

The Slaton Slatonite

Volume 3.

SLATON, LUBBOCK COUNTY, TEXAS: MAY 1, 1914.

Number 35.

WORTHAM WELL FLOWS 2,800 GAL.

Slaton Party Visits Helen Temple Farm and Sees Irrigation Well Run.

S. G. Brastfield, E. S. Brooks, J. H. Norvell, J. C. Stewart, Dr. G. H. Branham, and L. P. Loomis drove out to the Helen Temple farm nine miles north of Slaton Saturday to see the big irrigation well in operation, and see the work that Mr. John L. Wortham is doing in developing that neighborhood.

This farm is in the San Augustine school land in east Lubbock county that Messrs. Wortham and Sheb Williams purchased and are colonizing. It comprises some of the finest land on the plains and is almost as level as a floor, with but little slope; the finest land on the plains means mighty good land as the best land in the world lies right here in the country tributary to Slaton. Mr. Wortham has erected quite a colony of pretty houses on the Helen Temple ranch. He has in addition to the barns a garage and machine shop where almost any class of ordinary machine work can be handled.

A tractor engine is used on the farm for much of the field work, and the farm is provided with a special wagon to be hauled about by the engine. The wagon looks more like a box car than a farm wagon, and is nearer the size of one, also.

The center of interest naturally takes a person to the big well that furnishes the water to irrigate the Helen Temple fields. The pump has a 10-inch discharge and is operated by an 80-horse power Bessemer engine which uses crude oil for fuel. The engine is quite a splendid piece of machinery and works very smoothly. It runs without ignition. A bowl in the head of the engine is superheated by a powerful gasoline torch, and the distillate is pumped against this bowl in regular discharges. The distillate is ignited by this heated bowl, and the repeated explosions keep the bowl hot.

The well was put down about 240 feet in order to get the third or fourth strata of water, but the well casing is only down eighty feet, the water level being considerably less than eighty feet from the top.

The well has been tested several times, and the wier showed each time a flow of 2,800 gallons a minute. The water comes out of the pump and into a large concrete tank, and from the tank is carried by a four foot sluice way to the ditches where it goes to the fields. The sluiceway had considerable fall to it and the flow of water was rapid and yet the pump kept a stream four inches deep in it all the time. This immense quantity of well water made quite a river by the time it was a hundred yards away from the pump.

The well will be run pretty steady this spring and summer,

WE CARRY IN OUR FURNISHING DEPARTMENT

For the Ladies

EVERYTHING IN

Black and White Lisle Hose Black Silk Tailoring Elastic
Dexter Knitting Cotton Hair Pins Brass Pins Safety Pins
Toilet Articles Pearl Buttons DMC Thread Ribbon
Clark's O N T Sewing Thread

We Carry for the Men
Everything in Furnishing Goods and Tailoring

PROCTOR & OLIVE, PROPRIETORS

SLATON SANITARY GROCERY

SANITARY Way is the Only Way. You Only Pay for What You Buy and at Lower Prices

except when the rain comes freely. Saturday the water was being utilized to flood a wheat field and the wheat certainly looked good. Beside the wheat was an oat field, and adjoining that was a cotton field just being planted.

The visitors agree with Mr. Wortham that he has a fine farm and they could see that his land has been put in splendid shape for crop raising this year.

The San Augustine school land is only five miles of Slaton and will mean much to our town when there is a farmer on every 160 acres of it.

The Slaton gentlemen were more than pleased that they had made the trip to this farm to see the aqua pura gushing forth from a well in such abundance; and the courteous welcome that was given them by the farm and well employees made their visit especially enjoyable.

Clean-up Day Ordered.

The City Council requests me to proclaim Tuesday, May 5th, 1914, as clean up day for Slaton. It is urged on all citizens to clean up their premises on or before this date and thereby assist in maintaining a healthy and sanitary condition within the city limits.

R. J. MURRAY,
Mayor.

COUNTY COMMISSIONERS SESSION

Last Meeting a Busy One in Which New Roads Petitions Are Taken Up.

The Commissioners Court of Lubbock County met in regular session Monday, April 13, and there was quite a lot of business transacted.

The Lubbock Brownfield road question was taken up and the report of the jury of view that was appointed at the last sitting of the court was approved, including the damages which they assessed, and the road was ordered opened as far as the east line of Donley county school and in Hockley county. The clerk was ordered to issue warrants against the road and bridge fund for the damages assessed, also for the payment for the services of the jury of view.

J. C. Levy of Slaton was appointed Deputy Hide and Animal Inspector.

F. V. Williams, Road Overseer of Road Precinct No. 20, tendered his resignation, which was accepted, and J. T. Able was appointed to fill out the unexpired term, or until his successor shall be elected.

C. V. Young offered his resignation as Justice of the Peace of Precinct No. 2; same was accepted and the office declared

vacant. L. P. Loomis was appointed to succeed him and upon presentation of the necessary bond will be declared Justice of the Peace for that precinct.

It was ordered by the court that the court house yard be set in blue grass and white clover.

The county accepted the offer of the city of Lubbock to furnish water for the court house, and agreed to pay for same at the rate of 12½¢ per 1,000 gallons.

In response to a petition of a number of people, a road of the third class was ordered opened, beginning at the north end of Railroad Avenue, Slaton, Texas, and running to the Lubbock-Crosbyton road at a point near the John L. Wortham farm.

Upon a petition of H. D. Talley and others, a road of the third class was ordered opened from the east end of Railroad Avenue, Slaton, Texas, to a point 3 miles north, which is the northeast corner of Section 33, Block S, thence in a northeasterly direction along the old road to a point on the west line of Crosby county in Survey 1,066, Block D-19.

It was ordered by the court that four monuments be made, three feet long by 18 inches square at the bottom and 12 inches square at the top, same to be used to mark the corners of Lubbock county permanently when the lines and corners have been thoroughly established. The same were ordered made by J. B. Pryor, and R. A. Barclay was authorized to receive same when finished, the cost to be \$12 for the four.

A petition signed by Jas. L. Benton and others, asking for a road, beginning at the s-w corner of Section 30, Block S., thence west six miles, on section lines to the Tahoka road, to southwest corner of survey 68, was examined by the court, and receiving favor in their sight the following were appointed a jury of view to view out the proposed road and assess the damages if any—F. V. Brown, L. W. Wilke, S. S. Stewart, Clem Kitten and J. Benton.

The court then adjourned.—Avalanche.

06 SHIPS 2,500 FOURS AND FIVES

Sold to Chase Brothers at \$55 and Sent to Kansas Pastures for Summer.

The 06 Ranch has been pretty busy during the last week rounding up and shipping from the Slaton stock yards 1800 head of four and five year old steers, and 700 head of heifers which Messrs. Kokernot & Johnson sold to Chase Brothers of Kansas. The cattle brought around \$55 a head, and part of them were driven up from the Z Bar L pastures. They were shipped to Kansas pastures.

H. L. Kokernot of San Antonio attended the shipping of the cattle. S. I. Johnson is part owner and manager of the 06.

The 06 has been re-stocking the range with cattle from the Kokernot pastures at Alpine, Texas.

HEAVIER STEEL BETWEEN PLAINVIEW AND CANYON

The Santa Fe announced this afternoon that it would soon commence the laying of standard gauge, 72 pound rails between here and Canyon City.

The heavier rail will replace the 52 pound rail, which was used in building the road into Plainview, several years ago.

The larger size rails are necessary on account of the heavy increase in freight and passenger traffic.

The construction work, which will commence on May 1st, will require three months. A large extra gang will be put to work. The construction crew will be in charge of roadmaster Bruce.—Plainview Herald.

ODD FELLOWS VISIT LUBBOCK

A bunch of Slaton Odd Fellows went to Lubbock Tuesday evening to attend a social function given by the Lubbock Odd Fellows in honor of their new hall and lodge furniture. The Lubbock Three Linkers have lately secured quite a splendid lodge home in a new building recently erected there, and can justly be proud of it. A number of Odd Fellows and their wives from Abernathy were in attendance, and the large hall was crowded with the participants in the festivities.

A literary program was given in which Messrs. R. A. Baldwin, A. E. Arnfield, and L. P. Loomis represented Slaton. A splendid banquet was then served, and an after dinner hour of toasts was prepared when the death of Commissioner Barclay was announced, and this brought the meeting to a close.

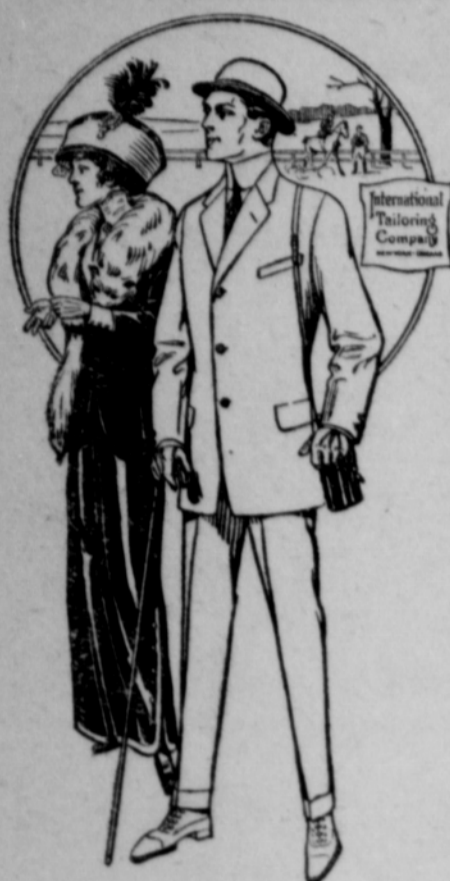
Messrs. A. E. Arnfield, Joe H. Teague, Jr., P. M. Faulkner, E. S. DeLoach, J. G. Wadsworth, I. W. Hudgens, G. W. Dudley, C. F. Anderson, R. A. Baldwin, R. J. Murray, and L. P. Loomis were in attendance from Slaton Lodge. C. W. Olive, Ed Shopbell, and Briggs Robertson took the crowd up in their cars.

PICTURES.

Don't fail to call at the tent and have your pictures made while you have a first class Photographer to do your work right at your door, and while you get as fine work as you can get in any city.

WILLIAMS, PHOTOGRAPHER
IN SLATON FOR TEN DAYS

JNO. R. McGEE
ATTORNEY AT LAW
LUBBOCK, TEXAS
Practice in all State Courts



Our Spring and Summer Woolen Display

from New York's and Chicago's "Homes of Fine Tailoring"

Is Positively Gleaming With Snap and Style...

all the Spring Tints.

ORDER NOW!

Proctor & Olive

Gents Furnishing Goods
Slaton, Texas

UNIONITES.

Mr. and Mrs. Young, Sr., spent the day with Walter Pierce Sunday.

Mrs. Lee Luther of Slaton is spending a few days with Mrs. Robert Luther.

Mrs. L. R. Brasfield made a call at the home of Mrs. M. G. Leverett, Wednesday afternoon.

Mr. and Mrs. Elmo Brooks spent Sunday at the home of the latter's parents, S. G. Brasfield.

George Burns and Marvin Bounds of Lubbock spent Saturday and Sunday at the home of Elmer Bounds.

Jessie Brasfield and Clint Joplin spent the earlier part of Saturday evening with Master Oval and Melvin Leverett.

Most of the Union Sunday school visited the New Hope Sunday school to attend the afternoon services held there last Sunday.

The Union youngsters enjoyed a singing party at the home of Mr. and Mrs. Young, Sunday evening. Quite a crowd was present and all report a jolly good time.

Mr. and Mrs. Jesse Joplin, Mr. and Mrs. John Standifer, Grandma Standifer, Milo and Sanky Johnston Jr., and Miss Esther Young, spent Sunday at the home of Hurd Standifer.

Marvin Bounds entertained a number of his friends at the home of his brother, Elmer Bounds, Saturday night. Despite the sand storm there were several present. Several games were played, after which a delicious lunch of chocolate tea and cake was served. After this several more games were played and then the guests bid their host goodnight.

Sunday school is progressing rapidly, but instead of being on Sunday afternoon it is now held at 10 o'clock in the forenoon. Teachers were elected Sunday. For the bible class, Mrs. W. R. Standifer; Seniors, Mrs. Young, Sr.; Junior class, Mrs. W. Pierce; Card class, Mrs. Jessie Joplin. Miss Esther Young, Secretary; Sanky Johnston, Sr., Superintendent; Mrs. Elmer Bounds, organist.

I'm a booster for Union, you bet, come along boys let's go to Union.

Dimple Dolly.

Our Educational System

In the year 1066 William The Conqueror crossed over the English Channel with his army and met the English King, Harold, and his army at the battle of Hastings, killing the English king and annihilating his army. William took charge and partitioned the fair and fertile lands of England among his captains and generals and the people dwelling on those lands as tillers of the soil became as abject slaves as were ever the negroes of the South, and were known as villeins. These officers of the Conqueror laid the foundation of that idle class in England known as the nobility. To keep up the pomp and splendor of each title they enacted the law of primogeniture. That is, the oldest son took all the estate and left the younger children paupers. These pauper scions of the nobility could not afford to toil in the fields along with the low down fellows, which the word villein implies. So something had to be done for them to make a living without working on their fathers' farms.

The result was an educational system to make lawyers, doctors, preachers and other professions supposed to be above that of the farmer which was considered at that time to be menial labor.

Our educational system is still pushing our children into the

We Wish to Announce
Our Spring and Summer Showing for 1914.

Late Creations Moderately Priced

Ladies' Ready to Wear
Dresses, Kimonas, Slips, Combination Suits
Middie Blouses and Petticoats.

Men's Shirts for the Particular Dresser.
Walk Over, Brown, and Patriot Shoes.

The Hub of Fashions
Simmons & Robertson
Dry Goods Department

SLATON PLANING MILL

R. H. TUDOR, Proprietor

Contracting and Building

Estimates furnished on short notice. All work given careful and prompt attention. Give us a trial.

North Side of the Square

WRITE

R. J. MURRAY & COMPANY
SLATON, TEXAS

For Information About the City of
Slaton and the Surrounding Country

EASY TERMS on Furniture at CASH PRICES HOWERTON'S



Racket Goods at Popular Prices

Cash or Exchange for
Furniture or Stoves

professions instead of making successful farmers of them.

To make a successful farmer there must be a combination of three essential elements: brains, water and soil. I name the elements in the order of their importance. Some people think that good soil is all that is necessary; in proof that it is not, give a horse, mule or an ox the richest soil in Texas; either has the physical strength to do the farm work more than a man, yet neither will succeed in farming, for want of brains. To show that water is next most important give the same rich soil to the most scientific farmer in Texas, and withhold the water and he will fail as would as the dumb beasts. But give a brainy man plenty of water in a permanent form as in a lake or shallow depths of the ocean and he will farm without soil, if he can raise nothing else but bull frogs and oysters.—H. A. Halbert.

Joe H. Teague, Jr., resigned his position at the Santa Fe depot and will enter the confectionary business in Slaton. He has not decided on a building yet but has already purchased a fountain and other fixtures.

All copy for advertisements should be in the Slatonite office by Wednesday morning.

Please remember this.

Startling

!!

In 1912 there were
8,729,592 telephones,
20,248,326 miles of wire,
13,735,658,245
messages handled
by the telephone companies
of the United States.

These are the recent government figures.

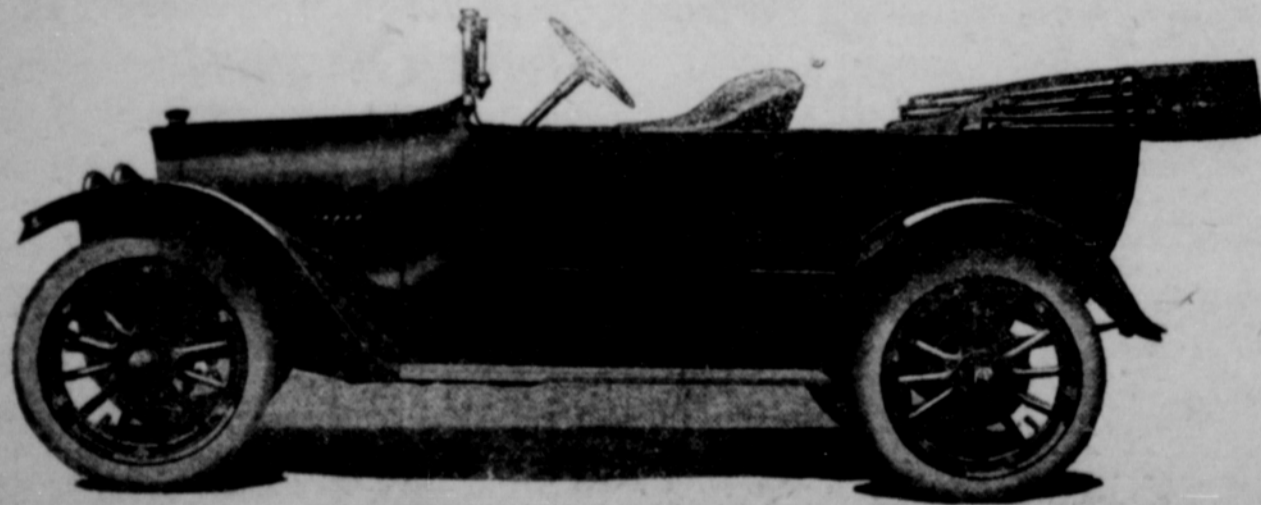
It is estimated that in 1913 they were increased fully ten per cent.

What will they be in 1914?

THE WESTERN
TELEPHONE
COMPANY

REO THE FIFTH

All That the Price Demands. Electrically Lighted and Started
POWER, SILENCE, DURABILITY AND GRACE



See the New Model of "The Last Word in Car Building."

SLATON AUTO SUPPLY COMPANY, Agents

R. A. BALDWIN
ATTORNEY AT LAW
Office West Side of Square
Slaton, Texas

Announcements

POLITICAL.

The SLATONITE is authorized to announce to the voters that the following named candidates for office solicit your support and your vote at the Democratic Primaries held in July, 1914.

For District Attorney 72nd Judicial District:

R. A. SOWDER of Lubbock.

For County and District Clerk of Lubbock and Attached Counties:

FRANK BOWLES of Lubbock.
SAM T. DAVIS of Lubbock.

For County Treasurer of Lubbock and Attached Counties:

CHRIS HARWELL of Lubbock.
MISS ADELIA WILKINSON of Lubbock.

J. M. JOHNSON of Lubbock.

For Sheriff and Tax Collector of Lubbock and Attached Counties:

W. H. FLYNN of Lubbock.
Re-election.

J. T. INMON of Lubbock.

For Tax Assessor of Lubbock and Attached Counties:

R. C. BURNS of Lubbock.
S. C. SPIKES of Lubbock.

For County Judge of Lubbock and Attached Counties:

E. R. HAYNES of Lubbock.

For Representative 122 District:

H. B. MURRAY of Post City.

For County Commissioner Precinct No. 2, Lubbock County:

C. A. JOPLIN of Slaton.

You ought to be a subscriber to your home paper.

Have the man you buy your car from, compare it with the new Reo.

Watch for the Saxon Demonstration at the Slaton Auto Supply Co's. garage.

H. F. Rice reports a six inch rain at Matador in three hours. It washed out bridges and flooded the land for a while.

Sheriff W. H. Flynn was in Slaton Wednesday summoning grand and petit jurors for the coming term of district court.

I am agent for the Ladies Home Journal, the Saturday Evening Post, and the Country Gentleman. Please hand me your subscriptions.

Vyola Talley.

A. I. Kuykendall and A. S. Page, recently elected, did not qualify for the new city council. J. S. Edwards was drafted to fill one of the vacancies and the other remains open as the draft has as yet failed to secure an occupant for it. Some kind patriotic citizen please volunteer for city council service.

Clarence Olive returned from Bells, Tex., Saturday. He says that Bells has a rat extermination club that has any fire company outclassed for efficiency in service. The rats became so numerous in the town that an extermination club was organized, and the skill of the club is so pronounced that they kill rats by the wagon load. Whenever rats are discovered about a building a rat alarm call is put in and the company responds with dogs and clubs, and the rodents might just as well surrender for their last name is Huerta.

If you contemplate the purchase of a car be sure to ride in the new Reo,—it's a pointer for you in car buying.

J. S. EDWARDS, PRESIDENT
O. L. SLATON, VICE PRESIDENT

P. E. JORDAN, CASHIER
J. G. WADSWORTH, ASST. CASHIER

754

FIRST STATE BANK OF SLATON

Supervised by State Bank Commissioner. Carefully examined every three months by State Examiner. Conducted according to law.

Win One, Lose One.

The Lubbock Second team came down to Slaton last Friday to play the Second team here, and they returned home with the loser's consolation of having done the best that they could. The visitors started in as winners by getting two scores in the first on no hits and three errors. They got two more in the third on no hits and three errors. They got two more in the third on no hits and several errors, and one in the fifth on one hit and two errors. This was all for them in the scoring line until the ninth when they got four more scores on no hits and six errors.

The Slaton team started out like losers, not getting any scores until the sixth inning when they put over seven on seven clean hits and one error. A home run in the seventh gave them another, and hits and errors in the eight gave them three more, giving them the game 9 to 11. Guinn pitching for Slaton allowed four hits and struck out 12, walking two. Lubbock didn't earn a score.

The Slaton boys got 13 hits and 8 struck out. Those who played: Champion, Cloud, Briggs Robertson, Robbie McReynolds, Joe McDonald, Wade Robertson, Bill Guinn, John DeLong, O. W. Davis and Willie Johnson.

The Slaton first team went to Lubbock Saturday and lost a game 9 to 5. The Slaton boys started in winners by putting over five scores in the first by clean hitting. They went in the air later in the game and the pitchers lost their nerve; three different men walking nine batters. That tells all of the sad story.

Subscribe for the Slatonite.

If It Is Anything in
Hardware
...and...
Furniture
Try This Store First.

We want to serve you
and our prices are low

FORREST HARDWARE

Slaton Livery Barn

G. L. SLEDGE, Proprietor

Good Teams and All Livery Accommodations.

We have for sale at all times—

Hay, Grain and Feed, Chicken Feed
Ground Oyster Shells, etc.

AGENTS

"Reo the Fifth." Detroit "32"
Demonstrators on Floor

Auto Livery Service, Local and Long Distance.

Lubricants, Accessories, Gasoline.

The new Lee Puncture Proof Pneumatic Tires. It will pay you to look at these.

We cater to local trips and will meet any train for you.

Slaton Auto Supply Co. Phone 14

TWO BARGAINS for SALE or TRADE

I am offering for a few days a dandy tract containing SIX acres ready for cultivation, with good two room house, practically adjoining the town of Slaton on the west, easy distance of the school and business section. Price, \$500.00. Terms of \$50.00 cash or its equivalent. Balance to suit you.

Also a four room house and lot in the Original Town, east front, feed shed, coal shed and chicken house, Etc., very convenient for railroad employee. Price, \$450.00. Terms, \$25.00 cash, balance \$10.00 per month, might accept vacant lot as first payment.

If interested in a home, don't delay, see or address,

C. C. HOFFMAN, CITY

Our Cost Sale Prices Stay On

FOR THIRTY DAYS LONGER

We have sold a lot of goods at our cost prices but there are yet remaining some
Overalls, Jumpers, Shoes, Gingham, Groceries, Etc.
that we want to close out to make room for other lines, so have decided to continue our cost sale prices during May. We have some splendid bargains for you.

W. R. HAMPTON
SLATON'S LOW PRICE CASH STORE

The Sierra Madres.

The program given at the auditorium Sunday night by the Sierra Madre Concert and Dramatic Company of Los Angeles, Cal., under the auspices of the Santa Fe Reading Room, was one of the most enjoyable that has yet come to Slaton.

Miss Frieda Peycke, impersonator and manager, captured the audience with her charming pianologues, and responded to many encores.

Mr. Fred C. McPherson, baritone, has a voice that is said by the music critics present to be one of the best before the American public today, and his solos displayed the power of his splendid voice in a way that delighted the audience. To hear him sing is a rare treat.

The mixed quartet numbers were good, and the soprano, contralto, tenor, the violinist, and the cellist had their favorites in the audience.

The Sierra Madres are good

S. H. ADAMS

Physician and Surgeon

Office at Red Cross Pharmacy

Residence Phone 26

Office Phone 3

Wall Paper and Paint Brushes

For sale; prices very reasonable. Come and select your patterns from the stock.

E. S. BROOKS

PAINTER AND
PAPER HANGER

See me, or W. E. Olive at Sanitary Grocery.

entertainers.

The next and last number of this season's Santa Fe Reading Room entertainments will be given tonight by the Illinois Valley Concert Company.

The Slaton Slatonite

Issued..... Every Friday Morning
LOOMIS & MASSEY..... Publishers
 L. P. Loomis..... Editor and Manager

SUBSCRIPTION, A YEAR \$1.00

Entered as second-class mail matter September 15, 1911, at the post office at Slaton, Texas, under the Act of March 3, 1879.

Dreaming your town into a city is impossible; you must boost and build it into one.

Read the clean up notice a second time and put it away in your day book where it won't be forgotten.

County Commissioner R. A. Barclay from Precinct No. 1 died in Lubbock Tuesday night after an illness of about a week.

A carload of culverts was shipped to Slaton last week from Lubbock to be used on the public roads in this corner of the county.

The north Panhandle is taking considerable stock in a rumor that the Santa Fe will extend its road from Englewood, Kans., to Ochiltree.

Have you "fumigated" around your home yet? is the way the Ochiltree Eagle-Investigator puts the spring clean up proposition to its people. That's a good way to put the idea, too.

Several trains of army provisions and munitions have passed thru the Slaton division this week. Tuesday night a special came thru bearing an aeroplane and the aeroplane squadron of about fifty men. They reached Galveston Wednesday and embarked for Vera Cruz.

The population of Texas is now placed at 4,257,854. That of the United States and its possessions, 109,021,992. San Antonio is the largest Texas city with 115,063 people; Dallas is second with 111,986. New York, including Brooklyn and other suburbs, now has 5,333,537 people. Chicago comes next with 2,393,325.

Cattle shipments have been pretty heavy for several days. The cattle are being moved to northern pastures for the summer, and this put a lot of extras over the Santa Fe. The 700 heifers in the 06 sale were held over until Thursday before a crew could be secured to take the train out, as all the extra crews had been taken out on previous cattle trains.

The trees on the city square are being tended in a proper way and they should make a good growth this summer. The ground has been plowed, and A. I. Kuykendall is going over it carefully with a hoe, getting the weeds that the plow failed to kill. He is an experienced horticulturist, and knows how to make trees grow. Mr. Kuykendall is also a pretty good authority on gardening.

The new Slaton-Wortham road has been receiving some attention, and will get more. Commissioner L. O. Burford has put in several days on the north side of the canyon and has done some good work in straightening out the road, cutting down the grade on the hill, and making water courses to keep the rains from washing out the road. He also put in a new crossing over the creek. We understand that he has exhausted his appropriation for that stretch of the road and had to stop work. This is to be regretted for there is more work that needs to be done to make this a good road. Commissioner C. A. Joplin has charge of the working of the canyon road on the south side. H. D. Talley has charge of the work on the Robertson road.

Preached for Odd Fellows.

The Rev. J. P. Callaway delivered an excellent sermon, in the interesting and exhaustive way that he handles all his texts, to the Odd Fellows at the Methodist Church Sunday morning, and from an Odd Fellow's viewpoint it was especially good. He read for his lesson the bible story of Jonathan and David to illustrate the faithfulness of true fraternity, and took as a text the verse, "The Lord be between me and thee, and between my seed and thy seed from this day, forever." He closed by bringing out that no life can be complete in its lodge affiliation without the Christian experience.

Brother Callaway was accompanied to Slaton by Mrs. Callaway and they remained in town for two or three days, visiting.

District Court Called.

District court sets May 26th. The grand jury consists of R. J. Murray, P. B. Penny, A. M. Becton, R. B. Shaw, H. B. Edsall, J. C. Bowles, J. H. Bryan, W. S. Posey, G. M. Arnett, J. W. Ellison, W. B. Burford, J. L. Benton, W. A. Bacon, R. M. Clayton, Geo. M. Bowles, and R. A. Rankin.

On the petit jury from Slaton are G. L. Sledge, H. D. Talley, J. S. Edwards, G. H. Orr, C. V. Young, A. E. Howerton, A. C. Benton, M. F. Klattenhoff, J. Andy Caldwell, J. H. Standifer, and Jesse Joplin.

Mrs. P. E. Jordan and son are in Denton County visiting for a few days. They left Slaton last Thursday.

Busser Visits Slaton.

S. E. Busser of Albuquerque, N.M., superintendent of the Santa Fe Reading Rooms, was in Slaton the first of the week on an official visit to the Slaton Reading Room. He was well pleased with the manner in which Mr. and Mrs. G. W. Resoner have conducted the Slaton Reading Room. Mr. Busser is the gentleman who originated the idea for the Santa Fe in building reading rooms for their employees, and when they accepted his ideas they selected him for the work. He resigned the ministry to take up the work of making surroundings of the railroad men more attractive, healthier, and happier, and finds the means of doing this thru the present splendid system of reading rooms and lyceum courses.

Mr. Busser attended the Sierra Madre Concert Company entertainment at the auditorium Sunday night and favored the people of Slaton with a short address upon the purposes and the benefits the Santa Fe has and receives thru these high class entertainments for the special pleasure of their employees. He enjoyed the Sierra Madre program very highly.

The people of Slaton enjoyed this visit to our city by Mr. Busser, and especially his attendance at the auditorium.

CAPTURES WHITE PRAIRIE DOGS

H. L. Stanton, a young white man living a few miles east of town, in passing through a prairie dog village a few days ago, saw a litter of white pups. He became anxious to capture them and dug a jug-shaped hole near the one occupied by the dogs, with the above results.

Mr. Stanton brought the pups to town, where they attracted a great deal of attention, one of them being purchased by our hustling townsman, Monte Bowron, who occupies the new store on the north side of the square.

The claim was made by some one that a white prairie dog had been captured once before and sold for a thousand dollars. We do not know if this be true, but we do know that white prairie dogs are a very rare occurrence, and Mr. Stanton will likely have no trouble in selling them for a good price.—Lubbock Avalanche.

May Kill Plover.

Texas sportsmen may kill the kind of plover found in this state, insofar as the federal game laws are concerned, according to an announcement by the United States District Attorney John Wilson. Only Golden plover are protected by the government, and this species is not common in Texas.

Many requests have come to the federal officers, relative to the killing of plover, and Mr. Wilson looked up information on the subject. The plover found in Texas has a rudimentary toe on the back of the foot, while the Golden plover, which the government protects, has none.

The Rev. Albert Arnfield of Slaton, Tex., and a former resident of this place spent several days here this week. Mr. Arnfield has many ardent friends and admirers here who will be pleased to learn that he was licensed as a Presbyterian minister at Clovis last week by the Pecos Valley Presbytery.—Fort Sumner, N.M., Leader. Mr. Arnfield returned to Slaton last Thursday.

J. G. WADSWORTH Notary Public

INSURANCE and RENTALS

Fire, Tornado, Plate Glass,
 Automobile, Accident, Health
 and Burglary Insurance . . .

Office at FIRST STATE BANK
 Slaton -:- Texas

Spring Tonic

Tone up your system in the spring. We have a full line of the popular tone-up medicines. Take a good tonic and see what a difference it will make with you.

Our Customers Know that when they buy Drugs of any kind at our store they get the most value for their money. When you need anything that a good druggist sells come to us.

Red Cross Pharmacy

SLATON

Founded and Owned by the Pecos & Northern Texas Ry. Company

SANTA FE SYSTEM

LOCATION---Southeast Corner of Lubbock County, Texas, in Central Section of the South Plains; on the new Main Trans-Continental Line of the Santa Fe System, of which the Clovis Extension is now under construction; connects North Texas lines of that system at Canyon, Texas, with South Texas lines at Coleman, Texas; junction of the Lamesa branch of that system.

ADVANTAGES AND IMPROVEMENTS---The Railway Company has completed Division Terminal Facilities at this point, constructed mostly of reinforced concrete material and including a Round House, a Power House, Machine and Blacksmith Shops, Coal Chute, a Sand House, Water Plant, Ice House, etc. Also have a Fred Harvey Eating House now open, and a Reading Room for Santa Fe employees. Have extensive yard tracks, preparatory to handling a heavy trans-continental business, both freight and passenger, between the Gulf and the Atlantic Coast and the Pacific Coast territories, and on branch lines to Tahoka, Lamesa and other towns.

3000 FEET OF BUSINESS STREETS are graded and macadamized and several residence streets graded; there are 26 business buildings of brick and reinforced concrete, with others to follow; 200 residences under construction and completed.

A FINE AGRICULTURAL country surrounds the town, with soil dark chocolate color, sandy loam, producing Kaffir Corn, Milo Maize, Cotton, Wheat, Oats, Indian Corn, garden crops and fruit. An inexhaustible supply of pure free stone water from wells 40 to 90 feet deep.

THE COMPANY OFFERS for sale a limited number of business lots remaining at original low list prices and residence lots at exceedingly low prices. For further information address

P. & N. T. RAILWAY CO., Owners.
 SOUTH PLAINS LAND COMPANY, and HARRY T. McGEE,
 Local Townsite Agents, Slaton, Texas.

