

We've Gone This Far---Let's Go On And Beat Childress, Then Win State!

The Slaton Slatonite

15¢
PER COPY

64th Year, No. 10

A MEMBER OF MOST FAMILIES IN THE SLATON TRADE AREA

SLATON, TEXAS, LUBBOCK COUNTY

Dec. 4, 1975

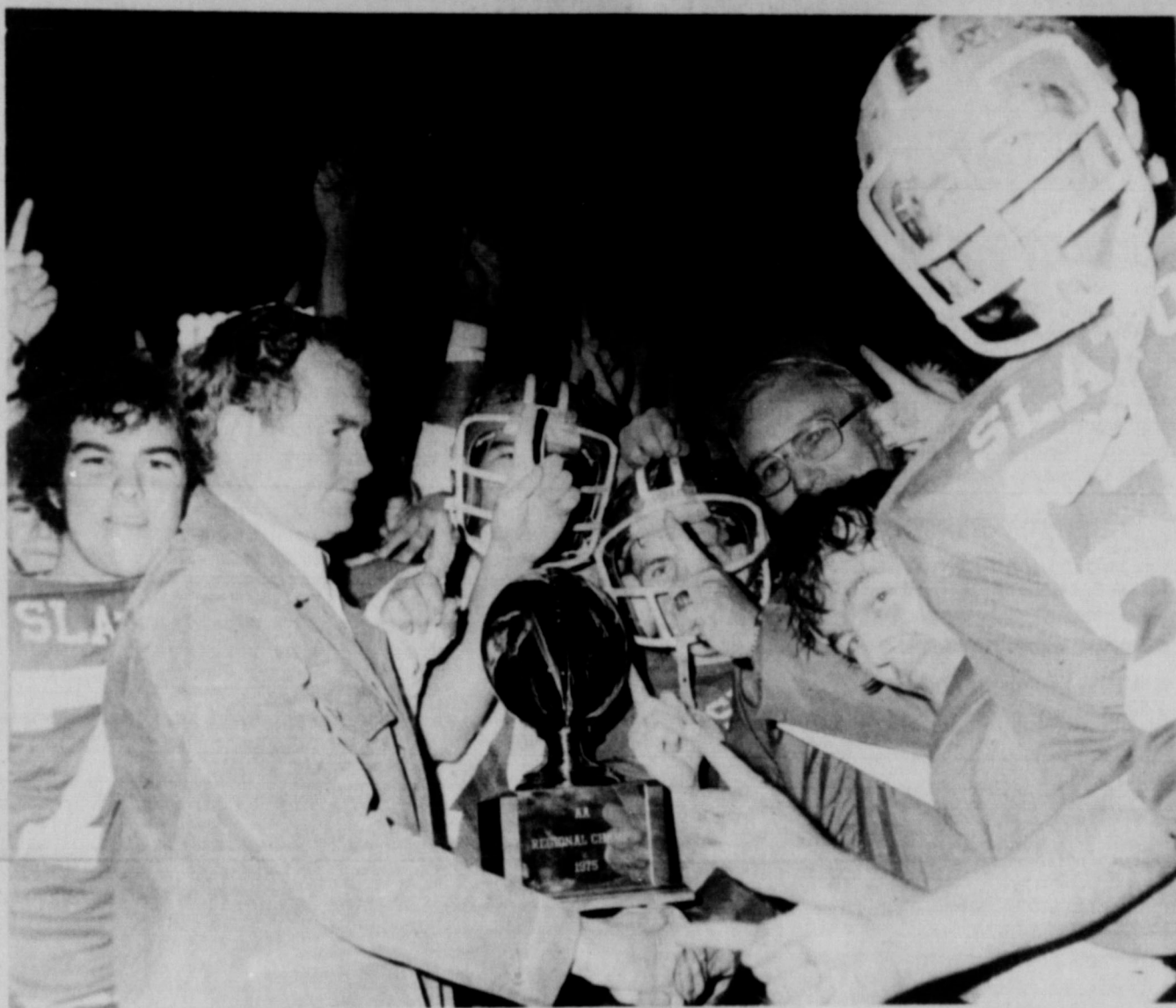
SLATON TIGERS ROLL ON, FACE CHILDRESS IN QUARTERFINALS

Tigers and down on a look-in pass against Olton. "Childress is probably a little more aggressive on defense than Anson or Alpine," Coach Eddie Cook told members of Slaton Tiger Club Monday night. Cook and First Assistant Tommy Boyd had nothing but praise for the play of the Tigers on both offense and defense last Friday. A big crowd jammed into the Chamber of Commerce building to view the films and shower compliments on the players and coaches for the tremendous play of the team.

Support for this year's football team has been tremendous in the community. Slaton football fans who have suffered through a lot of losing seasons are making the most of this year's triumphs, and they are very proud of the Tigers.

Gratifying, too, to the players and coaches and to the Slaton fans is the support demonstrated from the nearby communities of Roosevelt, Cooper and Post. Supporters of Cooper and Roosevelt teams in district have taken advertisements in the Slatonite voicing their congratulations and urging the Tigers on to further victories as representatives of District 5-AA. Post Coach Bobby Davis made a fine gesture in speaking to the Tigers at a pep rally last week. And Frenship sent a letter of support to the team.

These and other Tiger fans in addition to having separate ads supporting the team are continuing to back the boys with a double-page ad in the Slatonite each week, and this week's ad is in color—Tiger red, of course.



THE CHAMPS—Regional champions after beating Alpine, the happy Slaton Tigers receive the championship trophy from Jesse Hatfield of the Midland Chamber of Commerce. That's Coach Eddie Cook with the cap on at right, joining the players in signifying that the Tigers are No. 1 in the hearts of their countrymen. (SLATONITE PHOTO)

BY DALTON WOOD

The Slaton Tigers and their fans knew this year's team was for real all along, but the Alpine Bucks and a lot of fans and sportswriters outside the Slaton area found it out Friday night as the Tigers stopped Alpine's playoff express with a convincing 21-6 regional championship victory.

When the Tigers, now 8-4, play unbeaten Childress at Plainview Friday night, they will be further into the state playoff than any other Slaton football team in history.

Last Friday, Slaton's defensive line and linebackers and secondary battered Alpine's high-scoring Bucks into befuddlement and swarmed their two talented running backs every time they got the ball. Alpine's Ramon Gonzales and Clay Cornett had rushed for more than 1,200 yards each in 10 previous games, but the speedster Gonzales made just 46 yards in 13 carries, while the 200-pound Cornett was held to 44 yards in 15 trips. Alpine had 92 net yards rushing and 83 passing.

Steamboat Bill

On the other hand, Slaton's superback, Bill McClesky, added 148 yards to his season's totals in 33 efforts, and scored all three touchdowns for Slaton, giving him 138 points for the year. McClesky now has gained 1,633 yards in 12 games.

On defense, all of the Tigers showed their teeth. Linebackers John T. Basinger and Darrell Bednarz were in on the most tackles, 14 and 12 respectively, as expected of linebackers. Loran Roberts had 9, and so did Artie Limmer and corner back Gary Aycock. Credited with eight each were defensive ends Greg Basinger and Gaylon Buxkemper, while totals of six each were given by one statistician to Geron Stricklin and Steve Wood.

Alpine kicked off the regional contest before 3,500 fans at Midland stadium Friday night, and Brad Eblen returned it to the Slaton 25. Slaton, going against the wind, couldn't move, and punted out to Alpine's 45. A couple of plays later, Gonzales ripped off a 16-yard run that was to be the Bucks' longest run from scrimmage of the entire game. But Slaton held at the 16, and a field goal attempt was wide to the left at 5:35 left in the first.

Mike Passes Well

Slaton QB Mike Tumlinson, who hit on four of seven passes in the game, found Fullback Charlie Haynes on a 23-yard pass play, but Haynes fumbled at the end of the gain and

GAME AT A GLANCE

Slaton	Alpine
17	First downs 8
198	Yds. rushing 92
66	Yds. passing 83
4-9-0	Compl. by 3-9-0
2	Fumbles lost 3
6-30.1	Punts, avg. 6-31.7
5-35	Penalties 2-10

Mike Zimmerman recovered for Alpine at the Slaton 40. Alpine got another penetration as QB Mickey Scott hit Halfback Andrew Evans for 24 yards to the Slaton 16. Gonzales went 6 yards to the 10. Cornett rammed to the 6, and Slaton appeared in more trouble. But Cornett was then thrown for a loss of 4 and as Alpine tried another field goal, the snap went over the head of the kicker and holder and Roberts recovered for Slaton on the Tiger 32. Slaton continued to stay in a hole as a punt against the wind went out to the Slaton 46 near the end of the quarter.

In the second period, Slaton began to take charge after being outplayed in the first quarter. Alpine was halted on a fourth and 2 effort as John T. mashed Gonzales and Slaton took over on the Tiger 36. McClesky ran for 12 to start what wound up as a 64-yard scoring drive, with the biggest gain being a 19-yard scamper by McClesky to the Alpine 6. From there it took Bill four cracks at the line, and he went in from just inches away on fourth down. Roberts kicked the first of his three extra points at 5:55, to give Slaton a 7-0 lead.

Garcia Alert

On the kickoff, the Alpine receiver fumbled, and Slaton's Emilio Garcia pounced on it at the Bucks' 31. McClesky made this in five runs, the last one being 7 yards for the score at 2:51, and Roberts' kick made it 14-0 to the dismay of Alpine fans and astonishment of some members of the press box crew from Odessa, San Angelo and Midland.

On the kickoff after Slaton's second touchdown, Gonzales broke loose and appeared on his way to an Alpine touchdown when he dropped the ball in the clear, although Slaton's Ernest Gipson possibly could have cut him off. Slaton held and Alpine punted. McClesky got a rest and Tailback John Johnson, up from Slaton's unbeaten junior varsity team, ran for 4 and 16 yards as the half ended.

In the last half, Slaton's defense again was unyielding, and the offensive line of Mark Ethridge, Russell Heinrich and John T. Basinger, tackles Roberts and

(See ALPINE, Page 4)

Free Turkeys, Santa Slated

This holiday season will see 56 lucky persons receive free turkeys in the annual turkey give away sponsored by the Retail Trades Committee of the Chamber of

Commerce. And Santa will arrive in Slaton Friday, Dec. 12.

The drawings for the turkeys will be Dec. 12 and 19, with 28 turkeys given away each week.

Registration for the birds begins Monday at each of the participating merchants. Registration forms will be available at each place of business and will be turned in to the Chamber office at 3 p.m. each Friday.

Entrants must be 16 years of age or older, and may register as many times as they wish. However, there may be only one winner per family. If two members of the same family are drawn, one will be disqualified.

The turkeys, Honeysuckle Whites, will be stored at Henzler's Grocery and may be picked up there following the drawing.

Participating merchants who are donating the turkeys are Anthony's, Henzler

Grocery, Fondy's Western Wear, Piggly Wiggly, T.G.&Y., the Slatonite, Teague Drug, Eblen Pharmacy and Wendel's TV and Appliance.

Also, United Supermarket, White's Auto, Town and Country Chevrolet, Your Furniture House, Self Furniture, Smith Ford, Lasater-Hoffman Hardware and the Gift Gallery.

The drawings will be each Friday and Santa Claus will be on hand for the honors. He will arrive at the Chamber of Commerce office, via fire truck, hear the requests of visiting children, then draw the winning tickets.

WEATHER		
Courtesy of Pioneer Natural Gas Co.		
Date	Low	Hi
11-27	24	68
11-28	30	60
11-29	54	70
11-30	26	48
12-1	24	70
12-2	28	76
12-3	31	72
Rain—1975—22.00		

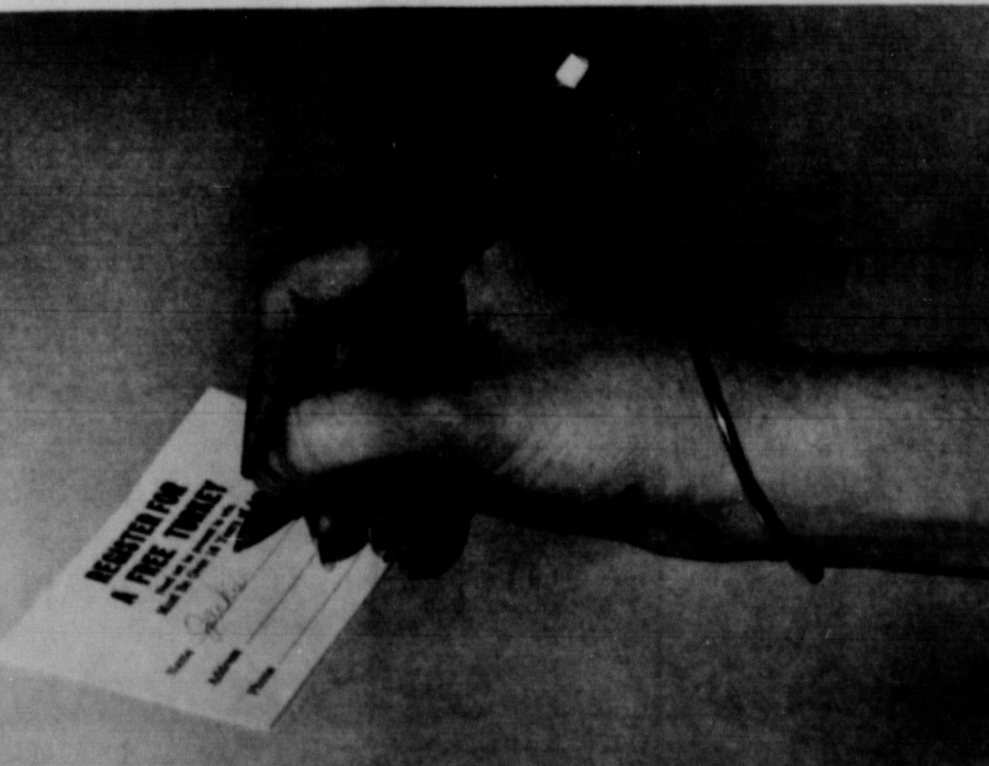


SUDDENLY it's December, and with December comes all those things unique to this time of year, like runny noses and cold feet, cotton ginning and frozen farmers, the ringing of sleigh bells and cash registers and all that goes with Christmas, including free turkeys, lighted homes and streets, and thin billfolds and plans to visit people you don't see very often.

Okay, so we have colder weather in January and February than we do in December, and the sound of sleigh bells is pretty hard to catch around here on most days. You still know what I mean.

Every year we who are on the far side of 30 remark that it doesn't seem like Christmas this year, and how it all at once jumped up in front of us, and how Christmas ain't what it used to be. I expect that if we'd look at it honestly, we'd see that the holiday season is just as exciting as it ever was for youngsters and parents alike, but especially for the kids. The trouble is not in the season; it's us who are older and consequently have more trouble enjoying the season than we did when we were youngsters. The Garza St. Grouch says the spirit of giving is great, but the spirit of receiving is even better.

WHEN G.K. CHESTERSON was asked the traditional question, "What single book would you like to have with you if you were cast away on a deserted island?" he replied: "Thomas's Guide To Practical Shipbuilding."



REGISTRATION TO BEGIN — Registration for 56 turkeys to be given away by sponsoring merchants will begin Monday. Registration forms will be available at each of the merchant's place of business. The turkey give away is a project of the Retail Trades Committee of the Chamber of Commerce. (SLATONITE PHOTO)

SLATON		CHILDRESS	
13	Colorado City	14	40 Clarendon
14	Dimmitt	0	28 Memphis
2	Littlefield	10	36 Shamrock
20	Abernathy	25	13 Wellington
6	Denver City*	10	32 Paducah
12	Post*	7	27 Olney*
28	Roosevelt*	0	19 Quanah*
21	Tahoka*	7	15 Electra*
36	Cooper*	22	48 Henrietta*
32	Frenship*	0	28 Seymour*
9 Bi-District		9 Bi-District	
Anson		0 29 Spearman	
Regional		Regional	
21 Alpine		22 Olton	
214 Opponents		101 337 Opponents	

Pair Solemnizes Vows In Slaton Ceremony



MRS. ALEX RANDALL MARSHALL
Kayla Anetia Curry

Kayla Anetia Curry and Alex Randall Marshall solemnized vows of marriage at 8 p.m. Nov. 28 in the First United Methodist Church of Slaton.

Officiating at the double ring ceremony were the Rev. Merriell Abbott, pastor, and the Rev. Bruce Parks of Tulia.

Parents of the couple are Mr. and Mrs. William C. Curry of Seminole, and Mr. and Mrs. R.O. Moore of Slaton.

Given in marriage by her father, the bride wore a formal gown of white chiffon knit, styled with an empire waistline. The moulded bodice featured a deep yoke of a Cameo design in Cluny lace with pearls outlining the Venise lace overlap. Full Camelot sleeves were accented with matching Greek caps of Cluny and Venise lace and lace cuffs. The double chiffon skirt formed a red-tinge. Pearl string lace outlined the chapel length train.

The bride wore a white picture hat with layered organza on the brim, edged in popcorn lace. Illusion streamers fell from a large illusion bow at the crown. She carried a cascade of white baby roses with English ivy.

Ushers were Craig Curry, brother of the bride, and Roy Jarnigan, Lubbock.

Kristi Curry, sister of the bride, and Laton Curry, cousin of the bride, were candlelighters.

Keith and Steve Curry, also cousins of the bride, were ring bearers.

Providing piano music was Mrs. Gordon Terry of Tahoka. Organist was Mrs. J.A. Wright of Slaton. Sheldon Curry, a cousin of the bride, Waco, was soloist.

A reception in the fellowship hall of the church followed the ceremony. The couple will make their home in Lubbock, following a wedding trip to Ruidoso, N.M.

The bride is a sophomore at Texas Tech University, where she is also employed. Marshall, also a Tech sophomore, is employed by McCoy's Building Supply.

Holiday Inn in Lubbock was the site of a rehearsal dinner for the wedding party.



MRS. WILLIE ROY MEYER
Susan Viola Martin

Martin-Meyer Vows Read In Lubbock

A ceremony at the Oakwood Baptist Chapel in Lubbock united Susan Viola Martin and Willie Roy Meyer in marriage at 7 p.m. Nov. 25.

The double ring ceremony was officiated by the Rev. Francis Wilson of the Trinity Baptist Church.

Parents of the couple are Mr. and Mrs. Joe W. Martin of Lubbock and Mr. and Mrs. Willie E. Meyer of Slaton.

The bride, escorted down the aisle by her father, wore a formal gown styled with a scooped neckline and a softly gathered skirt. The long sheer sleeves were cuffed in lace. Lace also accented the neckline and skirt of the dress. The chapel length veil of illusion was trimmed in matching lace. She carried a bouquet of baby's breath, sweetheart roses and stephanotis accented with burgundy ribbons.

The bride's sister, Katherine Babbitt, was matron of honor. Terri Wilson and Kathy Merrell, both of Lubbock, were bridesmaids.

They wore long dresses of velvet, styled with empire waistlines and long sleeves. The honor attendant wore a royal blue dress and the

bridesmaids wore dresses. Both carried bouquets of carnations and heart roses and a train of honor carnations and heart roses.

The couple followed the ceremony to the reception hall at the Holiday Inn in Lubbock. The reception was held from 7 p.m. to 10 p.m. The bride and groom were the center of attention. They were surrounded by friends and relatives.

The bride is a sophomore at Texas Tech University, where she is also employed. Meyer, also a Tech sophomore, is employed by McCoy's Building Supply.

The bride's sister, Katherine Babbitt, was matron of honor. Terri Wilson and Kathy Merrell, both of Lubbock, were bridesmaids.

They wore long dresses of velvet, styled with empire waistlines and long sleeves. The honor attendant wore a royal blue dress and the

The bride and groom hosted a rehearsal dinner at the Holiday Inn in Lubbock.

Couple Wed In Home Ceremony

Mary Frances Browning and David Dean Baucum were married at 7 p.m. Nov. 26 in the home of the bride's father. The Rev. Bruce Parks, minister of the First United Methodist Church in Tulia, read the double ring ceremony for the daughter of V.C. Browning and the late Mrs. Browning and for the son of Mrs. Stanley Goble of Lubbock and of W.R. Baucum of Amarillo.

Matron of honor was Mrs. Gary Glasscock, sister of the groom, and best man was Tom Arledge of Lubbock.

The bride, a graduate of Texas Tech University, is employed by a CPA firm in Lubbock.

Baucum, also employed by a CPA firm, is a candidate for graduation from Tech in December. He is an accounting major, as is the bride.

Following a wedding trip to Vail, Colo., the couple is at home in Lubbock.

TEXAS TALK

By FRED MYERS

Even political unanimity is a quarter century old. Cultural ability work of America's strength. At the time of the agreement, strong union control, land control, food, support police international, with all the things seem to definite direction. The world is now buying products from us. We want protection. China, Russia, underdeveloped are now under long term contracts. The exclusive for years preparing to bial path to members door.

CONGRATULATIONS, SLATON TIGERS! FULL STEAM AHEAD! BEAT CHILDRESS!

SENTRY ASSOCIATION



WE GIVE TOWN VALUE STAMPS



Slaton Pharmacy personal attention your medical needs and keeps file your prescription customer records

SLATON PHARMACY

"THE DOCTORS AID" SLATON PHONE 828-6815

CARD OF THANKS

Our members wish to thank those who volunteered and the Slatonite and KCAS to make our Poppy Days a success. We especially thank the ROTC and Miss Poppy, Angie Forsythe. Although our profit was approximately \$200

this is a great aid to our emergencies in child welfare and rehabilitation.

The American Legion Aux. Unit 438, Slaton
Mickie Anderson-Chairman
Pearl Pinchert-Co-Chairman
Gerri Schmid-Public Relations

THREE DAYS ONLY
THURS. DEC. 4 10 a.m.-5 p.m.
FRI. DEC. 5 10 a.m.-5 p.m.
SAT. DEC. 6 10 a.m.-5 p.m.

IT'S THE CHRISTMAS PLACE IN SLATON AGAIN!
CORNER of Blin & Lynn

3 day sale of handcrafted gifts

Barbara Cox, Plains, was maid of honor. Bridesmaid was Nelda Bryant, Itasca. Mrs. Robin Wilson, Slaton, was bridesmatron.

The attendants wore long dresses of mint green double knit. The dresses featured forest green velvet boleros. They carried nosegays of white poinsettias and greenery.

Serving as best man was Gregg Parks of Tulia. Groomsmen were Dwayne Mosser of Lubbock and Gregg Pannell of Lubbock.

If you are looking for a hair stylist that is in the know on men and women's styles and hair analyzing for all problems...

CALL JAN HAYES 799-9031
MENS WORLD STYLE SHOP 4507 34th St. Across from Furr's Super Market

Cooper High Highlights

By CASSIE KITTEN

Band Sells Cakes
Members of the Cooper band are now selling Manor Texas Fruit Cakes as their annual money raising project. They can be ordered from any band student.

The prices are: 1-lb. package, \$2.50; 2-lb. package, \$4.95; 2-lb. tin, \$5.95; 3-lb. tin, \$8.75; 5-lb. tin, \$13.75.

Slide One Mile
J. A. Cannon gathered his family around him in their half dugout home, southwest of Lubbock. The year was 1903.

"We're moving," he declared. "But Paw," asked his wife, three daughters and two sons almost in unison: "How in the heck are we gonna move the well?"

But move they did, and so did five other families of a young community on the Plains of Texas.

They moved exactly one mile west. They called it "sliding". Residents of "Block 20" of Lubbock County settled

chosen to plan the car wash. Then the club discussed the Cooper UIL Meet. They voted to sponsor the meet, which will be March 13.

The last topic of the meeting was the adopting of the new NHS Constitution. Articles I through IX were approved as they were, with the exception of Article IV. Section 1 under this Article was amended.

It was then moved by Scot Pate and seconded by James Fehleison that any previous Constitution be rescinded and the new one be adopted. The Constitution was adopted by a unanimous vote.

Slide Banquet
The members of Slide Baptist Church held their Thanksgiving Banquet Wednesday, Nov. 19.

"Let Christ's Freedom Ring" was the Bicentennial theme of the banquet.

Following the meal was a Bicentennial program. This consisted of a ceremony saluting the American Flag, and the singing of patriotic songs by the congregation. Lynn Ekeburger was the guest speaker.

After this, the youth group showed a movie entitled "Where's John?". They acted in it and filmed it themselves.

Starring in the movie were Cooper High students: Debbie and Jerry Reynolds, Melinda Ray, Rhea Cooper, Ricky and Renee Flournoy, Terry Thomason and Kris Thomas.

Anthony's

Velvet Bedspreads & Drapes
the perfect Christmas Gift

Beautiful crushed velvet bedspreads and matching drapes of 55% cotton, 45% rayon in lovely colors to suit every decor.

Twin Reg. 16.99 .. \$15	Full Reg. 18.99 .. \$16
Queen Reg. 24.99 .. \$21	King Reg. 29.99 .. \$26
DRAPES Reg. 17.99 .. \$16	Valance Reg. 7.99 .. \$7

215 W. LUBBOCK ST. SLATON

Sunshine Place

Hallmark

We would like to invite you to come in and see our large selection of gifts for the holidays.

HALLMARK CARDS AND GIFTS

Records, tapes, caddies and accessories, stuffed toys, handcrafted items, macrame, pottery, music boxes, jewelry, imports, candles, oil paintings.

AUTHENTIC INDIAN JEWELRY

GIFTS FOR ANYONE

Register for Velvet Patchwork Bedspread and AM FM Stereo Radio, Tape and Speakers to be given away Dec. 13th at our Grand Opening

GO TIGERS!

Fast Delivery

Beauty Supplies

Slaton Pharmacy
personal attention
your medical needs
and keeps file
your prescription
customer records

SLATON PHARMACY

"THE DOCTORS AID" SLATON
PHONE 828-6815

Couple United in Ceremony

Matthes and Truman Ford were united in marriage in a ceremony Nov. 29 in the Methodist church.

A reception in the fellowship hall of the church followed the wedding. Following a wedding trip to Las Vegas, the couple will reside in Slaton.

Couple Plans January Vows

Mrs. Arlyne Traylor of Amarillo and James Montandon of Tulia announce the engagement of their daughter, Roxanne Montandon, to Jerry Winterrowd, son of Mrs. Paul Winterrowd of Southland.

The couple plans to be married Jan. 3 in the First Methodist Church of Tulia.

Miss Walker Is Runner-Up

Marilyn Walker, 21, daughter of Mr. and Mrs. Jack Walker of Slaton was first runner-up in the Miss Wayland Baptist College 1976 competition.

She performed a piano solo which she called "Amazing Grace with a little Gospel" during talent competition. Marilyn enjoys sewing as well as playing the piano and likes to travel. She hopes to enter special education as a teacher upon completion of studies.

KEEP GOING, TIGERS BEAT CHILDRESS!

Hot water does not freeze sooner than cold water.



MRS. JACKEY TRUMAN FORD
Rebecca Lynne Matthes

Club Roundup

VFW AUXILIARY
The Ladies Auxiliary to the VFW Post #6721 met in regular session Nov. 22.

Due to the resignation of Fern Dillon as two year trustee, Ruby Wheatley was elected to fill the office. President Brooksennell Davidson reminded the members to bring their gifts for the VA Hospital and the state hospital to her or to the post home.

The Christmas party for Veterans' children and grandchildren will be held in the Post Home Wednesday, Dec. 17 at 7 p.m. Also the Post and Auxiliary will have their Christmas party Saturday, Dec. 20.

Members who have not paid their 1976 dues have until Dec. 30 to pay. Please send them in as soon as possible in order for us to be 100%. Mail them to Elizabeth Klaus, 855 So. 14th, Slaton, Texas 79364, or call 828-6347 and she will pick them up.

Next meeting will be Monday at 7:30 p.m. The Auxiliary Ladies will serve supper.

HD CLUB
The Slaton Home Demonstration Club had their annual Christmas luncheon in the clubhouse Tuesday.

Hostesses for bread and drinks were Linda Klattenhoff and Helen Meeks.

Guests for the luncheon were members of the Slatonite staff, David Biggs and Mr. Bednarz. Eleven members answered roll call with "My favorite place to spend Christmas."

Veida Gage read a Christmas story, and Joyce Biggs and Mrs. Meeks led the group in games.

Gifts were exchanged and secret pals were revealed.

Friday will be the day for the HD Christmas Luncheon countywide at the Precinct 1

clubhouse. Each club will have a table full of Christmas decorations and gifts for display.

The Slaton Club used their display of crafts as the centerpiece for the luncheon.

Home Decorating News

BY CLARK SELF, JR.

CHAIRS....for charm, for comfort, for sophisticated decorative accents, for sociable conversation groupings or solitary television watching! What item of furniture offers so much variety, so much scope for your personal, family and entertaining needs?

Today's wide selection of chairs can be any decorator's delight. A good idea is to familiarize yourself with the different types available. The club or lounge chair is a man's favorite. Characterized by simplicity of line, with T or square cushion, this is one of America's favorite chairs. The famous Lawson chair is a good example.

The open-arm chair, usually smaller, has an upholstered seat and back, with the area under the arms open. You'll find it in every style from traditional to Scandinavian modern. Similar, but often smaller still, is the pull-up or occasional chair, light in weight so that it can be easily moved. These are effectively used in pairs.

Decorators often refer also to the "character" chair. It serves the function of lounge or occasional chair, but is styled as a dramatic eye-catcher. Examples are high-back wing chairs, barrel chairs, contemporary rockers, and many others.

From "club" to "character" chair, you'll find them all in stunning variety in our showroom now, in full range of distinctive new fabrics to complement your decorative scheme. Come in and see them all!

SELF Furniture

235 W. Garza
Phone 828-6584

Annual Coon Supper Slated For Saturday

The 12th annual coon supper of Luther Powers Post 438 of the American Legion will be Saturday night beginning at 7:30 p.m. in the Slaton Legion Hall.

Guest speaker for the evening will be Larry Lahaie, commander of the American Legion, Department of Texas. Mrs. Mary Helen Rodriguez, president of the American Legion Auxiliary, Department of Texas, will also be a special guest.

Lahaie, a native of Michigan, is now residing in Kilgore, where he is semi-retired, and is the owner of a finance company there.

He enlisted in the Army in 1943, and was honorably



LARRY LAHAIE
Department Commander
The American Legion

PERSONALS

Mrs. Stella Shelton visited recently in Amarillo with relatives and ate Thanksgiving with a nephew, Dale Bippus. Others she visited include her niece, Mrs. Huel Hulsey, Mrs. Roger Ardoff, and a brother, Ralph Singleterry.

CARD OF THANKS

We would like to thank all our kind friends and neighbors who made our golden anniversary so memorable with their gifts, cards and beautiful floral arrangements. Their wonderful deeds and thoughts will stay in our memories forever.

Mr. and Mrs. August Kitten

BIRTHS

11-29-75—Mr. and Mrs. Wovencelado Tijerina, Tahoka, girl, Christine P. 5 lbs., 8 1/2 oz.

11-30-75—Mr. and Mrs. Jose Maria Torres III, Tahoka, a boy, Jose Maria IV, 7 lbs., 7 oz.

Yea, Tigers!

KEEP GOING, TIGERS! BEAT CHILDRESS!

CONGRATULATIONS TIGERS— ON TO STATE
ADAMS SCHOOL STORE
Mr. and Mrs. W.E. Adams and Steve, Owners

Mary Hiracheta will be working Mon. & Wed.
At the
STYLE SHACK
142 W. GARZA
For appointment call
828-5791
8:30—5 p.m.

The Slaton Slatonite

DALTON WOOD, Publisher

Entered as Second Class Matter at the Post Office at Slaton, Texas under the act of March 5, 1897.

Published at 163 S. 9th St., Slaton, 79364
SLATON TIMES PURCHASED—JANUARY 20, 1927.

Notice to the Public: Any erroneous reflection upon the reputation or standing of any individual, firm, or corporation that may appear in the columns of the Slatonite will gladly be corrected when called to our attention.

SUBSCRIPTIONS: Payable in advance. LUBBOCK, LYNN, GARZA, AND CROSBY counties -- \$5.00 per year. Outside these counties -- \$6.00 per year. Member of West Texas Press Assn., Texas Press Assn.

TEXAS PRESS ASSOCIATION
MEMBER 1975

During this busy season, shop for your family's **QUALITY MEAT MARKET** choice of USDA choice quality beef. Orders while shopping South Plains Mall. Pick up order same day.
Dec. Special
Choice Side lb. 87c
DE RD. 793-0090

Two New Operators
Wynon Taylor
and Joann Howell
READY TO SERVE YOU
WEDAY THROUGH SATURDAY
PERMANENT SPECIAL
GOOD THROUGH DECEMBER
g. \$20.00 for \$15.00
HAIRCUT, SHAMPOO & SET
LUPE'S
MAGIC MIRROR
8th 828-5253

Ree's formerly Sanders Fashions
Has a Christmas Gift For You
FAMOUS NAME BRAND
HATS, TOPS, COATS AND
DRESSES ALL ON SALE TO
SAVE YOU DURING THE GIFT
GIVING SEASON
20% to 60% OFF
828-3929

HIGHEST RATES ON SAVINGS COMPOUNDED DAILY

PASSBOOK SAVINGS:

Rate	Effective ** Annual Yield	Time	Minimum Amount
5.25%	5.39%	None	None
5.75%	5.92%	90 Days	None

CERTIFICATE SAVINGS:

5.75%	5.92%	90 Days*	None
6.50%	6.72%	1 Year*	\$1,000
6.75%	6.98%	2 1/2 Years*	\$1,000
7.50%	7.79%	4 Years*	\$1,000
7.75%	8.06%	6 Years*	\$1,000

* Penalty for withdrawal prior to maturity.
** Based on accumulated interest of one year.

5 1/4% Passbook Savings earn interest from date of deposit to date of withdrawal.

Certificates opened by the 10th of the month earn from the first day of the month.

SENTRY SAVINGS ASSOCIATION
100 W. GARZA 828-6557

ALPINE
(continued from Page 1)
Mike Bednarz and ends Bednarz, Bill Burks and Tim Bourn continued to block out the frustrated Buck defenders as McClesky rolled up the yardage. Slaton lost one scoring chance as Tumlinson made a good 10-yard run, but fumbled and Alpine's Rocky McBride grabbed it out of the air and ran back to the Alpine 27.

Marked Down
Late in the quarter, Tumlinson punted and Gonzales fielded the ball at the one, only to be nearly obliterated by Ethridge, who splattered him into the end zone. The ball was down at the one, and again the defense shut off the Buck runners. A short punt out to the 30 put the Slaton offense in business and a couple of plays later Tumlinson scampered 18 yards to the one, only to have it called back on a motion penalty to the 24. Tumlinson then hit Bednarz for 10 yards to the 14, and on fourth down Roberts kicked a field goal from the

18 as the quarter ended. But Alpine was offside and so Slaton Coach Ed Cook showed confidence in his offense as he took the penalty and first down at the 7, rubbing out the field goal the Tigers already had made. The coach was vindicated two plays later as McClesky ran 7 yards for the Tigers' third TD, just 7 seconds into the last quarter.

Wood recovered a Gonzales fumble at the 48 a few minutes later. With just 57 seconds left in the game, Cornett took a screen pass from Scott and rambled 33 yards for Alpine's only score. Garcia blocked the extra point kick, and it was 21-6.

CARD OF THANKS

We want to say thanks to our loved ones and friends for making our golden wedding anniversary reception such a success. Also many thanks for all gifts and kind words. May the Lord bless you real good.
The F.B. Sexton family



EXAMINES COTTON — Representatives of the J.P. Stevens & Co. Inc. toured the Slaton Co-Op Gin Tuesday and stopped a moment to examine some of the local cotton. From left are Gordon McCabe Jr., P.W. Nipper Jr., Jay Gray, manager of the gin, C.H. Gallman (SLATONITE PHOTO) and Foy Fisher Jr.

New Books for Children

Discovering In God's World Series

- Discovering Colors
- Discovering Little Things
- Discovering at the Zoo

Hardback Books, \$2.25 each

Slaton Slatonite

Representatives Tour Co-Op Gin

Representatives of the J.P. Stevens & Co. Inc. of South Carolina and of the Idris Traylor Cotton Co. of Lubbock toured facilities of the Slaton Co-Op Gin Tuesday.

According to Jay Gray, manager of the gin, the Stevens corporation is the second largest textile mill in the United States. "We sell them most of our cotton, through the Traylor com-

pany," said Gray. Stevens personnel who toured the gin include P.W. Nipper Jr., executive vice president of the Cotton and Blended Fabrics Division. Others from that division who were present were C.H. Gallman, vice president of fine goods group; D.J. Worthington, assistant general manager of the Greenville group; W.T. Simpson, plant manager,

Rock Hill, S.C.; Ellis Ball, plant manager, Anderson, S.C.; and Fred McKenna, process engineer senior, technical department.

W. Gordon McCabe Jr., group vice president and general manager of the commodity division was also on hand.

Others from the commodity division were L. Foy Fisher Jr., vice president and assistant general manager; George R. Herron, assistant controller; and Dan R. Arrowood, fiber performance analyst.

Fred Traylor and W.B. Atkins from the Traylor company completed the group which spent Tuesday morning looking over the gin's production procedures.

party the 23rd at 7 p.m. Jo Bills donated the turkey for Thanksgiving dinner. The Rev. J. L. Cartrite brought the services Sunday evening at 3 p.m.

Walsie Tucker checked out of the Care Center to live with a son in El Paso for a while.

Lena Payne is in the hospital. We hope her a speedy recovery.

There are several already bringing in Christmas gifts for the residents. The St. John Lutheran A.L.C.W. from Wilson brought turkish towels, bibs and stamps. Bill Klattenhoff brought Christmas cards and gifts, and Linda Walters brought a scripture calendar from the Lutheran A.L.C.W. group of Slaton.

New residents are Mary Watipaka and John Hartnett.

Thought — Life's hardships are intended to make us better. . . not bitter.

Missions Week Observed Here

Beginning Nov. 30 and ending Dec. 7 is a week set aside by Southern Baptist Churches when emphasis is placed on foreign missions, our missionaries and their needs.

Mrs. Birdie L. Jones and the ladies of Westview were in charge of the Wednesday evening service and presented a special program concerning the work in foreign lands, and the needs of the missionaries who serve in various countries.

A special offering honoring Miss Lottie Moon who gave her life to foreign missions will be taken and used to further Baptist Mission work.

Nursing Home News

By Gladys Richardson
On the weekend of Nov. 23 Rev. Bruce Coker and group from the Church of God brought the services.

Our Care Center Auxiliary met Monday, Nov. 24, and set the December birthday party for Tuesday the 16th, and residents' Christmas

Methodist—2nd & 4th Sun. Rev. Grady Adcock

SOUTHLAND SOUTHLAND BAPTIST Rev. P. D. Fullingim

SOUTHLAND METHODIST Rev. Charles Hastings

'Boss Of Year' Letters Sought

The Women's Chamber of Commerce met at 1:15 p.m. Monday in the Chamber office with 10 present.

Louise Smith, president, presided over the business meeting.

Bula Beard was appointed to be chairman of the "Boss of the Year" contest. Employees should be thinking of writing their letter to the Chamber about why their boss is the best one. A date will be given later as to the deadline to get this letter in.

Dorothy Jaynes reported on the sale of tickets for the Christmas Tour of Homes for Dec. 14 with tickets still on sale.

New directors elected include Pat Moses, Evelyn Vaughan, Winnie Vaughn, Gladys Haral and Helen Dunn. Officers will be elected at the next meeting.

An ice bucket in the shape of the Liberty Bell that Winnie and Leon Vaughn presented to the chamber was on display with the engraving on it. Chamber officials expressed their thanks to the Vaughns.

THY WORD

"Thy Word is a lamp unto my feet and light unto my path" (Ps. 119:105). In a day of uncertainty and fear, only God's Word can provide the illumination to direct one's feet aright.

The church of Christ in Slaton has planned a special spiritual feast for this Sunday, December 7, and we want you to share in its blessings. Don Shackelford, chairman of the Bible department at Lubbock Christian College, will speak to the combined adult classes at 9:45 a.m. and present the sermon at 10:40 a.m. Charles Valentine of Lubbock's Sunset congregation will teach the combined youth classes and direct singing at the worship hour.

You are invited to be one of 300 in Bible classes and worship. Let God's Word be your guide.

A sincere welcome is yours at every service of the church of Christ:

- Sunday morning Bible classes 9:45 a.m.
- Sunday worship 10:40 a.m. and 6:00 p.m.
- Wednesday Ladies' Bible class 10:00 a.m.
- Wednesday night Bible study 7:30 p.m.
- "Five Minutes with the Bible" Monday - Friday on KCAS 7:30 a.m.

CHURCH OF CHRIST
11th and Division
Slaton, Texas

Obituaries

GLENN SHELTON
Services for Glenn Edwin Shelton, 54, of Dublin and formerly of Post and Southland community, were held at 2 p.m. Tuesday in the First Baptist Church in Post with the Rev. Buddy Helms, pastor of Edna Hill Baptist Church in Dublin officiating, assisted by the Rev. James Barron of Jonesboro.

Burial was in Southland Cemetery under the direction of Hudman Funeral Home of Post.

Shelton died Sunday at Scott and White Hospital in Temple following a brief illness.

Shelton moved to Dublin two years ago. He retired from George R. Brown Oil Co. of Post. A World War II veteran, Shelton was a crew member of the USS Honolulu. He married Bernice Hedrick in 1951 in Levelland. He was a member of the Edna Hill Baptist Church of Dublin.

Survivors include his wife; two stepsons, Allen Kemp of Houston and Harold Mack Kemp of Lubbock; a brother, James R. Shelton of Post; four sisters, Mrs. George Baker and Mrs. John Myers, both of Lubbock, Mrs. C.J. Marts of Weatherford and Mrs. N.R. King of Post; and 10 grandchildren.

BOB NORMAN

Services for Bob Alvie Norman, 76, of Grassland were held at 2 p.m. Tuesday in the Nazarene Church in Grassland with the Rev. Ed Porter, pastor of Graham Chapel Baptist Church officiating.

Burial followed in Grassland Cemetery under the direction of Mason Funeral Home of Post.

Norman died Monday at his home after a brief illness.

Norman came to the Grassland area 60 years ago. He married Grace Odum in 1920 in Grassland. He was a World War I veteran and a retired farmer.

Survivors include his wife; three daughters, Mrs. Ragan R. Reed of Brownfield, Mrs. Raymond Gerner

of San Angelo, Richard Berry of brothers, Erwin W.H., Aunie Leall of Post at Levelland; two Erlene Saage of Mrs. Mary Al Post; seven grand and one great-grandchildren. Pallbearers were Norman, Darreman, Gerald Norman, R. Norman, L. Noel Don Norman and A. Jr.

ELMER G

Services for Gindorf, 64, of be today (Th p.m. at St. Jo Church in Wil Rev. Bobby Zia iating. Burial Southland Cem Gindorf died Lynn Co. Hosp after a brief ill born in Bartle moved to and farmed in the since 1927, member of St eran Church.

Survivors wife, Gertrude three daug Janett Wuen Betty Bishop son, and Hobbs of brother, Chris sister Viola S and 10 grande

DORIS

Services for Brown, 41, of held at 2 p.m. the Resthaven Wilson Chap Rev. Mike G Graham, form bock, officiat

Burial was Memorial Park Mrs. Brown in Lubbock moving from She was a m Church of Chr

Survivors in band, Andy; and Keith; home; a dau Stroope of Hal mother, Mrs. of Newcastle; Janis King of one grandchild

Merlin the Mag on how to solve your heating pro

These drifty old castles are notorious over heat in summer and frigidly cold in winter. We study in these days, of course, I think what I like best is its simplicity. One unit provides heating and cooling in any kind of weather with one unit. And the best part is environmentally safe. It actually provides more energy than a heat pump. I wouldn't have been in the my magic secrets.

BE SWITCHED TO ELECTRIC

You've got Merlin the Mag when it comes to getting the most out of your heating and cooling system. He'll show you how to save money with our FREE energy audit. Factor in the savings. At the end of the year.

ENERGY EFFICIENT
We at Southern Electric are getting the most out of your heating and cooling system. He'll show you how to save money with our FREE energy audit. Factor in the savings. At the end of the year.

ELECTRIC IS BEST

Equal Opportunity Employer

Attend The Church of Your Choice Sunday

Slaton Churches

ALL SAINTS CHURCH OF GOD IN CHRIST
7th & Jean Sts.
Eld. J. W. Butler

CHURCH OF CHRIST
11th & Division
Grandol Forehand

IVORY ST. CHURCH OF CHRIST
896 Ivory St.
Lester Means

CHURCH OF GOD
206 Texas Ave.
Rev. Bruce E. Coker

FIRST ASSEMBLY OF GOD
14th & Jean
Rev. Floyd Schaeffer

BIBLE BAPTIST
525 West Panhandle
Rev. H. E. Summar

FIRST BAPTIST
255 S. 9th
Rev. J. L. Cartrite

FREE WILL MISSIONARY BAPTIST
Rev. E. Canady

MT. OLIVE BAPTIST
Rev. Clifton Peoples

TEMPLO BAUTISTA (Latin Baptist Mission)
East Panhandle
Rev. Pablo Pequeno

TRIUMPH BAPTIST
East Geneva
Rev. M. A. Brown

21st ST. BAPTIST
1010 S. 21st St.
Rev. Jim Franklin

WESTVIEW BAPTIST
830 S. 15th St.
Rev. Birdie Jones

MISSIONARY BAPTIST
14th & Scurry
Rev. Jack N. Bell

FIRST CHRISTIAN
150 S. 22nd
Rev. Gene Cherry

ST. JOSEPH'S CATHOLIC
19th & Lubbock
Msgr. Peter Morsch

OUR LADY OF GUADALUPE
710 S. 4th
Rev. James Daly

GRACE LUTHERAN
840 W. Jean

GOSPEL CHAPEL A.M.E.
996 Johnson St.
Rev. James Green

FIRST METHODIST
305 W. Lubbock
Rev. Merriel Abbott

TRINITY EVANGELICAL METHODIST
700 S. 19th St.
Rev. Linam Prentice

PENTECOSTAL HOLINESS
905 W. Knox
Rev. Darryl Manning

FIRST PRESBYTERIAN
435 W. Lubbock
Rev. Henry Chisholm

Area Churches

ACUFF CHURCH OF CHRIST
Austin Siburt

ROOSEVELT BAPTIST
Rev. Oscar Newell

PLEASANT VALLEY BAPTIST CHURCH
Rev. Bruce Giles

WOODROW COOPER METHODIST
Rev. Clarence Collins

WOODROW BAPTIST CHURCH OF CHRIST
Jerry Tallman

GORDON CHURCH OF CHRIST
Joe Cross

WILSON WILSON BAPTIST
Rev. E. K. Shepherd

ST. JOHN LUTHERAN
Rev. Bobby Zacharias

ST. PAUL LUTHERAN

WILSON METHODIST
Rev. James Taylor

ASOCIACION BAUTISTA EMANUEL

POSEY IMMANUEL LUTHERAN
Howard Stendahl, Interim Pastor

CANYON UNITED CHURCH
Baptist—1st & 3rd Sunday Rev. Curtis Jackson
Methodist—2nd & 4th Sun. Rev. Grady Adcock

Church Listings Presented as a Public Service By

Becker Bros. Mobil Sta. 405 So. 9th 828-7127	Bownds Body Shop 100 S. 9th 878-6647	Citizens State Bank The Bank with a Heart	Wilson State Bank
O. D. Kenney Auto Parts "Your Automotive Parts Distributor"	Slaton Co-op Gins	White's The Home of Greater Values	Sentry Savings Assn. "We Pay You To Save"
R. E. Janes Gravel Co. FOR THE Construction Industry	Acuff Co-op "It's Your Association"		

GLE Roundup

Has Surgery
E. Dickerson
major surgery
24, in Uni-
in Lubbock.
a quick and
Tournament
Junior High
boys captured
at the Union
Tournament
girls defeated
the first night
ment. Camille
high scorer
s. Cynthia
10 points.

points. The Eagles were not so fortunate in the championship game as they fell to Sands, 53-22. Andrew was again the high scorer for Southland with 9 points.
Fluvanna Games
High school girls defeated Fluvanna 44-35 with the B team seeing plenty of action Nov. 25. Joy Basinger was high scorer with 17. Stacy Rush and Elaine Buxkemper put in 13 and 8 points, respectively.
Fluvanna outscored the high school boys 43-34. Ricky Cardona was high scorer with 12 points. Kendon Wheeler made 11.
Calendar of Events
Dec. 4-6 — Anton tournament, high school girls and boys.
Dec. 8 — Junior high girls and boys basketball with St. Joseph, home, 6:30 p.m.
Dec. 9 — High school girls and boys basketball

with Meadow, home, 7 p.m.
Dec. 11 — Assembly program "Mental Miracles of the Mind", 1:10 p.m. (ESP and Magic).
Dec. 11-13 — Ralls tournament, high school girls and boys.
Lunch Menu
Monday — Wieners with chili, rolls, whipped potatoes, turnip greens, cranberry crunch, butter, milk.
Tuesday — Hamburgers, fried potatoes, lettuce and tomatoes, pickles, onions, fruit cocktail, cookies, peanut butter syrup mix, milk.
Wednesday — Stew, crackers, stuffed celery, bread, plum cobbler, butter, milk.
Thursday — Fish portions, beans, corn, peanut butter cake, cornbread, butter, milk.
Friday — Chicken and noodles, rolls, asparagus, carrots, peanut butter syrup, pears, milk.

Cotton Center Games
Cotton Center edged out the high school girls B team 35-34 Nov. 24. Stacy Rush topped all scoring with 30 points. Elaine Buxkemper and Mary Ann Vasquez each scored two.
Southland's high school girls A team defeated Cotton Center 51-44. Kelly Chaffin was high scorer with 27 points. Joy Basinger made 20 points, and Donna Shelton added 4.
The high school boys lost 62-24. Kendon Wheeler scored 15 points. Nathan Wheeler made 4, and Curt Wheeler and John Sertuche each added two.

ADVERTISING
PAYS
See The Slatonite

Slaton Independent School District Balance Sheet (Exclusive of Enterprise Funds) August 31, 1975

				10 GENERAL OPERATING FUND
ASSETS AND OTHER DEBITS				
CASH AND TEMPORARY INVESTMENTS				
1110	Cash in Bank			4,100.76
1172	Temporary Investments			
1100	Certificate of Deposit			
	Total Cash And Temporary Investments			4,100.76
RECEIVABLES				
1220	Property Taxes - Delinquent			99,430.66
1230	Due From State			24,798.77
1240	Due From Federal Agencies			1,274.17
1260	Allowance For Uncollectible Taxes			(87,582.82)
1280	Interfund Receivables			1,575.86
1200	Total Receivables			39,496.64
LAND, BUILDINGS AND EQUIPMENT				
1510	Land			
1520	Buildings And Improvements			
	Furniture And Equipment			
1541	Furniture And Other			
1542	Vehicles			
1540	Total Furniture And Equipment			
1500	Total Land, Buildings And Equipment			-0-
OTHER DEBITS				
Amounts To Be Provided For:				
1610	Bond Principal			
1630	Bond Interest			
1600	Total Other Debits			-0-
1000	TOTAL ASSETS AND OTHER DEBITS			43,597.40
	20 DESIGNATED PURPOSE FUND	50 INTEREST & BONDED DEBT FUND	90 GENERAL FIXED ASSETS	TOTAL
	2,191.47	5,811.95		12,104.18
		22,000.00		22,000.00
	2,191.47	27,811.95	-0-	34,104.18
	1,753.09	43,431.84		142,862.50
		(38,926.77)		26,551.86
	1,354.40			1,274.17
	3,107.49	4,505.07		(126,509.59)
				2,930.26
				47,109.20
			58,016.00	58,016.00
			1,797,652.00	1,797,652.00
			297,174.82	297,174.82
			34,675.00	34,675.00
			331,849.82	331,849.82
	-0-	-0-	2,187,517.82	2,187,517.82
		771,000.00		771,000.00
		159,783.75		159,783.75
	-0-	930,783.75	-0-	930,783.75
	5,298.96	963,100.77	2,187,517.82	3,199,514.95
				10 GENERAL OPERATING FUND
LIABILITIES, FUND BALANCES AND RESERVES				
LIABILITIES				
CURRENT PAYABLES				
2110	Accounts Payable			9,011.46
2120	Loans Payable - Current			5,655.00
2130	Bonds Payable - Current			
2140	Bond Interest Payable - Current			
2170	Interfund Payables			1,354.40
2180	Due To State			
2100	Total Current Payables			16,020.86
2310	DEFERRED INCOME			-0-
2610	LOANS PAYABLE - DEFERRED			14,802.00
BONDED DEBT				
2710	Bonds Payable			
2730	Bond Interest Payable			
2700	Total Bonded Debt			-0-
2000	Total Liabilities			30,822.86
FUND BALANCES AND RESERVES				
3100	FUND BALANCES			12,974.54
INVESTED RESERVES				
3220	Reserve For Funded Indebtedness			
3240	Reserve For Investment In General Fixed Assets			
3200	Total Invested Reserve			-0-
3000	Total Fund Balances And Reserves			12,974.54
Total Liabilities, Fund Balances And Reserves				43,597.40
	20 DESIGNATED PURPOSE FUND	50 INTEREST & BONDED DEBT FUND	90 GENERAL FIXED ASSETS	TOTAL
	796.87		1,800.00	9,808.33
		81,000.00		7,455.00
		31,168.75		81,000.00
	1,575.86			31,168.75
	237.07			2,930.26
	2,609.80	112,166.75	1,800.00	237.07
	1,294.38	-0-	-0-	132,599.41
			19,300.00	1,294.38
				33,902.00
		690,000.00		690,000.00
		128,615.00		128,615.00
	-0-	818,615.00	-0-	818,615.00
	3,904.18	930,783.75	21,100.00	956,410.79
	1,394.78	-0-	-0-	14,369.32
		32,317.02		32,317.02
	-0-	32,317.02	2,166,417.82	2,166,417.82
	1,394.78	32,317.02	2,166,417.82	2,108,734.84
	5,298.96	963,100.77	2,187,517.82	2,219,104.16

GIFT IDEAS

PRE-CHRISTMAS SALE




RCA XL-100

- This great console brings you brilliant RCA XL-100 performance... in a cabinet rich with Old World embellishments. The molded plastic front has a carved effect. Surprisingly low cost. Come see it now!
- RCA XL-100, 100% solid state for reliability - no chassis tubes to burn out.
- Super AccuColor black matrix picture tube for sparkling, sharply detailed color.
- Automatic Fine Tuning pinpoints and holds the correct broadcast signal.
- Plug-in AccuCircuit modules simplify servicing.

Splendid Spanish styling
RCA The TOWNSEND Model GU585 25" diagonal **\$599⁰⁰** WITH TRADE

Splendid Spanish styling
RCA The SEVILLE Model GU708 25" diagonal **\$629⁰⁰** WITH TRADE

FOR EVERYONE ON YOUR SHOPPING LIST

RCA Portable



- RCA XL-100, the reliability of 100% solid state - no chassis tubes to burn out.
- AccuLine black matrix picture tube system for brilliant, high contrast color.
- Automatic Fine Tuning pinpoints and holds the correct broadcast signal.
- Plug-in AccuCircuit modules simplify servicing.
- Attractive cabinet of durable plastic.

\$338⁰⁰ WITH TRADE



Big RCA XL-100 Value!

Screen - giant value!
Only **\$438⁰⁰** WITH TRADE



SOLID TV VALUES!

RCA Model 19" diagonal 100% solid state color TV.

Wendel's

109 S. 9th, Slaton
820-8220

2828-34th, 792-2751

ACCENT ON HEALTH

No one would purposely buy a toy which could injure the child for whom they plan happiness, but thousands of Texans this Christmas may be doing this unknowingly.

If the wrong toy falls into the hands of a child, this toy could produce a serious injury, says the Texas Department of Health Resources. When buying toys this year, think toy safety, advises Dr. Fratis L. Duff, director of the Texas Department of Health Resources.

A few months, or a year or two, in a child's development can make quite a difference in that child's ability to cope with toys. "That's the reason manufacturers are required to place precautionary labeling on toys," says Harold Ray,

director of the Department's Division of Product Safety.

"Consumers should look for the warning label on a toy which states that the toy isn't recommended for a child under a certain age," Ray said. "If such a label warns that the toy is too advanced for the child in mind, the purchaser should heed the warning and find one to fit the child."

Ray noted that a testing process has been used in determining the right toy for the right child. During the past year the United States Consumer Product Safety Commission issued final regulations for use and abuse testing of toys. While not banning toys, the regulations provide tests for impact, bite, flexure, torque, tension and compression—all of which simulate

normal and reasonably foreseeable use, damage and abuse of toys, games and other articles by children at play. These testing levels were used reflecting the ages of children for whom the toys are intended. These age levels are 18 months and less, over 18 months but not over 36 months, and over 36 months but not over eight years of age.

What can you as an individual do to prevent this mis-match of toy and child?

First, be aware of how the toy is built, says Ray. Toy buyers in the family should reject those with obvious hazards — sharp points; rough or unfinished surfaces; small detachable parts that may be swallowed; brittle plastic or glass that breaks easily and

leaves sharp edges that may cut; poorly constructed toys with sharp spikes or pins that are exposed when the toy is pulled apart by a curious child; toys with triggers, gears, or other parts activated by a spring or motor that may pinch fingers or catch hair.

Most of these types of toys have been eliminated through Consumer Product Safety Commission standards. But, some 5,000 new toys enter the marketplace each year. The holiday season will find more than 150,000 different kinds of toys for sale in an estimated one million retail outlets. Despite the efforts of toy manufacturers, retailers, state and federal inspectors and different governmental agencies, it is impossible to inspect every toy.

It is possible, however, for parents, relatives, friends and older sisters and brothers to check every new toy they buy and every old toy around the house for possible hazards.

There are some specific things you can do in thinking toy safety. These suggestions include:

Buy toys that suit the skills and abilities of the child. Avoid toys that are too complex for young children. No small child should be subjected to electrical toys or those which can produce burning temperatures.

Look for labels that give age recommendations or safety information such as "Not Recommended for Children Under Three" or "Non-Toxic" on toys likely to end up in little mouths.

Watch out for toys that have sharp edges, small parts or sharp points. Avoid toys that produce

extremely loud noises that can damage hearing, as well as propelled objects that can injure eyes.

Explain to the child to use toys safely. Always try

SLATON TIGERS

INDIVIDUAL STATISTICS TO DATE

SCORING					RUSHING		
Player	TD	EP	FG	TP	Player	TC	YG
McClesky	22	6	0	138	McClesky	317	1,633
Aycock	3	2	0	20	Tumlinson	58	186
Tumlinson	2	0	0	12	Haynes	39	133
Roberts	0	12	1	15	Gipson	46	169
Bourn	1	0	0	6	Aycock	21	112
Wood	0	1	0	1	Johnson	5	25
Gipson	0	2	0	2	Wood	8	51
Bednarz	1	0	0	6	Buxkemper	16	36
Haynes	1	0	0	6	Eblen	7	23
Hammons	1	0	0	6	Smith	11	44

PASSING			
Player	Att.	C	I Yds. Pct.
Tum.	122	41	12 676 .336
Wood	7	1	2 4 .143
McClesky	5	2	0 86 .400

THE PANTRYFUL!

"UNITED'S TRU-TENDR GRAIN FED STEER BEEF!"

GLOVER'S FRANKS
MEAT OR BEEF
12 OZ. PKG. **79¢**

GLOVER'S BOLOGNA
MEAT OR BEEF
12 OZ. **79¢**

CHUCK ROAST BLADE CUT
..... LB. **78¢**

BONELESS EXTRA LEAN STEW
CUBES OF BEEF
..... LB. **\$1.19**



• ROUND • RIB • SIRLOIN
STEAK
UNITED'S TRU-TENDR BEEF!
..... LB. **\$1.29**

WRIGHT BRAND BACON
SLAB SLICED
LB. **\$1.29**
LEAN AND STREAKED

T-BONE OR CLUB STEAK
LB. **\$1.79**

FAMILY PACK GROUND BEEF
LB. **79¢**

FINE FARE 10 CT. CAN
BISCUITS..... **10¢** FOR

Fine Fare, Reg. Quarters
OLEO..... **3** 1 LB. CTRNS. **\$1**

HI-C FRUIT ASSORTED FLV'RS.
46 OZ. CAN **49¢**

FLAV'R PACK SHOESTRING
POTATOES
LARGE 20 OZ. BAG
2 **48¢** FOR

KEN-L-RATION DOG FOOD..... **5** 15 1/2 OZ. CANS **\$1**
STILLWELL FROZEN REG. 98' PKG.

COBBLER
CHERRY
BLACKBERRY
PEACH
APPLE
STRAWBERRY
2 LB. CARTON **88¢**

BANQUET POT PIES
BEEF
CHICKEN
TURKEY
.....
4 FOR **88¢**

BIBLE
PUBLISHERS \$3.95
RETAIL PRICE
\$9.95
Only With a \$10.00 Purchase Or More East. Cigarettes

SAT. DEC. 13TH IS THE FINAL DAY TO RECEIVE BINGO SHIELDS AT UNITED!

PLAY **BONUS "BLACK-OUT" BINGO**
GET 1000 EXTRA S&H GREEN STAMPS

UNITED SUPER MARKETS
WE GIVE S&H GREEN STAMPS

WE RESERVE THE RIGHT TO LIMIT QUANTITIES



PRICES GOOD THRU DECEMBER 6TH

service industry. Today's on-the-go family spends one out of every three dollars in the family food budget in a restaurant, cafeteria, or other food-serving establishment.

There are, of course, many reasons for the tremendous growth of the food service industry in the past twenty-five years. One important factor is the progress that has been made in food service sanitation. Today, most people feel confident in visiting almost any restaurant, feeling that regular inspections by public health authorities—and the conscientious attitude of food service operators—will protect them against disease.

And it's true that every public health agency—whether local, state, or federal—considers food service sanitation to be a top priority. Wherever you go to eat out, you're almost sure to visit a restaurant or

cafeteria that has been licensed by local authorities and visited periodically by well-trained health inspectors who have the authority to impose legal sanctions if they find anything out of order. It's reassuring to know that serious outbreaks of food-borne disease are comparatively rare.

But they do happen, and they can happen to you. The vast majority of food service operators realize their obligation to the public, and they take seriously their responsibility to safeguard their customers from disease. But inevitably, there are a few individuals who take short cuts. And even where the management recognizes the need for sanitation, there is always the possibility of a single employee who, through lack of training or poor attitude, fails to take the proper precautions.

Your Texas Department of Health Resources offers a

few simple suggestions that you can use to reassure yourself about the safety and sanitary condition of any restaurant you visit.

First, don't overlook the obvious. A restaurant, cafeteria, cafe, tavern, concession stand, or sidewalk vendor should look clean. Trash and food scraps should be removed from the floor and from tables as soon as each customer finishes his meal. Chairs, walls, carpets, and other fixtures should be neat and clean to both sight and touch. Dishes, silverware, and cups and glasses should look and feel clean, too.

What about the restrooms? In many places, especially smaller restaurants, kitchen employees use the same restrooms that the public uses. If the restrooms aren't spic and span, you may have good reason to wonder about the sanitary condition of the kitchen, too.

Notice the food serving personnel. A good waiter or waitress never touches the food contact surfaces of the silverware and never holds a cup or glass near where your lips will touch it. If you see carelessness here, it's a strong indication of poor training for all of the employees. Another dangerous, but all-too-common, practice is carrying food to the table with the dishes stacked on top of one another, so that some of the dishes are actually resting on your food.

One of the most important indicators is the temperature of the food when it reaches your table. All foods should be either hot or cold—either about 140 degrees Fahrenheit, or below 45 degrees.

Most people know that all foods should be served only to one customer, unless they're individually wrapped, such as crackers or sugar packets. Don't accept

"leftovers" from someone else's table. What many people don't realize is that the same principle applies to dishes, silverware, and glassware, too. Many restaurants prefer to save time by putting complete place settings at each table before the customers arrive. That's okay—but every table should be completely cleared after each customer finishes his meal, even if the customer didn't actually use every piece of tableware.

If you are ever unsure about the safety or proper sanitation in a restaurant you visit, don't hesitate to call the questionable practice to the manager's attention. Almost without exception, the people in the food service industry will do everything possible to ensure that every customer is satisfied. They want you to come back—and they don't want you even to think that there's anything the least

bit suspicious about their operation.

Finally, if you're not satisfied that a restaurant operator is willing to do his best, call your local health department or the nearest office of the Texas Department of Health Resources. Protecting the health of the public is our job; we take it very seriously, and we welcome your help.

As the restaurant industry likes to remind you, "Eating out is fun." We agree—and we're doing everything we can to help keep it that way.

Junior High Jottings

By Greg Johnson and Shelby Brake

The seventh and eighth grade girls played their first

SLATON SLATONITE, DECEMBER 4, 1975, PAGE 7 district game Nov. 24 with Frenship. The seventh grade won 19-12, and the eighth won 36-20.

The seventh and eighth grade boys basketball team and the boys who are in the off-season program have been working hard.

The sixth grade had its annual Red and Black game last Wednesday, Nov. 26. The Red team won 14-12.

The sixth grade came out on top in the Colgate-Palmolive school action plan contest. They collected labels worth \$26.14. The eighth grade won second place with labels worth \$9.21, and the seventh coming in third with labels worth \$3.39.

We are sorry to see Leo and Leon Enloe, Kevin Bales, Elisia Jimenez, Jimmy Stewart, and Daniel Ybarra leave Junior High.

We are glad to see Randy James enroll in Junior High.

QUANTITY RIGHTS RESERVED PRICES GOOD THRU DEC. 6TH



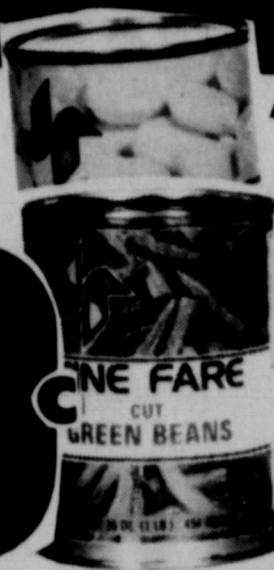
SAVINGS BY

"FINE FARE MIX OR MATCH"

FINE FARE CATSUP 2 20 OZ. BTL. 89¢

FINE FARE EVAP. MILK 3 TALL CANS 89¢

89¢



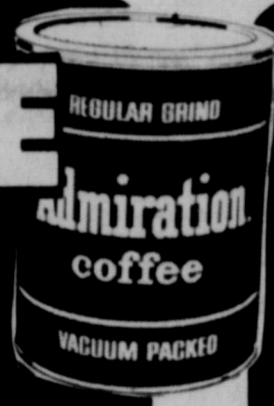
SPINACH 4 303 CANS 89¢

CUT GREEN BEANS 4 303 CANS 89¢

WHOLE OR SLICED NEW POTATOES 4 303 CANS 89¢

89¢

ADMIRATION COFFEE REG. DRIP ELECT. LB. CAN \$1.09

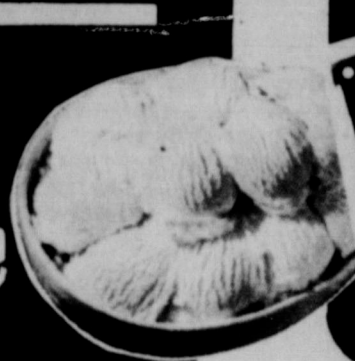


WILSON'S BAKE-RITE SHORTENING 3 LB. CAN \$1.19



LIGHT CRUST FLOUR 5 LB. BAG 49¢

MELLORINE ASSORTED FLAVORS Half Gallon 59¢



DINTY MOORE BEEF STEW LARGE 24 OZ. CAN 69¢

SWIFT'S VIENNA SAUSAGE 5 OZ. CAN 29¢

FINE FARE LIQUID, HEAVY DUTY DETERGENT LARGE 32 OZ. BOTTLE 89¢

FINE FARE FABRIC SOFTENER GAL. JUG 89¢

"ORCHID QUALITY PAPER PRODUCTS"

PAPER TOWELS JUMBO ROLL 49¢

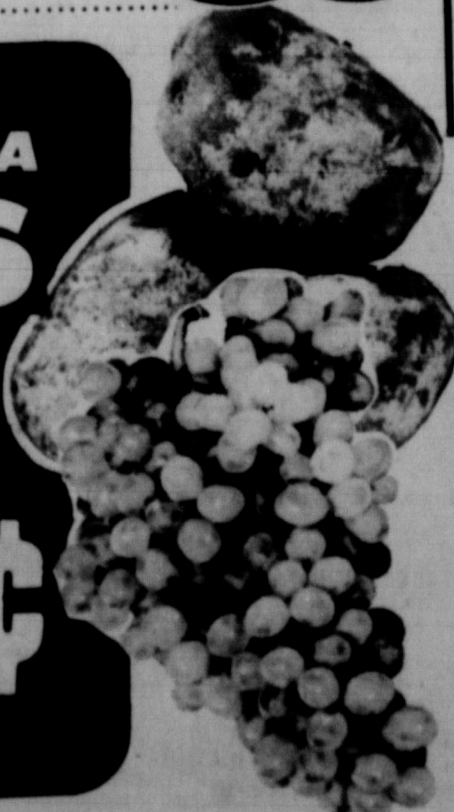
FACIAL TISSUE 150 COUNT BOX 39¢

CREST TOOTH PASTE TWIN PACK 14 OZ. \$1.79

PRELL SHAMPOO 11 OZ. LIQUID \$1.29 5 OZ. TUBE EA.

35% OFF LABEL SECRET DEODORANT 7 OZ. OR 9 OZ. A.P. 98¢

GREEN CALIFORNIA GRAPES LB. 38¢



38¢

CASSEROLE PINTO BEANS 2 LB. BAG 59¢

U.S. No. 1 RUSSET POTATOES 5 LB. BAG 58¢

CALIF. NAVAL NEW CROP ORANGES LB. 25¢

ROME BEAUTY EXTRA FANCY APPLES LB. 25¢

GREEN ONIONS PENCIL SIZE 2 FRESH BUNCHES 25¢

38,984 Bales Ginned In Area

Thirteen area cotton gins had turned out a total of 38,984 bales by Tuesday afternoon, an increase of nearly 14,000 over the previous report Nov. 24. At about the same time last year, 21,893 bales had been counted. But on Dec. 4, 1973, a whopping 79,823 bales had been ginned.

Season totals to date include Slaton Co-Op Gin 10,000; Acuff Co-Op 4120; McClung Co-Op 2220; Union Co-Op 2448; Posey Gin 1675; Farmers Gin of Slaton 2632; Southland Gin

1700; Hackberry 3585; Wilson 3940; Wayside 1974; Gatzki 1200; Moses 1596 and Wilson Farmers Gin 1894.

Grower prices were \$7.50 to \$10.00 per bale higher during the week ending Nov. 28, according to Paul R. Dickson, in charge of the Lubbock Cotton Classing Office. They sold mixed new crop lots of mostly grades 32 and 42; staples 30 and 31; mike 2.7 through 2.9 for about 37 cents per pound. Mixed lots of mostly grades 41, 51 and 42; staples 30

through 32; mikes 3.0 through 3.4 brought about 43.50 cents.

The USDA's Agricultural Marketing Service reported trading was moderate and growers offered small lots of new crop cotton in light volume.

Demand was good, Dickson said.

Prices paid growers for cottonseed ranged from 75-95 dollars per ton, mostly 75 to 85 dollars.

Staples 29, 30 and 31 were predominate lengths. Staple 29 was 25 percent,

staple 30-35 percent and staple 31 was 19 percent.

Mike readings 3.0 through 3.2 amounted to 34 percent of the total.

About 98,000 samples were classed by the Lubbock Classing Office during the week ending Nov. 28. This season's total stands at 266,000 samples compared to 6,600 on the same date a year ago.

Boosters Meet At Cooper

The Cooper Pirate Athletic Booster Club met last Monday night in the school library and discussed projects which are now underway and those planned for the future.

Members of the group were also told that the ice machine they raised money for has been purchased and installed. The machine is for the use of Cooper athletes.

Another project started this year that is doing well is the serving of cold drinks to the boys and girls basketball teams at out of town games.

Booster Club members also discussed a new project for the future, that of building and opening a concession stand for the visitors side in Pirate stadium.

The next meeting of the Booster Club will be Jan. 12, 1976 at 7 p.m. in the high school library.

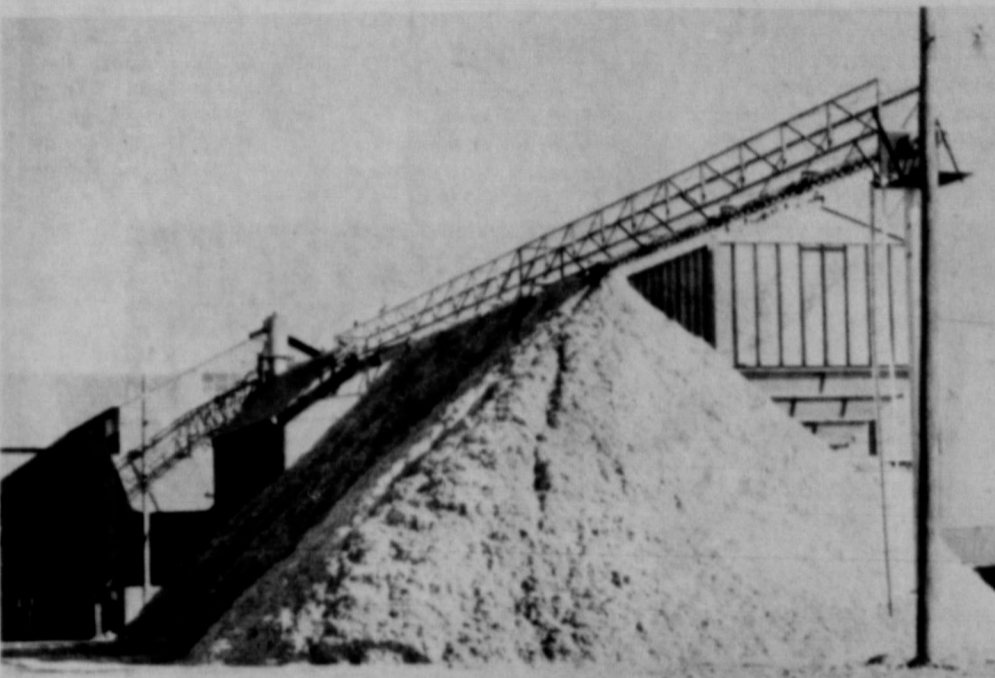
The Booster Club is dedicated to support all athletics at Cooper and although football season is over, basketball is underway and spring sports are coming up. The club will remain active throughout the year, and anyone interested is invited to attend the next meeting.

Red Dress Tea Is Yule Event

Virgie Hunter's annual Red Dress Tea is planned this holiday season for Dec. 14 from 2-5 p.m.

She invites the women of the community to wear a red dress and find the red carpet rolled out at 845 W. Lubbock St.

Young salmon always swim downstream tailfirst.



SEASONAL SCENE — This pile of cottonseed at Slaton Co-Op Gin is a familiar sight throughout the area as all gins are busy harvesting this year's crop. (SLATONITE PHOTO)



Airport, Farm Area Discussed By City

Slaton City Commission last Wednesday discussed lease of farmland owned by the city adjacent to the Slaton airport and responsibilities of upkeep on the property involving the operators of the airport, the city and the operator of the farm.

Slaton Flying Service has been operating the airport, although it was pointed out at the meeting that this is not a franchise operation, and other flying operations could be set up at the airport along with the Slaton Flying Service. The farm has been operated for the last few years by Joe Bob Bednarz, whose lease expires Dec. 31.

Matters of keeping down weeds, keeping fences repaired and other maintenance were discussed by the board members. Also present at the meeting were Joe Bob Bednarz and Alex Bednarz, and Earl Eblen, chairman of the airport board, a city-appointed advisory group.

Eblen cited the need for cleanup around the airport and urged definition of areas of responsibility on the airport property.

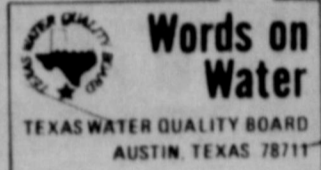
The method of leasing or renting the city-owned farm property, including about 230 acres of land actually farmed, was discussed. Commissioners agreed that the lease or rental period should be longer than the one-year term now allowed.

In other action, the commission voted to install a street light at the north end of Terry Drive, to light an area reportedly being used for "parties", and thereby discourage such activities.

Tour Of Homes Set Dec. 14

The Slaton Women's Chamber of Commerce reminds you once again to get your tickets for the Tour of Homes at the Slatonite, Chamber of Commerce office or from any member of the Women's Chamber.

The tour will be Dec. 14, 3-5 p.m. Tickets are \$1.50 each. Refreshments will be served at each home.



GOOD NEWS FOR FISH

It can be a smelly subject, but fish kills concern everyone interested in the quality of Texas' waters.

The primary cause is man's indirect and then directly.

Indirectly man causes hazardous conditions for aquatic life when sewage treatment plant discharges stimulate algae growth which uses up available oxygen in the water, leaving less for the fish.

Directly man creates problems for his finny friends by oil spills, chemical spills and other similar accidents.

Unknown causes come next, then natural causes (heat in summer, natural oxygen depletion, etc.) in order of the number of fish kill

occurrences.

In 1970, three years the Texas Water Board was created, nearly 4 1/2 million recorded between December, the first on record. All killed attributed to man, was not taken into account because TWQB sonnel were few enough water samples possible, and reports sufficient.

But, over the years, as better became possible, an pollution abatement took shape.

Last year marked its change for the

••••• If you need you

House Paint Inside or Outside Call 828-8255 SLATON LUMBER

SEE THE LIGHT

See all the reasons why OUR AGENCY should be your LOCAL INSURANCE AGENT. By keeping abreast of modern methods in the insurance industry, we can be your ALL-IN-ONE Agency for Auto, Home and Business. For LIGHT call us today!

Kendrick Insurance
DON KENDRICK
145 W. Lubbock
828-6576

YOUR Independent AGENT

"I'd rather explain higher gas bills than why you don't have gas."

Your natural gas bill is higher. And, you have every right to know why.

One reason is lower temperatures brought on by winter.

The main reason, however, is simply that you are paying more for natural gas. Because we are paying more. This chart shows how much:

This increase hurts both you and Pioneer. It adds to your bill and to our cost... a cost for which Pioneer is not entirely compensated. It is passed through without mark-up or additional charges.

Why does gas cost more? Competition... particularly from petrochemical and other industries. The competition for gas has never been so fierce.

We will have to pay more for gas than in the past. But by working together, and without outside interference, you'll have the gas you need today and in the future.

K.B. Watson
K. B. (TEX) WATSON
President
PIONEER NATURAL GAS COMPANY

Follis Heating & Air Conditioning

Arkla-Servel, Bryant and Payne Equipment, Sales, Installation & Service. Gas units financed by approved credit.

Call for free estimate. Wilson, Texas Phone 628-3271

Oscar Follis

Christmas Favorite

Free Gift Wrapping

CROSS
SINCE 1846

Writing Instruments in Lustrous Chrome
Pen or Pencil \$ 6.00
Set \$12.00

12 k. GOLD
Set \$24.00
Pen or Pencil, ea. . . \$12.00

Lifetime Guarantee

The Slatonite

After you see your doctor

bring your prescription to

Teague's Drug Store
828-6535 Night 828-6500

Actions speak louder than words

A good bank has more answers than questions

Answers that help you carve out a bigger chunk of prosperity for yourself, your family, your business, You do the asking! We've got answers that go to work for you immediately. Savings, Checking, Home Mortgages, Personal Loans, Commercial Accounts... they aren't just words. Or just answers. They are all your piece of the action at the best of possible banks!

THE BEST OF ALL POSSIBLE BANKS

Wilson State Bank



VIETNAMESE FAMILY — Lich Phan Thi and her children, from left, Tuan, Anh Tuyet and Dung are currently in Slaton as a refugee family sponsored by the First Baptist Church here. Lich is awaiting reunion with her husband in Iran, and will be in the city for approximately a month. (SLATONITE PHOTO)

Chinese Mother Living In Slaton

Although Lich knew where her husband was, she could not communicate with him because he neither reads nor writes Vietnamese. Lich received the good news Monday that authorities have contacted her husband and that the government is in the process of obtaining the necessary papers so that she and her family may join him in Iran. The government will provide transportation for the family to Iran, but until that time they are the responsibility of the First Baptist Church. The Rev. J.L. Cartrite, pastor, said the church obtained sponsorship of the family through the Southern

Baptist Home Mission Board.

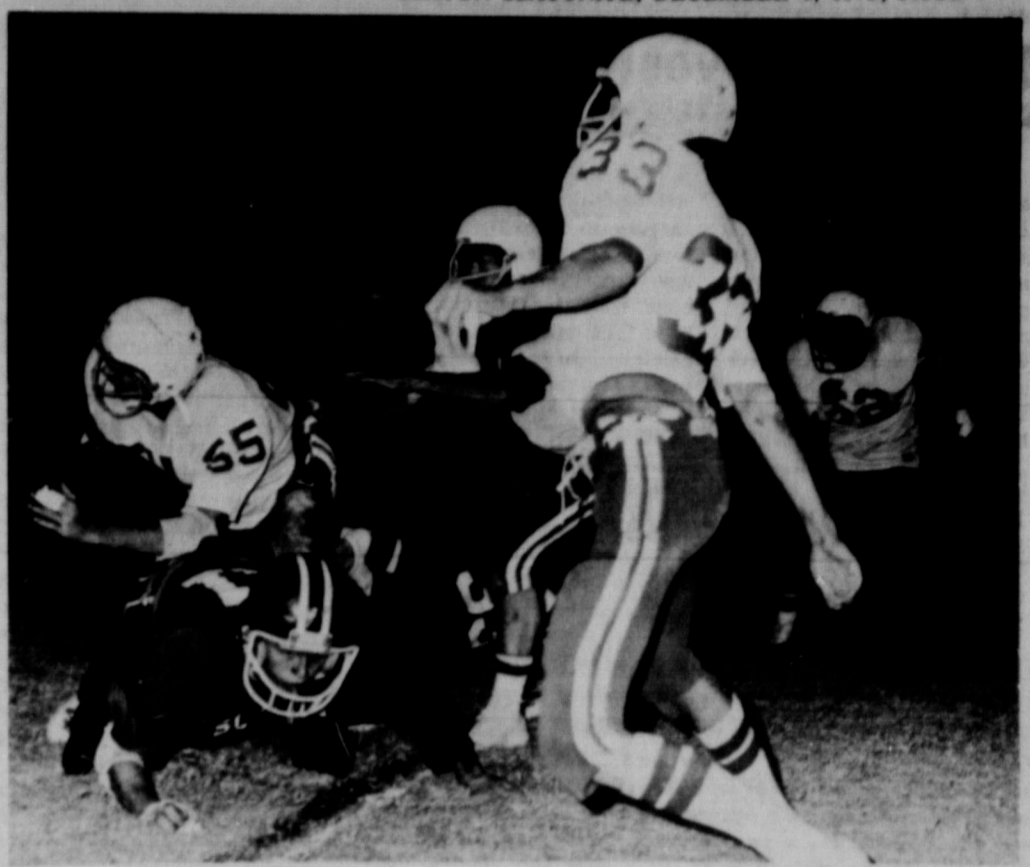
"We applied to take in a Vietnamese family, and we were originally scheduled to have three men. But Lich's need was more pressing and she came to us first." Cartrite said the church may also get another family after Lich and her children leave. "She's very grateful and appreciative for everything we do for her," said Cartrite. "She didn't come over here expecting charity," he said, "she wants to work. She does as much for herself as possible, and she has really disciplined her children well."

The children, Tuan, age 6; Dung, age 4; and Anh Tuyet, age 2, and their mother were all born in Da Nang. None of them speak English, but Lich is studying the language in night classes here. Lich has a Vietnamese-English Bible she reads. She is a Christian, and is quickly learning the words God and Jesus, which she always says with a smile and a nod.

Hospital Has Holiday Spirit

Holiday spirit at Mercy Hospital is evident everywhere as the staff at Mercy prepares for Christmas. The holiday season kicked off Nov. 23 when Hospital Administrator Arnold Ingraham gave a Thanksgiving dinner for all the employees and their families. The turkey and dressing dinner was served to approximately 150 people in the dining room of the hospital. The new drapes and tablecloths in the dining room, provided by the Mercy Hospital Auxiliary, added to the Thanksgiving decorations, gave the dining room a party atmosphere. Now, the staff at Mercy is involved in a Christmas decorating contest between the departments. The competition is friendly, and Ingraham said he is happy to see the employees of the hospital becoming as close knit as a family. All the staff members are wearing red tags which offer holiday greetings from Mercy.

As the new year approaches, improvements are continuing at Mercy. According to Ingraham, all the suggestions for improvements made by the Joint Commission have either been completed or are contracted. A newly installed PA system allows those within the hospital to be paged at any time and two new lights have been installed in front of the hospital. Also, generators have been rigged to come on automatically if there is a



GARY GROUNDED—Gary Aycock is down on the ground in the middle of a bunch of Alpine Bucks. Gary was frequently in the middle of the action during the game, won by Slaton 21-6. Aycock is a doubtful starter this week, however, because of a nagging ankle injury. (SLATONITE PHOTO)

Two Persons Are Hurt In Wreck

Two persons suffered minor injuries in the collision of two cars at FM 400 and U.S. 84 access road on the south edge of town Saturday. Involved were a 1975 Dodge Colt driven by Dean Hambrick of Lubbock and a 1970 Buick driven by Etta Dodd Landom, 805 S. 8th St. Hambrick and a passenger in the Landom vehicle, Ina Boggs, 509 Plaza Dr., were treated for injuries. Another citizens band radio was reported stolen to Slaton Police Dept. during the week. Monday a report from Ford Rinne, 805 S. 18th, listed loss of a radio and antenna valued at \$270, stolen from his 1974 pickup parked at that address. Smith Ford Tuesday reported a 1976 Ford pickup had been stolen from the parking lot. The gold and white pickup was valued at \$6979. On Sunday, Bobby Pritchett of Lubbock advised that while her car was parked on East Crosby a woman had broken windows on her 1973 Monte Carlo with a hammer.

Johnny Stone, 930 S. Flint, reported burglary of that residence with a gold medallion, man's watch and cassette player missing. The items were valued at a total of \$105. Triangle Mfg. Co. reported a radio valued at \$50 and an adding machine worth \$400 missing from an office on E. Division.

School Menu

- Monday — Hamburger, French fries, sliced tomato, brownie, milk.
- Tuesday — Chalupas, buttered corn, sweet pepper, fruit jello, milk.
- Wednesday — Corn dog, blackeyed peas, whipped potatoes, cookie, milk.
- Thursday — Fish, French fries, cole slaw, cobbler, milk.
- Friday — Smothered hamburger steak, mashed potatoes, Popeye salad, banana pudding, rolls, milk.

Classified Ads GET RESULTS! See THE SLATONITE by 5 p.m. Tuesday.

Call the Experts at SLATON LUMBER CO. 828-6255

BUSINESS AND PROFESSIONAL DIRECTORY

Wendel TV **Whirlpool**

Quality Products Service you can trust **Amana.**

Anthony's CR ANTHONY CO.

The Slatonite

AUTO Service We Sell **Whirlpool**

O.D. Kenney AUTO PARTS Your Automotive Parts Distributor 828-6523

Wilson 4-H Elects Leaders

The Wilson Elementary 4-H Club met recently and elected officers. President for the coming year will be Rita Rios. Other officers are vice president, Connie Lorado; secretary, Mary Garcia; reporter, Irene Castillo; and council delegate, Tammy Trotter. Mrs. Sherie Etheridge gave a program the day of the meeting. The next meeting will be Dec. 12.

BACK HOME
Don't Make A \$300 Mistake. See Me Before You Buy A Car Or Pickup

TIP KENDRICK
Mac's Olds Pontiac GMC, Inc. 828-6554



KEEP GOING, TIGERS

The Dona Basinger Family

"Low rates are a big reason we're the largest home insurer. But there are more..."

Our low rates wouldn't mean a thing if we didn't back them up with first-class service. We offer automatic inflation coverage. And, of course, I'm always close by when you need me. Stop in or call.

BOB BRAKE
108 Texas Ave.
828-3433



Like a good neighbor, State Farm is there.
STATE FARM FIRE AND CASUALTY COMPANY
Home Office: Bloomington, Illinois

ALL ALBUMS ON SALE

LIST FOR \$6.98
RAY'S EVERYDAY
PRICE \$5.47
SPECIAL SALE PRICE
\$3.99

Tapes \$4.99

EXCELLENT SELECTION OF POSTERS
PRICES GOOD THURSDAY, DEC. 4 — MONDAY, DEC. 8

- TONY ORLANDO & DAWN BEE GEES
- EAGLES
- OSMONDS
- THREE DOG NIGHT
- FREDDY FENDER
- JOHNNY RODRIGUEZ
- JOHN DENVER
- ELTON JOHN

CHICANO
LIST FOR \$4.98
RAY'S PRICE \$3.47
SALE PRICE \$2.99

Antonio Aguilar
Big Lu
Gavilanes
Little Joe
Cornelio Reyna
Tortilla Factory
Special \$3.99

RAY'S GOOD TIMES
160 W. GARZA
828-5161 SLATON

LAYAWAY TAPE PLAYERS FOR CHRISTMAS

if You Haven't Been To Or Don't Know Where Ray's Good Time Shop Is, Now Is The Time To Get Down To

Friends Harvest Crop For Hospitalized Man

Neighbors and friends of Fred Stolle met Tuesday at the Stolle farm, Rt. 1 Slaton, in the Posey Community to harvest approximately 300 acres of cotton. Stolle has been in West Texas Hospital in Lubbock for 56 days and does not know when he will be released. He had surgery Oct. 13 and it did not do as expected thus necessitating surgery a second time on Nov. 17. The doctor put in a new hip socket and a plastic bone from the hip to the knee. The surgery is healing nicely at this time, according to Mrs. Stolle, but Stolle is suffering other complications.

Mrs. Stolle is unable to spend much time with her husband as she also must care for their son who is ill at home and must have someone with him. The Stollers have another son, Fred Paul, who works at Texas Tech and lives in Slaton.

Women of the community prepared lunch Tuesday for the volunteer workers at the educational building of the Emanuel Lutheran Church at Posey. Registered for lunch were 25 workers but more helped with the harvest, with 12 machines gathering the cotton and many trailers. The Posey Gin was closed to other customers until all the Stolle cotton was ginned. They finished the stripping about 4:30 p.m. and the gin will continue until they have it all processed.

The Stolle family expressed their thanks and gratitude for everyone for their help at this time.

A man's heart beats eight or ten beats more each minute than a woman's.

Two former presidents, Thomas Jefferson and John Adams, died July 4, 1826.

News And Views Of St. Joseph's

Students and teachers were happy to return to school Monday after an enjoyable holiday. Attention has now turned to preparation for the Christmas season.

The second graders are very excited about the Christmas season and for a special language project they are writing letters to Santa Claus.

The first graders are having a pronunciation contest. The list consists of 100 words and after hard study if the pronunciation of all the words is correct, they will receive a real nice surprise for their effort.

Even though Christmas is very much on the minds of the students, the seventh and eighth grades took a few minutes to enjoy the results of their Bake Sale held on Nov. 26 in which games such as the Turkey Trot, Pluck the Turkey, Pilgrim Hats and Turkey Throw were the main events.

Judging by the high level of interest and excitement

generated throughout the afternoon, it seems the entire student body enjoyed themselves. \$134.40 profit was realized which will be used for instructional purposes such as the purchase of paper, duplicating fluid, chalk, art materials, etc.

At St. Joseph's we have entered the Season of Advent, the time of preparation for Christmas which should bring about a change, for the good, in our lives. In all the religion classes special projects and emphasis has been placed on this preparation that Christ will find our hearts open to Him through our acts of love, kindness, patience and peace. At this time we especially try to be unselfish and think first of others.

The basketball teams are going to be very active next week with the boys and girls teams playing at Southland on Monday, Dec. 8 and then both teams entering a tournament at Tahoka the following weekend.



ABOUT EVEN—It takes three Alpine Bucks to stop Slaton's Bill McClesky, and three of them stack up like dominoes to halt Bill. Quarterback Mike Tumlinson is background. (SLATONITE PH)

regular and balanced while handmade items are not). But this method may not work in all cases because the best handmade pieces are usually perfectly regular. The best clue that the jewelry is authentic and handmade is a signature or identification mark on the back. However, only one tribe—the Hopi—uses an identification mark on its silver pieces. Occasionally, you will find a particularly fine piece from some other tribe that has a hallmark.

Make sure the stones are untreated natural turquoise. Because the supply of good hard turquoise is dwindling, a lot of low-quality softer turquoise is being used. At the same time, the cheap, commercial market is being flooded with synthetic blue colored plastic "stones" and beads made of plaster

and coated with turquoise colored lacquer. Make sure you have the real thing,

especially if you're paying a high price on the basis that it is genuine.

Determine if the jewelry is made of sterling silver. Sterling is an alloy that mixes silver and copper in a proportion that meets an international standard. If a piece is represented as being sterling, it should meet this standard. Some "American Indian jewelry" appears to be sterling silver but isn't.

Buy from a reputable dealer. Look for a dealer with an established place of business so that he or she will be available later to answer any questions or complaints that you have. Many dealers belong to the Indian Arts and Crafts Association (IACA), a trade association whose

members guarantee merchandise is honest when resented when they get your money back.

Try to find a good source is the Arts and Crafts which publishes a directory of Indian craftsmen who sell jewelry. Write to the Indian Arts and Crafts Board, Department, Washington, D.C. 20240.

KEEP GOING, T BEAT CHILDREN

INSUR-MATION

By Bob Kern
Pember Insurance
828-6251



I have heard of a type of policy which will help fight inflation as far as my Homeowner's coverage is concerned. Could you tell me about this?

This is an Inflation Guard endorsement. Conditions for a Homeowner's policy require you to carry 80% of the replacement value of your home. On a one-year Homeowner's policy an Inflation Guard would not be needed since you are continually up-grading your coverage, year by year. However, on a three-year Homeowner's policy the Inflation Guard endorsement keeps the coverage on your home more nearly in line with current property values. Your premium covers this with a formula whereby your policy automatically increases its value 12 percent over a three-year period. This provides for an automatic gradual increase for your dwelling and unscheduled personal property.

Wedding Stationery

Let us show you our beautiful wedding invitations, thank you notes, napkins, etc. You can select your complete paper trousseau from a wide variety of styles in every price range. For wedding invitations, prices begin at \$10.95 per 100.

by Carlson Craft

The Slatonite

Dear Consumer

Indian Jewelry: Know Before Buying

By Virginia Knauer
Special Assistant to the President and Director
Office of Consumer Affairs
Department of Health, Education and Welfare

American Indian jewelry—it is featured in many stores and is sometimes sold right on the street. But for most consumers, buying this jewelry is a "blind purchase"; therefore, you can be taken "blind" unless you select with care.

To get information for consumers interested in buying American Indian jewelry, I have consulted with a number of government experts on the subject and have also visited Indian trading posts and craft centers. Here, in brief, is what I learned:

Call the Experts at
SLATON LUMBER CO.
828-6255

Find out where the jewelry is made and by whom. Much "American Indian jewelry" is not made by Indians but is manufactured in large commercial factories. And some of the cheaper "Indian jewelry" is not even made in this country but is imported.

Find out if the jewelry is handmade. Some jewelry may look handmade but is actually machinemade. To determine which is which, some dealers suggest that you look for irregularities in the jewelry (machinemade pieces are



39 LANGUAGES
47 EDITIONS
MORE THAN 3 MILLION CIRCULATION
IN MORE THAN 120 COUNTRIES

The Lord on high is mightier than the noise of many waters, yea, than the mighty waves of the sea (Psalm 93:4) I sat in the sand by the sea and watched the blue-green waves. End over end they tumbled in a ceaseless, rhythmic jumble of foam and noise, sometimes swirling around my feet, sometimes revealing small fish and bits of broken shells.

I felt insignificant—like one of the grains of sand—but linked somehow with everything in creation. The prayers which formed in my mind could not be put into words; but they were important, basic to the relationship between myself and things eternal.

God's love surrounds us like an ocean of warmth and peace. It is immense beyond our understanding but immediate and accessible, capable of buoying us up, of transporting us to new experiences of spiritual growth.

PRAYER: O Lord, we thank Thee for Thy love which from our birth over and around us lies. We raise to Thee our prayer of grateful praise. In the name of Thy Son Jesus Christ, who revealed to us Thy great love and taught us to pray. Amen.

THOUGHT FOR THE DAY: No matter how unimportant we may feel, God cares for us.

—copyright—The Upper Room
—Pat Mason, Memphis, Tennessee

A Gift for Her

CRO
SINCE 1906

This Christmas
CROSS Writing Instrument
in 14 Karat Gold
Sterling Silver
attractively
Presented

Pen or Pencil
Set

Slaton Slatonite
Free Gift Wrapping

FALL FESTIVAL SALE

HARDWICK

Continuous Cleaning Oven
Save \$40.00
Model K4632-G-120
36" wide
GRIDDLE IN MIDDLE

Griddle
5th Burner
Triple Burners At One Setting
Heat for Big Cooking Jobs
Griddle Cover

SPECIAL PRICED AT ONLY \$288.

Model 19618-110R
Clock
Continuous Cleaning Oven
Lift Up/Lift Off Top
Removable Top Burners
Oven Window Light
Drip-Proof Cooktop
Lighted Back Guard
30" Range

EXPERT TV & APPLIANCE SERVICE

SELF'S

Furniture & Carpets—T.V. & Appliances

W. GARZA, SLATON 828-6584

RIVERSIDE FERTILIZER COMES TO SLATON

Dry Fertilizer & Anhydrous Ammonia by Riverside Fertilizer and Chemicals

THIS YEAR'S PRICES ARE EVEN LOWER THAN LAST YEAR'S

Custom Spreading Available

CALL MAX LEE
Phone 806 828-3272
1560 W. Garza
Slaton, Texas 79364

CLASSIFIED FOR THE ACTION YOU WANT

RENT

Three bed mobile home at Holiday 9-tfc

ROOM furnished for rent. Plaza 8-2tc

enced mobil storm shel- Lubbock highway 84. 2-tfc

for rent. No pets. 105-A 7-tfc

RENT

Finest. Two- central refrig- conditioning. Unfurnished 4-tfc

APARTMENTS 2nd Street 5407

PERSONAL SERVICES

Anonymous meet 8:00 p.m. Church. For information 828-3171. or All calls and kept confidential 45-52tp

for families of For information 828-3171.

GIVE AWAY

es to give away. six months old. 10-1tnc

FOR SALE

77 Pontiac Wa- some work. 828-6814. 10-tfc

RD, new motor mission, fresh Floyd (Hoot) Ave. D, Lub- 828-3175. 10-1tp

FOR SALE

grows more thousand fea-

REAL ESTATE FOR SALE

LOTS for sale. Mobile home space for rent, \$30 a month, water furnished. C. E. McCoy, 828-6276. 4-tfc

FOR SALE — New 3-bed-room home, 2 full baths, on Golf Course Road. Call 828-6275 days, or 828-3888 nights. 38-tfc

FOR SALE—Two-bedroom, one bath, living room and dining area combined, kitchen and carport. 315 S. 13th. 828-6852 or 828-3205. 37-tfc

REAL ESTATE FOR SALE

NICE TWO-bedroom house for sale, 950 S. 17th St. Call 828-6684. 8-tfc

THREE-room house, beautiful paneling and carpet, fenced, cellar, on 12th St. Antwine-Davis & Kiser Realtors, 129 S. 9th. 828-6332. Wayne Edwards, mgr. 8-tfc

REAL ESTATE FOR SALE

COMPLETELY remodeled two-bedroom home. Double garage, very nice. 605 S. 12th St. Call Slaton Lumber Co. 828-6255 or Tommy Davis, 828-3787. 46-tfc

KEEP GOING, TIGERS BEAT CHILDRESS!

LOST & FOUND

LOST — miniature chocolate female Poodle. Red rhinestone collar and flea collar. Reward. Call 828-6753 or 828-3798. 10-1tp

REWARD — Lost north of Wilson, white male Alaskan Husky dog, name Bamzy. Call 628-3552 nights, 828-3457 days. 10-2tp

FOR SALE

Newly decorated 2 and 3-bedroom houses

SEE US FOR CHOICE 2 & 3-BEDROOM RENTAL PROPERTY

Browning and Marriott

100 N. 8th 828-3216

MISCELLANEOUS FOR SALE

FOR SALE — twin bed foundation, \$15. 828-3350. 10-1tc

FOR SALE — twin blue velvet bedspreads, one pair 92x62 beige drapes. Will trade drapes for high chair. 828-3764. 10-tfc

DIVORCE SALE — everything must go. 225 S. 18th. Thursday 8 to 6, Friday 2 to 6. 10-1tp

FOR SALE — Used dishwasher. 828-6166. 10-1tp

CHILD'S play house, \$50, 715 S. 8th. Call 828-3276. 10-2tp

MISCELLANEOUS FOR SALE

FOR SALE — House to be moved, 14x28, two-room, solid sheeting inside and out. Like new, large baby buggy. 828-6991. 10-tfc

HEATERS, bicycles, beds, refrigerators, cookstove, dinette sets, lamps, dishes. Antiques of all kinds, new dog houses. Ted's Trading Post, 1205 S. 9th. Phone 828-6820. 5-tfc

MISCELLANEOUS FOR SALE

TRASH BARRELS for sale at Perkins Auto Supply. Phone 828-6240. 29-tf

SLATON FARM STORE has a wide selection of work boots, coveralls, and insulated coveralls. 166 S. 8th St., 828-6487. 52-tfc

LOSE weight with New Shape Tablets and Hydrax Water Pills at Eblen Pharmacy. 9-4tp

HELP WANTED

TEXAS OIL Company needs dependable person M/F who can work without supervision in Slaton. Contact customers. Age unimportant, but maturity is. We train. Write T. E. Dick, Pres., Southwestern Petroleum, Ft. Worth, Tx. E.O.E. 10-1tc

MATURE, responsible persons needed for both day and night shifts. Apply in person, Dairy Queen. 48-tfc

WANTED

JOB on farm by week, hour or discuss terms. J.C. Price, Rt. 1, Box 125A, Lubbock, Tex. 9-2tp

WANTED TO BUY, junk cars and scrap iron. Call 828-6814. 21-tfc

MISCELLANEOUS FOR SALE

SINGER, 1974 model, zig-zag, blind hem, buttonhole, fancy stitches. One year guarantee, \$50. Cash or terms. Sewing Center, 1801 34th, 744-4618. 10-tfc

MISCELLANEOUS FOR SALE

Fire Chief Gasoline 51.9 per gal. **M.D. Geer Texaco** 305 N. 9 St.

SINGER TOUCH & SEW Deluxe models, these machines zig-zag, blind hem, make button holes, fill bobbin in machine, etc. Desk cabinets, with drawer space. Used only three months. Several left out of public school systems. Your choice \$65 each. Fully guaranteed. Sewing Machine Service Center, 1801 34th, 744-4618. 10-tfc

MISCELLANEOUS FOR SALE

AMARILLO FARM EQUIPMENT CO. 6641 Canyon Expressway Amarillo, Texas Phone 806 353-1161

Pre Inventory Sale New Allis-Chalmers 860 Cotton Strippers 1 Diesel — \$22,900 1 Gasoline — \$20,900

MISCELLANEOUS FOR SALE

FROM WALL to wall, no soil at all, on carpets cleaned with Blue Lustre. Rent electric shampooer \$1. Lasater-Hoffman Hardware. 10-1t

MISCELLANEOUS FOR SALE

Free Gift Wrapping **CROSS** SINCE 1948

Writing Instruments in 12 Karat Gold Filled Pen or Pencil ... \$12.00 Set ... \$24.00

CHROME Set ... \$12.00 Pen or Pencil, ea. ... 6.00

The Slatonite

BUSINESS SERVICES

HAVE YOUR PRESCRIPTIONS filled at TEAGUE DRUG by a Registered Pharmacist. 50-tf

ADVERTISING PAYS See THE SLATONITE before 5 p.m. Tuesdays.

BUSINESS SERVICES

KIRBY VACUUM CLEANERS For Service Call MOSSER TV 828-6475

Furniture Rebuilt Upholstery Good Fabric Prices Good Work Evenings 828-5231

BUSINESS SERVICES

N. H. ROBERTS Cement Contractor Free Estimates 828-6991

BILL REED DITCHING Backhoe Sewer Service Dump Truck Plastic Pipe Phone 828-6814

BUSINESS SERVICES

ELECTRIC WIRING & REPAIR APPLIANCE & HEATING, & MOTOR REPAIR **Kuss Electric** 828-3225 — 850 S. 16th

HOUSE NEED PAINTING? for a good job priced right, call D. H. RUDD 828-6937 FEATURING ALL TYPES PAINTING, TAPING AND BEDDING ACOUSTIC CEILING AND WALL TEXTURE BLOWN ALSO AIRLESS SPRAYING FOR BIG JOBS. 48-4tp

BUSINESS SERVICES

CHAMPION'S SWAP SHOP & JEWELRY NEW-USED-ANTIQUE FURNITURE Jewelry — Watch Repair and Engraving BUY—SELL—TRADE ANYTHING OF VALUE **JOHN C. CHAMPION** 828-3751—330 S. 9th St.

BUSINESS SERVICES

White's Auto SLATON LET US **Steam Clean YOUR CAR OR TRUCK ENGINE** call 828-3946

Public Notice

NOTICE TO ALL PERSONS HAVING CLAIMS AGAINST THE ESTATE OF ROY B. McALLISTER, DECEASED NO. 15,609

NOTICE OF APPOINTMENT OF ADMINISTRATOR

Notice is hereby given, that on November 24th, 1975, Letters of Administration upon the Estate of ROY B. McALLISTER, Deceased were issued to E.C. McALLISTER, who resides in Lubbock, Lubbock County, Texas and whose

Public Notice

Mosser Radio & TV SALES AND SERVICE 110 Texas Ave. Call 828-6475

WANT TO BUY Burned, Wrecked or Abandoned Cars 8 2 8 - 6 2 4 0 PERKINS WRECKER SERVICE

Public Notice

Magouirk Electric ELECTRIC REPAIRING AND WIRING 1400 S. 5th Phone 828-6809

Public Notice

SELF'S T.V. APPLIANCE ACROSS ST. FROM SELF FURN. FEATURING A FULL LINE OF ADMIRAL APPLIANCES AND TELEVISIONS, AS WELL AS A COMPLETE LINE OF MAYTAG WASHERS, DRYERS & DISHWASHERS, KITCHEN-AID DISHWASHERS & COMPACTORS & HARDWICK GAS & ELECTRIC RANGES. **COMPLETE SERVICE DEPARTMENT** 828-6584 240 W. GARZA

Public Notice

SPARE TIME BUSINESS Own your own profitable vending business. \$200 to \$600 monthly earnings possible in your spare time (day or eve.) NO SELLING. If selected, you will be servicing company established EXCLUSIVE locations. **OUR COMPANY IS A SUPPLIER OF NABISCO SNACK ITEMS.** REQUIREMENTS: \$1,000 to \$5,000 CASH INVESTMENT (secured by machines and merchandise) good character, dependable auto, and 6 to 9 spare hours weekly. Income starts immediately! We supply product, machines, locations, expansion financing, buy back option, and professional guidance. If you are sincerely interested in applying for this genuine opportunity toward financial success, please call or write (include phone number) for personal interview in your area to:

MR. ROBERT L. ANDERSON WORLD INDUSTRIES INC. Executive Suite 303 1919 East 52nd Street Indianapolis, Indiana 46205 Telephone (317) 257-5767

Post Office address is 2709 22nd St., Lubbock, Texas, by the honorable County Court of Lubbock County, Texas in said Cause No. 15,609, pending upon the Probate Docket of said Court.

All persons having claims against said Estate being administered are hereby required to present to present the same within the time prescribed by law.

FOR THEIR **Christmas**



Couples Gift **CROSS** SINCE 1948

Man's Pen and Lady's Pen* in 14 Kt. Gold Filled or Sterling Silver. Attractively Gift packaged \$30.00

with Pen Purse

The Slatonite Free Gift Wrapping

SPECIALS

- 1/2" C.D. Plywood 4x8 \$5.49
 - 3/4" C.D. Plywood 4x8 8.95
 - 3/4" A.D. Plywood 4x8 11.95
 - 2/4 x 2/6—10—thru 16" #1 Y.P. bd. ft. 23c
 - 18"—20" #1 Y.P. bd. ft. 28c
 - 1/6 Rgh YP #2 up to 16". bd. ft. 23c
 - 18"—20" #2, bd. ft. 28c
 - 1/4 — #2 YP up to 16". bd. ft. 23c
 - #2 YP, 18", 20" 28c
 - 2/4 & 2/6, 10 thru 16", new stock #2 and better, bd. ft. 19 1/2c
 - 2/4 Fir Studs, ea. 79c
 - 1/12 #3 Resawn (good) 15.99
 - Portland Cement Ea. 2.69
 - White Commode Seats, ea. 3.95
 - 48" x 1" Poultry Netting, roll 29.99
 - 48" x 2" Poultry Netting, roll 16.95
 - 60" x 2" Poultry Netting, roll 19.90
 - 4x8 Pre-finish wood paneling, ea. 3.95
 - 6-6-10-10 Mesh Wire 35.50
 - 1/2 Rebar 11.95
 - 1/2" x 8x8 Gypsum Board, ea. 1.59
 - White Exterior Latex Paint, gal. 4.50
 - 30-Gal. Water Heaters 79.50
 - 6" Steel Drive Post w/flang, ea. 1.19
- 250 S. 9th 828-6586**

WALTERS & ASSOCIATES

1602 Avenue N Lubbock, Texas 79401

By: James A. Walters

ATTORNEYS FOR THE ESTATE OF ROY B. McALLISTER, DECEASED

GARAGE SALE

GARAGE SALE — 325 S. 12th, Kenmore washer, TV, dishes, miscellaneous. Saturday, 8-5. 10-1tc

GARAGE SALE — Three families, Saturday, 9 to 5. One block north of St. Paul Lutheran Church in Wilson. 10-1tp

GARAGE SALE

GARAGE SALE — Friday and Saturday, 9 a.m. 225 S. 6th St. Miscellaneous items. 10-1tp

GARAGE SALE — Saturday, 1025 S. 19th. Clothes, tools and miscellaneous items. 10-1tp

BIBLES

Prices, and versions. From back New Testaments, to leather Print Bibles. Also Bibles for gift sets, and white Bibles for Brides.

THE SLATONITE

HOLIDAY

Mobile Home Park OF SLATON

located on N. 20th St. 1/2 blocks north of High School

Free Local Moving

Phone 828-5304 or 795-8891

Sikes Machine Shop

Complete Welding and Machine Shop

155 N. 9th Slaton

1—1962 4010 LP—\$3600

Good Selection of Used Strippers

1—Used JD 12' Disk Harrow—\$950

BRYANT FARM SUPPLY

North 20th St. Phone 828-6848

Want to give someone you love a Christmas gift they'll never forget?

For the last word in fantastic Christmas gifts, why not give him or her (or them) a trip to Europe, England or Mexico? Just contact Sandy Martin at the Slatonite, pay a small deposit down on the trip, and we'll fix up a gift certificate for the lucky recipient.

The Mexico trip is for 8 days, leaving out of Lubbock Feb. 23, and costs \$415 per person, including all lodging, transportation and guides, but no meals.

The England and European trip lasts nine days during the spring vacation for Texas Tech and public schools in the area. The plane leaves from Lubbock and after the group going to England is left at London, the rest of the group goes on to visit Holland, Belgium, Germany, France and Switzerland. The England trip is \$694 per person, and the European trip is \$724, with each trip price including all transportation, lodging, guides, tips, fees and two meals a day.

Call Sandy Martin at 828-6201, or just come by and see her sometime.

Trips sponsored by the Slatonite, with arrangements by Wholesale Tours International.

Tigerettes Win Twice

The Slaton Tigerettes whipped Olton and Spur during the last week to improve their season record to 4-2, and Coach Gay Benson's girls will be competing in a tournament at Meadow today through Saturday.

Four girls scored in double figures as the Tigerettes bombed Spur 73-29 here Tuesday. Debra Montgomery had 21. Terri Holland 16. Dwana Mosser 12 and Lynn Webb 11. Slaton led 41-12 at halftime. Essie Kelley of Spur scored 14.

At Olton Monday, the Slaton girls took a 33-17 halftime lead and went on to win 54-43, as Montgom-

ery tallied a big 33 points and Mosser had 15.

Christ the King will be Slaton's opponent in first round of the Meadow tournament. The Tigerettes will seek revenge at Klondike Tuesday after playing Paducah here Monday.

First district game will be Jan. 3 against Frenship.

Yea, Tigers!

**Keep Going,
Tigers!
BEAT
Childress!**



PASSING THE BUCK—Bill McCleshy runs around an Alpine Buck here in action from the regional playoff game at Midland Friday, won by Slaton 21-6. Blocking on Alpine's Rocky McBride is Charlie Haynes. Alpine's No. 62 is Guard Ken Locke. (SLATONITE PHOTO)

SportScene

BY DALTON WOOD

THE KEY ingredient in the makeup of a championship team, at least in the case of the Slaton Tigerettes, is an unusual and unselfish dedication to the overall goal of the team, without petty jealousies or prima donna player on the squad has come to realize that the most important to the success of the team. In more significant terms, the teamwork of this year's bunch is fantastic.

Probably no single team member has done more to contribute to the spirit of teamwork than Bill McCleshy, kind of running back who rarely comes along to get the hearts of coaches and fans. Since he has had so much of headlines, he could be excused somewhat for acting like he's something pretty special, but he really is pretty special, buy mainly because he acts like it. Talking with Bill convinces you that he is sincerely more concerned about the good of the team than any individual honors that come his way.

"I just can't say too much about the offensive," said this week. "No matter who you are, you've got to block to do any good, and those guys are the greatest." Bill credits all of his success this season to the coaches and the other guys on the team. McCleshy paid tribute to Charlie Haynes and the other linemen who block for him as well as the linemen. "Charlie surprises a lot of defensive ends, because he isn't as big as they are, but he does a good job of clearing out those ends."

Lauds Defense
Bill, who doesn't play on defense, had something to say about the defense, too. "I think our defense is a great job...sometimes when our offense isn't doing so well, defense hangs in there and gets it back for us to have another chance."

The offensive line usually includes Mark Basinger, Russell Heinrich and John T. Basinger. Loran Roberts and Michael Bednarz at tackle. Bednarz at one end and either Tom Bourn or Bill Cook at the other end. Some of these linemen, in particular, gave some indication of why they're so hard to block the defensive players this season.

"This is really the first year the backs have blocked how much they appreciate what the backs are doing," commented John T., and Ethridge added that the offensive line is proud to clear the way for them. They both agreed that the offensive linemen are good when they know they've made their blocks, you look up and find that the back has made a good block. Ethridge added:

"Even if you don't make a perfect block, the backs like Bill and Gary (Aycock) can get it going. Indicative of the spirit of teamwork among the linemen is that when someone finds he's overmatched, he can't handle his man, then he's not too proud to ask for help, and whoever is next to him is usually glad to help. "The offensive linemen help each other instead of everybody trying to outdo the other." Basinger said.

Same Feeling Evident
Basinger, who has been a tower of strength on defense, says the same spirit of working together is evident on the defensive team. He pointed out the man who makes the tackle is able to do so on someone else did exactly what he is coached to do to hit, he said. "When the other guys do a job that frees me or Darrell to make the tackle."

Also doing a fine job on defense all season are such strong players as Geron Stricklin, Greg Gaylon Buxkemper, Artie Limmer, and the people like Aycock, Mike Tumlison (who also pass and punt better with each game), Brad E. Wood and others. Some players not mentioned contributed much to the success of the season, and to be commended.

One of the team leaders always has been Aycock, who also attributed the team's success to the player's attitudes. "On and off the field, everybody is close," he said. "I think I'd rather block for Bill with the ball myself...I just can't say enough about everybody on the team; they're all great...Our coach has done a good job this year. One of the reasons we're so well is because they have shown us what we're doing it."

All of the players interviewed expressed appreciation for the support shown by the community this season. "It's great to go somewhere out of town and find out there are more fans there than the other team," said Basinger. "They've decorated the gym, bought us Gatorade, they've worked hard for us, and we appreciate it."

So it's obvious that the spirit of teamwork has been well for the Slaton Tigers this season. And just as the fans and coaches can echo the sentiments of the players, so can the players.

"I wouldn't take anything for this year in football."

**Cooper Fans are behind
the Slaton Tigers
All the way to State!**



COMPLIMENTS OF THE
**COOPER ATHLETICS
BOOSTER CLUB**

I'M LEAVING!
An old legend says that if you stand a broom behind a door an unwanted guest will leave!

**Save Those Costly Drips
Call KIP'S!**

762-5994

LUBBOCK

For Quality Plumbing,
Remodeling, Furnaces, Etc.

LETTER TO THE EDITOR

Dear Dalton:
Enclosed are the clippings you asked for.

It was a real pleasure meeting you, and seeing the fine team Slaton has. I wish the Tigers all the luck in the world in their upcoming playoff game.

I've heard several people here in Midland comment on your fine team. I think everybody was impressed with the way the football

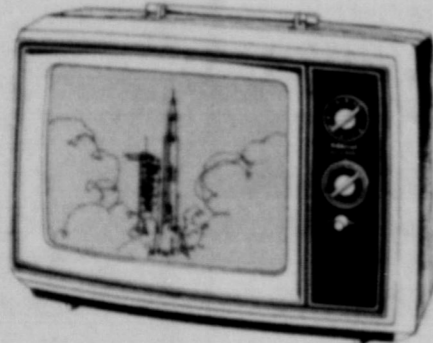
team played, and the way the High School students acted at the game. Your city has a lot to be proud of.

Coach Cook also wanted to see these stories. I would appreciate it if you would show them to him.

Sincerely,
Terry Williamson
R-T Sports Writer

Admiral

The Smart Money Set.



• 13" (diag.)
Super-Solarcolor TV. 3117P

• Compact styling made to order for small-area convenience.

\$288.
W.T.



Admiral The LEXINGTON Model 25L08

25" (diag. meas.)
Super-Solarcolor TV
Super-Solarcolor performance with Color Master Control convenience. A great combination at a great price!

\$588.
W.T.

Admiral

One of the greatest values in Color TV history. Compact 18" (diag. meas.) portable gives you a Super-Brite color picture that's big enough for the whole family to watch. Come in and see it in action.

\$329.95

Admiral

Stereo FM/AM Radio, 8-Track Tape Player/Recorder

Superb sound in a compact system. Play/record stereo 8-track tapes; dial stereo FM/AM radio. Four full-fidelity quality speakers.

STC971

\$219.95



19T957

Admiral

100% Solid State Super-Solarcolor TV 19" (diag. meas.) Portable color with console quality performance. Super-Solarcolor Black Matrix Tube brings brightest picture ever!

\$419.95

W.T.

SELF'S

Furniture & Carpets— T.V. & Appliances

W. GARZA,

SLATON

828-6584

Eblen's COURTEOUSNESS

IS PART OF OUR
PRESCRIPTION SERVICE

We're never too busy to serve you with care...that's because your health is our first concern.

YOU KNOW YOU CAN
TRUST YOUR PHARMACIST

**EBLEN
PHARMACY**

828-6537

Roosevelt News

by
Lynda Hall
and Sandra Patschke



Saturday, Nov. 22

BASKETBALL

At Tahoka Nov. 24 the seventh, eighth, and ninth grade girls won all three games. The seventh won 20-10 with high point Karri Roberts netting 12 points. The eighth grade won 31-11 with Kelli Powell being high point. In the ninth grade game Pam Stevens made 11 points bringing their win to 30-25. The boys did not play this week.

Roosevelt hosted LCHS Nov. 25 and only won one game that night. The J.V. boys lost 30-31 in the last seconds of the game. Darron Mann led the scoring with 15 points. The varsity girls defeated LCHS by a terrific score of 65-15. Kay Harrison led the winners with 17 points and Debbie Trammel was next with 16 points. The varsity boys lost 44-58 with Roger Daniel making 12 points.

NEWS BRIEFS

Mr. and Mrs. Ray Medley and family spent Thanksgiving with relatives in Shallowater.

Mrs. Wanda Holland of Missouri, former Roosevelt citizen, spent Thanksgiving visiting her son, RHS-ex John Calloway. John was dismissed from the Lubbock Methodist Hospital Thursday after undergoing tests.

Mrs. Bobby Henson, Bobby Don, and Laura, Mr. and Mrs. M.C. Pinkston, and Mrs. Anna Brookoy, Tracey and Kim spent Thanksgiving visiting with Mr. and Mrs. Norman Haddad and family in El Paso.

Mr. and Mrs. R.A. Peel and Rex spent Thanksgiving

in Mineola visiting R.A.'s parents.

Mr. and Mrs. L.W. Smith of Big Spring visited with friends in the area over the weekend.

Mr. and Mrs. Earl Eblen Jr. of Austin visited Mrs. Eblen's parents, Mr. and Mrs. S.N. Jones Jr.

Visiting in the home of Mr. and Mrs. O.A. Oats over the holidays were Mr. and Mrs. W.D. Oats and George of Honeygrove; Mr. and Mrs. Zane Oats, Cindy, Sandra, Donna, Emily, Geneva, Patricia of Cooper (Delta County); Mr. and Mrs. Austin Purdy, Mr. and Mrs. Terrell Oats, Mrs. Birdy Oats, Mrs. Jean Meade, and Sandy Oats all of Lubbock; Neil and Todd Faulkner; and Mrs. Mike Oats and Ivy Michelle of Denver.

Mrs. Troy Thomas, Mr. and Mrs. Max Thomas and family, and Mr. and Mrs. Bobby Petree and Christy visited Mr. and Mrs. Pascal Hosch at College Station over the holidays.

The date for the Roosevelt's Band Christmas concert has been set for Dec. 14 at 2 p.m. in the school auditorium. The public is invited to attend.

For all of the Secret FHA Grannies the date for the granny social has been set for Dec. 18 from 7:00-8:30 p.m. in the Home Ec. Building.

Guests in the Walter Perry home over the holidays were Mr. and Mrs. Ronny Robert and family of Wichita Falls, Mr. and Mrs. Dale Lambert and family of Dallas, Marcie Hunt and Mr. and Mrs. Dub Perry and family of Lubbock.

YOUNG HOMEMAKERS

The Roosevelt Young Homemakers screened approximately 200 first and second grade students recently. Out of this number they had 14 referrals to eye doctors.

A reminder that the Bake Sale will be held at the Acuff Gin, Dec. 12 from 8 to 11 a.m.

The Christmas pot luck supper for the Young Homemakers and their families will be held Dec. 9 at 7 p.m.

The program for the Nov. 25 meeting was "So Glad I'm Me" given by Mrs. Austin Siburt, wife of the Acuff Church of Christ preacher. Mrs. Sylvia Bessent was in charge of the program. Hostesses were Mmes. LaNeeta Carr and Bettie Washington.

Roosevelt Tournament

The Roosevelt Invitational Basketball Tournament begins today and will end Saturday.

There are 16 teams entered, including both the Roosevelt varsity and junior varsity boys and girls. Other towns entered are Olton, Idalou, Petersburg, Lorenzo, Crosbyton and Shallowater. Play began at 11:30 this

morning when the Olton and Roosevelt JV girls met on the courts. The boys' action began at 12:50 p.m. with Olton and the Eagle JV's.

Playoff games will be at 1 p.m. and 6:20 p.m. Saturday for the girls, and at 2:20 p.m. and 7:40 p.m. for the boys.

BRIDAL SHOWER

Betty Curry, bride-elect of Gary Stennett was honored with a bridal shower Nov. 22 at the Roosevelt Club-house.

Special guests were her mother and grandmother, Mrs. Albert Curry and Mrs. Wiley Curry of Tahoka and Mrs. Arlen Stennett and Mrs. E. Harkey, the groom's mother and grandmother.

Hostesses were Mmes. Mary Miller, Melle Killian, Bobby Mimms, Doris Thomas, Marggerite Lipps, Sandra Darby, Lynda Marshall, Lynda McLeod, Ann Jones, Oma Martin, Katy Rowan, Lane Davis, Elsie Stewart, Charlene Poyner, Charlene Taylor, Sandra Medley and Norine Patschke.

Hostess gifts were an electric blanket, folding table and chairs, and a set of cookware.

FTA

The Roosevelt Future Teachers of America have chosen Mrs. Pat Williams as November's Teacher of the Month.

She teaches high school mini-English courses, special education and is a co-sponsor of FTA.

Amy Speed, senior, was chosen by the FTA as November FTA Member of the Month.

She is secretary of the club and is also DECA's historian-parliamentarian.

CORRECTION

Junior high pep rallies begin at 12:15 p.m. instead of 12:45 p.m.

Support the basketball program by attending the pep rallies and games.

HONOR ROLL

Twenty-four high school students reported for the second six weeks. Juniors had ten, seniors, nine, sophomores, five.

SBG

The Student Body Government had a Thanksgiving assembly last week with Dee Bowman being the speaker. His theme was on "American Heritage".

The student council is still selling the Roosevelt Eagle writing pens. SBG members put up a Christmas tree and decorated it in the foyer of the high school Wednesday.

In their last meeting they voted to join the District Student Council and will be attending the District meeting Wednesday, Dec. 10 at the South Plains College in Levelland.

LUNCH MENU

Monday — Hot dogs with chili, pinto beans, potato salad, chocolate pudding, milk.

Tuesday — Spaghetti, tossed salad, buttered corn, French bread, butter, apple cobbler, milk.

Wednesday — Chicken & dumplings, English peas, celery sticks, lime jello, rolls and milk.

Thursday — Peanut butter & jelly sandwich, pinto beans, mashed potatoes, sliced bread, cherry cobbler, milk.

Friday — Hamburger, French fries, lettuce and tomato slices, pear cobbler, milk.

Facts About Nutrition

Good nutrition is essential for good health.

From simple one-celled plants to highly complex human beings, all living things need food. Food is necessary to support growth, to repair constantly wearing tissues and to supply energy for physical activity. Unless the food consumed supplies all the elements required for normal life processes, the human body cannot operate at peak efficiency for very long. If an essential nutrient is missing from the diet over very long periods of time, "deficiency diseases" such as rickets, scurvy, or certain anemias may develop.

The food choice of civilized man is influenced by many factors, such as cultural background, habit, taste preference, susceptibility to advertising, family finances, economic situation, and many others. In the United States today a variety of good foods is available everywhere and within economic reach of most people. Nevertheless, persons still consume inadequate or faulty diets which are likely to lead to poor or borderline health, and there is a continuing need to provide information on how to use this abundance of food to the best advantage.



BEAT CHILDRESS!

Local 4-H Members Win In Food Show

Eighty-nine 4-H'ers entered the Lubbock County 4-H Food Show held Nov. 22 in the Home Economics Building on the Texas Tech campus.

Categories in both the junior (9-13 year olds) and senior (14-19) included: Breads and Desserts, Main Dishes, Side Dishes, and Snacks and Beverages. A special "Pee Wee" division was also available to eight year olds.

In the senior division, Becky Hand, Lynda Maunier, David Stuart, and

Diana Burton received first place honors. Junior division winners were: Benton Easter, Penny Hight, Cally Hill and Tawn Dulin. These eight 4-H'ers earned the right to represent Lubbock County in the District 4-H Food Show Saturday.

Those receiving first alternate awards were: Senior division — Darlene Swan, Laura Arnold and Lori Beyer. Junior division were: Dianne Hitt, Kathi Beyer, Jan Ward and John Beyer. Pee Wee winner was Laurie Harris.

Nancy Hand served as

general food show chairman. Committee members included: Melba Parham, Louise Beyer, LaVerna McMenamy, Ann Swan, Beth

Arnold, Rosalie Berry, Nona Hitt, Jackie Maxcey, Sylvia Bessent, Jackie Harris, Laverne Young, Paula Lewis and Marv Maunier.

Changes In Highway Routes Are Changed

AUSTIN — The State Highway and Public Transportation Commission has amended an earlier Commission order allowing the extension of Indiana Ave. across a portion of U.S. Highway 82 in the city of Lubbock.

Texas Technological University and the City of Lubbock want to provide access to the new Texas Technological University Medical School and Teaching Hospital by extending Indiana Ave. from 19th Street, northward to 4th Street, and thereby crossing U.S. 82.

The earlier order designated the present U.S. 82 a freeway from U.S. 62 north-eastward and eastward to

University Avenue, a distance of approximately 2.0 miles. This prohibited the access to or from the abutting lands under state law. The order has been amended to allow the proposed Indiana Avenue extension to cross U.S. 82 and provide access to the new teaching facilities.

Also last week, the Commission acted to provide a single highway route number between Lubbock and Dallas.

A present section of 114 from its junction with 380 in Bridgeport northward to its junction with 287 at Bowie will be redesignated 101.

The change is effective Jan. 1.

Puppet Show Set Saturday

Weird and wonderful puppet creatures inhabit the make-believe undersea world in the adventure of Stanley Stevenson Gish who suddenly finds himself transported to exotic depths in the puppet extravaganza to be presented in the Mahon Library Saturday, by the Texas Tech Puppeteers.

The production in the 19th annual traditional cooperative offering of the Lubbock City-County Children's Department and the puppetry class of Texas Tech, taught by Peggy Howard Bright, Associate Professor of Art.

A federal grant to the Lubbock City-County Li-

WILSON LUNCH MENU

Monday — Super dogs, corn, ranch style beans, apple cobbler, milk.

Tuesday — Meat sandwiches, lettuce, tomatoes, French fries, peanut butter cookies, milk.

Wednesday — Turkey & dressing, gravy, cranberry sauce, sliced bread, English peas, fruit salad, milk.

Thursday — Cheese & macaroni, green beans, hot rolls, buttered carrots, chopped pears, milk.

Friday — Sloppy joes, French fries, salad, catsup, pickles, brownies, milk.

library this year provides for funding to cover the production costs of this cooperative effort, in order to keep it free for area children.

In order to accommodate the crowds of children who want to see it, there will be four performances of this production entitled "Stanley Stevenson Gish and the Puddle Fish" at Mahon Community Room, Saturday. There will be no admission charge for the performances at 9:30 a.m., 11 a.m., 2 p.m. and 3:30 p.m.



If your clothes come out gray, it may be because they are being soaked and washed too long. This only redeposits the dirt already removed. It takes a lot of dirt to need more than 8 or 10 minutes.

If you need a new
ROOF
Call 828-6255
SLATON LUMBER CO.

Shop Early For Christmas Gifts

Commemorative coins make great gifts!

Select from:
SINGLE COINS
COIN SETS
PENDANTS
BELT BUCKLES
BOLO TIES
KEY CHAINS

PRICES RANGE FROM \$2.50 TO \$100.

On display now at the Slaton Chamber of Commerce.




Call the Experts at
SLATON LUMBER CO.
828-6255

Greater Slaton Area Jaycees will be selling

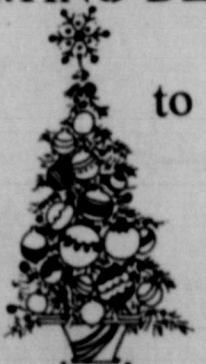
CHRISTMAS TREES

KINDS, ALL SIZES

WEST SIDE OF SQUARE

STARTING DEC. 1

6 p.m. to 9 p.m.



limit one to a customer please

50¢—Good—50¢

for 50¢ off

Complete Breakfast

over \$1.00

OPEN AT 6.AM 828-5443

THURS. DEC. 4 - SUN. DEC. 7

50¢ Good from 6am to 11am 50¢

We're just plain folks at West Texas Savings Association!

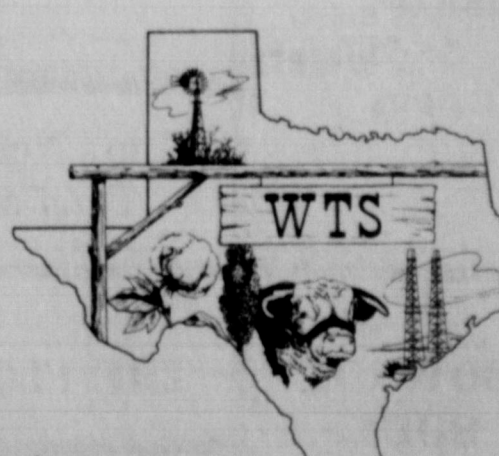


We pay you the highest rates allowed by Federal Regulations—

From **5 1/4%** to **7 3/4%**

Savings are compounded daily—day in—day out on passbook savings.

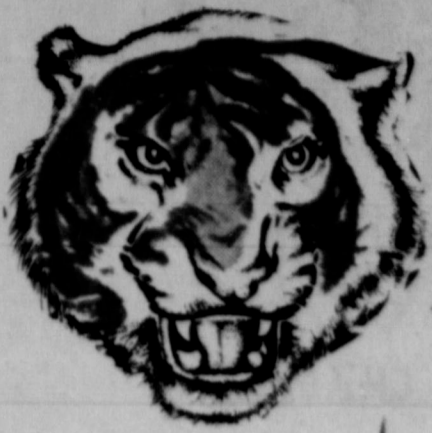
Savings deposited by the 10th. earn from the 1st. on all savings plans other than passbook. Withdrawals prior to maturity are subject to prescribed penalties.

Friendly folks . . . friendly service . . . and good old fashioned West Texas hospitality . . . are key words that best describe West Texas Savings Association. The officers and directors, all home grown and dedicated to provide West Texas folks with the finest in savings and loan services.

West Texas Savings Association

3400 50th. Street - Lubbock, Texas 79413 - Ph. 792-3755



GO TIGERS



**THREE TO GO!
LET'S WIN STATE!**



I HOPE THEY CALL TAILS AT THE COIN TOSS, CAUSE WE HAVE ONE AND THEY DON'T.

COACH BOYD SAID HE SAW A BOB CAT ONCE AT SMITH FORD.

BATTLE OF THE UNRANKED
SLATON VS CHILDRESS
FRIDAY - 7.30 PM.
PLAINVIEW

BOB CAT TRAP

LEAKE

SLAT-CO PRINTING
Al & Carl Lewis

Eblen Pharmacy
828-6537
245 W. Lubbock

O. D. KENNEY AUTO PARTS
Box 846 — 828-6523
Slaton, Texas 79364

Paulines Flowers
828-6275

Jim, Nona and Jeff Eblen Terri and Greg Laurence	Tom's 8 Till Late 828-7102	BRUSH PLUMBING 828-6275	SMITH FOR
THE FLOWER PATCH	EBB STRICKLIN BUILDERS	SLATON TIGER CLUB	Mr. J.C.
Anthony's C. R. ANTHONY CO.	BRYANT FARM SUPPLY	PEMBERTON AGENCY 828-6251 144 WEST GARZA	SENTRY SAVINGS ASSOCIATION
BOB BRAKE INSURANCE YOUR LOCAL STATE FARM AGENT 828-3433		HAM'S FOOD MART 828-6307	Piggly Wiggly
MR. & MRS. SKIP TUMLINSON	GO, TIGERS, GO!	MR. & MRS. RONNIE DUNN of Post	QUALITY CLEANER BILLY, TOM, JIM, PATTI and

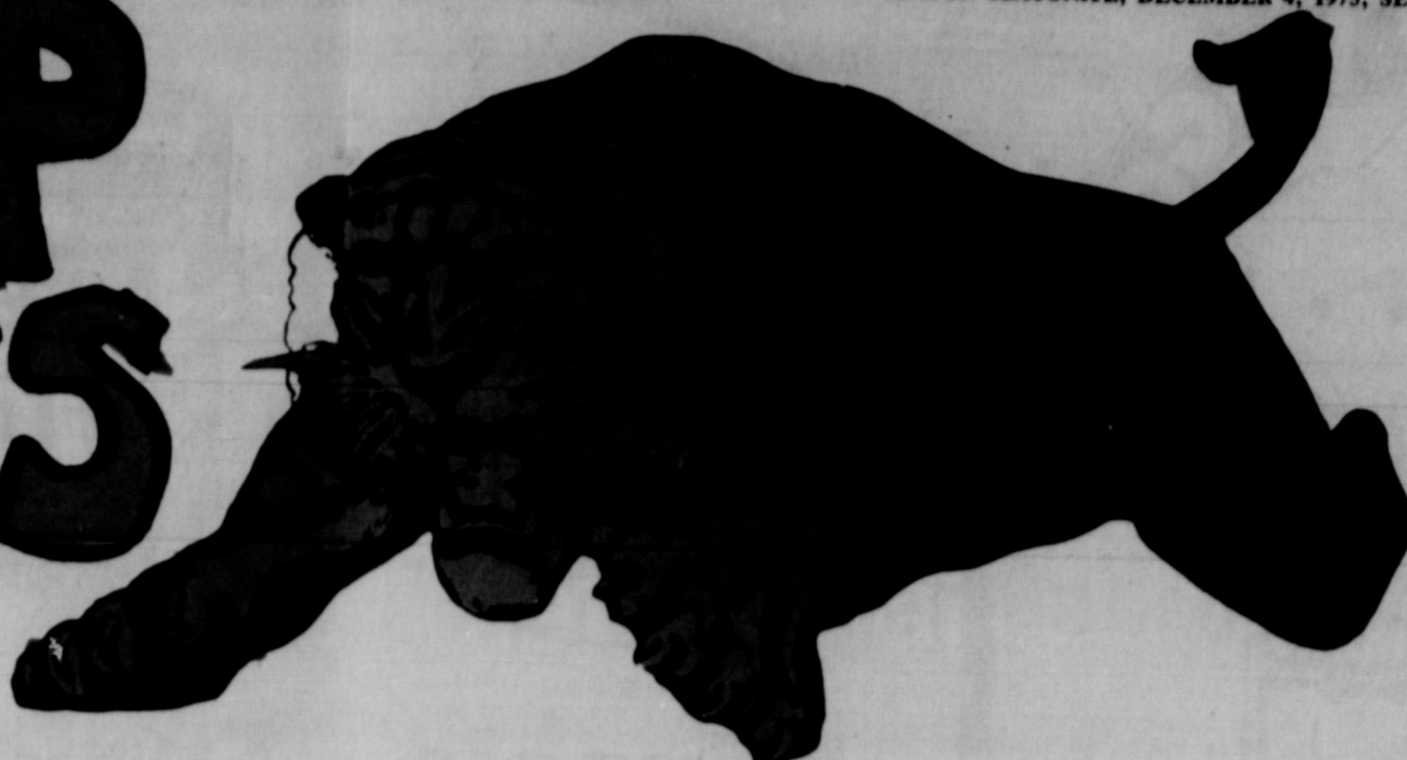
BOWNDS BODY SHOP

JOE & KELLY, KENT & NOEL SPARKMAN



THE
Edwin
DaiAn
Mr.
J.C.
Z.
W. GAR
Mr. Far

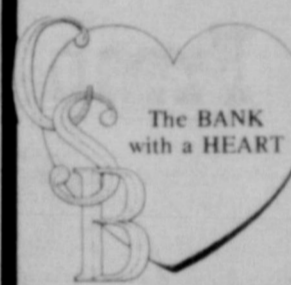
CHIEF UP CHILDRESS



After Childress, Tigers Play Winner Between Decatur And Gladewater



Union Road
828-5443



**PARTAIN'S
Frozen Foods**



Custom Processing
828-6127

Fans From Roosevelt
Eagle Country

The Heinrichs
Walter, Lillian, Kelly, Phyllis
and Michelle

WENDEL'S T.V.
& APPLIANCE

828-3609
109 S. 9th

THE KNIGHTS
Edwin, Betty, Eddie,
DaiAnn and Shelly

The Curtis Aycock Family

MR. & MRS. A.C. ETHRIDGE

**EDWARDS
INSURANCE**

Mr. and Mrs.
J.C. McClesky

The Raymond Wood Family

THE BOURNS
Liz, Tim, Gary

SLATON
BAKERY

Z. Ball & Co.

HANDY HUT
22 & W. Division 828-6216

Forrest
LUMBER COMPANY
250 S. 9th
828-6586 — 828-6587



**SLATON
PHARMACY**

650 W. Division
Phone 828-3253

SELF'S
FURNITURE & CARPETS T.V. & APPLIANCES
W. GARZA 828-6584

SLATON GOLF CLUB
Courtney White, Pro.

Max Arrants
County Commissioner

**TRIANGLE
MFG.
CO.**

TG&Y
Family Store in Slaton

bring your prescription to
Teague's Drug Store
828-6535

GO, TIGERS, GO!



**Dependable
ELECTRIC Service**



Prices good thru December 6, 1975. We reserve the right to limit quantities. None sold to dealers.



Hunt's
Tomato Sauce
6 \$1
8-oz. Cans

Hunt's Peeled or Whole Tomatoes 3 1/2-oz. Cans \$1.00

Hunt's Tomato Paste 4 6-oz. Cans \$1.00

Tomato Hunt's Ketchup qt. Btl. 69c

Piggly Wiggly, Spinach or Cut

Green Beans
4 \$1
16-oz. Cans

Piggly Wiggly, Cream Style or Whole Kernel Golden Corn 3 16-oz. Cans \$1.00

Rosedale or Golden Best Green Peas 4 16-oz. Cans \$1.00

Piggly Wiggly Whole or Sliced Potatoes 4 16-oz. Cans \$1.00



Kraft's

Miracle Whip

79c
32-oz. Jar

Piggly Wiggly, Light

Chunk Tuna Limit 3 6 1/2-oz. Cans **3 \$1**

Piggly Wiggly Pancake Mix 2-Lb. Box 69c

Piggly Wiggly, Creamy or Crunchy Peanut Butter 18-oz. Jar 89c



Piggly Wiggly, All Purpose

Enriched Flour

49c
5-Lb. Bag

Tomato

Campbell's Soup 10 1/2-oz. Cans **6 \$1**

Piggly Wiggly Macaroni Dinners 4 7-oz. Pkgs. \$1.00

All Varieties, Betty Crocker Hamburger Helpers 59c



Looking for a convenient day gift idea? Give Piggly Wiggly Gift Certificates to friends, employees, business acquaintances.

For more information, see your local Wiggly Store Manager.

Piggly Wiggly Regular Quarters

Oleo
3 \$1
16-oz. Pkgs.

Bell Yogurt

Piggly Wiggly Cinnamon Rolls

Bell Eggnog



Swanson's All Varieties, Frozen

Pot Pies
3 \$1
8-oz. Pkgs.

Piggly Wiggly, Cut Corn, Chopped Broccoli, Broccoli Spears or

Green Peas 3 8-oz. Pkgs.

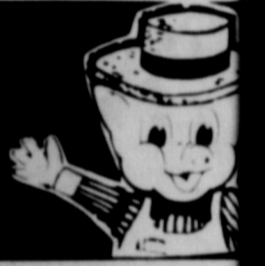
All Varieties, Freezer Queen

Cooking Pouches 4 5-oz. Pkgs.

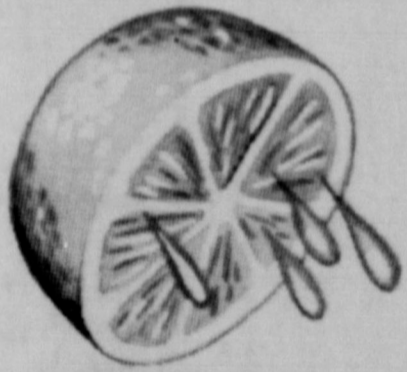
Cal-Ida, Frozen, Shoestring

Potatoes 4 20-oz. Pkgs.

YOUR PEOPLE PLEASIN' STORE



Fresh Produce



California

Navel Oranges
4 \$1
Lbs.

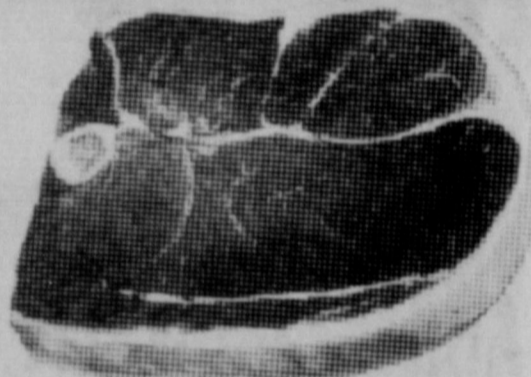
Golden Ripe Bananas Lb. 19c

Texas Ruby Red Grapefruits 4 Lbs. \$1.00

Romaine, Red or Green Leaf Lettuce ea. 39c

Garden Fresh Crisp Carrots 1-Lb. Cello Ctn. 25c

Red or Golden Delicious Apples 4 Lbs. \$1



Family Pack, 5-Lbs. or More USDA Good Lite Beef

Round Steak
\$1.19
Lb.

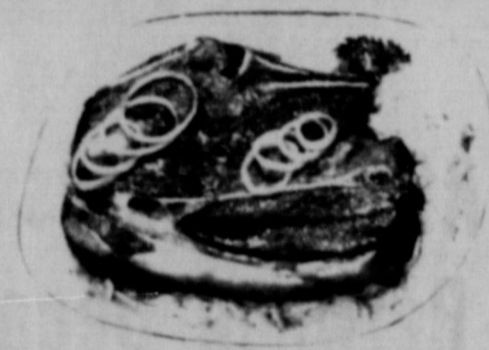
Family Pack, 5-Lbs. or More USDA Good Lite Beef

Sirloin Steak Lb. \$1.09

Boneless Stewing Beef Lb. \$1.19

Red "Hot" Smoked Link Sausage Lb. 99c

Farmer Jones Tasty Franks



Family Pack, 5-Lbs. or More USDA Good Lite Beef

Chuck Steak
89c
Lb.

Family Pack, 5-Lbs. or More USDA Good Lite Beef

Rib Steak Lb. \$1.09

Boston Butt Cut, Fresh Pork Roast Lb. 99c

Farmer Jones, Heat & Serve Smoked Sausage Lb. \$1.59

12-oz. Pkg. 89c



We Give S&W Green Stamps



OLD FASHIONED Everyday Low Price

All Varieties Morton's Donuts 9-oz. Pkgs.

All Varieties, Frozen Patio Dinners 11-oz. Pkgs.

All Varieties, Nabisco Snack Crackers 8-oz. Btl.

Van Camp's Pork N' Beans 15 1/2-oz. Cans

Armour's Potted Meat 5 3-oz. Cans

Piggly Wiggly, Assorted Facial Tissue 2 200-ct. Boxes

Coffee Lightener Borden's Cremora 22-oz. Jar

All Varieties, Fox Deluxe Frozen Pizza 13 1/2-oz. Pkgs.

Bama Peach Preserves 18-oz. Jar

Ken-L Ration, 15-oz. Cans

Dog Food 6 Pkgs.

Kraft's Orange Juice 1 1/2-Gal. Btl.

All Flavors, Piggly Wiggly

Soft Drinks 64-oz. Btl. **59c**

"A Real Value" Only a Penny A Cookie Sugar, Chocolate Chip or Fudge Drop, 100-Ct.

Keebler Cookies 20-oz. Bag **99c**