



OFFICERS took the helm of Chamber of Commerce activity in Slaton Monday evening at annual banquet of that group. Pictured here, left to right, are Bob Clodfelter, vice-president; Ed Williams, president; and J. S. Edwards, Jr., treasurer.



GAVEL OF LEADERSHIP and responsibility was handed by outgoing Board of Development and Chamber of Commerce President John A. Schmidt to Ed Williams, newly named head of the organization.



RECEIVING PLAUDITS for outstanding contributions to local enterprise were Alex Webb, named "Outstanding Citizen"; Mrs. Tommy Davis, honored as "Woman of the Year"; and the Lions Club, recipient of the "Distinguished Service Award", held here by M. H. Lasater, deputy district governor.

Calendar of Activities March of Dimes Drive Here

ROAD BLOCK

Future Homemakers of America also will be on the job Saturday in behalf of the fight against crippling diseases. Attempt will be made to string a block-long line of dimes down the sidewalk on the north side of the Slaton city square.



Block of Dimes The Little Sisters group from the Future Homemakers of America also will be on the job Saturday in behalf of the fight against crippling diseases. Attempt will be made to string a block-long line of dimes down the sidewalk on the north side of the Slaton city square.

BAKE SALE

The Centrettes Study Club will sponsor a bake sale Saturday at Teague Drug, proceeds going to the March of Dimes. The sale is scheduled to commence at 9 a.m.

MOTHERS MARCH

Details of the Mothers March will be told in the Slatonite next Thursday, preceding the "march" that same night to conclude the January M.O.D. drive.

COIN BOXES

Coin containers have been placed in strategic locations throughout the city by the Centrettes Study Club, local sponsors of the March of Dimes effort to aid in control of polio, birth defects, arthritis, and to aid the Salk institute through medium of the National Foundation. Donations have been coming in throughout the month via means of these containers that proclaim in large type, "Give for the Life of a Child!"

NEIGHBORS ON THE JOB

particular time of the year employees are trying to do. If they are really busy, they are really busy. If they are really busy, they are really busy. If they are really busy, they are really busy.

NEIGHBORS ON THE JOB

particular time of the year employees are trying to do. If they are really busy, they are really busy. If they are really busy, they are really busy. If they are really busy, they are really busy.

NEIGHBORS ON THE JOB

particular time of the year employees are trying to do. If they are really busy, they are really busy. If they are really busy, they are really busy. If they are really busy, they are really busy.

NEIGHBORS ON THE JOB

particular time of the year employees are trying to do. If they are really busy, they are really busy. If they are really busy, they are really busy. If they are really busy, they are really busy.

NEIGHBORS ON THE JOB

particular time of the year employees are trying to do. If they are really busy, they are really busy. If they are really busy, they are really busy. If they are really busy, they are really busy.

The Slaton Slatonite

An Old Established Friend Serving the Interests of Slaton Since 1911

VOL. 53 NO. 15

Thursday, January 24, 1963

14 Pages

Slaton, Lubbock County, Texas

TEN CENTS

-WEATHER-

A beautiful and balmy Sunday, with early-week blowing dust and rapidly plummeting temperature was the weather story meted Slaton area residents this week, frigid 3 degrees above zero early Wednesday morning providing expected but unwelcomed encore to the cold of last week.

No moisture had fallen locally at presstime last night.

Snow flurries and strong northeast winds marked upper Panhandle weather Tuesday and Wednesday, but the lot of South Plains communities was cold and dry with diminishing winds. The mercury dropped 62 degrees in Slaton Tuesday, and Tuesday night, with a high of 65 recorded, low night-time reading of 3 above zero.

Day to day temperatures, high and low, as recorded by Pioneer Natural Gas Company in Slaton, were:

Thursday	17-5
Friday	24-56
Saturday	0-11
Sunday	8-52
Monday	22-62
Tuesday	25-65
Wednesday	3-10

Participation In Civic Enterprise Urged - Huffman

"People cause good and great things to happen within a community", asserted guest speaker Berl Huffman in a dynamic address before the members of the local Chamber of Commerce at annual banquet of that organization Monday evening.

Huffman, a former Chamber of Commerce executive himself, laid a challenge directly on the line, pointing out that the wide opportunities in industrial and agricultural development of Slaton and area would progress just as much as desired by the local folks willing to "participate" in community welfare activity.

Huffman further developed his theme by stating that "as you

build a better Slaton, you build a better state and nation". He lauded chamber of commerce membership and activity as necessary in accomplishing that

SEE NO. 1, BACK PAGE

Funds Alloted

Details on the \$23 million in the president's budget for the Canadian River project were forwarded the Slatonite Friday by Congressman George Mahon.

Recommended expenditures included: dam and reservoir, \$12,909,500; regulatory reservoir, \$400,000; pumping plant, \$1,170,000; and pipeline, \$8,344,500.

Mahon stated that this would be the peak expenditure year in construction of the project. The dam is expected to be completed in 1965, and the aqueduct target date in 1968. Congress provided \$11,503,000 last year for the project.

Mahon concluded his announcement by stating he was glad to see the construction get into high gear.

Slaton, one of the participating cities in the aqueduct system, has a first year contract calling for at least 60% use of the total of 310,000,000 gals. scheduled for the year. Maximum usage would represent 831,666 additional gallons per day, an amount determined by local engineers still to be inadequate with present Slaton facilities. Increase in local water rates recently was initiated in preparation for both the long-range Canadian supply and for short term measures to insure ample water until such date as the upper Panhandle source can be tapped.

LICENSE PLATES FOR FEB. 1st



LICENSE PLATES FOR '63 will go on sale in Slaton February 1st so although Albert Pinkert is shown above holding the plate that will be his on that date, he can only look, not receive, before the first of next month. Ellis Schmid, shown here with Pinkert, states that the plate supply has been received at the Drevry Insurance office here, and facilities are being geared to serve the local area from that office.

Tags must be placed on vehicles again this year by April first.

Due to the continuous efforts of a number of Texas Department of Corrections officials and the hard work of 220 specially-assigned inmates of the Huntsville Unit, car owners of Texas will be able to purchase their license plates on time this year.

License Plate Plant Superintendent, Benjamin Smith, announced this week that the last of more than eleven million (actual count 11,094,268) individual vehicle plates were shipped to the distributing centers on January 15, one full month ahead of the deadline established by the Texas Highway Department.

Since July 1962 when the plant started producing 1963 license plates, inmates and employees have worked a day-and-night shift.

Reuben Blagrove, 17-year veteran employee of the Department of Corrections, said, "This was our busiest year. We got started late due to installing new equipment, and we had one million more plates to produce, but we got caught up and finished well ahead of time."

Blagrove gives credit to the inmates who operated the presses, cutters, ovens, and other machinery in the plant. "They are the boys who turned out the work," he said.

The Huntsville plant produces 23 varieties of license plates for the vehicles of Texas. The 1963 order called for 7.8 million individual plates for automobiles. The smallest single order was for the special plates used by members of the United States Senate from Texas. The Huntsville inmates produced six sets of license plates for the senators.

Johnson Is Given Presidential Citation for Draft Board Service

Mr. Raymond Johnson of Slaton was signally honored this month, receiving a certificate of appreciation from President Kennedy.

The Presidential Citation was awarded for Johnson's service as board member on the area draft board serving Lubbock, Crosby, Garza and Lynn counties. It was pointed out that Mr. Johnson has served five years on the board, performing his duties as a public service, without monetary compensation.

Actual presentation of the citation was made by J. W. Gillon chairman of the board, representing the president, at the request of Col. Morris Schwartz, state Selective Service director. In addition to the president's signature, the certificate was signed by Gov. Price Daniel, Lieutenant General Lewis B. Hershey, director of Selective Service; and Col. Schwartz, state director.

Johnson, only Slaton member among the 5-man board serving the area, lives at 630 South 10th Street. He moved to Slaton on November 17th, 1915. He is a veteran of World War I, serving

with the 131st Field Artillery, 36th Division.

A long-time fireman and engineer on the Santa Fe, Johnson retired June 3rd, 1947.

Draft Board Member Honored



Raymond Johnson (pictured at right) received a Presidential Citation this month for his contributions as a member of the area draft board. Shown here with the Slaton man are Colonel Schwartz, State Selective Service Director, and J. W. Gillon, Ralls member of the area board.

SLATON'S 1963 PROGRESS PARTNERS
APPRECIATION TIME FOR CUSTOMER & EMPLOYEE LOYALTY
NEIGHBORS ON THE JOB ROUNDUP

MEET THE FRIENDLY FIRMS and FOLKS YOU TRADE WITH in SLATON'S GROWING TRADE TERRITORY WILL BE FEATURED in a Slatonite Series INTRODUCING THE HUMAN SIDE of BUSINESS and the BACKGROUND STORY OF FIRMS SERVING YOU in OUR AREA.

IT'S FUN TO TRADE WITH THE FOLKS YOU KNOW in SLATON'S TRADE TERRITORY. THANK YOU!

YOUR SLATON NEIGHBORS WILL BE A REGULAR WEEKLY FEATURE in YOUR SLATONITE - and COMPLETELY ILLUSTRATED!

YOUR NEIGHBORS ARE BUILDING WITH YOU A GREATER SLATON TRADING CENTER. KNOW THE FOLKS THAT SERVE YOU, Better. THANK YOU!

L.O. LEMON, MAYOR of SLATON

JOHN H. KING, II, PUBLISHER SLATON SLATONITE

SLATON HIGH SCHOOL ATHLETIC TEAMS

BERT NEELLEY, EDITOR

EDITORIALLY SPEAKING

Observations and Potpourri

Debate subjects selected for the 1963-64 school year (Interscholastic League competition) could hardly have been named to touch three greater problem areas than have been announced.

Propositions set for the full year of debating are:
 "Medical Care"
 "United States Fiscal Policies"
 "Control of Nuclear Weapons"
 Upon remembering the research and study that high school debaters put into their debate preparation, we are looking forward to hearing the verbal fisticuffs! It just might be eye-opening for a lot of us to take time out to hear some of these debates, though it no doubt will be disconcerting to have the elder generation's dirty linen brought out into the open. It would be interesting to hear some of us try to defend the "advances" made in the three areas during the past decade or less.

We are glad to see the high school students grapple with these very real problems. . . on the debate floor; there might even be a vrey thin possibility that their open discussion could cause some soul searching on our own part.

Yes, the debaters have their work cut out for them. Below are listed the several topics under each of the debate problems. Why not read these topics and do some debating in your own mind?

Medical Care

What should be the role of the federal government in providing medical care to the citizens of the United States?

a. Resolved: That the federal government should provide complete medical care for all citizens at public expense.

b. Resolved: That Social Security benefits should be extended to include complete medical care.

c. Resolved: That the federal government should assure medical care for any citizen through subsidies to authorized health insurance companies.

Fiscal Policies

What should be the fiscal policy of the United States?

a. Resolved: That the federal personal income tax should be abolished.

b. Resolved: That the federal deficit spending should be terminated.

c. Resolved: That the federal government should establish a national sales tax.

Nuclear Weapons

What should be the policy of the United States with regard to nuclear weapons?

a. Resolved: That the United States should invest control of its nuclear weapons in the North Atlantic Treaty Organization.

b. Resolved: That the United States invest control of its nuclear weapons in a new organization of non-communist nations.

c. Resolved: That the United States should invest control of its nuclear weapons in the United Nations.

With all Russia's boasts of great progress this is what the United States would have to do to get down to the Soviet's level:

- Abandon three-fifths of its steel capacity.
 - Drop two-thirds of its steel output.
 - Forget over 90% of its natural gas.
 - Eliminate 95% of its electric motor production.
 - Rip up 14 of every 15 miles of its highways.
 - Destroy 2 out of every 3 miles of its railroads.
 - Sink 2 out of 9 of its ocean-going ships.
 - Junk 19 out of every 20 of its cars and trucks.
 - Scrap two-thirds of its hydro-electric plants.
 - Slash all pay checks by three-fourths.
 - Transfer 60 million Americans back to farms.
 - Break up 40 million television sets.
 - Rip out 9 of every 10 telephones.
 - Raze 7 of every 10 houses that now stand.
- Despite the wide gap in our relative positions it would be a grave mistake for us to rest on our oars. We must do everything we can to grow at the fastest possible rate.

The Slaton Slatonite

163 S. 9th Street Phone VA 8-4201

John H. King II, Publisher

SLATON TIMES PURCHASED JANUARY 20, 1927

Entered as Second Class Matter at the Post Office at Slaton, Texas, under the act of March 3, 1897.

NOTICE TO THE PUBLIC - Any erroneous reflection upon the reputation or standing of any individual, firm, or corporation that may appear in the columns of the Slatonite will be gladly corrected when called to our attention.

SUBSCRIPTIONS: Payable in advance. Lubbock, Lynn, Garza, and Crosby Counties - \$3.00 per year plus tax. Outside these counties - \$5.00 per year plus tax.

MEMBER:
 West Texas Press Association
 Panhandle Press Association

TEXAS PRESS ASSOCIATION
 Member 1963

Notes from Neighbors: Events and Opinions

From the Exchanges of the Slatonite

FAT IN THE SADDLE



WHY?

Folks will kill you with politeness
 When you meet them here and there,
 But just let them drive an auto
 And good manners take the air!
 That sweet courtesy they show you -
 Even lighting your cigar - -
 Will become a lust to kill you
 When they drive a motor car.
 What strange chemistry controls them?
 What's the tiger urge they feel
 That can change the meekest person
 To a friend behind a wheel?
 -New York Daily Mirror

"Like Aunt Emma's fragile chinaware, about the only way to keep from breaking New Year's resolutions is to put them away and never use them."
 -Grove City (O.) Record

"In the business world an executive knows something about everything, a technician knows everything about something, and the switchboard operators know everything."
 -Mountain Home (Ida.) News

"No opportunity is ever lost. The other person takes those you miss."
 -Chapel Hill (N.C.) Weekly

Transfiles - Permanent Files

AT THE SLATONITE

Upper Panhandle Wants 70 MPH Speed Helping Hand is Lended

One of the things the Texas Legislature is going to consider in this session is the raising of the speed limit on Texas highways from 60 to 70 miles an hour.

Most of the Panhandle legislators are in favor of the change including our own representative, Fritz Thompson of Borger and Senator Grady Hazlewood of Amarillo.

While it can be argued that 60 is a safer speed than 70, as a practical matter, very few people drive 60 any more. This speed limit was established back in the 30's when 60 was a high speed for the vehicles of that day, although even then a lot of drivers exceeded the speed limit.

Present day automobiles are engineered to drive faster than 60 and out here where the roads are generally flat and smooth, you are liable to get run over if you drive 60 miles an hour.

Downstate where the roads are older and more winding, 60 is perhaps too high for a lot of highways.

But the fact remains that most people drive closer to 70 than 60 if their car attain 70 without strain.

Adjoining states have had higher speed limits than Texas for many years. New Mexico has a changing speed limit, with posted signs giving different limits for different roads and conditions.

We think a 70 mile speed limit would be reasonable for Texas. After all, we ought to have a speed limit that will be observed. The 60 mile limit certainly isn't today.
 -The Sunday Herald - Perryton

Justice Clark Makes Worthy Observation

Among other things the new year will bring will be a flare-up of the issues of separation of church and state.

The Supreme court has several cases it will consider during the year that may cause various religious bodies to take a new look at an old issue.

In the past most of the controversy has stemmed over the teaching of religious doctrine in schools supported largely by public funds. In Texas Protestant groups have opposed the teaching in public schools of various religious orders.

Earlier this year the Supreme Court upheld a ban on prescribed prayer in New York Schools and only this month a Massachusetts school forbade the use of Christmas trees in classrooms.

Church leaders are now wondering to what extent this seemingly anti-religious movement will go. To the casual observer, it would appear that the United States, long considered a "Christian" nation, would no longer come under that classification.

The number is growing of non-orthodox Christian groups including Jews, Universalists, and certain of the Oriental religions and various and sundry cults of recent origin.

Freedom of religion is one of the cardinal tenets of the Bill of Rights and must be preserved for them as well as Christian at all cost.

Justice Tom Clark of Texas defends the Supreme Court's stand by calling attention to the need of more religious training in the home. This could be a point well taken as ministers, law officers and others can attest.

Recently a nation-wide survey indicated that juvenile delinquency among Jewish children was far below the national average. Hebrew religion has always centered in the home, built around a strong parental influence. This was also true of early day Christians but apparently not so today. If America lost its Christian influence it certainly will not be from court orders but because the light of faith has gone out in the home.
 -Quanah Tribune

Four little Latin children, their teeth chattering, stood at the post office to call for their mother's mail after school last Friday afternoon, during the first hours of a cold wave.

All were under nine years of age. The two little girls crying from the cold and the two boys looked quite unhappy. One girl was clad in a very short summer dress and jacket which was too small for her. The others wore blue and light jackets.

Clerk Jack Brashear noticed their plight and stopped. Postmaster Olen Littlefield took them back to the station and ran warm water over their nearly frostbitten hands.

Alton Wallace happened in. He led them back to Dry Goods where he gave them leotards and gloves.

Postal clerk Don Parker put them in his car and them home to the gin barracks where the family is located on the north side of Crosbyton.
 -Crosbyton

We Wonder . . .

One of the alert Fort Stockton business men has figured a way to beat the postal rate increase - at least on outgoing letters.

"Don't write: Telephone - Collect!", is his formula.
 -Fort Stockton

SUCCESS CALENDARS

AT THE SLATONITE

WILL AYERS says
 IF AT FIRST YOU
 DON'T SUCCEED
 TRY PLAYING SECOND
Will Ayers Farm Store

DEAL'S MACHINE SHOP

SLATON, TEXAS

155 No. 9th St.

Ph. VA 8-4307

Res. VA 8-4307

FOR YOUR IRRIGATION PUMP
 AND GEAR HEAD REPAIR
General Welding And Machine Shop



The Dales believe in investing much of their time with their three children, Karen, 6; Marilyn, 4; and Kenny, 5. The warm floors that

their electric heating gives them make it possible for the Dales to enjoy games with their children, informally, on the living room floor.



Mrs. Dale touches up a desk built by Mr. Dale in his garage workshop. Marilyn, an interested spectator, indicates her desire to help in such a fascinating project.



Mr. Dale, a teacher, by profession, instructs Karen and Kenny on the importance of safety using power tools in his woodworking hobby.

"We wouldn't go back to any other kind of heating," say the HARRY DALES of 313 E. Church, Roswell, N. M.

"Even on the coldest day, 23 degrees below, we were completely comfortable," says Mrs. Dale. The Dales' experience with electric heating shows that this modern heating method is capable of delivering true comfort, over-all warmth no matter what the outside weather. The Dales use infra-red wall panels in their heating system. Other types of electric heating equipment are: ceiling cable, completely concealed in the ceiling; baseboard units; electric furnace, and electric heat pump that both heats and cools. One of these modern electric heating methods will fit into your home.

YOUR PUBLIC SERVICE MANAGER HAS COMPLETE INFORMATION ABOUT MODERN ELECTRIC HEATING.



SOUTHWESTERN PUBLIC SERVICE COMPANY



Mr. Dale enjoys hunting, as well as home craftsmanship. Here he inspects scope-equipped rifle. Lamp base was made by him.



Electric living frees the family for pleasant occupations. The Dales enjoy music, as participants. Both are accomplished musicians.

By 1967 the number of scholastics in Texas public schools will approximate 2,650,000.

Growth in Texas student population now requires about 3,500 new teachers each year in public schools.

ONLY
Authorized New Car Dealers
GIVE
Warranty when you purchase your used car
AUTHORIZED
New Car Dealers

FREE AIR
AT MARTINDALE SERVICE STATION

The expectant mother was showing the clothes she had for the new arrival. Pink booties, pink dresses and pink gowns. A male guest asked, "But what if it is a boy?" Then the father-to-be spoke up, "He'll wear dresses and I'll teach him to fight."

Many a man goes into politics with a fine future and comes out with a terrible past.

Better to do a kindness near at home, than to walk a thousand miles to burn incense.

You don't have to drive far to get the best service for your car, just drive into ---

Martindale's
Phillips
STATION

ODD CHALKINS
WIVES ARE BOUGHT WITH MONEY MADE OF FEATHERS IN THE SANTA CRUZ ISLANDS OF THE SOUTH SEAS...
FIDELITY FEATURES CO.

But The Newest Drugs are used in Our Prescription Lab, and we are prepared to fill your Doctor's Prescriptions in Any Emergency!

TEAGUE DRUG
Phone VA 3 4535



Just how important is God in your life? Just what role does He play in your everyday thinking? Is God something or somebody that you call upon in an emergency and then put Him back on the shelf and forget all about Him till the next emergency arises? Just how big is your God? Does He give meaning to your everyday life? Maybe you can find encouragement to give God the first place in our life, if we will consider some of the remarks made by the famous astronaut, John Glenn, in an interview on the Lutheran Hour.

"Ever since the children were small," Col. John Glenn recalls in this interview, "we stressed the idea that Christmas is Jesus' birthday. We always had a birthday cake and we had candles on it, although we couldn't put on the 2,000 we would need by this time," then he goes on to tell what Christmas meant to him: "Christmas is a home time. It's a time to be together with your own family. We very definitely try to stress the religious aspects of Christmas. We naturally make church activities and our religious activities the center of our Christmas home program."

After discussing space objectives, experiences, and expectations, Dr. Hoffman asks, how Col. Glenn, who served as the Soviet cosmonaut's host for part of the trip, felt about Titov's remarks that he hadn't seen God or any angels in space.

Says the Colonel, "The God I believe in I don't envision as being small enough that I could run into Him in space with the little distance we've gone."

Recalling his test pilot days he continues: "I've flown out over the ocean many times. I don't see the lines of magnetic force that give my compass its proper reading, its direction. I can't taste this force that's out there. I can't touch it. I can't feel it. I can't shine a light on it — there's no way I can see it. And yet by looking at that compass, I give direction and purpose to this whole flight."

"To me, this is the same thing that our religion does for us in our everyday lives. I didn't run into God in space, and I didn't expect to. But nevertheless, these religious beliefs we have certainly give a direction and purpose that we can see."

O God, help us and give meaning to our life. We ask it in Jesus' name. Amen.
F. A. Wittig, Pastor
Immanuel Lutheran Church, Posey

Tuning-up your gasoline or LP gas tractor can increase its power by 11 percent and its fuel efficiency by as much as 14 percent, says Henry O'Neal, extension agricultural engineer. The increased power and economy can also mean a savings in time, he adds. Use the Operator's Manual for instructions on doing the job.

Reservations Available for WTCC Feedlot, Grain Market Western Tour to Arizona - California Lots

A steady flow of reservations continues to arrive at the West Texas Chamber of Commerce office in Abilene as the date nears for the annual WTCC Livestock Feeding and Grain Market Development Tour into Arizona and California, February 17-23.

Up to 200 West Texans are expected to ride the Santa Fe special train, Dr. W. L. Stangel of Lubbock, chairman of the WTCC Livestock Feeding Committee, has said.

The tour into Arizona and California is held in cooperation with the Grain Sorghum Producers Association of Amarillo, Texas Technological College and Texas A&M College.

Dr. Stangel said the Western states offer one of the greatest market potentials for grain sorghum produced in West Texas, and one of the principal reasons for visiting these states is to help develop new markets for West Texas grain products.

The WTCC tour last year was into this same area, but a different itinerary will be followed this time entirely, Stangel said.

This year the West Texas delegation will visit the Tucson-Casa Grande area of Arizona, the Los Angeles area, and the San Francisco-Stockton sectors in California. Livestock feeding facilities in all of these areas will be visited, grain storage and distribution facilities, and other points of interest.

Dr. Stangel said the tour would interest bankers and financiers; grain producers, grain and feed dealers, livestock feeders and breeders, farmers, and many others in the livestock and grain business.

There are still seats left on the special train, he said. The price is \$245.00, except for those in the Fort Worth-Dallas area where increased rail fares make the price \$255.00.

Reservations may be made by writing the West Texas Chamber of Commerce, Box 1561, Abilene, Tex., and enclosing a check for the cost. Reservations will be limited to 200, and the deadline for accepting reservations will be February 2, Stangel said. Complete instructions as to boarding the special train, departure and arrival times all along the route, and other details will be mailed to all of those making reservations. Passengers may board at a number of stops along the Santa Fe route, and the special train will form at Clovis, N. M. for departure at 11:50 a.m. on February 17.

Highlights of the California portion of the tour include a tour of the Port of Stockton area, with a stop at the mammoth Stockton Elevators from whence grain is shipped all over the world; beef cattle feedlots near Stockton; harvest store operations around Stockton; a 800-cow dairy near Los Angeles which does drylot feeding and extensive milk processing and

Safflower Tests Conducted At Research Farm

Six varieties of safflower were tested at the High Plains Research Foundation in 1962. The high yield was 1,070 pounds per acre. This was higher than in previous years but lower than would be required to make safflower a suitable crop for this area. A date of planting test will be included in the 1963 research program to determine if this factor would affect the yield.

The six varieties were planted April 4 and harvested August 18. All plots received a 2-inch pre-plant irrigation on February 20 and received no further irrigation throughout the growing season. 15.45 inches of rainfall was received between planting date and the date of harvest. The varieties received a 60 pound application of anhydrous ammonia per acre.

Foundation Report No. 51 on Safflower by Barry Love and Paul M. Belcher included data on Early Vigor, Bloom Date, Rust Damage, Plant Height, Plants per Foot of Double Row, Seeds per Head, Weight of Seeds, and Yield in Pounds Per Acre.

distribution; a 10,000-head feedlot in the same area which is set up near beef packing facilities; a visit to California Polytechnical College of Agriculture and its facilities; a grain company at Artesia, Calif., which handles bulk feed and supplies milled concentrates to dairymen of Los Angeles County's milkshed; and a visit to a poultry ranch which has 70,000 laying hens.

Thursday, January 24, 1963 The Slaton Slatonite
Vehicle Check April Deadline Told by D.P.S.

"Our weather is getting worse all the time and April 15 will come before you know it," Captain Alan Johnson, Texas Department of Public Safety Supervisor, commented this week. He was talking about the time left for Texas motorists to get 1963 vehicle safety inspections. The seven and one-half month period for getting inspections is more than half finished. Inspections started September 1 and will continue through April 15.

Since the period is so long, Johnson stated, no allowances are made for bad weather. He pointed out that inspections may not be made when streets are wet. "From now until April 15, we usually have a seige of bad weather in this part of the state which eliminates many inspection days," Captain Johnson said.

He also pointed out that inspection of vehicles now will insure that they are safer for the rest of the winter driving period, when good lights, brakes and other equipment are so vital.

Failure to have a 1963 inspection sticker displayed on the windshield of your vehicle after April 15 is a violation of the law and is punishable by a fine not to exceed two hundred dollars.

Texas public schools enrolled 2,191,000 students and employed 95,200 teachers in 1961-62.

Dirty filters are the cause of at least two common problems encountered with forced air heating systems — loss of efficiency and unsatisfactory performance — says W. S. Allen, extension agricultural engineer. The first indication of a dirty filter may come when fuzz is noted over the house and the efficiency of the unit declines. He suggests frequent checks of the filter.

IF YOUR PLATES DON'T FIT GET "CUSHION" NOW
A new Plastic Jelly, Apple "Cushion" from Slaton...
"Cushion" fits in mouth and bite down gently.
"Cushion" flows and seals to shape of gums.
"Cushion" expands and forms soft liner in plate that holds for weeks. To remove just pull out and apply more. Plates can be washed and sealed with no damage. Try it.
3 in. round only \$1.49 At All Drug Stores.

YOUR Independent AGENT
BREWER INSURANCE AGENCY
139 So. 9th.

Get Your Quality INTERNATIONAL HARVESTER
Farm Equipment PARTS AND SERVICE
SLATON IMPLEMENT CO.
Lubbock Hi-way VA 8-4933

Phillips 66 Wilson Oil Company
Wilson, Texas Phone 2251
*BUTANE, PROPANE *PHILLIPS 66 GAS. OIL.
COMMERCIAL, INDUSTRIAL GREASES and BATTERIES
*LEE TIRES and TUBES *AUTO ACCESSORIES

- St. Paul Lutheran Church
Mo. Synod, Wilson
Rev. R. F. Kamrath
- First Nazarene Church
625 W. Scurry
Rev. Charles Stuart
- Westview Baptist Church
830 S. 15th
Rev. Clinton Eastman
- First Methodist Church
305 W. Lubbock
Rev. Rollo Davidson
- Church of God
206 Texas Ave.
Rev. B. E. Coker
- Church of Christ
11th & Division
Roy Dean Verner
- Assembly of God
340 W. Division
- Missionary Baptist Church
1010 South 21st
Ray Smith
- First Baptist Church of Southland
Eddie Fortson, Pastor
- Southland Methodist Church
Rev. B. B. Byus
- First Baptist Church
Wilson
Rev. H. F. Scott
- Acuff Baptist Church
W. O. Donley, Pastor
- Our Lady Of Guadalupe Church
- St. Joseph's Catholic Church
Msgr. T. D. O'Brien
19th & Lubbock
- Gordon Church of Christ
Cline Drake, Minister
- Acuff Church of Christ
Brooks Terry, Minister
- Grace Lutheran Church
840 W. Jean
Rev. Leroy R. Deans
- St. John Lutheran Church
Wilson
Rev. John W. Onda
- First Baptist Church
255 S. 9th
Dr. Charles Wood
- First Christian Church
145 E. Panhandle
John L. Floyd
- Immanuel Lutheran Church
Posey
Rev. F. A. Wittig
- First Presbyterian Church
425 W. Lubbock
Rev. Fred Ryle
- Bible Baptist Church
W. Panhandle
Rev. H. E. Summar
- Wilson Methodist Church
Wilson
Rev. W. A. Rucker Jr.
- Pentecostal Holiness Church
105 W. Knox
Rev. W. L. Comstock
- Trinity Evangelical Methodist Church
Rev. Weldon Thomas
- African Methodist Church
Rev. J. S. Gilbert
- First Assembly of God
14th & Jean
Miss Nela Stout, Pastor
Miss Norma Elliott, Associate

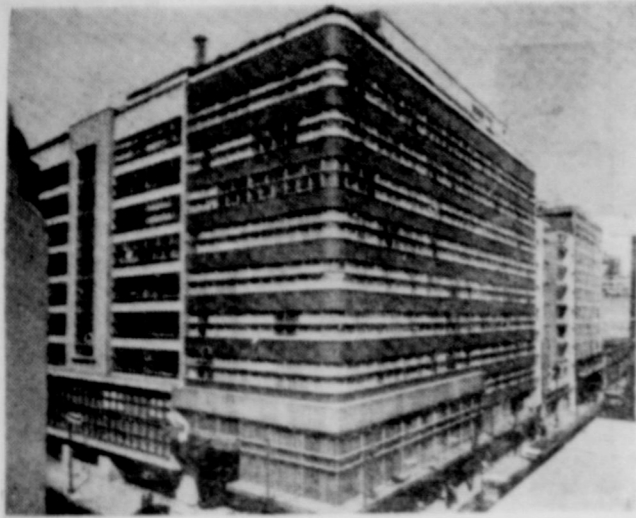
There's a Friendly Church Near You



CAKE IS NOT ALL SUGAR!
And Even If The Best Ingredients Are Used They Need Careful Blending
That's the first thing a young cook learns, because it doesn't take much of an error to spoil the integration of flour, eggs, sugar, flavoring. Thoughtlessness or carelessness in timing — too hasty or too little effort in blending and all the ingredients... all the efforts are spoiled beyond repair.
So, too, it is with the way we conduct our lives. Ambition, hard work, long hours may bring us success — but without careful blending we can know no happiness.
We must add a wholesome enjoyment of leisure; good friends; and a sense of spiritual value which can be found and nurtured in only one way — and that is by regular attendance at the church of our faith. Whether you are Protestant, Catholic, Jewish or Brahmin, make the teachings of your church part of your life and you will best be able to fulfill your responsibilities and realize joys; more than ever now, in these turbulent times.

- THIS MESSAGE IS MADE POSSIBLE BY THESE MERCHANTS:
- O. D. KENNEDY AUTO PARTS
"Your Automotive Parts Distributor"
 - SLATON CO-OP GINS
"Owned And Operated By Farmers"
 - CUSTER'S GULF SERVICE STATION
350 S. 9th VA 8-74
 - SPRADLEY'S FURNITURE AND UPHOLSTERY
 - SLATON SAVINGS & LOAN ASS.
"We Pay You To Save"
 - WILL AYERS FARM STORE
555 Railroad Ave. VA 8-45
 - JANES - PRENTICE, IN SAND & GRAVEL
For The Construction Industry
 - HOWARD GIN
 - BECKER HUMBLE PRODUCTS SERV. STA.
400 S. 9th VA 8-71
 - PIGGLY WIGGLY GROC
Slaton, Texas
 - WEST TEXAS GRANITE AND MARBLE WORKS
Searcy O. Henry, Owner
 - UNION COMPRESS AND WAREHOUSE COMPANY
 - Higginbotham - Bartlett Lumber Company
225 N. 7th VA 8-44
 - CARROLL OIL COMPANY
Lubbock Hwy. VA 8-4
 - WILLIAMS FUNERAL HOME
Unlimited Insurance Protect Cadillac Ambulance Service
 - RAY C. AYRES & SON, Inc.
Grain - Feed - Seed
 - SLATON IMPLEMENT CO.
Lubbock Hwy VA 8-4
 - SOUTHWESTERN PUBLIC SERVICE
 - WILSON FRIENDS
 - WILSON SUPER MARK
Pat Campbell, Owner
 - GATZKI GIN COMPANY
 - WILSON STATE BANK
 - ACUFF FRIENDS
ACUFF CO-OP GINS
"It's Your Association"

**FLY BRANIFF INTERNATIONAL AIRWAYS
TO THE GLAMOROUS
PRAVADO ALFFER
HOTEL**



REGISTER
AT PIGGLY WIGGLY FOR

**FREE THREE 4 DAY HOLIDAY
TRIPS TO
MEXICO
CITY**

Winners will visit the Floating Gardens of Xochimilco, attend gala parties, luncheons and bullfights! Sightsee in exciting Mexico City, see the pyramids and Shrine of Guadalupe. Mexico Architecture and age-old customs are charming and delightful. . . the people gracious and friendly. Your transportation and accommodations are free! \$100 free spending money plus \$50 per person meal allowance.

Register through February 9th while you save at Piggly Wiggly. No obligations! Only residents of Texas and New Mexico 18 years or over are eligible. Employees of Piggly Wiggly and their immediate families are not eligible.

FRESH FROZEN FOODS

ALL PURPOSE
DETERGENT, GIANT BOX

**TIDE
73c**

COOKIES

12.57c
BOTTLE CARTON

Gerber's Strained
**BABY
FOOD
3 29c**



Fruit Pies BANQUET, Apple, Cherry & PEACH, FAMILY SIZE **29c**

MEAT DINNERS 11-oz. Size **39c**
Banquet, Beef, Chicken, Salisbury Steak and Turkey
BAR-B-Q CHICKEN **59c**
Underwood's 14-oz. Pkg

Silverdale CUT CORN 10-oz. pkgs. **2 FOR 25c**
BRUSSEL SPROUTS Seabrook, 10-oz. pkg. **25c**

**YOU ALWAYS SAVE MORE MONEY
AT PIGGLY WIGGLY!
LOWEST PRICES IN TOWN!**

PICK UP FREE
RECIPE BOOKLETS
AT PIGGLY WIGGLY

**ICE CREAM
TISSUE
SAUSAGE
CORN**

PLAIN'S or GLACIER, CLUB, ASS'T FLAVORS, 1/2 GALLON **59c**
TOILET, SCOT ASS'T COLORS, **4 ROLL 33c**
VIENNA, CAMPFIRE **3 NO. 1/2 CANS 35c**
STOKLEY, GOLDEN CREAM STYLE, or WHOLE KERNEL **NO. 303 CANS 25c**

SHORTENING, Bessie Lee, All Vegetable Highly Unsaturated DOG FOOD **3 Lb. Can 59c**
Rusty, PICKLES, Full Quart **6 No. 1 Cans 39c**
Silver Saver, Sour or Dill **25c**
SPAGHETTI DINNER Kraft's, 8-oz. Pkg. **25c**

Health and Beauty Aids
SHAMPOO, \$1.75 Size **99c**
VO-5, Golden or Green **88c**
CREAM RINSE, \$1.75 Size **49c**
TOOTHPASTE, 69c Size **77c**
Gleem, 7c Off Label with 5c Coupon
MOUTHWASH, Reg. 98c Size

COTTAGE CHEESE, 12-oz. Carton Bell's or Borden's **25c**
SOUR CREAM, 8-oz. Carton Bell's or Borden's **27c**
CHOW MEIN NOODLES La Choy, No. 2 1/2 Can **29c**
BEEF CHOP SUEY La Choy, No 303 Can **53c**

Finest Quality Meats always at Piggly Wiggly!

**CHUCK ROAST
ROUND STEAK**

SIRLOIN STEAK, Armour's Star, Aged, Heavy Beef, "Valu-Trim" POUND **89c**
RIB STEAK, Armour's Star, Aged, Heavy Beef, "Valu-Trim" POUND **69c**
PORK CHOPS, Lean, Northern Pork, Center Cut Rib Chops POUND **59c**
FORK ROAST, Lean, Northern Pork Picnic Cuts POUND **29c**
PORK RIBS, Lean, Northern Pork, Country Style POUND **49c**

ARMOUR'S STAR, AGED, HEAVY BEEF, "VALU-TRIM", POUND **55c**

ARMOUR'S STAR, AGED, HEAVY BEEF, "VALU-TRIM", POUND **85c**

CHEESE, Kraft's, 10-oz. Stick Cracker Barrel, Sharp, Extra Sharp, or Mellow LONGHORN CHEESE
Whole Milk, Full Cut POUND
CANNED HAMS, Boneless, Armour's Star, or Rodeo, Lean, Fully Cooked BEEF STEAKS **3 Lb. CAN \$2.99**
Blue Morrow, Thrif-T 20-oz. Pkg.
SLICED BOLOGNA, Butcher Boy All Meat, Thick or Thin POUND

La Choy, Beef, No. 303 Can CHOW MEIN DINNER **77c**

Trappey's, Fancy, Whole, In Heavy Syrup, No. 303 Can YAMS **25c**

Nabisco, 12 oz. Package VANILLA WAFERS **35c**

THIS COUPON IS WORTH 10c TOWARD THE PURCHASE OF A 14-oz. Can of JOHNSONS

PLEDGE Spray Furniture Polish

Without Coupon — \$1.89

FRESHEST FRUITS AND VEGETABLES!

CELERY CALIFORNIA, GREEN PACAL, LARGE STALK **2 FOR 25c**
ONIONS No. 1, DRY YELLOW, POUND **5c**
CARROTS TABLE SIZE, CLIPPED TOP, 1-LB. CELLO BAG **2 FOR 19c**
RUTABACUS SWEET, YELLOW TURNIPS, POUND **12 1/2c**

BESTEY unsweetened, ORANGE
**JUICE
25c**
46 oz. CAN

Look What a Dime Will Buy at Piggly Wiggly

INSTANT POTATOES, Pillsbury, 3-oz. Pkg.
SPINACH, Allen's No. 300 Can
TOMATO SAUCE, Hunt's, 8-oz. Can
NEW POTATOES, Allen's No. 300 Can
HOMINY, Hallmark, White or Golden, No. 300 Can
SPAGHETTI, Hallmark, No 300 Can.
SOUP, American Beauty, Tomato or Vegetable, No. 1 Can
MUSHROOM SAUCE, Dawn, 5-oz. Can

10c

These Prices Good In Slaton Jan. 24, 25, 26, and 28, 1963. We Reserve The Right to Limit Quantities.

Lowest Prices . . . Greatest Variety . . . always at

Piggly Wiggly

CLA
cents p
rate: 3
insertion
subsequen
legal notit
FOR
4-ROOM
acres of
Street. Vp
for cheap
town. B. F.
4233.
FOR SAL
gation m
used 4-in
tion pipe;
outlets. T
1200 So. I
7132.
FOR SA
chest type
See at Bai
Garza
FOR SA
rugs, \$4.99
110 E. Lu
FOR SA
wheels fo
pickups.
Phone VA
Garage.
FOR SA
trans'ers
and over-
starters;
Ted & J
th. Pho.
FOR SA
hog feede
bu. Botto
See Mill
southwes
3075.
FOR S
house on
cellent l
and high
ner, 705
3484.
FOR SA
on West
located a
Want to
in Lubbe
Hickman
We have
room ho
please. R
North St
37-1c
FOR SA
zer, near
or pho
LOT FO
R55 Sout
south ho
W. H. G
\$529.
FOR S
doors, S
Slaton.
FOR
house
interes
18th. C
answet
All Bric
and 3
Russell
3-Bedro
kitchen
or FHA
INS
189 So.
FOR
land
5 in.
13800
room
60 sq
with
gas,
ment
on p
2-bed
ed B
book.
3-bed
3-bed
7000

WANT ADS

CLASSIFIED RATES
50 cents per word, minimum of 50 cents each insertion. Legal rate: 3 cents per word first insertion; 2 cents per word for subsequent insertions of same legal notice.

FOR SALE

4-ROOM modern house and 5 acres of land on North 20th Street. Would consider trading for cheaper house close in to town. B. H. Coston, Phone VA 8-4233. 12-3c

FOR SALE: Allis Chambers irrigation motor, several feet of used 4-inch aluminum irrigation pipe; some 4-inch pipe with outlets. Ted & Juell's Garage, 1200 So. 9th St., Phone VA 8-7132. 14-1fc

FOR SALE: One good used chest type 18 cubic foot freezer. See at Bain Auto Store, 146 West Garza. 12-3c

FOR SALE: 9 x 12 Linoleum rugs, \$4.95. Slaton Trading Post, 110 E. Lubbock, VA 8-4632. 14-1fc

FOR SALE—Tires, tubes, and wheels for trailer, cars and pickups. 1200 S. 9th Street. Phone VA 8-7132. Ted & Juell's Garage. 35-1fc

FOR SALE — Factory rebuilt transmissions, straight shaft and over-drive; generators and starters; at exchange prices. Ted & Juell Garage, 1200 S. 9th, Ph. VA 8-7132. tfe-22

FOR SALE: One 12-hold round hog feeder almost new. Holds 55 bu. Bottom guaranteed 15 years. See Milton Pivonka, 4 miles southwest of Slaton. Ph. VA 8-3075. 14-3tp

FOR SALE: Three-bedroom house on 75-ft. corner lot, excellent location close to grade and high school. Joe Schwertner, 705 S. 21st, Slaton, VA 8-3484. 14-3tp

FOR SALE: Two bedroom home on West Lynn, 75 foot lot, well located and worth the money. Want to trade 2-bedroom home in Lubbock for Slaton dwelling. Hickman - Neill 15-1fc

We have listings for 2&3 bedroom houses — if you have one please list with us. Hickman & Neill Ins & Real Estate, 145 North 8th. 37-1fc

FOR SALE: G. E. Upright Freezer, nearly new. See J. O. Eckles or phone 3948. 15-1tp

LOT FOR SALE — 90' x 140', 835 South 19th St., one block south hospital, on pavement. See W. H. Glasscock. Phone VA 8-5529. 34-1fc

FOR SALE: Group of used doors, various sizes. City of Slaton. 11-1fc

FOR SALE: 2 bedroom house attached garage. Low interest G. I. Loan. 840 S. 18th. Call VA 88-3708, if no answer, VA 8-3746. 15-1tp

FOR SALE: 2 bedroom house attached garage. Low interest G. I. Loan. 840 S. 18th. Call VA 88-3708, if no answer, VA 8-3746. 15-1tp

FOR SALE: 2 bedroom house attached garage. Low interest G. I. Loan. 840 S. 18th. Call VA 88-3708, if no answer, VA 8-3746. 15-1tp

FOR SALE: 2 bedroom house attached garage. Low interest G. I. Loan. 840 S. 18th. Call VA 88-3708, if no answer, VA 8-3746. 15-1tp

FOR SALE: 2 bedroom house attached garage. Low interest G. I. Loan. 840 S. 18th. Call VA 88-3708, if no answer, VA 8-3746. 15-1tp

FOR SALE: 2 bedroom house attached garage. Low interest G. I. Loan. 840 S. 18th. Call VA 88-3708, if no answer, VA 8-3746. 15-1tp

FOR SALE: 2 bedroom house attached garage. Low interest G. I. Loan. 840 S. 18th. Call VA 88-3708, if no answer, VA 8-3746. 15-1tp

FOR SALE: 2 bedroom house attached garage. Low interest G. I. Loan. 840 S. 18th. Call VA 88-3708, if no answer, VA 8-3746. 15-1tp

FOR SALE: 2 bedroom house attached garage. Low interest G. I. Loan. 840 S. 18th. Call VA 88-3708, if no answer, VA 8-3746. 15-1tp

FOR SALE: 2 bedroom house attached garage. Low interest G. I. Loan. 840 S. 18th. Call VA 88-3708, if no answer, VA 8-3746. 15-1tp

General Assembly Report Given Lengthy Study at Slaton Meeting Plains Presbytery of Church

The First Presbyterian Church of Slaton was the host to an overnight meeting of Plains Presbytery on January 16th and 17, the first overnight meeting of the Presbytery in several years. The Presbytery consists of each minister and one Elder from each Presbyterian Church in the Panhandle area, extending as far south as Lamesa and Snyder.

The Presbytery approved of the call of the Brownfield Presbyterian Church to the Rev. Albert D. McDowell of Vinita, Oklahoma, to come as the pastor of that church. The group also approved plans to meet on January 20th in Amarillo to organize a new Presbyterian Church to be known as the Grace Presbyterian Church of Amarillo.

A commission was appointed, made up of ministers and elders from various churches in the Presbytery, to be in charge of the affairs of the Presbyterian Church at Jayton until such a time in the future when a Session can be elected and take responsibility for the church.

DELEGATES ELECTED

The Presbytery elected the Rev. C. M. Schindler, pastor of the Covenant Presbyterian Church in Lubbock, and A. P. McCelvey, ruling elder of the First Presbyterian Church of Perryton, as the two delegates from the group to the General Assembly, the highest body in the Presbyterian Church, is made up of ministers and elders from each of the 198 Presbyteries in the church.

REPORT STUDIED

One of the major items of business was the consideration of the report, "Relations Between Church and State" which was written by a special committee and submitted to the General Assembly that met last May in Denver. That General Assembly sent the report to every Synod, Presbytery and Session in the Church that each body might discuss it and vote on each of the recommendations.

The Presbytery found itself in general agreement with the report. In the area of religion and the public schools, the group agreed that the Church should

Miscellaneous

FEED GRINDING and Mixing Service offered by Huser Hatchery. 18-1fc

YOU'LL FIND VALUES galore at Round-Up Surplus & Supply, located across from bank on Texas Avenue. Tools, clothes, boots, trapalins, camping needs.

NOTICE — Let me repair your tractors. Can do it better for less. Sexton Tractor Shop, VA 8-4179. 15-1tp

TRY Purina Liquid hog wormer. No change in feed schedule. Just add to the drinking water. Huser Hatchery

TILLIE'S FURNITURE Upholstering offers free estimates, reasonable prices and guaranteed work. Mrs. Fred Perdue, 445 W. Scott, phone A 8-3760. 28-1fc

HAVE YOUR prescriptions filled at TEAGUE DRUG STORE by a registered pharmacist. tfe-31

NOTICE: I will be responsible for no one's debts but my own. Ed Lasis. 14-2tp

FOR SALE: New 3-bedroom homes with attached garage or carport. FHA-GI-Conventional Loans. SLATON LUMBER COMPANY VA 8-4255

FOR SALE CAFE and 3-Bedroom HOME

Across From Junior High School 950 South 10th St. SLATON LUMBER CO. VA 8-4255

take the primary responsibility for teaching religion, and not expect the public schools to do this job. The Presbytery approved, in general, the use of federal money to aid public schools, under the controlled situation outlined by the 1956 General Assembly. The Presbytery agreed that a man's religion should not in itself disqualify him from holding public office, but that his religion should not cause prejudicial actions in that office. The body also agreed with the report that Sunday closing laws should not be made more stringent, and indeed went beyond the report to urge the abolishment of such laws.

Greater freedom in marriage laws was urged, but the group hesitated to concur in the recommendation on the divorce laws written by the committee, feeling that it was too broad and general. The Presbytery urged that a conference be called to include various legislators of the various states to the end of making varied laws more equitable. The Presbytery concurred with the report in urging the abolishment of tax exemption for non-religious economic activities owned by the church. In addition the Presbytery agreed with the report that ministers should get no special tax privileges nor special treatment in the draft.

The Presbytery spent some 5 1/2 hours discussing the report. The Rev. Dr. Robert Skinner, pastor of the First Presbyterian Church of Amarillo and the Rev. Fred Ryle, pastor of the First Presbyterian Church of Slaton, administered the Sacrament of the Lord's Supper on Thursday morning. The Session of the Slaton Church took part in the service.

The Presbytery ate supper at the Presbyterian Church and had dinner on Thursday in the fellowship hall of the Methodist Church. Ladies of the church were responsible for the food and the coffee.

Dividend Declared By Credit Union

A 5-percent dividend payment was voted at the annual meeting of the Caprock Santa Fe Credit Union held in Slaton Monday evening.

President J. E. McMeekin presided over the session, with Mrs. Jack Shepard reading the minutes and reports.

The following were elected as members of the board of directors for 1963: Jack Shepard, maintenance clerk; A. C. Burk, dispatcher; Bob Roberts, roadmaster; B. H. Crandall, signal supervisor; and Carl Kayser, dispatcher.

Members of the supervisory committee elected for the new year were Lyle Berry, operator; J. B. Adams, cashier; and G. C. Brunson, winning.

Members winning \$5 shares in the Credit Union were announced as Agent and Mrs. H. R. NeSmith of Brownfield, Mrs. J. D. Warner, wife of station clerk at Lubbock; yardmaster A. B. Lockett, and cashier J. B. Adams.

March of Dimes Film is Shown Athenian Club

The Athenian Study Club met Tuesday January 15th in the home of Mrs. W. T. Davis Jr.

Mrs. Bob Kern, president, presided over the business meeting. It was noted that the remodeling of the Girl Scout Hut would begin immediately.

Mrs. Phil Brewer was in charge of the program, introducing Wayne Banks who presented the 1963 March of Dimes film.

After refreshments were served to members and guest, the club made centerpieces to be used for the Chamber of Commerce Banquet.

Present at the meeting were: Mrs. Phil Brewer, Marlin Bumpass, Willard Childers, M. G. Davis, George Harlan, Kenneth Jones, R. C. Hall Jr., L. A. Reasoner, Surman Clark, Harley Martin, Stan Jaynes, Joe Miles, George Privett, Doug Galassini and Hostess Mrs. W. T. Davis Jr.

Lee Mason went to Cordell, Okla., Monday to attend the funeral of his wife's uncle, Gottfried Garner.

Southland News

Written By MRS. EDGAR MOSELEY

Dougie Smallwood was honored on his 10th birthday last Wednesday in the home of his parents, Mr. and Mrs. Arthur Smallwood.

Present were Mr. and Mrs. Fagan Ross, Slaton, Mr. and Mrs. G. N. Smallwood, Mr. and Mrs. E. C. Smallwood, Terry, Scott, Mr. and Mrs. Hubert Pinkert, Steve and Janey, of Lubbock, Mr. and Mrs. Joe Ross and Demetra, of Slaton, Mr. and Mrs. Harvey Hancock, Tracy and Tony of Lorenzo; Mr. and Mrs. Don Ross, Laura Ann of Wilson, and Bonnie of the home. Refreshments of birthday cake, Cokes and coffee were served.

Mrs. Jack Myers visited her mother, Mrs. O. M. Hart, at Spur Saturday. Mrs. Hart is hospitalized there.

J. L. Hawthorn of Lockney visited Riley Wood last week. Mr. and Mrs. Ed Cummins visited their daughter and grandchildren, Mr. and Mrs. Ted Aten and children, Sunday at Post.

Mrs. E. C. Hogan was in Lubbock Tuesday.

Mrs. Ed Cummins visited Mrs. Alpha Taylor Friday evening. Cline Drake is ill at this time. Mr. and Mrs. Henry Edwards of Post visited the Will Barons last week.

Mrs. Hub Taylor, Mrs. Earl Lancaster, Mrs. Jack Harvare and Mrs. Eddie Fartson went to the College Avenue Baptist W.M.U. quarterly conference last Thursday night.

Mrs. Alpha Taylor, who has been with her son, Clarence, for the past three months, came home last Thursday from Nederland where Clarence has been bedfast since last February. Little Terry Scott Smallwood is sick this week.

Jack Roberts, son of Mrs. Jo Roberts, is visiting his mother, arriving from Forbes Air Force Base at Topeka, Kansas. He plans to be here until Feb. 2nd.

Rev. Eddie Fartson attended the Baptist Convention in Dallas.

Visitors in the Kenneth Calloway home over the weekend were Mr. and Mrs. Harold Donahoo and children of Lubbock, and Mr. and Mrs. Chob Kelly and children of Slaton.

Little Sunday Stewart from Gale is visiting her grandparents, Mr. and Mrs. Kenneth Davis.

The Rev. Turrentine of Lubbock preached Sunday at the Methodist Church here.

Visitors in the Earl Morris home Sunday included Max Morris and Mrs. B. L. Cagdill of Lubbock. Mrs. Cagdill is Mr. Morris' sister.

Mr. and Mrs. Edgar Moseley went to Amarillo last Tuesday, spending the night with their daughter and family, the Jack Lancasters. While there they enjoyed a fish fry in the Lancaster home, the catfish was caught from Sugar Lake in Old Mexico. The fish weighed 25 pounds.

Jerry Pennell recently flew to Huntsville, Alabama, to be interviewed for employment at the Red Stone Arsenal there.

Mrs. Lewis Kuykendall and children of Littlefield visited his parents, the J. W. Kuykendalls.

January 3 — A baby boy born to Mr. and Mrs. Stanley W. Harris, Rt. 1, Lubbock. Stanley Warren Jr., weighed in at 8 lbs, 2 oz.

January 5 — Mr. and Mrs. Adam Avila, Rt. 2, a girl, Juanita, weighing 7 lbs, 7 ounces.

January 6 — Mr. and Mrs. Eliverio Acuna, Rt. 1, a girl, Patsy Jo, 7 lbs, 6 ounces.

January 6 — Mr. and Mrs. George W. Pool, 1005 West Lynn, a boy, Stanley Robert, 5 lbs, 9 ounces.

January 9 — Mr. and Mrs. Rudy Hernandez, Post, a girl, Sindia, 8 lbs, 7 ounces.

January 10 — Mr. and Mrs. Alcario Arrendondo Jr., Lubbock, a boy, Alcario Jr., 9 lbs., 1 ounce.

January 11 — Mr. and Mrs. Thomas Valdez, Rt. 2, a girl, Sandra, 6 lbs., 4 ounces.

January 11 — A boy, Shannon Douglas, born to Mr. and Mrs. Clyde R. Thomas, Lubbock, 8 lbs., 15 1/2 oz.

January 13 — Mr. and Mrs. Jesus Flores, Rt. 1, a boy, Guadalupe, 6 lbs. 7 1/2 ozs.

January 14 — Mr. and Mrs. David Perez, Post, a boy, Paul Bradley, 8 lbs 15 ounces.

Southland News

Visitors with the Bill Pools in Big Spring over the weekend were Mr. and Mrs. Vernon Scott and Mrs. C. B. Scott.

Brenda Dabbs, a student from Texas Tech, was home this weekend with her parents, the Herman Dabbs.

Jo Ann Lee, who has been a student at Baylor University, Waco, was at home this weekend prior to changing to Hardin Simmons University at Abilene.

Mr. and Mrs. Earl Lancaster visited Mrs. Carl Foster and Snappy in Lubbock Sunday.

Mrs. Melvin Phelps and Julia Hutchinson from Altamonte, Tennessee, are visiting the Alva Albrights.

Mrs. Delbert Alcorn and daughter, Jan, of Amarillo, are visiting her mother, Mrs. Alpha Taylor.

Visiting Mrs. Ruby Pritchard and Sue recently have been Robert Pritchard, Airman 3rd class in the Air Force at Amarillo, Mr. and Mrs. Leo Cobb of Post and Sherry Moore of Post.

Mr. and Mrs. Dale Edmunds of Lubbock visited his parents the Martin Edmunds, Saturday.

Mr. and Mrs. Weldon McGehee went to Wilson Monday night to see the Junior High ballgame.

Mrs. Edgar Moseley and Mrs. Harley Martin were in Lubbock Tuesday on business.

Mr. and Mrs. Curtis Head of Lubbock visited in the Lee Mason home last week.

Ballgame Here Promises Hilarity

Fun and hilarious comedy, plus possibly a bit of stellar ballhandling, is promised in store for spectators at the Tuesday night basketball game scheduled here, pitting the "All-American Redheads" against a high school girls team.

Rumors are that the "Redheads" actually are male faculty members transformed via means of wigs, etc. into a "girls team", athletic's answer to the womanless wedding gag.

Proceeds from this game, scheduled at 7:30 p.m. Tuesday night, will go toward financing of the All-Sports athletic banquet on the calendar for Thursday night, January 31st. Berl Huffman, member of the Texas Tech athletic administration staff, will be principal speaker for the 7:30 p.m. affair to be held in the school cafeteria. Both boys and girls of the athletic program within the local high school will be honored at this banquet, according to plans announced by Coach "Bing" Bingham.

Revival, Training Course To Begin At Local Church

A combined revival and workers training course has been announced by the First Assembly of God Church, 14th & Jean Streets in Slaton.

The series will commence this Sunday, with the evangelist being Mrs. Alma Ditto of Tampa, Florida. Pastor Nola Stout invites the public to attend the services each evening at 7:30 o'clock.

Grass, Gin Fires Bring Fire Calls To 29 for Month

Twenty-nine fire runs have been made by the local Volunteer Fire Department to date in January, with nine reported since last Wednesday.

Calls for the last seven days include: January 16: Don Basinger east of Gordon; 17th: Cathlene Hill car fire; 18th: Howard Gin; 19th: car fire on 16th street; 20th: two grass fires; 22nd: grass fire at 1015 South 19th, house at Oklahoma and Geneva street, and a call to the gin yard at Southland.

Farm Program Sign-up Period Begins Feb. 15

The sign-up period for the 1963 crop of corn, grain sorghum and barley will be from February 1 through March 22, 1963, Charles G. Bragg, office manager, Lubbock Agricultural Stabilization and Conservation County Office, has announced. The sign-up period for wheat in winter wheat areas ended December 14th.

The voluntary diversion programs for feed grains and wheat are generally the same as in previous years, the manager explained. Of a few provisions which are slightly different the principal one is the price support payment which will be available to farmers participating in the program in addition to the regular price support loans and purchase agreements.

Bragg gave these highlights of the 1963 feed grain program:

For small farms — with total feed grain base acreage of 25 acres or less — on which the

Lions Encourage Poll Tax Payment

With final date for payment of 1963 poll taxes only one week away, the Slaton Lions Club has launched a drive to urge widespread payment of these fees, assuring representative local voice in any questions that might come up for vote in this "off election" year.

Mel Tudor has been named Lion chairman of the poll tax committee, and he has application blanks available, as does Lauster-Hoffman Hardware, for payment of the taxes.

Sentence Passed On Store Theft

Willie Harrison was sentenced Wednesday to serve three years in the state penitentiary, after pleading guilty before Judge Robert H. Bean in 140th District Court to theft of a ring set on December 18th from Champion Jewelry in Slaton.

Harrison, 52, was apprehended as a suspect in the robbery only minutes after the theft. Sheriff deputies nabbed him in Lubbock and returned him to Slaton for identification within two hours of the crime. Harrison told local Chief Martin at that time that he had been in the pen four separate times, on convictions for narcotics violations, manslaughter and forgery.

The stolen rings have not been recovered to date, J. C. Champion, jewelry store owner, reports.

LOCAL JAIL ARRESTS

In local activity this week, one case of carrying a prohibited weapon was filed, Jessie Clark being filed on in county court yesterday morning. He was apprehended Tuesday at the Reuben L. Williams place where he allegedly had struck another male on the head with a pistol. He was found, said in a drunken state, with a fully loaded 32-caliber automatic pistol in his pocket. The police report states that when arrested, Clark put his hand in his pocket and got hold of the pistol which had to be taken by force. He was lodged in the local jail, charged with a drunk violation to which he entered guilty plea Wednesday morning. He was fined \$20 and returned to jail to await transport to the county jail and processing of the CPW charges.

Jail arrests since last Thursday totaled one for vagrancy, and window peeping, 16 drunk, five for investigation of shoplifting, one gambling, and three traffic warrants.

Advances payments will be available at the time of up. Final payments under the diversion program and the support payments will be after compliance has been terminated.

Bragg has urged farmer, get in touch with the County Office for further details about the 1963 feed grain wheat programs.

IT PAYS TO TRADE AT

McCills

LIQUOR STORES

Just Follow the Signs in
Odessa — — Lubbock

THE CITIZENS STATE BANK
IS YOUR
"HOME MADE BANK"

OF THE PEOPLE
FOR THE PEOPLE AND
BY THE PEOPLE IN OUR
PROGRESSIVE TRADE AREA

SLATON'S 1963

PROGRESS PARTNERS

APPRECIATION TIME
FOR CUSTOMER & EMPLOYEE LOYALTY

NEIGHBORS ON THE JOB ROUNDUP



You're Invited to Get Better Acquainted with the Folks and know what Good Friends Your Bank Can Be ---

THANKS
For Letting Us Be Your Bank
SINCE

OCTOBER 12, 1932

YOUR OL' FAITHFUL

Citizens State Bank

Chartered to Serve You October 12, 1932

Your Bank is the Backbone of Economic Progress. You are Your Bank — Use Your Bank with Confidence. We are Your Neighbors and we are Grateful for the 31 years You have let Us serve with You in our Area's Growth and Progress — THANK YOU GOOD NEIGHBORS.

**MY JOB
PRESIDENT**

Since January, 1961



J. S. Edwards, Jr. is a native of Slaton, and he and wife Margaret have four sons: Richard, Don, Danny and David. Edwards attended colleges at Texas A&I and Texas A&M. Hobbies are hunting, fishing and golfing. Memberships in local organizations include Commandery; Shrine; board of trustees of the First Methodist Church, board of trustees and building and finance committees of the Lubbock Methodist Hospital; is a director of the Slaton Chamber of Commerce; and is a director of the Slaton Savings and Loan.

**CITIZENS STATE BANK
Slaton, Texas**

CHARTERED OCTOBER 12, 1932

31st Anniversary Year 1963
Founder J. S. Edwards, Sr.
Capitalized for \$25,000
Present Capital Structure \$435,216

Original Officers and Directors

J. S. Edwards, Sr.	H. G. Sanders
Bob Merrell	C. F. Anderson
Abe Kessel	G. H. Orr
J. S. Edwards, Sr.	President
Howard T. Swanner	Cashier
T. A. Worley, Jr.	Asst. Cashier
Edda Belle Benton	Asst. Cashier
J. S. Tekell	Asst. Cashier

PRESENT OFFICERS

J. S. Edwards, Jr.	President
H. T. Swanner	Exec. Vice President
T. A. Worley, Jr.	Cashier
Tommie Wicker	Asst. Cashier
Mary Reynolds	Asst. Cashier

DIRECTORS

Clarence Basinger	R. E. Edwards
J. S. Edwards, Jr.	H. T. Swanner
T. A. Worley, Jr.	

Honorary Directors

Bob Merrill	C. F. Anderson
-------------	----------------

Member Texas Bankers Association
American Bankers Association
F. D. I. C.
Texas Association of State Chartered Banks
South Plains Bankers Association



**MEET THE TEAM SERVING YOU AT YOUR
CITIZENS STATE BANK**



YOUR DRIVE-IN BANK

**MY JOB
EXECUTIVE VICE - PRES.**

Since October, 1962



H. T. Swanner is well known for his banking activities and many civic interests. Born in Lincoln County, Tennessee, Swanner is an engineering graduate from Oklahoma A&M College. He is past president of Slaton Rotary Club, past president of South Plains Bankers Ass'n., past president Texas 7th Dist. Bankers Ass'n., is a charter member of Kappa Sigma Fraternity, Texas Tech Alumni Ass'n., Lubbock; past president Slaton Retail Merchants Ass'n. and served two terms as city commissioner and two terms on the Slaton School Board. He is a member of the Rotary Club and Methodist Church. Wife: Edith; children, Ted, Tom and Lanny.

**MY JOB
Cashier**

Since October, 1962



An old timer at the bank, T. A. Worley, Jr. is a member of the local can Legion, Masons and First Methodist Church. Wife: Ethel Lee; children: Tommie Karen, T. A. born in Centrahoma.

**MY JOB
TELLER**

Since December, 1962



Mary Reynolds is a native born Slatonite and the wife of Bobby Reynolds, operator of a local firm. She is a 1958 graduate of the Slaton School. Hobbies are bowling and collecting. Church: St. Joseph's Catholic.

**MY JOB
BOOKKEEPER**

Since September, 1962



A graduate of Slaton School, Claudia Stephens is one of the newest members of the bank family. Hobbies are playing the piano and also sewing. Church: St. Joseph's Catholic. She is a teacher. She is a native.

**MY JOB
TELLER**

Since August, 1959



Jo Nell Shackelford is a native born Slaton resident and attended 12 years of school in the local schools. Hobby: bowling. Member of Church of Christ. Children: Joe Mack, 6 years, Jerry Bob, 5 years of age.

**MY JOB
TELLER**

Since March, 1957



Elizabeth Nall is a native of Mt. Selman, Texas, and attended school at the Jacksonville High School. She is a member of the First Baptist Church, and is the mother of three children, Larry, and twins Carlton and Claude.

**MY JOB
TELLER**

Since October, 1953



Tommie Wicker, well known as an employee for almost 10 years, is a graduate of Southland High School and is a native of the area. Church: Lubbock Highland Assembly of God.

**MY JOB
TELLER**

Drive-In Window
Since June, 1958



Claudia Stephens, born in Mullin, Texas, attended school in Colorado City, and is the wife of Wynn Stephens, fireman with the Santa Fe. Hobbies: bowling and coin collecting. The couple have three children: Claude, 13; James, 10; and Kay Ellen, 6 years. A member of the First Baptist Church, Claudia is superintendent of Nursery I.

**MY JOB
SECRETARY**

Since April, 1961



Miss Maxine Moore is a graduate from the Slaton High School, Class of '60. She attended Draghon's Business College in Lubbock before joining the staff of the bank. She is a member of Westview Baptist Church, and professes hobby of playing the piano. Birthplace: Clarksville, Texas.

**MY JOB
PROOF OPERATOR**

Since April, 1961



Miss Becky McCuiston was born in San Jose, California, and she graduated from the Tahoka High School in 1960, later attending business college. Hobby: bowling and piano. Church membership: Westview Baptist Church.

**MY JOB
BOOKKEEPER**

Since June, 1960



Ruby Swint is a native of Corsicana and graduated from the Colorado City schools. She has distinction of being an identical twin, her sister living at Freeport. Hobby: bowling; Hubby: Wyatt. Ruby is the mother of two children, Ronnie, 8 years old, and Janis, 2 years of age.

**MY JOB
BOOKKEEPER**

Since December 1961



Sue Dodson, wife of John Dodson, is a '61 graduate of our local high school. She enjoys singing and teaching a Junior girls' Sunday School class at the First Baptist Church here.

**MY JOB
BOOKKEEPER**

Since April, 1962



Miss Opal F. Willis is another of the newer members of our staff serving you at the Citizens State Bank. Opal was born in our neighboring state of Oklahoma, at Idabel.

**MY JOB
BOOKKEEPER**

Since August, 1962



Mrs. George Timmons is a '62 graduate of the New Home High School, and is married to Howard Timmons. Hobbies: cooking and piano playing. She is a member of the Westview Baptist Church.

Wilson News

Good Attendance Marked Lutheran Women's Meeting

The regular meeting of the Lutheran Women's Missionary League of the St. Paul Lutheran Church in Wilson was held Sunday, at which time the constitution was revised, accepted and sealed.

hymn, scripture reading and prayer led by Mrs. R. E. Behrend. Pastor Kamrath led the topic on missions.

Project for the month of February will be to bring homemade canned foods or other items made for the Lutheran Student Center at Texas Tech. These are to be brought to the next meeting.

Present at the Sunday meeting were Rev. Kamrath, one

members Mesdames Carl Harzog, R. E. Behrend, Melvin Wuensche, Milton Wied, B. G. Wied, Cecil Wied, Howard Moerbe, Robert Kamrath, Felix Nolte, Ronnie Nolte, Mesdames Hubert Teinert, George Dellinger, A. J. Gieckhorn, Arthur Bickhorn, Oswald Dube and Monroe Talkmitt.

Surprise Party Given Jerri Clem

A surprise going-away party in honor of Jerri Clem was given last Wednesday in the Mike

Surprise Breakfast In Meyers Home

A surprise "come as you are" breakfast was held by Kappa Kappa Iota Saturday, January 12, at the home of Mrs. Roberta Meyers.

Present were Miss Catheline Thomas, Miss Alice Armstrong, Mrs. Evelyn Boyd, Mrs. Beryl Gunter, Mrs. Elizabeth Martin, Mrs. Anita Perkins, Mrs. Edith Brooks, Mrs. Troyce Woods, Mrs. Wanda Hurst, Mrs. Jean Bingham, Mrs. Bobby Norris, Mrs. Mary Gilmore, Mrs. Shirley Copeland, Mrs. Opal Townsend and Miss Gay Ivy.

Next meeting of the Kappas will be at the home of Mrs. Evelyn Boyd.

Mrs. Virgil Henderson has gone to Jacksonville to be with her mother who is ill.

St. Paul Lutheran School in Wilson was dismissed for two days while Principal George Dellinger and Rev. Robert Kamrath attended the annual bi-regional conference of Lutheran Church in Littlefield. The conference was attended by pastors and teachers from Lutheran churches and schools in West Texas and eastern New Mexico.

CHILI SUPPER

The annual chili supper at St. Paul Lutheran Church will be held on February 15th this year at the parish hall. Games and prizes will be there for all, starting at 6 p.m.

BEAURA'S BEAUTY SHOP

Announces An Addition To Our Staff **Pat Blackerby**

Special Limited Offer Complete Permanent (by Pat) **5.95**

(Mon. — Tues. — Wed. Only) \$50 Permanent \$10.00—\$10.00 Permanent \$8.50 S. 11th Phone VA 8-3647



March of Dimes Helps Save Boy



Here's Johnny at age one after first operation . . . and today, leading a normal life at age four.

At his fourth birthday party, Johnny Wilson's big blue eyes sparkled as his mother carried in the most magnificent cake he had ever seen.

and causes the head to swell enormously. This is what had happened to Johnny. (If shunt surgery is not performed in time, mental retardation and blindness may ensue, even death, in certain cases.)

tion set up for the study and treatment of birth defects. At the center, trained specialists work together to help children with many kinds of birth defects. They include a neurosurgeon, orthopedic surgeon, internist, psychiatrist, physical therapist and medical social worker. They have put their skilled hands and minds to work on Johnny's behalf.

It was a happy affair. Yet at one time, Johnny's parents had little hope he would live to celebrate even his first birthday. For he was born with the often fatal birth defect of water on the brain, or hydrocephalus.

Since 1958, doctors have performed two other shunt operations and have treated Johnny for gastroenteritis and septicemia. Today, Johnny leads a relatively healthy, happy and care-free life. Like any other little boy who lives on a farm, he loves to hug lambs, chase cows and tease chicks on the family's 100 acres near Columbus, Ohio.

Johnny is growing up to be an impish, energetic and friendly little boy who likes to do everything and go everywhere. Especially, he likes to wheedle rides on a pony at the next farm. He'll settle, though, for a tour on the tractor with his mother or father, Julia and John Wilson.

Ronnie Dunn

A Native of the Slaton Area...having been born and raised at Southland and attended Southland Schools. . .is married to the former Deloris Basinger, graduate of Slaton High School. . .

Now Representing The

NASH—PHILLIPS—COPUS

In The

SLATON AREA

From 1 story to two story, dens, cathedral ceiling, fireplace, Early American, 1-2 and 3 baths All brick . . . \$15,000 to \$25,000. Call VA 8-4562 today about a new custom built home from one of hundreds of plans or your own . . . We Invite You to call . . .

Ronnie Dunn

AT VA 8-4562, SLATON, TEXAS



CARD OF THANKS

I wish to express my deepest thanks to everyone who was so kind and helpful during my recent stay in Mercy Hospital. Especially do I wish to thank Mr. and Mrs. Calvin Lamb, Mr. and Mrs. George Gamble, Mr. and Mrs. Phil Brewer, Dr. Jones, the hospital staff, and all the others who aided with their visits, flowers and thoughtful gestures.

Ed Williams

Typewriter and adding machine ribbons for all make machines. Available in Slaton at The Slatonite.

SCHOOL MENU

- Monday — Meat Patties with gravy, creamed potatoes and carrot sticks, English peas, jello with fruit, hot rolls, butter and honey.
- Tuesday — Hamburgers, cheese sticks, red beans, peach halves.
- Wednesday — Chicken with noodles, green beans, lettuce salad, cranberry sauce, cake, coconut icing.
- Thursday — Turkey with dressing, celery sticks, buttered asparagus, cranberry sauce, fruit salad.
- Friday — Tuna, pimiento

cheese sandwiches, potato chips, fruit drink, 1/2 pint milk, do-nuts.

STOP FROZEN PIPES

Electric Heating Tape easily wrapped on pipe prevents freezing.

Built-in thermostat saves current. Insulate with WRAP-ON INSULATION to save heat. All sizes stocked.

\$3.95 SEE US TODAY.

File Folders and Guides

AT THE SLATONITE

Lasater - Hoffman Hardware

Now Get Dependable Power with a New White "Standard" Battery!

Custom Built for Longer Life!

GUARANTEED 12 MONTHS

Dependable Under All Conditions!

6-VOLT 744 EXCL.

Fits 1940-'54 Chev., 1936-'55 Plymouth, 1955 Rambler, etc.

12-VOLT 1044 EXCL.

Fits 1955-'63 Chev., 1956-'63 Plymouth, 1955-'63 Pontiac, 1956-'63 Rambler, others.

INSTALLED FREE!

152-18

Triple-Written Guarantee

1. BATTERY REPLACEMENT within 90 days if battery is defective.
2. THREE YEAR WARRANTY. All of our batteries are warranted on regular use.
3. ALL STORES. Guarantee honored at ALL White Stores.

AUTHORIZED DEALER

WHITE

AutoStore

THE HOME OF GREATER VALUES

TEXAS AVENUE, ADJACENT TO CITIZENS STATE BANK Bobby Poynor, Owner - Manager

Old Friends

By J. J. Maxey

Charles Reese, class of 1942, has been visiting his mother, Mrs. G. Reese, here in Slaton for the past several days. Charles is an assistant passenger transportation clerk for the coast lines of Santa Fe. He is living at 3729 Tracy Street, Apartment 4, Los Angeles 27, California.

When we look around us we see some of our old and dear friends slipping away to a better place than Slaton. Among the most recent deaths in our community was that of Msgr. T. D. Brien and Mrs. Annie Shelby.

Father Tom, as he was known by most of his parishioners, came to Slaton in the late twenties and was known and respected by Catholic and Protestant alike. He was a man that was ever interested in his community and could be counted upon to be for progress in every way. One only has to look at the Church and school to see the results of the physical progress that was made under his leadership. I doubt seriously if there is any one in Slaton who has been here for a number of years that did not call him friend. The community, as well as his parish, will miss him.

It has been our privilege to claim all members of the Shelby family as friends for a great many years. We came to Slaton early in 1925 and the Shelby family had been here for a number of years then. Gordon, the oldest, only attended school here for a short time. He is now connected with the Robert W. Hunt Engineering Company and lives at 6809 North Ashland, Chicago, Ill. Pauline, class of 1924, is a designer of ladies sports wear for a Dallas manufacturer and lives at 7000 Shook, Dallas, Texas. Howard (Luke), class of 1928, is a maintenance superintendent for a Chicago meat packing firm. Luke lives at 155330 Vine Ave., Harvey, Illinois. Mrs. Bob Stewart (Moreen), class of 1928, is living at 3514 Verde Street, Riverside, California. J. H. (Jim), class of 1934, lives in Slaton and is a conductor for the Santa Fe. Don (Boothel), class of 1937, has retired from the Army and is now in the real estate business in Albuquerque. He lives at 424 Morningside Drive, N.E., Albuquerque, New Mexico. Walter (Ducky), class of 1938, is in the automobile business in Dallas and lives at 7000 Shook Avenue, Dallas, Texas. Mrs. Johnny Mathis (Marita), class of 1940 is living at 9030 Longmont, Dallas 18, Texas. Mr. Shelby, a railroad engineer, lost his life in a train wreck near Posey in 1926. We salute the memory of Mrs. Shelby who had the indomitable courage to rear and educate the fine family that has been named above. Throughout the many years of our acquaintance we have witnessed an expression of calm and mature advice to the many Slaton Students who were friends of the Shelby kids. We all have a warm spot in our hearts from having known her.

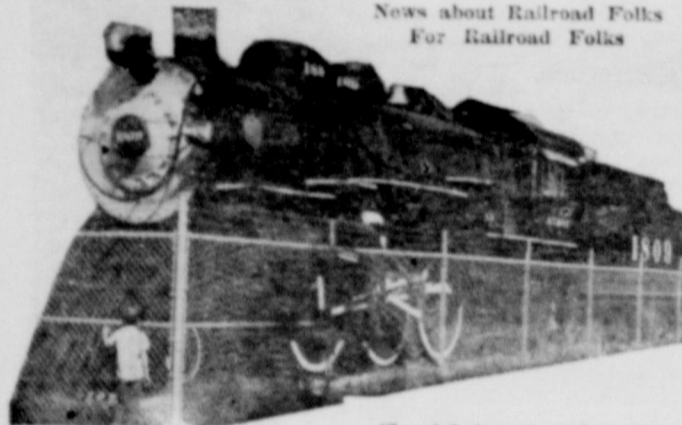
Wayne Liles, class of 1938, the local tin bender, has taken on another job in addition to his local air conditioning and heating business. He is now representing the Western Windmill Company in setting up dealerships, etc., for a certain brand of heating and air conditioning equipment. Wayne says that you can still get your tin belt locally since his workmen are still on the job.

Those paying dues since last week were Lois Rogers, Charles Reese and Josephine Shelton Baker.

Come To The Safety Meeting - - -

Railroad Events ..

News about Railroad Folks For Railroad Folks



(Special for the Slatonite)

HERE AND THERE
Here we go again with a little more face lifting in the Division Office — this time it is the Dispatchers Office which is getting a going over. New paint and dropped ceiling with better lighting is in store for them, but at the moment it looks pretty hopeless while they are in the process of getting the walls and ceiling ready for the new stuff. If you are in town and have the time to come to the Safety Meeting — it will be held in the Committee Room over the Depot at 2:00 p.m. Friday, January 25th. Coffee and doughnuts usually top off the meeting so come on down and have your coffee break with us.
Engine Timekeeper J. J. Wicker is on sick leave and Personal Record Clerk Walter Mosser is holding down his job, while Steno Mary Spears is filling his job. Mary's vacancy is being filled by Relief Clerk Carolyn Banks.

Conductor L. N. Foster and Switchman B. C. Martin are both on leave of absence to attend B. of R. T. General Chairman's Committee Meeting in Kansas City. Agent J. D. Haynes from Sudan has his bid in the vacancy at Littlefield as Agent.

CLOUD NINE NOTICES
At 8:30 a.m., January 22nd, 1963, Chairman and Mrs. Tommy Beach became the proud parents of a brand new baby boy at Mercy Hospital, Slaton. The new son, which incidentally is their fourth one, weighed in at 7 lbs., 3 1/2 oz. Congratulations! That's nearly a basketball team, isn't it?

VISITORS
Mrs. Bennie Sorrel (Jan Bagby) is visiting her mother and father, Chief Clerk and Mrs. J. W. Bagby, and of course she brought Kathy, Carrie and Christy Ann, her three charming little daughters.

SICK LIST
We are mighty glad to know

that Maintenance Clerk Jack Shepard has made his maiden voyage back into the rugged old world and is getting out and around some now. Also, that Engineman C. E. Corley is doing so well. We will all be mighty glad to see them back on the railroad again.

WCSA Cuba Circle Program Given By Mrs. Phil Brewer

The Women's Society of Christian Service, Cuba Circle, of the First Methodist Church, met January 16th, in the home of Mrs. Bob Kern, 901 West Garza.

The meeting was opened by a prayer led by Mrs. R. C. Hall Jr., chairman of the circle.

The program was presented by Mrs. Phil Brewer assisted by Mrs. Kern. The program title was: "The Spofford Home — A Ministry to Children with Special Needs". This is a school in Kansas City, Missouri, for disturbed children and children with special emotional problems. This school is one of a growing number of such institutions throughout the country devoted to special handling and treatment of children with these problems.

A business meeting followed the program.
Next meeting of the circle will be held February 13, at 4 p.m.

Church Invites Attendance At Fellowship Meet

The Bible Baptist Church of Slaton is inviting the public to attend a Youth Fellowship at the Temple Baptist Church of Lubbock this Friday. The church bus will leave from the Slaton church at 6:45 o'clock.

Youths from other churches will present the programs.

Anthony's CLEARANCE

Continues... Huge Savings In Every Department

MEN'S SUIT SALE

Sizes 36 to 46 -- Regular 39.00 Value

29⁹⁷

MEN'S DRESS SLACKS

Sizes 28 to 40 -- Values to 7.95

5⁰⁰

MEN'S SHOE SALE

BROKEN SIZES -- VALUES TO 13.95

5⁰⁰

MEN'S LONG SLEEVE SPORT SHIRTS

Regular 3.98

3⁶⁶ — 2 For \$7

MEN'S LONG SLEEVE SPORT SHIRTS

Values To 3.98

2⁶⁶ — 2 For \$5

LADIES' SHOE SALE

Regular 1.98 Value -- 1.66

2 PAIR \$3

LADIES' DRESS FLATS

Assorted Styles ----- Values to 4.95

2⁶⁷

Close Out Fall Piece Goods

REGULAR 79c PER YARD

57c — 2 yds \$1

FINAL CLEARANCE Ladies' Dresses

Values To 10.95

\$3

FINAL CLEARANCE Better Fabrics

Values To 1.98

88c per yard

The fact that Internal Revenue collects 97% of our taxes with any enforcement effort on part of Internal Revenue is of the finest compliments to American citizens that could be paid. The tax folks believe most American taxpayers to do what is right. They want IRS to see that others do what is right. None of us want to pay any more than we but we are willing to do our share if the other fellow is to do his share.

Johnny Long Will Show Barrows At Fort Worth Show

Johnny Long of Slaton will have three junior show barrows in competition at the 1963 Fort Worth Stock Show, January 25 through February 3, Livestock Superintendent W. A. (Bill) King has reported. The nation's oldest major livestock show will present approxi-

mately 10,000 head of livestock, including 12 breeds of cattle, 10 breeds of sheep and eight of swine. Entries have come from three-fourths of the United States and Mexico. The horse division of the Fort Worth show, again featuring the largest Quarter Horse show in the world, will see approximately 1,500 entries compete. An Appaloosa sale and classes for Galiceno horses will be new to the show.

Minnie Pearl of "Grand Ole Opry" fame, America's No. 1 country-style comedienne, will be featured at the 1963 Fort Worth Rodeo "all-star spectacular". She'll join the precision-riding Side-Saddle Susans, sensational trick riders The Flying Cimarrons and the leading rodeo comedy act of Ken Boen and the New Gray Mare.

Nearly 400 top cowboys will tackle the roughest stock from three major producers in bareback and saddle bronc riding, bull riding, calf roping and steer wrestling.

Rev. Deans Member Directorate Texas Lutheran College

Rev. Leroy Deans of Slaton is a member of the Board of Directors of the Texas Lutheran College Ex-Student Association which will meet Saturday, Jan. 26, at Texas Lutheran College.

Among the items of business to be taken up at the meeting will be the 1963 homecoming.

Rev. Deans, pastor of Grace Lutheran Church, Slaton, is president of the Upper Caprock Chapter.

Did you make New Year's resolutions covering farm safety? There is still time to make plans now to prevent accidents on your farm and in your home, says the Texas Farm and Ranch Safety Council. They might be responsible for your being around next year.

Changes in Income Tax Legislation Alters Credits on Farm Assets

During the last session of Congress, important legislation relating to income tax payments was passed; among the changes were depreciation and tax credit on certain types of assets used in farm and ranch operations as well as other businesses, reports C. H. Bates, extension farm management specialist.

The investment credit provision is a tax credit of 7 percent, computed on the purchase or investment in depreciable, personal property during 1962 and thereafter. Livestock, including race horses, are excluded from the list of eligible items. Bates points out. The credit is given only for the tax-year in which the business assets is acquired and includes such items as tractors, combines, trucks, cotton harvesters and new fences, explains the specialist.

Here is an example of how the investment credit provision works. Assume a tractor is purchased in November 1962 for \$5,000 with no trade-in. The useful life of the asset determines the amount of tax credit allowed.

Since 1952, Texas public school enrollment has increased annually at an average of 76,000 students and will continue near this rate for the next few years.

Good Grades Prevail as Cotton Harvest Activity Nears Close

The 1962-63 cotton season is drawing to a close, states W. K. Palmer, officer-in-charge of the Lubbock cotton classing office. Palmer reported a number of classers were being released and the Lubbock office went on a single shift from 8-5 starting January 14.

The Lubbock office pushed its season total to 1,655,000 samples with 177,000 samples classed for the week ending January 11. This office had a carry-over of 50,000 samples.

The white grades continued to have good percentages for this time of the year. The percentages were 17 percent for Strict Low Middling, 1 percent for Low Middling Plus, 9 percent for Low Middling and 1 percent for Strict Good Ordinary Plus and Lower.

For the Light Spotted grades

If the tractor is set up on a life of 8 years, a full 7 percent of the purchase price of \$350 is credited on the tax due from the taxpayer for 1962 business operations. If the asset has a determined life of 5 years, only a third of this amount is allowed as a tax credit. Assets having 6 or 7 year life entitle the purchaser to two-thirds of the \$350 tax credit, explains Bates.

Used equipment items get the tax credit, too, but are reported separate from new assets, says Bates. In case of "trade-ins," the portion of the purchase price eligible for tax credit is computed differently on new and used equipment.

Because this provision is new some taxpayers may overlook the requirement that the tax credit is compulsory on eligible assets. The basis or remaining cost for depreciation purposes must be reduced by the credit taken. If the taxpayer fails to take credit for items purchased in 1962, he simply loses the amount involved and it cannot be recovered in future years, says Bates. All farmers are urged to get a copy of the 1963 Farmers Tax Guide at the office of county agents or Internal Revenue when it is available.

Middling Light Spotted accounted for 11 percent, Strict Low Middling Light Spotted 39 percent and Low Middling Light Spotted 10 percent. The Spotted grades were showing higher percentages with 2 percent Middling Spotted, 4 percent Strict Low Middling Spotted and 2 percent Low Middling Spotted. Three percent of the cotton was tinged in grade. Seven percent of the samples being classed was reduced because of foreign matter. The average staple length for the week was 29.8 thirty-seconds of an inch. This was down from the previous week when the average was 29.9 thirty-seconds of an inch. The percentages for the various staple lengths were: 7/8" 1 percent, 29/32" 25 percent, 15/16" 66 percent, 31/32" 7 percent and 1 inch and longer 1 percent.

The Micronaire readings continued a downward trend. Seventy percent milked 3.4 or below with 34 percent in the range of 3.0 - 3.4. Thirty percent milked 3.5 or better. For the week 15 percent of the cotton was classed as wasty.

On the Lubbock Market, 63,000 bales were reported purchased by the Cotton Exchange for the week ending January 11, according to H. A. Poteet, secretary of the Exchange. This was well below the 106,500 bales reported for the same week last year.

On January 8th the Lubbock Spot Quotations Committee raised quotations on all staple lengths of Middling Tinged and Strict Low Middling Tinged. They lowered quotations on all staple lengths of Strict Low Middling Spotted, Light Gray and Gray grades. Middling 1 inch quotation is 32.55 as compared to 32.85 for the same week last year. The quotations for the grades predominant in production remained unchanged. These quotations are: Strict Low Middling 29/32 29.60, Strict Low Middling 15/16 30.10, Low Middling 29/32 28.45, Low Middling 15/16 28.95, Middling Light Spotted 29/32 28.90, and Strict Low Middling Light Spotted 15/16 29.40.

HONORED AT COLLEGE
Rodney Maeker, son of Mr. and Mrs. Edmund Maeker of Wilson, has been announced as one of the student senators at Texas Lutheran College.

Maeker, a sophomore pre-theological student, by virtue of this office joins 28 other students who are playing key roles in the student government organization at the college.

By 1967 Texas will need 109,000 teachers for an anticipated student enrollment of 2,459,000.

Texas now has more than 2,383,000 scholastics (pupils between the ages of 6-17).

One of our neatest packaged and most nutritious food items — the egg — should be in ample supply during 1963 and at prices favorable to the consumer, says John McHaney, economist for the Texas Agricultural Extension Service. He adds that supplies may average for the first months of 1963 a bit under those for the same months in 1962 and prices up correspondingly. The average prices for the year, however, will be closer or a little below those for 1962.

Happy Birthday

January 24 — Leonard Cranston Morris, Myrtle Garman, Jane Tefertiller.

January 25 — Mrs. Francis Grabber, Albert Kahlich, Estelle Glasscock, Mrs. Jim Gentry, Holley Brookshire, Larry Clifton McNeely, Amy Lynn Brewer, Lester John Kitten.

January 26 — Mrs. Jim Hall, Carol Sue Walston, Sandra Gay Brush, Jerry Hodge, Kim Alan McPherson, Boyd Meeks, Mrs. Myrtle Edwards.

January 27 — Jean Blair, George Bond, Jimmy Sikes, Mrs.

Thirty-three Are Injured in Rural County Accidents

The Highway Patrol investigated 43 rural accidents in Lubbock County during the month of December, according to Sergeant O. C. Guthrie, patrol supervisor of this area.

These wrecks accounted for thirty three persons injured and an estimated property damage of \$26,165.00.

The rural traffic accident summary for Lubbock County from January through December of 1962 shows a total of 355 crashes resulting in 36 persons killed, 337 injured. The estimated property damage amounted to \$254,380.00.

When the final reports are tabulated in March of 1963, it is estimated the death count will be approximately 4% above the 2314 killed in 1961. This increase should be a challenge for every individual to put forth his best defensive efforts to prevent accidents for the new year, patrol representatives point out.

The veteran patrol supervisor cautions all motorists to beware of icy patches at bridges, underpasses and in shadows, reducing speed before reaching the slippery area.



PEMBER INSURANCE AGENCY

135 N. 8th VA 8-3541

Ledgers - Bookkeeping Forms AT THE SLATONITE

From the country of 1100 springs



CLIFF "SLIM" PROFFITT Distributor

SLATON LIQUOR STORE

Largest Stock To Select From BEER - WINE - LIQUOR

Come By the Y to Buy HOME - OWNED By Long Time Slaton Resident J. A. WARREN VA 8-7178

41% Of The National Homes FINANCED BY SAVINGS AND LOAN LET US HANDLE YOUR HOME FINANCING SLATON SAVINGS AND LOAN

T.G.&Y.

UTMOST IN UTILITY! LASTING DURABILITY!

POLY VALU-RAMA

Designed for Durability! Marproof . . . Sanitary . . . Will Not Crack or Chip. Your Choice at a Low, Low DISCOUNT PRICE!

- ROUND LAUNDRY BASKET
- 14 Qt. RECTANGULAR WASTEBASKET
- 21" x 27" DAMPENING BAG
- 17 1/2" x 12 3/4" DISH RACK
- 12 Qt. LIPPED PAIL
- RECTANGULAR DISH PAN
- 14 Qt. ROUND WASTEBASKET
- 3-PC. MIXING BOWL SET
- 80 Oz. LEAF & GRAPE PITCHER
- 8" RIBBED FLOWER POT
- 5" x 12" BREAD BOX



69¢ TO 89¢ VALUES

NOW JUST 57¢ EACH



SCHLITZ BEER in the handy 6-Pak

SEE YOUR DEALER TODAY

You'll make the wisest choice no matter which Chevrolet you choose!

These four different cars are alike in one important way. Each is a product of Chevrolet Division of General Motors. So each will give you more performance, beauty, comfort and good news at trade-in. But each is tailored to a certain kind of buyer. Our big Chevrolet has the Jet-smooth ride, luxury and styling you'd expect only in costly cars. Chevy II features parkable size, perky performance and outstanding fuel economy. Corvair gives you rear engine maneuverability and sports car flair. The new Corvette Sting Ray can best be described as dramatic. With a choice of 33 models, Chevrolet that



Shown (top to bottom), '63 Chevy II Nova 400 Station Wagon, Chevrolet Impala Sport Sedan, Corvette Sting Ray Sport Coupe and Corvair Monza Club Coupe

See four entirely different kinds of cars at your Chevrolet dealer's.

"Doc" Crow Chevrolet

120 NORTH NINTH STREET

VA 8-4261

First Round Favors Irrigation Farmers in Court Test of Water As Depletable Natural Deposit

A spokesman for the High Plains Undergr... District has said that a letter received last week by attorneys for the Water District, Joseph B. Dooley, Judge of the United States District Court for the Northern District of Texas, stated that ground water used in the production of agricultural crops in the Southern High Plains of Texas is a depletable natural deposit under the federal tax laws, and that he has so ruled in a case pending before his court.

The spokesman, Tom McFarland, manager of the High Plains Water District, said Judge Dooley's comments were in regard to a case tried before his court during January 1962. The suit is a test case filed by a Floyd County farmer, Marvin Shurbet, in behalf of the High Plains Undergr... District and is styled, "Marvin Shurbet, et ux v. United States of America". It seeks an income-tax refund of about \$300 for the tax year 1959. McFarland said that the favor-

able decision in the Shurbet case, upheld on appeal, will ultimately mean millions of dollars in tax savings for persons in the Southern High Plains of Texas who can show a cost in the ground water beneath their land and who are using the water to produce income.

McFarland pointed out that in 1954 the Board of Directors of the High Plains Water District first authorized the District's staff to seek a depletion allowance on ground water. The Board felt that if such a program were

allowed on ground water by the Internal Revenue Service, then a great many more persons would realize first hand that their supply of water is truly exhaustible and would then become conscious that "water conservation" is a necessity for continued prosperity.

McFarland continued, "in the beginning our Board had the feeling that too many people are not really convinced that the ground water is not being replaced, or that they accept the fact of decline only in an abstract sort of way. The Board thought that if each person had to physically check the water level in his own wells in order to take the tax deduction, that then the decline in water level would be a personal thing and would make him cognizant of his plight. Only when some men reach this point are they ready to discover ways and means of using water efficiently as possible."

The James Eubanks family of Amarillo is in Slaton this week at the bedside of his father, H. H. Eubanks, who is reported seriously ill in Mercy Hospital.

Mr. and Mrs. Martin Edmunds visited their son, Merwin, in Lubbock, and Glenn and family in Slaton Sunday.

Peace Corps Placement Tests Will Be Give in Lubbock, January 26

A new battery of Peace Corps Placement Tests will be given throughout the nation on Saturday, January 26, at 8:30 a.m. Tests will be given in this area at Room 16-A, Postoffice Building, Lubbock.

Those who take the tests will be considered for many new Peace Corps projects in Latin America, Africa, the Far East, and in the Near East and South

Asia. Peace Corps opportunities cover hundreds of different kinds of jobs. Most of them falling into the major fields of education, agriculture, health, construction and community development.

Applicants must be American citizens who are at least 18 years of age. There is no upper age limit. Married couples without dependent children may apply providing both qualify for Peace Corps Service.

Interested persons who have not yet filled out a Peace Corps questionnaire may take the tests on a space-available basis and complete the questionnaire after the tests.

Two types of placement tests will be given. One is for men and women who would like to teach in the Peace Corps at the secondary school and college levels. For this, a bachelor's degree is usually required, although the applicant need not be an accredited teacher. The general examination is for all other Peace Corps assignments. However, an applicant who chooses the test for teachers may take an additional test in the afternoon in order to be considered

for other positions as well. While many projects require technical skills, some do not. Liberal arts graduates, for example, are often assigned to community development work — after special training, or to teach English at the elementary school level. People with general farm backgrounds might be assigned to agricultural projects without being highly skilled in any of the many agricultural specialties.

Radio Club To Hold Election

Annual elections for the Slaton Amateur Radio club will be held next Tuesday, January 29th. The meeting will begin at 7:30 p.m. in the club's regular meeting rooms, above Slaton Savings and Loan Association. All members are urged to be present at the meeting.

Any one interested in any phase of Amateur Radio is cordially invited to attend the meetings, held each Tuesday at the club rooms. Information concerning the club may be obtained by contacting Carl Magouirk, club president.

Quality Pencil Sharpeners

Typewriter, Adding Machine Ribbons

AT THE SLATONITE

Bonus Cotton Acreage Believed Possible, High Plains Counties

As a result of a complete overhauling of zones by the Texas Agricultural Stabilization and Conservation Service State Committee, the High Plains has a good possibility of receiving a sizable increase in bonus acres in 1963 through release and re-apportionment on the basis of past records; area cotton authorities have estimated that the "bonus" could be 100,000 or more acres for distribution within 23 counties. This would help offset the 244,983 acres lost this year in the base allotments as they now stand, according to statement by the Plains Cotton Growers, Inc.

A law which went into effect in 1960 permits farmers to release unplanted cotton acres to their county ASC committees and retain "history" for future allotments on their own farms. The county committee then redistributes the released acres to farmers who have application and who own farms within the county in which the acres were released. If enough requests for additional acres have not been filled in the county office to absorb all the acres released with-

in the county, the excess acres go to the state committee to be redistributed in other counties within the zone in which the acreage was freed.

Since the state received its allotment based on the history of the individual farms within the state, when farmers follow this practice of releasing unplanted acres he retains history for the state as well as his own farm. Conversely, if farmers simply do not plant their full allotments and refuse to release the unplanted acres, both the individuals and the state lose history for allotments in future years. Since cotton is the state's top cash crop, these losses adversely affect the economy of the entire state.

Up to this year Texas was divided into five zones for purposes of release and re-apportionment, and this to some extent, restricted the free flow of unused cotton acres over the state. Under the new arrangement there are only two zones. The High Plains is included in Zone II which covers, approximately, the north two thirds of the state.

A survey of the acres now included in Zone II shows that released to the state ASC for re-apportionment within the present zone boundaries. Since the High Plains is always on the demand side, requesting more acres, and released acres come from other areas within the new zone, the estimate that the High Plains can get one-half, and possibly more, of these released acres is considered to be very realistic.

Indications are that there will be as many acres up for re-apportionment within the area of Zone II in 1963 as there were in 1962, even with the reduction in base allotments. As a result of an intensive educational campaign emphasizing the importance to the entire state, and to individuals, in fully utilizing the cotton allotments in the state, there were 19,843 more acres released for re-apportionment in 1962 than in 1961, even though there was a 2 to 3 percent cut in allotments in 1962.

The 23 counties served by Plains Cotton Growers received 40,000 bonus acres through re-apportionment in 1962 and 23,500 acres in 1961.

To be eligible to receive any of the bonus acres, individual farmers must make application to their county ASC committees before the deadline of March 4. It is important that area farmers remember this deadline date and make application early. Released acres will be re-apportioned on March 25. Additional acres received through the release and re-apportionment program do not figure in the history of the farm receiving seed acres.

Centenarian Dies At Lubbock Home

Funeral services were conducted Monday for W. E. Douglas, 101 years of age, in a Lubbock funeral chapel.

Mr. Douglas, well-known in Slaton, was the father of Mrs. Joe H. (Lola) Rogers, former Slaton resident. Mr. Rogers was a train dispatcher here for a number of years prior to his death. In recent years, Mrs. Rogers had been living with her father in Lubbock, friends here report.

Death came to Mr. Douglas, former cattle buyer, early Sunday morning at his home, 2804 20th St. in Lubbock.

Mrs. Rogers stated that on her father's 101 birthday last year, he stated that "I still enjoy life. I'm mighty thankful for my good health." He had retained a life-long interest in politics and still read the paper.

Surviving are two daughters, a son, six grandchildren, several great-grandchildren, and one great-great-grandchild.

Shower Was Given Carolyn Carpenter In Hodge Home

A miscellaneous bridal shower, honoring Miss Carolyn Carpenter, bride-elect of George Ray Angerer, was given Sunday afternoon in the home of Mrs. R. G. Hodges, 1035 S. 20th Street.

Shirley Hodges registered guests in the bride's book, with Mrs. Gerold Broyles pouring.

The table was covered with pink net over pink cloth. Punch, cookies, nuts and mints were served during the hours 3:30 to 5:00 o'clock.

The receiving line consisted of Carolyn, her mother, and Mrs. A. J. Angerer, mother of the groom-to-be.

The "hostess gifts were an electric blanket and a kitchen utility set.

Hostesses were Mesdames H. C. Heinrich, Ben Sokoll, Roy Hodges, Ray Miller, Bobby Reynolds, Bobby Miller, Gerold Broyles, Dan Winn, W. A. Heinrich, Dan Seiwert, Bob Brasfield, Fred Miller, Pauline Hill, R. R. Dreyer of Slaton, and Jerry Hodges and Ralph Hodges of Lubbock.

Continued From Page 1

which individuals alone would find insurmountable. "Community service," said the Tech mentor, "is the rent we pay for the space we occupy."

Five new directors were selected by means of balloting conducted at the meeting; Tuesday tabulation revealing election of Truett Bownds, Doug Galassini, J. E. Gray, Jim Hughes and Don Kendrick.

Ed Williams is the 1963 president, assisted by Bob Clodfelter, vice-president, and J. S. Edwards Jr., Treasurer.

Holdover directors are Clodfelter, Earl Ehlen, Edwards, and Ensbund, W. H. Heinrich, Robert Huser, Harry Stokes, Dr. Lee Vardy and Williams.

Mrs. Tommy Davis was announced as "Slaton Woman of the Year" by Mrs. W. K. Fry who cited the recipient for attributes as "an outstanding mother, a church worker, club worker, Girl Scout leader, and for being the kind of woman who is not content to sit at home by the side of the road and be a friend to man, but one who goes out to serve". Mrs. Fry was awarded winner of this honor last year.

Alex Webb was revealed as "Outstanding Citizen of the Year" in presentation made by Dr. Lee Vardy. Counted among his contributions were activities with youth, civic and service clubs, Boy Scouts, Little League, chamber of commerce and church.

The Slaton Lions Club was told as selection by a secret committee for the honors of "Distinguished Service". Contributions of that civic organization were outlined, with commendations extended for a score of activities including aid in the oral polio program, broom sale for aid to the blind, little league activity, Boy Scout endeavors, financing of trips by local crippled children to the Lions Kerrville Camp, purchase of eyeglasses for local children, Christmas tree sale in a fund-raising project enabling purchase of an emergency mobile unit for the volunteer fire department, collection of books for shipment to Mexico, aid in ticket selling at football games, etc.

Table decorations were provided by the Athenian Study Club, and the meal was served by Bruce's Cafe personnel.

Dee Bowman was master of ceremonies, with Rev. Fred Ryle, local Presbyterian minister, delivering the invocation. Mrs. M. G. Davis provided dinner music.

Postal Receipts Show '62 Gain

Postal receipts at the Slaton postoffice aggregated \$53,470 in 1962, representing an 8.2 per cent increase from the \$49,407 recorded the previous year, according to figures released by Postmaster Harry Ford. Increase amounted to \$4,063 without benefit of 1st class postage increase, thus being a true indication of increased activity through local mails.

Postal patrons are reminded of the new rates now effective, most letters going for 5c, with airmail stamps now 8 cents each.

MINIMUM SIZES

Caution also was expressed by Ford this week in noting the minimum size restrictions now set forth for envelope mailing.

If you are a proud parent, about to announce a new birth, a mother about to send out your child's birthday invitations, a friend of a bride-to-be mailing shower invitations, or a gift recipient about to mail a thank-you note — watch out!

If you want that missile of mail to arrive at its destination, it would be advisable to conform to new postal regulations which came into effect with the new year.

According to Slaton Postmaster Ford, here are the new limitations on sizes of envelopes, cards and self-mailers.

They must measure not less than three inches width or 4 1/4 inches in length, and they must be rectangular in shape. In addition, envelopes more than nine inches in width or 12 inches in length or those which have a ratio of width to length of less than 1 to 1.414 (1 to the square root of 2) are not recommended.

MINOR RESTRICTIONS

"I mention birth announcements, birthday and shower invitations and thank-you notes specifically," said Ford, "be-

Motor Rebuilding Firm Opens Here

Announcement is carried elsewhere in this issue of the Slatonite revealing a new business in Slaton, the Reliable Motor Rebuilding firm, 165 West Panhandle, headed by Bud and Bob Siekman.

The Siekman brothers come here from Abilene where they were in the same type business.

The firm will specialize in automotive and irrigation motor rebuilding, the partners state.

Bob Siekman is single, and Bud's family is planning to join their husband and father here as soon as suitable housing is obtained. They have two children, Karen, age 12; and Kathy, age 5 years. They are members of the Baptist Church.

CARD OF THANKS

We wish to express our deepest and heartfelt appreciation to all who were so thoughtful at the time of the loss of our dear husband and father. Special thanks goes to all the doctors, the ministers and loving friends for all their wonderful deeds. May God's richest blessings be with you all.

Mrs. Clyde Shaw and family

cause quite often these items are of unusually small dimensions or of odd shapes.

"Although these restrictions are minor ones, full cooperation of the public will assist materially in enabling post offices to mechanize and economize."

Envelopes, cards and self-mailers which are smaller than the minimums indicated above, or which are not rectangular in shape, are non-mailable. Post offices will not accept them for processing and delivery, explained the official.

Coming Events

Thursday, January 24
Jayceettes, 7 p.m.
V. F. W. Auxiliary, 8 p.m.
at V.F.W. Hall.
Rotary Club, noon at house.

Masonic Lodge, 8 p.m.
Masonic Hall.

Friday, January 25
Senior Citizens Club, 2 p.m.
at clubhouse.

Sunday, January 27
B. or R.T., Lodge 892, at Legion Hall.

Monday, January 28
American Legion, 7:30 p.m.
Rainbow Girls, 7 p.m.
Masonic Hall.

City Commission, 8 p.m.
Tuesday, January 29
Lions Club, noon at Club Cafe.

Alcoholics Anonymous, 7 p.m.
at 205 S. 11th Street.

Wednesday, January 30
Jaycees, 8 p.m.
Two days left for payment!

STOP DRIPPING PA...
STOP FREEZING...
USE WRAP-...
Insure instant hot and cold water by insulating pipes. Prevent water from freezing. Save expensive hot water. Good insulation is a lifetime investment. \$1.00 package provides 1 double insulation 17ft of 1/2" pipe.

Lasater - Hoffman Hardware

FIRST STOP FOR Home Hunters!

Are The Slaton Slatonite Classified Ads

Save Your Valuable Time Shop The Classified Columns First!

Whether you desire a 2, 3 bedroom home or a many roomed mansion, you'll find it listed in the Slatonite by a reputable Slaton Real Estate Dealer or an individual.

If You Want to Trade

You'll probably be able to reach your prospect through The Slatonite.

Just Call VA 8-4201

reach... FOR EXCITEMENT through Journalism

Caps Canaveral, courtrooms, police stations, baseball diamonds and the football gridiron are a few of the places you may go as a news writer.

For more information see or write:

- YOUR LOCAL NEWSPAPER
- HIGH SCHOOL COUNSELOR
- NEAREST COLLEGE JOURNALISM DEPT.
- TEXAS PRESS ASSOCIATION

Texas Press Association
1716 SAN ANTONIO STREET, AUSTIN 1, TEXAS
(This ad prepared by Texas Tech Journalism Department)

Society - Clubs

The Slaton Slatonite

MERLE KING, SOCIETY EDITOR

PHONE 5314

The Slaton Slatonite

Thursday, January 24, 1963



MRS. TOMMY DAVID STELL, nee Linda Kay Roper

Linda Kay Roper Bride Of Tommy David Stell

Tommy David Stell and his bride, the former Miss Linda Kay Roper, who were married Saturday evening are on a wedding trip to Durango, Colorado and points in New Mexico.

The bride is the daughter of Mr. and Mrs. Claud Roper, Rt. 2, Wilson. She is a graduate of Wilson High School and Lubbock Christian College, where she was a member of Metah Moe Social Club, Meistersinger Chorus and Student National Education Association.

Mr. and Mrs. David Stell, Rt. 1, are parents of the bridegroom, also a graduate of Wilson High School and a student at South Plains College, where he is president of Forrest Hall and a member of Phi Theta Kappa, national honor society.

Cline Drake of Gordon officiated for the double ring ceremony in the Slaton Church of Christ.

Mr. Roper gave his daughter in marriage. She wore a formal

length dresses of red peau de soie brocade fashioned with basque bodices having bateau necklines, elbow-length sleeves and bell shaped skirts. Headpieces were of matching handmade cabbage roses topped with circular veils of illusion. They wore short white kid gloves and each carried a long stemmed pink rose.

Best man was Lynn Culp, Petersburg, and groomsmen included Claud Roper Jr., Wolf-orth, brother of the bride; Bobby Porter and Buddy Melton, both of Afton; and Dean Daniel of Lubbock.

Eddie Williams, assisted by Claud Roper, Jr. and Buddy Melton, seated the wedding guests. J. B. Rackler Jr., Southland, cousin of the bride, was junior usher.

Sue Cobb of Athens, Ala., and Sandra Wiggins of Roswell, New Mexico, were candlelighters.

Nuptial music was presented by the Broadway Church of Christ Wedding Chorus with Horace Coffman, soloist.

The Slaton Club House was scene of the reception afterward.

The attendants wore street-

For traveling the bride chose a geranium red two-piece suit of basket weave wool. The jacket was designed with a mandarin neckline, scalloped front and bracelet-length sleeves. She wore black and white accessories and the orchid from her bridal bouquet.

The couple will be at home in Lubbock where both will continue their studies at Texas Tech.

BAINS OFF TO NASSAU

Mr. and Mrs. C. R. Bain enplaned in Lubbock last Thursday for a weeks holiday in Nassau, the Bahamas, with stops in Houston Texas and the gateway city of Miami, Florida. In Houston Mrs. Bain will visit briefly with her sisters and their families.

Mr. Bain, owner of Bain Auto Store, earned this trip through the sale of Whirlpool appliances.

The Slaton couple will be at the Emerald Beach Hotel in Nassau.

—Want Ads Get Results—

Miss Roper Named Honoree At Shower

Miss Linda Roper, bride-elect of Tommy David Stell, was named honoree at a miscellaneous shower Monday night in the home of Mrs. Jasper Campbell Rt. 1, Wilson.

Other hostesses included Mmes. H. D. Daniell, S. V. Weaver, W. F. Raymond, Grover Coleman, Luke Coleman, Herbert Ehlers, S. A. Tilley and Sherry, Ella Mae Hall, Homer Campbell, E. L. Walker, Carl Stone, Truitt Stone, Dorothy Kincer, W. A. Wilke, and Mildred Caldwell.

The bride-elect's colors of red and white were carried out in table decorations. The table, covered with white linen, was centered with an arrangement of red and white sweetheart roses, flanked with red candles. Red streamers bore the names of the couple. White cake squares and red punch were served.

The hostess gift was a bedspread.

Church Women In New Study Course

Mrs. Emer Nelson was hostess to the C.W.F. of the First Christian Church, 7:30 p.m., January 16. The group began a new study course "Paul's Roman Sandals" based on 1st and 2nd Timothy.

Present were Mrs. Nelson, Mrs. H. L. Marsh, Mrs. Jack Smith, Mrs. G. Smith, Mrs. W. T. Davis Jr., Mrs. R. C. Sanner, Mrs. Earl Reasoner, Mrs. Hat-tie Lynch, Mrs. T. A. Davis, Mrs. M. C. Hodge, Mrs. J. L. Floyd, and Mrs. H. Sammons. Mrs. Earl Reasoner, the President presided.

The Stitch and Chatter Group met Thursday morning in the fellowship hall and completed the mending of clothing for the needy refugees in Hong Kong. The clothing has been shipped.

On Monday the group took 28 dozen 6" by 6" and 20 dozen 4" by 4" dressings and 2 dozen bed protectors, which the women made, to be distributed by the American Cancer Service in the Lubbock area.

Literary Honors Reaped by Sue Oats

Miss Sue Oats, a senior education major at McMurry College in Slaton, won first place in poetry writing as the McMurry literary magazine, The Galleon, was distributed this week. Miss Oats won third place in short story writing.

The Galleon was presented in an assembly program, and winners in all divisions were presented certificates of achievement.

Miss Oats is extremely active in campus activities. She is a member of S.E.A., Alpha Chi, and Kappa Delta Pi. She was junior class favorite last year.

Sue is the daughter of Mr. and Mrs. Jay Oats, who live on Route 2, Slaton.

Grace Class Group Held Regular Meet

Twenty-two members were present last week when the Grace Mission Workers of Grace Lutheran Church met at the Parish Hall for regular meeting.

The session was opened with the song, "May We Thy Precepts Lord, Fulfill", with Mrs. A. A. Russell presenting the cause of the month, evangelism. The worship offering was led by Mrs. Marvin Rushing.

The group sang the new song for the year, "O Saviour, Precious Saviour", followed by the Bible study led by Mrs. Leroy Deans.

One new member was admitted at the business session, Mrs. Sylvia Brown.

Refreshments were served by hostess Mrs. Fred Kahlich and Mrs. A. A. Russell.

"Texas, Our State" Was Topic at Club

The Centrettes Study Club met Monday, January 21, at the home of Mrs. Tommie Tomlin with Mrs. W. B. Wilks as co-hostess.

Mrs. Jerry Don Ross gave an interesting program on "Texas, Our State".

Refreshments of sandwiches, potato chips, pickles, olives, brownies, and cokes were served to fourteen members: Mesdames Jackie Allred, Arlie Bownds, Harley Castleberry, Truman Ford, Jackie Haire, Jack Halburton, Joe Holland, Joe Ross, Pat Taylor, Ralph Thorpe, Ray Wilkins, and Tomlin, Wilks and Ross.

Marinell Speaks For Study Group

Fifteen members and a guest, Mrs. J. W. Richardson, were present when the Daughters of the Pioneers Study Club met Monday evening in the home of Mrs. Don Crow. Mrs. Jack Nowlin presided for the business session.

Marinell was guest speaker for the evening and demonstrated with oil on canvas how to paint portraits. She showed how highlights, middle-tone and shadows give the feeling of depth to a portrait.

Next meeting for the club will be a Mother-Daughter Tea, February 4, at the Slaton Club House.

Luncheon Courtesy For Recent Bride

Mrs. M. J. McSween III, a recent bride, was honored with a luncheon January 15 in the home of Mrs. Max Arrants, 750 West Lubbock St. Assisting Mrs. Arrants with the hospitality were Mrs. Claude Porter and Mrs. Howard Hoffman.

The honoree is the daughter of Mr. and Mrs. George W. Hay of Lubbock and was married to Mr. McSween in a ceremony at the Second Baptist Church in Lubbock on December 29.

The table was laid with a cut-work linen cloth and centered with a silver bowl containing an arrangement of green grapes and white pom poms interspersed with gardenia foliage. Other appointments were silver.

Places were marked for twelve, including Mmes. George W. Hay, M. J. McSween II, Jack Nowlin, J. S. Edwards Jr., V. G. Browning, Wade Thompson, Oree Glasscock, Ed Had-dock, Harmon Thompson, Geo. Brassell, Cecil Scott, and the guest of honor.

The hostess gift was a silver tray.

Demonstration Group Studied Soap And Detergents

"Soap, Detergents and Fabric Conditioners" was subject of the program presented last Wednesday in the regular meeting of the local Home Demonstration Club.

Mrs. W. L. Roche and Mrs. J. W. Pettigrew, home management leaders, presented the program; and Mrs. Alton Meeks, president, was in charge of the business session.

Mrs. Meeks led the group in games, and refreshments were served to Mesdames William B. Brown Jr., Paul Gilbreath, Earl Stahl, Meeks, Roche and Pettigrew.

Next meeting of the group will be February 6th at the Slaton clubhouse.

CARD OF THANKS

We wish to express our deep appreciation to Dr. James, to the management and nurses of Mercy Hospital, and to all others who comforted during the recent death and bereavement of our dear mother.

The family of
Mamie G. Hancock

Sandra Black Wed To E. G. Smith Jr.

Miss Sandra Jane Black and Elton Giles Smith, Jr., were married Saturday at the home of his grandparents, Mr. and Mrs. Judge C. Smith.

Mr. and Mrs. Arthur C. Black 3410 30th St., Lubbock are parents of the bride; and Mr. and Mrs. Elton G. Smith, parents of the groom.

Dr. Charles L. Wood, pastor of the First Baptist Church, officiated for the double ring ceremony.

Mr. Black presented his daughter in marriage. She chose a white basket weave wool suit fashioned with a slim skirt and semi-fitted jacket designed with bracelet length sleeves and self-covered buttons. The jacket was accented with a white fox collar. She wore a matching pillow hat and sand white accessories completed the bridal attire.

Maid of honor was the bride's sister, Miss Debbie Black of Lubbock. Her dress was a wint pink sheath, fashioned with two small bows accenting the waist. Larry Smith attended his brother as best man.

When the couple left for wedding trip to New Orleans, La., the bride was wearing beige wool suit with bone accessories and the gardenia corsage from her bridal bouquet.

The bride is a graduate Monterey High School and is sophomore business major Texas Tech, where she is member of Zeta Tau Alpha sorority. Her husband is a graduate of Slaton High School and is junior agronomy major at Texas Tech. His fraternity is Kappa Sigma.

The newlyweds will live on I 1, Slaton, where the groom engaged in farming.

Circle Meets With Mrs. Joe Teague J

Mrs. Joe Teague Jr. was hostess for members of the Lot Moon Circle of the First Baptist Church last Wednesday morning.

A study from the missive study book, "The Chains of Stronger", was presented by Mmes. R. L. Smith, Mark Et and H. G. Stokes.

Mrs. Smith presided at meeting and Mrs. Ben Ke gave the scripture from Romans.

Mrs. Smith will be hostess the next meeting February 2 at 9:30 a.m.



PRETTY MISS KELLY JO MYERS of Southland should put the area on the map when she rides in the Grand Entry at the Fort Worth Stock Show Rodeo next Monday, also participating in the parade and other events. At the rodeo she will receive special introduction, as she will represent the City of Post as Cowgirl Sweetheart.

Honeycomb, the beautiful mare ridden by Kelly Jo, is owned by Ed "Kelly" Sims, and will be entered in the paint horse show at the stock show, where the mare will receive the High Point Award Trophy as "high point mare of 1962", having earned this honor by virtue of wins at various horse shows during the past year.

Kelly Jo, petite daughter of Mr. and Mrs. Jack Myers, is 17 years old and attends Southland high school. Her hobby, possibly guessed by now, is horses and rodeos, and she has entered a number of rodeo events during the past years, excelling in barrel racing and pole bending. She is a cowgirl in her own right, living on the Star ranch in Garza County where she works right along with her father and ranch-hands.

Honors are nothing new for Kelly Jo who at the age of 5 years was named "most typical little cowgirl" at the Southwestern Championship Junior Rodeo in Post, and later (in 1959) was chosen rodeo queen at the same rodeo.

FUN TO DRIVE...

EASY TO OWN!

Exciting new blend of beauty and action... in the low-price field! What a simple, saving way to move into an Oldsmobile! The stylish, longer-looking F-85 sports a spirited aluminum V-8... maneuvers around tight turns and into snug parking places with equal ease! Yet it's priced right down in the low-price field! Fun-drive an F-85... today!

There's "Something Extra" about owning an OLDSMOBILE!

OLDSMOBILE F-85

SEE YOUR LOCAL AUTHORIZED OLDSMOBILE QUALITY DEALER

DAVIS OLDS INC. 130 WEST LYNN STREET

Turkey meat, he adds, continues to be a good year-round meat buy.

Job printing is a fine art at the Slatonite. Rush orders are welcomed. Phone VA 8-4202.

Rev. Sammut Was Guest Speaker

Rev. Tito Sammut, native of Malta, was special guest of the

Catholic Daughters of America when they met Wednesday evening in St. Joseph's Hall. He used colored film, slides and pictures in explaining the customs, history and scenic places of Malta.

Mrs. Clarence Kitten, grand regent, presided at the business session, at which time Mrs. Albert Kuss gave the report for

the sick committee. The sick committee for January includes Mrs. Louie Melcher, chairman; Mrs. Josephine Looke, Mrs. Cecilia Maeker, Mrs. Ed Maeker and Mrs. Johnny Melcher.

Members will join the Centuriettes in the March of Dimes Campaign. All volunteers are asked to meet at the clubhouse January 31 at 5:30 p.m.

The court will again sponsor the annual poetry contest at St. Joseph's school. Members who wish to help score the Go-Kart races on April 7 are asked to contact the grand regent, Mrs. Clarence Kitten. Contributions were made to the March of Dimes and scholarship fund for teachers of retarded children.

C.D. of A. window decals will be available from Mrs. Walter Lee Bednarz.

Donuts and coffee were served by Mrs. Louie Melcher to the 58 members present.

It's time to take and submit soil samples for testing from fields which are being prepared for this year's crops, says Bill Bennett, extension soil chemist. A soil test recommendation, he adds, is mighty good insurance when it comes time to buy fertilizer. Insurance that you'll apply the right kinds and in the right amounts for profitable crop or pasture production.

Pre-Nuptial Parties Held Recently For Miss Linda Sue Reasoner

Continuing a series of in-honor affairs for Miss Sue Reasoner, bride-elect of Lyndon Maeker, was a Friday shower and a Saturday luncheon.

Miss Reasoner, daughter of Mr. and Mrs. L. A. Reasoner, and Maeker, son of Mr. and Mrs. Ed Maeker, will exchange wedding vows January 26 in St. Elizabeth's Catholic Church in Lubbock.

BRIDAL SHOWER
The bridal shower was given Friday evening in the home of Mrs. Robert H. Davis. Hostesses included Mmes. R. H. Davis, M. M. Brieger, Earl Reasoner, C. E. Dickson, Clarence Heaton, Paul Buxkemper, Stan Jaynes, and Claude Porter.

Others were Mmes. Bill Chriesman, Marion Hodge, Bill Wright, Don Hatchett, Truett Bownds,

Joe Holland, Phillip Dawson, and Mrs. Melvin Johnson of Lubbock.

Members of the houseparty who assisted with the hospitality were Miss Ann Yates of Perryton; Gail Johnson of Lubbock; Kathy Buxkemper, Mrs. Wendel Brieger, and Mrs. Lee Meurer.

The serving table, covered with a white cutwork cloth and appointed in silver, featured silver candleabra and white pom pom mums and leather leaf in a silver epergne.

Seventy-seven guests were greeted by Mrs. Robert Davis and Mrs. Melvin Johnson. The registry table which held the bride's book was enhanced with a white floral arrangement and miniature bride and groom.

In the receiving line with the honoree was her mother, Mrs. A. L. Reasoner; Mrs. Ed Maeker, mother of the prospective groom; and the bride's grandmother, Mrs. Nora Kirk.

The hostess gift was an assortment of linens.

LUNCHEON
Dunlap's Tea Room in Lubbock was the scene of a bridal luncheon Saturday for Miss Reasoner. Hostesses were Mmes. W. B. Nesbitt, Douglas Galasini, W. T. Davis Jr., and M. G. Davis.

The table held an arrangement of white stock on a round mirror. Places for twelve were laid with gold mats and marked with gold lettered cards.

Special guests were Mrs. L. A. Reasoner, Mrs. Ed Maeker, and Mrs. Nora Kirk.

The hostess gift was a piece of silver in the bride's choser pattern.

T. E. L. Class Met With Mrs. Hanna

The T.E.L. Sunday School Class of the First Baptist Church met last week in the home of Mrs. B. A. Hanna, with Mrs. Geo. Payne as co-hostess.

Mrs. E. M. Lott presided, with Mrs. Willie Mae Smith in charge of the devotional period. Several songs were sung, and Mrs. R. L. Smith read the poem, "House by the Side of the Road".

Refreshments were served to the 12 members present.

Next meeting will be with Mrs. Joe Teague Jr., on February 14th.

A miniature cotton gin in the Agricultural Engineering Department at Texas A&M College is helping evaluate cotton mechanization research, says B. G. Reeves, extension cotton gin and mechanization specialist. The gin is used to handle samples from the research projects being conducted at different locations in the state, he says.

Southern yellow pine lumber, a lot is produced in Texas, has been shown by U.S. Department of Agriculture's Forestry Products Laboratory tests to be the strongest wood for construction purposes. Bill Smith, extension forester, recommends it for any and all construction.

Miss Ann Yates of Perryton was the houseguest of Miss Sue Reasoner last weekend.

—Want Ads Get Results—

Lions Attended District Conclave

Slaton Lions attending the District 2T2 Mid-winter Conference in Plainview Saturday and Sunday included Haek Lasater and Bob Graves, together with their wives.

Lasater is deputy district governor of the Lions organization, with Graves as secretary of the local club.

Highlighting the Plainview conference was the Sunday address by Ralph Whitten, Des Moines, Iowa, international director of Lions.

Mrs. G. F. McGuire and Mike and Kenneth of Amarillo were Sunday and Monday visitors in the home of Mrs. Nora Kirk.

It Won't Be Long Until Our Grand Opening

Watch For Our **Big** Announcement

Slaton Fertilizer and Chemical, Inc.

WES-TEX PEST CONTROL

We Exterminate All Household Pests
Roaches, Termites, etc
BONDED & INSURED

Call For Free Inspection
W. B. WILKS

715 So 15th VA 8-5260

JANUARY CLEARANCE SALE!

ENTIRE OVERSTOCK . . . ONE AND MUST GO TO MAKE ROOM FOR OUR FEW-OF-A-KIND FLOOR SAMPLES NEW PURCHASES NOW ARRIVING . . .

- TABLES LAMPS**
- 9.95 Step Tables **\$6.66**
 - 17.95 Solid Maple Tables, any Style **14.00**
 - 69.95 Marble Top French Prov. Tables **55.00**
 - 9.95 Table Lamps **6.00**
 - All Floor Lamps Regardless of Style **1/2 price**
- FLOOR COVERINGS**
- 8.50 Nylon Carpet **5.70**
 - 9.95 All Wool Wilton **5.47**
 - 11.95 Nylon Carpet **7.79**
 - 9.95 Nylon Carpet **5.77**
 - Heavy Weight Armstrong Linoleum **1.00** Sq. Yd.
 - Heavy Weight Vinyl **1.56** Sq. Yd.
- MISCELLANEOUS BUYS**
- 6.95 Bridge Tables **3.95**
 - All Metal Student Desk **15.95**
 - Toy box **6.95**
 - 109.95 Maple Gun Case **89.00**
 - 31.00 - 6 Year Crib **24.80**

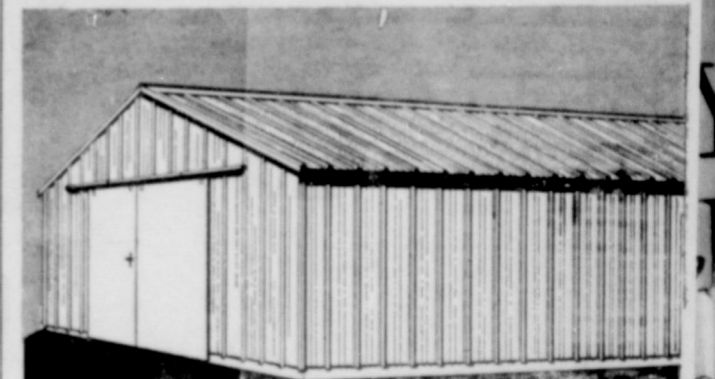
- BEDROOM SUITES SACRIFICED**
- 2 Pc. Solid Oak **89.00**
 - 352.50 - Piece French Prov., White Cherry **287.00**
 - 3 Big Pieces; Triple Dresser, Bookend Bed and Chest of Drawers, Modern **98.00**
 - 4 Pc. Maple Suite, Dbl. Dr., Bed, Chest and Night Stand **140.00**
- LIVING ROOM FURNITURE**
- 249.00 - Club Chair and Sofa, Rose Belge Nylon Cover - Modern Design By Brandt **149.00** With Trade
 - 339.00 - 2 Pc. Suite - High Styled, Nylon over **219.00**
 - 295.00 Sofa By Pullman **195.00** With Trade
- SOFA BEDS**
- 198.00 - 7 Pc. Sofa Bed Suite **159.00**
 - 249.50 - 7 Pc. Ranch Sofa Bed Suite **199.00** With Trade

- DINETTES**
- 79.95 - 7 Piece Suite **59.95**
 - 5 Piece Suite **37.50**
 - 79.95 - 5 Pc. Suite **64.95**
 - 129.95 - 7 Pc. Suite **89.00**
 - 129.95 - 9 Pc. Suite **99.95**
- BEDDING**
- Restown Silver Anniversary Smooth Top MATTRESS **39.95**
 - 49.95 - Mattress or Box Spring **29.95**
 - 69.95 Mattress or Box Spring **49.50**
 - 149.50 U. S. Foam Ensemble **129.50**
 - 89.00 Foam Ensemble by Brandt **59.00**
- REAL CHAIR VALUES**
- 79.50 - Chairs - Lounge or Rockers **48.84**
 - 24.95 Platform Rockers **18.38**
 - 41.95 - T. V. Chairs **29.95**
 - 39.95 - French Spot Chair **21.50**
 - 119.00 - Pullman Lounge Chairs **87.00**

TERMS TO FIT YOUR BUDGET	\$6.95 Bridge Tables 3.95	Decorator Pillows 2 for 5.00	10-Peg Accordion Hat Racks Maple 2.49	\$1.98 Size Lustre Foam Shampoo 59c	50c Size Lemon Oil Polish 19c
--------------------------	----------------------------------	-------------------------------------	--	--	--------------------------------------

BLAND'S FURNITURE

Need a new farm building?



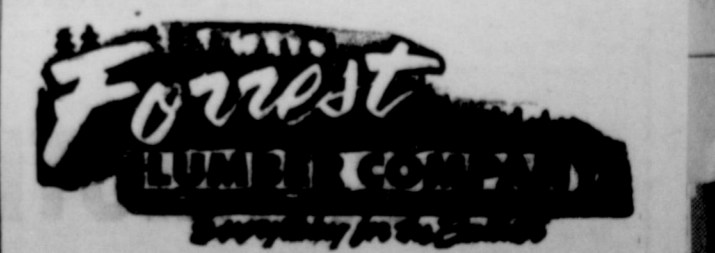
HERE IT IS... A COMPLETE CLEAR SPAN BUILDING

CUCKLER AGRICULTURAL BUILDINGS CAN BE USED FOR

- Cattle Barn
- Poultry House
- Machinery Storage
- Grain Storage
- All Purpose

If you need a new building on your farm, the time to get it now. Choose from widths of 24', 32', 40' or 44'. Every building is complete with galvanized iron siding and roofing. Regular Cuckler Building features — 100% usable space, superior strength, clear span construction. So easy you can put it up yourself in days, not weeks. Or we'll handle it for you. Stop in or call NOW. Have your building working for you just days from now.

Nothing Down - Monthly or Annual Payment Plans Now Available



250 So. 9th VA 8-4106 SLATON

