

RENEW NOW!

Progress Is—
Making
Good Things Happen

THE RISING STAR

Where Three
Good Texas Counties
Get Together

Rising Star, Texas

©1991 Eastland County Newspapers, Inc.

Established in 1890

50 Cents

Thursday, December 5, 1991

Number 49

Holiday Open House Was Held at Peoples State Bank



Polly Price, right, was one of many guests served by Jean Ramsay, left, and Ann Ford, center, at the Holiday Open House held by the Rising Star Branch of Peoples State Bank, Clyde.



Doug Ford, president of Peoples State Bank, Clyde talks with Maurine Wells during the bank's open house at the Rising Star Branch.



Attending the Holiday Open House at the bank Tuesday was five-year-old Jessica Riddle, along with her grandmother, Betty Hounshell, and favorite stuffed toy.

Plan to Join in the Hometown Christmas

Watch for downtown and a Christmas lights to be turned on Friday.

Plans for Rising Star's first annual "Hometown Christmas" are beginning to take shape. This community holiday celebration is coming about on Monday, December 16, at the American Legion Hall parking lot.

Mark your calendar and plan to join everyone at the community Christmas tree downtown at 7 p.m.

Santa Claus will be there ...

... and Mrs. Claus, too. There will be entertainment for all ages, church

choirs, refreshments, fun and fellowship.

"Hometown Christmas"

sponsored by Star Pride and your Chamber of Commerce & Agriculture.

Christmas Party at Lakewood Saturday

Don't forget the Christmas party this Saturday, December 7. The social will begin at 6:30, with the meal to follow at approximately 7 p.m. Everyone should bring a dessert and a side dish. The Ladies Association will supply the ham and dressing.

We will also play bingo afterwards. Each person should bring a gag gift or some old white elephant item you have laying around the house. Wrap each item so they won't know what they are getting. If you are bringing children you might want to bring a child's gift for them too. It's never too early to get them involved in the golf course. Landon has been going to Lakewood since he was just a few weeks old, and

he and Mande both love to play golf.

The response on nominations for the Board of Directors has been very low. There are four directors whose terms are expiring. They are President Ken Horan, Vice-President J.D. Green, Secretary Betty Westerman and Frances Taylor. Remaining on the board are Nicky Harris, Barbara McKoy and Bill Porter. Each adult member of Lakewood has a vote on who serves on the Board of Directors. Be sure to use this vote and elect a board which you, the members, feel will do the best job of improving and maintaining our golf course. I hope that our children and grandchildren will be playing on this golf course for many years to come.

The Ole Store to Celebrate 1 Year on December 15

It will be one year on December 15 since Robert and Nancy opened The Ole Store. With your patience, your kind words

and your ongoing support it has been a good year. We are proud to be part of our community.

Thank you!

Local Woman Was Injured in an Auto Accident Last Week

Bill Gray, longtime resident of Rising Star, was very seriously injured in a two-vehicle accident here last Friday.

She suffered a broken wrist, ankle, pelvic bone and ribs and had internal injuries. Surgery on her left ankle was postponed when it was necessary to give her blood transfusions Saturday night because of internal bleeding. It was postponed again after her condition worsened Monday night. She was stabilized Monday night and was a little better Tuesday morning. Family members said it might be a week or two before she will be able to

undergo surgery on her ankle.

Mrs. Gray was transported to Humana-Abilene by Rising Star EMS.

The driver of the pickup was apparently uninjured and his passenger, a young boy, was treated and released.

The accident happened on U.S. Highway 183 N about mid-day after Mrs. Gray, apparently not seeing the pickup, pulled into its pathway.

Saturday Club Hosts 2nd Annual Christmas Concert

The Saturday Club is pleased to invite the community of Rising Star to its second annual Christmas Concert Tuesday, December 10, at 6 p.m. at the Methodist Church. The Cisco Junior College Choir, directed by Professor Wylie Peebles, was well received last year.

Refreshments will served directly after the concert at the City Library. Saturday Club

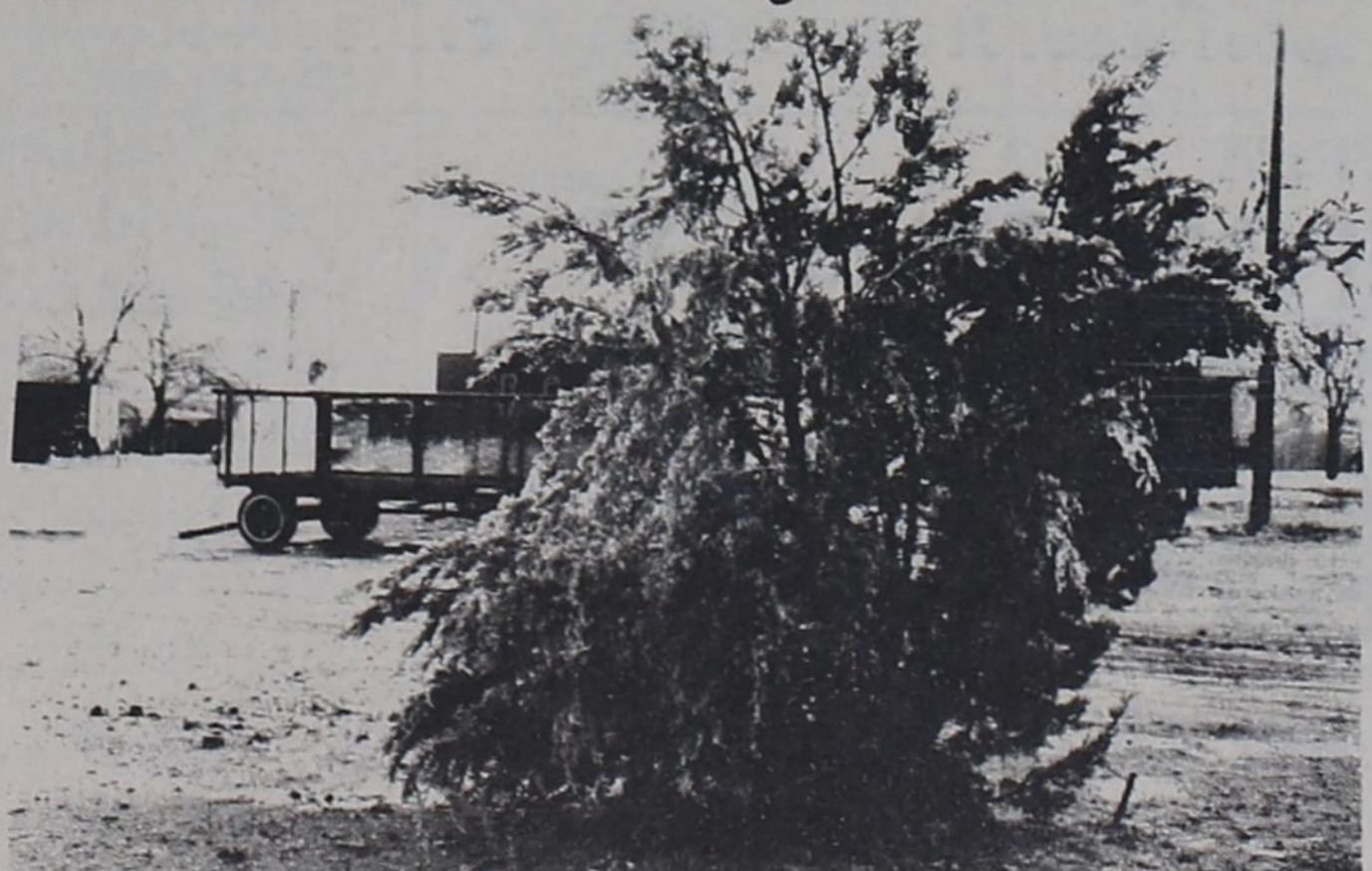
members will be hostesses.

This performance will be the club's gift to the city.

Many subs expire Jan. 1,

RENEW NOW!

It Must Already Be Winter



Rains began in the early hours Sunday and coated everything in ice although dirt roads had water puddles rather than ice. The temperatures hovered around freezing until the sun and southerly breeze warmed things up Monday.



Kids! Santa's Coming!

Santa will be in town Monday night, December 16. Ask your parents to bring you to the American Legion Hall at 7 p.m. Santa should be there shortly.

He will have "goodie bags" for youngsters through grade 6 from May

and Rising Star.

Santa is busy preparing for delivery of toys to all the boys and girls, so come and tell him what to bring to your house!

There will be someone available to take your picture with Santa, too.

School Calendar

by Leah Maynard
Rising Star High School will have a busy week, with something happening every day.

Calendar of Events
RSHS basketball teams will compete in the Santa Anna Tournament Thursday through Saturday, December 5-7.

Junior High will host Brookesmith Monday at 6 p.m., December 9, and High School hosts Zephyr Tuesday, December 10, at 6:30.

The Christmas Band Concert will be Thursday, December 12.

RSHS did great in sports the past week, playing hard and giving it their best. "It's not whether you win or lose, it's how you play the game."

Junior High Basketball

The Jr. Lady Cats enjoyed their trip to Brookesmith last week to play against the Lady Mustangs even though the game ended in defeat for the Jr. Ladies, with a score of 16-14.

The Jr. boys brought home an exciting win for Rising Star as they defeated Brookesmith with a score of 32-9. The Cats

have been working hard on their defense and are looking forward to upcoming games against Brookesmith.

High School Basketball

The RSHS Lady Cats played only one game last week due to the Thanksgiving holidays. They hosted Gorman in a tension filled game of skills Tuesday, November 26. Although the Lady Cats lost (38-31) it was a close game and they played hard and good. Good luck, Cats!

The Wildcats lost to the Gorman Panthers 48-42 last Tuesday in Rising Star. Better luck next time, Cats!

Thank You

My sincere thanks to all my Eastland colleagues, Sheila, Margaret and Ladonna, for completing the paste-up work and to Debbie (Baird editor) for helping with the mail work and John for delivering the printed newspaper in Rising Star when I was ill last week. And thanks to Pam for taking me to the doctor and home and to Tabitha for driving the truck.

Community Calendar

THIS THURSDAY HOW TO STUDY
Study Skills Strategies, Thurs., Dec. 5, school cafeteria, 7 p.m.

1ST THURSDAY
Rural Fire Fighters, meet and train at County Barn, 5:15 p.m.

Board of Directors meets after training session, 6

Firefighters Assn. meets at 7 p.m., City Hall.

Dept. of Human Services assistance regarding food stamps, ADFC, Medicare, City Hall, 8:30-4:30

EACH THURSDAY Senior Citizens Center is open for lunch, activities.

City Library, open Thursdays, 9:30-11 a.m.

1ST SATURDAY Sipe Springs Musical, community center, all musicians welcome

EACH SATURDAY
Bingo, American Legion Hall, 205 S. Main

2ND MONDAY
School Board, 121 N. Main

EACH MONDAY
Old Testament Survey, Church of Christ, 7-9 p.m.

2ND WEDNESDAY
License tag renewals, County Precinct offices, Hwy. 36 W

Hometown Christmas Mon., Dec. 16
Santa and Mrs. Claus, Christmas goodies for kids (photos available), church choirs, Christmas tree, refreshments, more! American Legion lot, 7

RSNC Christmas Party Thurs., Dec. 19, 7
The Christmas party for residents of the nursing home will be Dec. 19 at 7.

EASTLAND COUNTY ASCS PEANUT SCORE BOX

Eastland County Peanut Production Summary as of November 27 with Harvest 75% Complete:
TOTAL LOADS PEANUTS SOLD 3,514
TOTALS POUNDS SOLD 31,235,257
POUNDS SOLD PER ACRE 1,139
ESTIMATED DOLLAR VALUE \$9,225,418

Dr. Carpenter's Office

Will Be Closed

2nd Week in December (9-13)

Retired Teachers To Meet Dec. 9

The Eastland County Retired Teachers and Associates will meet Monday, Dec. 9, 11:30 a.m. at K-Bob's Steak House in Eastland. Lena Stockton will present a program on Christmas Decorations.

Each person is reminded to bring a canned item of food or paper goods for the Community Food Pantry.

The Rising Star Sells RUBBER STAMPS

Safety Tips for Heating Equipment

- The State Fire Marshal's Office recommends these safety precautions for operating heating equipment:
- Keep all heaters at least THREE FEET away from combustible objects**, such as walls, curtains, drapes and furniture, especially beds. Use a yardstick or meter stick to measure the distance.
 - Use only heating equipment that is in good operating condition.** Watch for worn electrical cords, gas leaks or faulty switches. Keep your heating equipment (including ducting) clean.
 - Have your heating equipment, both central systems and portable equipment, serviced by a qualified expert at least once a year.** Have your fireplace, wood-burning stove and chimney inspected and cleaned at least once a year.
 - Test your smoke alarms frequently.** Install a smoke alarm if you don't have one. Contact your local fire department if you can't afford one or install one yourself. Change the battery if it has not been changed in the past year.
 - If your heating equipment is not safe, ASK FOR HELP.** Contact local authorities for help in improving your heating equipment or for locations of shelters in extremely cold weather.
 - If you know someone who does not have safe, adequate heating equipment, offer help or ask a local social service agency to help.**
 - Be sure all heaters, stoves, fireplaces and chimneys are installed and insulated properly.** Check for heating of adjacent floors and walls, which can be very hazardous.
- Use only approved heaters and fuels.** Check for UL or Factory Mutual labels. Because portable heaters are illegal in some jurisdictions, check with local fire authorities to be sure that portable heaters are allowed in your area.
 - Follow all operating instructions for your heating equipment EXACTLY.** Re-read the instructions before operating your heater.
 - Wear close-fitting pajamas or night clothes — and avoid loose, billowy gowns or robes —** to reduce the risk of igniting your clothes by contacting heaters or cook stoves. Warn senior citizens and children to stay away from heaters.
 - Be sure there is adequate ventilation in any area where there is an open flame.** Keep the central gas heating system ventilation ducts open. Provide ventilation for wood- or gas-fueled heaters by opening a window.
 - Practice emergency procedures so you and your family know what to do in case of a fire:**
 - Know to "stop, drop and roll" to put out the fire if your clothes catch on fire.
 - Have an emergency exit plan with two exit routes from each room, and explain your plan to overnight guests. Keep your exit routes clear; don't place portable heaters near doorways or in halls.
 - Hold a practice exit drill each month so everyone will know how to get out safely.
 - Emphasize the importance of getting out quickly in case of fire.

For more information on heating safety and fire prevention, contact your local fire department or the State Fire Marshal's Office, Information & Education Section, Texas Commission on Fire Protection, Mail Code 205-1D, P.O. Box 149104, Austin, Texas 78714-9104, telephone (512) 322-3550

Types and Causes of Heating-Related Fires

Illustrating the need for a comprehensive approach to heating safety, TEXFIRS statistics show the most common causes of fires involving different types of heaters. NOTE: This table includes statistics only on heating-related fires for which the fuel or power and the cause was reported.

Type of Heater*	Fuel/Power	# Of Fires	Most Common Cause (# Attributed)	2nd Most Common Cause (# Attributed)
Water heaters	Gas	432	Combustible too close (123)	Part failure, leak or break (83)
	Electric	34	Short circuit, ground fault (23)	Other electrical failure (5)
Central units	Electric	92	Electrical failure (55)	Part failure, leak or break (10)
	Gas	89	Part failure, leak or break (42)	Lack of maintenance, worn out (15)
Portable local	Electric	90	Combustible too close (33)	Electrical failure (15)
	Gas	89	Combustible too close (40)	Part failure, leak or break (16)
Fixed local	Gas	134	Combustible too close (43)	Part failure, leak or break (35)
	Electric	26	Short circuit, ground fault (42)	Combustible too close (2)

* Fixed local heaters are designed to remain stationary and heat a small area or room. Portable local heaters are designed to heat a small area or room and are generally easy to relocate. Central units are generally designed to circulate warm air from a central heating unit.

SUGGESTED TELEPHONE LABEL

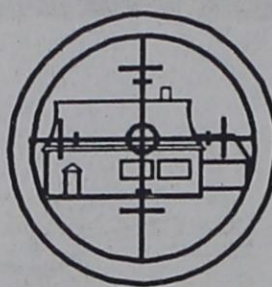
TO REPORT FIRES OR EMERGENCIES CALL

643-3001

YOU ARE CALLING FROM

PHONE _____
ADDRESS _____

Your Home



In the line of **FIRE!**
Protect Your Investment

PREVENT RANGE FIRES

Texas Forest Service
Texas A&M University System

Is your home in the line of fire?

Area firefighters and ranchers fear that heavily grassed Texas ranges could fuel more destructive wildfires than those that occurred in and around Shackelford County in 1988 and the North Texas town of Stinnett in March of 1991. Thanks to above normal rainfall during 1991, Texas ranges boast taller and denser grass cover than many area residents can ever remember seeing.

Don't let a range fire take your home and ranch. The Texas Forest Service suggests that you build fire breaks around your home and other structures.

Contact your local fire department for additional tips on how to protect your property and prevent wildfires.



WARNING: FIRE KILLS
READ THE CLASSIFIEDS

Child Protection

The Eastland County Child Protective Services Board assists with the care and planning of our local children who are in foster care due to abuse and/or neglect.

In order for our children to have a happy Christmas, we need your financial help.

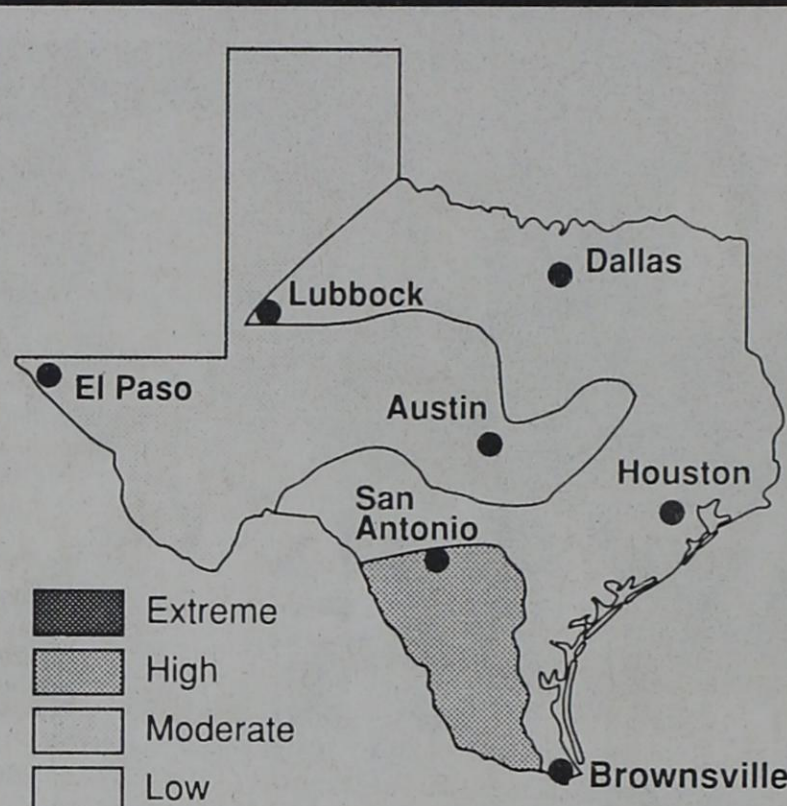
Each year, Christmas gifts are obtained through the support of community organizations, citizens and businesses.

Each child is busily preparing a Christmas list and your generosity will make it possible to obtain these gifts.

These tax deductible donations can be made to the Eastland County Child Protective Services, 1331 E. Main, St., Eastland, TX 76448. If you have any questions, please call Alice Prichard at 629-3317.

Thank you for your interest in the foster children of Eastland County.

WILDFIRE DANGER REPORT



Parts of Texas received scattered showers for temporary relief from wildfire danger, but conditions are expected to dry out again as cold fronts blow through. Source: Texas Forest Service and Texas Agricultural Extension Service. 11-21-91

Your home could be in the line of fire!

The Texas Forest Service suggests that you:

Remove tree limbs that extend over your roof or near a chimney. Keep limbs away from utility lines to protect essential services. Keep your roof free of debris. Never store flammable material like lumber or firewood under or near your home. Have coiled hoses attached to faucets on opposite sides of your home. Keep hand tools such as rakes, shovels and axes handy, along with a ladder that will reach your roof. Top your chimney with a mesh spark arrester. Screen vents and install underpinning or screening beneath porches, decks and the house itself.

Install firebreaks around your home, particularly on the downhill side if steep slopes are present. Mow dormant lawn grass closely and bag or compost the cuttings. Rake all leaves that are within 30 feet of a structure, and use bedding mulch or straw sparingly near buildings. Safely dispose of stove, fireplace and grill ashes.

Contact your local fire department for more fire safety tips.

Seasons Greetings!

IN HOW MANY LANGUAGES CAN YOU SAY "MERRY CHRISTMAS"?

- A. Danish — Satbatori vesele
- B. Finnish — Boas Festas
- C. French — Feliz Navidad
- D. German — God Jul
- E. Hawaiian — Buone Feste Natalizie
- F. Dutch — Houska Joulua
- G. Hungarian — Nadolig Llawen
- H. Irish — Boze Narodzenie
- I. Italian — Nodlag mibaith chugnait
- J. Swedish — Mele Kalikimaha
- K. Polish — Fröhliche Weihnachten
- L. Portuguese — Glwedelig Jul
- M. Romanian — Joyeux Noël
- N. Spanish — Vrolyk Kerstfeest
- O. Welsh — Kellemes Karacsonyi unnepeket

Answers Below

MAKE IT A YEARLONG GREETING WITH WELCOME NEWS FROM HOME

We'll Announce Your Gift With A Card

CALL TODAY!
Callahan Star 854-1008
Cisco Press 442-2244

Eastland Telegram 629-1707

Ranger Times 647-1101
Rising Star 643-4141

Answers to the "Merry Christmas" quiz:

A: Danish: Satbatori vesele; B: Finnish: Boas Festas; C: French: Feliz Navidad; D: German: God Jul; E: Hawaiian: Buone Feste Natalizie; F: Dutch: Houska Joulua; G: Hungarian: Nadolig Llawen; H: Irish: Boze Narodzenie; I: Italian: Nodlag mibaith chugnait; J: Swedish: Mele Kalikimaha; K: Polish: Fröhliche Weihnachten; L: Portuguese: Glwedelig Jul; M: Romanian: Joyeux Noël; N: Spanish: Vrolyk Kerstfeest; O: Welsh: Kellemes Karacsonyi unnepeket.

A LITTLE EARLY?

Maybe...But now is a good time to think of a gift subscription of The Star to a friend or loved one away.

It will say "Merry Christmas" From you 52 times a year.

And here's a gift for your thoughtfulness: \$2 Off with each local new subscription and \$1.00 Off for each in state subscription, you order from now until Christmas.

Wildcat Tales

Journalism Class
Rising Star High School

Basketball Babes

by Gherda Williams

The Lady Cats only got to play one basketball game this week due to the Thanksgiving holidays and festivities. All of the girls were, of course, excited about spending the holiday with their families, but disappointed at the fact that they did not have another game to look forward to this week.

On Tuesday, November 26, the Lady Cats hosted the Gorman High School girls' team. Our RSHS girls' team might not have won with a 38-31 score, but they did work

hard and seem to be improving more and more with every game.

Putting points on the Lady Cats' side of the scoreboard were Brandi Harris, 14; Jo Linney and Gherda Williams, 6 each; Inga Williams, 3; and Emily Stuteville and Olivia West each 2 points.

The Lady Cat basketball team's next game will be next Tuesday in Gorman at 6:30 p.m. Be sure to get over there, they would really appreciate each and every fan's support!

Stuteville's Stats

by Emily Stuteville

The Jr. Lady Cats traveled to Brookesmith last week to battle with the Lady Mustangs. The game ended in a disappointing defeat for the Lady Cats, 16-14.

In the first quarter, the Lady Cats kept up with Brookesmith, with Tianay Chambers and Angella DeLong each netting two points, making the score at the end of the period 6-4, in favor of the Lady Mustangs.

The second quarter proved to be more difficult. Rising Star remained scoreless while Brookesmith widened their lead by seven points. The halftime score was 11 to 14.

The Lady Cats came back from this deficit with Amy Collins scoring four points, Shirley Smith two and Angella DeLong banking one in for a total of eight points in answer to Brookesmith's mere three, bringing the third quarter score

to 14-12, Mustangs. The excitement peaked in the fourth quarter. A marvelous exhibition of defense from the Lady Cats forced many Brookesmith turnovers. However, many missed shots by Rising Star made the win easier for the Lady Mustangs. Scoring the only two points in the final quarter for the Lady Cats was Angella DeLong, closing the final score to 16-14, sadly in favor of Brookesmith.

Scoring for the Lady Cats were Amy Collins 6; Angella DeLong 4; Tianay Chambers 2 and Shirley Smith 2.

Coach Stuteville shared with me his thoughts about their next opponent, Sidney. "This will be our third meeting; it's time to beat 'em."

The next team they will play will be Brookesmith on December 9, here at 6 p.m.

Cosmic Thoughts

by Slam

Pisces: Did you know that making fun of people at family gatherings is rude? Well, it sort of is bad but not real bad.

Dear Marie

My sister is my problem. She borrows my jewelry, my blow dryer, my clothes, everything! It's not like she doesn't have these things in her own room. And where are my things when I need them? In her room, of course.

Borrowed Out

Talk to her. Find out why she's always borrowing your stuff. Maybe she doesn't like her stuff. You know you buy something that looks great in the store, but when you get it home, it doesn't look so great. Or maybe she likes your taste. Who knows? Make agreements and conditions between the two of you. If that doesn't work out, talk to your parents. Sometimes our largest problems involve small solutions.

Dear Marie,

My best friend is getting on my nerves. She's always trying to keep me out of trouble, or so she says. She always makes plans without me knowing it and gets mad if I break them, especially to see my boyfriend. She's my friend, but she's acting like my mother, what do I do?

Smothered

I think you two should sit down, and have a long talk. Tell her about how aggravated you get when she makes plans without talking to you first. You may find out some things you've never known before, and so may she. You may even turn out to be better friends.

Elementary's Extras

by Michelle Ferbrache

Here's what we found out happened at elementary for Thanksgiving.

The Early/Childhood classes and kindergarten through first grades celebrated Thanksgiving by dressing up as pilgrims, turkeys and Indians. They sang songs in the spirit of the first Thanksgiving and the children proposed a wonderful Turkey dinner, thanks to Peoples State Bank and The Ole Store donating items for the children to use.



What 8th grader J.H. likes raw mountain oysters? Let's just call him Mountie.

What senior is always going somewhere so that no one can find him? Is he hiding from his girlfriend or does he just have a lot to do with so little time to get it done?

What senior R.W. threw a fit when he lost a bet over the game Tuesday night. If you can't take it, don't make it.

What senior B.J. got a drink from the squirt bottle only to find out that it makes funny noises? I wonder what that could be?

What 8th graders are found on the street corner every night? Don't they have a home, or do their parents know where they are?

What 3rd grader told a joke to a teacher who told the joke to a class and an 8th grader told it to another teacher who sent him to the principal... and no one remembers the joke!

What sophomore J.S. is really mean to her little sister? Don't you know it isn't nice to make them stick their tongues to the freezer?

What sophomore C.B. has so many boys calling her that she can barely get her homework done?

What same sophomore is going to get a dozen roses from J.A.? Is this love or just another crush?

Looks like there was another cat fight this weekend between D.S. and P.W.

What freshman B.W. got his temper up a little bit and decided to throw things? Don't you know that kind of stuff will only get you into trouble? Especially when they're ladies.

What sophomores cheat on their biology homework? Better not get caught! You could end up with a deficiency slip and a failing grade!

What sophomore R.C. finally turned sweet sixteen? Happy birthday.

What fish got thrown in the mud by a senior? Somebody's got to teach that bully a lesson!

What 8th grader missed the bus and what senior started making fun of her? I guess that T.C. will stay away from C.H. from now on.

Fast Talk

by Cheryl Robinette

What senior L.M. got suckered? I guess driving down the forest with your eyes covered isn't a good idea.

What Wildcats A.J., D.B., J.H., R.S., W.E. and D.H. were going to go camping this weekend but ended up not going after all? What's the matter guys? Are you afraid that you might get frostbite?

Which teacher put up the Christmas tree without D.R.? How mean! Now Christmas just won't be Christmas because she didn't get to help with the tree.

What coaches revamped their basketball boys' suits? If the job is too tough give it to the coaches aides!

What 7th grader pulled a knife on a junior? Don't you know that is not cool?

What sophomore M.S. had a magic pig? He did a disappearing act this weekend and now no one can find him.

What same sophomore is going out with a 7th grader? Maybe we should all chip in and buy him a new cradle. Just kidding.

What freshman got caught at the cemetery with a sophomore?

What guys chased a non-sobber man all the way home this weekend? He not only got chased but he was supplied with a full moon too.

What junior got suckered into getting drunk only to find out that the plan was to drop him off at home after he got drunk?

WILDCAT EYES TO:

The 8th grader that gave up his chair for another eighth grader so that she could get her tutoring. That's the way to be thoughtful.

Mrs. Webb for putting up with all of the harassment from the people she lives with.

Mrs. I. for helping out with the basketball jerseys that got messed up in the washing machine.

G.W. for helping out her dad putting up the Christmas lights on the WTU building.

A.J., D.B. and J.H. for putting the top over the pig pen so that the little pigs wouldn't freeze to death.

C.H. for staying home Saturday night so that his girlfriend wouldn't get sick.

Incredible Edibles

by Inga Williams

December 9-13

MON: Lunch: Cheese & meat nachos, baked beans, salad, crunch, milk. **Breakfast:** Oatmeal, toast, juice, milk.
TUE: Lunch: Chicken strips, blackeyed peas, rolls, jello, milk. **Breakfast:** Eggs, toast, juice, milk
WED: Lunch: Turkey and dressing, glazed carrots,

gravy, rolls, salad, milk. **Breakfast:** Bacon, toast, fruit, milk
THU: Lunch: Pork chops, mashed potatoes, green beans, rolls, cookies, milk. **Breakfast:** French toast, syrup, milk, juice
FRI: Lunch: Hotdogs, fixings, chips, fruit, milk. **Breakfast:** Sausage gravy, biscuits, juice, milk

Wid's Wide World of Wildcats

by Wid Keeling

The Wildcats played the Gorman Panthers last Friday in Rising Star. Chad Hill had 10 points in the first quarter. Jarod Horton and Jason Bible both had two points. The score was 14-12 after the quarter.

The second quarter saw Chris Harrelson make his first two points of his high school career. Jarod Horton had three baskets for six points. The halftime score was 24-22 in favor of the Cats.

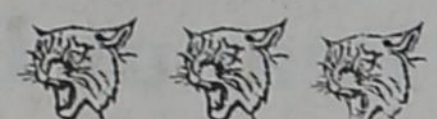
The third quarter had Chad

Hill make 2 baskets. Jarod Horton did the same with two. Rene Rodriguez made a three pointer and Wid Keeling received 5 fouls. The score was 35-33 in favor of the Cats.

The fourth quarter saw three baskets made and two free throws which gave the Cats a disappointing score of 43-48 in favor of the Panthers.

The Cats will be playing in the Santa Anna Tournament Thursday, Friday and Saturday.

Go, Blue!



Rising Star High School 1991-1992 Basketball Schedule

Date	School	Place	Time
Nov. 19	Sidney	Here	6:30 p.m.
Nov. 22	Sidney	There	6:30 p.m.
Nov. 26	Gorman	Here	6:30 p.m.
Nov. 29	Thanksgiving		
Dec. 3	Gorman	There	6:30 p.m.
Dec. 5-7	Santa Anna	Tournament	
Dec. 10	Zephyr	Here	6:30 p.m.
Dec. 13	Moran	There	6:30 p.m.
Dec. 17	Zephyr	There	6:30 p.m.
Dec. 20	Trent	Here	6:30 p.m.
Dec. 3	May	There	6:30 p.m.
Jan. 2-4	Rising Star	Tournament	
Jan. 7	Lingleville	Here	6:30 p.m.
Jan. 10	Moran	Here	6:30 p.m.
Jan. 14	* Lohn	Here	6:30 p.m.
Jan. 17	* Paint Rock	There	6:30 p.m.
Jan. 21	* Novice	There	6:30 p.m.
Jan. 24	* Brookesmith	Here	6:30 p.m.
Jan. 28	* Lingleville	There	6:30 p.m.
Jan. 31	* Lohn	There	6:30 p.m.
Feb. 4	* Paint Rock	Here	6:30 p.m.
Feb. 7	* Novice	Here	6:30 p.m.
Feb. 11	* Brookesmith	There	6:30 p.m.

*District Games

Junior Cat Tracks

by Christy Hughes

The Jr. Cats enjoyed their trip to Brookesmith last week, and they brought home an exciting win. The team members hustled throughout the game as the final score of 32-9 proved.

This year the Jr. Cats have been working on their zone defense, and they are anxiously awaiting the chance to perfect it during upcoming games. They have also been working hard on offensive plays and drills that will be put to good use in the future.

In the first quarter of this game, both teams got off to a slow start. The Jr. Cats, who had a slight size advantage, played together well and managed to take an 8-0 lead. By halftime the Cats had managed to hold on to a 12-7 lead.

Going into the third quarter of play, the Jr. Cats had com-

plete control of the court. The Cats had many fast breaking opportunities, and

Brookesmith was forced to play very unorganized defense. This led to the third quarter score being 24-7, Rising Star.

In the fourth quarter the Jr. Cats scored eight points to Brookesmith's two. With only three seconds left in the game, Brookesmith was forced to continue playing with only four young men on the court due to foul trouble.

Scoring for the Cats were Robert Hollis, 12; Michael Perales, 12; Johnny Fox, 4; Michael Fox, 2; and Kirby Bush, 2.

The Jr. Cats have been working hard and are hoping to have a winning season. They will take on Brookesmith Monday, December 9, here, at 6 p.m.

Laura's List

by Laura Ranklin

Top 3 reasons not to make beef jerky with Will and Robert.

1. They think deer meat, lonestar, and Tabasco sauce work well together. 2. The words "Bring me another bottle of that lighter fluid scare me." 3. I don't like hearing "Let Laura try it first."

2 reasons I didn't work on my Government research paper this weekend.

1. My parents made me watch the UT vs. A&M game. Someone should talk to them about how important time management is to my education. 2. I forgot really!

Top 4 things I'd like for

Christmas (Hint! Hint!)

1. A "Where's Waldo?" book from Mrs. Bryan. 2. Some blue map colors from Coach Goodman. 3. Some blank worksheets from Mrs. Pritchard. 4. Not to have to write this article.

3 things I was really thankful for this year.

1. I didn't have to eat any of my grandmother's cranberry marshmallow salad. 2. Mrs. Wood let us borrow her Robin Hood tape this weekend. 3. Because I have suffered through "Ford Fairlane" once, I'll never have to watch it again.

This page is made possible by the businesses below, Support local businesses

BASKETBALL



WILDCAT BASKETBALL '91

Santa Anna Tourney
Thu.-Sat., Dec. 5-7

Lady Cats
Wildcats

Zephyr, Here
Tues., Dec. 10, 6:30

BASKETBALL



Go!! LadyCats!!	Chamber of Commerce & Agriculture 515 W. College 643-1209	Peoples State Bank Rising Star Branch, Member FDIC 206 W. College 643-2811	Dr. B. T. Carpenter 512 W. College 643-3141	Max's Quickway 200 W. College 643-1490	Go!! Wildcats!!
L & J Construction 430 E. Mill 643-6464	Winfrey Feed & Peanut Co. E. Hiway 36 643-6251	Buddy's Plumbing & Appliance Serv. 430 E. Mill 643-6464	The Rising Star 105 N. Main 643-4141	Nall's Quik Stop 100 E. College At Main 643-1441	Rising Star One Stop J. Bible, Owner J. Burcham, Mgr. 109 E. College 643-7011
Higginbotham Funeral Home 803 N. Main 643-4321	Frank Agnew Farm Bureau Agent 104 N. Main 643-1010	Leonard, Butler & Goldston Bookkeeping & Tax Serv. 643-7430	Green & Assoc. Insurance Agency 200 S. Main 643-7817	True Value Rising Star Lumber & Hardware 200 E. College 643-4131	Rising Star Nursing Center 409 S. Miller 643-2681
Murphree Oil Co. 308 W. Mills 643-2341	Main Street Auto Repair 127 N. Main 643-1701	#1 Video Mildred Childers, Owner 200 S. Main 643-1009	Jim Ratliff Welding 430 E. Mill 643-6464	Palace Drug Store 100 N. Main 643-3231	The Ole Store 124 N. Main 643-2221

Classifieds Sell

REAL ESTATE

161 A. Lots of bottom land, 60 tillable; well fenced, 1/2 mi. Sabanna, good deer hunting, lots big oak, pecans. \$550 ac. Agent owned.

80.5 A. 7 mi. NE Rising Star, 30 coastal, app. 1/2 cult., well fenced, lots rd. front, \$560 ac.

95.43 A. 20 cult., 3-1 frame home, 4 mi. of Carbon. Good barn, native grasses. \$70,000, \$14,000 down, 10% int.

62 A. ML, about 1/2 cult. good peanut/melon land, some coastal, lots road front, with new fence. \$500 a., liberal terms, agent owned.

70.3 A. 7 mi. E. Hwy 26, timber, coastal, 3 water taps applied for, well fenced, barn, tanks, \$500 a., cash or equity/GI assumption.

182 A. Desdemona, most native pasture, rolling, liveoak, deer, 2BR frame home, FREE nat. gas, barns, corrals, fine well, \$600 A. 1/4 down. LOTS pavement.

54.35 A. E. Carbon, most all good coastal, near pavement, well fenced, good well, 1 tank, minerals, \$750 A. cash or (?) terms.

App. 1.5 A. E. Carbon, 2 BR frame home, clean, big oak trees, small barn, walls insulated, co-op water meter, fruit/pecans, just off hwy. Jus. \$20,000.

We WANT Your Listings
35 Yrs. in Business
COGBURN REALTY
893-666 893-5898
893-2642 DE LEON

ACTION REALTY
WE NEED LISTINGS!!!
Equal Housing Opportunity
914-643-6516

AT RISING STAR:
3 BR, 2b Corner lot, laundry room, fenced garden, well. Call for details!
Car wash! Ready to go! Covered stalls, new pumps. Main highway!
1 lot for sale. Trees, need to see! Hooked for trailer.
2 lots at Shamrock Shores. Just in time for summer!

First time on market. Close to town! Rock house, needs some inside repair, large tree covered lot, several sheds! Priced to sell. Call for details.
3BR, 1B Stucco sheds, large yard with trees, 10 acres, stock pond with fish. Call today!
2 BR, 1 B, owner willing to finance! Call.
James Smith, Broker
915-646-0297
In Rising Star Call
STELLA WARE
817/643-3591

PRICED TO SELL Modern 2 BR, 2B home at 416 S. Main. Well built home with good roof, vinyl siding, CH/A, many extras. Sits on 100X80 lot, has good well & pump as well as city water, includes adjacent fenced lot 80X250. Call 817-643-3423 after 5.

SELLING YOUR Home or buying? Call Stella Ware, 817/643-3591, your local real estate agent for Action Realty, Brownwood, James Smith, broker.

SERVICES

WILLIE VANDIVERE
Dirt, Caliche Hauling
Build Driveways,
Lease Roads, Etc.
9-5 Call 643-2023
After 5, 643-6451

CAMPBELL'S
Cabinet Shop
& Construction
817/842-5875

CARPET
Cleaned, Restretched
Repaired, Sold, Installed
Scotch Guarding Available
No charge for moving furn.
Dub Meador
Cross Plains 725-7720

DeLeon
IRRIGATION SUPPLY, INC.
Route 1 Box 22-A, De Leon
Phone 893-2123
Zimmatic Pivots • Ag Rain Hard Hose
Guns • Cornell Pumps and all other
types of irrigation equipment
Complete Service And Installation

Paul Williams Roofing Co.
• FREE Estimates •
• All Work Guaranteed •
• Hot Tar & Gravel Composition •
• Shingles • T-Locks • Wood Shingles •
25 Years Experience In Eastland Area
Paul Williams Carbon, Texas
817-639-2330
If No Answer call 817-629-1020

FOR SALE

MEN'S 5-buckle arctic rubber boots, fleece lined to fit over cowboy boots, \$31.99. Johnson's Dry Goods, Cross Plains.

NEW Shipment of Australian Oil Skin drover coats, M.L.XL, brown only, \$175, free gift wrapping. Johnson's Dry Goods, Cross Plains.

BULK SEED Wheat: Russian beardless, TAM 200, Thunderbird, Dry Spreaders available. Richmon Farm Supply, Brownwood, 915-646-3833.

SEED: bulk Nora oats, has some wheat mixed in. 84 lb. Richmon Farm Supply 915-646-3833.

PIANO FOR SALE Wanted responsible party to take on small monthly payments. See locally. Trade-ins accepted. Credit manager 1-800-233-8663.

MLS Supplement
David Holubec
915-286-4284 Melvin
Reggy Stover
817-725-7370 Rising Star

FOR SALE: A nice custom and polytone PA system, guitars, guitar cases, fiddles, banjo, piano, 77 Toyota motor home. We also buy musical instruments and furniture. 611 E. 8th, Cisco. Call (817) 442-3407.

RS49

AUTOS

FOR SALE 1983 Grand Prix, loaded, new tires, runs good. Call 817/643-1614.

LEASE WANTED

NEED GRASS Lease in Rising Star area. Please call 643-4004 after 6 p.m.

47-6

HELP WANTED

NEED RN relief for Sats. & Suns., hours 6-2 or 2-10. Salary competitive. Contact Russell Gray, 817/643-6700, Rising Star Nursing Center.

NEWLY Remodeled, 61-bed nursing home in Rising Star seeks leadership of RN Director of Nurses; competitive salary, excellent working conditions. Contact Russell Gray, 817/643-6700.

SALES PEOPLE NEEDED!! No experience necessary. Must Be: 21 yrs or older, have driver's license, have H.S. or GED.
Pierce Ford, Cisco
442-1566

RS50

FOR RENT

PUBLIC Housing authority of Rising Star has apartments for rent for senior citizens or persons with a handicap or a disability. Equal housing opportunity. 817/643-3812 or 643-6791.

SERVICES

OLIVER WEST
PUMP SALES & SERVICE
817/643-4683
Rising Star, Texas
Complete Systems
Sold & Serviced
2 1/2 mi. south of town

JOHN DEERE TRACTORS
NEW AND USED
PEANUT EQUIPMENT
LILLISTON - KMC
PLANTERS-DISKS-
DRILLS-ROLLING
CULTIVATORS-
CHISELS
SELL OR TRADE
CLARK TRACTOR & SUPPLY, INC.
DELEON (817) 893-2061
COMANCHE (915) 356-3922
WHERE YOUR BUSINESS
IS APPRECIATED

THANK YOU

The family of Melba Y. "Sue" Watson would like to thank everyone who came by and brought food, flowers and other things during the loss of our loved one. We would like to thank Bro. Williams for the service. We would like to give a special thanks to Pat Nall, Bones and Kay O'Connor, Gloria and Revah for the special help they provided. Again, thank you.

The Watson Family

THE RISING STAR
P.O. Box 129 817-643-4141
104 N. Main St. Rising Star TX 76471
©1991 Eastland County Newspapers, Inc. Publication No. (USPS 446500). 2nd class postage paid at Rising Star TX under Act of Congress, March, 1870. Published every Thursday. Publishers, Mr. & Mrs. H.V. O'Brien. Subscription rates per year: Eastland County & 30 mi. radius of Rising Star, \$9; other Texas counties, \$13; out of Texas, \$19. No out of U.S. without APO. Postmaster: Send address changes to The Rising Star, Box 129, Rising Star TX 76471-0129.

TEXAS SCAN
Statewide Classified Advertising Network
Advertise in 291 Texas newspapers for \$250.
Reach more than 3 MILLION Texans.
Call this newspaper for details.

ADOPTION: A LOVING ALTERNATIVE. Choose the best home for your baby from several approved families. Medical, legal, housing and emotional support available for you. Call collect: Susan/Benny 512-448-2946, Margaret/Mark 1-800-584-3235, Gail/Steve 512-335-3780. It's illegal to pay for anything beyond legal/medical expenses.

DEER HUNTERS SPECIAL: 25 acres, \$795/acre, wooded, excellent hunting, adjoins large ranch. Texas veteran or owner financing, prime acreage. Fox Realty, 500 Buchanan Dr., BURNET, TX 1-800-725-3699.

AIRCRAFT MECHANIC CAREER TRAINING: Secure career, day/night classes, financial aid, relocation services, job placement, high starting pay, call collect 713-820-9470.

TRACERS WANTED: No experience necessary. Part-time. Own hours. Process FHA Mortgage refunds. 1-800-776-5872 or 1-800-927-9565.

WOLFF TANNING BEDS: New commercial-home units from \$199. Lamps, lotions, accessories. Monthly payments low as \$18. Call today. FREE NEW color catalog. 1-800-228-6292.

SENTINEL BUILDINGS: All-steel building kits, color walls, engineer certified plans. 30X50X12...\$4,785; 40X50X14...\$6,127; 40X75X16...\$8,535; 50X60X14...\$8,997; 50X80X16...\$10,765; 60X100X16...\$14,918; FREE BROCHURES 1-800-327-0790.

COVENANT TRANSPORT: Hiring tractor trailer drivers. *1 yr. O.T.R. experience *Single 19-22c *East coast pay *Incentive pay *Bonifits package *Minimum age 23 *Teams 27-31c 1-800-441-4394.

Location: 9 miles S/W of Carbon, Texas on FM 2526 to Okra Community then 1/2 mile west to Auction Site (watch for Auction Signs)
"Carbon Texas is 10 miles South of Eastland Texas on Hwy 6."

Tractors
9700 Ford Cab & air
7700 Ford Cab & air
2-105 White Cab & air
1494 Case Cab & air
2-4000 Ford tractors
3600 Ford Tractor
3550 Ford w/1 dr
95 JD Combine

Trucks & Trailers
1980 GMC Astro
1988 Chev 3/4 Ton
1982 Chev Suburban
Willis Jeep

Lunch Available
Loader on Sale Day only

Farms And Gardens

By David Tunmire

LAST COLUMN

This will be my last column in Eastland County and as a County Extension Agent. I have purchased the Rainbow International Carpet Dyeing and Cleaning Company in Abilene and will open for business on December 9th.

I have enjoyed my short tenure here in Eastland County and have made many friends. During my time here I have tried hard to serve all the people in the county and hope in some way I have helped some of you along the way.

COUNTY

LIVESTOCK SHOW VALIDATION

Validation Day for the Eastland County Junior Livestock show is Saturday, December 14, 1991 from 9:00 a.m. to 2:00 p.m. at the County Show Grounds. All market steers, hogs, lambs and wether goats must be validated. Your animal must be present.

DON'T FORGET TO ENTER THE PECAN SHOW

Plans are now finalized for the 39th Annual Eastland County Pecan Show, December 12th and 13th at the County Courthouse Lobby. Entries must be at the County Extension Office by 4:00 p.m., Wednesday, December 11th. The office is located in the Basement of the County Courthouse.

Each entry must have at least 43 nuts of the same variety. Bring the nuts in a paper sack marked with owner's name, address, telephone number and variety, if know.

All pecans entered in the show must have been grown in 1991 by the person showing them. Each grower is limited to one entry of each improved or papershell variety. There is no limit on the number of seedling or native entries one grower may enter. There will, also, be a class for the largest pecans and smallest pecans. Plaques will be awarded for the Champion and rosettes for the Reserve Champion in the commercial, classic and native divisions. Ribbons will be awarded for the first three placing entries in each class. Plaques and ribbons are courtesy of Eastland County Pecan Growers Association and Texas Pecan Growers-Association.

EASTLAND COUNTY HAY SHOW AND AUCTION
The Eastland County Hay Show and Auction is scheduled for December 7th at the Eastland County Show Grounds.

DRIVERS: KLLM INC., Dallas and Houston terminals are now hiring experienced tractor trailer drivers to run 48 states and Canada! Call 1-800-925-5556, Monday-Friday.

PIONEER STEEL BUILDINGS SPECIAL:
20X24X10...\$2,520;
24X24X10...\$2,888;
24X30X10...\$3,397;
30X40X10...\$4,450. Includes one walk door and one roll-up door. 26 gauge/color walls. Financing! 1-800-637-5414.

TWO COMMERCIAL LOTS in one of Albuquerque, New Mexico's fastest growing areas. A great investment undervalued at \$20,000 per lot. Terms available. 915-366-9322.

ARE YOU TIRED of collecting monthly payments on your deed of trust or contract? We'll give you cash now! Call American Equity Funding, Inc. 1-800-874-2389



This trailer load of peanuts is one of many waiting in Carbon to be processed. An early freeze and wet weather slowed down the harvesting.



Peanuts are finally out of the field - now these trailer loads are lined up in Carbon, waiting for processing. Wet weather and an early freeze delayed the harvesting, and that early freeze is causing many of the peanuts to grade lower than usual.

The judging will be at 8:30 a.m. followed by a program on hay production by Dr. George Alston, Extension Agronomist at 9:30 a.m.

The auction of the donated hay bales will begin at 10:00 a.m. All funds raised from the auction will go to the Eastland County Livestock Raisers Association for debt and maintenance on the buildings at the show grounds.

A total of 143 round bales and 163 square bales of hay were donated by 58 producers in Eastland County. A protein analysis will be available on each lot of hay. The total number of bales with that analysis will also be listed.

The Eastland County Hay Show is a critical fund raising event for Eastland County Livestock Raisers Association. Without the money raised by this auction, the Eastland County Livestock Show would be almost impossible to operate.

USDA Proposal for 1992 National Peanut Poundage

The U.S. Department of Agriculture today (November 18) proposed a national peanut poundage quota for the 1992 marketing year of 1,610,000 short tons (3,220 million pounds), up 60,000 short tons (120 million pounds) from the 1991 level.

Keith Bjerke, administrator of USDA's Agricultural Stabilization and Conservation Service, said USDA is required by the 1990 Farm Bill to announce the final national poundage quota for 1992 marketing year peanuts by December 15. The quota may be no less than 1,350,000 short tons.

The Agricultural Adjustment Act of 1938, as amended, requires the national poundage quota for the 1992 crop of peanuts to be equal to the quantity of peanuts that the Secretary of Agriculture estimates will be devoted to domestic edible, seed and related use in the 1992 marketing year. The marketing year for peanuts begins August 1. It is also stipulated that the quota may be no less than 1,350,000 short tons.

All available information will be considered prior to the final determination, Bjerke said. Notice of the proposed determinations will appear in the November 21 Federal Register.

Comments concerning the determination must be received no later than December 9 by the Director, Commodity Analysis Division, USDA-ASCS, Room 3741, South Building, P.O. Box 2415, Washington, D.C. 20013; FAX number (202)720-8261.

Bankrupt Auction

Sat., Dec. 7, 1991
11 AM

Other Equipment
8200 & 8300 J D drills
KME Costal plow
Off-set plows
Tandem discs
Chisel, plows
Cultivators & planters
Shredders & blades
Fuel & water tanks
WW Cattle Chute
Cattle guards
40' Grain auger PTO
Post hole digger
Field cultivators
Irrigation pipe
Midland 4 yd. scraper (like new)
New & used tractor tires
Steam cleaner
Cattle sprayer
Much More

Sale Conducted by
L & L Auction Co.
Box 41
Morgan Mill, TX TX Lic. 6787
Jakie Laughlin Auctioneer
Ph. 817-918-4963 or 4982

Everything Sells Without
Minimum or reservation

FISH

Now is the time for Pond and Lake Stocking Hybrid Bluegill, Florida Hybrid Bass, Channel Catfish, Fathead Minnows, Black Crappie.
The Hybrid Bluegill will REACH the weight of 2 1/2 to 3 lbs. We furnish your Hauling Containers. We guarantee live delivery.
Supplies - Fish Feeders, Turtle Traps, Liquid Fertilizer, Commercial Fish Cages, Bug-Light Feeders
Delivery will be Tues., Dec. 12 at the times listed for the following towns & locations.
Cisco - Farm & Ranch Supply, 8:00-9:00 a.m., 442-2535.
Ranger - H & R Feed, 10:00-11:00 a.m., 647-5311.
Rising Star - Pioneer Farmers Coop, 12:00-1:00 p.m., 725-6564.
Cross Plains - Cross Plains Grain & Peanut Co., 2:00-3:00 p.m., 725-7345.
Santa Anna - Simmons Feed & Supply, 4:00-5:00, 348-3168.
Call Your Local Feed Store To Place Your Order
Or Call: 405/777-2202
TOLL FREE 1-800-433-2950
Fishery consultant available.
Special Deliveries on large ponds & lake orders.
DUNN'S FISH FARM
P.O. Box 85
Fittstown, OK 74842

Home Phone 643-4236 Gasoline & Diesel
CAREY'S AUTOMOTIVE
Open Mon. - Fri. 7:30 a.m. - 5:30 p.m.
Sat. 8 a.m. - 12 Noon
James Carey, Mechanic
Hwy. 36 E. Rising Star
Shop Phone 643-7009

Main Street Auto Repair
Open Monday - Friday 8-5 p.m.
CUSTOM MUFFLER & TAILPIPE WORK
Jackie Palmore - Mechanic
643-1701
Hwy. 183 Rising Star, Texas

MEMBER 1991
TEXAS PRESS ASSOCIATION

Mobil Oil Products All Other Major Oil Brands
Conoco Oil Products We Deliver Bulk Fuel
Cross Plains Petroleum (E.S.E. Inc.)
P.O. Box 219 6th at Ave. F
Cross Plains, Tx. 76443
David and Lenell Sliger Managers Phone (817) 725-6582
We Accept FINA, VISA, MasterCard & Discover

FARM BUREAU TEXAS
RETIREMENT PLANS
LIFE - LIABILITY
AUTO - HEALTH
HOMEOWNERS - FARM
FRANK AGNEW
AGENT
Rising Star Office 817/643-1010 Home 817/643-3189 P.O. BOX 470 EASTLAND, TEXAS 76448 Office 817/629-1704

T-L Irrigation Co.
Center Pivot, Hydrostatic Drive Can Be Moved In Minutes
Sales and Service At
Buddy's Plumbing & Appliance
112 N Main Rising Star
817-643-7312

Rising Star Nursing Center

Vickie Majors Activity Director

MON: We did in-room, daily visits and passed out mail. Playing bingo were Addie Green 1, Bryant Houston 5, Albert Cline 4, Ruby Booth 3, Ellen Mayes 1, Jennye Turner 2, Laura Bennie 2, Rose Nichols 3, Leona Welch 1, Pauline Hill 3, Opal Gattis 7, Daisy Smoot 2 and Charles Rixford 3.

TUE: We did care plans, passed out mail and had an in-service for employees.

WED: We did exercises, ring toss and passed out mail. Bingo players were Bryant Houston 1, Albert Cline 2, Addie Green 1, Ruby Booth 4, Maggie Christian 2, Ellen Mayes 3, Leona Welch 1, Rose Nichols 2, Helen Mitchell 2, Laura Bennie 2, Opal Gattis 0, Daisy Smoot 1, Jennye Turner 3, Pauline Hill 1 and Charles Rixford 2.

THU: Some of the residents went out for Thanksgiving.

FRI: We did exercises, snacked and passed out mail. Bingo players were Leona Welch 4, Laura Bennie 2, Opal Gattis 4, Daisy Smoot 1, Jennye Turner 4, Ellen Mayes 2, Maggie Christian 1, Addie Green 1, Bryant Houston 4, Albert Cline 4 and Charles Rixford 3.

Visiting with Ruby Bailey were Gayla Robinson and Ruby and Gale Nunnally.

Alpha Hogan's visitor was Opal Atwood.

Thank you, First Baptist Church, for Sunday services.

Our residents' Christmas party will be December 19 at 7 p.m.

Families are invited to come and spend time with their loved one.

Residents having birthdays this month are Lila Jarrett, December 6, 1904; Ethel Moore, December 13, 1907; Essie Green, December 18, 1903; and Daisy Smoot, December 24, 1896.

Obituaries

Sue Watson

Melba "Sue" Watson, 51, died Friday at her home. Services were at 4 p.m. Saturday at Higginbotham Funeral Home Chapel in Cross Plains with the Rev. Dick Williams officiating. Burial was in Rising Star Cemetery.

Mrs. Watson was born and lived her life in Rising Star. She was a homemaker and a member of the Baptist Church.

Survivors include her husband, Donald Watson of Rising Star; five sons, Donald Joe Watson, Richard Lee Watson and David Earl Watson, all of Ennis, Darryl Edward Watson of Cedar Creek and Dustin Edward Watson of Rising Star; four brothers, Damon Benson of Amarillo, Robert Benson of Brownwood, Charlie Benson of Frankston and Cleo Benson of Ennis; four sisters, Myrle Parker of Lake Chandler, Billie Williams of Rising Star, Naomia Cain of Rising Star, and Lorine Clark of Buchanan Lake; her mother, Haddie Benson of Rising Star; and five grandchildren.

L.B. Haynes

ABILENE - Memorial services for L.B. Haynes, 73, were at 10:30 a.m. Friday at Sacred Heart Catholic Church with the Rev. Mark Woodruff officiating. Burial was in Elmwood Memorial Park, directed by Elliott-Hamil Funeral Home, 542 Hickory.

He died Tuesday at his home. Mr. Haynes was born in Noodle, attended school in Lawn and moved from Rising Star to Abilene in 1951. He was an oil transport driver for Big Tex and Compton oil companies. He was a U.S. Army veteran of World War II.

Survivors include his wife, Theresa Haynes of Abilene; two daughters, Barbara Mitchell of Abilene and Janet Burch of Fort Hood; a sister, Thelma DeSarte of Abilene; two brothers, Lawrence Haynes of Pearce, Ariz., and Oscar V. Haynes of Canyon Springs; eight grandchildren; and two great-grandchildren.

Pioneer Patchwork

by Irma Miller

The ice storm cut into the activities of the community. The traditional Quilters' Christmas party was hosted by Jean Alexander at her home.

Jewel Foster's grandson, Don Huston, and wife of Houston visited Jewel at their two-day Thanksgiving holiday, which was celebrated at Charles and Lucille Foster's at Clyde.

Frankie and Oliver Smith enjoyed the holiday with both daughters and their families. They went to Ranger Friday and visited her father.

Joe and Nell Fleming celebrated the holiday at the home of JoVeda and Bill Watson who prepared the Thanksgiving feast for them and their guests, Mr.

and Mrs. Ronnie Flippin and children of Houston and Charlotte Fleming and son Bryan of Amarillo.

Novilia Barton's guests were Lee Ann Barton of Commerce, Randall Barton of Willis and Cecil and Mary Barton of Waco.

John and Irma Miller's children, with guests, from Dallas and the Houston area visited on a very enjoyable Thanksgiving holiday.

Extension Homemakers

from Janet Thomas County Extension Agent

PECAN BAKE SHOW DECEMBER 12TH

Don't forget...enter your favorite pecan baked goodies at the Annual Eastland County Pecan Bake Show on Thursday, December 12th at the Courthouse Lobby. The Pecan Bake Show is open to both adults and all school-age youth of Eastland County.

The Pecan Bake Show will be in the Courthouse Lobby on Thursday, December 12th. All Pecan Bake Show entries should be registered in between 8 a.m. and 11 a.m.

The divisions are: PIES, CAKES, CANDY, COOKIES, NUTBREAD, AND PECAN SNACKS. On your candy, and cookies there should be 12 pieces for an entry. All baked entries must contain pecans as part of the ingredients. Be sure and attach your recipe. Also you may enter only one entry per division.

Owners of bake show entries may pick their entries up between 4:30 p.m. and 5:00 p.m. If you do not desire to pick up your entries then they will be sold and the proceeds will go to the Eastland Homemakers Council.

Cash awards and ribbons will be sponsored and awarded by the Eastland Chamber of Commerce.

The Eastland County Extension Homemakers Association will be presenting silver trays to the Grand Champion winners in the adult and youth Pecan Bake Show.

The annual event is co-sponsored by the Eastland Chamber of Commerce and the Eastland County Extension Homemaker Clubs.

For more information contact Mrs. Janet Thomas, County Extension Agent at 629-2222.

PECAN CENTERPIECE CONTEST DECEMBER 12TH

The 39th Annual Eastland County Pecan Show will feature a Pecan Centerpiece division for adults and youth.

The Pecan Centerpiece Contest will be on Thursday, December 12th in the Eastland County Courthouse Lobby, states Mrs. Janet Thomas, County Extension Agent. All Pecan Centerpiece show entries should be registered in between 8 a.m. and 11 a.m. on December 12th.

The Pecan Grower's Association sponsors cash awards which are \$5 for first, \$2.50 for second, and \$1.50 for third.

Centerpiece arrangements must contain pecans or parts of the pecan tree. They must be original and created in 1991.

Personal

Brad and Stella Carroll of Canyon and Mutt and LaVerne Carroll, Pauline Witt and Jr. Witt, all of Rising Star, spent Thanksgiving in the home of Charles and Kathy Carroll at Tolar. Also present were the grandchildren and great-grandsons of the senior Carrolls.

Brad and Stella and Charles and Kathy then visited with Mutt and LaVerne in Rising Star Friday and Saturday.

EXTENSION HOMEMAKERS HOLD BAKE SALE DECEMBER 12TH

Let the Extension Homemaker Clubs do your holiday baking. That's right...the Extension Homemakers will have a bake sale in conjunction with the County Pecan Show on Thursday, December 12th in the Courthouse Lobby.

The Bake Sale will feature homemade cakes, pies and all kinds of delicious homemade goodies.

Pecan pies will be their specialty.

All proceeds from the bake sale will be used to finance community service projects to be sponsored in 1992.

EXTENSION HOMEMAKER CHRISTMAS LUNCHEON AND AWARDS PROGRAM

The annual Eastland Extension Homemaker Clubs will have their annual Christmas Luncheon on Wednesday, December 4th at the Eastland Woman's Club. Some 100 members and guests will enjoy Christmas music by Mrs. Donna DeLuca and friends. Following the luncheon, awards of accomplishments will be presented. These awards include Woman of the Year, Club of the Year, Most New Members and Publicity Award.

RECIPE FOR THE WEEK

The nicest things happen at Christmas and most of them happen at home. HOME...where we make gifts, entertain family and friends, and prepare all those special holiday foods for holiday feasting and gift giving. This week I am sharing an old time favorite.

FRUITCAKE SQUARES

Combine and press evenly on bottom of 15 1/2 x 10 1/2 x 1 inch jelly roll pan:

2 cups fine graham cracker crumbs
1/2 cup butter, melted
Combine, mixing well:
2 cups diced mixed candied fruit

1 cup shredded coconut
1 cup chopped dates
1 cup coarsely chopped pecans

1 can (14 ounces) sweetened condensed milk

Spread evenly over crumb mixture. Bake in 350 degree oven for 25 to 30 minutes. Remove from oven and cool completely in pan. Cut into 1 1/2 inch squares. Remove from pan. Makes 70 squares.

Holiday Mailing

The holiday season is fast approaching along with the time-honored tradition of sending holiday packages to family and friends. To ensure those packages reach their destination with ease, we offer the following tips:

Use a good sturdy cardboard box or container large enough to secure the item being mailed.

Prevent damage by using shredded newspapers, polystyrene or corrugated fiber board to cushion the contents.

Secure the package with filament tape. Do not use cellophane tape, wrapping paper, twine or cord.

Prior to sealing, insert the address inside the package. Be sure to use smudge-proof ink for addressing the outside of packages.

Express Mail Service has always been a great deal. We deliver across the country overnight, on time, every day, including Sundays. We even deliver on holidays! So don't let those homemade delicacies arrive too late, use Express Mail Service; it's guaranteed! And for friends and loved ones overseas, we offer Express Mail International Service for fast delivery within two and three days. And for those serving in the armed forces, remember to use Military Express Mail Service. We'll get those important packages to most APO and FPO addresses within three days.

Need fast service, but not overnight? Use Priority Mail for delivery of packages within two days. And for your holiday international mail, we recommend the use of international airmail for your letters and packages.

Overseas mailing deadlines are posted in post offices (some are already past.)

Sipe Springs News

Last Tuesday night was game night and a good crowd attended. Everyone had a good time.

Visitors at the Ted Barton home over the weekend were Mr. and Mrs. Lewis Barton of Knickerbocker, J.V. Barton of Dublin and Mr. and Mrs. Dale Whitaker and son, Dane, of College Station.

Mrs. Nancy Cobb and son, Matthew, of Arlington spent Thanksgiving with Mr. and Mrs. Travis Boswell.

Mr. and Mrs. Hines of Colorado visited her sister, Mrs. Jack Millwee, and family over Thanksgiving holiday.

Mrs. Mae Leonard's visitors over the weekend were Mr. and Mrs. Charles Gardner of San Antonio, Mr. and Mrs. Darin Leonard of Corpus Christi, Mr. and Mrs. Brian Graves, Allis Derek of Knoxville, Mr. and Mrs. Terry Leonard of Brady and Nonnie Leonard of Rising Star.

Visitors at the T.A. Weavers for Thanksgiving were Mrs. Vernon Cagel of Abilene, Mr. and Mrs. David Rainer and Mr. and Mrs. Todd Weaver and friend of Garland.

Mr. and Mrs. Quill McKeehan and Mr. and Mrs. John McKeehan spent Thanksgiving day with Mr. and Mrs. Marvin McKeehan in Comanche.

Mr. and Mrs. Jack Millwee and family spent Thanksgiving with Mrs.

Artis Kanady in Rising Star and was joined there by their parents, Mr. and Mrs. Lane Cotter of Rising Star.

Mrs. Mae Leonard, Mrs. Irene Wortham of Bryan and Mr. and Mrs. Richard Wekeler of Moscow, Idaho visited Mr. and Mrs. J.W. Rye and Mr. and Mrs. Larry Poole at Albuquerque, N.M. last week.

Mrs. Opal Whiteside and Joyce McKeehan visited their sister, Mrs. Mary Jo Dickey in DeLeon, who is ill.

Mr. and Mrs. Caylon Joyce of Dallas visited Mr. and Mrs. David Rainer and other relatives over the holidays.

Happy Birthday

DECEMBER 6

Wade Ratliff

DECEMBER 7

Wesley Killion

DECEMBER 8

Shelley Gray, LaJuan Killion, Pauline Hudson, LaRue Holmon

DECEMBER 9

Kay Gray, Sandy Elliott, Peggy Wilson, Bobby Zellers, Eddie Murphy

DECEMBER 10

Fay Calloway, Winnie Armstrong, Mickie Holmans

DECEMBER 11

David Griffin, James Christian

DECEMBER 12

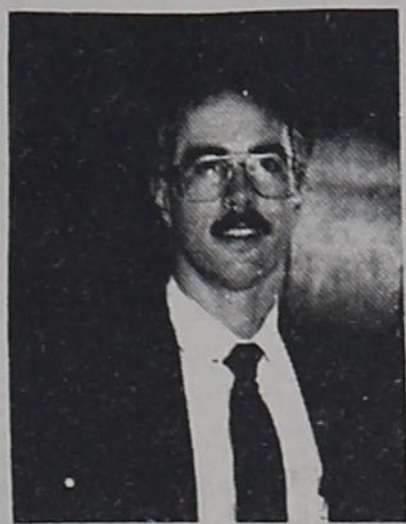
Mozelle McConaughy, Alfred Burcham

PERSONAL

Visitors of Helen Donham and Mike and Evelyn Donham were Mrs. Mike Spencer, Everett and Hannah of Austin, Guyle Greynolds Jr. of Wichita Falls, Dr. Don Donham of Emory University at Atlanta, Ga. and Guyle Donham of Baylor University of Waco.

"Why Farm Bureau life insurance?"

"Value. Their rates are competitive and help you get great value for your money. Your agent can help you plan for the future with a wide range of products. Life Insurance. Annuities. IRA's. Mortgage Cancellation. Disability Income. Whole Life... you name it. No wonder Americans from every walk of life depend on Farm Bureau Insurance."



Frank Agnew
817/643-1010
817/629-1704



Helping You Is What We Do Best.

Southern Farm Bureau Life Insurance Company
Jackson, Mississippi

What's an Energy Saving Plan Home?

It's a home that gives you extra comfort plus lower energy bills. So check out the features an ESP home can offer.

Attic Ventilation
Proper ventilation controls summer heat build up and moisture accumulation in winter. This adds life to the building and its components.

Insulation
Insulation in the ceiling and walls in the amount appropriate for this area and climate keeps ESP homes cooler in summer and warmer in winter.

Air Distribution System
Correctly sized air ducts and proper placement of supply and return air are important considerations for an ESP home.

Heating and Cooling Equipment
Equipment is properly sized to the structure for highest efficiency. WTU recommends the all-season electric heat pump that heats in the winter and cools in the summer for year-round savings. Call WTU for details.

Air Infiltration Control
Air infiltration control helps stop uncomfortable drafts with weatherstripping, caulking, and insulation.

Windows and Doors
Insulated or storm doors and windows greatly improve both efficiency and comfort by reducing heat gain and loss in both summer and winter.

WEST TEXAS UTILITIES COMPANY
An Equal Opportunity Employer
WTU
A Member of The Central and South West System

Remember REDDY Supplies the energy - but only YOU can use it wisely!

WTU Changes Their Senior Management



ABILENE - West Texas Utilities Company today announced three changes in its senior management. Glen D. Churchill, president and chief executive officer, notified the board of directors that he plans to retire May 1, 1992. At the same meeting the board elected Glenn Files to the new position of executive vice president, and elected Paul J. Bower vice president, marketing and business development.

Churchill has led the company since July 1979. He began his utility career at WTU in 1964 as assistant to the controller following employment with Arthur Andersen & Co., an accounting firm. He progressed through various financial positions, and was elected to the board of directors and vice president and treasurer of WTU in 1972.

In 1976 Churchill was elected executive vice president of Central Power and Light company which, like WTU, is a subsidiary of Central and South West Corporation. He returned to WTU as president and chief executive officer in 1979.

The Centralia, Ill. native received his BBA in accounting from Texas A&M University in 1956 and is a certified public accountant. He attended the Advanced Management Program at Harvard University in 1978.

Churchill was an officer and member of the board of directors of the Abilene Chamber of Commerce. He also has served as president and is a director of the Abilene Chamber of Commerce Foundation and the Abilene Industrial Foundation. He has been campaign chairman and president of the United Way of Abilene. He has been chairman and a director of the executive committee of the West Texas Rehabilitation Center, and served on the WTRC Foundation board.

He is a director of the Hendrick Medical Center Foundation, the Hardin-Simmons University Center for Economic Education, Abilene Improvement Corporation, and the Abilene Tax Increment District. At the state level he serves on the board of directors of the Texas Chamber of Commerce, the Texas Research League, the Texas Association of Tax-

payers and the Texas Council on Economic Education.

Professional affiliations include the Abilene chapter of Certified Public Accountants, the Texas Society of Public Accountants and the American Institute of CPAs. He also is a director of the Electric Reliability Council of Texas and the Texas Atomic Energy Research Foundation.

Churchill and his wife, Joy have three grown children, Susan Hicks, Sheryl Cosgrove and David Churchill, and are members of Our Savior Lutheran Church. They plan to stay in Abilene following retirement.

Files most recently was vice president of marketing and business development and a member of the board of directors of CPL. He has held that position since September 1990 when he transferred from Public Service Company of Oklahoma, another Central and South West company.

He joined PSO in 1971 and held several positions in the accounting, customer service, and operations areas of that company before being named director of corporate planning and analysis in 1988. His community work includes membership and leadership positions with the Jaycees, Rotary, Kiwanis and Lions clubs. He was district chairman and executive council member for the Boy Scouts of America Indian Trails Council in Oklahoma. Files has been involved in numerous Chambers of Commerce in the communities he has served, and also has worked in United Way activities. He received a bachelor of science degree from Cameron University in Lawton, Okla. He has completed the Oklahoma State University Management Development Program and the Program for Management Development at Harvard University.

Files and his wife, Linda Reilly, have six children, Ryan 16, Natalie 13, Preston 9, Alan 7, Lesley 5 and Elizabeth 2, and are members of the Episcopal Church.

Paul Brower replaces Bill Elmore, who was recently named vice president, marketing and business development for Central and South West Services in Dallas, another subsidiary of Central and South West Corporation.

Brower formerly was Eastern division manager for Public Service Company of Oklahoma in McAlester, Okla. During this 25 years of service to PSO he worked in consumer services and marketing areas. He was named division sales manager in 1984, sales development manager in 1985 and corporate sales

Eastland County Has Been Awarded Federal Funds For Emergency Food And Shelter Programs

Eastland County has been chosen to receive \$9,717.00 to supplement emergency food and shelter programs in the area.

The selection was made by a National Board that is chaired by the Federal Emergency Management Agency (FEMA) and consists of representatives from the Salvation Army, American Red Cross, Council of Jewish Federations, Catholic Charities, USA, National Council of Churches of Christ in the USA and United Way of America which will provide the administrative

staff and function as fiscal agent. The board was charged to distribute funds appropriated by Congress to help expand the capacity of food and shelter programs in high-need areas around the country.

A local board made up of (Mike Zuniga, Jr., Central Texas Opportunities, Inc.; Judge Scott Bailey, County Judge; Susie Thomas, Eastland Goodfellows; and Mike Perry and Mary Jo Williams of Salvation Army will determine how the funds awarded to Eastland County are to

be distributed among the emergency food and shelter programs run by local service organizations in the area. The local board is responsible for recommending agencies to receive these funds and any additional funds available under this phase of the program.

Under the terms of the grant from the National Board, local governmental or private voluntary organizations chosen to receive funds must: 1) be non-profit, 2) have an accounting system and conduct an annual audit, 3) practice nondiscrimination, 4) have demonstrated the capability to deliver emergency food

and/or shelter programs, and 5) if they are a private voluntary organization, they must have a voluntary board.

Qualifying organizations are urged to apply.

Eastland County has distributed Emergency Food and Shelter funds previously with Central Texas Opportunities, Inc. Multi-Purpose Center participating.

Further information on the program may be obtained by contacting:

Mike Zuniga, Jr.,
Executive Director
Central Texas
Opportunities, Inc.
P. O. Box 820
Coleman, TX 76834
(915) 625-4167

Courthouse Lawn Made Attractive



Eastland County Commissioner of Precinct 2 Calvin Ainsworth and Eastland County Agent David Tunmire in a photo and story from several weeks ago.

The Courthouse Square is a bright spot now, thanks to the work of Pct. 2 Commissioner Calvin Ainsworth, County Agent David Tunmire, and others who helped on the beautification project.

A lush stand of Fescue grass makes a soft green carpet between pecan and walnut trees. The yellow barricade markers are due to come down in about another week, says Ainsworth. The newly planted Fescue needs about two weeks to get established before it can be walked on without damage, he adds.

Ainsworth began planning the lawn beautification right after he assumed supervision of the grounds and Courthouse last January. He consulted with David Tunmire and they realized that a sprinkler system was needed for any permanent lawn improvement.

Obviously a lot of hard work had to be done on leveling the grounds, and new soil was needed before planting anything.

The County Commissioners agreed to purchase an underground sprinkler system, and this was installed during the summer. There was also extensive work on lawn leveling and rebuilding,

with labor provided by jail inmates. Ainsworth, along with courthouse employees David Cross and Donald Leach helped with various jobs on the premises. Three loads of dirt were hauled in, and tree trimming and spraying was completed.

By early September the ground was in shape to plant, but Ainsworth and Tunmire decided to wait until after Old Rip Day Sept. 21. There was a lot of traffic on the grounds that day, so more smoothing was needed before County Agent Tunmire began his planting Sept. 23.

Tunmire used a seed spreader to sow the Fescue, and the job was not easy. But his labor did not cost the county anything, nor did any of the other work done by individuals on the courthouse grounds.

"I'm really pleased with the way people have helped on this improvement project," says Ainsworth. "This Fescue grass is supposed to be green winter as well as summer - that's why Tunmire recommended it."

The commissioner looks across the lawn and chuckled. "The way that grass is looking now, I may have to let out some contracts to cut it!"

Mountain Top Church To Serve Eastland County Area Lawmen's Assoc. Christmas Banquet

Pastor John C. Jones of the Mountain Top Church announces that the 1991 Eastland County Area Lawmen's Association Christmas Banquet will be held at the Mountain Top Church Family Center in Cisco, Tx.

For a number of years, Pastor John C. Jones and the Mountain Top Church Congregation have been privileged to sponsor and serve an annual Christmas Banquet to show honor to all those who serve in Law Enforcement including Law Enforcement Officers, Judges, Justice of Peace, District

Attorneys Office, etc.

The Banquet is scheduled for December 11th at 7:00 p.m. in the Mountain Top Family Center located at 600 E. 8th, Cisco, Tx. The turkey and dressing dinner is free of charge to all those in the Area Lawmen's Association. During the banquet, the December meeting for the Lawmen's Association will be held. This annual Christmas banquet is one more way for the Mountain Top Congregation to say "Thank you" to all those who serve and protect our County!

GTE Continues National Workforce Reductions

IRVING - As part of its ongoing efforts to meet previously announced workforce reduction targets, GTE Telephone Operations today announced a nationwide voluntary separation program for selected management level employees.

The separation program is part of an overall plan to reduce the company's present nationwide workforce of 90,000 employees by 6.5 percent (roughly 6,000 positions) by the end of 1992. As previously announced, the reductions will be achieved through a combination of voluntary separation programs and normal employee attrition. In addition, options to reduce the hourly workforce are also being studied as part of the effort to reach the 6,000 reduction target by year-end 1992. The company also said that involuntary separations may be required if sufficient reductions are not achieved through these efforts.

The company emphasized that minimal impact will occur in any single location since the reductions will occur throughout the company's 40-state domestic operations. All expenses related to today's announcement have been anticipated and included in reserves taken at the times those programs were originally announced.

Employees judged to have unique or critical skills may be excluded from the program.

GTE began a major restructuring program (called Winning Connection II) of its telephone operations in 1988. The program has a workforce reduction target of 14,000 employees. In addition, the company previously announced a workforce reduction of 4,900 employees in connection with the merger with Contel Corporation. Today's announcement represents a continuation of efforts to achieve those targets.

The reductions, as previously announced, are part of an overall cost reduction effort by GTE Telephone Operations, resulting from improved technology, work center consolidations and competitive pressure to reduce costs and prices.

GTE Telephone Operations, the largest of GTE Corporation business groups, provides local phone service through 18.8 million access lines in portions of 40 states and two foreign countries. In addition, GTE Telephone Operations markets telecommunication products and services internationally and supplies computer software and data processing nationwide. Revenues in 1990 totaled \$15.4 billion. GTE Telephone Operations has approximately 114,000 employees.

Recipe

FRENCH APPLE BREAD PUDDING
3 eggs
1 (14 ounce) can Sweetened Condensed Milk (Not evaporated milk)
3 medium all purpose apples, pared, cored and finely chopped
1 3/4 cups hot water
1/4 cup margarine or butter, melted
1 teaspoon ground cinnamon
1 teaspoon vanilla extract
4 cups French bread cubes (about 6 ounces)
1/2 cup raisins, optional
Preheat oven to 350. In large bowl, beat eggs; add sweetened condensed milk, apples, water, margarine, cinnamon and vanilla. Stir in bread and raisins, moistening completely. Turn into buttered 9-inch square baking pan. Bake 1 hour or until knife inserted near center comes out clean. Cool. Serve warm with ice cream if desired. Refrigerate leftovers. 1

Scranton Musical Saturday Night

The Scranton country and western singing will be held Saturday, Dec. 7, in the Scranton Community Center. The concession stand will open at 5:30 p.m. and the music will start at 6:30.

On Thursday, Dec. 5, at 7 p.m. the Scranton Community Center will have a Christmas party. Games will be played and light snack foods served.

Everyone is invited to attend both events.

manager in 1986. He was named division manager in September 1990.

Brower was graduated from Northwestern Oklahoma State University in 1976 with a BS in marketing following four years of service in the Navy. He has been associate director of the Oklahoma State Home Builders Association. Paul and his wife, Regina, have two sons, Jason 15 and Matthew 9.

Paul Brower replaces Bill Elmore, who was recently named vice president, marketing and business development for Central and South West Services in Dallas, another subsidiary of Central and South West Corporation.

Brower formerly was Eastern division manager for Public Service Company of Oklahoma in McAlester, Okla. During this 25 years of service to PSO he worked in consumer services and marketing areas. He was named division sales manager in 1984, sales development manager in 1985 and corporate sales



Happy Birthday, Grandpa!
Love,
Brandy, Scott
& Samantha

THE GLASS MECHANIX

Don't replace it - Have it Repaired

Ed Williams
Cisco, Texas 76437
817-643-3313
Complete Mobile Service

L&J Construction

CABINETS: ALL KINDS

- * Add-Ons
- * Remodeling
- * Metal Buildings
- * New Construction
- * Tape & Bed
- * Sheet Rock
- * Acoustics
- * Texture

Free Estimates

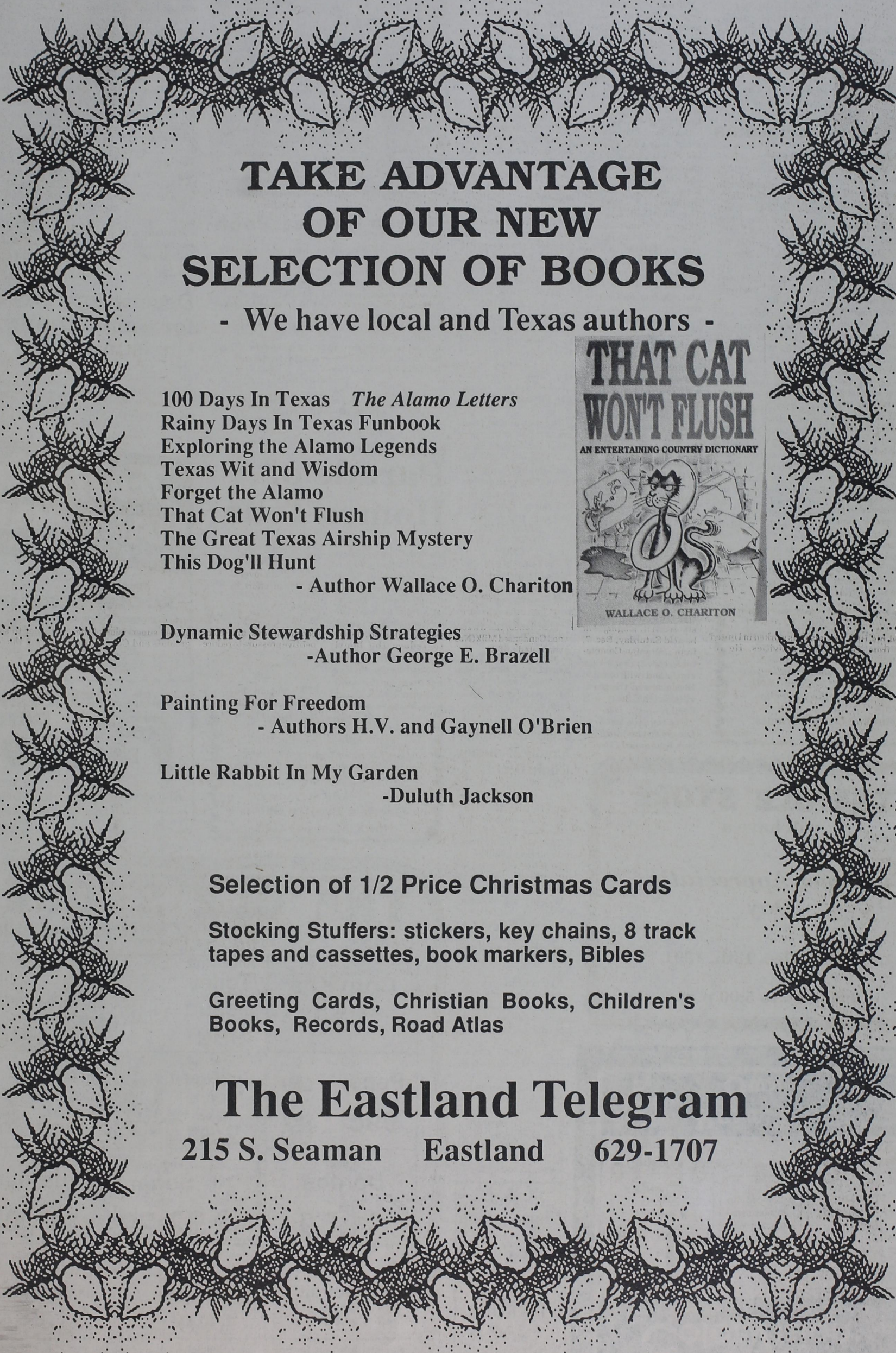
Lynn Hutton Jim Ratliff
817/725-7582, Cross Plains 817/643-6464, Rising Star

To Help You Make The Rising Star Classifieds Ads Work Harder For You:

AD WRITING TIPS
"The More You Tell - The More You Sell"

Include answers to as many of the points noted in each type of ad shown below for maximum response to your reader ad. A national survey by the CLASSIFIED ADVERTISING MANAGERS' ASSOCIATION has shown these are the features that people want to know when answering an ad. They are listed in order of importance.

AUTOS FOR SALE Make Year Model Body Style Motor (V-8? Horsepower?) Transmission Power Equipment Finish Mileage Previous Use (One Owner?) Mechanical Condition Accessories Tires, Battery Interior Price, Terms, Down Payment	RENTALS Location Number Of Rooms Closets Bath, Shower Garage Heating Air Conditioning Furnishings Utilities Furnished Elevator Neighborhood Convenience To Schools, Stores And Transportation Children Accepted Pets Allowed Privileges - Phone, Kitchen Laundry, Television, Etc. When Available Price	MERCHANDISE AND MISCELLANEOUS FOR SALE Item Brand Name Size Age Color Condition Specifications Previous Usage Upholstery Finish Accessories & Attachments Hours To See Offering Price
HELP WANTED Kind Of Job Hours Security Benefits Facilities Vacation Privileges Advancement Opportunity Wages Experience Necessary Qualifications Location How To Apply	REAL ESTATE Location Construction (Frame? Brick?) Architecture, Landscaping Number Of Rooms, Description Number Of Bedrooms Condition, Age Possession Date Convenience To Stores, Schools and Transportation Lot Size, Zoning Garage Bathrooms Kitchen (Disposal?) Basement, Recreation Room City Sewer, Utilities Heating Fireplace Plumbing Built In, Closets Features For Children Price, Terms, How Much Down?	LIVESTOCK AND PETS Kind Of Animal Breed Age Size Or Weight Color, Markings Registered Price
FARM ITEMS Item Make (Brand Name) Model Year Condition Overhauled Attachments Hours Of Previous Use Paint Price	BUSINESS SERVICES Kind Of Service Experience Special Equipment Trained Personnel Guarantee Follow-Up Service Hours Insured? Bonded? Prices	

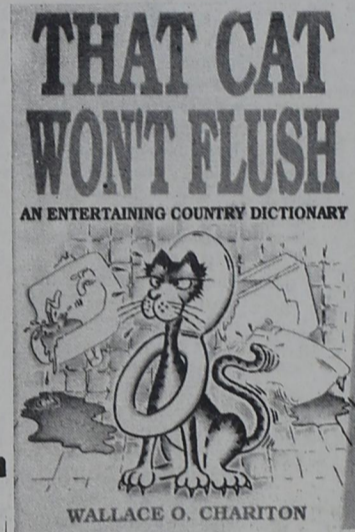


TAKE ADVANTAGE OF OUR NEW SELECTION OF BOOKS

- We have local and Texas authors -

100 Days In Texas *The Alamo Letters*
Rainy Days In Texas Funbook
Exploring the Alamo Legends
Texas Wit and Wisdom
Forget the Alamo
That Cat Won't Flush
The Great Texas Airship Mystery
This Dog'll Hunt

- Author Wallace O. Chariton



Dynamic Stewardship Strategies
-Author George E. Brazell

Painting For Freedom
- Authors H.V. and Gaynell O'Brien

Little Rabbit In My Garden
-Duluth Jackson

Selection of 1/2 Price Christmas Cards

Stocking Stuffers: stickers, key chains, 8 track
tapes and cassettes, book markers, Bibles

Greeting Cards, Christian Books, Children's
Books, Records, Road Atlas

The Eastland Telegram
215 S. Seaman Eastland 629-1707



Birth Announcement

26, 1991. She weighed 7 lbs. 11 oz. and measured 19.5 in. long.
Grandparents are Vernon and Sandra Browning of Snyder, Bob Burnes of Midland and Carol and Joe Don Lewis of Granbury.
The new baby is also welcomed by her sister, Courtney, 22 months old.

Whitney LeAnne Doyle and Shawn Browning are happy to announce the arrival of a daughter, **Whitney LeAnne**, born November

CJC Hosts Christmas Madrigal Dinner

The 18th annual Christmas Madrigal Dinner will be presented by the Fine Arts Department of Cisco Junior College, Friday and Saturday, December 6 and 7, at the Hilton Community Center.

"It isn't easy to come up with something different after doing this program for 17 years," director Wyley Peebles explained, "but we do have all new arrangements this year." There are certain elements of a madrigal dinner that are expected. Some of these are the wassail bowl and the pig's head ceremonies. Each of these events will be done with appropriate brass fan fares provided by Eastland County Brass.

The 1991 menu will include prime roast beef with Yorkshire pudding, and instead of the plum pudding, apple-cranberry pie will be served. New this year in the ceremony will be "The Blessing," sung to the tune of a Canadian-Indian carol.

Two arrangements made especially for the King's Singers of England are "Boar's Head Carol" and "Joy to the World," each using brass quintet for accompaniment. None of the madrigals in this year's program have been used in a CJC madrigal program before.

In the Christmas section of the program an arrangement of the old carol, "Sing We All of our Savior Mild," has an accompaniment of two flutes. One interesting number is called "A Bach Merry Christmas." Arranger Arthur Frackenhohl has taken the familiar "We Wish You a Merry Christmas" and combined it with "Prelude in F," by J.S. Bach. Steven Zell will play this prelude on the harpsichord while the Madrigal Singers sing "We Wish You a Merry Christmas."

Tickets are \$10, and reservations may be obtained by calling the college switchboard at 817/442-2567.

4-H Club News

By Janet Thomas, Eastland County Extension Agent

YOUTH PECAN BAKE SHOW - DECEMBER 12TH

All youth 3rd grade to 18 years of age are invited to enter the Youth Division of the Pecan Bake Show on Thursday, December 12th in the Courthouse Lobby.

All entries should be registered between 8 a.m. and 11 a.m. at which time the judging will begin.

Bake Show divisions are Pies, Candy, Cakes, Cookies, Nut Breads and Pecan Snacks. Prize money and ribbons will be sponsored by the Eastland Chamber of Commerce. The Eastland County Extension Homemakers' Council will award an engraved tray to the Grand Champion winner.

Entries will be released to owners between 4:30 and 5:00 p.m. on December 12th.

DISTRICT 8 4-H FOOD SHOW TRAINING

The 4-Hers who will be advancing to District 8 4-H Food Show are encouraged to attend a training workshop on Wednesday, December 4th from 4:30 to 5:30 p.m.

The workshop will be at the Eastland National Bank Community Room. 4-H teen leader Cathy Thomas will conduct the training. Thomas was contestant in the 1990 and 1991 State 4-H Food Shows at Texas A & M University.

4-H SCHOLARSHIP TRAINING

4-Hers planning to apply for a 4-H Scholarship are urged to attend a statewide ETN training on Tuesday, December 17 from 7-9 p.m. The teleconference training sites are the District Extension Headquarters in Stephenville or the State 4-H Center.

Pre-register prior to December 11th by calling the Extension Service

Office in Eastland County, 629-2222. Pre-registration will be necessary for you to receive a scholarship packet at the training site you attend.

For more information, contact Janet Thomas, Eastland County Extension Agent.

4-HERS TO TRIM COURTHOUSE TREE

All Eastland County 4-Hers are invited to attend a "tree trimming" on Friday, December 13th at 4 p.m. The Community Christmas Tree in the Courthouse Lobby will be decorated.

4-Hers who have made ornaments are reminded to bring these.

4-Hers may bring canned foods and toys which will be donated to Goodfellows.

LIVESTOCK SHOW VALIDATION

4-Hers entering animals in the County Livestock Show are reminded that Saturday, December 14th is validation day at the County Livestock Show Grounds. Validation will be from 9 a.m. to 2 p.m.

The 4-H Junior Leaders Association will sponsor a concessions stand and have hot coffee, cocoa, donuts, and cold drinks. They will appreciate your support, as they are raising funds for an exchange trip in 1992.

SALUTE TO GORMAN 4-H CLUB

The Gorman 4-H Club has recently reorganized. Mrs. Becky Smith is the 4-H Club Manager. Officers for this year are: President, Don Mauney; 1st Vice-President, Rachel Smith; 2nd Vice-President, Michael Foster; Secretary, Samantha Stevens; Treasurer, Janice Glover; Council Delegate, Shannon Mauney.

Eastland County Family Planning Clinic Dec. 12

The regular Family Planning Clinic will be held Thursday, December 12th. Applications are taken from 9:00 a.m. until 5:00 p.m. Family Planning services available in this clinic will include: consultation, physical exam with a Pap test, laboratory examination, appropriate methods of birth control, birth control supplies and education regarding birth control and continuing supervision.

This program provides services to income eligible clients and charges a small co-pay fee. Private patients are welcome to participate.

The clinic is held monthly at 1509 Hwy. 80, Cisco.

Central Texas opportunities, Inc. of Coleman, Texas is the provider for the Texas Department of Human Services.

For more information concerning this clinic please call 442-4522.

L & J Construction

Lynn Hutton
725-7582
or
Jim Ratliff
643-6464

Call for estimate on any construction jobs.



Ode to James Cook

Here once stood a young man in his prime,
Now he is walking on his hind.
The hair that once was thick and long,
He now finds in the teeth of his comb.
He once could swell his chest with pride,
But now he must suck it in to see his feet.
The only thing he has left of his youth
Is his beautiful smile—with all his own teeth.

But he realizes things could be worse,
He could be celebrating his forty-first
Instead of his fortieth.

Happy Birthday
and
We hope those beautiful teeth
stay until your fiftieth.

At Cross Plains

Parade of Homes Tour

The Cross Plains Alpha Rho Zeta Chapter of Beta Sigma Phi would like to invite the public to its annual Parade of Homes tour on Sunday, December 8, from 2-4 p.m. Tickets can be bought in advance or at the door for \$5 or any one home can be viewed for \$1. Maps are provided on the back of the tickets for those who need directions.

There will be five lovely homes on display this year. The homes belong to Bob and Carolyn Morgan, John Howard and Vida Balkum, Charles and Kathy Chesshir, Warren and Susan Trammell, and Donnell and Imo Jean Clark of Cross Plains.

Refreshments will be served at the Chesshir home.

Shop For Christmas

Right here in Rising Star!
Hand Decorated Shirts by Julia Devers
Hand Painted Shirts & Purses by Felecia Bibby
Fine Lingerie

All At
Gerrie's Beauty Salon
101 N. Main 643-4673

County Pecan Bake Show Is Next Week

The public is invited to enter their favorite pecan baked goodies at the Annual Eastland County Pecan Bake Show on Thursday, December 12th at the Courthouse Lobby.

The Pecan Bake Show is open to both adults (men and women) and all youth of Eastland County.

The Pecan Bake Show will be in the Courthouse Lobby on Thursday, December 12th, states Janet Thomas, County Extension Agent. All Pecan Bake Show entries should be registered in between 8 a.m. and 11 a.m.

The divisions are pies, cakes, candy, cookies, nutbread, and pecan snacks. All baked entries must contain pecans as

part of the ingredients. You may enter only one entry per division.

Cash awards and ribbons will be sponsored and awarded by the Eastland Chamber of Commerce.

The Eastland County Extension Homemakers Association will be presenting silver trays to the Grand Champion winners in the adult and youth Pecan Bake Show.

This annual event is co-sponsored by the Eastland Chamber of Commerce and the Eastland County Extension Homemaker Clubs.

For more information contact Mrs. Thomas, at the Eastland County Extension Service office at 629-2222.

Decorations Needed for Community's Christmas Tree

If you have Christmas decorations you are not using and would like to donate them to Star Pride for use on our community

Christmas tree, please call 643-7533 or leave them at the Peoples State Bank. Thanks very much.

Wonderful potpourri from Fredericksburg, Texas and South Carolina! Black Cherry, Citrus, Christmas Spice and more.
Cinnamon pine cones to make your home have that Holiday smell.
Free complimentary gifts, too.

George & Don's Antiques
300 S. Main

THE 'OLE' STORE
will have a
Customer Appreciation Day
Friday, Dec. 13th, 1991
9:00 a.m. to 5:00 p.m.

Color Vision
957 E. Main, Eastland
629-1632

Free Delivery No-Credit Check
Free Service Early Pay-Off Plan

OWN
RENT TO

Starting at \$15.99 wk
Stereos 100 Watt

Starting at \$15.99 wk
Refrigerators

Starting at \$17.99 wk
Washers & Dryers

Starting at \$19.99 wk
Consoles, T.V.'s

Come by and see our New Inventory and also save on our pre-rented items.

Freezers Vacuums Ranges Consoles
Living Room Suites Bedroom Suites
Microwaves VCR's Duettes T.V.'s

THE 'OLE' STORE
Main St. Rising Star
Trying To Keep Our Prices Down To Help Local Economy
643-2221

Corn Kits 3/\$1	Angel Soft Toilet Tissue 99¢	Del Monte Fruit Cocktail 17 oz. 89¢
Pepsi 2 liter 99¢	Del Monte Cut Green Beans 16 oz. 2/\$1	Del Monte Whole Kernel Corn 17 oz. 2/\$1
Lays Doritos 9 1/2 oz. \$1.59	Imperial Sugar 5 lb. \$2.29	Baker Potatoes 3 lb. \$1.00
Sunkist Red Grapefruit \$1.69 bag	U.S.D.A. Rump Roast \$1.99 lb.	U.S.D.A. Ground Hamburger \$1.29 lb.

Register any time for FREE ham shank, given away each Saturday until Christmas.
Sale Wed., Dec. 4-Sat., Dec. 7

**CHILD ABUSE
24 HOUR HOTLINE
1-800-252-5400**

**Calendar
of Events**

A Public Service from Eastland/Callahan County Newspapers and The Majestic Theatre.

WED., DEC. 4

7:00 Kiwanis, Eastland.
8:00-400 Senior Citizens, Cisco, Eastland, Ranger.
9:15-11:00 Community Bible Study, First Baptist Church, Eastland.
12:00 Kiwanis, Ranger.
12:00-1:00 Community Bible Study, First United Methodist Church, Eastland.
5:30 Overeaters Anonymous, 629-8773.
7:30 Support Group, Gorman.

THURS., DEC. 5

8:00-3:00 Senior Citizens, Eastland, Gorman, Rising Star.
8:30-4:30 Dept. of Human Services Assistance, Rising Star.
12:00 County Resource, Eastland.
12:00 Lions, Ranger.
12:00 Noon, Thursday Afternoon Study Club luncheon in Eastland.
6:00 City Commissioners, Gorman.
7:00 Stephens County Genealogy Society, Breckenridge.
7:00 Volunteer Fire Dept., Olden.
7:00-10:30 Forty Plus Dance, Cisco.
7:30 Eastland County Bass Club, Eastland.
7:30 The Shadow Majestic Theatre of the Air, KEAS 97.7.
7:30 Masonic Lodge, Ranger.
8:00 Narcotics Anonymous, Eastland.

FRI., DEC. 6

8:00-4:00 Senior Citizens, Ranger, Cisco.
7:00 Christmas Madrigal Dinner in Cisco.
7:30 All I Want For Christmas, Rated G, Majestic Theatre.
SAT., DEC. 7
8:30 Eastland County Hay Show & Auction.
10:00 Christmas Music Fantasy Parade, Breckenridge.
6:00 Bingo, Rising Star.
6:00 Country Western Musical, Sipe Springs.
7:00 Carbon Cemetery Assoc., School Cafeteria in Carbon.
7:30 All I Want For Christmas, Rated G, Majestic Theatre.
8:00 Alcoholics Anonymous, Eastland.
8:00 Al Anon, Eastland.

SAT., DEC. 7

For Deletions or Additions Call Faye Spurlen at Majestic Theatre, 629-2102

Eastland County Bass Club

The Eastland County Bass Club will hold its regular monthly meeting on Thursday, Dec. 5, at the Eastland National Bank. The meeting will start at 7:30 p.m. and all members are urged to be there as many important items will be discussed. The next scheduled ECBC monthly interclub tournament will be Sunday, Dec. 15. Interested anglers will meet at Double Vision Restaurant in Eastland for the drawing for the lake to be fished and the drawing will take place at 6 a.m.

This past September the ECBC sent its Top Six Anglers to the Honey Hole Top Six Team Tournament held on Sam Rayburn and we hope to be able to send the top six to Richland-Chambers this October. After three monthly tournaments, the Top Six are: 1st, Gary Harton; 2nd, Al Senterfitt; 3rd, Butch Willingham; 4th, Melvin Crabtree; 5th, Shannon Kendall; and 6th, James Mayes. These places are still wide open and all club members are still in the running for the Top Six places and also the Angler of the Year. These final places won't be decided until the August monthly tournament.

The top six places are determined by the anglers who catch the most pounds of fish during our monthly tournaments with the angler weighing in the most pounds being declared Angler of the Year.

The lakes that the ECBC members fish must be in a 35 mile radius of Eastland; however, twice in the year a lake in a 100 mile radius may be drawn and the same lake cannot be fished two months in a row.

Interested anglers wanting to join the ECBC are welcome to do so at the monthly meetings, the day of the club tournament, or by contacting any member that they might know. The membership fee covers husband, wife and children under 18 still living at home and an extra incentive of a years paid subscription to Honey Hole Magazine. We

have several of the anglers wives competing with us now and we would like to see more and to also get members kids involved.

Any needing more information about our club or any of its activities can call Gary Harton at 647-3888 or Butch Willingham at 442-3142.

Defensive Driving

Eastland County Defensive Driving classes will be held Saturday, Dec. 14, from 8:30 a.m. until 4:30 p.m. in the Mt. Top Church Family Center, located at 600 E. 8th Street in Cisco. The fee is \$20. Call now for early registration at 442-4479 and leave name and phone number, or call 442-2673 after 10 a.m.

Eastland Telegram, Cisco Press, Ranger Times, The Rising Star Thursday, December 5, 1991

**CHILD ABUSE
24 HOUR HOTLINE
1-800-252-5400**

EASTLAND MEMORIAL HOSPITAL'S AMBULATORY CARE SERVICES in cooperation with **Hendrick Medical Center** Proudly Announces the Addition of

SPEECH-LANGUAGE PATHOLOGY SERVICES by Licensed Clinical Speech-Language Pathologists providing Evaluation and Treatment of All Ages

Specializing in:
Aphasia
Articulation
Developmental Speech and Language
Hearing Impairment
Stuttering
Voice
Laryngectomy
Feeding and Swallowing

Friday Appointments Available

For Information Contact
Eastland Memorial Hospital
304 S. Daugherty
Eastland, TX 76448
817-629-2601

Eastland County Hay And Auction Show December 7

Next Saturday, Dec. 7th, is a very important date for you to remember.

December 7 is the date for the Eastland County Livestock Raisers Association hay show and auction. Judging of the hay will begin at 8:30 a.m. by Dr. George Alston, Extension Specialist with the Texas Agricultural Extension Service. He will present a program on feeding values of the various hays at 9:30 a.m. At 10:00 a.m., the auction will begin. Programs showing the proteins of the various lots of hay will be available. Plaques and ribbons will be awarded to the winning entries.

The hay show and sale will be at the Eastland County Livestock Raisers Association

showgrounds, located on FM 3101.

The hay auction will provide an opportunity to purchase hay that has been tested for protein quality, and will provide much needed funds to pay for livestock show facilities. The success of this hay sale is vital to the Eastland County Livestock Show and their attempt to provide a good place for the youth of Eastland County to exhibit livestock and have other youth activities.

Please show your support of this worthwhile event by being present for the hay show and sale. We will have a tractor to load hay for you.

Subscribe To Your Local Newspaper

Read The Classifieds

Eastland Memorial Hospital To Offer Prostate Screenings

Prostate problems are common in adult men. It is estimated that about 50 thousand men will die of prostate cancer in 1991, and about 200 thousand new cases will be diagnosed. Although there are three common diseases of the prostate that cause symptoms and need treatment, the most worrisome is prostate cancers.

Cancer of the prostate is very slow growing and may cause no symptoms in early stages. Modern research has offered us different blood test, ultrasound and x-rays to diagnose cancer of the prostate in its early stages. Rectal examination by a physician is very important, to feel for any cancer that may not cause any symptoms. Cancer of the prostate can cause a variety of symptoms, blockage to the flow of urine, burning, urgency, blood in the urine, and frequency

of urination. Prostate cancer in the advanced stages tend to spread to the back and hip bones and may cause bony pains. Prostate cancer also tends to run in families.

The National Cancer Institute has recommended that every man above the age of fifty years undergo yearly rectal examinations for screening purposes. It is important that if one has any symptoms of prostate disease, that he be thoroughly examined by a physician. The physician may then perform a variety of tests to diagnose the problem and treat it appropriately.

Eastland Memorial Hospital will again sponsor a screening for prostate problems at no charge to the public. The next screening is scheduled for December 20, 1991, from 3:00 to 5:00 p.m. in the Ambulatory Service De-

partment of the hospital. The first part of the screening will be educational with a lecture and slide presentation followed by individual screenings by Avi T. Deshmukh, M.D., Urologist. Seating is limited so call Eastland Memorial Hospital, at 629-2601 to reserve a seat.

Sheriff's News

The Eastland County Sheriff's Office reports the burglaries of a home and a ranch occurring around Nov. 23.

The burglaries are still under investigation.



Radio Shack SINCE 1921 AMERICA'S TECHNOLOGY STORE™

JOYFULLY-PRICED CHRISTMAS GIFTS! SALE!

MEMOREX™
World's Smallest, Lightest Full-Size VHS Camcorder
3 1/2" Wide • 3.6 lbs. • 12x Zoom • With Case • #827
Save \$100
\$899 Reg. 999.00
Low As \$30 Per Month

MEMOREX
8mm Binocular Style Camcorder
Save \$100
\$699 Reg. 799.00
Low As \$25 Per Month • 6x Zoom • With Accessories • #18-855

REALISTIC
Pocket LCD Color TV
\$30 Off **11995** Reg. 11995
Low As \$15 Per Month • Reg. 119.95
Convenient Search Tuning • Case

REALISTIC
Portable CD Player
Save \$50 **11995** Reg. 169.95
Programmable Memory • Built-in • Cd Battery Charger • #42-5077

REALISTIC
Dual-Cassette System
\$70 Off **14995** Reg. 219.95
Synchro-Start for Easy Dubbing • 27 1/2" High Speakers • #13-1202

REALISTIC
AM/FM Stereo Cassette Player
Cut 33% **3995** Reg. 59.95
Record From Radio, Or "Live" with Mike

Radio Shack
100 Lights Play Your Favorite Tunes
SPECIAL PURCHASE! **1499** Reg. 27.99
Plays 21 Great Carols • Lights "Dance" to Music

REALISTIC
AM/FM Headset Weighs Only 6 Oz.
45% Off **2195** Reg. 39.95
Super Stereo to Go • Great for Exercise • #12-146

MICRONITA
Rugged Jumbo LCD Display Watch
Cut 30% **695** Reg. 9.95
Quartz • Accurate Time • Month/Day/Date • #63-5064

Radio Shack
Adjust-a-tilt™ Pocket Calculator
Cut 30% **699** Reg. 9.99
Solar/Battery Powered • 3-Key Memory • Case • #85-565

TANDY
20MHz 386SX Computer With 85MB Hard Drive
SUPER VALUE!
\$1299 Low As \$40 Per Month
Tandy 2500 SX/20 • America Online™ Prodigy™ And DeskMate™ Software • #25-077 Monitor extra

TANDY
Our Fastest 80-Column Printer for Home or Office
Cut \$70 **24995** Low As \$15 Per Month • Reg. 319.95
Prints Up to 300 cps • #28-2866

TANDY
Notebook With 20MB Hard Drive
Save \$500 **\$1699** Low As \$52 Per Month • Reg. 2199.00
Tandy 2810 HD • 3.5 Hour Battery Life

DUOFONE
Cordless Telephone With Paging
25% Off **5995** Reg. 79.95
Low As \$15 Per Month • "Beep" Handsel From Base • #43-554 Tone/pulse dialing

DUOFONE
Dual-Cassette Phone Answering Machine
Cut 31% **5495** Low As \$15 Per Month • Beeperless Remote Turn-On • Voice Actuation • #43-398

TOY WONDERLAND NOW OPEN! SHOP EARLY AND SAVE!

FANTASTIC ELECTRONIC TOYS PRICES START AS LOW AS 299

(1) Fun Lantern II. #60-2207. Style May Vary. 2.99	(7) Robie™ the Bank. #60-2261. 9.95
(2) Wire-Controlled Hover Buggy. #60-2208. 6.95	(8) Laser Sword. Save the Planet! #60-2206. 9.95
(3) Wire-Controlled Walking Dinosaur. #60-2307. 6.95	(9) Flying Choppers. #60-2316. 12.95
(4) Pocket Repeat Game. Cut 27%. Reg. 10.95. #60-2152. 7.95	(10) Handheld "Rap" Mike. #60-2211. 19.95
(5) Turbo Raceway. 23% Off. Reg. 12.95. #60-2242. 9.95	(11) Stack Challenge Game. #60-2247. 19.95
(6) Sea Battle™. Cut 23%. Reg. 12.95. #60-2245. 9.95	(12) RC 4 x 4 Truck. #60-4046. 47.95

Plus Dozens of Other Exciting Gifts

Check Your Phone Book for the Radio Shack Store or Dealer Nearest You

Most battery-powered equipment excludes batteries. MS-DOS licensed from Microsoft Corp. SWITCHABLE TOUCH-TONE/PULSE phones work on both tone and pulse lines. Therefore, in areas having only pulse (rotary-dial) lines, you can still use services requiring tones. FCC registered. Not for party or con lines. We service what we sell.

PRICES APPLY AT PARTICIPATING STORES AND DEALERS

105 W. Main, St. Eastland **Eastland Office Supply/Radio Shack Dealer** 629-8942

PUBLIC SALE!

NEW, UNSOLD SCHOOL SEWING MACHINES WITH SIMULATED PROFESSIONAL SERGING STITCH!

SINGER EDUCATION DEPARTMENT placed orders in an anticipation of large school sales. Due to budget cuts, these sales were unsold. These machines must be sold! All machines offered are the most modern machines in the SINGER line. These heavy-duty machines sew on all fabrics.

LEVIS • CANVAS • UPHOLSTERY • NYLONS • STRETCH • VINYL • SILK • Even Sews on Leather!

THESE MACHINES ARE NEW WITH A 25-YEAR WARRANTY!

YOUR PRICE WITH THIS AD...

1 DAY ONLY... Fri., Dec. 6 \$198.00 1 DAY ONLY... Fri., Dec. 6

Reference Retail \$429 • Machines Available at Location!

With the new SINGER Machine, you just set the dial code and see magic happen. Straight sewing, zigzag, built-in buttonhole (any size), invisible blind hem, monogram, satin stitch, embroider applique, sews on buttons and snaps, top stitch.

ALL OF THIS AND MORE WITHOUT THE NEED OF OLD-FASHIONED CAMS OR PROGRAMMER

Professional Serging Stitch

Bill's Dollar Store ONE DAY SALE ONLY Fri., Dec. 6; 9 a.m. - 5 p.m. 647-1712 Main St. Ranger

Factory Demonstrators Will Be On Hand!

Cash, Check or Layaway for these incredible prices. 2% surcharge for all major credit cards.

Limited quantity of Sergers on hand, starting at \$288

Guest Slot

By HVO

ARMY POST Christensen Barracks on the Czechkovokian Border and just up the hill from Wagner's opera house town of Bayreuth, was a beehive of rumor and speculation when we were there as to whether it would survive the "drawdown" of forces in Germany now underway.

We have since learned from Amy that the announcement has been made: it will be closed by May 15, as will the post in Northern Germany where she and Capt. Vince were to report in mid-December when he finishes the special school he's now attending. So it is doubly good that we visited when we did because they'll obviously be coming out of this ideal Bavarian locale. (They have a placque that reads: Home is where the Army sends you.) They love the area and we enjoyed every minute. Bayreuth is a bustling university town of 71,000 except in August when the annual Wagner Festival, founded in 1876, brings thousands and thousands of

visitors for the only performances ever held in the 1,900 seat theatre. Tickets are available only years in advance.

The university is recognized worldwide, and three names stand out in Bayreuth's cultural heritage. The composer Richard Wagner, the poet Jean Paul and the Margravine Wilhelmine (sister of Frederick the Great of Prussia and wife of the Marquis of Brandenburg) all lived, worked and found their last resting place at Bayreuth as did Franz Lizst. The twin towers of the Stadtkirche Castle are symbols of Bayreuth, and one of its many treasures is the Eremitage, now a picturesque park outside of town, and formerly the rural refuge of the Bavarian nobility.

Of the Baroque opera houses that have remained intact, the Margravial Opera House downtown is one of the most beautiful, and still used today year around. It originally served as scene for a wedding reception. The Wagner Festival House is world famous not for its beauty, but for the acoustics and technical possibilities of its stage. It was the New Palace built by Wilhelmina that attracted Wagner to Bayreuth in the first place. Her theatre wasn't suitable for his operas, so he built the Festival House, a plain, almost intimidating building; unpadded seats and no wall decorations, but near perfect acoustics. Ideal musically, but unsuccessful, financially, it is said, because the great composer gave away so many lifetime passes in exchange for building financing. He had split with his major benefactor, Bavarian King Ludwig (the Dream-King castle builder) and was pretty much on his own.

Wagner's villa is now a museum. Others are the Jean Paul Museum, the Museum of Freemasons, a Museum of Typewriters and Museum of historical farming equipment.

Down the hill on the other side of the Barracks is a Guesthouse, known locally as Mom's where the troopers' families go for outstanding meals: cordon blue, etc. And there are great numbers of factories: crystal, porcelain, nutcrackers, etc., near by. And we learned that the officers wives know every antique and/or junk store for miles around and they scour them regularly for

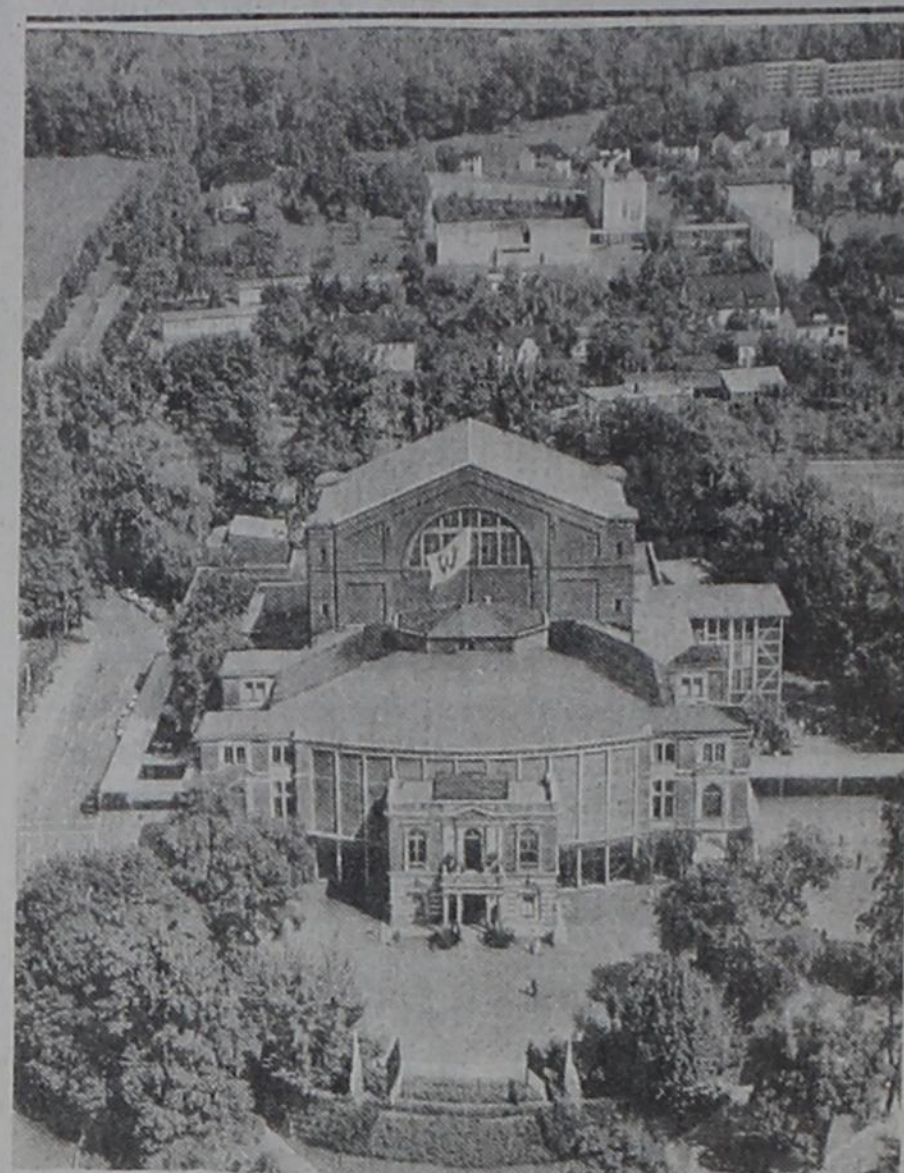
great finds in old German treasures.

The post is a complete American village with 4-story condo of military families, close-knit and supportive in their two-bedroom homes. Probably German built, the beautiful hardwood floors are outstanding, and all are flanked by a giant children's playground. The Child Care Development Center, where Amy is a Supervisor, is across the street. Full laundry in basement. Hospitals in nearby Bayreuth and in Nurnberg.

Their television? One channel: Armed Forces Network which had news from CNN Headline and Army/Europe news, and assorted network offerings; no commercials; just public-service.

Except for mailings from home, their newspaper is European edition Stars and Stripes. In Bindloch, a McDonalds; Community Club is an all-rank eating/drinking spot; a bowling alley offers fast food and slot machines, which apparently are in most posts there. Amy took us to headquarters to visit, and Gaynell attended an officers wives meeting with her. Guess this will all be turned over to the Germans soon. Sold or donated?

Cisco Press - Eastland Telegram-Ranger-Times-Rising Star And Callahan County Star
Thursday, December 5, 1991

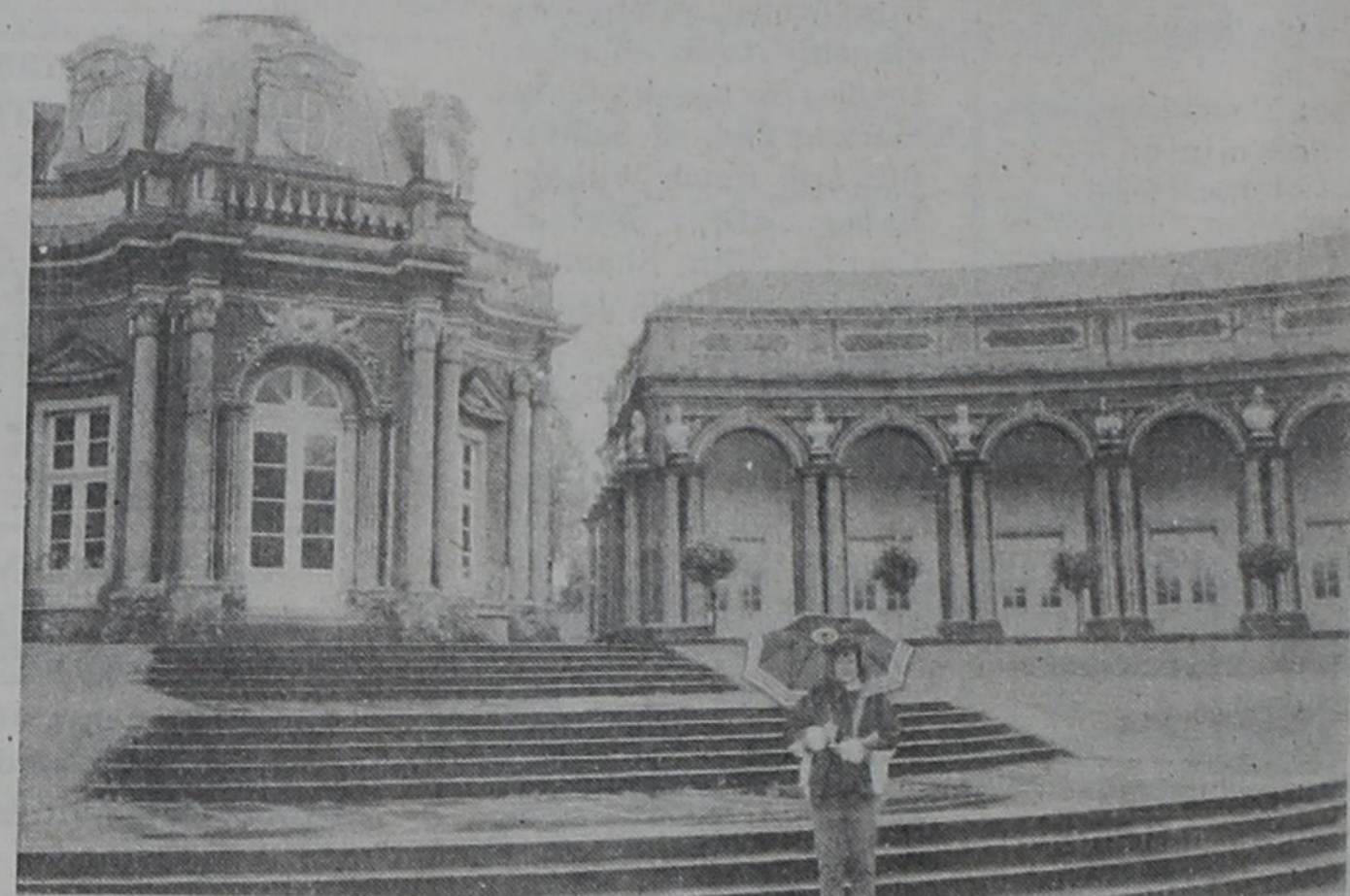


WAGNER'S BAYREUTH OPERA HOUSE

State Industry Hearing Dec. 6

The Railroad Commission of Texas will hear comments from motor carriers, shippers, and other interested persons on the motor transportation industry in Texas as its annual state-of-the-industry hearing set for Dec. 6 in Austin.

Chairman Lena Guerrero and Commissioners James E. (Jim) Nugent and Robert Krueger will open the hearing at 9:30 a.m. at the Commission headquarters in the William B. Travis Building. Some 300 people attended the hearing last year.



AMY AT THE HERMITAGE

your advertising dollars do better in
the classifieds

CHILD ABUSE
24 HOUR HOTLINE
1-800-252-5400

Thomas Chiropractic Office Has Moved

Now at 418 Foch, Eastland
(Corner of Marsh & Foch)

Open 8-5, Mon.-Wed.-Fri.
By Appointment - Tues. & Thurs.
We accept Medicare, Medicaid,
Most Insurance

Call 629-3311 or 629-3471

MAJESTIC THEATRE

629-1322



Fri. • Sat. • Sun. • Mon.
All Shows: 7:30 p.m. - \$3.00
We Now Offer 5-Admission Gift Passes - \$10

Pharmacy Topics

By Bob Mueller

New laser procedure -- transmyocardial revascularization -- creates new pathways to bring blood to the heart when arteries are clogged beyond angioplasty. Therapy is being done at Seton Medical Center in Daly City, California, and St. Luke's Hospital in Milwaukee.

Exercise alone, even without medication, seems to reduce blood pressure in people with moderate hypertension, the British medical journal Lancet reports. Study was done at Radcliffe Hospital, Oxford, England.

Migraine and tension headaches may be the same thing, according to a report by the American Association for the Study of Headache. New research suggests that stress may not be the cause of headache but a result of chemical changes produced by the headache.

Blood-glucose levels in diabetics fluctuate less if injections are given in just one area of the body instead of various sites, researchers at the Department of Medicine at the University of Minnesota found. Blood flow and absorption differ at each site.

Diabetics know they can count on us for fresh insulin, syringes, and the test materials they need. We're health headquarters at Wal-Mart Pharmacy, Hwy. 80 East, Eastland, 629-3347.

I-20 MOTORS

19th & I-20
Cisco, Texas
(817) 442-4262 or 442-2161

- | | |
|--|---|
| 87 Mercury Topaz, 4 door, all wheel drive, auto, air, cruise.....\$3350 | 89 Escort, 4 spd., w/air, nice car.....\$3495 |
| 87 Ford Ranger Pickup, 5 sp., air, nice pickup....\$3350 | 85 GMC Cargo Van w/tilt, cruise, auto, air.....\$2995 |
| 89 Tempo 4 dr, auto, air, cruise, tilt, AM/FM Cassette, 1 owner.....\$4250 | 83 Oldsmobile, Delta 88 Royale Brougham, 4 dr., auto, air, extra clean car.....\$2250 |
| 81 Chevy Luv Pickup, 5 sp., deisel.....\$2550 | 87 Plymouth Horizon, auto, air, clean car.....\$2250 |
| 88 Chevy Celebrity Wagon, extra clean, fully loaded, auto, air.....\$4550 | 87 Ranger XLT Long Bed, 5 sp., air, cruise.....\$3950 |
| 85 Ford Ranger Pickup, 5 Sp, air, 62,000 miles....\$2250 | 83 Nissan Pickup, King Cab.....\$1950 |
| 89 Ford Festiva, air, extra nice.....\$3250 | 86 Audi, 4 dr., loaded..\$4250 |
| 89 Ford Tempo Auto, air, AM/FM cassette, Elect. windows, locks & seats, cruise, 61,000 miles, one owner.....\$4550 | 77 Chevy Blazer, auto, air, 4 WD, excellent condition.....\$2250 |
| | 77 Ford Granada auto, air, good clean car.....\$795 |

Also For Sale: Lake Cabin
South of Lake Cisco.
Other Cars To Choose
From



WAIT!!



Check With Us Before You Buy.
Local Owned Business For 35 Years
Siding: Vinyl - Steel - Aluminum
Windows: Storm - Replacements - Thermal Break
Sun Rooms - Solariums

100% FINANCING AVAILABLE
NO DOWN PAYMENT TO QUALIFIED BUYERS
ON INSTALLED (labor and material) JOBS

For Free Estimates Call 442-2077, or
If Out of Town Call 1-800-772-8532

CERTIFIED TEXAS VETERANS LAND BOARD CONTRACTOR

S & M Supply - Reynolds Manufacturing
105 East Eighth
Cisco, Texas 76437

5-99

cersb104

5-104

Fishing Outdoors

by Terry L. Wilson

"MOUNTAIN LION REPORTS INCREASING"

Winter seems to be here folks, and area lakes water temperatures are low. But this doesn't mean the fishing will be all poor. As normal we can look for the bass bites to come a little deeper and be a lot lighter. These fish will feed during winter but prefer an easier meal. One that they don't have to use much energy to catch. Most anglers choose a jig with pork which is an excellent choice. But these early freezes put the shad die off in full swing. Anglers can capitalize on this using jiggling spoons Johnson Silver minnows, Rat-Z-Traps and leaded crank baits. All of these can be worked at different depths which will allow you to get below the balls of shad.

To minimize your search head for the north or northeast side of the lake. Fish may not be on the bank but should be setting out in good numbers in 7 feet of water or more. A slow presentation with whatever bait you choose will increase your bites. And be sure to really watch your line close, because there won't be a good thump most of the time. I have along with many other anglers began using Berkley's XT Solar Line to increase my above water visibility. Don't let the color of this high visibility line scare you folks it goes almost invisible even in the show tanks at our Boat & R.V. Shows.

Next cast I will try to have a few winter tournaments listed for those of us with cabin fever.

Reports of mountain lion sightings in Texas appear to be on the increase with the Texas Parks and Wildlife Department's nongame resources program receiving several calls during October and November.

Calls have come from remote areas of western Travis County and near Dripping Springs and Hamilton Pool in Hays County. A deer hunter recently harvested a 7-foot, 9 inch mountain lion in the Pineywoods of East

Texas. Reports of mountain lions, also called cougars, also have increased in South Texas.

Much of Texas, with abundant deer populations in large, unoccupied areas coupled with cover and water, provides potentially good lion habitat. Most people will never see this wide-ranging secretive cat, but some citizens residing in these remote areas of the state might.

Under most circumstances, mountain lions do not frequent areas with a great deal of human activity. However, since wild animals are known to be unpredictable, it is recommended that humans living near lion habitat alert themselves to certain behavior, which could minimize the likelihood of injury.

While in mountain lion habitat, travel in groups and make enough noise to avoid surprising the animal. A sturdy walking stick can be used to ward off an oncoming lion. Keep children close to you at all times. Never approach a mountain lion.

If you run across a lion some suggestions include: stay calm (use a confident, but calm voice); pick all children up off the ground immediately (a child's rapid movement when frightened may provoke an attack); do not run (try to back away from the lion slowly); face the lion and remain in an upright position; enlarge your image (do not crouch down or try to hide).

If a mountain lion behaves aggressively; arm yourself (grab a stick, throw rocks, speak louder and more firmly - convince the lion that you're not prey, but in fact area danger to it); fight back, but remain standing up.

Anyone reasonably sure they have seen a mountain lion, or anyone that has killed one, should report it immediately to the nearest TPWD office. You also may call the nongame resources program in Austin at 1-800-792-1112, ext. 4771, or (512)389-4771.

Terry L. Wilson

Gramm Announces REA Loan

U. S. Sen. Phil Gramm announced the award of a \$56,127,000 low-interest loan to Brazos Electric Power Cooperative Inc. in Waco.

The loan guarantee from the Federal Financing Bank is provided by the Rural Electrification Administration and will enable the company to upgrade its electric facilities.

Specifically, the funds will be used to construct new lines, substations and transmission projects and reimburse the company for previous construction costs.

"I believe in assuring that Texans get a fair return on the tax dollars we send to Washington," Gramm said. "So I am pleased that this loan will provide permanent improvements which will benefit rural Texans."

Brazos Electric Power Cooperative Inc. serves customers in Walker, Grayson, Brazos, Ellis, Freestone, Grimes, Hill, Hood, Johnson, Leon, Limestone, Navarro, Robertson, Madison, Bell, Bosque, Brown, Coryell, Falls, Hamilton, Lam-

papas, Milam, McLennan, Mills, San Saba and Archer counties.

Also, Baylor, Foard, Knox, Wilbarger, Clay, Childress, Cottle, Dickens, Hall, Hardemann, Kent, Motley, Burleson, Waller, Callahan, Haskell, Comanche, Eastland, Erath, Jack, Montague, Garza, Palo Pinto, Parker, Somervell, Stephens, Shackelford, Stonewall, Throckmorton, Wise, Young, Crosby, King, Denton, Collin, Cooke, Dallas, Williamson, Montgomery and Tarrant counties.

REA operates both electrification and telephone service programs and has provided low-interest loans and loan guarantees to small companies and cooperatives for over 50 years. The agency was authorized by Congress to carry out a special rural loans and grants program to promote economic development and job creation.

Cisco Press - Eastland
Telegram - Ranger Times -
Rising Star Star - Callahan
County Star

Thursday,
December 5, 1991

Weekly Specials Pull Shoppers Into Stores

The kind of shopper grocery stores love scans the Sunday and Wednesday ads looking for specials on the foods her family likes.

Then she goes to the store - determined to buy only the sale items.

"But every time I go to the store for something on special, I buy something else," she says. "Sometimes I spend \$18. Sometimes \$20 or \$25."

She is, in industry lingo, a cross-shopper and impulse buyer, the kind grocery marketing people hope will respond to their ads. Grocers use these and other terms to describe their shoppers' buying habits.

Cross-shoppers, say grocery marketing experts, go to different stores. Impulse buyers,

enticed by low prices or mouth-watering displays, go home with items they hadn't planned to buy.

And newspaper specials are designed to bring shoppers into stores.

"Of course, specials are lures," says an international retail consulting firm. "Supermarket strategy is to offer a product below or at cost to drive traffic into the store. The obvious motive is the hope that consumers will impulse purchase other items of a higher (profit) margin - and maybe even switch stores."

Switching stores is a crucial issue right now for grocers who are struggling to keep their market shares in this hotly competitive market.

Special Treatment
Advertised specials are

at the center of the fray. The fact that turkey ads began showing up 15 days before Thanksgiving - the key food holiday - shows the intensity in the marketplace. Usually, the turkey ads appear less than two weeks before the holiday.

"This market is driven by weekly specials," says the president of Minyard Food Stores Inc. "And it's amazing what kind of lures you're seeing right now."

This year, the lures included free or cheap turkeys with a minimum purchase.

Grocers say this isn't "specials war," but to some astute shoppers, that's what it appears to be.

"Look at the price of toilet paper or coffee or meat," says special shoppers. "When one store comes down 30 percent on the price of a product and next week another

store comes down 40 percent, it looks like a war to me."

One shopper looks at grocery ads and sometimes will shop several times during the week to buy sale items. She is the grocery store anathema, the "cherry picker" who can walk out of a store without additional purchases unless a minimum is required.

What pulls her and other shoppers into the stores?

What Shoppers Want

As shoppers plan for holidays, traditional foods such as turkey, ham, sweet potatoes, beans, cranberries, pumpkin, baking supplies and nuts are ad stars.

Popular special items at other times of the year include round steak, brisket, bath tissue, frozen dinners, bread, ground beef, coffee, sugar, whole fryers, bananas, milk and diapers.

September Daily Crude Production Average Down

Texas crude oil production averaged 1,709,223 barrels daily in September, according to preliminary figures released by Railroad Commission Chairman Lena Guerrero. September 1990 preliminary production was 1,731,603 barrels daily.

This figure compares with preliminary August production of 1,729,945 barrels daily. Final production reports for August indicated average production at 1,747,771 barrels daily.

The preliminary Texas oil production figure for September is 51,276,688 barrels, down from 53,646,328 barrels in August. September 1990 preliminary Texas oil production figure was 51,948,098 barrels.

Guerrero said the state's top producing counties, rank ordered by preliminary September production, were: Gaines, 3,426,958 barrels; Andrews, 2,866,738 barrels; Ector, 2,856,863 barrels; Yoakum, 2,647,260 barrels; Hockley, 2,445,799 barrels; Gregg, 2,388,240 barrels; Pecos, 1,903,000 barrels; Crane, 1,443,057 barrels; Scurry, 1,018,120 barrels; and Burleson, 1,008,852 barrels.

Total crude oil production in Eastland County for September was listed at 66,908.

oil production figure for September is 51,276,688 barrels, down from 53,646,328 barrels in August. September 1990 preliminary Texas oil production figure was 51,948,098 barrels.

Guerrero said the state's top producing counties, rank ordered by preliminary September production, were: Gaines, 3,426,958 barrels; Andrews, 2,866,738 barrels; Ector, 2,856,863 barrels; Yoakum, 2,647,260 barrels; Hockley, 2,445,799 barrels; Gregg, 2,388,240 barrels; Pecos, 1,903,000 barrels; Crane, 1,443,057 barrels; Scurry, 1,018,120 barrels; and Burleson, 1,008,852 barrels.

Total crude oil production in Eastland County for September was listed at 66,908.

Lingerie Factory Outlet

SAVE 40% - 70%

For all your lingerie needs. . .

- Panties
- Gowns
- Robes
- Slips
- Camisoles
- Beach Cover-Ups
- Terry Robes
- Pajamas
- Teddies



Lacy Lady
Exit 330, I-20 Cisco
(817) 442-3627

At Purina, Cattle Business Means Business.




Call Us Today!

(915) 698-7045
or
691-9629

Savings on all
quality Purina products

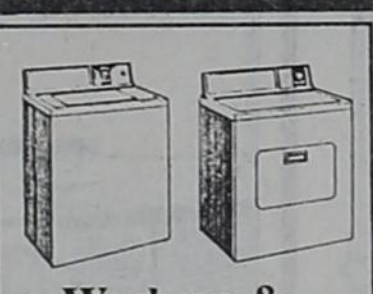


TRUCKLOAD SALES

Portable T.V.'s Bunk Beds Refrigerators

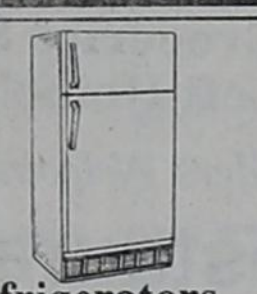
Color Vision INC.

957 E. Main, Eastland 629-1632



Washers & Dryers
\$17⁹⁹ wk

Come in and see our New Inventory also save on our pre-rented items.



Refrigerators
Starting at \$15⁹⁹ wk

Consoles, T.V.'s
Starting at \$15⁹⁹ wk

Stereos 100 Watt
Starting at \$19⁹⁹

Free Delivery No-Credit Check **RENT TO OWN** **Free Service Early Pay-Off Plan**

Living Room Suites Bedroom Suites

Lillie's Coffee Pot

Ranger, Texas

Open all day Thursday, Nov. 28, 6 a.m. to 10 p.m.

Come join us, Thanksgiving Dinner served at 11 a.m. to 3 p.m.
Ham or Turkey plus all the trimmings, includes salad bar, pumpkin pie and drink.
Adult-\$5⁹⁵ Children under 12-\$3⁹⁵

Come in and see our newly remodeled dining room.
Make your reservations today!

647-3171



Rust Processing & Country Meats

New Ownership
Keith and Stacy Reich
Backed by
Elmer and Dorece Rust

Open Weekdays 8:00-5:30; Sat. 9-2

- Custom processing • All Cuts of Beef & Pork •
- Fresh Lunch Meat & Cheese Sliced To Your Order •
- Fresh Ground Hamburger • Pork Sausage •
- Thanksgiving and Christmas Turkeys and Hams •

Turkey 11 lbs. \$13.95
Smoked Turkey 9 lbs. \$15.95
Gooch E-Z Slice Ham
10-15 lbs. \$2.89 a lb.

817-442-3495

THERE IS STILL A DIFFERENCE AT FOOD PLAZA

INSURANCE AVAILABLE

We are interested in hiring persons who possess the following qualities:

- Personal Integrity & Dependability.
- Willingness To Work & Contribute To A Progressive Organization.
- An Ability To Work In A Fast Paced Work Environment.
- An Outgoing Personality With An Eagerness To Serve The Public.
- Personal Schedule Flexibility.
- Personal Phone Number.
- High School Diploma or Equivalent.

If You Feel You Meet All Of These Criteria, Please Apply At:
The Former J & W Kwik Stop
I-20, Hwy 6
The New Food Plaza
(Drug Screening Required).

Fire Safety Can Save Holiday Spirit

This is the season to be jolly, so keep the holiday spirit uncharred this December by practicing fire safety at home and in the workplace.

On the average, a Christmas tree caught fire somewhere in Texas every day last December, and each fire caused about \$42,000 in property damage, according to State Fire Marshal Ernest A. Emerson. "During the holiday months of 1990, 32 residential fires related to Christmas trees caused 13 civilian injuries, two fire service injuries and property damage totalling \$1.4 million," he said. "Another 19 residential fires involved holiday decorations and caused property damage amounting to \$97,000. In business properties, there were six fires that caused damage of \$68,000."

Emerson warned consumers that natural Christmas trees are particularly dangerous. "All of the Christmas tree fires reported during holiday months in 1990 were natural products, not artificial trees," he said.

Emerson urged Texans to prevent holiday tragedies by removing fire hazards commonly associated with Christmas trees and holiday decorations. According to statistics from the Texas Fire Incident Reporting System (TEXFIRS), the top four reported causes of holiday fires in 1990 were:

1. Electrical problems,

including short circuits or ground faults in cords, plugs, lights, switches and receptacles, which caused 18 fires.

2. Candles left unattended or used too close to trees or decorations, which caused 11 fires.

3. Children playing with fire materials such as matches, candles, fireworks and lighters, which caused nine fires.

4. Placing Christmas trees too close to heat sources such as fireplaces, portable heating equipment, electric lamps and candles, which caused eight fires.

TEXFIRS is a standardized reporting system coordinated by the State Fire Marshal's Office through which 320 Texas fire departments report on fire incidents, causes, casualties and property loss.

Other fire hazards don't take a holiday during this season, according to TEXFIRS statistics. For example two persons died in Christmas Day 1990 fires. Also, on Christmas Eve and Christmas Day in 1990, fire departments responded to 30 cooking-related fires in residences, about 50 percent more than on average days.

The State Fire Marshal's Office recommends the following guidelines to reduce the risk of holiday fires:

• **Keep your natural tree as fresh as possible.** Buy early, when

trees are fresh. Don't buy trees with loose needles or brown spots. To keep the tree fresh, cut the base of the tree at a 45-degree angle, place the base in a bucket of water and keep outdoors until ready to decorate. After the tree indoors, keep the tree in a water-containing base. Check the water level every day to keep the tree well watered. Remove the tree promptly after the holiday or when it becomes dry.

• **Never leave lighted candles unattended, especially with children in the home.** Store matches and lighters out of the reach of children.

• **Always turn off Christmas lights before leaving home or going to sleep.** Never leave lights on when no one is at home.

• **Keep your tree (natural or artificial), decorations and presents away from heat sources, such as fire-**

places, candles, heaters and lamps.

• **Carefully inspect light strings, cords, plugs and receptacles.** Check for worn or frayed insulation and loose connections. If the item is damaged, throw it away.

• **Don't overload electrical circuits or extension cords.** Read and follow directions on cord labels regarding connecting light strings and extension cords.

• **Use plastic holders for stringing lights.** Avoid nailing through wires or wrapping wires around nails.

• **Use only lights that have been laboratory tested.** Check for UL or Factory Mutual labels.

• **Remember general safety rules throughout the holiday season:**

1. **Check your smoke alarm each week.** If you don't have a smoke alarm, buy and install one. (State law requires the installation of smoke alarms in

rental property.)

2. Keep all heating equipment at least three feet away from any combustible items, especially upholstered furniture, bedding, Christmas trees and decorations.

3. Be sure that smoking materials are extinguished completely and disposed of properly. This is especially important if holiday guests, most importantly those who have been drinking, have been smoking in your home.

The Office of the State Fire Marshal is a division of the Texas Commission on Fire Protection. The functions of the commission are to conduct fire investigations and fire safety inspections, license several fire safety related industries, gather information on fires in Texas, conduct fire safety information programs, oversee fire service training and education standards, and administer an emergency funding program for fire departments.

RANCH HOUSE RESTAURANT

We are taking orders to prepare your Holiday Meal. Turkey (10-12 lb.), Dressing, Homemade Rolls & Pies. Come by and place your order

607 E. I-20 Cisco 442-2855

A beary special offer from Hallmark!

Christmas boy or girl bear only \$3⁹⁹ with any \$5⁰⁰ Hallmark purchase. While supplies last.

Heather's Hallmark
Hwy 80 E., Eastland 629-3521

Retail Value: \$7⁹⁵

Rompers • Bullfrog Fashions • L.A. Gear Sweatshirts

KIDS KOUNTRY

201 S. Lamar (Inside J & J Building)
Hours: Mon.-Fri. 9:00-11:30; 12:30-6:00; Sat. 9:00-2:00

WE'VE GOT IT!

Boys & Girls Clothing - Sizes Newborn to size 14

Mickey & Minnie Mouse Duffle Bags & Purses
Ninja Turtle Stocking Stuffers

EVERYTHING IS ON SALE 10-50% OFF

Special selection of sleepwear arriving daily including: Boys pajamas & girls lacy gowns & gown sets.

Free Gift Wrap

Leggings • Capri Tights • Dance Wear

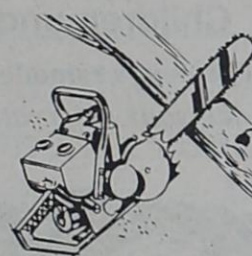
Cisco Press - Eastland Telegram - Ranger Times - Rising Star - Callahan County Star
Thursday, December 5, 1991

AUCTION NOTICE
Due to icy roads our Dec. 1 Auction was postponed until Dec. 8 at 1:00 P.M.
COOK AUCTION SERVICE
Jasper Cook 9634
817-442-3154

Grandpaw's Tool Shed Rental

WINTER SPECIAL

CHAIN SAWS \$12⁰⁰ day



1304 E. Main Eastland
Travis Chapman 629-3363

MOBILE HOME TRANSPORTING
Complete Moves & Setups
Moving Throughout Texas
• Tie Downs
• Blocking & Leveling
* Licensed
* Bonded
* Insured
18 Years Experience
817-893-6753

Home of the Lobo Burger!
The Best Groceries Since You Left Home!
Call In Orders Welcomed

R.D.'s Restaurant
901 Conrad Hilton
Cisco, TX 442-4425

Open Mon.-Fri. 9 a.m. - 8 p.m.
Sat. 9 a.m. - 5 p.m.
Daily Plate Lunch Specials
Evening Supper Specials

Use this ad to register for FREE Turkey!

DRAWING DEC 23

The Earth Stove Sale Price **\$1299⁰⁰** w/this ad

BayView®
Model BV400C Features
• EPA Certified
• Catalytic
• Gold Plated etched side glass
• Large Gold Plated glass door
• 500 CFM variable speed blower
• Catalytic Temperature Probe
• Auto fan with manual override
• Built in flue by-pass damper
• Zero clearance fireplace approval
• Accepts up to 24" log

E.D.C.O.
817-559-2273
FM 3099 #204
Breckenridge, TX

Installation Available

Other models to choose from

D. J.'s Firewood Service
Delivered & Stacked
Cut any size 12" to 24"
\$1 a mile after 10 mile radius.

\$70⁰⁰ Cord
\$40⁰⁰ Rick
Call: 817-629-2805
Oak - Mesquite
Also: Tree Trimming and Removal

EASTLAND GREAT TIMES
I-20 Access, Eastland 629-3921

Call anytime for private or birthday parties

Skating Lessons, Group Rates

Tuesday & Thursday Matinee 3:30 to 5:30 For After School

Family Night Thursdays 7-9 p.m.

Christian Fellowships Tues. 7-9 p.m. \$2.75

Enlarged, wood floor rink - new games

Fun & Games • Skating • Raquetball

FAMILY DOLLAR
Family Dollar Stores, Inc.
1002 Conrad Hilton Ave. Cisco, TX

1,790 Discount Stores and Growing

Christmas Layaway Special \$1 Down



Shown in the photo are the state and county FB leaders who served on the committee.

Front row, l-r: TFB Vice President Don Smith, Sulphur Springs; the committee chairman; State directors Aubery Rasor, Gruver, committee secretary; C. H. Dowdy, Wichita Falls; Leo C. Williams, Ranger; Russ Arnold, Trinity; Bob Stallman, Columbus, committee vice chairman; and David Krebs, Portland; and Steve Moore, Roscoe, the state Young Farmer & Rancher Committee chairman.

Second row, l-r: Harold Dean Morton, Dumas; Robert L. Jackson, Adrian; Earl Foerster, Slaton; Beth Clements, Leveland; Aaron J. Hinsley, Crowell; Q. Richards, Paducah; Frank Commiato, Jr., Kerens; and B. W. Steele, Glen Rose.

Third row, l-r: Eddy Finnell, Gilmer; James Miller, Sulphur Springs; Thomas Peters, Cooper; David Robbins, Fort Stockton; Robert Brown, Tennyson; John David McClure, Graford; Maarten X. Cromer, San Saba; and Anna Belle Madson, Moody.

Fourth row, l-r: Richard Cortese, Temple; James Eddy, Lampasas; James L. Smith, Beaumont; Felix Parmley, Nacogdoches; Anton Haner, Tarpley; Mike Whitwell, Cotulla; and John Earl Smith, Quemado.

Top row, l-r: Barney A. Eilers, Carmine; Keith Johnson, Victoria; Obert Sagebiel, Cuero; Ronald Starry, Edna; Mark Riser, George West; and Dennis Goldsberry, Donna.

WACO — The 41-member Texas Farm Bureau Resolutions Committee met here this past week to edit and consolidate state resolutions and national recommendations for the voting delegates to consider Dec. 3-4 at the 58th annual TFB convention in Lubbock. The Resolutions were submitted by county FBs.

Bible Questions Answered
By Dr. M.H. Clark

QUESTION: "In First Kings, chapter 19 and verse 19, it says that Elisha was plowing with twelve yoke of oxen. If a yoke means a pair, that means he had 24 oxen pulling his plow. What kind of plows did they have in those days?"

ANSWER: Observe that it also adds, "and he with the twelfth (yoke of oxen)." As a man of some means, he had servants plowing along "before" (in front of) him, and he followed with the 12th yoke and pair of oxen. No doubt he stayed behind so as to keep an eye on their work.

The Amplified Bible has correctly paraphrased this passage this way: "...whose plowing was being done by twelve yoke of oxen, and he drove the twelfth."

A pair of big strong oxen could easily pull the plows of those days. The plow usually had a wooden frame with an iron plowshare attached to it. The plowman guided it by holding on to the single wooden handle. A heavy wooden yoke went across the necks of the two oxen and was fastened to the plow. Some were able only to have a pointed branch of the tree to plow through the hard ground, the other branch serving as the guiding handle.

The main point about the account of Elisha is that he was an industrious, hard-working man, the only kind of man who can endure the rigors of being a prophet or preacher of God's Word, and that his devotion to God made him willing to leave everything to follow Elijah and prepare to take his place.

(HAVE A BIBLE QUESTION? WRITE TO: DR. M.H. CLARK, P.O. BOX 222, CISCO, TX 76437).

READ THE CLASSIFIEDS

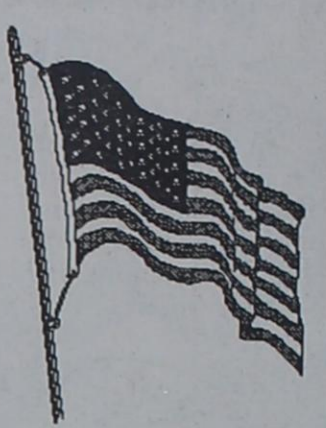
SWINDLERS ARE CALLING



Don't be fooled by appearances! Ask questions and confirm the information before you spend any money.

For a free copy of the brochure, Swindlers are Calling, call 800-621-3570, or 800-572-9400 (in Illinois)

REMEMBER PEARL HARBOR



December 7, 1941

Eastland Telegram, Ranger Times, Cisco Press, Rising Star, Callahan County Star
Thursday, December 5, 1991

Read The Classifieds

Come in and celebrate Christmas with
Poe Floral
Poinsettias
Fresh Christmas Garland
Silk and Fresh Christmas Wreaths
Silk Arrangements

609 W. Main Eastland 629-1711

Survival chances for heart attack victims
Only 5% of heart attack victims treated by emergency medical services survive.

- 60% of heart attack victims can be saved if treated quickly, according to American Heart Association
- Heart attack is the leading cause of death in the U.S.
- About 1.5 million Americans will suffer heart attacks this year; 550,000 will die; 350,000 will die before reaching a hospital
- 485,000 emergency medical technicians in U.S., one for every 476 people

What is CPR
Mouth-to-mouth breathing and chest compression; if someone you know has a heart attack, call medical rescue service immediately; administer CPR, if trained

SOURCE: American Heart Association

The Earth Stove

Stoves & Inserts
Prices starting at
\$399⁰⁰

Model 1003CL Features
* EPA Certified
* Long burning catalytic
* Built in flue by-pass damper
* Gold plated glass door
* Accepts up to 18" log
* Optional blower system

EPA Certified

E.D.C.O.
817-559-2273
FM 3099 #204
Breckenridge, TX

Installation Available

Other models to choose from

Cut your corporate travel costs and increase your lodging value.

AMERICA'S • AFFORDABLE • ALL-SUITE • HOTEL

WHY SETTLE FOR JUST A ROOM!

Amarillo	\$42
(1-40 East of Coulter)	
San Antonio-North	\$45
(I-10 at Fredericksburg)	
San Antonio-Airport.....	\$51
(281 North at Airport)	
El Paso	\$51
(I-10 and Lomaland Drive)	
Irving	\$51
(Airport Freeway and Esters Rd.)	

PLUS
Earn **\$50.00** savings bond when you join AmeriClub, our frequent guest club, and stay 10 times.

Additional benefits include:

FREE!
CONTINENTAL BREAKFAST BUFFET • AIRPORT TRANSPORTATION AT MOST LOCATIONS
MORNING NEWSPAPER • COURTYARD SWIMMING POOL AND SPA

RESERVATIONS
TOLL FREE: 1-800-255-1755
(ask for schedule 6 program)
Bring this ad for immediate member benefits.
Rates based on single occupancy and do not include tax.

...and think about helping the American Cancer Society get people on the Road to Recovery, as a volunteer driver. Even if you can't stop for long. Call your local American Cancer Society office for details.

1-800-ACS-2345

AMERICAN CANCER SOCIETY TEXAS DIVISION, INC.

RANDY GATTIS PLUMBING

Residential & Commercial Repairs
Remodeling & New Construction
Electric Sewer & Sink Cleaning Machines
Water Heaters & Plumbing Fixtures
State Licensed - Master License - M-18038

Free Estimates
Call: 442-1688 24 hrs/day
106 Ave. I Cisco, Texas

DON'T OVERLOOK YOUR INSURANCE NEEDS

Serving Eastland County Since 1919

CONTACT
D.L. KINNAIRD
GENERAL INSURANCE

629-2544 629-8606
Sallie Kinnaird 104 N. Lamar Mike Perry

Give A Gift that will be enjoyed all year...

\$89⁰⁰*

Novatel 3100 Series TRANSPORTABLE

*Requires NEW Southwestern Bell Mobile Systems phone activation. Basic, Corporate or Association rate plans. Some restrictions may apply. Local Eastland No. Available (629-2995)

- 911 Emergency Dialing
- Automatic Call Re-dial
- Triple Electronic Lock
- Missed Call Counter
- Call Timer
- 3 year Warranty

CSSI
1-800-588-2774
WIDE AREA PAGING

An Authorized Agent Of

When It Comes To Christmas Candy, Mrs. Davies Cooks At Thistle Hill

In Texas, when it comes to country music, Bob Wills is still the king. But when it comes to cooking candy at Christmas, that holiday happening has another monarch -

Martha Davies of Dallas. The irony is that Mrs. Davies does her Christmas candy cooking in Fort Worth at the city's historic Thistle Hill, 1509 Pennsylvania Avenue.

And she'll be in the kitchen there from 10 a.m. until 4:00 p.m. every day of the Texas Heritage's holiday tour and open house, December 6-15.

"This year's Christmas open house theme is 'Electra's Edwardian Christmas,'" said Mrs. Davies recently. "Thistle Hill, one of the last remaining residences of the

wealthy cattlebarons who made this city's Silk Stocking Row famous, will be completely decorated as we think Electra Waggoner Wharton, the first owner, might have decorated it when she lived here."

While an expected 6,000 plus guests from across Texas leisurely tour this annual Christmas gift to the public, the tantalizing odor of cinnamon and chocolate will tempt them to abandon all hope of dieting.

"Calories consumed during Christmas don't count," reminds Mrs. Davies. That's good news. Even better is the news that the two kinds of still-warm fudge and the homemade cinnamon rolls - good enough to die for and all baked right on the premises that day - will be for sale in the docent's pantry.

During the 10 days of the annual Thistle Hill holiday tour Mrs. Davies bakes approximately 16 dozen cinnamon rolls and stirs up 16 pounds of fudge - every day.

"That's a lot of mixing and stirring," she agreed. "Thank goodness for food processors."

Mrs. Davies first fell in love with Thistle Hill six years ago when she visited the mansion during an annual flower show. It was love at first visit and even though she and her husband have moved to Dallas, where they are renovating a 64-year-old home, she drives back and forth to discharge her docent responsibilities at Thistle Hill.

The recipes for the cinnamon rolls and White Christmas Fudge she's preparing during the Christmas tour are found in the Thistle Hill Cookbook, "Recipes Stenciled in Time". The cookbook was published during the year Mrs. Davies was president of the Thistle Hill docents and several of the published recipes are from her own kitchen. The other fudge recipe on sale at Thistle Hill during the tour is Fantasy Fudge, aka Mamie Eisenhower Fudge, and several other names. This recipe is found on the label of the marshmallow creme jar.

"When we first began making fudge available during the Christmas open house, I thought the fact that so many people have the Fantasy Fudge recipe would hamper sales," Mrs. Davies said. "I was wrong. Both of the fudges we make are very popular items."

The White Christmas Fudge recipe came from Mrs. Davies' Minnesota grandmother. "But I must tell you, I modernized it. The only thing I didn't change was the texture and the fabulous taste," she said.

Guests attending this year's sixth annual open house will be able to visit

the historic mansion's third floor ballroom - open to the public for the first time in decades. But, the ballroom and the tasty goodies are just part of the excitement.

Fifteen Christmas trees, glittering with exotic decorations, will be on display to provide beauty and clever ideas for home holiday decorating.

Each tree will be decorated to match its setting. Two seven-and-a-half-foot-tall trees will be on the newel posts on either side of the mansion's entrance hall stairs. Ten more trees will surround a fountain in the solarium. The parlor will feature an unusual feather tree, decorated with feathers and Edwardian-style ornaments of the period. The upstairs living room will contain a tree decorated with peacock feathers and ornaments.

In addition to the Christmas trees, guests may view a variety of antique collections, loaned by private collectors, and displayed throughout the mansion.

"Children will particularly enjoy seeing the three-story Victorian dollhouse, donated to Thistle Hill by Deborah Moncrief," said Davies. "The dollhouse is authentically furnished and has a circular staircase. It will also be decorated for Christmas."

Hours for the Christmas open house in the historic Fort Worth landmark are from 10 a.m. to 4 p.m., weekdays, and from 1 to 4 p.m., on Sundays. On Friday and Saturdays, December 13-14, Thistle Hill also will be open from 6 to 9 p.m.

Admission is \$7 for adults, \$2 for children under 12. Tickets are available at the door. Groups are welcome. For additional information, please call (817) 366-1212.

"We're inviting people from across Texas to come to Fort Worth for a day, or for a weekend," said Mrs. Davies. "We hope large and small groups will plan shopping and sight-seeing trips here. Thistle Hill's annual Christmas open house is a project of Texas Heritage, Inc., and proceeds from the tour pay for the continued renovation and upkeep of Thistle Hill."

For those unfortunates

unable to visit Fort Worth for this year's holiday tour, and an opportunity to buy their own fudge or cinnamon rolls, Mrs. Davies offers these recipes for White Christmas Fudge and for Thistle Hill Cinnamon Rolls.

White Christmas Fudge

3 cups sugar
1/2 lb. Brazil nuts
1 1/2 sticks margarine
1/2 lb. pecans
1 5 1/3-oz. evaporated milk
1/2 lb. walnuts
1 7-oz. jar marshmallow creme
1/4 lb. candied red cherries

1 1/2 teaspoon vanilla flavoring
1/4 lb. candied green cherries

Chop nuts coarsely. Halve red and green cherries. Butter a 9x13" shallow pan. Combine sugar, margarine and evaporated milk in a large kettle. Stir over medium heat until smooth and melted. Bring to a boil, and cook 5 minutes, stirring constantly or until candy thermometer registers 238 degrees (soft ball stage.) Remove from heat and quickly stir in marshmallow creme. Add vanilla, and all the nuts and cherries. Stir well; mixture will be stiff. Press into prepared pan and cool. When cool, cut into small squares. Makes 3 pounds.

Thistle Hill Cinnamon Rolls

Rapid mix cool rise white

1 tablespoon salt
bread to make 2 loaves

3 pkgs. active yeast
6 to 7 cups flour
1/4 cup melted margarine

4 tablespoons sugar
2 cups very warm water (120 to 130 degrees)
1 1/2 cups powdered sugar

Use mixer with dough hook. Put 5 1/2 cups flour, sugar, salt and yeast in bowl. Add margarine and water. Attach dough hook and mix (knead) at speed two for 15 minutes. Let rise until doubled in bulk. Roll bread dough into rectangle, drizzle with 1/2 cup melted margarine. Mix 1 1/2 cups powdered

sugar and 1 tablespoon cinnamon. Sprinkle this over dough. Add nuts and raisins if desired. Roll jellyroll fashion. Slice and let rise until double in bulk. Bake at 350 degrees for 20 to 25 minutes.

Read The Classifieds

TAKE A MOMENT TO THINK ABOUT BREAST CANCER.

Approximately one in every nine women will develop breast cancer in her lifetime. Learn the facts about a disease that touches all our lives. For further information regarding early detection, call (800) 221-2141 weekdays, 9:00 a.m. - 5:00 p.m. (central time zone).

Y-ME

National Breast Cancer Hotline

Cisco Press - Eastland Telegram - Ranger Times - Rising Star - Callahan County Star
Thursday, December 5, 1991

817/629-3631 OPEN 8:00 - 5:30 SAT. 8:00 - 12:30



EXPRESS PHOTO
SAME DAY PHOTO PROCESSING
COLOR, BLACK & WHITE, PHOTO REPRODUCTION

601 W. Main

BILL CULVERHOUSE, OWNER

Wedding Sports Studio Pictures Passports I D Cards Immigration pictures

Serving all your photographic needs



Something Special
Open M-S 10:00-5:30

New Shipments Arriving Daily For Your Christmas Shopping

Gift Certificates Free Home Delivery For Christmas

Just Arrived

Broom Skirts Sweaters • Jewelry Christmas Knit Wear • Candies String Jackets • Knit Suits P. Jammies in a Jar • Hair Twistees Custom Wood Entertainment Center Stocking Stuffers Potpourri • Gift Baskets

115 W. Main Eastland 629-8030

UP TO AN ADDITIONAL \$1400'S OFF THESE ALREADY LOW LOW PRICES**

PIERCE FORD DEMO SALE!

NOW TILL DEC. 31, 1991

1991 F150 Super Cab XLT Lariat A/T \$13,805* (MSRP \$18,643) Loaded! Plus Chrome Brush Guard & Chrome Bumper. SK#2717	1992 Crown Victoria LX V-8, A/T \$18,603* (MSRP \$22,353) Loaded! SK#2776
1991 Explorer XLT V-6, A/T \$17,847* (MSRP \$20,818) Loaded! SK#2890	1991 Ranger XLT Supercab V-6, A/T \$13,273* (MSRP \$16,701) Loaded! SK#2826

YOU MUST BRING THIS AD WITH YOU TO GET THESE DEALS!
442-1566

*Just add T.I. & L. prices are valid only if financed through dealership sources, and factory rebates & incentives assigned to dealer. Other advertised promotions not applicable to these sales prices.
**Subject to vehicle & individual buyer qualifications from Ford Motor Co.

UP TO AN ADDITIONAL \$1400'S OFF THESE ALREADY LOW LOW PRICES**

HAVE A REAL TREE CHRISTMAS

NOW - Renew the Tradition. . .

choose 'n cut your own special Christmas Tree

ENJOY THE EXPERIENCE!

RANGER: elderica pine Crossroad Tree Farm Open 9-5 Mon. - Sat. 1-5 Sun. Tel. 647-3624, 3657	DE LEON: virginia pine Evergreen Acres Christmas Tree Farms Open 12-5 Mon. - Fri. 10-5 Sat. & Sun. Tel. 893-6085
DIRECTIONS: In Ranger, take Hwy. 80 E. to FM 571. Go 4 miles. Turn left on County road. HAYRIDES ON WEEKENDS Hal & Mary Walton	DIRECTIONS: In De Leon, turn north on McKinney from Hwy. 6. Follow signs. COFFEE & HOT CHOCOLATE Gerry & Kathy Enzerink

Live Potted Trees Available
MEMBERS TEXAS CHRISTMAS TREE GROWERS ASSOCIATION

HAVE A REAL TREE CHRISTMAS

OUR CHRISTMAS CATALOG OFFERS EASY SHOPPING FOR YOUR BUSY HOLIDAY SEASON

With so much to do, and so little time as you get ready for the holidays, shopping Catalog could be one of your smartest ideas. Where else can you do all your Christmas shopping with just a toll-free phone call?

You'll also enjoy the convenience of fast, usually 2-3 day delivery, and if you like, we can deliver your order to any address in the US, or to any APO/FPO address. And you can charge your order to your JCPenney Charge, VISA, MasterCard or American Express.

CALL TOLL-FREE ANY TIME! 1-800-222-6161
or 629-2618

JCPenney Catalog
Fashion comes to life™

Shady Oaks Shopping Center - Eastland

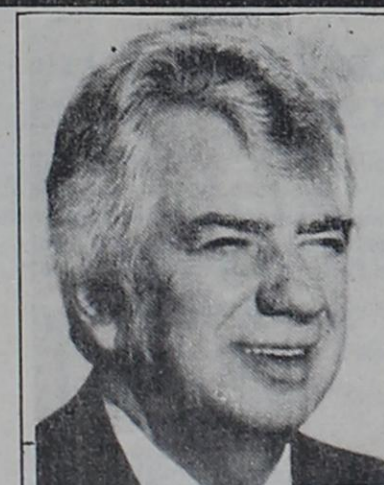
Gaines Automotive
Hi Tech Care For Hi Tech Cars

Heater & A C Cooling System Engine Tune • Complete Analysis

State Inspection Station
Eastland

Owner Blake Gaines
629-1008

Hours: Mon.-Fri. 8:00 till 5:30 Sat. 8:00 till Noon
314 W. Main



Buddy Aaron
Managing General Agent
Grand Council

108 S. Seaman
P. O. Box 392
Eastland, Texas 76448
Business (817) 629-8533
Home (817) 629-1086

CONTACT BUDDY AARON ABOUT GUARANTEED ANNUITIES - SAME PRINCIPLE AS C.D. OR SAVINGS
Minimum \$5,000 to Maximum \$500,000.
Same Rate of 8.3% Annual and 8% Monthly on \$5,000 to \$500,000.

A-1 BUILDERS
Building & Remodeling

- ROOFING
- SIDING
- METAL BUILDINGS
- PLUMBING
- ELECTRICAL
- CONCRETE

Commercial * Residential
Jerry Maston • Owner 629-8148

11th Court Of Appeals

The following proceedings were had in the Court of Appeals, Eleventh District of Texas:

Motion Submitted & Granted

11-90-242-CV Jose Zavala-Nava v. A.C. Employment Inc. and Centron Corporation. - Palo Pinto. Appellee's (Centron) motion for extension of time to file motion for rehearing.

Affirmed

11-90-077-CR Pedro Villaruel a/k/a Pedro Lopez v. State of Texas. - Harris. (Opinion by Judge Dickenson).

11-90-109-CR Blas Moreno v. State of Texas. - Harris. (Per Curiam Opinion).

11-91-178-CR Michael Alex Fields v. State of Texas. - Taylor. (Per Curiam Opinion).

11-91-179-CR Michael Alex Fields vs. State of Texas. - Taylor. (Per Curiam Opinion).

11-91-180-CR Michael Alex Fields v. State of Texas. - Taylor. (Per Curiam Opinion).

Affirmed In Part and Reversed & Remanded In Part

11-90-062-CR Michael Joseph Bitgood Easton v. State of Texas. - Harris. (Opinion by Judge Dickenson).

Affirmed On Remand

11-89-076-CR Earl Eugene Wilcots, Sr. v. State of Texas. - Dallas. (Per Curiam Opinion).

Motions Submitted & Granted

11-90-127-CV Palo Pinto Co. et al v. Charlie Ray Cockburn, Stonewall Jackson & O. H. Gilbert, II. Palo Pinto. Appellant's motion to

supplement record.

11-91-045-CR Billy Joe Riggins v. State of Texas. - Scurry. State's motion for extension of time to file brief.

11-91-046-CR Billy Joe Riggins v. State of Texas. - Scurry. State's motion for extension of time to file brief.

11-91-097-CR Reginald Wayne Starks v. State of Texas. Appellant's third motion or extension of time to file brief. - Anderson.

11-91-098-CR Marvin Ray Edwards v. State of Texas. Appellant's third motion for extension of time to file brief. - Anderson.

11-91-154-CV Tarrant Bank v. Mark B. Miller and Julie A. Miller. Appellant's motion for extension of time to file brief. - Brown.

11-91-157-CR Edward Resendez, Jr. v. State of Texas. State's motion for extension of time to file brief. - Taylor.

11-91-161-CR Kevin Patrick Wheeler v. State of Texas. State's motion for extension of time to file brief. - Jones.

Motion Submitted & Overruled

11-91-021-CV Service Lloyds Insurance Company v. Phillip Berry. Appellant's motion for rehearing.

Cases Submitted
11-90-233-CV Arthur W. Carson v. Larry D. Robertson. - Taylor.

11-90-265-CV Norman E. Crittendon v. Floyd E. Miller. - Taylor.

11-91-106-CV Arthur W. Carson v. Warden George Waldron, and G. Crawford. - Anderson.

'All I Want For Christmas' Has Message For All Ages

At first glance the movie "All I Want For Christmas" seems to be an offering just for young people—something to entertain the kids during the holiday season.

But actually it is geared for grown-ups as well as young people—a picture with a real message. This G admission film will show at the Majestic in Eastland nightly from Friday, Dec. 6 through Monday, Dec. 9 with curtain time at 7:30 each evening. Tickets will be \$3 at the box office.

The picture is a comedy about two New York City children who launch a hilarious scheme to get what they most want this holiday season—their divorced parents together

with them again.

A number of young actors star in this film: Harley Jane Kozak, James Sheridan, Ethan Randall. Famous actress Lauren Bacall also has a role in the picture.

The desire to have the O'Fallon family together for the holidays is shared by Ethan (Randall) 13, a practical older brother,

and adorable Hallie (Thora Birch) 7, who knows how to charm her way out of a difficult situation. As Ethan and Hallie embark on their adventure, almost nothing goes as they had planned.

You won't be able to guess the outcome of this fast-moving picture. Take time to enjoy it.

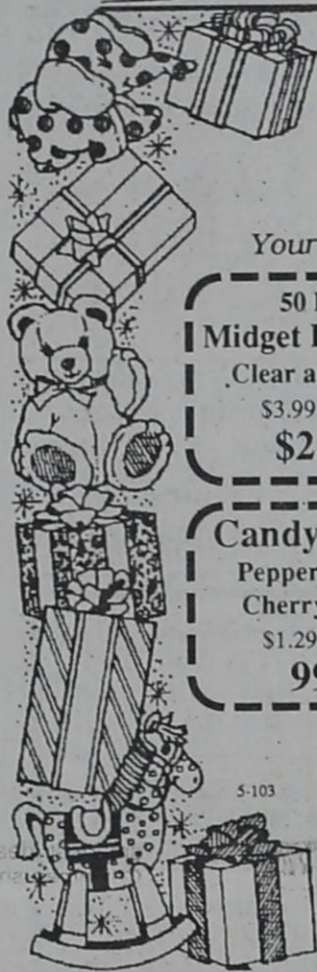
Putnam Musical To Be Friday

The regular Putnam musical will be held Friday, Dec. 6, in the Putnam Schoolhouse. Serving will begin at 5:30 p.m., and the music will begin at 6

o'clock. Gene Kniffen will be master of ceremonies. Everyone is invited to attend. There is no admission charge.

Cisco Press - Eastland Telegram - Ranger Times - Rising Star - Callahan County Star
Thursday, December 5, 1991

READ THE CLASSIFIEDS



5-10 MOTT'S 5-10 Cisco

Open Sundays till Christmas
10 AM-6 PM

Your Neighborhood, Friendly, Easy To Shop Store

50 Lite Midget Light Set Clear and Asst. \$3.99 Value \$2.99	Queen Anne Chocolate Covered Cherries \$1.99 Value \$1.44	25 Count Christmas Star Bows Our Price 67¢
Candy Canes Peppermint or Cherry 12 ct. \$1.29 Value 99¢	100 Lite Midget Light Set All Colors & Clear \$5.00 Value \$4.99	25 Lite Outdoor Light Set Asst. Colors & Clear \$8.99 Value Our Price \$6.99
4 1/2 foot Norway Pine Tree \$19.99 Value Our Price \$16.99	Liquid Potpourri Asst. Frag. 16 oz. \$2.99 Value \$1.99	Boxed Christmas Cards 50% OFF Manufacturers Suggested Selling Price



Ethan O'Fallon (Ethan Randall) and his sister Hallie (Thora Birch) make plans to get what they want most for Christmas—to have their parents back together. See how their plans work out in this delightful Paramount picture, scheduled for the Majestic Dec. 6-9.

Grand Opening

Friday, Nov. 22

Golden Hut Chinese Restaurant

2019 W. Walker Breckenridge

Closed Monday
Lunch 11:00 - 2:30
Dinner 4:30 - 9:00
Fri. & Sat. 2:00 - 9:30 Lunch Buffet
\$3.99

Tempt The Tastebuds With Old Fashioned Popcorn Balls

Pop corn has always played a significant role in holiday festivities in this country. Native Americans introduced pop corn to the Pilgrims at the first Thanksgiving feast and since then, Americans have made pop corn a key holiday feature—from snowy white pop corn garlands to golden candied pop corn balls.

And what could be a more festive and fun family project than making pop corn balls this holiday season?

There's no end to the festive fun that pop corn ball-making can add to your family's holiday. And pop corn balls made with Jolly Time's Old Fashioned Pop Corn Ball recipe (below) make perfect gifts! Simply wrap your confections in red cellophane or plastic wrap and tie with red ribbons. Pop Corn Balls make ideal stocking-stuffers, or fill a tin with several and you've got a cheery hostess gift.

The kids can create snowmen or Santa faces out of pop corn balls. Give snowman a safety cone hat, Santa a sugar cone cap and decorate both with candy-coated chocolate eyes and gumdrop ears and lips.

Or you can deck the halls with pop corn wreaths. Place just-made pop corn balls close together in a buttered ring mold and let the ring harden. Finish with a big red and green bow.

Old-Fashioned Pop Corn Balls

2 quarts popped Jolly Time Pop Corn
1 cup sugar
1/3 cup light or dark corn

syrup
1/3 cup water
1/4 cup butter or margarine
1/2 teaspoon salt
1 teaspoon vanilla

Keep popped pop corn warm in 200°F oven while preparing syrup. In 2-quart saucepan, stir together sugar, corn syrup, water, butter and salt. Cook over medium heat, stirring constantly, until mixture comes to a boil. Continue cooking without stirring until temperature reaches 270°F on a candy thermometer or until a small amount of syrup dropped into very cold water separates into threads, which are hard but not brittle. Remove from heat. Add vanilla; stir just enough to mix through hot syrup. Slowly pour over pop corn, stirring to coat every kernel. Cool just enough to handle. Working quickly, heap about 1 cup pop corn mixture into large sphere of Jolly Time Pop Corn Ball Maker. Press with smaller sphere to shape into balls. Release and cool on wax paper-lined surface. Wrap in cellophane, plastic wrap or plastic bag; tie with ribbon. Makes 8-12 medium pop corn balls.

Confetti Pop Corn Balls: Stir food coloring into syrup before adding to popped pop corn.

Flavor variations: Stir almond, peppermint, orange or any other favorite flavor extract into syrup in place of vanilla before adding to popped pop corn.

CHILD ABUSE 24 HOUR HOTLINE 1-800-252-5400



CHIROPRACTIC FOR BETTER HEALTH

DR. STEPHEN G. BARRY

CHIROPRACTOR

MEDICAL RESEARCH SUPPORTS CHIROPRACTIC

The British Medical Journal reports that Chiropractic treatment of low back pain, which affects 75 million Americans, is superior to the standard regimen administered by medical doctors.

The study, published in the summer of 1990, indicated that chiropractic manipulation can relieve severe back pain quicker and at lower cost than medical treatment. Chiropractic patients experienced less pain and disability and missed fewer days work.

At Barry Chiropractic Clinic we

are committed to not only getting you free of back pain but treating those conditions which cause your pain. No symptom can be more depressing than persistent back pain. Don't delay treatment when help is readily available.

In the interest of better health from the office of:

Dr. Stephen G. Barry
—Chiropractor—
951 E. Main, Eastland
629-1771

Lay-A-Way Now For Christmas

PARAKEET

Tanks of all sizes and supplies for fresh & salt water fish

Special
10 gal. Tank set
\$39⁹⁵

IAMS[®] PET FOODS

Tetra Min Staple Food

- Complete fish diet
- World's leading fish food
- All natural ingredients

Fish, Birds and small animals

Pat's Pot Luck
200 E. Plummer, Eastland
629-1984

We carry name brands

Budget Host

629-2655 I-20 Eastland

BREAKFAST \$1.99
Eggs, Bacon, Hashbrowns & Toast

DAILY LUNCH SPECIALS \$3.50
Senior Citizens Save 10% On Mondays

SUNDAY SPECIALS \$5.50
Served From 11:00 AM - 3:00 PM

Banquet Room Available For Holiday Parties

Grandma's Kitchen

I-20 Exit 343

OPEN
M-S 6:00 a.m.-2:00 p.m.
5:00 p.m.-10:00 p.m.
Sun. 6:00 a.m.-3:00 p.m.

Lemon Tree Boutique

612 Conrad Hilton 442-3294

Drastic Reduction on New Fall Merchandise Due To Our Economic Crunch.

Several Groups of Sportswear 1/4 - 1/3 - 1/2 OFF

All Dresses 1/4 Off
All Lingerie 40% Off

Sale tables with miscellaneous items.
Big selection of items for after Thanksgiving Sale.

