

Progress Is—
Making
Good Things Happen

THE RISING STAR

Where Three
Good Texas Counties
Get Together

Rising Star, Texas

© 1989 Eastland County Newspaper Co.

Established in 1890

Thursday, August 10, 1989

25 cents

Number 32

E.C.E.D.C. Proposal Ready For Public Viewing At Cisco Office

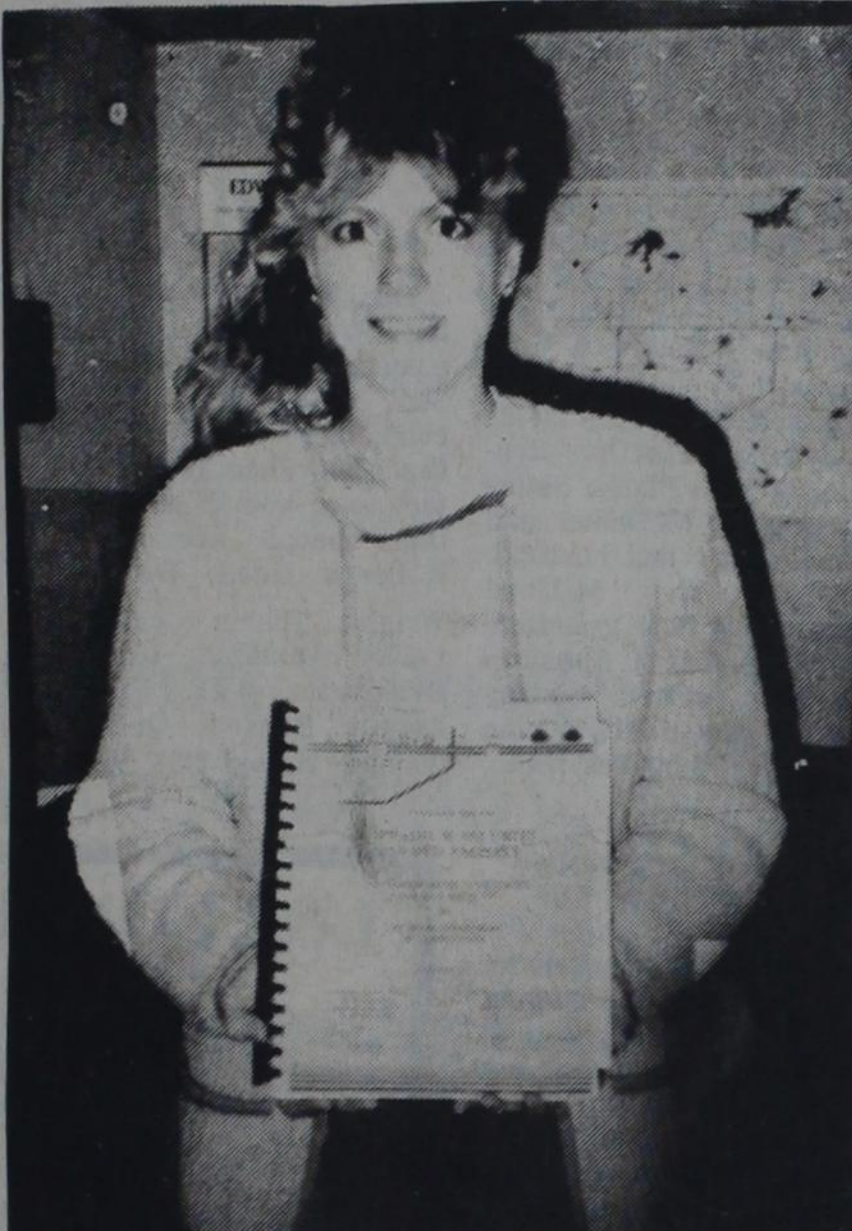
A copy of "Eastland County, Gateway To West Texas", a proposal that was given to the Texas Department of Corrections for Eastland County to be chosen as the site for a new state prison, is on hand at the Eastland County Economic Development Council for the public, according to an announcement by Dr. Charles M. Barnes, project coordinator.

Dr. Barnes and Don Shepard, president of the Eastland County Economic Development Council, delivered the 177 page proposal to the T.D.C. last month. Eastland County is one of 47 other counties in Texas who are earnestly seeking to be chosen as the site of a new prison.

Other counties in this part of the Big Country who are seeking to be chosen for the site of a new prison are Jones (north of Abilene and Abilene), Stephens (Breckenridge), Brown (Brownwood), Baylor, Wichita, Nolan, and Lampasas counties.

Several counties who already have a prison are also trying to obtain another prison for their county. These counties are Liberty, Falls, Scurry (Snyder) Childress and Karnes counties. Most of the counties are in east Texas and every county that already has a prison has applied again which should say that the benefits of a prison located in a county are substantial. The Pecos area and Medina county (San Antonio) in far southwest Texas are the only ones in that area who are applying for a prison.

The Eastland County pro-



JACKIE HOLIMAN WITH COPY OF T.D.C. PROPOSAL

posal has detail descriptions of health care, education facilities, housing, playground, minerals and descriptions of the proposed prison site. There are maps and photos of the county in the copy of the Eastland County, Gateway To West Texas.

The public is encouraged to stop by the ECEDC office, 700 Ave. C, and look at the proposal. The copy can not be removed from the office. Their phone number is 442-3413. Dr. Charles Barnes and all of the volunteer

members of the Eastland County Economic Development Council are to be commended for the hard work they have put forth for the betterment of Eastland County.

Weather

Area residents were treated to a brief respite from the heat last Wednesday, August 2, when about .2 inch of rain fell in Rising Star. The heat soon returned and was helped by the wind to bring a parched look to lawns.

Temperatures cooled and dry land was watered as clouds moved in Sunday and began an on again off again rainfall that lasted until Monday afternoon and delighted area farmers. While amounts varied by some two inches, most of the area received enough moisture to make a definite impact on crops.

A heavy shower at midday Monday added a half inch or so to the more varied amounts reported for the Sunday evening and early Monday morning rains. These are the reports for Sunday evening and early Monday: just west of town, 2.4 and .6; to the north, .6 and .5; just northeast, a total of 3; and to the east, 1.6 and 1.6.

Two-day totals reported were 2.1 to 2.3 in town and 3.7 at Okra.

Whether it was 2 inches or 4, everyone was happy with the unusual August rainfall. High temperatures dropped from around 100 where they had been for days to the mid 70s on Monday; a low temperature in the lower 60s Tuesday morning didn't banish the smiles brought on by the rain.

Tuesday's high was predicted to be mid 80s with a return to the normal August weather of the mid 90s later in the week.

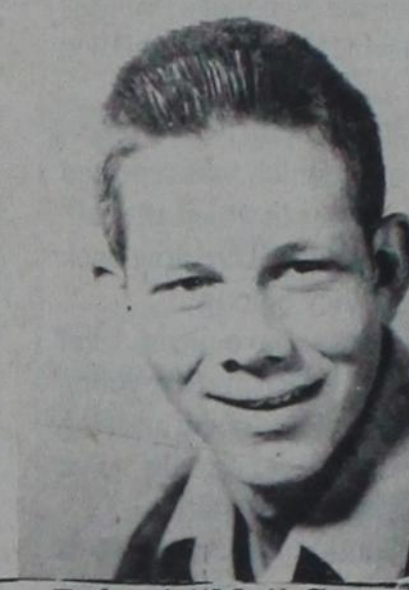
Searching for a Speaker

by Guy Nell West
The Permanent Board of Directors and current officers of the Rising Star Ex-Student Association assume the responsibility each year of securing a speaker for the Homecoming Assembly held in the gymnasium on the Saturday morning of homecoming weekend. Our criteria are not written nor well established, but we usually select an ex-student (sometimes an ex-teacher or present school personnel) who has distinguished himself/herself in a profession, community service, etc., and who might have informative, interesting things to tell us.

The "search" for just the right speaker for the 1989 homecoming started immediately following last year's assembly. Since this year is the 40th anniversary of the graduating class of 1949, the old school annual, "La Estrellita" was consulted for a member of that class as a possible speaking candidate. The likely one instantly became apparent - Robert Cox, the senior class president that year.

The accompanying annual pictures helped us identify him and the search began for Robert (better known in those days as "Mo") Cox.

Next week you will learn where we "found our man."



Robert "Mo" Cox
HOMECOMING IS
SEPTEMBER 16.

Fish Fry Fundraiser for Firefighters

The Rising Star Rural Fire Department will have a fund raiser fish fry at Cook's Fish Barn, located 12 miles east of Rising Star on U.S. Highway 36. It will be Tues-

day, August 15, from 6:00 until 10:00 p.m.

Homemade pie will be available by the slice or whole.

Barbara Murphree,
Secretary-Treasurer

Rising Star School Registration Is

August 18

Rising Star High School students are asked to report to the high school library for registration Friday, August 18, according to the following schedule: seniors, 9 a.m.; juniors, 10 a.m.; sophomores, 1:30 p.m.; freshmen, 2:00 p.m.

Students who are new in grades 7-12 should go to the high school principal's office August 18 to enroll in school.

Students who are new in grades k-6 should go to the grade school principal's office between the hours of 9:00 and 11:00 a.m. August 18 to enroll. New students in k-6 should take copies of their birth certificates, immuniza-

tion records and reports of grades if available.

Rising Star school classes will start Monday, August 28. The buses will run the first day according to the routes used last year. New riders who wish to ride the first day need to contact the superintendent of schools.

The 1989 California Achievement Test results are in. Parents who wish to see the results of their child's testing may contact the appropriate principal or the counselor.

Superintendent's office, 643-2717; high school principal, 643-3521; grade school principal, 643-2431; counselor, 643-3362.

Register at May

Schools August 24

SCHOOL BEGINS SOON
School classes at May Schools begin Monday, August 28; classes begin at 8:15 a.m. and dismiss at 3:30 p.m.

REGISTRATION
May kindergarten students register from 9:00 a.m. to noon Thursday, August 24; they should bring immunization records and their birth certificates with them.

Ninth grade students register at high school between 9:00 and 12:00 the same day, August 24.

ICE CREAM SOCIAL

The annual ice cream social at May will be in the football field area at 7 p.m. Thursday, August 24.

DOUBLE-HEADER SCRIMMAGE

The May Tigers' opening scrimmage of the football season will be against Trent at 6 p.m. Friday, August 25.

The host team's session will be followed by a scrimmage between Bosqueville and Loraine.

Public Notices

May ISD offers vocational programs in Vocational Agriculture and Home Economics.

It is the policy of May ISD not to discriminate on the basis of sex, handicap, race, color, and national origin in its educational and vocational programs, activities, or employment as required by Title IX, Section 504 and Title VI.

May ISD will take steps to assure that lack of English language skills will not be a barrier to admission and

participation in all educational and vocational programs.

For information about your rights or grievance procedures, contact the Title IX Coordinator, Don Rhodes, at Box 38, May, TX 76857, 817-259-2091, or Section 504 Coordinator, Ronnie Watkins, at Box 38, May, TX 76857, 817-259-2131.

USE THE
CLASSIFIEDS

community calendar ...

RSNC BIRTHDAY PARTY
The monthly birthday party for residents at Rising Star Nursing Center will be at 2:30 p.m. Friday, August 11.

2nd MONDAY SCHOOL BOARD
EACH THURSDAY SENIOR CITIZENS

EACH SATURDAY BINGO, American Legion Hall

MAY HOMECOMING
Homecoming for May Schools will be Saturday, October 21.

LIBRARY HOURS
The summer hours for the Library are from 9:00 to 11:00 a.m. every Thursday. New books arrive regularly.

Doggone It - Who Is the Dog Controller?

Gene Hicks, constable for Precinct 3 in this county, reports that he is NOT responsible for dog control in the city limits of Rising Star; also he is appealing to the Eastland County Commissioners about whether he is to enforce the 1981 Rabies Control Act in this precinct. He voiced objections which included not having proper equipment for dealing with rabid animals.

Apparently these doggone pesty dog complaints have been tossed back to officials of the City of Rising Star.

Dog owners, please make it unnecessary for ANYONE to have to take complaint calls about dogs running loose in town. Loose dogs are definitely a nuisance and can pose a health hazard. Increase your vigilance in keeping your pet inside fenced areas or otherwise controlled. There is a city ordinance prohibiting allowing

Applications Being Taken For Eastland County Head Start

The Eastland County Head Start program is accepting applications for the 1989-90 school year to begin classes August 14. Children who will be 3-years old by September 1, or who are currently 4-years old are eligible.

Applicants must provide income verification, birth certificate and immunization records. For more information call 442-4401 or come by 901 West 7th, Cisco. Limited enrollment is available.

pets to run loose and fines can be assessed against pet owners who fail to comply with the ordinance.

Please cooperate on a permanent basis with this request. You will make fellow residents happy, school personnel will be happy, neighborhoods will look better with less trash strewn about and city officials will appreciate fewer complaint calls. (Wow! Just think of the happiness we dog owners can spread around just by keeping our dogs to ourselves.)

Rev. Grubbs To Be Guest Speaker Sun.

The First Presbyterian Church of Eastland is proud to announce Rev. Henry Grubbs as our guest speaker Sunday, August 12 and Sunday, August 19. Morning Worship is at 11:00 and visitors are always welcome.

\$2,500.00 REWARD

Any person with information leading to the arrest and indictment of the person or persons responsible for the crime may call 643-4261 or 643-3421. Information may be given anonymously and arrangements will be made for the payment of the reward.

Money may be mailed to First State Bank, Rising Star, 76471, to be deposited in the Witt Reward Fund. The account number is 72-360-6. No arrests have been made in the rape/murder case. Era Witt, 87, was found dead in her home on June 7.



The 1948-49 Senior Class Officers were, top row, Mildred Carter Hounsel, vice president; Robert Cox, president; Mrs. Mary Claborn, sponsor; and Marygene Ragsdale Musgrove, treasurer; and, seated, Roberta Reed Welsh, secretary and Evelyn White Zellers, reporter.

Rising Star High School Homecoming

Saturday, September 16, 1989 School Gym

SCHEDULE OF EVENTS

8 a.m. Coffee, Registration, Visitation
9 a.m. Assembly, Business Meeting
11:30 a.m.-1 p.m. PTO Luncheon at Cafeteria
2 p.m. Homecoming Parade, Downtown
3 p.m. Pep Rally, Gymnasium
8 p.m. Football Game, Wildcat Stadium

WILDCATS VS. SANTA ANNA MOUNTAINEERS
(Crowning of Homecoming King and Queen, Class of 1939 King and Queen and Wildcat Sweetheart at Half-Time)

Literacy Council to Form

Efforts have begun to organize a Literacy Council in Eastland County. Sponsored by the West Texas Council of Government, a representative has been talk-

ing with people here currently involved in literacy and adult education. A Literacy Council would benefit our area by coordinating and supporting local literacy centers and

by expanding them if the need exists. If you are interested in being involved or if you would like more information, call Corrie Cowley, 629-1813, in Eastland.

Senior Center News

The rains are nice; we are needed them and are enjoying them.

Lisa and Lori Bates of Brownwood spent Saturday night with their grandmother, Martha Carouth. Monday night Ricky and Neta Carouth and son came by to check on his mom. Marth received a telephone call from her very ill sister in Arlington.

Betty Raybon spent a week in Odessa with her son, Weldon Evans, and a friend, Pat Carver.

Mary Carroll is still in the hospital after knee surgery. She will be released this week; she is doing real good.

Edith Bostick, Darwin

Bostick and Peggy Hooper visited Lane Bostick and family in Kerrville Friday; they also saw Don Bostick who is visiting from Washington, D.C.

Marion and Marjorie West spent the weekend in Seagraves visiting friends and relatives. They enjoyed a birthday party for Parker Metcalf who celebrated his 85th birthday. Margie West will have eye surgery Tuesday.

DEvelyn and Joe Ward have visitors from Alberta, Ga., her sister, Joyce, and husband and daughter, Elaine. They will all be attending a family reunion at Canton.

Sheriff's Dept. News

The Ranger Police Dept. arrested a juvenile for burglary.

About nine mailboxes between Eastland and Morton Valley were beaten up. Deputies have leads and there was a witness. An arrest is expected soon.

A service station in Rising Star was burglarized last Thursday with \$130 in quarters, \$10 in dimes, some snack items, and some tire repair equipment being taken. Three boys aged 12 and 13 confessed and the items taken were returned or restitution was made. The case will be referred to juvenile authorities.

Efforts are being made to locate the owner of a Brangus bull which strayed onto Hwy. 6.

A trailer with two 4 wheelers on it which was reported stolen was not stolen after all, but moved. All are now back where they belong.

Charges have been filed against two Rising Star young men for forgery by passing after they reportedly gave statements to deputies.

Deputies received a theft by check complaint from H.T.S. Builders. It was investigated and cleared, and charges were dropped.

On Sunday and Monday morning, 16 calls were received by the Sheriff's Dept. Many were suspicious person or suspicious vehicle calls and some were cattle missing calls.

Daniel Boone reported a calf missing north of the Union Store, and some Longhorn cattle, crossed with

Herefords, are missing near Rising Star.

The cattle stolen from the Kelly Ranch near the Stephens County line were returned. The bull had lost weight but the cows were reported to be in good shape.

Complaints were made about harassment at Rising Star.

South of Ranger, a cow was reported to be shot and in a taken on one place and two cows were killed on another place and their hindquarters were missing.

The missing Clark bull was reported been found and is to be returned. He had strayed away.

The Dept. of Human Services in Austin is helping the Sheriff's Dept. to locate some wanted people. They sometimes apply for jobs.

A trip to San Antonio to pick up a prisoner become a trying experience for members of the Eastland County Sheriff's Dept. A deputy left in a patrol car, but it broke down a few miles down the highway. A second patrol car was sent, but it also broke down before it was 50 miles from Eastland. A third patrol car finally made the trip, bringing the prisoner to Eastland. The Dept. has one new car, but three others have more than 150,000 miles on them and parts keep wearing out.

A white custom walk-in camper mounted on a red pickup bed trailer was taken from a farm northeast of Gorman. Reportedly a former employee took it and may have left the state.

Obituaries

Lona E. Kornegay

Lona E. Kornegay, 62, died Tuesday at her residence.

Services were held at 2 p.m. Thursday at the First Baptist Church with the Rev. Darrell Dossey officiating. Burial was in the Rising Star Cemetery, directed by Higginbotham Funeral Home.

Born in Pioneer, she was an Eastland County resident.

She was a homemaker, a Baptist and the widow of Harvey J. Kornegay Sr.

Survivors include a son, Harvey Joe Kornegay Jr. of Rising Star; two daughters, Connie Beam of Rising Star and Patsy Shirley of Big Spring; and 10 grandchildren.

George C. Berry

George C. Berry, 63, died Saturday at a San Antonio hospital. Services were held Monday at Higginbotham Funeral Home Chapel with C.M. Haygood officiating. Burial was in Blake Cemetery.

Born July 17, 1926 in Dora, he moved to Rising Star five years ago. He was a retired iron worker and a U.S. Army veteran of World War II.

Survivors include his mother, Grace Berry of Rising Star; a brother, Jack Berry of Hesperia, Calif.; and a sister, Judy Berry of Montana.

WTU Names Officer

West Texas Utilities Co. has selected Dennis M. Sharkey as its new vice-president-finance. Glen Churchill, WTU's president and chief executive officer, announced the move is effective today. Sharkey succeeds Larry Connors who has transferred to an affiliate utility that serves south Texas.

Sharkey will supervise the company's accounting and finance operations as well as the computer information services department. He has served as comptroller of Public Service Company of Oklahoma, another affiliate of WTU, for the past eleven years. Prior to that he worked for the Arthur Andersen accounting firm nine years.

A native of Oklahoma, he graduated from Northeastern Oklahoma State



With more than 600 pages of family history's ready to be published in the soon-to-be-released Eastland County History Book, History Book Committee members (L-R) Ann Jay, Wanda Smith, June Hicks, Roy Lee Smith and Ron Bailey work on adding the memorial and business pages to the giant book.

Rising Star Nursing Center

Vickie Majors Activity Director

Monday: In-room activities; passed out mail. Bingo players were Joe Fox 1, Pauline Hill 3, Vera Forbes 5, Pearl Petty 2, Jenne Turner 5, Brice Carroll 3, Rose Nichols 2, Maggie Christian 2, Vera Hill 6, Martha Irby 5 and Buster Rixford 3.

Tuesday: Passed out mail. Ruby McCowen and Bobby Jack McCowen sang for us.

Wednesday: Passed out mail. Bingo players were Joe Fox 1, Martha Irby 4, Maggie Christian 2, Vera Forbes 3, Vera Hill 3, Mary Hord 3, Pearl Petty 2, Jenne Turner 4, Brice Carroll 6, Rose Nichols 2 and Buster Rixford 6.

Thursday: Sat on patio; passed out mail. Some played dominoes.

Friday: Exercised on

patio; passed out mail. Bingo players were Joe Fox 1, Pauline Hill 3, Vera Forbes 5, Pearl Petty 2, Jenne Turner 5, Brice Carroll 3, Rose Nichols 2, Maggie Christian 2, Vera Hill 6, Martha Irby 5 and Buster Rixford 3.

Visiting Ellen Mayes were Harvey and Geneva Kornegay and kids.

Visiting with Idella Collins were Kristie Collins and Brianna Cooksey of Rising Star.

Lena Scott was visited by Gladys Barron.

Lillian Morrow's visitors were Mr. and Mrs. Robert Vaughn and Derek of Dallas.

Thanks to First Baptist Church for Sunday services. Our monthly birthday party will be Friday, August 11, at 2:30 p.m.

Sipe Springs News

The Sipe Springs Homecoming on Sunday, July 30, was well attended and enjoyed by all. Some attended for their first time.

Elton and Jim Richardson of Levelland, Don Morrow of Lawton, Okla., Oran Hansford of Killeen, Buddy Hansford of San Angelo and Arthur Hansford of Granbury visited friends and attended the homecoming.

Herman Boswell of Arlington and Ruby Boswell of Whitney visited Mr. and Mrs. Travis Boswell over the weekend and attended homecoming.

Visitors at the N.L. Leonard home over the weekend were Mr. and Mrs. Chuck Simmons and

children of Wichita Falls, Jo Leonard, Gary Leonard and Sherry Morgan of Odessa, Linda and Kelly Thompson of Wichita Falls and Gayle Leonard of Fort Worth.

Mr. and Mrs. Carl Houser of Comanche, Mr. and Mrs. Donald Hutchins and Mr. and Mrs. Moody Reece of Fort Worth visited Mr. and Mrs. N.L. Leonard on Saturday and attended the musical and homecoming.

Mr. John McKeehan was bitten by a rattlesnake on his hand last Tuesday and is recovering nicely at this time.

Mrs. Bailey Elliott of Matador and Mrs. Emma Jean Miller of Houston visited the John McKeehans.

Happy Birthday

AUGUST 11
Von Dene Willett
Vance Wilson

AUGUST 12
Mrs. Henry Prestridge
Michael Jackson

AUGUST 13
Mrs. George W. Williams
Krystal Wheat
Edith Mae Hull
Beverly Willett

AUGUST 14
Rita Wilson
Sandy Hutton

AUGUST 15
Maxine Crisp
Courtney Ezzell
Jessie Headrick

AUGUST 16
H.L. Killion
Michael Clark
Dorothy Calloway
Danny Medley
Geneva Bobeon
Dianna Brown
Danny White

AUGUST 17
James Jackson
James A. Hokett
Larry Earp
Scotty Hutton

Read The Classifieds

MOBILE HOME TRANSPORTING

Complete Moves & Setups

Moving Throughout Texas

• Tie Downs •
• Blocking & Leveling •

• Licensed •
• Bonded •
• Insured •

18 Years Experience
817-893-6753

College Notes

McMurry College recently announced its Spring 1989 Dean's List. To be eligible for the Dean's List, a student must be enrolled in at least 12 semester hours and maintain at least a 3.5 GPA for that semester. Included on the list is Carolyn Sue Bloom Patton of Rising Star.

Sunday Noon Buffet
at
Jody's Pizza
11:30 a.m. - 2:30 p.m. Sunday
\$3.89

THE SOUTHWEST LOOK!

IS HERE (ON DISPLAY)



- Pottery
- Figurines
- Plants
- Wall Hangings
- Draperies
- And Lots More!

BEIL DRAPERIES

1706 W. Commerce (Hwy 80 W.)
Eastland 629-1319

Auditions For CJC Wrangler Belles To Be Held August 12

Auditions for the Cisco Junior college Wrangler Belles are scheduled for August 12, at 9:00 a.m. in the CJC gym. This will be the final audition before the fall semester begins. Students accepted into the performing drill team are recipients of an activity scholarship issued each semester.

The Wrangler Belles actively promote the college through numerous appearances around the Big Country. Performances include football and basketball game halftimes, parades and special events. The group has also traveled with the CJC Wrangler Band to the New York Macy's Thanksgiving parade, the Shenandoah Appleblossom Festival near

Washington, D.C. and the Fiesta de Tabasco in Villahermosa, Mexico.

Any girls who have graduated from high school or have previously auditioned for the Wrangler Belles are eligible to attend. For more information contact Debbie Baker, Wrangler Belle Director at Cisco Junior College (817) 442-2567.

Rust Processing Center and Country Meats
Cisco Hwy 80 East
Freezer Packs Available
Food Stamps Accepted

Lone Star Title
101 W. Main
Eastland, TX 76448
629-2683

Texas Bar-B-Que

Bar-B-Que Plates
Sandwiches

Brisket
Ribs
Sausage
Ham

Downtown Baird
(Next To Opry Theatre)

• Orders To Go •
Come & Eat With Us
Before Attending
Johnny Lackey's
Saturday Nite OPRY
Senior Citizens Discount

Open: Fri. 11:00 a.m. - 9:00 p.m.
Sat. 4:00 p.m. - 9 p.m.

L&J CONSTRUCTION

- New Const. • Remodels
 - Add-Ons • Steel Bldgs.
 - Sheet Rock • Tape & Bed
 - Acoustic • Texture
- Jim Ratliff Lynn Hutton
817-643-6464 817-725-7582
Rising Star Cross Plains

Johnny Lackey OPRY Theater

Downtown Baird, Texas
Sat. Night 7:30 - 9:30 p.m.

There Will Be A Drawing Each Week For Door Prizes. At The End Of August, There Will Be A Drawing For A VCR.

Door prizes donated by: Olive Garden, U-Bar-U Steakhouse, Pizza Garden, Chick-N-More

Admission \$5 At Door
Advance Tickets Available For \$4 at
U-Bar-U Steakhouse &
The Pizza Garden In Baird
& At Chick-N-More In Clyde
Children 12 Years & Under Get In Free.
For More Information Call 673-2114

HOUSTON'S FABULOUS Tides II MOTOR INN
6700 SOUTH MAIN

Dick Meeple, V.P.

SUMMER DISCOUNT
\$39.95 DBL.
KIDS FREE 12 & UNDER

- ASTROWORLD/WATERWORLD TICKETS AVAILABLE AT FRONT DESK
- EXCELLANT BUFFET AT REASONABLE PRICES
- BEAUTIFUL POOL AND GARDEN AREA
- CABANA ROOMS AND SUITES
- FREE PARKING
- RISING TIDES CLUB
- MAJOR CREDIT CARDS ACCEPTED

713-522-2811
HOUSTON, TEXAS
Across From Texas Medical Center

5 Minutes to Astrodome, Astroworld and Waterworld
Rice Stadium - Zoo - Golf Course - Fat Stock Show - The Summit

Letters To The Editor

Editor,
Isn't Eastland County part of Texas? That was the first question to come to mind as I began hearing of the efforts made to have the state save us by GIVING us a new prison. I was wondering if the Rah-rah enthusiasm was a sign of the times, not the economic situation, but the let's not help ourselves if someone else can do it for us. I wasn't too overwhelmed back then about having a prison here and really am not now, but I felt that my thoughts and experience might be helpful to those who aren't sure where they stand on this issue.

After months of airing a promotional message on the cable tv advertisement channel that was pointless and did not address the prison issue,

there was an article in the newspaper telling of a bus trip to the Palestine facility. This poor attempt at journalism detailed the meal at McDonald's and the bus ride in greater detail than the prison and the surrounding area. (I'm sorry if I offended its author, but it didn't sell the prison if that was its intent.) Now we are invited to again view the "instructional film" on having a prison by Dr. Barnes. I don't really know what qualifies him to be in charge of bringing a prison here. I am sure that he is a good person and has the best interests at heart. His answers were so general that you could easily read anything that you would like into them. For example the promise of 800

or 500 new jobs is made in such a way that you hope that it is meant for Eastland County residents, but how practical is it to believe that our population has the persons skilled in the specialized areas required? I could find more examples as there were many. I have seen in two recent editorials by Mittie Bledsoe that reasonable people have given this issue some thoughtful consideration.

I can understand how the business people of this county would like to see the people afford to patronize at their establishments and understand how parents would like to see their children and grandchildren remain nearby. With all the hopes and desires for these things, has anyone thought of what will be traded for this new prosperity?

I left Texas and worked in

New Orleans as a police officer with nine years on the street before retiring and returning. I also attended college and got my degrees in Criminal Justice and Applied Behavioral Sciences. So what I am about to write has its basis in fact and actual experiences.

A prison is NOT the answer to Eastland's economic revival. The increased tax burden and the lowered quality of life would cost more than any number of new jobs. People in prison aren't there for forgetting to wash their car. The Texas Department of Corrections statistics states that 80% of the Texas state prison population is made of minorities. That in itself may not appear to be a possible problem, but let's just look at this one item.

I remember a while back reading an editorial written by someone who was professing his pride in being a bigot. The first time he or some other bigot sees a welfare momma and her tribe of ankle biters getting out of their welfare Cadillac the stage will be set. Maybe those same persons find that a car trip from Dallas, Houston, wherever is too far to travel to visit her man in the prison, so she might have to move here to

be closer to him. If the man gets a weekend pass, he will be here in the county to be with her. Prisoners are also made trustees and allowed to work outside the prison. Now she has to get her welfare benefits and food stamps. When her children get hurt, they go to the hospital and she doesn't pay as she expects the government to do it for her. Her children go to school, are different, and become disruptive. Trouble begins to follow her and the children. The children having nothing to do, get into more trouble out of school. If a bigot or group of zealots decided that enough is enough and tries running her out of the county, you will have some bleeding heart liberal lawyer come down and file all kinds of civil rights charges against the county for not protecting her rights.

That was only one of many possible scenarios. This would be a cause of an increase in unemployed people in the county requiring an increase in social (welfare) services which means hiring more police and case workers. Well there are more jobs, but also a higher tax rate paid by the working people of the county and its home owners. There may even be a need for

public transportation. Living in the bigger cities teach many members of minority groups to rely solely on the police or other government agency to support them and their lifestyle. An example of one of the most ridiculous misuse of a police officer's time is when an elderly black man called about a domestic problem. The police were dispatched to settle an argument of who had the right to decide which television channel should be watched. It was a common practice to call the police every time a welfare momma went into labor and count on being brought to the hospital. We really didn't have the time to extend these social services as we were averaging a murder a night during the week days and three a night during the weekend. I am not speaking of the city, only the district in which I was assigned which was less than

one-ninth of the city. The crime encouraged me to return to Texas. I sure don't want to see the county invite that here.

There was only passing mention of attracting some company to invest in Eastland County a vague excuse that company restructuring could cause us to lose it as quickly as it arrives. That's what has been bothering me about the whole prison situation. The unspoken demands that imply to work for it or don't bother living in Eastland County. Why doesn't the Chamber of Commerce or a few individuals take the initiative form a company and produce something locally. I would think that there is still enough oil money in this area to put up the capital for a business venture or why not look into starting a corporation, selling shares and open it? There are many possible

business areas in which we have a natural advantage. Hasn't any one tried to get a peanut butter manufacturing plant or at least attracted one of the peanut butter companies to this area? Why doesn't someone try a Texas Barbecue Meats mail order company? I'm sure that there are other businesses, besides the aforementioned.

Whenever you turn to someone else to solve your problem, you turn over more than just the problem. Do we really want to turn over Eastland County?

Thank you for taking the time to read this letter.

John Roe

READ THE CLASSIFIED ADS

The Next Best Thing -

...to a clear conscience and a good night's sleep is the feeling of security in owning your own home with a clear title. Peculiar to the real estate field, values are based on land and the improvements thereon, if any. But values on these are based on the title. The title then comes the most important item to be considered when purchase of real property is contemplated. So be careful to buy good title based on an abstract of title or a policy of title insurance.

Eastland County Abstract Company, Inc.

Eastland, Texas

817-629-1077

CERRS104



Barbara Love, Inc. Highway 80 East
Broker Eastland, Texas 76448
629-1725 629-8391
EASTLAND

WANT THAT COUNTRY FEELING IN Town? Like New, 3BR, 2 Bath Dbl. Wide. Cen. H/A, Fenced yard, private patio. PRICED RIGHT! NEAT, FRAME 2BR, 1 bath home with possibilities. Fenced yard, large steel building. PRICE REDUCED! E2
NEW DECOR in this 3BR, 2 bath home in Oak Hills. Special financing. E4 THIS 3BR, 1 bath Frame needs some work & is PRICED TO SELL! E7
E-Z TO BUY this 2BR, 1 bath house. Newly remodeled with low monthly payments. E31
PRICE DRASTICALLY REDUCED for quick sale! Beautiful 4 yr. old 3BR, 2 1/2 bath home in exclusive neighborhood. Built-ins throughout. Professional landscaping, sprinkler sys. & MORE! E35
AFFORDABLE CRESTWOOD HOME - Spacious 3BR, 2 bath, beautiful kitchen, sunken LR, sauna, much more. CALL TODAY! E26
COUNTRY LIVING IN TOWN! Nearly new large custom home. Heat pump, rock fireplace, office. Beautiful oak covered lot. E23
STOP! Look at this budget S-T-R-E-T-C-H-E-R! 2BR in nice neighborhood. Under \$15,000.00! E1
GREAT PRICE & LOCATION for growing family. Needs some work, 3BR, 2 bath. E38
PRICE LOWERED on this 3BR, 2 bath Frame. Beautifully landscaped, well-kept home. E3
TREE COVERED lot, custom 3BR, 1 1/2 bath home, 3 car gar., sprinkler sys., sun room & more! E8
LIKE A SHADY DEAL? Try this 2BR, 1 1/2 bath frame home on a tree shaded lot. Nice Neighborhood! E11
STORAGE GALORE in this 3BR, 2 bath home with sunken den. 4 car carport and workshop. NICE! E29
VACANT LOT - COMMERCIAL AREA, near downtown. Frontage on N. Lamar, access from Patterson St. Owner will finance. E30
ON A BUDGET? PRICE REDUCED on this affordable 2BR, 1 bath home - lg. living area, gar., carport. E25
SHADED CORNER LOT - 2BR, 1 bath frame. Central heat, metal stg. bldg. E6
2 LOTS LOCATED close to park. Ideal bldg. site for family with younger children. E28
WHAT YOU HAVE BEEN WAITING FOR: Brick 3BR, 1 1/2 bath in the 40's! E5
EDGE OF TOWN - 3BR, 2 bath frame on approx. 1 A. Completely redone; Cen. h/a, tree covered lot. E16
OVERLOOKING EASTLAND - 3BR, 1 1/2 bath, beautifully landscaped. Kit. built-ins, walk-in closets. Cen. H/A & MORE! E17
CHARMING COTTAGE - 2BR & small den or could be 3BR, 1 bath; formal dining. Cen. H/A, or freestanding. P.P. E18
CLOSE TO FINANCING, FHA-VA-CONV. Large 3BR, 1 bath home with Cen. H/A, fireplace, storm windows & More! E20
GOOD BUY FOR SELLER UPPER. 5BR, 4 bath Frame. Det. Garage. E10
WHY RENT - Own this neat & freshly painted 3BR, 1 bath home. Cen. h/a, stove & refrigerator. E22

OTHER

TWO HOMES IN RISING STAR - 2BR, 1 1/2 bath frame & 4BR, 1 bath frame. Both in need of repairs! O7 & O8
RANGER 3BR, 2 bath Brick on nice lot. P/P, Cen. H/A, Kit. built-ins. O5
CARBON cozy 3BR, 2 bath on nice lot. O22
OWNER TRANSFERRED! 3BR, 1 1/2 bath brick. Storm windows, new appliances & More! Only \$36,000.00. O4
GOLDEN-A-REAL DELIGHT! Neat, well-kept 2BR, 1 1/2 bath with den or 3rd BR, on large lot. FHA-VA-CONV. Financing. O1
CISCO-This 3BR, 1 1/2 bath home is not only well designed, but has large, beautiful kitchen. A MUST SEE! O2
RANGER: CORNER LOT! 3BR, 2 bath frame. Total elec.; Att. gar., cov. patio. Low 30's! O3
CISCO-LET'S TALK TERMS! FHA, VA or CONV. financing to qualified buyer. Nice 3BR, 1 1/2 bath brick, cen. H/A. PRICED TO SELL in low 30's.

HOUSE & ACREAGE

PRICE REDUCED on this large 2BR, 2 bath home situated on 1.4 AC. GREAT BUY! HA14
PRICE REDUCED-4BR brick on 22.5 AC or will split 10 ac & house. Some sun., peanut quota & more. NW of Desdemona. HA11
198 ACRES with early 1900's home - Joins Eastland City Limits. EXCELLENT TO SUBDIVIDE! Hwy. frontage, rustic trees. HA8
32 ACRES m1 with 3BR home, access to Lake Leon. Staff water & well, stock tank, barn, shed. Producing gas well, 1/2 royalty. HA17
"NEARLY NEW" 3BR, 1 1/2 bath brick on 4 acres surrounded by oak trees. SOLD place! HA19

BARBARA BOSTICK BARBARA LOVE CINDY POSTER
442-3822 647-1397 629-8227

Moving to Eastland County? Or anywhere in U.S.A. Call Toll Free 1-800-525-8910 Ext. 4365 for information. (No Rentals Please)

CUSTOM 3BR, 3 1/2 bath with beautiful lake view. Satellite dish, split bedrooms, Jacuzzi. MANY EXTRAS! HA4
PRICE REDUCTION On this spacious 3BR, 2 1/2 bath brick on 5 AC, outside of Carbon. OWNER FINANCING! HA3
CISCO-2BR on 1 1/2 AC, outside of Carbon and water makes for country living in the City! HA4
40 ACRES WITH 2BR HOUSE-needs some repairs. Land is cleared, sandy soil, some coastal, some minerals. Stock tank, city water well. EXCELLENT LOCATION! HA21
OAK TREES SURROUND 6 1/2 yr. old 2BR, 1 bath on 7.9 Acres. \$10,000 down & Owner Finance! HA5
SO. OF CARBON-This 3BR brick surrounded by oak trees sits on 60 AC. Owner will split into smaller tracts! HA6
LUXURY CAN BECOME A HABIT in this 3BR, 3 bath log home on 5 AC. Large closet space; kit. built-ins. Nothing has been overlooked on this one! HA1
OLDEN-3BR, 1 1/2 bath brick on 2.2 AC. Some coastal, 2 water wells! HA2

ACREAGE

LAKE LEON-EXCELLENT RECREATIONAL OR BUILDING SITE! Approx. 4 acres with highway frontage and lake frontage. Trees! A1
SO. OF CISCO, 15 AC. SOLD - cannot cultivation, pasture & wooded with 1/2 highway frontage. A3
OWNER SAYS SELL-239 Acres, some coastal, brush, pasture, 3 tanks. Turkey, Deer & Minerals! A17
92 ACRES - NEAR RANGER. Approx. 50 ac. coastal, 3 stock tanks, well & barn. Some minerals. Can pick up pmts. on 1981 mobile home. A5
PRICE CUT IN HALF! Must sell this 8.9 AC. in Carbon. City water & Some trees. A6
SO. OF RANGER: 61.894 AC with County rd. frontage. Producing oil & gas well; will convey 1/4 minerals. A15
E32 AC SE OF EASTLAND - native pasture & good deer cover. Hunter's cabin, 2 tanks; oil & gas production & some minerals. WILL SPLIT! A13
166 AC NEXT TO QUAIL RESERVE. Good bird & deer hunting! Stocked lake, tanks, water well. WILL SPLIT! A14

LAKE LEON-20 ACRES m1, stock tank, barn, fenced. Adjacent deeded waterfront lot! A8
2 ACRES-MORTON VALLEY excellent building site. Water meter available. Highway frontage. A9
EDGE OF EASTLAND, 2 1/2 acres homesite - oak trees, city utilities available! A2
5.2922 AC. LAKESIDE COUNTRY CLUB. Nice building site. Owner Finance! A12
HUNTER'S PARADISE on 1.990 AC of mostly native pasture. Several tanks. Owner will split into smaller parcels! A16
40 ACRES of coastal. Perimeter fencing, tank & some minerals which owner will transfer. A18
CARBON AREA: 118.5 AC. Fenced & cross-fenced, 3 tanks & equip. shed. Some minerals. A19
224 AC SO. OF CARBON: Part brush, approx. 30 ac in coastal, 2 tanks, fenced & cross-fenced. Some minerals. A20
320 AC, CARBON: improved grasses & cult. Fenced & cross-fenced, 5 tanks. Some minerals. A21
WEST OF DESDEMONA-201.32 AC. Wooded, small mountain - Excellent hunting for deer, turkey and quail. Some cult. A22
79 AC N. OF GORMAN - good bottom land. Some cult. Numerous pecan trees, small tank. MINERALS! A23
160 AC, S. BRICKENRIDGE - Approx. 90 ac improved grasses; remainder native pasture with scattered trees, 2 tanks! A24
220 ACRES, N. of Eastland - native pasture, mesquite & oak, 2 tanks. Hwy & county road frontage. A25
35 AC., EAST OF TOWN-Pasture w/improved grasses; stock tank & water well. Some royalty. A4
HERE IT IS! 16 AC. on pavement near Eastland. Fenced, beautiful oak trees. BE QUICK! A11
296 AC NORTH OF CISCO-Native pasture with Hwy. & Cnty Road frontage. 3 tanks; good hunting! A26
7 1/2 ACRES IN OLDEN-completely fenced and set to build on, including satellite dish. Some fruit trees. A27
GOOD LOCATION-2 AC. tract in Pogue Industrial Park. A28
SOUTH OF CARBON, 160 AC. Approx. 40 ac. in field w/balance in pasture. Good dove and deer hunting. A29

COMMERCIAL

EXCELLENT LOCATION - Store with 1680 sq. ft., kitchen, Cen. H/A. 5 trl. spaces located in back on separate meters w/all utilities. C7
153' OF 1-20 ACCESS FRONTAGE, near Eastland with 2.5 ac. & office. Excellent set up for oilfield business. C3
UNDERGROUND FUEL TANKS. Hookups for 4 mobile homes & 7 campers. PRICED RIGHT! C5
PRIME LOCATION ON Miracle Mile for this 50.05 AC tract. Suitable for any type of development. C8
NEWLAUNDROMAT-excellent location, 20 washers, 10 dryers. Equipped with all the conveniences! C9
FANTASTIC LOCATION Next to Skinny's. 24 x 11 office bldg. sitting on 60 x 160 paved & fenced lot. C1

COMMERCIAL

LAKE LEON AREA-Store w/3BR, 1 bath home, 2 underground fuel tanks. Hookups for 4 mobile homes & 7 campers. PRICED RIGHT! C5
PRIME LOCATION ON Miracle Mile for this 50.05 AC tract. Suitable for any type of development. C8
NEWLAUNDROMAT-excellent location, 20 washers, 10 dryers. Equipped with all the conveniences! C9
FANTASTIC LOCATION Next to Skinny's. 24 x 11 office bldg. sitting on 60 x 160 paved & fenced lot. C1

BARBARA BOSTICK BARBARA LOVE CINDY POSTER
442-3822 647-1397 629-8227

Eastland Telegram - Ranger Times - Cisco Press
And Rising Star
Thursday, August 10, 1989

ANN WILLIAMS
REAL ESTATE
610 Conrad Hilton Ave., Cisco
442-1880
Business & Home Phone

CISCO HOMES
Invest and Rent Now - Homes priced under \$10,000.
Great Starter Home or Investment property - 2 BR, DR, CH/CA, extra large rooms, carport, & storage.
Do Not Hesitate on this 3 BR home, just repainted, new carpet, workshop, oak trees, reduced to \$16,500.
Quiet Shaded! 2 BR brick home, 4 lots, workshop, water well, shade trees.
Comfortable Family Home, 3 BR, 2 bath, Den, many cabinets, patio, & carport.
Here's Your Chance! 2 or 3 BR homes priced under \$20,000. Call for more information.
Country Feel with City Conveniences - 3 BR, 1 1/2 bath, CH/CA, & unfinished small house located on 13 lots.
Family Sized Rock Home - 3 BR, 1 1/2 bath, CH/CA, located on 3 lots.
Desirable Neighborhood - 3 BR, 1 bath brick home, formal DR, CH/CA, covered patio, carport, & 2 storage buildings.
Room For Everyone in this 3 BR, 1 1/2 bath home, sep DR, Den, LR, nice cabinets, CH/CA, 2 carports, fenced yard.
Let's Talk Space! 10 room, 2 bath home, located on corner lot, lovely shade trees.
Feeling Confined? Give yourself space in this 4 BR, 2 bath home, sep DR, LR, many extras.
Family Delight! 3 BR, 1 1/2 bath, nice kitchen with breakfast nook, large shop, several lots.
Experience Comfortable Family Living in this 4 BR, 3 bath home, LR, DR, Game room, Den with fireplace, CH/CA, & 3 car carport.
Close-In Country Setting - 3 BR, 2 baths, CH/CA, carport, lots of storage space.
All the Space you Need Plus a Swimming Pool with this 3 BR, 2 bath brick home, fireplace also.
Lovely North Shore Family Lake Home - 3 BR, 3 baths, CH/CA, fireplace, covered patio, boat dock, deep water.
LAKE CISCO AREA: Peaceful living, accessible to lake and town, nice homes and cabins.
MOBILE HOMES: Comfortable and affordable, 3 BR, 2 bath, each located on 2 lots or more, starting at \$12,500.
HUD HOMES: Need information? Call us.
RESIDENTIAL LOTS: Have you considered building your own home?

COMMERCIAL PROPERTIES
Very well maintained Downtown office building with CH/CA.
Easy access - spacious building - only \$12,500.
Medical Offices, Professional office will accommodate 2 physicians. Close to Hospital, large parking area, CH/CA.
ACREAGE AND COUNTRY HOMES
Just minutes from town! 3 BR home, CH/CA, satellite antenna, 2 water wells on 1.8 acres.
Pecan Orchard, 2 tanks, on approx. 29 acres, also 3 BR, 1 1/2 bath mobile home with CH/CA.
Extra Nice 3 BR, 1 1/2 bath Rock Home, LR, Den, office, large kitchen, sun room, on .407 acres.
Home Site, Approx. 40 Acres, I-20 frontage, 2 tanks.
Country Living At It's Best! 3 BR, 1 1/2 bath brick home, CH/CA, 80 acres, barn, pens, tank, Westbound Water.
Great for Hunting! 160 acres, mostly wooded, small field, tank, creek - only \$390. per acre.
Lots of Living Space - 4 BR, 2 1/2 bath brick home, CH/CA, fireplace, 3 water wells, 3 tanks, on 160 acres.
In Ranger Area - Spacious 4 BR, 2 bath Austin Stone home, CH/CA, on approx. 190 acres, mostly wooded. Will consider selling home and acreage separate.

Ann Williams Cathy Wallen
Broker Associate
442-1880 442-2120
CERRS104

BIG COUNTRY REAL ESTATE
1101 1/2 W. 12th 442-1693 Dana 442-3958
Corner brick 3 bd, storage galore, fenced.
3 Bd. large lot, minor finishing, \$6,800.
3 Bd. remodel, on 5th, garage, 2nd house.
Nice large 2-story homes, Priced to move.
165 AC. 2 Homes, bldgs. water, cultivation, o/carry.
72 AC. Lg. Bk. w/pool, wooded, private, make offer.
80 AC. Pecan orchard, 2 homes, Extras, o/carry.
HUD repos - Duplex - Lots - Comm. Bldgs., More.
Jeffrey 643-3129 Penny 442-1707

PAT MAYNARD REAL ESTATE

WE APPRECIATE YOUR BUSINESS!!
629-8568 MAYNARD BUILDING HWY. 80 EAST EASTLAND, TEXAS
EASTLAND HOMES AND LOTS
Lovely Two-Story, 3 BR, 1 1/2 Bath, Brick, Central Heat & Air, New Carpet in Kitchen/Dining Rm., Builtins, Privacy Fence, Super Neighborhood, \$55,000.
Owner Means Business! Neat 2 BR, Frame, Carpet, Drapes, Dishwasher, Storm Windows, Big Patio, Fenced Backyard, Storage Building, 3-Car Carport, REDUCED! \$24,000.
No Flag Burners In This Neighborhood! Large 3 BR, 2 Bath, Frame, Central Heat & Air, Huge Beamed Ceiling Den w/Woodburning Heater, Built-in including Trash Compactor, Great Cabinets, \$28,000.
Bulging At The Seams? This Gigantic 5 BR, 3 1/2 Bath, Brick, on Large Corner Lot has Separate Living Areas, Formal Dining Rm., Upstairs Studio or Office, Atrium, Garage Apt. & More! \$85,000.
Latest Listing, Attractive 2 BR, Frame, Central Heat & Air, Patio, Fenced Backyard, Ceiling Fans, Pecan Trees, \$30,000.
Investment or Payment Saver, Extra Nice Brick Duplex, 2 BR, 2 Bath on Each Side, Central Heat & Air, Located near Schools and Little Store, Just Right! \$55,000.
This Little Acre Comes with Pretty 3 BR, 2 Bath Doublewide, Carpet, Central Heat & Air, Builtins, Fireplace, Sky-Lite, Built-in Stereo, and Lots More! Owner Says Sell! \$38,500.
High Prices Are History! Large 3 BR, 2 Bath, Central Heat & Air, Carpet, Formal Dining, Detached Garage, Fenced Backyard, Corner Lot, \$29,500.
Picnic In The Park, Or Use Your Own Backyard with This Rustic 3 BR, 2 Bath, Cedar Home situated on abt. 1 ac. near Lakeside Golf Course, Large Open-Living Area, Wallpaper, CH/CA, Builtins, NICE! \$68,500.
Dream Home! Gorgeous Log/White Stone/Glass Home, Approx. 3,000 sq. ft., All the Amenities including Built-in Vacuum System, Ice Machine, Pop-Up Blender, Microwave, Fireplace, & More. Situated on 3.77 heavily wooded Acres, Must See!
It's Summertime And The Living Is Easy in this Comfortable 3 BR, 1 1/2 Bath, Brick Home on 2.67 ac. ideally situated just S. of Eastland on Hwy. 6, Carpet, Drapes, Wallpaper, Builtins, CH/CA, Beautiful Patio & Deck, \$80,000.
Hideaway, Handy Location Just Off Main Hwy., Very Neat 3 BR Frame Home has COOL Refrigerated Air, Fenced Backyard, Storage Shed, \$23,000.
Handyman's Delight, large older 3 BR, 1 Bath Home with a Living Rm., Dining Rm. & Kitchen, in dire need of some TLC! This has possibilities. Make Offer!
Country Home, Attractive 3 BR, 2 Bath, Brick, Central Heat & Air, Fireplace, Formal Dining, On 9.67 ac. Pasture Land Near Eastland, \$65,000.
New! 3 BR, 2 Bath Cedar Home on Large Corner Lot, Central Heat & Air, Ceiling Fans, Carpet, Builtins, Fabulous Master BR Closet, Move In Immediately! \$63,500.
Light Up Your Life with this Pretty 3 BR, 2 Bath, Mission Brick, Approx. 2,471 sq. ft., two CH/CA Units, Fireplace, Builtins, Wet Bar, Garden Tub, \$99,500.
New Carpet Throughout in this Stately 3 BR, 1 1/2 Bath Home on Corner Lot, Central Heat & Air, Custom Drapes, Formal Dining, Spacious Kitchen, Detached Garage/Storage, \$60,000.
Close In & Convenient to Church, Doctor's Office, & The Square, This Duplex could easily be turned into a 4 BR, 2 Bath Home, or leave it as is for excellent rental property, \$27,500.
HUD Properties Available in Eastland, Cisco, and Ranger. Call for information. Equal Housing Opportunity.
Secured 3 BR, 2 1/2 Bath, Brick Home on 9.3 ac. in Eastland, fenced & crossfenced, Priced Low To Sell! \$60,000.
Country Air, Recently Remodeled and like New! 3 BR, 2 1/2 Bath, Approx. 1900 sq. ft. on 6.2 wooded acres, \$68,500.
Edge of Town, Comfortable 3 BR, 2 Bath, on approx. 2 ac., big den, storm cellar, pecan trees, Good Terms, \$29,500.
Just Minutes From Town, Nice 3 BR, 2 Bath Home on 12.9 ac. beautiful coastal, Large 16' x 20' Shop Bldg., Completely Fenced, City Water, plus well, \$64,900.
First Time On Market, Large Older Home situated on big lot, approx. 140' x 226', Plenty of room for horse or Ag Project, Huge Bedrooms, plus detached Bedroom or Office, Big Porch & Covered Patio, \$30,000.
Children can walk to Elementary school from this Attractive 3 BR, 1 1/2 Bath, Brick Home, Central Heat & Air, New Carpet, Drapes, Privacy Fence, Recently repainted inside & out, Barn & Pens, \$45,000.
Desirable South Seaman Street, 2 BR Frame w/ Siding, Carpet, Storm Windows, New Privacy Fence, Screened Porch, Big Trees, \$29,500.
Hilltop View, 3 BR, 2 Bath, COOL Refrigerated Window Units, Woodburning Stove, Dishwasher, Pretty Patio, Owner Says Sell! \$27,000.
Must See! Spacious Two-Story Brick Home on approx. 10 ac. near Eastland, 3 BR, 2 1/2 Bath, Abt. 3,000 sq. ft., CH/CA, Covered Patio, Big Shop Bldg. & Boat Storage, \$85,000.
Bricked 3 BR, 1 1/2 Bath Mobile Home, 14' x 72' w/ additional room built on, Central Heat & Air, Appliances, Assumable Loan! \$23,500.
Like New Inside! 3 BR, 2 Bath, Central Heat & Air, Ceiling Fans, Carpet, Builtins, Storm Windows, Pretty Cabinet Work, Large Shop Bldg., \$33,000.
Executive Home, Brick Two-Story, Approx. 5,000 sq. ft., 4 BR, 3 Bath, Formal Living & Dining, Den, Garamero, Office, Fabulous Kitchen w/Breakfast Area, Six Figures.
Owner Finance, Cute 3 Bedroom, Sunshine Yellow, Just Right For You Newlyweds! Detached Garage, Storm Cellar, Big Trees, \$18,500.
Be Ready For The Boom! This Older 4 BR, 1 1/2 Bath, Frame Dwelling is located on West Main St. next to major convenience store, \$20,000.
Residential or Commercial, Take Your Choice! This 2 BR Home has large comfortable rooms in R.G. (BUCK) WHEAT BROTHERS

LAKE LEON AND OTHER LOCATIONS
Lake Leon, Near Lone Cedar Country Club, 2 Lake Lots, approx. 100' water frontage, Staff Water Meter, plus Travel Trailer on property, \$35,000.
Lake Leon, 6 Lake lots near LaMancha area, Water Frontage, \$6,000 each.
LaMancha Area, Lake Lots priced from \$2,500 to \$12,000, Good Selection!
Lake Leon, 3 BR, 1 1/2 Bath, Brick Home on Deeded Lot, Deep Water Frontage, Staff Meter, Furniture Included, \$45,000.
Lake Leon, Nice 2 BR Brick Home on Deeded Lot, Central Heat & Air, Staff Meter, Fireplace w/Heat-o-Later, plus small one-bedroom house on same property, \$59,500.
Morton Valley, 3 BR Home & Grocery Store on approx. 1.3 ac., \$57,500.
Morton Valley, Spacious 3 BR, 2 Bath Brick Home on approx. 10 ac., Carpet, Drapes, Builtins, CH/CA, Big Kitchen, Nice Oak Trees, Good Fences, City Water, Stock Tank, & Water Well, \$130,000.
Olden, Pretty 3 BR, 1 1/2 Bath, Brick Home on approx. 1 ac., CH/CA, Fireplace, Covered Patio, \$69,000.
Olden, 3 BR, 2 Bath, 14' x 80' Mobile Home, CH/CA, Builtins, 2-Car Carport & Stor. Shed, on approx. 3 ac., \$16,500.
Olden, Secluded Pond beneath giant Oak Trees adds to this 2 BR Stucco, Approx. 3 ac., \$29,500.
Rising Star, Residential Lot near School w/24' x 40' Shop Building, City Water plus water well, lots of trees, \$4,500.
Carbon, Large Residential Lot, 135' x 172', three big pecan trees, fenced on three sides, Good Location, \$3,500.
Carbon, 3 BR, 2 Bath, Brick Home on Corner Lot, Central Heat & Air, Carpet, Drapes, Fireplace, Beautiful Kitchen Cabinets, Like New! Better Hurry On This One!
Cisco, Lovely Two-Story Home with Basement and Full Attic, Close In, Ideal Family Home or could be used for good commercial location, \$50,000.
Cisco, Large 3 BR, 1 1/2 Bath Home, Central Heat & Air, Carpet, Builtins, Large Living Area, Sep. Dining Rm., Breakfast Area Off Kitchen, Fenced Yard, \$49,500.

LAND: FARMS, RANCHES, & SMALL ACREAGE
260 ac. near Scranton, 3 water wells, 1 spring-fed tank, abt. 140 ac. cultivation, barn & shed, 2 oil wells-buyer get 1/2 of Sellers mineral rights, \$475 per ac., Will divide for \$525 per ac.
249.3 ac., Sabana River, two tanks, 1/2 minerals, 140 ac. cultivation, oak & pecan trees, \$500 per ac.
166 ac., Road Frontage on two sides, good fences, some cultivation, trees, corrals, could be divided, \$550 per ac.
146 ac. Pasture, Oak Trees, tank, Hwy. Frontage, Fenced, Some Minerals, \$550 per ac.
120 ac. near Lake Leon, all pasture w/scattered oak trees, two tanks, running creek, lovegrass & bluestem, 1/8 minerals, \$595 per ac.
75.5 ac., all wooded, good hunting, near Olden, \$525 per ac.
50.6 ac. near Eastland Lake, creek, pecan trees, three tanks, coastal, pens, \$42,504.
50 ac., Staff Area, Lake Leon, Heavily Wooded, \$400 per ac.
40 ac. Wooded Tract, can be divided, owner finance, \$36,000.
34 ac., Near Lone Cedar Country Club, Native Grass, Oak Trees, Fenced, Road Frontage, \$25,000.
26.15 ac., Hwy. 80, Westbound Water, One Tank, Mostly All Coastal, \$21,574.
14 ac. Coastal near Eastland, County Road Frontage on two sides, \$12,500.
10 ac., Singling Lake Road, City Water, Natural Gas, On School Bus Route, \$10,000.

COMMERCIAL PROPERTY
Brick Building, Formerly used as restaurant but very versatile, Main Street Frontage, \$42,700.
I-20 and Hwy. 80 East, Eastland, Holland's Building & Lot, Ideal Location! Call for Details.
New Landromat & Acreage available on Hwy. 80 East, Own Your Own Business!
Invest In A Duplex Apartment, We have three nice ones priced \$27,500 - \$55,000.
Commercial Acreage, up to 50 ac. in the heart of Eastland's prime commercial area off Hwy. 80 E.
Cisco Motel w/Living Quarters & Two-Story Shop, Would make ideal storage units, flea market, mini-mall, etc. \$20,000.
Modern Office Building w/8 offices, kitchen/conference room, 2 rest rooms, central heat & air, carpet, 2,880 sq. ft., \$75,000.
Busy Service Station, 2 Bays, Office, Shop Building, Fully Equipped, Corner Location, Good Business.
Choice Location on Hwy. 80 East, Eastland, approx. 2 1/2 ac., Lots of prime highway frontage! \$80,000.
5,000 sq. ft. metal building on approx. 2/3 ac., I-20 Eastland, \$76,000.
DEBRA MAYNARD ASSOCIATE 629-1013
WAYNE CHAMBER ASSOCIATE 734-2782
KAY BAILEY ASSOCIATE 629-8568
R.G. (BUCK) WHEAT BROTHERS BROKER

CLASSIFIEDS 643-4141

REAL ESTATE

16.5 ACRES on Mill Street, lots road most in coastal, **SOLD** with low down payment.
300 ACRES Sipe Springs area, partially timbered, good deer, turkey, sandy loam soil, good fences, \$400 per acre.
1400 ACRES, 2 sets of improvements, 5 acre lake, 1 1/2 mi. of Sabanno creek, good deer & turkey, \$500 per acre.
81 ACRES near Carbon, about 20 cultivated. 1 well, tank, big oak trees & road on 3 sides. \$575 ac.
161 ACRES lots bottom land, pecans, 60 tillable, well fenced, 1/2 mile Sabanna, good deer hunting, lots big oak, pecans. \$550 ac. Agent owned.
58 ACRES, Several big trees, 2 tanks, some coastal, most new fences, lots road front. \$550 ac. E-ZZ terms.
246 ACRES Carbon area. 62 ac. grain land, native grasses, 6 tanks, good to new fences, road on 3/2 sided, runs 25-30 cows. \$450 ac.

We WANT Your Listings
 34 Yrs. in Business
COGBURN REALTY
 893-6666 893-5898
 893-2642 DE LEON

ACTION REALTY
 WE NEED LISTINGS!!!
 Equal Housing Opportunity
 915-643-6516

Rising Star

ROCK 3 BR, 1 B on highway, fenced garden area. Call today!
STUCCO 3 BR, 2 B, dining room, carpet, laundry room with sink, water well. Priced to sell!
CLOSE TO PARK, 2 BR, 1 B, hardwood floors, breakfast nook, large lot. Call Stella!
2 BR, 1 B, SUN room. Needs some work. Acreage. Call today.
2 BR, 1 B, LARGE rooms, recently done over. Close to school on paved road. Call today.
2 BR, 1 B, DINING room, water well, close to town. Call today.
3 BR, 2 B, ROCK on B'wood hwy. Needs lots of work. Priced cheap.
BE THE BOSS! Working grocery store, meat market, vegetable bins, inventory. Call Stella for details!
2 LOTS AT Shamrock Shores, Lake Brownwood. Call!

James Smith broker 646-0297
IN RISING STAR
STELLA WARE 643-3591

HOUSE FOR SALE on West College Street. Corner lot, good water well. Priced for quick sale. Call 817-643-2854. 16-26

FOR SALE, 1/2 acre lot with all utilities, \$1,500. (817) 643-1805 or 643-1707 29-32

SELLING YOUR HOME OR BUYING? Call Stella Ware, 643-3591, your local real estate agent for Action Realty, Brownwood, James Smith, broker. 26-52

SERVICES

CARPET CLEANING Commercial/Residential. Free estimates. Scotchguarding available. We move all regular furniture. Carpet sold, repaired, installed. New or used. No mileage charge within 40 miles of Cross Plains. Dub Mador (817) 725-7720.

Mobil Oil Products **CONOCO**
Texaco Oil Products Pennzoil
Golden West Gulf/Chevron
Farm Fuel Delivered
CROSS PLAINS PETROLEUM (E.S.E. Inc.)
 P.O. Box 219, 6th at Ave. F
David and Lenell Slinger Cross Plains
Managers (817)725-6582

Main Street Auto Repair
 Open Monday - Friday 8 - 5 p.m.
CUSTOM MUFFLER & TAILPIPE WORK
 Jackie Palmore - Mechanic
643-1701
 Hwy. 183 Rising Star, Texas

FOR SALE

FOR SALE Golf carts & golf cart trailers. To see, come to 3rd house on I-20 west of Union Hill Rd. between Baird & Clyde, or call 915-893-2662
MEN'S WRANGLER jean shirts, long sleeve, assort., stripes, oversized pockets, S,M,L,XL, \$14.99. Johnson's Dry Goods, Cross Plains 32

GIRLS' SILVER LAKE JEANS Pink, whitewash & dark denim, sizes 7-14, reg. & slim, \$18.99. Johnson's Dry Goods, Cross Plains 32

WATERMELON PATCH FOR SALE-Call 817-643-1008. Several varieties. 31-32

GARAGE SALES

MOVING SALE Thur. & Fri. at the old Kelley Supermarket bldg. on Main St. in Cross Plains. Pulling up stakes after 50 years. Building must be vacated. Large accumulation of electrical & plumbing supplies from business, garden tiller & tools, filing cabinets, desk, shelves, racks, 2 wheel trailer, large tables, maple love seat rocker, housewares, clothes & lots of misc. items. For more information call 725-7459 32

HAROLD'S FLEA MARKET- August 11-12-13, come look, Indian jewelry, handmade items, great unique gifts, old, new items, vendors welcome, inside, outside, stalls. I-20 Merkle, 915-928-5534. rs-32

Read The Classified Ads

HELP WANTED

NEEDED: RN for 10:30 p.m. to 7 a.m. shift. Competitive salaries and benefits. Contact Personnel Department, Eastland Memorial Hospital, 304 S. Daugherty St., Eastland, TX 76448 629-2601, ext. 364. R533

POSITIONS FOR LVNs now available, evening and night shifts, 8 hour and 12 hour shifts. Competitive salaries and benefits. Contact Personnel Department, Eastland Memorial Hospital, 304 S. Daugherty St., Eastland, TX 76448, 629-2601, ext. 364. R533

FOR RENT

Public Housing Authority has apartments for rent for senior citizens. Equal housing opportunity. 817-643-3812 or 643-6791. RISING STAR

HOUSE FOR RENT 304 N. Anderson, Rising Star, \$180 per month. Ph. 725-7767 30-33

THANK YOU

We want to express our thanks to all our friends for the cards, flowers, food, calls and concern at the time of our mother's death. Also a special thanks to the nice ladies of First Baptist Church, Rev. Dossey and the kind people at the funeral home.
 Patsy Shirey
 Connie Beam
 Harvey Joe Kornegay
 and families

I want to express my thanks to all my friends for their cards, flowers, visits, food and calls during my hospital stay and at home.
 Maxine Robinson

My heartfelt thanks for the concern and acts of kindness shown me at the time of the death of my son. I appreciate the food, flowers and visits more than I can say.
 Grace Berry

Rising Star
 sells
RUBBER STAMPS

SERVICES

WILLIE VANDIVER TRUCKING

Dirt, Caliche Hauling
 Build Lease Roads,
 Driveways, etc.
 9-5 Call 643-2023
 After 5 Call 643-6451

Need things fixed up around the house? Or wooden furniture made or repaired? Call Joe Campbell, CAMPBELL'S CABINET SHOP, (817) 842-5875 Rt. 5 Box 107B, Comanche, TX 76442 If no answer call (817) 643-2251.

OLIVER WEST, PUMP SALES & SERVICE

817-643-4683
 Rising Star, Texas
 Complete systems sold & serviced
 2 1/2 miles south of town

JIM RATLIFF WELDING

Oilfield and Farm
 817-643-6464
 Rising Star

JOHN DEERE TRACTORS NEW AND USED PEANUT EQUIPMENT LILLISTON - KMC

PLANTERS-DISKS-DRILLS - ROLLING CULTIVATORS - CHISELS
 SELL OR TRADE
CLARK TRACTOR & SUPPLY, INC.
 DELEON (817) 893-2061
 COMANCHE (915) 356-3922
 WHERE YOUR BUSINESS IS APPRECIATED R552

D & R UPHOLSTERY

643-3942 Rising Star
 For your upholstery needs.
 Country, Continental & Baloon style curtains.
 Debbie Jones, owner

Bring your TV, radio, stereo, small appliances to DAD'S DOO-DADS & REPAIR SHOP at 300 S. Graves, off W.Hy. 36, Rising Star. New & used merchandise. Shop work only. 817 643-5909

FAST DEPENDABLE Film Developing PALACE DRUG STORE

643-3231 Rising Star

BUDDY COOK Residential, Commercial Refrigeration & Plumbing

817-643-7312 Rising Star

AUCTIONS

FARM EQUIPMENT Auction

Sat. Aug. 12th 10:30 A.M.

From Brownwood follow Hwy. 377 South for app. 3 miles - turn East on Farm Rd. 45 for 2.8 miles - then left on Farm Rd. 2126 for 2.5 miles OR From Brownwood follow Hwy. 67 & 377 Northeast for app. 1 1/2 mi. - then turn Southeast at Early Grade School on Hwy. 183 for 1 mi. - then West on Farm Rd. 2126 for 3.5 mi. to sale site.

Marion Baugh Jr. is quitting farming & will sell the following.

TRACTORS - DOZER
 1984 John Deere 4250, MFWD, cab, 15 sp. power shift trans., dual hyd., rear weights, 18.4 - 38 rubber (270 hrs); 1979 John Deere 4840, cab, duals, power shift, triple hyd., front & inside weights, 20.8 - 38 rubber (4200 hrs); John Deere 750G Dozer with 10 ft. blade, rippers, brush rake, rops & canopy, SN. 283272T (\$15,000 spent on this tractor, less than 200 hrs use since then - very good); John Deere 620 tractor, LPG, tricycle front (needs repair).

FARM EQUIPMENT

JD 1610 - 25 ft. following spring chisel; JD 220 - 22 ft. folding dbl. offset; Schafer 12 ft. offset; Bush Hog 7 shank chisel with gauge wheels (Big Ox type); JD 1010 - 3 pt. folding field cultivator with harrows (near new); 2 - JD 8300 grain drills with press attachments (16 - 10); JD 225 - 9 ft. offset with cone disk; Bush Hog 8 ft. shredder; JD 158 loader; Noble harrows; Wack - A - Track; Weidon hyd. dbl. drill hitch; Mayrath 6 in. - 36 ft. grain auger on wheels (less motor); Mayrath 8 in. - 40 ft. PTO grain auger on wheels.

TRUCKS - TRAILERS - MISC.

1976 Ford 800 Truck with Harsh 400 mixer feeder & Dole scale system; 1974 Chev C - 65 Tk. Tractor with 454 engine; 1988 Chev C - 50 Truck with hyd. gravel dump; 1975 Chev C - 65 bulk feed truck with 454 engine & drag axle; 1973; 1973 Ford bulk Truck (needs repair); 1956 Hobbs 50 ft. tandem 5th wheel cattle trailer with tarp top; Wilson 40 ft. hopper bottom 5th wheel trailer; 24 ft. tandem axle gooseneck flatbed trailer with 24 x 6 triple axle gooseneck livestock trailer (covered); P&H - DC welder on trailer (cond. unknown); 4 - 4 ton skid livestock feeders; Honda 250 ATV.

IRRIGATION EQUIPMENT
 1/4 mile Western hyd. wheel move (5 ft. wheels); 4500 ft. 7 inch line pipe; 1200 ft. 4 inch line pipe.
AUCTIONEER'S NOTE: From the first of the sale to the end, this is the cleanest, best kept, we have had the privilege of selling.

TERMS: Cash, cashier's check, or bank letter guaranteeing payment with stated limit, addressed to Storey & Associates. If these conditions are not met, eqpt. will be retained until funds are collected.

HENRY R. STOREY & ASSOCIATES
 Brownwood, Texas
 TXS 6487
 For information call 915-646-3956 at night

BROWNWOOD MUFFLER SHOP
 Custom Duals
 "Our Work Speaks for Itself"
 (915) 646-0716
 200 N. Main W. Owner
 Brownwood, Tx 76801 James P. Smith

Susan J. Schaefer
 Certified Public Accountant
 9th & Main P.O. Box 501
 Cross Plains, Tx. 76443
 Office: Home:
 817-725-6747 817-442-3784

Public Notices

NOTICE OF EFFECTIVE TAX RATE 1989 PROPERTY TAX RATES IN Rising Star City

This notice concerns 1989 property tax rates for Rising Star City. It presents information about three tax rates. Last year's tax rate is the actual rate the taxing unit used to determine property taxes last year. This year's effective tax rate would impose the same total taxes as last year if you compare properties taxed in both years. This year's rollback tax rate is the highest tax rate the taxing unit can set before taxpayers can start tax rollback procedures. In each case these rates are found by dividing the total amount of taxes by the tax base (the total value of taxable property) with adjustments as required by state law. The rates are given per \$100 of property value.

LAST YEAR'S TAX RATE:

Last year's operating taxes \$50,198
 + Last year's debt taxes \$-0-
 = Last year's total taxes \$50,198
 + Last year's tax base \$9,077,454
 = Last year's total tax rate \$553/100

THIS YEAR'S EFFECTIVE TAX RATE:

Last year's adjusted taxes (after subtracting on lost property) \$49,812
 + This year's adjusted tax base \$8,306,113
 = This year's effective operating rate \$5.9970/100
 x 1.08=this year's maximum operating rate \$6.4767/100
 + This year's debt rate \$-0/100
 = This year's rollback rate \$.65767/100

SCHEDULE A: UNENCUMBERED FUND BALANCES

The following balances will probably be left in the unit's property tax accounts at the end of the fiscal year. These balances are not encumbered by a corresponding debt obligation.

TYPE OF PROPERTY TAX FUND

Maintenance & Operation BALANCE -0-
 SCHEDULE B: 1989 DEBT SERVICE
 The unit plans to pay the following amounts for long-term debts that are secured by property taxes. These amounts will be paid from property tax revenues (or additional sales tax revenue, if applicable).
 Description - NONE
 Principal - -0-
 Interest - -0-
 Other - -0-
Total Payment - -0-
 This notice contains a summary of actual effective and rollback tax rate calculations. You can inspect a copy of the full calculations at: City of Rising Star Tax Office - Rising Star, Texas.
 Name of person preparing this notice: Steve Thomas, R.T.A.
 Title: Chief Appraiser - Eastland County Appraisal District
 Date Prepared: July 25, 1989. 8-3-89

GOVERNMENT SEIZED vehicles from \$100. Corvettes, Chevys, Porsches, etc. Selling this area. For buyers guide 1-(312)844-9009 ext 5401. Also open evenings. 31-32

1985 Buick LaSabre Limited "Collectors" Edition. 2 door W/chrome sides. Navy throughout. Good gas mileage. Excellent condition, \$5,000. 643-3152. 31-2tp

LIVESTOCK

HORSE SALE Breckenridge Aug. 12. Call Mel 442-1727 or J.W. 559-3613. R532

ANGUS BULLS for sale, 817 647-1155 or 647-1182 r104

ANGUS BULLS for sale. James Ratliff. Call 647-1260 or 647-1667.

NOTICE OF EFFECTIVE TAX RATE 1989 PROPERTY TAX RATES IN Rising Star ISD

This notice concerns 1989 property tax rates for Rising Star ISD. It presents information about three tax rates. Last year's tax rate is the actual rate the taxing unit used to determine property taxes last year. This year's effective tax rate would impose the same total taxes as last year if you compare properties taxed in both years. This year's rollback tax rate is the highest tax rate the taxing unit can set before taxpayers can start tax rollback procedures. In each case these rates are found by dividing the total amount of taxes by the tax base (the total value of taxable property) with adjustments as required by state law. The rates are given per \$100 of property value.

LAST YEAR'S TAX RATE:

Last year's operating taxes \$356,175
 + Last year's debt taxes \$-0-
 = Last year's total taxes \$356,175
 + Last year's tax base \$26,189,358
 = Last year's total tax rate \$1.36/100

THIS YEAR'S EFFECTIVE TAX RATE:

Last year's adjusted taxes (after subtracting on lost property) \$329,375
 + This year's adjusted tax base (after subtracting taxes on new property) \$23,514,849
 = This year's effective tax rate \$1.4007/100
 x 1.03=maximum rate unless unit publishes notices and holds hearing \$1.4427/100

THIS YEAR'S ROLLBACK TAX RATE:

Last year's adjusted operating taxes (after subtracting taxes on lost property) \$329,375
 + This year's adjusted tax base \$23,514,849
 = This year's effective operating rate \$1.4007/100

x 1.08=this year's maximum operating rate \$1.5127/100
 + This year's debt rate \$-0/100
 = This year's rollback rate \$1.5127/100

SCHEDULE A: UNENCUMBERED FUND BALANCES

The following balances will probably be left in the unit's property tax accounts at the end of the fiscal year. These balances are not encumbered by a corresponding debt obligation.

TYPE OF PROPERTY TAX FUND

Maintenance & Operation BALANCE \$350,000
 SCHEDULE B: 1989 DEBT SERVICE
 The unit plans to pay the following amounts for long-term debts that are secured by property taxes. These amounts will be paid from property tax revenues (or additional sales tax revenue, if applicable).
 Description - NONE
 Principal - -0-
 Interest - -0-
 Other - -0-
Total Payment - -0-
 This notice contains a summary of actual effective and rollback tax rate calculations. You can inspect a copy of the full calculations at: Rising Star ISD Business Office, Rising Star, Texas
 Name of person preparing this notice: Steve Thomas, R.T.A.
 Title: Chief Appraiser - Eastland County Appraisal District
 Date Prepared: 7-27-89 8-3-89

You Can't Be Recycled

Buckle Up
 A reminder from this newspaper and the Troopers of the Texas Department of Public Safety.

Distributor for Fairbanks-Morse Pumps.
 Complete systems, sales & service.
PVC 1/2" - 6" pipe.
Water well casing 4" - 8".
Irrigation sales & service.
Buddy's Plumbing & Appliance
 112 N. Main Rising Star
817-643-7312

RADIO EQUIPPED TRUCKS FOR "FAST FRIENDLY SERVICE"
1-800-535-7562
WELLS PROPANE
 Rt. 1, Box 82A May TX 76857 817-259-3204
 Hwy. 377E Box 425 Comanche, TX 76442 915-356-2516

DISCOUNT FOR CASH

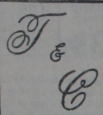
THE RISING STAR
 BOX 127 817-643-4141
 Rising Star, Texas 76471
 104 N. Main
 ©1989 Eastland County Newspaper, Inc. Publication No. (USPS 466500)
 Second Class Postage paid at Rising Star, Texas, under Act of Congress in March, 1870. Published every Thursday. Publishers, Mr. and Mrs. H.V. O'Brien.
 Subscription Rates Per Year: Eastland County and 30 mi. radius of Rising Star, \$9; other Texas counties \$13; out of Texas, \$19; No out of U.S. without APO.
 POSTMASTER: Send address changes to The Rising Star, Box 127, Rising Star, TX 76471.

Home Phone 643-5742 Gasoline & Diesel
CAREY'S AUTOMOTIVE
 Open Mon. - Fri. 7:30 a.m - 5:30 p.m.
 Sat. 8 a.m.-12 Noon
James Carey, Mechanic
 Hwy. 36 East Rising Star
 Shop Phone 643-7009 R51552

Hale Trailer Dealer
 2 Horse Trailers
 Gooseneck Horse & Stock Trailers, Covered & Open Bumper Pull Stock Trailers, Covered & Open Top
Barker's Garage
 817-259-2252 May, Texas

JAKE'S SHOP
 GENERAL MECHANICAL & WELDING FABRICATION
 Body Work & Painting
 OWNER JAKE LANDESS 817-643-3031
 404 N. MAIN RISING STAR, TX R52

ADAMS QUALITY MILDBOARD PLOW PARTS
 For Case, Ford, IHC, Deere, Massey-Ferguson & Oliver/White
Wings -- \$53.00 to \$74.00
BETTER QUALITY IMPORT DISK BLADES
 Sizes 18" thru 26" in Stock
 Medium & Heavy Gauges
\$12.15 to \$36.00 Each
CLARK TRACTOR & SUPPLY INC.
 DELEON 817-893-2062
 COMANCHE 915-356-3922



VILLAGE MARKET

EVERY MONDAY IS SENIOR CITIZENS DAY -5% DISCOUNT ON YOUR TOTAL PURCHASES EXCLUDING CIGARETTES

WE ACCEPT FOOD STAMPS & WIC CARDS

We Have Money Orders & Postage Stamps

WEEK LONG SPECIALS
SAVE THIS AD, SHOP ANY DAY YOU LIKE - SPECIAL PRICES IN THIS AD EFFECTIVE

QUANTITY RIGHTS RESERVED

STORE HOURS
MONDAY - SATURDAY, 7 A.M. - 8 P.M.
SUNDAY, 8 A.M. - 7 P.M.

Phone 725-7131, Cross Plains, Texas

FREE COFFEE WHILE YOU SHOP

We Have Postage Stamps & Money Orders

DOUBLE COUPONS 7 DAYS A WEEK



BONELESS HAMS
SHURFRESH, LB.
\$1.89



CHUCK ROAST
BONELESS, LB.
\$1.59



ARM ROAST
BONELESS, LB.
\$1.79


BONELESS ARM ROAST LB. **\$1.79**
FRYER LEG QUARTERS LB. **59c**

STATE FAIR CORN DOGS 10 CT. PKG. **\$2.79**
SHURFRESH SLICED BACON LB. PKG. **\$1.59**

OSCAR MAYER MEAT FRANKS LB. PKG. **\$1.29**
EL MONTERREY BURRITOS 10 CT. PKG. **\$2.69**



TEXAS RED RIPE WATERMELONS LB. **\$1.89**



CALIFORNIA MID-SUMMER RED PLUMS LB. **49c**

NECTARINES CALIFORNIA LB. **79c**
LEMONS CALIF. FANCY SUNKIST 6/\$1

GRAPEFRUIT SUNSHINE RED 3 LB. BAG **\$1.79**
YELLOW SQUASH LB. **59c**

APPLES WASHINGTON X-FANCY RED DELIC. 3 LB. BAG **\$1.29**
POTATOES BAKER RUSSET LB. **49c**



CUT GREEN BEANS DEL MONTE, 16 OZ. **3/\$1**



16 OZ. FRENCH STYLE GREEN BEANS
17 OZ. CREAM STYLE OR WHOLE KERNEL CORN
17 OZ. SWEET PEAS
DEL MONTE **2/\$1**



ICE CREAM GANDY'S 1/2 GALLON **\$1.99**



EGGS SHURFRESH MEDIUM, DOZEN **59c**

SANDWICH COOKIES BUTTER BUTTER 6 OZ. **\$1.99**
BIS-KITS **3/\$1**
CARNATION CAN MILK **2/\$1**
RANCH STYLE BEANS 16 OZ. **2/\$1**

CLOROX DETERGENT "NEW" 48 OZ. **\$1.69**
DOWNY FABRIC SOFTENER 48 OZ. **\$1.99**
IVORY LIQUID HAND SOAP 22 OZ. **99c**
DISHWASHING LIQUID JOY 22 OZ. **\$1.19**

COUNTY LINE 1/2 MOON CHEESE **\$1.89**
COUNTRY CROCK MARGARINE 3 LB. **\$1.99**
SHURFINE FROZEN BLACKEYE PEAS 10 OZ. **3/\$1**
DOWNYFLAKE 6 OZ. **89c**
FROZEN BREAKFAST

TEA BAGS LIPTON 24 CT. FAMILY SIZE **\$1.79**

GLADE AIR FRESHENERS 7 OZ. **89c**

FROOT-LOOPS KELLOGG'S 15 OZ. **\$2.99**

CORN FLAKES KELLOGG'S 18 OZ. **\$1.79**

TOMATO SAUCE CONTADINA **4/\$1**

CLEANER TOP JOB 28 OZ. **\$1.79**

TIDE DETERGENT 147 OZ. FAMILY SIZE **\$5.99**

TOWELS PRICE SAVER ROLL **39c**

PEPSI 6 PACK, 12 OZ. CANS **\$1.69**

DORITOS 11 OZ. **\$1.79**

IBC ROOT BEER 6 PACK, 12 OZ. BOTTLES **\$1.99**

Guest Slot

by HVO

RUMORS PROBABLY, but the thought of a Disney park in South Texas sure brings smiles for many. . . Today, it's Florida, California or Tokyo for W.D.'s Magic Kingdom, the first, the biggest and the original theme park against which the hundreds of operating today are judged.

Most of us have had a pretty good introduction, thanks to the multiply-tie-in connections between television, movies and publications about the basic park. Exactly what do you find? We can but guess about the

Japanese version, but the two domestic parks are cut from the same cloth, at least on the surface. We understand that the newer Florida park has a total, separate underground support system, for employees. Visitors above ground are advised to be in reasonable good health and wear comfortable shoes. (Provisions for the handicapped above however.)

After parking (at \$3), free tramping to entrance (either to ticket booths or through turnstiles, you're immediately into Main St.

U.S.A. near depot for the park-encircling steam train. There's the food, shops and services and the main boulevard which leads to the center piece Cinderella's Castle, preceded by a junction from which you can shoot off to the various lands: clockwise—Adventure, Frontier, Liberty, Fantasy, Mickey's Birthday and Tomorrow.

We did it years ago with small children and of course they are the ones who enjoy it most and naturally they pretty much want to do each and every thing, so it makes for a mighty long day. This trip, adults did a lot of picking and choosing; re-doing some that are treasured in memory and skipping a lot.

(The Disney guidebooks you're given are excellent, with clear, color-coded

graphics which make finding things easy. It would be disaster without them.)

Each "land" has attractions, restaurants and snacks and shops, themed. For Adventure, there's Swiss Family Treehouse, Jungle Cruise, tropical, Serenade and Pirates of the Caribbean.

In Frontierland, there's Big Thunder Mountain Railroad Ride, Tom Sawyer Island, Country Bear Jamboree, a shootin' arcade as well as the Diamond Horseshoe Jamboree (a "saloon-type" musical, comedy floor show.)

In Liberty Square, there's a riverboat (full size), and keelboat rides, the Haunted Mansion, and the Hall of Presidents, in which full size statues of all the presidents "come to life" by computer.

A real moving experience. Fantasyland (where the little kids shine) has the Mad Tea Party Ride, 20,000 League Under the Sea (we re-enjoyed this simulated under-water ride), Mr. Toad's Wild Ride, Snow White's Adventures and Magic Journeys (a 3-D movie motion picture experience), Dumbo, the Flying Elephant, Cinderella's Golden Carousel and everybody's favorite, It's a Small World Ride, Peter Pan's Flight, a band stand and skyway ride.

Legal Notice

statement of nondiscrimination

Comanche County Electric Cooperative is the recipient of Federal financial assistance from the Rural Electrification Administration, an agency of the U.S. Department of Agriculture, and is subject to the provisions of Title VI of the Civil Rights Act of 1964, as amended, Section 504 of the Rehabilitation Act of 1973, as amended, the Age Discrimination Act of 1975, as amended, and the rules and regulations of the U.S. Department of Agriculture which provide that no person in the United States on the basis of race, color, national origin, age or handicap shall be excluded from participation in, admission or access to, denied the benefits of, or otherwise be subjected to discrimination under any of this organization's programs or activities.

The person responsible for coordinating this organization's nondiscrimination compliance efforts is Ronnie Robinson, Assistant Manager. Any individual, or specific class of individuals, who feels that this organization has subjected them to discrimination may obtain further information about the statutes and regulations listed above from and/or file a written complaint with this organization; or the Secretary, U.S. Department of Agriculture, Washington D.C. 20250; or the Administrator, Rural Electrification Administration, Washington D.C. 20250. Complaints must be filed with 180 days after the alleged discrimination. Confidentiality will be maintained to the extent possible.

(8-10, 8-17)

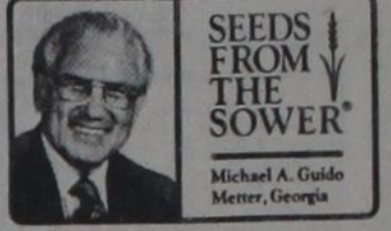
Eastland Telegram - Ranger Times - Cisco Press - Rising Star And Callahan County Star
Thursday, August 10, 1989

Florida's not a bad place to visit, but who'd want to live there? In Texas, there's Six Flags, Astro-World, Sea-World, Rangers and Cowboys, Oilers and Astros, and Opry-Land is on

its way. Not to forget, the Alamo and Old Rip. There might not be room for Disney here.

'89 Memories worth keeping: caught out in a rain without an umbrella; stumbling and dumping two soft drinks down the back of a fellow tourist, and having her turn, laugh and say, "Hey, these things happen. Forget it"; missing the tram and hot-footing it wearily many miles to the parked car; and among many others, the joy of that sign that finally reads: "Welcome to Texas."

Use The Classifieds



A father was taking his boy on a tour of the zoo and they stopped in front of a den of lions. "Daddy," asked the boy, "If the lions get out and eat you up, how do I get home?"

One day our Lord was talking to some young men about our heavenly home. One asked, "How can we know the way?" Our Lord answered, "I am the Way."

In Him we have more than advice, we have access to God. He comes to us, and walking with us. He takes us safely and surely home to heaven.

You're going somewhere, make it heaven. You're on a way, make it the way by trusting in God's Son, won't you?

Guardian Abstract & Title Co.

110 S. Seaman St.
Eastland, TX
629-8548

5-70



EASTLAND FARM & RANCH CENTER

301 N. SEAMAN
EASTLAND, TEXAS 76448
(817) 629-2173 or 629-8035

JOE MCCOLLUM (817) 643-3043

5-70

Quality for LESS

300 S. Oak
629-2141
Eastland, TX

Eastland Community Child Care Center

5-70



When the time comes... LET US LOVE & CARE FOR Your Loved Ones.

Providing T.L.C. in I.C.F.
EASTLAND MANOR NURSING CENTER
1405 W. Commerce St. Eastland 817-629-2686
Peggy Pryor, Administrator
Call soon for complete details and information

Prater Equipment Co.

Heavy Equipment Contractors
Roads Brush Work
Utilities Dams Developments

Free Estimates

817-842-5878 817-842-5244
No Job Too Small or Too Large

5-104

Come See Us In AUCTION

Saturday, Aug. 12, 1989 9 A.M.

City Coliseum, Austin

1000 Barton Springs Rd.

STATE OF TEXAS

325 Surplus Vehicles & Equipment
On-Site & By Color Slide

VEHICLES & PICKUPS: 87 Sedans, Station Wagons, 7 Suburbans, 115 Pickups; TRUCKS: Truck Tractor, 16 Dump Trucks, Crane Trucks, Stripping, Flatbed, Utility, Aerial, Litter, Stripping, & Stake Dump Trucks; TRAILERS: 27 Tiltbed Trailers (to 16 Tons), 30 Freuhauf; TRACTORS: 10 JD, IHC & Ford Tractors; EQUIPMENT: Motor Grader, Crawler/Excavator, 6T Crane, Loader/Backhoe, Forklifts, Stripping Machines, 25 Sweepers, 10 Mowers, Compressors, Asphalt Units, Guardrail Straightener; SURPLUS PROPERTY: Office Equipment, Computers, Photo, Lab & Food Service Equipment, Tools, AC's and much more.

Announcements made auction day supersede all advertising.
TERMS: Payment in full by Cash, Cashier's Check or Check-Drafts with current unqualified Bank Letter of Guarantee made to the State (NO EXCEPTIONS).
REGISTER & VIEW: 7:00 A.M.

Ed Lanford Jr. 7799 • Marilyn K. Burgess 7878 • Bill Burgess 6983



Auctioneers, Inc.

817-429-3336

CEM-4-R3332

Vic's Welding

323 N. Commerce Ranger, Tx 76470
Heliarc & Wire Feed Aluminum
Heavy or Light
Portable & Shop Arc Welding
Custom Fabrication
Call 817-647-5120
Phone answered 24 hours, 7 days

CEM-67-R5333

Red's Steakhouse & Club

Hwy 80 W. 629-3519 Eastland

"3 - 2 - 3"

August 11 & 12

Wednesday:

Ladies Night - Free Admission

"Larry & Cyndie"

Steakhouse Specials:

Monday Nite

Chicken Fry Steak \$3⁹⁵

Thursday

Sirloin For 2 \$9⁹⁵

Private Club Membership Available

Open Mon. - Fri. 4 - 12 p.m. Sat. - 4 - 1

Now Open Wed. Closed Sun.

CEM-RS3104

COMANCHE COUNTY ELECTRIC COOPERATIVE

ANNUAL MEMBERSHIP MEETING

AUGUST 18, 1989
8:00 P.M.

COMANCHE HIGH SCHOOL COMMONS AREA
IN COMANCHE
(Hwy. 16 North)

Registration Gifts - Refreshments - Door Prizes
REGISTRATION BEGINS AT 7:00 P.M.



Gindy & Charlie Stenholm



Ya'll Come!

September 9
4:30 p.m. to
8:00 p.m.
\$10 per person

FUNDAY is an old-fashioned political picnic with all the fixin's and fresh watermelon.

Cindy and Charlie are home to see everyone, and Charlie brings colleagues from Washington to see the 17th District that he's so proud to represent.



Directions to FUNDAY

For more information:
Stenholm for Congress
P.O. Box 1032
Stamford, TX 79553
Phone: 915/773-5521

Paid for by Stenholm for Congress Committee

Consumer Groups Storm Local Grocery Stores!

Stores point finger at newspaper

Today saw one of the largest consumer responses of the week to offers made by local grocery stores for discounted prices. Across the city, shoppers were redeeming coupons cut from the local paper in record numbers.

"We know any offer we make will be highlighted most by the newspaper," commented a grocery store spokesman. "Our goal is simply to inform the consumers that these discounts are available. We are confident they will respond if they see it in the paper." His statement was backed by recent Consumer Data Service reports that indicated grocery store ads triple volume on discounted items and double volume on regularly priced items. It also revealed grocery ads are read by well over 70% of newspaper readers.

Grocery store representatives unanimously agreed that newspaper advertising was the only way to get immediate consumer response. One grocer remarked, "Most people read the paper, and a bunch of those readers clip our coupons. It's that simple." His comments reflect the well known Manufacturer's Coupon Center report which stated that over 80% of all families use coupons.

"When consumers want more for their money, they always go to the



Grocer claims local newspaper "totally responsible" for consumer rush

"We make great offers in our newspaper ads every week, and we always get great response."

newspaper," a grocery official said. When pressed by reporters for the best offer he could make for the consumers he replied, "Look in the paper, it's all right there. Green leaf lettuce, two heads for 79¢... with a coupon of course."

It's Easy And Economical To Put Your Local Newspapers On Your Sales Team! Call Today

Callahan
County
Star
854-1008

The
Cisco
Press
442-2244

The
Eastland
Telegram
629-1707

The
Ranger
Times
647-1101

The
Rising
Star
643-4141

Engagement Announced



Mr. and Mrs. Don Lee of Rising Star have announced the engagement and approaching marriage of their daughter, Kimberly Kay, to Michael Wayne Mullins, son of the late Bobby and Paula Mullins of Early and nephew of Robert and Deborah Stewart of Early.

The bride-elect is a graduate of Bangs High School and Tarleton State University and is employed by La Grange Independent School District as head track coach and assistant basketball coach. Her fiancé is a graduate of Brownwood High School, attended Tarleton State University and will be entering the U.S. Air Force in October.

The wedding is planned for 2 p.m. September 2 in the Early First Baptist Church. Family and friends are invited to attend.

New Deputy Hired



David Franklin, who became a permanent officer with the Houston Sheriff's Office in '86, will be moving to Eastland to fill the vacancy for a deputy at the Eastland County Sheriff's Dept. He will be returning to the home near Eastland High School where he was reared.

After obtaining an Associate Degree at Waco, Mr. Franklin was trained by the Harris County Sheriff's Acad-

emy and became a reserve deputy in '85. Sheriff Dee Hogan says that Franklin, who will work evenings patrolling and will also work cases such as family disturbances and thefts, has had just the right training for the local job and is a native of the county.

Aged 35, Franklin is married and has three daughters aged 11, 9, and 4 that he would like to rear in a smaller city. Holding an intermediate certification as a peace officer, David Franklin is also a deacon in the Church of Christ, a Mason, and a member of the East Harris Christian School's School Board.

Ranger Lodge 738 To Hold Meeting

Ranger Lodge 738 will have a called meeting, Thursday August 10th at 7:30 p.m., for the purpose of conferring the Fellow Craft Degree.

Refreshments will be served afterwards.

EVERY DAY IS SALE DAY

Eastland/Callahan County Newspapers announces some Red Hot Advertising to help Heat Up Your Sales.

During the month of August, a 2x2 display ad can be featured in All 5 Newspapers for a MERE \$10.00!!!!!!

It's part of our "Every Day Is Sale Day" Campaign that we are offering to every Eastland/Callahan County Merchant!!!

What a Great Way to focus on your Back To School Clothes or Supplies!!!! — Or just remind local folks of your Everyday Low Prices.

Sound Good So Far — Well, give one of our offices a call and let one of our advertising representatives discuss this "Red Hot Special" with you today.

Cisco Press: 442-2244

Eastland Telegram: 629-1707

Ranger Times: 647-1101

Rising Star: 643-4141

Callahan County Star: 854-1008

County Resource To Meet Sept. 12

A Committee of the Eastland County Resource Association met in Eastland Centennial Memorial Library on Aug. 1 to discuss plans for the group.

This Association is a community-service, all-county group which helps with emergency food, clothing, shelter, transportation and other critical needs.

Helen Osburn, Treasurer, led out at the meeting. Other Committee members present were Corrie Cowley, Peggy Roberts, Mary Dunn and Viola Payne.

Mrs. Osburn gave a report on funds issued since the last meeting. This summer the Association assisted with the transportation of local handicapped children to hospitals for treatment.

Committee members discussed several needs of the Association. One need was to find a new President to fill the position vacated by David Bondurant, First Christian Church minister who recently moved from Eastland.

Another need was to update and expand the Directory on Community Services - a listing of the Association compiled earlier this year.

The Committee stated that new members are needed for the Association, as well as people to help with publicity and recruitment. Membership dues are \$10 per month, and all funds go for local charitable purposes.

Plans were made to hold a general meeting at 12 noon on Tuesday, Sept. 12 in the Eastland Library. A new slate of officers will be presented at that time, and programs decided on.

The public is cordially invited to attend this meeting. Individuals as well as representatives of Clubs and Churches are welcome. Bring

Cisco Tumbling And Trampoline Classes To Be Held

Cisco Tumbling and Trampoline classes will begin Tuesday, August 29. Classes will be held at the Rollin' Pin Skating Rink, 200 Ave. E, Cisco, with the first class beginning at 5:30 p.m.

The monthly fee is \$20 with a \$10 registration fee. For registration and information call Sara Wilson in Albany at 915-762-2765.

a sack lunch to the meeting if you wish.

In the meanwhile the updating on the Directory has begun. If your Church or group was not listed in the compilation published in The Eastland County Newspapers, yet has a special service to offer to the Community, please contact any of the Committee members listed in this article.



All air conditioning systems may look similar when you're shopping for a new one, but before you purchase, be sure you know about the Seasonal Energy Efficiency Ratio. S.E.E.R. is a system that rates air conditioning equipment usually from 5 to 15 so shoppers will know how energy efficient a unit is.

WTU recommends selecting a unit with a rating of 9 or higher to insure lower operating costs.

Plus a S.E.E.R. of 9 or above can qualify you for a rebate under WTU's Energy Saving Plan. Ask for details.



To find out more about the S.E.E.R. rating of cooling equipment, call your cooling and heating dealer or West Texas Utilities.

FAMILY FOOD STORE

North Main St.
NEW STORE HOURS
Monday-Sunday
8:00 a.m.-6:00 p.m.

Affiliated Food Store
Phone 643-2221

Rising Star

Prices Effective

Wed., Aug. 9-Sat., Aug. 12

We Make Deliveries

★ Support Your Town - Shop At Home ★

We Gladly Accept Food Stamps

Shurfresh Grade "A" Medium Eggs 59¢ Doz.	Price Saver Tea Bags 100 Ct. 68¢	Shurfine Chunk Light Tuna 6 1/2 Oz. Water Or Oil Limit 3 58¢
Jumbo Delta Towels 49¢	Zee Nice N Soft Toilet Tissue 4 Roll Pkg. 99¢	Morrison Mixes 6 Oz. Assorted 3/89¢
Shurfine Milk 13 Oz. 48¢	Del Monte Tomato Catsup 32 Oz. \$1.09	Riviana Success Rice 14 Oz. \$1.19
Del Monte Peas & Carrots 16 Oz. 68¢	Del Monte Sweet Peas 17 Oz. 2/89¢	Del Monte Golden Corn 17 Oz. Cream Style or Whole Kernel 2/99¢
Del Monte Chunky Fruit 17 Oz. 88¢	Del Monte Yellow Cling Peaches 16 Oz. Sliced Or Halves 88¢	Del Monte Fruit Cocktail 17 Oz. 88¢
Del Monte Green Beans 16 Oz. Sliced Or Cut Limit 6 3/\$1.09	Del Monte Pear Halves 16 Oz. 88¢	Totinos Party Pizza 9.6 Oz.-10.6 Oz. Assorted 89¢
Libby's Pumpkin 16 Oz. 3/\$1.00	U.S.D.A. Choice Beef Chuck Roast Boneless \$1.39 Lb.	U.S.D.A. Choice Beef Chuck Steak Boneless \$1.59 Lb.
U.S.D.A. Choice Beef Shoulder Roast Boneless \$1.59 Lb.	U.S.D.A. Choice Beef Shoulder Steak Boneless \$1.79 Lb.	Large Red Ripe Tomatoes 49¢ Lb.
California Mid Summer Red Plums 49¢ Lb.	Washington Italian Purple Plums 49¢ Lb.	Green Cabbage 15¢ Lb.
Sunkist Red Grapefruit 5 Lb. \$1.79 Bag	Washington X-Fancy Red Delic. Apples 3 Lb. \$1.29 Bag	Baker Russet Potatoes 49¢ Lb.