

PROGRESS IS—
MAKING GOOD THINGS
HAPPEN

THE RISING STAR

WHERE THREE GOOD
TEXAS COUNTIES
GET TOGETHER

Rising Star, Texas

©1983 Eastland County Newspaper Co.

Established in 1890

25¢

Thursday September 22, 1983

Number 38

Clean Up Day Is This Saturday

The Rising Star Chamber of Commerce and Agriculture will hold its annual citywide clean-up day on Saturday, September 24. Mark Cooksey, this year's clean-up coordinator, asks that those who would like to participate meet at the City Park between 8 and 8:30 a.m.

"We need people with shredders and riding mowers, but we mainly just need people. The more people we have out helping,

the more we can get done," Cooksey said.

"Last year, we were short of people to walk through some of the vacant lots ahead of the shredders. So just show up, we will find some way for everyone to help," he added.

"Persons who have lots that they want cleaned up or mowed may call 643-4311 at Bramlett Implement before closing time on Friday evening. Please leave your name, and the street and location of the lot

to be cleaned," Cooksey requested. "This will allow the clean-up coordinators to schedule the workforce and hopefully get more work done."

This year, an additional service is being offered: junk car disposal. Old cars will be hauled off free of charge. Contact either Bramlett Implement or David Harris for this service. Old refrigerators, freezers and other heavy items can also be picked up. Cooksey points out that this is an excellent opportunity to have these cars removed, free of charge, before laws

are passed requiring that they be moved.

"Last year we had by far the biggest and best clean-up day we have ever had. The effect still shows throughout Rising Star, so we should have a headstart this year," Cooksey stated.

"Please, come to the Park Saturday morning; we really can clean up Rising Star," urged the clean-up coordinator. "One week from Saturday, at Homecoming, we will have more out-of-town guests than at any other time of the year - let's show them a Rising Star that we can all be proud of."

Minutes of RSISD Board Meeting

Members of the Board of Education for the Rising Star Independent School District met September 12 at 8 p.m. in the board room of the school.

Present were President Jack Hubbard, David Harris, Dan Hughes, Sue Barnes, Joyce Baker, Terry Geye and Joe McCollum. Superintendent Gene Williams and Principal Frank Gray also attended.

Minutes of the regular meeting August 8, budget hearing and special meeting of August 18 were read and approved.

Board members discussed merit pay, Title I and litigation.

In regular business, the members voted that the bills incurred by the Rising Star Independent School District be ordered paid. Motion was made by Jack Hubbard and seconded by Joyce Baker.

They voted to accept

application for foundation funds for the current school year. Motion was made by Sue Barnes and seconded by Terry Geye.

After discussing summer renovation, the board voted to purchase a plain copier for the high school. Motion was made by Sue Barnes and seconded by Joyce Baker.

Members voted to send Angela White to tax collector school in Austin for an approved rate of \$40 per diem and mileage. Motion was made by David Harris and seconded by Joe McCollum.

Members discussed the possibility of supplying locks for student lockers.

Board members also heard reports of accounts by the superintendent, report of instructional progress by the superintendent and principals, and the report of special committees.

The meeting adjourned at 9:39 p.m.

Son Of Local Couple Is National Merit Semifinalist

Al West, son of Homer G. and Guy Nell West, was recently named a semifinalist in the 1983 National Merit Scholarship Program.

West, a student at Brownwood High School, was among the approximately 15,000 semifinalists nationwide.

entered the competition by taking qualifying exams last year. The Merit Scholars will be chosen through further tests.

West said he probably will attend Baylor University and eventually plans to attend medical school. He is drum major of the band, vice president of the National Honor Society, and is involved in debate and drama. He has received Rotary academic awards for the past five years and academic letters in math the past two years.

Santa Anna 22 Rising Star 0

The Rising Star Wildcats started Friday's game as if they were going to bury the Santa Anna Mountaineers, but wound up having to dig and scratch to hold on.

The Wildcats kicked off to open the game and Bebo Fox forced a fumble by tackling the Mountaineer return man. The ball was recovered by Wayne Johnston. The Cats then proceeded to drive to the Santa Anna five yard line on runs by Wayne Johnston and David Cooper. Good blocking up front by Shawn Autrey, Steve Hill and Jamie Smothers helped open the holes, however, at the five the Mountaineers defense poured through and threw the Wildcat runners for losses on two downs and a pass from Johnston to Bishop fell incomplete.

Santa Anna then drove the length of the field to score their first touchdown. The score was delayed by numerous penalties on the Mountaineers. Chris DeLeon scored running in from the six yard line, the extra point kick was good.

It was mostly Santa Anna from this point on, they scored again in the second quarter and added a two point conversion to lead at half-time by 15-0. They tacked on 7 points in the third quarter to

make the final score 22-0 Santa Anna.

The Wildcats had some bad luck with injuries. David Cooper, filling in at quarterback for the injured Sam Scott, had a knee twisted in the second quarter. Cooper will undergo exploratory knee surgery Tuesday or Wednesday to determine the extent of his injury! Cooper's replacement at quarterback, Coy Barker, was knocked unconscious in the third period. On the very next play, freshman Jerry Long recieved a broken arm as Barker's replacement. Wayne Johnston then handled the quarterback chores as Lowell Bishop moved to tailback.

Outstanding defensive performances were turned in by Shawn Autrey, Bebo Fox, Wayne Johnston and Jarrel Pannell.

Leading offensive players include Steve Hill, Lowell Bishop, Johnston, Autrey and Jamie Smothers.

Next game for the Wildcats will be at Evant Friday night.

**Volunteer
Fire Dept.
Meets
Tues. Sept. 27
8 p.m.
City Hall**

**Dr. Carpenter's Office
Will Be
CLOSED
Sept. 28th through Oct. 9
Open 9:00 a.m. Oct. 10.**

27th Homecoming Rising Star High School Saturday, October 1, 1983

SCHEDULE OF EVENTS

8:30 A.M.Coffee-Registration-Visitation
9:30 A.M.Assembly-Business Meeting
11:30-1:00 P.M. ...PTO Luncheon, School Careteria
2:00 P.M.Homecoming Parade
3:00 P.M. ...Pep Rally-Class Parties following
7:30 P.M.Football Game, Wildcat Stadium
Wildcats vs Blanket Tigers

Half-time Activities

Crowning of homecoming King and Queen
Wildcat Sweetheart

HOMECOMING ASSEMBLY

"Remembering the Past-Enjoying the Present-
Planning the Future."
Honoring the Class of 1933 - 50th Anniversary
and all classes ending in three.

Inoculation.....Weldon Hill
Principal of Rising Star Grade School
Welcome.....Gene Williams, Superintendent
Rising Star Schools

Review of Activities, Recognition of Classes
Announcements, Business Meeting
Presentation of Awards
Introduction of Speaker ...Steve Bibb, President
RSHS-Student Association
Benediction.....School Song

TV Cable Rate Hike Hearing September 27

There will be a call meeting of the Rising Star City Council Tuesday, September 27. The purpose of the meeting is a hearing on the rate increase request by Brownwood Television Cable Services, Inc.

The public is invited for input on the subject. The tv cable company asked for an in-

crease from the present \$7.75 per month to \$11.75 per month to cover operating expenses, rather than construction expenses. The company plans to add five channels to those now provided to their Rising Star customers.

Senior citizens will be granted an 18 percent discount.



meeting notices ...

NARFE

Eastland County chapter of the National Association of Retired Federal Employees will meet Tuesday, September 27, at 1:30 p.m. at the Colony Restaurant at Cisco for a luncheon.

Elmer Foster, president, will officiate. Aubrey Goss will introduce Paula Fonville and Susan Redfrew who will present the program on home health care service.

City Council

Called meeting of City Council. Public is invited to let voice opinion on TV cable rate increase.

MEETING NOTICES
4th MONDAY,
Soc. Sec. Rep. 10:00

The monthly dinner for members of Lakewood Recreation Center will be Tuesday, September 27, at 7:30 p.m.

1983-1983 OFFICERS

President.....Steve Bibb
Vice-President.....Guy Nell West
Secretary-Treasurer.....Barbara Long
Reporter.....Jeanne Thornhill
Publicity.....Evelyn Donham

PERMANENT BOARD OF DIRECTORS

Mary A. Claborn, Chairman
Jeannine Jacobs Bailey
Lenell Clark Henry
Weldon Hill
Irene Shults Mayfield
Ray Nunnally
James Steel-Honorary

SCHOOL SONG

Joyous and ever loyal
Let us fight for our old High
Let every voice ring,
There's no time to grieve nor sigh
It's ever onward
our course pursuing,
May defeat ne'er our arder cool;
For united we will fight for her
Our old High School.

Mounties 6 Kittens 2

Rising Star's Junior High Kittens lost a heart breaker to Santa Anna Thursday at Santa Anna. The Mounties scored in the third quarter to break a 0-0 deadlock. The Kittens stopped the try for extra point and Santa Anna led 6-0.

After a see-saw third quarter, the Kittens took control and marched to the Santa Anna 9 yard line. David White scored, but the score was nullified by a penalty against the Kittens. The Kittens drove the ball to the one foot line but on a fourth down were stopped short of the score. On the next play Santa Anna fumbled in their end zone and recovered it for a safe-

ty giving the Kittens two points.

Santa Anna punted from their own 20 yard line and the Kittens pushed the ball close to the goal but were shut down by the Mounties to preserve the victory.

Outstanding on offense for the Kittens were linemen Chip Gray, Shane Ford and Devin Sessums. Also, backs David White, Stacey Green and Kerry Hill played well.

The defense was led by Cory Atwood, Shane Ford, Devin Sessums, Chip Gray and Dal Randle.

Next game for the Kittens is here Thursday, September 22, at 6:30 p.m.

Security Income

An individual or couple can have some income and still be eligible for supplemental security income (SSI) payments, according to Glyn Hammons, the Social Security district manager in Abilene.

As of July, an individual can now have countable income up to \$304.30 a month, while a couple can have up to \$456.40 a month.

If a couple have been living apart for more than six months, each person is treated as an

individual. If they are living together and only one member qualifies for SSI, a portion of the other person's income is treated as if it were the eligible individual.

An unmarried child under 18 who is living at home is considered to be receiving a portion of the parents' income. Allowance is made for the parents' work and living expenses, and for other children living in the home.

**NEW
Saturday Store Hours
8:30 - 3:00
Palace Drug Store
Rising Star, Texas**

CLASSIFIED ADS sure to get results

Misc. ?

For Sale Good 3020 John Deere diesel, Super Long peanut combine, 4-row Burch planter, 4-row Lilliston rolling cultivator, 11 1/2' King tandem disc, misc. item. Call Davy Jones, 817-643-2910. 37-2tp

For Sale Apples Red & Yellow Delicious, plus canning apples and pears. 817-643-4871 38-2tc

WALLPAPER
Beil Draperies
Eastland
629-1319
1706 W. Commerce

For sale or trade- Sofa sleeper, makes into full size bed \$75, companion sleeper, white fiberglass with tinted bubble windows \$300. Set of New World Encyclopedia; 8 geese, \$6.50 each or \$50 for all 8. Call 259-2065. 38-2tp

For Sale- Matching couch, chair and rocker. Heavy wood frame with earthtone floral cushions. 3 years old. Phone 725-6675 or after 5 p.m. 643-1676. 38-1tc

For Sale- Toys, chairs, baby bed, riser chair, pottier chairs, etc., from Nelle's Day Care Center. Come by 502 E. Mill or call 643-4675. 38-1tp

Hairy Vetch seed- Cleaned, in 50 lb. bags. Not tested, but good. Call Homer West before 7 a.m. or after 7 p.m. 643-2921. 38-3tp

Babysitting available- Large fenced yard with toys and play set. Good neighborhood. Lunch is served. Vickie Majors. Ages 2 and up. Call 643-1414. 38-2tp

Cake Decorating- I'm now decorating cakes with simple designs. Have variety of shaped pans: Yosemite Sam, Strawberry Shortcake, Heart, Halloween, and Christmas, etc. Vickie Majors. Call 643-1414. 38-2tp

SCHOOLMASTER ANTIQUES
639-2228
We will buy one item or an estate. Call for appraisals, items for sale or special items you wish to purchase. TC

Garage Sale

Garage Sale- Several families, Friday and Saturday, Sept. 23 and 24, 400 block South Main, white house on east side of highway. Children's and women's clothes, paperback books, Montgomery Ward washer and dryer (10 lb. capacity, used 3 years), dishes, baby bed, stroller, walker, pictures, shoes. Call 643-4101 after 5 p.m. 38-1tp

CARD OF THANKS

Nelle's Day Care Center has closed. We wish to thank all of you who brought their children to us. We have many pleasant memories. Nelle



Real Estate

REAL ESTATE FOR SALE? Let us handle it for you. 25 yrs. selling your area. We have the buyers. Cogburn Realty, 893-6666, DeLeon nights 893-5898 or 893-2642. 6-tfc

502 E. Mill St. 4 Br., 2 bath, den, comb. kitchen and dining, carpeted. Lot 80 X 180. New storage room. 817-643-4073. 21-tfc.

I have a variety of homes and land listed. Let's talk.

Louis A. Mayfield
Broker
817-643-4073

FOR SALE: 114 acres in Palo Pinto County near Santo and Palo Pinto Lake. Fronts on black top county road, city water, and R.E.A. line. Ideal for development. \$1500 per acre. Call 817-442-1303 after 6 p.m. Terms. TF

FOR SALE: 4 bdrm. brick house, 2 story, 2 bath, dining rm., all electric, central heat & air. Large lot, water well, 7 large pecan trees & concrete cellar. Call 915-862-6386. 42tfc

Small acreage for sale- Call Durwood Fussell, home 817-643-1212 or business 817-259-3051. 38-4tc

T BYRD REALTY
1100 EARLY BLVD
EARLY, TEX
915-643-2193 or 643-2317
BUSINESS OPPORTUNITY! Large brick bldg. on main street of Rising Star. Can be purchased with business or property only. A good buy! #281

TWO LOTS WITH 2 BR 2 BATH HOME Nice shady corner lot! Has another house that can be bought and moved. Also has good water well! Bargain! #280
ESTABLISHED BUSINESS Buy station & shop or owner will keep muffler shop tools and reduce price! Owner financed. Priced to sell! Let's talk! #290

WE HAVE THE PERFECT PLACE! 3 BR 1 1/4 bath on approximately 1.6 acres. Water well, barn and corral. All on quiet street. #306

FOR SALE: 1.1 acres with 6 large pecan trees. 3 bdr., 2 bath with large storage bldg. 817-643-3384 evenings. Days, ask for Fenton Smith at 817-643-2811. 36-tfc

2 Bedroom House, carpet, large lot, water well, fruit trees. 302 Joyce St., 643-5011. 35-4tp

For sale 2 BR home. Perfect for single person or couple. Large corner lot, big pecan trees, cellar and out building. Ideally priced. Located at corner of Short & S. Brewer St. 817-643-2811 before 5 p.m. Weekends call collect 817-968-3858. 37-2tp

For sale Small 2 Bdrm house plus lot with fruit trees. Also 12X65 mobile home and/or lot. Call Davy Jones, 643-2910. 37-2tp

NOTICE
Sue Vandivere was not among the residents of E. Ross St. who had the BEWARE to speeders notice in last week's edition of this newspaper.

Autos

FOR SALE: 1977 Dodge Van; five captain chairs and couch, sink and ice box. Low mileage and loaded. Also 1977 Courier pickup with radio and air, loaded and low mileage. See at Scott's Paint and Body or call 629-2372 or 1514. TF

FOR SALE: 1946 Chevy Pickup runs great, tags and sticker \$1750.00. Refrigerator/freezer \$100.00, riding lawn mower 5 hp Sears \$150.00. 647-3848.

Mustang-1973-V8-Automatic-A good car-\$1850-Johnston Ford 725-6181.

'82 Escort 2 door-Automatic-air conditioner. Only \$4300. Johnston Ford 725-6181.

78 LTD II-2 door-V8-Automatic-air conditioned and more-a very good car. \$3650. Johnston Ford 725-6181.

78 Buick Par Avenue-Loaded-this car has been cared for-\$3995. Johnston Ford 725-6181.

77 Buick Century-2 door hardtop-Blue and white-a very clean car-\$2495. Johnston Ford 725-6181.

82 Bronco-XLS-351 V8-Automatic-air conditioner-we sold it new-\$11,250. Johnston Ford 725-6181.

81 Ford Pickup-1/2 ton-302 V8-automatic-air conditioned-a very good one-\$6000. Johnston Ford 725-6181.

80 Ford F150-Short, wide bed-351 V8 Automatic-Air conditioned-\$5325. Johnston Ford 725-6181.

82 Ford one ton-flatbed-only 27,000 miles-only \$8900. Johnston Ford 725-6181.

79 Super Cab F250-one owner-49,000 miles-V8-automatic-air cond. \$4950. Johnston Ford 725-6181.

79 Super Cab F150-We sold it new-A real good pickup-\$4975. Johnston Ford 725-6181.

OPPORTUNITY

MAKE MONEY WORKING AT HOME! Be flooded with offers! Offer-details rush stamped addressed envelope and 25 cents service fee - Nola Riet, Dept. M, 10135 Amariyllis St., Sandy, Utah 84070. 35-4tp

HELP WANTED

Rising Star Nursing Home now taking applications for an afternoon part time cook and dish machine operator. Apply to Linda Robertson in person before noon. 38-4tc

Wanted Gree Thumb has an opening in Rising Star City Hall. Applicant must be 55 or older and must meet income guidelines. Contact Doris Griffin at 643-4261. An equal opportunity employer. 37-tfc

SPECIALIZING IN SEWER SYSTEM INSTALLATION AND SERVICE
Clovis' Septic Tank & Backhoe Service
CROSS PLAINS, TEXAS 76443
CLOVIS SIMONS
TELEPHONE (817) 725-7484 P. O. BOX 604

Misc. ?

FREE Swap shop on KVMX-FM 97 Radio - twice every Monday through Friday at 7:10 a.m. and 12:30 noon - Call 629-8585 and tell the Micro-Plex what you have to sell, rent, give away are to announce! It's a free community service of KVMX-FM 97 Radio. TF

RANGER FLEA MARKET
Open 2nd & 4th weekend Dealers & garage sales welcome
Spaces \$5 without electricity
\$8 with. 647-1992. TFC

CALL US FIRST for all auction needs:
TUCKER AUCTION CO.
Rt. 1 Box 90
Eastland, TX 76448
817-629-1956
Consignment sale 2nd Sat. of each month 7:00 p.m. TC

YOU WON'T NEED A PUSH with a Continental Battery in your car this winter. Free battery check and free installation.
CENTRAL AUTO PARTS
801 East Central
COMANCHE, TEX. 76442
Ph: 915-356-3925
OPEN 7 DAYS A WEEK

Sand and Caliche Hauling
Willie Ezzell
Phone: 643-5431

HUTTON INSULATION
Blown-in Cellulose
Fiberglass Batts
Acoustical Ceilings
Free Estimates
725-6683

WATERLESS COOKWARE
22 Piece Sets
Life-Time Guarantee
Competitor Prices:
\$1000 to \$1400
Our Price:
\$400
Call: 817-629-8669

RUST & SONS FENCING CONTRACTOR
Pipe Line and general fencing construction.
Rt. 1, Box 120, Rising Star, Tex. 76471
PH: 817-643-3137

GROUP HEALTH INSURANCE THE TRAVELERS
Eastland County Farm Bureau
643-5951 TC

* **RADIO STATION KVMX-FM 97** is now super country music! Enjoy 24 hours a day in stereo! * TF

HOMES FOR RENT

FmHA non-discrimination apartment for rent. Call 817-842-5294. 16-tfc

Misc. ?

WELDING
Oilfield and Farm
Jim Ratliff
Ph: 643-6464

Fast, Dependable Film Developing
Palace Drug Store
Rising Star Texas

Need things fixed up around the house? Need a new cabinet, kitchen or bathroom? Or wooden furniture made or repaired? Call Joe Campbell, Campbell's Cabinet Shop, 817-842-5526. Rt. 5 Box 107B, Comanche, Tx. 76442. If no answer, call 817-643-2251. 26-6mo.

NEW HOMES
On your lot, \$9,500 up. 2 miles east of Rising Star Highway 36.
Sam Justice 817-643-4289
Dave Justice 915-698-8889 35-8tp

CISCO RADIATOR SERVICE
207 E. 6th St., Cisco (Breckenridge Hwy.)
Cleaning-rod-ding- recoring-auto-truck- tractor radiators- heaters. New radiators and heaters. Auto gas tanks cleaned-repaired. Open Monday thru Friday, 8 a.m. to 5:30 p.m. Call 442-1547, Cisco. tfc

Shaklee Products
Do you really get a balanced diet? Let me tell you about Dr. Shaklee's Slim & Trim Plan.
We also carry natural food supplements, concentrated biodegradable household cleaners, toiletry and natural skin care products. 643-5791
Barbara Jo Kanady
Shaklee Distributor

For your metal building needs get a Second Opinion
Rolston Metal Building Systems
915-698-1721

BUDDY COOK
Residential, Commercial
Refrigeration & Plumbing
817-842-5950
Rising Star

HENRY R. STOREY & Associates
Brownwood, Texas
TXS 014-0005
For information call 915-646-3956

Auction's Best (SM)
by Fred Tucker
*1981 Auction Marketing Network
KNOWLEDGE OF VALUES
If you're not sure what your items are worth you may be giving away your dollars when you think you're selling.
My knowledge of values can help you get fair market value when you have something to sell.
Many items have gone up in value recently. And some of them are going up faster than the rate of inflation. But since I'm in the market daily selling all types of auctions I can help you get today's top dollar prices.
Why settle for one offer when you can receive the benefit of crowds of people eagerly competing by making their bids. I know what amount to ask to get the bidding started and I know how to keep it moving at a rapid pace.
It all adds up. My knowledge of values and proven auction selling techniques can net more money for you. Remember, when it comes to buying or selling AUCTION'S BEST (SM).
TUCKER AUCTION COMPANY
ROUTE 1, BOX 90
EASTLAND, TEXAS 76448
License number TXS-083-1152
Phone 629-1956 Member NAA and TAA

Misc. ?

OLIVER WEST Pump and Water Well Service
Valley Aeromotor Pumps
1/2hp & larger stocked
2 1/2 mi. so. Rising Star
817-643-4683
Call Anytime

Randy Guidry
Drag Line
Large Backhoe Service
Rising Star
817-643-1687
Call Anytime

BOOKKEEPING SERVICES
It's getting close to the end of the year! If you don't have time to get the books ready, call me. Familiar with farming & oil reports, payroll & quarterly reports. All information in strict confidence.
Mary L. Anderson
Rising Star 817-643-4166

RUBBER STAMPS
at the
RISING STAR Auction
FRI.-SEPT. 23 10:30 A.M.

P-M Well Service
310 North Main
Rising Star, Texas

2 blocks North of Traffic Light

P-M Well Service has lost their lease and will sell the following by Public Auction
Approx. 80 spools of UL submergible pump cable - consisting of flat PVC coated, twisted PVC coated, twisted RHW rubber coated - all wet location and underground wire in 12 & 14 gauge - 500 ft. & 1000 ft. per spool; 1/8 to 2 in. galvanized pipe fittings; well seals - 5 in. x 1 1/4 in., 6 in. x 1 in., 6 x 1 1/4 in., x 1 in.; black metal low pressure pipe fitting, tank plugs, couplings, caps, bushings, dresser sleeves; approx. 500 electric motor capacitors - start capacitors 43 MFD-240 VAC, 108 to 130 MFD-330 VAC, Run capacitors from - 5 MFD-370 VAC to 35 MFD-440 VAC; Brass gate valves 1/2 in. to 3 in.; PVC pipe fittings 1/2 in. thru 3 in. assorted; Jet Pump parts; 3 metal parts bins; work benches; Victor cutting torch and gauges; Airco 225 amp welder.

1967 Ford 250 - 4 wheel drive truck with 32 ft. telescoping derrick, 6000 lb. 24 volt elec. winch, hydraulic raising and leveling rams and side mt. tool boxes.

HENRY R. STOREY & Associates
Brownwood, Texas
TXS 014-0005
For information call 915-646-3956

THE RISING STAR
Publication No. (USPS 466500)
1983 - EASTLAND COUNTY NEWSPAPER CO.
643-4141 105 N. Main St. Rising Star, Texas Box 127 76471
Second Class Postage paid at Rising Star, Texas, under Act of Congress in March, 1870. Published every Thursday.
Publishers-Mr. & Mrs. H.V. O'Brien
Editor-Cisco-Herrel Hallmark
Editor-Eastland-H.V. O'Brien
Assoc. Editor-Eastland-Michelle Lindsey
Editor-Ranger-Betty McGee
Editor-Rising Star-Carolyn Ratliff
Staff-Gary Slade
Office Staff-Margaret Hallmark
Office Staff-Patricia Hallmark
Office Staff-Daisy Rutledge
Columnist-J.W. Sitton
Production Supervisor-Ted Rogers
Production-Raymond McCoy
Production-Wayne McCoy
Adv. Production-Wanda Hallmark
Computer Operator-Kathy Wilford
Feature Writer-Viola Payne
Commercial Printing-Hale Dunson
SUBSCRIPTION RATES: year; Out of Texas \$12 per Eastland and adjoining year; No out-of-continental counties \$; per year; Other U.S. except APO's. Texas counties \$8.50 per
Thursday, Sept. 22, 1983

HOUSE HOLD Auction
SAT. - SEPT. 24 1:30 P.M.
Hamilton, Texas
ESTATE OF MR. & MRS. JIM PIPES
DIRECTIONS: Take Hwy. 281 (Stephenville Hwy) to FM 2905, Right on 2905 for one-tenth mile east of City Limit sign. (Watch for Auction Signs).

FURNITURE & APPLIANCES
3 pc. Maple Bedroom Suite, (nice); Antique 3 pc. Bedroom suite; Antique Treadle Sewing Machine in Oak cabinet; Chifferobe with Mirror, (nice); Chest-of-drawers; Recliner (green); 2 pc. living room suite; Platform Rocker; Maple end tables; Antique Rocker with cane bottom; (2) Iron Beds; Shelves; Cabinet B&W Television; Dearborn Heater; 7 pc. Dinnette suite; 5 pc. Breakfast Table; Chest type Freezer; Westinghouse Ref./Freezer; Apartment size Gas Range; Older Refrigerator & Much More.

ANTIQUES & MISC.
Antique Cast Iron Toys; Few pc. Depression; Cast-Iron Pots & Pans; Antique Washpot; Kerosene Lamp; Set of Dishes; Quilts; Linens; Towels; Misc. Pots & Pans; Lamps; Hand Tools; Carpenter Box with Tools; Vac. Cleaner; sm. Appliances; Fan; Lawn Chairs; Vise; Garden Tools; Barrell pump; Hose; Ladder; Barrells; Plus much more to numerous to mention.

For more information call: (817) 643-4288 (after 4:00)

THARP AND ASSOCIATES
Auctioneers
Rt. 2, Rising Star, Tx.
Lic. No. TXS-113-1449

WATER WELLS
Ray Norworth
Rotary Drilling
Air & Mud
Major Brand Pumps
915/356-2844

Hale Trailer Dealer
Covered Goosenecks 16X6 Bumper Pulls
2-Horse Trailers All Types in Stock
Barker's Garage
817-259-2252 May, Texas



Dillard-Patterson Engagement Announced



Tracy Mechelle Dillard and Noel Wayne Patterson have announced their engagement and approaching marriage. Tracy is the daughter of Patsy and

Luis Rios of Rising Star and granddaughter of Mr. and Mrs. W.B. Dillard of Cross Plains.

Noel is the son of Mr. and Mrs. Wayne Patterson of Comanche.

The bride-elect is a senior at Cross Plains High School and Noel is currently employed with Twin Drilling Co. of Rising Star.

The wedding is planned for 6 p.m. Saturday, November 19, at the First United Methodist Church in Cross Plains with the Rev. Knox Waggoner officiating.

Friends and relatives are invited to attend.

Gordon Spot

County Extension Agent

DeMarquis Gordon

It seems Eastland County missed another good chance for rain this past week. However, some small areas in the south part of the county were fortunate to get from one to two and one half inches of rain. Most of the county remains extremely dry, without any rain since the last of May of early June. Many have described this drought as the worst since the 1950's.

Dryland peanuts that did not get rain last week will not have much chance to make a crop. Normally, dryland peanuts will make if fall rain begins by September 1. Maturity slows considerably when the nights begin getting cooler.

Rain is also needed for grass before cooler weather comes. It would be most helpful to get some good grass growth this fall since there will be a shortage of hay this winter.

The first conference for disabled farmers to be conducted in the

Southwest is scheduled for October 4 and 5 at Texas A&M University. The Extension Service has designed the conference for disabled farmers, rancher and family members.

The primary objective is to provide disabled farmers with knowledge to help them perform their work. It will identify and develop paractical designs, modifications, and accessories to aid farmers and ranchers with physical disabilities in the operation of tractor and other farm equipment. The conference will also give insight for coping with individual and family stress related to a disability.

If you are interested in this conference contact our office for a copy of the program and registration form.

Applying nitrogen for small grains this fall will be important. We list four important reasons why wheat and other small grains need nitrogen at plan-

ting or a short time afterward:

- aid in developing of good root system,
- for early grazing
- to hasten decomposition of excess residual straw, and
- for high production of forage and grain.

Sufficient fall growth for early grazing cannot be expected without adequate nitrogen at planting. The advantages of early planting and favorable growth conditions can be lost if nitrogen fertilization is delayed until late fall. Establishing a good uniform stand with good tillering requires nitrogen, and most soils are deficient in this nutrient.

To meet nitrogen requirements during the fall growing period, producers can apply the total requirement before planting on heavy textured soils for both forage and grain. Or they can apply a small amount at planting followed by topseeding soon after planting or, in late winter for grain production only.

Of course, fall nitrogen fertilization is also affected by the amount of straw from the previous crop. The bacteria and other microorganisms needed to decompose the straw require nitrogen and can use that already in the soil as well as that applied, thus reducing the amount available during the fall.

The general rule in applying nitrogen has been to increase the rate of nitrogen about 20 pounds per acre for each ton of undecomposed straw. However, a portion of this nitrogen is recovered during the final stages of decomposition so that as much as half of this may be available during the spring months. This means that about half of the "extra" nitrogen could be deducted from the late winter topdressing.

Thursday, Sept. 22, 1983

County Extension Homemakers Council

The Eastland County Extension Homemakers Council recently met and made plans for the upcoming fall activities; Mrs. Morris Underwood, chairman, presided. Mrs. Bill Brown of Kokomo serves as the Council Secretary. Mrs. M.D. Lee of Cisco gave the treasurer's report and reported that a new Texas flag had been purchased for the courthouse flag pole.

The EHC voted to present \$100 saving bonds to the 4-H Gold Star honorees. Mrs. Ruthie Keyes of Cisco will present the awards at the 4-H County Awards Banquet scheduled for October 8 in Rising Star.

Mrs. Twila Lee, Mrs. Wynelle Brown and Betty Greer were elected to serve on the nominating committee.

Council members voted to work and assist as volunteers at the Eastland County Fair exhibit booths.

It was announced that the Senior Citizens Bazaar will be November 3 and 4. All club treasurers were asked to work as a committee with Twila Lee as chairman to plan the food concessions for the Bazaar.

The annual E.H. Achievement Day date was changed to November 7.

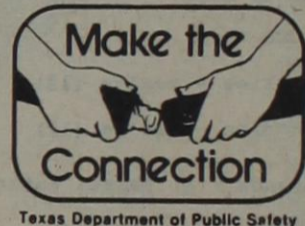
The State TEHA convention will be in Lubbock on September 20-22. Attending as voting delegates from Eastland County are Mrs. Ruthie Keyes of Cisco; Mrs. Dorothy Underwood of Morton Valley; and Mrs. Alberta Sims of Cisco.

The Texas Extension Homemakers Association 57th Annual State Convention will be at the Lubbock Civic Center on September 20-22. The Eastland county delegates are Mrs. Ruthie Keyes, of Cisco; Mrs. Dorothy Underwood, of Morton Valley; and Mrs. Alberta Sims, of Cisco. Speakers for the general convention sessions will include Tony Brignon, American Ambassador of Good Will for Southwest Airlines. Another keynote speaker will include Jim Parcell, Chemical People Project of War on Drugs.

Workshop programs will include Citizenship and Legislative, International Understanding, Family Life and Family Understanding, Membership, Health and Young Homemaker.

Prior to the Convention delegates will participate on tours of the Texas Tech Home Economics Department. Texas Tech is one of the top ten largest undergraduate Home Economics programs in the nation. There will also be an opportunity to tour the Ranching Heritage Center. The center is a 12 acre authentic outdoor exhibit depicting the real story of the history of ranching in America's west.

Over 1,000 Extension Homemaker club members are expected to attend this year's convention in Lubbock.



CLASSIFIED ADS GET RESULTS

Harvey's
APPLIANCE SERVICE

1001 W. 8th
CISCO, TEXAS

SERVICING ALL MAJOR BRANDS
12 Years Experience

HARVEY G. HENSON
Owner 442-4072 or 442-4947

Lawrence-Holmes Wedding Vows Exchanged

Miss Janetta Kay Lawrence and Landry Rex Holmes exchanged their wedding vows in a candlelit ceremony at 2:30 p.m. August 13, 1983, at First Baptist Church of Rising Star with the Rev. R.D. Williams officiating.

The bride is the daughter of Mr. and Mrs. Aubrey Lawrence of Rising Star and the bridegroom's parents are the Rev. and Mrs. R. Doyle Holmes of Lubbock.

Wedding music was provided by pianist Kathy Grant of Vernon and soloist Ken Stanton of Brownwood. He sang "The Lord's Prayer" and "Whither Thou Goest". Guests were registered by Dorothy Bishop.

Given in marriage by her parents, the bride wore a full length dress of chiffon over taffeta, featuring a lace bodice trimmed with seed pearls and set off by a lace capelet. The bodice had a stand up collar and joined the flounced skirt in a raised waistline. Lace panels adorned the skirt and in the front a wide lace panel ran down the length of the skirt and around it to enhance the chapel length train. A fingertip veil of illusion decorated with seed pearls, was set on a small lace cap. The bride carried cascade bouquet of baby's breath and blue and white miniature carnations surrounding a white cymbidium orchid on a white lace covered Bible.

Honor attendants for their sister were Teresa Lawrence of Comanche and Derenda Lawrence of Brownwood. The wore full length dresses fashioned of blue

polyester and edged in lace. The dresses featured square necklines and empire waistlines. The attendants carried longstemmed carnations.

Mothers of the couple wore full length dresses in an apricot color and had apricot colored corsages.

The Rev. Holmes served his son as best man and Steve Freeman of Irving was groomsman. The groom and his attendants wore gray tuxedos.

Howard Lawrence of Rising Star, brother of the bride, was candlelighter and also served as an usher, along with Greg Gilmore of Lubbock.

The altar of the church was decorated with twin arches covered with greenery and the couple lit a unity candle.

A reception in the Fellowship Hall of the church followed the ceremony; it was hosted by the bride's parents. The three-tiered wedding cake of white with blue roses featured sherry glasses holding the tiers. Punch was served from a crystal punchbowl and the table was set with silver appointments.

CJC Offers Defensive Driving Course

Cisco Junior College will offer a defensive driving course on October 3 and 5 from 6 to 9:30 p.m. in the Science Hall lecture room. Fee for the course is \$20.

The defensive driving course is an eight-hour classroom course designed to improve driver skills and attitudes, especially in

A rehearsal dinner, hosted by the parents of the bridegroom, was held at Western Sizzlin in Brownwood.

The bride is a graduate of Rising Star High School and of Howard Payne University where she earned a B.B.A. degree in general business.

The groom was graduated from Coronado High School in Lubbock and received B.S. and B.A. degrees from Howard Payne University where he was graduated summa cum laude.

Following a trip to Arlington, the newlyweds are at home in Fort Worth where the groom attends Southwestern Baptist Theological Seminary and is employed by A.L. Williams.

Wedding guests were in attendance from Coleman, Victoria, Lubbock, Cleburne, Hoshua, Brownwood, Beeville, Vernon, Abilene, Cisco, San Antonio, Dallas, Irving, Corpus Christi and Rising Star.

Bridal showers honoring Janetta and Landry were given on July 8 in the home of Mrs. J.D. McPhaul of Lubbock and on July 30 at First Baptist Church in Rising Star.

emergency situations.

Drivers who complete the course are eligible for a 10 percent discount on automobile insurance rates covering bodily injury, property damage, medical payments and collision coverages. Good for three years, the discount may be renewed by retaking the defensive driving course.

Art Lessons in Rising Star

Call Betty Beggs
725-7235

The Dog House

Poodle Grooming & Other Small Breeds

Hiway 80 West

behind Harp's Cabinet Shop

817-629-1403

Penny Coplen

Susan Alexander

YORK
Heating and Air Conditioning

629-2251

J & J Air Conditioning

1201 W. Commerce Eastland

Call Now & Have Your Heater Checked Early

Free Estimates

DRAPERIES DRAPERIES DRAPERIES

BY *Beil's*

1706 W. Commerce

Eastland, Tx. 76448

817-629-1319

ARRIVING DAILY

Beds preads-Comforters-Sheets-Mattress Pads

Factory Outlet

Spreads Start At \$20

Twins - Full - Queen - King

The Back Room

Adjoining Beil Draperies

1706 W. Commerce Eastland, Tx. 629-1319

Sunday, Sept. 18, 1983

1983 Eastland County Fair Rules

FROM: MRS. JANET THOMAS, COUNTY EXTENSION AGENT
SUBJECT: 1983 EASTLAND COUNTY FAIR RULES
HOME CRAFT DIVISION
GENERAL RULES

1. There will be no entry fee.
2. All entries (except baked goods) will be accepted from noon to 6:00 p.m., Thursday, September 29 with judging to be Friday morning. Baked goods entries will be accepted from 9:00 to 1:00 p.m. on Friday morning, with judging at 1:30 p.m. Friday, September 30.
3. No entries will be accepted after 6 p.m. excluding baked goods.
4. Only one entry per class per contestant. Due to limited space, only one item will be accepted, i.e., one pillowcase, one book end, etc.
5. NO HOME CRAFT ENTRIES WILL BE PICKED UP BEFORE 5:00 P.M. SATURDAY IN ORDER THAT THE PUBLIC MAY VIEW ALL ENTRIES. ENTRIES MUST BE CHECKED OUT BY DIVISION WORKERS BEFORE BEING RELEASED TO OWNER.
6. Each division will have the following classes: Adult - 18 years and over; Youth - Kindergarten to 3rd grade; Youth 4th to 7th grades; Youth - 8th to 12th grades.
7. Ribbons will be awarded to 1st, 2nd and 3rd places.
8. Best of Show awards will be given to each division. Winners to be chosen from the 1st place winners in each class.
9. Regardless of number of entries, article must be worthy of rating before it is given a ribbon.
10. Decision of the judge will be FINAL.
11. All entries (excluding handicrafts) must have been prepared during the previous 12 months. Entries in the Handicrafts division must not have placed in any previous County Fair.
12. Entries need not be new but must be clean.
13. The Fair Association will not be responsible for any damages, loss, or injury to any person or article while participating in the Eastland County Fair. There will be a watchman on duty at night.
14. No name tags shall be on articles to be judged. Numbers will be assigned upon registration.
15. Names of winners will be posted in each division after judging is completed.

BAKED GOODS

NOTICE: Baked entries become the property of the County Fair and will not be returned.

1. Participant must abide by the general rules.
2. No commercial mixes may be used.
3. Each participant shall bake his own entry. No entry group will be accepted.
4. A recipe must accompany each entry.
5. Entries requiring refrigeration will not be accepted, i.e., gelatin, whipped cream, ice cream. (All entries not keeping six (6) hours will be sent to be sold.)
6. Baked good will be sold at the booth where they are entered. Entries will be sold at 4:00 p.m. Friday, September 30 after judging.
7. All entries must be on disposable containers and wrapped securely, (plastic bags).

- CLASSES
- a. Fudge
 - b. Divinity
 - c. Hard Candies
 - d. Caramel
 - e. Peanut Brittle
 - f. Hand dipped candies
 - g. Date Loaf

1. Cookies - twelve (12)
2. Candies - twelve (12)
3. Breads - A. Yeast, enter 1 loaf or 6 rolls. B. Quick
4. Cakes
5. Pies
6. Peanut Creations - anything with peanuts or peanut butter as one of the main ingredients.
7. Decorative cakes - A. Amateur B. Professional

PRESERVED FOODS

1. Participant must abide by general rules.
2. Any entry not in standard canning jars will be judged in a separate category.
3. All entries must be labeled on the jar as to content.
4. Pickles, jellies, and relishes will be opened and flavor tasted when judged.
5. All entries must be sealed.
6. Participant may not enter identical entries or more than three items in each class.
7. When necessary entries will be combined for judging.

CLASSES

- FRUITS: apples, blackberries, peaches, pears, other fruits.
2. VEGETABLES: Green beans, beets, tomatoes, blackeyed peas, okra, squash, mixed vegetables, i.e., soup mix, etc.
 3. JELLY: grape, plum, berry, jellies not listed. Speciality items will be judged on appearance, quality of product and flavor.
 4. BUTTERS: Peach, plum, apple, etc.
 5. JAMS: Grape, plum, berry, etc.
 6. PRESERVES: Strawberry, peach, apricot, pear, marmalade, other fruits not listed.
 7. PICKLES: A. Fruit B. Sweet C. Dill Cucumber D. other vegetables, i.e., okra, squash, etc.
 8. RELISH: Fruit - pear, etc. Vegetable -chow-chow, tomato, picadilly, corn, etc.
 9. NOVELTY ITEMS: Vegetables, pickles, fruits, jelly, etc.

HANDCRAFT DIVISION

- I. All general rules of the Fair will apply to this division.
- CLASSES
- KNITTING: A. Sweater B. Afghan C. Poncho, Shawl, Stole D. Anything of merit not mentioned.
- CROCHET: A. Sweater B. Afghan C. Tablecloth, Bedspread D. Any items not

mentioned above of merit.

- NEEDLEPOINT: A. Any center filled item - exhibitor completed background
B. original canvas designed and executed by exhibitor C. Picture D. Pillow
E. Petitpoint, Any items of Merit not mentioned.

EMBROIDERY: A. Liquid embroidery B. Crewel C. other embroidery items

D. Machine E. Cross stitch (counted and stamped) F. Candlewick

QUILTS: A. Applique quilts, B. Quilt tops C. Pieced quilt D. Quilted pillows

WOODCRAFT: A. Woodburning B. Wood Carving C. Handmade wooden items

OTHERS: Pottery, tating, metal art, bedspreads (other than knitted or crocheted), Jewelry, decorations - Christmas, etc., decoupage, seed art, china painting, macrame, string art, dolls and toys, art plaster, miscellaneous - candles, lye soap, beadwork, foil art, wall plaques, toile paintings, leather, crafts from junk, stain glass, glass inking

FURNITURE: A. Refinished Furniture B. Upholstered Furniture C. Handmade Furniture.

CLOTHING DIVISION

1. Participants must abide by the general rules of the Fair.
2. Garment will be judged on construction and overall appearance.
3. Garments should be on a hanger.

CLASSES

1. Women's Clothing
2. Men's Clothing
3. Girl's Clothing
4. Boy's Clothing
5. Western Clothing

LIVING PLANTS DIVISION

Directors: Cisco Garden Club Members

1. Participants should abide by the general rules of the Fair.
2. All plants should have been in the grower's possession for 3 months prior to the Fair.
3. Flowering plants must be in bloom.
4. Plant entries will be released between 5-7:00 p.m. on Saturday, October 1.

CLASSES

1. Foliage Plants
2. African Violets
3. Flowering Plants
4. Cactus
5. Succulents
6. Ferns

CERAMIC DIVISION

1. All general rules of the Fair will apply to this division

- CLASSES
1. under glazes
 2. over glazes
 - A. Glazed
 - B. Stained
 - C. Pastels

FROM: DEMARQUIS GORDON, COUNTY EXTENSION AGENT
SUBJECT: 1983 EASTLAND COUNTY FAIR RULES (AGRICULTURAL)

General Superintendent - Mr. John Rodgers, Vocational Agricultural Teacher, Carbon High School, Carbon, Texas

GENERAL RULES:

1. All entries must be the product of the 1983 crop.
2. No entry fee will be charged.
3. The name of the exhibitor will not be allowed on the exhibits until after the judging and the awards are on the exhibit.
4. Each exhibitor will furnish the Superintendent a list of his exhibits and stay with them until they are properly entered and tagged.
5. Exhibitors who wish to claim their entries at the end of the fair should advise the Superintendent of the fact when the entry is made.
6. Entries will not be picked up until the close of the fair.
7. 4-H Club and FFA members may show entries in these departments as well as adults.
8. Each contestant will be allowed only one entry in a lot, but may enter as many lots as they like.

CLASSES:

(Limit of 1 entry per individual in each lot. Premiums will be awarded to places 1, 2, & 3.)

Class 1 - Grain Sorghum & Corn Five (5) heads or ears per lot.

- Lot 1. Milo, yellow
- | | |
|----------------|----------------|
| 2. Milo, White | 4. Indian Corn |
| 3. Yellow Corn | 5. Popcorn |

Class 2 - Grain, Grasses and Legume Seeds (Each sample to be approximately one quart and should be labeled).

- Lot 7. Oats
- | | |
|-----------------------------------|-----------------------------------------|
| 8. Rye | 15. Peanuts, Other Varieties (in shell) |
| 9. Barley | 16. Sorghum Allum |
| 10. Sorghum Sweet | 17. Sudan Grass |
| 11. Grain Sorghum | 18. Guar |
| A. Red or yellow | 19. Sideoats Gramma |
| B. White | 20. Bluestem mixtures |
| 12. Vetch | 21. Yellow Corn |
| 13. Field Peas (except blackeyes) | 22. White Corn |
| 14. Peanuts, Spanish (in shell) | 23. Wheat (any variety) |

Class 3 - Legumes for Soil Improvement (one full plant, root system and top)

- Lot 24. Guar
- | | |
|-------------|-----------------|
| 25. Cowpeas | 28. Vetch |
| 26. Peanuts | 29. Winter Peas |
| 27. Alfalfa | |

Class 4 - Bundles of Forage (Seven inches around at base)

- Lot 30. Alfalfa
- | | |
|-------------------------|---------------------------|
| 31. Sudan Grasses | 37. Indian Grass |
| 32. Native Grasses | 38. Bluestem |
| 33. King Ranch Bluestem | 39. Sorghum Allum |
| 34. Blue Panic | 40. Hybrid Forage Sorghum |
| 35. Side Oats Gramma | 41. Sweet Sorghum |
| 36. Klein | 42. Grain Sorghum |

Class 5 - Cotton

- Lot 43. Cotton Stalk (Any variety)
- | |
|----------------------------------------|
| 44. 20 Open Bolls |
| 45. Cotton Seed - gin run (one gallon) |

Class 6 - Vegetables

- Lot 46. Irish Potatoes, any variety - Six (6)
- | | |
|-------------------------------------------|------------------------------------------|
| 47. Sweet Potatoes, any variety - Six (6) | 60. Watermelon, any variety one (1) |
| 48. Onions, any variety - Six (6) | 61. Cantaloupe, Three (3) |
| 49. Turnips, any variety | 62. Peppers, Bell - Six (6) |
| 50. Beets - Six (6) | 63. Peppers, Any other variety - Six (6) |
| 51. Carrots - 12 | 64. Okra - 12 |
| 52. Radishes - 12 | 65. Cucumbers, green - (3) |
| 53. Tomatoes - Six (6) Large | 66. Beans, Lima - One quart green |
| 54. Tomatoes - Six (6) Small | 67. Beans, Pinto - One quart dry |
| 55. Egg Plant - Three (3) | 68. Blackeye Peas, One quart dried |
| 56. String beans - 1 gallon green | 69. Cream Peas - One quart dried |
| 57. Squash - Three (3) green | 70. Cream peas - Blackeyes one quart |
| 58. Cashaw - One (1) | 71. Green Peas, Cream - One quart |
| 59. Watermelon (IceBox) | |

Class 7 - Fruits

- Lot 72. Apples - Six (6)
- | |
|----------------------------------------------|
| 73. Pears - Six (6) |
| 74. Peaches - Six (6) |
| 75. Plums - 12 |
| 76. Grapes - three bunches |
| 77. Apricots - 12 |
| 78. Pecans - One quart of 1982 crop in shell |
| 79. Pecans - One quart of 1982 crop shelled |

Class 8 - Mammoth Exhibit

- Lot 80. Watermelon
- | |
|-------------|
| 81. Pumpkin |
|-------------|

This page provided by

These Banks
and Local Newspapers:

First National Bank,

Cisco

Dick Wooley, President

Member F.D.I.C.

Eastland National Bank

Eastland

Grover Hallmark, President

Member F.D.I.C.

First National Bank,

Gorman

Mike McCormick, President

Member F.D.I.C.

First State Bank,

Rising Star

Don E. Landers, President

Member F.D.I.C.

Eastland County
Newspapers Co.

Cisco Press

Eastland Telegram

Ranger Times

Rising Star

**Rising Star
Nursing Center**
Avis Massey
Activity Director

MONDAY 12 Exercise and crafts were held in the morning.

Alice Mayfield and Tiny Martin brought 15 Heavenly Highway Hymnals donated to Rising Star Nursing Center by Pleasant Grove Baptist Church of Holder.

Bingo was held in the afternoon with Buster Rixford calling numbers. The big winner was Mary Crisp with four games. Martha Irby won three games. Ada Foster and Maggie Christian won two games; Pauline Hill one game. Popcorn was served for refreshments.

WEDNESDAY 14 Residents participated in exercise and crafts activities. Shopping was done for the residents.

Dorothy Reynolds sang with Ruby McCowin at the piano for the afternoon.

At evening Bible study, Mrs. Robertson played piano while Bro. Cox led singing. The lesson was in Acts I. We look forward to the study in Acts.

We welcomed Roy Emfinger back from his stay at Brownwood Regional Hospital. R.T. Ezzell donated a 110 lb. watermelon.

THURSDAY 15 Craft time was enjoyed by residents.

FRIDAY 16 Olive Odom was in charge of afternoon Bible study, with Bea Kelton at the piano and Robert Sparkman leading singing.

Residents welcomed Mary Hord back from her stay at Hendricks Medical Center in Abilene.

The Starbrites senior citizen band entertain-

ed the residents in the afternoon. A big thanks to Estella Hudson and Elza Witt for taking over the refreshments for me. Elza even did some baking! Thanks to everyone.

SATURDAY 17 Sympathy to the family of Rose Roach in her passing.

SUNDAY 18 The Rev. Billy Chamberlain of the First Baptist Church in May officiated at afternoon church services.

Visitors who registered for the week included:

Eva Ashworth and Jean Bean of May to see Martha Irby and Wandine Walker and others.

Alice Mayfield and Tiny Martin of Lake Brownwood. Alice played the piano for us.

Merlene Somerford, Sherry, and C.S. Perry of Mineral Wells, and John Slabown of Dallas to see Emma Fox.

Elizabeth Robertson visited the center.

Tammy, Sandy and Mrs. Gladys Flint of Electra, and Butch Flint and Barbara Adams of Wichita Falls came to see Buster Rixford.

Detta Webb, Bonnie Park, Dorothy Shook, Mamie Joyce also signed in as visitors.

Grannie, Gary and Linda Pancake of Breckenridge to see Emma Fox and Helen Jackson.

Mack and Terry Inglet and Robert and Veda Reynolds of Brownwood to see Zed Inglet.

Wilda Dennis, Nona Shirley, and D.L. and Erma of Cross Plains visited the center.

Thanks

Due to health I will have to stop working full time. Thanks to everyone for your kindness. I will visit as often as I can. A.M.

Rising Star Nursing Center Birthday Honorees

Thursday, Sept. 22, 1983



Martha Irby
September 19, 1898
Brown Co.



Pearl Nunnally
September 21, 1901
Texas



Pauline Hill
September 1, 1906
Hamilton, Texas

Photos Not Available

The residents who are 80 or more received a card from President and 1st Lady Ronald Reagan.

Susie Seals
September 18, 1903
South Bend, Texas

Della Roberts
September 3, 1900
Brown Co.

Artie Fleming
September 27, 1911
Oplin

Hey Eastland,
Your cost of living is coming
down... That's "THE WAL-MART WAY"

**LOW PRICES
EVERY DAY!**

**Start
Saving Soon!**
You'll save every day at
Wal-Mart ... Our policy
guarantees it!

"THE WAL-MART WAY"

Low Everyday Prices

You'll find our prices low every day - not just during sales events. We dare you to shop and compare our prices with those at other stores.

We Won't Be Undersold

We will meet or beat any competitor's advertised sale price on any identical item we sell. Just bring in their current ad.

Famous Brands for Less

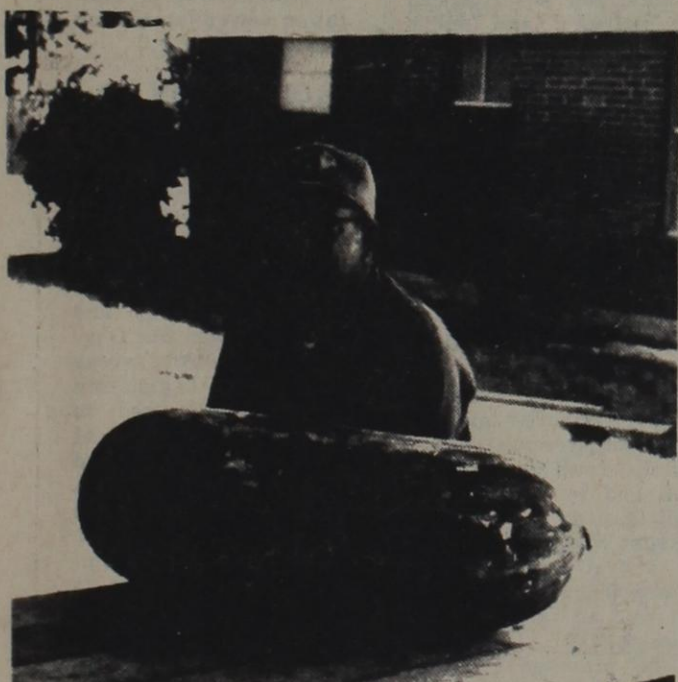
We really do sell nationally advertised brands for less every day ... much less than you've been paying.

Friendly Service

We're here to serve you, our customer, every day.

Guaranteed Satisfaction

We stand behind every purchase you make at Wal-Mart.



R.T. Ezzell sits behind the 110 pound watermelon he donated to the residents of Rising Star Nursing Center for their enjoyment.

SBA SCORE Rep Will Be In Brownwood September 22

A representative for SCORE of the Small Business Administration will visit the Brownwood area on Thursday, September 22.

The representative will meet with area business operators at the Chamber of Commerce building in

Brownwood to discuss programs of the Small Business Administration.

Meetings will be by appointment only, by calling 915-646-9535.

Additional information may be obtained by contacting the Chamber of Commerce office.

The Rising Star
Main Street

Get Ready! "THE WAL-MART WAY" Is Coming Your Way Soon In

WAL-MART Eastland
U.S. Hwy. 80 East

Commentary

by Myrtle Owen

(Continued from last week) - It's time to return to God and the Bible: "Cans't thou not watch with Me one little hour? One little hour and then the glorious crowning, the golder harp strings and the victor's palm: One little hour and then the hallelujah. Eternity's long deep thanksgiving psalm." I realized it was sinful to want to die when God had saved me to serve Him. I asked for forgiveness, and courage to live. "For to me, to live is Christ, and to die is gain." This is not our rest, however, so I determined to live in the power of God. God works - mighty, wonderful and mysterious. One usually thinks of misfortune as an act of fate and that we can do nothing to alter the acts of our lives. To a degree this is true. In the case of a child of God, his life is planned. Whether that plan is fulfilled or not is the individual's gain or loss. One has said, "I am the captain of my fate, the master of my soul." Truer words were never spoken. You are the captain and the master; you control your mind and heart.

The course of your life is challenged by fate or providence as you allow them to challenge you. The crisis is reached when you give over your will, one way or the other, for good or evil. You can love or hate, you can want to understand or misunderstand. It all depends on you. The will to obey is the greatest force of the new-born Christian; the will to disobey is the most destroying force of the sinner. A child, when left alone in the world, is controlled by one of two powers: good or bad, right or wrong, God or the devil. These two powers contend one against the other. Everyone is challenged by these two ways of

life, and each must choose which life he will live. It has been said, "God is a God of love and will never send anyone to hell." To this we will agree. God has not and will not send anyone to hell. However, it is certain that many will go there: this, in spite of God's love. Let me illustrate: Insert a cork in the top of an empty bottle thus making it impossible for air to get in or out, then throw it into a body of water. As long as the cork is firmly intact, the bottle will remain empty inside. The air is sealed in and the water is sealed out. Friend, you may be on the ocean of God's divine love all your life, and yet not permit His love admittance by sealing your heart. It is not God's will that any should perish. Hell was not made for you; it was made for the devil and his angels. True, God will not send you to Hell; you will send yourself there. He has made every provision for the salvation of mankind. He has done all to provide a simple, yet full way of salvation. Jesus said, "He that heareth my word, and believeth on him that sent me, hath everlasting life, and shall not come into condemnation; but is passed from death unto life." (John 5:24). The decision is up to you! If we don't get our children to God while they are young, we will eternally lose them. The Sunday School is the church of tomorrow. We surely need to train them for the cause of Christ so when they are grown up, they will not depart from the ways of the Lord. The devil never sleeps, he seeks to pull them into his devilish cause, and into hell with him.

Birthdays Greetings

- SEPTEMBER 25
Kerri Byrd
E.T. Hudnall
LaJean Lawrence
Merle Roach
- SEPTEMBER 26
Grady Bush
Charles Moore
J.R. Morrow
Norman Hubbard
Jammy Calloway
- SEPTEMBER 27
Butch Butler
Mrs. Arite Fleming
Dean Bailey
Derenda Lawrence
- SEPTEMBER 28
Deanna Nobles
Randy Goldston
- SEPTEMBER 29
Rita Byrd
Mark Kizer
Benny Byrd
Darwin Muir
- SEPTEMBER 30
Coy Barker
Charles Chamberlain
Louis Mayfield
Emma Morris
- OCTOBER 1
George Steel
W.N. Jenkins

Baptist W M U

Baptist Women of First Baptist Church of Rising Star observed a "Week of Prayer for State Missions" during September 12 through 17.

The Baptist Women met each morning for a study of state mission work. Theme for the week was "In Times Like These - HOPE", with Sarah Chamberlain leading each session.

Hostesses for the week were Jean New, Debbie Jones, Julia Ross and Dorris Harrell, with refreshments each morning following the program.

Lifting Up Jesus



Gregg Knight

I have dealt with parents the past several weeks and this week will emphasize on the youth. Now, I am one to praise, but on the other hand I realize that there are many problems they face today. I know there are many young teenagers doing good and living the best they can in today's setting. But let's help them all we can as their parents by setting them the example - we should not and cannot fail them in this area. Parents, you still have the greatest influence on your children whether you know it or not.

Have them read the following Ten Teen Commandments:

1. Do not let your parents down; they brought you up.
2. Choose your companions with care; you become what they are.
3. Be master of your habits, or they will master you.
4. Treasure your time; do not spend it, invest it.
5. Stand for something,

May Methodist Women

The Ada Prentice Unit of United Methodist Women met Monday at 2 p.m. The meeting opened with the group singing "Sweet Hour of Prayer". Bea Kelton accompanied the group on the piano, and Rosalie Glenn led the singing.

Ben Branum gave the devotional "The Trees" proclaiming that only God can make a tree. The thought for the day was "God made us". Ben Branum voiced the opening prayer.

Bea Kelton conducted the business meeting. The minutes were read and approved. Opal Erwin led the group in the lesson from "The Great Physician". What Is the Gospel of Luke?

Mrs. Clyde Allen read the Scriptures from Luke and Acts. Members discussed the lesson. The meeting closed with the group joining hands and singing "Lord Jesus Come Into My Heart".

Betty Wilson served cake and coffee to 12 members and one visitor, Mrs. V.O. King.

Kiss Your BABY

When you kiss your child, you give and receive love. But your kiss could also be a test for cystic fibrosis, an inherited respiratory and degenerative disease. An excessively salty taste to the skin is one symptom of cystic fibrosis. Call your doctor or local Cystic Fibrosis Foundation Chapter for more information. Early diagnosis and treatment can be the key to a better quality of life for children with CF.

Meantime, kiss your baby. It's a good idea, anyway.
National Cystic Fibrosis Week
September 18-24



Cisco Chapter Of American Association Of Retired Persons Are Recruiting Tax Counselors

The Cisco effort of the nationwide tax-aid program has begun recruiting volunteers to serve as tax counselors to older persons for the 1983 tax season.

Tax-aid is a community service of the American Association of Retired Persons working in cooperation with the IRS. It provides free income tax help to the older taxpayers in preparing their returns, according to Walter Knowlden, coordinator for the Eastland County program.

Mr. Knowlden said that persons volunteering to serve as counselors should have a sincere interest in serving older adults and have a good knowledge of tax matters. They should also be willing to participate in an Internal Revenue Service training course and agree to devote at least four hours a week to providing tax counseling.

Volunteer counselors do not have to be members of AARP. Mr. Knowlden pointed out that volunteers should be older persons since a unique tax-aid feature is emphasis on peer-group assistance. However, persons of any age are welcome.

"Some of our best counselors are retired professionals," Mr. Knowlden said. "Since the training course emphasizes tax benefits for older adults and not general tax preparation, those volunteers who are already familiar with taxes have a head start and usually make better counselors."

"We've found that

our counselors enjoy their activities so much that most of them come back year after year," Mr. Knowlden said. "But we can always use additional volunteers, especially this year since we're trying to open more counseling sites and reach additional Eastland County older residents.

Persons interested in finding out more about tax-aid or in serving as a counselor may call Walter Knowlden at 442-1715.

TAX-AIDE PROGRAM

The IRS training course for volunteers will be held in January, 1984. The local tax-aid program will offer assistance to older residents at a convenient location from February 1 to April 15.

jurisdiction and to county courts."

costs of administering the fund and issuing the bonds. The amendment provides, further, that if there is not money in either the Veterans' Land Fund or the Veterans' Housing Assistance Fund available for payment of principal and interest on the general obligation bonds issued pursuant to the amendment, then money coming into the Treasury in each fiscal year is appropriated in an amount sufficient for payment of principal and interest due in that fiscal year.

Beil
Draperies

Mini Blinds
30% off

Call 629-1319
For Appointment
Or Come By
1706 W. Commerce

PUBLIC NOTICE BRIEF EXPLANATORY STATEMENTS OF PROPOSED CONSTITUTIONAL AMENDMENTS SPECIAL ELECTION NOVEMBER 8, 1983

PROPOSITION NO. 1 ON THE BALLOT

House Joint Resolution 91 proposes a constitutional amendment which requires a county with a population of 30,000 or more to be divided into not less than four nor more than eight justice of the peace precincts. A county with a population of 18,000 or more but less than 30,000 shall be divided into not less than two nor more than five justice of the peace precincts. A county with a population of less than 18,000 shall be designated as a single justice of the peace precinct or, upon a finding of necessity by the commissioners court, shall be divided into more than one justice of the peace precinct but not more than four. The amendment provides further, that in any precinct in which there is a city with a population of 18,000 or more, two justices of the peace shall be elected. The amendment allows a justice of the peace, constable or commissioner to continue in office until the expiration of his term, although a change in precinct boundaries results in the officer no longer being a resident of the precinct for which he was elected or appointed and allows a justice of the peace or constable to continue in office until the expiration of his term even though a change in precinct boundaries results in the abolishment of the precinct or more than one justice of the peace or constable serving the precinct. Vacancies in the office of justice of the peace or constable that result from a precinct boundary change shall be filled by the commissioners court until the next general election. The amendment would take effect on January 1, 1984, and counties with populations of less than 30,000 and with more than four justice of the peace and constable precincts would have until January 1, 1987 to comply with the amendment.

The proposed amendment will appear on the ballot as follows: "The constitutional amendment providing fewer justice of the peace and constable precincts in counties with a population of less than 30,000 and providing for continuous service by justices of the peace, constables, and county commissioners when precinct boundaries are changed."

PROPOSITION NO. 2 ON THE BALLOT

House Joint Resolution 105 proposes a constitutional amendment which would limit a homestead in a city, town or village to a lot or lots amounting to not more than one acre of land, together with any improvements on the land. The constitutional requirement that, at the time of

designation, an urban homestead not exceed ten thousand dollars in value without reference to the value of any improvements on the land would be eliminated.

The proposed amendment will appear on the ballot as follows: "The constitutional amendment replacing the limitation on the value of an urban homestead with a limitation based on size."

PROPOSITION NO. 3 ON THE BALLOT

Senate Joint Resolution 1 proposes a constitutional amendment that authorizes the Legislature to enact legislation that permits representative associations of agricultural producers to collect refundable assessments on their product sales to be used solely to finance programs of marketing, promotion, research and education relating to those products. It provides, further, that adoption of the proposed constitutional amendment will bring into effect Senate Bill 607, Acts of the 68th Legislature, Regular Session, 1983, with rejection of the amendment resulting in Senate Bill 607 having no effect.

The proposed constitutional amendment will appear on the ballot as follows: "The constitutional amendment providing for the advancement of food and fiber production and marketing in this state through research, education, and promotion financed by the producers of agricultural products."

PROPOSITION NO. 4 ON THE BALLOT

House Joint Resolution 30 proposes a constitutional amendment which authorizes the Legislature to enact laws to provide for the succession of members of the Legislature in the event of enemy attack and allows the suspension of procedural rules imposed by the Constitution in the event of, or immediate threat of, enemy attack. The amendment empowers the Governor, after consultation with the Speaker of the House and the Lieutenant Governor, to suspend the constitutional requirement that the Legislature hold its sessions in Austin and allows the suspension of procedural rules by the Governor issuing a proclamation in which the House of Representatives and Senate concur by resolution approved by a majority of the members present. Suspension of the constitutional rules may not exceed a period of two years under a single proclamation; however, the Governor may renew the suspension by issuing a new proclamation concurred in by the House of Representatives and the Senate through a resolution approved by a major-

ity of the members present.

The amendment will appear on the ballot as follows: "The constitutional amendment authorizing statutory provisions for succession of public office during disasters caused by enemy attack, and authorizing the suspension of certain constitutional rules relating to legislative procedure during those disasters or during immediate threat of enemy attack."

PROPOSITION NO. 5 ON THE BALLOT

Senate Joint Resolution 12 proposes a constitutional amendment that authorizes the Legislature to enact legislation providing for the use of the permanent school fund and income from the permanent school fund to guarantee bonds issued by school districts. The amendment provides, further, that the Legislature may appropriate part of the available school fund for administration of the permanent school fund or of a bond guarantee program established pursuant to the amendment.

The constitutional amendment will appear on the ballot as follows: "The constitutional amendment authorizing use of the permanent school fund to guarantee bonds issued by school districts."

PROPOSITION NO. 6 ON THE BALLOT

House Joint Resolution 1 proposes a constitutional amendment which would permit the Legislature to provide for the garnishment of wages to enforce court-ordered child support payments. The garnishment remedy would not be available for other purposes.

The proposed amendment will appear on the ballot as follows: "The constitutional amendment allowing the Legislature to provide for additional remedies to enforce court-ordered child support payments."

PROPOSITION NO. 7 ON THE BALLOT

Senate Joint Resolution 14 proposes a constitutional amendment that authorizes the Veterans' Land Board to provide for, issue, and sell general obligation bonds of the State of Texas in an amount not to exceed \$800 million to provide financing to veterans of the state. The amendment requires that three hundred million dollars of the state bonds be dedicated to the Veterans' Land Fund. The Fund is to be used to purchase land to be sold to veterans under such terms, rules and regulations as may be authorized by law. The amendment creates the Veterans' Housing Assistance Fund and requires that \$500 million of the state bonds authorized by the amendment be dedicated to the Fund. The Veterans' Housing Assistance Fund will be utilized by the Veterans' Land Board for the purpose of making home mortgage loans to veterans for housing within the state and for the administrative

costs of administering the fund and issuing the bonds. The amendment provides, further, that if there is not money in either the Veterans' Land Fund or the Veterans' Housing Assistance Fund available for payment of principal and interest on the general obligation bonds issued pursuant to the amendment, then money coming into the Treasury in each fiscal year is appropriated in an amount sufficient for payment of principal and interest due in that fiscal year.

PROPOSITION NO. 8 ON THE BALLOT

Senate Joint Resolution 1 proposes a constitutional amendment that authorizes political subdivisions to exempt veterans' organizations from ad valorem taxation on their property. The amendment requires that the veterans' organizations be chartered by the United States Congress, be composed of members or former members of the United States Armed Forces, and be organized for patriotic and public service purposes. The amendment provides, further, that political subdivisions may exempt fraternal organizations from ad valorem taxation on their property. The amendment requires that the fraternal organizations be organized to perform and be primarily engaged in charitable or benevolent functions. The Legislature would be authorized to enact laws that prescribe eligibility requirements for fraternal organizations to benefit from the exemption and to pass legislation limiting the types or amount of property owned by a fraternal organization which may be exempted from ad valorem taxation.

The proposed constitutional amendment will appear on the ballot as follows: "The constitutional amendment to authorize taxing units to exempt from taxation property of certain veterans' and fraternal organizations."

PROPOSITION NO. 9 ON THE BALLOT

House Joint Resolution 70 proposes a constitutional amendment to authorize the Legislature to provide, by local or general law, a method by which judges of statutory courts with probate jurisdiction may be assigned to any other statutory court with probate jurisdiction and to any constitutional county court in any county in the state.

The proposed amendment will appear on the ballot as follows: "The constitutional amendment providing for assignment of judges of statutory probate courts to other statutory county courts with probate

PROPOSITION NO. 10 ON THE BALLOT

Senate Joint Resolution 17 proposes a constitutional amendment that authorizes the Legislature to enact laws which would allow a city or town to expend public funds to relocate or replace sanitation sewerage laterals on private property if done in conjunction with the replacement or relocation of sanitation sewer mains serving the property. The amendment requires that the law authorize the city or town to affix a lien on the private property, with the consent of the owner, to cover the costs of the replacement or relocation of the sewer laterals on the property. The lien may not be enforced until five years have expired since the date the lien was affixed. The amendment provides, further, that the law require that the costs of the replacement or relocation of the sewer laterals on the private property be assessed against the property with repayment to be amortized over a period not to exceed five years and at an interest rate provided by law.

The proposed amendment will appear on the ballot as follows: "The constitutional amendment to permit a city or town to expend public funds and levy assessments for the relocation or replacement of sanitation sewer laterals on private property."

PROPOSITION NO. 11 ON THE BALLOT

Senate Joint Resolution 13 proposes a constitutional amendment that would change the Board of Pardons and Paroles from a constitutional agency to a statutory agency and would eliminate the Governor's power to revoke paroles. The Legislature would be authorized to establish the Board of Pardons and Paroles and to require it to maintain records of its actions and the reasons for its actions. The amendment would empower the Legislature to enact parole laws. Constitutional language specifying the qualifications and terms of office for members of the Board of Pardons and Paroles is eliminated. The constitutional language governing the composition of the Board of Pardons and Paroles and the manner of filling vacancies on the Board is eliminated.

The proposed amendment will appear on the ballot as follows: "The constitutional amendment to change the Board of Pardons and Paroles from a constitutional agency to a statutory agency and to give the board power to revoke paroles."

Estos son los informes explicatorios sobre las enmiendas propuestas a la constitucion que apareceran en la boleta el dia 8 de noviembre de 1983. Si usted no ha recibido una copia de los informes en español, podra obtener una gratis por llamar al 1/800/252/9602 o por escribir al Secretario de Estado, P.O. Box 12887, Austin, Texas 78711.

FOOTBALL

**Wishing Well
Flowers
& Gifts**
643-2023

**Rising Star
Chamber of
Commerce**
643-2251

**Medley
Motor Co.**
643-5211

**Palace
Drug Store**
643-3231

**Kizer
Insurance
Co.**
643-4421

**Eddie & Kay
Barker**

**Go
Wildcats!!!**

**Star Plaza
Restaurant
& Truck Stop**
643-6960
643-1090

**The
Rising Star**
643-4141

**Winfrey
Feed & Peanut
Co.**
643-6251

**D & T
Building
Supplies**
643-4131

**Sam Justice
General
Contractor**
643-4289

**Quickway
Gro. & Deli**
643-1490

**Kountry
Kitchen**
643-6831

**Twin Drilling
& Well
Service**
643-7100

Snak Shak
open after games
643-3102

Trails West
643-1601

**Randy Goldston
Satellite Antennas**
643-3077

**Payton
&
Johnnie Scott**

**Bramlett
Implement Co.**
643-4311

**Jim Ratliff
Welding**
643-6464

**All Star
Pump
&
Supply**
643-4300

**Chambers
Gro.**
643-5292

**Dr. B.T.
Carpenter**
643-3141

**Jenkins
Insurance
Agency**
643-2251



**Rising Star
Nursing
Center**
643-2691

1983 Rising Star Football Schedule

Sept. 2 - Friday	Eden	There	8:00
Sept. 9 - Friday	Tolar	Here	8:00
Sept. 16 - Friday	*Santa Anna	Here	7:30
Sept. 23 - Friday	*Evant	There	7:30
Oct. 1 - Saturday	**Blanket	Here	7:30
Oct. 7 - OPEN			
Oct. 14 - Friday	*Lometa	There	7:30
Oct. 21 - Friday	*Goldthwaite	There	7:30
Oct. 28 - Friday	*Rochelle	There	7:30
Nov. 4 - Friday	*Cross Plains	Here	7:30
Nov. 11 - Friday	*Gorman	Here	7:30

**Butler
Texaco**
643-3261

**K & S
Equipment
&
Machine Co.**
643-3177

Higginbothams
643-2271

**Jack Hubbard
Soil Conservation
Contractor**
643-6242

RISING STAR JUNIOR HIGH SCHEDULE

Sept. 15	Thursday	Santa Anna	There	6:30
Sept. 22	Thursday	Evant	Here	6:30
Sept. 29	Thursday	Blanket	There	6:30
Oct. 6		Open		
Oct. 13	Thursday	Lometa	Here	6:30
Oct. 20	Thursday	Goldthwaite	Here	6:30
Oct. 27	Thursday	Rochelle	Here	6:30
Nov. 3	Thursday	Cross Plains	There	6:30
Nov. 10	Thursday	Gorman	There	6:30

Athletic Director - Jack Gray

L & C Auto
643-3261



Cattlemen's Round-Up for Crippled Children Schedules Sales

Area chairmen have been appointed for the Cattlemen's Round-Up for Crippled Children, according to Jim Alexander, general chairman. The Cattlemen's Round-Up for Crippled Children benefits the West Texas Rehabilitation Center with campuses in Abilene and San Angelo.

"Livestock donated by ranchmen are collected at a designated point in each community and transported free to the auction site," Alexander explained. "The area chairman's role is to make a personal pledge, then ask friends and neighbors to join him in the annual CRCC drive."

Sales of livestock are converted to dollars and the amount provides care for about 11,000 handicapped persons throughout the Southwest at Rehab campuses.

Scheduled sales include the Cattle Sale at Abilene Auction on September 26; Abilene Horse Sale on October 1; Junction Sheep and Goat Sale on October 3; Coleman Sale on October 5; and Brownwood Sale on November 2.

Aubrey Stokes of San Angelo is CRCC co-chairman for the Southwest region. Midwest Feedyards in San Angelo serves as the regional collection point.

County Receives Grant For Roads

Austin--Texas Treasurer Ann Richards recently sent checks totaling \$7.3 million in grants to the state's 254 counties for road construction and maintenance projects.

The 19 counties in the Abilene area received a total of \$392,000.

Each year the State Treasurer disburses money appropriated by the legislature for the Lateral Road Program. The grants may be used by counties for the purchase of right-of-way and for construction and maintenance of lateral

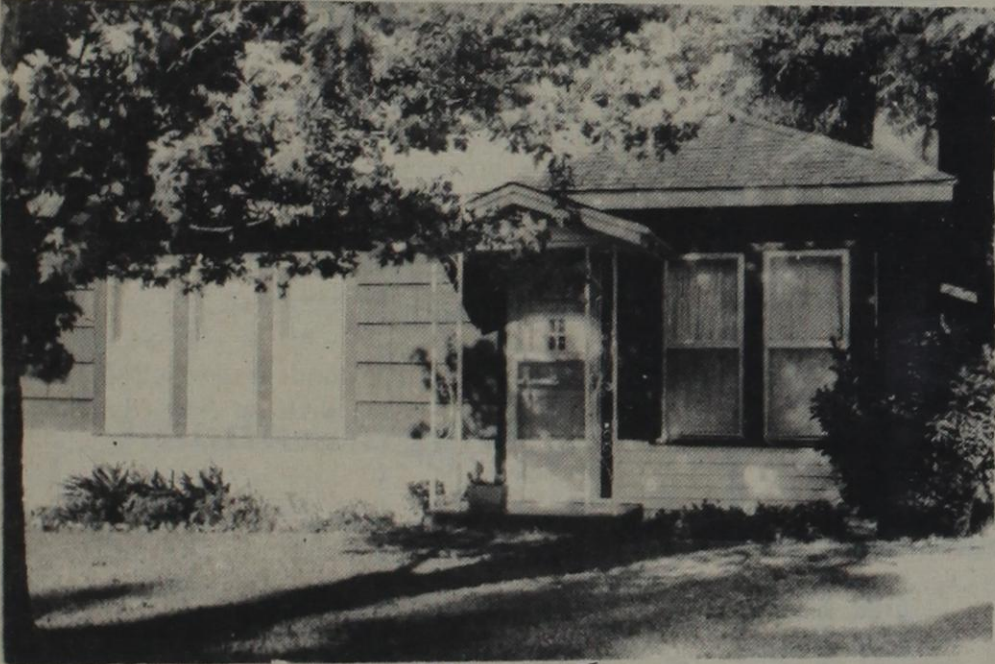
roads, farm-to-market roads or state highways.

Richards said the \$7.3 million is allocated to each county under a formula based on the county's area, rural population and lateral road mileage.

State road grants to area counties are Brown, \$31,481.01; Callahan, \$21,146.33; Coleman, \$27,158.04; Eastland, \$25,231.53; and Shackelford, \$14,320.38.



Yard of the Week

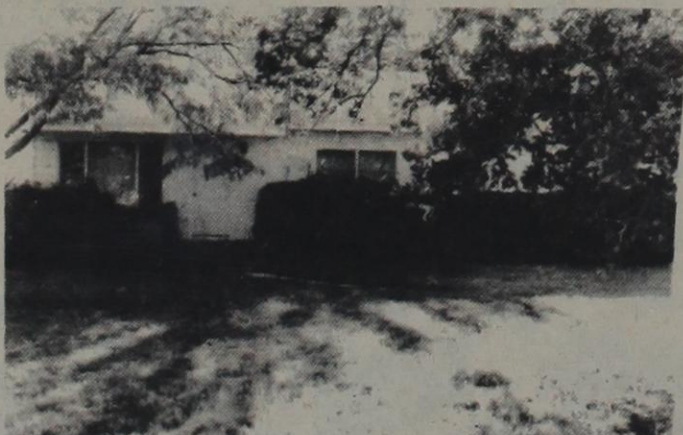


Mr. and Mrs. Art Fisher

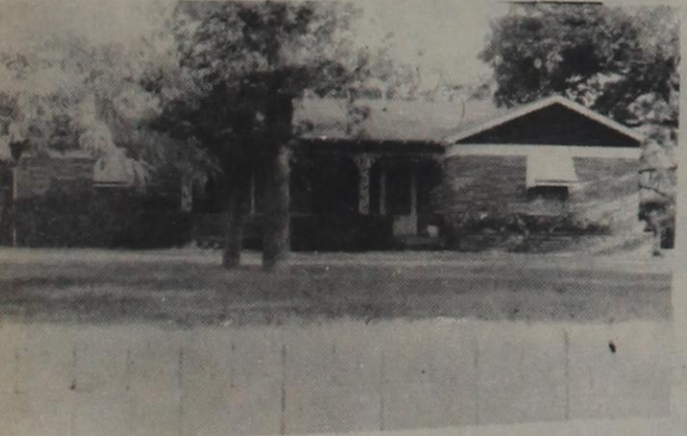
Honorable Mention



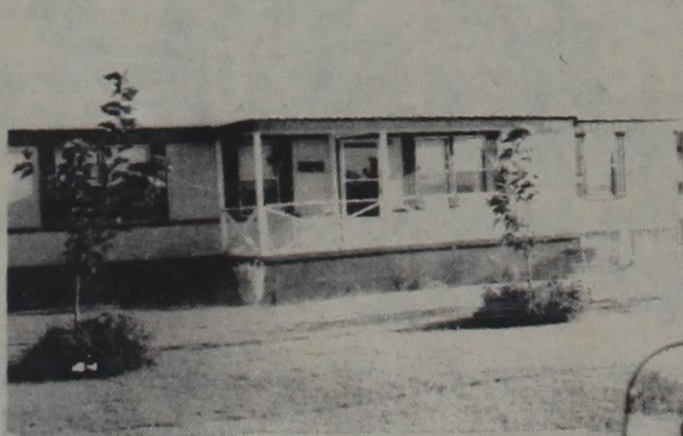
Mr. and Mrs. John W. Lee



Mr. and Mrs. Casey Pittman



Charlie Tyler & Helen Jackson



Mr. and Mrs. Henry Robertson

Cystic Fibrosis Campaign Week Is This Month

Dear Editor:

The observance of National Cystic Fibrosis Week in Rising Star will be followed by a door-to-door fundraising campaign, September 25-October 8. Mrs. Sandy Wright will coordinate the educational effort and organize the fundraising, according to Fred Greene, President of the North-East Texas Chapter of the Cystic Fibrosis Foundation.

The purpose of Cystic Fibrosis Week is to increase public awareness of this country's number one inherited killer of children and young adults, and the door-to-door campaign will help raise the research funds which are the only hope of the CF community.

Cystic fibrosis (CF) is a fatal disease that attacks the lungs and digestive system. It produces a thick, glue-like mucus that makes breathing difficult and impedes digestion. The disease both suffocates and starves its victims.

For more information, contact the local chairperson or the North-East Texas Chapter of the Cystic Fibrosis Foundation, 2405 Cedar Springs, Suite 211, Dallas, Texas 75201. The literature will be distributed by the chairperson or is available from the Chapter.

Andrea Rutledge
Campaign Director

Thursday, Sept. 22, 1983

HPU Offers Free Classes For Attaining GED

BROWNWOOD-Free classes for adults wishing to attain the GED (high school equivalency diploma) are now being offered on a continuous basis at Howard Payne University in Room 202 of Old Main.

The classes are taught each Tuesday and Thursday evening throughout the school year from 6 to 9 p.m. each night. Registra-

tion is open through the school year, and students may join the classes at any time.

All five areas of the GED test are taught in class, including math, writing, reading, social studies and science skills. Study is individualized, allowing students to progress at their own rate of learning.

The GED test is administered each month in Brownwood at the University. The GED is accepted by most employers and colleges instead of a high school diploma.

Two other classes, basic reading and English as a second language, are also available at the University. These classes also meet Tuesday and Thursday nights from 6:30 to 9 p.m. October through March.

For more information about the free classes, call Howard Payne University at 915-646-2502, Ext. 270.

Tax Statements Will Be Mailed Soon

Eastland county property owners will be receiving their 1983 property tax statements during the next several weeks. Local taxing jurisdictions are planning to have the majority of all statements mailed on or before October 1, 1983.

All 1983 tax statements should be mailed by the middle of October, 1983. If you own taxable property within the County and

do not receive your 1983 tax statement by the end of October, you should contact the Eastland County Appraisal District to be certain that the property was placed on the 1983 tax rolls correctly.

If any charge or correction is needed, the Eastland County Appraisal District should be contacted for assistance. This is a change from past procedures where

changes and corrections were made by the local tax collectors of each jurisdiction. This change in the procedure is a result of new Property Tax Laws.

Needed corrections or changes will be made as quickly as possible by the Appraisal District staff. However, in most cases, corrections will not be able to be made on the spot as the property tax laws now re-

quire certain procedures to be fulfilled before changes and corrections are complete.

If you have any questions concerning the 1983 tax statements, you should contact the Eastland County Appraisal District. The telephone number is 629-8597 and the Appraisal District office is located on the second floor of the Eastland County Courthouse.

Town & Country
REAL ESTATE

BARBARA LOVE, INC. BROKER
HIGHWAY 80 EAST
EASTLAND, TEXAS 76448

629-8391 629-1725

EASTLAND

NEAR SCHOOLS-4 bdr. 1 1/2 baths on 2 lots. E1
ASSUMABLE LOAN, Large 3 bdr., 2 baths. E3
FANTASTIC DEAL-2 bd, 2 B frame, Cent. H/A. E2
ASSUME FHA No qualifying, 3 br. 1 bath cen. H/A. E5
CHARMING 2 STORY 4 bdr. beautifully decorated. E6
LARGE 2 bdr., H/A, corner fenced. Assume FHA. E7
EXCEPTIONAL BRICK HOME, Pool, Guest House. E9
3 BDR. 1 B to be remodeled, Owner finance. E10
70'X105 Corner Lot, Utilities available. E15
EXTRA NICE 2 br. home-Priced right. E11
BRICK 3 Br., 1 1/2 bath, 2 living area, patio. E12
LARGE LOT, 3 bdr., 1 b., frame, lots of extras. E13
NEAR SCHOOLS-older 3 bdr frame-lots storage. E16
NICE OLDER-2 bdr., cent. H/A, new kitchen. E17
ENERGY EFFICIENT new metal frame 2 bdr. home.
NEW HOMES UNDER CONSTRUCTION, Call for details.
CLOSE TO SCHOOLS, 3 bdr. 1 1/2 bath, nice house. E20
PRICED RIGHT, 2 bdr., 1 bth, inside repainted. E21
BRICK 3 bdr., 1 1/2 ba., Will trade for Lake Leon. E22
OLDER 3 Bdr., Double garage, trees, Good area. E23
3 BDR., 1 1/2 Bath Brick, Assumable 235 Loan. E4
3 BDR., 2 B, Frame older home, Good location E8
PRICE REDUCED - 4 bdr., 3 bath, extras. E13
NEW UNIQUE 1 1/2 story rock in Oakhollow. E18
LITTLE CASH NEEDED to move in 2 bdr. home, C/H.

GORMAN

ROCK HOME, over 1 ac. lot. G3
EQUITY BUY-3 bdr., patio and storage building. G8
PEGGYE SWAFFORD 647-1050 HAZEL UNDERWOOD 629-1188
BARBARA LOVE 647-1397 ROGER AUTREY 442-3345
ELMER FOSTER 629-1972

Moving to Eastland County? or anywhere in U.S.A. Call Toll Free 1-800-525-8910 Ext. 4365 for information. (No Rentals Please)

OTHER

CISCO-Frame, 3 bd. 1 B, garage, large lot, trees.013
RANGER, Large 2 bdr., cellar, corner lot, nice. O1
1 1/2 STORY LAKE HOUSE, 3 bdr., 3 baths, leased lot. O2
CISCO, 3 bdr., 1 bath on 1 Ac. Greenhouse, trees. O3
LAKE LEON, 3 Br., 1 1/2 B., Mobile Home, good water. O4
RISING STAR, 1900's home needs TLC, on 8 Ac. O5
CARBON BRAND NEW, Cent H/A, large lot. O6
CISCO ASSUMABLE-1 Yr. old 3 bdr. 2 B. O14

LAKE LEON, 3 bdr., 2 baths, on 2 deeded lots. O7
OLDEN, 2-3 Br., 1 B., Lg. fenced lot, carport. O8
RANGER ASSUMABLE, 3 Br. 2 B. Cent. H/A extras. O9
CISCO OWNER FINANCE, 2 Br. 2 1/2 lots, Appliances. O10
CARBON, 2 Br., 75% completed, you finish & SAVE. O11
CISCO-Brick 5 yr old 3bd, 2 bath, many extras.O12

HOUSE AND ACREAGE

7 1/2 ACRES, 2 bdr. hon SOLD ouse and barns. HA5
CROSS PLAINS,116 ac., custom brick home. HA11
CISCO, 4 bdr., 2 1/2 bath home on 10 acres. HA15
CUSTOM DOUBLE WIDE on one acre, Many extras. HA2

ACREAGE

428 ACRES So. of Cis SOLD hunting, minerals. A1
.725 AC. So. access of I-20, near 2 exits. A2
1.2 ACRES, city water, excellent homesites. A3
SMALL tracts So. of Eastland, building sites. A4
100 ACRES, good coastal, barns, corrals, 3 tanks. A5
12 1/2 AC. Near Lake Leon on pavement, staff water. A7
60 ACRES, NW of Cisco, Rd. frontage on 2 sides. A8
167 1/2 AC. 70 Ac. field, rest pasture, tanks, well. A14
30.87 AC. on FM571 SE of Lake Leon, trees, minerals. A15
RISING STAR, 8 ac., w/older home, owner carry. A17
146 AC. on Highway, Trees, Lots of quail. A9
55 1/2 AC. on HWY 101 near Raner, Trees & Quail. A10

COMMERCIAL

3 RENTALS, large lots, fenced, garage. C3
OFFICE BLDG., 2 lots on Commerce St. C4
HWY 80 E. near I-20, large bldg. 1/2 ac. C5
PRICE REDUCED-Office or Retail. Main Street. C6
GORMAN-Hwy. 6 Frontage-Cafe & Metal Building. C9

Majestic Theatre

Eastland 629-1220

One Showing Only Each Evening
Open 7:30 Show Starts At 7:50 P.M.

Fri. Sat. & Sun.

DAN AYKROYD EDDIE MURPHY
They're not just getting rich...
They're getting even.



Some very funny business.

PARAMOUNT PICTURES PRESENTS
AN AARON RUSSO PRODUCTION - A LANDIS/FOLSEY FILM
DAN AYKROYD EDDIE MURPHY TRADING PLACES - RALPH BELLAMY
DON AMECHE DENHOLM ELLIOTT AND JAMIE LEE CURTIS
MUSIC BY ELMER BERNSTEIN - EXECUTIVE PRODUCER GEORGE FOLSEY JR.
WRITTEN BY TIMOTHY HARRIS & HERSCHEL WEINGROD
PRODUCED BY AARON RUSSO - DIRECTED BY JOHN LANDIS
A PARAMOUNT PICTURE

Ranger Drive-In Theatre

Ranger 647-3802

One Showing Only Each Evening
Open 8:00 Showtime 8:30 P.M.

Fri, Sat, & Sun

You won't believe what goes on
and what comes off in...

Private School



by R. BEN EFFRAIM producer "PRIVATE SCHOOL"
PHOEBE CATES - BETSY RUSSELL - MATTHEW MODINE - MICHAEL ZOREK
Also starring RAY WALSTON and SYLVIA KRISTEL as the Sex Teacher
written by DAN GREENBURG, SUZANNE O'MALLEY
Produced by R. BEN EFFRAIM, DON ENRIGHT Directed by NOEL BLACK
Songs performed by STRAY CATS, RICK SPRINGFIELD, PHOEBE CATES and more!

A UNIVERSAL PICTURE UNTY R RESTRICTED UNDER 17 REQUIRES ACCOMPANYING PARENT OR ADULT GUARDIAN

PLUS

SPRING BREAK

R

© 1983 UNIVERSAL PICTURES INDUSTRIES, INC.

Senior Center News

There were about forty people who signed our register Thursday. Every one enjoyed a delicious lunch. We had two visitors, Gene Hicks and Frank Gray. We welcome visitors, come and enjoy the day with us.

We wish to thank Frank Gray for giving each senior citizen a courtesy pass to all athletic events during the school year. We want to thank Superintendent Williams and the school faculty for supporting us in our effort to make the world a little better place in which to live.

Friday afternoon was a fun event for us. The Starbrites played for the residents at the Rising Star Nursing Home. It was worth our effort when we saw all of those smiling faces, all seated when we arrived. After a number of peppy tunes were played, several numbers of special songs were sung by Alvy Bible, Clyde Griffin, Louella McKinney, Julia Ross and Marjorie West.

On Tuesday, September 20, the Starbrites will go to Baird to play for their nursing center. We always enjoy going to Baird—they really enjoy our type of program.

Thomas and Nancy Wolf of Midland were recent visitors for his mother Rada King.

Henry and Inez Robinson, Stella Hill and Mary Carroll spent a day in Abilene visiting their sister and husband, Alice and Dowell West.

Irvin Selman of San Antonio, a son of Annie May Selman, had major surgery at the Methodist Hospital in San Antonio. He is recovering nicely.

Lela Clark was back in club Thursday after being out due to not feeling too well.

Howard White is taking treatments from Dr. Addy in Cisco. Hope you will soon be good as new.

Johnnie Mooney is home after spending 18 days in Eastland Hospital with pneumonia. Johnnie, we are all glad you are back home, and hope you will be back at our center soon.

Mana Allsup of Chicago, Ill., and Lollie Allsup of Coleman visited Bea Morton last week.

Edith Bostick and Marjorie West attended a ceramic class in Cisco last Wednesday.

On Friday, Louella McKinney, Edith Bostick and Willia Leah Maynard made a business trip to Brownwood.

Marion and Marjorie West visited Arval and Jewell Davis recently.

Our recipe for the week is:

Texas Date Cake
Chop 18 oz. of dates, pour 1 cup of boiling water over them and add 1 tsp. baking soda.

Cream together 1 cup butter or oleo, 1 cup sugar and 1 beaten egg. Add 2 cups flour, 1 tsp. vanilla and the grated rind of one orange. Mix all ingredients well and bake at 350 degrees in a greased and floured loaf pan. Bake until firm in the center.

For icing: Mix 1 cup sugar with juice from 2 oranges. Sprinkle 1 cup of chopped pecans on top of cake and pour the juice and sugar mixture over them. Put the cake back in the oven and heat a few minutes at low temperature.

Marjorie West

Poetry Contest Announced

A \$1,000 grand prize will be offered in a poetry contest sponsored by the World of Poetry newsletter. Another 99 prizes worth more than \$10,000 will be offered.

The contest is expected to draw new poets, even those who have never entered a poetry contest before.

For a free brochure of rules and prizes, please write to World of Poetry, 2431 Stockton Blvd., Dept. P, Sacramento, Calif. 95817.



Clarence Gales, who grew up in Rising Star recently entered the White Settlement Nursing Center in Fort Worth.

Gales' three sisters, Sadie Erwin of Rising Star and Thelma Gilliland and Ethel Foy, both of Fort Worth, understand that at such a time, it's a comfort to hear from old friends and acquaintances. They ask those in Rising Star who remember Gales, who will be 74 in November, to send him cards and letters.

The address is Clarence Gales, White Settlement Nursing Center, 7820 Skyline Park Drive, Fort Worth 76108.

Small Towns Are Same World Over

In New Zealand or central Texas, small towns are the same all

over the world. The following news article from the Wairarapa

News in Featherston, New Zealand, was submitted to the Hico, Tx., News Review:

A small town is... Featherston, Greytown or Carterton?

-A small town is where you don't have to guess who your enemies are. Your friends tell you.

-A small town is the only place on earth where people past middle age are called by their first names when they saunter down the street.

-A small town is where everybody knows everybody else's car by sight and also where and when it goes.

-A small town is when you get the

wrong number, you can talk for 15 minutes anyhow if you want to.

A small town is where the ratio of good people to bad people is something like 100-1.

-A small town is where it is hard for anybody to walk to work for exercise because it takes too long to stop and explain to people in cars who stop and honk and offer a ride.

-A small town is where city folks say there is nothing to do, but those who live here don't have enough nights in the week to make all the meetings and social functions.

-A small town is where everyone becomes a neighbor in cases of need.

-A small town is where businessmen struggle for survival against city stores and shopping centers.

-A small town is where those same

businessmen dig deep many times to help, with countless fun raising projects.

-A small town is where many teenagers say there's nothing to do and then are surprised to learn that their big city peers are saying the same thing.

-A small town, when all is said and done, is a nice place in which to live.

-A small town knows all the news before it is published. They just

read it to see if the Wairarapa News got it right.

OFFICE SUPPLIES

at the
RISING STAR
643-4141

Thursday, Sept. 22, 1983

PARAMOUNT THEATER 1983-1984 Season Abilene, Texas

Texas Opera Theater's
The Barber Of Seville
Saturday, October 8, 1983
NEW AMERICAN RAGTIME ENSEMBLE
Saturday, January 28, 1984
BLUES IN THE NIGHT
Starring Della Reese
Thursday, March 22, 1984

Call Linda George for Season or Individual Tickets. 643-2061 after weekdays or weekends.

Congressional Comment Social Security "Notch"

CHARLES W. STENHOLM
17TH DISTRICT
TEXAS

DISTRICT OFFICES:
P.O. Box 1237
STAMFORD, TEXAS 79553
(915) 773-3623

P.O. Box 1101
ABILENE, TEXAS 79604
(915) 673-7221

WASHINGTON OFFICE:
1232 LONGWORTH HOUSE OFFICE BUILDING
WASHINGTON, D.C. 20515
(202) 225-6605

A number of folks have contacted me with reference to a recent "Dear Abby" column in which a reader commented on the social security "notch". Unfortunately, some of the information contained in that particular column was incorrect and misleading, and I think it is necessary to discuss this issue in some detail. Let me begin by providing some background information.

The 1972 Social Security Amendments indexed social security benefits to the cost-of-living or, in other words, provided social security beneficiaries with a cost-of-living adjustment (COLA) every year. Every time retirees received a raise, the amounts in the benefit table also increased; these amounts would be used to compute benefits for new and future retirees. At the same time that the benefit tables were increasing, many workers in the labor force were receiving wage increases. The result was that new retirees were compensated twice for increases in the cost-of-living during their working careers (through higher benefit tables, and higher wages upon which their benefits would be based). If this system had been left in place, many people would have received retirement benefits higher than their salaries had been while they were working.

In 1977, two years before I came to Congress, the Congress established a new benefit computation formula which affects all those born after 1916. The new formula went into effect in 1977 and lowered overall benefit levels by about 5 to 7 percent. Everyone who turns 62 after 1978 is going to get lower benefits than they would have received under the previous formula. Contrary to current rumor, however, there will not be a \$100 difference in benefits between those born in 1916 and 1917 except in a limited number of cases at the maximum benefit levels.

The term "notch" refers generally to the difference between the age-65 benefits for those who turned 62 before 1979 and those who turned 62 during and after 1978. This difference is caused by the reduction in overall benefit levels brought about by the 1977 amendments. In order to ease the transition into the new benefit computation, the Congress made provision for a five-year phase-in of this new formula.

Thus, people who turned 62

in the period 1979-1983 came under the transition provision which allowed them to get the higher of two benefits: either a benefit using the old law benefit table (frozen at 1978 levels, and thus not increased for inflation) but using only earnings before age 62, or a benefit using the new formula and using all earnings both before and after age 62.

As a result of this provision, individuals born during the years 1917-1921 receive benefits which are somewhat greater than they would have been under the new formula. The "Dear Abby" column implied that the folks born during those five years would receive less in social security benefits, and everyone born before and after those years would not be affected; this is simply not true. The 1977 Social Security Amendments affected everyone born after 1916.

If this issue had not been addressed by the 1977 Congress, benefits to retirees would have far exceeded the ability of the social security trust funds to pay them. The alternatives were steeper tax increases or a bankrupt system. By the time Congress had corrected this problem, benefit levels had already climbed higher than any time in the history of the program; these are the high benefits enjoyed by many people born in or just before 1916. A line had to be drawn somewhere, and any delay would have made the problem worse. Already, it would cost \$9 billion in the first year, \$20 billion the second year, and more thereafter to go back to the old formula.

Earlier this year, the Congress made certain reforms of the Social Security Program and addressed the financial crisis facing the trust funds. The Congress determined that increased payroll taxes were necessary to meet the needs of today's social security recipients and the needs of future generations. Given the fact that the use of the old benefit computation formula would be prohibitively expensive, it is highly unlikely that the Congress will make any further changes in this particular provision of the law. Our nation's elderly have worked hard to make this nation what it is today, and I do not believe that they want to leave a legacy of excessive taxation and debt to their grandchildren and great grandchildren; a return to the old benefit computation formula would do just that.

3 bedroom, 1 bath mobile home (12x65) on nice lot, total electric. \$8,500.

A large 2 bedroom, 1 bath home on two lots, 2 car carport and storage, several trees. \$28,500.

3 bedroom, 1 1/2 bath mobile home (14x80) with central Heat/Air, to be moved. \$11,500.

Beautiful 2 story brick home in Oakhollow, 4 bedroom, 3 baths, 2 half-baths, 3 car garage with automatic door opener, kitchen has center island, 2 cook tops, Jennaire grill, microwave, trash compactor and double ovens, breakfast room, formal dining and living rooms, gameroom and den, assumable loan. Call for appointment.

In Olden, 3 bedroom, 1 1/2 bath brick home on 1 acre, carport, central heat/air, fruit trees. \$57,500.

Prestigious 2 story rock home on one of Eastland's finest streets. This is an exceptional home with approx. 5,000 sq. ft. and has all the extras including CH-CA, built-ins, trash compactor, intercom system, stereo hookups in each room, 2 car garage with electric door opener, drapes, fenced yard, and more. Definitely a quality place. Call for appointment.

3 bedroom, 1 bath with ceiling fans, refrig. air, big oak trees and nice garden spot, plus a large workshop. \$28,000.

Attention young couples: Good starter home, beats paying rent. 2 bedroom, 1 bath with detached garage. \$18,000.

3 bedroom 1 1/2 bath frame home on large lot, living/dining room area with fireplace, large kitchen with separate utility, breezeway between garage, fruit trees. \$30,000.

3 bedroom, 1 1/2 bath brick home on large lot. Carpet, built-ins with central heat and air. \$41,500.

3 bedroom, 1 bath 2 story frame home, separate living and den, large master bedroom and kitchen. \$27,500.

PAT MAYNARD REAL ESTATE

629-8568 EASTLAND INT. 20 E. NORTH SIDE 442-1880 CISCO

Homes: Eastland, Ranger and Carbon

3 bedroom, 1 bath mobile home (12x65) on nice lot, total electric. \$8,500.

A large 2 bedroom, 1 bath home on two lots, 2 car carport and storage, several trees. \$28,500.

3 bedroom, 1 1/2 bath mobile home (14x80) with central Heat/Air, to be moved. \$11,500.

Beautiful 2 story brick home in Oakhollow, 4 bedroom, 3 baths, 2 half-baths, 3 car garage with automatic door opener, kitchen has center island, 2 cook tops, Jennaire grill, microwave, trash compactor and double ovens, breakfast room, formal dining and living rooms, gameroom and den, assumable loan. Call for appointment.

In Olden, 3 bedroom, 1 1/2 bath brick home on 1 acre, carport, central heat/air, fruit trees. \$57,500.

Prestigious 2 story rock home on one of Eastland's finest streets. This is an exceptional home with approx. 5,000 sq. ft. and has all the extras including CH-CA, built-ins, trash compactor, intercom system, stereo hookups in each room, 2 car garage with electric door opener, drapes, fenced yard, and more. Definitely a quality place. Call for appointment.

3 bedroom, 1 bath with ceiling fans, refrig. air, big oak trees and nice garden spot, plus a large workshop. \$28,000.

Attention young couples: Good starter home, beats paying rent. 2 bedroom, 1 bath with detached garage. \$18,000.

3 bedroom 1 1/2 bath frame home on large lot, living/dining room area with fireplace, large kitchen with separate utility, breezeway between garage, fruit trees. \$30,000.

3 bedroom, 1 1/2 bath brick home on large lot. Carpet, built-ins with central heat and air. \$41,500.

3 bedroom, 1 bath 2 story frame home, separate living and den, large master bedroom and kitchen. \$27,500.

A 3 bedroom 1 1/2 bath brick home in the desirable Crestwood addition, large living area with fireplace, beautiful lot. \$77,000.

In Ranger, a beautiful stucco 3 bedroom, 1 bath home, detached garage, storage buildings. \$39,000.

In Gorman, 2 bedroom, 1-bath frame home on 2 1/2 lots with separate garage and storage. \$30,000.

Reasonably priced lots in nice area: \$4500 to 5500. New homes in the exclusive Oakhollow addition. Call for appointment.

A 2 bedroom, 1 bath home, formal dining area, CH-CA, carpeted, nice modern cabinets with dishwasher. \$35,000.

Only 9 months old, this 3 bedroom, 1 bath brick home in exclusive area. Custom made drapes, fireplace, and other extras. \$65,000.

Small Acreage With Homes

Outside Cisco, approx. 15-18 acres with very nice 3 bedroom, bath and a half double wide mobile home. Large carport. Big frontdeck. 1/4 minerals. One water well and two tanks. Owner financing available at 10 percent.

2 1/2 acres on Staff road near Lake Leon with water well and tool house. Nice place for home. \$6,900.

In Carbon, 3 bedroom, 1 1/2 bath, rock home on 4 acres, shop barn, fruit trees. \$31,500.

In Carbon, 9.3 acres with 3 bedroom, 1 1/2 bath mobile home (12x65) located on Hwy. 6, 52 pecan trees, wells, beautiful place. \$35,000. (Will consider small down, remainder over 10 years at 10 percent interest)

5.3 acres near Lake Leon with a 2 bedroom mobile home (14x70). Carpeted, central heat/air, house type windows, special siding, storage building and city water. \$35,000.

16 acres near Eastland, with I-20 frontage. \$4,000 per acre. In 4 acre tracts \$4,500 per acre.

Located near Union Center: 2 bedroom 1 bath home on approx. 38 acres. This house is a dream place in the country. \$70,000.

A 3 bedroom, 2 1/2 bath, 2 story, approx. 3,000 sq. ft. brick home only 3 years old situated on 10 acres close to Eastland. Unique petrified wood fireplace. \$105,000.

10 acres northwest of Cisco with city water and mobile home hook-up. Assumable loan. \$12,000.

131 acres southwest of Cisco with 2 bedroom, 1 1/2 bath frame home, cultivation and timber, 4 water wells, barns. Some minerals. Owner financing available. \$160,000.

40 acres off 2526 out of Carbon, nearly all in love grass, some minerals. \$900 per acre.

A hunter's dream, the 150 acres south of Carbon. 60 acres of cultivation, good fences and hunters shack. \$600 per acre. Owner will finance.

40 acres located south of Cisco on 183, native pasture with scattered pecan trees, one well and tank, fenced (3) sides. \$42,000.

Near Eastland and Lake Leon, 49.6 wooded acres with six tanks and spring, on FM 2214, good place to hunt and fish, assumable loan. \$60,000.

Near Lake Leon, a 20 acre tract of land. Some cultivation and good hunting area. \$30,000.

320 acres located between Carbon and Gorman. Some cultivation but mostly wooded. Good fences and hunting, some minerals included: \$500 per acre. Owner financed at 9 percent.

5 acres near Eastland. I-20 frontage. \$5,000 per acre. Terms can be arranged.

640 acres approx. 17 miles northwest of Breckenridge with 2 bedroom, 1 bath frame house, 175 acres cultivation with remainder in pasture. 45 percent minerals with leasing rights. \$583 per acre.

160 acres off of Hwy. 183 eight miles south of Cisco, 100 acres cultivation, remainder trees. \$600 per acre.

80 acres west of Eastland with 2 bedroom, 1 bath frame home, good grass, beautiful oak trees. 2 wells and tanks, good hunting place. \$70,000.

4 bedroom frame home on corner lot and a half. Plus shop and half bath. \$33,700.

3 bedroom, brick home with CH-CA, new carpet, fenced yard, fruit trees and garage. Assumable loans.

Nice 3 bedroom 1 1/2 bath brick home in good neighborhood. Has CH/CA, built-ins, fireplace, fenced yard, double garage and other extras.

A large 2 bedroom, 1 bath home with formal dining and breakfast area. Vinyl siding, garage, storage building, on 2 1/2 lots with large oak trees.

Large 3 bedroom, 2 bath frame home with fireplace. Metal workshop and other buildings on several lots. Great potential. \$37,500.

2 or 3 bedroom, carpeted home with central heat and air. Surrounded by beautiful oak trees. Paved street. Also has large shop and garage.

Nice 2 bedroom, 1 bath frame home. New carpet, large rooms. Nice trees and shrubbery. Owner financing available \$22,500.

A 4 bedroom, 1 1/2 bath 2 story stone home on 2 big lots; privacy fence around swimming pool. Also has small efficiency rental unit. Reduced to \$29,500.

Large 2 story with 5 bedrooms, 2 baths, den, separate dining and breakfast rooms, located on 2 big corner lots. Also has a nice roomy apartment attached. Beautiful landscaped yard with lots of trees.

A new 4 bedroom, 2 bath home on .46 acre lot, CH-CA, large carport and storage room, with fireplace and storm windows.

A 3 bedroom, 1 bath home with a small apartment, storage building, situated on 2 lots. This nice home had been reduced to \$26,500.

3 lots with approx. 20 pecan trees. Fenced with water well. \$10,000.

Commercial
Located near downtown: an older, building that would make a good location for a business. \$35,000.

In Eastland, a new metal building, 2400 sq. ft. with dock area. \$28,000.

PAT MAYNARD Broker 629-8063
CINDY FOSTER Associate 629-8195
ANN WILLIAMS Associate 442-1880
WAYNE CHANDLER Associate 734-2782
KAY BAILEY Associate 629-2365
NOLAN BUTLER Associate 629-8106

Obituaries

SECTION 24: INCORPORATION OF THIS ORDINANCE INTO CONSUMER CONTRACT. All of the provisions of this Ordinance shall be deemed to be incorporated into every contract between the City Utilities Department and its consumers, and each consumer shall be charged with the responsibility for knowledge accepting water or gas from the City Utilities Department, to have assented to the provisions hereof.

SECTION 25: DRILLING OF WATER WELLS.

- a. **Permit, Fee, Regulations.** Any person desiring to drill a water well within the limits of the City shall be governed by the following rules, regulations, and procedures:
 - 1) A permit shall be obtained from the City Secretary, who shall issue the same upon a form prepared for that purpose, before any drilling operations of any kind whatsoever are conducted or commenced.
 - 2) A fee shall be paid to the City in the sum of twenty-five dollars (\$25.00) for such permit.
 - 3) All work of casing such well, determining the size and weight of pipe to be used, the procedure of setting the pipe to the proper depth and landing to insure the sealing off of all seepage and surface waters which may contaminate the City water supply shall be under the supervision, direction, and control of the City Water Superintendent, including the installation of proper concrete block around the casing and the surface in such manner as to insure the complete sealing off of the well so that no vermin or rodent may gain entrance thereto. Such concrete blocks shall not be less than twelve inches (12") high nor less than twenty-four inches (24") square.
 - 4) A driller of a water well within the city limits shall require a City Permit on the premises before drilling a water well.
- b. Proper well seals to fit pipe.
- c. **Installation of Electric Drilling Pump.** If an electric drilling pump is installed over a well within the corporate limits of the City, all electric wiring shall be placed in rigid conduit with proper radio interference control, if such be needed, and the erection of the same shall be under the supervision and control of the Water Superintendent.

SECTION 26: LIABILITY OF CITY FOR DAMAGE. The City shall not be liable for any damage to property of any consumer of any utility service furnished by the City except when such damage is due to the negligence of the City.

SECTION 27: PENALTY. Any person violating any of the provisions of this Ordinance shall be deemed guilty of a misdemeanor, and, upon conviction, shall be subject to a fine of not more than two hundred dollars (\$200). Each transaction in violation of any of the provisions hereof shall be deemed a separate offense.

SECTION 28: SEVERABILITY. It is hereby declared to be the intention of the City Council that the sections, paragraphs, sentences, clauses, and phrases are separable, and, if any phrase, clause, sentence, paragraph, or section of this Ordinance shall be declared unconstitutional or invalid by the valid judgment or decree of any court of competent jurisdiction, such unconstitutionality or invalidity shall not affect any of the remaining phrases, clauses, sentences, paragraphs, or sections of this Ordinance, since the same would have been enacted by the City Council without the incorporation in this Ordinance of unconstitutional or invalid phrases, clauses, sentences, paragraphs, or sections.

REPEAL OF PREVIOUS ORDINANCES

This Ordinance shall be held and construed to be cumulative to all other Ordinances affecting the Utilities and all Ordinances, or parts of Ordinances, in conflict with the provisions of this Ordinance are expressly repealed.

PASSED AND APPROVED THIS 22nd Day of May, 1978.

Lavonne White
City Sec

APPROVED:

Mayor

Student Loan Defaulters Revealed In Texas

Unlike many stories in the past, student loan defaulters in Texas do not get away without paying. The Texas Guaranteed Student Loan Corporation has experienced only 900 defaults among the over 100,000 students who have received loans in Texas under this program. The majority of these 900 defaulters have been convinced to begin repaying their loans again. Legal action is taken against those who do not make adequate payment arrangements and judgments have been granted against the 51 students listed below.

The Texas Guaranteed Student Loan Corporation uses various other means to collect all defaulted loans. Students are pursued through credit reporting agencies, state records such as Department of Public Safety and Texas Employment Commission, the withholding of State employee paychecks, and through the use of private collection agencies.

The Texas Guaranteed Student Loan Corporation has been extremely successful in keeping the student loan default rate low in the State of Texas. Though some students defaulted early in the program because

they had heard that students generally do not pay back their student loans, the majority have since learned a very valuable lesson: Pay your Texas Guaranteed Loan.

So that students may be better informed, the following is a list of the only three ways to get out of a student loan obligation: 1. Die, 2. Become totally and permanently disabled, 3. Pay the debt in full.

Judgments obtained as of July 28, 1983, were against Noberto Alvear Jr. of Kenedy, TX; Sylvia Arvizu of APO New York; Clayburn H. Beasley of San Antonio; Dorothy J. Bishop of Jerseyville, IL; Thomas J. Brodt of DeKalb, IL; Coerena G. Brown of Sweetwater; Craig A. Brown of Amarillo; George R. Burkes Jr. of Cedar Creek, TX; Cynthia D. Butler of Houston; Edelmira Camacho of San Diego, TX; Luis F. Davila of Alice, TX; Michael Durden of Houston; Ricky L. Durham of Houston; Gilbert Garza Jr. of Houston.

Also against Juan G. Garza of Runge, TX; Mauro Garza of San Diego, TX; Kathy J. Gilmore of Euless, TX; Carmen S. Gonzalez of El

Paso; Juan Gonzalez of El Paso; Paul C. Goodie of Houston; Regina Harper of Houston; Lucille Helmkamp of Denver, CO; Thomas D. Holbert of Fort Benning, GA; Donna R. Horton of Toledo, OH; Henry Ivey of Pearland, TX; Archie D. Jones of Canton, MS; Louise L. Gilgore of Llano, TX; Joan Lawson of Houston; Johnny R. Limbrick of Jasper, TX; John P. Lyda of San Antonio; Alberta Manual of Houston; and Gloria Martinez of Houston.

Also Oscar Marmolejo Jr. of Canutillo, TX; Patricia Marshall of Cleburne, TX; Sandra McIntyre of Vandenburg, CA; Deborah K. Morrison, Pawnee, OK; Harvey E. Murphy of Bellaire, TX; Mattie H. Nelson of Houston; Reynaldo R. Ramirez of San Diego, TX; Maria D. Rosas of San Diego, TX; Cynthia K. Smith of Belleville, IL; Regina Stringer of Universal City, TX; Sheryl Tanner of Houston; Nanette Tillerson of Detroit, MI; Arthur L. Truscott of Houston; Fernando Vasquez of Fabens, TX; Willie E. Walker of Seguin, TX; Danny Weatherford of Canyon, TX; Sharon L. Weatherford of Canyon; Larry D. White of Houston; and Kenneth R. Williams of Houston.

Ruth McAlister
Ruth E. McAlister, 62, of Oklahoma City, Okla., died September 13 at her home after a lengthy illness. Services were at 2 p.m. Thursday at Higginbotham Funeral Home in Rising Star.

The Rev. Armo Bentley, pastor of the First Baptist Church, officiated. Burial was at Long Branch Cemetery.

Born October 21, 1920, in Philadelphia, Pa., she married Ben McAlister July 22, 1944, in Philadelphia. She was a homemaker and a Methodist.

Survivors include her husband and a daughter, Dona Ruth Wilcox of Irving.

'Rose' Roach
Rosalie "Rose" Nunnally Roach, 93, of Rising Star, died at 1:15 a.m. Saturday at Rising Star Nursing Center. Services were at 3 p.m. Monday, September 19, at Higginbotham Funeral Home.

The Rev. R.D. Williams, chaplain for Girling Health Care in Brownwood, officiated, assisted by the Rev. Armo Bentley of First Baptist Church. Burial was at Rising Star Cemetery.

Born January 12, 1890, in Paris, she married Joh M. Roach in July, 1910, in Rising Star. He preceded her in death. She was a Baptist.

Survivors include four sons, Lawrence of Breckenridge, Jack of Fort Worth, Eldon of Brady and Merle of Midland; two daughters, Fredra Montgomery of Ponca City, Okla., and Edra Butler of Rising Star; and numerous grandchildren and great-grandchildren.

Pallbearers were Butch Butler, Kenny Battes, Jody Butler,

Bernie Roach, Mike Montgomery, Phillip Wacaster, Johnny McGuire and Bruce Course.

Honorary Pallbearers were C.A. Claborn, J.C. Claborn, Raleigh Darnell, Clifford Watkins, Lafayette Parker, George Steel, Matt Canoll, Curt Smith and Bobby Bushee.

Luther Forbes
Luther Berton Forbes, 86, a retired grocer from Rising Star, died at 6 p.m. September 20 at the Rising Star Nursing Center. Services will be at 10:30 a.m. Thursday at the Higginbotham Funeral Home.

Ed Jackson of Hardin-Simmons University will officiate. Burial will be at Cross Plains Cemetery.

Born June 30, 1897, in the Hill Country, he married Vera Forbes August 24, 1919, in Pioneer. He was a member of Pioneer Baptist Church.

Survivors include his wife of Rising Star; two daughters, Murlene Somerford of

Rising Star and Maurie Woods of Brownwood; three sons, Murel of Mineral Wells, Phill of Andrews and Elva Thompson of Monahans; 15 grandchildren; 24 great grandchildren; and three great great grandchildren.

Zelma Morgan
Zelma Runkles Morgan, 106, of Sipe Springs died at 3 p.m. September 20 at the Rising Star Nursing Center. Services will be at 2:30 p.m. Thursday at Higginbotham Funeral Home.

The Rev. R.D. Williams, chaplain of Girling Health Care of Brownwood, will officiate. Burial will be at Sipe Springs Cemetery.

Born January 6, 1878, in Burleson County, she married Jeff Morgan September 5, 1898 in Eastland. He died in 1936. A homemaker and a Baptist, she was a member of Eastern Star Chapter No. 416.

Survivors include a daughter, Mrs. H.A. Anderson of Sipe Springs; seven grandchildren, including Harry Anderson of Rising Star; 13 great grandchildren and several great great grandchildren.

Homecoming

RISING STAR
Bruce Stovall of Cisco, 1953 RSHS graduate, will be the speaker for the Ex-student Association meeting during Homecoming activities Oct. 1. Stovall, a businessman and church leader, presently serves as Coordinator of the Baptist Mexican Missions. After RSHS he graduated from Cisco Junior College, Howard Payne University (B.A. Degree) Southwestern Seminary (Masters of Education Degree) and the Mexican Language Institute (Masters Degree in Language).

WILDLIFE AND NATURE

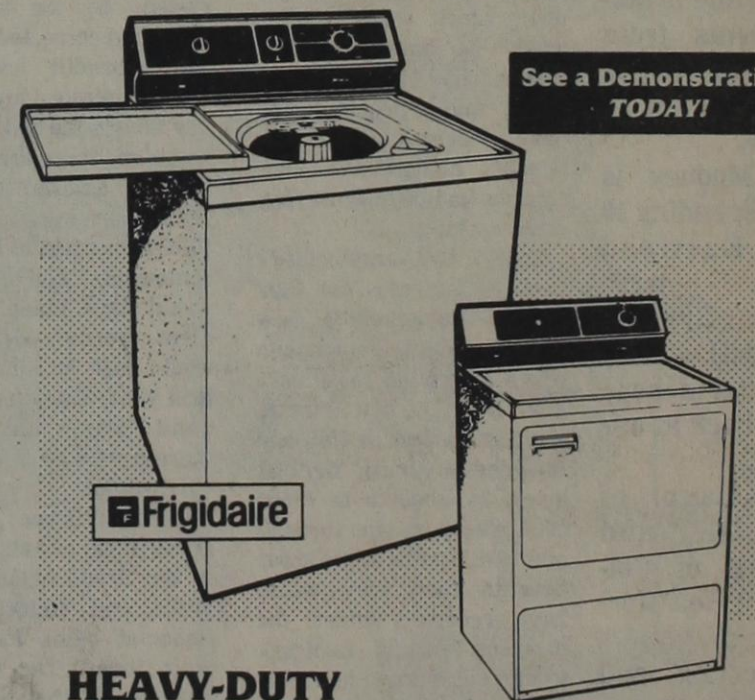
Despite fears that bats are rabid, only 10 people in the United States and Canada have died of disease from bats in more than 30 years, says International Wildlife magazine. In contrast, more people are killed annually in the U.S. by dog attacks, bee stings or lightning.

REPORT OIL FIELD THEVES
1-800-OIL-COPS
TOLL FREE • REWARD

STAR ★ PLAZA
RESTAURANT
 Highway 36 West
Chicken Fried \$2.49
Steak with Choice of 14 Salads,
Baked Potatoe or Fries Eff. Sept. 22-28
All Orders Can Be Prepared To Go

Don & Jean Farrow 643-6960

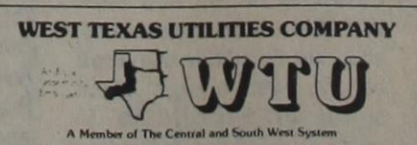
ALL NEW IMPROVED FRIGIDAIRE TOTAL PERFORMANCE WASHER AND DRYER



See a Demonstration TODAY!

HEAVY-DUTY FRIGIDAIRE LAUNDRY PAIR

- 18-lb. Capacity • 2-Speed Washer
- Regular and Permanent Press Care
- Improved Heavy Duty Washer Transmission
- Exclusive Halo-Spray Fill • Powersurge Agitator and Tri-Action Wash System • Variable Water Miser Control • Automatic or Timed Drying with 4 Dryer Temperature Selections



FRIGIDAIRE. HERE TODAY, HERE TOMORROW.
 WITH QUALITY, DEPENDABILITY AND THE BEST IN FACTORY TRAINED APPLIANCE SERVICE.

ONDULINE GOES UP AT CHURCHILL DOWNS.

Onduline's the right roofing for your stable for the same reasons it's used at the world's most famous race track. It's attractive, easy to install, and virtually maintenance-free. And unlike metal, Onduline won't rust or corrode. It's quieter, too. That's because its asphalt impregnated construction deadens the sound of rain and buffeting wind. With its Lifetime Warranty,* quick installation, and eye-appealing colors, Onduline is the thoroughbred roofing your horses deserve. **\$44.95 Sq.**

*See your Onduline dealer for full details on warranty.

Onduline
 The Lifetime Roofing

Cisco Lumber & Supply Co.
 110 Sandler Square Cisco, Texas

The Oil Belt News

Thursday, Sept. 22, 1983

Drilling Bits

Adobe Oil & Gas Corp. of Midland has filed for permit to drill two developmental wells in Eastland County.

The No. 1 R. & R. has proposed total depth of 4,100 feet. It is located in the Cisco Conglomerate Field two miles east of Cisco. Drillsite is in a 40-acre lease in the H&TCRR Co. Survey A-765.

An Albany-based operator has filed for permit to drill three 2,000-ft. developmental wells in the Adobe Crosscut Field, Eastland County. The No. 3 Olson "A", No. 3 Olson "B", and the No. 4 Olson "B" are located in a 40-acre lease in the H&TCRR Co. Survey, Sec. 98, Blk. 3. Drillsite is 11 miles south of Cisco. Cauble Drilling Co. is the operator.

Another 2,000-ft. developmental well is planned by Snow Oil Co. of Ft. Worth in the Eastland Regular Field. The No. 3 Van-Zandt-East is located five miles southeast of Eastland. Drillsite is in a 182-acre lease in the Eastland County's Charles Messer Survey A-372.

Irea Oil Inc. of Cisco has revealed plans to drill a 1,900-ft. wildcat for oil 12 miles southwest of Cisco. The operator has 92 acres leased, with drillsite in Eastland County's H&TCRR Co. Survey, Sec. 113 Blk. 3. The venture has been designated as the No. 2 Robert Earl Hamilton.

A San Angelo operator has staked location for the No. 2 De De, a developmental well to be located five miles northeast of Romney. With projected total depth of 1,700 feet, the well is in a 70-acre lease in Eastland County's Nimrod Cross Cut Field, H&TCRR Co. Survey A-171. The operator is Jack Warren Co.

Another 1,700-ft. developmental well is planned by Glen's Backhoe Service, Inc. of Breckenridge, Eastland County. The location is three miles northwest of Nimrod. Drillsite is in an 88-acre lease in the J.J. Butts Subd. of the A.T. Burnley Survey A-11. Well's designation is the No. 2 McGough. It is in the Eastland Regular Field.

At a location six miles south of Eastland, D.A.B. Oil Service Inc. of Abilene has staked location for a 1,400-ft. developmental well in the Eastland Regular Field. The No. 2 Hodge is located in a 140-acre lease in Eastland County's H&TCRR Co. Survey, Sec. 15, Blk. 2.

Bob J. Williams of Graham has filed first production figures on a new gas well in the Neely Bend Conglomerate Field. The No. 8 Copland Ranch showed potential to flow 1,253,000 CF gas per day on a three-quarter-inch choke. It was rated at 6,675,000 CFD on absolute open flow.

The No. 1 Templeton has been filed by McClymond Brothers Inc. of Breckenridge. It is a developmental oil well in the Stephens Regular Field, two miles west of Necessity. Drillsite is in an 89-acre lease in Stephens County's TE&L Co. Survey.

The well showed a potential to pump four barrels of oil and 200,000 CF casinghead gas per day on open choke. Tubing pressure was 100 PSI. It bottomed at 2,779 feet, and will produce from perforations 2,700 to 2,706 feet into the hole.

Flowing 254 barrels of oil per day, along with 398,000 CF casinghead gas, the No. 2 Stroud Unit 2 was completed successfully in the Ivadell

Mississippi Field by Enserch Exploration Inc. of Bridgeport.

Drillsite is nine miles northwest of Breckenridge. It was drilled to 4,650 ft. total depth and will produce from an interval 4,400 to 4,415 feet into the wellbore. Production tests were run on a 14/64-in. choke, and tubing pressure registered 500 PSI.

The location is in a 40-acre lease in Stephens County's SPRR co. Survey.

At a location two miles south of Eliasville, American Petroleum Co. of Texas out of Wichita Falls has finalized a new oil producer in Stephens County's East Ryan Mississippi Field. The well is designated as the No. 7 J.R. Hill, flowing oil at the rate of 81 barrels per day on a 8/64 in. choke.

Location has been staked for a 4,200-ft. Palo Pinto County oil wildcat six miles southwest of Strawn. The explorer well is designated as the No. 18 Copeland Ranch. It is in a 4,731-acre lease assembly with drillsite in the AB&M Survey. Bob J. Williams of Graham is the operator.

Edwin S. Nichols Explorations LTD. has staked drillsite for a Palo Pinto County gas wildcat located 10 miles north of Gordon. The Meridan-based operator has 305 acres under lease, with drillsite in the T&PRR Survey. The explorer well is designated as the No. 232 H.W. Riebe. It carries permit for 1,100-ft. total depth.

Raw Energy Corp. of Weatherford has driven

stakes for 11 developmental wells in four different Palo Pinto County Fields.

The ventures include: *NORRIS (Gas) Field - No. 1 A. Ritchie "B", 5,000-ft. TD, 10 miles northwest of Graford.

*NORTH STRAWN (Gas) Field- No. 2 and 3 Ritchie, 4,900-ft. TD each, three miles south of Metcalf Gap.

*MES (Oil) Field - No. 1 and 2 Gray, 4,700-ft. TD each, one mile west of Brad; No. 1 Heath, 4,700-ft. TD, one mile west of Brad; No. 1 and 2 Hopkins, 4,700-ft. TD each, one mile west of Brad.

*BRA (Gas) Field - No. 1 and 2 Yearly, 2,700-ft. TD each, two miles north of Poolville; No. 3 McNally, 2,700-ft. TD; two miles north of Poolville.

Operating out of Fort Worth, Originala Petroleum Co. has filed for permits to drill a pair of 4,750-ft. developmental probes in Palo Pinto County's TJB (Gas) Field. The location is in a 960-acre lease in the T&PRR Survey, about two miles southeast of the Palo Pinto townsite.

The wells will be known as the No. 8 and No. 11 Padgett Ranch.

Flowing 119,000 CF gas per day on a half-inch choke, the No. 30 SET Ranch has been completed in the SET Ranch Field, Palo Pinto County. Dallas Production Inc. is the operator.

The well, located five miles northwest of Brad,

was given a 148,000-CFD rating on open flow.

It was drilled to total depth of 4,404 feet and will produce from a Conglomerate Structure, 4,245 to 4,263 feet into the wellbore. Location in all 11,625-acre lease in the T&PRR Survey.

Four Palo Pinto County

wildcats for oil of gas scheduled to be spudded three miles east of Pickwick by Arlington-based Steve Warren and Associates Inc.

The wells will be known as the Nos. 1-F, 4-E, 4-D, and 5-F L.L. Bridges. All carry permit for 1,900 feet of hole making. The operation will be in a 258-acre lease in the

John F. Smith survey.

Pumping 16 barrels of crude and 240,000 CF gas per day on open choke, the No. 1 W.M. Sanders "A" has been finalized in Palo Pinto Regular Field by Breckinridge-based W.G.

Arndt Jr.

The well is in a 160-acre unit in the T&PRR Survey. It was drilled to 1,210-ft. bottom and will produce from a perforated interval 1,170 to 1,210 feet into the hole.

Advertising Pays!

For Lease
170 acres Mineral rights located 7 Miles
SW Carbon. One Owner
Phone 817-629-1009
Box 225 Eastland, Tx. 76448

ACE WELL SERVICE INC.
—Dale Jones—
Completions - Swabbing
Workovers - Roustabout Crews
Rods & Tubing
Fully Insured For Customers Protection
Radio Equipped Call Day Or Night
TC 200 S. Newton 559-5439

fox OIL & GAS REPORTS
RAILROAD COMMISSION REPORTS
2012 W. COMMERCE (OLD HWY. 80)
ROUTE 1 - BOX 257B
EASTLAND, TEXAS 76448 • (817) 629-8537
Permits-Completions
Legal Typing
Land Title Search
Notary Public
Copies
ELAINE FOX
(817) 629-8236

VIC'S WELDING & MUFFLER SHOPPE
Monday - Saturday - 8 to 5
106 S. Virginia
Eastland
629-2874

William's Painting
OIL FIELD TANKS
Sand Blasting Spray Painting
Power Cleaning Water Tanks
817-442-4805 TC

GINGER ENDSLEY
Record Research
CISCO TC 442-4725

EASTLAND DRILLING INC.
817/629-8512
24 Hour Number
3 Rotary Rigs
Drilling depth from 1500' to 6000'
All Rigs Radio Equipped with 24 hr. answering service plus phone patch.
Gary Snapp, Vice President & Operations Mgr.
Res. Phone 817/647-3416
23 Yrs. Offfield Experience

Snow Oil Plaza
Pipe & Supply
Drilling Corp.
Well Service
TC
Off. (817) 629-8521
Linda Nelson
Res. (817) 629-8123

Want To Buy Production
Will Pay Cash for Shallow Production with Additional Development Potential. Must Have Clean and at Least 6 Months Production History. Please Reply to:
ARK RESOURCES, Inc.,
6410 Southwest Blvd., Ste. 101,
Fort Worth, Texas 76109
Phone 817-737-0891 T-82

Oil & Gas Leases Wanted
If You Own Unleased Minerals with Offset or Close-in Production, We Will Pay you Top Dollar for Your Lease. Terms Commensurate with Production Economics in the Immediate Area. Please Reply to:
ARK RESOURCES, INC.
6410 Southwest Blvd., Ste. 101
Fort Worth, Texas 76109
Phone 817-737-0891 T-82

One Thing After Another -
... can and may happen to land titles in the passing of moments. During the time it takes you to read this ad, something could happen to your title that would change your whole financial structure, or indeed it could alter your plans and aspirations for generations to come. The abstracter, in a sense, is your land title guardian, for he keeps the records day by day as you or others make them. Advise with him often about your title.
Eastland County Abstract Company
112 W. Commerce,
Eastland, Texas
R. Pat Miller
Annelle B. Miller
TC

S & S DRILLING CO.
OIL & GAS
Route 4
CISCO, TEXAS 76437
BILL GARY 442-3048
LEE STARR 442-3226

U-Save Pharmacy
Enjoy Our
Drive-In Window Service
Convenient Call Ahead
Good Parking
Call for Fast Prescription Service
Open 8-6 Weekdays
8-1 Saturday
201 S. Daugherty
629-1160

Kiva inn
MOTOR HOTEL
Year Round Inn-Door Summer Fun
2 Locations
Abilene & Wichita Falls
915-695-2150 817-788-6000
The Library Restaurant
BRUNCH 11 AM-2 PM SUNDAY
LUNCH 11:30 AM-2 PM WEEKDAYS
DINNER 6 PM-11PM WEEKDAYS & Saturday
Sidewalk Cafe
OPEN 6 AM-10 PM
WEEKDAYS and SUNDAY.
TILL 11 PM SATURDAY

SAT-Tracker
Satellite Antenna 100 Plus Channels
Sports Channels Sports Specials 24 Hour Movies
The World In A Dish
Eastland Electric Supply Co. Inc.
400 S. Seaman Eastland, 629-3315
Hours: 7:30 - 5 Mon. - Fri.
7:30 - 12:00 Sat.
TC

4-H News

The Rising Star 4-H Club met September 12 in the Ag room with 25 members attending. Six new members were enrolled.

After a short business meeting, new officers for 1983-84 were installed by adult leader Shelly Bailey. New officers are Jami Long as president, Tabitha Hutton as vice-president, Karmen Hall as secretary and treasurer, Stephanie Long as reporter, Parliamentarian Kelly Hill, Council delegate Jerry Long, Stacey Green as recreation chairman, and Howard Lawrence and Toby Long as refreshment chairmen.

Adult leaders Kathy Hall and Debbie Winfrey gave reports on plans for the Eastland County awards banquet to be hosted by the Rising Star 4-H Club on October 8.

Eighth Grade Officers Elected

The 33 students of the eighth grade class at Rising Star Junior High School recently held elections for 1983-84 officers.

Jackie Harris was elected president of the class; Chip Gray is vice-president; Cassi Gray is secretary; and Jennifer Linney is treasurer.

Jake Floyd had been

The club voted to sponsor the Cystic Fibrosis fund drive. Chairman of the CF drive is Sandi Wright.

New members enrolled were Barbara Majors, Donna Majors, Sherry Shaw, Catina Duke, Ronnie Wilson and Cody Wilson.

Other leaders present were Sandi Wright, Sandi Hutton, Jacki LeBleau, Waneta Parson and Barbara Long.

Senior 4-H'ers (age 14 to 19) met later that evening. Jerry Long, Kelly Hill, and Rebecca Owens enrolled at that time.

New members may enroll through September. There are no dues, but enrollment cards must be completed and filed with the Extension office in Eastland. For information contact Barbara Long at 643-6103 or Kathy Hall at 643-2321.

Jackie Harris was elected reporter, but when he moved out of town, the class elected Sammie Holland as the new reporter.

The eighth grade class, under the direction of Mrs. Azalee Womack, is looking forward to a good 1983-84 school year in sports and other school activities.

Class Reunions

Class of '68

The class of '68 is having their 15th reunion at the Home Ec. Cottage immediately following the pep rally.

Thursday, Sept. 22, 1983

Class Of '57

The class of 1957 will hold a reunion Friday and Saturday, September 30 and October 1, in the Senior Citizens building.

PTO Luncheon Is A Part Of Homecoming Activities

PTO President Gail Rutledge has announced that the Homecoming luncheon will be served on Saturday, October 1, from 11:30 a.m. to 1 p.m. in the school cafeteria.

Arla Hill and Sandi Wright are co-chairmen.

The menu will be fried chicken, creamed potatoes, cheese and broccoli casserole, green beans, salad bar, homemade rolls, cake, tea or coffee.

Tickets are \$4 for adults and \$2.50 for children under 12.

Take-out orders may be placed in advance or on Saturday morning by calling 643-2431. Orders may be picked up at the back door of the cafeteria.

THANKS FROM PTO

The PTO concession stand is doing well this season thanks to the willing help volunteered by parents and teachers alike.

This past week the stand was staffed by second- and third-grade parents and grandparents.

Representing the second grade were Gail Rutledge; Kathleen Hardesty; Earl, Stacey and Sandi Wright; Lori Justice and Lee Wilson.

Third-grade participants were Cynthia, Kim and Lynn Clark; Stella Ware and Carol Goode.

Those donating hamburger meat for the second grade included Gail Rutledge, Edith Bibb, Wanda Williams and Josie Hughes.

For the third grade, Cynthia Clark, Connie Hooten, JoAnne Lin-

ney, Stella Ware, Ann Sessums and Brenda Ezzell donated meat. Cynthia Thornhill and Carol Goode donated rice krispy squares.

The PTO also thanks those who support this effort from behind the scenes. Our chairman for ordering supplies is Debra Cooksey - we couldn't make it without her help. Big

thanks also to Kathy Hall for placing these orders through the Quik Stop, and to Kenneth Bibb for the abundant supply of ice.

Grilled hamburgers will again be served at the Homecoming night game. Enjoy the Homecoming festivities while supporting the local PTO and the Fighting Wildcats.

Help Your Heart



Lower Your Food Bills

Because of today's high food costs, you want to get the most nutrition possible for your money. There are ways to ease the strain on your pocketbook and at the same time help the hearts of every member of your family.

Foods that probably claim the biggest chunk of your grocery dollar are those highest in cholesterol and saturated fat: fatty meats, whole milk, cheese, butter and eggs. Scientific research indicates that a diet high in saturated fat and/or cholesterol increases your risk of developing heart and blood vessel diseases, because it tends to raise the level of cholesterol in your blood.

Buy "good" or "standard" grades of beef. In addition to being less expensive, they contain more protein and less fat than "prime" or "choice" grades. For good nutrition, the American Heart Association recommends you eat no more than six ounces of lean meat, fish or poultry each day.

Skim Milk Costs Less

Buy low-fat or non-fat dairy products. Fortified skim or low-fat milk costs less than whole milk or cream, and is better for your heart. Instead of butter, use margarine

that lists liquid vegetable oil as the first ingredient on the label. You can eat as many egg whites as you desire, but the AHA recommends you limit your intake of egg yolks to three per week, since they are high in cholesterol.

Whole grains, legumes, fruit and nuts are nutritious foods that are often reasonably priced. The AHA suggests you eat four servings or more per day of bread and cereals (whole grain, enriched or restored).

Avoid Bad Buys

Buy fruit juices instead of fruit drinks, which may be mainly water, sugar and flavorings with vitamins added. Choose juices high in vitamin C such as orange, grapefruit and tomato. Fruit juice and tomato juice also are better buys than soft drinks or alcoholic beverages.

"Organic foods" may not, in fact, be organically grown since there are no standards to regulate their sale. They may be more expensive but no more nutritious than foods grown in conventional ways.

Many convenience and snack foods contain large amounts of saturated fat, sugar and salt, and their cost is far too high for the vitamins and minerals they provide.



Saturday Club Makes Improvements on Library

The Rising Star Library has had some improvements made recently. The porch, newly enclosed, and the steps have been carpeted and a coat rack has been added. The book drop, formerly a small structure at

the front of the building, is now incorporated in the wall to the east of the door.

The library is sponsored by the Saturday Club, which had the building constructed in 1921 and has operated the library since that

time. The club's library and building committee planned the recent improvements to the library.

The building committee is chaired by Helen Donham; other members are Blanche Cawley, Ruby Murdoch, Dorris Harrell and Rosa Van Cox. Bertha Mae White, Hazel Marsh, Elizabeth Robertson and Cliffogene Witt are on the library committee; Dorothy Shook is chairman.

The library is open Thursday mornings from 10 until noon.

HOUSE OVERFLOWING? CLEAN UP WITH CLASSIFIED ADS

Get Your HUNTING & FISHING LICENSE at Stewart's Tire Store 2.1 mi. E. of Traffic Light, Hwy. 36, Rising Star

Thursday, Sept. 22, 1983

TEXAS PRIDE IN TEXAS SCHOOLS

TSTA Tips For Parents

What is your goal in your child's education? Is there a better way to achieve it? The Texas State Teachers Association is your partner in helping your child to learn. The following is the third in an eight part series. It focuses on "mathematics."

Math Made Easy

Give your child practical experience using mathematics at home. Mention the size of containers, such as pints of cream and half gallons of milk. Encourage help when you bake, lay carpet or tile, or seed or fertilize the lawn, and allow your child to actually measure ingredients, or areas of quantities of materials.

Use the metric system of measurement to increase the child's knowledge of and proficiency in the use of the metric system.

Before a shopping trip, have your child read newspaper ads and price the cost of items to be purchased. Encourage comparison of prices and quantities

marked on containers to determine the best buys.

Allow your child to purchase an item and figure out the change to be received. Other ways to help children apply their growing knowledge of mathematics to practical situations are: (1) letting them double check the addition on grocery tapes; (2) manage allowance; and (3) read thermometers, barometers or even stop watches.

Let them calculate age, weight, height and dimensions, or figure gas purchases and mileage, tolls and other trip expenses. If your child is having difficulty with multiplication tables, buy or make flash cards and use them on a regular basis. Children will enjoy giving answers they know and will learn more complex problems through drill. Let your child explain the math papers brought home from school and take time to help with correction and understanding of mistakes.

Next: Creative Arts

school lunch menu

LUNCH	
Monday	
Fish	
Macaroni, cheese	
Green beans	
Slaw	
Cornbread	
Jello	
Tuesday	
Shepherd's pie	
Corn, salad	
Rolls, Cake	
Wednesday	
Pinto beans	
Cabbage, Salad	
Cornbread	
cobbler	
Thursday	
Turkey, dressing	
Sweet potatoes	
English peas	
Salad, rolls	
Fruit salad	
Friday	
Hot dogs w/meat	
Cheese, relish	
Onion, pickles	
Cookies	
BREAKFAST	
Monday	
Eggs and toast	
Sausage	
Juice, milk	
Tuesday	
Coffee cake	
Juice, milk	
Wednesday	
Biscuits, gravy	
Jelly, juice, milk	
Thursday	
Cereal	
Juice, milk	
Friday	
Pancakes, syrup	
Juice, milk	

24 HR. SERVICE - SENIOR CITIZEN DISCOUNT

Sepco ENTERPRISES

BROWNWOOD, TEXAS
SEPTIC TANKS, SAND TRAPS, GREASE TRAPS
COMMERCIAL/INDUSTRIAL/RESIDENTIAL

BOBBY DEAN THORNHILL OWNER DAYTIME 915-646-9713 NIGHTS 817-259-2621

Family Food Store

Is Open Monday-Saturday 7:30-6:30 p.m. Sunday 8:00-6:00 p.m. Sale Days - Wed. thru Sat.

SUPER HARVEST SPECIALS

September closeout specials on John Deere 40 Series tractors: finance charge waiver to March 1, '84, or up to \$1,850 in lieu of waiver

The supply of new John Deere 40 Series tractors is going fast and will shortly be gone. So to get the new tractor power \$26 you want at Super-Save savings, act now!

Slicker prices on 40 Series tractors date from '83 - meaning 20% off the '83 list price for you on a tractor! September 30 - get your good deal to boot!

Here's more! During September finance your new tractor with John Deere and save \$1,000 or even \$1,500! Because purchases made by September 30 are eligible for finance charge waiver to March 1, 1984. Or you can get a cash rebate in lieu of waiver for the amount shown here.

More yet! If you anticipate 1983 taxable income, buy your new 40 Series tractor now. So you take advantage of 83 Investment Tax Credit plus full-year depreciation to reduce your taxes. You'll shield income and be saving the actual cost of your new 40 Series.

Another option: Lease a new 40 Series tractor and lease payments will be discounted by an amount comparable to the finance charge waiver. Use leasing to get modern power plus tax advantages even if your 83 taxable income is low.

Model	September '83 Cash Rebate In Lieu of Waiver	Model	September '83 Cash Rebate In Lieu of Waiver
228-hp 8840	\$1,850	90-hp 4040	\$ 750
179-hp 8440	1,500	80-hp 2940	500
180-hp 4840	1,275	70-hp 2640	450
155-hp 4640	1,150	60-hp 2440	400
130-hp 4440	900	50-hp 2240	325
110-hp 4240	825	40-hp 2040	275

(Offer subject to tractor availability)

Any ability of John Deere financing and leasing subject to approval of credit. *A dealer may be required to file an application with you.

Bramlett Implement Inc. Of Rising Star
Ph: 643-4311 Mark Cooksey, Manager

Call in Orders 643-3102 **SNACK SHAK**

Chicken Basket \$2.79

Open After All Home Football Games

Drop in and Register for FREE Meal

HOME TOWN

COW POKES By Ace Reid

"Now, this is the kind of air I like—never did like to breathe stuff I couldn't see!"

When A 'Blue Norther' Blows In And You Can't Get Out To The Bank, Don't 'Choke Up!' JUST USE OUR EASY, SAFE, CONVENIENT BANK-BY-MAIL SERVICE!

STATE ST BANK
YOUR CONVENIENCE IS FIRST WITH US!
Member F.D.I.C.
RISING STAR, TEXAS 76471

DRIVE-IN BANKING EQUAL HOUSING LENDER