

# Report shows economy boost in Sept.

WASHINGTON (AP) — The U.S. economy, bolstered by a surge in car sales, expanded at an annual rate of 2.8 percent from July through September, the government reported today.

The Commerce Department said the revived performance of the gross national product, the broadest measure of economic health, was accompanied by a substantial pick-up in inflation as well.

An inflation index tied to the GNP was rising at an annual rate of 3.6 percent in the third quarter, double the pace from April through June.

The GNP implicit price deflator, which measures price changes and

changes in purchasing patterns, had risen just 1.8 percent in the second quarter, the lowest inflation rate since the spring of 1967.

Analysts blamed a rise in food prices for much of the upward spurt in prices.

The 2.8 percent rise in the GNP represented a revision from a slightly higher government estimate last month that put third quarter growth at 2.9 percent.

Analysts believe the 2.8 percent third quarter growth will be repeated in the October-December quarter, but they have expressed fears that growth could weaken substantially in the early part of 1987 because of the

adverse impact of major changes in the tax law.

For the first nine months of 1986, the economy expanded at an annual rate of 2.4 percent, far below the administration's hopes at the beginning of 1986 for growth of 4 percent.

In 1986, the economy expanded at an annual rate of 2.7 percent and some analysts believe growth this year will fail to match even that lackluster performance.

In 1985, the economy expanded at an annual rate of 2.7 percent and some analysts believe growth this year will fail to match even that lackluster performance.

The Reagan administration last

week slashed its estimate for GNP growth in 1987 to 3.2 percent.

This was a full percentage point lower than its earlier estimates as the administration responded to criticism that its forecasts for the last two years had proven to be wildly optimistic. The administration's economic forecasts are used to estimate government revenues and spending.

The third quarter GNP report showed that much of the strength came in a boom in auto sales as consumers responded to cut-rate financing offers. Final sales jumped \$40.4 billion, 4.5 percent, in the summer

with half of that increase accounted for by auto sales.

Business investment, which has been weak all year, edged down 2.1 percent in the third quarter, a decline partially offset by a 9.7 percent rise in housing construction, which has enjoyed a boom because of falling mortgage rates.

The country's trade deficit, as measured by the GNP, worsened in the third quarter but at a slower pace than in the spring. While the deficit was growing at a rate of \$28 billion from April through June, the summer increase was \$9.4 billion.

The various changes left the GNP

at \$3.69 trillion at an annual rate after adjusting for inflation in the third quarter. Before inflation was taken into account, the GNP rose 6.4 percent in the third quarter.

In a separate report, the government said that corporations' after-tax profits rose 5.5 percent in the third quarter, the biggest increase since an 11.3 percent advance in the third quarter of 1983.

Many analysts believe that economic growth will weaken considerably in the first three months of 1987 as businesses cut back further on investment because of the loss of a variety of tax incentives.

Wednesday  
December 17, 1986

# The HEREFORD BRAND



★ Hustlin' Hereford,  
home of Betty Henson

86th Year, No. 118, Deaf Smith County, Hereford, Tx.

14 Pages

25 Cents

## Foreign trade imbalance hits record, factories improve

By VIVIAN MARINO AP Business Writer

The broadest measure of the U.S. foreign trade imbalance hit record heights in the third quarter while housing construction fell in November to the lowest level in more than two years, the government reported.

But there was at least one bright spot in the otherwise gloomy economic picture painted Tuesday. American factories, mines and utilities operated at 79.3 percent of capacity last month, the first improvement in that measure since July, the government said.

Meanwhile in Geneva, 12 of the 13 members of the Organization of Petroleum Exporting Countries agreed to cuts in oil production, but failed to persuade Iraq to go along. OPEC officials said Tuesday. Oil prices moved lower in the United States because of the uncertainty

surrounding the OPEC meeting.

The Commerce Department said the imbalance in the nation's current trade account climbed to an all-time high of \$36.28 billion in the July-September quarter. The department said the imbalance was 5.4 percent higher than the old record of \$34.41 billion set in the second quarter.

The current account measures trade between countries not only in merchandise but also in services, primarily investment earnings, and transfer payments such as foreign aid.

Deficits in the current account have pushed the country in just three years from being the world's largest creditor to the biggest debtor. That means foreigners hold more U.S. investments than Americans hold in foreign investments.

In a separate report, the Commerce Department said a building slump in the South helped push hous-

ing construction down 1.8 percent in November, the third straight monthly decline. New homes and apartments were built at a seasonally adjusted annual rate of 1.6 million units last month, the slowest pace since October 1984, the department said.

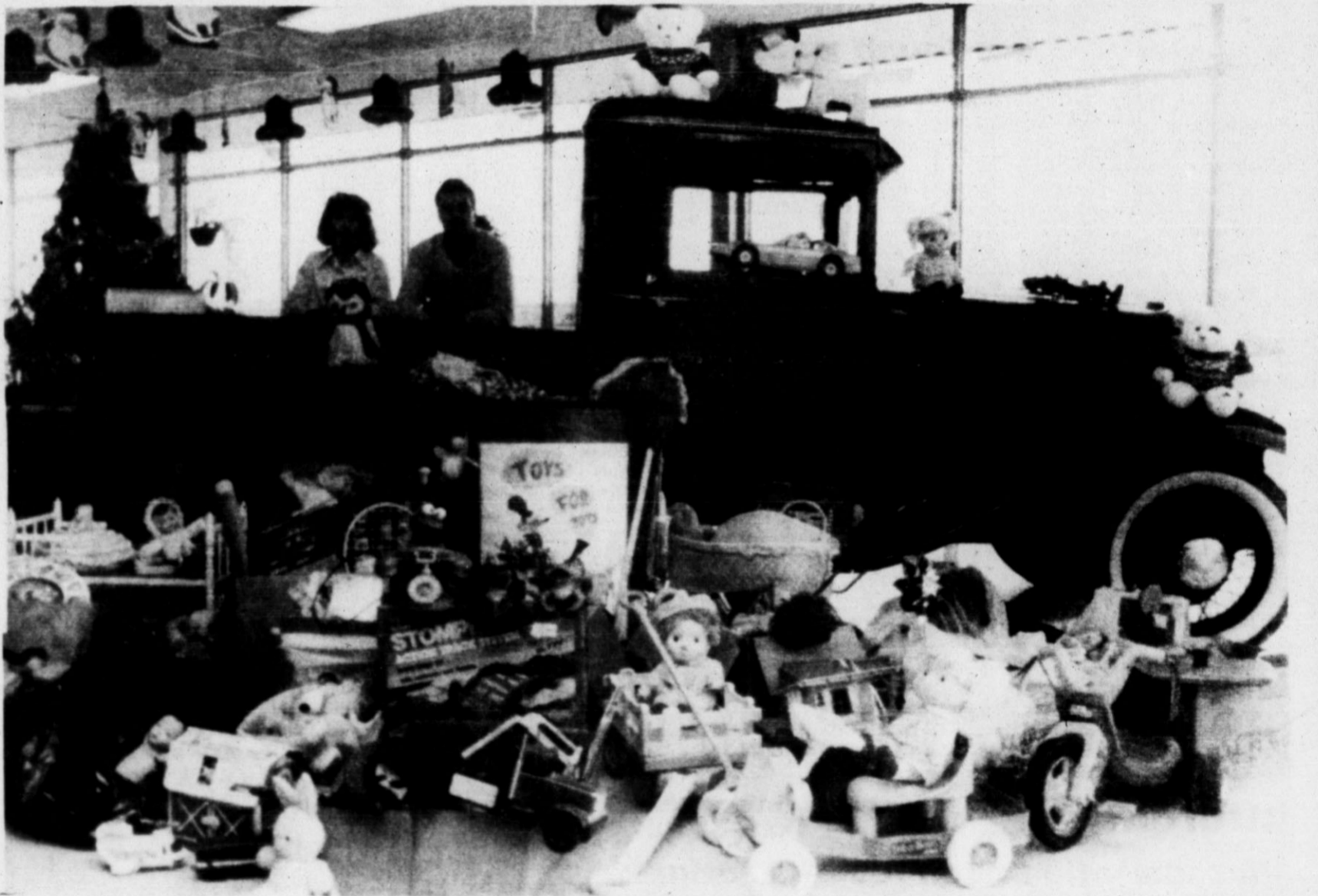
Analysts blamed the latest setback on depressed conditions in the oil patch and adverse effects on multi-family construction coming from the new tax law and high vacancy rates.

The Federal Reserve Board said the November operating rate of

American factories, mines and utilities was 0.3 percentage points higher than it was in September and October.

The operating rate remained 2.5 percentage points lower than it had been in mid-1984, the highpoint for

the recovery from the 1981-82 recession. But analysts expressed hope that the November gain marked a turning point for American manufacturers, who have suffered for the past 24 months from stiff foreign competition.



Truckload of Toys

An array of Toys for Tots pile high around the 1933 Chevrolet pickup owned by L.D. Stevens of Stevens Chevrolet. Linda and Jerry Stevens lean over the bed

of the old pickup to check out the load of toys patrons donated at their business. The toys were given to the Red Cross for distribution at Christmas.

## Local Roundup

### Police report

The Hereford Police department heard reports Tuesday of a family fight in the 200 block of Kibbe, criminal mischief in the 100 block of Ave. E, theft from a residence in the 200 block of Lawton, a civil problem in the 400 block of McKinley, attempted robbery in the 1300 block of W. Highway 60, a stolen vehicle was reported in the 100 block of New York St., theft of a newspaper holder from a convenience store, criminal mischief in the 500 block of Irving, a neighbor problem in the 500 block of Whittier, and a mental problem at Big Daddy's Truck Stop.

Police also issued six citations and investigated one minor accident.

### Weather

TUESDAY'S HIGH: 58 LOW: 34

OUTLOOK: A 60 percent chance of snow tonight, 1 to 3 inch accumulation possible. Low in the lower 20s. Northeast wind 10 to 15 mph. Thursday, 20 percent chance of snow in the morning, partly cloudy by afternoon with a high in the upper 30s. North wind 5 to 15 mph.



That feller on Tierra Blanca Creek says even a family tree has to have some sap.

ooo

It's better to sleep on what you plan to do than to be kept awake by what you have done.

ooo

As a woman was about to leave the doctor's office, she spun around and gave him a strange look. "Is something the matter?" he asked.

"I'm not sure," responded the woman. "I arrived five minutes early for my appointment and you took me right away. You spent a lot of time with me and answered all my questions. I understood every word of instructions you gave me. I can even read this prescription you wrote. Are you a real doctor?"

ooo

Set your alarm for Thursday morning so that you can get ready and get to the Fun Breakfast between 6:30 and 7 a.m. The usual fun and games

will be led by John Stagner and Charlie Bell, and there will be some surprises for the Christmas edition of the Fun Breakfast. There will be some special drawings for candidates for the "Live for Free in December" contest, so join in the fun!

ooo

Congratulations to the Hereford Whiteface football team on a great season. This squad etched its mark in the HHS record books by advancing to the state semifinals and the final four of competition. Perhaps it was a team of over-achievers but the players set high goals and almost went all the way.

The team should be well aware that the community and school is proud of them. The semifinal defeat does not diminish this season's thrill of victory for the fans, because the Herd accomplished much more than we expected. We tip our hats to the 1986 Whitefaces and coaches!

## One week left for collections

# CSF now accepting food

As the final week for donations to the Christmas Stocking Fund gets underway, contributions have started coming in at a more rapid pace and yesterday's total jumped to \$4,675.40.

The CSF committee has accepted only money donations in the past, but

several local grocers have agreed to set up food boxes in their stores so that canned goods and kitchen staples can be donated to the Stocking Fund.

While getting ready for their Christmas celebrations, grocery shoppers will have the opportunity to

remember the less fortunate by placing basic food items in the CSF boxes, which will be located right in the store. These foodstuffs will be collected next week and placed in baskets to be taken to the needy by Stocking Fund volunteers.

The stores which are cooperating with CSF on this project are Moore's Jack & Jill, Pak-A-Sak, Save & Gain, and Taylor's. Any other merchant wishing to help collect food or other items for the needy is invited to contact the Red Cross office, 364-3761.

Also participating in the food drive will be several Hereford schools, who are encouraging their students to bring canned goods.

The Stocking Fund committee, composed of anonymous private individuals, expresses deep gratitude to the local merchants and schools for their help in this worthwhile goal of feeding the hungry.

Applications for help through the Christmas Stocking Fund are being accepted by the Red Cross office, located at 224 S. Main. Friday will be the last day applications will be accepted, except in the case of an emergency situation.

Persons interested in making cash donations to the Stocking Fund may do so in care of The Hereford Brand, P.O. Box 673, Hereford or at 313 N.

Lee. Names of contributors will be published regularly in The Brand.

### CONTRIBUTORS

PREVIOUS BALANCE	\$1,000.00
Tap & Hope Loerwald	25.00
David & Renee Zinsner	25.00
Anonymous	100.00
Mr. and Mrs. Owen Stagner	75.00
Anonymous	15.00
Earl & Peggy Clark	10.00
Virginia Holmes	10.00
Anonymous	10.00
Anonymous	50.00
Dale & Tonya Kleuskens	100.00
L.J.R.	30.00
Anonymous	30.00
Anonymous	25.00
Roberta Caviness	25.00
Mr. & Mrs. Bobby Boyd	25.00
In memory of Hankel & Verdie Benson, by children	50.00
Benny & Joan Womble	50.00
Anonymous	25.00
Scott & Jean Holbert	25.00
Audine Dettmann	100.00
Pioneer Study Club	43.00
Mr. & Mrs. Lester Wagner	10.00
Plains Motel	100.00
Anonymous	100.00
Adelphi Class, 1st Christian Church	170.00
Anonymous	100.00
In memory of Lucille Hughes, from Birthday Bunch	42.50
Hereford Junior Supply	50.00
Carl & Helen Kleuskens	50.00
Anonymous	25.00
Rosie, Amy & Jennifer Griffith	25.00
TOTAL TO DATE:	\$4,675.40

## Two planets will form Christmas star

GAINESVILLE, Fla. (AP) — This week's conjunction of two of the brightest planets will form a Christmas star, according to an astronomer who says the original Star of Bethlehem could have resulted from a similar event.

Jupiter and Mars will appear to come as close as the diameter of the full moon Thursday night, University of Florida astronomer Alex Smith said Tuesday.

"It's even neat that this one precedes Christmas by a week," Smith said. "Presumably the real Star of Bethlehem did something similar to lead the three Magi, two millennia ago."

Astronomers have offered other

theories to explain the Star of Bethlehem. Some have suggested that it could have been a comet, and others have guessed it may have been an exploding star, or supernova.

While planetary conjunctions are not rare, Thursday's will be the brightest of 1986, Smith said. Jupiter will be a large, bright, yellowish-white object, while Mars will be smaller and red.

"You can tell planets from stars because planets generally shine with a steady light while stars twinkle. And if you're still not sure, just remember that besides the moon, Jupiter will be the brightest thing in the Southern sky," he said.



# News Roundup

## State

### AIDS victim back in classes

LUBBOCK (AP) — A child diagnosed as the first Texas elementary school student having AIDS will be allowed to return to school. The student whose name, age, sex and school have not been released by school officials, was diagnosed as having the disease in early June, and subsequently was voluntarily withdrawn from summer school after attending the first two days of classes.

The readmission will be subject to at least six guidelines designed to protect the AIDS victims and his or her classmates from medical dangers, as well as to address the public's concerns, said Vicki Shaden, Lubbock Independent School District's director of nursing.

The school board Tuesday night unanimously concurred with a review committee's recommendation that the AIDS victim be readmitted, noting that there is no medical evidence to justify barring the child from school.

The guidelines, to which the child's parents agreed, require that the AIDS victim use a separate restroom, bring his or her lunch or eat at home, be monitored daily by a school nurse and submit to other rules as necessary.

They also require that the school staff will be notified of the child's medical condition on a "need-to-know" basis and that transfer requests from teachers and students at the child's school not given no special consideration.

Under the policy, the AIDS victim may be removed from school at any time by the school principal, the school nurse, his or her family or physician. The child would not be allowed to return to school unless the school board then again voted to allow readmission.

AIDS, acquired immune deficiency syndrome, is a fatal illness in which the body's immune system no longer has the ability to fight off certain cancers and infections.

### Seven die in apartment fire

MAKSHALL, Texas (AP) — At least seven people died early today when fire swept through a garage apartment in this Northeast Texas city, fire and police officials say.

The dead include four children and three adults, authorities say. Further details were not immediately available.

## National

### Voyager endures tough weather

LOS ANGELES (AP) — Voyager's fatigued pilot handed control over to his co-pilot today after guiding the aircraft around a typhoon for 12 hours in their unprecedented quest to circle the globe nonstop on one tank of fuel.

The experimental craft was over the South China Sea heading toward Thailand and Malaysia early today after winging its way through the spiraling arms of Typhoon Marge around the Philippines on Tuesday.

Ground personnel advised pilot Dick Rutan to get rest, and turn over control to Jeana Yeager, as their epic flight entered its fourth day.

"We did have a very adventuresome time this morning with a tropical storm, and our weather department had us try a slingshot maneuver ... and we gained a tremendous amount of time and airspeed," project spokesman Lee Herron told Cable News Network.

"But this took a lot out of our pilots and left them in a stormy area of towering cumulus (clouds) and thunderstorms, which Dick felt he should handle," Herron said.

Rutan, a 48-year-old former Air Force fighter pilot, stayed at the controls throughout the 12-hour ordeal before giving way to Ms. Yeager, who piloted the craft past the 8,700-mile mark of its trip at 1:30 a.m. PST.

"I'd say he was feeling his fighter pilot training, and was in there figuring if he didn't do it no one else would," said Herron, adding that the flight crew never saw Rutan's fatigue as a crisis.

"Dick is such a great pilot" that Voyager officials "wanted him to get as close to the storms as possible," said meteorologist Len Snellman. The storm generated a tailwind.

Voyager, which was flying at an average 128 mph, was expected to be near Singapore around 11 a.m. PST. It will then cross the Indian Ocean to Africa, where changes in land temperatures were expected to create new turbulence.

## International

### Vietnam's three top leaders resign

HANOI, Vietnam (AP) — The country's three top leaders resigned Wednesday after leading the communists through five decades of war and revolution.

Interior Minister Pham Hung told the Sixth National Party Congress that Communist Party Secretary General Truong Chinh, Prime Minister Pham Van Dong and key Politburo member Le Duc Tho were stepping down from the party's Central Committee.

"The Central Committee has accepted their retirements and they will be advisers to the new Central Committee," said Hung, a member of the ruling Politburo.

Chinh, 79, Dong, 80, and Tho, 73, went to the rostrum at the Ba Dinh conference hall and waved goodbye amid the applause of hundreds of Vietnamese and foreign delegates.

It was the most dramatic leadership change in the party's 56-year-old history.

The new leadership, to be announced Thursday, is widely expected to include officials identified with recent economic reforms the party has deemed crucial.

Widely tipped as new party secretary general is Nguyen Van Linh, 73, a former party secretary in Ho Chi Minh city, formerly Saigon.

In Ba Dinh Hall at the Congress sessions, Vietnam's leaders sit on a stage before a huge banner depicting the yellow star of the Vietnamese flag, the hammer and sickle emblem and portraits of Marx and Lenin.

Attending the congress are 1,129 delegates from all parts of the country, representing more than 1.8 million party members.

### Mexican election protest continues

MONTERREY, Mexico (AP) — About 500 people from a wide range of political parties, angered by recent elections in the border state of Tamaulipas, protested outside the state legislature in Ciudad Victoria to pressure elections officials, a spokesman said.

Jorge Camargo, defeated gubernatorial candidate from the opposition National Action Party, or PAN, said Tuesday protesters from small towns all over southern Tamaulipas would remain outside the legislature building where the electoral college was to meet Wednesday to certify results of the Dec. 7 vote.

The dominant Institutional Revolutionary Party, or PRI, won 42 of the 43 mayoral races in Tamaulipas, losing only in the border city of Reynosa, according to the state electoral commission.

That victory went to a disgruntled PRI member who, upset with the ruling party's methods for winning elections, ran as the candidate of the Authentic Party of the Mexican Revolution.

Complete results from the 15 state legislative races and the gubernatorial election had not been released Tuesday.

Camargo claimed the PAN, a conservative party that usually presents the strongest challenges to the PRI, was cheated out of mayoral victories in three Tamaulipas cities because of PRI-orchestrated vote rigging.

# GOP says rural America cannot continue to rely on farming

ROSEMONT, Ill. (AP) — Rural America must broaden its economic base beyond agriculture or face further erosion of the most basic community services: jobs, health care and education, a Republican task force has warned.

"It would be nice to just say, 'Let's just restore profitability to farming,' and that everything else would take care of itself," Rep. Doug Bereuter of Nebraska said Monday. "But it isn't that easy."

The task force held its first forum last month in Des Moines, Iowa, and Monday's meeting brought together legislators and chief executives from nine states.

Sen. Robert Dole of Kansas, another GOP leader, said the group hoped to develop initiatives in four areas — rural development, farm policy, farm credit and agricultural trade — to present to Reagan administration officials at a third meeting in Washington set for January or February.

"We believe very strongly that rural America is an important part of our total fabric and our total economy," Dole said. "We don't want small towns to close up across this country of ours as they're already doing in many states."

Dole said deregulation already had cut into basic health care, transportation and communication services in many rural communities and would continue to erode unless some

state-federal partnerships filled those voids.

"First, something like the (grain) elevators close, then a bank, next a medical facility ... and it can only get worse because there aren't other job opportunities to replace farming," Dole said.

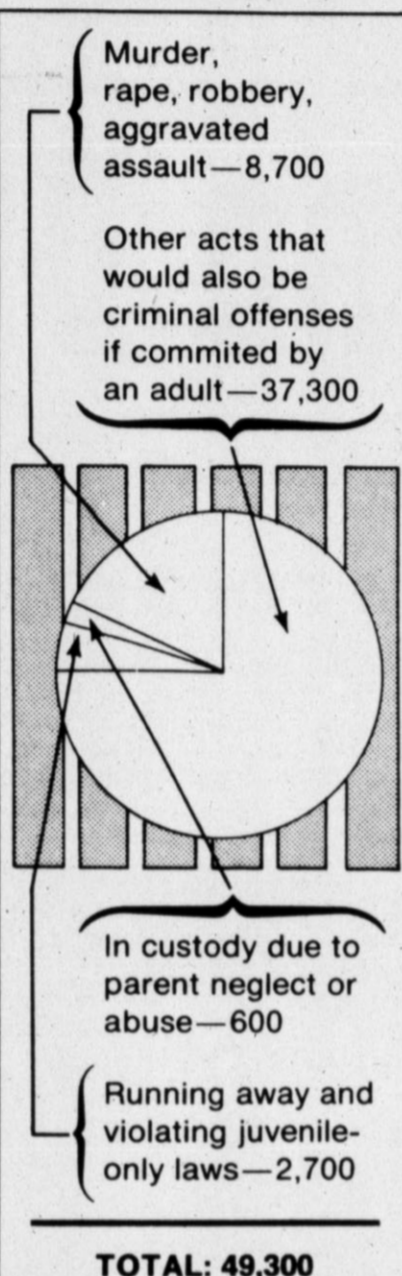
With the year-old farm law likely to come under scrutiny when Congress convenes next year with a Democratic majority, Dole conceded it may be difficult to increase aid to rural communities.

"We have to be budget-responsible. We know the present farm bill is costing a lot of money, about \$26 (billion) or \$27 billion" in subsidies, the highest level ever, Dole said.

"We understand the pressure some urban members (of Congress) and others are under to cut back the cost of the farm program. ... But we're not going to rest until rural America and the American farmer are prosperous again."

## JUVENILE CRIME

### YOUTHS HELD IN JUVENILE-DETENTION CENTERS (1985)



(Source: U.S. Justice Department/Bureau of Justice Statistics) NEA GRAPHIC  
Nearly 50,000 American youths are being held in juvenile-detention centers — 17 percent for murder, rape, robbery or aggravated assault; and most of the rest of them for other substantial crimes.

## Study projects Texas will lose ethnic majority by 2015

WASHINGTON (AP) — Education and labor in Texas will change dramatically over the next 50 years because of a predicted boom in Hispanic population, a private research group says.

The report, written by economist F. Ray Marshall and demographer Leon F. Bouvier, predicts the population of Hispanics in the Lone Star State will nearly equal that of the state's Anglo population by the year 2035.

In 1985, Anglos represented 63 percent of the state's population of 16.5 million people compared to 22.7 percent for Hispanics, 12.5 percent for blacks and 1.8 percent for Asians and other groups, according to the report, which was released Tuesday.

By 2035, when the state's projected population will be more than 30.2 million, Anglos will represent 43.4 percent of all Texans, Hispanics 39.3 percent, blacks 10.9 percent and Asians and others 6.4 percent, according to the report.

"Texas will continue to grow and should double in size over the next half-century," according to the study, issued by the Washington-based Population Reference Bureau, Inc. "In marked contrast, the United States population is expected to in-

crease by only 28 percent during the same period."

The study suggests the population shift will put increasing demands on the state's educational system as the school-age population becomes increasingly Spanish-speaking.

"Over two-thirds of foreign born Texans came from Latin America, most of whom were Mexican," according to the report.

The report predicts that "under reasonable assumptions regarding fertility and age-specific immigration rates, Anglo children will lose their majority before the turn of the century and by 1995 they will make up 48 percent of the state's population under 15."

"Thirty years from now, young Hispanics will equal Anglos in numbers. If current trends continue, black youths will comprise smaller proportions in the future while Asian proportions will grow."

The sheer growth of nearly 2 million students over the next 50 years will require 100,000 more teachers if the current ratio between students and teachers is retained, the study suggests.

"Bilingual instructors will be particularly in demand."

The shift in ethnic balance will also

bring more minorities into the labor market, including a substantial increase in white collar jobs, most of which are now held by Anglos, according to the report.

"Between 2000 and 2035, Anglo females and minorities will comprise 95 percent of the new entrants into the labor force of Texas," the report said.

The researchers estimated the labor force to grow from just over eight million people in 1985 to 11.5 million by the turn of the century and 15.7 million by 2035.

"In future years, the labor force of Texas will become increasingly feminized and, perhaps more important, considerably older," Marshall and Bouvier said. "Not only will the state's labor force age, it will also be more ethnically diverse."

### Local banks set up benefit

Hereford State Bank and First National Bank have each established funds to defray medical costs of Cleatus Savage.

Savage went to Galveston this week for further treatment of pancreatitis.

## Higher sugar prices predicted

WASHINGTON (AP) — A sugar industry leader predicts consumers will pay higher prices and may even run into some shortages as a result of the Reagan administration's decision to cut import quotas 41 percent for 1987.

Nicholas Kominus, president of the U.S. Cane Sugar Refiners Association, said Tuesday that the reduction in the amount of raw sugar that can be imported into the United States will be devastating to an "already battered cane sugar refining industry."

Kominus asked that the cutback be reconsidered. If not, he said, "the tight quota is going to push sugar prices up. There will be disruptions and there could be shortages."

The 1987 quota should be increased by 200,000 to 300,000 tons from the level of slightly more than 1 million tons announced on Monday by Agriculture Secretary Richard E. Lyng, said Kominus. That represented a 41 percent reduction from this year's quota of more than 1.7 million tons.

Annual quotas are spread among

sugar-producing countries, and for many, those are primary earners of foreign exchange. Foreign raw sugar then is refined for the U.S. domestic market.

"Eight refineries have been shut down since 1981," Kominus said in a statement. "And unless a realistic import quota is established, more will close."

In his announcement on Monday, Lyng said the high U.S. sugar support prices are to blame, along with a decline in the consumption of cane and beet sugar, and a continued rise

in the use of sweeteners from corn.

Lyng said the administration will seek an overhaul of the sugar program, including a lowering of government price supports for sugar beets and sugar cane.

### Cheese to be given away

Free cheese distribution will be Thursday at 10 a.m. in the east end of the Senior Citizens Center.

Sacks will be needed to carry the cheese.

## Hospital Notes

### PATIENTS IN HOSPITAL

Francis Arredondo, Mary Benavides, William Davis, Jorge Dominguez, Guadalupe Escobado, Allen Fangman.

Maria Garcia, Lucille Gibbins, Ramon Gonzales, Ralph Morrison, Fred Mulkey, Diane Mowrey, Girl Mowrey, Aurelino Munoz.

Elocadia Pena, Juanita Perales, Anita Quirino, Edna Riley, Debe Roark, Girl Roark, Juanita Si-fuentes, Rose Sotelo, Boy Sotelo, Silvia Salazar, Amelia Zuniga.

## Letters to the Editor

### A tribute to the Herd; loneliness at Christmastime

Dear editor:

In a world where success is most often equated with prizes won and victory measured by number of points scored, stands a small group of people who have learned that... "the race is not to the swift, nor the battle to the strong, nor bread to the wise, nor riches to the intelligent, nor favor to the men of skill; but time and chance happen to them all."

To these people has come the realization that WHAT WE CAN LEARN from all of life's situations is the ultimate prize. In the midst of this small group of people have come a band of young men this community has come to affectionately call, "The Hostile Herd" along with Don Cumpston and his staff. Over the last few months they have learned and hopefully taught this community that the greatest rewards in this life are the ones that come, not so much between the lines of the field, but between the lines of depending upon one another for wisdom, courage and strength.

In this football season these young men learned that life is precious; more precious than any game; that leaning on one another in looking to God, regardless of racial and denominational differences is more important than even the state championship. This will make a difference long after the sting of losing a football game is gone.

In a world where the value of one's best effort can easily be considered to be less than that of winning, stand a group of coaches and young men who know differently. They did the best they could. Long after people forget who won the 4A state championship in 1986, these young men and coaches will be making a positive difference in this world because they learned this season that doing your best is a great prize that no one can touch or take away.

In a world that teaches that losing means you let someone down, I believe these young men and coaches have learned and taught the true reverse. Don Cumpston, Coaches, Herd, on behalf of the Hereford Ministerial Alliance let me say, you didn't let anyone down. You listened to one another, you played as A TEAM, you learned and taught about faith, you showed yourselves and the people of Hereford what really matters in life.

We're proud of you and grateful for the message of your lives. "Hangeth in there, Herd!"

Sincerely,  
Reverend Bruce Kochsmeier

Dear editor:  
This is the Merry Christmas season and it may be the last time I will be able to write you a letter. I am a resident of an old people's home here but still able to care for myself

to a certain extent.

But I am aware enough to realize the loneliness of some of the poor residents here and how much they would enjoy individual visits. Too many people only think of them in a material way and shower them with material things—presents they cannot use or have a place for in the home.

A visit would mean so much more to them in their state of loneliness. Christmas was not intended for material blessings only, but for spiritual help as well. Jesus helped a lot of people in a material way but he said, "Ye follow me for the loaves and fishes but overlook the spiritual value."

Some of these old and helpless people have worked hard or spent many a hard-earned dollar to help some of your readers' kinfolks in times of need—perhaps your grandparents, or parents, or even you.

Now, in their helplessness and loneliness, these people need to be appreciated, but some people don't care enough even to visit them, or even a "Hi" or "How are you?" I believe people who only give material things do not have the true Christmas spirit.

I hope this message can be a help both ways. My signature is not needed—only the spirit of faith, not disappointment.

Name Withheld

## The Hereford Brand

THE HEREFORD BRAND (USPS 242-060) is published daily except Mondays, Saturdays, July 4, Thanksgiving Day, Christmas Day and New Year's Day, by the Hereford Brand, Inc. 313 N. Lee, Hereford, Tx. 79045. Second class postage paid at the post office in Hereford Tx. POSTMASTER: Send address changes to the Hereford Brand P.O. Box 673, Hereford, Tx. 79045.

SUBSCRIPTION RATES: Home delivery by carrier in Hereford, \$2.95 month (\$4.15 with tax); one year paid in advance at Brand office, \$43 (\$45.20 with tax); by mail in Dear Smith or adjoining counties, \$43 (\$45.20) a year; mail to other areas, \$44.95 (\$47.25 with tax).

THE BRAND is a member of The Associated Press, which is exclusively entitled to us for republication of all news and dispatches in this newspaper and also local news published herein. All rights reserved for republication of special dispatches.

THE BRAND was established as a weekly in February, 1901, converted to a semi-weekly in 1948, to five times a week on July 4, 1974.

O.G. Nieman Publisher  
Jeri Shire Managing Editor  
Maurl Montgomery Advertising Mgr.  
Charlene Brownlow Circulation Mgr.



# Lifestyles

## Calendar of Events

### THURSDAY

Walcott School Christmas program, at the school, 7 p.m.  
 Kiwanis Christmas party, Hereford Community Center, 7 p.m.  
 San Jose prayer group, 735 Brevard, 8 p.m.  
 Weight Watchers, Community Church, 6:30 p.m.  
 Ladies exercise class, Church of the Nazarene, 6:30 p.m.  
 AA and Al-Anon meeting, 406 W. Fourth St., 8 p.m.  
 Hereford Toastmasters Club, Caisson House, 6:30 a.m.  
 Kiwanis Club, Community Center, noon.  
 TOPS Club, No. 941, Community Center, 9 a.m.  
 Amateur Radio Operators, north biology building of high school, 7:30 p.m.  
 Story hour at library, 10 a.m.  
 Young at heart program, YMCA, 9 a.m. until noon.  
 Bud to Blossom Garden Club, 9:30 a.m.  
 Elketts, 8 p.m.  
 American Association of Retired Persons, Community Center, 7 p.m.  
 L'Allegria Study Club, 10 a.m.  
 Alpha Iota Mu Chapter of Beta Sigma Phi Sorority, 8 p.m.  
 North Hereford Extension Homemakers Club, 2:30 p.m.  
 Wyche Extension Homemakers Club, 2:30 p.m.  
 Bay View Study Club, 2 p.m.  
 Merry Mixers Square Dance Club, Community Center, 8 p.m.  
 Red Cross Uniformed Volunteers, noon luncheon.  
 VFW, CFW Clubhouse in Veterans Park, 7:30 p.m.  
 BPOE Lodge in Elks Hall, 8:30 p.m.  
 Hereford Study Club, 7:30 p.m.

### FRIDAY

Kiwanis Whiteface Breakfast Club, 6:30 a.m.  
 Community Duplicate Bridge Club, Community Center, 7:30 p.m.  
 Patriarchs Militant and Ladies Auxiliary, IOOF Hall, 8 p.m.  
 Good Timers Square Dance Club, Community Center, 8 p.m.  
 Dawn Extension Homemakers Club, Dawn Community Center, 2 p.m.  
 Family film, "Chitty, Chitty, Bang, Bang" at Walcott School.  
**SATURDAY**  
 AA open meeting, 406 W. Fourth St., 8 p.m.  
 Open gym for all teens, noon until 6 p.m. Saturdays and 2-5 p.m. Sunday at Church of the Nazarene.  
**MONDAY**  
 AA and Al-Anon Spanish speaking meeting, 406 W. Fourth St., 8 p.m.  
 Odd Fellows Lodge, IOOF Hall, 7:30 p.m.  
 TOPS Chapter No. 1011, Community Center, 5:30-6:30 p.m.  
 Rotary Club, Community Center, noon.  
 Planned Parenthood Clinic, open Monday through Friday, 711 25 Mile Ave., 8:30 a.m. to 4:30 p.m.  
 Young Mothers Study Club, 7:30 p.m.  
 Valeda Study Club, 8 p.m.  
 Easter Lions Club, Easter Clubhouse, 8 p.m.  
 Deaf Smith County Lapidary Club, Energas Flame Room, 7-9 p.m.  
 Band-Orchestra Boosters Club, Hereford High band hall, 7 p.m.  
 Friends of the library, board meeting, Heritage Room, noon.

### TUESDAY

Hereford Rebekah Lodge No. 228, IOOF Hall, 7:30 p.m.  
 Problem Pregnancy Center, 505 E. Park Ave., open Tuesday through Saturday. Free and confidential pregnancy testing. Call 364-2027 for appointment.  
 AA and Al-Anon meeting, 406 W. Fourth St., 8 p.m.  
 Free blood pressure screening, Tuesday through Friday, South Plains Health Providers Clinic, 603 Park Ave., 8:30 a.m. - 5 p.m.  
 Hereford AMBUCS Club, Ranch House, noon.  
 Social Security representative at courthouse, 9:15 a.m. until noon.

Kiwanis Club of Hereford-Golden K, Senior Citizens Center, noon.  
 Deaf Smith County Historical Museum: Regular museum hours Tuesday through Saturday 10 a.m. to 5 p.m. and Sunday by appointment only. Museum closed Monday.  
 TOPS Chapter No. 576, Community Center, 9 a.m.

Ladies exercise class, Church of the Nazarene, 7:30 p.m.  
 Pilot Club, Caisson House, 7 a.m.

### WEDNESDAY

AA discussion meeting, 406 W. Fourth St., 8 p.m.  
 Noon Lions Club, Community Center, noon.

## Musical scheduled Friday, Saturday at high school

The public is reminded of the one-act musical entitled "Scrooge" which will be presented by the Hereford Chamber Singers. The two performances will be held in the Hereford High School

auditorium at 7:30 p.m. Friday and at 2 p.m. Saturday. All tickets are priced at \$2 per person and may be obtained at the Deaf Smith County Chamber of Commerce office, from any Chamber Singer and at the door.

## Senior Citizens Opportunities

### WEDNESDAY

Activities scheduled this week (Dec. 18 through Dec. 24) at the Hereford Senior Citizens Center include the following:  
**EVERY WEEKDAY** - Quilting 8 a.m. to 5 p.m.  
**THURSDAY** - Oil painting class 9 a.m., advanced oil painting class 1 p.m., choir 1 p.m., stretch and flexibility class 10 a.m. \$2 charge at YMCA.  
**FRIDAY** - Beginners line dance 10 p.m., advanced line dance 1 p.m.  
**SATURDAY** - Christmas party and birthday social 6:30 p.m.  
**MONDAY** - Beginners line dance 10 a.m., devotional 1 p.m., advanced line dance 1 p.m.  
**TUESDAY** - Stretch and flexibility 10-10:45 a.m.

**WEDNESDAY** - Ceramics 1:30 p.m.

### Lunch Menus

**THURSDAY** - Meat loaf, northern beans, broccoli with cheese sauce, onion slice, cabbage-green pepper slaw, fruit and cookie.  
**FRIDAY** - Fish baked potatoes, beets, golden salad, chocolate meringue pie.  
**MONDAY** - Beef stew, sliced peaches, cake, cornbread.  
**TUESDAY** - Baked ham with raisin sauce, scalloped potatoes, seasoned green beans, pineapple-cottage cheese salad, pumpkin custard.  
**WEDNESDAY** - Baked chicken breast on long grain wild rice, broccoli spears with cheese sauce, raspberry Jello with apple sauce and celery, date cake.

## YMCA to sponsor sale

The Hereford YMCA will sponsor a frozen casserole and garage sale Saturday from 10 a.m. until 2 p.m. Poppy Head, board member, is in charge of the casserole sale to take place at Sugarland Mall. YMCA board members are preparing casseroles, which will be in disposable containers, and baked goods.

Weldon Knabe and Jerry Brock are heading up the garage sale which will take place at the YMCA facility on East 15th St. Anyone wishing to contribute merchandise should call 364-6990. The YMCA staff will pick up your contribution and provide you with a receipt for Income Tax deductions.

Proceeds from the sales will benefit the YMCA.



## Halberts Honored

Ouida and Kenneth Halbert, manager and assistant manager at Hereford Country Club for 23 years, were honored at a reception Sunday afternoon at HCC. The Halberts resigned effective Jan. 1. David

Emerick, HCC president, presented the couple a microwave as a gift from the board of directors. Guests made contributions to a "money tree" for the Halberts.

## Applications being taken

The 1987 Miss Texas Glamour Girl Pageant is now taking applications for the state preliminary pageant.

The pageant is open to girls between the ages of 14 to 24 years of age. A screening committee will select the finalist who will then compete for the Miss Texas Glamour Girl Crown.

Each finalist will then compete in the evening gown, judges interview, and swim suit competition. The state winner will then represent the state of Texas in the Miss Glamour Girl Pageant.

The state winner will receive many fabulous prizes and personal ap-

pearances throughout the state of Texas. For more information call or write: Trudy Andes, Miss USA Glamour Girl, National Director, RR 4 and Box 96 Winfield, Kansas 67156.

Mount Erebus is one of three active Antarctic volcanoes. It is located on Ross Island and towers 13,200 feet.

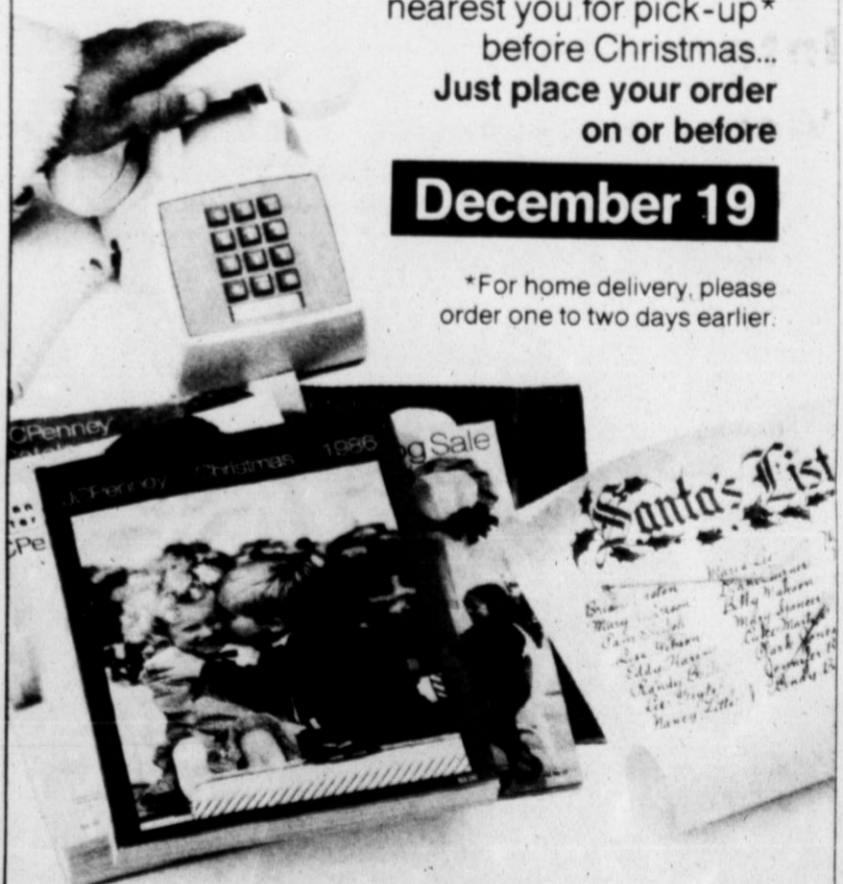
**Balloon Bouquets**  
 for all occasions  
**Balloon Express**  
 364-0220  
 (Clown Delivery Available)

# It's not too late to shop the JCPenney Catalog for Christmas.

Toys and last-minute gifts can still be delivered to the store nearest you for pick-up\* before Christmas... Just place your order on or before

**December 19**

\*For home delivery, please order one to two days earlier.

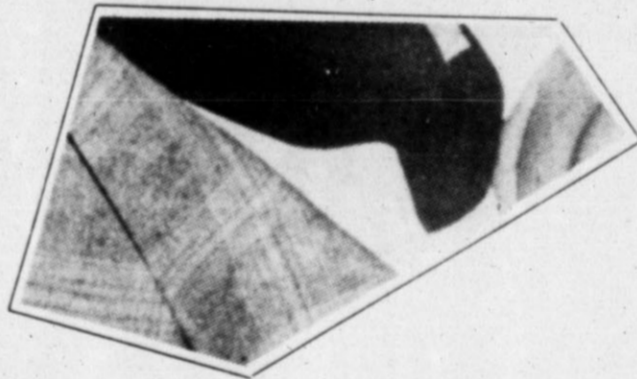


CALL TOLL-FREE **DIRECT LINE**  
 TO PLACE YOUR ORDER  
 CATALOG SHOPPING

Shop-by-phone: 000-000-0000

The JCPenney Catalog  
 SUGARLAND MALL  
 To Check On Your Order  
 Call 364-4205

## Jigsaw Photo Puzzle Game Here's Piece No. 5



Clip to complete your puzzle... you could win \$25 in Hereford Bucks in our "Shop Home for the Holidays" promotion!

## COBBIE cuddlers



**BRRR!**  
 Snow, rain, sleet... all the nasty weather winter brings is no match for Cobbie Cuddlers' warm nylon boot! It's specially designed to keep your feet toasty warm and dry in every kind of winter weather.

Reg. \$48 to \$52

NOW **\$34<sup>90</sup>**

**Gaston's**

Sugarland Mall

Like a good neighbor, State Farm is there.

See me for car, home, life and health insurance.

M.D. Gentry

809 N. Lee

364-7350



State Farm Insurance Companies Home Offices Bloomington, Illinois





JEAN NESBITT



SHIRLEY RATTAN



FAYE MURPHY



LINDA WASSOM

## School of Instruction held here recently

Ninety-two members from District II, Section III, attended the Eastern Star School of Instruction recently in the Masonic Lodge Hall. "Sowing Seeds of Knowledge" was the theme of the school.

The Order of the Eastern Star is a non-profit organization dedicated to charitable and benevolent service with headquarters in Washington, D.C. It is world-wide in scope. The Texas branch is located in Arlington.

It was reported at the Grand Chapter Session just completed in Houston that nearly 1 1/2 million was contributed to young men and women in religious training, educational loans and scholarships, needed improvement and equipment for the home at Arlington and funds toward endowment of that home.

The major projects for the coming year will be the O.E.S. Home, home endowment and training and religious leadership awards.

### SOUNDPROOF BABY'S ROOM

NEW YORK (AP)—You can noise-proof a baby's room by covering the walls with fabric or sheeting and quilt batting — and it's easy to install.

Determine if the walls are wallboard or plaster, advises Family Circle magazine, because the procedures are different for each material.

First, cut the materials to fit. If you're applying it to wallboard, you'll need plenty of thumb tacks in colors that coordinate with the fabric. Just place a layer of fabric over the batting and tack to the wall. Make sure the tacks hold firmly so that a baby or small child cannot remove them.

School officers for the Eastern Star School in Hereford included Jean Nesbitt of Marshall, Worthy Grand Matron; Faye Murphy of Abilene, Grand Examiner; Shirley Rattan of Boys Ranch District Deputy Grand Matron; and Linda W. Wassom of Plainview, Deputy Grand Matron. Betty Phillips, associate Grand Conduress, was the floor officer present.

Following the adjournment of the school, a banquet was held in the Hereford Community Center with the theme "Christmas of Unity, Peace and Harmony." Beverly Brooke of Hereford chapter was chairman of the banquet.

During the fraternal visit that evening at the Lodge Hall, Katie Price of Hereford was awarded the 50-year pen and certificate by Jean Nesbitt, Worthy Grand Matron.

Members enjoyed a get-acquainted session at the Lodge Hall the night before the school with a covered dish supper. Chapters present represented the cities of Canyon, Dimmitt, Earth, Floydada, Happy, Lemond, Lockney, Muleshoe, Olton, Plainview, Tulia and Hereford which was the host chapter.

Regular session of Eastern Star was held Dec. 9 at the Masonic Hall with a Christmas party and gift exchange. Members also brought gifts to be donated to the Eastern Star Home.

Ludie Greeson, Worthy Matron, and Courtney Brooke, Worthy Patron, presided.

**DEAR ANN LANDERS:** Our 20-year-old daughter is extremely promiscuous. I believe she had her first sexual experience when she was 14.

I know "Nan" slept around all through her high school years. She is now in her third year of college and goes to bed with anyone who asks, including casual acquaintances.

When I first discovered Nan was sexually active, I asked her if she knew about birth control. She said she did and that she was "careful." But the girl is such a convincing liar I have no way of knowing if she is telling the truth.

Nan went to a Christian school and attended church regularly. She always had friends but says she never felt as if she "belonged." We have had many conversations about her behavior and she doesn't see anything wrong with it.

I believe the girl needs counseling but when I suggest it she says, "I am not crazy!" and becomes very angry. How can she be reached? Should we allow her to continue to live with us until she finishes college? We love her and are worried about the inevitable consequences. Nan is a regular reader of your column. Perhaps she will listen to you.—WORRIED IN THE WEST

**DEAR WORRIED:** First, be glad Nan wants to live at home. At least you have some idea of where she is and who she is seeing. Please don't try to punish her by putting her out.

Nan needs counseling desperately. I hope she will agree before she gets into serious trouble. Sexual pro-

## Reception scheduled Friday

A reception is planned from 2:30-4:30 p.m. Friday at the Hereford Senior Citizens Center to honor Mr. and Mrs. Clay Rucker of Hereford.

The couple, who were married Dec. 24, 1936 in Clovis, N.M., will be observing their golden wedding anniversary.

Friends and relatives are invited to attend the event.

## Military Muster

Army Spec. 4 Manuel Cervantez, Jr., son of Manuel and Estella Cervantez of 213 Vera Cruz, Hereford, has arrived for duty with the 3rd Support Command, West Germany.

Cervantez is a power generator repairer.

The trouble with children leaving the nest is that they then feather one of their own with stuff scrounged from the old folks.

# Ann Landers

Don't kick her out

miscuity is a symptom of low self-esteem and today it could mean suicide. Nan needs to work on this and you can help by being non-judgmental and loving.

**DEAR ANN LANDERS:** What do U.S. children know about countries other than their own? As a Canadian, I am appalled by the ignorance of some of the tourists who come up here.

Yesterday a girl asked if I am an American. When I said, "Of course, Canada is part of the North American continent...and so is Central America," she said, "Where is THAT?"

When I inquired if she knew where the world's tallest free-standing building was, she replied, "The Empire State in New York." I told her it was the CN tower in Toronto. She'd never heard of it.

United States visitors are always

surprised to find that we have a spring, summer, and fall. They think it is winter all year long and that we live in igloos. They also think we do nothing up here but make whiskey and play hockey. One gentleman asked me where I learned to speak English.

Almost every Canadian over the age of 10 knows that the first president of the United States was George Washington. I wonder how many Americans can name the first prime minister of our country. You have been a fine neighbor and we treasure your friendship, but I do believe, in the interest of good public relations, it would be helpful if your schools would teach a little something about our country. Respectfully—A FRIEND TO THE NORTH

**DEAR FRIEND:** Please accept my apologies on behalf of the millions of Americans who are better

informed than the tourists you've been running into.

I confess, however, that I didn't know who the first prime minister of Canada was until I looked it up. For those who don't know, his name was Sir John Macdonald. He served from 1867 to 1873.

Are drugs OK if you learn how to control them? Can they be of help? The answers are in Ann Landers' all-new booklet, "The Lowdown on Dope." For each booklet ordered, send \$2.00, plus a long, self-addressed, stamped envelope (39 cents postage) to Ann Landers, P.O. Box 11995, Chicago, Illinois 60611.

**Farm/Ranch Insurance**  
**JERRY SHIPMAN, CLU**  
 801 North Main Street  
 Off.: 364-3161  
State Farm Fire and Casualty Company  
 Home Office: Bloomington, Illinois

**Convenience Beverage Inc.**

Bud & Bud Light \$4.79 12 Pack Cans

**If it's Borden's... it's got to be good**

BORDEN'S FRESH & HOT Sausage On A Stick	99¢ EACH
BORDEN'S BUTTERMILK	1/2 GAL. CTN. 99¢
BORDEN'S WHIPPING Cream	8 OZ. CTN. 69¢
BORDEN'S SOUR CREAM OR Dips	2 8 OZ. CTNS. 99¢
BORDEN'S REGULAR Egg Nog	QT. CTN. 99¢

ALLSUP'S FRESH & HOT Sausage On A Stick

COFFEE MUGS: FILLED WITH FRESH HOT COFFEE ALLSUP'S Coffee Mugs 99¢ EACH. REFILLED AT ALL ALLSUP'S LOCATIONS FOR ONLY 25¢.

RUFFLES REGULAR/SOUR CREAM & ONION/BARBECUE/BACON & SOUR CREAM/CHEDDAR & SOUR CREAM

**Potato Chips** NOW ONLY 99¢ REG. \$1.39

ALLSUP'S Hot Chocolate 8 OZ. CUP ONLY 30¢

SHURFINE Biscuits 8 for \$1.00

DECKER Bacon 1 Lb. \$1.49

FRESH CUT Christmas Trees \$8.99 AS LOW AS

- SCOTCH PINE
- FIR
- BLUE SPRUCE
- BALSAM

We've got the tree you want at Allsup's

WE WILL BE OPEN ALL DAY CHRISTMAS FOR YOUR SHOPPING CONVENIENCE

**Merry Christmas**

From all of Your Friends at **Allsup's**

PRICES EFFECTIVE DECEMBER 18-19-20, 1986 WHILE SUPPLIES LAST

**ALLSUP'S CONVENIENCE STORES**

30 YEARS OF SERVING YOU

Pop Special Pepsi-Cola \$1.09 2 Liter

SHURFINE Sweet Potatoes 16 Oz. 2/99¢

SHURFINE Cranberry Sauce 16 Oz. 2/99¢

Season's Greetings

from Arrowhead Mills

Gift Boxes Available at Front Store.

Mon-Fri 8 a.m. - 5:30 p.m.  
 Sat. 8 a.m. - 12 (Noon)

110 S. Lawton  
 364-0730



## Senator Bill Sarpalius



### Reports



#### COUNTY SALES TAX EXPLAINED

AUSTIN — One of least understood provisions in the tax bill passed during the summer special sessions was the one that allowed counties to impose a half-cent sales tax in exchange for lowering property tax rates.

Little was known about the provision because it was overshadowed by the tax bill's primary purpose, which was to raise the state sales and motor fuels taxes. The county sales tax has begun to attract attention only recently as a number of counties debate the merits of implementing it.

A case in point is Potter County, where the commissioners are considering levying the tax. The advantages of the tax seem too good to resist, yet many residents appear suspicious of it because it represents the first they ever will have paid a sales tax to the county.

Perhaps a closer look at the tax — and the history behind it — is in order. Such in-depth study might help residents in Potter County and other counties considering the tax better understand what they are facing.

The county sales tax provision was included in the tax bill primarily to give counties (and cities, which have a similar option) an opportunity to roll back property taxes that are excessively high. The idea was to spread the burden of local government to all who use its services instead of balancing those local budgets strictly on the backs of property tax owners.

According to the provision, a county that chooses to implement the half-cent tax in return must reduce property taxes by an amount equal to the amount generated by the new sales tax. From then on, property taxes could be increased only when sales-tax revenue failed to grow while excessive growth in sales-tax revenue would mandate further property tax reductions.

In Potter County, implementation

of the new tax would cut the average property owner's tax bill in half, an awfully tempting proposition. At the same time, some legitimate questions about the tax are being raised by county residents.

Could Potter County commissioners quickly raise the property tax back up after adopting the sales tax? No, the tax bill specifically prohibits such action. Property tax increases will be tied to sales-tax revenue.

What would happen if Potter County adopted the tax and Randall County didn't? Would merchants in Randall County have an unfair competitive advantage because their goods would cost less?

That's a much tougher question, and one each county considering the tax must address. Anytime items for sale in an adjacent county are even slightly cheaper there is a risk of lost business.

These questions, though, point out the single best aspect of the county tax provision. No county sales tax can be levied without voter approval. That means you, the taxpayer, have an opportunity to judge the proposed tax thoroughly and the final say on whether they pay it. Also, an election to rescind the tax can be called at almost any time.

It was because of the voter-approval safeguards that we, along with State Reps. Buck Buchanan, Pete Laney, Jim Rudd and Chip Staniswalis, supported the county sales tax provision of the tax bill.

Each of us realized the tax wasn't going to be perfect for every county, but we also knew it just might be the only way to lower alarmingly high property taxes in a few. At any rate, we all thought you, the taxpayer, had the right to choose.

If you have additional questions about the county sales tax, or other issues, please write us at P.O. Box 12068, Austin, Texas, 78711.

## Sarpalius installed in recent ceremony

State Senator Bill Sarpalius was honored by the Panhandle-Plains Historical Museum recently for his recent contribution to the Texas Hall of State Government, according to Museum Director Tom Christian.

Sarpalius' portrait was formally placed in the Texas Hall of State Government, a division of the Museum's Research Center. The Senator becomes the eighth Texas legislator to be so honored.

"The Texas Hall of State Government was established in the Museum's Research Center by legislative act in the mid-1960s," said Claire Kuehn, the Museum's Librarian. It is an archival repository for the public papers of Texas' State Senators and Representatives.

A long-time Panhandle resident, Sarpalius attended school at Boys' Ranch, received a B.S. degree from Texas Tech, and earned an M.S. degree from W.T.S.U.

He is presently serving as State Senator representing District 31, a 29-county region which includes the top 26 counties of the Texas Panhandle.

Sarpalius was elected to the Senate in 1981. His first bill, enacted into law

in April of that year, authorized the Panhandle-Plains Historical Society to receive for the State of Texas a grant of \$3.25 million from the Harrington Foundation, of Amarillo. The funds financed construction of the Museum's Petroleum Wing, said Kuehn.

"Senator Sarpalius has donated to the Museum his public papers relating to his legislative service from 1981 through 1985," said Kuehn. The collection includes constituents' letters, news clippings, oil and gas letters, and files relating to the proceedings of the Sunset Commission.

The German city of Munich was founded in 1158.

**Charlie's Tire & Service Center**  
**Special**  
 Oil Change-Grease Job \$15.95  
 Oil & Filters Included  
**Quality Tires-Quality Service**  
 Tractor-On Farm Truck-On Road  
 Passenger-On Road  
 Computer Spin Balancing  
 Front End Alignment  
 Grease Jobs Bearing Pack Shocks  
 Oil Change Brake Repair  
 501 West 1st 364-5033

## As male counterparts

# Women were treated same

Today equality may indicate a progressive attitude, but historically that has not always been so.

Texas Tech University sociologist Marietta Morrissey said that her research into slavery in the Caribbean shows that women were treated virtually the same as their male counterparts.

"I don't know if the sexes were so much equal or if they simply became dehumanized, blotting out individual characteristics. They became less differentiated over time and were seen only as a unit of labor," she said.

Morrissey's research into women in slavery grew from her dissertation work on economic development in the Caribbean. While slavery was an important element in the area's economics, there is virtually no material on the lives and work roles of women in those societies.

"The information I have seen on slavery deals almost exclusively with males," Morrissey said. "I have many questions on fertility, treatment and social standing of female slaves in the West Indies."

Morrissey said she found it an interesting contradiction that while men and women were treated equally as slaves, they lived in an agrarian society where men and women are traditionally treated unequally.

"Perhaps slaves could be better compared to our industrialized society where there is a much higher degree of equality between the sexes

than in their agrarian setting," she said.

Morrissey found that physical treatment and degree of work were basically the same between males and females. Females, even when pregnant, were beaten and tortured as severely as male slaves were.

"I found that women were made to work just as hard as their male counterparts," Morrissey said. "Men were more likely to be found doing the more arduous work like cutting sugar cane. But, toward the end of the slave era, when there were more female slaves than male, production on the cane plantations did not necessarily decline which indicates that the women often picked up the slack."

Morrissey said males had an advantage over female slaves in that they tended to have access to positions as artisans and skilled workers where women were domestics. But women sometimes had control over provision grounds given to slaves to grow their own food. This was in direct opposition to U.S. practices where if any land was given to slaves it was to the men.

"While the women had power when they controlled the food plot and the money made from selling excess products at market, there was a problem in that they had to rely on male help for the heavy work of clearing the land. The female was also expected to care for the children, gather the food and cook," Morrissey

said. While there is evidence of nuclear families among the slaves, there is little evidence that there were multigenerational families, as in the U.S. slave South.

"Perhaps as many as half the female slaves lived in nuclear families on some plantations, but nearly as many could have been single household heads," Morrissey said. "It was important for women to have children to help them with the heavy work when they controlled the food plots in the absence of a man."

Because children were important, Morrissey found the low birth rate among West Indies slaves interesting. There is evidence that the Caribbean slave women were more often infertile than their counterparts in the U.S., who had a high birth rate.

"There are questions as to whether these women were making fertility decisions by having abortions or ab-

staining from sex," Morrissey said. "There is little evidence to back these theories up. It is more likely that illnesses like tuberculosis caused a great deal of infertility."

Morrissey said that her work has raised many broad questions that she hopes will result in future researchers looking more in-depth at specific questions.

"While there is a lot of work on slavery in general, there is very little on the role women played," Morrissey said. "It's interesting that in an era when women were in general treated differently than men, female slaves were treated remarkably equally to the males in their society."

The 5th Dimension won the 1967 single record Grammy with "Up, Up and Away."

Samuel C. Johnson introduced Johnson's Wax in Racine, Wis., in 1886.

Steel Siding      Steel Overhang      Storm Windows  
 Free Estimates  
**Richards Siding Company**  
 "Your Home-Town Siding Company"  
 Alside  
 Leon Richards-Owner 364-6000

## BARRICK'S HAS THE BEST DEALS!

OR      OR

Give Furniture This Christmas      Give An Appliance This Christmas      Give A RCA TV or VCR This Year

## BEST TERMS IN TOWN ---

No Down Payment!!      No Payment 'til March 1987!!      90 Days Same As Cash!!!

Also: • 30 Day Charges      • Layaways  
 • Instant Credit In Most Cases



ALL THIS-PLUS--  
 ALL MERCHANDISE REDUCED

# 20% to 50%

Shop-Compare-You'll Buy From Barrick's

## BARRICK Furniture & Appliance

W. Hwy. 60 "Never Undersold" 364-3552

## Arrow Sales, Inc.

Customer Appreciation Day

Dec. 18th

10% off all non-discounted items.

Refreshments will be served.

Come On In!

409 E. 1st 364-2811





**Jack & Jill**  
FOOD CENTER

SERVED BY NASH FINCH COMPANY  
SUPPLIER TO SUCCESSFUL RETAIL  
FOOD STORES FOR 100 YEARS

**Store Hours**  
7 a.m. - 11 p.m.

**Closed**  
**Christmas**  
**Day**

# The Merry Christmas

**MOORE'S Jack & Jill "We're**  
**HEREFORDS HOME OWNED AND OPERATED**  
**WATCH US GROW**



All Flavors  
**JELLO**  
**3 \$1.00**  
3 oz. Pkgs.

Kraft Reg. or Mini  
**MARSHMALLOWS** ..... 10 oz. Pkg. **55¢**  
Hersheys  
**CHOCOLATE SYRUP** .... 16 oz. Can **89¢**

Fisher	PECAN CHIPS	6 oz. Pkg.	\$2.09
Fisher	WALNUT HALVES	8 oz. Pkg.	\$1.89
Fisher	RAW PEANUTS	12 oz. Pkg.	\$1.38



Hersheys Assorted  
**CHOCOLATE**  
**MINIATURES**

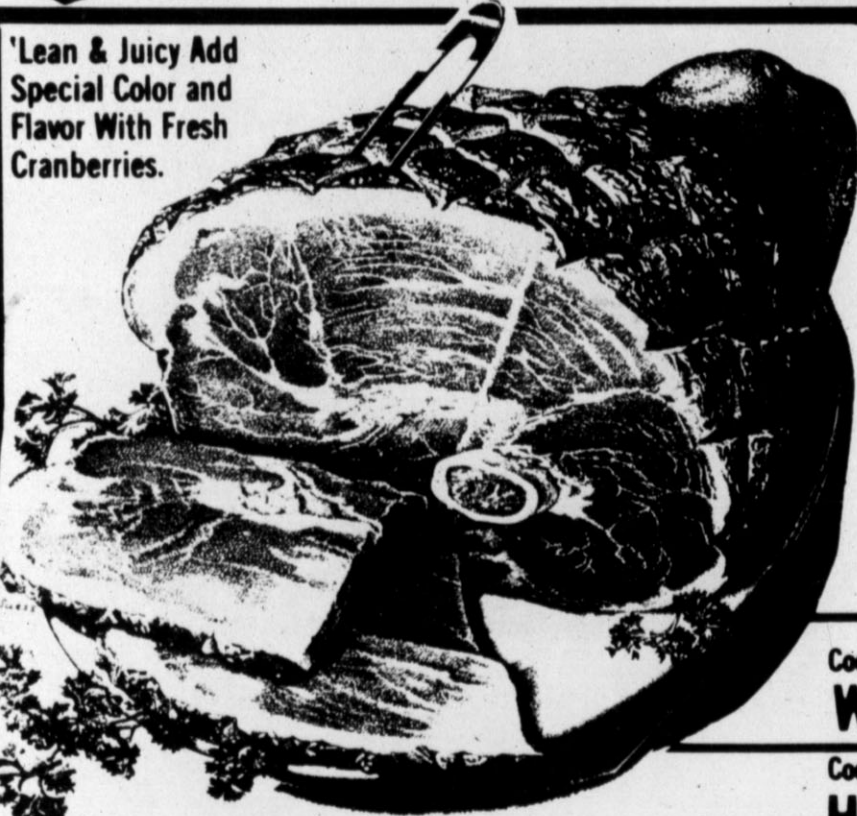
9 to 11 oz. Pkg. **\$1.69**



Stove-Top Assorted  
**STUFFING MIX**  
Our Family  
**MANDARIN ORANGES**  
Our Family Deep Dish  
**PIE SHELLS**  
Kleenex  
**NAPKINS**

Reynolds Heavy Duty  
**FOIL WRAP**

'Lean & Juicy Add  
Special Color and  
Flavor With Fresh  
Cranberries.



Cook's 'SUPER TRIM' Bone-In  
**SMOKED**  
**HAM**

'SHANK  
PORTION'  
**\$1.29**  
Lb. (water Added)

Cook's 'Super Trim' "BUTT PORTION" or  
**WHOLE SMOKED HAM** .. Lb. **\$1.39**

Cook's 'CENTER CUT'  
**HAM SLICES** ..... Lb. **\$1.99**

Tender Taste® 'BONELESS'  
**RIB EYE ROAST** ..... Lb. **\$3.99**

Tender Lean 'Center Cut'  
**PORK RIB ROAST** ..... Lb. **\$1.89**

Bonnie Best  
**BAKING HENS** ..... Lb. **99¢**

Bonnie Best  
**GRADE A DUCKS** ..... Lb. **\$1.24**

Rodeo 93% Lean  
**BONELESS WHOLE HAMS** .. Lb. **\$3.09**

Rodeo 93% Lean  
**BONELESS HALF HAMS** .. Lb. **\$3.23**

Barber 'FRESH FROZEN'  
**TURKEY HINDQUARTERS** ..... Lb. **58¢**  
Wilson  
**SLICED BACON** ..... 16 oz. Pkg. **\$1.87**  
Wilson  
**MEAT or BEEF SLICED BOLOGNA** ..... 16 oz. Pkg. **\$1.63**



10-14 lb. Avg.  
Grade A  
**PERKY**  
**TURKEYS**

Self Basting  
**89¢**  
W/Pop-Up  
Timer Lb.

Grade A Self Basting 5-9 Lb. Avg. \$1.12  
**PERKY TURKEY** ..... Lb.



Wilson CornKing  
**BONELESS**  
**HAM**  
**\$2.18**  
Lb. (Water Added)

Wilson CornKing Bnls.  
**HALF HAM**  
**\$2.33**  
Lb. (Water Added)

Pala Dura Sliced  
**SLAB BACON**  
**\$1.79**  
Lb.



Tender Taste® 'BONELESS'  
**ROUND ROAST**

'Bottom  
Cut'  
**\$1.59**  
Lb.

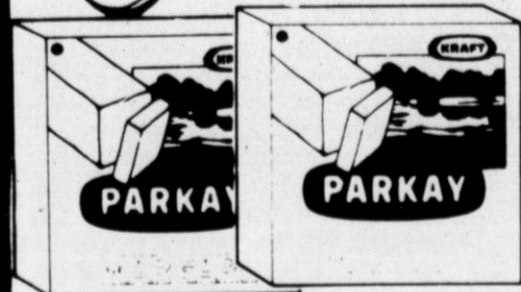
Lean & Tender  
A Special Way To  
Celebrate a  
Special Dinner



**Kraft**  
**CREAM**  
**CHEESE**

8 oz. Pkg. **79¢**

For Delicious Dessert  
Buy Now and Save



**Kraft 'PARKAY'**  
**MARGARINE**

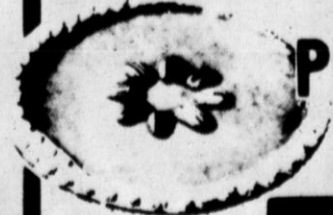
Add's that  
Special  
Taste  
To Your Holiday  
Meals.  
1 Lb. Pkg. **49¢**

**Kraft**  
**MARSHMALLOW**  
**CREME** ..... 7 oz. jar **69¢**



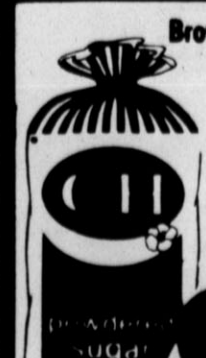
Our Family  
**WHIPPED**  
**TOPPING**

8 oz. Ctn. **69¢**



Banquet  
**PUMPKIN**  
**PIE**

20 oz. Pie **79¢**



Brown, Dh. Brown or Powdered  
**C&H**  
**SUGAR**

2 Lb. Bag **89¢**



Wilderness  
**PIE**  
**FILLING**

21 oz. Can **\$1.19**



# Christmas Sale

"We're Here To Stay"  
 GARDEN SUPERMARKET  
 NOW!



Green Giant Sweet Whole Kernel or Cream Style  
**PEAS — CORN**  
 Kitchen Sliced, French Style or Cut  
**GREEN BEANS**  
 5 16 oz. Cans **\$1.89**

Swanson Beef or CHICKEN BROTH 2 14 oz. Cans 89¢  
 Durkee, Large Pitted RIPE OLIVES 15 oz. Can 99¢  
 Durkee Manzanilla STUFFED OLIVES 5 1/2 oz. Jar 79¢

6 oz. Box 89¢  
 11 oz. Can 59¢  
 Pkg. of 2 99¢  
 Pkg. of 50 99¢

18" X 25" Roll **\$1.29**



Pillsbury Layer **CAKE MIXES**  
**79¢**  
 18 to 20 oz. Box  
 Top With Pillsbury R.T.S. Frosting



Family **WHIPPED TOPPING**  
**69¢**

**PILLSBURY FLOUR**  
 5 Lb. Bag **99¢**



All Grinds **FOLGERS COFFEE**  
**\$2.99**  
 1 lb. Can  
 A Great Way To Start Your Day With A Refreshing Cup of Coffee.

*Season's Best Buys* Dewy-Fresh  
 Golden Ripe **CHIQUITA BANANAS** Save up to 20¢ Per Lb.  
**4 \$1.00** LBS.

Crisp & Tender Stuff with Kraft Cheese for snack items.  
 California **PASCAL CELERY**  
**4 \$1.00** Stalks

California **YAMS** LB. 49¢

Washington Extra-Fancy Red or Golden **DELICIOUS APPLES**  
 Washington

California Sunlight **D'ANJOU PEARS**  
 California Sunlight

Perfect For Holiday Gift Giving  
**NAVEL ORANGES**  
**4 \$1.00** for only  
 US No. 1 Colorado **RUSSET POTATOES**  
 10 lb. bag **\$1.19**

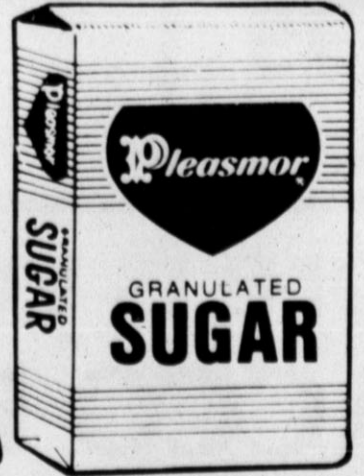
Florida **RUBY RED GRAPEFRUIT**  
**4 For Only \$1.00**  
 Red GRAPEFRUIT **\$6.99** Great Gift Idea!  
 1/2 ctn.

This Year Give A **Fruit Basket Gift**

Town Talk **BROWN & SERVE ROLLS**  
**2 99¢**  
 12 ct. Pkgs.



**COCA COLA**  
**99¢**  
 2 liter



**PLEASMOR SUGAR**  
**\$1.49**  
 5 Lb. Bag

**MOORE'S Jack & Jill**  
 1105 WEST PARK

derness 'Cherry' **PIE FILLING**  
**\$1.19**



Del Monte **FRUIT COCKTAIL**  
**79¢**  
 Reg. or Light 17 oz. Can



Delicious **NESTLE MORSELS**  
**\$1.99**  
 12 oz. Pkg.  
 •Regular  
 •Butterscotch  
 •Semi Sweet Mini  
 •Milk Chocolate  
 •Peanut Butter



Viva Assorted **PAPER TOWELS**  
**79¢**  
 Jumbo Roll



**Jack & Jill FOOD CENTER**  
 SERVED BY NASH FINCH COMPANY  
 SUPPLIER TO SUCCESSFUL RETAIL FOOD STORES FOR 100 YEARS  
 PRICES GOOD THRU WED., DEC. 24, 1986  
 — Quantity Rights Reserved —





**Jack & Jill**  
FOOD CENTER

SERVED BY NASH FINCH COMPANY  
SUPPLIER TO SUCCESSFUL RETAIL  
FOOD STORES FOR 100 YEARS

**Store Hours**  
7 a.m. - 11 p.m.

**Closed**  
**Christmas**  
**Day**

# The Merry Christmas

**MOORE'S Jack & Jill "We're**  
**HEREFORDS HOME OWNED AND OPERATED**  
**WATCH US GROW**



All Flavors  
**JELLO**  
**3 \$1.00**  
3 oz. Pkgs.

Kraft Reg. or Mini  
**MARSHMALLOWS** ..... 10 oz. Pkg. **55¢**  
Hersheys  
**CHOCOLATE SYRUP** ..... 16 oz. Can **89¢**

Fisher	PECAN CHIPS	6 oz. Pkg.	\$2.00
Fisher	WALNUT HALVES	8 oz. Pkg.	\$1.89
Fisher	RAW PEANUTS	12 oz. Pkg.	\$1.38



Hersheys Assorted  
**CHOCOLATE**  
**MINIATURES**

9 to 11 oz. Pkg. **\$1.69**



'Lean & Juicy Add  
Special Color and  
Flavor With Fresh  
Cranberries.



Cook's 'SUPER TRIM' Bone-In  
**SMOKED**  
**HAM**

'SHANK  
PORTION'  
**\$1.29**  
Lb. (water Added)

Cook's 'Super Trim' 'BUTT PORTION' or  
**WHOLE SMOKED HAM** ..... Lb. **\$1.39**

Cook's 'CENTER CUT'  
**HAM SLICES** ..... Lb. **\$1.99**

Tender Taste® 'BONELESS'  
**RIB EYE ROAST** ..... Lb. **\$3.99**

Tender Lean 'Center Cut'  
**PORK RIB ROAST** ..... Lb. **\$1.89**

Bonnie Best  
**BAKING HENS** ..... Lb. **99¢**

Bonnie Best  
**GRADE A DUCKS** ..... Lb. **\$1.24**

Rodeo 93% Lean  
**BONELESS WHOLE HAMS** ..... Lb. **\$3.09**

Rodeo 93% Lean  
**BONELESS HALF HAMS** ..... Lb. **\$3.23**

Barber 'FRESH FROZEN'  
**TURKEY HINDQUARTERS** ..... Lb. **58¢**  
Wilson  
**SLICED BACON** ..... 16 oz. Pkg. **\$1.87**  
Wilson  
**MEAT or BEEF SLICED BOLOGNA** ..... 16 oz. Pkg. **\$1.63**



10-14 lb. Avg.  
'Grade A'  
**PERKY**  
**TURKEYS**

Self  
Basting  
W/Pop-Up  
Timer  
**89¢**  
Lb.

Grade A Self Basting 5-9 Lb. Avg. \$1.12  
**PERKY TURKEY** ..... Lb.



Wilson CornKing  
**BONELESS**  
**HAM**  
**\$2.18**  
Lb. (Water Added)

Wilson CornKing Bnis.  
**HALF HAM**  
**\$2.33**  
Lb. (Water Added)

Pala Dura Sliced  
**SLAB BACON**  
**\$1.79**  
Lb.



Tender Taste® 'BONELESS'  
**ROUND ROAST**

'Bottom  
Cut'  
**\$1.59**  
Lb.

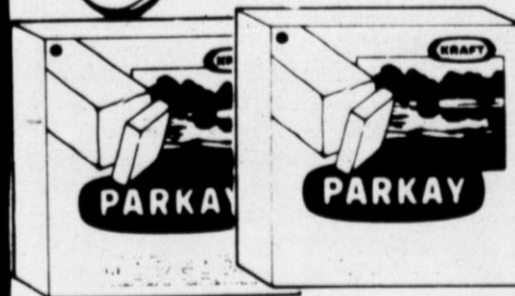
Lean & Tender  
A Special Way To  
Celebrate a  
Special Dinner



Kraft  
**CREAM**  
**CHEESE**

8 oz. Pkg. **79¢**

For Delicious Dessert  
Buy Now and Save



Kraft 'PARKAY'  
**MARGARINE**

Add's that  
Special  
Taste  
To Your Holiday  
Meals.  
1 Lb. Pkg. **49¢**

Kraft  
**MARSHMALLOW** **69¢**  
**CREME** ..... 7 oz. jar

Stove-Top Assorted  
**STUFFING MIX**  
Our Family  
**MANDARIN ORANGES**  
Our Family Deep Dish  
**PIE SHELLS**  
Kleenex  
**NAPKINS**

Reynold's Heavy Duty  
**FOIL WRAP**



Our Family  
**WHIPP**  
**TOPPI**

8 oz. Ctn. **69¢**



Banquet  
**PUMPKIN**  
**PIE**

20 oz. Pie **79¢**



Pillsbury's  
**BEST**  
**XXXX**  
Flour

BAKE YOUR BEST  
WITH  
PILLSBURY'S BEST



Brown, Dk. Brown or Powdered  
**C&H**  
**SUGAR**

2 Lb. Bag **89¢**



Wilderness  
**PIE**  
**FILLING**

21 oz. Can **\$1.19**



# Christmas Sale

"We're Here To Stay"  
 BEST SUPERMARKET  
 NOW!

Green Giant Sweet Whole Kernel or Cream Style  
**PEAS — CORN**  
 Kitchen Sliced, French Style or Cut  
**GREEN BEANS**  
 5 16 oz. Cans **\$1.89**

Swanson Beef or CHICKEN BROTH 2 14 oz. Cans 89¢  
 Durkee, Large Pitted RIPE OLIVES 15 oz. Can 99¢  
 Durkee Manzanella STUFFED OLIVES 5 1/2 oz. Jar 79¢

Pillsbury Layer **CAKE MIXES**  
 18" X 25" Roll **\$1.29**  
**79¢**  
 18 to 20 oz. Box  
 Top With Pillsbury R.T.S. Frosting

All Grinds **FOLGERS COFFEE**  
 1 lb. Can **\$2.99**  
 A Great Way To Start Your Day With A Refreshing Cup of Coffee.

Del Monte **FRUIT COCKTAIL**  
 17 oz. Can **79¢**

Season's Best Buys Dewy-Fresh  
 Golden Ripe **CHIQUITA BANANAS** Save up to 20% Per Lb.  
**4 \$1.00** LBS.  
 Crisp & Tender Stuff with Kraft Cheese for snack items.  
 California **PASCAL CELERY** **4 \$1.00** Stalks  
 California **YAMS** LB. **49¢**  
 Washington Extra-Fancy Red or Golden **DELICIOUS APPLES**  
 Washington **D'ANJOU PEARS**  
 California Sunkist **NAVEL ORANGES** Perfect For Holiday Gift Giving.  
**4 \$1** for only  
 US No. 1 Colorado **RUSSET POTATOES** 10 lb. bag **\$1.19**  
 Florida **RUBY RED GRAPEFRUIT** **4 For Only \$1**  
**\$6.99** Great Gift Idea!  
 1/2 ctn. **Red GRAPEFRUIT**

Town Talk **BROWN & SERVE ROLLS**  
 12 ct. Pkgs. **2 99¢**

**PLEASMOR SUGAR**  
 5 Lb. Bag **\$1.49**

**COCA COLA**  
 2 liter **99¢**

**MOORE'S Jack & Jill**  
 1105 WEST PARK  
**Jack & Jill FOOD CENTER**  
 SERVED BY NASH FINCH COMPANY  
 SUPPLIER TO SUCCESSFUL RETAIL FOOD STORES FOR 100 YEARS  
 PRICES GOOD THRU WED., DEC. 24, 1986  
 — Quantity Rights Reserved —

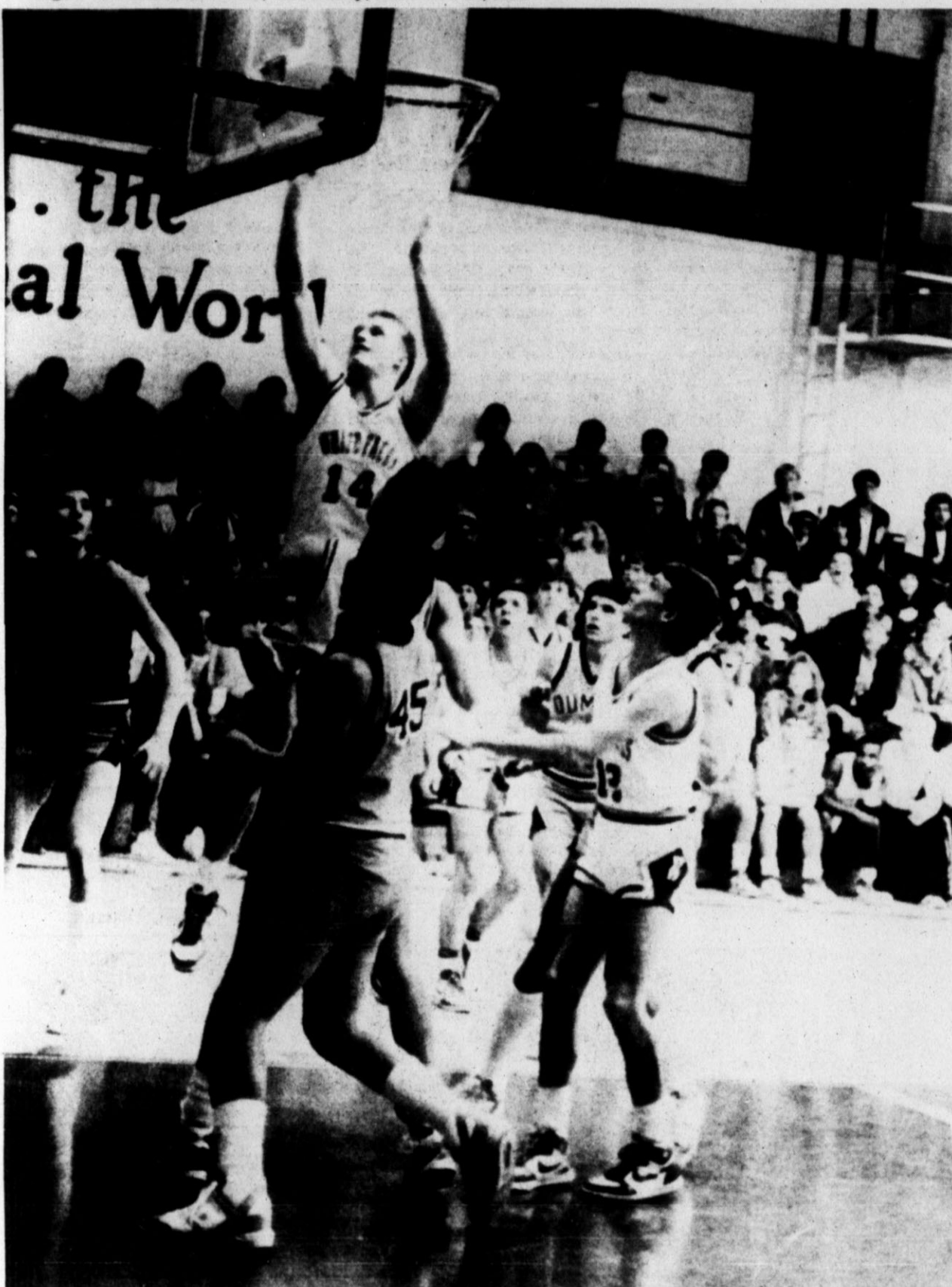
Delicious **NESTLE MORSELS**  
 12 oz. Pkg. **\$1.99**

Viva Assorted **PAPER TOWELS**  
 Jumbo Roll **79¢**

**PILLSBURY FLOUR**  
 5 Lb. Bag **99¢**

Wilderness 'Cherry' **PIE FILLING**  
 17 oz. Can **\$1.19**





**Flying High**

Rodney McCracken (14) of the Hereford Whiteface varsity boys' basketball team scores a field goal early in the game Tuesday night against Dumas, as teammate Brian Townsend (12) looks on. McCracken, playing in his first basketball game of the season after concluding the

football season, scored eight points. His defensive efforts, which included blocking several Dumas shots, helped the Whitefaces build up a 32-12 halftime lead. Hereford won the District 1-4A opener, 58-40. (Brand photo by Gary Christensen)

**Whiteface varsity boys smother Demons, 58-40**

By GARY CHRISTENSEN  
Sports Editor

An outstanding defensive effort, including the blocking of many shots by the opponents, helped power the Hereford Whiteface varsity boys' basketball team smother the Dumas Demons Tuesday night in Hereford, 58-40.

It was the District 1-4A opener for the Whitefaces, who are now 4-8 for the season. Hereford's junior varsity boys were also winners Tuesday over Dumas, 51-49, and now have a 5-6 season record.

Hereford plays at home Friday night against Frenship. Game times are 7 p.m. for the junior varsity and 8:30 p.m. for the varsity.

In Tuesday's varsity game, the score was tied at 2-2 and 4-4 before Hereford built up leads of 10-4 and 12-6. Dumas closed to within four points at 12-8, but the Whitefaces scored 10 straight points before the Demons could score again.

A basket by Brad Smith with 4:55 left in the second quarter gave Hereford the 22-8 lead.

After Dumas scored a pair of baskets to make the score 22-12, Hereford scored 12 straight points for a 34-12 halftime lead.

Smith, Rodney McCracken led the first half defensive effort by blocking

several Dumas shots, and the Whitefaces also put on a good press against the Demons.

The Whitefaces' biggest lead of the second half was 27 points at 54-27 with 5:08 left in the game, when Kevin Hansen scored a field goal.

"It was real important for us to win this district game. You can't afford to lose a home district game," Hereford Coach Mike Fields said.

"Our effort on defense was the key. If we want to be a good team, we've got to keep striving to improve on defense.

"We've got so many people who can play; they can go as hard as they can for a couple of minutes, then we can put someone else in and it won't hurt us," Fields continues.

"Our offense wasn't really good tonight, but as we get more into the season, our kids should begin to work well together.

"With the winning tradition the football players bring in, and with those who have already been playing beating an established program like Dimmitt last Friday, our confidence is real high. And we've got to work hard," Fields adds.

The scoring was balanced among the Whitefaces, who made 25 of 45 shots from the field. Brad Smith was the leading scorer with 12 points.

Three others each contributed eight points — Todd Weaver, David Manchee, and Rodney McCracken. Bobby Baker added seven points for Hereford.

Smith led in rebounds with 11, and Kevin Hansen, McCracken and Baker each had three rebounds. Weaver led in steals with five, and Chris Johnson had three steals.

Hereford and Dumas played a close game all the way in the junior varsity game. Dumas held a 25-24 halftime lead, and Hereford led 38-37 after three quarters enroute to the 51-49 win over Dumas.

Pat Mercer led Hereford with 12 points, and Jay Beene was also in double figures with 10 points. Other Hereford scorers included John Mark Streun with eight points, Ross Torres with seven points, and Clint Cotten with six points.

Beene led in rebounds with six and Mercer had five rebounds.

HEREFORD VARSITY: Brad Smith 6-10 0-3 12; Rodney McCracken 4-7 0-0 8; Todd Weaver 4-5 0-1 8; David Manchee 4-6 0-0 8; Bobby Baker 3-5 1-1 7; Kent Walterscheid 0-3 5-6 5; Kevin Hansen 2-6 0-0 4; Cody Davis 1-2 1-2 3; Blake Conter 1-2 0-1 2; Mark Artho 0-0 1-2 1. Totals: 25-45 8-15 58.

Rebounds: Smith 11, Hansen, Baker and McCracken 3 each, Brian Townsend 2; assists: McCracken 2; steals: Weaver 5, Chris Johnson 3, Baker, Hansen, Manchee, and Walterscheid 2 each.

Dumas	8	4	13	15-40
Hereford	16	18	11	13-58

HEREFORD JUNIOR VARSITY: Pat Mercer 5-8 2-2 12; Jay Beene 5-6 0-2 10; John Mark Streun 3-5 2-2 8; Ross Torres 3-13 1-4 7; Clint Cotten 2-2 2-2 6; Raymond Romo 2-5 0-0 4; Jason Bullard 1-2 0-0 2; Stuart Mitts 1-3 0-0 2. Totals: 22-51 7-12 51.

Rebounds: Beene 6, Mercer 5, Torres 3; steals: Bullard 2; assists: Arturo Martinez 2.

Dumas	12	13	12	12-49
Hereford	6	18	14	13-51

**Two La Plata boys' 'B' teams defeat Muleshoe**

La Plata Junior High School won a pair of boys' "B" team basketball games played Monday against Muleshoe.

The La Plata eighth grade "B" team scored a 39-13 victory, and the La Plata seventh grade "B" team win 23-19.

Eric Cortez scored eight points, and Randy Robbins and Garrick McPherson each scored six points in the La Plata eighth grade "B" team's victory.

Leading scorers for the Maverick seventh grade "B" team were Roger Ramirez with nine points and Chuck Reinauer with eight points. Muleshoe led by one point at halftime, 9-8.

La PLATA EIGHTH GRADE "B" TEAM: Eric Cortez 4 FG, 8 points; Randy Robbins, 3 FG, 6 points; Garrick McPherson 3 FG, 6 points; Patrick Newton, 2 FG, 4 points; Kent Simmacher, 2 FG, 4 points; Blake Buckley, 2 FG, 4 points; Arthur Allemand 1 FG, 1 FT, 3 points; Brady Wilson, 1 FG, 2 points; Chris Blair, 1 FG, 2 points. La Plata 14 11 8 6-39 Muleshoe 5 2 2 4-13

La PLATA SEVENTH GRADE "B" TEAM: Roger Ramirez 4 1-2 9; Chuck Reinauer 4 0-0 8; T.J. Garza 2 0-0 4; Keith Simmacher 1 0-0 2. Totals: 11 1-4 23.

La Plata	14	11	8	6-39
Muleshoe	5	2	2	4-13

In a fight in 1884 in New York City, John L. Sullivan was arrested by police in the second round and charged with acting in a "cruel and inhuman manner." Sullivan beat the rap in court.

**FB** Jesus is the Reason for the Season Merry Christmas from Martha Jones

**RAYMOND ARTHO**  
CERTIFIED PUBLIC ACCOUNTANT  
300 N. Main  
P.O. Box 236  
Vega, Texas  
267-2108

**Country Store and Bob's Hickory Pit**  
**Holiday Specials**

203 S. 25 Mile Ave. 364-6442 Prices Good Thru Dec. 24th, noon.

<p>Paul Masson Champagne Extra Dry or Brut Your Choice 750 ML. <b>\$4.29</b></p>	<p>Budweiser or Bud Light Coors or Coors Light Lite Beer Your Choice 12 Pack Cans <b>\$4.99</b></p>	<p>Dine in or Carry Out 11:00 a.m. - 2:00 p.m. 5:00 p.m. - 8:00 p.m. Monday thru Saturday</p> <p>Reg. Chopped Beef Sandwich <b>\$1.40</b> Reg. Sliced Beef, Ham or Sausage <b>\$1.50</b> Double Meat Sandwich <b>\$2.00</b></p>
<p>Riurite Ernest &amp; Julio Gallo Reserve Dry Burgandy Reserve Dry Chablis All Flavors Vintage Johannisberg Riesling Your Choice 750 ML. <b>\$2.99</b> <b>\$2.39</b></p>	<p>Hams <b>\$2.15</b> Lb. Custom Orders plus cooking &amp; slicing Turkeys <b>79¢</b> Lb. (while Supply lasts)</p>	<p>To insure delivery of your custom orders—Order before Sunday, Dec. 21st, 10:00p.m. Bring Your Own or We'll Supply</p>

**Country Store is your authorized ACCO FEEDS Dealer for the Hereford area.**

<p>Winners Pride Oats <b>\$5.95</b> 50 Lb.</p>	<p>Sugar Pig 18% Ration <b>\$7.85</b> 50 Lb.</p>	<p>Horse and Mule <b>\$4.95</b> 50 Lb.</p>	<p>Showmaster Hog Feed 16% Ration <b>\$5.85</b> 50 Lb.</p>	<p>4-Way Gain Mix <b>\$4.95</b> 50 Lb.</p>	<p>Showmaster Lamb Feed <b>\$5.85</b> 50 Lb.</p>
--	--	--	--	--	--





### Binder Scores A Layup

Brandi Binder (42) of Hereford drives around a Dumas opponent for a layup in a District 1-4A girls' basketball game played Tuesday night in Hereford. Binder was high scorer for Hereford with 10 points in a 51-29 loss to Dumas. (Brand photo by Gary Christensen)

## Hereford junior varsity wins 35-32

# HHS varsity girls fall to Dumas 51-29

**By GARY CHRISTENSEN**  
Sports Editor  
A cold one and a half quarters to start the game was the downfall of the Hereford High School varsity girls' basketball team in a 51-29 loss to Dumas Tuesday night in Hereford. Dumas scored the first 11 points of the ball game, and later held a 20-2 lead over Hereford in the second

quarter.  
The loss dropped Hereford to 0-3 in District 1-4A games and to 5-10 for the season.  
The HHS junior varsity girls outscored Dumas 19-4 in a second half rally and won their first game of the season, 35-32. The Hereford junior varsity's record is 1-5.  
Hereford's varsity team was play-

ing without its leading scorer Tuesday night. Carmen Brockman, who has a 12.5 average this season, sat out the game with a bruised arm suffered in last Friday's game at Borger.  
Hereford was led by Brandi Binder with 10 points, and Amy Coneway with seven points. Susie Kalka had six points and seven rebounds, and Shea McGinty also had seven rebounds. Binder led in steal with four.

In the junior varsity contest, Hereford fell behind Dumas 28-16 in the first half. After three quarters of play, Dumas' lead was 29-21, but in the final period, Hereford outscored Dumas 14-3 for a 35-32 victory.  
Scoring in double figures for Hereford were Whitney Whitaker with 11 points and Susan Bell with 10 points. Susan Gage, who grabbed 15

rebounds, scored seven points.  
Bell led in steals with eight, and Whitaker had six steals. Renee Mercer had six rebounds and five points. Shea McGinty totaled seven rebounds.  
**HEREFORD VARSITY:** Brandi Binder 3-7 4-4 10; Amy Coneway 3-6 1-2 7; Susie Kalka 2-3 2-2 6; Shea McGinty 1-3 2-4 4; Cindy Tice 1-1 0-0 2; Tricia Kahlich 0-2 0-1 0; Kathy Banner 0-0 0-1 0.  
**Totals:** 10-25 9-16 29.  
**Rebounds:** Kalka and McGinty 7 each, Binder and Coneway 5 each, Kamille Martin 2; steals: Binder 4, Coneway 2; assists: Binder and Kalka 2 each.  
**Dumas:** 14 14 13 10-51  
**Hereford:** 2 11 10 6-29  
**HEREFORD JUNIOR VARSITY:** Whitney Whitaker 4 3-6 11; Susan Bell 3 4-9 10; Susan Gage 2 3-4 7; Renee Mercer 0 5-4 5; Diana Ochoa 0 2-4 2.  
**Totals:** 9-36 17-29 35.  
**Rebounds:** Gage 15, Mercer 6, Ochoa 4, Whitaker, Bell, and Kerri King 2 each; steals: Bell 8, Whitaker 6, Gage 5; assists: Bell 2.  
**Dumas:** 12 16 1 3-22  
**Hereford:** 4 12 5 14-25  
There have been four buildings carrying the name of Madison Square Garden in New York City over a period of more than 100 years.

## NBA standings

By The Associated Press

EASTERN CONFERENCE				WESTERN CONFERENCE			
Atlantic Division				Midwest Division			
Team	W	L	Pct.	Team	W	L	Pct.
Boston	15	7	.682	Utah	14	7	.667
Philadelphia	13	9	.591	Dallas	15	8	.652
Washington	10	12	.455	Denver	11	13	.458
New York	5	19	.208	Houston	9	12	.429
New Jersey	4	19	.174	San Antonio	6	16	.273
Atlanta	18	5	.783	Sacramento	6	17	.261
Milwaukee	16	8	.667	Pacific Division			
Detroit	11	8	.579	L.A. Lakers	17	5	.773
Chicago	11	11	.500	Golden State	14	9	.609
Indiana	11	11	.500	Portland	15	10	.600
Cleveland	9	12	.429	Seattle	11	10	.524
CENTRAL DIVISION				Phoenix	12	11	.522
Boston 107, New York 96	Tuesday's Games			L.A. Clippers	4	18	.182
Utah 109, Washington 106	Detroit 111, Atlanta 100			Wednesday's Games			
L.A. Lakers 121, Cleveland 116	Indiana at Boston			Cleveland at Philadelphia			
Milwaukee 102, Philadelphia 91	Utah at Detroit			Phoenix at San Antonio			
Chicago 99, New Jersey 98	Golden State 119, L.A. Clippers 117			Denver 120, Sacramento 119			
Dallas 101, San Antonio 98	Portland 126, Seattle 118						
Phoenix 106, Houston 102							
Golden State 119, L.A. Clippers 117							

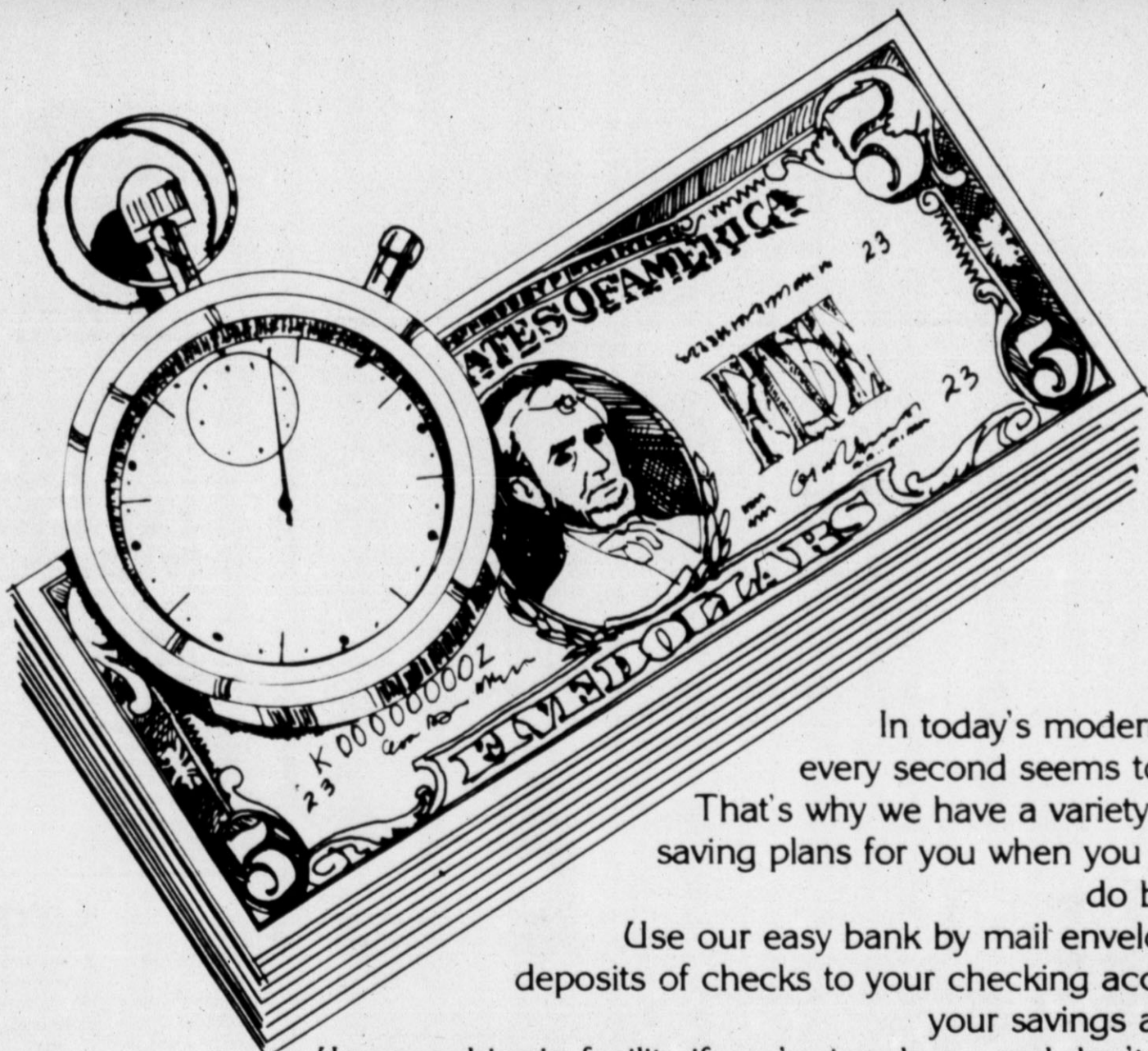
The average height for National Football players at the start of the 1986 season was 6.17. The average weight was 227.1 pounds.

The 1983 NFL draft was a great one for quarterbacks. In the first round alone the following were selected: John Elway, Dan Marino, Jim Kelly, Ken O'Brien, Tony Eson and Todd Blackledge.



801 N. Main 364-8461

# TIME IS MONEY



In today's modern world, every second seems to count. That's why we have a variety of time saving plans for you when you need to do banking.

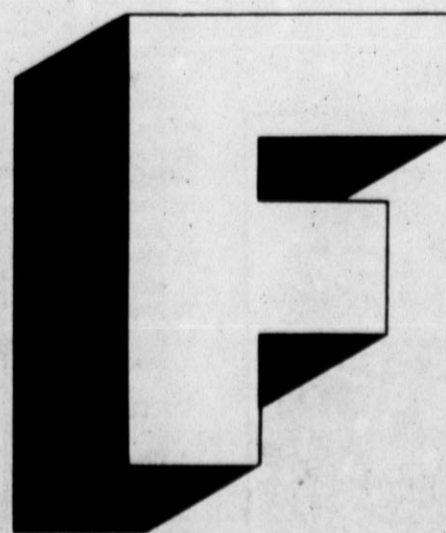
Use our easy bank by mail envelopes for deposits of checks to your checking account or your savings account.

Use our drive-in facility if you're in a hurry and don't want to leave your car.

Or, use our quick and easy parking lot if you need to transact business in the bank.

In any case, you'll find we respect your time.

**You'll Like Our Attitude**



**The First National Bank of Hereford**

P.O. Box 593  
Hereford, Texas 79045  
(806) 364-2435

MEMBER F.D.I.C.

## NFL's individual leaders

By The Associated Press  
Through Games of Monday, Dec. 15  
AMERICAN FOOTBALL CONFERENCE

Quarterbacks				Rushers							
Player	ATT	COM	YDS	TD	INT	Player	ATT	YDS	AVG	LG	TD
Marino, Mia.	584	355	4480	41	21	Dickerson, Rams	286	1753	4.5	42	10
O'Brien, Jets	455	287	3584	25	17	Morris, Giants	219	1401	4.4	54	13
Eason, N.E.	439	270	3269	18	10	Riggs, Atl.	332	1302	3.9	31	8
Krieg, Sea.	351	208	2683	19	11	Mayes, N.O.	270	1292	4.8	50	7
Kelly, Buff.	441	261	3332	21	16	Payton, Chi.	306	1282	4.2	41	7

Rushers				Receivers							
Player	NO	YDS	AVG	LG	TD	Player	NO	YDS	AVG	LG	TD
Warner, Sea.	295	1289	4.4	31	10	Rice, S.F.	82	1499	18.1	66	14
Brooks, Cin.	190	1008	5.3	56	5	Craig, S.F.	77	589	7.6	48	0
Jackson, Pitt.	202	855	4.2	31	5	J. Smith, S.L.L.	75	948	12.6	45	6
Abercrombie, Pitt.	195	779	4.0	38	6	Clark, Wash.	74	1265	17.1	55	7
Winder, Den.	235	777	3.3	31	9	Walker, Dall.	72	807	11.2	84	2

One of the roughest starts in Kentucky Derby history was in 1936. Granville unseated jockey Jimmy Stout, and Brevity, the odds-on favorite, was knocked to his knees. He ultimately finished second to Bold Venture.

**Dr. Milton Adams**  
Optometrist  
335 Miles

Phone 364-2255  
Office Hours:  
Monday - Friday  
8:30-12:00 1:00-5:00

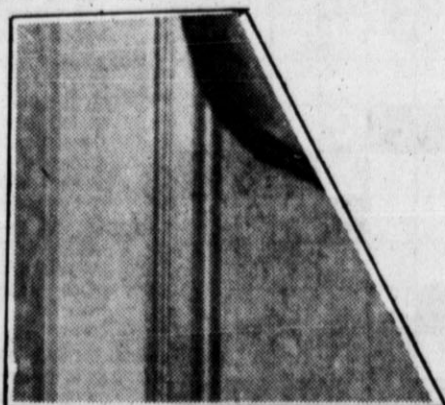
Indoor football was played at Madison Square Garden in New York in the early part of the 20th century. The game officials wore top hats and tails.

## A.O. THOMPSON ABSTRACT COMPANY



Margaret Schroeter, Owner  
Abstracts Title Insurance Escrow  
P.O. Box 73 242 E. 3rd Phone 364-6641  
Across from Courthouse

## Jigsaw Photo Puzzle Game Here's Piece No. 6



Clip to complete your puzzle... you could win \$25 in Hereford Bucks in our "Shop Home for the Holidays" promotion!



About time change

# 'Designing Women' fret

NEW YORK (AP) — When CBS announced it was moving the sassy sitcom "Designing Women" from Monday to Thursday night, the show's sassy stars took to the road to tell viewers.

Their efforts were not immediately successful. "Designing Women" dropped in the Nielsen rankings, and CBS plans to take it off the air temporarily after its Jan. 1 broadcast.

But with any luck, it will get another chance so that Delta Burke, Dixie Carter, Annie Potts and Jean Smart can continue cracking wise on a California soundstage.

The series, about four Southern women who run an interior design business, was written by Linda Bloodworth-Thomason as a snappy-dialogue vehicle specifically for its four stars.

The show was moved to Thursdays as a lead-in to the soap "Knots Landing" — but opposite NBC's hit sitcom "Night Court."

Days before the ratings came out,

Carter and Potts stopped off in New York. They said they were "not exactly worried," but "alert."

"Very alert," added Potts. Potts was the off-the-wall receptionist in the movie "Ghostbusters." Carter co-starred with Delta Burke in the short-lived series "Filthy Rich" and is married to actor Hal Holbrook, who recently did a guest spot on "Designing Women."

The Southern accents are for real. Carter is from Tennessee, Potts from Kentucky.

Not only are they funny, each thinks the other is hilarious, so they tend to digress during an interview. For instance, they decided they would do a play together this spring, perhaps something by an English writer:

Potts: "I have the most insipid English accent. I mean, it's just, you want to smack me immediately! I had no idea I had an accent when I first started working in the theater. My little teacher, she said, 'Darlin',

you're gonna have to get rid of the accent.' I said, 'What accent?'"

Carter: "Daddy came home with a tape recorder, years ago, when tape recorders were huge and had these big reels of tape? He set it up in the kitchen and recorded the meal. We all said, 'Well! Everybody else sounds like themselves, but I certainly don't sound like that!'"

Potts: "I thought I sounded like the cast album of 'The King and I.' And I was so surprised to find out that I sounded like a hick. It was like, 'Who is that person locked inside that tape recorder? Someone is trickin' me!' I thought I sounded like Katharine Cornell."

Carter (laughing to the point of tears): "That's the cutest thing! Kathy Cornell? That's so precious!"

Potts: "I was 13."

Saudi Arabia's King Khalid died in 1982 at the age of 69. He was succeeded by Crown Prince Fahd, his half-brother.

## COMICS

### PEANUTS by Charles Schultz



### STEVE CANYON by Milton Caniff



### FRANK AND ERNEST by Bob Thaves



### THE BORN LOSER by Art Sansom



### EEK & MEEK by Howie Schneider



### ALLY OOP by Dave Graue



### MARMADUKE Brand Anderson



## Television Schedule

### WEDNESDAY

- 6:00** (2) **Hardcastle and McCormick**  
 (3) (7) (8) **News**  
 (9) **MacNeil/Lehrer NewsHour**  
 (1) **Jim and Tammy**  
 (2) **Barney Miller**  
 (11) **SportsCenter**  
 (12) **Maria de Nadie** Grecia Colmenares, Jorge Martinez  
 (13) **Can't on TV**  
 (14) **Riptide Perry King, Joe Penny**  
 (15) **Too Close for Comfort**  
 (16) **Oliver Twist**  
 (17) **(MAX) MOVIE: The Bridge on the River Kwai** \*\*\*\* A British colonel and his men build a strategic bridge for their Japanese captors, although they know their own forces will demolish it. *William Holden, Sessue Hayakawa* (1957) NR Violence.
- 6:05** (1) **Sanford and Son**
- 6:30** (1) **M\*A\*S\*H**  
 (2) **Wheel of Fortune**  
 (3) **Benson**  
 (4) **Entertainment Tonight**  
 (5) **NFL's Superstars**  
 (6) **Dangerouse**  
 (7) **Gimme a Break!**  
 (8) **(HBO) The Talk Show**
- 6:35** (1) **Honeymooners**
- 7:00** (1) **Bring 'Em Back Alive**  
 (2) **Highway to Heaven**  
 (3) **Die Fledermaus** Galina Panova, Richard Cragun (1986)  
 (4) **Perfect Strangers**  
 (5) **Camp Meeting USA**  
 (6) **Twilight Zone**  
 (7) **How the Grinch Stole Christmas** (1966)  
 (8) **World Class Championship Wrestling**  
 (9) **Monte Calvario** Edith Gonzalez, Arturo Deniche  
 (10) **Donna Reed**  
 (11) **Wednesday Night Fights**  
 (12) **MOVIE: White Christmas** \*\* Two Army buddies become a top notch comedy team and get involved with a sister act. They all play at Vermont inn, owned by their former general. *Bing Crosby, Danny Kaye* (1954) NR  
 (13) **Air Power** Walter Cronkite  
 (14) **(HBO) MOVIE: Wild Geese II** \*\* Mercenaries face Soviets, Palestinian terrorists and the IRA in an attempt to spring Nazi war criminal Rudolf Hess from Spandau after 40 years. *Scott Glenn, Barbara Carrera* (1985) R Profanity, Violence.
- 7:05** (1) **MOVIE: It's a Wonderful Life** \*\*\*\* A small town failure contemplates suicide until a guardian angel appears and shows him how life would be if he'd never been born. *James Stewart, Donna Reed* (1946) NR
- 7:30** (1) **Head of the Class** (1986)  
 (2) **College Basketball**  
 (3) **'Twas the Night Before Christmas** (1974)
- 8:00** (2) **700 Club**  
 (3) **NBC Movie of the Week: A Year in the Life, Part 3** Richard Kiley, Eva Marie Saint (1986)  
 (4) **Mark Russell Comedy Special**  
 (5) **Dynasty**  
 (6) **Magnum, P.I.**  
 (7) **Superbouts**  
 (8) **Muchachita** Gonzalo Vega, Talina Fernandez  
 (9) **My Three Sons**  
 (10) **The Legendary Sports Cars**
- 8:30** (1) **The Flapper Story** (1986)  
 (2) **Pastor Paul Cho**  
 (3) **El Camino Secreto**  
 (4) **Monkees**
- 9:00** (1) **Goodbye, Mr. Speaker** (1986)  
 (2) **Hotel**  
 (3) **Jim and Tammy**  
 (4) **The Equalizer**  
 (5) **Bodybuilding**  
 (6) **Muy Especial, Julio Iglesias** Julio Iglesias  
 (7) **Spy**  
 (8) **Alewolf Ernest Borgnine, Jan Michael Vincent** (1985)  
 (9) **Horizons**  
 (10) **(MAX) MOVIE: The Guns of Navarone** \*\*\*\* A British intelligence in the Middle East is forced to send six men on an impossible mission during World War II. *Gregory Peck, David Niven* (1961) NR Profanity, Violence.  
 (11) **(HBO) MOVIE: Rosebud** Beach Hotel \*\* A young couple manage a run down beach hotel owned by the girl's unscrupulous father. Their luck changes when they install hookers as bellhops. *Colleen Camp, Peter Scolari* (1984) R Profanity, Nudity, Adult Themes.
- 9:30** (1) **American Snapshots**  
 (2) **News**  
 (3) **TBA**
- 9:55** (1) **MOVIE: Color Classic Presentation Forty-Second Street** \*\*\*\* A Broadway bound hit is placed in jeopardy when the star breaks her ankle the day before the big opening; it's up to the understudy to save the day. *Warner Baxter, Ruby Keeler* (1933)
- 10:00** (1) **Hardcastle and McCormick**  
 (2) (7) (8) **News**  
 (3) **World Chess Championship**  
 (4) **Dwight Thompson**  
 (5) **Karate**  
 (6) **24 Hours**  
 (7) **Route 66**  
 (8) **Alfred Hitchcock**  
 (9) **Joan Rivers**  
 (10) **An Evening at the Improv**
- 10:30** (1) **Tonight Show**  
 (2) **Nightly Business Report**  
 (3) **Muy Especial, Julio Iglesias**  
 (4) **My Three Sons**

Get plugged in  
**HBO & Cinemax**  
 Hereford Cablevision  
 126 E. 3rd 364-3912

### THURSDAY

- 6:00** (2) **Hardcastle and McCormick**  
 (3) (7) (8) **News**  
 (9) **MacNeil/Lehrer NewsHour**  
 (1) **Jim and Tammy**  
 (2) **Barney Miller**  
 (11) **SportsCenter**  
 (12) **Maria de Nadie** Grecia Colmenares, Jorge Martinez  
 (13) **Can't on TV**  
 (14) **Riptide Perry King, Joe Penny**  
 (15) **Too Close for Comfort**  
 (16) **Shortstories**  
 (17) **(MAX) MOVIE: Butterflies Are Free**  
 (18) **(HBO) MOVIE: Santa Claus: The Movie** \*\* A mischievous elf becomes involved in the evil plot of a toy manufacturer who wants to muscle in on Santa's racket. *Dudley Moore, John Lithgow* (1985) PG Profanity.
- 6:05** (1) **Sanford and Son**
- 6:30** (1) **M\*A\*S\*H**  
 (2) **Wheel of Fortune**  
 (3) **Benson**  
 (4) **Entertainment Tonight**  
 (5) **Speedweek**  
 (6) **Dangerouse**  
 (7) **Gimme a Break!**
- 6:35** (1) **Honeymooners**
- 7:00** (1) **Coral Jungle**  
 (2) **The Cosby Show**  
 (3) **Living Planet: Portrait of the Earth**
- 7:05** (1) **MOVIE: Anatomy of a Murder** \*\*\*\* (1959)  
 (2) **Our World** (1986)  
 (3) **Camp Meeting USA**  
 (4) **MOVIE: Lilies of the Field** \*\*\*\*  
 (5) **Twilight Zone**  
 (6) **Bahin' Hole Special**  
 (7) **Monte Calvario** Edith Gonzalez, Arturo Deniche  
 (8) **Donna Reed**  
 (9) **MOVIE: Miracle on 34th Street**  
 (10) **MOVIE: Yentl** \*\* A turn of the century Polish girl masquerades as a man in order to get the education denied her as a woman. *Barbra Streisand, Amy Irving* (1983) PG Adult Themes.  
 (11) **Idomeneo** Yvonne Kenny, Jerry Hadley (1983)  
 (12) **MOVIE: Anatomy of a Murder** \*\*\*\*
- 7:30** (1) **Family Ties**  
 (2) **Simon and Simon**  
 (3) **Herencia Maldita** Angelica Maria, Miguel Palmer  
 (4) **Mr. Ed**
- 8:00** (2) **700 Club**  
 (3) **Cheers**  
 (4) **Governor's Report**  
 (5) **Dynasty II: The Colbys**  
 (6) **College Basketball**  
 (7) **Muchachita** Gonzalo Vega, Talina Fernandez  
 (8) **My Three Sons**  
 (9) **(MAX) MOVIE: A Piece of the Action**

## Crossword

ANSWER TO PREVIOUS PUZZLE

S	H	U	T	U	P	V	E	A	L		
I	O	L	I	T	E	S	I	S	T	E	R
S	W	E	A	T	S	I	N	T	O	N	E
S	E	X	E	T	T	E	O	P	T	S	
ARSENIC											
V	E	S	T	A	N	A	C	Y	D		
A	G	I	N	G	R	A	G	I	M	E	
A	G	R	O	U	N	D	O	U	N	C	E
L	Y	E	S	U	R	B	E	A	D		
SHROUDS											
V	E	T	O	S	P	R	Y	T	A	C	
I	S	O	L	D	E	G	L	O	R	I	A
I	N	D	E	E	D	E	A	T	I	N	G
E	O	N	S	S	N	O	O	T	Y		

**ACROSS**

- Actor Kruger
- Zipped
- Growing old
- Hot
- Pointless
- Make angry
- 20 450, Roman
- Old coin
- Regretted
- Over (poet.)
- Tea
- Shade tree
- Earth goddess
- By birth
- Be of one mind
- Evasive
- Nobility
- Burdened
- Poverty-war agency (abbr.)
- Low area
- Aviv
- Nose
- Firearm
- 43 Plains Indian
- Poured down
- Intention
- Grape plants
- Scraped
- Chemical compound
- Physician, e.g.
- Philippine native

**DOWN**

- Western hemisphere organization (abbr.)
- Weekend-welcoming abbr.
- Cultivate
- Bystander
- Buddhism type
- Select
- "Tosca" or "Aida"
- 8 Food served
- 9 River in Ireland
- 10 Group of two
- 12 Spinning motion
- 13 Cooking vessel
- 17 Make angry
- 20 450, Roman
- 21 Tug
- 22 S-shaped
- 23 Of the planet Mars (comb. form)
- 25 Spin
- 26 Nest of pheasants
- 27 Knivevel
- 28 Poetic contraction
- 29 Away (pref.)
- 30 Roof overhang
- 32 Devil worship
- 34 Engage in small talk
- 38 Last queen of Spain
- 40 Asian country
- 42 Tear apart
- 43 Kingfish
- 44 Siphon
- 45 Odd (Scott.)
- 46 Crimson
- 47 Within (comb. form)
- 48 Game animal
- 50 Joy
- 51 Sunday speech (abbr.)
- 53 Sign at full house (abbr.)

©1986 by NEA, Inc. (c) 1986 by NEA, Inc. 17

(HBO) MOVIE: Gymkata 1/2 America stands to win a valuable satellite if the US entrant in a grueling endurance test can become the first winning foreigner in over 900 years. *Kurt Thomas, Richard Norton* (1985) R Violence.

**8:30** (1) **Night Court**  
 (2) **Way of the Winner**  
 (3) **Designing Women**  
 (4) **El Camino Secreto**  
 (5) **Monkees**

**9:00** (1) **L.A. Law**  
 (2) **Mystryl**  
 (3) **20/20**  
 (4) **Jim and Tammy**  
 (5) **News**  
 (6) **Knots Landing**  
 (7) **Estamos Unidos**  
 (8) **Spy**  
 (9) **Alewolf Ernest Borgnine, Jan Michael Vincent** (1985)

**9:30** (1) **Bill Cosby**  
 (2) **TBA**  
 (3) **(HBO) Not Necessarily the News**

**10:00** (2) **Hardcastle and McCormick**  
 (3) (7) (8) **News**  
 (4) **Tonight at Farlinghetti**  
 (5) **Capitol Christian Center**  
 (6) **Honeymooners**  
 (7) **Auto Racing '86**  
 (8) **24 Hours**  
 (9) **Route 66**  
 (10) **Alfred Hitchcock**  
 (11) **Joan Rivers**  
 (12) **(HBO) Inside the NFL**

**10:30** (1) **Tonight Show**  
 (2) **Nightly Business Report**  
 (3) **MOVIE: To Kill a Mockingbird** \*\*\*\*  
 (4) **Benson**  
 (5) **Magnum, P.I.**  
 (6) **Barney Miller**  
 (7) **SportsCenter**  
 (8) **(MAX) MOVIE: Used Cars** \*\*\*\*

**11:00** (2) **Burns and Allen**  
 (3) **Sign Off**  
 (4) **Nightline**  
 (5) **Special Presentation**  
 (6) **CBS Late Night Night Heat** Scott Hylands, Jeff Wincott  
 (7) **Skating Magazine**  
 (8) **Amo y Senor**  
 (9) **Donna Reed**  
 (10) **Dragnet**  
 (11) **Taxi**  
 (12) **Idomeneo** Yvonne Kenny, Jerry Hadley (1983)  
 (13) **(HBO) MOVIE: Goodbye, New York**

**11:30** (2) **Best of Groucho**  
 (3) **Late Night with David Letterman**  
 (4) **Nightline**  
 (5) **This is the Life**  
 (6) **MOVIE: Penny Serenade** \*\*\*\* A story of the trials and tribulations of a young married couple who adopt after their own baby dies. *Irene Dunne, Cary Grant* (1941) NR  
 (7) **Skate America 1986**  
 (8) **Mr. Ed**  
 (9) **Edge of Night**  
 (10) **MOVIE: Evil Under the Sun** \*\* An opulent beach resort is the setting as Hercule Poirot attempts to unravel a murder mystery. *Peter Ustinov, James Mason* (1982) PG Profanity, Violence, Mature Themes.

**12:00** (1) **Jack Benny**  
 (2) **Jimmy Breslin's People**  
 (3) **Success 'n Life**  
 (4) **MOVIE: CBS Late Movie Tuareg: Desert Warrior**  
 (5) **Estamos Unidos** Raul Matas  
 (6) **My Three Sons**  
 (7) **Edge of Night**

**12:25** (1) **(MAX) MOVIE: Foreplay** Poor Melvin. He is 18, innocent and totally irresistible to women! The trouble is, all these turned on women turn him off. How can he win? NR Profanity, Nudity.

**12:30** (1) **Doble Gillis**  
 (2) **Muppets**  
 (3) **Down the Stretch**  
 (4) **Monkees**  
 (5) **MOVIE: Buckskin** \*\* A ruthless land baron drives homesteaders out of the Montana territory in droves, aiming to acquire all the land he can. *Barry Sullivan, Joan Caulfield* (1968) G

**12:35** (1) **(HBO) MOVIE: Finders Keepers** \*\* A stress, two comen, a starlet and a soldier are in hot pursuit of a cool \$5 million in stolen loot. *Michael O'Keefe, Louis Gossett Jr.* (1984) R Profanity, Nudity, Violence.



# Christmas Sale



LARGE SELECTION  
LADIES DRESSY  
BLOUSES  
**40% off**  
Orig. 19.99 to 28.00  
Now 11.99 to 15.99



**Sale 12.99**  
**Heavyweight sportshirt sale**

Big Mac® heavyweight plaid sportshirt. Orig. \$18 Sale 12.99  
Big Mac® talls. Orig. \$20 Sale 12.99  
St. John's Bay® quilted shirt. Orig. \$22 Sale 12.99



**SALE 12.99**  
Par Four® and Fox®  
**LONG SLEEVE SHIRTS**  
Orig. 18 & 19  
TALL SIZES 12.99 Reg. 20.00 & 21.00



**Sale 14.99 to 20.99**

**Kids' outerwear sale**  
Reg. 17.99 to 36.00 Don't get left out in the cold! Save on kids' quilted jackets, crinkle nylon ski jackets, bomber styles and much more.



**Sale 14.99**

**Great slack sale**  
Pick up gifts for every man in your life at our Great Slack Sale  
Dak's tri-blend slacks. Reg. \$28 Sale 14.99  
Towncraft® corduroy slacks. Reg. 21.99 14.99



**Sale 24.99**  
**Cozy robes cut the chill factor**

Full length trapunto trim robe. Reg. \$42 Sale 24.99  
Full length wrap robe. Orig. \$42 Sale 24.99  
Full length trapunto trim zip robe. Reg. \$30 Sale 24.99



**40% off**

Large Selection  
JUNIOR and MISSES  
SWEATERS

Mens Wool  
and Corduroy  
SPORTCOATS  
**49.99**  
Orig. \$70.00 to \$89.00

Mens Velour  
SPORTSHIRTS  
**11.99**

Mens Lined  
DENIM VEST  
**21.99**  
Orig. \$36.00

Mens Par Four  
FLANNEL  
SHIRTS  
**8.99**

Mens Flannel  
WESTERN  
SHIRTS  
**12.99**  
Orig. \$18.00

Boys  
SHIRTS and  
VEST SETS  
**7.99 & 8.99**

All Ladies  
FLANNEL  
SLEEPWEAR  
**9.99**

Select Group  
LADIES  
HANDBAGS  
**4.99**

Ladies  
SLEEPWEAR  
ENSEMBLE  
**40% off**

Select Group  
LADIES  
HANDBAGS  
**1/2 off**

Shop Weekdays Until 8:00 P.M. Sunday 1 P.M. To 5:00 P.M.

*You're looking smarter than ever.™*

**JCPenney**  
SUGARLAND MALL



# WANT ADS DO IT ALL! BUY - SELL RENT - TRADE

**THE HEREFORD BRAND**  
 WANT ADS DO IT ALL!  
 YOU WANT IT YOU GOT IT  
**CLASSIFIED**  
**364-2030**  
 ADDRESS: 313 N. LEE

**CLASSIFIED ADS**  
 Classified advertising rates are based on a minimum of 20 words. One day is 13 cents per word or \$2.00 minimum. Rates below are for consecutive issues, no copy change, and apply to solid ad lines only.

TIMES	RATES	MIN.
1 day per word:	.13	2.00
2 days per word:	.22	4.00
3 days per word:	.31	6.20
4 days per word:	.40	8.20
5th day FREE		

Add 9 cents per word for additional days: 10 days (2 free) is 15.20 minimum; 15 days (3 free) is 22.40; month 77.80.

Classified display rates apply for special captions, paragraphing, bold type or larger type, and ads not set with full lines. \$2.00 per column inch, \$2 a column inch for additional insertions, or \$1.75 a column inch per month.

**LEGALIS**  
 Advertising rates for legal notices are \$3.50 per column inch for the first insertion and \$3 per column inch for consecutive issues.

Deadlines for classified ads are 3 p.m. daily for the next day's edition; 3 p.m. Friday for Sunday's edition.

Cash is required on advertisements under \$10.

**ERRORS**  
 Every effort is made to avoid errors in Classified Ads and legal notices. We will not be responsible for more than one incorrect insertion. Advertisers should call attention to any errors immediately after the first insertion. In case of errors not the fault of the advertiser, an additional insertion will be given.

**1. Articles for Sale**

**RENT-A-STORAGE**  
 1-88-tfc 364-7713

WE ARE Distributor of Amarillo Daily and Amarillo Globe News. Call 364-1346.

FOR SALE: 15" wheels for Ford Ranger or Bronco II. Call 364-0458 after 5 p.m.

There's a place for you in Sunday School at First Baptist Church. A new single's class has been started and a class for young married couples. Just come at 9:30 a.m. Sunday and you will be directed to the department you prefer. Your life will be blessed for the effort.

**CAR IN SHOP? FRIENDS GOING TOGETHER?**  
 We now rent Aerostar Vans, Pickups, Cars. Daily, weekly and monthly rentals available.

**WHITEFACE**  
 FORD LINCOLN MERCURY INC.  
 Phone 364-2727  
 1-52-tfc

Introducing SunTana SynSystems, a proven System of Tanning available now Monday afternoon thru Saturday by appointment at JJ's Hair Fashion 1013 West Park Avenue 364-1013 Gift certificates available. 1-201-tfc

**SAVE TAX WITH AN IRA**  
 Call Steve Nieman, CLU  
 or  
**B.J. GILLILAND**  
 Gilliland-Nieman and Associates, Inc.  
 205 E. Park Ave. 364-2666  
 1-164-tfc

**FRESH PECANS**  
 1986 crop, well filled out paper shell, great for baking. 1.25 - 1.50 lb. call Mel Holubec 364-8596. 1-104-tfc

## USE THE WANT ADS

2 sofas - like new. One rust velvet \$200.00. One Rust/beige floral print \$200.00. 364-3534 1-115-5p

Four used P235-750/R15 Whitewall Steel Belted tires for Suburban. \$60.00. Sunbeam Kerosene Heater 18000 BTU-Excellent condition. 364-5975 1-118-5p

**SHAKLEE** - Vitamins, cleaning products, cosmetics. Clyde & Lee Cave, 107 Avenue C. 364-1073. 1-100-tfc

Will Make Excellent Christmas Gifts. Registered, Yorkshire Male, & 1980 Goldwing Motorcycle - will trade for good used car or pickup. 276-5818. 1-111-10p

**NICE 17 cuft. side by side refrigerator with ice maker.** Also ice 30" Kelvinator electric range. 364-8370. 1-112-tfc

**Brown and beige velvet sofa \$300.** Simulated fur and leather suede lady's coat, like new \$100. Off-white lady's leather with fur collar coat \$25. 364-1443. 1-113-5c

**PHEASANT HUNTING, 70 acres with lake, low rates** 364-3566 or 364-1534 1-115-tfc

**FREE PUPPIES.** Call 364-6833 1-116-3p

**FOREVER BLINDS** 50% off Levolor products 30% off Nanik Wood-Mini & Vertical & Optix Blinds. 364-7960 for appointment. 1-47-tfc

**HEATED king size water bed with sheets and spread.** \$600. Call 364-2777. 1-112-tfc

**AKC Cocker Spaniel sire,** looking for meaningful overnight relationship. Fee, or pick of the litter. Call 364-6961 1-117-3p

Used trampoline. \$150. Call 364-2123, ask for Terri. 1-111-10c

**2. Farm Equipment**

6 x 16' Bowie Stock Trailer, Round Bale Mover, W&W Cattle Chute, Powder River Calf Table, Saddle King Stock Saddle, 500 gal propane tank, 1979 LUV Pickup with about 15000 miles on new motor. LeRoy Williamson, 364-1933. 2-111-10c

**BRAND new link chain for John Deere Beet Harvester 1/2 price.** Have three complete sets. Charles Schlabs, 276-5261. 2-115-20c

**3. Cars for Sale**

**NEW & USED CARS** Now for sale at **STAGNER-ORSBORN BUICK-PONTIAC-GMC** 1st & Miles 3-8-tfc

**MILBURN MOTOR COMPANY**  
 We pay cash for Used Cars  
 136 Sampson  
 Phone 364-0077 3-4-tfc

**NEED TO RENT A CAR??** We have rent cars available at **WHITEFACE FORD LINCOLN MERCURY, INC.** 200 West 1st. Phone 364-2727. 3-250-tfc

1982 Chevrolet Camaro. PS, PB, AC, power door locks, AM-FM Cassettes. Good rubber. White with red interior. One owner. Call 1-265-3286. 3-110-tfc

1981 Jeep Wagoneer Limited 4 WD 78,000 miles. Extra clean inside & out, leather interior. 364-1205 weekends; 364-3484 weekdays. 3-111-tfc

**LOW MILEAGE** 1981 Malibu Chevrolet, 4-door, only 20,000 miles. Very good condition and sharp-looking body, not weather-beaten. Call 364-6957. 3-112-tfc

1985 MERCURY Topaz (Blue) 12,500 miles. Like new. All electric. Call 578-4349 3-117-10p

1979 Honda Civic. Needs some body work, but excellent condition and tires. Reasonable. \$800. 364-4514 or 364-3400. 3-115-5p

1974 Silver Mustang, very good condition; also 350 Honda in good condition. After 5:30 call 364-3240 or see at 417 Avenue G. 3-117-5p

**FOR SALE: 1962 Chev.** Pickup. Runs good. Call 364-1042. 3-117-5c

**4. Real Estate for Sale**

**SEE THE SUNDAY BRAND REAL ESTATE PAGES FOR MORE DETAILED LISTINGS**

**HAVE GOODIES WILL TRADE!!** NEED DEBT FREE HOME IN NW HEREFORD TO TRADE FOR STOCK IN SOLID LOCAL COMPANY. CALL DON TARDY CO., REALTORS, 364-4561. 4-114-tfc

Money paid for houses, notes, mortgages. Call 364-2660. 4-97-tfc

**309 SUNSET, HEREFORD.** 4 bedrooms, 2 baths brick home. 2812 sq. ft. Priced for quick sale. John Bingham Land Company, Friona, Call 247-3909. 4-253-12c

**FOR SALE BY OWNER:** Large 3 bedroom, 2 bath country home on 12 acres with hwy frontage, 4 miles from Hereford city limits. House has over 2200 sqft. additional 1000 sqft building also included in price. Price reduced. 578-4565. 4-66-tfc

Owner over anxious to sell this 3 BR on Irving; will assist with closing costs. Price negotiable. Call Realtor. 364-6633. 4-77-tfc

**ADULT RETIREMENT** Living at its finest. Look into Palo Duro Village, 9 Hospital Drive, Canyon, Texas 79015 806-655-1712. 4-98-tfc

**KIT 'N' CARLYLE** © by Larry Wright  
**A KITTEN'S NIGHTMARE...**  
 ...AND SO, I PROPOSE SEVERE PENALTIES FOR CATNIP DEALERS...

**By Owner** 4 Bedrooms, 2 Bath with living, dining, kitchen & Utility. Country House on 2 acres. 1700 square feet. 20 miles north on Hwy. 385. In V.I.S.D. 1-287-2562 4-101-20c

**LEASE PURCHASE.** Carpeted and paneled large 2 bedroom, garage and shop area. Call Realtor, 364-1446 or 364-9022. 4-114-5c

**ROOMY, WELL MAINTAINED 3 BEDROOM, 1 1/2 BATHS, LOCATED IN QUIET NEIGHBORHOOD.** TWO CAR DETACHED GARAGE AND STORAGE BLDG. FENCED YARD ON CORNER LOT. A GREAT BUY, REASONABLE PRICED! CALL DON TARDY CO., REALTORS, 364-4561. 4-114-tfc

421 Avenue G. Easily assumable loan, brick. 3 bedroom, 1 1/2 bath, move in before Christmas, call HCR Real Estate 364-4670. 4-115-tfc

**LARGE FAMILY, SMALL BUDGET, NEED MORE ROOM AT A VERY REASONABLE PRICE?** 4 BR. 2 BATH, BRICK. SMALL DOWN PAYMENT. GIVE US A CALL. TOP PROPERTIES, INC. 364-8500. 4-116-tfc

5 acres, 10 acres, and 20 acres, as low as \$300 down, easy monthly payments, Gerald Hamby, Broker off. 364-3566 Res. 364-1534 4-254-tfc

**DO YOU HAVE A SMALL HOUSE AND WOULD BE INTERESTED IN TRADING FOR A 3 BR. 1 1/2 BATHS IN NORTHWEST HEREFORD.** GIVE US A CALL. TOP PROPERTIES, INC. 364-8500. 4-116-tfc

**Mobile Homes**

1970 Sentry 2 Bedroom, 12'x65', \$2,000 worth of remodeling, new paneling, skirting, insulation, fence good carpet & plumbing \$5,500 364-6447. 4A-101-10p

**\$99 TOTAL DOWN PAYMENT.** 1983 Fleetwood Mobile Home for only \$166 per month, 180 months, 13.50 APR. Free delivery and setup. Call Jim 806-376-5363. 4A-109-10c

**NICE 3 bedroom mobile home on well located lot.** \$18,000 Terms. Call 364-7700. 4A-111-tfc

**YOU'VE GOT CREDIT WITH US!!** Low, low down repos. Good, bad and no credit welcome. 806-381-1352, call collect. 4A-113-tfc

**CASH FOR THREE BEDROOM MOBILE HOME** 1965-1975 MODEL GOOD CONDITION. DESCRIBE FULLY AND BEST PRICE. BOX 31 HEREFORD, 364-0484. 4A-113-5c

3 bedroom trailer. Stove and refrigerator. 1 1/2 baths. Will accept Community Action. 364-4370. 5-99-tfc

Tidy 3 bdrm 2 bath house. Nice area rent reduced! Call 364-2660. 5-102-tfc

2 bedroom unfurnished or furnished apartment. Fenced patio. Stove, refrigerator, cable and water furnished. 364-4370. 5-8-trc

ONE bedroom furnished apartment. Bills paid. 364-3734 after 6 p.m. 5-112-tfc

**CHECK THE RATES for a classified ad. Then buy, sell, or trade. Call 364-2030.**

**CARPETED** and paneled, large 2 bedroom, garage and shop area. Call Realtor, 364-1446 or 364-9022. 5-114-5c

For Rent to qualified tenant, 1400 sq. ft. 3 bdrm. brick, 2 baths, will rent monthly or lease for 6 months. 364-3566. 5-115-tfc

14x65 TRAILER FOR RENT. Prefer older or retired couple. Bills paid. Close to Hereford. Call 364-3363. 5-117-10c

**HOUSE** at 428 Avenue H. 364-4085 after 5 p.m. 5-117-tfc

**NEED extra storage space?** Rent a mini storage, 2 sizes available. 364-4370. 5-53-tfc

Two and three bedroom duplexes. Available immediately. Northwest, West Central and LaPlata School Districts. Call Don Tardy Company Realtors, 364-4561. 5-65-tfc

2 bedroom house at 510 Knight. Call 364-2170 or 364-1371. 5-90-tfc

2 bedroom trailer house. Stove and refrigerator furnished. Call 364-2131. 5-92-tfc

**FURNISHED,** clean one bedroom apartment for single or couple. No pets. Call after 4 p.m. 372-9993. 5-92-tfc

2 bedroom house partially furnished. No pets. Inquire 334 Avenue G. 364-1118. 5-105-tfc

Apartment, 2 bedroom, one bath. Stove and refrigerator furnished. Washer-dryer hookup. No pets. 364-7393. 5-105-tfc

2 bedroom duplex. Will qualify for Community Action. 276-5291 days; 364-4113 nights. 5-107-tfc

SMALL, unfurnished 2 bedroom house on Avenue H. \$200 per month plus deposit. Call Mark Armor, 364-3203. 5-118-tfc

Self-lock storage. 364-8448. 5-95-tfc

**DIAMOND VALLEY MOBILE HOME PARK** F.H.A. Approved Lots 700 Block of Ave. G&H Office 415 North Main 364-1483 Home 364-3937 5-56-tfc

136 SAMPSON. Bachelor apartment. All bills paid. Call 364-0077 or 364-1364 after 6 p.m. 5-106-tfc

TWO bedroom house. No pets. Call 364-0527. 5-109-tfc

3 bedroom unfurnished house. 1 1/2 baths. Stove and double garage, fireplace. 364-4370. 5-111-tfc

4 bedroom house. Remodeled. \$390 per month; \$150 deposit. See at 604 Ave. G. 364-2615 or 655-7465. 5-115-5p

ONE bedroom efficiency. All bills paid. \$185 month. Call HCR Real Estate 364-4670. 5-115-tfc

ONE bedroom house with refrigerator and stove. \$150 month; \$100 deposit. 364-5982 after 5 p.m. 5-115-tfc

3 bedroom house. Fenced yard. \$250 month; \$100 deposit. 364-5982 after 5 p.m. 5-116-tfc

SMALL unfurnished 3 bedroom house with stove and fenced yard. Week ends and after 6 p.m. 364-6326. 5-116-3c

Furnished one bedroom duplex apartment - clean, winter warm, summer AC, also ceiling fans, carpet, central location, owner pays gas, water and maintains yard-364-2913. 5-116-3c

NICE 2 bedroom furnished mobile home. \$300 per month; \$75 deposit, bills paid. No pets. Call 364-4694. 5-116-tfc

**Sycamore Lane Apts** NICE 2 bedrooms two blocks from new shopping center. Fresh paint, fireplace, kitchen appliances, fully carpeted. Gas and water paid. \$250 or \$285 month plus deposit. 12th month free with year's lease. Call 364-4901. 5-4-tfc

SMALL efficiency. Has refrigerator and stove. \$100 deposit; \$130 rent. 364-2777. 5-109-tfc

One bedroom apartment. Has stove & refrigerator. To see call 364-5337. 5-113-tfc

One bedroom furnished, utilities paid. \$50 deposit. \$260 per month. No pets or children. Ideal for single adult. Call days 364-6691 after 8:00 p.m. 364-0790. 5-118-tfc

SMALL, unfurnished 2 bedroom house on Avenue H. \$200 per month plus deposit. Call Mark Armor, 364-3203. 5-118-tfc

Self-lock storage. 364-8448. 5-95-tfc

**DIAMOND VALLEY MOBILE HOME PARK** F.H.A. Approved Lots 700 Block of Ave. G&H Office 415 North Main 364-1483 Home 364-3937 5-56-tfc

136 SAMPSON. Bachelor apartment. All bills paid. Call 364-0077 or 364-1364 after 6 p.m. 5-106-tfc

TWO bedroom house. No pets. Call 364-0527. 5-109-tfc

3 bedroom unfurnished house. 1 1/2 baths. Stove and double garage, fireplace. 364-4370. 5-111-tfc

4 bedroom house. Remodeled. \$390 per month; \$150 deposit. See at 604 Ave. G. 364-2615 or 655-7465. 5-115-5p

ONE bedroom efficiency. All bills paid. \$185 month. Call HCR Real Estate 364-4670. 5-115-tfc

ONE bedroom house with refrigerator and stove. \$150 month; \$100 deposit. 364-5982 after 5 p.m. 5-115-tfc

3 bedroom house. Fenced yard. \$250 month; \$100 deposit. 364-5982 after 5 p.m. 5-116-tfc

SMALL unfurnished 3 bedroom house with stove and fenced yard. Week ends and after 6 p.m. 364-6326. 5-116-3c

Furnished one bedroom duplex apartment - clean, winter warm, summer AC, also ceiling fans, carpet, central location, owner pays gas, water and maintains yard-364-2913. 5-116-3c

NICE 2 bedroom furnished mobile home. \$300 per month; \$75 deposit, bills paid. No pets. Call 364-4694. 5-116-tfc

**Sycamore Lane Apts** NICE 2 bedrooms two blocks from new shopping center. Fresh paint, fireplace, kitchen appliances, fully carpeted. Gas and water paid. \$250 or \$285 month plus deposit. 12th month free with year's lease. Call 364-4901. 5-4-tfc

SMALL efficiency. Has refrigerator and stove. \$100 deposit; \$130 rent. 364-2777. 5-109-tfc

**SALE-TRADE-OR LEASE**  
 Playhouse Skating Rink (now closed)  
 Building, land, skates, music system, video machines  
 pin ball machines  
 276-5585 or 354-9671 7-107-10c

**Situations Wanted**

I WILL DO TREE REMOVAL. Call Bill Devers for free estimates. 364-4053 after 5 p.m. SitWa-

**Help Wanted**

WANTED LVN with current license. For details, please contact King's Manor Methodist Home, Inc., 400 Ranger Drive, P.O. Box 1999, Hereford, Texas 79045. Phone (806)364-0661, Monday thru Fridays. 8-102-tfc

**THE HEREFORD BRAND**  
 WANT ADS DO IT ALL!  
 YOU WANT IT YOU GOT IT  
**CLASSIFIED**  
**364-2030**

LICENSED nursing home administrator for ICF III facility. Salary commensurate with experience. Excellent benefits. Please send resume to Golden Plains Care Center, 420 Ranger, Hereford, Texas 79045. 806-364-3815. 8-113-tfc

3000 GOVERNMENT JOBS LIST. \$16,040-\$59,230/yr. Now hiring. Call 805-687-6000 Ext. R-7777. 8-62-tfc

**JOB OPENING** DEAF SMITH COUNTY HAS AN OPENING FOR THE FOLLOWING POSITION:

Deputy County Clerk. Applicant must have typing skills; greet public well and have knowledge of office practices and filing procedures.

Pick up Applications from the Treasurer's Office, Courthouse, Room 206, between 8:30 A.M. and 5:00 P.M. beginning December 16, 1986. Deadline for submitting applications will be December 19, 4:30 P.M.

Equal Opportunity Employer.

La Oficina Del Secretario Del Condado De Deaf Smith hoy tiene la posicion para trabajo de Secretario Deputado. El Apicante debe de tener talento para escribir en maquina, tratar el publico agradable, tener conocimiento de praticas de oficina y archivar procedimientos.

Levante su aplicacion en la oficina de la Tesorera en la casa de corte cuarto No. 206 entre el medio de 8:30 A.M. y 5:00 P.M. empesando el dia 16 de Diciembre 1986. El ultimo dia para someter su aplicacion es Diciembre 19 a las 4:30 P.M.

Empleador de Oportunidad Igual. 8-117-3c

HEREFORD SENIOR CITIZENS has a job opportunity for the person who has supervisory ability, can type and has some computer knowledge. Persons with these qualifications may apply at 426 Ranger. NO PHONE CALLS. EOE. 8-117-2c

**USE THE WANT ADS**

Business Opportunities 7



# Put Yourself in the Marketplace, in the Classifieds

**DISTRICT REPRESENTATIVE HIGH CALIBER PERSON**

Sales career position with management opportunities in growing organization. Intensive training program. Starting income to \$2950 per month. No experience necessary. Outstanding group insurance and retirement benefits. Relocation not necessary.

For confidential personal interview, send resume to E.O. Box 7831 Amarillo, Texas 79114-7831

8-116-3c

OFFERING the following services:  
Rotor tilling and leveling, cleaning and mowing vacant business and residential lots. Carpenter work. Bill McDowell, 364-8447 after 5 p.m.

11-21-tfc

NEW FENCES AND REPAIR OLD FENCES. Free estimates. For all your fencing needs, call C.L. Stovall 364-4160.

S-W-11-67-tfc

FOR SALE: Round bales of fresh hay grazer. Call 364-4521 after 5 p.m.

12-112-tfc

WE BUY pigs, hogs, light cattle. Sell ACCO Feed. Hereford Livestock, 1/2 mile south of Big Daddy's 364-4467. Home phone 364-4713.

12-112-20p

## Sheela out of incubator, on display

BROWNSVILLE, Texas (AP) — A foot-long polar bear born in the semi-tropics of South Texas has lived longer than any other born at the Gladys Porter Zoo here.

But staff veterinarian Sherri Huntress says 3-week-old Sheela isn't completely out of peril.

Ms. Huntress says the 3-pound, 15-ounce bear has to survive another six months before she'll feel confident Sheela will grow to adulthood. A full-grown bear may weigh 650 pounds.

"There's just too many things that can go wrong with the little guy — pneumonia, diarrhea," she said. Because Sheela has been hand-raised on formula, she does not have the resistance to disease that other bears get when they grow up on their mother's milk.

Sheela was still "just a little baby with her eyes closed" when she celebrated her 3-week birthday Tuesday by leaving her incubator and sleeping through her first visit with the public.

Sheela was born weighing 1 pound 5 ounces, about normal for a baby polar bear. Ms. Huntress said.

"It's a big record for us to finally get to where we feel confident to put her on display," said Ms. Huntress. "We don't like to take them out of the clinic until they're doing very well."

"When you put one on display there's a lot of public sentiment — if something goes wrong, it's hard to explain what when wrong."

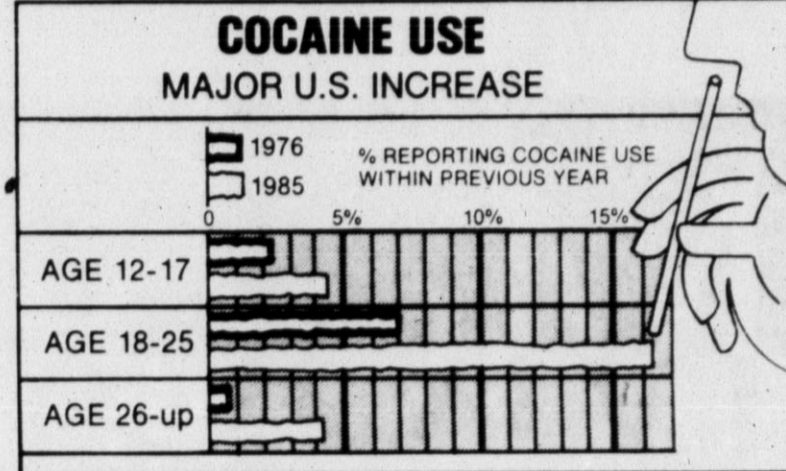
Sheela was snatched from the polar bear exhibit shortly after birth when zoo officials noticed her mother carrying her by the head.

Ms. Huntress said she feared the baby was dead because of the way it was being held by the mother "but then we heard it cry."

Sheela was rushed to the zoo's clinic and was warmed with a hot-water bath and later heating pads. A tube was used to feed Sheela a special formula.

Tube feeding was chosen because two of the three polar bears born at the zoo last year died when they sucked their milk into their lungs and drowned, Ms. Huntress said. The third polar bear died of a bacterial infection.

Sheela is the first bear to be born at the zoo this year, and Ms. Huntress said only a dozen polar bears are born in captivity in the United States every year.



(Source: National Institute on Drug Abuse Household Survey) NEA GRAPHIC  
It's estimated that about 5.8 million Americans use cocaine each month, while another 12 million use it at least once in the course of a year. The percentage of annual users has increased sharply since 1976 — particularly among those ages 18 to 25.

**Child Care**

HEREFORD DAY CARE (State Licensed)  
Excellent program by trained staff.  
Children 0-12 years.  
215 Norton 248 E. 16th  
364-3151 364-5062  
9-202-tfc

BONNIE COLE has openings for infants. Experienced. References furnished. Call 364-6664.

9-114-tfc

NEED HELP? Operation Good Shepherd. 364-0382. People helping people.

10-237-10c

DRINKING A PROBLEM? 24 hour hotline. Alcoholic Anonymous. Every Tuesday through Saturday. 8:00 p.m. at 406 West 4th.

10-105-tfc

PROBLEM PREGNANCY CENTER. 505 East Park Avenue, 364-2027.  
Free pregnancy tests. Confidential. After hours hot line 364-7626, ask for "Janie."

10A-226-tfc

**Business Service**

KELLEY ELECTRIC  
Virgil Kelley  
Residential-Commercial  
All bids & Wiring  
Competitive  
Ph. 364-1345  
Nights 364-1523  
or 364-5929  
P.O. BOX 30  
11-15-tfc

WILL PICK UP JUNK CARS FREE. We buy scrap iron and metal, aluminum cans. 364-3350.

11-196-tfc

CUSTOM BLADE PLOWING, DEEP CHISEL PLOWING. CALL TIM HAMMOND 364-2466.

11-238-tfc

CUSTOM Plowing, large acres. Discing and chisel or sweeps. Call Marvin Welty 364-8255 nights.

11-195-20p

Small Engine Parts & Warranty Factory authorized sales & warranty center Briggs & Stratton Tecumseh Kohler Wisconsin  
See us for all your air cooled engine needs, engine sales, short blocks, parts.  
ARROW SALES  
409 E. 1st  
364-2811  
S-W-11-42-tfc

STORAGE SPECIALIST. Custom design and construct. New and existing closets. Book and toy shelves; attic storage. Free estimate. Call 647-4553. Dimmitt.

11-116-20p

HANDY MAN CONSTRUCTION. New homes, additions, patios, carports, total in-home remodeling, kitchen, bath interior and exterior painting. When you call the rest, call us will save you money. Harlan Armstrong, free estimates. 364-5925.

11-208-tfc

SAVE TAX WITH AN IRA  
Call Steve Nieman, CLU

or

B.J. Gilliland, Gilliland-Nieman and Associates, Inc.  
205 E. Park Ave.  
364-2666  
1-164-tfc

RENT TO OWN! New RCA TV's & VCR's. NO CREDIT CHECK! First Weeks Rent Free  
VHS Home Movie Rental 52 FREE overnight movie rentals with new VCR Rental.

Hereford Rapid Rental  
1005 W. Park  
364-3432  
11-58-tfc

Mr. Farmer - For The Highest Price, Check With Me For A Bid On Your Generic Certificates. Bids Vary Each Day.

Wilbur Gibson  
200 South 25 Mile Ave.  
806-364-0442  
Night 364-2225

NOAH'S ARK GROOMING Proudly announces the addition of CARY & LESLIE RUARK  
Nationally Certified Groomers  
Classes in Obedience Training & handling of Show Animals.  
Call 364-8311 for appointment  
Yes, we do big dogs...

11-118-tfc

PIK's Veigel GRAIN CO. Route 1 806-578-4239  
Competitive Bids Daily  
Contact Us  
Find The Highest Bidder.

76-20c

**Legal Notices**

**LIQUOR APPLICATION PUBLICATION**

James Anthony Huckert has made application with the Texas Alcoholic Beverage Commission for a Package Store Permit to be located at 421 N. 25 Mile Ave., City of Hereford, County of Deaf Smith and operated under the trade name of Porky's Discount Liquor.

118-2c

**ARE YOU PUTTING ME ON?**  
MAKE THE CONNECTION FOR SAFETY!  
A MESSAGE FROM THE NEWSPAPER AND THE DPS TROOPERS

**A buck in the hand is worth more than a garage full of Junk.**

Q — I understand that as a veteran without a service-related health problem, I may have to pay a deductible for VA health care, depending on my income. Does VA consider such things as stocks and bonds, in addition to my salary, when making this determination?

A — Yes. When you apply for medical care at a VA medical center, you will be required to complete VA form 10-10F, which includes information on income as well as "net worth," such as stocks, bonds, bank deposits and savings, and real estate. Your primary residence is not included, nor is personal property such as one car, clothing and furnishings. You also will be required to provide information on any debts you have.

The total amount of your debts will be deducted from your total net worth. Depending on your combined income and net worth, you will be placed in either Category A, B or C. If your income plus net worth after your debts have been deducted is greater than \$40,000, you will be tentatively placed in Category C and will be required to pay a deductible for health care.

The VA regional office will make the final determination on your financial situation. If the regional office determines that your net worth (is) a bar to your receiving cost-free health care, you will remain in Category C and will be required to continue paying a deductible for VA health care.

**VA Benefits**

MISS YOUR PAPER ON CARRIER ROUTE? Call 364-2030 between 6-7 p.m.

**Schlabs Hysinger**  
COMMODITY SERVICES  
1500 West Park Ave.  
Richard Schlabs Steve Hysinger Brenda Yosten  
Phone 364-1286 Each Trading Day After 5:30 P.M.  
for Recorded Commodity Update.

**CATTLE FUTURES**

Month	Price	Change
Jan	41.90	+0.10
Feb	41.25	+0.15
Mar	41.05	+0.10
Apr	40.90	+0.10
May	40.80	+0.10
Jun	40.70	+0.10
Jul	40.60	+0.10
Aug	40.50	+0.10
Sep	40.40	+0.10
Oct	40.30	+0.10
Nov	40.20	+0.10
Dec	40.10	+0.10

**GRAIN FUTURES**

Month	Price	Change
Jan	155 1/2	+1 1/2
Feb	155 1/4	+1 1/4
Mar	155 1/2	+1 1/2
Apr	155 1/4	+1 1/4
May	155 1/2	+1 1/2
Jun	155 1/4	+1 1/4
Jul	155 1/2	+1 1/2
Aug	155 1/4	+1 1/4
Sep	155 1/2	+1 1/2
Oct	155 1/4	+1 1/4
Nov	155 1/2	+1 1/2
Dec	155 1/4	+1 1/4

**METAL FUTURES**

Month	Price	Change
Jan	394.80	+2.30
Feb	394.50	+2.00
Mar	394.20	+1.70
Apr	393.90	+1.40
May	393.60	+1.10
Jun	393.30	+0.80
Jul	393.00	+0.50
Aug	392.70	+0.20
Sep	392.40	-0.10
Oct	392.10	-0.40
Nov	391.80	-0.70
Dec	391.50	-1.00

**FUTURES OPTIONS**

Month	Price	Change
Jan	5.80	+0.15
Feb	5.75	+0.10
Mar	5.70	+0.05
Apr	5.65	+0.00
May	5.60	-0.05
Jun	5.55	-0.10
Jul	5.50	-0.15
Aug	5.45	-0.20
Sep	5.40	-0.25
Oct	5.35	-0.30
Nov	5.30	-0.35
Dec	5.25	-0.40

## One share, vote rule basis of Democracy

WASHINGTON (AP) — A proposal before the Securities and Exchange Commission that would end voting rights for some stockholders reflects incompetent managers trying to protect their jobs, says Texas oilman T. Boone Pickens.

Pickens, the Amarillo financier and takeover specialist, was scheduled to testify today at an SEC hearing on a New York Stock Exchange petition to end its 60-year-old "one share, one vote" standard.

The proposed change would allow companies listed on the exchange to issue two classes of common stock — one with little or no voting authority and one with significant voting authority. In practice, the latter would be held by management and its allies, giving them unchallenged control.

"A fundamental principle of corporate democracy... is that shareholders are the owners and management is the employee," Pickens said in a breakfast session before the SEC opened its hearings Tuesday.

"Many companies want the change as the ultimate weapon against takeovers. By limiting who can vote on management issues, they can ensure that raiders do not corner enough stock to take over a corporation."

But corporate raiders argue that it would insulate the managers from stockholders.

Under the proposed change "ordinary shareholders are disenfranchised and management accountability is lost forever," Pickens said.

Pickens and his United Shareholders Association have urged the SEC not only to keep the rule at the NYSE, but to extend it to other exchanges as well. He argues

that it is the only way shareholders, the company's legal owners, can remove incompetent managers.

NYSE Chairman John Phelan said Tuesday that the Big Board was moving to abandon the rule reluctantly, under competitive pressure.

He said an increasing number of NYSE-listed companies want to limit shareholder authority, one of the most effective defenses against hostile takeovers, and will take their business to competing exchanges if the NYSE does not lift its ban.

Arthur Levitt Jr., the chairman of the American Stock Exchange, said his exchange would be forced to abandon its much weaker version of the rule if the Big Board is permitted to abandon the standard. Levitt urged the SEC to reject the NYSE petition to avoid a so-called "race to the bottom."

The dispute before the SEC involves a rule change that has little visible support but considerable hidden momentum.

For 60 years the Big Board has required all its listed companies to give holders of common stock equal voting rights, citing the standards of "corporate democracy."

The spate of takeovers has prompted managers to prepare defenses, including limits on shareholder authority.

"The marketplace reacts spasmodically to rumors, and offers and counter-offers are thrown together virtually overnight," said Levitt. "Under these conditions, it is not surprising that even the most dedicated and responsible corporate managements

have sought to erect the strongest possible defenses. One of the most effective of those is the two-tier voting structure."

There are few public defenders of the rule change, however. No companies were scheduled to testify before the SEC about their need for the rule.

## Catholic diocese created

SAN ANTONIO, Texas (AP) — A priest in the San Antonio Roman Catholic Archdiocese will become the bishop of a new diocese to be created in Tyler next year.

Monsignor Charles E. Herzog is currently vice-chancellor and director of the tribunal of the San Antonio Archdiocese. He will be ordained archbishop on Feb. 17, church officials said Tuesday.

The bishops of Texas requested and Pope John Paul II granted the creation of the new diocese in East Texas because the 32-county area was not being served adequately by the dioceses in Dallas, Houston and Beaumont, San Antonio Archbishop Patrick Flores said.

"Bishop-elect Herzog is a very dedicated individual with a clear and incisive mind," Flores said. "He is a good moral person, reflecting the virtue of poverty in his lifestyle."

The Newspaper BIBLE

## THE ONLY PEACE THAT WILL LAST

Salvation is not a reward for the good we have done, so none of us can take any credit for it. It is God Himself who has made us what we are and given us new lives from Christ Jesus; and long ages ago He planned that we should spend these lives in helping others.

Never forget that once you were heathen, and that you were called godless and "unclean" by the Jews. (But their hearts, too, were still unclean, even though they were going through the ceremonies and rituals of the godly, for they circumcised themselves as a sign of godliness.) Remember that in those days you were living utterly apart from Christ; you were enemies of God's children and He had promised you no help. You were lost, without God, without hope.

But now you belong to Christ Jesus, and though you once were far away from God, now you have been brought very near to Him because of what Jesus Christ has done for you with His blood. For Christ Himself is our way of peace. He has made peace between us Jews and you Gentiles by making us all one family, breaking down the wall of contempt that used to separate us.

And He has brought this Good News of peace to you Gentiles who were very far away from Him, and to us Jews who were near. Now all of us, whether Jews or Gentiles, may come to God the Father with the Holy Spirit's help because of what Christ has done for us. (Ephesians 2:9-14, 17-18)



# Moonlight Sale

GREAT  
BUYS  
IN  
EVERY  
DEPARTMENT!

**THURSDAY Dec. 18 6 PM To 9 PM**

Toddlers CORDUROY BOXERS 2/ <b>\$5<sup>00</sup></b>	Boys FLANNEL SHIRTS <b>\$3<sup>99</sup> to \$5<sup>99</sup></b>	All Girls SWEATERS <b>25% off</b>
Toddlers Long Sleeve KNIT PULLOVERS 2/ <b>\$5<sup>00</sup></b>	All Girls JEANS <b>30% off</b>	Ladies Heavyweight COATS and JACKETS <b>25% off</b>
All Boys SWEATERS <b>25% off</b>	All Boys JEANS <b>25% off</b>	Girls Winterweight SLEEPWEAR <b>30% off</b>
Mens ROBES <b>30% off</b>	Entire Stock MENS SWEATERS <b>30% off</b> <small>Does Not Include Sweaters Already On Sale. Regular Price Only.</small>	All Mens PLAIN POCKETS, LEVI JEANS, and LEVI SLACKS <b>30% off</b>
Toddlers SLEEPWEAR <b>30% off</b>	All Young Mens SWEATERS, LONG SLEEVE SHIRTS and SLACKS <b>30% off</b>	

*You're looking smarter than ever.*

**JCPenney**  
SUGARLAND MALL