

INSIDE

At the Movies	2	Sam's Corner	12
Among the Neighbors	4	Out at the Lake	5
Recycling Words	5	For the Sport of It	7
School Lunch Menus	2	Spiritually Speaking	13
Extension News	4	A "Center" Piece	3



**FOOTBALL
CONTEST**

Pages 8&9

The Hansford County

50¢

Reporter-Statesman

Serving Hansford County Since 1907

Volume 87 • Issue 37

213 Main • Spearman, Texas 79081

Thursday • September 14, 1995



GRUVER QUEEN CANDIDATES - The Gruver Greyhounds will be having their homecoming this Friday, September 15, as they will take on the Texhoma Red Devils. This year's Queen Candidates are (l to r) Sahala McCloy, Molly McLain, and Tara Shapley. (Photo by Chad Davis)

Gruver gears up for homecoming

The "Danger Zone" is Gruver's theme for Homecoming 1995. The week is filled with exciting activities. Each day the students dress up. Monday was "Twin City" day, and the students dressed like another student. Tuesday was "Men at Work" Day, and they chose a career for a day. Wednesday was "Caution: Wet Pain" Day or "Freak" Day, the students could either wear

painted clothes or wild and crazy clothes. Thursday was "Enter at Your Own Risk" Day, and the students dressed in their pajamas. On Friday, the students could either wear all red or all black on "Red Alert" or "Blackout" Day.

The Greyhounds will have a pep rally Thursday night following the JV game to get ready for Friday's game against the Texhoma Red

Devils. On Friday, a snake dance around the school will start at 2:45, and end up at the football field at 3:00. Pregame activities start at 7:30 p.m. Friday night. At this time, the Alumni Queen and king and the 1995 Homecoming Queen will be elected. The Homecoming Queen candidates for 1995 are: Shala McCloy, Molly McLain and Tara Shapley.

SPS to take over TNP officially during ceremony September 15

Electric rates in six Texas Panhandle communities will be reduced an average of 10% following ceremonies Friday, September 15, marking the transfer of electric service for these communities to Southwest Public Service Company.

SPS is acquiring the electric properties in Perryton, Spearman, Booker, Follett, Darrouzett, and Higgins from Texas-New Mexico Power Company of Fort Worth. Documents completing the transfer will be signed during a ceremony at 12:30 p.m. on September 15 at the electric company offices at 222 S. Amherst in Perryton. Also, the SPS sign will be unveiled. An open

house featuring refreshments and an appearance by Sparky, the SPS safety mouse, will follow until 3:00 p.m.

For customers, further rate decreases will be implemented over the next 10 years, until rates in the six communities match rates in the other 75 Texas cities served by SPS. SPS also has announced its manager for Perryton, Spearman, and Follett. Wallace Hill, a general foreman in the line department in Amarillo, will become the Perryton manager and will oversee Booker operations as well. Craig Vinson, the current Perryton manager for Texas-New Mexico Power, will become the Spearman manager for

SPS. Don Foreman, a lineman journeyman for SPS in Elkhart, Kansas, will become the Follett manager, with responsibilities for Darrouzett and Higgins as well. Until now, Perryton has been the only city with a manager.

Southwest Public Service Company is a regional electric utility that primarily provides electric service to a population of about one million people in a 52,000 square-mile area comprising eastern and south eastern New Mexico, the South Plains and Panhandle of Texas, the Oklahoma Panhandle and southwestern Kansas. Corporate headquarters is in Amarillo.

P-M C.I.S.D. holds special meeting

Pringle-Morse C.I.S.D. Board of Trustees held a special meeting on August 31, 1995. members present were Ron Womble, Betty Womble, Clay Reid, Clyde McCloy, Lonnie Clemmons, and Pete Schuman. members absent were Charlie Kiser. Superintendent Linda Kay Barnhart and Business manager Paige Speck were also present.

A quorum was established and the meeting was called to order at 8:06 p.m. by President Ron Womble. No one was present for the public forum. The Board conducted the 1995-96 Budget Hearing. No guests were present. Charlie Kiser joined the meeting at 8:08 p.m.

Under the Action Items portion of the agenda, a motion was made by Lonnie Clemmons and seconded by Clyde McCloy to approve all the August 22, 1995 minutes as corrected. The motion passed 7-0. A motion was made by Clyde McCloy and seconded by Clay Reid to ap-

prove the Certificate of Authority/Request for CNP/IMP Access. The motion passed 7-0. A motion was made by Charlie Kiser and seconded by Betty Womble to approve Linda Kay Barnhart to the Regional Advisory Council. The motion passed 7-0. No action was taken on the Agreements to Count Transfer Students as Resident Students. A motion was made by Betty Womble and seconded by Clyde McCloy to amend the 1994-95 Budget as presented by Business Manager Paige Speck. The motion passed 7-0.

Discussion Items/Reports during the meeting included Superintendent Linda Kay Barnhart discussed Board Member Training, disposal of oil from buses, the closing of the school office on September 5, 1995, Student Teacher Agreement, Pep Club, suburban use, bus driver procedures, and Local Policy BED.

During the Closed Session the

Board entered closed session at 10:06 p.m. in accordance with the Texas Open Meetings Act, Texas Government Code, Section 551.074 at 10:06 p.m. The Board came out of closed session at 10:37 p.m. A motion was made by Clyde McCloy and seconded by Lonnie Clemmons to adjourn at 10:37 p.m. The motion passed 7-0.

During the Second Called Special Meeting, President Ron Womble reconvened at 10:41 p.m. A motion was made by Lonnie Clemmons and seconded by Pete Schuman to adopt the 1995-96 Budget as proposed by the Business Manager and Superintendent. The motion passed 7-0. A motion was made by clay Reid and seconded by Charlie Kiser to adopt the 1995-96 tax rate at 1.29. The motion passed 7-0. A motion was also made by Pete Schuman and seconded by Ron Womble to adjourn at 11:10 p.m. The motion passed 7-0.

Klinger speaks on legislative goals

WASHINGTON—Hans Klinger, director of U.S. Sen Phil Gramm's office in Lubbock, will deliver an update on the Senate's legislative goals for 1995 during an open meeting with Spearman city leaders on Friday, September 15. The meeting is sponsored by the Spearman Chamber of Commerce.

The briefing is slated to begin at 2:00 p.m., Friday, September 15 at the First State Bank Hospitality Room.

The Senate, under a new Republican majority has begun work on a myriad of bills aimed at tightening the federal government's belt so Americans can keep more of what

they earn.

Among the Gramm proposals are a tax cut that would double the dependent exemption for children. Also, the senator is working to repeal the Clinton tax increase on Social Security benefits, and to pass a balanced budget amendment to the Constitution.



SALES TAX UPDATE - Bill Pittman, spokesman for the Spearman Sales Tax Service Committee, recently gave a sales tax update held last Tuesday night, September 12th at the O'Loughlin Center, for the members of the Golden Spread Senior Citizens Center. Pittman explained how the two new tax proposals could help bring new jobs to the committee and decrease the property tax by 26%. Elections for the tax proposals will be held this coming November. For more information concerning the proposals, contact Cindy Blackman at the Spearman Chamber of Commerce Office, 659-5555. (Photo by Chad Davis)

Hansford Happenings

Medical Funds

There have been medical funds set up for Avo Tope Gray at First State Bank and Ed Whitefield at First National Bank, both in Spearman. For more information contact FSB at 659-5565 and FNB at 659-5544.

Hospice Meeting

The Hansford Hospice monthly meeting will be held on Monday, September 18, at 7 p.m. in the La Casita room at Gruver State Bank. Carolyn Hicks has an interesting program planned on "Alzheimer's Disease".

Defensive Driving

Defensive driving will be Sept. 20 and 21. Call the Spearman Chamber of Commerce at 659-5555 to sign up.

Legislative Update

Hans Klinger, western representative from Sen. Phil Gramm's office, will be in Spearman on Friday, Sept. 15 at 2:00 p.m. at the First State Bank Hospitality Room. This will be a legislative update and information time.

Lions Club/Rotary Joint Meeting

Monday, Sept. 18 at 12:00 noon, Lions Club and Rotary will meet together at Ivey's Hungry Cowboy. The program will be Cheryl Pink, economic development director with Southwestern Public Service, discussing the advantages of passing the sales tax in November.

Hunter's Safety Course

A Hunter's Safety Course will be held Oct. 2, 3, & 4 at Gruver Ag Building from 6 p.m. to 10 p.m. on Monday and Tuesday and from 8 p.m. to 10 p.m. on Wednesday. Cost \$5. Must call to reserve a spot by Sept. 22, 1995 at 733-2091 during business hours.

Screening For Children with Special Needs

The Gutchinson-Armstrong-Carson County Special Education Co-op, along with Region XVI, Early Childhood Intervention Program will be screening children with disabilities, birth through 5 years of age. Please call the co-op for an appointment for the screening if your child has a significant delay in the development of one or more of the following areas: Communication or language skills, motor skills, cognitive or thinking skills, and/or self-help skills. Borger will be the screening site for people who live in the following school district: P-S-P, Fritch, Skellytown, Pringle-Morse, Spring Creek, and Borger at the Borger Administration Building located at 200 E. 9th St. from 10 a.m. to 6 p.m. on September 19th and 20th. An appointment must be made by calling (806)273-1008 by September 18, 1995.

Pringle-Morse Open House

Come visit our Teachers, Classrooms, & new Superintendent. PTA membership table will be available for you to join. Open house is Monday, Sept. 18 at 7:00 p.m.

Lunch and Learn Program

"Drying Foods at Home", Tuesday, September 26 at 12 noon in the Fellowship Hall of Spearman Church of Christ. Selecting an electric home food dehydrator, drying tips and techniques, tasting samples of various dried fruits and meat. Light lunch served. Free and open to the public. Sponsored by Texas Agricultural Extension Service.

Insurance needed for FSA program

Insurance is a requirement for participation in the 1996 acreage reduction program. In order to participate in the FSA Farm Program, you must purchase either Catastrophic (CAT) or "Buy-Up" coverage for crops of economic significance. Crop insurance is offered in Hansford County for wheat, oats, barley, nursery crops, soybeans, corn, sorghum, and hybrid sorghum seed.

Sales closing dates for crop insurance are much earlier than last year for fall planted crops and certain perennials. According to Preston Wright, CED, "Last year, sales closing dates were extended to accommodate producers because the crop insurance law was changed during the growing season. This year's sales closing dates are the standard 'old' dates." The sales closing dates for crops in Hansford County are:

- Wheat, Oats, Barely, and Nursery Crops - September 30, 1995
- Soybeans - February 28, 1996
- Corn, Sorghum, and Hybrid Sorghum Seed - March 15, 1996

In most cases, crops insured last year are automatically insured this year. Producers planting insurable crops that were not planted last year need to obtain at least catastrophic level of insurance by the sales closing date to be eligible for many USDA farm programs and loans. Catastrophic coverage may be obtained at the local Consolidated Farm Service Agency office or from a crop insurance agent. Only crop insurance agents can sell coverage in excess of the catastrophic level of protection. Producers wanting to change before the applicable crop's sales closing date.

If you have any questions contact an insurance agent of the Farm Service Agency (FSA) at (806) 659-3036.

School Lunch Menus

SPEARMAN ISD LUNCH MENU
Monday, September 18
 Chicken nuggets, whipped potatoes, gravy, green beans, hot roll, peaches, and milk.

Tuesday, September 19
 Tacos, salad, cheese cups, pinto beans, Spanish rice, pineapple tidbits, and milk.

Wednesday, September 20
 Chicken fried steak, fritter on a bun, tator tots, salad, applesauce, and milk.

Thursday, September 21
 Sausage pizza, corn, carrots, banana pudding, and milk.

Friday, September 22
 Hamburger, French fries, salad, birthday cake, and milk.

BREAKFAST
Monday-Breakfast taco, fruit, and milk.

Tuesday-Cereal, toast, juice, and milk.

Wednesday-Sausage, biscuit, fruit, and milk.

Thursday-Cinnamon toast, fruit, and milk.

Friday-Scrambled eggs, biscuit, fruit, and milk.

GRUVER ISD LUNCH MENU
Monday, September 18
 Chicken nuggets, mashed potatoes with gravy, carrots, banana pudding, hot roll, and milk.

Tuesday, September 19
 Western burger, tossed salad, corn, jello, and milk.

Wednesday, September 20
 Baked ham, macaroni and cheese, green beans, hot roll, apricot cobbler, and milk.

Thursday, September 21
 Chicken noodle soup, cheese stick, carrot stick, fruit, crackers,

and milk.
Friday, September 22
 Chili dog, cheese, French fries, fruit juice bars, and milk.

BREAKFAST
Monday-Cereal, muffin, juice, and milk.

Tuesday-Two pancakes, syrup, juice, and milk.

Wednesday-Breakfast burrito (scrambled eggs and ham in a flour tortilla), hot sauce, juice, and milk.

Thursday-Two slices of toast, peanutbutter and jelly, juice, and milk.

Friday-Cinnamon roll, juice, and milk.

PRINGLE-MORSE CISD LUNCH MENU
Monday, September 18
 Beef and cheese enchiladas, rice, beans, salad, cornbread, fruit, and milk.

Tuesday, September 19
 Chicken strips, potatoes and gravy, salad, rolls, cake, and milk.

Wednesday, September 20
 Hamburgers, French fries, salad, fruit, and milk.

Thursday, September 21
 Lasagna, salad, rolls, no bake cookies, and milk.

Friday, September 22
 Salmon patties or macaroni and cheese, salad, fruit, ice cream, and milk.

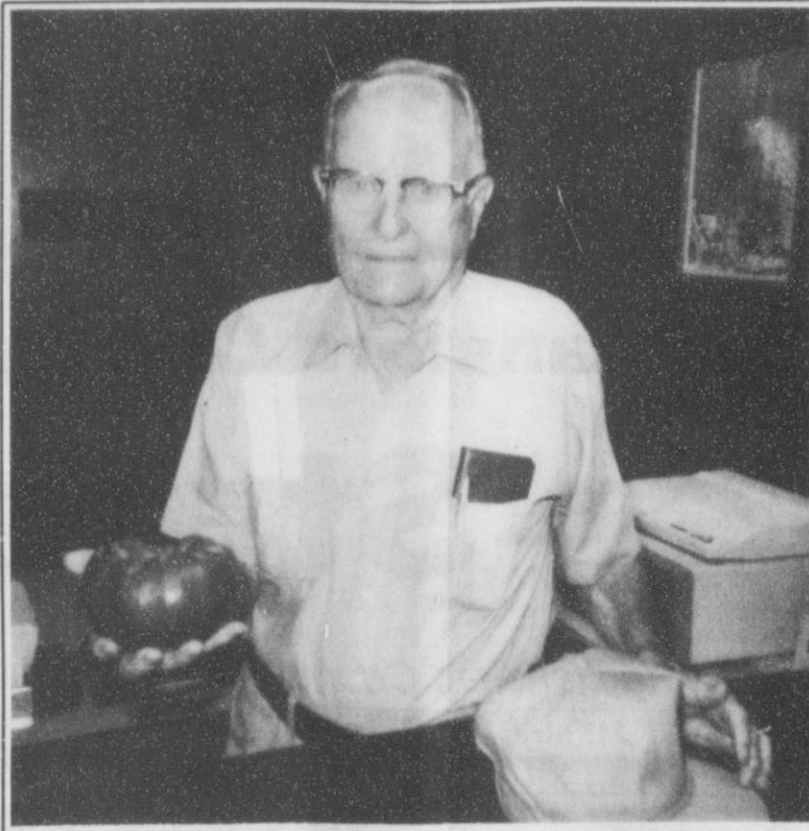
BREAKFAST
Monday-muffins, toast, juice, and milk.

Tuesday-Cereal, toast, juice, and milk.

Wednesday-Pancakes, sausage, juice, and milk.

Thursday-Cinnamon toast, toast, juice, and milk.

Friday-Biscuit, sausage, juice, and milk.



THAT'S A KEEPER-Raymond Kirk, of 1110 Linn St. in Spearman, is shown with a one pound 13.2 ounce tomato he grew.

At the movies...

Showing at The Lyric Theatre Friday, September 15 through Tuesday, September 19 on Screen 1 beginning at 7:30 p.m. is "Something To Talk About", and on Screen 2 beginning at 7:45 p.m. is "Babe".

In "Something To Talk About", reviews have pegged Julia Roberts' new comedy as her best in years. She discovers husband Dennis Quaid is cheating. Her father (Robert Duvall), mother (Gena Rowlands) and sister (Kyra Sedwick) offer advice.

In "Babe", a talking pig longs to be a sheedog. The buzz network reports that this movie has several special effects that really make the pig look like he has a mouthfull.

The Lyric will be featuring *Waterworld* and *A Walk in the Clouds*.

ert Duvall), mother (Gena Rowlands) and sister (Kyra Sedwick) offer advice.

In "Babe", a talking pig longs to be a sheedog. The buzz network reports that this movie has several special effects that really make the pig look like he has a mouthfull.

The Lyric will be featuring *Waterworld* and *A Walk in the Clouds*.

TxDOT awards contracts for bridge replacement

The Texas Department of Transportation recently awarded a contract for \$515,548 to Knight Construction of big Spring to replace three bridges in the northeast Texas Panhandle. The project includes the two bridges over Hackberry Creek on FM 1261 in Hansford County and the bridge at South Palo Duro Creek on FM 281 in Hutchinson County.

The aging bridges were built to meet old load capacities and needed

to be replaced. "When the project is completed, the bridges will be stronger, modern structures and will better serve the area's heavy agricultural traffic," says Borger Area Engineer Kenneth Petr.

Construction on the bridge replacement projects began August 25, 1995 and should be completed by March 1996. Contractors do not expect the project to interfere with traffic on either road.

Retraction

In the August 31, 1995 edition of The Hansford County Reporter-Statesman under the headline *Spearman Police Department and Sheriff's Department make rounds*, a mistake was made. It

was erroneously reported that Lee Sheets was charged with assault when in fact he was not. We apologize for any misunderstanding and the harm it may have caused for those who were involved.

Historical Commission meets at Zulu Stockade

The Hansford County Historical Commission met September 11 at the Zulu Stockade at 2:00 p.m. Joel Lee Lackey, Chairman, presided over the meeting.

Joyce Johnson, Member of the Historical Marker Committee, reported on the progress of moving the Fort Zulu marker.

Rubyjo Wilbanks, of the Historical Preservation Committee, reported that the Palo Duro School is ready to move things into. Gus and Clementine Renner donated a cement floor for the chicken house.

Bill K. Jackson recently did some window repair to the Stationmaster's House.

Cindy Blackman showed a

sample of the coverlets that the Chamber of Commerce will soon be selling that represented Hansford County. The Stationmaster's House and the train car will be represented on that coverlet.

Joel Lee reported on the Annual Historic Preservation Conference to be held May 2-4, 1996. This year's theme will be "Preservation at the Crossroads."

Members present were Joel Lee Lackey, Helen Boyd, Jennie Blankenship, Joyce Johnson, Rubyjo Wilbanks, J.D. Wilbanks, Gus Renner, Clementine Renner, Bill K. Jackson, Joanne Eaton, Jeff Lackey, Cindy Blackman, and Sylvia Robertson.

4-H Food and Nutrition program to start in Sept.

Sign up now for the 4-H Food and Nutrition project. Food preparation is a main part of each project meeting. You will also learn about healthy snacks, making centerpieces and folding napkins to set a pretty table.

4-H projects are open to all youth 3rd grade and up, regardless of socioeconomic level, race, color, sex, religion, disability, or national origin.

Project meetings in Gruver will

be held after school September 25, October 2, 9, and 16 at the Fellowship Hall of the Methodist Church.

Project meetings in Spearman will be held after school September 26, October 3, 10, and 17 at the Fellowship Hall of the Church of Christ.

Please call Peggy Winegarner, County Extension Agent, at 733-2901 or 659-4130 to enroll.

The Hansford County Reporter-Statesman

Serving all of Hansford County
 Spearman • Gruver • Morse

USPS 509560 • 213 Main, Box 458 • Spearman, Tx. 79081
 (806) 659-3434 • 1-800-395-9482 • FAX (806) 659-3368

Published weekly at 213 Main, Spearman, Texas

Owned & Operated by
 Texas Independent Newspapers, Inc.
 16607 Blanco Road #100 • San Antonio, Tx. 78232
 (210) 492-8907

Second class postage paid at Spearman, Texas 79081

Any erroneous reflection upon the character of any person or firm will be gladly and promptly corrected upon being brought to the attention of the management.

Publisher - Deziree Torres

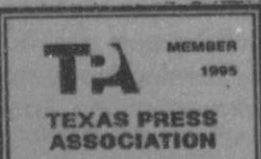
Editor/Advertising - Chad Davis

Associate Editor - Wade Alwood

Student Assistant - Erin Alwood

The publisher reserves the right to revise or reject at its option any advertisement which it deems objectionable, either in subject or phraseology, or which it may deem detrimental to its business.

Subscription Rate: Hansford County, \$19.95; out of county, \$24.95 annually.
 Postmaster: Send address changes to Hansford County Reporter-Statesman, Box 458, Spearman, Tx. 79081.
 Advertising & Story Deadlines Monday, 5:00 p.m.



NOTICE

The Spearman Housing Authority is now taking applications for residents. Eligible applicants will be placed on a community-wide waiting list. Families with the following incomes are especially needed for occupancy at the Housing Authority:

FAMILY SIZE	FAMILY INCOME	
	From	To
1 Person	\$11,800	\$18,850
2 Person	\$13,500	\$21,500
3 Person	\$15,150	\$24,250
4 Person	\$16,850	\$26,950
5 Person	\$18,200	\$29,100
6 Person	\$19,500	\$31,250
7 Person	\$20,900	\$33,450
8 Person	\$22,250	\$35,600

Rent is based on family income minus allowances for children and elderly occupants. For more information, contact Gary Elsworth at Spearman City Hall or call 659-2524 from 8:00 a.m. until 5:00 p.m. Mondays through Fridays. The Spearman Housing Authority does not discriminate based on race, religion, sex, age, disability, national origin or other classification protected by federal and state laws.

Attention Homeowners!

Termites have become active in your area. The damage they can do to your home in a short period of time is extensive. So now is the time to have your home checked. We are offering a pest control and termite inspection for a special time offer of \$50.00, regular value of \$100.00

Call now to avoid potential disaster to your home!

Diamond D. Pest Control
 1-800-687-9226
 806-659-1012

ATTENTION

If you have any kind of dispute with
TRI-STAR COUNTRY CABLE
 out of Perryton
 please call
733-2006 or 733-2333

At The Lyric Theatre...

Friday, September 15 - Tuesday, September 19

*Bargain Nights Mon. & Tue. Adults - \$4
 Fri., Sat., Sun., Adult \$5 - Child \$3 every night
 Closed Wednesday & Thursday*

SCREEN 1 • 7:30 PM SCREEN 2 • 7:45 PM

Something To Talk About
(R)

Babe
(G)

113 Main • Spearman

100 Years
 Fraternal Life Insurance

Complete FRATERNAL LIFE INSURANCE for the entire family including
 Omni-Plus II Universal Life
 Annuities and IRAs
 Highly Competitive Interest Rates
 Term-Plus

MARILYNN HART
 P.O. BOX 426
 GRUVER, TX
 (806)733-2066

SCORE A BASKET AT DQ!

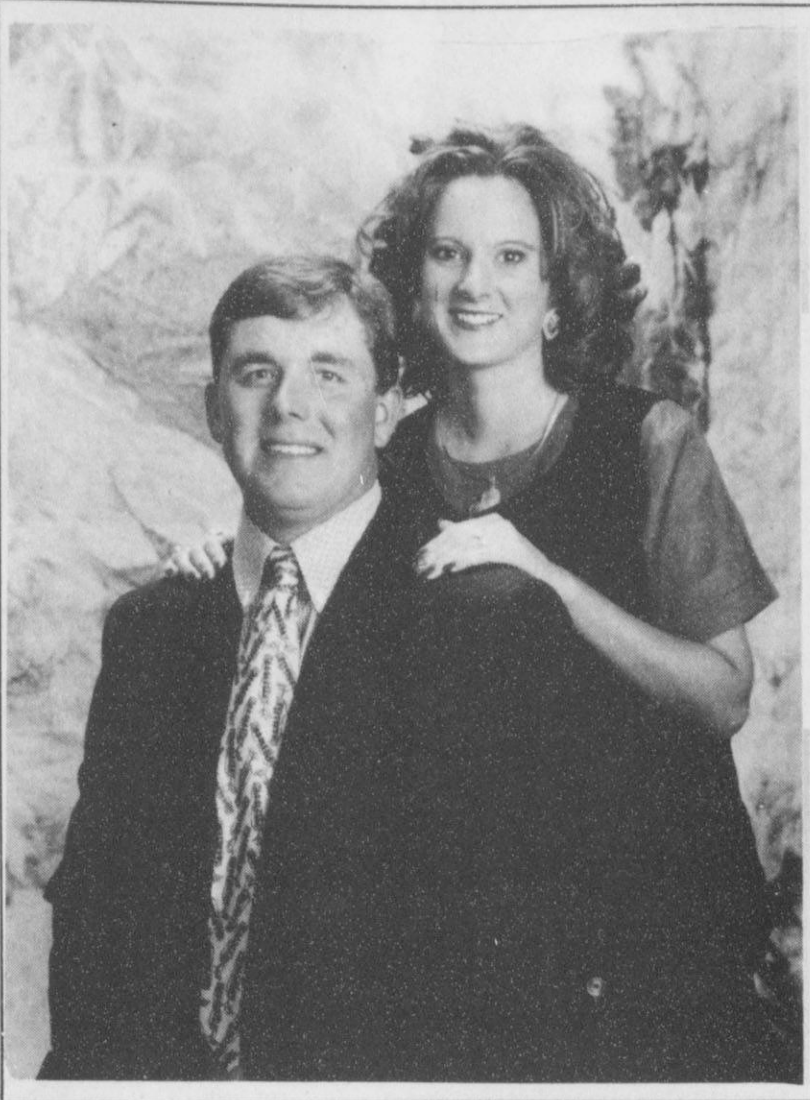
Chicken Strip Country Basket® \$2.99
 4-piece

Steak Finger Country Basket® \$1.99
 4-piece

On Sale September 11 to October 1, 1995
 Hurry to your nearest DQ® now and score baskets for less!
 Choose juicy, tender steak fingers or big, plump chicken strips.
 Each served with crisp fries, creamy country gravy and a big slice of Texas toast. Either way, you can't miss!

NOBODY BEATS DQ TREATS & EATS™

At participating Dairy Queen® stores. ©Reg. U.S. Pat. & Tm. Off. Am. D.Q. Corp. *Reg. TM Tx. D.Q. Op. Conn.



ASHLEY WAGNER and MITCHEL BEZNER

Wagner and Bezner make plans to wed

Richard and Wanda Wagner of Gruver are pleased to announce the engagement and upcoming marriage of their daughter Ashley Shea Wagner to Joseph Mitchel Bezner, son of Jody and Kay Bezner of Dalhart.

Ashley is the granddaughter of Thelma Meyer of Uvalde, and Mitchel is the grandson of Doc and Boots Bezner of Dalhart and Ernest and Katherine Botard of Alice.

The bride-elect graduated Magna Cum Laude from Tarleton State University with a degree in

Ag Business, and she was a member of Alpha Zeta.

The groom-elect graduated from Tarleton State University with a degree in Ag Services and Development and he is currently self-employed with Bezner Cattle and Grain.

The wedding will take place on November 25, 1995 at St. Peters Catholic Church in Guymon, Oklahoma.

After the wedding the couple plans to reside 25 miles west of Dalhart.

A "Center" Piece

How nice to have some nice cool weather. We can keep praying for rain. Seems most people are doing just that.

Things have been rather slow for the Thursday crafters. They have really been trying to find new and interesting projects to interest people of the community. One thing being planned to undertake soon is to make an applique jacket. A

definite date has not yet been set. But people of all ages in our area are welcome to participate. You may come by the Blodgett Room in the O'Loughlin center to find out more details. As soon as plans are finalized, they will be reported.

To those with Medical problems, we wish you a speedy recovery and hope to see you up and about soon. May God Bless Our Country

Poole awarded scholarship by Interscholastic League

Kristina Kay Poole, a graduate of Spearman High School, has been awarded a scholarship by the Texas Interscholastic League Foundation.

Poole received an Accounting Careers Scholarship in the amount of \$4,000, payable \$500 each semester for four years. This year the Educational Foundation of the Texas Society of Certified Public Accountants, Inc. award a total of five grants to students who have participated in University Interscholastic League Academic State Meet Contests and who plan to major in accounting.

This year the TILF awarded 242 new awards and will renew approximately 241 awards for a total

of 483 scholarships for 1995-96 with a value of \$675,000. Recipients may attend any approved college or university in Texas.

Poole qualified for the UIL Academic State Meet in 1995 in accounting. She also participate in UIL computer applications, mathematics, ready writing, and number sense. Poole ranked fourth in her graduating class and was a member of the National Honor Society, Gifted & Talented Program, Student Council, and yearbook staff.

Poole plans to attend West Texas A&M University and major in accounting.

Club News

The Gladiola Flower Club met in the home of Charlsie Baker on September 7, 1995.

President Margaret Evans call the meeting to order. Roll call and the reading and approval of the minutes of the previous meeting were the first orders of business.

Estella Jackson introduced Margie Fagan who gave a very interesting program on Recycling.

Flower winners were: Pot Plant, Charlsie Baker; Home Grown Arrangement, Myra Berner; and Specimen, Kathleen Sutton.

The Nominating Committee is Dickie Allen, Betty Jean Davis, and

Jo Larson.

Members present for this meeting of the Gladiola Flower Club were: Dickie Allen, Myra Berner, Wanda Brown, Dorothy Buzzard, Rose Cummings, Betty Jean Davis, Margaret Evans, Virginia Head, Mike Hergert, Fay Holt, Estella Jackson, June Jackson, Lorene Kunselman, Jo Larson, Judy Martin, Gwen Smith, Kathleen Sutton, and hostess Charlsie Baker.

The next meeting will be with Estella Jackson.

Well begun is half done.

Aristotle



Thought we forgot ya, huh!
HAPPY 22ND WADE!

39+1
is already
dead and done.
Happy Birthday Mom!!

I want to express my deepest appreciation for the prayers, prayergrams, cards, visits, calls, flowers and other expressions of concern while I have been ill.

Most of all thanks be to God for his love and watch and care.

Thank you so very much for concern and care throughout these years.

Avo (Tope) Gray

Thank You

To the people of Hansford County during the loss of my sister, *Becky Haire.*

All of the prayers, cards, calls, flowers, food and visits were deeply appreciated.

I thank God for such a caring and loving community.

God bless each of you,

Clay and Teri Montgomery & Family

Hansford County Hospital District announces the opening of the clinic at 702 S. Roland

Dr. Ahmed Iqbal
Internal Medicine
General Practice

Office Hours: 8-12; 1-5
Call 659-2846 for appointment
The Old Crew,
Betty, Darlene, Brenda, Helen, & Elizabeth,
is looking forward to seeing you!

Gordon's DRUG
Bridal Gift Registry

COME BY & LET US HELP YOU SET UP YOUR SPECIAL GIFT TABLE

Couples Currently Registered

Chad & Tara (Russell) Davis
Brandon & Misti Babitzke
J Garnett & Brooke Bivins
Kimberly Slater & Kelly Smith

* Date of the Bridal Shower

314 MAIN PHONE 659-2141 **Gordon's DRUG** SPEARMAN TEXAS

Among the Neighbors

by Helen Fisher

Guests of Lucile Hagerman for a couple of days last week were her daughter, Valerie and Max Huber and son Austin of Amarillo.

Mr. and Mrs. Frank Gaines of Eureka, Kansas visited his brother, Rich and Betty Gaines one day last week. They all left the next day for a week at Red River, New Mexico.

Mr. and Mrs. W.L. Beck and son, Leon, of Gridley, Kansas have been visiting here. The Becks stayed with his aunt, Olive Pendergraft, and Leon with his cousins, Glenda Purcell and the Alan Varnons.

Angela and Truman Wright returned from their honeymoon last Tuesday after a delightful stay on Cozumel Island off the south coast of Mexico. They were married in the United Methodist Church in Walsh, Colorado on the 26th of August.

They are back at their employment-she with Interstate Savings and Loan in Spearman and he with the Palo Duro Feeders south of Gruver. Maintaining their balance between Spearman and Gruver, their address is HCR 2, Box 21 B, Spearman and their telephone number, listed in Gruver, is 733-2356.

Angela was previously a reporter for the Reporter-Statesman. Best wishes, Angela and Truman, for a happy and enduring marriage.

Dorothy and Don Hudson returned Wednesday from a weeks stay in Missouri. They drove to Sarcoxie so he could meet with some army buddies. They had all served at Camp Crowder. The Hudsons then spent some time at near-by Anderson where he visited his brothers.

The weather, though warm, was not nearly as hot and dry as the weather in Hansford County while they were gone.

At the Tri-State High School Association Rodeo held last weekend, the only Hansford County cowboys placing were Quentin Harper

and T.J. Jennings, 7th in team roping. It was held at Boys Ranch.

Mrs. Aleen Lowder accompanied her daughter, Marilyn Hart, and granddaughter, Joni, to Stillwater, Oklahoma recently. Their purpose was for Joni to tour the campus of Oklahoma State University, and discuss qualifications with the authorities.

Joni is a senior at Gruver High School, and though last year she had all the attributes of a senior, she was a junior. The statement that she was a senior as stated in this column last week was an error when an error is made in other's columns, of course, it is stupid-while if it is made in this column, it's "unavoidable".

Ila Mae and J.B. Buchanan's guests a few days last week were her nieces. Bonnie Garner is from Aline, Oklahoma, and Ruth Miller from Rockledge, Florida.

A recent guest in the home of Elizabeth and Richard Holton was Dale Davidson, former resident of Spearman. Dale was the husband of the late Florence Holton, sister of Richard. He still lives in Carthage, Missouri and is in reasonably good health.

The Holtons met him in Amarillo and he was here from Thursday through Tuesday and they took him to the air port.

The next day they left for a few days at Las Vegas. They, together with Frances and Gene Cudd, and Dorothy and Max Baggerly of Amarillo, enjoyed some shows and sight seeing, particularly the gigantic Forum Mall. They also met some old friends from Abernathy. They stayed at the Golden Nugget.

One activity that was hardly mentioned-the gaming tables. Probably they have learned the way to leave a casino with a small fortune is to start with a large one.

Richard, ever the philosopher, realizes that if all gambling were made illegal, the first restraints

would be farming and getting married!

Misti and Shawn Martin, with Hunter, spent last week here in the home of her parents, Mr. and Mrs. Don Savage. They are from Quitman, Arkansas and also visited other relatives while here.

How about that attractive, shiny little school house, Palo Duro School, at the Station House Museum? Makes a feller want to gather up reader, 'rithmetic and 'riting book and go back to school.

Certainly the community owes a vote of thanks to J.D. and the others who spent so many hours and effort in getting it into such fine shape.

Joe Lynn Leland of Broomfield, Colorado spent Wednesday to Sun-

day visiting her parents, Joe and Enzie Copeland. Upon her return to Broomfield, she and husband Bob left for Las Vegas to visit their daughter, Lori.

Mr. and Mrs. Earl Goodheart, Damon and Michelle Goodheart, and Darren and Kamela Goodheart of Amarillo all attended funeral services for Earl's brother at Colby, Kansas on Saturday.

Dean Goodheart, 49, was a highway patrolman at Colby and at 6:30 a.m. he had stopped a truck. As he spoke with the driver, he was struck by a passing car and killed instantly.

The car was driven by an 18 year old college girl who had been driving all night.

Sympathy is extended to Earl and the family on this tragic event.

See NEIGHBORS, page 13



AMARILLO OPERA-Keralee Johnson (Baby Doe-Thursdays and Saturdays), Ron Loyd (Horace Tabor), and Brenda Christophersen (Baby Doe-Friday and Sunday) perform in Amarillo Opera's production of *The Ballad of Baby Doe*. September 21-23, at 7:30 p.m. and September 24, at 2:30 p.m.

Extension News

By Peggy Winegarner
Hansford County Extension Agent

For centuries, drying food was a matter of survival. Before refrigeration-before plastic wrap-people dried surplus food to preserve for later use.

They knew what they were doing. Dried food resists spoilage and is highly portable. With all the moisture removed, dried fruit, vegetables and meats were easy for nomadic groups to carry from one location to the next.

Today, we can survive without dried foods, but who would want to? With modern dehydrating appliances, you can dry foods at home with minimal hassle and maximum reward.

From saving money to a refreshing new way to "put up" your harvest, drying your own food has a varieties of benefits:

* Vitamins, minerals and fiber in fruits are concentrated in the

drying process.

* Dried food is lightweight and easy to pack.

* You'll conserve storage space. You can store 20 to 25 dried bell peppers in a single quart jar and 16 to 20 dried tomatoes in the same space.

For more information on drying foods at home, features to look for in choosing an electric home food dehydrator and tasting dried fruits and meats, come to the Lunch and Learn program Tuesday, September 26, at Noon in the Fellowship Hall, Spearman Church of Christ.

Annetta McIver will present the demonstration and provide samples of dried foods that are good for after-school snacks, lunches, camping or sending on the bus with your athlete. Handouts will be provided and a light lunch served.

Go ahead-Dry Something New!

Amarillo Opera offers The Ballad of Baby Doe

The streets of Leadville during the fabulous mining era and the legendary characters Baby Doe and Horace Tabor come to life once more when the Amarillo Opera, in association with Amarillo College, presents *The Ballad of Baby Doe* this month at the Amarillo College Concert Hall Theater. Three evening performances are scheduled, beginning at 7:30 p.m. on September 21, September 22, and September 23, and a matinee performance is scheduled for 2:30 p.m. on September 24.

Tickets to *The Ballad of Baby Doe*, which is sponsored by Blackburns, are \$10 and may be purchased by credit card by calling 806-371-5360 between 1:00 and 5:00 p.m. beginning September 18, or area residents may contact Coordinator Mrs. J.D. Wilbanks for ticket arrangements.

"Part of the mission of the Amarillo Opera Company is to raise the

level of appreciation for good music among the whole community," Mila Gibson, founder/director of the company said. "The huge success of *La Traviata* last year at the Civic Center convinced us that our area wants this level of good music." As a facet of the Amarillo Opera's community outreach, Dr. Robert Krause will present a free lecture at a brown bag luncheon Friday, September 22 at noon at the Amarillo College Commons Lobby. The luncheon is sponsored by Don's Hi-Fidelity.

For the performances of *The Ballad of Baby Doe*, Ron Loyd will sing the role of Horace Tabor, mayor of Leadville; Cloyce Stradley performs as his wife Augusta. Keralee Johnson and Brenda Christophersen will sing the role of Baby Doe. Kathy Kendle sings the role of Baby Doe's mother, and

See OPERA, page 13

HANSFORD COUNTY HOSPITAL DISTRICT

Balentine as Solid Gold Selection

Our featured resident for the month of September is Catherine Balentine. She was born March 19, 1917 in Angleton, Texas to William and Ruth Norris. Her father was a painter and her mother was a homemaker. Catherine has three sisters and two brothers. She attended school in Albuquerque, New Mexico.

It was on a bus trip from Phoenix, AZ that she met her husband Mike; they married and moved to Hansford Co. in 1937. He was a farmer and rancher.

Catherine had two children: Her daughter passed away several years ago; her son, Wesley, retired from Huber Corp. and started farming the home place near Morse. She has nine grandchildren and seven great grandchildren.

She loves gardening, cooking, and playing cards. Catherine has a jar full of recipes and would share a bunch of them with someone so they will not go to waste.

Catherine has been very well pleased during her stay at the Manor (she came here in July 1991).

She would like to invite everyone to come by and see how great it is here.



CATHERINE BALENTINE

A Note From Activities

September is here with lots of activities for everyone! We will be traveling to Hawaii for our theme this month. (Really we won't be going any farther than our own activity room, but we can dream!) Everyone is invited to stop in and wiggle their toes in the sand!

With the departure of summer, we have also had to say goodbye to our summer youth worker, Lexy Spivey. Lexy did a fantastic job, and we will truly miss her.

A special thanks to Jim Shirley and the great folks at First State Bank for barbecuing chicken for our family night dinner. They cook

delicious chicken, and the residents always look forward to visiting with them. This is just another indicator of the super community support we receive from Hansford County.

The Lion's Club will be sponsoring Bingo on Tuesday nights for our Manor Residents. Our Christian Buffet will be held September 14, and will be sponsored by the First Christian Church of Gruver.

We are planning a tip to Gruver to have supper at the home of Les and Sharon Barkley on September 18. This is an annual event that our residents (and staff!) look forward to.

We are looking for volunteers that would be interested in spending individual time with some of our residents. We have several residents that have expressed an interest in playing bridge. Please contact me if you would be interested.

Have a great month. Aloha!

Welcome New Resident

Martha Nitschke came to live in the Manor on August 2. She was born in Shattuck, OK. Martha married Samuel Nitschke, and they had two sons and one daughter; one son, Robert, lives in Spearman.

July Employee of the Month

Rosetta Barrera, who started working for H.C.H.D. in 1973 as a Nurses Aide in the Hospital, was the Employee of the Month for July. She attended LVN school at Frank Phillips college, worked one year as a hospital employee for Dr. Chris Gunasakara, worked two years at Hansford Manor, and then went back to hospital staff until August 1994, when she went to work for Hansford Home Care, the District's Home Health Agency.

Rosetta tells us she has enjoyed her work since she first started. "I have learned a great deal and feel I am using more of my nursing skills than ever before!"

Her hobbies are her grandchildren and fishing. We love to see Rosetta coming because we know she'll always have a big smile on her face!



ROSETTA BARRERA

Resident Birthdays!

- Malcolm Wirtz • 3rd
- Virus Wilbanks • 5th
- Raye Wirtz • 19th
- Richard Shedeck • 24th
- Nova Lee Walker • 25th
- Ruby Milledge • 27th



PROUD OF OUR STAFF - Anne Snow, Administrator, awards Elvira Rodriguez with a plaque. Elvira retires after 15 years of service for H.C.H.D. in the Housekeeping Department.



THE YOUNG AND THE YOUNGER - Fem Pope, resident of the Manor, holds 3 month old Zack McCaig, son of Dr. and Mrs. Delbert McCaig. Dr. McCaig has joined H.C.H.D. as one of the new doctors.



COOKING OUT - Worth Whitworth, Clay Schness, Brel Burgin, and Randall Sauer barbecued chicken for the family night dinner. Thanks to First State Bank for taking time and making our family night one to never forget.

Recycling Words

By MARGIE FAGAN
Spearman-Gruver Recycling Co-ordinator

"Life doesn't cease to be funny when someone dies any more that it ceases to be serious when someone laughs." (George Bernard Shaw) Recently a Solid Waste Reduction Survey was sent out to residents of Spearman and Gruver and perhaps it wasn't a serious as some thought a communication from the government should be. That was my fault. I tend to find the humor in most situations. I'm doomed to go through life with a grin on my face and drool on my chin.

Despite the jocularity, some respondents expressed concerns that required a response. Here goes.

Q. This survey wasted the tax payers money. A. The survey reached about 1200 homes in Spearman, cost about \$300 (less than a Pentagon toilet seat) and was paid for through the recycling grant from the TNRC. One of the biggest expenses of the survey (and out of my own pocket) was a trip to Won-

derland Park for my children after they helped fold and stuff over 3000 surveys.

Q. I would be motivated to recycle if the city or a private company would pick it up. A. It can be very expensive to implement this kind of program. Would you really want to pay for this? Canadian is the only community in the entire panhandle that is attempting curbside. Canadian offsets the costs by using their 1.3 million dollar transfer station to bale the materials for resale. There is a one time charge of \$5 to pay for a bin which then belongs to the customer. (Less than you'd pay for the same bin at Wal-Mart) Despite this only 20% of the cities customers have enrolled. Why?

Q. Need bins scattered in convenient places around town. A. In Spearman there are aluminum recycling bins at the schools. If nothing else, recycle aluminum in Spear-

man and support the National Honor Society at their convenient bins. They've raised \$7,000 for community projects in recent years.

Q. I'm too lazy. A. Sorry, can't help you there. That was your mom's job.

Q. No place for "trash" in my home and it would be nice if you paid for all the containers and bags I use to do this. A. A cardboard box with three grocery sacks in it holds a ton of recyclables and is ready to go when you are. A few plastic grocery sacks hung on a wall above the laundry works great too. Keep your newspapers under the bathroom sink. There's plenty of room and it doesn't cost a cent.

Q. Who thought up these questions? A. It was aliens. The same creatures that will bring the supply ships when we run out of resources on earth.

Q. I don't know if the reasons to recycle are just politically correct or factual. A. See next weeks column "Digest Debunked" for the facts.

There are certainly a lot of excuses for not recycling and they are strangely similar to the reasons I have memorized for not shedding a few pounds. (I can't go walk because it is raining, too hot, there is a big dog out there, it's too dark, I'm too lazy/tired, I'm too busy, the mosquitoes will eat me alive). But there really are no good reasons.



JOAN McCLELLAN, field coordinator, of the Spearman office of the Texas Dept. of Health, recently retired with the Health Dept. The local TDH office closed its doors last week in conjunction with the TDH closure of area's rural health office including those in Dumas and Dalhart. Larger offices in Berger, Pampa and Perryton will continue operations. Mrs. McClellan will continue her health profession as a consultant with the Hansford Hospital in Spearman. (Photo by Eck Spahich)

Panhandle Quilters to hold quilt show

"Bits & Pieces" is not going to be just a quilt show. Make and take workshops, free demonstrations, informative lectures, a boutique, and a display of antique sewing machines will be ongoing throughout the "Bits & Pieces" quilt show September 30, 1995. Texas County Activity Center in Guymon, Oklahoma will be the location of the day's activities sponsored by Panhandle Piecers Quilt Club.

Actual hands-on make and take workshop scheduled include:

- * Fusible applique with pen stitching, great for gifts and decorating.

- * Stamped miniature quilting using textile ink, one of the newest techniques in miniature quilting,

fun, quick, and easy to do.

* If you've always wanted to know how that beautiful hand applied work is done, we'll have a workshop just for you.

Valuable free demonstrations will be available on:

- * Various specialized techniques using a rotary cutter, matt, and ruler.

- * An informative demonstration to help alleviate the problem of how to make and attach a binding to your quilt.

Additional educational, informational, and special activities include:

- * A surprise lecture to be revealed at the opening of the lecture, guaranteed to be awe inspiring.

* A display of antique sewing machines belonging to member of Panhandle Piecers Quilt Club.

* A boutique featuring handmade items for sale by members of Panhandle Piecers Quilt Club.

Come to the "Bits & Pieces" quilt show Saturday, September 30, 1995, at the Texas County Activity Center in Guymon, for a day filled with yards of quilting. Show hours will be 10:00 a.m. to 6:00 p.m. and is open to the public with free admission.

For more information contact Mary Anne Mayer, quilt show co-chairman, at 405-338-6123, or Judy Rice, workshop chairman, at 405-338-5259.

Out at the Lake

Lake Depth-September 11, 1995- 27 feet and 6 inches.

The Panhandle Sams Club of Guymon made their fifth monthly trip to the Lake this past weekend. They left a note asking for reservations next month-if the weather held. Jim Derington says they are a great group of people.

A few tent campers were at the Park. The First State Bank of Spearman rented the group shelter Sunday.

For those of you who have wondered what is going on at the edge of the Lake on the west side that is Randy Hendrickson preparing to open a lakeside eating area. He also plans to have a few tents set up for campers. He said he would put a spot on the radio and have a sign when he was ready for the public. Friends tell me that Randy is an excellent chef.

If you go out to the Lake, be sure to notice the abundance of stickleleaf sand lilies. Evening is a good time to see them, as they close for the late mornings and afternoons. They are sometimes called starflowers or poor man's patches. The sunflowers are not as thick this year, but it seems to me that the flower heads are larger than usual.

Pauline Hale has shared some "unforgettable moments" with me. One of them was seeing a field of sunflowers near Morse with the light just right. Last week coming home through Kansas from a trip to Missouri we saw a field of sunflowers with the early morning sun on them and each head turned to the sun, and I knew what Pauline meant. They were so bright that they almost hurt our eyes. Truly an "unforgettable moment."

MS Society to present program

The panhandle chapter of the National Multiple Sclerosis Society is presenting its 10th annual Education Day Program, "MS Update 1995: Looking Ahead", on Saturday, October 7, 1995 at the Amarillo Garden Center. The chapter's annual meeting will be held on Friday night, October 6. The main speaker will be Dr. Timothy Vollmer. People with MS are invited to attend the annual meeting as guests of the chapter.

At the Saturday program there will be two guests speakers: Dr. Timothy Vollmer, medical and clinical research director of the Rocky Mountain MS Center in Colorado, and Dr. Annette Howard, staff neurologist, MS Center, Baylor University in Houston.

Both speakers will discuss the many new drugs which are under consideration by the FDA at this

time. They include Beta Interferons, Copolymer 1, and Cladribine. The doctors will also talk about Oral Myelin and other experimental treatments for MS.

Allied Health Professionals will receive 8.5 contact hours through Amarillo College Center for continuing healthcare education. The fee is \$49 and includes dinner Friday night, lunch and breaks on Saturday, and all materials.

The program has also been approved for 3 CMES for physicians through Texas Tech University Health Sciences Center at Amarillo. Dr. Vollmer will present two morning workshops for physicians. Physicians are invited to participate in the afternoon workshops with Allied Health Professionals.

For more information and registration, call the MS office at 806-372-4429.

PUBLIC NOTICE BRIEF EXPLANATORY STATEMENTS OF PROPOSED CONSTITUTIONAL AMENDMENTS SPECIAL ELECTION NOVEMBER 7, 1995

PROPOSITION NO. 1 ON THE BALLOT

House Joint Resolution 50 proposes a constitutional amendment providing that the legislature by general law may authorize the Texas Higher Education Coordinating Board to issue general obligation bonds of the state in an amount not exceeding \$300 million to finance educational loans to students. The maximum interest rate to be borne by the bonds must be set by law. The legislature may provide for the investment of bond proceeds and may establish an interest and sinking fund to pay the bonds.

The proposed amendment will appear on the ballot as follows:
"The constitutional amendment providing for the issuance of \$300 million in general obligation bonds to finance education loans to students."

PROPOSITION NO. 2 ON THE BALLOT

Senate Joint Resolution 36 proposes a constitutional amendment that would authorize the legislature to exempt from ad valorem taxation the property of an organization chartered by the Congress of the Republic of Texas if the property is used primarily for the charitable, benevolent, or public service activities of the organization as defined by general law. The Comptroller's Property Tax Division has identified the Grand Lodge of Texas, also known as the Masonic Lodges, as the primary organization which would qualify for this tax exemption.

The proposed amendment will appear on the ballot as follows:

"The constitutional amendment to authorize the legislature to exempt from ad valorem taxation property of an organization chartered by the Congress of the Republic of Texas that is used primarily for the charitable, benevolent, or public service activities of the organization."

PROPOSITION NO. 3 ON THE BALLOT

Senate Joint Resolution 51 proposes a constitutional amendment that provides that the farm and ranch finance program fund shall be administered by the Texas Agricultural Finance Authority and not by the Veterans' Land Board, as provided by current law. In addition, the proposed amendment provides that the proceeds of \$200 million of the \$500 million in bonds authorized by the Texas Constitution for the farm and ranch finance program fund may be diverted to the agricultural fund and the rural micro-enterprise development fund, also authorized by the Texas Constitution, to be used for agricultural and rural economic development programs.

The proposed amendment will appear on the ballot as follows:

"The constitutional amendment allowing the use of existing bond authority of the farm and ranch finance program to include financial assistance for the expansion, development, and diversification of production, processing, marketing, and export of Texas agricultural products."

PROPOSITION NO. 4 ON THE BALLOT

Senate Joint Resolution 46 proposes a constitutional amendment that would allow an encumbrance to be fixed on homestead property for an owelty of partition. In divorce and probate situations, a piece of property may be owned jointly by two

or more people, and each person owns an undivided interest in the property, as opposed to a specific portion of the property. If one owner wishes to purchase the other person's interest in the property and wishes to obtain a loan to finance the purchase, the lending institution requires all interests in the property to be used as security for the loan; this is called an owelty of partition. Senate Joint Resolution 46 would allow the lending institution to foreclose on the homestead property for an owelty of partition if the purchaser defaulted on the loan. In addition, the proposed amendment would allow the refinancing of a lien against a homestead. Finally, the proposed amendment would allow a purchaser or lender to rely on an affidavit that states that the property to be conveyed or encumbered is not the homestead of the affiant.

The proposed amendment will appear on the ballot as follows:

"The constitutional amendment permitting an encumbrance to be fixed on homestead property for an owelty of partition, including a debt of a spouse resulting from a division or award of a homestead in a divorce proceeding, and for the refinancing of a lien against a homestead, including a federal tax lien resulting from the tax debt of the owner."

PROPOSITION NO. 5 ON THE BALLOT

House Joint Resolution 34 proposes a constitutional amendment which would increase by \$500 million the constitutional authorization of the Veterans' Land Board to issue and sell general obligation bonds of the state to provide housing financing to Texas veterans. The proceeds from the bonds authorized by this amendment shall be used to augment the Veterans' Housing Assistance Fund II to be administered and invested as provided by law. The bonds authorized by this amendment shall be incontestable after execution by the Veterans' Land Board, approval by the attorney general, and delivery to the purchaser.

The proposed amendment will appear on the ballot as follows:

"The constitutional amendment to increase by \$500 million the amount of general obligation bonds that may be issued to augment the veterans' housing assistance fund II."

PROPOSITION NO. 6 ON THE BALLOT

House Joint Resolution 64 proposes a constitutional amendment which would extend the tax exemption under article VIII, section 1-b(b) of the Texas Constitution for the residence homestead of a person age 65 or older to the surviving spouse of a person who received the exemption. The surviving spouse must be age 55 or older when the deceased spouse died, and the property must be the residence homestead of the surviving spouse when the deceased spouse died and remain the surviving spouse's residence homestead. A surviving spouse who already receives an exemption under this section of the Texas Constitution is not entitled to an additional exemption under the amendment.

The proposed amendment will appear on the ballot as follows:

"The constitutional amendment exempting from ad valorem taxation the residence homestead of the surviving spouse of an elderly person."

PROPOSITION NO. 7 ON THE BALLOT

House Joint Resolution 73 proposes a constitutional amendment that would reduce the amount of general obligation bonds authorized for the superconducting super collider fund from \$500 million to \$250 million.

The proposed amendment will appear on the ballot as follows:

"The constitutional amendment reducing the amount of general obligation bonds authorized for undertakings related to the superconducting super collider research facility from \$500 million to \$250 million."

PROPOSITION NO. 8 ON THE BALLOT

House Joint Resolution 80 proposes a constitutional amendment abolishing the office of constable in Mills, Reagan, and Roberts counties. In Mills County, the office of constable is abolished, and the powers, duties, and records of the office are transferred to the sheriff. In Reagan and Roberts counties, the office of constable is abolished and the powers, duties, and records of the office are transferred to the sheriff only if a majority of voters in each of the respective counties favors the proposed amendment.

The proposed amendment will appear on the ballot as follows:

"The constitutional amendment providing for the abolition of the office of constable in Mills, Reagan, and Roberts counties."

PROPOSITION NO. 9 ON THE BALLOT

Senate Joint Resolution 7 proposes a constitutional amendment that would allow investment of money from the Texas growth fund in a business without the business's disclosure of its investments in or with South Africa or Namibia. Currently, such investments are prohibited by article XVI, section 70(r) of the Texas Constitution, which would be repealed.

The proposed amendment will appear on the ballot as follows:

"The constitutional amendment allowing investment of money from the Texas growth fund in a business without the business's disclosure of its investments in or with South Africa or Namibia."

PROPOSITION NO. 10 ON THE BALLOT

Senate Joint Resolution 1 proposes a constitutional amendment that would abolish the constitutional office of state treasurer effective September 1, 1996. The transfer of specific constitutional powers and duties to the comptroller of public accounts takes effect on that date. The statutory powers and duties and the property and other obligations of the state treasurer are transferred to officers and agencies of state government as the legislature provides by general law.

The proposed amendment will appear on the ballot as follows:

"The constitutional amendment abolishing the office of state treasurer."

PROPOSITION NO. 11 ON THE BALLOT

House Joint Resolution 72 proposes a constitutional amendment requiring that land devoted to wildlife management be taxed on the basis of its productive capacity. The proposed amendment also adds a temporary provision to the Texas Constitution validating the changes to the law made by Chapter 560, Acts of the 72nd Legislature, Regular Session, 1991, which amended the Tax Code to allow land used for wildlife management to be appraised as agricultural land. The temporary provision also provides that a property owner is not authorized to claim a refund of taxes paid unless the tax payment was challenged before the effective date of the proposed amendment. The temporary provision expires on January 1, 1998.

The proposed amendment will appear on the ballot as follows:

"The constitutional amendment to allow open-space land used for wildlife management to qualify for tax appraisal in the same manner as open-space agricultural land, subject to eligibility limitations provided by the legislature."

PROPOSITION NO. 12 ON THE BALLOT

House Joint Resolution 31 proposes a constitutional amendment providing that the legislature may exempt from ad valorem taxation income-producing personal property and mineral interests that have a taxable value which is insufficient to recover the costs of administering the tax.

The proposed amendment will appear on the ballot as follows:

"The constitutional amendment authorizing the legislature to exempt from ad valorem taxation personal property and mineral interests having a value insufficient to recover the administrative costs of collecting the taxes."

PROPOSITION NO. 13 ON THE BALLOT

House Joint Resolution No. 35 proposes a constitutional amendment authorizing the governing body of a political subdivision to exempt from ad valorem taxation boats and other equipment used primarily in the commercial taking or production of fish, shrimp, shellfish, and other marine life.

The proposed amendment will appear on the ballot as follows:

"The constitutional amendment authorizing the governing body of a political subdivision to exempt from ad valorem taxation boats and other equipment used primarily in the commercial taking or production of fish, shrimp, shellfish, and other marine life."

PROPOSITION NO. 14 ON THE BALLOT

House Joint Resolution 68 proposes a constitutional amendment that allows the legislature to raise the current ad valorem tax exemption for disabled veterans and their surviving spouses and minor children. The tax exemptions would be raised based on a veteran's disability rating as follows:

Disability	Maximum Tax Exemption
10%-30%	\$ 5,000
30%-50%	\$ 7,500
50%-70%	\$10,000
More than 70%	\$12,000
Age 65 and 10% or higher	\$12,000
Loss or loss of use of limb	\$12,000
Blindness or paraplegia	\$12,000

The spouse and children of any veteran who dies while on active duty may be granted an exemption of up to \$5,000. The amounts of the exemptions provided for in this proposed amendment may be repealed by the legislature by general law.

The proposed amendment will appear on the ballot as follows:

"The constitutional amendment relating to raising the limits of the exemption from ad valorem taxation of property owned by disabled veterans or by the surviving spouses or surviving minor children of disabled veterans."

Este es el informe explicatorio sobre la enmienda propuesta a la constitucion que aparecera en la boleta el dia 7 de noviembre de 1995. Si usted no ha recibido una copia del informe en español, podra obtener una gratis por llamar al 1/800/252/8683 a por escribir al Secretario de Estado, P.O. Box 12060, Austin, Texas 78711

Published by Secretary of State
Tony Garza

PALO DURO DOWNS

Come celebrate Sept. 17, 1995

Gates open at 12:00 p.m. Ostrich races will be at 2:00, 4:00, & 6:00 p.m.

There will be a concession stand and lots of family fun and entertainment each Sunday at the Palo Duro Downs 7 miles W. and 2 miles N. of Spearman, Texas.

\$2/over 13 • \$1/6 to 13 years • Free/6 and under

Aprovecha esta oportunidad para darles GRACIAS a todos por asistir a la inauguracion de las carreras el dia de tyaba Palo Duro Downs va a tratar de que usted y su fam. Se sientan comodios por lo tanto vamos a esperar su cooperacion y no deven de tyder licor o bebidas ya que aqui se encontrara de lo mas indispensable; sodas, cerveza. Antojitos Mexicanos y las carreras de Avestruz seran a las 2 p.m. la direccion es en el camino N. 1 and 7 millas al poniente de Spearman y 2 al Norte.

Sports



STREAK OF LIGHTING - Lynx quarterback, Coyt Tigrett, is seen here outrunning Panhandle Panthers defensive players for one of his many big break-away runs in last Friday night's match-up between the Lynx and the Panthers. Tigrett boosted his team into a victory over the Panthers, 24-21, by rushing 12 times for 124 yards and scoring one touchdown. He also put the Lynx in scoring position several times. Tigrett and fellow teammates will be hosting the Memphis Cyclones this week at 8:00 p.m. in Lynx Stadium.

Lynx CC competes at Wolf Creek

Spearman's set of guys' and gals' cross country team was afoot again this past weekend, as this fearsome group of competitors competed and did quite well in the Wolf Creek Classic at Lake Fryer.

For the varsity girls, Kristen Beedy led the pack of 7 talented girl runners. Beedy finished with a 12th place time of 14:02, and she was the only varsity Lynxette to medal. Brittni Beedy was only a minute behind her, with a time of 15:12, but to prove how tough the competition really was, her time gave her 47th place - a big difference in placing from her cousin but not a big time difference. Lindsey Smith, who finished 57th, came in with a time of 15:24, while Keisha O'Quin was close on her heels with a time of 12:25 and 58th place. Kasey Dunnihoo finished 61st, as she brought in a time of 15:29. To finish up the varsity girls, Shayla Barber, who placed 65th with a

time 15:30, and Brooke Trantham, who placed 92nd with a time of 16:28, brought in the rest of the Lynxettes.

An impressive 13 runners competed for the Lynxettes' JV team. Out of those 13 girls, 3 emerged as medal winners. Ashley Brown, who finished the best for the JV Lynxettes with a 12th place time of 16:21, Samantha Beasley, who finished close behind her with a 13th place

time of 16:35, and Gena Kunselman, who finished again close behind with a 14th place same place time of Beasley, 16:35, were the only JV Lynxettes to medal. Grace Davis, who finished with a 22nd place time of 16:49, and Jocelyn Edwards, who finished up with a 27th place time of 16:59, ended the rest of the 16 minute time girls. Carrie Burton, who finished with a

See RUNNERS, page 9

Varsity Lynx clinch exciting victory against Panthers in season opener

By Chad Davis

Last year, the Panhandle Panthers came to the town of Spearman and started off a season for the Lynx that would pretty much be how it went all year - losses. The Panthers embarrassed a young and very unexperienced Spearman team in front of their very own home crowd, 28-12. However, if that pattern stays true, the Lynx should have a really fabulous year this go around. Spearman went into their opening season game against Panhandle with many things in mind, on being, of course, the game of last year, and the thought of how they were the ones who were not the unexperienced, and how time, at least in this case, does not heal old wounds. Thanks to their strong desire to never give up, and a 4th quarter Gregg Elliott field goal, the Lynx were able to return the "favor" that the Panthers gave them last year and embarrass Panhandle in their own territory, 24-21.

Spearman started off the game in high spirits, and it really showed. On the very first play of the game, defensive back Jeremy Blan had a near pick-off from one the Panther's favorite receivers of the night, Grant Garner. This marked how the first quarter, or least the first drive, was going to go for the Lynx. After that

near grab, the Panther's quarterback, Cody Wilkinson, a man who really gave the Lynx a tough time last year, handed the ball off to his favorite back of the night, Trent McKiernan. He sparked a 7 play 16 yard drive for the Panthers. However, on a 2nd a 4 play, the Lynx's tough and rugged defense stopped him cold in his track, and the Panthers were forced into a 3rd and 4 situation, which ended in a horribly executed screen play, and forced them to turn the ball over to the Lynx on a punt.

It did not take the Lynx to respond after that. On the very first play of the drive, senior quarterback and team leader, Coyt Tigrett, took the snap from junior center, Tony Clement, and ran 68 plus yards to the goaline of the Panthers. Panhandle, who was still in shock from that devastating play, then watched as the multitalented junior running back, Michael Witten, danced across the goaline for the 1 yard touchdown with 7:50 left in the first quarter. Elliott, who plays a bigger part later in the game, kicked the extra point and the Lynx were on their way to taking this Panhandle squad, 7-0.

From there, it was all Panhandle. The Panthers, to give them some credit, put on an awesome display of offense. Their very next drive,

after the Lynx score, took off with a 14 play drive, which ultimately ended in a touchdown. Panhandle backs McKiernan and Ryan Capps, along with Wilkinson, combined to give the Panthers much needed yardage to get them back in the game. After a fumble, and what looked like a Lynx recovery, but was not, Wilkinson hit Garner on a 65 yard roll-out pass for the Panthers' first score of the night with only 29 ticks left on the board in the first quarter. The extra point sailed through the uprights, and made the score even at 7, which also brought the buzzer for the end of the first quarter.

Spearman tried to come out in the second quarter with the same spirit as they did in the first. However, a Brent Collins run of 8 yards was the only spark Spearman had to use for their drive, and they were forced to punt with 9:30 still left in the half.

Thanks to good coverage on the punt, the Lynx had Panhandle fairly deep in their own territory. The Panthers did have some good plays in this drive, but they too were forced to punt the ball with 7:06 left in the quarter.

Spearman and Panhandle then exchanged punts again, but this

See LYNX, page 10



**HERGERT
FORD**
Top Quality
Body and Paint
Repairs

DARL HERGERT
420 S. Main Perryton, TX 435-7676

We're committed to serving the Golden Plains.

To the communities of Booker, Darrouzett, Follett, Higgins, Perryton and Spearman, Southwestern Public Service Company extends not only our welcome, but our commitment as well.

As we have for many years with many of your neighbors, we pledge to serve your electrical needs in a superior fashion, providing you with courteous service and reliable, low-cost energy.

Thank you for the genuine goodwill and acceptance.

OPEN HOUSE

222 S. Amherst in Perryton
Friday, September 15
1 - 3 p.m.



SOUTHWESTERN PUBLIC SERVICE COMPANY
222 S. Amherst • Perryton, Texas 79070 • 806 435-4077



EFFECTIVE SEPT. 10-16, 1995
SPEARMAN — GRUVER

SPECTACULAR SAVINGS

<p>HAM, EGG & CHEESE OR SAUSAGE, EGG & CHEESE BREAKFAST BURRITOS FOR ONLY 99¢</p> 	<p>SAVE ON PEPSI-COLA SOFT DRINKS \$2.19 six-pack</p> 	<p>SAVE ON MELLO CRISP BACON 1 LB. PKG. 99¢</p> 
<p>ALL VARIETIES REGULAR OR WAVY LAY'S® POTATO CHIPS \$1.49 SIZE 99¢</p> 		
<p>ALL PURPOSE RUSSET POTATOES 10 LB. BAG \$1.29</p> 	<p>AMERICAN CHEF CHOPPED HAM 10 OZ. PKG. \$1.49</p> 	
<p>DECKER MEAT BOLOGNA 12 OZ. PKG. 79¢</p> 		

STORE SPECIAL

CUDDLES 20 LG. OR 26 MED.
DIAPERS EA. **\$4.99**

SHURFINE JUMBO ROLL
PAPER TOWELS EA. **69¢**

SHURFINE ALL PURPOSE
FLOUR 5 LB. **89¢**

48 LOAD
TIDE DETERGENT ... EA. **\$6.99**

SHURFINE CHUNK LIGHT
TUNA 6 OZ. **69¢**

STORE SPECIAL

DRINK SPECIAL

BIG 32 OZ. TALLSUP
FILLED WITH YOUR FAVORITE FOUNTAIN DRINK!

59¢

STORE SPECIAL

STORE SPECIAL

Hounds win stunning victory over Wheeler in season opener

By Bob Bort

The Gruver Greyhounds hosted the state's 8th ranked class A team this past Friday night, September 8 - the Wheeler Mustangs - and the Hounds blitzed their opponents, rolling past them 22-0 in the season-opening game for both teams.

Travis Ferguson was key to the Hounds offensive attack, with 19 carries for 108 yards. Daniel Bort averaged 8.7 yards per carry in carrying the ball 9 times for 78 yards. Bailey Barkley handled the quarterback duties well, and the offensive line had a strong showing. But it was the defense that played especially well in shutting out the Mustangs; it was the defense that made several key plays of major importance.

Wheeler started out the game hot. They drove from their own 30 yard line, after the opening kickoff, to the Hounds 15. It looked as though they would continue on into the end zone and score the first touchdown.

But two key defensive plays halted the Mustangs drive with no points. Scott Jarvis blitzed and sacked the Mustang quarterback, Travis Stevens, for a two yard loss when the Mustangs seemed as though they couldn't be stopped. Then, after an incomplete pass on a

third down, the Mustangs attempted a field goal from 34 yards out, but Jason Ward blocked it. It was now the Hounds ball.

The Hounds had a textbook touchdown drive on their first series. They ran 10 plays, no passes, no penalties, for 71 yards and the touchdown. Ferguson carried the ball 7 of the 10 plays for 52 yards, including the touchdown on a five yard scamper in which he fumbled the ball, but recovered it smartly and continued carrying it on into the end zone. The kick by Sammy Renteria was good, and the Hounds led 7-0 with 2:39 left in the opening period.

Wheeler again looked good, especially with its passing attack and Stevens to Jason Porton, who clicked for five straight pass completions. But with a 2nd and 7 yards to go on the Gruver 38, the Hounds defense came through again. Andy Morris blitzed and sacked the quarterback for a 7 yard loss; then Renteria, Ward, and Ferguson all broke through the line and met at the same time at the quarterback, sacking Stevens for a big ten yard loss. Wheeler was forced to punt.

Gruver lost two scoring opportunities, one on a fumble, and one a penalty - an ineligible receiver downfield penalty. Wheeler also

lost a fumble, recovered by Juan Arreola. The half ended with the Hounds hanging precariously to the 7-0 lead.

The Hounds lost the second half kickoff on a fumble, then had a 15-yard personal foul penalty, and it looked as though Wheeler was really about to jump back into the game. The 'Stangs had the ball on the Hounds 6 yard line, but on 4th and two it was the defense again. Jarvis blitzed and sacked the quarterback for a 4-yard loss, and the Hounds had the ball on the 10 yard line.

That seemed to spur the offense on to a gigantic 15-play, 90 yard drive, that put the Hounds up 14-0 and threatened to sew up the game for the Hounds. Bort accounted for 60 of the yards on 7 carries. The touchdown was again by Ferguson, on another 5 yard run, and the Hounds led 14-0 with 2:47 left in the third quarter, after Renteria had booted through the point after touchdown again.

Scott Stedje had a fumble recovery, but the Hounds couldn't capitalize on the good field position.

But early in the 4th quarter, the Hounds closed out the scoring with an exciting play. Again, it was the

See HOUNDS, page 9



END OF THE TACKLE - The Gruver Greyhounds hosted Class A 8th state ranked Wheeler Mustangs last Friday in Gruver. In the photo above, fullback, Travis Ferguson (23) is seen at the end of a nice run, while Sammy Renteria (44) is clearing a path. Ferguson gained 108 yards for the night. The Hounds will be hosting another game this week, as they will be involved in their homecoming ceremonies and game at 8:00 in Greyhound Stadium.

For the Sport of it

by Bob Bort

This week is homecoming. The opponent is the Texhoma Red Devils, and they were blanked their opening week by Sunray 28-0, then defeated the Woodward JV the second week of the season 8-0. They are only a fragment of the team they were last season, when they finished 14-1, losing only to Velma-Alma 19-18 in the state championship game. Among others, they have lost superstars Brad Cornelsen and Shane Elliott. They defeated Gruver last year, 26-14 at Texhoma.

Eleven games have been played between these two schools in the history of the two schools, with Gruver holding a 6-5 advantage.

Several times they have met in Gruver's homecoming game. This game should be a delight to the homecoming crowd, as the Red Devils are no match for the Hounds this year. The Hounds want to avenge all three of their losses last year, and this is the first one. Final score, Gruver 28 Texhoma 0. The Hounds will really be rolling by the time they get to district competition. That is what I am predicting. But Texhoma can be dangerous - they have played one more game than the Hounds, and that may help them. But this Hounds team, as evidenced by their 22-0 drubbing of Wheeler, is a very, very good team.

By the way, here are the record for the homecoming crowd over the past 5 decades: 1994 (6-3, Doug Frick); 1984 (9-4, Barry Haenisch); 1974 (3-6-1, Stocky Lamberson); 1964 (7-3, Corky Chapman); 1954 (3-7, Austell Burrus); 1944 (DNP).

ANSWERS TO LAST WEEK'S TRIVIA QUESTIONS:

Question number one: About half time of the Hounds season opener at Stratford on September 8, 1989, a chilling blast from the north blew in, and a day in which the temperature hit 90 saw the temperature plummet unbelievably

See SBORT, page 9

65th Annual Gruver High School Homecoming Celebration

Reunions for the Classes of: 1935, 45, 55, 65, 75, 85, 95

SEPTEMBER 15TH
5 p.m. to 7 p.m. - Alumni Chili Supper - School Cafeteria

7:30 p.m. - Crowning of Alumni Queen and Homecoming Queen

8:00 p.m. - Gruver Greyhounds vs. Texhoma Red Devils
- Greyhound Stadium

Individual class gatherings will follow the game.
The location will be announced at the game.

SEPTEMBER 16TH
9:00 p.m. to 1:00 a.m. - All School Alumni
Dance - Harland Gerardy's hangar at the
Gruver Airport
starring "The Rowdy Ace Band"
\$5.00 per person

ALUMNI QUEEN CANDIDATES AND ESCORTS:

1935 - Frances Thoreson Glasgow & Joel Stavlo
1945 - Alma Dahl Walker & Arnold Bayless
1955 - Evalyn Edwards Dahl & Glen Ward
1965 - Judy Hill Larch & Mike Stedje
1975 - Terri Bagwell Thompson & Gregg Carroll
1985 - Holly Holt Key & Bart Shapley
1995 - Julie Meyer & Jace Dawson

NOBODY TACKLES FOOTBALL LIKE PRIMESTAR.

For hard-hitting football action, no other mini-dish system scores like PRIMESTAR.

Look at what you get:

- Over 100 NFL games including the weekends biggest games!
- Over 100 college games on the 15-channel Mega Sports package - No extra charge.
- NBC and Fox coverage* - including the Super Bowl - plus ESPN and TNT.
- December Saturday NFL games - not included in other pay packages.

What about the competition? Along with their high up-front cost (starting at \$899 for a similar system), you'll pay extra for football coverage PRIMESTAR offers at no charge.

PRIMESTAR is the best mini-dish value!

- There's nothing to buy or maintain.
- Packages start at about \$1 a day for everything - equipment and programming.
- No-hassle, professional installation is just \$149!
- Three programming packages to choose from.
 - Worry-Free Warranty
 - Lots of options and more!

NOBODY.

In Spearman and surrounding areas

call 1-800-716-004

or call Audio Video Electronics at 249-5019 or Sanders Satellite at 353-6706 (Amarillo) or Future Cinema at 935-3482 (Dumas)

CALL TODAY AND ASK HOW TO SAVE \$60 MORE!

*ABC, CBS, NBC, PBS and FOX affiliates are available only for homes (1) which cannot receive an acceptable picture from local ABC, CBS, NBC, PBS and FOX affiliates via a conventional outdoor weather-resistant antenna and (2) which have not subscribed to cable television in the last 90 days. Cost is \$1.00 per channel per month. Additional charges for complex installations may occur. ©1995 PRIMESTAR by TCI

1995 SPEARMAN LYNX FOOTBALL SCHEDULES

Varsity

Sept. 8 - Panhandle, T	Oct. 13 - *Stratford, H
Sept. 15 - Memphis, H	Oct. 20 - OPEN
Sept. 22 - **Clarendon, H	Oct. 27 - *Gruver, T
Sept. 29 - Perryton, T	Nov. 3 - *West Texas, H
Oct. 6 - Fritch, T	Nov. 10 - *Boys Ranch, T

**Homecoming *District Games - 7:30 p.m.

Junior Varsity

Sept. 7 - Stratford, H	Oct. 12 - Stratford, T
Sept. 14 - Sunray, T	Oct. 19 - Sunray, H
Sept. 21 - Gruver, T	Oct. 26 - Gruver, H
Sept. 28 - West Texas, H	Nov. 2 - West Texas, T
Oct. 5 - Boys Ranch, T	Nov. 9 - Boys Ranch, H

Junior High

Sept. 14 - Sunray, T	Oct. 19 - Sunray, H
Sept. 21 - Gruver, T	Oct. 26 - Gruver, H
Sept. 28 - West Texas, H	Nov. 2 - West Texas, T
Oct. 5 - Boys Ranch, T	Nov. 9 - Boys Ranch, H
Oct. 12 - Stratford, T	

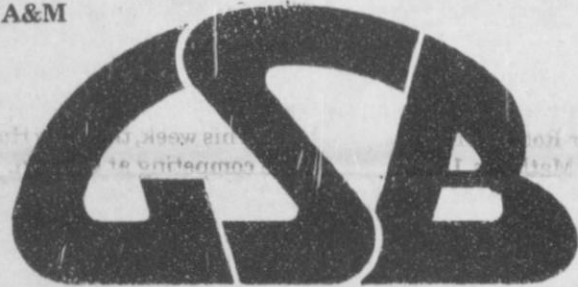
GAME OF THE WEEK
MEMPHIS AT SPEARMAN



MARKETPLACE - JOLLY ROGER - PAY-N-SAVE
CONVENIENCE STORES

1804 Hall Avenue
Littlefield, Texas 79339
In Spearman at 505 Plains Shopping Center

FORT LEWIS AT WEST
TEXAS A&M



GRUVER STATE BANK

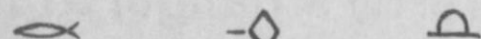
3 Main Plaza
Gruver, Tx. (806) 733-5061
Member FDIC



DEAN CLUCK
CATTLE CO., LTD.

MONDAY NIGHT
PITTSBURGH AT MIAMI

HCR 3, Box 47
Gruver, Tx. 79040
(806) 733-5021



DALHART AT STRATFORD

GILLASPIE

AUTO & TRUCK CENTER, INC.
CHEVROLET, OLDS, BUICK, PONTIAC
CHRYSLER, PLYMOUTH, DODGE
Highway 207 South • P.O. Box 430
Spearman, Texas 79081
(806)659-2541

See us for all your automotive needs:

Sales
Service
Parts



221 Main • Spearman
659-3426
212 S. Main • Perryton
435-4261

BORGER AT TASCOSA



The Hansford County

Reporter-Statesman

Serving Hansford County Since 1907
211 Main • Spearman, Texas 79081

1995 FOOTBALL CONTEST

--- RULES --- RULES --- RULES ---

1. In each advertiser's box you will find the name of a team playing this weekend. Place the team you think will win in the entry form below.
2. Fill in your name, address and phone number (please print) and sign the entry.
3. Entries in Spearman may be turned in at the Reporter-Statesman Office. Gruver Residents may turn in their entries at the Gruver City Hall or mail them to: Reporter-Statesman, Box 458, Spearman, Tx. 79081. Deadline for entries is 5 p.m. Friday and mailed entries must have an official U.S. Post Office postmark dated no later than Friday. Winners will be picked on Monday mornings after mail delivery.
4. No photocopies will be accepted.
5. The tie-breaker will be used to break ties. In the event of entries having the same tie-breaker then the winner will be determined by blind draw. The tie-breaker is the total number of points scored (combined - both teams) on the game of the week.

1st Prize - \$25
2nd Prize - \$15
3rd Prize - \$5



The Hansford County

Reporter-Statesman

Serving Hansford County Since 1907
211 Main • Spearman, Texas 79081

Tie-Breaker:

Total points scored
in 'Game of the Week'



Lowe's Marketplace: _____
Gruver State Bank: _____
Dean Cluck Cattle Co.: _____
Gillaspie Auto: _____
Cates Men & Boys: _____
Main Street: _____
J&M Service Center: _____
Paschel Irrigation: _____
G&G Foodliner: _____
Little Fiffanies: _____
Caprock Industries: _____
Curtis' Hot Oilers: _____
Bunkhouse: _____
Gruver Ford: _____
Hi Plains Auto: _____
Hansford Implement: _____
Equity: _____

Name: _____
Address: _____
Town: _____
Phone: _____
Signature: _____

1995 GRUVER GREYHOUNDS FOOTBALL SCHEDULES

Varsity

Sept. 8 - Wheeler, H	Oct. 13 - *Boys Ranch, H
Sept. 15 - **Texhoma, H	Oct. 20 - Stratford, T
Sept. 22 - Highland Park, T	Oct. 27 - *Spearman, H
Sept. 29 - Booker, T	Nov. 3 - OPEN
Oct. 6 - Panhandle	Nov. 10 - *West Texas, T

**Homecoming *District Games - 7:30 p.m.

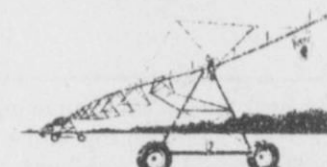
Junior Varsity

Sept. 7 - Boys Ranch, H	Oct. 12 - Boys Ranch, T
Sept. 14 - Stratford, T	Oct. 19 - Stratford, H
Sept. 21 - Spearman, H	Oct. 26 - Spearman, T
Sept. 28 - Sunray, T	Nov. 2 - Sunray, H
Oct. 5 - West Texas, T	Nov. 9 - West Texas, H

Junior High

Sept. 14 - Stratford, H	Oct. 19 - Stratford, T
Sept. 21 - Spearman, H	Oct. 26 - Spearman, T
Sept. 28 - Sunray, T	Nov. 2 - Sunray, H
Oct. 5 - West Texas, T	Nov. 9 - West Texas, H
Oct. 12 - Boys Ranch, T	

SOUTHERN METHODIST
AT OKLAHOMA



Reinke is the leader in
Innovation in the Pivot Industry.

Paschel
Irrigation Inc.

Richard & Arlene Paschel
(806)659-5228
Hwy 15 W. • P.O. Box 69
Spearman, TX 79081

REINKE
THE FIRST NAME IN IRRIGATION

DALLAS AT MINNESOTA

Tires • Flats • Oil & Lube • Wash • Brakes & Motor Repairs • Front End Alignments

J & M Service Center

24 Hour Road Service

DAVID PEARSON - Owner
(806) 659-5519



415 Collard
Spearman, TX 79081
24 Hr. Service
(806) 659-3352

TEXHOMA AT GRUVER



G&G
FOODLINER

516 Main • Gruver
733-2471

Little Tiffanies

DIAMONDS - FINE JEWELRY
BRIDAL REGISTRY



OAKLAND AT KANSAS CITY

BOOKER AT HOOKER, OK.

Main Street Store



506 Main Gruver, Tx. 733-5040

"We Support Our Local Teams"

CAPROCK #1 & #2

Mike Heard, General Manager
(806) 733-5025

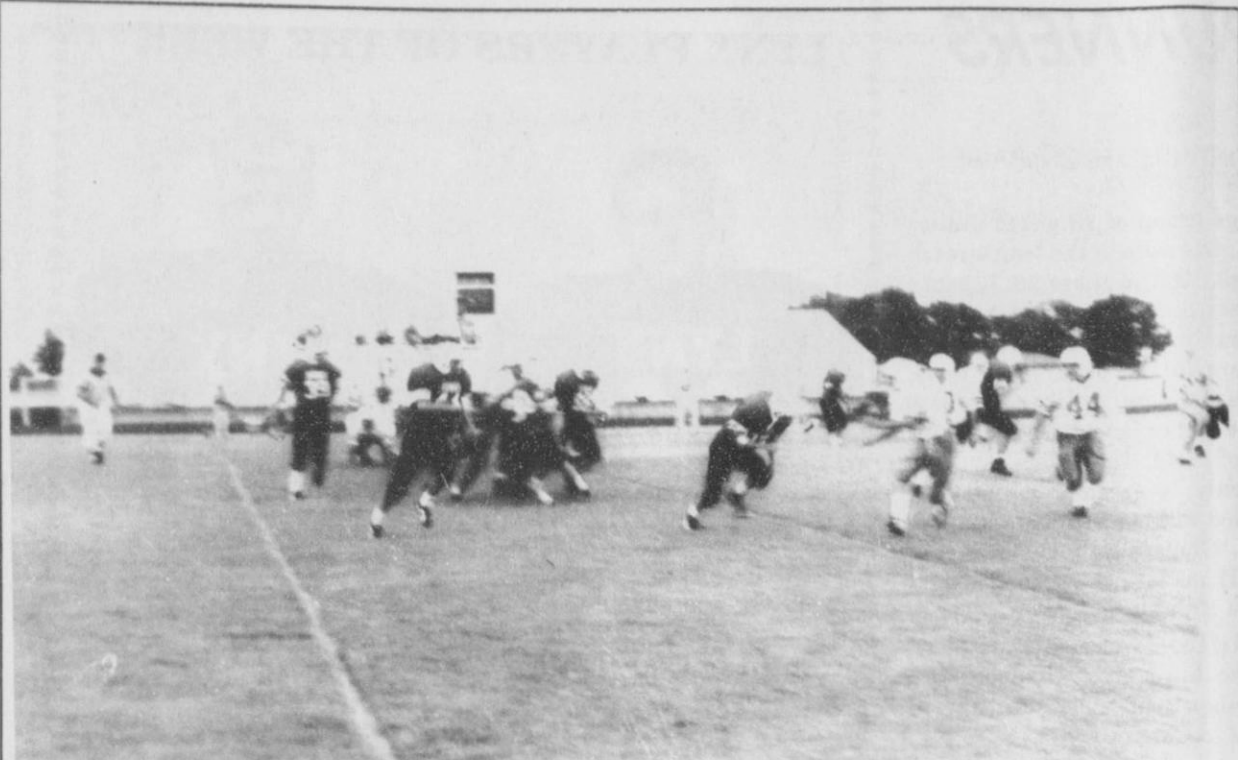
"Custom Cattle Feeding"



MISSOURI AT TEXAS TECH

HOUNDS

CONTINUED FROM PAGE 7



LONG RUN: - Travis Bayless (44), one of the JV Hounds' running backs, is seen in the photo above carrying the ball for a nice gain, after taking the hand-off from quarterback Jim Potts (39). The Hounds were overtaken by a surprising Boys Ranch team in their season opener, but they are looking to bounce back this week as they travel to Stratford to take on the Elks for a 6:00 game.

Gruver JV misses the mark and records first loss of the season

By Bob Bort
The Gruver Greyhounds junior varsity team played host to the team from Boys Ranch this past Thursday night, September 7, and it was the Roughriders who came away with the victory. The final score was 34-0.

After falling behind 6-0, the Hounds were still in the game, as Clint Robinson and Jason Smith ripped off 11 and 16 yard runs, respectively, on successive plays, and the Hounds moved in as close as the 8-yard line. But no further

progress was made, and the Hounds came away with no points.

At the end of the first half, the Hounds had a defensive highlight, as they swarmed the Boys Ranch quarterback for an 11-yard loss. The sack followed three successive holding penalties on the Ranch, and it brought about a 2nd down and 42 yards to go as the half ended.

Altogether, Boys Ranch was penalized 15 times for 115 yards, 95 of those yards in the first half alone. The Hounds were guilty of 8 penalties for only 57 yards.

There was another defensive highlight. Boys Ranch tried the old Oklahoma "Swinging Gate" play repeatedly in the first three quarters of play on points after touchdowns attempts. They were unsuccessful four straight times. The Hounds defended it well.

The Hounds will now prepare for Stratford this week. It is a game that has been switched to Greyhound Stadium in Gruver on Thursday, September 14, following the two junior high games, which begin at 5 p.m.

R-S posts 1st week contest results

With both Spearman and Gruver teams winning this week, both towns really seem like they are full of winners. However, the football teams were not the only successful ones this past week.

The Hansford County Reporter-Statesman's football contest results are in, and for this being just the first week, many intelligent pickers proved their superior knowledge in this pigskin preview.

The top three winners were really tight this week, with two Gruver winners and one Spearman winner. In fact, all three top prize winners missed only 2 games, but the tie breaker was the deciding factor. Brett Burgin, of Spearman took the top prize of 25 big ones. Brett missed the Perryton vs. Guymon game and the Notre Dame vs. Purdue game, but his tie-breaking guess of 27 points, only 5 away from the actual 22 points, helped him to take home the top prize.

Not far behind him, and guessing a real close 28 tie-breaking points, was Justin Carthel of Gruver. Justin missed the West Texas High vs. Childress game and the

Booker vs. Beaver game. For his real close to first place guesses, he will receive the second place prize of \$15.

The other Gruver person to bring home money was Frances Hathaway. Frances was only 2 tie-breaking points behind Justin with 30. She will receive the third place prize of \$5.

Brett Coates of Spearman was also real close, as he only missed 2 games also. However, his 36 tie-breaking points was his downfall this week.

The contest brought in 32 total entries, and several of the players were really close, by just missing 3 or 4 games. For their efforts, they, along with others, will receive honorable mention. They are: Tamara Wright, of Gruver who missed 3; Cindy Blackman, of Spearman who missed 3; Cathy Gafford, of Spearman who missed 3; Billy Blankenship, of Gruver who missed 3; Kiki Carthel, of Gruver who missed 4; Jarod Huddleston, of Spearman who missed 4; Ladd Gafford, of Spearman who missed 5; Israel Arzate, of Gruver who missed

5; Jerry Overbey, of Gruver who missed 5; Keith Hight, of Spearman who missed 5; Earl Griffin, of Gruver who missed 5; and Kade Carthel, of Gruver who missed 5.

Congratulations to the winners, and thanks to everybody who played last week. Although you may have not been a winner, this week holds 17 more new games.

A special thanks to the sponsors of the contest. Without these fine business' support, the contest could not be possible: Lowe's Marketplace in Spearman, Gruver State Bank in Gruver, Dean Cluck Cattle Co. in Gruver, Gillaspie Auto and Truck in Spearman, Cates in Spearman, Main Street Clothing in Gruver, J & M Service Center in Spearman, Paschel Irrigation in Spearman, G & G Foodliner in Gruver, Little Tiffanies in Gruver, Caprock, Curtis' Hot Oilers in Spearman, The Bunkhouse Clothing Store in Spearman, Gruver Ford in Gruver, Hi Plains Auto in Spearman, Hansford Implement in Spearman, and Equity in Spearman, Morse and Holt locations.

defense. Wheeler was pinned deep in their own territory, with a 4th down and 13 yards to go from the 9 yard line. On the punt attempt, Bort blocked it, and Arreola caught it in midflight before it had touched the ground, and carried it into the end zone for the score.

On the point after touchdown attempt, the kick was blocked, but Barkley without hesitation scooped it up and threw the strike to Wylee Maupin for the two point conversion.

With 7:53 left in the game, the Hounds led 22-0, and the game was over. Bort was put in at quarterback for several plays, and Wheeler kept trying, but could not master the Hounds' defense. Bort had an

interception to kill one Mustang drive.

It was a super effort. Hats off to the team, especially the 11 seniors - Barkley, Tye Womble, Ferguson, Bort, Maupin, Renteria, Ward, Jarvis, Max Frick, Morris, and Arreola. Those are the starters.

Coach Doug Frick nominated four players class AA Player of the Week in the Texas Panhandle. Fullback Travis Ferguson rushed 19 times for 108 yards and two touchdowns; Tandem back/Defensive back Daniel Bort rushed 9 times for 78 yards, made eight tackles, intercepted a pass, and blocked a punt that turned into a Gruver touchdown; Linebacker Max Frick made 11 tackles and two caused

fumbles; and Defensive back Scott Jarvis made two crucial quarterback sacks and eight tackles.

District 1-AA looks very strong. Three of the teams came away with victories, and fourth with an equally impressive showing in a loss. West Texas, Stratford, Spearman, and Boys Ranch did not play...

Whe 0 0 0 0 - 0
Gru 7 0 7 8 - 22
Gru - T. Ferguson 5 yard run (Renteria kick)
Gru - T. Ferguson 5 yard run (Renteria kick)
Gru - Arreola 9 yard run with blocked punt (Barkley pass to Maupin)

SBORT

CONTINUED FROM PAGE 7

fast, with a chill factor in the 20's by game's end at Stratford! What a shock that was, with everyone in short sleeves!

Question number two: About halftime of the Hounds homecoming game with Texhoma on October 23, 1965, it started to snow! About two inches accumulated before the game ended on a Saturday afternoon.

Question number three: Coach Steve Myatt's parents, J.H. and Earlene Myatt, average about 7800 miles per season travelling to Gruver Lady Hounds games to cheer them, and their son, on. At least that's what they travelled last year, a year in which they saw 26 of the 31 Lady Hounds games, at about 150 miles each way from Dimmitt to see our girls play. And I thought I was the Hounds and Lady Hounds biggest fan.....

and mingle with 49er greats from past and present at a special tailgate party prior to the game.

I nominated both myself, and my son, Daniel. To enter, I had to write an essay on why we are the two greatest 49er fans of all time. If we win, I would especially be thrilled to meet Y.A. Tittle, Hugh McElhenny, Joe Perry, and Leo Nomellini. Daniel just wants to meet Jerry Rice...

The contest ends September 30, and I will let you know how we did. It doesn't mean you have to stop rooting for the Cowboys... you can still wish us luck!

Lady Hounds CC run at Wolf Creek Classic

By Bob Bort
The Gruver Lady Hounds cross country team competed this past Saturday, September 9 at Wolf Creek, Lake Fryer (Perryton) in the second cross country meet of the year. They performed very well. Here are the placings and the times.

Varsity Girls
25. Myriam Alvarez 14:34
35. Kadie Grotegut 14:50
62. Amber Murrell 15:30
71. Amy Gillispie 15:38
72. Kiki Carthel 15:39
Weslyn Maupin 15:57
Kathy Slough 16:28

Junior Varsity Girls
4. Tara Shapley 15:23
Amber Roberts 18:14
Robbi Mathews 18:30

TRIVIA QUESTION FOR NEXT WEEK: What was the most satisfying, rewarding victory for the Gruver Greyhounds in Coach Doug Frick's three-year stint as head coach?

Congratulations to the Gruver Hounds! Their decisive, impressive victory over Wheeler has moved them up in the state rankings in the Harris Poll 15 notches. They have moved from 45th to 30th. Only West Texas in district 1-AA now has a power rating higher than Gruver's 177. WT is at 188. The Hounds' opponent this week, Texhoma, is an Oklahoma school and is, thus, not rated. But you can believe Gruver would be a big favorite if they were rated.

I have entered a contest that won't win me a popularity contest here in the Texas Panhandle.

The San Francisco 49ers are celebrating their big 49th anniversary this year, and in conjunction with that, they are selecting the 49 greatest 49er fans of all time. The 49 fans will comprise the "All-Star Fan Line-up".

The winners get to go to Candlestick Park in San Francisco for the 49er- Buffalo game on December 3, and the winners also get to meet

and mingle with 49er greats from past and present at a special tailgate party prior to the game.

I nominated both myself, and my son, Daniel. To enter, I had to write an essay on why we are the two greatest 49er fans of all time. If we win, I would especially be thrilled to meet Y.A. Tittle, Hugh McElhenny, Joe Perry, and Leo Nomellini. Daniel just wants to meet Jerry Rice...

The contest ends September 30, and I will let you know how we did. It doesn't mean you have to stop rooting for the Cowboys... you can still wish us luck!

A couple of notes: There were 150 girls competing in the junior high competition. Altogether, Coach Steve Myatt took 19 girls to Perryton for this week's meet.

Also, according to Coach Myatt, last week's results from Berger were inaccurate, and we may never know the correct final placements.

This week, the Lady Hounds will be competing at Canyon.

RUNNERS

CONTINUED FROM PAGE 6

28th place time of 17:00, Andee McGaha, who finished with a 42nd place time of 17:44, Leslie Holton, who finished with 44th place time of 17:48, and Jennifer Neff, who finished with a 48th place time of 17:59, brought in the group of JV girls who were in the 17 minute mark. The other 4 girls, Macy Shieldknight, Holly Pipkin, Misha Davis, and Rebecca Howard all placed in the 18 minute mark. Shieldknight ran an even 18 minutes and took a 50th place, Pipkin ran 18:05 and took a 51st place, Davis ran 18:27 and placed 58th, while Howard finished up with a 65th place time of 18:58.

There was a large number of boys who turned out for the long stretch of running, including 3 Lynx varsity runner and one Lynx Jun-

ior High runner. Yes, that's right, not only are the boys running this year, but they also have a Junior High traveler who is competing as well. Jeremy Mackie made his debut run this past week. Mackie finished with an impressive 6th place time of 19:38. His older teammates did quite well also. Jason Villines was last week's best Spearman runner. He captured a time of 18:40 and a 17th place. Heath Archer, who is already known for his great high jumping skills, finished with a 26th place time of 19:41. Darrel Scroggs also competed for the Lynx, and he finished with a time of 23:17.

Mackie was not the only Junior High runner competing this week.

See RUNNERS, page 10



 

COLUMBIA AT HARVARD


Curtis' Hot Oilers
806-659-3432

"Taking Service to Perfection"

GRUVER FORD, INC.
531 MAIN • GRUVER
"Well worth the drive"

SUDAN AT SPRINGLAKE- EARTH



HANSFORD IMPLEMENT
HWY 207 South (806)659-2568
1-800-753-1511 (806)733-2088

CLARENDON AT BOYS RANCH

NEW ENGLAND AT SANFRANSICO

The Bunkhouse
Cathy Gafford, Owner

Clothing & Accessories for Men, Women



Buyers:
Ladd Gafford
Jan Betzen
Betty Lookingbill

(806)659-2617
212 S. Main
Spearman, Tx.

CANADIAN AT WEST TEXAS


AUTOMOTIVE • INDUSTRIAL • OILFIELD SUPPLIES
WHOLESALE AND RETAIL • IRRIGATION PARTS

Hi-Plains Auto Supply, Inc.
VANCE SNIDER • CLOIS (BILLY) BAKER
Owners

Box 116
Spearman, Texas 79081
806-659-2506
800-657-8742


Mobile Numbers
806/435-0289
806/435-0288

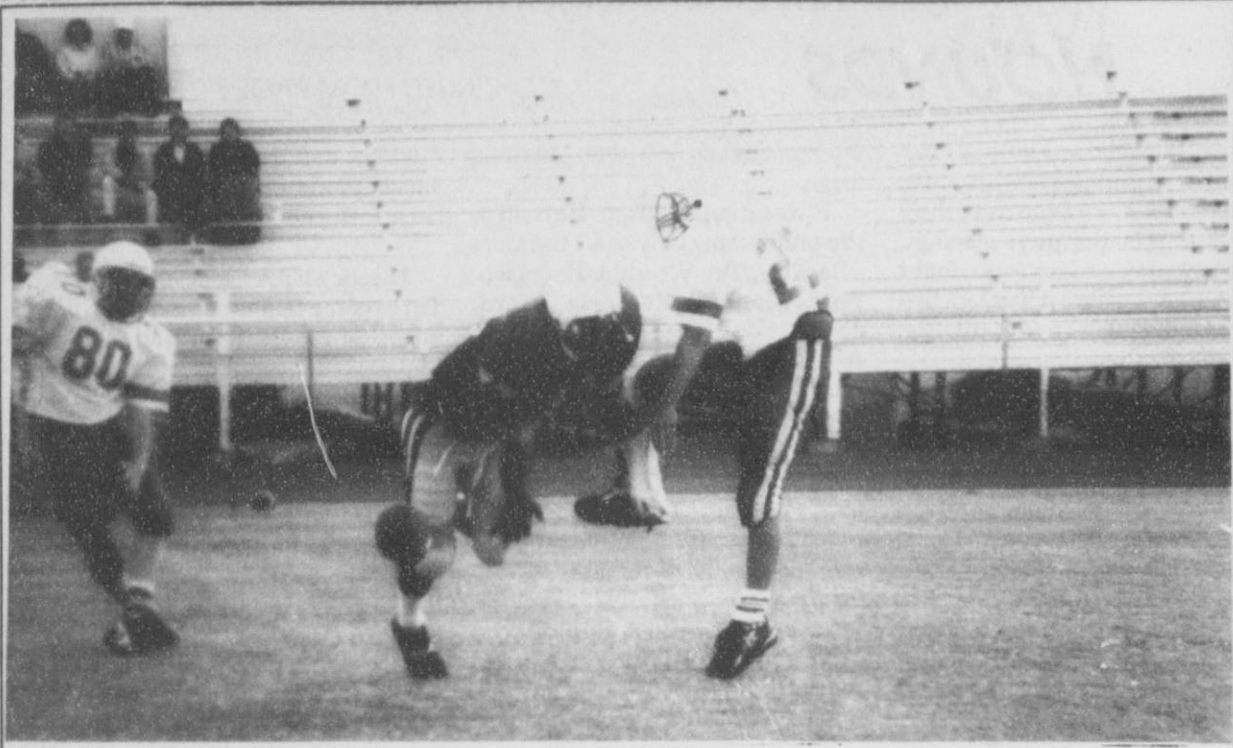


BUS. (806) 659-2420

Spearman
Pringle
Morse
Holt

PANHANDLE AT WHEELER





BLOCKED PUNT - The Spearman Lynx JV played host to a very tough and competitive Stratford JV last Thursday night in Lynx Stadium. Carlos Hernandez, one of the main players of the team, is seen here blocking one of the Elks' punts. Hernandez went on to rush 17 times for 126 yards and help the Lynx to take the 22-14 victory. Spearman will be traveling to Sunray this Thursday night to take on the Bobcats at 6:00 p.m. (Photo by Chad Davis)

Lynx JV wins opener against Elks

By Chad Davis

A fine and very aggressive set of Lynx JV football players marched on to Lynx Stadium last Thursday, September, 7th, with only one thought in mind - winning. That's exactly what they did, as this set of hard-working Lynx hosted and defeated the Stratford Elks in an almost near close one, 22-14.

Spearman's first possession, which began on the 20 almost ended in disaster on the very first play of the game, as a fumble on the snap was quickly recovered by the Lynx's quarterback, Josh Bynum. After an offside penalty on Spearman and two sweep plays by one of the main running backs, Carlos Hernandez, for 5 yards, the Lynx were forced to punt.

However, Stratford could not capitalize either, so Spearman quickly got the ball back. Unfortunately, the Lynx's next drive did end in disaster, when Hernandez dropped the ball on a hand-off and the Elks' #73 quickly scooped it up.

Once again, a mighty Lynx defense held the Elks from moving the ball, and they were forced to punt. This series of down was highlighted by some awesome defensive plays, including an 11 yard sack by Hernandez. Spearman then soon gained sweet revenge on the Elks when, on 4th down and bunches, the ball went between the legs of the Stratford punter, who quickly tried to get rid of the ball, but he was soon met by an aggressive Michael Lusby.

On the very next drive, Spearman was again forced to punt, and once again, the special teams were there to give the much needed helping hand. On the 30 yard punt, the Stratford returner dropped the ball and a quick Brian Howell was there to recover the loose ball.

After a penalty, and two of the middle blast for 12 and 15 yards by Lusby, the quarter ended. Still no score in this one, 0-0.

However, that quickly ended at the start of the 2nd quarter. On the very first play of the new quarter, Hernandez danced his way across a sea of defenders to get Spearman's first TD of the night - a one yarder. Hernandez then scrambled in for the 2-point conversion, and the Lynx were on top, 8-0.

It didn't take long for the Elks to quickly respond, though. After a 2 yard run up the middle by #25, Stratford's main back of the night, #22 for the Elks took a sweep to the right and ran 62 big yards for their first TD with 9:20 still left in the half. This was the first thorn in Spearman's side, but the Lynx's defense was able to stop Stratford's try on the 2-point conversion play. The Lynx still lead, 8-6.

Spearman then looked like they were going to put more points on the board, but thanks to an eager #11 Elk, who intercepted a pass from Bynum, the drive was quickly halted. On the drive, Lusby, Hernandez, and Clint Goodman all pitched in for the possible score. Lusby accounted for 33 of the hard earned yards, while Hernandez and Goodman accounted for 24 of the yards. Unfortunately, besides the interception, the Lynx were plagued

with several penalties.

From there it looked like nothing could stop the Elks, until the Lynx defense finally picked up the slack after a 45 yard run by #25 on the very first play of their drive. After a great sack by a whole swarm of defensive Lynx, including Jamie Townsen, Scott Thompson, and Clancy Vanderburg, the Elks were forced to punt. Once again, the special teams for the Lynx really came shining through. A very quick Hernandez came blasting through the offensive line for the Elks a blocked punt, which was picked up by Vanderburg who ran a few yards before being tackled by some angry Elk linemen.

Spearman really took control and capitalized on that momentum, as on the first play of their next drive Hernandez took the ball 40 yards for the next TD for the Lynx. However, his hard working efforts went unrewarded, as his play was called back on a holding call. This really hurt Spearman and it showed, as on the very next play another fumble on the snap caused the Lynx to turn the ball over to

Stratford with 1:10 left in the half.

Stratford then drove the ball hard down the field, but the Lynx defense was again there to stop their efforts. On the very last play of the half, Aaron Witten jumped up an intercepted a pass. This ended the quarter, as well as the half, Lynx 8 Elks 6.

The Stratford Elks must have really heard an earful during half-time. This charged-up group of kids came out with a vengeance and

See JV, page 12

RUNNERS

CONTINUED FROM PAGE 9

A huge group of 28 gifted Junior High girls were in the long stretch as well. Out of those 28 distance runners, 3 of them earned the right to wear medals. The 10th best runners in the pack of all girls, Audra Sanders, finished the best for the Junior Lynxettes and took a time of 14:44. Halee Beasley, who was only 10 seconds behind her, finished with an 11th place time of 14:54. Chelsea Nollner, the last of the JH medal achievers, finished with a 15th place time of 15:14.

All of the teams mentioned above will be hard at work again this Saturday, September 16th, as they travel to Canyon.

LYNX

CONTINUED FROM PAGE 6

Time when the Panther punted, they kicked to the wrong guy. Witten, who is always been known to be quick on his feet, quickly took the punt and took it back for 65 plus yards. This set up the Lynx's next touchdown, in which the big man, 205 pound senior running back, Phillip Sanders took the ball in for the 25 yard touchdown with only 43 seconds left in the half. Elliott went on to kick another extra point, and the Lynx were on top, 14-7.

From there, the Panthers, who were still rubbing their bites from the Lynx blockers, could do nothing, and the half ended. Sanders had a great second quarter, including his touchdown, and the Lynx defense really showed tight coverage and hard pressure all around. The third quarter started off

LYNX PLAYERS OF THE WEEK



OFFENSE
PHILLIP SANDERS

DEFENSE
CODY McLEOD

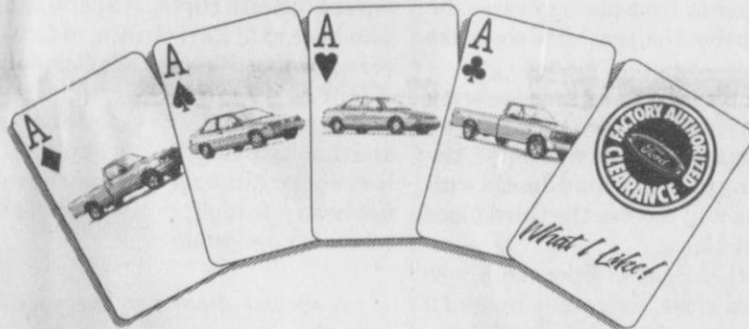
much how the Lynx had left the first half. Spearman, who obviously was still pumped from the Sanders' touchdown and a great "pep-talk" from Head Coach Ric Smith, started on their 30 yard line. Sanders and Tigrett again headed this drive for the Lynx. Sanders took two straight plays in which he rushed for 15 hard earned yards and one play later for 2 more yards. The Panthers got a real shock after Sander's runs. Junior wing back, Jake Howard, was sent in by Smith to do a mission for the Lynx, and that is exactly what he did. He threw a perfect "thread-the-needle pass" to senior end martin Sanders for 10 yards. This again, stunned the Panthers, so it was real easy for Tigrett to take another roll-out keeper for a touchdown. This time

Tigrett cross the goaline after sprinting in for 36 yards with 8:24 worth of ticks in the third left. Elliott again sent one straight through the uprights, and the Lynx were ahead by 14, 21-7.

This is when things started going wrong for the Lynx. Sure, Blan almost had another pick-off, which gave the Lynx the ball back, but Spearman was forced to punt, after gaining only 6 yards on their next possession after the near pick-off. What really gave the Lynx trouble was when they had the ball back after another Panther punt. On a bad miscue, with 3:21 still left in the quarter, Spearman fumbled the ball and the Panthers quickly recovered into Lynx territory.

See LYNX, page 11

It's Tough To Beat A Deal This Good.



Your Ford Dealer's got all his cards on the table during Ford's Factory Authorized Clearance. The best offers all year on new '95 Ford cars and trucks, hands down. But hurry, these deals end soon, and that's no bluff.



'95 RANGER
3.9% APR financing^(A) OR \$600 Customer Cash + 500 RCO Cash
up to **\$1,100** Total Cash Back^(B) with Ford Credit's Red Carpet Option



'95 CONTOUR
Just **\$229/month**^(C) with Ford Credit's Red Carpet Option



'95 F-SERIES
\$1,573 Option Pkg. 500A Savings
500 Manual Trans. Discount
806 Air Conditioning Discount
+ 363 Decor Pkg. B Discount



'95 ESCORT
\$500 Customer Cash
500 RCO Cash Back
\$800 Total Cash Back
+ 400 Young Buyer Cash

\$3,242 Total Savings^(D) up to \$1,200 Cash Back^(E) with Ford Credit's Red Carpet Option

(A) 3.9% APR financing on '95 Ford Ranger. Varies by credit worthiness of consumers as determined by Ford Credit. 3.9% APR for 48 mos. at \$22.55 per mo. per \$1,000 financed with 10% down. Dealer participation may affect savings. Take new retail delivery from dealer stock by 9/20/95. (B) For cash back on '95 Ranger, F-150 and Escort, must take new retail delivery from dealer's stock by 9/20/95. (C) \$228.56 per mo. for 24 mos. with 3 options for final pmt. with Ford Credit's RCO. '95 Contour GL w/PEP 235A. \$15,070 MSRP less \$500 customer cash plus \$500 Ford Credit RCO cash. 11.5-16.5% APR Ford Credit RCO plan financing varies by credit worthiness of consumers as determined by FMCC. Some consumers will not qualify. Example based on \$1,000 APR for 24 mos. \$1,700 down. Amount financed \$11,800. 24 mos. at \$228.56 per month for the amount of final pmt. Amount financed, monthly pmt., and down pmt. may be different. Tax, license, title fees and insurance extra. Purchaser may purchase the vehicle for the amount of final pmt., refinance the final pmt. with no increase in amount of monthly pmt., or return the vehicle to Ford Credit at end of term and pay \$250 disposal fee plus any excess mileage and wear charges. Dealer financial participation may affect consumer cost. Must take retail delivery by 9/27/95. Residency restrictions apply. See dealer for qualification details. (D) '95 F-150 XL with manual transmission PEP 500A and Decor Package 1. Option package savings based on MSRP of option package vs. options purchased separately.

What I Like...



Gruver Ford

531 Main, Gruver
(806) 733-2431

GraceTM
STEEL GARAGES & BUILDINGS

Porta
1-800-287-6782

Sanders & Custer Construction
P.O. Box 619 - Booker, Texas 79005
GRACE & PORTA DISTRIBUTORS
Some Dealerships Still Available



6TH GRADE TAAS WINNERS - The Spearman Junior High announced their TAAS winners for last year recently. The 6th grade, which were 5th graders last year, are: (Back Row l to r) Tammy Backus, Tanner Beedy, Erin Boxwell, Monica Cantu, LeAnn Earle, Amber Elliott, and Behany Furlow. (Front Row l to r) Laura Gillaspie, Stevn Haney, Marty Miesner, Chad Scarborough, Tashi Schumann, Clara Shieldknigh, and Jessica Volden. (Photo by Chad Davis)



7th GRADE TAAS WINNERS - The 7th grade had its share of TAAS winners as well, and they are: (Back Row l to r) Jennifer Schnell, Carey Cates, Andrew Cummings, Jared Freeman, Coley Griffin, Jacob Harbour, David Holt. (Middle Row l to r) Dib Kirk, Nichole Lazono, Kyle McLaughlin, Chelsie Villines, Danita Raschal, Kara Pipkin. (Front Row l to r) Travis Atwood, Sally Pittman, Jason Quillin, Adrian Simpson, Chelsie Villines, Tye West, and Brady Wooley. (Photo by Chad Davis)



8th GRADE TAAS WINNERS - The 8th grade TAAS winners, 7th graders last year had a big group of test winners. They are: (Back Row l to r) Seean Baker, Dusby Barber, Haley Beasley, Stephanie Bynum, Brandi Campbell, and Evan Cudd. (Middle Row l to r) Tommie Dewberry, Cynthia Goodman, Kelsey Henton, Aaron Hernandez, Jeremy Mackle, and Mark Matthews. (Front Row l to r) Lacey Miesner, Kathryn Murphy, Amber Ramon, Miki Schoenhals, Camille Smith, and Sid Woodington. (Photo by Chad Davis)

Students honored for TAAS scores

This past spring, students at Spearman Junior High School in grades 6-8 were given the Texas Assessment of Academic Skills (TAAS) Test. In grades 6 and 7 the students were tested in reading and math. In grade 8 they were tested

in reading, math, writing, science, and social studies. Several of these students receive this recognition, the students must answer 95% or more questions correctly on one or more of the tests. We had a total of 57 Junior High Students who received this recognition, which helped our campus achieve a "Recognized" status from the State of Texas. We congratulate these students and their families.

In honor of their hard work, these students were awarded either a free Personal Pan Pizza from Pizza Hut or a free Blizzard from the Dairy Queen. These items were donated by these businesses to the school. Spearman Junior High School would like to express their appreciation to these businesses for their support of our young people.

AWARENESS



A Disease of Global Concern

Seminar taught by Donna Sweet, M.D.



Dr. Sweet is a native of Wichita and a graduate of the University of Kansas School of Medicine. She is Chair of the Internal Medicine Department and Director of Internal Medicine Education at St. Francis Regional Medical Center in Wichita. She is best known for the medical treatment and research she has done on AIDS. She has received the Award of Courage from the American Foundation for AIDS Research, The U.S. Department of Health/Human Services Public Health Service Award for Region VII, and the Samuel Crumrine Medal for outstanding service for Kansas health.

Free Public Seminar

Friday, September 15
7 P.M. Seward County 7 P.M.
Community College Theatre

I
G
N
O
R
A
N
C
E
is NOT Bliss!

Find out about the following:
Is AIDS spreading at epidemic proportions?
Do mosquitoes spread HIV?
Can you get AIDS from drinking from a common cup?
If I touch an AIDS patient, will I get AIDS?
As a family-member caregiver, what do I need to know?

Sponsored by
SWMC
SOUTHWEST MEDICAL CENTER
a regional medical center

Southwest Home Care and WeKARE

Talk About--
THE FACES OF AIDS



LYNX

CONTINUED FROM PAGE 10

From there, it was almost nothing for Panhandle, as Wilkinson hit Garner again on a 31 yard pass to put the panthers in very good scoring range. The next play, McKiernan jumped 1 yard over the goaline for the score with 3:02. The extra point was good, and the Panthers were closing in on the heels of the Lynx, 21-14.

On the very next drive for the Lynx, disaster hit once more. The second play of the drive was an attempted screen pass to Witten, who was overthrown, and who forgot about the lateral rule. A quick thinking Paul Breck for the Panthers picked it up deep in Lynx territory, on their 13 yard line, and it looked as though the Panthers were fixing to tie the Lynx.

Only one play, a pass form Wilkinson to Kevin Brinkley, and panhandle was even with the Lynx, after the extra point of course, and there was still 1:43 left in the quarter. Spearman could not make anything happen after that, and Pan-

handle really knocked up an awe-some 3rd quarter.

However, the Lynx were not willing to give up. On the very first drive of the last quarter, a silent Collins stepped back into play. He, along with an impressive 22 yard Sander's run, helped the Lynx to set up their final score of the night. On a 4th and big play, Elliott was called in to show his expertise at kicking. Fortunately for the Lynx, he sailed a 32 yard field goal through the uprights with 9:55 left in the game to give the Lynx the go-ahead points, 24-21.

Things really got down to the nail biting times after that, with the Panthers really gaining some impressive yards, but the Lynx were just too much for Panhandle, and they held on to win their opener against the Panthers and taste the sweet revenge, 24-21.

When all was said and done, the Lynx recorded some fantastic stats. Sanders rushed 17 times for 182 yards and a big average of 10.7

yards per carry. Tigrett, who really impressed several people with both quarterback and running back skills, rushed 12 times for 124 yards and 10.3 yards per carry. Brent Collins, who is still trying to recover from a shoulder injury, rushed 14 times for 44 yards and an average of 3.1 yards per carry, while Witten rushed 7 times for 23 yards and 3.3 yards per carry, but don't judge Witten on this one game. He is a much better player than what the stats show.

As for the defense, the Lynx allowed only 79 yards rushing and 127 yards passing. Cody McLeod had 6 unassisted tackles and 12 total tackles. Collins also punted the ball 4 times for 123 yards, which gave him an average of 30.8 yards per punt.

The Lynx will be hosting their first home game of the season this Friday against the Memphis Cyclones at 8:00 p.m. The stadium will fill up fast, so it is advisable to get there early.

Irrigated and Dryland for Cash Lease

- Section 121, 640 Irrigated acres, 2 - 8" wells, 1 sprinkler
- Section 23, 770 Irrigated acres, 1 sprinkler, 2 pivots, 2 - 8" wells, tailwater systems, barns and pens
- South half of Section 119, 320 acres dryland
- South half of Section 4, 309 dryland acres

ALL land ready to plant

For information call Howard L. Swink
806-435-7279

INVENTORY REDUCTION SALE

Final Year Closeout
Buick Of Chrysler
1995 Vehicles

Making Room
For The Dodge Pontiac
1996

SALES ON ALL

Chevrolet Oldsmobile
Plymouth

ALL IN STOCK NEED TO GO
COME BUY TODAY!



GILLASPIE

AUTO & TRUCK CENTER, INC.

CHEVROLET * OLDS * PONTIAC * BUICK

CHRYSLER * PLYMOUTH * DODGE

Highway 207 South - P.O. Box 430 (806) 659-2541

Spearman, Texas 79081 1-800-692-4657

PUBLIC NOTICE

LEGAL NOTICE

By resolution duly adopted on Monday, August 28, 1995 the Board of Directors of Ground Water Conservation District No. Two, located north of the Canadian River in Texas, adopted a preamble and rules for the District. A true and correct copy of these rules may be obtained from the District office at 603 E. First Street in Dumas, Moore County, Texas. The preamble and a brief resume of the rules follows:

Preamble

The purpose of this District is to provide for the conservation, preservation, protection, recharging, and prevention of waste of the groundwater, and of groundwater reservoirs or their subdivisions, and to control subsidence, within the defined boundary of the District. To carry out this purpose, these rules and regulations are passed, adopted and will be enforced to: minimize as far as practicable draw down of the water table, depletion of the groundwater reservoirs, interference between wells, reduction of artesian pressure; and to prevent waste of groundwater, pollution or harmful alteration of the character of the groundwater and promote conservation to extend the longevity of groundwater resources, and to manage the groundwater effectively based upon ecological and socio-economic systems unique to the aquifers within the North Plains Ground Water Conservation District No. Two. Rule 1 defines certain words including the following: abandoned well or deteriorated well, acceptable decline rate, allowable decline, aquifer, authorized well site, Board, borehole, chemigation, county committee, County secretary, dam, dewatering well, District, easy access, exploratory well, flapper, foreign substance, groundwater, groundwater reservoir, injection well, irrigation distribution system, monitoring well, owner, person, pollution, recharge well, saturated thickness, section, specific yield, underground water, waste, water, water rights, water well, and well.

Rule 2 prohibits waste or pollution of groundwater, production of groundwater from an abandoned or deteriorated well, and requires that abandoned or deteriorated wells and boreholes be plugged, capped or recompleted.

Rule 3 prohibits the importation into the District of radioactive waste, toxic substances, hazardous substance, polychlorinated biphenyls, salt fluids or other materials or substances contaminated with any of the above, and prohibits disposal wells, tanks and reservoirs for any of the above. Certain agricultural chemicals are excluded from the Rule. This Rule requires all persons or entities having care, custody or control of hazardous materials to report same by sworn inventory to the district office within ten days of acquisition along with a plan or schedule for ultimate disposition of the substances. Rule 4 provides for strict enforcement of Rule 3 and provides a departure from Rule 3 to alleviate hardships in certain instances.

Rule 5 requires that a permit be obtained from the District before drilling a well or increasing the size of a well or pump which could reasonably be expected to produce in excess of 25,000 gallons of water per day. Certain wells are exempt. Section B authorizes a test hole permit which is not a requirement for a well permit application. Even though certain wells are exempt from permitting under § 36.117 of the Texas Water Code, all such wells must be registered with the district.

Rule 6, like its predecessor Rule 8, creates a county committee of five in each county to perform duties

and procedures outlined by the Board. The board also appoints a county secretary for each county who serves at the pleasure of the Board.

The Board may designate the county secretary or other authorized person to receive applications for a permit to drill a well and the county committee recommends to the Board the granting or refusal of such applications.

If any application is not favorably recommended by the county committee, the applicant has the right to appeal to the Board, provided that such appeal must be filed with a member of the board, the Manager of the district or mailed by registered mail to the District within fifteen days from the time that the county committee denied the application.

Rule 7 provides for deposits and administrative fees when an application for a permit to drill is filed with the County Secretary or other authorized person.

Rule 8 provides for the issuance of well permits and test hole permits upon proper application executed and filed by the owner or his authorized agent with the proper County Secretary, manager of the district or other person designated by the Manager to receive it. This Rule is new as to test hole permits, giving the person intending to drill a well the right to protect an area while test holes are being drilled.

Rule 9 establishes certain requirements for drilling, completing, equipping and reworking wells and requires that complete records be kept, reports made to, and documents filed with, the District concerning such operations. Prohibits drilling, completion, equipping or reworking of wells by persons not having current Texas Water Well Driller's License, Texas Pump Installers License, or who failed to comply with rules and regulations of state laws and agencies.

Rule 10 sets the procedure for classifying wells based upon pumping capacity, spacing wells to minimize interference and limits the maximum pumping capacity for a section of land to five gallons per minute per acre per year.

Rule 11 is a comprehensive new rule under which the District must establish an acceptable decline rate for the district to become effective January 1, 1997. The District may establish a Depletion Study area containing not less than ten (10) contiguous sections. If the Board determines that all or part of an area within a Depletion Study Area is exceeding the acceptable decline rate for the District, it may delineate a proposed Strategic Conservation Depletion Area (SCDA), require the installation of approved measuring devices on wells capable of producing 25,000 gallons or more per day, limit the production of groundwater from wells located within the SCDA and limit additional wells. The annual amount of production allowed shall not be reduced below a calculated volume equal to one and one-half acre feet per acre of water rights owned within each section of the SCDA. The Board shall consider each owner's special or unusual water needs when setting production limits.

Rule 12 requires that a well must be drilled within ten yards of the location specified in the permit.

Rule 13 provides that no person shall rework, re-drill or re-equip a well in such a manner that would increase the rate of production from such well by an amount sufficient to raise the well classification without first having made an application and obtained a permit to do so.

Rule 14 provides that the work permitted under a permit must be completed within 120 days from the date of filing of the application, provided that it may be extended upon application for an additional 120

days upon application. The applicant may not apply for a subsequent application for a well permit located within the minimum spacing distance of wells in Rule 10 B. until after the expiration of 10 days from the original or extended expiration date.

Rule 15 describes equipment which must be installed forthwith when a pump is installed or repaired on existing wells, when a new well is drilled and on wells having a chemical injection, chemigation or foreign substance unit in the water delivery system: an inline, automatic quick-closing check valve capable of preventing pollution or harmful alteration of the groundwater. Installation of this equipment is mandatory on other wells by January 1, 2000. Comprehensive details as to equipment type and manner of installation is set forth in this Rule.

Rule 16 requires any owner or operator of land within the District to close or cap permanently or temporarily any open or uncovered well. Detailed requirements and specifications are set forth in order to insure the safety of these wells.

Rule 17 grants the District the right at reasonable times to enter upon land to inspect wells, read metering or other measuring instruments for measuring production determining the pumping capacity of wells, to collect water samples and make other inspections to determine compliance with District rules.

Rule 18 provides for exceptions to the Rules of the district.

Rule 19 sets forth a procedure should anyone desire to protest or oppose any pending matter before the board of prosecute an appeal from the action of a county committee.

Rule 20 provides for a rehearing if an application is denied or a contest is overruled, or when a person is not granted the relief desired. A motion for rehearing must be filed within fifteen days from the announcement by the Board of its decision or action.

Rule 21 provides for reconsideration upon showing changed conditions or the discovery of new or different conditions or facts after a hearing or decision on a matter.

Rule 22 sets forth general rules for procedure for hearings before the Board and specifically provides that technical rules or legal and court procedure need not be applied. The objective of the board is to obtain all relevant information and testimony pertaining to an issue as conveniently, inexpensively and expeditiously as possible without prejudice to the rights of other parties. Any interested party may appear either in person or by attorney or both. Evidence may be stipulated.

Rule 23 sets forth general rules for computation of time, time limitations, show cause orders and complaints.

Rule 24 provides that the district may enforce its rules by injunction, mandatory injunction, civil penalties or other appropriate remedy. If the district prevails in a suit to enforce its rules, it may recover reasonable fees for attorneys, expert witnesses, and other costs incurred by the District.

Rule 25 provides that these rules become effective October 1, 1995 at 12:01 a.m.

Directors of North Plains Groundwater Conservation District No. Two
Neal Spurlock, President and Chairman
Thane McCloy, Vice President and Vice Chairman
Robert Thompson
Mr. Roy Stollings
Mr. David Moore
Mr. Phil Haaland
Mr. Roland Wheat



FARM AUCTION

TUESDAY
September 26, 1995
10:00 A. M.

A. L. & Howard Swink & Neighbors

We are leasing all our land and no longer Farming, Trucks, Tractors, Vehicles, and Equipment.

For more information call:
Howard Swink - 806-435-7279



REAGAN & BROWN AUCTIONEERS — OFFICE-806-249-6776

Dale Reagan TXS. L.C. - 040-0619
Bob Brown TXS. L.C. - 040-0618

WHY SPEND TIME ON TILLAGE WHEN YOU CAN NO-TILL YOUR WHEAT INTO STALKS?

Brian Watley is now booking acres for no-tilling wheat into corn and milo stalks!

NEW 30' JOHN DEERE NO-TILL DRILL
WITH 7140 CASE IH TRACTOR AND TANDEM TRUCK

For more information or to book your acres
CONTACT BRIAN AT WATLEY SEED

659-3838 OR 659-3618 (evenings) or (806)898-1329 (mobile)

BUFFET TIME

All You Can Eat

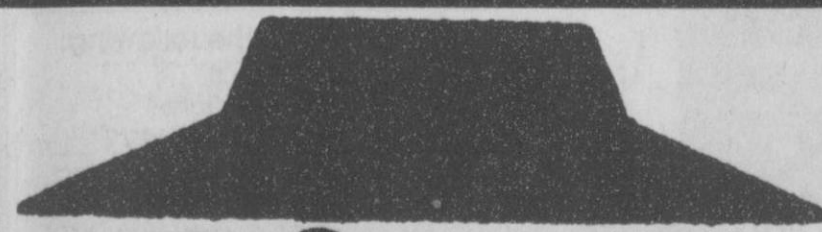
Starting Thursday, Sept. 14th
\$3⁹⁹ • 11:30 a.m. to 1:00 p.m.

Tuesday Night
Kids' Buffet

\$4⁹⁹ • 6:00 to 8:00 p.m.

Friday Night Buffet

\$4⁹⁹ • 9:00 to 11:00 p.m.



Pizza
Hut

Hwy 207
South
Spearman

(806)659-2547

SAM's Corner

By SAM

I always sit out each morning on my chaise and this is "my" time; my time to think and wonder and look at the world around me. I was looking the other morning early and it looked like a fairy tale land, as the sun came up and slowly shone through the sparkling tree that the water I was watering the lawn with it looked like lace covering every tree, shrub and bit of vegetation. How beautiful it was too awe inspiring to describe in full detail! Like diamonds twinkling on every limb; and an occasional red bird slowly perched on the tree bough gave the only bit of contrast to the silvery cyclorama as my eyes scanned the space around me.

JV

Then, I started wondering and thinking how people could do all the terrible things that they do surrounded by the beauty in this world of ours; and I started to fantasize how wonderful life would be in this place if there were no evils, no suffering, no pain, no sorrow, no bad left, just good. A world with only good books and literature to read; good music and the birds songs to listen to. There would be no depressing news reports or television, just good shows, clean shows and sports with no money changing hands. There would be no more wars ever; no taxes, no broken promises between both countries or people: no jails or prisons or

laws. For, there would be no need for laws, for the Lord would be the head of the universe, and it would be perfect.

In this world I could do all the things I enjoy doing, have the things I like to have; be able to help those in need, and live in peace with self and others, where the lamb could lie down with the lion, and every thing would be free from anxiety and danger.

I think this is the world as God made it and intended it to be. So, as I sit here this is my conception of "Heaven". And so I'll leave you now in Sam's Corner, till next week.
Sam

CONTINUED FROM PAGE 10

sparked a 4 play 76 yard drive, which included a 59 yard pass from #11 to #27 with 7:58 still left in the quarter. The 2-point conversion, which was a quarterback keeper, was good and the Elks went on top, 14-8.

This really sparked the Lynx and forced them to wake-up. The next drive for Spearman was something fierce. Lusby and Hernandez combined together to drive the Lynx 80 yards down to the goal line on just 9 plays. The man with the power,

Hernandez shoved it down the throat of the Elks, as he shot up the middle for a 6 yard TD run. Goodman took in the ball on the 2-point conversion, after the Lynx were penalized 3 yards for delay of game. Spearman was on top and looking good, 16-8.

Stratford, who was apparently stunned, could not regroup in time before the quarter was over, so the Lynx were going into last period with a 2 point lead.

At the start of the 4th, Stratford

was forced into a 4th and 2 situation by the Lynx. Forgetting how tough Spearman's defense was, the Elks decide to go for it on a QB keeper, but the Lynx's defense was more than ready for them.

Spearman then went through a tough time as well, when on seemed to be a good drive, Hernandez tossed up the ball and the Elks recovered it with 5:56 still left in the game. Stratford still had the chance to

See JV, page 13

Spiritually Speaking

By Dr. Lewis C. Holland
Pastor, Gruver United Methodist Church

Historian, Clarence McCartney, tells the story about a pastor who had a terrible problem with a difficult member of his congregation during the time of the American Revolution. This difficult member who was a young man went off to join the General George Washington's army. The young man betrayed the army and was sentenced to death. The pastor walked 70 miles through snow and ice to pray with the young man before he was to be executed.

The pastor also appealed to General Washington for the young man's pardon. General Washington responded. "I'm very sorry, but I can do nothing for your friend." The pastor replied. "My friend, my friend. He's not my friend! He's my

enemy." General Washington was amazed and said. "If you would walk that far through the snow and the ice to save an enemy, then I will pardon him."

The thought of doing something for "our enemies" is hard for most of us to swallow, but Christ has taught us a way to change the world. Listen to his beautiful words from Luke 6:27-28.

"But I tell you who hear me: Love your enemies, do good to those who hate you, bless those who curse you, pray for those who mistreat you."

Christ is teaching us that we are to conquer evil not with more evil but with good. Are we willing to do our part to change the world and to build Christ's kingdom here on earth? Let Christ give you the strength to love your enemies.

Jesus Is Lord!

NEIGHBORS

CONTINUED FROM PAGE 4

An announcement of stupendous significance:

Payton Dean Little made his entry into this world on Monday morning at Northwest Texas Hospital in Amarillo, weighing 9 pounds 8 ounces and was 21 inches long.

Grandparents are Mrs. Dale Little of Graham, Texas and Texie Ann and Zack B. Fisher of Memphis.

Great grandparents are Harry Barkley, Memphis, and AHEM, Helen Fisher of Spearman.

Overwhelming and mixed emotions come at the sight of this little genetic wonder-this composite of so many who have gone before-from various states, nationalities, personalities, characteristics, woven together into one by the Master Craftsman of the Universe.

In Hansford County Payton Dean's roots go deep-to pioneers-

the families of Clines, Tomlinsons, Harris, Barkleys, Buchanans.

One's meditations move from his past to his future-what changes will occur in the world, in this country, in his life, before he gazes upon his own great grandson.

The thoughts come of his past and his future-and comes back to his present. His granddad, Zack, remembering all the times he had to look at the pictures of infant prodigies shown him by overly imaginative grandpaws, some children as amazingly bright he had to view them through sun glasses. Now he has started his photo collection. Of course it will be history in the making since it is the very first absolutely perfect child's photographs.

As for Grandmother Texie-her first look at the very beautiful baby-and her belief in heredity was confirmed!

OPERA

CONTINUED FROM PAGE 4

Steven Weber sings the role of William Jennings Bryan.

Music Director/Conductor for the event is David Stockton, with Mila Gibson serving as artistic director. Stockton, who was guest conductor for *La Traviata*, is a native of Plainview who served as the general music director/conductor with the Boston Concert Opera for 14 years.

The production is funded in part by the Texas Commission on the Arts and the National Endowment for the Arts.

The opera, with music by Douglas Moore and libretto by John LaTouche, is based on the true story of the mayor of Leadville, Horace Tabor, who struck it rich in the silver mines of Colorado, and his liaison with Mrs. Elizabeth Doe, known to the miners of Central City as "Baby". What begins as a mild flirtation between the married older man and the younger woman develops into a deep and abiding love, which ultimately leads to tragedy for Tabor, his wife, and Baby Doe. "Panhandle audiences will enjoy this opera," Gibson said. "Not only is the story a good one, but the music is beautiful and a delight to perform."

In addition to the lead roles, other cast members are Joe Bolin,

Jessica Boyd, Samantha Usnick, Amy Burns, Janet Tonne, Matt Oglesby, Jerry Perales, Myngoe Brashears, Daniel Shipman, Robert Hansen, Katrina Perales, Natalie Heim, Mika Bradford, Katy Byrd, Lynn Tyler, Chuck Thrasher, Adrian McClish, Rex Martin, Chuck Anderson, Tom Blake, Ramone Diggs, and Jim Rauscher.

Members of the production staff include chorus director Joan Webber, company accompanist Raenell McDonough, company vocal coach Elsa Porter, assistant accompanist E.P. Simmons, and production assistant Madeline Miller. Terry Becket is the set designer and technical director and Jim Elliott is lighting director. Other technical crew members are Ben Weber, Fred Rathjen, Ray Nordhausen and Jaqueta Urbazek. The running crew is the Palo Duro High School Theater Arts Students.

Advisors for *The Ballad of Baby Doe* are William A. Moore and Dr. Robert Vartebetein. Crew members working on costumes are Beth Nelson with Carol Coleman, Jeanette Helms, Mary Mager, Joyce McBroom, Gene Murray, Sylvia Ortho, Sandra Robinson, Nancy Somerville, and hairdresser, Yong Menkhoff.

JV

CONTINUED FROM PAGE 12

make this game close.

However, the defense was there again to save the day, and the Elks turned the ball back over to Spearman on a punt.

Spearman, although the game was drawing near, was still not ready to quite. In fact they put on another impressive drive, which ended in yet another Lynx TD. This time Lusby gained the glory he deserved and blasted up the middle for the one yard TD. The points after attempt failed, but with only 41 ticks left on the clock, Spearman had bagged this one. Stratford did try and get one last play out of the

deal, but Howell was there to pick-off the attempted pass.

Statistically, the Lynx rushed for 247 yards on 42 plays for an average of 5.9 per carry. Running backs Lusby, who rushed 19 times for 115 yards, Hernandez, who rushed 17 times for 126 yards, Goodman, who rushed for 1 time for 4 yards, and Bynum, who rushed 4 times for 2 yards, made up the Lynx's running.

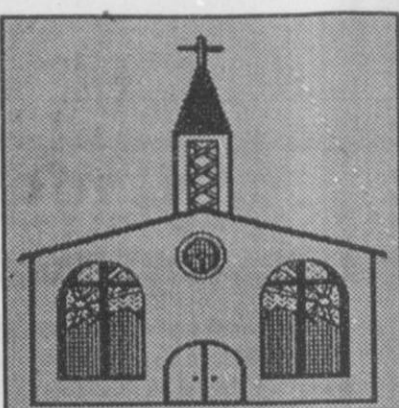
The Lynx JV will be at it again this Thursday, September 14, as they will be hosted against the Sunray Bobcats. Game time is at 6:00 p.m.

Oh, to be only half as wonderful as my child thought I was when he was small, and only half as stupid as my teenager now thinks I am.

—Rebecca Richards

Let us replenish the seed of faith through...

REGULAR CHURCH ATTENDANCE, DAILY BIBLE READING & PRAYER



Curtis' Hot Oilers
806-659-3432
"Taking Service to Perfection"
806-659-2912 P.O. Box 714
800-821-6714 Spearman, TX 79081

Palo Duro Supper Club
22 S. Archer
659-2232

C.O.'S SUPPLY CO.
Plumbing & Tire Sales & Service
421 W. Kenneth • Spearman
659-3781 or 659-3555

Bartlett's Ace Hardware
105 W. Broadway
733-2404

GILLASPIE
AUTO & TRUCK CENTER, INC.
321 MAIN STREET • SPEARMAN, TEXAS 79081
806-659-2541

DEKIN ELECTRIC
OILFIELD • RESIDENTIAL • COMMERCIAL
321 Main Street
Spearman, TX 79081
1-800-999-1506 (806)659-5016

PORTER SATELLITE
TREY PORTER
806-659-3657
420 Davis
Spearman, Texas 79081

Gruver Cablevision
Quality Family Entertainment
with "the Disney Channel"
308 Main • 733-5295

Morse Implement Company
"Join us in church this week"

Boxwell Bros. Funeral Home

THE HANSFORD COUNTY REPORTER-STATESMAN
Serving The Communities Of Spearman, Gruver & Morse
213 Main • 659-3434
1-800-395-9482

CORONADO HOSPITAL
Pampa, Texas
(806)665-3721

Compliments of **G&G FOODLINER**
516 Main • Gruver
733-2471

CANDLE IN THE NIGHT



There is something about a candle...something about a flame...something about fire itself...that has fascinated man throughout the centuries. Despite the fact that you can translate fire, these days, into a known chemical formula, it is still a mystery, a wonder, and sometimes a fear.

It is an elemental thing that this little girl is studying as she watches the candle flicker. And, like so many of the elemental things - like Nature itself, and like Faith, for that matter - it is awesome.

Faith, too, is a mystery and a wonder. Yet, the only feat that Faith engenders is the fear, deep within one's heart, that it might be lost.

So that this essential ingredient of life does not elude you and does not diminish during misfortune, make it a habit of attending the church or synagogue of your choice regularly. Here you will be given spiritual strength and inspiration and kindle the mystery of love and joy within your heart.

SUNDAY	MONDAY	TUESDAY	WEDNESDAY	THURSDAY	FRIDAY	SATURDAY
Galatians 5:1-15	Galatians 6:1-10	Leviticus 19:1-10	Ruth 2:1-23	1 Kings 4:1-7	Nehemiah 5:14-19	Hebrews 13:1-19

Scriptures Selected by The American Bible Society
Copyright 1995, Keister-Williams Newspaper Services, P. O. Box 8005, Charlottesville, VA 22906

In Spearman...

Apostolic Faith Church
822. S. Dressen • 659-2870
Sunday School: 10 a.m.
Worship: 11 a.m.
Evening Worship: 6 p.m. Sun.
Wed. Prayer Meeting: 7:30 p.m.
Pastor James Brown

First Assembly of God
401 N. Bernice • 659-2295
Sunday School: 9:45 a.m.
Worship: 10:50 a.m.
Evening Worship: 7 p.m.
Wednesday Worship: 7:30 p.m.
Youth: 7:30 Wednesday
Pastor Todd Lillard

First Christian Church (Disciples of Christ)
29 S. Bernice • 659-2036
Sunday School: 9:45 a.m.
Worship: 10:50 a.m.
Evening Bible Study Worship: 6:30 p.m. Sundays.
Pastor LaVern Draper

First Baptist Church
123 N. Bernice • 659-5557
Sunday School: 9:45 a.m.
Worship: 11 a.m.
Evening Worship: 7 p.m.
Jr. High Youth: 6 p.m. Wed.
High School Youth: 7 p.m. Wed.
Youth Choir: 6 p.m. Sun.
Pastor Kyle Henderson

Church of Christ
121 S. Haney • 659-3244
Sunday Bible Class: 9:45 a.m.
Worship: 10:30 a.m.
Evening Worship: 6 p.m.
Bible Study Wed. 7:30 p.m.
KRDF Radio Program
Living With Christ 7:50 a.m. M-F
Minister Arnis Pape

Fellowship Baptist
1102 S. Archer • 659-2783
Sunday School: 10 a.m.
Worship: 11 a.m.
Evening Worship: 6 p.m. Sunday
Youth & Adult Serv.: 7:30 Wed.
Pastor Tim Luttrall

Primera Mision Bautista
502 E. 7th • 659-3991
Sunday School: 9:45 a.m.
Worship: 11 a.m.; Evening: 6 p.m.
Wed. Prayer Meeting: 7 p.m.
Thurs. Visitation: 7 p.m.
Pastor Isaias Martinez.

"WE SUPPORT OUR LOCAL CHURCHES"
CAPROCK #1 & #2
Bill Park, Gen. Mgr.
(806)733-5043 or 733-5025
"Custom Cattle Feeding"

Trinity Community Church
717 W. 7th Ave. • 659-2671
Celebration of Praise 10:15
Worship Service and Children's Church 10:30
Sunday Evening 6:30 p.m.
Wednesday evening: 7 p.m.
Pastor Dan Carter

Faith Lutheran Church (ELCA)
1101 Bernice • 659-2252
(Worships with First Presbyterian Church)

First Presbyterian Church
(Worships with Faith Lutheran Church)
1021 Cotter • 659-2033
Sunday School: 9:45 a.m. at Lutheran Church
Worship: 11 a.m. (alternates monthly between addresses above)
Pastor Beverly Cook

First United Methodist
407 S. Haney • 659-5503
Sunday School: 9:45 a.m.
Worship: 11 a.m.
Jr. High Youth: 5 p.m. Sun.
High School: 6 p.m. Sun.
Pastor Jeff Lust

Union Church
31 S. Endicott • 659-2644
Sunday School: 9:45 a.m.
Worship: 10:45 a.m.
Evening Worship: 6:00 p.m.
Bible Study & Prayer Meeting: 7:00 p.m. Wed.
Pastor Billy Stanford
Sacred Heart Catholic Church
901 Roland • 659-2792
Sat. Night Mass: 7 p.m.
Sunday Mass: 8:45 a.m. - English (8:45a.m. Service on KRDF 98.3 FM)
11:15 a.m. - Spanish
1:30 p.m. - Gruver - Christo Rendentor Mass - Spanish
Rev. Fernand Couture

This feature is made possible through the Sponsorship of these Civic Minded Businesses

In Gruver...

First Baptist Church
402 E. Broadway • 733-2411
Sunday School: 9:45 a.m.
Worship: 10:50 a.m.
Disciple Training: 6 p.m. Sunday
Prayer Meeting: 7:30 p.m. Wednesday
Pastor Larry Miller

Church of Christ
209 King • 733-2760
Sunday School: 9:30 a.m.
Worship: 10:20 a.m.
Evening Worship: 6 p.m.
Wed. Evening Worship: 7:30 p.m.
Minister Bob Setliff

First Christian Church
510 King • 733-2960
Sunday School: 9:45 a.m.
Worship: 11 a.m.
Wed. Bible Study: 7:30 p.m.
Youth: 6:30 Wednesday
Pastor Gary Gumbofy

Oslo Lutheran Church (ECLA)
West of Gruver on Hwy 15 & N. FM 1162
339-7646
Sunday School: 9:45 a.m.
Worship: 11 a.m.
Morning Prayer: 9 a.m. Wed.
Pioneer Clubs (Grades 1-6): 4-5:30 p.m. Wednesday
Pastor John R. Chandler

Community Bible Church (Interdenominational)
Hwy. 15 • 733-2443
Sunday School: 10 a.m.
Worship: 11 a.m.
Wed. Prayer Meeting: 7 p.m.

First United Methodist
Broadway & Garrett • 733-2651
Sunday School: 9:45 a.m.
Worship: 8:30 a.m. & 10:50 a.m.
Evening Worship: 6 p.m.
Pastor Lewis Holland

In Morse...

Morse Baptist Church
Pastor Mike Martin
733-2757

"Your Home Away From Home"
Nursanickel Motel
815 Hwy. 207 S.
Phone: (806)659-3737 P.O. Box 115
Spearman, Texas 79081

BERRY CLEANERS
DAN DESIMONE • OWNER
Phone 659-3122 • P.O. Box 1017
207 Main St. • Spearman, Tx. 79081

GRUVER FORD
531 Main • Gruver • 733-2431

Interstate Savings & Loan
322 Main • Spearman • 659-2559

Hagerman Services
Backhoe • Dozer • Welding
North Hwy. 15 • Spearman
659-5131

Gordon Drugs
Dependable Prescription Service
314 Main • Spearman
659-2141
Jim Evans

Compliments of...
AGCO
of Spearman, Inc.
"See you in Church"
659-3751

