

## Inside

At the Movies	2	Among the Neighbors	5
Lunch Menus	2	Museum Musings	5
City Lites	2	For the Short of It	10
Out at the Lake	2	Classifieds	11
Chamber Chatter	3	Church Page	12

# P.T.A. Activites

Page 3 & 4

## WEATHER

Day	Hi	Lo	Precip	Day	Hi	Lo	Precip
Thu	83	56	.94	Mon	88	63	.00
Fri	86	56	.00	Tue	88	64	.00
Sat	86	64	.00	Wed	--	67	.00
Sun	88	62	.00	Total Precipitation 17.19			

HANSFORD COUNTY LIBRARY  
0120 MAIN ST. SPEARMAN, TX 79081  
EXPIRES 04/01/1995 THANK YOU

## The Hansford County

# Reporter-Statesman

Serving Hansford County Since 1907

Volume 86 • Issue 47

213 Main • Spearman, Texas 79081

Thursday • September 15,

## Local Lions Club to hold annual Broom & Mop Sale Sept. 22, 1994

Raising funds to operate and to give back to the community can sometimes be a challenge. But for the Spearman Lions Club the task can be a sweeping moment.

Members of the local Lions Club will be conducting their annual Broom and Mop Sale to raise funds for the upcoming year. Funds raised are returned to the community by

contributing to various organizations, groups and activities.

The Spearman Lions Club Annual Broom and Mop Sale will be conducted on Thursday, Sept. 22 at the Spearman Post Office parking lot from 7:30 a.m. through 6 or 7 p.m.

Funds raised through this event also benefit the Lighthouse for the

Blind.

Mops, brooms, brushes, mats, and other miscellaneous items will be available for the home or for businesses. Prices vary from .75-cents for a fly-swatter to \$20.75 for an industrial floor squeegee or push broom.

The Spearman Lions Club has raised a little over \$19,000 in the past two years. Of that money raised some \$6,700-plus has come about directly through the broom and mop sales.

Other funds raised by the club are through dues and small projects during the course of the year.

Money raised through the various events is used to pay international and district dues. But most importantly to help fund several worthwhile projects.

Locally the Spearman Lions Club provides glasses for the needy. An estimated \$3,318 was spent buying

See SALE, page 12

## Hansford Masonic Lodge to give awards

Two local men will be honored for 50-years of service by fellow Masonic members.

The Hansford Masonic Lodge #1040 AF & AM will be honoring J.B. Buchanan and Phil Jenkins with 50-year awards.

Buchanan and Jenkins will receive recognition for their service and dedication to the Masonic Fra-

ternity on Monday, September 26th.

An open meeting will be conducted at the Hansford Lodge located at 406 E. 11th Street in Spearman. Members of the Hansford Lodge and their families, all Master Masons, and friends are invited to attend.

The meeting will start at 7 p.m. and refreshments will be served afterwards.

## Gruver I.S.D. holds special hearing

Gruver Board of Education holds special meeting to discuss tax increase for 1994-95.

On August 31 a special hearing was held to inform the public of the districts intent to increase taxes for 1994-95.

At the regular meeting on September 7, the tax rate was set at \$1.2101/\$100. This is due to the decrease in the values of the property in the school district and reduction of revenue from the state this year. All the tax money raised will go to the maintenance and operation of the districts schools and activities.

Acting upon a request from the

Gruver Classroom Teachers Association, the board members approved a Catastrophic Sick Leave Program for the district employees. The plan calls for employees desiring to join the program to donate a local sick day to a bank. If a catastrophic illness occurs to a member, the member may request sick leave days from the bank after using all the sick leave day he/she has accumulated from the state. A yearly call for a day from each member will be made until the bank has enough days to safely operate.

The board members voted to allow Pringle-Morse CISD to purchase weighted average daily at-

tendance (WADA) credits from the Gruver ISD rather send money to the state of Texas. It does not allow Pringle-Morse CISD tax money to be used for the education of some of the high school students living in their district.

The board also approved; campus handbooks, a resolution rejecting the 1994-95 budget proposed by the Hansford County Appraisal District and bills totaling \$70,665.67 was voted to be paid.

Meeting was adjourned.

## Concurrent English Classes to be offered

Spearman Independent School District Board authorized Concurrent English Classes for Spearman High School.

On August 29 the Spearman School Board came to order. They voted to pay bills totaling \$47,645.09 and to move money around from bank accounts to cover money needed.

The board renewed Employee Benefit Health Insurance at same rate as last year. The 1994-95 budget rate was adopted at \$4,473,562.00 and a tax rate of \$1.2596 was established.

The board also authorized a Concurrent English Class for the high school, this is a class that counts as a high school and college credit.

Meeting was adjourned.

## P.T.A. Month proclaimed by Governor

Governor Ann W. Richards recently proclaimed the month of September as "PTA Membership Enrollment Month" in Texas.

Texas PTA's more than 2,600 local units make it an easily accessible avenue for all people to get involved in education and child advocacy.

Because children need advocates, schools need volunteers, and citizens need a link to children's edu-



**SHS VARSITY CHEERLEADERS** - The 1994-95 Spearman Lynx will be cheered on by many but leading the cheering section both on and off the field are the following girls. Making up the SHS cheerleading squad (top row, from left) Mica Pipkin, Ashley Shieldknight, Molly Blackman, Amanda Burrell. On the bottom row (from left) Carrie Burton, Kelly Shieldknight, Samantha Beasley, and Jennifer Neff.



**GHS VARSITY CHEERLEADERS** - This year's spirit leaders for the Gruver Greyhounds feature six girls that will shout, cheer, and entertain those along the sidelines. Making up the varsity cheerleading squad are (top row, from left) Molly McLain, Windy Rodriguez, Kim Venneman, and Julie Meyer. On the bottom row (from left) are Tara Shapley and Tisha Raiston.

## Police respond to calls

Spearman Police Department stayed busy last Sunday night.

At 2:22 p.m., September 11, the Spearman Police was dispatched to a traffic accident at 2nd and Brandt, a 1984 Ford pickup struck a utility post. Carlos Espenosa, age 35, of Spearman, was arrested for driv-

ing while intoxicated.

Later that evening at 8:57 p.m., the Spearman Police was dispatched to the 200 block of South Endicott for a domestic dispute. Alga Gutierrez, age 29 of Spearman, was arrested for disorderly conduct.

Chief of Police, Charles Morris, is very pleased with the animal control program. He stated that "several animals have been picked up and many citations have been issued." This program will continue to try and control the animal population running at large in the city.

## Hansford Happenings

### Meals-On-Wheels Service

To sign up for Meals-On-Wheels Service or to receive information, call Ernestina Salgado at 659-2535, ext. 226 between 8 a.m. and 5 p.m.

### P.T.A. First Meeting

The Spearman P.T.A. will hold its first meeting Monday, September 26, 1994 from 7 - 8 p.m. in the High School Auditorium. D.A.R.E. Officer Jamie Downs will be speaking on the new D.A.R.E. Program in Spearman schools. All parents are urged to attend!

### Beta Sigma Phi/Rho-Rho \$250.00 Shopping Spree

Hansford Bucks raffle tickets are now available from any Rho-Rho member. They are \$3.00 for one or \$5.00 for two. The drawing will be held Sept. 30 during Homecoming halftime. Please help us support Ronald McDonald House and Hansford Hospice.

### Spearman UMC Choir Tours

The Chancel Choir of the United Methodist Church will go on tour Sept. 17-18, 1994. They will be performing "God With Us" by Don Meon, Jack W. Hayford, Tom Hartley, Tom Feltke, and Camp Kirkland at Pleasant Valley UMC in Amarillo, Central UMC in Dalhart, Fritch UMC, and Booker UMC. The musical will be featured in the FUMC Sunday morning Worship Service and KRDF FM Radio here in Spearman on September 25, 1994.

### Defensive Driving Course

The Defensive Driving Course will be held September 21 & 22 from 6 - 9 p.m. in the Hansford County Library. The cost is \$35.00 for non Chamber members and \$30.00 for members.

### Spearman Lions Club Broom Sale

The Spearman Lions Club will be conducting its Annual Broom Sale on Thursday, Sept. 22 on the Spearman U.S. Postal Office parking lot. Sale begins at 7:30 a.m. and runs until 6 or 7 p.m.

### Hansford Hospice Volunteer Meeting

The Hansford Hospice Volunteers will be meeting Monday night on Sept. 19, 1994 at 7:00 p.m. in Gruver at the Gruver State Bank. The program will be given by Rev. Billy Everett, who is the Hospice Chaplain for Dumas Memorial Hospice. Everyone is welcome to attend.

place for you. People need to work together to make this a better world for all children and youth.

We can't afford not to have a strong PTA organization working in our nation today. Take time to join! A membership form is available in this newspaper or call your local PTA organization. In Spearman call 659-3882.

The National PTA believes in the following principles. PTA offi-

cial use these guidelines to serve the children, the schools, and communities. The PTA Principles are as follows: Human Values, Spiritual Faith, Good Homes, Sound Health, Safety, Educational Opportunity, Vocational Technical Competence, Conservation of Natural Resources, Constructive Leisure, Human Relations, Civic Responsibility, and International Understanding.



# City Lites

by Kelvin Knaut,  
Spearman City Manager

As the City Council prepares to adopt the 1994-95 Budget, I think it is interesting to look at some of the budget "numbers."

- 1 - the number of dollars the swimming pool fee will decrease for adults
- 5 - the number of police officers budgeted for
- 50 - the number of cents the swimming pool fee will decrease for youths
- 4,080 - the number of dollars the Police Department spends on gasoline for police cars
- 15,297 - the number of dollars paid to the State of Texas for permits and fees
- 18,540 - the number of dollars allocated to lease-purchase a new garbage truck
- 25,715 - the number of dollars City wages will decrease from the current budget
- 49,234 - the number of dollars the city spends on property and liability insurance
- 50,000 - the number of dollars set aside for unknown solid waste regulations
- 148,118 - the number of dollars the city spends on electricity
- 281,500 - the Police Department Budget for 1994-95
- 290,779 - the number of dollars received from property taxes
- 348,604 - the number of dollars the tax base declined this year
- 498,265 - the number of dollars the City anticipates spending on natural gas purchases

This next year will be a very difficult year for the City. Our revenues are not increasing very much, yet our expenses keep going up because of State and Federal rules and regulations. On behalf of the City staff, I pledge our very best efforts to provide the quality and level of service which Spearman residents expect.

## School Lunch Menus

- |  |   |
|--|---|
| <p><b>SPEARMAN SCHOOLS MENU</b></p> <p><b>MONDAY, SEPTEMBER 19</b><br/>Char broiled meat balls, spaghetti w/sauce, whole kernel corn, bread stick, pears halves, and milk.</p> <p><b>TUESDAY, SEPTEMBER 20</b><br/>Steak fingers, whipped potatoes, seasoned green beans, sliced bread, pineapple upside-down cake, and milk.</p> <p><b>WEDNESDAY, SEPTEMBER 21</b><br/>Taco salad, edible salad bowl, season ground beef, shredded cheese, shredded lettuce, chopped tomato, diced onion, taco sauce, refried beans, purple plums, and milk.</p> <p><b>THURSDAY, SEPTEMBER 22</b><br/>Jumbo corn dog, macaroni &amp; cheese, sweet peas, mixed fruit, and milk.</p> <p><b>FRIDAY, SEPTEMBER 23</b><br/>Cheeseburger, shoestring french fries, lettuce, tomato, pickle, onion, peaches, and milk.</p> <p><b>SISD BREAKFAST</b></p> <p><b>MONDAY</b>, Breakfast pizza fruit, juice, and milk.</p> <p><b>TUESDAY</b>, Scrambled egg, biscuit, jelly, butter, fruit juice, and milk.</p> <p><b>WEDNESDAY</b>, Cereal, toast, fruit juice, and milk.</p> <p><b>THURSDAY</b>, Large cinnamon roll, fruit juice, and milk.</p> <p><b>FRIDAY</b>, Breakfast burrito: (tortilla, scrambled egg w/sausage, and cheese), fruit juice, and milk.</p> <p><b>GRUVER SCHOOLS MENU</b></p> <p><b>MONDAY, SEPTEMBER 19</b><br/>Chicken patties, mashed potatoes w/ gravy, english peas, hot roll, brownie, and milk.</p> <p><b>TUESDAY, SEPTEMBER 20</b><br/>Burritos w/chili, cheese, tossed salad, fruit, and milk.</p> <p><b>WEDNESDAY, SEPTEMBER 21</b><br/>Roast turkey, mashed potatoes w/ gravy, corn, hot roll, apple cobbler, and milk.</p> | <p><b>THURSDAY, SEPTEMBER 22</b><br/>Ground beef Stroganoff, green beans, biscuits, fruit, and milk.</p> <p><b>FRIDAY, SEPTEMBER 23</b><br/>Corn dogs, tator tots, fruit juice bars, peanut butter cookie, and milk.</p> <p><b>GISD BREAKFAST</b></p> <p><b>MONDAY</b>, Cereal, muffin, juice, and milk.</p> <p><b>TUESDAY</b>, 2 pancakes, syrup, juice, and milk.</p> <p><b>WEDNESDAY</b>, 2 slices toast, peanut butter, jelly, fruit, and milk.</p> <p><b>THURSDAY</b>, Breakfast burritos, scramble eggs &amp; ham, hot sauce (opt), juice and milk.</p> <p><b>FRIDAY</b>, 2 cinnamon rolls, fruit, and milk.</p> <p><b>PRINGLE-MORSE SCHOOLS MENU</b></p> <p><b>MONDAY, SEPTEMBER 19</b><br/>Cheese nachos, pinto beans, chef salad, cornbread, peanut butter cookie, and milk.</p> <p><b>TUESDAY, SEPTEMBER 20</b><br/>Steak fingers, mashed potatoes w/gravy, green peas, hot rolls, fruit, and milk.</p> <p><b>WEDNESDAY, SEPTEMBER 21</b><br/>Hot dogs, chili, tator tots, slaw, no bake cookies, and milk.</p> <p><b>THURSDAY, SEPTEMBER 22</b><br/>Meatloaf, macaroni &amp; cheese, salad, green beans, hot rolls, fruit pie, and milk.</p> <p><b>FRIDAY, SEPTEMBER 23</b><br/>Stromboli, french fries, salad, ice cream, and milk.</p> <p><b>PMISD BREAKFAST</b></p> <p><b>MONDAY</b>, Cheese toast, toast, juice, and milk.</p> <p><b>TUESDAY</b>, Muffins, toast, juice, and milk.</p> <p><b>WEDNESDAY</b>, Waffles, toast, sausage, juice, and milk.</p> <p><b>THURSDAY</b>, Cereal, cinnamon toast, juice, and milk.</p> <p><b>FRIDAY</b>, Biscuits, sausage, juice, and milk.</p> |
|--|---|

# Scouts finalize organizational plans

Spearman Cub Scouts Pack #578 met in its Pack Committee Tuesday, Sept. 8 to finalize organizational plans for the 1994-95 school year.

According to Cub Master Andy Scarborough, the Cubs will be divided into four age groups: Tiger Cubs (first grade boys); Wolves (second grade boys); Bears (third grade boys); and Webelos I. and II. (fourth and fifth grade boys).

"Our Tiger cub parents will take turns leading their boys' meetings," Scarborough explained. The first Tiger Cubs meeting will be Monday, Sept. 26 from 6:45 to 7:45 p.m. at the O'Loughlin Activity Center. Tigers will also meet on the following Mondays at the same time: October 11, November 14 and December 12. Parents leaders will include Sherry Correll, Roger Close, Rick Howard, and Kim Rex.

Wolves will meet the first three Tuesdays of each month from 7 to 8 p.m., reported leader Jean Ann Behney. "We'll start Tuesday, Sept. 20 and then follow with meetings on October 4, 11 and 17," she explained. The Sept. 20 meeting will be at the Activity Center, she added, with subsequent meeting site varying, according to the special activity planned for that evening.

"We want to grow, so I'd like to have at least eight or the boys," said Bear Cub leader Jamie Deacon. She said Bears' meetings are scheduled to take place the first three Mon-

days of each month, with the first one to be September 19 from 4 to 5 p.m. at the Activity Center. "I want to start out fresh, do it well and be there for the kids," Deacon added when asked about her goals for the scouting year.

Scarborough will lead the fourth and fifth grade boys jointly the first and third Thursdays of each month from 6 to 8 p.m. at the Activity Center. The first Webelos meeting will be Tuesday, Sept. 20. He said he has a fun, busy year planned ahead and encourages new cubs to join his group.

Scarborough and other leaders introduced new parents to Spearman's Cub Scout program Back-to-School Scout Night on Aug. 25. "We want to thank Kountry Donut for donating the refreshments for the evening and John Earl of John's Cabinets and More for cutting out the Lynx paw pattern used for repainting the safety paw path at the elementary school," Scarborough said. "Also, thanks to the Spearman PTA for donating the paint and brushes we used," he added.

Pack Committee Chairman Randall Sauer said thanks are also due to the Hansford County Activity Center, which recently donated money to the Cub Scouts. "We'll be using this money for the Cub scouting program in Spearman this year," Sauer said.

The first big activity for Cub

Scouts this school year will be the annual Dad-Lad Cake Bake competition and fund-raiser, slated for Saturday, Oct. 22 with a 6 p.m. check-in time, at 6:30 p.m. judging will be conducted, and at 7 p.m. an auction will be held.

This year's Dad-Lad Cake Bake theme is "Under the Big Top"

Deacon reminded prospective bakers that the cakes must be made

from scratch and everything on the cake must be edible. More details about the event will be published in the newspaper next month.

"We're off to a good start in Cub Scouts," Scarborough said. "We hope to see a lot of new faces this year, so parents of first through fifth grade boys should make note of the meetings and activities scheduled so far."

## At the movies...

Showing at the Lyric Theatre in Spearman Friday, September 16, through Tuesday, September 20, are "Clear and Present Danger" on screen #1 at 7:45 p.m. and "The Shadow" on screen #2 at 7:30 p.m.

In "Clear and Present Danger" Harrison Ford returns as CIA agent Jack Ryan, who discovers a link between the U.S. government and a Columbian drug cartel in this thriller based on Tom Clancy's best

seller. Willem Dafoe, Anne Archer and James Earl Jones co-star.

"Clear and Present Danger" is rated PG-13.

In "The Shadow" Alec Baldwin is Lamont Cranston, a Manhattan playboy whose alter ego is a crime fighter known as "The Shadow." Penelope Ann Miller is Cranston's love interest, and John Lone is his archvillain, a descendant of Genghis Khan.

"The Shadow" is rated PG-13.

## At The Lyric Theatre...

Friday, Sept. 16 - Tuesday, Sept. 20

Bargain Nights Mon. & Tue. Adults - \$4  
Fri., Sat., Sun., Adult \$5 - Child \$3 every night  
Closed Wednesday & Thursday

SCREEN 1 • 7:45 PM SCREEN 2 • 7:30 PM

Clear and Present Danger (PG-13)

The Shadow (PG-13)

113 Main • Spearman

## Out at the Lake

The Lake depth continues at around 23 feet with fishing continuing to be good. The Bob Farr family of Spearman had the shelter rented this weekend. During the past week, the dam was inspected by freeze and Nichols and McClellan Engineering without anything negative being found.

Fannie Venneman has posed the question of whether the Snow-on-the-Mountain plant written about last week is a milkweed. Many of us have always thought it belonged to that family, because when you break it the sticky milk flows. However, the flower books consulted all say that it is not a milkweed, and that it belongs instead to the Spurge family. There is some difference in the books about which plant is Snow-on-the-Mountain and which is a cousin, Snow-on-the-Prairie.

Fannie was kind enough to say she had been enjoying the columns on the people who used to live in the area that is now Palo Duro Park. She added some information on the Doyle family that lived on the Lasater place at one time. If any of you are interested in the Doyle family, the Hansford County History 1876-1979 has a very good piece with pictures written by Daphne Doyle Womble. She tells that her father was very well known for his fiddle playing. He often played at the Hansford County Courthouse with Milo Blodgett and W.M. Lackey. Her father died while playing the fiddle for the veterans at Fort Lyon.

Daphne also wrote that before they got ponies, she and her older sister Bernice broke the milk pen calves to ride. They could ride them out among the cattle.

## Birth announcement

**Ashley Dawn Williams**  
Ashley Dawn Williams was born September 2, 1994 in Perryton, Texas at 3:54 p.m. She weighed 9-lbs., and was 19 3/4-inches long.

Ashley is the daughter of Ronnie and Rhonda Williams. Maternal grandparents are Steve and Mary Lou Mathews of

Spearman, and Jackie Mathews of Dallas.

Paternal grandparents are John and Ynese Williams of Gruver.

\*\*\*\*\*

There are no accidents so unfortunate from which skillful men will not draw some advantage. - La Rochefoucauld  
\*\*\*\*\*

**The Hansford County Reporter-Statesman**  
Serving all of Hansford County  
Spearman • Gruver • Morse

USPS 509660 • 213 Main, Box 458 • Spearman, Tx. 79081  
(806) 659-3434 • 1-800-395-9482 • FAX (806) 659-3368  
Published weekly at 213 Main, Spearman, Texas  
Owned & Operated by  
Texas Independent Newspapers, Inc.  
16607 Blanco Road #100 • San Antonio, Tx. 78232  
(210) 492-8907  
Second class postage paid at Spearman, Texas 79081

Any erroneous reflection upon the character of any person or firm will be gladly and promptly corrected upon being brought to the attention of the management.

Publisher - Daniel Ramos  
Office Manager - Deziree Torres  
Production Manager - Leticia Ramos  
Staff Writer - Cora Thompson  
Staff Writer - Chad Davis

The publisher reserves the right to revise or reject at its option any advertisement which it deems objectionable, either in subject or phraseology, or which it may deem detrimental to its business.

Subscription Rate: Hansford County, \$19.95; out of county, \$24.95 annually.  
Postmaster: Send address changes to Hansford County Reporter-Statesman, Box 458, Spearman, Tx. 79081.  
Advertising & Story Deadlines Monday, 5:00 p.m.

TA TEXAS PRESS ASSOCIATION

**ADM Securities, Inc.**

- ◆ IRA'S
- ◆ STOCKS
- ◆ BONDS
- ◆ MUTUAL FUNDS
- ◆ RETIREMENT PLANS

Let us sit down with you to discuss a plan suited for your needs.

**Kent Guthrie - Account Executive**  
221 Sanders, Spearman, TX 79081  
Phone 659-3515 or 1-800-223-3515

Call now for information about our \$9.95 Cable Installation...Hurry, this offer is for a limited time!

Finally, a Saturday night you won't regret Sunday morning.

There's a great never-before-seen-on-HBO movie every Saturday night, 52 weeks a year. Guaranteed.

**HBO Saturday Nights**  
Channel 16  
Sept. 12-16

MISSION CABLE 659-3363

DEMOLITION MAN  
THE FUGITIVE  
STRIKING DISTANCE  
THE AGE OF INNOCENCE



# Lifestyles



**RIBBON CUTTING** - The Picnic Place in Spearman was officially welcomed to the community last week with an official ribbon cutting. Attending the ceremony were several Spearman Chamber of Commerce officials, local merchants, friends and family members. Pictured (front row) are Cindy Blackman, Tiki Farrar, Kathy Boyd, Pat Dear, Steve Benton, Verlin and Debbie Hagerman - owners, Ruth Ochoa, Mary Brock and Sandy Russell.

Back row are Ginger Turner, Jim Brown, Janet Williams, Cheryl Hill, Mike Cudd, George Finley, Worth Whitworth, Lynnane Maize, Carma Dorfon, Rev. LaVern Drapen, and Alton Ellsworth. The business is located at 217 Main Street in Spearman. It is open from 11 a.m. to 8 p.m. Monday thru Saturday, and it offers a variety of hot or cold sandwiches, desserts, ice cream and other good foods.

## Spearman Parent Teacher Association to hold member drive

Spearman PTA is inviting the public to become a member of the largest child advocacy organization in the state of Texas and in the nation. Spearman's PTA will be full of opportunities for the community to become involved in lots of big and small projects to help better Spearman schools.

PTA stands for Parent Teachers Association, and one of its goals is to involve more of the community in the opportunities for service. These areas of service are the "A" Honor Roll, PTA Carnival, Reflections Program, Environmental Awareness, The McGruff Program, Youth Protection Program, PTA news Letter (to inform parents of school activities), Sucker Sales, The Junior High and Elementary School Directories and more.

All that's needed is you to help make it all happen. During the month of September the PTA will conduct its yearly membership drive. It is hoped that many people (not just parents), teachers, and community leaders will join this important organization and become involved in Spearman's schools.

A membership for is below and may be either sent to school with your child or sent to the Spearman Elementary School Office. Join today and "Put Your Heart in PTA for All Children."

PTA membership is open to everyone - business people, teachers, parents, grandparents, aunts and uncles. Dues are \$5 for individual memberships, or \$8.50 for family memberships. The dues collected are used in part for equipment, education projects, or in other ways to aid in better educational programs for the children. The class with the most memberships will receive a pizza party.

Todos pueden ser miembros del PTA - gente de negocios, padres, abuelos, y tíos. Ser miembro cuesta \$5 por un individuo y \$8.50 por una familia. Ese dinero paga en parte por equipo, proyectos educativos, o por cualquier otra cosa que sea necesaria para educar a nuestros hijos si ustedes participan o no en las actividades del PTA. La clase que tiene mas miembros que las demas va a recibir un pizza party.

## TAFCE to hold Leadership Conference

Would you like to develop your leadership potential? Would you like to learn how to make your views known to decision makers? Would you like to make your organizations stronger by developing leadership in your members? If the answer to any of these is yes, Leadership 2000 is your answer.

A four day leadership training series is being planned for the Panhandle area. Leadership 2000 will help prepare Panhandle residents for active roles in decisions in their communities. The training series will be held from 9:45 a.m. to 4:30 p.m. on October 5, October 19, November 2 and November 16 at the Texas A&M University Research

and Extension Center at 6500 Amarillo Blvd. West in Amarillo.

The course series is sponsored by Family Community Leadership (FCL) and the Texas Association for Family and Community Education (TAFCE) in cooperation with the Texas Agricultural Extension Service. Family Community Leadership is an educational program designed specifically for women who want to develop their leadership potential and become more involved in decision making in their community. It was started in 1987 and as of 1993 over 800 volunteers have been trained across the state who have shared their information with over 10,000 others. They have as-

sisted in their communities in a variety of ways helping to improve life for families.

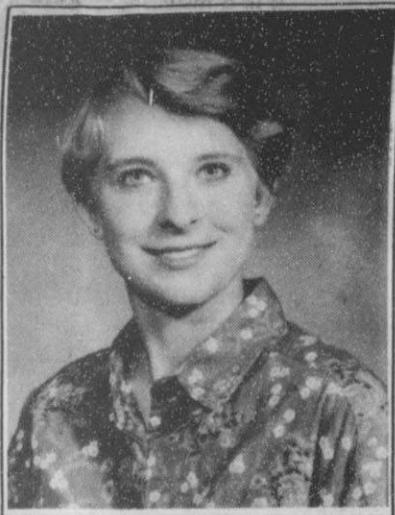
Those interested in attending will attend all 4 days receiving training in leadership styles, problem solving in a community, how to prepare for change, how to teach others, teamwork, improving communication skills, delegating of duties, effective group work, conflict

management, motivation of members, and networking. The information can be used personally by participants and with groups or organizations. It is the intent of the FCL program to train individuals who can in turn work in their community sharing the information and making their community a better place to live. The course costs \$35.00

See LEADERSHIP, page 4

## Paschel receives full scholarship from camp

Sara Beth Paschel attended the Fifth Annual Southwest Texas State University Honors Summer Math Camp from June 12 to July 23, 1994. This is an intensive summer mathematics program, with course in number theory, Mathematical computer lab, discrete math, and an Honors Seminar. Participants came from all parts of Texas as well as 4 other states. This summer program is funded by the National Science Foundation Young Scholars Program, and Sara Beth received a full scholarship. Sara Beth attends Spearman High School and will continue working on a school year project under the supervision of her high school teacher Ms. Susan Kidder as well as a faculty mentor from Southwest Texas.



SARA BETH PASCHEL

## Chamber Chatter

by Cindy Blackman  
Chamber Manager

The small business development center, West Texas A&M University and the Chamber of Commerce will be sponsoring small business counseling on Friday, September 23 in the Spearman Chamber Office. This program is a free service offered to our businesses and we urge you to take advantage of this service. The counselor will come to you and will answer any questions that you may have concerning book-keeping, advertising, insurance, ADA, or problems that you are having. To set an appointment, call the Chamber Office, 659-5555.

The first of the "Hot Lunch Topics" will be Friday, September 23 at the Palo Duro Cafe. The seminar will be on customer service and we would like to see employers as well as employees at this meeting.

There will also be a ribbon cutting for JK Farm & Ranch Supply

on Friday, September 23. This will be at 10:00 a.m. and we want to invite all of you that would like to wish Jody and Keith good luck on their new business to come and welcome them to the Spearman Business Community. JK Farm & Ranch Supply is located at 1451 W. Hwy. 15.

The Chamber of Commerce Board of Directors will be meeting to consider three people to serve on the Board starting January, 1995. Each year is a particularly important one for the Chamber Leadership Team. The Chamber is furthering its ambitious program, taking on new tasks, and building a solid foundation for the future. This means a special dedication will be required of its leaders. If you would like to serve on this board, call Steve Benton, 659-3743 or the Chamber Office.

**Kairos #2 was a success and the Team members want to thank everyone in the Spearman, Gruver, Hansford County & Panhandle of Texas area for their contributions to this ministry.**

**Your time, movies, cookies & prayers were truly appreciated. You are the special people Jesus is talking about in Matthew 25:34-40. GOD BLESS YOU ALL!**

**Gordon's**  
DRUG

**Bridal Gift Registry**

COME BY & LET US  
HELP YOU SET UP YOUR  
SPECIAL GIFT TABLE

**Couples Currently Registered**

LeAnn Hood & Bill Carson \*Sept. 17  
Tammy Thomas & Jason Sutterfield \*Oct. 8  
Nancy Ivey & P.J. Bowles  
Paige Pittman & Bret Burgin  
Tamri Townsen & Eric Savage

\* Date of the Bridal Shower

314 MAIN  
PHONE  
659-2141

**Gordon's**  
DRUG

SPEARMAN  
TEXAS

**SPEARMAN PTA**

Name/Nombre \_\_\_\_\_

Dues are \_\_\_\_\_ per member  
Miembrecia anual es \_\_\_\_\_ por cada miembro

Name(s) \_\_\_\_\_

Nombre(s) \_\_\_\_\_

Address \_\_\_\_\_ Zip \_\_\_\_\_ Phone ( ) \_\_\_\_\_  
Direccion \_\_\_\_\_ Numero Postal \_\_\_\_\_ Telefono \_\_\_\_\_

Student \_\_\_\_\_ Teacher \_\_\_\_\_  
Estudiante \_\_\_\_\_ Maestro(a) \_\_\_\_\_

Total dues enclosed \$ \_\_\_\_\_  
Suma incluida \_\_\_\_\_

*(Please list other children in this school and their teachers on back)*  
*(Favor de anotar a los otros niños en esta escuela y los maestros en el reverso)*

Please, turn this form in by Sept. 17. We look forward to working with you!

Sale! Sale! Sale! Sale! Sale! Sale! Sale! Sale!

**PTA PTA PTA**

Spearman PTA is taking orders for the Junior High and Elementary Student Directory. This directory will include student's name, address and phone number, divided by classrooms K-5, Jr. High is separate. Also included will be the Elementary or Jr. High faculty, school calendar and bell schedule. We feel this will be helpful with homework, classroom parties, invitations for birthday parties, activities outside of school, etc. These directories will be sold for \$1.00 each.

If you would like to purchase a directory, please fill out the form below and return with money to your child's homeroom teacher. Your directory will be delivered to your child in approximately 1 to 2 weeks after we receive your order. Please, give us some input on what we might add or change to improve the directories in the possible future. If you do not want your child's name in the directory please check the appropriate box.

Spearman PTA (Asociacion de Padres y Maestros) esta tomando ordenes para una guia telefonica de la escuela primaria. La guia telefonica incluire el nombre, domicilio y numero de telefono dividido por clases del kinder al grado cinco. Incluido tambien la facultad, el calendario y horario de campanas. Pensamos que la guia telefonica sera utilizada para ayuda con las tareas, fiestas de clases, invitaciones para fiestas de cumpleaños de sus hijos, actividades afuera de la escuela, etc. La huia telefonica estara a venta por \$1.00 por copia.

Si usted huista comprar una guia telefonica, por favor de llenar esta forma y mandar el dinero para la clases de su hijo. La guia telefonica estara lista para su hijo dentro de dos semanas despues de recibir su orden. Por favor de decirnos si hay alguna cosa que pudieramos uanadir o quitar de la guia telefonica para que sea mas util para usted en el futuro.

Grade/Grado \_\_\_\_\_  
Teacher/Maestro/Maestra \_\_\_\_\_  
Name/Nombre \_\_\_\_\_

How Many/Cuantas Guias \_\_\_\_\_ Total \$ \_\_\_\_\_

Yes, I's like my child's name, address and phone number included./Si deseo el nombre, domicilio y numero de telefono de mi hijo incluido.

No, I don't want my child included./No deseo mi hijo incluido.

Parents Signature/  
Firma de Padres \_\_\_\_\_

Sale! Sale! Sale! Sale! Sale! Sale! Sale! Sale!



# Sharing



**STUDENT TEACHERS-** Student teachers from Oklahoma Panhandle State University in Goodwell, Oklahoma, will be teaching in Texas schools. They include: front row (l to r), Christie Pier (has transferred and will be teaching in Michigan); Melissa Finchum, Dumas; Cindy Shackelford, Perryton; April Darrow, Wheeler. Back row (l to r), Susan O'Banion, Booker; Staci Adamson, Perrton; Linda Brady, Boys Ranch; Misty Hedgpeth, Perryton; Katrina Hughes, Gruver; Sandi Pearson, Spearman. (Photo courtesy of OPSU)

## Hughes and Pearson to begin student teaching in local schools

Two Hansford County women are a step closer to fulfilling their educational quest and becoming professional educators.

Katrina Hughes and Sandi Pearson are two of 29 Oklahoma

Panhandle State University's student teachers who will begin their student teaching assignments at local schools.

Hughes from Gruver will be student teaching at Gruver, and

Pearson from Spearman will be with student teaching in the Spearman ISD system.

They will be student teaching at their respective locations from September 19 through December 12.

## Spearman P.T.A. to hold first meeting of 1994-1995 school year

The first scheduled meeting of the Spearman PTA will be Monday, September 26, in the Spearman High School Auditorium from 7 to 8 p.m.

Spearman's own D.A.R.E. Officer, Jamie Downs, will be speaking on the new D.A.R.E. program starting in the Spearman school system this year.

D.A.R.E. stands for Drug Abuse Resistance Education and it seeks to prevent adolescent substance abuse and to help build self-esteem in young students.

Officer Jamie Downs has undergone training that qualifies him to teach structured, sequential curriculum in the public schools.

This will be a meeting full of important and interesting information for everyone to hear. The meeting is free and open for all of the public to attend. Refreshments will be served.

Serving as officers for the Spearman PTA during the 1994-95 school year are: Andy and Janet Scarborough - presidents, D.D. Ellis - vice president, Kristy Ramon - secretary, Sherry Benton - treasury, D.D. Longoria - historian, Verlin Winegarner - parliamentarian, Lee Schubert - membership,

## 4-H to offer food project

Plans are underway to offer a 4-H project in foods and nutrition during the month of October.

Project participants will learn skills in food preparation, meal planning, nutrition, and food buying and safety.

To enroll in the project, call Peggy Winegarner at the County Extension Office 659-2030 or 733-2901 by September 23.

4-H projects and activities are open to all.

## Leadership

CONTINUED FROM PAGE 3

which includes a file box of 16 leadership lessons, refreshments, lunch each day, and supplies for the class. To enroll for the class contact your local County Extension Agent or send \$35.00 to Leesa Calvi, 1513 5th Ave., Canyon, Texas 79015 by September 19. Local County Extension Agents have a brochure about the course and can answer other questions.

## Pringle-Morse ISD offers classes

Pringle-Morse ISD is offering computer classes for those persons wanting to gain some knowledge on computers.

The class will be conducted on Thursdays only beginning Sept. 22, and the course will conclude on Oct. 20. Class times are 6:30 to 9:30 p.m.

Cost of the computer class is \$25 plus book, and the instructor will be Karen Swink.

The first class is an introduction to computer class. Classes for DOS/Windows and WordPerfect 6.0 are planned. The class is limited to the first 12 people enrolled.

Persons interested in enrolling into the program are asked to call 733-2507 or for more information. Students will receive a certificate at the end of the course.

\*\*\*\*\*  
 ★ Jackson Welding Service ★  
 ★ Agricultural & Oil Field ★  
 ★ Welding ★  
 ★ 17 Years Pipe Welding ★  
 ★ Experience ★  
 ★ Fully Insured ★  
 ★ Contact Roy Jackson ★  
 ★ 659-2137 or 659-5129 ★  
 ★\*\*\*\*\*

## HENSON CHIROPRACTIC

410 S. Davis • Spearman, Tx.

Call for Appointment • 659-5603

OFFICE HOURS:

Monday, Wednesday & Friday 9:00 to 5:00  
 Tuesday & Thursday 9:00 to 11:30

*We would like to express our appreciation to all who remembered us with flowers, cards, donations and prayers in the loss of our mother and grandmother. Your concern was a great comfort to us.*

*The Family of Allie Mae Dear*

## Seventeenth Annual Golden Spread Antique Machinery Association Show

Featuring John Deere Tractors & Equipment

Saturday & Sunday  
 September 17th & 18th, 1994

Donald Sell Farm  
 Perryton, Texas 79070

Located 10 miles east of Perryton on FM 377 and 5 south on FM 2711; or 5 south of Booker, TX, on SH 23, 6 west on FM 377 and 5 south on FM 2711.

First Baptist Church  
 Gruver, Texas  
 Welcomes Guest Speaker

## Carol Everett

Nationally known Pro-Life speaker and author  
 Wednesday, Sept. 21 • 7:30 p.m.  
 Former abortion clinic director and owner will share her gripping story of the deception in the abortion industry.

Youth and Parents Welcome



With Call Forwarding, he only has to know one number to find you any number of places.

It's not impossible for someone to learn the phone numbers of all the places you might be. But it is unnecessary. Because with Call Forwarding from Southwestern Bell, you can have your home phone number ring wherever you go. And when your number keeps up with you, it's easier

for your family and friends to do the same. To order, or for more information on this and other EasyOptions™ calling services, call 1-800-234-BELL.

Southwestern Bell Telephone

"The One to Call On"™

Available in selected Southwestern Bell Telephone areas.

## School Bell Program

From now until April 28, 1995, Southwestern Bell Telephone will donate \$2 to the board of trustees of your local high school when you purchase the Call Forwarding service. Your school can earn up to \$1,500 to help purchase anything from fine arts programs to computer software to band uniforms.



# Museum Musings

by Joanne Eaton

"In some ways the primitive nature of frontier life inspired a creativity in all women which was expressed in their quilts, pottery, basketry, beadwork, weaving, flower gardens, garmets, and a myriad of other ways." (from *Women of the Texas Frontier* by Ann Patton Malone)

In the early days of Hansford County, ladies made their own decorations for their homes. There was little money to buy anything to beautify their rooms.

Clementine Renner recently made flowers out of colored burlap to decorate the room at Fort Zulu. The pattern she used dates back to the fifties, but could be a replica of flowers made in earlier times.

To this arrangement Clementine added cattails, "the Real McCoy" as Clementine put it. The cattails were found at a lake near Meade, Kansas thirty years ago. She dipped them in varnish, let them dry, then stored them in a dark closet to preserve them. The burlap flowers and cattails were then displayed in

a milk can to add to the old time look.

Clementine remembers as a little girl she used to save the Christmas cards her family received, cut out the pictures, and glued the pictures to cardboard to make wall hangings. These were then hung on the wall for decoration.

Come by the Museum! Let Clementine's arrangement and many other items bring back memories for you.

We do have a new red barn on the property. So far the ridge row on the roof is not completed; therefore, we have put nothing in it yet. We welcome one and all to come by to see it.

The grounds are getting quite impressive now. We have the Stationmaster House complete with a train car, a school house, Fort Zulu, and now a red barn. This is a collection that all of Hansford County can be proud of.

We always welcome donations. This is the main way our museum is able to operate. Even \$5.00 or \$10.00 donations will be much appreciated. Remember this is for all of us!

Museum hours are Tuesday through Saturday from 2:00 until 5:00 p.m. Special tours can be arranged by calling J.D. or Rubyjo Wilbanks at 659-3084 or Clementine Renner at 659-2335.



**HOMESPUN** - One of the items which can be seen while touring the Fort Zulu exhibit is this homespun burlap flowers and cattail arrangement.

# Among The Neighbors

by Helen Fisher

Blanche Greene returned Wednesday from Lubbock to check on daughter, Wanda Eakin, in the Methodist Hospital. She was accompanied by Rita Cluck.

Wanda was injured on Monday last when the horse she was training reared and fell on her. Her chest, arms, ribs were injured also she has a dislocated shoulder and cracked pelvis. She was first taken to Littlefield, then transferred to Lubbock. She is recovering but will be disabled for some time after leaving the hospital and Blanche plans to return to be with her.

Wanda and her sons were at the pens at their home at the time of the accident, and since she often practises alone while they are in school, it was fortunate that they were there with her.

Blanche had just returned from Yukon, Oklahoma where her daughter Joan and Eldon Vernon and their family live. They celebrated Joan's birthday during her stay, and also sharing it were Janice Banister and Eldon's mother, Ivan Allen.

Prior to his Joan, her daughter Shannon Loggins and granddaughter Brittnie had been visiting Spearman and Blanche returned with them.

\*\*\*\*\*

Joe and Enzie Copeland were delighted to entertain grandson, two-year-old Kit Copeland from Tuesday to Saturday. Kit accompanied his dad, Kim from Austin for the visit.

\*\*\*\*\*

Janet Ward took her last radiation treatment on Monday and will enter High Plains Baptist Hospital to begin Chemotherapy treatments. She will return every 21 days for this treatment.

Janet and Glen express appreciation for the many evidences of concern and caring from their friends, neighbors, and church members. The cards, calls, food and other attentions have earned the heartfelt gratitude of the Wards.

\*\*\*\*\*

Dorothy and Don Hudson returned Wednesday from about a week in Missouri. They joined four couples, the men had all served in the army with Don, for several days of fellowship. They met at Ginger Blue, near Noel, on the Elk River. The water activities on the river entertained them and the scenic beauty and good weather made for a very relaxing time.

The Hudsons went on to Sarcoxie for a few days with his brothers, Max and Lee Hudson.

\*\*\*\*\*

Lois Allison is seriously ill in Gaymon Memorial Hospital, suffering from pneumonia and heart problems. Relatives report that she was taken last Tuesday. Her son Paul and Mrs. Allison of near Dallas are with her. Don and Nada Allison of Topeka were her earlier.

Lois has been in poor health for sometime, but has managed to stay in her own home with the excellent care provided by the Hansford Hospital Home Health Care. Dixie Burch is the director and has a well-trained staff that provides the service that so many feel fortunate in having.

\*\*\*\*\*

Friends, expecting a huge fish fry, are eagerly awaiting the return of Orville and Martha Latham, and G.W. and Fern Robinson. They are expected back from a weekend of fishing at Monument Lake, Colorado.

However, since there are reports of more bears than usual in that area, it's possible they will return empty handed, reporting that the scavenging bears stole all of their fish.

\*\*\*\*\*

Guests of Sylvia and Ray Robertson over the weekend were their daughter, Brenda, and Claud Annen with Sage and Cody from Dimmitt.

Cody, a high school football player, is recovering from a most unusual accident. About two weeks ago at ball practice one afternoon, he idly unwound the outer cover of

a golf ball, and put the rubbery center in his mouth. This is a practice among young people. Cody bit this one with his front teeth and it exploded in his mouth. Most lodged between his front teeth and his chin.

The local doctor sent him to Amarillo where surgery was required to remove some of the embedded particles. Much could not be removed by it is expected to work out through the outer skin.

Information from the company where the balls are manufactured is that the center contains barium under pressure. There are only two companies that use this process. The company has shown concern and called the Annens to check on his progress.

Though there is considerable swelling, Cody was able to play football the past Friday. He probably will be doing his chewing with chewing gum hereafter.

\*\*\*\*\*

Seeing the awful and tragic scenes of the starvation and cruelty in Rwanda and the knowledge that similar conditions exist in most of Africa, causes anger in the remembrance that this was predicted.

The same can be expected in South Africa, which was recently reverted to self-rule.

South Africa has been a most stable and progressive country. All these countries were prosperous, peaceful, with roads, schools, hospitals, a stable economy while under European control. The people were content, employed, becoming educated and Christianized until outsiders stirred up discontent.

Reference can be made to the newspapers of a couple or so decades ago - when the liberals, including some religious denominations, were championing the forcing of democracy as we have it on all those countries. They insisted on abolishing "Colonialism" "Exploitation." Conservatives explained that the people were not yet ready for democracy, even though they were being educated and had limited self-rule.

# Spearman opens ADM office

ADM Securities, Inc. has opened a branch office in Spearman, TX. The new office is located at 221 Sanders. The office is staffed by broker/manager Kent Guthrie. ADM Securities, Inc. is a wholly owned subsidiary of ADM Investor Services, Inc., which is a wholly owned subsidiary of Archer Daniels Midland Company.

ADM Securities, Inc. has entered into an agreement with National Financial Services Corp. a wholly owned subsidiary of Fidelity Investments Company, for clearing services. National Financial Services Corp. (with over \$200 million in capital) was chosen to be the clearing arm of ADM Securities for being a leading provider of clearing and execution services along with its commitment to continue expanding and improving its products and services.

Available investment opportunities include stocks, money market funds, mutual funds, IRA's, pension plans, asset management programs, and government, municipal or corporate bonds.

ADM Securities will share office space with Complete Price Management which has been affiliated with ADM Investor Services, Inc. for the past two years. Kent Guthrie is a registered representative of Complete Price Management.

**JEANS FOR ALL AGES**

REDEEM THIS COUPON

**20% OFF**

**ON ANY JEAN**

Coupon good now through Sat., Sept. 24, 1994

**KIDS' STUFF** 719 W. 7th • Spearman  
659-2608

JUST RELEASED Bill Beatty's Newest Nashville Recorded Album

**"THE ROAD LESS TRAVELED"**

**Bill Beatty**

This album includes 10 of the Artist's New Original Christian Country Songs and is available on CD or cassette at B&B Sales.

Call 659-2370 or (405)-497-2521 for information on bookings

**Keep Energy Savings From Going Out The Window.**

Texas-New Mexico Power Company furnishes clean, reliable power, plus tips to help you save energy. ★ For instance, make sure any cracks around windows are caulked. Drapes, curtains and shutters also can help. ★ For more information about keeping energy savings from going out the window, call or visit your local TNP office for our free fact sheet, Straight Talk About Window Treatments.

**Texas-New Mexico Power Company.**

**DON'T DIG**

in streets, alleys or easements until you call the City of Spearman your gas company.

The City of Spearman will then mark their underground gas lines with yellow stakes, flags or spray paint.

Make request 48 hours in advance. This service is available at "no charge"

**THE O'LOUGHLIN CENTER**

**"Where the action is!"**

Planning a Party?

Christmas  
Birthday  
Anniversary  
Family Celebration  
Organization Special Events

**WE'VE GOT JUST THE PLACE FOR YOU!!!**  
**AND WE MOVE ALL THE TABLES AND CHAIRS.**

Where else can you get slim, trim and fit all for the price of \$1.00?  
**SPAS, SAUNA & FITNESS CENTER--\$1.00**

MON.-THURS. 6:00 a.m. - 9:00 p.m.  
FRIDAYS 6 a.m. - 4 p.m.  
SATURDAYS 8 a.m. - 1:00 p.m.

For more information call Kathy Bryant  
659-3030

**Picnic Place Restaurant**

**11 a.m. - 8 p.m.**

**Monday - Saturday**

Serving:  
**Deli hot & cold sandwiches, a dozen flavors of ice cream and baked potatoe pile-on**

**HAPPY HOUR: 3:30-4:30 p.m. (special prices)**

**Saturday Night Special**

**Senior Citizens Discount Night (65 years & older)**

**Discounts on everyting (except pie)**

**5 p.m. - 8 p.m.**

217 Main  
For Take-Out Call 659-3864



# Agri-Business



**NEW TRACTOR** - Hansford County Implement in Spearman recently held an open house to officially unveil a new John Deere tractor out on the market. Folks are invited to come by and visit the local dealership and take a look at the new farm equipment that features many updated and modernized qualities. Pictured with the new tractor is Mike Cudd from Hansford County Implement.

## John Deere unveils all-new 8000 Series tractors from 160 to 225 PTO

Drawing on input from extensive customer and competitive owner research and more than 70 years of experience in designing and manufacturing tractors, John Deere has developed four all-new 8000 Series Tractor Models, ranging from 160 to 225 PTO horsepower. The company says the tractors establish new standards in control, visibility, maneuverability, power, and ease of service in this size class.

The John Deere 8000 Series Tractors include the 160-horsepower 8100, 180-horsepower 8200, and 200-horsepower 8300, which replace the 4560, 4760, and 4960 models in the product line. The largest model, the 225-horsepower 8400, provides the most PTO horsepower and hitch lift capacity of any row-crop tractor in the industry.

The tractors feature a John Deere-designed-and-manufactured powertrain. They use proven electronic technology to provide fingertip control of the transmission, SCVs, PTO, and hitch; precise engine performance; self-diagnostic capabilities; and complete compatibility with options like row guidance and electrohydraulic depth control. The chassis design is so innovative and unique that it is patented. It gives these tractors the shortest turning radius (17 feet) in narrow rows of any competitive MFWD tractor in this size class.

Fingertip controls and a CommandView cab

One of the most distinctive features of the tractors is the CommandARM that places the con-

trols for the transmission, throttle, SCVs, hitch, and PTO in the armrest of the seat for convenient fingertip operation.

The secondary tractor controls and the vehicle monitor are located on the right-hand console, within easy view and reach of the operator. The monitor can display diagnostic codes directly to the operator -- a first in John Deere tractors. The codes are explained in the operator's manual.

The 8000 Series CommandView cab provides unobstructed visibility to the front tires, over the hood, to the sides, and to the rear hitch with 62 square feet of glass area. The cab has 65 percent more inte-

rior volume than the 60 Series SoundGard Body. The fully adjustable air suspension, swivel seat and automotive-style ventilation system enhance operator comfort.

**Powetrain and hydraulics**  
The model 8100, 8200, and 8300 are powered by a six-cylinder 7.6-liter John Deere diesel. The 8400 features a new six-cylinder 8.1-liter Deere diesel. Both engines have a 40 percent PTO torque rise and feature air-to-air intercooling for increased performance. Both meet 1996 emissions standards.

The engine feature an electronic governor, an exclusive in this trac-

See TRACTORS, page 12

**Manufacturers for Agriculture & Industry**



**5 ft., 5 1/2 ft., and 6 ft. Sweep Blades**



421 W. Kenneth • Spearman, Texas

## Emergency farm loan application are being accepted by FmHA

Applications for emergency farm loans for damages and losses due to extreme hail damage, high winds, tornadoes, and excessive rain during the period of April 27, May 24, May 25, June 10, 1994 in Hansford and Ochiltree counties, are being accepted at the Farmers Home Administration (FmHA) office located in Perryton, FmHA County Supervisor, James M. Heck said today.

Heck said farmers may be eligible for loans up to 80 percent of their actual losses or the operating loan needed to continue in business or \$500,000, whichever is less. For farmers unable to obtain credit from private commercial lenders, the interest rate is 3.75 percent.

"As a general rule, a farmer must have suffered at least a 30 percent loss of production to be eligible for an FmHA emergency loan," Heck said. Farmers participating in the PIK or Federal Crop Insurance program will have to figure in proceeds from those programs in determining their loss.

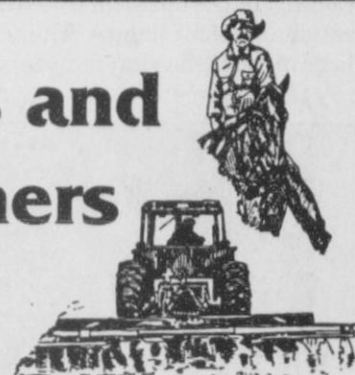
"Applications for loans under this emergency designation will be accepted until April 17, 1995 but farmers should apply as soon as possible. Delays in applying could create backlogs in processing and possibly over into the new farming season," Heck said.

FmHA is a credit agency of the U.S. Department of Agriculture. It is authorized to provide disaster emergency loans to recognized farmers who work at and rely on farming for a substantial part of their living. Eligibility is extended to individual farmers who are U.S.

citizens and to farming partnerships, corporations or cooperatives in which U.S. citizens hold a majority interest.

The FmHA office is located at 800 N. Main, Suite B in Perryton and is open from 8:00 a.m. to 4:00 p.m. Monday through Friday.

## Farmers and Ranchers



Farmers and ranchers may not always be able to depend on the weather for support in their business, but they can rely on the agricultural specialists at their LAND BANK ASSOCIATION.

For more than 75 years, the LAND BANK ASSOCIATION has been a reliable source of long-term credit for the Texas farmer and rancher.

To discuss the various loan options, stop by and visit the LAND BANK ASSOCIATION.

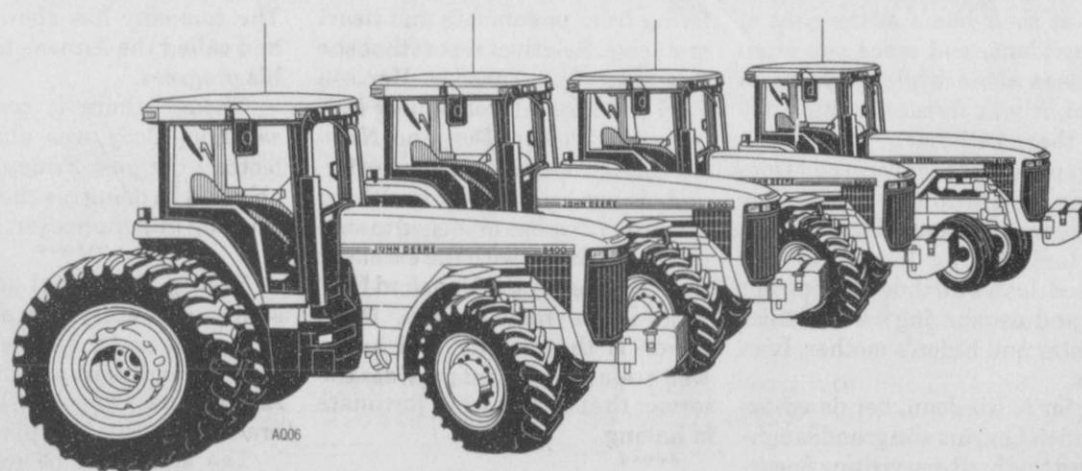


We're dedicated to helping you.

**High Plains FLBA of Pampa**

Pampa Office  
(806) 669-1126

Perryton Office  
(806) 345-4319



**JOHN DEERE**

## Introducing the all-new John Deere 8000 Series Tractors

- Four all-new models: 160-hp 8100, 180-hp 8200, 200-hp 8300, and 225-hp 8400.
- Revolutionary new CommandARM (armrest module) puts all major tractor functions in the palm of your hand.
- Unprecedented visibility with 62 square feet of curved, tinted glass.
- Tightest narrow-row MFWD turn radius for high-horsepower tractors.
- All-new, ultra-efficient 16-speed Power Shift transmission.
- New high-torque 8.1 L and 7.6 L engines with exclusive electronic engine control.
- Over 15,000-pound optional hitch-lift capacity on two largest models; over 14,000-pound hitch-lift capacity available on two smaller models.
- Exclusive TouchSet™ hydraulic-control panel lets you set rate and flow from your seat.
- Exclusive John Deere Field Cruise™ engine control ensures uniform seeding, chemical incorporation, and seedbed making.



**Hansford Implement**

Hours: 8 a.m. to 6 p.m. Monday -Friday  
S. Hwy 207 • Spearman • 659-2568



21ST CENTURY TECHNOLOGY TODAY

## CAPROCK INDUSTRIES

**Feedyards 1 and 2**

**Now taking HIGH MOISTURE CORN**

**Daytime harvesting**

**Additional pricing options**

**For bids call**

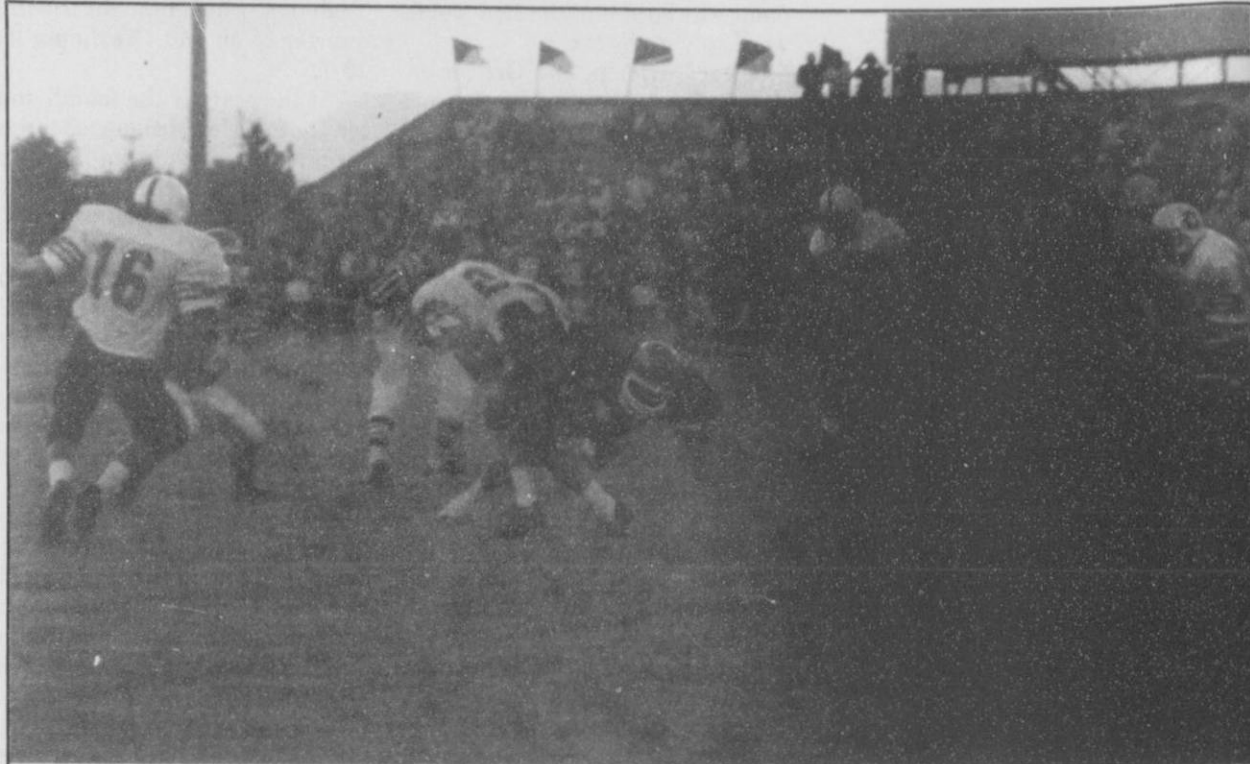
**Mike Heard or Julie Williams**

**at 733-5043**





# Sports



**BLAST-** #23 Travis Ferguson blast through an open hole created by his offensive line. Unfortunately, the Hounds were defeated 26-14, but are looking to bounce back this Friday as they take on the Hornets of Highland Park.

## Red Devils edge Hounds, 26-14

By **CHAD DAVIS**  
REPORTER-STATESMAN  
STAFF WRITER

Coming off a fantastic win two weeks ago, against the number two ranked Mustangs of Wheeler, the Gruver Greyhounds tied up their season 1-1 falling to the Texhoma Red Devils, 26-14.

Although Gruver had first possession of the ball, as well as an impressive short drive in which Travis Ferguson accounted for sixteen of the hard earned yards, they could not seem to penetrate Texhoma's defensive line which averaged 195 pounds. After four plays into the game, Gruver was forced to punt.

On the first play of possession for Texhoma, their quarterback,

Brad Cornelsen, connected to Shane Elliott for a 70-yard touchdown pass, which was then followed by the extra point, to bring the Red Devils to an early 7-0 lead.

Shortly after the impressive touchdown, Gruver was forced to punt. With the ball in the hands of Texhoma once again, Gruver was reluctant to let the Red Devils off so easy. They held them to eleven yards and one first down, which was capped off by an arresting sack by senior defensive back Jace Dawson. Texhoma was then forced to punt back to Gruver, but the ball was returned when the Hound's offense could not move the ball; thus, bringing the first quarter to a close, with the Hounds trailing 7-0.

The second quarter started to

look brighter for the Hounds, due to great coverage by Gruver's secondary on a fourth and nine-yard pass deflection early in the quarter.

However, Gruver was forced to punt, and Texhoma used their back field for an impressive drive, which turned into a three-yard touchdown run by Brad Cornelsen. The two-point conversion failed and the Hounds trailed by thirteen.

Nevertheless, Gruver, had their own plan of action. After two runs by Jarrod Hoel, and a first down run by Dawson, Gruver decided to let Aaron Frick try his arm at the pigskin. On a running back pass, Frick connected with Daniel Bort for 49 yards, to give Gruver its first

See **HOUNDS**, page 8

## Cyclones beat Lynx, 29-7

By **DANIEL RAMOS**  
REPORTER-STATESMAN  
PUBLISHER

The Spearman Lynx dropped their second game of the season last Friday as the Memphis Cyclones blew past them 29-7.

Speed and power can usually be a strong combination. And last Friday night the Lynx found out that either can strike in big ways.

Memphis used the speed of Mikey Bryley and Melvin Mason, and the power of Richard McGuire from his fullback position to get their first win of the season.

The Cyclones struck first and with a fury. In two plays, one which had a 15-yard facemask call tacked on to it, MHS had moved to the 40-yard line on their second possession. And then with just one more

play McGuire had bullied his way past Spearman's defenders for a 40-yard touchdown run. The kick after by Otho Dickson was good and Memphis was up 7-0.

With 50-seconds remaining in the first quarter Spearman took over at the 39-yard line after Cody McLeod recovered a Memphis fumble.

It appeared as if the SHS drive had run out of juice early as the first play from scrimmage resulted in a five yard loss. Then the next one was just for a yard. But time ran out and the teams switched sides going into the second.

The very first play in the second stanza was the most exciting of the night for the Spearman fans. Phillip Sanders took the pigskin from quarterback Chad Wilkerson and busted

through the line to stumble early. However, Sanders maintained his balance by going almost 10-yards with one hand on the ground keeping himself from falling.

He regained his balance and raced through the secondary for a 44-yard touchdown run. The extra point kick by Greg Elliott after was good and the contest was all knotted up at 7-7.

Unfortunately for Spearman, Memphis answered that exciting moment with a big blow. The Cyclones lined up at the 27-yard line and struck paydirt on the very first play as Memphis' Brian Hughes hit Bryley for a 73-yard touchdown strike to dampen the SHS spirits. The kick after failed.

See **LYNX**, page 10



**SURROUNDED-** Spearman Lynx quarterback, #10 Chad Wilkerson hustles for the ball, after being attacked by the swarming Cyclones. The Lynx went on to loose 29-7, but are hoping to win this Friday against the Clarendon Broncos at Clarendon.

## Carthel is second week contest winner

Although both Spearman and Gruver lost their football games this past Friday, one lucky person in the Hansford county region won big.

Kade Carthel was this weeks lucky winner in the Hansford County Reporter-Statesman football contest. Kade got 16 out of a possible 23 games correct to earn him the \$25 dollar cash prize.

Kade edge out other competitors Kiki Carthel of Gruver and Keith Height of Spearman, by guessing closest to the tie breaking score of the game of the week, Gruver vs. Texhoma. The magic number to get was 40, and Kade came closest

with 45, but Kiki, with 33, and Keith, with 50, followed close behind.

Receiving honorable mention for the second week of the contest were: Melissa Donahue, Billy Logsdon, Sonny Windom, and Shelly Beedy, all from Spearman. Gruver also one honorable mention, Aaron Frick, who won last weeks top prize.

Remember, the contest is easy and anyone can play. Just simply fill out the entry blank in this weeks paper and return it to *The Hansford County Reporter-Statesman*, or drop it by the Gruver City Hall by 5 p.m. on Friday's.

It keeps more than memories alive.

AMERICAN HEART ASSOCIATION MEMORIALS & TRIBUTES



1-800-AHA-USA1  
**American Heart Association**  
Fighting Heart Disease and Stroke  
This space provided as a public service.  
©1993, American Heart Association

## Super September SALES!

We want to **THANK** all of our customers for their great support of our **Easy Money Sweepstakes**. We sure appreciate your business!

Prices Effective September 11-17, 1994  
**Gruver & Spearman Only**

ALLSUP'S  
**CANADIAN BACON, EGG & BISCUIT**  
FOR ONLY

**99¢**

ASSORTED  
**PEPSI-COLA SOFT DRINKS**

Be young. Have fun. Drink Pepsi.

6 pk. • 12 oz. cans

**\$1.99**

SAVE ON  
**ASTRO POP SUCKERS**

10Z

**2.99¢**

FOR

ALL VARIETIES  
REGULAR OR WAIY  
**LAY'S**

**POTATO CHIPS**

REGULAR \$1.49 EACH

**99¢**

ALLSUP'S  
**"FAMOUS" BURRITOS**  
BUY ONE GET ONE  
**FREE**

WILSON'S  
**TURKEY BREAST & SMOKED HAM**  
10 OZ. PKG.

**\$1.99**

ALLSUP'S  
1.5 LB. LOAF  
**SANDWICH BREAD**

69¢ EACH OR

**2 \$1.00**

FOR

ALLSUP'S  
**HOMOGENIZED MILK**

GALLON

**\$1.99**

## STORE SPECIALS

KLEENEX FACIAL TISSUE	175 CT. BOX	<b>\$1.19</b>
LAUNDRY DETERGENT ULTRA CHEER	98 OZ.	<b>\$6.99</b>
SHURFINE WHITE HOMINY	15 OZ.	<b>39¢</b>
STAR-KIST WATER OR OIL CHUNK LIGHT TUNA	6 OZ.	<b>79¢</b>

## EASY MONEY PROMOTION WINNERS

'94 FORD ESCORT LX  
**GRAND PRIZE WINNER!**

**RON HENDRIX**  
PORTALES, N.M.



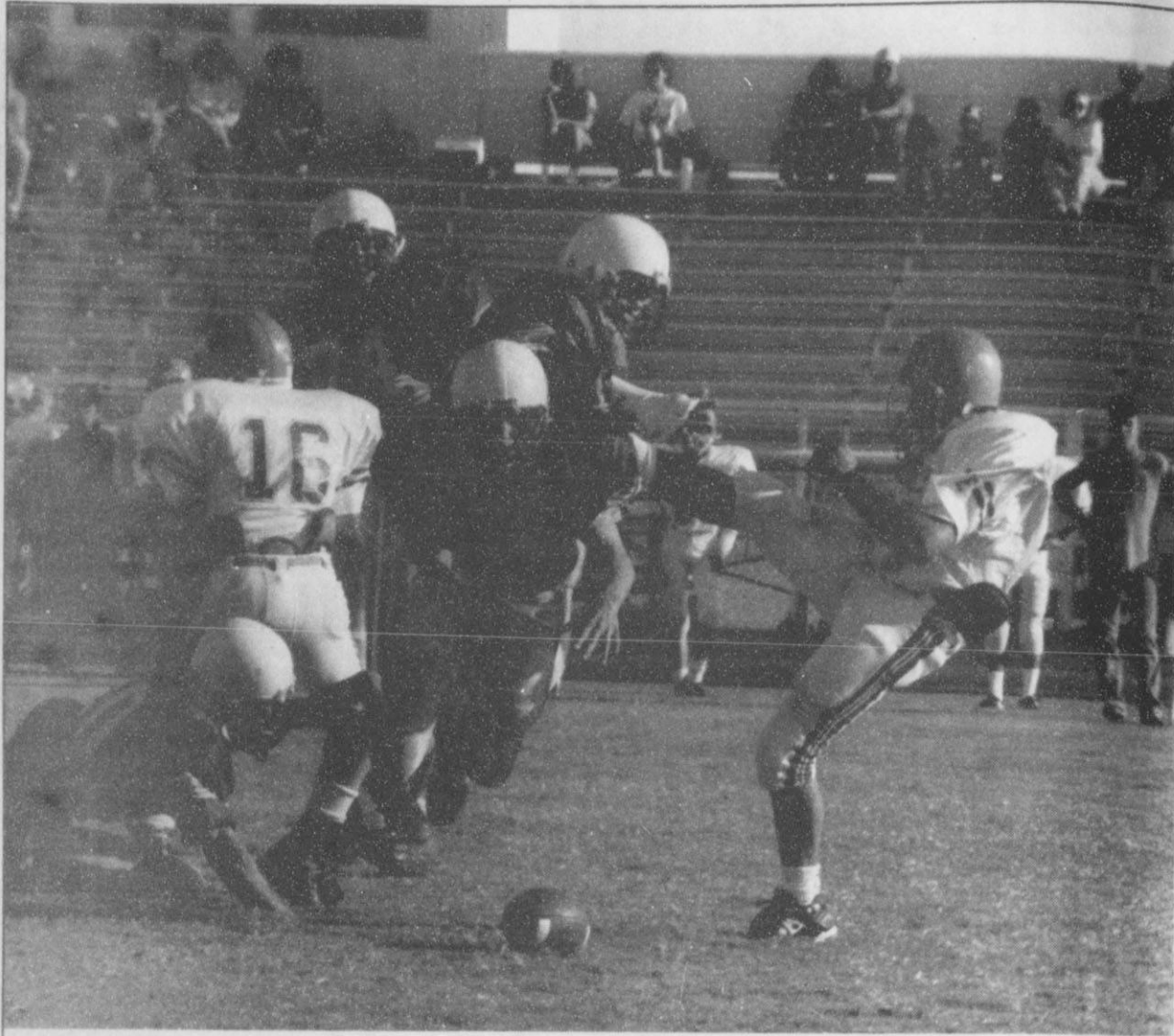
**\$1,000**  
WEEKLY  
**WINNERS!**

**GAS FOR A YEAR WINNERS!**

VICTORIA A. MATTHEWS  
ALBUQUERQUE, N.M.  
PEGGY N. RUBIO  
DALLAS, TEXAS  
MARIE WARREN  
DALLAS, TEXAS  
SHEILA LEWIS  
DALLAS, TEXAS  
LISA RAMIREZ  
DALLAS, TEXAS  
MARINA UNDERWOOD  
DALLAS, TEXAS  
JIM LINDSEY  
WILLINGTON, TEXAS  
MICKEY WILKINSON  
DALLAS, TEXAS  
JANIE PESINA  
DALLAS, TEXAS



# Sports



**BLOCKED-** #68 Britt Savage flies in to block a would be punt by the Sunray Bobcats. Savage, as well as the rest of the JV Lynx, went on to destroy the Bobcats 32-6 to win their first home game. The Lynx JV will stay at home again this week, as they prepare to battle the Gruver Greyhounds.

## JV Lynx blister Sunray, 32-6

By DANIEL RAMOS  
REPORTER-STATESMAN  
PUBLISHER

Spearman's junior varsity football squad played in what many would call 'a good olde fashion smash-mouth football game' last week.

The JV Lynx rolled to their second win of the season with a blistering 32-6 win over the visiting Sunray Bobcats.

From the very beginning one could tell that things were going to be good. Spearman took the opening kickoff and marched 60 yards for the first score of the game.

It took just four plays for the JV Lynx squad to find the endzone. Quarterback Eric Cudd rolled out to his right looking for receiver. But instead found himself scampering 47 yards for a touchdown. The two-point try by Frankie Dominguez was good and SHS was up 8-0.

Dominguez turned out to be Sunray's worst nightmare as the SHS junior recovered a fumble at the five-yard line after Sunray had snapped just five plays.

Two plays later Dominguez was dancing in the endzone for Spearman's second score. Cudd converted the two-point try and the JV

Lynx squad was enjoying an early 16-0 lead.

Spearman's defense played like possessed players and Sunray can probably attest to that. During the Bobcats second attempt with the pigskin, the Lynx swarmed the 'Cats ball carriers like bees to honey.

Eric Varnon swatted a pass away to force Sunray to punt. However, the Bobcats attempt to getting out of their territory for the first time failed as Britt Savage came rushing in and blocked the would-be punt.

Sunray countered with an impressive defensive stance that forced Spearman to turn the ball over on downs. However, the Lynx defenders continued their overpowering ways and stopped the Bobcats short despite a scare that led Sunray to the Spearman 33-yard line.

The Bobcats finally got their first and only score in the contest late in the second quarter to cut the margin to within 10-points. But that was as close as it would get.

Before the half Spearman's defensive squad put on a show. It started with Dillon Miller recording a quarterback sack, followed by Blake Beedy almost picking off a

Sunray pass. Then Varnon and Travis Loomis end up blocking Sunray's punt and Beedy recovered it.

In the second half it was all Spearman as the Lynx manhandled the Bobcats.

Sunray fumbled on its very first play of the second half and it was Loomis who came up with it to set Spearman up at the 25-yard line.

Spearman appeared to be heading towards an easy score as Dominguez and Cudd pounded the Bobcats defense. But a breakdown in the momentum put a stop to that and Spearman came up empty.

That would be the last time the Lynx would be turned back.

Varnon and Miller pressured the Sunray quarterback and one of the two got a hand on the pass to alter the direction right to Dominguez.

Three plays later Dominguez had cashed in from two yards out for another SHS touchdown. The pass from Cudd to Clint Goodman was good and the Lynx were up 24-6.

Cudd recorded Spearman's final score of the night as he slipped in from a foot out on a fourth and goal. Dominguez converted the two-point try and that 'was all she wrote' for Sunray, 32-6.

## X-Country compete at Wolf Creek Classic

Spearman High School, as well as the Junior High, cross country girls traveled to Perryton last Saturday to compete in the Wolf Creek Classic.

The Junior High team finished third overall, and had one girl, Audra Sanders, to finish 11th. Sanders led her Junior High teammates with the time of 14:53. Other girls who participated included Syd Woodington who finished 27th, Camille Smith who finished 34th, Kristi Carbajal 36th, Kristi Wall 38th, Amber Ramon 39th, and Kathryn Murphy who finished 43rd.

Coach Shieldnight was really impressed with the girls, and went on to say, "They really did a fabulous job, and only one of these girls is an eighth grader, the rest are in seventh grade."

As for the High School girls, Shieldnight added, "In this meet each one of these girls improved their best time." Among the top leaders for the girls were, Kasey Dunniho and Jocelyn Edwards, who both tied with the time of 15:13. Other High School girls who competed were Sasha Flores, Michel Elliott, and Reagan Boxwell.

Both will travel this Saturday to Thompson Park in Amarillo. Race time is 9:00 a.m.

touchdown of the night. The extra point was good and the Red Devils were only up by six.

After Texhoma and Gruver exchanged punts, the Red Devils were unable to score again, thus bringing the first half to a close, Red Devils 13 Hounds 7.

At the start of the second half, Texhoma continued their ruthless attack on the Hounds. On their first possession of the quarter, the Red Devil's quarterback Cornelsen connected again to Elliott for a two yard touchdown. The two-point conversion failed, and left the Red Devils in the lead 19-7.

Gruver, now with possession of the ball, tried to get down the field, but was denied. With a sack, as well as an interception by Cornelsen, Texhoma once again took control.

However, the Greyhound's defense refused to yield. As the third quarter wound down, the Red Devils tried a pass on fourth and third, but ended up giving the ball to the Hounds, thanks to a brilliant heads-up interception by defensive end, Juan Arreola.

Gruver's offense still had trouble

penetrating and punted back to Texhoma, which brought the third quarter to an end. Texhoma lead 19-7.

At the start of the fourth quarter, the Red Devils managed to score yet another touchdown. This time Cornelsen took the quarterback keeper and ran 38 yards for Texhoma's fourth touchdown of the night. The extra point was good, which put Texhoma ahead by 19.

Gruver, unwilling to give up, put on an impressive drive which was capped off by a 28 yard strike from Bailey Barkley to Dawson. The extra point was good, and brought Gruver to within 12.

Gruver then proved themselves by holding Texhoma on their next drive, and forced them to turn the ball over. However, they couldn't seem to score again, and had to punt back to the Red Devils. With little time remaining, Texhoma let the clock wind down, which brought the game to a close and a disappointing defeat for the Greyhounds. The game's final score, Texhoma 26, Gruver 14.



See GRUVER, page 10

### DRY CLEANING

Shirts & Jeans  
Laundered With or Without Starch.  
FREE Pick-up and Delivery  
**1-800-232-5370**  
*"It's not how cheap but how good"*  
**Perryton Cleaners**

Race on Down to the  
**ROADHOUSE**  
**SUB SHOP & ARCADE**  
and have a peaceful dinner while your kids are playing in the Game Room

Located in the breezeway  
of Plains Shopping Center  
659-3117  
Mon. - Sat.  
11 a.m. - 10 p.m.  
Sun.  
1 p.m. - 6 p.m.


**GET THE ALCO Advantage**



**FREE**  
**EVERY TUESDAY!**  
SECOND SET OF PRINTS

Receive a second set of 3" prints FREE with any exposure roll of 35mm, disc, 110 or 126 color print film left for developing and printing at our everyday prices! C-41 process only. Excludes larger 4" size prints, and photo galaxy.





**DUKE'S CHIROPRACTIC CENTER**

**EVENING HOURS AVAILABLE**

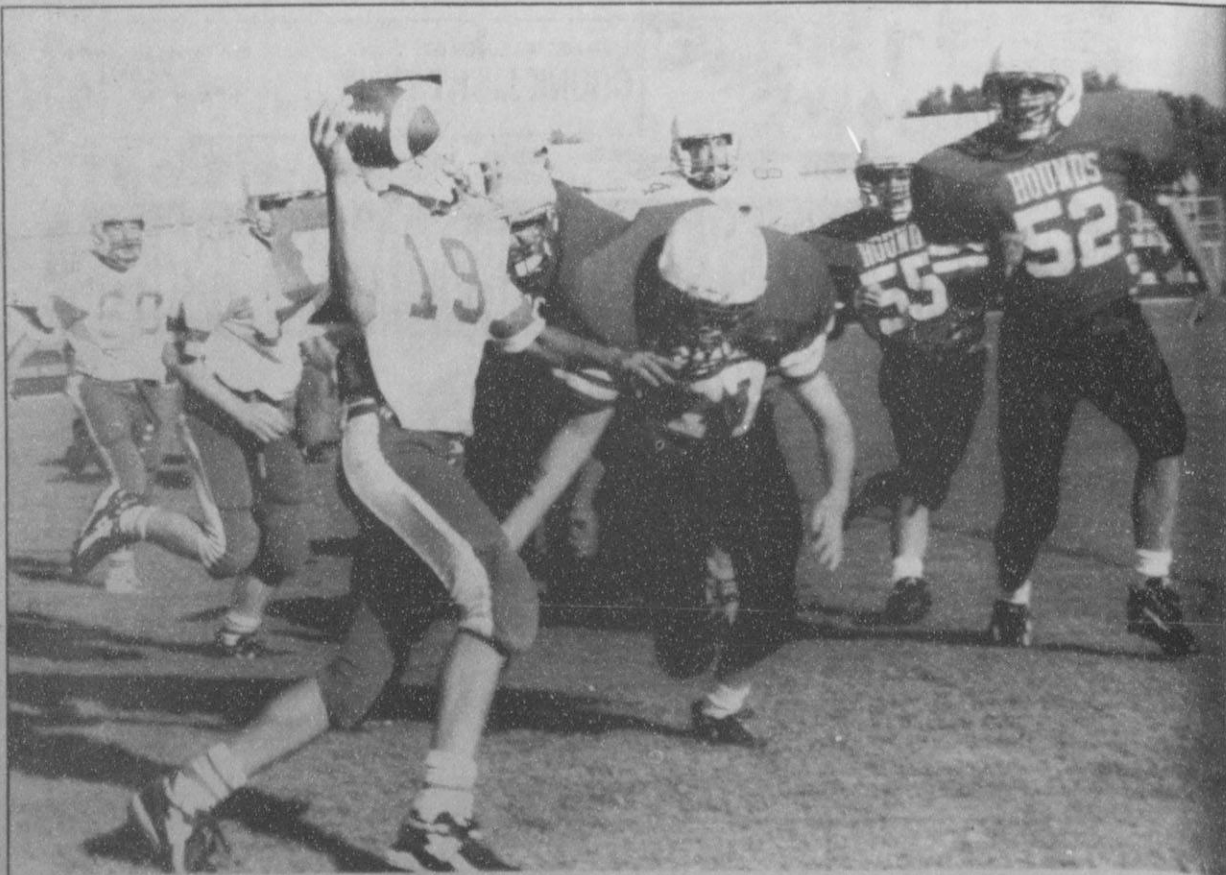
<input type="checkbox"/> Headaches / TMJ	<input type="checkbox"/> Family Health Care
<input type="checkbox"/> Neck Pain / Stiffness	<input type="checkbox"/> Pediatrics
<input type="checkbox"/> Low Back Pain	<input type="checkbox"/> Athletic Injuries
<input type="checkbox"/> Shoulder / Arm Pain	<input type="checkbox"/> Numbness
<input type="checkbox"/> Hip / Leg Pain	<input type="checkbox"/> Gentle Treatment

AUTO ACCIDENTS • WORK INJURIES  
(Most Insurance Accepted)

New Hours:  
2-6 p.m. Mon. thru Fri.

**659-5505**

Darrell D. Duke DC      11 W. Kenneth • Spearman, Tx.



**RUSHING HARD-** Defensive end, Jeb Lee, attempts to break up a two-point conversion pass. Coming into help are defensive lineman Heath Tolleson and defensive lineman Blake Ferguson. The Hounds JV went on to win 14-8 defeating the Stratford Elks. The Hounds will travel to Spearman this week to take on the Lynx for the Hansford County championship.

## Games for this week

Last Friday night both Hansford County football teams were disappointedly defeated. Spearman's loss to Memphis and Gruver's loss to Texhoma definitely broke the spirits of the area's fans.

However, both teams are looking to bounce back this week, and raise the spirit of their fans. The Lynx will be looking for their first win of the season, as they travel to Clarendon to take on the Broncos.

See GAMES, page 10



### 1994 SPEARMAN LYNX FOOTBALL SCHEDULES

**Varsity**

Sept. 2 - Panhandle, H, 8 p.m.	Oct. 7 - *Stratford, T, 7:30 p.m.
Sept. 9 - Memphis, T, 8 p.m.	Oct. 14 - OPEN
Sept. 16 - Clarendon, T, 8 p.m.	Oct. 21 - *Gruver, H, 7:30 p.m.
Sept. 23 - Perryton, H, 8 p.m.	Oct. 28 - *West Texas, T, 7:30 p.m.
Sept. 30 - **Fritch, H, 8 p.m.	Nov. 4 - *Boys Ranch, H, 7:30 p.m.

\*\*Homecoming

\*District Games

**Junior Varsity**

Sept. 1 - Stratford, T, 5 p.m.	Oct. 6 - Stratford, H, 8 p.m.
Sept. 8 - Sunray, H, 5 p.m.	Oct. 13 - Sunray, T, 8 p.m.
Sept. 15 - Gruver, H, 8 p.m.	Oct. 20 - Gruver, T, 8 p.m.
Sept. 22 - West Texas, T, 8 p.m.	Oct. 27 - West Texas, H, 8 p.m.
Sept. 29 - Boys Ranch, H, 8 p.m.	Nov. 3 - Boys Ranch, T, 8 p.m.

**Junior High**

Sept. 15 - Gruver, H, 5 p.m.	Oct. 13 - Sunray, T, 5 p.m.
Sept. 22 - West Texas, T, 5 p.m.	Oct. 20 - Gruver, T, 5 p.m.
Sept. 29 - Boys Ranch, H, 5 p.m.	Oct. 27 - West Texas, H, 5 p.m.
Oct. 6 - Stratford, H, 5 p.m.	Nov. 3 - Boys Ranch, T, 5 p.m.

Dalhart at West Texas High



MARKETPLACE - JOLLY ROGER - PAY-N-SAVE  
CONVENIENCE STORES

1804 Hall Avenue  
Littlefield, Texas 79339  
In Spearman at 505 Plains Shopping Center

Stratford at White Deer



**GRUVER STATE BANK**

3 Main Plaza  
Gruver, Tx. (806) 733-5061  
Member FDIC



**DEAN CLUCK CATTLE CO., LTD.**

HCR 3, Box 47  
Gruver, Tx. 79040  
(806) 733-5021

Spearman at Clarendon

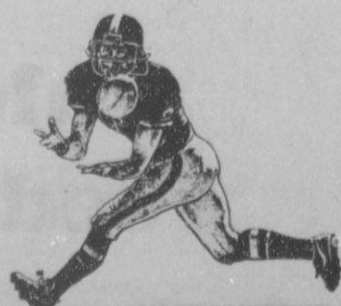
**GILLASPIE**

AUTO & TRUCK CENTER, INC.  
CHEVROLET, OLDS, BUICK, PONTIAC  
CHRYSLER, PLYMOUTH, DODGE  
Highway 207 South • P.O. Box 430  
Spearman, Texas 79081  
(806) 659-2541

**See us for all your automotive needs:**  
Sales  
Service  
Parts

**Lone Star Service Center**

HCR 3, Box 39  
Gruver, Tx. 79040  
(806) 733-5263



Happy at Memphis

## The Hansford County Reporter-Statesman

Serving Hansford County Since 1907  
211 Main • Spearman, Texas 79081

### 1994 FOOTBALL CONTEST

--- RULES --- RULES --- RULES ---

1. In each advertiser's box you will find the name of a team playing this weekend. Place the team you think will win in the entry form below.
2. Fill in your name, address and phone number (please print) and sign the entry.
3. Entries in Spearman may be turned in at the Reporter-Statesman Office. Gruver Residents may turn in their entries at the Gruver City Hall or mail them to: Reporter-Statesman, Box 458, Spearman, Tx. 79081. Deadline for entries is 5 p.m. Friday and mailed entries must have an official U.S. Post Office postmark dated no later than Friday. Winners will be picked on Monday mornings after mail delivery.
4. No photocopies will be accepted.
5. The tie-breaker will be used to break ties. In the event of entries having the same tie-breaker then the winner will be determined by blind draw. The tie-breaker is the total number of points scored (combined - both teams) on the game of the week.

1st Prize - \$25  
2nd Prize - \$15  
3rd Prize - \$5



## The Hansford County Reporter-Statesman

Serving Hansford County Since 1907  
211 Main • Spearman, Texas 79081

**Tie-Breaker:**  
Total points scored  
in 'Game of the Week'



- Lowe's Marketplace: \_\_\_\_\_
- Gruver State Bank: \_\_\_\_\_
- Dean Cluck Cattle Co.: \_\_\_\_\_
- Gillaspie: \_\_\_\_\_
- Lone Star Service Center: \_\_\_\_\_
- Main Street Store: \_\_\_\_\_
- L&M Water Well Service: \_\_\_\_\_
- J&M Service Center: \_\_\_\_\_
- Equity: \_\_\_\_\_
- Little Tiffanies: \_\_\_\_\_
- Gruver Insurance Agency: \_\_\_\_\_
- Barlett's Ace Hardware: \_\_\_\_\_
- Paschel Irrigation, Inc.: \_\_\_\_\_
- Larry's Welding: \_\_\_\_\_
- Gruver Ford, Inc.: \_\_\_\_\_
- Gruver Redi-Mix: \_\_\_\_\_
- Caprock #1 & #2: \_\_\_\_\_
- KRDF Radio: \_\_\_\_\_
- Sunray Co-op: \_\_\_\_\_
- Cates Mens & Boys Wear: \_\_\_\_\_
- Hansford Supply, Inc.: \_\_\_\_\_
- G&G Foodliner: \_\_\_\_\_
- Palo Duro Feeders, Inc.: \_\_\_\_\_

Name: \_\_\_\_\_  
Address: \_\_\_\_\_  
Town: \_\_\_\_\_  
Phone: \_\_\_\_\_  
Signature: \_\_\_\_\_

Highland Park at Gruver



506 Main Gruver, Tx. 733-5040

### 1994 GRUVER GREYHOUNDS FOOTBALL SCHEDULES

**Varsity**

Sept. 2 - Wheeler, T, 7:30p.m.	Oct. 7 - Boys Ranch, T, 7:30p.m.
Sept. 9 - Texhoma, T, 8 p.m.	Oct. 14 - Stratford, H, 7:30p.m.
Sept. 16 - Highland Park, H, 7:30p.m.	Oct. 21 - Spearman, T, 7:30p.m.
Sept. 23 - *Booker, H, 7:30p.m.	Oct. 28 - OPEN
Sept. 30 - Panhandle, H, 8 p.m.	Nov. 4 - West Texas, H, 7:30p.m.

\*Homecoming

**Junior Varsity**

Sept. 1 - Boys Ranch, T, 6 p.m.	Oct. 6 - Boys Ranch, H, 6 p.m.
Sept. 8 - Stratford, H, 6 p.m.	Oct. 13 - Stratford, T, 6 p.m.
Sept. 15 - Spearman, T, 6 p.m.	Oct. 20 - Spearman, H, 6 p.m.
Sept. 22 - Sunray, H, 6 p.m.	Oct. 27 - Sunray, T, 6 p.m.
Sept. 29 - West Texas, H, 6 p.m.	Nov. 3 - West Texas, T, 6 p.m.

**Junior High**

Sept. 15 - Spearman, T, 5 p.m.	Oct. 13 - Stratford, T, 5 p.m.
Sept. 22 - Sunray, H, 5 p.m.	Oct. 20 - Spearman, H, 5 p.m.
Sept. 29 - West Texas, H, 5 p.m.	Oct. 27 - Sunray, T, 5 p.m.
Oct. 6 - Boys Ranch, H, 5 p.m.	Nov. 3 - West Texas, T, 5 p.m.

### L&M Water Well Service

Box 933 Gruver, Tx. 79040  
Shop - (806) 733-2991 or 733-2996



Domestic Pumps & Well Supplies  
Windmill Repair

Wheeler at Wellington

Hooker, OK at Booker

Tires • Flats • Oil & Lube • Wash • Brakes & Motor Repairs • Front End Alignments

### J & M Service Center

24 Hour Road Service

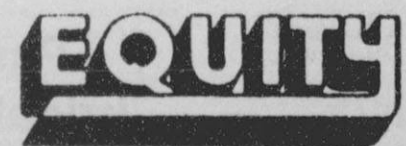
DAVID PEARSON - Owner  
(806) 659-5519



415 Collard  
Spearman, TX 79081  
24 Hr. Service  
(806) 659-3352

Spearman  
659-2420

Gruver  
733-2280



Grain Handling - Farmland Feeds  
Fertilizer Application

Holt  
659-2390

Tucumcari, NM at Canadian

Morse  
733-2318

### Little Tiffanies

DIAMONDS - FINE JEWELRY  
BRIDAL REGISTRY



Sunray at Claude

103 E. Broadway  
Gruver, Tx. 79040

(806) 733-5290  
(806) 733-2759

Leon O. "Corky" Chapman

Gruver

Insurance Agency  
GRUVER, TEXAS

120 Main  
Nite (806) 733-5194  
Office (806) 733-2422

- Federal Crop
- Crop Hail
- Life
- Health

Miami at Higgins





# For The Sport Of It

by Bob Bort

Well, for those of you who don't know, I have been a patient at the V.A. hospital in Big Spring. It is the sixth time since October 1987 that I have been here. I was here this past August 3-13, then home again 10 days in Gruver, then back here to Big Spring August 25 to present. I missed the Wheeler game September 2 at Wheeler, the big 14-7 victory, and I also missed the Texhoma loss September 9, at Texhoma. Hopefully, I will be home this Friday night for the home opener.

For the Wheeler game I called coach Doug Frick on Saturday, got the report, then put it in my column and reported via phone to the newspaper. However, the newspaper got so many calls about there not being a story on the game that they sent their own reporter and camera person to the Texhoma game, in my absence, which left me out of this week's newspaper.

Friday night, here in Big Spring, I was so curious that I had to make some phone calls. I first called information, and the only athletic number they had listed for Texhoma was the gymnasium. So I tried the police department. There was no answer after many rings. They must have all gone to the ball game. So about 8:45 p.m. I called the Guy-mon police department and they used police radio to contact the Texhoma police department, and I found out the score Texhoma 13, Gruver 7 in the second quarter. I was still hopeful.

I waited until 9:30, then called KVII-T.V. in Amarillo. They had nothing.

That's all I had until about 10:35. Not wanting to bother the police

department again, since it wasn't an emergency, I waited until 10:35 to call my brother Arthur in Amarillo. He was watching KVII-T.V. channel 7.

Nothing! No mention of Gruver-Texhoma at all! By 10:35 the sports was over. My next try would be the Amarillo Daily sports department at 11:45, in hopes that I could talk to Jim Lexa.

However, first at 11:00 p.m., I decided to try the police department at Texhoma again. Surely somebody would answer the phone there now. The ball game was over. No answer. Nothing. Where was the Texhoma police department?

So finally I got Wes at the Amarillo Globe News sports department at 11:45, and he had just gotten the report; and he told me the bad news that Gruver had lost 26 to 14, but the thrilling news was that my son Daniel had caught a 49 yard touchdown pass from Aaron Frick. Both Aaron and Daniel would have rather had the victory. Nevertheless, I was proud of Daniel! I wish I could have seen it.

That was only one loss, and a good team at that, but there would be many more good wins. This is a good Gruver team, and they will beat Highland Park this week and will go 2-1.

"They played hard," said coach Frick. I couldn't have asked them to play any harder," he added. "They played their hearts out. We had trouble stopping Cornelson and Elliot, their wideout. Daniel scored the first touchdown on a half back pass from Aaron - we were down 13 to 0 at the time; and Jace scored the second touchdown on a pass from Bailey - we were down 26-7 at that

time. Aaron, Jace, Jarrod, Daniel, and Bailey played well offensively. We did things better this game than against Wheeler - the score just didn't indicate it. Two controversial fumble recoveries by us really hurt, as we didn't get either. One was on the twenty, the other on the thirty five, and both times Texhoma retained possession. One was on a kick off and there was an inadvert-

ent whistle, and Texhoma got the ball. Who knows what might have happened?

\*\*\*\*\*

Coach Steve Myatt of the Lady Hounds CC is going to do me a big favor. He is going to write the article for the CC meet at Lake Fryer in Perryton this Saturday. It should be an awesome article!

## Lynx

CONTINUED FROM PAGE 7

Spearman's Wilkerson tried to counter the high flying Memphis scoring spurt with a gallop of his own as he took the ensuing kickoff and raced through the field for a big return. He almost broke it for a touchdown, but one man brought him down from behind and the Lynx had to settle at the 25 yard line.

They got up to the 19, but a fumble killed the drive and turned back the SHS effort.

Memphis responded with a 57-yard TD run six plays later. However, laundry dotted the field and a clipping call brought everyone back giving SHS life as they dodged a bullet.

The Cyclones suffering the effects of the miscue was plagued with four more flags during that drive forcing them to punt.

A possession later the Cyclones were back at it again, and again the struck big. Mason dashed to the outside and then raced 83-yards for another MHS score. The two-point try after was good and Memphis had extended their lead to 21-7.

In the second half, the Spearman Lynx had five possessions. However, they weren't able to get a drive into the endzone.

Memphis rubbed salt into the wound as the Cyclones scored 1:35 remaining in the game to wrap things up at 29-7.

The Lynx finished with 173 yards on the ground and 17 in the air. Phillip Sanders accounted for 68 yards on the ground, Shawn Moore picked up 63 yards, Chad Wilkerson finished with 31, Jeremy Blan had 10 and Coyt Tigret had one carry for one yard.

Moore had one reception for 13 yards and Sanders had one for four yards.

Wilkerson had a big night returning kicks. He returned four kicks for a total of 130 yards for a 32.5 average. Two of those attempts he was one player away from breaking it for a score.

This week (Friday, Sept. 16) the Spearman Lynx will again be on the road as they travel to Clarendon for an 8 p.m. game.

## Gruver

CONTINUED FROM PAGE 8

Statistically, the Red Devils rushed for 271 yards with Lance Gaillard leading the way with 17 carries for 103 yards. Overall the Red Devils had a total of 408 yards on the ground, as well as in the air. Gruver was held to 160 total yards,

with 73 on the ground and 87 in the air. The Red Devils also had 13 first downs to Gruver's 3.

Gruver will take on the Hornets of Highland Park this Friday at on the ground, as well as in the air. Gruver. Game time is scheduled for 7:30 p.m.

## Games

CONTINUED FROM PAGE 8

Scheduled game time is 8:00 p.m. Gruver is going to try to make 2-1, as they take on the Hornets of Highland Park. Game time for the Hounds is scheduled at 7:30 p.m.

teams will be playing. Both Gruver and Spearman JV and Junior High teams, will take on each other to battle for the Hansford County championship this Thursday night. Seventh and eighth grades play for the first time this season, with the seventh grade kicking things off at 5:00 p.m. Junior Varsity scheduled time for kick-off is 8:00 p.m.

The varsity teams will not be the only players who will be tossing the pigskin around this week. Junior Varsity, as well as Junior High

## Lynx Players of the Week



OFFENSIVE PLAYER  
MARTIN SANDERS



DEFENSIVE PLAYER  
GREG ELLIOT

Borger at Amarillo Road

**Bartlett's**  
ACE Hardware

105 W. Broadway, Gruver, Tx. (806) 733-2404

**GRUVER REDI-MIX**

P.O. BOX 12  
Gruver, Texas 79040

Business  
733-2907

Residence  
733-2583

Small Enough To Know You...  
But Large Enough To Serve You...

Game of the Week Vega at Boys Ranch

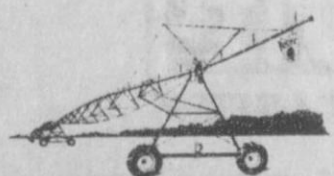
**GATES**  
Mens & Boys Wear



221 Main • Spearman  
659-3426  
212 S. Main • Perryton  
435-4261

New York Jets at Miami Dolphins

Howard Payne Univ. at West Texas A&M Univ.



Reinke is the leader in  
Innovation in the Pivot Industry.

**Paschel Irrigation Inc.**

Richard & Arlene Paschel  
(806) 659-5228  
Hwy 15 W. • P.O. Box 69  
Spearman, TX 79081

**REINKE**  
THE FIRST NAME IN IRRIGATION

"We Support Our Local Teams"

**CAPROCK #1 & #2**

Mike Heard, General Manager  
(806) 733-5025

"Custom Cattle Feeding"



Missouri at Houston

**HANSFORD SUPPLY, INC.**

210 Main  
Gruver, Tx.  
(806) 733-2469  
(806) 733-2340  
Fax: (806) 733-5102

Dumas at Perryton



Plainview at Pampa



**Larry's Welding**

Box 933 Gruver, Tx.  
Shop - (806) 733-2991 or 2996

Full Service Shop - Custom Pen Building  
Underground Line - Irrigation Supplies  
Ditching & Backhoe Service



**KRDF - fm**  
98.3 STEREO

Texas Tech at Oklahoma

(806) 659-2529  
FAX (806) 659-3421  
605 E. Kenneth Ave. • P.O. Box 307  
Spearman, Texas 79081



San Diego Chargers at Seattle Seahawks

**G&G FOODLINER**

516 Main • Gruver  
733-2471

**GRUVER FORD, INC.**



Oklahoma State at Baylor

531 Main Street

P.O. Box 767 Gruver, Tx. 79040 (806) 733-2431



Rice at Kansas State

**KERMIT MCKEE**  
Gruver Branch Manager

North Highway 136  
P.O. Box 91  
Gruver, Texas 79040

Branch Office: (806) 733-2481  
Phone: (806) 948-4121  
Fax: (806) 948-5606



Electra at Childress

**Palo Duro Feeders, Inc.**

Gruver, Tx.

(806) 733-2416



**"IT'S FOR YOU"...**

The Classifieds Have Something For Everyone!

The Home Sealer...  
The Car Buyer...  
The Do-It-Yourselfer...  
The Mother's Helper...  
The Job Seeker...  
The Bargain Reaper...

When you want results, turn to The Classifieds.

# The Hansford County Reporter-Statesman

Serving Hansford County Since 1907

Telephone: 1-800-395-9482 or (806)659-3434

**REAL ESTATE**

**AA Realty**

Allen Alford - Broker • 659-3034  
Julie Martin - Sales • 659-2425  
Larry Trosper - Sales • 659-3491

1017 Townsend: 3/2/1 - New lower price!  
714 Gibner: 4 BR, SOLD  
1115 Dessen: 3 BR, 1 B, Gar., between 7th & 5th St. off Brandt. App. 10 acres.  
1105 S. Haney: 3 BR, 1 1/2 B, REDUCED  
718 Cotter - 3 BR, 1 B, 1 car  
725 Cotter - 3 BR, 1 1/2 B, cvd. patio  
1103 S. Townsend - 3/1 1/4 1, good loc.  
1107 Barkley - 3/1 1/2 Below Appraisal

NEW LISTING  
510 S. Endicott - 3-2, 2 story  
417 S. Dessen - 3, 1 3/4, 1 garden, patio, HWD FL, FP, SPKR. SYS.  
FOR QUALITY & SERVICE CALL US TODAY  
We Need Your Listing.

**REAL ESTATE**

**Century 21**

**GOLDEN SPREAD REALTY**  
Janye Helton Pointer, Broker Owner  
435-5444

117 Brandt - Just listed, a real buy on this "3 bedroom!"

**Crawford Addition:**  
2 - 1 3/4 • Will look at all offers!  
2 - 1 • Small and affordable!

315 1/2 N. Bernice: Lot for sale.  
East 7th Street - 9 mobile home lots. Buy one or all!

© and TM trademarks of Century 21 Real Estate Corporation. Equal Housing Opportunity. INDEPENDENTLY OWNED AND OPERATED

**THREE ADJACENT HOUSES FOR SALE - A.** 620 S. Bernice, 2400 sq. ft., \$30,000 - currently occupied by seller. **B.** 620 1/2 S. Bernice, 1200 sq. ft., \$15,000 - currently rented at \$300/mo. **C.** 608 S. Bernice, 1500 sq. ft., \$27,500 - currently rented at \$300/mo. Properties A&B together \$39,500; All three properties as a unit, \$65,000. Assumable loans. For more information contact Ed Pearson at 806/659-3851. S31, 1tc RTN

Three Bedroom Brick, two baths, double garage, lots of trees. 1.8 acres, horse barn, 26 by 36 shop. 205 E. 10th, Gruver, Texas. Call J.W. Whitaker at 733-2433. Also 1983 Coachman Motor-home. S30, 1tp/RTN.

FOR SALE: 3 bedroom, 1 3/4 bath, 2 living areas, large utility room, new heat and air, covered patio, fenced, large storage shed, lots of storage, fresh and ready to move into. Call 659-3647. S39, RTN?

**3 1/4 sections all in Blk. 1, WCCR survey, Hansford Co.,**

SW/4 SEC. 1 - 160.91 ac. m/l, 1 - 8" irrig well, row watered.  
SEC. 2 - 648 ac. m/l, 197 ac. CRP, \$20/ac./yr. to buyer, expires 1998, bal. native grass.  
SEC. 3 - 646 ac. m/l, 1 - " irrig well, row watered, 400 ac. cropland, bal. pasture w/ windmill.  
SEC. 11 - 646 ac. m/l, 632.8 ac. CRP, \$20/ac./yr. to buyer, expires 1997.  
Co. listed with Bob Pratt Real Estate Guyton, OK. 405-338-6779.

**PONDER LAND COMPANY**  
935-5145

2-STORY-brick home with basement. Over 3,000 SQ-FT, 5 bedrooms, 2 baths, fireplace, 1017 Wilmeth. To see call Julie Martin at 659-2425-AA Realty. S47, 3tc

HOUSE FOR SALE: 1700 sq. ft., fresh paint, 3 BDR, large den w/ fireplace, ceiling fans throughout, large fenced yard, patio, 2 car garage. Priced to Sell!!! See at 1009 Haney or call 659-2660 after 5:00 p.m. S42, 8tp

PRICED TO SELL - Low 30's three bedroom 1 3/4 bath, all purpose room, central air, recently remodeled kitchen. Call 659-3956 - 407 W. 12th. S30, 4tp RTN

**FOR RENT**

4 BDR, 3 B, 2 living areas, kitchen/dining area, utility room with cabinets, panel sunroom, storm cellar, fenced backyard. \$500/month at 703 Steele Dr. Call 802-365-9742.

FOR RENT: Trailer park spaces for rent. Located on S.E. 7th and Loop road, Spearman. \$30 per month. Call 435-5080. S23, 1tc/RTN.

FOR RENT: 1 BDR house, 2 BDR house, 3 - 1 BDR apartments. Call 659-3260. S47, 4tc

Office Space For Rent: Pittman-Shieldknight Building. Call 659-3731. S07/RTN.

**KNOTS LANDING!** - Beautiful home located in cul-de-sac, 3 bedroom, 2 baths. The one you have been waiting for. 16 Glover Pl. To see call Julie Martin, 659-2425-AA Realty. S47, 3tc

FOR SALE: 3 BR/1B with large fenced yard. Near high school. Nice lawn and trees. Call (806) 935-6956 and leave message or after 10 p.m. call (806) 935-6747. S47, 4tp

**FOR OWN:** 4 BDR, central heat and air, and attached garage. 701 Collier. \$375 per month. S46, RTN

FOR SALE: Apple IIc Computer, with color monitor printer, manuals, word processing, dual disk drive, Apple Works-\$700.00. See at Farm Bureau-Rich Melton. Call 659-3133 S47, 3tp

HOUSE FOR SALE: Newly remodeled, 3 BDR, central air/heat. 2 car garage on corner lot. Call 733-2149. S47, 2tp

GREAT HOUSE IN GREAT LOCATION FOR SALE  
2100 sq. ft., basement, double car garage, 4 bedrooms, 3 baths, big den, fireplace, living room, ceiling fans, central heat and air. 702 Gibner. Call 659-3838, 659-3970, or 733-5555. S42, RTN

**FOR SALE**

BAHAMA CRUISE! 5 days/4 nights, Underbooked! Must Sell! \$279/Couple. Limited tickets. (407) 767-0208 ext. 6346. Mon. - Sat. 9 a.m. - 10 p.m. S46, 4tp

**SERVICES**

Free Bible Correspondence Course. Write P.O. Box 604, Perryton, TX 79070. S46, RTN

CLIFCO WINDSHIELD REPAIR SERVICE  
Don't replace your damaged windshields. Mobile service: 435-0126. Home phone: 435-9149. And toll free at 1-800-753-9849. Ask for Clifford Cox. S43, RTN

PITS CLEANED: Dragline or Loader. Call LeeRoy Mitchell, 733-2384 or 733-2175. S47, 1tc/RTN.

WEIGHT WATCHERS is now meeting every Monday in Gruver. For more information, please call 1-800-359-3131. S13, 1tc/RTN.

**AUTOMOBILES**

MUST SELL!!!! 2-93 Deville Cadillac  
MUST SELL!!!! 1-92 Deville Cadillac  
MUST SELL!!!! 1-91 Deville Cadillac  
No old contract to assume! No back payments to make. Just need responsible person to make reasonable monthly payments. Ask for Kenneth in the Business Dept. Phone (806) 935-6424 at Murphy OLDS GMC • Dumas, TX. S47, 1tc

MUST SELL!!!! 92 Chev. f/w, p/u, X-Nice, V6-Auto. No old contract to assume! No back payments to make. Just need responsible person to make reasonable monthly payments. Ask for Kenneth in the Business Dept. Phone (806) 935-6424 at Murphy OLDS GMC • Dumas, TX. S47, 1tc

MUST SELL!!!! 92 Olds Cutlass Supreme, sport, luxury pkg. loaded. No old contract to assume! No back payments. Just need responsible person to make reasonable monthly payments. Ask for Kenneth in the Business Dept. Phone (806) 935-6424 at Murphy OLDS GMC • Dumas, TX. S47, 1tc

CALL YOUR LOCAL Used Cow Dealer for days a week stock removal. 659-3544 or 1-800-692-4043. Serving Cattlemen for the past 20 years. G51/RTN.

J & M Service Center 24-Hour Service 415 Collard, Spearman 79081. 659-5519 or 659-3352. Tires, flats, oil & lube, wash, brakes, batteries and minor repairs. Now selling gas. S27, 1tc/RTN.

**PUBLIC NOTICE**

NOTICE TO ALL PERSON HAVING CLAIMS AGAINST THE ESTATE OF ROMA DAVID TOMLINSON JR.  
Notice is hereby given that original Letters Testamentary for the Estate of Roma David Tomlinson Jr. were issued on September 6, 1994, in Cause No. 2110, pending in the County Court of Hansford County, Texas, to David O. Tomlinson and Lester J. Tomlinson. The post office address of David O. Tomlinson is Box 632, Gruver, Texas 79040. The post office address of Lester J. Tomlinson is 2106 Vallejo, Perryton, Texas 79070. All persons having claims against this estate, which is currently being administered, are required to present them within the time and in the manner prescribed by law.  
DATED the 6th day of September, 1994.  
John L. Hutchison  
Attorney for the Estate

**JOB OPPORTUNITIES**

OWN YOUR OWN APPAREL OR SHOW STORE Choose: Jean/Sportswear, Bridal, Linen, Maternity, or Accessories Store. Over 2000 name brands. \$24,900 to \$36,900; inventory, training, fixtures, grand opening, etc. Can open 15 days. Mr. Loughlin (612) 888-6555. S47, 2tp

**HELP WANTED**

WANTED: Lady to stay with invalid lady 5 days and nights per week in Perryton. Do light housekeeping and some nursing skills needed. Call evenings 435-2242. S47, 2tc

EXPERIENCED INDUSTRIAL Engine and compressor mechanic needed. Must have own tools. Please send resume to: P.O. Box 905, Perryton, TX 79070. S47, 2tc

NEEDED: Amine Plant Operator, 5 GPM Perry-Plant near Guvner, must have experience in amine plant operations. Call 512-882-3046 between 8 a.m. - 5 p.m., Mon. - Fri. S47, 2tp

**GARAGE SALE**

MOVING SALE  
417 Dessen  
Sat., Sept. 17, 9-5  
Patio set, plant stand, wheel barrow, planter, dishes, plants, brass floor lamp, shelf unit, clothes, jewelry, canning jars.  
Lots of items too numerous to mention.

**LEGAL NOTICE**

Hansford County will receive sealed bids until 4:00 p.m., Friday, September 23, 1994 on one new front-end loader for Precinct #2. Bids will be opened September 26, 1994 at the regular meeting of the Commissioners' Court. Specifications are available at the County Judge's office or the County Auditor's office in Hansford County Courthouse. The Court reserves the right to accept or reject any or all bids.  
Jim D. Brown  
Hansford County Judge

**NOTICE**

The Spearman Housing Authority is now taking applications for residents. Eligible applicants will be considered for two apartments now available or placed on a community-wide waiting list. Families with the following incomes are especially needed for occupancy at the Housing Authority:

FAMILY SIZE	FAMILY INCOME
1 Person	From \$11,800 To \$18,850
2 Person	\$13,500 To \$21,500
3 Person	\$15,150 To \$24,250
4 Person	\$16,850 To \$26,950
5 Person	\$18,200 To \$29,100
6 Person	\$19,500 To \$31,250
7 Person	\$20,900 To \$33,450
8 Person	\$22,250 To \$35,600

Rent is based on family income minus allowances for children and elderly occupants. For more information, contact Gary Ellsworth at Spearman City Hall or call 659-2524 from 8:00 a.m. until 5:00 p.m. Mondays through Fridays. The Spearman Housing Authority does not discriminate based on race, religion, sex, age, disability, national origin or other factors.

**OSGOOD MONUMENT CO.**  
Amarillo, Texas

Dealers of Rock of Ages Granite, as well as all colored granites, marble and bronze memorials.

Represented by  
**Boxwell Bros. Funeral Home**  
519 S. Evans  
659-3802

**Precision Sweep Airseeding**  
Quick, Economical, Minimum Tillage  
-200 Acres (\$6.25/A)  
+200 Acres (\$5.75/A)  
Bob Williams  
435-4835

**CLASSIFIED RATE**  
\$4.00 first insertion  
\$3.00 each additional insertion (30 words or less)  
13¢ each word over 30  
Legal Notices: 15¢ per word

**JAN'S ETC. NEW & USED & ANTIQUES TOO**  
Everything for home and family. Plains Shopping Center in Spearman  
Open Monday - Saturday  
10 a.m. til 6 p.m.

**The Hansford County Reporter-Statesman**

Dedicated to serve the communities of Spearman, Gruver, & Pringle-Morse

213 Main • 659-3434  
1-800-395-9482

**NEW TRAMPOLINES**  
Mats & springs  
Resew trampoline mats.  
Make new boat covers.  
Call (806)659-2109  
Harry Stumpf  
301 W. 12th  
Spearman, Texas

**Are You A Victim of Physical Abuse?**  
Call Toll Free 1-800-753-5308

We are in Spearman on the 1st, 3rd, & 5th Wednesdays of each month at the First Presbyterian Church, 1021 Cotter. On the 2nd & 4th Wednesdays we are at the First Christian Church at 510 King in Gruver. We can come to Spearman & Gruver any time upon request. We operate a safe place for victims & their children to stay in times of crisis.

**Panhandle Crisis Center**  
Serving Hansford, Lipscomb & Ochiltree Counties  
317 S. Main Memorials Accepted Perryton, Tx.

**TexSCAN**  
Statewide Classified Advertising Network  
More than 300 Texas newspapers for \$250. Call this newspaper for details.

**TRAIN TO BE** a certified aircraft mechanic day and evening classes available. Rice Aviation call now! 1-800-7423, North Houston Campus; 1-800-8540, South Houston Campus.

**MARINE WORKERS NEEDED** by Laxson Marine. Personnel Service - AB's, OS's, captains, pilots, mates, chief engineers, DDB's tankermen and experienced deckhands. Off-shore cooks and galleyhands. Call 713-324-7128.

**78 YEAR OLD** custom lubricant company seeks sales reps. Commissions and bonus. For information contact B. Moran, Primrose Oil, P.O. Box 29665, Dallas, TX 75229, 1-800-275-2772.

**WE NEED YOUR help!** We are expanding our business to Texas and we need 10 honest, hard working individuals to work with a proven system in marketing the scientific breakthrough weight loss product of the 90's! Call 1-800-448-1460 for more information.

**FRIENDLY TOYS AND gifts** has openings for demonstrators. No cash investment. Part time hours with full time pay. Two catalogs, over 700 items. Call 1-800-488-4875.

**BECOME A PARALEGAL.** Join America's fastest growing profession. Lawyer instructed home study. Choice of specialty programs offered. P.C.D.L., Atlanta, Georgia. Free catalogue, 1-800-362-7070, Dept. LLK72203.

**BECOME A MEDICAL transcriptionist.** Great opportunity - typing for doctors and hospitals. Home study. Free career literature. P.C.D.L., Atlanta, Georgia. 1-800-362-7070 Dept. YJK722.

**138.5 ACRES ON** the Rio Grande River. Paralyzing views of the river canyon and mountains of old Mexico. Hunt, fish. South of Dryden. \$1,349/down, \$292/month (11% - 15 yrs.). 210-257-5564.

**LOVE CANDLES?** BE sponsored direct to fastest growing PartyPlan - PARTYLITE, featuring colonial candle of Cape Cod. No investment, deliveries or territories. Flexible hours. Top income. 1-800-951-5483.

**ATTENTION DRIVER TEAMS:** \$15,000 in bonus. Paid monthly, quarterly & yearly, plus top mileage pay. 401 (K) plan, \$500 sign-on bonus. Other paid benefits - Vacation - Health & life - Dead head - motel/layover - Loading & unloading. Covenant Transport 1-800-441-4394/915-852-3357, solos and students welcome.

**SCK MILLER EXPANDING,** need flatbed commercial-home units from \$199. Lamps, lotions, accessories. Monthly payments low as \$18. Call today, free new color catalog, 1-800-462-9197.

**WE BUY NOTES** secured by real estate. Have you sold property and financed the sale for the buyer? Turn your note into cash. 1-800-969-1200.

**QUICK CASH!** TOP price for your own financed contract for Deed, Mortgage or Deed of Trust. Any state. Call Steve or Ken 1-800-874-2389.

**FREE DEBT CONSOLIDATION.** Immediate relief! Too many debts? Over due bills? Reduce monthly payment 30% to 50%. Eliminate interest. Stop collection callers. Restore credit. NCCS, non-profit. 1-800-955-0412.

**YOU CAN OWN** your own home! No downpayment on Miles materials, attractive construction financing. Call Miles Home today, 1-800-343-2884, ext. 1.

**RAPID WEIGHT LOSS.** "Specializing in difficult cases." Known nationwide for great results. \*guaranteed "increase metabolism \*boosts energy \*stops hunger. Call United Pharmaceutical. Now save 20%. 1-800-733-3288.

**OPEN ADOPTION!** BIRTHPARENTS select families and keep in touch. Waiting families from all races and religions. We care and we can help. Call now 24hrs. Winnell, Blessed Trinity Adoptions 1-800-789-5881.

**ADOPTION: ABUNDANT LOVE,** laughter, secure life await your newborn. Peace of mind for you. Loving father, stay at home mom. Allowed expenses. Wendy and John 1-800-727-9662. It's illegal to be paid for anything beyond legal/medical expenses.

**ADOPTION: HAPPY, SECURE,** loving married couple offers newborn life of love, fun and many opportunities for success/happiness. Legal/confidential. Call Dick & Helen collect 212-941-9019. It's illegal to be paid for anything beyond legal/medical expenses.

**HAROLD IVES TRUCKING** hiring drivers. Free driver training. Students welcome. Experience pay up to 28¢ per mile. 1995 conventional KW's here. Excellent benefits: 1-800-842-0853.



# Obituaries

## Iola Smith

SPEARMAN - Iola Smith, 57, died Saturday, Sept. 10, 1994.

Services were held at 1 p.m. on Monday Sept. 12 at the Trinity Community Church with the Rev. Dan Carter, pastor, officiating. Graveside services were held at 4 p.m. on Monday in Knowles Cemetery in Knowles, Okla. Arrangements are by Boxwell Brothers Funeral Home Inc.

Mrs. Smith was born in Beaver County, Okla., and had lived in Spearman for 28 years. She married Hubert Smith in 1965 at Clayton, N.M. She was homemaker and a member of Trinity Community Church.

Survivors include her husband; two sons, Chuck Smith of Spearman and Jim Smith of Canyon; her mother, Rudy Dyer of Knowles; and two sisters, Marie Poorbaugh of Yuma, Ariz., and Marjorie Gray of Lewisville.

# Spiritually Speaking

By DR. LEWIS C. HOLLAND  
Pastor of the Gruver  
United Methodist Church

## "When Suffering Comes"

It seems that suffering is all around us today. We have seen the tragedy of Rawanda, of Bosnia, of Cuba, of Haiti, and of Northern Ireland. We have read of senseless killings in America as well as accidents that take people in the prime of life. We see others who are not killed but who are left crippled. In addition, there are all kinds of physical and emotional suffering. What hope does God's word give us in the midst of this suffering?

In Romans 8:18, Paul says, "I consider that the sufferings of this present time are not worth comparing with the glory that is to be revealed to us." Paul is not just talking about 'pie in the sky by and by!' He is talking about the glory of a close relationship to God. Suffering can remind us to draw closer to God for the strength we need to live. There is no glory that compares with that closeness.

In Romans 8:28, Paul gives us another promise. He says, "We know that in all things God works for the good of those who love him, who

have been called according to his purpose." What does this verse have to do with suffering? Paul is saying in so many words that without God, suffering is just suffering. Only when we place our suffering in God's hands, does He enable us to use our suffering instead of letting our suffering use us. Helen Keller once said, "I thank God for my handicaps, for through them I have found myself, my work, and my God." She was able to use her suffering instead of letting her suffering use her.

Then Paul assures us at the end of Romans 8 that no matter what happens, "Nothing will be able to separate us from the love of God in Christ Jesus our Lord!" Betsie ten Boom, the sister of Corrie ten Boom, once spoke these words from a concentration camp: "No pit is so deep that God's love is not deeper still." Rest in the assurance that the ultimate victory over suffering comes from living in God's love. That leads us to a choice. We can try to muddle our way through our suffering alone, or we can place our suffering and ourselves in God's hands and draw strength and comfort from His love and presence.

Jesus Is Lord

# U.S. Postal Service offering various jobs

The search for a new career can always be challenging. Not too many people can test or be tested for a position up front. However, persons interested in entering the U.S. Postal Service get that chance.

The United States Postal Service will be accepting applications for Processing, Distribution and Delivery positions.

The openings are for positions located at Borger and Plainview, Texas; and at Guymon, Oklahoma.

Applications can be picked up at local Postal Offices starting Sept.

19. The last day to pick up an application is Sept. 23. In Spearman they may be picked up between 8:30 a.m. and 4:30 p.m.; and in Gruver any time during regular office hours.

Applicants must be drug-free and are required to take a written examination.

Further information on the qualifications can be obtained from your local Post Office according to Post Masters George Finley from Spearman and Mike Floyd from Gruver.

# Sale CONTINUED FROM PAGE 1

glasses for local persons, most of which are children. They have also donated \$750 through a scholarship fund.

Scouting organizations have also benefited from the local Lions Club. Some \$769 were donated to scouting groups. And they have also given over \$2,000 to folks for Christmas

gifts (for needy families), and for other events, groups or needs during the course of the year.

Area donations which the Spearman Lions Club donate to include the Eye Bank, Lions Camp, the Girls' Coat and Show Fund, and the Cripple Children's Camp.

# Tractors CONTINUED FROM PAGE 6

tor class, that provides precise, consistent engine performance. The tractors develop as much as a 10 percent PTO power bulge within the constant power range for additional horsepower (above rated power) to pull through tough spots. The electronic governor also provides a Field Cruise feature that works like the cruise control on an automobile for maintaining a consistent ground speed in light-load operations.

All four models use the same 16-speed forward x 4-speed reverse full-power shift transmission manufactured by John Deere in Waterloo, Iowa. The electronically controlled transmission provides eight gears in the working range, evenly spaced at one-half mile-per-hour (13 percent) increments to easily match ground speed to the field operation for optimum productivity and fuel efficiency.

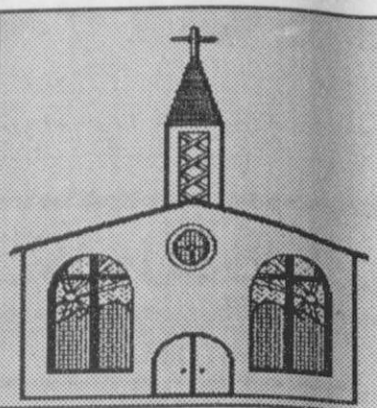
The MFWD axle driveline, located above the axle housing, delivers power from the transmission through two drop gears in the axle's differential. This eliminates driv-

eline universal joints and their associated maintenance, and increase clearance for crops and crossing levees. The MFWD fenders to pivot during turns for a tighter turn angle. An independent 1,000-rpm PTO with a 1-3/4-inch stub shaft is standard. A 540/1,000-rpm PTO with a 1-3/8-inch stub shaft is available as an option. A torque limiting collar is provided to prevent overpowering the 1-3/8-inch shaft.

The pressure-and-flow hydraulic system on the 8000 Series Tractors features a pump for the steering and brakes and a separate pump for the hitch and selective control valves. Maximum system pressure is 2,900 psi, the highest in the industry, for ample hydraulic power. Standard hitch lift capacity is 10,400 pounds for the 8100 and 8200, 11,700 pounds for the larger models. Optional lift capacities increase to 14,165 pounds for the two smaller models and 15,650 pounds for the 8300 and 8400. All four models can be ordered with a no-hitch option for dedicated drawbar applications.

Let us replenish the seed of faith through...

# REGULAR CHURCH ATTENDANCE, DAILY BIBLE READING & PRAYER



**HI-PLAINS AUTO SUPPLY, INC.**  
Mobile Oil for Irrigation & Industrial Purposes  
118 Main • Spearman  
659-2506 • (800)657-8742

**Palo Duro Supper Club**  
22 S. Archer  
659-2232

**C.O.'S SUPPLY CO.**  
Plumbing & Tire Sales & Service  
421 W. Kenneth • Spearman  
659-3781 or 659-3555

**Bartlett's Ace Hardware**  
105 W. Broadway  
733-2404

**GILLASPIE**  
AUTO & TRUCK CENTER, INC.  
DIESEL • OLDS • PONTIAC • BUICK  
CHRYSLER • PLYMOUTH • DODGE.  
Hwy 207 South • P.O. Box 430 (800)659-2541  
SPEARMAN, TEXAS 79081

**Deakin ELECTRIK**  
OILFIELD • RESIDENTIAL • COMMERCIAL  
519 Plains Shopping Center  
Spearman, TX 79081  
1-800-999-1506 (806)659-5016

**REINKE IRRIGATION SYSTEMS Paschel Irrigation**  
(806)659-5228 • 1-800-659-6580  
Corner Airport Rd. & Hwy 15 West  
Spearman, Tx.

**Gruver Cablevision**  
Quality Family Entertainment with  
"the Disney Channel"  
308 Main • 733-5295

**Morse Implement Company**  
"Join us in church this week"

**Boxwell Bros. Funeral Home**

**THE HANSFORD COUNTY REPORTER-STATESMAN**  
Serving the Communities of Spearman, Gruver & Morse  
213 Main • 659-3434  
1-800-395-9482

**CORONADO HOSPITAL**  
Pampa, Texas  
(806)665-3721

Compliments of **G&G FOODLINER**  
516 Main • Gruver  
733-2471



**STOP and LOOK...**  
A child is born with imagination, with the ability to see the magic of the world around him. Yet, so much creativity — so much "seeing" — is often lost as we grow older and the complexities of life sweep over us. When a child confronts nature, he isn't in a hurry. He takes time to study each blade of grass, to appreciate the colors of a butterfly, to marvel at a flower or the soft fur of a kitten. We shouldn't lose this sensibility as we grow up. God created the world, but man has often abused it. So stop — once in a while — and look, feel and listen. This is communion, restoration...like the spirit you find in your church or synagogue. Have you been there lately?

Sunday	Psalm 1
Monday	Psalm 19
Tuesday	1 Corinthians 1:1-17
Wednesday	1 Corinthians 1:18-31
Thursday	1 Corinthians 2:1-16
Friday	1 Corinthians 3:18-23
Saturday	Daniel 2:24-49

Scriptures Selected by The American Bible Society  
Copyright 1994, Keister-Williams Newspaper Services, P. O. Box 8005, Charlottesville, VA 22906

## In Spearman...

**Apostolic Faith Church**  
822 S. Dressen • 659-2870  
Sunday School: 10 a.m.  
Worship: 11 a.m.  
Evening Worship: 6 p.m. Sun.  
Wed. Prayer Meeting: 7:30 p.m.  
Pastor James Brown

**First Assembly of God**  
401 N. Bernice • 659-2295  
Sunday School: 9:45 a.m.  
Worship: 11 a.m.  
Evening Worship: 7 p.m.  
Wednesday Worship: 7:30 p.m.  
Youth: 7:30 Wednesday  
Pastor Ray Cook

**First Christian Church (Disciples of Christ)**  
29 S. Bernice • 659-2036  
Sunday School: 9:45 a.m.  
Worship: 10:50 a.m.  
Women's Bible Study: 2 p.m. Wed.  
Youth: Wed. 6 p.m. & Sun. 5 p.m.  
Pastor LaVern Draper

**First Baptist Church**  
123 N. Bernice • 659-5557  
Sunday School: 9:45 a.m.  
Worship: 11 a.m.  
Evening Worship: 7 p.m.  
Jr. High Youth: 6 p.m. Wed.  
High School Youth: 7 p.m. Wed.  
Youth Choir: 6 p.m. Sun.  
Pastor Kyle Henderson

**Church of Christ**  
121 S. Haney • 659-3244  
Sunday Bible Class: 9:45 a.m.  
Worship: 10:30 a.m.  
Evening Worship: 6 p.m.  
Bible Study Wed. 7:30 p.m.  
KRDF Radio Program  
Living With Christ 7:50 a.m. M-F  
Minister Arnis Pape

**Fellowship Baptist**  
1102 S. Archer • 659-2783  
Sunday School: 10 a.m.  
Worship: 11 a.m.  
Evening Worship: 6 p.m. Sunday  
Youth & Adult Serv.: 7:30 Wed.  
Pastor Rick Fincher

**Primera Mission Bautista**  
502 E. 7th • 659-3991  
Sunday School: 9:45 a.m.  
Worship: 11 a.m.  
Pastor Guadalupe Carranza, Jr.

**Trinity Community Church**  
717 W. 7th Ave. • 659-2671  
Celebration of Praise 10:15  
Worship Service and  
Children's Church 10:30  
Sunday Evening 6:30 p.m.  
Wednesday evening: 7 p.m.  
Pastor Dan Carter

**Faith Lutheran Church (ELCA)**  
1101 Bernice • 659-2252  
(Worships with First Presbyterian Church)

**First Presbyterian Church**  
(Worships with Faith Lutheran Church)  
1021 Cotter • 659-2033  
Sunday School: 9:45 a.m. at Lutheran Church  
Worship: 11 a.m. (alternates monthly between addresses above)  
Pastor Beverly Cook

**First United Methodist**  
407 S. Haney • 659-5503  
Sunday School: 9:45 a.m.  
Worship: 11 a.m.  
Jr. High Youth: 5 p.m. Sun.  
High School: 6 p.m. Sun.  
Pastor Jeff Lust

**Union Church**  
31 S. Endicott • 659-2644  
Sunday School: 9:45 a.m.  
Worship: 10:45 a.m.  
Evening Worship: 6:30 p.m.  
Bible Study: 7:00 p.m. Wed.  
Pastor Billy Stanford

**Sacred Heart Catholic Church**  
901 Roland • 659-2792  
Sat. Night Mass: 7 p.m.  
Sunday Mass: 8:45 a.m. - English (8:45a.m. Service on KRDF 98.3 FM)  
11:15 a.m. - Spanish  
1:30 p.m. - Gruver - Christo Rendentor Mass - Spanish  
Rev. Fernand Couture

**This feature is made possible through the Sponsorship of these Civic Minded Businesses**

"WE SUPPORT OUR LOCAL CHURCHES"  
**CAPROCK #1 & #2**  
Mike Heard, Gen. Mgr.  
(806)733-5043 or 733-5025  
"Custom Cattle Feeding"

## In Gruver...

**First Baptist Church**  
402 E. Broadway • 733-2411  
Sunday School: 9:45 a.m.  
Worship: 10:50 a.m.  
Disciple Training: 6 p.m. Sunday  
Prayer Meeting: 7:30 p.m. Wednesday  
Pastor Larry Miller

**Church of Christ**  
209 King • 733-2760  
Sunday School: 9:30 a.m.  
Worship: 10:20 a.m.  
Evening Worship: 6 p.m.  
Wed. Evening Worship: 7:30 p.m.  
Minister Bob Setliff

**First Christian Church**  
510 King • 733-2960  
Sunday School: 9:45 a.m.  
Worship: 11 a.m.  
Wed. Bible Study: 7:30 p.m.  
Youth: 6:30 Wednesday  
Pastor Gary Gumfory

**Oslo Lutheran Church (ECLA)**  
West of Gruver on Hwy 15 & N. FM 1162  
339-7646  
Sunday School: 9:45 a.m.  
Worship: 11 a.m.  
Morning Prayer: 9 a.m. Wed.  
Pioneer Clubs (Grades 1-6): 4-5:30 p.m. Wednesday  
Pastor John R. Chandler

**Community Bible Church (Interdenominational)**  
Hwy. 15 • 733-2443  
Sunday School: 10 a.m.  
Worship: 11 a.m.  
Wed. Prayer Meeting: 7 p.m.

**First United Methodist**  
Broadway & Garrett • 733-2651  
Sunday School: 9:45 a.m.  
Worship: 8:30 a.m. & 10:50 a.m.  
Evening Worship: 7 p.m.  
Pastor Lewis Holland

## In Morse...

**Morse Baptist Church**  
Pastor Mike Martin  
733-2757

**Henton & Co., P.C.**  
Certified Public Accountants  
221 Sanders • Spearman • 659-2518

**BERRY CLEANERS**  
DAN DESIMONE - OWNER  
Phone 659-3122 • P.O. Box 1017  
207 Main St. • Spearman, Tx. 79081

**GRUVER FORD**  
531 Main • Gruver • 733-2431

**Interstate Savings & Loan**  
322 Main • Spearman • 659-2559

**Hagerman Services**  
Backhoe • Dozer • Welding  
North Hwy. 15 • Spearman  
659-5131

**Gordon Drugs**  
Dependable Prescription Service  
314 Main • Spearman  
659-2141  
Jim Evans

Compliments of... **AGCO**  
of Spearman, Inc.  
"See you in Church"  
659-3751