



The Hansford County Reporter Statesman

PROUDLY SERVING HANSFORD COUNTY SINCE 1907

reporter@spearmanreporter.com

VOLUME 102 • ISSUE 8

WWW.SPEARMANREPORTER.COM

THURSDAY, FEBRUARY 19, 2009

Gruver HS Basketball Playoff Games

The Gruver High School Hounds and Lady Hounds are both advancing to playoff games.

The Hounds will play Farwell at 6 p.m. on Thursday, February 19th at FUBC Canyon for a practice game. They will play another practice game on Friday, February 20th at 6 p.m. against White Deer. The game is scheduled to be played at Amarillo High School.

The Lady Hounds will face Anton for the Area Championship on Friday, February 20th at 7:30 p.m. This game is also scheduled to be played at Amarillo High School.

Hansford County Sheriff's Office Announces NEW Crime Stoppers Number

submitted by Gary Garrett, Hansford County Sheriff's Office, Chief Deputy

The Hansford County/Hutchinson County Crime Stoppers now has a new number available to citizens of Hansford County. Calling the new TIPLINE, (806) 659-4149, could net you a cash reward for your information about criminal activity. When calling the TIPLINE callers are asked to leave a call back number, a personal ID number that only they will know, and the information that they are wanting to give. ALL CALLERS ARE KEPT CONFIDENTIAL. Information is not just limited to advertised criminal activity but is open to any criminal activity or wanted persons. Once the message is left a person from Crime Stoppers will contact the caller. Also people can mail tips to Crime Stopper at 10 NW Court, Spearman, Texas 79081. Again all information about the caller's identity is kept confidential. Crime Stoppers doesn't want you, just your information, and your information could net you a cash reward!

The above is a press release that I would like to get out to everyone. We have just put this new number into service and I am trying to get it out as much as possible. I plan on putting together several cases for broadcasts and later even some fundraisers. Any information that I can get from you would be greatly appreciated. Please give me a call at (806) 659-4142 if you have any suggestions. Again thank you for your help.

Spearman Elementary Plans TAKS Pep Rally

On Tuesday, the 24th at 8:15 am we will be having a TAKS pep rally in the elementary cafeteria.

Weather Forecast

THURSDAY NIGHT - Mostly clear. Lows in the lower 20s. Light and variable winds becoming southwest around 10 mph after midnight.

FRIDAY - Mostly sunny. Highs around 60. Northwest winds 10 to 15 mph shifting to the east in the afternoon.

FRIDAY NIGHT - Partly cloudy. Breezy. Lows around 20.

SATURDAY - Partly cloudy. Highs in the mid 40s.

SATURDAY NIGHT - Mostly clear. Lows in the lower 20s.

SUNDAY - Partly cloudy. Breezy. Highs in the upper 50s.

SUNDAY NIGHT - Partly cloudy. Lows in the lower 20s.

MONDAY - Partly cloudy. Highs in the mid 60s.

MONDAY NIGHT - Partly cloudy. Lows in the mid 20s.

TUESDAY - Partly cloudy. Highs in the lower 60s.

Texas Crop & Weather

The following specific livestock, crop and weather conditions were reported by Panhandle Extension directors: Light showers fell, but soil moisture remained short or very short throughout the region. The rain was followed by strong, dry winds and low humidity, and wildfire danger remained high. Dryland wheat was in poor condition, and heavy irrigation was applied to the crop where possible. Not many cattle were left grazing as there was nothing for them to eat. Land preparation for spring crops continued, but moisture will be needed before planting. Some aphids were reported in wheat fields. Range and pastures were in poor to very poor condition.

COME TO THE GAME

Spearman Lynx/Lynxettes

2/20 VG vs. Sonora, 6:30 p.m. at Lubbock Monterrey High School (Area Championship)

2/23 VB vs. Dimmitt, 8 p.m. in Palo Duro Activity Center - Palo Duro High School (Bi-District)

Gruver Greyhounds/Lady Hounds

2/19 VB vs. Farwell, 6 p.m. at FUBC Canyon

2/20 VB vs. White Deer, 6 p.m. at Amarillo High School

2/20 VG vs. Anton, 7:30 p.m. at Amarillo High School (Area Championship)

Spearman Ousts Muleshoe in Bi-District



The Spearman Lynxettes defeated Muleshoe Lady Mules 43-35 on Monday night, February 16, 2009 at Canyon High School gym to take the Bi-District trophy. The Lynxettes will face Sonora Friday night at 6:30 at Lubbock Monterrey High School to compete for the Area Championship. Spearman ISD will dismiss school at 1 p.m. to allow students and parents to attend the game. Pictured are: (Back Row, L-R) Coach Starla Whiteley, Abbey Eudy, Brittany Barnes, Andi Linn Scarborough, Presless Baker, Cha Tae Avila, Rosa Ortiz, Shelby Hanna, Haley Smith, Bond Pittman, Coach Nan Cook, Natalie Saldivar, Chasity Thomas; (Front Row, L-R) Ashley Close, Gately Garnett, Whitney Maestas, Leanna Espinosa, Morgan Ashmore, Malory Martin, Suttan Garnett, Vickie Renteria. (Photos by Tami Hargrove, <http://spearmansports.smugmug.com>)

By Les Giles, Amarillo Globe-News

Spearman defeated the Lady Mules 43-35 on Monday, February 16, 2009 in a 2A bidistrict playoff game at 6:30 p.m. at Canyon High School.

Spearman's Lynxettes began the season with only two returning lettermen, while Muleshoe's Lady Mules welcomed eight returning players from a team that barely missed the playoffs a year ago.

Spearman, which reached the area round last year before losing to Slaton, finished second in District 1-2A, while Muleshoe was the third-place team in District 2-2A.

The Lynxettes were 23-5 overall, including 8-2 in district play, while Muleshoe was 19-12, including 5-5 in district play.

Spearman's only returning players are guards Bond Pittman, who is averaging 11 points and 3.3 assists, and LeAnna Espinosa.

Freshmen Morgan Ashmore, the team's leading scorer at 14.7 points per game, and Shelby Hanna (six rebounds per game) have emerged as quality players.

Muleshoe was led by junior guard

Sarah Johnson (averaging 17.3 points and five assists) and senior guard Morgan Smith (10.7 points and 3.2 assists). Janae Pyle, a senior post, averages 6.3 rebounds per game.

Bond Pittman sank four free throws during the final 49.5 seconds to key a 7-0 run as Spearman turned back Muleshoe, 43-35, in a girls Class 2A bidistrict basketball game Monday before about 500 fans at Canyon High School.

Muleshoe's Sarah Johnson hit the front end of a one-and-one foul situation with 2:48 to play, then canned an 8-footer with 2:01 to go to bring the Lady Mules within one point, 36-35. That was as close as Muleshoe would get as the Lynxettes took charge by scoring seven unanswered points during the final 1:03 to advance to the area round against Sonora later this week.

Muleshoe, which finished 19-13, led the entire first half. The Lady Mules were up 7-2 with 1:42 remaining in the first period and by five points on two occasions in the second before going into halftime with a 15-12 advantage.

Spearman opened the third quarter on a 10-0 run to grab a 22-15 lead with 3:42

remaining. Muleshoe answered with six straight points to close within one point at 22-21, only to see the Lynxettes close out the quarter on a 5-2 run for a 27-23 advantage.

The Lynxettes led by as many as six points in the fourth quarter before Muleshoe closed within 36-35 with 2:01 to go.

"We played some good defense in the first half," Spearman coach Nan Cook said, "but our offense was slow getting started. That scoring run to begin the third quarter seemed to settle us down on offense. We made some big free throws in the final minute to close it out."

Leanna Espinosa, who led the Lynxettes with 14 points, including a clutch 3-pointer with 4:04 to play that gave them a 36-32 lead, said it took some time for her team to get over being nervous.

"We are a young team and were nervous to start out," she said. "We played kind of scatterbrained until we got over being nervous, then settled down. We knew they would be a tough team and we knew that we would have to play well in order to win."

Haley Smith added 10 points for the

Lynxettes, while Pittman had eight, all in the second half.

Johnson was Muleshoe's leading scorer with 13 points, while Val Olivias added eight.

Muleshoe 7 15 23 35

Spearman 4 12 27 43

MULESHOE (19-13): Sarah Johnson 5 1-4 13, Yvonne Gardea 2 0-0 4, Gabby Agundis 2 0-0 4, Morgan Smith 1 2-2 4, Janae Pyle 1 0-0 2, Gizell Vasquez 0 0-1 0, Val Olivias 4 0-0 8. Totals: 15 3-7 35.

SPEARMAN (24-5): Bond Pittman 2 4-4 8, Morgan Ashmore 2 1-1 5, LeAnna Espinosa 6 1-2 14, Shelby Hanna 1 2-3 4, Presless Baker 1 0-0 2, Haley Smith 5 0-0 10. Totals: 17 8-10 43.

3-pointers: Muleshoe 2 (Johnson 2), Spearman 1 (Espinosa 1). Total fouls: Muleshoe 14, Spearman 15. Fouled out: None. Technicals: None. Attendance: 500.

Records: Spearman is 24-5. Muleshoe finishes 19-13.

Impact: The Lynxettes advance to the area round to meet Sonora.

Key Stat: Spearman closes with a 7-0 run during the final 1:03.



(Photos by Tami Hargrove, <http://spearmansports.smugmug.com>)

Lullabies, Legends & Lies

by Parson Smith, the Prime Minister of Laughter

I heard about this fellow who went to see his doctor.
"Doc, I would like to live very long time. What should I do?"
"I think that is a wise decision," the doctor replies. "Let's see, do you smoke?"
"Oh, half a pack a day."
"Starting NOW, no more smoking."
The man agrees. The doctor then asks, "Do you drink?"
"Oh, well Doc, not much, just a bit of wine with my meals, and a beer or two every once in a while."
"Starting now, you drink only water. No exceptions."
The man is a bit upset, but also agrees.
The doctor asks, "How do you eat?"
"Oh, well, you know, Doc, nor-

mal stuff."
"Starting now you are going on a very strict diet: you are going to eat only raw vegetables, with no dressing, and non-fat cottage cheese."
The man is now really worried. "Doc, is all this really necessary?"
"Do you want to live long?"
"Yes."
"Absolutely necessary. And don't even think of breaking the diet."
The man is quite restless, but the doctor continues, "Do you have

sex?"
"Yeah, once a week or so... only with my wife!" he adds hurriedly.
"As soon as you get out of here you are going to buy twin beds. No more sex for you. None."
The man is appalled. "Doc... are you sure I'm going to live longer this way?"
"I have no idea, but I assure you it will seem like an eternity!"

Until the next time,
May God Bless.

Gary's Quote of the Month

"Sure there have been injuries and deaths in boxing - but none of them serious."
Alan Minter, Boxer
"I didn't know Onward Christian Soldiers was a Christian song."
Aggie Pate, at a non-denominational mayor's breakfast in Fort Worth, Texas

Wolf Creek Heritage Museum Notes

MUSEUM HAPPENINGS

A quiet, slow week gave us another chance at catching up with our assignments. Our newsletter will be mailed out soon and my goal of four issues this year is one issue closer to completion. Our board meeting is scheduled for this week and we will discuss and set our goals for the historical commission and the museum.

We received a donation from the PNM Foundation recently in honor of the volunteer hours of Georgia Couch. This is the company that Georgia worked for when she retired, and they have an employee program that donates money in return for their employees volunteerism. What a great program!

We have received several donations from matching employee programs. This is a great way to donate to your community. There are numerous non-profit organizations in our area, please find one and donate your time. Be a volunteer this year.

HISTORICAL MUSINGS

Frank Balch was an early settler in Lipscomb County. He was of Irish descent, born in Cincinnati, Ohio on June 17, 1879 to James and Alice McClain. Frank was only seven weeks old when both of his parents died. He and his sister were placed in an orphanage in Quincy, Ill. At the age of seven, he was adopted by Luke and Clara Balch, who owned a large farm in Adair County, Mo.

The only food he had ever eaten was boiled milk and sourdough bread. So when Ms. Balch served him fried eggs for his first breakfast, he thought they were very good and requested more and kept asking for more. He ate a total of 13 fried eggs that first breakfast. He attended a one-room school and helped his parents on the farm. He took a course in blacksmithing and horseshoeing at a school in

Quincy, Ill.

In 1908, he married Ruhama Pope, who, with her parents had homesteaded east of Higgins, Texas but had moved back to Missouri. In the fall of 1909, the couple returned to the panhandle, arriving in Podunk, OK by train. They bought a farm in Lipscomb County, five miles south of where Darrouzett is now located. They bought a quarter section at \$7 an acre and added to it over the years. Frank built a one-room house hauling lumber from Higgins. They lived in this one room while building another room and an attic.

Frank hauled water for all uses for three years from their closest neighbors, Jim Barnes. He finally drilled a well for \$285 and continued adding to the house with additional rooms and a basement. Frank planted broomcorn, barley (for hog feed), and wheat (his main crop).

He would harvest his wheat, storing it in his barn hayloft, then when harvest was over, start hauling the wheat to Glazier to sell. He hauled with a team and wagon that held 60 bushels, using two horses and two mules to pull the wagon.

He would scoop on a load of wheat one day, get the horses ready that evening and leave early the next day; returning home the following day and let the horses rest a day before starting another trip. On the last three return trips he would bring coal in the wagon on two trips and bring 48 pound sacks of flour and 50 pound sacks of sugar on the last trip. The family grew the rest of their groceries on the farm with a garden, chickens, milk cow and hogs. During the 30s he would take hogs to market and would give hogs to his neighbors.

The Balchs enjoyed their 50th wedding anniversary in 1958 on their farm. They remained on their farm until 1964 when they moved to Amarillo. Frank died in 1965 and Ruhama in 1981. They are buried in Darrouzett Cemetery. Their son Glenn still lives in Darrouzett and wrote their history for the Lipscomb Heritage newsletter in January 1989. This is the source of this article. The Balchs were one of early families that set the standard of generosity and friendliness that this county is known for.

Enjoy the week!

Editors Note...

Freedom of speech is one of the guarantees of the First Amendment of our Constitution, so we encourage readers to express themselves, even if we don't agree with what is said. However, freedom involves responsibility. Therefore, the only letters we will consider publishing are from individuals who are willing for their names to appear with the letter. Letters must contain the telephone number, address and a personal signature of the writer. We will not knowingly publish any letter containing libelous statements.

In the event that numerous letters are received concerning the same subject, letters can be limited to one pro and one con letter per publication. Eligible letters will be published in the order in which they were received.

"Letters To The Editor," like all materials submitted to this newspaper, are subject to editing for space and clarity. The publication of any letter or article is the decision of the Editor and Publisher. Deadline for all news, as well as "Letters To The Editor," is 5 p.m. on Monday.

The Hansford County Reporter-Statesman

State Capital HIGHLIGHTS

SPEAKER STRAUS NAMES 34 CHAIRS OF STANDING COMMITTEES

AUSTIN - Texas House Speaker Joe Straus on Feb. 12 exercised one of his most important duties in naming standing House committees.

Straus, R-San Antonio, assigned leadership roles and responsibilities in an egalitarian fashion, reflecting a near balance of 76 Republican seats to the Democrats' 74.

Straus said 15 of his 34 new chairs have not chaired standing committees in prior sessions, and of the 34, 18 are Republicans and 16 are Democrats.

Here are just a few committees and chairs:

Appropriations, Jim Pitts, R-Waxahachie; Ways & Means, Rene Oliveira, D-McAllen; State Affairs, Burt Solomons, R-Carrollton; Calendars, Brian McCall, R-Plano; Human Services, Patrick Rose, D-Dripping Springs; Criminal Jurisprudence, Pete Gallego, D-Alpine; and Public Education, Rob Eissler, R-The Woodlands.

Straus also named Rep. Craig Eiland, D-Galveston, as speaker pro tempore.

As for the state Senate, Lt. Gov. David Dewhurst stuck with his chairs from the 2007 session, with the exception of the Administration Committee. Kim Brimer, R-Fort Worth, former chair of the committee, lost his re-election bid last fall, so Dewhurst named Sen. Tommy Williams, R-The Woodlands, as the committee's new chair.

Stimulus money will flow to Texas

On Feb. 13, Congress passed the conference report of House Resolution 1, the American Recovery and Reinvestment Act of 2009, without a "yea" vote from any Republican member of the Texas congressional delegation.

H.R. 1, President Barack Obama's \$787 billion economic stimulus package, got a thumbs-down earlier this month from Gov. Rick Perry, who said he would be against the package unless it offered more tax cuts and less spending.

But the president got all the support he needed in a 60-38 filibuster-proof vote in the Senate and 246-183 vote in the House that included "yeas" from Texas' 12 Democratic reps.

Texas' share of the stimulus spending has been estimated at \$16 billion, but the money must be used as directed. Details on that will come.

As finally passed, H.R. 1 is about two-thirds stimulus spending and one-third tax cuts.

Water must play increasing role

Texas Comptroller Susan Combs' new report, "Liquid Assets: The State of Texas' Water Resources" studies Texas' current and future water resources, the issues facing water planners and funding methods that could be used to develop water resources.

Combs said, "By 2060, more than 46 million people could be liv-

SPEAKER STRAUS NAMES 34 CHAIRS OF STANDING COMMITTEES

ing in Texas, and demand for water will increase by an estimated 27 percent.

"According to the Texas Water Development Board, failing to meet this demand could cost businesses and workers in the state approximately \$9.1 billion per year by 2010 and \$98.4 billion per year by 2060."

AG launches restitution program

Attorney General Greg Abbott on Feb. 11 made public a restitution program he said is for eligible Countrywide Financial Corp. residential mortgage customers who lost their homes to foreclosure.

In 2008, Abbott initiated an investigation into allegations that Countrywide encouraged homeowners to accept loans they could not afford, failed to fully disclose risky loan terms to borrowers and wrote loans for unqualified borrowers in an effort to increase market share.

AG halts 2 retirement schemes

On Feb. 13, Attorney General Abbott charged the owners of two investment plans with orchestrating a fraudulent scheme that targeted retirees and teachers.

Howard G. Judah Jr. of Houston and Gregory F. Jablonski of Castle Rock, Colo., falsely guaranteed lucrative investment returns, misrepresented their "life settlement" policy investment offerings, failed to disclose material information to investors and committed multiple violations of the Texas Securities Act.

Travis County District Judge Suzanne Covington granted the attorney general's request for receivership and issued an order seizing more than \$19 million held in several bank accounts under the defendants' control.

Abbott's office said the enforcement action charges the defendants with failing to make required disclosures, selling unregistered securities and other violations of the Texas Securities Act.


by Ed Sterling



Weatherford Construction
Septic Systems

Kirk Weatherford (806) 336-2820
8125 FM 3395 Toll Free: 1-800-585-6047
Sanford, TX 79078 Email: kirk@weatherford-construction.com

SUDOKU
PRESENTED BY



VolunteerMatch.org
Where volunteering begins.

				3	9				
8	4			5			9	6	
2	9	6	1		4				
7	5	9						3	
1		8					2		9
	6					5	7	1	
			9		5	3	4	8	
8	1			7			9	2	
			3	2					

© 2009, StatePoint Media, Inc. answer on classified page

Fill in the blank squares in the grid, making sure that every row, column and 3-by-3 box includes all digits 1 through 9.

DINNER TIME

These games are brought to you by the
Hansford County Reporter-Statesman

ACROSS

1. A Jedi's aura
6. Lake in France
9. A deep prolonged sound
13. Plural of obelus
14. Type of tray
15. Lowest Hindu caste
16. Relating to a node
17. Type of resort
18. One that forces or inspires
19. *Children's reward
21. Done to understand without hearing
23. *Side vegetable or object of princess test
24. Speech defect
25. Tom of "Tom and Jerry"
28. Not yet final or absolute
30. Card carrier
35. *Submarine sandwich
37. Something owed
39. Steal goods
40. Egyptian goddess of fertility
41. Thoroughly wash
43. Seawards
44. ____prosequi
46. *An appetizer in Spain
47. Give temporarily
48. Composure under strain
50. Reduced
51. Instruction Set
52. Infection of the eye
53. Water marker

DOWN


1. Tender or warm, often followed by "of"
2. Double reed woodwind
3. Commies
4. Necklace fastener
5. Song "Come on ____"
6. But not least
7. Inquire about
8. *Texas is famous for it
9. Cat's vibrating sound
10. U2 guitarist
11. Geographical region
12. Hog fat
15. *Dinner for some
20. Feared by the mob, pl.
22. A belief or philosophy

24. Book lender
25. *Formal dishes
26. "The Tortoise and the Hare" author
27. Sol-fa-sol-fa-sol-fa, e.g.
29. Dissenting clique
31. *One of three
32. Circled in baseball
33. "The main ____"
34. Done before getting set and going
36. Capital of Norway
38. Tupi people language
42. Lowest male singing voice
45. Mortician's action
49. Purchase
51. *Appetizer or main dish, e.g.
54. Twig of a willow tree
56. *Flesh of fish
57. Limited haircut
58. Hindu sacred writing
59. Work hard
60. Popular '80s band
- "Quiet ____"
61. Annoying biting fly
62. Being nothing more than specified
63. Four, e.g.
64. Started, as in golf hole
67. Spermatozoa counterpart

CROSSWORD

1	2	3	4	5	6	7	8	9	10	11	12
13					14				15		
16						17				18	
19				20			21	22			
		23					24				
25	26	27		28		29		30		31	32
35			36			37		38		39	
40					41			42		43	
44				45		46				47	
48					49		50		51		52
				53		54		55		56	
57	58	59	60				61			62	63
65					66	67			68		
69						70			71		
72						73			74		

PRESENTED BY



VolunteerMatch.org
Where volunteering begins.

© 2009, StatePoint Media, Inc. answer on classified page

The Hansford County Reporter-Statesman

213 Main Street • Spearman, TX 79081
Phone - (806) 659-3434 • Fax - (806) 398-9080
www.spearmanreporter.com
reporter@spearmanreporter.com
cathysmith@valonet.com

Mon.-Thurs. 9 a.m.-12 p.m., Mon.-Wed. & 1-5 p.m.
Closed Thurs. afternoon and all day Fri., Sat. & Sun.

Gary Smith - Publisher Catherine Smith - Editor
Contributing Writers: Dorothy Hudson, Jim Derington,
Merry Sparks, Cecil Biggers
Contributing Photographer: Charlie Johnson



Subscription Rates
In Hansford County - \$30.00 • Out of County - \$40.00

The Hansford County Reporter-Statesman (USPS 529660) is published weekly in Spearman, TX. Periodical postage paid in Spearman, TX. **POSTMASTER:** Send address changes to: The Hansford County Reporter-Statesman, 213 Main Street, Spearman, TX 79081.

Publication Policy
The deadline to submit news and advertising to The Hansford County Reporter-Statesman is Monday at 5 p.m. Items submitted after the deadline will be published at a later date, as time and space permit. Publication of all items is at the discretion of the editor.

Advertising
Open Display rates are \$4.00 per column inch. Classified Ads are \$6 for the first 25 words and 10¢ per word for each additional word. (Additional charge for boxed classifieds.) There is a \$1 charge per week if billed.

Member of
Gruver Chamber of Commerce
Spearman Chamber of Commerce
Texas Press Association and Panhandle Press Association

Happy Birthday!

February 19
Birthday - Melissa Quillin, Delphine Etling, Bob Womble, Stephanie Hays, Bennie Brogdon, David Kellum, Sylvia Rosales, Niki Taylor, Robert Dean Meire, Chuck Ball, Sylvia Taranto
Anniversary - M/M Dorsey Perez, M/M Lupe Moreno, M/M Larry Trosper

February 20
Birthday - Brant Armes, Ed Mayfield, Greg Stork, Tessa Yanke, Kathy Brown, John Antalek, Terry Morris, Melissa Holt, Brenda Moyer, Steve Shields, Clayton Hergert, Bill Volden, Cody Brandvick, Rosemary McKee, Jeannie Folwen, Pauline McGee, Richey Thompson
Anniversary - M/M Wilson Bruning, M/M Charles Evans, M/M Jon Hart

February 21
Birthday - Sandra Proffitt, Walter McDade, Lisa Meisner, Raul Ortega, Ann Thomas, Chandler Adkins, Tom Speck, C.J. Renteria
Anniversary - Ken & JoAnn Schneider

February 22
Birthday - Russell Dahl, Rhonda Hicks, Betty Mathews, Ryan Mathews, Sherri Hall, Tim Cook, Bobby Jo Grayson, Paul Reimer, Sonny Kell, DeAnn Sparkman, Derryla Stedje, Connie Davis, Linda Coombs, Jack Sparks, Brenda Winegarner, Kreisun Dominguez
Anniversary - M/M Jason Bass, M/M Freddy Walton

February 23
Birthday - Hailey Lamb, Randy Reid, Dave Clement, Janyth Smith, Cynthia Miller, Phil Larson, Aaron Hager, Kacee Smith, Elizabeth Pipkin, Jim McMahan, Maxine Cline, Jason Bartimos, Eodolinda Garcia, Tommy Reger, Daryl Noble, Mollie Burnam, Alan Jones
Anniversary - M/M Richard Rator, M/M Joe Rodriguez, M/M Tommy Boone

February 24
Birthday - Lori Messer, Linda Scroggs, Adam Holladay, Mani Noble, Tiffany Goodrich, Chuck Morgan, Sherry Boyd, Fernando Saldana, Glenda Close, Barbara Townsh, David Swink, Frances Davis
Anniversary - M/M Tom Cathey Sr., M/M Quentin Hart, Andrea & Gary Woolley

February 25
Birthday - Marian Tomlison, Lynna Renner, Don Schmer, Mike Brown, Leslie Paul, Crystal Carson, Loree Viola, Tabettha Thoms
Anniversary - Bob & Jackie Pearson

February 26
Birthday - Debbie Davis, Bruce Knight, Suzie Womble, Burl Buchanan, Pam Edwards, Margie Schubert, Lynn Pierce, Marinell Webster, Deziree Hughes, Carol Poole, LaQuita Evans, Bob Meier, Kip Francis, Denise Paschel, Tony Holquin, Nicholas Avila, Kay Ann Miller

Anniversary - Britt & Linda Jarvis

February 27
Birthday - Roy Diaz, Colby Weldon, Sharon Sutton, Cindy Jenkins, Adrian Barrera, Rosie Jackson, Melinda Hall, Winnie Vernon, Clint Goodman, Lance Wood, Vanessa Vela, Lacey Salgado

February 28
Birthday - Robert Blount, Max Davis, Karen Sparks, Shannon Bowling, Debbie Carter, James Lair, Sammy Don Jones, Edna Anderson, Willie Shields, Hal Bennett, Davis Nash, Parker Grotegut
Anniversary - M/M Gilbert Salgado, Tim & Jackie Nelson

February 29
Birthday - Clifton Harden, Michael Holt

March 1
Birthday - Lori Swink, Justin Ooley, David Stafford, Michael Rosales, Gary Cates, Ruby Mitchell, Mary Saldavar, Nora Baca, John Duncan, Peggy Robinson, Caleb Miller, Danny Parker
Anniversary - M/M Robbie Dewberry, M/M Harold King, Norlan & Linda Winegarner

March 2
Birthday - Wynn (Maupin) Essler, Justin Thompson, Tonni Yanke, Olive "Babe" Pendergraft, Wayne Barber, Matthew Baker, Carma Dorton, Bob Farr, Robin McCullough, Rachele Moreno, Josh Winegarner, Ryan Hill, Sammy Renteria
Anniversary - M/M Joel Lackey

March 3
Birthday - Sue Smith, Jackie Womble, Vicky Papay, Doris Brogdon, Kim Scroggs, Kelley Hart, Cass Lasater, Andy Scarborough, Brian Black, Darla Black, Amber Fox, Allan Taylor, Denise Schuman, Crystal Harris, Richard Melton, Paxton Pittman, Matti Wheelock, Pam Schnell

March 4
Birthday - Evelyn Dahl, Don Evans, Tanner Sherrell, Tommy Hahn, Jon Garnett, Virgil Jones, Chuck Taylor, Jose Renteria, David Harbour, Ron Fox, Judy Park, Brenda Red, Ronald Kirby, Heather Hamilton, Lucio Vela, Carrie Guthrie, David Rosser

March 5
Birthday - Ron Dunning, Beth Swink, Barry Beck, Brooks Beck, Mark Garnett, Mary Garza, Mike Cowan, Trixie Pearson, Mike Garrard, Alexis Johnson, Benny Brandvick, Steve TeBeest, Shelby Williams, Ramon Garcia, Jj Anaya
Anniversary - M/M Ramiro Morales

March 6
Birthday - Brenda Hart, Charlie Slough, Marcie Womble, Bobby Archer, Tommy Barkley, Travis Patterson, Janet Reger, Doran Dulana, Kenneth Slough, Lindsey Cliff, Nancy Evans, Mick Sharp
Anniversary - M/M A.R. Cazares

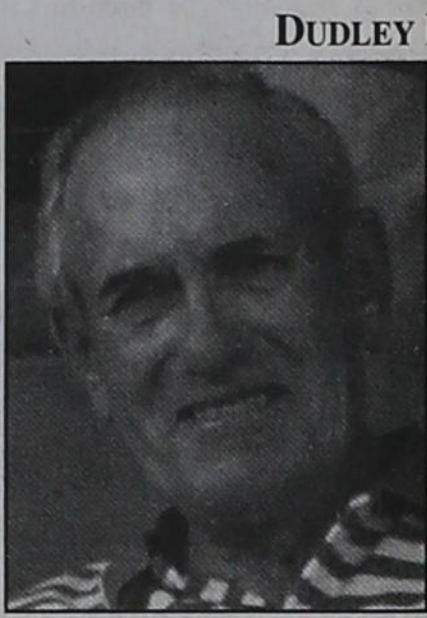
Our Sympathy

JACK HEFLEY
 WHEELER - Jack Hefley, 78, died Wednesday, February 11, 2009. Services were at 2 p.m. Friday, February 13, 2009 in Church of Christ with Dr. Shawn Johnson, minister, officiating. Burial was in Mobeetie Cemetery in Mobeetie by Wright Funeral Home.

Jack Hefley was born Sept. 27, 1930, in Gageby to Farmer and Opal Hefley. He attended school in Briscoe and Mobeetie and graduated from Mobeetie High School in 1950. Jack married Bernice Carter on Aug. 12, 1950. He served his country in the U.S. Army in 1954, stationed in El Paso and Germany. Jack and Bernice lived in Gruver and Wheeler before moving to Mobeetie in 1968. Jack owned a feed mill and the first feedlot in Wheeler County, and farmed and ranched until his retirement in 1992. Jack was a member of Church of Christ in Wheeler, and he also served as a member of the Mobeetie school board for nine years. Jack received the first Pioneer Farmer and Rancher award of Wheeler County in 2008.

He was preceded in death by his parents, Farmer and Opal Hefley. Survivors include his wife, Bernice Hefley of Mobeetie; a son, Mark Hefley and wife Darla of Elk City, Okla.; a daughter, Melissa Rodgers and husband Timm of Miami; a brother, Richard Hefley and wife Dorothy of Brownwood; grandchildren, Tiffany and Bryan Johnson of Lubbock, Michael and Courtney Hall of Camp Lejeune, N.C., Justin and Brittney of Elk City, Dustin Hampton of Wheeler, Tamara and Chris Gallagher of Amarillo, Heather Hampton of Lubbock, Vanessa Trent and Randie Zims of Clinton, Okla., Jonathan Comelsen of Weatherford, Okla., and Gabriel, Nikki and Allison Rodgers of Canadian; 10 great-grandchildren; and a host of nieces, nephews, family and friends.

The family suggests memorials be to Mobeetie Cemetery, in care of First State Bank of Mobeetie, P.O. Box 8, Mobeetie, TX 79061; or Star Chapter, Alzheimer's Association, 415 West Eighth Ave., Amarillo, TX 79101-2215. Sign the online guest book at www.wrightfuneraldirectors.com.



DUDLEY HARGROVE
 PERRYTON - Dudley Hargrove, 82, died Thursday, February 12, 2009.

Rosary was said at 7 p.m. Sunday, February 15, 2009 in Boxwell Brothers Funeral Home. Services were at 10:30 a.m. Monday, February 16, 2009 in Immaculate Conception Catholic Church with Monsignor Rex Nicholl officiating. Burial was in Ochiltree Cemetery.

Mr. Hargrove was born Dec. 23, 1926, in Farnsworth and was a lifetime Perryton resident. He married Rita Ann Hurter on Nov. 27, 1948, in Huntoon. She preceded him in death in 2003.

Mr. Hargrove was a veteran of the U.S. Army, serving in World War II and the Korean conflict. He was a contract pumper and a member of Immaculate Conception Catholic Church in Perryton.

Survivors include two sons, Mike Hargrove and wife Sharon of Richfield, Ohio, and Dennis Hargrove and wife Reiko of Perryton; two daughters, Cynthia Powell and husband Jim of Perryton and Paula Williams and husband Ty of Gruver; a brother, Lanny Hargrove and wife Nina Beth of Amarillo; 13 grandchildren; and five great-grandchildren.

The family suggests memorials be "in memory of Dudley Hargrove," Perryton ISD Athletic Booster Club, P.O. Box 173, Perryton, TX 79070.

REECE WILLIAM "RUSTY" TAYLOR
 PERRYTON - Reece William "Rusty" Taylor, 78, died Sunday, Feb. 15, 2009.

Services will be at 2 p.m. Wednesday in Harvest Time First Assembly of God with the Rev. Scott Barton, pastor, officiating. Burial will be in Ochiltree Cemetery by Boxwell Brothers Funeral Home of Perryton.

Rusty was born Aug. 13, 1930, in Perryton to Reece E. and Florence S. Taylor. He married Lois Reynolds on Dec. 29, 1948, in Spearman. He was a farmer and a rancher.

He was preceded in death by his parents; his wife, Lois Taylor, in 2005; a sister, Laura Atchison; and two grandchildren, Donny White and Bradley Hensley.

Survivors include three daughters, Vicki T. Carpenter of Dallas, Sheri L. Kee of Perryton and Florence Hensley of Texoma; two sons, William R. Taylor of Amarillo and Curtis R. Taylor of Perryton; two brothers, John Taylor and Gary Taylor, both of Perryton; 15 grandchildren; and 18 great-grandchildren.

The family suggests memorials be to Harvest Time First Assembly of God, P.O. Box 1243, Perryton, TX 79070; or Hospice Home Health, 3101 Garrett Drive, Perryton, TX 79070.

HOWARD DEAN KELLY
 AUSTIN - Howard Dean Kelly, 83, left this earth to be with his Heavenly Father on February 11, 2009.

Services were at 1 p.m. Saturday, February 14, 2009 in Cook-Walden Funeral Home Colonial Chapel with Dr. Bruce M. Muny and Dr. Jay Miller officiating. Burial was in Cook-Walden Memorial Hill Cemetery.

Mr. Kelly was born Dec. 27, 1925, in Spearman to Oran and Elmo Kelly.

Howard served his country in the Army Air Corps in the 40's. He was a graduate of Texas A&M University, class of 1950. He had a long career as a professional civil engineer. He was a deacon at River Road Baptist Church. He particularly loved church functions, high-school sports, and college football. He had a great sense of humor and loved to make people laugh. He was a good friend and was loved by many, and he will be missed by all.

He is survived by his wife of 62 years, Dorothy; son, Dennis and wife, Kathy; son, Timothy; daughter, Kathleen and husband Darrell Vrla. He leaves behind eight grandchildren and two great grandchildren. He is survived by one sister, Colleen and husband Grady Yeary, and many nieces and nephews.

S.T.A.R. (Services-To-At-Risk Youth & Their Families) brings you...

"Back in Control"

Parenting Workshop
 Wednesday, March 4, 2009
 Be There: 8:45 AM-4:00 PM
 Frank Phillips College
 2314 S. Jefferson Street
 Perryton, Texas 79070

Must pre-register! Call 806-359-2005

Instructors: Janice James, M.A., M.C.A.P. Coordinator, Q.M.H.P. Pam Harris, Case Manager III

CEUs available for LPCs & MSWs; General CEUs available, also (Must attend full class for certificate)

NO CHARGE

Seating is limited. No childcare is provided.

STAR is a TDFPS funded program of TPMHR

MONUMENTS

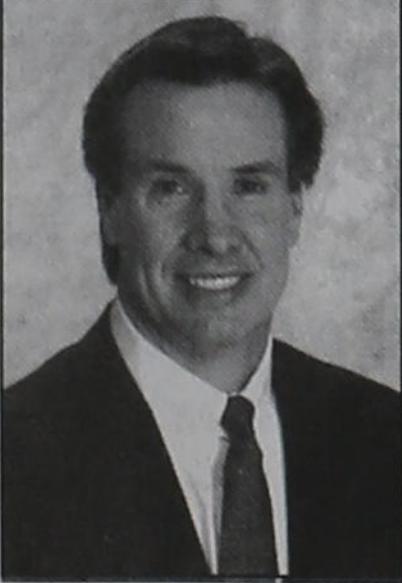

Boxwell Brothers Funeral Home

519 Evans • Spearman
 659-3802

Dear friends,
 When you buy a monument from us we make sure it is exactly what you want at a price you can afford. If it is not right, we will make it right. And you will not have to search the countryside to find us. We are here when you have a need.

Sincerely,
 Bob Boxwell

GOLDSTON DENTAL HEALTH CENTER

Hugh Goldston D.D.S. Shad Goldston D.D.S.

DEDICATED TO EXCELLENCE IN DENTISTRY

Orthodontic, Implant, Cosmetic and General Dentistry
103 E. Broadway
 Gruver
 Office Hours 8:15AM until 4:45PM
 Wednesdays
 For appointment call 733-2700

Replenish the seed of faith through . . .

DAILY BIBLE READING, PRAYER & REGULAR CHURCH ATTENDANCE

<p>Spearman</p> <p>Apostolic Faith Church 822 S. Drexler • 659-2870 Sunday School: 10 a.m. Worship Service: 11 a.m. Sun. Eve.: 6 p.m. Wed. Prayer Mtg.: 7 p.m. Pastor - Roland Haney</p> <p>First Assembly of God 401 N. Bernice • 659-2295 Sunday School: 9:30 a.m. Worship: 10:40 a.m. Evening Worship: 6 p.m. Wed. Youth: 7 p.m. Pastor - Jerry Pollard</p> <p>First Christian Church (Disciples of Christ) 29 S. Bernice • 659-2036 Sunday School: 9:45 a.m. Worship: 10:50 a.m. Minister -</p> <p>First Baptist Church 123 N. Bernice • 659-5557 Sunday School: 9:45 a.m. Worship: 11 a.m. Evening Worship: 7 p.m. Men's Bible Study - Wed. 7 a.m. Children's Choir - Wed. 6 p.m. Adult Choir - Wed. 7 p.m. Wed. Bible Study: 7 p.m. Pastor - Jim Medley</p> <p>Church of Christ 121 S. Haney • 659-3244 Sunday Bible Class: 9:45 a.m. Worship: 10:30 a.m. Evening Worship: 6 p.m. Bible Study Wed.: 7:30 p.m.</p>	<p>Sacred Heart Catholic Church 901 Roland • 659-2792 Sat. Night Mass: 5:30 p.m. Sun. Mass: 9 a.m. - English Sun. Mass: 11:30 - Spanish 1:30 p.m. - Gruver - Christo Rectorator Mass - Spanish Rev. Guillermo Morales</p> <p>First United Methodist 407 S. Haney • 659-5503 Sunday School: 9:45 a.m. Worship: 8:30 & 11 a.m. Jr. High Youth: 5 p.m. Sunday High School: 6 p.m. Sunday Kids Club: 3 p.m. Wed. Pastor - Neely Landrum</p> <p>Grace Presbyterian Church (Worships with Faith Lutheran Church) 1101 Bernice • 659-2033</p> <p>Faith Lutheran Church (ELCA) 1101 Bernice • 659-2252 Sunday School: 9:45 a.m. Worship: 11 a.m. (Worships with Grace Presbyterian Church) Pastor - Cecil Biggers, PLM</p> <p>Union Church 31 S. Endicott • 659-2644 Sunday School: 10:00 a.m. Worship: 11:00 a.m. Bible Study: 7 p.m. Wed. Youth Service: 6 p.m. Wed. Pastor - Don Baltazor</p> <p>Fellowship Baptist 1102 S. Archer • 659-2783 Sunday School: 10 a.m. Worship: 11 a.m. Sun. Evening Worship: 6 p.m. Youth/Adult Service: 7:30 Wed. Pastor - James Washburn</p>	<p>Primera Mision Bautista 502 E. 7th • 659-3991 Sunday School: 9:45 a.m. Worship: 11 a.m. Evening: 6 p.m. Wed. Prayer Meeting: 7 p.m. Thurs. Visitation: 7 p.m. Pastor Joe Garcia Jr.</p> <p>El Aposento Alto U.P.C.I. 1105 S. Roland Domingos: Escuela Dominical - 10 a.m. Culto Evangelistico - 7 p.m. Jueves: Oracion - 8 p.m. Mier: Estudio Biblico - 7 p.m. Pastor - A.G. Martell (806) 659-2153</p> <p>Gruver</p> <p>First Baptist Church 402 E. Broadway • 733-2411 Sunday School: 9:45 a.m. Worship: 10:50 a.m. Disciple Training: 6 p.m. Sunday Prayer Meeting: 7:30 p.m. Wednesday Pastor - Scott Curry</p> <p>Church of Christ 209 King • 733-2760 Sunday School: 9:30 a.m. Worship: 10:20 a.m. Evening Worship: 6 p.m. Wed. Worship: 7:00 p.m. Minister - Gaylord Cook</p> <p>First Christian Church 510 King • 733-2960 Sunday School: 10:00 a.m. Sunday Worship: 11 a.m. Youth: 7:30 Sunday Adult Bible Study: 7:30 Sun. Wed. Bible Study: 8:00 p.m. Pastor - Gary Gumfory</p>	<p>Gruver United Methodist Broadway & Garrett 733-2651 Sunday School: 9:45 a.m. Worship: 8:30 & 10:50 a.m. Eve. Worship & UMY: 6 p.m. Pastor - George Price</p> <p>Spanish Cristo Redentor Church Sunday Mass: 1:30 p.m. Friday Evening Mass Summer - 8:00 p.m. Fall/Winter - 7:30 p.m.</p> <p>Oslo</p> <p>Oslo Lutheran Church (ELCA) 6 Miles West & 12 Miles North of Gruver 339-7646 Sunday School: 9:45 a.m. Worship: 11 a.m. Pastor - Arlen Lloyd</p> <p>Morse</p> <p>Morse Baptist Church 733-2757 Pastor - Mike Martin</p> <p>Waka</p> <p>Church of Christ 300 Rogers Ave. 202-7126 Sunday Worship: 6 p.m. Wednesday Bible Study: 6 p.m. Preacher - James Gordon</p>
--	---	--	--

He has showed you, O man, what is good. And what does the LORD require of you? To act justly and to love mercy and to walk humbly with your God. Micah 6:8

This feature is made possible through the sponsorship of these civic minded businesses:

<p>Deakin</p> <p>ELECTRIC OILFIELD • RESIDENTIAL • COMMERCIAL 321 S. MAIN • SPEARMAN 1-800-999-1506 Chris Deakin (806) 659-5016 President</p>	<p>Bartlett's Lumber & Hardware 105 W. Broadway • Gruver, Texas (806) 733-2404</p>	<p>BERRY CLEANERS Ann & Vernon Pipkin - Owners Phone 659-3122 • P.O. Box 1017 207 Main St. • Spearman, TX</p>	<p>Morse Implement & Auto Supply "Join us in church" Tom Dortch 733-2668 Box 89 • Morse, TX 79062</p>
<p>PRAIRIE MOTORS INC. Hwy. 207 South • P.O. Box 430 Spearman, TX 79081 • (806) 659-2541 www.prairiemotors.com</p>	<p>MurMur's Cafe 100 Roland St Spearman, TX. 659-3580</p>	<p>Hansford County Reporter-Statesman "Proudly Serving Hansford County Since 1907" (806) 659-3434 310 Barkley • Spearman, TX</p>	<p>INTERSTATE BANK, ssb www.interstatebank.net 322 Main • P.O. Box 146 Spearman, TX • 659-2559</p>

H&H FOR YOUR INFORMATION

Medical Fund for Krystal Puentes

An emergency medical fund has been established for Krystal (Burkhammer) Puentes at First National Bank, Spearman. If you would like to make a contribution you may make a deposit with any teller or mail a donation to First National Bank, Krystal Puentes Medical Fund, PO Box 337, Spearman TX 79081.

Medical Fund for Rene Griffin

A medical fund has been established for Rene Griffin at First State Bank, Spearman. If you would like to make a contribution you may make a deposit with any teller or mail a donation to First State Bank, Rene Griffin Medical Fund, PO Box 247, Spearman TX 79081.

Medical Fund for Bruce Duncan

An emergency medical fund has been established for Bruce Duncan at First National Bank, Spearman. If you would like to make a donation you may make a deposit with any teller or mail a donation to First National Bank, Bruce Duncan Medical Fund, PO Box 337, Spearman TX 79081.

Medical Fund for Nancy DeLuna Jernberg

An emergency medical fund has been established for Nancy DeLuna Jernberg of Stinnett. Nancy was recently diagnosed with a rare malignant brain tumor and will be undergoing treatment. If you would like to make a contribution you may make a deposit with any teller or mail a donation to H&H Federal Credit Union, 104 Main Street, Stinnett TX 79083.

Project Graduation 2009

The parents of the Spearman High School Class of 2009 will sponsor and host a "Project Graduation Party" following commencement exercises Friday May 29th. Graduates will be provided with food, games, activities, and fun! In addition, to encourage the graduates to stay the entire night, door prizes are awarded throughout the evening. The graduation party will culminate with the distribution of grand prizes. Prizes, gift certificates, and cash are needed for the evening's gifts. If you, the community, who supported and encouraged these seniors these past 13 years of school, would be willing to share in the final "class of 2009" memory, making this project special, please contact Patti Schnell at 659-2919, Paula Cooper at 659-3133, Shannon Barnes at 659-2164 or Maria Sibley at 659-1037. Contributions can be mailed to: Project Graduation - Maria Sibley, P.O. Box 74, Spearman, TX. 79081.

Fund Established for Cross Country Lynxette Championship Rings
A fund has been established at First National Bank, Spearman for the Spearman Lynxettes Cross Country 2008 State Championship Team. The fund has been established to purchase a ring for each team member and their coach in honor of their achievement. If you would like to give money to support this endeavor, please contact Stephanie Brock at 659-1774, or take your check by First National Bank.

Eloy & Friends to Play at SCOT Hall

Circle the date - Eloy and Friends, better known as Eloy and the Troubadores are coming to Sherman County Older Texans (SCOT Hall), 513 E. 3rd, Stratford TX, from 7-10 p.m. at the February 28, 2009. You can tap a toe, scott a boot and enjoy the company for friends on a night out. For information, call Lynn at 806-396-2011 or Leonda Fedric 806-753-6759.

Hospice Training Classes Scheduled

Hansford Hospice Volunteer Training Classes will begin on March 7, 2009, in Spearman. To sign up for the classes or for more information please call Verna Lee Shirley- 806-659-5345 or the Hospice Office at 806-659-5811. Please call before February 25th if interested in enrolling in the classes. These classes provide excellent training for anyone interested in learning more about Hospice.

FPC Flu Shot Clinic

The Department of State Health Services is holding a Flu Shot Clinic on Thursday, February 19, 2009 from 10 a.m.-3 p.m. at the Frank Phillips College Allen Campus, 2314 S. Jefferson, Perryton. For more information, contact Jaci at 8-6-648-1450.

Texas Outdoor Family Program

Admit it. Camping looks, fun, but you have questions. Texas Parks and Wildlife can help. The Texas Outdoor Family program will teach you and your family the basic camping skills needed for a great time outdoors. We supply all the equipment including tent, lantern, stove and cookware. You simply provide the willingness to learn and create lasting memories with your family. In addition to camping skills, you will help you learn about wildlife, hiking and geocaching. At a cost of only \$55 you can have an affordable get-away while learning new skills that will last a lifetime. Join us at Palo Duro Canyon State Park. Contact us at (512) 389-8903 or www.tpwd.state.tx.us/outdoorfamily.

WTAMU Offers Two Discover WT Preview Events

West Texas A&M University will host two Discover WT preview events this semester. I'd like to invite you to encourage your juniors and seniors interested in our university to register for one of these events. They are a great opportunity to get a taste of college life, learn about the majors they are interested in studying, tour the dorms, meet current students and faculty and much more. Discover WT is free and students will receive t-shirts and free tickets to an athletic or arts event held on campus that evening. This semester's events will be held on February 21 and April 3. More information, a sample schedule and the registration form can be found at http://www.wtamu.edu/admissions/discover_wt.aspx.

GHS Baccalaureate Scheduled

I wanted to inform you as soon as possible that due to several issues, Baccalaureate will be held on Wednesday, May 13, at 7:30 at the Gruver United Methodist Church. (The way that the school calendar is set for this year, our usual day to have Baccalaureate, May 24, falls on the weekend of a national holiday; May 17, the band and seniors will be returning from trips; May 10 is Mother's Day with the Prom being held on May 9.) We have checked with all the churches and the Pastors who participate in the Baccalaureate service, and they all agree that May 13 would be an excellent time to have it. Commencement will be on Friday, May 29, at 8:00. Hopefully this early notification will be helpful when making plans. If you have any questions, please contact Gruver High School principal Troy Seagler at 733-2477.

Miss Irish Rose Pageant

Once again, Shamrock, Texas will be hosting their annual Saint Patrick's Celebration on March 13-15, 2009. One of the many highlights of this celebration is the crowning of Miss Irish Rose. This Scholarship Pageant is open to all young ladies that are between the ages of 14 through 19 and enrolled in High School. None of the contestants need to live in the neither Shamrock or Texas area nor do they need to be currently holding a title or reign. The 2009 Miss Irish Rose, along with her three runner-ups and Miss Congeniality, will be receiving a scholarship to the college of her choice. For further information, please send a S.A.S.E. to Miss Irish Rose, Attention Dana Hosack, PO Box 453, Shamrock, Texas 79079, or call Betty Lee at 806-334-0929, Dana Hosack at 806-662-5405 or the Chamber of Commerce Office at 806-256-2501. The deadline for entry forms to be received is February 27, 2009.

Lunch & Learn - "Thai Cooking"

"Thai Cooking", will be the topic for Lunch & Learn, Thursday, February 12, from 12:00 - 1:00 p.m. in the Fellowship Hall of Spearman Church of Christ. Frank and Lucy Pittman will present the program. Participants will learn food preparation tips, take home recipes, and enjoy Thai cuisine. This free program is sponsored by the Texas AgriLife Extension Service and Extension Education clubs. Donations for lunch will be accepted. Call Peggy Winegarner at 659-4131 or 733-2901 for more information. Extension programs are open to all regardless of socioeconomic level, race, color, national origin, sex, age, religion, or disability.

Region 16 ESC offers Free GED Preparation Software

Region 16 ESC is offering free GED preparation software for students interested in obtaining a GED. You will also have access to a free online GED prep program through the public library. If you are interested in finding out more information about these services, please contact: Cindy Blackman at 659-3233, Maria Carbajal or Margaret Ruttman at 659-2231 or stop by the Hansford County Library.

Spearman Lynx Basketball Fundraiser

The Spearman Lynx Varsity basketball players are painting paws on driveways (\$15 each or 2 for \$25) to raise money for tournament expenses this year. If you are interested in purchasing paws, please contact Coach Jr. Ashmore or any member of the Lynx basketball team.

GISD Offering Reward for Information

Gruver Independent School District is offering a \$1,000 reward for information that leads to the arrest and conviction of the person or persons who burglarized two Gruver teachers homes between October 17-19 2008. If you have any information, contact: Troy Seagler at 806-733-2477, Micah Davis at 806-733-2081, David Teal at 806-733-2001 or the Hansford County Sheriff's Office at 806-733-2901.

Our Sympathy

MARVIN LEON WEBB



AMARILLO - Marvin Leon Webb, 66, died Thursday, February 12, 2009.

Memorial services were held at 4 p.m. on Saturday, February 14, 2009 in the Brentwood Chapel of Schooler Funeral Home. Chaplain Jeff Messer officiated. Arrangements were by Schooler Funeral Home, 4100 South Georgia.

Mr. Webb was born August 20, 1942 in Fort Sumner, NM to Virgil and Leola Webb. He met Michele and they married in Trinidad, Colorado. He was employed as a petroleum engineer with Diamond Shamrock and Santa Fe Energy. He was employed by Jaten Oil Company for over twenty-three years and served as the company president for many years. He was

the past president of the Society of Petroleum Engineers. He was a member of First Baptist Church in Amarillo.

He was preceded in death by his parents, and two brothers, Olan and L. R. "Buddy" Webb.

He is survived by his wife Michele of the home; one stepson Tom Kernick of Pasadena, CA; three brothers, Lee Roy Webb of Mansfield, Tx, Orval Webb of Aztec, NM and O'Dell Webb of Quanah; five sisters, Margaret Oldham of Fort Sumner, NM, Erma Harkey of Aubum, CA, Arline Darrow of Hominy, OK, Freda Briscoe of Dallas and Lynda Archer of Amarillo; and many nieces and nephews.

In lieu of flowers, the family requests memorials be made to City Church.

SHARON ANN "SHERRY" MOORE

SPEARMAN - Sharon Ann "Sherry" Moore, 61, died Tuesday, February 17, 2009.

Memorial services will be held on Saturday, February 21, 2009 at 10:30 a.m. at the First Baptist Church of Spearman with the Rev. Jim Medley officiating. Interment will be in Citizen Cemetery in Clarendon at 3 p.m. on Saturday, under the direction go Boxwell Brothers Funeral Home of Spearman.

Sherry was born in Clarendon on September 28, 1947. He married Phillip Terry Moore. She was a homemaker.

She was preceded in death by her father, H.C. Shaw of Clarendon; two aunts, Margaret Hillman and Jane Hillman, both of Clarendon.

Survivors include her husband, Terry Moore of Spearman; a daughter and her husband, Jo and Wayne Pierson of Muleshoe, TX; a son and his wife, Shawn and Dynell Moore of Ruther Glen, VA; a granddaughter, Megan Pierson of Muleshoe; two grandsons, Tobin Pierson of Muleshoe and Connor Moore of Ruther Glen, VA; her mother, Joann Shaw of Clarendon; and a sister, Carrie Show of Clarendon.

The family requests memorials be to the MS Society - Panhandle Chapter, 6222 Canyon Dr.; Amarillo TX 79109.

Are You A Victim of Domestic Violence, Sexual Abuse or Physical, Emotional or Sexual Assault?

Call Toll Free Hotline 1-800-753-5308

Battering Intervention & Anger Management Available

Panhandle Crisis Center
Serving Hansford, Lipscomb & Ochiltree Counties
301 S. Ash - Perryton, TX
Memorials Accepted

FREE DIRECTV 4 ROOM SYSTEM!

265+ ALL DIGITAL CHANNELS!
130 HD CHANNELS!
FREE HBO, Showtime & Starz for 3 Months!
Channel Pkgs. Start \$29.99 / mo
Packages Start only \$29.99
FREE DVR/HD
No Start Up Costs!
We're Local Installers!
Toll Free 800-214-7110

MORTGAGE ASSISTANCE?

The Federal Government has called on lenders, servicers, and banks to assist homeowners. This is a tremendous benefit for borrowers seeking to lower their payment and lower their interest rate and even reduce the principal balance. This restructuring is designed to keep homeowners in their home by customizing a loan payment to fit their budget with their existing lender.

Get A FREE Case Evaluation With No Obligation!
Call Toll Free 877-817-7858
Mon-Fri 9:00am-6:00pm, Sat 10:00-4:00 PST.

Attention Farmers!!

Cowpea Contracts Available
Gross \$550 - \$650 per acre with irrigation
Drought Tolerant, Fast Crop
Contact C.T. Smith Co. in Pleasanton
(830) 569-2140

Got land?

United-Bilt has quality, custom-built homes for you, with affordable financing you just can't find anywhere else:
ZERO down • 100% financing
No payments for 6 months!
United-Bilt Homes
Homemade just for you.
800.756.2506 @ ubh.com

Gordon's



Couples Currently Registered

- Kristie Talbott & Reagan Renner - 3/15
- Amy Harris & Matthew Lohse - 3/28
- Lisa Espinosa & Dave Pope - TB&
- Kathy Hinds & Carlos Lopez
- Brittany Morris & Dustin Borden

Baby Registry

- Nicole & Paul Swanson - 2/28
- Leah (Mackie) & Mark Strickland - TB&
- Janie (May) & Steven Vincent

Gordon's 659-2141
314 Main Spearman

You are invited to a
Baby Boy Shower
honoring
Jessica Crossland Dunnihoo
on Saturday, February 21, 2009
from 10:00-11:30 a.m.
at the home of
Cindy Blackman
719 Wilbanks Dr. Spearman TX

Thank You!
Many thanks to Five Star Equipment for purchasing my swine at the Hansford County Jr. Livestock Show.
Steven Johnson

Celebrate

Gifts for all your celebrations!

Bridal Registry

- Kristi Talbott & Reagan Renner - 3/14
- Amy Harris & Matt Lohse - 3/28
- Katie Weaver & Jared Shufeldt - TB&
- Lisa Espinosa & Dave Pope - TB&
- Brittany Morris & Dustin Borden
- Kathy Hinds & Carlos Lopez

Baby Registry

- Jessica (Crossland) & Matt Dunnihoo - 2/21
- Brooke & Wade Stewart - 3/25
- Leah (Mackie) & Marc Strickland - April
- Anna Millican & Colton King - TB&
- Kelci & Jordan Brock

Celebrate

203 Main St. Spearman, TX
(806) 659-3350 1-800-663-8026

HANSFORD COUNTY



Joseph Walter Chesser

Joseph Walter Chesser, the son of P.M. and Minnie Chesser, was born at Harmon, Oklahoma on March 26, 1919. When J.W. was two, his family along with Minnie's parents, W.S. and Ella Thomas, moved to the Kimball Community ten miles north of Spearman in Hansford County.

After two years of high school in Gruver, J.W. went to Arizona to prospect for gold with his friend Ross Walker. Two years later they returned to Gruver.

J.W. did farm and ranch work before becoming an automotive mechanic for the McClellan Garage in Gruver in 1940. Soon the draft was initiated, and J.W. was called in the first round. He was inducted on March 24, 1941, at Fort Bliss in El Paso and assigned to Headquarters Troop of the 5th Regiment, one of the four regiments of the First Cavalry Division. After basic training, J.W. was sent to Ordnance School at David Rankin, Jr. School in St. Louis, Missouri. Following twelve weeks of training as an automotive mechanic, he rejoined his outfit at Fort Bliss.

At this time Fort Bliss was a traditional cavalry post with around 18,000 head of horses and mules. Most soldiers were horse mounted, and most equipment was horse drawn. They patrolled certain areas in the Big Bend and were expecting to patrol the Border as well. Despite their preference for horses, they had been forced to adopt some vehicles. J.W. managed a motor pool of 65 vehicles. He instructed and supervised new men in their duties and kept maintenance records on all services performed.

After the attack on Pearl Harbor, J.W. knew that he was in for the duration of the war and would probably be sent overseas. During a furlough, he and his sweetheart, Billie Thomas (from a different line of Thomases) were married at Liberal, Kansas on October 4, 1942. Billie was able to join him in El Paso.

In February 1943 J.W.'s outfit began preparation to go overseas as a dismounted unit. They left for Australia on May 29, 1943, and arrived there June 18, 1943. When J.W. shipped out, his brother Leon came to El Paso and helped Billie move to Amarillo to work at the PanTex Plant. Her job was pudding bombs (i.e., packing the explosives into the bomb shell cases). Eventually Billie became sick from too much of the T.N.T. getting in her blood, and she had to find other work.

J.W. was sent to Camp Strathpine near Brisbane for 6 months of training in jungle and amphibious warfare. Then his outfit moved to Oro Bay, New Guinea and unloaded ships while waiting to be called into battle.

From aerial reconnaissance, intelligence officers determined that Los Negros in the Admiralty Islands 200 miles north of New Guinea had not shown signs of Japanese activity. As the island had an excellent harbor and a small airport that could be enlarged, General MacArthur decided that part of the Fifth Regiment should land and take it over. After they landed on February 29, 1944, J.W.'s unit set up camp and dug foxholes. At two a.m. they found out that the intelligence was wrong when the Japanese, who outnumbered them 2 to 1, attacked. Though they were able to repulse the initial assault, nightly attacks and intermittent sniping continued for several days. J.W. said some mornings there were so many Japanese bodies that it was hard for him to move his jeep.

On October 20, 1944, the 5th Regiment began its Philippine campaign when they landed on Leyte Island. After 3 weeks of heavy rain, the ground became too mushy to hold up heavy equipment. On January 27, 1945, as part of their ongoing effort to liberate the Philippines, the regiment landed on the beaches of Lingayen Gulf on Luzon. From there J.W. was in one of the squadrons sent to Manila with orders to free the internees at

Santo Tomas and take the Malacanan Palace and the Legislative Building.

Helping free the 3700 emaciated men, women, and children who had been prisoners of the Japanese for over 3 years in the confines of the Santo Tomas University Internment Camp was one of the highlights of the War for J.W. He spoke of sharing his rations with one of the men.

In Manila J.W. and Walter Hart, a classmate from Gruver High School, had a brief visit. They were both in the First Cavalry Division, but this was the first time that their paths had crossed.

The Japanese were still firmly entrenched in Luzon, and they had no thought of surrendering.

While the bitter fighting continued, J.W. was given an order to take his platoon on a suicide mission, and he refused. Even though he had spent 2 years in the rank of staff sergeant as a mechanic and 2 years as a platoon leader, he was punished by being demoted to private first class.

On July 1, 1945, the Luzon Campaign was officially terminated, and the Division began a rehabilitation and training program in preparation for an invasion of the Japanese homeland.

When the atomic bombs were dropped in August and the Japanese surrendered unconditionally, plans were changed. The First Cavalry was to be sent to Japan as an occupying force.

By this time J.W. had accumulated 93 points on the ASR, so he was eligible to return home. He arrived back in the states on September 23, 1945, and was honorably discharged on October 6, 1945, at El Paso as a private first class. J.W. had spent 4 years, six months, and 10 days in the service of his country.

After his discharge, J.W. began farming. At first he leased land in Kansas even though his family lived in Hansford County. Eventually he was able to farm closer to home. J.W. and Billie had 3 children: Walter Leon, known as W.L., Rebecca, and Tammie (Osbourne). W.L. was killed in an automobile accident on September 25, 1963. J.W. died on January 9, 1973. Billie later married Bob Nobles, now deceased. Rebecca passed away on December 16, 2007. Both Billie and Tammie live in Gruver.

Texas Senate Review

Week of February 9-13

(Austin) Hurricane Ike will cost Gulf Coast school districts hundreds of millions of dollars to repair and rebuild facilities damaged or destroyed by the September storms, according to testimony offered to the Senate Education Committee on Tuesday. Texas Education Agency official Dr. Ray Glenn estimated the total cost for these schools at about \$300 million to recover from the hurricane. He said of the 7,900 students displaced by the storm, about 6,900 still have not returned to their home districts. Some schools missed as many as 21 days of instruction, while officials tried to restore power and services to communities.

Arnold Proctor, an assistant superintendent at Galveston ISD, testified that Chapter 41 relief would be a great help to property-rich districts like his. He estimated repair and rebuilding costs for his district at \$65 million, but the district will still be expected to give money back to the state under district equity laws. Committee Chair Senator Florence Shapiro of Plano said that did not make much sense. "The idea that you would be giving money away, during this time that you're trying to get money to build, almost seems incongruous," she said. "You've got to utilize other dollars, and you're giving dollars away." The committee will continue to look at ways to help districts impacted by Hurricane Ike throughout the session.

Senator Craig Estes filed a bill Tuesday to reform the process of eminent domain, where private land is taken by the government for public interest. Senate Bill 18 would clearly define terms of public use and fair compensation, and would direct the Comptroller to review which entities have eminent domain authority. Estes said this is an issue that must be resolved soon. "When we have this necessary evil of eminent domain," he said, "make sure that the property that is taken is for the public good."

Wednesday, Texas Supreme Court Chief Justice Wallace Jefferson spoke before a joint session of the Legislature, encouraging them to reform the way the state chooses its judges. Jefferson delivered his biannual State of the Judiciary address, where he advises lawmakers on necessary legislation relating to the judicial branch. This year, he wants legislators to move away from judicial elections, and use a merit-based appointment system. Jefferson said that 80 percent of Texans believe that judges are

influenced in their rulings by campaign contributions. "If the public believes that judges are biased toward contributors, confidence in the courts surely will suffer," said Jefferson.

Also Wednesday, Houston Senator Dan Patrick spoke in favor of a conservative fiscal policy as the Senate looks to ride its budget. Patrick advocated a cap on increased spending, linked to population growth and inflation, or growth in personal income, whichever is least. He praised past Legislatures

for keeping conservative fiscal policies, saying this was why Texas finds itself in a stronger economic position relative to other states, and should continue this trend. "It's very important that we get control of spending as we move forward," said Patrick. "This is not a time for government to spend one penny more than needs to be spent."

The Senate Finance Committee continued budget work throughout the week and took two days of public testimony relating to health and human services allocations Thursday and Friday. Hundreds of citizens signed up to testify about the need for more funding for services ranging from disabled care, mental health and state schools. The Finance Committee will begin hearings on funding for the courts, natural resources and general government next week.

The Senate will reconvene Tuesday, February 17, 2009.

Words from Faith & Grace



by Cecil R. Biggers, Lutheran Lay Minister

On the last week of Epiphany, we study the Transfiguration of Our Lord as we study 2 Kings 2: 1-12, Psalm 50: 1-6, 2 Corinthians 4: 3-6, and Mark 9: 2-9.

Elijah, considered to be the "greatest of the prophets", is preparing to meet God. Taking his 'apprentice', Elisha, he visits the company of prophets at Bethel and then at Jericho. Three times Elijah asks Elisha to stay behind; three times Elisha refuses and continues on. By his desire to stay with his mentor as long as possible, Elisha shows his deep commitment to Elijah and the Lord.

When they reach the Jordan river, Elijah strikes the water and it parts to allow them to pass over to the other side. When they arrive in Trans-Jordan, Elijah asks what he can do for Elisha before he is taken to God. Elisha requests a double-portion of the spirit of God which Elijah possessed. Elijah explains that this will happen only if Elisha sees Elijah being taken by God, for the spirit is the gift of God. Elisha sees Elijah leave as a chariot of fire and horses of fire separates them. Elisha has seen an epiphany (some would say theophany), a revelation of God.

The Psalmist sings of God shining forth out of Zion. Zion is the mount that the temple was constructed on; hence, we have the word of God and acts of power shining forth from the temple. God is sensed in the devouring fire and the mighty tempest that precedes him. God is coming to sue his people for their breach of his covenant (contract). God calls upon the mountains and the heavens to witness the transgressions of his people. Yet God also summons those who have been faithful. God is suing his people and God is the judge.

The Psalmist is calling for the people to re-orient themselves to God in thanksgiving and gratitude. This too, is an epiphany, a theophany.

Paul warns the Corinthians that the god of this world has blinded the minds of those who will not believe the good news. Paul tells them that we are not proclaiming ourselves, we proclaim Christ as Lord. The light that shines in the darkness of our lives is Jesus Christ! Our epiphany is that in seeing Jesus Christ, we see God.

On the week of the Feast of Booths, Jesus, James, John and Peter ascend a high mountain (possibly Mount Hermon) and as they climb, suddenly Jesus is transfigured before them. His clothes became as burnished bronze or as the golden glare of the sun. They see Jesus conversing with Elijah and Moses, the greatest of the prophets and the greatest law-giver. Jesus has previously set his path to Jerusalem and the cross. We may interpret this 'transfiguration' as God's endorsement of Jesus' decision. Peter overwhelmed, falls back on the law, and suggests that they build a 'booth' for Jesus, Elijah and Moses. Then a voice from the cloud that settled upon them says: "This is my Son, the Beloved; listen to him!" This command is for the disciples (including us) and it is given in the present imperative tense (pay attention grammarians); we are to listen to Him, now! After this epiphany, a showing of what God is, a showing of what God is about in this world, Jesus and the disciples descend the mountain. Jesus is headed for the cross and the disciples have been given something to hold onto in a time of distress.

May the Holy Spirit "transfigure" your life into a reflection of the glory of Jesus Christ.

Pictures and information for this feature may be submitted to the Reporter-Statesman (310 Barkley Street), mailed to WW II Memories, % Reporter-Statesman, 213 Main Street, Spearman TX 79081, emailed to reporter@spearmanreporter.com, or they may be given to Dorothy Hudson, 733-2562, 806 Cluck Avenue, Gruver TX 79040, or emailed to dhudson862@gruver.net.

Spearman Lynx & Lynxettes

<http://spearmansports.smugmug.com>

Photos available of Spearman Lynx and Lynxette athletic events.

Come & Get It!

HAPPY HOUR
3-5 p.m., Monday-Friday
ALL FOUNTAIN DRINKS 69¢

MURMUR'S CAFE
100 S. Roland • 659-3580 • Spearman

The Joys of Summer
SNOW CONE STAND
1:30-8 p.m., Monday-Friday

MURMUR'S CAFE
100 S. Roland • Spearman
659-3580

PTCI Can Show You the Money with myCustom Pak!

If you have two or more PTCI services, call today and **Start Saving!**

721 W 7th in Spearman
1-800-562-2556
www.ptci.net

DIGITAL TV

PTCI
Communication & Broadband Solutions

Some restrictions apply.

Hoochy Poochy Parlor

For Boarding reservations and grooming appointments, call now!

Hoochy Poochy Parlor
421 E. 10th St.
Borger, TX 79007
806-273-2724
hoochypoochy@att.net
www.hoochypoochy.net
Hours:
Mon.-Fri., 8 a.m.-5 p.m.
Saturday by appointment only

Please visit us for a free estimate on your pet care needs.

We put the Hoochy in your Poochy

Hansford County Sports

Basketball Rankings

High school basketball rankings as compiled by the Texas Association of Basketball Coaches and Tex Preps Basketball magazine for this week:

Class 2A Boys: 1 New Waverly (26-3) (13-0); 2 Ponder (32-1) (12-1); 3 Gladewater Sabine (32-3) (13-0); 4 Krum (27-5) (12-1); 5 Whitewright (26-2) (12-1); 6 Edgewood (26-5) (12-1); 7 Brock (26-6) (13-0); 8 Hitchcock (22-10) (9-0); 9 Floydada (26-2) (8-1); 10 Newton (18-6) (9-0); 11 San Antonio Cole (24-5) (10-1); 12 Little River Academy (23-5) (10-1); 13 Spearman (25-3) (8-1); 14 Shallowater (21-5) (12-1); 15 Hallettsville (30-2) (10-1); 16 Jarrell (21-8) (8-2); 17 Universal City Randolph (26-2) (10-1); 18 Godley (22-7) (12-1); 19 Kermit (23-4) (12-0); 20 Heame (22-6) (8-1)

Class 1A Division I Boys: 1 Cayuga (14-3) (9-0); 2 Plains (25-1) (10-0); 3 Clarendon (20-4) (8-0); 4 Wheeler (21-1) (8-0); 5 Roscoe (21-3) (10-1); 6 Avery (26-2) (8-0); 7 Detroit (23-6) (6-2); 8 Bronte (24-3) (8-2); 9 Big Sandy (19-10) (7-1); 10 Eula (21-7) (7-3); 11 Itasca (21-7) (9-0); 12 Martin's Mill (23-8) (11-0); 13 Tenaha (23-5) (11-0); 14 Bartlett (21-7) (8-0); 15 Mumford (27-3) (7-2); 16 San Antonio Stacy (20-5) (8-0); 17 Normangee (15-6) (7-1); 18 Poolville (24-4) (10-0); 19 Mt. Enterprise (17-8) (8-2); 20 Seagraves (20-8) (7-2)

Class 2A Girls: 1 Winstboro 33-1 14-0; 2 Bowie 34-2 9-0; 3 Poth 22-5 10-0; 4 Kountze 25-5 12-0; 5 Wall 30-3 9-1; 6 Shallowater 27-3 13-1; 7 Jim Ned 24-8 9-1; 8 Brock 25-8 11-1; 9 Peaster 29-2 13-1; 10 Abemathy 23-4 13-1; 11 San Saba 30-1 11-1; 12 New Waverly 22-4 14-0; 13 Godley 30-3 14-0; 14 Krum 29-6 12-2; 15 Ponder 30-5 12-2; 16 Hallettsville 25-5 11-1; 17 Hempstead 25-6 11-2; 18 Woodville 27-4 10-0; 19 Skidmore-Tynan 24-9 10-0; 20 Karnes City 26-6 8-1

Class 1A Division I Girls: 1 Canadian 24-2 8-0; 2 Thorndale 27-2 10-0; 3 Sudan 29-5 10-0; 4 Simms Bowie 27-1 8-0; 5 Wellington 28-2 8-0; 6 Lovelady 27-5 7-1; 7 Gruver 25-7 8-0; 8 Martin's Mill 26-5 12-0; 9 Nueces Canyon 25-1 9-0; 10 Goldthwaite 23-8 7-1; 11 Tahoka 25-4 9-1; 12 Smyer 28-3 9-1; 13 Cayuga 23-5 10-0; 14 Roscoe 26-4 11-1; 15 Falls City 24-4 8-0; 16 Evadale 24-3 10-0; 17 Itasca 26-4 9-0; 18 Albany 24-8 11-1; 19 Anton 24-6 9-1; 20 Lockney 27-6 9-1

Basketball Standings

(2/13/09)

District 1-2A - Girls Final		
Team	Dist.	Overall
x-Panhandle	9-1	20-11
y-Spearman	8-2	23-5
x-Bushland	6-4	12-15
River Road	5-5	15-19
Highland Park	1-9	10-21
Sanford-Fritch	1-9	5-22

District 1-2A - Boys

Team	Dist.	Overall
x-Spearman	7-1	24-3
x-Bushland	7-1	16-8
Panhandle	5-3	15-11
Highland Park	3-5	19-10
River Road	2-6	12-18
Sanford-Fritch	0-8	5-19

(2/13/09)

Dist. 1-1A, Div. 1 - Girls		
Team	Dist.	Overall
y-Gruver	8-0	24-7
x-Sunray	6-2	26-4
Stratford	3-5	9-17
Boys Ranch	3-5	11-15
West Texas	0-8	3-24

District 1-1A, Div. 1 - Boys

Team	Dist.	Overall
x-Stratford	7-0	11-3
x-Gruver	6-1	19-8
West Texas	2-5	10-16
Boys Ranch	2-5	15-8
Sunray	1-7	3-18

(2/17/09)

Dist. 1-2A - Boys		
Team	Dist.	Overall
x-Spearman	8-1	25-3
x-Bushland	8-1	17-8
x-Panhandle	6-3	16-11
Highland Park	3-6	19-11
River Road	2-7	12-19
Sanford-Fritch	0-9	5-20

District 1-1A, Div. 1 - Boys

Team	Dist.	Overall
x-Gruver	7-1	20-8
x-Stratford	7-1	11-4
x-Boys Ranch	3-5	16-8
West Texas	2-6	10-17
Sunray	1-7	3-18

Globe-News HS Basketball Rankings

(2/13/09)

Boys 3A-2A-1A - 1. Vega 26-2; **2.** Floydada 25-2; **3.** Spearman 24-3; **4.** Wheeler 21-1; **5.** Clarendon 19-4
Girls 3A-2A-1A - 1. Canadian 24-2; **2.** Wellington 28-1; **3.** Gruver 24-7; **4.** McLean 22-10; **5.** Vega 22-8

Basketball Statistics

(2/13/09)

Classes 3A-2A-1A Boys Team Offense
Team Avg.: Spearman 67.0; Kress 63.6; Childress 62.7; Stratford 56.4; Gruver 56.0; McLean 54.9; Follett 54.4; Muleshoe 52.5; Arbor Christian 48.5; Groom 43.5

Team Defense
Team Avg.: Follett 33.6; Stratford 41.1; Spearman 42.9; Gruver 42.9; Kress 46.9; Groom 49.4; Muleshoe 54.5; Arbor Christian 54.3; McLean 56.1; Childress 56.3

Individual Scoring

Player, Team Points Avg.: Ashmore, Spearman 69.9 26.9; Flemons, Childress NA 19.1; Torres, Groom 36.7 18.4; Poston, Kress 34.2 18.0; Amador, Kress 33.3 17.5; Platt, Arbor Christian 41.7 17.4; McAnear, McLean 38.2 17.4; Bohlar, McLean 33.1 16.6; Wood, Childress NA 15.3; Gallman, Muleshoe 24.6

14.5; Blau, Follett 19.4 13.9; Hernandez, Follett 21.4 13.4; Urban, Gruver 30.5 12.2; Washington, Muleshoe 21.5 11.9; Cummings, Stratford 15.8 11.3; Kaleb Horsford, Stratford 15.5 11.1; Wright, Stratford 15.5 11.1; Pushman, Arbor Christian 15.2 10.9; Owen, Kress 19.3 10.7; Case, Groom 26.3 10.5; Wills, Gruver 25.0 10.0

Individual Rebounding

Player, Team Reb. Avg.: Poston, Kress 20.9 11.0; Pushman, Arbor Christian 14.4 10.3; Washington, Muleshoe 18.2 10.1; Owen, Kress 18.1 10.1; Ashmore, Spearman 25.6 9.9; Hernandez, Follett 14.3 8.9; Hicks, Childress NA 8.9; Wills, Gruver 21.9 8.8; Franks, Follett 13.8 8.6; McAnear, McLean 17.7 8.0; Wright, Stratford 10.7 7.7; Case, Groom 18.2 7.3; Torres, Groom 13.9 7.0; Kyle Horsford, Stratford 9.3 6.7; Fairchild, Childress NA 6.7; Platt, Arbor Christian 15.3 6.4; Bohlar, McLean 12.5 6.3; Collins, Arbor Christian 10.0 6.3; Urban, Gruver 15.1 6.0

Classes 3A-2A-1A Girls Team Offense

Team Avg.: Gruver 56.6; Spearman 54.7; Wellington 53.0; San Jacinto 52.3; Follett 52.0; Dalhart 50.7; Muleshoe 50.1; Happy 48.0; Arbor Christian 44.6

Team Defense

Team Avg.: Wellington 30.2; Gruver 39.2; Spearman 39.6; San Jacinto 42.4; Arbor Christian 42.4; Happy 42.7; Follett 45.0; Dalhart 49.6; Muleshoe 46.9

Individual Scoring

Player, Team Points Avg.: Knoll, Happy 51.0 17.6; Johnson, Muleshoe 53.6 17.3; Haynes, McLean 49.9 16.6; Yanke, Gruver 46.5 15.5; Schniederjan, Dalhart 44.3 15.3; Ross, Memphis 36.8 15.3; Warrick, Wellington 44.0 15.2; Davis, Memphis 35.4 14.8; Ashmore, Spearman 41.2 14.7; Cox, San Jacinto 40.5 14.5; Vela, Gruver 43.1 14.4; Menefield, McLean 35.9 14.0; Smith, San Jacinto 42.2 13.2; Rinker, Perryton 34.6 12.4; Woods, Follett 28.4 12.3; Clark, Memphis 27.4 11.9; Lapp, Arbor Christian 30.6 11.8; Byron, McLean 8.1 11.8; Ashmore, Wellington 23.2 11.6; Pittman, Spearman 30.8 11.0; Bell, Happy 31.7 10.9; Smith, Muleshoe 33.2 10.7; Smith, San Jacinto 30.7 10.2; McNeely, Follett 22.9 10.0

Individual Rebounding

Player, Team Reb. Avg.: Warrick, Wellington 34.3 11.8; Yanke, Gruver 33.6 11.2; Ross, Memphis 26.9 11.2; Davis, Memphis 24.4 10.2; Sims, San Jacinto 26.7 8.9; Knoll, Happy 23.0 7.9; Woods, Follett 17.8 7.7; Rinker, Perryton 20.9 7.5; Steele, Dalhart 20.6 7.1; McNeely, Follett 16.4 7.1; Smith, San Jacinto 20.9 6.5; Roach, Arbor Christian 16.9 6.5; Jeffers, Dalhart 18.4 6.3; Pyle, Muleshoe 18.2 6.3; Sybesma, Dalhart 18.2 6.3; Hagler, Follett 14.5 6.3; Hanna, Spearman 16.3 6.0

Globe-News Athlete of the Week Honor Roll

(2/17/09)

Taylor Williams of Gruver scored a team-high 16 points in a District 1-1A Division I victory against West Texas and scored 10 points in a one-point district victory against Stratford. Jordan Ashmore of Spearman scored a combined 73 points in two District 1-2A wins - 32 against Panhandle and 41 points against Highland Park.

High School Basketball Playoff Pairings

(2/17/09)

Region 1-2A Girls Bistrict Spearman 43, Muleshoe 35
Sonora (22-7), bye.
Shallowater 62, Kermit 34
Floydada (19-10), bye.
Cisco 51, Nacona 50
San Saba (30-1), bye.
Wall 48, Bangs 44
Clyde (24-6), bye.
Tulita 43, Bushland 31
Abemathy (23-4), bye.
Idalou 56, Reagan County 36
Panhandle (20-11), bye.
Olney (24-8) vs. Merkel (19-13)

Tuscola Jim Ned (24-8), bye.
Ballinger 35, Early 33.
Bowie (31-2), bye.

Region 1-1A Div. I Girls Bistrict

Sunray 59, Wheeler 22
Lockney (24-7), bye
Quanah 73, New Deal 47
Canadian (24-2), bye
Sundown 38, Farwell 32
Wink (21-5), bye
Stanton 62, Van Horn 24
Smyer (27-3), bye
Claude 48, Stratford 22
Wellington (28-1), bye
Anton 65, Clarendon 50
Gruver (24-7), bye
Tahoka 57, Springlake-Earth 17
Forsan (21-8), bye
McCamey 50, Marfa 38
Sudan (28-5), bye

High School Basketball Playoff Pairings

(2/19/09)

Region 1-2A Girls Bistrict Spearman (24-5) vs. Sonora (22-7), 6:30 p.m. Friday, Monterey High School, Lubbock.
Shallowater (28-3) vs. Floydada (19-10), 6 p.m. Friday, Rip Griffin Center, Lubbock.
Cisco (24-9) vs. San Saba (30-1), 6 p.m. Friday, Coleman High School.
Wall (30-3) vs. Clyde (24-6), 8 p.m. Friday, Coleman High School.
Tulita (17-13) vs. Abemathy (23-4), 7 p.m. Friday, Littlefield High School.
Idalou (21-11) vs. Panhandle (20-11), 7:30 tonight, Plainview High School.
Olney (25-8) vs. Tuscola Jim Ned (24-8), 6:30 p.m. Friday, Eastland.
Ballinger (25-8) vs. Bowie (31-2), 5:30 p.m. Friday, Breckenridge.
Region 1-1A Div. I Girls Bistrict
Sunray (27-4) vs. Lockney (27-6), 6 p.m. Friday, First United

Bank Center, Canyon.
Quanah (24-7) vs. Canadian (24-2), 6:30 p.m. Friday, Pampa High School.
Sundown (21-9) vs. Wink (21-5), 6:30 p.m. Friday, Lamesa High School.
Stanton (16-14) vs. Smyer (27-3), 6 p.m. Friday, Denver City.
Claude (19-9) vs. Wellington (28-2), 6 p.m. Friday, Tascosa Activity Center.
Anton (25-6) vs. Gruver (25-7), 7:30 p.m. Friday, Amarillo High Activity Center.
Tahoka (26-4) vs. Forsan (21-8), 8 p.m. Friday, Andrews High School.
McCamey (23-6) vs. Sudan (28-5), 6:30 p.m. Friday, Seminole High School.

SPEARMAN ISD

(2/13/09)
Varsity Lynx
Highland Park 2 17 30 43
Spearman 19 38 48 74
HP-Bryan Ponder 13, Alex Hernandez 10, S-Jordan Ashmore 41, Brett Winegamer 9. Records: Highland Park 19-11, 3-6. Spearman 25-3, 8-1.

Varsity Lynx

(2/16/09)
Varsity Lynxettes
Spearman Lynxettes 43
Muleshoe Lady Mules 35
The Spearman Lynxettes defeated Muleshoe Lady Mules Monday night, February 16, 2009 at Canyon High School gym to take the Bi-District trophy. The Lynxettes will face Sonora Friday night at 6:30 at Lubbock Monterey High School to compete for the Area Championship.

Varsity Lynxettes

(2/17/09)
Varsity Lynx
Bushland 63
Spearman 53
Records: Bushland 18-8 overall, 9-1 in District 1-2A. Spearman 25-3, 8-1.

4, 8-2.
Top Scorers: B-Michael Matthews 14, Crockett Gillmore 12, S-Jordan Ashmore 35, Tyler Schnell 7.
What Happened: The Falcons won their ninth straight game to capture the 1-2A crown and advance into the playoffs as the No. 1 seed. While Spearman's Jordan Ashmore scored a game-high 35 points, the Lynx managed only four points in the opening quarter and trailed most of the game as they lost only their fourth game, finishing second in the district race.

GRUVER ISD

(2/13/09)
Varsity Hounds
Stratford 8 26 35 41
Gruver 12 22 31 42
S-Bryce Cummings 15, Luis Ortega 8, Kyle Horsford 8; G-Taylor Williams 10, Rily Urban 10; Records: Gruver 20-8, 7-1; Stratford 11-4, 7-1. JV: Gruver 50, Stratford 31.

Varsity Lady Hounds

(2/13/09)
Varsity Lady Hounds Girls Warmup Game
Vega 9 20 27 33
Gruver 8 20 33 50
V-Carissa Crist 10, Teysa Matthews 7; G-Mattie Yanke 18, Lynn Vela 16, Madison McLain 11. Records: Vega 22-9, Gruver 25-7.

UPCOMING GAMES

2/20 Lynxettes vs. Sonora, 6:30 p.m. at Lubbock Monterey HS (Area Championship)
2/23 Lynx vs. Dimmitt, 8 p.m. in Palo Duro Activity Center - Palo Duro HS (Bi-District)
2/19 Hounds vs. Farwell, 6 p.m. at FUBC Canyon
2/20 Hounds vs. White Deer, 6 p.m. at Amarillo High School
2/20 Lady Hounds vs. Anton, 7:30 p.m. at Amarillo HS (Area Championship)

Lady Aggies Play Well in Loss to Ranked St. Mary's

By Scott Puryear of OPSU Sports on 02-13-2009

Not a great deal was expected from the Oklahoma Panhandle State women's basketball team in San Antonio on Thursday evening as they matched up with perennial Heartland Conference powerhouse St. Mary's. The Lady Aggies entered the contest with three wins in 21 games and St. Mary's was 19-2, but a spirited OPSU effort resulted in a close game - won 60-49 by St. Mary's.

The experienced St. Mary's squad came in to the game carrying a top regional ranking as well as holding the 16th spot nationally in the USA Today/ESPN Division II Coaches Poll.

OPSU was in the game all the way and kept things very close in the first half, trailing by just seven points at the halftime break (27-20). Thanks to some good hustle, the Lady Aggies also stayed within single digits for a good part of the second half.

The game featured a great match-up between a pair of very solid players - Kariz Bioni of OPSU and St. Mary's Rachel Jones. On the night, Bioni scored 18 and Jones canned 22.

Nicole Candelaria also had a nice game for the Lady Aggies with ten points and five rebounds. Lauren Cherry also had five boards while Bioni and Natasha Normand each pulled down four. Cherry had three steals and Bioni had a team high four assists.

With their win, St. Mary's (a team that should do well in the NCAA tournament) raised their record to 20-2 on the season and a perfect 9-0 in league play.

The Lady Aggies (3-19, 1-8) will stay in Texas and head to Austin for a 2:00 p.m. Saturday afternoon game with another Heartland Conference rival - St. Edward's. Fans can catch all the action via an internet broadcast - log on to www.opsu.edu and click on Athletics to find the link.

St. Edward's Tops Lady Aggies, 79-65

By Scott Puryear of OPSU Sports on 02-16-2009

The Oklahoma Panhandle State women's basketball team matched up with Heartland Conference rival St. Edward's in Austin, Texas on Saturday afternoon. After a close first half, St. Edward's pulled away in the second half for a 79-65 win.

The Lady Aggies led by as many as nine points three times in the opening half, and though OPSU fought hard all the way, St. Edward's rallied to take 34-32 lead at the halftime break.

In the second half, St. Edward's shot a blistering 62% from the field to seal their win. With the victory, St. Edward's evened their season record at 12-12 (6-5 in conference play). They were led by Sara Head's 16 points and eight rebounds.

Kariz Bioni led the way for the Lady Aggies with 13 points, Sarah Sweatt scored a dozen, and Halee Edwards and Nicole Candelaria scored 11 and ten, respectively. Bioni's five rebounds and five assists were both team highs, and Lauren Cherry had three steals.

The Lady Aggie conference record is now 1-9 (3-20 on the season). They will see action in a pair of road games in the coming week - on Thursday evening against Newman University (Wichita, Kansas) and against Lincoln University on Saturday afternoon in Jefferson City, Missouri.

Non Insured Crop Disaster Assistance Program Requirements

Producers May Apply for Crops Not Covered by Federal Crop Insurance
Rick Hargrove, Executive Director of USDA's Farm Service Agency (FSA) in Hansford County reminds agricultural producers of the need for insurance coverage for crops in order to be eligible for the agency's Disaster Assistance Programs. Application closing dates for coverage in Hansford County is March 15th for the following crops: NI Corn, NI Cotton, NI or IRR Forage or Grazing or NI or IRR Sorghum Forage for grazing or forage.

Producers must purchase at least catastrophic (CAT) level of insurance for all insurable crops and/or FSA's Noninsured Crop Assistance Program (NAP) coverage for noninsurable crops to be eligible for the USDA Farm Service Agency Disaster Assistance Programs.
"Crop insurance is an important risk management tool for farmers, but it's not available for all crops. That's why NAP is so important," said Hargrove.
NAP is a federally funded program that provides coverage to producers for non-insurable crops when low yields, loss of inventory or prevented planting occurs due to natural disasters.
Crops eligible for NAP coverage are those for which crop insurance is not available, including but not limited to fruits and vegetables, aquaculture, pecans, turf grass and forage crops. However, crops that FCIC deems

Thank you!

I would like to take this time and give a very special thank you to the members of the Union and Methodist Church members who helped put a roof on for my family. Another thank you goes out to Ronnie Williams @ Bartlett's Lumber who donated the lumber. We greatly appreciate all the hard work and generosity they showed us. We are so grateful to have such wonderful people in this community. Thanks again!
Xavier & Patsy Barrera and family

Thank you!

Thanks to the people from Hospice who stayed with Fern, brought food daily during her stay at hospice and after, making sure that her family didn't want for anything. To all the people who provided her family with food, paper goods, sent flowers, made donations in her memory, to all who visited the family at the hospital and at home. Fern's co-workers at DCP for their kindness shown to us. We will always treasure the goodness of each and every person at Hospice for the kindness and goodness shown us. Thanks so much and God bless everyone.
Bill, Trey, Kylee, Kelsea, Kegan and Fern's brothers and families

Serenity Massage
High Plains Shopping Mall
511 Hwy. 207
Spearman (next door to Jeffrey's Steaks)
806-659-5679
806-341-8941

Certified in deep tissue, sports, therapeutic, relaxation, prenatal, postpartum and infant massage.

Hours by appointment
Monday-Friday

Hotline for Priority Seating - 435-3945

MONEY'S

BBQ & STEAK HOUSE

We Are THPLC-2-B...

14 SE 3rd Ave.
Perryton, TX

Stan and Donna Zepp

Under New Ownership
Same Great Service & Menu!

Palace Theatre

MOVIE SHOW TIMES
Friday-Thursday - 7 p.m.
Sunday - 2 p.m.
Closed Sunday Night

FRESH POPCORN & DRINKS!
PARTY ROOM & ARCADE
MOVIE RENTALS

Palace Theatre
210 Main Street
Canadian TX 79014
806-323-5133
www.palacetheatre.com

The Palace Theatre meets
Lucasfilm THX specifications for
site and sound quality.

REAL ESTATE

FOR SALE: Trailer house in Morse with lot. 2BR, 1B. For more information call 806-733-2227 or 806-736-0566 or 806-736-0567. TFN(1-22-09)B

HELP WANTED

HELP WANTED: Gigot Agra Products, Valley Center Pivot Dealer, is seeking additional service technicians at our Spearman location. Experience desired, but not required. Benefit package is available. Send resume to PO Box 1413, Guymon OK 73942, or call 580-338-2536 or 806-659-3121. TFN(9-18-09)B

HELP WANTED: First State Bank, Spearman, has full time positions open for a Teller. Applicant must have a high school diploma or equivalent, typing and some ten-key skills required, customer relation and telephone skills are very important. Computer skills in word-processing and spreadsheets is helpful but not required. Benefit program includes group hospitalization insurance, 401K, vacation pay, sick leave pay and holiday pay. Apply with Ginger Turner at First State Bank, PO Box 247, Spearman, Tx. 79081, telephone #806-659-5565. An Equal Opportunity Employer. TFN(1-15-09)

HELP WANTED: First State Bank is now taking applications for a full time building and yard maintenance person. Applicant should be self-motivated, have mechanical skills and be in good health and physical condition. A strong work ethic is a must. Benefit program includes group hospitalization insurance, 401K, paid vacation and a sick leave program. Contact Ginger Turner, 659-5565. An Equal Opportunity Employer.



**We're out of houses!
We NEED listings!**
Call us now
to help YOU sell
your home for top dollar!

Shirley Howard, Broker/Owner
806-886-6536, Cell
Melinda McCullough, Realtor
(806) 733-5678

**We would LOVE to sell
your HOUSE!**
CALL US!

HANSFORD CO - 2 1/2 miles from town, on pvt. 640 acres, choice land, 1/2 mile sprinkler, excellent location for dairy.
LIPSCOMB CO - 640 ac., strong water area, sprinklers & ir. wells, with some improved pasture, barns and pens.
POTTER CO, TX - 4872.8 acres of beautiful ranch country four miles north of loop 335, Amarillo, TX. pvt. on four sides (3 mi. - hwy 287, 1 mi. - Western St., 1 mi. - Givens Rd., 1 mi. - Rivera Park Rd.) Well watered by pumps powered by solar energy (state of the art) and windmills. Deer, quail & dove. Talk to us about dividing (640 ac. min.).

JUST LISTED! Texas Panhandle - 177 acres with extraordinary 5404 sq. ft. +/- home overlooking the property with beautiful views of live creek, trees, wildlife (deer, quail & turkey), covered horse training facilities, stables, excellent cattle working facilities and pens, employee housing.
OCHILTREE CO - Choice dairy location, strong water area, three phase electricity, 776.5 acres more or less of choice land (Pullman Clay Loam - almost all "A" slope) with two pivot points for sprinklers, two irrigation wells, preconditioning pens with indoor working area, grain, hay and fuel storage.
TEXAS COUNTY, OK - 560 acre irrigated stock farm, wind energy lease.
OCEANS OF WATER II - Hansford Co., Texas - 4 sections, strong water, dev. with sprinklers, wells, feedyard, home, barns, pvt., 2 mi. hwy. frontage.
SEE OUR WEBSITE OR GIVE US A CALL!
www.scottlandcompany.com
Shawn Gillispie 806-922-5532
Ben G. Scott, Broker
1-800-933-9698 day/eve
TFN(1-29-09)

TFN(1-15-09)

FOR SALE

FOR SALE: Corriente Ropers - 7 big horned fresh native steers, 7 Corriente pairs, 2 Longhorn pairs, 1 Corriente Bull. Call (806) 435-0312. 2(2-12-09)B

SERVICES

HOOCHY POOCHY PARLOR Call us for all your pet's grooming and boarding needs. Call now for reservations! 806-273-2724. TFN(11-2-07)

FIREWOOD: Seasoned oak firewood for sale. \$140 a rick, delivered. Call Steve at 620-515-0873 or 580-256-4546. TFN(2-4-09)

FIREWOOD: Good mix firewood. \$165 a rick, delivered. Call (806) 435-8862. 2(2-12-09)B

PUBLIC NOTICE

PUBLIC NOTICE
The Texas Department of Transportation will host an Informational Meeting on March 5, 2009 concerning the planning of future projects.

This informational meeting is held to explain how the department plans transportation projects. We would like to receive the public's input regarding the current Transportation Improvement Plan for the district.

The meeting will be Thursday, March 5, 2009 at 6:00 p.m. It will be located at the Borger Chamber of Commerce, 613 Main Street, Borger Texas.

The meeting will cover transportation plans for all areas of the Panhandle and the city of Amarillo. An overall view of the planning process will be presented, as well as the criteria used for selecting individual projects. Draft versions of current transportation plans will be presented at the meeting for public

comment.
The public is invited to speak regarding projects currently planned or any additional projects that might be proposed. Speakers will be limited to five minutes. Verbal and written comments from the public regarding any project may be submitted at the meeting. Written statements and other exhibits may be submitted to the District Office at 5715 Canyon Drive (P.O. Box 7368) Amarillo, Texas 79114-7368. Comments must be received no later than March 15, 2009.

All interested citizens are invited to attend this public meeting. Persons interested in attending the meeting whom have special communication or accommodation needs are encouraged to contact Cheryl Luther at 806.356.3249. Requests should be made no later than two days prior to the public meeting. TxDOT will make every reasonable effort to accommodate these needs.
2(2-5-09 & 2-24-09)B

LEGAL NOTICE

Spearman I.S.D. is accepting sealed bids for underground irrigation systems in five areas around our schools. The bid is to provide for labor, material, and equipment to install underground irrigation systems at the following locations: (1) east side of Junior High School Playground; (2) west end of Elementary Playground (around playground equipment); (3) east side of Elementary Playground; (4) area around new science labs at High School; (5) football practice field east of Lynx Stadium. You are asked to bid each project separately. Project shall comply with all State Laws and City Ordinances regarding underground irrigation

See us for:
AUTO • HOME • CROP HAIL • FARM & RANCH • MULTIPERIL • LIVESTOCK

INSURANCE



BORT AGENCY, INC.
510 Main St. • Gruver, TX
(806) 733-2456

Blankenship Real Estate
659-3052 - 670-3774

3BR/1B Home (Spearman) - 2 living areas, fenced backyard, storage, close to school and hospital!

NEW LISTINGS WANTED!
Eulalia Blankenship - Sales
Eschol Blankenship - Broker

MITCHELL THEATRES
NORTHDRIDGE CINEMAS
Guymon, Oklahoma


FRESH POPCORN EVERYDAY!
-PARTY ROOM & ARCADE-

Call for Showtimes
580-338-3281
www.northridge8.com

systems. Include with bid the length of any warranty for the project (work and equipment installed).
All sealed bids are due by noon on Friday, February 27, 2009. Send bids to Attn: Larry Murphy, Spearman I.S.D., 403 East 11th Avenue, Spearman, Texas, 79081. Successful bidders must furnish certificates of insurance showing coverage of General Liability, Workers' Compensation and Commercial Automobile Liability and Umbrella Liability in amounts acceptable by Spearman I.S.D. before commencing work. Spearman I.S.D. reserves the right to accept or reject any or all bids or parts of bids, and to waive any formalities and technicalities.
2(2-12-09)B

FOR	CE	LAC	PEAL
OBELI	ASH	SUDRA	
NODAL	SKI	URGER	
DESSERT	LIP	READ	
PEAL	LISP		
CAT	NISI	MEMBER	
HERO	DEBT	REAVE	
ISIS	SCRUB	ASEA	
NOLLE	TAPA	LEND	
APLOMB	RISC	STY	
	BUOY	SOB	
TVTRAYS	GOURMET		
REOIL	ION	REEVE	
IDIOM	EVA	SAREE	
MALT	RAT	EMEND	

5	7	1	6	3	9	4	8	2
3	8	4	7	5	2	1	9	6
2	9	6	1	8	4	7	5	3
7	5	9	2	6	1	8	3	4
1	3	8	5	4	7	2	6	9
4	6	2	8	9	3	5	7	1
6	2	7	9	1	5	3	4	8
8	1	3	4	7	6	9	2	5
9	4	5	3	2	8	6	1	7



This is an excellent opportunity for qualified individuals interested in:

- Team environment
- Working toward career advancement
- Competitive salary
- Incentive program
- Benefits package

As a Scale Operator, you will:

- Be responsible for operating the scale in an accurate, efficient manner with superior customer service.
- Weigh and grade inbound and outbound grain
- Provide a high level of customer service by displaying courteous, helpful, knowledgeable interaction and behaviors.
- Balancing Account payable statements
- Running miscellaneous daily reports- Be an involved/engaged member of a team and be willing to act and think independently.

Qualifications
Requirements

- Ability to problem solve and make decision as needed
- Demonstrated self starter and high initiative
- Strong customer service orientation
- Ability to work effectively in a team environment
- Good Attendance Record & Work Ethics
- Basic computer skills
- Ability to work some long irregular hours (weekends and holidays included)
- Right to work in the U.S. that is not based solely on possession of a student visa or a visa sponsored by a third-party employer.

Assets

- Ability to learn and explore depths of career (Passion/Curious)
- Strong Communication, reading, writing & Math Skills - Grain Grading knowledge

Equal Opportunity Employer

Apply at Cargill, Inc., Hwy 15 West, Spearman or online at [HYPERLINK "http://www.ichoosecargill.com"](http://www.ichoosecargill.com)
www.ichoosecargill.com
P.O. Box 265 Spearman, TX 79081 806-659-3554

Happy Hour Special



3 LARGE PIZZAS
Single Topping PIZZAS
\$19.99

Mon.-Thurs. - 11:30 a.m.-9 p.m.
Fri. - 11:30 a.m.-10:30 p.m.
Sat. - 12 noon - 10:30 p.m.
Sun. - 12 noon - 9 p.m.

312 Main Street • Spearman, TX
(806) 659-9991

Suzee Walks!



Celebrate Suzee Walking



LARGE BABY SALE
25% - 75% off all baby items
(Sale Starts Saturday, February 21)

Gordon's DRUG
314 Main • Spearman • 659-2141



Three Falls COVE

From Sanford, take Hwy. 159 across the Lake Meredith Dam. About 1/2 mile after crossing the dam, turn left on Hwy. 3395. Go 2 miles until you see a pond surrounded by beautiful cottonwood trees.
For map, go to www.threefallscove.com



Shopping items and Gift Certificates available.

Kirk and Rebecca Weatherford
325 FM 3395
Sanford TX 79078
806-876-2366

by Dorothy Hudson

Out at the Lake



Jim Derington
Palo Duro River Authority
P.O. Box 99
Spearman, TX 79081
806-882-4401
pdra@dishmail.net



This picture was taken February 9th. I backed out of the driveway, and stopped to take this picture. The moon was going down, with the wind generators in sight. It was beautiful!

Lake Level--February 16, 2009-20.89 feet (-0.19)

There was little activity at the Lake last week. Although a few people fished, there were no reports of catches.

The water fowl have mostly disappeared, but 4 eagles were counted. Jim mentioned seeing some red-shafted

Northern Flickers. These distinctive woodpeckers are often seen feeding on the ground. When they are flying, a bright, white rump

patch identifies them quickly.

Sunday afternoon Jim tackled an unpleasant job of cleaning off the Lake Level Gauge. Algae collects on it and makes it difficult to read from above with a scope. He donned his chest waders and made it down the rocky slope into the Lake. The bountiful weeds both on the slope and in the water made walking difficult. Added tumbleweeds made it even harder. He thinks the next time he will try to figure a better way to do the dirty job.

More Buffalo Hunter Stories
From an interview with buffalo hunter J. Wright Moorar by J. Everts Haley in 1927 we learn about his team's encounter with the Comancheros.

"In October [1873] we set out, striking the Canadian about eighteen miles above the old Adobe Walls. There we ran into some

Mexican outfits that were running a contraband trade with the Indians. They were afraid we would break into this. There were twelve or thirteen of us in our party and we had trouble with them. We had two or three set-to's with them and killed a number. Twenty-five of them came into our camp one day to kill us, but they got it pretty bad. On that account we pulled back to the headwaters of the North Palo Duro Creek and camped about where Jimmy Cator lived. There we camped all winter."

In the interview he tells of the Wheeler and Lane outfit that came down and camped about seven miles west of them. Next week I will write of the encounter that Wheeler had with a party of Comanches.

Hansford County Well Served by the Ronald McDonald House in Amarillo



Picture are Karen Thompson (right) introducing Jan Reid (left), Director of the Ronald McDonald House in Amarillo.

The Ronald McDonald House has served over 200 families from Hansford County during the past 25 years. Karen Thompson, Program Chairman for the Hansford Hospice Volunteers, introduced Jan Reid, director of the Ronald McDonald House, to the Hansford Hospice Volunteers at their program on February 9th. The Ronald McDonald House serves children and their families by providing a temporary "home away from home" for those who travel to Amarillo for medical services. Mrs. Reid stated that 154 families from Spearman and 46 families from Gruver had stayed in the Ronald McDonald House over the years since records have been kept. This year is the 25th anniversary for the Amarillo Ronald McDonald house. Anyone interested in knowing more about the Ronald McDonald House or wanting to make a donation or a memorial can call 806-358-8177.

USDA Extends Comment Period for Regulation on Payment Limitations and Payment Eligibility

Rick Hargrove, Executive Director for the USDA's Farm Service Agency (FSA) in Hansford County announced today that following Agriculture Secretary Tom Vilsack's announcement that the comment period for the regulation defining actively engaged participation in a farming operation has been extended for an additional 60 days, FSA is seeking a diverse range of comments from different areas of the United States and farming communities.

With this extension, the public may continue to submit comments until April 6, 2009. The extension document is available at <http://www.fsa.usda.gov/FSA/federalNotices?are=home&subject=lare&topic=frd-ii>.

The regulation, published Dec. 29, 2008, invited comments on the interim rule for implementation of key eligibility requirements for many FSA and Natural Resources Conservation Service (NRCS) programs. The regulations were revised as mandated by the Food, Conservation, and Energy Act of 2008 (2008 Farm Bill) to make changes in payment eligibility, payment attribution, maximum

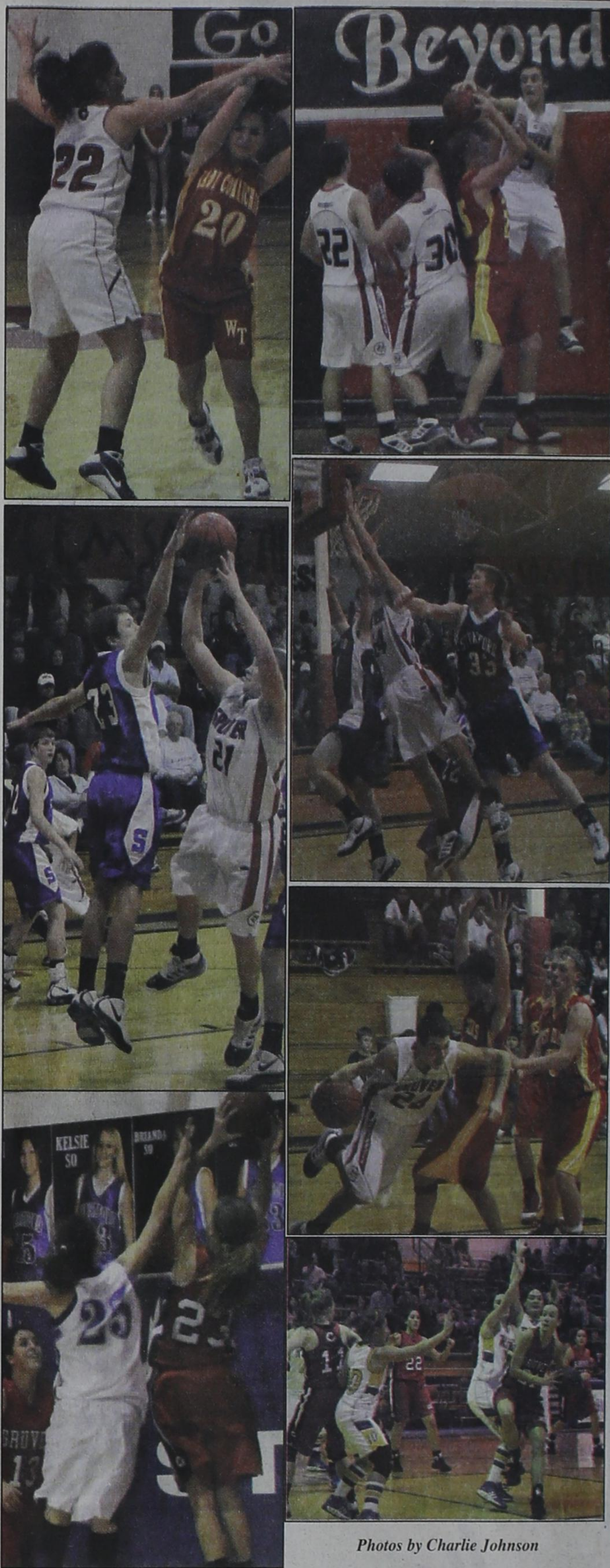
income limits and maximum dollar benefit amounts for participants in CCC-funded programs. In addition, certain provisions were incorporated that are discretionary.

The actively engaged provision requires that individuals and entities must be "actively engaged in farming" with respect to a farming operation in order to be eligible for specified payments and benefits. To be "actively engaged in farming," the individual or entity must make significant contributions to the farming operation of (1) capital, equipment, land, or a combination; and (2) personal labor or active personal management, or a combination.

Under rules in effect since 1988, not every member of an entity is required to contribute active personal labor or management. The interim rule requires each partner, stockholder, or member with an ownership interest to make a contribution of active personal labor or active personal management. The contribution must be regular and substantial, and documented as well as separate and distinct from any other member's contribution. The rule limits the ability of passive stock-

holders to continue to realize benefits from the entity.

The substantive rule changes make the requirement for adding new persons to a farming operation more restrictive. The addition of a person to an existing farming operation can be met through an increase of 20 percent of base acres to the operation; previously the requirement was an increase of 20 percent in cropland.



Photos by Charlie Johnson



Since 2000, almost \$50,000 of scholarships have been invested in the youth of the North Plains Electric Cooperative service area.

Past local recipients include:

2004	Jenny Hart	Gruver	2005	Monica Cantu	Spearman
2005	Brittanie Osbourne	Gruver	2005	Macy Christine Harbour	Spearman
2006 & 2007	Timber Barkley	Gruver	2006	Tonya Hart	Spearman
2002	Clara Shieldknight	Spearman	2006	Maribel A. Moreno	Spearman
2003	Monica Cantu	Spearman	2007 & 2008	Emily Hood	Spearman
2004	Katie Clyburn	Spearman	2008	Dane Harbour	Spearman
2004	Claudia Vaquera	Spearman			

Is it your turn? Visit www.npec.org for details or contact Bill Carson (806) 435-5482 or (800) 272-5482

WHEN DOES YOUR SUBSCRIPTION EXPIRE?

SCR1
02/09 EXPIRES
JOHN Q. PUBLIC
PO BOX 123
SPEARMAN TX 79081

Expiration dates are printed on the top of all mailing labels. Our readers can help keep the cost of subscriptions down by mailing in renewals in the appropriate month.

Thank you, Catherine Smith

THE HANSFORD COUNTY REPORTER-STATESMAN
213 Main Street • Spearman, TX 79081
Annual Subscription Rates
In Hansford County - \$30
Out of County - \$40