

## Inside

At the Movies	2	A "Center" Piece	5
Lunch Menus	2	Museum Musings	5
Among the Neighbors	6	For the Sport of It	12
Out at the Lake	5	Classifieds	13

## Basketball Schedules

Pages 10&11

## WEATHER FOR WEEK OF 11-10 THRU 11-16

Day	Hi	Lo	Precip	Day	Hi	Lo	Precip
Thu	60	29	.00	Mon	51	33	.00
Fri	71	38	.00	Tue	54	26	.00
Sat	56	45	.05	Wed	--	29	.00
Sun	59	38	.00	Total Precipitation			18.9

HANSFORD COUNTY LIBRARY  
0120 MAIN ST.  
SPEARMAN, TX 79081  
EXPIRES 04/01/1995 THANK YOU

## The Hansford County

# Reporter-Statesman

Serving Hansford County Since 1907

Volume 86 • Issue 56

213 Main • Spearman, Texas 79081

Thursday • November 17, 1994

## Freak accident takes life of Floydada man

A 24-year old man was killed Thursday, November 10th near Gruver while taking a nap in a field. He was accidentally run over by a co-worker driving a truck, according to Hansford County officials.

Hansford County Sheriff R.L. McFarlin said Michael Gonzalez of Floydada died at 1 p.m. Thursday at Hansford County Hospital from a head injury he suffered in the accident.

Kevin Moll, 26, of Elk City, Oklahoma, was also injured in the accident. Moll suffered a broken arm. He was treated and released from the Hansford County Hospital.

According to McFarlin, the two men, both employees of Lockhart Geophysical out of Denver, Colorado, surveying seven-tenths of a mile west of Gruver, were napping in a field of Conservation Reserve Program (CRP) grass during a noon break. The grass was said to be about 3-to-4 feet tall by authorities investigating the accident.

Christopher Trujillo of Pueblo, Colorado, another member of the

crew, was driving south-bound through the field in a 1991 Ford one-ton pickup. He did not see the two men lying in the tall grass and accidentally ran over them.

Moll was unable to tell authorities what had happened to him or to his friend.

"The man at the hospital that was injured said they were lying down taking a nap like they usually did," said Michelle Davis, Hansford County Justice of the Peace. "He said he just woke up and his arm was hurting, and he realized that his arm was broken, and he couldn't wake up his friend," according to publication in the Amarillo Daily News.

Gonzalez was married to Leticia Jasso and had two sons, Jose Manuel and Efrén Gerardo.

Services for Gonzalez was held Sunday, November 13, 1994 at 2 p.m. in Templo Getsemanía Assembly of God with Rev. Thomas G. Lopez of the church officiating. Burial was in Floydada Cemetery by Moore-Rose-White Funeral Home.



**VETERAN'S DAY ACTIVITIES** - Spearman's varsity gymnasium was filled from wall to wall as area residents and students gathered to pay tribute to the many men and women who served in the U.S. Armed Forces. The Veteran's Day celebration also called on all present persons who had served to set forward and be recognized. In the photo (from left) Rev. James Brown, James Myers (special speaker), Sisd Superintendent Willard Murrey, and SJHS Principal Larry Morris look on as members of the Boy Scout Troop #551 fold the U.S. flag ending the ceremonies. (Photo by Chad Davis)

## Suspects arrested in robberies of local businesses

Joint efforts of many law enforcement offices led to the arrest of three suspects involved in the burglaries of five Spearman businesses November 3rd.

The suspects, Rex Michael Allen, 20; Jerry Allen Stewart, 19, both of Woodward, Oklahoma, and Timothy Edward Ivan Gray, 19, of Fort Supply, Oklahoma, are being held on charges of burglary in Dodge City, Kansas. They were arrested in Bucklin, Kansas, by the Ford County Sheriff's Department after committing burglaries in Bucklin.

The suspects were questioned about the burglaries committed in Spearman, Miami, Pampa, and a number of other cities in Oklahoma and Kansas. They gave statements to Morgan Wilkenson, Oklahoma Bureau of Investigation agent, and Marvin Goodwin, detective of the Woodward Police Department, giving the officers enough evidence to get search warrants to search addresses in the city of Woodward, Woodward County, and Fort Supply, Oklahoma. The searches turned up items taken in all the robberies.

Due to a report that was sent over the teletype by Spearman Police Officer Paul Ortega, the Spearman Police department was contacted about the items recovered.

Officer Paul Ortega, and Deputy Dennis Cline, Hansford County Sheriff's Department, went to Woodward and identified items taken in the burglaries in Spearman. The items that were identified were taken from Celebrate. The money taken from the Spearman businesses was not recovered.

The arrests of the suspects were due to combined efforts of the Spearman Police Department, the Hansford County Sheriff's Department, the Oklahoma Bureau of Investigation, and other law enforcement officers in a four-county task force.

## PDRA considers bids on trees

The Palo Duro River Authority conducted its regular session meeting Tuesday, November 8 at 2 p.m. The meeting was in the Palo Duro Authority board room, 11 miles north of Spearman on the south side of the lake.

The meeting was called to order. The minutes and treasurer's report were read and approved. Monthly bills were considered and paid.

A presentation was given by Alice Peddy, Chief Appraiser of the Hansford County Appraisal District. She explained the purpose and function of the appraisal.

A review of the insurance coverage was tabled until a later date.

The board considered bids for Small Business Administration trees to be planted in the park area. A bid of \$2,395 was presented by Kirk Weatherford of Dumas. It was accepted.

## Hansford Happenings

### Meals-On-Wheels Service

To sign up for Meals-On-Wheels Service or to receive information, call Ernestina Salgado at 659-2535, ext. 226 between 8 a.m. and 5 p.m.

### November Pack Meeting

The November Cub Scout Pack #578 meeting will be November 22 from 7 to 8:30 p.m. in the O'Loughlin Center.

### Methodist Community Thanksgiving

The Methodist Chancel Choir will have its community Thanksgiving dinner on Nov. 17 from 11:30 a.m. to 1:30 p.m. Tickets are \$5.50 and is free for children ages 6 and under.

### Conservation District Tree Sales

The Hansford Soil & Water Conservation District now has order forms for windbreak and landscaping trees. The District is again offering bare rooted and potted evergreen trees. Sign-up time is now and until March 15, 1995. Anyone interested, may come by the office at 909 W. 9th, Spearman.

### Pringle-Morse School Activities

Thursday, November 17--Thanksgiving Lunch.  
Monday, November 21--PTA meeting, Program: "Stranger Danger" 7:00 p.m.  
Monday, November 28--Book Fair.

### Quilt Raffle

Twelve Days of Christmas quilt raffle tickets are available. \$2 each or 3 for \$5. Call 659-3866 or any Senior Citizen member.

### What is Self-esteem?

What is self-esteem and why is it important? "Polishing the Mirror of Self-Esteem," a thirty minute video will be shown at the PTA meeting, November 21, at the Spearman High School Auditorium at 7:00 p.m. The public is invited to attend.

### Tree Lighting Ceremony

Hansford Hospice will hold its Tree Lighting Ceremony December 5 at 6:00 p.m. Please come by Hansford Hospital for fellowship, Wassall, and to remember former Hospice patients and families.

### Bake-Sale

The Catholic Church Women's Guild will hold a bake-sale on November 23 from 8:00 a.m. to ? in Lowe's Marketplace.

### Spearman Elementary School Open House

The Spearman Elementary School will hold its Open House on Nov. 17 from 6:30 to 7:30 p.m. It is open to the public and parents are encouraged to attend.

### "Is It Alzheimer's?"

"Is It Alzheimer's? 10 Warning Signs of Alzheimer's Disease" a program by Sheila West, Executive Director of Panhandle Chapter of Alzheimer's Association, will be held on November 30 at 7 p.m. at the O'Loughlin Center sponsored by Hansford County Hospital District.

### Community Thanksgiving Service

The Gruver Ministerial Alliance will have its Community Thanksgiving Service on Sunday, November 20 at 7:00 p.m. at the First Christian Church of Gruver.

## Spearman man in satisfactory condition after surviving gun shot

Robledo Lombardo, 31, of Spearman suffered a gunshot wound Friday, November 11 about 9 p.m.

Lombardo was playing around with a loaded gun while under the influence of alcohol and shot himself, according to Terry Bouchard, Ochiltree County Sheriff's Department.

The bullet went in just below

the sternum and above the diaphragm in a slightly downward path, damaging a kidney and a section of his intestine, according to Ochiltree County police release.

Lombardo was transported by ambulance from Perryton Feeders, 15 miles south of Perryton to Hansford County Hospital in Spearman. He was then air-lifted by

MediVac helicopter to Northwest Texas Hospital in Amarillo where he underwent surgery to repair his kidney and remove part of his intestine.

Lombardo is reported to be in satisfactory condition at Northwest Texas Hospital. The accident is still under investigation by the Ochiltree County Sheriff's Department.

## Local PD kept busy over weekend

The Spearman Police Department was kept busy over the weekend with traffic accidents and thefts.

Sometime between 10 p.m. Friday, November 11, and 9 a.m. Saturday, November 12, someone stole a battery out of an automobile in the 600 block of Bernice. The theft is under investigation by the Spearman Police Department.

The Spearman Police were dispatched to D. Avenue and N. James at 12:15 a.m. Saturday due to a traffic accident. Nota Marie Leicht, 35, of Spearman, ran her 1986 silver Chrysler Fifth Avenue into the back of a 1991 tan Ford pickup driven by Efrén Solis, also of Spear-

man. Leicht was arrested for DWI. Her bond was set at \$1,000 by Justice of the Peace Michelle Davis.

At 1:44 p.m. a traffic accident occurred at the Police Department, 10 W. 1st, when a 1993 Dodge pickup owned by Vance Snider and driven by Buelah Helton Snider of Spearman, struck a legally-parked 1984 blue Chevy Impala, owned by the City of Spearman, while backing out of a parking place at the Police Department. A citation was issued to Buelah Snider for unsafe backing.

A theft was committed in the 100 block of S. Hazelwood around 4 p.m. Saturday. A Nintendo game

cartridge was taken. This incident is under investigation.

A traffic accident occurred at 4:20 p.m. Saturday in the 500 block of E. 2nd street. Renee Taylor of Spearman left her 1982 Ford van unattended and running with her child in it. The child put the van in gear it traveled across the street and struck a 1989 red and white Dodge pickup owned by Miguel Guierrez, of Spearman. A traffic citation was issued to Taylor.

A hit-and-run accident occurred Sunday, November 13, in the 600 block of 7th street. A vehicle,

See PD, page 5

## GISD outs smoking on its facilities

The Gruver Independent School Board met in regular session Tuesday November 9, to discuss several issues and upcoming events that will be and have been affecting the Gruver schools.

The first of these issues was an audit, which was presented by J. Mack Hoel, and accepted by the Board. Mr. Hoel is the auditor for the district, and in his report, he dealt with the audit for the 1993-94 school year.

Secondly, the board dealt with the issue of the local leave policy. Due to a request by the Gruver Classroom Teacher's Association, and after much debate, the Board decided to make no changes in the policy. The policy allows employees two days of leave in addition to the employee's state leave already in effect.

One of the issues of greatest impact the Board discussed was that of the smoking and weapon

policy. The board voted to prohibit smoking inside all educational facilities within the district. This policy change will affect smoking in the gym as well as the other campuses' buildings. Also, a policy calling for automatic expulsion of any student bringing a weapon to a campus facility was adopted.

The Board also dealt with substitute teacher pay. A substitute, for long term of more than 10 con-

See SMOKING, page 2

## School Menu

### Spearman School Lunch Menu

**Monday, November 21**  
Beef soft burrito: flour tortilla, seasoned ground beef, shredded cheddar cheese, refried pinto beans, shredded lettuce, diced tomato, Spanish rice, pineapple tidbits, and milk.

**Tuesday, November 22**  
Roast beef, whipped potatoes, brown gravy, green beans, sliced steamed carrots, bread slice, raisin cup, and milk.

**Wednesday, November 23**  
No school

**Thursday, November 24**  
No school

**Friday, November 25**  
No School

**SISD Breakfast**  
**Monday** - Two waffles, fruit juice, and milk.

**Tuesday** - Cereal, toast, fruit juice, and milk.

**Wednesday** - No school

**Thursday** - No school

**Friday** - No school

**Gruver School Lunch Menu**  
**Monday, November 21**  
"Contest Winner Menu", turkey sandwich, lettuce, two cheese sticks, two carrot sticks, two celery sticks, orange, frozen yogurt, and milk.

**Tuesday, November 22**  
Corn dog, french fries, fruit, and milk.

**Wednesday, November 23**  
No school

**Thursday, November 24**  
No school

**Friday, November 25**  
No school

**GISD Breakfast**  
**Monday** - Cereal, donut holes, juice, and milk.

**Tuesday** - Cereal, two muffins, juice, and milk.

**Wednesday** - No school

**Thursday** - No school

**Friday** - No school

**Pringle-Morse School Lunch Menu**  
**Monday, November 21**  
Burrito, chili, salad, fruit, cookie, and milk.

**Tuesday, November 22**  
Hamburgers, lettuce, ect., french fries, fruit, milk.

**Wednesday, November 23**  
Cheese nachos, pinto beans, cornbread, salad, fruit, and milk.

**Thursday, November 24**  
No school

**Friday, November 25**  
No school

**PMISD Breakfast**  
**Monday** - Cheese toast, toast, juice, and milk.

**Tuesday** - Cinnamon toast, oatmeal, juice, and milk.

**Wednesday** - Sausage, pancakes, juice, and milk.

**Thursday** - No school

**Friday** - No school

## Smoking

CONTINUED FROM PAGE 1

secutive days will receive \$50 per day if they have a college degree and \$60 per day if they have teachers' certification in the area in which they are substituting.

Last, the Board recognized the GHS band's accomplishments this fall. Those members being recognized were: Rosalio Arreola, Juan Arreola, Manuel Morales, Carmen Moreno and director Mr. Todd Parker.



**SHS PRINCIPAL**- Thanks to the encouragement by Spearman High School Principal Sam Atwood, the students of Spearman High were honored by the Texas Education Agency (TEA) for exemplary scores on their college entrance exams. (Photo by Chad Davis)

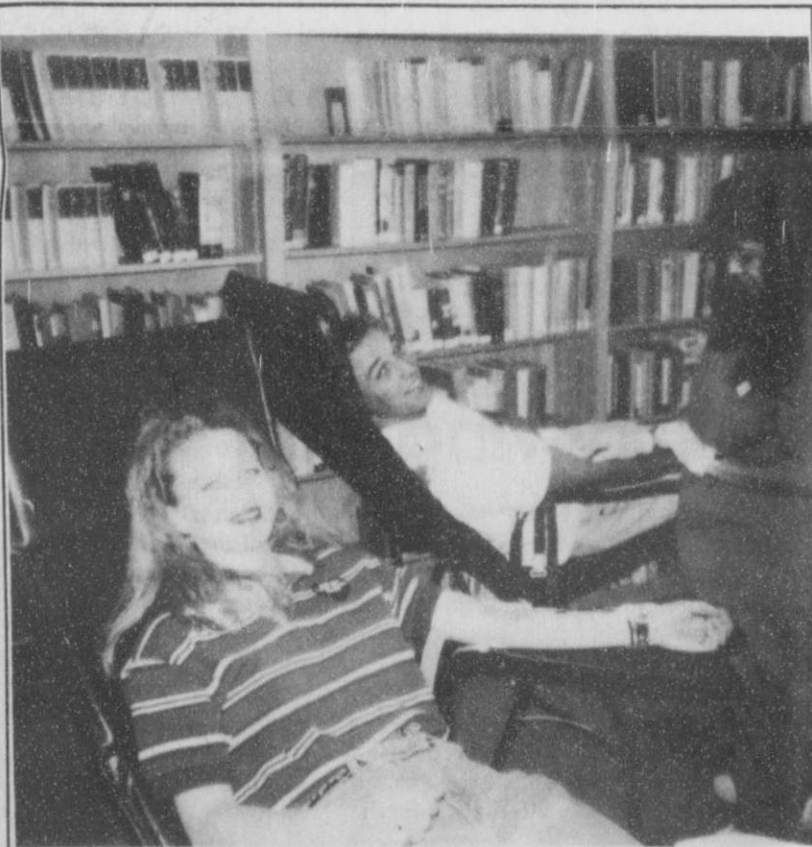
## SHS recognized for Exemplary Scores

Spearman High School has received notice from the Texas Education Agency that they have been recognized for Exemplary Scores made by last year's seniors on their college entrance exams. This is one of several criteria that TEA uses in evaluating public schools across the state. This system categorizes schools and ranks them using the Academic Excellence Indicator System. An exemplary recognition is the highest level of achievement that TEA acknowledges.

In order to receive an Exemplary Recognition, at least 70% of the graduating seniors must take a college entrance exam, and of those, 35% must score a minimum of 1000

on the SAT or 24 on the ACT. Based on information provided by the TEA, only 39 of the 1,518 high schools in Texas met the criteria for Exemplary Status. The very rigorous standards established by TEA make this recognition all the more satisfying.

SHS is extremely proud of this recognition and wants the entire community to share in this pride. This accomplishment is a direct reflection on the positive commitment of the parents and community members in supporting SHS. The emphasis placed on attaining a quality education is greatly appreciated by the administration and staff of SHS.



**GRUVER BLOOD DRIVE** - The Gruver High School students participated in the blood drive Monday, November 7. Pictured are Aaron Frick, and Jana McCloy as Teresa with the blood drive takes their blood.

## Letter to the editor

Dear Editor,  
I would like to thank Harry Stumpf for the great job he is doing at the elementary school crossing, our children are so important to all of us. And I appreciate you taking your time to see they start their day save.

Eddie Largent

I would like to thank the Hansford Manor for the wonderful Halloween party they provided for the community. Debbie and Janie planned a great event and the residents had as much fun as the children.

Eddie Largent

Dear Editor:  
Your heart skips a beat and becomes a lump in your throat as you realize your billfold is missing. That was my condition a few weeks ago as I was getting on a plane after a week long visit in Lubbock.

I knew exactly where I had left it in the room. My friend called the motel immediately, just as I did upon reaching my home, near Dallas. We were assured three or four people had looked for the billfold, in that spot, to no avail.

There was quite a bit of travel money in it and I told the hotel the finder could have it, if the remainder of the billfold could be sent to me. They assured me it wasn't there but that they would notify me if it were found.

By the end of the week, I had closed my bank account, applied for a new driver's license and changed most of my credit cards. Still, there could be many items that I could not remember if they were in it. Usually I write down the contents of my billfold before a trip, but this had been a rush trip.

If it wasn't where I had left it, I could only assume that the maid had found it and pocketed the money. Then when others came to look for the money from the front office, she was embarrassed and caught in a position where she chose not to admit she had found it.

This disappointed me as she had been quite nice. Worse than that, I worried as to "in what dumpster" might my identification have been dropped!

Last week a young man called me from Spearman, Tx. to tell me he had found my purse. I asked him to tell me where in the room he had found it.

Yes, exactly where I had left it, exactly where the front desk had assured me that several people had looked. I can only assume they didn't bother to take the time to appease this frantic customer.

Our group of nearly a hundred had enjoyed our stay there all week. Lubbock had been most gracious to us, but do you think I will ever stay in that hotel again?

I asked the young man if there was any money in it and he answered, "Oh, yes mam!" Since he had called twice to reach me, I asked if he could take money out for the telephone calls, and the postage, then send the purse to me, keeping

the money for himself.  
I only put one "catch" in the deal. Send me his name and address. Some day I would like to come through Spearman and meet a honest young man of the 90's.

He hesitated, then answered, "All the money?" I assured him I had assumed the money lost and wished it to be his.

This week my billfold arrived, wrapped in a Hansford County Reporter-Statesman, with two notes inside. One from the young man that read, "Dear Mrs. Maples, I only took dollars from your purse for the postage. There was \$220 in it and I didn't think I should take it. After all, money is hard to come by these days! I'm glad I found your wallet and was able to return it to you, Brian McLaughlin."

The other note was from his mother. It read, "Ms. Maples, I hope you haven't missed your purse for long. We felt that you'd better off with us sending your purse back, than relying on the motel. I am proud of Brian for being so honest. Sincerely, Delinda McLaughlin."

This has certainly restored my faith. It has brought tears to the eyes of several to whom I have told

the story.  
All of Spearman should be proud of this young man. No reward I can send to him will equal the reward he has given me and my friends that have heard this message.

Widowed about ten years ago, I had always been someone's wife or mother. What did I want to do with the rest of my life? I decided I would write for the newspapers promoting the positive events that take place in our area that sadly, are often neglected.

Because of this newspaper background, I took the leave of writing you to assure you that no positive event that I have covered in the Dallas County area, is any more touching than the act of honesty of this Spearman youth.

Perhaps you can write the story or use it on the "Letter to the editor" page.

Ginger Maples  
DeSoto, Texas

### ALCO CUSTOMERS

Due to manufacturing delays, there are only limited supplies of the Black T-Fal Cookware sets available. We will honor rainchecks at the ad price. Merchandise should be available within 30 days. We regret any inconvenience to our customers.

ALCO STORES, INC.

## At the Movies

Showing at the Lyric Theatre in Spearman Friday, November 18, through Tuesday, November 22, are "Little Giants" on screen #1 at 7:45 p.m. and "The Shawshank Redemption" on screen #2 at 7:30 p.m.

In "Little Giants" former football pro Kevin O'Shea (Ed O'Neill) is a car salesman in smalltown Urbana, coaching the local kids' football team, the Cowboys. Taking seriously the dream of a state championship, he dismisses the wimps and klutzes at the tryouts, as well as one kid, "The Icebox," who has the misfortune of being a girl, even if she is his own niece. Rick Moranis co-stars.

"Little Giants" is rated PG. In "The Shawshank Redemption" Tim Robbins and Morgan Freeman are two convicted murderers who strike up a longtime friendship in this gritty prison drama based on a short story by Stephen King.

"The Shawshank Redemption" is rated R.

## The Right One

for quality drycleaning and laundry service. Shirts-Jeans Starched.

**PERRYTON CLEANERS & LAUNDRY**

1-800-232-5370

## At The Lyric Theatre...

Friday, Nov. 18 - Tuesday, Nov. 22

**Bargain Nights Mon. & Tue. Adults - \$4**  
**Fri., Sat., Sun., Adult \$5 - Child \$3 every night**  
**Closed Wednesday & Thursday**

SCREEN 1 • 7:45 PM SCREEN 2 • 7:30 PM

Little Giants

(PG)

The Shawshank Redemption

(R)

113 Main • Spearman

## Get More Value with the ALCO Advantage

**2nd Set FREE!** On Tuesday  
**3" Prints**



From your original C-41 process roll of 110, 126, disc or 35mm full frame color print film. Excludes larger 4" size prints and photo galaxy.

**Early Bird Special!** through 11/22/94  
**Holiday Photo Greeting Cards**



10 Free Cards when you order 20 \$ 9.99  
15 Free Cards when you order 40 18.99  
20 Free Cards when you order 60 26.99  
25 Free Cards when you order 100 39.99

Made from any color negative, slide or print. If print is submitted, a copy negative charge will be added. Photo Cards returned glossy finish ... no matte finish available.

**ALCO 224**

521 • HWY 207 • SPEARMAN, TX 79081

Mon. - Sat. 9 a.m. to 8 p.m.

Sun. 12 p.m. to 5 p.m.

## The Hansford County Reporter-Statesman

Serving all of Hansford County  
Spearman • Gruver • Morse

USPS 509660 • 213 Main, Box 458 • Spearman, Tx. 79081  
(806) 659-3434 • 1-800-395-9482 • FAX (806) 659-3368

Published weekly at 213 Main, Spearman, Texas

Owned & Operated by

Texas Independent Newspapers, Inc.

16607 Blanco Road #100 • San Antonio, Tx. 78232

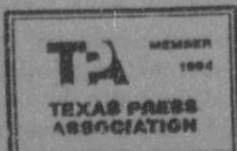
(210) 492-8907

Second class postage paid at Spearman, Texas 79081

Any erroneous reflection upon the character of any person or firm will be gladly and promptly corrected upon being brought to the attention of the management.

Publisher - Daniel Ramos  
Office Manager - Deziree Torres  
Staff Writer - Cora Thompson  
Staff Writer - Chad Davis

The publisher reserves the right to revise or reject at its option any advertisement which it deems objectionable, either in subject or phraseology, or which it may deem detrimental to its business.



Subscription Rate: Hansford County, \$19.95; out of county, \$24.95 annually.  
Postmaster: Send address changes to Hansford County Reporter-Statesman, Box 458, Spearman, Tx. 79081.  
Advertising & Story Deadlines  
Monday, 5:00 p.m.

## "THANKS"

This is to Thank everyone, whomever you are, all of you, for supporting me this last year of football and following me. Without all the support I received it wouldn't have been possible to accomplish what I wanted to do. I feel I am a better player because of all the support I had for 6 years. The memories were great--Thanks! So "THANKS" from me and from my parents also. We appreciate it very much.

Sincerely,

#21-Shawn Moore, Sr. 95

# Lifestyles



NANCY AND PAUL BOWLES

## Ivey/Bowles unit in marriage, October 8

Nancy Ivey and Paul Jonathon Bowles were united in marriage October 8, at 2 p.m. at the First Christian Church in Spearman, with the Rev. LaVerne Draper officiating.

The bride is the daughter of Jim and Kay Ivey of Spearman. Parents of the groom are Larry and Glenda Bowles of Houston. The brides grandparents are Ann White, of Spearman, and Jack and Inez Foster, of Payson, Arizona. The grooms grandparents are Gracie and Lester Weeks of Nettleton, Mississippi, and Barbara Bell of Dallas, Texas.

Maid of honor was Sunshine Smith of Spearman. Bridal attendants were Kindra Davis and Cindy Atkins, both sisters of the bride from Amarillo, and Kayla Bowles, of Houston, sister of the groom.

Best man was Keith Phipps of Dripping Springs, Texas. Groomsman were Evan Longacre, also of Dripping Springs, Stan Mann, cousin of the groom of Nettleton, Mississippi, Cole Ivey, brother of the bride of Spokane, Washington. Guests were seated by grooms-men.

Flower girl was Jessica Schmidt, of Morse cousin of the bride. Ring bearer was Cody Ivey, nephew of

the bride of Spokane WA. Candlelighters were Logan Davis and Ryan Atkins, nephews of the bride of Amarillo.

Servers were Monte Davis and Halee Davis, niece and nephew of the bride. In charge of signing in the guests were Mindy Patterson, of Spearman, and Tonda Lolmough, of Abilene. Greg Meek sang "Any-more" for the bride and groom.

The bride's dress was floor-length white satin decorated with lace and pearls. The dress had a rosette centered bow in back. Bridesmaids dresses were forest green tea-length satin brocade.

The bride's "something borrowed" and "something old" was a bible in the middle of her bouquet. The bible was borrowed from the bride's sister-in-law, Jana Ivey, the bible is over 100 years old. The "something new" was her dress and "something blue" was a blue garter.

The groom wore "Texas tails" black jeans, boots, black tuxedo jacket and white shirt. The grooms-men were dressed in "Texas tails" also.

The bride and groom both attended Hardin-Simmons University, but now manage Ivey Hungry Cowboy in Austin.

**BE A GOOD NEIGHBOR**

Volunteer.

American Heart Association



## CHRISTMAS OPEN HOUSE

FEATURING

**Home Interiors & Gifts by DEBBIE SEARS**

Saturday, December 3, 1994

10:00 a.m. - 5:00 p.m.

303 Third St. • Morse, TX

(806) 733-5004

(Order now for Christmas!)

## OPEN HOUSE

The Hansford County ASCS Office staff would like to invite you to an open house honoring Keith Martin's service to Hansford County over the past 12 years. Refreshments will be served from 9:00 a.m. to 12:00 p.m. on Monday, November 21, 1994.

Keith has been an asset to Hansford County and will be sadly missed by his staff and area farmers. We hope you will come by to visit with Keith at the Hansford County ASCS Office located at 711 W. 7th, and wish him well in his new position.

## Howell to be in 1995 edition of Who's Who

Alan Clifford Howell of Morse is among 41 McMurry University students who have been selected as national outstanding leaders. These students will be included in the 1995 edition of Who's Who Among Students in American Universities and Colleges.

Campus nominating committees and editors of the annual directory

have included the names of these students based on their academic achievement, service to the community, leadership in extracurricular activities and potential for continued success.

They join an elite group of students from more than 1,800 institutions of higher learning in all 50 states, the District of Columbia and several foreign nations.

## Winn to begin term as Student Senator

Cynthia Winn, daughter of Bill and Nelda Winn of Gruver, is beginning her term as a West Texas A&M University Student Senator. Winn, a senior special education major, is a 1991 graduate of Gruver High School. Students elected her to represent the College of Education and Social Sciences.

"West Texas A&M University is a wonderful school which I am proud

to be attending," Winn said. "Being involved is important to me because the students and faculty really care, and I know my voice will be heard."

Winn said she wants to communicate more with her constituents and accomplish what her constituents feel is important.

Winn is also one of the eight members of the West Texas A&M University Zeta Tau Alpha (ZTA) sorority who were awarded academic achievement scholarships for the 1994-95 academic year at the ZTA Founder's Day Celebration October 15.

"Academic achievement is the main thing we stress to our members, because that is why we are here," Lane, ZTA pledge advisor, said. "Scholarships are an important way to recognize their academic achievement."

Each of the scholarship recipients maintained a grade point average of 3.0 or better during the 1994 spring semester.

Winn is also involved in Student Council for Exceptional Children, WT Reading Council and Greeks for Christ.

## Kizzar awarded known scholarship for by GUF

Timothy Kizzar of Spearman, a junior hotel, restaurant and administration major at Oklahoma State University, has been awarded a \$1,000 Greater University Fund Scholarship for this academic year.

Kizzar, a transfer from Oklahoma Panhandle State University, was given the scholarship by Dr. Robert Graalman, director of the OSU Office of University Scholarships. This scholarship is made possible by OSU alumni and friends

who want to preserve and promote high-quality educational programs at OSU.

He was given the nomination for the scholarship by Karen Fellers-Howell of the OSU Office of High School and College Relations.

Hallmark introduces Saturdays-a new, light-hearted line of greeting cards. You'll love Saturdays-they're upbeat, joyful, and carry unpredictable messages.

SATURDAYS

Come in and see Saturdays soon. Any day of the week will be fine.

Hallmark  
COUSINS  
Cards & Gifts  
Main & Broadway  
Carla Gumfory • Teresa Barkley  
18061 733-5420 • Box 1098 • Gruver, Texas 79040



TIMOTHY KIZZAR



CYNTHIA WINN

You are invited to the 80th birthday celebration in honor of **Pete Maupin** Friday, November 25, 1994 United Methodist Church Fellowship Hall Gruver, TX 2:30 - 4:00 p.m. No gifts please

## Picnic Place Restaurant

11 a.m. - 8 p.m.

Monday - Saturday

Serving:

Hot & cold sandwiches, many flavors of ice cream and baked potato pile-on

HAPPY HOUR: 3:30-4:30 p.m. (special prices)

Saturday Night Special

Senior Citizens Discount Night (65 years & older)

Discounts on everything (except pie)

5 p.m. - 8 p.m.

Mexican Fiesta Plate - Friday

BBQ Plate - Wednesday



217 Main

For Take-Out Call 659-3864



## PERRYTON SATELLITE

Presents its

## Arts & Crafts Festival

Perryton Expo Center  
Nov. 19: 9 a.m. to 7 p.m.  
Nov. 20: 10 a.m. to 4 p.m.

Sponsored by:

Lions Club

Night Watch

Wheatheart Shrine

Food & Refreshments provided.

10% of exhibitors' sales goes to ASC Industries-Perryton Satellite to support our work with localmentally retarded adults.

## OVER 200 BOOTHS

Wood crafts, lawn art, ceramics, clothing, jewelry, florals, pottery, lathe turnings, dolls, calligraphy, wheat weaving, paintings, watercolors, candy, steel sculpture, leather frames, musical instruments, quilts, quick portraits, western art, stained glass and more!!!



**HOSPICE VOLUNTEERS** - Many area people work as volunteers for the Hansford Hospice. However many are professionals, some of which represent the Hansford County Hospital. Staff members play a major roll in the area Hospice. Pictured are: (l to r) Mary Allen RN, Sue Watts LVN hospice director, Kaye McFarlin DON, Dr. Behney, and Verna Lee Shirley.

## Hospital recognizes Hospice month

This is National Hospice Month, and we want to commend our nurses at the hospital for their services to our hospice patients. Most of our nurses at the hospital have dual roles they are full-time nurses at Hansford Hospital and most are Hospice volunteers. Some of our volunteers are retired nurses from the hospital here.

They take care of Hospice patients when they are in unit at the hospital and are sometimes called on as volunteers after their shift.

Hansford Hospital is one of the few hospital based Hospices. The nurses at the hospital take the Hospice volunteer training on their own time to benefit themselves as well as the people of the community.

Sometime in our busy routine, we have been guilty of not thanking the nurses at the hospital, and how grateful we are to them.

Dr. Behney is our medical director and we also work with doctors from Amarillo and other communities.

Kay McFarlin, Director of Nurses, has been one of our supporters and a caring friend to our hospice patients.

So again Hansford Hospice and Sue Watts, Director, want to thank each and every one of our hospital nurses for their great and caring work.

## Cities sign proclamation to honor Hospice

November is usually remembered as the month for giving thanks.

Thanks to the many things in life that we receive and accomplish.

It, however, is also "National Hospice Month," and like many communities across the United States, the cities of Spearman and Gruver passed proclamations declaring November as "National Hospice Month" in their respective areas.

The mayors of Spearman and Gruver recently signed the documents that honor the many volunteers that make Hospice work from day to day.

Hospice care helps the terminally ill patients to face natural death without feeling alone or unprepared. These programs are helping to ensure that hospice care remains a positive, viable alternative for terminally ill individuals and their loved ones.

Hansford Hospice has been providing hospice care to families in Hansford and surrounding counties since it was established in May, 1991, along with hospice programs in all fifty states, providing care to more than 200,000 terminally ill people and their families.

Signing the proclamation in Spearman was Mayor Burl Buchanan, and in Gruver it was Mayor Archie Nelson.

**Editor's Note:** The photo taken in Spearman of the proclamation signing was lost dur-

See HOSPICE, page 12

See PROCLAMATION, page 12



**PROCLAMATION SIGNING** - Mayor Archie Nelson signed the Hospice proclamation while (l to r) Anna Beth Wood, Opal Wallin, Carolyn Hicks, J. C. Harris, and Connie Gammill look on. The proclamation is to declare the month of November Hospice month.

## Nov. as National Hospice Month

In 1974, the first American hospice program opened in New Haven, Connecticut. Today, 20 years later, more than 2,000 hospice organizations offer compassionate, comprehensive care to terminally-ill patients and their families throughout the United States. November, National Hospice Month, is a good time for us to reflect on the impact of hospice in our area, and around our nation.

"When people think about the issues of death and dying, they think about them in terms of fear - fear of dying alone, fear of dying in pain, fear of being a burden on the family," says John J. Mahoney, president of the National Hospice Organization (NHO) in Arlington, Va. "And certainly the family is fearful of how they're more than just one dimensional. It goes to the basis of what hospice care is - that is, a philosophy of care that addresses the physical, emotional, and spiritual needs of patients and families."

This recognition of hospice's ability to meet these multiple needs that allowed hospice to take root in the U.S., 20 years ago. Hospice care was introduced to this country by Dame Cicely Saunders, founder of the modern hospice health care concept and St. Christopher's Hospice near London, England. Dame Saunders cultivated seeds of interest in hospice care during a U.S. lecture tour. Soon a small group of people began to study the benefits and feasibility of offering hospice care to people on this side of the Atlantic.

One of these founders was Dennis Rezendes who became the administrator for the fledging New Haven program. As more hospice programs sprang up around the country, the need for movement-wide guidance, public awareness, and financial stability became ap-

parent. Four years after the New Haven hospice opened its doors, NHO was founded developing guidelines and a workable national framework begun. Final passage of the Medicare hospice benefit in August 1982 made hospice care even more accessible to America's terminally-ill patients and their families. Zachary Morfogon, first NHO chair and now head of the newly-formed National Hospice Foundation, believes Medicare qualification was a crucial turning point in assuring the growth of hospice in America. About 60% of all hospice patients are cared for under this benefit. Hospice care is also covered by most private health insurance plans.

As hospice nears a quarter century of service to Americans, the movement continues to expand. We hope to see the entire regulatory, legislative, and professional education approach to hospice care broadened, while a volunteer-based, com-

munity focus for hospice services is maintained. "Our success nationally is directly proportionate to our success in the community. You can't have one without the other," says Mahoney.

Since it was licensed in May of 1991, Hospice has cared for some thirty patients and their families in our area. Training classes began with the Dumas hospice in the fall of 1990, then a Spearman class early in 1991, at least one class has been offered each year to train interested persons in the care of the terminally-ill. And not only the patients benefit from our services, but the entire family is cared for, valued and assisted in many ways as they go through this passage we call death. We have a wonderful professional staff of doctors, nurses, ministers, etc., as well as approximately sixty-two trained volunteers, and training class of nine

**I would like to express my appreciation to those of you who helped in my election. I will try to continue to make Hansford County a great place to live as those before me have.**

**A sincere thanks,  
Danny Henson**

## HENSON CHIROPRACTIC

410 S. Davis • Spearman, Tx.

Call for Appointment • 659-5603

OFFICE HOURS:

Monday, Wednesday & Friday 9:00 to 5:00  
Tuesday & Thursday 9:00 to 11:30

## C.J.'s Xtra Dimensions



10% Storewide Sale

518 N. Main Berger, Texas  
invites you to our

Grand Opening

and

Christmas Open House

Sunday, November 20, 1994  
12:00 noon til 5:00 p.m.

Door prizes to be given away

Refreshments served

## HOLIDAY OPEN HOUSE

Sunday, November 20, 1994

1:00 to 5:00 p.m.

Cash & Carry Discounts

Drawing for door prize

Prairie Garden

209 Main  
Spearman, TX 79081  
(806) 659-2212 • (806) 659-3329

(800) 753-2389

**\$100  
GIFT  
CERTIFICATE  
TO BE  
GIVEN AWAY!**

**ALCO**  
CUSTOMER  
APPRECIATION  
NIGHT

SUNDAY, NOV. 20  
7 P.M. TO 9 P.M.

- SHOPPING CART BINGO
- REFRESHMENTS
- LAY-AWAYS WELCOME

**10%  
DISCOUNT  
ON PURCHASES  
UP TO  
\$150.00**

**15%  
DISCOUNT  
ON PURCHASES  
OVER  
\$150.00**

DISCOUNTS  
DO NOT  
APPLY TO  
TOBACCO  
PRODUCTS  
SOBER  
NO  
RAINCHECKS

521 • Hwy 207  
Spearman, TX

## Museum Musings

by Joanne Eaton

Open house for the Harry and Margaret Shedeck Wagon Barn at the Stationmaster's House Museum grounds, 30 S. Townsend, will be Saturday, November 19, at 10 a.m. Come on by for coffee and donuts! We'll visit until noon or later.

All names of the original Rolling Plains Mule Train members are wanted. Please contact a board member to give them these names or to tell any family story about the mule train. We do not want to leave anyone out!

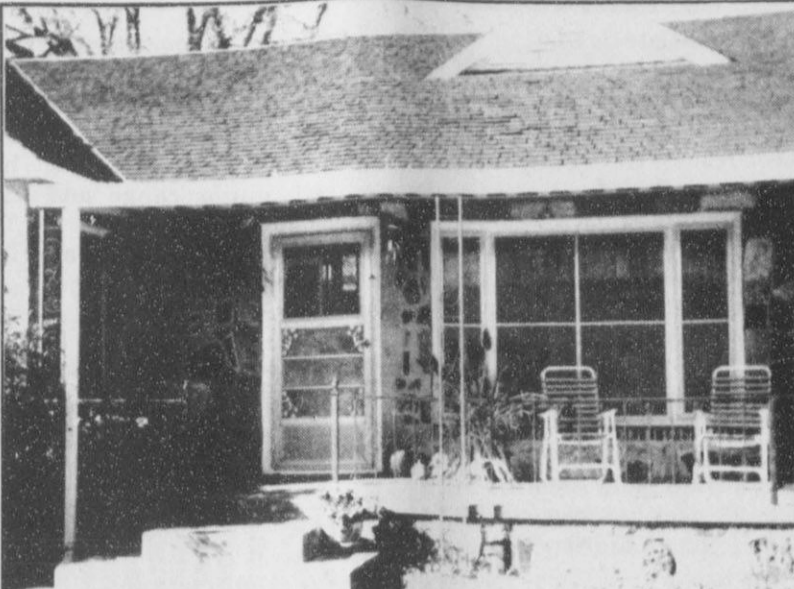
The First State Bank has given the museum three large sheets of plywood with all the registered brands of Hansford County woodburned onto them. These will also be on display in the new wagon

barn.

Remember a museum visit is free! Where else can you get so much entertainment for no cost?

I have been putting the wrong time that the museum is open in the paper. It is open Tuesday through Saturday from 1-5 p.m. That adds five hours of visitation a week to the times I've been giving you. Barbara Rojas is always anxious to show you around and answer any of your questions. What a great place to visit with little children also. Most things are behind glass so mothers with your children can take them along and educate them about their grandparents' "good old days" without too much worry.

## Gladiola Flower Club to hold home tour



OPEN HOUSE - The Gladiola Flower Club will be sponsoring their annual open house tour December 4 from 2-5 P.M. The house featured here will be toured, and it belongs to Mr. and Mrs. Danny McLaughlin of 526 Townsend.

The home of Mr. and Mrs. Danny McLaughlin, 526 Townsend, will be one of four homes which will be featured in the upcoming tour of homes.

The Gladiola Flower Club will be sponsoring its annual home tour from 2-5 p.m. on Sunday, December 4.

Danny and Delinda bought their home from the estate of her grandparents, the Kiff Whites.

The Whites built the home in 1948. The kitchen was remodeled in 1965. Their home has four bedrooms and two baths. Special no-

tics should be taken of the curved ceilings in the living room and den, according to tour organizers. The exterior is rock, which Kiff White hauled from Granite, Oklahoma.

Other homes which will be open for the tour are: Helen Etter, 711 Gibner Dr.; Mr. and Mrs. Len Simpson, 27 Golden Circle; and Mr. and Mrs. Rick Sander, 718 Gibner Drive.

Tickets for the tour are available from any Gladiola Flower Club member. Proceeds from the tour are donated to community projects and a scholarship.

## A "Center" Piece

By GARLAND HOPPER

Seniors, if you have not participated in the activities of the Center, a lot of fun has been missed. Some of the members have been going to different crafts and fashion shows. Others have been making Christmas tree decorations. Others have enjoyed playing games.

Christmas is closer than one might think. So, of course, preparations are being made for decorations. Christmas tree angels will be made Nov. 17th. Extra supplies will be available. You may come make your own or buy a completed one.

First there is Thanksgiving and

the First National Bank will serve its famous Thanksgiving dinner on Nov. 15th to the Senior Citizens. (Before you read this it will have been enjoyed.) Then Nov. 22nd, the First State Bank will serve the Seniors its famous fish dinner. Both the banks do outstanding cooking for the Senior Citizens. OUR THANKS TO ALL THE PERSONNEL WHO MAKE OUR LIVES MORE PLEASANT.

Plenty of raffle tickets are available for the Twelve Days of Christmas quilt. You may contact Senior Citizen member or anyone at the O'Loughlin Community Center. They are \$2.00 each or 3 for \$5.00.

MAY GOD BLESS OUR COMMUNITY.

## Out at the Lake

By DOROTHY HUDSON

Lake depth on November 14, 1994--21 feet, three and a half inches.

The typo in last week's column of one foot, five inches was scary. I didn't make it, but I did make the one of the government sponsored shelter belts of 1835 to 1948. Most of you probably recognized the first year as 1935.

Telephone calls from Joyce Johnson of the Oslo Community and Hix Spivey of Gruver added to our information on bois d'arc trees. The tree at the park is not the only one in the county nor is it the largest. Joyce said she and Bill had set out several of these trees, and in 1993 she gathered and gave away over 400 of the hedge apples. People use them sliced cross wise and dried for flower arrangements and as insect and mouse deterrents.

The trees Hix Spivey told me about are ten miles southwest of Gruver on the place where Elizabeth and her brother Ward Spivey grew up--the old Billy Spivey place, now owned by Brad Spivey. Hix could place the age of the trees in the time period of 1900 to 1910.

Billy, with brothers George and Sul moved to Hansford County and within a year each had filed on four sections of school land. The brothers then convinced their father Isaac Temple Spivey to join them in 1902, with each brother giving him one of their sections of land.

That same year Billy built his first sod house. He traded one section for his well and windmill. Later he built a larger sod house. In 1908 this 40-year-old bachelor married Mary Ward, who taught at Lakeside. This started a trend because three more of his brothers also married Lakeside teachers. The bois d'arc trees are east of the two story house that was built in 1910.

Although I had noticed these trees and wondered what they were doing so far from the house, I had never driven to them for a closer look. Looking at them up close last Saturday, I decided Billy had planted them for a hedge fence as was customary in the early days where the trees grow naturally. The first branches are covered with thorns and grow out in a bushy fashion. Many of the trees have died, and some of them have regrown from the roots. They would have been east and north of the soddies. And, yes, in the corner was an old tree of greater girth than the one at the park.

## What is Alzheimers and does it affect you

Alzheimer's Disease seems to be affecting more and more Americans every day.

What is it? Some of the signs or symptoms to look for are:

- \* Confusion about a place; gets lost on the way to work.
- \* Mood/personality changes - anxious about symptoms - keeps to self.
- \* Trouble handling money, paying bills. Has difficulty in writing checks.
- \* Loses things. Forgets grocery list.
- \* "Mother's not the same. She's

withdrawn, disinterested."

\* Less outgoing, hides things, gets upset easily.

\* Paid the bills three times over, or didn't pay for three months.

These are just a few symptoms of the disease. If you are interested in learning more about Alzheimer's Disease, Erin Bergin, BSW, LSW Director of Social Services for Hansford County Hospital District, is coordinating a meeting for the public on November 30 at 7 p.m. at the O'Loughlin Center. Sheila West, from the Alzheimer's Association in Amarillo will address Alzheimer's Disease and coping with the special problems of Alzheimer's patients during the holidays.

PD

CONTINUED FROM PAGE 1

thought to be a 1973 white Ford car, was traveling south on Brandt Street at a high rate of speed and attempted to turn on 7th street, hitting a legally-parked 1994 Chevy pickup owned by Automotive Rental Inc., Laurel, N.J. The hit-and-run car was identified by evidence left at the scene, according to officer Phillip LaRue. The accident is still under investigation. Anyone who might have information about this should call the Spearman Police Department at 659-3707.

SATURDAYS

Cards that make every day a Saturday!



"Life is your chair. Sit on whatever part you want."

A new card line full of light-hearted thoughts about countless subjects and special occasions.

Hallmark COUSINS

## Christmas Open House

Sunday • November 20 • 1:00 - 5:00 p.m. in Gruver, Texas

GRUVER FLORAL  
502 Main • 733-5632

MAIN STREET STORE  
506 Main • 733-5040

JANIE'S JUNK  
417 Main • 733-5423

HITCHIN' NAIL  
417 Main • 733-2333

COUSINS CARDS & GIFTS  
Main & Broadway • 733-5420

LITTLE TIFFANIES  
103 E. Broadway • 733-5290

We will offer fresh cut X-mas trees from Monte Clark's tree farm for \$30. Delivery free anywhere in county with purchase of Hallmark Christmas ornament!

Refreshments Served

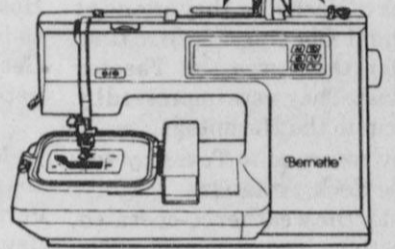
In Store Specials

For Your BBQ or Smoked Turkey call  
**Sutphen's BBQ**  
(in the Pahandle for 44 years)  
806/273-6442  
303 N. Cedar  
Berger, TX

# WANT TO EMBROIDER? YOU NEED A BERNINA.

ADD A PERSONAL TOUCH TO ANY PROJECT WITH PROFESSIONAL QUALITY MULTI-COLORED EMBROIDERY AND MONOGRAMMING. THE NEW BERNETTE DECO 500 EMBROIDERY SYSTEM FROM BERNINA.

- Over 50 Built-In Multi-Colored Designs
- 30 Bernina Exclusive Designs
- Monograms And Decorative Motifs Up To 4" x 6"
- Updatibility With Pre-Programmed Design Cards
- Easy To Follow On-Screen Instructions
- Optional Scanner For Copying Your Favorite Designs



WIN A FREE EMBROIDERY MACHINE!

**FREE!**  
For a limited time only, buy the new Deco 500 and get an embroidery thread assortment from Sulky. **A \$150 VALUE!**

Make no payments until August 1995

JO'S THIS 'N THAT  
216 Main Street  
Spearman  
659-3999

**BERNINA**

\*Granting for 11 free Deco 500 embroidery machines to be held March 31, 1995. No purchase necessary, void where prohibited, at participating dealers only.

Introducing  
**RCA**  
Digital Satellite System.



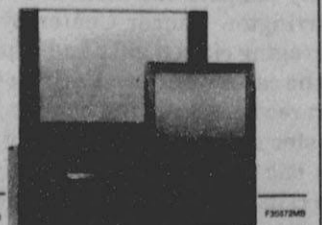
Sharper Picture. Clearer Sound. Greater Choice.

- Laser disc quality picture capability™
- CD quality sound™
- Great programming choices for the whole family

System prices start at **\$699**  
Professional installation available.

Featuring **UP TO 150 CHANNELS** OF PROGRAMMING EXCITEMENT, ALL IN DIGITAL QUALITY! **USSB**

RCA Home Theatre and the new DSS™ Digital Satellite System: TV never looked so good.



(1) Quality of picture and sound are dependent upon the audio system and/or television used by consumer. Television also requires S-Video input to realize full capability of DSS receiver.  
(2) Total capacity available from two Hughes satellites.  
Second satellite scheduled for operation Fall, 1994.  
© 1994, DIRECTV™ and DSS™ are official trademarks of DIRECTV, Inc., a unit of GM Hughes Electronics.  
© 1994, USSB, Inc., is a subsidiary of Hubbard Broadcasting, Inc.  
© 1994, Thomson Consumer Electronics, Inc.

**RCA**  
Changing Entertainment Again.™

**Buddy** FURNITURE CO.  
723 W. 7th  
Spearman, Texas 79081



# Among The Neighbors

by Helen Fisher

John and Jim Brown returned Thursday from Tyler, Texas where they had gone to be with their sister, Sue White. She underwent surgery for arterial by-pass Wednesday morning. All went well and she is recovering and expects to be able to go home next week. She and Tom live at Alba, Texas.

Mrs. Aleen Lowder was quoted in the column Word by Bob Wylie in the Sunday News-Globe. Regarding the kinds of people there are in the world, he quotes Mrs. Lowder as remembering her Irish grandfather who taught all the kids to say "There are two kinds of people in this world, them that's Irish, and them that wish they was."

Mrs. Lowder, who taught school many years, is retired and lives in Spearman.

Wanda Hershall Jones are back from a two weeks drive through foliage country. They went to Oklahoma City, through Arkansas and on to Memphis, Tennessee. Leisuredly they drove to Chattanooga, then to Shiloh, here they took tie to tour the famous Civil War Battlefield.

They took several days to go thru the Great Smokey Mountains, including the national park. Next was the Blue Ridge Mountains in North Carolina. They spent some time at Gatlinburg and several places of interest in the vicinity.

Back to Nashville, they attended the Grand Ole Opry. A first time treat for them was the Theater Breakfast. They were impressed by their trip to the Hermitage.

They returned to Texas by way of Little Rock, Arkansas.

Mostly the weather co-operated, though there was some rain. The beauty of the foliage is beyond description.

The trip was especially enjoyable for the Jones as for so long, he was home-bound by a serious health problem, so just being able to go was an experience to be savored.

Hansford County citizens are dismayed on learning that the Keith Martin family is leaving Spearman. Keith, who has been in charge of the Hansford County ASCS office here for 11 years has been transferred to Wellington.

Keith and Charlotte first came here in 1979 for two years while he was with the soil conservation service. They returned in 1983 when he was transferred here with the ASCS.

His duties will start in Wellington, his home town, on November 28. Their daughter, Tracy, a senior in high school, is already enrolled in school there and staying with her grandmother.

Their other daughter, Lana, is a freshman here, and their son, Keith Clark, graduated here and is now a student at the Baylor Dental College in Waco.

## FNB honored for support of Harrington Cancer Center

The Don and Sybil Harrington Cancer Center recognized the First National Bank of Spearman along with many other area banks at "The Stars At Night" special event on October 8th, 1994. The first National Bank was among many area banks participating in the Area Bank Matching Contribution Program.

Area financial institutions actively support the Don and Sybil Harrington Cancer Center by encouraging citizen gifts and support to the cancer center. Each institution receives a plaque honoring its trustee status and a traveling loving cup is presented annually at the center's special event to honor the most donation - productive trustee for the year. The Harrington Cancer Center matches funds raised in each bank on an annual basis. As the accounts increase, the center uses only the interest for patient care operations. For more information regarding the area bank matching contribution program, contact Charlotte Rhodes at 806-359-4673.

Keith expressed regret at leaving Hansford County. He stated that he had enjoyed working with the farmers of the area during his 14 years here. He considers them to be most cooperative and congenial and has many friends among them.

All those who have been associated with this family wish them the best of luck and good fortune in their new home.

The obituary for Jerry Gibner is carried elsewhere in this issue. Friends of Jerry, his parents, Pope and Margaret, were saddened by his passing last week. Jerry, 64, lived in Albuquerque and his services were at the Veterans National Cemetery in Santa Fe on Saturday.

Sympathy is extended to his wife and daughter, but especially to Margaret, who is now living with her granddaughter in Albuquerque. Margaret has grieved with the passing of her parents, sister, daughter and husband, and now in the lengthening shadows of her life, her son.

Old friends can contact her at 4508 Calyx Court, N.W.; Albuquerque, N.M., 87120.

Helen Prachar is recovering from surgery for a ruptured disc performed on Saturday in Amarillo. It is expected that she can return home during this week, but it will be quite awhile before she can resume her duties in the Family clinic.

She is in High Plains Baptist Hospital and her room is #733. As a co-incident her brother, Clifford George of Gruver, is also a surgical patient on the same floor.

Mary and Don Allen attended the funeral of their long time friend, Jerry Gibner, at Santa Fe on Saturday. They had driven to Albuquerque, where he lived, on Friday and

returned home late Sunday.

Don and Jerry had been friends since high school days, and Mary and Jerry's widow, Juanita, had also been friends since girlhood.

Wanda Burke is back at home recuperating from surgery for carpal tunnel syndrome. It was performed at St. Anthony's hospital a couple weeks ago.

Delayed information regarding Doris Wilde Bateman is that she underwent back surgery at St. Anthony's Hospital in Amarillo on October 26, and has been in St. Anthony's Rehabilitation Center until this week.

She will be staying with her daughter Vicki and Charles Adkison until she is sufficiently recuperated. Although she will be going to Amarillo for check-ups, she will return to Hobbs. Her address is 734 E. Aspen, Hobbs, N.M., 88240.

Doris is looking forward to sharing Thanksgiving and an early Christmas with the Adkisons as both their sons will be there. Arnie and wife Sandra Adkison live in El Paso where he is the pastor of the Loma Terrace Baptist Church. Daron, who is attending Southwest Baptist Theological Seminary in Fort Worth, will be there with his fiancé, Julie Daly.

Doris, with her usual optimism, expects to be able to be present when her fourth great grandchild arrives in early January, courtesy of Arnie and Sandra. Spearman schoolmates Vicki and Charles will acknowledge their grandparent status for the first time.

Doris also expects to be able to attend the wedding of Daron and Julie on January 7.

See NEIGHBORS, page 8

# Renner awarded scholarship

Ross Renner of Gruver received the Orvall and Christy Grimm Scholarship Saturday, October 29, at the Abilene Christian University Aggie Club annual reunion. Renner is a junior range and agronomy major at ACU.

ACU is a private University affiliated with the churches of Christ with an enrollment of more than

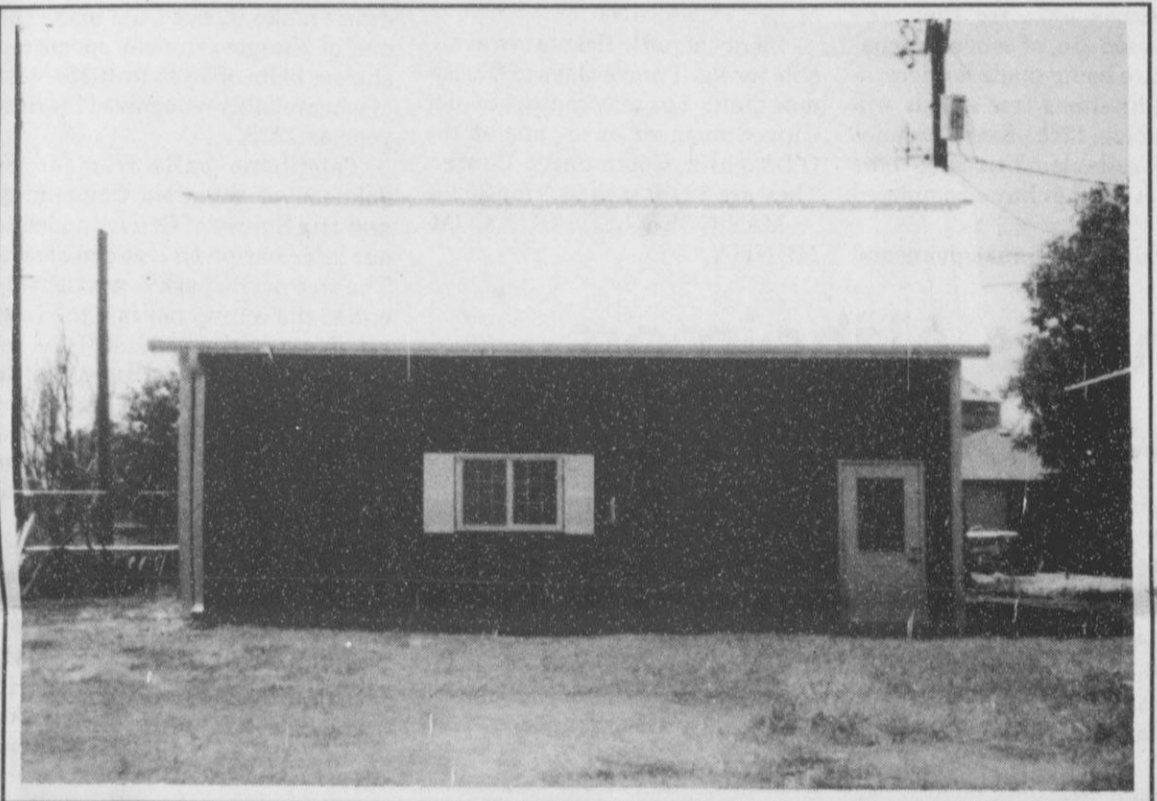
4,200 students, making it one of the largest private universities in the Southwest. The campus, located 150 miles west of Dallas/Fort Worth, has been recognized by Independent Colleges and Universities of Texas as part of a statewide model for efficiency and innovative programs to keep down costs of higher education.

The university offers 117 bachelor's programs through its three colleges, Arts and Science, Biblical and Family Studies and Business, and the School of Nursing. The ACU Graduate School offers 39 masters' programs and one doctoral program. For more information about ACU, call toll-free 1-800-888-0228

## Stationmaster's House Museum

### OPEN HOUSE

Saturday, November 19  
10 to 11:30 a.m.  
Refreshments Served



**MORTON BUILDINGS**  
**APPRECIATES YOUR BUSINESS!**

**Bob Martin/Manager**  
**806/935-6881**

## SUTPHEN'S BBQ

303 N. Cedar • Borger, TX  
806/273-6442

### Catering

25 People or More  
\$5 per plate  
(choice of 2 meats)

• BBO Brisket • BBQ Chicken • Polish Sausage • Ham • BBQ Chicken Strips •

With all the trimmings!

• Onion Rings • Potato Salad • Cole Slaw • Beans • Coffee or Tea


• Fruit Cobblers Available •



With Three-Way Calling, you can bring together people on opposite sides of the country, or on opposite sides.

When you've got something to share with a couple of people in a couple of places, share it with both of them at the same time. Get Three-Way Calling from Southwestern Bell. No matter how far apart your family and friends are, Three-Way Calling

is bound to bring them closer. To order, or for more information on this and other EasyOptions™ calling services, call 1-800-234-BELL.

 Southwestern Bell Telephone

"The One to Call On"™

Available in selected Southwestern Bell Telephone areas.

## School Bell Program

From now until April 28, 1995, Southwestern Bell Telephone will donate \$2 to the board of trustees of your local high school when you purchase the Three-Way Calling service. Your school can earn up to \$1,500 to help purchase anything from fine arts programs to computer software to band uniforms.

# Agri-Business



**GRUVER FFA** - The Junior Chapter Conduct Team was one of the teams to attend the Top of Texas District contest held at Clerendon College. The members are: front row; Kevin Harris, Kathy Slough, and Brant Armes, back row; Buster McLain, Jared Johnson, Ross Murrell, and Travis Bayless.

## Soil Conservation Service to change name to NRCS

The Department of Agriculture's Soil Conservation Service will soon take on a new identity as the Natural Resources Conservation Service as it streamlines its operation and takes on new program responsibilities. The new agency was authorized under the reorganization ordered October 20 by Agriculture Secretary Mike Espy.

The new Natural Resources Conservation Service will continue to have responsibility for all the programs of the former Soil Conservation Service. In addition, several other programs have been trans-

ferred to it including the Wetland Reserve Program, the Waterbank Program, The Colorado River Basin Salinity Control Program, Farms for the Future Program, Forestry Incentive Program, and Great Plains Conservation Program.

"We are working to make this a smooth transition for our customers," said Paul Johnson, chief of the agency. "And we will continue to build on 60 years of a unique relationship between federal government and this nation's private land owners as well as our conservation

district and state agency partners. It's a relationship built on voluntary programs, technical assistance, and conservation cost-share programs."

Johnson said farmers, ranchers, and customers of the agency can continue to receive the same assistance they have from the Soil Conservation Service during the transition period.

"Throughout this process, we will keep our customers and our employees well informed," said Johnson. "And we will stay connected to their ideas and concerns."

## Area farmers can apply for emergency farm loans

Application for emergency farm loans for damages and losses caused by a lack of moisture, and other weather related problems, which occurred during the 1994 crop small grain growing season are being accepted at the Farmers Home Administration (FmHA) office in Perryton, FmHA County Supervisor, James M. Heck said today.

Heck said farmers may be eligible for loans up to 80 percent of their actual losses or the operating loan needed to continue in business or \$500,00, whichever is less. For farmers unable to obtain credit from private commercial lenders, the

interest rate is 3.75 percent. "As a general rule, a farmer must have suffered at least a 30 percent loss of production to be eligible for an FmHA emergency loan," Heck said. Farmers participating in the PIK or Federal Crop Insurance program will have to figure in proceeds from those programs in determining their loss.

"Application for loans under this emergency designation will be accepted until May 23, 1995 but farmers should apply as soon as possible. Delays in applying could create backlogs in processing and possibly over into the new farming

season," Heck said. FmHA is a credit agency of the U.S. Department of Agriculture. It is authorized to provide disaster emergency loans to recognized farmers who work at and rely on farming for substantial part of their living. Eligibility is extended to individual farmers who are U.S. citizens and to farming partnerships, corporations or cooperatives in which U.S. citizens hold a majority interest.

The FmHA office is located at 800 N. Main, Suite B in Perryton and is open from 8 a.m. to 4 p.m. Monday through Friday.

## Bridge work begins

Hutchinson County - A project to replace the westbound bridge on State Highway 152 at Bear Creek is now underway. Construction crews from Concho Construction Company will detour traffic onto the eastbound lanes of the State Highway 152. That means traffic through the construction zone will be restricted to one lane of 45 mile per hour travel in each direction.

Work on the project should be completed in April of 1995. Work is supervised by Borger Area Engineer Kenneth Petr.

The bridge replacement project is one way the Texas Department of Transportation (TxDOT) is fulfilling its mission to provide safe, effective, and efficient movement of people and goods.

### ATTENTION!

When using your mobile or cellular telephones to call the 911 emergency number remain calm & identify the TOWN and LOCATION you are calling from so the 911 operator may direct your call properly.

*This is a public service message from this newspaper and your local police department.*

## Farm & Ranch Show 10th anniversary

When the 10th anniversary of the Amarillo Farm & Ranch Show opens the doors of the Civic Center on November 29, producers and agribusinessman alike can expect an exposition that's nearly 30% larger than any previous year.

Featuring over 825 total booths, the Amarillo Farm & Ranch Show's growth is the result of the addition of a 20,000 sq. ft. climate-controlled, temporary outdoor pavilion accommodating nearly 100 new exhibits, the utilization of Civic Center meeting rooms as new exhibit space, and the marked increase in exhibit demand by manufacturers and suppliers servicing the agribusiness community.


Benefits to attending agribusinessman, in addition to size, include a host of new product introductions and greater variety. Slated for introduction in Amarillo are the John Deere 7450 cotton stripper and 8000 Series tractors, Sunflower model 9430 Foldir g Grain Drill, and the Caterpillar Challenger 45. There's also a new showcase on Ratite Breeding.

The Amarillo Farm & Ranch Show is Tuesday, November 29 - Thursday, December 1 in the Amarillo Civic Center. Admission is free. Show hours are 10:00 - 6:00 daily. For show information call (612) 894-8007.

The Amarillo Farm & Ranch Show is sponsored by Texas Wheat Producer, High Plains Journal, KFDA TV and KGNC Radio. The Amarillo Farm & Ranch Show is part of the Champion Farm & Ranch Show series which also includes the Northern Illinois Farm Show in Rockford, Illinois on January 4 & 5, 1995, the Corpus Christi Farm & Ranch Show on January 10 & 11, 1995, the Dixie Farm Show in Jackson, Mississippi on February 7 & 8, 1995, the Big Country Farm & Ranch Show in Abilene on February 15 & 16, 1995, and the Texoma Farm & Ranch Show in Wichita Falls on February 21 & 22, 1995.

For additional information contact Ethan Cartwright at 1-800-827-8007.

\*\*\*\*\*  
 ★ Jackson Welding Service ★  
 ★ Agricultural & Oil Field ★  
 ★ Welding ★  
 ★ 17 Years Pipe Welding ★  
 ★ Experience ★  
 ★ Fully Insured ★  
 ★ Contact Roy Jackson ★  
 ★ 659-2137 or 659-5129 ★  
 \*\*\*\*\*



**DUKE'S CHIROPRACTIC CENTER**

**EVENING HOURS AVAILABLE**

<input type="checkbox"/> Headaches / TMJ	<input type="checkbox"/> Family Health Care
<input type="checkbox"/> Neck Pain / Stiffness	<input type="checkbox"/> Pediatrics
<input type="checkbox"/> Low Back Pain	<input type="checkbox"/> Athletic Injuries
<input type="checkbox"/> Shoulder / Arm Pain	<input type="checkbox"/> Numbness
<input type="checkbox"/> Hip / Leg Pain	<input type="checkbox"/> Gentle Treatment

**AUTO ACCIDENTS • WORK INJURIES**  
(Most Insurance Accepted)

**New Hours:**  
2-6 p.m. Mon. thru Fri.

**659-5505**

Darrell D. Duke DC      11 W. Kenneth • Spearman, Tx.

**Look** *The Competition is About to Copy Us Again...*

## Interchangeable Structural Components

- Mainline pipes are universal and can be located anywhere in any span.
- Common Truss Supports.
- Universal Truss Rods.
- Interchangeable Tower Tops and Flexjoints.

**Come see Booth #3212 at the Amarillo Farm Show, Nov. 29, 30, and Dec. 1 from 10 a.m. to 6 p.m. each day.**

### Paschel Irrigation Inc.

Richard & Arlene Paschel      Hwy 15 W. • P.O. Box 69  
(806)659-5228      Spearman, TX 79081

First in Innovation and Technology

© 1994 REINKE MFG. CO., INC. RNK 2/94



\* \* \* FIVE STAR EQUIPMENT, INC. \* \* \*

**What: Winter Service Special**  
**Where: Five Star Equipment - Spearman, Texas**  
**When: November through February**

**Options Listed Below:**

**Option 1 - A 10% Discount** on all Case IH Parts and in shop labor when the total bill reaches \$1000. The job must be committed to us by December 31, 1994. Payable on the 10th of the month following billing.

**Option 2 - A 5% Discount** on all Case IH Parts and in shop labor when the total bill reaches \$1000. The job must be committed to us by February 28, 1995. Payable on the 10th of the month following billing.

**Option 3 - A July 10th Payment** due date with approved credit with a 1.5% per month finance Charge beginning March 1, 1995 or 1st of the month following completion of the job. The job must be committed to us by February 28, 1995 with a minimum balance of \$1000.

**FREE HAULING ONE WAY WITHIN 50 MILES OF SPEARMAN**

Winter Service Special includes all of your Case IH tillage, harvesting, and planting equipment.

Call Today So We Can Start Saving You Money!

FIVE STAR EQUIPMENT      659-3743  
Highway 15 W.



# Grime Fighter.

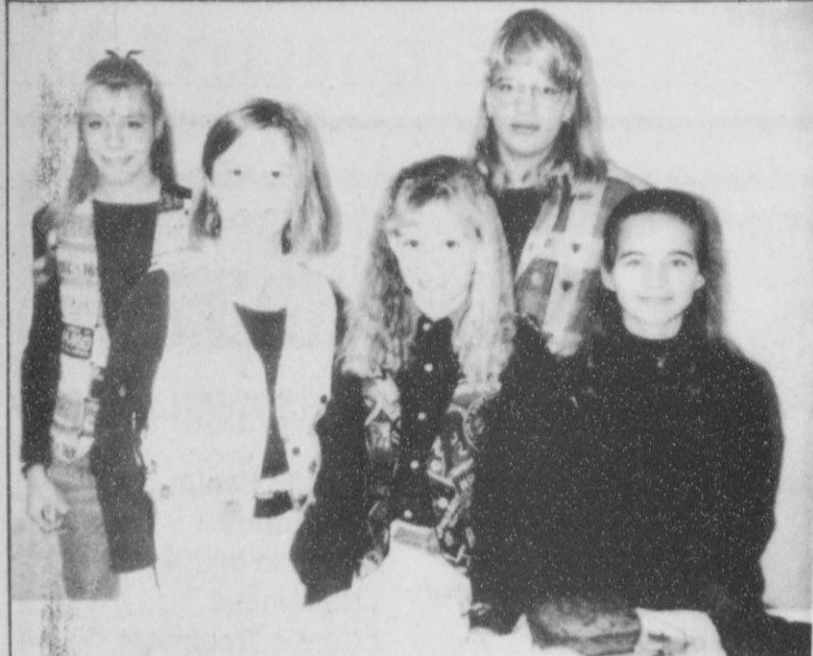
Outdoor grilling is a Texas tradition. You've probably collected lots of great recipes for barbecued ribs, chicken, steaks and burgers. But now there are two ingredients you won't need. Charcoal and lighter fluid. Both contribute to the grime of air pollution. So take a deep breath and fire up a propane grill. Grilling with propane is faster, cheaper and environmentally correct. Propane. The clear choice.

The clear choice. Bon appetit!

PROPANE

THE CLEAR ALTERNATIVE

RAILROAD COMMISSION OF TEXAS  
 James E. (Jim) Nugent, Chairman    Mary Scott Nabers, Commissioner    Barry Williamson, Commissioner  
 For more information about propane, call us at 1-800-64-CLEAR



**4-H FOOD SHOW** - Nine 4-Hers from Gruver and Spearman participated in a county-wide 4-H Food and Nutrition Show. Participants were (top photo) Brittini Beedy, Sammie Stavlo, Kaylee Holt, Audrey Winegarner, and Brittany Morris, (bottom photo) Brianne Stedje, Kara Pipkin, Amber Elliott, and Lori Beth Stedje.



## Provision of 1995 wheat program announced

Corn, Sorghum, Oats, and Barley producers are eligible to enroll their 1994 crops into the grain reserve. These crops must go through the nine month regular loan process first, but would be eligible for the reserve after the loan matures. If you are interested in placing grain into the farmer owned reserve you must take action by April 30, 1995. Please contact the Hansford County Agriculture Stabilization and Conservation Service (ASCS) office if you have any questions.

Provision of the 1995 wheat program that have been announced include 0% required leave out (ACR), and established a Target price of \$4 per bushel. Other provisions will be announced as they become available.

If you suffered a 35% loss (and had FCIC insurance), or a 40% loss (without FCIC insurance) you will need to collect your production evidence for the crop, with the disaster, for all farms. FCIC appraisals will be required if the crop was

appraised by FCIC. We expect that the sign up will begin about December 1, but it will be after the first of the year before we receive our training on this program, and before any payments can be made on this program, but please go ahead and collect this production information and be ready to sign up as soon as possible. The sign up will go through March 1995.

The office staff of the ASCS office would like to invite you to an open house honoring Keith Martin's service to Hansford County over the past 12 years. Refreshments will be served from 9 a.m. to 12 p.m. on Monday, November 21, 1994, at the Hansford County ASCS Office. Keith has been an asset to Hansford County and will be sadly missed by his staff and area farmers. We hope you will come by to visit with Keith, and wish him well in his new position.

(Just a note of thanks) As many of you know I will be moving to Collingsworth County to manage the ASCS office there. I have en-

joyed working with each and every one of you. I do appreciate the kindness that you have shown my whole family. I feel blessed to have lived here, and to have the opportunity to get to know all of you. I wish

you the best of luck, and pray that the Lord will bless you. I also hope that if you ever get lost and find yourself in Wellington, that you'll stop and visit. Again, Good Luck, and Thanks a lot. (Keith)

## HALF HOG--\$87.50

Cured, smoked, cut, and wrapped to your orders!



**SUNRAY LOCKER**

806/948-4403

## Area youths involved in 4-H Food Show

Thirty young people recently participated in the 4-H Food and Nutrition project during the month of October. Of those taking part, nine chose to compete in a county-wide food show which was held in Spearman last Saturday.

Participants prepared a dish in one of four categories: Main Dish, Fruits and Vegetables, Breads and Cereals, or Snacks and Desserts. They also answered questions

concerning the preparation and nutritional value of the dish they prepared.

Brittini Beedy, Sammie Stavlo, Kaylee Holt, Audrey Winegarner, Brittany Morris, Brianne Stedje, Kara Pipkin, Amber Elliott, and Lori Beth Stedje were the exhibitors.

Judges for the event were Lisa King from Morse and Teresa Hefley from Fritch.

## Delivering Technology to Your Field



Cooperator: Ricky Thompson  
Location: Gruver, TX

Hybrid	Moisture	Yield	Rank
ICI 8285	14.1	140.4	1
ICI 8281	13.3	137.1	2
ICI 8272	13.4	120.2	5
ICI 8344	12.5	115.2	7
Asgrow RX899	14.7	114.6	8
ICI 8326	12.7	97.5	12
Pioneer 3162	15.1	92.6	13
Cargill 7997	14.0	92.5	14

Plot Averages  
EXTREME STRESS PLOT - Limited water

Gruver: Ricky Thompson - 733-2782  
Spearman: Darrell West - 659-3800



## New Mexico trip ends Merit badge seminar

**By Carolyn Cummings**  
The Atomic Energy Merit badge seminar ended with our trip to New Mexico. Members of Cadet/Senior Girl Scout Troop 127 - Dawn Loomis, Kelli Cummings and Brandi Burch, along with Wayne and Carolyn Cummings, headed out for Amarillo on Thursday. They had supper at CiCi's Pizza and spent a very short night at the West Star.

On Friday morning, we loaded onto buses at 4:30 A.M. at the Target parking lot. We were on bus #4 out of 5 buses. It was dark, cold, and windy as we loaded suitcases, sleeping bags, mats, pillows and our food supplies onto the buses. Most bus members fell silent, or at least quieter, to the snores of the many tired travelers. Our first rest stop was at Santa Rosa, New Mexico.

We arrived at the Atomic Energy Museum in Albuquerque for a short welcome. Then the various buses left for different tour sites.

Our first stop was the Solar Tower, which was surrounded by solar panels. Various solar energy experiments are performed there controlled by computers. There was a large solar oven. It would bake 50 loaves of bread and will be used in remote areas. There was also a solar ice machine. A large 1.5 inch thick aluminum panel was on display. It had large hole burnt into it by the sun reflecting off the panels. It took only 22 seconds for this to happen.

Our next stop was the Trestle Bridge. This bridge was built in 1960 by the Army. It is the largest all wood bridge. The nails are hard-

ened plastic and the anchors are compressed fiberglass. Testing is done on planes and other vehicles with lightening or electromagnetic pulses to see how they might impede communications and navigational waves during war conditions. It was a huge structure. They said that if they milled the wood, it would build 400-500 homes.

We then toured the Particle Beam Fusion Accelerator II. It is 108 feet in diameter and 20 feet high. One chamber is filled with oil and the next with water. Then the ion diode region. It takes a lightening effect picture. Its purpose is to demonstrate fusion in the lab.

Next was Cylindrical Boiling Facility (CYBF). It's to see how an accident could be controlled. The cavity is stainless steel, measuring 16 foot high and 12 feet wide. It takes 1.5 days to fill and 4 days to heat to boiling. The bubbles are 3 feet wide. Test are run at night because it uses too much electricity equal to 37,000 cubing irons.

We then went back to the museum, where a very nice man gave us a brief talk about World War II and what led to the bombs being dropped. There were replicas of Fat Man and Little Boy, the bombs that were dropped to end World War II. They even had what was left of the U.S. flag that had flown the day of the bomb test at White Sands.

Next was supper at Sandia Cafeteria on Kirland Air Force Base. Then a brief stop at an elementary school where a teacher had intro-

See SEMINAR, page 12

## Neighbors CONTINUED FROM PAGE 6

Doris expresses her heartfelt gratitude to all who have shown their concern with their prayers, visits, phone calls and cards; to the First Baptist Church for their prayergrams; to her pastor, Brother Billy Stanford, and to the church family for their prayers and solicitude.

\*\*\*\*\*

To observe her dad's birthday on Monday, Mary Ann Morris with little sons, Chip and Reese, came for the weekend in the home of her parents, Judy and Ray Martin. Vega is the home of the Morris family.

\*\*\*\*\*

The elections are over, finally,

and toward the last it became obvious that most of the candidates were running from something, rather than for something.

The two-party system is an effective system--unless you try to have them both in one night.....

\*\*\*\*\*

Ora Lee Blackburn enjoyed a pleasant four days over the weekend with her guest, a niece Allouez Blackburn. During the time they drove to the Pampa area and visited the Joe Hutchison family on the ranch.

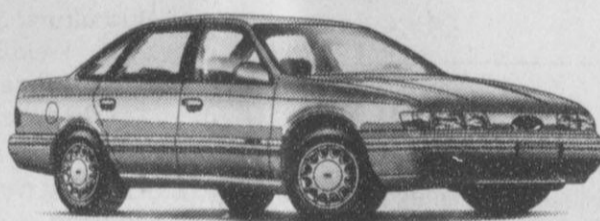
Miss Blackburn is from Hawley, Texas.

\*\*\*\*\*

# Life Is Complicated.



# 2.9% Is Simple.



Ford Taurus  
America's Best-Selling Car



Ford F-150  
America's Best-Selling Truck

NOW GET 2.9% APR FINANCING FOR 48 MONTHS  
OR CASH BACK<sup>(1)</sup> ON TWO OF AMERICA'S BEST-SELLERS!<sup>(2)</sup>

Lots of things are complicated. But 2.9% financing on Ford Taurus and Ford F-Series trucks is simple. 2.9% can mean great savings on a huge selection of Taurus' or get \$1000 cash back on Taurus SHO, \$500 cash back on Taurus sedans and wagons or \$750 cash back on Ford F-150 regular cabs with 4.9L engines and manual transmissions.

HURRY. 2.9%  
OR UP TO \$1000 CASH BACK ON TAURUS/\$750 CASH BACK ON F-SERIES  
ENDS DECEMBER 3RD!

# POLLARD FRIENDLY FORD

1. 2.9% APR financing for 48 mos. or \$1000 cash back on '94/'95 Taurus SHO's, \$500 on Taurus GL/LX/SE or \$750 cash back on '94/'95 F-150 regular cab w/4.9L engine and manual trans. Excludes SuperCabs. Varies by credit worthiness of consumers as determined by Ford Credit. 2.9% APR for 48 months at \$22.09 per month per \$1,000 financed with 10% down. Dealer participation may affect savings. Take new retail delivery from dealers stock by 12/3/94. Residency restrictions apply. See dealer for details.  
2. Based on 1994 calendar year to date R.L. Pollak Registrations.



# Sports

## Varsity boys begin season with a close call

After much anticipation all year, the 1994-95 Spearman Lynx varsity season was kicked off last Tuesday at Spearman, and for a team that is only carrying one senior, the team did great defeating the White Deer Bucks in a close one, 45-44.

Although Spearman led only one quarter, the third, several players contributed hard efforts to the Lynx's winning cause. Leading scorer Jarod Huddleston finished the game with a fabulous 13 points,

with Heath Archer not far behind with 12. One of the biggest stars besides these two, Shad O'Quin, finished the game with 8 points. Archer, one of the Lynx's main 3-point shooters, made all his points on field goals with two 3 pointers, while Huddleston and O'Quin used their inside strength to sink all field goals, except for one free shot by Huddleston, for their points.

Also making his mark on the game was the senior, Chad Wilkerson. Wilkerson proved last Tuesday that he is not just an awesome quarterback, but he can also hoop it up with the best. Although he finished the game with only 4 points

on 2 field goals, his big defensive effort helped Spearman to the victory.

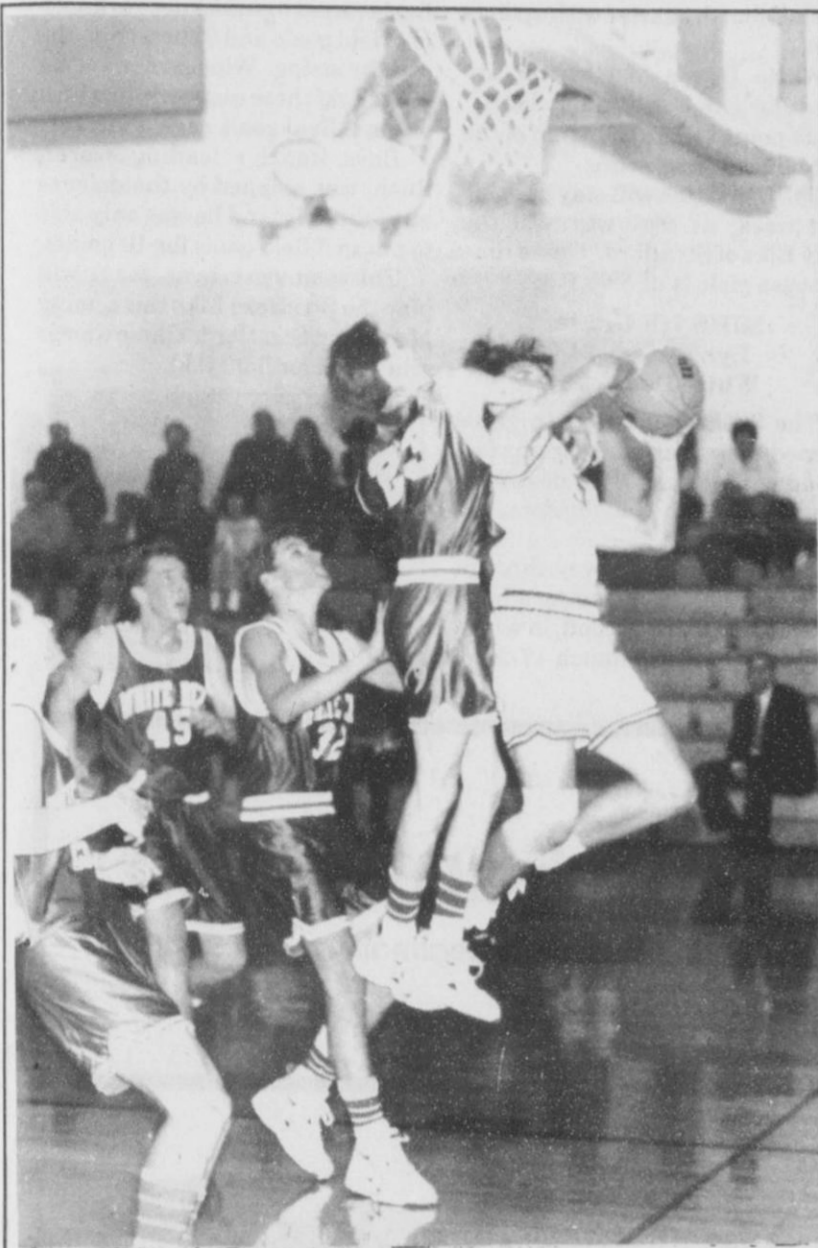
Freshman Eric Cudd, junior Coyt Tigrett, and junior Dillon Miller also helped the Lynx cause by contributing points of their own. Cudd sunk a field goal and a free shot, while Tigrett put in a field goal. Miller's point came on a free shot in the first quarter.

The big Lynx defense only allowed two Buck's players to reach double figures, Willie Herring with 12 and Duane Coffey with 14. The only person even remotely close to these two was Torey Craig with 6 points.

The Spearman Lynx varsity boys will travel along with their younger teammates, the 9th grade, to Perryton for the Perryton Tournament. Just like all tournaments, game times are still to be announced.

**For Your  
BBQ or Smoked Turkey  
call**

**Sutphen's BBQ**  
(in the Pahnandle for 44 years)  
806/273-6442  
303 N. Cedar  
Berger, TX



**HEATED ACTION** - Although basketball is sometimes considered as one of less non-contact sports, this picture clearly proves that theory wrong. As seen here, a Lynx lay-up is trying to be blocked by a swarm of four White Deer Buck's players last Tuesday night. The Lynx went on to win the ball game by the narrow margin, 45-44. (Photo by Chad Davis)

### SHS Junior Varsity Lynx - 46 White Deer - 39

Many Lynx fans probably remember the Spearman Lynx JV by their awesome football season they had this year, but last Tuesday night the Lynx proved they can do much more than win on the gridiron by defeating the White Deer Bucks, 46-39.

The first quarter looked as though the Lynx were in for a long night by being out-scored 20-10, but they soon bounced back into the game by returning the favor to White Deer and out-scoring them, 14-5. The Lynx did hold on through the third and fourth quarters by tying the third with 12 and win-

ning the fourth 10-3.

Former superstar running back Blake Beedy contributed most of Spearman's points by sinking in an incredible 15 points, which all, with the exception of 3 free shots, were made by field goals. Brent Savage followed close behind Beedy by knocking in 13 of his own, and much like Beedy, all his points, with the exception of 3 from the painted line, were all field goals. Eric Varnon also contributed his efforts to the winning cause by putting 2 field goals and 3 free shots to give him 7 points.

Also seeing the heated action were Shane O'Quin with 4 points, Clint Faries with 5 points, and Alan Huddleston with 2.

## Varsity girls defeat LadyBucks, 58-46

A winning tradition, a great new coach, and fabulous athletes; all of these factors contributed to the Spearman Lynxettes' winning effort last Tuesday night, as they took on the Lady Bucks of White Deer and wiped the court with them, 58-46.

Senior Ashly Shieldknight proved that she is not just another pretty face, as she led all of the Lynxettes' scorers with 19 points. Shieldknight's points came with 6 field goals, including a 3-pointer, and 6 free shots. Coming in right behind this super athlete was Kara Townsen with 18 of her own points. Townsen managed to sink in 6 field goals and 6 shots from the penalty stripe. Townsen, who lives to play basketball and obviously proves it, was the only Lynxette starter who went 100% on all of her free throws.

The Lynxettes played their hearts out the entire game by winning every quarter except the last, but by then the game was really already over. What really helped these talented girls was their big blow-outs of the second and third quarter, in which they out-scored White Deer 30-12.

The Lynxettes also had several other players that shined. Shayla Barber used her lightning speed to knock down 9 points, while Tara Butts sunk 2 field goals and free shot to give her 5 points. Also helping the Lynxette effort were Keisha O'Quin with 3 points on 1 field goal and free shot and Samatha Beasley with 2 free shots.

The Lynxette defense held the Lady Bucks so well that only one girl, Tiffany Day, was able to make double figures on points.

The Lynxettes will travel to Perryton November 17th to strut their stuff in the Perryton tournament. This tournament should be a test for the Lynxettes, and if they play their best, they should come out on top.

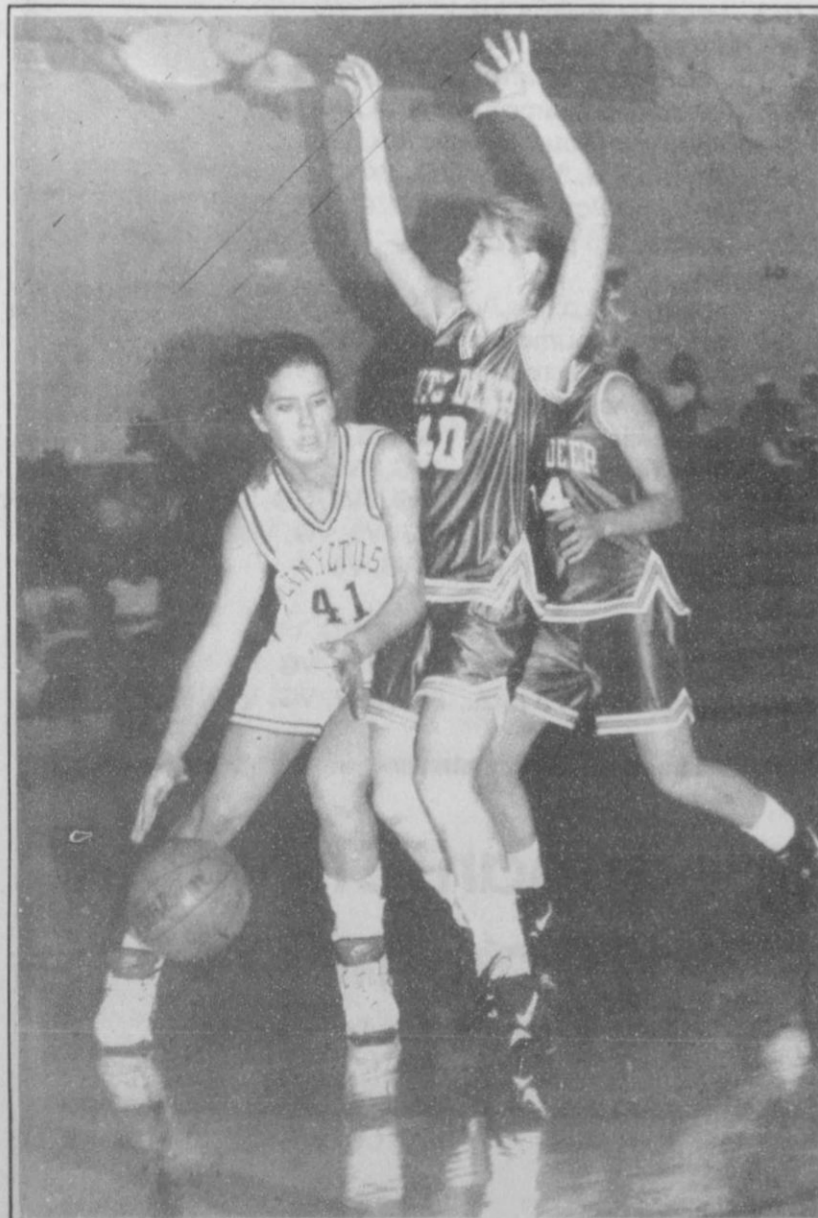
### SJHS 8th Grade Lynx - 53 Boys Ranch - 24

After coming off a perfect season in football, the Spearman Lynx 8th grade continued winning last Monday night as they took on the Roughriders of Boys Ranch and beat them, 53-24.

The Lynx led the way all four quarters, and the only time the Ranch even came close to the same score, was the first quarter in which the Lynx out-scored them, 13-9. The second quarter, Spearman's strongest quarter, was a total blow out in which the Lynx widened their lead by out-scoring the Ranch, 13-2.

With a fabulous game, Carlos Hernandez led all Lynx scorers with 16 points, and he did not even play the third quarter. Hernandez's points came with 7 field goals and 2 free throws. Michael Lusby, who also set out the third quarter, played a great game too, in which he knocked in 9 points. Lusby's points came on 4 field goals and free shot. Coming in only 1 point behind Lusby and scoring 8 was Quentin Shieldknight, in which all 8 points were made on field goals.

The leading scoring for the Ranch, Charles Hawkins, was only able to put in 12 points, thanks to the great defensive effort of the Lynx.



**NO PRESSURE** - The Spearman Lynxettes hosted the White Deer last Tuesday night at Spearman, and as predicted they came out on top. In the picture above, super-girl Kara Townsen fires to dribble past a Lady Buck defender. Townsen finished the game with 18 points, and was 100% from the free shot line. (Photo by Daniel Ramos)

## The Perfect Setting For Energy Savings.



You get power from Texas-New Mexico Power Company, plus advice on saving energy. ★ Set your thermostat at 68° in the winter and 78° in the summer to save energy without sacrificing comfort. For every degree it's set above 68° in winter and below 78° in summer, you use six to eight percent more energy. A setback thermostat can help save even more by adjusting the temperature when you're not home. ★ Call or visit your local TNP office for our free Energy Management Guide.



Prices Effective November 13-19, 1994  
Gruver, Spearman, Perryton, & Booker Only

# Thanks giving BUYS

**ALLSUP'S**

SAVE ON PEPSI-COLA  
*Be young. Have fun. Drink Pepsi.*  
6 pk. • 12 oz. cans  
**\$1.99**

ALLSUP'S SAUSAGE & BISCUIT FOR ONLY  
**79¢**

ALLSUP'S BEEF & SALSA BURRITO FOR ONLY  
**99¢**

GRADE A SHURFINE LARGE EGGS 18 CT. CTN.  
**99¢**

REGULAR 60¢ GRAB BAGS "CHEETOS, FRITOS, & FUNYUNS"  
**2 \$1.00 FOR**

SAVE ON SHURFINE DIAPERS 30 MEDIUM -20 LARGE  
**\$4.49**

BEER NUTS CLASSIC PEANUTS 5.5 OZ.  
**99¢**

ULTRA POWER SHURFINE LAUNDRY DETERGENT 42 OZ.  
**\$2.69**

60% FREE CONTACT 12 HOUR CAPLETS  
**\$4.59**

ALLSUP'S 1.5 LB. SANDWICH BREAD 60¢ EACH OR  
**2 \$1.00 FOR**

CHARMIN BATHROOM TISSUE 4 ROLL PKG.  
**\$1.39**

SHURFINE DILL PICKLE SPEARS 24 OZ.  
**\$1.99**

Fresh Baked Cooked Turkeys-Cooked to Order  
**\$10.99**

Assorted Juices  
64 oz. **99¢**

Basic Diapers **\$4.49**

**SHS Junior Varsity  
Lynxettes - 32  
White Deer - 26**

The Lynxette JV played their first game last Tuesday, and as most Lynxette teams do, they beat their opponents, the White Deer Lady Bucks, soundly, 32-26.

With the exception of the third, the Lynxettes led each quarter on most points scored. Despite a slow start with a 8-2 lead in the first quarter, the Lynxettes jumped out to a 16-9 lead at the end of the first half.

Misha blew away the rest of the pack by finishing with an unbelievable 17 points. She attained all but 1 point on field goals, including 6 first quarter points.

Misha was not alone, however, and Jennifer and Brooke came into help by knocking in 9 points together.

Also helping the Lynxette cause were Lacie, Carrie, and Lindsey, who all canned a field goal each.

**SHS 9th Grade  
Lynx - 24  
Boys Ranch - 28**

The Spearman Lynx 9th grade did the same as their female teammates last Monday, as they were edged out by Boys Ranch, 28-24.

The lead throughout the entire game exchanged hands every quarter but the first one, in which both teams tied with 6 points. However, Spearman did out-score the Ranch in the second quarter 9-7, but did not match their points in the third or fourth quarters.

Josh Bynum used his skills to muster up 7 points for the Lynx and lead the scoring on the Spearman side. Bynum's points came on 3 field goals and 1 hit from the free shot line.

Boys Ranch's Garcia was able to bank in 11 points to lead the Ranch scoring, with 4 field goals and 3 free shots.

Despite this loss, the Spearman Lynx 9th grade will be traveling to

Perryton the 17th of November to play in the Perryton Tournament. Game times for when they will be playing is still to be announced.

**SJHS 8th Grade  
Lynxettes - 38  
White Deer - 14**

The Lynxette's 8th grade basketball team hit the roundball court for the first time last Monday night against the White Deer Lady Bucks at White Deer, and for such a young team, the girls defeated their opponents soundly, 38-14.

Both Audra Sanders and Camille Smith, finished the game with a tremendous 12 points each to lead the Lynxettes with most points scored. Halee Beasley and Kristi Wall also brought the girls' score up by scoring 4 of their own points each, while Brooke Leslie, Amber Ramon, and Kathryn Murphy put the icing on the cake by knocking in a field goal each.

Sanders points were made on 4 field goals and 2 penalty shots, while

Smith attained her glory on 5 field goals and 1 shot from the painted stripe.

White Deer's attack on the Lynxettes was useless, with Brownlow and Salzbrenner making the top two point getters with 6 each.

The eighth grade Lynxettes will play at home this coming Monday, as they take on the Stratford Lady Elks immediately following the 7th grade game.

**SJSHS 7TH Grade  
Lynx - 42  
Boys Ranch - 16**

In a very close contested game, the Spearman Lynxette's 7th grade open their season last Monday by defeating the White Deer Lady Bucks at White Deer, 42-23.

Leading the way for the Lynxettes were Kristin Beedy and Gale Mayfield with 6 points each. Mayfield made her shot on two field goals and two free shots, while Beedy's were all from the field.

Spearman and White Deer ex-

changed leads in the first three quarters, with White Deer leading the first with 8, Spearman taking the second with six, and White Deer taking the third with 9. Both teams finished fourth quarter with 4 points each.

White Deer's McClendon finished her game with an outstanding 14 points, more than half of the Lady Buck's total score.

The Lynxettes will stay at home next week, as they will host the Lady Elks of Stratford. Game time for these girls is at 5:00 P.M.

**SJHS 7th Grade  
Lynxettes - 24  
White Deer - 23**

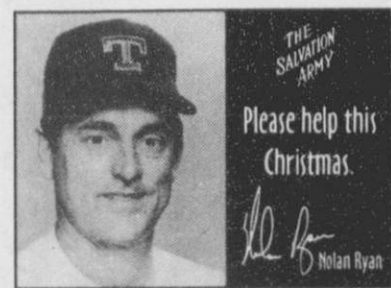
The Spearman Lynx 7th grade opened their season victorious last Monday night, as they destroyed the Boys Ranch Roughriders, 42-16.

Spearman led the way through all four quarters, including a huge break-away in the second, in which they outscored the Ranch 17-2.

Dusty Barber led his team on scoring with an unbelievable 14 points, including 7 in the fourth quarter. Just 2 points behind him was Aaron Winegarner with 12. Barber used his quickness to knock in 6 field goals and 2 shots from the penalty stripe. Winegarner's came in the first three quarters, in which put in 2 field goals each quarter.

Boys Ranch's leading scorer, Rush, was stopped by the defense all night long, and he was only able to put in 5 field goals for 10 points.

This youngest Lynx team will play the Stratford Elks this coming Monday at Stratford. Game time is scheduled for 5:00 P.M.



**Beedy Furniture**

723 W. 7th Spearman, Tx. 659-3701

**Hansford Supply**

210 Main Gruver, Tx. 733-2469

**C&O Supply Co.**

421 W. Kenneth Spearman, Tx. 659-3555

**Caprock  
Industries, Inc.**

Feed Lot #1 & #2

733-5025 733-5043

**1994-95 Spearman  
Basketball Schedule**

(Varsity, Junior Varsity and Ninth)

DATE OPPONENT PLACE TIME TEAMS PLAYING

- November
- 14 - Boys Ranch, H, 5 p.m., 9B
- 15 - White Deer, H, 5 p.m., JVB, JVG, VB, VG
- 17-19 - Perryton Tournament, TBA, 9B, 9G, JVB, JVG
- 18 - Clarendon, at Pampa, 6 p.m., VG
- 21 - Stratford, GH/BT, 5 p.m., 9B, 9G
- 22 - Wheeler, H, 5 p.m., JVB, JVG, VB, VG
- 28 - Gruver, GH/BT, 5 p.m., 9B, 9G
- 29 - Panhandle, T, 4 p.m., JVB, JVG, VB, VG
- December
- 1-3 - Miami Tournament, TBA, JVG, VB
- 1-3 - Canyon Tournament, TBA, VG
- 1-3 - Gruver JV Tournament, TBA, JVB
- 5 - West Texas, GT/BH, 5 p.m., 9B, 9G
- 6 - Canadian, H, 5 p.m., JVB, JVG, VB, VG
- 8-10 - Wheeler Tournament, TBA, VB, VG
- 8-10 - Borger Tournament, TBA, 9B, JVB
- 10 - Wheeler, H, 10 a.m., JVG
- 12 - Sunray, GT/BH, 5 p.m., 9B, 9G
- 13 - Sanford-Fritch, T, 6 p.m., JVB, JVG, VB, VG
- 16 - Perryton, H, 5 p.m., JVB, JVG, VB, VG
- 29-31 - Canadian Tournament, TBA, VB, VG
- January
- 3 - Borger, T, 6 p.m., JVB, JVG, VB, VG
- 5 - Gruver, GH/BT, 5 p.m., 9B, 9G
- 6 - Sunray, T, 4 p.m., JVB, JVG, VB, VG
- 9 - Boys Ranch, T, 5 p.m., 9B
- 10 - Boys Ranch, H, 6 p.m., JVB, VB
- 13 - Stratford, T, 4 p.m., JVB, JVG, VB, VG
- 16 - Stratford, GT/BH, 5 p.m., 9B, 9G
- 17 - West Texas, H, 5 p.m., JVB, JVG, VB, VG
- 20 - Sunray, H, 5 p.m., JVB, JVG, VB, VG
- 23 - West Texas, GH/BT, 5 p.m., 9B, 9G
- 24 - Gruver, T, 5 p.m., JVB, JVG, VB, VG
- 27 - Boys Ranch, T, 6 p.m., JVB, VB
- 30 - Sunray, GH/BT, 5 p.m., 9B, 9G
- 31 - Stratford, H, 5 p.m., JVB, JVG, VB, VG
- February
- 2-4 - West Texas Tournament, TBA, 9B, 9G
- 3 - West Texas, T, 5 p.m., JVB, JVG, VB, VG
- 6 - Gruver, GT/BH, 5 p.m., 9B, 9G
- 7 - Hooker, T, 4 p.m., JVB, JVG, VB, VG
- 10 - Gruver, H, 5 p.m., JVB, JVG, VB, VG



**1994-95 Gruver  
Basketball Schedule**

(Varsity and Junior Varsity)

DATE OPPONENT PLACE TIME TEAMS PLAYING

- November
- 15 - Dumas, T, 5 p.m., JVG, JVB, VG, VB
- 17-19 - Perryton JV Tournament, TBA, JVG, JVB
- 18 - Fritch, H, 6 p.m., VG, VB
- 22 - Claude, H, 5 p.m., JVG, JVB, VG, VB
- 29 - Borger, T, 5 p.m., JVG, JVB, VG, VB
- December
- 1-3 - Gruver JV Tournament, TBA, JVG, JVB
- 1-3 - Lake Meredith Classic, TBA, VG, VB
- 6 - Hartley, T, 5 p.m., JVG, VG, VB
- 8-10 - Borger JV Tournament, TBA, JVB
- 8-10 - Amarillo Tournament, TBA, VG
- 8-10 - Perryton Tournament, TBA, VB
- 12 - Guymon, H, 5 p.m., JVG, JVB, VG, VB
- 16 - Highland Park, T, 6 p.m., JVG, JVB, VG, VB
- 29 - Texline, T, 3 p.m., JVB, VB
- January
- 3 - Hooker, H, 5 p.m., JVG, JVB, VG, VB
- 5-7 - Stratford Tournament, TBA, VG, VB
- 10 - Sunray, T, 4 p.m., JVG, JVB, VG, VB
- 13 - Boys Ranch, T, 5 p.m., JVB, VB
- 17 - Stratford, H, 5 p.m., JVG, JVB, VG, VB
- 20 - West Texas, T, 5 p.m., JVG, JVB, VG, VB
- 24 - Spearman, H, 5 p.m., JVG, JVB, VG, VB
- 27 - Texhoma, T, 4 p.m., JVG, JVB, VG, VB
- 31 - Boys Ranch, H, 5 p.m., JVB, VB
- February
- 3 - Stratford, T, 4 p.m., JVG, JVB, VG, VB
- 7 - West Texas, H, 5 p.m., JVG, JVB, VG, VB
- 10 - Spearman, T, 5 p.m., JVG, JVB, VG, VB

**Golden Spread  
Sales Co.**

414 S. Hwy. 207 Spearman, Tx. 659-3776

**Berry Cleaners**

207 Main Spearman, Tx. 659-3122

**Spearman Chamber  
of Commerce**

211 Main Spearman, Tx. 659-5555

**G & G Food Liner**

516 Main Gruver, Tx. 733-2471

**Gordon's Drug**

314 Main Spearman, Tx. 659-2141

**Sunray Co-op**

North Highway 136 Gruver, Tx. 733-2481

# Brock featured in Dallas news

In the Saturday, October 29th issue of The Dallas Morning News, a familiar face to Hansford County appeared.

Janna Brock, formerly of Spearman, was the featured face, in which she talked about her busy schedule and life-style.

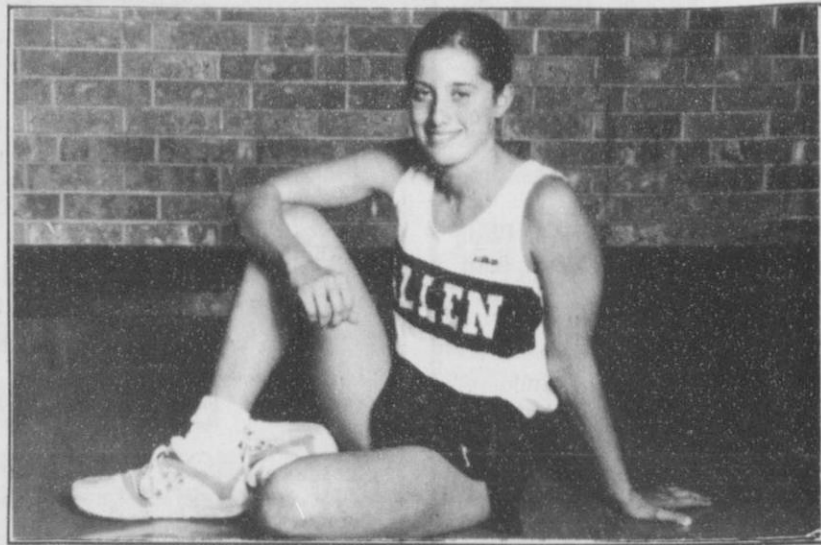
Brock, who gets up before dawn six days a week, had several things to say about her hectic life. "My schedule is booked. When I don't have anything to do, I don't know what to do. When I'm on break, I drive my parents crazy," said Brock, who narrowly missed the cuts for the U.S. Olympic Trials in the 100 and 200-meter breast stroke last August in Clovis, California.

Brock also does much more than swimming. She runs or swims every morning for at least 90 minutes. She swims for another hour and 45 minutes every afternoon, and runs or swims on Saturdays

and spends Sundays studying to maintain her A average in her honors courses.

The former Spearman athlete

has left here, but her competitiveness and drive to achieve what many of people her own age only dream of has stayed with her.



JANNA BROCK

**Lady Hounds 7th (1-0) vs Sunray**  
Monday 11-14-94 at Greyhound Gym  
Sunray 0 0 6 19  
Gruver 19 27 35 53  
Gruver - Janae Watley-16, Krystle Deeds-11, Amanda Snider-6, Chelsea Hicks-4, Annie Mayhew-4, Mary Puebla-4, Lindy Tolleson-4, Becky Cassidy-2, Leah Shultz-2.  
**Lady Hounds 8th Black (1-0) vs Sunray**  
Monday 11-14-94 at Greyhound Gym  
Sunray 2 6 12 15  
Gruver 12 23 33 37  
Gruver - Jessica Favela-10, Missy Johnson-9, Sabrina Cookenour-6, Kadie Grotegut-4, Kelley Ogilvie-4, Erika Salmans-4.  
**Lady Hounds 8th White (1-0) vs Sunray**  
Monday 11-14-94 at Activity Center  
Sunray 2 10 10 16  
Gruver 8 16 24 40  
Gruver - Teresa Crow-10, Bibbi Kay Christian-8, Heather

Gammon-6, Jennifer Lopez-6, Lauren Miller-6, Audrey Beasley-4.  
**Lady Hounds 9th (0-1) vs Sunray**  
Monday 11-14-94 at Greyhound Gym  
Sunray 3 8 11 20  
Gruver 6 9 9 13  
Gruver - Steffany Simon-5, Virginia Barrera-4, Darby Johnson-4.  
**Hounds 7th Red (1-0) vs Sunray**  
Monday 11-14-94 at Sunray  
Gruver 9 18 24 33  
Sunray 6 17 21 31  
Gruver - Bray Armes-14, Colby Hunt-10, Dallas Henson-6, Trevor Ferguson-2, Dan Odom-1.  
Synopsis: Gruver pulled down three key rebounds at the very end of the game, Bray Armes two and Dallas Henson one. With the final rebound and no time on the clock, Dallas hit a little turnaround for the game winning shot.  
**Hounds 7th White (1-0) vs Sunray**  
Monday 11-14-94 at Sunray

Gruver 4 4 12 20  
Sunray 2 2 2 12  
Gruver - Jared Chirstian-6, Gilbert Perez-6, Darren Duran-4, Josh Blount-2, Winston Griffin-2.  
**Hounds 8th (0-1) vs Sunray**  
Monday 11-14-94 at Sunray  
Gruver 5 12 19 31  
Sunray 6 11 25 34  
3-pointer - Jason TeBeest  
Gruver - T.J. McClure-8, Charlie Stavlo-7, TeBeest-5, Matt Watlington-5, Dustin Ross-3, Jeff McClure-2, Clint Robinson-1.  
**Hounds 9th (0-1) vs Sunray**  
Monday 11-14-94 at Sunray  
Gruver 4 4 16 28  
Sunray 10 16 16 31  
Gruver - Jared Johnson-10, Arturo DeLaCruz-8, Kyle McNett-6, Michael Minter-4.

Support The Christmas Seal Campaign  
AMERICAN LUNG ASSOCIATION  
1-800-LUNG-USA

**Little Tiffanies**  
103 E. Broadway Gruver, Tx. 733-5290

**Gruver State Bank**  
3 Main Plaza Gruver, Tx. 733-5061

**Lone Star Service Center**  
Hwy. 1573 Gruver, Tx. 733-5263

**Cargill Inc.**  
W. Highway 15 Spearman, Tx. 659-3554

**Gruver Agri-Industries**  
200 W. Broadway Gruver, Tx. 733-5005

**Hagerman Services**  
702 Collard Street Spearman, Tx. 659-5131

**Go Hansford Hoopsters**

**1994-95 GISD Basketball Schedule**  
(7th, 8th and 9th)

**1994-95 SISD Basketball Schedule**  
(7th, 8th and 9th)

DATE	GAME	PLACE	TIME	TEAMS PLAYING
<b>November</b>				
14	- Boys Ranch, H,	5 p.m.,	(Boys)	7A-B, 8A-B, 9
17-19	- Perryton Tournament,	TBA,	9G,	9B
21	- Stratford, H,	5 p.m.,	(Girls)	7A-B, 8A-B, 9
21	- Stratford, T,	5 p.m.,	(Boys)	7A-B, 8A-B, 9
28	- Gruver, H,	5 p.m.,	(Boys)	7A-B, 8A-B, 9
28	- Gruver, T,	5 p.m.,	(Girls)	7A-B, 8A-B, 9
<b>December</b>				
5	- West Texas, H,	5 p.m.,	(Girls)	7A-B, 8A-B, 9
5	- West Texas, T,	5 p.m.,	(Boys)	7A-B, 8A-B, 9
8-10	- Borger Tournament,	TBA,	9G,	9B
12	- Sunray, H,	5 p.m.,	(Boys)	7A-B, 8A-B, 9
12	- Sunray, T,	5 p.m.,	(Girls)	7A-B, 8A-B, 9
<b>January</b>				
5	- Gruver, H,	5 p.m.,	(Girls)	7A-B, 8A-B, 9
5	- Gruver, T,	5 p.m.,	(Boys)	7A-B, 8A-B, 9
9	- Boys Ranch, T,	5 p.m.,	(Boys)	7A-B, 8A-B, 9
9	- Dalhart, T,	5 p.m.,	(Girls)	7, & 8
12-14	- Spearman Tournament,	TBA,	7B-8B,	7G-8G
16	- Stratford, H,	5 p.m.,	(Boys)	7A-B, 8A-B, 9
16	- Stratford, T,	5 p.m.,	(Girls)	7A-B, 8A-B, 9
23	- West Texas, H,	5 p.m.,	(Girls)	7A-B, 8A-B, 9
23	- West Texas, T,	5 p.m.,	(Boys)	7A-B, 8A-B, 9
26-28	- Gruver Tournament,	TBA,	7B-8B,	7G-8G
30	- Sunray, H,	5 p.m.,	(Girls)	7A-B, 8A-B, 9
30	- Sunray, T,	5 p.m.,	(Boys)	7A-B, 8A-B, 9
<b>February</b>				
2-4	- West Texas Tournament,	TBA,	9B-9G	
6	- Gruver, H,	5 p.m.	(Boys)	7A-B, 8A-B, 9
6	- Gruver, T,	5 p.m.	(Girls)	7A-B, 8A-B, 9

**Gopher's**  
301 Cooper Av. Gruver, Tx. 733-5288

**Hansford Home Care**  
720 Roland Spearman, Tx. 659-2547

**Gruver Farm Supply**  
515 Main Gruver, Tx. 733-2427

**Picnic Place Restaurant**  
217 Main Spearman, Tx. 659-3864

**North Plains Home Health**  
120 Main Gruver, Tx. 733-5808

**Gruver Redi-Mix**  
700 S McCree Gruver, Tx. 733-2907

**Gruver Insurance**  
120 Main Gruver, Tx. 733-2907

**Hansford Implement Company**  
Highway 207 South Spearman, Tx. 659-2547

**Gruver Ford**  
531 Main Gruver, Tx. 733-2431

**Lowe's Market Place**  
505 Plains Shopping Center  
659-2522 Spearman, Tx.

SHS 9th Grade  
Lynxettes - 23  
White Deer - 47

# For The Sport Of It

by Bob Bort

In spite of an excellent try by the 9th grade Spearman Lynxette's basketball team last Monday night, the girls fell in defeat to the Lady Bucks of White Deer, 47-23.

With the exception of the fourth quarter, White Deer dominated the whole game with 16 points compared to Spearman's 2 in the first quarter, 14 points compared to the Lynxette's 12 in the second quarter, and 15 compared to Spearman's 4 in the third quarter. Spearman was able to take control of the fourth by out-scoring White Deer, 5-2.

For 12 of the Lynxette's points, leading scorers Andee Magaha and Kasey Duniho contributed their talents by scoring 6 points each. Ashly Brown and Jocelyn Edwards were not far behind these girls, and they brought in 8 points for Spearman by adding 4 of their own points each. Also contributing to the Spearman cause were Maribelle M. and Lena Harbour who sunk a field each.

White Deer's Duncan managed to squeeze by the Lynxette's defense and put in 14 points, including a third quarter 3-point shot.

The Lady Hounds played two scrimmages prior to the opening of the 1994-95 basketball season at Dumas this past Tuesday night, November 15.

On Tuesday, November 8, the Lady Hounds scrimmaged five quarters against the Booker Lady Kiowas at Greyhound Gym, and won 121-38. The first four quarters were played non-stop, and Gruver won 99-29. Julie Meyer scored 31, and Kiki Carthel scored 22, including 8-10 from the free throw line. Tisha Ralston scored 15, including 6-7 from the field and 3-4 from the free throw line. All told, the Lady Hounds were 22-30 (73%) from the charity stripe, and shot 47% from the field. Amber Murrell and Wendy Rodriguez also scored in double figures.

Then on Saturday, November 12, the Lady Hounds played seven quarters in a scrimmage against the Borger Lady Bulldogs, again at Greyhound Gym. The Lady Hounds won 91-54. Again, the first four quarters were played non-stop, and Gruver won 55-27. Meyer scored

30 this time, and Carthel 22 again, including 6-8 from the charity stripe. Murrell and Cara Hathaway also scored in double figures.

In the junior varsity scrimmages on the same dates, Joni Hart was leading scorer on both days, with 14 versus Hardesty/Booker JV on Tuesday night, and 13 versus Borger JV on Saturday. Crystal Christian also had 14 on Tuesday night.

The Lady Hounds were really ready for the action to begin in earnest for the first time at Dumas this past Tuesday night. They opened the season with a roster of 10, with Molly McLain on injured reserve. The Hounds opened with a roster of 13 Tuesday night against the Demons.

## A Youthful Winter of Roundball

By Bob Bort, with respect to Lord Tennyson

Fast, fast, fast,  
Down, O Jace, the cold, hard floor!  
As quick a break as Amber runs,  
The crowd doth ask for more.

Dunk, dunk, dunk,  
Through netted goal, O Wylee!  
And slam it down as Weslyn doth,

Like waves that crash at sea.  
Set, set, set,  
A screen, O Miss Tara dear!  
Up, up, the ball, with touch of

Josh,  
Deafening now to hear.  
Clutch, clutch, clutch,  
Thy performance now, O Phil!  
Down two, thee and Kevin doth

make  
A troy, for all a thrill.  
Score, score, score,  
Beneath, O Kiki, the rim!  
And then, like Max, on bank off

glass,  
Defeat, a chance so slim.  
Quick, quick, quick,  
And steal, O Kaysha, the ball!  
A thief with hands like Rico's

hands,  
To screams from one and all.  
Jump, jump, jump,  
High as you can, O Aaron!  
Rebound the ball as Cara can,  
And start a break; 'tis done.

Swat, swat, swat,  
The ball, O Eric, the ball!  
"In thy face!" sayeth Molly dear,  
With leap, near ten feet tall.

Pass, pass, pass,  
Full court, O Wendy, and run!  
Back and forth, and then to

Roma,  
A troy; we win by one.  
Tough, tough, tough,  
Play "D", O Ryon, play "D"!  
And Rayne; skilled as thieves

are skilled,  
A sight for all to see.  
Dish, dish, dish,  
Dish off, O Tisha, the ball!  
So drive the lane like Sammy

doth,  
And dish, dish off, the ball.  
Win, win, win  
Thirty, O Julie, from thee!  
A triple double for Travis,  
With skills in groups of three.

Cold, cold, cold,  
Thy winds, O Winter, blow cold!  
And I would that we all could see  
The spirit of youth take hold.

## Gruver opens hoop season

Lady Hounds JV (0-0)  
vs Dumas

Tuesday 11-15-94 at Dumas  
Gruver cancelled due to state  
Dumas Volleyball Tourney

Hounds JV (1-0)  
vs Dumas

Tuesday 11-15-94  
at Dumas  
Gruver 11 22 35 44 51  
Dumas 10 23 31 44 50

3-pointers - Tye Womble - 3.  
Gruver - Juan Arreola-20,  
Womble-18, Brant Armes-6, Daniel  
Bort-6, Scott Jarvis-1.

Synopsis: Daniel Bort knocked  
down two pressure-packed free  
throws on the one-on-one with 10.1  
seconds left in regulation to tie the  
game 44-44 and send it to overtime;

then, after Tye Womble canned two  
clutch free throws with 31.1 seconds  
in the extra period to give the  
Hounds the lead for good, 49-47,  
Bort stole the ball and hit a lay up  
with 22 seconds left in overtime to  
give the Hounds a 51-47 lead, en-  
abling them to withstand a last  
ditch 3-pointer by the Demons,  
which made the final 51-50.

Womble hit three 3-pointers in  
regulation and scored 18 points;  
but didn't match Juan Arreola's  
fine effort - a 20 point output. The  
Hounds shot terribly from the free  
throw line. They were 8-23 (34.7%).  
But Bort and Womble hit the four  
that counted the most.

Lady Hounds (1-0)  
vs Dumas

Tuesday 11-15-94 at Dumas

Synopsis: The Lady Hounds over-  
came a tremendous height disad-  
vantage, and won the second  
straight overtime thriller played at  
Dumas Gym Tuesday night. In the  
period, Freshman Weslyn Maupin  
hit the clutch shot - a beautiful 3-  
point play with 2:12 left in overtime  
and the score tied 43-43. That,  
combined with a couple of added  
free throws - one by Amber Murrell  
and another one by Maupin, gave  
Gruver the five point victory.

Wendy Rodriguez had brought  
the Lady Hounds back from the  
dead with 2:50 left in regulation,  
after the Demonettes had outscored  
the Gruver gals 8-1 to take a 39-36  
lead. Rodriguez canned one heck of  
a clutch 3-pointer to tie the game  
39-39. Then Maupin had scored  
her first two points of the game  
with 44 seconds left in the fourth  
quarter on a really nice turnaround  
to tie the game again 41-41 and  
send it to overtime.

The Demonettes were led by their  
6'0" post Meredith Stephenson, who  
scored 26 of their 43 points. Dumas  
had one starter injured, and an-  
other starter, a 6'2" girl, who is  
involved in the state volleyball tour-  
nament, neither of whom played.

Lady Hounds (1-0)  
vs Dumas

Tuesday 11-15-94 at Dumas

Synopsis: The Hounds met their  
Waterloo in the fourth quarter  
against the AAAA Demons. They  
trailed by eight towards the end of  
the half, but Phil DeLaCruz stole  
the ball and laid it up and turned  
it into a nice three-point play right  
at the half. That left Gruver trail-  
ing only 25-20, and it seemed to  
spark the Hounds at halftime. They  
came out of the third quarter and  
outscored the Demons 13-2, for a  
16-2 run, to take a 33-27 lead at  
the end of the third quarter. But  
the Demons came out in the fourth  
quarter on fire, and the Hounds  
could not keep up with them. The  
Demons outscored the Hounds in  
the fourth quarter 24-6 for the  
twelve point victory.

The Hounds were terrible from  
the free throw line. They were only  
7-20 (35%).

Gruver 15 26 31 41 48  
Dumas 14 19 31 41 43  
3-pointer - Wendy Rodriguez.  
Gruver - Julie Meyer-13,  
Rodriguez-7, Kiki Carthel-6,  
Kaysha Cluck-6, Cara Hathaway-  
5, Amber Murrell-3, Tisha Ralston-  
2.

Synopsis: The Lady Hounds over-  
came a tremendous height disad-  
vantage, and won the second  
straight overtime thriller played at  
Dumas Gym Tuesday night. In the  
period, Freshman Weslyn Maupin  
hit the clutch shot - a beautiful 3-  
point play with 2:12 left in overtime  
and the score tied 43-43. That,  
combined with a couple of added  
free throws - one by Amber Murrell  
and another one by Maupin, gave  
Gruver the five point victory.

Wendy Rodriguez had brought  
the Lady Hounds back from the  
dead with 2:50 left in regulation,  
after the Demonettes had outscored  
the Gruver gals 8-1 to take a 39-36  
lead. Rodriguez canned one heck of  
a clutch 3-pointer to tie the game  
39-39. Then Maupin had scored  
her first two points of the game  
with 44 seconds left in the fourth  
quarter on a really nice turnaround  
to tie the game again 41-41 and  
send it to overtime.

The Demonettes were led by their  
6'0" post Meredith Stephenson, who  
scored 26 of their 43 points. Dumas  
had one starter injured, and an-  
other starter, a 6'2" girl, who is  
involved in the state volleyball tour-  
nament, neither of whom played.

The Hounds were terrible from  
the free throw line. They were only  
7-20 (35%).

The Hounds were terrible from  
the free throw line. They were only  
7-20 (35%).

The Hounds were terrible from  
the free throw line. They were only  
7-20 (35%).

The Hounds were terrible from  
the free throw line. They were only  
7-20 (35%).

The Hounds were terrible from  
the free throw line. They were only  
7-20 (35%).

The Hounds were terrible from  
the free throw line. They were only  
7-20 (35%).

The Hounds were terrible from  
the free throw line. They were only  
7-20 (35%).

The Hounds were terrible from  
the free throw line. They were only  
7-20 (35%).

The Hounds were terrible from  
the free throw line. They were only  
7-20 (35%).

The Hounds were terrible from  
the free throw line. They were only  
7-20 (35%).

The Hounds were terrible from  
the free throw line. They were only  
7-20 (35%).

The Hounds were terrible from  
the free throw line. They were only  
7-20 (35%).

The Hounds were terrible from  
the free throw line. They were only  
7-20 (35%).

The Hounds were terrible from  
the free throw line. They were only  
7-20 (35%).

The Hounds were terrible from  
the free throw line. They were only  
7-20 (35%).

The Hounds were terrible from  
the free throw line. They were only  
7-20 (35%).

The Hounds were terrible from  
the free throw line. They were only  
7-20 (35%).

The Hounds were terrible from  
the free throw line. They were only  
7-20 (35%).

The Hounds were terrible from  
the free throw line. They were only  
7-20 (35%).

**GET THE ALCO Advantage**

**FREE EVERY TUESDAY!**

SECOND SET OF PRINTS

Receive a second set of 3" prints FREE with any exposure roll of 35mm, disc, 110 or 126 color print film left for developing and printing at our everyday prices! C-41 process only. Excludes larger 4" size prints, and photo galaxy.

**BE YOUR OWN BOSS!**  
Be independent! Be Secure!

Saturday & Sunday  
THE  
**FRANCHISE & BUSINESS OPPORTUNITIES EXPO**

NOV. 19-20 - AMARILLO CONVENTION CENTER

See a variety of Business Opportunities available in this area and anywhere in U.S.A.

- FRANCHISES
- VENDING OPPORTUNITIES
- HOME BUSINESSES
- INVESTMENTS
- FULL & PART-TIME
- MANY CAN BE OPERATED WITHOUT EXPERIENCE
- NEW PRODUCTS

**EXPO OPEN TO THE PUBLIC!**  
CHOOSE A BUSINESS THAT SUITS YOU  
Admission \$5.00 Expo Hours 11 A.M. - 6 P.M.  
BOOTH INFORMATION 1-800-788-8403

at participating  
**NAPA AUTO PARTS STORES**

**NAPA HALOGEN HEADLIGHTS**  
Four-Lamp System #14651, 56, #15001, 06  
Two-Lamp System #14656, #16024, 54  
**\$4.99 EACH** **\$9.99 EACH**  
Replacement Bulbs #9004, 05, 06 **\$7.99 EACH**

**WD-40 TWIN PACK**  
Stops squeaks, loosens rusted parts and protects metal.  
(Two 12 oz. cans) #42212  
**\$3.88**

**NAPA SAFETY STOP™ BRAKE PADS & SHOES**  
#350-799 **\$7.99**  
#242 **\$9.99**

**NAPA RAINGUARD WIPER BLADES OR REFILLS**  
For most domestic and import cars and light trucks.  
**\$2.99**

## Hospice

more in progress. We have beautiful facilities at Hansford Hospital which includes a patient room, family room (actual living area with sofa-hide-a-bed, table/chairs, T.V., restroom) and a furnished kitchen-

ette. We also provide a fenced courtyard area with gazebo.

We can be proud of Hansford Hospice and it's "special kind of caring."

## Proclamation

ing production. We regret not having the photograph. At the signing there were eight local residents who witnessed Mayor Buchanan's signature on the proclamation. Present were

Continued from page 4

Verna Lee Shirley, Sandy Russell, Jack McWhirter, Edith Womble, Betty Jean Davis, Muriel Boyd, Carolyn Cummings, and Garland Hopper.

## Seminar

duced taxidermy to difficult students. Their interest in this project has lead to better grades and better behaved students.

Continued from page 8

town was really top secret. Even children born to families living on the mesas were shown to be born at Box 1663.

Finally, it was the end of the day. Time for showers and a short night's sleep. We stayed at Kirtland Air Force Base.

We toured Fuller Lodge, which were apartments, kitchen, dining room, and infirmary for staff of the school and later the Los Alamos staff. We saw the Ice House Memorial, where during WWII nuclear components of the Trinity device (prototype of the first nuclear weapon) was assembled. And we saw Ashley Pond, which during the war was ringed by the motor pool, Gamma Building, post office, and commissary with laboratories across Trinity Drive.

We were up and going by 4:30. Breakfast at 6:00 A.M. and then on the road to Los Alamos.

After lunch, we toured parts of the Meson Facility. The leaders were stationed at intervals to en-

It was originally the site of boys' school started by Mr. Ashley Pond. At the peak of World War II, the Army Corp of Engineers took over the mesa and scaled it for a secret crash mission that would end the war.

See SCOUTS, page 14

At the new library we viewed a short film detailing "the town that never was", Los Alamos. This little

GRUVER INDEPENDENT SCHOOL DISTRICT  
Combined Balance Sheet - All Fund Types and Account Groups  
August 31, 1994

Data Control Codes	Governmental Fund Types		Proprietary Fund Types	Fiduciary Fund Types	Account Groups	Totals (Memorandum Only)
	100-199	200-499	750-799	800-899	901	
	General Fund	Special Revenue Fund	Internal Service Fund	Agency Fund	General Fixed Assets	August 31, 1994
Assets:						
Cash (Note C)	\$132,435.29	\$ 3,651.44	\$ 40,782.54	\$13,014.61	\$ -	\$ 189,883.88
Temporary Investments, at cost (Note C)	530,768.81	-	-	-	-	530,768.81
Receivables:						
Property taxes - delinquent (Notes D & E)	50,182.30	-	-	-	-	50,182.30
Allowance for uncollectible taxes	(33,561.54)	-	-	-	-	(33,561.54)
Due from state agency	-	23,281.92	-	-	-	23,281.92
Sundry receivables	286.75	-	-	-	-	286.75
Accrued interest receivable	2,093.11	-	-	-	-	2,093.11
Due from other funds	24,679.27	6,165.73	-	-	-	30,845.00
Inventories, at cost	28,785.92	6,549.59	-	-	-	35,335.51
Other current assets	38,264.02	-	-	-	-	38,264.02
Land, buildings, and equipment:						
Land (Note G)	-	-	-	-	219,298.66	219,298.66
Buildings and improvements (Note G)	-	-	-	-	3,819,359.67	3,819,359.67
Furniture and equipment (Note G)	-	-	-	-	1,534,280.69	1,534,280.69
1000 Total assets	\$773,933.93	\$39,648.68	\$ 40,782.54	\$13,014.61	\$5,572,939.02	\$ 6,440,318.78
Liabilities:						
Current liabilities:						
Accounts payable	\$ 66,627.60	\$ -	\$ 15,681.53	\$ -	\$ -	\$ 82,309.13
Payroll deduction and withholdings payable	798.71	319.76	-	-	-	1,118.47
Accrued wages payable	133,354.77	6,393.68	-	-	-	139,748.45
Due to other funds	6,165.73	24,679.27	-	-	-	30,845.00
Due to student groups	-	-	-	13,014.61	-	13,014.61
Deferred revenues	103,081.07	1,706.38	-	-	-	104,787.45
2000 Total liabilities	\$310,027.88	\$33,099.09	\$ 15,681.53	\$13,014.61	\$ -	\$ 371,823.11
Fund equity:						
Investments in fixed assets	-	-	-	-	35,572,939.02	\$ 5,572,939.02
Invested reserves:						
Investments in inventory	28,785.92	6,549.59	-	-	-	35,335.51
Prepaid items	38,264.02	-	-	-	-	38,264.02
Reserve for self-funded insurance	50,000.00	-	25,101.01	-	-	75,101.01
Undesignated fund balance	346,856.11	-	-	-	-	346,856.11
3000 Total fund equity	\$463,906.05	\$ 6,549.59	\$ 25,101.01	\$ -	\$5,572,939.02	\$ 6,065,495.67
4000 Total liabilities and fund equity	\$773,933.93	\$39,648.68	\$ 40,782.54	\$13,014.61	\$5,572,939.02	\$ 6,440,318.78

The accompanying notes are an integral part of this statement.

**"IT'S FOR YOU"...**

The Classifieds Have Something For Everyone!

The Home Seller...  
The Car Buyer...  
The Do-It-Yourselfer...  
The Mother's Helper...  
The Job Seeker...  
The Bargain Reaper...

When you want results, turn to The Classifieds.

# The Hansford County Reporter-Statesman

Serving Hansford County Since 1907

Telephone: 1-800-395-9482 or (806)659-3434

**REAL ESTATE**

**AA Realty**

Allen Alford - Broker - 659-3034  
Julie Martin - Sales - 659-2425  
Larry Trosper - Sales - 659-3491

1017 Townsend - 3/2/1 - New lower price!  
1103 S. Townsend - 3/1 1/2, good loc.  
510 S. Endicott - 3-2, 2 story  
417 S. Dessen - 3, 1 3/4, garden, pati.

NEW LISTING  
1117 Townsend - 3, 2, w/basement  
1107 S. Barkley - 3, 1 1/2, 2, BELOW

**APPRAISAL!**  
Good Hanger & Storage - Old Airport  
1017 Wilmeth Dr. - 5/2/2, two story w/bsmt  
412 Roland - 3/1/1, make offer

FOR QUALITY & SERVICE CALL US TODAY  
We Need Your Listing.

**REAL ESTATE**

**Century 21**

**GOLDEN SPREAD REALTY**  
Janye Helton Pointer, Broker Owner  
435-5444

117 Brandt - Just listed, a real buy on this "3 bedroom!"

**Crawford Addition:**  
2 - 1 3/4 • Will look at all offers!  
2 - 1 • Small and affordable!

315 1/2 N. Bernice: Lot for sale.  
East 7th Street - 9 mobile home lots. Buy one or all!

® and ™ trademarks of Century 21 Real Estate Corporation. Equal Housing Opportunity INDEPENDENTLY OWNED AND OPERATED

**FOR SALE BY OWNER** - 3 bedroom, 1 1/2 bath, storm door and windows, fireplace, ceiling fans, 14 closets, 1 car garage, 1728 sq. ft. \$35,000 - 605 Cluck, Gruver. Call 733-2015. S28, 3tp RTN

**HOME FOR SALE: REDUCED, REDUCED, REDUCED!!!!** 2400 sq. ft. 3 bedroom, 3 bath, large living area, inside grill, two door refrigerator, dishwasher, furniture (opt.), 6 ft. picket fence-steel posts. Garden area 640 sq. ft. Self sustaining pond 13x15, 300 sq. ft. deck with hot tub, walking and bicycle track, cabanna bar, out building, 160 sq. ft. storage, 9 hole golf course with 210 ft. stream and 5 ponds. Large carport, 24x24. Total under roof 3000 sq. ft. Property offered at \$29,000. Shown by appointment 806/659-2235. S56, RTN

**FOR SALE:** Brick, 3 bedroom, 1 1/2 bath, storm windows, elec. fans, attached garage, store room, RV shed, fenced yard. 659-3353. S55, 1tp

**3 1/4 sections all in Blk. 1, WCRS survey, Hansford Co.,**  
SW/4 SEC. 1 - 160.91 ac. m/l, 1 - 8" irig well, row watered.  
SEC. 2 - 648 ac. m/l, 197 ac. CRP, \$20/ac./yr. to buyer, expires 1998, bal. native grass.  
SEC. 3 - 646 ac. m/l, 1 - " irig. well, row watered, 400 ac. cropland, bal. pasture w/ windmill.  
SEC. 11 - 646 ac. m/l, 632.8 ac. CRP, \$20./ac./yr. to buyer, expires 1997.  
Co. listed with Bob Pratt Real Estate Guyton, OK. 405-338-6779.

**PONDER LAND COMPANY**  
935-5145

**THREE ADJACENT HOUSES FOR SALE - A.** 620 S. Bernice, 2400 sq. ft., \$30,000 - currently occupied by seller. B. 620 1/2 S. Bernice, 1200 sq. ft., \$15,000 - currently rented at \$300/mo. C. 608 S. Bernice, 1500 sq. ft., \$27,500 - currently rented at \$300/mo. Properties A&B together \$39,500; All three properties as a unit, \$65,000. Assumable loans. For more information contact Ed Pearson at 806/659-3851. S31, 1tc RTN

**FOR RENT**

4 BDR, 3 B, 2 living areas, kitchen/dining area, utility room with cabinets, panel sunroom, storm cellar, fenced backyard. \$500 month at 703 Steele Dr. Call 802-365-9742.

**GREAT HOUSE IN GREAT LOCATION FOR SALE**  
2100 sq. ft., basement, double car garage, 4 bedrooms, 3 baths, big den, fireplace, living room, ceiling fans, central heat and air. 702 Gibner. Call 659-3838, 659-3970, or 733-5555. S42, RTN

**FOR RENT**

Three bedroom, 1 3/4 bath, attached two car garage, fenced back yard. Call 659-3017. S54, 1tp

**FOR SALE-No Sign:** 3 bedroom, 1 3/4 bath, 1450 sq. ft., remodeled kitchen, 12x12 covered deck, \$31,500. Not for rent/407 W. 12th. Call 659-3956. S48, RTN

**FOR RENT OR FOR SALE:** Three bedroom, 1 3/4 bath, attached two car garage, fenced back yard. Call 659-3017. S54, 1tp

**HOUSE FOR SALE:** 3 bedroom, 1 bath with attached garage, private fenced back yard, built-in appliances. Call 659-3523. S53, RTN

**OFFICE SPACES FOR RENT!!!!** 1-Newly remodeled 439 sq. ft. office, \$200 per month. 2-144 sq. ft. offices, \$75 each month. 1-240 sq. ft. office, \$125 per month. All bills are furnished. Please call 659-3133 or come by 307 W. Davis. S56, 3tp

**HOUSE FOR SALE: REDUCED!!!!** 5 lots fenced, 2 car carport, shed, hot tub, fish pond, 3 bedroom, 3 bath, handicap accessible, large LR, bar. \$29,000. 605 S. Archer. 659-2235. S55, RTN

**FOR SALE:** 3 bedroom, 2 bath, carport, privacy, fenced, large storage shed, C-8H, trees, fish pond, new paint, dishwasher and stove, \$26,500. 807 Archer. For appointment call 659-2448. S56, 2tc

**FOR RENT**

**FOR RENT:** Trailer park spaces for rent. Located on S.E. 7th and Loop road, Spearman. \$30 per month. Call 435-5080. S23, 1tc/RTN.

**FOR RENT:** One bedroom newly decorated, furnished apartments, utilities paid. Call 659-3260. S47, RTN

**RENT TO OWN:** 3 bedroom, 1 bath, brick, carport, central air and heat, fenced backyard. See at 1004 Townsend or call 659-2245 or 435-8746. S50, RTN

**FOR RENT:** Small efficient apartment, very clean, nice neighborhood. Can be seen at 119 S. Snider or call 659-2039. S56, 1tp

**FOR RENT:** One bedroom furnished house and 2 bedroom furnished house. Call Gus McLain at 659-2274. S55, RTN

**SERVICES**

**PITS CLEANED:** Dragline or Loader. Call LeeRoy Mitchell, 733-2384 or 733-2175. S47, 1tc/RTN.

**CALL YOUR LOCAL Used Cow Dealer** for days a week stock removal. 659-3544 or 1-800-692-4043. Serving Cattlemen for the past 20 years. G51/RTN.

**J & M Service Center 24-Hour Service** 415 Collard, Spearman 79081. 659-5519 or 659-3352. Tires, flats, oil & lube, wash, brakes, batteries and minor repairs. Now selling gas. S27, 1tc/RTN.

**Free Bible Correspondence Course.** Write P.O. Box 604, Perryton, TX 79070. S46, RTN

**CLIFCO WINDSHIELD REPAIR SERVICE** Don't replace your damaged windshields. Mobile service: 435-0126. Home phone: 435-9149. And toll free at 1-800-753-9849. Ask for Clifford Cox. S43, RTN

**AUTOMOBILES**

**FOR SALE:** 1984 Ford Truck with 20' van and lift. V-8 diesel engine. Excellent condition. For more information call 659-3432 or 659-2912. S52, RTN

**FOR SALE:** 1976 Chevet, 2 door; 1984 Nissan Stanza; and a 1975 Jeep Wagoneer. Call 659-2568 ask for Dennis, after 6 p.m. call 733-5214. S55, 2tp

**FOR SALE:** 1979 Chevy Fleetside pick-up with new GM issue 350 motor, twin fuel tanks, custom rear bumper for trailer towing, 410 gears, AC, automatic transmission and nearly new tires. Asking \$3750. Call 659-3649 or see at 303 S. Hazelwood. S56, 3tp

**MISC. FOR SALE**

**MOTORCYCLE FOR SALE:** Honda Twin Star 200, maroon red, 13,161 miles, tires in great shape, and new chain. Asking \$550. Call 659-3649 or see at 303 S. Hazelwood. S56, 3tp

**FOR SALE:** Nintendo Entertainment System with two regular controllers, turbo controller, zipper gun, and 14 games with storage box. \$75. 659-2518, after 5 p.m. 659-3506. S56, 2tp

**FOR SALE:** 6 man hot tub, like new \$2500. Call 5016. S53, RTN

**FOR SALE**

**BUY DIRECT FROM GROWER:** Locally grown poinsettias, florist quality at wholesale prices, quantity discounts. D&C Greenhouse, 806/659-5171. S55, 4tc

**ATTENTION SHOPPERS:** Perryton Satellite Center is hosting its 24th annual craft festival at the county EXPO building in Perryton on Nov. 19th from 9 a.m. to 7 p.m. and Nov. 20th from 10 a.m. to 4 p.m. Food and refreshments may be purchased on the premises from the Wheatheart Shriners. Drawing for a free color T.V. on Nov. 20th at 4 p.m. Over 150 exhibitors offer you many unique hand-made items. S54, 3tc

**NEW TRAMPOLINES**  
Mats & springs  
Resew trampoline mats.  
Make new boat covers.  
Call (806)659-2109  
Harry Stumpf  
301 W. 12th  
Spearman, Texas

**HELP WANTED**

**RN's and LVN's**  
Join the staff of one of the Panhandle's finest facilities. SNF certified. Excellent LVN and CNA staffing. Non-profit with hospital attached. Outstanding survey history. Highly competitive salary and benefit package. Relocation and commuting assistance. Great quality of life for families. Send resume to:  
Linda Sanders, Personnel Director,  
Hansford County Hospital District,  
707 S. Roland, Spearman, TX 79081  
806/659-2535

**HELP WANTED:** Part time dispatcher. Can work into full time position. On the job training. Apply at Hansford Co. Sheriff's Dept. S53, 3tc

**POSITION AVAILABLE:** Experienced feed truck driver. Apply in person at Palo Duro Feed Yard. S55, 3tc

**FUEL TRUCK DRIVER NEEDED:** CDL a must. Interested persons may apply at Spearman Equity. S56, 1tc

**DRIVER NEEDED:** Home daily, Class A CDL with hazmat required. Tanker experience necessary. Call 1-800-531-5960. S56, 4tc

**HELP WANTED:** Part-time night watchman for Caprock #1 and #2; and a Yard maintenance man for Caprock #1. Call 733-5025 and ask for Lawrence or Phil. S55, 2tc

**HELP WANTED:** Part-time attendants wanted to help with the handicap and elderly. Call Caprock Primary Home Care at 352-8480. S54, 2tc

**HELP WANTED:** Texas Refinery Corp. needs mature person now in Spearman area. Regardless of training, write W.G. Hopkins, Box 711, Ft. Worth, TX 76101. S54, 4tc

**HELP WANTED:** Sales manager for office machine dealer. Unique advancement opportunities. Must relocate. Call 1-800-233-1247. Ask for personnel recruiter. S56, 3tc

**JOB OPPORTUNITIES**

**HELP WANTED:** The Business Office of Gruver Independent School District is taking applications for a Business Administrative Assistant. Minimum requirements are a Bachelor's Degree in Business with extensive experience/education in computers and bookkeeping/accounting. Applications can be picked up in the Business Office, 601 Garrett St., Gruver. Deadline for receiving applications will be November 22, 1994. Gruver I.S.D. is an equal employment employer. S56, 1tc

**OWN YOUR OWN APPAREL OR SHOW STORE** Choose: Jean/Sportswear, Bridal, Lingerie, Maternity, or Accessories Store. Over 2000 name brands. \$24,900 to \$36,900: inventory, training, fixtures, grand opening, etc. Can open 15 days. Mr. Loughlin (612) 888-6555. S47, 2tp

**SPECIAL NOTICE**

**BEST FRIEND WANTED:** Lifelong. Knowledge of Dickens, Hugo, Whitman or Dickinson, not required. Can be Elton John. Or just hoops. Ages no problem. With years come resilience, with youth comes innocence, a fresh outlook. One Capricorn to another wishes we lived in Paris, or St. Etienne. People would look and they would see. Talk to me at church, only if it is your happiness. S56, 1tp

**JAN'S ETC. NEW & USED & ANTIQUES TOO**

Everything for home and family. Plains Shopping Center in Spearman  
Open Monday - Saturday  
10 a.m. til 6 p.m.

**GARAGE SALE**

**GARAGE SALE:** 316 S. Bernice, Saturday, Nov. 19, 9:00 a.m. to 7. Couch, computer desk, clothes, and lots of miscellaneous. S56, 1tp

**WANTED**

**EXPERIENCED CHILD CARE PROVIDER:** References available. Call 659-3435. S56, 3tp

**Precision Sweep Airseeding**  
Quick, Economical, Minimum Tillage  
-200 Acres (\$6.25/A)  
+200 Acres (\$5.75/A)  
**Bob Williams**  
435-4835

**OSGOOD MONUMENT CO.**  
Amarillo, Texas

Dealers of Rock of Ages Granite, as well as all colored granites, marble and bronze memorials.

Represented by  
**Boxwell Bros. Funeral Home**  
519 S. Evans  
659-3802

*We're Rated Number One Again For A Lot Of Little Reasons.*

*The Dilley Sextuplets: Their CENTURY 21® sales associate not only sold their too-small home, she organized a diaper drive that produced over 10,000 diapers. No wonder homeowners named the CENTURY 21 team number one again!*

Discover The Power Of Number 1.

**Century 21**  
Golden Spread Realty  
200 S. Main - Perryton, TX  
806-435-5444

\*Source: 1994 Nationwide Survey of Homeowners. Survey included 1,800 telephone interviews with a random sample of homeowners from across the USA and was conducted January 8-17, 1994 by The HomeGroup. Results show a 95% confidence interval of ± 2.3%. Homeowners were asked: "Thinking about the different real estate sales organizations, which one would you say is the leader in real estate?" Equal Housing Opportunity. ® Equal Housing Opportunity. INDEPENDENTLY OWNED AND OPERATED.

**TODAY'S THE DAY**  
Stop Smoking.  
American Heart Association

**CLASSIFIED RATE**  
\$4.00 first insertion  
\$3.00 each additional insertion (30 words or less)  
13¢ each word over 30  
Legal Notices: 15¢ per word

**WE ARE LOOKING FOR A FEW GOOD MEN & WOMEN FOR A REWARDING CAREER AS A CERTIFIED NURSES AIDE (CNA)**

**HANSFORD HOSPITAL**

**HANSFORD MANOR**  
Is Offering a Two-Week Course Required for CNA Certification  
**Nov. 21 Through Dec. 9, 1994**

Full and Part Time Positions Will be Available Following The Course. Excellent Wages, Benefits & Working Conditions in the Panhandle's Finest Nursing Facility.

To Register or For More Information Contact:  
**Linda Sanders, Personnel Director**  
Hansford Manor, 707 S. Roland  
Spearman, TX 79081 — 806/659-2535  
Equal Opportunity Employer

**Are You A Victim of Physical Abuse?**  
Call Toll Free 1-800-753-5308

We are in Spearman on the 1st, 3rd, & 5th Wednesdays of each month at the First Presbyterian Church, 1021 Cotter. On the 2nd & 4th Wednesdays we are at the First Christian Church at 510 King in Gruver. We can come to Spearman & Gruver any time upon request. We operate a safe place for victims & their children to stay in times of crisis.

**Panhandle Crisis Center**  
Serving Hansford, Lipscomb & Ochiltree Counties  
317 S. Main Memorials Accepted Perryton, Tx.

**NOTICE**

The Spearman Housing Authority is now taking applications for residents. Eligible applicants will be placed on a community-wide waiting list. Families with the following incomes are especially needed for occupancy at the Housing Authority:

FAMILY SIZE	FAMILY INCOME
1 Person	From \$11,800 To \$18,850
2 Person	\$13,500 To \$21,500
3 Person	\$15,150 To \$24,250
4 Person	\$16,850 To \$26,950
5 Person	\$18,200 To \$29,100
6 Person	\$19,500 To \$31,250
7 Person	\$20,900 To \$33,450
8 Person	\$22,250 To \$35,600

Rent is based on family income minus allowances for children and elderly occupants. For more information, contact Gary Ellsworth at Spearman City Hall or call 659-2524 from 8:00 a.m. until 5:00 p.m. Mondays through Fridays. The Spearman Housing Authority does not discriminate based on race, religion, sex, age, disability, national origin or other classification protected by federal and state laws.

# Obituaries

**Jerry Dale Gibner**  
ALBUQUERQUE, NEW MEXICO - Jerry Dale Gibner, 64 and resident of Albuquerque since 1970, died Tuesday, November 8, 1994.

Services were conducted Saturday November 12th at 9 A.M., with mass at Church of the Risen Savior Catholic Church. Burial was at the National Cemetery in Santa Fe, New Mexico.

Mr. Gibner was born in Spearman, and was a Veteran of the

Korean Conflict, serving in the U.S. Navy. He graduated from Texas Tech, taught at Texline Independent School, and was involved in farming prior to moving to Albuquerque.

He is survived by his wife Juanita, a daughter Barbara Mallak, her husband Dan of Albuquerque, a son Jerry Dale Gibner of Albuquerque, two grandchildren Jeremy and Taylor Mallak and mother Margaret Gibner of Albuquerque.

## Spiritually Speaking

By MARTIN GAUBY,  
PASTOR - WAHA  
CHURCH OF THE  
BRETHREN

We are tempted to spend a good deal of energy complaining. Some may even claim that we are in the worst of time, and wish they could live in another age. However many who know God are thrilled for the privilege of living in this time, and having the opportunities of our day. It is a spiritual law, that those who live for God and enjoy serving those who are around them experience joy, excitement and much meaning in life. As we come to the Thanksgiving Season, it is a good time to be reminded that we have a great deal to be grateful for in our county and in our community.

Life is intended to be outgoing; to be serving God and others; to grow in our understanding and appreciation of others and God's will for our lives. When we are not excited about living for others we become concerned about little things in our own living and begin to worry about them. Have we not known those who worry about such small things that we wonder if they don't have better to do with their lives.

Norman Peale told about meeting an old statistician who kept track of all the things he worried about over the years. And he reported that only 8% of the things he

worried about ever happened. So he was asked: what did you do about the 8%, and he replied: "By the grace of God, I had enough faith to handle them." Would it not be easier, to trust God in the first place?

Life beings many challenges. We can choose negative thinking, worry and frustration, if we rely on our own energy and wisdom. But if we rely on our Lord and re-commit ourselves to serving Him and His people each day we will see a new joy and purpose in life. God has promised this in His word.

## Scouts

CONTINUED FROM PAGE 12

sure that there would be no touching of sensitive computers. We were even welcomed by a computerized voice. Part of this tour was the Linear Accelerator. All of these areas were highly sensitive and high security areas. The tour and demonstrations were led by nationally known scientists.

The entire trip was fantastic, and I for one will be ready to go again - as soon as I recover from this time!

### PUBLIC NOTICE

NOTICE TO ALL PERSONS HAVING CLAIMS AGAINST THE ESTATE OF ELIZABETH ANN HULL

Notice is hereby given that original Letters Testamentary for the Estate of ELIZABETH ANN HULL were issued on November 7, 1994, in Cause No. 2005 pending in the County Court of Hansford County, Texas, to Robert Novak. The post office address of the Executor is HCR 1 Box 4, Spearman, TX 79081. All persons having claims against this estate, which is currently being administered, are required to present them within the time and in the manner prescribed by law.

Dated the 7th day of November, 1994

John L. Hutchison  
Attorney for the Estate

### PUBLIC NOTICE

TO ALL PERSONS INTERESTED IN THE ESTATE OF MATTIE ALZINA REED, DECEASED

You are hereby commanded to appear before the Honorable District Court of Hansford County, Texas, at the Courthouse in Spearman, Texas, at or before 10:00 a.m. of the first Monday next after the expiration of 42 days from the 10th of November, 1994, the date of issuance of this citation, by filing a written answer to the Petition filed by Charles Brillhart, Administrator, with Will Annexed in the Estate of Mattie Alzina Reed, Deceased, Numbered 4072 on the docket of the Court, and entitled ESTATE OF MATTIE ALZINA REED. A brief Statement of the nature of this suit is as follows:

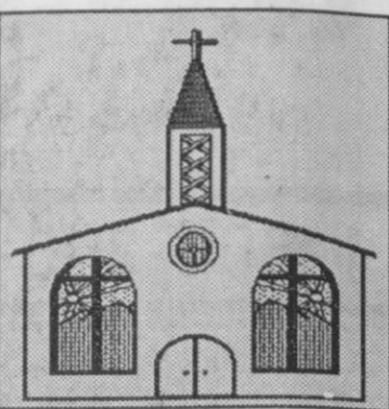
A Petition for Declaratory judgement by Administrator for Construction of Will, and a request that this court construe Decedent's will to determine the right, obligations and legal relations of all parties by virtue of the Last Will of Mattie Alzina Reed, and in particular to determine the following questions: (1) (a) under the provisions of the will do legatees take the bequests as therein set forth? (or) (b) was the will a contingent will conditioned on the Decedent's husband perishing with her in an accident or passing away within sixty days after her death, so that on the failure of either of such events, heirs inherit the Decedent's Estate? (2) If the Court determines that the will was a contingent will, that the court determine who are the heirs and only heirs of Mattie Alzina Reed, Deceased, the heirs' respective shares and interests under the laws of the state, if any, in the Estate of Mattie Alzina Reed, (c) was the gift to West Amarillo Christian Church of a residence attempted by the sale of the property by Mattie Alzina Reed prior to death, all as is more fully shown by the Petition on file in this cause.

If this citation is not served within 90 days after the date of its issuance, it shall be returned unserved. The officer executing this writ shall promptly serve it and make due return according to requirements of law. And the mandates of this citation.

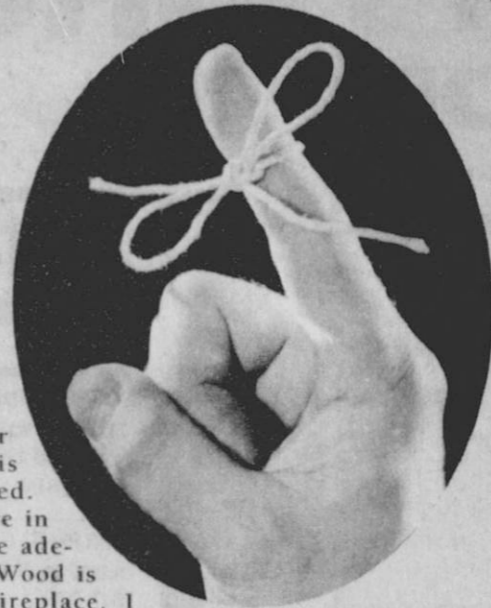
Issued under my hand and the seal of the court at Spearman, Texas, on the 21st day of October, 1994. Amelia C. Johnson, District clerk, Hansford county, Texas.  
By Kim V. Vera Deputy

Let us replenish the seed of faith through...

## REGULAR CHURCH ATTENDANCE, DAILY BIBLE READING & PRAYER



### The List



"Let's check our list. The furnace is fueled and filtered. Storm windows are in place and we have adequate insulation. Wood is stacked by the fireplace. I checked the anti-freeze and charged the battery. We have warm coats, and canned vegetables from our garden are stored in the basement. The list is complete. Now we are ready for winter."

We take such pride in preparation. Have we prepared our souls as carefully? Are they fueled with faith and insulated with the Word of God? Is our spiritual battery charged for those times we must go that "extra mile"? Have we stored in our hearts the love of God that warms us through sorrow's chill?

"On the first-day of every week each of you is to put something aside and store it up..." (1 Cor. 16:2). Place worship at the top of your list. Now you are ready.

Sunday	Monday	Tuesday	Wednesday	Thursday	Friday	Saturday
Luke 17:11-19	Psalms 145	Psalms 146	Psalms 147	Psalms 148	Psalms 149	Psalms 150

Scriptures Selected by The American Bible Society. Copyright 1994. Keister-Williams Newspaper Services, P. O. Box 8005, Charlottesville, VA 22906

**HI-PLAINS AUTO SUPPLY, INC.**  
Mobile Oil for Irrigation & Industrial Purposes  
118 Main • Spearman  
659-2506 • (800)657-8742

**Palo Duro Supper Club**  
22 S. Archer  
659-2232

**C.O.'S SUPPLY CO.**  
Plumbing & Tire Sales & Service  
421 W. Kenneth • Spearman  
659-3781 or 659-3555

**Bartlett's Ace Hardware**  
105 W. Broadway  
733-2404

**GILLASPIE**  
AUTO & TRUCK CENTER, INC.  
SPECIALTY TYRES • PONTIAC • BUICK  
CHEVROLET • PLYMOUTH • DODGE  
Hwy 207 South • P.O. Box 430 (800)659-2541  
SPEARMAN, TEXAS 79081

**Deakin ELECTRONICS**  
OILFIELD • RESIDENTIAL • COMMERCIAL  
519 Plains Shopping Center  
Spearman, TX 79081  
1-800-999-1506 (806)659-5016

**REINKE IRRIGATION SYSTEMS**  
**Paschel Irrigation**  
(806)659-5228 • 1-800-659-6580  
Corner Airport Rd. & Hwy 15 West  
Spearman, Tx.

**Gruver Cablevision**  
Quality Family Entertainment with  
"the Disney Channel"  
308 Main • 733-5295

**Morse Implement Company**  
"Join us in church this week"

**Boxwell Bros. Funeral Home**

**THE HANSFORD COUNTY REPORTER-STATESMAN**  
Serving The Communities Of Spearman, Gruver & Morse  
213 Main • 659-3434  
1-800-395-9482

**CORONADO HOSPITAL**  
Pampa, Texas  
(806)665-3721

Compliments of  
**G&G FOODLINER**  
516 Main • Gruver  
733-2471

### In Spearman...

**Apostolic Faith Church**  
822. S. Dressen • 659-2870  
Sunday-School: 10 a.m.  
Worship: 11 a.m.  
Evening Worship: 6 p.m. Sun.  
Wed. Prayer Meeting: 7:30 p.m.  
Pastor James Brown

**First Assembly of God**  
401 N. Bernice • 659-2295  
Sunday School: 9:45 a.m.  
Worship: 11 a.m.  
Evening Worship: 7 p.m.  
Wednesday Worship: 7:30 p.m.  
Youth: 7:30 Wednesday  
Pastor Todd Lillard

**First Christian Church (Disciples of Christ)**  
29 S. Bernice • 659-2036  
Sunday School: 9:45 a.m.  
Worship: 10:50 a.m.  
Women's Bible Study: 2 p.m. Wed.  
Youth: Wed. 6 p.m. & Sun. 5 p.m.  
Pastor LaVern Draper

**First Baptist Church**  
123 N. Bernice • 659-5557  
Sunday School: 9:45 a.m.  
Worship: 11 a.m.  
Evening Worship: 7 p.m.  
Jr. High Youth: 6 p.m. Wed.  
High School Youth: 7 p.m. Wed.  
Youth Choir: 6 p.m. Sun.  
Pastor Kyle Henderson

**Church of Christ**  
121 S. Haney • 659-3244  
Sunday Bible Class: 9:45 a.m.  
Worship: 10:30 a.m.  
Evening Worship: 6 p.m.  
Bible Study Wed. 7:30 p.m.  
KRDF Radio Program  
Living With Christ 7:50 a.m. M-F  
Minister Arnis Pape

**Fellowship Baptist**  
1102 S. Archer • 659-2783  
Sunday School: 10 a.m.  
Worship: 11 a.m.  
Evening Worship: 6 p.m. Sunday  
Youth & Adult Serv.: 7:30 Wed.  
Pastor Rick Fincher

**Primera Mision Bautista**  
502 E. 7th • 659-3991  
Sunday School: 9:45 a.m.  
Worship: 11 a.m.  
Pastor Guadalupe Carranza, Jr.

**"WE SUPPORT OUR LOCAL CHURCHES"**  
**CAPROCK #1 & #2**  
Mike Heard, Gen. Mgr.  
(806)733-5043 or 733-5025  
"Custom Cattle Feeding"

**Trinity Community Church**  
717 W. 7th Ave. • 659-2671  
Celebration of Praise 10:15  
Worship Service and Children's Church 10:30  
Sunday Evening 6:30 p.m.  
Wednesday evening: 7 p.m.  
Pastor Dan Carter

**Faith Lutheran Church (ELCA)**  
1101 Bernice • 659-2252  
(Worships with First Presbyterian Church)

**First Presbyterian Church**  
(Worships with Faith Lutheran Church)  
1021 Cotter • 659-2033  
Sunday School: 9:45 a.m. at Lutheran Church  
Worship: 11 a.m. (alternates monthly between addresses above)  
Pastor Beverly Cook

**First United Methodist**  
407 S. Haney • 659-5503  
Sunday School: 9:45 a.m.  
Worship: 11 a.m.  
Jr. High Youth: 5 p.m. Sun.  
High School: 6 p.m. Sun.  
Pastor Jeff Lust

**Union Church**  
31 S. Endicott • 659-2644  
Sunday School: 9:45 a.m.  
Worship: 10:45 a.m.  
Evening Worship: 6:00 p.m.  
Bible Study & Prayer Meeting: 7:00 p.m. Wed.  
Pastor Billy Stanford

**Sacred Heart Catholic Church**  
901 Roland • 659-2792  
Sat. Night Mass: 7 p.m.  
Sunday Mass: 8:45 a.m. - English (8:45a.m. Service on KRDF 98.3 FM)  
11:15 a.m. - Spanish  
1:30 p.m. - Gruver - Christo Rendontor Mass - Spanish Rev. Fernand Couture

**This feature is made possible through the Sponsorship of these Civic Minded Businesses**

### In Gruver...

**First Baptist Church**  
402 E. Broadway • 733-2411  
Sunday School: 9:45 a.m.  
Worship: 10:50 a.m.  
Disciple Training: 6 p.m. Sunday  
Prayer Meeting: 7:30 p.m. Wednesday  
Pastor Larry Miller

**Church of Christ**  
209 King • 733-2760  
Sunday School: 9:30 a.m.  
Worship: 10:20 a.m.  
Evening Worship: 6 p.m.  
Wed. Evening Worship: 7:30 p.m.  
Minister Bob Setliff

**First Christian Church**  
510 King • 733-2960  
Sunday School: 9:45 a.m.  
Worship: 11 a.m.  
Wed. Bible Study: 7:30 p.m.  
Youth: 6:30 Wednesday  
Pastor Gary Gumfory

**Oslo Lutheran Church (ECLA)**  
West of Gruver on Hwy 15 & N. FM 1162  
339-7646  
Sunday School: 9:45 a.m.  
Worship: 11 a.m.  
Morning Prayer: 9 a.m. Wed.  
Pioneer Clubs (Grades 1-6): 4-5:30 p.m. Wednesday  
Pastor John R. Chandler

**Community Bible Church (Interdenominational)**  
Hwy. 15 • 733-2443  
Sunday School: 10 a.m.  
Worship: 11 a.m.  
Wed. Prayer Meeting: 7 p.m.

**First United Methodist**  
Broadway & Garrett • 733-2651  
Sunday School: 9:45 a.m.  
Worship: 8:30 a.m. & 10:50 a.m.  
Evening Worship: 7 p.m.  
Pastor Lewis Holland

### In Morse...

**Morse Baptist Church**  
Pastor Mike Martin  
733-2757

**Henton & Co., P.C.**  
Certified Public Accountants  
221 Sanders • Spearman • 659-2518

**BERRY CLEANERS**  
DAN DESIMONE - OWNER  
Phone 659-3122 • P.O. Box 1017  
207 Main St. • Spearman, Tx. 79081

**GRUVER FORD**  
Ford FORD  
531 Main • Gruver • 733-2431

**Interstate Savings & Loan**  
322 Main • Spearman • 659-2559

**Hagerman Services**  
Backhoe • Dozer • Welding  
North Hwy. 15 • Spearman  
659-5131

**Gordon Drugs**  
Dependable Prescription Service  
314 Main • Spearman  
659-2141  
Jim Evans

Compliments of...  
**AGCO**  
of Spearman, Inc.  
"See you in Church"  
659-3751