

THURSDAY  
JANUARY 15, 2004

VOL. 07 • ISSUE 3

THE HANSFORD COUNTY

# REPORTER & STATESMAN

SCR2  
COMP  
HANSFORD COUNTY LIBRARY  
0122 MAIN ST  
SPEARMAN TX 79081-2064



213 MAIN ST • SPEARMAN, TX 79081

• NEWS • PICTURES • SPORTS

PROUDLY SERVING HANSFORD COUNTY SINCE 1907

## Mugger Suffers 'Hart' Attack



Joni Hart

by Harletta Carthel

The three would-be muggers in the parking lot of a Target store in Dallas may have thought the thin young Christmas shopper in high heels would be an easy target for them. But minutes later, the three teens would learn from Gruver graduate and former cross country runner, Joni Hart, that appearances can be deceiving.

Hart was concluding her Christmas shopping December 23, when she drove into a Dallas Target store parking lot.

"It was about 5:30 p.m. - still light outside but moving very quickly toward dusk. The parking lot was insane," Hart said.

Despite the chaos, Hart felt relatively safe as she parked next to a huge RV marked "Dallas Police Department."

"The presence of that vehicle, combined with the number of people in the parking lot, the uniformed guards at the door, and the fact that it was light outside, made me feel pretty safe," Hart said.

But as Hart emerged from her car, she was quick to notice a group of three young African-American males standing in such a way that she would have to walk through them to get to the door of the business. One male was standing on one side of the aisle, and the other two were on the opposite side.

"I knew they were together because they were yelling to one another across the aisle," Hart said.

Always a bit on edge when she walks through groups of people, Hart was especially alert as she passed through the aisle.

"The moment I walked past the guys, all the hair on my arms and on the back of my neck stood on end. I knew something was up - they were talking about me as I passed. I sensed that something was about to happen - I just didn't know what," Hart said.

Her thoughts ran the gamut from a mere catcall to car theft or abduction.

"I had no idea what they had planned, but I thought surely they wouldn't be stupid enough to try something violent in broad daylight with all the people and police around," she said.

As Hart passed through the trio, they quickly fell in step behind her, causing her to increase her guard.

"Being a good student of self-defense classes, I turned and looked each of them in the eye, giving a look that I hoped said 'Leave me alone. Don't even think about trying something with me,'" Hart said.

Hart squared her shoulders and began walking at a faster pace.

And then it happened.

One of the three teens ran up behind Hart, and grabbed her purse straps.

"Because I was on my guard, I had a pretty good grip on my purse, and I had no intention of letting go," Hart said. "I held on, pulling as hard as I could, and screamed for help at the top of my lungs."

The struggle over the purse continued for about 15-20 seconds. With the teen eventually dragging Hart across a row of cars.

"I threw my keys at his head and continued to pull and shout. Unfortunately, he was stronger," Hart said.

At this point, Hart kicked off the heels she was wearing to enable her to stay on her feet, but the larger teen eventually snatched the purse away. As he started to run, Hart, still screaming, tore off across the parking lot in barefoot pursuit. She pursued until the teen darted into traffic and took off toward a subway station.

Fortunately, the chase had alerted a uniformed Dallas police officer and a uniformed security guard, who arrived quickly, followed by two plain-clothed security guards, one of whom handed Hart a cell phone to give her story to a 911 dispatcher.

Three or four other witnesses then came forward to offer their contact information.

"The whole time, all I could think about was identity theft, having to buy a new cell phone, and the fact that I could kiss the \$200 cash in my wallet, meant for Christmas presents, goodbye," Hart said.

Those fears subsided when the police officer recovered the

purse, tossed aside by the teen just before he disappeared into a subway tunnel. The only item missing was Hart's checkbook, which was probably dropped in the thief's flight.

"I was so impressed by the way the officers handled the incident; they took it seriously and were determined to catch the creep," Hart said.

Within 30 seconds of Hart's call to 911, three police squad cars arrived and then pulled out in pursuit. Minutes later, a police helicopter arrived on the scene to search for the teen's companions who had scattered.

With her part of the ordeal over, Hart called a friend to accompany her home. Just as she pulled into her garage, her cell phone rang.

"The police officer in charge called to let me know that the suspect had been apprehended at the end of his three-mile jog through the subway tunnel," Hart said.

Returning to the Target store to make a positive identification, Hart learned the thief was only 15 years old.

"I am extremely fortunate that the situation was resolved and that I wasn't hurt. I'm lucky he didn't have a weapon," Hart said.

Although Hart says she has learned two valuable lessons from the Ordeal: (1) You can do everything right and still become a victim, and (2) Always wear running shoes when you're out running errands alone.

Hopefully, the culprit will also learn some lessons: (1) that you must pay for your crimes, and (2) that there are some women best left alone.

## Panhandle Sports Hall of Fame Honors Lindsey Short



Lindsey Short

2003 2-A Girls Singles State Tennis Champion

The Panhandle Sports Hall of Fame ceremonies will be held on February 8 at Amarillo College.

The area's top athletes, coaches and teams for 2003 will be honored in addition to the induction of the 130th, 131st and 132nd members into the Hall of Fame - former NFL Pro Bowlers Carl Birdsong and William Thomas, both of Amarillo, and former West Texas State basketball standout James Scott.

Among this year's honorees is Lindsey Short, who is being honored as the Tennis Athlete of the Year. Lindsey, a sophomore at Spearman High School, won the 2-A state crown last year, winning 6-0, 6-0 in the championship match.

Lindsey is the daughter of Kyle and Lisa Short of Spearman. Adam Cherry and Kevin Beedy, both 2003 graduates of Spearman High School, were honored last year as the 2002 2A state doubles tennis champions. Beedy was honored as the 2001 singles champion.

## BSE (Mad Cow Disease) Contact Information & Resources

If you have questions or require detailed information regarding the BSE (Mad Cow Disease) situation please consult the following resources provided by the U.S. Department of Agriculture and Animal Plant Health Inspection Service (APHIS).

General Public Information - 1-800-601-9327; select option 2. You are then given 7 additional options to pick from:

- 1) Center for Disease Control, 1-800-311-3438
- 2) USDA Food Safety Inspection, 1-800-535-4555
- 3) Import/Export Animal Feed
- 4) FDA, 301-437-1420
- 5) Media, 202-720-4623
- 6) Updated message, 1-866-487-3226
- 7) Information on BSE and all other inquiries (takes you to a live person who provides the phone number 1-866-487-3226)

You can also read about the BSE Emergency Response Plan on the web at <http://www.aphis.usda.gov/lpa/issues/bse/bseum.pdf>

## SBA Disaster News

Small businesses in Childress, Clay, Collingsworth, Cooke, Dallam, Fannin, Grayson, Hansford, Hardeman, Hemphill, Lamar, Lipscomb, Montague, Ochiltree, Sherman, Wheeler, Wichita, and Wilbarger Counties are eligible to apply for a low-interest Economic Injury Disaster Loan from the SBA.

These loans are available to small businesses that have suffered financial losses and are dependent on farmers and ranchers who sustained crop losses as a result of drought that occurred July 1, 2003, and continuing. The loan application deadline is June 1, 2004.

Small businesses in Hansford, Hemphill, Ochiltree, Sherman, and Wheeler Counties are eligible to apply for a low-interest Economic Injury Disaster Loan from the SBA.

These loans are available to small businesses that have suffered financial losses and are dependent on farmers and ranchers who sustained crop losses as a result of severe storms and tornadoes that occurred May 8-30, 2003. The loan application deadline is February 10, 2004.

Farmers and ranchers are not eligible for these SBA loans. Nurseries that are victims of drought can apply.

For further information call SBA at 1-800-366-6303.

## FSA Receives Partnership Award from Texas Cooperative Extension

Texas Cooperative Extension recognized Texas FSA for their efficient, effective and proactive response to the demands of the 2002 Farm Bill and their willingness to forge a successful, mutually beneficial partnership with Extension at both the State and County levels. Together, Extension and FSA co-sponsored more than 200 regional and county-level producer meetings enabling Texas producers to make informed, educated decisions regarding the complex 2002 Farm Bill legislation.

Texas FSA would like to thank Texas Cooperative Extension for recognizing the merits of our long-standing partnership.

## "Water News" Available to the Public

North Plains Groundwater Conservation District provides a quarterly newsletter, "North Plains Water News", free of charge to anyone interested in subscribing. The newsletter, produced in the North Plains Water District's office in Dumas, provides current news on water issues in the Panhandle of Texas and North Plains Water District, as well as articles on ongoing projects of the Water District. Information is also provided on current water conservation and water quality issues around the state of Texas, and a listing of upcoming educational opportunities will be listed. Those who are interested in water conservation and water use issues in our area can subscribe to have the newsletter mailed to them by contacting the North Plains Water Conservation District office at 806-935-6401, by sending a written request to P.O. Box 795, Dumas, TX 79029, or by e-mailing Rhonda Artho at [artho@npwd.org](mailto:artho@npwd.org).

## Beef Quality Assurance Training Offered on CD

Ranchers are now able to take the Beef Quality Assurance Training in the comfort of their own homes.

In cooperation with the National Cattlemen's Beef Association and the Texas and Southwestern Cattle Raisers, Texas Cooperative Extension developed a CD-ROM from material taught for several years in workshops throughout the state, said Dr. Dan Hale, Extension meats science specialist. The CD will be included in slip covers of The Cattleman and Gulf Coast Cattleman magazines or may be ordered directly from Extension, he said.

In the late 1980s, the Texas Cattle Feeders Association put together the Beef Quality Assurance Program for feeder cattle, Hale said.

Ranchers then began asking for the training, so Extension - with the help of TSCRA and the Texas Beef Council - developed the program and materials. All of the programs are supported in some degree through associational sponsorships and Beef Checkoff dollars, he said.

More than 3,000 producers have attended the face-to-face Level One trainings that teach producers about beef quality assurance, Hale said.

"We saw a need to get this same information out to the masses," he said, since Texas has more than 100,000 cattle producers, he said. That's when they approached the NCBA to develop the CD.

The goal of Beef Quality Assurance is to improve the quality and safety of Texas beef from the ranch to the consumer, he said.

"People call it a 'gate-to-plate' beef safety assurance program," he said, "and it's also a program that improves the quality and consistency of beef."

The course is set up in four modules: defining beef quality assurance, management practices that improve the safety of beef, improving the quality of the beef and optimizing the care of cattle, and management practices that enhance the environment.

The CD takes from three to four hours to complete, he said. In-person training sessions are six hours long.

If producers want to certify they have been through the program, they will need an Internet connection to link with the Web site (<http://www.beefquality.com>) and take the quizzes that go over the material.

After successfully completing the four modules and the quizzes, producers will be added to the Texas Beef Quality Producer database maintained by TSCRA.

All of the educational material is contained on the CD; further resource material is available through the Web site link included, Hale said.

After completing Level One, ranchers are eligible to take the Level Two training that helps certify their ranches have beef quality assurance programs in place. Further information about that training is available from Extension agents in each county.

"I look at it this way: Level One trains the person. Level Two shows the ranch has a beef quality assurance program," he said.

In the future, with an added emphasis on food safety, more people will be looking for cattle that have been produced from ranchers trained in beef quality assurance, he said.

The CDs are free with a subscription to The Cattleman or Gulf Coast Cattleman magazines, or may be ordered for \$10 (to cover shipping and handling) by contacting the local Extension agent-agriculture or from <http://www.beefquality.com>.

## Chamber Accepting Business & Citizen of the Year Nominations

The Spearman Chamber of Commerce is now accepting nominations for Business of the Year and Citizen of the Year. Nominations must be submitted to the Chamber office by 5:00 p.m. on Friday, February 13, 2004. The awards will be awarded at the Annual Chamber of Commerce Banquet, which will be held on Saturday, February 28, 2004 at the O'Loughlin Center. Call the Chamber office at 659-5555 for more information.

## SHS Cross Country Honors



Melissa Lesly (left) has been named to the AA All-State Cross Country Team by the Texas Girls Coaches Association.

Ashlee Flowers (right) has been named AA Academic All-State by the Texas Girls Coaches Association.

## March 9th Republican Primary

January 9, 2004 was the first day for a voter to submit an application for an early ballot by mail for the primary, runoff and the general elections. Ballots will be mailed beginning January 24th. Ballots by mail will be received until March 1st.

February 9th is the last day to register to vote for the March 9th primary election.

Early voting will be held at the Hansford County Courthouse in Spearman and the branch office in Gruver City Hall from February 23rd through March 5th.

The primary election day will be Tuesday, March 9, 2004 from 7 a.m. to 7 p.m. at the following polling places: Precincts 1, 5 & 6 - Spearman City Hall, Precincts 2, 3, 4, 7 & 9 - Gruver High School Library.

Two candidates filed for the Hansford County Judge position. Benny Wilson, who was appointed by the Hansford County Commissioners Court to fill the unexpired term of Judge Jim Brown, and Cody Cazares.

Four candidates filed for the Hansford County Sheriff position, including Deputy Pete Ochoa, Deputy Gary Evans, Deputy Lance Swan and Spearman Police Officer Edward Mayfield.

Two candidates filed for the Tax Assessor/Collector position. They are Linda Cummings, currently serving as assistant tax assessor/collector, and Jackie Reed Nelson, an employee at First State Bank.

Three candidates filed for the Precinct 3 County Commissioner seat. They include Tim Stedje, who was appointed to fill the unexpired term of Kent Guthrie, as well as Charlie Bell and Ty Williams.

Butch Reed, County Commissioner for Precinct 1, County Attorney John L. Hutchison, 84th Judicial District Judge William D "Bill" Smith and 84th Judicial District Attorney Clay Ballman are all running unopposed in the primary election.

No democrats filed for Hansford County.



# Live, Laugh & Love



by Catherine R. Smith  
CathyRSmit@aol.com

My friend Deborah Jacobs sent me the following story entitled "The Road of Life." I have read this story before, but had forgotten about it. Thanks for the reminder, Deborah!

## The Road of Life

At first, I saw God as my observer, my judge, keeping track of the things I did wrong, so as to know whether I merited heaven or hell when I die. He was out there sort of like a president. I recognized His picture when I saw it, but I really didn't know Him. But later on when I met Christ, it seemed as though life were rather like a bike ride, but it was a tandem bike, and I noticed that Christ was in the back helping me pedal. I don't know just when it was that He suggested we change places, but life has not been the same since.

When I had control, I knew the way. It was rather boring, but predictable it was the shortest distance between two points. But when He took the lead, He knew delightful long cuts, up mountains, and through rocky places at breakneck speeds. It was all I could do to hang on!

Even though it looked like madness, He said, "Pedal!" I worried and was anxious and asked, "Where are you taking me?" He laughed and didn't answer, and I started to learn to trust. I forgot my boring life and entered into the adventure, and when I'd say, "I'm scared," He'd lean back and touch my hand. I gained love, peace, acceptance and joy; gifts to take on my journey, My Lord's and mine. And we were off again.

He said, "Give the gifts away. They're extra baggage, too much weight." So I did, to the people we met, and I found that in giving I received, and still our burden was light.

I did not trust Him, at first, in control of my life. I thought He'd wreck it; but he knows bike secrets, knows how to make it bend to take sharp corners, knows how to jump to clear high rocks, knows how to fly to shorten, scary passages. And I am learning to shut up and pedal in the strangest places, and I'm beginning to enjoy the view and the cool breeze on my face with my delightful constant companion, Jesus Christ.

And when I'm sure I just can't do it anymore, He just smiles and says... "Pedal."

May God bless and keep you; May He make his face to shine upon you, and be gracious to you; May the Lord lift up his countenance upon you, and give you peace.

Numbers 6:24-26

Catherine :)

### Spearman High School

The Spearman High School Speech/Forensics team traveled to Friona High School to compete with 31 schools in their annual Invitational Speech Tournament.

With a majority of three and four A schools involved, the Spearman team brought back a third place Sweepstakes trophy. This is their second sweepstakes trophy of the season.

The team members also brought back seven large trophies and 14 medals.

Receiving a second place trophy in Experienced Poetry was Cristal Alvarado. She placed in Radio Broadcasting. Katie Baylor advanced to semi-finals in Novice Prose and placed in Radio Broadcasting.

Tracy Brown was awarded 8th place in Radio Broadcasting while Josh Chambers placed 5th. Josh Derrington received a trophy for third place in Novice Persuasive. He also placed in Radio Broadcasting.

Biti Huffaker competed in Radio along with Felicia Martinez. Felicia was given fourth place. Clayton Smith advanced to the Semi-finals in Novice Prose. Mark Thomas also placed in Radio. Marcos Vasquez and K'Lee Ratzliff also competed in Broadcasting, and K'Lee was given a third place trophy.

Maribel Moreno advanced to Semifinals of Novice Prose. Adrianna Pinon received fourth place in Experienced Poetry and sixth place in Experienced Prose.

Russell Sheets came away with three large trophies, a personal best at a tournament, with a first in Persuasive Speaking, a second in Radio Broadcasting, and a third in Novice Poetry.

Spearman took seven of the eight places in Broadcasting, helping them to win a sweepstakes trophy.

Other members of the team included Chris Cudd, Michael Lozano, Ryan Ramon, Jessica Villarreal, Timberly Thomas, Linzi McCubbin, Holly Baker, and Melissa Lesley.

SHS is now the largest National Forensics 2A squad in the Panhandle.

The Spearman Basketball Homecoming will be Friday, January 16th in the varsity gym against Channing. The Lynxettes will play at 6:30 p.m. and the Lynx will play at 8 p.m.

### Spearman Jr. High

Spearman Junior High will host their annual Basketball Tournament this weekend, January 15th-17th. Schedule as follows.

Pool #1: Spearman, Dalhart, Gruver; Pool #2: Canadian, Perryton, Borger (Spearman "B" team girls replace Canadian girls Friday and Saturday); Record Pool Play decides finals (Pool #1 1st place vs. Pool #2 1st place, etc.)

**Thursday: Varsity Gym** - 5 p.m., 7th Girls, Spearman vs. Gruver; 6:15 p.m., 7th Boys, Spearman vs. Gruver; 7:30 p.m., 8th Girls, Spearman vs. Gruver; 8: 45 p.m., 8th Boys, Spearman vs. Gruver

**Friday: Activity Gym** - 5 p.m., Spearman "B" vs. Perryton; 7:30 p.m., 8th Girls, Spearman "B" vs. Perryton

**Saturday: Activity Gym** - 9 a.m., 7th Girls, Dalhart vs. Spearman; 10:15 a.m., 7th Boys, Dalhart vs. Spearman; 11:30 a.m., 8th Girls, Dalhart vs. Spearman; 12:45 p.m., 8th Boys, Dalhart vs. Spearman;

**Saturday, Finals: Activity Gym** - 2 p.m., 7th Boys Consolation; 3:15 p.m., 7th Girls Consolation; 4:30 p.m., 8th Boys Consolation; 5:45 p.m., 8th Girls Consolation; 7 p.m., 7th Boys 3rd Place; 8:15 p.m., 7th Girls 3rd Place; **Varsity Gym** - 2 p.m., 8th Girls 3rd Place; 3:15 p.m., 8th Boys 3rd Place; 4:30 p.m., 7th Girls Championship; 5:45 p.m., 7th Boys Championship; 7 p.m., 8th Girls Championship; 8:15 p.m., 8th Boys Championship

### Gruver High School

Sophomores will take the TAKS Field Test Wednesday, January 21st.

Lions Club guests for January 21st will be Meagan Knight and David Puebla.

GHS UIL Academic contestants will compete in a practice meet at WT High on January 17th.

Seniors ordered their caps, gowns, and invitations on Monday.

Gruver will host its first Power Lifting Meet at 9 a.m. on Saturday, January 24th.

### Gruver Jr. High

All region band members will attend the Region I All Region Band Clinic Friday, January 16, and will perform in the All-Region concert Saturday, January 17 at 2 p.m. in the Amarillo Civic Center Auditorium.

All-Region band members include sixth graders Mary Barron and Cory Graves; seventh graders Matt Salazar, Lynn Vela, and Jordan Hicks; and eighth graders Seth Thompson, Lorenzo Torres, and Sorrele Blevins.

Emily Williams was chosen second alternate.

The seventh and eighth grade girls and boys will compete in the Spearman Basketball Tournament on Thursday, January 15th - Saturday, January 17th. Schedule as follows.

**Thursday: Varsity Gym** - 5 p.m., 7th Girls, Spearman vs. Gruver; 6:15 p.m., 7th Boys, Spearman vs. Gruver; 7:30 p.m., 8th Girls, Spearman vs. Gruver; 8: 45 p.m., 8th Boys, Spearman vs. Gruver

**Friday: JH Box Gym** - 5 p.m., 7th Girls, Gruver vs. Dalhart; 6:15 p.m., 7th Boys, Gruver vs. Dalhart; 7:30 p.m., 8th Girls, Gruver vs. Dalhart; **Varsity Gym** - 5 p.m., 8th Boys, Gruver vs. Dalhart; 6:30 p.m.

**Saturday, Finals: Activity Gym** - 2 p.m., 7th Boys Consolation; 3:15 p.m., 7th Girls Consolation; 4:30 p.m., 8th Boys Consolation; 5:45 p.m., 8th Girls Consolation; 7 p.m., 7th Boys 3rd Place; 8:15 p.m., 7th Girls 3rd Place; **Varsity Gym** - 2 p.m., 8th Girls 3rd Place; 3:15 p.m., 8th Boys 3rd Place; 4:30 p.m., 7th Girls Championship; 5:45 p.m., 7th Boys Championship; 7 p.m., 8th Girls Championship; 8:15 p.m., 8th Boys Championship

## HANSFORD HAPPENINGS

### Out-Of-School TAAS Examinee Registration

Individuals who are no longer enrolled in school and who have not previously met minimum expectations on all sections of the TAAS test, but have met all other graduation requirements, may retake the necessary sections. The TAAS test will be given on February 24th (writing), February 25th (math), and February 26th (reading). A student can register for the TAAS test online by accessing the website at <http://k12testing.tx.ncspearson.com/ooos> or by completing a registration form. Registration forms may be picked up at the high school counselor's office between the hours of 8 a.m. and 4 p.m. Registration packets are due in Austin no later than 5 p.m. on January 23, 2004. Please contact Krista Baird at 659-2584 if you have any questions.

Los individuos que ya no están matriculados en la escuela y que todavía no han cumplido con los requisitos mínimos en todas las secciones del examen de TAAS, pero han cumplido todos los otros requisitos necesarios para graduarse, pueden tomar los exámenes necesarios del TAAS. Damos el examen de TAAS el 24 de febrero (escritura), el 25 de febrero (matemáticas), y el 26 de febrero (lectura). Un alumno puede registrar para el examen por computadora en el sitio <http://k12testing.tx.ncspearson.com/ooos> o pueden cumplir una forma de registracion. Pueden recoger esta forma en la oficina de la consejera de high school entre las horas de 8 a.m.-4 p.m. Los papeles de registracion tienen que estar en Austin antes de las 5 p.m. el 23 de enero, 2004. Favor de comunicar con Krista Baird, 659-2584, si tienen preguntas.

### Southwest Pioneer Windmill Association

The annual meeting of the Southwest Pioneer Windmill Association will be held at 12 noon on Thursday, January 22nd at the Hungry Cowboy. Lunch will be served at a cost of \$7.00. If you can RSVP, please do so (659-2791). If not, just show up. The purpose of the meeting is to report on what has happened during the past year and what is planned for the coming year. Seth Davidson has been invited and will have a report on the "Trail of the Wind" project, of which the J.B. Buchanan Windmill Park is a part. Membership dues for 2004 (\$10) are now due and can be sent to: Orville Latham, 903 S. Bernice, or Nellie Buchanan, 1112 Linn Dr., or may be paid at the meeting. Individuals, businesses and organizations are invited to join.

### Rotary Club "Employee of the Year" Nominations

The Spearman Rotary Club is currently accepting nominations for "Employee of the Year". This award will be presented at the Chamber of Commerce Banquet on Saturday, February 28th. Nominations should be submitted in writing to Jason Cantrell or any Rotary Club member, or may be mailed to: Rotary Employee of the Year, Box 492, Spearman, TX 79081. Nominations must be received on or before February 15, 2004.

### Chamber Business & Citizen of the Year Nominations

The Spearman Chamber of Commerce is now accepting nominations for Business of the Year and Citizen of the Year. Nominations must be submitted to the Chamber office by 5:00 p.m. on Friday, February 13, 2004. The awards will be awarded at the Annual Chamber of Commerce Banquet, which will be held on Saturday, February 28, 2004 at the O'Loughlin Center. Call the Chamber office at 659-5555 for more information.

### Hospice Bereavement Support Group

A new Hospice Bereavement Support Group will be held March 22nd through April 19th on Monday and Thursday nights from 7-8:30 p.m. This support group is being sponsored by Hansford Hospice Volunteers and is open to all persons dealing with grief. It will meet in the First Methodist Church parlor in Spearman. For further information, or to enroll, please call the Hospice office at (806) 659-2535, extension 3810, or call Ken Cole at 659-5503.

### Basic EMT, Intermediate EMT Classes Offered

Frank Phillips College, with approval from the Texas Department of Health, will offer a Basic EMT class at its Borger campus beginning January 20th. This class, instructed by Sam Aldrich, will be held on Tuesdays and Wednesdays from 7-11 p.m. in the Classroom Learning Complex, room 38.

Aldrich will also coordinate an Intermediate EMT class through FPC that will be held in Stratford. This class, also approved by TDH, began January 14th and will be held at the Stratford EMS classroom.

For more information, call Percilla Newberry at (806) 274-5311, ext. 749, or Sam Aldrich at (806) 935-5616.

### Hansford Gun Club To Meet

The Hansford County Gun Club will meet Tuesday, January 27, 2004, at Spearman City Hall in the City Council Room at 7 p.m.

Anyone interest in joining the club or learning more about the club is invited to attend. For more information, call Larry Hornsby, 806-659-3259.

### Quilt To Be Raffle

A quilt made by the geometry classes of Julie Babbs will be raffled off January 27 during the Gruver/Booker basketball games. Tickets for the raffle are \$1 with all proceeds to go to the local Gruver Scholarship fund. The quilt was constructed by geometry class members using squares of logos from T-shirts and athletic shirts depicting all areas of Gruver sports. The squares surround a large "Gambler" G with a silhouette of a Greyhound above the emblem. Mrs. Babbs sewed the quilt together while Ada Joyce Stedje did the binding.

## The Hansford County Reporter-Statesman

213 Main Street • Spearman, TX 79081  
Phone - (806) 659-3434 • Fax - (806) 659-3368  
CathyRSmit@aol.com  
Mon.-Thurs. (Closed Fridays) 9 a.m.-12 p.m. & 1-5 p.m.

Gary Smith - Publisher • Catherine Smith - Editor  
Harletta Carthel - Assist. Editor

Contributing Writers: Helen Fisher, Dorothy Hudson • Contrib. Photographer: Charlie Johnson

### Subscription Rates

In Hansford Co. - \$25.00 • Out of County - \$30.00

The Hansford County Reporter-Statesman (USPS 529660) is published weekly in Spearman, TX. Periodical postage paid in Spearman, TX. POSTMASTER: Send address changes to The Hansford County Reporter-Statesman, 213 Main Street, Spearman, TX 79081.

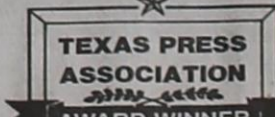
### Publication Policy

The deadline to submit news and advertising to The Hansford County Reporter-Statesman is Monday at 5:00 p.m. Items submitted after the deadline will be published at a later date, as time and space permit. Publication of all items is at the discretion of the editor.

### Advertising

Open Display rates are \$4.50 per column inch. Classified Ads are \$5 for the first 25 words and 10c per word for each additional word. (Additional charge for boxed classifieds.) There is a \$1 charge per week if billed.

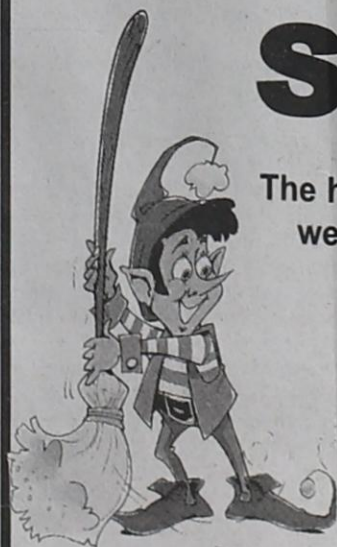
Member of Texas Press Association and Panhandle Press Association



# Clean Sweep Sale!

The holidays are over, and we're ready to clean out our Christmas items!

# 50% OFF



## Celebrate

203 Main St. • Spearman, TX  
(806) 659-3350 • 1-800-663-8026

**Dr. Rick Sheppard, D.D.S.**  
**FAMILY DENTAL PRACTICE • BRACES**  
658-4569 or 1-800-687-2010  
**Pioneer in Booker TEETH FOR A LIFETIME**

**CORNER SERVICE STATION**  
your full-service station!  
Gasoline  
Oil Changes  
Battery Service  
Flat Tire Service  
Car Washing & Cleaning  
Tire Rotation & Balancing  
Free Pick Up & Delivery!

101 Main Street • Spearman, Texas  
(806) 659-2722 • Joe & Nita Bynum

**Clean Sweep Sale!**  
The holidays are over, and we're ready to clean out our Christmas items!  
**50% OFF**  
**Celebrate**  
203 Main St. • Spearman, TX  
(806) 659-3350 • 1-800-663-8026

**The Hansford County Reporter-Statesman**  
213 Main Street • Spearman, TX 79081  
Phone - (806) 659-3434 • Fax - (806) 659-3368  
CathyRSmit@aol.com  
Mon.-Thurs. (Closed Fridays) 9 a.m.-12 p.m. & 1-5 p.m.  
Gary Smith - Publisher • Catherine Smith - Editor  
Harletta Carthel - Assist. Editor  
Contributing Writers: Helen Fisher, Dorothy Hudson • Contrib. Photographer: Charlie Johnson  
**Subscription Rates**  
In Hansford Co. - \$25.00 • Out of County - \$30.00  
The Hansford County Reporter-Statesman (USPS 529660) is published weekly in Spearman, TX. Periodical postage paid in Spearman, TX. POSTMASTER: Send address changes to The Hansford County Reporter-Statesman, 213 Main Street, Spearman, TX 79081.  
**Publication Policy**  
The deadline to submit news and advertising to The Hansford County Reporter-Statesman is Monday at 5:00 p.m. Items submitted after the deadline will be published at a later date, as time and space permit. Publication of all items is at the discretion of the editor.  
**Advertising**  
Open Display rates are \$4.50 per column inch. Classified Ads are \$5 for the first 25 words and 10c per word for each additional word. (Additional charge for boxed classifieds.) There is a \$1 charge per week if billed.  
Member of Texas Press Association and Panhandle Press Association  
Texas Press Association Award Winner



## Our Deepest Sympathy

### TRACY RUSSELL MAYBERRY

LOS OSOS, CA - Funeral services for Tracy Russell Mayberry, 43, were held Monday, December 29, 2003 in Los Osos, CA. She died December 24, 2003 in a Los Osos hospital from double pneumonia complicated by an asthma condition.

Mayberry was born on August 20, 1960 to Jim and Earlene "Scooter" Russell of Bovina. She was a 1978 graduate of Bovina High School. During her senior year in high school, she worked for Bill Ellis at the Bovina Blade office and worked for newspapers in Mountain Home, ID for several years.

She is survived by her husband, Richard Mayberry; two sons, Russell, 21 and Orion, 4; her parents, Jim and Scooter Russell of Spearman; and two sisters, Janee Russell and Tami Kunselman, both of Spearman.

## Prayer Workshop

led by Rev. Lewis Holland

Saturday, January 17th

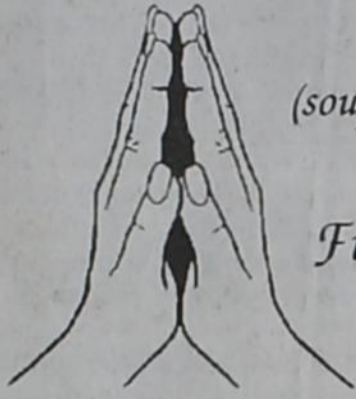
9 a.m. - noon

(soup and sandwiches provided)

Fellowship Hall

First United Methodist

Church of Spearman



Anyone interested is invited to attend.

## MONUMENTS

Boxwell Brothers Funeral Home

519 Evans • Spearman

659-3802

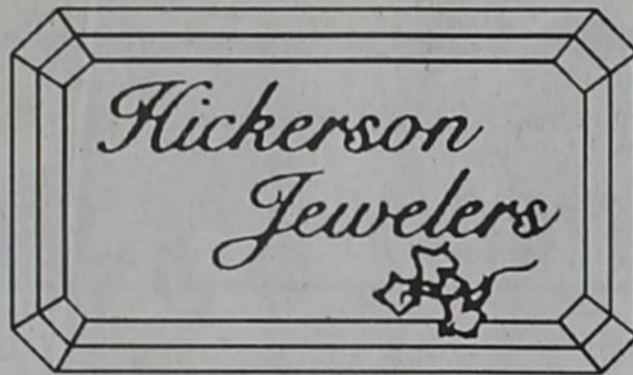
Dear friends,

When you buy a monument from us we make sure it is exactly what you want at a price you can afford. If it is not right, we will make it right. And you will not have to search the countryside to find us. We are here when you have a need.

Sincerely,

Bob Boxwell

## OVER 55 YEARS OF FINE JEWELRY AND WATCH REPAIR SERVICE



222 S. Main St. • Perryton 79070  
(Corner of 3rd and Main)  
(806) 435-2495

### Thank You

Perhaps you sent a lovely card, or sat quietly in a chair. Perhaps you sent a funeral spray, if so we saw it there. Perhaps you spoke the kindest words, as any friend could say; Perhaps you were not there at all, just thought of us that day. Whatever you did to console our hearts, we thank you so much whatever the part.  
Family of Otho Gammill

### Thank You

Dear friends, Hansford Manor staff, Hospice staff and Hospital Auxiliary:

We want to thank you for all the love and care shown Henrietta the last ten years as a Manor resident. Thank you for giving your time to play bingo, dominoes, and other games with her. She loved to play, but more than that, she loved your attention. She would always tell us who came by and who played games with her. Thank you again, and may God bless each of you.  
Family of Henrietta Andrews

### Thank You

Thank you for all the expressions of love shown to our family during these days after losing our daughter and sister, Tracy. The flowers, cards, calls, thoughts and prayers are greatly appreciated.  
Families of Jim Russell; Tammy Kunselman; and Janee Russell

### Thank You

We would like to give everyone who has given our daughter, Ashley Bates, a moment of thought and a prayer, a heartfelt thank you. Without all of your prayers and thoughts, this miracle would not have been possible. She has been home since Thanksgiving, and is recovering well.

Thank you again,  
Debbie and Larry Hornsby

### Thank You

The Gruver Chamber of Commerce would like to once again thank the citizens of Gruver for making our city a beautiful place to spend the holidays with our family and friends.

In addition to the winners of the lighting contest we would like to make a special thank you to Larry Babbs for his contribution of Christmas light wonders just west of town and to Kevin Babbs for placing his Christmas Train in the City park.

The Ray Hite family donated the blue lights for City Hall in memory of Lamoyne Cator, we thank them for their thoughtfulness.

Our park was a glorious view this year, and we thank Robert Blount, Alan Jones, and Jeremy Sipes for all their hard, around the clock work to keep them all lit for us. And finally, the park would not be such a beautiful place without all of those who adopted a tree to decorate.

### Thank You

We would like to thank everyone for the prayers, cards, visits and kindnesses shown the past few months during our recent illnesses, hospital stays, surgeries and recovery.

Also, a special thanks to the hospital staff, the EMS personnel, Dr. Garnett and Dr. Sharma.

LeRoy and Donna Farris

### Thank You

We extend our many thanks to Hansford Manor and staff, Hansford Hospice, Dr. Sharma, and Hospital staff, Brother Patrick Six, and Staff, and our many friends.

You have given us a clear example of how Jesus works on Earth: with His hands, you prepared food, with His arms, you hugged, with His knees, you prayed, with His voice, you comforted. We felt His love so completely through all your selfless acts.

I thank my God ever time I remember you. Phil 1:3.  
Bob Vinson; Andy and Terri Vinson and family; Craig and Beverly Vinson; Grady and Heather Cline and family; Nic and Lindsay Vinson, Dusty Vinson; and April and Hayle Vinson

## BLAN IRRIGATION

Backhoe • Trencher • Road Bores  
SEPTIC TANK INSTALLATION

Sales & Service - State Certified

Hwy 15 & S. Bartlett • Waka, TX 79093

(806) 435-2363 • Fax (806) 435-1428

Irrigation • Oilfield • Agriculture • General

## Replenish the seed of faith through . . .

### DAILY BIBLE READING, PRAYER & REGULAR CHURCH ATTENDANCE

#### Spearman

**Apostolic Faith Church**  
822 S. Dressen • 659-2870  
Sunday School: 10 a.m.  
Worship Service: 11 a.m.  
Sun. Eve.: 6 p.m.  
Wed. Prayer Mtg.: 7 p.m.  
Pastor - Roland Haney

**First Assembly of God**  
401 N. Bernice • 659-2295  
Sunday School: 9:30 a.m.  
Worship: 10:35 a.m.  
Kid's Church: 10:35 a.m.  
Evening Worship: 6 p.m.  
Wed. Worship: 7 p.m.  
Wed. Youth: 7 p.m.  
Pastor - Bob Elder

**First Christian Church**  
(Disciples of Christ)  
29 S. Bernice • 659-2036  
Sunday School: 9:45 a.m.  
Worship: 10:50 a.m.  
Minister - Gary Smith

**First Baptist Church**  
123 N. Bernice • 659-5557  
Sunday School: 9:45 a.m.  
Worship: 11 a.m.  
Evening Worship: 7 p.m.  
Wed. Fellowship Meal: 6 p.m.  
Wed. Disc. Time: 6:30 p.m.  
Wed. Youth Mtg.: 8 p.m.  
Pastor - Patrick Six

**Church of Christ**  
121 S. Haney • 659-3244  
Sunday Bible Class: 9:45 a.m.  
Worship: 10:30 a.m.  
Evening Worship: 6 p.m.  
Bible Study Wed.: 7:30 p.m.  
KRDF Radio Program  
Living W/Christ: 7:50 a.m.  
Minister - Leonard Harper

**Sacred Heart Catholic Church**  
801 Roland • 659-2792  
Sat. Night Mass: 5:30 p.m.  
Sun. Mass: 9 a.m. - English  
(aired on KRDF-FM 98.3)  
Sun. Mass: 11:30 - Spanish  
1:30 p.m. - Gruver - Christo  
Renditor Mass - Spanish  
Rev. Guillermo Morales

**First United Methodist**  
407 S. Haney • 659-5503  
Sunday School: 9:45 a.m.  
Worship: 8:30 & 11 a.m.  
Jr. High Youth: 5 p.m. Sunday  
High School: 6 p.m. Sunday  
Kids Club: 3 p.m. Wed.  
Pastor - Ken Cole

**Grace Presbyterian Church**  
(Worships with Faith Lutheran Church)  
1101 Bernice • 659-2033  
Pastor - Beverly Cook

**Faith Lutheran Church (ELCA)**  
1101 Bernice • 659-2252  
Sunday School: 9:45 a.m.  
Worship: 11 a.m.  
(Worships with  
Grace Presbyterian Church)  
Pastor - Beverly Cook

**Union Church**  
31 S. Endicott • 659-2644  
Sunday School: 9:45 a.m.  
Worship: 10:45 a.m.  
Evening Worship: 6 p.m.  
Bible Study: 7 p.m. Wed.  
Pastor - Bill Sparks

**Fellowship Baptist**  
1102 S. Archer • 659-2783  
Sunday School: 10 a.m.  
Worship: 11 a.m.  
Sun. Evening Worship: 6 p.m.  
Youth/Adult Serv.: 7:30 Wed.  
Pastor - Gene Foster

**Primera Mision Bautista**  
502 E. 7th • 659-3991  
Sunday School: 9:45 a.m.  
Worship: 11 a.m.  
Evening: 6 p.m.  
Wed. Prayer Meeting: 7 p.m.  
Thurs. Visitation: 7 p.m.  
Pastor - Joe Garcia Jr.

**El Aposento Alto U.P.C.I.**  
1105 S. Roland  
Domingos: Escuela-Dominical - 10 a.m.  
Culto Evangelistico - 7 p.m.  
Jueves: Oracion - 8 p.m.  
Mier: Estudio Biblico - 7 p.m.  
Pastor - A.G. Martell  
(806) 659-2153

#### Gruver

**First Baptist Church**  
402 E. Broadway • 733-2411  
Sunday School: 9:45 a.m.  
Worship: 10:50 a.m.  
Disciple Training: 6 p.m. Sunday  
Prayer Meeting: 7:30 p.m. Wednesday  
Pastor - Scott Curry

**Church of Christ**  
209 King • 733-2760  
Sunday School: 9:30 a.m.  
Worship: 10:20 a.m.  
Evening Worship: 6 p.m.  
Wed. Worship: 7:00 p.m.  
Minister - Gaylord Cook

**First Christian Church**  
510 King • 733-2960  
Sunday School: 10:00 a.m.  
Sunday Worship: 11 a.m.  
Youth: 7:30, Sunday  
Adult Bible Study: 7:30, Sun.  
Wed. Bible Study: 8:00 p.m.  
Pastor - Gary Guntory

**Gruver United Methodist**  
Broadway & Garrett  
733-2651  
Sunday School: 9:45 a.m.  
Worship: 8:30 & 10:50 a.m.  
Eve. Worship & UMY: 6 p.m.  
Pastor - George Price

**Spanish Cristo Redentor Church**  
Sunday Mass: 1:30 p.m.  
Friday Evening Mass  
Summer - 8:00 p.m.  
Fall/Winter - 7:30 p.m.

#### Oslo

**Oslo Lutheran Church (ELCA)**  
6 Miles West & 12 Miles  
North of Gruver  
339-7709  
Sunday School: 9:45 a.m.  
Worship: 11 a.m.  
Pastor - Paul Fiske

#### Waka

**Waka Church of the Brethren**  
435-4598

#### Morse

**Morse Baptist Church**  
733-2757  
Pastor - Mike Martin

#### Deakin

**ELECTRIC**  
OILFIELD • RESIDENTIAL • COMMERCIAL  
321 S. MAIN • SPEARMAN  
1-800-999-1506  
(806) 659-5016  
Chris Deakin  
President

This feature is made possible through the sponsorship of these civic minded businesses.

Compliments of . . .  
**AGCO**  
of Spearman, Inc.  
"See you in Church"  
659-3751

**Bartlett's Lumber & Hardware**  
105 W. Broadway • Gruver,  
Texas  
(806) 733-2404

**BERRY CLEANERS**  
Ann & Vernon Pipkin - Owners  
Phone 659-3122 • P.O. Box 1017  
207 Main St. • Spearman, TX

**Morse Implement & Auto Supply**  
"Join us in church this week"  
Tom Dortch 733-2668  
P.O. Box 89 • Morse, TX 79062

**PRAIRIE MOTORS INC.**  
Hwy. 207 South • P.O. Box 430  
Spearman, TX 79081 • (806) 659-2541  
www.prairiemotors.com

**Gruver Cablevision**  
308 Main  
Gruver, TX 79040  
733-5295

**Hansford County Reporter-Statesman**  
"Proudly Serving Hansford County Since 1907"  
(806) 659-3434  
213 Main Street • Spearman, TX

**Interstate Bank, sbb**  
322 Main • P.O. Box 146  
Spearman, TX • 659-2559

**LYRIC Cinema**  
113 Main Spearman, Tx 806.659.2812  
On the Internet @: [www.antiden.com/newweek.asp](http://www.antiden.com/newweek.asp)  
Children 3 thru 11 - \$5 Adults - \$7  
Sr. Patrons (65 & older) - \$5

Movies at 7:00 - Friday thru Tuesday  
January 9th thru January 13th

Screen 1  
**Cold Mountain**  
Rated R  
Jude Law Nicole Kidman  
For Violence and Sexuality

Screen 2  
**Peter Pan**  
Rated PG  
For Adventure Action Sequences & Peril  
Ratings Conscience Parents: [www.screenit.com](http://www.screenit.com)



# The Gruver Grapevine

by Harletta Carthel

**Laxson Named to All-State**  
Terry Laxson, a senior at Amarillo High School, has been named to the 5A all state second team as a kicker. The talented young man was also named as a kicker to the Amarillo Globe News Super team composed of the best players from schools of all classes.

Terry is the son of 1972 Gruver graduate Richard Laxson. He is the nephew of Paulette Laxson, and the grandson of Charline Laxson, both of Spearman.

**Yanke Honored in Sherman County**  
Marilyn Yanke was named the 2002 Conservation Homemaker of the Year by the Sherman County Soil and Water Conservation District. She then received the Conservation Homemaker Award by the Soil and Water Conservation Districts of Texas Area I in 2003.

Marilyn and her husband Clarence live in the four corners of Moore, Hansford, Sherman, and Hutchinson counties, where they have farmed and ranched for many years.

Marilyn, who has always been concerned with conserving the environment, has implemented many conservational methods in her landscaping.

**Community Care Concerns**  
Shelia Nix, the wife of former Gruver coach Rick Nix, underwent surgery last week at Baptist St. Anthony's Hospital.

Corky Chapman is progressing after undergoing heart surgery for two bypasses last week at North West Texas Heart Hospital.

Diane McLain is at home following ankle surgery last week. She is progressing well but does face weeks of recovery.

June Barkley will be traveling to Dallas this week for an eye evaluation.

Odin Blount has returned home after recuperating in Hansford Manor.

**ECA Classes Began**  
Emergency Care Attendant classes began January 9 and will continue through Sunday, January 18. The thirteen individuals taking the classes will be eligible to make EMT runs with the ambulance.

**Spring, Already?**  
With a high of 65 degrees Sunday, January 11, area residents enjoyed a beautiful spring-like day in the midst of January.

Only a good dose of measurable rainfall could make the moderate weather more perfect.

**T-Shirt Sought**  
A local resident is in need of a T shirt once sold in Gruver

which read "Paris, New York, Gruver."

The seeker will be traveling to California, where she has tickets on "The Price Is Right" game show, in the near future.

By wearing the T-shirt, the local resident hopes to promote Gruver on national TV.

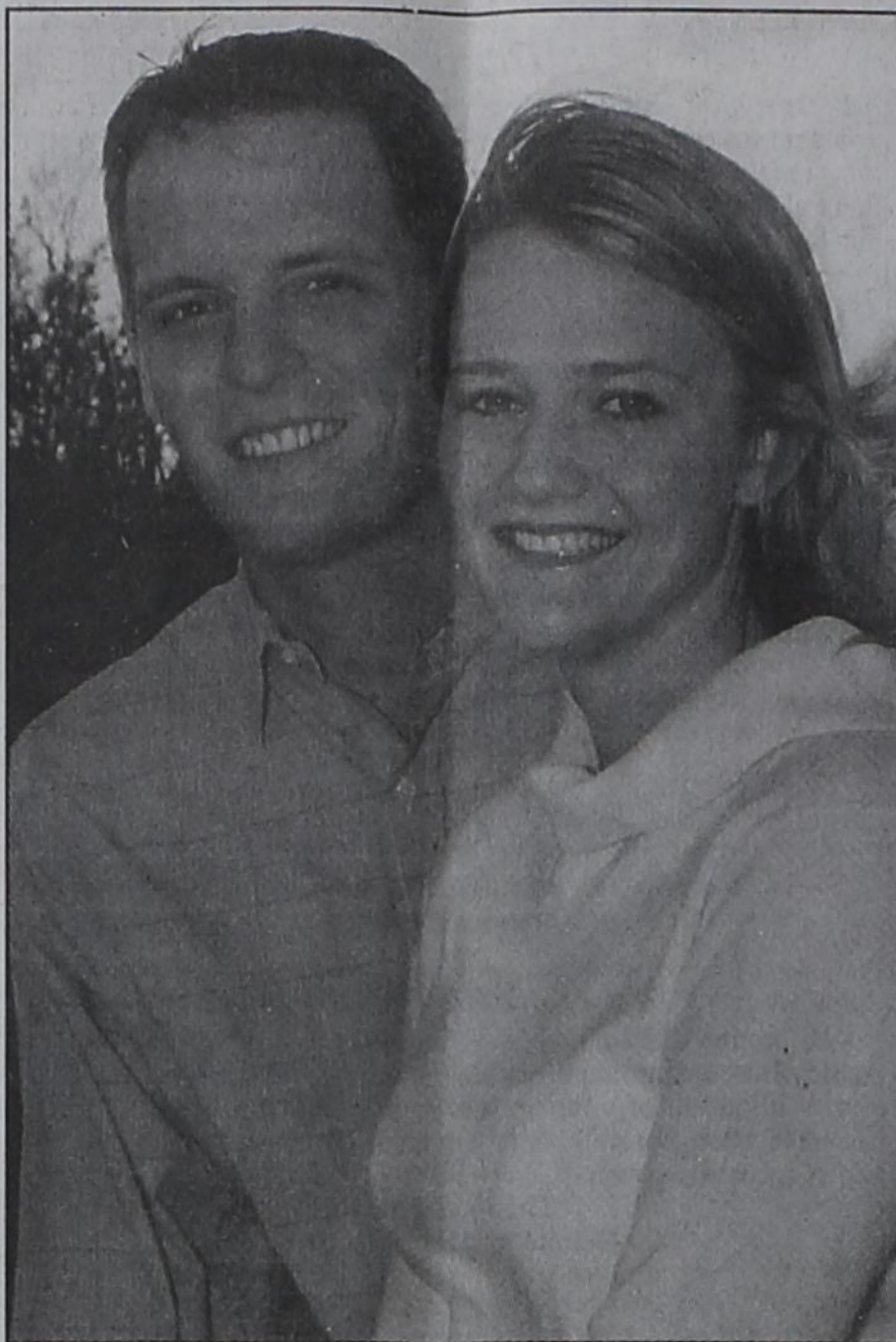
If you have the shirt requested, please contact the Reporter-Statesman office at 659-3434, or call me at 338-0282, and I will inform the interested party.

**Immunization Clinic Set**  
An immunization clinic will be held in the Gruver Junior High School Library, Thursday, January 22, from 10 a.m. - 12 p.m. and from 1 - 3:30 p.m.

**Eat the Soup; Save the Label**  
All three campuses of Gruver schools are collecting Campbell's Soup Labels to be used to purchase educational materials. Labels may be deposited in the large soup can holders placed in the foyers of all three schools.

**Citizens of Six Weeks Chosen**  
Gruver Junior High has selected Citizens of the third Six Weeks.

Chosen for best exemplifying the qualities necessary to be a good citizen were fifth grader Matison Jones, sixth grader Luli Hernandez, seventh grader Devlin Reynolds, and eighth grader Dalila Santillan.



## Engagement Announcement

Mr. and Mrs. Joe Hrencher of Stillwater, Oklahoma announce the engagement of their daughter, Jessica Hrencher, to Martin Sanders, son of Phil Sanders of Spearman and Linda Stalcup of Hugoton, Kansas.

A March 13, 2004 wedding date has been set. The couple will reside in Oklahoma City, Oklahoma.



## Engagement Announcement

J.W. and Rhonda Ward of Gruver announce the engagement and approaching marriage of their daughter, Monica Lee, to Michael Ray Hallam. Michael is the son of Charles and Judy Hallam of Duncanville, Texas.

Monica is the granddaughter of Betsy Ward and the late Jewel Ward of Gruver and the late Oscar and Frankie (Duryee) Donnell of Spearman.

The couple plans an April 17, 2004 wedding at 6 p.m. in the Gruver United Methodist Church. A reception will follow at the O'Loughlin Center in Spearman.

Monica is a graduate of Gruver High School and a 1998 graduate of Texas Tech University in Lubbock with a double major in Accounting and Management Information Systems. She went on to receive a Masters off Business from Dallas Baptist University. She is employed by Cingular Wireless as an IT Project Manager.

Michael is a graduate of Duncanville High School and a 1998 graduate of Southwest Texas State University in San Marcos with a degree in Criminal Justice. He is employed at Pilgrim's Pride as a Network Administrator.

## Lee Gibson Announces Bid for District 31, Texas State Senate Seat



Lee Gibson

Lee Gibson was born in Centralia, IL on December 2, 1953. At the age of five his father's work brought the family to the Texas panhandle.

In 1972, Lee graduated from Fritch High School. In 1976 he graduated from West Texas State University with a Bachelor of Science degree in biology. In 1978 Lee received a Master's degree from West Texas State University in Biology.

Pol. Adv. Paid for by Lee Gibson Campaign; Evelyn Ham, Campaign Manager, (806) 935-2510; Marlin Ham, Campaign Treasurer, (806) 934-0092

On January 7, 1977, Lee wed Paula Beauchamp. Paula works for the Harrington Cancer Center in Amarillo.

In May of 1978 he and Paula moved to Dumas where Lee began a career in farming. He currently farms wheat, seed milo and corn. In 1996 he began a business called Nature's Way Compost.

Lee and Paula have three children, Braden, Brett and Katie.

Lee has served his community in the following areas:

- 1980's served as a board member for the Dumas YMCA
- 1991 was elected to the Dumas School Board. Lee has been president of the school board and currently serves as vice-president
- 1991 was elected to the Moore County Farm Bureau Board of Directors, and is currently serving
- 1995 graduated from Ag lead II sponsored by Farm Bureau
- 2003 served on the Texas State Farm Bureau resolutions committee

- Attends Farm Bureau State conventions
- United Way Fundraiser
- Currently serves as a member of the Board of Trustees at the First United Methodist Church of Dumas
- Member of the Dumas Chamber of Commerce
- Board Member, Top of Teas Investors, Inc.
- Member of the Dumas Noon Lions Club

Gibson understands the need to reform school finance and the need to have proper benefits and retirement plans for teachers and all state employees. "When elected to the senate seat in the 31st district," said Gibson, "I will be for the farmer the voice who is concerned about you; the voice who is aware of your needs, the voice responsible for ensuring farmers get the treatment they deserve, the voice eager to serve the farming community and the farmer representing you in Austin who stands behind his word."

Gibson does not see a need for a state income tax nor unfunded state mandates.

**CLEARANCE SALE**  
All Gift Items - 50% Off  
All Jewelry - 65% Off  
**Little Tiffanies**  
103 E. Broadway • Gruver, Texas  
(806) 733-5290  
sale continues through January 31st

## Bridal Registry

Jessica Hrencher & Martin Sanders - Feb. 21  
Erica & Jared Lozano - Feb. 21  
Landree Woodward & Russell Steadman - Feb. 21  
Courtney Walker & Tye Womble - March 6 (Morse)  
Jennifer Laxson & Aaron Langston  
Shelly Hunt & Andy Etheredge  
Grace (Davis) & Justin Calvert

## Celebrate

Gifts for all your celebrations!  
203 Main St. • Spearman, TX  
(806) 659-3350 1-800-663-8026

## JUMP-START

### YOUR WEIGHT LOSS WITHOUT GIVING UP CARBS.

Join Weight Watchers now and get our Fast Track kit **free.**  
Offer ends January 31.

Valid until 1/31/04 at participating meeting locations. Fast Track not included in At Home kits. Free Registration not valid for At Work meetings or Online subscribers. ©2003 Weight Watchers International, Inc. owner of the WEIGHT WATCHERS trademark. All rights reserved.

Armando and Rosi Martinez wish to announce the birth of their son, Isaac Joel Martinez. Isaac was born on Tuesday, December 16, 2003 in Amarillo. He weighed 8 pounds, 4 ounces and was 20 inches long. Proud grandparents are Virginia Reyes and Tomas Reyes of San Antonio and Enrique and Silvina Guzman of Spearman.

TELL SOMEONE YOU LOVE THEM with **ROSES!**

Order Early for Valentine's Day!

Long-Stemmed Roses • Fresh-Cut Arrangements  
Plush Animals • Balloon Bouquets  
Angel Figurines • Green & Blooming Plants

**All Occasion Flowers**  
202 N. Bernice (across from the Post Office)  
659-5180

## For The Bride & Groom

Come by and let us help you set up your special gift table

**Couples Currently Registered**

Jennifer Laxson & Aaron Langston  
Shelly Hunt & Andy Etheredge  
Grace Davis & Justin Calvert

**Gordon's DRUG**  
314 Main 659-2141 Spearman, Texas

**Alva Monument Co.**  
Formerly Liberal Monument & Memorial Company

**New Location:**  
111 Tucker Road  
Liberal, Kansas

North of the New Wal-mart

**Liberal Alva**  
1-888-654-9138 1-800-344-4605





## Among The Neighbors

by Helen Fisher

Verlan, Brenda, and Brett Winegarner recently visited Brenda's sister, Debbie Leppanen in Duxbury, Massachusetts. Debbie and Pete Leppanen recently flew to Moldova to adopt a 3 1/2 year old girl named Maria.

Maria now has a 4 1/2 year old brother named Matthew. Matthew was adopted when he was 1 1/2 years old from Moldova. The Winegarners really enjoyed meeting the new niece and visiting.

Mary Dixon is now home from a hospital stay in Amarillo with an elbow infection.

Her elbow is improving. She will still be going through treatment for several more weeks.

Georgia Grace Pearson is home from a hospital stay. Her parents, Mark and Anne Marie Pearson and brother, Charles are trying to take good care of her. Georgia Grace had RSV and is recovering nicely.

Joyce and Marvin Byers were in a vehicle mishap on Sunday night.

Joyce was transported to Northwest Texas Hospital in Amarillo by helicopter and Marvin was transported by ambulance. Joyce received multiple injuries and Marvin had face lacerations. Both are home and improving.

The family would like to thank everyone for their prayers.

C.A. and Gerry Davis recently celebrated their 50th anniversary with 25 members of their family at the Ambassador Inn in Amarillo for three days. They had a wonderful time together.

Gerry said that C.A. was something else to put up with for 50 years!

C.A. and Gerry rode the Amtrak train to Natick, MA. Gerry's brother, Mike and his wife, Mary O'Brien live in Natick. Gerry and Mike's sister, Beth and her husband Pat Mullins, flew into Natick for a family reunion. Gerry toured some quilt shops. The group went to Plymouth Rock and saw the Mayflower. They really

enjoyed lots of sight seeing in Boston.

One of the fun things they did was pick apples in a famous apple orchard. If you haven't seen any of Gerry's quilts that she has made, ask her to share them with you. She does enjoy making beautiful quilts.

Congratulations to Carolyn Savage - winner of an electric scooter from New Dimensions.

This writer had a little surprise birthday celebration for her 90th birthday, which was January 12th.

She always had an ambition to try to spread cheer, and she succeeded partially . . . she spread!

She does realize that she is not as old as she hopes to become!

Four generations of her family were present to help her celebrate her special day.

## North Plains Groundwater Conservation District Scholarship Essay Competition

North Plains Groundwater Conservation District announces the 2004 Scholarship Essay Competition. Any high school student who resides within the boundaries of the North Plains Groundwater Conservation District is eligible to compete. Students are asked to submit an essay on "Why is Groundwater Conservation Important?"

Three scholarship awards will be presented. The student submitting the first place essay will receive a four-year scholarship in the amount of \$4000 (\$1000/year). Second place will receive a \$3000 scholarship, and third place will receive a \$2000 scholarship.

Scholarship applications and scholarship rules can be obtained from the student's high school counselor's office, or can be downloaded from the North Plains Water District website at www.npwd.org. Deadline for submission of the essays is April 1, 2004.

## It's A Boy!

Jeff and Deana Shields of Liberal, KS are the proud parents of a baby boy, Ryan Thomas, born January 7, 2004. Ryan weighed 9 pounds, 9 ounces and was 21 inches long.

Ryan was welcomed home by big brother Trever Shields. Proud grandparents are Phillip and Molly Turner of Spearman and Paul and Carol Van Steenburg of Hughsville, MS. Great-grandmothers are Nathalie Turner of Spearman, Oleta Mires of Marshall, MS and Myrtle Mires of Guymon, OK.

## Engagement Announcement

John and Tammy Woodward of Ruidoso Downs, NM are proud to announce the engagement and approaching marriage of their daughter, Landree Dawn to Mr. Russell Hane Steadman. Russell is the son of Henry (Hane) and Ida Steadman of El Paso, Texas.

Landree is the granddaughter of Melba and the late George Rook and John E. Woodward, Sr. of Spearman and Dee Woodward of Albuquerque, NM.

Russell is the grandson of Lucille and the late Ross Capshaw of El Paso, Texas and Barbara and the late Henry Hane Steadman of Avondale, Georgia.

The couple will exchange vows at the First Presbyterian Church in Canyon. They will reside in Amarillo.

We will be closed on Monday, January 19th in observance of

## Martin Luther King Day



## \$ Interstate Bank, ssb

A Full Service Bank - FDIC Insured  
322 Main Street • Spearman, TX 79081  
Phone - (806) 659-2559 • Fax - (806) 659-3276



## Lee Gibson

Texas State Senate

A VOICE FOR

WORKING MEN & WOMEN!

Lee has served his home community of Dumas for many years through his leadership in civic and professional organizations. Lee Gibson is committed to keeping our farming and ranching industries viable by fighting for a continuance of their tax exempt status.

As past president and active member of the school board since 1991, Lee gives our children's education top priority. He has the experience necessary to push for school finance reform. He will work to improve teacher salaries, health benefits, and retirement funding so that we can continue to recruit and retain great teachers.

Lee is a small business owner, too! And he understands the hard work and dedication it takes to succeed.

He realizes that more jobs and better jobs come through economic development. His plan for economic development is to create a business friendly atmosphere so that companies are encouraged to call West Texas "HOME." By working to improve the educational system and striving to make our communities safer, he believes this can be achieved.

"I'm Lee Gibson. As a farmer, I'm concerned, aware, and eager to be the voice of the West Texas communities. I believe that we never know how tall we stand until we are called to rise. For a long time I have felt that farmers, ranchers, small business owners, and teachers needed someone to rise up and represent them in Austin. If you believe that we need a voice for the working men and women in West Texas, please vote for me, Lee Gibson in the January 20th Texas State Senate race. Thank you!"

Make your voice heard - Vote for Lee Gibson Jan. 20th

Political ad paid for by Lee Gibson Campaign



## ANNUAL MEETING

of  
SOUTHWEST  
PIONEER WINDMILL  
ASSOCIATION

at  
Hungry Cowboy  
12:00 noon  
Thurs., January 22, 2004

Hear reports on  
the windmills and  
"Trial of the Wind"

Lunch is \$7.00. R.S.V.P., if possible, to 659-2791.

Membership dues of \$10 now due.  
Pay at meeting or to Orvil Latham or Nellie Buchanan.

Membership open to individuals, families, businesses and organizations. For more information, call 659-2791.

## Dear Hansford County Voters,



Tim Stedje Family

I have filed for the position of County Commissioner, Precinct 3. I would like to introduce myself, talk about the issues, and ask for your vote in the March 9th Republican Primary.

My name is Tim Stedje. I am a life long resident of Hansford County. I graduated from Gruver High School and Texas Tech University with a degree in agricultural economics. Fifteen years ago I married my high school sweetheart Julie Latta of Spearman. We now have three children and live in the Oslo Community where I farm and ranch. I am active in the Oslo Lutheran Church and currently serve as deacon.

I am a landowner and a taxpayer who understands how important the county government is to the future of our cities and businesses. I am a conservative and believe in financial responsibility. I am for economic development as long as it is done in such a way that it benefits the community and preserves the way of life that we currently enjoy. I would love to see more children in our schools, people in our churches and consumers in our businesses.

On September 1, 2003 I was appointed to the position of Hansford County Commissioner for

precinct 3. I have enjoyed serving the county in this capacity. My background in business management has prepared me for the new challenges that I have faced thus far on the job.

I believe the most important issue effecting Hansford County residents right now is the drug problem. We must send the message that the manufacture, sale, or use of illegal drugs is unacceptable and will not be tolerated. We must be prepared to do what it takes to fix this problem. As your commissioner I will support the new sheriff and his department and see that they have the funding and moral support that they need to fight this battle.

The next issue is the large turnover at the courthouse. With several key people retiring, we must choose leaders with high morals and values that can work together and solve problems with an open mind and the county's best interest at heart.

My goal for the county's roads and bridges is to keep them safe and well maintained, and do this in the most economically feasible way possible.

I have never been good at asking for help, but I do need your help here. I would like to ask for your vote in the March 9th Republican Primary. The new leaders in the Hansford County government will be decided in this primary election. So please come out and vote.

If you have any questions or concerns please don't hesitate to call me. My phone number is (806) 733-5457.

Sincerely,

Tim Stedje  
County Commissioner Precinct 3

## Vote for Tim Stedje County Commissioner Precinct 3

Pol. Adv. Paid for by Tim Stedje

### SPEARMAN INDEPENDENT SCHOOL DISTRICT STATEMENT OF REVENUES, EXPENDITURES, AND CHANGES IN FUND BALANCE GOVERNMENTAL FUNDS FOR THE YEAR ENDED AUGUST 31, 2003

| Data                                   | 10  | Gus              | Total            |
|--|---|------------------|------------------|
| Control                                | General   | Birdwell         | Governmental     |
| Codes                                  | Fund  | Trust            | Funds            |
| <b>REVENUES:</b>                       |   |                  |                  |
| 5700                                   | Total Local and Intermediate Sources                      | \$ 4,288,054     | \$ 24,145        |
| 5800                                   | State Program Revenues                                    | 1,481,367        | 193,896          |
| 5900                                   | Federal Program Revenues                                  | 28,209           | 466,771          |
|  | <b>Total Revenues</b>                                     | <b>5,797,630</b> | <b>24,145</b>    |
| 5020                                   |   |                  | 1,000,190        |
|  |   |                  | 6,821,965        |
| <b>EXPENDITURES:</b>                   |   |                  |                  |
| <b>Current:</b>                        |   |                  |                  |
| 0011                                   | Instruction   | 3,618,734        | 362,387          |
| 0012                                   | Instructional Resources & Media Services                  | 132,114          | 11,852           |
| 0013                                   | Curriculum & Instructional Staff Development              | 38,685           | 38,029           |
| 0021                                   | Instructional Leadership                                  | 6,543            | 3,042            |
| 0023                                   | School Leadership   | 306,223          | 6,823            |
| 0031                                   | Guidance, Counseling & Evaluation Services                | 167,172          | 5,893            |
| 0033                                   | Health Services   | 54,509           | 1,000            |
| 0034                                   | Student (Pupil) Transportation                            | 190,708          | 1,012            |
| 0035                                   | Food Services   | 7,498            | 334,985          |
| 0036                                   | Cocurricular/Extracurricular Activities                   | 301,878          | -                |
| 0041                                   | General Administration                                    | 413,727          | 5,053            |
| 0051                                   | Plant Maintenance and Operations                          | 682,805          | 55,494           |
| 0053                                   | Data Processing Services                                  | 18,775           | -                |
| 0061                                   | Community Services  | 23,008           | 1,015            |
| <b>Debt Service:</b>                   |   |                  |                  |
| 0071                                   | Debt Service - Principal on long-term debt                | 7,690            | 220,000          |
| 0072                                   | Debt Service - Interest on long-term debt                 | -                | 15,815           |
| <b>Capital Outlay:</b>                 |   |                  |                  |
| 0081                                   | Facilities Acquisition and Construction                   | 43,144           | -                |
| <b>Intergovernmental:</b>              |   |                  |                  |
| 0093                                   | Payments to Fiscal Agent/Member Districts of SSA          | 93,450           | -                |
| 6030                                   | <b>Total Expenditures</b>                                 | <b>6,106,663</b> | <b>1,062,400</b> |
| 1100                                   | Excess (Deficiency) of Revenues Over (Under) Expenditures | (309,033)        | 24,145           |
|  |   |                  | (62,210)         |
|  |   |                  | (347,098)        |
| <b>OTHER FINANCING SOURCES (USES):</b> |   |                  |                  |
| 7915                                   | Transfers In  | 49,664           | 72,745           |
| 8911                                   | Transfers Out (Use)                                       | (72,745)         | (49,664)         |
| 7080                                   | <b>Total Other Financing Sources (Uses)</b>               | <b>(23,081)</b>  | <b>(49,664)</b>  |
|  |   |                  | 72,745           |
|  |   |                  | -                |
| <b>EXTRAORDINARY ITEMS:</b>            |   |                  |                  |
| 7919                                   | Extraordinary Item - Resource                             | 96,748           | -                |
| 1200                                   | Net Change in Fund Balances                               | (235,366)        | (25,519)         |
|  |   |                  | 10,535           |
|  |   |                  | (250,350)        |
| 0100                                   | Fund Balance - September 1 (Beginning)                    | 3,365,591        | 1,442,861        |
|  |   |                  | 28,035           |
|  |   |                  | 4,836,487        |
| 3000                                   | Fund Balance - August 31 (Ending)                         | \$ 3,130,225     | \$ 1,417,342     |
|  |   |                  | \$ 38,570        |
|  |   |                  | \$ 4,586,137     |





# Hansford County

## A Winning Tradition!



Thanks to the fine sponsors below, you can keep up with sports and news featuring the Lynx, Lynxettes, Hounds, Lady Hounds and Cougars in 2003-2004!

### Hansford County Basketball

#### Spearman Lynxettes Caprock Tournament

**1st Game**  
Lynxettes 30, Lubbock Monterey 50  
Jordan Short 6, Cayla Smith 3, Ashlee Flowers 3, Kelcee Rex 6, Sami Cazares 2, Tonya Hart 8, Joclyn Whitefield 2

**Coach's Comments:** We held the lead for most of the first half. We had some careless turnovers that gave them some easy baskets. Played OK after the Christmas holidays, but they took it to us pretty good in the second half.

**2nd Game**  
Lynxettes 30, Lubbock Monterey 50  
J. Short 4, Smith 5, A. Flowers 3, Rex 5, Cazares 2, Whitefield 6

**Coach's Comments:** We did a good job on this top 20 class 2-A team. We caused them many problems with our defense but we struggled with our offense and turnovers. This was a one-point game from about 5:00 to 1:00 left.

**3rd Game**  
Lynxettes 53, El Paso Jefferson 47  
L. Short 12, J. Short 9, Smith 6, A. Flowers 4, Rex 2, Cazares 3, S. Flowers 3, Hart 11, Whitefield 3

**Coach's Comments:** We got off to a slow offensive start. Jefferson was a 4-A top 20 team. We finally got hot shooting and played a real solid second half to win.

Lynxettes 49, West Texas 62  
L. Short 2, J. Short 9, Smith 6, A. Flowers 4, Rex 4, Cazares 9, S. Flowers 6, Whitefield 9

**Coach's Comments:** We had a hard time stopping WT. They have some really good athletes who know how to score. We will need to shoot better and slow down their offense in the 2nd round of district.

Lynxettes 43, Highland Park 36  
L. Short 2, Harbour 1, J. Short 11, Smith 3, A. Flowers 6, Rex 6, Cazares 6, S. Flowers 4, Hart 2, Whitefield 2

**Coach's Comments:** We had a good defensive game especially in the 2nd half. We played real hard and hustled the entire game. We made some shots at key moments to finally break open a tight game.

Lynxettes 78, Boys Ranch 27  
L. Short 15, Harbour 1, J. Short 8, Smith 5, A. Flowers 7, Rex 14,

Cazares 10, S. Flowers 2, Hart 5, Whitefield 11

**Coach's Comments:** We got off to a real sluggish start. We played well on defense throughout and had some runs of some good shooting. Free-throw shooting a plus.

**JV Lynxettes - Purple**  
Lynxette 32, West Texas 21  
Hart 8, Shields 4, Parker 6, Lozano 8, McElroy 6

**Coach's Comments:** It took a while to shake off the rust from Christmas break. The girls won this game by playing defense. Good win.

Lynxettes 32, Highland Park 17  
Hart 3, Shields 11, Parker 4, Vanderburg 2, Lozano 2, Paul Miranda 2, McElroy 6, Montgomery 2

**Coach's Comments:** Our girls played good defense most of the game. We also made shots in the second half. Good win.

Lynxettes 55, Boys Ranch 10  
Hart 15, Mendoza 2, Shields 9, Parker 4, Vanderburg 5, Lozano 12, Paul Miranda 5, Montgomery 3

**Coach's Comments:** The girls played well on the road. We made free-throws and played good defense.

**JV Lynxettes - White**  
Lynxettes 26, Sanford-Fritch 18  
Kaley Barnes 2, Mendoza 6, Paul 10, Brown 2, Sara Barnes 6

**Coach's Comments:** This was a team we had lost to just before Christmas. The girls played their best game of the year. We passed the ball well and played together.

**8th Grade Lynxettes**  
Lynxettes 40, Boys Ranch 14

Lynxettes 47, Sanford-Fritch 11

**7th Grade Lynxettes**  
Lynxettes 28, Boys Ranch 12

Lynxettes 45, Sanford-Fritch 22

#### Gruver

The GHS Hounds and Lady Hounds began district play Friday night with two big wins over Vega

The Hounds took a 53-34 victory, while the Lady Hounds won by a score of 51-43.

**Gruver Greyhounds**  
Hounds 53, Vega 34  
Brock Irwin 7, Lance Williams 4, Carlos Borunda 10, Matt Messer 3, Cass Cooper 8, Ryan Winger 6, Cody Mac Been 14, Reid Winger 1.

**Lady Hounds**  
Lady Hounds 51, Vega 43  
Lindsay Clift 20, Lauren Urban 6, Laina Grotegut 2, Liz Lopez 1, Rachelle Holt 9, Cassie Myatt 13.

**Gruver JV Lady Hounds**  
JV Lady Hounds 32, Vega 33  
Kellyn King 8, Bonnie Frick 2, Sarah Mireles 1, Jessica Vela 1, Victoria Vela 14, Sydney Been 6.

**Gruver JV Hounds**  
The Junior Varsity Hounds competed in the Perryton Tournament over the weekend.

**Perryton Tournament**  
1st Game  
Gruver JV 44, Canadian 38  
Crispin Borunda 9, Tanner Irwin 6, Tyler Lane 13, Tucker Williams 1, Conrad Curry 5, Oscar Medina 8, Brian Johnson 2

**2nd Game**  
Gruver JV 44, Pampa JV 75  
Crispin Borunda 15, Tanner Irwin 3, Tyler Lane 8, Conrad Curry 5, Oscar Medina 6, Brian Johnson 3

**3rd Game**  
Gruver JV 46, Spearman 43  
Crispin Borunda 22, Tanner Irwin 4, Tyler Lane 4, Tucker Williams 8, Brian Johnson 6

**Final Game**  
Gruver JV 65, Canadian 50  
Crispin Borunda 10, Tanner Irwin 6, Tyler Lane 13, Conrad Curry 4, Drew Grotegut 2, Brian Johnson 10

**8th Grade Lady Hounds**  
Gruver 23, Sunray 16  
Emily Williams 10, Diana Solis 6, Whitney Moffett 4, Sorrele Blevins 2, Kayla Swink 1.

**Coach Essler's Comments:** The Eighth grade played well against a relatively weak Sunray team.

**8th Grade Hounds**  
Gruver 31, Sunray 18  
Roy David Gaspar 10, Miles Messer 2, Taylor Williams 9, Matt Salazar 6, Saul Hernandez 4

Gruver 26, Booker 23  
Kaleb Shultz 2, Chandler Miner 12, Taylor William s4, Tony Lora 7, Matt Salazar 1

**7th Grade Lady Hounds**  
Gruver 23, Sunray 13  
Brenda Mendoza 11, Lynn Vela 9, Sydney Clawson 2, Mallory Reid 1

**Coach Essler's Comments:** The seventh grade played really well. We were 5 of 8 from the free throw line. Our press and defense really hurt Sunray.

**7th Grade Hounds**  
Gruver 41, Sunray 21  
Tanner Sherrill 2, Kaleb Shultz 3, Thomas Madden 8, Seth Thompson 2, Chandler Miner 16, Casen Finley 2, Tony Lora 8

#### Gruver Greyhounds & Lady Hounds Basketball

| Date      | Opponent              | JVG  | JVB  | VG   | VB   |
|-----------|-----------------------|------|------|------|------|
| Jan 16    | *White Deer           | 4:00 | 5:15 | 6:30 | 8:00 |
| Jan 20    | @ Stratford           | 4:00 | 5:15 | 6:30 | 8:00 |
| Jan 23    | *Sunray               | 4:00 | 5:15 | 6:30 | 8:00 |
| Jan 27    | *Booker               | 4:00 | 5:15 | 6:30 | 8:00 |
| Jan 29-31 | @ Canadian JV Tourney | TBA  |      |      |      |
| Jan 30    | @ *Vega               |      | 5:00 | 6:30 | 8:00 |
| Feb 3     | *Stratford            | 4:00 | 5:15 | 6:30 | 8:00 |
| Feb 6     | @ *White Deer         | 5:00 | 5:00 | 6:30 | 8:00 |
| Feb 10    | @ *Sunray             | 5:00 | 5:00 | 6:30 | 8:00 |

#### Gruver Junior High Basketball

| Date      | Opponent              | 7G   | 8G   | 7B   | 8B   |
|-----------|-----------------------|------|------|------|------|
| Jan 15-17 | Spearman JH Tourney   | TBA  | TBA  | TBA  | TBA  |
| Jan 19    | @Pringle-Morse        |      | 5:00 |      | 6:15 |
| Jan 26    | Stratford (B-H, G-T)  | 5:00 | 6:15 | 5:00 | 6:15 |
| Jan 29-31 | Gruver JH Tourney     | TBA  | TBA  | TBA  | TBA  |
| Feb 2     | White Deer (B-T, G-H) | 5:00 | 6:15 | 5:00 | 6:15 |
| Feb 9     | Sunray (B-T, G-H)     | 5:00 | 6:15 | 5:00 | 6:15 |

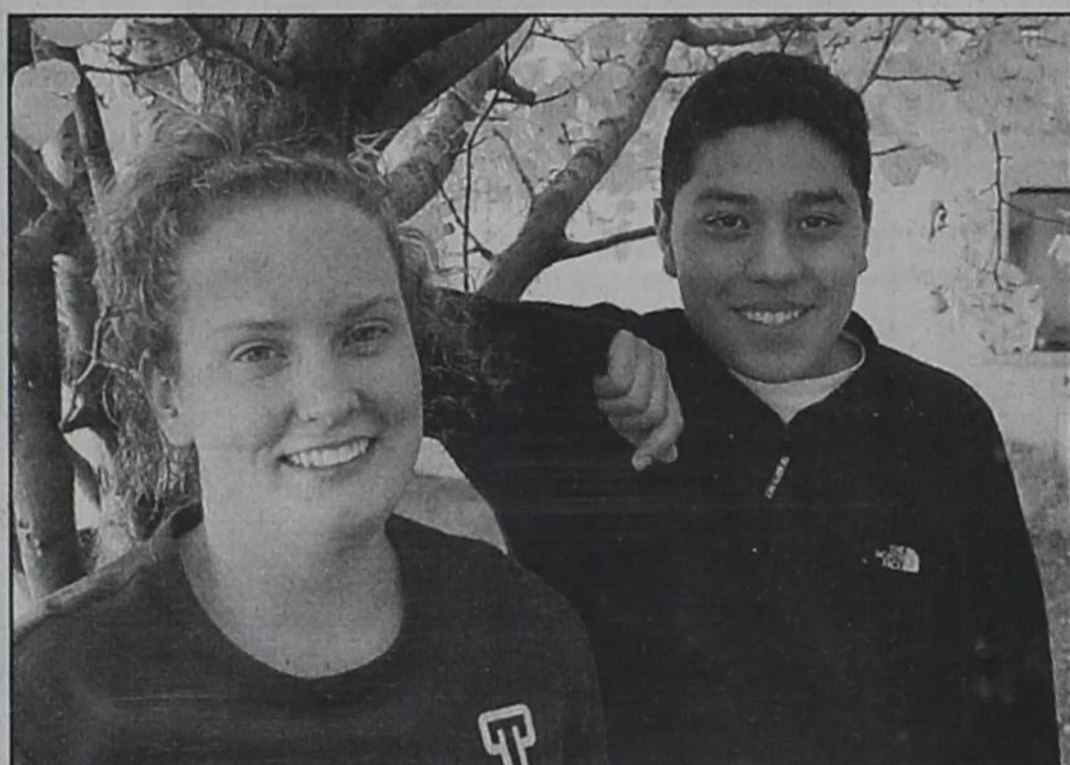
#### Spearman Lynx & Lynxettes Basketball

| Date   | Opponent         | JVG  | JVB  | VG   | VB   |
|--------|------------------|------|------|------|------|
| Jan 16 | Channing         |      |      | 6:30 | 8:00 |
| Jan 20 | *Panhandle       | 4:00 | 5:30 | 6:30 | 7:00 |
| Jan 23 | @ *Canadian      | 5:00 | 5:00 | 6:30 | 8:00 |
| Jan 27 | *West Texas      | 4:00 | 5:00 | 6:30 | 8:00 |
| Jan 30 | @ *Highland Park | 5:00 | 5:00 | 6:30 | 8:00 |
| Feb 2  | *Boys Ranch      | 4:00 | 5:00 | 6:30 | 8:00 |
| Feb 4  | @ *Fritch        | 5:00 | 5:00 | 6:30 | 8:00 |
| Feb 10 | Open             |      |      |      |      |
| Feb 13 | @ *Panhandle     |      | 5:00 |      | 6:30 |
| Feb 17 | *Canadian        |      | 5:00 |      | 6:30 |

#### Spearman Junior High & Freshman Basketball

| Date      | Opponent                     | J    | B    | 9B   | JVG(W) |
|-----------|------------------------------|------|------|------|--------|
| Jan 15-17 | Spearman JH Tourney          |      | TBA  | TBA  |        |
| Jan 19    | *Panhandle (B-T, G-H)        | 5:00 | 6:00 | 5:00 |        |
| Jan 19    | Stratford (Here)             |      |      |      | 6:00   |
| Jan 22-24 | Sanford-Fritch Tourney (G-T) | TBA  | TBA  |      |        |
| Jan 26    | *Canadian (G-T)              | 5:00 | 6:00 | 5:00 | 7:00   |
| Jan 29-31 | Gruver JH Tourney            | TBA  | TBA  |      |        |
| Jan 29-31 | Canadian Tourney             |      |      | TBA  |        |
| Feb 2     | *West Texas (B-T, G-H)       | 5:00 | 6:00 | 7:30 | 6:00   |
| Feb 9     | *Highland Park (B-H, G-T)    | 5:00 | 6:00 | 7:30 | TBA    |
| Feb 16    | *Boys Ranch (B-T)            | 5:00 | 6:00 | 7:30 |        |

\*District Games



#### SHS Students of the Month

Keilee Goodheart is the Spearman High November Student of the Month.

The SHS senior is a member of the National Honor Society and has been a member of the varsity basketball team for four years, and is a four-year tennis letterman.

Her honors include all district honorable mention in basketball her freshman year, first team all district her sophomore and junior years, Lynxette Fighting Heart Award her freshman and sophomore years, outstanding Lynxette in basketball her junior year, a tennis regional qualifier her sophomore and junior years, outstanding Lynxette in tennis her freshman and sophomore years, and academic all district for three years in basketball and tennis.

The daughter of Damon and Michele Goodheart, Keilee plans to attend Tarleton State University next fall.

What she lists as best about Spearman is the support given by the residents. She has enjoyed being able to walk down the halls of SHS and know every student. She cites Mrs. Wilkerson as her most influential teacher.

Homer Martinez, Jr. is the Spearman High School November Student of the Month. A senior, he is the son of Homer and Maria Martinez.

He is a member of the National Honor Society and has been named to the National Honor Roll, Who's Who Among American High School Students, and was named to the honorable mention list of NASA's Sharp program ( Summer High School Apprenticeship Research Program designed for students who have demonstrated a strong interest in and aptitude for science, technology, engineering, mathematics, and geography).

He enjoys the outdoors and computers and plans to major in computer engineering at the University of Texas at Austin or Texas Tech.

He lists his most influential teacher as Mrs. Short, and he has enjoyed the student to teacher ratio at Spearman High School.

**SPEARMAN LYNX**

**Gruver Greyhounds**

**All Occasion Flowers**

202 N. Bernice • Spearman, TX  
(806) 659-5180

**\$ Interstate Bank, ssb \$**

322 Main Street • Spearman, TX 79081  
Phone - (806) 659-2559 • Fax - (806) 659-3276  
FDIC Insured

**PANHANDLE DINER & DELI**

217 Main Street • (806) 659-3864 • Spearman, TX  
Hours: Mon.-Wed., 8 a.m.-2 p.m.; Thurs. & Fri., 8 a.m.-8 p.m.; Saturday, 8 a.m.-2 p.m.; Sunday, 11 a.m.-2 p.m.

TEXAS PRESS ASSOCIATION AWARD WINNER  
213 MAIN ST. SPEARMAN, TX 79081 (806) 659-3434  
PUBLISHED THURSDAYS THE HANSFORD COUNTY REPORTER STATESMAN  
PROUDLY SERVING HANSFORD COUNTY SINCE 1907

**Pringle-Morse Cougars**



**MurMur's**

100 S. Roland • Spearman, TX  
659-3580

**Celebrate**

Gifts for all your celebrations!  
203 Main St. • Spearman, TX  
(806) 659-3350 • 1-800-663-8026

**HANSFORD IMPLEMENT COMPANY**

Mike Cudd - General Manager  
Hwy. 207 S. • P.O. Box 518 • Spearman, Texas 79081  
(806) 659-2568  
Nothing Runs Like a Deere 1-800-753-1511  
A full-service John Deere Dealership.

**SIMPLE SIMON'S PIZZA & ANITA'S VIDEO MADNESS**

312 Main St. • Spearman  
(806) 659-5046 • Fax (806) 659-5196

Show support for Hansford County Schools with a sponsorship ad - dedicated to promoting sports and news featuring Gruver ISD, Spearman ISD and Pringle-Morse CISD students and teachers. Call the Reporter-Statesman at (806) 659-3434 for details!



**REAL ESTATE FOR SALE**

**FOR SALE BY OWNER:** 721 Wilbanks, Spearman - 3BR, 2B, 1940 sq. ft., fireplace, new carpet and tile, completely remodeled inside. Large backyard with new wood fence. Call 659-3426 daytime, or 659-3830 after 6.  
TFN(5-29-03)B

**FOR SALE:** 222 S. Hazelwood, Spearman - 3300 sq. ft. 4BR, 2 1/2 brick home with metal roof, fenced back yard, detached 1200 sq. ft. shop and carport. Call 659-3550. TFN(12-11-03)B

**FOR RENT/LEASE**

**FOR RENT, SPEARMAN:** 1BR apartment. Call 659-5519. TFN(8-8-02)B

**FOR RENT, SPEARMAN:** 3BR, 1B apartment - \$425/month, water paid - excellent condition. Call 659-9971. TFN(11-27-02)B

**HELP WANTED**

**SECRETARIAL HELP WANTED:** Must have experience in customer relations, Word, Excel Spreadsheet, typing and 10-key. Contact Tammy Kunselman at First National Bank, 659-5544.  
4(1-8-04)B

**HELP WANTED:** Experienced diesel mechanic needed. Benefits and salary. Apply in person at Five Star Equipment, Gruver Highway, Spearman. TFN(1-8-04)B

**HELP WANTED:** North Plains Electric Cooperative, Inc. is now accepting resumes to fill the new position of Accountant. The person selected for this position will be required to live in or near Perryton, Texas. Applicants for this position must have a minimum of an associate degree in accounting, business administration, or related field. Work experience in lieu of education will be considered. Applicants must demonstrate proficiency using a PC, MS Word, and MS Excel. The applicant must also be able to learn in-house software and complete a USDA RUS accounting class within one year of employment. A pre-employment drug screen is required. Only those interested in a non-exempt position with a 40-hour workweek and overtime as required, should submit a resume to North Plains Electric Cooperative, P.O. Box 1008, Perryton, Texas 79070 or email: resumes@npec.org. All submissions must be received by 5:00 p.m., January 30, 2004. (An Equal Opportunity Employer.)  
1(1-15-04)B

**HELP WANTED:** Hansford County Veterinary Hospital is now taking applications for a full-time veterinary assistant/office worker. Please apply in person at the Veterinary Hospital, 405 County Road 24, between the hours of 9 a.m. and 4 p.m., Monday thru Friday. Call (806) 659-2100.  
4(1-15-04)B

**FOR SALE**

**FOR SALE:** 300 shares of First National Bank stock, Spearman, TX. \$55 per share. Call 655-2049.  
3(1-15-04)B

**FOR SALE:** 100'x45' shop building and land in Spearman. For more information, call (806) 655-2049.  
3(1-15-04)B

**SERVICES**

**NEED A CAREER?** Become a Licensed Vocational Nurse! Make plans to enter Frank Phillips College's Nursing Program today. 12 month, TAS-waived program with financial aid available to those who qualify. Clinical training sites in Borger, Dalhart, Dumas, Guyton, Pampa and Perryton. Frank Phillips College's LVN program prepares you to function as a vital member of the health care team. Please call (806) 274-5311, ext. 745 for testing dates or for more information today!  
7(1-15-04)B

**FREE**

**FREE:** Cute puppies - free to good home. Call 664-1529.  
2(1-8-04)

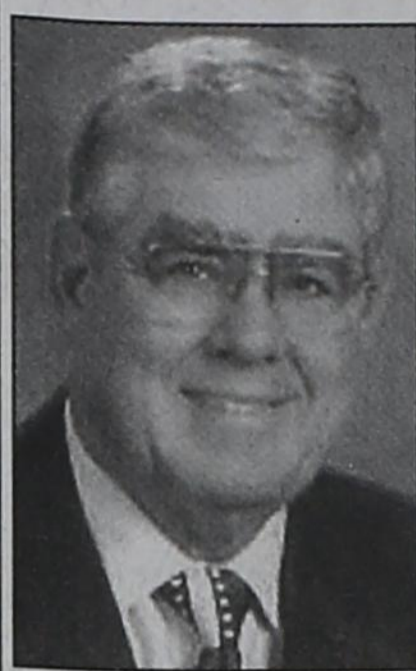
**LEGAL NOTICE**

**NOTICE TO BIDDERS**  
Bids are currently being accepted on a construction project for a Computed Tomography (CT) Room build out for Hansford County Hospital District, at 707 S. Roland St., Spearman TX 79081. Bids will be opened in the office of the District Administrator/CEO on January 22, 2004 at 2:00 p.m. Project specifications may be obtained by contacting John Kunselman at 806-659-5838.  
2(1-8-04)B

**JOB OPENING**

The City of Spearman is accepting applications for a Maintenance Worker II position in the Utilities Department. A high school diploma or equivalent and two to four years related experience and/or training in gas, water and/or wastewater is preferred, but not required. A Texas drivers license will be required. The City has an excellent fringe benefit program which includes retirement, group hospitalization, insurance, vacation, holidays and sick leave. Applications may be obtained at City Hall, 30 SW Court, until position is filled. The City of Spearman is an EOE.  
1(1-15-04)B

**Sparks Runs for State Senate, District 31**



Don Sparks

"I'm a conservative who believes in the values of faith, family, free enterprise and freedom—values I learned as a boy in the Texas Panhandle.

"I would be honored to have your support in the January 20th Special Election."

Pol. Adv. Paid for by Don Sparks for State Senate; 800 N. Marienfeld, Suite 100, Midland, TX 79701; phone 432.683.5203; fax 432.687.1930; email don@donsparks.org



**Insurance/Billing Clerk and Data Entry Clerk** openings with Hansford County Hospital District. Billing Clerk responsibilities include filing and follow up of Medicare/Medicaid claims. Data Entry Clerk responsibilities include entering daily charges and payments. Previous experience preferred.

Hansford Manor has openings for two full-time **Ward Clerk** positions. Responsibility includes filing and maintaining residents medical records.

Excellent benefits package including paid vacation, sick leave, retirement and health insurance.

Please apply at 707 S. Roland, Spearman, TX 79081 or contact Lisa Unruh, HR Mgr. at (806) 659-5841.  
Equal Employment Opportunity Employer  
2(1-15-04)B

**SHOP SATURDAY AT THE CLOTHES OUT**  
Open 9 a.m. to 5 p.m. Next to Alco

All name-brand, first quality Clothing & Shoes at GARAGE SALE PRICES!

**NEW MERCHANDISE**  
Sleepwear for Ladies Many new items on our "\$8 or Less" Racks

New selections Sport Shoes for Men & Women  
EVERY SATURDAY Shop 9 a.m. to 5 p.m.

**New Mattress Sets For Sale**

Queen mattress set, brand new, never used, with warranty - \$202  
Queen pillow-top, double-sided mattress set, new, still packaged, warranty - \$236  
Full pillow-top, double-sided mattress set, new, still pkgd., warranty - \$208  
Full mattress set, brand new, still packaged, warranty - \$180  
King pillow-top mattress set, new, in plastic, warranty - \$268  
Queen Cherry Sleigh Bed, new, still boxed, lists for \$750 - \$399  
7-Piece Cherry wood bedroom set w/Sleigh Bed, still boxed - \$999  
7-Piece Pine wood bedroom set w/4 Poster bed, still boxed - \$999  
Call 806-517-1050  
5(10-30-03)

**MARTIN & ASSOCIATES REALTY**  
Hansford County's ONLY locally owned and operated Realty.  
Julie Martin: Broker - 659-2425  
Kym Williams: Assoc. - 733-5183

**IN SPEARMAN**  
1112 Townsend - SOLD  
208 Lonita - 3/11 - New paint inside.  
1001 Townsend - 2/11, new paint, blinds, corner lot!

**IN GRUVER**  
402 Womble - 1BR, 1B, Large lot

We'd Like Your Listing FOR QUALITY & SERVICE CALL US TODAY!  
Equal Housing Opportunity

**Blankenship Real Estate**  
659-3052 - 670-3774

LET US HELP YOU SELL YOUR HOME!

Eulalia Blankenship - Sales  
Eschol Blankenship - Broker

**Farms & Ranches**  
Ochiltree Co. - 128 (+/-) Acres. South of Perryton on pavement, mostly native grass with 3BR, 1 1/2 home, 40x100 barn, pens and cattle scales and other improvements. Call Gary at 806-662-6949 or Neal at 806-434-1407.

**LARGEST LAND BROKER IN THE TEXAS PANHANDLE**  
CLIFT, SCOTT & ASSOCIATES  
Amarillo Perryton Dalhart  
(806) 355-9856  
www.texpanland.com

**Century 21 Golden Spread Realty**  
200 S. Main • Perryton, TX  
(806) 435-5444

**SPEARMAN Residential**  
105 Wanda Drive - w/c  
107 Wanda Drive - see at 360house.com  
1111 Dressen - w/c  
1016 Wilmeth - Large home, 3517 sq. ft, rec room w/hot tub - \$59,500

**Commercial**  
412 Kenneth

**WAKA #1 Greever & Rodgers** - 4BR, 1 3/4B, wall heater, 2 car carport - \$27,000  
**301 Butler** - 4BR, 2B, CH/A, 2 car detached garage - \$30,000

**GRUVER**  
1.4 Miles East of Gruver

Equal Housing Opportunity, INDEPENDENTLY OWNED AND OPERATED.

Subscribe to the Reporter-Statesman.  
Call 659-3434 for details.

Subscription Rates  
In Hansford Co. - \$25.00  
Out of County - \$30.00

**FOR SALE IN SPEARMAN**

**606 S Bernice**  
This exquisite 3,744 sq ft home has 5 bedrooms, 3 1/2 baths, office, FP, CACH, 2 car garage. It has been totally remodeled and is ready to move into.

Call Shirley Howard  
806-886-6536  
The LaMaster Agency

**Real Estate & Rental**  
Spearman Property

12 S. James - 3BR, 1B, 1CG  
611 S. Evans - 3BR, 1 1/2, 1CG

**Gruver Property**  
NEW LISTING - 811 Richardson - 3BR, 1B, 1C Carport  
Broadway & King - Commercial Building  
618 Front Street - 1BR, 1B, cellar, lg. shed  
813 Richardson - 2BR, 1B  
800 Front Street - 3BR, 2B, 5 lots  
802 Womble - 2-3BR, carport, corner lot  
903 Richardson - 2BR, 1B  
801 Richardson - 3BR, 1B, 1CG, 2 carports - REDUCED

**Rural Property**  
170 Acres - 3BR, 1B  
12 mi E on 759, Cty Rd 5 - 22 acres  
1520 Hwy. 15 W - 3BR, 2B, 2CG

**Real Estate & Rental** for all your real estate needs!  
Melinda McCullough, Assoc. (806) 733-5678  
Dawn Brown, Assoc. (806) 274-3568  
John Graves, Broker Toll Free: 1-877-664-5050

**MONEY'S BBQ & STEAK HOUSE**  
14 S.E. Third in Perryton • 435-3945  
(Directly behind Interstate Bank)

For that Special Person in your life, take them somewhere unique.

**Money's Valentine Special - Saturday, February 14th**  
Reservations Required - Adult Dining Only

For more information or to make reservations, call 435-3945  
**Remember, We R-TH-PLC-2-B!**

**TEXAS STATEWIDE CLASSIFIED ADVERTISING NETWORK**

**TexSCAN**

TexSCAN January 11, 2004

**ADOPTION**  
Note: It is illegal to be paid for anything beyond medical and legal expenses in Texas adoption.  
PREGNANT AND ALONE? Adoption Wise specializes in you, the birthmother. Call toll free 1-800-361-9333. Relocation and financial assistance is available.  
PREGNANT? CONSIDERING ADOPTION? We can help. We specialize in matching families with birthmothers nationwide. Toll Free 24 hours a day, 1-866-921-0565. One True Gift Adoptions.

**AUCTION**  
ABSOLUTE AUCTION - JANUARY 15th, Utopia, Texas. Luxury Home and Game Ranch. 130+/- acres in parcels. J.P. King Auction, 1-800-558-5464. William Scott Swenson, Bro: Jerry Craig King AUCTNR00006960, 10% Buyer's Premium.

**AUCTION FEB. 12TH.** Marshall, TX. Fenced Hunting Ranch and Home. 911+/- acres in parcels, some abovate. J.P. King Auction Co. 1-800-558-5464. 7.5% Buyer's Premium. William Scott Swenson, Broker. Jerry Craig King. AUCTNR00006960.

**BUSINESS OPPORTUNITY**  
1,800 VENDING, 90 MACHINES - \$8,670. The best locations. 1-800-836-3464, 24 hours.  
AMERICA'S HOTTEST OPPORTUNITY - DOLLAR STORES. Own your own store. Turnkey from \$45,900. DollarServices4.com. 1-800-829-2915.

**DRIVERS WANTED**  
DRIVER: \$1500 Sign-On Bonus for FLATBED DRIVERS. Great freight/miles. Must have CDL/A: 1 year OTR. Call 1-800-743-7384 or apply online www.roberoncontractors.com. EOE.

**DRIVERS-REGIONAL-10 states (70%)**. Home weekly. \$600-\$800. OTR - start .32 cents. 6 months experience w/CDL/A. Owner/Operators - OTR .83 cents loaded and empty. Call Bob, National Freight, 1-800-666-0380.

**DRIVERS - COVENANT TRANSPORT.** Teams and Solos check out our new pay plan. Owner/Operators, Experienced Drivers, Solos, Teams and Graduate Students. Call 1-888-MORE PAY (1-888-667-3729).

**DRIVERS-DENNIS BURTON** with TTL 31 years! You'll stay too! Great pay/Equipment/Miles/Respect! 2 years OTR. Class CDL/A. Tiona: 1-800-821-3046. Ex. 1124. www.truckiona.com

**DRIVERS-DRIVING SCHOOL** graduates, we need you today! Tuition reimbursement. Up to 37 cents/mile. Guaranteed home time. Pay on delivery. USA Truck. 1-800-237-4642.

**DRIVERS! MILES! MILES!** Miles! Longhaul, regional, lease operators. Friday paydays, in-cab E-mail, family voice mail. Class CDL/A, 6 mo. OTR. 1-800-745-9670. www.continentalx.com

**DRIVERS - NEW PAY** package. Start at .34 cpm. Guaranteed home time. Dedicated, regional available. Driving school graduates and Owner/Operators welcome. USA Truck. 1-800-237-4642.

**DRIVERS... NO EXPERIENCE?** Low cost CDL training! NO CREDIT CHECK. Lodging and transportation provided. Tuition reimbursement. Sign on bonus, van, flatbed and autohaul. 1-800-231-5209. www.SwiftTruckingJobs.com

**DRIVERS-REGIONAL-10 states (70%)**. Home weekly. \$600-\$800. OTR - start .32 cents. 6 months experience w/CDL/A. Owner/Operators - OTR .83 cents loaded and empty. Call Bob, National Freight, 1-800-666-0380.

**OWNER/OPERATORS, IF YOU own your own truck, Fikes Truck Line is looking for you.** We have the need for 15 Owner/Operators in the Texas area! Cargo and liability insurance furnished. Comdata fuel card, home weekends by choice, weekly settlements and direct deposit, permits furnished and much more! Small fleets welcome! 1-877-321-0186.

**SUNSET LOGISTICS-OWNER/OPERATORS** needed to haul scrap metal/aggregate materials in end dumps. Trailers available. \$346/month or TX Yet Home weekly. 100k potential. 98% Texas. Call Scott at 1-888-215-HAUL.

**THE INDUSTRY'S TOP** pay just got BETTER. Company driver paying going to .43 cents. Owner/Operators pay going to .88 cents! Heartland Express. 1-800-441-4953. www.heartlandexpress.com

**FINANCIAL SERVICES**  
\$\$\$CASH\$\$ - Cash now for structured settlements and insurance payouts. 1-800-794-7310, J.G. Wentworth...J.G. Wentworth means cash now for structured settlements.

**CASH FOR STRUCTURED** settlement/annuity payments. It's your money! Get cash now when you need it most. Oldest/best in the business. Settlement Purchasers. 1-877-Money-Me.

**FOR SALE**  
FREE 4-ROOM DIRECTV SYSTEM including installation! FREE 3 MONTHS HBO (7 movie channels) with subscription. Access 225+ TV channels. Digital quality! Limited Offer. Restrictions apply. 1-800-264-3458.

**WOLFF TANNING BEDS** - Affordable - Convenient. Tan at home. Payments from \$25/month. FREE color catalog. Call today. 1-888-839-5160.

**MISCELLANEOUS**  
**SURGERY AFTER 1999?** Complications, serious injury or death after Abdominal Aortic Aneurysm. Stent or Bypass surgery? You may be entitled to MONEY DAMAGES! James Rolschhouse practices law in MN, associates with lawyers throughout the U.S. 1-800-820-4167. www.surgery.rolschhouselaw.com

**REAL ESTATE**  
47.29 ACRES SW of Rocksprings. Electricity, native and exotic game, hogs, turkey. \$1,762 down, \$346/month or TX Yet Home weekly. 100k potential. 98% Texas. Call Scott at 1-888-215-HAUL.

**RUIDOSO, NEW MEXICO** 140 acres only \$49,900. Adjacent to National Forest, elk, deer, small game. Abutting ranch preserve for added permanent open space. Great sportsmen area. Absolutely beautiful setting and land. Remote and private but with year round road access and still an EZ drive to exciting Ruidoso. Best financing ever. 1-866-350-5263.

**ENGLISH SECOND LANGUAGE CLASSES and CONVERSATIONAL SPANISH CLASSES**

Spearman ISD Community Resource Program is considering starting an adult ESL and Conversational Spanish class and we are trying to get an indication of interest among the people of our community. Please help us by calling the Community Resource Program office or by filling out this survey. Teachers from the district will be teaching both classes.

Are you interested in ESL classes to improve your English?

Are you interested in a Conversational Spanish class for you or your employees?

Please return this form to:  
Community Resource Program Office  
Spearman ISD  
403 E. 11th Street  
Spearman, Texas 79081  
or call 659-3233

**CLASES DE ESL CLASES CONVERSACIONALES**

El Programa del Recurso de la Comunidad de Spearman ISD esta considerando el comenzar una clase de ESL para adultos y una Clase Conversacional de espanol y estamos intentando conseguir una indicacion del interes entre la gente de nuestra comunidad. Ayudenos por favor llamando a la oficina del Programa delRecurso de la Comunidad o llenando esta forma. Los profesores del distrito ensenaran las dos clases.

Esta usted interesado en las clases de ESL para mejorar su ingles?

Esta usted interesado en una Clase Conversacional de espanol para usted o sus empleados?

Por favor devuelva esta forma a la oficina del Programa del Recurso de la Comunidad de Spearman ISD  
403 E. 11th Street, Spearman, TX 79081  
o a la llamada 659-3233



# Out At The Lake

by Dorothy Hudson

Lake Level--January 12, 2004--27.27 feet

The subzero temperature froze the Lake except for two little holes, and despite the nice days and some wind, most of it is still frozen. Jim said he usually sees more eagles when the Lake is frozen, but this time the count is still 4 mature and 2 immature eagles. He turned that in to the Texas Parks and Wildlife for their annual

January count.

Jim and Mandy have been enjoying 3 or 4 pairs of cardinals at their bird feeder, but they have been surprised that they have not seen bluebirds this year.

A man and two women, all birdwatchers from Wichita Falls, visited last week. They had over 400 Texas birds on their life lists. They had seen more mallards at Palo Duro than anywhere, but their only new bird here was the rough-

legged hawk.

Buddy Lowe called me last Friday to verify his story about Texas water turkeys, as he was having trouble convincing his friends that there was such a bird. Well, I was no help, but it reminded me that daughter Nancy and her husband Vlad had been asking help identifying a bird that looked like a turkey duck. I had gotten out my books and found nothing that looked like their bird.

Again, I looked through the books without finding any birds resembling a turkey duck or a water turkey. Daughter Jackie, also home, took to the Internet and found both. The turkey duck is a domesticated duck called the Muscovy duck. It is sometimes referred to as a "turkey" duck because its head and body resembles a turkey and its feet are webbed.

The Texas water turkey is another name for an anhinga. It's a name given by a Brazilian Indian tribe and means "snake-bird." When the bird is swimming, only the neck and head are out of the water and the viewer at first glance thinks "snake". This water bird looks a bit like a slender cormorant with the head of a heron. When it flies with its long neck stretched out and its long tail fanned out behind, it looks like a turkey. Thus it is frequently called a "water turkey."

Buddy saw his water turkey while on a fishing trip on Lake Falcon. These birds range from Texas to North Carolina and southward to Argentina. They are a somewhat tropical bird, as they can't stand cold water. They winter at the tip of Texas and sparingly on the coast. And Buddy recommends that you don't crowd them unless you want to clean your boat.

# MANOR MATTERS

by Merry Sparks

Thank you to the Lutheran/Presbyterian Church for bringing church services to the Manor on the 4th. We do appreciate you.

Monday started off with our usual exercise program. Many residents participated while many others watched.

After lunch we held a Chatter Club on the Dust Bowl Days. Residents and Staff brought pictures to share and many stories were told and compared. I was amazed that on the internet they related that the Dust Bowl Days lasted 10 years!!

Most residents remember the Dust Bowl here from 1931 through 1938. As relayed by different residents, the days seemed to differ. Most days the walls of dirt would hit around 10 a.m. and last until around 2 p.m. Some spent the time in cellars. Some covered windows with wet sheets while many covered their faces with wet cloths. They said that you could see the wall of dirt coming as evidenced in pictures shown.

Some gave up and moved west while others took measures to tough it out and stay. The dirt blew year round. Many had to go to bed at night under the protection of a wet sheet cover in order to breathe. Many people gave their lives up to dust pneumonia. In 1935 they relayed that the dirt blew for 27 days and nights solid that spring.

One resident told of the family saving their main source of food, which was their garden, by wetting gunny sacks. They wet them and stacked them around the outside edge of the garden. When the dirt started the wet sacks would soon be just like stucco and protect the crop. Some put lines between the house and barns so that they could feel their way to the barns to feed their livestock. All of the residents remembered Black Sunday. It was a very interesting discussion group.

Tuesday morning started off with a very active Musercise. When they really get cranked up you can hear them all the way down the hall.

That afternoon, Jennie, John and Laura McCloy played music for the residents. Jennie plays the piano beautifully and John and Laura are very skilled on the violins. They played many beautiful songs. Thank you to the McCloy's!

Afterward, we loaded residents onto our busses and went to Gruver to Tiffanee and Will Crane's house for a party. Tiffanee left up her beautiful Christmas decorations for the residents to see and has a life-size Santa that sings & dances in her living room. She had baked cookies, made dipped pretzels, and banana nut bread.

We visited and enjoyed her decorations while we had refreshments and then got down to the serious business of Crazy Bunko. It was hilarious! When you roll doubles with a set of dice you win a prize. You can pick your prize from the center of the table or take your neighbor's prize. I watched a red teddy bear change ownership 10 times!

We had a great time and appreciate Tiffanee very much. It is a very generous person that will prepare and receive us for an afternoon of fun. It makes life at the Manor so very special to have people like Tiffanee give so much of herself to the residents. Thank you Tiffanee!

Wednesday morning Ann Whitaker brought a Bible study. Thank you Ann for your time and expertise! The residents

enjoyed that as well as the donuts.

That afternoon we began on a project of painting heart-shaped boxes. When they have all been painted, we will decorate them for Valentine's Day.

Thursday morning was filled with kickball. These folks get pretty rowdy when we play kickball!!

That afternoon the auxiliary hosted bingo for the residents. Thank you to the auxiliary for your help!

Friday morning the Newscurrents Program for the week was a pop quiz from the Newscurrents of 2003. Can you imagine still having pop quizzes? We did. And you know what? They remembered more than we ever thought they would. (Would you believe they remembered more than we did? Well, they did.) They did a great job on their quiz.

Afterward, 20 residents went with us for a dutch treat luncheon at the Panhandle Deli and Diner. We had a great time. The food was good and the atmosphere is wonderful.

When we returned, there were games of dominoes, skip-bo and a new game called Taboo. We had a great time that afternoon and I might mention that the residents are pretty salty at Taboo.

## Nominations Sought for Texas Freshwater Fishing Hall of Fame

Each year the public has a chance to nominate their favorite fishing icon for consideration as an inductee into the Texas Freshwater Fishing Hall of Fame. Nominations will be accepted until February 20, 2004.

The Freshwater Fishing Hall of Fame, which is housed at the Texas Freshwater Fisheries Center in Athens, honors legendary anglers and fisheries professionals who have made a lasting contribution to fishing in Texas. One nominee will be chosen by an independent selection committee and formally inducted during the annual Hall of Fame Banquet in May. They will join a legendary group of fishing Hall of Famers including Floyd Mabry, Jackie Hewlett, R.D. Hull, Bob Kemp, Nick Creme, Sugar Ferris, Leonard Ranne, Earl Golding, Kathy Magers, the Sabine River Authority and Skeeter Boats.

The rules are simple. The nominee must be a current resident of Texas who has made a lasting beneficial impact on fishing or fisheries management in Texas. They may be either living or deceased. The nomination form must be completed and postmarked by the deadline, February 20th.

- To submit a nomination:
  - Obtain an official nomination form available from our website [www.tpwd.state.tx.us/fish/infish](http://www.tpwd.state.tx.us/fish/infish) or from the Texas Freshwater Fisheries Center by calling (903) 676-2277.
  - Complete the nomination form and mail it to the Freshwater Fishing Hall of Fame, c/o Texas Freshwater Fisheries Center, 5550 FM 2495, Athens, Texas 75752, or fax to (903) 676-3474 by the deadline.
  - Include copies of supporting documentation (testimonials, videos, photos, samples, etc.).
  - Deadline for nominations is February 20, 2004. Nomination forms postmarked after that date will not be accepted.
  - Nomination forms and all materials submitted with them become the property of Texas Parks and Wildlife Department and will not be returned.

We will be closed on Monday, January 19th in observance of MARTIN LUTHER KING DAY

A Full Service Bank



Spearman, Texas 79081 Dumas, Texas 79029  
806-659-5544 806-934-8455  
800-583-4196 866-583-4196  
Member FDIC

Listen to KRDF-FM 98.3  
24-Hour Hot Country Stereo

James R. "Jim" Jackson, CPA

- Income Taxes
- Bookkeeping
- Advisory Services

407 S. Davis • Spearman, TX  
Office Hours: 8:30 a.m. - 5 p.m. on Tuesdays  
(806) 659-3869

Send a bear to do a man's job.



Valentine's Day is Saturday, February 14

**DON'T DIG**  
in streets, alleys or easements until you call the City of Spearman, your gas company.  
The City of Spearman will then mark their underground gas lines with yellow stakes, flags or spray paint.  
Make request 48 hours in advance. This service is available at "no charge".

First State Bank will be closed on Monday, January 19th in observance of Martin Luther King Day



**FSB**  
The Bank that has the Tradition of Strength and Service

One NE Court Spearman, Texas  
(806) 659-5565  
member FDIC

**LegalPharmacy.com**  
Your source for legal online prescriptions  
**Phentermine, Soma, Fioricet, Ambien, Tramadol & more.**  
**\$10 Off All Orders**  
Type Promo Code - "Discount"  
[www.legalpharmacy.com](http://www.legalpharmacy.com) 1-866-278-7082  
Safe • Secure • Discreet.

**VIAGRA®**  
Prescription Strength Alternative  
Now Available Without Prescription  
(30 tabs-blue 100mg) \$79.95  
TOLL FREE 1-888-527-0870 FREE SHIPPING!  
Mail Order: Send Check or M.O. to: P.E. Laboratories  
1025 SW 59th st.  
OKC, OK. 73109  
[www.rxsexpill.com](http://www.rxsexpill.com)

The **BEST** Just got **BETTER**  
CFI, announces Industry leading pay increase!

- Company Drivers earn up to 45¢ per mile
- Company Teams earn up to 53¢ per mile
- Owner Operators earn up to 98¢ per mile

800-CFI-DRIVE [www.cfidrive.com](http://www.cfidrive.com)

**New Program!**  
O/O Leasing Program with purchase option  
Now Hiring:  
Company • O/O • Singlet & Teams  
800-CFI-DRIVE [www.cfidrive.com](http://www.cfidrive.com)

**Cerebral Palsy** NO FEE FOR FIRST VISIT  
Cerebral palsy may be caused by professional neglect during prenatal care or childbirth. Its causes may include premature birth, birth trauma, and neonatal asphyxia (lack of oxygen). Call us for professional insight.  
Ryan A. Krebs, MD, JD  
Doctor-Lawyer in full time Law Practice  
Richard A. Dodd, J.D.  
Timothy R. Cappolino, P.C.  
Board Certified Personal Injury Trial Law & Civil Trial Law, Texas Board of Legal Specialization  
1-800-460-0606  
[www.birthtraumalaw.com](http://www.birthtraumalaw.com)

## HANSFORD COUNTY HOSPITAL DISTRICT proudly presents the Employee of the Month



Beth McIntyre, R.N., January 2004 Employee of the Month  
Beth McIntyre has been employed by HCHD since October 1990. Beth is an RN in the Hospital.

Beth was nominated for this honor because patients love Beth and trust her as their nurse. "Beth demonstrates the true sense of nursing. When hearts are breaking she shows compassion. When a life-threatening event occurs she can deliver complicated care with confidence and expertise, which has gained her the respect of our doctors. Beth treats her peers, the doctors, co-workers and patients (even the difficult ones) with respect and kindness. Beth and her husband have, on several occasions, donated the meat for the annual employee banquet."

**Hansford County Hospital District**  
707 S. Roland • Spearman, TX  
(806) 659-2535