

Only 16 Days Until Christmas

★ HANSFORD COUNTY ★
THE REPORTER-STATESMAN

THURSDAY,
 DECEMBER 9, 2010

CELEBRATING 103 YEARS OF SERVICE TO HANSFORD COUNTY
 HANSFORD COUNTY'S ONLY NEWSPAPER

75¢

WWW.SPEARMANREPORTER.COM

VOLUME 103 • ISSUE 48

reporter@spearmanreporter.com

Deadline Notice!

The deadline to submit news and advertising to the Hansford County Reporter-Statesman is Monday at 5 p.m. Items submitted after the deadline will be published at a later date, as time and space permit.

The deadline for the December 23rd and December 30th issues will be Thursday, December 16th at 12 noon.

Items may be submitted by phone (806-659-3434), fax (806-398-9080), mail (Reporter-Statesman, 213 Main Street, Spearman TX 79081), or e-mail (reporter@spearmanreporter.com).

For more information, please contact Catherine Smith at 659-3434, or e-mail to reporter@spearmanreporter.com

TGCA 2010-11 Cross Country Coach of the Year, All-State Athletes



Tylo Farrar, Coach Starla Whiteley and Gately Garnett



Taylor Felderhoff and Shelley Gibson

The Texas Girls Coaches Association has selected Starla Whiteley, Spearman High School Cross Country Coach, as the 1A-2A-3A 2010-11 Cross Country Coach of the Year.

They also selected two Spearman High School and two Gruver High School athletes as 2010-11 Cross Country All-State Athletes.

Gruver High School juniors Taylor Felderhoff and Shelley Gibson were selected for 1A.

Spearman High School juniors Tylo Farrar and Gately Garnett were selected for 2A.

Athletes are selected by the Cross Country Committee of the Texas Girls Coaches Association, which is comprised of member cross country coaches, from nominations presented by member coaches. Athletes do not have to be seniors to be chosen for All-State.

GOVERN THE GAME

Spearman Lynx/Lynxettes

12/9-11 VG @ Vernon Tourney
 12/9-11 JVG @ Spearman Tourney
 12/9-11 JVB @ Borger Tourney
 12/14 JVG (5), JVB (5), VG (6:30), VB (8) @ Stinnett
 12/17 JVG (5), JVB (5), VG (6:30), VB (8) vs Gruver
 12/28-30 VG, VB @ Caprock Tourney in Lubbock

Gruver Greyhounds/Lady Hounds

12/9-11 VG, VB @ Claude Tourney
 12/9-11 JVG @ Spearman Tourney
 12/9-11 JVB @ River Road Tourney
 12/14 JVB (4), VG (6:30) vs. Borger
 12/17 JVG (4), JVB (5), VG (6:30), VB (8) @ Spearman
 12/28-30 VG, VB @ Canadian Tourney

Weather Forecast

THURSDAY NIGHT - Partly cloudy in the evening then becoming mostly cloudy. Lows in the upper 20s. North winds around 5 mph.

FRIDAY - Partly cloudy. Highs in the upper 50s. Southeast winds around 5 mph becoming south 10 to 15 mph in the afternoon.

FRIDAY NIGHT - Partly cloudy in the evening then becoming mostly cloudy. Lows in the upper 20s. Southeast winds 5 to 10 mph shifting to the northeast after midnight.

SATURDAY - Mostly cloudy. Windy. Highs around 50.

SATURDAY NIGHT - Partly cloudy. Lows around 18.

SUNDAY - Partly cloudy. Highs in the mid 40s.

SUNDAY NIGHT - Partly cloudy. Lows in the mid 20s.

MONDAY - Mostly sunny. Highs in the upper 50s.

MONDAY NIGHT - Clear. Lows around 30.

TUESDAY - Sunny. Highs in the lower 60s.

TUESDAY NIGHT - Mostly clear. Lows in the mid 20s.

WEDNESDAY - Mostly sunny. Highs in the upper 50s.

Read more: <http://www.city-data.com/forecast/w-Spearman-Texas.html#ixzz0xgJ5WQkT>

Texas Crop & Weather

The following specific livestock, crop and weather conditions were reported by Panhandle Extension directors: Producers had favorable weather to finish harvests and prepare fields for 2011. Most cotton harvest has been stripped, and producers were waiting for modules to be picked up. Cotton yields were reported to be good or above average across much of the region. However, winter wheat continued to struggle due to lack of moisture in some areas. Counties reported the crop in poor to excellent condition, depending on moisture levels. Cattle were doing well on wheat pastures. Rangeland and pastures were holding up, but the combination of dry conditions and winter dormancy caused grass to decline and the risk of wildfires to increase.

Gruver ISD Unveils New Gymnasium Dedication Ceremony Scheduled December 18th

By Brenda Bernet, Amarillo Globe-News

It's something unexpected for a small high school in a town with one traffic light. Gruver High School's new gym goes beyond a big box with basketball goals, wood floor and bleachers.

The \$4.9 million, 36,000-square-foot gym is luxurious by high school standards. It features upholstered theater seats with cup holders and a community walking trail built above the gym floor. There are four scoreboards and 13 large flat-screen TVs, including one at the snack bar, connected to a remote camera system to show live footage of action on the gym floor.

Multiple docking stations for iPods are linked to speakers that automatically turn on when the devices are plugged in. Lights and a fog machine near the locker rooms allow for dramatic player introductions.

"It'll be a big deal for a little town," said Brent Stedje, vice president of the school board.

Recent gyms built for high schools in the Panhandle have come with a significant renovation or a new building. New gyms at Dimmitt, River Road and Panhandle offer at least some sections of backed seats and then a section of bleachers. River Road's gym has a video camera capable of showing live footage of a game on TVs inside the concession stand, bordered by glass window panes that overlook the gym.

Among the most prominent high school gyms in the country is The Fieldhouse at Chrysler High School in New Castle, Ind., a city of about 19,000 residents. With a seating capacity of 9,325, the gym was named the largest gym in the country by USA Today in 2004.

Nine of the 10 largest basketball gyms are in Indiana, the exception being the Alfred J. Loos Fieldhouse in Dallas.

Mike Bergum, athletic director for Chrysler, explained that in Indiana, the passion for basketball rivals the passion for football in Texas.

"It's Hoosier hysteria," he said. The Fieldhouse, built in 1959, features a 1/7-mile walking track and the stands are built in a bowl shape.

"There's not a bad seat in the entire facility," Bergum said.

Though he hadn't seen the gym in Gruver, Bergum said extra features often don't add too much to the final price tag. Those luxuries enhance the experience for play-



Those attending an event inside the new Gruver High School gym will see a commons and concessions area. A countertop overlooking the gym floor provides a space for spectators to eat and watch a game.

ers, fans and spectators, he said.

"It sounds like they've done some homework in capitalizing on every aspect of the facility," he said. "I would applaud them for going that extra step."

Greg Huseman of Huseman Builders in Canyon, the firm that constructed the Gruver gym, said he is not aware of any venue like it. Sheryl Honeycutt, editor of Texas Coach, a publication of the Texas High School Coaches Association, agreed.

"There is nothing to compare it to," Honeycutt said. "It's a cut above the rest."

And the only comparison that came to mind was a four-sided hanging scoreboard in the high school gym in Prosper, said Joe Barnett, athletic director for Irving Independent School District who is president of the Texas High School Athletic Directors Association.

Michael Norris, owner of Norris Audio Video of Amarillo, said the elaborate audio-video system was the first his firm had installed inside a high school gym. The sound system also comes with preset programs that turn on the right speakers and adjust the volume depending on the activity, so that the floor is loud for practices but not for games.

"They had us put in theatrical lighting for stage events," he said.

The school board and administration in Gruver started talking about a new gym two years ago. The 1950s activity center it replaced was in poor condition, Stedje said. Talking about a new gym was a sensitive matter, though, because of the fond memories and nostalgic attachment the community had to what's known as the old varsity gym, which is still standing.

"I always thought it was the greatest place ever, until we started this project,"

Stedje said. "Now that other gym just looks like a gym with wooden bleachers."

While few gyms may have all of the features in the new Gruver gym, planners borrowed features from other gyms. The idea to put visitor seating off of the floor and the home side on the floor came from Peryton, Teal said. The concept of a raised walking trail was taken from Grandview ISD, near Fort Worth.

"The school is the heart and soul of the community," said David Teal, superintendent of Gruver Independent School District, about 90 miles north of Amarillo near the Oklahoma border. "They wanted something they could be proud of that maybe people had never done before."

In Gruver, a small agricultural town of about 1,200, high school football and basketball games are a prime source of entertainment, Teal said. The new gym seats 950 people, while the football stadium can accommodate 1,500.

The community was heavily involved in planning the new gym, designed by architect Stephen Butler of A&E Design Group in Canyon, Teal said. Residents wanted to make the most of the building and suggested features to accommodate a variety of events.

The project didn't directly hit taxpayers' pocketbooks. The district puts money aside each year from its annual operating budget, which totals about \$8 million this year, Teal said. The district combined the savings with money paid by wind farms as part of a tax incentive.

The situation enabled the district to pay for the project with a bond, but without raising taxes. The bond passed in 2008 with 85 percent of the vote.

Gruver school officials plan a dedication ceremony for Dec. 18, and teams already have started practices in the new facility.

"People are very excited," Stedje said. "None of us can wait to get moved in."

New Gym Rules/Directions

Home fans will need to park in the football field parking lot and enter through the new commons area.

Visitor fans will park in the north HS student parking lot and enter through the northeast door.

Cushioned seating on the home side is reserved primarily for adults.

Gruver Student sections (Jr. High & High School students) are in the wooden bleachers below the cushioned seats. (The pull out wooden bleachers, on either side of the goals, are for overflow only.)

Third Quarter Clean Up: We will come around with trash sacks at the end of the 3rd quarter of the last game of the evening to collect trash in an effort to help keep the gym cleaner.

Gruver Gym Dedication

December 18, 2010

11:30 a.m. - 12:50 p.m.: Introduction and Recognition of Gym Committees; Introduction of 2010-2011 Basketball Teams

11:50 a.m. - 12:15 p.m.: Hot Dogs and Tours

12:15 - 12:30 p.m.: Free Throw and 3 Point Competition

12:30 - 1:30 p.m.: Alumni Game between Odd and Even Years

The Hansford County Reporter-Statesman 2010 Holiday Schedule

SANTA LETTERS: The Reporter-Statesman will publish Santa Letters in the Thursday, December 23rd edition. The deadline to submit information for this issue will be Thursday, December 16th.

HOLIDAY GREETINGS: Anyone wishing to place a holiday greeting in the newspaper is encouraged to call or come by the Reporter-Statesman office as soon as possible. Holiday greetings will be included in the December 23rd Christmas edition, and the December 30th New Year's edition.

OFFICE CLOSED: The Hansford County Reporter-Statesman office will be closed December 20-31 for the Christmas Holidays. (The deadline for the December 23rd and December 30th issues is Thursday, December 16th at 5 p.m.) The office will open for the new year on January 3, 2011 at 9 a.m.

Words from Faith & Grace

by Cecil R. Biggers, Lutheran Lay Minister



We learn of patience as we study Isaiah 35: 1-10, Luke 1: 47-55, James 5: 7-10, and Matthew 11: 2-11.

The prophet Isaiah writes of the Advent of God. To a people in bondage he announces that the desert shall rejoice and blossom. Do not fear! Here is your God! God appears to save! If this sounds familiar, listen again to Handel's Messiah. The message is that God is our salvation and God will grant whatever is needed for us to reach the potential of our created humanity. Note that the healing by God numbers seven; therefore, God's healing is complete, perfect.

Luke presents the Song of Mary, the Magnificat. The young Mary sings a thanksgiving for the mercy of God. Mary sings that she is lowly because as the world judges she is not of those who are highly esteemed. She sings of God's power and judgment, and the results of God's power and judgment is redemption. Mary's song captures the revolution of God's Advent! God scatters the proud, a moral revolution. God casts down the Mighty and exalts the lowly, a social revolution. God fills those who are hungry while the rich are empty, an economic revolution. Because of God's Advent, Mary sings that all generations will call her, blessed.

James urges the faithful to be patient. James urges the faithful to strengthen their hearts and not resort to grumbling at each other. When one suffers as the first century church was suffering, it is difficult to have patience. But, James warns that the Judge is standing at the doors! As an example of patience James calls attention to God's prophets, many of whom were killed, many of whom died before they saw the fulfillment of their prophecy. From James we learn that of the Second Coming no man knows the day or hour. We know that it will be sudden as lightning! We are told to be ever alert and on watch. We are told to have patience. We are told to use what time that we have to prepare! We are told that when Christ comes again, we must be found in fellowship, but we must have patience.

John the Baptist, a free soul, a child of the desert, is confined to a basement prison cell near the Dead Sea. He awaits his fate at the hand of Herod. John sends his disciples to ask Jesus, "Are you the One who is to come, or are we to wait for another?" Jesus answers John's disciples, "Go and tell John what you hear and see". They report the blind receive sight, the deaf receive hearing, lepers receive pure skin, the dead are raised to life again, and the poor hear good news! The signs of the Advent of God. This was a witness not only for John, but for his disciples. Dear Christian, the Kingdom of God comes with our prayers or without them. When we pray, "Thy Kingdom Come", we are praying that God's Kingdom comes to us. Patience! Watch! Wait!

May the Holy Spirit enable you to have confident patience. Even so, come Lord Jesus!

National Call for Christmas Boxes for the Troops

Isn't it time to show them we care?

'Tis the Season! And this is a national call to all good Americans to show their love and support this holiday season for our deployed troops. Join us in our mission to ship Christmas Care Boxes to our soldiers overseas, and help us send a little bit of home and comfort their way.

SupportOurTroops.Org makes this call on behalf of the 60+ troop support groups across America who send care packages to the troops.

Want to make a difference in the life of a soldier this Christmas? It's simple!

Just go to SupportOurTroops.Org, and click on the Christmas 2010 Care Package Icon. Over 90 groups are listed there. Just pick the one you want to send your care box goods to and follow the instructions. The types of things the troops request are listed there. The care box rules are posted there.

Martin C. Boire, Chairman of Support Our Troops, said "during 2010 SupportOurTroops.Org has shipped over \$7,200,000 in goods to the troops worldwide with a 1.3% overhead. To Afghanistan, Iraq, Korea, Japan, Bosnia, Qatar, Kuwait, Guam and on and on. We are asking everyone to help us spread the word to send care packages to the troops for the holidays."

He continued, "The items and the money to ship them come from generous people across America. It is amazing to see the way people step up for their troops. If you would like to provide items for future care boxes or make a donation to help pay to ship the goods, you can find everything you need to know posted on SupportOurTroops.Org, such as the type of things the troops are asking for, and where and how to send them to us. This shows them how much we all care."

Our troops have a tough job -- and they can't go home at the end of the day to relax, get a hug from a loved one, or sleep in peace through the night to start fresh in the morning. Join us in sending a little bit of love and appreciation their way with a Christmas Care Package to boost their spirits and their hearts during the holidays.

It's a gesture that means more than you know. So come on. Let's get to it!

See us for:
AUTO • HOME • CROP HAIL • FARM & RANCH • MULTIPERIL • LIVESTOCK
INSURANCE

BORT AGENCY, INC.
 510 Main St. • Gruver, TX
 (806) 733-2456



STATE CAPITAL HIGHLIGHTS



by Ed Sterling

High court rules against release of birth date information

AUSTIN — Reporters' long-held practice of using dates of birth for fact checking before publication comes courtesy of the Texas Public Information Act -- the law that governs the release of data held by state agencies and other governmental bodies.

The law currently includes no prohibition on the release of most state employees' date of birth information. However, on Dec. 3, the Texas Supreme Court ruled birth dates may be kept confidential and need not be released to the public.

Grounds for the case, Texas Comptroller of Public Accounts v. Attorney General of Texas and The Dallas Morning News Ltd., originated in 2005, when the newspaper requested payroll information on 145,000 state employees. Most of the request was granted, but the comptroller disallowed the release of date of birth information.

Although no evidence of identity theft resulting from the release of date of birth was presented in the case, the court's main argument for closing off the information was that the release of it would expose state employees to the risk of identity theft.

Sect leader brought to Texas

Warren Steed Jeffs on Nov. 30 was returned to Texas to stand trial for sexually assaulting a child, the Texas Attorney General's Office announced.

Law enforcement officers with the Texas Rangers and the attorney general's office escorted Jeffs to San Angelo after taking custody of him in Utah.

Jeffs is being held without bail and is to be tried in a Tom Green County state district court on two charges of sexual assault of a child and bigamy.

Jeffs is the former president of the Fundamentalist Church of Jesus Christ of Latter Day Saints, a group that split from the mainstream Church of Jesus Christ of Latter Day Saints in the 1890s. The FLDS group bought land near Eldorado in Schleicher County and created the YFZ "Yearning for Zion" Ranch and compound. The ranch was the site of a multi-government agency intervention in the spring of 2008, in which agents removed more than 400 chil-

dren and placed them in safe housing after allegations of sexual abuse at the ranch were communicated to authorities.

To date, seven of 12 YFZ Ranch-related suspects have been convicted of sexually assaulting children, according to the Texas Attorney General's Office.

Recount favors incumbent rep

After a recount of mail-in ballots cast in the Nov. 2 election, state Rep. Donna Howard, D-Austin, last week was declared the winner in the House District 48 race, by 12 votes over Republican challenger Dan Neil.

There is a procedure to follow if Neil contests the recount. He would have to file papers with the secretary of state and the secretary of state would forward the matter to House Speaker Joe Straus, who in turn would assign a House member to lead an investigation and a special investigating committee.

If Neil had won, the GOP would have had 100 seats to the Democrats' 50 seats in the upcoming 82nd Texas Legislature, which convenes Jan. 11.

A 50-seat difference would have created a supermajority, allowing Republicans to more easily advance their bills to House floor votes.

Driving records available online

The Texas Department of Public Safety on Dec. 1 announced drivers may order their driving records online and print them out instead

of waiting to have the record mailed to them.

Drivers can visit www.texas.gov, place an order using a credit card and print out their record.

Drivers must submit certain personal identification information to proceed. The printout will be certified and suitable for submitting to a court for permission to take defensive driving, the DPS said.

Student performance data online

All it takes is curiosity and a computer with internet access to find out how students are performing academically in any Texas school district.

The Texas Education Agency has made the 2009-10 Academic Excellence Indicator System reports available online at www.tea.state.tx.us.

One can look up information on high-stakes test results, passing rates, attendance rates, dropout rates, college readiness scores, college entrance exam statistics, and much more.

Ag Dept. compiles gift guide

The state Department of Agriculture is helping Texas businesses merchandise their wares with its new 2010 Go Texan Holiday Gift Guide.

"Focused on bringing families a holiday season full of unique Texas gifts," the 32-page guide, posted online at www.tda.state.tx.us, "is your one-stop shop for locally made Texas products," the agency says.

Sergio's Auto Sales

Current Inventory

- 2004 VW Passat GL \$5,900
- 2004 Hyundai Tiburon \$6,550
- 2003 F-150 Crew Cab \$14,500
- 2007 GMC Yukon \$22,500
- 1986 Chevrolet \$3,500
- 2002 Ford Crow Victoria \$5,600
- 1999 VW Beetle \$4,996
- 2005 Chevrolet Aveo \$4,995

We appreciate your support!

Happy Holidays

SERGIO'S AUTO SALES

SERGIO VARGAS

120 W. KENNETH AVE. SPEARMAN, TX 79081
 806 659 9971 CEL. 806 330 0173

The Hansford County Reporter-Statesman
 Mailing Address - 213 Main Street • Spearman TX 79081
 Physical Address - 310 Barkley Street • Spearman TX 79081
 Phone - (806) 659-3434 • Fax - (806) 398-9080
 www.spearmanreporter.com • reporter@spearmanreporter.com
 Mon.-Thurs. 9 a.m.-12 p.m., Mon.-Wed. & 1-5 p.m.
 Closed Thurs. afternoon and all day Fri., Sat. & Sun.
 Gary Smith - Publisher Catherine Smith - Editor
 Contributing Writers: Dorothy Hudson, Jim Derington, Merry Sparks, Cecil Biggers
 Contributing Photographers: Charlie Johnson, Lisa Johnson, Tammy Batton, Bonnie Bergan
 Subscription Rates
 In Hansford County - \$30.00 • Out of County - \$40.00
 E-Mail Subscription - \$35.00

The Hansford County Reporter-Statesman (USPS 529660) is published weekly in Spearman, TX. Periodical postage paid in Spearman, TX. POSTMASTER: Send address changes to: The Hansford County Reporter-Statesman, 213 Main Street, Spearman, TX 79081.

Publication Policy
 The deadline to submit news and advertising to The Hansford County Reporter-Statesman is Monday at 5 p.m. Items submitted after the deadline will be published at a later date, as time and space permit. Publication of all items is at the discretion of the editor.

Advertising
 Open Display rates are \$4.00 per column inch. Classified Ads are \$6 for the first 25 words and 10¢ per word for each additional word. (Additional charge for boxed classifieds.) There is a \$1 charge per week if billed.

Member of
 Gruver Chamber of Commerce
 Spearman Chamber of Commerce
 Texas Press Association and Panhandle Press Association

MUSIC MAKERS

- ACROSS**
1. Make fit for something else
 6. Chitchat
 9. m in F = ma
 13. Robin Hood's companion Tuck, e.g.
 14. 2nd largest bird
 15. *Yo-Yo's instrument
 16. The A in AV
 17. Sea in Spain
 18. Kitchen tear-jerker
 19. *Dueling _____
 21. What lawyers often do
 23. Pine juice
 24. It's been called "a good walk spoiled"
 25. Piping material
 28. Wine country
 30. Card carrier
 35. Birdbrain
 37. Type of poker
 39. _____ 66
 40. _____-de-camp
 41. Chased up a tree
 43. Chills and fever
 44. Frown with anger or disapproval
 46. *Type of vest used by marching band drummer
 47. Skidded
 48. Non-physical aspect of a sport
 50. St. _____ patron saint of Norway
 52. Female suffix
 53. *Black Eyed _____
- DOWN**
1. School for cadets
 2. Beat thoroughly
 3. *Verdi's famous opus
 4. No gains without these
 5. USC player
 6. Diamonds and rubies, e.g.
 7. American Medical Association
 8. Donkey in Mexico
 9. Carte du jour
 10. Align, past tense
 11. _____ gln fiz
 12. Daughter's brother
 15. Valuable storage?
 20. Abstractionism using optical illusion

22. Freddy's scary street
24. Shade providers
25. Colorless watery fluid of blood
26. *Human instrument
27. DNA strand of bases
29. Actor's role
31. Extinct flightless birds of New Zealand
32. *"Reveille" instrument
33. Ladies' pocketbooks
34. *Woodwind mouthpieces
36. Salamander
38. Ardor
42. Sink hole
45. As opposed to desktop
49. Unit of length of yarn
51. *Stradivari's instrument
54. Buddhist in state of nirvana
56. *"What A Feeling" singer Cara
57. Celt
58. Sky bear
59. Desktop picture
60. Matured, as in wine or cheese
61. No ifs or buts either
62. Make with needles
63. Traveler's helper
65. Metal-bearing rock
67. "Oui" in English

These games are brought to you by the Hansford County Reporter-Statesman

CROSSWORD

| | | | | | | | | | | | |
|----|----|----|----|----|----|----|----|----|----|----|----|
| 1 | 2 | 3 | 4 | 5 | 6 | 7 | 8 | 9 | 10 | 11 | 12 |
| | | | | | | | | | | | |
| 13 | | | | | 14 | | | 15 | | | |
| 16 | | | | | 17 | | | 18 | | | |
| 19 | | | | 20 | | | 21 | 22 | | | |
| 25 | 26 | 27 | 28 | | 29 | | 30 | 31 | 32 | 33 | 34 |
| 35 | | 36 | | 37 | | 38 | | 39 | | | |
| 40 | | | | 41 | | 42 | | 43 | | | |
| 44 | | | | 45 | | 46 | | 47 | | | |
| 48 | | | | 49 | | 50 | | 51 | | 52 | |
| | | | | 53 | | 54 | | 55 | | 56 | |
| 57 | 58 | 59 | | | | 60 | | | | 61 | 62 |
| 63 | | | | | 64 | 65 | | 66 | | | 67 |
| 68 | | | | | 69 | | | 70 | | | |
| 71 | | | | | 72 | | | 73 | | | |

PRESENTED BY

VolunteerMatch.org
 Where volunteering begins.

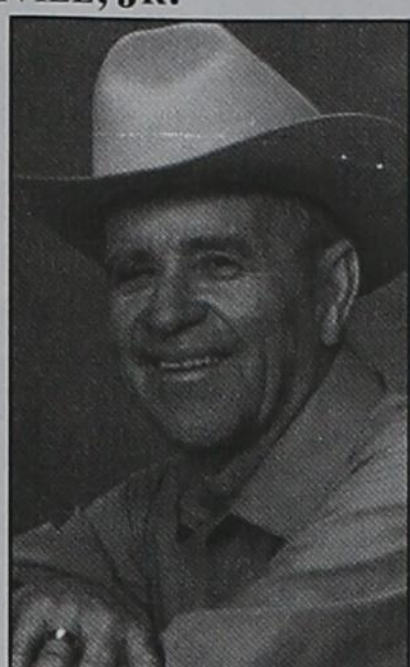
©2010, StatePoint Media, Inc. answer on classified page

Happy Birthday!

December 9 Birthdays - Clayton Smith, Grant Odom, Matt Overbey, Marlene Winger, J.H. Campbell Jr., Gail Vanlandingham, Elodia Flores, Melana Papay, Shawn Cook, Juan Garcia Jr., Elda DeSantiago, Maddie Rose Stork, Gannon Crum, Don England, Chaz Patterson...

Our Sympathy

MACK BEVILL, JR. GRUVER - Mack Bevell, Jr., 81, passed away Saturday night, December 4, 2010 at Baptist St. Anthony's Hospice, Amarillo, Texas. Memorial services were Wednesday morning, December 8, 2010, 11:00 A.M. at the First Baptist Church, Gruver with Rev. Scott Curry officiating.



SARAH WAUNETA COLE SPEARMAN - Sarah Wauneta Cole, 94, passed away on Tuesday, December 7, 2010. Family visitation will be held on December 9, 2010 from 2-4 p.m. at Boxwell Brothers Funeral Home.

GARY NEAL SCROGGS PERRYTON - Gary Neal Scroggs, age 63, died Monday, December 6, 2010. Funeral services will be at 2 p.m. on Friday, December 10, at the Victory Family Church of Perryton.

MONUMENTS Boxwell Brothers Funeral Home 519 Evans • Spearman 659-3802 Dear friends, When you buy a monument from us we make sure it is exactly what you want at a price you can afford.

Alva Monument Co. Formerly Liberal Monument & Memorial Company New Location: 1111 Tucker Road Liberal, Kansas North of the New Wal-mart

STOP LEG CRAMPS BEFORE THEY STOP YOU. Calcet is designed to help stop low calcium leg cramps. Just ask your pharmacist.

COSTA RICA \$995 + tax & fees 10 Day Tour All-Inclusive Available at Caravan.com. PANAMA Canal Cruise & Tour 8 day all-inclusive guided vacation.

FREE HD FOR LIFE! Only on DISH Network. Lowest Price in America! \$ 24.99/mo for over 120 channels! \$500 Bonus!

Mesothelioma EXPERIENCE COUNTS Lawyers with over 35 years combined expertise. 1-888-MESO-FIRM

DIRECTV Direct Sat TV 1-800-577-1322 285+ Channels 160+ HD Channels Packages Start At \$29.99 Mo.

Replenish the seed of faith through... DAILY BIBLE READING, PRAYER & REGULAR CHURCH ATTENDANCE. Spearman, Sacred Heart Catholic Church, First United Methodist, Grace Presbyterian Church, Union Church, Fellowship Baptist, Church of Christ.

He has showed you, O man, what is good. And what does the LORD require of you? To act justly and to love mercy and to walk humbly with your God. Micah 6:8

This feature is made possible through the sponsorship of these civic minded businesses: Deakin ELECTRIC, Bartlett's Lumber & Hardware, BERRY CLEANERS, Morse Baptist Church, Morse, Waka.

PRAIRIE MOTORS INC. 100 Roland St Spearman, TX 79081 (806) 659-4541 www.prairiemotors.com MurMur's Cafe 100 Roland St Spearman, TX 79081 (806) 659-3580

HYI

FOR YOUR INFORMATION

Education Fund For Johnson Children
An education fund has been set up at First National Bank for the children of David Johnson. If anyone would like to donate, they can mail to PO Box 337, Spearman, TX or bring by the bank and give to any teller.

Pringle-Morse CISD Cougar Pride Selling Cookbooks
The parent-teacher organization of Pringle-Morse CISD-Cougar Pride, is selling one-of-a-kind cookbooks. The cookbooks are a collection of recipes from the 1995 cookbook and more from this year, with over 1,300 recipes included. The recipes were collected from our community, friends, and family members. The proceeds from the books goes toward school and community projects. Please contact the school at 733-2507 or cindy.lieb@region16.net if you are interested in purchasing a cookbook.

Senior Enchilada Fund Raiser
The Project Graduation for the Spearman Senior Class of 2011, will be taking enchilada orders Monday, November 29th - December 16th. The enchiladas will be available for pick-up on December 18th from 11:00 a.m.-3:00 p.m. at the Church of Christ. Orders can be placed with any senior parent or you can call Missie Bates at 659-9907, or Sherry Boyd after 6:00 p.m. at 659-3844, to place your order. You can also stop by Dreamers Salon, located at 224 Hancock, to place your orders. Enchiladas will be \$13 a dozen and you may order meat and cheese or just cheese enchiladas. Please request with or without onions. Thanks from the parents and families of the upcoming graduating Class of 2011.

Responsible Nutrient Management Seminar
You are invited to a Responsible Nutrient Management Seminar hosted by Allied Custom Gypsum and Agro-Culture Liquid Fertilizer on Friday, December 10 from 10 a.m.-12 noon at the O'Loughlin Center 502 Brandt. Lunch will be provided. Door prizes will be available. Please RSVP to 806.659.3751 or 806.330.0259. 3 CEUs will be available.

Gruver PTO Angel Tree
The Gruver PTO Angel Tree has been at the Amazing Vase for about a week now. PTO is still in need of community members who are willing to help provide Christmas for our 'angels.' Those who are interested may pick up an angel at the Amazing Vase anytime (just be sure to sign the yellow PTO notepad on the counter at the flower shop). Gifts may be wrapped and returned to City Hall by the end of the workday on Friday, December 10th.

Live Nativity
The 1st-5th grade Sunday School classes of First Baptist Church of Spearman (123 S. Bernice) will present a Live Nativity on Sunday, December 12, 2010 from 6:30-7:30 p.m. The community is invited share in this celebration of the birth of our Lord, Jesus Christ.

Spearman Community Blood Drive
A Spearman Community Blood Drive will be held on Monday, December 13th from 1-7 p.m. at the O'Loughlin Center Gym. Coffee Memorial has partnered with some very special businesses to bring you the 12 Days of Christmas, November 24th-December 22nd. Eligible donors will receive a Holiday T-Shirt and may also register for 12 drawings for 12 big gifts. There will be one winner drawn per week beginning December 17th. Sponsored by Sam's Club, Circle N Appliance, Edes Meats, Buzula Furniture, Panhandle Eye Group, Sound by Design, Walmart, Best Buy, Sears and Proffitt's Lawn & Leisure. For appointments, call Jada Breeden at 659-3030. Photo ID or donor card required to donate. All blood types are currently needed.

Pancakes With Santa
You are invited to enjoy Pancakes with Santa on Friday, December 17th at the Spearman Elementary/Jr. High Cafeteria from 5:30-7 p.m. Come support the Spearman Elementary PTO and then cheer on your favorite team between the Spearman Lynx and Lynxettes and the Gruver Greyhounds and Lady Hounds. Prices are \$5 for adults, \$3 for children, and children 4 and under are free.

NOTICE
As of Monday, December 6, 2010, the District Clerk's Office for Hansford County will no longer issue applications for passports. The public can have an application issued from the District Clerk's Office at the Courthouse in Stinnett or the Post Office in Perryton.

Take Off Pounds Sensibly
Take Off Pounds Sensibly meets on Tuesday mornings at 8:30 a.m. at the First Christian Church in Gruver. For more information, contact Marilyn Been at 806-733-2087.

Hansford Gun Club Rifle Shoot
The Hansford Gun Club holds a .22 rifle shoot on the second Sunday of each month, starting at 1:30 p.m. at the gun range (located on Hwy. 15 between Spearman and Gruver). Everyone is invited to join the fun.

Care Packages
If you would like to help with Care Package Drop Offs, please contact Less Sullivan at lessullivan@hotmail.com. Less is collecting items for care packages in conjunction with AmericaSupportsYouTexas.com. Journals are also located at the O'Loughlin Center, Spearman High School, and Gus Birdwell Elementary for anyone wishing to sign them. For more information, contact Less at 330-0973.



McNeat Bakery, owned and operated by Rhonda Mc-Nett, is located at 410 1/2 Main Street. Operating hours are 7 a.m.-5 p.m.



Gypsies, Lamps & Beads, owned and operated by Roxie Ralston, Traci Venneman, Erika Stedje and Lisa Salmans, is located at 231 Main Street.

Gruver Chamber of Commerce Holds Ribbon Cuttings

The Gruver Chamber of Commerce held two ribbon cuttings on Thursday, December 2, 2010.

McNeat Bakery, owned and operated by Rhonda Mc-Nett, is located at 410 1/2 Main Street. Operating hours are 7 a.m.-5 p.m. Early birds, come in for an assortment in the morning for breakfast or a sweet snack throughout the day. Orders are taken daily (806-736-0274) for cakes, cookies, etc. Put your own twist on your party and design a treat!

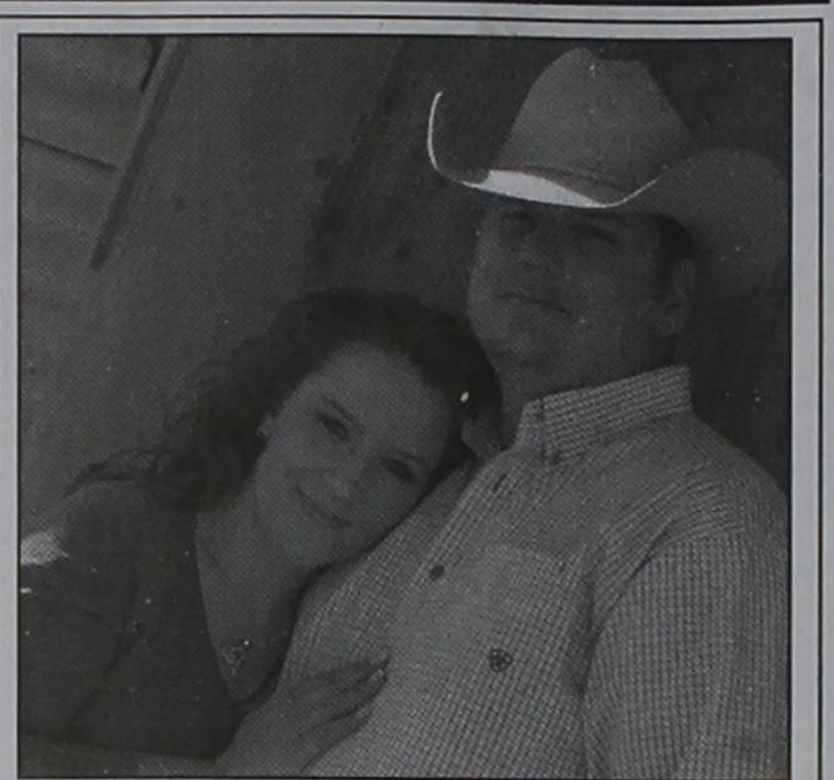
Gypsies, Lamps & Beads, owned and operated by Roxie Ralston, Traci Venneman, Erika Stedje and Lisa Salmans, is located at 231 Main Street. A spin off a favorite Cher song, Gypsies, Lamps & Beads is a great addition to the community because it holds an assortment of exciting finds.

Gypsies is what you might think of when you come in and enjoy the fun, carefree environment! Be careful, you may find yourself sitting at the round table and spending a little more time than planned.

Lamps are definitely something you will find; round ones, black and white ones, color ones, tall ones, new ones, antique ones, each and every one unique in its own way! The lamps are much like the furniture you will stumble upon; it is all redone, one of a kind and has a unique look that will catch your eye. Maybe enough to conversation start; maybe enough to purchase! Traci can even transform your old pieces you love and make you love them in new style.

Beads is quite obvious when you walk in because there are such vibrant and clever jewelry sorts in each corner and in between. If you don't find exactly what you want but have an idea in your head; sit and design with Roxie. Some are even found wearing their accessory-less outfit in for a brainstorm of the perfect jewel.

Although G, L&B is only open on Thursdays, feel free to call the numbers on the front door and have somebody let you in (hint: great for emergency gift shopping). These ladies aim to please.



Engagement Announcement

Jerry and Christy Hart of Morse announce the engagement of their daughter, Tonya Hart, to Brenton Hughes. Brenton is the son of Gary and Jan Ellsworth of Spearman. Tonya is a 2006 Graduate of Spearman High School, and a 2009 Graduate of Texas Tech University. Brenton is a 2001 Graduate of Spearman High School.

The couple will be married December 18, 2010 in a private ceremony, and they would like to invite their friends and family in the community to join them at their reception at 8:00 PM at the Tindell Electric Shop Building at 204 County Road 24 in Spearman.

You are invited to a Baby Girl Shower

honoring
Matti DeSha

Sunday, December 19, 2010
at 3 p.m. in the

Hansford Manor Activity Room
707 Roland Spearman TX

Go Painlessly™

Mary Ann W. Tom W.

Thera-Gesic

Ounce for Ounce - Compare and Save!

The top-quality & top-value pain creme

HOME PHONE SERVICE

NO Pre-Payment • NO Deposit Required!

Rates from \$6.99 per month*

(\$17/month including approximate taxes & fees)

FREE 1st Month of Service

Caller ID & Call Waiting included in Packages**

New-Talk 866.934.3448

*\$6.99/month with auto pay **Requires silver or gold package

Give the gift of Christmas Beauty

Poinsettias

available in various sizes

Ready now for pickup or delivery

All Occasion Flowers

202 N. Bernice (across from the Post Office)

659-5180

teleflora

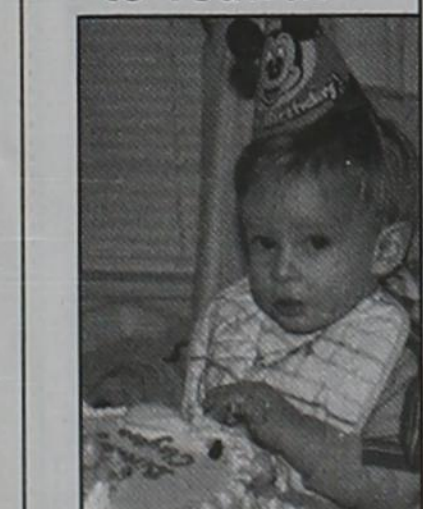
Happy Birthday to you
Happy Birthday to you
Happy Birthday Dear Clayton!
Happy Birthday to You!

FPC Frank Phillips College

REGISTRATION

for **SPRING 2011 CLASSES** is underway at the ALLEN CAMPUS (2314 S. Jefferson, Perryton, Texas) and classes begin on January 18th.

SO... WHAT ARE YOU WAITING FOR?



WHY SHOULD YOU CHOOSE THE FPC ALLEN CAMPUS?

- Close to Home!
- Small Class Size!
- Affordability!
- Quality Education!
- Transferability of Classes!

With our **AFFORDABILITY** and **GUARANTEED TRANSFERABILITY** of **CORE CURRICULUM COURSES (IT'S THE LAW!)** to other **PUBLIC COLLEGES AND UNIVERSITIES IN TEXAS (PROVIDED YOU MAKE A GRADE OF "C" OR BETTER)** it just makes "CENTS" to take classes at Frank Phillips College.



Call (806.648.1450) or stop by the Allen Campus to complete your paperwork. You can download an Allen Campus class schedule as well as a full schedule of classes offered by FPC by accessing our website:

www.fpctx.edu

Writing Matters

AT FRANK PHILLIPS COLLEGE

www.fpctx.edu

Ask us about this!!

Hansford County 4-H Livestock Judging Results

The Hansford County 4H livestock judging team competed at three contests this fall.

They started out the season at the Five State Fair in Liberal, Kansas. In the senior division, Hansford placed 1st overall with strong individual efforts from the entire team. Brenna Reid placed 2nd overall and was recognized for 1st in cattle and 2nd in reasons. Audrey Lieb placed 3rd in cattle and 3rd overall. Jacob Lieb finished 2nd in swine and 5th overall. Jennifer Crowl earned a 4th place finish in sheep and Callie Stedje placed 4th in cattle.

In the junior division, the Hansford crew placed 2nd overall. The team had sev-

eral individuals recognized for their accomplishments. Jaci Burgin won 1st in cattle, 1st in reasons, and 2nd place overall honors. Rayel Anderson placed 4th in cattle, 4th in reasons, and 5th overall. Maggie Pipkin was awarded 3rd in reasons. Carter Burgin placed 2nd in reasons. Dustyn Kelley was the high individual in swine.

The next contest on the schedule was the Panhandle Expo in Guymon, Oklahoma.

The Hansford team swept the senior division, winning each species as well as the high team overall award. Jacob placed in the top 2 in each species en route to winning high individual overall. Brenna was 1st in

both reasons and sheep and 2nd overall. Audrey placed 3rd in both swine and sheep and 4th overall. Callie placed 4th in sheep and Jennifer won 4th in swine.

We didn't have a complete team in the junior division, but the two individuals did very well. Tyler Stedje was named the high individual in swine and cattle as well as the high individual overall. Jonathon Crowl received 3rd in reasons.

The final stop in the fall campaign was Tri-State Fair in Amarillo.

The Hansford County senior team went in a little shorthanded with only a three-man team but fought hard enough to earn a 3rd place overall finish. As a team, they placed 2nd in both cattle and swine. Individually, the team was led by Jacob, placing 2nd in swine and 4th overall. Audrey placed 11th in cattle and 14th overall. Travis Stedje came through with a strong day in his first full contest, winning 16th in sheep. The team came within 22 points of knocking off the Arkansas state champion team.

The junior team placed 4th in cattle and 10th overall. Individually, Rayel placed 17th in swine and 27th overall. Jaci placed 23rd in cattle. Kaycee Anderson placed 42nd in cattle. Kennedy King placed 6th in cattle. Carter earned a 44th place finish in swine.

The team will practice throughout the winter to prepare for the spring contests and a chance to qualify for the State competition.



Bret Burgin, Audrey Lieb, Jennifer Crowl, Callie Stedje, Jacob Lieb, Brenna Reid



Maggie Pipkin, Jaci Burgin, Carter Burgin, Rayel Anderson, Dustyn Kelley

Thank you!

The family of Leo Cummings would like to thank everyone for their support during Leo's illness and death. A special thank you to the Hansford Manor, Hansford Hospital, Hansford Hospice, Dr. Mark Garrett, the First Assembly of God Church, Pastor Danny Hendricks, Melba Rook, Billy Volden, Johnny Ring and Bob Boxwell.

Phyllis Cummings;
Stella Cummings; Wayne Cummings & Family;
David Cummings & Family; Joyce Pierce & Family

Thank you!

I want everyone to know what a wonderful business First State Bank is. Last week I was in the bank and wrote a check for \$200. I must have dropped the envelope in the bank, because when I got home I didn't have it. Everyone in the bank was so concerned. They didn't find it, but to my surprise, the bank reimbursed the money. They didn't have to do that! Thank you, too, to Ginger for coming over and trying to help me, and see if I was OK, and to Mike for being a wonderful person and friend.

Thank you again,
Sara Dossett

Spearman Lynx & Lynxettes

<http://spearmansports.smugmug.com/>

Photos available of Spearman Lynx and Lynxette athletic events.

Amore & Baci

Amore & Baci
Means love & kisses. Designed to be fun, and a way for a woman to express her own style.
A diverse selection of beads available.

Lay-A-Way Now For Christmas

Dunlavy Jewelry
435-3136 209 S. Main

We accept Master Card, Visa & Discover Cards

Merry Christmas!

QUALITY AND DESIGN
FOR THE HOLIDAY SEASON & BEYOND!

CALL 806-644-4000

HANSFORD COUNTY FLORAL COMPANY

300 MAIN • SPEARMAN, TX

WHERE EXPERIENCE COUNTS

The Spirit of Christmas

14th Annual
Community Christmas Dinner

Where: The O'Loughlin Center
When: December 25th • 12:00-1:30 p.m.
What: A free dinner will be provided for anyone in the community who would like to share the Christmas spirit with food and fellowship.

Everyone is invited for this special occasion.

Rides will be available to and from the O'Loughlin Center. Call 659-3030 and leave message if you need transportation.

Holiday Help

Sun Loan Company can help with your Holiday expenses!
Loans from \$100-\$1233

During December, if you open a new loan or reopen a closed account, we will give you FREE TURKEY!

SUN Loan Company
& Tax Service

106 S. Main • Perryton
(806) 435-7242 Se Habla Espanol

Contact Laura Flores, Manager

Local Sports

Spearman BB News
 12/6/10
 7th Grade Lynx 38, River Road 34
 8th Grade Lynx 40, River Road 43
 7th Grade Lynxettes 33, River Road 13
 8th Grade Lynxettes 31, River Road 26
 8th Grade Lynxettes B-Team 24, River Road 14

Lynxettes Outrun Wildcats
 The Lynxettes traveled to Canadian on Tuesday, December 7, 2010 to take on the Lady Wildcats. The two teams showed up ready for a hard-fought match-up. The Lynxettes trailed by three points at the end of the first quarter, and went into the half down 27-29.

The Lynxettes came back after the half determined to win, and moved ahead of the Wildcats, 40-39.

The Lynxettes and the Lady Wildcats both seemed driven to come out on top. The Lynxettes had a 51-48 lead late in the fourth quarter, but a 3-pointer by the Lady Wildcats tied the game. With just 35 seconds left in the game, Morgan Ashmore was fouled. Ashmore made the first shot, but missed the second, taking the Lynxettes ahead 52-51. Both teams fought to the buzzer. With 5 seconds left in the game, Tylo Farar was fouled. She made both shots to win the game at 54-51.

Lynx Dominate Wildcats
 The Lynx went onto the Canadian Wildcats court ready to take home a win. (The Wildcats team lacked it's normal luster since the football team is still in the playoffs.)

At the end of the first quarter, the Lynx led 18-9. The Lynx let off the throttle in the second quarter, and went into halftime with a 25-10 lead.

The Lynx continued their domination in the second half, leading 36-18 at the end of the third quarter. The Lynx closed the game with a score of 47-20.

Gruver BB News Game Time Changes
 Game times for the Gruver Lady Hounds games on Tuesday, December 14, 2010 have changed. The JV Lady Hounds will play at 5:30 and the Varsity Lady Hounds will play at 6:30.

Gruver Breaks in New Gym
by Coach Wade Callaway
 The Varsity boys and girls finally had their shot in the new gym last night. What a great atmosphere for basketball!

The boys hosted the always tough Dusters from Beaver, Oklahoma. In yet another defensive nail biter the Hounds prevailed in the end by a score of 38 to 36.

Haden Hart broke the Duster's hearts with an old-fashioned three point play with 11 seconds to go to give Gruver the go-ahead basket and FT. The Greyhounds then dug in and made a defensive stand to seal the deal. Haden led the way in scoring with 14 points and 4 assists while Korbin Irwin finished with 9 points and 6 rebounds. Senior Wil McCloy didn't score a bucket, but hit two crucial FT's late and added 6 rebounds, 3 steals and a great defensive effort!

All the Greyhounds got in the game and they all contributed to a great team win! They would like to thank the great crowd for its support!

Boys Ranch Defeat Greyhounds
by Coach Wade Callaway

The Varsity boys lost at Boys Ranch 67-41. Kramer King led the way with 11 points including three 3-pointers. Justin Bass and Danny Bonilla both

chipped in 6 points each. The boys will play 4 games in three days beginning Thursday with a 1:30 pm tip-off against district rival WT High followed by a 6:00 pm game versus the host team: Sanford-Fritch. On Friday the Greyhounds will play 3-A Borger at 4:30 pm and conclude the round-robin tournament on Saturday with a tilt against the Hornets of Tulia at 11:00 am.

11/19/10
 Gruver JV Hounds 39, River Road 23
 Scoring - Beau Blankenship 10 points, Colten Jackson 10 points

11/22/10
 Gruver JV Hounds 14, Perryton 58
 Scoring - Colten Jackson 6 points

11/23/10
 Gruver JV Boys 20, Panhandle 52
 Scoring - Jace Lane 8 points

11/30/10
 Gruver JV Boys 23, Boys Ranch 43
 Scoring - Jace Lane 6 points

12/2/10-12/5/10
Gruver JV Tournament 3rd Place

Gruver JV Boys 38, Panhandle Gold 31
 Scoring - Lupe Pena 13 points

Gruver JV Boys 33, Perryton White 43
 Scoring - Colten Jackson 11 points, Beau Blankenship 10 points

Gruver JV Boys 38, Spearman 37
 Scoring - Lupe Pena 12 points

12/3/10
 Varsity Girls 51, Borger 38
 Varsity Girls 45, Fritch 38

Varsity Boys 37, Borger 31

12/6/10
 7th Grade Lady Hounds 36, Canadian 14
 8th Grade Lady Hounds 19, Canadian 39
 7th Grade Hounds 26, Canadian 30
 8th Grade Hounds 27, Canadian 29

Gruver Jr. High All-Region Band



Gruver Jr. High All-Region Band Members - (Front Row, L-R) Ramiro Hernandez, Christina Ayala, Ady Garcia; (2nd Row, L-R) Serena Diaz, Mattie Mayfield, Lalo Barrera, Kennedy King, Wyatt Poer, Sarah Olmos; (3rd Row, L-R) Lesley Bernal, Tania Ortiz, Trenton Finley, Vanessa Garcia, Brett Wills, Lizi Tarango, Abigail Trejo; (Back Row, L-R) Nick Rivera, Gabriel Mundo, Oziel Rey, Brenny Sea-gler, Ulysses Valverde, Kennedy Venneman, Gabby Villalobos, Antolina Mendoza

Several 6th, 7th and 8th grade band students from Gruver Jr. High traveled to Panhandle, Texas where they auditioned along with over 800 other students for the Jr. High All-Region Band. Our students competed against kids from other 1A, 2A and even 3A schools in the surrounding area.

It is a huge accomplishment to be selected as a member of this band! Gruver Jr. High walked away with 24 kids making the band and once again, more students in the band than from any other school! It is unbelievable the amount of hard work and dedication these students put into learning their music and practicing during class,

after school and at home. The students will travel to Canyon, Texas in January where they will have a 2-day clinic and concert.

The band is directed by Sandy Cross and assisted by Katie Wiggins. These talented students know what it takes to be the best band in the area and never settle for less than the best!!

WHY WISH FOR SAVINGS?

Get them here.

Christmas Sale 2010

Sale Prices Good From December 6-24

| | | |
|--|---|---|
| Men's L/S Dress Shirts Arrow, Van Heusen, Chaps, Company 81, Tabasco & More 30% OFF | Men's Fashion Jeans Tommy, Chaps, Company 81 \$39⁹⁵ | All Men's & Boys Shoes Adidas, Reebok 30% OFF |
| Men's Cinch Shirts Men's Cinch Jeans - Black Label (Medium & Dark Denim), Blue Label & White Label \$39⁹⁵ | Boys Long Sleeve & Short Sleeve Dress Shirts - 25% Off Boys Carhartt & Company 81 Jeans - 25% Off Boys 20X Shirts & 20X Jeans - \$19 ⁹⁵ Boys L/S George Strait Shirts - \$19 ⁹⁵ Boys Cinch Shirts & Jeans - \$24 ⁹⁵ Boys Jeans - \$19 ⁹⁵ Wrangler, Levi, Denim & Colored Boys Fashion Jeans - \$29 ⁹⁵ Tommy, Union Bay | |
| Men's Wrangler Riatas Assortment of sizes and colors \$29⁹⁵ | Men's 20X Shirts \$35⁹⁵ | Men's George Strait Shirts \$35⁹⁵ |
| Men's Levis 550 & 560 Jeans \$29⁹⁵ | Sale Rack - 1/2 Price Men's & Boys Shirts | |

Cates Men & Boys
 221 Main Street
 Spearman, Texas
 (806) 659-3426
 Mon.-Sat., 9 a.m.-6 p.m.

Tong's Chinese Restaurant
 (806) 644-2838
 22 Archer Street • Spearman

Daily Buffet
 Lunch Buffet 11 a.m.-2:30 p.m.
 Dinner Buffet 5:30-9 p.m.
 Sushi Available on Sunday Buffet
 Open Wednesday-Monday - Closed Tuesday

MITCHELL THEATRES.COM
 GUYMON, OK • LIBERAL, KS • NEWTON, KS

NORTHRIDGE 8
 Guymon, Oklahoma
 www.northridge8.com
 580-338-3281

SOUTHGATE 6
 Liberal, Kansas
 www.southgate6.com
 620-624-5573

SEQUOYAH 8
 Garden City, Kansas
 www.sequoyah8.com
 620-275-2760

CHISHOLM TRAIL 8
 Newton, Kansas
 www.chisholmtrail8.com
 316-283-0555

FRESH POPCORN EVERYDAY!
-PARTY ROOM & ARCADE-

Proudly Celebrating Two Years

FRONTIER FENCING & CONSTRUCTION

FF

NOW OFFERING OVER 20 YEARS OF THE HIGHEST QUALITY FENCING EXPERIENCE

Barbed Wire Fencing Pipe Fences Corrals Metal Buildings - Prefabs & Pole Barn
 Residential Fence Various Construction & Carpentry Projects

Contact - Brandt Oquin (806) 202-2208

HELP WANTED

HELP WANTED: Reliable babysitter needed. Must have references. Saturday-Wednesday, 4:30 a.m.-3 p.m. Please Call Britney or John at 806-202-7386 or 806-202-6701. TFN(12-9-10)

HELP WANTED: The Nursanickel Motel is seeking a housekeeper. Call 659-3737, or go by 815 Hwy. 207 S. in Spearman. 4(12-9-10)B

HELP WANTED: Experienced automotive technician needed. Good working environment, holiday pay, health insurance. Also service department helper needed. Apply in person at Prairie Motors in Spearman. (806) 659-2541 or 1-800-692-4657. TFN(12/2/10)B

HELP WANTED: Wolf Creek Feedyard, located in Perryton, TX, is accepting applications for positions in our Mill, Cattle and Yard Maintenance departments. Experience is not required. We will train the right applicants. We offer a competitive wage, benefits including health insurance and a retirement plan. Please call (806) 436-5697 or come by the office to fill out an application. 2(12/2/10)B

HELP WANTED: Frontier Feedyard is now hiring an experienced pen rider. Must have horses and tack. EOE. Contact Ben at 806-882-4251 or 806-736-0230. TFN(12/9/10)B

HELP WANTED: First United Methodist Church, Spearman is currently taking applications for a nursery worker. Need to be available for Sunday church services and various times throughout the week and for funerals. If interested, please come by the church to pick up an application. 806-659-5503. 407 S. Haney. TFN(11/4/10)B

HELP WANTED: Truck Driver - Must have Class A CDL with hazmat. Regional deliveries. Fuel hauling experience a plus. Health insurance available. Vacation after a year. Various bonuses and incentive pay. Fax resume to 940-668-8303 or go to www.gainsvillefuel.com for an application. 3(12/9/10)B

SERVICES

HOOCHY POOCHY PARLOR Call us for all your pet's grooming and boarding needs. Call now for reservations! 806-273-2724. TFN(11/2/07)B

FOR SALE

FOR SALE: Matching couch and love seat. Excellent condition. Call 659-2875. 1(12/9/10)P

PUBLIC NOTICE

JOB REQUISITION NUMBER: 015369 TRANSPORTATION MAINTENANCE TECHNICIAN II (K513)

The Texas Department of Transportation will be accepting applications for one full-time positions at the Hansford County Maintenance Office located at 114 W SH 15, Gruver, Texas.

JRO15369 (K513): Performs skilled transportation maintenance work. Work requires use of maintenance tools and operation of light equipment and some types of heavy equipment. The starting salary will be \$12.08 - \$18.72 per hour.

A completed State of Texas application is required and applications will be accepted until 5:00 p.m., Friday, December 10, 2010. For further application information, including a complete job vacancy notice, contact the nearest Texas Department of Transportation. Information may also be accessed via the Internet at www.txdot.gov/careers/.

Mailed applications should be postmarked no later than Friday, December 10, 2010 and sent to: TxDOT, Attn: Human Resources, 5715 Canyon Drive, Amarillo, TX 79110. If more information is needed or if an applicant needs an accommodation in order to apply for this job, contact Human Resources at (806) 356-3231.

TxDOT IS AN EQUAL OPPORTUNITY/AFFIRMATIVE ACTION EMPLOYER. 2(12/2/10)B

FIREWOOD FOR SALE

Cedar firewood for sale. Delivered & stacked, or self pickup. Call (806) 658-2573. 15(8/12/10)P

NORTH PLAINS ELECTRIC COOPERATIVE, INC. is now accepting resumes to fill the position of Accountant. The person selected for this position will be required to live in or near Perryton, Texas. Applicants for this position must have a minimum of a bachelor's degree in accounting, business administration, or related field. Work experience in lieu of education will be considered. Applicants must demonstrate proficiency using a PC, MS Word, and MS Excel. The applicant must also be able to learn in-house software as well as some internet applications. A pre-employment drug screen is required. Only those interested in a non-exempt position with a 40-hour workweek and overtime as required, should submit a resume to North Plains Electric Cooperative, P.O. Box 1008, Perryton, Texas 79070 or email: resumes@npec.org. All submissions must be received by 5:00 p.m., December 17, 2010. (An Equal Opportunity Employer.) 2(12/02/10)B

PUBLIC NOTICE

This notice is to advise the public that the Gruver Volunteer EMS is operating under a staffing variance.

This variance allows Gruver Volunteer EMS staff two BLS/MICU ambulances. When in service, each unit must be staffed by two people with a minimum of one certified EMS technician. This variance is for 24 hours a day seven days a week. 2(12/9/10)B

hchd

Hansford County Hospital District
Openings at Hansford Hospital

CLINIC LVN: Graduate of an approved LVN program. Provide general nursing care to patients in clinical setting. Interacts with patients and patient's families, Medical Staff members and other departments of HCHD on a continuous basis.

Great working environment and staff, quality facility providing opportunities for professional growth. Great benefit package. Apply at 707 S. Roland, Spearman, TX or contact Jackie Nelson at 806-659-5841. Download application at www.hchd.net EEOE (12/02/10)



Lease Operator - Oil & Gas

Vernon E. Faulconer Inc., an Independent Oil & Gas Company with over 35 years in the business has an opportunity for an experienced, detail oriented Lease Operator located in the Spearman, TX area. Position is responsible for the daily inspection, operational monitoring, repair, and reporting on assigned wells and facilities.

Position requires two (2+) years of oil and gas experience with good working knowledge of all surface production equipment. Candidates with general knowledge of compressor operations and well automation preferred. High School diploma or equivalent required. Attractive compensation and benefit package for qualified candidates. Fax or email resume to: Human Resources (903) 581-2111 or email to careers@vefine.com. EOE

M&D Aerial, LLC



David & Megan George
P.O. Box 520 Danth: (806) 202-2360
Spearman, Texas 79081 Megan: (806) 202-2358
mdaerial@yahoo.com

ADAPT GAB MASS
FRIAR EMU CELLO
AUDIO MAR ONION
BANJOS REFUTE
SAP GOLF
PVC NAPA MEMBER
LOON RAZZ ROUTE
AIDE TREET AGUE
SCOWL TIBAR SLID
MENTAL OLAV ESS
PEAS IIII
GUITAR ANORAK
MARCO HOG LENNY
AESOP ARE INDIE
PLAN TED NESTS

9 7 4 5 1 6 2 8 3
5 3 1 2 7 8 4 9 6
6 8 2 4 9 3 1 5 7
7 2 8 6 3 1 5 4 9
4 1 9 7 8 5 3 6 2
3 6 5 9 4 2 8 7 1
8 4 3 1 6 7 9 2 5
1 5 6 8 2 9 7 3 4
2 9 7 3 5 4 6 1 8



Serving Hansford County Since 1990

Julie Martin: Broker - 659-2425

We'd Like Your Listing!
FOR QUALITY & SERVICE CALL US TODAY!
Equal Housing Opportunity



Golden Spread Realty

903 S. Bernice, Spearman - 1,644 sq. ft., 3 BR, 1 3/4B, CH/CA, 1C attached & 1C detached garage, nice shop & storage building in back, RV parking with extra lot. **7959 FM 1573, GRUVER** - 3BR, 1 3/4B, 2C attached garage, 1961 sq. ft. on 5 acres.

404 4th Ave, GRUVER - 2BR, 1B, 1090 sq. ft. Also available for rent.

121 S. Hwy. 207, Spearman - Apartment complex & Bunkhouse. **PRICE REDUCED - MAKE OFFER.**

Gina Deal, Broker/Owner (806) 435-5444 www.century21.com

INDEPENDENTLY OWNED & OPERATED. ©1992 and Century 21 Real Estate Corporation. Equal Housing Opportunity. EOW(8-05-10)B

PUBLIC NOTICE

The Board of Trustees of the Spearman Independent School District is accepting sealed bid proposals until 1:00 PM, January 7, 2011 for the attached "SURPLUS ITEMS LIST" for the 2010-2011 school year. Any proposals received after that time and date will not be read and returned unopened and not considered. Please mail or deliver bid proposals to Spearman ISD, Larry Murphy, 403 E. 11th Avenue, Spearman, TX 79081-4021. The District reserves the right to reject any bid and/or all bids, to award the bid as it may appear to be advantageous to the District and to waive all formalities in bidding. The "ITEMS" are purchased "Where Is As Is, With No Return & No Guarantee" to be removed by PURCHASER no later than 5:00 PM, January 10, 2011. PLEASE LIST THE ITEM NUMBER ON YOUR BID PROPOSAL TO ASSURE THE CORRECT BID FOR THE CORRECT ITEM.

Surplus Items to Sold by Sealed Bid January 7, 2011

| ITEM NUMBER | DESCRIPTION |
|-------------|--|
| 1 | High School Science- Wooden Cabinets |
| 2 | same as #1 |
| 3 | same as #1 |
| 4 | same as #1 |
| 5 | HS Science - Vent Hood (large) |
| 6 | HS Science - Wooden two door cabinet |
| 7 | HS Science - Wooden two drawer/ two door cabinet |
| 8 | HS Science - Wooden three drawer cabinet |
| 9 | HS Science - Wooden two door cabinet |
| 10 | same as #9 |
| 11 | HS Science - Wooden three drawer cabinet |
| 12 | HS Science - Wooden two door cabinet |
| 13 | HS Science - stainless steel double sink |
| 14 | Fixed leg table 5ft X 3ft |
| 15 | Fixed leg table 5ft X 3ft |
| 16 | Fixed leg table 5ft X 3ft |
| 17 | Folding table 6ft X 2.5 ft |
| 18 | Folding table 5ft X 3ft |
| 19 | Folding table 5ft X 3ft |
| 20 | Folding table 5ft X 3ft |
| 21 | Folding table 5ft X 3ft |
| 22 | Folding table 6ft X 2.5 ft |
| 23 | Rolling "Baker's" Rack holds Trays (no trays) |
| 24 | Rolltop Desk |
| 25 | Old Dish washer |
| 26 | Two Door Metal chemical cabinet |
| 27 | Glass and wood trophy case |
| 28 | Folding table with eight sides |
| 29 | Metal rolling cart |
| 30 | Folding table 6ft X 3ft |
| 31 | Microwave |
| 32 | Microwave |
| 33 | Folding table 6ft X 3ft |
| 34 | Television 12inch |
| 35 | Television 19inch |
| 36 | Television 17inch |
| 37 | Television 17inch |
| 38 | Television 24inch |
| 39 | Television 24inch |
| 40 | Television 24inch |
| 41 | Large metal mixing bowl |
| 42 | Metal desk 4ft X 2.5ft |
| 43 | Two Door Metal Storage cabinet 6.5ftHX3ftWX18inchesD |
| 44 | Antique Top Open Coke Machine |
| 45 | Two door Metal Chemical cabinet 2.5ftX2ftX10inches |
| 46 | Stacking Clothes Washer/Dryer |
| 47 | Commercial Venti-Mixer Model 13P (bread) |
| 48 | Eight Metal leg/wooden seat bar stools |
| 49 | Antiques PA System |
| 50 | Five Drawer Letter Size metal file cabinet |
| 51 | Four Drawer Letter Size metal file cabinet |
| 52 | Four Drawer Letter Size metal file cabinet |
| 53 | Four Drawer Letter Size metal file cabinet |
| 54 | Four Drawer Letter Size metal file cabinet |
| 55 | Television VTEL 33inch |
| 56 | Television VTEL 33inch |
| 57 | Television 24inch |
| 58 | Television 19inch |
| 59 | Two Drawer metal File cabinet |
| 60 | Two Drawer metal File cabinet |
| 61 | Two Drawer metal File cabinet |
| 62 | Three Drawer Card File |
| 63 | Three Drawer Card File |
| 64 | Nine Drawer File Cabinet 20inchesWX4ftHX2.5ftD |
| 65 | Nine Drawer File Cabinet 20inchesWX4ftHX2.5ftD |
| 66 | Nine Drawer File Cabinet 20inchesWX4ftHX2.5ftD |
| 67 | Refrigerator |
| 68 | Small Spray rig with tank/gas motor no pump |
| 69 | Four foot Round Table |
| 70 | Four foot Round Table |
| 71 | Glass and wood trophy case |
| 72 | 16 - Single door wooden cabinets |
| 73 | 22 - Blue Computer Chairs on casters |
| 74 | Desk Chair |
| 75 | Secretary Chair |
| 76 | Secretary Chair |
| 77 | Two Audio Speakers |
| 78 | Secretary Chair |
| 79 | Two Door metal double wall chemical cabinet 5.5ftHX3.5ftWX2ftD |
| 80 | Two Door wooden cabinet 4ftX2.5ftX16inches |
| 81 | Two Door wooden cabinet 4ftX2.5ftX16inches |
| 82 | Two Door wooden cabinet 4ftX2.5ftX16inches |
| 83 | Two door wooden table 2.5ftX3ftX4ft |
| 84 | Folding table 6ftX2.5ft |
| 85 | Folding table 6ftX2.5ft |
| 86 | Fixed leg table 6ft X 3ft |
| 87 | Science table with sink with water fixture |
| 88 | Solid Metal Doors with glass window & hardware |
| 89 | Solid Metal Doors with glass window & hardware |
| 90 | Solid Metal Doors with glass window & hardware |
| 91 | Science table with doors |
| 92 | Science table with sink with water fixture |
| 93 | Science Vent Hood |
| 94 | Four Science table stand/top with water&gas fixtures |
| 95 | Miscellaneous |

Christmas Specials

at **Gordon's DRUG**

314 Main • Spearman • 806-659-2141
Where gift-giving is effortless & FUN!

Thursday Night Savings

Different Special Each Thursday Night

Open until 8 p.m. each Thursday through December 23rd

Photo Machine
Fast Printing Time
Personalized Christmas Cards
Poster-Size Photos

French & Co., Realtors
273-7355

Beautiful 3 BR, 2B home in Morse, Texas. 1.06 acres.
Updates Galore, Gorgeous tile & wood floors, stunning trim, custom paint, 28x33 garage & separate shop.
Call Michele for details.
806 273 7355

Blankenship Real Estate
659-3052 - 670-3774

LET US HELP YOU SELL YOUR HOME.

4BR, 2B, 2CG, basement, separate garage & workshop. Excellent location and condition. Many special features.

NEW LISTINGS WANTED!
Eulalia Blankenship - Sales
Eschol Blankenship - Broker

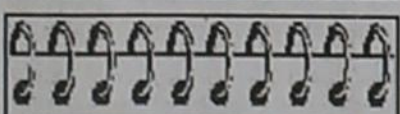
This ad is just a small sample of the properties that we currently have for sale.
Please check our Web site and give us a call! We need your listings both large and small, all types of ag properties (ESPECIALLY CRP).

HARTLEY/MOORE COUNTY LINE - corn, wheat, cotton, cattle with all the perks, 992 acres, sprinkler irrigated with some improved pasture, large brick home, large set of state of the art steel working pens with concrete feed bunks and covered working area, on pavement. House, shop & horse barn on 2 acres may be bought separately.

DALLAM COUNTY - Three adj. sections of dryland, some native grass, irrigation in area (new wells across the road).

SWINE PRODUCTION FACILITY - Moore Co., TX. - 1200 sow capacity, capable of running 28,000 pigs annually, computerized feed mill, flex-flo feeding system, management in place. PRICED TO SELL! INVESTORS WELCOME!

SEE OUR WEBSITE OR CALL US!
www.scottlandcompany.com
Shawn Gillispie 806/922-5532
Ben G. Scott, Broker
1-800-933-9698 day/eve
TFN(11-11-10)



We NEED listings!
Call us now to help YOU sell your home for top dollar!

902 9th - Gruver: Horse Stables FOR SALE! 18 acres circular driveway, arena, & 4500 sq ft barn on 10.42 acres! PRICE REDUCED!!

Shirley Howard, Broker/Owner
806-886-6536, Cell
Melinda McCullough, Realtor
(806) 733-5678

We would LOVE to sell your HOUSE!
CALL US!

JINES REAL ESTATE

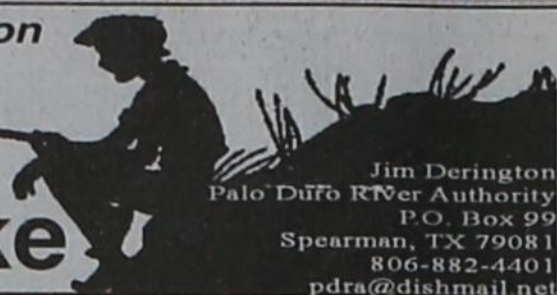
Farnsworth 208 Locust - \$132,000
Open Sunday, June 20 • 1-4
Residence - Apartment - 3 Car Garage
14601 NW Loop 143 - \$124,900
10+ Fenced Acres w/Manufactured Home
New Listings Coming Soon!
I Look Forward to Working For You!

Remember, I can show you homes in the Spearman and Surrounding areas even if listed with another Broker.

Linda Jines • Broker-Owner
806-202-4752
View Photos at www.jinesrealestate.com

by Jim Derington

Out at the Lake



Jim Derington
Palo Duro River Authority
P.O. Box 99
Spearman, TX 79081
806-882-4401
pdra@dishmail.net

December 6, 2010 - Lake Palo Duro level - 48.73 feet

The picture this week is a white tail buck, spotted near the lake, on the south side. I saw him move, then lay down, in some tall grass. I grabbed the binoculars, and could see his antlers. I took pictures while slowly getting closer to him. He didn't move at all, until I got within twenty yards of him. He was with a doe, and did not run far, leaving an opportunity for more pictures.



White tail buck on the south side of Lake Palo Duro.

Many of us were busy pheasant hunting, over the weekend. I heard mixed reviews on the results. The Spearman Rotary hunters did not bring in many birds, though we saw enough to keep it exciting. My group saw fifty birds or more fly out of a weedy area, into a milo field, that we did not have permission to hunt. I heard of two other groups of hunters in the area, that had a good hunt.

The Texas Parks and Wildlife Inland Fisheries employees (one is Jim Hoy, former Gruverite) have been busy, checking our fish. They electro-fished a while back, with disappointing results. Last week, they placed frame nets around the lake, mainly to check for crappie. I have not been able to get results of that survey, yet. They plan to place gill nets, which usually catch wall-eye and catfish, at a later date. The results of these surveys will help determine spring stocking rates. They have already placed more than 100,000 channel cat

fingerlings in the lake. The most recent stocking, was 2,000 more channel cats, that were six to nine inches long.

We still don't have any geese, and only a few ducks, at Lake Palo Duro. These birds are scattered throughout the area playalakes, however. I will guess that if we get a prolonged cold spell, these playalakes will freeze, forcing the waterfowl to our lake.

Bill Pittman purchased a

spotting scope at the Rotary auction, then generously donated it to the lake. Everyone is welcome to come by and take a look. Many times bald eagles, deer, or waterfowl, are visible here.

Our local trapper, Louis Schnell, releases raccoons at the lake from time to time. He recently told me that he only brings the ones with a good disposition. Some are mean, while others will let him pet them.



Gruver boys practice inside the new high school gym.

Operation Christmas Greeting

The Hansford Hospital Auxiliary has begun their yearly fundraiser - Operation Christmas Greeting. Instead of mailing greeting cards, individuals who wish to may donate money to the Hansford Hospital Auxiliary and have their greeting published in this paper. The money is used to purchase equipment and supplies that are not budgeted at the Hospital and Manor.

Your donations can be mailed to Operation Christmas Greeting Chairman Judy Nelson, 130 Nelson Road, Spearman, Texas 79081. Checks should be made to Hansford Hospital Auxiliary and marked Operation Christmas Greeting. Thank you so much for supporting this fundraiser.



from

Charlie Ball
Jim & Nan Nicholson
Gary & Cathy Smith

Dennis & Judy Nelson
Mary Alice Gibner
JoAnn Lee

E Waste Collection

By Ed Hansen City Manager of Spearman

The City of Spearman is accepting e-waste at City Hall through December 12th. A drop-off site has been established at the drive-thru, where e-waste can be deposited.

E-waste consists of TV's (not wooden console TV's), computers, monitors, cell phones, video machines and games, printers, etc. Thermostats and smoke detectors cannot be accepted at this time as they contain hazardous material.

For more information, contact Spearman City Hall at 659-2524.



Season's Greetings

from

First National Bank

Open House

December 21, 2010

Come enjoy refreshments!!

Cookies, wassail and coffee will be served all day.

Santa will be at FNB from 10-3 p.m.

Member FDIC



FREE Internet Installation!

Merry Christmas!



Digital TV with HD

- * OMC Networks in HD
- * OU Sooners Sports News
- * OSU Cowboys Sports News
- * Amarillo Networks in HD
- * Local High School Sports
- * NFL Network



Free Premium Channels for 1 month

\$29.99 per month for 6 mos.

Free Installation of up to 4 set-top boxes!

Offers good thru 12/31/10

www.ptci.net 800.882.2266 721 W. 7th in Spearman

Restrictions apply. All services not available in all areas.