

The Hansford County Reporter-Statesman

All three districts potential losers ...

Confusion reigns upon finance bill's passage

by Jean Ann Behney

Reporter's note: This is the first of a two-part series on Texas's new education reform bill and the effect it will have on Hansford County's school districts and taxpayers.

This week's story outlines in the broadest sense some of what the very complex, 48-page reform bill mandates. Next week's article will include in-depth interviews with Superintendents Roy Harris, Tommy Cathey and Larry Butler, as well as the most specific and updated financial data available.

After seven years of haggling, both in the courts and the Texas State Legislature, an education finance reform bill designed to equalize school funding has passed and been signed into law.

On Thursday, April 11, the Legislature passed Bill 351, which was then signed into law by Governor Ann Richards Monday, April 15.

Confusion and uncertainty reign all over Texas in the aftermath of the reform bill's passage. Hansford County's three school district superintendents are doggedly sifting through reams of data, including the new 48-page law itself, in an attempt to assess the changes it will make for the school systems.

Pringle-Morse Independent School District (ISD), Gruver ISD and Spearman ISD are all considered to be "slightly above average to very well-off" in terms of per pupil expenditure and tax valuation wealth, according to Spearman Superintendent Larry Butler. He said this ranking or rating is determined by state property tax boards and the Texas Education Agency (TEA).

Since Bill 351 seeks to equalize school funding statewide, partly through redistribution of locally-

raised property taxes, all three Hansford County school systems are potential "losers" in the 1991-92 school year.

Bill 351 creates 188 County Education Districts (CEDs) to group poor to wealthy independent school districts as new districts for funding purposes. Hansford County has been put in a CED with Sherman, Potter, Dallam and Moore counties. Although Pringle-Morse straddles Hansford and Hutchinson Counties, it is being included in Hansford County for CED purposes.

The philosophy behind relatively-wealthy to wealthy school districts sharing some of their local monies with their poorer neighbors in the same CED has been described as a "Robin Hood" solution to traditionally inequitable school funding, i.e. the State "steals" from the rich to give to the poor.

It should be noted that the Legislature plans to have the bulk of the equalizing monies—to the tune of \$1.3 billion!—come from the State of Texas itself. This money will not come out of existing funds, but be generated by some new fundraising source for education. The most likely source for this money would be a new tax, possibly even a state income tax.

Initially, the Legislature estimated that \$400 million would come from increased local property taxes, but new projections from the TEA show that amount will be as much as \$2.1 billion.

Hansford County's schools will actually be struggling with three crucial money matters in terms of school funding next year if Bill 351 and its follow-up Omnibus bill (not yet passed) are in effect.

First, the local taxes raised in this county for local schools may be up for "recapture," meaning to be

allotted to other school systems in the five-county CED.

Secondly, the state funds Gruver and Spearman receive may be cut, so that they can instead be redistributed to poorer districts all over Texas. (It should be noted here that Pringle-Morse is a budget balanced school and does not receive state funds.)

Thirdly, the tax valuation on which the three local school systems base their tax rate and, ultimately, their yearly budgets, are going to decrease in 1991-92. This information has already been given to all three superintendents. Spearman's tax valuation will decrease by five million dollars, Butler reported.

This means that unless the tax rate is increased to make up for the devaluation, the three local schools systems will have less money for the 1991-92 school year, regardless of what happens under the new law.

This all seems to spell "money crunch" for Hansford County's schools next fall, but the new law and its mandates are extremely complex and open to many interpretations at this point. In addition, it is almost certain, according to Butler, Harris and Cathey, that the constitutionality of Bill 351 will be challenged in the court of law within the next few days or weeks.

A 1931 Texas State Supreme Court decision called Love vs. the City of Dallas ruled that in this state, one taxing district cannot raise monies and transfer them to other taxing districts. Morse's Harris said this is only one of three or four "very questionable" provisions of Bill 351 that will be challenged in terms of legality.

In the meantime, however, unless State District Judge F. Scott McCown, who retains jurisdiction over

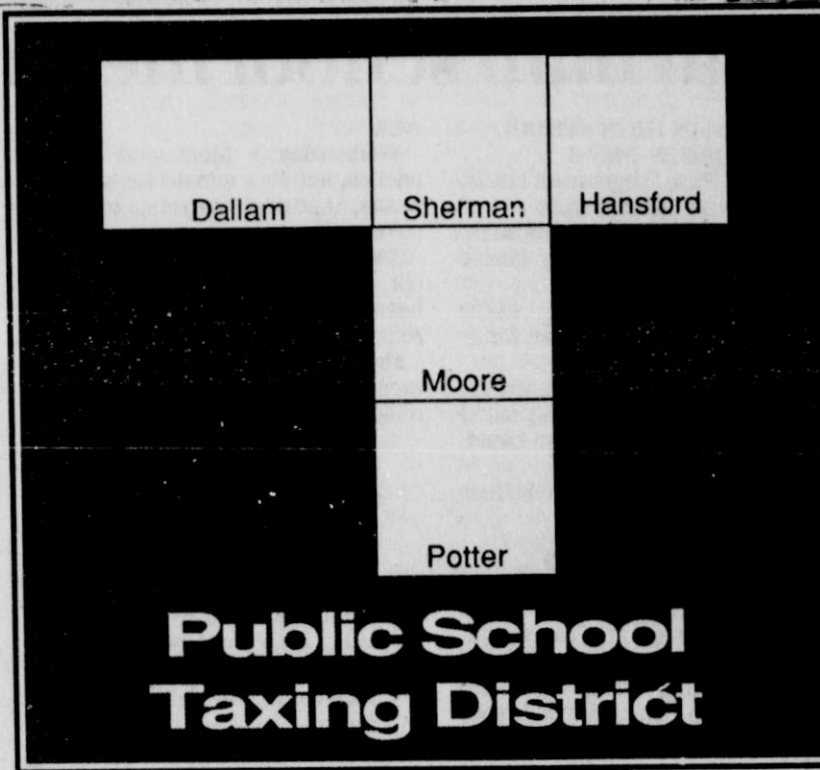
the education funding case, strikes down the new law as unconstitutional, the law will be upheld and all school districts in Texas must adhere to it. The law would also have to be upheld during the time it was being challenged in the courts.

There are several significant points to consider in all this confusion. The basic facts are that the Texas State Supreme Court has ruled (Edgewood vs. Kirby) that it isn't legal for some school districts to have more money to spend on schools than others. The Court demanded that the Texas State Legislature devise a reform bill to equalize funding across the state. The Legislature now claims it has passed a bill that will accomplish this momentous task, yet that bill's constitutionality is already up for challenge.

For now, school districts are left in limbo. No superintendent has yet received the final data from the TEA's Lynn Moak which would tell them what their state funds will be or what local funds will be "recaptured" by other, poorer school districts.

Moak is the Deputy Commissioner for Research and Development who ultimately "plugs the numbers into the formulas," said Butler, to determine who gets what. The local superintendents also noted that the preliminary data they have received is full of glaring errors. For example, the amount of tax assessed per hundred dollar valuation of property noted for Hansford County's districts is a higher figure on the data sheets received than what is actually taxed.

Superintendents Butler, Cathey and Harris will discuss Bill 351 and, specifically, its effect on the future of their school systems, in next week's Hansford County Reporter-Statesman.



County to help pay for deeper landfill

by JoAnn Morton
Editor

Hansford County commissioners, at their April 22 meeting authorized an expenditure of \$8,000 to deepen the pit at the Spearman municipal landfill.

According to Hansford County Judge Jim Brown, the commissioners authorized the expenditure as part of an effort to lengthen the life span of the landfill until specific solid waste disposal guidelines are issued by the Environmental Protection Agency.

"The county is continuing to work with the City of Spearman to try to resolve the solid waste disposal problem in Hansford County," said Brown. "Until the EPA gives us some specific guidelines to work with, the only option we have is to try to use the current landfill as long as possible."

In other business, commissioners authorized the letting of bids for a road grader for Precinct No. 1, and

authorized the letting of bids for an air conditioning system for the county courthouse.

The commissioners' court discussed a resolution concerning prison construction in Texas, but did not sign the resolution.

The resolution, received from the Texas Association of Counties, would give the state a virtual blank check in the matter of funding prison construction, according to Brown.

The resolution is in support of the state legislature being able to enact any taxation it sees fit, to fund prison construction, said Brown. He commented that the resolution would take away a measure of local control over taxation, and Hansford County Commissioners do not agree with the wording of the resolution.

Personnel policy was discussed by the commissioners. Regular business included approval of minutes of the last meeting, receiving the treasurer's report and investments, and payment of claims.

Gives notice of deficiencies ...

Council takes action against Mission Cable

Mission Cable Company representatives told the Spearman City Council about recent changes in the company's cable television system, but city officials still don't seem to be happy with Mission Cable.

The position taken by Mission Cable is that the cable television system has been upgraded and the company is in compliance with the city's franchise ordinance. The position taken by the City of Spearman is that Mission Cable is not complying with agreements made in the franchise ordinance.

At the April 16 Spearman City Council meeting, council members voted to give the cable company a notice of deficiencies and to file any required judicial action in accordance with the franchise ordinance.

Rick Wall, regional manager for

Mission Cable, attended the meeting with Richard Taapken, area manager, and Vicky Genn, secretary. Wall told the council that any litigation with Mission Cable was the responsibility of the company's administration, and their attendance was for the purpose of answering questions about the quality of service in Spearman.

Taapken said a Spanish channel has been added to the system, and that an up-stream line for each school campus has been installed except for amplifiers. He also said the emergency alert system is complete and the system has been expanded to accommodate 36 channels.

In other business, the council adopted a resolution which suspends rate increases proposed by Texas-New Mexico Power Company for a

period of 90 days beyond the proposed effective date. Texas-New Mexico had extended an invitation for up to three members of the city council to tour its new Robertson County generating facility, but the council voted to decline the invitation.

The council also considered participating in a telephone franchise steering committee. Jim Murray, city manager, said Southwestern Bell Telephone Company is currently involved in litigation with several cities which concerns the payment of franchise taxes to the cities.

He said it is his understanding that GTE, which serves Spearman, is taking a "wait and see" attitude on the litigation before negotiating new franchise agreements. The council then voted its approval of participating in the telephone franchise steering committee.

The season schedule and fees for the municipal swimming pool were set by the council. The swimming pool will be open Monday through Saturday from 1 to 5 p.m. and Sunday from 2 to 5 p.m., from Wednesday, May 29 through Sunday, Aug. 25. The pool will also be open for the Labor Day holiday weekend.

On Tuesdays, the pool will have "Teen Night" and will be open from 8 to 10 p.m. Thursdays will be "Family Night" from 8 to 10 p.m.

Admission charges will be \$1.50 for age 12 and under; \$2 for age 13-18; and \$2.50 for age 18 and over. Season passes will be priced at \$40 for 12 and

under; \$50 for 13-18 and \$60 for those over the age of 18. No family passes are available.

Cost for parties is \$35 per hour, with one guard and concession for 25 people. There will be an additional charge of \$10 per hour for each additional 25 persons. Lessons are priced at \$15 for 12 lessons of 30 minutes each.

The council voted to purchase a used cash register and time clock for the swimming pool. The cash register will be purchased from Southern Office Supply at a cost of \$450, and the time clock will be purchased from Bob Boxwell at a cost of \$100. Southern Office Supply had submitted a price quote of \$255 for a time clock.

After discussion concerning employment of an administrative assistant, the council voted to do so and set the salary range from \$23,000 to \$28,000. The city manager was authorized to advertise for an administrative assistant.

Consideration was given to a settlement offer which was made in a lawsuit filed by the city. The offer was rejected.

Regular council business included approval of minutes of meetings held March 19 and April 9; approval of monthly fire, ambulance, police, municipal court and animal control reports; approval of monthly bills payable, investments and current cash position; and approval of the February revenue and expense report.

Gruver pool fees set by city commission

by JoAnn Morton
Editor

Admission fees for the Gruver municipal swimming pool will be \$1.50 per day per person and \$70 for a season pass, according to A.J. Ratliff, Gruver city manager.

The fees were set at the April 17 meeting of the Gruver City Commission, said Ratliff.

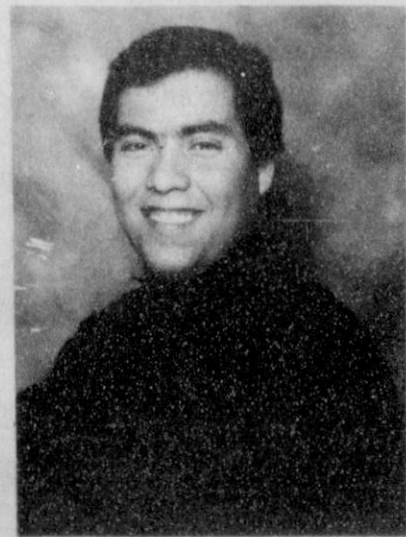
He added that the pool is scheduled to open Saturday, May 25.

Other business for the commission included receiving the audit report from Alice Peddy, chief appraiser,

from the Hansford County Appraisal District. Peddy also brought with her a list of delinquent taxes owed to the city, which she advised were uncollectable.

Ratliff gave a reminder of absentee voting for the city election, saying voters have until Tuesday, April 30 to cast absentee ballots in person at Gruver City Hall.

Regular business for the commission included approval of minutes of March 13 and 17 meetings, and approval of bills for the month of March.



Sgt. Oscar Herrera (left), son of Pete and Maria Herrera of Gruver, returned to Gruver Saturday, April 20 for a few days' leave before going back to his base in Las Vegas, Nev. Herrera was involved in Operation Desert Storm, stationed in Saudi Arabia with the United States Air Force. He attained the rank of sergeant while in Saudi Arabia, according to his father. He came back to the U.S. April 4 and has been in Las Vegas since that time, with his family traveling there to visit him upon his return. "I'm just glad he's home," said Pete Herrera. "While the war was going on, I was in front of the TV the whole time, hoping to see my son. I felt like I was there myself," he added. Oscar's brother Lee Herrera (right) is also in the U.S. military service, and has been in San Diego, Calif. with the United States Marine Corps since Jan. 28. Lee was set to graduate from basic training May 26, but his family was informed that he was injured. The injury has postponed his graduation for an unknown period of time.

by Gary Ellsworth

Billy Beacham, president of Student Discipleship Ministries and author of the seminar material used in Spearman's "Thirty-Something" discipleship event, will speak to parents, grandparents and parents-to-be at the Lyric Theatre Saturday, May 4 at 1 p.m.

The session, which is free to all who attend, will center on the same topic studied by participating "Thirty-Something" youth - Family Relationships. Beacham will share with parents what their children will learn about in small group sessions during the event.

The material was written to help young people recognize and accept responsibility in building healthy relationships in their homes. This year's study, titled "The True Test," is designed to help students understand: biblical principles and guidelines for family relationships, behavior that contributes to the building up or tearing down of the home, how reactions reveal your true character, life change takes place from the inside out, and how to handle conflict in the home.

By attending the session with Beacham, parents will have a

clearer understanding of the study material the youth are discussing and have some common ground, a starting point, to solve current or future conflict in the family.

Billy will also serve as the featured speaker at "Thirty-Something's" "Main Event," a rally Saturday evening which brings all the participating youth together for singing, worship, a concert by singer Vicki Harrell, and a closing challenge by Beacham.



In addition to authoring the curriculum used for "Thirty-Something," Beacham serves as vice-president of the National Network of Youth Ministries and president of Student Discipleship Ministries which offers his studies. Student Discipleship Ministries exists to build up the body of Christ through the local church. By use of tools which are Bible-centered, simple, and relevant, SDM strives to teach young people how to know God intimately and how to share that fulfilling relationship with others.

The "Thirty-Something" organizers encourage all parents and others interested in family relationships to attend Beacham's parents' session Saturday, May 4 at 1 p.m. at the Lyric Theatre. There will be no charge for this insightful seminar.

WEATHER				
Day	Hi	Lo	Precip	
Thu	68	42	0.00	
Fri	65	49	0.00	
Sat	61	41	0.00	
Sun	76	43	0.00	
Mon	66	42	0.00	
Tue	72	42	1.48	

Pringle-Morse school menu

April 29 - May 3
LUNCH
Monday - Mexican rice casserole, nachos, salad, fruit, milk
Tuesday - Barbeque chicken, onion rings, corn, cole slaw, Texas toast, pies, milk
Wednesday - Hamburger, trimmings, tator tots, fruit, blond brownies, milk
Thursday - Pizza, salad, fruit,

cookie, milk
Friday - Sandwiches, soup, chips, fruit, ice cream, milk
BREAKFAST
Monday - Toast, cereal, juice, milk
Tuesday - Donuts, toast, juice, milk
Wednesday - Pancakes, sausage, juice, milk
Thursday - Muffins, toast, juice, milk
Friday - Bacon, eggs, juice, milk

Spearman school menu

SPEARMAN HIGH SCHOOL
April 29 - May 3
Monday - Pizza, raw vegetables, salad bar, fruit cobbler, milk
Tuesday - Grilled cheese sandwich, vegetable soup, salad bar, ginger bread, milk
Wednesday - Meat and cheese nachos, pinto beans, salad bar, birthday cake, milk
Thursday - Chicken strips, gravy, opt, candied sweet potatoes, salad bar, hot rolls, peanut butter blend, milk
Friday - Hamburger, french fries, salad bar, cookie, milk
Jr. High/Elementary
April 29 - May 3
Monday - Pizza, Raw vegetables and ranch dressing, vegetarian beans, fruit cobbler, milk
Tuesday - Grilled cheese sandwich, vegetable soup, fruit, ginger bread,

milk
Wednesday - Meat and cheese nachos, lettuce - tomato salad, pinto beans, buttered carrots, birthday cake, milk
Thursday - Chicken strips, gravy, opt, candied sweet potatoes, green beans, hot rolls, peanut butter blend, milk
Friday - Hamburger, tator tots, lettuce, tomato, pickle, onion, cookie, milk
DIET AND CANCER
 There are many factors involved in developing cancer. Diet is just one of them, but it is one that you can control. You can take personal responsibility for eating well to stay well. To learn how, contact your local American Cancer Society or call 1-800-ACS-2345.

Hansford Happenings

The Spearman Classroom Teachers Association will sponsor a forum featuring candidates for election to the Spearman School Board. The forum is scheduled for Thursday, May 2 at 7:30 p.m. at the Spearman High School auditorium. Dwayne Mitchell will serve as moderator for the event, during which candidates will respond to prepared questions. The public is invited and encouraged to submit questions for the candidates. Questions for school board candidates can be submitted to either Dwayne Mitchell or Wesley Jarvis at Spearman High School.

The Gladiola Flower Club's annual Home Tour will be conducted Sunday, May 5 from 2 to 5 p.m. Homes on the tour will include those of the Brad Beedys, the Vance Sniders, the Roy Wilmeths and the Joey Woolleys. Tickets are available from any Gladiola Flower Club member or at the homes on the day of the tour.

"Greyhound Gallery of Stars" is the theme for the Gruver Greyhound Athletic Banquet, set for Monday, May 13 at 7 p.m. in the elementary school gym. The admission price of \$10 per person will include a steak dinner catered by Wheatheart Shriners. All adult Greyhound fans are urged to attend. In anticipation of future banquets, however, no one under the 9th grade will be allowed to attend. Those planning to attend should contact LinJa Tidwell at 733-2891 or Rhonda Ward at 733-2025.

Hansford County Extension Homemakers Bridge Luncheon is set for Saturday, April 27 in the Extension Homemakers Clubroom, 309 N. Bernice in Spearman. Registration and coffee will be at 9:30 a.m., and tournament play begins at 10 a.m. Lunch will be served at 12:30 p.m. There is a charge of \$10 per person for lunch and games. Those planning to attend should contact Adalyn Barnes at 659-3493, or the Hansford County Extension Office at 659-2030.

The Waka Lions Club will have its annual Old Fashioned Pie Supper at 8 p.m. Saturday, April 27 at the Waka Schoolhouse. Everyone is invited.

A Kindergarten Roundup and Preschool Screening is scheduled for Monday, May 6 from 1 p.m. to 3:30 p.m. at Pringle-Morse School in Morse. The Roundup and Screening is for children ages 3 to 5 years. Parents of children age 3 to 5 who will attend Pringle-Morse School are asked to contact the school at 733-2507 for more information.

A fund has been established at First State Bank of Spearman for the benefit of the Rev. David and Jane Nuckels. The fund will help to defray medical and living expenses incurred because of health problems. The Nuckels were associated for 15 years with First Assembly of God Church in Spearman. Contributions to the fund can be made at the bank.

The annual Golden Spread Senior Citizen's Center Radiothon will be Thursday, May 2 from 10 a.m. to 4 p.m. on the local radio station, KRDF.

The Spanish Dagger Gallery in Gruver will be open from 2 to 5 p.m. Sunday, April 28 for the Carbone art exhibit.

Police report

Spearman Police Department
 Spearman police answered a call in the 300 block of East Fourth Street in the early morning hours of April 15. According to the department's incident report, a domestic disturbance was reported. No complaints were filed and no arrests were made.

A traffic accident was reported at 6:55 a.m. April 15. The left front tire failed on a 1985 Ford van, driven by Manuel Garcia of Amarillo. The van, which was traveling north in the 900 block of South Highway 207, struck a tree and a reflective road marker. No injuries were listed in the police incident report.

Spearman police answered a call on the evening of April 15, when a domestic disturbance was reported in the 500 block of East Second Street. No complaints were filed and no arrests were made, according to the police incident report.

A 1 year old child was bitten by a dog on April 17. According to the police incident report, the dog is under home quarantine.

Donald Shannon Burke of Spearman reported a vandalism to his vehicle April 19. Grease was poured on his windshield, according to the SPD incident report.

Another domestic disturbance call was answered April 20, when a simple assault was recorded by Spearman police in the 300 block of Roland Street. No complaints were filed in the incident, and no arrests were made by police officers.

The Spearman Police Department received 46 calls for service during the week of April 15 through April 21. Those calls included one report of larceny/theft; two reports of vandalism; one report of drunkenness; five reports of disorderly conduct; one traffic violation; five calls on suspicion; one dog bite; and eight miscellaneous calls for officer response.

Also included in the calls last week were one traffic accident; four vehicle lockouts; one escort; two special detail calls; three domestic disturbances; nine animal control responses; and one motorist assist.

Gruver Police Department

The Gruver Police Department received a report April 15 of a trespassing at the varsity gym at the high school building. Three juveniles were detained in connection with the incident, said Police Chief Steve Gaines.

On April 18 Gruver police accompanied a juvenile officer to the

school, where a conference was held with the three students, their parents and school officials. The juveniles were placed on six months' informal adjustment, which is similar to a probationary period, said Gaines.

A report of a suspicious vehicle was investigated by Gruver police on April 15. The report came from the 400 block of Richardson.

On April 16, an assault report was taken in the 300 block of Womble in connection with a domestic dispute, said Gaines. The incident is under investigation, he said, and charges are pending.

On April 18, the Gruver Police Department was asked to convey a message to a man possibly traveling through town. The traveler was not located.

A hit and run report was received April 18, in the 600 block of Cluck. A parked car was apparently struck by an unidentified vehicle sometime Wednesday, said Gaines. The incident is under investigation.

On Thursday, April 18, a report of alleged criminal mischief was received in the 700 block of Main Street.

Gruver police escorted a funeral procession to Gruver Cemetery on Friday, April 19.

Gruver Ambulance
 On Wednesday, April 17, the ambulance was called to the high school, where a man had injured his back. He was transported to Hansford Hospital.

Another ambulance call was received Saturday, April 20, this time in the 500 block of Richardson for a possible drug overdose. Gaines said the patient was verbally unresponsive and was transported to Hansford Hospital.

Hospital Notes

ADMISSIONS
Thursday, April 18: Margurite Jenkins, E.J. Wade
Friday, April 19: None
Saturday, April 20: Robert Bort
Sunday, April 21: Carolyn Murphy, Francis Williams
Monday, April 22: Marguerite Hernandez
Tuesday, April 23: Eddie Gage
DISMISSALS
Friday, April 19: Dorothy Bryan, Bill Henderson, Gene Leatherman, Albert Mackie, E.J. Wade
Saturday, April 20: None
Sunday, April 21: None
Monday, April 22: Bruce Sheets, Holly Riley, C. Murphy, Courtney Baca
Tuesday, April 23: None
 Patients in the hospital are Margurite Jenkins, Marguerite Hernandez, Francis Williams, Eddie Gage, and Robert Bort

Now Playing At The Lyric Theatre
 Friday, April 26 - Tuesday, April 30
 Bargain Nights Mon. & Tue. All Seats \$3
 Screen 1 - 8:00 Screen 2 - 7:45

Teenage Mutant Ninja Turtles II: Secret of the Ooze	THE HARD WAY Starring Michael J. Fox
--	--

113 Main, Spearman

At the movies . . .

Showing at Spearman's Lyric Theatre Friday, April 26 through Tuesday, April 30 are "Teenage Mutant Ninja Turtles II: Secret of the Ooze" and "The Hard Way."
 On Screen 1 at 8 p.m., the Heroes in a Half-Shell are taking on more crime, while also trying to determine the source of the radioactive goo that made them the way they are in "Teenage Mutant Ninja Turtles II: Secret of the Ooze."

Vanilla Ice, the wildly successful, largely unbearable rap star, makes a singing appearance.
 On Screen 2 at 7:45 p.m. is "The Hard Way," an action/buddy comedy about a hot young actor who makes a pest of himself by tagging along with a gruff New York cop while studying for a role.
 Michael J. Fox and James Woods star as the actor and the cop, respectively.

Attend the Church of YOUR Choice!

In Spearman Primera Mission Bautista 502 E. 7th 659-3991 Sunday School 9:45 a.m. Worship 11:00 a.m. Pastor Jose Rauda Perez First Assembly of God 401 N. Bernice 659-2295 Sunday School 9:45 a.m. Worship 10:45 a.m. Evening Worship 7 p.m. Wednesday Worship 7 p.m. Pastor Ray Cook Church of Christ 1101 S. Bernice 659-2252 (Faith Lutheran Church) Sunday Bible Class 9:45 a.m. Worship 10:30 a.m. Evening Worship 6:00 p.m. Bible Study Wed. 7:30 p.m. KRDF Radio Program Living With Christ 7:50 a.m. M-F Minister John Scott First Baptist Church 123 N. Bernice 659-5557 Sunday School 9:45 a.m. Worship 11:00 a.m. Evening Worship 7:00 p.m. 24 Hr. Prayer 659-2911 Pastor Russ Gibbs Faith Lutheran Church 1021 Cotter 659-2033 Sunday School 9:45 a.m. Worship 11:00 a.m. KRDF Program Sun. 9 a.m. First Presbyterian Church 1021 Cotter 659-2033 Sunday School 9:45 a.m. Worship 11:00 a.m. KRDF Program Sun. 9 a.m. Word of Life Community Church (Interdenominational) 1105 S. Roland Sunday School 9:45 a.m. Sun. Morning Service 10:45 a.m. Sun. Eve. Service 6:30 p.m. Wed. Eve. Service 7 p.m. Interim Pastor Merle Davis Union Church 31 S. Endicott 659-2544 Sunday School 9:45 a.m. Worship 10:45 a.m. Sun. Evening 6:30 p.m. Wed. Bible Study 7 p.m. Pastor Jeff L. Burress	Fellowship Baptist 1102 S. Archer 659-2783 Sunday School 9:45 a.m. Worship 11:00 a.m. Evening Worship 7:30 p.m. Wed. Evening 7:30 Pastor Ron Fox First United Methodist Church 407 S. Haney 695-5503 Sunday School 9:45 a.m. Worship 11:00 a.m. Worship/Study 7:00 p.m. Youth Wed. 7 p.m. & Sun. 6 p.m. Pastor Todd Dyess Apostolic Faith Church 822 S. Dressen 659-2870 Sunday School 10:00 a.m. Worship 11:00 a.m. Sunday Evening 6:30 p.m. Wed. Prayer Meeting 7 p.m. Pastor Lealand Grimmer	First Christian Church Disciples of Christ 29 S. Bernice 659-2036 Sunday School 9:45 a.m. Worship 10:50 a.m. Women's Bible Study Wed. 2 p.m. Youth Wed. 6 p.m. & Sun 5 p.m. Pastor LaVern Draper Sacred Heart Catholic Church 901 Roland 659-2166 Sat. Night Mass 7:00 p.m. Sunday Mass 9:30 a.m. C.C.D. Sunday 10:30 a.m. Spanish Bible Study Fri. 8 p.m. Father Norbert Kieferle	Devotional WORD of GOD Jesus said: Verily, verily, I say unto you, He that believeth on me, the works that I do shall he do also; and greater works than these shall he do; because I go unto my Father. And whatsoever ye shall ask in my name, that will I do, that the Father may be glorified in the Son. If ye shall ask any thing in my name, I will do it. John 14:12-14	In Gruver Church of Christ 209 King 733-2760 Sunday School 9:45 a.m. Worship 10:20 a.m. Sunday Evening 6:00 p.m. Wed. Eve. 7:30 p.m. Minister Harold Sneed Community Bible Church (Interdenominational) Hwy. 15 733-2838 Sunday School 10 a.m. Worship 11 a.m. Sunday Evening 6:30 Wednesday 7 p.m. Pastor Zane Gray First Christian Church 510 King 733-2960 Sunday School 10 a.m. Worship 11 a.m. Wed. Bible Study 7:30 p.m. Youth Wed. 6:30 p.m. Pastor Gary Gumfory
--	--	---	---	--

Brought to you by these Fine Hansford Businesses

Boxwell Brothers Funeral Directors
 519 Evans Spearman

Hagerman's Service
 1213 Hwy. 15
 659-5131

GRUVER STATE BANK
 103 E. Broadway Gruver

Berry Cleaners
 DAN DESIMONE - OWNER
 P.O. Box 1017 • 207 Main St.
 Phone 659-3122
 SPEARMAN, TEXAS 79081

Kerry L. Henton

The Gift Registry
 103 E. Broadway
 Gruver

Dr. Charles Ridge
 721 S. Evans
 659-3395

Dr. Laurence Behney
 702 S. Roland
 659-2846
 After Hours 659-2535

Stand Firm Christian Book Store
 322 Main Gruver
 733-5124

Hansford County Reporter-Statesman

Oslo Lutheran Church (ELCA)
 West of Gruver
 On Hwy 15 & N. FM 1162
 339-7709
 Sunday School 9:45 a.m.
 Worship 11 a.m.
 Pastor Nate Hanson

First Baptist Church
 402 E. Broadway 733-2411
 Sunday School 9:45 a.m.
 Worship 10:50 a.m.
 Disciple Training Sunday 6 p.m.
 unday Eve. 7 p.m.
 Youth Happening Wed. 6:30 p.m.
 Prayer Meeting Wed. 7 p.m.
 Pastor Larry Miller

First United Methodist Church
 Broadway & Garrett 733-2651
 Sunday School 9:45 a.m.
 Worship 8:30 & 10:55 a.m.
 Sun. Evening 6 p.m.
 UMY 6 p.m.
 Pastor Lewis Holland

The Hansford County Reporter-Statesman
 "Serving All Of Hansford County"

USPS 509660
 213 Main, Box 458, 659-3434
 Spearman, TX 79081

Published Weekly at
 213 Main, Spearman, Texas

Owned and Operated by:
 Texas Independent Newspapers, Inc.
 15915 Alsace
 San Antonio, TX 78232
 (512) 545-1739
 Second Class postage paid at Spearman, Texas 79081.

Any erroneous reflection upon the character of any person or firm appearing in these pages will be gladly and promptly corrected upon being brought to the attention of the management.

Publisher - Robert M. Hulett
Copy Editor - JoAnn Morton
Bookkeeper - Colleen Burkhammer

Subscription Rate: Hansford County, \$19.95; out of county, \$24.95 annually.
Postmaster: Send address changes to Hansford County Reporter-Statesman, Box 458, Spearman, TX 79081.
 The publisher reserves the right to revise or reject at its option any advertisement which it deems objectionable, either in subject or phraseology, or which it may deem detrimental to its business.
Advertising and Story Deadlines:
 Tuesday, 12:00 p.m.

TEXAS PRESS ASSOCIATION MEMBER



Jeffrey Brock of Spearman, son of Kim and Stephanie Brock, was Spearman's only winner on the state level in the PTA Reflections Program. His entry in the preschool visual arts division won Honorable Mention. Jeffrey was recognized along with other District 8 winners at a reception in Amarillo on April 8. He was encouraged by his preschool teacher, Donna Trantham, to enter the Reflections contest.



Dwayne Smith reads bits of poetry to an attentive audience during the Hansford County Library's "Night of a Thousand Stars." The event, designed to promote family literacy, was held in conjunction with National Library Week, April 14-20.

Letter to the editor

Dear Editor:
We are the parents of Alan Beeson, who has been stationed with the U.S. Army 2nd Armored Cavalry Regiment during Operation Desert Storm.

We finally received a much-welcomed phone call from Alan. He was out of Iraq, waiting in Saudi Arabia to fly back to his base in Germany between April 19-23.

Alan stated he was involved in all 100 hours of the war. He said he saw many people killed, lots of equipment destroyed and that they captured over 10,000 EPWs.

Alan wanted to pass on to the residents of Spearman his "Thanks" for all the mail and packages. He said he has half a duffel bag full of letters, and is sorry he hasn't had time to answer each letter.

He said he was glad everyone had pulled together during these times and was proud there weren't any protesters here.

He wanted to tell everyone he appreciated their support and that Spearman was going to look a lot different to him now.

Jim and Linda Beeson
Spearman

Dear Editor:
I am very concerned about the recent actions of the area city councils, chambers, county commissioners, and school boards to support a resolution that favors the expansion of the Pantex plant in Amarillo.

I am hoping that the members of these boards did their homework and informed themselves about the function of the plutonium plant at Rocky Flats, Colorado (17 miles from Denver), and why this plant is being moved.

FUNCTIONS OF THE ROCKY FLATS, COLO. PLANT:

1. The plant makes triggers for atomic bombs from plutonium, a radioactive material that is notoriously treacherous to handle, prone to spontaneous combustion and so potent that lethal lung doses are measured in the billionth of a gram. One billionth of a particle is all a human has to inhale for it to be lethal.

2. Plutonium oxidizes readily on contact with oxygen, especially if it is in fine pieces or shavings, which occurs when being made into precisely designed triggers. There has been hundreds of small fires and two major blazes that have involved significant radioactive releases at Rocky Flats. Technology is not available to filter out the finest particles of plutonium from the air, so there is an ever present danger of inhaling even a single molecule which is lethal to a human's lung.

3. Hundreds of barrels of radioactive waste were produced every month at Rocky Flats. There is no permanent storage for the waste at this time.

The plant is being moved for one major reason: safety. After many years of accidents from trying to prove the plant's safety, the Department of Energy (D.O.E.) finally conceded and the plant was closed in Dec. 1989 because of safety concerns and severe contamination. The soil is contaminated as far as 9 miles from the plant and toxic wastes have leaked into the ground water. The General Accounting office in Washington, D.C. says Rocky Flats is its "worst environmental mess."

Quantities of waste have been mishandled and hundreds of drums filled with plutonium contaminated oil have been stacked, leaking most of the time. It is estimated that 86 grams of plutonium were lost from the drums, enough to give lung cancer to every person on earth.

Many of these facts were discovered in a law suit filed against the plant by a nearby land owner in 1985. At the same time, the plant managers were saying that everything was fine and safe.

At the present time, the "TIGER Team" of the Department of Energy has revealed that Pantex is contaminated 292 feet down because of solvents that were put in an unlined pit up until 1960. This in itself is very alarming to me.

These are all facts, which are not easily found because all the inner workings of weapons plants are closely guarded secrets. At the present, there is no technology available to operate the plutonium plant safely without contamination. Pantex could become a waste dump, by default because there is no place for this waste to go. We just finished fighting this issue in Deaf Smith County.

The Department of Energy has to answer to no one. Their credibility is zero, everyone who has ever dealt with the D.O.E. knows this. Safe, sound and proven technology has to be developed before this plant is moved to Amarillo.

I hope not only the city council members, county commissioners, chamber of commerces, and school board members but each of you will act as a public watch dog to make sure this plant is not moved to Amarillo.

My hope is that this area continues to be a good and safe place to live for generations to come.

Lois Wales
Dimmitt

Lookin' Back

5 YEARS AGO...
Thursday, April 17, 1986

Jeff Lackey was the guest speaker for the Rotary Club. His program was on the local EMT training course.

FNB and FSB were the donors of the All Around Boys and All Around Girls saddles for the Spearman Tri-State Rodeo.

Rich Melton gave the program at the Lions Club. The program was on safety and was sponsored by Texas New Mexico Power Co.

10 YEARS AGO...
Thursday, April 16, 1981

\$10,000 was raised at the annual YMCA - Rotary Auction.

A ribbon-cutting ceremony was held at the new barbershop located in the brick building just east of Allsup's.

Seven Spearman High School students were inducted into the National Honor Society.

Karen's Kozy Korner

by Karen Babitzke

Family Community Leadership

Family Community Leadership (FCL) is an educational program primarily for teaching women leadership and public policy decision-making skills which they can, in turn, teach to other groups of citizens in the county.

The program is aimed at the effective participation of women and other family members in resolving important family-related public issues. These issues may include anything that affects the quality of family life, ranging from the availability of day care to educational opportunities or the adequacy of the water supply in the community.

The FCL program does not tell people which issues they should be involved in, but it teaches them the leadership skills needed to deal with any issue of importance in their community.

What is Taught?

Basic Family Community Leadership teaches participants how to prepare for change, make your world a better place, know your leadership ability, manage conflict creatively, lead groups, motivate yourself and others, prepare to talk to decision makers, build teamwork, handle stress in groups, use power and power tools and listen and lobby.

Registration forms are available at the Hansford County Extension Office by calling 659-2030 or 733-2901.

Nutrition Advice For Women

Consumers today are subject to many dietary do's and don'ts, many of which are deceiving. Women are particularly vulnerable to nutritious misinformation because of cultural factors emphasizing a slender figure. In hopes of achieving this, women turn to fad diets and quick fixes. This misinformation, along with poor food choices and inconsistent eating habits may be compounding the problem.

Recent research cited by the U.S. Department of Agriculture by Alanna Moshfegh showed that although women are now eating leaner meats and drinking lower fat milk, at the same time they are eating more rich desserts, salty snack foods, cheese higher in fat, mayonnaise, regular

salad dressings and other fat at the table such as margarine or butter.

Nutritious, quick weight-loss solutions that classify foods as good or bad or eliminate certain food groups from the diet do not make good sense, scientifically. However, there are some types to use in evaluating nutrition advice from various sources:

- Read between the lines. Not all nutrition news can be immediately translated into food choices so try not to cut out certain foods or go overboard on others.

- Don't make too many assumptions. Just because a product has a no cholesterol label does not ensure that it is a heart-healthy choice. This cholesterol claim offers no clue of the amount of saturated fatty acid within.

- Put diet/nutrition into context of your total life. No perfect foods exist. Diet is only one factor contributing to wellness. Consider your exercise habits and total lifestyle (smoking, alcohol use), too. Realizing that simply adding or eliminating a single food will not be the only remedy.

- Question claims portraying food as good or bad. No good or bad foods exist. What's important is your overall meal plan and how you fit in moderate portions of a variety of foods.

- Consider whether this is something you can live with. Quick fixes offer short-term results, and repeated dieting makes each pound harder to lose. For lasting results, make small but permanent changes in the way you eat. Balance, variety and moderation are keys to healthful eating that will serve you for life.

BEHNE ELECTRIC & CONSTRUCTION

Electrical Repairs
& Handy Man Service
Reasonable Rates

CALL 659-3404

Chamber Chatter

by Brett Whitford

It is just a few weeks until the next Miss Hansford County will be crowned. We would like to say thank you to all of the reigning queens. And a big thank you to Misty Savage, Miss Hansford 1990. Misty has done a great job representing our county this year. We wish her the best in the future. Thanks Misty!

Our categories this year have a good number of contestants and we wish them luck. The Little Miss contestants are Nicole Sander, Heather Hamilton, Christen Whitford, Dana Sharp, Dana McLaughlin, Tessa Thoreson, Jessica McClure and Amanda Backus.

The Junior Miss contestants are Kayla Taylor, Amber Moore, Rachael Moore, Amanda Adams, Adrian Watts, Jessica Crossland, Nicole Ramon, Michelle Laughlin, Kelcee Barkley and Brianne Burkhammer.

In the Preteen category, our contestants are Kellie Cummings, Brooke Adams, Dynell Vera, Detsi Vera and Kristal Burkhammer.

The Miss Teen contestants are Regina Abston, Summer Riggins, Mary Cook, Chayci Shaver and Dawn McCullough.

Our Miss Hansford contestants are Cyndi Jenkins, Tamri Townsen, Marci Womble and Kyla Nelson.

Please note, this list is not complete at the time of print. There are still a few forms out that have not been returned to the office, so if your child is not listed and you have turned a form in your child is included.

So as you see we have a great group and our judges will certainly have their hands full in making this year's choice.

The beard growing contest is in full swing so when you see the local men

who look like they might have lost their shaving equipment, you know they are preparing for Round-Up 1991!

Round-up is just around the corner and plans are underway for a big event. We would like to have your input on the Round-Up. Call the office or the chairperson, Loretto Cook.

Our committee consists of Loretto Cook, Jodie Hight, Cheryl Sander, Donna Murray, Sharron Swan and myself.

We held Career Day last Friday and we had an outstanding group of consultants and offered the students a wide selection of career choices. We had the Honorable Ralph Maxfield, mayor of Booker, as our speaker and he offered the students an opening address with much humor and a good message for life. We would like to thank the Spearman Rotary Club for co-sponsoring Career Day as well as the staff of the high school for all of their hard work. And to our consultants, thank you for taking your time for our youth, as they are the future of our community.

Until Next Time,
Brett Whitford

HENSON CHIROPRACTIC

410 S. Davis Spearman, TX

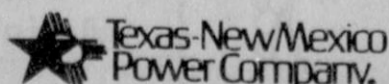
Call For Appointment 659-5603

Office Hours: Mon., Wed., Fri. 8:30-5:00
Tue., Thu. 8:30-11:30

BUILT-IN ENERGY FITNESS

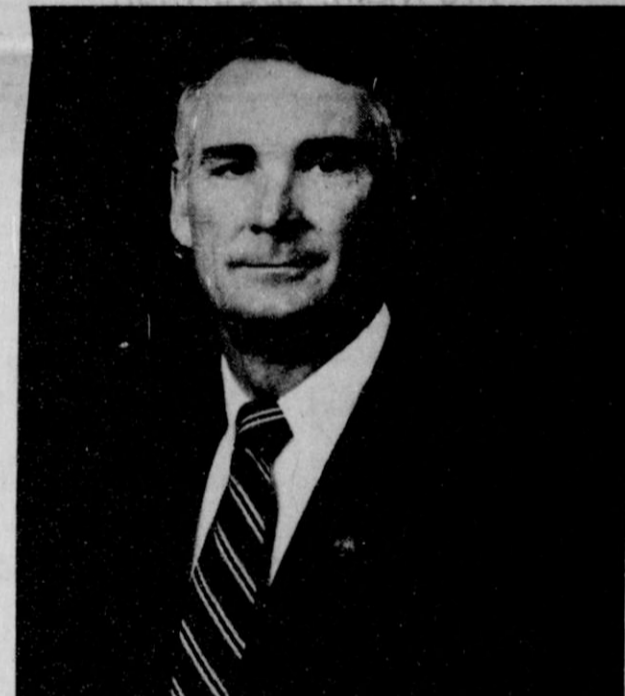


A Good Cents home has special features built in to ensure that it's Energy Fit... so you can reduce energy waste without reducing your comfort. You'll find well-insulated walls, attics and doors and specially designed windows all working in harmony to save you money. For more information about the comfort and savings of Good Cents, call your nearest Texas-New Mexico Power Company office.



JAMES SCHNELL

Candidate For Spearman School Board Trustee



- ★ Open to concerns of students, teachers & parents
- ★ Committed to being an informed decision-maker
- ★ Sympathetic to the community's tax burden
- ★ 1967 Spearman graduate, Army Reserve Captain 1972-80
- ★ 1971 Texas A&M graduate with civic leadership skills
- ★ Have children in Spearman schools

Sometimes one person can make a difference.

**VOTE SATURDAY, MAY 4
SPEARMAN HIGH SCHOOL**

Among the Neighbors

by Helen Fisher

Virginia Head returned the early part of last week from a relaxing six day trip with her sisters, Elizabeth Carr and Catherine Hall of Miami. They visited another sister, Frankie and Troy Sloan in Breckenridge. Then they toured the hill country including Kerrville, Fredricksburg, San Marcos, Johnson City and briefly, the L.B. Johnson ranch.

Waco took more of their time, and they also visited a cousin in West, Texas. After so much rain this spring, the scenery was beautiful and the bluebonnets beyond description.

At last Bobbie and Dr. Earl Novak have status befitting his gray hair. On Saturday, proudly they became grandparents.

Ethan Hunter Novak was born April 20 in Liberal, Kan., weighing 8 pounds, 13 ounces. He is the son of Bonnie and Hunter Novak.

Sue and Thane McCloy of Morse are the other grandparents. Ethan rounds out a dozen grandchildren for them.

The Woodrow Fulkersons of Spearman are his only great-grandparents. Hunter and Bonnie Novak live in Guymon where he is associated with a mortuary there.

To Bobbie goes the honor of sharing the first week of his life with Ethan and his parents in Guymon.

The many old friends of Spearman's favorite octogenarian, Ernest Newcomb, will be greeting him this week.

He has been with the Robert Newcombs in Wichita Falls all winter. Lola and Charles Newcomb made a trip to Houston last week and picked him up on their return to Spearman.

An experience few will ever have was that of Eulalie, W.R. and Steven Greever one evening last week when they opened the door in response to a knock. A young stranger, laying aside his bicycle, asked if he could put up his tent and spend the night in their yard. The Greevers agreed, noting that he had everything needed on his bicycle, tent, sleeping bag, food and camera. After he made camp, he was invited in.

He was 24 year old Dale (Skip) Simonson from Bloomington, Minn. He had shipped his bike to Los Angeles, and after a reunion with friends, he started his odyssey. His

plan was to travel the old Highway 66 as much as possible.

After 19 days he had traveled 1900 miles. He came through Spearman enroute to Canadian and on through Oklahoma. His plans are to meet his parents, driving from Minnesota, somewhere in Tennessee or thereabouts the last of April. They will join him on a bike tour over the Blue Ridge Trail and through the Smokey Mountains. He expects this will take about five days.

Dale graduated from Carleton College and has been to Japan four times. The first time as an exchange student and during the last two years, twice to visit and one time he was employed.

The middle of May he will be in New York and will begin employment with Dun and Bradstreet June 1st.

The next morning Steven showed him around the farm explaining various phases. After breakfast, picture taking and exchanging addresses, he continued his journey.

He was a most interesting young man and was very pleased with the considerate treatment he had received on the entire trip; had had no trouble with anyone. He made a point to eat one nourishing meal each day, and had snacks as he biked for the others. Every few days he stayed at a facility where he could do his laundry and shower.

The Greevers are looking forward to further contact with him.

Commissioner Dick Gillaspie underwent bone surgery last Tuesday in St. Anthony's hospital, but is back at home now.

In putting up a basketball goal at his home, he tripped and fell from the back of his pickup, fracturing and crushing the tibia.

He will be on crutches for six weeks

but is now able to go to his office for short periods.

Sarah and Fred VanBuskirk had a pleasant five days in Arizona and Mexico. They drove to Phoenix and did some sight seeing there, then to Tucson and on to Nogales, Mexico.

Guests of Elsie Watley for the weekend were Mr. and Mrs. Ray Weitzel of Fort Morgan, Colo. Mrs. Weitzel is her sister.

Camille Butts, daughter of Robbie and Larry Butts, has recovered from a recent illness and able to return to school this week. She was hospitalized for several days in St. Anthony's Hospital in Amarillo.

Reba Huffines of Amarillo was in Spearman a few days back visiting her sisters, Virginia Renfro and Gertrude Archer, and brother, Freeman Barkley.

Gertrude returned recently from Phoenix, Ariz. where she wintered. Her daughter Sue Venters and husband live near there at Sun Lake.

Enroute to Spearman Gertrude stopped off in Lubbock for a visit with her other daughter Patton Ann Hamilton and family.

Ed Berner, son of the Wally Berners, underwent neck surgery at St. Anthony's Hospital last Monday. He made a remarkable recovery and returned Monday.

An honor was accorded a Spearman high school graduate at McMurry College in Abilene last week. Kari Schneider, who is a senior there, was elected Senior class president to serve the 1991-92 school year. Kari is the daughter of Trudy and Terry Schneider.



(photo by JoAnn Morton)

Friday, April 19 was "Come as You Are" day at Spearman Junior High School. The special day was designated "just for the fun of it" by the school's Student Council, with the permission of Richard Olsen, principal. Taking advantage of the day to come as they were when

they got up were (front row, l-r) Courtney Dooley, Summer Riggins, Lacie Baker, Virginia Carbajal, (back row, l-r) Chad Wilkerson, Regan Boxwell, Jill Clement, Niki Buster and Schane Schneider.

Special fund established for Nuckles

A special fund has been set up at First State Bank to help with medical and living expenses for Rev. David and Jane Nuckles.

David has muscular dystrophy and is in the hospital in Galveston. He is improving, and is off the breathing machine. They do not know how long he will be in the hospital.

The doctor has told them he will not be able to work for six months to a year after he recovers.

They have no insurance. They will have to move, so will have moving and storage expenses.

The Nuckles pastored the First Assembly of God Church in Spearman for 15 years.



(photo courtesy Sacred Heart Church)

Jeanette Bort (center) was honored by Father Norbert Kieferle, pastor of Sacred Heart Church in Spearman, and by Anita Sumner (right), president of the Sacred Heart Women's Guild, for dedication to the group. The organization's 1991 yearbook is being dedicated to Mrs. Bort, a longtime resident of Gruver, according to Mrs. Sumner.

Disaster course set

PERRYTON - The Ochiltree County chapter of the American Red Cross will offer two free courses on disaster Friday and Saturday, April 26 and 27 at the Ochiltree County Courthouse.

Sue Jones and Laura Blount of

Amarillo will be the instructors.

The Introduction to Disaster course will be Friday, April 26 from 6 to 10 p.m. The course provides basic information about disaster and its effects, and outlines the role of agencies (both governmental and nongovernmental) in disaster relief. It will also introduce participants to the American Red Cross Disaster Services.

The instructors will relate what qualifies as a disaster and how it affects people and the community, as well as the responsibility of the Red Cross and other agencies in alleviation of the effects of a disaster.

The authority, policies and regulations of the Red Cross regarding disaster relief, and how the Red Cross provides assistance. The course will also explain the local chapter's disaster preparedness planning.

Emergency Assistance to Families I is to enable Red Cross volunteers, paid staff, and representatives of other community agencies to meet the emergency needs of families following a disaster, on an individual basis. The course is designed to enable the trainee to develop the interviewing skills, knowledge, attitudes, and relationships necessary to meet the individual disaster needs.

The courses are being offered to residents of Hansford, Lipscomb, Ochiltree, and surrounding counties. Those planning to attend should call the Ochiltree County Red Cross chapter at 435-8175 to sign up.

Emergency Assistance to Families I will be offered Saturday, April 27 from 8 a.m. to 5 p.m.

Birth announcement

Alfred and Cindy Avila of Spearman announce the birth of a daughter, Cha'tae Reann Avila, on Thursday, April 18.

She was born at 5:30 p.m., weighing six pounds, one ounce. She was 19 1/2 inches long at birth.

Grandparents are George and Virginia Young and Joe and Paula Avila, all of Spearman.

Great-grandparents are Freeland Bartz and Mary Sedgwick of Spearman and Nicholasa Avila of Rock Spring, Texas.

Hometown news

Sharron and Bessie Swan traveled to Plainview last weekend to watch Lance Swan, Sharron's son, compete in a track meet.

Lance competed at Wayland Baptist University in three events, placing high in all three. He took second place in the hammer throw, third in the shot put and third in the discus.

Lance is a sophomore student at South Plains College at Levelland.

IN THE BEGINNING...

In 1913, the American Society for the Control of Cancer (now called the American Cancer Society) was organized in New York City.

Club News

SERVITORS

Servitors met April 18 at First State Bank.

New officers were elected as follows: Donna McCubbin, president; Lee Schubert, vice president; Ann Rook, historian; Linda Cummings, secretary; Maria Ochoa, treasurer.

After the election the group discussed the concession stand at the Jaycees ball park, which Servitors will have open when ball season opens.

Members present were Kim Vera, Cheryl Gibson, Linda Cummings, Donna McCubbin, Lori Downing, Paulina Close, Maria Ochoa, Lee Schubert, Ann Rook, Hope Moore, Julie Moore, Brenda Vera, Malissa Vera and Sally Vaquera.

GLADIOLA FLOWER CLUB

The Gladiola Flower Club met April 18 in the fellowship hall of the First Christian Church with Dorothy Haner as hostess.

Roll call was answered with "Your flower for the month of your birthday."

Fay Holt presented Linda Jarvis who gave a program on "Lasting memories with dried flowers." She showed methods and told of different methods to dry flowers. She also displayed many items made using dried flowers and said several arrangements had been used for her daughter's wedding.

The group's Home Tour will be conducted Sunday, May 5 from 2 to 5 p.m. Homes on the tour will include those of the Brad Beedys, Vance Sniders, Roy Wilmetts and Joey Woolleys.

Virginia Trindle won Home Grown Arrangement, Betty Davis won Borrowed Arrangement and Estelle Jackson won Specimen with a French Lilac.

The group's next meeting will be Thursday, May 2 with Estelle Jackson as hostess.

Attending this meeting were Dickie Allen, Charisie Baker, Wanda Brown, Dorothy Buzzard, Betty Davis, Margarette Evans, Dorothy Haner, Virginia Head, Fay Holt, Estelle Jackson, June Jackson, Lorene Kunselman, Judy Martin, Jo Larson, Virginia Trindle and guest, Linda Jarvis.

RETAIL MERCHANTS

Spearman Retail Merchants met April 16 at the Spearman Chamber of Commerce office with Kay Vernon, president, presiding.

Election for the office of president was conducted. Eulalia Blankenship is the newly elected president.

Discussion was held on Round-Up plans. It was decided to continue with the sidewalk sale. Gruver merchants have also been asked to participate.

Plans are also being made for the 4th of July celebration.

THANK YOU

Once again I want to express my appreciation for your prayers, cards and phone calls of encouragement, while I was in Denver and Amarillo. God has truly blessed me to let me live in such a caring community.

Sincerely,
Marie Harbour

THANK YOU

To all who were concerned while I was in the hospital at Perryton and Enid, I wish to express thanks with deep gratitude for the many prayers, the cards and personal notes, the familiar sound of voices over the phone as well as flowers, food, and gifts. These lovely gestures helped sustain me through a difficult problem.

Cara Hester

You are invited to a
Baby Shower
Honoring
Cha'tae Reann
Avila
Daughter of Alfred & Cindy Avila
Saturday, May 4, 1991
Come & Go From 2:00 to 4:00 p.m.
at First State Bank
Hospitality Room
Given by hostesses

You are invited to attend a
Baby Shower honoring
Tammy Batton
Saturday, May 4, 1991
2:00 to 4:00 p.m.
Union Church, Spearman
Given by Hostesses

You are invited to attend a
Wedding Shower honoring
Lynda Hunnicutt
bride-elect of
Billy Pat Underwood
Saturday, May 4, 1991
From 10:30 to 11:30 a.m.
At 714 Gilner, Spearman
Given by hostesses



Gruver's Golden Age community center is being repaired with the help of donations including a recent grant from Pioneer Hi-Bred International, Inc.



Oscar Herrera and Bob Boney are welcomed home after spending several months with Operation Desert Storm. The Gruver community paid special tribute to them Saturday, April 20.



Colby and Earl Griffin were two of the 115 riders in the St. Jude "Wheels for Life" Bike-A-Thon on Friday, April 19 in Gruver.

Hometown news

Jennifer Hart, a senior at Gruver High School, was recently selected by Principal Barry Haensch to compete in the Academic Excellence Award program conducted by the Texas Association of Secondary School Principals (TASSP). This is the third year TASSP has conducted the program to recognize high school seniors for their outstanding academic achievements. Over 200 students in the state of Texas participated, and Jennifer was designated as a Commended Scholar. Selection criteria included scores on the SAT or ACT test, overall academic grade point average, pursuit of advanced diploma, and other evidence of exceptional academic ability. Each student was asked to write a monitored 300-500 word essay to submit with the application. As a Commended Scholar in the TASSP Academic Excellence

Awards program, Jennifer is to be congratulated for her superior scholarship.

Panhandle Events

BORGER - The Frank Phillips College Lyceum, in its final spring presentation, will present William Westney, pianist, in a solo performance at the FPC auditorium on Friday, April 26 at 8 p.m. A reception will follow.

More information can be obtained from members of the FPC Lyceum Committee, including co-chairs Judy Hart and Sharon Lane, or Marlin Adams, Brad Herndon, Y.K. Hui, Jan Moore, Leon Pepper, Mitzi Stephens and Wallace Thompson.



APRIL SPECIAL
Feedlot Manure Prices
20¢ Per Ton Off On All Orders In April.
Even More From Some Feedlots.
 Call For More Information.
REAGAN 659-3402 DENNIS 659-2634
CLOIS (BILLY) 659-3642
BAKER'S DOUBLE "C" FEED PEN SERVICE INC.

GHS band awards presented

The annual Gruver High School band awards were presented by Todd Parker, band director, at the band's spring concert.

Four band groups, fifth grade, sixth grade, seventh grade and high school, each played to a large audience.

Receiving the Outstanding Band Student awards were Brandi Hicks and Cody Cazarez, fifth grade; Lexy Spivey and John Duncan, sixth grade; and Ki Ki Carthel and Jason Ward, seventh grade.

Outstanding marchers in the high school band were Bryce Goldsmith and Bennie McClennagan, while outstanding performers were Joey Garza and Gretchen Lowder. Lowder was also named GHS Band Queen.

The junior high director's award was given by Hailey Lamb while the John Phillip Sousa Award was presented to Cynthia Winn.

Band booster and bus driver Harold Sneed was recognized for his work and support the past four years.

Four senior band members were recognized. They were Chris Kauffman, Cynthia Winn, Gretchen Lowder and Bryce Goldsmith.

Gruver PTA holds last meeting

The Gruver PTA held its final associational meeting Thursday night.

Cori Lowe and Kasla Cluck presented the flags while Kevin Babbs gave the devotional.

Miranda Thoreson was honored for her winning poster in PTA's environmental poster contest.

Officers for the 1991-92 school year were elected.

Pioneer awards grant to center

The city of Gruver was recently awarded \$5,000 by Pioneer Hi-Bred International, Inc. for repairs to the Golden Age community center. Local Pioneer sales rep Keith Gibson worked with community leaders to secure the funds through the company's Community Investment Committee.

"The renovation of the center is a very worthwhile project," Gibson said. "We have only 1,200 people in Gruver, but the center serves at least 2,500 people in the surrounding county."

Gruver City Manager A.J. Ratliff said the center, built in 1949, was closed to the public during the winter of 1990 after snow buildup on the roof damaged the building. Ratliff said the center serves many functions on a daily basis, including a meeting place for senior citizens, volunteer ambulance attendants, Boy Scouts and Girl Scouts.

Pioneer Hi-Bred International, Inc.'s Community Investment Committee annually contributes to worthy programs and organizations in rural areas served by the company. Areas of education, health/human services, and economic development are targeted by the committee. The project must have local community support and commitment, and demonstrate the potential to make a positive difference with long-lasting effects on the community.

Pioneer Hi-Bred International, Inc. is a leading developer, producer and marketer of corn, sorghum and sunflower hybrids as well as wheat, alfalfa and soybean varieties. The company also markets microbial products, including silage and hay inoculants and animal health products, as well as information management systems for farmers.

Gruver menu

April 29 - May 3 LUNCH

Monday - Pig-in-a-blanket, corn, fruit, milk

Tuesday - Cheese sandwiches, tater tots, fruit, cowboy bread, milk

Wednesday - Chicken nuggets, macaroni and cheese, green beans, cobbler, milk

Thursday - Nachos (meat & cheese), pinto beans, fruit, corn bread, milk

Friday - Hamburgers, french fries, lettuce, pickles, cheese, cookies, milk
 Salad bar - Monday, Tuesday, Wednesday

Nacho bar - Monday & Wednesday
Potato Bar - Tuesday & Thursday (request only)

BREAKFAST

Monday - Cereal, fruit or juice, muffins, milk

Tuesday - French toast sticks, fruit, peanuts, syrup, milk

Wednesday - Cowboy bread, fruit, peanuts, milk

Thursday - Toast, peanut butter & jelly, fruit, milk

Friday - Cinnamon rolls, fruit, peanuts, milk

On The Go With Joy

by Joy Henderson

For the first time in a couple of years, I knew what this week's column was going to be.

I had in my possession a little "ditty" called "Death and Taxes," but when I found it, I had marked it used in 1990. Now, I don't mind having it reprinted again, but some people remember some of the things I do, so I won't bother you again - unless you demand that I bring the subject up later. Especially for those of you who filed for extensions, you might need reminding.

Those of you who know me very well have heard me state, "I don't mind paying taxes. I'd be happy to pay taxes if I could prove that I had seen any income." No, I don't mind paying taxes but for those years that I have got caught owing them, I sure did holler loud and long. So, I guess I'm a hypocrite or something.

Anyhow after some research on paying taxes, maybe I'm changing my thinking a little bit. "Taxes" mean the setting aside of private properties for the common usage of the people. Webster helps one to know that taxes are "a charge imposed by authority on persons or property for public uses." (Webster's Ninth New Collegiate Dictionary, p. 1209)

So, in our modern world of rampant taxation, we realize this is but one of the prices one pays for freedom. I can remember back when people had to pay a poll tax before they could cast their votes (or enrollment tax) but this was done away with when lawmakers said voting was not only your duty but a privilege and in order to promote "voting," we should not have to pay money or taxes.

For some reason or other, I kept M.H. last poll tax receipt as a souvenir or keepsake, but imagine my surprise that as a proof for Lewis to be able to file for a delayed birth certificate, I could produce this item. He had to have this birth certificate before he could receive social security.

Also, the more income tax a person pays, the more social security he will receive when retirement occurs. So, if we (the Hendersons) would have paid more attention to these matters, the better off we would be now.

You young people get these facts now, and then be more prepared for your golden years. Of course, don't ask me where the money comes from to pay these taxes, because I haven't figured that out yet. I imagine that there are some luxury items and probably a few necessities we have to do without.

All of this is to say that we should be a little more understanding about paying taxes when we realize that some of that money goes for the

defense of our country.

Last Saturday morning, several in our community gathered at the El Vaquero to welcome home two of our boys who had been involved in Desert Storm.

Bob Boney and Oscar Herrera were honored by their community and both of them stated how you don't know how much you miss America and the things it stands for until it is not there any more. These may not be their exact words, but the thoughts were along these lines.

Corky Chapman was master of ceremonies and the high school band members kept the occasion festive. Lewis Holland gave the invocation and Larry Miller gave the benediction.

This tribute to Bob and Oscar was planned by Phyllis Atwood, assisted by her crew at the El Vaquero.

Romans 13:7 - "Render to all their dues, tribute to whom tribute; custom to whom custom; fear to whom fear; honor to whom honor."

A few visitors seen in our community recently were the brother and his wife of Harlan Gerardy visiting in the Gerardy home.

"Great" and "Grandparents" of Gruver had a special treat in store recently when Nanette (Cluck) and Tom Hains visited in homes of Del and Barbara Cluck and with Ralph Borts, Faye Cluck. Probably everyone interested in that new baby.

Other grandparents enjoying a visit were Archie and Margarite Nelson when Cheryl and Denny Farren and children dropped by.

It was good to see Chet Pittman and family over the weekend. By the way - where was Lucy?

Bob Setliff with wife Karen and their daughter Toby visited with members of the Church of Christ Sunday. The Setliffs are from Claude.

Regina Turner from Pampa, a student at Wayland, was guest in the home of Larry and Rhonda Hicks. Regina and Rhonda are sisters.

Mr. and Mrs. Bill Hatton of Hutchinson, Kan. visited in the home of their daughter and family, Tim and Hayley Garland. Special attraction of course is granddaughter Bayley.

Charlie Casdorff will be in his second week of radiation treatments in Amarillo. It is believed that the scheduled two weeks will be all that he will need. That is good news for Charlie and Cleta as these treatments (radiation used to take about a month).

Debbie Chisum is at home in Gruver with mom Reta Gross. Hopefully, this new surgery will be of some help in relieving Debbie's pain.

Bill Henderson spent a few days in Hansford Hospital after suffering an injury to his back.

David Turner is at home now after receiving treatment in the hospital at Oklahoma City. Others in area hospitals are Boots Williams at High Plains Baptist with high fever. Diagnosis unknown at this time. Also Bob Bort is currently in Hansford Hospital.

Edna Marie Walker is currently in the Guymon Hospital being treated for respiratory problems.

MAY IS BETTER HEARING MONTH
 Have your hearing tested.

Plant The Leader Package For Total Performance

3189 3168 3162

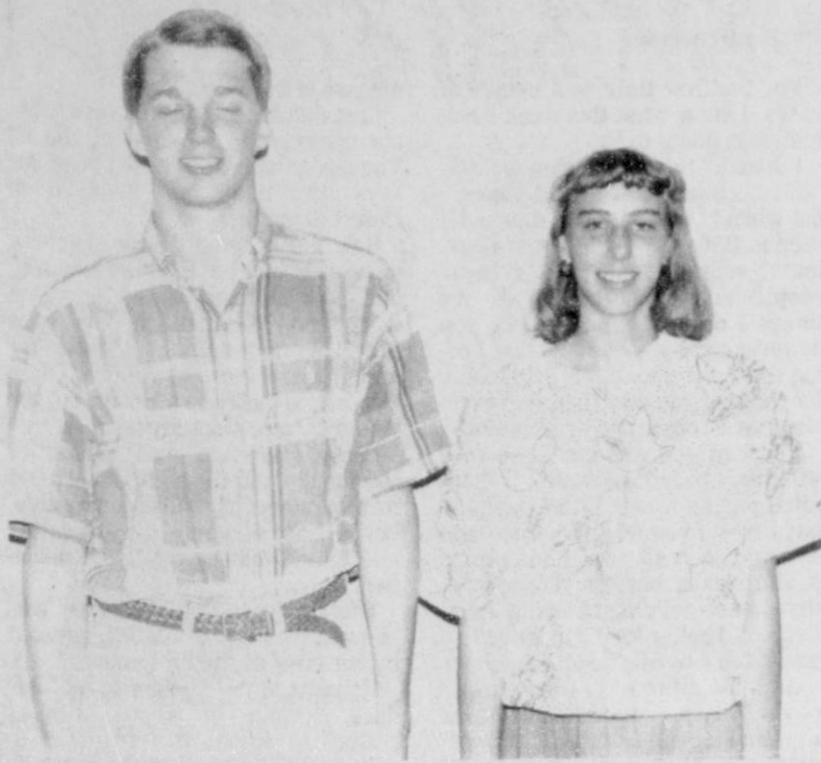
North Plains Chemical
 304 N. First Gruver, TX
 Keith Gibson
 733-2376
 1-800-749-6127

PIONEER BRAND SEED CORN
 PIONEER HI-BRED INTERNATIONAL, INC.
 All sales are subject to the terms of labeling and sale documents.
 © Registered trademark of Pioneer Hi-Bred International, Inc.

Dine in or Carry out at Casa Alvarez
 A generous taste of old Mexico
 Offering the finest in south of the border cuisine
 Open 7 days a week
 Mon.-Sat. 11am. - 9pm.
 Sunday 11am. - 8pm.
 Available for Parties
 For carry out or reservations call 659-3422

Casa Alvarez
 819 Hwy 207 S
 Spearman, Texas

Hutchison, Pipkin are UIL winners



Jeff Hutchison and Elizabeth Pipkin will advance to the State UIL Literary Contest, to be held May 3-4 at the University of Texas at Austin.

Jeff Hutchison, senior at Spearman High School won first in Literary Criticism and Elizabeth Pipkin, freshman at SHS, won second in Poetry Interpretation at the UIL Regional Literary Contests in Abilene, April 19-20. They will compete in the State UIL Literary Contest, May 3-4 at the University of Texas, Austin.

Jeff won his contest with a total of 85 points. Elizabeth advanced into the finals of Poetry Interpretation to finish second overall.

Other participants at the contest from Spearman High School were Alfonso Martinez, James Macias and Joy Gafford in Number Sense; Ross Jarvis, Jason Swink and Josie Holt in Calculator; and Matt Archer in Current Events.

Accompanying the students were Mrs. Susan Kidder, Number Sense and Calculator sponsor; Mrs. Phyllis Kirkland, Poetry Interpretation sponsor; Mrs. Mary Lou Mathews, Current Events sponsor; and Dwayne Mitchell, Literary Criticism sponsor.

All UIL Academic students will be honored at a banquet on Tuesday, April 30 in the high school cafeteria at 7:00 p.m. All UIL students in elementary, junior high and high school are invited and will be recognized. They will receive District and Regional Awards at that time.



The Spearman Junior High Choir (above) traveled to Amarillo High School on April 11 to compete in the Regional UIL Choir Contest. The group was required to perform three numbers from a list and to sight read. Junior high choir members received a first division (superior) rating on their performance of their three numbers, and a third division (average) rating on

sight reading. The Spearman High School Chorale (not shown) competed in the Regional UIL Choir Contest on April 9 at West Texas State University in Canyon. Chorale received a second division (excellent) rating on its performance of three numbers, as well as a second division rating in the sight reading performance.

Boy Scouts start finance drive

The Spearman Boy Scouts' annual finance drive will start Monday, April 29.

Harry Stumpf, finance chairman for Spearman Troop 551, says his goal is to raise \$6,000 to support the 150 boys participating in scouting in Spearman.

According to Stumpf, the money goes to offset the \$56 per year of additional costs needed for a boy to be in scouting. He explained that the money goes to support the two district scout camps and to help offset the expenses of supplying badges.

"The people of Spearman have always been generous toward the scouts and I know we will meet our goal, as we have in the past," stated Stumpf. He said that he expects to call on about 100 individuals and businesses in the next week and that 95 percent will donate at least \$5.

Those businesses and individuals donating last year were:

Bobby Archer, Harold Crooks, Sandy Morris, Ageo of Spearman, Adela's Flowers and Gifts, B and B Sales Co., B and B Farm Industries, Karen Babitzke, Max Baggerly, Baker Harvesting Shop, Laurence W. Behney, M.D., Berry Cleaners, Boxwell Brothers;

J.L. Brock, Brown and Graham and Co., Roy Bulls, Buster Aerial Dusters, C and W Partnership, Callaway's Lumber Co., Cates Men and Boys, Chalos', Clark Aerial Spraying, Stanton Cobb, D.D.S., J.R. Collard, Jr., Corner Service Station, Gordon Cummings Refrigeration;

T.H. Davis, Irwin Delk, Perry and Mary Dixon, Earl's T.V. and Appliances, Farber Livestock Transportation, Farm Bureau of Hansford County, Farmers Union Insurance, Bob Farr, First State Bank of Spearman, First National Bank of Spearman, Five Star Equipment, Fuller Jewelry, Pope Gibner;

Gillaspie Chevrolet-Olds, Golden Spread Sales Co., Gordon Drugs, Great Plains Insurance, H and H Well Service, H and W Roustabout, E.K. Haner, Hansford Implement Co., Hansford Insurance Agency, Hansford Vet. Hospital, Kerry L. Henton, Henton-Beedy Co.;

Hickerson Jewelers, Hi Plains Auto, Hi Plains Conoco, Horizon Oil and Gas Co., Interstate Savings and Loan, J.G.'s, Jack and Jill Grocery, Billy B. Jarvis, Kid's Stuff, Kountry Donuts, K.R.D.F.-FM Radio Station, LaKay's Merle Norman, Marcus Larson;

Johnnie C. Lee, Lewis Schnell Electric, Mrs. A.E. Lusby, Mike and Patty Schnell, Lyric Theater, Don Maize, Roy L. McClellan, Wilson McClellan, McClure Paint and Supply, R. L. McFarlin, Jr., J.T. McWhirter, W.M. Miller;

Mission Cable T.V. of Spearman, Jim Murray, Roscoe Nelson, Chuck Newcomb, Northern Natural Gas, Dr. Earl E. Novak, D.D.S., R. D. O'Loughlin, Pittman and Sons, Pearson (Bob) Oil and Gas, Ray Phelps, Billy D. Pittman, Pittman and Shieldknight, Prairie Garden;

Don E. Reed, E.F. Renner, T. Ray Robertson, W.L. Russell, Kevin

Russell, Sacks Third Avenue, Rex Sanders, Jr., Clay Schnell, Claude Sheets, Marsha Shieldknight, Jim Shirley, Speartex Grain Co., Spearman Rotary;

Spearman Moose Lodge 2212, Spearman Lions Club, Spearman Cattle Feeders, Spearman Reporter-Reporter Statesman, Spearman Industrial Engines, Spearman Super Service, Spearman Auto Supply, W.A. Spoomore, J., Harry and Hazel Stumpf, Dwight Turner, Sunray Oil Co., The Buckhouse, Transpectco #1;

Ned Turner, Loyall Turner, R.R. Uptergrove, Everett Vanderburg, Jim Vanlandingham, Video Hut, Wardrobe Cleaners, Ted Widner, Roy Wilmet, Cloyd Windom, Dora L. Wormble, Wy-Tex Livestock, Inc., Eugene Yarborough, James Cunningham, Larry Trosper and Robert Cantu.

Accomplishments listed

by Donna McCubbin

This is your "Wolf Momma" reporting on how all our Cub Scouts are doing this month. From the list you can see there are some very active Scouts. The following are the accomplishments for this month: Cary Cates, Silver Arrow; Jordan Brockman, 2 Silver Arrows; David Sharp, 2 Silver Arrows; Andrew Cummings, 2 Silver Arrows; Wayne McCubbin, 2 Silver Arrows; Daniel Ellis, Wolf Rank, Gold Arrow and Silver Arrow; Dib Kirk, Wolf Rank, Gold Arrow and Silver Arrow; Jo-Bob Wrinkle, Wolf Rank, Gold Arrow and Silver Arrow; Timmy Bynum, 2 Silver Arrows; and Michael Abbott, Bear Rank, Gold Arrow and Silver Arrow.

Also Jordan Brock, Bear Rank, Gold Arrow and Silver Arrow; Jake Coates, Bear Rank, Gold Arrow and Silver Arrow; Evan Cudd, Silver Arrow; David Parker, Silver Arrow; Glen Powers 2 Silver Arrows; Brian McLaughlin, Aquanaut Activity pins; Chris Cummings, Aquanaut Activity patch and Sportsman Activity

pins; Josh Bynum, Citizen, Sportsman, Compass emblem and point pins; Jason Genn, Aquanaut, Athlete, Sportsman, Citizen, Compass point emblem pins; Casey Nobles, Sportsman Activity pins; and Chris Stewart, Communicator, Citizen, Family Member, Forester, Scientist, Sportsman, Traveler, 2 compass points Activity pins.

Give these boys a big round of applause. Next month will be the Blue and Gold Banquet. There will be awards handed out just like all the meetings in the past, but these awards are for work done above what was needed for their ranks that they worked so hard for during the year. This will be one meeting a doting parent will not want to miss.

The boys should have received an application for Camp Parnell by now. When filled out, return them to your Scout leader or to Linda Cummings or Julie Ortega. Our Scouts only have to pay \$12.00 of the camp fee. Our Scout organization will pay the \$13.00. This will be a learning experience for the boys so think about it before you say no to the Camp.

MAY 4, 1991
 DON R. HAWKINS
 FOR
 SPEARMAN SCHOOL BOARD
 20 YEARS
 BUSINESS EXPERIENCE,
 BUDGETING,
 PROBLEM SOLVING AND
 WORKING WITH PEOPLE
 HE IS CONCERNED ABOUT
 ALL CHILDREN AND THEIR
 EDUCATION
 Political ad paid by Don Hawkins

FREE
BOOKLET ON HEARING!
 Hearing loss is America's No. 1 handicap. To learn more about help for hearing loss, write the Texas Hearing Aid Association, 222 N. Riverside Dr., Ft. Worth, Texas 76111 or call 1-800-229-EARS (A non-profit organization.)

IT'S THE NATIONAL DODGE SELL-A-THON!

Rediscover American value at the National Dodge Sell-a-Thon. Your Dodge dealer has some of the best Dodge deals ever assembled under one roof with total savings up to \$4370! But hurry! These deals can't last forever!

<p>DODGE DYNASTY</p> <p>UP TO \$1600 TOTAL SAVINGS*</p>	<p>DODGE DAKOTA</p> <p>UP TO \$3700 TOTAL SAVINGS*</p>
<p>DODGE D-150 PICKUP</p> <p>UP TO \$4200 TOTAL SAVINGS*</p>	<p>DODGE CUMMINS TURBO DIESEL</p> <p>UP TO \$2700 PACKAGE SAVINGS*†</p>

*On select vehicles in stock. \$300-\$1500 cash back plus \$50-\$3370 package savings based on list prices of items if sold separately. †On select models in stock. No charge air conditioning offer based on list prices of AFW package items if sold separately. **Base list prices exclude tax and destination charges (Dakota S-\$7483 after \$1000 cash back; Shadow America 2 Dr. -\$7699). ††Pkg. savings based on list prices of 2BE pkg. items if sold separately.

Rediscover American Value at Advantage Dodge
GILLASPIE
 AUTO & TRUCK CENTER, INC.
 CHRYSLER, PLYMOUTH, DODGE
 Highway 207 South P.O. Box 427 (806) 858-2541
 SPEARMAN, TEXAS 79081
 BUCKLE UP, AND PLEASE DRIVE SAFELY

AUCTION
Real Estate — Minerals
May 2, 1991 — 10 a.m.
Perryton, Texas

Owner: Bob Williams
 Location: From Perryton, Texas, 15 mi. south on Hwy. 70, then 2 mi. West on FM 759.

REAL ESTATE
 Legal: The North 1/2 of Sec. 84, blk. 13, T&NO Survey, Ochiltree County, Texas.
 This Ochiltree Co., Texas farm consists of 253 acres of irrigatable land with one irrigation well. Irrigation pump and gearhead intact. Fuel is at well head price. Tail water pit in north east corner tied into underground water line. Also lake water available in southeast corner when lake is full. 2.5 miles of underground line. ASCS allotments consist of 121 ac. wheat with a 40 bu. irrigated yield. Milo 127 allotted acres with a 104 bu. irrigated average. New 1991 weighted yields for dryland are wheat - 32 bu. and milo - 77 bu. CRP 39.5 acres - 7 years remaining on contract.

MINERALS
 Owner will offer 80 acres of producing minerals. This farm has two producing oil wells at the present time. **Five year average gross production income is \$9,877.** Zones below the Cleveland are now producing in this section. Potential for more production in the lower zones is possible.

Terms: 10% of the purchase price will be deposited in escrow the day of sale. Abstracts to date, warranty deed and merchantable title will be furnished. Purchaser to have 15 days to examine title. Closing will be held within 30 days of signing of contract. This property will be offered to the highest bidder subject to seller's confirmation of the contract. Property will be offered separately, then as one unit. 1990 and prior taxes to be paid by seller. 1991 taxes prorated to date of closing. Possession of wheat ground after harvest. Possession of milo ground at closing.
 Closing Agent: Bruce Julian, Texas Attorney

— REAL ESTATE BROKER —
 DALE NAYLOR
 Balto, Oklahoma
 (405) 646-3548

NAYLOR
 AUCTION and REALTY, INC.
 RT. 1 BOX 65 • BALTO, OK 73231 • (405) 646-3548

— REPRESENTATIVE —
 RANDY SCHREINER
 Texhoma, Oklahoma
 (405) 423-7110

Hounds and Lady Hounds ...

At Regionals South Plains College, Levelland



Scott McCloy (r) and Kyle Haenish are both competing in the 800 m run. Their first race is at 3:55 p.m. Friday, April 26.



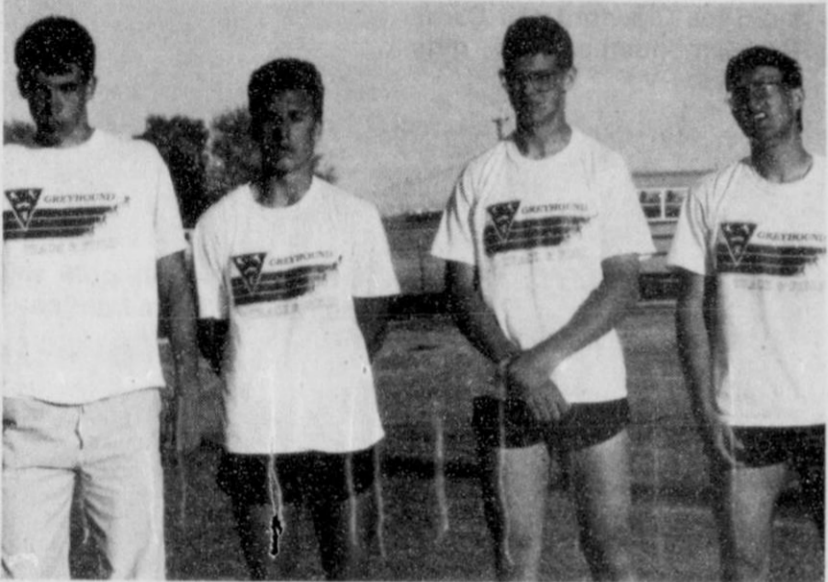
Shannon Pool will be pole vaulting. The vaulting will start at 2 p.m. Friday, April 26.



Kasey Davis will run on the mile relay team at 6:40 p.m. Friday, April 26.



The 800 m relay team of (l-r) Holly Venneman, Amanda Hiller, Gina Hoel and Janelle Haefner will run their first race at 5:15 p.m. Friday, April 26.



The boys mile relay team of (l-r) Trent Seagler, Scott McCloy, Kyle Haenisch and Dan McCloy will run their first race at 6:40 p.m. on Friday, April 26.



Dan McCloy will run the 200 m dash at 6:20 p.m. on Friday, April 26.



Wynn Maupin will start triple jumping at 11:15 a.m. Saturday, April 27.



Mika McLain (l) and Holly Venneman (r) will high jump starting at 2 p.m. Friday, April 26.

Go
Team
Go
El Vaquero
425 Main
733-9407



Brice Goldsmith will shot put at 2 p.m. Friday, April 26.



Max Davis will run in the 3200 m and 1600 m runs on Friday.



Felipe Dominquez will run the 300 m hurdles at 5:55 p.m. Friday, April 26.



Cora Meyer will run in both the 800 m and 400 m dash on Friday, April 26.



The girls mile relay team, with the exception of Gina Hoel, will run at 6:40 p.m. Friday, April 26. Team members are (l-r) Holly Venneman, Gina Hoel, Amanda Hiller and Cora Meyer.



Matthew Hoel will play his first tennis match on Thursday.

Best Of Luck
G & G Foodliners
516 Main
733-2471

Good Luck At Regionals All The Way To State
Caprock No. 1
SW of City 733-5044

Good Luck Team
The Gift Registry
103 E. Broadway 733-2914


All The Way Team
Bulk Lariat
available in Gruver for corn and milo
Gruver Equity Elevator
101 S. McCree 733-2280

Win! Win! Win!
Main Street
506 Main 733-5040

Bring Regionals Home
Go To State
Caprock No. 2
FM 2387 733-5025

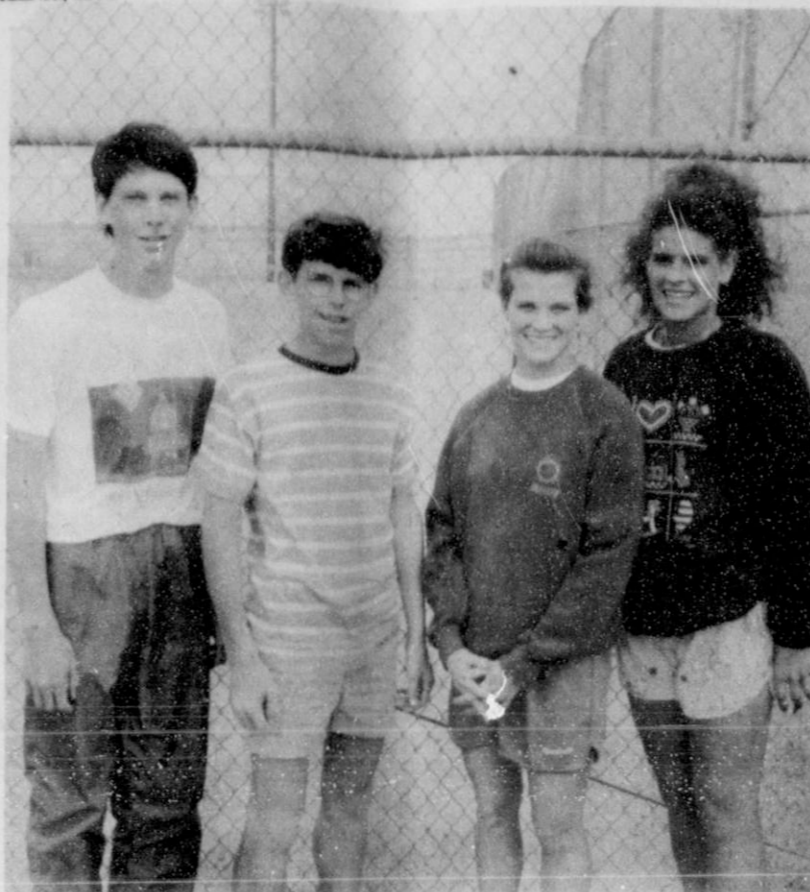
Lynx and Lynxettes

Abilene Christian U

Go

Team
Go
Berry Cleaners
 207 S. Main
 659-3122

Tennis Schedule
Thursday, April 25
 9 a.m.-1st rnd, B Singles
 10:30 a.m.-1st Rnd. G. Sin
 Noon-1st Rnd. B Doubles
 1:30 p.m.-1st Rnd. G. Doub
 3 p.m.-Qtrfnl. B & G Singles
 4:30 p.m.-Qtrfnl, B & G D

Friday, April 26
 10 a.m.
 Semis, B & G Singles
 Semis, B & G Doubles
 2 p.m.
 Finals, B & G Singles
 Finals, B & G Doubles



The number one boys doubles team is (l-r) Mike Hager and Clint Townsen. The number one girls doubles team is (l-r) Cam Butts and Tamri Townsen.



(l-r) Shea Crawford and Carrie Pearson number two girls doubles.



Chris Williamson will triple jump and run the 100 m dash.



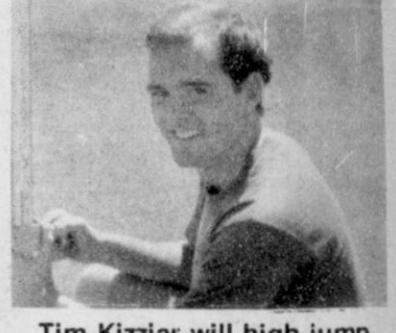
Brian Beck will pole vault and run the 300 m hurdles.



Mary Cook will run the 800 m relay.



Joy Gafford will run both hurdle events.



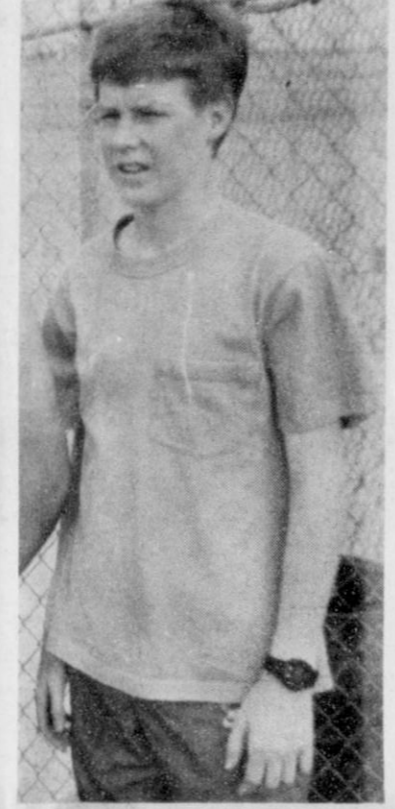
Tim Kizziar will high jump.

Good Luck Team

Thriftway
 505 Plains Shopping Ctr.
 659-2522



Kimbre Townsen number one girls single.



Wess Dyess number one boys single.



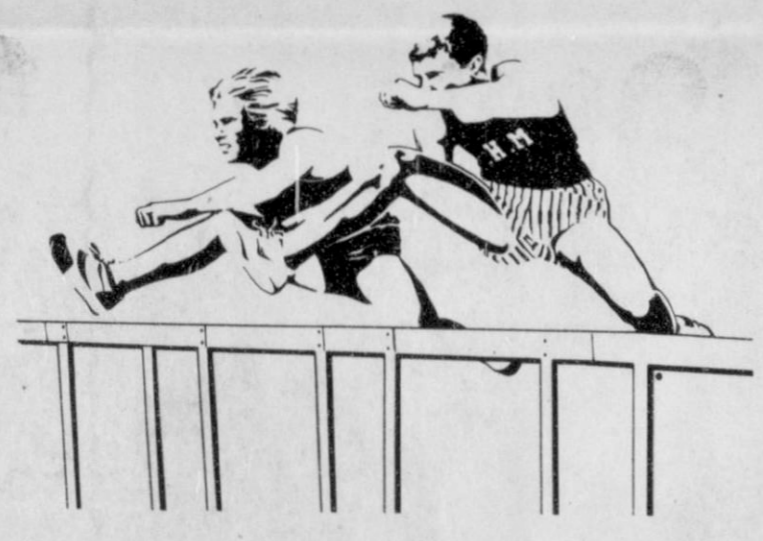
Brandi Schneider will substitute for Butts.



Jill Lusby will high jump at 10:30 p.m. Saturday, April 27.



Suzanne Sanders will run the 100 m hurdles at 7:05 p.m. Friday, April 26.




Good Luck At Regionals

All The Way To State !!!



One NE Court Spearman, Texas MEMBER FDIC 659-5565


All The Way Team
From Regionals To State
Farm Bureau Of Hansford County
 307 W. Davis 659-3133

Support Business that Support

Bring Em
 Lynx & Lynxettes
 The Bunk
 217 M
 659-2

Win Reg
 Cates Men &
 221 M
 659-34

Good Luck
 Charolette F
 313 M
 659-31

ettes at Regionals ian University



The 400 m relay team of (l-r) Mendy Lasater, Michelle Garnett, Suzanne Sanders and Bonnie Thompson will run at 6:30 p.m. Friday, April 26.



The 800 m relay team of (l-r) Sonya Nitschke, Shannon Holton, Suzanne Sanders and Michelle Garnett will run at 7:50 p.m. Friday, April 26.



The Lynxettes golf team of (l-r) Marci Womble, Monica Blackmon, Cindy Melton, Lori Lieb and Rainey Whittington tee off on Thursday, April 25.



The Lynx golf team of (l-r) Justin Boyd, Josh Nett, Cass Lasater, Ron Whittington and Toby Thompson.



Lyn Garrard will run the 1600 m and 3200 m runs.



The 1600 m relay team of (l-r) Shannon Holton Sonya Nitschke, Jill Lusby and Joy Gafford will run at 9:15 p.m. Friday, April 26.

Golf
Wednesday, April 24
Thursday, April 25

Track
Friday, April 26

Running Prelims
Field events finals

Saturday, April 27

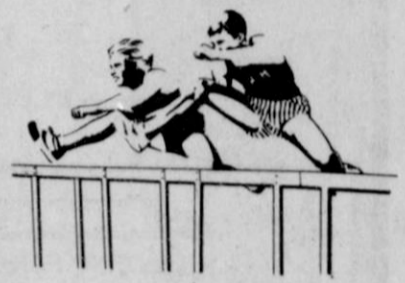
Running events finals
Field events finals

**Spearman Lynx
and Lynxettes**

**Good
Luck
Team
Five Star
Equipment**

Hwy 15 659-3743

**Best
Of
Luck**



Lynx & Lynxettes

Spearman Jack & Jill

123 W. Kenneth

659-3190

**Good
for
You**



Bring

Regionals

Home!!!!

Go To State !!!



MEMBER
FDIC

729 W. 7th Spearman

659-5544

Good

Luck

At Regionals

**Northern Natural
Gas Co.**

659-5581



Businesses

Support Spearman

**Engem Home
& Lynxettes
Bunkhouse**
217 Main
659-2476

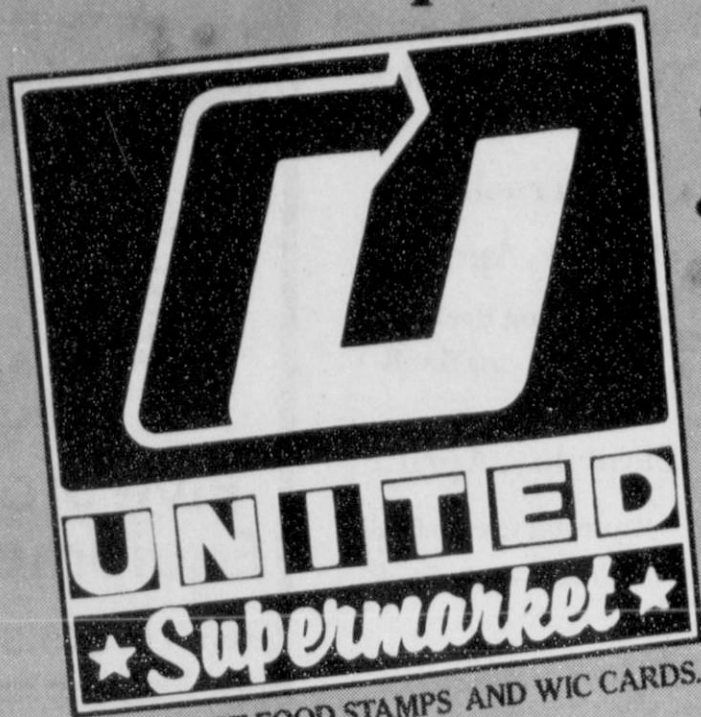
in Regionals

Men & Boys Wear
221 Main
659-3426

Good Luck Team

ette Ford Trunks
313 Main
659-3027

Double Coupons!



PRIVATE LABEL

Sale

PRICES GOOD THRU TUES. APRIL 30TH

WED	THUR	FRI	SAT	SUN	MON	TUES
24	25	26	27	28	29	30

GOOD THRU APRIL 30th IN PERRYTON ONLY.



Fine Fare Saltines

16 oz. **.59**



Fine Fare Orange Juice

12 oz. **.69**

United Extra Lean Super Valu Pak T-Bone Steak



lb. **\$3.98**

Single Pak lb. **\$4.19**



Fine Fare Macaroni & Cheese

7.25 oz. **4** for **\$1**

Fine Fare Salad Dressing



32 oz. **.69**

Fine Fare Ketchup



32 oz. **.79**



Wright's Bacon

1 1/2 lb. pkg. **\$2.38**

Fine Fare Hamburger Dill Chips



32 oz. **.89**

the personal touch

Oil & gas report

WEEK ENDING APRIL 18

Intentions to Drill

POTTER (PANHANDLE) Comstock Oil & Gas, Inc., #11-40P Bivins (54260 ac) 1030' from South & 2130' from West line, Sec. 40,0-10,D&P, 4 mi north from Ady, PD 4000' (Box 535, Dumas, TX 79029)
SHERMAN (TEXAS HUGOTON) Phillips Petroleum Co., #1R Property (643.4 ac) 1850' from South & 2000' from East line, Sec. 45,1-C,GH&H, 5 mi W-SW from Texhoma, PD 3600' (Box 358, Borger, TX 79008)

Applications to Re-Enter

ROBERTS (SOUTH LEDRICK) RANCH Upper Morrow Trans Terra Corp., International, Ledrick (960 ac) Sec. 55,C,G&M, 14 mi NW from Miami, PD 900' (Box 2814, Pampa, TX 79066) for the following wells:
#55-2, 2200' from South & 100' from West line of Sec.
#55-3, 467' from South & 150' from West line of Sec.

Oil Well Completions

HUTCHINSON (PANHANDLE) J.M. Huber Corp., #27 Otis Phillips 'A', Sec. 2,M-16,AB&M, elev. 3346 kb, spud 1-2-91, drlg. compl 1-10-91, tested 3-27-91, pumped 14 bbl. of 40 grav. oil + 63 bbls. water, GOR 6000, perforated 3136-3238, TD 3350', PBTD 3325'
HUTCHINSON (PANHANDLE) Moore Co.) J.M. Huber Corp., #14 Otis Phillips 'B', Sec. 2,1,BBB&C, elev. 3336 kb, spud 1-23-91, drlg. compl 1-19-91, tested 4-3-91, pumped 34 bbl. of 40 grav. oil + 126 bbls. water, GOR 5882, perforated 3130-3252, TD 3350', PBTD 3325'

Gas Well Completions

HEMPHILL (WILDCAT) Marsh Operating Co., #3-14-C Mathers, Sec. 14,A-2,H&GN, elev. 3016 kb, spud 1-14-91, drlg. compl 1-29-91, tested 1-29-91, potential 32000 MCF, rock pressure 3200, pay 8691-8754, TD 12077', PBTD 12038' - Dual Completion

HUTCHINSON (W.T. COBLE Upper Morrow) Eagle Exploration Co., Inc., #1 Turkey Track Ranch, Sec. 17,M-22,TCRR, elev. 3107 kb, spud 1-10-91, drlg. compl 1-22-91, tested 3-25-91, potential 2275 MCF, rock pressure 1642, pay 6653-6680, TD 7000', PBTD 6753' -

LIPSCOMB (SPERRY Morrow) Zinke & Trumbo, Inc., #1 Gadberry '1152', Sec. 1152,43,H&TC, elev. 2510 kb, spud 12-14-90, drlg. compl 2-6-91,

tested 2-27-91, potential 2135 MCF, rock pressure 2914, pay 9029-9041, TD 9500', PBTD 9150' -

MOORE (WEST PANHANDLE Red Cave) Phillips Petroleum Co., #1 Sneed 'M', Mary Johnson Survey, elev. 3088 rkb, spud 12-5-90, drlg. compl 12-9-90, tested 2-19-91, potential 1401 MCF, rock pressure 160, pay 1618-1688, TD 1905', PBTD 1865' -

SHERMAN (PALO DURO CREEK Penn. Lime) Phillips Petroleum Co., #3 Wells 'A', Sec. 9,3-B,GH&H, elev. 3410 rkb, spud 10-20-90, drlg. compl 10-31-90, tested 3-7-91, potential 725 MCF, rock pressure 893, pay 5302-5428, TD 5570', PBTD 5528' -

SHERMAN (TEXAS HUGOTON) Myriad Resources Corp., #3 L.L. Smith, Sec. 247,1-T,T&NO, elev. 3572 gr, spud 9-26-90, drlg. compl 10-4-90, tested 4-4-91, potential 171 MCF, rock pressure 85.2, pay 3224-3234, TD 5500', PBTD 3250' -

Plugged Wells

GRAY (PANHANDLE) Conoco, Inc., #15 William Jackson, Sec. 90,B-2,H&GN, spud 8-23-90, plugged 3-26-91, TD 3326' (oil) -

GRAY (PANHANDLE) Oilwell Operators, Inc., Sec. 111,3,I&GN (oil) - Form 1 filed in Cree Oil, Inc., for the following wells:

#3 Bell, spud 3-7-55, plugged 3-29-91, TD 3325' -

#1 Bell, spud 10-2-54, plugged 3-21-91, TD 3323' -

HANSFORD (WILDCAT) Harken Exploration Co., #85-1 Bivins, Sec. 85,2,GH&H, spud 3-3-91, plugged 3-24-91, TD 7400' (dry) -

HUTCHINSON (PANHANDLE) G.C.&W., Inc., Cal Merchant, Sec. 38,47,H&TC (oil) - Form 1 filed in Teeple Oil & Gas, for the following wells:

#3-38, spud 1-28-85, plugged 4-3-91, TD 3124' -

#8-38, spud 1-2-85, plugged 4-1-91, TD 2976' -

OCHILTREE (DUTCHER Cleveland) Gasoil, Inc., Brownlee Ranch (oil) - Form 1 filed in Otex Energy, Inc., for the following wells:

#1-48, Sec. 49,43,H&TC, spud 10-5-79, plugged 1-18-91, TD 10808' -

#1-127, Sec. 127,43,H&TC, spud 1-30-80, plugged 1-25-91, TD 10729' -

#1-128, Sec. 128,43,H&TC, spud 2-13-80, plugged 1-14-91, TD 7851' -

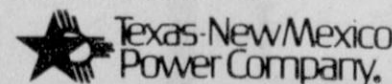
WHEELER (PANHANDLE) Jerry Lobley, #5 Pryor, Sec. 48,12,H&GN, spud unknown, plugged 4-9-91, TD 2250' (oil) -

Statement of Intent to Change Rates

In accordance with the regulations of the Public Utility Commission of Texas, Texas-New Mexico Power Company announces the Company's intent to change rates for its entire Texas operations. The effective date of such change is May 17, 1991. All classes of customers will be affected by said proposed changes. The proposed rates will produce an increase in gross revenues to the Company over test year revenues adjusted for test year customer growth and weather and annualization of test year rate increases of \$35,836,827, or 9.63%. TNP is proposing an alternative rate base treatment for Unit 2 of TNP One, the second unit of the Company's generating facility located in Robertson County, Texas. Under this alternative, sale-leaseback treatment will be given to Unit 2, thereby including a lease payment in the cost of service, as opposed to traditional rate base treatment. If adopted, the sale-leaseback plan results in an increase in gross revenues of \$31,210,197, or an 8.38% increase over adjusted test year revenues during the first year of the plan. Texas-New Mexico Power Company provides electrical service to more than 165,011 customers located within the state of Texas.

A complete copy of the requested rate filing package is on file with the Public Utility Commission of Texas in Austin, Texas, and with all cities served by Texas-New Mexico Power Company which have retained original jurisdiction. You may inspect a copy of the filing during normal business hours at each business office of Texas-New Mexico Power Company in your area.

Persons who wish to intervene or otherwise participate in these proceedings should notify the Commission as soon as possible. A request to intervene, participate, or for further information should be mailed to the Public Utility Commission of Texas, 7800 Shoal Creek Boulevard, Suite 400N, Austin, Texas 78757. Further information may also be obtained by calling the Public Utility Commission Consumer Affairs Division at (512) 458-0223 or (512) 458-0227, or (512) 458-0221 teletypewriter for the deaf.



TNP-4/91

Oil & Gas Reporting Service

Box 2052 Pampa, TX 79065

Providing the Oil & Gas Report for Hansford County Readers

Doris Harrison

Phone 665-5800



(photo by JoAnn Morton)

Spearman Elementary School celebrated National Library Week April 14-20. Each student received a commemorative National Library Week bookmark, and one student's name was drawn each day as the winner of a free paperback book. In addition, one teacher's name was drawn and her class received one extra library

period during the week. Winners included (l-r) Brenda Flores, first grader; Stephanie Brock, whose first grade class won an extra library period; Meagan Sasser, fourth grader; Cary Alvarado, fifth grader; Brianne Burkhammer, kindergartener; and Yolanda Ortiz, fourth grader.



Little Dribblers Team 5, fifth and sixth graders, include (front row, l-r) Mac Butts, Mike Butts, Lance McMahan, (back row, l-r) Frankie Dominguez, Kevin Baker, Blake Beedy, Michael Gallegos and Petie Vera. They are coached by Khris Kelp.

Award donors listed

GOODWELL, Okla. - Panhandle State University recently held its college rodeo at the Pioneer Stadium in Guymon.

Rodeo buckles were donated by local merchants and local people. Donors include: Hitch Enterprises of Guymon, bullriding buckle; Pride Feeders, Inc. of Hooker, barebacks buckle; Bill Newman of Guymon, saddle broncs buckle; Community Grocery of Goodwell and First National Bank of Texhoma, team roping buckles; Scott Keltner Memorial and Mr. and Mrs. Job Keltner of Wapello, IA., steer wrestling buckle; Jim Arute Memorial and Mr. and Mrs. Bud Arute of La Mesa, N.M., calf roping buckle; and Panhandle Implement, Inc. of Guymon, Men's

All-Around buckle.

Other donors include Richard Gardner, Jr., CPA, Beaver, Men's Team Trophy; CRI Feeders, Inc. of Guymon; Farmers Elevator of Goodwell; National 4 Petroleum of Gruver; Equity Bank and Savings of Beaver, Men's All-Around saddle; Frontier Feedyards of Spearman, Women's All-Around buckle; and First National Bank of Hooker, Women's Team trophy.

The PSU college rodeo team appreciates all the persons who donated trophies, saddles and buckles.

West Texas to host TSHSRA rodeo

STINNETT - West Texas High School will hold its fourth annual Tri-State High School Rodeo Friday and Sunday, April 26 and 28.

The rodeo will kick off at 7:30 p.m. Friday with TSHSRA events including ladies' barrel races, bronc riding, roping and bull riding.

Saturday's events will begin with a rodeo parade at 11 a.m. down Main Street. The Hutchinson County Invitational All Ranch Rodeo will start at 2 p.m. Saturday. Entry fee for the ranch rodeo is \$100 per team, with all money paid back.

"Country Express" will sponsor a street dance on West Broadway Saturday night at 9 p.m. Admission to the dance is \$3 per person.

Sunday highlights include a barbecue, beginning at 11 a.m. in the high school cafeteria, catered by the Cattle Call. Tickets are \$5.50 per person.

The Tri-State High School Rodeo will begin at 2 p.m. Sunday. The All-Around Cowboy and Cowgirl will be awarded Frontier trophies. Award buckles are handmade by Ralph Maynard.

Youngsters' events include a boot scramble and a calf scramble. Rodeo announcer this year is Marv Pierce of Wister, Okla., and stock producer is McCloy Rodeo Company of Morse.

Rodeo admission is \$3 for adults and \$1 for students. More information can be obtained from West Texas High School at (806) 878-2457, or by writing to Box Y, Stinnett, Texas 79083.

SOUTHWEST OUTDOORS



Mel Phillips

Spearman baseball begins

The Hansford County Activity Center would like to announce the start of baseball and softball season for the kids. The first game is Monday, April 29 at 5:00 p.m. and Mayor Buri Buchanan will be throwing out the first pitch of the season.

We would like to thank all the coaches for their help. They are T-ball: Jim Miller, Robbie Dewberry, Sheila Watley, Randall Sauer and Ray Ortega; Girl's Softball: Pam Barber, Ed Williamson and James Schnell; Minor League: Larry Scroggs, Marvin Wilkerson, Ken Freeman and Joe Vanderburg; Major League: Keith Burgess, Allen Varmon, Joe Hutchinson and Andy Francis; Babe Ruth: Matt Lair and Jeff Beedy.

The Activity Center would like to thank everyone for their support and invite everyone to come out and watch.

Strange how pollution reaches us in the most unexpected and frightening places. History teaches us that water is the key ingredient to survival in this part of the world, yet the protests at the death of Buffalo Lake in the '60s were barely audible. Is history repeating on the Canadian River?

"April 1991 Guidelines For Eating Fish From Ute Lake," available from Game and Fish Dept., contains some frightening reading for all residents of this area, because it describes how many fish may be caught and eaten before risking "health problems such as kidney disease, and/or eye, respiratory tract or brain damage" due to mercury poisoning.

Brain damage is something I am definitely not willing to risk; so all my fish from Ute Lake can count on being released.

After spending several days on the phone with "experts," it is clear that officials in both Texas and New Mexico are surprised at the sudden high levels of mercury found in the fish. The impact of this "warning" on the terrific people doing business near Ute Lake remains to be seen, but health warnings seldom improve business.

The quality of New Mexico water directly affects everyone down stream. Where does the water from Ute Lake go? Directly into the Canadian River and after picking up a "load of salt, it ends up in Lake Meredith and the drinking water of

14 west Texas communities. (All government experts agree that no health risk from mercury in drinking water has been proven.) Logic dictates that we better keep a close eye on this situation.

Congratulations to the brothers, Larry and Dean Logan of north Randall County, on their sweep of first and second place in the Walleye category at the first 1991 Lake Meredith Fun Tournament. Melvin Kaylor of Borger may have lost the "Lake Record" for black bass last year but he pocketed over \$500 by winning the Bass category. The fishing will get better as the water warms up. You are invited to try a Fun Tournament at Lake Meredith on the first and third Thursday evening each month.

Fun Tournaments at White River are scheduled for the second Thursday evening of each month. Mark your calendar and we will see you on May 9 at the White River Marina with registration beginning at 3:00 p.m. and fishing from 6:00 to 9:00 p.m. All Fun Tournaments cost only \$20, and if 100 anglers enter, the winner takes home \$750.00.

The West Texas Sportsman Show in Lubbock on May 10 - 12 will have Dr. Loren Hill of OU Research Station at Lake Texoma sharing some striped and bass secrets. He joins former Dallas Cowboy Randy White, B.A.S.S. Champion Ted Miller, and Trout expert Ti Pippin as they reveal secrets of the great outdoors.

Panhandle Events

FRITCH - The Fritch Chamber of Commerce will be sponsoring a "Walleye Flea Market" on May 4 in Fritch, starting at 9:00 a.m. The flea market is in conjunction with the Walleye Tournament that will be taking place that weekend at Lake

Meredith.

Individuals and organizations are encouraged to contact the chamber office to reserve a space for the Flea Market. The cost will be \$10.00 per space. The chamber phone number is 857-2458.

OSCAR'S WELDING & BACKHOE SERVICE

Repair All Types of Irrigation Lines

General Welding

Farm Equipment Welding

Aluminum Welding

INDUSTRIAL ROAD

659-2158

MOBILE 5832

STARS & STRIPES

Mobil Oil Sale

APRIL 1st - APRIL 30th

Farmers...

Truckers...

Construction Companies...

30¢ per gallon discount on Delvac engine oils and Mobilfluid 423

NUSSER OIL COMPANY, INC.
570 BORDER AVE.
ELKHART, KS. 67950
1-800-232-2294 • (316) 697-4624

\$2.99

CHICKEN COUNTRY BASKET

FOUR CHICKEN FILLET STRIPS, GRAVY, FRIES, TEXAS TOAST

THIS WEEK'S

DQ VALUE

\$2.49

GRILLED CHICKEN SANDWICH

FEWER THAN 300 CALORIES!

ON SALE AT DAIRY QUEEN APRIL 15-28, 1991

© Reg. U.S. Pat. & Tm. © Am. D.Q. Corp. 7/1M Reg. U.S. Pat. & Tm. Tx. D.Q. Op. Coun. © Tx. D.Q. Op. Coun. At participating Dairy Queen stores.

	Regular Price	Discount	SALE PRICE
Mobil Delvac 1300 Super 15W40 W/B	4.55	Less 30¢	= 4.25/Gal.
Mobil Delvac 1200 Super 15W40 W/B	4.15	Less 30¢	= 3.85/Gal.
Mobil Delvac 1330 W/B	4.13	Less 30¢	= 3.83/Gal.
Mobil Delvac 1230 W/B	4.02	Less 30¢	= 3.72/Gal.
Mobil Delvac 1140 W/B	3.69	Less 30¢	= 3.39/Gal.
Mobil Delvac 1130 W/B	3.69	Less 30¢	= 3.39/Gal.
MobilFluid 423 W/B	3.98	Less 30¢	= 3.68/Gal.

Absentee balloting continues

by JoAnn Morton
Editor

Absentee voting in city and school board elections throughout Hansford County will continue until the close of the business day Tuesday, April 30. Absentee voting for Spearman city elections can be done at Spearman City Hall from 8 a.m. to 5 p.m. weekdays. Absentee balloting in the Spearman School Board election can be done at the school business office from 8 a.m. to 4 p.m. weekdays.

Morse voters who wish to cast absentee ballots in the school board election should visit the school business office between 8 a.m. and 4 p.m. on weekdays.

In Gruver, city hall is the place to go to cast absentee ballots for the city election. Absentee voting can be done there from 8:30 a.m. to noon and from 1 to 5 p.m. weekdays. Absentee voting in the Gruver School Board election can be accomplished at the school business office from 8 a.m. to 4:30 p.m. on weekdays.

Saturday, May 4 is the date for regular balloting in city and school board elections.

There are three seats on the Spearman City Council at stake in the Spearman city election. Candidates include Steve Benton, Ray Dean Coates, Ed Garner and Mike Cudd. Running for election to the Spear-

man School Board are Mike Garnett, Joe Clement, James Schnell, Kerry Henton and Don Hawkins. There are two positions open on that board.

Ron Womble and Bob Womble are uncontested in their bid for reelection to the Pringle-Morse CISD Board of Trustees.

The race for two positions on the Gruver City Commission is being run by Keith Gibson, Mark Irwin and Daniel Boyd. Candidates for election to the Gruver School Board include J.W. Ward, Linda Venneman, James W. (Wes) Whitaker and George B. Odorn. There are two positions up for election on that board.

Lynxettes win qualifier meet

The Lynx and Lynxettes track regional qualifiers traveled to Elk City, Okla., for a regional qualifier meet last Saturday. The Lynxettes came away with a first place team finish over the other 38 teams competing.

Joy Gafford contributed points for a first and two second place finishes to help the Lynxettes to their first place finish. Her first place finish was in the 100m hurdles. One of her second place finishes was as a member of the 1600m relay team. The other second place finish was in the 300m hurdles.

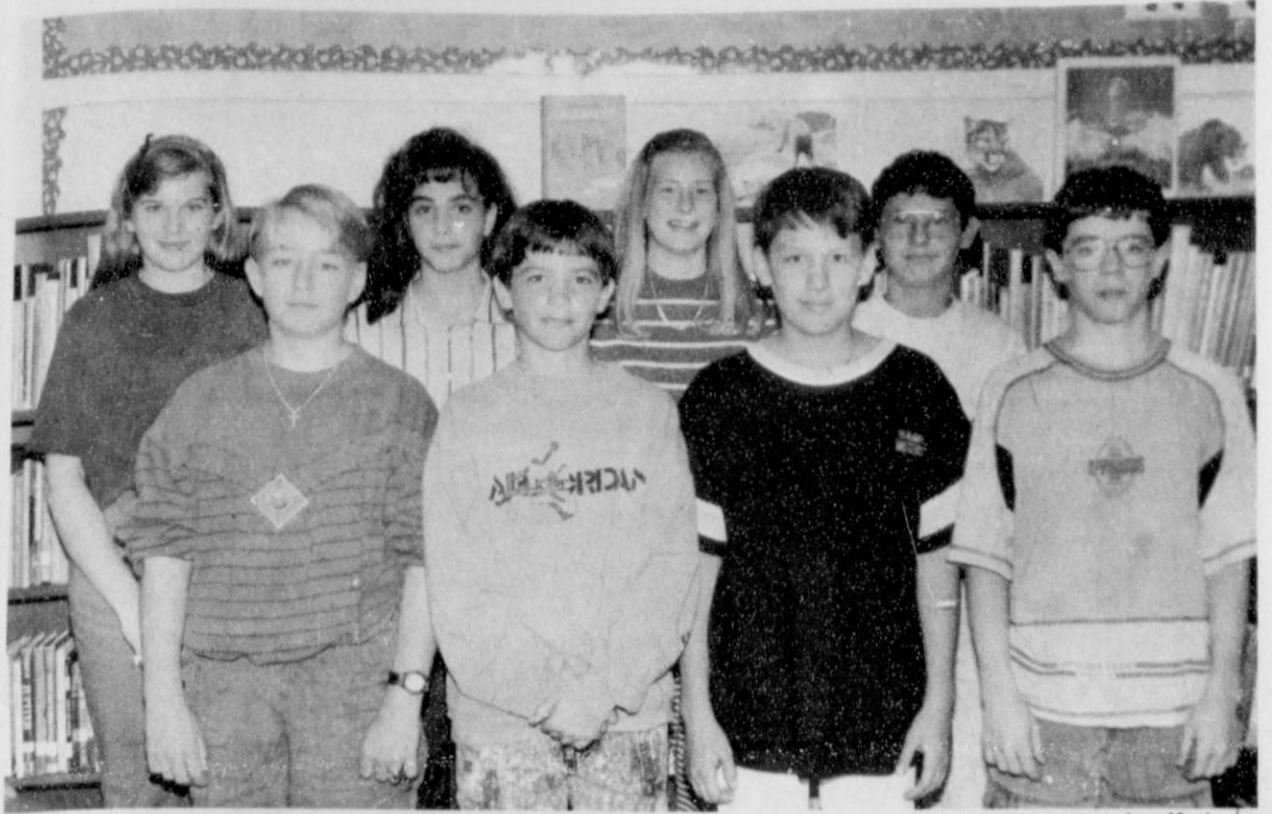
The 800m relay team contributed first place points as well. Members of the team are Sonya Nitschke, Shan-

non Holton, Suzanne Sanders and Michelle Garnett.

The four Lynx regional qualifiers did not fare as well at Elk City. Lyn Garrard, Brian Beck, Tim Kizziar and Chris Williamson ran into stiff competition in their events. But, according to coach Ricky Smith, all four boys are capable of getting into the finals at the regional meet in Abilene on Friday and Saturday.

100 M. Hurdles - Joy Gafford - 1st, 15.96; Suzanne Sanders - 4th, 16.52
200 M. Dash - Sonya Nitschke, 27.75; Carla Greene, 28.49
High Jump - Mary Cook - 4th, 5'; Jill Lusby - 5th, 5'; Suzanne Sanders - 7th, 5'
4 x 200 Relay - Sonya Nitschke, Shan-

non Holton, Suzanne Sanders, Michelle Garnett - 1st, 1:51.60
4 x 400 Relay - Shannon Holton, Sonya Nitschke, Jill Lusby, Joy Gafford - 2nd, 4:13.1
3200 M. Relay - Mary Cook, Christie Taylor, Shannon Holton, Jill Lusby - 2nd, 10:46
100 M. Dash - Bonnie Thompson, 13.07; Carla Greene, 13.30
300 M. Hurdles - Joy Gafford - 2nd, 47.56; Mendy Lasater - 6th, 50.1
800 M. Run - Mary Cook - 5th, 2:35.46
Long Jump - Holly Jarvis - 2nd, 15'10 1/2"
4 x 100 Relay - Mendy Lasater, Michelle Garnett, Suzanne Sanders, Bonnie Thompson, 53.57



Some of the Spearman Junior High School students who won paperback books in drawings during National Library Week included Rashele Reed, Mika Pipkin and Sandi Rich, 8th grade; Jeremy Blan, Mark Parker and Heath Aringer, 7th grade; and Eric Cudd and Frankie Dominguez, 6th grade.

GHS tracksters run qualifiers

The Gruver Greyhounds and Lady Hounds varsity track teams traveled to Amarillo on Saturday to compete in the Randall High School Regional Qualifiers meet.

According to Mike Banks, Lady Hounds coach, illness kept some of the Lady Hounds at home and may have affected the performance of those who did make it to the meet. "They had to shuffle girls around to just to field a relay team," said Banks. He went on to say that this meet was not an indication of how his team will fare at the Regional Meet this Friday and Saturday in Levelland.

Banks did mention that Holly Venneman's 5'-1" high jump was enough to win a third place in the meet. "On the boys' side of the meet, the varsity Hounds were a little under par. "We worked really hard last week," said coach David Steele. "The boys were a little leg-weary." He went on to say that the Hounds will have lighter workouts this week before they leave for regionals in Levelland on Thursday. "They

should be a lot fresher and ready to compete at regional," concluded Steele.

Following is a listing of how the Hounds did at Randall High School.

3200 M. Run - Max Davis, 11:49.55
800 M. Run - Kyle Haenisch - 4th, 2:10.67; Scott McCloy - 3rd, 2:10.07
400 M. Dash - Dan McCloy, 52.17; Trent Seagler, 54.02
300 M. Int. Hurdles - Felipe Dominguez - 6th, 43.39
200 M. Dash - Dan McCloy - 5th, 23.24; Trent Seagler, 24.59
1600 M. Run - Max Davis, 5:15.55
1600 M. Relay - Trent Seagler, Kyle Haenisch, Scott McCloy, Dan McCloy, 3:36.38
Shot Put - Brice Goldsmith - 6th, 48'2"
Discus Throw - Brice Goldsmith, 118'6"
Pole Vault - Shannon Pool - 6th, 12'0"

Pringle-Morse students finish well in UIL

Pringle-Morse students competed in the District 1-A UIL Academic Meet last week. Though their team standings were not high, they did come away with several first place finishes in individual events.

In the junior high division Scott Jarvis and Lori Schrayner both had first place finishes. Jarvis won the seventh grade oral reading event.

Schrayner won the calculator application eighth grade event. Maria Gonzales finished second in the calculator event.

Following is a list of all the Pringle-Morse participants who finished in the top six places in each event.

4th Grade: Ready Writing - Ashley Phillips, 2nd, Holly McCloy, 4th.
5th Grade: Ready Writing - Michelle Schick, 6th; Number Sense, Jared Johnson.
6th Grade: Oral Reading - Jesse Moreno, 1st; Listening - Marcus Schick, 1st; Number Sense - Markus Schick, 4th; Calculator - Dustin Parks, 1st, Chris Womble, 2nd.
7th Grade: Oral Reading - Scott Jarvis, 1st; Life Science - Scott Jarvis, 6th; Number Sense - Sahala McCloy, 3rd, Timmy Hoyt, 5th, Tye Womble, 6th. Calculator - Brandon Tull, 3rd, Jeremy Austin, 4th, Wes Leach, 6th.
8th Grade: Ready Writing - Lori Schrayner, 5th; Earth Science - Jana McCloy, 5th; Dictionary - Jana McCloy, 4th, Maria Gonzalez, 5th; Number Sense - Maria Gonzalez, 4th; Calculator - Lori Schrayner, 1st, Maria Gonzalez, 2nd; Impromptu Speaking - Jana McCloy, 5th.

Area Eye Center
 Dr. Billy Nowlin
 Optometrist
 206 Main 659-3109
 Hours: Tuesday 9-12 & 1-5 Friday 9-12
 Selection of Frames and contact lenses serving this area for 13 years.

>Welcome to
Kay's Cafe
 Starting Friday, April 19th -
 We will be open until 9:00 p.m. and have a
 Brand New Menu for Evening Dining!

<p>Appetizers (served after 5:00pm)</p> <p>Cheese Sticks.....\$3.00 Zucchini Sticks.....\$2.50 Cheese Nachos.....\$2.25</p> <p>Entrees</p> <p>Liver & Onions.....\$4.95 Ham Steak.....\$5.25 Chicken Livers.....\$4.95 Chicken Gizzards.....\$4.95 Fried Chicken (3 Pieces).....\$5.50 Chicken Strips.....\$4.95 Breaded Pork Chops.....\$5.25</p> <p>Steaks</p> <p>Large T-Bone.....\$10.75 Large Rib-Eye.....\$9.75 Small Rib-Eye.....\$8.25 K.C. Strip.....\$9.25 Bacon Wrapped Filet.....\$8.50 Chicken Fry w/Gravy.....\$5.25 Hamburger Steak.....\$4.95 Cheeseburger Steak.....\$5.35 Dutch Steak.....\$5.25 Salisbury Steak.....\$4.75</p> <p>Seafood</p> <p>Catfish Fillets (3).....\$6.25 Jumbo Fried Shrimp (6).....\$8.75 Popcorn Shrimp.....\$8.25 Seafood Platter.....\$12.95 Fish Sticks.....\$4.50 Fried Oysters.....\$7.25 Clam Strips.....\$6.95</p> <p>All above are served with your choice of Baked Potato or French Fries, one trip to the Salad Bar & Texas Toast.</p> <p>Sandwiches Bar-B-Q Sandwich Reuben Sandwich</p>	<p>Mexican (Served after 5:00pm)</p> <p>Fajitas (Beef or Chicken).....\$6.95 Served with Chips, Salsa, Beans, Rice, Cheese & Guacamole.</p> <p>Enchilidas.....\$5.95 Beef, Cheese or Combination) Served with Beans, Rice, Salad, Chips & Sauce.</p> <p>Chili Rellenos.....\$5.95 Served with Beans, rice, Salad, Chips & Sauce.</p> <p>Combination Plate.....\$5.95 (1 Chili Relleno, 1 Enchilida, 1 Taco) Served with Beans, Rice, Salad, Chips & Sauce.</p> <p>Tostada Plate.....\$4.95 Crisp Corn Tortilla covered with Beef, Refried Beans, Cheese & Salad.</p> <p>Open Burritos (Homemade).....\$4.95 Beef & Beans, Onions, Grated Cheese, Lettuce & Tomato, Chips & Sauce.</p> <p>Tacos (Each).....\$1.35 Taco Salad.....\$3.95 Beef & Cheese Nachos.....\$3.75 Guacamole Salad.....\$3.25 Guacamole Salad (Small).....\$2.75 Chips & Hot Sauce.....\$2.25</p> <p>Italian (served after 5:00pm)</p> <p>Lasagna.....\$4.95 Spaghetti & Meat Sauce.....\$4.95 Above Served with Salad & Garlic Bread</p> <p>Chinese (Served after 5:00pm)</p> <p>Pepper Steak.....\$4.95 Almond Chicken.....\$4.95 Above Served on Rice</p> <p>Salads Taco Salad Guacamole Salad Wilted Lettuce Salad</p>
---	---

210 Main Spearman

Parents group forms

PERRYTON - Perryton Family Services Director, John O'Nan, announces plans for a Parent's Information and Self-Help Group.

Family Services is facilitating and sponsoring formation of a local group for this area similar to the TEXAMI Group. TEXAMI stands for Texas Alliance for the Mentally Ill and is affiliated with The National Alliance Group. The Texas Group is located at 400 W. 15th St., Suite 619, Austin, Texas 78701, phone 512-474-2225.

This is a group that was organized as part of the National Group in August of 1984 to represent local grassroots, self-help, support, and ad-

vocacy affiliates of families of the mentally ill, as well as those persons themselves. The function is to promote the exchange of information and assist in formulation of new support groups.

Local level groups provide emotional support and practical advice to families. Sessions, besides providing information about mental health conditions, will have a "Caring and Sharing" portion, which most families find supportive of their situations that can be threatened by the severe and major upheavals caused by symptoms of serious mental illness.

Primary functions will not be limited to these, but will be set by the local group members who will elect their own officers, do their own chartering, and prioritizing of focus of needs. The National/State people are available for resource.

O'Nan feels that this is an excellent addition to help offset some of the shrinking services to this population group. However, many of the chapters find that their functions are in these areas of development:

- 1) Setting a network of geographically contiguous affiliate groups whose primary purpose and membership criteria are consistent with the National Alliance for the Mentally Ill support groups.
- 2) These "grassroots" groups will eventually represent the 150 Texas Legislative Districts and will develop as influential resource components in the decisions that affect the mentally ill population in Texas.
- 3) Another function will be to facilitate and participate in statewide education programs focusing on combating the stigma of mental illness.
- 4) To serve as a resource to assist the public system to upgrade

See group page 16

Don't Miss Out
 because you can't be reached

G & G ELECTRONICS

CELLPHONE U.S.A.

2 Way Radio Repeater Spaces Pagers
 Mobile Telephones

Towers located in: Guymon Ok. Spearman, Tx.
 Perryton Tx. Boise City Ok. Elkhart Ks.
 Hugoton Ks. Liberal Ks.

Bruce Duncan Spearman (806)659-3673
 George Reust Shop (405)338-7762
 102 N. Main Guymon, Oklahoma 73942

The Hansford County
Reporter-Statesman
 Serving All Of
 Hansford County

213 Main Spearman, Hansford County, Texas 75785

If YOU have a story to tell,
 call us TOLL-FREE!

1-800-395-9482

Dial 659-3434 in Spearman

Gruver students compete in UIL Regional



Gruver 5th grade UIL contestants included (front row, l-r) B. Armes, B. McLain, J. Odom, L. Garcia, K. Slough, E. Alvarez, (second row, l-r) R. Murrell, W. Maupin, J. Swink, A. Roberts, D. Johnson, A. Roberts and D. Nash.



Gruver 4th grade UIL contestants included (front row, l-r) C. Stavlo, G. Slough, C. Henson, M. Banks, L. Miller, A. Knight, (second row, l-r) J. Lopez, N. Trammell, E. Salmons, J. Potts, J. Dahl, S. Fiel and J. TeBeest.



Gruver 7th grade UIL contestants included (front row, l-r) D. Bort, J. Ward, S. Renteria, C. Marquez, C. Lowe, M. Alvarez, M. McLain, (second row, l-r) B. Barkley, T. Ferguson, C. Musick, W. Maupin, K. Carthel, R. Holt and M. Ross.



Gruver 8th grade UIL contestants included (front row, l-r) K. Foster, C. Ortega, J. Hart, A. Overbey, G. Odom, A. Knight, M. Garcia, (second row, l-r) R. Soto, I. Arzate, J. Dawson, K. Haenisch, J. Meyer, T. Ralston and K. Wagner.

The Gruver UIL Regional Qualifiers competed in the Regional UIL Academic Meet last week. Luke Miller is headed to the state meet as a number sense competitor, and Benny McClenagan may get a chance at state as an alternate in persuasive speaking.

The current events team did well, finishing tied for third. The members of that team are McClenagan, Clay Gillispie and Chris Kauffman.

The Gruver Junior High and Elementary UIL Academic teams competed in district contests over the last two weeks.

In the end, the Gruver junior high team amassed enough team points to finish first and the elementary team finished second.

Following is a list of the Gruver competitors finishing in the top six places of each event.

Junior High

- Spelling 7th - Memory Ross, 1st; Joni Hart, 2nd; Cristy Marquay, 5th
- Ready Writing 7th - Memory Ross, 6th
- Science 8th - Jimmy Aceredo, 2nd; Isaias Arzate, 3rd
- Dictionary Skills 7th - Hailey Lamb, 3rd; Jennifer Stevens, 6th
- Modern Oratory 7th - Kiki Carthel, 1st; Veronica Bravo, 2nd; Jennifer Stevens, 3rd
- Impromptu Speak 7th - Molly McLain, 1st; Cori Lowe, 2nd; Jennifer Stevens, 3rd
- Spelling 8th - Carmen Ortega, 5th; Monica Garcia, 6th
- Ready Writing 8th - Kimberly Wagner, 1st
- Science 7th - Andy Morris, 1st; Doug Gunfory, 5th;
- Dictionary Skills 8th - Kiki Carthel, 1st; Roxanne Holt, 3rd
- Modern Oratory 8th - Jace Dawson, 1st; Tisha Ralston, 2nd
- Imprompt Speak 8th - Janyth Hart, 2nd; Lacy Barkley, 4th
- Oral Reading 7th - Joni Hart, 2nd
- Number Sense 7th - Roxane Holt, 1st; Bailey Barkley, 2nd
- Calculator App. 7 - Daniel Bort, 1st; Sammy Renteria, 2nd; Wylee Maupin, 5th
- Oral Reading 8th - Kim Venneman, 2nd; Jace Dawson, 3rd; Janyth Hart, 4th
- Number Sense 8th - Kimberely Wagner, 3rd
- Calculator App. 8th - Ricardo Soto, 4th; Grant Oldom, 6th.



Gruver 6th grade UIL contestants included (front row, l-r) K. Cluck, M. Henson, M. Overbey, C. Christian, K. Evans, S. Stedje, (second row, l-r) A. Knight, J. Mayhew, C. Hathaway, A. Murrell and L. Spivey.

Elementary

- Spelling 3rd - Randi Atwood, 2nd; Annie Mayhew, 3rd;
- Spelling 5th - Jill Odom, 5th
- Ready Writing 5th - Darby Johnson, 5th
- Oral Reading 4th - Nacole Trammel - 5th; Sheri Fiel, 6th
- Storytelling 3rd - Lindsay Barkley - 5th; Candice Casdorff, 6th
- Spelling 4th - Jennifer Lopez, 1st; Jennifer Dahl, 4th
- Spelling 6th - Amber Murrell, 5th; Isela Morena, 6th
- Ready Writing 4th - Matt Banks, 3rd; Jennifer Dahl, 6th
- Ready Writing 6th - Amber Murrell, 1st; Tucker Henson, 4th; John Duncan, 5th
- Oral Reading 5th - Kathy Slough, 3rd
- Oral Reading 6th - Ke'ly Boone, 3rd
- Picture Memory 5th - Davida Nash, 3rd
- Music Memory 6th - Mary Dawn Henson, 1st
- Dictionary Skill 6th - Amy Gillispie, 2nd
- Listening Skills 6th - John Duncan, 2nd; Aaron Knight, 4th
- Number Sense 5th - Darby Johnson, 4th; Katherine Brown, 5th
- Calculator Appl. 6th - Josh Mayhew, 3rd; Kristin Evans, 5th
- Picture Memory 4th - Jennifer Dahl, 1st
- Music Memory 5th - Autumn Roberts, 2nd
- Dictionary Skill 5th - Erica Alvarez, 6th
- Listening Skills 5th - Kyle Winter, 3rd
- Number Sense 4th - Jason TeBeest, 1st; Greg Slough, 3rd; Clayton Henson, 6th



Gruver elementary UIL contestants included (front row, l-r) L. Fiel, J. Miller, T. Ferguson, (second row, l-r) L. Barkley, K. Deeds, C. Hicks, A. Mayhew, K. Barkley, (third row, l-r) C. Casdorff, S. Lowe, B. Bevil, D. Johnson, H. Hart and R. Atwood.

TULIP QUILT CLASS
 Jean McCarley, Pampa, Instructor
May 3rd, 5:00 - 9:30
May 4th, 9:00 - ???
 For more information contact
Jo's This N' That
 216 Main Spearman, TX 659-3999

ALLSUP'S

6 PACK/ 12 OZ. CANS \$2.39 APRIL 21 to APRIL 27 WHILE QUANTITIES LAST

Enjoy Coke

RUSSET POTATOES
U.S. No. 1 5 lb. BAG
59¢

MELLO CRISP BACON LB. PKG.
\$1.09

Cheetos REG. \$1.79
\$1.39

ALLSUP'S CORN DOGS
2/99¢

SAUTEYA SAUSAGE
89¢

HAM, EGG & BISCUIT
79¢

ALWAYS THE BEST PRODUCTS AT THE BEST PRICES! SHOP & SAVE

Shur Saving Bathroom Tissue 4 roll pkg.	2/\$1.00
Shur Fine Saltine Crackers	59¢
Shur Fine Sugar 5 lb.	\$1.69
Shur Saving Facial Tissue 150 - 2 ply	59¢
DelMonte, Shur Fine, Contadina Tomato sauce 8 oz. can	6/\$1.00

COOKED FRESH 30 MINS. A DAY	HOT FOODS MENU	AVAILABLE AT ALL ALLSUP'S LOCATIONS
BARBECUE BEEF SANDWICH	99¢	9 PRICE BOX CHICKEN \$4.99
BARBECUE PORK RIBS (LB)	\$3.99	BEEF & CHEESE CHIMICHANGA \$1.19
BARBECUE WHOLE CHICKEN	\$3.99	(MEAT) CORN DOG 69¢
ALLSUP'S BURRITO	79¢	DELICIOUS HAMBURGER 59¢
BREAKFAST BURRITO	99¢	WILSON HOT LINKS 99¢
BURRITO BEEF & SALSA	\$1.19	SAUSAGE ON A STICK \$1.59
DELICIOUS CHEESEBURGER	79¢	SAUSAGE & BISCUIT 79¢
CHICKEN FRIED STEAK	\$1.59	SAUSAGE, EGG & BISCUIT \$1.09
3 COUNT CHICKEN STRIPS	\$1.49	SAUTEYA SAUSAGE \$1.09
W/POTATO WEDGES/ CHICKEN Q PCS/BISCUIT	\$1.99	4 COUNT STEAK FINGERS \$1.00

CALL IN ORDERS WELCOME CHECK OUR WEEKLY SPECIALS

AUCTION

-AUCTIONS COMING UP-
 May 23, 1991 - Perryton
 May 25, 1991 - Shattuck
Farm Equipment
 Limited Consignments Welcome

Swink Auction Co.

Howard L. Swink TXS 6829 (806)435-7279
 David Bay - Shattuck, OK (405)938-2248

Licensed - Bonded - Insured Complete Auction Service

WE'RE GOING TO DO SOME SPRING CLEANING!!

For your shopping convenience we have combined our used cars & trucks from both dealerships! From now on all of our used cars & trucks will be located at Hergert Ford, 2322 S. Main in Perryton. We have over 60 vehicles in stock with more trade-ins arriving daily. If you are looking for a nice used car or truck for yourself, or a great school car for your son or daughter, then check our inventory! We've got some of the nicest "factory program cars" and good clean used cars & trucks in the Panhandle! For your shopping convenience we have GMAC, Ford Motor Credit and bank financing available ... (we have been known to take cash too!) We're open on Saturdays until noon.



1991 Lincoln Town Car

USED CAR INVENTORY

- * 1991 Lincoln Town Car 4 Dr. - Silver Rose - 9,990 miles. Equipped with 4.6 liter V-8, automatic w/OD, leather split bench seat, dual power seats, power windows, locks, cruise, tilt and AM/FM cass., plus rear defroster. CASH \$23,950
- * 1991 Ford Taurus GL 4 Dr. - Gold - Tan Cloth, 16,000 miles with 3.0L V-6 engine. This car has power windows, door locks, air conditioning, cruise, tilt and rear window defroster. CASH \$13,900
- * 1991 Ford Tempo 4 Dr. GL - Red - Red Cloth, 10,900 miles with 2.3 OL 4 cyl. EFI engine, equipment includes automatic transmission, power brakes, windows, locks, AM/FM cass., air conditioning, cruise, tilt and in excellent condition. CASH \$9,950
- * 1990 Lincoln Continental 4 Dr. - 2 To Choose From! (Crystal blue - blue leather, 10,500 mi. - Champagne - Tan leather, 14,000 mi.) Both are equipped with 3.8 V-6 engine, leather power seats, AM/FM cass., power windows, locks, cruise, tilt, and rear window defroster. YOUR CHOICE \$18,900
- * 1990 Lincoln Town Car 4 Dr. - 2 Left In Stock! (Adobe beige, tan cloth - 10,000 miles - Light crystal blue, blue leather, 10,900 miles). These cars have factory mags, cruise, tilt, power windows, locks, AM/FM cass., dual power seat, and more. YOUR CHOICE \$19,900
- * 1990 Mercury Grand Marquis LS 4 Dr. - Light/Dark Woodrose. Only 25,000 miles! We Sold New! Formal coach roof, power seats, windows, locks, tilt, cruise, AM/FM cass., rear defogger, Mercury mags & Michelins. CASH \$14,900
- * 1990 Ford Taurus 4 Dr. GL - White, Extra Nice, Ext./Maroon Cloth, 12,500 miles and loaded with the following equipment. Automatic transmission, 3.0 L V-6 engine, power windows, locks, AM/FM radio, air conditioning, cruise & tilt. CASH \$11,900
- * 1990 Mercury Sable GS 4 Dr. - Grey Exterior/Red Cloth, 16,000 miles. Loaded with 3.0 L V-6 engine, power windows, locks, air conditioning, cruise, tilt and rear defroster. CASH \$11,900
- * 1990 Mercury Topaz 4 Dr. (2 To Pick From!) (Tan with tan cloth, 10,600 mi. - White with red cloth, 10,600 mi.) 2.3 EFI 4 cyl. engine, automatic transmission, power steering, brakes, windows, custom wheels, air conditioning, cruise & tilt, AM/FM stereo. YOUR CHOICE \$8,450
- * 1990 Ford Tempo GL 4 Dr. - Dark Metallic Blue/Blue Cloth, 11,000 miles, 2.3 EFI engine, automatic, steering, brakes, locks, AM/FM radio, air, cruise, tilt, and rear defroster. CASH \$8,450
- * 1989 Ford 1/2 Ton 4X4 Ranger Supercab XLT - White/Blue, V-6, auto, air, AM/FM cass., Only 26,000 miles! We sold new! CASH \$10,900
- * 1989 Ford Tempo "All Wheel Drive" 4 Dr. - Light Crystal Blue, Power seat, windows, locks, tilt & cruise, AM/FM cass. Only 10,000 miles! We sold new! CASH \$9,250
- * 1988 Lincoln Town Car "Signature Series - Crystal Blue/Cloth, 5.0 L EFI V-8 engine. This car is loaded with dual power seats, cruise, tilt, air, windows, locks, and AM/FM cass. Priced to sell. CASH \$10,900
- 1986 Oldsmobile Regency Brougham "98" 4 Dr. - Sapphire Blue Firemist, 3.8 V-6 engine, wire wheel covers, dual leather seats, PW, PL, cruise, tilt, AM/FM cass., and rear defroster. Need a family car — try this! CASH \$6,950

* Balance Of Factory Warranty Transferrable Automatically

LIBERAL CASH REBATES OR INTEREST AS LOW AS 4.8% ON NEW 1990'S & 1991'S

We'd Sure Appreciate Your Business!



Hergert Ford
2322 S. Main
Perryton, TX
(806) 435-7676

Don Hergert Steve Clumsky
Darl Hergert Leo Meyers
Donnie Hergert



1991 Ford Taurus GL

USED CAR INVENTORY

- 1987 Chevrolet Van - Regency Conversion - Midnight Blue, Local trade in just in time for vacation. Has only 57,000 miles and loaded with many extras! CASH \$10,900
- 1985 Cadillac Seville D'Elegance 4 Dr. - Creme Beige/ Dark Met. Brown, This car has all the options plus leather seats. If you need a car that rides excellent this is the one! CASH \$5,950
- 1985 Oldsmobile 98 Regency 4 Dr. - Light Met. Blue/Blue Cloth, Local trade in from Oklahoma. 3.8 V-6 engine and all the power equipment, including Base Stereo! CASH \$5,950
- 1985 Cadillac Fleetwood D'Elegance Brougham - Sapphire Blue Firemist, This full size car rides and drives like new. If you want comfort, this is the one! Loaded with equip., including leather power seats & real chrome wire wheels! CASH \$6,950

BARGAIN CORRAL

- 1985 Pontiac Grand Prix Brougham 2 Dr. - Charcoal/Silver, 305 V-8, power seat, windows, locks, AM/FM cass. CASH \$4,750
- 1985 Ford F-150 4X4 - Tan/Tan Interior, Excellent work pickup with 4.9 6 cyl. engine (Rebuilt), automatic transmission, power steering, brakes, air conditioning, cruise & tilt. CASH \$4,250
- 1985 Ford Mustang LX - Slate Grey/Grey Cloth, 302 V-8 engine, automatic transmission, air, cruise, tilt, and in good condition. CASH \$3,500
- 1985 Buick LaSalle Limited 2 Dr. - Tan/Tan Cloth, This is a local trade in and in excellent condition. 307 V-8 engine, automatic transmission, and plenty more! CASH \$3,500
- 1983 Ford Ranger P.U. - Tan/Tan Interior, 2.3 4 cyl. engine, 4 speed manual transmission, air, power steering, brakes, and AM/FM radio. 62,000 miles. Brand New Steel Radials! CASH \$3,250
- 1978 Chevrolet Custom Van - Brown/Beige, This will make a good one to take the kids to school or on vacation this summer. Come see this one! CASH \$3,750
- 1978 Lincoln Town Car - White/Blue Cloth, This car is loaded and will make someone a good transportation. Extra nice! CASH \$2,450
- 1973 Chevrolet Caprice 4 Dr. - Metallic Brown/Tan, If you need a good work car in excellent condition this is the one for you. It's loaded with equipment! CASH \$1,650
- 1973 Chevrolet Suburban - Tan, This is the work wagon to haul your crew to and from work. Would also make good hunting or fishing wagon! CASH \$1,200
- 1948 Ford Flatbed With Portable Sides, This truck has been refurbished and in excellent condition. Don't rule this one out until you see it! Like new with very recent overhaul. Looks and runs great! CASH \$2,500

CALL US ON OUR TOLL FREE NUMBER
1-800-722-FORD (3673)



1991 Olds Cutlass Supreme

USED CAR INVENTORY

- * 1991 Cadillac Sedan 4 Doors - 2 To Pick From! (Pastel Slate Grey - 4,000 miles! White - 8,600 miles!) Both are equipped with Michelins & Mags, cloth power seats, AM/FM cass., graphic equal., cruise, tilt & rear defogger. Balance of 4 yr./50,000 mile warranty transferable automatically at no charge. YOUR CHOICE \$24,995
- * 1991 Olds Cutlass Supreme 4 Door, Silver - Burgundy cloth, 10,000 miles! Equipped with V-6, auto, Michelin, power windows & locks, tilt & cruise, AM/FM cass., rear defogger. Balance of 3 yr./50,000 mile warranty. CASH \$13,995
- * 1991 Pontiac Grand Am LE's - 2 To Pick From (Light metallic blue, 2 dr., 9,600 miles - bright blue 4 dr., 8,800 miles). Both are equipped with 4 cyl., EFI, auto, air, tilt & cruise, AM/FM stereo, & Michelins. Balance of 3 yr./50,000 miles warranty. YOUR CHOICE \$9,995
- * 1990 Buick Park Avenue 4 Door - Ruby Red, Only 17,000 miles! V-6, auto, air, tilt & cruise, power seats & recliner, AM/FM cass., & Michelins, defogger. CASH \$16,995
- * 1989 Cadillac FWD Fleetwood 4 Dr. - Dark Rosewood, New Michelins, wire wheels, leather power seats, windows & locks, tilt & cruise, AM/FM cass., & vinyl top, rear defogger, 45,000 miles. We sold new! CASH \$17,995
- * 1989 Pontiac Grand Am LE 2 Dr. - Bright Metallic Blue, 36,000 Miles! 4 cyl. EFI, auto, air, power windows, AM/FM, tilt. A real eye catcher. Would make a good economical school car! CASH \$7,950
- * 1989 Chevy Corsica 4 Dr. - Charcoal, Burgundy Cloth, 4 cyl. EFI, auto, air, & cruise, power windows & locks, AM/FM cass., wire wheels. Only 18,000 miles! Warranty remaining. CASH \$7,950
- * 1988 Chevy 1/2 Ton Suburban - Silverado - Bright Metallic Blue, 39,000 Miles! Warranty remaining! New steel radials, 350 V-8 EFI, auto, dual air, tilt & cruise, windows & locks, AM/FM cass., panel doors, all three seats, running boards and hitch. CASH \$13,950
- 1987 Chevy Caprice Classic 4 Dr. - Gold/Met. Brown 2 Tone, 51,000 Miles! 305 V-8, auto, air, wire wheel, tilt & cruise, windows & locks, AM/FM cass. CASH \$6,950
- 1986 Pontiac 6000 STE 4 Dr. - Gold (Tan Cloth), 70,000 miles, V-6, auto, air, Pontiac Mags, power seats & recliner, windows & locks, tilt & cruise. You must see the stereo on this one! CASH \$5,950.

BARGAIN CORRAL

- 1985 Cadillac Fleetwood Brougham D'Elegance RWD - Burgundy, High mileage but this car is immaculate! Wire wheel, 4.1 V-8 EFI, power everything! CASH \$4,950
- 1980 Olds Delta 88 4 Dr. - Silver, High mileage but mechanically sound! Would make a good crew car. CASH \$1,250.
- 1985 Chevy Caprice Classic 4 Dr. - Gold (Saddle Tan Cloth), 57,000 miles! 305 V-8, auto, air, tilt & cruise, AM/FM cass., power windows & locks. CASH \$4,950

* Balance Of Factory Warranty Transferrable Automatically

LIBERAL CASH REBATES OR INTEREST AS LOW AS 4.9% ON REMAINING NEW 1990'S



Don Hergert Motors
420 S. Main
Perryton, TX
(806) 435-3686

Don Hergert Steve Clumsky
Darl Hergert Leo Meyers
Donnie Hergert



1991 Cadillac Sedan DeVille

BARGAIN CORRAL

- 1983 Olds 98 Regency Brougham 2 Dr. - Light Met. Brown/Burgundy, 78,000 miles & loaded with equipment! Power seats & recliner, AM/FM cass., & wire wheels. CASH \$3,950
- 1982 Plymouth Reliant 4 Dr. - White/Tan, Good inexpensive transportation with AM/FM cass., and air conditioning. CASH \$1,750
- 1982 Chevrolet 1/2 Ton Short/Wide Silverado - Black/Silver, Only 68,000 miles! 305 V-8, automatic, air, tilt, cruise, AM/FM cass., chrome wheels. A real eye catcher! CASH \$4,750
- 1981 Buick LeSabre 4 Dr. - Dark Metallic Brown/Tan, Only 31,000 miles!! 4.3 V-6, auto, air, power seat, tilt, cruise, AM/FM stereo. CASH \$4,950
- 1981 Cadillac Fleetwood Brougham 4 Dr. - Charcoal, High mileage but looks and runs great! D'Elegance leather trim & loaded. CASH \$2,950
- 1980 Pontiac Sunbird 2 Dr. - Dark Blue/White, Automatic, air & cheap! CASH \$750
- 1980 Olds 98 Regency 4 Dr. - Pastel Grey, High mileage but mechanically sound! Loaded with equipment! CASH \$1,250
- 1985 Chevy Impala 4 Dr. - Burgundy (Burgundy cloth) 4.3 EFI V-6, auto, air, tilt & cruise, AM/FM cass., 55,000 miles. This car would make good economical transportation. CASH \$3,950
- 1985 Chevy 1/2 Ton Silverado - Light Metallic Blue, Brand new paint job! 305 V-8, auto, air, tilt, cruise, AM/FM, power windows & locks, white lettered tires. This one is a real eye catcher! CASH \$5,500
- 1984 Buick Regal Limited Somerset - 2 Tone Metallic Brown, 4.1 V-6, auto, Buick Mags, power seat, windows & locks, tilt & cruise, AM/FM cass., 71,000 miles! Not a dent or scratch on it. CASH \$4,000
- 1984 Chevy Caprice Classic 4 Dr. - 2 Tone Metallic Blue, High mileage but looks & runs great! 305 V-8, auto, air, wire wheels, tilt & cruise, power windows & locks, AM/FM cass. CASH \$3,000
- 1981 Buick Park Avenue 4 Dr. - Light Met. Brown/Tan, High mileage but mechanically sound! Power seats & reclines, windows & locks, tilt, cruise, AM/FM cass. CASH \$2,500
- 1979 Buick Riviera 2 Dr. - Dark Metallic Blue, 350 V-8, auto, air, tilt, cruise, windows & locks, AM/FM cass. CASH \$2,500
- 1979 Chevy 1/2 Ton 4X4 Suburban - Dark Brown/Tan, 400 V-8, auto, air (dual) all three seats. Would make a good hunting & fishing wagon. CASH \$2,000
- 1977 Chevy 3/4 Ton Conversion Van - Dark Metallic Blue, Mag wheels, captain chairs, auto, air, cruise. CASH \$2,450
- 1974 Chevy 1 Ton Dually with Welding Bed - White/Blue, 350 V-8, 4 speed, make a great work truck on the farm or ranch! CASH \$1,750

CALL US ON OUR TOLL FREE NUMBER
1-800-833-4CAR (4227)

Count on the Classifieds to Do the Job

WANT ADS Work Wonders!

Count on the Classifieds to Do the Job

NOTICE
 deadline to place or cancel classified line ads is Tuesday noon Thursday insertion.
CLASSIFIED RATE
 \$4.00 first insertion
 \$3.00 each additional insertion (30 words or less)
 13" each word over 30
 Legal Notices: 15¢ per word
 Ads must be paid in full in cash before publication, unless advertiser as established credit with the Reporter-Statesman.
 Payment for out of state classifieds must be in the form of a money order or cashier's check.
 No tear sheets provided for classified ads.
 Tear sheets provided on request for legal notices.

REAL ESTATE
NICE THREE BEDROOM, one bath home for sale. Good location. Call 435-5064. S24-4tc
NICE THREE BEDROOM two bath home. Sunken living room, fireplace, fenced back yard, two car garage. Very nice location for children, 1120 Archer in Spearman. Call 659-2306. S21-9tc
622 S. ENDICOTT - Cute 2 bdr, 1 bath, double car garage, corner lot. \$18,000 or pay equity and take up payments. Call Jerry, 659-3585, or Joy, 665-4425. S11-RTN

Today's Best Buys
SHUR SAVING BATHROOM TISSUE
 4 roll pkg. 2/\$1.00
ALLSUP'S CONVENIENCE STORE
COKE, DR. PEPPER or 7 UP
 3 Lt. \$1.69
UNITED SUPERMARKET-PERRYTON
UNITED MILK
 1/2 Gal. 99¢
UNITED SUPERMARKET-PERRYTON
FINE FARE CHEESE SPREAD
 2 Lb. pkg. \$3.39
UNITED SUPERMARKET-PERRYTON
FAJITAS (BEEF OR CHICKEN)
 After 5 p.m. \$6.95
KAY'S CAFE

HOUSEHOLD GOODS
KENMORE VACUUM with attachments for sale. For information call 659-3146. S25-1tp
PERSONAL
 I AM NOT responsible for any debts other than my own.
 Steve Fleetwood
 S26-2tp

HELP WANTED
FOUR POSITIONS AVAILABLE in this area with Avon. Call 659-2989. S25-4tp
JOB OPENING
 The City of Spearman is now accepting applications for the position of Customer Accounts Clerk in the Financial Administration Department. Position involves advanced billing calculations, customer service, accounts receivables, accounts payable, maintaining personnel files, payroll calculations and reports, and other duties as assigned. Applicants must have a High School Diploma and be able to deal effectively with the public. Applicants must have the ability to operate a typewriter, calculator, computer and have past bookkeeping experience.
 The City has an excellent fringe benefit program which includes retirement, group hospitalization insurance, vacation pay, holiday pay, and sick leave pay.
 Applications will be received until noon on April 29, 1991. Applications may be obtained at City Hall located at 30 S.W. Court. The City of Spearman is an E.O.E. S25-2tc16.77

PUBLIC NOTICES
TO ALL INTERESTED PERSONS AND PARTIES:
 You are hereby notified of the opportunity for written public comment concerning the Construction Permit Application No. C-20616 by Gruver Redi-Mix to construct a Redi-Mix Plant in Gruver, Hansford Co. Texas. The proposed location is 700 McCree, Gruver, TX. This facility proposes to emit the following air contaminants: dust particles.
 A copy of all materials submitted by the applicant is available for public inspection at the Texas Air Control Board Lubbock Regional Office at Bierncroft South #1, 5302 South Avenue Q, Lubbock, Texas 79412, telephone (806) 744-0090 or 744-6055 and at the Texas Control Board, 6330 Highway 290 East, Austin, Texas 78723. All interested persons may inspect these materials and submit written comments to the Executive Director of the Texas Air Control Board. Any person who may be affected by emissions of air contaminants from the proposed facility may request a contested case hearing from the Board on the construction permit application pursuant to Section 3.271 (c) of the Texas Clean Air Act. All comments and hearing requests must be received in writing by May 25, 1991. All written comments submitted to the Executive Director shall be considered in determining whether to issue or not issue the permit. All comments will be made available for public inspection at the Texas Air Control Board office in Austin. S25-2tc33.30

AA Realty
 Allen Alford-Broker-659-3034
 Hester Crawford-Sales-659-2074
 Julie Martin-Sales-659-2425
 Dennis Nelson-Sales-659-3608
 Larry Trosper-Sales-659-3491
Office Building-Large-708 Roland
1121 Dressen-Neat-3/1 1/2 garage
715 Steele-Cute-3/1 1/2 garage-REDUCED
526 Townsend-Large rooms-4/2
Country Home-3/1 1/2-Barns-2 acres
221 Barkley-Good Investment-Low Price
1119 Haney-2/1 garage-Spacious
1028 Townsend-3/1 1/2-corner lot
 We can now service you on all FmHA Homes in town.
 Look for Century 21 Signs
 We have 1 Section Farmland-Choice-178 Grassland-Balance Dry Land
 Remember 8 1/4% Loan-FHA 1st Time Homeowners-Use on almost any Home-
 New & Used-Released May 8th
 Homes to Show Not Listed
 Just Call For Showings
 FOR QUALITY & SERVICE CALL US TODAY
 Equal Housing Opportunity

NICE HOUSE on 1 1/2 lots. Fence, 3 bedrooms, 1 1/2 baths, study, utility room, lots of cabinet storage, garage, huge driveway, central air/heat, 1500 sq. feet. \$42,000. 727 Wilbanks. 659-3970 or 659-3838. S24-3tpRTN
FOR SALE: 3 Bedroom, 2 bath home. Sunken living room, parquet floors, fireplace, covered patio, 2 car garage, sprinkler system, 2193 sq. ft. living space, excellent location. Call 659-3587 or 659-5022. S33-RTN
THREE BEDROOM two bath brick home on two lots, corner with large trees, beautiful back yard, RV shed with hookups, two car detached garage. 1920 sq. ft., storm windows throughout, outside awning on all windows, whirlpool tub in master bath. \$63,000 or assumable loan. Must see to appreciate. 621 S. Endicott. 659-2040 after 5 p.m. for appointment. S25-3tp7.51
REDUCED - 1119 S. Haney. Nice 2 bedroom, 1 bath, garage, central heat & air. Fenced backyard. Owner will finance with low down payment. Call Darlene at 659-5565, or after 5 p.m. at 659-5227. S25-2tp
HOME FOR SALE at 425 Cooper in Gruver. Four bedrooms, 2 1/2 baths. Call 733-2245 after 4 p.m. S26-3tp

AUTOMOBILES
1981 CHEVROLET station wagon. Call 659-3802 or see at 519 Evans, Spearman. S21-6tc
FOR SALE: 1987 Cadillac Fleetwood D'Elegance. 30,000 miles. Call 659-2687. S25-2tp
MOBILE HOMES
8 X 40 SUNFLOWER travel trailer. Two bedroom, carpeted, clean. \$6500. Call 405-487-3827, Forgan, OK. S25-2tp

MISC. FOR SALE
14-FOOT ALUMINUM fishing boat for sale. Has 18 horsepower motor, canopy, boat cover, two swivel seats. Good condition. Call after 5:30 p.m., 659-3849. S25-RTN n/c
NEW TRAMPOLINES
 Mats and springs. Resew trampoline mats. Make new boat covers.
 Call 806-659-2109
 Hary Stumpf
 301 W. 12th
 Spearman, Texas

JOB OPENING
 The City of Spearman is now accepting applications for the position of Administrative Assistant in the Administration Department. Position involves responsibility for financial oversight, personnel, purchasing coordination, budget requests and preparation and records management. Applicants must have a Bachelors degree in business or public administration, minimum of twelve hours in accounting, with course work in personnel, purchasing, business law, and related studies. Applicant must be able to operate computer, to maintain complete bookkeeping controls and to deal effectively with the public.
 The City has an excellent fringe benefit program which includes retirement, group hospitalization insurance, vacation pay, holiday pay, and sick leave pay.
 The application deadline is May 26, 1991. Applications may be obtained at City Hall located at 30 S.W. Court. The City of Spearman is an E.O.E. S26-2tc17.03

LEGAL NOTICE
 Spearman Financial Corp., Wilmington, Delaware intends to apply to the Federal Reserve Board for permission to form a bank holding company at 1209 Orange Street, Wilmington, Delaware. We intend to acquire control of First National Bank, P.O. Box 337, Spearman, Texas 79081. The Federal Reserve considers a number of factors in deciding whether to approve the application including the record of performance of banks we own in helping to meet local credit needs.
 You are invited to submit comments in writing on this application to the Federal Reserve Bank of Dallas, Supervision & Regulation Department, Station K, Dallas, Texas 75222. The comment period will not end before May 25, 1991 and may be somewhat longer. The Board's procedures for processing applications may be found at 12 C.F.R. Part 262 (as revised, 49 Federal Register 5603 (February 14, 1984)). Procedures for processing protested applications may be found at 12 C.F.R. 262.25 (1984). To obtain a copy of the Board's procedures or if you need more information about how to submit your comments on the application, contact the Community Affairs Officer at the Federal Reserve Bank of Dallas, Mr. Andrew W. Hogwood, Jr., Assistant Vice President, at (214) 651-6341. The Federal Reserve will consider your comments and any request for a public meeting or formal hearing on the application if they are received by the Reserve Bank on or before the last date of the comment period. S26-2tc35.70

Century 21
GOLDEN SPREAD REALTY
 Janye Helton Pointer, Broker Owner, 435-5444
 Jennifer Nollner, Sales Associate 659-5243
200 Airport Road - Steel building w/office, large overhead door & concrete slab!
Old Hansford Location - Quality home on UNDER CONTRACT. Price reduced!
821 Dressen - 5/2, lots of house for the money! Call today!
515 S. Bernice - 4/1 1/2, extra large lot & close to school!
18 S. James - 3/2, extras include basement and large building in back!
605 Archer - 3/2, large rooms plus deck and hot tub!
515 Evans - 3/2, two story with all the amenities!
101 E. 12th - 3/1 1/2, move-in condition. Great location!
18 S. James - 3/1, good condition! Small pay!
704 Wilbanks - 3/1 1/2, call for details on this Farmers' Home property!
505 Haney - 3/1 1/2. New listing! Sell or rent!
515 S. Haney - 3/1. Don't miss this Farmer's Home house!
611 S. Evans - 3/1 1/2, affordable!
118 Townsend - 4/2, apartment included. Price slashed!
315 1/2 N. Bernice - Lot for sale!
Barn Off County Road - For sale!

BOB HARDY REALTY
 803 WILMETH DR.
 659-3440
NEW LISTINGS
906 LINN DR. - Qualified buyers only. 4 BR, 2 1/2 Baths, Jacuzzi, 3 Car Garage, Landscaped, Fenced, Sprinkler System. Exceptional Quality. Colorado Property For Sale.
ROBERT HARDY - BROKER
FOR RENT
APARTMENTS FOR RENT. One and two bedrooms, furnished. Call J.P. at 659-2117. S25-2tpRTN
FOR RENT: Nice 2 bedroom furnished trailer house within walking distance of downtown. Nice yard, carpet, cement driveway. No pets. Deposit required. Call 659-3657, leave message. S19-RTN
APARTMENT FOR RENT. Call 659-3185. S26-1tp
HOUSE FOR RENT: 3 bedroom, 2 bath, 2 living areas, 1700 sq. ft. \$350 plus deposit. 659-2631 or (817) 696-0433. S26-4tp

ANTIQUE SHOW & SALE
 Guyton, Okla. - Texas County Activity Center, April 27 & 28. Sat. 10:00 to 6:00; Sun. 1:00 to 6:00. Admission \$1.50. 405-338-1537. S25-2tp
GARAGE SALE Saturday, April 27, 9:00-7:15 Collier Dr., Spearman. Clothes, TV, weight bench, chair, toys, lots of items. S26-1tp
PETS
FREE PUPPIES! Very cute and friendly. 702 S. Haney, Spearman. 659-3656. S23-1tpRTN
FARM PRODUCTS/LIVESTOCK
MILK SEED \$28.00. Corn Seed \$55.00. Hay Grazer \$18.00 CWT. Prices include delivery. Call 1-800-725-0520. S23-1tcRTN
SUDAN GRASS HAY for sale. Round or square bales. Call V.B. or Chris Morris, 733-2203. S17-1tcRTN
FARM MACHINERY
FOR RENT - John Deere 4955 MFW and a John Deere 4755 tractor. Weekly, monthly or quarterly rates available. Call 733-2867 or information. S25-2tp

PIANO FOR SALE - Wanted: Responsible party to take on small monthly payments on piano. See locally. Call Manager at 800-635-7611. S26-3tp
JAN'S ETC. NEW & USED & ANTIQUES TOO
 Everything for home and family. Plains Shopping Center in Spearman. Open Monday - Saturday, 9:30 a.m. til 6:00 p.m. S16-RTN
WORK AT HOME
READ BOOKS FOR PAY! \$100 a title. No Experience. Call 1-900-847-7878 (\$0.99/min.) or Write: PASE - E3134, 161 S. Lincolnway, N. Aurora, IL 60542. S26-4tp
\$500 WEEKLY POSSIBLE clipping coupons. (615)859-9485, Ext. W-79081 S26-1tp4.50

ADoption: MOMMY/DADDY and baby makes 3!! The only thing missing from our happy home is a child to share it with. If you can help us adopt a newborn, please call Charles/Tina collect 212-737-3824.
ADOPTION: LOVING COUPLE Diane, Joe, little doggie and giant teddybear open our hearts for baby or two. Expenses paid. Call collect 718-268-3145.
CONVERT MOBILE HOME axles to trail-

NEW LISTINGS!
 13 S. Brandt
 1109 S. Haney
 ©1989 and 1991 Century 21 Real Estate Corporation
 Equal Housing Opportunity
 INDEPENDENTLY OWNED AND OPERATED.

ADVERTISING PROVISIONS
 1. Publisher reserves the right to reject, edit, revise and properly classify any advertisement at his sole discretion.
 2. Advertiser assumes all liability for advertisements printed pursuant to his instruction and shall indemnify and hold the publisher harmless from and against any and all claims and damages, including all costs incurred by publisher in connection therewith. Advertiser represents that all advertising copy is truthful and not misleading. Advertiser shall indemnify and hold publisher harmless from any claim against publisher arising out of or in connection with publication of advertising (except for modifications made by publisher without Advertiser's approval) including, but not limited to, claims for libel, invasion of privacy, commercial appropriation of one's name or likeness, copyright infringement, trademark, trade name or patent infringement, commercial defamation, false advertising, or any other claim whether based in tort or contract, or on account of any state or federal statute, including state and federal deceptive trade practices acts. If advertiser claims copyright ownership in any of the advertising published, advertiser must include proper notice of its copyright claim in the body of the advertisement, otherwise copyright ownership shall remain in publisher.
 3. Advertiser agrees to check advertisement in the first issue in which it appears and report any error at once as publisher assumes no responsibility for errors after the first insertion. For any error which is the fault of the publisher and of which publisher has been timely notified, publisher will reprint the corrected advertisement for one extra insertion or refund the proportionate cost of the advertisement containing the error. Publisher shall have no responsibility for errors appearing in the copy submitted by advertiser.

JOB OPPORTUNITIES
KUWAIT JOBS - \$37,500-\$150,000 yrl. All skills. Construction, road rebuilding, telephone repair. Incredible opportunities. Call 1-206-736-7000 Ext. 8992W5 S26-1tp3.75
KUWAIT JOBS - \$37,500-\$150,000 yrl. All skills. Construction, road rebuilding, telephone repair. Incredible opportunities. Call 1-206-736-7000 Ext. 9210W5 S26-1tp

SERVICES
CALL YOUR LOCAL Used Cow Dealer for 7 days a week dead stock removal. 659-3544 or 1-800-692-4043. Serving Cattlemen for the Past 20 Years. G51-RTN
Are You A Victim of Physical Abuse?
 Call Toll Free
 1-800-753-5308
 Trained counselors can help you on the road to an abuse-free life. We also operate a safe place for victims and their children to stay in times of crisis.
Parhandle Crisis Center
 Serving Lipscomb, Hansford and Ochiltree Counties
 317 S. Main Perryton, TX.

MAKE A FRIEND...FOR LIFE! Scandinavian, European, Yugoslavian, Australian high school exchange students...arriving August...HOST FAMILIES NEEDED! American Intercultural Student Exchange. Call toll-free 1-800-SIBLING.
I'VE LOST 40 lbs in nine weeks! Need 10 overweight people to lose weight and launch local introduction of revolutionary program. Karry 602-222-5451.
PIONEER STEEL BUILDINGS 20X20 Carport...\$1,175; 12X15X7 Storage...\$1,395; 24X30X10...\$3,378; 30X40X10...\$4,350; 30X60X12...\$6,595; 40X75X12...\$8,795. Financing available. All sizes. 1-800-637-5414.
HAPPY JACK MANGE LOTION: Promotes healing & hair growth to any mange or hot spot, on dogs & horses without cortisone. At Farmland/Double Circle Co-ops & Better Feed Stores.
1991 PALM HARBOR DOUBLEWIDE \$250.67/month. Visit the factory, save thousands. Free factory tours. Eliminate the middleman. \$24,900, 10% down, 240 months, 12.25% APR 1-800-880-SAVE.

TexSCAN
 Statewide Classified Advertising Network
 Advertise in 279 Texas newspapers for only \$250. Reach 3 MILLION Texans. Call this newspaper for details.
MAKE A FRIEND...FOR LIFE! Scandinavian, European, Yugoslavian, Australian high school exchange students...arriving August...HOST FAMILIES NEEDED! American Intercultural Student Exchange. Call toll-free 1-800-SIBLING.
I'VE LOST 40 lbs in nine weeks! Need 10 overweight people to lose weight and launch local introduction of revolutionary program. Karry 602-222-5451.
PIONEER STEEL BUILDINGS 20X20 Carport...\$1,175; 12X15X7 Storage...\$1,395; 24X30X10...\$3,378; 30X40X10...\$4,350; 30X60X12...\$6,595; 40X75X12...\$8,795. Financing available. All sizes. 1-800-637-5414.
HAPPY JACK MANGE LOTION: Promotes healing & hair growth to any mange or hot spot, on dogs & horses without cortisone. At Farmland/Double Circle Co-ops & Better Feed Stores.
1991 PALM HARBOR DOUBLEWIDE \$250.67/month. Visit the factory, save thousands. Free factory tours. Eliminate the middleman. \$24,900, 10% down, 240 months, 12.25% APR 1-800-880-SAVE.
ADOPTION: MOMMY/DADDY and baby makes 3!! The only thing missing from our happy home is a child to share it with. If you can help us adopt a newborn, please call Charles/Tina collect 212-737-3824.
ADOPTION: LOVING COUPLE Diane, Joe, little doggie and giant teddybear open our hearts for baby or two. Expenses paid. Call collect 718-268-3145.
CONVERT MOBILE HOME axles to trail-
ers. Use 24-ply 14.5 aircraft tires, only \$24.95. Many other sizes. 1-800-828-3350. GENSCO, Box 14628, Houston, Texas 77221.
YOU CAN SAVE both money and the environment with our energy and water saving products. Free catalog, Blue Planet, P.O. Box 213, Boston, MA 02115, 1-800-626-4059.
82 YEAR OLD plumbing, electric & A/C business for sale in Uvalde. Growing city in prime hunting and recreation area. Owner retiring. Possible financing. 512-278-5224.
WE PAY TOP DOLLAR for clean cars and pickups. Will come to your area. Call Kenneth Howell, 915-263-0747, Howell Auto Sales, Big Spring, Texas.
ATTENTION RNS AND LVNS. We are now hiring at VA Medical Center, Kerrville, Texas. Excellent salary and benefits. Contact Nurse Recruiter at 512-896-2020 Extension 150.
WE HAVE AN EXCELLENT part-time job opportunity for you, trimming photographs. Easy work! Great pay! 1-800-755-3449
WE NEED RELIABLE PEOPLE a few hours a day to assist high school and college students with scholarship applications. 1-800-775-1718
MODELS WANTED: Adult, teen, children. Be pictured in publication sent to model agencies nationwide. Send SASE to: The Right Look, Box 65600-187, Lubbock, Texas 79464.
44 SPOT RAIL SIDING on U.P. with 30 acres on I-20. Big Spring, Texas. Rail-Highway Terminal-Manufacturing Plant-Motel? Call 1-800-274-4599.
DEHULLED BUFFALOGRASS SEED: Beautiful lawns. Ecologically safe. Less watering. Less mowing. Half pound \$29.95 (500 sq.ft.). Frontier Hybrids, Box 177, Abernathy, TX 79311. 1-800-872-0522.
WORKING PARTNER to handle hot-set vending item in Holiday Inns, etc. \$5,000 cash produces average monthly income of \$558. 1-800-654-2419.

CLASSIFIED ADS
\$\$\$ CLASSIFIED ADS \$\$\$
PAY OFF!
OSGOOD MONUMENT CO.
 Amarillo, Texas
 Dealers of Rock of Ages Granite, as well as all colored granites, marble and bronze memorials.
 represented by
BOXWELL BROS. FUNERAL HOME
 519 S. Evans
 659-3802

Classifieds
NOTICE
 Wallace Monument Co. Monuments, Curbing, Grave Covers 1-800-999-9506
 Local Representative
LEONARD JAMESON
 Spearman, Texas
 35s-rtn

Stay in touch!
G&G ELECTRONICS
 CellPhone USA
 *2-way Radio
 *Mobile Telephones
 *Repeater Spaces
 *Pages
 Call Bruce Duncan
 (806) 659-3673

Obituaries

Pete Wall
 STRATFORD - Pete Wall, 69, died Sunday, April 14 in Memorial Hospital of Dumas.
 Mr. Wall was born Aug. 1, 1921 in Greenville and had been a Stratford resident since 1948. He was a retired pipeline contractor. He was a member of First Christian Church and a member of the Stratford Masonic Lodge, where he was past worshipful master and 32nd degree mason.
 A veteran of World War II, he served with the 80th Infantry Division during the Battle of the Bulge and received the Bronze Star.
 He was preceded in death by his wife, Nell Wall.
 Survivors include three sons, Peter J. Wall of Spearman, Robert Ragsdale of Stratford and Bryant Carter of Westminster, Calif.; one daughter, Sheryl Hayworth of

Hugoton, Kan.; six grandchildren; and two great-grandchildren.
 Funeral services were conducted Tuesday, April 16 in First Christian Church of Stratford. Burial was in Stratford Cemetery. The family requests memorials be to the American Heart Association, Stratford Area Foundation, or Coldwater Manor Nursing Home in Stratford.

Mildred Hintergardt
 Mildred Hintergardt, 80, of Gruver died Wednesday, April 17.
 Mrs. Hintergardt was born near Goodwell, Okla. and had been a resident of the Gruver area for 59 years. She married Ruben P. Hintergardt in 1928 at Hooker, Okla. He preceded her in death in 1973. She was a member of the United Methodist Church, Eastern Star, China Painting Club and Area Art Foundation in Amarillo.

Survivors include two sons, Dick Hintergardt of Gruver and Bud Hintergardt of Dalhart; two sisters, Polly Jones of Gruver and Goldie Wright of Tucumcari, N.M.; a brother, Harry Reid of Logan, N.M.; and four grandchildren.
 Funeral services were conducted Friday, April 19 in United Methodist Church with the Rev. Lewis Holland, pastor, officiating. Burial was in Gruver Cemetery.

Dean Lane
 TURKEY - Dean Lane, 78, died Wednesday, April 17.
 Mr. Lane was born in Hall County. He married Pauline Tate in 1976 at Tulia. He had farmed and ranched in Turkey all of his life. He was a member of the Church of Christ.
 Survivors include his wife; a son, Gerald Lane of Clarendon; a daughter, Gelene Proctor of Turkey; a sister, Olga Gafford of Spearman; a brother, Tink Lane of Turkey; five grandchildren; and one great-grandchild.
 Graveside services were conducted Friday, April 19 in Dreamland Cemetery with Stewart Smith, minister of Church of Christ, officiating.

Group from page 12

recovery rates of the seriously mentally ill through educating the public, the legislators, and the medical community in new rehabilitative technology.
 5) To help train affiliate members, consumers, professionals, and other interested people to speak as advocates on behalf of the rights and rehabilitation of persons suffering with mental illness.
 There is a \$15 individual membership fee for the Texas Association and other membership fees for other individuals, but at this time the individuals who form the initial group in Perryton will set their own membership dues, if any.
 Ideally, this group will be one of the 150 support groups in the state but would not be limited to a sole group in the Perryton area only. There could easily be a Hansford County, a Lipscomb County and a Hemphill County group.
 Basic Facts: Mental illness is a group of medical disorders that cause severe disturbances in thinking, feelings, behavior, and relating with others. These are "no fault" brain diseases.
 The National Institute of Mental Health estimates that one in four American families is affected by mental illness, a fact that makes it everybody's business. No segment of our society is immune.
 Twenty-five percent of all hospital beds are filled by mentally ill pa-

tients - more beds than for victims of heart disease, cancer, and respiratory ailments combined.
 Schizophrenia is one of the most serious and disabling of mental illnesses. Approximately one in 100 people is affected. The disorder is twice as common as Alzheimer's, five times more common than multiple sclerosis, and 60 times more common than muscular dystrophy.
 In both human and economic terms, schizophrenia and depression exact an enormous national toll: 14.5 million Americans are afflicted; at best they are disabled for a period, at worst they are shattered for life. A total of \$20 to \$48 billion is spent each year on medical and social services for victims.
 Those wishing to find more information or communicate with O'Nan, the group start-up facilitator, should contact him through Perryton Family Services at 435-3671. The initial start-up meeting is scheduled for Monday, May 13 at 7 p.m. at the Perryton Family Service office, 315 S. Main.
 At the initial meeting, other meeting sites will be considered, depending on the wishes of the group members.

PUBLIC NOTICES

NOTICE TO ALL PERSONS HAVING CLAIMS AGAINST THE ESTATE OF LELAN SMITH CLOSE
 Notice is hereby given that original Letters Testamentary for the Estate of LELAN SMITH CLOSE, Deceased, were issued on April 22, 1991, in Docket No. 1991, pending in the County Court of Hansford County, Texas, to Carole Lyn Stumpf. The residence of the executor is Spearman, Texas, and her post office address is 1112 S. Haney St., Spearman, Texas 79081. All persons having claims against this estate which is currently being administered are required to present them within the time and in the manner prescribed by law.
 DATED the 22 day of April, 1991.
 John L. Hutchison
 Attorney for the Estate

S26-1tc17.10

NOTICE OF BID

Hansford County will receive sealed bids for a Road Maintainer for County Precinct No. 1 on or before 4 p.m., Friday, May 10, 1991. Bids will be opened at the regular meeting of the Commissioners' Court beginning at 10 a.m., Monday, May 13, 1991. A trade-in is offered to bidders. Hansford County reserves the right to pay for any bids accepted with time-warrants, by lease-purchase contract, or full payment as decided by the Commissioners' Court. Bids shall be made on Conventional and/or Total Cost Basis.
 A copy of the specifications and total cost form may be obtained from the Office of the County Judge or County Auditor.
 Hansford County reserves the right to reject any and all bids.
 -s- Jim D. Brown
 Hansford County Judge

S26-2tc19.50

LEGAL NOTICE

Hansford County will receive sealed bids for an air conditioner system for the Hansford County Courthouse on or before 4:00 p.m., Friday, May 10, 1991. Bids will be opened at the regular meeting of the Commissioners' Court beginning at 10:00 a.m. on Monday, May 13, 1991. A copy of specifications may be picked up at the Hansford County Judge's office.
 Hansford County reserves the right to reject any and all bids.
 -s- Jim D. Brown
 Hansford County Judge

S26-2tc11.85

Pipe organ concert set

PERRYTON - A pipe organ concert, featuring guest artist and composer James Gardner, will be held at the First United Methodist Church in Perryton on Saturday, May 18 at 2 p.m. A reception for Gardner will follow in the church fellowship hall.
 Gardner was also selected as a national winner of the American Guild of Organists-Moller Organ Company Award for Choral Composition.
 At present, Gardner is instructor of organ at West Texas State University and serves as staff musician at St. Thomas Catholic Church in Amarillo.
 This will be the second pipe organ concert made possible by the Joe Erickson Endowment for Music Fund. Erickson was a longtime Perryton resident and patron of music.

Logos
 Brochures
 Flyers
 Letterheads
 Business Cards
 Business Forms
 Satisfied customers in your area.

photograph design print deliver

Mike Shiew
 316-227-7171
 316-225-5213 eves.

TG&Y STORE CLOSING

75% Off EVERYTHING IN THE STORE!

- Family Apparel
- Health and Beauty Aids
- Domestic
- Family Hosiery
- Housewares
- Candy and Snacks

ALL SALES FINAL! VISA, MASTERCARD, DISCOVER OR CASH. SORRY NO PERSONAL CHECKS.

AVAILABLE AT:

Plains Shopping Center

521 Hwy. 207 South
 Spearman, Texas

If you like C.D.s,
 you'll love
TAX DEFERRED ASSET

ACCUMULATION

SPA *BONUS*

A Single Premium Deferred Annuity

Features of This Plan

No Sales Charges or Fees

Interest

Interest is earned daily and compounded annually to the Annuity Fund.
 The interest rate on the Premium is guaranteed for one contract year.

Bonus Interest Rate

The first year's interest rate is a "bonus" rate. Interest rates in subsequent years will be lower.

Penalty-Free Withdrawal Option

1. Penalty-free partial withdrawal up to 10% of the beginning of the year Annuity Fund for any year is available. This amount does not accumulate from year to year.

Withdrawal Charges

For any withdrawal in excess of the amount available under the Penalty-Free Withdrawal Option, the following withdrawal charges will be deducted (see contract for full details):

Contract Yr.	1	2	3	4	5	6	7	8	after 8
Withdrawal Charge	9%	8%	7%	6%	5%	4%	3%	2%	0

Return of Premium

Central Life guarantees return of the premium at surrender or at the death of the owner.

Call today. And discover why thousands of families are handling risks and accumulating wealth with Central Life. You may never be satisfied with a C.D. again.

8.25%
 Current Rate*



DONALD M. ROGERS, CLU, ChFC
 P.O. Box 1005, 7 S.W. 3rd Ave.
 PERRYTON, TX 79070
 (806) 435-3931 (515) 243-6057

Central Life
 Home Office Des Moines, Iowa

Backed by Central Life Assurance Co., Home Office, Des Moines, Iowa; one of America's oldest and highest rated insurance companies. Assets are over two billion dollars.

*Your actual rate will be the one in effect on the date of investment. The minimum guaranteed rate is 4 1/2%.
 **Withdrawals subject to contract terms. See policy for complete details. For more information ask for a copy of the SPA Family brochure.
 ***A.M. Best Company, an independent insurance analyst, rates Central Life A+ Superior.