



CAR-RT LOT**B 006 EXPIRES 5/11
CLARENDON SCHOOL LIBRARY
PO BOX 610
CLARENDON TX 79226-0610

THE CLARENDON Enterprise

05.06.2010

The Texas Panhandle's First Newspaper.
Established 1878.

THE CLARENDON NEWS & THE DONLEY COUNTY LEADER

www.ClarendonLive.com
Single Copy Price: 75¢

THIS WEEK

- 2 Mom's best lessons were not taught in her junior high classroom.
- 4 Residents from Howardwick share their mothers' time-tested advice.
- 5 Local athletes are recognized for their performance at WBU.
- 9 And three young men share a crown at Hedley.

All this and much more as The Enterprise reports in this week's incredible edition!

Aldermen select Covey as Secretary

The Clarendon Board of Aldermen tapped a new city secretary last Thursday during a called session.

Deputy City Secretary Machiel Covey was elevated to the position and was later sworn in on Friday afternoon.

The board met in closed session for more than 1½ hours during which time they heard from Interim City Administrator Phyllis Jeffers and interviewed two candidates for the position.

Covey succeeds former city secretary Linda Smith, who retired at the end of January.

Hedley will host Kindergarten Day

Hedley Independent School District will be hosting Kindergarten Day on May 14, 2010, from 8 a.m. to 11:30 a.m. Students are invited to visit the classroom, enjoy lunch with the class and meet new friends.

Parents interested in having their student(s) attend kindergarten at Hedley School need to bring a copy of the child's shot record, social security card and birth certificate.

If you have any questions, please contact Mikki Morris at 856-5323 ext.21

Apply now to enroll in Head Start, Pre-K

Clarendon Head Start and Pre-Kindergarten will take applications for the 2010-2011 school year on May 5 and 6 from 12:30 p.m. to 3:30 p.m. You may make an appointment by calling the Elementary office at 874-3855.

Children who will turn four years old on or before September 1, 2010 and five-year olds who are not going to be enrolled in Kindergarten and meet the qualifications will be considered for enrollment.

All children must complete a Head Start application and this will determine which room your child will be eligible for. If an opening occurs in Head Start, they will be pulling the next qualifying applicant from the Pre-K class.

You must bring your child's birth certificate, income verification, immunization record, Social Security card, documentation of disability (if applicable), and proof of public assistance.

Survey says 'no' to serving while owing

A wide majority of those responding to an online poll say people who have not paid their taxes should not be allowed to serve on local boards.

Of the 25 people who participated in the poll through Tuesday afternoon, 80 percent said "absolutely not," and eight percent said they had no problem with people serving while owing back taxes. Another 12 percent said they thought it depended on the circumstances.

Results of the poll are not scientific.

Visit www.ClarendonLive.com this Thursday for our next online poll: Who makes the best hamburger in town?

Voters head to polls Saturday

Voters will head to the polls Saturday to cast ballots in several local elections.

The polls will open at 7 a.m. and close at 7 p.m.

Election results will be posted Saturday night on THE CLARENDON ENTERPRISE Facebook page as well as at www.ClarendonLive.com, and complete coverage will be included in next week's print edition.

On the ballot this year, Clarendon voters will have a choice of seven candidates to fill three positions on the Board of Aldermen.

Incumbent City Aldermen Kyle Davis and Will Thompson will be joined on the ballot by challengers Jeff King, Jeremy Powell, John Lockhart, Danny Bennett, and former alderman Terry Noble. Aldermen serve two-year terms and are elected at-large. Balloting is at the Donley County Courthouse Annex.

Voters in Hedley will have two choices for mayor – incumbent Bruce Howard and Dusty D. Wilkinson – and five choices for four positions on the Board of Aldermen – David

Wells and incumbents Leon Ward, Tonya Metcalf, Travis Thomas, and Lonnie Roby. Hedley city officials also serve two-year terms and are elected at large. Voting will be held at the Hedley Lions Den.

The City of Howardwick has four people running for three positions on the Board of Aldermen. Incumbents Rod Donaldson and Tanis McMorries are being challenged by Johnny Hubbard and Tim Gallagher. These offices are two-year terms, and balloting is at Howardwick City Hall.

Six candidates are running for three positions on the Clarendon College Board of Regents. Challengers Cindy Myers, Glenda Hawkins, and Jerry Gage will face incumbents Susie Shields, Charles Deyhle, and Ruth Robinson. Regents serve six-year terms, and balloting is at the Donley County Courthouse Annex. An additional Election Day ballot box will be at the Hedley Lions Den.

One challenger is seeking a spot on the Clarendon ISD Board of Trustees. Current members Robin Ellis, Jim Shelton, and Marvin Thompson

will be joined on the ballot by Linda Rowland. Trustees serve three-year terms, and balloting is at the Donley County Courthouse Annex.

The Hedley ISD Board of Trustees has three candidates for two full terms. Incumbents James Edward Potts and Troy Monroe will face Bonnie Walsh Brown during the election. Karen Watt is serving an unexpired term on the board and was the only one to file to run for that position. Trustees serve three-year terms. Election Day balloting will be at the Hedley Lions Den.



The 2010 District Champion Clarendon Broncos.

COURTESY PHOTO

Broncos clinch district championship

By Sandy Anderberg, Clarendon Enterprise

Once again, the Clarendon Broncos claimed a District Championship and clobbered Paducah 12-0 in five innings in their final district match up.

The Broncos finished their 2010 season at 14-3 overall and 11-1 in District play.

The win will put them in a good spot for the playoffs and give them an edge going in.

"This was a big game for us," coach Brad Elam said. "We were able to clinch first place out right with the win. We have shared first place the last two years and the kids were determined to not share it this year."

According to Elam, the Broncos started off strong when Johnny Gaines crushed a two-run homerun and Forrest Yelverton singled home a run for a 3-0 lead.

"Our bats were quiet for an inning before Gaines added his second home run of the game in the third," Elam said.

"Matt Henderson and Brayden Phillips scored in the fourth before we busted the game open with six runs in the fifth."

Elam went on to say that Phillips also had a big two-run triple followed by a hard hit ball by Colter Goolsby that reached the fence.

And then Goolsby came all the way home on a hit. Troy Chambliss pitched four strong innings for the Broncos to go 7-0 on the year and Gaines came into pitch the last inning and struck out the side to seal the win.

The Broncos will play Follett in Borger Friday, May 7, at 4:30 p.m. in a warm-up game to prepare for post-season play, which will be announced at a later time.

Sign-up period begins for citywide garage sale

The sign-up period for the fifth annual "Trash To Treasures" garage sale event is underway, this year's sale is slated for Saturday, June 5. A large participation is again anticipated.

Garage sales in Hedley, Howardwick, and the surrounding area are also welcome to sign up for the big day.

"This event has been a huge

success the last four years, and we're hoping it will be equally successful this year," said Roger Estlack, publisher of THE CLARENDON ENTERPRISE, which sponsors the event.

"People realize that it makes sense to have these garage sales on the same day to draw a bigger crowd."

Residents who wish to participate in this year's "Trash To Treasures" are asked to come by the ENTERPRISE before 5 p.m. on Friday, May 28, to sign up for the promotion.

For just \$20, each household will get a 50-word advertisement in the Big-E Classifieds and the exclusive "Trash To Treasures" garage sale kit, which includes tips for holding a successful sale, price stickers, and two yard signs.

In addition, the ENTERPRISE will print a city map the week of the event indicating the location of each sale and will promote the citywide garage sale in area newspapers and with local radio ads.

For more information about the fifth annual Trash To Treasures garage sale event, call 874-2259 or come by the ENTERPRISE office at 105 S. Kearney.

CHS UIL kids head to state

By Ashlyn Tubbs, Clarendon Enterprise
Six CHS students will compete in the state academic UIL competition this week on UT's campus.

Juniors Ashlyn Tubbs will compete in feature writing, and Kelsey Mullins will compete in editorial writing.

Juniors Dominique Brady and Laura Howard will compete in spelling as will senior Tony Sisomsouk and freshman Maritta Brady.

Ashlyn placed 1st in features at the Regional meet; Kelsey placed 2nd in editorials; Dominique placed 1st in spelling, and her teammates helped to win the 1st place spelling team award.



Advancing to state UIL are Kelsey Mullins, Maritta Brady, Dominique Brady, Ashlyn Tubbs, Laura Howard, and Tony Sisomsouk.

Johnson takes plea agreement

A local woman was one of three people who pled guilty in separate cases when the District Court met in Childress on May 3.

Kristina Lynn Johnson, a 30-year-old Clarendon resident, pleaded guilty and was placed on deferred adjudication for a period of two years to a lesser included offense of assault.

Johnson was arrested by Donley County Sheriff Butch Blackburn on November 15, 2009, for the state jail felony offense of injury to a child. Johnson pleaded guilty to lesser included offense of the assault, after being indicted by the Donley County Grand Jury on January 13, 2010.

Pursuant to the plea agreement, Johnson is required to pay a \$1,000 fine to Donley County, court costs of \$333, and successfully complete 100 hours of community service.

If Johnson violates probation, she could face up to one year in the Donley County jail.

Officers were dispatched to a residence on McClelland Street on November 9, 2009, to investigate a possible crime.

"Our investigation determined that a three-year-old white female had been burned on her private area," Sheriff Butch Blackburn told the ENTERPRISE last November.

The contact burns were likely caused due to hot water, the sheriff said. The child was taken to Northwest Texas Hospital in Amarillo and then transferred to the Lubbock burn unit for treatment.

Johnson was arrested by the Childress County Sheriff's Office on November 13 and placed in the Childress jail. Blackburn said he and Chief Deputy Randy Bond traveled to Childress and obtained a confession from the woman.

Luke Inman, the 100th Judicial District Attorney, assisted by Greg Buckley, prosecuted the cases for the State of Texas with the Honorable Judge Stuart Messer presiding.

Also, James Thomas Chitty, 52-year-old Athens, Texas resident, was convicted and sentenced to five years in the Institutional Division of the Texas Department of Criminal Justice. Chitty was sentenced on the third degree felony of possession of a controlled substance.

Chitty was convicted of the third degree felony offense that he originally pleaded guilty to on November 21, 2008. Chitty was placed on probation for the offense that occurred on May 2, 2008, for a period of three years.

The State filed a motion to adjudicate the guilt of the defendant against Chitty on August 28, 2009, alleging eight violations of probation, which Chitty pleaded true on all of the State's allegations.

Pursuant to the plea of true, Chitty is also required to pay a total fine of \$3,000 to Childress County, \$376 in court costs, in addition to the five-year penitentiary sentence.

Michael T. Thomas pleaded guilty and was placed on deferred

See 'Pleas' on page 3.

Mom did her best teaching while at home

Holidays are difficult after you've lost someone you love, and so it comes as no surprise that I have a certain amount of dread for this coming Sunday... my first Mother's Day with no mother.

As I struggled with that realization this week and grasped for the best way pay tribute to Mom, my wife, Ashlee, pointed out that this is also Teacher Appreciation Week. And with just one sentence, she nudged me down the right path... like another woman I dearly loved had done so many times over the years.

Mom's legacy in her junior high English classroom is well known, and she touched the lives of so many people who went on to become teachers. She was so proud of my brother and his wife as they found their calling in classrooms and was especially full of excitement and encouragement as Ashlee began her own journey towards becoming a certified teacher and launched her pursuit of an Education degree.



editor's commentary
by roger estlack

She never tired of teaching, whether it was at school, in Scouts, with a civic group, or just by lending her proofing and grammatical skills to a former student who found themselves overwhelmed a bit by that first big high school report or college term paper.

But what she is not famous for are the daily lessons in life that she imparted to her sons. She was the "Teacher of the Year" on more than one occasion, but to Russell and me, she was the "Teacher of a Lifetime," imparting wisdom that transcended the diagramming of a sentence or the conjugating of a verb. These lessons do not gather dust in a basement box of teaching material but live and breathe with us every day and hopefully will continue to live in her grandchildren.

So pay attention, class. Get out your yellow paper and red pens, and let's review a few things.

"You catch more flies with honey than with vinegar." Whether you're just wanting some Rice Krispie snacks or you're trying to persuade someone to your way of seeing things, a kind word and some gentle diplomacy almost always work. Get to know someone, become their friend, and they will be more likely to help you when you ask a favor.

"Always be prepared." This wasn't just a Boy Scout motto at our house; it was a way of life. From plenty of food in the pantry or freezer to having extra rolls of toilet paper stashed in the bathroom, we were ready for just about anything. First Aid materials and medicines were always available, flashlights were at the ready, and there were almost always snacks in the car. A rain slicker or chemical hand warmer packet was there if it was needed, and there was bottled water in the basement. But it wasn't just disaster that she was prepared to face. She kept new games and toys stashed away for times when young nieces and nephews – and in later years, grandkids – would come to family functions at the house and need some distraction to stay out of the adults' hair. And if a relative or family friend showed up unexpected for Christmas, somehow she had something under the tree for them.

"Salt makes food better." To heck with these Health Nazis, my Mom knew this truth about food preparation – you've got to add some seasoning, and salt is the best way to bring out the flavor. You better taste it before you salt it at Helen's table because you could be darn sure she had already put it in there.

"That will be stinking by morning." In other words, get up from in front of the TV and carry out the trash, Son. You sure don't want the packaging from tonight's chicken or whatever that was that we just cleaned out of the fridge to ripen while we're asleep.

"Quit piddling around." Procrastination never got anything done, and she especially had no tolerance for it if she had asked you to do something.

"Be sure you get a good date." This had nothing to do with girls. No, this was more serious – it was about grocery shopping.

"You've got to eat the last bit of cheese." This is the secret to homemade macaroni and cheese. Now I know plenty of mothers do it straight out of a box, but you've got to make it yourself to have something really special. It takes just the right amount of salt (see above), the right amount of boiling water, just enough milk and black pepper, and, of course, Velveeta cheese. The last cube (or two) has to be eaten by whoever is cooking it (or whoever is helping). It's a tradition my family still lives by.

"When I was a little girl..." This was the start of a lot of stories, particularly one about cabbages that I won't bother you with. But regardless, it was something important that you were about to learn regarding family history or the way things used to be. She said that line so often that my Dad on a few occasions would start off by saying, "Now, son, when I was a little girl..."

"You've just got to have faith." Probably the best advice for life that she ever gave me. When things looked bad or just were going in the wrong direction, she would tell me to have faith that things would be alright. God is always with you, and more often than not she had found in her life that things generally worked out for the best. Nine months ago in the ICU, this was an increasingly hard one to remember, much less live by. Now as I wonder what path to choose from day to day and especially how to raise our only Estlack girl, I can still hear her whispering, "Have faith, Son. It will be alright."

As usual, I suspect my Mom will be right about that. I believe all of us in the family will be alright because we carry her with us and because she taught us the most valuable lessons of all.

Happy Mother's Day, Mom.

Keeping our Texas banks strong

For more than a year, Democrats and Republicans on Capitol Hill have been working to craft legislation that would prevent another catastrophic financial crisis like the one we saw in the fall of 2008. We are beginning debate and working to ensure that the final legislation has bipartisan input. The memories of the divisive health care debate and the methods used to ram the health care bill through are still fresh. This bill, which will affect all aspects of our economy, is too important to be rushed and pushed through in a partisan manner.

Republicans had been attacked for speaking out against rushing this bill and asking for bipartisan negotiations before bringing the bill to the Senate floor for debate. But we held fast, and we won a major concession to remove a \$50 billion bailout fund that gave the implication that the fund and the American taxpayers would cover the big institutions' riskiest deals.

This was a critical early victory. The idea that a financial institution is 'Too Big To Fail' perverts free market

capitalism. It suggests that large firms can privatize their profits, yet socialize their risks. These companies take their profits in good times – but when things



capitol comment
by sen. kay bailey hutchison

go bad – they turn to the government to bail them out. We won assurances that this loophole language will be removed from the bill. The American people should not be forced to pay the risky gambling debts of the large financial institutions.

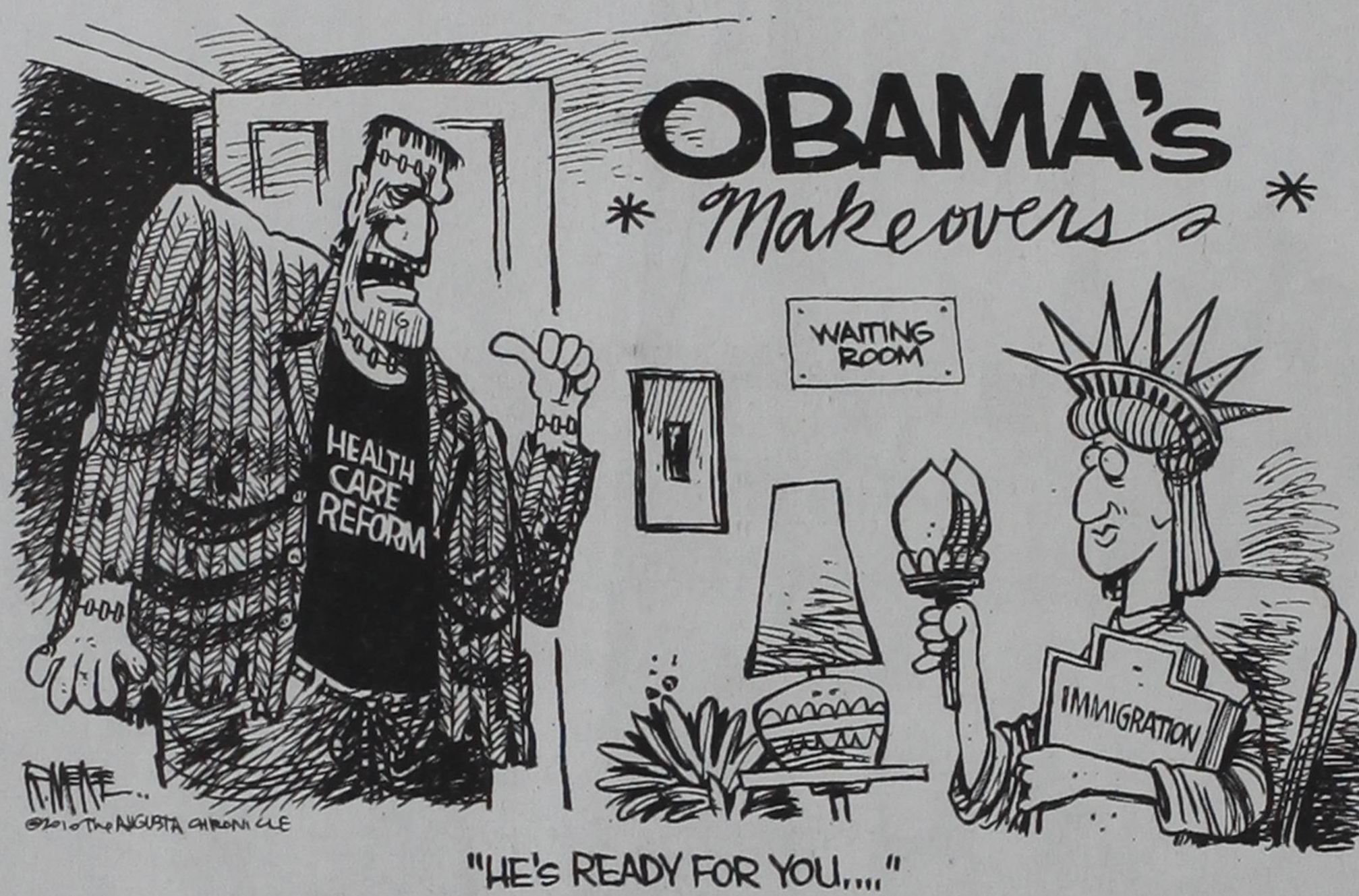
Now, as the debate begins, my priority will be to protect our Main Street banks. Community banks did not engage in the risky, speculative trades that contributed to the financial meltdown. Community banks have been and continue to provide credit to small businesses.

We must safeguard against creating a two-tier, bifurcated banking system

that puts community banks at a competitive and regulatory disadvantage to the large financial institutions.

First, the current legislation removes community banks from the purview of the Federal Reserve, meaning that the Fed will be making monetary policy with a very narrow view. It is imperative that the Fed have a national and Main Street perspective, not just a New York, Wall Street focus. The legislation also puts our community banks, which were steady lenders during the financial crisis, at a competitive disadvantage when it comes to interest rates. I will be introducing an amendment, and hope to get bipartisan support, to allow our community banks the option of membership in the Federal Reserve.

Keeping our nation's financial institutions strong is critical to our economic recovery. Community banks extending credit to small businesses allows those companies to create jobs. We must set politics aside and get financial regulatory reform right, and I hope we are now on the road to do just that.



"HE'S READY FOR YOU..."

Teach students about communism

By Dr. Paul Kengor

I knew the time would come. America's public schools and ideologically monolithic universities have spawned a generation woefully uninformed in the most elementary facts about free markets, socialism, and communism. Personally, after teaching this material for years, I'm getting an inordinate number of questions about communism in particular, as that word is banded about like crazy—the result of America's decisive lurch leftward since the election of November 2008.

There's so much to say, especially about communism in practice, where the story is unprecedented misery: a death toll of 100-140 million human beings since 1917. That's twice the combined corpses of WWI and WWII.

But what about communism as a theory?

We constantly hear the claim: Communism in theory is not as bad as communism in practice. If you read Marx, you'll see that communism promotes sharing, equality, love of man.

In truth, this is arrant nonsense. When I hear it, I know the person has never read Marx's Communist Manifesto, a plainly awful book, packed with hatred and, frankly, stupidity. But rather than just say this, I thought I'd attempt a public service by laying out key facts on the Communist Manifesto—another teachable moment. So, here we go:

First off, Marx's Manifesto is very brief and inexpensive, leaving no excuse for someone with a strong opinion to not read it. Originally published in 1848, there are several recent editions, small enough to fit in your pocket. Most have decent introductions by some recognized authority. Here, I'll refer to a 1998 edition by Penguin's Signet Classics (\$5.95), with an introduction by the outstanding scholar, Martin Malia, a Harvard Ph.D. and UC-Berkeley professor. This edition contains several earlier prefaces, with the actual Manifesto covering 42 pages.

Marx's writing was painfully ambiguous, though certain identifiable elements emerge, from his revulsion of religion to disgust of traditional morality and the family. (Click here for my 2007 lecture on the communist war on religion.) Yet, Marx's common thread, which we need to remember, was his contempt for private property. On page 67, he emphasized something all Americans should know, particularly students suffering the perverse professor who somehow admires communism. Stated

Marx: "the theory of the Communists may be summed up in the single sentence: Abolition of private property."

That's the essence of communism, which Marx returned to repeatedly, including in the final paragraph of the Manifesto.

Of course, on this point, a first grader—let alone a grown adult—ought to immediately recognize that Marxism can't work. Abolishing private property is completely contrary to human nature, violating the most innate precepts of all peoples, from the cave to the courthouse. It shatters Judeo-Christian thinking, Western philosophy, the ancient and modern worlds, Cicero, Aristotle, Augustine, Aquinas, Locke, Jefferson, Old Testament, New Testament, Moses, Jesus, you name it. Only a fool would not instantly, intuitively realize that implementing this vision would generate mass bloodshed.

This is why, I imagine, most Marxist professors dare not have students read the Communist Manifesto.

In another illuminating section (page 75), Marx interrupted his meandering sophistries with a 10-point program of specific policy recommendations. I'm not going to shy from stating the obvious: Marx's list is chillingly similar—in some respects, certainly not all—to what the American left has pushed for decades, from progressive income taxes, to inheritance taxes, to centralization and nationalization. Here they are, in direct quotation:

1. Abolition of property in land and application of all rents of land to public purposes.
2. A heavy progressive or graduated income tax.
3. Abolition of all right of inheritance.
4. Confiscation of all property of

emigrants and rebels.

5. Centralization of credit in the hands of the state, by means of a national bank with state capital and an exclusive monopoly.

6. Centralization of the means of communication and transport in the hands of the state.

7. Extension of factories and instruments of production owned by the state; the bringing into cultivation of waste lands, and the improvement of the soil generally in accordance with a common plan.

8. Equal obligation of all to work....

9. ... gradual abolition of all the distinction between town and country by a more equitable distribution of the population over the country.

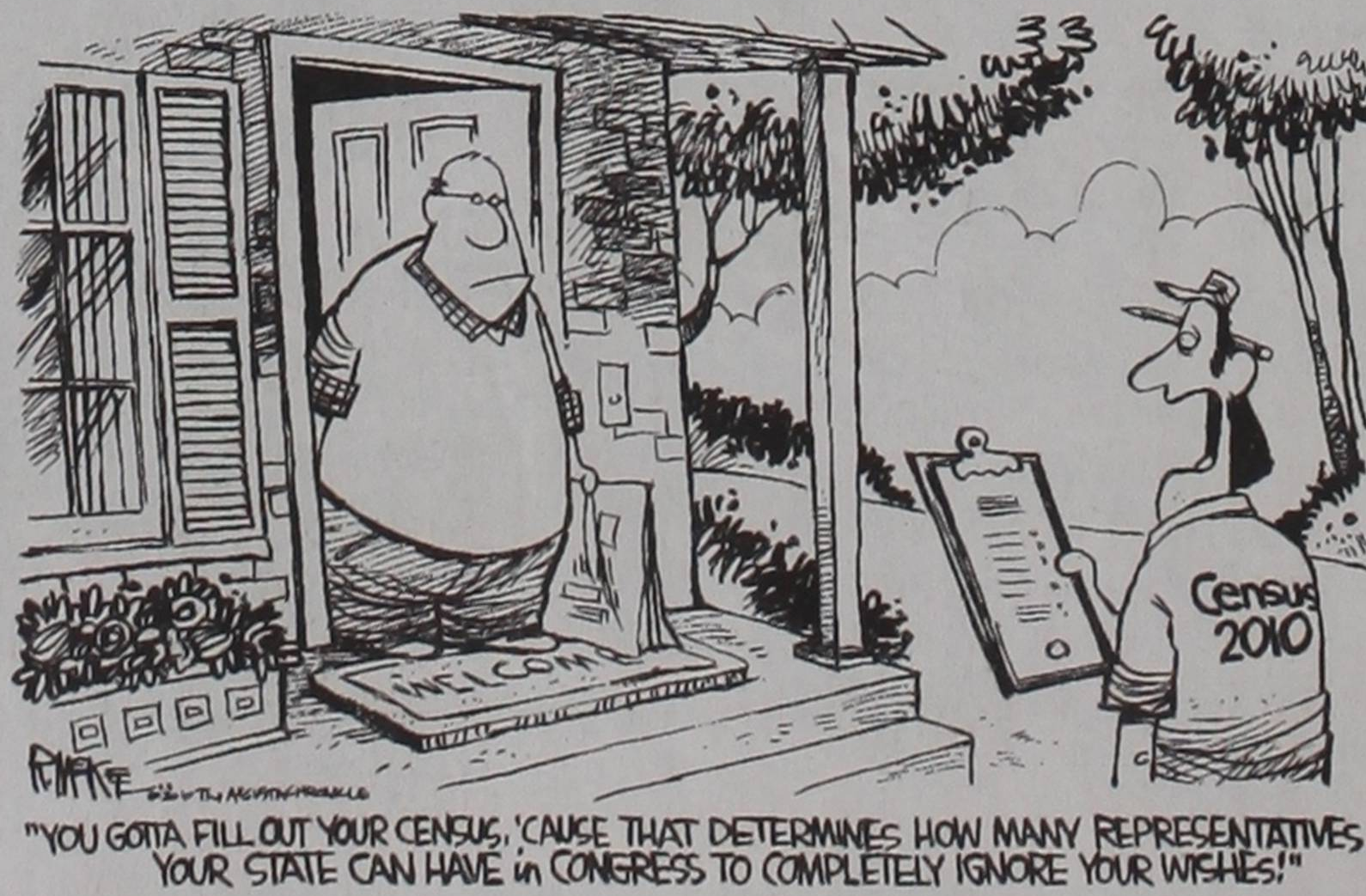
10. Free education for all children in public schools....

That's what the Communist Manifesto really says, and, worse, desired for not one country but the whole world (page 91). It's a prescription for despotism, as Marx himself conceded, prefacing his 10 points: "Of course, in the beginning, this cannot be effected except by means of despotic inroads."

Communism is not a good idea, in theory or practice, and likewise for its ugly step-sister: socialism. Both are about statism, collectivism, redistribution, nationalization, appropriation, excessive taxation, the inane assertion that public services are "free" services, and, overall, government control. They—along with modern progressivism—differ in degree.

Americans must understand this. They must in order to know what not to support, and, most important, who not to vote for.

Dr. Paul Kengor is professor of political science and executive director of The Center for Vision & Values at Grove City College.



ENTERPRISE STAFF

Roger A. Estlack
Publisher & Editor

Ashlee Estlack
Contributing Editor

Anndria Newhouse
Office Director

Julle Shields
Ad Director

Ashlyn Tubbs
Reporter

CORRESPONDENTS

Peggy Cockerham
Howardwick

Sandy Anderberg
Clarendon Sports

Tangela Copelin
Hedley Sports

Karl Lindsey
Photographer

Kathy Spler
Hedley

CONTACT INFORMATION

Phone
806.874.2259

Fax
806.874.2423

E-Mail
news@clarendononline.com

Web Site
www.ClarendonLive.com

ADVERTISING

Open Display rates are \$4.50 per PASS column inch. Classified Ads are \$7 for the first 15 words and 12¢ per word for each additional word (Boxes or special typography are extra). Thank You Notes are \$9 for the first 40 words and 12¢ per word for each additional word. Basic engagement, wedding, anniversary, and birth announcements are \$10 each. Expanded wedding announcements are \$20. A one-column announcement picture is \$5, and a two-column announcement picture is \$10. Pictures submitted for publication should be picked up within ten days after publication.

DEADLINES

News articles and photos are due by Monday at noon. Advertising and Classifieds are due by five o'clock Monday afternoon. Deadlines may be altered for holidays or special issues.

SUBSCRIPTIONS

Annual subscriptions are available for \$25 for zip codes inside Donley County, \$35 elsewhere in Texas, and \$40 out of state. **POSTMASTER:** Send all address changes to: The Clarendon Enterprise, PO Box 1110, Clarendon, TX 79226-1110. **Digital Subscriptions** are \$14.95 per year.

LETTERS

Letters to the editor are welcome. Views expressed in letters are those of the writers and do not necessarily reflect the views of the editor or staff of The Clarendon Enterprise. Submission of a letter does not guarantee publication. Letters may be edited for grammar, style, or length. All letters must be signed and must include an address and telephone number for verification. To improve your chances of publication, type and double space your letter, stick to one main topic, and keep it brief. No letters will be accepted from candidates for local political offices. Letters submitted to this newspaper become the property of The Enterprise and cannot be returned.

The Texas Panhandle's First Newspaper

THE CLARENDON NEWS, established June 1, 1878 with which have merged: The Clarendon Traveler, February 1889; The Clarendon Journal, November 1891; The Banner-Stockman, October 1893; The Agitator, February 1899; The Clarendon Times, May 1908; The Donley County Leader, March 12, 1929; The Clarendon Press, May 18, 1972; and The Clarendon Enterprise, March 14, 1996.

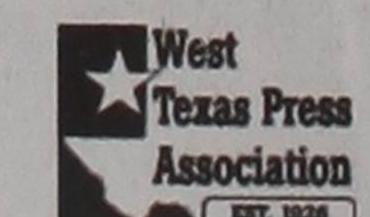
Member 2010



National Newspaper Association



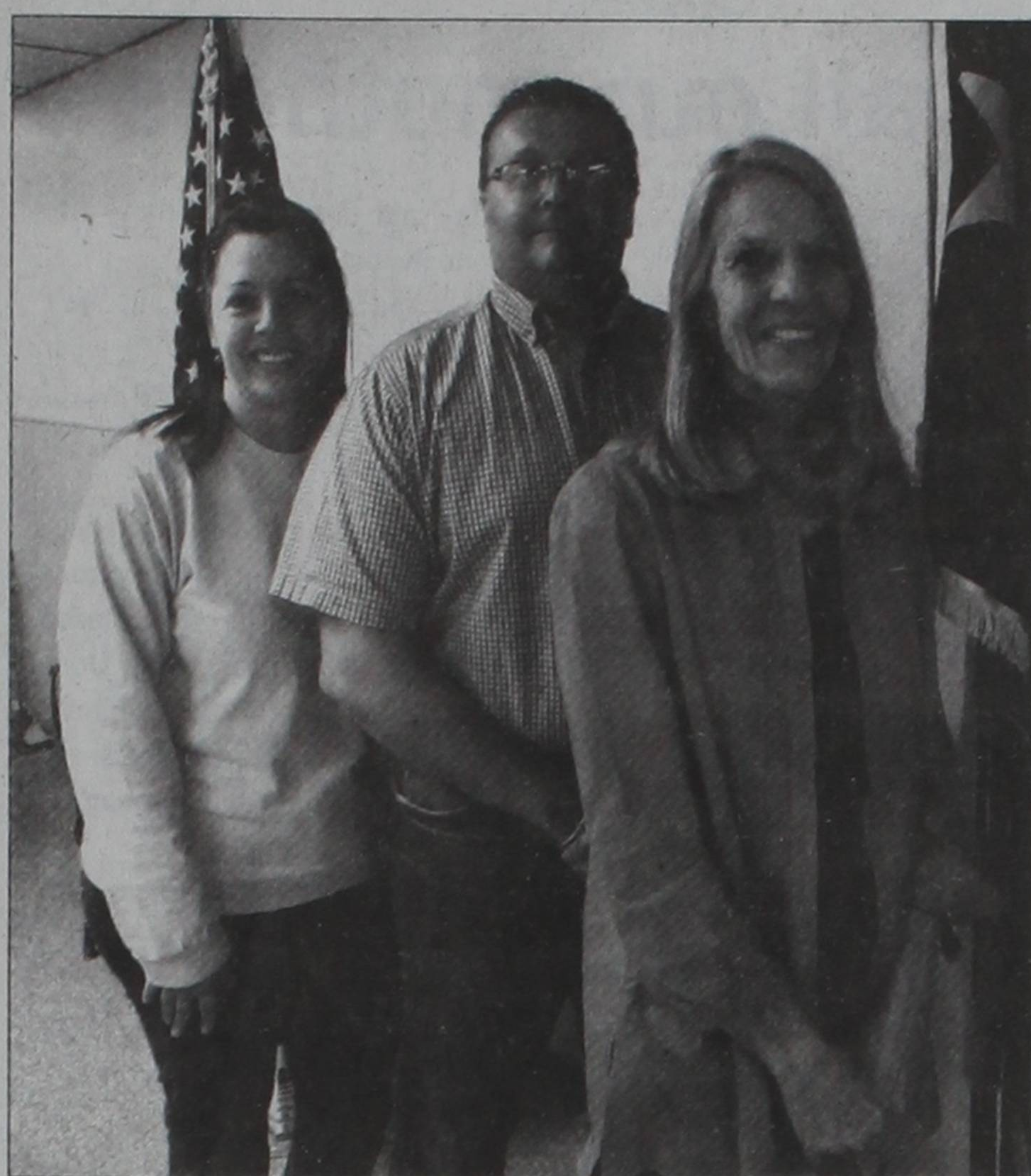
Texas Press Association



West Texas Press Association



Panhandle Press Association



It's official

Mayor Chris Ford (center) poses with newly installed City Secretary Machiel Covey (left) and Municipal Judge Connie Havens after the two were sworn into office last Friday. Havens was appointed to her position following the retirement of former judge Jimmy Johnson, and Covey succeeds former city secretary Linda Smith, who retired in January.

ENTERPRISE PHOTO / ANNDRIA NEWHOUSE

the lion's tale
by roger estlack

The Clarendon Lions Club held its regular Tuesday noon meeting May 6, 2010, with Boss Lion Chuck Robertson in charge.

We had 14 members, Lion Sweetheart Lauren Shelton, and two guests this week – Lion Gene Alderson, a former member of our club; and Scarlet Estlack, guest of Lion Russell Estlack.

The Sweetheart was commended for representing our club and community well during the Lions District Queen contest last weekend in Canyon.

The Boss Lion discussed our flag service and talked about expanding that program to get more businesses involved.

Lion Jerry Woodard presented our program and urged members to get out and do their civic duty by voting in local elections this week.

www.ClarendonLive.com

| | |
|--|---------|
| Installation | Repairs |
| FAITH FENCING | |
| Cedar • Spruce • Chain-link Wood • Metal Post | |
| Kelly Hill Clarendon, Texas 672-0414 | |

weather report

| Day | Date | High | Low | Pres. |
|------|------|------|-----|-------|
| Mon | 26 | 77° | 46° | - |
| Tue | 27 | 61° | 37° | - |
| Wed | 28 | 70° | 42° | - |
| Thur | 29 | 88° | 54° | - |
| Fri | 30 | 90° | 52° | - |
| Sat | 1 | 70° | 48° | - |
| Sun | 2 | 64° | 35° | - |

Total precipitation this month: 0.00"
Total precipitation to date: 9.30"

weekend forecast

| | |
|--|---|
| | Friday, May 7 Sunny 69°/43° |
| | Saturday, May 8 Mostly Sunny 68°/50° |
| | Sunday, May 9 Isol'd T-Storms 82°/60° |

Information provided by:
Tommy C. Saye
50 yr. Cooperative Observer, National Weather Service

Morrow Drilling & Service
Hwy. 287 West, Clarendon

Water Well Specialist • Turnkey Systems
Solar Windmill • Electric Irrigation
T-L Pivot System

John E. Morrow (806)874-2704

Pleas: Continued from page one.

adjudication for a period of three years for the state jail felony offense of possession of marihuana.

Thomas was arrested in Carson County on March 25, 2010. Thomas pleaded guilty to a complaint and information filed by the State on March 26, 2010.

Pursuant to the plea agreement, Thomas is required to pay a \$3,000.00 fine to Carson County, court costs of \$327.00, \$140.00 in

restitution and successfully complete 200 hours of community service.

If Thomas violates probation, he could face up to two years in the state jail division of the Texas Department of Criminal Justice.

A total of \$7,000 in fines was assessed as a result of the pleas on May 3. In addition to the fines, the defendants were required to pay a total of \$1,036 in court costs and \$140 in restitution.

WINDSHIELD REPAIR

Larry & Donna Hicks
Call Donna at 806-874-3108 or 806-205-1501

Before After

SEAL THAT CHIP BEFORE IT SPLITS!

Please Vote

Chuck Deyhle

FOR CLARENDON COLLEGE BOARD OF REGENTS

"Your vote and influence would be greatly appreciated."

Political ad paid for by Charles E. Deyhle, Sr., PO Box 946, Clarendon, Texas 79226.

Cavities can hurt

Proper care means less cavities.

Let our professionals take care of that painful tooth and help you keep a healthy and beautiful smile.

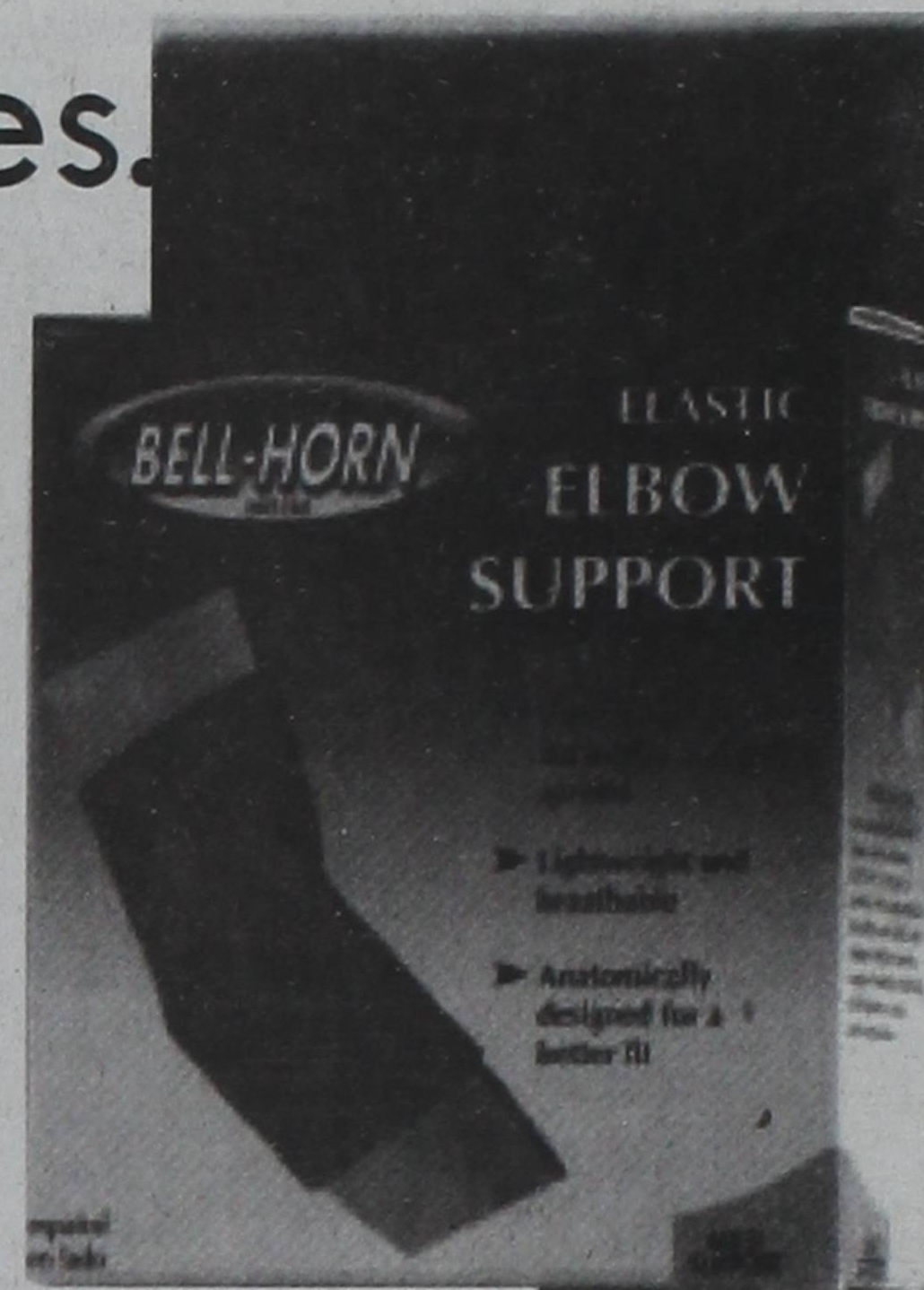
Orthodontics
Family Dentistry
Implants
Bleaching

Richard Sheppard, DDS
Located in the Community Services Building, Medical Center Campus in Clarendon

The phone company left us out of the book.
Jot down our number 874- 5628

We now carry a variety of Bell-Horn braces.

Elastic Elbow Support
Providing the firm support you need to relieve pain of sprains and strains. Made of genuine surgical material with seamless edges for greater comfort, support and durability.



only \$8.99



Healthy Living

Emergen-C \$10.39 • Elations \$11.99 • Resource Boost Breeze \$1.95

Outpost Deli

Call it in at 874-5203
Open Mon-Sat, 6:30 a.m. to 8:00 p.m. and Sunday, 8:00 a.m. to 8:00 p.m.

New Ede's Custom Meats
1/2 & 1/3 lb. Burgers

Mother's Day Special
Sunday, May 9
12 pc. Chicken \$28
W/ two 32oz sides & apple pie

Blue Bell Flavors: Chocolate Chip • Milk Chocolate • Crazy Kolors • Cake Batter • Homemade Vanilla • Strawberry
Orange Pineapple • Peppermint • No Sugar Added Butter Pecan • Butter Crunch • Peaches & Homemade Vanilla • Cherry Vanilla

The Clarendon
OUTPOST
619 W. 2nd St. Clarendon, Texas

STORE HOURS:
6 a.m. to 10 p.m. EVERYDAY
PHARMACY: 874-5202
Ad good April 28 - May 4, 2010

JEWELRY
For all of your Jewelry Needs
Branigan's Jewelry

We are a Medicare Participating Provider for Medicare Supplies
Diabetic Strips • Inhalation Medications • Most Other Medicare Supplies
Satisfaction Guaranteed! • Ask about our Senior Citizens Discount!

★
¿Qué Pasa?
Community Calendar

- May 8**
Local Elections
- May 9**
Mother's Day
- May 28**
Trash To Treasures Sign-up Deadline
- CHS Graduation
- HHS Graduation
- May 31**
Memorial Day
- June 5**
2010 Trash To Treasures Garage Sale Event

★
Menus

May 10 - 14

Donley County Senior Citizens

Mon: Lasagna, steamed broccoli, tossed salad, rice krispie treats, garlic toast.
Tue: King Ranch chicken, turnip greens, California blend salad, brownies, chips, salsa.
Wed: Hot steak, toast, gravy, pickled beets, sliced peaches, cinnamon rolls.
Thu: Spaghetti, meat sauce, green beans, tossed salad, banana bread, garlic toast.
Fri: Cheeseburger, bun, lettuce, tomatoes, pickle, onion slices, chips, cookies

Hedley Senior Citizens

Mon: Liver, onions, mashed potatoes, fried squash, Italian tomato/onion, butterscotch pudding, biscuits.
Tue: steak, gravy, scalloped potatoes, buttered carrots, pear/cottage cheese, cake, roll.
Wed: Chicken spaghetti, fried green beans, cabbage, tossed salad, baked apples, garlic toast.
Thu: Stuffed bell peppers, corn nuggets, buttered squash, pineapple/cottage cheese, pudding, roll.
Fri: Beef tips, noodles, teamed broccoli, corn nuggets, jello salad, cookies, roll.

Clarendon ISD

Breakfast
Mon: Cereal, toast, fruit, milk.
Tue: Sausage, biscuit, gravy, fruit, milk.
Wed: Pancakes, juice, milk.
Thu: Egg, toast, fruit, milk.
Fri: Cinnamon roll, juice, milk.

Lunch
Mon: Chili, cheese, fritos, salad, broccoli blend, Rosie applesauce, milk.
Tue: Fajita chicken, rice, peas, apricots, milk.
Wed: Steak fingers, gravy, potatoes, green beans, peaches, roll, milk.
Thu: Burrito, cheese, corn, salad, cherries, milk.
Fri: Hot dog, cheese, baked beans, chips, orange, milk.

Hedley ISD

Mon: Pizza, ham rolls, lettuce, tomatoes, applesauce, Spanish rice, flour tortilla, milk.
Tue: chili cheese dog, frito chili cheese pie, pinto beans, pineapple, salad, milk.
Wed: Chicken nuggets, steak fingers, green beans, mashed potatoes, gravy, fruit, rolls, milk.
Thu: Chicken spaghetti, spaghetti, meat sauce, Texas toast, tossed salad, fruit, milk, fruit juice.
Fri: Cheese burger, BBQ beef, bun, oven fries, salad, pickles, fruit, milk.

Words of wisdom still echo from all our mothers

Next Sunday May 9 is Mothers Day, so naturally I have to talk about Mothers.

Jim and I have both lost our Mothers - Mildred Cockerham in 1975 and Marie McCracken in 2003. But we all carry our Mother with us in her teachings and pass it to the next generation. By that I mean the things she said that are remembered, no matter what your age.

I took a very informal poll of friends and family, and these were some of the things I remember and was told by them. From my Mother, "If at first you don't succeed, read the directions." That ran through my life when I was having difficulty, she would ask about the directions, and sometimes she meant the Bible.

Pretty smart, huh?

My children remember "Don't chew your hair; you'll get worms." That went to my long-haired hippie kids of the 70s. When they were younger, it was, "Don't pick your nose; you'll get worms" I guess I was obsessed with keeping them away from worms.

"Go play on the freeway" was frequently said at gatherings but not by me. I was responsible for getting them to the emergency room, a road I knew only too well. "Do you want me to jerk a knot in your tail" was serious as well as "Do I have to stop this car?"

Mildred loved to garden, and Jim remembers, "Always wear a long sleeve shirt when you pick

okra." Still very good advice. There was, "Don't cross your eyes; they might get stuck that way." To girls especially, "Don't crack your knuckles; your hands will look like a man's".

About animals, "Don't let that dog kiss you; you don't know where his tongue was last," and "Keep that cat away from the baby; it will suck the breath out."

On holidays, "Put your hand down both ends of the turkey and pull both bags out;" "Save the bows"

-one they tease me about now; and "Save the Christmas tree tinsel."

Nancy Davis remembers, "If you do a job, do it right." Our young waiter at Country Barn, "Be safe." My son-in-law Chris from his Mom, "Find a good therapist, Son; it will set you free."

I still say as someone leaves, "Drive carefully; watch out for the other guy;" and if they are leaving from my house at night, "Watch for deer."

Times have changed, I now save gift bags instead of bows, and tinsel makes too much mess to be used, but I still want to know they arrived safely and e-mail is usually used for that.

Remember your Mother this

Sunday and don't forget those life lessons she taught you.

I would like to know if anyone's Mother actually told them to wear clean underwear because they might be in a wreck. That wasn't the reason I used.

Saturday, May 8, is local Election Day, we have four people running for three positions on the Board of Alderman. They are Rod Donaldson, Tanis McMorries, Johnny Hubbard and Tim Gallagher. Polls are open 7 a.m.-7 p.m. with voting at City Hall. Don't forget.

More prayers are requested for Pat Barton who has throat cancer and will begin treatments soon and for Dean Arnold who also begins his cancer treatments soon.

Hedley Senior Citizens will benefit from dance Saturday

Helen and J.T. Lamberson celebrated their 77th wedding anniversary on May 1, 2010. He is 97 years old, and she is 93, and both still work their farm. We want to wish them a very Happy Anniversary.

Also, Patsy Spier will have gall bladder surgery on Wednesday, May 5, at BSA; and hopefully she will be home that same afternoon unless there are complications, but there won't be. We believe God will pull her thru this, but we could use your prayers.

Don't forget The Hedley Senior Citizens Fund Raiser Dance on May 7. We have really had wonderful responses from Memphis and Clarendon and other places to the sponsoring of Jody Nix and The Cowboys, and we hope you all will come out and enjoy his music with us. If any business or person would like to donate money to go towards Jody Nix's costs, please send to Hedley Senior Citizens, PO Box 216, Hedley, Texas 79237 and please write on the check "Jody Nix Fund Raiser". All proceeds will go toward a building fund to help us get a new building.

Also, if anyone would like to donate something for the Silent Auction please call me at home, 856-5302, or the Senior Citizens at 856-0143, and I will make arrangements to get it. Remember we will be

at the Donley County Activity Center in Clarendon on Highway 70 North. We have some wonderful things coming along and I know you all will enjoy Jody Nix and The Cowboys' western swing music.

chatty kathy
by kathy spier
Hedley • 856-5302

Recipe: Cheese Chicken And Noodles: 12 ounces wide egg noodles, 2 cups desired frozen vegetables (peas, carrots, sweet red pepper strips and/or pea pods), 1 - 16-ounce jar light Parmesan-Alfredo pasta sauce, 1 - 9-ounce package frozen cooked chicken breast strips, thawed, 1 - 4-1/2-ounce can sliced mushrooms, drained, 2 tablespoons dry white wine, dry sherry, chicken broth, or milk (milk optional), grated Parmesan cheese. In a 4-quart Dutch oven, cook noodles according to package directions, adding the vegetables the last 3 minutes of cooking time. Drain, return noodle mixture to Dutch oven. Stir in sauce, chicken, mushrooms, and wine. Heat through. If desired, stir in additional milk to reach desired consistency. Sprinkle servings with Parmesan cheese. Make 6 servings.



77th Anniversary

JT and Helen Lamberson celebrated their seventy-seventh anniversary Saturday, May 1, 2010. Jim and Gene Taylor took them to the McLean Steakhouse to celebrate. The Lambersons would like to thank everyone for the cards, gifts and flowers. They are so grateful to the Hedley Senior Citizens, the Methodist Church and the Hedley community. They love living there and love the people of Hedley.

New laws support current 'Click It' program

COLLEGE STATION - New seat belt laws and a contest for teens are among the features offered to reinforce this year's Click It or Ticket campaign, according to Bev Kellner, Texas AgriLife Extension Service passenger safety specialist.

"The good news is that more people are buckling up in Texas. The bad news is there are still far too many killed in crashes due to lack of seat belt use," Kellner said. "Despite gains in seat belt use for Texas, there are still some groups that do not wear their seat belts."

Kellner explained that the new laws in Texas require adult vehicle occupants in all seating positions to be buckled up - both front and back.

Previously, the law required only those in the front seat and those less than 17 years of age in the back seat to be buckled.

The new laws, which became effective last September, extend to 12- and 15-passenger vans as well, she said. For children, the new law requires children under age 8, unless taller than 4 foot 9 inches, to be in a child safety seat system.

According to Kellner, among the groups that have lower usage rates are 16-20 year olds, pickup truck drivers and passengers, and male drivers and passengers. Statistics from 2008 show that 56 percent of persons killed in crashes were unrestrained.

Because teens are among the groups prone to not use seat belts, the campaign offers them an opportunity to create a personalized video to share with friends. The video will follow a teen beginning a road trip. Teens who participate will be entered into a contest for prizes. More information is available at <http://seatbeltsrock.com>.

"Even with the new laws, more education is needed to convince some groups that seat belts save lives," she said.

The key to surviving a crash is staying inside the vehicle, she said. Statistics from 2008 showed that 77 percent of occupants who were thrown from their vehicle were

killed. "Motorists can increase the odds of survival in a rollover crash in a light truck by nearly 80 percent by wearing their seat belts," Kellner said. "Seat belts are credited with saving 255,115 lives from 1975 through 2008."

The enforcement time for this year's campaign by the Texas Department of Transportation is May 24 through June 6. During that time, extra law enforcement will be on the roads to enforce the new laws with the goal of saving lives.

"The goal is to get every Texan to always buckle up, on every trip, every time. A seat belt is your best defense against injuries and deaths."

CC honors 23 for academic excellence

Clarendon College recognized outstanding students in academic areas Thursday evening at the Harned Sisters Fine Arts Center Auditorium in Clarendon.

Twenty-three students were honored for being the top students in a variety of disciplines for the 2009-2010 academic year. Dr. Debra Kuhl, dean of instruction, led the ceremony and Clarendon College faculty members presented the awards and each spoke about why each student was chosen as the best in their discipline.

Those receiving awards were: Agriculture - Clayton Gardner, Estancia, NM; Drama - Whitney Dawne Goldston, White Deer; Interpersonal Speech - Lauren Weinert, Arlington; English World Literature - Dane Terrill Hooker, Sweeny; Equine - Courtney Ries, Kaufman; Cosmetology - Stefanie McGahen, Pampa; Computer Technology - Jesse Gordon Seaman, Pampa; Chemistry - Jerra McMath, Willard, NM; Microbiology - Christina Woodard, Hedley; College Algebra - Eddi Marks, Clarendon; Math - Maria Daena McAllister, Memphis; Business - Heidi Lynn Schwoppe, Pampa; English Composition - Trevor Guston, Amarillo; History of the United States - Martha Smith, Clarendon; Office Technology - Angela Carver, Pampa; Zoology - Trenton Todd Darsey, McLean; College Algebra - Norberto Alonzo, Pampa; Wind Energy - Christopher Paul Gray, Childress; Criminal Justice - Marlin Vilius, Eustis, FL; Vocational Nursing - Brittany Kempf, Pampa; Vocational Nursing - Jamie Greer, Erick, OK; Phi Theta Kappa - Danielle Smith, Hedley; and Phi Theta Kappa - Lauren Weinert, Arlington.

Kenny's Barber Shop and Clarendon Auto Sales
204 S. Koogle, Clarendon
874-9308
We appreciate your business!

Double M Carpet Cleaning
Commercial and Residential
Steam Cleaning

Carpets Cleaned Water Extraction
Upholstery Cleaned Rugs Cleaned

Contact Mitchell Martin: Cell 806-662-7678

WATER PROBLEMS?
We can fix your water!
Serving the area since 1970
Locally owned & Operated

Chris Durham, Owner
806-353-4632 • Lic. & Bonded

We also offer sales, rent and service on soft water systems as well as drinking water systems.

Germania INSURANCE

Joey & Brenda Lee
Lee's Insurance
PO Box 189 • Clarendon, Texas 79226
806.874.2130

HOME • AUTO • LIFE • COMMERCIAL

Mothers Are:
Loving, Selfless, Caring, Patient, Giving, Beautiful, Teachers, Taxidivers, Mediators, Unbelievable.

Thank You, Mom!
Happy Mother's Day

Robertson FUNERAL DIRECTORS
806.874.3515
www.robertsonfuneral.com

ELECT
John C. Lockhart
For City Alderman

"Your vote and support on May 8, 2010 will be sincerely appreciated"

Political ad paid for by Shirley Lockhart, PO Box 1461, Clarendon, TX 79226

I would appreciate your vote in the May 8 election for
Clarendon College Board of Regents

Glenda Hawkins

Lady Broncos gear up for playoffs

By Sandy Anderberg

Thirty-four wins out of thirty-nine games equals a winning season for the Lady Bronco softball team this season. And a perfect district season at 10-0 turned into yet another District Championship for the ladies as well.

The ladies are currently ranked ninth in the state and are looking to go deep in the play offs.

The Lady Broncos will play their first playoff game Friday, May 7, at Vernon Junior College against Baird beginning at 5:30 p.m. The format is a best two-out-of-three series with the second game being played on Saturday at 1:00 p.m. If a game three is needed, it will be played thirty minutes after the second one.

To prepare for post-season play, the Lady Broncos took on Vernon and Bushland in warm-up games. They defeated Vernon 8-6, but lost to Bushland 2-8.

The ladies trailed early in the

game with Vernon, but used some good hitting to fight their way back into the game. After three innings, Clarendon was behind by five runs, but their bats got them back into the game.

"They're a pretty good team," head coach Gary Jack said. "We were down by five in the third, but we fought back and played pretty good defense. We started getting good hits, and that allowed us to get the win."

Jack gave credit to pitchers Danielle Ford and Jency Burton for shutting them down in the final innings. Jack also said Trevela Dronzek, Dominique Mason, Ford, and Chelsea Covey had big hits in the game.

"We were able to make things happen," Jack said.

"It was a good warm-up game for us. We tried to play several people and get ready for the play-offs."

The game with Bushland did

not end as the ladies had hoped, but it gave them the opportunity to see a different type of team.

"They got ahead early because of a few mistakes we made," Jack said. "We maybe had a little jet-lag from the day before, but it was good practice for us."

According to Jack, Jentry Shadle, Elissa Holland, and Dronzek hit the ball well and Brandi Mays had a good workout on defense.

"Brandi made some great defensive plays for us," Jack said. "She had seven or eight balls hit to her and out of those accounted for six outs. She made a lot of good stops."

The Lady Broncos will take the week to practice and prepare for their game with Baird (19-5) in the Area Round.

Get out and support the Lady Broncos as they begin post-season play Friday and Saturday, May 7 and 8, in Vernon on the Vernon College campus beginning at 5:30 p.m.

**In County Subscription
Only \$25 Per Year**

THE CLARENDON
Enterprise



**Where's
Your Card?**

Business Cards
Brochures • Envelopes
Stationery • Posters
Postcards • Flyers
Promotional Items

**Call Today!
806-874-2259**

Visit us online at www.ClarendonLive.com.



Drugs in the News

Hepatitis B Vaccine to be Evaluated as Treatment

Last month NanoBio, a research company, and a medical research team from the University of Michigan announced joint plans to develop an intranasal vaccine for hepatitis B. The announcement indicated that testing would evaluate the ability of this vaccine to treat those already infected with hepatitis B. All currently available hepatitis vaccines are only approved for the prevention of this infection. As a preventative, the routine immunization of children in the US during the last two decades has produced a dramatic reduction in the incidence of hepatitis B in this age group. The research, announced by these two institutions, is described as important for persons with decreased kidney function since such persons are at a higher risk for developing complications associated with hepatitis B.

Hepatitis B is a serious infection involving the liver. The infection can be spread when a non-infected person comes in contact with the blood or other body fluids of an infected person. Each year it is reported that up to five thousand individuals who become infected die from cirrhosis or cancer of the liver.



**Mike's
PHARMACY**

Call 874-3554 or Toll Free 800-766-2089
Hwy 287 West • Clarendon, Texas

CCC to host two day Tournament

By Sandy Anderberg

The annual Century Tournament will be held May 15-16 at the Clarendon Country Club. The event is a two-day thirty-six-hole scramble with the team members' ages totaling at least 100 years old.

Entries are still being accepted, and you may call the Pro Shop for more information.

The team of Norm Hagood, Sandy Anderberg, Kevin Rogers, Jr. Rodriguez, and Brian Wilburn won the Friday night nine-hole scramble at five under par. The nine-hole scrambles will be played each Friday night and begin at 6:00 p.m.

There will also be the First Annual Eddie Baker Memorial Tournament May 22. It will be a four-person 18-hole scramble.

WBU presents athletic awards to two locals

PLAINVIEW - Two track and field athletes received Wayland Baptist's highest athletic honor at the 2010 Winter/Spring Athletic Awards Reception held Wednesday evening. Kydia Echols from Harleton, Texas and Kirby Dunn of Bowie, Texas were named the Roscoe Snyder Award winners as the university's top female and male senior athletes.

Among those recognized were: Women's Basketball - Hutcherson Family Award: junior Jessi Howard of Clarendon; and Cross Country/Track and Field: senior Bradley Sell of Clarendon.

POSITIVE FEED SALES

All-In-One 30%
Supplement for Cattle
Brangus Bulls & Heifers For Sale
DANNY ASKEW
874-5001 or 874-3844

WHEN WE LOSE A HISTORIC PLACE, WE LOSE A PART OF WHO WE ARE.

To learn how you can help protect places in your community visit:
NationalTrust.org
1-800-315-NTHP
HISTORY IS IN OUR HANDS.

Bake Sale

Saturday, May 8
Beginning at 9:00 a.m.
Lowe's Grocery Store
Hosted by Hedley Varsity Cheerleaders

Baseball & Softball 2010

Area Championship Round

Friday, May 7

Lady Broncos v. Baird

Vernon Junior College, 5:30 p.m.

Saturday, May 8

Lady Broncos v. Baird

Vernon Junior College, 1:00 p.m.

Third game will be played 30 minutes after if needed

Friday, May 7

Broncos v. Follett

in Borger, 4:\300 p.m.

Lady Broncos

- 2 Danielle Ford Jr.
- 3 Jentry Shadle Fr.
- 4 Morgan Wood Sr.
- 5 Jency Burton Fr.
- 6 Emily Clark Jr.
- 7 Miranda Miller Jr.
- 8 Maci White Fr.
- 9 Brandi Mays Sr.
- 10 Jill Luna Sr.
- 12 Trevela Dronzek So.
- 15 Erin Moore Jr.
- 16 Chelsea Covey Jr.
- 20 Andrey Shelton Fr.
- 24 Chanda Reynolds Jr.
- 25 Dominique Mason Sr.
- 33 Caitlyn Christopher Sr.
- 44 Elissa Holland Sr.

Head Coach: Gary Jack
Asst. Coach: Shanna Shelton
Stats: Elizabeth Christopher

Broncos

- 1 Dusty Rice Fr.
- 2 Brady Miller Jr.
- 3 Dylan Wright Sr.
- 4 Matt Henderson Sr.
- 5 Colter Goolsby Jr.
- 6 Justin Shillings Jr.
- 7 Mathew Thomas Sr.
- 8 Brayden Phillips Jr.
- 9 David Roberts Jr.
- 10 Bradley Watson Jr.
- 11 Forrest Yelverton Fr.
- 12 Johnny Gaines Jr.
- 13 Caleb Mitchell So.
- 14 Troy Chambless Jr.
- 16 John Levario Jr.

Head Coach: Brad Elam
Asst. Coach: Randy Yelverton
Managers: Jordan Luna, Savannah Thackeray, Holly Phillips

These businesses proudly support the Broncos on their way to victory.

Bust 'Em Broncos!

Best Western Red River Inn
Clarendon Family Medical Center
Clarendon Insurance Agency
Greenbelt Electric Cooperative
Greenbelt Water Authority
GreenLight Gas

J&W Lumber
Lowe's Family Center
Mike's Pharmacy
Shelton Law Offices
Richard Sheppard, DDS

Security Abstract
The Clarendon Enterprise
Wallace Monument
Stavenhagen Video
Evan's Fertilizer
Herring Bank

Prospective wine-grape grower workshop set June 10 in Childress

CHILDRESS – A program sponsored by the Texas AgriLife Extension Service for people interested in commercial wine-grape production will be held from 9 a.m.-4 p.m. June 10 in Childress.

The Prospective Wine Grower Workshop will be presented in the Hospital Education Room, Childress County Hospital, 901 Highway 83 North. Program registration begins at 8:30 a.m.

"This workshop will be useful to those considering planting a commercial vineyard or for those who already have a vineyard and want to expand planting to a commercial scale," said Dusty Timmons, the new AgriLife Extension viticulture advisor for West Texas.

Timmons, who works from the Texas AgriLife Research and Extension Center, 1102 East Farm-to-Market Road 1294 near Lubbock, is responsible for providing viticulture advice and technical assistance to wine-grape growers throughout the Panhandle, South Plains and far West Texas.

He said the prospective grower workshop was created by the Texas

AgriLife Extension Viticulture Team to address the most common concerns small-scale producers usually have prior to committing valuable resources towards a commercial vineyard enterprise.

Workshop topics include: necessary viticulture expertise, vineyard site selection, risk factors, vineyard labor requirements and vineyard economics.

AgriLife Extension presents a Prospective Wine Grower Workshop every six to eight weeks in regions of Texas conducive to wine-grape production, Westover noted, adding that the workshop is a prerequisite for registration and acceptance into the Texas Tech Viticulture Certificate Program.

The cost for the workshop is \$125 per person or \$200 per couple, and includes educational materials and lunch. Online registration for the workshop can be completed by going to the AgriLife Conference Services website, <http://agrilifevents.tamu.edu> and entering "Prospective" as the keyword.

For more program information, contact Timmons at 806-787-5110.

Need to sell?
Put your ad in the Big E Classifieds!

Limited Time **5.03%** APY*
INSURED CD

Ask About IRA/401K Specials!
FIRST FIDELITY
Financial Group, LLC
Your Safe Money Solution®

1800 Washington, Suite 110 • Amarillo, TX
806-373-9480
1-800-371-9201
By appointment only

First Fidelity is a financial services firm that licenses FDIC insured banks offering the highest CD yields nationwide. Minimum deposits may apply. See and discuss subject to availability. Subject to change without notice. Penalty for early withdrawal. CD and FDIC insured to \$250,000 per depositor. Actual bank rate may be lower than advertised rate. Any difference in rate will be provided by the local First Fidelity office as a Promotional Incentive. First Fidelity Financial Group is not a state or federally chartered financial institution, and is not affiliated with First Fidelity Bank, First Fidelity Trust, or First Fidelity Securities & Loan. Insurance products, including fiscal annuities, are not guaranteed by any bank, broker/agent, or the FDIC. © 2010 First Fidelity Financial Group, LLC.

SAINTS ROOST COWBOY CHURCH
SUNDAY MEETING 4PM
SPIRIT FILLED SPIRIT LED
CLARENDON RODEO GROUNDS
Pastor: Carl Cox

Everybody is welcome...come as you are!
Bible study every Wednesday night at 7 p.m.
Breakfast on first Saturday of every month at 7:30 a.m.

Terry Noble Asks For Your Vote For City Alderman

To Represent All The City Of Clarendon Equally

City Aldermen are responsible for the spending of your tax dollars.

If I'm elected to serve you, my job will be to listen to you, work with other board members to make your voice heard and then make a decision for you, the City of Clarendon.

I will also have a reason for every vote I cast and will be open to you about it.

I value your thoughts and opinions.
Please call 806-290-7914.

Political ad paid for by Terry Noble, PO Box 814, Clarendon, TX 79226.

Find everything you need... And more!

CITY-WIDE GARAGE SALE!

Saturday, May 8th • Claude, Texas
Maps & sale listings available at local businesses, or online at www.claudenews.com



Clarendon Church of Christ

WHAT'S WRONG WITH HAVING MONEY?

In our politically correct society, the wealthy are attacked for being prosperous. It is a rather odd attitude towards others. Doesn't everyone who works for someone else want to be promoted and make a little more money? Doesn't the man or woman who owns their own business look to prosper? In Genesis 39:3, the king saw that Joseph prospered and understood that prosperity came from God. There are so many scriptures where God has helped His people prosper. Obviously having a lot of money is not evil. Someone could obtain it in a way that is evil, but having an overabundance of money isn't wrong in itself.

Remember Solomon? God asked him in 1 Kings 3:5, "Ask! What shall I give you?" Solomon asked for wisdom and God was so pleased (1 Kings 3:10) that he gave him wisdom and riches (1 Kings 3:13). Solomon, for a time, was the wealthiest man on earth and was enabled by God to have these riches.

Many politicians play off of the envy of others. Some people are preoccupied with what others have. Unless someone stole from me, why should I care that someone has more than I have? Am I owed anything from others? Shouldn't I look to God for my blessings and prosperity? Of course my own work and industry must be coupled with God's blessings. God has a plan in place for when we are "down on our luck". It's called the church! 1 Timothy 6:18 tells the rich to share with others, but all Christians are to help one another (Hebrews 13:16).

God has promised our needs will be taken care of (Matthew 6:33). He has never promised that all people would be wealthy or that the rich should evenly distribute their wealth to the multitudes.

The prevailing societal attitude towards the rich is un-Christian. God wouldn't have given Solomon and others riches if having said riches were sinful. We should look within and ask why we would be envious of others. Shouldn't we be satisfied with our lot in life? I hope that all would look to God for prosperity and not to others.

CLARENDON CHURCH OF CHRIST
PO Box 861 / Clarendon, TX 79226
Minister: Chris Moore / 874-1450
If you have any Bible questions, please write or call.

ELECT JERRY GAGE

Clarendon College Board of Regents
May 8, 2010

"Please allow me the opportunity to represent the tax payers of Donley County, the Students, and the Employees of Clarendon College."

- Lived & Worked in Donley County since 1972
- Managed the USDA-ASCS office for 10 years.
- RFO Instructor at Clarendon College for 24 years
- Sons Jay & Lee graduated from Clarendon College

"If not for the taxpayers of Donley County there would be no Clarendon College as we know it today, regardless of what you hear or read."

Your tax dollars have been and are still important to Clarendon College even though they are portrayed as insignificant to the overall operation."

Thank you for your support.

With knowledge the sky's the limit!

Unbelievable things happen every day. Newspapers are a great way to learn about what's up in the world - from mysterious astronomical events to stories of the most unlikely heroes, newspapers cover it all. So spread the word, a world of information is waiting!

THE CLARENDON ★
Enterprise
THE CLARENDON NEWS & THE DONLEY COUNTY LEADER

It all starts with newspapers.

www.newspaperlinks.com



THIS MESSAGE IS BROUGHT TO YOU BY THIS NEWSPAPER AND THE NEWSPAPER ASSOCIATION OF AMERICA®
The Walt Disney Company is committed to Reading Together.
For more information, go to www.disneyhand.com/readingtogether

Tech ranch horse team repeats national win

For the second consecutive year, the Department of Animal and Food Sciences' Ranch Horse Team clenched the American Stock Horse Association (ASHA) Collegiate National Championship at the Texas Tech Equestrian Center in Lubbock.

The win capped an undefeated season for the 15 Texas Tech students, including one from Hedley, who competed on the team.

"We are fortunate to have outstanding students, first class equestrian facilities and a coach who challenges the team to new heights," said Kevin Pond, chairman of the Department of Animal and Food Sciences. "Their hard work, extensive preparation and drive to be the best paid off. We are proud of our student athletes who repeated as national champions."

To accompany the team crown, the team members won six class

individual national championships. Winners included: Brienne Hight who finished first in the Non-Pro Trail and Pleasure classes; Cooper Cogdell who finished first in the Non-Pro Cowhorse class; Will Wallendorff who finished first in the Limited Non-Pro Cowhorse class; and Kelsey Stokes who finished first in the Novice Trail and Reining classes.

Team members in the Non-Pro Division included: Cooper Cogdell, an agribusiness major from Silverton; Alicia Daugherty, an agricultural communications major from Alpine; Brienne Hight, an animal science major from Clovis, N.M.; Jay Ray Sageser, an agricultural leadership major from Cotton Center; and Jordan Williams, an economics major from Weatherford.

Team members in the Limited Non-Pro Division included: Dusty

Burson, an animal science major from Silverton; Mattie Dunshee, an agricultural communications major from Alpine; Luke England, an animal science major from Winters; Will Wallendorff, an animal science major from Hedley; and Ashley Palmer, an agricultural communications graduate student from Cypress.

Team members in the Novice Division included: Justine Boswell, a nursing major from Goshen, Utah; True Burson, an animal science major from Silverton; Amanda Cage, an animal science major from Ponder; Robert Rivers, an

animal science major from Elgin; and Kelsey Stokes, an agribusiness major from Afton.

The team is coached by Levi Williamson, a graduate student in the department.

In addition to its national championship victory, the Texas Tech (Black) Team placed second. New Mexico State University, Texas A&M University and Sam Houston State University rounded out the top five in the team competition. Nine universities and eleven teams competed in the event.

Free Big E Classified with every new subscription.

Mr. Fix It

Kyle Hill

Minor repairs, odd jobs, and more.

672-8908 or 874-2283 Evenings

RE-ELECT

Ruth Robinson

FOR CLARENDON COLLEGE BOARD OF REGENTS

"Your vote will be greatly appreciated."

Political ad paid for by Ruth Robinson, PO Box 810, Clarendon, Texas.

CISD looks at big waterline project

The Clarendon ISD Board of Trustees met in special session April 29, 2010, in the Administration & Technology Building

Superintendent Monty Hysinger led the board on a tour of all district facilities. Facility improvement needs were discussed at length throughout the tour.

Each board member was provided a scoring matrix to help in prioritizing the improvement needs of the district.

The board members are to submit their matrix scores to Hysinger by Friday, May 7, 2010, and he will tally the matrix scores to

provide a composite score for the Team of Eight as a whole. The data derived from this ranking/scoring process will be used to develop a five year facilities improvement plan.

Hysinger proposed that the board consider the replacement of the main water lines that feed the entire Elementary and Jr. High campuses. The water lines are in desperate need of replacement.

After some discussion, a motion was approved to accept the proposal from Howard's Mechanical, Inc., for \$55,815.00 to replace the main water lines in the Elementary and Junior High buildings.

Wax figures come to life at pphm

CANYON - From historical figures like Abraham Lincoln to Buddy Holly to Nolan Ryan, fourth-grade students from Reeves-Hinger Elementary School in Canyon will portray influential people at the Panhandle-Plains Historical Museum Monday, May 6 from 9:00 to 11:30 a.m.

Students will be stationed like wax figures throughout the museum

in areas pertaining to their character. Visitors can push a button on the costumed student's shoulder and the historical or influential character will come to life.

"This is the 4th year the students have interpreted history at PPHM, and we are excited to have such an interactive program for visitors," says Education Coordinator Millie Vanover.

Call About RotoFilling!

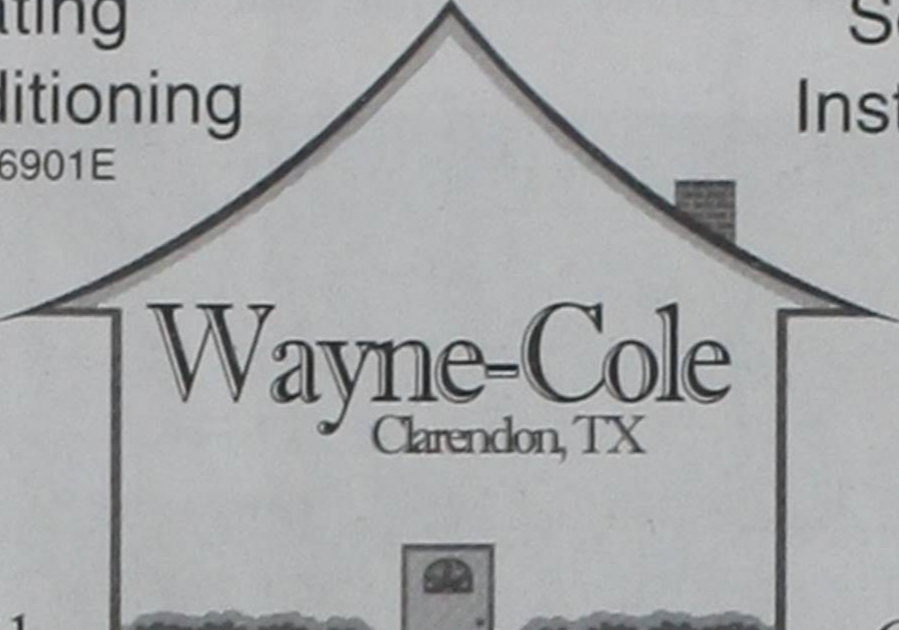
Jobob's

HANDYMAN SERVICES

Painting • Minor Repairs • Small Jobs • Tractor Services

806.205.0270

Heating Airconditioning Service Installation
TACLB26901E



Wayne-Cole
Clarendon, TX

Home 874-2271 Cell 673-1411

Continuing Education Courses

Beginning Watercolor

Instructor: Greta Byars

Tuesdays from 1 to 3 p.m.

Clarendon Senior Citizens Building

Start Date: 5/11/2010 Ending Date: 7/13/2010

Space is limited in this class!

You must register no later than Monday, May 10.

You will need to purchase supplies and will be provided with a supply list at the first class.

Christianity's Family Tree

Instructor: Don Stone

Thursday evenings from 7 to 8:30 p.m.

Clarendon Senior Citizens Building

Start Date: 5/20/2010 End Date: 8/5/10

You must register no later than Tuesday, May 18.

To register call us or stop by!
806.874.3571

Clarendon COLLEGE
Unleash your potential!

National Day of Prayer

Thursday, May 6 from 12 p.m. - 12:30 p.m.
Veteran Memorial at the Donley County Courthouse

Donley County Fire!

A weekly focus will be posted in this ad as well as any news or updates. If you feel the call to pray here and/or praise one hour per week for God's presence to move in wonderful ways, call 806-874-1313 between 8:30 a.m. and 5:30 p.m. and ask to sign up on the prayer schedule. God Bless you all.

"Keep the Fire Burning"

1 Thessalonians 5:16-19 "Be joyful always; pray continually; give thanks in all circumstances, for this is God's will for you in Christ Jesus. Do not put out the Spirit's fire."

WEEKLY FOCUS: **One Nation Under God**

Slots taken 109 • Available 59

your guide to area CHURCHES

Clarendon

| | | |
|--|--|--|
| <p>Agapé Christian Church 712 E. 2nd (Hwy. 287) Minister: David Lowrie Sunday School: 9:30 a.m. Sunday Service: 10:30 a.m.</p> <p>Calvary Baptist Church US 287 E • 874-3156 Rev. Rob Seale Sunday School: 10 a.m. Sunday Service: 11 a.m. Sunday Evening: 7 p.m. Wednesday: 7 p.m.</p> <p>Church of Christ 300 S. Carhart • 874-2495 Minister: Chris Moore Sun. Bible Class: 9:30 a.m. Sunday Service: 10:30 a.m. Sunday Evening: 6 p.m. Wednesday: 7:00 p.m.</p> <p>Church of Nazarene 209 S. Hawley • 874-2321 Pastor: Bill Hodges Sunday School: 9:30 a.m. Sunday Service: 10:30 p.m. Sunday Evening: 6 p.m. Wednesday: 7 p.m.</p> <p>Community Fellowship Church 12148 F.M. 2162 • 874-0963 Pastor Larry Capranica Sunday School: 10 a.m. Sunday Service: 11 a.m. Sunday Evening: 6 p.m.</p> <p>First Christian Church 120 E. Third Street • 874-3212 Sunday Service: 11:00 a.m.</p> <p>First Assembly of God 4th St. & Hwy. 70 South Pastor: Matthew Stidham Sunday School: 9:45 a.m.</p> | <p>Sunday Service: 10:40 a.m. Sunday Evening: 6 p.m. Wed. Youth Service: 6:15 p.m. Wed. Bible Study: 7:00 p.m.</p> <p>First Baptist Church 300 Bugbee Ave • 874-3833 Rev. Lance Wood Sunday School: 9:45 a.m. Sunday Service: 10:55 a.m. Sunday Evening: 6 p.m. Wednesday: 5:30 p.m. GA & Team Kid Ministry 6:30 p.m. Adult Bible Study 7:00 p.m. Youth Study 9:00 p.m. College Ministry</p> <p>First Presbyterian Church Fourth & Parks • 874-9269 Pastor: Rev. Robin Gantz Fellowship: 10:30 a.m. Sunday Service: 11:00 a.m.</p> <p>First United Methodist Church 420 S. Jefferson • 874-3667 Pastor: Terry Lowe Sunday School: 9:45 a.m. Sunday: 8:30, 10:50 a.m.</p> <p>Jesus Name Apostolic Church 720 E. Montgomery • 874-2388 Rev. Calvin Burrow Sunday Services: 3 p.m. Wednesday: 7:30 p.m.</p> <p>Clarendon Family Christian Center Church 511 E. 5th St. Pastor: R.W. Ellerbrook Sunday School: 9:30 a.m. Sunday Service: 10:30 am</p> | <p>Sunday Evening: 6:00 pm Wednesday: 6:30 p.m.</p> <p>Old Paths Primitive Baptist Church 416 S. Kearney • 874-5374 Pastor: Lyman Little Sunday Services: 10:30 a.m.</p> <p>Saints Roost Cowboy Church Rodeo Grounds Wednesday Service: 7 p.m. Sunday Service: 4 p.m.</p> <p>St. John The Baptist Episcopal Church Rev. Jim Aveni 301 S. Parks St. • 874-2511 Sunday Service: 11 a.m.</p> <p>St. Mary's Catholic Church Corner of Montgomery & McClelland Fr. Arokia Raj Samala Sunday Mass: 10:30 a.m.</p> <p>St. Stephens Baptist Church 300 N. Jefferson St. Pastor: Roy Williams Sunday School: 10 a.m. Sun. Service: 11:15 a.m. Wednesday: 7:00 p.m. (weather permitting)</p> <p>True Church of God in Christ 301 N. Jefferson St. Pastor: Jeff Riles Sunday School: 10 a.m. Sun. Service: 11:15 a.m. Wednesday: 7 p.m.</p> |
|--|--|--|

Hedley

| | | |
|--|---|--|
| <p>Church of Christ 110 E. Second St. Minister: Bright Newhouse Sun. Bible Class: 10 a.m. Sunday Service: 11 a.m. Sunday Evening: 6 p.m. Wednesday: 7:30 p.m.</p> | <p>First Methodist Church 200 N. Main St. Pastor: Gary Boles Sunday Service: 9:30 a.m. Sunday School: 10:30 a.m.</p> | <p>First Baptist Church 210 N. Main St. 856-5980 Pastor: Bruce Howard Sunday School: 10 a.m. Sunday: 11 a.m. & 6 p.m. Wednesday: 7 p.m.</p> |
|--|---|--|

| | | |
|---|---|--|
| <p style="text-align: center;">Howardwick</p> <p>First Baptist Church 222 Sherwood Blvd. 874-3326 Reverend: Dave Stout Sunday School: 10 a.m. Sunday Service: 10:45 a.m. Sunday Evening: 6 p.m. Wednesday: 6 p.m.</p> | <p style="text-align: center;">Martin</p> <p>Martin Baptist Church US 287 W • 874-2025 Pastor: Darrell Burton Sunday School: 10 a.m. Sunday Service: 11 a.m. Sunday Evening: 6 p.m. Wednesday: 7 p.m.</p> | <p style="text-align: center;">Brice</p> <p>Brice Deliverance Tabernacle 867-3029 or 867-2012 Pastor: Louis Bennett Sun. Service: 9:45 a.m. Sunday Evening: 6 p.m. Wednesday: 6 p.m.</p> |
|---|---|--|

The Church Directory is sponsored by:

Pilgrim Bank
Country Bloomers Flowers & Gifts
J&W Lumber
Robertson Funeral Directors
The Clarendon Enterprise

To become a sponsor of the Church Directory, please call 874-2259.

Whatever Her Heart Desires

Find that perfect Mother's Day gift for her with great brands like Montana Silver and Jewelry, Bags, Clothes and Boots to choose from.



CORNELL'S COUNTRY STORE
...So Much More Than A Feed Store.
806-874-6773
903 E 2nd in Clarendon



Thornberry chosen for security group

WASHINGTON, D.C. — House Republican Leader John Boehner (R-OH) today tapped Rep. Mac Thornberry (R-Clarendon) to serve on the new National Security Solutions Group, which will take the lead in developing and advocating better policy solutions to the national security challenges the country faces. The group is part of the House GOP's efforts to create a "governing agenda" to deal with America's most pressing issues.

"I believe that the first job of the federal government is to defend America so I am honored to join the National Security Solutions Group," said Thornberry. "People tell me every day that we need realistic,

common-sense policies to deal with a whole variety of issues, including current and future threats we face at home and abroad. With the help of the American people, this group will create the kinds of proposals to make America safer and more secure moving forward," he continued.

The National Security Solutions Group will complement and support the work of the Chief Deputy Whip Kevin McCarthy (R-CA) who is leading the effort by House Republicans to engage the American people and put forth a positive governing agenda. A number of other GOP Solutions Groups have been established over the past year on issues ranging from economic recovery to

energy reform.

"Addressing the national security challenges we face and protecting the American people are absolutely vital," said Leader Boehner. "Rep. Thornberry has been a real leader in our efforts to offer solutions that keep America safe and support our troops in harm's way. That's why I asked him to join and why he will play a critical role in the group," he said.

Members of the GOP National Security Solutions Group include: Rep. Peter T. King (R-NY), Ranking Member, Committee on Homeland Security; Rep. Howard P. "Buck" McKeon (R-CA), Ranking Member, Committee on Armed Ser-

vices; Rep. Peter Hoekstra (R-MI), Ranking Member, Permanent Select Committee on Intelligence; Rep. Ileana Ros-Lehtinen (R-FL), Ranking Member, Foreign Affairs Committee; Rep. Jerry Lewis (R-CA), Ranking Member, Appropriations Committee; Rep. Lamar Smith (R-TX), Ranking Member, Committee on the Judiciary; Rep. Michael Conaway (R-TX); Rep. Charles Dent (R-PA); Rep. Trent Franks (R-AZ); Rep. Duncan Hunter (R-CA); Rep. Candice Miller (R-MI); Rep. Jeff Miller (R-FL); Rep. Sue Myrick (R-NC); Rep. Hal Rogers (R-KY); Rep. Edward Royce (R-CA); Rep. Mac Thornberry (R-TX); and Rep. Frank Wolf (R-VA).

Tell us what YOU think!
Voice your opinion at www.ClarendonLive.com

Time for a little Spring Cleaning?

Joe's Flea Market
Mon. ♦ Wed. ♦ Fri.
at 9 a.m.

KLSR
105.3 FM

Buy ♦ Sell ♦ Trade ♦ Give Away



Chisum selected for energy post

AUSTIN — Speaker Joe Straus (R-San Antonio) today announced the appointment of Representative Warren Chisum (R-Pampa) to the executive committee of the Energy Council. Rep. Chisum serves as Vice Chair of the House Committee on Environmental Regulation.

"Rep. Warren Chisum brings extensive knowledge to the Energy Council with his background in oil and gas," said Speaker Straus.

Headquartered in Dallas, the Energy Council was created to promote a balanced national energy strategy and related environmental policies, foster an understanding for energy and its role in the global economy and environment, to assist member legislators in leading their states' policymaking efforts on energy and environment, and to initiate dialogues with policymakers, at all levels, on energy and related environmental matters. The executive committee is the governing body of the Council and implements the goals and policies of the Energy Council.

The executive committee of the Energy Council consists of two members of the Senate and two members of the House from each of the 12 member states - Alabama, Alaska, Arkansas, Colorado, Kansas, Louisiana, Mississippi, New Mexico, North Dakota, Oklahoma, Texas and Wyoming.



All smiles

Sierra Shelp, Ryan Hill, Sunny Cia, Patricia Valles smile for the camera during the 2010 Prom at Hedley High School last weekend.

ENTERPRISE PHOTO / KARI LINDSEY

ENTER TO WIN A

\$1000
SHOPPING GIVEAWAY

YOU could be our next LOCAL winner!

It is easy to enter our Shopping Giveaway!

Simply fill out the official entry blank found on the inside back cover of our merchandise book - then submit it when you visit our store.

With over 2,900 items available in our merchandise book to choose from, you are sure to have \$1,000 worth of fun if you are selected as our local winner!

Stop by and pick up your copy of our Spring Merchandise Book Today!



J&W Lumber

Clarendon, TX • 874-2000

Entry deadline is May 31, 2010, at 6 p.m.

Correction:

The candidate's profile published last week for Cindy Myers included three errors in spelling. The Enterprise regrets these errors and any confusion they may have caused and apologizes to Ms. Myers for the error. In the interest of fairness, we are reprinting the entirety of her profile this week.

Candidate Profile

Cindy Myers

Position Sought: Clarendon College Board of Regents

Challenger

Taxes: Paid

Occupation: Retired college instructor, retired business owner

Education: B.S. and M.A. from WTAMU in history, M.A. from WTAMU in Political Science and Criminal Justice.

Qualifications: Resident of Clarendon and Donley County for 49 years, former faculty member of Clarendon College, extensive knowledge of procedural law as it relates to all aspects of Board policies, procedures and processes.

Top three goals: To improve the lines of communication between the Board and community, to ensure that funds are allocated and used appropriately, to take the steps necessary to implement changes that are conducive to success of the faculty, administration, student body and community.

Reason for running: Given the fact that I am a former faculty member, I understand the needs and concerns of the faculty. A communication gap exists between the Board and faculty, and this must be resolved.

Re-Elect Mary E. (Susie) Shields Regent for Clarendon College

What an exciting and challenging time to serve as a regent at Clarendon College. Enrollment is increasing each semester, two new classroom buildings are being constructed at the Pampa Center and a building in Childress is being renovated for the Clarendon College Childress Center. At the same time funding and student housing are concerns.

I feel privileged to have been chosen to serve two terms on the board and would be honored to serve another. Your vote on May 8, 2010, would be sincerely appreciated.

Please vote.

Political ad paid for by Susie Shields, 3988 FM 1754, Lelia Lake, TX 79240

FISH DAY

Tuesday, May 11, from 4 to 5 p.m.
Cornell's Country Store • 903 E. 2nd • 874-6773

Special Pond Packages!!!
(Traditional Package for 1 acre with Catfish)

| | | |
|------------------|------|----------|
| Bluegill | 1000 | \$390.00 |
| Red Ear | 100 | \$49.00 |
| Hybrid bluegill | 100 | \$39.00 |
| Large Mouth Bass | 200 | \$158.00 |
| Crappie | 100 | \$69.00 |
| Minnows | 150 | \$135.00 |
| Catfish 4"-6" | 450 | \$158 |

Regular Price - \$998.00 • Sale Price Only \$875.00!

Traditional Package without Catfish only \$750.00!

This package cannot be altered! NO SUBSTITUTIONS!
Free delivery with purchase of 1 Acre Package or larger!
1/2 Acre Package \$475.00 or \$400 without Catfish.

TO PURCHASE 8-11" CATFISH
Please bring your own water & containers.
Too Big to Bag!

We Also Carry:

Sun Perch • Redear Bream • Albino Catfish
CALL AHEAD FOR LARGE QUANTITY ORDERS!

4-6" Catfish \$39/100

6-8" Catfish \$59/100

8-11" Catfish \$99/100

(501) 676-3768 • www.stockmypond.com

Safe beef for our table
and yours

3H
ALL NATURAL BEEF
Jeremiah 29:1-14

3H is now selling Angus and Charolais beef that emphasizes safety, quality, tenderness, flavor and marbling with no growth hormones, antibiotics or feed additives.

Process beef sold by whole, half or quarters.
Steak, roast, ground beef, and brisket sold by weight.
Select your cuts and make your own gift basket. We'll ship it.

All beef is quick frozen in clear long freezer life packaging and we will deliver to your home!

806-874-9422 or 806-662-5538 • 4650 Co. Rd. 8 North, Clarendon, TX

Be Loyal.

Buy Local.

Support your
hometown merchants.



We three kings

Hedley Prom Queen Kailee Burton had to split her time at the dance this weekend when three young men tied for the honor of Prom King. Sharing the crown were Dylan Pettit, Lane Thomas, and Danny Garcia.

ENTERPRISE PHOTOS / KARI LINDSEY

FSA reminds producers to file annual report of acreage

Bruce Ferguson, Executive Director of USDA's Farm Service Agency (FSA) in Donley County has reminded producers to submit their annual report of acreage to their local FSA county office to meet FSA program eligibility requirements.

"Producers must file their reports accurately and timely for all crops and land uses, including prevented and failed acreage, to ensure they receive the maximum FSA program benefits possible," said Ferguson.

Accurate acreage reports are necessary to determine and maintain eligibility for various programs, such as the Direct and Counter-cyclical Program and newer programs authorized in the 2008 Farm Bill. Programs include the Supplemental Revenue Assistance Payments Program (SURE), Average Crop Revenue Election Program (ACRE), Livestock Forage Disaster Program (LFP), Tree Assistance Program (TAP), and Emergency Assistance for Livestock, Honeybees, and Farm Raised Fish Program (ELAP).

Acreage reports are considered timely filed when completed by the applicable final crop reporting dead-

line, which may vary from state to state. Prevented acreage must be reported within 15 calendar days after the final planting date. Failed acreage must be reported before the disposition of the crop. Producers should contact their county FSA office if they are uncertain about reporting deadlines. Wheat, Oats, May 15th, Spring seeded Crops July 15th

Late-filed provisions may be available to producers who are unable to meet the reporting deadline as required. Reports filed after the established deadline must meet certain requirements to be accepted and may be charged late fees.

Producers should visit their county FSA office to complete acreage reporting. For questions on this or any FSA program, including specific crop reporting deadlines and planting dates, producers should contact their county FSA office. More information on FSA programs is at: www.fsa.usda.gov.

Subscribe Today.
874-2259

The members of the Clarendon Volunteer Fire Department supports

First Assistant Chief Jeremy Powell for Clarendon Alderman

We would appreciate your support also.



Political ad paid for the members of the CVFD, treasurer David Pitts, PO Box 830, Clarendon TX, 79226.



"Your support and vote would be greatly appreciated."

Election Day: May 8

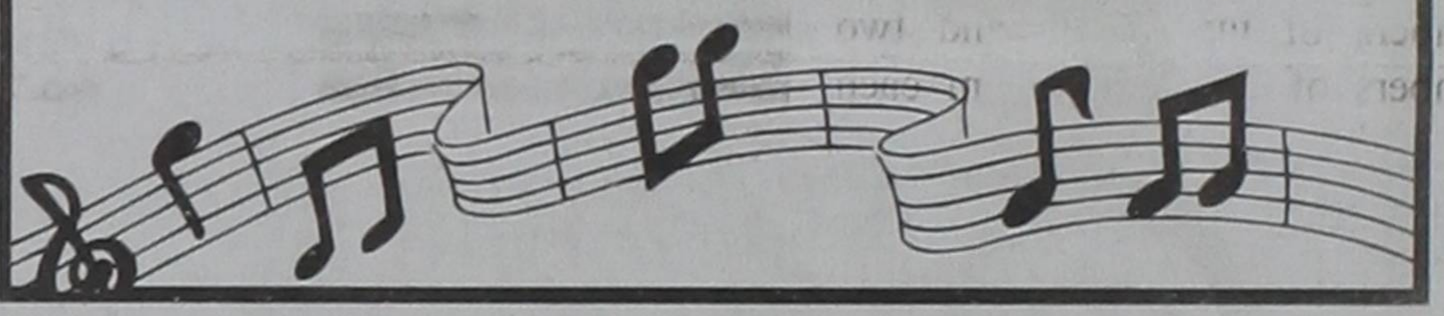
Jeremy Powell
for City Alderman

Pol. Ad Paid for by Jeremy Powell, PO Box 299, Clarendon Tx, 79226

Renew Today!
Out of county subscription \$ 35
In county subscription \$ 25

National Day of Prayer
Thursday, May 6
12:00 p.m. - 12:30 p.m.
At the Veteran Memorial on the lawn at Donley County Courthouse
Join the community for a moment of prayer. Everyone is invited.
In case of bad weather, everyone will meet at the covered area at the City Park.

Howardwick Baptist Church Revival Meeting
May 13 - 16, 2010
Evening Services at 6 p.m.
Sat., May 15 - Music & hot dogs in the Howardwick Park 12 p.m.
Guest Speaker Bob Miller
Guest Musician Dan Hall
For more information call 806-874-0379



PUBLIC NOTICE

If it's not in the newspaper, how will you know?



Zoning changes in your neighborhood. A proposal to increase your property taxes. Information on how public officials are spending your tax dollars. These are just a few of the topics — topics that affect your family and

your community — local government officials are required to publish in the local newspaper.

Your local newspaper fulfills an essential role in serving your right to know. After all, it shouldn't be your responsibility to know how to look ... where to look ... when to look ... and even what to look for in order to be informed about public information. It is the government's responsibility to notify you of public information, and your local newspaper is the most accessible place to find it.

THE CLARENDON ★
Enterprise

THE CLARENDON NEWS & THE DONLEY COUNTY LEADER

PUBLIC NOTICES IN NEWSPAPERS.
Where public information is accessible to the public.



"I didn't know how I would manage on my own."

Speaking from the heart

I already had a doctor for my diabetes and another for my heart problems, but after I fell, they said I would need physical therapy. I didn't know how I would manage it all on my own. So I talked to my doctor, and he explained my options. **I chose Accolade Homecare.**

When I met Kathy, the nurse from Accolade, she taught me how to manage everything from the doctors and medications right down to my lifestyle, like what foods could help me. **I had no idea Accolade did so much.** Thanks to Kathy, I'm moving around again and am even healthier than before.

Accolade Home Health Services
Include:

- Skilled Nursing
- Wound Care
- Telehealth/Cardiac
- Memory Care
- Wound Care
- Lower Extremity Management
- Diabetic Teaching/Training
- Home Care Aide
- Physical Therapy
- Occupational Therapy



Shamrock
(806) 256-1100

Visit us online at www.AccoladeHomeCare.com.
Serving over 220 counties in Texas, Oklahoma, and New Mexico

Sheriff's Report

April 26, 2010
 7:38 a.m. - 300 blk Rosenfield St., incorrigible minor.
 1:23 p.m. - See caller, possible break in over the weekend. 100 blk S. Parks St.
 4:34 p.m. - See caller, 900 blk W. 2nd St. Disgruntled employee refusing to leave.
 4:44 p.m. - 400 blk W. 2nd St., paper service.
 4:49 p.m. - 600 blk White St., paper service.
 5:01 p.m. - Charles St, Howard-wick; paper service.
 9:58 p.m. - See caller, 500 blk W. 5th St.; Hedley.
 10:15 p.m. - Hwy 287 E., chemical spill. EMS, Fire Department and Hazmat clean up crew dispatched.
 10:42 p.m. - To jail, one male in custody; assault by threat.
 11:45 p.m. - Welfare check, Lelia Lake residence.

April 27, 2010
 7:35 a.m. - Welfare check, 600 blk Gorst St. Use any means to make entry.
 10:05 a.m. - At school. Incorrigible minor left school grounds, reported in alleyway, Allen and Koogle Sts.
 5:10 p.m. - Co. Rd. 19, criminal

trespass. Warning served.
 5:37 p.m. - See caller, Medical Center Dr. Possible assault.
 5:41 p.m. - At Medical Center Dr.
 6:42 p.m. - Disturbance, 500 blk E. 4th.
 8:46 p.m. - To jail, one male in custody; sexual assault.
 10:06 p.m. - At residence, 100 blk N. Sully St.
 11:03 p.m. - Back to disturbance, 500 blk E. 4th St.

April 28, 2010
 12:30 a.m. - Disturbance, 1500 blk W. 5th St.; loud motorcycle.
 3:14 p.m. - 500 blk W. 2nd St., trespass.
 7:22 p.m. - N. Sully St, fence burning. Dispatch FD and EMS.
 8:41 p.m. - Located male reported lying in bar ditch, I-40; transporting to rest area.

April 29, 2010
 7:30 p.m. - Grass fire, Hwy 70 N.
 10:06 p.m. - Stand by DPS traffic stop, Hwy 287 at Hwy 70 S.
 10:21 p.m. - Stranded motorist behind business, 500 blk E. 2nd St.
 11:10 p.m. - See caller, Clarendon College; vehicle

damage.
April 30, 2010
 4:24 a.m. - To jail, three males in custody; two with public intoxication, one with DUI minor/transporting beer without statement.
 11:00 a.m. - JP office, Hedley.
 1:20 p.m. - Out at location in Lelia Lake.
 1:27 p.m. - Medical Dr., continuing investigation.
 2:02 p.m. - Have located origin of reported smoke; two railroad tires burning, Co. Rd. 7. Fire Department dispatches, BNSF railway notified.
 6:58 p.m. - EMS assist, Hwy 287; Ashtola.

May 1, 2010
 12:41 a.m. - Out at business, Medical Dr.
 1:33 a.m. - At college.
 2:20 - Located stranded motorist, Co. Rd. 'V'. Will transport to residence.
 3:47 a.m. - Unable to locate suspicious vehicle reported, location not logged.
 4:54 a.m. - Alarm, 300 blk W. 2nd.
 5:01 a.m. - Building secure, employee problems with code.

8:20 a.m. - No activity at residence, FM 1755.
 9:29 a.m. - 400 blk S. Parks, Unable to locate dogs.
 1:59 p.m. - Unable to locate large rock reported in roadway, Hwy 287 at S. Kearney St.
 2:15 p.m. - Spoke with juveniles around sewer ponds, told to leave area.
 4:30 p.m. - At rodeo grounds.
 7:05 p.m. - Back to rodeo grounds.
 8:40 p.m. - See caller, 600 blk. W. 2nd St.
 9:33 p.m. - Back to rodeo grounds.
 10:52 p.m. - To jail, one male in custody.
May 2, 2010
 12:45 a.m. - Stand by DPS traffic stop.
 9:41 a.m. - Out with pedestrian, Hwy 287 W.
 2:08 p.m. - At DPS office.
 8:22 p.m. - Have located stranded motorist, Hwy 273.

Arrests 9
 EMS 10
 FD 4

Exercise your rights and vote this Saturday, May 8.

Swimming Lessons June 28 - July 2
 4 & 5 yr. old class 11 - 11:45 a.m.
 6,7,8 yr. old class 12 - 12:45 p.m.
 At the Clarendon Country Club \$50 • Space Limited
 Call Ceneé Graham 806-670-1901

Concealed handgun application now available online

Starting on May 1, 2010, all applicants for concealed handguns will be able to complete the entire application form, as well as schedule their digital fingerprint appointments online.
 "Completing the application form online is convenient for applicants and will allow us to process applications faster," said RenEarl Bowie, the Assistant Director, Regulatory Licensing, for DPS. "We are excited to offer this online service to concealed handgun applicants and hope they take advantage of the

online application process." Applicants are also encouraged to have their fingerprints digitally scanned, instead of sending in ink fingerprints. Digital fingerprints have a 98 percent accuracy rate, far higher than traditional fingerprint captures, reducing the number of fingerprint card rejects and the inconvenience of reprints for applicants.
 At this time, although supplemental materials (such as citizenship documents and criminal history) are still required to be mailed in, completing the application form online

and submitting digital scanned fingerprints will alleviate much of the application processing delays.
 Also starting on May 1: applicants for CHL renewals will no longer have to submit fingerprints, and applicants with a valid Texas ID or Driver License will no longer have to provide photos for renewal.
 For more information about the CHL application process, please see our website at http://www.txdps.state.tx.us/administration/crime_records/chl/chlindex.htm.

Get Informed. Get Involved.
www.ClarendonLive.com

Embrace Your Memories
by Turning Any Photo Into A Woven Work of Art



Bereavement

To Heirloom Throw

Family

Perfect for graduation gifts!

Memorials • Holidays
 Weddings • Military
 Anniversaries
 Birthdays • Newborns

Pets

Robertson FUNERAL DIRECTORS
www.RobertsonFuneral.com
 "Ethical, Experienced & Affordable"
 806-874-3515 • www.RobertsonFuneral.com

Order Today!

THE ANSWER TO YOUR PRAYERS

Are you tired of old news or simply no news due to slow or no delivery from the post office?

Now Only **\$14.95**

Get all the news delivered to your Inbox each week with a subscription to **Enterprise D**

Sign up today at www.ClarendonOnline.com/subscribe

OSBURN APPLIANCE AND SERVICE

Now Carrying New Appliances

Ranges • Refrigerators • Washers • Dryers
 General Electric, Whirlpool, Frigidaire, and others

Rebuilt Used Appliances For Sale • Will Buy Used Appliances In Good Condition

874-3632 **319 S. Kearney**

TRASH TO TREASURES

GARAGE SALE EVENT

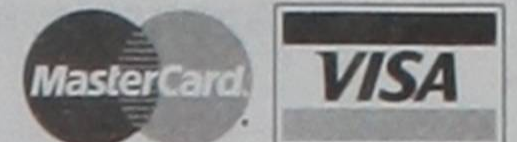
SATURDAY, JUNE 5

SIGN-UP DEADLINE MAY 28

big E classifieds

Call in your ad at
874-2259

Deadline: Monday @ 5 p.m.
Prepayment required.
Visa / MasterCard accepted.



MEETINGS FOR SALE HELP WANTED SERVICES SERVICES

Clarendon Lodge #700 AF&M
Stated meeting: Second Mondays, 7:30 p.m. Refreshments at 6:30 p.m. Practice: Fourth Mondays, 7 p.m. Russell Estlack - W.M., Grett Betts - Secretary, 2 B 1, ASK 1

Clarendon Order of the Eastern Star #6
Stated meetings: First Thursdays, 7 p.m., Refreshments at 6 p.m. Betty Morgan - W.M., Naomi Green, Secretary.

Clarendon Lions Club
Regular meeting each Tuesday at noon. Chuck Robertson, Boss Lion. Russell Estlack, Secretary

Donley County Memorial Post 7782 Veterans of Foreign Wars
Meets first Tuesday at 7 p.m. 822-VETS.

HAY FOR SALE - Cane hay, round bales. Call 806-663-0937. 14-ctfc

REAL ESTATE

• **JUST LISTED! 251+ AC** grassland with 168 ac. CRP thru 2012, lots of big trees & thickets, on pavement near Hedley.
• **320 AC. + 3 STOCKED PONDS** 2 bedroom brick home, huge trees, lots of game, NE of Hedley.
• **631 AC. ALL GRASS**, on Salt Fork River, spring fed pond, good deer & bird hunting. Offered Exclusively by Whitaker Real Estate 806-356-6100 www.whitakerrealestate.com 21-2tc

FOR SALE BY OWNER - West of Clarendon. 3 BR, 1 Bath, 1 1/4 ac. 677-8399 or 806-874-0932. 21-ctfc

This ad is just a small sample of the properties that we currently have for sale. Please check our website and give us a call! We need your listings both large and small, all types of Ag properties (ESPECIALLY CRP).
AMAZING 327 ACRES - Donley Co., TX. - Beautiful scenery, live water, great hunting & fishing, lovely home, pavement, hanger & landing strip, strong irrigation water & ongoing hay business with excellent cash flow.
EXCELLENT HUNTING - Hall Co., TX - 1032 ac., 2 miles of scenic creek bottom with large trees, whitetail & mule deer, turkey, bobwhite quail & dove, pavement.
BUSHY CREEK RANCH - Hall Co., TX - 990 ac., with good cropland, strong irrigation water, three sprinklers, sub-irrigated meadows & brush covered rangeland offer high productivity plus excellent deer, quail, turkey & dove hunting, good fencing, pens, house, pavement. www.scotlandcompany.com Ben G. Scott - Broker 800-933-9698 Gerald M. Smith - Agent 806-292-0197 21-1tc

2 BEDROOM, 1 BATH HOUSE FOR SALE IN HEDLEY - Remodeled inside. 101 Bailey St. Owner may carry part of note. 806-930-9102. 21-ctfc

MOVING MUST SELL! 2 bd/1ba 1700+ sq ft. living room, dining room, big kitchen, detached garage, a real must see. Asking \$75,000.00 Call 806-874-0904. 21-4tc

HOUSE FOR SALE BY OWNER - 410 Browning Blvd. 3 bedrooms, 2 baths, CH/A, new #4 roof, cellar, carport, (806) 874-5360. 11-ctfc

HOUSE ON 4 ACRES - 3 bedroom, 2 bath, finished basement, fireplace, CH/A, 2-car unattached garage. Two metal barns, one 40' x 60', and one 13' x 30'. Call 664-8221. 26-ctfc

CATTLEMEN'S FEEDYARD II - is looking for an accounts payable clerk. Full time w/insurance. Call or come in for an application. 806-856-5984. Ask for DeAnna. 19-ctfc

PERSONAL CARE ATTENDANTS - Seeking caring and dependable people to work in the homes of elderly and disabled clients in the Clarendon and Claude areas. Will assist with preparing meals, shopping, personal care, errands, light housekeeping, and other assigned duties. We offer flexible day, evening, and weekend shifts. Must be at least 18 yrs of age with a clean criminal background, MUST have reliable transportation. No certifications or prior experience required. Fax Resume referencing Ad # 10394 to (806) 747-0491. For an application, call (806) 747-0173. Apply online at www.grling.com. Or apply in-person at 5010 Kenosha Ave Suite C in Lubbock E.O.E / MFDV. 21-2tc

MEMPHIS CONVALESCENT CENTER has immediate openings for Certified Nurse Aides and Weekend RN. If you want to work in a family environment by 1415 N 18" Street to apply. 21-ctfc

GARAGE SALES

313 ANDERSON, HOWARDWICK - Saturday, May 8 from 8 a.m. to 4 p.m. Women's size 18-24. Love seat, drawer, chest, recliner, wood queen size bed, dishes, books, etc. 21-1tc

604 W. 5TH ST. "SALE" - Lots of things! Toys! End Table! Come and see! Saturday, May 8 at 8 a.m. 21-1tc

YARD SALE - Friday and Saturday 9:00 a.m. to 2:30 p.m. 339 Walleys St. Howardwick. Lots of baby stuff, Pickup tool box FS, Cabinet Clamps, ext. cords, tools and lots of misc. 21-1tc

CARPENTRY WORK - Call Dickie Bennett at 205-1260 or 874-2362. 17-ctfc

MOWING & YARD CLEAN-UP SERVICE - Call Jr. or Tray Crump, 806-336-1898 or 806-433-5113. 21-1tp

THANK YOU

I wish to express my appreciation to Walt & Janice Knorpp, Bobbie Thornberry, and the whole Donley County State Bank crew for making my 12 years with them a rewarding experience. The retirement party was great. Thanks for all of my friends who came by to make it a special event to be long remembered.

Thanks a bunch,
Bryan Knowles

The St. Rost Museum Board of Directors would like to thank the Wellington Community Theatre for presenting their musical melodrama, The Dastardly Doctor Devereaux, for a delightful afternoon on May 2, 2010. A special thanks to Clarendon College for the use of their Harned Sisters Fine Arts Center and the Vera Dial Dickey Library.

The Board also extends a thank you to the following contributors: Don Stone Signs, Country Bloomers, Clarendon Country Club, Taylor Petroleum, Greenbelt Water Authority, Pilgrim Bank, Johnny Floyd, Michael Thompson, Jo Shaller, J.D. Steakout, Nuttin' Fancy Cafe, Bronco Burger, Subway, and The Sun Place. And everyone who participated in the silent auction.

The proceeds of this benefit will be used for restoration of the one hundred year old building that houses the museum.

Where's Your Card?
Let us get you started with professional design and printing solutions for all of your marketing and promotional needs!
500 Full-Color Business Cards
Only \$54.60 + tax
Business Cards
Flyers • Brochures
Envelopes • Stationery
Postcards • Posters
Promotional Items
Call Today!
806-874-2259
The Clarendon Enterprise

Big E Meeting Listings only \$8.50 per month. Call 874-2259 to have your club or organization meeting listed.

ANNOUNCEMENTS

FACILITIES AVAILABLE - Family Reunions, Receptions, Business Meetings, Club Functions, and more. Clarendon Lions Hall, 111 W. Fourth. Call Melinda at 874-3521 for rental information.

Saints' Rost Museum
610 East Harrington
Wednesday - Saturday
1 p.m. to 5 p.m.
Other times by appointment.
Call 874-3863.

PUBLIC NOTICES

What if America didn't NOTICE?
Public notices help expose
• fraud in government!
• dishonest businesses!
• unfair competitive practices!
Find out about these and much more in your local newspaper!
Participate in Democracy. Read your Public Notices.

Jerry C. Gage
Agent
Cozy Parson Real Estate Broker
401 N. Main, McLean, TX
806.874.5167 Home
806.681.2225 Cell

REAL ESTATE

CLARENDON

2 B/R - 1 & 1/2 BATH - BRICK - large living/den - modern kitchen/ dining with built ins - new central heat & ref. air - range - ceiling fans - storm windows - attached 2 car port - attached covered patio - fenced backyard - metal storage building @ 411 E. 4th for \$49,500.

ATTRACTIVE SMALL HOUSE - 2 bedroom, 1 bath, living room - kitchen/ dining - storm windows - metal siding - large garage with concrete floor & electric door opener - large fenced back yard with hobby/work shop - car port - covered front porch & rear deck - walking distance to High School and Clarendon College - good location on corner lot @ 1001 W. 7th St for \$35,000. Call Fred @ 662-7888 or 874-9318.

HEDLEY

3 B/R - 1 3/4 BATH - kitchen - living - dining - 2-car shed garage - concrete cellar - storage barn - older house needing upgrading inside and outside and priced accordingly to settle estate @ 401 McDougal for \$17,500.

FARM & RANCH LAND

158 ACRES, m/l COUNTRY HOMESITE OR HUNTING RETREAT - approx 7 mi NE Hedley on paved Hwy 207 - 70 ac m/l good farm land - 78 ac m/l good grass and tall cover - approx 10 ac shelter belts with large trees - excellent habitat for deer, turkey, & quail - includes historical site of old McKnight School - for \$900 per ac (PICTURES ON WEBSITE)

25 ACRES - more or less - **SOUTH SIDE** of Hwy 203 - 3 1/2 mi N/E Hedley - all grass - convenient home site - good wildlife habitat for \$950 per acre.

Office: 806/874-9318
202 W. 3rd Street
Mobile: 662-7888
www.joetlovellorealestate.com

Fred Clifford
Texas Licensed Real Estate Agent
License #0472918
Representing Joe T. Lovell Real Estate

STATE & REGIONAL

TEXAS STATEWIDE CLASSIFIED ADVERTISING NETWORK

TexSCAN Week of May 2, 2010 AUCTION

FORECLOSED HOME AUCTION 1904 homes. Auction 5/24 Open House: May 15, 22 & 23 REDC. View full listings, www.auction.com. RE Broker #0580708.

BUSINESS OPPORTUNITIES
ALL CASH VENDING! Do you earn \$800 in a day? Your own local candy route. 25 machines and candy. All for \$9,995. 1-888-625-5481. Multi Vend, LLC.

DRIVERS
ACT NOW TOP 5% pay 32¢-38¢ cpm. Excellent benefits, need CDL-A and 3 months recent OTR. 1-877-258-8782. www.meltontruck.com

CDL-A COMPANY DRIVERS: 6 months OTR experience, good MVR required, miles & benefits = money! Call 1-800-326-8889 www.gsttransportation.com

DRIVERS - STUDENTS your new career starts here with tuition sponsored training. Possible \$40K 1st year. Call FFE, 1-423-436-0209 or e-mail: slong@flex.net

FOOD TANKER DRIVERS needed, OTR positions available now! CDL-A with Tanker required. Outstanding pay & Benefits! Call a recruiter today! 1-877-810-1041 www.oakleytransport.com

NATIONAL CARRIERS needs O/O's. Lease purchase. Company drivers for it's expanding fleet. Offering Regional/OTR runs. Outstanding pay package, excellent benefits, generous hometime. 1-888-707-7729 www.nationalcarriers.com

NO MONEY DOWN! No credit checks! Top lease purchase plan, low monthly payments. High % pay package, owner operators welcome! 1-800-767-6918 www.JoinCRST.com

PICKUP TRUCKS needed in Hope, AR. Make money now! Seeking qualified pickup truck owners to deliver 11,000 RV trailers from Hope, AR. www.horizontransport.com/more

EQUIPMENT FOR SALE

NEW NORWOOD SAWMILLS - Lumber Mate-Pro handles logs 34" diameter, mills boards 28" wide. Automated quick-cycle-sawing increases efficiency up to 40%! www.NorwoodSawmills.com/300N. 1-800-661-7746 Ext 300N

CASH NOW! GET CASH for your structured settlement or annuity payments. High payouts. Call J.G. Wentworth. 1-866-SETTLEMENT (1-866-738-8536). Rated A+ by the Better Business Bureau.

HEALTH
IF YOU USED TYPE 2 diabetes drop and suffered a stroke or heart attack you may be entitled to compensation. Attorney Charles Johnson. 1-800-535-5727

HELP WANTED
BETWEEN HIGH SCHOOL and college? Drop that entry level position. Earn what you're worth! Travel with successful youth business group. Paid training. Transportation, lodging provided. 1-877-646-5050.

SALES REPRESENTATIVE needed. Most earn \$50K-\$100K or more. Call our regional office at 1-800-804-9968, ask for Pat Bessette or e-mail: patricia.bessette@insphereis.com. Visit www.insphereis.com

MATTRESSES FOR SALE
NEW QUEEN PILLOW Top Mattress Set \$200.00 1-817-862-0782

REAL ESTATE
ABSOLUTELY THE BEST VIEW Lake Medina/Bandera 1/4 acre tract, central W/S/E. RV/motor home/house, OK only \$830 down \$235 month (12.91%/10yr). Guaranteed financing. More information call 1-830-460-8354

HUNT WEST TEXAS, Terrell County/Sanderson. Panther Canyon Ranch #6, 118.42 acres, mule deer, 334,933. Paint Mare Ranch #17, 164.02 acres, whitetail, 548,385. 1-866-286-0199. www.westertexasland.com

\$106 MONTH BUYS land for RV/motor home/house, pier, boat ramp, pool, clubhouse, gated entry, on Lake Fork, \$690 down (\$6900/10.91%/7yr). Guaranteed financing. 1-214-696-2315

10.1 ACRES, DUVAL County. Heavy brush, deer, hogs, quail, locked gate. \$29,500, \$1475/ down, \$290/month, (5% down, 11%, 20 years) or Vet financing. Toll-free: 1-866-286-0199. www.westertexasland.com

20 ACRE RANCHES near growing El Paso, Texas. Only \$12,900, \$0 Down, \$99/month, owner financing, no credit checks, money back guarantee. Free map, pictures. 1-800-755-8953; www.SunsetRanches.com

676 ACRES-REEVES County. 15 Miles North Pecos. River frontage. Call Jack 1-214-755-6224.

\$106 MONTH BUYS land for RV, MH or cabin. Gated entry, \$690 down, (\$6900/10.91%/7yr) 90 days same as cash. Guaranteed financing. 1-936-377-3235

TOLEDO BEND LAKE LOUISIANA. Waterfront properties, homes, second homes, retirement homes, camps, lots. WWW.Lbrooksrealestate.com. 1-318-590-1000. Featured: 4br/4ba, 4160 sq ft., 1.57 acre waterfront home with boathouse

SCHOOLS/TRAINING
AIRLINES ARE HIRING Train for high paying aviation career. FAA approved program. Financial aid if qualified, job placement assistance. Call Aviation Institute of Maintenance. 1-877-523-4531

ATTEND COLLEGE ONLINE from home. Medical, Business, Paralegal, Accounting, Criminal Justice. Job placement assistance. Computer available. Financial aid if qualified. Call 1-888-205-8920. www.CenturaOnline.com

CAN YOU DIG IT? Heavy Equipment School. 3 week training program. Backhoes, Bulldozers, Trackhoes. Local job placement assistance. Start digging dirt now. 1-866-362-6497

HIGH SCHOOL DIPLOMA graduate in 4 weeks! Free brochure! Call now! 1-866-562-3650. ext. 55. www.southeasternHS.com

Run Your Ad In TexSCAN!
Statewide Ad.....\$500
307 Newspapers, 1,018,288 Circulation
North Region Only.....\$230
99 Newspapers, 270,048 Circulation
South Region Only.....\$230
107 Newspapers, 501,889 Circulation
West Region Only.....\$230
101 Newspapers, 248,581 Circulation
To Order: Call this Newspaper direct, or call Texas Press Service at 1-800-749-4793 Today!

Follow us...
to a new website for all your local news.
Clarendon LIVE.com

REAL ESTATE

WHITAKER REAL ESTATE

Specializing in Farm and Ranch Property
Lewis Whitaker, Broker
Lee Whitaker, Broker
4600 I-40 West, Suite 101 Office (806) 356-6100
Amarillo, Texas 79106 Fax (806) 356-6517
www.whitakerrealestate.com

Jim Garland Real Estate MIS

874-3757
COUNTRY PROPERTIES
• 2880 acs. Collingsworth Co. New 4500 sq. ft. lodge. 80 ac. Circle system with 3 wells. 3 lakes. stocked. Lake cabin 900 sq.ft. 2 miles of Crow Creek Deer, Turkey, ducks, quail.
• 320 acs. N of Hedley, one Well. Excellent hunting. 8 feeders in place.

FOR SALE

CLARENDON

PRETTY HOUSE ON NICE CORNER LOT - 3 bedroom, 2 bath - living room with decorative ceiling & built in bookcase - roomy kitchen/dining - unfinished basement - 3 Dearborn heaters - 3 window ref. air units - 2 car port - large yard with lots of concrete walks & curbing @ 415 E. 4th for \$49,000. MAJOR PRICE REDUCTION TO \$35,000. (PICTURES ON WEBSITE)

HEDLEY

3 B/R - 1-3/4 BATH - kitchen - living - dining - 2-car shed garage - concrete cellar - storage barn - older house needing upgrading inside and outside and priced accordingly to settle estate @ 401 McDougal for \$17,500.

FARM & RANCH LAND

158 ACRES, m/l COUNTRY HOMESITE OR HUNTING RETREAT - approx. 7 mi NE Hedley on paved Hwy 207 - 70 ac m/l good farm land - 78 ac m/l good grass and tall cover - approx 10 ac shelter belts with large trees - excellent habitat for deer, turkey & quail - includes historical site of old McKnight School - for \$900. per ac. (PICTURES ON WEB SITE)

321 ACRES - 2 circles irrigated Blue Stem grass - 2 irr. wells on natural gas, 2 Zimmatic pivots - 1 domestic well with sub. pump, supplies water to 10,000 gal. upright storage tank - 999 hd capacity pens - backup livestock water from irr wells to 2 large dirt tanks - 1 mi frontage on FM 1260 - 7 mi S/E Clarendon - in operation and ready to go for \$1500 per ac.

50 ACRES - irr well with diesel engine (natural gas available) - Zimmatic pivot waters 40 ac. presently in Bermuda grass - water line from irr well to dirt tank for livestock water - soil suitable for all crops - across county road and only a few feet from S/E corner of 321 acre tract mentioned above - for \$1500 per ac.

25 ACRES, more or less **SOUTH SIDE** of Hwy 203 - 3 1/2 mi N/E Hedley - all grass - convenient home site - good wildlife habitat for \$950. per acre.

COMMERCIAL

GREENBELT CLEANERS - Well established and in continuous operation for many years at same location at 102 S. Sully St. in Clarendon. Large trade territory with limited competition and good opportunity for growth. Call for appointment for tour and to meet with present owner/operator to discuss business operations and price.

Joe T. Lovell Real Estate
Office 806-874-9318
www.joetlovellorealestate.com

Subscribe Today
Donley County: \$25/yr.
Out of County: \$35/yr.
Out of State: \$40/yr.
Enterprise-D: \$14.95/yr.
Call 874-2259 for more information

PUBLISHER'S NOTICE: All real estate advertising in this newspaper is subject to the Fair Housing Act which makes it illegal to advertise "any preference, limitation, or discrimination based on race, color, religion, sex, handicap, familial status, or national origin, or an intention, to make any such preference, limitation, or discrimination." Familial status includes children under the age of 18 living with parents or legal custodians, pregnant women, and people securing custody of children under 18. This newspaper will not knowingly accept any advertising for real estate which is in violation of the law. Our readers are hereby informed that all dwellings advertised in this newspaper are available on an equal opportunity basis. To complain of discrimination, call HUD toll-free at 1-800-669-9777. The toll-free telephone number of the hearing impaired is 1-800-927-9275.

CLASSIFIED AD RATES are \$7.00 for the first 15 words and 12¢ for each additional word. Special typelaces or boxes are extra. **THANK YOU NOTES** are \$9.00 for the first 40 words and 12¢ for each additional word. **DEADLINES** are 5:00 p.m. each Monday, subject to change for special editions and holidays. **PREPAYMENT** is required on all ads except for customers with established accounts. Visa and MasterCard accepted. **ERRORS:** Check your ad on its first printing. Errors not corrected within ten days of the first printing are considered the responsibility of the advertiser.

NOTICE: While most advertisers are reputable, we cannot guarantee products or services advertised. We urge readers to use caution and when in doubt, contact the Texas Attorney General at 1-800-621-0508 or the Federal Trade Commission at 1-877-FTC-HELP. The FTC web site is www.ftc.gov/bizop

Extend your advertising reach with TexSCAN, your Statewide Classified Ad Network.

PUBLIC NOTICE

Application of Cross Texas Transmission, LLC to Obtain or Amend a Certificate of Convenience and Necessity for a Proposed CREZ 345 kV Transmission Line in Gray, Wheeler, Donley, Collingsworth, Hall and/or Childress Counties, Texas ("Gray - Tesla" CCN)

PUBLIC UTILITY COMMISSION OF TEXAS (PUC) DOCKET NO. 37956

Cross Texas Transmission, LLC ("Cross Texas") provides this notice of intent to obtain a Certificate of Convenience and Necessity ("CCN") for the construction of a new 345 kV double circuit transmission line to be located within Gray, Wheeler, Donley, Collingsworth, Hall and/or Childress Counties. This project is intended to allow for reliable and cost-effective delivery of power produced from renewable energy generators located in areas of West Texas and the Panhandle called Competitive Renewable Energy Zones ("CREZ") to load centers throughout the state.

Cross Texas' CCN application includes a route designated by Cross Texas as a "preferred route"; however, any of the proposed routes may be selected by the PUC. During the course of a CCN case, the possibility exists that additional routes may be developed that could affect property in a different manner than the original routes proposed by Cross Texas. If the PUC approves the preferred route or an alternate route, Cross Texas will have the right to build facilities on the approved route.

The estimated cost of this project is \$177,881,000. A map of the project area showing Cross Texas' proposed preferred route links and the alternate route links for the proposed project in this CCN application, as well as written descriptions of these route links, appears in this notice. A complete copy of the application, as filed at the PUC, and a large scale map of the project area and Cross Texas' proposed preferred and alternate route links may be viewed at the following locations:

Lovett Memorial Library, Mclean
302 N. Main
Mclean, TX 79057

Burton Memorial Library
217 S. Kearney
Clarendon, TX 79226

Shamrock Public Library
712 N. Main St.
Shamrock, TX 79079

Collingsworth Public Library
711 15th St.
Wellington, TX 79095

Memphis Public Library
303 S. 8th St.
Memphis, TX 79245

Childress Public Library
117 Ave. B NE
Childress, TX 79201

Persons with questions about the transmission line, or to request a copy of the map, may contact Cameron Fredkin, Cross Texas Transmission, LLC at (806) 669-3000. Persons who wish to intervene in the docket or comment on the applicant's application should mail the original and 10 copies of their requests to intervene or their comments to:

Public Utility Commission of Texas
Central Records
Attn: Filing Clerk
1701 N. Congress Ave.
P.O. Box 13326
Austin, Texas 78711-3326

Persons who wish to intervene in the docket must also mail a copy of their request for intervention to all parties in the docket and all persons that have pending motions to intervene, at or before the time the request for intervention is mailed to the PUC. The deadline for intervention in the docket is June 2, 2010 (30 days after the date the application was filed with the PUC), and the PUC should receive a letter from anyone requesting intervention by that date.

The PUC has a brochure entitled "Landowners and Transmission Line Cases at the PUC for Competitive Renewable Energy Zone (CREZ) Projects." Copies of the brochure are available from Cameron Fredkin at (806) 669-3000, or may be downloaded from the PUC's website at www.puc.state.tx.us. To obtain additional information about this proceeding, you may call the PUC's Customer Assistance Hotline at (888) 782-8477 or (512) 936-7120. Hearing- and speech-impaired individuals with text telephones (TTY) may contact the PUC's Customer Assistance Hotline at (512) 936-7136 or toll free at (800) 735-2989. In addition to the intervention deadline, other important deadlines may already exist that affect your participation in this docket. You should review the orders and other filings already made in the docket. The PUC brochure explains how you can access these filings.

The Attorney General of Texas has a document entitled "Texas Landowner's Bill of Rights." Copies of this document are available from Cameron Fredkin at (806) 669-3000, or may be downloaded from the Attorney General's website at <http://www.oag.state.tx.us/agency/landowners.html>.

Gray to Tesla Routes (Table 1) and Link Descriptions (Table 2)

Table 1. Gray-Tesla Routes

| Routes | Links |
|--------|--|
| 26 | A, C, T, CC, GG, KK, LL, PP, RR, XX, YY |
| 165 | A, E, F, G, H, K, T, BB1, BB2, DD, HH, II, KK, LL, PP, RR, XX, YY |
| 170 | A, E, F, G, H, K, T, BB1, BB2, DD, HH, II, KK, LL, QQ, UU, YY |
| 172 | A, E, F, G, H, K, T, BB1, BB2, EE, FF, MM, PP, RR, XX, YY |
| 177 | A, E, F, G, H, K, T, BB1, BB2, EE, FF, MM, QQ, UU, YY |
| 180 | A, E, F, G, H, K, T, BB1, BB2, EE, FF, NN, OO, UU, YY |
| 189 | A, E, F, G, H, K, T, CC, HH, II, KK, LL, PP, RR, XX, YY |
| *194 | A, E, F, G, H, K, T, CC, HH, II, KK, LL, QQ, UU, YY |
| 210 | A, E, F, G, H, L, R, S, U, BB2, DD, HH, II, KK, LL, PP, RR, XX, YY |
| 215 | A, E, F, G, H, L, R, S, U, BB2, DD, HH, II, KK, LL, QQ, UU, YY |
| 217 | A, E, F, G, H, L, R, S, U, BB2, EE, FF, MM, PP, RR, XX, YY |
| 222 | A, E, F, G, H, L, R, S, U, BB2, EE, FF, MM, QQ, UU, YY |
| 225 | A, E, F, G, H, L, R, S, U, BB2, EE, FF, NN, OO, UU, YY |
| 227 | A, E, F, G, H, L, R, S, V, Y, FF, MM, PP, RR, XX, YY |
| 232 | A, E, F, G, H, L, R, S, V, Y, FF, MM, QQ, UU, YY |
| 235 | A, E, F, G, H, L, R, S, V, Y, FF, NN, OO, UU, YY |
| 238 | A, E, F, G, H, L, R, S, V, Z, AA, OO, UU, YY |
| 247 | A, E, F, G, I, M, Q, S, U, BB2, DD, HH, II, KK, LL, PP, RR, XX, YY |
| 252 | A, E, F, G, I, M, Q, S, U, BB2, DD, HH, II, KK, LL, QQ, UU, YY |
| 254 | A, E, F, G, I, M, Q, S, U, BB2, EE, FF, MM, PP, RR, XX, YY |
| 259 | A, E, F, G, I, M, Q, S, U, BB2, EE, FF, MM, QQ, UU, YY |
| 262 | A, E, F, G, I, M, Q, S, U, BB2, EE, FF, NN, OO, UU, YY |
| 264 | A, E, F, G, I, M, Q, S, V, Y, FF, MM, PP, RR, XX, YY |
| 269 | A, E, F, G, I, M, Q, S, V, Y, FF, MM, QQ, UU, YY |
| 272 | A, E, F, G, I, M, Q, S, V, Y, FF, NN, OO, UU, YY |
| 275 | A, E, F, G, I, M, Q, S, V, Z, AA, OO, UU, YY |
| 314 | A, E, F, J, O, W, Y, FF, MM, PP, RR, XX, YY |
| 319 | A, E, F, J, O, W, Y, FF, MM, QQ, UU, YY |
| 322 | A, E, F, J, O, W, Y, FF, NN, OO, UU, YY |
| 325 | A, E, F, J, O, W, Z, AA, OO, UU, YY |
| 328 | A, E, F, J, O, X, AA, OO, UU, YY |
| 337 | A, E, F, J, P, Q, S, U, BB2, DD, HH, II, KK, LL, PP, RR, XX, YY |
| 342 | A, E, F, J, P, Q, S, U, BB2, DD, HH, II, KK, LL, QQ, UU, YY |
| 344 | A, E, F, J, P, Q, S, U, BB2, EE, FF, MM, PP, RR, XX, YY |
| 349 | A, E, F, J, P, Q, S, U, BB2, EE, FF, MM, QQ, UU, YY |
| 352 | A, E, F, J, P, Q, S, U, BB2, EE, FF, NN, OO, UU, YY |
| 354 | A, E, F, J, P, Q, S, V, Y, FF, MM, PP, RR, XX, YY |
| 359 | A, E, F, J, P, Q, S, V, Y, FF, MM, QQ, UU, YY |
| 362 | A, E, F, J, P, Q, S, V, Y, FF, NN, OO, UU, YY |
| 365 | A, E, F, J, P, Q, S, V, Z, AA, OO, UU, YY |
| 536 | B, F, J, O, X, AA, OO, TT, VV, XX, YY |
| 598 | A, D, I, N, R, S, U, BB2, DD, HH, JJ, LL, PP, SS, VV, WW |

* Preferred Route

Table 2. Gray-Tesla Link Descriptions

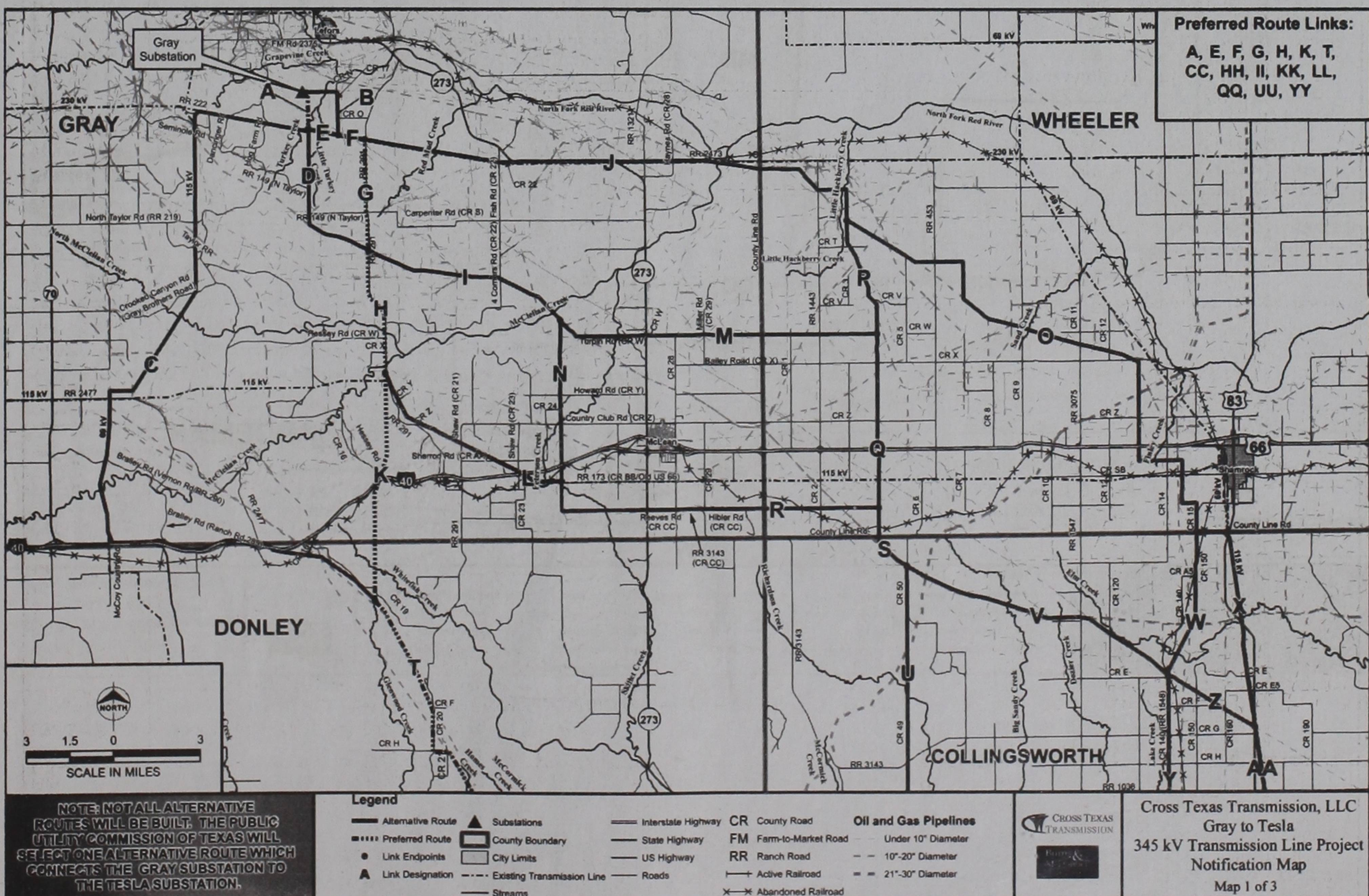
| Link | Description |
|----------|--|
| A | From the Gray Substation, located approximately 9,635 feet south of Farm-to-Market Road (FM) 2375 and approximately 6,300 feet west of Gray County Road (CR) 17 in Gray County, Texas, Link A proceeds in an easterly direction for approximately 965 feet to a point located approximately 9,700 feet south of FM 2375 and approximately 5,260 feet west of Gray CR 17. From this point, Link A proceeds in a southerly direction for approximately 6,780 feet to a point located approximately 1,140 feet south of Turkey Creek and approximately 8,200 feet east of Hog Farm Rd and terminates. This point is the intersection of Links A, C, D and E. This segment crosses an existing pipeline and Turkey Creek. |
| B | From the Gray Substation, located approximately 9,635 feet south of FM 2375 and approximately 6,300 feet west of Gray CR 17 in Gray County, Texas, Link B proceeds in an easterly direction for approximately 6,350 feet to a point located approximately 110 feet east of Gray CR 17 and approximately 1,470 feet south of the intersection of Gray CR 17 and Gray CR N. This segment crosses Turkey Creek and Gray CR 17. From this point, Link B proceeds in a southerly direction roughly parallel and approximately adjacent to the east side of Gray CR 17 for approximately 4,800 feet. Link B then continues in a southerly direction for approximately 2,995 feet to a point located approximately 2,945 feet south of the intersection of Gray CR O and Gray CR 17 and approximately 5,100 feet west of RR 291 and terminates. This point is the intersection of Links B, E and F. This segment crosses Gray CR O and an existing pipeline. |
| C | From the intersection of Links A, C, D and E the Link C proceeds in a west/northwesterly direction, crossing an existing 230 kV transmission line, roughly parallel and approximately adjacent to the south side of an existing 230 kV transmission line for approximately 20,370 feet to a point located approximately 180 feet north of Ranch Road (RR) 222 and approximately 5,300 feet west-northwest of Dancinger Road. This segment crosses Turkey Creek, Hog Farm Road, Dancinger Road and an existing pipeline. From this point, Link C proceeds in a southwesterly direction for approximately 975 feet to a point located approximately 247 feet south of Ranch Road (RR) 222 and 6,060 feet west-northwest of Dancinger Road. This segment crosses RR 222. From this point, Link C proceeds in a southerly direction, crossing an existing 115 kV transmission line, roughly parallel and approximately adjacent to the west side of an existing 115 kV transmission line for approximately 32,295 feet to a point located approximately 70 feet north of Crooked Canyon Road (Gray Brothers Road) and approximately 9,270 feet east of North McClellan Creek. This segment of the transmission line crosses Seminole Road, six existing pipelines, North Taylor Road (RR 219), an existing pipeline, Taylor Ranch Road, and two existing pipelines. From this point, Link C proceeds in a southwesterly direction roughly parallel and approximately adjacent to the west side of an existing 115 kV transmission line for approximately 21,270 feet to a point located approximately 1,370 feet north of RR 2477 and approximately 14,640 feet east of State Highway (SH) 70. This segment of the transmission line crosses Crooked Canyon Road (Gray Brothers Road), North McClellan Creek, and an existing pipeline. From this point, Link C proceeds in a westerly direction roughly parallel and approximately adjacent to the north side of the existing 115 kV transmission line for approximately 4,240 feet to a point located approximately 10,400 feet east of SH 70 and approximately 1,380 feet north of Ranch Road (RR) 2477. This segment crosses three existing pipelines. From this point, Link C proceeds in a southerly direction roughly parallel and approximately adjacent to the west side of an existing 69kV/115kV transmission line for approximately 28,190 feet to a point located approximately 140 feet north of Interstate Highway (IH) 40 and approximately 510 feet east of McCoy Country Road. This segment roughly parallels a 115 kV transmission line approximately north of RR 2477 and a 69 kV transmission line approximately south of RR 2477. This segment crosses RR 2477, an existing 115 kV transmission line, two existing pipelines, Bralley Road (Vernon Road/RR 290), McClellan Creek and McCoy Country Rd. A portion of this segment parallels the west side of McCoy Country Road. From this point, Link C proceeds in an easterly direction roughly parallel and approximately adjacent to the north side of IH 40 (near the Gray County/Donley County line) for approximately 29,600 feet to a point located approximately 160 feet north of IH 40 and approximately 1,895 feet east of RR 2477. This segment crosses Bralley Road (RR 289) and RR 2477. From this point, Link C crosses IH 40 in a southeasterly direction and proceeds in an east-southeasterly direction for approximately 9,985 feet to a point approximately 2,900 feet south of the Gray/Donley County line and approximately 1,500 feet west of Donley CR 19. This segment crosses IH 40, an abandoned railroad corridor, and two existing pipelines. From this point, Link C proceeds in a southeasterly direction roughly parallel and approximately adjacent to an existing pipeline for approximately 12,600 feet to a point located approximately 10,900 feet south of the Gray/Donley County line and approximately 1,740 feet west of Donley CR 19 and terminates. This point is the intersection of Links C, K and T. This segment crosses Glenwood Creek. |
| D | From the intersection of Links A, C, D and E, Link D proceeds in a southerly direction for approximately 17,330 feet to a point located approximately 1,900 feet south of RR 149 (North Taylor Road) and approximately 10,800 feet west of RR 291. This segment crosses an existing 230 kV transmission line, Little Turkey Creek twice and RR 149 (North Taylor Road). After crossing RR 149 (North Taylor Road) Link D roughly parallels the west side of RR 149 (North Taylor Road) for approximately 4,280 feet until RR 149 (North Taylor Road) turns east. From this point, Link D proceeds in a southeasterly direction roughly parallel and approximately adjacent to the north side of an existing pipeline for approximately 11,750 feet to a point located approximately 150 feet west of RR 291 and approximately 6,770 feet south of RR 149 (North Taylor Rd) and terminates. This point is the intersection of Links D, G, H, and I. This segment crosses three existing pipelines. |
| E | From the intersection of Links A, C, D and E, Link E proceeds in an east-southeasterly direction roughly parallel and approximately adjacent to the north side of an existing 230 kV transmission line for approximately 5,510 feet to a point located approximately 2,945 feet south of the intersection of Gray CR 17 and Gray CR O and approximately 5,100 feet west of RR 291 and terminates. This point is the intersection of Links B, E and F. This link crosses Little Turkey Creek. |
| F | From the intersection of Links B, E and F, Link F proceeds in an east-southeasterly direction roughly parallel and approximately adjacent to the north side of an existing 230 kV transmission line for approximately 5,000 feet to a point located approximately 110 feet west of RR 291 and approximately 3,915 feet south of Gray CR O and terminates. This point is the intersection of Links F, G and J. This link crosses three pipelines. |
| G | From the intersection of Links F, G and J, Link G proceeds in a southerly direction roughly parallel and approximately adjacent to the west side of RR 291 for approximately 20,060 feet to a point located approximately 160 feet west of RR 291 and approximately 6,745 feet south of Carpenter Road (Gray CR S) and terminates. This point is the intersection of Links D, G, H and I. This link crosses three existing pipelines, RR 149 (North Taylor Road) and another existing pipeline. |
| H | From the intersection of Links D, G, H and I, Link H proceeds in a southerly direction roughly parallel and approximately adjacent to the west side of RR 291 for approximately 23,510 feet to a point located approximately 3,725 feet south of Gray CR X and approximately 140 feet west of RR 291 and terminates. This point is the intersection of Links H, K and L. This link crosses two existing pipelines, North McClellan Creek, Hessey Road (Gray CR W), Gray CR X, McClellan Creek and an existing pipeline. |
| I | From the intersection of Links D, G, H and I, Link I proceeds in a southeasterly direction, crossing the existing pipeline, roughly parallel and approximately adjacent to the south side of the existing pipeline for approximately 9,310 feet to a point located approximately 8,240 feet east of RR 291 and approximately 8,000 feet south of Carpenter Road (Gray CR S). This segment crosses RR 291 and four existing pipelines. From this point, Link I proceeds in an easterly direction, crossing the existing pipeline, roughly parallel and approximately adjacent to the north side of the pipeline for approximately 29,435 feet to a point located approximately 13,625 feet north of Howard Road (Gray CR Y) and approximately 15,720 feet west of State Highway (SH) 273 and terminates. This point is the intersection of Links I, M and N. This segment crosses seven existing pipelines, 4 Corners Road (Gray CR 22), three existing pipelines and McClellan Creek. |
| J | From the intersection of Links F, G and J, Link J proceeds in an east-southeasterly direction roughly parallel and approximately adjacent to the north side of an existing 230 kV transmission line for approximately 24,970 feet to a point located approximately 60 feet east of Fish Road (CR 22). This segment crosses RR 291, an existing pipeline, Red Mud Creek, four existing pipelines and Fish Road (Gray CR 22). From this point, Link J continues in an easterly direction roughly parallel and approximately adjacent to the north side of an existing 230 kV transmission line for approximately 2,710 feet to a point located approximately 365 feet west of SH 273 and approximately 200 feet north of the existing 230 kV transmission line. This segment crosses Gray CR 22. From this point, Link J crosses SH 273 and proceeds in an easterly direction roughly parallel and approximately adjacent to the north side of SH 273 19,325 feet to a point approximately 1,070 feet east of SH 273 and approximately 200 feet north of the existing 230 kV transmission line. This segment crosses SH 273 and five existing pipelines. From this point, Link J proceeds in an easterly direction roughly parallel and approximately adjacent to the north side of the existing 230 kV transmission line for approximately 9,685 feet to a point located approximately 20 feet west of Haynes Road (Gray CR 28) and approximately 660 feet north of the intersection of Haynes Road (Gray CR 28) and RR 2473. This segment crosses five existing pipelines, RR 1321 and two existing pipelines. From this point, Link J crosses Haynes Rd (Gray CR 28) and proceeds in an easterly direction roughly parallel and approximately adjacent to the north side of RR 2473 for approximately 6,290 feet to a point located approximately 6,270 feet east of Haynes Rd (Gray CR 28). This segment crosses Haynes Road (Gray CR 28) and an existing pipeline. From this point, Link J proceeds in an east-southeasterly direction roughly parallel and approximately adjacent to the south side of an existing pipeline corridor for approximately 16,980 feet to a point located approximately 7,023 feet east of County Line Road and approximately 1,392 feet south of RR 2473. This segment crosses RR 2473, an existing pipeline, the existing 230 kV transmission line, McClellan Creek, four existing pipelines, County Line Road (Gray/Wheeler County line) and four existing pipelines. From this point, Link J proceeds in a southeasterly direction roughly parallel and approximately adjacent to the south side of an existing pipeline corridor for approximately 5,150 feet to a point located approximately 85 feet west of RR 1443 and approximately 5,400 feet south of RR 2473. This segment crosses seven existing pipelines. From this point, Link J proceeds in an easterly direction for approximately 5,290 feet to a point located approximately 5,200 feet east of RR 1443 and approximately 5,310 feet south of RR 2473. This segment crosses an existing pipeline, RR 1443, two existing pipelines and Little Hackberry Creek. From this point, Link J proceeds in a southerly direction for approximately 5,590 feet to a point located approximately 4,975 feet north of Wheeler CR T and approximately 5,200 feet east of RR 1443 and terminates. This point is the intersection of Links J, O and P. This segment crosses five existing pipelines. |
| K | From the intersection of Links H, K and L, Link K proceeds in a southerly direction for approximately 14,806 feet to a point located approximately 13,250 feet south of an existing 115 kV transmission line and approximately 5,420 feet east-northeast of the intersection of Hessey Rd and Gray CR 16. This segment crosses an existing 115 kV transmission line. From this point, Link K proceeds in a southwesterly direction for approximately 7,470 feet to a point located approximately 15,995 feet west of RR 291 and approximately 1,435 feet south of IH 40. This segment crosses Hessey Road, IH 40 and an abandoned railroad corridor. From this point, Link K proceeds in a southerly direction for approximately 19,660 feet to a point located approximately 1,740 feet west of Donley CR 19 and approximately 10,900 feet south of the Gray/Donley County line and terminates. This point is the intersection of Links C, K and T. This segment crosses an existing pipeline, the Gray/Donley County line, Whitefish Creek and Donley CR 19. |

| | |
|----------|---|
| L | From the intersection of Links H, K and L, Link L proceeds in a southeasterly direction roughly parallel and approximately adjacent to the north side of an existing 115 kV transmission line for approximately 8,930 feet to a point located approximately 11,855 feet north of IH 40 and approximately 2,880 feet southeast of the intersection of Gray CR Y and RR 291. This segment crosses RR 291 and Gray CR Y. From this point, Link L proceeds in a southeasterly direction roughly parallel and approximately adjacent to the north side of an existing 115 kV transmission line for approximately 26,420 feet to a point located approximately 530 feet north of RR 173 (Gray CR BB/Old US 66) and approximately 3,065 feet east of Shaw Road (Gray CR 23). This segment crosses an existing pipeline, Shaw Road (Gray CR 21), two existing pipelines, Sherrod Rd (Gray CR AA), Shaw Road (Gray CR 23) and IH 40. From this point, Link L proceeds in an easterly direction roughly parallel and approximately adjacent to the north side of an existing 115 kV transmission line for approximately 4,830 feet to a point located approximately 260 feet north of RR 173 (Gray CR BB/Old US 66) and approximately 3,255 feet east of Peterson Creek and terminates. This point is the intersection of Links L, N and R. This segment crosses Peterson Creek, an abandoned railroad corridor and an existing pipeline. |
| M | From the intersection of Links I, M and N, Link M proceeds in a southeasterly direction roughly parallel and approximately adjacent to the north side of an existing pipeline for approximately 4,225 feet to a point approximately 10,650 feet north of Howard Road (Gray CR Y) and approximately 12,800 feet west of SH 273. This segment crosses two existing pipelines. From this point, Link M proceeds in an easterly direction for approximately 9,295 feet to a point located approximately 110 feet north of Turpin Rd (Gray CR W) and approximately 3,505 feet west of the intersection of SH 273 and Turpin Rd (Gray CR W). This segment crosses two existing pipelines, Peterson Creek and Gray CR W. From this point, Link M proceeds in an easterly direction roughly parallel and approximately adjacent to the north side of Turpin Road (Gray CR W) for approximately 8,830 feet to a point located approximately 120 feet north of Gray CR W and approximately 5,315 feet east of SH 273. This segment crosses an existing pipeline, SH 273 and four pipelines. From this point, Link M proceeds in an easterly direction for approximately 5,600 feet to a point located approximately 315 feet east of Miller Road (Gray CR 29) and approximately 5,540 feet north of Bailey Road (Gray CR X). This segment crosses two existing pipelines and Miller Road (Gray CR 29). From this point, Link M proceeds in an easterly direction roughly parallel and approximately adjacent to an existing pipeline for approximately 6,705 feet to a point located approximately 5,425 feet north of Bailey Road (Gray CR X) and approximately 3,615 feet west of County Line Road (the Gray/Wheeler County Line). This segment crosses three existing pipelines. From this point, Link M proceeds in an easterly direction for approximately 24,780 feet to a point located approximately 5,430 feet west of the intersection of Wheeler CR W and Wheeler CR 5 and approximately 5,215 feet north of Wheeler CR X and terminates. This point is the intersection of Links M, P and Q. This segment crosses County Line Rd, the Gray/Wheeler County line, two existing pipelines, Wheeler CR 1, an existing pipeline, RR 1443, and an existing pipeline. |
| N | From the intersection of Links I, M and N, Line N proceeds in a southerly direction for approximately 29,410 feet to a point located approximately 260 feet north of Ranch Road 173 (Gray CR BB/Old US 66) and approximately 3,255 feet east of Peterson Creek and terminates. This point is the intersection of Links L, N and R. This link crosses four existing pipelines, Howard Road (Gray CR Y), Gray CR 24, Peterson Creek, Country Club Road (Gray CR Z), three existing pipelines, IH 40 and an abandoned railroad corridor. |
| O | From the intersection of Links J, O and P, Link O proceeds in a southeasterly direction roughly parallel and approximately adjacent to the south side of an existing pipeline for approximately 14,625 feet to a point located approximately 1,685 feet east of Wheeler CR 5 and approximately 18,665 feet south of RR 2473. This segment crosses two existing pipelines and Wheeler CR 5. From this point, Link O proceeds in an easterly direction for approximately 8,820 feet to a point located approximately 18,335 feet north of Wheeler CR X and approximately 5,240 feet east of RR 453. This segment crosses an existing pipeline and RR 453. From this point, Link O proceeds in a southerly direction for approximately 6,835 feet to a point located approximately 5,150 feet east of RR 453 and 11,500 feet north of Wheeler CR X. This segment crosses an existing pipeline. From this point, Link O proceeds in a southeasterly direction roughly parallel and approximately adjacent to the south side of an existing pipeline for approximately 34,540 feet to a point located approximately 5,430 feet southeast of the intersection of Wheeler CR 12 and Wheeler CR X and approximately 410 feet south of Wheeler CR X. This segment crosses four existing pipelines, Wheeler CR 9, Sand Creek, an existing pipeline, Wheeler CR 11, an existing pipeline, Wheeler CR 12, Wheeler CR X and three existing pipelines. From this point, Link O proceeds in a southerly direction for approximately 18,085 feet to a point located approximately 2,560 feet south of IH 40 and approximately 5,365 feet east of Wheeler CR 12. This segment crosses four existing pipelines, Wheeler CR Z, one existing pipeline, IH 40 and two existing pipelines. From this point, Link O proceeds in an easterly direction for approximately 7,965 feet to a point located approximately 2,805 feet east of Wheeler CR 14 and approximately 2,605 feet south of IH 40. This segment crosses Finley Creek, one existing pipeline, Wheeler CR 14 and three pipelines. From this point, Link O proceeds in a southerly direction for approximately 7,875 feet to a point located approximately 2,680 feet east of Wheeler CR 14 and approximately 5,465 feet north of County Line Rd (Wheeler/Collingsworth County Line). This segment crosses an abandoned railroad corridor, Wheeler CR Sb, an existing 115 kV transmission line and one existing pipeline. From this point, Link O proceeds in an easterly direction for approximately 2,725 feet to a point located approximately 6,840 feet west of U.S. Highway (US) 83 and approximately 5,490 feet north of County Line Rd (Wheeler/Collingsworth County Line). From this point, Link O proceeds in a southerly direction for approximately 1,940 feet before crossing Wheeler CR 15. Link O then continues south roughly parallel and approximately adjacent to the east side of Wheeler CR 15 for approximately 3,420 feet to a point located approximately 170 feet northeast of the intersection of Wheeler CR 15 and County Line Road (Wheeler/Collingsworth County line) and terminates. This point is the intersection of Links O, W and X. This segment crosses Wheeler CR 15 and one existing pipeline. |
| P | From the intersection of Links J, O and P, Link P proceeds in a southerly direction approximately 4,180 feet to a point located approximately 715 feet north of Wheeler CR T and approximately 5,245 feet east of RR 1443. This segment crosses two existing pipelines. From this point, Link P proceeds in a southeasterly direction roughly parallel and approximately adjacent to the south and west side of an existing pipeline for approximately 9,115 feet to a point approximately 4,790 feet northeast of the intersection of Wheeler CR 3 and Wheeler CR V and approximately 9,020 feet east of RR 1443. This segment crosses Wheeler CR T and three existing pipelines. From this point, Link P proceeds in a southerly direction roughly parallel and approximately adjacent to the west side of an existing pipeline for approximately 1,480 feet to a point approximately 4,015 feet northeast of the intersection of Wheeler CR 3 and Wheeler CR V and approximately 9,020 feet east of RR 1443. This segment crosses one existing pipeline. From this point, Link P proceeds in a southeasterly direction roughly parallel and approximately adjacent to the south and west side of an existing pipeline for approximately 2,170 feet to a point approximately 5,205 feet east of the intersection of Wheeler CR 3 and Wheeler CR V and approximately 805 feet south of Wheeler CR V. From this point, Link P proceeds in a southerly direction for approximately 5,325 feet to a point approximately 5,215 feet north of Wheeler CR X and approximately 5,210 feet west of the intersection of Wheeler CR 5 and CR W and terminates. This point is the intersection of Links M, P and Q. This segment crosses one existing pipeline. |
| Q | From the intersection of Links M, P and Q, Link Q proceeds in a southerly direction for approximately 31,750 feet to a point located approximately 5,380 feet north of County Line Rd (Wheeler/Collingsworth County line) and approximately 10,660 feet east of Wheeler CR 2 and terminates. This point is the intersection of Links Q, R and S. This link crosses one existing pipeline, Wheeler CR X, two existing pipelines, Wheeler CR Z, one existing pipeline, IH 40, two existing pipelines, an existing 115 kV transmission line and one pipeline corridor containing two existing pipelines. |
| R | From the intersection of Links L, N and R, Link R proceeds in a southerly direction for approximately 5,390 feet to a point located approximately 5,186 feet south of RR 173 (CR BB/Old US 66) and approximately 8,430 feet east of Gray CR 23. This segment crosses RR 173 (CR BB/Old US 66), an existing 115 kV transmission line, Skillet Creek, and one existing pipeline. From this point, Link R proceeds in an easterly direction for approximately 58,100 feet to a point located approximately 5,380 feet north of County Line Rd (Wheeler/Collingsworth County line) and approximately 10,660 feet east of Wheeler CR 2 and terminates. This point is the intersection of Links Q, R and S. This segment crosses one existing pipeline, Skillet Creek, SH 273, one existing pipeline, Gray CR 28, RR 3143, one existing pipeline, Gray CR 29, three existing pipelines, County Line Rd, the Gray/Wheeler County line, an abandoned railroad corridor, two existing pipelines, Wheeler CR 2, and five existing pipelines. A portion of this segment located between SH 273 and County Line Rd, parallels the north side of Hibler Road, Reeves Road and Ranch Road 3143 (collectively known as Gray CR CC) for approximately 21,170 feet. |
| S | From the intersection of Links Q, R and S, Link S proceeds in a southerly direction for approximately 6,410 feet to a point located approximately 1,065 feet south of County Line Rd (Wheeler/Collingsworth County line) and approximately 5,210 feet west of Collingsworth CR 50. This segment crosses an abandoned railroad corridor, one existing pipeline, County Line Road, and the Wheeler/Collingsworth County line. From this point, Link S proceeds in a southeasterly direction roughly parallel and approximately adjacent to the north side of an existing pipeline corridor containing multiple pipelines for approximately 6,635 feet to a point located approximately 5,250 feet south of the Wheeler/Collingsworth County line and approximately 125 feet west of Collingsworth CR 50 and terminates. This point is the intersection of Links S, U and V. This segment crosses one existing pipeline. |
| T | From the intersection of Links C, K and T, Link T proceeds in a southeasterly direction roughly parallel and approximately adjacent to the north side of an existing pipeline corridor containing multiple pipelines for approximately 22,890 feet to a point located approximately 550 feet southwest of the intersection of Donley CR 20 and Donley CR F and approximately 7,400 feet north of Donley CR H. From this point, Link T proceeds in a southerly direction roughly parallel and approximately adjacent to the west side of Donley CR 20 for approximately 7,530 feet to a point approximately 165 feet south of Donley CR H and approximately 130 feet west of Donley CR 20. This segment crosses three existing pipelines and Donley CR H. From this point, Link T proceeds in an easterly direction roughly parallel and approximately adjacent to the south side of Donley CR H for approximately 2,955 feet to a point located approximately 360 feet east-southeast of the intersection of Donley CR H and Donley CR 21 and approximately 330 feet east of CR 21. This segment crosses Donley CR 20, Donley CR 21, and two existing pipelines. From this point, Link T proceeds in a southeasterly direction roughly parallel and approximately adjacent to the north side of an existing pipeline corridor containing multiple pipelines for approximately 61,655 feet to a point located approximately 2,430 feet south of Donley CR R and approximately 790 feet east of SH 273 and terminates. This point is the intersection of Links T, BB1 and CC. This segment crosses Homes Creek, Troublesome Creek, an existing pipeline, Salt Fork Red River, Lelia Lake Creek, Donley CR 25, Donley CR 26, FM 2471, SH 273 and an existing pipeline. |

| | |
|------------|--|
| U | From the intersection of Links S, U and V, Link U proceeds in a southerly direction roughly parallel and approximately adjacent to the west side of Collingsworth CR 50 for approximately 9,215 feet. Link U then continues in a southerly direction for approximately 17,305 feet. Link U then continues in a southerly direction roughly parallel and approximately adjacent to the west side of Collingsworth CR 49 for approximately 9,325 feet. Link U then continues in a southerly direction for another 11,740 feet to a point located approximately 5,350 feet west of Richardson Creek and approximately 11,780 feet south-southwest of the intersection of Collingsworth CR 49 and RR 3143. This segment crosses an existing pipeline corridor containing multiple pipelines, another pipeline, Richardson Creek, and RR 3143. From this point Link U proceeds in a southwesterly direction for approximately 7,530 feet to a point located approximately 20,960 feet east of the Donley/Collingsworth County line and approximately 15,840 feet north of Collingsworth CR N. From this point, Link U proceeds in a southerly direction for approximately 15,820 feet. Link U then continues in a southerly direction roughly parallel and approximately adjacent to the west side of Collingsworth CR 40 for approximately 10,610 feet to a point located approximately 130 feet west of Collingsworth CR 40 and approximately 5,310 feet south of Collingsworth CR O. This segment crosses Salt Fork Red River, Collingsworth CR N and Collingsworth CR O. From this point, Link U line proceeds in an easterly direction for approximately 5,325 feet to a point located approximately 5,215 feet east of Collingsworth CR 40 and approximately 5,360 feet south of Collingsworth CR O. This segment crosses Collingsworth CR 40. From this point, Link U proceeds in a southerly direction for approximately 10,630 feet to a point located approximately 5,200 feet east of Collingsworth CR 40 and approximately 175 feet south of SH 203 and terminates. This point is the intersection of Links U, BB1 and BB2. This segment crosses SH 203. |
| V | From the intersection of Links S, U and V, Link V proceeds in a southeasterly direction roughly parallel and approximately adjacent to the north side of an existing pipeline corridor containing multiple pipelines for approximately 33,845 feet to a point located approximately 5 feet west of RR 1547 and approximately 11,277 feet north of Collingsworth CR E. This segment crosses Collingsworth CR 50, three existing pipelines, Big Sandy Creek, two existing pipelines and Dozier Creek. From this point, Link V proceeds in a southeasterly direction, crossing the existing pipeline corridor, roughly parallel and approximately adjacent to the south side of an existing pipeline corridor containing multiple pipelines for approximately 19,540 feet to a point approximately 160 feet east of Collingsworth CR 140 (RR 1548) and approximately 315 feet north of Collingsworth CR E and terminates. This point is the intersection of Links V, W, Y and Z. This segment crosses RR 1547, two existing pipelines, Collingsworth CR 120, three existing pipelines, Collingsworth CR 140 (RR 1548) and an abandoned railroad corridor. |
| W | From the intersection of Links O, W and X, Link W proceeds in a southerly direction roughly parallel and approximately adjacent to the east side of Collingsworth CR 150 for approximately 5,355 feet. Link W then crosses CR 150 and continues in a southerly direction roughly parallel and approximately adjacent to the west side of CR 150 for approximately 8,895 feet. Link W then continues in a southerly direction for approximately 1,525 feet to a point approximately 7,670 feet south of Collingsworth CRA5 and approximately 2,525 feet east of Collingsworth CR 140. This segment crosses the County Line Road, Wheeler/Collingsworth county line, Collingsworth CR 150, an abandoned railroad corridor, one existing pipeline, Collingsworth CR A5 and one existing pipeline. From this point, Link W proceeds in a southwesterly direction for approximately 7,705 feet. Link W then continues southwest roughly parallel and approximately adjacent to the south and east side of Collingsworth CR 140 for approximately 3,150 feet to a point located approximately 85 feet east of Collingsworth CR 140 (RR 1548) and approximately 1,315 feet north of Collingsworth CR E. This segment crosses five existing pipelines, Elm Creek, Collingsworth CR 140, and one existing pipeline. From this point, Link W proceeds in a southerly direction roughly parallel to and approximately adjacent to Collingsworth CR 140 (RR 1548) for approximately 970 feet to a point located approximately 365 feet northeast of the intersection of Collingsworth CR E and Collingsworth CR 140 (RR 1548) and terminates. This point is the intersection of Links V, W, Y and Z. This segment crosses two existing pipelines and an abandoned railroad corridor. |
| X | From the intersection of Links O, W and X, Link X proceeds in an easterly direction roughly parallel and approximately adjacent to the north side of the Wheeler/Collingsworth County line and County Line Road for approximately 4,980 feet to a point approximately 160 feet north of County Line Rd and approximately 5,045 feet east of Wheeler CR 15. From this point, Link X proceeds in a southeasterly direction for approximately 1,680 feet to a point located approximately 1,180 feet south of the Wheeler/Collingsworth County line and approximately 470 feet east of US 83. This segment crosses County Line Rd, the Wheeler/Collingsworth County line, US 83, and an existing 115 kV transmission line. From this point, Link X proceeds in a south-southeasterly direction roughly parallel and approximately adjacent to the east side of an existing 115 kV transmission line for approximately 17,735 feet. This segment crosses five existing pipelines, Elm Creek, US 83 and an existing pipeline. Link X then crosses the existing 115 kV transmission line and continues south-southeast roughly parallel and approximately adjacent to the west side of the existing 115 kV transmission line for approximately 17,090 feet to a point located approximately 90 feet east of US 83 and approximately 1,330 feet north of Collingsworth CR G and terminates. This point is the intersection of Links X, Z and AA. This segment crosses two existing pipelines, Collingsworth CR E, Collingsworth CR E5 and US 83. |
| Y | From the intersection of Links V, W, Y and Z, Link Y proceeds in a southerly direction roughly parallel and approximately adjacent to the east side of Collingsworth CR 140 (RR 1548) for approximately 26,590 feet to a point located approximately 165 feet east of Collingsworth CR 140 (RR 1548) and approximately 5,400 feet north of Collingsworth CR K. This segment crosses two existing pipelines, Collingsworth CR F, Lake Creek, Collingsworth CR G, Lake Creek, Collingsworth CR H and RR 1036. From this point, Link Y proceeds in an easterly direction for approximately 5,285 feet to a point located approximately 145 feet east of Collingsworth CR 150 and approximately 5,390 feet north of Collingsworth CR K. This segment crosses one existing pipeline, an abandoned railroad, and Collingsworth CR 150. From this point, Link Y proceeds in a southerly direction for approximately 15,590 feet roughly parallel and approximately adjacent to the east side of Collingsworth CR 150. This segment crosses Collingsworth CR K and Collingsworth CR L. Link Y then crosses to the west side of Collingsworth CR 150 and proceeds in a southerly direction roughly parallel and approximately adjacent to the west side of Collingsworth CR 150 for approximately 5,090 feet. This segment crosses Collingsworth CR 150 three times. Link Y then continues in a southerly direction for approximately 10,285 feet to a point located approximately 970 feet north of RR 1981 and approximately 10,770 feet east of RR 1981. This segment crosses Salt Fork Red River and an abandoned railroad corridor. From this point, Link Y proceeds in a southeasterly direction roughly parallel and approximately adjacent to the south side of an abandoned railroad corridor for approximately 6,540 feet to a point located approximately 155 feet north of Collingsworth CR Q and approximately 2,575 feet east of Collingsworth CR 150. This segment crosses RR 1981. From this point, Link Y proceeds in an easterly direction roughly parallel and approximately adjacent to the north side of Collingsworth CR Q for approximately 2,870 feet and then proceeds in a southerly direction for approximately 10,295 feet. This segment crosses an abandoned railroad corridor, Collingsworth CR Q and an abandoned railroad corridor. Link Y then continues in a southerly direction roughly parallel and approximately adjacent to Collingsworth CR 160 for approximately 8,285 feet to a point located approximately 125 feet west of Collingsworth CR 160 and approximately 2,540 feet south of SH 203 and terminates. This point is the intersection of Links Y, EE and FF. This segment crosses Collingsworth CR S and SH 203. |
| Z | From the intersection of Links V, W, Y and Z, Link Z proceeds in an east-southeasterly direction for approximately 1,060 feet and crosses two existing pipelines. Link Z then continues in a southeasterly direction roughly parallel and approximately adjacent to the north and east side of an existing pipeline for approximately 17,520 feet to a point approximately 90 feet east of US 83 and approximately 1,330 feet north of Collingsworth CR G and terminates. This point is the intersection of Links X, Z and AA. Link Z crosses four existing pipelines, Collingsworth CR 150, three existing pipelines, Collingsworth CR F, Collingsworth CR 160, one existing pipeline, and US 83. |
| AA | From the intersection of Links X, Z and AA, Link AA proceeds in a south-southeasterly direction roughly parallel and approximately adjacent to the west side of an existing 115 kV transmission line for approximately 34,830 feet. Link AA then continues in a southerly direction roughly parallel and approximately adjacent to the west side of US 83 for approximately 3,925 feet to a point located approximately 165 feet west of US 83 and approximately 110 feet south of Collingsworth CR N. This segment crosses Collingsworth CR H, Collingsworth CR I, Wolf Creek, Collingsworth CR J, US 83, Collingsworth CR K, Collingsworth CR L and Collingsworth CR N. From this point, Link AA proceeds in an easterly direction for approximately 5,520 feet. This segment crosses US 83, an existing 115 kV transmission line, Indian Creek and Collingsworth CR N. Link AA then continues in an easterly direction roughly parallel and approximately adjacent to the south side of Collingsworth CR N for approximately 5,240 feet. This segment crosses Collingsworth CR N. Link AA then continues in an easterly direction for approximately 16,200 feet to a point located approximately 5,360 feet south of Collingsworth CR M and approximately 10,825 feet east of Collingsworth CR 210. This segment crosses Collingsworth CR 210, Panther Creek, Collingsworth CR 220 and Willow Creek. From this point, Link AA proceeds in a southerly direction for approximately 36,800 feet to a point located approximately 5,390 feet north of the SH 203 and approximately 5,425 feet east of RR 2734. This segment crosses Salt Fork Red River. From this point, Link AA proceeds in an easterly direction for approximately 5,105 feet to a point located approximately 10,530 feet east of RR 2734 and approximately 5,390 feet north of SH 203. This segment crosses Collingsworth CR 230. From this point, Link AA proceeds in a southerly direction for approximately 5,395 feet. Link AA then continues in a southerly direction roughly parallel and approximately adjacent to Collingsworth CR 240 for approximately 5,300 feet. This segment crosses SH 203 and Collingsworth CR W. Link AA then continues in a southerly direction for approximately 11,410 feet to a point approximately 590 feet north of FM 338 and approximately 130 feet west of RR 1642. This segment crosses Sand Creek and Collingsworth CR Y. From this point, Link AA proceeds in a southerly direction roughly parallel and approximately adjacent to RR 1642 for approximately 575 feet before crossing to the east side of RR 1642 and continuing in a southerly direction roughly parallel and approximately adjacent to the east side of Collingsworth CR 240 and Childress CR 18 for another 51,650 feet to a point located on US 62 approximately 105 feet east of the intersection of US 62 and Childress CR 18. This segment crosses FM 338, Collingsworth CR 240, Collingsworth CR Z, one existing pipeline, Collingsworth CR SC, the Collingsworth/Childress county line, County Line Rd, RR 1034, Childress CR E and US 62. From this point, Link AA proceeds in a southerly direction for approximately 5,180 feet to a point located approximately 2,765 feet east of Childress CR 18 and approximately 5,160 feet south of US 62 and terminates. This point is the intersection of Links AA, NN and OO. This segment crosses an existing 115 kV transmission line. |
| BB1 | From the intersection of Links T, BB1 and CC, Link BB1 proceeds in an easterly direction for approximately 43,815 feet to point located approximately 2,750 feet north of SH 203 and approximately 5,350 feet west of Collingsworth CR 40. This segment crosses RR 2944, County Line Rd, the Donley/Collingsworth County line, Collingsworth CR 10 and Collingsworth CR 20. From this point, Link BB1 proceeds in a southeasterly direction for approximately 3,965 feet to a point approximately 190 feet south of SH 203 and approximately 2,705 feet west of Collingsworth CR 40. This segment crosses SH 203. From this point, Link BB1 proceeds in an easterly direction roughly parallel and approximately adjacent to the south side of SH 203 for approximately 7,905 feet to a point located approximately 5,180 feet east of Collingsworth CR 40 and approximately 180 feet south of SH 203 and terminates. This point is the intersection of Links U, BB1 and BB2. This segment crosses Collingsworth CR 40. |
| BB2 | From the intersection of Links U, BB1 and BB2, Link BB2 proceeds roughly parallel and approximately adjacent to the south side of SH 203 in an easterly direction for approximately 5,270 feet to a point located approximately 165 feet southwest of the intersection of SH 203 and Collingsworth CR 60 and terminates. This point is the intersection of Links BB2, DD and EE. |
| CC | From the intersection of Links T, BB1 and CC, Link CC proceeds in a southeasterly direction roughly parallel and approximately adjacent to the north side of an existing pipeline for approximately 118,200 feet to a point located approximately 9,360 feet south of RR 1619 and approximately 5,350 feet west of Hall CR 31 and terminates. This point is the intersection of Links CC, DD, GG and HH. This segment crosses Donley CR T, SH 203, Donley CR U, North Fork Buck Creek, Donley CR 30, Donley CR Y, Buck Creek, the Collingsworth/Donley County line, Collingsworth CR SB, FM 1547, Collingsworth CR SC, the Hall/Collingsworth County line, an existing pipeline, Hall CR B, SH 256, Hall CR 27 three times, Hall CR C, Hall CR 28, Hall CR E and RR 1619. |

| | |
|-----------|---|
| DD | From the intersection of Links BB2, DD and EE, Link DD proceeds in a southerly direction for approximately 5,070 feet. Link DD then continues in a southerly direction roughly parallel and approximately adjacent to the west side of Collingsworth CR 60 for approximately 10,555 feet. This segment crosses Collingsworth CR S and Collingsworth CR U. Link DD then continues in a southerly direction for approximately 44,825 feet to a point located approximately 2,785 feet north of the Collingsworth/Childress County line and approximately 15,945 feet west of Collingsworth CR 90. This segment crosses Buck Creek, RR 1547, Wet Salt Creek and Collingsworth CR SA. From this point, Link DD proceeds in a southeasterly direction for approximately 2,840 feet to a point located approximately 45 feet north of the Collingsworth/Hall County line and approximately 5,130 feet west of the Hall/Childress County line. This segment crosses Dry Salt Creek. From this point, Link DD proceeds in a southwesterly direction for approximately 3,940 feet to a point located approximately 3,840 feet north of SH 256 and approximately 5,880 feet west of the Hall/Childress County line. From this point, Link DD proceeds in a southerly direction approximately 3,825 feet. This segment crosses an existing pipeline and SH 256. Link DD then continues in a southerly direction roughly parallel and approximately adjacent to the west side of Hall CR 30 for approximately 4,640 feet. This segment crosses Hall CR C. Link DD then continues in a southerly direction for approximately 6,385 feet. Link DD then continues in a southerly direction roughly parallel to and approximately adjacent to the west side of Hall CR 30 for approximately 7,960 feet. This segment crosses Hall CR D, RR 3032 and RR 1619. Link DD then continues south for approximately 9,370 feet and to a point located approximately 9,370 feet south of RR 1619 and approximately 5,350 feet west of Hall CR 31 and terminates. This point is the intersection of Links CC, DD, GG and HH. |
| EE | From the intersection of Links BB2, DD and EE, Link EE proceeds in a southeasterly direction roughly parallel and approximately adjacent to the south side of SH 203 for approximately 10,785 feet to a point located approximately 230 feet south of the intersection of Collingsworth CR S and SH 203. This segment crosses Collingsworth CR S. From this point, Link EE proceeds in a southerly direction for approximately 4,970 feet to a point located approximately 1,250 feet west of RR 1547 and approximately 5,385 feet north of Collingsworth CR U. From this point, Link EE proceeds in an easterly direction for approximately 1,245 feet. Link EE then continues in an easterly direction roughly parallel and approximately adjacent to the north side of Collingsworth CR T and SH 203 for approximately 32,005 feet to a point located approximately 160 feet north of SH 203 and 190 feet east of Collingsworth CR 140. This segment crosses RR 1547, Collingsworth CR 100, SH 203, RR 2344 and Collingsworth CR 140. From this point, Link EE proceeds in a southeasterly direction for approximately 3,960 feet to a point located approximately 2,530 feet south of SH 203 and approximately 2,380 feet west of Collingsworth CR 150. This segment crosses SH 203 and an existing pipeline. From this point, Link EE proceeds in an easterly direction for approximately 7,345 feet to a point located approximately 130 feet west of Collingsworth CR 160 and approximately 2,555 feet south of SH 203 and terminates. This point is the intersection of Links Y, EE and FF. This segment crosses Collingsworth CR 150. |
| FF | From the intersection of Links Y, EE and FF, Link FF proceeds in a southerly direction roughly parallel and approximately adjacent to the west side of Collingsworth CR 160 for approximately 15,740 feet to a point located approximately 2,435 feet south of FM 338 and 130 feet west of Collingsworth CR 160. This segment crosses Collingsworth CR U, Collingsworth CR V and FM 338. From this point, Link FF then crosses Collingsworth CR 160 and proceeds in a southerly direction roughly parallel and approximately adjacent to the east side of Collingsworth CR 160 for approximately 1,190 feet. Link FF then continues in a southerly direction for approximately 7,170 feet to a point approximately 100 feet east of Collingsworth CR 160 and approximately 80 feet south of Collingsworth CR Y. This segment crosses Collingsworth CR X and Collingsworth CR Y. From this point, Link FF proceeds in an easterly direction roughly parallel and approximately adjacent to the south side of Collingsworth CR Y for approximately 10,470 feet to a point located approximately 120 feet south of Collingsworth CR Y and approximately 30 feet east of Collingsworth CR 180. This segment crosses House Log Creek and Collingsworth CR 180. From this point, Link FF proceeds in an easterly direction for approximately 4,150 feet to a point approximately 1,180 feet west of the intersection of US 83 and Collingsworth CR Y and approximately 5,400 feet south of Collingsworth CR X. This segment crosses an existing 115 kV transmission line. From this point, Link FF proceeds in a southerly direction roughly parallel and approximately adjacent to the east side of an existing transmission line for approximately 53,485 feet to a point approximately 7,480 feet southwest of the intersection of SH 256 and US 83 and 25,870 feet north of Childress CR K. This segment crosses Collingsworth CR SA, an existing pipeline, the Collingsworth/Childress County line, an abandoned railroad corridor, Buck Creek and SH 256. From this point, Link FF crosses the existing 115 kV transmission line and proceeds in a southerly direction roughly parallel and approximately adjacent to the west side of the existing 115 kV transmission line for approximately 4,630 feet to a point located approximately 4,250 feet west of US 83 and approximately 21,345 feet north of Childress CR K and terminates. This point is the intersection of Links FF, MM and NN. |
| GG | From the intersection of Links CC, DD, GG and HH, Link GG proceeds in a southerly direction for approximately 6,535 feet. This segment crosses Jonah Creek. Link GG then continues in a southerly direction roughly parallel and approximately adjacent to the west side of Hall CR 30 for approximately 6,240 feet to a point approximately 135 feet west of Hall CR 30 and approximately 105 feet north of Hall CR J. This segment crosses Hall CR I. From this point, Link GG proceeds in a southwesterly direction for approximately 1,400 feet to a point approximately 105 feet east of Hall CR 30 and approximately 1,235 feet south of Hall CR J. This segment crosses Hall CR J. From this point, Link GG proceeds in a southerly direction roughly parallel and approximately adjacent to the east side of Hall CR 30 for approximately 5,740 feet to a point approximately 125 feet east of Hall CR 30 and approximately 1,610 feet north of RR 1619. This segment crosses Hall CR K. From this point, Link GG proceeds in a southerly direction for approximately 7,260 feet to a point located approximately 246 feet west of US 287 and approximately 5,645 feet south of RR 1619. This segment crosses RR 1619, an existing railroad and US 287. From this point, Link GG proceeds in a southwesterly direction for approximately 10,840 feet to a point located approximately 1,065 feet north of SH 86 and approximately 2,635 feet west of Roosevelt Road. This segment crosses the Prairie Dog Town Fork Red River roughly parallel and approximately adjacent to US 287 and an abandoned railroad corridor. From this point, Link GG proceeds in a southeasterly direction roughly parallel and approximately adjacent to the south side of an existing 69 kV transmission line for approximately 23,500 feet to a point located approximately 125 feet south of Childress CR S and approximately 6,040 feet west of Childress CR 2. This segment crosses SH 86, an existing 69 kV transmission line, Hall CR 29, Hall CR 29A, Mountain Creek, RR 658, Hall CR P, the Hall/Childress County line, Rustlers Creek and Childress CR S. From this point, Link GG proceeds in an easterly direction roughly parallel and approximately adjacent to the south side of Childress CR S for approximately 6,050 feet to a point on Childress CR 2 approximately 130 feet south of the intersection of Childress CR 2 and Childress CR S. This segment crosses an existing 69 kV transmission line and Childress CR 2. From this point, Link GG proceeds in an easterly direction for approximately 15,835 feet to a point located approximately 6,750 feet west of Childress CR 7 and approximately 7,060 feet north of US 287 and terminates. This point is the intersection of Links GG, II and KK. This segment crosses US 287, Baylor Creek, an existing railroad and three existing pipelines. |
| HH | From the intersection of Links CC, DD, GG and HH, Link HH proceeds in a southeasterly direction roughly parallel and approximately adjacent to the north side of an existing pipeline for approximately 26,230 feet to a point located approximately 2,200 feet north of Childress CR M and approximately 6,195 feet east of Childress CR 1 and terminates. This point is the intersection of Links HH, II and JJ. Link HH crosses Jonah Creek, Hall CR I, the Hall/Childress County line, Childress CR J, Childress CR K and Ranch Road 1619. |
| II | From the intersection of Links HH, II and JJ, Link II proceeds in a southeasterly direction roughly parallel and approximately adjacent to the north side of an existing pipeline for approximately 21,775 feet to a point located approximately 15,485 feet north of US 287 and approximately 28,605 feet west of Childress CR 10. This segment crosses Childress CR M, Childress CR 2A and Childress CR M again. From this point, Link II proceeds in an easterly direction for approximately 6,675 feet to a point located approximately 20,025 feet north of US 287 and approximately 21,955 feet west of Childress CR 10. From this point, Link II proceeds in a southerly direction for approximately 7,880 feet to a point located approximately 6,370 feet west of Childress CR 7 and approximately 12,110 feet north of US 287. This segment crosses Prairie Dog Town Fork Red River. From this point, Link II proceeds in a southeasterly direction for approximately 1,160 feet to a point located approximately 5,575 feet west of Childress CR 7 and approximately 11,610 feet north of US 287. From this point, Link II proceeds in a southerly direction for approximately 4,520 feet to a point located approximately 6,750 feet west of Childress CR 7 and approximately 7,060 feet north of US 287 and terminates. This point is the intersection of Links GG, II and KK. |
| JJ | From the intersection of Links HH, II and JJ, Link JJ proceeds in an easterly direction for approximately 31,410 feet to a point located approximately 29,225 feet west of US 83/62 and approximately 8,235 feet south of Childress CR K. This segment crosses Jonah Creek. From this point, Link JJ proceeds in a southerly direction for approximately 21,765 feet to a point approximately 90 feet south of Childress CR P and approximately 1,430 feet east of Childress CR 8. This segment crosses Prairie Dog Town Fork Red River, Grassy Creek five times and Childress CR P. From this point, Link JJ proceeds in an easterly direction roughly parallel and approximately adjacent to the south side of Childress CR P for approximately 2,930 feet to a point located approximately 4,360 feet east of Childress CR 8 and approximately 115 feet south of Childress CR P. This segment crosses Grassy Creek. From this point, Link JJ proceeds in a southerly direction for approximately 10,585 feet to a point located approximately 10,690 feet south of Childress CR P and approximately 5,210 feet west of Childress CR 10 and terminates. This point is the intersection of Links JJ, KK and LL. This segment crosses one existing pipeline. |
| KK | From the intersection of Links GG, II and KK, Link KK proceeds in an easterly direction for approximately 15,910 feet to a point located approximately 10,690 feet south of Childress CR P and approximately 5,210 feet west of Childress CR 10 and terminates. This point is the intersection of Links JJ, KK and LL. Link KK crosses Childress CR 7, Childress CR 8, one existing pipeline and Grassy Creek. |
| LL | From the intersection of Links JJ, KK and LL, Link LL proceeds in an easterly direction for approximately 17,795 feet to a point located approximately 2,460 feet west of US 83/62 and approximately 16,000 feet south of RR 2465 and terminates. This point is the intersection of Links LL, MM, PP and QQ. Link LL crosses Childress CR 10 and an abandoned railroad corridor. |
| MM | From the intersection of Links FF, MM and NN, Link MM proceeds in a southerly direction roughly parallel and approximately adjacent to the west side of an existing 115 kV transmission line for approximately 60,530 feet to a point located approximately 2,460 feet west of US 83/62 and approximately 16,000 feet south of RR 2465 and terminates. This point is the intersection of Links LL, MM, PP and QQ. Link MM crosses an abandoned railroad corridor, Childress CR K, an abandoned railroad corridor, Prairie Dog Town Fork Red River, an abandoned railroad corridor, RR 2465 and an abandoned railroad corridor. |
| NN | From the intersection of Links FF, MM and NN, Link NN proceeds in an easterly direction for approximately 25,600 feet to a point located approximately 2,765 feet east of Childress CR 18 and approximately 5,160 feet south of US 62 and terminates. This point is the intersection of Links AA, NN and OO. Link NN crosses US 83/62, Childress CR 15, one existing pipeline, Buck Creek and Childress CR 18. |

| | |
|-----------|--|
| OO | From the intersection of Links AA, NN and OO, Link OO proceeds in a southerly direction for approximately 6,485 feet to point located approximately 11,670 feet south of US 62 and approximately 10,490 feet west of Childress CR 20. From this point, Link OO proceeds in a southeasterly direction for approximately 5,260 feet to a point located approximately 7,485 feet west of Childress CR 20 and approximately 15,985 feet south of US 62. From this point, Link OO proceeds in a southerly direction for approximately 38,890 feet to a point located approximately 300 feet south of Childress CR P and approximately 2,545 feet west of Childress CR 19 (FM 2884). This segment crosses Childress CR 19, Buck Creek, Childress CR L, Childress CR M, Prairie Dog Town Fork Red River and Childress CR P. From this point, Link OO proceeds in a southeasterly direction for approximately 5,780 feet to a point located approximately 240 feet west of Childress CR 19 (FM 2884) and approximately 5,440 feet south of Childress CR P. From this point, Link OO proceeds in a southerly direction for approximately 5,015 feet to a point located approximately 2,495 feet west of the intersection of Childress CR S and Childress CR 19 (FM 2884) and terminates. This point is the intersection of Links OO, QQ, TT and UU. This segment crosses two existing pipelines. |
| PP | From the intersection of Links LL, MM, PP and QQ, Link PP proceeds in a southerly direction roughly parallel and approximately adjacent to the west side of an existing 115 kV transmission line for approximately 10,825 feet to a point located approximately 715 feet west of US 83/62 and approximately 5,140 feet north of Childress CR V. This segment crosses Conkline Creek. From this point, Link PP proceeds in an easterly direction for approximately 9,210 feet to a point located approximately 2,310 feet west of FM 2530 and approximately 7,930 feet north of FM 3181. This segment crosses an existing 115 kV transmission line and US 83/62. From this point, Link PP proceeds in an east-northeasterly direction for approximately 2,410 feet to a point located approximately 195 feet west of FM 2530 and approximately 2,795 feet north of Childress CR U. From this point, Link PP proceeds in an easterly direction for approximately 2,470 feet to a point located approximately 2,900 feet north of Childress CR U and approximately 115 feet west of Childress CR 15 and terminates. This point is the intersection of Links PP, RR and SS. This segment crosses FM 2530 and two existing pipelines. |
| QQ | From the intersection of Links LL, MM, PP and QQ, Link QQ proceeds in an easterly direction for approximately 33,910 feet to a point located approximately 2,495 feet west of the intersection of Childress CR S and Childress CR 19 (FM 2884) and terminates. This point is the intersection of Links OO, QQ, TT and UU. Link QQ crosses US 83/62, Conkline Creek, Childress CR 14, and two existing pipelines. |
| RR | From the intersection of Links PP, RR and SS, Link RR proceeds in a southerly direction for approximately 21,760 feet to a point located approximately 515 feet south of Childress CR Y and approximately 3,965 feet east of FM 2530. This segment crosses Childress CR 15, Childress CR U, North Groesbeck Creek, RR 268, one existing pipeline, Childress CR X, US 287, Childress CR X1, an existing railroad, Childress CR Y and an existing 69 kV transmission line. A portion of this segment parallels the west side of Childress CR 15 for approximately 17,192 feet. From this point, Link RR proceeds in a southeasterly direction roughly parallel and approximately adjacent to the south side of an existing 69 kV transmission line for approximately 22,140 feet to a point located approximately 1,370 feet south of US 287 and approximately 5,390 feet west of RR 2638 and terminates. This point is the intersection of Links RR, VV, WW and XX. This segment crosses Childress CR 16, Childress CR 17 and North Groesbeck Creek two times. |
| SS | From the intersection of Links PP, RR and SS, Link SS proceeds in an easterly direction for approximately 21,080 feet to a point located approximately 5,390 feet west of Childress CR 20 and approximately 5,345 feet north of Childress CR V and terminates. This point is the intersection of the Links SS, TT and VV. Link SS crosses Childress CR 15 and Childress CR 19 (FM 2884). |
| TT | From the intersection of Links OO, QQ, TT and UU, Link TT proceeds in southerly direction for approximately 10,465 feet to a point located approximately 5,390 feet west of Childress CR 20 and approximately 5,345 feet north of Childress CR V and terminates. This point is the intersection of the Links SS, TT and VV. Link TT crosses Childress CR 19 (FM 2884). |
| UU | From the intersection of Links OO, QQ, TT and UU, Link UU proceeds in an easterly direction for approximately 2,520 feet to a point located on Childress CR 19 (FM 2884) approximately 75 feet south of the intersection of Childress CR S and Childress CR 19 (FM 2884). This segment crosses Childress CR 19 (FM 2884). From this point, Link UU proceeds in an easterly direction roughly parallel and approximately adjacent to the south side of Childress CR S for approximately 2,705 feet to a point located 160 feet southeast of the intersection of Childress CR S and Childress CR 20. This segment crosses Childress CR 20. From this point, Link UU proceeds in a southerly direction roughly parallel and approximately adjacent to the east side of Childress CR 20 for approximately 12,590 feet to a point approximately 2,125 feet south of Childress CR U and approximately 120 feet east of Childress CR 20. This segment crosses Childress CR U. From this point, Link UU crosses Childress CR 20 and proceeds in a southerly direction roughly parallel and approximately adjacent to the west side of Childress CR 20 for approximately 23,635 feet to a point located approximately 770 feet north-northwest of the intersection of Childress CR 20 and Childress CR Z and approximately 1,055 feet south of North Groesbeck Creek. This segment crosses Childress CR V, one existing pipeline, RR 268, Childress CR Y and North Groesbeck Creek. From this point, Link UU crosses Childress CR 20 and proceeds in a southerly direction roughly parallel and approximately adjacent to the east side of Childress CR 20 for approximately 3,555 feet to a point located approximately 165 feet east of RR 2638 and approximately 850 feet south of US 287 and terminates. This point is the intersection of Links UU, XX and YY. This segment crosses Childress CR 20, Childress CR Z, US 287, an existing railroad and an existing 69 kV transmission line. |
| VV | From the intersection of Links SS, TT and VV, Link VV proceeds in a southerly direction for approximately 5,345 feet to a point located on Childress CR V and approximately 90 feet west of the intersection of Childress CR 19 and Childress CR V. This segment crosses Childress CR V. From this point, Link VV proceeds in a southerly direction roughly parallel and approximately adjacent to the west side Childress CR 19 for approximately 5,275 feet to a point approximately on RR 268 and approximately 280 feet west of the intersection of Childress CR 19 and RR 268. This segment crosses RR 268. From this point, Link VV proceeds in a southerly direction for approximately 6,890 feet. Link VV then continues in a southerly direction roughly parallel and approximately adjacent to the west side of Childress CR 19 for approximately 3,715 feet to a point approximately on Childress CR Y and approximately 135 feet west of the intersection of Childress CR Y and Childress CR 19. This segment crosses Childress CR Y. From this point, Link VV proceeds in a southerly direction for approximately 6,690 feet to a point located approximately 1,370 feet south of US 287 and approximately 5,390 feet west of RR 2638 and terminates. This point is the intersection of Links RR, VV, WW and XX. This segment crosses North Groesbeck Creek, US 287, an existing railroad and an existing 69 kV transmission line. |
| WW | From the intersection of Links RR, VV, WW and XX, Link WW proceeds in a southerly direction for approximately 4,040 feet to a point located approximately 5,415 feet west of RR 2638 and approximately 140 feet south of Childress CR AA. This segment crosses Childress CR AA. From this point, Link WW proceeds in an easterly direction roughly parallel and approximately adjacent to the south side of Childress CR AA for approximately 5,955 feet to the Tesla Substation, located at the southeast corner of the intersection of Childress CR AA and RR 2638 in Childress County, Texas, and terminates. This segment crosses RR 2638. |
| XX | From the intersection of Links RR, VV, WW and XX, Link XX proceeds in a southeasterly direction roughly parallel and approximately adjacent to the south side of an existing 69 kV transmission line for approximately 5,735 feet to a point located approximately 165 feet east of RR 2638 and approximately 850 feet south of US 287 and terminates. This point is the intersection of Links UU, XX and YY. Link XX crosses RR 2638. |
| YY | From the intersection of Links UU, XX and YY, Link YY proceeds in a southerly direction roughly parallel and approximately adjacent to the east side of RR 2638 for approximately 3,040 feet to the Tesla Substation, located at the southeast corner of the intersection of Childress CR AA and RR 2638 in Childress County, Texas, and terminates. Link YY crosses Childress CR AA. |



NOTE: NOT ALL ALTERNATIVE ROUTES WILL BE BUILT. THE PUBLIC UTILITY COMMISSION OF TEXAS WILL SELECT ONE ALTERNATIVE ROUTE WHICH CONNECTS THE GRAY SUBSTATION TO THE TESLA SUBSTATION.

Legend

| | | | | |
|---------------------|------------------------------|----------------------|------------------------|-----------------------|
| — Alternative Route | ▲ Substations | — Interstate Highway | CR County Road | Oil and Gas Pipelines |
| — Preferred Route | □ County Boundary | — State Highway | FM Farm-to-Market Road | Under 10" Diameter |
| ● Link Endpoints | □ City Limits | — US Highway | RR Ranch Road | 10"-20" Diameter |
| ▲ Link Designation | — Existing Transmission Line | — Roads | — Active Railroad | 21"-30" Diameter |
| | — Streams | | — Abandoned Railroad | |

Cross Texas Transmission, LLC
 Gray to Tesla
 345 kV Transmission Line Project
 Notification Map
 Map 1 of 3

