

Regional basketball souvenir edition

24 hr. prayer
service, 659-2911

THE GRUVER STATESMAN

VOLUME 14, NUMBER 22

THE GRUVER STATESMAN, GRUVER, TEXAS 79040

THURSDAY, MARCH 7, 1987

Gruver Greyhounds lose to Naz. 45-40

Greyhounds drop heartbreaker!

The Gruver Greyhounds lost their bid for a state championship trophy to Nazareth in the regional tournament at Texan Dome last Friday.

The Swifts beat Gruver 45-40 in what many called the best two class A teams north of Dallas. Actually, the Greyhounds led most of the way. Gruver scored 19 field goals to Nazareth's 18, but the Swifts managed to keep the Greyhounds off the free throw line. The Swifts were 9 and 11 from the free throw line Friday while Gruver got only two chances at the line, converting both.

It was the closest game of the season against a class 1A opponent for the 25-5 Swifts. The game was tied seven times.

Gruver, which ended the season 18-3, jumped to a 10-2 lead as the Greyhounds tight 2-3 zone kept the Swifts on the perimeter.

With a little less than two minutes left in the first quarter, the Swifts cut the lead to 10-7. The Swifts then began hitting most of their points from the far corners.

Nazareth took the lead for the first time, 18-16, on a Randy Leavitt jumper from the lane and ended the half with a 22-20 advantage.

Gruver regained the lead 32-30 by the end of the third quarter. The Greyhounds and Swifts were both magnificent. The game witnessed by many Hansford County basketball fans was in doubt until the last minute.

Kelon Morley led the Greyhounds with 16 points and the Hounds as we said before, were in the lead 32-30 at the end of the third quarter.

Nazareth went ahead to win the regional tournament and felt extremely fortunate to survive the excellent play of the Gruver team.

Basketball fans all agree that Gruver, which ended the season 18-3, could have gone to state had they played as many games as Nazareth. The Swifts have played a total of 30 games this year.

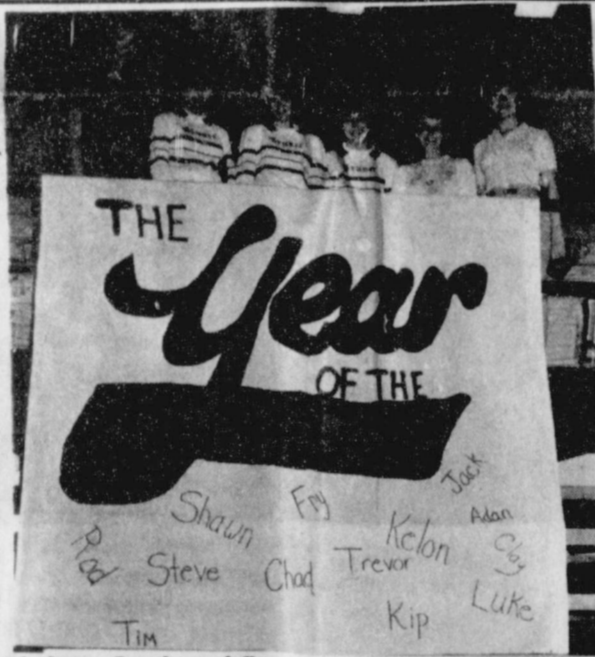


Pictured above are Gruver Cheerleaders (left to right) Cami Shapley, Dala Shapley, Lori Fletcher, and Carrie Hart.



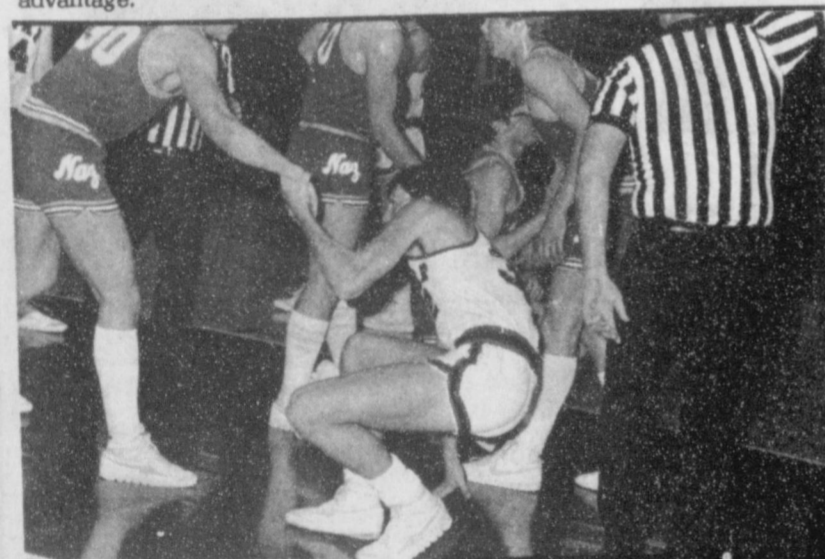
Region 1-1A sums

Nazareth 45, Gruver 40
Nazareth 9 22 30 45
Gruver 12 20 32 40
Nazareth (49): Chris Gerber, 24-6; Rick Backus, 0-4-4; Russell Hoelling, 10-2-22; Chris Schmucker, 1-0-2; Randy Leavitt, 4-0-8; Kevin Hoelling, 0-3-3. TOTALS: 18-43
Gruver (40): Chad Loosdon, 1-0-2; Rod Dean, 1-0-2; Steven Fry, 2-0-4; Kelon Morley, 7-2-14; Luke Pittman, 1-0-2; Kip Pittman, 7-0-14. TOTALS: 19-3-40
TOTAL FOULS: Gruver 10, Nazareth 8
FOULED OUT: None
TECHNICAL FOULS: None
ATTENDANCE: 550

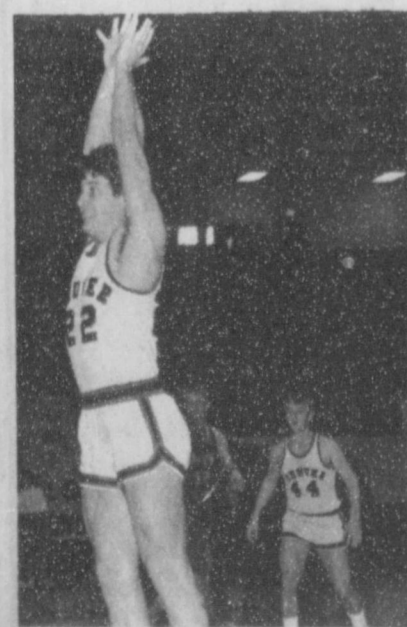


Pictured above Greyhound Banner are Sharon Reynolds, Lori Shapley, Joby White, and Joanna Fletcher, Dala Shapley, Cami Reynolds.

Gruver will host a track meet this Saturday, March 9



Kelon Morely is helped to his feet by a Nazareth player during the Gruver-Nazareth game.



Rod Been, 22, works to block Nazareth pass as Kip Pittman, 44, watches.



Kip Pittman, 44, puts the ball up for 2 points during Gruver-Nazareth.

Kelon Morley takes the ball down court during the Gruver-Nazareth game.



Kelon Morely jumps against Nazareth at start of Gruver-Nazareth game.



Greyhounds are on the defensive as Nazareth tries to move down court.

Two Hounds named to all district team

Coaches selections for District 3-1A Boys' Basketball All-District have been announced as follows: Kelon Morley, a senior and Kip Pittman, a junior from Gruver; Senior Travis Black of Higgins; Seniors Mike Jones and Shane

Pinckard and Junior Shawn Ammons of Booker; Juniors Robbie Miller and Brook Robbins of Darrouzett; and Seniors Wayne Freeman and Brett Laubhan of Follett. Jack Weldon is the District Chairman.

Gruver Greyhounds host track meet Saturday

The portrait of George Washington by Gilbert Stuart, which hangs in the East Room of the White House, is the oldest possession there. Brought to the executive mansion in 1800, it was saved by Dolly Madison when she escaped Washington in the wake of British troops in the War of 1812.

THE CUPBOARD
502 DAVIS
SPEARMAN, TEXAS
659-2767

For the week of March 4 - 9

- Monday
- Texas Beef Skillet
- Cornbread
- Cherry Cheesecake
- Tuesday
- Stuffed Potatoes
- Quiche
- Pecan Pie
- Wednesday
- Peppered Pork Chops
- Baked Potatoes
- Hot Rolls
- Sour Cream Raisin Pie
- Thursday
- New Orleans Style Red Beans & Rice
- Quiche
- Chocolate Cream Pie
- 6 to 8
- Fried Chicken Dinner
- Served Family Style
- Friday
- Manicotti
- Oatmeal Cake
- Saturday
- We serve from 11:30 a.m. - 1:30 p.m.
- Sandwiches and a special each Saturday

For March 11 - 16

- Monday
- Hot Beef Sandwiches
- Strawberry Rubarb Pie
- Tuesday
- Bierox or Quiche
- Steamed Mixed Veggies.
- Sour Cream Lemon Pie
- Wednesday
- Comed Beef and Cabbage
- Potatoes
- Hot Rolls
- Wacky Devils Food Cake
- Thursday
- Taco Salad
- Beans
- Chocolate Meringue Pie
- 6 to 8 p.m. Fried Chicken
- Dinner Served Family Style
- Friday
- Swiss Steak
- Mashed Potatoes-Gravy
- Rolls
- Old Fashion Bread Pudding
- Saturday
- Sandwiches & a special serving
- 11:30 a.m. - 1:30 p.m.

All dinners include salad bar for \$4.95. Menu also includes turkey, ham, or chicken salad sandwiches on whole wheat bread or a croissant.

CLIP AND SAVE
Menu is only printed every two weeks.



Chad Logsdon, 14, throws ball into Kip Pittman, 44, during Gruver-Nazareth game.



Soot Dahl, president of Gruver Lions Club presents City Manager Jim Ratliff with a check for \$4,000 to be applied to the Swimming Pool Fund.

Tee Vee Laffs

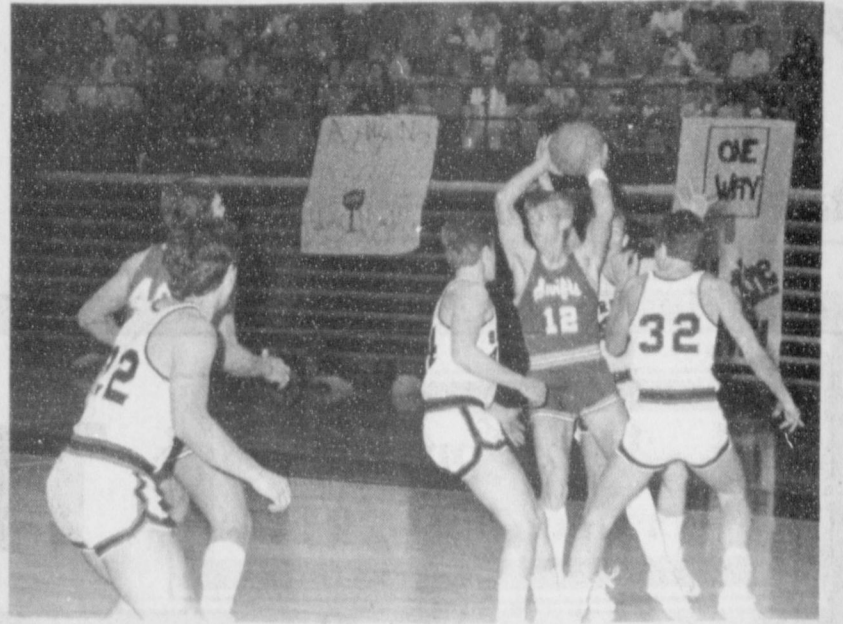


"OKAY IF I TURN ON THE EXHAUST FAN? IT MAY HELP TO GET RID OF THE SMELL OF THAT LAST TV PROGRAM!"

LUNCH MENU

LUNCH MENU
MARCH 11-14

- MONDAY
- Spaghetti w/meat
- Applesauce
- Bread
- Tossed salad
- Milk
- TUESDAY
- Corn dogs
- Tater tots
- Beans
- Cookies
- Milk
- WEDNESDAY
- Western burger
- Cole slaw
- Pinto beans
- Applesauce cake
- Milk
- THURSDAY
- Ham and cheese sandwich
- French fries
- Tossed salad
- Fruit cobbler
- Milk
- FRIDAY
- No school
- County stock show



Greyhounds Rod Been, 22, Kip Pittman, 44, and Kelon Morley, 32, are on the defensive against Nazareth.

Twin Summer Style Show planned

The 2nd Annual Twin Summer Style Show will be held March 30 at 7:00 p.m. at 8th and Academy Guymon, Oklahoma. Half of the proceeds go to the Sandy Price Scholarship Fund.

Tickets are: Adults \$2.00, Students \$1.00, 2 - 5 year olds \$.50. Buy your tickets at Allsup's.

Farmers Union is taking consignments for their Annual Farm Sale April 2. Consignments must be in by March 18 to be on Sale Bill. Call: Joe Morris - 733-2132; Burton Schubert - 659-2667; Glen Lesly - 659-2928; or R. C. Porter - 659-2035.

We'll Help Keep Your Future Safe.



Bruce Julian, Thalua Garner and Debbie Smith Trust Officers at First National Bank

Protect What You Own

You spend most of your life working and putting together important assets. An estate includes your home, farm and ranch property, investments, life insurance and some cherished personal belongings. Have you prepared to pass on those hard-earned assets to people important to you?

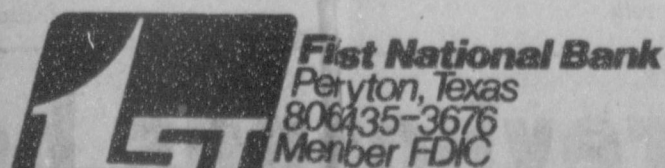
How Does a Trust Protect Your Estate?

A Trust is a special legal way to protect your assets from certain taxes. It can help prevent your property from being tied up in court. It even guards your estate from being mishandled by well-meaning, but inexperienced friends or family members.

We Offer Twenty-Five Years of Experience To You

Our Trust Department has been helping people take hold of their future for twenty-five years. Bruce Julian, Thalua Garner, and Debbie Smith are Trust Officers who can meet with you at the bank or in your home. There's no cost to talk with them about your needs ... whether you're hard at work today, or ready to retire. Call us.

We'll Help You Take Hold of Your Financial Future



Out of State
1-800-338-5871



Office:
1-405-338-3378

Home Owned and Home Operated

SALE EVERY THURSDAY
AT 10:00 AM

Cross Stitch Corner

Come see our new books and our new border fabric! 1/2 price table - kits books, and accessories. Complete line of DMC floss.

Tuesday-Thursday-Saturday

10 a.m. - 6 p.m.

1 mile east of Spearman High School

659-2480

Marilyn Cline, owner

WANT ADS

SERVICES

New to Area?
Give Us a Try
Call Your Local
USED COW DEALER
As Soon as Possible
659-3544
659-3545
1-800-692-4043
22-rtn

NOTICE
Wallace Monument Co.
Monuments, Curbing,
Grave Covers
Local Representative
LEONARD JAMESON
Spearman, Texas
40-rtn

**OSGOOD
MONUMENT CO.**
Amarillo, Texas
Dealers of Rock of Ages
Granite, as well as all
colored granites, marble
and bronze memorials.
represented by
BOXWELL BROS.
FUNERAL HOME
519 S. EVANS
659-3802

Hansford County
Planned Parenthood
412 Davis
659-2483
Spearman
Mon.-Fri.
8:30-12:30

SEARS BLOWN IN ATTIC INSULATION. Now 10% off. Completely installed. For FREE ESTIMATE at your convenience dial 659-2573. Sears Roebuck and Co. 517 S. Hwy. 207.
50-rtn

Sewing done-little darling and Cinderella dress types a specialty. Call Joy 733-2517.
nc

Need to oil your wood shake or shingle roof? Give it extra life and beauty.

Whatever your painting needs may be - from taping and textures to custom finishes with any coating on any surface. We also feature energywave insulating paints. Call today for a free estimate.

BEASLEY PAINTING
ALLAN 733-2858 JIM 733-2012
19-rtn

FOR SALE

CONCERT QUALITY piano tuning and repair. Free estimates. Write Elson Clark, Box 1016, Dalhart, Tx. 79022 or call collect 806-249-2783.
6-4tp-rtn

FOR SALE: Gray horse--make a good horse for kids to ride. Call 733-2517.
16-rtn-nc

FOR SALE: Cakes, pies, bread, rolls or cookies. Will take orders for Valentines. Birthday Cakes for children with novelty characters. Call 733-2517.
16-rtn-nc

FOR SALE: Story-Clark piano. Excellent condition. Call 1-355-2856.
22-1tc

REAL ESTATE

FOR SALE: New, just finished, 3 bedroom home with 2 baths, double car garage. Roy Edwards 733-2178. 114 Cooper Ave.
16-rtn

FOR SALE: 3 bedroom house, 1 bath on 2 lots. Detached garage. On corner, 322 S. Hazelwood. \$40,000. Call 659-3873 or 5046.
19-11tc

OFFICE BUILDING FOR LEASE OR SALE: 11 W. Kenneth, Spearman. Owner will finance. Phone 659-2766 or, after 5 p.m. 659-2719.
20-rtn

HELP WANTED

Caprock No. 1 Feedyard, located 15 miles S.W. of Gruver, Tx., is now taking applications for night watchman, experienced welders for yard maintenance and construction work and heavy equipment operator for feed mill. 733-2461.
22-2tc

WANTED

WANTED: Office Space for ASCS County Office
Requirements:

Specifications may be picked up at the Hansford County ASCS Office, between 8:00 a.m. and 4:30 p.m., from Feb. 18, 1985 until March 15, 1985. All bids must be submitted by 5:00 p.m., April 1, 1985.

For further information contact: Keith B. Martin, C.E.D., 806-659-3036.
19-4tc

SERVICES

Breaking and training horses.
Jeff Chase 435-5239.
15-10tc

BUSINESS OPPORTUNITIES

Own your own jean-sportswear, ladies apparel, childrens, large size, combination, western store, accessories. Jordache, Chic, Lee, Levi, Easy Street, Izod, Esprit, Tomboy, Calvin Klein, Sergio Valente, Evan Picone, Liz Claiborne, Members Only, Organically Grown, Healthtex, over 1000 others. \$7,900 to \$24,900 inventory, training, fixtures, grand opening etc. Can open 15 days. Mr. Keenan (305) 678-3639.
22-1tp

PUBLIC NOTICE

Guymon Elks Supper Club is open to the public. Our hours are Wednesday-Thursday 6-10 p.m. Friday-Saturday 6-10:30 p.m. We have a prime rib special every Friday.
51-rtn

CARD OF THANKS

The family of Cleo Walker wishes to extend their deep appreciation to all the many friends and relatives for all the prayers, flowers, food, cards, calls and especially for just being there. We also extend our gratefulness to those who gave a memorial for the Golden Age in memory of our beloved, wife, mother, nanny and sister. May God Bless you each in a special way.

Sincerely,
Ross Walker
John Preston Family
Gerald Clemens Family
Larry Linde Family
Zilla Pierce Family

Selective Service System

Young men born on or after January 1, 1960 are required to register with Selective Service within a month of their 18th birthday.

The registration process takes less than five minutes at the post office. A young man fills out a simple form asking only for his name, date of birth, address, telephone number and Social Security number.

Registration helps keep our country prepared with a pool of names to draw from in case of a national emergency... without interfering with people's lives. When you think about it... that's not a lot to ask for a country as great as ours.

IT'S QUICK. IT'S EASY. AND IT'S THE LAW.

PRINTED AS A PUBLIC SERVICE.



Kelon Morley, 32, takes one to the basket for two points during Gruver-Nazareth game.

To God "A note of thanks"

by Mrs. E.A. Greever

God, you have definitely told us we must be born again and how thankful I am. You also tell us no one can come to you except you draw us, so if we are not convicted or have a hungering and thirsting for righteousness, we will remain in sin. He that cometh to God must believe that he is and is a rewarder of them who diligently seek him. Jesus said, Ask and ye shall receive, seek and ye shall find, knock and it shall be opened unto you. Every one that asketh receiveth and he that seeketh findeth and and to him that knocketh it shall be opened, so if we are sincere and earnest about our need God is faithful who has promised. There is never a failure on his part. To ask from God is to pray, and the following only a few scriptures concerning prayer. Lord teach us to pray. Men ought always to pray. Pray without ceasing. And all things whatsoever ye ask in prayer believing ye shall receive. When we come to God we must believe that he is and that he is a rewarder of them who diligently seek him and so it is in anything we may need, and when we ask begin to seek or in other words pray with all of our heart and keep knocking until the spirit witnesses to us the work is done. In other words, "Pray Through". The Lord is no respecter of persons and is rich toward all who call, and the word says Call and I will answer thee and show thee great and mighty things which thou knowest not. Another scripture men ought always to pray and not faint (not give up) keep praying for God is faithful who hath promised.

I am so glad Father you have warned us about a form of godli-

ness and denying the power thereof. You said there was a time when you winked at the ignorance of man but now commandeth all men everywhere to repent. The law and prophets were until John (the forerunner of Jesus) since then the kingdom of God is preached and every man (person) presseth his way into it, so by prayer, supplication and the giving of thanks we receive. Beyond doubt we will have the desire of our heart by sincere asking seeking and knocking. All things are ready and Gods table is spread with all things we creatures of dust may need. Jesus blood will make the vilest sinner clean. In the book of Psalms the 51st chapter and verse 10 David said, Create in me a clean heart O God and renew a right spirit within me, Jer. 6:16. Thus saith the Lord Stand ye in the ways and see and ask for the old paths wherein is the good way and walk therein and ye shall find rest for your souls. In Bibles printed in our day we find changes in the word that change the meaning so I hold to King James version. In Rev. 22:18:19 we are told the result if we add to or take from God's word.

Fun & Fitness

No, they're not a band of religious fanatics that go through life without indulging in the finer cuisines. Vegetarians may be a whole lot healthier than the rest of us. Death rates from cancer, heart disease and diabetes are lower among vegetarians than among the non-vegetarian populations.

Vegetarians generally fall into three categories based on the animal foods left in their diet. Pure vegetarians consume only plant foods. Lacto-vegetarians eat dairy products as well as plant foods. Lacto-ovo vegetarians tolerate eggs, dairy products and plant foods.

Actually, a diet without meat does not differ markedly from an average Western diet. The main difference is that meat is replaced with legumes, cereals, nuts, seeds, milk and milk products, and eggs. Meat analogs, also an alternative, are prepared from the above ingredients and flavored to taste like meat.

Meat provides high quality protein, and this is required throughout life. Protein furnishes the building blocks for muscle and tissue, and these essential amino acids cannot be made by the body in the proportions and quantities needed.

In order to obtain the same balance of essential amino acids as in meats, plant foods need to be eaten in combinations. Grains fill in the missing amino acids in legumes or beans. Nuts and seeds compliment cereals while dairy products and eggs compliment any group.

A well chosen and varied lacto-vegetarian diet is adequate for the needs of all ages including the stressful periods of adolescence and pregnancy. The recommended number of servings for each food group remains the same for vegetarians as meat eaters. Four or more servings from both the fruit and vegetable and the bread and cereal groups. Two servings from the protein group and two servings from the milk group.

Pure vegetarians may need supplements of vitamin B-12, iron and zinc. Infants raised as pure vegetarians also may require vitamin D.

The vegetarian diet offers advantages beyond those cited earlier. It provides a diet where protein, carbohydrate and fat are in better proportions. Fat intake is much lower than typical American diets, especially if low-fat milk products are chosen. Vegetarian diets contribute an abundance of vitamins and minerals. Foods that contain more fiber are usually consumed.

The Gruver Statesman

PUBLICATION (USPS 9598-6000)
GRUVER, TEXAS 79040
Box 796 659-3434

Owner-Publisher..... William M. Miller
Editor..... Joy Henderson, Gruver, Tx.
Second Class postage paid at Gruver, Texas 79040

Any erroneous reflection upon the character of any person or firm appearing in these columns will be gladly and promptly corrected upon being brought to the attention of the management.

POSTMASTER: Send address changes to Gruver Statesman, Box 796, Gruver, Tx. 79040.

SUBSCRIPTION RATE: Hansford, adjoining counties, \$13.14 per year.

MEMBER

Texas Press Association

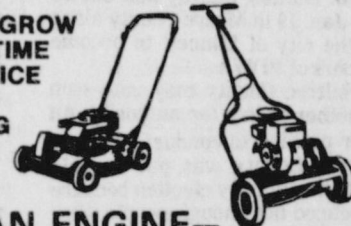
The Jacobshavn glacier on the west coast of Greenland is one of the largest in the Western Hemisphere and the world's fastest. It flows at a rate of more than 100 yards a day and "calves" giant icebergs as often as every five minutes.

When seven inches of rain fell within 30 minutes at Cambridge, Ohio, one day in July 1914, the air was so full of water that anyone stepping outdoors found it virtually impossible to breathe. It was one of the severest rainstorms ever recorded in the United States.

People who have their wits about them are quite apt to be talk show hosts conferring with their writers.

DID YOU KNOW

THAT GRASS CAN GROW 6 INCHES IN THE TIME IT TAKES TO SERVICE YOUR EQUIPMENT DURING THE SPRING RUSH.



IF ITS GOT AN ENGINE-- WE SPECIALIZE IN ITS REPAIR

Our trained mechanics use special tools and genuine replacement parts to put your equipment into running operation.
Complete Small Engine Repair
5th and Dreesen St.
Spearman, Texas 806-659-3826



Support the Livestock Show

Friday and Saturday March 15 & 16

Spearman County Barn

SHARE YOUR SKILLS

BE A LEADER!



Good luck to all

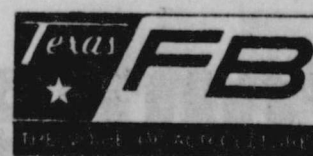


Hansford County Farm Bureau

806-659-3133

MELVIN BRADLEY

BOX 578
307 W. DAVIS
SPEARMAN, TEXAS 79081



TEXAS FARM BUREAU INSURANCE SERVICES

Board seeks reservoir funding

SPEARMAN — The Palo Duro Water Authority is asking the Texas Water Development Board in Austin to purchase about \$10 million worth of water storage to help build a reservoir at the junction of Horse Creek and Palo Duro River.

Johnnie Lee, PDWA general manager, met with the board during the weekend, and he said Monday what money PDWA would receive if its application is approved is not a grant.

"What they do is buy storage. They could buy as much as \$10 million worth in the reservoir," he said. "You can buy that storage back when you get ready for the water."

Lee said the purpose of having the water board buy storage is to save interest on what amounts to a loan.

"That's what we're trying to do, just save a few interest dollars," he said.

Plans for the project include construction of a 150-foot-high, 4,900-foot-long dam that would create a lake about nine and one-half miles north of Spearman.

The lake would cover about 2,500 acres and hold more than 69,000 acre feet of water. An acre foot is the amount of water required to cover one acre with one foot of water. A pipeline and water treatment plant are part of the project.

An average of about 7.8 million gallons would be pumped daily from the lake to municipalities, about 8,700 acre feet annually, Lee said.

The project could range in cost from as much as \$55 million to less than the \$47 million, Lee said.

The Legislature created Palo Duro Water Authority in 1973. The cities of Dumas, Sunray and Cactus voted Jan. 19 in Moore County along with the city of Stinnett to become members of PDWA.

Ochiltree County may vote soon on whether to join the authority. An earlier petition to conduct a vote in Ochiltree County was put on hold during the January election because it appeared not enough people were interested, Lee said.

But 27 civic leaders and representatives from Perryton, Ochiltree County's seat, have met with Lee and expressed a desire to have an election on joining PDWA.

The PDWA board has not decided on a timetable for the project, Lee said.

Lee said the board probably would have to raise money to build

the pipeline and treatment plant through either bond financing or a guarantee on bonds.

Funding just the dam will cost about \$22 million, Lee said, so even if the Water Board buys \$10 million worth of storage, PDWA will still have to raise about \$12 million through a tax revenue bond election.

The application from PDWA will have to be voted on by the Texas water board before any money is distributed, Lee said.

"They do have some money that might be available," he said Monday. "But if this Texas water plan goes through, that would be better for us."

Lee said a plan before the Legislature would guarantee about \$200 million to water authorities interested in building projects. The plan also would guarantee bonds at a lower interest rate, he said.

The PDWA board may delay the project until the Legislature votes on the water plan, Lee said. A state-wide referendum would take place on the plan, probably in November.

But if the Texas water board agrees to buy storage, Lee said, the PDWA probably will go ahead with construction of at least the dam, regardless of action on the water plan.

"Dance for Life"

Are you a "closet dancer"? Do you secretly yearn to be on Broadway? Do your toes tap when you hear a catchy tune? If so, Fitness Fantasia "Dance for Life" is the exercise for you! It is a fantastic fun way for you to feel better, look better, and gain self-confidence.

You will learn correct exercise movements, the best way to lose fat and stay trim, and how to determine your individual heart training zone for fitness.

"Dance for Life" is never boring. Each course offers you a set of new, completely choreographed exercise routines set to a variety of music. All exercises have been

FHA Scrapbook Wins First



Pictured above the Home Ec. I students hang first place plaque and ribbon won at the Area FHA meeting in Lubbock. They are

Denise Alderete, Cristina Soto, Jessica Ledbetter, Kristi King, Brooke Holt, Lanieda Burnam.

Friday, February 22, eight girls took the FHA scrapbook to the FHA Area I Meeting. The Gruver FHA scrapbook was entered in the Chapter Manual proficiency event contest. The scrapbook won first place.

The scrapbook committee members were Stephanie TeBeest,

Cheryl TeBeest, Frances Camp, Tencha Dominguez, Linda Vasquez, and Cathy Potts, the sponsor. These people put a lot of work into the scrapbook.

On April 12, the scrapbook will be entered in the Chapter Manual contest at the FHA state meeting in Houston.

carefully selected to offer you a total fitness program.

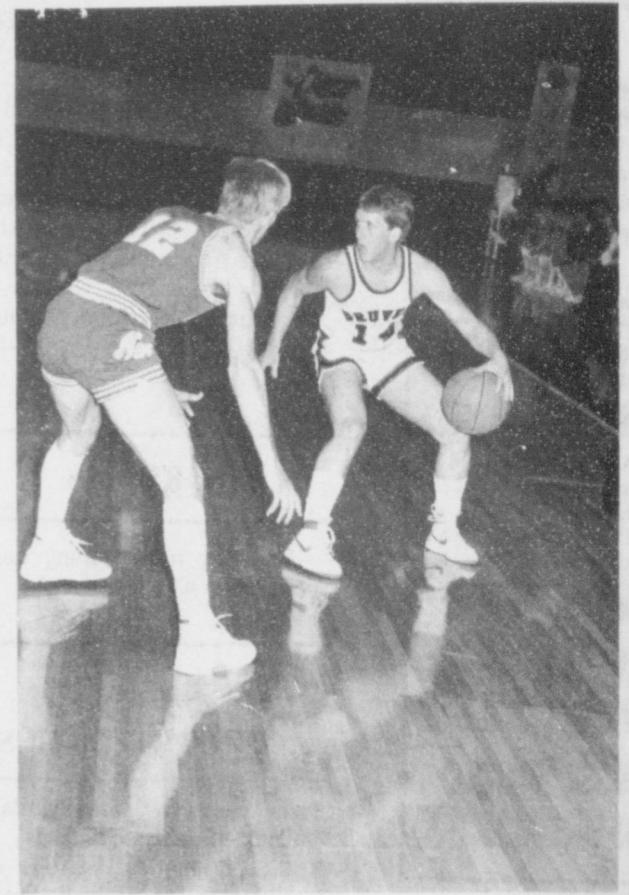
The classes consist of the warm up which prepares your body for strenuous exercise, the aerobic exercise which burns scads of calories while you gain more stamina and tone muscles. Aerobic exercises are designed for special muscle toning of the arms, waist, hips and thighs. Last is the cool down. Tummy toning, and additional hip, thigh and flexibility movements are added to this segment of "Dance for Life". Classes end with stretches that leave you feeling relaxed, yet full of energy to meet the demands of the day.

Classes are taught by Wanda Archer, a certified Fitness Fantasia instructor. There are two classes

offered at the Hansford County Y.M.C.A. One is an afternoon class from 4:15 to 5:00 on Monday, Wednesday, and Friday. The other is an evening class from 6:30 to 7:30 on Tuesday and Thursday and 9:30 to 10:30 on Saturday morning. The next quarter starts the first week in March but you are invited to start immediately and visit at no charge until March to see how much fun it is!



Greyhounds gather around coach during time out at Gruver-Nazareth game.



Chad Logsdon, 14, looks for a pass opening at Gruver-Nazareth game.

THERE'S STRENGTH

in numbers...

in facts.

Some people seem to think that beef is just too good tasting to be good for you. But the new numbers are in. And they are impressive.

76% PROTEIN
Beef is a super source of complete, high-quality protein.

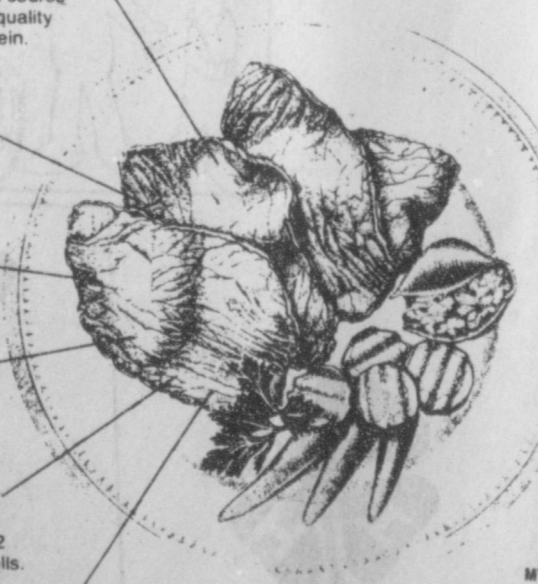
35% NIACIN
Needed to produce energy within cells.

51% ZINC
A component of many vital enzymes.

19% IRON
A great source of the iron you most easily absorb.

100% VITAMIN B-12
Essential in making new red blood cells.

13% CALORIES
You get all the bigger numbers for just 250 calories, 13% of a day's intake.



MYTH: The fat in beef is saturated fat.

FACT: Beef fat contains only about 47-49% saturated fatty acids. The rest is unsaturated fatty acids, including significant amounts of polyunsaturated fatty acids.

MYTH: Beef contains more cholesterol than most other animal-source proteins.

FACT: Three ounces of cooked lean beef contain 73 mg. of cholesterol; 3 ounces of roast chicken, 76 mg.; 3 ounces of flounder 52 mg.; 3 ounces of shrimp, 128 mg.; 3 ounces of pork, 79 mg.; 3 ounces of turkey, dark 72 mg.; light 59 mg.

MYTH: Heart disease risk can be reduced by reducing intake of saturated fat and cholesterol.

FACT: The current trend in the scientific literature is away from thinking that reducing heart disease risk is simply a matter of cutting down on foods high in saturated fatty acids and cholesterol. More scientists are now saying that more scientific answers are needed before marked changes in diets can be recommended for the general population.

MYTH: Dietary cholesterol has a direct effect on blood cholesterol level.

FACT: In most persons, dietary cholesterol and blood cholesterol are not closely related. In fact, in most persons, heredity and weight or amount of fatty tissue in the body are more important than diet, including dietary cholesterol, in determining blood cholesterol level. If a person keeps his weight at recommended levels, odds are that his blood cholesterol will not be above normal.



HANSFORD COUNTY

JUNIOR LIVESTOCK SHOW and SALE

March 15 & 16, 1985
Spearman, Texas

Clubs and Chapters Participating in the Show
Gruver FFA Spearman FFA
Gruver 4-H Spearman 4-H
Morse 4-H



*1983 Beef Nutrient Composition Study coordinated by the Meat Board with the USDA, Michigan State University, and University of Kentucky

**All percentages are based on a 4 oz. serving and recommended dietary allowances, women 23 to 50 years.

BEEF GIVES STRENGTH.

Frontier Feed Yards, Inc.



Bronc May

Phone 806-882-4251



HANSFORD COUNTY STOCK SHOW SCHEDULE

FRIDAY, March 15, 1985

Weighing will begin
8:00 a.m. - 10:00 a.m. Swine & Sheep
10:00 a.m. - 12 Noon Steers
2:00 p.m. Lamb Show starts
Swine Show will follow completion of Lamb Show

SATURDAY, MARCH 16, 1985

9:30 a.m. Judging of Steers
12:00 Noon Judging Contest
6:00 p.m. Floor prices will be auctioned
Presentation of Showmanship Trophies Sale

There will be an area wide Livestock Judging Clinic at the Spearman County Barn on Saturday, March 9, 1985 at 10:00 A.M. Lamb and Steer Judging will be discussed and several classes will be judged. The clinic will be finished by 3:00 p.m. Dr. John McNeill, area Beef Cattle Specialist and Robert Devin, 4-H Specialist will conduct the clinic. If you plan to judge livestock at the County Show or District 4-H Show this would be an excellent training session.

4-H meetings will not be held next week in Gruver or Spearman because of the County Show.

A Judging Contest will be held on Saturday, March 16 at 12:00 Noon with the County Stock Show. All county 4-H'ers are encouraged to judge in this contest

Entry Cards and Entry Fees for the County Show should be returned to the Extension Office by Friday, March 8, 1985 at 5:00 p.m.

County tax analysis

According to the state comptroller Sales and Use Tax Analysis for Hansford County shows gross sales for 1984 3rd quarter at \$17,923,415, compared to \$16,161,026 for 1983 3rd quarter which is a percent change of 10.9%.

Use Tax purchases for the county were \$579,804.
Total amount subject to tax are \$5,003,723.

World Day of Prayer Held

World Day of Prayer was held at the United Methodist Church Mar. 1, 1985. Theme was "Peace through Prayer and Action". This annual celebration is sponsored in the United States by Church Women United, which unites women of faith in some 5000 communities in the United States and 170 countries around the globe in day of prayer. 1985 marks the 98th consecutive observance which began in 1887 by the Presbyterian Church. It has grown today to include Christians from various races and cultures around the world.

The World Day of Prayer service this year was written by Women of India.

Nine churches participated in the service. Assembly of God, Apostolic Faith, First Christian, Faith Lutheran, Spearman Union, Sacred Heart Catholic, Church of the Brethren from Waka, Presbyterian and United Methodist, all of Spearman and Waka.

Our collection of \$115.00 was sent to World Hungar.

Next year World Day of Prayer will be held March 7, 1986 at the Presbyterian Church. Theme: Choose Life.

Candidate scarce for local races

School board incumbents, Mike Garnett and Kent Guthrie have refiled for re-election for the Spearman Independent School District.

Filing for election for the City of Spearman are Burl Buchanan, incumbent and Robert Queener, Jr. Terms are expiring for aldermen Wilson McClellan, Bob Pearson and Burl Buchanan.

Pringle-Morse school board has two positions open for election.

W.C. Womble, incumbent, has filed. The other trustee is Allen McCloy.

Two terms are expiring for the Gruver School. Billy Logsdon, incumbent has filed.

J.C. Harris, mayor, has filed for re-election and alderman Roy Byrd has also refiled.

March 6, Wednesday, at 5 p.m. is the last day to file for these elections which are set for April.

PDRA Agenda

Notice is hereby given there will be a meeting of the Palo Duro River Authority on Wednesday, March 13, 1985 at 11:00 A.M. in the meeting room of the Palo Duro River Authority in the Hansford County Courthouse, Spearman, Texas for discussion and/or action of the following:

1. Reading of the minutes of the last meeting.
2. Payment of claims.
3. Treasurer's report.
4. Consider petition for annexation and 6 cents maintenance tax for Ochiltree County.
5. Swearing in of new board members.

Johnnie C. Lee, Manger

The hausfrau in the TV ad who wonders how chicken could be fried twice should go to the beanery near us where they retrizzle it daily till sold.

Pringle-Morse School plans open house and spaghetti supper

Pringle-Morse School will be holding open house and the PTA will be sponsoring a spaghetti supper on March 14.

The spaghetti supper will be from 6 to 7:30 p.m. in the school cafeteria. Price for 5th graders and older will be \$2.00 and 4th graders and younger will be \$1.00.

CPR course planned at Pringle-Morse School

A CPR course will be offered at Pringle-Morse School on March 24 and 26. Paramedic, Michele Davis of Spearman will teach the course which will be held at 2 p.m. on March 24 and at 6 p.m. March 26th.

There will be no charge and anyone interested in the course should call the school office 733-2507.

The course is sponsored by the Pringle-Morse PTA.

HOSPITAL

Patients in Hansford Hospital are Maria Estrada and son, Oliver Barnes, Jewel Cummings, Bennie Vaughn, Glen Dobermeir, Ruby Lair, Minnie Jones, Pete Bayless and Bill Henderson.

Dismissed were Deanne Latham, and son, Garland Head, Beth Swink and daughter, Homer Flores, Kim Elbert, Toni Vera and Ina Martin.

Benefit dance set for YMCA

There will be a Benefit Dance March 23 from 8 p.m. to midnight at the YMCA. This will be a fund raiser for the birthing bed for Hansford Hospital.

Music will be by Ken Freeman's P.M.E.
Everyone is welcome.

Heart Association

The Hansford County Heart Association will meet Monday, March 11 at 7:30 p.m. at the First State Bank in Spearman, Texas. Dr. Joel Osborn, a cardiologist from Amarillo, will be speaking on arteriosclerosis. Everyone is invited to attend.

MARKETS

WHEAT	\$3.07
MILO	4.25
CORN	2.95



Livestock Show

March 15 & 16, 1985
Spearman, Texas

HANSFORD COUNTY

JUNIOR LIVESTOCK SHOW and SALE

March 15 & 16, 1985

Spearman, Texas

- Clubs and Chapters Participating in the Show
- Gruver FFA
 - Gruver 4-H
 - Spearman FFA
 - Spearman 4-H
 - Morse 4-H



Spearman 659-3990

Perryton 435-5449

228 Collard Spearman, Texas

Youth Groom Animals For Annual Livestock Shows



Hansford County Livestock show and sale will be held March 15 and 16 in the County Barn at Spearman.

Clubs and Chapters participating in the show will be the Spearman FFA, Spearman 4-H, Gruver FFA, Gruver 4-H and Morse 4-H.

The 1985 bookkeepers and auctioneer will be Jimmy Greene, Roger Odegaard, Alan Shields, Morse, Mary Burnam, Gruver, Cathy Boone, Gruver, W.B. Dickenson, auctioneer of Olton and Joe T. Venneman, Announcer.

Department superintendents will be Jerry Williams, Charles Eaton

and D.A. Cator, Sheep, Carl Kunselman, Buddy Murrell, and Bill Strawn, Swine, Glen Ray Mackie, Ricky Thompson, David Armes, Lynn Davis and James Schnell.

1985 judges include Ed Standlee, Dimmitt for the sheep, Tracy Haymes, Canyon for the swine and steers.

Board of directors of the Hansford County Livestock show are Chairman, D.A. Cator, Vice Chairman, Carl Kunselman, secretary, Burt Williams, treasurer, Roger Odegaard, and Assistant Treasurer,

Norma Jean Mackie.

Directors include David Armes, D.A. Cator, Carl Cooper, J.C. Harris, George C. Lowe, Jr., Buddy Murrell, Ricky Thompson and Jerry Williams, all of Gruver, Charles Eaton, Jimmy Greene, Carl Kunselman, Glen Ray Mackie, Roger Odegaard, James Schnell, and Bill Strawn, Spearman, Lynn Davis and Charles Reid of Morse.

Vocational Agriculture Teachers are Gary York and David Scott of Spearman and Craig Solomon of Gruver. Burt Williams, extension

service, Spearman is the 4-H sponsor.

Beginning on Friday, March 15, 1985 at 8 a.m. swine and sheep will be weighed and from 10 a.m. to 12, steers.

The grand opening of the show will be at 1:45 p.m. The Lamb Show will begin at 2 p.m. followed by the Swine Show.

On Saturday, March 16, judging of steers will begin at 9:30 and the judging contest will be at 12. At 6 p.m., floor prices will be auctioned with presentation of Showmanship

Trophies awarded.

Immediately following presentation of awards the auction sale of lambs, swine and steers. Livestock will sell in order, 1 lamb, 1 swine, 1 steer, etc.

Donor of Grand Champion Trophy-Steer, Gruver State Bank, Gruver; Donor of Reserve Grand Champion Trophy-Steer, Gruver Ford, Gruver; Donor of Grand Champion Trophy-Swine, Hansford Co. Parts and Supply, Gruver.

Donor of Reserve Grand Champion Trophy-Swine, Nelson Build-

ers, Spearman; Donor of Grand Champion Trophy-Lamb, First National Bank (In organization), Spearman; Donor of Reserve Grand Champion Trophy-Lamb, Brock Insurance agency; Donor of Animal Husbandry Award, Hansford County Farm Bureau, Spearman; Donor of Steer Showmanship Award, First State Bank, Spearman; Donor of Lamb Showmanship Award, Double D Ag Center and Donor of Swine Showmanship Award, Gruver Lumber Co., Gruver.

Scott Henderson receives certificate

Scott Henderson participated in graduation ceremonies at Texas State Technical Institute on Friday, Feb. 22, 1985, in the Amarillo Civic Center Auditorium. State Representative John Smithee, District 86, delivered the commencement address.

Scott received a certificate in Auto Body Repair and is the son of Mr. and Mrs. Lewis Henderson of 811 Womble, Gruver, Texas. He is also a graduate of Gruver High School.

Volleyball

tournament set

G&S Inc. and Gruver Insurance Volleyball teams are hosting the 1st annual Lisa Crane Memorial Invitational Volleyball Tournament, March 21, 22 & 23, 1985. Recreational Co-Ed.

Over 100 animals in county show

F.F.A. and 4-H youth who are entered thus far in the Hansford County Livestock Show to be held March 15 and 16 are: Bart Baker, Brandon Babitzke, Jason Babitzke, Berry Beck, Brooks Beck, Edward Beck, Monte Beck, Chris Brooks, Brandon Close, Michelle Cook, Mary Cook, Shannon DeArmond, Clint DeArmond, Joy Gafford, Stephanie Friemel, Chad Gardiner, Stacy Gardiner, Lance Harnish, William Harnish, Nancy Ivey, Tiki Jackson, Bonnie Jarvis, Anne Marie Jarvis, Karla Latta, Julie Latta, Leslie Latta, Tommi Latta, Joanne Odegaard, Cody Pipkin, Greg Reimer, Randie Renner, Clint Sasser, Ginger Sasser, James Tindell, Sonya Tindell, Deana Turner, Cinda Turner, August Vargas, Brandon White, Scotty Wilkerson, Kevin Williams, Lynette Williams, Jay York, Crista Urban, Mac Sheppard, Temp Sheppard, Pam Fluke, Carla Greene, Heather McRee, Heidi McRee, Kevin Nelson, Kyla Nelson, Nikki Strawn, Chris Strawn, Ty Martin, Todd Martin, Clint Patterson, Will Black, Mark Pearson, Mike Pear-

son, Rhonda Ross, Mark Brown, Tracy Thompson, Brandi Schneider, Carrie Pearson, Laura Pearson, Misty Savage, Michele Savage, Sara Sanders, Suzanne Sanders, Ross Donahue, Tracy Scribner, Beverly Burton, Carla Burton, Paul Trooper, Dallas Trooper, Chad Davis, Edward Mayfield, Dee Mayfield, Eva Babbs, Shell Babbs, Kim Boone, Laneida Burnam, Davonna Cator, Loyd Cator, Tina Cator, Tasha Haight, Brian Hoel, Mathew Hoel, Rod Karlin, Melanie Morris, Michael Park, Theron Park, Brady Pool, Shannon Pool, Rex Ralston, Jill Schell, Gina Schell, Kalee Shook, Chris Spivey, Kevin Spivey, Brent Stedje, Tim Stedje, Holly Venneman, Klint Venneman, Ashley Wagner, Brent Wagner, Trevor Williams, Raquel Mathews, Ryan Mathews, Carey Kauffman, Chris Kauffman, Misty Payne, Lisa Payne, Brian Payne, Marci Roberts, Brooke Roberts, Debbie Burton, Christie Burton, Crystal French, Lance Sparks, Lee Bob Harper, Janelle Haefner, Jason Haefner, Stephen Groce, Paul Groce, Tek Ferguson, Lee Stedje, and Krista Stedje.

NABW has quarterly meeting

The Texas-Oklahoma Panhandle Group of the National Association of Bank Women (NABW) is having their quarterly meeting and a management appreciation dinner in Amarillo, March 9.

Mrs. Marge Caldwell, a professional counselor and teacher, will be presenting the program. Mrs. Caldwell, from Houston, has authored three books *The Radiant You*, *Capsules for Confidence and Speak Out with Marge*.

A luncheon, business meeting and afternoon program will be held at Tascosa National Bank and will include guided tours of the new facility. Dinner at the Tascosa Country Club will conclude the day's activities.

NABW, with nationwide membership of over 30,000, is the only association which represents the interests of women financial executives. It's programs are for the purpose of encouraging professional excellence and career growth for all women in the financial world.

Guests are welcome to attend the Amarillo meeting. Please contact Margaret Ralston of Gruver for information concerning membership in NABW and registration for the meeting.

We have a colleague who regularly cleans up at the track - he's known as the Wizard of Odds.

Calendar of Events

MARCH CALENDAR OF EVENTS

March 7--Choir contest at WT. Open house in all schools from 7-9 p.m.

March 8-9--Stratford Tennis Tourney

March 9--Gruver track meet, (Jr. High and High School boys and girls).

March 11--PTA-one act play at 7 p.m.

March 12--4-H, County Barn at 7 p.m.

March 15--Holiday, Hansford County Stock Show

Jr. High boys and girls track at Groom.

March 15-16--Perryton Tennis Tournament.

March 16--Top of Texas at Pampa; varsity girls track at Groom; North Zone One Act Play at Follett; (Gruver practice 12:20, performs at 5:00).

March 18--Band clinic at 6:30 p.m.

March 19--District One Act Play at Miami at 5:00 p.m.; Ag Mechanics Contest in Amarillo.

March 22-23--Spearman tennis tournament; Jr. High and High School boys and girls track meet in Stinnett.

March 23--District UIL Writing in Booker; Livestock Contest in Clarendon.

March 26--Band Contest in Panhandle

March 28--PTA drug-alcohol abuse workshop for parents from 7-10 p.m. in the school cafeteria.

March 29-30--District UIL speaking at Frank Phillips; varsity girls track in Amarillo; varsity boys track in Whiteface; WT ag contest.

JR. HIGH CALENDAR OF EVENTS

MARCH

March 7--Open House from 7-9 p.m.

March 9--Report cards go out.

March 9--Gruver track meet, boys and girls.

March 12--Memory Mate Pictures

March 15--No school, county stock show; junior high track in groom, boys and girls.

March 22-23--high school and junior high track in stinnett, boys and girls.

March 23--UIL writing in Booker.

March 30--UIL speaking at *Frank Phillips.

"Tele-Help has the answers to questions about your phone service."



Angie Gatica Service Representative

With all the changes going on, it's easy to have questions about your phone service. But where do you go for answers?

Southwestern Bell Telephone wants to help. That's why folks like this have created Tele-Help.

Tele-Help is our way of helping you get the answers you need. It's a program that includes a series of useful booklets about everything from choosing a long distance service to home repair.

They're easy to read and simple to understand. And best of all, they're free.

Just send in the coupon and we'll send you the

Tele-Help booklets of your choice. It's that simple. So start getting the answers. Get Tele-Help.

To get your TELE-HELP booklets call 1-800-325-2686, extension 81, Monday-Friday, 8 a.m.-5 p.m. Or, fill out and mail this form to the address on the coupon.

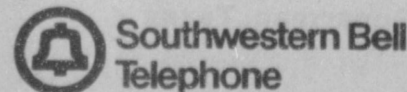
TELHELP - Southwestern Bell Telephone - Drawer 8 Wheeler Station - St. Louis, MO 63188 EXT. 81

To order your free Tele-Help booklets, check here:

SET I
 A Guide to Your Phone Service
 A Guide to Your Phone Bill
 A Guide to Home Phone Repair
 A Guide to Telephone Equipment
 A Guide to Long Distance Service
 A Guide to Savings Money on Phone Service

SET II
 A Guide to Home Security
 A Guide to Establishing New Service
 A Guide to Inside Wiring in Your Home
 A Guide to Local Service Options
 A Guide to Handling Annoying Telephone Calls

NAME _____
 ADDRESS _____
 City _____ STATE _____ ZIP _____
 (AREA CODE) PHONE _____
 Please allow two to three weeks for delivery.



Texans providing telecommunications for a growing state.

Panhandle Implement Company of Texhoma, and Bert Junior Allard, are pleased to announce that they have expanded their business with the opening of

PANHANDLE IMPLEMENT COMPANY OF GUYMON

We're here to serve your needs for all new and used John Deere farm equipment.

We also service and sell a complete line of John Deere lawn and garden equipment.

We're pleased to be a part of Guymon —

PANHANDLE IMPLEMENT CO. of Guymon Texhoma

Phone (405) 338-8511
 John Deere design, dependability and dealers make the difference



PDRA asks state grant

An application for up to \$15 million in Texas water development funds will be filed Thursday by Palo Duro River Authority to assist in building a lake for municipal water supply for North Plains cities.

Johnnie Lee of Spearman and Bob Davis of Amarillo, bond advisor, will take the application to Austin, reports Lee, PDRA manager.

The proposed lake would provide water for member cities and counties, including Dumas, Sunray and Cactus, Stinnett, and Moore and Hansford counties.

And, another member may be Ochiltree county, reports the PDRA manager, who met last week with civic leaders from Perryton.

The application for \$15 million will be made to the Texas Department of Water Resources for development funds for the reservoir, planned for the junction of Palo Duro and Horse Creeks, northwest of Spearman.

Several months ago, TDWR indicated that some

state funds probably would be available for the project.

Moore county and the three cities in the county voted Jan. 19 to join PDRA. A similar election joined the City of Stinnett to the river authority.

Cost for the project is estimated at approximately \$55 million.

Included in plans are a dam, a 90-mile distribution pipeline and a water treatment plant. The lake is designed to impound some 69,000 acre feet of water.

"I feel we are going to get a lot of help for this project from the water resources board," Lee declares. "The state can buy up to 50 percent of the water in storage at the lake or purchase any bonds we issue."

The application which will be made this week will be based on the present membership of the district -- but the application may be amended to include Ochiltree county if residents there decide to join.

Lee bases the possibility of Ochiltree membership on a meeting he had last week at the PDRA headquarters in Spearman with 27 residents and civic leaders from Perryton.

"Their position is very encouraging," the PDRA manager declares. "The petition they submitted last fall with 217 signatures is still good but the board will have to consider it again."

Ochiltree annexation may be on the agenda for the water authority board of directors March 6.

Lee says an annexation vote could be called April 6 when school and water districts and cities hold their spring elections.

"The time will be short but the election can be held then," he says. "If Ochiltree votes to join the district, the PDRA can amend its application to the state water board. We need to go ahead now to tie down the state funds for our project."

Todd Winders receives degree

Todd Winders participated in graduation ceremonies at Texas State Technical Institute on Friday, Feb. 22, 1985, in the Amarillo Civic Center Auditorium. State Representative John Smith, District 86, delivered the commencement

address. Todd received an Associate of Applied Science Degree from Auto Mechanics Technology and is the son of Comfort Winders of Box 904 Gruver, Texas. He is also a graduate of Gruver High School.

Gary Gilbreath earns

"Distinguished Student" status

Gary Z. Gilbreath from Gruver, fall graduate in agricultural engineering, has earned "Distinguished Student" status at Texas A&M University.

Recipients of the "Distinguished

Student" honor must earn at least a 3.25 grade point ratio, out of a possible 4.0, during the most recent grading period. The student must also be registered for 15 semester hours.

Busy Hands Hobby Club

The Busy Hands Hobby Club met Thursday, February 28th at the home of Mary Jo Robinson.

The afternoon was spent happily working on various projects.

Those in attendance were Joyce Duncan, Lousie Evans, Bessie Mitts, Alma Ross and our hostess Mary Jo. We welcomed Mrs. Carolyn Lunsford, Mrs. Opal Eagle and Mrs. Brenda Ross as our guests.

Refreshments were served to top off a very enjoyable day.

Obituaries

Margaret E. Lahmiller

Margaret E. Lahmiller, 97, died Tuesday.

Services were at 11 a.m. Friday in Boxwell Brothers Chapel with the Rev. Ray Crosire, pastor of Immaculate Conception Catholic Church, officiating. Graveside services were at 2:30 p.m. in Memorial Park Cemetery in Amarillo by Boxwell Brothers Funeral Directors.

Mrs. Lahmiller was born in Yale Kan., and had been a longtime Texas Panhandle resident. She had been a resident of Amarillo before moving to Perryton eight years ago.

Survivors include three sons, Lee Madden of Lamar, Colo., Charlie Madden of Spearman, and Earl Madden of Amarillo; a brother, John Dillion of Colorado Springs; a sister, Katie Arnold of Phoenix, Ariz.; six grandchildren; seven great-grandchildren; and six great-great-grandchildren.

Eva McCammond

Eva McCammond 91, of Las Animas, Colo. died Sunday.

Services were at 2:00 p.m. Wednesday in Griffy and Harber Funeral Chapel in Las Animas, Colo. Survivors include a daughter, Mildred Martin, a son, Raymond McCammond, two grandchildren Ray Martin and Charolette Ford all of Spearman, and several great grandchildren.

One Act Play Monday

There will be a one act play Monday night at the 7:00 in the Gruver High School auditorium. The title of the play is "Breaking Up Is Hard To Do". Everyone is invited.

Cleo Walker

Funeral services were held for Cleo Walker Saturday in Henson Funeral Chapel in Guyton, Okla., with the Rev. Grady McCollough, pastor of Victory Memorial United Methodist Church, and the Rev. Jim Smith, associate pastor, officiating. Burial was in Gruver Cemetery.

Mrs. Walker died Thursday at the age of 67.

Mrs. Walker was born in Barstow. She married Ross Walker in 1942 in Odessa. She was a member of First Christian Church.

Survivors include her husband; three daughters, Sandra Preston of Owassa, Okla., and Judy Clemans and Martha Linde, both of Guyton; a sister, Zella Pierce of Clovis, N.M.; eight grandchildren; and two great-grandchildren.

A Cleo Walker Memorial has been established for the Golden Age Citizens Club. Memorials will be accepted at the Gruver club or Henson Funeral Home.

A book is a friend

A book is a friend; a good book is a good friend. It will talk to you when you want to talk, and it will keep still--and there are not many friends who know enough to do that. A library is a collection of friends

Lyman Abbott

Pick up a friend at the Gruver City Library each week day during the hours of 2-6 p.m. Carolyn Fletcher, librarian, will help you choose a friend if you don't feel qualified.

Puzzle: find the one piece of tomato in all the lettuce served as a mixed salad in some salami foundries we could name.

Book Review

IF TOMORROW COMES by Sidney Sheldon

This book continues to be on the best-seller list, and best-selling novelist Sidney Sheldon now introduces the most intriguing heroine of all - a woman who lives on the cutting edge of danger, playing for the highest stakes in a deadly game. Lovely, idealistic Tracy Whitney is framed into a fifteen-year sentence in an escape-proof penitentiary. With dazzling ingenuity, she fights back to destroy the untouchable crime lords who put her there. With her intelligence and beauty as her only weapons, Tracy embarks on a series of extraordinary escapades that sweep her from New Orleans to London, Paris to Biarritz, and Madrid to Amsterdam. In an explosive confrontation, Tracy meets her equal in irresistible Jeff Stevens, whose past is as colorful as Tracy's. And always in the background, watching and waiting, is the malignant genius Daniel Cooper, who must destroy Tracy in order to ensure his own salvation.

Gruver City Library has the complete Sackett Series (17 vol.) by Louis L'Amour. These are but a few of the good books available in our Western section. Our purpose is to serve your reading needs, and to strive to provide what you, our users, ask for. Come visit and discover what your community has to offer in the "reading" area! LIBRARY HOURS: 2:00-6:00 p.m. Monday - Friday. Phone 733-2191.

Need a

particular book?

Needing a particular book that is seemingly nowhere to be found? Call or come by Gruver City Library with your requests. If the book is not available in our library, all it takes is the dialing of the phone for Interlibrary Loan in Amarillo to start a computer search for the book you need. Whether it is for a research paper, information on antiques, hobbies, etc., or just for your reading pleasure--give us a try!

That's Right . . .

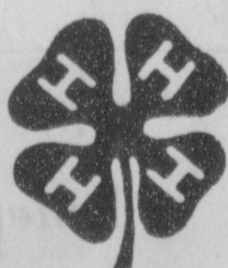
We're Tootin' Our Horn

ABOUT THE HANSFORD COUNTY STOCK SHOW

Friday and Saturday March 15 & 16

at the Spearman county barn.

Sale time is 6:00 P.M. Saturday March 16th



WE SALUTE... our FFA and 4-H People

See the great job they are doing...

Attend the Livestock Show and Sale.



Palo Duro Feeders

733-2416

Walt Olson Manager

10 Miles S. of Gruver



New minister joins Church of Christ



Harold and Thelma Sneed

After five and one-half years of preaching in Tehachapi, California, Harold and Thelma Sneed have moved to Gruver to work with the

Church of Christ here. Their arrival in the city came at 2:30 p.m. last Thursday. "Gruver was a welcome sight after three days on the road," Harold said.

The Sneeds are returning "home" to the Panhandle. Harold and Thelma were both raised in Lubbock county. Work assignment took them from the Panhandle-South Plains area in 1961. Though both of them grew up on the farm, they only remained on the farm two years after they married. That two years, of farming was spent in Swisher county, west of Kress.

The desire to preach built up over a period of years. Encouragement came from leaders and members of the church everywhere the Sneed family worshiped through the '50's and early '60's. When decision was made to leave the farm after the 1954 crop year, it was to attend Texas Tech, pursuing a degree in math. Even then

encouragement was given to attend a Christian college and prepare to preach. The decision to preach did not come for another eleven years, however. Teaching Bible classes on a weekly basis and serving as a deacon in the church in Roswell helped to spur that decision.

While still a student at Tech, Harold was employed by Southwestern Public Service Company in Lubbock. When family responsibilities forced withdrawal from college, fulltime employment with SWPS became reality. While still in apprenticeship training, Harold was asked to transfer to Roswell, N.M. to fill a vacancy there in the meter department. This move on June 1, 1961 was the first departure from the area where they grew up. They both stated, "It has taken almost twenty-four years to get back to home territory. It is good to be back."

Thelma and Harold have been

active members of the Church of Christ since the earliest days of their marriage in 1952. They have two sons. Michael was born in July, 1954 and Ricky in January, 1958. Mike and his wife, Caren, live in Mansfield, Texas. They have a little daughter, Cassie, who celebrated her first birthday February 5th. Rick and his wife, Kelly, lived in Tehachapi, but he is now in the Dallas-Ft. Worth area seeking employment. They have a young son, Nicholas, twenty-one months old. Rick helped his parents with their move before going on to Mansfield.

After two years of study at the Preston Road School of Preaching in Dallas, Harold's first fulltime work with the church was in Luling, Louisiana, near New Orleans. Four years and seven months were spent there, returning to Dallas in 1972 to work with the Garden Oaks Church of Christ in the Oak Cliff area. Merger of that congregation with

Trinity Heights Church of Christ brought about a move to Mansfield, Texas just one year later. Six years were spent in Mansfield before moving to California in 1979.

An invitation from the church here brought the Sneeds to Gruver for the first time in January of this year. Even as they faced a bitter cold "blue norther" on that first visit, they were immediately caught up in the friendly atmosphere of the church and community. "It was love at first sight," Thelma said. A delightful relationship with church members and townspeople is anticipated.

"We are happy to be in Gruver," Harold stated. "We feel very much at home here and have been warmly received by all." The Sneeds are sports enthusiasts. They will fit well in the winning tradition of the school and community.

Shower honors recent bride

Recently wed Mrs. David (Beth Ann) Rimmel was the center of attention at a charming shower at the home of the C.A. Davis's, Saturday, February 23 with guests calling between the hours of 2:00 p.m. to 3:30 p.m.

Centering the table which was laid with an ecru lace cloth over lavender was an exquisite arrangement of peach silk flowers in a cut glass bowl. Completing the table decor were the silver coffee service and the silver punch bowl from which peach punch was served.

Presiding at the serving table was Mrs. Steve Crable. Dainty white cake squares were served during the calling hours.

A corsage of white rose buds was presented to the bride with white carnation corsages being given to the bride's mother, Mrs. Rosemary Kumpan of Amarillo; the groom's mother, Mrs. Angie Rimmel of Gruver; and the groom's grandmother, Mrs. Lowie Rimmel of Guymon.

Hosting the delightful Saturday soiree were Mesdames Fred Davidson, James Deakin, C.A. Davis, Howard Nash, T.J. Bergin, Zay Gilbreath, John Armes, Mavis Hart, Don Hudson, Kermit McKee, Benny Wilson, Steve Beville, Don Hart, L.A. Williams, Edna Marie Williams, and Bob Crawford.

Also included among the hostesses were Mesdames Van Bradford, Del Cluck, Donnie Thoreson, Keith Whitaker, Dean Sparks, Bill Maupin, Byron Peddy, Leon Bagwell, Pat Holt, Hootie Cline, Dayton Barkley, J.C. Harris, Darrel Wright, Reika Gibson, Val Winger, Jerry Mills, Jon Hart, all of Gruver, and Mrs. Horace Curlee of Stinnett.

Among those from out of town was Pat Tyler of Guymon.

Mrs. Nelson nominated for KVII volunteer

A Gruver volunteer has recently been nominated for the 7 Who Care Volunteer Recognition Program. Marguerite Nelson was submitted to KVII-TV and the Volunteer Action Center of Amarillo for consideration as one of the seven Outstanding Individuals who have made an impact on their community.

"Each of the seven selected will receive \$500 plus a bronze award. The organization for which they volunteer will also receive \$500," announced Debra Patterson, Director of the Volunteer Action Center. "Two hundred and seventy four individuals were nominated for 1985," she said. "The individuals nomination forms were recently

judged by a panel of 19 area community leaders. The judges had to make some very difficult discussions as many deserving candidates were nominated," commented Mrs. Patterson.

The seven winners will be announced at an awards dinner to be televised on April 23 at 7:00 P.M. on KVII-TV.

The Harvest Moon, the full moon nearest the autumnal equinox, ushers in a period of several successive days when the moon rises soon after sunset. This phenomenon gives farmers in temperate regions extra hours of light in which to harvest their crops before frost and winter come.

Xi Psi Kappa Meets

Members of Xi Psi Kappa met in the home of Mary Jo Cluck on Tuesday, March 19, 1985 at 11:00 a.m.

President Mary Jane Hudson presided over the meeting. Plans were discussed for the fund raising dance to be held March 23, 1985. All the proceeds will go to the Swimming Pool Fund.

After the meeting adjourned, members were served lunch where they enjoyed visiting and eating.

The hostess gift was won by Mary Jane Henson.

Members present were Mms., Terry Etling, Kathy Stedje, Mary Jo Cluck, Mandy Derrington, Alexa Thoreson, Fran Duncan, Marian Shapley, Regina Barkley, Mary Jane Hudson, Kathy Logsdon, Linda Venneman and Lee Harper.

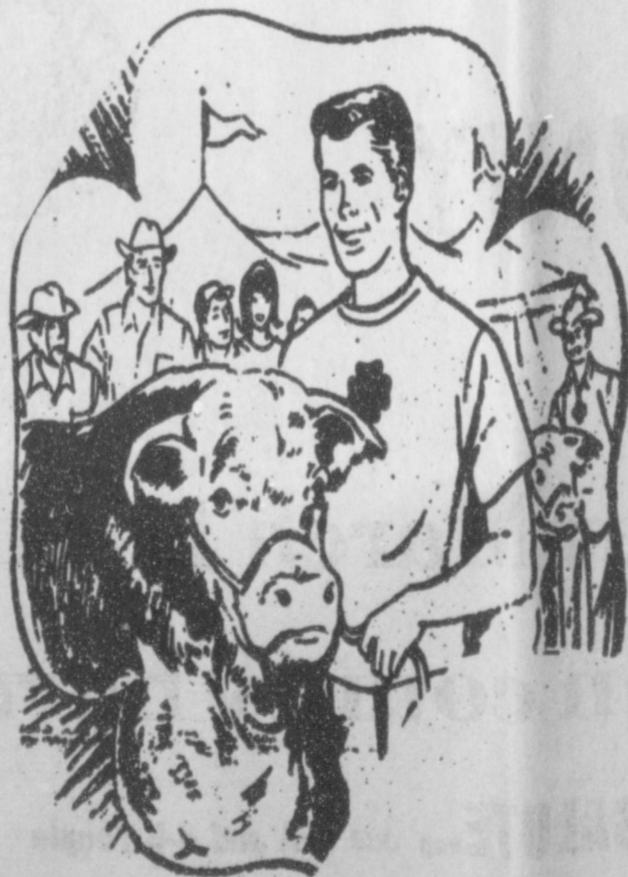


Luke Pittman, 42, misses block in to assist during Gruver-Nazareth game. as Chad Logsdon, 14, is moving

The Spotlight Is On The Annual Junior Livestock Show & Sale

County Ag Barn, Spearman, Texas

March 15 & 16, 1985



At The County Show Barn Spearman, Texas

COOP GHP Ruby Premium Diesel Fuel

CO-OP GHP Ruby Premium Diesel Fuel is the high-quality fuel with many controlled features needed for today's diesel engines. Most of today's diesels are turbocharged and putting out more power than ever before. That's why they need what our GHP Ruby Premium Diesel Fuel has:

- High cetane quality for quick starts, fast warm-up and smooth operation
- Controlled viscosity for low injector wear through proper lubrication
- Low sulfur to reduce deposits and corrosion and to prolong engine lubricant life
- Good stability for longer storage life
- GHP additive to keep injectors clean longer, ensuring proper spray pattern, injection pressures and maximum power.

Call us today for fast on-your-farm delivery.

Consumer Sales Co.

Standing together. Standing strong.

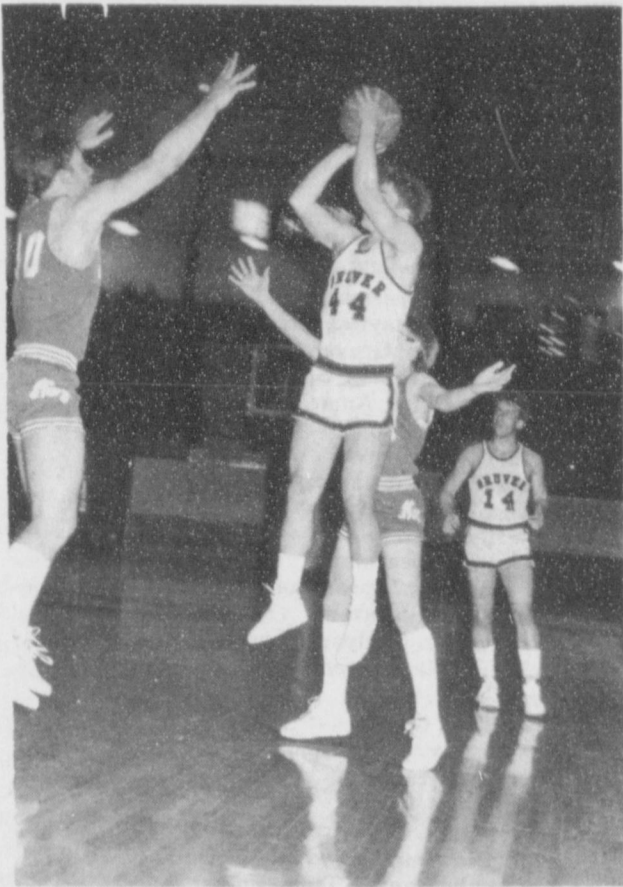


421 W. Kenneth

659-2012

Spearman, Texas

Support the Future Farmers of America and 4-H Clubs Livestock Show and Sale



Kip Pittman, 44, puts one over Nazareth player as Chad Logsdon, 14, watches.



Gruver Greyhounds leave for dressing room at half time during Gruver-Nazareth game. Players include Rod Been, 22; Trevor Williams, 40; Steve Duncan, 10; Shawn Bratton, 50; and Clay Smith, 24.

HANSFORD COUNTY JUNIOR LIVESTOCK SHOW AND SALE

Buyers of Grand Champions 1984

Sparks Bros. Drilling, Gruver Steer
 Gruver State Bank, Gruver Barrow
 Hansford Implement, Spearman Lamb

Buyers of Reserve Grand Champions 1984

Henderson & Williams, Gruver Steer
 Gruver State Bank, Gruver Barrow
 DGC Feeders, Gruver Lamb

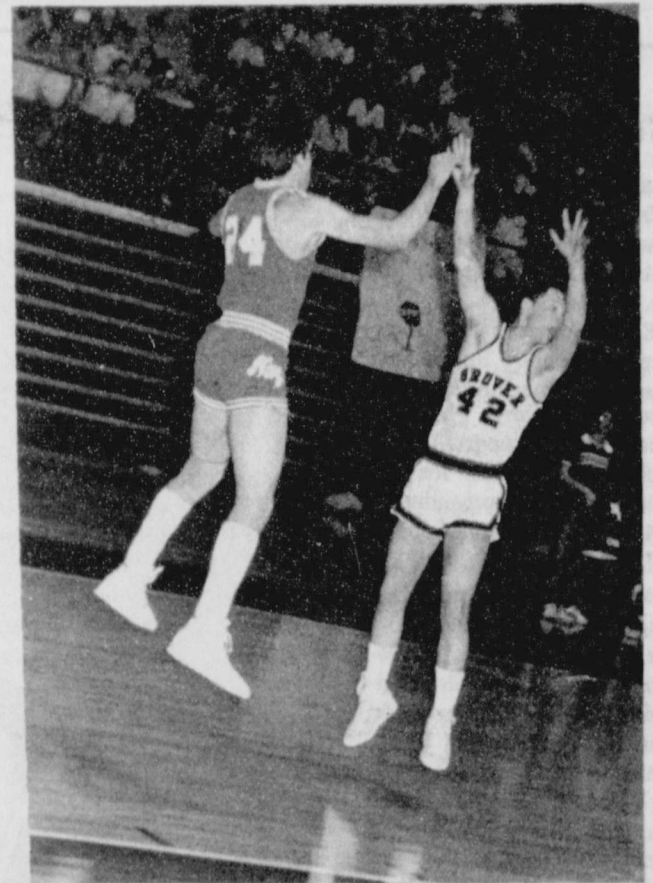
Junior Livestock Auction 1984 Buyers

The following list of firms and individuals purchased one or more animal at the 1984 Junior Livestock Auction, promoting our most important crop - YOUTH.

Caprock, Ind., Gruver
 Williams Bros., Gruver
 Hansford Imp., Spearman
 Gruver State Bank, Gruver
 Sparks Bros. Drilling, Gruver
 Hergert Pontiac, Spearman
 Hansford Co. Vet Clinic, Spearman
 Continental Grain, Gruver
 Lynn Hart, Gruver
 Erlis Pittman, Gruver
 Bill Logsdon, Gruver
 Baker & Taylor, Spearman
 Gruver Farm Supply, Gruver
 Marie Crawford, Spearman
 First National Bank, Perryton
 First State Bank, Spearman
 Linda Venneman, Spearman
 Bort Insurance, Gruver
 McCloy Feedlot, Morse
 Frontier Feedyard, Gruver
 Van Roach Cattle, Gruver
 Spearman Super Service, Spearman
 North Plains International, Spearman
 Dayton Barkley, Gruver

BOX BOUNTY — Lots of uses for those pretty plastic mesh boxes Spring's berries come packed in. Line them with sphagnum moss; plant with small flowering plants. Weave ribbon in and out of openings; fill with soaps or bath beads, cover with clear wrap and give as gifts. Or, make a cage of two boxes tied together with twist ties and use them in the dishwasher for small objects like nipples, baby bottle caps, etc.

CURTAIN FRESH — Bring Spring's sparkle to dining or bedroom windows with printed sheets. Select "springy" patterns, and, if you drape expertly, no sewing is necessary. Install wooden dowels at window top; run sheets through using hems. Swag sheets at top to suit your decor and eye, and tie gathers to dowel tips on either side. Use wide ribbon or tiebacks made from unused hems. Let streamers fall to the floor. A fresh look at little cost.



Luke Pittman, 42, jumps to block a pass to Nazareth player.

Musings

When Paul says, "Be careful for nothing" he does not mean one should be careless but uses the word "careful" in the archaic sense of "be full of care, anxiety."
 "Be careful for nothing; but in every thing by prayer and supplication with thanksgiving let your requests be made known unto God. And the peace of God, which passeth all understanding, shall keep your hearts and minds through Christ Jesus."
 — Phil. 4:6-7

© 1985 Suburban Features

Since 1886, the Statue of Liberty, enlightening the world, has stood as a symbol of freedom in New York harbor. It also commemorates French-American friendship, for it was given by the people of France. The statue was designed by Frederic Auguste Bartholdi (1834-1904).

Anyone who believes the fight game is languishing should move in next door to our neighbors.
 © 1985 Suburban Features



Guess who turned 41 the 28th of February!



It's
SHOW TIME

HANSFORD COUNTY

JUNIOR LIVESTOCK SHOW and SALE

March 15 & 16, 1985
 Spearman, Texas

Clubs and Chapters Participating in the Show
 Gruver FFA Spearman FFA
 Gruver 4-H Spearman 4-H
 Morse 4-H

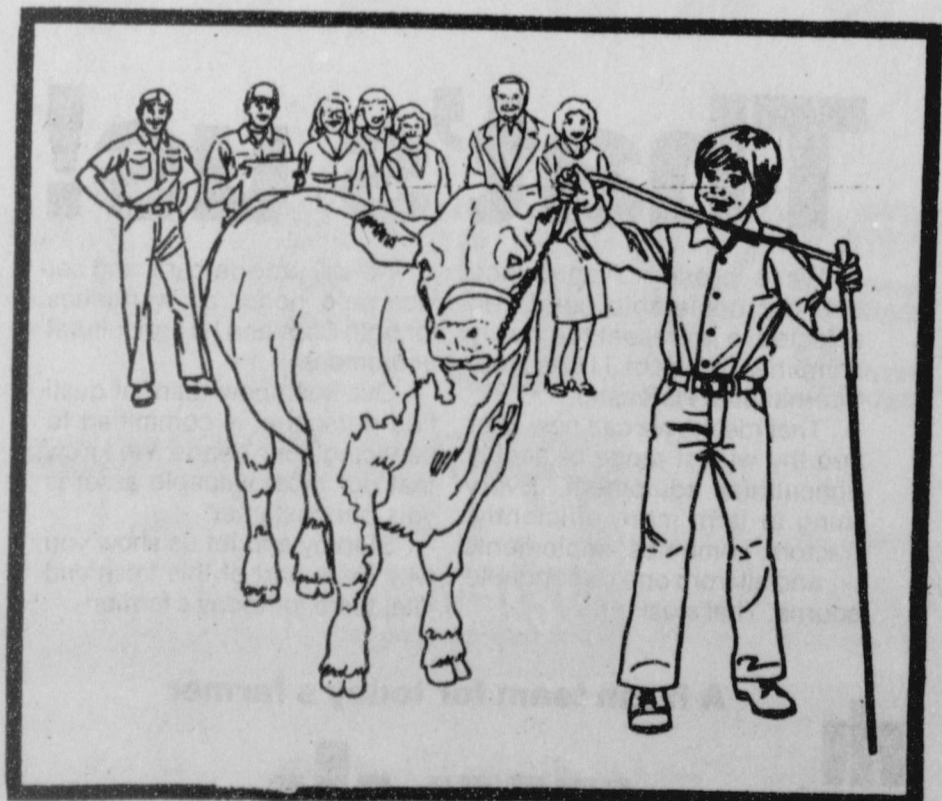
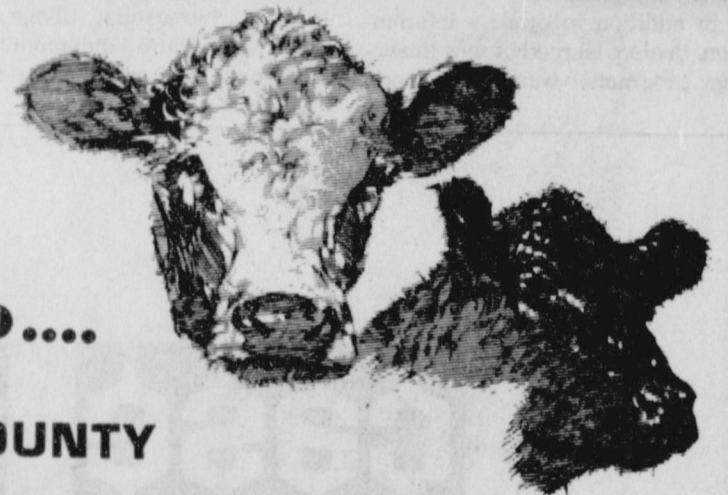


Sponsored by

We're
 Looking
 Forward To....

HANSFORD COUNTY

Livestock Show



First National Bank
 Perryton, Texas
 806/435-3676
 Member FDIC

Case IH dealers convene for historic meeting

It was agricultural history in the making last week in Las Vegas when Case IH dealers from around the country joined forces for the first time.

Dick Elbert, owner of North Plains International, Spearman's new Case IH agricultural equipment dealership, North Plains International, joined nearly 2,200 other dealers principals for the formal kick-off of the expanded JI Case agricultural equipment operation. On January 31, 1985, the U.S. Justice Department gave the final green light to Tenneco Inc.'s purchase of International Harvester's agricultural equipment business, which has now been merged into Tenneco affiliate, J I Case, headquartered in Racine, WI.

A high point of the dealer meetings was the unveiling of colors and graphics for the new Case International product line. Displayed on a Case IH 2096 tractor, the new graphics feature a major IH hallmark -- the characteristic IH red.

The new logo retains the best of both traditions, putting the two established logos side by side -- Case IH. This fresh look will soon be a familiar sight across the continent.

"There was a terrific feeling in the air," said Dick Elbert. "The entire Case IH dealer organization was excited -- excited to see the equipment, excited about the new look, the new logo, the new colors -- and excited to be a part of the new Case IH Agricultural Equipment dealer network."

"Our Case IH dealers can offer the most complete product line in the industry, backed by the financial strength of Tenneco," he said.

Case IH dealers participated in intensive training seminars on product features such as the Case IH Intelligence Center, CDC engines and power transmissions. The seminars also profile equipment lines including combines, hay and forage tools, planters and tillage equipment.

In addition to product information, dealers learned of new financing programs, warranties, parts



availability and other information vital to farm customers.

"I think our customers will be delighted the way things are shaping up," said Dick Elbert. "Both Case and IH warranties will be fully honored, parts availability will be excellent -- and Case financing, warranties and service will just be outstanding," he said.

New Case IH dealers carry two and four-wheel drive agricultural tractors up to 400 gross engine horsepower, plus a full line of planting, harvesting, tillage and other agricultural equipment. The equipment line reflects the tech-

nological expertise of two strongly innovative companies.

Early Riser Cyclor Air planters and Axial-Flow combines offer unparalleled productivity and efficiency. The Case IH Intelligence Center, standard on most tractor models, is the industry's most comprehensive electronic monitoring system.

New Case state-of-the-art diesel engines, already featured in the Case 96 Series tractors, will gradually be phased into all of the company's agricultural and construction equipment.

Case is a worldwide manufactur-

er and marketer of construction and agricultural equipment.

Tenneco Inc., with headquarters in Houston, is a \$15-billion, multi-industry company with major operations in integrated oil, natural gas, pipelines, construction and agricultural equipment, automotive components, chemicals, shipbuilding, packaging, life insurance and agricultural/land management.

People who see their lives flash before their eyes quite often have a home movie nut in the family.

BUYERS continued

- Wayne Shook, Gruver
- DGC Feeders, Gruver
- Henderson & Williams, Gruver
- Billy Logsdon, Gruver
- Farber Trucking, Spearman
- Growers Ag Service, Gruver
- H & H Water Well Service, Spearman
- Bunkhouse, Spearman
- Sparks Bro. Spraying, Gruver & Spearman
- Tommy Bergin, Gruver
- First National Bank, Spearman
- Browning Higgs, Amarillo
- Equity, Spearman
- James Stedje, Gruver
- Moose Lodge, Spearman
- Dutch Clawson, Gruver
- Leon Hobbs, Gruver
- Brock Ins., Spearman
- Joe Venneman, Spearman
- Britt Jarvis, Spearman
- Morris & Son Feedyard, Gruver
- Jack Gillispie, Gruver
- Stedje Bros., Gruver
- Kevin Holt, Gruver
- Preston Smith, Spearman
- Hitchland Grain
- John Armes, Gruver
- H & M Hot Oil Service, Spearman
- Kirby Clawson, Gruver
- Panhandle Bank & Trust, Borger
- Zay Gilbreath, Gruver
- Berry Grain, Waka
- Lone Star Service, Gruver
- Consumers Sales Co., Spearman
- Verlin Beck, Spearman
- Clark Spraying, Spearman
- A & H Oilfield Service, Spearman
- A.D. Reed, Spearman
- Val Winger, Gruver
- Brown, Graham & Co., Spearman
- G & S Inc., Spearman
- Donahue Ditching, Spearman
- George Lowe, Gruver
- Cecil Ralston, Gruver
- Gordon & Dennis Stedje, Gruver
- Pringle-Morse National Bank, Morse
- Mrs. Roy Nollner, Spearman

EGG-CITING — Make Easter masterpieces with hardboiled eggs and common household items. You need several colors of dye in small bowls. Dip the egg for overall color, then block off parts of the shell and dip again. Use things you find around the house to make designs

HICCUPS — Some old fashioned cures can still be effective. Swallow some granulated sugar or crumbled soda crackers without using moisture. Try sipping ice water in small sips, or drinking from the far rim of the glass while bent from the waist.

— rubber bands, tape, paste-on stars and other designs. Make patterns by using bits of parsley or other greenery and tying it to the egg with cheesecloth. Be creative by using crayons to write names and/or make patterns and dip and redip eggs for splashy colors.

CONTAINER TIPS — You can grow mini vegetables at home regardless of how little space you have and despite time limitations. Write for a free booklet, "Growing Vegetables in Containers," #615K, to the Consumer Information Center, Pueblo, CO 81009.
© 1985 Suburban Features

case ih

That's us!

We're proud to announce that our dealership has been selected to represent the newly combined forces of J I Case and International Harvester.

That means we can now offer you the widest range of quality agricultural equipment. Everything to farm more efficiently: tractors, combines, implements ... and all from one dependable source. That's us!

We will provide parts and service, and honor all warranties, for both Case and IH agricultural equipment.

Our fresh new team of qualified personnel is committed to servicing your needs. We know that our most valuable asset is you, our customer.

Stop by and let us show you why we're part of this fresh and vital team for today's farmer!

A fresh team for today's farmer



case ih

NORTH PLAINS INTERNATIONAL, INC.

Highway 15 West
Box 656
Spearman, Texas 79081
Phone: 806/659-3743



ALLSUP'S
CONVENIENCE STORES

PRICES EFFECTIVE
MARCH 7-9, 1985

GROCERIES-ICE- MILK- CHIPS & DIPS-
SOFT DRINKS- SNACKS- HOT COOKED
FOODS- SELF SERVE GAS-MONEY ORDERS-
WHILE SUPPLIES LAST

ASSORTED FLAVORS
GRANDMA'S
COOKIES

10 1/2 OZ. BAG

\$1.69

COOKED FOOD SPECIAL AS FEATURED ON TV
GREAT SOUTHWESTERN FLAVOR
ALLSUP'S
HOT LINKS

FOR

2.99

SALAMI, BOLOGNA, P & P LOAF, LUNCHEON LOAF

LUNCH MEATS

DECKER
8 OZ. SIZE

69¢

NEW TO OUR STORE

COCA-COLA

REG. \$2.99

3 LITERS **\$1.69**

HOMOGENIZED

BORDEN'S
MILK

GAL. CTN.

\$2.69

ALLSUP'S

MONEY FAST & CONVENIENT
ORDERS UP TO \$299.99 EACH

19¢

Fast-Het

SANDWICH CHOPPED
S.S.G.

\$1.39

EACH

ASSORTED FLAVORS

BORDEN'S
ICE CREAM

1/2 GAL. RND. CTN.

\$1.69

ASSORTED FLAVORS
BRACH'S
CANDIES

4 1/2 - 9 OZ. BAG

89¢

Clay Hobbs wins calf scramble

Clay Hobbs, a 14-year old FFA member from Gruver, Texas, won a \$600 calf scramble purchase certificate sponsored by La Petite Academy at the Houston Livestock Show and Rodeo's Feb. 23, 1985 evening performance.

The calf scramble is an event in which about a dozen wild calves are turned loose in the vast Astrodome arena to be chased by approximately twice as many eager, energetic youngsters. To win, the contestant must catch a calf, halter it and drag it across the finish line.

The winner then receives a \$600 purchase certificate with which to buy a registered beef or dairy heifer. The youngster must keep accurate records pertaining to the animal's raising, and must submit progress reports to both the livestock show and the individual sponsor. The entire project must be supervised by the winner's vocational agriculture teacher or county extension agent.

The project officially ends when the winner brings the animal to the following year's Houston Livestock Show to participate in special scramble heifer showing competition.

Aided immensely by sponsor support, the Houston Livestock Show and Rodeo has given 9,898 quality animals, valued at more than \$2 million, into the hands of Texas youth.

The purchase of these animals also affects the community in which they are bought and raised. A research study by two Stephen F. Austin State University professors reports that through the purchase of feed and supplies, as well as the purchase of the calf from purebred herds, the calf scramble program generates more than half a million dollars in economic activity throughout the state.



Shown left to right at the presentation following the scramble are: Craig Solomon, Ag. Teacher; Clay Hobbs, Winner; Carol Hammer, Sponsor; Loretta Weaver, Sponsor.

The calf scramble is just one of the exciting events held at the Houston Livestock Show and Rodeo, a total charity benefiting youth and supporting education.

1984 Non-Sale Supporters

- Jace Dawson
- Bill & Dorothy Cator
- North Plains International
- Kay Hobbs
- Golden Spread Sales
- Judy Stedje
- James Cunningham
- Southwestern Public Service
- Continental Grain Co.
- Zay Gilbreath
- Medford DeCamp
- Gene Cudd
- Dennis & Kathy Stedje
- Mr. & Mrs. Gordon Stedje
- C & L Applicators
- Consumers Sales Co.

- Main Street Store
- Gruver Equity
- Razor Farms
- Pat Patterson
- R & R Seed Sales
- Panhandle Travel Service
- R.L. Uptergrove
- R.B. Holton - H & H Water Well
- Moose Lodge
- Sparks Bros. Spraying
- Spearman Equity
- Nolan Holt
- Kenneth Irwin
- Hicks & Seagler Oro Seed
- Toby Phillips
- Lee Phillips
- Harlan Gerardy
- Dayton & June Barkley
- Jimmy C. VanLandingham
- Gary Prachar
- Aubery & Melba Razor
- S.B. Sheets
- Jack Gillispie
- Wayne Garrett
- Gruver Statesman - Joy Henderson
- McCloy Herefords - Delbert McCloy

- Erlis Pittman
- Fred Mans
- Mr. & Mrs. Francis Haefner
- Helen Dry
- A.M. Whitefield
- The Outhouse
- Rex & Kathy Reid
- Richard Wagner
- Donahue Ditching
- Lee Schubert
- Alan Shields
- Monty & Linda Blackman
- Jack Oakes
- Turner & Turner
- Verlin & Audene Beck
- Dan Ralston
- KRDF-FM
- A.D. Reed
- Mr. & Mrs. Allen McCloy
- Cecil Ralston
- Brice & Martha McRee
- Dennis Nelson
- Judy Nelson
- Clyde McCloy
- Bill Logsdon, Sr.
- Mrs. B.F. Schubert

- Burton Schubert
- Alvin Cator, Jr.
- Floyd Dry
- Paul Stavlo
- Marilyn Stedje Doege
- Mr. & Mrs. Tommy Boone
- Ron Cook
- Willard & Bea McCloy
- J. Mack Hoel
- Jan Stedje
- Mr. & Mrs. Dean Lieb
- C.H. Clawson
- N.F. Renner
- Craig & Judy Solomon
- Charles W. Haight
- Blanche J. Taber

Attention citizens of Hansford County

Citizens of Hansford County Our names are James Tindell and Keith Clark. We are members of Boy Scout Troop 551. As a Star project, we are asking you to help us save the most powerful symbol of our nations liberty. It is in a most serious state of despair. That's why we are asking you to join with us in one of the most

historic endeavors of our time. We have placed cans in several businesses in town for this collection. Your contribution will be listed in the Statute of Liberty. Register of Contributors as Boy Scout Troop 551 and Citizens of Hansford Co.

Thank You For Your Support.
Scouts James Tindell
Keith Clark
Troop 551
Scoutmaster Dwight Sumner

During the silver strike at Treasure City, Nevada, in the 1870s, two miners built a house from rock picked up at their claim. Later, when their mine gave out, the two "mined" their home for \$75,000 in silver!
© 1985 Suburban Features

Some folk dare to be different. Most of them are too timid — so they dare YOU to be different.

10K run planned for St. Patrick's Day

Officials of the annual St. Patrick's Day Celebration in Shamrock, Texas have announced plans to stage a ten kilometer run as part of the town's annual observance of St. Pat's Day.

The race will begin at 8:30 a.m. sharp on the morning of Saturday, March 16, 1985. Registration will begin at 7:00 a.m. in the parking lot of the El Paso Natural Gas Company's Shamrock warehouse facility just south of the city limits. There will be an \$8.00 registration fee for racers who pre-register, with the fee being \$10.00 on race day.

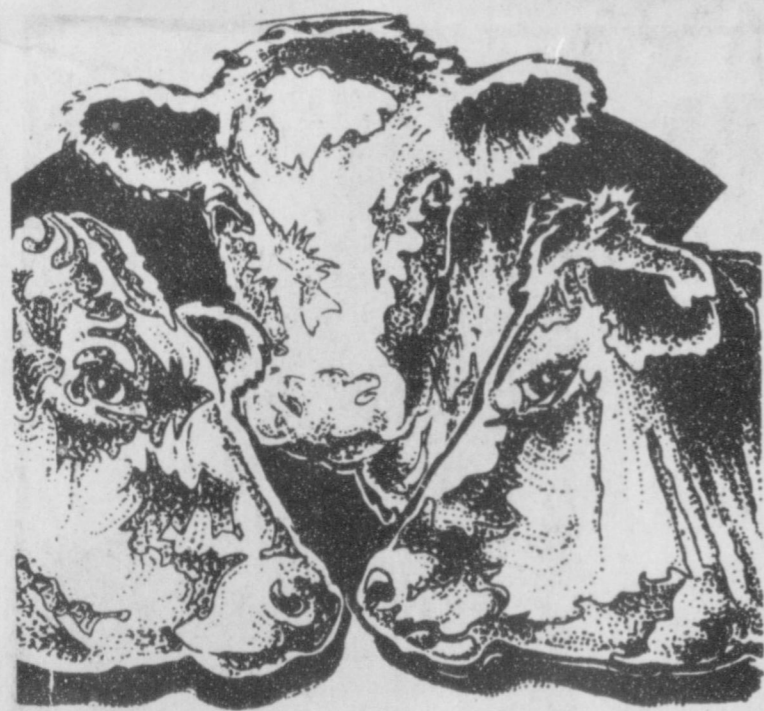
Steve Alesiani, who is acting as race co-ordinator for Shamrock Lions Club, sponsors of the event, said: "This is the first time we've ever done anything like this on St. Patrick's Day, and we'd like as many runners as possible to help us out by coming to Shamrock, and

joining us for this our first 10 K Run."

The race is being run with the co-operation of the Amarillo Running Club and the Amarillo YMCA.

Invitations to run in the race have already been mailed to the nearly 300 members of the Amarillo Running Club, but race organizers indicate that there is still plenty of room in the field for those interested in running the 6.25 mile course. "As far as we're concerned in Shamrock, it's the more the merrier for the 10 K," Alesiani remarked.

Persons who wish to obtain entry forms for pre-registration may do so by contacting the Shamrock Chamber of Commerce, P.O. Box 588, Shamrock, Texas 79070. The chamber's phone number is (806) 256-2501. The office is open from 9:00 a.m. until 5:00 p.m.



Let's
Go
To The

Hansford County LIVESTOCK SHOW

March 15 & 16, 1985

Spearman, Texas

coming at you with
MICHELIN
Tires in Stock

TOP BUYS

MICHELIN
WE PUT AMERICA ON RADIALS!

Automotive, Tractor - Parts & Supplies Firestone Tires - Irrigation Supplies

GRUVER FARM SUPPLY

Phone 733-2427 or 733-2882 Gruver, Texas

Owner: Roy Byrd

Developing Healthy Heart Habits Begins Early



4 Year Old Class - Little School. [Left to Right] Leah DeArmond, Detsi Vera, Gene Harris, Mike Butts, Mac Butts, Leah Mackie, Brooke Kohler, Aaron Witten, Rachel Burch, Derek Kuehl. Not pictured is Deanna Zabin. [Leah Mackie is pictured listening to Mac Butts heart.]

The Hansford County Heart Association will meet Monday, March 11, 7:30 p.m. at the First State Bank in Spearman, Tx. Everyone is invited to attend.



Members of the Gruver preschool who participated in recent Heart Association activities are standing, left to right: Jeannie Swink, Kathy Slough, Amber Roberts, Cassie Wilson, Brandi Hicks, Autumn Bateman, Autumn Roberts and Brandea Morris. Kneeling, left to right, are: Clint Shook, Brant Arms, Rob Murrell and Kyle McNett.



The four year old class had fun measuring and weighing each other at our doctor's office at Little School. Misha Davis is measuring Chris Cummings. Children pictured are David Zabin, Stephanie Bowling, Kasey Dunnihoo, Brooke Kohler, Chris Cummings, Misha Davis, Lana Martin, Josh Bynum, Meagan Sasser. Not pictured is Derek George.



This 3 year old class at Little School had fun listening to their heart beat with the stethoscope. Kyla Brown is listening to Cami Winegamer's heart beat. Other children in the picture are Micah Antalek, Brooke Kohler, Jared Brown. Not pictured are Mason Kuehl and Sonya Salgado.



Kelly Boone listens to nurse Kathy Lindsey's heart. Gruver kindergarteners who participated in Hansford County Heart Association activities are Michele Murrell, Tucker Henson, Isela Moreno, Jessica Barkley and Tracy Bates.



Shown above are students for Judy Hutchison's preschool. They are back row left to right Chester Hutchison and Kristin McClellan. Bottom row from left to right are Megan Woolley, Jocelyn Edwards, Grace Davis, Ashley Brown.

During the month of February, children of Hansford County learned about the heart and how it works, ways to tell if their heart is healthy and care of the heart through nutrition, physical activity and rest. They listened to their own heartbeats, both normal and after running, and listened to a baby's heartbeat, which beats much faster.

The purpose of Heart Treasure Chest is to teach children early on the right habits and attitudes to prevent heart disease, the number one killer of Americans. Heart disease often begins in childhood without symptoms appearing until middle adulthood. Instilling healthy lifestyle patterns in children reduces the risks tremendously.

All kindergartens and pre-schools from Hansford County participated. There was a total of 266 children.