

HANSFORD COUNTY L.B.A.
SPEARMAN, TEXAS 79081

THE GRUYER STATESMAN

Volume 15 No. 43

The Gruver Statesman, Gruver, Texas 79040

Thursday July 31, 1986

Temperature Hits 106 Here



Hansford County is heating up with extremely high temperatures this week. It was 105 for a high in Spearman Sunday and Monday and as we go to press Tuesday temperatures were once again crowding the 105 mark.

Spearman, Perryton, Gruver and numerous Panhandle towns reached the 105 degree mark Monday while Canadian, Texas was the high for the State with 109 degrees.

A high pressure system has moved over the area causing temperatures to soar according to the National Weather Service.

The system remains stationary Monday and Tuesday causing temperatures to top the 100 degree mark.

Weathermen stated there was little chance for rain through Wednesday and Thursday of this week. Actually there is no rain predicted for Hansford County in the near future. Tulia, Childress and Borger reported 105 degree temperature Monday.

Grasses in the area as well as Maize is suffering from the extreme high temperature. While the Southeast portion is getting some rain to relieve a small portion of their drought, Hansford County is continuing to set new heat records each day.

Hospital

Patients in Hansford Hospital are Bob Cook, and Faye Lynch.

Dismissals were: Sammie Bishop, Angel Chavez, Kelly Russell, Anna Sanchez, and Sara Vela.

Markets

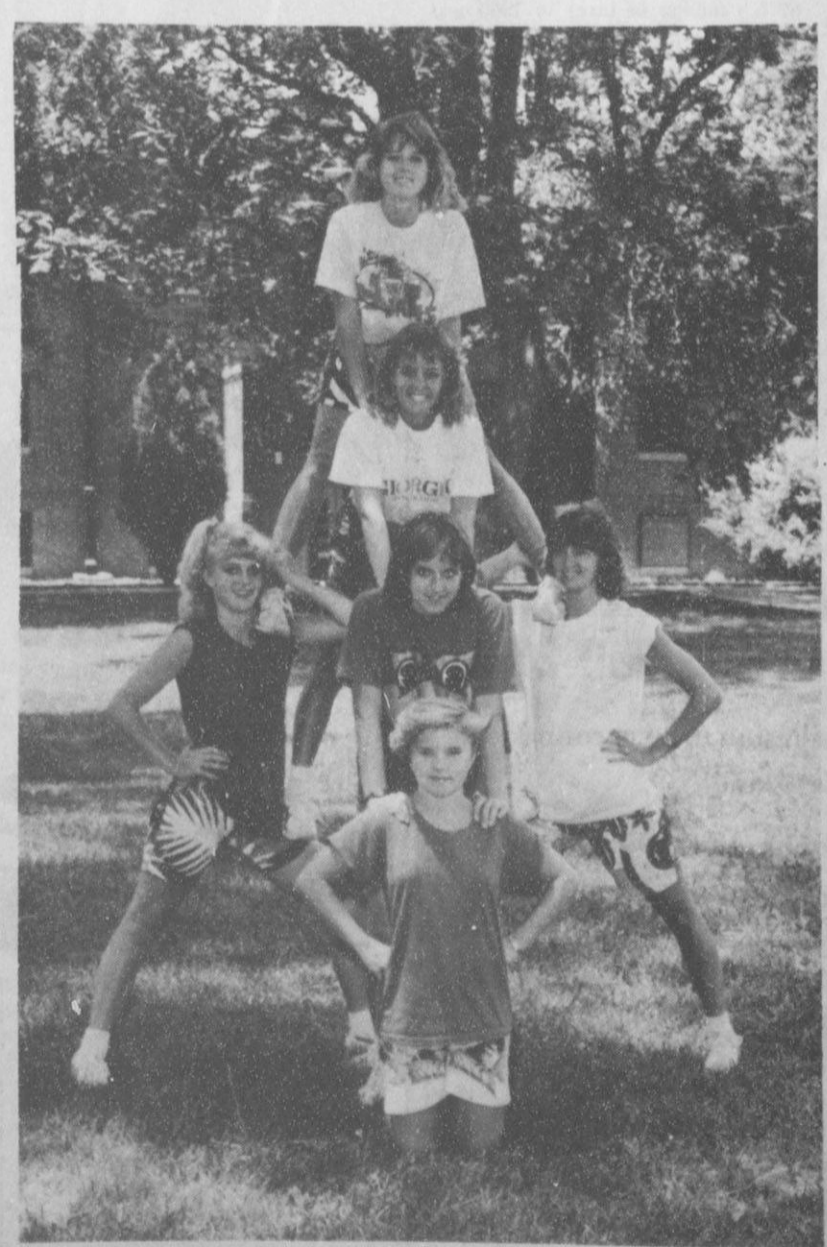
Wheat	\$2.10
Milo	\$3.50
Corn	\$2.20

Weather

Date	Hi	Lo
25	101	69
26	99	62
27	105	76
28	105	72

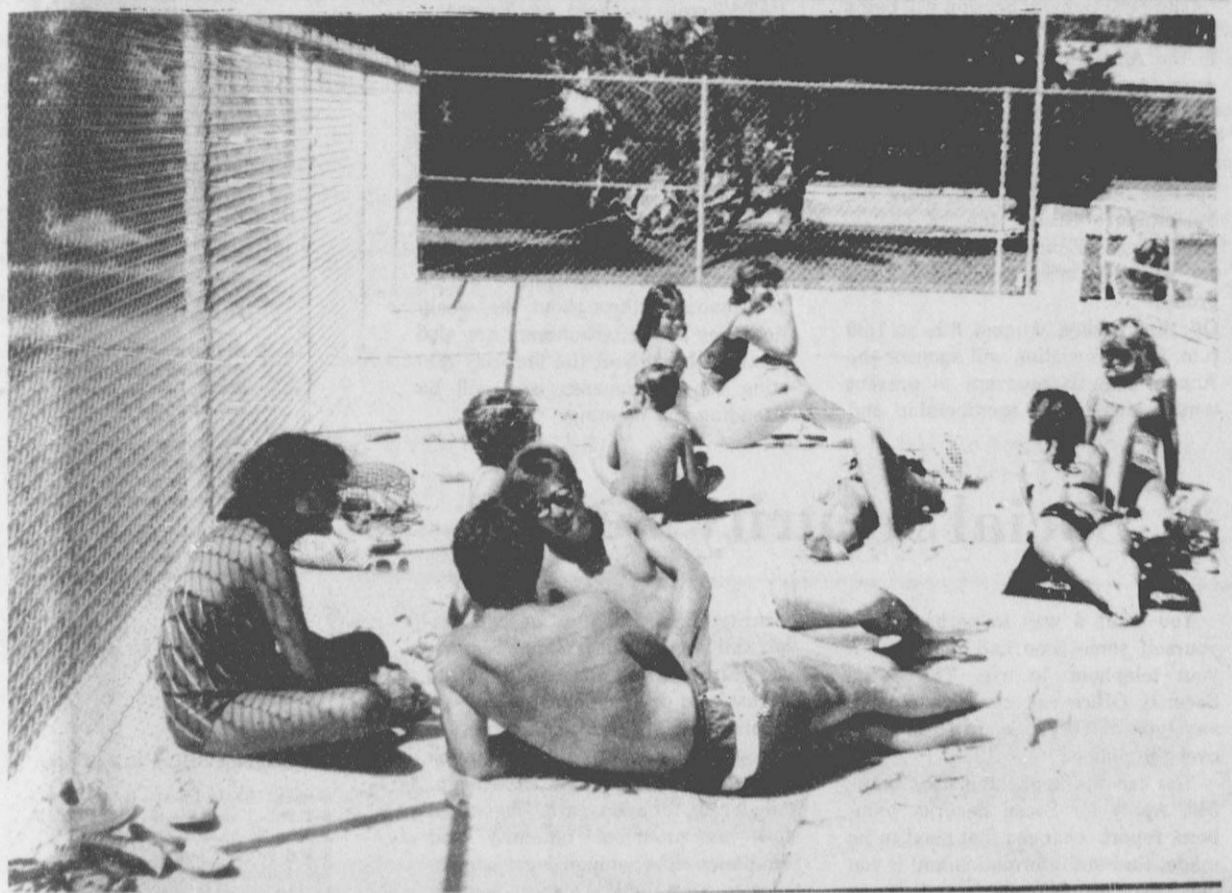
On July 26 we had .14 precipitation.

Gruver High School Cheerleaders



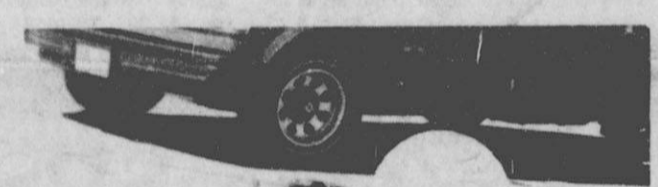
Gruver High School cheerleaders were among the 44 squads to participate in the 1986 NCA Cheerleading Camp held recently on the campus of Panhandle State University in Goodwell, Oklahoma. The 290 cheerleaders represented Oklahoma, Texas, Kansas and Colorado and received train-

ing in pompom and dance routines, new cheers, and leadership. Pictured above are: Jill Barrett, Tracy Logsdon, Jodi Martin, Quincey Tomlinson, Shiloh Finney, and Jennifer Price. The squad was one of sixteen to be awarded a Spirit Stick.



Cooling Off At The Gruver Swimming Pool

Gruverites enjoy their Swimming Pool!



Lemonade Stand

This Lemon-ade Stand was open during the heat wave at Gruver Tuesday. It is run by Kayse Haenisch, Jina

Hoel, and they are serving Erika Salmans, and Brooke Salmans. Lemonade was 5 cents and ice tea was 5 cents.



Main Street Store

The Main Street Store in Gruver is enjoying their Grand Opening this

week. Owners are Judy Stedje, Faye Gillispie, and Kathy Gillispie.



Vo.Ag. Teachers Workshop

INSERVICE EDUCATION WORKSHOP FOR VOCATIONAL AGRICULTURE TEACHERS, D/FW AIRPORT, GRAPEVINE, TEXAS, AUGUST 5-8, 1986.

Vocational Agriculture Teachers, some 1500 strong, will gather in Dallas, August 5 - August 8 1986 for the Annual In-Service Education Workshop and Meeting sponsored by the vocational Agriculture Education Department of the Texas Education Agency, Austin, Texas, under the direction of Jay Eudy, State Director, Vocation Agriculture Education.

Attending the In-Service Education Workshop from Spearman and Gruver Texas, will be the following Vocational Agriculture teachers: Gary York from Spearman and Craig Solomon from Gruver.

The First General Session will begin at 9:00 a.m. on Wednesday, August 6 in the Amfac Hotel, Enterprise Ballroom. Appearing on the program will be Dr. William N. Kirby, Commissioner of Education, Texas Education Agency, Austin and motivational speaker Joe Charbonneau, from the Performance Group, Inc. of Dallas. Other Texas Education Agency leaders will also bring remarks to this group.

On Wednesday, August 6th at 7:30 p.m. the Association will sponsor the Annual Awards program to present tenure pins to the membership and

other awards to Legislators, School Administrator, individual teacher publicly awards and to individuals who have contributed to the progress of Agriculture Education and the activities of the Future Farmers of America.

On Wednesday and Thursday the teachers will take part in Area meeting and twelve (14) In-Service Education Workshops. Some of the topics for discussion will be: Interactive Computer/Video for Vocational Agriculture Teachers; Planning - Publicity Campaign; Adapting Computers to the Classroom; Recruitment of Students into Vocational Agriculture; Essentials Elements and Competency Profiles; Legislative Process; Teacher Administrator Relationship and Evaluation.

A membership meeting for the VATAT will be held on Thursday, August 7 at 6:30 p.m. in the Ballroom of the Amfac Hotel. William T. Woody, Association President, will conduct the meeting. On Friday, August 8, the teachers will have their last general session and will meet in area meetings and plan their in-service Education meeting for the 1986-87 school year.

State leaders in agriculture will be in attendance throughout the week. Activities and entertainment are also planned throughout the four-day meeting for the spouses who will be attending the meeting.

The Lighthouse

By Glendon H. Etling

THE LIGHT HOUSE

May this church remain a Light House
For salvation, growth, and for praise;
May we always reveal that God is alive and well,
With Christ the source of life's every phase.

May the Word always be both honored and revered here,
And may the milk and the meat of the gospel be fed
To all those, who for the eternal life He alone offers,
Are willing to repent, receive His gift, and be led.

May we always hold high that Old Rugged Cross,
Where, for a time, He suffered, bled, died and knew hell;
He's the first in resurrection-we will follow;
So let's glory in that knowledge as others we tell.

Greater is He that is within us
Than he that now presides over this world.
We anticipate viewing His loving and glowing face
As the small remainder of prophesy is unfurled.

May this church be a part of the Rock Christ mentioned;
May the gates of hell never endanger or prevail;
May Christ, His word, and His life remain our example
For, in being 'Born Again' we just cannot fail.

We have now reached the anniversary called silver,
And on our way to the occasion called gold;
Should He carry that long for the Rapture,
Let's cling to the truth that makes us free and bold.

Lord, keep us free from custom and ritual;
Of stressing appearance, false image, pretence and pride.
Take us all where flesh and blood can't have residence;
Where covered with His blood, we can be secure and hide.

Lord prevent our gathering for social and vain apparel;
May attendance never just make us feel good;
Only let us grow to emulate Christ's giving;
Let's emphasize worship, and praise Him as we should.

God said, "let's make man in Our image";
May we ever then, in token, aspire to His way;
Jesus, forgive and cleanse as we follow your 'footprints';
Free all from the debt of death you came to pay.

May your word never be diluted or air wrong tolerance here;
May the PERSON of Christ be paramount in our lives.
Jesus, let us be part of the bride you'll take and deliver,
And, by your Grace, let our flock increase in size.

Receiving Christ never takes away to leave us a void;
His Agape love is more than we'll ever know,
Until we're given a new body and the abode long ready
And receive the harvest of seed we could not sow.

So Lord, let our church grow in your Wisdom and Stature;
May it reach out as an arm of your Light;
Please abide in all it's parts and it's members,
And finally, will you judge that 'we've fought the good fight'

WE PRAISE AND THANK YOU JESUS
On our 25th Anniversary

4/8/86
Glendon H. Etling
'Buddy'

Bible References by line of poem

- 4-Matt. 10 vs 29-31—Heb-5 vs 9
- 6-1 Pet-2 vs 2—Heb-5-13 and 14
- 7-John 14 vs 6
- 8 and 9-Matt.-vs 16 and 17
- 10-John 3-3
- 17 and 18-Matt.16 vs 16 thru 19
- 23- 1 Cor-15 vs 50 to 58
- 24- Heb.-4-15 and 16- John 9-32
- 27- 1 Cor.15-41 to 49-Emphasis 44
- 28- Heb- 2- 9 and 10—John 6-44 to 58—Eph-2-8 to 13
- 33- Gen 1-26
- 35- 1 John(not John)-1-9
- 36-Romans- 6-23—Matt. 20- 28
- 39- Bride- Eph 5-27—Rev- 21-2
- 43- John 11 vs 28—John 14 vs 1 to 6)
- 44- John- 8-12
- 45- Luke 2- 52
- 46- John 8-12
- 48- 1 Tim- 6 to 12 and 2 Tim- 4 vs 7 and 8
- 38-Refers to the Person of Christ within us, for correction, guidance, and wisdom. Academics does not give wisdom. Prov - 9-10

and other scriptures

Social Security News

You want a way to perhaps save yourself some time and money. Put your telephone to use. The Social Security Office can carry on almost, any type of Social Security Business over the phone.

You can file applications for benefits. Apply for Social Security numbers, report changes that need to be made, find out information and if you decide you want to come in and see us, you will know what documents and information to bring with you.

We know from past experience that people have driven many miles to see us only to find that we need another document or a letter they received. They could have saved themselves a lot of time by phoning first.

The most common problem deals with getting new Social Security cards. For years, people just went to a Social

Security office, filled out an application, and were given a Social Security card. Either a first one or a duplicate for lost card or name change.

This isn't the case anymore. A person must show us documentation that establishes their age, citizenship, and identity for a first card. They must show us proof of identity and sometimes citizenship or legal admittance to get a duplicate card. Such as in name change or lost card.

A lot of people get irritated when they find they have to drive back home to get certified copies of the document we are required to look at.

So, save yourself some time and money. Call the Pampa Social Security at: 806-669-1018, Mon-Fri from 9:00-4:45. In the Oklahoma Panhandle you can call the Guymon Resident station at 405-338-6527.

Co-Ops, SPS Agreement Could Benefit Irrigators

Irrigation customers of South Plains Electric Cooperative, Inc. of Lubbock, Texas, and Bailey County Electric Association of Muleshoe, Texas, could benefit from an experimental rate structure agreed to by the cooperatives and Southwestern Public Service Company (SPS).

The rate structure is pending approval by the Federal Energy Regulatory Commission (FERC).

The arrangement would allow the cooperatives to surpass their target demands for electricity without increasing their cost of electricity per kilowatt-hour or interrupting service to their irrigation customers, said J. C. Roberts, general manager of South Plains cooperative, and Duane Lloyd, general manager of Bailey County Cooperative.

SPS supplies wholesale power to the cooperatives.

Under the existing rate structure, the cooperatives interrupt service to irrigation customers when a target peak demand is reached. This is done because the cooperatives' electric bills for the next year are based in part on the peak demand during each preceding summer. The concept is that classes of customers who cause the need for more power plant capacity to meet brief peaks in electric usage should pay their fair share for the cost of additional capacity, said Gary Gibson, SPS vice president-marketing.

The experimental rate structure is possible because there is ample electric generating capacity available due to the completion last year of SPS' Tolk Station power plant unity number two near Muleshoe, Gibson said.

Under the new structure, prices effective September 1986 through August 1987 would be based on the target or actual peak demand -- whichever is lower -- that occurred from June through August 1986. Thus, if farmers need to irrigate this summer more than the cooperatives' target amount, they wouldn't risk

having their service interrupted simply because demand is exceeding the target.

South Plains Electric Association serves 2,449 irrigation wells.

This rate structure would be instituted on a one-year basis. After one year, the electric cooperatives and SPS will review the effectiveness of the program.

The two electric cooperatives and SPS applied to FERC for the new rate structure on July 9. A ruling is expected later this summer. FERC regulates wholesale sales by SPS to electric cooperatives.

South Plains Electric Cooperative provides electric service to portions of the City of Lubbock, and in the counties of Crosby, Hale, Hockley, Lubbock and Lynn.

Bailey County Electric Association serves customers in Bailey, Castro, Cochran, Lamb and Parmer counties.

SPS provides electric service to a population of about one million in a 52,000-square-mile area of eastern and southeastern New Mexico, the South Plains and Panhandle of Texas, the Oklahoma Panhandle and southwestern Kansas.



WHO KNOWS

1. Who was the first American astronaut?
2. When was the first atomic power plant completed?
3. Who wrote the song "God Bless America"?
4. How many gallons of water are there in a 1 inch rain over a 1 acre surface?
5. Define odontoprism.

Out of State Firms Pay Half of Taxes

State Comptroller Bob Bullock Monday said out-of-state companies operating in Texas may end up paying more than half of the taxes collected in the near future.

"Out of the top 2,000 taxpayers in 1985, firms headquartered outside Texas paid 47.8 percent of the dollars collected and this was up 1.2 percent from the 1984 payments," Bullock said.

Bullock said the tax payments were another indicator that the Texas economy is becoming more directly related to the national economy and nationwide business operations.

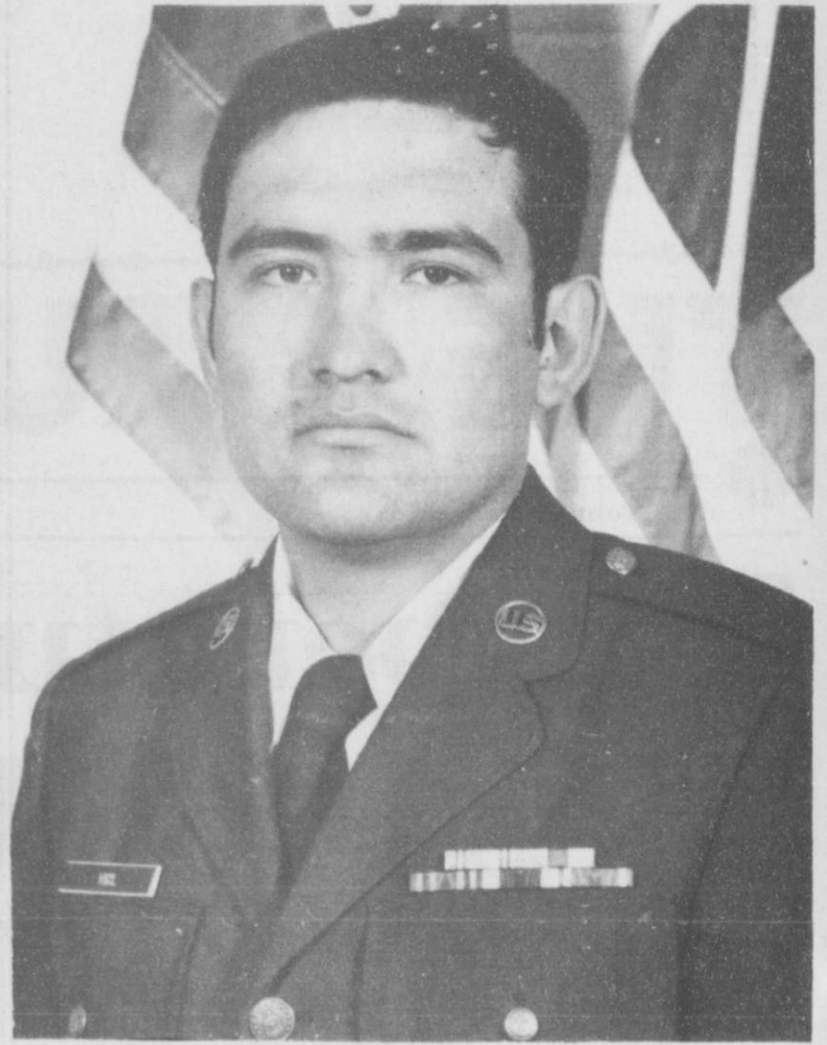
He said a survey of the State's 2,000 top taxpayers revealed that while there are fewer out-of-state firms on that list, these companies are paying almost as much in total dollars as Texas businesses.

Texas firms surveyed paid the state \$975.8 million in taxes in 1985 and out-of-state firms paid \$894.8 million.

There were 1,282 Texas firms included in the survey and 718 non-Texas companies.

The figures were drawn from information in audit reports conducted by the Comptroller's office.

Hometown News



Staff Sgt. Wilfred Vigil

Staff Sgt. Wilfred Vigil, son of Mr. and Mrs. Rafael Vigil of Star Route 3, Gruver, Texas, has graduated from the Air Force non-commissioned officer leadership school at Peterson Air Force Base, Colo.

The sergeant studied techniques of leadership, management and supervi-

sion. Vigil is a drivers evaluation supervisor with the 1001st Transportation Squadron.

His wife, Theresa, is the daughter of Lucas Martinez Sr. of 1905 N. James, Guymon, Oklahoma.

Rookie-Of-The-Month



Brad Cluck, son of Mr. and Mrs. Del Cluck, Gruver, was recently named Rookie-of-the-Month for Clayton Brokerage Co., whose home office is St. Louis, Missouri. A graduate of Gruver High School in 1979, Brad received an agricultural Economics degree from Texas Tech in 1983. He trained and studied for eight months while working as a runner at the Chicago Board

of Trade before going to work for Clayton in January 1985, in their Amarillo office.

Any person hired by Clayton during 1985 or 1986 is considered a Rookie. Brad was nominated by his office and was selected on the basis of his productivity over other persons nominated from and any/all of the thirty-one offices of Clayton throughout the United States.

Because of this honor, Brad's parents received a bouquet of flowers from Mr. James A. Layton, president of the company.

Texas Tech News

More than 1,900 Texas Tech University students qualified for the academic honors lists at the end of the 1986 spring semester.

Students on the President's Honor List earned a perfect 4.0 (A) grade-point average while enrolled in 12 or more semester hours of classwork. Students finishing 12 or more hours with a grade-point average of 3.5-3.9 qualified for the Dean's Honor List.

Students making the honor rolls included the following from Gruver: Richard T. Schad and Mica Been, both on the Dean's List.

We have great plans for the money you don't have.

The money you spend foolishly instead of investing. The money that goes into Uncle Sam's pocket instead of yours. The money you could be using to help you make more money.

Before we talk, we listen.

At IREC, Integrated Resources Equity Corp., the first thing we do is sit down and understand your financial situation. From there we go on to your needs and wants. Then together we decide which plan is best for you.

Maybe mutual funds are right for you. Or variable annuities. Or any number of investments designed to help you keep more of what you earn. Not to mention earn more on what you keep.

Before you find a plan, find out about the planner.

IREC is a subsidiary of Integrated Resources, Inc., a nationally recognized financial services firm listed on the New York Stock Exchange.

So if you're interested in making plans for the money you don't have, we suggest you give us a call.

Integrated Resources Equity Corporation Member SIPC

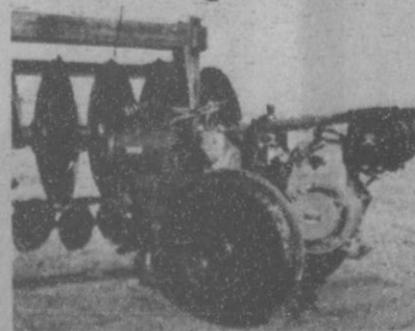
MARICA SHIELDKIGHT & DEBBIE STOPPER
P.O. BOX 516
SPEARMAN, TX 79081
(806) 659-3880 OR
(806) 358-7133

Oscar Rojas Jr. 659-2158

Design and Installation underground line for Irrigation

Repair all types of Irrigation Line
Welding and Straighten Aluminum Pipe

Q & H Disc Rolling



Q & H Disc Rolling

- Does not wear away blade
- Does not remove the temper
- Restores the natural cup of blade.
- Maintains the original size of disc.
- Restores the cutting action of the plow.

Richard Qualls Booker, Texas Allen Havens
658-2208 79005 658-9655

WANT ADS

CLASSIFIED RATES

Regular.....Per Word-\$0.13
 Display.....Per Col. Inch-\$4.20
 Double rate for blind ads
 Minimum charges
 Cash:.....\$4.00
 Charge:.....\$4.50

CASH IN ADVANCE ADS

Work Wanted*Trailers For Sale*
 Business Opportunities*No Longer
 Responsible*Political Advertis-
 ing*Child Care* Babysitting*
 Garage Sales*Out-Of-County Ads-
 unless advertiser has
 established credit with
 The Gruver Statesman

DEADLINES

To place or cancel ads
 Fri., 12:00 p.m.....Sun. edition
 Tues., 12:00 p.m.....Thurs. edition

The Gruver Statesman reserves
 the right to reject, edit, revise and
 properly classify all advertising
 submitted for publication. The
 Gruver Statesman also reserves
 the right to cancel any advertise-
 ment at any time.

The Gruver Statesman,
 Box 796
 Gruver, Texas 79040

NOTICE

Wallace Monument Co.
 Monuments, Curbing,
 Grave Covers
 Local Representative
LEONARD JAMESON
 Spearman, Texas
 40-rtn

Hansford County
 Planned Parenthood
 412 Davis
 659-2483
 Spearman
 Mon. - Fri.
 8:30 - 12:30

OSGOOD MONUMENT CO.

Amarillo, Texas
 Dealers of Rock of Ages
 Granite, as well as all
 colored granites, marble
 and bronze memorials.

represented by
BOXWELL BROS.
FUNERAL HOME

519 S. EVANS
 659-3802

Hay Swathing and Baling done -
 Call 733-2517 or Dennis at 733-5214
 31-rtn-nc

Sewing wanted, alterations etc.
 Baking and decorating cakes. I now
 have the He-Man Pan for birthday
 cakes. Call Joy at 733-2517.
 52-rtn-nc

For information and supplies for
 Tri Chem Liquid Embroidery, Con-
 tact Joy Henderson at 733-2517 in
 Gruver.
 8-rtn-nc

Announcements

POLITICAL ANNOUNCEMENT

This newspaper is authorized to
 announce the candidacy of the following
 candidates for public office subject to
 the action of the voters in the **MAY**
PRIMARY ELECTIONS:

DEMOCRAT
FOR COUNTY TREASURER
 Je
 Norma Jean Mackie
FOR COUNTY AND DISTRICT
CLERK
 Amelia C. Johnson
FOR STATE REPRESENTATIVE
 J.W. Buchanan
REPUBLICAN
FOR COUNTY TREASURER
 Eschol Blankenship
FOR STATE REPRESENTATIVE
 Dick Waterfield

Real Estate

OLDER 3 bedroom Permā
 Stone Home. All re-decorated, 2 car
 garage. Nice!

DELANO REALTY
 733-5000

for Sale: 3 bedroom, 2 bath frame
 home with inclosed patio. Real
 Nice! We have other selections
 also.

Delano Realty
 733-5000

WHY PAY RENT! Move into a beautiful
 home for less than you are paying in
 rent.

Alliance Homes of Amarillo
 Qualify by Phone
 806-381-1352
 Call Collect

**TAKE UP PAYMENTS ON TWO AND
 THREE BEDROOM HOMES.**

Alliance Homes of Amarillo
 Qualify by Phone
 806-381-1352
 Call Collect

GRUVER: Charming 3 bedroom, brick
 home. Built-in bookcase, china cabinet,
 kitchen appliances. Spacious rooms,
 closets and cabinets. New CH/A,
 carpet, water conditioner. Big fenced
 yard. Lots of Trees. ~~\$99,950.00~~ now
 priced \$37,950.00. Choice of new Micro-
 wave or 19" Color TV with purchase of
 house. Call 405-338-1065 evenings.
 41-rtn

Take Up Payments: 14x60 Trailer 2
 bedroom 1 bath. Call 659-5248
 42-2tp

Just Arrived - 1986 Tri-Chem
 Christmas catalogue. See the new
 Sun-glo, Sticker Art & Liquid Em-
 broidery items. Get a head start on
 your gift list or craft projects. Call Joy
 at 733-2517.

For Sale

HAY FOR SALE: Call Lewis Henderson
 at 733-2517.

FOR SALE: Repossessed Medium
 Brown Piano - Can Assume Low
 Monthly Payments - Will Show Locally -
 Ask for Piano Credit Manager - Ph.
 316-624-8422 - Brier & Hale Music Co. -
 Liberal, Ks.
 41-3tc

PIANO FOR SALE: Wanted: Responsi-
 ble party to assume small monthly
 payments on piano. See locally. Call
 Credit Manager 1-800-447-4266.
 41-4tp

FOR SALE: Fertile eggs Pullet size 50
 cents per dozen hen size 75 cents per
 dozen. Call Joy at 733-2517.
 NC

SUMMER "HOT" SALE! Flashing ar-
 row sign \$289! Lighted, non-arrow
 \$259! Nonlighted \$229! Free letters!
 Few left. See locally. 1(800) 423-0163,
 anytime.

**OWN YOUR OWN JEAN-SPORTS-
 WEAR, LADIES APPAREL, CHILD-
 ERNS/MATERNITY, LARGE SIZES,
 PETITE, DANCEWEAR, ACCES-
 SORIES OR BRIDAL SHOP. JOR-
 DACHE, CHIC, LEE, LEVI, IZOD,
 GITANO, GUESS, CALVIN KLEIN,
 SERGIO VALENTE, EVAN PICONE,
 IZZ CLABORNE, MEMBERS ONLY,
 GASOLINE, GEALHTEX OVER
 1000 OTHERS. \$14,300 TO \$25,900
 INVENTORY, TRAINING, FIX-
 TURES, GRAND OPENING ETC.
 CAN OPEN 15 DAYS. MR.
 LOUGHLIN (612) 888-6555.**

FOR SALE: Baldwin Console Piano
 also 3 Spinet Pianos. Excellent condi-
 tion. Will deliver. 1-355-2656.
 43-1tc

MUST SELL: Baby and started Guineas,
 chickens, ducks and quail. Call
 evenings or week-ends call 733-5190
 42-1tc

Autos for Sale

FOR SALE: 1983 Pontiac Bonneville
 Brougham. Excellent condition, one
 owner. After 6 p.m. call 733-2367
 42-1tp

Gruver Library

Louis L'Amour fans-**LAST OF THE BREED**
 is a book where L'Amour
 conquers a new frontier of adventure.
 In this new book he reveals himself as
 masterful a contemporary storyteller
 as he is a historical novelist. It is a
 classic tale of pursuit and survival in
 the most forbidding land ever known -
 the Siberian wilderness of Soviet
 Russia.

The hero of **LAST OF THE BREED**
 is one of L'Amour's most memorable
 characters: U.S. Air Force Major
 Joseph "Joe Mack" Makatozi, part
 Sioux, part Cheyenne, a near-Olympic
 caliber athlete who is as proud of the
 long-nurtured legacy of his Indian
 ancestors as he is of his place in white
 man's world. After his experimental
 aircraft is forced down over the Bering
 Sea by Russians starved for military
 secrets, Joe Mack soon makes a
 spectacular escape from a secluded
 prison camp. He flees into the vast
 wilderness of Siberia - a prison with
 walls of ice - where his pursuers
 expect him to perish.

But Makatozi is a true Indian born
 out of his time. Without food, shelter,
 clothing, weapon or ally, he is at last
 free to shed his twentieth century
 sensibility and summon up the noble
 calling of his Sioux warrior forebears.
 To survive he must call upon the
 ancient skills he learned as a boy: to
 hunt game with only hand-carved
 weapons, to make moccasins and
 outer garments from animal skins and
 to find shelter in a barren landscape.
 Most of all, he must continue to
 invisible to the relentless pursuit of
 the agents and soldiers under the
 direction of Colonel Zamatev, the
 ruthlessly efficient GRU officer whose
 career rests on recapturing the escap-
 ed American.

But Joe Mack is not always a man
 alone. He is befriended by a band of
 exiles in a nearly forsaken outpost and
 drawn to their leader's beautiful
 daughter, Natalya, whose spirit and
 yearning for liberty matches his own.
 Yet even in those rare moments of
 comfort and safety, it is the Yakut
 native Alekhin, his Siberian counter-
 part, whom Joe fears most. A legendar-
 y tracker who knows every natural
 and manmade hiding place on the
 Siberian frontier. Alekhin understands
 that to trap his quarry he must think
 like a Sioux.

LAST OF THE BREED is the kind of
 authentically detailed epic adventure
 that has become a L'Amour hallmark.
 It is a stunning appreciation of the
 unspoiled majesty and treachery of the
 Siberian land end of the native
 American character who must triumph
 over it. It is sure to be Louis
 L'Amour's biggest bestseller yet.

This and many other L'Amour books
 are available at Gruver City Library.
 Come in find the book that suits your
 needs.

Gruver City Library
 2:00 - 6:00
 Monday through Friday

Garage Sales

GARAGE SALE: In Morse on August
 1, and 2 from 8 a.m. - 8 p.m. North of
 School. Items include furniture, car-
 pet, sewing machine, clothes and
 much more.
 43-1tp

GARAGE SALE: August 2nd and 3rd,
 Saturday 9:00 a.m. - 6:00 p.m. and
 Sunday 1:00 p.m. - 6:00 p.m. located
 at 115 S. Townsend.
 43-1tc

ONE FAMILY GARAGE SALE: Thurs-
 day, July 31 and Friday, August 1st
 from 8:00 a.m. - 6:00 p.m. 25 in. T.V.,
 Cothes, Toys, Furniture, Shoes, Bo-
 ots, Etc.
 43-1tp

Weather Signs

Of all subjects, weather is the
 most universal, with which practi-
 cally everyone is concerned.

It's surprising, however, how
 little most people know about the
 subject. If one will take the time,
 he can learn the signs valuable in
 predicting weather.

All you need is a barometer
 and a wind vane. Here are several:

If you have a high and steady
 barometer, and the wind is from
 the southwest or the northwest,
 the weather will probably be fair
 with little temperature change for
 day or so.

If the barometer is high and
 falling rapidly and the wind is
 from the south or southeast, you
 will probably have increasing wind
 and rain within twelve to twenty-
 four hours.

If you have a high barometer,
 falling rapidly, and the wind is
 between the southeast and the
 northeast, the wind will increase
 and rain will come within twelve
 hours, in most cases.

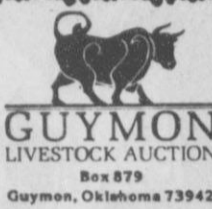
ADVERTISING PROVISIONS

1. Publisher's Approval - Publisher reserves the
 right to reject, edit, revise and properly classify any
 advertisement at his sole discretion.
 2. Liability for Advertisements - Advertiser as-
 sumes all liability for advertisements printed pur-
 suant to his instruction and shall indemnify and hold
 the publisher harmless from and against any and all
 claims and damages, including all costs incurred by
 publisher in connection therewith.
 3. Responsibility for Errors - Advertiser agrees to
 check advertisement in the first issue in which it ap-
 pears and report any error at once as publisher as-
 sumes no responsibility for errors after the first
 insertion. For any error which is the fault of the pub-
 lisher and of which publisher has been timely notified,
 publisher will reprint the corrected advertisement for
 one extra insertion or refund the proportionate cost of
 the advertisement containing the error. Publisher
 shall have no responsibility for errors appearing in the
 copy submitted by advertiser.

If you have a low barometer,
 rising slowly, and the wind is from
 the south to the southwest, you
 will soon have clearing weather
 and it will be clear for several
 days.

If you have a low barometer
 which is rising rapidly, the wind is
 from the west, it indicates the
 weather will be clearing and cold-
 er.

Out of State
1-800-338-5871



GUYMON
LIVESTOCK AUCTION
Box 879
Guymon, Oklahoma 73942

Office
1-405-338-3378

Home Owned and Home Operated

SALE EVERY THURSDAY
BEGINNING AT 12:00pm

The Gruver Statesman

PUBLICATION [USPS 9598-0000]
 GRUVER, TEXAS 79040
 BOX 796
 659-9454

OWNER-PUBLISHER
 William M. Miller
 EDITOR
 Joy Henderson
 Gruver, Tx.

Second Class postage paid at
 Gruver, Texas 79040.

Any erroneous reflection
 upon the character of any
 person or firm appearing in
 these columns will be gladly
 and promptly corrected upon
 being brought to the attention
 of the management.

POSTMASTER: Send address
 changes to the Gruver States-
 man, Box 796, Gruver, Texas
 79040.

SUBSCRIPTION RATE: The
 Gruver Statesman, adjoining
 counties, \$20.00 per year.

Who?

Why all this talk about getting
 back to normal? Who would re-
 cognize himself?

-Piedmont, Greenville.

30
YEARS
OF
SERVING
YOU

Office
1-405-338-3378

PRICES EFFECTIVE
 JULY 31-AUGUST 1-2, 1986
 WHILE SUPPLIES LAST

ALLSUP'S

CONVENIENCE STORES

Decker Gold
LUNCHMEATS
 (Except Chopped Ham
 and Danish Ham)
 8 oz. pkg. 89¢

Decker
FRANKS
 12 oz. pkg. 89¢

on the GO!

ALLSUP'S
30 YEAR
COMMEMORATIVE
Mug
FILLED WITH YOUR
FAVORITE FOUNTAIN DRINK
99¢
ONLY REFILLS ONLY 49¢

ALLSUP'S
Ice
\$1.09
LARGE
BAG
MADE WITH 99%
PURIFIED WATER

BORDEN'S ASSORTED
Fruit Drinks
1 GAL 87L
79¢

BORDEN'S
ICE CREAM SANDWICHES OR
Nutty Buddies
6 CT. PACK
99¢

HOT DOGS
2 for **79¢**

FRESH HOT
Corn Dogs
2 FOR **89¢**

B B Q
Sandwich
each **99¢**

CHILI DOGS
2 for **99¢**

B B Q CHICKEN
Sandwich
each **99¢**

REGULAR, AU GRATIN OR HEARTY
O'Gradys
Potato
Chips FROM FRITO LAY®
REGULAR \$1.39

NOW ONLY
89¢
NOW ONLY

MOVIE & VCR
RENTALS
The Very Best in
Home Video
Entertainment!
ALL YOU NEED
IS YOUR TV!

Diet Pepsi,
Pepsi-Cola,
Pepsi-Free
or Pepsi Light
12 oz. cans 6 Pak. **\$1.99**

**While supplies last!
Hurry in for your
best buy!**

TG&Y

Family Centers

**Selections will vary by
store. Limited quantities.
Sorry, no rainchecks.**

**Items Available At
The Stores Listed Below**

Copyright 1986, TG&Y Stores Co.

Shop These Locations:

521 HWY. 207 S.

Spearman, Texas

659-3741

SALE SALE SALE

<p>NCR BETA CASSETTE TAPES SONY, KODAK, SCOTCH 50% Off</p>	<p>ENTIRE STOCK ENAMEL SPRAY PAINT 25% Off</p>	<p>TG&Y WALL & HOUSE PAINT 50% Off</p>
<p>Crystalr <i>12 Piece Beverage</i> SET 3.99</p>	<p>Masterbilt TRASH BAGS 16 QT., 44 QT., 26 GAL or 33 GAL 1.00</p>	<p>Laundry BASKETS PASTEL COLORS 1.69</p>
<p>PEACH BASKETS 8 QT. CAPACITY 1.00</p>	<p>PLASTIC 5 COMPARTMENT SECTION PLATE 3/1.00</p>	<p>HARDBOARD TV TABLE TRAY 2.99</p>
<p>PRETTY BATH <i>6 piece Designer</i> BATH SET 9.99</p>	<p>TUCKER 32 GAL. TRASH CAN REG. 18.99 12.00</p>	<p>NEON 10 Pkg. HAPPY HANGERS 1.49</p>
<p>12 INCH OSCILLATING FAN REG. 24.99 16.00</p>	<p>ENTIRE STOCK Pocket Knives 50% Off</p>	<p>12 INCH Rotary 3 SPEED FAN REG. 34.99 23.00</p>

Store HOURS: Open 9 a.m. 'til 9 p.m. Monday through Saturday

**Not all items available in all stores. Quantities limited to stock on hand. Sorry, no rainchecks.
No sale to dealers. Intermediate markdowns may have been taken.**



Wedding Vows Exchanged



Kaye Lyn Janeway

Kaye Lyn Janeway and Don Edgar Dillow were united in marriage on July 18th, 1986 at the First Baptist church of Borger, Texas. Larry Miller, minister of the First Baptist Church, Gruver officiated in the double-ring ceremony which took place at 7:30 p.m.

The bride is the daughter of Mr. and Mrs. Joe L. Janeway of Borger. Parents of the groom are Mr. and Mrs. Don Dillow of Gruver.

Maid of Honor was Miss Teresa Meisner of Spearman, Texas and Bridesmaids were Miss Cindy Hendricks of Spearman, Miss Rebecca Dillow sister of the groom, Cruver and Miss Amy Janeway of Amarillo. Brian Dillow served his brother as Best Man. Groomsmen were Lonnie Burnam, and Mike Burnam of Gruver, Eddie Janeway, brother of the bride of Borger. Ushers were Larry Brain of Fritch, Eddie Janeway, Borger, and

Danny Shiftner of Ft. Worth. Candelighters were Miss Angie Calhoun of Amarillo, Mr. Chad Janeway of Amarillo and Mr. Larry Brain of Fritch. Miss Alanna Brain, of Fritch, was flower girl and Ringbearer was Mr. Jared Shiftner nephew of the groom from Ft. Worth. Miss Lisa Calhoun of Amarillo registered the guests.

Wedding music was provided by Mrs. Leon Leimer, organist of Borger and vocalists, Miss Teresa Meisner of Spearman and Mr. Eddie Joe Janeway, brother of the bride from Borger.

The bride wore a floor length gown belonging to her mother of white

chantilly lace with a fitted bodice and scalloped neck-line. The tiered skirt was of lace and net. The hip-length veil was of white net and the crown was formed with string pearls. She carried a bouquet of pink roses and baby's breath with dusty rose ribbon. For something old, she wore her mothers dress, for something new, the veil. For something borrowed, a panny in her shoe from her father. Something blue, the traditional blue garter.

The bridesmaids wore dusty rose floor length gowns with fitted bodice and "V" necklines and pleated cap sleeves. They each carried a bouquet of white jaisies and baby's breath with rose and grey ribbons.

The groom and best men wore charcoal grey tuxedos with white pleated shirts with dusty rose ties and cummerbund. The grooms boutonniere was a pink rose and the best man had

a pink carnation boutonniere. The groomsmen also wore charcoal grey tuxedos.

The brides' mother was attired in a dusty rose long sleeved pleated dress with grey accessories. Her corsage was a white and pink orchid. The grooms mother attired in a beige dress with cap sleeves and tiered skirt wore blue accessories and had a white and pink orchid corsage.

Following the ceremony, a reception was held in the First Baptist Church parlor with Mrs. Rose Grey as hostess.

Serving were Miss Randy Matson of Pampa, Wendy Smith, Mrs. Glenn Chambers of Borger and Mrs. Danny Shiftner, sister of the groom from Ft. Worth.

After a wedding trip to Branson, Mr. Don and Kaye will be residing at Goodwell, Oklahoma where they are students at Panhandle University.

Mrs. Dayton Barkley
requests the honour of your presence
at the marriage of her daughter
Callie Lou

to
Mr. Larry Neal Borger
on Saturday, the second of August
nineteen hundred and eighty-six
at six o'clock in the evening
United Methodist Church
506 Broadway
Gruver, Texas
and afterwards at the reception

Births

Lonnie and Marva Burnam proudly announce the birth of their first child, a girl, born July 27, 1986, at 3:40 A.M. in South West Medical Center, in Liberal, Kansas.

Named Valerie Michelle, she weighed 7 lbs. 12 ounces and was 21

inches long.

Grandparents are Mr. and Mrs. Mike Burnam and Mr. and Mrs. Val Winger, Greatgrand parents are Pauline Winger, Alma Gruver, Mrs. Oneida King and Mr. and Mrs. L.C. Burnam.

UIL

PRESS RELEASE

A local student has been awarded a \$1000 Carl B. and Florence E. King Foundation Scholarship by the Texas Interscholastic League Foundation. The King Foundation awarded ten grants to students who have participated in UIL State Academic Meet contests and who have compiled outstanding records of academic and extracurricular achievement.

A brief biographical sketch is attached below:

JOANNA WHITE - Gruver High School
Placed third in the 1985 State Meet Feature Writing contest. Salutatorian
...Academic Merit Awards in Home

Economics, Math, Biology, Typewriting, and Journalism...All-District Basketball...TABC Third Team All-Region...Texas Golden Spread Girls All-Star Games (East Team)...Cheerleader...Senior Class Secretary...Most Likely to Succeed...Regional Tennis Doubles, third place...plans to attend Texas Tech University and major in Business/Education.

Sober Smile

The smile that we appreciate most is the one that comes out of a sober face.

-Sentinel, Hartley, Ia.

CARQUEST BEAT THE HEAT SALE

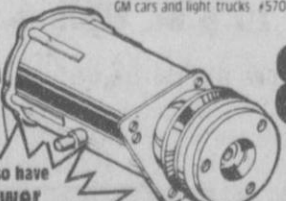
AUTO PARTS STORES

Sport Grip Steering Wheel Cover
Fits most steering wheels.
Cord, cushioned comfort.
6 colors. #58-0450
3.49



Get a 6-pack/12 oz. cans
Coke Classic or Diet Coke **49¢**
Limit one per customer per visit.
Offer expires Aug. 3, 1986.
Not valid in conjunction with any other coupon or offer.
Signature _____
COUPON WITH ANY PURCHASE AND THIS COUPON

Air Conditioning Compressor
Rebuild with clutch. Fits most 68-82 full size GM cars and light trucks. #57089



exchange **89.95**
Other applications available at slightly higher price.

PV Freon 14 oz. #R12
Limit 4 per customer. **99¢** each
PROVEN VALVE REFRIGERANT 12



PARTS FOR IMPORTS AT LOW AMERICAN PRICES
CARQUEST carries a wide variety of parts for imports including Toyota, Nissan and Honda. Quality you trust at low prices you expect from CARQUEST.

We also have Blower Motors at low CARQUEST prices!



Acar Oscillating Fan
For cool driving comfort.
6" 12 volt. #9V379
9.99



Hayden Transmission Oil Cooler
Protect against overheating! Easy to install with Hayden's patented quick-mount and quick-connect. Most applications. #A01
#A02 - \$6.99 #A03 - \$2.99 #A04 - \$2.99
Plus... **FREE** 27.99
Road atlas and \$5.00 rebate coupons on the purchase of Hayden products. See details in store.

Good at participating CARQUEST Auto Parts Stores thru Aug. 3, 1986.



Gruver Farm Supply
515 Main
Gruver - 733-2427

CARQUEST: the Right Place to buy auto parts.™

GRAND OPENING

Friday & Saturday,
Aug. 1 & 2 -

Now in Stock:
Tall Girls
ROCKY
MOUNTAIN
JEANS

All
Summer
Merchandise
30% to 50% off



All
Boots
10% off

Register for \$100.
Gift Certificate
Plus Door Prizes!

Refreshments
Served -

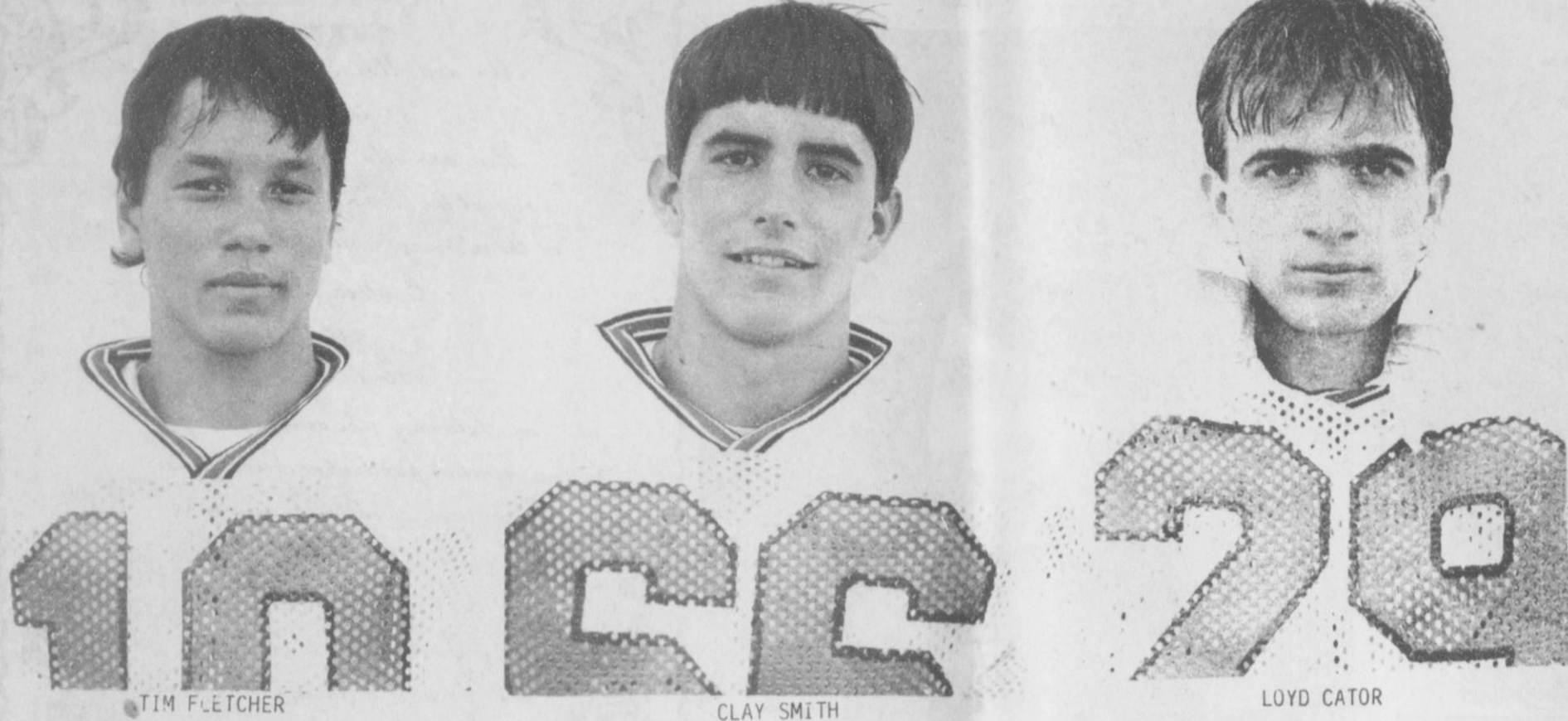
Fall & Winter Merchandise Now Arriving

Town & Country
WESTERN WEAR

118 S. Main

Perryton, TX

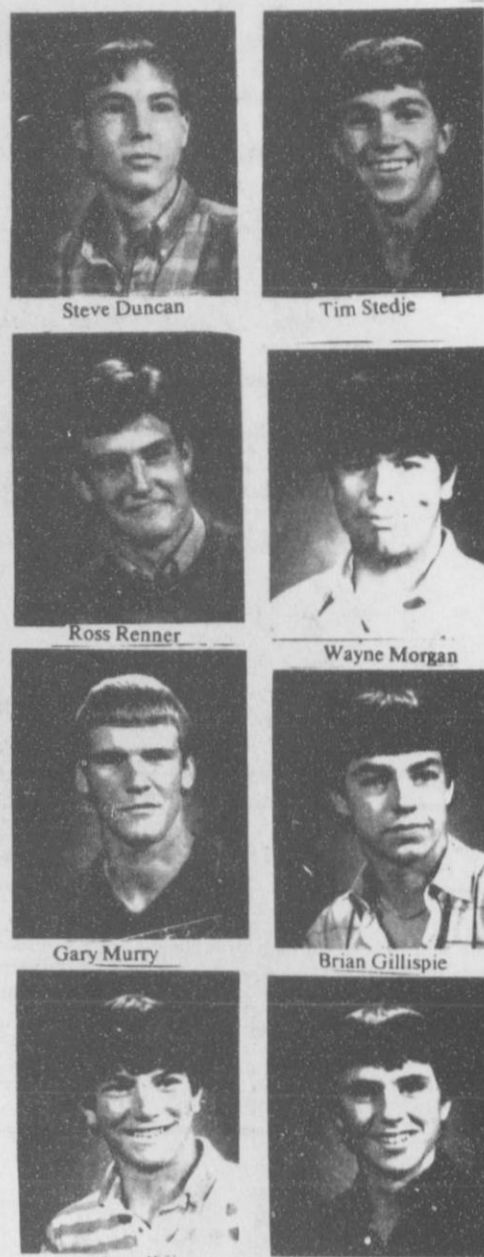
435-2442



TIM FLETCHER

CLAY SMITH

LOYD CATOR



Steve Duncan

Tim Stedje

Ross Renner

Wayne Morgan

Gary Murry

Brian Gillispie

Sid Shipp

Joe Lopez

Greyhounds Ready for Football!

NOTICE TO GRUVER FOOTBALL PLAYERS

Coach Steele and his Greyhounds are preparing for a new season in Football this year. The Greyhounds will be taking physicals Aug. 4th - Aug. 7 (see front page).

Coach Steele has seven returning starters from last years team. They are Loyd Cator, Steve Duncan, Wayne Morgan, Gary Murry, Ross Renner, Clay Smith, and Quarterback Tim Stedje. These seven are all Seniors. Two Juniors include Tim Fletcher, and Brian Gillispie.

Other returning Lettermen include: Joe Lopez and Sid Shipp.

It should be an exciting year for Greyhound fans as their Team jumps from A to AA. The Greyhounds will open at home, 8:00 p.m., Sept. 5th, against the Sunray Bobcats. Sept. 12 play at Phillips, Sept. 19 will be homecoming against the Groom Tigers at 8:00 p.m. Members of the AA Conference this year include: Gruver, Highland Park, Stratford, White Deer, Spearman, Stinnett, and Panhandle.

1986 GRUVER GREYHOUNDS

Returning Starters - Seniors

Loyd Cator-Running back. Steve Duncan-Receiver - Defensive back Wayne Morgan-Defensive Line, Gary Murry-Offensive Line-Kicker, Ross Renner-Running back-Defensive End, Clay Smith-Offensive Line-Linebacker, Tim Stedje-Quarterback.

Juniors

Tim Fletcher - Receiver - Defensive back, Brian Gillispie-Running back-Defensive back.

Returning Lettermen

Cator, Duncan, Morgan, Murry, Renner, Smith, Stedje, Fletcher, Gillispie, Joe Lopez-Offensive Line-Linebacker, Sid Shipp-Offensive Line-Defensive End.

PHYSICALS

All players that need physicals, Dr. Viola will give them to you without an office call charge as long as you show up during these times:

Monday	Aug. 4	9-12 am	1:30-4 pm	Spearman Clinic
Tuesday	Aug. 5	9-12 am	1:30-4 pm	Gruver Clinic
Wednesday	Aug. 6	9-12 am	1:30-4 pm	Spearman Clinic
Thursday	Aug. 7	9-12 am	1:30-4 pm	Gruver Clinic

As you can see Dr. Viola splits time at both clinics. He can be seen at Spearman or Gruver. The physical forms will be at the Dr.'s office. If you do not get your physical at this time, you will be responsible for the office call charge. For those of you that will see another Dr., you can get a physical form from me at the field house.

Indecision is costly but hasty action sometimes costs more.

Ronald Reagan, President, on star wars investment:

"A defensive system that can protect us and our allies against all ballistic missiles, nuclear and conventional, is a prudent investment."

ACCIDENTAL DEATHS

BOSTON -- Many baby deaths attributed to the mysterious sudden infant death syndrome actually result from suffocation, overbundling and other accidents that are caused by parents' poor judgment, a study concluded recently.

VOYAGER FLIGHT

MOJAVE, CALIF. -- The experimental airplane Voyager and its two weary pilots landed on a desert airfield at dawn recently after 111 hours of flight without stopping or refueling, unofficially breaking aviation records for distance and endurance.

Texas History?

Members of the Hansford County Historical Commission have been approached by some local citizens, asking to have a class on Texas History. The Sesquicentennial Year for Texas seems to have sparked an interest for those who never attended school in Texas and want to know some of it's history.

The Historical Commission is considering such a class, if there is interest. Mr. G.W. Robinson, former history teacher in the Spearman Schools and present Chairman of the Commission, is willing to hold the classes. There would be no testing, and no cost, other than a minimal contribution to the Commission.

There are bound to be those who did not attend school in Texas who would like to learn more about the state in

which they reside. If you are interested in such a class, please contact one of the members of Hansford County Historical Commission.

Classes would be held this fall, 1986, once or twice a week from 7:00 to 8:00 p.m. This is for the adults in the community.

Contact by September 1, 1986, one of the following:

- Spearman: G.W. Robinson, Clementine (Mrs. B.F.) Renner, Rubyjo (Mrs. J.D.) Wilbanks, Sylvia (Mrs. T.Ray) Robertson, or Juanita (Mrs. J. L.) Pierce.
- Gruver: Helen Boyd (Mrs. Irvin), Joyce Johnson (Mrs. Wm. L.), and Melba Rasor (Mrs. Aubrey).
- Morse: Jenny Blankenship (Mrs. Sonny).



Amy Gillispie was one of the clowns at the Main Street Opening in Gruver this week.

HOMESTYLE

"Full Meal Deal"

only **\$2.59**

July 21 thru August 24, 1986

The sweetest deal in town is the Dairy Queen Full Meal Deal. With a juicy quarter-pound Homestyle Hungry-buster, Golden french fries, Your favorite ice-cold soft drink. And a creamy 5-ounce Dairy Queen sundae with your choice of topping. The \$2.59 Full Meal Deal. It's a steal.

Dairy Queen

EVERYONE
WELCOME
TO
ENJOY ...

BINGO

License No. 1-75-1072869-8

Family Fun at the Perryton & Vinicity Y

1201 S.W. 15th

• No Admission Charge •

★ \$1,000 Giveaway Each Bingo Night

(Smallest Prize \$50.00 ... Up To \$300.00)

Entry Fee as Small as 75¢ Per Game

STATE LAW: No one under 18 years of age will be permitted in the gym during Bingo unless accompanied by a parent or legal guardian and all children will be required to remain seated with their parents.

Every Friday Night Beginning ...

FRIDAY, JULY 25, 1986

Bingo Time: 7:30 p.m. to 10 p.m. (Doors Open at 6 p.m.)

IMPORTANT: Come early the first few nights to understand the rules and be ready to play by 7:30.

Double Bingo or 9 in the Corner ...

Wild Number Bingo ...

Blackout Bingo ...

12 Games with 10 Instant
Winners of Cash and
2 Winners of Gift Certificates.

B	I	N	G	O
13	18	42	59	70
2	24	38	55	68
8	17	FREE SPACE	50	63
14	21	36	60	75
1	29	34	52	69

— CONCESSION STAND —

*Prizes may be adjusted according to attendance

Camp-Atwood Unite In Matrimony



Mr. and Mrs. Scott Atwood

Nuptial vows were exchanged by Frances Louann Camp, daughter of Fred and Helen Camp of Gruver, and Scott Ross Atwood, son of Harve and Phyllis Atwood, also of Gruver, on Thursday, June 26, 1986, at seven o'clock p.m. in Nature's Park, south of Gruver.

Officiating over the ceremony was Reverend Jeff Burress of the Community Bible Church in Gruver.

The bride's attendants were matron-of-honor, Mrs. Burke Trudel of Leoti, Kansas, and bridesmaids Raquel Rios and Tamara Wright, of Gruver and Lanece Lisenby of Miami, Texas. Flowergirl was Scott's niece, Randi Atwood. Crystal French, also a niece of Scott's, and Tina Camp, sister of the bride, registered guests and passed out rice bags.

Bridesmaids and matron-of-honor wore high-necked, tea-length dresses of the bride's chosen color, light blue. They were covered entirely with lace, and ruffles of the same material lined the hem.

The bride was dressed in a southern style gown of silk organza. It was accented by a V-neck of lace ruffles and many layers of the same kind of lace on the bottom part of the gown. Bows and gathers added the finishing touch to it. The headpiece featured a specially made bandeau with a fingertip veil lined in silk ribbon.

Bouquets were made of blue silk roses and white carnations with the bride's bouquet being a cascade of flowers, ribbons, and lace. Silk rose corsages were presented to both the mothers and grandmothers of the bride and groom.

Attendants for the groom were best man, cousin of the groom, Rocky Cribari of Grand Junction, Colorado, groomsmen Russell Tiner of Raton, New Mexico, Tad Lozier of Fritch, and Chet Pittman of Morse. Scott's nephews, Ryan Atwood and Skeeter French were ushers. Ringbearer was Fred Camp Jr., brother of the bride.

The men's attire consisted of dark blue jeans, white western shirts, tan corduroy jackets, navy blue ties, and straw cowboy hats. The groom was dressed the same for the exception of the jacket which was light blue/gray ultra-suede. All men in the wedding party had blue silk rose boutonnieres.

The bride arrived at the ceremony in a horse-drawn surrey with matching team of ponies and a red-fringed top. The bride was escorted by her father and given by both parents.

Balloons with announcements of the marriage and an RSVP were released while the two kissed. So far, the bride's parents have received five responses from Kansas, stating that balloons were found the day after the wedding. Responses came from the following people and places: Mr. and Mrs. Melvin Murphy Jr. of Larned; Sarah (8) and her brother, John Krueser of Ellsworth; Ecile Hall of Haviland; Lynn Hartwich of Omega; and Employees at Pratt Well Service of Pratt.

After the double-ring ceremony, the couple rode in the surrey through a flurry of rice. The driver, Emery Elliot of Texhoma, presented them with his and hers Bibles.

During the reception the bouquet was caught by Tamara Wright, and garter was caught by Fred Camp Jr.

The wedding cake was white and decorated with icing of blue flowers and bows. The cake top was the same one that the bride's parents had on

their wedding cake when they were married in 1966.

Out of town guests were: Mr. and Mrs. Jack Atwood, Lela Browell, and Ann Trout of Montrose, Colorado; Mr. and Mrs. Rocky Cribari and Margie Ray of Grand Junction, Colorado; Louise Marx of Big Piney, Wyoming; Charlotte Harbor and Family, Richard Burton, and Chet Pittman of Morse; Mr. and Mrs. Larry Dawson of Arnett, Oklahoma; Tad Lozier and Mray Lou Simmons of Fritch; Mr. and Mrs. Russell Tiner of Raton, New Mexico; Zame Brewer and Allen Mumau of Hardesty, Oklahoma; and Ruth Woodley of Williamsport, Pennsylvania.

A rehearsal and dinner was held the evening prior to the wedding day, Wednesday, June 25, by the parents of the groom. The festive cool greenery and atmosphere of a Chinese Garden was enjoyed by all the guests as Chinese lanterns swayed above the entertainment area and large brandy snifters of gaily colored candles gave a magical glow to the dining tables. Bride and groom were centered under an apple tree with a sign the bride's mother made which read, "Don't sit under the apple tree with anyone else but me." Entertainment was supplied by Margie Ray, aunt of Scott.

The couple came home from their two-week honeymoon in Colorado and New Mexico on July 10th. They reside in their own home west of Gruver. Scott is employed by Panhandle Eastern Pipeline Company and was a 1981 graduate of Gruver High School. Frances is employed at Hansford Steakhouse and was also a graduate of Gruver High in 1986.

Tennis Anyone

The First National Bank of Spearman will sponsor a Junior Tennis Tournament July 31-August 1 and an Open Tennis Tournament August 2-3 at the Spearman High School's Omni courts. All proceeds from the tournament and concession stand will be donated to the Spearman YMCA.

The Junior Tennis Tournament will contain four classes of youngsters. There will be a 10 and under, a 12 and under, a 14 and under, and a 16 and under division. These classes will compete in boys' singles and doubles and girls' singles and doubles.

The entry fee for the singles competition is \$7 per single event. For the doubles event, the fee will be \$14 per team. There is a limit of three events per person.

First and second place winners in each competition will receive trophies to remain eligible for school athletics. The tournament will begin at 9 a.m., July 31.

The Open Tennis Tournament will have women's singles, men's singles, women's doubles, men's doubles, and mixed doubles, for classes A, B, and C. A competitor is limited to entering two events.

The entry fee for the Open Tennis Tournament will be \$8 per single event and \$16 per doubles team. The tourney will begin at 9 a.m., August 2.

Entry deadline for both tournaments is noon, July 30. For more information, contact the tournament directors, Don and Barbara Townsen, at (806) 659-2735.

NEWS NOTES

ON ORAL CANCER

BOSTON -- A form of carotene, the substance found in carrots and leafy green vegetables, has been shown to shrink and prevent cancer tumors in the mouths of hamsters, and that might lead to a non-toxic treatment for human oral cancer, Harvard University researchers said recently.

TOWN CLEAN?

MOSCOW -- Decontamination crews have cleaned up at least seven villages around the crippled Chernobyl nuclear plant and have readied them for the return of their inhabitants, Pravda reported recently.

EMOTIONAL ILLNESS

CHICAGO -- Emotional problems will replace physical illness as the primary health concern for the children of the future, a panel of doctors at the International Congress of Pediatrics predicted recently.

Texas Water Development Board Agrees to Purchase Palo Duro Bonds

The Texas Water Development Board on Thursday, July 24th, agreed to purchase \$22.3 million in bonds to fund construction of the proposed Palo Duro Reservoir, Johnnie C. Lee, general manager of the Palo Duro River Authority, announced.

The bonds would be sold to the water board by the Palo Duro River Authority, which would own and operate the 2,413-acre lake 13 miles north of Spearman.

Voters will decide on August 26th whether to authorize the River Authority to issue the bonds. The reservoir would provide water service to municipalities in the River Authority.

The Authority covers Hansford and Moore counties and includes Spearman, Gruver, Sunray, Cactus and Dumas, as well as Stinnett in Hutchinson County.

"We're very pleased that the Water Development Board has agreed to purchase the bonds at a relatively low 7.6 percent interest to be paid back over 25 years," Lee said. "This makes it a very favorable time to build this lake."

The lake is designed to provide supplemental future water to the six municipalities and generate recrea-

tional opportunities for Panhandle residents and visitors. According to the U.S. Army Corps of Engineers, municipal water wells in the dwindling Ogallala aquifer are expected to be depleted between the years 2000 and 2037.

"Engineers say that there are no acceptable alternatives to meeting future water needs in the area other than building a surface lake," Lee said.

If voters approve the bond package on August 26th, the Reservoir could be completed by 1993.

Notice of election

THE STATE OF TEXAS
PALO DURO RIVER AUTHORITY

TO THE RESIDENT, QUALIFIED ELECTORS OF SAID AUTHORITY:

TAKE NOTICE that an election will be held in said Authority as provided in a RESOLUTION CALLING AN ELECTION duly passed by the Board of Directors of said Authority, which Resolution is substantially as follows:

RESOLUTION CALLING AN ELECTION

THE STATE OF TEXAS
PALO DURO RIVER AUTHORITY

WHEREAS, the Board of Directors of said Authority deems it advisable to call the election hereinafter ordered; and

WHEREAS, it is hereby officially found and determined: that a case of emergency or urgent public necessity exists which requires the holding of the meeting at which this Resolution is adopted, such emergency or urgent public necessity being that public permanent improvements are required as soon as possible and without delay for necessary and urgently needed public improvements; and that said meeting was open to the public, and public notice of the time, place, and purpose of said meeting was given, all as required by Vernon's Ann. Civ. St. Article 6252-17.

THEREFORE, BE IT RESOLVED BY THE BOARD OF DIRECTORS OF PALO DURO RIVER AUTHORITY:

1. That an election shall be held between the hours of 7:00 A.M. and 7:00 P.M. on August 26, 1986, in said Authority, in all that territory constituting Hansford County, in the regular voting precincts, at the polling places, and with the election officers as follows:

- | | | |
|--|--------------------------------|--|
| (a) Hansford County Courthouse, N.W. Court, Spearman, Texas: | Harry Stumpf
Marsha Kuehl | Presiding Judge
Alternate Presiding Judge |
| (b) County Barn, 702 Front Street, Gruver, Texas: | Merle Delano
Marie Walker | Presiding Judge
Alternate Presiding Judge |
| (c) Morse Community Building, Morse, Texas: | Vicki Urban
Milana Reiszvig | Presiding Judge
Alternate Presiding Judge |

2. That the Presiding Judges shall appoint not less than two qualified election clerks to serve and assist in conducting said election; providing that if the Presiding Judge actually serves as expected, the Alternate Presiding Judge shall be one of such clerks.

3. That absentee voting shall be conducted by personal appearance and by mail at the County Clerk's Office, County Courthouse, Spearman, Texas, and during the period absentee voting is required or permitted by law, being August 6, 1986 through August 22, 1986, the hours designated for absentee voting by personal appearance shall be from 8:00 A.M. to 5:00 P.M. on each day except Saturdays, Sundays and legal state holidays; and the absentee voting clerk shall keep said absentee voting place open during such hours for absentee voting by personal appearance. The absentee voting clerk for said election shall be Muriel Boyd.

4. That an absentee ballot board is hereby created to process absentee voting results, and Muriel Boyd is hereby appointed the presiding judge of said board. The presiding judge shall appoint at least two other members of the board.

5. That all resident, qualified electors of said Authority shall be entitled to vote at said election.

6. That a substantial copy of this Resolution shall serve as proper Notice of said election, and the President of the Board of Directors shall cause said Notice to be published one time a week for two consecutive weeks with the first publication to be at least 21 days prior to the election, with such notice not being published earlier than the 30th day or later than the 10th day prior to the date set for the election, in a newspaper published in each City contained in said Authority or, if none is published in said City, the Notice must be posted in three public places in such City.

7. That at said election the following PROPOSITION shall be submitted in accordance with law:

PROPOSITION

Shall the Board of Directors of Palo Duro River Authority be authorized to issue bonds of said Authority, in one or more series, in the aggregate principal amount of \$22,300,000, with the bonds of each such series, respectively, to mature within not more than 40 years, be sold at such prices, and bear interest at such rates, as shall be determined within the discretion of said Board of Directors, in accordance with law, for the purpose of providing a source of water supply for cities and other users for agricultural, municipal, domestic, industrial, oilfield flooding and mining purposes, through acquiring or constructing a dam and all works, plants and other facilities necessary or useful for the purpose of impounding, processing, and transporting water to cities and others, for municipal, agricultural, domestic, industrial, oilfield flooding and mining purposes, and shall the Board of Directors be authorized to levy and pledge, and cause to be assessed and collected annual ad valorem taxes sufficient, without limit as to rate or amount, to pay the principal of and interest on said bonds when due?

8. That the official ballots for said election shall be prepared in accordance with the Texas Election Code so as to permit the electors to vote "FOR" or "AGAINST" the aforesaid PROPOSITION with the ballots to contain such provisions, markings and language as required by law, and with such PROPOSITION to be expressed substantially as follows:

PROPOSITION

FOR) THE ISSUANCE OF \$22,300,000 OF BONDS
AGAINST) AND THE LEVY OF AD VALOREM TAXES
TO PAY FOR THE BONDS

9. That in all respects said election shall be conducted in accordance with the Texas Election Code.

Aviso De Eleccion

EL ESTADO DE TEXAS
AUTORIDAD DEL RIO DE PALO DURO

AL RESIDENTE, ELECTORES CALIFICADOS DE DICHA AUTORIDAD:

SE LES HACE SABER, que una eleccion tomara lugar en dicha Autoridad como se estipula en la RESOLUCION LLAMANDO A LA ELECCION, cual resolucio fue defidaments dada por la Junta Directores de dicho Autoridad, cual resolucio dice substancialmente la siguiente:

RESOLUCION LLAMANDO UNA ELECCION

EL ESTADO DE TEXAS
AUTORIDAD DEL RIO DE PALO DURO

YA QUE, esta Junta de Directores juzga conveniente el llamar a las eleccion que aqui se ordenan; y

YA QUE, oficialmente se encuentra y se determina aqui que existe un caso de emergencia de necesidad publica urgente, el cual requiere el que tenga lugar una reunion en la cual esta Resolucion se pueda pasar, siendo tal emergencia de necesidad publica urgente la necesidad de adquirir los fondos a obtenerse de la venta de los bonos propuestos, sin retrasos, con el fin de utilizar dichos bonos para mejoras publicas urgentes y necesarias; y que dicha reunion se hizo publica, habiendose publicado la hora, la fecha, el lugar, y el proposito de dicha reunion, todo tal como esta estipulado por Vernon's Ann. Civ. St. Articulo 6252-17.

POR CONSIGUIENTE, SE RESUELVE POR LA JUNTA DIRECTORS DE LA AUTORIDAD DEL RIO DE PALO DURO:

1. Que se celebraran elecciones antes de las horas de 7:00 A.M. y 7:00 p.m. el 26 de agosto de 1986 en dicho Autoridad, en todo ese territorio constituyendo el Condado de Hansford, en los siguientes lugares de escrutinio, con los oficiales de eleccion siguientes:

- | | | |
|---|--------------------------------|-------------------------------------|
| (a) Condado de Hansford Palacio de Justicia, N.W. Court, Spearman, Texas: | Harry Stumpf
Marsha Kuehl | Juez Actual
Juez Actual Suplente |
| (b) Condado de Barn, 702 Front Street, Gruver, Texas: | Merle Delano
Marie Walker | Juez Actual
Juez Actual Suplente |
| (c) Edificio Comunidad de Morse, Morse, Texas: | Vicki Urban
Milana Reiszvig | Juez Actual
Juez Actual Suplente |

2. Que el Juez Actual nombrara no menos de dos oficiales de eleccion calificados para servir y asistir en el conducto de dicha eleccion; con tal que si el Juez Actual actualmente desempeña sus funciones, entonces el Juez Actual Suplente debera ser uno de tales oficiales.

3. Que los votos ausentes seran dirigidos en persona y por correo en Oficina del Escribiente Condal, Palacio de Justicia, Spearman, Texas, y durante el periodo en que los votos ausentes son permitidos por ley, siendo el 6 de agosto de 1986 hasta el 22 de agosto 1986, las horas designadas para votos ausentes en persona sera desde las 8:00 de la manana hasta las 5:00 de la tarde de cada dia con excepcion de sabados, domingos, y dias feriados oficiales del estado; y el oficial de los votos ausentes mantendra tal lugar de votos ausentes abierto durante tales horas for los votos ausentes en persona. El oficial de los votos ausentes para tal eleccion sera Muriel Boyd.

4. Que una junta de votos ausentes esta por este medio nombrado para el proceso de los resultados de los votos ausentes, y Muriel Boyd esta por este medio nombrado el Juez Actual de dicha junta. El Juez Actual nombrara por lo menos dos otros miembros de la junta.

5. Que todo residente, electores calificados de tal Autoridad tendran el derecho de votar en dicha eleccion.

6. Que una copia substancial de esta Resolucion servira como Aviso propio de tal eleccion, y el Presidente de la Junta de Directores causara que dicho Aviso se publicara una vez, no mas temprano que el dia 30 de julio que al dia 10 antes de la fecha fijada para la eleccion, en un periodico publicado en tal Autoridad, o si ninguno se publica en tal Autoridad, en un periodico de circulacion general en dicho Autoridad.

7. Que en tal eleccion la siguiente PROPOSICION sea sometida de acuerdo con la ley:

PROPOSICION

Debera la Junta de Directores de la Autoridad del Rio de Palo Duro ser autorizada de emitir bonos de dicho Autoridad, en una o mas series, en el monto principal agregado de \$22,300,000, con los bonos de cada dichas series, respectivamente, a vencer dentro de pero no mas de 40 anos, ser vendidos a dichos precios, y devengar interes a dichos porcentajes, como sea determinado dentro la discrecion de dicha Junta de Directores, de acuerdo con ley, con el fin de proveer una fuente de abastecimiento de agua para ciudades y otros consumidores para proposito agriculural, municipal, domestico, industrial, inundacion de campo petrolifero y minero, por medio de adqurir o construir unlas repuestas y todos los mecanismos, instalaciones y otras facilidades necesaria o beneficoas con el fin de represar, purificar, y transportar agua a ciudades y otros, para proposito municipal, agriculural, domestico, industrial, inundacion de campo petrolifero y minero y debera la Junta de Directores ser autorizada a gravar y espasar y dar causa para avalotar y recaudar impuestos ad valorem anuales suficientes, sin limite a porcentaje o cantidad para pagar el principal de y el interes de dichos bonos cuando se vencen?

8. Que las balots oficiales para dicha eleccion se preparan de acuerdo con elCodigo de Eleccion de Texas para asi permitir a los electores de votar "A FAVOR" or "EN CONTRA" de la antedicha PROPOSICION, que las balots contengan dichas provisiones, arcaas, y terminologia requerida por ley, y que tal PROPOSICION sea substancialmente expresada como siguiente:

PROPOSICION

A FAVOR) LA EMISION DE BONOS DE
EN CONTRA) \$22,300,000 Y EL GRAVAMEN
DE IMPUESTOS AD VALOREM PARA
EL PAGO DE LOS BONOS

9. Que en todo respeto dicha eleccion sera ejecutada de acuerdo con elCodigo de Eleccion de Texas.

**THE
FINAL
2-DAYS**

**OF BEEDY'S
SUMMER
Clearance
FRI. & SAT.**

DOOR BUSTER Pine Regular or Queen
HEADBOARD CASH ONLY!
2 Only
Reg. \$289.50 Ea. **\$100⁰⁰**
By Broyhill Sale

DOOR BUSTER Pine Twin
HEADBOARD CASH ONLY!
1 Only
Reg. \$198.50 **\$75⁰⁰**
by Broyhill Sale

DOOR BUSTER Dark Pine
NIGHT STAND CASH ONLY!
1 Only
Reg. \$169.50 **\$75⁰⁰**
by Broyhill Sale

DOOR BUSTER Light Oak
PEDESTAL CASH ONLY!
Reg. \$159.50 **\$40⁰⁰**
by London Sale

DOOR BUSTER Dark Oak Regular or Queen
HEADBOARD, DOUBLE DRESSER, & MIRROR CASH ONLY!
Reg. \$744.50 **\$350⁰⁰**
by Harrison Sale

DOOR BUSTER Dark Oak
DESK & CHAIR CASH ONLY!
Reg. \$549.50 **\$250⁰⁰**
By Harrison Sale

DOOR BUSTER Dark Oak
CAPTAIN'S BED With Sto-away CASH ONLY!
Reg. \$619.50 **\$299⁰⁰**
by Harrison Sale

DOOR BUSTER Pine
MATES BED With 3 Drawers CASH ONLY!
Reg. \$439.50 **\$199⁰⁰**
by Broyhill Sale

DOOR BUSTER Dark Oak
SOFA TABLE CASH ONLY!
Reg. \$379.50 **\$95⁰⁰**
by Ayers Sale

DOOR BUSTER Gold Upholstered
BAR STOOL CASH ONLY!
1 Only
Reg. \$179.50 **\$75⁰⁰**
by Samsonite Sale

DOOR BUSTER Brown Upholstered
BAR STOOL CASH ONLY!
1 Only
Reg. \$109.50 **\$40⁰⁰**
by Samsonite Sale

DOOR BUSTER Taupe Velvet
QUEEN SLEEPER CASH ONLY!
Reg. \$950.00 **\$450⁰⁰**
by FMI Sale

DOOR BUSTER Navy Blue
VELVET SOFA With Beige Accents CASH ONLY!
Reg. \$925.00 **\$399⁰⁰**
by FMI Sale

DOOR BUSTER Dark Oak
CORNER DESK, 2 BACHELOR CHESTS & HUTCH TOPS CASH ONLY!
Reg. \$1250.00 **\$599⁰⁰**
by Harrison Sale

DOOR BUSTER Assorted
THROW PILLOWS CASH ONLY!
Values up to **\$2⁰⁰**
\$11.50 Ea. Ea.

**STORE CLOSED ALL DAY
THURSDAY, JULY 31
FOR FINAL MARKDOWNS**

**QUALITY FURNITURE
SAVINGS UP TO ... 80%**

**STORE HOURS: FRIDAY & SATURDAY AUGUST 1 & 2
9:00 A.M. - 5:30 P.M.**

• ALL SALES FINAL
• NO HOLDS • NO LAY-A-WAYS • NO PHONE ORDERS • NO REFUNDS • NO SPECIAL ORDERS

- All Simmons Mattresses & Box Springs REDUCED UP TO **50%**
- All Bedroom Suites REDUCED UP TO **50%**
- All Table Lamps REDUCED UP TO **80%**
- All Pictures & Accessories REDUCED UP TO **80%**
- All Sofas, Love Seats & Sleepers REDUCED UP TO **50%**
- All Rockers & Chairs REDUCED UP TO **50%**
- All Rocker Recliners & Wall Recliners REDUCED UP TO **30%**

All Items Subject To Prior Sale
MasterCard & VISA Accepted
24-Month Bank Rate Financing
All Terms Subject to Credit Approval

**ALL PATIO FURNITURE
40 - 60% OFF**



659-3701
723 W. 7th
Spearman, Texas