

24 hr. prayer
service, 659-2911

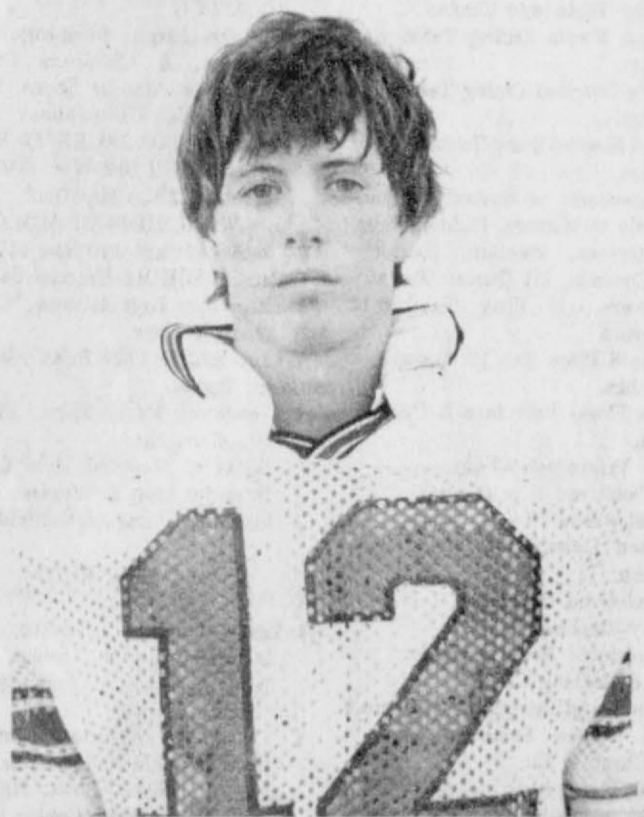
THE GRUVER STATESMAN

VOLUME 15 NUMBER 4

THE GRUVER STATESMAN, GRUVER, TEXAS 79040

THURSDAY, OCTOBER 31, 1985

Lefors Pirates coming to Gruver Friday



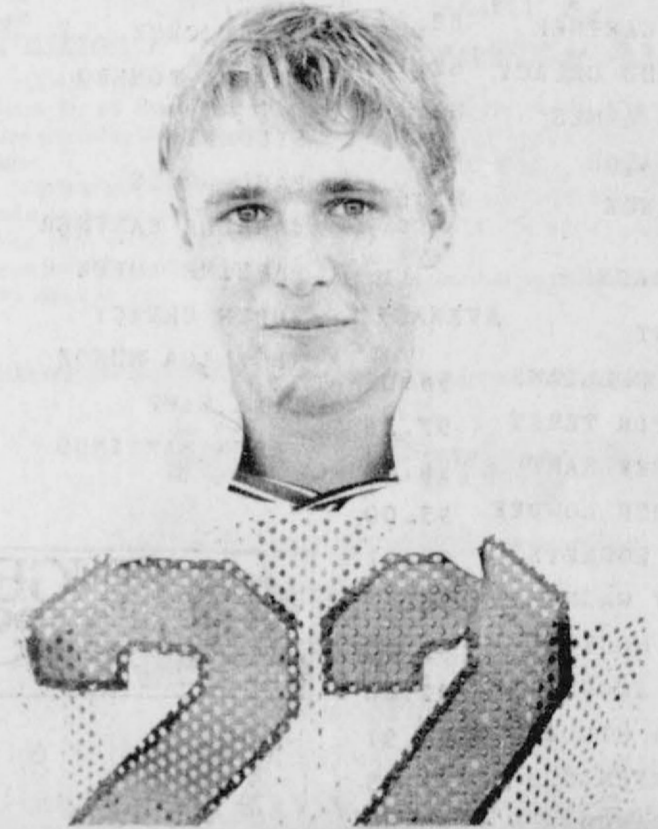
MARK GILBREATH

The Greyhounds just keep on "hangin" in there, and that is just what happened at Groom Friday night, as Gruver and Groom battled to a 15-15 tie at Groom. The Greyhounds apparently had the game on "ice" but the Tigers scored a TD and made the t point conversion to end up in a 15-15 tie.

Mark Gilbreath scored on a 10 yard pass from Tim Stedje in the second quarter, but the extra point kick failed, and Groom held a 7-6 lead at halftime.

In the third quarter Kip Pittman made a 54 yard run to give the Hounds a 12 to 7 lead. Gary Murray added a 35 yard field goal to put the Hounds ahead 15-7. The Tigers then ran a TD over, and made the 2 point conversion to tie the game at 15-15.

The Greyhounds will host Lefors on Friday night. The Dogs will be heavy favorites to win this game. The JV team will play at Phillips Thursday, 7 p. m. The 7th and 8th grade teams will also play at Phillips beginning at 5:30.



KIP PITTMAN

Elmer Thompson services held

Services for Elmer Thompson, 72, of Gruver were held at 2 p.m. Wednesday in Union Church in Spearman with the Rev. Steve Rogers, pastor, officiating. Burial was in the Gruver Cemetery by Boxwell Brothers Funeral Directors of Spear-

man.

Mr. Thompson died Sunday.

Survivors include his wife, four sons, three daughters, a brother, a sister, 23 grandchildren and 13 great-grandchildren.

First meeting for Harmony club

The Gruver Harmony Club had their first meeting for the 1985-86 school year at the Methodist Fellowship Hall Tuesday, Oct. 15th. Quite a few girls attended the meeting which lasted about 30 minutes. The meeting consisted mainly of welcoming everyone back and electing the officers for the new year. Carrie Hart was elected President, accompanied by Sally Holt who was elected Vice President. Tracy Logsdon was chosen as Secre-

tary while Cami Shapley was chosen as Treasurer. The Scrapbook Committee consists of Dala Shapley and Holly Creacy. Jill Garrett was chosen as Piano Player and Joby White as picked to serve as Public Chairman. The meeting was adjourned and the officers stayed to discuss a few ideas concerning the new year. We are planning some fun activities and are looking forward to a very exciting year.

GRUVER		GROOM	
GM - Brent Thornton 11 run (Jack Britton kick)		GR - Mark Gilbreath 10 pass from Tom Stedje (kick failed)	
GR - Kip Pittman 54 run (kick failed)		GR - Gary Murray 35 FG	
GM - Britton 11 run (Britton pass from Thornton)			
First Downs	16	10	
Yards Rushing	203	76	
Yards Passing	21	96	
Total Yards Gained	224	172	
Passes Attempted	5	16	
Passes Completed	1	6	
Passes Intercepted By	1	1	
Number of Punts	5	5	
Punt Average	43	34	
Opp. Fumbles Recovered	0	1	
Number of Penalties	5	8	
Yards Penalized	40	70	

Markets

MILO	\$3.85
WHEAT	\$2.81
CORN	\$2.50



DALLAS COWBOYS

1985 Football Schedule

PRESEASON		Dallas
Sat. Aug. 10	at GREEN BAY	8:00
Sat. Aug. 17	at San Diego	8:00
Mon. Aug. 26	CHICAGO	7:00
Sat. Aug. 31	HOUSTON	8:00

LEAGUE SEASON

Mon. Sept. 9	WASHINGTON	8:00
Sun. Sept. 15	at Detroit	12:00
Sat. Sept. 22	CLEVELAND	12:00
Sat. Sept. 29	at Houston	12:00
Sat. Oct. 6	at New York Giants	8:00
Sun. Oct. 13	PITTSBURGH	12:00
Sat. Oct. 20	at Philadelphia	12:00
Sun. Oct. 27	ATLANTA	12:00
Mon. Nov. 4	at St. Louis	8:00
Sun. Nov. 10	at Washington	3:00
Sat. Nov. 17	CHICAGO	12:00
Sat. Nov. 24	PHILADELPHIA	12:00
Sun. Dec. 1	at Cincinnati	12:00
Sun. Dec. 8	ST. LOUIS	3:00
Sun. Dec. 15	NEW YORK GIANTS	12:00
Sun. Dec. 22	at San Francisco	3:00

TURKEY WALK - Sponsored by American Heart Assoc. - November 2, 1985 - 10 a.m. Begins at La Casita Room, GSB.

3 Mile walk
Free juice and donuts to all walkers. Can pick up sponsor sheet from GSB or Gruver City Hall.

Free turkey to participants collecting over \$50.00. More information Call Pat Irwin, 733-2285.

Annual Installation of officers

The Gruver Chapter Future Homemakers of America held their annual installation of officers Monday, October 7, 1985 at 7:00 p.m. The officers installed were President-Angela Ross, 1st Vice-President-Cissy Smith, 2nd Vice-President-Anne Marquez, 3rd Vice-President-Rebecca Dillow, Secretary-Treasurer-Joby Martin, and Parliamentarian-Davonna Cator. The newly elected officers presented the rose ceremony. After the ceremony the officers, members & some of the mothers enjoyed refreshments. Del Roy Gammon and Ashley Wagner were the winners of the cake

given away by the FHA at the Gruver-Phillips game.

The Community Cookbooks will arrive sometime around the 1st of January and will cost \$5.00 because of so many recipes turned in. If you were planning on giving a cookbook for Christmas, gift certificates will be given instead, until the cookbooks do arrive. To get your gift certificate please contact Cathy Potts.



The South Plains College livestock judging team captured the championship and high point team honors in both quarter horse and swine judging at the Louisiana State Fair in Shreveport this past Monday (Oct. 21). Members are (from left) Durward Cator of

Gruver, Cecil Marrow of Route 2, Levelland, third high individual overall and second/third place tie in swine judging; Sherella Shaw of Smyer, eighth high individual overall and high point individual in quarter horse judging; Joe Raff of Grand Junction, Colo., 12th high

individual overall and fifth in quarter horse judging; and Matt Harris of McAlister, N.M., 14th high individual overall who tied with Marrow for second/third in swine judging. This was the second consecutive year that SPC had won the Louisiana championship.

Durward Cator on judging team

Durward Cator of Gruver assisted the South Plains College livestock judging team to its first major championship of the season and a repeat of last year's competition -- the junior division championship at the Louisiana State Fair in Shreveport this past weekend.

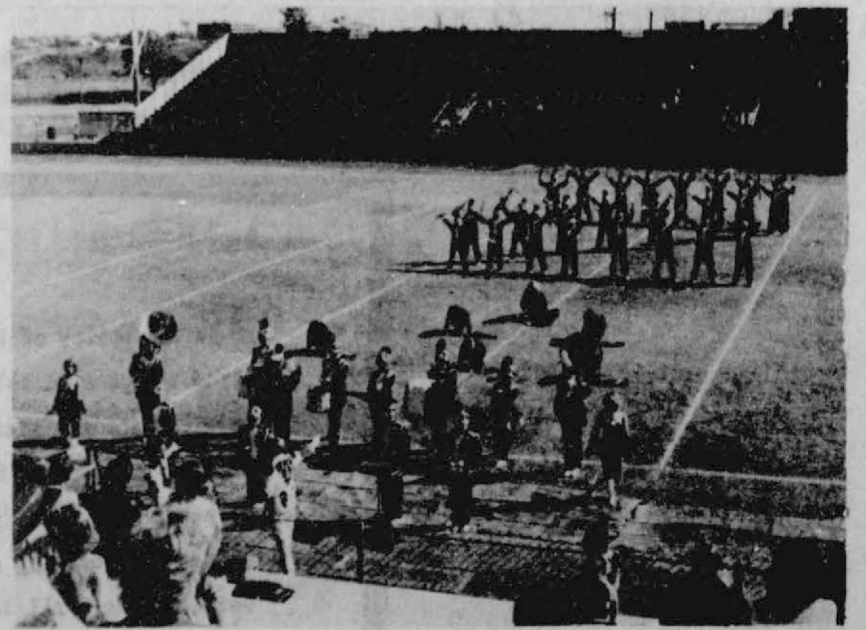
Cator helped the team to high point team honors in both quarter horse and swine judging and sixth over all in beef cattle. They competed with 40 other colleges from around the nation and 200 contestants.

"We were tickled to win," said team coach, Jim Jenkins, SPC associate professor of agriculture. "Durward did a solid job for us; we would not have won without him," said Jenkins.

The SPC team won over such favored competitors as Northeastern Oklahoma University, Sam Houston State University and Texas A&M University.

Cator, 20, is the son of Mr. and Mrs. D.A. Cator of Gruver and a 1984 graduate of Gruver High School. He is a sophomore agriculture major at SPC.

Band goes to Regional



The Gruver Greyhound Band will be competing in the U.L.L. Regional Marching Contest to be held in Vernon on November 2nd at 1:10 p.m. The Band Boosters will charter a bus for those wishing to attend and help support the band. The band is under the direction of Bruce Collins. Those wishing to make the trip,

may contact the high school principal office at 2477 by Thursday noon to make reservations. If at least 30 people register to go, the cost will be \$32.77 but if 39 people register, the cost will be \$25.25.

The time for the bus to depart will be decided after they receive a total of people registering.

8th GRADE

STUDENT	AVERAGE
STEPHANIE BRUNS	95.18
DEBBIE HATHAWAY	93.45
THERON PARK	93.36
JOE SOTELO	92.45
MANDA WINGER	92.45
BRENT STEDJE	91.18
SHELLEY STEDJE	91.18
KYLE IRWIN	90.18
KLINT VENNEMAN	89.27
TROY SEAGLER	87.18
LANCE SPARKS	86.81
STEFAN DORMAN	86.45
VANCE SCARBOROUGH	85.81
STEVE GROCE	84.90
MONICA ROMERO	84.72
RAMON ORTEGA	84.45
SANDRA GRIGGS	83.63
KATRINA BRATTON	82.63
JASON HAEFNER	82.27
JOHN ADD CREACY	82.18
JUSTIN ARMES	81.90
TINA CATOR	81
CINDY NOE	80.63

7th GRADE

STUDENT	AVERAGE
KATIE WILLIAMS	98.09
JENNIFER TERRY	97.36
JENNIFER HART	96.63
GRETCHEN LOWDER	95.00
MARCI ROBERTS	94.91
ASHLEY WAGNER	94.09
DERIK MACK	93.00
KATHY AUGUSTINE	92.00
AMANDA HILLER	91.91
KYLE HAENISCH	91.45
ELDA PANDO	90.64
JILL SCHELL	90.45
CYNTHIA WINN	90.45
JASON BASS	90.27
PATRICIA MORENO	90.18
CASEY SPENCE	89.91
BILLY HAYES	89.00
P.D. SWINK	88.27
BILLY CRAWFORD	87.72
EVA BABBS	87.63
KERRI MINTER	87.27
CHRIS KAUFFMAN	86.27
KEVIN BABBS	85.55
CHRIS SPIVEY	84.55
BRICE GOLDSMITH	84.45
GORGE SOTO	84.45
MARIA GUZMAN	84.36
ANA ORTEGA	84.18
BOBBY SHRADER	83.64
SHANE FITZGERALD	82.55
CUCA MARQUEZ	82.55
MONCE BORUNDA	82.36
TRACY KINCANNON	81.91
JOE CASAS	81.82
GERONIMO ORTEGA	81.18
LISA PAYNE	81.09

5th GRADE

STUDENT	AVERAGE
SHARLET SLOUGH	97.38
MARIQUIT VIOLA	97.38
CODY BARKLEY	97.0
TRACI CRAWFORD	96.88
JENNIFER BAKER	95.38
HOLLY VENNEMAN	95.0
NANCY ALVAREZ	94.63
HEATH GAINES	94.38
MICHAEL PARK	94.38
CORA MEYER	94.13
AMY MURRY	93.63
MONICA WARD	93.50

5TH GRADE

STUDENT	AVERAGE
TREVOR SHIPLEY	93.25
AMY GUMFORY	93.13
MATT ETHEREDGE	92.0
CAREY KAUFFMAN	92.0
TRACY TAYLOR	91.75
BRENDY BROWN	91.63
JIM CASWELL	91.25
SHANNON CANADA	90.25
KIM BOONE	90.0
KASEY DAVIS	89.25
JAKE BOESE	89.0
KEVIN SPIVEY	89.0
IRA GROSS	88.63
TOI SHARP	88.63
CRYSTAL FRENCH	87.5
JEFFREY PRICE	87.38
JENNIFER ANDERSON	87.25
T.J. BAYLESS	86.63
BRADY POOL	85.75
DANNY SOTELO	85.75
ISAUL CRUZ	85.0
FATIMA ROMERO	85.0
STUDENT	AVERAGE
PAUL GROCE	83.75
JANELLE HAEFNER	83.75
PAULINE LOPEZ	81.88
ROBYN CREACY	81.50
ANGELICA MUNOZ	80.50
TINA CAMP	80.38
JASON BARTIMUS	80.0

6th GRADE

STUDENT	AVERAGE
LUKE MILLER	96.0
BENNY MCCLLENAGAN	95.6
GARRETT GUMFORY	93.6
KENNY SLOUGH	92.4
TRENT SEAGLER	91.4
REX RALSTON	90.8
TERA BOYD	90.4
CINNAMON MARTIN	89.6
MATTHEW HOEL	88.6
CROCKETT TIDWELL	88.6
STACEY BRUNS	88.0
CLAY GILLISPIE	87.6
GUS CARBAJAL	86.8
STEPHANIE BOESE	86.6
SHANNON POOL	86.2
STACEY WILLIAMS	85.8
CHAD BROWN	84.2
MARGE CARBAJAL	83.2
CLINT BELL	81.8
JILL STEDJE	81.6

Vote For 1, 2, and 10

Propositions 1, 2 and 10 especially merit approval by voters on the Nov. 5 ballot, according to Aubrey Rasor of Gruver, president of the Hansford County Farm Bureau.

The first two deal with helping assure adequate water for future domestic, industrial and agricultural use, the local farm leader said. Proposition 10 would assist farmers and ranchers in the purchase of land, he said.

Aubrey pointed out that neither the water projects nor the land-purchase program will require use of tax money for financing.

Proposition 1 authorizes the issuance of an additional \$980 million of Texas water development bonds to create special water funds for water conservation, water development, water quality enhancement, flood control, drainage, subsidence control, recharge, chloride control, agricultural soil and water conservation and desalinization.

Proposition 2 authorizes the issuance and sale of \$200 million of Texas agricultural water conservation bonds. Proceeds from the sale of these bonds would be deposited in an agricultural water conservation fund for use by the Texas Water Development Board in funding programs adopted by the Legislature.

Proposition 10 authorizes the issuance of \$500 million of general obligation bonds to provide financing assistance for the purchase of farm and ranch land. The program would be administered by the Veterans' Land Board in the same manner that the Board administers other similar land programs for the benefit of veterans.

Zhao Ziyang, China's premier, on U.S.-Chinese relations: "We all know that there are obstacles in Sino-U.S. relations which prevent the proper and full tapping of the potentials between our two countries."



Now that the kids are back to school, the "holidays" are just ahead. And someone arranged to have them all fall into one hectic jumble — or so it seems as they quickly grow closer.

If you're like most people, you resolve every year to be organized — but the weeks slip by faster than Halley's Comet, and suddenly it's all upon you.

Organization starts with a cup of coffee, pad and pencil, and just a little quiet time for thought. Halloween. Thanksgiving. Hannukah and Christmas. Make lists and more lists. Do the children need costumes for Halloween? Should you have a party in lieu of "trick or treat?" Will the relatives be coming for turkey and stuffing? Which family member is the hardest to buy for? Do you need to entertain during the holidays?

Once it's down on paper — it really doesn't look so bad. Another cup of coffee and the buyer's best resource guide will get you on your way to a really enjoyable holiday season. Check the Yellow Pages to save time and frustration.

If you're planning a shopping trip, a few telephone calls can tell you where to find that gift for the "person who has everything." Use the directory to plan your route and save needless driving around and searching for parking places. Have you ever had a party catered? It might not be as expensive as you'd think — call early for suggestions and prices. Party favors, holiday centerpieces, mailing services, and a myriad of other details can be cleared up quickly by letting your fingers do the walking.

Use the Yellow Pages. Order gifts by mail — early, of course. Plan your holiday menus ahead of time. The holidays can be a relaxing time for family and friends instead of a frenzied period that leaves you exhausted.

OPEN ADMISSIONS POLICY STATEMENT

It is the policy of Hansford Manor to admit and to treat all residents without regard to color, race, national origin or handicap. The same requirements for admission are applied to all, and residents are assigned within the nursing home, without regard to color, race, national origin or handicap. There is no distinction in eligibility for, or in the manner of providing any resident service provided by or through the nursing home. All facilities of the nursing home are available without distinction to all residents and visitors, regardless of race, color, national origin or handicap. All persons and organizations that have occasion either to refer residents for admission or recommend Hansford Manor are advised to do so without regard to the persons race, color, national origin or handicap.

WILLIAMS & WEBB AUCTION

10:00 A.M. - Saturday - November 2
JAN'S ECT.

STOCK REDUCTION OF FURNITURE -

SMALL APPLIANCES - CLOTHING - GAMES - ETC.
NO MINIMUMS - NO RESERVATIONS - NO BID INS -
NO BUY BACKS - Sale Location: Plains Shopping

Center on East Side of Stinnett/Spearman Highway
in Spearman, Texas.

Inspection: 10:00 A.M. to 5:00 P.M. Day Prior to sale.

- FURNITURE**
- 240 Pair Ladies Designer Jeans in Sizes 1-13.
 - 1 Large Inventory Men's & Womens LEVI, WRANGLER, & SLEDGE-FIELD Jeans.
 - 1 Inventory of Childrens, Ladies, Mens Coats in Assorted Styles & Fabrics by MS PIONEER, CLOUD 9, MULBERRY, WEATHER TAMER, LONDON FOG.
 - 1 Very Large Inventory Men, Women, & Childrens Dress Shoes, Athletic Shoes, Boots, Snowboots, Houseshoes by JUMPING JACKS, DI BRAGGI, BUSTER BROWN, SONNET, WRANGLER, NACONA, REDWING, HONDO, ACME, Etc. in Sizes Infant thru Size 13 Adult.
 - 6 Pair DR SCHOLL Exercise Sandals.
 - 1 Inventory Knit Mittens, Gloves, Stocking Caps.
 - 1 Lot HANG TEN Belts, Scarves, Socks, Tights.
 - 1 Inventory Panty Hose, Panties, Brassiers, Etc.
 - 2 Racks of Assorted Style Leather Belts for Men & Women.
 - 1 Inventory Purses & Billfolds.
- NON CLASSIFIED**
- 1 Large Inventory of Sewing Notions Including Button, Thread, Yarn, Zippers, Material Remnants, & Craft Books.
 - 1 Inventory Assorted Christmas Decorations Including Glass Ornaments, Gift Boxes, Bows, Hangers, Wall Decorations, Center Pieces.
 - 3 Ceramic Santa Clauses.
 - 1 Inventory Cassettes, 8 Track Tapes, Record Albums.
 - 1 Large Inventory Assorted Greeting Cards & Gift Wrap.
 - 1 Bow Machine.
 - 1 Decal Transfer Machine w/3 Kits Block Letters.
 - 1 Inventory of Assorted Drug Items Including ALLAREST, COM-TREX, VICKS, NYTOL, MURINE, VISINE, ANACIN, CONTAC, DRISTAN, BAYER ASPIRIN, & BC.
 - 1 Inventory of Eye Shadow, Lipstick, Fingernail Polish, Cologne, Soaps, Mascara, Eye Liner by REVLON, LOREAL, MAYBELLINE.
 - 1 Inventory of Auto Supplies Including Turtle Wax, Poly Sealant, Fast Finish, Vinyl Top Dressing, Etc.
 - 1 Inventory Assorted Baskets.
 - 1 Inventory of Birthday Candles, Decorations, & Party Favors.
 - 1 Inventory Infant Car Seats, Playpen, Stroller, Walkers, Baby Buggy, Spring Loaded Rocking Horses, High Chair.
 - 1 Inventory Office Supplies, Desk Lamps, Ash Tray Cans.
- PLUS MUCH MUCH MORE!!!**
- GAMES**
- 43 RUBIK'S Pocket Cubes.
 - 88 RUBIK'S Cubes.
 - 51 Wonderful Puzzer Cubes.
 - 14 GURGLE Games.
 - 54 SPINBALL Games.
 - 47 PYRAMID Games.
 - 71 Miscellaneous 4 Packs of Toys.
 - 33 STARBURST Games.
 - 27 THE MISSING LINK Games.
 - 21 ENTRAPMENT Games.
 - 106 PYRAMID Puzzer.
 - 70 MONCHHICHI Dolls.
 - 18 MONCHHICHI Boutiques.
 - 2 I SCREAM Pop Up Games.
 - 3 I WANT TO BITE YOUR FINGER Games.
 - 6 ANNIE Games.
 - 16 GUESS WHO Games.
 - 3 COLOR MATCH Games.
 - 3 DOMINATION Games.
 - 11 GREAT MUPPET CAPER Games.
 - 6 Slot Games.
 - 2 TRIPLE CROWN Games.
 - 14 GIMME FIVE Games.
 - 38 RAIDERS OF THE LOST ARC Games.
 - 17 THE LONE RANGER Games.
 - 8 BLACK THE CLOCK Games.
 - 30 MICKY MOUSE PUB & PLAY Games.
 - 12 WORD YAHTZEE Games.
 - 5 PUSH OVER Games.
 - 1 Large Inventory Assorted Puzzles.
- LINENS & CURTAINS**
- 1 Inventory of Table Linens Including Table Cloths & Placements.
 - 1 Inventory of Twin, Full, & Queen Size sheets Some w/Matching Pillowcases.
 - 1 Small Inventory Window Shades and Curtain Rods.
 - 1 Inventory of Shower Curtains & Assorted Window Curtains.
- FIREPLACE ACCESSORIES**
- 1 Set Ornate Brass Fireplace Tools.
 - 1 Set Antique Brass Fireplace Tools.
 - 1 Brass Fan Shaped Fireplace Cover.
 - 1 Black Wrought Iron Fireplace Screen.
- LAMPS**
- 35 Assorted Table & Hanging Lamps in Various Styles.
 - 1 Brass 1 Bulb Pole Lamp w/Attached Glass table.
 - 2 Glass Table Lamps w/Hand Painted Base & Globes.
 - 1 Inventory GE, TIME-A-TRON, SYLVANIA, & Sun Lamp Light Bulbs.
- SMALL APPLIANCES**
- 1 Inventory of Small Electric Appliances Including: Bread Warmers, Juicers, Ice Cream Freezers, Toasters, Bag Sealers, Coffee Pots, Pop Corn Poppers, Waffle Irons, Brewer/Warmers, Indoor Grills, Burger Grills, Can Openers, Peeling Wands, MR COFFEES, Deep Fryer, Electric Heater, HANKSCRAFT Vaporizer, POLLENEX Massaging Foot Bath's, Fans, Rug Shampooers, Hand Mixers, Hair Dryers.
 - NEW CLOTHING, SHOES, & ACCESSORY INVENTORY**
 - 1 Inventory of 12 Month to 6X Childrens Clothing Including Dresses, Slacks, Tops, Pants, Suits, Shirts, Sweaters, Jeans, Jogging Suits, Etc.
 - 1 Large Inventory of Assorted Ladies Sweaters, Sweater Jackets, Skirts, Pants, Suit Jackets, Vests, Blouses, in Assorted Styles, Sizes and Fabrics by HANG TEN, STUFFED SHIRTS, HOWARD & CO., GENESIS, ETC.

School bus passing

The public is warned to not pass a school bus that is unloading children at anytime. A new law was passed that makes it mandatory for the bus driver to call in your license plate number to the Sheriff's department. If you pass a bus while it is unloading children.

Sheriff R. L. McFarlin reminds everyone to be careful during this Maize Harvest. Watch for our school buses and DO NOT PASS THEM.

James Baker III, Treasury Secretary:
"I think, given the political will to make the hard choices, you can reach balance without having to raise taxes."

Baseball Today

One doesn't like saying it, and many of today's youngsters may not realize it, but today's Major League baseball is a travesty. In post-season play of the best teams error after error has

decided games. Fielding was at the semi-pro level. Mental errors were continuous.

Players threw wild, dropped easy fly balls, failed to back up bases, missed routine grounders, etc., etc. Scorers were calling errors hits.

Boots in the infield were sometimes scored two-base hits. Flagrant misjudging of flies were scored doubles and triples. Commentators were lenient about incredibly sloppy play—protesting

the image of the game, preventing disgust and a loss of interest.

The truth is that the quality of fielding today (not hitting) is far below the standard of a few decades back. Whether it's the use of drugs, too much money, too much security for players, fewer years learning fielding in the minors or the end of the era when managers exercised real discipline, or all, one can't say.

But the game is too often a disappointment to watch for those who know what Major League standards should be. This truth should be spoken and written—in the hope the future can produce better quality baseball.

Buchanan to be honored Nov. 7th



of the Texas 88th district state representative.

The Moore County Community Building is located at Sixteenth Street and South Maddox in Dumas.

"This appreciation dinner for Buchanan is not only for the people of Moore County, but for all the counties he represents," says Herb Harter, one of the dinner organizers. "We are planning this together to say 'thank you' to Buck for his service to the entire 88th district."

A long time resident of Dumas, and a native of Hansford County, Buchanan is completing his third 2-year term of office in the Texas Legislature. He has previously served two terms in the late 1950's. Counties within the 88th district include: Carson, Dallam, Hartley, Hemphill, Hansford, Hutchinson, Lipscomb, Moore, Ochiltree, Oldham, Roberts, Sherman and Wheeler.

Buchanan is the retired manager of the North Plains Water District, a position he held from 1955 until 1980.

Tickets for the appreciation dinner are \$12.50 each and may be obtained by contacting Ken Morrison in Dumas at P.O. Box 635, Dumas, Tx. 79029 or by phone at (806) 935-4184.

NEWS RELEASE—(Dumas)—State Representative J.W. "Buck" Buchanan of Dumas will be honored at an appreciation dinner here on November 7 in the Moore County Community Building.

Guest speaker for the evening will be Speaker of the Texas House, Gib Lewis of Fort Worth, who is completing his second 2-year term in that office.

The dinner will begin at 7 p.m. and is being sponsored by friends

Section 1. Subsection (a), Section 104, Uniform Act Regulating Traffic on Highways (Article 6701d, Vernon's Texas Civil Statutes), is amended to read as follows:
(a) The driver of a vehicle upon a highway inside or outside of a business or residence district upon meeting or overtaking from either direction any school bus which has stopped on the highway for the purpose of receiving or discharging any school children shall stop the vehicle before reaching such school bus when there is in operation on said school bus a visual signal as specified in Section 124 of this Act, and said driver shall not proceed until such school bus resumes motion or is signaled by the school bus driver to proceed or the visual signals are no longer actuated. A violation of this subsection is punishable by a fine of not less than \$50 nor more than \$200.

Anniversary Sale

Starts Oct. 31

Value galore, everything in the store 25% off with special values up to 50% off.

Recliners reg. \$299.00 now only \$199.00

Bedroom wallunit reg. \$1099 now only \$599.

Lighted curio cabinets reg. \$299 now only \$199.

Dinnett with 4 chairs starting at \$100.00

Bunk beds & lamps 25% off shop early for Christmas the values will never be greater.

Vivian's Furniture

12 E. Brillhart

Perryton, Texas

COME IN FOR LAST MINUTE HALLOWEEN TREATS

SAVINGS TREAT

ICE-SOFT DRINKS-SELF SERVE GAS-SNACKS-PICNIC SUPPLIES-GROCERIES-FRESH COOKED FOODS-BREAD-MILK-WHILE SUPPLIES LAST

PRICES EFFECTIVE OCT. 31-NOV. 2, 1985

SHURFINE FALL HARVEST SALE

ALL GRINDS SHURFINE COFFEE \$1.89 1 LB. CAN	GRANULATED SHURFINE SUGAR \$1.39 5 LB. BAG	SHURFINE CREAM STYLE OR WHOLE KERNEL GOLDEN CORN 4 \$1 17 OZ. CANS
PUMPKINS JACK-O-LANTERNS SMALL 99¢ LARGE \$1.99	WINTERIZE YOUR CAR PRESTONE GAL. \$4.39	

DECKER GOLD LUNCH MEAT HAM 6 OZ. COOKED \$1.49 6 OZ. CHOPPED \$1.19	DONATE TO SPECIAL OLYMPICS BY PURCHASING DECKER PRODUCTS AT ALLSUP'S ALLSUP'S TALLSUP COKE CUP 49¢
--	---

ALLSUP'S ASST. FLAVORS ICE CREAM HALF GALLON \$1.69	BORDEN'S HOMO MILK HALF GALLON 99¢	COOKED FOOD SPECIAL FRESH SANDWICH BBQ EACH 99¢
--	---	--

MOVIE & VCR RENTALS
The Very Best in Home Video Entertainment!
ALL YOU NEED IS YOUR TV!

DIET PEPSI, PEPSI, and PEPSI FREE
MOUNTAIN DEW
\$2.19
6 PK. 16 oz. bottle

October 18, 1985

The Spearman Report
213 Main
Spearman, Texas 79081

Dear Editor:

"If history is any guide, most voters will ignore an issue that may have more impact on their future than who occupies the White House."

This summer we have been able to observe water problems throughout Texas - many major cities experienced restrictions on use of water and others observed problems with sewage treatment and flood control.

On November 5th we will have the opportunity to take a big step towards doing something about our water problems. Vote yes for Propositions 1 and 2 November 5th.

Sincerely,

Alton Ellsworth

Alton Ellsworth

Pd. adv. by Alton Ellsworth

D-8-17
(Rev. 1-84)

CONTRACTORS' NOTICE OF TEXAS HIGHWAY CONSTRUCTION

Sealed proposals for constructing 136.091 miles of Seal Coat on various limits in Armstrong, Lipscomb, Gray, Hansford, Ochiltree, Potter and Hemphill Counties, on SH 207, SH 213, SH 273, Spur 398, FM 1261, FM 377, RM 1321, FM 2172, FM 2248, FM 2176, FM 2266, FM 2388 & FM 2758, covered by CSB 357-2-11, CSB 357-3-11, CSB 357-5-15, CSB 460-1-13, CSB 560-1-20, CSB 560-5-4, CSB 790-6-11, CSB 790-8-13, CSB 790-9-5, CSB 1861-2-14, CSB 2078-1-6, CSB 2078-2-3, CSB 2081-1-4, CSB 2161-1-5, CSB 2330-1-6, CSB 2985-1-8 & CSB 2985-2-4 will be received at the State

Department of Highways and Public Transportation, Austin, until 9:00 A.M., November 14, 1985, and then publicly opened and read.

Plans and specifications including minimum wage rates as provided by Law are available for inspection at the office of Henry L. Gallegly, Resident Engineer, Dalhart, Texas, and at the State Department of Highways and Public Transportation, Austin, Texas. Bidding proposals are to be requested from the Construction Division, D. C. Greer State Highway Building, 11th and Brazos Streets, Austin, Texas 78701. Plans are available through commercial printers in Austin, Texas, at the expense of the bidder.

Usual rights reserved.

Painter and Alford exchange Vows



Mrs. Danny Mark Alford.

Suzanne Painter and Danny Mark Alford, both of Irving, pledged double ring wedding vows Saturday, September 21, in a 2 p.m. ceremony in the First Baptist Church of Tulia. The Rev. Charles Davenport, pastor, officiated.

Parents of the bride are Mr. and Mrs. Bob Painter of Tulia. The groom is the son of Mr. and Mrs. Doyle Alford of Littlefield.

Vows were exchanged before an arched candelabra flanked on either side by spiral candelabras, each holding ivory tapers and intertwined with greenery. Large ivory and teal blue bows accented the candelabra decor. The setting was completed by two white columns holding large baskets of fern. Sanctuary pews were decorated with ivory and teal bows with streamers.

After a prelude of classical selection, Mrs. Gary Henderson of Plainview, organist, played "Jesu, Joy Of Man's Desiring," by Bach, as the mothers and grandmothers were seated. Accompanied by Mrs. Henderson, Roger Edwards of Borger, cousin of the bride, played a trumpet solo, "Trumpet Voluntary," by Jeremiah Clarke, for the lighting of the candles.

Proceeding the marriage ceremony, Phil Alford of Fomey, brother of the groom, sang "Flesh Of My Flesh." For the processional, the organist played "Voluntary On 'Kremsler'" by Gordon

Young. After vows were exchanged, Phil Alford sang "The Lord's Prayer." Following the lighting of the Unity Candle, Mrs. Roger Edwards of Borger, cousin of the

bride, sang "As For Me And My House." Both soloists were accompanied by Mrs. Phil Alford at the piano. The recessional, played by the organist, was "Finale From Concerto No. 5," by G.F. Handel.

Escorted to the altar by her father, the bride wore a formal gown of candelight ivory Imperial silk taffeta and Alencon lace

designed by Antonio of New York. The fitted sweetheart style bodice of Alencon lace, encrusted with seed pearls and sequins, dropped below the waistline to deep points

in the front and back. It was accented by a Victorian neckline of Alencon lace, seed pearls and sequins above a sheer English net yoke decorated with clusters of pearls and sequins.

The French Poul Renaissance sleeves had a long panel of lace with pearl and sequin trim. The undecorated A-line skirt flowed into a court length train.

The bride chose to complete her ensemble with a two-tiered fingertip length veil of illusion enhanced with scattered pearls. The veil fell from a wreath of ivory flowers and leaves embellished with pearls and sequins.

The bouquet carried by the bride was mauve and teal day lilies, fuchsia bromelaid, teal spirea and other mixed Holland varieties, accented with wide white and ecru lace and mauve and teal picot satin ribbon.

Donna Goss of Amarillo was maid-of-honor. Serving his brother as best man was Scott Alford of Lubbock. Other attendants were Dodie Nunn of Cotton Center and Bryan Latchaw of Denver; Pamela Painter of Temple, sister of the bride, and Phil Alford of Fomey,

brother of the groom; Sherri Painter of Grand Prairie, sister of the bride, and Ray Sherrouse of Irving; Dianne Painter of Grand Prairie, sister of the bride, and Bobby Painter of Tulia, brother of the bride. The four groomsmen also served as ushers.

The bridesmaids were attired in tea length dresses of teal blue polyester taffeta. With scooped necklines, the fitted bodices dropped slightly below the natural waists to points in the front. They

had large elbow-length puff sleeves, tied with matching satin ribbon bows above the extended ruffles, and very full dimple shirts.

They carried bouquets of teal spirea, mauve lilies, mauve and teal day lilies and statice accented with teal blue, mauve and ivory

bows with streamers. The long stems were wrapped in candy-cane effect with teal and ivory ribbon. The groom wore and ivory tuxedo, and all other male

members of the wedding party wore black tuxedos. Candle-lighters were Jennifer Price of Gruver, and Gayla Michelle Edwards of Borger, both

cousins of the bride. They wore teal blue floor length dresses identical to those worn by the bridesmaids with the addition of ruffles at the necklines.

Special guests at the wedding were Mrs. Lois Painter of Tulia,

and Mr. and Mrs. Ben Harris of Gruver, grandparents of the bride. Following the ceremony, a reception was hosted by Mr. and Mrs.

Painter in the church parlor. The bride's table was covered with a white floor length cloth with sheer

ruffled skirt and lace overlay. The table was set with silver and crystal appointments and was centered

with the bride's bouquet backed by ivory and mauve tapers. Italian cream wedding cake and light burgandy punch were served.

At the center of the groom's table, covered with a floor-length ecru cloth, was a brass candle holder with a single large ivory candle and English ivy. Coffee and

hot spiced tea were served from a brass coffee service along with German chocolate cake.

Members of the houseparty were Mrs. Kris White of Amarillo; Mrs. James DeWese of Plainview, aunt

of the bride; Mrs. Gene Campbell of Holcomb, Kansas, cousin of the bride; Sherry Alford of Houston,

sister of the groom; Mrs. Scott Alford of Lubbock, sister-in-law of the groom; Dolores Whitteaker of Bartwell; Mrs. Roger Edwards of

Borger, cousin of the bride; Mrs. Pat Harris and Mrs. Jerry Hunt, cousins of the bride, both of Gruver; Mrs. Murry Vise, Mrs. Rae Thornton and Mrs. Howard Pollard, all of Tulia.

The bride attended Wayland Baptist University where she was a member of Theta Alpha Psi Sorority. She is with McDonnell Douglas Corp. in Las Colinas.

Also attending Wayland Baptist University, the groom is a 1981 graduate with a BA Degree in Theatre and Communications. He

is employed with FMC Corp., Information Resources, in Dallas. A rehearsal dinner was hosted by Mr. and Mrs. Doyle Alford at the Steak House in Tulia.

After a honeymoon trip to Colorado Springs, Denver and other points in Colorado, the couple are making their home in Irving.



The Right Place to buy auto parts.

Car Care SALE



CARQUEST Motor Oil
Meets or exceeds all mfrs. specs. 10W40 #CQ-640 or 50HD #CQ-530

Your Choice **99¢** qt.



Prestone® Windshield Washer Concentrate
Formulated to remove dirt and road grime from windshield when mixed with water.
15 oz. #A5142



Tuck Electrical Tape
2 For Only 99¢
For home, workshop or auto 3/4" x 60' #06675



Wagner Brake Fluid
Super heavy duty for disc or drum brakes.
12 oz. #FC29601



Gumout Gas Treatment
Gets rid of carbon, improves compression and stops "after-run."
#7599



Snap Power Steering Fluid
For most import & domestic cars.
12 oz. #5270



Fix-A-Flat
Seals and inflates tube and tubeless tires.
#5275



POWER STEERING FLUID



G.E. Silicone Sealant
Multi-purpose, durable sealant. Easy to use. Clear #421, Black #442, White #465
Sale Price \$1.99
Mail-In Rebate \$1.50
Your Cost After Rebate **49¢**



Turtle Wax® Products
Choose from Super Hard Shell Silicone Car Wax, #1-50, Power White, #1284, Power Shine, #1284, or Super Hard Shell Liquid or Paste, #1225 or 1225.
Your Choice **2.99**



BRAVO® Air Filter
Made by Parsipator. Fits most American cars and Toyotas.
1.99 Limit 2



Berryman Carburetor Cleaner
Cleans carb & choke linkages.
#0113 **1.99**



Ray-O-Vac Alkaline Batteries
9 Volt, #A1504-1; C Cell, 2 pk., #814-2; or D Cell, 2 pk., #813-2.
Your Choice **1.99**



Got A Parts Problem? Ask A Qualified Counterperson. Only CARQUEST has them.

Prices good at participating CARQUEST Auto Parts Stores thru Nov. 3, 1985.



Gruver Farm Supply
515 Main Gruver, Texas 733-2427



Lone Star Service Center
Rt. 3 Gruver, Texas 733-5263

CARQUEST the Right Place to buy auto parts.
Right Parts • Right Price • Right Advice.

Note of Thanks

Thank you to the people of Hansford County and surrounding areas. This month marks the end of our first year of serving you. We appreciate our patients support and look forward to helping others in the years to come.

Stanton W. Cobb D.D.S.

Phil 2:4

Family Practice of Dentistry

802 S. Roland
Spearman, Tx. 79081

659-5515

On The Go With Joy Kathryn Whitefill keynote speaker

I am sure all of you have heard of the men who box and wrestle professionally, retiring (is Mohamed All his name?) And then after a few years of boredom and spending all their money. They decide to come out of retirement for a new career. Well, that is about how I feel because I came out of retirement to drive the truck during the harvest. I was told "Mom, if you could help a couple of days until the week-end, we'd have it made." After muttering under my breath, griping and complaining out loud, I finally consented. Besides, my arm was hurting from the twisting. Anyhow, five days and three break-downs later, I'm still "helping".

I've learned from experience that you don't sigh with relief until the Last head of maize is fed through the header and delivered to the elevators because there have been quite a few times that we have had time consuming and expensive major break-downs with about 2-4 hours of cutting left. Or, one year, we were pushing ourselves to finish up before the snow storm dipped down into the Panhandle and threatened to end our harvest early.

Coming out of retirement one more time has caused me to start reminiscing about the good times I had in my 25 years career of driving the truck during harvest. To start out, the wearing of slacks or jeans was not Common in those days for the women who helped out. Also, to begin with I wasn't allowed to leave the field and take the truck to the elevator. My job was strictly "spotting" the truck in the place most convenient for the combine to dump. Then when the truck was loaded, my husband took over for the trip to town. I wasn't given any oral instructions, but my keen powers of observation was to be used for learning the correct method and time for shifting gears etc. and the maneuvers used for dumping at the elevator.

I guess I learned quickly, for in 1965 I graduated and reported for duty in the field and to on the road. (Now you know how I got "on the Go" started). My husband even presented me with my very own 1965 Little Red truck for an early Anniversary gift.

He decided to buy me Little Red after the brakes failed on the old '48 and I ended up 2 miles past the turnout at the elevator. Some smart guy asked "Why didn't you use the emergency brake?" THE What? More lessons learned were not to turn the truck around in the middle of the field and get stuck cross-wise over the furrows, and be sure not to set the wheat field on fire on those hot dry days.

Then, I remember the time I started the dumping process at an elevator in another town, and as the Hydraulic lifted the dump the front of my truck came up too! You could hear me yelling "help" 10 miles away. Thank goodness, I was in a town where no one knew me.

As the years passed by, I started wearing jeans and that enabled me to crawl up on top the truck and "tarp" and my husband surprised me with a used '66 green chevy. I really thought I was "Queen of the Road" as I gained knowledge and experience on what to do if the hydraulic lift jammed and refused to budge while on the scales with a half dozen drivers honking their horns. Thank goodness the elevator managers kept their hammers handy and knew what to bang on.

But, the most fun times are when all of us drivers get to play "War." When the trucks are lined up on both sides of the scales and trying to figure out little tricks on how to out-manuver the guy on the other side. Sometimes, the language got

pretty rough and the poor old elevator workers got caught in the middle, but now a days, with larger facilities we have eliminated the line up (almost).

Just about the time things began to be a little prosperous for us, I got the ultimate dream truck. A new red 73 Chevy Tandem with power steering and a radio. The only thing wrong, (I thought) was it had no air conditioner and T.V. so I could watch my soap operas during harvest. But my bubble burst and I wasn't too happy with my new toy. Seems like I did a lot of skidding as I turned corners and tried to make a stop. I casually hinted that I was having a few problems but everyone laughed it off as me getting too old and cranky for the job. And imagine the embarrassment I felt when the lift didn't work and they had to use their lift at the elevator. I tried to crawl under the seat when I drove away so no one would recognize me. Well, to make a short story long, my worst experience came when I was barreling along at about 60-65 mph with an extra full load. Way back behind me here came 2-18 Wheelers and I soon realized that I couldn't out run them when they passed me real easy. That deflated my ego quick.

Anyhow 2 or 3 miles ahead of me, the 2-18 Wheelers pulled out into the left lane in order to make a wide right turn. Oh well! I had plenty of time but I took my foot off the accelerator to slow the truck down half a mile later the trucks were still blocking the highway and guess what? My truck was not slowing down!! I pushed hard and the truck was not slowing down!!! I braked and the truck was not slowing down!! I pushed hard and the truck was not slowing down!!! A decision had to be made! The ditch on the right was out (the truck in front had that blocked) The left lane was out (the truck in the back had that blocked). The ditch on the left was out, (it had a culvert). So I prayed and cut to the left and coasted around the truck on the shoulder with a row of reflectors. Well, I missed the truck and reflectors and also missed the pick-up heading straight at me. Thank goodness it had slowed up and had come to a near stop when I came around the big truck.

At the end of harvest that year, my husband decided (after he had problems with the brakes) to take it back to the place where he bought it. After a thorough examination, they decided the tandem brakes hadn't been hooked up!!

Now I am to the end of my story with one last thought. Just before I started to town with "Big Red" the other day, My husband said "Oh, by the way, watch out for the brakes. You may have to pump them and if they freeze up--start slowing down sooner."

By the way--don't any of you smart guys ask "Why didn't you use the emergency brake? My legs and arms are so short I couldn't reach it even if I could find it!! No wonder I'm gray.

Hobby Club Busy Hands

Busy Hands Hobby Club met October 24th in the tea room with Louise Evans as hostess. We spent the afternoon working on various individual projects.

Present were Mary Jo Robinson, Mickey Delano, Imogene Williams, Frankie Leatherman, Alma Ross, and the hostess Louise Evans.

The Next meeting will be with Frankie Leatherman, November 14th.

On October 17, 1985 the District 8 Fall Workshop was held at the United Methodist Church in Gruver. Jan Stejde, our District President, welcomed our group followed by Kathryn Whitefill, Texas PTA First Vice-President, being the keynote speaker. The workshop featured that day

True

No home is complete without children and it seldom stays that way with them.

-W.O.W. Magazine.

The Same

A famous university de-emphasizing football somehow sounds like Washington de-emphasizing politics.

-Christian Sci. Monitor.

Unbelievable

Seeing ourselves as others see us wouldn't do any good. We wouldn't believe it.

-Scoop, Winter Harbor, Maine.

Immovable

There's always an argument when an unimpeachable source disagrees with an unquestioned authority.

-News, Indianapolis.

were "You Aksed For It", which was a discussion on everything you need to know about PTA; also, "Dynamic Differences," suggestions and ideas for local units. The group then enjoyed a lovely buffet luncheon which was prepared by the local Gruver PTA officers.

Sheriff's Department

Hansford County Sheriff's Department arrested the following subjects and they have received sentencing from judge J.E. Blackburn, District Judge.

Phillip Gonzales- Breaking/entering the Tommy Russell and Bruce Stinson residences. Also possession of controlled substances. Received 5 years TDC.

Robert M. Swope- Burglary/ breaking into Wyona Copps residence. Received 5 years TDC. David Ortega- Criminal Mischief. 2 years TDC.

The Dairy Queen



99¢ sale

For Texas Taste, DQ's the place for a Golden Chicken Fried, 100% Pure Beef Sandwich Served on a toasted bun with crisp lettuce and red, ripe tomatoes. So come on by ...



Monday thru Sunday, November 4 thru November 10.

"Just keeps on getting better."™

© Copyright 1985 by D.Q. Co. Council. All Rights Reserved. TM. Trademarks of the D.Q. Co. Council. ® Registered Trademark Am. D.Q. Corp.

On tap ...

MONEY FOR THE THINGS YOU WANT

Everybody Needs Extra Money

It takes more money to buy that new car or pickup truck, to add furniture, go on vacation, or send a graduate to college. That's when we can help. We'll loan the extra money you want, for the things you really want. And we'll work with you on terms you can handle.

We Loan Money Faster

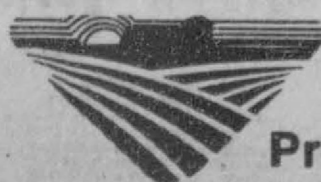
You often need money in a hurry, once you've made that important decision to buy or to add-on or to invest. That's when it is to your advantage to have a personal banker who knows you and your family, understands your situation and is ready to move quickly.



First National Bank invites you to talk with our personal loan officers before you go to buy. That way you'll have your financing arranged in advance. Come by or call loan officers Roger Monzingo, Quentin Rizley, or Leby Crane. In the main lobby. Open 9:00 to 3:00, Monday through Friday.



First National Bank
Perryton, Texas
806/435-3676
Member FDIC



Farm & Ranch Protection Pac

AN INSURANCE POLICY DESIGNED FOR YOUR OPERATION ... BECAUSE YOU DESIGN IT YOURSELF.

PROTECTION PAC is a new concept that allows you to select from a series of coverages and limits to match your own needs.

Coverage in one compact package for your home and its contents... your livestock, hay and grain... farm machinery and equipment... plus liability and property damage coverage, including payment of medical costs.

Frank Miller
Life-Home-Business-Crop-Hail

511 D Plains Shopping Center
P.O. Box 191
Spearsman, Texas 79081

Phone: (806) 658-3875

National Farmers Union Insurance Companies

The Challenge is On!!



Frances Murrell, Gruver, Texas, is walking for the Hanford County American Heart Association. She is challenging any resident of Hanford County to walk with her.

She plans to start at 8:00 a.m. and walk from Gruver to Spearman... Will you accept her challenge???

If you would like to sponsor Frances in the effort to "Walk All Over" heart disease please call the following people: Pat Irwin - 733-2285 or 733-2102 or 733-2431; Teresa Barkley - 733-2395 or 733-5061; Janet Irwin - 733-2325; Dorothy Buzzard 659-2010.

Weather

DATE	HIGH	LOW
Oct. 20	74	72
Oct. 21	78	53
Oct. 22	80	67
Oct. 23	76	46
Oct. 24	79	44
Oct. 25	78	46
Oct. 26	82	57
Oct. 27	71	49
Oct. 28	71	47

There was no moisture for the period of Oct. 20th - 28th.

Trend In Kids' Clothes Blends Bright With Soft

Bold colors and soft fabrics are the newest trends in children's fashions, according to a pattern designer for kids' clothes.

Diane Filmoehala, whose designs account for 20 percent of the children's patterns in the McCall pattern book, said that colors such as shocking pink and lavender are popular this season. But the fabric most desired is not some polyester blend but cotton.

"The soft texture of cotton provides a nice balance to the bright colors," she said, "even though it may take more effort to care for."

Will Diane's designs reflect this trend? "Fortunately, I can be very flexible with colors and cotton has always been a mainstay in my patterns," she said.

Her designs are geared to children under the age of 12 and primarily would fall into the category of "party" dresses for little girls. They are recognized by their frilly, romantic and nostalgic look.

Bob Herman, senior vice president of McCall Pattern Company, said that she "is emerging as one of the top designers in the country. She designs things that mothers like."

But Diane believes that she also designs clothes that children like, as well. "When it's a special occasion such as a holiday or birthday, little girls especially want to look dressed up to match the festivity of the day," she says.

Tiers of ruffles edged in lace, satin ribbons and embroidered rosebuds are trademarks of Diane's fashions. Her designs were first introduced into the marketplace by her and her brother-in-law about three years ago through a pattern business they started together called Designs from Enchanted Forest.

It wasn't long before her designs attracted the attention of McCall, and now, 2 million patterns later, they no longer sell directly to retail stores but work mostly through McCall, where her



Diane Filmoehala, arranges the tie on a young man modeling one of her creations, a "turn of the century" outfit, characterized by the broad ties.

designs are presented under the name of Little Darlings.

It hasn't been easy. Diane and her husband, a high school coach, have six children all under the age of 12. It was designing clothes for them that really brought her into the field of children's fashions.

When she was expecting her first child she created and sewed an elegant wardrobe for a little girl. Four sons later her daughter finally arrived. "I was able to dress her in something different every day," she said.

In the near future, even women who don't sew will be able to take advantage of Diane's gift for design. She is under contract to Morgan Incorporated, a design and character development firm, to create a comprehensive line of children's ready-to-wear apparel for the retail market under the name of Diane David.

Hospital News

Patients in Hanford Hospital are Jamie Rivera, Everett Sullins, Dora Olivarez, Ruth Gerard, Jimmy Hicks, Alma Kizzier, Tammy Benton, George Lamb and Adie Sparks.

Dismissed were Xavier Barrera, Charlene McClellan, Joe Bynum, Kimberly Gruver, Angela Lakay, Robbie McFarlin, Tammy Cudd & daughter, Sybil Vera & daughter,

Clyde Soaps, Jr., Robby Taylor, Howard Hartsell and Harold Boyd.

"A good book is the best of friends, the same today and forever."

M. Farquhar Tupper

CONSTITUTIONAL AMENDMENT ELECTION (ELECCION SOBRE ENMIENDAS A LA CONSTITUCION)

No.0000

(Condado de) Hanford County, Texas

November 5, 1985 (5 de noviembre de 1985)

SAMPLE BALLOT (BOLETA DE MUESTRA)

INSTRUCTION NOTE: (NOTA DE INSTRUCCION): Place an "X" in the square beside the statement indicating the way you wish to vote. (Marque con una "X" el cuadro al lado de la frase que indica la manera en que usted quiere votar.)

No. 1	<input type="checkbox"/> FOR (A FAVOR DE) <input type="checkbox"/> AGAINST (EN CONTRA DE)	"The constitutional amendment to authorize the issuance of an additional \$950 million of Texas Water Development Bonds to create special water funds for water conservation, water development, water quality enhancement, flood control, drainage, subsidence control, recharge, chloride control, agricultural soil and water conservation, and desalination, to authorize a bond insurance program, and to clarify the purposes for which Texas Water Development Bonds may be issued." ("La enmienda a la constitucion para autorizar la emision de una cantidad adicional de 950 millones de dolares de Bonos Para el Desarrollo de Recursos de Agua de Texas, para establecer algunos fondos especiales para la conservacion de agua, el desarrollo de recursos de agua, la mejoría de la calidad de agua, el control de diluivos, desague, el control de hundimiento, recarga, el control de cloruro, la conservacion de tierras y aguas agricolas, y la eliminacion de la sal, para autorizar un programa sobre seguros de bonos, y para clarificar los propósitos para los cuales se podrán emitir Bonos Para el Desarrollo de Recursos de Agua de Texas.")
No. 2	<input type="checkbox"/> FOR (A FAVOR DE) <input type="checkbox"/> AGAINST (EN CONTRA DE)	"The constitutional amendment authorizing the issuance and sale of \$200 million of Texas agricultural water conservation bonds." ("La enmienda a la constitucion autorizando la emision y la venta de 200 millones de dolares de bonos para la conservacion de aguas agricolas de Texas.")
No. 3	<input type="checkbox"/> FOR (A FAVOR DE) <input type="checkbox"/> AGAINST (EN CONTRA DE)	"The constitutional amendment to authorize the legislature to enact laws permitting a city or town to spend public funds and levy assessments for the relocation or replacement of water laterals on private property." ("La enmienda a la constitucion para autorizar a la legislatura para legislar leyes permitiendo que una ciudad o pueblo gaste fondos publicos e imponga impuestos para colocar de nuevo o reemplazar los conductos de agua laterales sobre propiedades particulares.")
No. 4	<input type="checkbox"/> FOR (A FAVOR DE) <input type="checkbox"/> AGAINST (EN CONTRA DE)	"The constitutional amendment authorizing proceeds from the sale of land dedicated to the permanent school fund to be used to acquire other land for that fund." ("La enmienda a la constitucion autorizando que se usen los réditos de la venta de terreno, dedicado al fondo escolar permanente para adquirir otro terreno para ese fondo.")
No. 5	<input type="checkbox"/> FOR (A FAVOR DE) <input type="checkbox"/> AGAINST (EN CONTRA DE)	"The constitutional amendment to authorize the legislature to regulate the provision of health care by hospital districts." ("La enmienda a la constitucion para autorizar que la legislatura dirija la administracion del cuidado de la salud por distritos de hospital.")
No. 6	<input type="checkbox"/> FOR (A FAVOR DE) <input type="checkbox"/> AGAINST (EN CONTRA DE)	"The constitutional amendment to permit state prisoners to be placed in penal facilities of another state pursuant to an interstate agreement." ("La enmienda a la constitucion para permitir que los prisioneros del estado se desinen a las (instalaciones penales de algún otro estado en cumplimiento de algún acuerdo entre los estados.")
No. 7	<input type="checkbox"/> FOR (A FAVOR DE) <input type="checkbox"/> AGAINST (EN CONTRA DE)	"The constitutional amendment authorizing Chambers County to be divided into two (2) precincts." ("La enmienda a la constitucion autorizando que el Condado de Chambers este dividido en dos (2) precintos.")
No. 8	<input type="checkbox"/> FOR (A FAVOR DE) <input type="checkbox"/> AGAINST (EN CONTRA DE)	"The constitutional amendment providing \$500 million in additional bonding authority for the veterans' housing assistance program and changing the definition of those veterans eligible to participate in the veterans' land program and the veterans' housing program by authorizing the legislature by law to define an eligible veteran for the purposes of those programs." ("La enmienda a la constitucion disponiendo 500 millones de dolares mas en apoderamiento de depósito para el programa ofreciendo ayuda en viviendas para veteranos y cambiando la definicion de esos veteranos elegibles para participar en el programa de terminos de veteranos tanto como el programa de viviendas para veteranos por autorizar a la legislatura bajo la ley para definir un veterano elegible al propósito de esos programas.")
No. 9	<input type="checkbox"/> FOR (A FAVOR DE) <input type="checkbox"/> AGAINST (EN CONTRA DE)	"The constitutional amendment to protect public funds by authorizing prior approval of expenditure of emergency transfers of state appropriations." ("La enmienda a la constitucion para proteger fondos publicos por autorizar que se realice primero el gasto o la transferencia de emergencia de apropiaciones del Estado.")
No. 10	<input type="checkbox"/> FOR (A FAVOR DE) <input type="checkbox"/> AGAINST (EN CONTRA DE)	"The constitutional amendment authorizing the issuance of general obligation bonds to provide financing assistance for the purchase of farm and ranch land." ("La enmienda a la constitucion autorizando la emision de bonos de obligacion general para prestar ayuda en financiar la compra de terreno para granjas y ranchos.")
No. 11	<input type="checkbox"/> FOR (A FAVOR DE) <input type="checkbox"/> AGAINST (EN CONTRA DE)	"The constitutional amendment relating to the manner in which a person is charged with a criminal offense and to certain requirements applicable to state writs and processes." ("La enmienda a la constitucion que se refiere a la manera en que una persona está acusada de un delito penal y a ciertos requisitos que pertenecen a mandamientos y procesos del Estado.")
No. 12	<input type="checkbox"/> FOR (A FAVOR DE) <input type="checkbox"/> AGAINST (EN CONTRA DE)	"The constitutional amendment granting the Supreme Court of Texas and the Court of Criminal Appeals of Texas jurisdiction to answer questions of state law jurisdiction to the Texas Supreme Court and to the Court of Appeals Criminals de Texas para contestar preguntas sobre la ley del estado verificadas de una corte de apelacion federal.")
No. 13	<input type="checkbox"/> FOR (A FAVOR DE) <input type="checkbox"/> AGAINST (EN CONTRA DE)	"The constitutional amendment providing for the reappointment of the judicial districts of the State by the Judicial Districts Board or by the Legislative Redistricting Board, and providing for the administration and jurisdiction of constitutional courts." ("La enmienda a la constitucion disponiendo que la Junta Sobre Distritos Judiciales o la Junta Legislativa sobre el Resaltamiento de Distritos proporcione de nuevo los distritos judiciales del estado, y disponiendo la administracion y la jurisdiccion de cortes constitucionales.")
No. 14	<input type="checkbox"/> FOR (A FAVOR DE) <input type="checkbox"/> AGAINST (EN CONTRA DE)	"The constitutional amendment to provide for: (1) the abolition of the office of county treasurer in Andrews County and El Paso County. (2) the abolition of the office of county surveyor in Collin, Dallas, Denton, El Paso, Henderson, and Randall counties." ("La enmienda a la constitucion que dispone: (1) la eliminacion del puesto oficial de tesorero del condado en los Condados de Andrews y El Paso. (2) la eliminacion del puesto oficial de agrimensores del condado en los Condados de Collin, Dallas, Denton, El Paso, Henderson y Randall.")

DON'T WAIT ANY LONGER!

Now's The Time

These '85's Have Got To Go!

Every 1985 Qualifies For
 11.25 A.P.R. % on Approved Credit

*Annual Percentage Rate

JEEP

	LIST	SELLING PRICE
Jeep Grand Wagoneer. White	\$22,239.00	\$19,384 ⁰⁰
Jeep Cherokee 2-Door Wagon 4X4. Blue.	\$15,878.00	\$13,800 ⁰⁰
Jeep Wagoneer 4-Door Wagon 4X4. Garnet.	\$16,870.00	\$14,950 ⁰⁰
Jeep Cherokee 4-Door Wagon. 2 Wheel Drive. White (DEMO)	\$14,253.00	\$12,500 ⁰⁰
Jeep Cherokee 4-Door Wagon. 2 Wheel Drive. Dark Honey	\$14,833.00	\$13,100 ⁰⁰
Jeep Cherokee Wagon. 4X4. Ice Blue. (DEMO)	\$17,321.00	\$14,900 ⁰⁰

RENAULT

Sport Wagon. Automatic. White.	\$10,931.00	\$ 9,500 ⁰⁰
Alliance DL 2-Door Convertible. White	\$12,673.00	\$11,400 ⁰⁰
Alliance L. 2-Door Automatic. Lt. Blue.	\$9082.00	\$ 8,000 ⁰⁰

JOHNSON MOTOR COMPANY

COOKE

(806) 435-7676
 2322 S. Main
 Perryton, Texas

Hansford Manor Expansion Project Underway



view from terrace

COX/CROSLIN and ASSOCIATES
ARCHITECTURE AND INTERIORS
3801 CAPITAL OF TEXAS HWY. NORTH, AUSTIN, TX 78704

HANSFORD MANOR

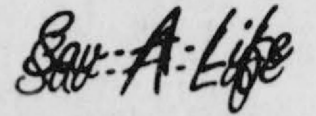
Hansford Manor expansion project is moving right along. Above you see the "View from the Terrace" drawing as designed by Cox/Croslin & Associates from Austin. What you are seeing is the south terrace looking into the large day room with fireplace and cathedral ceilings. To the right and left of the day room you can see the two smaller quiet areas. One of the areas will have french doors and can be closed for private visits with family and friends if residents desire.

Other construction will consist of a new and greatly enlarged dining room with doors opening to a large terrace for spring and summer dining as well as cookouts. In the residential section there will be eight suites which are much like large and compatibly equipped hotel suite, there is also a small refrigerator in the rooms. Nine private rooms and eight semi-private rooms, new nurses stations

and support areas complete the expected 2.2 million dollar expansion and renovation project.

At this time a bond issue is tentatively scheduled for December 17, and if passed with a beginning construction date of mid March, 1986 and completion 12 months later. We currently have 30 individuals on our waiting list and it seems to grow every day. There is no question that this expansion is needed and with additional beds it will help to bring the facility into a better financial situation. It is expected that the expansion will generate enough revenue to retire the bond without increasing taxes.

The preliminary drawings are in the administrator's office in the hospital and are available to the public for review and comments. Mr. Dennis Robertson will be glad to answer any questions you might have.



Coy Kelley has announced today that the Spearman Moose Lodge has joined forces with the Loyal Order of Moose Supreme Lodge, and thousands of other lodges around the World in the effort to keep drunk drivers off the road. Coy Kelley says that National safety Council figures indicate that each year more than 25,000 lose their lives, and 300,000 more are seriously injured in alcohol related Accidents. This is an area that calls for the kind of action and leadership that the Moose has been known for in the past". The program called: SAV-A-LIFE is one that can involve every Moose member around the country, as well as their guests. Coy Kelley said "It is more than just an awareness program, at the heart of the program is an active effort to identify and provide the excessive drinker with a safe way home."

Program elements will include: Posters, alcohol awareness information sheets, table tent cards, a professionally produced training program for Lodge employees called: Alcohol Server Responsibility. Every one in the Spearman Moose Lodge is excited about the positive effects that SAV-A-LIFE will have right in our own community, and believe it to be a program that will make a difference. More information and complete program details are available by contacting Verlin Behne at Spearman Moose Lodge.

Answers To Sports Quiz

1. Kansas City Royals and
2. Danny Edwards.
3. Beth Daniel.
4. Basketball.
5. A. Rams.

Square Dancing "Spooks"

The "Rainbows & Rangers" square dance club of Spearman hosted their regular bi-monthly dance (a Halloween Dance) at the county barn last Saturday night. If you've never seen chickens and witches, hoboes and hobgoblins perform do-si-does and left allemandes, you've missed a lot!

Calling was Murry Beasley, the "Cowboy Caller" from Oklahoma. Enjoying the dance, in addition to the club members, were guests: Frank and Barbara Bryan, Gary and Rhonda Garton, Ed and Lois Merydith, Dovie and Calvin Cochran, Clyde and Jo Ann Bechtold, Richard and Thelma Rush, Tom and Leone McGee, all from the "Kiowa Kickers" of Booker; Morris and Ada Creel, Sam and Wilma

Mercer, and Shorty and Leola Albert of "Boots and Calico" of Borger; Carl and Maudie Stewart and Rose Lujan from Elkhart, Kansas; Jana and Terry Sanders and Carl and Francis Perrin from Guymon, Oklahoma.

The next dance will be at the county barn on Saturday, November 9 and 8:00 with Richard Olson, an excellent caller from Canadian, doing the calling. He will conduct a Plus workshop from 7:00 to 8:00 for experienced Mainstream dancers.

If you've square danced in the past and would like to try it again or if you enjoy watching square dancing, the club would be glad to have you visit. There's always more than enough laughter and good clean fun to share!

A special "Fifth Saturday Dance" will be held at the county barn on November 30th with Roy Johnson of Amarillo doing the calling. The club will also have some mouth watering, absolutely delicious cakes someone will take home from a "cake walk" to be the same night.

ONE MINUTE SPORTS QUIZ

1. Name the teams who played in the World Series.
2. Who won the Pensacola Open golf tournament?
3. Name the winner of the J & B Gold Putter Award Playoff.
4. Patrick Ewing is known in what sport?
5. Eric Dickerson plays pro football for what team?

MICROWAVE BASICS

Chicken Wings Are Hot!

Chicken Wings, served hot and spicy, are cropping up at eating occasions everywhere. "Wings" are being served as bar food, appetizers and even as a main course in many restaurants. Now wing lovers can enjoy that special taste at home, microwaved in just minutes. One trip to the supermarket frozen food case can stock any wing lovers freezer for months.

Try these plump and meaty wing sections served as Mexican Chicken Dippers developed by the Banquet Foods Test Kitchens. This tasty combination will make anyone's taste buds come alive.

Mexican Chicken Dippers

- | | |
|---|---|
| 1 can (16 oz.) refried beans | 1 large tomato, chopped (about 1 1/2 cups) |
| 1 envelope (1 1/8 oz.) taco seasoning mix | 1/2 cup mild taco sauce |
| 1 cup dairy sour cream | 2 packages (15 oz. ea.) Banquet Hot 'n Spicy Snack'n Chicken, Fried Chicken Wing Sections |
| 1/2 cup ripe olives, sliced | |
| 3/4 cup (3 oz.) shredded Monterey Jack cheese | |

In small microwave-safe bowl, combine refried beans and taco seasoning mix. Heat on HIGH 5 to 7 minutes or until hot, stirring occasionally. Spread bean mixture in bottom of 10-inch pie plate. Top with sour cream, olives, cheese, tomato and taco sauce. Prepare chicken according to microwave package instructions. Serve with dip. Makes 22 to 25 appetizers.

Turkey Walk

10:00 a.m. Saturday

Nov. 2

Gruver State Bank

La Casita Room

3 Mile Course

Have A Heart Volunteer to Walk

Sponsors Walk

Pledge Sheets are at

Gruver City Hall

Gruver State Bank

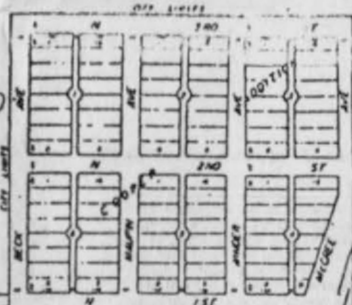
Dairy Queen

Main Street

Pat Irwin - Chairman

This advertisement sponsored by

Gruver State Bank



GRUVER, TEXAS
HANSFORD, COUNTY

