

MARKETS

WHEAT	\$3.08
MILO	\$4.50
CORN	\$2.95

Gruver Emergency Number
For:
FIRE-POLICE-AMBULANCE
After Hours Utility Problems
733-2424
(24 HOURS A DAY)

24 hr. prayer
service, 659-2911

THE GRUVER STATESMAN

VOLUME 14, NUMBER 27

THE GRUVER STATESMAN, GRUVER, TEXAS 79040

THURSDAY, APRIL 11, 1985

BLACK SUNDAY-APRIL 14

Newspaper Accounts

The Monday, April 15, 1935 edition of The Panhandle Herald, published in Guymon, OK noted that the St. Patrick's Day 1923 dust storm was more "resplendent" than the Black Sunday storm. The Herald was more concerned about rabbits escaping from the big rabbit drive near Hooker, OK the preceding day than it was about the storm itself, although the Herald gave a much more graphic account of the storm than other area newspapers.

Many of the people at the Hooker rabbit drive who were caught out in the open in the intense darkness were marooned from their own cars and found themselves caught up in a game of musical cars as they wandered from car to car and climbed in the first available car with others or alone until the dust lifted and they could return to their own cars.

Rabbits overran the sparse wheatfields during the 30s, eating High Plains farmers "out of house and home," by destroying what few crops were left. The rabbit drives were primitive hunts or drives, whereby rabbits were driven on foot over an area of 15 to 20 miles to a "V" shaped enclosure or mesh wire fence where an opening was left in the middle of the fence. When the rabbits came through the opening, farm families were waiting on the other side with clubs, chains, monkey wrenches--anything for a weapon. The hapless rabbits were thinned out somewhat over the small area, but they multiplied much faster than they could be killed and occupied the land in some areas at a density of 4,500 rabbits per square mile in some drought-stricken counties of the dust bowl.

Rabbit drives were never an effective deterrent for the rapidly multiplying pestilence during the 30s, but they served a more important purpose of buoying up lagging spirits during a hunt or drive. Rabbits also fed depression dirt farmers many meals that otherwise would have been meatless.

The Texhoma Times April 18, 1935 edition called the Black Sunday dust storm "Worst In Our History," and devoted one paragraph to Mrs. Vesta Tune, who was caught in a field while driving cows in to her home when the storm struck: "She got down on the ground and wrapped an apron around her head so she could breathe. She remained flat on the ground until the worst of the storm was over, then made her way to the house by following the wheat drill rows."

The same issue of the Times carries an article datelined "Washington, D.C., April 22, 1935...the Farm Credit Ad-

ministration now allows a loan of \$1 per acre on summer fallow to all farmers in the dust area...Kansas is getting 10 cents an acre, compared to the unlimited allotment given Oklahoma."

The Texhoma Times editor was not without humor during the darkest hours in those times, the April 11, 1935 "Dust From The Editor's Desk" stating "...Hoover made monkeys out of us, and now President Roosevelt is planting trees for us to climb."

The Thursday, April 18, 1935 edition of The Boise City News called the April 14 dust storm "Blackest Yet," and noted that a migration of Cimarron County farmers was underway to Arkansas, east-central Oklahoma, Colorado and California, particularly from the Felt Community in Southwestern Cimarron County, but termed the migration "temporary."

The News logged the time that the storm struck Boise City as "about 5:15 p.m." The article reported five men were stranded inside an airplane hanger for two hours before the storm abated. O.A. Haskins got caught 100 yards from his house in Boise City and spent 20 minutes feeling his way home with a long pole. Jay Speer of the Griggs Community in Southeastern Cimarron County felt his way home, crawling on his hands and knees in the black blindness one and one-half miles along the bank of a ditch and reached safety. He has been searching for his son, believed to be lost, who had waited out the storm in the home of a neighbor.

The Monday, April 15 edition of The Panhandle Herald perhaps realized the significance of the dust storm as it played up a front page story with a banner headline: "Intense Duster Throws Panhandle In Darkness."

The story not only reported the geographic extent of the mammoth storm--which "covered the entire Southwestern United States and centered in Kansas, Oklahoma, Colorado and Texas"--but also mentioned the "fiery effects" of the storm cause by a combination of static electricity and tumbling dust turning before the sun's kaleidoscope, revealing eerie tones and colors in the clouds.

**Surplus Cheese
& Butter to be
distributed April 17**

USDA surplus cheese and butter will be distributed Wednesday, April 17 from 1 to 5 p.m. from Judge McClellan's office at Hansford County Courthouse.

Fiftieth Anniversary of the big dust storm April 14, 1935-



This dust cloud hovering outside Syracuse, KS. May 21, 1937 was typical of the awesome beauty of some dusters as they rolled, danced and churned up dirt on the High Plains. The clouds in the sky ahead of the duster are not clouds of dust but rain clouds. Some dusters were preceded or followed by rain, causing the skies to drop mud balls. Some dust was mixed in with the rain or sleet or snow, causing mud baths. Such a storm was called a "Snuster" by residents of the High Plains.

The Spearman Reporter Spearman, Texas 79081

Don't Name It
By Honest Bill
The Dusty Don't Name It
Thursday, April 18, 1935

Tried awful hard to quit thinking about the biggest and worst dust storm in history.

Positively everything that one hears on the street this week is concerning experiences that were had during the Sunday dust storm. My own experience was mild and rather thrilling. Started home from Panhandle and was within 14 miles of home--met the duster and turned back, beat it all the way to Panhandle, where I remained until Monday morning.

The most pitiful case I have heard of comes first. Mrs. H. G. Frisbee was at her home with her six month old baby. She attempted to get to the home of R. C. Chase during the dust storm, where her husband was visiting. Mr. Chase and Mr. Frisbee found her after she had been in the storm for more than an hour. She suffered a nervous breakdown and Mr. Frisbee carried her to her relatives in Missouri Tuesday morning.

Have not been able to verify the statement but understand that one

See Black Duster, page 7



Panhandle dust storm
April 14, 1935

New Emergency No.

**733-
2424**

Bonnie King services held

Services were held at 3:30 Saturday in First Christian Church of Gruver for Bonnie King, 75, who died Friday. Gene Clack, pastor, officiated. Burial was in Gruver Cemetery by Boxwell Brothers Funeral Directors of Spearman.

Mrs. King was born in Bowie and moved to Gruver 13 years ago from California. She was a retired car dealer and a member of First Christian Church.

Survivors include a daughter, Connie Gammill of Gruver; and three grandchildren, Raymond Spradlin of Gruver, Bill Bradford of Englewood, Colo., and Nawana Carter of Pampa.

HOSPITAL

Patients in Hansford Hospital are Jenny Longoria, Rodney McDowell, Mary Sullins, Darlene Farris, Manuella Vellagas and son, Harold King, Cruz King, Virgil Williamson, Bonnie Patterson,

Mary Thompson, and Ora Vanlaningham.

Dismissals are: Alice Lackey, Elizabeth Holton, Rosetta Tindell, Benny Vaughn, Bill Goodson, Marietta Huse, and Jose Gonzales.

Open House

The Hansford County Appraisal District cordially invites you to attend the Grand Opening of its new offices on Wednesday, the seventeenth of April Nineteen hundred and eighty-five from ten o'clock a.m. to four o'clock p.m. located at 709 West 7th Spearman, Texas

Dumas Co-Op anniversary sale

Manager Gene Legg and assistant Manager Gary Bray, of the Dumas Co-op, 600 Twichell, Dumas, Texas, reminds the public of Hansford County that they are having their anniversary sale during the month of April.

Store wide discounts will be featured throughout the store all during the month of April.

Gene and Gary remind the public that they need not be a member to shop at Dumas Co-Op.

Employees of the Dumas Co-Op include: Gene Legg, manager; Gary Bray, assistant manager; Kenneth Vines; Delana Quirk; Della Smith; Diana Gould; Sid Baker; Tommy Schmidt; Verlyn Hollis; Bill Brown; Donna Reilman; Karen Witherspoon; Michael Barr; Bruce Terry; Jerry Morton; Raymond Tate; Bruce Rice; George Henry; Stephen Pickett; Wade Lookingbill; and George Newton.

The City of Gruver Emergency Medical Services Department would like to give notice to everyone served by our EMS Department that as of Thursday, April 11, 1985, our old emergency number, 733-2301, will be disconnected, and our new number, 733-2424 will be operational.

Under our old telephone system it was necessary for one of the ambulance personnel to be home or the City Hall had to be open in order for someone to be around to answer the phone for a call for assistance. Needless to say, there may have been times when no one was home.

Under the new system, 733-2424, will be answered on a 24 hour a day basis by trained communications personnel of the Spearman Police Department. Instead of stationary telephones, our EMS personnel have been issued tone activated pagers. When the Police Department receives a call for an ambulance, they merely have to touch a button to have an ambulance on the way. This capability enhances our response time and service to the community and outlying area.

In the event you find yourself in a situation where you must call an ambulance for someone the most important thing to remember is to STAY CALM, DO NOT BE IMPATIENT. When you call for an ambulance the dispatcher will ask you to remain on the line so that he/she can obtain vital information while he/she is summoning an ambulance.

The dispatcher will ask questions such as: "What is your name?" "Where do you need the ambulance?" "What is the nature of the illness or injury?" "What aid has been given to the ill or injured?" In the event of an automobile accident we will need such information as: "What type of vehicles are involved; eg. car vs truck, car vs car, etc.?" "How many injuries are involved?" "Are there hazardous chemicals involved or is there a fire?" They will also ask for a telephone number where they can call you back in the event that more information is needed. If you live in the country it would be in your best interest to know the exact distance from the city or given landmarks so that the responding ambulance can follow exact mileage to the scene. All of this information may seem unimportant during the tension of an emergency, but it is of great importance to the responding unit in order to prepare to treat the casualties.

The use of the new emergency number will give the caller access to the Gruver Fire Department, Gruver Police Department, and the City Utility Department for after hour utility problems.

All on call municipal personnel are issued tone activated pagers and can be located at anytime day or night and will respond promptly.

The City has new phone stickers printed with the phone number and department information at the City Hall. These will be distributed as soon as possible.

Appraisal practices and tax burdens Texas local governments 1983-84

Austin -- Local property taxes were highest in Crystal City and lowest in Brenham in 1983-84 according to the Texas Research League, an Austin-based public policy research group. The average tax on all types of taxable property was 2.3% of market value (selling price) in Crystal City but only 0.7 of 1% in Brenham.

For a single-family house that would sell for \$80,000, the highest tax was \$1,935 in Pasadena and the lowest was a \$251 tax bill in Dumas. Homestead exemptions cut the tax in Dumas to \$220 and Sweetwater was highest with \$1,601. Additional exemptions for homeowners aged 65 or over reduced the property tax bill to \$1,425 in Sweetwater and to \$105 in Dumas.

The local taxing entities tax structure on an \$80,000 single family residence are as follows:

HANSFORD COUNTY:	
No Homestead	\$360.40
Homestead	\$215.69
Over 65	\$184.58
GRUVER I.S.D.:	
No Homestead	\$536.00
With Homestead	\$288.10
Over-65	\$221.10
GRUVER CITY:	
No Homestead	\$440.00
With Homestead (Not Offered)	
Over-65	\$423.50
SPEARMAN I.S.D.:	
No Homestead	\$624.00
With Homestead	\$335.40
Over-65	\$257.40
SPEARMAN CITY:	
No Homestead	\$576.00
With Homestead	\$403.20
Over-65	\$360.00
PRINGLE-MORSE C.I.S.D.:	
No Homestead	\$442.32
With Homestead	\$237.75
Over-65	\$165.87

The report points out that many

elderly homeowners would pay less because school taxes are frozen at the level existing when the taxpayer turned 65.

The report cites two reasons for the wide range of taxes: First, local officials adopt budgets and set tax rates and homestead exemptions. Second, unless all property is appraised uniformly, tax burdens will vary. Houses in Dumas are valued at only 35% of market value while minerals are valued at 97% and utilities 112% of market value according to the State Property Tax Board, the report states. (See pages B-11 to B-40 for appraisal ratios for your school district.) While the legislature has prohibited the old practice of fractional assessing for tax purposes, the goal of equitable treatment of all taxpayers has not been reached in many localities the report concludes.

Equitable appraisals among different types of property are significant in attracting new industry to a community. The 1983-84 property tax on \$80,000 of industrial equipment and inventories ranged from \$558 in Gatesville to \$2,160 in Alvin. Commercial and industrial properties are taxed at about the same level as other property in Abilene, but in Arlington industrial property is taxed 49% higher and commercial 25% higher than the average for all types of property.

WALL WANDERER -- Looking for unusual, different decor? Liven painted walls by painting a wide swatch of color down one side, across the floor and up the other wall. Naturally, the assumption is that the floors are painted, too -- or sans carpet, anyway. Paint furniture in matching or contrasting colors and watch the room take on interest. Great in a dining room; center an oblong table on the floor's colored stripe.

To God: a note of thanks

By Mrs. E.A. Greever

Friends, we read in God's word of two roads and we mortals who are treading upon his earth are on one or the other. The words of Jesus found in his sermon on the mount tells us about them. Matt. 7:13-14 "Enter ye in at the strait gate for wide is the gate and broad is the way that leadeth to destruction and many there be which go in thereat. Because strait is the gate and narrow is the way which leadeth unto life and few there be that find it." It seems to enter the strait gate and narrow way there must be some restrictions. That no doubt must mean, "Ye must be born again" (Of the Spirit) and since only few find it, it need only be narrow. And may we not forget the broad way leads to destruction while the narrow one will lead to life eternal. Now let us hear of the ones God's word tells us are traveling these roads.

Gal. 5:19-20-21. "Now the works of the flesh are manifest which are these, adultery, fornication, uncleanness, lasciviousness, idolatry, witchcraft, hatred, variance, emulations, wrath, strife, seditions, heresies, envyings, murders, drunkenness, revellings and such like." I Cor. 6:9-10, "Know ye not that the unrighteous shall not inherit the kingdom of God? Be not deceived neither fornicators nor idolaters nor adulterers nor effeminate nor abusers of themselves with mankind nor thieves nor covetors nor drunkards nor revelers nor extortioners shall inherit the kingdom of God." And now let us hear the next verse. "And such were some of you but ye are washed (by the blood of Jesus) but ye are sanctified, but ye are justified in the name of the Lord Jesus and by the Spirit of God."

Rev. 22:14-15, "Blessed are they that do his commandments, that they may have right to the tree of life and may enter in through the gates into the city. For without are dogs and sorcerers and whore mongers and murderers and idolaters and whosoever loveth and maketh a lie."

Now we will read about the ones who have been born of the Spirit. The fruit of the Spirit is love, joy, peace, long suffering, gentleness, goodness,

faith, meekness, temperance against such there is no law (of God) (and I don't think the law of man would be needed). Why? Because the Bible states in Gal. 5:24 "They that are Christ's have crucified the flesh with the affections and lusts."

Now, to everyone of us who are traveling on the broad road, don't you think it would be wise to make a change?

Friends, this poem was written several years ago as fast as I could move my pen.

The Two Roads

There is a way that seemeth right unto a man
But the end of that way is death
And another way that is narrow and strait
But the pilgrims here have a calm sweet rest.

The first road is broad and the entrance wide
Multitudes are thronging it each day
But the narrow road few have found
For travelers here free from sin must stay.

The masses on the broad road are spreading
Themselves like a green bay tree
But the few who have found the narrow way
Are praying O Lord how I need thee.

The way of the transgressor is very hard
No hope do they have in God
And when before the great judge they stand
Will find from eternal life they are barred.

The ones on the broad road may jeer and mock
Shaking the head while passing by
But rejoicing in hope they on the narrow road
For the maker of heaven and earth they know.

At the close of day on the great broad way
Multitudes will receive the sentence of death
Hearing depart from me ye that work iniquity
You cannot enter into my rest.

While the ones yoked to Christ on the narrow road
Who have carried their cross with a smile
Will hear, "Well done enter now fair one
Into eternal life you have gone the last mile."

My friend today do you choose to stay
With the mob on the downward road?
Will you not turn away and seek Christ today
Traveling the road to an eternal abode.

There's naught at the end of this

great broad road
Forever destroyed from the glory of God's power
Jesus is calling today turn from sin away
For behold this is the accepted hour.

What will your answer be if you fail to heed
The call of the great Saviour of men?
What will you say when you hear depart from me?
God says, you will weep and wail then.

The Spirit and the bride are pleading come
The Spirit will not always strive with man
So enter today on the Kings highway
Turning from sin and shame while you may.

This life my friend is a vapour or a breath
Or as a flower that soon fades away
Even as a shadow that declineth so Jesus alone
Is the way that leads to an eternal day.

Speedreaders range from Jimmy Carter to Joe Namath. Lately, more companies have set up speed-reading courses for their executives. One reason: while executives spend at least one-third of their work days reading, their rate of speed is about 200-250 words a minute, no higher than the national average and less than the college level.

NOTICE TO MEMBERS OF NORTH PLAINS ELECTRIC COOPERATIVE, INC.



The 41st Annual Membership Meeting of North Plains Electric Cooperative, Inc. will be held in the Perryton High School Rangerette Center, 1102 South Jefferson St., Perryton, Texas, Monday evening, April 15, 1985. Registration and a free barbecue dinner, catered by Dyer's of Pampa, will begin at 6:30 p.m.

Many prizes will be available to the lucky members whose names are drawn. The Grand Prize this year will be a 19" COLOR TELEVISION. These prizes will be on display at your Cooperative headquarters in Perryton.

The business meeting will begin promptly at 7:30 p.m. for the purpose of: Reports from Officers; Management and Committees; Election of three directors for a three-year term in Districts 2, 3 and 5; All other business which may come before the meeting.

Remember this is your Cooperative so be sure and mark April 15 on your calendar. This is a time to be a part of directing the future of your Cooperative.

ALLSUP'S CONVENIENCE STORES

PRICES EFFECTIVE
APRIL 11-13, 1985

GROCERIES, SOFT DRINKS-
SNACKS- HOT COOKED FOODS-
SELF SERVE GAS-MONEY ORDERS-
WHILE SUPPLIES LAST

COOKED FOOD SPECIAL AS FEATURED ON TV

ALLSUP'S BURRITOS

2.99¢

FOR

MEAT OR BEEF BOLOGNA, SALAMI,
P & P LOAF, LUNCHEON LOAF

LUNCH MEAT NEW DECKER GOLD

99¢

8 OZ. PKG.

GRANDMA'S COOKIES

\$1.69

10 1/2 OZ. BAG

Come Home for Good

MARYLAND CLUB 1 LB. CAN **\$2.29**

COFFEE MATE 16 OZ. JAR **\$1.69**

Country Crock 2 1 LB. BOXES **\$1.00**

BUY ONE GET ONE FREE

TOM'S SNACKS

89¢

PKG.

ALLSUP'S ASSORTED FLAVORS

ICE CREAM

1/2 GAL. CTN. **\$1.59**

Fast Hot

DOUBLE CHAR BROILED BURGER

REG. \$1.99 EACH **\$1.59**

MOVIE & VCR RENTALS

The Very Best in Home Video Entertainment!

ALL YOU NEED IS YOUR TV!

BORDEN'S CHOCOLATE MILK QT. CTN. **79¢**

DIET OR REGULAR PEPSI-COLA

3 LITER PLASTIC BOTTLE REG. '2" **\$1.69**

WANT ADS

SERVICES

New to Area
Give Us A Try
Call Your Local
USED COW DEALER
As Soon As Possible
659-3544
659-3545
1-800-892-4043
22-rtm

FOR SALE

TO MOVE: Lubbock Home 16 miles SW of Spearman. 3 bdrm., 2 bath, large kitchen and dining area, large living room. About 1700 sq. ft. 659-2794.
27-rtm

TO MOVE: 1983 Redman 14x80 Mobile Home. 3 bdrm., 2 bath, under skirting, large front porch. 659-2794.
27-rtm

MOBILE HOMES FOR SALE

DEALER REPO!
3 bdrm. mobile home. 2 baths, wood siding, storm windows, garden tub, etc. Assume payments of \$267.66 with approved credit. Includes delivery and installation. WE TAKE TRADE - ANYTHING OF VALUE!! Quality Affordable Mobile Homes, Hwy 60 W., Pampa, 665-0714.
25-4tc

REAL ESTATE

FOR SALE: New, just finished, 3 bedroom home with 2 baths, double car garage. Roy Edwards 733-2178. 114 Cooper Ave.
16-rtm

FOR SALE: 3 bedroom house, 1 bath on 2 lots. Detached garage. On corner, 322 S. Hazelwood. \$40,000. Call 659-3873 or 5046.
19-11tc

BUSINESS OPPORTUNITIES

Own your own Jean-Sportswear, Ladies Apparel, Childrens, Large Size, Combination, Western Store, Accessories. Jordache, Chic, Lee, Levi, Easy Street, Izod, Esprit, Tomboy, Calvin Klein, Sergio Valente, Evan Picone, Liz Claiborne, Members Only, Organically Grown, Healthtex, over 1000 others. \$7,900 to \$24,900 inventory, training, fixtures, grand opening, etc. Can open 15 days. Mr. Loughlin (612) 888-6555.
27-1tp

AUTOS FOR SALE

FOR SALE: 1981 Olds Regency 98, 2 dr. Coupe, leather interior. Nice--\$8,925.00; 1981 Chev. Caprice Classic, 2 door Coupe, clean--\$5,250.00; 1982 Buick LaSabre, 2 door Coupe, extra nice--\$6,950.00; 1983 Olds Regency 98, 29,765. Loaded, superclean--\$12,175.00; 1984 Buick LaSabre Limited, 4 door, 10,000 miles!--\$11,650.00; 1982 Chev. Silverado Suburban, Diesel, 62,000 mi., loaded, running boards--\$11,400.00; 1982 Chev. Silverado 1/2 ton pickup, diesel, clean--\$6,950.00; 1983 Chev. Scottsdale 4X4 LWB, power brakes, steering, air--\$8,150.00; 1984 Chev. Silverado 1/2 ton pickup, diesel, loaded, extra nice, \$9,150.00. CHEVY VANS, Tra Tech Conversion. Three to choose from now in stock.

GILLASPIE CHEV-OLDS
HIWAY 207 SOUTH
659-2541
23-1tc
27-1tc
FOR SALE: 1978 Buick Electra 4 door, loaded, nice car. \$2850.00 659-2794.
27-rtm

NOTICE

SNOW SKI AUCTION, Liberal, Kans. Saturday, April 13 at 10 a.m., 2 doors south of Southwest Daily Times, sponsored by Hi-Plains Sport Center, Guymon, 405-338-3063. New and used boots, skis, poles, bindings, clothing and accessories. Largest snow ski sale of the year. Open Thursday and Friday prior to sale.
26-2tc

PUBLIC NOTICE

Guymon Elks Supper Club is open to the public. Our hours are Wednesday-Thursday 6-10 p.m. Friday-Saturday 6-10:30 p.m. We have a prime rib special every Friday.
51-rtm

NOTICE OF MEETING OF THE GOVERNING BODY OF City of Gruver

Notice is hereby given that a special meeting of the governing body of the above named City or Town will be held on the 12th day of April, 1985, at 2:00 p.m., in the City Hall at 108 East Broadway Street, Gruver, Hansford County, Texas, at which time the following subjects will be discussed, to-wit:

1. Open Meeting.
2. Read and Approve the minutes of the previous meeting.
3. Approve a resolution declaring the results of the April 6, 1985 election.
4. Consider a request from Mr. C.C. Heath to place a street light at Richardson Street and Tenth Street.
5. Approve a lease-purchase contract with Case Power and Equipment Co.
6. Consider the purchase of natural gas from West Texas Gas, Don Jones, and Houston Natural Gas.
7. Approve the bills for the month of March, 1985.

Dated this 8th day of April, 1985.

City of Gruver
by A.J. Ratliff

D & C GREENHOUSE

We're OPEN NOW! Outdoor flowers, vegetable plants, hanging baskets, spring bulbs by Superior, Northrup King seeds, fruit trees, shade trees, flowering shrubs, rose bushes, perennials, assorted vines, peat moss, and many more extras. Located 2 miles west of Spearman on Gruver hwy. on south side of road.
659-5171

27-2tc

ATTENTION FARMERS

If you would like future contract on your 1985 wheat or if you have any farm-stored grain to sell, contact Oles Grain Co., Perryton, Texas. 806-435-5449.
24-rtm

CARD OF THANKS

The family of Billy Tobin Cantrell would like to express to you how much we thank you for your love and kindness after the tragic accident and death of Billy. Thank you for your prayers, God is answering them. He has given us strength. Thank you for the food you sent to us. Thank you for the blood you gave. When our hopes were high you reached out and gave Billy a precious part of you. Thank you for the memorials that will live on in Billy's name. Thank you for the money, flowers, and visits that lifted us up. A very special thanks is extended to Bro. Larry Miller and Bro. Ronnie Travis who officiated at the services. To the Medical people in Spearman, Amarillo, and Dallas we thank you. God has blessed us all.
Love

Andy, Kathy and Stacy Lindsey
Lindsey Families
Ronnie Cantrell and family
E.P. Calhoun and family

YMCA Swim Team sign-up

Anyone interested in joining the YMCA Swim Team should sign up at the 'Y' or should call Hazel Shieldknight or Donita Lusby at 659-5240.
The swim team travels to Perryton Saturday mornings at 9:00 to practice. Admission to the Perryton pool is \$1.00.

Also, anyone interested in becoming a Swim Coach should contact Hazel Shieldknight or Donita Lusby.

COOKIE CAPER - Need fancy cookies in a hurry? Start with a box of ginger snaps. Whirl three dozen in a blender to make crumbs; pour into a bowl and add enough corn syrup to make them sticky. Stir in a dash or two of orange juice for flavor; some finely chopped ginger and a handful of chopped nuts. Or you can omit nuts and roll mixture in them later. Shape into log; chill overnight and slice into thin, no-bake ginger cookies.
© 1985 Suburban Features

Brillhart ranch home burns Monday

The James Brillhart ranch home, located approximately 15 miles north of Spearman, was completely destroyed by fire Monday morning, April 8. The fire was discovered at 9:17 a.m.

Fire departments from Spearman and Perryton answered the fire call to the ranch location. A few clothes were salvaged, but other than that, it was a complete loss.

A fire was also reported between Spearman and Gruver at the same time of the Brillhart fire. However, Sheriff's officers report that this was not a different fire, but that the Brillhart fire had been reported to the Gruver Fire Department twice.

Gruver will go to Lynx track meet

The annual Spearman Invitational Track Meet will be held this weekend. The meet will begin at 2:30 p.m. Friday and also will be run on Saturday, with Saturday's activities beginning at 9:00 a.m.

Boys and girls teams from the seventh, eighth, JV, and Varsity teams will compete in the two day affair.

Schools participating are Gruver, Canadian, Stinnett, Phillips, White Deer, Channing, Fritch and Spearman, the host team.

The Spearman Lions Club will cook the hamburgers for the two day meet. Boss Lion Frosty Hickerson and his Lion cooks plan to serve hamburgers both days to all who wish to eat at the track meet. The money from the hamburgers will go to Lions Club projects in the area. The public as well as those participating in the track meet is invited to eat both days with the Lions Club.

Highlighting the track meet for

The Gruver Statesman

PUBLICATION (USPS 6568-8000)
GRUVER, TEXAS 79040
Box 796 659-3434

Owner-Publisher.....William M. Miller
Editor.....Joy Henderson, Gruver, Tx.
Second Class postage paid at Gruver, Texas 79040

Any erroneous reflection upon the character of any person or firm appearing in these columns will be gladly and promptly corrected upon being brought to the attention of the management.

POSTMASTER: Send address changes to Gruver Statesman, Box 796, Gruver, Tx. 79040.

SUBSCRIPTION RATE: Hansford, adjoining counties, \$13.14 per year.

MEMBER

Texas Press Association

Track team places 5th

Gruver track team tied for 5th place with Clarendon at the Amarillo Boys Relays over the weekend. Gruver placed 4th in 3:27.35 in the 1600 relay.

Steve Duncan placed 6th in the 1600 with 5:03.58.

Jack Rodman had 39.83 in the 300 H for 3rd place.

Steven Fry was 4th in the 400 with 50.09.

Scott Tout was 3rd in the 100 with 11:20.

Gruver was 2nd in the 400 relay with 43.63.

Ron Green was 6th in the 3200 with 11:12:41.

Election Results

In the school trustee election, Tony Shapley and Billy Logsdon each received 42 votes to return them to the school board.

In the mayoral election, J.C. Harris, incumbent received 28 votes, Ila Jo Hart received 3 write-in votes and Sharon Wilson received 2 write-in votes.

Roy Byrd received 31 votes to return him to the council.

Those who know best



Lee Shawner
Hansford Co. Electric

recommend the heat pump

for modern, energy-efficient heating and cooling.

The top heating and air conditioning contractors in this area recommend the heat pump for its clean, quiet, economical operation. They agree it's the system to bring you comfort now and for a long time to come.

Look to those who know heating and cooling best. They'll recommend the best heat pump system for you.

Contact your heat pump contractor. Or call Southwestern Public Service Company for your free Heat Pump Buyer's Guide.

SPS SOUTHWESTERN PUBLIC SERVICE COMPANY

Hansford County
Planned Parenthood
412 Davis
659-2483
Spearman
Mon. - Fri.
8:30 - 12:30

Sewing done-little darling and Cinderella dress types a specialty. Call Joy 733-2517.
nc

Need to oil your wood shake or shingle roof? Give it extra life and beauty.
Whatever your painting needs may be - from taping and textures to custom finishes with any coating on any surface. We also feature energywave insulating paints. Call today for a free estimate.

BEASLEY PAINTING
ALLAN 733-2858 JIM 733-2012
19-rtm

WILL CLEAN TAILWATER PITS.
Reasonable rates 733-2628
23-4tp

SEARS BLOWN IN ATTIC INSULATION. Now 10% off. Completely installed. For FREE ESTIMATE at your convenience dial 659-2573. Sears Roebuck and Co. 517 S. Hwy. 207.
50-rtm

How Does Your Lawn Look?
Dandelion Problems?
Crab Grass?
Hen bit?
Any Weeds?
CALL
B J's
TREE & LAWN SERVICE
659-3847
26-rtm

FOR SALE

CONCERT QUALITY piano tuning and repair. Free estimates. Write Elson Clark, Box 1016, Dalhart, Tx. 79022 or call collect 806-249-2788.
6-4tp-rtm

FOR SALE: Cakes, pies, bread, rolls or cookies. Will take orders for Valentines. Birthday Cakes for children with novelty characters. Call 733-2517.
16-rtm-nc

FOR SALE: Bulk Garden Seed. Carolyn Hicks 733-2335, 108 Main.
27-4tc

4-H leaders "wear many hats"

4-H leaders are a key part of the 4-H program for all youth between the ages of 9 and 19, says Karen Harruff, county 4-H program coordinator with the Texas Agricultural Extension Service, The Texas A & M University System.

4-H leaders:

- Encourage members to try.
- Provide opportunities for 4-H members at club meetings, project meetings, activities, recognition events and individual projects.
- Recruit junior and teen leaders to serve in leadership roles for projects and activities.
- Are parents, grandparents, friends and community leaders.

A 4-H leader is somewhere between the sternness of a parent and the comradeship of a pal, says Harruff.

These leaders come in all shapes and sizes and may be male or female, but they all have one thing in common -- a glorious twinkle in their eyes.

4-H leaders are found everywhere—a judging contest, county fairs, square dances and talent shows.

They are tireless consumers of

muffins, experts at taking knots out of thread, peerless coaches, and expert hoof trimmers.

A 4-H leader is many things -- an artist making a float for the 4th of July, a doctor prescribing for an underfed calf, a counselor at camp, a lawyer filling out forms, and a shoulder to cry on when that dress just won't fit.

Nobody else has so much fun with so many boys and girls as does a 4-H leader.

4-H leaders are angels in aprons, saints in striped, three-piece suits. Their only reward is the love of the kids and the respect of the community. But when they look around them at the skills they have taught and the youth they have built, there is an inner voice from somewhere that says, "Well done!"

For more information on how to become involved in your community as a 4-H leader, contact the county Extension office, notes Harruff.

Educational programs conducted by the Texas Agricultural Extension Service serve people of all ages regardless of socio-economic level, race, color, sex, religion, handicap, or national origin.

M59 personnel carriers bring \$2,840.00

Hansford County Commissioners met in regular session Monday morning, April 8. The minutes were read and claims were approved.

They sold two model M59 army personnel carriers for \$2840.00. An order to issue time warrants for road equipment for precincts 3 and 4 was approved.

They also approved the deputization of Dickie L. Gillispie for the sheriff's department.

Oil painting anyone

Anyone interested in oil painting, come join the fun, we will paint all day Saturday, April 13th starting at 9:00 A.M. at the Golden Age Center. Floyd Dean Shook will be

there to help us over the rough spots. For more information call 733-2304 or 733-5037. Beginners welcome.

Beef's Role in a Healthy Heart

Cholesterol, saturated and unsaturated fats, low density lipoprotein (LDL), high density lipoprotein (HDL)—these are all buzz words of the 1970's and 1980's! The culprit often included in information concerning these words seems to be the all popular BEEF, a major industry in our area. The Calico CowBelles and the local chapter of the American Heart Association are combining Forces to present new findings from the United States Department of Agriculture on Monday night April 15 at 8:00 p.m. at the Perryton "Expo Center" located on Highway 15 West. Anne Ilse Anderson, of Austin, the Texas Coordinator of the Beef Industry Council of the Meat Board will duplicate a presentation made to the American Heart Association National Officers. The title of this program is "Beef's Role in a Healthy Heart."

The purpose of this presentation is to separate fact from misinformation. The general public is cordially invited to attend, with a special invitation being offered to the medically related professions in the area. There is no charge. If you

have specific questions concerning diet-health issues. Ms. Anderson is fully qualified to answer them.

The Calico CowBelles are a group of concerned women connected in some way to beef production. Those include ranch women, bankers, beef processors, grocers, and other allied industries. Local chairman of the American Heart Association, Lloyd Buzzard and Dorothy Buzzard have long been supporters of the Calico CowBelles.

4-H Record Book Workshop

A 4-H Record Book Workshop will be held in Gruver, on Thursday, April 11 at 7:00 p.m. This is a district wide training given by Robert Devin, 4-H Specialist. It will be held at the Gruver County Barn. Robert will be discussing changes in the books and will be able to answer any questions. All 4-Hers of Hansford County are encouraged to attend and also become acquainted with other 4-Hers in our District.

Record Books are used in many ways. First, they help the youngster to learn to keep records as a management source. Second, provide awards for the skills they have learned in their project. Third, they can apply for needed scholarships for further education. And last, they provide memories of a lot of hard work done. So, I would like to encourage everyone to come and learn.

If too many cooks spoil the broth, how come they turn 'em loose on the rest of the meal, too?

Snippets

Mishbaha beads — known to the West as "worry beads" — are carried in hand by both Lebanese Christians and Moslems. The beads help count the number of prayers, and by the rhythm of their clicking tell the mood of the holder; boredom, nervousness, impatience or hostility.

EASY MIXER — If your Mother didn't teach you...learn to mix dry ingredients for cakes, pastry and other uses on waxed paper. Sift what has to be sifted to the paper; mix by manipulating corners. No bowl to wash later either.

Karen's Kozy Korner

SIMPLIFYING MAKES HOUSEWORK EASIER

You can't make housework go away, but you can simplify your home care routine so it saves time, energy and effort.

Start your "work simplification" by eliminating unnecessary details and removing clutter. That means throwing or giving away household items that are not used. Then combine or streamline motions and activities and rearrange the sequence in which you perform jobs to reduce movement and exertion. For easy access, arrange all equipment at its point of first use. For example, store all baking items such as mixing bowls, mixer and dry ingredients, within a small radius. Developing an assembly line approach to your tasks will also allow you to do more in less time.

Establish correct work heights for your household tasks. Proper heights eliminate excessive reaching, bending and stooping. The proper counter height for standing work should be two inches below

the bent elbow.

Let your body work for you, not against you, as you do household tasks. Reduce exertion by using motions that are swinging, smooth and rhythmic rather than jerking. Use both hands when possible. Keep feet a shoulder-width apart with one foot slightly in front of the other to provide better stability.

When sitting, standing, walking or climbing stairs, stay as erect as possible. When you lift, push or pull a heavy object, bend your knees, not your back. And never

twist while lifting. Instead, pick up the item, hold it close to your body and then pivot.

And try working to music - pleasant surroundings will help reduce fatigue and make your chores go faster.

Educational programs conducted by the Texas Agricultural Extension Service serve people of all ages, regardless of socio-economic level, race, color, sex, religion, handicap, or national origin.

PTA selling pizza kits

The Gruver PTA is once again selling Pizza Kits. We had lots of satisfied customers from our fall sale, so are offering the kits again this spring. Each kit contains all the ingredients needed to make 6-12" pizzas. Choice of kits are, cheese, sausage, or pepperoni for \$14.95. A new cheese kit with whole wheat crust sells for \$16.95. Extra ingredients are also for sale: pepperoni \$2.75, sausage \$2.75, cheese (1 1/2 lbs.) \$4.20, mushrooms (1-16 oz. can) \$3.00, Canadian Bacon (12 oz.) \$3.95, and pizza sauce (30 oz.) \$1.40.

Also new this spring are cookie mixes. Choices are, chocolate chip, peanut butter chip, and oatmeal. Each kit contains everything needed to make 4 dozen cookies and sells for \$5.00.

If you are not contacted by a PTA member and wish to place an order please call Harletta Carthel at 1-753-4423 or Jo Alice Clawson 733-2247. Orders must be placed by April 15.

Boots & Slippers dance tonight

The Boots and Slippers Square Dance Club will be dancing tonight April 11th, 8 P.M. at the Golden Age Center with Murry Beasley calling. Come join the fun!!!

LUNCH MENU

- Monday
 - April 15
 - Fish
 - Mac. Cheese
 - Green Beans
 - Chocolate Pudding
 - Corn Bread
 - Milk
- Tuesday
 - April 16
 - Western Burger
 - Mix Vegetables
 - Applesauce
 - Milk
- Wednesday
 - April 17
 - Chicken Fried Steak
 - Carrots
 - Mashed Potatoes
 - Cake
 - Hot rolls
 - Milk
- Thursday
 - April 18
 - Pizza
 - Corn
 - Tossed Salad
 - Jello
 - Milk
- Friday
 - April 19
 - Chili Dog w/cheese
 - French Fries
 - Cole Slaw
 - Cookies
 - Milk

PRE-SEASON SALE patio

ACTION DINING from homecrest SALE

MAJORCA BY HOMECREST

Wheel of Fortune TV Show swivel rocker grouping! • Tough polyester slings • 46" dia. tempered glass table

• Self adjusting chaise also available

MAJORCA Table & 4 Chairs	Retail \$330.50	Sale \$199.50
Chaise	\$234.00	\$179.50

MONTEGO BY HOMECREST

Save dollars on deep-seated comfort! • Smooth action swivel rockers • Polyester filled cushions

• Zinc primed/powder coated frame finish

MONTEGO Table & 4 Chairs	Retail \$1068.00	Sale \$749.50
Chaise	\$380.00	\$324.50

CRICKET BY HOMECREST

Big savings on sling seating! • All-weather polyester slings

• Low and high back spring action chairs and chaise

CRICKET Spring Chair	Retail \$116.00	Sale \$79.95
Glider	\$298.50	\$209.50
Chaise	\$232.00	\$159.50

CRICKET DINING BY HOMECREST

Save on space saving 5-piece dining! • Sling chairs stack • 42" dia. expanded metal table

CRICKET Table	Retail \$88.50	Sale \$69.95
Table & 4 Chairs	\$668.50	\$469.50

KINGSTON BY HOMECREST

Most comfortable strap grouping made!

• 46" dia. tempered glass umbrella table • Wide vinyl protective table rim


KINGSTON Table & 4 Chairs	Retail \$1021.50	Sale \$719.50
---------------------------	------------------	---------------

RAIN COUPON

SAVE THIS COUPON

If it is raining at our store when you make your purchase during this sale, you receive an additional 10% off our already low discount price.

Out of State 1-800-338-5871



Office 1-405-338-3378

Home Owned and Home Operated

SALE EVERY THURSDAY AT 10:00 AM

Beedy FURNITURE CO.

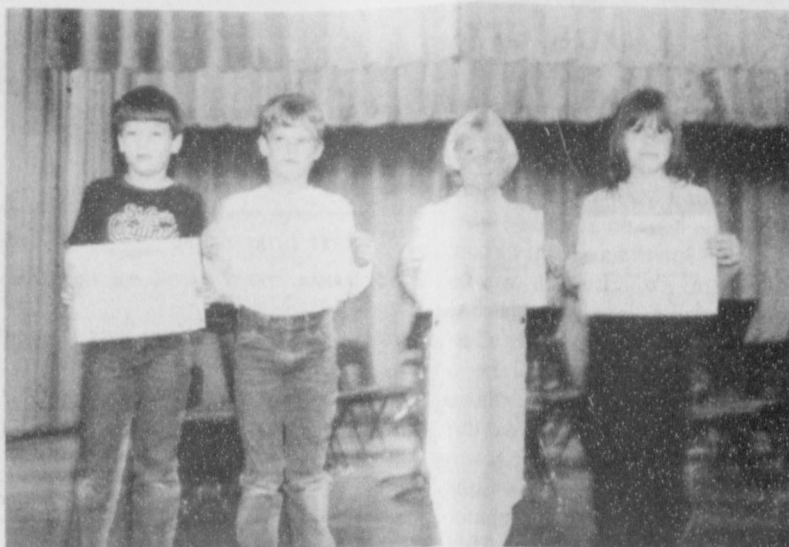
plains shopping center

723 W. 7th Spearman, Texas



Junior High Modern Oratory winners are: [left to right] Shelley Stedje, 1st place. Jennifer Price,

2nd place, Amy Sparks, 3rd place, Theorn Park.



Elementary Story Telling winners are: [left to right] Hart

Derington, Kenton Odom, Janyth Hart, Traci Smith.



Junior High Impromptu: [left to

right] Katrina Bratton, 1st place. Manda Winger, 2nd place. Debbie Hathaway, 4th place. Shelly Stedje.

"Texas" opens twentieth season

Canyon, Texas...For the twentieth season, the lone cowboy on top of the 600 foot cliff will dip his flag to the audience seated below in the magnificent Palo Duro Canyon. For the twentieth season, the lighting crack will seem to split the face of the canyon wall. For the twentieth season, the ranchers and the cowmen will face the coming of the railroad to the Texas Panhandle in the 1880's. These striking effects, pointing up the story of pioneer life in the northern most part of Texas, have become famous as the musical drama, "Texas", by Paul Green.

The twentieth year of the production will open June 12 and run through August 24.

More than a million and a half people have seen the show.

A new director will be in charge, the third since the beginning. It will be Neil Hess, who has previously been the choreographer. He is incorporating many new ideas to make this anniversary season refreshing and exciting.

For the first time, a professional has been called in to design the sets. He is George Petit of Dallas who has worked with Knott's Berry Farm for years and who is also a planner for the Six Flags and the Marriott theme parks. He also has planned most of the backgrounds for the crowning of the Queen of San Antonio Fiesta, and drawn the sketches for the sets for the Dalles Ballet Company. A graduate of Carnegie Institute of Technology, he majored in Drama and Set Design. He starts with the script and believes in working closely with the director to find his style. In talking about the "Texas" plans, he mentioned that the biggest challenge will be to combine the old and the new, to make the story come alive in new ways without destroying the continuity with the old. When asked how he felt about working in this area, he mentioned that he loves this country, likes to watch the storms and storm systems. He also said that any production of this kind, in this place, must always have a home-spun quality about it.

Mr. Hess and the Sound and Light Director for "Texas", Pat Jarrett, have also been conferring with a light specialist from California about ways to increase the effectiveness of the lighting. He is L. Lynn Hart, who has lighted and directed many feature shows for Disneyland. He has recently been appointed technical director for the "International Playwrights Theatre", a world-wide theatre operation based in Los Angeles.

The funds for making these fresh

improvements have come through a grant from the Don and Sybil Harrington Foundation. In addition, refurbishing funds are coming in from members and interested friends-and are still needed and welcome.

Everyone who is interested in attending the celebration of the twentieth season of "Texas" may make reservations by calling the "Texas" box office 806-655-2181, or by writing "Texas", Box 268, Canyon, Texas 79015, or by coming to the office at 2010 Fourth Avenue

in Canyon. The 1985 summer season will run from June 12 through August 24. It is well to make early advance reservations.

Mrs. Ralph Bort of Gruver is a member of the 1985-86 Texas Panhandle Heritage Foundation Board, the association which produces "Texas".

If you truly have something on the ball, better pray that the umpire is more myopic than usual.

Too often, the seat of learning turns out to be a seldom-opened encyclopedia used as a chair-riser for young-uns.



Junior High Number Sense winners are: [left to right] Brent Wagner, 4th place. Joe Satelo, James Villalobos, in back ground Vance Scarbrough. Winners also included but not pictured were: Jennifer Hart, 2nd place. Katie Williams, 4th place. J. J. Renteria, 4th place and Lee Bort, 4th place.

Take Advantage of Our Real Estate Loans, When You're Ready to Improve Your Home



See Roy Lynn Stollings or Roxie Stewart About Home Improvement Loans.



How long have you put that project on the back burner? You've been needing a work room for years. A place where you can work on home repairs and build things that you've always wanted to build. But you keep having to put it off because of braces and school clothes and every other bill in between.

At the First National Bank of Perryton, we know what it's like to make sacrifices. We have a solution: a home improvement loan. Not only will it increase the value of your home, but it will also improve the quality of your life. We think it's time that you finally put some of those pet projects on the front burner. It's time to get more living out of life.

Take advantage of home improvement loans at First Place.

The Land Bank

We say a farm real estate loan should be as easy to pay back as possible.

See us:



High Plains Federal Land Bank Association
505 South Main, Perryton, Texas
806-435-3219
Serving Hamford, Ochiltree and Upsham Counties.



Cub Scouts kite derby



The Gruver Cub Scouts, Pack 550 met Monday, April 1, 1985 for their annual kite derby. The boys attending were judged on best looking kite and also for the boy that could fly their kite the best. Judge for the event was Corky Chapman.

The three boys winning best looking kite was 1st Kevin Spivey, 2nd Will Evans, 3rd Paul Groce; three won on best flying 1st Paul Groce, 2nd Kevin Spivey, 3rd Jerry Mullins. Boys and leaders also participating were Den 1: Judy Lewallen, Debbie Deeds, Betty Mullins, Jerry Mullins, Terry Mullins, Galen Slough, Kevin McNett,

Ryon Atwood, Aaron Frick, Wesley Babbs, Kyle Deeds, Will Etherdige, L. D. Peters. Den 2: Nell Evans, Will Evans, Bryan Boyd, Lee Stedje, Mark Viola, Chris Stork, Jeff Peters, Michael Foster, Robert Whitaker, Raymond Lewallen. Den 3: Gyene Spivey, Cody Barkley, Kevin Spivey, Brady Pool, Matt Etherdige, Jason Bartimus, Paul Groce, T.J. Bayless, Heath Gaines, Weblos: Garrett Cumfory, Shannon Pool, Chad Stork, Rudy Olivarez and Kenny Slough.

All these boys did a very good job and look forward to next year.

Miss Hansford County Contest

This year's Miss Hansford Contest will be held on Saturday, May 4, in the Spearman High School Auditorium. Any girls who will be sixteen by that date, but who has not yet turned twenty-one is eligible to compete. There will be a Coke Party held for all those interested in participating, and the date will be announced shortly.

The Miss Hansford Escort Contest will again be held in conjunction with this year's pageant. This contest is open to any girls and boys, but will be limited to ten couples. The first ten couples to have their entry blanks turned in to Jackie Pearson at Kid's Stuff will be accepted. These entry blanks may be picked up from Kid's Stuff anytime during business hours beginning Monday, March 25. The age limits on the contest are that the children be at least four by the date of the contest, but not yet six.

Anyone interested in participating in either of these contests should contact either Jackie Pearson at 659-2608 or Judy Nelson at 659-3424 or 659-3608 for more information.

Sale at Ideal Store

NOTICE TO THE PUBLIC
The Ideal Food Store in Spearman is now open. All staple goods will be sold at a 20% discount until the store is closed out. No coupons or food stamps will be redeemed.

Miss Hansford Coke Party April 17

There will be a Coke Party held on Wednesday, April 17, 1985, at 3:30 p.m. in the Home Ec Room at Spearman High School for any girls interested in participating in the Miss Hansford Contest. The contest is open to any girl in Hansford County who will be sixteen prior to the contest date of May 4, 1985, but who will not yet be twenty-one. The deadline for entries is April 22, 1985.

If you are interested, please come to the Coke Party and sign up. If you cannot attend, entry blanks can be picked up at J.G.'s in Spearman from Judy Nelson.

MISS HANSFORD COUNTY
OFFICIAL PAGEANT ENTRY BLANK

_____ OF _____

REQUEST ENTRY IN THE _____ MISS HANSFORD COUNTY PAGEANT TO BE HELD IN SPEARMAN, TEXAS DURING THE ANNUAL HANSFORD COUNTY ROUNDUP ON _____

ENTRIES MUST BE RECEIVED BEFORE April 22, 1985

PERSONAL INFORMATION:
AGE _____ WEIGHT _____ HEIGHT _____ COLOR OF HAIR _____ EYES _____
EDUCATION _____ SCHOOLS _____
HOBBIES _____
OTHER ACTIVITIES _____

PARENTS (NAME) _____ (ADDRESS) _____ (TOWN) _____ (PHONE) _____
SPONSOR (NAME) _____ (ADDRESS) _____ (TOWN) _____ (PHONE) _____

I AGREE TO APPEAR IN THE BEAUTY PAGEANT _____ TO RIDE IN THE PARADE, ALSO ATTEND A TEA AND MEET WITH THE JUDGES FOR AN INTERVIEW. I UNDERSTAND THE CONTESTANTS ARE JUDGED EQUALLY ON BEAUTY, PERSONALITY, POISE AND FIGURE AND WILL APPEAR ON STAGE IN SHORTS SETS OR TENNIS DRESSES AND LATER IN FORMALS.

SIGNED _____

Entry blanks are also at J.G.'s, Chalor's, Boyd's Shoes, The Bunkhouse, and Lady Fair in Spearman and Main Street Store in Gruver.

NOTICE

On page 7 of this week's TG&Y Family Center circular, copy on the boys' camp short and men's athletic short was transposed. Prices on each are correct: Boys 4-7 camp short reg. 6.99 now 4.99; Men's Athletic Short 2 for \$5. We regret this error and any inconvenience it has caused.



The Hansford County Appraisal District cordially invites you to attend the Grand Opening of its new offices on Wednesday, the seventeenth of April Nineteen hundred and eighty-five from ten o'clock a.m. to four o'clock p.m. located at 709 West 7th Spearman, Texas

COMING SOON



has a new place where you can find your summertime tan in comfort, in luxury, and indoors.



The Sun Spot

Kerry Clark
Lita Robertson

SPRING SALE

April 8th thru April 21st
Discounts of 10%-50% off.

Shade Trees- Silver Maple, Red Maple, Weeping Willows, River Birch, Red Oak, Live Oak, Sweet Gum, Locust.

Hedges- Privet, Dwarf Burning Bush, Red Leaf Barberry.

Shrubs- Althea, Honeysuckle, Forsythia, Weigelia, Lilacs, Spirea, Snowball, Mock Orange.

Rose Bushes- Hybrid Tea, Floribundas, Climbers.

Fruit Trees- Large Assortment.

REGISTER FOR A LARGE SHADE TREE TO BE GIVEN AWAY

Specializing in under ground sprinkler system, drip systems, landscaping, yard service available weekly, monthly and yearly.

Open Mon.-Sat. 9-6 Sun. 1-6

Guymon Nursery and Landscaping

12th & East St. GUYMON, OKLA. 338-3683

PUBLICATION COPY FDIC 8040/35 (3-85) (STATE)

CONSOLIDATED REPORT OF CONDITION (Including Domestic and Foreign Subsidiaries)
(Dollar Amounts in Thousands)

LEGAL TITLE OF BANK	CITY	CH#	FBI#	STATE BANK NO.	FEDERAL RESERVE DISTRICT NO.	CLOSE OF BUSINESS DATE
GRUVER STATE BANK	GRUVER TEXAS 79040	1763-34	11 13 2218		HANSFORD COUNTY	

Dollar Amounts in Thousands	BILL	THOUS	THOUS
ASSETS			
1. Cash and balances due from depository institutions		9,180	1.a.
a. Noninterest-bearing balances and currency and coin		1,000	1.b.
b. Interest-bearing balances		1,018	2.
2. Securities		1,400	3.
3. Federal funds sold and securities purchased under agreements to resell in domestic offices of the bank and of its Edge and Agreement subsidiaries, and in IBFs		1,400	
4. Loans and lease financing receivables:			
a. Loans and leases, net of unearned income	15,443		4.a.
b. LESS: Allowance for loan and lease losses	297		4.b.
c. LESS: Allocated transfer risk reserve	none		4.c.
d. Loans and leases, net of unearned income, allowance, and reserve (Item 4.a. minus 4.b. and 4.c.)	15,146		4.d.
5. Assets held in trading accounts		none	5.
6. Premises and fixed assets (including capitalized leases)		205	6.
7. Other real estate owned		3	7.
8. Investments in unconsolidated subsidiaries and associated companies		none	8.
9. Customers' liability to this bank on acceptances outstanding		none	9.
10. Intangible assets		none	10.
11. Other assets		801	11.
12. Total assets (sum of items 1 through 11)		30,733	12.
LIABILITIES			
13. Deposits:			
a. In domestic offices:			
(1) Noninterest-bearing	13,313	35,494	13.a.(1)
(2) Interest-bearing	22,172	none	13.a.(2)
b. In foreign offices, Edge and Agreement subsidiaries, and IBFs	none	none	13.b.
(1) Noninterest-bearing	none	none	13.b.(1)
(2) Interest-bearing	none	none	13.b.(2)
14. Federal funds purchased and securities sold under agreements to repurchase in domestic offices of the bank and of its Edge and Agreement subsidiaries, and in IBFs		none	14.
15. Demand notes issued to the U.S. Treasury		none	15.
16. Other borrowed money		none	16.
17. Mortgage indebtedness and obligations under capitalized leases		none	17.
18. Bank's liability on acceptances executed and outstanding		none	18.
19. Notes and debentures subordinated to deposits		none	19.
20. Other liabilities		530	20.
21. Total liabilities (sum of items 13 through 20)		36,024	21.
22. Limited-life preferred stock		none	22.
23. Perpetual preferred stock		none	23.
24. Common stock		600	24.
25. Surplus		600	25.
26. Undivided profits and capital reserves		1,522	26.
27. Cumulative foreign currency translation adjustments		none	27.
28. Total equity capital (sum of items 23 through 27)		2,722	28.
29. Total liabilities, limited-life preferred stock, and equity capital (sum of items 21, 22, and 28)		38,746	29.

NOTE: This report must be signed by an authorized officer(s) and attested by not less than three directors other than the officer(s) signing the report.

I/We, the undersigned officer(s), do hereby declare that this Report of Condition has been prepared in conformance with official instructions and is true to the best of my knowledge and belief.

SIGNATURE OF OFFICER(S) AUTHORIZED TO SIGN REPORT: Michelle Boyd DATE SIGNED: April 10, 1985

NAME AND TITLE OF OFFICER(S) AUTHORIZED TO SIGN REPORT: Michelle Boyd, Assistant Cashier AREA CODE/PHONE NO: 908-733-5061

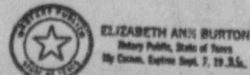
We, the undersigned directors, attest the correctness of this Report of Condition and declare that it has been examined by us and to the best of our knowledge and belief has been prepared in conformance with official instructions and is true and correct.

SIGNATURE OF DIRECTOR: Elizabeth Ann Burton SIGNATURE OF DIRECTOR: James S. Burton SIGNATURE OF DIRECTOR: Mark P. Burton

State of Texas County of Hansford

Sworn to and subscribed before me this 10th day of April, 1985.

My commission expires September 7, 1986 Notary Public



Continued from page 1 of the lady school teachers of Morse stranded in her car during the storm, abandoned the car and followed the wire fence to the nearest home. She was terribly upset from her experience and her hands were badly cut from tracing her course via the barb wire fence.

Mr. Meek tells of a lady at Stinnett who was rather heavy set and past middle age, who started out to reach her boy located at a pumping station near Stinnett. She followed the road for four miles finally reaching the pumping station. She was able to keep her course by feeling the hard surface of the road bed-often getting off the pavement but returning.

Frank Allen and his family were stranded near the Jess Edwards home and air became so thick that Frank got out and wet handkerchiefs out of the radiator of the car so that the members of the family might breathe.

Mr. and Mrs. R. V. Converse and Ray Vallett attempted to beat the storm home and were caught after they had turned East on the road home. They were in their truck, having come to Spearman for a truck load of water. The three sat in the seat of the truck for nearly two hours before they could get over the road to their home.

We are informed that 150 people living in the Stinnett neighborhood spent the night in the court house.

Many other cases were reported, but space and the nature of the stories prevent recording them at this time.

Among the humorous incidents: It is said that "Friday" had taken a nap, awakened and looked out the window to see a beautiful sunshiny day-he decided it was entirely too pretty to stay in the house and proceeded to dress. He stretched, yawned and closed his eyes for a half minute. When he opened his eyes he was in utter darkness. He was temporarily looney-so his friends say.

Jimmie Jackson claims the storm blew a six weeks old pig into the house and that he found the porker and a bulldog playing when he got up Monday morning.

Dwight Holland claims the storm blew in a one-dollar bill. He praises himself for finding the money and is keeping it. He states his wife made him clean up after the storm, and the finders are keepers.

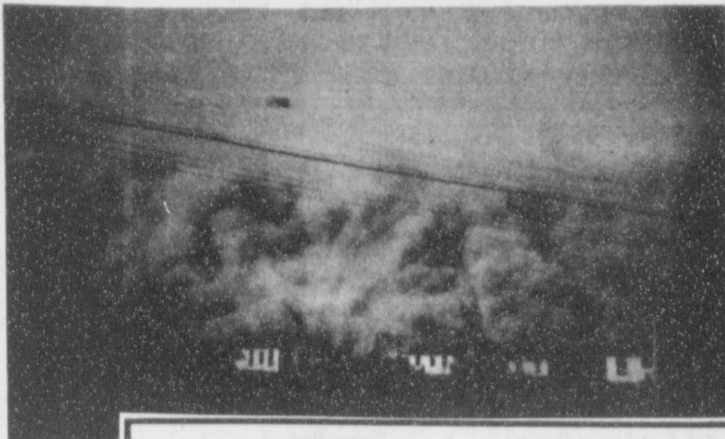
Deputy Sheriff Fred Linn made a bet of a sack of potatoes with Bob Morton last Tuesday morning that Spearman would not have more than two more sand storms. Bob stated Monday that after considerable argument Mr. Lynn finally agreed that the little flurry of dust Sunday was one of these two.

The Spearman Reporter has a limited supply of paper tape priced at 50 cents per roll. I have tried it on the windows and door facings at my home and find it practically eliminates dirt and dust. It is the easiest form of dust prevention to place in the home.

Come in today and get your supply.

If there is any human that deserved the embossed medal for unmitigated nerve it is my boy Bill Jr. Bill saw an ad in the Saturday Evening Post some two weeks ago whereby he could get a dandy new bicycle if he would circulate around among his friends and secure 9 three year subscriptions to the Saturday Evening Post at \$5.00 per. He has been pestering the ladies during the dust storms for the past two weeks. I imagine that several ladies who answered the door bell and found Bill Jr. soliciting a subscription feel like Don't Name It should be tossed into the next big dust storm that comes thru this country. However, Bill now has 7 of the nine subscriptions, and he has made me agree to pay \$1. for each of the subscribers he secures. If there is anyone in this county who just naturally read the Saturday Evening Post, and have \$4.00 in cash left that they can spare, if they will see Bill Jr. or me they can get the Post for 3 years. This represents a saving of \$4.00 on the regular 5 cents a copy price.

Black Sunday-April 14, 1935 approaching Gruver, Texas.



Sale Ends April 13

Items Available At TG&Y Family Centers Only.

TG&Y

Family Centers

Copyright 1985, TG&Y Stores Co.

A HOUSEHOLD INTERNATIONAL COMPANY

Stock-Up Sale



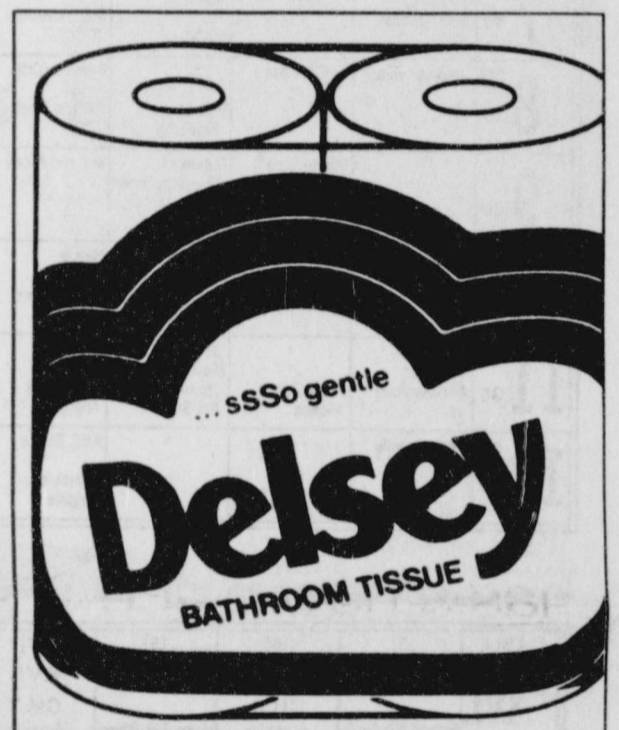
5.44 48 per package
Reg. 6.99

Stock up on Riegel Disposable Diapers. Extra absorbency diapers with elastic legs and one-piece tabs will give your little one a more comfortable fit. For babies 12-24 pounds.



.59 each 11 ounce can

Colgate Shaving Cream has a rich, thick lather for a more comfortable shave. Regular, lime, aloe or menthol. Price reflects 20¢ off label.



.80 4-roll package

Delsey 4-Roll Bathroom Tissue at a terrific low price. This soft, 2-ply tissue is very gentle and comes in white and assorted decorator colors.

After Easter Clearance Sale

Multi-function Alarm Calculator Watch

7.99

Sporty, masculine styling with easy-to-read LCD display of month, day, year, hour and minutes. Plus the handy wrist calculator feature that keeps convenience always within reach.

Crinkle Cotton Tops Your Choice

\$10 each

All Cotton Tops with the popular crinkled effect you'll see everywhere this season. Claim the look as your own and enjoy the over-sized sleeve design in a fun mix of styles. And at such a low price, too! Sizes S-M-L.

Turtle Wax Vinyl-Fabric Upholstery Cleaner Reg. \$2.44 75¢	Super Fix A Flat Reg. \$5.22 \$2.00	Parson Stack Tables \$2.00 Ea.	Large Assortment of Almay Cosmetics 2/\$1.00	Dura Flame Fire Log Reg. \$1.33 ea. Reg. \$7.98 Cs Now 50¢ ea. or \$3.00 Case
Bath Towels 2/\$5.00	Asst. Drapes and Panels 40% off	Ladies Briefs Asst. colors and sizes 2/\$1.00	Flat Fold Fabric Asst. prints, stripes and lace Reg. \$1.44 \$1.00 yd.	Hi Dry Paper Towel 2/\$1.00

521 Hwy. 207 S. Spearman, Texas 659-3741

TG&Y insists upon your satisfaction. If you are not happy with what you purchase, return it with your sales receipt. We will cheerfully exchange it or fully refund your money. If for unknown reasons advertised merchandise is not available, we will be glad to offer you a like item of comparable quality and value when possible. Most advertised items are reduced from our everyday low prices. Some merchandise is in limited quantities and available only while supply lasts. We reserve the right to limit quantities. We will be happy to accept your personal check, MasterCard, Visa or cash. We want you to be glad you shopped TG&Y.



THURSDAY 4/11/85

Table with 11 columns (CABLE, [3], [4], [5], [7], [8], [9], [10], [11]) and 12 rows of program listings for Thursday, April 11, 1985.

FRIDAY 4/12/85

Table with 11 columns (CABLE, [3], [4], [5], [7], [8], [9], [10], [11]) and 12 rows of program listings for Friday, April 12, 1985.

SATURDAY 4/13/85

Table with 11 columns (CABLE, [3], [4], [5], [7], [8], [9], [10], [11]) and 12 rows of program listings for Saturday, April 13, 1985.

SUNDAY 4/14/85

Table with 11 columns (CABLE, [3], [4], [5], [7], [8], [9], [10], [11]) and 12 rows of program listings for Sunday, April 14, 1985.

MONDAY 4/15/85

Table with 11 columns (CABLE, [3], [4], [5], [7], [8], [9], [10], [11]) and 12 rows of program listings for Monday, April 15, 1985.

TUESDAY 4/16/85

Table with 11 columns (CABLE, [3], [4], [5], [7], [8], [9], [10], [11]) and 12 rows of program listings for Tuesday, April 16, 1985.

NEW EMERGENCY NO.

733-2424

Fire-Police-Ambulance

Fire-Police-Ambulance

80 mph winds strike

WEATHER

Hansford County

DATE	HI	LO	PREC.
MARCH 29	49	39	.00
MARCH 30	31	25	.02
MARCH 31	58	25	.00
APRIL 1	59	36	.00
APRIL 2	77	39	.00
APRIL 3	81	42	.00
APRIL 4	80	44	.00

A total of 2.69 inches of moisture was received in March. Total moisture thru March for 1985 is 4.56 inches.

Thursday started out as a pleasantly warm day, but by late afternoon, the temperature had dropped and winds blew, with gusts up to 80 mph. A transport truck was blown over on its side north of town and straight winds blew a farm building down on the Knudson ranch north of town where Mr. and Mrs. John Stavlo reside.

The rural areas of Hansford County lost power at 5:45 p.m. Thursday. In a talk with newspapermen in the area, it has been assumed that the 80 mph winds did down some power lines in the north panhandle.

Friday as we go to press, the sun is shining, the temperatures are pleasant and gentle breezes are blowing.

Library News

Book Review:
"Deep Six"

by Clive Cussler

Clive Cussler's reputation as a master storyteller has been confirmed by such best-selling successes as "Raise the Titanic" and "Night Probe." In "Deep Six" he has surpassed himself with a brilliant and timely novel that pits his hero, Dirk Pitt, against the sinister and monstrous plan of a great Asian shipping family only to find that behind it is an even deeper and more dangerous Soviet plot to turn the President of the United States to their own designs by means of mind control.

"Deep Six" is full of action, like all Cussler's best sellers, but beyond the action is a plot so fast-paced, taut and highly charged that the reader is left breathless, whether it's at the mystery of a sunken ship with no name that unleashes a deadly tide of poison into the ocean waters, or the disappearance of the President of the U.S. on board his own yacht in the Potomac River, or the search of some of the most senior figures in the U.S. Government on board a Soviet cruise ship on the high seas... Like James Bond, Dirk Pitt is a swashbuckling adventurer, with a taste for the ladies and a way with violence - but in "Deep Six",

as in his other novels, Cussler has created a novel of compelling originality and rich detail that remains totally believable, with a huge cast of characters and a secret by ways of power in Washington and Moscow. "Deep Six" is grand adventure and major fiction. Other titles in Gruver City Library by Clive Cussler are: "Iceberg", "The Mediterranean Caper", "Night Probe", and "Raise the Titanic."

Junior High Readers

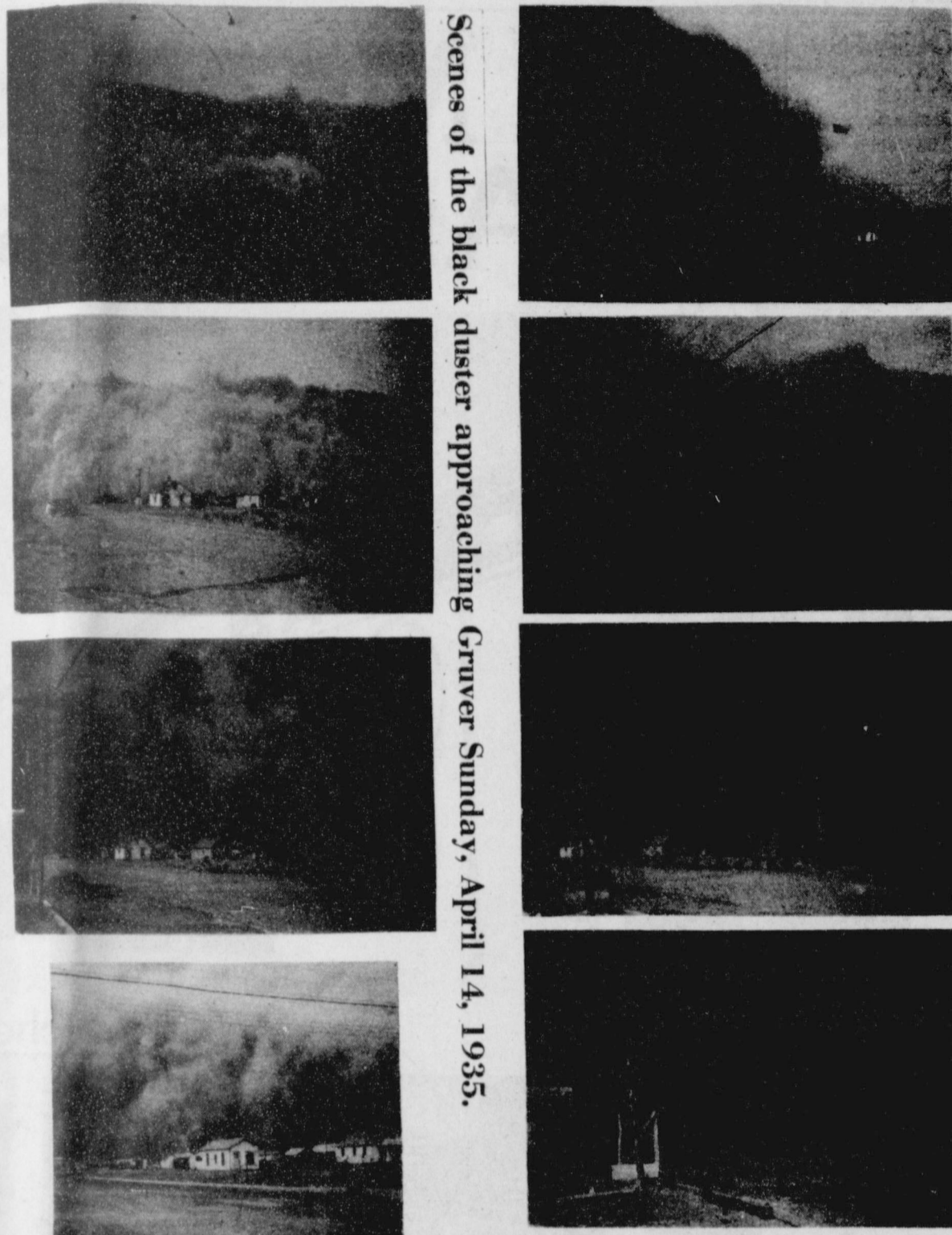
There are many books available for your reading pleasure, and we welcome you as patrons in your city library. For those of you who are interested in horses, "A Look Of Eagles" by Barbara Berry might be for you. Few horses possess the legendary "look of eagles" - that bold, imperious look, a fire kindled by a truly great heart. Gramp has searched for it all his life, and at last he finds it in a clumsy gray Thoroughbred colt called The Cat. He and young Sam, determined to remain independent, invest all their money and their hopes in the awkward yearling. At the very moment, however, when their faith in The Cat is justified by his first dazzling show of speed on the excitement of the racetrack by Uncle Jim, who has a reason for hating and fearing horses. The boy is bitter and angry about his new

life; he resents his new surroundings and everything connected with dairy farming. He lives only for the day when he will be grown up and free to search for The Cat. Sam discovers what growing up really means when he is unexpectedly reunited with The Cat, now a dangerous stallion condemned to death for his viciousness. It is a searing reunion that tests both their hearts, resulting in a tragic triumph for The Cat and sudden adulthood for Sam. Other good titles are also available for the teen-age reader, and you are invited to "check it out!"

"Books are masters who instruct us without words of anger, without bread or money. If you approach them they are not asleep. If you seek them, they do not hide, if you blunder they do not scold, if you are ignorant, they do not laugh at you." Richard de Bury.

Gruver City Library. Open 2:00 - 6:00 Monday thru Friday.

Settlement of Idaho was spurred by the discovery of silver at Coeur d'Alene in 1884. The state still leads the nation in production of that metal. It also ranks high in production of antimony, lead, cobalt, vanadium, zinc and mercury.



Scenes of the black duster approaching Gruver Sunday, April 14, 1935.

Continued on page 7

LIGHT BOUQUET - Bring Spring to the dining room by making a bouquet of the central fixture. Twine it with flowers and greenery - silk or other artificial materials. Let your imagination help you create an upside Spring flower arrangement from the ceiling that looks smashing when lighted. Try pastel bulbs for a soft glow.

When you see the light at the end of the tunnel, it means you'd better be pretty sly to keep from getting run over by the train.

Yes, Gwendolyn, you might say that a down-to-earth person is a divot-diggin' golfer.

Ideal Grocery Closing Out Sale

All merchandise 20% off
no coupons or
food stamps redeemed

Mon. - Sat. 9 - 6

CATTLEMEN

"Horn flies - Face flies - Ticks - Stable flies - Lice"

Are these guys stealing your profits on your summer cattle?

Insecticide tags can ease the problem of unwanted parasites keeping your cattle from gaining to their best potential. Fly tags release their fly repelling chemicals for a period of up to five months. Enabling your cattle to get and grow instead of fighting flies.

Insect tags may also be personalized with your name and phone number for identification.

Brawley Cattle Supply
Dumas, Texas
806-935-5677

Frank Watson
935-3668

Mike O'Hair
935-9086

Terry Tull
935-7473

All features great and small.

Southwestern Bell Telephone introduces five new TELE-HELP booklets.

TELE-HELP is a special information program created by the employees at Southwestern Bell Telephone. We've designed it to provide answers to our customers' questions as well as reaffirm our company's commitment to the community.

Home security is something that concerns us all. But, in reality, many people don't know how to prepare for an emergency in advance. This booklet gives you tips on how to do just that.

Annoying phone calls can happen to anyone at anytime. But you don't always have to be a victim because there are a few steps you can take to deal with this nuisance. We developed

this booklet to tell you about them.

Home wiring tells you how you can save money by installing new wiring or changing existing wiring in your own home. It also tells you about the options available if you would rather have someone else do the work.

A Guide to Establishing New Service tells you about all the steps involved, and what to expect, when setting up your new phone service.

Local Service Options tells you about the range of services that can enhance the value of your phone, including Custom Calling Services, Easy Access Dialing and Touch-tone service. To order your free TELE-HELP booklets, send in this coupon or call TOLL-FREE 1-800-325-2686, extension 81, Monday-Friday, 8 a.m.-5 p.m.

Southwestern Bell Telephone

Texans providing telecommunications for a growing state.

We're here to help.



Mail to: TELE-HELP
Southwestern Bell Telephone, Drawer 8
Wheeler Station, St. Louis, MO 63188 Ext. 81

Please send the set(s) of TELE-HELP booklets checked here:

SET 1 A Guide to Your Phone Service
 A Guide to Home Phone Repair
 A Guide to Long Distance Service
 A Guide to Saving Money on Phone Service

SET 2 A Guide to Home Security
 A Guide to Establishing New Telephone Service
 A Guide to Local Telephone Wiring
 A Guide to Handling Annoying Phone Calls

Please print clearly. Be sure to include zip code. Check here for Spanish versions

NAME _____
 ADDRESS _____
 CITY _____
 AREA CODE (_____) PHONE _____ STATE _____ ZIP _____

Please allow 2-3 weeks for delivery.

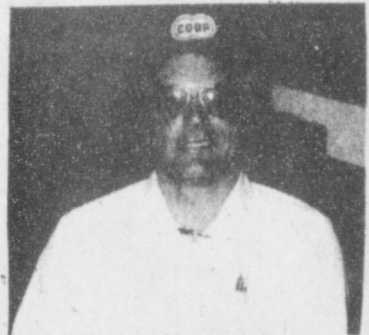
Month of April Anniversary Sale



Gene Legg, Manager



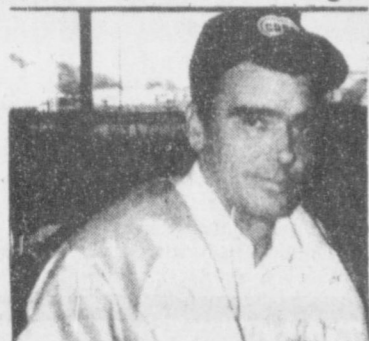
George Newton



Gary Bray, Assistant Manager



Stephen Pickett



Kenneth Vines



600 Twichell - 935-6440

We are celebrating our first anniversary.

Need not be member to shop at Dumas Co-op.



George Henry



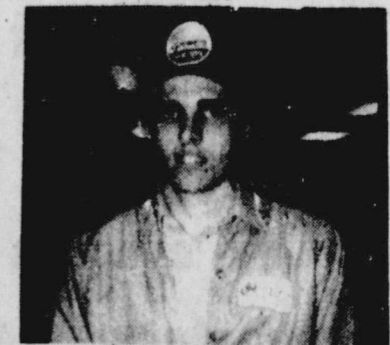
Delana Quirk



Bruce Rice



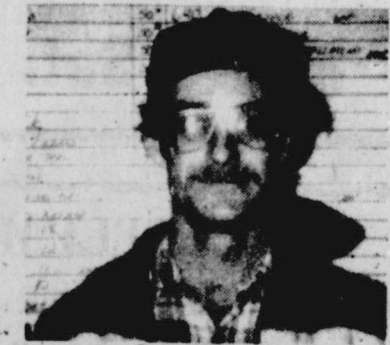
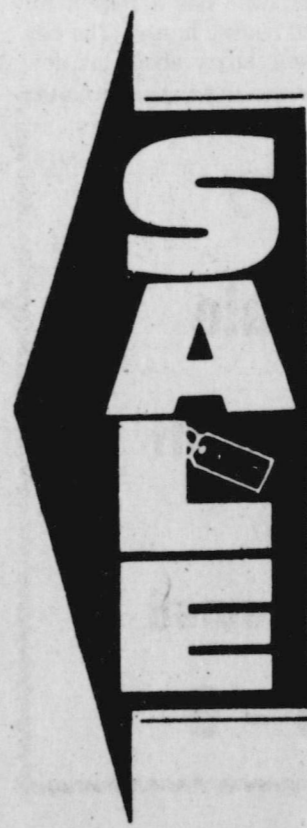
Della Smith



Raymond Tate

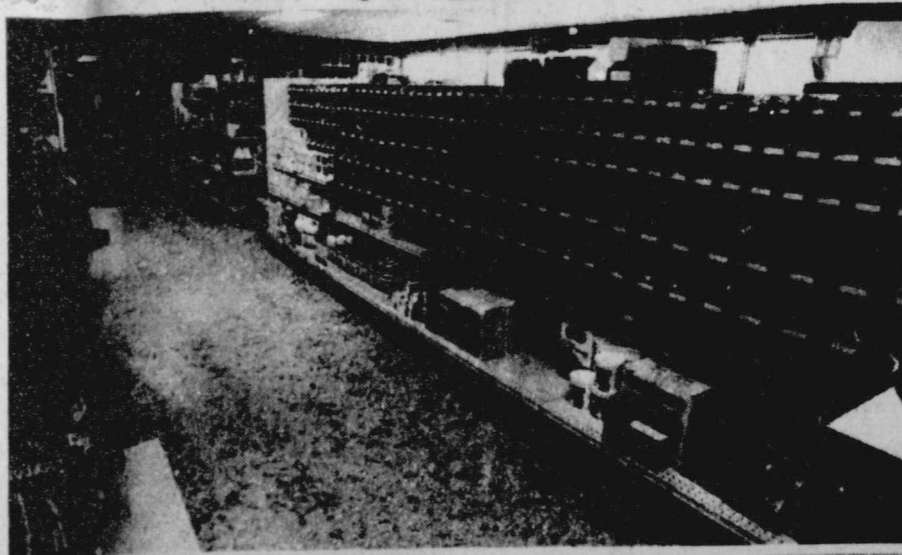


Diana Gould

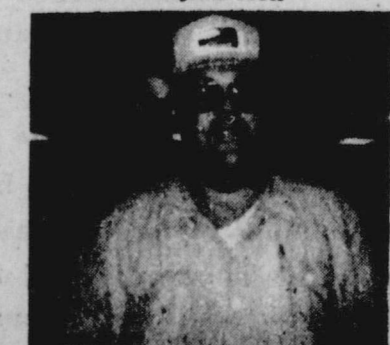


Jerry Morton

Big Discounts on numerous items throughout the store all during the month of April.



Sid Baker



Bruce Terry



Tommy Schmidt



Verlyn Hollis



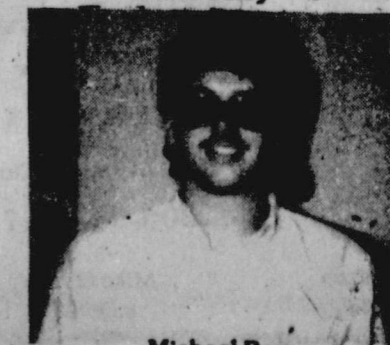
Bill Brown



Dorna Reilman



Karen Witherspoon



Michael Barr