

HANSFORD COUNTY L B A
SPEARMAN, TEXAS 79081

24 hour prayer
service 659-2911



THE CRUVER STATESMAN

Volume 16 No 10

The Gruver Statesman, Gruver, Texas 79040

Thursday December 11, 1986

Hospital

Patients in Hansford Hospital are: Shirley Burton, Cathy Monk, Manuela Vela, Luis Mize, Jeff Lackey, Loretto Cook, Willie Seitz, Bill Whitford, and Minerva Vela.
Dismissals are: Idela Randall, Sara Angelos, Lisa Love, Steven Foster, Robbie McFarlan, Dennis Sloury, Clara Hull, Mary Fern Terry, and Tom Jarvis.

Weather

Date	Hi	Lo	Precip.
Dec. 5	52	38	
Dec. 6	54	41	
Dec. 7	34	32	.62
Dec. 8	34	29	.24
Dec. 9	34		.31

With a report of one inch of snow on the ground as we go to press.

Miss Texas Farm Bureau



1st runner - up - Tammy Knox - Houston County, Queen - Carrie Hart - Hansford County, and last year's Queen Monica Cox - Hunt County

Carrie Hart, the 18 year old daughter of Mr. and Mrs. Don Hart, of Gruver, was crowned Miss Texas Farm Bureau, Monday night, Dec. 1, 1986 at McAllen, Texas.
Carrie represented District 1, Hansford County. Thirteen girls competed in the contest representing all thirteen districts in Texas. As a result of winning Carrie will receive a \$1,500 scholarship and a \$500.00 wardrobe made all natural fibers.
Carrie is a freshman at Texas Tech.

She is a member of Tri-Delt social sorority. First runner-up, who received a \$1,000.00 scholarship, was Tammy Knox, a 21 year old junior at Texas A&M, from Crockett, Tx.
Carrie would like to take this opportunity to thank the members of the Hansford County Farm Bureau for all the love and encouragement they have shown her. She will strive to represent Hansford County and the State of Texas in such a way to make them proud.

Sports Round-Up

The Varsity Lynx played the Gruver Greyhounds for their second game of the Spearman Tournament Friday, December 5.
The Lynx led 12 to 8 the first quarter, with five field goals and both their free throws, while Gruver scored three field goals and both their free throws.
The second quarter, the Lynx scored five field goals and six of seven free throws, while Gruver scored eight field goals and one of two free throws. Half-time score was Spearman 28, Gruver 25.
The final quarter, the Lynx scored seven field goals and one of five field goals, while Gruver scored seven field goals and four of eight free throws. Final score was Spearman 61, Gruver 52.
Individual scoring for the Lynx included (F.G., F.T., F., T.); Carl Urban (9-6-1-24); Tim Woolley (4-1-5-9); Brett Davis (4-0-3-8); Kevin Nelson (4-0-0-8); Monte Beck (3-0-3-6); Mark Garnett (1-2-2-4); Keith Benson (0-2-4-2); Jeff Gustin (0-0-0-0); Brian Calson (0-0-0-0); and Charles Roper (0-0-1-0).

The first quarter, the Lynxettes scored two field goals and three of four free throws, while holding the Lady Greyhounds to two field goals. First quarter score was Spearman 7, Gruver 4.
The second quarter, the Lynxettes scored four field goals and the Lady Greyhounds scored three field goals and one of two free throws. Half-time score was Spearman 15, Gruver 11.
The third quarter, the Lynxettes scored eleven field goals and one of two free throws, while holding the Lady Greyhounds to six field goals and four of five free throws. Third quarter score was Spearman 38, Gruver 27.
During the final quarter, the Lynxettes scored five field goals and eight of twelve free throws to Gruver's seven field goals and two of four free throws. Final score was Spearman 56, Gruver 43.



Empty Stocking Fund

It's that time of year again when the Hansford Manor is collecting donations for their "Empty Stocking Fund". The manor has several needy residents who have need of this fund. The money goes to buy these residents clothing, toiletries and other personal items throughout the year. Your tax deductible donations are greatly needed and appreciated. Send them to the Hansford Manor in care of Jody Harnish or Carol Hergert.

Markets

Wheat	\$2.20
Corn	\$1.85
Milo	\$2.70
Barley	\$1.60
Soybeans	\$4.20 indication only

Basketball Tournament Results

Friday December 5th

First Round GIRLS

PERRYTON (8)	14	28	32	43
STINNETT	7	17	24	34
P - Farvey 10, Jones 9; S - Smith 7, Bodey 4.				
FRITCH (5)	17	19	28	40
GRUVER	12	24	32	48
F - Shelly Riggle 26, Dusti Whitley 6; G - Potts and Smith 17.				
SPEARMAN	21	33	51	70
BORGER JV	0	6	16	23
S - Mary Baker 14, Shannon Jenkins 13; B - West 7, Sheppard 6.				

BOYS

PERRYTON	17	31	50	60
STINNETT	12	26	42	57
P - Barnes 12, Johnson & Wade 11; S - Thompson 19, McDonald 12.				
GRUVER	10	18	31	44
SPEARMAN JV	6	19	23	38
G - Hoel 19, Smith 8; S - Pat Shields 10, Stan Grant 8.				
SPEARMAN	10	22	34	74
TEXLINE	6	11	24	43
S - Carl Urban 24, Kevin Nelson 12; T - Anderson 16, Asher 12.				

Saturday December 6th Spearman Invitational

GIRLS

S-FRITCH	14	30	29	49
BORGER	4	11	19	29
SF - Riggle 18, Hooker 8; B - Baren 8, Sheppard, Caldwell & Lofton 4.				
CANADIAN	14	32	34	48
PERRYTON	6	15	21	35
C - Dunnam 18, VanHooser 10; P - James & Pivbide 8.				
SPEARMAN	7	15	38	56
GRUVER	4	7	27	43
S - Shannon Jenkins 18, Jill McLain 17; G - Smith 17, Chapley 13.				

BOYS

SPEARMAN JV	12	27	45	51
TEXLINE	9	26	25	49
S - Womble 10, Tucker & Brand 9; T - Anderson 19, Rice 13.				
PERRYTON	12	26	42	58
CANADIAN	9	24	34	47
P - Dierks 13, Brans 11; C - Payner 23, Robins 9.				
SPEARMAN	12	28	46	64
GRUVER	8	25	34	52
S - Urban 24, Woolley 9; G - Hoel 15, Smith 13.				

Tournament

GIRLS

Consolation				
S-FRITCH	16	32	40	48
STINNETT	6	10	2	21
SF - Riggle 16, Whitley 12, S - Smith 16, McDonald 7.				
Third Place				
GRUVER	9	21	45	48
PERRYTON	5	11	13	28
G - Potts 17, Smith and Shapley 8, P - Farvey 5, Philliv 4.				
Championship				
CANADIAN	13	31	41	46
SPEARMAN	10	21	37	48
C - Van Hooser 13, Burns 10, S - Jenkins and Jill McLain 12.				

BOYS

Consolation				
STINNETT	16	34	52	70
SPEARMAN B	1	13	21	38
ST - Tybo Thompson 24, Chad Willmon 14, BB - Garcia 16, Tucker 4.				
Third Place				
CANADIAN	12	28	42	68
GRUVER	10	25	38	54
S - Payner and Rubio 16, G - South 36, Hoel 16.				
Championship				
SPEARMAN	8	24	38	48
PERRYTON	12	26	38	46
S - Urban 26, Benson 4, P - Barnes 12, Dorris 10.				

Hounds hold off Channing

If you're going to travel an hour and a half somewhere on a bus, you had better make it worth it and make it worth it the Hounds certainly did. Gruver traveled to Channing Tuesday night, December 2, and came away with an impressive win. With a 57-51 win, the Hounds gained a quick dose of momentum. Leading the Hounds with 5 of 12 field goal shooting was senior point guard Steve Duncan and his eleven points. Brian Hoel and Clay

Smith each chipped in ten points a piece.
Gruver outrebounded Channing 28 to 17 which proved to be the winning edge. But who would have that winning edge. But who would have that winning edge couldn't be discerned until the very end. With under two minutes left, the score was tied. Clay Smith stepped to the charity line and dripped in two free throws to spark Gruver to a six point run and the win.



Christmas Open House at "The Dahl House". Shown is the owner Teresa Dahl.

Lady Hounds Take 3rd, Hounds 4th in Spearman

The Gruver Greyhounds traveled to Spearman Dec. 4, 5 and 6 to participate in the Lynx Tournament. The Lady Hounds grabbed third place by defeating the Perryton Rangerettes, 48-28. They were able to advance by defeating Sanford-Fritch 48-40. Then a tough Spearman girls team kept the Ladies out of the final match by a 43-56 margin. Our girls then pulled out their heroics for the Perryton game. Leading the way for the Lady Hounds was Cissy Smith with 15 points per game. Anne Potts also chipped in a 13 point average in the tournament. Cami Chapley chipped 13 of her own points in a losing effort to Spearman. The Lady Hounds record is now a whopping 8-1.

The Gruver boys placed fourth in the Tournament. They beat a spirited Spearman "B" ball club to begin their own advancement. They were then narrowly beaten by the Spearman Varsity 61-53 in what looks to be one of many upcoming and intense battles! Gruver then went on to play always-tough Canadian. But the Hounds couldn't quite pull it out losing by a 65-54 margin.
Clay Smith led the Hounds with a 13 point average in the three games. Brian Hoel also chipped in another hearty 15 points per game. Steve Duncan contributed his 7 steals during the tournament, the Hounds will have hosted Canadian by press time so be sure that you were there to support them.

Top-O-Texas Banquet

Foto compliments Lipscomb Limelight



Voting delegates of the Top-O-Texas District Future Farmers of America selected Bonnie Jarvis, center with roses, as their Sweetheart Monday, Dec. 1, following a banquet in the old Follett High gym. Bonnie, daughter of Mr. and Mrs. Britt Jarvis of Spearman, is a freshman, has blue eyes, brown hair and stands 5'6" tall. Other Sweetheart candidates were, L-r, DeAnn Ingram, Miami; Davonna Cator, Gruver; Leslie Tatman, Booker; Kathi Colby, Higgins; Bonnie Jarvis, Spearman; Tammie Harwell, Mobeetie; Tommie Maurer, Darrousett; Sue Kealin, Kelton, and Pam Piersall, Follett.

The Hound's Tale

PTA Bannerlines
delivers- Fruitcakes and candy are scheduled to be delivered by Thanksgiving.

Appreciation coffee A Christmas appreciation coffee for faculty members is scheduled for December 23. A few volunteers are still needed to man classes so that all teachers may attend the gathering. If you would like to volunteer approximately 30 minutes of time, call Marilyn Hart at 2226.

Associational Meeting-The December associational meeting was held December 1, at 7 p.m. in the school auditorium. A singing program will be presented by the second and third graders and the high school choir. Ty Seagler and Robin Karlin were also featured. The program was under the direction of Hayley Hatton. Everyone was cordially invited to attend.
WELCOME to Coach Terry Brax, his wife Judy and to "Little Baby Brax". Coach Brax is from Colorado Springs, Colo. and graduated from Bethany College. His interests are hunting, fishing, camping, motorcycles and working in his shop.

Also making a debut this month was Chelsea Ann Blackshire to join sister

Kelly and parents Royce and Debbie. Chelsea made a brief visit to the elementary last week.

New Secretary-The new face in the elementary secretary's office is Pam Cassidy. Pam assumed duties on Nov. 10th. She is the wife of Monty Cassidy, and the couple has two children, Keith, a 7 year old second grader, and Becky, 4. Pam enjoys being with her family, doing church work, and needlepoint.

SCHOOL WILL BE DISMISSED on Dec. 23rd, at 2:00 p.m. for the Christmas holidays. Classes will resume on Monday, January 5, 1987.

BUCKLE UP during the holiday season.

EXCURSION-The 5th grade toured to the Carson County Museum in Panhandle on Nov. 14. Mrs. Knight and Mrs. Mayhew sponsored the outing which enhanced the students recent study of Indians.

THANKS to the 5th and 6th grade students for their performance at the PTA program.

ENTER AT YOUR OWN RISK! The 7th graders are busy with their

scalpels in Coach Flowers class.

BEST OF LUCK to the 7th and 8th graders as they start the basketball season. Be sure to support these players as they learn to fine-tune their abilities on the court.

HAVE any of you Jr. High parents noticed your child hasn't asked for a pencil lately? Well, it seems the "Eron Machine" is doing a fine job supplying them with these collectors items, but **LOOK OUT** if it ejects a Dallas Cowboy or Chicago Bears pencil. They are "Hot Ones."

TRIVIA QUESTIONS
Who was the first Hispanic to graduate from Gruver High School?
In what year did Gruver High School have the largest graduating class?

Do you have an interesting school trivia question? Give it to Rhonda Ward or Harletta Carthel, and we'll share it with the **Hound's Tale** readers.

HAPPENINGS IN HIGH SCHOOL
NEW RINGS The Junior class has received their senior rings.

There are 4 teams going to Area Contest in Speaking events from the Gruver FFA.

The seniors are selling "great"

looking sweatshirts for \$17.00. To get yours contact any senior, Mr. Looper or Mrs. Bayless.

INVITATIONS-1987 Graduate invitations were selected and ordered by the seniors this past week.

Area Tryouts
Robin Karlin and Ty Seagler will be competing in the All Area Choir tryouts in Amarillo on Dec. 6th. Good Luck to both of you.

All School Play tickets can be purchased from any junior, Mr. Chisum or Mrs. Burnam. The play will be presented Dec. 20 at 7:30.

Label Drive-The drive for Campbell, Swanson, and Franco-American labels will continue through the year. The drive has been slow so far, so please inform friends and family that may not have children in school of our efforts. Put labels in the box by the elementary secretary's office.

Boots and Slippers

The Boots and Slippers Square Dance Club will be having our last dance Thursday, December 11, 8:00 p.m. at the Golden Age Center with Murry Beasley calling. Come join in the fun!

SNOW IN GRUVER
Light snow fell in Gruver this week. Approximately .50 inches of rain fell on Monday, before the snow fall.
Guymon received 5 inches of snow, and the snow was heavier North of town.

HOME
for Christmas



May a joy-filled holiday walk right up to your door. Thank you friends.

Check Safety To Make The Holidays Bright

- Before hanging strings of lights, spread them on the floor and check for frayed or bare wires, cracked insulation, loose connections, and damaged plugs or light sockets.
- Check extension cords for wear or damage and don't run them across walking areas.
- Test lights before putting them on the tree. Unplug them before making repairs or replacing bulbs.
- Overloading circuits with too many lights can cause fire. Follow manufacturer's instructions about the number of lights allowed on one circuit.
- Choose a fresh, green tree, trim its base and keep it in plenty of water. If the needles are brown and break off easily, it could be a fire risk.
- If you buy an artificial tree, make sure it has been tested for flammability by Underwriters Laboratories (UL).
- Place your tree away from the fireplace or other heat sources and out of the traffic pattern.
- Never string lights on a metallic tree. Light strings with damaged insulation can electrically charge a metallic tree. Instead, shine unattached colored floodlights or spotlights on the tree.
- Always turn off lights before leaving home or going to bed. You'll save money and be safer, too.
- Never use lighted candles on a tree or near evergreens. And don't burn evergreens in the fireplace.
- Do not use inside lights on the outside. All outside lighting equipment, including lights, cords and plugs, should be waterproof and made for outdoor use. Also, hang sockets downward and don't leave a socket empty.
- When hanging lights on the rooftop or in tall trees outdoors, stay clear of electrical lines. Make sure you or your decorations don't come in contact with them.
- Should you receive a CB radio or television this Christmas, let a qualified serviceman install the CB base unit or television antenna for you. This delicate job is best left to the professionals.
- Be sure electrical toys are tested for safety. Look for the UL mark.

Wishing You A Safe, Happy Holiday

MOONLIGHT MADNESS SALE

Friday December 12 659-3741
6-9 p.m. **McCRORY**

7:00 P.M. TO 8:00 P.M. ONLY		6:00 P.M. TO 7:00 P.M. ONLY	
ALL TOYS IN STOCK 25% OFF		SELECT GROUP OF LADIES HANDBAGS 50% OFF ORIGINAL PRICE	
8:00 P.M. TO 9:00 P.M. ONLY		8:00 P.M. TO 9:00 P.M. ONLY	
ORIENTAL DESIGN FLOWER CART & VASE SET \$5⁰⁰ Reg. 9 ⁹⁹		BLANKETS SOLIDS OR PRINTS Reg. 5 ⁹⁹ 2/\$5⁰⁰	
FOLDING BABY STROLLER Reg. 12 ⁹⁹ \$7⁹⁹	SOFT & LOVELY GIFT PACK OF BATH BEADS AND BODY POWDER Reg. 1 ⁹⁹ \$1⁰⁰	DECORATIVE THROW PILLOWS 18 x 24 Reg. 7 ⁹⁹ \$4⁹⁹	VINYL CASSETTE CARRYING CASE Reg. 7 ⁹⁹ \$4⁹⁹
LIBBEY 24PC GLASS SETS Reg. 9 ⁹⁹ \$6⁰⁰	MENS QUILTED FLANNEL SHIRTS Reg. 15 ⁹⁹ \$9⁹⁹	PRINTED COMFORTERS Reg. 14 ⁹⁹ \$9⁹⁹	20" DECORATIVE WREATH Reg. 4 ⁹⁹ \$3⁰⁰

REGISTER TO WIN A \$100.00 SHOPPING SPREE

Name _____

Address _____

Telephone Number _____

MUST BE 18 YEARS OLD

Bring This Coupon in to Register

521 HWY 207 S.
Spearman, Texas

McCRORY®

SPECIAL HOLIDAY HOURS

Monday-Saturday 9:00 a.m.-8:00 p.m. | Sunday 12:00-6:00 p.m.



SOUTHWESTERN PUBLIC SERVICE COMPANY

WANT ADS

CLASSIFIED RATES

Regular.....Per Word-\$0.13
 Display.....Per Col. Inch-\$4.20
 Double rate for blind ads
 Minimum charges
 Cash.....\$4.00
 Charge.....\$4.50

CASH IN ADVANCE ADS
 Work Wanted*Trailers For Sale*
 Business Opportunities*No Longer
 Responsible*Political Advertising*
 Child Care*Baby-sitting*
 Garage Sales*Out-Of-County Ad-
 vertiser has established credit with
 The Gruver Statesman

DEADLINES
 To place or cancel ads
 Fri., 12:00 p.m.....Sun. edition
 Tues., 12:00 p.m.....Thurs. edition

The Gruver Statesman reserves the right to reject, edit, revise and properly classify all advertising submitted for publication. The Gruver Statesman also reserves the right to cancel any advertisement at any time.
 The Gruver Statesman,
 Box 796
 Gruver, Texas 79040

NOTICE

Wallace Monument Co.
 Monuments, Curbing,
 Grave Covers
 Local Representative
LEONARD JAMESON
 Spearman, Texas
 40-rtm

Hansford County
 Planned Parenthood
 412 Davis
 859-2483
 Spearman
 Mon. - Fri.
 8:30 - 12:30

Real Estate

ABANDONED HOMES TAKE UP PAYMENTS!!
 Call Collect
 806-381-1352

YOU'VE GOT CREDIT WITH US!!
 Low, Low, down Repos!
 Good, Bad, & No Credit
 Welcomed
 806-381-1352
 Call Collect

USDA News

A list of highly erodible soils was recently released by the USDA Soil Conservation Service as mandated by the Food Security Act of 1985. The list revealed that all land in Hansford County is highly erodible.

The conservation compliance provisions of the Act denies most USDA farm program benefits to farmers who farm highly erodible land unless the land is being farmed in accordance with a conservation plan approved by the local Hansford Soil & Water Conservation District.

The Act allows a grace period for those who are not using a conservation plan. They have until January 1, 1990 to develop and begin actively applying a plan. They have until January 1, 1995 to have the plan fully in effect.

The provisions will have no effect on farmers who are using up-to-date conservation plans. If you are farming highly erodible land with a conservation plan, check with the Soil Conservation Service office in Spearman to find out if it meets conservation compliance provisions.

"We are ready to help anyone prepare a conservation plan that doesn't have one", Monnie Edwards, district conservationist for the SCS said. "We will do our best to try to help people figure out how to apply enough conservation practices to keep them in compliance with the 1985 farm bill."

Such plans may include crop residue management, terraces, waterways or other practices.

Farmers with highly erodible land may also want to consider placing it in the Conservation Reserve Program, Edwards said. There will probably be another sign-up for the CRP in early 1987.

Situations Wanted

WANTED: Cake baking & decorating done. I now have the "Ele-rop pan." Also sewing and alterations. Call Joy at 733-2517.

WANTED: Custom work get a jump on your 1987 crop by working your ground this fall. Will Do! Chisel Plowing, Discing, Listing, Rodweeding, NH3 Application, Combining of Corn and Milo, for less than you are Now paying. Work Guaranteed Fully Insured. 806-384-2086. 2-4tp

Sewing wanted, alterations etc. Baking and decorating cakes. I now have the Wuzzles cake pan "EleRoo". CALL Joy at 733-2517. 52-rtm-nc

Special Item

Roofing - specializing in wood shingle-shake & composition reroof & repairs. Call Buddy at Spearman - 659-2210, 30 yrs experience - Free estimates. 11-rtm

Christmas baking-Brandied Fruit Cakes and Novelty "Santa" Cakes. Also Regular Fruit Cakes and Pies.

Just Arrived - 1986 Tri-Chem Christmas catalogue. See the new Sun-glo, Sticker Art & Liquid Embroidery items. Get a head start on your gift list or craft projects. Call Joy at 733-2517.

BUYING COYOTES: \$12.00-\$15.00. Paying top dollar weekly. 435-9471 after 7:00 P.M. 435-2279 Fri. & Sat. nights. 435-3929 Daytime. 10-1tp

NOTICE OF PUBLIC HEARING

The Planning Board of Adjustment of the City of Gruver will hold a PUBLIC HEARING to discuss a zoning variance which has been applied for by David Turner.

The variance applies to property located in Block 6, lots 26-30, Eastern Addition of Gruver. The applicant wishes to place a beauty shop on the property located at 803 Womble Street.

The Public Hearing will be held on December 29, 1986 at 2:00 P.M. at the City Hall.

Section of Land For Sale

Section 101 4T T&NO
 3 Miles southeast of Spearman. 186 1/2 acres wheat base, 89% acres grain sorghum base, balance in grass. No minerals.

Auction District Court Room, Spearman, TX, 2 p.m., December 19. Furnished abstract or title insurance.

Terms Cash. Reserve the right to reject all bids.
 659-2922 or 659-2337

A hardworking woman needs a hardworking investment plan.

Your career keeps you busy. That's why you've gained in responsibilities and income. And it's why you now need sound investment counsel to help make more of all you make.

Chances are you have neither the time nor the special skills necessary to develop a financial program in these uncertain economic times. We can help with a wide range of capital appreciation opportunities from real estate to cable television, leasing to oil and gas, from \$1000 up. For every working woman who wants to put her money to work. Call or write us soon.

Shickelgruber, Wilson, Stapp & Associates, Inc.
 3014 W. 25th #4000
 AMARILLO, TX 79109 358-7131
 P.O. BOX 516
 SPEARMAN, TX 79081 659-3880

IR Integrated Resources Equity Corporation

Marcia Shickelgruber Debra Stapp

Member SIPC

For Sale

FOR SALE: Ladies Saddle. Excellent Condition. Call 733-2978 after 5:00.

FOR SALE: Manx (tailles) Kittens. Call 733-2514 or 733-2978.

Pets

CAT LOST - Reward offered for return of large blue-grey short haired male cat, has small chunk gone out of one ear. Answers to shorty. Call 396-2453. Collect. 10-1tp

PILLOW TALK

Around America, parents are putting their heads together and getting their little ones—and not so little ones—pillows to hug. A new answer to a child's old need for a "security blanket" are adorable Pillow People from Springs Performance Products Division bringing their own special friendliness to night-or-nap-time.



WRESTLING NEWS

The Pampa Wrestling Club held a tournament Nov. 23rd. Our boys participated, and here are the results:
 Div. I - Clint Shook-3rd
 Brant Armes - 1st
 Bray Armes - 6th
 Div. II - Curt Shook - 6th
 Andy Morris - 5th
 Bailey Barkley - 1st
 Wylee Maupin -
 Div. III - Jace Dawson - 1st
 Ryon Atwood - 2nd
 Clint Williams - 6th

Results from the Amarillo Spartan Wrestling Tournament on Dec. 6th are:

Div. I - Clint Shook - 6th
 Brant Armes - 1st
 Bray Armes - 10th
 Div. II - Buster McLain - 3rd
 Curt Shook - 6th
 Bailey Barkley - 2nd
 Wylee Maupin - 2nd
 Andy Morris - 4th
 Div. III - Jace Dawson - 3rd
 Ryon Atwood - 2nd
 Clint Williams - 6th

Our next tournament is on Jan. 24th at River Road.

• Whether on a dresser or in a travel bag, a Mundi jewel box is a gem of a way to hide treasures. Covered in three decorative fabrics—Conversation Print, Tapestry and French Canvas—the cases add color to dressertops and spice to a room's decor. Available in three sizes, they feature suede compartments, pouches and mirrors.

The Gruver Statesman

PUBLICATION OFFICE 7904-0000
 GRUVER, TEXAS 79040
 BOX 796
 806-381

OWNER-PUBLISHER
 William M. Miller
 EDITOR
 Joy Henderson
 Gruver, Tx.

Second Class postage paid at Gruver, Texas 79040.

Any erroneous reflection upon the character of any person or firm appearing in these columns will be gladly and promptly corrected upon being brought to the attention of the management.

POSTMASTER: Send address changes to the Gruver Statesman, Box 796, Gruver, Texas 79040.

SUBSCRIPTION RATE: The Gruver Statesman, adjoining counties, \$30.00 per year.

• The street-smart nylon Walla-Bag, available in three styles and sizes and six vibrant colors, provides young women on the go with more carrying space than conventional wallets or handbags. Mundi products are sold at leading department and specialty stores.

Prices Effective Dec. 11-12-13, While Supplies Last AT GRUVER TEXAS LOCATION

ALLSUP'S CONVENIENCE STORES

30 YEARS OF SERVING YOU

SCOTCH PINE/BLUE SPRUCE/BALSAM/FIR
 Fresh Cut
Christmas Trees
 AS LOW AS
\$8.99 WE'VE GOT THE SIZE OF CHRISTMAS TREE YOU WANT AT ALLSUP'S

You're #1 With Us

BORDEN'S DIPS OR Sour Cream 8 OZ. CTN. 2 FOR 99¢

FILLED WITH FRESH HOT COFFEE ALLSUP'S Coffee Mugs EACH 99¢ REFILLS ONLY 25¢

BORDEN'S Egg Nog QT. CTN. 99¢

HOT AND GREAT TASTING-ALLSUPS Hot Chocolate 8 OZ. CUP. 30¢

BORDEN'S Assorted Novelties 12 CT. PKG. \$1.19

ALLSUP'S GOLDEN BROWN & DELICIOUS Chicken Nuggets 8 CT. SERVING 69¢

BORDEN'S Homo Milk 1/2 GAL. CTN. \$1.09

ALLSUPS BEEF AND BEAN BURRITOS (REG. SIZ) 59¢

CHILI DOGS 2/99¢ HOT DOGS 2/79¢

DORITOS REG./TACO/NACHO CHEESE/COOL RANCH

Tortilla Chips \$1.69

REGULAR \$2.29 NOW

SHURFRESH BISCUITS 10 CT. CAN 10/1.00

CAFFEINE FREE COKE, CHERRY COKE, COCA-COLA CLASSIC AND DIET COKE 12 OZ. CANS 6 PAK

TOPS

Our November meeting were called to order by our leader Rhonda Reichen with the TOPS Pledge. The meetings of the last meetings were read and approved as read. Louise Evans called the roll with Ida Hendrick, Ina Soapes, Phyllis Rasor and Sue Fiel winning the fruit bowls with best loss for the week. Phyllis and Ida received 12 week attendance charms. Phyllis was voted Inspirational Angel for the month of September. We welcomed our new member Sue Fiel, are very glad to have her. Our Queen for the month of October with best loss is Phyllis Rasor. She also reached her goal and will be KIW (Kops in Waiting) for 13 weeks, then she will be KOPS. We are proud of her!! Winnie will be our gracious hostess December 17th for our Christmas party and luncheon. We'll look forward to that. Several great programs were presented this month. Our meeting were closed with the Serenity Prayer, Merry Christmas and Happy New Year to all.

Annual Drive

The annual drive to provide the 390 young residents of Cal Farley's Boy Ranch with a new suit or clothing package began today.

The purchase of new clothing for the boys through the Christmas Suit Fund has become a favorite way of Christmas giving among friends of the boys who contribute \$45.00 for this purpose. Special discounts by Amarillo merchants and difference in clothing prices for younger and older boys make the average cost of \$45.00 possible. The suits replace those that have been worn out or outgrown. In many cases, these are the first new suits some boys have ever known.

"Many of the Ranch's boys are now shopping for the clothes of their desires in Amarillo stores, and the job of trying to outfit each one is tremendous," said Ranch president Roy E. Turner. "In addition to clothing packages for the younger boys, the new suits will be worn by graduating seniors next spring." Mr. Turner added that a new suit is the best Christmas gift a boy can receive because it is a year-round reminder of those who care about him.

Contributions of any amount to the Boys Ranch Christmas Suit Fund are welcome, and may be mailed to the Ranch office, P.O. Box 1890, Amarillo, Texas, 79174. Donations may also be presented at the offices at 600 West 11th Street in Amarillo.

GRUVER MENU

DEC. 15 - 19

MONDAY

CHICKEN PATTIES
MASHED POTATOES W/ GRAVY
CARROTS
CHOCOLATE PUDDING
HOT ROLLS
MILK

TUESDAY

GOULASH
APPLESAUCE
BREAD
MILK

WEDNESDAY

"CHRISTMAS DINNER"
TURKEY W/ DRESSING & GRAVY
MASHED POTATOES
CORN
CHERRY COBBLER
HOT ROLLS
MILK

THURSDAY

BEEF STEW
PEACHES
CORN BREAD
MILK

FRIDAY

HAMBURGERS
FRENCH FRIES
LETTUCE PICKLES CHEESE
CHRISTMAS CUP CAKES
MILK

DEC. 22 - 23

MONDAY

CHEESE SANDWICH
TATER TOTS
FRUIT COCKTAIL
BROWNIES
MILK

TUESDAY

CORN DOGS
PORK AND BEANS
FRUIT BARS
MILK

Engagement Announced



Marline Dowdy & TeJay Simpson

Mr. and Mrs. Murrell Dowdy announces the engagement and forthcoming marriage of their daughter Marline to TeJay Simpson. Mr. and Mrs. Jerry Simpson of Brady, Tx. are

parents of the groom. The wedding will be December the 27th at 11:00 in the morning in Lubbock, Texas. 2 sp & 1 Gr.

Heartfelt Thanks

We wish to express our sincere and heartfelt thanks to the many, many friends of I. L. "Big" Harris, Sr., who passed away on November 13, 1986.

Prior to losing our beloved husband father and grandfather, he underwent surgery. During the few weeks following the surgery, the outpouring of prayers, cards, personal visits and sincere concern by all of his friends in and around Gruver, Texas, were a God sent blessing to all of us.

Following the death of Mr. Harris, the visits, cards, flowers and food to the family home were again overwhelming and extremely heartwarming.

To all of his children who have moved away from Gruver, it was most gratifying to see the love and compassion poured out by the beloved people and friends of LL Harris, Sr. Obviously since most of us have moved away we were not acquainted with some of the people, but it was extremely appreciated to see the outpouring of love and concern by all of you wonderful people.

From the bottom of our hearts and with sincere appreciation, we thank you one and all for the concern and prayers that you showed at the time of Mr. Harris' death.

In our return visits to Gruver, we shall endeavor to remind you of our thanks personally.
The Family of LL Harris, Sr.

Season's Greetings

Museum

The Stationmaster's House Museum Board has great hopes for the future. A replica of Old Zulu is just waiting to be built. You know or may not know Zulu was the first Trading Post and later a Post Office north of the Canadian River. It was located on the Perry Hawkins ranch now owned by his son, Jeff. The site has been excavated by archeologist, Bill Harrison. We have the dimensions and other pertinent information. Hansford County residents, in reminiscence, have contributed much. One of these is Viola (McNabb) Whitson. She spent many enjoyable hours at Zulu.

Would you like to make Old Zulu a reality? This can be accomplished if we only had the money. There is one Hansford County resident who is willing to do his share. He will donate \$5000.00 to the Museum if that sum can be matched. How about you, the public, making this possible? Surely there is someone out there who is willing and able to match the \$5000.00.

1986 is almost gone. Your deductible donation can serve two purposes - save on your income tax and help make Old Zulu live again. Your children and future generations will thank you for preserving history for posterity. Write your check today. Bring it by the Museum or give it to any Board member.

CHRISTOPHER'S A&A Inc.

Formerly Only Aluminum
Still Supplying The Ultimate In Custom Aluminum Products

"Our products are custom made to Fit Your Home."

- ★ Storm Doors
- ★ Storm Windows
- ★ Patio Covers
- ★ Carports

Come In or Call
Sam Christopher

8:00 a.m. To 5:00 P.m.

114 W 1st Street Guymon, OK (405)338-6966
After 5:00 p.m. Call (405)338-3097

\$600⁰⁰ CASH FOR Good For You SHOPPERS

Drawing will be at First National Bank, Spearman.

\$\$\$\$\$\$\$\$\$\$\$\$

Good For You Bucks
First National Bank

Name _____

Address _____

Phone _____

\$\$\$\$\$\$\$\$\$\$\$\$

The First National Bank will distribute "Good For You Bucks" to the local merchants listed below. For each \$25.00 of purchase you will receive one "Good For You Buck". These "Good For You Bucks" should be brought to the First National Bank and deposited in a hopper. These Bucks will be drawn December 24th, Christmas Eve.

- | | |
|-----------------------------|-----------------------------|
| Adelas Gift & Ceramics | Fuller's Jewelry |
| Anthony Electric | Gordon's Drug |
| B&B Sales | Hickerson Jewelry |
| Bedy Furniture Co. | J.G.'s |
| Blackburns Flower Basket | Jans Fashions |
| Boyd's Family Shoes | Jenny Lynns |
| Brown's Furniture | Kid's Stuff |
| Bob's Antennas | Lady Fair |
| Bunkhouse | Prairie Chalet |
| Callaway's House of Flowers | Sacks Third Avenue |
| Cates Men & Boys Inc. | Spearman Auto Supply |
| Cha Lors | Spearman Drug Co. |
| Charlottes Trunks | Hotel Royale |
| Country Stitches | Knack Shoppe |
| Desk Set | Hi-Plains Auto Supply, Inc. |
| Earl's TV | Grandma's Corner |

Three Bucks with winners name on them will be drawn Dec. 24th, Christmas Eve. Each winner will receive \$200⁰⁰ in cash.

Good For You

and Hansford County Tool

FNBANK
First National Bank of Spearman

FDIC

Hospital and Manor Bulletin

NEWS RELEASE
BY: Dennis Robertson, Administrator
FOR: Hansford County Hospital District

New and exciting things are happening at the Hospital and Manor! As a citizen of the Hansford County Hospital District you can be proud of the outstanding medical care programs and facilities available to you now and those that are being developed for the future. The Governing Board of the Hospital District is most concerned that each person residing within the District the fully cognizant of the wide range of quality health care services available. Otherwise, how can you make full use of those services? Everything done within the Hospital District is for only one purpose; to provide the best and most comprehensive care at the lowest possible cost for those who use those services. Therefore, we will be writing periodic articles, giving as much detail as possible, in regard to the important services available to you. For example, did you know that the physician staff of the hospital consists of the services of 14 physicians and dentists? The following is a brief listing of each:

DAVE MUTHALI* M.D. - Lives in Spearman, does general practice and has full admitting privileges in the Hospital.

ROMEO SANGALANG* M.D. - Lives in Spearman, is a qualified general surgeon who also does general practice and has full admitting privileges in the Hospital.

FRED TAYLOR* M.D. - Lives in Spearman, does obstetrics, pediatrics and general practice and has full admitting privileges in the Hospital.

JUAN VIOLA* M.D. - Lives in Gruber, does obstetrics and general practice and has full admitting privileges in the Hospital.

PANLILLO QUIROS* M.D. - Lives in Borger, practice is limited to obstetrics and gynecology and may admit Hansford County residents to the Hospital since the doctor has courtesy admitting privileges in the Hospital.

EDWARD QUIROS* M.D. - Lives in Borger, practice is limited to general surgery and may admit Hansford

County residents to the Hospital since the doctor has courtesy admitting privileges in the Hospital.

RICK SIEWERT* D.O. - Lives in Perryton, does general practice and may admit Hansford County residents to the Hospital since the doctor has courtesy admitting privileges in the Hospital.

GLORIA TRIGROFF* M.D. - Lives in Borger, practice is limited to anesthesiology and may attend Hansford County patients in the Hospital since the doctor has courtesy privileges in the Hospital.

PRUDENCIO AVENDANIO* M.D. - Lives in Pampa, practice is limited to Radiology, serves as a physician consultant in the field of Radiology for the benefit of other physicians on the Hospital staff.

DANNY BELTRAN* M.D. - Lives in Elkhart, Kansas, practice is limited in Radiology, serves as a physician consultant in the field of Radiology for the benefit of other physicians on the Hospital staff.

JOSE DIAZ-ESPUIVEL* M.D. - Lives in Amarillo, practice is limited to Pathology, serves as a physician consultant in the field of Pathology for the benefit of other physicians on the Hospital Staff.

IAN McRae BIRKETT* M.D. - Lives in Amarillo, practice is limited to Pathology, serves as a physician consultant in the field of Pathology for the benefit of other physicians on the Hospital Staff.

JOHN DENKO* M.D. - Lives in Amarillo, practice is limited to Pathology, serves as a physician consultant in the field of Pathology for the benefit of other physicians on the Hospital Staff.

EARL NOVAK* D.D.S. - Lives in Spearman, is a dentist and has full dental privileges in the Hospital.

STAN COBB* D.D.S. - Lives in Spearman, is a dentist and has full dental privileges in the Hospital.

Did you know that the Hospital has ordered new Cardiac Monitoring equipment, has fetal heart monitoring equipment available, has automated blood chemistry capability in the laboratory, is installing new computer equipment in the business office to

better serve you; that there is a fully qualified staff of nurses, medical technologists and other allied health professionals available at the hospital? Did you know that the Hansford Manor has a superior rating from the State Health Department? Of course, you know that the Hansford Manor is being expanded to make it more financially viable and better serve the needs of the district's older citizens.

The new developments and many more capabilities and services are available to you and I will be telling you more about them in the months to come.

You are always welcome at the Hospital or Manor and we will be glad to give you a personally conducted tour of YOUR facility at any time you would like to come by.

NOTICE OF MEETING OF THE GOVERNING BODY OF CITY OF GRUVER

Notice is hereby given that a regular meeting of the governing body of the above named City or Town will be held on the 11th day of December, 1986, at 2:00 P.M. in the City Hall at 108 East Broadway, Gruber, Hansford County, Texas, at which time the following subjects will be discussed, to-wit:

1. Open the meeting.
2. Approve the minutes of the previous meeting.
3. Approve the bills for the month of November, 1986.
4. Appoint a member to the Library Board to fill an un-expired term.
5. Conduct a public hearing concerning a Parks grant.
6. Consider the purchase of a word processor.
7. Other business.

Dated this 8th day of December, 1986.

Gruver City Manager

I, the undersigned authority, do hereby certify that the above Notice of Meeting of the governing body of the above named City or Town of Gruber is a true and correct copy of said Notice and that I posted a true and

correct copy of said Notice on the bulletin board, in the City Hall of said City or Town in Gruber, Texas, a place convenient and readily accessible to the general public at all times, and said Notice was posted on December 8, 1986, at 1:00 o'clock P.M., and remained so posted continuously for at least 72 hours preceding the scheduled time of said Meeting.

Dated this 8th day of December, 1986.

Gruver City Clerk

Tax Time

The Stationmaster's House Museum Board invites you, the public to be a part of your County Museum. To do this a tax deductible donation will help make this possible. At this time of the year many people are striving to reduce their income tax. Time is running short when this can be accomplished. Ask your accountant how much you can give to help yourself and the Museum. Any donation, large or small, will be greatly appreciated. Remember it is tax deductible.

Vice President Honor Roll

Steve Been and Kevin Bramer were recently named to the Vice President's Honor Roll for the fall quarter at Texas State Technical Institute.

Honorees must achieve a 3.5 or above grade point average on a 4.0 scale.

Been, son of Truman J. Been of Gruber, is a 1982 graduate of Gruber High School. He is a diesel mechanics technology student.

Bramer, son of Linda Short of Gruber, is a 1982 graduate of GHS. He is a drafting and design technology student at TSTI.



Christmas DEALS ON WHEELS!

4-Wheelers 1987 MODELS

YFZ350T Reg. \$3049.00.....2 Cylinder.....	SALE	2749 ⁰⁰
YFM350FMT Reg. \$3599.00.....All New 4-Wheel Drive.....	SALE	3199 ⁰⁰
YFM350XT Reg. \$2929.00.....	SALE	2599 ⁰⁰
YFM350ERT Reg. \$2879.00.....Front & Rear Carrier.....	SALE	2579 ⁰⁰
YFM200DXT Reg. \$2279.00.....	SALE	1999 ⁰⁰
YFM100T Reg. \$1459.00.....New for '87.....	SALE	1339 ⁰⁰
YFM80T Reg. \$1149.00.....	SALE	1049 ⁰⁰

1986 MODELS

YFM225S Reg. \$2569.00.....Front & Rear Carrier.....	SALE	2299 ⁰⁰
YFM200DXS Reg. \$2219.00.....	SALE	1899 ⁰⁰
YFM80S Reg. \$1099.00.....	SALE	959 ⁰⁰
YF60S Reg. \$ 829.00.....	SALE	759 ⁰⁰

1985 MODELS

YFM200N Reg. \$2049.00.....	SALE	1579 ⁰⁰
-----------------------------	------	--------------------



3-Wheelers Some Priced Below Invoice

1985 MODELS

YTZ250N Reg. \$2299.00.....	SALE	1549 ⁰⁰
YTM225DXN Reg. \$1899.00.....	SALE	1269 ⁰⁰
YTM200N Reg. \$1499.00.....	SALE	1049 ⁰⁰
YT60N Reg. \$ 699.00.....	SALE	579 ⁰⁰

YAMAHA
 We make the difference™
Eagle Cycle Shop

717 S. Main — Perryton, TX
 Phone 806-435-3594

Stretch Your Christmas Dollars

MENS SHIRTS

Long Sleeve — Dress

Sport Flannel **20% OFF**



TALLMENS SHIRTS

Long Sleeve Dress

Sport Flannel **30% OFF**

TALLMENS SWEATERS

30% OFF

BOYS SWEATERS

30% OFF

MENS

SWEATERS

30% OFF

COATS

MENS WINTER

20% OFF

COATS

BOYS WINTER

20% OFF



Gates Men & Boys Wear

659-3426

Spearman, Texas

221 Main

Double Ring Ceremony



Mrs. Philip Wayne Tripp

Miss Beth Ann Holt and Dr. Philip Wayne Tripp were united in marriage on Saturday, November 29, 1986, at three o'clock in the Gruver United Methodist Church, Gruver, Texas. The double-ring ceremony was performed by the Reverend Jim Terry, pastor of Gruver United Methodist Church, and the Reverend Jim Smith, pastor of Saint Stephen United Methodist Church, Amarillo, Texas.

The bride is the daughter of Mr. and Mrs. Pat Holt of Gruver. Parents of the groom are Mr. and Mrs. Wilbur N. Tripp of Guymon, Oklahoma.

The church sanctuary was decorated with arched candelabra arranged in an overlapping pattern with spiraling candelabra on either end and one large floral arrangement of gladiolas, mums, and carnations.

Wedding music was provided by Mr. Erwin Elms, organist, Mrs. Erwin Elms, pianist, and Mrs. Lon Godley, soloist. Vocal selections were "O Perfect Love," "A Wedding Prayer," "Heavenly Father," "The Lord's Prayer," "Bless This House," "Whither Thou Goest," and "This Is The Day."

As the "Processional from the Sound of Music" was played, the bride was escorted to the altar by her father. She wore a formal gown of white satin. The fitted bodice was covered with Alencon lace which was adorned with sea pearls. The dress had a basque style dropped waistline. The Renaissance sleeves had Alencon lace and a touch of sea pearls. The satin skirt flowed into a Cathedral length train with an Alencon lace edging. The bride chose a veil edged with Alencon lace and sea pearls.

The bride carried a bouquet of pink and white roses and baby's breath. She carried out the bridal tradition of wearing something old, something new, something borrowed, something blue, and a sixpence dated the year of her birth in her shoe for good luck.

Miss Eva Marie Holt of Stillwater, Oklahoma, served as her sister's maid of honor. Bridal attendants were Miss Kristi Holt of Galveston, Texas, sister of the bride; Mrs. Kevin Holt of Gruver, sister-in-law of the bride; Mrs. Charlie Kiser of Morse, Texas; Mrs. Jack Thompson of Dallas, Texas; and Mrs. Tom Haines of Roswell, New Mexico.

The bridesmaids wore identical cranberry dresses of matte taffeta. The floor length dresses featured a scooped ruffle neckline and shirred elbow-length sleeves. Each bridesmaid carried a bouquet of pink roses, daisies, hot pink carnations, and baby's breath.

Attending the groom as best man was his brother, Dr. Mike Tripp, of Ringling, Oklahoma. Groomsman were Steve Sebesta of Fargo, North Dakota, brother-in-law of the groom; Ray Drake of Hume, Missouri, brother-in-law of the groom; Dr. Pat Edmonds of Duncan, Oklahoma; Dr. Keith Fuchs of Elk City, Oklahoma; and Dr. Mike Pruitt of Gotebo, Oklahoma. Guests were seated by Kevin Holt of Gruver, brother of the bride, and the groomsman.

and Mrs. Mike Pruitt, Gotebo, Oklahoma; Dr. and Mrs. Keith Fuchs, Elk City, Oklahoma; Mrs. Gordon Moore, Goodwell, Oklahoma; and Mr. and Mrs. Erwin Elms, Keyes, Oklahoma.

Other out of town guests attending were General James A. Van Fleet, Polk City, Florida; Mrs. Betty Van Fleet McConnell, Charlotte, North Carolina; Mr. and Mrs. Tom Haines, Roswell, New Mexico; Ruel Holt, Cimarron, New Mexico; Mr. and Mrs. Ray Drake, Hume, Missouri; Mr. and Mrs. Steve Sebesta and Ashley, Fargo, North Dakota; Wendy Jefferies, Boulder, Colorado; and R. Wayne Jefferies, Bayfield, Colorado.

Immediately following the ceremony, a reception was held in the fellowship hall of the church. The bride's table was covered with a white floor length satin and lace cloth. The centerpiece was a silver epergne holding white tapers and pink roses, daisies, and baby's breath. The white tiered wedding cake was encircled with four smaller cakes at the base and was topped with fresh pink roses. A silver punch service and appointments completed the bride's table.

The groom's table was covered with a Thanksgiving tablecloth made by the bride's paternal grandmother, Mrs. Coy Holt. It was decorated with horns of plenty and clusters of fruit. The groom's cake was a square chocolate cake topped with a cluster of red grapes. A silver coffee service completed the groom's table.

Serving at the bride's table were Paige Holt of Dallas, Texas; Holly Holt of Lubbock, Texas; and Sally Holt and Brooke Holt of Gruver; all cousins of the bride.

At the groom's table chocolate cake, coffee, and cranberry tea were served to the guests by Mrs. Steve Sebesta of Fargo, North Dakota, sister of the groom; Mrs. Ray Drake of Hume, Missouri, sister of the groom; and Mrs. Mike Tripp of Ringling, Oklahoma, sister-in-law of the groom.

Tiny bags of wheat tied with cranberry ribbons were distributed to the wedding guests by Roxane Holt of Gruver, cousin of the bride.

Pre-nuptial courtesies honoring the couple were a miscellaneous shower in the home of Mrs. Del Cluck, a lingerie shower given by Mrs. Jack Thompson, Mrs. Tom Haines, and Mrs. Charlie Kiser, and a tea in the home of Mr. and Mrs. Wilbur N. Tripp.

The rehearsal dinner was hosted by Mr. and Mrs. Wilbur N. Tripp at the Ambassador Inn, Guymon, Oklahoma. A bridal luncheon was given in the home of Mrs. Dayton Barkley.

The bride graduated from Panhandle State University in Goodwell, Oklahoma, with a bachelor of science degree in business education. She is also a graduate of Lipsett Court Reporting College in Plainview. She is a self-employed free-lance court reporter.

The groom received a bachelor of science degree in animal science from Oklahoma State University in Stillwater, Oklahoma. He recently received his doctorate of veterinary medicine from the Oklahoma State University College of Veterinary Medicine. He practices at Oaklawn Park race track in Hot Springs, Arkansas.

Following their wedding trip to Lake Tahoe, the couple will be at home in Hot Springs.



Other beautiful decorations shown at the Open House of "The Dahl House".

Remember Your Museum on Christmas

Christmas gifts are on our minds at this time of the year. Why not make this an unusual one and remember your museum. Give a tax deductible donation and help yourself at the same time.

If history is not preserved now, children will never know how their ancestors lived and how hard they worked to make the future better for them and for generations to come. Let

them see the many changes that have taken place over the years.

Your Museum Board is anxious to preserve Hansford County's history; but it takes money to do this. The doors are kept open only by donations. Any size gift is greatly appreciated and assure you of the best possible use. Will the \$5000.00 check earmarked for Old Zulu go unmatched and consequently lost? We hope not.

Lions

Dear Hunter,

The Morse Lions Club is proud to announce its 2nd Annual Pheasant Hunt. We know that you will be pleased to find some of the best pheasant hunting available anywhere (right here in the top of the Texas Panhandle) with the bird count appearing to be up from last year.

Our hunt takes place on thousands of acres of cut croplands, weedrows and patches, and each group will be guided by men who know both the area and the ways of the ringneck pheasant. However, our guides do more than just lead you toward great gunning. Whether it be the extra effort put forth to find a downed bird, the added time spent helping a beginner, or just friendly conversation, our Lions will do their best to make your hunt a great experience.

Opening weekend, Dec. 13 & 14, 1986, is the time set for our hunt. The fee is \$100.00 per gun for our hunt. It includes two days, and includes breakfast both days. A registration form is attached for your convenience; just fill it out and mail with your check, to confirm your reservation; but hurry, space is limited.

Feel free to share this information with your friends and form your own groups, or we can put you with a group. If more information is needed, call me at 806-733-2118.

We are looking forward to a good hunt and a good time!

Sincerely, Dub Womble
Hunt Chairman

What to Bring

1. Valid Texas Hunting License
 2. Bright, Warm Clothing
 3. Hunting equipment and dogs (if you use them)
 4. This article for information
- No alcohol will be allowed on the hunt for safety reasons.

The Bargain Store

Antiques & Junque

The Bargain Store 601 Main
(across from the Shamrock Station in Gruver)
Phone 733-2129

Open - Mon-Sat - 9 a.m.-6 p.m.

Owner - Anne Whitaker

- ★ Scarborough Bros. Popourri from London, England
- ★ New Shipment of Antiques
- ★ All kinds of NEW little and inexpensive gifts
- ★ Good used clothing & goods
- ★ Used furniture and appliances
- ★ good used exercise electric bicycle
- ★ great used red rug (12x14)
- ★ Used books

Lodge News

Pheasant Hunters Breakfast

The Spearman Moose Lodge # 2212 will host a Pheasant Hunters Breakfast on December 13. This has become an annual breakfast for hunters in our town. Breakfast will begin serving at 5:00 a.m. so that you can get to your destination early. The charge for this breakfast is \$3.00 for all you can eat. There will be plenty of food and room so bring a friend, and don't disturb your wife and come have breakfast at the Lodge.

FREE MOVIES!!!!

The Moose Lodge will host FREE movies at the Lyric Theater on 12/13 and 12/20 for children while their folks do a little Christmas shopping in Spearman. The movies for 12/13 will be "My Little Pony" and 12/20 will be "Dream Chaser." Movies will start at 2:30 till 5:30. Parents are encouraged to drop your children by the Lyric on these dates and enjoy your shopping. There will be bags of candy for each child attending.

Pheasant Hunters Supper


Friday night before the breakfast 12/12/86 there will be a Pheasant Hunters supper hosted by the Moose Lodge. Supper will be CALF FRIES potato salad, beans, and etc. serving will start at 6:30 p.m., also there will be a REMINGTON 1100 shotgun given away, so don't be left out buy your ticket at the Lodge! For more information contact them at 659-3971.

Dances! Dances! Dances!!!!

Saturday night 12/13/86 there will be a Dance featuring "TIMBERLINE" (band from Gruver & Stinnett) starting at 9:00 till 1:00 for members and their guests. Charge for the dance is \$10.00 couple, \$5.00 single. Then to wrap up the activities for this year the Lodge will have a "NEW YEARS EVE DANCE" 12/31/86 "CHAPPERAL" (GREAT BAND) from Hooker, Okla. will be playing. Charge for "New Years Eve Dance (only) will be \$15.00 couple, \$8.00 single. Dance will start at 8:30 till 12:30. Members and their guests welcome!!!!

Tickets for the NEW YEARS EVE DANCE will go on sale in about a week, get your tickets early!!!! Don't be left out on the fun!!!!!! Se ya there!!!!!!

For more information about the tickets contact the Lodge at 659-3971.




Just In Time For Christmas

All of Santa's Golfing Needs.

Fox Bat Magic - Full Set - 3 Woods 1-3-5 Irons 2-PW - \$380.00
Fox Bat Fx-15 Irons - \$250.00
Powerbilt Momentum Irons - \$300.00
[2] Wilson Tour Model Woods - \$200.00 each set
Wilson Dynapower II Irons - \$350.00
Wilson 1200 GE Woods - \$160.00
Wilson Bags #Do 349-\$25.00-#Ro35-\$45.00
Inertial Putter: Big Mo. - \$65.00 - High Momentum - \$48.00
Ladies Hogan Bags w/HC - \$75.00 each
Ladies Shirts - no logo - size small - \$10.00 each
Tiger Shark Tour Bag - \$65.00
Burton Bag w/HC - \$70.00 (was \$105.00)
Titleist Bag - \$70.00
Men's Shirts - L, XL, XXL - \$15.00 each with logo
Men's Jackets - L, XL, XXL - \$28.00

Hogan Gloves - \$7.50 each
Ultra & Pinnacle Golf Balls - \$18.00 doz.
Hogan Magnum Golf Balls - \$15.00 doz.
Titleist DT Golf Balls - \$18.00 doz.

Sale Prices Do Not Apply to Gift Certificate Purchases.



Hansford Golf Club

B's Pro-Shop

Phone 659-2233

Spearman, Texas 79081

All gift certificates will expire December 31, 1986.

December Calendar

GRUVER HIGH SCHOOL
DECEMBER CALENDAR
1986

- Dec. 1 - District FFA Banquet - Follett - 7:00 pm.
- Dec. 2 - J.V. and Varsity vs Channing - There - 5:30 pm.
- Dec. 4, 5, & 6 - Varsity Tournament Spearman
J.V. Tournament Gruver
- Dec. 6 - FFA State Leadership Contest - Huntsville
- Dec. 9 - J.V. and Varsity vs Canadian - Here - 5:00 pm.
- Dec. 11, 12 & 13 - Varsity Tournament Sunray
- Dec. 16 - J.V. and Varsity vs White Deer - Here 5:30 pm.
- Dec. 18 - Christmas Band Concert - 7:30 pm.
- Dec. 19 - J.V. and Varsity vs Panhandle - There - 5:30 pm.
- Dec. 20 - All School Play - 7:30 pm.
- Dec. 23 - School Dismiss at 2:00 pm.
- Dec 24 - Jan. 5 - Christmas Holiday

Brother of local Resident Dies Obituary

Leon Douglas, a former district Attorney for the 46th Judicial District who later served as a judge on the Texas Court of Criminal Appeals and as special assistant to Gov. Mark White, died about 9 p.m. Thursday, Nov. 27, after suffering in apparent heart attack at his home in Austin.

Funeral services were held at 2:30 p.m. Sunday, Nov. 29, at University Methodist Church in Austin, with burial there. Mr. and Mrs. Hugh Bell attended the services from Gruver.

Douglas was born Feb. 29, 1916 in Chilicothe and after graduating from high school in 1934. Attended the University of Texas. There he received a law degree in 1941 and was admitted to the Texas State Bar that same year.

He was also licensed to practice before the federal district courts in Texas and Oklahoma, the fifth Circuit Court of Appeals in New Orleans and the United States Supreme Court. In addition to serving in various capacities of the law profession, he was

author of several articles in the Texas Bar Journal and South Texas Law Journal and once appeared as a panelist on a national television program discussing "Free Press and a Fair Trial."

Douglas also served with the U. S. Navy in the Pacific Theater during World War II, rising through the ranks from apprentice seaman to lieutenant. He was a member of the United University Methodist Church in Austin, and honorary member of Delta Theta Phi legal fraternity, Masonic Lodge 655 of Vernon and Pi Sigma Alpha, honorary government fraternity.

He married the former Marybelle Grace of Houston in 1944.

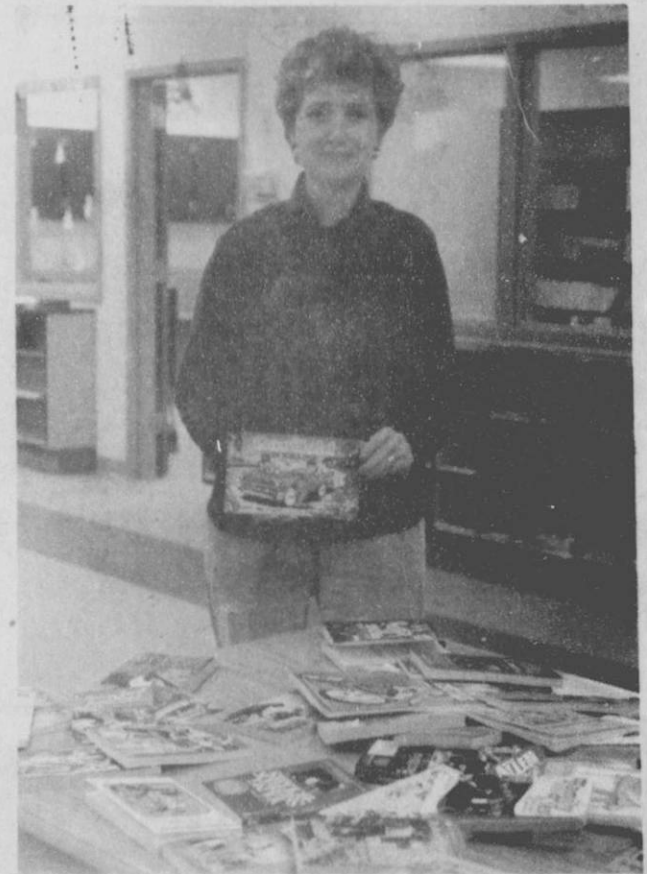
Surviving are his wife; a son David Douglas of Austin, a daughter Mrs. Nancy Moore of Austin; two brothers, J. L. Oswald of Denver, Co; R. E. Douglas of Houston; and a sister Marie Bell of Gruver; seven grandchildren. He was preceded in death by a brother, R.A. Douglas and a sister Lavonia Gill.

Burial was in the state cemetery and flags were flown at half-mast at the Capitol Monday in his honor.



American Cancer Society Chairman of the Hansford Unit is pictured with Melody Miller Field Representative of the American Cancer Society of Amarillo are both pictured exhibiting the

painting won By Elsie Mathews of Spearman. Elsie won this beautiful painting with the raffle that was held by the American Cancer Society Hansford Unit.



Glenda Renner - Jr. High Librarian shown with selection of books offered for sale at recent Book Fair.

Book Fair

A book fair was conducted recently by Jr. High Librarian Glenda Renner. The students were able to browse through the books and posters and make purchases during the 3 day event.

A total of \$472 was raised and the school was able to keep a profit of \$236 in books to be kept in the library.

Mrs. Renner is planning to make this an annual event and hopes to have a completely new selection to choose from next year.

The extensive fine nappa leather collection of wallets, clutches and credit card cases offers slim styling in 15 delicious fashion colors and a wide-range of silhouettes. Customers will receive a free gift with each fine nappa purchase.

Obituary

Blanche Archer Fuller, 77, died Thursday.

Services were at 2 p.m. today in First Christian Church with the Rev. Martin Foster, pastor, and Andy Burleson officiating. Burial was in Holt Cemetery by Boxwell Brothers Funeral Directors.

Mrs. Fuller was born in the Holt community and had lived in the Spearman area all of her life. She attended West Texas State University. She was a member of the Arts and Crafts Guild and 20th Century Study Club. She was married to Guy Fuller in 1927 in Amarillo. He died in 1978.

Survivors include two brothers, Johnie Archer of Plainview and Fancher Archer of Hale Center.

The family will be at 304 Endicott in Spearman and requests memorials be to a favorite charity.

Baby Shower

A shower honoring the infant son of Randy and Beatrice Karlin of Hereford was given Saturday December 6th in the home of Harold and Thelma Sneed. The home was gaily decorated with the greenery, poinsettias and red candles to carry out the winter theme of the season.

After registering, the guests became acquainted with Benjamin Wayne, his mother and grandmother Toni Diaz from Hereford. Baby sock corsages were presented to them by the hostess; A sock corsage was also presented to the Gruver grandmother, Dixie Karlin. An enjoyable afternoon was spent also by father Randy Karlin who attended and recorded this special time on film.

Refreshments of cake, candy, mints with punch and coffee were served from a table laid with white lace over a red cloth. A centerpiece of greenery with red candles and red napkins carried out the color scheme. The cake made by Opal Wallin was white with pairs of blue "bootie" a top each serving piece.

Hostess for the occasion were; Aline Henderson, Rita Williams, Marie Bell, Vivian Green, Pauline Winger, Josephine Ayers, Kay Hobbs, Lucy Pittman, Harletta Carthel, Teresa Barkley, Pat Burnam, Glenda Renner, Olene Cluck, Donna Williams, Nell Thoreson, Violet Lee, Joy Henderson, Sue Smith, Resetta Gammon, Connie Burgoon, Elene Green, Charmain Lyles, Sylvia Duncan, Thelma Sneed, LaNetta Shapley, Linda Haight, Diane Brown, Louise Evans, Frankie Leatherman, Mickey Maupin and Opal Wallin.

"Say No"

"Do you want to know how to say 'No' and still be able to keep your friends?" Sharon Scott, a licensed professional counselor and president of Scott & Associates - a Dallas based firm offering training and consulting to schools will be coming to Spearman Jan. 22-23. She will conduct workshops with Jr. High & Sr. High students & will speak to parents on night.

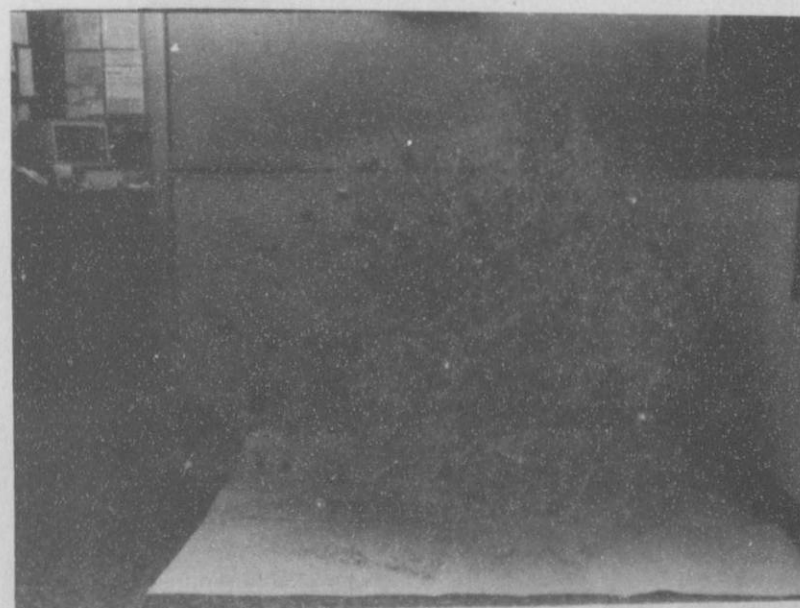
Be watching for further details in the next few weeks. Ms. Scott is a dynamic speaker and we feel fortunate to have her coming to Spearman!

Holiday Hints

A jewel box that is decorative as well as functional. A fashionable nappa leather wallet or accessory that comes with a free gift. A personal management planner that can organize anyone's life. An elegant and active junior misses.



Secret Grandmothers Revealing Party held on December 7th. (FHA Beau Ross Renner as Santa Claus)



Christmas Decorations in High School office and Tax office.

Texas Masons

Judge Thomas A. Wicker of Borger was appointed District Deputy Grand Master for the Texas Masonic Grand Lodge at its annual meeting in Waco December 4-6, 1986.

Wicker is past master of Plemons Lodge No. 877 in Stinnett.

As District Deputy, Wicker represents Grand Master John E. (Jack) Kelly of San Antonio in the 102nd Masonic District during 1987. The

district includes seven Lodges in Hansford, Hutchinson and Moore Counties.

The Grand Lodge celebrates its 150th birthday during 1987, having

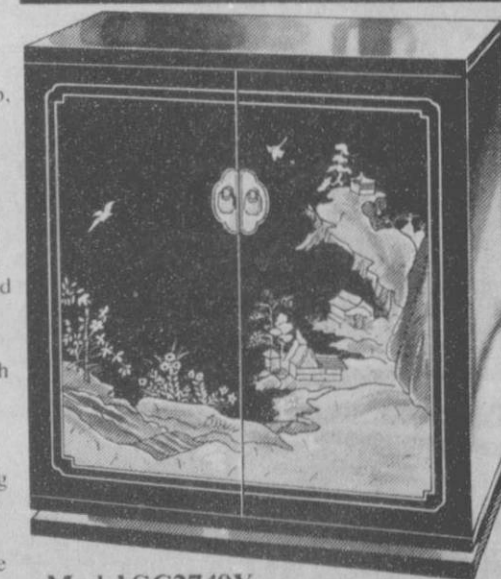
been founded in 1837 by Sam Houston, Anson Jones and other early Texas Masons.

Wicker said that special programs will be held in all lodges in his district to observe the Grand Lodge birthday.

The Grand Lodge is the governing body for 959 Texas Masonic lodges with over 200,000 members, making it the largest fraternal order in the state. There are some 5 million members of the Masonic Fraternity worldwide.

Wicker is president of the Panhandle County Judges and Commissioners Association and is on the Board of Directors of the Panhandle Alcohol Recovery Center.

Introducing a Totally New Television System Picture and Sound So Realistic, They Rival the Actual Performance

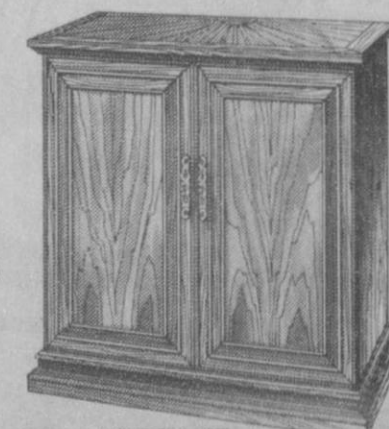


Model SC2749Y

A dramatic Black lacquer finish, with distinctive Oriental design and accents, creates the center of attention for any room, whether the TV is on or off.

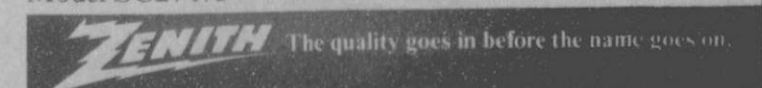
Zenith presents a bold new line of Color Television with Sound by Bose. A sound with amazingly deep, rich bass. A sound with startlingly crisp, clear highs and mid-ranges. A sound you'd expect to hear only from an audio component system. This spectacular new sound, combined with Zenith's all new Digital System 3 TV gives an audio-video experience that you have to see and hear to believe.

- ▲ Bose-developed Waveguide speaker system produces deep, rich bass from a small enclosure.
- ▲ Conventional tweeter and mid-range speakers are combined into two specially-designed, front-firing Twiddlers.™
- ▲ Dynamic Equalization Circuit automatically balances the relative volume of the bass with mid-range and high frequencies.
- ▲ Play CDs or other audio components through the TV sound system. Use the Audio Only switch to turn off the video.
- ▲ Three Amplifier Sound System
- ▲ Built-in World System Teletext Decoding
- ▲ 27" diagonal screen size
- ▲ Computer Space Command 7200 Remote Control
- ▲ MTS Stereo Decoder
- ▲ Chromacolor Contrast Picture Tube for superior color and resolution



Model SC2747P

The rich glow of genuine Pecan veneers, with a striking inlaid sunburst pattern, make this traditionally styled cabinet as much fine furniture as high technology. Brass-plated handles add an elegant touch to this stunning piece.



EARL'S TV & APPLIANCE, INC. FAST PROFESSIONAL SERVICE

106 E. KENNETH

SPEARMAN, TEXAS 79081



THESE PRICES GOOD THRU DEC. 13
PERRYTON ONLY
DOUBLE COUPONS ON THURSDAY

Stock up now for delicious Holiday Treats

WE GIVE S&H GREEN STAMPS EVERY DAY
DOUBLE STAMPS ON WED. & SAT. with purchase of \$2.50 or more, excluding cigarettes

PRODUCE

SUNKIST NAVAL ORANGES
3 LBS. \$1

CHIQUITA BANANAS
3 LBS. \$1

WASHINGTON GOLDEN DELICIOUS APPLES
2 LBS. \$1

FINE FARE MACARONI AND CHEESE
7.25 OZ. 5 \$1

FINE FARE FLOUR
5 LB. BAG .59

6/12 OZ. CANS COKES
\$1.88

HUNT'S SQUEEZE KETCHUP
32 OZ. .98

HORMEL NOT SO SLOPPY JOES
14 OZ. .98

FINE FARE CUT GREEN BEANS
16 OZ. 4 \$1

SPAM LUNCHEON MEAT
•REG. •SMOKED
•LESS SALT
12 OZ. \$1.29

UNITED PREMIUM QUALITY WHITE BREAD
1 1/2 LB. LOAF 2 \$1

FINE FARE CORN
CREAM STYLE OR WHOLE KERNEL
17 OZ. 4 \$1

FINE FARE SANDWICH CREMES 20 OZ. .89

FINE FARE POTATO CHIPS 7 OZ. .69

FINE FARE SUGAR 5 LB. BAG \$1.49

GROCERY

UNITED TRU TENDR OR USDA CHOICE BONELESS TOP SIRLOIN STEAK
LB. \$2.18

FRESH EXPRESS PIZZA COMBINATION OR PEPPERONI
32 OZ. 2 \$4.99

COUNTRYPRIDE FRYER THIGHS GRADE A
LB. .68

COUNTRYPRIDE FRYER DRUMSTICKS
LB. .78

KRAFT VELVEETA
1 LB. PKG. \$1.98

WILSON BACON \$1.58
1 LB. PKG.

KAHN'S COCKTAIL SMOKIES \$2.48
1 LB. PKG.

KRAFT PHILADELPHIA CREAM CHEESE .88
8 OZ. PKG.

MEATS

FINE FARE ORANGE JUICE
12 OZ. .59

BORDON'S ICE CREAM \$1.58
1/2 Gal. Asst. Flavors

BORDON'S EGGNOG 93¢
QT.

FINE FARE BISCUITS SWEETMILK OR BUTTERMILK
8 OZ. .15

UNITED HOMO MILK \$1.09
1/2 GAL.

PLAINS COTTAGE CHEESE .69
REG. 12 OZ.

DAIRY

QUANTITY RIGHTS RESERVED • NO SALES TO DEALERS



TIDE
1 1/2" OFF LABEL REG. OR UNSCENTED
147 OZ. \$5.98



LUVS SUPER PANTS
•MEDIUM 96'S •LARGE 64'S
•EX LARGE 56'S
\$16.99



DURACELL BATTERIES

2 PAK C OR D \$1.69

2 PAK AA OR AAA \$1.29

1 PAK 9 VOLT \$1.69



CREST TOOTHPASTE PUMP
•REG. •MINT •GEL
•TARTER CONTROL
6.4 OZ. \$1.69

HEALTH & BEAUTY