

IOWA PARK LEADER

50 Cents

Vol. 23, No. 46

IOWA PARK, WICHITA COUNTY, TEXAS 76367

Thursday, July 30, 1992

AUGUST 19

Start of school nears

There's a phrase that's repeated when playing the children's game, hide and seek: "Here I come, ready or not!"

The start of school is similar.

Iowa Park schools will open their doors for the first day of classes on Aug. 19 -- only three weeks in the future.

Each of the four campus principals have announced dates for enrolling students who did not attend classes here last year, and have not yet pre-enrolled. Also, the elementary principals have collected lists of supplies their students will need for the start of the new year.

Students not yet enrolled at Iowa Park High School should go to the counselor's office either Aug. 5 or 6, during the hours of 8 a.m. until 12-noon and 1-4 p.m., principal Richard Davis said.

There, they will register and get their schedules. They should have with them their transcripts from their previous school, shot records and Social Security card.

Students wishing to enroll at the junior high school, and did not attend school in Iowa Park last year, should go to the campus between 8 a.m. and 3:30 p.m. next Monday or Tuesday, according to Randy Lovelady, principal.

Those students should have with them their shot records and Social Security cards. Pat Cravens, principal of Bradford Elementary, said students who did not attend Iowa Park schools last year and plan to enroll in the third, fourth and fifth grades, should enroll between 8:30 a.m. and 3 p.m. Aug. 12 through Aug. 18.

They also should have with them their shot records and Social Security cards. Birth certificates are no longer required to enroll there, Mrs. Cravens said.

Kidwell Elementary will enroll students who have not yet registered there on Aug. 10, between 8:30 a.m. and 12-noon, and 1-2:30 p.m., Ron Woods, principal, said.

Students who will attend kindergarten, early childhood, first and second grades will attend classes at Kidwell.

Kindergarten and pre-kindergarten students who have not yet enrolled will need their birth certificates, as well as their shot records and Social Security cards.

Principal Woods added that his office is seeking information on all pre-kindergarten children not yet registered at his campus.

Supplies required by teachers in the two elementary schools are as follows:

KIDWELL ELEMENTARY EARLY CHILDHOOD

- 2 jumbo pencils
- 1 box crayons
- 1 small bottle glue
- 1 roll paper towels
- 2 boxes facial tissue
- \$15 snack fee

KINDERGARTEN

- 12 - No. 2 pencils
- 1 - water colors - Prang brand or equivalent
- 2 - boxes facial tissue, 200 count
- 2 boxes crayons, 8 count (no jumbo, fluorescent, metallic or pastel)
- 1 - box crayons, 16 count
- 1 - plastic school box (8 1/2" x 5 1/2") no handles
- 1 - plastic folding rest mat
- 1 - plastic 3" x 5" file box
- 1 - package 3" x 5" notecards, 100 count
- 1 - large eraser
- 3 - glue sticks

BACKPACK OR BOOK BAG

FIRST GRADE

- 1 - large pencil eraser
- 1 - pair pointed scissors
- 12 - #2 pencils, regular size
- 2 - boxes regular crayons - 8 count
- 1 - box regular crayons - 16 count
- 1 - water color (check with the teacher before purchasing as some brands are unsuitable)
- 2 - plastic bottles school glue, 4 oz.
- 2 - boxes facial tissue, 200 count
- 1 - school box
- 1 - book bag or satchel
- 1 - box ziplock type storage bags, not pleated, (boys bring quart size, girls bring gallon size)
- Child's name should be on each item

SECOND GRADE

- 8 - #2 pencils
- 1 - large eraser
- 1 - bottle white school glue, 8 oz.
- 2 - glue sticks
- 1 - box regular crayons, 24 count
- 1 - pair pointed, good, sharp scissors (not plastic)
- 2 - boxes facial tissue, 200 count
- 1 - school box (5 1/2x8 1/2, preferably plastic)

- 1 - box water colors, 8 color set
- 1 - package notebook paper, wide ruled
- 2 - pocket folders
- 1 - wide ruled spiral notebook, 120 sheets

- 1 - tote bag or back pack
- No looseleaf notebook binders, trapper keepers or clip boards.

All items, as well as coats, should have student's name on them

BRADFORD ELEMENTARY THIRD GRADE

- 1 - addition flash cards
- 1 - subtraction flash cards
- 2 - red grading pens or pencils
- 6 - #2 pencils
- 1 - package looseleaf notebook paper, wide rule
- 1 - box regular crayons, 24 count
- 1 - pair pointed scissors
- 4 - folders with pockets and brads (each folder should be a different color)
- 1 - 3-ring plastic folder with metal binders
- 2 - boxes facial tissue, 200 count
- 1 - ruler, wood only, inches and metrics
- 1 - large eraser
- 2 - glue sticks
- 1 - bag, small zipper for pencils and erasers

- 1 - school box (5 1/2 x 8 1/2 maximum)
- 1 - package of 8 large washable markers - jumbo size
- 1 - tote bag or book pack
- 1 - cursive writing tablet
- \$1.50 for Weekly Reader

Do not send large looseleaf notebook binders, trapper keepers or clip boards. Permanent identification needed on all items.

FOURTH GRADE

- 4 - #2 pencils, with erasers
- 1 - box regular crayons, 24 count
- 1 - plastic bottle white school glue, 4 oz.
- 1 - wooden 12-inch ruler
- 1 - package looseleaf notebook paper, wide ruled, not colored
- 1 - box map colors
- 1 - set magic markers, 8 count
- 1 - box facial tissue, 200 count
- 1 - red grading pen
- 1 - small zipper bag for supplies
- 4 - spiral notebooks, 40-50 pages
- 1 - trapper keeper, small
- \$1.50 for Weekly Reader subscription

FIFTH GRADE

- 2 - #2 pencils
- 1 - plastic bottle white school glue
- 1 - ruler, 12-inch, inches and metrics
- 1 - package looseleaf notebook paper, wide ruled, not colored
- 3 - folders with brads and pockets
- 1 - box facial tissue, 200 count
- 2 - red grading ink pens
- 1 - plastic zippered pencil bag (not box)
- 1 - tote bag (optional)
- 1 - box crayons, 24 count
- 1 - trapper keeper with 7 folders
- 1 - washable marker
- \$1.50 for Weekly Reader subscription



NEARING COMPLETION - Among the numerous preparations for the start of the 1992-93 school year was a project of resurfacing the tennis courts at Iowa Park High School. Coaches Dick Wineinger and John Hoelter have patched cracks, completely repainted the entire concrete surface, and painted new stripes.

Council opens search for new police chief

After officially accepting police chief Wayne Parsons' resignation, the city council voted to accept applications to fill the position, during Monday night's meeting.

Monday was the first regular meeting of the council since Parsons submitted his resignation on July 15, to become effective Monday, Aug. 3.

Aldermen, upon returning from an executive session that lasted an hour and 25 minutes behind closed doors, voted unanimously to advertise for applications in the Texas Municipal League publication.

During the closed session, council members considered the recommendation by Administrator Gary Jones to name Kenneth Garrett police chief.

Garrett, who was in the audience throughout the evening, recently retired after 35 years with the Department of

Public Safety. He is a long-time resident of Iowa Park.

Parsons has served as chief slightly more than two years, having moved here from Temple.

No cutoff time for accepting applications was mentioned, but it could possibly be sometime in September.

An ordinance replating lots in the Manes Subdivision was approved, but Mayor Wayne House had to break a tie that developed.

The lots are on the west end of the block behind Pacific Avenue Baptist Church, which is bounded by Pacific, First Street, Coleman and Manes.

Alderman Bob Hamilton argued the replating for sale of the lots should not be approved until that portion of Manes Street had been paved, as required of all developers.

Hamilton said the 500 block of Manes was opened to serve only as an alley for businesses that front on the Access Road.

Mayor House pointed out that the property on both sides of the street were owned by different people, not just the developer.

Hamilton pointed out that the 500 block of Coleman was a similar situation when it was paved, and the city funded the work and placed liens on the property so the cost would be paid when the lots were sold.

"I don't feel the taxpayers of the city should pay development costs, like streets," Hamilton said.

The mayor replied that building permits would not be issued until the street is completed.

Aldermen Johnny Crawford and Bud Mercer voted for passage of the ordinance replating the lots, and

Hamilton and Mark Raby voted against it.

Voting on two other issues was unanimous in approval, however.

The council authorized the administrator to proceed with plans for repairs to the sewer treatment plant, expected to cost approximately \$60,000.

Also approved was a proposal to advertise for bids the sale of a lot at 610 East Bank. The property had been claimed for taxes earlier, and sold. But the buyers failed to complete payment after making a downpayment, Jones explained to the council.

In other business, the council recognized Sue Goodknight as the city's Employee of the Month for June, and heard reports from Jones on landfill regulations.

BUDGET WORKSHOPS

Aldermen held a work session on the 1992-93 budget Tuesday afternoon, and decided to meet again at 5 p.m. Monday.

During Tuesday's session, aldermen said they felt they had cut enough items from the proposed general fund to operate the year. The budget was balanced and did not require a tax increase.

Tuesday's session will be concentrated on the water and sewer department. Because of a drastic decrease in revenue the past two years in that department, some concern was expressed that an increase in rates possibly would be required.

Rash of thefts reported

Police were almost smothered with theft reports during the past week.

Eight theft reports were filed, four of them from the same neighborhood Monday morning.

The four were from residents of the 1000 block of Louisa.

The first caller said someone had emptied a can of gasoline that had been sitting on a trailer, and then added that his neighbor's car also had been hit by gas thieves.

A couple hours after that report was received, another neighbor told police half a tank of gasoline had been taken from a pickup, and the locked gas cap on his car had been damaged when someone attempted to gain entry into that tank.

Only moments after the second call, the caller's next-door neighbor told police two full tool boxes had been stolen from his pickup, as well as a two-man dome tent and ice chest.

Three thefts were reported before the Louisa neighborhood incident.

Thursday, a resident on Surrey said a tire and rim had been stolen from the

carriage on his pickup.

That same day, an AM/FM radio was reported to have been taken overnight from a van while parked in the 100 block of West Park.

Sunday afternoon, a boy's Huffy bicycle, painted pink, was taken from its temporary parking place at Gordon Lake.

A resident of Woodbriar Apartments called police after being out of town a few days, to report that someone had apparently gained entry into his unit through a window and stolen several items.

Among the items listed were a Nintendo game, 10 Nintendo tapes, a Zenith VCR, baseball cards and a clock radio.

When officers responded to a reported domestic disturbance at 4:25 a.m. Thursday to a residence in the 200 block of South Wall, they arrested Edwin Carl Kissner, 61, on a charge of assault to prevent family violence.

He was released later that morning after signing a personal recognizance bond, according to the police blotter.

Wichita Falls voters carry MPEC election

The proposed multi-purpose event center in Wichita Falls apparently will become a reality, thanks to the overpowering number of voters who live in the city turning out at the polls Saturday.

Wichita Falls voters were able to effect the outcome of a \$9-million bond election which was opposed by virtually all the polls outside the city.

The bonds will be used to fund part of the construction of the \$25-million facility.

Another \$9-million was pledged

by the city of Wichita Falls. Of that amount, \$4-million in certificate of obligation bonds also were approved by residents of the city, and the remaining \$5-million will come from the city's surplus funds.

The balance of the \$25-million, or \$7-million, is to come from donations from private sources, according to proponents of the center.

Iowa Parkans voted solidly against approval of the county's bond issue, as

Continued on page 4

Does your subscription
expire this month?
Check the list on page 4.

Miller, Stansbury vows recited Friday evening in Wichita Falls

Karen Sue Miller became the bride of Jimmy Ray Stansbury Friday evening in a ceremony performed in Trinity United Methodist Church in Wichita Falls.

Single ring wedding vows were officiated by Rick Lucier, minister of the church.

Mr. and Mrs. Wallace Miles of Holliday are parents of the bride. The groom is the son of Mr. and Mrs. David Pilkinton of Iowa Park and Jimmy R. Stansbury of Santa Paula, Calif.

Pink and ivory rose arrangements decorated the nuptial area.

Musical selections included The Wedding Song, "There Is Love," "Wind Beneath My Wings," and "Everything I Do".

Kelly Henke, the bride's brother, presented her for marriage. She was attired in a tea length dress of antique white style with rounded neck with one-inch straps and a straight skirt.

The dress was completely covered with antique lace and accented with a matching satin belt. She added a matching lace jacket. Complementing her attire was a pearl covered hat of antique white that held a trailing veil.

She carried a bouquet of pink and ivory rosebuds interlaced with pearl beads and pink ribbon and featured trailing rosebuds and greenery.

Debra E. Mande of Wichita Falls was matron of honor. She wore a solid pastel pink skirt and matching jacket. Her bouquet was fashioned of pink and ivory rosebuds backed with antique lace and light pink streamers.



Mr. and Mrs. Jimmy Ray Stansbury (Karen Sue Miller)

Jennifer Stansbury of Mesquite was flower girl and Adam Stansbury of Iowa Park served as ring bearer. He wore a gray single button suit with light pink shirt and maroon print tie.

Roland Edgemon of Iowa Park served the groom as best man.

A reception in fellowship hall followed the wedding. Pink and ivory rosebud arrangements were used on

the cake table that was covered with antique white lace over a pink cloth.

The three tiered bride's cake was decorated with pink and ivory silk rosebuds and greenery.

The couple left for a honeymoon in San Antonio. They will make their home in Iowa Park.

The bride is employed by American Federal Bank and the groom is an employee of Cryovac.

Couple set August date

Shelia Ann Proctor and Donald Ray Sidlauskas are announcing their engagement and future wedding plans.

The couple will exchange vows Aug. 25 at 7:30 in Faith Baptist Church in Bowie.

The bride-to-be is the daughter of Jo Ann Proctor of Sunset and Roy Proctor of Bowie.

She is a graduate of Chico High School and Midwestern State University and is a social worker at Wichita Falls State Hospital.

Sidlauskas, son of Andy and Orpha Sidlauskas, is a graduate of Iowa Park High School. He is employed by Cryovac.



LIBRARY NEWS

DISCOVER A NEW WORLD OF READING

Our summer reading program for children ages three years through sixth grade will come to a close with the Awards Program Monday, Aug. 3.

The program went by very fast, as we talked about many different subjects at the group gatherings during June and July.

A big heartfelt thanks to all the children who participated in our "Discover A New World of Reading" program, because without you, we would not have had the success that we did. Watch in next week's column to see who our top readers were.

REMINDERS

Our Awards Program for the summer reading program will be held Monday, Aug. 3, starting at 7 p.m. here on the library grounds. We will be serving ice cream and bars/cookies and beverages.

The closing program is open to everyone (grandparents, parents, and those interested in seeing what the children accomplished). Bring your own lawn chair and come join us. If you would like to furnish cookies/bars or toppings for the ice cream, please call Ardis at 592-4981.

READING LOGS

The Reading Logs need to be filled in Friday by 5 p.m. so the certificates can be made out. There are a lot of children who have not filled in the names of the books they have read, so please try to do that by Friday. Thanks!

For the children who have read 25 books during our program, they will receive a coupon good for a free topping personal pan pizza from the Iowa Park Pizza Hut.

Every child who participated in our program will receive a free snowcone coupon, regardless of the number of books read.

Taco Bell has given us special

bookmarks for the children to redeem for a free children's meal.

If you are not able to make the Awards Program, please stop by the library during regular business hours and pick up your certificates.

MOVIE

Today the movie entitled "Discovering Country and Western Music" will be shown at the Friendly Door at 11:15. Please make plans to come join us. Then on Friday, the same movie will be shown at the Heritage Manor from 10-10:30.

NEW BOOKS

CHILDREN'S FICTION
The Ugly Stepsisters by Disney
Mickey Finds a Kitten by Disney
Welcome Back, Snow White by Disney
Pinocchio's Promise by Disney
Thumper's Little Sister by Disney
Wendy's Adventure in Never Land by Disney
Goofy's Big Race by Disney
Scrooge and the Magic Fish by Disney
Pooh's New Clothes by Disney
Animals Can Be Almost Human by Reader's Digest

'72 Class reunion planned
Iowa Park High School graduating class of 1972 will hold a reunion Sept. 18-19.

Any classmate not yet contacted is encouraged to contact Jan Clapp, 592-4967, or Alyce Bondurant, 592-5854.

Friendly Door NEWS

TELEPHONE REASSURANCE

If you are interested in someone to call you each day, please call the Friendly Door Monday through Friday between the hours of 9-3. Phone number is 592-9311.

This is not a new program, but we need to have more response.

QUILTERS

We need quilters! If you are interested in learning to quilt, come to the Center between 9-3 and maybe someone can teach you.

CLOGGERS

Friday night sandwiches, chips and homemade ice cream will be served at 6:30 p.m. Cloggers will perform.

Helpful Facts

Any person or persons soliciting door to door in any Iowa Park residential area is required to pay a fee of \$30 per day, and register at the Public Works office at the city hall.

Look Who's New

A daughter, Jenna Denise, was born Sunday, July 19, in Wichita General Hospital to Mr. and Mrs. Daryl Frazier of Iowa Park. She weighed seven pounds, 11 ounces.

The baby has an older brother, Brant, four, and sister, Kati, 18 months.

Grandparents are Mr. and Mrs. James Frazier Sr. of Iowa Park and Mr. and Mrs. Edward H. O'Mealey of Wichita Falls. Her great-grandmother is Janie Frazier of Narrows, Va.

Happy 18th Birthday Jason & Joey



Love,
Mom & Dad



Happy 13th Birthday Dub

Christy Adams is having a special on Perms!

Haircut, shampoo, set and perm ~ \$20

Perm ~ \$15
July 30 - August 15

Pauline's Beauty Shop

592-5354

Happy Birthday Tiffany

From "Sweet Cheeks" To "Sweet 16"

Guess Who

We honor all these Insurance Programs

- United Provider Service
- Mutually Preferred Blue Cross & Blue Shield
- PAID prescription plan
- Medimet
- PCS
- APC
- Medicare

Hughes PHARMACY

120 W. Park Joe Hughes - Pharmacist
Toll Free 1-800-585-4191 592-4191
UPS Service

Valu-Rite
WEEKLY SPECIALS

FISHER-PRICE BABY SHAMPOO OR CONDITIONING SHAMPOO 12 OZ. 2 39	FAULTLESS WATER BOTTLE #2816-02 5 79	TINACTIN CREAM 15 GM. 4 59
OS-CAL 500 120'S 11 99	ANACIN MAXIMUM STRENGTH ANACIN TABLETS 300'S 11 89	BAUSCH & LOMB RENU REWETTING DROPS 5 OZ. THERMAL ENZYMATIC TABLETS 1/2 OZ. OR EFFERESCENT TABLETS 1/2 OZ. 4 49

• Insurance Plans
• Medimet
• PCS
• Perform
• United Provider
• Blue Cross
• PAID
• Travelers (Howmet)

FREE DELIVERY

115 W. Park
592-2731

Hallmark Cards
Bridal Registry
Noritake
China & Crystal

Jack's PARK PHARMACY

True Value
HARDWARE

Shop now from our SUMMER SAVERS circular!

Sale Ends Soon!
If you haven't received your True Value copy, get one FREE at

PARKWAY
200 W. Bank True Value 592-5512
HARDWARE STORES 592-4681



Mrs. Belvin Lytle

Debbie (Mrs. Belvin) Lytle is a new faculty member at Kidwell Elementary School, where she will be teaching kindergarten students.

A native of Anson, Debbie lived there all of her life before moving to Iowa Park. She worked as a teacher's aide before deciding to attend Abilene Christian University where she graduated with a BS degree in Education.

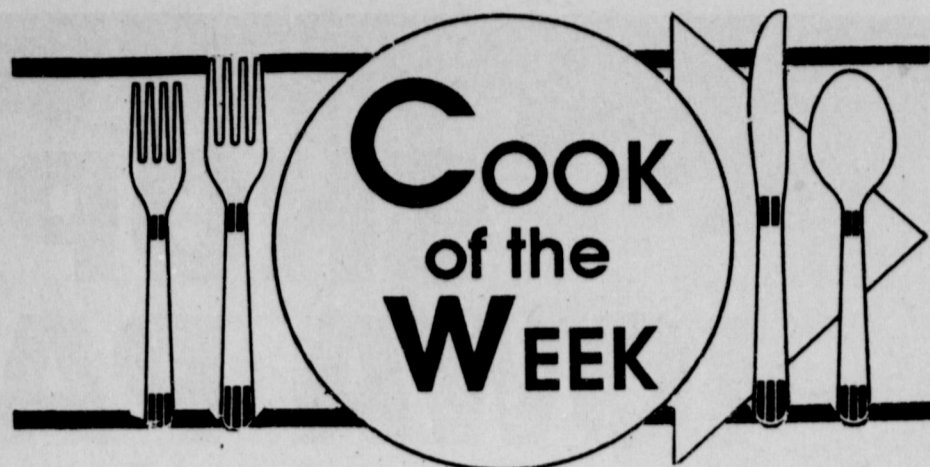
Debbie taught kindergarten three years in Anson before she and her family moved to Iowa Park, and for the past two years, has been teaching in Holliday.

Her husband, Belvin, grew up in Chillicothe, and moved to Abilene when he was in high school. He is employed by Primrose Operating Co.

They have four sons: Jason, who will be a senior in high school, plays baseball and football, and is a member of the National Honor Society; Jonathan, an eighth grader, is active in all sports and will be a member of the Junior National Honor Society; Joshua is in the fourth grade and plays soccer and baseball; and two-year-old Jared.

This has been a busy summer for the Lytle family. Debbie and Belvin play on a volleyball team, and he was coach of the Oilers, Joshua's baseball team. Debbie will be going to Dallas next week to attend a three-day workshop for kindergarten teachers. The family played golf quite often when they lived in Anson, but haven't had the time since they have been here. With an active family and full-time career, Debbie doesn't have much time for hobbies. But for her leisure activities, she enjoys reading and working in the yard.

They are active members of the Iowa Park Church of Christ, where Belvin teaches a high school class.



Debbie said that she got most of her recipes from an older sister who lives in Houston, and the boys' favorite is "Lasagna."

Stuffed Jumbo Shells

Boil about 30 jumbo manicotti shells according to directions.

Brown:

- 1 1/2 lbs. ground chuck
- 2 cloves garlic, crushed
- Salt and pepper
- Parsley

Add:

- 1/2 lb. grated Mozzarella cheese
- 1/2 lb. Ricotta cheese
- 1/3 cup Parmesan cheese
- 1 jar Ragu w/mushrooms

Stuff cooked shells. Pour another jar of Ragu over and around shells. Sprinkle with Parmesan cheese. Bake 20 minutes at 350 degrees.

Sour Dough Biscuits

- 1 cup warm water
- 1 pkg. dry yeast
- 3/4 cup sugar
- 3/4 cup cooking oil
- 2 cups buttermilk
- 3 Tbsps. baking powder
- 1/2 tsp. soda
- 1/2 tsp. salt
- 6 or more cups flour

Dissolve yeast in water. Add sugar, oil, milk and dry ingredients. Add more flour if needed to make smooth.

Can bake immediately or keep tightly covered in refrigerator and use as needed.

When ready to prepare, shape dough with floured hands into desired size. You can let them rise for 1 hour or place in oven at 375 degrees until brown.

Lasagna

Tomato Sauce:

- 1/4 cup olive oil
- 1/2 cup onion
- 1 clove garlic
- 2 Tbsp. chopped parsley
- 1 lb. ground chuck
- 1 can Italian tomatoes
- 2 cans tomato paste
- 2 tsps. oregano
- 1 tsp. basil
- 1 bay leaf

Lasagna Noodles: Boil until tender.

Cheese:

- 1 lb. Ricotta
- 1 lb. Mozzarella
- 1 jar grated Parmesan

1. Make sauce: saute onion, garlic and parsley in olive oil. Add meat and brown. Then add all other ingredients. Bring to a boil and reduce heat and simmer 3 hours.

2. Boil noodles.

3. Layer in this order: sauce, noodles, Ricotta, Mozzarella, Parmesan, then repeat. Bake in 350 degree oven 45 minutes to 1 hour, or until bubbling.

Melting Moments

- 1 cup soft butter, creamed
- 1/3 cup powdered sugar
- 3/4 cup corn starch
- 1 cup sifted flour

Mix well in order given. Chill 1 hour and form into irregular heaps on unbuttered sheet. Bake at 350 degrees until light brown on bottom.

Cool, then frost with:

- 2 Tbsp. melted butter
- 1 cup powdered sugar
- 1 tsp. flavoring

Cream to spreading consistency.

Chocolate Pound Cake

Cream:

- 2/3 cup shortening
- 2 cups sugar
- 5 eggs

Add:

- 2 squares unsweetened baking chocolate, melted
- Pinch salt
- 1 tsp. soda
- 1 cup buttermilk
- 2 cups flour
- 1 tsp. vanilla

Bake at 350 degrees 45 minutes to 1 hour.

Helpful Facts

Persons other than the property owner doing work on a residence must be a licensed building contractor, plumber, electrician, or heating and air conditioning contractor with the City of Iowa Park, and carry a performance bond.

EXPRESSWAY RESTAURANT
US 287 & Pacific
592-4811

LUNCH SPECIALS
-7 days a week-

YOUR CHOICE OF ONE:
Chicken Fried Steak
Chicken Breast Tenders
Roast Beef
Meat Loaf

YOUR CHOICE OF TWO:
Corn - Green Beans
Carrots - Red Beans
Creamed Potatoes
French Fries

Served with Salad and Hot Rolls

ONLY \$3²⁹

ESA members attend district meeting

Six members of Epsilon Eta chapter of Epsilon Sigma Alpha attended a district meeting in Quanah.

The guest speaker was a descendant of Quanah Parker and told some of the history of "Quanah Parker-the Last Great Chief of the Comanches," and for whom the city of Quanah was named.

During the meeting, a scrapbook, history and yearbook were presented to the junior past president, Dee Dee Forney of Iowa Park.

Epsilon Eta received honorable mention for Chapter Scrapbook and second place for History.

During a report on the International Convention held in Atlanta, Ga. it was announced that ESA had donated \$1,677,821 to St. Jude's Research Hospital for the year. During the last 21 years, ESA has donated a total of 16.3-million dollars to the hospital. Lela Mercer of Iowa Park attended the convention.

Those from Iowa Park attending the meeting in Quanah included Essie Johnson, District VI Scrapbook Chairman, Mary L. Boyd, Skeeter Clark,

Lela Mercer, Dee Dee Forney and Essie Johnson.

The next district meeting will be held in October in Arlington.

Look Who's New

Mr. and Mrs. Gary Cray are parents of a son, Carson Wendell, born July 21 in Wichita General Hospital. He weighed seven pounds, 12 ounces. He has one sister, Emily, age three and one-half. Mrs. Cray is the former Lori Hankins.

Grandparents are Dorothy and the late Wendell Cray of Burkburnett, Johnny and Ann Hankins of Wichita Falls and David and Ann Johnson of Iowa Park.

Great-grandparents are Majorie Harvey of Burkburnett, Edith Lawrence of California and Mildred Parkey of Iowa Park.

6 pack cans
All Types
Coca-Cola
\$2.29

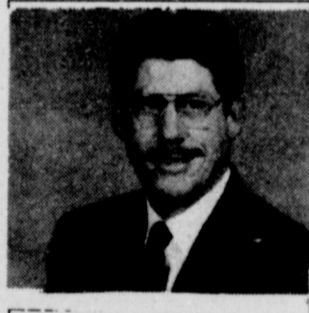
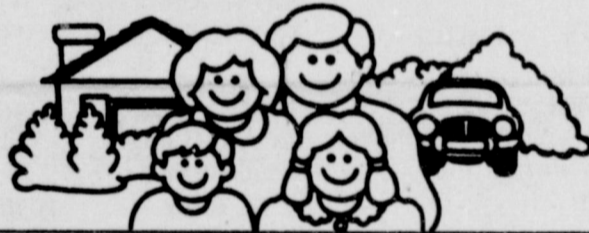
12 pack cans
All Types
Coca-Cola
\$2.99

2 Liter
All Types
Coca-Cola
\$1.19

Prices Good August 1 - 25, 1992

K&K FOODS
1309 Johnson Road 592-5931

"Let me analyze your insurance needs with a free Family Insurance Checkup."



CALL ME.

PHILIP WELCH
118 W. PARK
592-4155



State Farm Insurance Companies
Home Offices: Bloomington, Illinois

Like a good neighbor, State Farm is there.

Simple Pleasures
A Unique Menagerie
of Country Gifts
114 W. Park 592-2141
Upstairs in Iowa Park Florist
All Items are Cash & Carry
No Deliveries

Accredited by the American College of Radiology

BREAST CANCER DETECTION UNIT
AVAILABLE TO AREA WOMEN

TUESDAY, AUGUST 11th
IOWA PARK

The Unit will be parked at:
FRIENDLY DOOR SENIOR CITIZENS
100 W. Cash

CALL 1-800-633-6452 FOR APPOINTMENT

A Service of
Transamerican Diagnostic Services
(Providing Mammography Services for over 5 years)

CALL 1-800-633-6452 FOR APPOINTMENT

According to the American Cancer Society, one out of ten women in the United States will develop breast cancer sometime in her lifetime. It is currently estimated that over 37,000 women die each year as the result of breast cancer.

Ninety percent of breast cancers are diagnosed by women or their physicians finding a lump in the breast. Women who are diagnosed with a lump large enough to feel have a 50 percent five year survival rate. A woman who is diagnosed as having breast cancer by mammography, before a lump can be felt, has a 97% five year survival rate and a 90% 10 year survival rate.

A mammogram can detect a cancer this small, even before it can be felt.

Guidelines For Screening Mammography Established by the American Cancer Society.

- I. 35-40 years of age - One baseline mammogram.
- II. 40-50 years of age - A mammogram every 1-2 years depending on breast type and risk factor.
- III. 50 years of age and over - An annual physical examination and annual mammogram.
- IV. Asymptomatic women under 50 years of age with significant high risk factors should be examined at appropriate intervals. These risk factors include previous breast cancer and family history of cancer.

V. A symptomatic woman should have a mammogram at any age when she experiences a mass, nipple discharge, skin changes or unexplained breast pain.

A screening mammogram is an x-ray of the breast using extremely low dosages of radiation (usually comparable to dental x-rays) and is designed to find very early cancers.

A female technologist who is highly trained in mammography will perform the examination.

The charge for the screening mammogram is \$70.00. The Unit accepts cash, check, Visa, Mastercard and American Express.

NOW ACCEPTING MEDICARE AND MEDICAID

Cholesterol and Your Health

- Cholesterol is a soft, fatty substance that the body needs—in small amounts
- Cholesterol is made up of HDL's (High Density Lipoproteins) and LDL's (Low Density Lipoproteins.) When overall cholesterol levels are measured in the bloodstream, the percentage of HDL's and LDL's is now often determined.
- LDL's seem to promote cholesterol deposits on the artery walls. HDL's, however, help move cholesterol back to the liver.
- High blood cholesterol levels contribute greatly to the development of coronary heart disease—America's number one killer which claims approximately 550,000 lives every year.
- Millions of adults have cholesterol levels of 200 or higher, placing them at increased risk of heart disease and heart attack.
- Most people can lower cholesterol to less than 200, a "desirable" level, with diet and exercise. Make sure you carefully follow your doctor's instructions about any change in eating habits or exercise routine.
- Stop smoking.
- Lose weight if your doctor advises you to.
- If the above measures aren't adequate, your doctor may prescribe a prescription medication to help lower cholesterol levels.

For more information on cholesterol and health—
Ask your pharmacist.

WAL-MART PHARMACY
500 W. Highway 592-4157
Tammi Morman - Pharmacist

NEW HOURS:
9 a.m. - 7 p.m., Weekdays; 9 a.m. - 6 p.m. Saturday

As I See It . . . By Bob Hamilton



Short summer, you say?
Just because your kids are going back to school in three weeks, you think this has been a short summer?

What would you say if your kids were enrolled on one of those year-around school schedules?

Yeah, short!
Not too many years ago, students enjoyed summer vacations that lasted more than three months.

And, in many rural communities, a student's school year was almost as long as was the vacation period.

It was not at all uncommon in communities where cotton was king that schools just didn't commence until the harvest was completed. And that sometimes was well into December.

Families, all members, had to do the harvesting, by hand. It was a simple choice, either harvest the crop, or not have any money to buy food and clothes.

Schools didn't continue classes into June, either. There were weeds to hoe, hopefully, by that time, in those same cotton fields.

Students in those days didn't have to study foreign languages, computers and subjects like that. They studied the basics, or reading, writing and arithmetic, but they also had considerable knowledge of government, geography, diagramming sentences, punctuation, spelling, and such common consumers of time.

And you know what? They emerged educated. They became doctors, educators, lawyers, politicians, businessmen, and some remained on the farms.

I'm convinced, it's not the number of hours one remains in the classroom, the age one begins attending classes, nor the materials and equipment that gives a student knowledge.

It helps, but that's not all. A child's home life. The support and encouragement received from the family. What they do with their free time. And dedicated teachers. Those are the most important ingredients in learning.

But, even though I have no children still in school, I'll have to agree. It's been a very short summer.

School hires choir director

Iowa Park school trustees filled the recently-vacated position of high school and junior high choir director, during a called meeting Monday evening.

The new teacher is Debra Walters, who has held a similar position at Kate Burgess school in Wichita Falls. She is

a graduate of the University of Mary Hardin Baylor, and has two years teaching experience.

The balance of the meeting was a work session on the 1992-93 budget, one in a series.

Another work session is tentatively set for Tuesday evening.

Election

Continued from page 1

did voters at the other two polls in the Iowa Park school district.

Voters of Precinct 32 cast 577 votes against the proposal, and only 355 for it, while Precinct 33 voters were 183 votes against and 86 for. That was a total of 760 votes against and only 441 for the issuance of the bonds.

There was a considerable difference in the voting at Precinct 32 Saturday than was counted in early voting, however. Saturday, 255 votes were cast for the issue and 331 against it. The margin was wider in early voting counting, with 246 voting against and only 100 for it.

There were 123 votes cast against and only 65 for the bonds Saturday in Precinct 33. The early voting tally by voters of the same precinct was 60 against and 21 for.

The margins of defeat were closer at Precinct 34, Valley View, and Precinct 34, Chaparral Baptist Camp.

The issue failed by 11 votes, 57-46, at Valley View. Only 14 voters of that precinct cast early ballots.

Precinct 35 voters turned down the issue 89-83. But the difference was in early voting, where it failed, 35-21. Those who cast ballots during Saturday actually were for the issue, 62-54.

The bond issue failed at Burkburnett, 603-523, while Electra voters demonstrated greater opposition, with 252 against and only 123 for.

County-wide, the issue passed by a 58.5-percent margin, 11,272 to 7,991.

Residents of Wichita Falls had the opportunity to cast two ballots on the center issue. One concerning the city's bonds and the other the county's bonds.

The \$4-million bond issue was approved by a 63.7-percent margin, 9,355-5,336.

County commissioners, when pledging the \$9-million, explained the 2.6 cents per \$100 that has been collected on the tax rate the past 10 years to fund renovation of the jail building would be continued to finance the money pledged.

Financing will be for a 20-year period.

Both the commissioners court and Wichita Falls city council had said if either election failed, the center would not be built under the proposed plans.

Letters to Editor policy explained

The *Leader* receives numerous letters which cannot, for one reason or another, be published.

Letters will not be printed unless they are signed. A typed name will not do. And, for the sake of verification, the writer's telephone should be included.

Should the writer not wish his/her name printed, it will be omitted upon request. However, the letter will be kept on file to be read upon request.

Letters also must be free of libel. If not, they will not be published, because we will not edit their content.

Corrections will not be made if they change the message in any way, but will be edited to enhance their content.

In letters supporting political candidates or issues, the *Leader* reserves the right to limit their lengths.

We encourage your Letters to the Editor, and offer the paper as your forum for discussions of ideas and observations.



Wants to keep Substation

Attention: Commissioners Court
Sirs,

I am sending you this letter in regard to the alleged consideration of the closing of the Iowa Park Tax Office Substation.

I feel your consideration of this issue is not in the best interest of the taxpayers.

The people of Iowa Park and the surrounding area have used the Iowa Park Substation for at least 30 years. The businesses of this area as well as the elderly and working people feel this office is vital for county tax and motor vehicle transactions.

I hope we will not see this office close for any reason.
Concerned Taxpayer,
Danny J. Haynes

Political Column

The following is a list of candidates who are seeking offices in the November General Election, and who have paid for the political advertisement.

State Senator,
30th District
Steven A. Carriker

The more you know, the better able you are to make the right choices. Be a wise consumer. Acquaint yourself with funeral merchandise and services, what expenses you can expect to incur, and the role of the funeral director during one of life's most difficult times.

Stop by for a free copy of "Funeral Costs." We are here to serve you.

DUTTON FUNERAL HOME
300 E. Cash 592-4152

SHOP IOWA PARK FIRST!

NOTICE TO SUBSCRIBERS

This is only a notice to those listed below that their subscriptions will expire on the published date. You don't owe us a thing if your name is on the list. It only means that what you've paid for is running out. To renew your subscription, please fill out the form below, as it appears on your paper's mailing label. Indicate whether this is a renewal or new subscription. Enclose you check or money order, as all subscriptions must be paid in advance.

Subscriptions due to expire AUGUST 15, 1992

Please disregard this notice if already paid

A Richard Altio Denny Anderson Louise Ault	Beavercreek	J Opal Jackson Frank Johnson Melvin Johnston Donald Ray Jones Earl Jones Jack Jones Lloyd Jones	Plainview	R John Rains Glen Reaves Earnie Reusch J. J. Riley Linda Rowe Bobby Rowland F. E. Ruth	Graham
B Marie Balch Lois Barnes G.K. Beall Jody Beavers O. M. Bell Larry Beutel Leon Biddy A. L. Bohannon Fred Botkin Elaine Bowden James Brixey Floyd Browning Frank Burns Mrs. William Burns Helen Burrell	Copperas Cove Midland Fort Worth	K Joe Kennedy Pat Kennedy Cathy Key Shane Kimbrow Gail Kingcade	Abilene Wichita Falls Wichita Falls	S Eddie Sasser Kerry Scobee Raymond Scobee Charles Seets Lonnita Shaw Gene Shawver John Sibley Andy Sitgreaves Frank Smith David Springer Dan Spruiell Garry Stamm	Rusk
C J. C. Canada Mrs. Grace Cannaday Irene Cassee Donna Chandler Hester Clark John Clubb Clyde Cole George Connor Jr. Brad Costello O. G. Crumpton R. D. Cunningham	Winnsboro Bryan Mineral Wells Lubbock	L Jo Ann Lange Gracie Lee S. K. Little Charles Lyons	Wichita Falls Highland Park	T Helen Taylor TCI Cablevision Mrs. Evie Teal Hubert C. Thompson Riley M. Thompson Beatrice Todd Phyllis Togerson Aimee Trantham Clarissa Turner	Collinsville Mineral Wells
D Don Davis Erschell Davis Lisa Doyle L. A. Drissel Glenn O. Durham Bertha Dwyer	San Diego Wichita Falls	M John Manfolk Kenneth Manuel Bill Martin Joanna Matthews Mrs. Virginia May Edgar Mays Joe Martin Lois Mitchell Larry Don Moser Annelle Mundt Donna Jean Myers	Arlington College Sta. Wichita Falls	V Jimmie Veik Jimmy Voyles Joe Voyles	Northglenn Dallas
E Harold Eaton May Easton Kenneth Edwards Gratan Eiben Jayne Elliott Cookie Ellis Mrs. Ruth Ely Elsie Evans	Galveston	Mc A. J. McAlister Denny McCarthy Will McCarthy Sandra McDonald Sam McIlroy Hunt McKee	College Sta. Wichita Falls	W Jerry Walsh John Webb Ruth Whitton Teresa Wiese Marion L. Wilkins Randall Willingham Gerline Williams Ivan Wilson Melvin Wilson Randal Wilson Holly Witt Hugh Woody	Henrietta Carrlton
F Barbara Findley Clyde Fowler Charles Franks Bob Frazier Udell Frazier Kristi Fulfer	Plano Buda	O William D. Owens	Burkburnett	Y Bural Yoder	
G Lucky Gamble Mrs. Ruth Gard Jerry Gholson Billy C. Gilmore Marsha Glass Randal Goodman	Wichita Falls	P Lee Pelz Mrs. Doris Perry Richard Phillips Harold W. Pohlmann Mrs. Carl Price Jerry Pruett	Mesquite		
H Mrs. Joe Harris W. F. Hastings Billy Helms Jerry Hogan K. J. Hollis Winnie Holmes Calvin Huff	Kamay				

Wichita County\$13.00
Elsewhere in Texas\$15.00
Elsewhere in United States\$18.00

To: Iowa Park Leader
P.O. Box 430
Iowa Park, Texas 76367

PLEASE CHECK ONE:
 New
 Renewal
 Change of Address Only

\$ _____ Enclosed

Name _____

Address _____

City _____ State _____ Zip Code _____

IOWA PARK LEADER

Bob Hamilton Editor/Publisher
Dolores Hamilton Co-Publisher
Karl Collins Advertising Director
Myrna Smith Reporter

The IOWA PARK LEADER is published every Thursday. Offices are located at 112 W. Cash, Iowa Park, Texas, 76367 (766280). Telephone: 592-4431. Second Class Postage Paid at Iowa Park, Texas 76367. Annual Subscription rates are \$13 in Wichita County; \$15 elsewhere in Texas; \$18 anywhere in the United States. Any erroneous reflection upon the character, standing or reputation of any person, firm or corporation which may appear in the columns of this newspaper will be corrected upon being brought to the attention of the publisher. The entire content of each issue of the Iowa Park Leader is protected under the Federal Copyright Act. Reproduction of any portion of any issue will not be permitted without the express permission of the Iowa Park Leader.

MEMBER
TEXAS PRESS ASSOCIATION

State Capital
HIGHLIGHTS
By Lyndell Williams
TEXAS PRESS ASSOCIATION

AUSTIN — Trailing in polls everywhere, concerned Texas Republicans last week continued preparing Houston's Astrodome, where they will stage their party's national convention Aug. 17-20.

They expect President Bush to take off the gloves and begin serious campaign warfare.

Democratic nominee Arkansas Gov. Bill Clinton, meanwhile, was also in Houston at three fundraisers at the homes of Mayor Bob Lanier, former Lt. Gov. Bill Hobby, and Arthur Schechter.

Clinton ripped Bush's economic plan, but said he too, would take on Saddam Hussein if the United Nations supported military action against Iraq.

Clinton's efforts to strengthen his Texas ties were countered by GOP jobs at his ties with Time Warner Inc., the record company distributing "Cop Killer," the controversial anti-police rap song by Ice-T.

GOP party boss Rich Bond, from his Astrodome base, accused

Clinton and Democrats of taking \$400,000 from Time Warner to underwrite the Democratic National Convention in New York.

Gramm to Keynote

Foul play, said some Lone Star Democrats, when Clinton stood up to Jesse Jackson over Sister Souljah's lyrics.

Now, many observers believe that event was the beginning of Clinton's recent surge to frontrunner status.

But Bond, once again, drew attention to the Astrodome, where the convention will siphon an estimated \$25 million into the Texas economy and give Bush an expected bounce back into the polls.

Two Texans will be prominent: U.S. Sen Phil Gramm will give the keynote speech and Texas Treasurer Kay Bailey Hutchison will serve as the convention's temporary chair, giving her national visibility.

Economic Indicators

With the election likely riding on the state of the economy, the battle of financial news releases continues:

The Texas Employment Commission said unemployment rates in Texas jumped almost one percent from May to June. Commissioner Mary Scott Nabers, a Democrat, said the trend for job growth is in industries only offering lower-paying jobs.

Small Business Administration loan demand jumped dramatically in Texas over the past six months with seven cities ranked in the nation's top 10 business loan recipients: El Paso, 101.2 (1st); Lower Rio Grande Valley, 86.3, (2nd); San Antonio, 72.3 (5th); Dallas, 51.5 (6th); Houston, 44.5, (7th); Lubbock, 31.6 (9th); and Corpus Christi, 21.7 (10th).

Many of the nation's banks, including several in Texas, reported strong gains in second-quarter earnings. The profits were attributed to aggressive cuts in interest rates. It marked the ninth straight quarter of profits posted by the Texas banking industry.

New Texas Banking Commissioner Catherine Ghiglieri, 39, named by Gov. Ann Richards as the first woman ever on the panel, said she sees improvement in the industry, but is concerned about the lack of lending.

Redistricting Revisited

A controversial figure on the

court overseeing Texas redistricting, U.S. District Judge James Nowlin, removed himself from the case last week.

His departure will not affect the current election, but is seen as

a Democratic victory in lawsuits by Attorney General Dan Morales which will affect the 1994 elections.

Morales, a Democrat, wanted Nowlin, a Republican, removed for counseling with state Rep. George Pierce, R-San Antonio, about drawing political boundaries.

Board Prods Insurers

The State Board of Insurance adopted new rules which chairwoman Claire Koriath said cracks down on insurance companies taking too long to settle claims.

The new rules shorten to 15 days the time allowed to approve or reject a claim after receiving all paper work.

An exception is 30 days for extended investigation in suspected arson cases.

Strauss Has Warning

Washington's Texan-at-large Robert Strauss, now U.S. Ambassador to Russia, told a breakfast club his goal is to make Russia look like Abilene, Texas in 1930.

Listing their problems of hunger, unemployment and ethnic warfare, he called it "a dicey situation." Strauss warned that the U.S. has not won the Cold War until the former Communist regime has a healthy economy.

Other Highlights

Lt. Gov. Bob Bullock has proposed improving care in Texas' nursing homes by rewarding high-quality care, improving the training of state regulators and preventing proven "bad actors" from owning or operating homes.

Workers' compensation insurers in Texas could lose their recently won freedom to raise and lower rates without state approval if they don't back off a recent round of increases, state Sen. Bob Glasgow warned. State Insurance Commissioner Georgia Flint also

stepped up pressure on insurers to reduce rates.
GOP chairman Bond joked that he was tempted to make a citizen's arrest of Bill Clinton on two counts: "A misdemeanor for impersonating a moderate, and a felony for impersonating a conservative."

COUPON
EXPRESSWAY RESTAURANT
US 287 & Pacific
592-4811
2 Eggs & Toast
\$1.29 7 a.m. to 9 p.m.
with coupon

4-H Club News

Wichita County 4-H members put their interior design skills on display at the annual home designer contest held July 13.

Top winners were Joeise Hanson, senior; Jami Hanson, intermediate, and Meagan Smith, junior.

Receiving second place awards were Brianna Toney, intermediate, and Kendra Toney, junior.

First place winners were to advance to the district contest, at Guthrie, July 28.

Helpful Facts
Regular meetings of the Iowa Park city council is at 7 p.m. on second and fourth Mondays, in council chambers at 103 N. Wall. All meetings are open to the public.

Helpful Facts
The City of Iowa Park offers a \$250 reward for information leading to the arrest and conviction of any person committing arson within the city limits.

RICHARD C. CARVER, D.D.S.
GENERAL DENTISTRY
TELEPHONE 817-592-5141
315 NORTH WALL
IOWA PARK, TEXAS 76367

Hurt on the Job?
In an Auto Accident?
Don't Suffer with Pain!
Brown-Cavett Back & Neck Chiropractic now has an agreement with a group of physicians in the same health complex to provide you with the best treatment available.
Do Something About the Pain. Call Today.
BROWN-CAVETT BACK & NECK CHIROPRACTIC
Treatment you can trust.
3506 Buchanan, Suite A Wichita Falls 696-2211
906-B Kramer Road Burk Burnett 569-2266
501 South Archer Henrietta 538-5603
402-A West Park Iowa Park 592-2778

PLAY! PLAY! EASY MONEY
FREE GAME TICKET TODAY!
FREE GAS FOR A YEAR!
ALLSUP'S

EASY MONEY \$1,000.00 WINNERS
GERALD J. ELLIOTT-CLOVIS, N.M.
MARGARET M. CHAVES-ALBUQUERQUE, N.M.
TINA HAUMESSER-DENVER CITY, TX.
LISA FOWLER-TATUM, N.M.

\$100.00 WINNERS
PATSY BROWN-DALHART, TX.
TRISHA TAYLOR-VERNON, TX.
SUE VALLASTER-MORTON, TX.
BOBBY J. MORENO-DEXTER, N.M.
STEVE MARTINEZ-LAS VEGAS, N.M.
VIRGINIA GIBBS-FREDERICK, OK.
CHRISTINA MORTON-CANYON, TX.
DEBRA SUTHERLAND-LEONARD, TX.

ALLSUP'S HOMOGENIZED MILK GALLON \$1.99

BOLOGNA, LUNCHEON, P&P, SALAMI, BEEF BOLOGNA DECKER LUNCH MEATS 6 OZ. PKG. 89¢

GOTTA HAVE IT
ALL TYPES PEPSI-COLA 6 PACK CANS \$1.89

SWANSON BONED WHITE CHICKEN 5 OZ. CAN \$1.39

TYSON FRIED CHICKEN 9 PIECE BOX \$4.99

ASSORTED FLAVORS BRACH'S CANDIES 59¢ EACH OR 2 FOR \$1

VALLEY FARE BATHROOM TISSUE 4 ROLL PKG. 79¢

SHURFINE TOMATO KETCHUP 32 OZ. BTL. 89¢

ULTRA TIDE 24 OR 30 LOADS BOX \$5.99

HAM, EGG & BISCUIT EACH 89¢

PEARSON NUT ROLL CANDY 55¢ EACH OR 2 FOR \$1

PRICES EFFECTIVE JULY 30 - AUG. 5, 1992
IOWA PARK AND HOLLIDAY STORES

DUBUQUE BOLOGNA 79¢
Reg. 55¢
BABY RUTH & BUTTERFINGER... 3/\$1
3 OZ.
LIBBY POTTED MEAT 4/\$1
12 OZ.
CORN KING BACON 79¢

GAS FOR A YEAR WINNERS
LUZ CHAVARRIA-ABILENE, TX.
MARY WESSNER-WHITE DEER, TX.
KALEENA SOTELO-MONAHANS, TX.
FRED McMULLEN-MELROSE, N.M.

Obituaries

Mary M. Pearce

Memorial services for Mary Magdelaine Pearce, 81, are pending with Owens & Brumley Funeral Home. Mrs. Pearce died July 3 in Las Vegas, Nev.

Born Dec. 10, 1910 in Lindale, she was a 42 year resident of Iowa Park. She was a homemaker and a member of the Church of Jesus Christ of Latter-Day Saints. Her husband, Jake Gullatt died in 1945, and her husband, Clarence Pearce died in 1963.

Survivors include one son, Hersh Ray Gullatt of Iowa Park; one daughter, Louise Roland of Las Vegas; seven grandchildren, and eight great-grandchildren.

Omie Clifton

Graveside services for Omie Clifton, 87, were held Wednesday morning in Eastside Cemetery at Vernon, with Rev. Ole Olds, pastor of Lakeview Church of God, officiating. Arrangements were under the direction of Dutton Funeral Home.

She died Monday in Iowa Park. Mrs. Clifton was born April 25, 1905, in Vernon and had lived in Iowa Park four years. She was a former 57-year resident of Wichita Falls. She had worked in retail sales for many years at Grace's Ladies Wear, and was a member of Tenth and Broad Street Church of Christ in Wichita Falls. She and George H. Clifton were married Oct. 20, 1922, in Vernon.

Survivors include two sons, R.J. of Gardena, Calif., and Jerry Sam of Muenster; a daughter, Dema Morrison of Iowa Park; a sister, Garner Briscoe of Artesia, N.M.; six grandchildren; and four great-grandchildren.

Memorials may be made to the American Heart Association, Masonic Lodge or the Eastern Star Home.

Brittney N. Villarreal

Graveside services for Brittney Nicole Villarreal, eight-day-old daughter of Michael Ann and Randall Villarreal of Lubbock, were at 10 a.m. Monday in Crestview Memorial Park.

Rev. Rick Allen of Saint Jo officiated.

The baby was born July 14 in Lubbock and died July 23.

Surviving are her parents; one sister, Aimi of Lubbock; her grandparents, Bob and Donna Burleson of Wichita Falls, Larry and Billie Roberts and Mike and Carla Walsh, all of Iowa Park; her great-grandparents, Robert and Jenny Walsh of Wichita Falls, Jack Holt and Mericio Villarreal, both of Terral, Okla.; Mildred Burleson of Henrietta, and her great-great-grandmother, Elizabeth Massey of Grand Prairie.

Claude V. Starr

Services for Claud V. Starr, 88, were Tuesday at 10:30 a.m. at Dutton Funeral Home.

Rev. Ole Olds, pastor of Lakeview Church of God officiated. Burial was in Highland Cemetery.

Starr died Saturday in a Wichita Falls hospital.

Born Feb. 17, 1904, in Scott County, Ark., he moved to Iowa Park in 1927. He was married to Leola Osborne Sept. 8, 1927 in Scott County. She died in 1988.

Starr retired from farming after 63 years in the Iowa Park area. He was preceded in death by a daughter, Doris Fern and a son, Billy D.

Survivors include two sons, Lanny of Thornberry and Jerry of Iowa Park; two daughters, Robbie Watts and Retha Lamb, both of Iowa Park; one brother, Baxter Starr of Ola, Ark.; 10 grandchildren and 12 great-grandchildren.

Wayne Short

Services for Wayne Short, 86, were held Sunday afternoon at Porter Loring Chapel in San Antonio, with Rev. Wilbert Long officiating.

He died Friday in San Antonio.

Short was a resident of Wichita County from 1938 to 1986, and had been a resident of San Antonio since 1986. He retired at age 79 from oil field production work. He was a member of Northeast Baptist Church in San Antonio.

Survivors include his wife, Clarice; a son, Donald Wayne Short of San Antonio; a daughter, Annelle Mundt of Longview; a sister, Willie Marie Mann of Clifton; eight grandchildren; and 12 great-grandchildren.

EXPRESS YOURSELF
with a letter to the editor

Iowa Park Leader
P.O. Box 430
Iowa Park, TX. 76367

Breast Cancer Detection Unit to be in Iowa Park

TransAmerican Diagnostic Services will have a Mobile Breast Cancer Detection Unit available to local women Tuesday, Aug. 11.

The unit will be parked at Friendly Door Senior Citizens Center, 100 W. Cash. Appointments may be made by calling TransAmerican at 1-800-633-6452.

Breast cancer cannot be prevented, but early detection can save many lives. Breast cancer will strike one in nine American women.

The American Cancer Society predicts that about 44,000 women will die of breast cancer this year.

Experts estimate that if every woman had regular mammograms according to guidelines established by the ACS, nearly a third of the women who die of breast cancer would survive.

- The guidelines are:
- A) Begin mammography by age 40.
 - B) Age 40-49 mammogram every 1-2 years.
 - C) Over age 50 annual mammogram.
 - D) Monthly breast self examination
 - E) Regular breast exams by a physician.

Mammograms are the best means for early detection of breast cancer.

TransAmerican Diagnostic Services has been accredited by the American College of Radiology since 1989.

The American College of Radiology Program is voluntary and designed to insure women receive optimum quality mammographic examinations.

The accreditation is done through evaluation of the facility's staff qualifications, (technologist, radiologist, and physicist), equipment, quality control, quality assurance, image quality, and breast dose.

TransAmerican Diagnostic Services is also approved by the Texas

Department of Health to accept self referred patients and is approved by Medicare as a provider to the Medicare Mammography Program. It recently has been contracted by the Texas Department of Health to be an official provider for low income women.


Kamay Road Church of Christ
Corner of Colorado & Emerald

'Seeking the Old Paths'

10 a.m. & 6 p.m.
Wednesday 7:00 p.m.

Pacific Avenue Missionary Baptist Church
1400 N. Pacific Ave.
Church - 592-9711
Informal
Christ-Centered
Worship for all ages.

Sunday School	9:45 a.m.
Morning Worship	11:00 a.m.
Evening Worship	6:00 p.m.
Wednesday	7:00 p.m.



Christ The King Catholic Church

First & Clara 592-2802
Rev. Mr. Patrick Burke, Pastor

8:45 a.m. Children's Religious Formation
10:00 a.m. Mass

The Catholic Church recognizes that there are many good people outside its membership, that other religions can and do bring their members closer to God and to their fellow human beings. But we as Catholics have indeed found something very special and we would like to share our Church, our Faith, our Way of Life with you. If you are interested in more information about the Catholic Church please call the church office.

THE END OF YOUR SEARCH FOR A FRIENDLY CHURCH

ASSEMBLY OF GOD

SUNDAY
9:45 a.m. Sunday School
11:00 a.m. Morning Worship
7:00 p.m. Evangelistic Service

WEDNESDAY
7:00 p.m. Royal Rangers & Missionettes
Nursery provided Sunday morning & Wednesday Evening

200 S. YOSEMITE
592-5087 - Church
592-4627 - Pastor
Charles Hensley, Pastor


Serving Iowa Park since 1890

First Presbyterian Church

Philip W. McLarty, Pastor

Sunday School 9:30 a.m. Sunday Worship 11:00 a.m.
Wednesday Night Bible Study
Individual, marriage and family counseling

211 S. Yosemite 592-4220



Lakeview Church of God

N. Victoria and Expressway

Opportunities for Service


Children's Church	Ladies Ministry
Choir (youth & adult)	Men's Fellowship
Nursing Home	Boys' Club, ages 6 - 17
Visitation	Girls' Club, ages 6 - 17
Puppet Ministry	Nursery Provided

Sunday School...9:45 a.m. Wednesday Family Training Hour...7:30 p.m. (classes for all ages)
Morning Worship...10:45 a.m.
Sunday Night...6:00 p.m.

Phone - church: 592-2776, Parsonage: 592-9555
Pastor Ole Olds

Discover The Joy

Faith Baptist Church



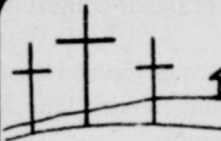
BREAK THROUGH "Where the Bible is taught, the family is emphasized and where everybody is somebody."

411 S. Wall S.B.C. 592-2716

SUNDAY	WEDNESDAY	
Sunday School 9:15 a.m.	Wednesday Evening Prayer 7:00 p.m.	
Morning Worship 10:30 a.m.	Choir Rehearsal 8:00 p.m.	
Church Training 6:00 p.m.		
Evening Worship 7:00 p.m.		

Nursery Care Provided - Full Range of Mission's and Children's Ministries

Dr. Greg Ammons, Pastor



Cornerstone Pentecostal Church of God

"The Church at the foot of the cross"

West Smith Rd.

9:45 a.m. Sunday School
10:50 a.m. Morning Worship
6:00 p.m. Evangelistic Service
7:00 p.m. Wednesday Family Night, also Christian Pathlighters Boys and Girls

"If you like a small church, you better hurry"

Church Phone 592-5929 Pastor Duffy Terry 592-5520

Where Jesus is Lord

BAPTISM - A BEGINNING

Why is there rejoicing when one is baptized! (Acts 8:39). One of the reasons is that it means a new beginning. "Therefore if any man is in Christ, he is a new creature; the old things passed away; behold, new things have come." (2 Corinthians 5:17).

Baptism is a new birth. When one is begotten by the Word of God and is born of water and the Spirit, he becomes a citizen of the kingdom of God. (John 3:5).

As a child of God, he can call God, "Abba Father." (Romans 8:15-17). He has family care and becomes an heir.

Baptism is a resurrection. It is an event in which one dies to his old self and is buried in baptism after which he is raised to walk in "newness of life." (Romans 6:4-6). Baptism is an act which makes all things new. As Jesus was resurrected from physical death, so we are resurrected from a spiritual death.

Baptism is a salvation event. Following the analogy of Noah's salvation when the world was destroyed by water, Peter said, "and corresponding to that, baptism now saves you..." (! Peter 3:21). Just as Noah's obedience saves him and his family when the world was destroyed by water, so shall one's obedience in baptism bring salvation when the world is destroyed by fire.

Baptism is a new beginning.

Welcome To The Church of Christ

300 East Park, Iowa Park, 592-5415

Dwight Parker, Gospel Preacher
George Watson, Associate

Watch "Search" Every Sunday at 7:30 a.m.
On KFDX - CHANNEL 3

SCHEDULE OF SERVICES

SUNDAY	WEDNESDAY
Bible Study 9:30 a.m.	Evening Study 7:30 p.m.
Worship 10:30 a.m.	FREE BIBLE COURSE!
Worship 6:00 p.m.	Call for information.



Country Chapel

Country Style Singing & Preaching
Lots of God's Love & Acceptance

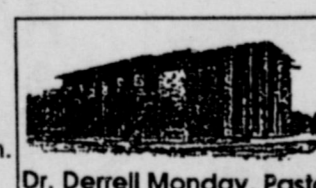
Sun. Sch. 9:00 A.M.
Worship 10:30 A.M. & 6 P.M.
Wednesday 7:00 P.M.

Dr. John D. Ward, Pastor 855-9367
Chapel Phone 855-8811
287N. at Wellington Rd. Wichita Falls, TX 76305

First Baptist Church

300 N. Yosemite - Iowa Park - Phone: 592-2152
Worship & Bible Study for the Family

Sunday Schedule
Sunday School - 9:45 a.m.
Morning Worship - 11 a.m.
Discipleship Training - 6 p.m.
Evening Worship - 7 p.m.



Dr. Derrell Monday, Pastor

Jim Wright
Music/Education

Greg Sipe
Youth Director

Wednesday Schedule
Prayer Meeting - 7 p.m.
Youth in Action - 6:30 & 7 p.m.
RA's for Boys - 7 p.m.
Sanctuary Choir - 7:45 p.m.

FIRST UNITED METHODIST CHURCH



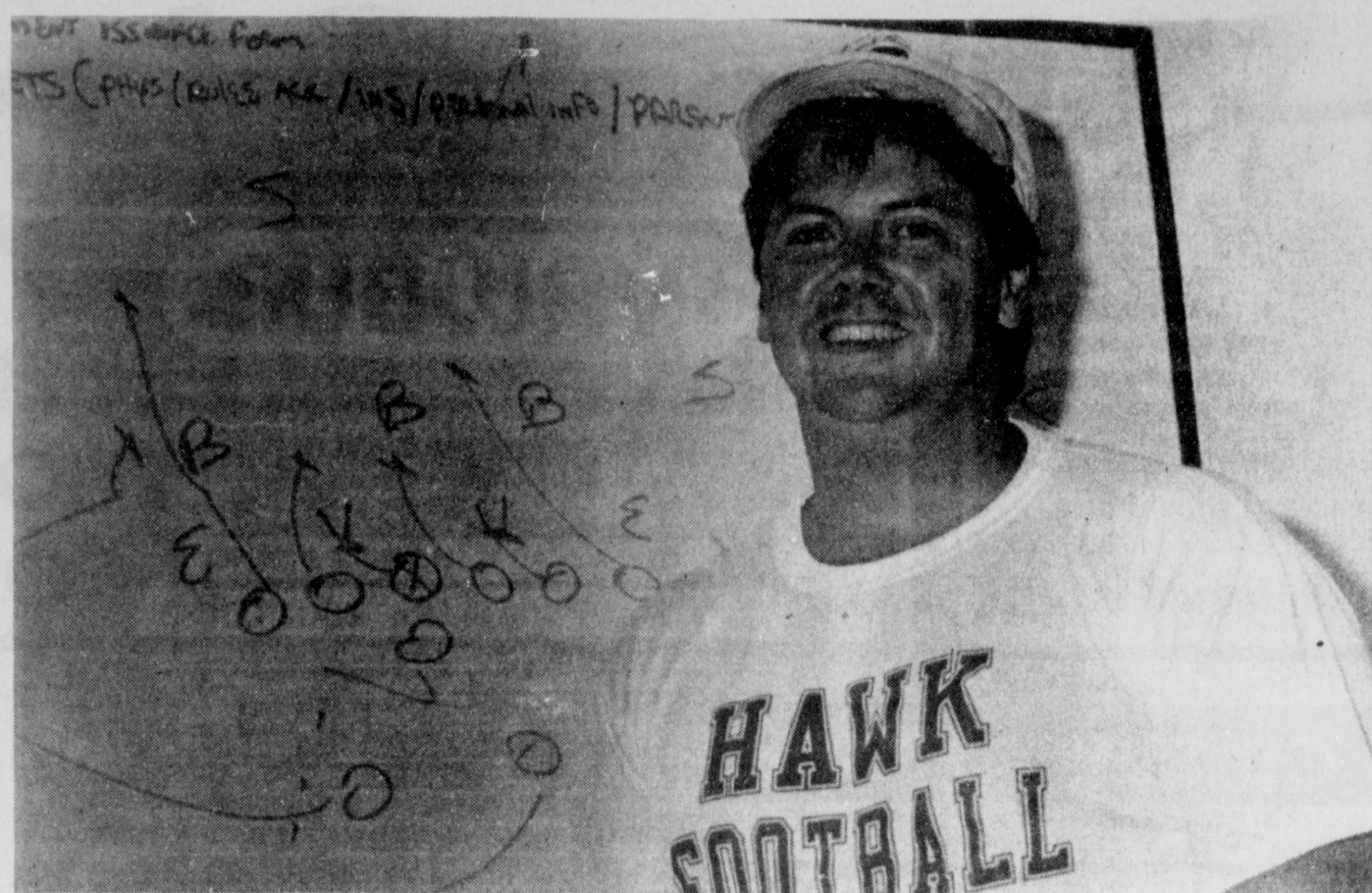
Rev. Karl S. Klaus, Pastor
Be "Another Happy Methodist"

Sunday School- 9:30 a.m. Worship-10:40 a.m. UMYF-5 p.m.

201 E. Bank 592-4116



MINOR LEAGUE TOURNAMENT ALL-STARS outscored their four opponents 57-17 to win the Burk Burnett tournament July 13-20. Players include: front row, Chris Simmons, Wesley Bohannon, Ryan Bess, Bubba Antones, Brandon Criswell, Mason Adams and Chris Clerihew; back row, Steven Gray, Brandon Lane, Jimmy Miller, Scott Balch, Heath Hodges, Zack Miller and Bryan Swenson. Steve Gray, Roy Adams and Thomas Criswell were coaches.



NEW HEAD COACH AND ATHLETIC DIRECTOR ROBERT CLENSAY . . . ready for start of the football season.



GOLD TEAM ALL-STARS include, front from left, Troy Tatom, Chase Simpson, Tyler Pulley, Dusty Dean, Eric Justus and Tim Smith; back row, Dustin Shierry, Aaron Duran, Jeff Duerson, Lance Gamble, Chase Wright and Shane Sands. David Wright is manager, Terry Tatom and L.S. Whisnand coaches, and Charles Quick score keeper.

NEXT WEEK

Hawks to get equipment

All Iowa Park High School football players are to be issued equipment Thursday and Friday of next week, according to new head coach Robert Clensay.

The equipment will include shorts, shoes, helmets, shirts, socks and jockey straps.

Hours equipment will be issued will be 1-7 p.m. Thursday and 10 a.m. to 5 p.m. Friday.

Two-a-day workouts will begin the following Monday, Aug. 10.

Coach Clensay said the players are to be dressed and ready for the first morning workouts, at 7:45. That will be the starting hour through Aug. 18. Afternoon workouts will begin at 5.

Iowa Park schools are scheduled to begin holding classes Aug. 19.

The players will continue working out in shorts until Aug. 14, when the University Interscholastic League allows pads to be used.

After a week's workouts in full pads, the Hawks will hold the first of their two pre-season scrimmages, both of which will be held here this year.

First scrimmage will be Aug. 21, against the Coyotes of Wichita Falls High. The following Friday, the 28th, Olney will be the opponent, Clensay said.

The season will open Sept. 4, when the Hawks travel to Burk Burnett.

When players are issued equipment next week, they will pick up a series of forms which must be completed and returned before they can begin two-a-day practices.

Included will be personal information, parent consent and rules acknowledgement.

All freshmen and those who did not play football here last year also are required to have physicals completed.

Also required to provide new physicals are players who were injured and re-

quired a doctor's care last year.

The new Head Hawk explained a change in UIL rules some three years ago dropped the requirement of annual physicals for football players.

Win two tournaments

Iowa Park's Gold Team, for players nine and 10, won both tournaments after the regular season ended.

They won tournaments at both Burk Burnett and Sheppard AFB.

The club went undefeated in all four games at Burk Burnett, defeating Olney 23-1, Graham 11-1, Sheppard 15-5 and Graham 4-3.

At Sheppard, the team had no

problems with Burk Burnett B, 29-0, and Sheppard, 8-1, but then had to battle the Burk Burnett A club three times before winning the trophy.

In their first game, Iowa Park edged Burk A 4-2, but lost in their second meeting, 3-6.

However, in the championship contest, Iowa Park defeated Burk A by a 12-9 margin.

Senior All-Stars lose

Iowa Park's Senior League All-Stars got off to a good start Saturday in their tournament at Abilene, but it was all downhill after that.

The club knocked off The Colony 2-1 behind the pitching of Jason Young.

The following day, they fell victim to Midland, 10-0. Coach Howard Klinkerman defended the team's play, however, saying their performance was not indicative as the score might tend to indicate.

Monday, against Lubbock, Iowa

Park got seven runs across the plate, but left 14 runners on the bases during the seven-inning contest, and lost 10-7.

"The kids played well. We could compete with the teams on a one-and-one basis, but they just had more depth," Klinkerman said.

Come Check Us Out!
Fun House Arcade
Video Games - Pinball - 2 Pool Tables
113 W. Park 592-5591
with Jimmy's Hair Cutting

Harvey's
Coke
805 West Highway
NEW HINTER HOUSE!
6 a.m. - 9 p.m. Monday - Saturday, 7 a.m. - 9 p.m. Sunday
FOR TAKE OUT ORDERS
CALL 592-4731

THIS WEEK'S SPECIAL
CHICKEN SANDWICH \$3.69
Curley fries, med. drink Reg. \$4.13
ICE CREAM SPECIAL
Banana Split... \$1.59 Reg. \$1.89
Breakfast Special
Sausage, Egg, Biscuit (Reg. 1.29) \$1.29
SUNDAY LUNCH
Chicken fried steak, gravy, mashed potatoes, salad, vegetable, toast... \$3.49
BEAN DAY EVERY THURSDAY
All you can eat: Pinto Beans, cornbread, onions, pickles. Served from 11 a.m. - 2 p.m. \$1.49
11 a.m. - 9 p.m. Thursday
FARM-FRESH CATFISH
Served with Cole Slaw • Tartar Sauce • Fries • Hush Puppies • We now use Cholesterol-Free Canola Cooking Oil and dipped in our special batter and \$4.95 and \$5.95

SUBWAY
Subway of Iowa Park
404 West Park Iowa Park
592-2782 592-A-SUB
OPEN TIL MIDNIGHT 7 DAYS A WEEK

COLD SUBS	WHEAT OR ITALIAN BREAD	SIX INCH	FOOT LONG
FOR TWICE THE MEAT, JUST SAY "SUPER" ADD...		1.00	2.00
BMT (ham, genoa, pepperoni, bologna)		2.89	4.39
SUBWAY CLUB (roast beef, turkey, ham)		2.89	4.39
SPICY ITALIAN		2.49	3.89
COLD CUT COMBO		1.69	3.29
TUNA		2.69	3.99
SEAFOOD & CRAB		3.19	4.89
HAM & CHEESE		2.69	3.89
ROAST BEEF		2.89	4.29
TURKEY BREAD		2.69	3.89
TURKEY & BACON DELUXE		2.99	4.39
ROASTED CHICKEN BREAD		2.69	3.89
VEGGIES & CHEESE		1.49	2.49
HOT SUBS	WHEAT OR ITALIAN BREAD	SIX INCH	FOOT LONG
MEATBALL		1.99	3.29
STEAK & CHEESE		2.99	4.39
BBQ BEEF		2.99	4.39

FREE FIXIN'S CHEESE • ONIONS • LETTUCE • TOMATOES • PICKLES GREEN PEPPERS • OLIVES • SAU • PEPPER • OIL ON REQUEST
MUSTARD • MAYONNAISE • HOT PEPPERS • VINEGAR
ANY SANDWICH ALSO AVAILABLE AS A CUSTOM SALAD PLATE
Ask about our Giant Party Subs and Platters.

GOOD & PLENTY RESTAURANT
510 Old Iowa Park Road
592-4933
HOURS:
6 a.m. - 9 p.m.
7 Days a week

Remember, We're open every morning for Breakfast
2 eggs, any style, bacon or sausage, hash browns, biscuits, and gravy.
\$2.49

Lunch specials served every day except Saturday
Monday through Friday
Small \$3.25 Large \$3.85
Sunday Lunch Special
Small \$4.25 Large \$4.99

6 Butterfly Shrimp, Baked potato, salad, toast
\$6.99

In-House Special
All you can eat fish and shrimp.
\$7.99
Fish and Shrimp Basket
\$5.99
16 oz. T-Bone Steak & Shrimp
\$8.99

SATURDAY NIGHT SPECIAL
8 oz. Rib Eye Steak, choice of potatoes, salad, toast
\$5.25

ALL THE CATFISH YOU CAN EAT
Every night of the week from 5 until closing
\$7.99

SUNRISE SPECIAL
1 egg, sausage or bacon, toast & coffee \$2.10 + tax

FRIDAY NOON & NIGHT Farm-Raised Catfish
Served with French Fries, hush puppies, cole slaw, pickles, onions and tartar sauce.
Half and Full Orders

~ Pete & Otto's ~
3-M CAFE
114 W. Cash 592-4721
Hours: Monday - Friday, 6 a.m. - 2 p.m.
Friday night, 5-8 p.m.; Saturday, 6-10 a.m.

MEAL DEALS

DINNER FOR TWO
Any Medium pizza, a single order of breadsticks, and a pitcher of Pepsi. Serves 2 to 4. \$12.99

FAMILY NIGHT OUT
Any 2 Medium pizzas, a family order of breadsticks, and a pitcher of Pepsi. Serves 4 to 5. \$19.99

DINNER FOR FOUR
Any Large pizza, a family order of breadsticks, and a pitcher of Pepsi. Serves 4 to 5. \$16.99

DINNER FOR MORE
Any 2 Large pizzas, a family order of breadsticks, and 2 pitchers of Pepsi. Serves 6 to 7. \$26.99

*Dine-in only *Add a trip to the salad bar for \$1.49 per person

FREE PIE IN JULY!
Buy a Specialty Pizza at regular mehu price, get a FREE Medium one-topping pizza

NEW SUMMER HOURS:
11 a.m. - 11 p.m., Sunday - Thursday
11 a.m. - Midnight, Friday & Saturday

DELIVERY NOW ALL DAY SATURDAYS AND SUNDAYS 11 a.m. - Midnight

Your Hometown
Pizza Hut
412 W. Park
592-2772

The Classifieds

DEADLINES

10 a.m. WEDNESDAY (Word Ads Only)
4 P.M. TUESDAY, DISPLAY ADS

SAVE 8¢ PER WORD FIRST

**INSERTION BY PAYING
WITH COPY AT OFFICE**

RATES:

23¢ PER WORD FIRST INSERTION
15¢ PER WORD EACH REPEAT

CLASSIFIEDS SELL!!

QUAIL RUN APARTMENTS

Now accepting applications
1-2 bedrooms, water & gas paid,
assistance available.

Equal Opportunity Housing
Property financed by Farmer Home.
592-4646

HOMES FOR SALE

MOBILE HOME - Assumable w/\$1,500 down. Melissa Birk, Key 692-8461. 7-2-4tc

DON'T RENT. 3-1 1/2-1, \$100 down, approximately \$330 a month. Nice home near Cryovac. HUD. Gene, Alpha Realtors, 592-9574, 692-6290. 7-23-2tc

FOR RENT

3-BEDROOM, 1 bath trailer, \$300 month, \$150 security deposit. Can walk to Bradford school. Recently remodeled, no pets. Call 592-5817. 7-30-1tp

LARGE METAL SHOP - 510 E. Pasadena. 7-23-2tc

MISC. FOR SALE

BIG GARAGE SALE - Great school clothes for girls - young junior sizes 3-4 and 5-6, including Girbaud jeans; boys - all sizes (from 6 mo. to student sizes 28-30) Lots of misc., exercise bike, smoker, DP Gympac weight bench system, and much, much more. Saturday only, 7:30-1:30, 1605 Wagonwheel Dr. 7-30-1tp

MISC. FOR SALE

GARAGE SALE - 2 family. Saturday, 703 W. Louisa, 8 a.m. till ? We've cleaned out closets, drawers, etc. We've got lots of kids clothes. Boys - 8-14, girls - 5-6. A twin bed with bookshelf headboard, adult clothes & shoes. We have a lot. Come check us out. 7-30-1tp

MISC. FOR SALE

GOLF CART. Call 592-4791. 7-30-1tp
FEMALE DOBERMAN - one year old. \$75. 592-0336. 7-30-1tp
DEER LEASE HUNTERS Special - small travel trailer. 592-4233. 7-30-1tp
1978 MERCURY Monarch. Air, automatic, power steering & power brakes, cruise. Good tires, new battery and tags. 592-4887 after 7:30 p.m. 7-30-1tp

Lloyd Thompson
592-2850 592-5384
Trimming & Mowing
Cutting & Clearing
Clean-Up - Light Hauling

Buy Name Brand Major Appliances, Electronics and Furniture at Cost + 10%
See KEN at **PARKWAY**
200 W. BANK
592-5512 592-4681

More Classifieds on next page.

3 BEDROOM, 2 full baths, 2 car garage, corner. See to appreciate. \$48,000.
801 VAN HORN - 3 bedroom, corner lot, good location, near Kidwell School Must sell this week. \$32,000.
3 OR 4 BEDROOM, 1 3/4 baths, den, fireplace, kitchen appliances, beautiful back yard and garden area. Quiet street. \$59,900.
ESTABLISHED large 3 Bdrm, den, fireplace, 1 3/4 baths, triple garage. Near downtown. Being remodeled. Repairs completed \$48,000. As is \$45,000.
NICE LOT, good location. Small house on back of lot needs repair. \$7,500.
MOBILE HOME LOTS - \$60 monthly.
DEEDED .75 ACRE Lake Arrowhead lot. East of Scotland on south side of FM 172. Driveway installed, ready for building or mobile home. \$3,900.
COMMERCIAL PROPERTY immediately west of Johnson Road & Exp. 287. 3.67 acres. 400X400-ft. Paid \$40,000, will sell for \$25,000.
Have buyers, need listings!
Hunter Real Estate
Sam Hunter 107 E. Cash 592-4661 Wanda Hunter

YARD WORK

YARD WORK, Moving, edging, weedeating. Other services available. Call Eddie, 592-9561. 7-2-9tp
LAWN CARE, Free estimates. \$15 & up. Mowing, edging & trimming. Sammy Nicholas 592-4236. 7-30-4tc

TEXOMA REALTY INC.
592-9622
Thomas Johnson 592-2391
Patty McLemore 592-5109
YOUR GUIDE TO HOMES
In Iowa Park and surrounding area
Non-qualifying VA loan, 3 BR, 1 1/2 baths, living room, paneled den with fireplace. 1712 sq. ft. of friendly living for only \$41,900. 1122 W. Louisa.
313 Southgate Garden - 5 BR, 2 baths, den-family, gorgeous kitchen, dining, on 4.62 acres. Must see! Only \$69,900
1011 Louisa - Nice and large 3 BR, 2 1/2 baths, double car garage, patio. (Made for living, comfort.) Priced at \$48,000.
No. 38 Surrey - very nice, 1510', 3 bedrooms, den, formal living, 1 3/4 baths. Large pool, many other amenities. Modestly priced at \$68,500.
1511 Britain in Wichita Falls - Beautifully decorated, large 2 bedroom with utility room; lots of storage.
Member of Multiple Listing Service

KEY REALTY
Sarah Barker
Cindy Witherspoon
592-2718 592-4583
We hold the Key to your new home

Regency One REALTORS
Don't Just Dream...Live the Dream!
Office - 592-2133 or 592-2134

Winnie Jo Holmes 592-5730
Darrell Jolly 592-4926
Julie Ressel 592-2877

NEW LISTING - LONLEY ROAD
3 BR, 2 full baths, 2 living areas, breakfast area. 24X36 shop and storage. 3.1 acres. Pretty country home. \$72,500.
1820 COLLINS - WF
Approx. 1,230 sq. ft. living area. 2 BR, FP, laundry rm., lg. covered patio, nice yard, privacy fence. \$26,500.
3404 WELLINGTON
Approx. 5000 sq. ft. home. 2 living, 2 dining areas. 4 or 5 BR, separated master suite. Gameroom or office. Private study with bookshelves, new pool, new fence, 4-line telephone. 3-car garage, carport, 6.76 acres. \$287,500.
EDEN HEIGHT - W.F.
New carpet, new curtains in this lovely 3 bedroom, 1 1/2 bath home. Has **IN CONTRACT** throughout. Two car garage. \$110,000.
HELLO CANOE LOVERS! - 2994 HORSESHOE BEND
Immaculate 3 Bdrm. - 3 bath home. Formal dining-breakfast area and breakfast bar. Laundry room, large living/fireplace, study and TV room. 15X12 storage. Has pier, \$126,500.
COUNTRY ATMOSPHERE
3 BR, 2 baths, 2 living areas, 2 dining areas, 2 fireplaces, 2-car garage, sun room, new privacy fence. \$59,500.
TIME SHARE CONDO
In Christi, Colo. \$8,000. 2 weeks out of the year.

NEW LISTING - 510 W. REBECCA
4 BR, 2 full baths, remodeled, den w/fireplace, formal dining. 2 lg. storage bgs. Manicured yard. \$64,000.
405 E. JEFFERSON
This home is being painted outside, new carpet on the inside. Nice size kitchen, refrigerator and stove remain.
523 N. WALL-PRICE REDUCTION!
Approx. 1,900 sq. ft. 3 BR, 3 full baths, living, dining, laundry room & study. Corner lot. \$32,500. Make Offer.
405 E. ALDINE - PRICE REDUCTION!!!
2 BR, 1 full bath, 56X12 mobile home, does not include land. \$5,000. Will look at offers.
WICHITA GARDENS - W.F.
Corner lot. Two bedrooms, large living area, cute kitchen with dining area, new carpet. Price reduced to \$14,500
QUAIL VALLEY ESTATES - IP
2700 sq. ft. 4-3-2, formal living, den, game room, Sewing/sound room. Carpet allowance with full price offer. \$110,000.
411 W. LOUISA - IOWA PARK
4 BR home, 2 full baths, formal dining, laundry room, central H/A, two car carport. Large trees. \$37,500.
103 & 105 HAWTHORNE
2 Houses, each has living area, kitchen-dining, single BR, and 1 full bath. Live in one, rent the other. Both-\$14,500.
OUR LISTINGS ARE SELLING!!!!

NEW LISTING - 500 E. PASADENA
New carpet throughout, 3 BR, 1 bath, vinyl siding, new roof, freshly painted inside. \$31,500
108 W. CHESTNUT
2 BR trailer, IN CONTRACT aliances
workshop, 2 car garage, 14x20 trailer, 310,000
207 E JEFFERSON - IOWA PARK
IN CONTRACT n, single
0.
SMALL HOUSE - BIG LOT storage
IN CONTRACT
3886 WEST 367
2 living areas, fireplace, 2 1/2 baths, 4 bedrooms, all built-ins in kitchen. 30X60 barn, 4 horse stalls on 1.24 acres. \$90,000.
208 W. ALDINE, IOWA PARK
Approx. 1800 sq. ft. Separated master bedroom, 3 BR, 2 baths, laundry room. 2 car detached garage, 50X20 shop. Sits on 4 lots. \$50,000. Will look at 'as is' offers.
LAND-NEW LISTING-North Bell Road, 4 lots, \$12,500.
LAND - 1.6 Acres, \$13,340 (SOLD)
Vacant lot, \$1,500.
COMMERCIAL BUILDING - \$75,000. Private showing only

RESIDENTIAL

4612 SH 370	\$65,000	5 Acre, quality liv. Must see
511 W. REBECCA	\$58,000	CONTRACT PENDING
1304 EMMA	\$58,000	VA assumption. Make offer
SH 258	\$50,000	3-2-2, living area, 2 acres
300 E. GARDEN	\$46,000	CONTRACT PENDING
1308 EMMA	\$45,000	Must sell! Make offer! assumption. Low equity. Superb quality!
816 N. PARK	\$43,500	CONTRACT PENDING
405 W. CLARA	\$42,000	CONTRACT PENDING
800 PARK PLAZA	\$39,500	CONTRACT PENDING
1302 WESTRIDGE	\$38,900	CONTRACT PENDING
113 HOPE LANE		4-2-2
510 N. VICTORIA	\$27,500	CONTRACT PENDING
504 E. RUBY	\$16,000	CONTRACT PENDING
511 N. VICTORIA	\$13,500	CONTRACT PENDING
LAKE KICKAPOO		North side, large lake house, pier. City water, super great deal. Call for details.
COMMERCIAL		Super location for business, Hwy 287.
COMMERCIAL		Building in super location. 2 story, Mid-30's. Call for details!

TEXAS REALTY
109 W. Cash
592-2728
LOOK for information boxes on our yard signs. Fact sheets are FREE.

20's
903 W. Louisa
3-bedroom, big yard, near school.

30's
710 Mockingbird
209 E. Garden
1002 W. Louisa
903 Park Plaza
104 W. Ruby
1005 S. Jackson
606 N. Yosemite
1006 Park Plaza
1308 N. 4th
1310 Edgehill
1314 Westridge
40's
1607 Douglas
205 E. Aldine
50's
1504 Douglas
705 W. Coleman

60's
624 Bell Road S.
#9 Surrey
801 N. Park
#44 Surrey
70's
2400 Lansing, WF
5849 FM 1206
#26 Surrey
Land
1.73 Acres
2 Acres
32.01 Acres
38.53 Acres
54.75 Acres
Commercial
1.54 Acres
1321 N. 4th
926 & 928 W. Highway

4 BR, 3 ba., many extras, outside city limits.
3 BR, choice location, fresh interior paint.
Spacious; 2 1/2 bath; 3 BR plus office.
SOLD

Large 3 BR home on corner lot; great location.
CONTRACT PENDING with Contingency
Elegant and spacious; numerous amenities.

NE corner 3rd Street & 287 Serv. Rd.
Close to Iowa Park on FM 367.
Peterson & 287 Expressway
Corner of FM 367 & Coleman Park Road
FM 367

Old Iowa Park Hwy & Magnolia
Corner of 4th and expressway access road
Two buildings; one is leased

NEW LISTING 905 PARK PLAZA
Three bedroom, 1 1/2 bath home with fenced yard, pantry, walk-in closet in master, garage door opener. New roof this month.

Polly Spruiell
Res. - 592-4756
Mobile ph. - 733-4832

Tommy & Glenda Key
Res. - 592-4660
Mobile ph. - 733-0646
Mobile ph. - 733-4012

BUSINESS

EIBEN Home Repair and Remodeling. Additions, roofing, painting, sheetrock, doors, carports, patio covers, and more. Small jobs welcome. Reasonable rates. Licensed and bonded. 592-2053.
11-1-tfc

WOLFE ROOFING - Residential-commercial. Free estimates. 855-5657.
11-1-tfc

GARDEN HOSE REPAIRS with factory brass couplings. Parkway TrueValue.
7-9-tfc

SCHOLARSHIP \$\$\$ for education. Recorded Message gives full details. (817) 723-4289.
4-16-13ptfc

SIDING, INSULATION, windows & doors. The Great Plains Siding and Insulation Company 761-2124 or 592-9829.
10-3-tfc

BLACK POWDER Guns and accessories, revolvers \$50 and up. Powder \$5.00 lb. Will order modern guns for 10% over cost. Ye Ole Gun Shack, 413 W. Washington, 592-5430.
11-1-tfc

REMODELING, additions, or new construction. Bath and kitchen remodels a specialty. Roofing, insulation and storm windows. Free estimates, references, discount for senior citizens. Jack or David Kerr, 5056 Old Electra Rd., 592-5710.
11-7-tfc

HORTON CONSTRUCTION Additions, roofing, painting, remodeling, dry wall & acoustic ceilings. Blaine Horton, 592-5586.
11-1-tfc

FACSIMILE capability. Glenna Via Insurance.
11-1-tfc

BUSINESS

TNR CONSTRUCTION- Roofing, painting, sheetrock, and texture, brick and cement work. Licensed and bonded. Rick Caffey, 592-4625.
11-1-tfc

COPIES MADE at Parkway True Value, 25¢ each.
11-1-tfc

HOME IMPROVEMENTS from additions to remodeling. Patios and carports, acoustic ceiling, ceramic tile, general carpentry. Gary Williams, 592-2480.
11-1-tfc

LEER CAMPER SHELLS - Over 200 in stock. Most colors and sizes. Petes R.V., Marlow, 658-5114.
4-16-tfc

COPIES MADE - 20¢ each including reduction and enlargement. Iowa Park Air Conditioning, 607 E. Bank.
11-1-tfc

LAWN MOWER and Weed Eater Repair. Overhauls, blades sharpened & balanced. Also edgers & riding mowers. 8 a.m. - 12 noon. 592-5734.
7-9-4tp

\$1000 REWARD

For information leading to the arrest and conviction of any person or persons involved in theft, vandalism, arson, fishing or hunting on any of our properties in Wichita, Archer, Wilbarger, Clay, Wise or any other county in which we may have equipment located. Tom Swanson Oil Co., TS&T Drilling Inc. Ph. 817-495-3971.

DOMESTICS

KING'S KIDS Christian Day Care. Openings, all ages - 18 mo. & older. Summer activities. 592-4242.
7-9-6tp

REGISTERED Day Care has openings for two school age children. Summer activities. Mary Bidy, 592-4302.
7-9-tfc

LEE'S DAY CARE has 4 openings, 18 months and older. USDA required meals served. FM 369, Iowa Park School District. 851-8546.
7-16-4tc

REGISTERED Child Care, Monday - Friday. 592-4466.
7-16-4tp

REGISTERED Child Care has 2 openings for 18 months though pre-school age. USDA food program. Call Nancy, 592-4657.
7-23-tfc

OPENINGS for infant through 4 years old in registered child care home. Call Dianna, 592-9561.
7-23-5tp

NOTICE

FREE PUPPIES - Mother, retriever, daddy? Call 592-9413.
7-30-1tp

NOTICE OF PUBLIC MEETING

The Texas Department of Transportation (TxDOT) will conduct a public meeting on August 14, 1992 from 4:00 P.M. to 6:30 P.M. at the District Office Assembly Room, which is located at 1601 Southwest Parkway in Wichita Falls, Texas. The purpose of the public meeting is to allow public input into the Project Development Plan (PDP) and Transportation Improvement Plan (TIP) preparation process. A list will be provided of projects selected in Phase I, proposed to be selected, and proposed to remain pending. Maps and drawings will be on display. Mr. Dale Cantrell, District Design Engineer with the Texas Department of Transportation in Wichita Falls, will be in charge of the meeting. The meeting will be informal, and all interested citizens are invited to attend and express their views on the proposals. Written comments may be submitted to the Texas Department of Transportation, 1601 Southwest Parkway, Wichita Falls, Texas 76302, but must be received not later than 10 days after the public meeting.
7-16-2tc

HELP WANTED

PART-TIME counter help. Experience preferred. Apply in person, Harvey's Family Restaurant.
7-9-tfc

THE CITY OF IOWA PARK, Texas (pop. 6,072) will accept applications for Police Chief. Applicants must be a certified peace officer in the State of Texas. Salary is negotiable and request applicant submit expected salary. Send resumes to Mayor Wayne House, P.O. Box 190, Iowa Park, Texas 76367. Closing Date: 9/4/92.
7-30-4tc

POSITION OPEN - Executive Director for the Iowa Park Recreational Activities Center (RAC). Mail resume to RAC, attention Dolores Hamilton, Box 430, Iowa Park 76367, or bring to 112 West Cash. Must be able to start by Aug. 12. Deadline for applications is Aug. 7.
7-30-2tc

NEEDED: Beginning piano teacher in Iowa Park for 8-year-old child. Call 592-4693.
7-30-1tc

PART-TIME delivery drivers. Apply in person, Ken's Pizza.
7-30-tfc

SHIFT LEADER - apply in person, Ken's Pizza.
7-30-tfc

KENDELL J. HILL
Electrical Contractor
All types of electrical work
592-4773

Telephone Jacks/Wiring
Installation or Repair
Low Rates
Free Estimates
592-2243

Come see what's happening in the World of **AVON**
You can be a star in the New Star Program
Jennifer Goin 592-9607

CEMETERY MONUMENTS
DALE THOMPSON
Sales and Installation
Representing
Lancaster Memorials
of Wichita Falls - 592-4747

Park Home Health Services
592-2753
Phone Answered 24 hours
Medicare-Medicaid approved
Private Insurance

To all the citizens who supported the vote against the **Multi-Purpose Events Center: "THANKS"**

MINI-CON Self-storage
1. Variety of sizes.
2. Competitive prices.
3. Locally owned and operated.
4. Monthly rates.
805 W. Hwy. 592-2761

The Following is a list of dissatisfied Leader Classified Advertisers:

THE WEEKLY OIL AND GAS REPORT

PREPARED BY OIL & GAS REPORTING SERVICE, INC.
P. O. BOX 2645, CORPUS CHRISTI, TX 78403 512/883-6533
RRC DISTRICT 9 - WICHITA FALLS

WICHITA COUNTY

BOHNER OIL COMPANY of Wichita Falls, Tx has filed for a permit to DRILL a 600' depth Wichita County Regular Field well 3 miles N of Kamay. The KEMP & ALLEN 'A' [SHALLOW] No. 3-S is located on a 40 acre lease in the Lot 6, Block 26, K.W.V.F.L. S/D.

BOHNER OIL COMPANY of Wichita Falls, Tx has filed for a permit to DRILL a 1400' depth Wichita County Regular Field well 3 miles N of Kamay. The KEMP & ALLEN 'A' [SHALLOW] No. 4-S is located on a 40 acre lease in the Lot 6, Block 26, K.W.V.F.L. S/D.

CODA ENERGY, INC. of Dallas, Tx has reported a NEW OIL WELL COMPLETION in the Wichita County [Special] Field, 2 miles NE of Electra. The B. A. BYWATERS No. 149, located on a 292.50 acre lease in the S. P. RR. Co. Survey, A-280, tested 20 BO/D, trace of gas, 392 BW/D, on pump from perfs 1477'-1506', 1593'-1614' and 1758'-1802' after acid and frac treatment.

F. T. FELTY OPERATING COMPANY of Burkburnett, Tx has filed for a permit to DRILL a 1950' depth Wichita County Regular Field well 2 miles S of Burkburnett. The L. K. HOLMAN No. 12 is located on a 120 acre lease in the Reuben Hornsby Survey, A-97.

J. FRANK HOOD, JR. of Wichita Falls, Tx has reported a NEW OIL WELL COMPLETION in the Wichita County Regular Field, 1.5 mile S of Clara. The MOBIL-FOSTER No. 2, located on a 103 acre lease in the Charles Roberts Survey, A-566, tested 16 BO/D, no gas, 20 BW/D, on pump from perfs 1196'-1200' after frac treatment.

PRIMROSE OPERATING COMPANY of Wichita Falls, Tx has reported a NEW OIL WELL COMPLETION in the Wichita County Regular Field, 6 miles N of Iowa Park. The W. F. RAMMING 'A' No. 59, located on a 100 acre lease in the H. T. & B. RR. Co. Survey #1, A-124, tested at rate of 14 BO/D, no gas, 34 BW/D, on pumps from perfs 1530-44' and 1606-14' after acid and frac treatment.

PRIMROSE OPERATING COMPANY of Wichita Falls, Tx has reported a NEW OIL WELL COMPLETION in the Wichita County Regular Field, 6 miles N of Iowa Park. The CLARA RAMMING No. 34, located on a 110 acre lease in the H. T. & B. RR. Co. Survey #1, A-124, tested at rate of 15 BO/D, no gas, 2 BW/D, on pump from perfs 1174-80' and 1652-62' after acid and frac treatment.

PRIMROSE OPERATING COMPANY of Wichita Falls, Tx has reported a NEW OIL WELL COMPLETION in the Wichita County Regular Field, 6 miles N of Iowa Park. The CLARA RAMMING No. 36, located on a 110 acre lease in the H. T. & B. RR. Co. Survey #1, A-124, tested at rate of 16 BO/D, no gas, 38 BW/D, on pump from perfs 1178-84, 1290-94' and 1554-60' after acid and frac treatment.

RAY CRAIGHEAD of Wichita Falls, Tx has filed for a permit to DRILL a 2000' depth Wichita County Regular Field well 5 miles S of Electra. The MRS. E. D. COLLETT No. 24-C is located on a 251.4 acre lease in the G. C. & S. F. RR. Co. Survey #1, A-767.

S & J OPERATING COMPANY of Wichita Falls, Tx has reported a NEW OIL WELL COMPLETION in the Wichita County Regular Field, 3.5 miles N of Kamay. The J. & J. WAGGONER 'A' No. 1711, located on a 40 acre lease in the H. George Survey, A-454, tested 34.3 BO/D, no gas, 71.4 BW/D, on pump from perfs 1376-94' and 1504-14' after frac treatment.

R&R Carpet Cleaning
Best prices on carpet, upholstery & car interiors.
Free estimates
Call Ronnie - 767-4660
24-Hour Emergency Service

504 E. Hwy. 592-5163
The World Store
Jewelry - Toys - Tools Imports - Gift Items
Over 50 Alternative Perfumes - \$3.99
WHY PAY 8 TIMES MORE?
100'S of Earrings - New Each Month - 99¢
Short Sets Reg. Size \$11.99 Plus Dize \$14.79
Pants Sets Reg. Size \$14.99 Plus Dize \$15.79
LinBo Wholesale offers Dealer Discounts
Small quantity buyers welcome

The PRO Approach
MOW LIKE A PRO.
Take advantage of the summer's best prices on all the powerful, professional-quality mowers from Poulan Pro®.
MODEL PP1844B Reg. \$2,699.00
\$2,399.00
Features:
•18 HP Kohler Magnum engine w/oil filter
•44", 3 blade vented mowing deck
•6 forward speeds, 1 reverse speed transaxle
•Dash-mounted electric PTO switch
•Adjustable cutting height
•Mulch capable
C&L SERVICE CENTER
205 N. Colorado 592-2733

Arto's HOME PEST EXTERMINATORS SINCE 1959
322-8771
"Professional Pest Control Service"

IOWA PARK AIR CONDITIONING & HEATING
You can trust us even if you can't trust the weather
TRANE
592-2761
TACLA001156C
We have 24-Hour Service
We service Carrier and all other brands

POSEY'S APPLIANCE SERVICE
We service all makes of washers, dryers, freezers, refrigerators and window air conditioners
208 James Drive Phone - 592-5452

Jim's Conoco
Check with Jim or Mark Shirley for expert repairs on your vehicle.
592-4897
612 W. Highway

KINGS KIDS CHRISTIAN DAYCARE & PRESCHOOL
"Iowa Park's finest for Parents who care"
202 N. Jackson 592-4242

WOODBRIAR COMMUNITY
1 and 2 Bedroom Units Available
(Selected 2 & 3 BR Units have washer/dryer connections)
Lots of Storage Fenced Playground
Discount for Retired and Elderly People
ALL BILLS PAID (includes Basic Cable)
Check about our Section 8 for elderly.
Come to the Woodbriar Community
1000 Mary 592-2121

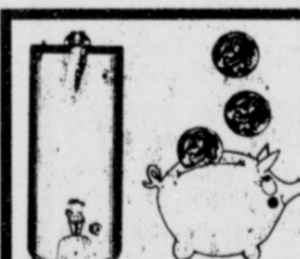
One bedroom apartment \$189 to \$199
Two bedroom apartment \$229 to \$244
•Energy efficient •Off-street parking
•Central Heat/Air •Water paid
•Children's Play Area •Total electric
•Fully carpeted and draped •Full equipped laundry room
COLONIAL HEIGHTS APARTMENTS
Handicap Accessible 592-2705

GIFT IDEAS
Let Mary Kay help with your year-round gift ideas.
Wrapping & delivery. It's easy!
Call Norma Young, 592-2337

Shaklee Distributors
Ruby & Dan Love
1601 Karen, Iowa Park
592-5951

Cash for Cans IOWA PARK RECYCLING CENTER
Corner Pacific & Bank
9 a.m. - 6 p.m., Fri. & Sat.

FAX Messages
Ph. 592-5613
Copies made - 15¢
USP Packages
Hughes Pharmacy



OUR MOST AFFORDABLE MODEL
Quality and Workmanship at a Special Value Price
If you're looking for a new water heater at an affordable price, call us today.

FEATURES
•High density foam insulation
•Porcelain glass-lined tank
•Anode rod for corrosion protection
•Five-year tank warranty
•Factory installed temperature and pressure relief valve
•30-gallon gas
\$149⁹⁵
Includes free delivery in town
Parkway True Value HARDWARE
200 W. Bank 592-5512 592-4681
Master PLUMBER