

MRS. LITA WATSON  
520 W. CLARA  
IOWA PARK TX 76367  
112

# IOWA PARK LEADER

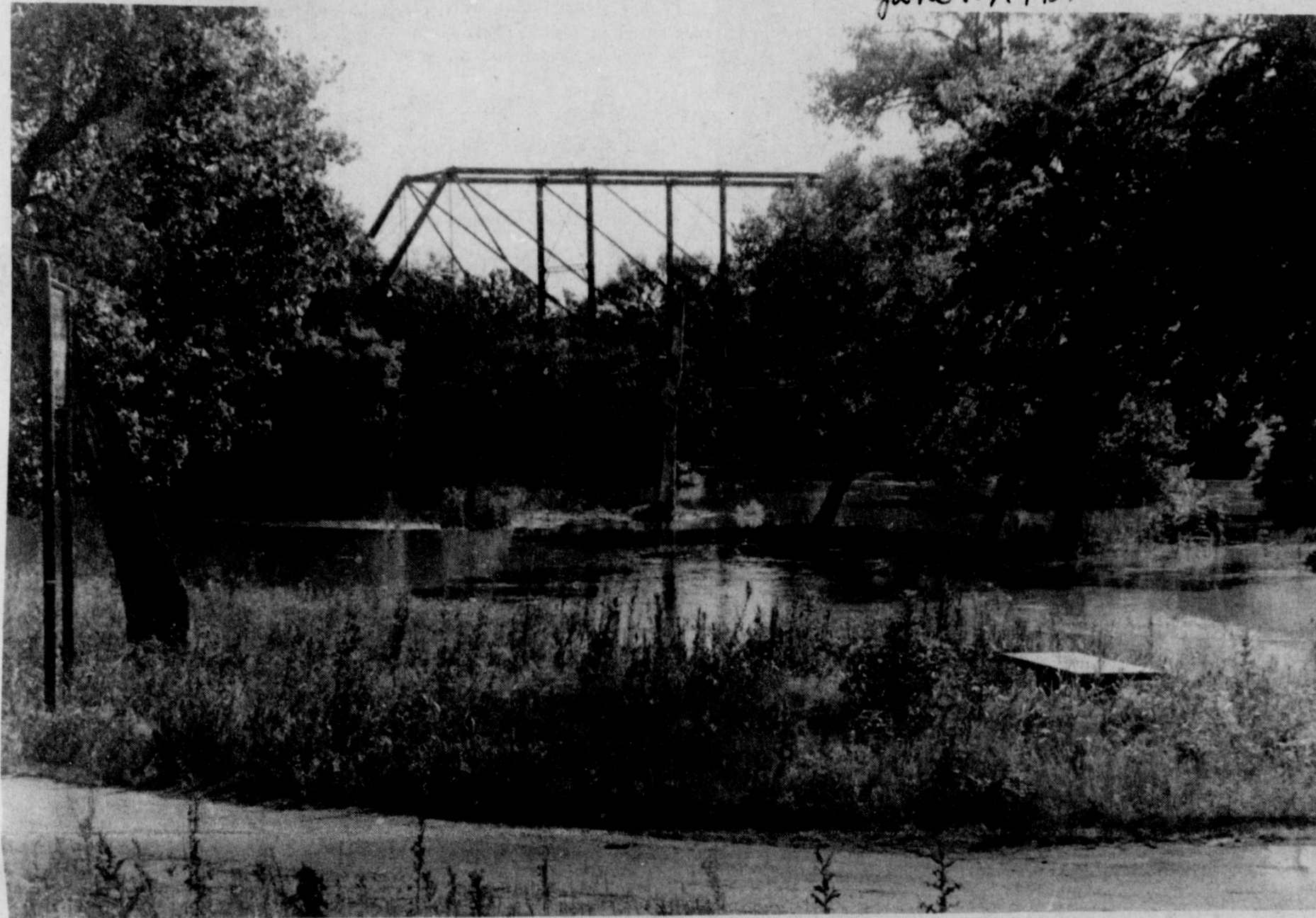
50  
Cents

Vol. 23, No. 38

IOWA PARK, WICHITA COUNTY, TEXAS 76367

Thursday, June 4, 1992

June 11, 1992



WICHITA RIVER AT FM 368 WAS WELL OUT OF ITS BANKS TUESDAY MORNING  
... most of Burnett Park area was flooded from rising water caused by recent rains.

## Storm floods areas

### Total rainfall for week 2.83 inches

A loud and brilliant storm that moved over the area Sunday afternoon contributed most of the week's 2.83 inches of rainfall.

Streets, especially in the Garden Valley area, were flooded. Several areas of the city were left temporarily without electric service, and numerous burglar alarms were set off, by lightning.

Rushing runoff waters flooded one

home, but it was not in the south part of town. Residents of a home in the 600 block of West Clara were assisted in evacuation by volunteer firemen.

Virgil Woodfin measured 2.20 inches Monday morning. Another .63 was caught from showers Thursday and Friday, raising the week's total to 2.83 inches, he reported.

Barricades were put into place on several streets in the Garden Valley area, warning motorists of the high water.

A part of FM 368 was under water near the fertilizer plant for a few hours, but later receded.

Volunteer firemen and ham radio weather observers stationed in areas around the city at various times Sunday, whenever threatening clouds approached the area.

The rains only added earlier woes

for farmers. Virtually all the wheat fields remained untouched by harvesting combines, because they were unable to move the heavy equipment under muddy conditions.

Farmers whose crops continue to stand are concerned both by grain beginning to sprout in the unharvested heads, as well as weeds growing rapidly because of helpful moisture.

Thus far, however, hail has not yet struck area fields, as it has primarily to counties west and southwest.

Oil field workers likewise are hampered by muddy conditions and lightning knocking out electric motors.

Meanwhile, city street crews are hampered in work scheduled for them, both resurfacing and repairing potholes, because of the continuing wet conditions.

## Trustees approve salary increases

Iowa Park school trustees, in a called meeting Thursday, approved a proposal to give a salary increase to all personnel in the district who have reached the tops of their pay scales.

All, that is, but one. Supt. Glen Mitchell did not include himself among the 41 professional staff members who were included in the proposal.

Additionally, additional steps for all maintenance, custodial and lunchroom personnel likewise were increased.

The board agreed to hold its regular monthly meeting at 7:30 p.m. Monday in the junior high library.

"Steps" defined by House Bill 72 amount to \$1,140 annual salary increases. There are 10 such steps included in that piece of legislation.

However, the regular salary increases in the legislation did not include any personnel in the system except teachers, leaving that to decisions of local school boards.

Among the 149 professional and paraprofessional positions currently employed by the district, 42, including the superintendent, have reached the

Continued on page 4

## Burglars hit school auto mechanic shop

Police are continuing investigation of a major burglary at the auto mechanics building of Iowa Park High School, discovered Friday.

While no complete inventory appears available, police estimate the cost of replacing all the various tools taken will run between \$15,000 and \$20,000.

Actually, the building's entry may have been noted shortly after midnight Thursday.

According to a blotter entry made at 12:39 a.m. Thursday, an officer found

a door open. The radio dispatcher called Principal Richard Davis.

Davis reportedly asked if anything appeared to be missing, but the officer said he could not tell and was told to secure the door.

School officials checked the building Friday morning, and determined locks to all cabinets had been cut off. Further investigation determined virtually every tool in the building, used

Continued on page 4

## Porcelain portraits prove painter's proclivity

By Myrna Smith

Dorothy Lowry grew up with a special talent and a love of art instilled in her mind by her mother. She has expanded on these gifts, adding her own concept to the nuances in her world of artistry.

Dorothy is especially gifted in portraying faces on porcelain tiles and vases. And, the exquisitely executed pieces displayed in her home are ample proof that she loves her work. Each of them takes on a character of their own, and each deserves individual attention.

Dorothy credits her mother with getting her started in the field of art, and she credits Mildred Metz with her becoming interested in china painting.

"My mother loved all kinds of art but never got to take art lessons and fulfill her dream, so she pushed me to do art work after she realized I had some talent for it. I guess she is living her dream through me," Dorothy explained.

Not long after Dorothy and her

husband, Robert, moved to Iowa Park in 1961, Mrs. Metz was trying to get a class in china painting started, but the instructor would not take less than five students, so, "Mildred talked me into taking the china painting class", Dorothy said.

She had taken a few art lessons while her husband was attending Texas Wesleyan College. For several years she did oils and pastels.

They moved to Wichita Falls and Lowry was an instructor at SAFB. He decided he would rather live in a small community so they moved to Iowa Park. Dorothy said he could get to Sheppard quicker from here than from where they lived in Wichita Falls.

After he retired from SAFB Lowry worked seven years for the Department of Human Services in Wichita Falls.

After moving here Dorothy became interested in the art of making porcelain dolls, through the influence of the John Chapmans. "But making dolls is more than just painting their

faces, you then have to make clothes for them, so I didn't really want to keep making dolls.

"I became sold on the art of porcelain when my mother's house burned to the ground," Dorothy said. She explained that her mother had wanted every picture she painted and had her walls full of her daughter's work. When the house burned everything was lost, all of her canvas paintings were ruined.

But, "A porcelain doll mother had that was made in 1901 and had belonged to her sister, did not burn. Her face was cracked in places, but I brought it home with me and took it to the Chapmans," Dorothy related.

She said Chapman made a mold of the head and poured the porcelain for it. Dorothy finished the doll for her mother, so she would at least have a replica of the original. After that her mother then encouraged Dorothy to work with porcelain.

"When I decided to take the china painting class with Mildred, I thought I had a lot of paints and brushes. After I started that class I found out I lacked a lot having enough," Dorothy recalled.

After she started the class that became a regular activity the next five years. The first large size portrait she painted on porcelain tile was of a picture her husband had sent to her from Italy.

Also it was one that her art teacher told her was much too advanced and that she was not ready for something like that portrait in her lessons.

Dorothy was sure that she could do it, so when her teacher returned from her vacation, Dorothy had the beautifully executed portrait completed.

"Some pieces seem to speak to me and tell me their story," said Dorothy. It seems she sees a story in every thing she does. Perhaps the inspiration she

gets from them feeds her creativity, and she has found another challenge.

The portrait she did against her art teacher's advice, says to her "here's an old musician who slips off to his wine cellar with his beloved violin to play and reminisce better days".

Dorothy explained that the art teacher had them paint a lot of flowers and for Dorothy that did not tell a story. Then too, she doesn't like pastel colors nearly as much as she does darker colors.

Dorothy's mother again was her avid supporter as she began painting portraits on flat tiles as well as other pieces.

"Portraits are such a challenge and to make them fit on an odd shaped vase, plate or bowl, takes a lot of work. You have to get the correct composition and perspective so it will fit a particular classically shaped urn or vase or odd shaped china flat I plan to paint."

She may spend as much as four or five days drawing the subject on brown paper.

"Each shape of china requires different ideas. The perspective has to be a thing of precision to make everything work right on the odd shapes," Dorothy said, adding, "The flat tiles aren't much of a problem, except you have to give the people real features."

She referred again to the picture her husband had sent to her. "Until I really started to study that picture I did not realize the man did not have a nose. The way the artist had used his paint on the canvas had given the illusion of a nose. You can't do that when you paint a portrait on porcelain."

"That is when I began asking myself, 'Are you seeing what you are looking at, or looking at what you see?'"

Continued on page 2

## News Briefs

### Iowa Parkan suffers stab wounds

An Iowa Park man is listed in serious condition in a Wichita Falls hospital after being stabbed several times Saturday night.

Michael Schmidt, 34, was involved in an altercation in the parking lot of Lannie's Place, 1400 Iowa Park Road,

when he was stabbed in the chest and stomach area.

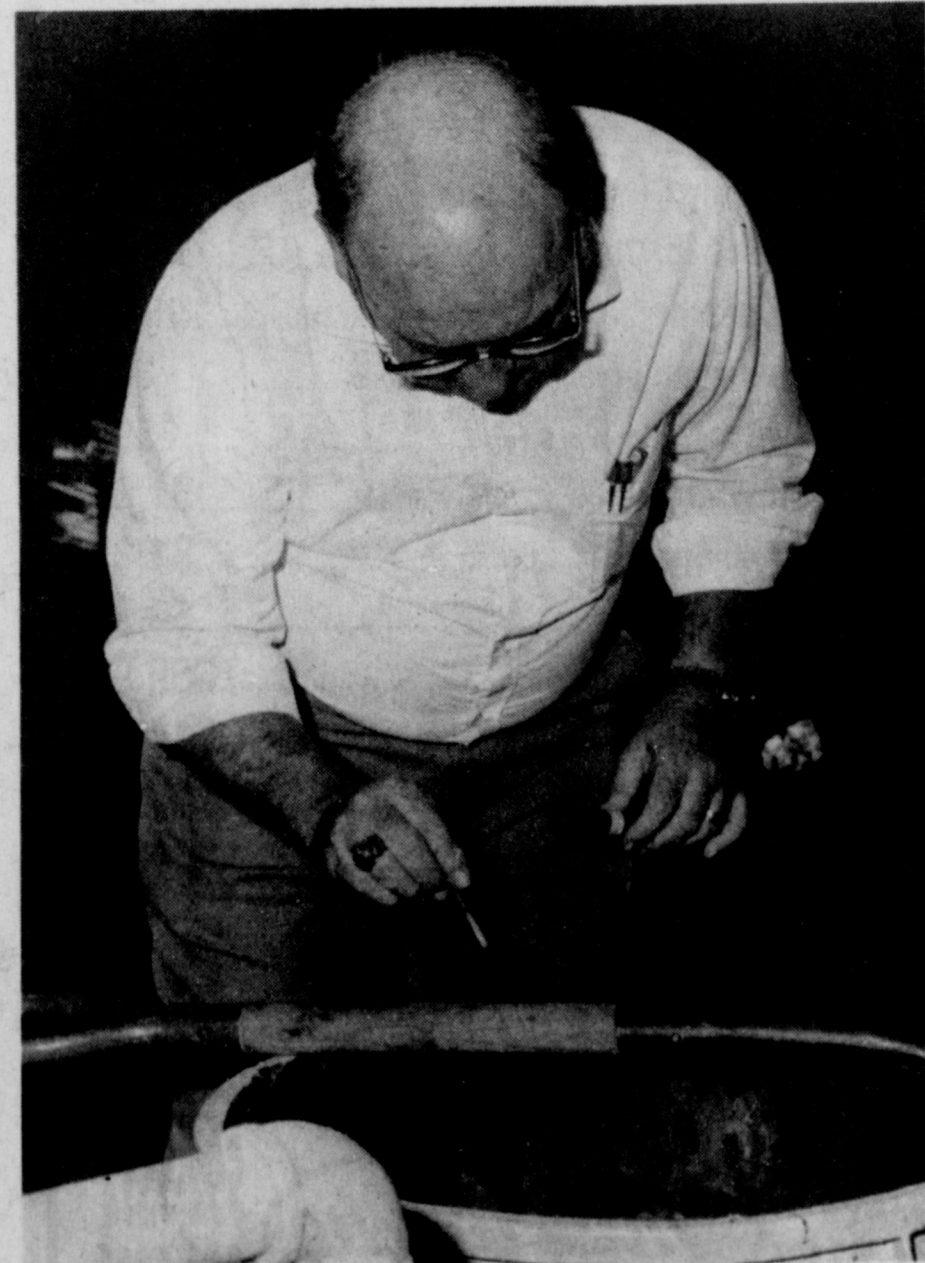
The incident took place about 1 a.m. Sunday.

Charges are pending against a suspect in the case, according to Det. Tony Fox of the Wichita Falls Police Dept.

### USDA commodities here June 18

Distribution of U.S.D.A. food commodities will be held Thursday, June 18, at the First Christian Church,

according to Miss Frances Park. To be distributed from 2 to 6 p.m. will be flour, butter and tomatoes.



CHIEF WAYNE PARSONS DUSTS FOR FINGERPRINTS  
... on shovel handle believed to have been used by thieves.

# Painter's proclivity

Continued from page 1

Dorothy does do crafts, but her china painting is very slow, it is process after process, and she says, "for the artist or craftsman in a hurry, it is something they should not get into."

To achieve the exact color she wants, she uses transparent paints, and coat after coat of color.

She does not like to do two of the same portrait, or any subject, because she says they will never look exactly the same. If anyone sees one and wants her to do a second like it, they really won't be just alike.

"I never remember the colors I mixed or how much I used to achieve the finished product. The eyes are the hardest thing about a portrait for me," Dorothy says.

"Many people think of china painting as pastels, but the Old Masters used dark colors, and I love the strong colors, I just add color after color. And many times after a piece is fired I will see that an eye needs a little more depth. I just keep painting until I am satisfied," Dorothy said. "I have given up everything else for my china painting," she added.

An inspiration for one of her paintings on a flat porcelain tile was a picture taken from a London Herald printed in 1848. The accompanying story told that when the farmers came to town with their nosebags was how the English people knew spring had arrived.

And if Dorothy sees a picture and it does not have a story with it she uses her imagination to give it a story.

Dorothy has taken one bedroom of their home and made it into her workshop. It is filled with many pieces of her work in various stages of completion. One shelf is lined with beautiful plates.

The closet in this room has been converted into a storage for her many pieces of china flats she has bought at various gift shops in Lubbock, Happy, and other places. Some of them, her relatives have bought for her because they were of unique shapes. Some of them are from a shop that she bought the inventory.

Dorothy has two large kilns and two small ones, that she uses for her firing. When she takes her work from a kiln for the last time, the deep colors take on a softened lustrous cast.

Currently she is working with three pieces of tile on which she has figures of children that she made from line drawings in an 1800s magazine that tell a story.

The many pieces of her own creativity are sprinkled with sentimental antique pieces and beautiful figurines that are gifts from friends.

In her workshop she has many antique books for study, some printed in the 1800s. She uses those also for ideas to do portraits.

Dorothy is a jolly person and laughter comes easy for her. She commented, "I certainly have never been bored, as so many people say today. But I can tell anyone who thinks they would like to work with china painting they had better have a lot of patience."

She raked up 833 hours of study with Letha Cornish of Wichita Falls and studied with Paula White and Sharon Steen. She also studied with Margaret Winburn, an internationally known porcelain teacher who was brought to Wichita Falls by the Wichita Falls Porcelain Art Club.

Dorothy was president of the Wichita Falls Club two years. She also is a member of the national and international porcelain associations. She is a member of the Iowa Park Arts and Crafts Association, but currently is on the inactive list.

She has given seminars or demonstrations on china painting to Porcelain Art Clubs in Frederick, Okla., Vernon, Nocona, Seymour and Mineral Wells. She will probably do that again in the fall.

Dorothy has received many first and second place awards at shows she has entered, and last year she received the People's Choice Award at Iowa Park's Whoop-T-Do.

Dorothy recently came into possession of a beautiful antique clock that belonged to her grandparents. The clock was made in the late 19th and early 20th centuries and sold for \$6. It has all of its original works and is still striking every hour on the hour.



**DOROTHY LOWRY**

... with few of her beautiful pieces of art.

The ornate clock holds a number of memories for Dorothy, including the fact that she remembers her grandmother would stop the clock the minute anyone in the family died, and she remembers that happened when her grandfather died, but she never knew why.

Also, the clock has an open place in the back that she remembers her grandfather would stick his hand in and she would wonder why he did that. Finally the secret was out. She saw him one time pull out a large roll of something that she found out later was his chewing tobacco.

Dorothy was born at Oran, the area where the legendary Charles Goodknight started out. Only at that time it was called Black Springs.

The Lowrys have one daughter, JoAnn Ratcliff of Denton. She graduated high school in Iowa Park and attended Midwestern State University. She came back here to teach

two years. She also taught in Mineral Wells before moving to Denton.

The Lowrys also have one grandson they idolize, and Dorothy especially does, because he loves and appreciates her artistry. In fact, he does a lot of drawing and sketching himself, and she hopes he will follow in her footsteps with some art form.

Robert and Dorothy also kept two children for three and one-half years while their father was in service. Their mother left one night while they were asleep and never returned. So the Lowrys like to claim them at least as foster children.

Dorothy says she just hopes she lives long enough to paint all of the things she has in mind that she wants to paint.

EXPRESS YOURSELF  
with a letter to the editor  
Iowa Park Leader  
P.O. Box 430  
Iowa Park, TX 76367

## Obituaries

### Kathryn Angela Baxter

Former Iowa Park resident, Kathryn Angela Baxter, 79, died Tuesday in an Amarillo nursing home.

Graveside services will be at 10:30 a.m. today in Highland Cemetery with Dr. Greg Ammons, pastor of Faith Baptist Church, officiating. Arrangements are under the direction of Dutton Funeral Home.

Mrs. Baxter was born Jan. 13, 1913, in Millsap, Texas, and had been a resident of Iowa Park most of her life, and was a member of Faith Baptist Church. She had lived in Amarillo five years.

Survivors include a daughter, Joan Looney of Amarillo; a sister, Marie Gouchie of Wichita Falls; a brother, Howard of Electra; and two grandchildren.

### Card of Thanks

We would like to say thank you to the woman who gave our kids a ride to the Fina Station on Johnson Road last Tuesday.

Eddie and Donna Ewing

### Card of Thanks

We would like to thank the Iowa Park Volunteer Fire Dept. and everyone else who tried to help save our home on Rifle Range Rd. on April 17.

J.T. and Naomi Ray

### Helpful Facts

Any person or persons soliciting door to door in any Iowa Park residential area is required to pay a fee of \$30 per day, and register at the Public Works office at the city hall.

### Helpful Facts

Regular meetings of the Iowa Park city council is at 7 p.m. on second and fourth Mondays, in council chambers at 103 N. Wall. All meetings are open to the public.

Does your subscription to The Leader expire this month? Check the list on page 4.

## Make Sure You Have The Right Insurance Coverage On Your Home

With Prudential's Pru-Review

For your fast and free Pru-Review, contact me today.

Glena Via Insurance  
206 W. Bank, Iowa Park  
817-592-4159

The Prudential  
©1984 Prudential Property and Casualty Insurance Company, Holmdel, N.J.

## FUN HOUSE ARCADE

**113 W. Park  
592-5591**

Video Games ~ Pin Ball ~ 2 Pool Tables

**Come by and Check Us Out!**

Monday: 3 p.m. to 7 p.m.  
Tuesday through Friday: 9 a.m. - 7 p.m.  
Saturday: 9 a.m. - 5 p.m.

In the same building with Jimmy's Barber Shop and Four Seasons Sports Cards

## True Value HOT BUYS

 <b>1.99</b> 15-Oz. Wasp & Hornet Spray reaches nests up to 25 ft. above the ground. 440-7	 <b>49¢</b> Charcoal Lighter Fluid is a low-odor, clean-burning formula. Quart. 7138C	 <b>37¢</b> Cloth Duct Tape helps save energy by sealing ducts. In economical 10-yd. roll. 8200-P987
2 1/2 Gal. Poly Gas Can.....	\$2.99	
Kingsford 10-lb. Charcoal.....	\$2.99	
22 oz. Fantastik Cleaner.....	\$1.99	
Electrical Receptacle (Ivory White or Brown).....	39¢	
Quiet Switch (Ivory White or Brown).....	59¢	
G.E. Soft White Bulbs (60-75-100 Watt).....	\$1.69	
9 oz. WD 40 Spray.....	\$1.39	
White Toilet Seat.....	\$4.98	
Weedeater Gas Trimmer.....	\$69.99	
3 Speed 12-inch Oscillating Fan.....	\$14.99	
3/4"X60 Yards Masking Tape.....	49¢	
16 oz. Nail Hammer.....	\$4.29	
Brown Jersey Gloves.....	77¢	

## PARKWAY

200 W. BANK  592-5512  
592-4681

# PARKWAY True Value Father's Day Gift Ideas

**EAVESDROP ON YOUR CITY TONIGHT .....**



**139.99**

**IN WAREHOUSE**

**BC-177XL  
16 Channel Scanner**

A full featured step-up from the BC-147XL at a great savings. Scans 16 channels in 11 bands including aircraft. It has a full 8 digit frequency channel display, automatic search to find active new frequencies, channel one priority checks for important not-to-be-missed broadcasts, instant weather search, plus a three second scan delay to prevent missed transmissions.



**159.99** Similar  
Dual-Burner Gas Grill.  
Deluxe cart, with 430-sq. in. cooking area. 31AC



**39.99**  
40-Watt Flying Insect Killer zaps insects. Safe for people or pets. XL200



**5.99**  
Electric Charcoal Starter is solid-state, with a stainless-steel stand. 25153



**2.49**  
Grill Brush And Scraper has brass bristles and hardwood handle. 7272



**99.99**

**BC-147XL  
16 Channel Scanner Radio**

The industry's best selling scanner is fully programmable with 16 channels covering 10 frequency bands. It also has a built-in 3 second delay to prevent missed transmissions, and a priority feature that checks channel 1 every two seconds for important messages. Plus, instant search for emergency weather conditions. You can also review the frequencies programmed on each channel with the touch of a key and lock out select channels you choose not to scan. You can see why the BC-147XL is our best seller. Make it yours too!

## PARKWAY

200 W. BANK  592-5512  
592-4681



Just say "Charge It!" at participating stores

## Evening Lions officers installed

Jerry Boone, director of Region IV of Lions District 2E-1, installed new officers of the Evening Lions Club Tuesday. He was introduced by Cornell Evans, retiring president.

He preceded the installation by giving the goals and challenges of Bill Terry, incoming district president. Officers installed included: Pete Elliston, president; Harvey Troutman, first vice president; Joe Strickland and Gordon Callahan, second and third vice-presidents; Gordon Giffith, secretary; Virgil Woodfin, treasurer; Lem Tate, Lion tamer; Jerry Pruet, tail twister; Milton McWhorter, Sam Hunter, Riley Thompson and Claude

Johnson, directors; C.L. Thompson, liaison officer for the Lioness and Lions Clubs.

During the evening, McWhorter, was inducted as a new member by Boone, and Sam Hunter was presented with the Lion of the Year plaque, not only in recognition of what he has done for the club during the 1991-92 club year, but also for his faithful service for the many years he has been a member of the club.

Special guests included Tammy Worley of Wichita Falls; Mmes. Evans, Johnson, Troutman, McWhorter, Tate, C.L. Thompson, and Hunter, wives of the Lions.

## Cookout honors recent graduate

A recent cookout for Jeremy Dale Johnson in honor of his graduation was given at the home of Fannie Price.

Johnson, son of Mr. and Mrs. Aric Johnson, graduated Midway High School as salutatorian.

Members of Grace Baptist Church of Iowa Park, where Johnson's father is pastor, hosted the party.

The party area was decorated with graduation balloons. The large cake was decorated checkerboard fashion in red and white, colors of Midway High School. Red roses and

silhouette heads depicting capped graduates decorated the cake.

The honored graduate was selected Mr. MHS, Most Handsome, Most Athletic and was recipient of the English Award.

He also was Regional Qualifier in track in the 200M, 400M and Sprint Relay. He was a member of the varsity team in basketball, baseball and track, was All Regional Basketball, team two, and All District Most Valuable Offense Player.

Johnson will enter Midwestern State University in the fall.



## RAC NEWS

By SHERI KENNEDY

### Story Patch Players

Tomorrow is the big day for the Story Patch Players. The presentation begins at 10 a.m. here at the RAC, and the cost is \$1.50 per child. We hope you will join us.

### Summer League Volleyball

Summer League play (6 person coed) is scheduled to begin the week of July 6th. For information or to pre-register contact the RAC.

### Children's Activities Schedule

**June 16, 9:30 - 11 a.m.** - Ceramics, 8 years old and up. Spoon rest, \$2.00 fee.

**June 16, 1-2 p.m.** - Arts & Crafts, 4 to 7 year olds and 8 year olds and up. \$1.00 fee.

**June 18, 9-10 a.m.** - Bingo for school-age children, and Objects Bingo for pre-schoolers. No charge.

**June 18, 1-2:30 p.m.** - Ceramics, 8 years old and up. Spoon rest, \$2.00 fee.

### Volleyball Tournament Schedule

**June 20 - 6 Person Coed Recreational** - 10:30 a.m., \$60 per team.

**July 11 - Men's Foursome & Women's Foursome**, 7:30 p.m., \$40 per team.

**Aug. 1 - Four Person Coed**, 7:30 p.m., \$40 per team.

**Aug. 8 - RAC Community Day Draw** Tourney, 1:30 p.m. Free.

**Aug. 22 - 3 Person Coed**, 7:30 p.m., \$30 per team.

Pre-registration requested.

### Bridge Club

With four tables in play Monday afternoon, Beatrice Mayfield had the high score of 4,880, and Dolores Hamilton was second high with 4,270.



Karen Michelle Ellis and Joseph Leon Pickrel

## Couple select August date

The engagement and future wedding plans of Karen Michelle Ellis and Joseph Leon Pickrel have been announced by the bride-elect's parents, Clayton Ellis of Iowa Park and Cookie Ellis of Roswell, N.M.

Howard Pickrel and Fortune Pickrel, both of Dallas, are parents of the groom-to-be.

The couple will pledge vows of matrimony Aug. 15 at Chapel No. 3, Sheppard Air Force Base.

Miss Ellis is a graduate of Iowa Park High School and is attending Midwestern State University as a pre-physical therapy major.

Pickrel graduated Joseph Berkner

High School in Richardson and attending the University of Texas at Austin. He is a dental technician in the Air Force, stationed at SAFB.

## In The MILITARY

### Col. Lucy Retiring

Col. Forest Lucy is to retire June 30 from the U.S. Marine Corps. He and his wife plan to move to San Angelo from their current home in Fairfax, VA. upon retirement.

**HOT! HOT! HOT!**  
**SUMMER SIZZLER**  
DESIGNER SERIES SILADIUM® CLASS RINGS

DESIGNER SALE PRICE: \$64.95  
MANUFACTURER'S REBATE: -5.00  
**\$59.95**

**LOWEST PRICE OF THE YEAR!**

PLUS, up to \$50 worth of custom features FREE!

Some restrictions may apply. See dealer for details. Offer good thru August 16, 1992. BRING THIS AD

**ARTCARVED CLASS RINGS** *Louis' Jewelry*  
Quality is the difference. 408 W. Park, 592-5942

**NOW OPEN!** **New Releases Each Week**  
**50¢ ROOM** We also carry Nintendo Games

**All Regular Movies - \$1.50\***  
New releases not included

**NEW HOURS:**  
12-noon - 9 p.m., Monday through Saturday  
Closed Sunday

**VIDEO LIBRARY**  
901 W. Highway 592-2122

**FATHER'S DAY**  
is just around the corner  
(Sunday, June 21)

ALL GIFT ITEMS REDUCED  
**25% TO 50%**

*Hughes*  
**PHARMACY**

120 W. Park Joe Hughes - Pharmacist  
Toll Free 1-800-585-4191 592-4191

You deserve the best...

**DUTTON FUNERAL HOME**

300 E. CASH (817) 592-4151

...We strive to be the best.

Serving the Iowa Park area since 1908 with

- CONCERN
- PROFESSIONALISM
- DIGNITY
- EXPERIENCE
- PRIDE
- CONFIDENTIALITY

We have one of the largest funeral chapels in the North Texas area.

Pre-needs... burial insurance

Larry and Norma Dutton's traditional values are combined with modern innovations to offer you the best.

**Now you can lose weight in the right spot. Your community.**

**10 Weeks ONLY \$90, No Registration Fee**

Now losing weight is right around the corner. Because Weight Watchers is bringing its flexible weight loss plans to you with meetings in your community. Like our simple new Quick Control™ plan. It has pre-planned, hassle-free menus that put you in control fast. And with meetings so close, sticking to our program will be easier than ever. To learn more, come to our free, no-obligation Open House. And see how we've put losing weight within easy reach.

**Free Open House**

**RAC Center, Iowa Park**  
6:15 P.M., Tuesday  
June 16, 1992

**Call 1-800-792-1126**

**You've Got It In You To Get It Off You.**

*Weight Watchers*

©1992 Weight Watchers International, Inc., owner of the registered trademark. All rights reserved.

**potpourri Cottage**  
Beauty Mall  
"A potpourri of beauty"  
208 N. Yosemite 592-2707  
Call Katherine for appointment

**Swiss Skin Care Products are Here!**  
All Natural Ingredients - 99% Allergy Free

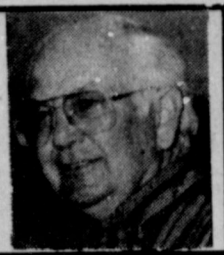
**Nails By Sally ~**

**Sculpts \$21.50**  
For all new customers.  
Reg. \$25 value. 2 weeks only

**Genie's Sun Salon ~**  
Tanning Available  
Hourly and Monthly Rates  
**30 Sessions - \$30**

# As I See It. . .

By Bob Hamilton



I had my hand called on a statement I made in this space last week, concerning the Multi-Purpose Event Center being planned in Wichita Falls.

I said about its proposed location, "...I have the feeling the site of the facility was long ago selected, and all this stuff about a committee of volunteers looking at other possible locations was a sham."

My point was, the 100-acre tract that has been selected is on both sides of the Wichita River, due north of the county courthouse, and would connect with the riverwalk.

For obvious reasons, it being a part of the riverwalk was my perception of that decision.

I had a lengthy visit in my office with Don Daugherty, the architect who lives between Iowa Park and Wichita

Falls, and Kay Yeager, one of the principal coordinators of the entire project.

Both strongly denied any planned association of the Center and riverwalk, as being a part of the site selection committee's decision.

Some 15 sites, I'm told, were on a list originally. Those were narrowed down to three, and then the one selected.

I must point out, that every one who had anything to do with the site that was selected either lives in Wichita Falls, or works full-time in that city. That was confirmed.

Don explained to me that the final selection was made because of its proximity to the expressway and Scott Street, as well as it becoming a "people place."

He said none of the other sites had roadways that could handle the traffic the Center is expected to draw for major attractions, without considerable road building.

Knowing most of the other sites that were considered, I must admit I'm forced to agree on that point. But that point only.

I'm concerned about the fact that the site is composed of some 300 lots, and some 140 of them have houses on them.

Be that as it may, my major concern now stands with the commissioners court pledging \$9 million to help fund the \$25 million Center.

We're told the county, which by the way reportedly has overspent budget by \$1 million last year and well on the way

## Board approves pay increase

**HOLLIDAY** - During a meeting of the Holliday School Board Monday evening, trustees approved a pay increase for teachers at the top of the state's maximum pay scale.

Trustees voted to increase the teachers pay one-half step above the state's maximum pay scale, with the additional money to be paid out of local funds.

Board members also approved a five-year technology plan for the school district, which included a computer lab for the high school. Twenty stations of Apple computers were moved to the elementary school, and replaced with IBM computers.

The resignation of Debra Lytal, a kindergarten teacher, was accepted by the board. Trustees hired Sharon Barker to fill the position.

The board rejected a proposal from Mayflower for transportation.

to matching that this year, will not have to "raise" taxes to pay its share.

Well, what the commissioners are planning is using the portion of the current tax rate, 2.5 cents per \$100 valuation, now being used to pay bonds that are paying for the jail's expansion and remodeling project.

That bond will be paid for before year's end.

I didn't object to the jail funding. It was in fact mandated by law, and we really had no choice.

But the pledging of that money for the Center is wrong, because it is not mandated. Only desired.

Therefore, I feel the taxpayers of Wichita County deserve the right to vote whether they want to contribute that \$9 million, or take a 2.5-cent tax rate cut instead.

Petitions are available which, if signed by enough citizens, will force the county to hold such an election.

One is here in the *Leader* office, and you are welcome to sign it if you wish.

## Burglars

Continued from page 1

of their steps.

Half-step increases for the professional and paraprofessional personnel amounted to a total of \$33,112. That, along with the state-mandated increases, increased the cost of those personnel next year by \$117,099, according to the proposal presented by Supt. Mitchell.

The motion to approve the proposal as presented passed by unanimous vote of the trustees, all of whom were present for the meeting.

Among the major topics on next Monday's meeting are personnel, board policies, a report on the technology plan, and a report on the Academic Excellence Indicator System for 1991-92.

Under the topic of personnel, trustees will be asked to accept some resignations and hire new personnel, though no names appear on the agenda.

Board policies requiring action include "Update 41 (first reading)," student dress policy, and field trips.

The report on the Academic Excellence Indicator System will include an evaluation of how the local district's students did when compared with other districts of similar tax wealth, enrollment and ethnic makeup.

Scores on the TAAS are included as well as other factors, including the drop out rate.

## Council considering employee insurance

City aldermen delayed until their next meeting taking action on a health insurance program for employees, but did take action on two ordinances and confirmed appointments by the mayor.

The council has for more than a month been considering an inter-local cooperation agreement with the City of Wichita Falls, concerning health insurance.

That city has for several years been self-insured, and has experienced considerable savings with its program, according to Jan Strickland, program coordinator.

Iowa Park became interested in such a program when informed of a pending substantial increase in premiums for the coming year, and increases annually have been common occurrences.

Effective July 1, the increase of the current carrier will be 18 percent.

Mrs. Strickland told the council the plan offered Iowa Park varied somewhat from the Wichita Falls plan, but it basically offered the same coverage as now in place, plus dental coverage.

"I believe you will save between \$18,000 and \$20,000 this year, plus having a dental benefit," she told the council.

The minimum coverage for the year could be as low as \$45,014, while the maximum, would be \$119,330, council members were told.

Should the city decide to continue with its present carrier, the cost would be \$102,440, which does not include a portion of the deductible that also is paid by the city for its employees.

Monday's meeting was the second presentation by the Wichita Falls representative. Aldermen asked that a vote on the issue be placed on the city's next meeting agenda, which will be June 22.

The two ordinances approved were the rezoning of an entire block from general residential to general commercial, and the other was a minor change in the city's retirement system for employees.

Recommended for approval by the Planning and Zoning Commission, the council agreed to the rezoning of the block between Wall and Yosemite, just south of the railroad track.

The tract has been purchased by Mr. and Mrs. Mark Wicks, who say they plan to produce fresh vegetables both out of doors and in a greenhouse they plan to construct, as well as market the produce at that location.

The change aldermen agreed to make in the retirement system was to give employees credit toward retirement from the date of employment, rather than after a six-month probationary period that had existed in the plan.

An employee must have worked a minimum of 10 years for the city to become fully vested for retirement.

Aldermen voted to confirm appointments by Mayor Wayne House of three members on the city Electrical Board.

Members approved are David Collins, Herman Daymude and Dale Williams.

Also agreed to during the meeting was setting of the first date in a series of meetings to work on the 1992-93 budget.

The first session is to be at 5 p.m. Tuesday in the council's conference room in city hall.

# NOTICE TO SUBSCRIBERS

This is only a notice to those listed below that their subscriptions will expire on the published date. You don't owe us a thing if your name is on the list. It only means that what you've paid for is running out. To renew your subscription, please fill out the form below, as it appears on your paper's mailing label. Indicate whether this is a renewal or new subscription. Enclose your check or money order, as all subscriptions must be paid in advance.

## Subscriptions due to expire June 15, 1992

Please disregard this notice if already paid

<b>B</b>	Wanda Bailey Loretta Beeman	Thomas K. Moore J. S. Morrison Ricky Moss
<b>C</b>	CW3 Jim Callaway Cecil Catlin Brian Catlin Wendell Clifton	Dallas Ft. Worth Vernon
<b>D</b>	Don Daugherty Madline Davis	
<b>F</b>	Tom Fitzgerald Ronald Francis Steven Furr	Wichita Falls Lima
<b>G</b>	Ailene Guy	Woodward
<b>H</b>	Robert Harper	
	Sammy Henderson James Howell Pat Hunter	
<b>K</b>	C. S. Ketchersid Don Roy Klinkerman	
<b>L</b>	Jerry Lee	Dallas
<b>M</b>	John Marshall B. C. Mashburn	
<b>N</b>	Carol Neal Stella North	Lima
<b>P</b>	Wayne Parsons Kathy Payne Hallie Price	Lubbock
<b>R</b>	Jack Railsback Paul Rice Carolyn Richter Lucindia Robertson Drama Roden Gary Rusk	
<b>S</b>	Margie Sayre Luther Shaw Anne R. Shawver G. L. Smith	Collingsville Megargel
<b>T</b>	Lee Roy Truett	
<b>W</b>	Mrs. A. R. Ward Curtis Williams Linda Wood	
<b>Y</b>	Chris York	

Wichita County ..... \$13.00  
Elsewhere in Texas ..... \$15.00  
Elsewhere in United States ..... \$18.00

To: Iowa Park Leader  
P.O. Box 430  
Iowa Park, Texas 76367

PLEASE CHECK ONE:

New  
 Renewal  
 Change of Address Only

\$ \_\_\_\_\_ Enclosed

Name \_\_\_\_\_

Address \_\_\_\_\_

City \_\_\_\_\_

State \_\_\_\_\_

Zip Code \_\_\_\_\_

## Petitions are in Iowa Park!

Last chance to vote on how your tax dollars will be spent!

Need volunteers, Friday and Saturday, to help with petitions to hold an election concerning financing of the proposed Multi-Event Activity Center in Wichita Falls.

Call 592-5444

## Mary's Hair Cutting

will be closed

June 20 until July 7

for VACATION!



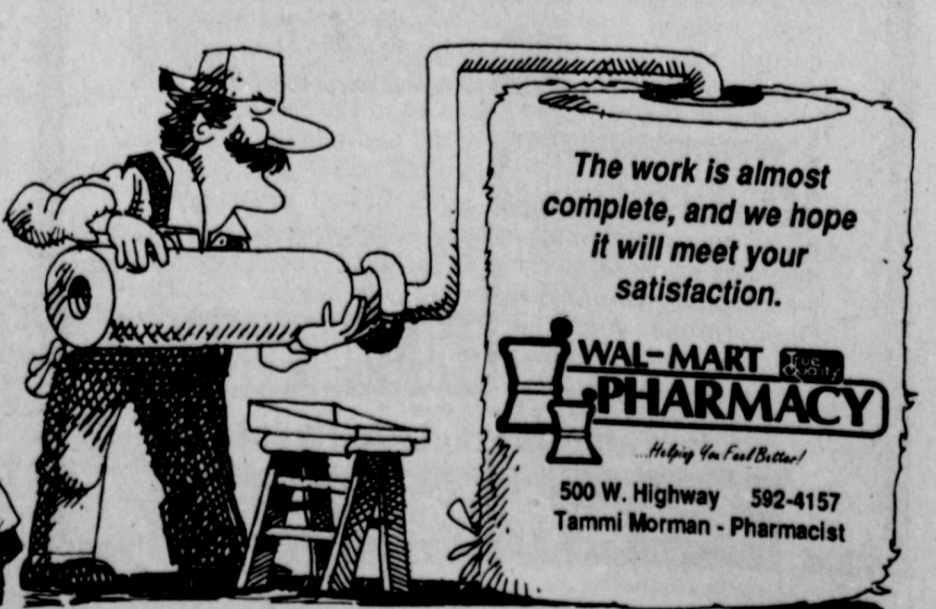
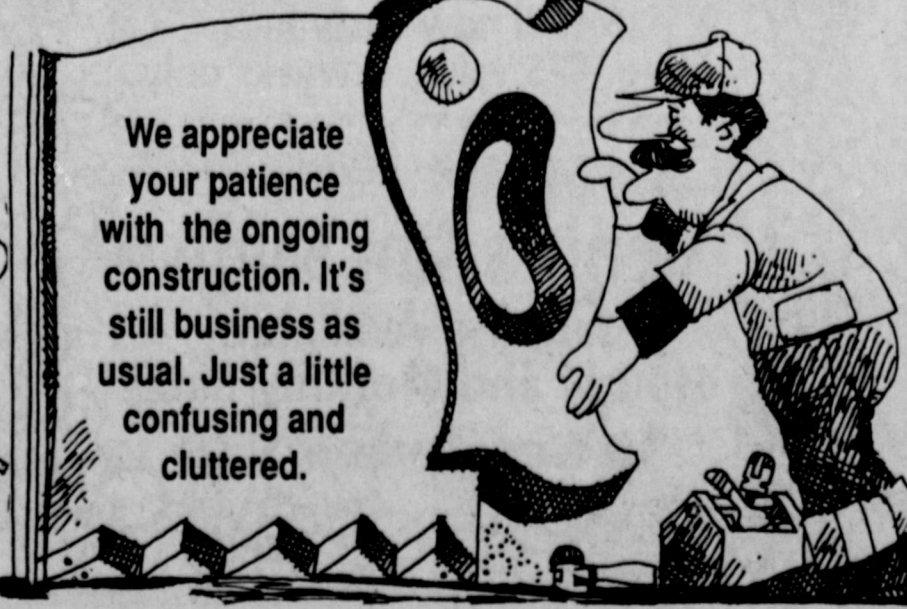
# IOWA PARK LEADER

THE LEADER

Bob Hamilton ..... Editor/Publisher  
Dolores Hamilton ..... Co-Publisher  
Kari Collins ..... Advertising Director  
Myrna Smith ..... Reporter

The IOWA PARK LEADER is published every Thursday. Offices are located at 112 W. Cash, Iowa Park, Texas, 76367 (766280). Telephone: 592-4431. Second Class Postage Paid at Iowa Park, Texas 76367. Annual Subscription rates are \$13 in Wichita County; \$15 elsewhere in Texas; \$18 anywhere in the United States. Any erroneous reflection upon the character, standing or reputation of any person, firm or corporation which may appear in the columns of this newspaper will be corrected upon being brought to the attention of the publisher. The entire content of each issue of the Iowa Park Leader is protected under the Federal Copyright Act. Reproduction of any portion of any issue will not be permitted without the express permission of the Iowa Park Leader.

MEMBER  
**TEXAS PRESS ASSOCIATION**





Mrs. Jim Stevens  
Jeremiah and Janna

Judy (Mrs. Jim) Stevens, the daughter of Mr. and Mrs. Willie Hastings, is a graduate of Iowa Park High School and received an associate degree in nursing at Midwestern State University.

Her husband, also an IPHS graduate, is a fireman with the Wichita Falls Fire Department. He is the son of Mr. and Mrs. Jack Stevens of Valley View.

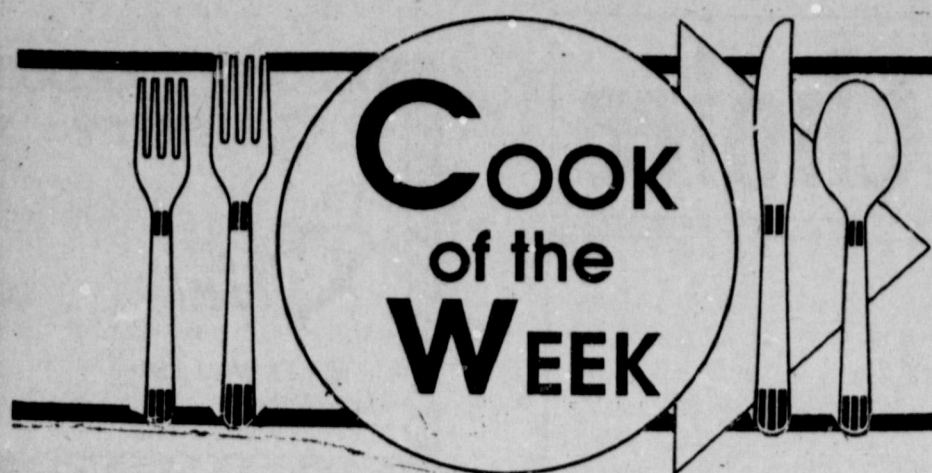
They have a son, Jeremiah, who is 11, and a daughter, nine-year-old Janna. They will be in the fifth and third grades respectively at Bradford Elementary School next year. Both children enjoy sports and Jeremiah played baseball and Janna played softball this year.

Judy had always lived in town, but after their marriage, Jim talked her into living in the county and built them a home a short distance from Iowa Park. Now Judy says that she wouldn't live anywhere but in the country.

Jim's father, a well-known artist and sculptor, was commissioned to do a large sculpture for the riverwalk area in Wichita Falls, and in his spare time, Jim has been helping him. Jim, who has a pilot's license and is working on a commercial license so he can teach, is also rebuilding an airplane.

These projects, plus the children's activities, keep the family pretty busy. For relaxation, Judy likes to play tennis, because she says it's fun and good exercise, and she enjoys reading.

Judy didn't work for several years when the children were small. But



now that they are in school, she works part-time in Out-Patient Surgery at Bethania Regional Health Care Center.

The family are members of Grace Church in Wichita Falls, where Judy is teaching Children's Church this summer.

Referring to the recipes she brought in, Judy said that her children really like the "Meat Casserole," and the "Fruit 'N Oat Bars" are a favorite treat.

**Meat Casserole**  
(Simple)

- 1 1/2 lbs. hamburger meat
  - 1 small onion, diced
  - 1 can tomato soup
  - 1/4 lb. Velveeta cheese
  - 1 medium bell pepper
  - 1/2 lb. macaroni, cooked
- Brown hamburger, onion and pepper; add tomato soup. Add cooked and drained macaroni and the cheese. Pour into greased casserole dish and bake one hour at 350 degrees. Serve with picante sauce.

**Sausage-Egg Tortillas**

- 1 lb. sausage
  - 8-10 eggs, beaten
  - Grated cheese
  - Picante Sauce
  - Flour tortillas
- Cook and drain sausage; add beaten eggs; cook until the eggs are scrambled (medium heat). Place sausage-egg mixture over a warm tortilla; add grated cheese and picante sauce. Roll up and enjoy!

**O Henry Bars**

- 3 cups oatmeal
- 1 cup flour
- 1 cup brown sugar
- 1/2 cup butter
- 1/2 cup Crisco

- 1/2 cup white syrup
  - 1 tsp. vanilla
- Mix all together and put in greased 8x10-inch pan. Bake 15 minutes at 350 degrees.
- Melt:
- 1 - 6 oz. pkg. (or more) chocolate chips
  - 1/2 cup peanut butter
- Spread on cooled bars.

**Jumbo Brownie Cookies**

- 1 pkg. (21.5 oz.) fudge brownie mix
  - 1/4 cup flour
  - 1/4 cup oil
  - 1 cup chocolate chips
  - 3 Tbsps. water
  - 2 eggs
- Heat oven to 375 degrees. Mix brownie mix (dry), flour, oil, water and eggs. Stir in chips. Bake until set, 12-15 minutes. Makes 30 small or 15 jumbo cookies.

**Fruit 'n Oat Bars**

- 2 cups oatmeal (quick or old fashioned)
  - 1 cup flour
  - 3/4 cup margarine or butter, melted
  - 1/3 cup firmly packed brown sugar
  - 1/3 cup chopped nuts
  - 1/2 tsp. salt
  - 1/2 tsp. baking soda
  - 1 - 10-12 oz. jar fruit preserves (apricot is great)
- Heat oven to 350 degrees. Grease 11x7-in. glass baking dish. Combine all ingredients except preserves; mix well. Reserve 3/4 cup oats mixture; press remaining mixture onto bottom of prepared dish. Bake 10 minutes. Spread preserves evenly over partially baked base; sprinkle reserved oats mixture over preserves. Bake 20-22 minutes or until golden brown. Cool and cut into bars.

**Fund established to assist Aulds**

A fund has been established to assist in surgery expenses for a young Iowa Park man.

Mark Aulds suffers from turrett syndrome, a life-threatening disease that can in some cases be controlled by medicine, but not in Aulds' case.

Faith Baptist Church has established a fund at State National Bank that is hoped will offset the expense of both surgery and travel to New Orleans, where the surgery is scheduled.

A surgeon in New Orleans is the only physician, possibly in the world, who has experience in this particular procedure. Reports are that most of his patients do well following surgery.

Surgery has been scheduled for July 20, and, if necessary, a second will be scheduled two months later.

**Roger Yorks have Yard of the Month**

The yard of Mr. and Mrs. Roger York, 1613 Douglas, has been chosen Yard of the Month by the Iowa Park Garden Club.

**Red Cross sets safety courses**

Courses in standard first aid, infant/child CPR and back injury prevention have been scheduled this month by the Red Cross Chapter in Wichita Falls.

Standard first aid will be 6-10 p.m. June 18 and 25; infant/child CPR 8:30 a.m. to 5:30 p.m. June 27, and back injury prevention 6:30-9 p.m. June 30.

All courses will be at the Red Cross center, 1809 Fifth St., Wichita Falls.

**Cub Scout NEWS**

**CUB CAMP June 17-20**

We will be meeting at the RAC at 11 a.m. June 17. Wear a green T-shirt and swim wear. Be sure to eat lunch before you come.

Bring your camping gear and lets have fun

**Look Who's New**

A daughter, Jessica Diane, was born at 8:02 p.m. Friday, June 5, in Wichita General Hospital, weighing eight pounds, four ounces.

She is the daughter of Mr. and Mrs. Larry Marshall of 701 W. Magnolia.

She has one sister, Danielle, one, and three brothers, Phillip, 15, J.L., nine, and Foster, two.

Grandparents are Mr. and Mrs. Virgil Marshall of Kamay and Virginia Calvin of Quanah.

**Volunteer tutors needed by group**

The Wichita Adult Literacy Council will hold a literacy training course for volunteer tutors July 14, 16, 21 and 23.

All sessions will be from 6 to 9:30 p.m. at the Region Nine Education Center on Loop 11, Wichita Falls.

Volunteers interested in teaching adults to read on a one-on-one basis should call Pam Iden at 322-6928.



**SIX FLAGS TICKETS**

Best discounts on Six Flags Over Texas tickets are being sold at the Wichita County 4-H Office, where the savings on one-day tickets range as high as \$6.50.

Season ticket savings are greater than 50 percent.

Office hours are 8 a.m. to 5 p.m. Monday through Friday.

**National Fireworks**  
Up To **75% OFF**

**BUY ONE GET ONE FREE**

Open June 24 - July 4

Best Prices in Wichita County.  
Air conditioned for your comfort. Additional discount prices up to 10% to 40% off orders of \$200 and more.

**National Firework Discount**  
US 287 - East of Huntington Lane

**Introducing Brock Jennings, one of the few professionals still making house calls.**

Brock Jennings is one of more than 1,800 Edward D. Jones & Co. Investment Representatives serving the investment needs of more than one million individual investors in 47 states. Brock is anxious to put his expertise and the extensive Edward D. Jones & Co. financial goals. Call him today.

He'll meet with you at home, or at

**692-2459**  
**Edward D. Jones & Co.**

**"People come to me for good rates... they stay for my Good Neighbor service."**

**PHILIP WELCH**  
118 W. PARK  
592-4155

State Farm Insurance Companies  
Home Offices: Bloomington, Illinois

**CALL ME.**

Like a good neighbor, State Farm is there.

**IOWA PARK ATHLETIC CENTER**  
215 N. Yosemite - 1 block north of Allsup's 592-2570

**SPECIAL 3-MONTH SUMMER RATE**

**For students only, ages 14 to 18. During the summer months of June, July & August students can work out at the Athletic Center for only \$45.00!**

**For you football players and wanna-be's, the summer months are a critical time to workout and stay in shape or to get into shape. It may make the difference in playing on the field or warming the bench.**

**Sign up in advance required at the Athletic Center. Deadline - Saturday, June 13**

**The CARSMITH**

**A full service paint and body shop**

Small Dent Repair to Complete Paint Work - Power Windows and Locks Repaired - Auto Glass Installed - Window Tinting  
Pinstriping and Body Side Mouldings - Insurance work welcome  
**All work guaranteed and done to your satisfaction - FREE ESTIMATES**

8:00 a.m. - 5:00 p.m. Monday through Friday  
Estimates can also be given after 5:00 p.m. by appointment

**1109 FM 368 South 592-5920**  
Owners: Gary and Sheryl Smith

**REVIVAL**

**LAKEVIEW CHURCH OF GOD**

**Sunday, June 14 through Friday, June 19**

**Service Sunday 6:00 P.M. Weeknights 7:30 P.M.**

**Evangelist Sherrie Moss**  
**Special Singing by Bob Ringo**

**For additional information: 592-2776**

# Attend The Church of Your Choice

**Kamay Road Church of Christ**  
Corner of Colorado & Emerald  
**'Seeking the Old Paths'**  
10 a.m. & 6 p.m.  
Wednesday 7:00 p.m.

**ATTEND CHURCH SUNDAY**

**Pacific Avenue Missionary Baptist Church**  
1400 N. Pacific Ave.  
Church - 592-9711  
**Informal Christ-Centered**  
**Worship for all ages.**  
Sunday School 9:45 a.m.  
Morning Worship 11:00 a.m.  
Evening Worship 6:00 p.m.  
Wednesday 7:00 p.m.

## FIRST UNITED METHODIST CHURCH



Rev. Karl S. Klaus, Pastor  
*Be "Another Happy Methodist"*  
Sunday School- 9:30 a.m. Worship-10:40 a.m. UMYF-5 p.m.  
201 E. Bank 592-4116

**Country Chapel**  
Country Style Singing & Preaching  
Lots of God's Love & Acceptance  
Sun. Sch. 9:00 A.M.  
Worship 10:30 A.M. & 6 P.M.  
Wednesday 7:00 P.M.  
855-9367  
855-8811  
Wichita Falls, TX 76305  
*Y'ALL COME!*  
Dr. John D. Ward, Pastor  
Chapel Phone 287N. at Wellington Rd.

**Serving Iowa Park since 1890**  
**First Presbyterian Church**  
Philip W. McLarty, Pastor  
Sunday School 9:30 a.m.  
Sunday Worship 11:00 a.m.  
Wednesday Night Bible Study  
Pastoral Counseling by Appointment  
211 S. Yosemite 592-4220

**THE END OF YOUR SEARCH FOR A FRIENDLY CHURCH**  
**ASSEMBLY OF GOD**  
SUNDAY 9:45 a.m. Sunday School  
11:00 a.m. Morning Worship  
5-6:30 p.m. Missionettes & Royal Rangers  
7:00 p.m. Evangelistic Service  
Wednesday Service 7:00 p.m.  
200 S. YOSEMITE  
592-5087 - Church  
592-4627 - Pastor  
Charles Hensley, Pastor

**Christ The King Catholic Church**  
First & Clara 592-2802  
Rev. Mr. Patrick Burke, Pastor  
8:45 a.m. Children's Religious Formation  
10:00 a.m. Mass  
The Catholic Church recognizes that there are many good people outside its membership, that other religions can and do bring their members closer to God and to their fellow human beings. But we as Catholics have indeed found something very special and we would like to share our Church, our Faith, our Way of Life with you. If you are interested in more information about the Catholic Church please call the church office.

**Cornerstone Pentecostal Church of God**  
"The Church at the foot of the cross"  
West Smith Rd.  
9:45 a.m. Sunday School  
10:50 a.m. Morning Worship  
7:00 p.m. Evangelistic Service  
1 p.m. Tuesday Ladies Prayer & Bible Study  
7 p.m. Wednesday Family Nite, also Christian Pathlighters Boys & Girls  
"If you like a small church, you better hurry"  
Church Phone 592-5929 Pastor Duffy Terry 592-5520  
Where Jesus is Lord

**Faith Baptist Church**  
**BREAK THROUGH** "Where the Bible is taught, the family is emphasized and where everybody is somebody."  
411 S. Wall S.B.C. 592-2716  
SUNDAY 9:15 a.m. Sunday School  
10:30 a.m. Morning Worship  
Church Training 6:00 p.m.  
Evening Worship 7:00 p.m.  
WEDNESDAY 7:00 p.m. Wednesday Evening Prayer  
8:00 p.m. Choir Rehearsal  
Nursery Care Provided - Full Range of Mission's and Children's Ministries  
Dr. Greg Ammons, Pastor

**Lakeview Church of God**  
N. Victoria and Expressway  
**Opportunities for Service**  
Children's Church Ladies Ministry  
Choir (youth & adult) Men's Fellowship  
Nursing Home Boys' Club, ages 6 - 17  
Visitation Girls' Club, ages 6 - 17  
Puppet Ministry Nursery Provided  
Sunday School...9:45 a.m. Wednesday Family Training Hour...7:30 p.m.  
Morning Worship...10:45 a.m. (classes for all ages)  
Sunday Night...6:00 p.m.  
Phone - church: 592-2776, Parsonage: 592-9555  
Pastor Ole Olds  
**Discover The Joy**

**First Baptist Church**  
300 N. Yosemite - Iowa Park - Phone: 592-2152  
Worship & Bible Study for the Family  
Sunday Schedule  
Sunday School - 9:45 a.m.  
Morning Worship - 11 a.m.  
Discipleship Training - 6 p.m.  
Evening Worship - 7 p.m.  
Dr. Derrell Monday, Pastor  
Jim Wright Music/Education  
Greg Sipe Youth Director  
Wednesday Schedule  
Prayer Meeting - 7 p.m.  
Youth in Action - 6:30 & 7 p.m.  
RA's for Boys - 7 p.m.  
Sanctuary Choir - 7:45 p.m.

**IOWA PARK'S FAMILY WORSHIP CENTER**  
Invites You To Be A Part Of  
\*Exciting Praise & Worship Music  
\*Dynamic Worship Services  
\*Innovative Children's Ministries  
SUNDAY 9:45 a.m.  
10:45 a.m.  
6:00 p.m.  
WEDNESDAY 7:30 p.m.  
Rev. and Mrs. L. Edward Prince, Pastor  
Yes, There Is a Place.....  
**"Where Love is More Than Just A Word"**  
601 E. Cash 592-4348 592-5316  
\*Van Transportation Available\*

**Join us on our FANTASTIC JOURNEY!**  
June 22 - 26  
8:30 - 11:30 a.m.  
**Faith Baptist Church**  
**Vacation Bible School**  
4 years - 6th grade  
Transportation provided  
**Be on the lookout for our VBS FANTASTIC JOURNEY PARADE!**  
Saturday, June 20 - 9 - 10 a.m.  
For more information, call: 592-2716 or 592-4302

**COPING WITH YOUR PARENTS' DIVORCE**  
Statistics tell us that up to 50% of marriages end in divorce, affecting thousands of teens annually. Perhaps you are one of those who know this pain. The questions you have and emotions you experience are common to almost every young person facing your situation. Perhaps it will help you to know what to expect.  
The first stage many go through is DENIAL. Even if your parents have had difficulty in recent months, or even years, many still are never quite ready for the parents divorce. Yet in some ways the divorce may be a relief - especially if one of the parents has been abusive.  
Often a young person will have intense periods of GUILT. They will wonder if they contributed to the breakup of their parents. The fact is that parents rarely divorce because of problems directly related to their children. The difficulties go deeper than that. Although parent/child relationships are strained at times, divorce comes as a result of husband/wife tension, not parent/child problems.  
ANGER is a common emotion. Many teens will feel a certain amount of anger when their parents divorce. The teen thinks it is unfair for parents to be so selfish. Anger is a coverup emotion that masks hurt, fear, rejection, or grief. It is a normal process through which to go.  
Divorce raises many question in a young person's mind and also brings many FEARS. Some fear that the other parent will leave as well. There are also the normal anxieties of wondering where you will live, and go to school. Many fear that they will not be able to commit to marriage themselves. Just because your parents divorce does not mean you are destined to follow the same path. Learn from their mistakes and strive to implement good things in your relationships.  
LONELINESS is also a common emotion. When a home is divided through divorce, there is less time with parents than ever before. Mom will take a job or Dad will have other responsibilities around the house that he did not have before. Going to functions where parents are invited just reminds you that you only live with one parent now. You will probably come home to an empty house after school. While it is helpful to establish good relationships and fill your time with things to do, realize that there will just be times when loneliness creeps in. This is natural.  
Next week we will examine "COPING WITH YOUR PARENTS' DIVORCE - PART II."

**Welcome To The Church of Christ**  
300 East Park, Iowa Park, 592-5415  
Dwight Parker, Gospel Preacher  
George Watson, Associate  
Watch "Search" Every Sunday at 7:30 a.m.  
On KFDX - CHANNEL 3  
SCHEDULE OF SERVICES  
SUNDAY Bible Study 9:30 a.m.  
Worship 10:30 a.m.  
Worship 6:00 p.m.  
WEDNESDAY Evening Study 7:30 p.m.  
FREE BIBLE COURSE!  
Call for information.



# Bennett, Mikkelson win golf tournament

Neither of the 1991 All-Iowa Park Golf Tournament winners was able to successfully defend their titles, in the second-annual event held Friday at LaVista Country Club.

One had the same last name, however.

Earl Bennett was low gross winner, shooting a scratch 71. His father, Dick, was the low net winner last year.

Low net winner this year was Vern Mikkelson, whose score after the Callaway handicap was applied came out at 69. His actual score was 95.

Bennett unseated Jim Rinehart as scratch medalist title winner, edging the 1991 winner by eight strokes.

This year's tournament, which is sponsored by the Chamber of Commerce and open to all residents and employees who work full time in the school district, ballooned by 22 players over last year.

The number of entrants grew from the initial event's 43 to 65.

Special prize winners included: closest to the hole, Ron Woods and Shirley Jones; longest drives, Jackie Hodges and Nell Copening; low women's gross score, Shirley Jones, and caps for the highest gross men's scores.

(The caps were presented to all the qualified recipients who had not left the club house when prizes were handed out. Those who were not available can pick their's up at the office of the Iowa Park Leader.)

A complete listing of player scores, gross and handicap, follows:

Earl Bennett	71	68
Charles Heacox	78	74
Jim Rinehart	79	76
Steve Gray	79	76
Jackie Hodges	80	68
Arlen Shook	80	70
Daryl Beals	80	71
Jim Murfield	81	72
Mark Ledsm	82	73
Farley Friday	84	75
Harold Smith	84	73
Sam McIlroy	85	72
Mike Negri	85	72
Bob Hamilton	86	72
Robert Palmer	86	73
Philip Welch	86	74
Skip Sheets	86	74
Leroy Threet	87	73
Jeff Brookshire	87	76
Jim Grove	88	73
Denny Boland	88	74
Steve Sampson	89	77
Carmen Lozipone	90	71
Dwayne McKee	90	74
Shirley Jones	90	74

Robert Harper	91	75
Dennis Dillard	91	75
Carroll Phipps	91	75
Charles Friday	92	71
Ron Woods	92	74
Dick Bennett	93	74
Dan Spruiell	93	77
Russell Guyette	94	75
Wayne Gaston	94	76
Vern Mikkelson	95	69
James Harrison	95	72
Jim Medlinger	95	73
Terry Skasick	95	74
Doug Johnson	95	75
Joe Langdon	97	77
Craig Johnson	98	77
Bruce Palmer	99	76
Pat Spruiell	99	80
Brad Teplick	100	70
Paul Ward	100	75
Gary Jones	100	74
Rick Cowser	100	77
Tommy Cantrell	102	77
Tommy Isbell	105	74
Wayne House	106	74
Sid Carlson	107	73
Roy Childers	110	75
Joe Hughes	110	75
Pam James	110	77
Max Henderson	113	77
Dolores Hamilton	113	78
Gloria Carver	113	81
Jim Edwards	114	77
Kerri Bauer	120	73
Nell Copening	121	75
Herschel Nipper	122	72
Patti Hughes	123	79
Billy James	134	85
Jodi Young	145	91
Ronald Robinson	WD	WD

## 5-PITCH LEAGUE RESULTS

Blue Jays 23, Brewers 22  
Angels 31, Twins 12  
Angels 21, Brewers 16  
Blue Jays 19, Twins 7

## STANDINGS

Angels	8-3
Blue Jays	7-3
Brewers	5-5-1
Twins	0-9-1

## MINOR LEAGUE RESULTS

Phillies 6, Indians 5  
Padres 7, Reds 6  
Pirates 12, Padres 3  
Rangers 16, Oilers 7  
Mariners 8, Cardinals 3  
Cubs 13, Phillies 8  
White Sox 16, Indians 9  
Mariners 19, Expos 1  
White Sox 8, Rangers 7  
Padres 10, Cardinals 7  
Oilers 13, Cubs 11

## STANDINGS

### WESTERN CONFERENCE

White Sox	9-0
Phillies	7-3
Rangers	5-4
Oilers	3-7
Indians	3-7
Cubs	2-8

### EASTERN CONFERENCE

Pirates	7-1-1
Mariners	8-2
Padres	4-4-1
Cardinals	2-5-1
Expos	2-6-1
Reds	2-7

## MAJOR LEAGUE RESULTS

Rangers 7, Giants 3  
Dodgers 11, Yankees 8  
Pirates 8, Astros 2  
Giants 12, Yankees 12  
Giants 7, Dodgers 2  
Yankees 10, Pirates 5  
Dodgers 14, Rangers 1  
Giants 20, Astros 0  
Yankees 22, Astros 4

## STANDINGS

Pirates	12-2-2
Giants	11-4-2
Rangers	9-7
Dodgers	8-8-1
Yankees	3-10-3
Astros	2-14

### Helpful Facts

Regular meetings of the Iowa Park city council is at 7 p.m. on second and fourth Mondays, in council chambers at 103 N. Wall. All meetings are open to the public.

### Meet Your Friends At

**Jimmy's Barber Shop**  
Where Your Business is Welcome  
Mon. - Fri. - 9-5:30; Sat., 9-1  
592-5591 113 W. Park

## Sand volleyball tourneys slated

Five tournaments have been scheduled this summer at Sand Action courts, a function sponsored by the Recreational Activities Center.

They are in addition to the regular six-person coed summer league, which is to get underway July 6.

The first tournament will be June 20. It is a six-person (coed recreational) to begin at 10:30 a.m. Entry fee is \$60 per team.

July 11, the tournament format will be men's foursomes and women's foursomes. Play will begin at 7:30 p.m., and entry fee is \$40 per team.

A four-person coed tourney will be played Aug. 1, starting at 7:30 p.m. Entry fee is \$40 per team.

The RAC Community Day Draw Tourney will be held Aug. 8, with play to start at 1:30 p.m. No entry fee will be charged.

August 22 is the final tournament slated for the summer. It will be a three-person coed format, set to get underway at 7:30 p.m. Entry fee is \$30.

Pre-registrations are requested by calling 592-4471 or 592-2098.

Teams planning to enter the summer league are asked to call the same telephone numbers to express which nights of the week play is preferred.

## Green named All-District

Former Hawk Gary Green and five other athletes at Midwestern State Univ. were named to the 1992 NAIA District 8 Men's and Women's All-District Track and Field teams.

Though he was the district champion in both the discus and shot putt, Green was named to the All-District team in the shot putt.

The other MSU athletes named included Brent Finney of Clifton, javelin; Dusty Meeks of Haskell, high jump; Kenny Johnson of Burkburnett, javelin; Freddie King of San Antonio, high jump; and Amy Estes of Azle, both shot putt and javelin.

## Girls' basketball clinic next week

A basketball clinic for girls who will be in grades six, seven and eight next fall will be held June 15-19 at the Iowa Park High School gymnasium, according to Coach John Hoelster.

A minimum of 10 players is necessary, and registration will be on a first-come, first-serve basis.

Cost will be \$30 per participant. Checks should be payable to Iowa Park High School.

## SPORTS

Shorts



Charles Jolly's North All-Stars racked up all their 26 points in the first half and coasted to a 26-20 win over the South, in the annual Greenbelt Bowl played Saturday at Childress.

ss ss ss ss ss

District 4-AAA champion Graham, the club that edged the Hawks by 6-5 in their second and final game, won the regional title with a 5-0 win over Canyon. The Steers will play Queen City today in the semi-final of the state tournament in Austin.

ss ss ss ss ss

Also playing today are the Holliday Eagles, who will face Shiner in the Class AA bracket at Austin. Holliday, starting six sophomores, earned their trip to the state tournament with a 7-1 victory last week over Albany.

## GOOD & PLENTY RESTAURANT

510 Old Iowa Park Road  
592-4933  
HOURS:  
6 a.m. - 9 p.m.  
7 Days a week

Remember, We're open every morning for Breakfast  
2 eggs, any style, bacon or sausage, hash browns, biscuits, and gravy.  
\$2.49

Lunch specials served every day except Saturday

Monday through Friday  
small \$3.20 Large \$3.85  
Sunday Lunch Special  
Small \$4.25 Large \$4.99

**TUESDAY NIGHT SPECIAL**  
6 Butterfly Shrimp, Baked potato, salad, toast  
\$6.99

**THURSDAY NIGHT SPECIAL**  
In-House Special  
**FRIDAY NIGHT SPECIALS**  
All you can eat fish and shrimp.  
\$7.99

Fish and Shrimp Basket  
\$5.99

**SATURDAY NIGHT SPECIAL**  
8 oz. Rib Eye Steak, choice of potatoes, salad, toast  
\$5.25

**ALL THE CATFISH YOU CAN EAT**  
Every night of the week from 5 until closing  
\$7.99

GO HAWKS!

**CLIP OUT**  
**CORN DOG**  
BUY ONE, GET ONE  
**FREE**  
**EXPRESSWAY RESTAURANT**  
US 287 & Pacific

**Harvey's HAMBURGERS**  
805 West Highway  
FOR TAKE OUT ORDERS  
CALL 592-4731

**THIS WEEK'S SPECIAL CLUB \$3.09**  
SANDWICH Reg.  
Potato chips, Med. Drink \$3.44

**Breakfast Special**  
Egg, Biscuit, Gravy...99¢  
Breakfast Burrito...\$1.29

**SUNDAY LUNCH**  
Hamburger steak, brown gravy, vegetable, salad, toast.  
\$3.49

**BEAN DAY EVERY THURSDAY**  
All you can eat: Pinto Beans, cornbread, onions, pickles.  
\$1.49  
Served from 11 a.m. - 2 p.m.

11 a.m. - 9 p.m. Thursday  
**FARM-FRESH CATFISH**  
Served with Cole Slaw \* Tartar Sauce \* Fries \* Hush Puppies \* We now use Cholesterol-Free Canola Cooking Oil and dipped in our special batter and \$4.95 and \$5.95

**SUNRISE SPECIAL**  
1 egg, sausage \$2.10 or bacon, toast & coffee + tax

**FRIDAY NOON & NIGHT Farm-Raised Catfish**  
Served with French Fries, hush puppies, cole slaw, pickles, onions and tartar sauce.  
Half and Full Orders

**Pete & Otto's 3-M CAFE**  
114 W. Cash 592-4721  
Hours: Monday - Friday, 6 a.m. - 2 p.m.  
Friday night, 5-8:30 p.m.; Saturday, 6-10 a.m.

**ken's PIZZA** 902 W. Hwy. 592-4184

**Here to Stay...By Popular Demand!**

<b>SUNDAY FAMILY BUFFET</b> 11 a.m. - 2 p.m. Pizza - Pasta Salad Bar Dessert <b>\$3.89</b>	<b>BUDGET LUNCH</b> M-F 11 - 2 p.m. Any Day - Mini Pizza Monday - Ham & Cheese on Sub Tuesday - Small Lasagna Wednesday - Garlic Cheese Bread Thursday - Salad Bar Friday - Small Buffalo Wings <b>\$1.99</b>	<b>MONDAY NIGHT PIZZA BUFFET</b> 5-8 P.M. <b>\$2.99</b> And as always... <b>REGULAR LUNCH BUFFET</b> M-F 11-1:30 <b>\$3.89</b>
---	---	--

**THIS WEEK'S TUESDAY NIGHT SPECIAL Large Pepperoni Pizza...only \$7.99**

**\$4.00 PIZZA** 2 Large Single Topping Pizzas **\$12.99**  
Buy one Medium Ken's Pizza, of your choice, at the regular price, then get a second or third Medium Ken's Pizza (of equal or lesser value) for only \$4 each.  
Void with other promotions or coupons. One coupon per customer, per Pizza, please. Good for dine-in, carryout and delivery (where available). Certain delivery restrictions may apply.  
Redeem this coupon for 2 large single-topping Ken's Pizza for only \$12.99 plus tax. Additional toppings available at an additional charge. Void with other promotions or coupons. One coupon per customer, per Pizza, please. Good for dine-in, carryout and delivery (where available). Certain delivery restrictions may apply.

**FREE DELIVERY** \* with minimum \$5 food purchase

**VALLEY VIEW MINI MART & CAFE**  
Cafe Hours:  
6:30 - 6:00, Monday - Thursday  
6:30 am - 6:00 p.m., Friday (Fish Served 11-5:45)  
6:30 - 2, Saturdays  
CALL-INS WELCOME  
438-2901

**EXPRESSWAY RESTAURANT**  
US 287 & Pacific 592-4811  
Hours: 7 a.m. - 10 p.m.  
Owner: Ray Copening

**ENCHILADA DINNER \$4.49**  
Includes 3 tacos, beans, French fries

**RED BEANS \$1.49**  
All You Can Eat  
4:30 - 8:30 p.m. Wednesdays

**Lunch Specials Every Day \$3.29 only**

# The Classifieds

**DEADLINES**

10 a.m. WEDNESDAY (Word Ads Only)  
4 P.M. TUESDAY, DISPLAY ADS

**SAVE 8¢ PER WORD FIRST  
INSERTION BY PAYING  
WITH COPY AT OFFICE**

**RATES:**

23¢ PER WORD FIRST INSERTION  
15¢ PER WORD EACH REPEAT

One bedroom apartment \$189 to \$199  
Two bedroom apartment \$229 to \$244

- Energy efficient
- Central Heat/Air
- Children's Play Area
- Fully carpeted and draped
- Off-street parking
- Water paid
- Total electric
- Full equipped laundry room

**COLONIAL HEIGHTS APARTMENTS**

Handicap Accessible **592-2705**

**HOMES FOR SALE**

FOR LEASE - Older house in Iowa Park area. Two bedrooms, one bath, fenced yard, storage, stove & refrigerator. Phone 592-2605 after 10 p.m. 6-11-2tp

TRAILER HOUSE - 3 bdrm., 2 bath, \$250, plus deposit. No inside pets. 438-2207. 6-11-1tc

**FOR RENT**

IOWA PARK - Small, furnished house for one. Utilities paid. \$225, \$100 deposit. 592-5272. 5-14-tfc

1 BEDROOM, Huntington Lane. Stove, refrigerator, air conditioner. Deposit. 855-3062, 592-5252. 6-11-1tp

**MISC. FOR SALE**

YARD SALE - Thursday, 8-6, 506 E. Bank. Boys & girls clothes, sizes 8-10, ladies size 7-9, some men's, toys, lots of misc. items. 6-11-1tc

GARAGE SALE - 202 Valley, Thurs., Fri., Sat., 8-5. Most children's things. 6-11-1tc

**MISC. FOR SALE**

GARAGE SALE - Changing table, car seat, misc. baby items, infant to child size clothes, bikes, toys, couch, queen bed frame, microwave cart, lamps, table, new drapes, valances, window shades, mini blinds, various size curtain rods, full and queen bedspreads, sheets, shopvac, and much more. Saturday, 8 to 5. Four miles west of Iowa Park on US 287, Burnett road exit, follow the signs. 6-11-1tp

GARAGE SALE - Floral divan, swivel rocker, TV, stereo, exercise equipment, Star Wars collectibles, light fixtures, clothes & much more. 605 Manes, Saturday, 8 a.m. - 6 p.m. 6-11-1tp

**YARD WORK**

YARD WORK. Mowing, edging, weedeating. Other services available. Call Eddie, 592-9561. 5-28-4tp

YARDS MOWED - Buffy, 592-5675. Free estimates. 4-30-8tc

TREE TRIMMING, trash hauling, mowing, edging and trimming. 592-4704. 6-11-12tp

YOUNG CHRISTIAN man needs odd jobs for summer money. Call Louis at 592-9392. 6-11-1tp

**CEMETERY MONUMENTS**  
DALE THOMPSON  
Sales and Installation  
Representing  
Lancaster Memorials  
of Wichita Falls - 592-4747

**MINI-CON Self-storage**

1. Variety of sizes.
2. Competitive prices.
3. Locally owned and operated.
4. Monthly rates.

805 W. Hwy. 592-2761

**801 VAN HORN** - 3 bedroom, corner lot, good location, near Kidwell School Must sell this week. \$32,000.  
NEW LISTING: Walk to post office, bank, groc., and Church from this sparkling older home. **CONTRACT PENDING**

**3 OR 4 BEDROOM**, 1 3/4 baths, den, fireplace, kitchen appliances, beautiful back yard and garden area. Great street. \$59,900. **CONTRACT PENDING**

**ESTABLISHED** large 3 Bdrm, den, fireplace, 1 3/4 baths, triple garage. Near downtown. Being remodeled. Repairs completed \$48,000. As is \$45,000.

**Good Starter Home** near Jr. High with new vinyl siding and storm windows. Reduced to \$45,000. **CONTRACT PENDING**

**3 BEDROOM**, corner, near Jr. High. Lrg. bdrms., 2 full baths, double gar., includes \$125 rental in back yard.

**3 BEDROOM**, choice location. **CONTRACT PENDING**

**NICE LOT**, good location. Small home on back of lot needs repair. \$7,500.

**MOBILE HOME LOTS** - \$60 monthly.

**4 ACRES PASTURE** for lease - 3 miles east of Iowa Park. \$35 monthly. **Have buyers, need listings!**

**Hunter Real Estate**  
Sam Hunter 107 E. Cash 592-4661 Wanda Hunter

**QUAIL RUN APARTMENTS**  
Now accepting applications  
1-2 bedrooms, water & gas paid, assistance available.

Equal Opportunity Housing  
Property financed by Farmer Home.

**592-4646**

**WOODBRIAR COMMUNITY**  
1 and 2 Bedroom Units Available  
(Selected 2 & 3 BR Units have washer/dryer connections)  
Lots of Storage Fenced Playground  
Discount for Retired and Elderly People

ALL BILLS PAID (includes Basic Cable)

Check about our Section 8 for elderly.  
Come to the Woodbriar Community  
1000 Mary 592-2121

**KEY REALTY**

**Sarah Barker** **Cindy Witherspoon**

**592-2718 592-4583**  
We hold the Key to your new home

**Regency One REALTORS**  
Don't Just Dream...Live the Dream!

**MIAMI ST. - W.F.**  
**SOLD**  
208 W. ALDINE, IOWA PARK  
Approx. 1800 sq. ft. Separated master bedroom, 3 BR, 2 baths, laundry room. 2 car detached garage, 50X20 shop. Sits on 4 lots. \$50,000. Will look at 'as is' offers.

**3404 WELLINGTON**  
Approx. 5000 sq. ft. home. 2 living, 2 dining areas. 4 or 5 BR, separated master suite. Gameroom or office. Private study with bookshelves, new pool, new fence, 4-line telephone. 3-car garage, carport, 6.76 acres. \$287,500.

**EDEN HEIGHT - W.F.**  
New carpet, new curtains in this lovely 3 bedroom, 1 1/2 bath home. Has a formal dining area. Ceiling fans throughout. Two car garage. Central H/A. Price reduced \$45,500.

**HELLO CANOE LOVERS! - 2994 HORSESHOE BEND**  
Immaculate 3 Bdrm. - 3 bath home. Formal dining-breakfast area and breakfast bar. Laundry room, large living/fireplace, study and TV room. 15X12 storage. Has pier, \$126,500.

**NEW LISTING - COUNTRY ATMOSPHERE**  
3 BR, 2 baths, 2 living areas, 2 dining areas, 2 fireplaces, 2-car garage, sun room, new privacy fence. \$59,500.

**TIME SHARE CONDO**  
In Christl, Colo. \$8,000. 2 weeks out of the year.

**513 N. WALL**  
Approx. 1,900 sq. ft. 3 BR, 3 full baths, living, dining, laundry room & study. Corner lot. \$38,500. Make Offer.

**405 E. ALDINE**  
2BR, 1 full bath, 50X20 mobile home, does not include land. \$6,000. Will look at offers.

**WICHITA GARDENS - W.F.**  
Corner lot. Two bedrooms, large living area, cute kitchen with dining area, new carpet. Price reduced to \$16,500.

**QUAIL VALLEY - IP. SITS ON 7.9 ACRES**  
2 living, 2 baths, laundry room, 2 car garage. **SOLD**

**QUAIL VALLEY ESTATES - IP**  
2700 sq. ft. 4 BD, 3 baths, formal living/fireplace, built-ins; den/ Franklin stove, Sewing or sound room. Game rm./wet bar. \$5,000 carpet allowance with full price offer. \$110,000.

**411 W. LOUISA - IOWA PARK**  
4 BR home, 2 full baths, formal dining, laundry room, central H/A, two car carport. Large trees. \$37,500.

**LAKE CABIN (DIVERSION)**  
Lakelront prop. - 2 story - all beds, cooking ut. remain. Like new pier. \$8,500. Will trade for motor home of equal value!

**103 & 105 HAWTHORNE**  
2 Houses, each has living area, kitchen-dining, single BR, and 1 full bath. Live in one, rent the other. Both-\$14,500.

**108 W. CHESTNUT**  
2 BR trailer house, corner lot. 1 1/2 bath, all appliances remain, bedspreads remain, large storage building and workshop. 1 1/2 garage. 14X70 trailer. \$16,500.

**1004 W LOUISA - IOWA PARK**  
Clean 2 BR, 1 1/2 bath. Family 3 BR. Like new carpeting, 2 car garage, **IN CONTRACT** covered patio, un.

**207 E JEFFERSON - IOWA PARK**  
Corner lot, lg. 3 BR brick, large living, laundry room, single car garage. Large trees. Established area. \$37,500.

**SMALL HOUSE - BIG LOT**  
1 Bdrm building. **IN CONTRACT** as storage

**1328 EDGEHILL - IOWA PARK**  
1600 sq. ft. formal living, 2 baths, **IN CONTRACT** like you're living in the country. Price reduced. \$41,500.

**3886 WEST 367**  
2 living areas, fireplace, 2 1/2 baths, 4 bedrooms, all built-ins in kitchen. 30X60 barn, 4 horse stalls on 1.24 acres. \$90,000.

**LAND/LAND!**  
Vacant lot, \$1,500; 11.6 Acres, \$13,340. COMMERCIAL BUILDING - \$75,000. Private showing only

**Winnie Jo Holmes** 592-5730  
**Darrell Jolly** 592-4926  
**Julie Ressel** 592-2877

**GARAGE SALE** - 2 Family - 1912 North Access Rd. Corner of Wigley Road - Wigley Road goes to Iowa Park Lake. Saturday only, 9-7  
6-11-1tp

**GARAGE SALE** - 502 W. Daisy, Thursday, Friday & Saturday, 8 a.m. - ? Lots of kids clothes, car bed, chain saw, boys jeans. 6-11-1tp

**GARAGE SALE** - Bell Road South across the tracks 1/4 mile. Friday & Saturday. Lots of goodies. 6-11-1tc

**INSIDE SALE** - 406 E. Bank. Lots of miscellaneous. Thursday only, 9 a.m. - ? 6-11-1tp

**LARGE GARAGE SALE** - Some furniture & washer. Friday and Saturday, 815 N. Wall. 6-11-1tp

**YARD SALE** - Saturday only, 9-2. No early sales. 500 W. Aldine. 6-11-1tp

**YARD SALE** - 510 N. Texowa, Thursday, Friday, Saturday, 8-5. 6-11-1tc

**RESIDENTIAL**

FM 369 SOUTH	\$65,000	<b>IN CONTRACT</b>
4612 SH 370	\$65,000	5 Acre, quality liv. Must see
511 W. REBECCA	\$58,000	3-2-2, sunken den, fireplace
1304 EMMA	\$58,000	VA assumption. Make offer
SH 258	\$50,000	3-2-2, living area, 2 acres
421 W. VALLEY	\$49,500	<b>CONTRACT PENDING</b>
305 E. GARDEN	\$46,500	Like new construction.
300 E. GARDEN	\$46,000	3-2-2, corner lot.
1308 EMMA	\$45,000	Must sell! Make offer! assumption. Low equity.
816 N. PARK	\$43,500	Superb quality!
405 W. CLARA	\$42,000	3-2-0, 2 living, fireplace
800 PARK PLAZA	\$39,500	Immaculate, corner lot
1302 WESTRIDGE	\$38,900	Don't miss this! Xtra clean.
1210 N. JACKSON	\$33,950	<b>CONTRACT PENDING</b>
113 HOPE LANE		4-2-2
616 W. TEXAS	\$32,750	3-1-2/Corner Lot
510 N. VICTORIA	\$27,500	Corner lot.
807 E. PASADENA	\$26,500	2-1
504 E. RUBY	\$16,000	Non-qualifying VA assumption, payment less than \$200.
511 N. VICTORIA	\$13,500	<b>REDUCED</b>

**COMMERCIAL** Building in super location. 2 story, Mid-30's. Call for details!

**LEASE**  
405 W. CLARA - \$450 511 W. REBECCA - \$575

**TEXAS REALTY** **SELLING IOWA PARK**  
109 W. Cash 592-2728

**NEW LISTING**  
1607 DOUGLAS  
Nice 3 BR home with 2 baths, kitchen built-ins plus pantry and eating bar. Large living room with fireplace.

**Polly Spruiell**  
Res. - 592-4756  
Mobile ph. - 733-4832

**Tommy & Glenda Key**  
Res. - 592-4660  
Mobile ph. - 733-0646  
Mobile ph. - 733-4012

306 W. Ruby 20's  
903 W. Louisa  
205 W. Texas 30's  
1002 Louisa  
104 W. Ruby  
606 N. Yosemite  
1006 Park Plaza  
721 Park Plaza  
1308 N. 4th  
1310 Edgehill  
1314 Westridge  
1310 Mockingbird 40's  
1312 Edgehill  
1104 W. Cornelia  
1315 Blue Jay  
1003 W. Cornelia  
205 E. Aldine  
1003 Lanelle 50's  
723 N. Park  
1504 Douglas

**IN CONTRACT**  
3-bedroom, big yard, near school.  
2-bedroom, central heat, shaded lot. **REDUCED**

3 BR, large living room, covered patio.  
3 BR, large back yard with fruit, pecan trees.  
Enclosed patio; updated and spacious kitchen.  
Lg. living area; storage; lot w/fruit trees.  
Immaculate home, beautiful lawn, **REDUCED**  
Steel siding trim; covered patio; 3-bedroom  
3 BR, energy-efficient C H/A, mini blinds.

**IN CONTRACT SOLD**

**IN CONTRACT SOLD**  
Fireplace; new carpet; 3-year-old kitchen.  
Beautiful home w/ open floor plan; corner lot.  
Total electric 4 BR home; attractively decorated.

**SOLD**  
3 BR, large rooms, 2 living areas, 2-car garage.

60's  
#27 Surrey  
903 Doria  
624 Bell Road S.  
#9 Surrey  
801 N. Park  
70's  
2400 Lansing, WF  
5849 FM 1206  
#26 Surrey  
Land  
1.73 Acres  
2 Acres  
2 Acres  
9 Acres  
16.5 Acres  
32.01 Acres  
38.53 Acres  
54.75 Acres  
Commercial  
1.54 Acres  
1321 N. 4th  
926 & 928 W. Highway

**IN CONTRACT**  
**IN CONTRACT**  
4 BR, 3 ba., many extras, outside city limits.  
3 BR, corner lot, choice location.  
Spacious; 2 1/2 bath; 3 BR plus office.

Large 3 BR home on corner lot; great location.  
11.2 ac., 3 BR, sun room, game room, shop.  
Elegant and spacious; numerous amenities.

NE corner 3rd Street & 287 Serv. Rd.  
Close to Iowa Park on FM 367.  
**SOLD** North Victoria  
**SOLD** Kamay  
Headquarters Road; barn, corral, pond  
Peterson & 287 Expressway  
Corner of FM 367 & Coleman Park Road  
FM 367

Old Iowa Park Hwy & Magnolia  
Corner of 4th and expressway access road  
Two buildings; both are leased



**BUSINESS**

**EIBEN Home Repair and Remodeling.** Additions, roofing, painting, sheetrock, doors, carpentry, patio covers, and more. Small jobs welcome. Reasonable rates. Licensed and bonded. 592-2053. 11-1-tfc

**WOLFE ROOFING - Residential-commercial.** Free estimates. 855-5657. 11-1-tfc

**REDUCE;** Burn off fat while you sleep. Take Opal available at Wal-Mart Pharmacy. 6-11-5tp

**SCHOLARSHIP \$\$\$** for education. Recorded Message gives full details. (817) 723-4289. 4-16-13ptfc

**SIDING, INSULATION,** windows & doors. The Great Plains Siding and Insulation Company 761-2124 or 592-9829. 10-3-tfc

**REDUCE SAFE** and fast with GoBese Tablets and E-Vap Diuretic available at Wal-Mart Pharmacy. 6-11-3tp

**PARK SERVICE - Mini detail** your car. \$22.50 - wash, wax, vacuum, clean wheels. 592-5933. 5-28-3tp

**BLACK POWDER** Guns and accessories, revolvers \$50 and up. Powder \$5.00 lb. Will order modern guns for 10% over cost. Ye Ole Gun Shack, 413 W. Washington, 592-5430. 11-1-tfc

**FAX Messages**  
Ph. 592-5613  
Copies made - 15¢  
USP Packages  
Hughes Pharmacy

**BUSINESS**

**REMODELING,** additions, or new construction. Bath and kitchen remodels a specialty. Roofing, insulation and storm windows. Free estimates, references, discount for senior citizens. Jack or David Kerr, 5056 Old Electra Rd., 592-5710. 11-7-tfc

**COPIES MADE** at Parkway True Value, 25¢ each. 11-1-tfc

**LEER CAMPER SHELLS -** Over 200 in stock. Most colors and sizes. Petes R.V., Marlow, 658-5114. 4-16-tfc

**PARK SERVICES - Auto repair,** detailing, paint, body repair, mobile service. 592-5933. 5-21-4tp

**COPIES MADE - 20¢** each including reduction and enlargement. Iowa Park Air Conditioning. 607 E. Bank. 11-1-tfc

**HORTON CONSTRUCTION** Additions, roofing, painting, remodeling, dry wall & acoustic ceilings. Blaine Horton, 592-5586. 11-1-tfc

**HOME IMPROVEMENTS** from additions to remodeling. Patios and carpentry, acoustic ceiling, ceramic tile, general carpentry. Gary Williams, 592-2480. 11-1-tfc

**TNR CONSTRUCTION -** Roofing, painting, sheetrock, and texture, brick and cement work. Licensed and bonded. Rick Caffey, 592-4625. 11-1-tfc

**FACSIMILE** capability. Glens Via Insurance. 11-1-tfc

**DOMESTICS**

**REGISTERED Child Care** has openings for 2 yrs. and older. U.S.D.A. food program. Call Nancy, 592-4657. 3-12-tfc

**REGISTERED HOME** day care opening for ages 3 thru 13 yrs. USDA food, lot of summer activities. Drop-ins welcome. DeDe Tatom, 592-9632. 5-21-tfc

**REGISTERED Day Care** has openings for school age children. USDA food program. Lots of summer fun. Michelle Kerr, 592-5710. 5-28-3tc

**SUMMER CHILD CARE -** Swimming, crafts, games, parks, picnics, and more. Call 592-9561. 5-28-3tp

**DAY HOME** in process of registering has openings for infant through school age. Monday - Saturday, 6-6:30. Competitive rates. Call or leave message, 592-4611. 6-4-3tc

**GRAND OPENING** Special - Second week free. Kids in Bloom has moved to Iowa Park. Food program, lots of TLC and fun. Just 3 openings left. Call 592-2142. 6-11-2tc

**NOTICE**

**FREE PUPPIES - 8 weeks** old. Call 855-3449. 6-11-1tp

**PUBLIC NOTICE**  
The Iowa Park Consolidated Independent School District is accepting bids on food and non-food items (excluding bread, milk, and ice cream) and frozen food storage for the food service department for August-December, 1992. Bid specifications may be obtained from the Iowa Park Administration Building, 413 East Cash, Iowa Park, Texas between 8:00 a.m. and 4:00 p.m. Monday through Friday. Bids are to be returned to Robert Palmer, P.O. Box 898, Iowa Park, Texas 76367, no later than 9:00 a.m., Monday, June 22, 1992. Bids will be opened at the Administration Building, Monday, June 22, 1992 at 9:00 a.m. 6-4-2tc

**PUBLIC NOTICE**  
The Iowa Park Consolidated Independent School District is accepting bids on bread, milk, and ice cream for the 1992-93 school year. Bid specifications may be obtained from the Iowa Park Administration Building, 413 East Cash, Iowa Park, Texas, between 8:00 a.m. and 4:00 p.m., Monday through Friday. Bids are to be returned to Robert Palmer, P.O. Box 898, Iowa Park, Texas, 76367, no later than 9:00 a.m., Wednesday, June 24, 1992. Bids will be opened at the Administration Building, Wednesday, June 24, 1992 at 9:00 a.m.

**HELP WANTED**

**CASHIER - full time,** 11-8 shift. Apply in person at B&R Thriftway. 6-4-tfc

**PART-TIME COOK.** Experience preferred. Apply in person, Harvey's Family Restaurant. 4-30-tfc

**MAINTENANCE -** The Iowa Park C.I.S.D. is taking applications for the position of Athletic facilities maintenance man. Applicants must possess a knowledge of lawn care machinery operation and be willing to work nights during athletic seasons. Apply at Iowa Park School Administration Building, 413 East Cash, Iowa Park, Texas. 6-11-1tc

**EXPERIENCED** breakfast cook, Monday through Friday. Apply in person, 3-M Cafe, 114 W. Cash. 6-11-2tc

**HELP WANTED -** Now taking applications for Home Health Aides - 117 W. Park. 6-11-2tc

**KENDELL J. HILL**  
Electrical Contractor  
All types of electrical work  
592-4773

**\$1000 REWARD**  
For information leading to the arrest and conviction of any person or persons involved in theft, vandalism, arson, fishing or hunting on any of our properties in Wichita, Archer, Wilbarger, Clay, Wise or any other county in which we may have equipment located. Tom Swanson Oil Co., TS&T Drilling Inc. Ph. 817-495-3971.



**IT'S OFFICIAL -** A ribbon-cutting ceremony for Iowa Park's newest business, *The Total Image*, was held Tuesday by representatives of the Iowa Park Chamber of Commerce. Co-owned by Karen Barker and Donna Williams, the firm, which also became the Chamber's newest member, is located in Dooley's Fitness Center, in Park West Shopping Center.

**LIBRARY NEWS**

**DISCOVER A NEW WORLD OF READING**  
Our Summer Reading Program had a total of 111 children enrolled Tuesday of this week.  
Globe Trekkers I (children having just completed third through sixth grade) has 27 registered readers; Globe Trekkers II (children having just completed Kindergarten through second grade) has 57 registered to read; and the Age of Discovery (children three years to entering Kindergarten) has 27 registered readers.  
The themes for the Globe Trekkers I & II, are centered around topics of the earth; such as rain forest, mountains, deserts, rivers, volcanoes, seashores and woodlands.  
Themes for our Age of Discovery will be centered on animals and insects that live in the different areas, (lizards, frogs, spiders, fish, birds, mice and insects).

Thursday--1-1:30 4/6 years old  
Friday--9-9:30 2/3 years old  
These classes are open to all area children. There is no registration needed to participate in these programs.  
**NEW BOOKS**  
**NON FICTION--ADULTS**  
The Consumer Reports Money Book by Janet Bamford  
Basketball Fundamentals by Jay Mikes  
The Living Trust by Henry Abis  
Born For Love by Leo Buscaglia  
Free Yourself From Depression by Michael Yapko

The Native Americans by Smithmark Publishers  
The Complete Sewing Course by Gallery Books  
Physicians' Desk Reference  
Texas Facts Book by John Clements  
The Photographic Encyclopedia by Richard Coomber  
Fifty State Legislative Review by John Clements  
The Home Pet Vet Guide by Martin Green  
Womancare by Lynda Madaras  
Suicide: Why? by Adina Wroblewski  
Fodor's USA 1992  
Mathematics Made Simple by Abraham Spelling  
Electric Motors by Edwin Anderson  
**NEW BOOKS FICTION--ADULT**  
Sierra Triumph by Dana Fuller Ross  
A Time to Kill by John Grisham  
The Deep End by Chris Crutcher  
The Sweet Hereafter by Russell Banks  
Incident at Potter's Bridge by Joe Monninger  
Evening Star by Larry McMurtry  
The Ebony Swan by Phyllis Whitney  
Elephant Song by Wilbur Smith

**THE WEEKLY OIL AND GAS REPORT**

PREPARED BY OIL & GAS REPORTING SERVICE, INC.  
P. O. BOX 2645, CORPUS CHRISTI, TX 78403 512/883-6533  
RRC DISTRICT 9 - WICHITA FALLS

**WICHITA COUNTY**  
AAB OIL CO., INC. of Wichita Falls, Tx has filed for a permit to DRILL a 1900' depth Wichita County Regular Field well 3 miles N of Holiday. THE PERKINS & CULLUM No. 18 is located on a 180 acre lease in the Block 6, Denton C S L League 4.  
AAB OIL CO., INC. of Wichita Falls, Tx has filed for a permit to DRILL a 1900' depth Wichita County Regular Field well 2 miles N of Holiday. THE PERKINS & CULLUM 'A' No. 18 is located on a 200 acre lease in the Block 21, Denton C S L League 4.  
ATAPCO of Houston, Tx has reported a NEW OIL WELL COMPLETION in the Wichita County Regular Field, 4 miles E of Burk Burnett. The H. REILLY No. 127A, located on a 2100 acre lease in the D. L. & C. Co. Survey, A-714, tested 2 BO/D, no gas, 32 BW/D on pump from perfs 1406-11' and 1615-21' after acid and frac treatment.  
ATAPCO of Houston, Tx has reported a NEW OIL WELL COMPLETION in the Wichita County Regular Field, 4 miles E of Burk Burnett. The H. REILLY No. 128A, located on a 2100 acre lease in the L. C. Dennison Survey, A-55, tested 8 BO/D, no gas, 5 BW/D on pump from perfs 1524-30' after acid and frac treatment.  
ATAPCO of Houston, Tx has reported a NEW OIL WELL COMPLETION in the Wichita County Regular Field, 4 miles E of Burk Burnett. The LAWLER No. 129A, located on a 158 acre lease in the Section 17, Red River Valley Lands S/D, tested 1 BO/D, no gas, 65 BW/D on pump from perfs 1634-38' after acid treatment.  
BTO VENTURE, INC. of Holiday, Tx has filed for a permit to DRILL a 1999' depth Wichita County Regular Field well 2 miles N of Kamay. THE BURNS SHALLOW No. 24 is located on a 386.68 acre lease in the Lot 10, Block 26, K. W. V. F. L. S/D.  
LANDRUM WEST, INC. of Burk Burnett, Tx has filed for a permit to DRILL a 1999' depth Wichita County Regular Field well 1 mile NE of Kamay. THE BAILEY No. 31L is located on a 314 acre lease in the Block 30, KWVFL S/D.  
LANDRUM WEST, INC. of Burk Burnett, Tx has filed for a permit to DRILL a 1999' depth Wichita County Regular Field well 1 mile NE of Kamay. THE BAILEY No. 32L is located on a 314 acre lease in the Block 30, KWVFL S/D.  
O. L. FULFUR OPERATING CO., INC. of Iowa Park, Tx has filed for a permit to DRILL a 1950' depth Wichita County Regular Field well 3 miles NW of Kamay. The T. J. AND J. L. WAGGONER A.D.E. No. 70 is located on a 377.20 acre lease in the B. S. & F. Survey #11, A-387.  
TOM SWANSON of Electra, Tx has filed for a permit to WORKOVER [plug back & test above 1550'] a 1550' [PBTD] depth K.M.A. Field well 8 miles W of Iowa Park. The SUE MITCHELL No. 25 is located on a 70 acre lease in the P. Castleman Survey, A-36.

**IOWA PARK AIR CONDITIONING & HEATING**  
You can trust us even if you can't trust the weather  
**TRANE**  
592-2761  
TACLA001156C  
We have 24-Hour Service  
We service Carrier and all other brands

**"BUCKEY" SAYS, FOR A PRESCRIPTION FOR FIRST CLASS REAL ESTATE SERVICE: CALL "Buckey"**

**TEXOMA REALTY INC.**  
592-9622

**YOUR GUIDE TO HOMES**  
In Iowa Park and surrounding area  
\*\*\*\*\*  
Presenting This Week's Specials

- 1011 Louisa - Nice and large 3 bedrooms, 2 1/2 baths, double car garage, patio. (Made for living and comfort.) Priced at \$48,000.
  - No. 38 Surrey - very nice, 1510', 3 bedrooms, den, formal living, 1 3/4 baths. Large pool, many other amenities. Call for your appointment with Patty. 592-5109. Modestly priced at \$68,500.
  - Wichita Falls: 1511 Britain - Beautifully decorated, large 2 bedroom with utility room; lots of storage.
  - 419 East Rogers - High on a hill, 3 bedrooms, den with fireplace, 2 baths and extra room for whatever.
- Thomas Johnson Broker 592-2391  
Patty McLemore Sales Associate 592-5109

**S.E.T. Auto Detailing**  
You Tried The Rest, Now Use The Best  
Eric Tidwell, Owner  
761-5607 Pager  
723-0237  
2601 Jacksboro Hwy.  
Wichita Falls, TX 76302

**KINGS KIDS CHRISTIAN DAYCARE & PRESCHOOL**  
"Iowa Park's finest for Parents who care"  
202 N. Jackson 592-4242

**Jim's Conoco**  
Check with Jim or Mark Shirley for expert repairs on your vehicle.  
592-4897  
612 W. Highway  
CONOCO

**Tatom Construction**  
"Professional Remodeling"  
Terry Tatom (Owner) Licensed and Bonded  
600 N. Wall 10 Years Experience  
Iowa Park, Texas 76367 All Work Guaranteed  
(817) 592-9632

- Cabinets
- Roofing
- Painting
- Interior Wood
- Fence Work
- Carpentry
- Concrete
- Decks

**Political Column**  
The following is a list of candidates who are seeking offices in the November General Election, and who have paid for the political advertisement.  
State Senator,  
30th District  
**Steven A. Carriker**

**Park Home Health Services**  
592-2753  
Phone Answered 24 hours  
Medicare-Medicaid approved  
Private Insurance

**Shaklee Distributors**  
Ruby & Dan Love  
1601 Karen, Iowa Park  
592-5951

**GIFT IDEAS**  
Let Mary Kay help with your year-round gift ideas.  
Wrapping & delivery. It's easy!  
Call Norma Young,  
592-2337

Come see what's happening in the World of **AVON**  
You can be a star in the New Star Program  
Jennifer Goin 592-9607

**POSEY'S APPLIANCE SERVICE**  
We service all makes of washers, dryers, freezers, refrigerators and window air conditioners  
208 James Drive Phone - 592-5452

**Cash for Cans IOWA PARK RECYCLING CENTER**  
Corner Pacific & Bank  
9 a.m. - 6 p.m., Fri. & Sat.

## Cindy Haddock's work to be on display

Cindy Haddock is the representative from Iowa Park Arts and Crafts Association who will have her work on display through June at State National Bank and Tom Burnett Memorial Library.

Cindy's displays will be a poster board with a clever display of some of the earrings and pins that she makes, and a wicker basket with a handle that has a stiffy bow on it. In the basket Cindy has arranged silk greenery and burgundy flowers.

Other hobbies Cindy has are counted cross stitch, fabric painting, and in her words, she "dabbles in oils and pastels."

A bride of six months, she was Cindy Harper before her marriage to

Matthew Haddock, high school choir director.

Cindy is office manager at Entex Fabrication Inc. She is a graduate of Iowa Park High School and attended Midwestern State University.

A self-taught hobby, she has had for about six years, is calligraphy. This is a help for her home business of Best Wishes.

Cindy addresses envelopes for wedding invitations and will do the invitations in calligraphy if anyone wants them. She also can order wedding invitations and help plan weddings from beginning to the reception, even arranging for the cake and reception. She has been in this business for a year.

In addition to that, Cindy sings for weddings and provides the music. She plays both piano and organ. Currently she and her husband are working on an interim basis with First Baptist Church of Electra. She is organist and he directs the choir.

They are members of Faith Baptist Church in Iowa Park.

Cindy became a member of the Arts and Crafts Association the latter part of 1991. Her mother, Mrs. Bob (Ann) Harper, who also is a member, is responsible for her being a member.

### A WORLD OF ADVENTURE EXPLORE THE WORLD AS AN ASPECT FOUNDATION HOST FAMILY OR INTERNATIONAL EXCHANGE STUDENT



STUDENTS FROM 23 COUNTRIES WHO WANT TO LEARN ABOUT AMERICA WOULD LIKE TO SPEND A SCHOOL YEAR OR SEMESTER IN YOUR COMMUNITY. SHARE THE LEARNING EXPERIENCE BY BECOMING A LOVING FAMILY FOR AN ASPECT STUDENT OR STUDYING IN ANOTHER COUNTRY. PLEASE CALL: Christy Burton at 1-800 US YOUTH Local Area Representative: Albert Dillard, 767-0767

## SHOP IOWA PARK FIRST

Is your CD about to roll over and play dead?

If you bought a CD 2 or 3 years ago, you're in for a big shock when you call the bank for the renewal rate.

Right now, you can earn  
7.10% current quarter  
6.65% guaranteed

...in an annuity where your earnings accumulate tax-deferred. You can start a lifetime income at any time. Earn a competitive interest rate safely and start a lifetime income backed primarily by U.S. government securities.

CHRISTY MCKENZIE, CFP

1901 10th Street, Suite 100, Wichita Falls, Texas 76301  
(817) 723-0122

4.00% guaranteed minimum annual interest rate for subsequent contract years.

SPDA-PS 1/90 Underwritten by Delta Life and Annuity Company/530 Oak Court, Suite 200, Memphis, TN 38117 Form #339TX-4/92 Rated "A" (excellent) by A.M. Best Company



Cindy Haddock

HELP US CELEBRATE OUR THIRD ANNIVERSARY OF OUR SUMMER GAME PROGRAM

### Come In And Start Winning Today!

# ALLSUP'S

# PLAY EASY MONEY

ALL TYPES PEPSI-COLA  
**Gotta Have It**  
6 PACK CANS  
**\$1.29**

PRICES EFFECTIVE JUNE 11-17, 1992  
WHILE SUPPLIES LAST

IOWA PARK & HOLLIDAY

**ALLSUP'S**  
\$50.00 WORTH OF GASOLINE FREE!  
TAKE THIS COUPON TO SIERRA BLANCA MOTOR CO. RUIDOSO, NEW MEXICO 88345. IF YOU PURCHASE A NEW VEHICLE BEFORE AUGUST 8, 1992, YOU WILL RECEIVE \$50.00 WORTH OF FREE GASOLINE COURTESY OF ALLSUP'S

WIN A 1992 CAVALIER 4 DR. SEDAN  
For fast friendly car deals shop SIERRA BLANCA MOTOR CO. RUIDOSO, NM

FREE FOOD  
FREE GAS

OVER 340,000 CHANCES TO WIN!

WIN UP TO \$1,000.00 IN CASH INSTANTLY!

HOMOGENIZED ALLSUP'S MILK GALLON

**\$1.99**



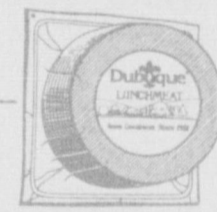
DUBUQUE FRANKS 12 OZ. PKG.

**59¢**



DUBUQUE BOLOGNA 12 OZ. PKG.

**79¢**



SHURFINE GRADE A LARGE EGGS DOZEN

**59¢**

ALL FLAVORS DORITOS® CHIPS 6 OZ. PKG.

**99¢**

HERSHEY'S, KRACKEL SKOR REESE'S, MOUNDS, SYMPHONY, BAR NONE, TWIZZLERS, MR. GOODBAR  
HERSHEY'S CANDY BARS 3 \$1 FOR

20-16 OZ. PKG. HEFTY PLASTIC CUPS **89¢**

4 ROLL PKG. NICE 'N SOFT BATH TISSUE **89¢**

5 LB. BAG SHURFINE FLOUR **79¢**

EACH SAUSAGE, EGG & BISCUIT **79¢**

10 OZ. SIZE ALL FLAVORS OCEAN SPRAY DRINKS **69¢**

ALLSUP'S CORN DOGS

2 **89¢** FOR

6 1/4 OZ. CAN SHURFINE TUNA **59¢**

32 OZ. BTL SHURFINE TOMATO KETCHUP **89¢**

STOCK UP ON SAVINGS!

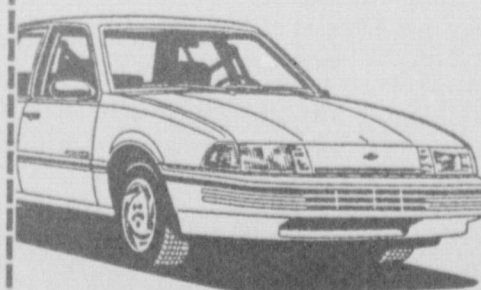
Enter Our Second Chance Sweepstakes and Win A 1992 Cavalier



ENTER TODAY!

Print Your Name, Address, Phone Number & Sign Your Name. Stop By Any Participating Allsup's Store and Drop Your Entry Into The Sweepstakes Entry Box.

Name: \_\_\_\_\_  
Address: \_\_\_\_\_  
City: \_\_\_\_\_ State: \_\_\_\_\_ Zip: \_\_\_\_\_  
Phone Number: ( ) \_\_\_\_\_  
Signature: \_\_\_\_\_



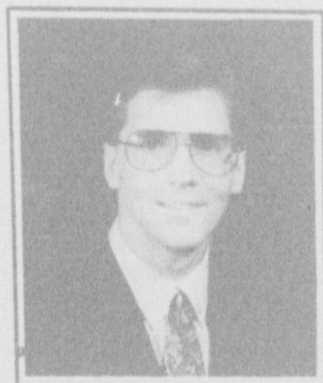
OR Be one of 9 lucky people who will win FREE GAS FOR A YEAR! (\*8 Gallons a week for 52 weeks)

You can enter as often as you like, but each entry must be on a separate completed entry form found on either the game tickets or in Allsup's Grocery Ads.

NO PURCHASE NECESSARY See Store For Complete Rules And Odds

## R&R Carpet Cleaning

Best prices on carpet, upholstery & car interiors.  
Free estimates  
Call Ronnie - 767-4660  
24-Hour Emergency Service



Dr. Dan Broom

## Hurt on the Job? In an Auto Accident?

Don't Suffer with Pain!

Brown-Cavett Back & Neck Chiropractic now has an agreement with a group of physicians in the same health complex to provide you with the best treatment available.

Do Something About the Pain. Call Today.

BROWN-CAVETT  
**BACK & NECK**  
CHIROPRACTIC  
Treatment you can trust.

3506 Buchanan, Suite A Wichita Falls 696-2211  
906-B Kramer Road Burkburnett 569-2266  
501 South Archer Henrietta 538-5603  
402-A West Park Iowa Park 592-2778