

MRS. LITA WATSON  
528 W. CLARA  
IOWA PARK TX 76367  
112

# IOWA PARK LEADER

50 Cents

Vol. 22, No. 48

IOWA PARK, WICHITA COUNTY, TEXAS 76367

Thursday, August 15, 1991

## Local, county voters nix issues on ballots

Iowa Park area voters agreed with the majority of other vote casters across Wichita County in defeating all three County Education District funding proposals in Saturday's special election.

And while area and county voters also agreed on the two state constitutional amendments on the ballots, they

failed to find agreement with the majority of voters across the state on one of the issues.

Local and county voters disapproved Amendment One, 4,895-1,413. But the total for the state passed the amendment 467,115 to 346,826.

Amendment One was "...to allow the voters of a county education district

to adopt certain exemptions from the district's ad valorem taxation for residence homesteads and to provide for the taxation of certain tangible personal property."

Voters in precincts 32, 33, 34, 53 and 60 voted against the amendment by a 569-99 margin.

The reason offered for the amendment's passage statewide and failure locally is that most county districts already provide for homestead exemptions, while only one-quarter of the school districts across the state have not offered the exemptions.

The second amendment, which would have allowed the state to issue obligation bonds to provide loans to college students, was a major failure locally and in the county, but was disallowed by only a 7,000-margin total over the state.

The area's five boxes turned down the amendment 598-65, while it lost in the county 4,902-1,336. Statewide, it failed 410,117-403,352.

All three CED issues failed in each of the area boxes, as well as in the total county voting.

Proposal One, which would have allowed taxation of personal property, failed 443-177 in the area boxes, and 3,421-2,031 in the county.

Proposal Two, allowing exemption of 20 percent exemption for homesteads, failed 418-194 in the area boxes, and 3,197-2,229 in the county.

Proposal Three, allowing additional exemptions for the disabled and older citizens, was turned down 601-18 in area boxes and 7,116-273 in the county.

Precinct 32 had a total of 414 votes cast Saturday, while Precinct 33 drew 86, Precinct 34 had 44, Precinct 53 had 55 and Precinct 60 had 60. In addition, there were 39 votes cast absentee in the local box.

Continued on page 4

## Council taking aim to complete budget

The city council Monday night took two more steps toward adopting the 1991-92 tax budget.

Although no formal discussion was actually held on the budget, following two evening work sessions held last week, aldermen approved a resolution accepting the certified tax rolls for 1992, as well as procedures for holding the required public hearing on the budget.

Despite the loss of some \$2-million in taxable values, the council at its Aug. 26 meeting is expected to tentatively approve a proposed balanced budget of \$3-million, without increasing the current tax rate.

Should that action be taken, notice

would be published giving the public at least 15 days notice of a public hearing on the budget.

However, should the council decide a tax increase would be necessary, a 30-day notice would be required to announce the public hearing, according to the procedures adopted by the council.

A proposal also was approved to sell a tract of land at 610 East Bank to the highest bidder.

The property, which was put up for sale for taxes by the county sheriff, did not receive a bidder at its publicized sale, so the city assumed responsibility of the property.

Aldermen agreed to accept the highest bid on the property, but only if a minimum of \$690 is offered. Any money above that amount will be shared on a prorated share with the school district and county, it was pointed out.

Five ordinances were approved during the meeting.

The first of the ordinances was to comply with state requirements. It repealed the enterprise zone ordinance adopted June 24, and used the same language in the new ordinance, which complied with time requirements of the state.

Two ordinances dealt with zoning of two tracts recently annexed into the city. It zoned 401 East Diamond commercial-automotive/recreational, and 1211 North Bell agricultural.

The other two ordinances were replays of two tracts, one at 503 East Alameda and the other at 709 East Ruby. Both were approved.

Also approved was the lowest of four bids for crusher run (gravel) to be used on the Recreational Activities Center parking lot. It was for \$7.65 per ton, some 15 cents above the anticipated cost.

Because of weather delays, work

## Big month for permits

Residents have apparently been taking advantage of summer weather to improve their homes, according to the previous month's building permits issued by city hall.

July, with \$102,731 in permits, is the largest month for construction in the city thus far this year.

The year's total is now \$376,614. However, there still has not been a permit issued for construction of a new home.

Permits issued during July included: Mitch Williams, 700 E. Ruby, addition, \$2,500; Virginia Camp, 900 E. Camp, carport, \$250; Donna Ledesma, 1321 Edgehill, repair, \$300; Jimmy Cook, 1001 W. Cornelia, alteration, \$1,396; Frank Guyette, 601 W. Manes, pool, \$15,900; Kenneth Mars, 1008 W. Cornelia, pool, \$9,500; Deryl Frazier, 1315 Bluejay, repair, \$1,406; Davis Knox, 502 W. Daisy, mobile home, \$17,800; Mildred McLemore, 107 W. Jefferson, alteration, \$300; Kathy Karen, 1002 W. Cornelia, storage shed, \$400; Howard Klinkerman, 607 W. Coleman, alteration, \$4,300; Clydell Cockrum, 702 E. Pasadena, repair, \$500; Jerry Robertson, 111 W. Chestnut, addition, \$1,500; Bill Guthrie, 106 W. Magnolia, alteration, \$788; M.J. Brandt, 407 W. Washington, carport, \$100; Mrs. Wakefield, 413 W. Aldine, alteration, \$5,400; Virgil Woodfin, 201 S. Park, alteration, \$2,100; Horacia Arredondo, 608 W. Rebecca, alteration, \$500; Danny Templeman, 405 W. Ruby, work shop, \$21,600; Kenneth D. Edwards, 201 E. Jefferson, storage shed, \$3,000; Mike Thomson, 1 Surrey, repair, \$1,438; Nell Burns, 608 E. Cash, repair, \$2,400; Mrs. Burns, 510 E. Pasadena, repair, \$1,175; Henry Kiser, 1008 W. Louisa, repair, \$4,350; Jack's Pharmacy, 115 W. Park, repair, \$1,500; Dale Prunty, 1006 S. Park, repair, \$2,328.

## TRUSTEES APPROVE:

### Tax abatement for Cryovac

Iowa Park school trustees Monday night approved a 10-year tax abatement agreement with Cryovac, on an expansion project at the plant which will result in hiring additional personnel.

Cryovac, which already provides one-fifth of the tax monies generated locally for the school district, will add 50 new employees as result of the expansion.

A similar abatement agreement has already been approved by the county commissioners court.

Should the manufacturer not comply with the agreement during the entire 10-year period, all taxes which were due the district and county will be "recaptured," according to the language of the agreement.

Trustee Martha Dudley, an employee of the plant, abstained from the voting, which drew unanimous approval from the balance of the board.

Cafeteria prices for all meals will

remain the same as the previous four years, following approval of the recommendation to the board.

A formality acted upon annually by the board was to approve the federally-funded free and reduced school lunch program.

Preston Dairy was determined to have submitted the lowest of three bids to supply the cafeterias with milk again this year.

The Burkburnett firm, it was reported, has agreed to refund \$7,000 to the local district, following a settlement with the state's attorney general in July.

Successful bidders for the school's purchases of ice cream and bread were firms that have never served the local schools.

Blue Bell was the low bidder for ice cream, while Continental Baking (Wonder Bread), won the bread bidding.

Low bidders of all the other cafete-

ria supplies were too numerous to list.

An appeal by Rev. Mike Grubbs that the board authorize payroll deduction for employees as contributions to the United Way Fund was received.

No action was taken as the issue was tabled, but the board agreed to poll teachers and staff to determine the feasibility of the request.

The board discussed setting dates to work on the final figures of the 1991-92 budget, and though several dates were proposed, none was set.

Supt. Glen Mitchell told the board he still has no figures from state on how much monies the district can expect, after the legislature's finally completing its special session Tuesday.

He did tell the trustees, however, that it appears the state will have a shortfall that could cost the local district \$66,000, if not more.

And that figure could double next year, he said.



PREPARING for the 1991-92 school year, members of Iowa Park High's Mean Green Marching Machine began its summer band program this week, and will continue through next Thursday. Musicians practice indoors during the afternoon session, and return in the evening to practice marching.

## News Briefs

### Kindergarten seminar slated

A meeting designed to inform parents of children who will enroll in kindergarten this fall will be held next Thursday.

To begin at 7 p.m. in the high school auditorium, topics slated for

discussion will include grading, hours, buses, discipline, dress code and absenteeism.

Class lists will be posted, and parents will be able to meet their child's teacher. Refreshments will be served.

### Six graders invited for tour

The doors of Iowa Park Junior High School will be open for sixth graders and their parents Tuesday, Aug. 20, according to Principal Randy Lovelady.

Students will not only be able to look the building over, but also will find their homeroom assignments posted.

Parents of the students also will be able to tour the structure, as well as given an opportunity to join the Junior High PTSA, Lovelady added.

Open house for the sixth graders only, and their parents, will be from 9:30 to 11 a.m. on that date.

### Jr. High band dates changed

Junior High Band students will begin summer sessions two days later than originally planned, Director Ed Hefli announced this week.

Students will meet next Wednesday

and Thursday, from 9 to 11 a.m., at the band hall.

The musicians initially were to meet next Monday, but the plan was delayed, Hefli said.

### New bus riders need passes

New students, and students who have moved during the summer, will need to be issued bus passes before they can ride Iowa Park school buses this year, according to Robert Palmer, assistant superintendent.

The passes may be obtained at the

school tax office between 8 a.m. and 4 p.m. on weekdays.

The office is located on the west side of Kidwell Elementary campus.

Passes have been issued in the past at the administration building, Palmer noted.

### City receives 1.14 moisture

Something unusual happened this week.

It rained! Iowa Park received 1.14 in precipitation from three days of mostly

drizzle, according to readings at the city's wastewater treatment plant, located on the southwestern edge of town.

Measurements included .89 Sunday, .04 Monday and .21 Tuesday.

### Leader reader glad had paper

A 75-year-old Valley View woman, Leona Moore, likes her paper even more now.

She said she was leaving the beauty salon one day last week when she was attacked by two full-grown blue heeleders.

She was knocked to her knees and the dogs were biting one arm. In her free hand was a rolled up copy of the Iowa Park Leader. She struck one dog with the paper, and it immediately turned loose.

Others heard her screams and came to her rescue.

She was treated by a doctor, who reported the attack to county authorities, for bites on the arm. The dogs were picked up for observation.

"If I hadn't had that paper," Mrs. Moore said, and added her wounds might have been considerably more serious.

## Local sales tax receipts still ahead of last year

This month's sales tax rebate from Austin didn't match up with the check received in August 1990.

But three of the other four municipalities in Wichita County found it to be the same way.

Iowa Park's check was \$17,033.91, down 6.88 percent from the \$18,293.32 received the same month last year, according to the state comptroller's report.

Wichita Falls was a minus 3.00 and Burkburnett minus 1.71. Only Electra, with a plus 2.46 percent, showed a gain.

For the year, Iowa Park is still 3.44 percent above the same time frame in 1990, having received \$113,752.33, as

compared with \$109,970.96.

The report stated every municipality in the county also was running ahead of last year: Electra 9.08; Burkburnett 5.97 and Wichita Falls 0.55.

Holliday's sales taxes are still on the rise, running 45.01 percent ahead of the same period in 1990.

August's checks include taxes collected on June sales and reported in July by businesses filing monthly sales tax returns with the state.

This month's check also includes taxes collected during the second quarter period, for businesses filing quarterly sales tax returns.

Does your subscription to the Leader expire this month?

Check the list on page 4.



Adell Marlar



Peggy Luna

## Marlar, Luna work to be displayed

By Myrna Smith

Adell Marlar and Peggy Luna are representing the Iowa Park Arts and Crafts Club with their work displayed in two local business institutions for the next three weeks.

Mrs. Marlar enjoys almost every kind of art or craft and is adept at several.

A painting of a tranquil country scene is her exhibit for this month, done in oil, her favorite medium for painting pictures. She also does tole painting and uses acrylics for that artistic endeavor.

Mrs. Marlar also enjoys doing ceramics, floral arranging and sewing.

She and her husband, Howard, moved to Iowa Park in 1976 when he retired from Texaco at Electra. Mrs. Marlar says she is basically a homemaker.

In addition to being a member of the Arts and Crafts Club, she also is a member of the 23 Study Club, which she serves as treasurer.

Mrs. Marlar is active in First Baptist Church. She is president of Baptist Women and serves as hospitality chairman.

She and her husband share a love of travel. They have been to all the states in continental United States and last year they visited Hawaii. They are planning a trip later this month to Alaska with the Good Sams of which they are members. They will fly to Vancouver and cruise to Alaska. Plans are in the making to attend the New Year's Day Rose Parade.

The Marlars also are members of an RV Club that has been formed by some members of First Baptist Church. This year they have been to Branson, Mo., Granbury and San Antonio.

They have two sons and two grandsons.

Mrs. Luna's display will be three pieces of her favorite handiwork in her

favorite colors, shocking pink and burgundy.

She has a doll dressed in a beautiful crocheted dress of shocking pink trimmed in burgundy, accented with burgundy satin ribbon bows down the front.

Mrs. Luna has made a crocheted afghan with a wild rose motif in the selected colors, touched with green. The lap quilt she has on display has a crosstitch wild rose design and is put together with strips of shocking pink and burgundy.

Mrs. Luna said it took her about year to complete the three pieces, however, she remarked, "That was because I would get tired of working on one piece and work on something else for a while before I would pick up the piece again".

A member of the Arts and Crafts Club for one year, this year Mrs. Luna is in charge of the displays and the scrapbook.

Mrs. Luna and her husband, Richard, and some of their nine children are musically inclined, and the Lunas are members of the Blue Grass Club.

They attend Scotland Baptist Church.

Each month two club members

### Kid's Crusade begins tonight

First Assembly of God's annual Kid's Crusade will commence tonight and will continue through Saturday, beginning at 7 p.m. nightly.

The church is located at 200 S. Yosemite.

Bible stories, puppets and songs are planned for the nights events, conducted by the Billy Williams family, formerly of Iowa Park.

display their work for the public to view some of the crafts they have learned and some they complete during the club meetings.



Mr. and Mrs. Keith Hillard of Wichita Falls are parents of a son, Dylan Keith, born Aug. 4 at Wichita General Hospital. He weighed seven pounds, three ounces and is their first child. Mrs. Hillard is the former Risa Roberts of Iowa Park.

Grandparents are Dr. and Mrs. Ross Roberts and Mr. and Mrs. Lewis Hillard of Iowa Park.

Great-grandparents are Mr. and Mrs. Jeff Roberts of Bryson, Mr. and Mrs. Doyle Ice of Saint Jo, and Ruby Hillard of Wichita Falls.

Mr. and Mrs. Tim Karsten are parents of a daughter, Jacquelynn Rose, born July 31 at Sheppard Air Force Base Hospital. She weighed seven pounds, one and one-fourth ounces and was 20 inches long. She has a brother, Kristian Stewart.

Grandparents are Margaret Rose and Helen and Charles Karsten.

Jordan Wayne, was born Aug. 8 to Deborah and Deryl Walls. He weighed seven pounds, nine ounces. Jordan has one sister, Kristeen.

Grandparents are Dorothy and Jim Jackson of Lakeside City and Kay and Willie Clayton of Iowa Park.

## Golden anniversary celebrated

Ret. Col. William M. and Fenton Best of Kerrville celebrated their golden wedding anniversary July 28 with a reception at Northway Christian Church in Dallas.

Hosting the occasion was the couple's son and daughter-in-law, Dr. and Mrs. Thomas Best, and grandchildren, Sarah and Will.

Co-hosts were Mrs. Best's sisters, Mrs. Jack Moss of Arlington and Mrs. Rollin Roberts of Iowa Park, and Best's sister, Mrs. Jerry Miller of Bethany, Ok.

The Bests were married June 2, 1941 at First Christian Church in Iowa Park. Mrs. Best is the former Fenton Lenore Clark, daughter of the late Mr. and Mrs. T.M. Clark. Best is a native of Sand Springs, Ok.

Both Mr. and Mrs. Best are graduates of Texas Christian University. They are members of the TCU Ex-Lettermen's Association, the TCU Century Club and the U.S. Air Force Retired Officers Association.



Ret. Col. and Mrs. William M. Best

## Whoop-T-Do King & Queen Contest

EPSILON ETA Chapter of Epsilon Sigma Alpha International invites all boys and girls in age groups of 0-3 and 4-7; to compete for WHOOP-T-DO KING AND QUEEN. A King and Queen winner will be named in each age group. Votes are cast by a penny vote. The winners will be determined by the child who has collected the most money for votes. The winner will be crowned at the Whoop-T-Do on SATURDAY, SEPTEMBER 28, 1991.

ESA is a non-profit organization which supports St. Jude's Children's Hospital, March of Dimes, Special Olympics and community projects on the local level.

Please call one of the following persons to register your child. You will be given further information. DEE DEE FORNEY, 592-5252; CYNDY DICKERSON, 692-4217

CONTESTANT'S NAME \_\_\_\_\_ AGE \_\_\_\_\_ BOY OR GIRL \_\_\_\_\_

ADDRESS \_\_\_\_\_ PHONE \_\_\_\_\_

PARENT'S SIGNATURE \_\_\_\_\_

# SNB

Welcome to the  
Iowa Park Area  
and the  
11th Annual

TEXAS RANCH ROUNDUP  
Best wishes to our own Moorhouse Ranch

Friday, Saturday & Sunday  
Wichita County Mounted Patrol Arena

### Performance Events:

Ranch Bronc Competition • Wild Cow Milking  
Team Roping • Team Branding  
Team Penning • Wild Horse Race

### Competitors:

W.T. Waggoner Estate ~ R.A. Brown Ranch ~ Burnett Ranches  
Double U Ranch ~ Green Land & Cattle Co. ~ Johnson Ranches  
Lewis Ranches ~ Moorhouse Ranch Co. ~ U Lazy S Ranch  
Pitchfork Land & Cattle Co. ~ Renderbrook-Spade Ranch  
Tongue River & Spur Headquarters

# STATE NATIONAL BANK



Your Full Service Bank  
Striving to meet your banking needs

Each Depositor Insured to \$100,000  
FDIC  
FEDERAL DEPOSIT INSURANCE CORPORATION

## Hughes is more than a Pharmacy

Home-Owned and Home-Operated

### A Full-Line Drug Store with...

- Cosmetics •Gift Items
- Costume Jewelry
- Greeting Cards •Candy
- Skin Care •Tobacco
- Home Decorations
- Etc., Etc., Etc.

### We Offer...

- Free Delivery of prescriptions
- 24-Hour Service when emergency arises
- Charge Account with approved credit
- Computer records for tax purposes
- Gift wrapping for those special gifts
- 10% Senior Citizen Discount

### We Will Meet or Beat All Retail Prescription Prices

Just bring in a current prescription purchase receipt.

### It's Easy to Transfer your Prescription

Just give us a call-we'll do all the work.

- We Gladly Accept
- Blue Cross & Blue Shield
  - PCS •Medimet
  - Paid •APS
  - Medicaid
  - Mutually Preferred

## Hughes PHARMACY

Joe Hughes - Pharmacist  
120 W. Park 592-4191



Mrs. William A. Artley, Jr.  
(Charlotte Cockrum King)

## King, Artley vows read Friday at 'the Falls'

The waterfalls in Wichita Falls formed the background for the Friday wedding ceremony at 12 noon that united Charlotte Cockrum King and William A. Artley, Jr.

Miles Graham, Wichita County tax collector and an Electra minister, directed the recitation of vows.

Parents of the bride are Mr. and Mrs. Clydell Cockrum of Iowa Park and the groom's parents are Mrs. A.D. Thompson and William A. Artley, Sr., of Williamsport, Pa.

Given in marriage by her father, the bride, who has American Indian blood in her lineage, chose for her wedding a costume designed and made by an Indian seamstress in Anadarko, Ok., after she had seen the original in Indian City USA Museum there.

Her dress of white knit was styled with a wrap around skirt of ankle length featuring a turquoise fabric strip down the skirt's side opening that was enhanced with Indian symbols.

The long sleeved blouse was fashioned with long puff sleeves trimmed with turquoise ric-rack braid. Neckline of the blouse opened to a V shape that revealed a handmade choker of ivory and turquoise with drops of ivory and turquoise beads, ending with shell beads. Her matching earrings were borrowed from her matron of honor.

She added a white belt with turquoise beaded Indian symbols at the waistline, and squaw boots for a more authentic look. Her bouquet was fashioned of turquoise and white carnations and roses.

Mrs. Jimmy Nicks of Wichita Falls attended the bride as matron of honor. Her mid-calf dress of turquoise was styled similar to the bride's, with a wide strip of white Indian symbols accenting the side opening.

She wore a handbeaded necklace of turquoise and white joined by a large circular Indian design of ivory and turquoise bead drops and a blue feather. She completed her attire with a beaded headband, a gift from the bride, and Indian moccasins.

Flower girls were Carmen and Reba King, daughters of the bride. They wore denim skirts. Reba wore a red T-shirt and Carmen wore a turquoise T-shirt. They both wore boots.

Ring bearers were Elizabeth Artley of Wichita Falls, daughter of the bridegroom, who carried the bride's rings, and Carrie King, the bride's daughter who carried the groom's ring. They wore denim jump suits with turquoise T-shirts.

They carried ivory crocheted baskets for the flowers and rings. All flowers and boutonnieres were turquoise and white roses and carnations.

Curtis Simmons of Wichita Falls was best man. Both he and the bridegroom wore jeans, red double breasted shirts and boots.

Mrs. Artley graduated Iowa Park High School in 1977 and is employed at the Vehicle Registration Department in Wichita Falls.

Artley received the GED from Williamsport Area Community Col-

lege, Williamsport, Pa., and is an employee of Washex Machinery Corp of Wichita Falls.

A surprise reception honored the couple hosted by co-workers in the Motor Transportation Division.

Following the ceremony the couple left for a wedding trip to Denver, Colo. When they return they will make their home in Iowa Park.

## State ESA meeting held

Bobbie Shaw and Joyce Tidwell were chairmen at the Epsilon Sigma Alpha State Leadership Seminar and meeting held in Plano Saturday.

The pair chaired the Leadership Seminar, where the theme was "Ride High in the Texas ESA Constellation." Sessions were held on membership campaign, putting leadership in place, publicity and the ESA Foundation.

During the state board business

meeting upcoming state-wide events were announced, and yearbooks and reporting forms for the coming year were distributed.

Also attending from the Iowa Park Chapter were Lela Mercer and Mary L. Boyd.

The next State Board meeting and arts and crafts sale will be held in November in Odessa, with the Epsilon Eta chapter participating.

**Jack's Park Pharmacy**  
115 W. Park 592-2731

**Bridal Selections For**  
**Kimberly Williams & Shawn Price**

**8:30 a.m. - 6 p.m., Monday - Friday**  
**9 a.m. - 1 p.m., Saturday**

DISCOVER    MasterCard    VISA

**There's no Magic about Blood Pressure Control ... it's easy**

1. CHECK IT REGULARLY
2. IF IT'S HIGH, SEE YOUR DOCTOR

**WAL-MART PHARMACY**  
500 W. Highway 592-4157  
Tammi Morman - Pharmacist

makes it even easier with **FREE BLOOD PRESSURE CHECK**

High Blood Pressure is a Killer ... but it can be controlled — and the sooner it's caught, the less damage it does to your vital organs. **CHECK YOUR BLOOD PRESSURE REGULARLY ... it only takes a minute ... and IT'S FREE.**

**WE CARE ABOUT YOUR HEALTH**

**BACK TO CAMPUS**

 <b>50¢</b> Every Day 4 Ounce Elmer's® Glue Dries Clear. Non-toxic. No. E-102/3.	 <b>2/\$3</b> SALE Pentech® Fiberz Pens® No. 21003.	 <b>\$1</b> SALE Pentech® Grip Stix® No. 72206.	 <b>97¢</b> Every Day Construction Paper No. 78-853.	 <b>68¢</b> Every Day 120 Count Theme Book Manufacturer may vary.	 <b>68¢</b> Every Day 24 Count Crayola® Crayons Non-toxic. No. 2448-M.
 <b>4.86</b> Every Day Assorted Children's Lunchboxes Includes insulated bottle. Manufacturer may vary.	 <b>79¢</b> Every Day 6 Pack Erasermate II® Black or blue ink. No. 315/6-66.	 <b>1.46</b> Every Day Scented School Box Strawberry Red, Blueberry Blue, Bubblegum Pink or Lemon Yellow. Nos. 267-57/5/6/4.	 <b>50¢</b> Every Day Empire® 12 Pack Pencils No. 9162.	 <b>42¢</b> Every Day Filler Paper Manufacturer may vary. 200 count	
<b>Pedigree Pink Erasers</b> Model # 2908 Reg. 37¢ SALE <b>4/\$1</b>	<b>Milky Way, Snickers, Mars Plain &amp; Peanut M&amp;Ms, 3Musketters,</b> Vendor Bars Reg. 36¢ SALE <b>3/99¢</b>	<b>Wal-Mart Facial Tissue</b> 175-count EVERDAY LOW PRICE <b>82¢</b>			

SALE DATES: Aug. 15 - 18, 1991  
STORE LOCATION: Loop 370 & Pacific Ave., IP  
STORE HOURS: 10 a.m. - 8 p.m., Mon. - Sat.  
12-noon to 5 p.m., Sunday  
PRICES GOOD AT IOWA PARK STORE ONLY

**WAL-MART**

**BACK TO CAMPUS**

WAL-MART'S ADVERTISED MERCHANDISE POLICY—It is our intention to have every advertised item in stock. However, if due to any unforeseen reason, an advertised item is not available for purchase, Wal-Mart will issue a Rain Check on request, for the merchandise to be purchased at the sale price whenever available, or will sell you a similar item at a comparable reduction in price. We reserve the right to limit quantities. Limitations void in New Mexico. 1990 © WAL-MART STORES, INC.

# As I See It...

By Bob Hamilton



There's going to be a lot of people surprised by our Iowa Park Hawks this football season... especially if they are paying a lot of attention to the "experts" and their predictions.

This is not particularly a comment on the major changes in the coaching staff. I can't really comment on this new group, because I don't know them nearly as well as I know the players themselves.

But the evening the school board was hiring Lucky Gamble as the new head coach, I told the Head Hawk that I'd put a thousand-pound monkey on his back, with my prediction of the 1991 team.

Lucky looked puzzled, until I said, "Whoever coaches this bunch will look like Knute Rockney (or however you spell it). They've got that much talent and experience."

Let me justify my thinking. That 2-8 season record in no way was an indication of the players' talent or the ability of the coaching staff, first of all.

Only 72 players turned out for the varsity, junior varsity and freshman teams, and among those were very, very few seniors.

The club then became victim of more sidelining injuries than is normal in a two-year period.

Lacking the normal number of seniors, a very talented junior class was called upon to fill the starting positions. And that class has contained a number of talented athletes I'd been watching since they were first entering organized sports.

As the number of injuries continued to mount, more and more sophomores were called up from the junior varsity. So many, as you will recall, that the JV schedule had to be cancelled.

That class also has a group of exceptionally talented athletes.

The bottom line is, Iowa Park will have more players this year, with varsity starting experience, than any school we will face on our regular schedule.

And, hopefully, Gamble will not have to draw from this year's sophomore class, which produced a winning team as freshmen.

Our "experts" apparently are looking only at last year's losing record, and not at what is coming back, nor what effect the coaching changes may have.

None of the "experts" has given the Hawks a shot at a finish in the district higher than fourth place.

I'll take any odds they might want to give me on that.

It's not just that I like my Hawks, either. I'd have to like them as a favorite if I still lived in Alaska, knowing them and their background.

I'll not be foolish enough to predict what the season record will be. This is still high school football, and as such, highly unpredictable.

But, if you like high school football, I'd advise you to get your season tickets and check your vehicle's traveling ability.

We're about to launch another Hawk football year.

## WORTH QUOTING

We noticed an interesting item in the Lovington, New Mexico paper last week that should alert school teachers in this state.

The news item reported that teachers' salaries in New Mexico will increase by \$585 - school districts in the state are giving their teachers an average 2.27 percent pay raise, boosting the average statewide teacher salary from \$25,747 a year to \$26,332.

That's normal enough but we noticed that in addition to the 2.27 average raise statewide that five districts in the state will get more because of a density factor -- the state's five largest districts, Albuquerque, Gallup, Las Cruces, Roswell and Santa Fe -- will divvy up an additional \$9 million.

Those five districts have a majority of representatives in the state capitol of Santa Fe.

Can't you just imagine what would happen to school districts in West Texas if we wind up with statewide tax base for school districts? With Dallas, Houston, and San Antonio having more representatives than the rest of Texas, those guys could vote in a density factor and cop a majority of the funds for their schools. Evidently, majority rules in New Mexico -- as it would in Texas.

JAMES ROBERTS  
Andrews County News

## N.L. Lowrance also a Confederate Vet

Another name has been added to the list of Civil War Confederate veterans who are buried at Highland Cemetery.

N.L. Lowrance, who moved to Iowa Park in 1890, was a veteran, according to a relative, Francis Park. He was buried in either 1929 or 1930, she said.

Information of the additional name has been forwarded to records keepers.

The *Leader* published a list of 11 veterans last week who are buried here and whose graves were marked by Jack Sellers with miniature Confederate flags.

## Police look for burglar

Iowa Park police are looking for a suspect with a cut arm, after receiving a complaint of a burglary Monday.

At least one item, a VCR, was reportedly taken from a home in the 700 block of West Cornelia.

Residents of the home were out of town, but had a friend checking on it during their absence. A neighbor noticed something different and notified the friend, who, in turn, called police.

The investigation determined the burglar had apparently gained entry by breaking out a glass in the garage door. It was there that police believe the burglar received a cut.

Once inside the garage, however, the intruder could not gain entry into the house itself. So entry was gained by breaking out a window in the back of the structure.

Officers found blood throughout

the house, they reported, indicating the burglar had indeed cut himself while breaking out one or both glasses.

Only the VCR was reported missing.

Two arrests for public intoxication were made, within a two-hour period Monday night, according to the police blotter.

Officers took Carl Robertson Jr., 21, into custody in the 300 block of West Washington on an intoxication charge at 11:15 p.m.

Then, at 12:55 a.m., Bruce Edwin Holder, 28, was arrested in the 100 block of South Jackson.

## Commodity distribution set

USDA food commodities will be distributed Thursday, Aug. 22, from 12-noon until 6 p.m. at First Christian Church Fellowship Hall.

At least five different items will be distributed, but it was not known at presstime what those items were, according to Francis Park, one of the working volunteers.



## NOTICE TO SUBSCRIBERS

This is only a notice to those listed below that their subscriptions will expire on the published date. You don't owe us a thing if your name is on the list. It only means that what you've paid for is running out. To renew your subscription, please fill out the form below, as it appears on your paper's mailing label, please. Indicate whether this is a renewal or new subscription. Enclose your check or money order, as all subscriptions must be paid in advance.

## Subscriptions due to expire August 15, 1991

Please disregard this notice if already paid

- |  |  |
|--|--|
| A. ....<br>Denny Anderson, Beaver Creek  | L. ....<br>Mrs. Harriette Laird<br>Daniel Lightsey<br>Donald Littig<br>S.K. Little, Lewisville   |
| B. ....<br>Cindy Bartow, Kamay<br>H.E. Bragg<br>Tami Buckmaster<br>Frank Burns, WF   | M. ....<br>Bill Martin<br>Joanna Matthews<br>Mrs. Virginia May<br>Joe Minton<br>James Moore, Argyle<br>Larry Don Moser<br>Mrs. Annelie Mundt<br>Longview |
| C. ....<br>Patsy Cope<br>Beverly Corgill, WF<br>S.W. Crim  | Mc. ....<br>Sam McIlroy  |
| D. ....<br>Lt. Chuck Devenport, APO NY<br>Bertha Dwyer, Lawton   | N. ....<br>Tammie Nicholson, WF  |
| E. ....<br>Gayle Eggleston, San Antonio<br>Mrs. Ruth Ely, Tyler  | P. ....<br>Lee Pelz<br>Harold W. Pohlman<br>Fammie Price   |
| F. ....<br>Bryan Faux<br>Barbara Findley, Plano<br>Clyde Fowler  | R. ....<br>Earnie Reusch<br>Linda Rowe<br>F.E. Ruth, Graham  |
| G. ....<br>Jerry Gholson<br>Billy C. Gilmore   | S. ....<br>A.K. Settle<br>Gene Shawver<br>Pricilla Shoop, WF<br>Andy Sitgreaves, Rusk<br>Gary Stamm  |
| H. ....<br>Esther Hail<br>Arvil Hatfield<br>Betty Heazeltine, WF<br>Kevin Holdeman<br>K.J. Hollis<br>Calvin Huff                   | T. ....<br>Phyllis Torgerson   |
| J. ....<br>Jami Jansa, San Bernadino<br>Jimmy's Barber Shop<br>Frank Johnson, Plainview<br>Donal Ray Jones                         | W. ....<br>Ruth Whitten<br>Teresa Wiese<br>Norma Wight<br>Brad Williams<br>Holly Witt, Carrollton<br>Rita Worthy   |
| K. ....<br>K&M Electric<br>Steven Kannry, Arlington<br>Kemp Public Library, WF<br>Pat Kennedy<br>Carl R. Kent<br>Roy Koenig, Vista | Y. ....<br>Bural Yoder   |

## Council

Continued from page 1

load of city employees and breakdown of equipment, Administrator Gary Jones told the council he would seek a cost estimate from a contractor to fill a pit that has delayed work on the parking lot, and possibly present a proposal to have the work done by other than city employees.

Jones' request for permission to advertise for bids to furnish work uniforms for employees was approved.

The council voted support of Mayor Wayne House's appointment of Mike Hicks as an alternate to the Board of Adjustments.

The administrator was directed to seek advice of an architect on how best and most effectively to make repairs that will stop roof leaking at the Tom Burnett Memorial Library.

David Collins was recognized as the city's Employee of the Month.

## School lunch cost assistance available here

Free or reduced prices are available for children who attend Iowa Park schools, based on the family's income and size.

Meals this year will be \$1 at Kidwell Elementary, \$1.10 at Bradford Elementary, and \$1.25 at junior high and high school.

Breakfast at all schools is 75 cents. Families now receiving food stamps or AFDC are eligible, and application forms are available at the four school campuses and administration building.

Complete information as to family size and income is included on the application forms.

### Helpful Facts

Persons other than the property owner doing work on a residence must be a licensed building contractor, plumber, electrician, or heating and air conditioning contractor with the City of Iowa Park, and carry a performance bond.

## VOTER REGISTRATION

### DO YOU KNOW?

from your Voter Registrar

1. Who is eligible to register to vote?

### ANSWERS

- To be eligible to register as a voter in this state, a person must:
    - be 18 years of age\* or older;
    - be a United States Citizen;
    - not have been determined mentally incompetent by a final judgement of a court;
    - not have been finally convicted of a felony or, if so convicted, must have:
      - received a certificate of discharge by the Board of Pardons and Paroles or completed a period of probation ordered by a court and at least 2 years have elapsed from the date of receipt or completion, or;
      - been pardoned or otherwise released from the resulting disability to vote;
    - be a resident of the county in which they are applying for registration.
- \*You may register to vote if you are at least 17 years and 10- months of age on the date the registration information is submitted to the registrar, but you may not vote until you are 18 years of age.

Until next week,  
Office of the Voter Registrar  
766-8174

## IOWA PARK LEADER

THE LEADER

Bob Hamilton ..... Editor/Publisher  
Dolores Hamilton ..... Co-Publisher  
Kari Collins ..... Advertising Director  
Myma Smith ..... Reporter

The IOWA PARK LEADER is published every Thursday. Offices are located at 112 W. Cash, Iowa Park, Texas, 76367 (766280). Telephone: 592-4431. Second Class Postage Paid at Iowa Park, Texas 76367. Annual Subscription rates are \$13 in Wichita County; \$15 elsewhere in Texas; \$18 anywhere in the United States. Any erroneous reflection upon the character, standing or reputation of any person, firm or corporation which may appear in the columns of this newspaper will be corrected upon being brought to the attention of the publisher. The entire content of each issue of the Iowa Park Leader is protected under the Federal Copyright Act. Reproduction of any portion of any issue will not be permitted without the express permission of the Iowa Park Leader.

MEMBER

### TEXAS PRESS ASSOCIATION

Wichita County ..... \$13.00  
Elsewhere in Texas ..... \$15.00  
Elsewhere in United States ..... \$18.00

PLEASE CHECK ONE:  
 New  
 Renewal  
 Change of Address Only

\$ \_\_\_\_\_ Enclosed

Name \_\_\_\_\_

Address \_\_\_\_\_

City \_\_\_\_\_ State \_\_\_\_\_ Zip Code \_\_\_\_\_



VISITATION PERIOD WAS POPULAR WITH THOSE ATTEND CLASS OF '61 REUNION ... Jim Gard, left, Coach Bill Carter, talking with Tommie Smith, and Shirley Banks.

## '61 classmates reunite, remember

The 30-year reunion of the class of 1961 of Iowa Park High School was held Saturday at La Vista Country Club.

From 2 until 4 Saturday afternoon the clubroom "buzzed" with 34 former classmates and 29 spouses or guests as they visited and got re-acquainted.

Also attending were five mothers of 1961 seniors, including Doris Johnson, Ruth Gard, Tommie Smith, Mildred Parkey and Pauline White.

Former coach, Bill Carter of Marlow, Ok., attended during the two-hour visiting period.

A booklet of addresses and other information about classmates from their freshman through senior years was presented each member.

Cookies and beverages were served while annuals were reviewed. Old pictures provided a lot of laughs, and some members even denied their identification.

Visiting resumed at a pre-dinner social for former classmates only, with 56 meeting for the evening.

Following the meal awards were given to Carolyn White Powell and Rev. Wendell Estep for having come the farthest to attend the reunion. Mrs. Powell resides in Upland, Ca., and Estep is from Columbia, S.C.

Six Iowa Park Hawk shirts were given to the ones with marked placemats. One Hawk T-shirt was given to Jimmy Davis for having the most children of anyone present.

A gift was presented to Shirley Morgan Banks for helping with the reunion.

Master of ceremonies was Phillip Keeter of Longview.

Classmates introduced themselves and their guests and told different things they remembered about their years in Iowa Park schools, including incidents about their classmates and teachers.

Also former students related how many teachers had a big influence on their lives.

At one point in the festivities, Jackie Brooks of Decatur asked for a pause to remember a former classmate, the late Bobby Gilbreath, who played a part in many memories of the graduates.

The reunion planning committee was composed of Trish Clements Heskett, Shirley Banks and Kathy Teal Donnell.

Another reunion is planned for 1996.

### Helpful Facts

Regular meetings of the Iowa Park city council is at 7 p.m. on second and fourth Mondays, in council chambers at 103 N. Wall. All meetings are open to the public.

## Friendly Door MENU

**Thursday, Aug. 15**--Sliced beef with brown gravy, cabbage, parsliced potatoes, white or wheat bread, strawberry Jello, milk.

**Friday, Aug. 16**--Barbecue chicken, mashed potatoes, carrot-raisin salad, cornbread, applesauce, milk.

**Monday, Aug. 19**--Swiss steak with Creole sauce, mashed potatoes, broccoli, hot rolls, chocolate pudding, milk.

**Tuesday, Aug. 20**--Roast beef, brown gravy, mashed potatoes, copper pennies, hot rolls, buttermilk pie, milk.

**Wednesday, Aug. 21**--Spaghetti with meat sauce, tossed salad, green beans, bread sticks, banana pudding, milk.

**Thursday, Aug. 22**--Meatloaf with tomato sauce, green limas, carrots, cornbread, peach half, milk.

## District Mission Team meets

Wichita Falls District Mission Team met Saturday morning in First United Methodist Church library with 10 officers present.

Carlene Bennett and Jo Gilbert served individual quiches, fruit juices and banana bread to the group.

President Jo Daggett called the meeting to order and Ruth Hornback of Decatur gave the devotion and voiced the prayer.

Plans for the annual meeting in Jacksboro Aug. 24 were reviewed by the vice president, Mary Rexin of Chico.

Betty Dyer gave the nomination committee report. Officers for 1992 will be elected and installed at the annual meeting.

Others in attendance were Ruth Teaff of Electra, Dorothy Martin of Jacksboro, Kay Wellington from St. Marks Methodist Church in Wichita

Falls, Pearl Burbank from Friberg-Cooper and Juanita Booker of Henrietta.

## Sons gives program

Iowa Park Chapter No. 42, Order of Eastern Star, hosted a meeting of the Past Matrons and Past Patrons Association of District 2, Section 6, Saturday evening.

Justice of the Peace Janice Sons of Wichita Falls presented the program entitled "Laughter".

A covered dish supper was served, followed by the monthly business meeting.

Those attending represented eight chapters in this area, including Electra, Burkburnett, Petrolia, Henrietta, three chapters from Wichita Falls and members of the Iowa Park chapter.

PRICES EFFECTIVE AUGUST 15-21, 1991

IOWA PARK AND HOLLIDAY STORES

**ALLSUP'S**

OSCAR MAYER  
HAM & SWISS OR  
TURKEY & CHEDDAR  
LUNCHABLES  
4.5 OZ. PKG.

**\$1.19**

GOLD STAR  
FRUIT DRINKS  
GALLON

**89¢**

LAUNDRY DETERGENT  
SURF  
39 OZ. BOX

**\$1.99**

NABISCO  
CHIPS  
AHOY!  
18 OZ. BAG

**\$1.79**

HOMOGENIZED  
ALLSUP'S  
MILK  
½ GALLON JUG

**99¢**

ALL TYPES  
PEPSI-COLA  
6 pack 12 oz. cans

**\$1.89**

ALLSUP'S  
BEEF, CHEESE & GREEN CHILI  
CHIMICHANGA  
EACH ONLY

**89¢**

HAM, EGG & BISCUIT EACH **79¢**  
WITH PEANUTS  
FIDDLE FADDLE ..... PKG. **99¢**  
ARTIFICIAL SWEETENER  
SWEET-N-LOW ..... 100 CT. BOX **\$1.99**

CRANBERRY, CRAN-APPLE,  
PINK GRAPEFRUIT  
OCEAN SPRAY  
JUICES  
48 OZ. BTL.

**\$2.29**

HUNT'S 18 OZ.  
BARBECUE  
SAUCE ..... **79¢**

SKITTLES  
CANDY ..... **3/\$1**

COOKED FRESH 24 HRS. A DAY	HOT FOODS MENU	AVAILABLE AT ALL ALLSUP'S LOCATIONS
BARBECUE BEEF SANDWICH	99¢	9 PIECE BOX CHICKEN \$4.99
BARBECUE PORK RIBS (LB.)	\$3.99	BEEF & CHEESE CHIMICHANGA \$1.19
BARBECUE WHOLE CHICKEN	\$3.99	(MEAT) CORN DOG 69¢
ALLSUP'S BURRITO	79¢	DELICIOUS HAMBURGER 59¢
BREAKFAST BURRITO	99¢	WILSON HOT LINKS 99¢
BURRITO BEEF & SALSA	\$1.19	SAUSAGE ON A STICK \$1.59
DELICIOUS CHEESEBURGER	79¢	SAUSAGE & BISCUIT 79¢
CHICKEN FRIED STEAK	\$1.59	SAUSAGE, EGG & BISCUIT \$1.09
3 COUNT CHICKEN STRIPS	\$1.49	SAUTEYA SAUSAGE \$1.09
W/POTATO WEDGES/ CHICKEN (2 PCS) BISCUIT	\$1.99	4 COUNT STEAK FINGERS \$1.00

CALL-IN ORDERS WELCOME CHECK OUR WEEKLY SPECIALS

NO PURCHASE NECESSARY See Store for Complete Rules and Odds.

**PLAY TODAY**  
**Convenient**  
**Cash**™ Pick Up Your FREE Instant Win Scratch-Off Game Ticket  
**Over**  
**325,000 Chances to win CASH, FREE PRODUCTS & FREE FOOD**  
**Enter Our Second Chance Sweepstakes and Cruise The Caribbean**

OR Be one of 9 lucky people who will win **FREE GAS FOR A YEAR\*** (\*8 Gallons a week for 52 weeks)

7 Day Cruise For Two Can Be Yours (a \$5000 Value) With \$300 Spending Money!

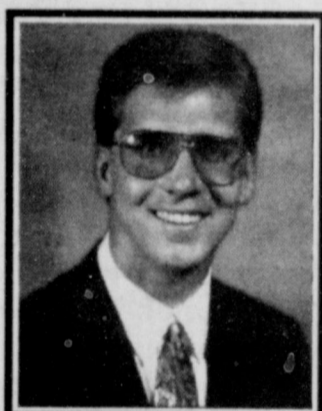
**CORN DOGS**  
**2/89¢**

4-ROLL PENNY SMART BATHROOM TISSUE ... **69¢**

KOOL-AID ... 12 PACKS/\$1

\$1000+ WINNERS  
GENEVA KILPATRICK, HEREFORD, TX.  
CARLOS CARRILLO, HOBBS, N.M.  
ALFONSO ALVARADO, HOBBS, N.M.  
BARBARA HAGGARD HOLEMAN, GAINSVILLE, TX.  
MIKE REYNA, CLOVIS, N.M.  
JIMMY NORTHCUTT, ELECTRA, TX.  
GAS FOR A YEAR WINNERS  
PATSY FIERRO, CARLSBAD, N.M.  
LISA CLARDY, QUITAQUE, TX.

Meet the New Doctor!



"Hi, I'm Daniel R. Broom, Doctor of Chiropractic. As a new member in the community, I would like to take this opportunity to introduce myself and let you know how thrilled I am to have a chance to

serve you. As some of you know, I am originally from Amarillo, Texas. After six years of college, with graduation from Palmer College of Chiropractic, I was fortunate to be chosen as an associate with the Brown-Cavett Chiropractic in Wichita Falls. I hold membership with the American Chiropractic Association; ACA: Council on Chiropractic Physiological Therapeutics, Council on Neurology, Council on Sports Injury; and Practice Management Associates. I have also had extensive post-graduate work in the management and treatment of neck pain, low back pain, and headaches. If you have hesitated to visit a chiropractor, then perhaps you didn't know that today's professional is so well qualified. Have a Super Day!!!!"

Chiropractic has been highly beneficial for millions of people suffering from:

- Back pain ■ Headaches ■ Shoulder Pain ■ Painful Joints
- Neck Pain ■ Arthritis ■ Arm/Leg Pain ■ Stiffness
- Numbness ■ Bursitis ■ Hip Pain ■ Cold Hands/Feet

If you're suffering from any of these conditions, or desire to improve your overall health, call today for your appointment and find out why literally millions of Americans have made Chiropractic part of their lives!

BROWN-CAVETT

**BACK & NECK**

CHIROPRACTIC

(817) 592-2778

402 A West Park • Iowa Park, Texas



Your treatment may be at little or no cost to you in accordance with the terms of your insurance policy.

**Initial Exam & X-Rays for \$30**

(Regular Value to \$175.00)  
With Coupon - Iowa Park Office Only

# Baptist families aid in church construction

Several families from First Baptist Church and Faith Baptist Church spent a week in Porum, Ok., the latter part of July on a mission building trip.

These families helped the local congregation of First Baptist Church of Porum, near Muskogee, construct a new building.

This was the 22nd year First Baptist Church of Iowa Park has been involved in this kind of mission trip. They have been joined by the membership of Faith Baptist Church through the years.

Each summer since 1971 a group from the two churches has set aside a week to help construct a building for Baptist churches who lack enough money to complete a needed building.

The existing Porum church sanctuary was erected in 1907 and had been declared structurally unsound. They did not have enough money to build a new structure, but with the volunteer help from the two Iowa Park churches saving from a fourth to a third of the construction cost, it enabled them to build.

A few families went to Porum a few days early to pre-cut and sort the needed lumber bought by the Porum church. When the second group of

families arrived they joined to nail the boards together.

The mission group laid the foundation, built the walls and roof. Porum members were responsible for interior work, wiring and brick work.

Supplies were provided by the Porum Baptist Church. Iowa Park families supplied the labor, their time, and paid for their own food and lodging. Many of them stayed in trailers along Lake Eufaula.

Women of the group prepared meals and women of the Porum church provided desserts and snacks for breaks for the working crew.

The Iowa Park group has become well known and lists of churches in need are sent to them for selection. Some members are sent to survey the situation of those seeking help before a decision is made.

The group has constructed buildings for Baptist churches in Texas, New Mexico, Arkansas, Minnesota, and several in Colorado. This

year marked their first mission venture in Oklahoma.

Those attending from the two Iowa Park churches were John and Ruby Cummings, Jack and Lucy Reynolds, Vern and Joan Hooley, Wayne and Phletious Williams, John and Peggy Miller and their grandson, John Keese, Roger, Cheryl, Randy, and Jenny York, Rev. Darrell Monday and daughter, Emily.

Also Rev. Greg and Lisa Ammons, Bob and Ann Harper, Herman and Mary Daymude, Richard, Kathy, Jered, and Jeremy Hicks, Dan, Charlie, Michael, and Ashley Fears, John and Joyce Rentschler, Dick,

Doris, and Bebbett Broyles, Denny McCarthy, and Paul, Theresa, Joshua, and Adam Arrington.

## Scout pack to take trip

Cub Scout Pack 7 family members will take a trip to the Wichita Mountains Saturday.

Scheduled to leave at 9 a.m. from Tom Burnett Memorial Library, each family is requested to provide their own lunch and beverages.

This is the last outing for members to apply toward their Summer Achievement Award, according to Richard Hicks, Pack leader.

## Attend the Church of Your Choice

### Pleasant Valley Baptist Church

880 Huntington Lane

Pastor: Carl Kent  
592-9064  
Come Grow with us"  
SBC

Sunday School - 9:45 a.m.  
Morning Worship - 11 a.m.  
Evening Worship - 6 p.m.  
Wed. Prayer Meeting - 7 p.m.



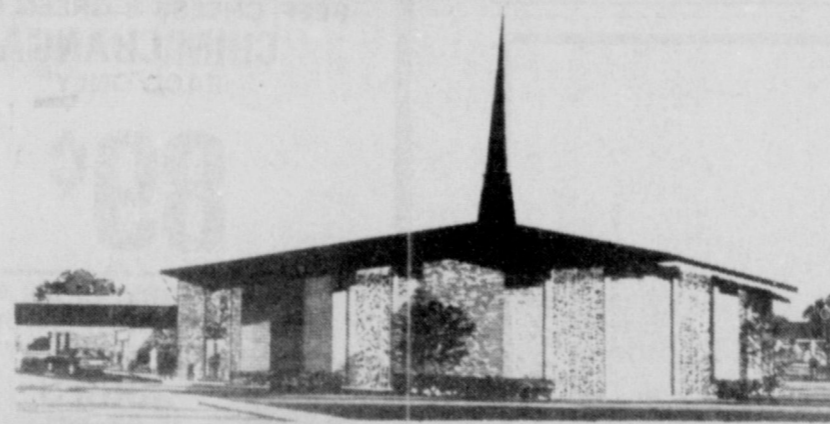
### Christ The King Catholic Church

First & Clara 592-2802  
Rev. Mr. Patrick Burke, Pastor

8:45 a.m. Children's Religious Formation  
10:00 a.m. Mass

The Catholic Church recognizes that there are many good people outside its membership, that other religions can and do bring their members closer to God and to their fellow human beings. But we as Catholics have indeed found something very special and we would like to share our Church, our Faith, our Way of Life with you. If you are interested in more information about the Catholic Church please call the church office.

### Faith Baptist Church



#### BREAK THROUGH

"Where the Bible is taught, the family is emphasized and where everybody is somebody."

411 S. Wall S.B.C. 592-2716  
SUNDAY: Sunday School 9:15 a.m., Morning Worship 10:30 a.m., Church Training 6:00 p.m., Evening Worship 7:00 p.m.  
WEDNESDAY: Wednesday Evening Prayer 7:00 p.m., Choir Rehearsal 8:00 p.m.

Dr. Greg Ammons, Pastor

Nursery Care Provided - Full Range of Mission's and Children's Ministries

### "LOVE NEVER FAILS..."

I Cor. 13:8

The Bible tells us God Is Love!

You are invited to worship God with people who care about you... at the

### IOWA PARK CHURCH OF GOD

601 E. Cash

#### SCHEDULE OF SERVICES

Sunday School 9:45 a.m.  
Sunday Morning 10:45 a.m.  
Praise and Worship  
Sunday Evening 6:00 p.m.  
Wednesday Evening Worship 7:30 p.m.



Rev. & Mrs. L. Edward Prince, Pastor

"Where Love Is More Than Just a Word"

Church Phone: 592-4348  
Pastor: 592-5316

Transportation Available  
Nursery Provided

### First United Methodist Church

201 E. Bank 592-4116  
Rev. Karl S. Kiaus, Pastor



Church School 9:30 a.m.  
Morning Worship 10:40 a.m.  
Youth Meetings 4:30 p.m.

Come on Home!

## ANNUAL KID'S CRUSADE

August 15, 16 & 17 - 7 p.m. Nightly

Bible Stories Puppets Fun Songs  
Bring a Friend & Join The Fun!!!

FIRST ASSEMBLY OF GOD  
200 S. YOSEMITE

### First Baptist Church

A Southern Baptist Church

of Iowa Park

Yosemite at Park

#### SUNDAY SERVICES

-Mornings-

Sunday School 9:45  
Worship 11:00

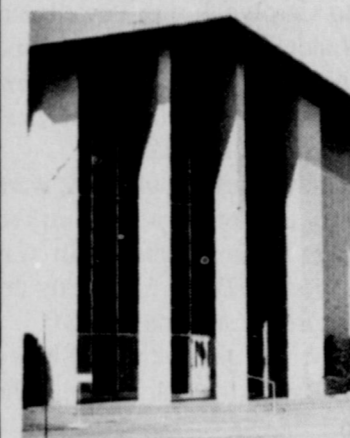
-Evenings-

Disciple Training 6:00  
Worship 7:00

-Wednesday-

Prayer Meeting 7:00  
Choir Rehearsal 7:45

Dr. Derrell Monday, Pastor



#### THE END OF YOUR SEARCH FOR A FRIENDLY CHURCH

### ASSEMBLY OF GOD

SUNDAY 200 S. YOSEMITE  
9:45 a.m. Sunday School  
11:00 a.m. Morning Worship  
5-6:30 p.m. Missionettes & Royal Rangers  
7:00 p.m. Evangelistic Service  
Wednesday Service 7:00 p.m.  
592-5087 - Church  
592-4627 - Pastor  
Charles Hensley, Pastor

### ARE YOU WALKING ALONE? We invite you to join people who care First Presbyterian Church

Church School 9:30 a.m. Worship 11:00 a.m.  
211 S. Yosemite 592-4220

### Cornerstone Pentecostal Church of God

"The Church at the foot of the cross"  
West Smith Rd.

9:45 a.m. Sunday School  
10:50 a.m. Morning Worship  
7:00 p.m. Evangelistic Service  
1 p.m. Tuesday Ladies Prayer & Bible Study  
7 p.m. Wednesday Family Nite, also Christian Pathlighters Boys & Girls

"If you like a small church, you better hurry"

Church Phone 592-5929 Pastor Duffy Terry 592-5520

Where Jesus is Lord

### Lakeview Church of God

N. Victoria and Expressway

#### Opportunities for Service

Children's Church Ladies Ministry  
Choir (youth & adult) Men's Fellowship  
Nursing Home Boys' Club, ages 6 - 17  
Visitation Girls' Club, ages 6 - 17  
Puppet Ministry Nursery Provided

Sunday School... 9:45 a.m. Wednesday Family Training Hour... 7:30 p.m.  
Morning Worship... 10:45 a.m. (classes for all ages)  
Sunday Night... 6:00 p.m.

Phone - church: 592-2776, Parsonage: 592-9555  
Pastor Ole Olds

Discover The Joy

#### SOME ALTERNATIVE STATEMENTS WHEN CONFRONTING THE CRISIS OF GRIEF

Facing the death of a loved one or friend is one of the most trying experiences of life. The bereaved need the support and love of family and friends. Many times people feel awkward and do not know what to say. There are times we simply need to listen and also times we need to speak. The following are suggested alternative statements when visiting the bereaved.

Instead of: "I know exactly how you feel" try: "I can only imagine what you are going through."

Instead of: "At least he doesn't have to suffer anymore" try: "He suffered through a lot, didn't he."

Instead of: "It's God's will" try: "One comfort is God's promise never to abandon us."

Instead of: "Take this valium - it will calm you down" try: "Do you feel like talking right now?"

Instead of: "She wouldn't want you to grieve" try: "It's hard to say goodbye, isn't it."

Instead of: "Don't cry - you'll only make it worse" try: "Sometimes tears are the best way to express our feelings."

Instead of: "This death is a great victory for God" try: "Even with the promise of the resurrection, it hurts to give someone up."

Instead of: "You can't be angry with God" try: "God understands even when we are upset."

Instead of: "At least you have other family members" try: "There's no way to replace the one you have lost, is there."

Instead of: "Don't talk about the funeral - it will only make you sad" try: "We can talk about whatever you want."

Instead of: "Don't you think it is time to get on with living your life" try: "Everyone has to grieve in their own way, don't they."

Instead of: "Time heals all wounds" try: "Time will lessen the pain, but you'll always have a part of him/her with you."

Instead of: "You've got to be strong" try: "I want you to know it's okay to be yourself around me."

Welcome To The

### Church of Christ

300 East Park, Iowa Park, 592-5415

Dwight Parker, Gospel Preacher

George Watson, Associate

Watch "Search" Every Sunday at 7:30 a.m.

On KFDX - CHANNEL 3

SUNDAY: Bible Study 9:30 a.m., Worship 10:30 a.m., Worship 6:00 p.m.  
WEDNESDAY: Evening Study 7:30 p.m., FREE BIBLE COURSE! Call for information.



**Mrs. John C. Cummings**

Ruby (Mrs. John C.) Cummings may be one of the best cooks in Iowa Park, and surely, she is the most well-known.

The memory of eating her hot rolls is shared by hundreds of students, teachers and parents who have gone through the high school cafeteria line during the last 21 years.

This year, Ruby will begin her 22nd year of work in the cafeteria. When she began, she was in charge of rolls and salads, and five years ago she was promoted to cafeteria manager.

The Cummings have been active members of First Baptist Church 26 years. For 20 years, Ruby and John have been members of a local group who travel to small towns each summer and build a church for congregations that need help. They supply their time and labor, and pay their own expenses for food and lodging, and the church provides the building supplies. So far, the Cummings have participated in the building of 22 churches.

Ruby said that their first love, outside of church work, is traveling, and since John retired from his work with Civil Service, they have been able to go on quite a few trips.

Her other activities include working on arts and crafts. She is a member and reporter for the Iowa Park Arts and Crafts Association.

Ruby and John have three children, Roger who lives in Fort Worth where he owns a business; Clifton, minister of Emanuel Baptist Church in Enid, Okla.; and Patricia Costello, a kindergarten teacher in the Iowa Park school system. They have three granddaughters and one grandson. Ruby said that her favorite pastime is playing with her grandchildren.

Among the recipes Ruby is sharing is the one for her rolls (cut down so it only makes 40 rolls), and a cookie recipe that has also been a big hit with the students.

**Swedish Meat Balls**

SAUCE:  
1 Tbsp. butter or oleo  
1 green pepper, chopped  
1 onion, chopped  
1 can condensed chicken rice soup  
1 can tomato soup  
1 cup water or beef stock

**MEAT BALLS:**

1 slices soft bread crumbs  
1/4 cup evaporated milk (canned)  
1 egg, beaten  
1 tsp. salt  
1 lb. ground beef

In frying pan, cook green pepper and onion in butter until tender. Stir in chicken rice soup, tomato soup, water or beef stock. Heat until boiling, turn down heat while sauce cooks and make meat balls. Mix ingredients for meat balls thoroughly and shape into the size of ping pong balls. Drop into simmering sauce and cook slowly about 1 hour or until sauce is thickened.

**Schoolhouse Hot Rolls**

4-5 cups white flour  
2 pkgs. instant rapid yeast  
1 3/4 cups warm water  
1/3 cup sugar  
1/3 cup oil or shortening (if shortening is used, melt first)

In large mixer bowl with dough hooks or regular beaters, blend flour, yeast, and sugar together. Add 1/2 water and oil to flour mixture. Then add rest of water. If too dry to mix, add water a tablespoon at a time until flour is in a smooth ball and has left the sides of the bowl. Need to mix in mixer or by hand approximately five minutes.

Grease top of dough and placed in a greased bowl. Let rise until double, approx. 1 to 1/2 hours, depending on how warm the area is. If the area is cool and you wish to hurry up the dough, place near a pan of steaming water for approx. 30 minutes. This will make the dough rise faster and also help in the end product.

Punch down, divide dough in half, working with half at a time. Roll out on floured board to 1/4 in. thickness. Cut in circles and place on greased cookie sheets with a space between each roll. Butter tops and let rise until double.

Roll out other half the same way - or make cinnamon rolls.

Bake in pre-heated 350 degree oven 20 minutes. Makes approx. 40 rolls.

**Cinnamon Rolls**

Cinnamon Sugar:  
1 Tbsp. cinnamon  
1/2 cup sugar  
1/2 cup brown sugar

Roll dough and brush with water. Cover with cinnamon sugar lightly and roll up like a jelly roll. Cut in 3/4 in. slices and place on buttered sheet pan. Let rise until double. Bake at 350 degrees 20 minutes.

**COOK of the WEEK**

**Schoolhouse Cookies**

1 cup shortening  
1 cup white sugar  
1 cup brown sugar  
2 eggs  
1 tsp. vanilla  
2 cups flour  
1 tsp. soda  
1/2 tsp. baking powder  
1 cup oatmeal  
1 cup Rice Krispies  
1 cup coconut, peanuts, or chocolate chips

Cream shortening and sugar; add eggs and vanilla. Mix dry ingredients together and add to creamed mixture. Add oatmeal, Rice Krispies and other choice. Drop by teaspoonsful onto greased cookie sheet and bake 8-10 minutes in 350 degree oven. Yields approx. 4 doz. cookies.

**Mission Trip**

**Chicken Spaghetti**

1 - 3 1/2 to 4 lb. chicken or 2 canned chickens  
1/2 cup chopped celery  
1/2 cup chopped green pepper  
1/2 stick or 4 Tbsp. oleo  
1 Tbsp. chili powder  
2 tsp. salt  
1 tsp. pepper  
1 tsp. paprika  
1 can cream mushroom soup  
1 can cream chicken soup  
3 Tbsp. chopped pimento  
1 1/2 pkg. spaghetti  
1 - 8 oz. pkg. Cheddar cheese, grated

Cook and debone chicken. Save broth to cook spaghetti. Cook spaghetti in broth as directed on package; set aside. In large bowl, mix chicken (chopped) and all other ingredients except cheese; mix only half of cheese into spaghetti mixture. Pour into large ovenproof casserole and cover with remaining cheese. Bake in pre-heated

350 degree oven 30 to 45 minutes, until hot and bubbly and cheese is melted. If all is not eaten, place in refrigerator and reheat for another meal. Serves 12.

**Quick Egg Custard Pie**

2 cups milk  
3/4 cup sugar  
1/2 cup biscuit mix  
4 eggs  
1/2 stick (1/4 cup) oleo  
1 tsp. vanilla  
Spice or coconut for top

Combine milk, sugar, eggs, oleo, vanilla and biscuit mix in electric blender. Cover and blend on low speed 3 minutes. Pour into greased 9-in. pie pan. Let stand 5 minutes before baking. Sprinkle spice or coconut on top and bake 40 minutes at 350 degrees.

**Banana Pineapple Cake**

3 cups sifted flour  
1 tsp. salt  
1 tsp. soda  
1 tsp. cinnamon  
2 cups sugar  
1 1/4 cup oil  
1 - 8 1/2 oz. can crushed pineapple & juice  
1 1/2 tps. vanilla  
3 eggs  
2 cups diced ripe bananas  
1 cup chopped nuts

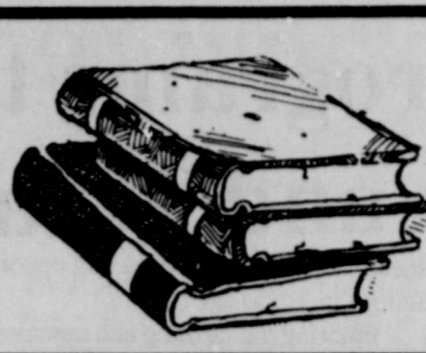
Sift all dry ingredients into a large bowl. Add oil and mix together until flour disappears. Add other ingredients. Do not beat. Pour into bundt or tube pan that has been greased and floured. Bake 1 hour at 350 degrees.

**MDA pledge centers in Iowa Park, Kamay**

Iowa Park and Kamay will both have pledge centers working during the Labor Day Telethon, benefiting the Red River Chapter of the Muscular Dystrophy Association.

Linda Horton is the coordinator for Iowa Park, which will have a telephone number of 592-5586 to receive pledges. Kamay's coordinator will be Sandi Gilmore. That center's telephone number will be 438-2838.

More than 800 volunteers from Northcentral Texas and Southern Oklahoma participate in the annual telethon, which will be aired on KFDX TV-3.



**LIBRARY NEWS**

**Latch Key Program**

A Latch Key program will be given from 7 to 8 p.m. Aug. 27 by De De Alderman of the Iowa Park Police Dept.

This program is to teach parents, as well as the children, safety precautions for students coming home after school, and being alone until parents arrive.

We invite all parents and students who might be thinking about this type of program to come and learn from films, topic discussions, etc.

Mime, Bryan Rondone and company will be here from 2 to 3 p.m. today. This program is for all ages, from children to adults. We invite everyone to come and enjoy our special program.

**REMINDER!!**

Our Reading Campers from "Camp Wanna-Read" need to come by the library and pick up their mobiles, certificates, registration slips and coupons from our participating sponsors.

**NEW BOOKS**

**Adult Fiction**  
Scandal by Amanda Quick  
Double Masquerade by Martha Powers  
Another View by Rosamunde Pilcher  
The Helpful Ghost by Sheila Allne  
The Prince of Midnight by Laura Kinsale  
Night Shadow by Nora Roberts

**Adult Non-Fiction**

How To Create Animation by John Cawley

**Keeping Family Stories Alive by Vera Rosenbluth**

The New Social Security Guide by Fred Evicci

So You've Been Asked To Pray by John Toay

Simply Fun by Patricia Zatopa

When Six-Guns Ruled by Marc Simmons

101 Classic Love Poems by Contemporary Books

How To Handle Your Own Contracts by Christopher Neubert

Taiwan-A Travel Survival Kit by Robert Storey

Easy-to-make Cloth Dolls & All the Trimmings

The Working Women's Dream Kitchen by Hilde Lee

Surviving Teen Pregnancy by Shirley Arthur

Landmark Decisions of the Supreme Court by Maureen Harrison

Cooking for a Healthy Heart by Virginia Defendorf

Student Loan Handbook by Lana Chandler

Peter Lawford - the Man Who Kept the Secrets by James Spada

Presidential Passions by Michael Sullivan

How to File Your Own Bankruptcy by Edward Haman

**Juvenile Fiction**

Fielder's Choice by B.B. Calhoun

Mixed Signals by Crystal MiMeo

The Case of the Sneaker Snatcher by L.E. Wolfe

The Case of the Tour De Tricks by L.E. Wolfe

Lizzie Learns About Lying by Gary Hogg

**DUTTON FUNERAL HOME**

\*Thoughtfulness \*Professionalism \*Dedication



Serving Iowa Park Area Since 1908

Pre-Need Payment Plans with No Interest Charge

We honor most other

pre-need funeral plans and burial insurance

Call Collect

592-4151

300 E. Cash

Iowa Park, Texas

**G.M. VIA INSURANCE**  
has moved to  
**206 West Bank**  
Between Parkway True Value & SportsCards Plus  
**592-4159**

*Why Not Make  
Dance*

*Part of your schedule  
this year?*

**STUDIO KG**

121 West Park

*Ages 3 and Up*

*Classes in Jazz, Acrobatics, Tap,  
Twirling and Ballet*

**Registration**  
**Aug. 20 & 27**  
**4 - 6:30 p.m.**

592-2513

Karen Gauthier, Owner

**A Very Good Reason To  
Come To The Rock -  
Me**

You know Prudential. The Rock. Now I'd like you to get to know me. As the new Prudential agent in your area, I am trained to offer you professional service for virtually all your insurance needs... Life, Health, Auto and Homeowners.

And I'm backed up by the vast resources of the largest insurance company in the country - Prudential.

So if personal, professional service is important to you, contact me. I'm now here to help.



**Rita Ristow**

(Formerly Ratcliff)

District Agent

3917 Callfield Rd.

Wichita Falls

Office: 696-0033

Residence: 592-5991

**Iowa Park Air Conditioning and Heating**  
now offers you  
high quality Trane  
air conditioners,  
heat pumps,  
and gas furnaces.

We're here for customers who are looking for quality products and quality service. That's why we're so proud to offer you Trane products... the finest in central air conditioners, Weathertron heat pumps, and gas furnaces. And our servicemen are trained to give you the best service possible and to assure

you of expert installation. We're proud to be a member of the Trane team. We think it is good for us and good for the community we serve. Call on us. For service, repair or replacement, we're happy to serve you.



**We Service All Brands**

**Iowa Park Air Conditioning & Heating**

**592-2761**

**We want to thank our customers for their loyal patronage over the last 23 years. Other Air Conditioning companies have come and gone, but we plan to continue our success and to serve you for many more years to come.**

# TDA has programs to benefit agriculture and Texas economy

By RICK PERRY

**Texas Agriculture Commissioner**

As Texas' Commissioner of Agriculture, I represent all the people of Texas, from the producers in the field to the consumers at the supper table, and being a member of both groups, I am fully aware of the challenges facing today's producers and needs of today's consumers.

I've been actively involved in my family's Haskell County farm and ranch operation for most of my life. The daily decisions I face -- as well as the ups and downs inherent in the industry -- intro-

duced me to the challenges and opportunities in Texas agriculture.

Entering the farming and ranching business today is no easier a task than it was 100 years ago. We cannot control the amount of rain we receive or what the market does. And it's still difficult today to obtain conventional financing for farm and ranch operations.

But in order to foster innovation and adaptation to changing economic and environmental conditions, the state of Texas has established sources of capital for business start-ups and expansions and to finance agricultural producers who introduce new crops and production methods.

These programs, like the Texas Department of Agriculture's Texas Agricultural Finance Authority, Linked Deposit Loan, Rural Microenterprise and Texas Agricultural Diversification programs offer lenders and producers opportunities to develop creative solutions for financing new agricultural ventures.

The Texas Agricultural Finance Authority makes available financing through loan guarantees for projects contributing to the processing of Texas food and fiber products. Loans from \$30,000 to \$2 million are dedicated to these processing ventures, crop and livestock marketing enterprises and new crop and livestock production development. Just recently, the State Bond Review Board authorized the authority to issue \$25 million in general obligation bonds.

The Texas Agricultural Diversification Matching Grants program is designed to help diversify Texas agriculture by providing matching grants to eligible projects aimed at transferring newly developed agricultural crops and technologies to the marketplace, including soil, water and energy conservation. The program also establishes small business incubators in rural areas.

Grants are made in the areas of research and innovation, as well as business assistance. Since the program was implemented in 1988, TDA has awarded 63 grants totaling \$750,000.

Those grants were matched with private funds totaling more than \$3 million and have the potential to generate substantial economic activity and expand markets for Texas food and fiber products.

The linked Deposit Loan program, administered jointly with the Texas State Treasury, was begun in 1988 to offer incentives to the state's banks to lend to agricultural businesses.

Under the terms of the program, an alternative crop producers could receive a loan of up to \$100,000, and an agricultural processor or marketer can secure up to \$250,000 to be deposited with the financial institution with which he or she has obtained a production, processing or marketing loan.

The financial institution in turn agrees to reduce the interest rate on that portion of the loan. Since the program began, 42 projects have received funding totaling \$4.6 million.

The Rural Microenterprise Program, a new program to be in operation by the fall of 1991, is designed to stimulate the growth of small businesses in rural Texas.

Through a loan-to-lenders program, a revolving loan fund will be estab-

lished. The Microenterprise fund is supported by \$5 million in general obligation bonds, with maximum loan amounts at \$30,000 for business expansions and \$15,000 for business start-ups.

These loan funds are available for all types of small businesses located in rural communities. The fund is intended to work cooperatively with local non-profits, such as business incubators, councils of government, community colleges and other local agencies.

The Young Farmer Endowment Program, scheduled to begin Jan. 1, establishes an interest-free loan program for Texans between the ages of 18 and 40 who have four years of practical farm or ranch experience and who want to establish their first farming or ranching operation.

A \$5 increase in farm license tag fees will be earmarked for the endowment program.

Applicants must submit a 10-year plan to their local county agricultural extension agent and then to the Texas Agricultural Finance Authority for final approval. The loan must be repaid within 15 years.

From those of us who have grown up on farms and ranches, to those researchers and small business entrepreneurs these programs illustrate how state government, and the private sector can enhance economic growth.

At TDA, we'll continue to encourage innovation and welcome new ideas.

For more ideas about any of these financing programs, contact us at P.O. Box 12847, Austin, 78711, or call (515) 463-7624.

## Letters to Editor policy explained

The *Leader* receives numerous letters which cannot, for one reason or another, be published.

Letters will not be printed unless they are signed. A typed name will not do. And, for the sake of verification, the writer's telephone should be included.

Should the writer not wish his/her name printed, it will be omitted upon request. However, the letter will be kept on file to be read upon request.

Letters also must be free of libel. If not, they will not be published, because we will not edit their content.

Corrections will not be made if they change the message in any way, but will be edited to enhance their content.

In letters supporting political candidates or issues, the *Leader* reserves the right to limit their lengths.

We encourage your Letters to the Editor, and offer the paper as your forum for discussions of ideas and observations.

## Jimmy's Barber Shop

9 a.m. - 5:30 p.m., Tues. - Fri.  
9 a.m. - 1 p.m., Saturday  
113 W. Park  
592-5591




# RAC NEWS

By PAT RABY

IOWA PARK RECREATIONAL ACTIVITY CLUB, INC.

My last day to work for the RAC will be Friday. I have enjoyed the past three years and learned a lot. In leaving there are people who helped make my three years as productive and enjoyable as they were.

I would like to thank those people: Jim Smeaton, Sherry Rose, Darla Bradberry, Dee Dee Alderman, Sue Maness, Debbie Rowland, Lola Rowe, Norma Chandler, Kathy Crawford, my husband and my son, Mark and Steven Raby.

For this summer program (just ending), a big thank you to Stephanie Roberts and Julie James. You did a great job!

As the transition of a director is being made, activities are already scheduled and ready to join.

### FALL CLASSES

Clogging is scheduled to resume Sept. 10 and paint class with Denise Henderson begins Monday, Sept. 16.

Twirling class, morning and evening aerobics, beginning bridge lessons, country and western dance classes, and gymnastics are all scheduled.

### VOLLEYBALL

A fall Volleyball League is a possibility and a country and western talent contest will be in place Sept. 8.

Registration for any and all of these classes is necessary. Call the RAC 592-4471.

The parking lot is taking a little longer than expected at the new RAC building. Move in date has been extended to about Sept. 1.

Six-man co-ed Recreational Volleyball Tournament at Sand Action

Courts, Saturday, 17 at 6 p.m. Only lines and net will be called. \$60 entry fee. Prizes will be given first and second place teams.

### BRIDGE CLUB

Monday bridge winners were Marilyn Hale, first, and Paula King, second. There were three tables in play.

Bridge club will meet next Monday at 1 p.m. If you haven't signed up and would like to play, call Betty Dyer, 592-4768 or Dolores Hamilton, 592-4431

### Card of Thanks

The class of 1961 would like to thank Bob Hamilton and the Iowa Park Leader for all they did to help make our reunion special. Also thanks to Susan at the Chamber of Commerce office for being there for need after need. Thank you Mayor Wayne House. We also appreciate all the mothers who took time to come by for a visit and especially Coach Bill Carter for taking time "to care".

Shirley Banks  
Trish Heskett  
Kathy Donnell

### Helpful Facts

Persons other than the property owner doing work on a residence must be a licensed building contractor, plumber, electrician, or heating and air conditioning contractor with the City of Iowa Park, and carry a performance bond.



LACY WELLS, daughter of Mr. and Mrs. Lonny Wells of Iowa Park and a Fourth Grader at Bradford Elementary, competed in three events of the TAAF State Meet Friday in Dallas. Though she failed to qualify for the finals in either the 100 and 200 meter sprints, she was sixth in the long jump, with a distance of 10-7. She was competing in the Bantam division, for nine and 10 year olds.



## LOOK WHO'S NEW

Mr. and Mrs. Mike Studdard announce the birth of their son, Mike Stacy, born Aug. 5 at Wichita General Hospital. He weighed eight pounds, two ounces. He as a brother, Randall Keesling, two years old.

Grandparents are Mr. and Mrs. Elmer Studdard of Wichita Falls and Mr. and Mrs. Freddie Smith of Iowa Park.

Great-grandparents are Reba Smith and Bernice Bibby, both of Electra, Mr. and Mrs. Alvin Heidrich of Kamay and Granny Robins of Gainesville.

Great-great-grandparents are Velma Smith and Callie Brown, both of Electra and Mr. and Mrs. Manley Allgood of Ardmore, Ok.

A daughter was born to Phil and Monique (Edwards) Sloss of Abilene Aug. 5. She has been named Rhonda Brooke. She weighed eight pounds, one ounce and was 21 inches long. She has a sister, Shauna, three and a half years old.

Grandparents are Herb and Cindy Edwards of Iowa Park, Josie Sloss of Abilene and Dean Sloss of Harlingen.

Great-grandparents are Mr. and Mrs. E.F. Edwards of Hamby and Mr. and Mrs. O.E. Rannefeld of San Angelo.

Mr. and Mrs. Richard Jansa of San Bernardino, Cal. are the parents of a seven pound, 13 oz. son, James Dylan, born Aug. 13. He is the couple's first child.

Mrs. Jansa is the former Jami Ming of Iowa Park.

Grandparents are Kathy Ming of Iowa Park and Mr. and Mrs. Phil Jansa of Wichita Falls. Mr. and Mrs. F.L. Costello of Iowa Park, Mr. and Mrs. Richard Hodges of Wichita Falls and Mr. and Mrs. Hubert Jansa of Oklaunion are great-grandparents.

# VALLEY VIEW MINI MART & CAFE

**Not just your ordinary Service Station.**

**We offer Country Cooking at its Best!**

Cafe Hours: 6:30 - 6:00, Monday - Thursday

**OPEN LATE FRIDAY FOR OUR CATFISH FRY!**

Fish Served 11-2 and 5-7:30.

6:30 - 1:30, Saturdays

**Home of the Ronnie Burger and the Squirley Burger!!**

**~ New and Used Tire Service ~**

**~ Flats Repaired Monday - Friday ~**

**~ Oil Changes ~**

6:30 a.m. - 6 p.m., Monday - Thursday

6:30 a.m. - 7:30 p.m., Friday

6:30 a.m. - 2 p.m., Saturday

# EXPRESSWAY RESTAURANT

**US 287 & Pacific 592-4811**

**Hours: 7 a.m. - 9 p.m.**

**Owner: Ray Copening**

**We've added full meals to our regular menu of sandwiches. They'll change daily, and will be available to eat in our dining room or carry out, from 11:30 a.m. until 8 p.m.**

<p><b>SUNDAY</b> Chicken Breast Tenders or Chicken Fried Steak with creamed potatoes and gravy or French fries, green beans, salad, rolls</p> <p><b>MONDAY</b> Roast Beef, creamed potatoes and gravy or French fries, corn salad, rolls</p> <p><b>TUESDAY</b> Meat Loaf, creamed potatoes and gravy or French fries, red beans, salad, rolls</p> <p><b>WEDNESDAY</b> Baked Ham, creamed potatoes and gravy or French fries, green beans, salad, rolls</p> <p><b>THURSDAY</b> Chicken Fried Steak, creamed potatoes and gravy or French fries, corn, salad, rolls</p>	<p><b>FRIDAY</b> Liver and Onions, red beans, creamed potatoes and gravy or French fries, salad, rolls</p> <p><b>SATURDAY</b> Casa Dias and salad (10-inch flour tortilla smothered with pinto beans, taco meat, chili and cheese, onions and peppers.)</p>
---	---

**EACH MEAL ONLY**

# \$ 2.99

**STEAK on GARLIC** \$ 1.99

# ken's PIZZA

**902 W. Highway 592-4184**

**Large Pepperoni Pizza**

## \$7.99

Redeem this coupon and get a Large Ken's Pepperoni Pizza for \$7.99. Additional Toppings available at an additional charge. Void with other promotions or coupons. One coupon per customer, per Pizza, please. Good for Dine-in, Carryout and Delivery (where available). Certain delivery restrictions may apply.

**2 Large Single Topping Pizzas**

## \$12.95

plus tax

Redeem this coupon for 2 Large single-topping Ken's Pizzas for only \$12.95 plus tax. Additional toppings available at an additional charge. Void with other promotion or coupons. One coupon per customer, per Pizza, please. Good for Dine-in and Delivery (where available). Certain delivery restrictions may apply.



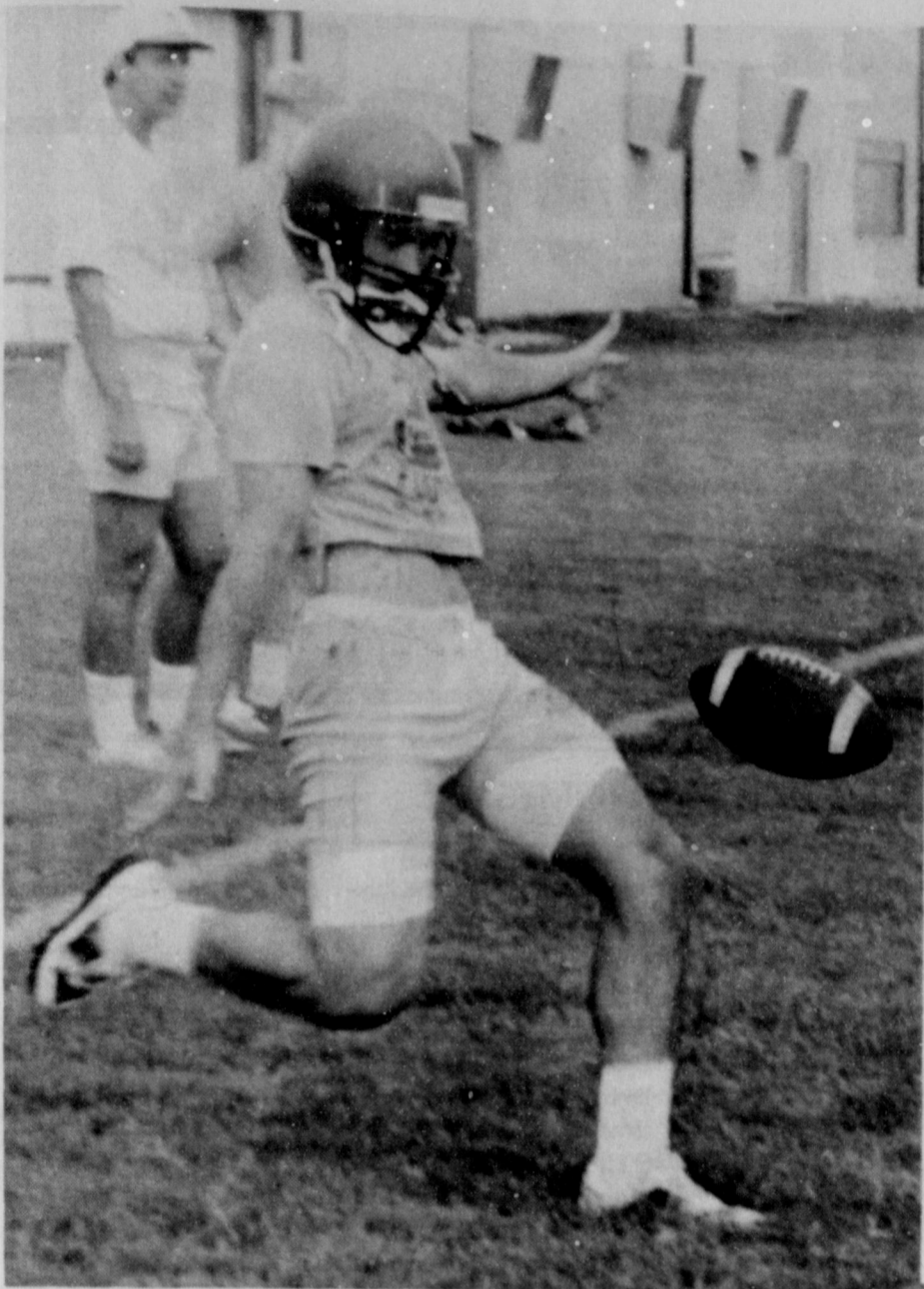
©1990 Mase's Corporation



©1990 Mase's Corporation



# Hawks not moaning; workouts start



KICKING OFF TWO-A-DAY PRACTICE SESSIONS  
... senior Robert Denton gets his kicks in workout.

The Hawks weren't moaning and groaning during two-a-day workouts, which got underway Monday.

It wasn't that the coaching staff was taking it any easier than in years past.

It was because of the unusually cool weather, brought on by a cool front and heavy cloud cover.

Usually, football players dread the start of two-a-days, because they always get underway during August. And August in this part of the country usually means temperatures in the 100-degree range.

But the thermometers were indicating about 20 degrees cooler, as the athletes in their shorts, t-shirts and helmets began preparation for the 1991 season.

Not only were the temperatures cooler, but, due to the wet field conditions brought on by rains, they worked out Monday inside the south gym at the high school.

Tuesday, however, they were back on the grassed practice turf.

Morning sessions get underway at 7:45, and last until around 10. They are back on the field at 5:30 in the afternoon for another two-hour workout.

After four days of workouts in shorts, the University Interscholastic League rules allow the players to put on their full pads, starting Friday.

The Hawks will have their pictures taken at 10 a.m. Saturday, and at 7 that

evening they and their parents will be fed all the watermelon they can handle.

A departure from the past, no intrasquad scrimmage will be held this year.

The teams are slated to scrimmage Holliday Friday, Aug. 23, and the following Friday with Olney. Both scrimmages are set up to begin at 6 p.m., and both will be away.

The "real" season gets underway Sept. 5, when the freshmen and junior varsity play their first games at Burkburnett.

Burk's Bulldogs are to open the '91 season here, in Hawk Stadium, on Friday, Sept. 6.

Sale of season reserved seat tickets is now underway at the high school principal's office.

A book of tickets for all five home

games, which includes Burkburnett, Decatur, Clyde (homecoming Sept. 27), Bridgeport and Breckenridge, is \$25.

General admission tickets, sold in advance of games in the principal's office, will be \$2 for students and \$4 for adults.

However, all tickets sold at the gate will be \$5, according to Richard Davis, principal.

Holders of 1990 season reserved seats will have until 4 p.m. Sept. 6 to claim those same seats, if they are desired.

## SPORTS

Shorts



Former IPHS athlete Vance Edwards, who transferred to Burkburnett his last two year of eligibility, has signed a letter of intent to play baseball for Wayland Baptist Univ. at Plainview.

Bowie's big two-way lineman Doug Andraesen has accepted an invitation to try for a walk on opportunity this fall at Texas A&M Univ. The invitation, according to the *Bowie News* is to report Aug. 15 for football orientation and practice, as well as being housed in the athletic dorm.

## GOOD & PLENTY RESTAURANT

510 Old Iowa Park Road  
592-4933

HOURS:  
Mon., Tues., Wed., - 11 a.m. - 9 p.m.  
Thurs., Fri., - 11 a.m. - 10 p.m.  
Sat., Sun. - 7 a.m. - 10 p.m.

**FRIDAY NIGHT SPECIALS**  
All the Catfish and Shrimp you can eat, served with French fries, slaw, hush puppies, pickles and onion.

\$7.99

10 oz. T-Bone & Shrimp, choice of potato, salad and toast.

\$7.99

**SATURDAY NIGHT SPECIAL**  
10 oz. Club, choice of potato, salad and toast.

\$6.29

## NOW OPEN UNTIL 8:30 FRIDAY NIGHTS! FRIDAY NOON & NIGHT Farm-Raised Catfish

Served with French Fries, hush puppies, cole slaw, pickles, onions and tartar sauce.

Half and Full Orders

**SUNRISE SPECIAL**  
1 egg, sausage or bacon, toast & coffee \$1.87 + tax

## Pete & Otto's 3-M CAFE

114 W. Cash 592-4721

Hours: Monday - Friday, 6 a.m. - 2 p.m.  
Friday night, 5-8:30 p.m.; Saturday, 6-11 a.m.

## THIS WEEK'S SPECIAL

**CHEESEBURGER \$3.29**  
AND FRIES  
with medium-size drink Reg. \$3.69

**BREAKFAST SERVED ANYTIME!**  
Breakfast Special

1 egg, 1 biscuit, gravy 89¢

Breakfast Burrito - \$1.29

### SUNDAY LUNCH -

Hamburger steak, fried onions, brown gravy, vegetable, rolls, dessert

\$4.29

## BEAN DAY EVERY THURSDAY

All you can eat:  
Pinto Beans, cornbread, onions, pickles \$1.49  
Served from 11 a.m. to 2 p.m.

## 11 a.m. to 9 p.m. Thursday FARM-FRESH CATFISH

### CATFISH

Served with • Cole Slaw • Tartar Sauce • Fries • Hush Puppies • We now use Cholesterol-Free Canola Cooking Oil and dipped in our Special Batter!

\$4.95 and \$5.95



Coke

804 West Highway

NEW SUMMER HOURS: 6 a.m.-9 p.m. Monday - Wednesday;  
6 p.m. - 10 p.m. Thursday - Saturday; 7 a.m. - 9 p.m. Sunday

FOR TAKE OUT ORDERS

CALL 592-4731



OIL BOWL PARTICIPANTS from Iowa Park were Gary Green, above right, and his queen nominee Marcy McCarthy. Green was utilized both as an offensive guard and linebacker on the Texas team. The annual charity event was held in Wichita Falls' Memorial Stadium Saturday night.

## Top 'O Texas signup continuing Saturday

Registration of players who want to participate this fall in the Top 'O Texas football league will be held from 1 to 3 p.m. Saturday at the County Agriculture Building, 201 West Park.

Players began registering two weeks ago.

Does your subscription to *The Leader* expire this month? Check the list on page 4.



## VERNON REGIONAL JUNIOR COLLEGE

FALL 1991 REGISTRATION:  
Vernon & Wichita Falls

August 21 - Vernon: King PE Center 9:30 a.m. - 1 p.m. & 4 - 6 p.m.

August 22 - VRJC at Wichita Falls

4105 Maplewood 11 a.m. - 6 p.m.

Late Registration - Vernon:

Aug. 26 - 30 - Osborne Administration Building.

Late Registration - Wichita Falls:

Aug. 28 and 30 - 4105 Maplewood

Vernon 817/552-6291

For more information call: VRJC W. Falls 817/696-8752

## WANTED

IOWA PARK SENIOR CLASS 1992

Turn Yourself in Today and

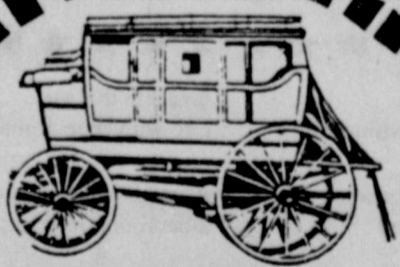
Werner will REWARD

you with all this and much more.

Formal setting, casual setting, free glossy for school. Packages starting at \$47.95. AND that great quality AND personal service only found at Werner's.

WERNER STUDIO  
767-2501

## WICHITA STATION FEEDS



Bluebonnet Feeds

"QUALITY IS THE BEST VALUE"

4428 S.H. 370

(East of FM 369 on Old Iowa Park Road)

855-3226 ED & MELBA HARVILL 855-2661

# The Classifieds

## DEADLINES

10 a.m. WEDNESDAY (Word Ads Only)  
4 P.M. TUESDAY, DISPLAY ADS

SAVE 8¢ PER WORD FIRST  
INSERTION BY PAYING  
WITH COPY AT OFFICE

## RATES:

23¢ PER WORD FIRST INSERTION  
15¢ PER WORD EACH REPEAT

**MINI-CON**   **HOMES FOR SALE**   **HOMES FOR SALE**   **FOR RENT**   **REAL ESTATE**   **DOMESTICS**   **DOMESTICS**   **DOMESTICS**

**Self-storage**  
1. Variety of sizes.  
2. Competitive prices.  
3. Locally owned and operated.  
4. Monthly rates.  
**805 W. Hwy. 592-2761**

**FOR SALE BY OWNER** - 11 acre pecan orchard - 2300 sq. ft. brick home - barn/shop - Valley View. \$95,000. Call Jimmy Howell for appointment, 322-2839. 8-8-4tp

**FOR SALE BY OWNER** - 900 W. Cornelia. 4 bedroom, den, game room, large family area, 1 1/2 bath. Needs cleaning and painting. Best offer over \$29,500. Call Don Barge, 692-0777 or 692-8223 on the weekends. 7-18-tfc

**3-ROOM** garage apartment. 592-4714. 8-1-tfc

**HOMES FOR LEASE.** Call Texas Realty at 592-2728. 2-7-tfc

*More Classifieds on next page.*

**NEEDED:** Homes to sell with assumable loans. We have ready buyers. Call Tommy & Glenda, Texas Realty, 592-2728. 8-30-tfc

### YARD WORK

**FLOWER BEDS** need worked and cleaned out? Call Linda anytime, 592-4923, 592-9472. 5-10-tfc

**TURF TEAM** Lawn Service. Call Joe for free estimates. 592-9645. 7-11-6tc

**LAWNS MOWED,** hedge, weed eat. Dependable, Call 592-2989. 6-20-12tp

**NUSSER LAWN CARE** - Moving, edging, weeding. Reasonable rates. Dependable. 592-4274. 8-1-3tp

**REGISTERED** Child Care - Openings for preschoolers and morning kindergarteners. Transportation to and from school. Structured preschool activities. Playroom. Fenced yard. Siblings accepted. Dianna Miller, 592-9561. 7-25-4tp

**REGISTERED DAY CARE** - Openings for 18 months and older. USDA food program, summer activities. Will take morning kindergarten children. 592-2922. 7-18-tfc

**LET ME DO** your ironing, men's shirts, etc. Also after school care, snacks and homework. Reasonable rates. Call anytime between 7 a.m. and 7 p.m. 592-9378. 8-8-2tc

**BABYSITTING** in my home. Infants welcome. Will take to and from school (including preschool). Good meals & planned activities. Teresa, 592-9510. 8-8-5tp

**WILL WATCH** your child any hour, any day except Sunday. Transportation to and from school. \$30 week for one, \$50 for two. 592-4611. 8-15-2tc

**EXPERIENCED** child care in my home. Infants welcome. Monday-Saturday. Call Nancy at 592-4657. 8-1-4tc

**CHILD CARE** in my home, Monday - Friday, 7 - 5:30. 592-5352, ask for Ramona. 7-25-4tp

**WILL BABYSIT** Bradford kids before and after school. Call Kathy at 592-9371. 8-1-3tp

**JUST CAN'T** seem to find the time to clean your house? Call Brenda, 592-2215. 7-18-tfc

**IRONING** - Very reasonable rates. 592-9006. 12-6-tfc

**DO YOU NEED** a large older brick home? 1416' living area. Lots of trees, double garage and double carport. Priced for quick sale. \$35,000. **912 W. LOUISA** - 3 Bdrm., huge den, fireplace, over 1600', large living. Very clean, covered patio. \$39,900. **GREAT OLDER** county home on 22 acres. Extra large rooms. 2349' living area, 2 porches, 3 car garage, shop, barn. \$70,000. **MULTI-USE** masonry commercial building. Excellent condition, current use auto body shop. 4608' working area. 80X326 lot. **NEAT OLDER ONE BEDROOM** Home. Repainted inside and out. Good for retired person or starter home. \$11,000. Must sell. **ELECTRA**, 50' X 75" metal commercial building. Highway frontage. Price reduced, \$32,000. **903 PARK PLAZA**, 3 Bdrm. brick, 1 1/2 baths, fenced. Must sell. Price reduced. **3 BEDROOMS**, 1 1/2 lots, 1,200-ft. living area. New paint, central air. \$32,000. **CLEAN 3 BEDROOM**, huge master bedroom, shop, on 2 large fenced lots. **3 BEDROOM**, 1 1/2 bath, fresh paint. Good floor plan. Near Cryovac. **THREE BDRM.** Brick, 1372' liv. area, corner, includes separate apartment, renting for \$125. Make offer.

**Sam Hunter Real Estate**  
107 E. Cash 592-4661

One bedroom apartment **\$189 to \$199**  
Two bedroom apartment **\$229 to \$244**  
•Energy efficient •Off-street parking  
•Central Heat/Air •Water paid  
•Children's Play Area •Total electric  
•Fully carpeted and draped •Full equipped laundry room

**COLONIAL HEIGHTS APARTMENTS**  
Handicap Accessible **592-2705**

**WOODBRIAR COMMUNITY**  
**1 and 2 Bedroom Units Available**  
(Selected 2 BR. Units have washer/dryer connections)  
Lots of Storage - Pool - Fenced Playground  
Discount for Retired and Elderly People  
**ALL BILLS PAID (included Basic Cable)**  
Come to the Woodbriar Community  
**1000 Mary 592-2121**

## Regency One REALTORS

Don't Just Dream...Live the Dream!

Office - 592-2133 or 592-2134

**Sarah Barker** 1-495-3743  
**Darrell Jolly** 592-4926  
**Winnie Jo Holmes** 691-6602

- Lake Cabin at Diversion. All household items, furniture remain! \$9,500.
- 3 bedrooms, 2 baths, older home. New Listing \$9,500 SOLD
- Small house & large lot. Priced reduced to \$9,500.
- Trailer house on 100X350 lot. Storage building. \$11,500.
- 3 bedroom, 2 bath trailer house. \$18,500. IN CONTRACT
- 3 bedroom, 1 bath, nice fenced yard, storage building. \$22,500. SOLD
- Has workshop, neat garden area & storage building, double garage & carport. \$37,500.
- Curio Delight. 2 bedroom, new everything. \$38,500. NEW LISTING
- 3 or 4 bedroom charmer. Central heat & air. New roof. Corner lot. \$39,500
- New Listing. 3 bedroom brick home. Quality amenities. Franklin stove. \$40,500.
- 3 BR. 2 baths, separated master suite, 20X50' bldg. Wants trade down \$52,000.
- 3 BR. 2 living areas on 7.9 acres, remodeled kitchen-dining. Price Reduced to \$94,900.
- 3 bedrooms, 2 baths, formal dining, covered patio. Decorator colors. \$98,800.
- In Shiloh Addition. 3 bedroom, 2 baths, beautiful pool. \$110,000. IN CONTRACT
- 4 bedrooms, 3 baths, 2 living areas, 2,700 sq. ft., Sits on 5 acres. \$110,000.
- 4 bedrooms, 2 1/2 baths, 2 living areas, 2 dining areas, in-ground pool. \$119,000.
- Hobby room, game room, 4 bedrooms, 4 baths, pool, 5,014 sq. ft. living area. \$288,000.

We are a member of the Multiple Listing Service of Wichita Falls.  
We can show and sell any listing.

**FREE HOME MARKET ANALYSIS** {LAND} Vacant Lot, 8.76 Acres, 11.6 Acres

CALL ABOUT OUR RANCH AND FARM LISTING  
CALL ABOUT VA AND FHA REPO'S

## KEY REALTY

592-2718  
592-4583 592-9667

**Cindy Witherspoon**  
**Melissa Birk**

"We Hold the Key to Your New Home"

### RESIDENTIAL

304 W. ALAMEDA	\$78,500	IN CONTRACT
511 N. WALL	\$62,500	3-2-2/Super decor
614 W. MANES	\$58,000	4-2-2/Corner Lot
907 FOLEY	\$56,500	IN CONTRACT
125 WOOD CIRCLE	\$54,000	3-3-2cp/shop
1017 W. CORNELIA	44,500	3-1 1/2/Den/FP
1503 DOUGLAS	\$43,750	LEASED
154 YUCCA (Rural)	\$41,900	REDUCED
1311 BLUE JAY	\$41,500	3-1 1/2-1 FmHA
4613 HOME ROAD	\$35,000	3-1 1/2/3 acres
1220 FM 368 South	\$33,500	3-1-1/Shop/1acre
807 E. PASADENA	\$26,500	2-1
1001 S. WALL	\$24,800	3-2/Assumable
405 S. VICTORIA	\$24,500	3-1 1/2/Shop/Cellar
511 N. VICTORIA	\$15,000	REDUCED
KAMAY, TEXAS	\$10,000	2-1

**FOR LEASE**  
511 N. WALL      1017 W. CORNELIA

**Registered Family Home Day Care**  
Structured learning activities and fenced play area. USDA meals and snacks furnished. Infant, toddler and after school care.  
**Sandy**  
592-5124  
720-4334

**Stacy's Country Daycare**  
Safe country home, state registered, USDA food program, pre-school program, lots of fun, lots of love. Afternoon Kindergarten pickup and deliver at Kidwell.  
Rates begin at \$35 week.  
855-5695

\*\*\*\*\*  
We are very proud to announce that **Polly Spruiell** is joining Texas Realty as Sales Associate.  
A long-time resident of the area, Polly and her husband, Dewey, have lived on a farm east of Iowa Park since 1956.  
Polly had been employed by the Agricultural Stabilization Conservation Service (ASCS) 27 years before retiring in December, 1988. She obtained her real estate license in 1978.  
The Spruiell's have a son, Johnny of Iowa Park, and two daughters Paula John of San Antonio and Glenda Key of Iowa Park. She looks forward to working with friends and family in the community, and farmers she has served in the past. We invite you to come by the office and visit, or you can reach Polly at 592-4756.  
**Tommy & Glenda Key**  
**TEXAS REALTY**  
\*\*\*\*\*

**TEXAS REALTY**  
SELLING IOWA PARK  
**109 W. Cash 592-2728**

**Tommy & Glenda Key**  
Res. - 592-4660  
Mobile Ph. - 733-0646  
Mobile Ph. - 733-4012

**YES! OUR LISTINGS ARE SELLING!**  
If you want to sell your home or buy a home, Call your LOCAL FULL-TIME Realtors.

Invest in this one.  
Lot with shop & mobile home.

Attractive mobile home.  
2-bedroom; nice lot.

2-bedroom; central H/A  
3-bedroom, big yard, near school.  
Central H/A, storm windows, corner lot.  
Assumable 3-bedroom with central H/A.  
3-bedroom near elementary school; REDUCED

3-bedroom; steel siding trim.  
SOLD  
SOLD  
IN CONTRACT  
Enlarged living room; covered patio.  
Large family room with fireplace; 3 bedrooms.  
IN CONTRACT

Redecorated throughout; landscaped  
IN CONTRACT  
Gorgeous family room; large kitchen.

**1300 Blue Jay 50's**  
723 N. Park 60's  
801 N. Park 10479 Longley 70's  
503 W. Coleman 2400 Lansing, W.F. 601 W. Magnolia 90's  
1606 Yucca Land 6.55 Acres  
16.5 Acres  
32.01 Acres  
38.53 Acres  
54.75 Acres  
**Commercial**  
1.54 Acres  
Tract 2  
1321 N. 4th  
926 & 928 W. Highway

**IN CONTRACT**  
Large home on corner lot; kitchen built-ins  
Double-hearth fireplace; Large lot. Garden room, 3 bedrooms, 1.98 acres.  
Custom built 3-bedroom. New vinyl flooring. Great location; corner lot, large rooms. Lovely, custom-built home on corner lot.  
2 living areas & fireplaces; pool  
FM 367 & Old Electra Road  
Headquarters Road; barn, corral, pond  
Peterson & 287 Expressway  
Corner of FM 367 & Coleman Park Road  
FM 367  
Old Iowa Park Hwy & Magnolia  
IN CONTRACT - Park West Shopping Center  
Old Peppy's Building  
Two buildings; one currently rented

**BUSINESS**

**REMODELING**, additions, or new constructions. Bath and kitchen remodels a specialty. Roofing, insulation and storm windows. Free estimates, references, discount for senior citizens. Jack or David Kerr, 5056 Old Electra Rd., 592-5710. 10-4-tfc

**EIBEN Home Repair and Remodeling**. Additions, roofing, painting, sheetrock, doors, carports, patio covers, and more. Small jobs welcome. Reasonable rates. Licensed and bonded. 592-2053. 5-31-tfc

**HOME IMPROVEMENTS** from additions to remodeling. Patios and carports, acoustic ceiling, ceramic tile, general carpentry. Gary Williams, 592-2480. 6-1-tfc

**HORTON CONSTRUCTION** Additions, roofing, painting, remodeling, dry wall & acoustic ceilings. Blaine Horton, 592-5586. 11-15-tfc

**SIDING**, insulation, remodeling, roofing, room additions. The Great Plains Siding and Insulation Company 761-2124 or 592-9829. 9-20-tfc

**BLACK POWDER** Guns and accessories, revolvers \$50 and up. Powder \$5.00 lb. Will order modern guns for 10% over cost. Ye Ole Gun Shack, 413 W. Washington, 592-5430. 6-1-tfc

**TNR CONSTRUCTION**-Roofing, painting, sheetrock, and texture, brick and cement work. Licensed and bonded. Rick Caffey, 592-4625. 6-7-tfc

**GROOMING** - 13 years experience. All breeds. Call 592-4716. 6-1-tfc

**A-1 APPLIANCE Service**-Repair major household appliances. 592-5537. 3-8-tfc

**FACSIMILE** capability. Glenna Via Insurance. 6-1-tfc

**COPIES MADE** - 20¢ each including reduction and enlargement. Iowa Park Air Conditioning. 607 E. Bank. 6-1-tfc

**CAMPERSHELLS** - Over 200 in stock. Fiberglass, from \$495. Metal, \$345. Pete's RV, Marlow, Okla. 405-658-5114. 5-2-tfc

**BUY OR sell Avon**. Contact Jennifer Goin, 592-9607. 4-12-tfc

**BUSINESS**

**HOUSE PLANS** designed or stock plans. Roy's Custom Plans, 592-9006. 11-15-tfc

**COPIES MADE** at Parkway True Value, 25¢ each. 6-1-tfc

**WOLFEROOFING** - Residential-commercial. Free estimates. 855-5657. 6-1-tfc

**STANLEY HOME Products**, call Shirley Hicks, 592-4634 after 5. 3-2-tfc

**KING'S KIDS** Christian Day Care & Preschool - Now enrolling for back to school, age 2 yrs. thru second grade. Preschool, all day, before & after school. Transportation to and from Kidwell. 202 N. Jackson, 592-4242. 7-25-tfc

**FROSTFREE** refrigerator, \$175; wood single bed, wood double bed, single springs, metal frames. Swampcooler \$150; 220 air conditioner, \$225; queen-size couch hideabed, \$175. Lamps, pictures, mirrors, knick-knacks, and other stuff. Also pop, candy, cigarettes and some groceries. Come see us. Amanda's Country Store, Corner of South Colorado and James Drive. 8-8-2tp

**WANTED:** Furniture, and will buy out left over garage sales. 592-5014. 8-8-tfc

**\$1000 REWARD**

For information leading to the arrest and conviction of any person or persons involved in theft, vandalism, arson, fishing or hunting on any of our properties in Wichita, Archer, Wilbarger, Clay, Wise or any other county in which we may have equipment located. Tom Swanson Oil Co., TS&T Drilling Inc. Ph. 817-495-3971.

**MISC. FOR SALE**

**GARAGE SALE** - Great girls & boys clothes for back-to-school, girls rompers, dresses, jeans, shorts, etc. in sizes 7-14. Boys (size 14) & young mens (waist sizes 26-29) Levi jeans. Bugle Boy shirts & pants, Dockers pants & shorts, etc. New Kelly green Russell sweatshirts - adult sizes \$4.00 each. Baby clothes to 24 months, maternity clothes, infant carrier, baby swing, rattan rocker, bentwood rocker, BBQ grill, baseball bats, lots of misc. Saturday only, 7:30-12:30, 1605 Wagonwheel Drive. 8-15-1tp

**MOVING SALE**, 25 years of accumulation. Riding lawn mower, linens, knick-knacks, small appliances, dresser, twin brass bed & mattress, doors, shutters, custom-made couch, bikes, moped, exercise bike, girl's infant clothes, much more. Garage in rear of house, 613 W. Rebecca, Saturday 8-5, Sunday 9-5. 8-15-1tp

**COUNTRY GARAGE SALE**-Tools, welding items, air compressor, baby furniture, pianos, organs, saddles. 1-7 p.m., Saturday, Sunday, 371 Peterson Road North, Pleasant Valley Estates. 8-15-1tc

**YARD SALE** - Friday and Saturday, 8 a.m. til 7 Children's clothes 2-8, square dance dresses & petticoats size 10-12, miscellaneous household items. 975 Horseshoe Lake Rd. 8-15-1tp

**3-FAMILY** Garage Sale, 615 N. Wall, Friday & Saturday, 8 a.m. Furniture, toys, sewing machine, household items and love seat, lots of children's clothes, baseball cards, misc. 8-15-1tp

**IOWA PARK OPTIMIST** - Non-profit. Everything from A to Z. Reasonable. Please come and see. 603 W. Texas, Friday and Saturday. 8-8-2tp

**MOVING STORAGE SALE**, Solid oak waterbed, \$100; dryer, \$20; clothing, all sizes; tons of misc. 592-5014, 300 W. Lafayette. 8-15-1tc

**MISC. FOR SALE**

**GARAGE/Sporting Goods** Liquidation Sale. Used ladies & boys clothing, shoes & misc. New close-out items such as youth & adult T-shirts, socks, gym shorts, jackets, sweats, football shoes, shimmels, jerseys, athletic/school bags & lots more. 8-5 Saturday & 1-5 Sunday, 1309 Mockingbird. 8-15-1tp

**GARAGE SALE** - Friday only, 8:00 - 4:00. Hauling rack for RV, Honda 70's, housewares, books, computer, much more. 412 S. Bond, Iowa Park. 8-15-1tp

**MOVING SALE**, 1300 Blue Jay. Lots of good bargains! Clothes, microwave, swing set, etc. Thursday only, 8-1. Come early. 8-15-1tp

**SUNBELT** clothes, painted and appliqued, children's teepee, baby and resaleable clothes, jewelry, knick-knacks, books, crafts & gifts. 603 W. Texas, 592-2337. 8-15-1tp

**GARAGE SALE** - 9:00-4:00. Friday only, 415 West Chestnut. Boys & adult clothes, toys, dishes, and lots more. 8-15-1tp

**YARD SALE** - Moving Sale, 511 N. Wall, Friday & Saturday, 8-4. Furniture, misc. 8-15-1tc

**MOVING SALE** - Thursday-Saturday, 10 a.m. - til 7. Everything goes. 101 S. Colorado. 8-15-1tp

**ANTIQUES & Collectibles** at Clayton's Fina, 1410 Johnson Rd. 8-15-2tp

**SOFA**, old sewing machine, coffee table, dresser. 592-2484. 8-15-1tp

**GOOD UPRIGHT** piano, \$200. Days, 592-2650, after 6, 592-5135. 8-15-1tp

**CHILD'S ANTIQUE** wardrobe, handpainted, \$150. 592-5072. 8-15-1tp



TYPICAL IOWA PARK SCENE Friday and Saturday, during the first annual community-wide garage sale, sponsored by the Chamber of Commerce, was at this First and Magnolia home. In addition to the several dozen garage sales, local merchants participated with a Crazy Daze Sale.

**DEPENDABLE YARD WORK**  
Mowing, trimming, hauling, flower beds.  
LOYD THOMPSON  
Days - 592-5384  
Evenings - 592-2850

**NUSSER LAWN CARE**  
592-4274  
Lawn Mowing  
Edging \* Weed-eating

**Cash for Cans IOWA PARK RECYCLING CENTER**  
Corner Pacific & Bank  
9 a.m. - 6 p.m., Fri. & Sat.

Mary Kay Cosmetics  
Tapestries' Fall Colors  
Private Spa Collections  
MasterCard Visa  
Norma Young  
592-2337 495-3480

**Park Home Health Services**  
592-2753  
Phone Answered 24 hours  
Medicare-Medicaid approved  
Private Insurance

**Shaklee Distributors**  
Ruby & Dan Love  
1601 Karen, Iowa Park  
592-5951

**MISC. FOR SALE**

**1980 DELTA 88**. Power steering, brakes, automatic cruise, V-8, 57,000 miles. One owner. \$2,000. 592-5568. 8-15-1tc

**HELP WANTED**

**APPLICATIONS** are being accepted for position of Director of the Iowa Park Recreational Activities Center. Must be able to plan, teach, and oversee youth and adult activities and crafts. Must be self-starter and able to accept responsibilities. Willing to work flexible hours. Send resume to RAC, Box 430, Iowa Park 76367. 8-8-tfc

**BEAUTY OPERATORS** needed. Call Bangs and Thangs, 592-9823. Booth rental. 2-21-tfc

**TAKING APPLICATIONS** for nurses aides. Apply in person only, 1109 N. 3rd. 8-15-tfc

**COOK/WAIT PERSON** - Apply in person at Harvey's Family Restaurant. 8-8-tfc

**NOTICE**

**FREE** to good home, 3-month-old female puppy. Part Blue Heeler. 592-5749. 8-15-1tp

**PUBLIC NOTICE**  
Sealed bids for School Pictures will be received by the Board of Trustees at the School Administration Building, 413 E. Cash, Iowa Park, TX 76367 until 3:30 P.M., Thursday, September 5, 1991.

Bid specifications may be obtained by contacting Glen Mitchell, Superintendent, P.O. Box 898, Iowa Park, TX 76367 or by calling (817) 592-4193. 8-15-2tc

**PUBLIC NOTICE**  
The City of Iowa Park, Texas is accepting sealed proposals for a two (2) year rental service agreement for uniforms for the Public Works and Public Utilities departments. Proposals will be accepted until 10:00 a.m. on Tuesday, September 3, 1991, at the office of the City Secretary, 103 North Wall, Iowa Park. All proposals shall be sealed in an envelope clearly marked on the front "Uniform Rental Service." Proposal specifications may be picked up at the Public Works Office, 103 East Cash, Iowa Park. The City of Iowa Park reserves the right to reject any or all proposals. 8-15-1tc

**NOTICE**

**NOTICE OF PUBLIC HEARING**  
A public hearing on the City of Iowa Park, Texas fiscal year 1991/1992 operating budget will be held on August 26, 1991, in the Council Chambers at City Hall, at 7:00 P.M. A certified true copy of the proposed budget containing the revenues and proposed expenditures was filed August 5, 1991 with the City Secretary. The budget is available for public inspection at the City Secretary's office during office hours Monday through Friday. The proposed budget contains NO ad valorem tax or user fee increases. 8-8-2tc

**PUBLIC NOTICE**  
The Board of Adjustment of the City of Iowa Park, Texas, will conduct a public hearing at 6:15 p.m. on Monday August 19, 1991, to consider the issuance of a variance at Lot 8, Block G, Sandra Gail Addition (614 West Rebecca) to allow the building of an open carport with less than the required side yard set back. Any comments for or against may be presented orally at the hearing or in writing to the Public Works Director prior to the meeting. All meetings are open to the public. 8-8-2tc

**NOTICE OF APPLICATION FOR FLUID INJECTION WELL PERMIT**

BTO Venture, Inc. P.O. Box 507 Holliday, Texas 76366 has applied to the Railroad Commission of Texas for a permit to inject fluid into a formation which is productive of oil or gas. The applicant proposes to inject fluid into the KMA, Burns Ellenberger, Well Number 5. The proposed injection well is located 1 1/2 mi N/Kamay, Texas in the KMA Ellenberger Field, in Wichita County. Fluid will be injected into strata in the subsurface depth interval from 3526 to 3730 feet. LEGAL AUTHORITY: Chapter 27 of the Texas Water Code, as amended, Title 3 of the Natural Resources Code, as amended, and the Statewide Rules of the Oil and Gas Division of the Railroad Commission of Texas. Requests for a public hearing from persons who can show they are adversely affected, or requests for further information concerning any aspect of the application should be submitted in writing, within fifteen days of publication, to the Underground Injection Control Section, Oil and Gas Division, Railroad Commission of Texas, Drawer 12967, Capitol Station, Austin, Texas 78711 (Telephone 512/445-1373). 8-15-1tc

**LEGAL NOTICE**

**NOTICE OF BIDS ON FUEL 1991-92**  
Bids will be received at the Iowa Park School Administration Building, 413 East Cash, P.O. Box 898, Iowa Park, Texas 76367, until 2:00 P.M., Friday, August 23, 1991 on the following items subject to conditions listed. Bids will be opened at the School Administration Building at 2:00 P.M., Friday, August 23, 1991.

GASOLINE		
Diesel	Bid (per gal.)	
Unleaded, describe grade	Bid (per gal.)	Grade
Include state tax.		
Do not include federal tax.		
Deliveries to be made in 2,000 gal. or less.		
Estimated use - 4,800 gal. unleaded per month during school term.		
Prices F.O.B. transportation yard, 603 E. Washington, Iowa Park.		
School reserves right to accept or reject any bids for the best interest of the school.		
The bid price may be raised during the year as dealer costs increase.		
The school reserves the right to request documentation to support the price increase.		
Any questions should be directed to Robert Palmer, Assistant Superintendent.		
8-8-2tc		

**SHERIFF'S SALE THE STATE OF TEXAS County of Wichita**

**NOTICE IS HEREBY GIVEN** That by virtue of a certain Order of Sale issued out of the Honorable 30th District Court of Wichita County, on the 17th day of June 1991 by Dorsey Trapp, Clerk of said District Court for the sum of Two thousand eight hundred seventy seven and 65/100 DOLLARS Plus 10% interest from date of judgment and costs of suit, under a certain judgment, in favor of Iowa Park Consolidated Independent School District, Et Al in a certain cause in said Court, No. 36, 101-A and styled Iowa Park Independent School District, Wichita County, Electra Hospital District, Wichita County Water Improvement District No. 2 vs. R.J. Davis, Helen Davis and placed in my hands for service, I Thomas J. Callahan as Sheriff of Wichita County, Texas, did, on the 25th day of June 1991 levy on certain Real Estate, situated in Wichita County, Texas, described as follows, to-wit:

Tract 1: Two parcels of land out of Block 22, J.A. Kemp's subdivision of Wichita Valley Farm Lands, Wichita County, Texas, described as follows:

First Parcel: All that certain tract of land in Wichita County, Texas described in a deed from H.W. Johnson and wife, Luivirney Johnson to T.L. Shook dated March 21, 1945, and recorded in Volume 406, Page 209 of the Deed Records of Wichita County, Texas, SAVE & EXCEPT a tract described as follows:

BEGINNING at a point 100 feet West & 210 feet South of the Northeast corner of Block 22 Kemp's Wichita Valley Farm Lands; THENCE South 90 feet; THENCE West 135 feet; THENCE North 90 feet; THENCE East 135 feet to the place of beginning, and also described as the "First tract" in a deed recorded in Volume 788 at Page 163 of the Deed Records of Wichita County, Texas.

Second Parcel: BEGINNING at a point 475 feet South of the Northeast corner of Block No. 22 Kemp's Wichita Valley Farm Lands THENCE South 125 feet; THENCE West 100 feet; THENCE North 125 feet; THENCE East 100 feet to the place of beginning and also described as the "Second Tract" in a deed recorded in Volume 788 at Page 163 of the Deed Records of Wichita County, Texas;

And it is further Ordered, Adjudged, and Decreed that the owner of such property, or anyone having an interest therein, or their heirs, assigns, or legal representatives, may, within two (2) years from the date of the filing for record of the purchaser's deed and not thereafter, have the right to redeem said property as provided by law, and levied upon as the property of R.J. Davis and that on the first Tuesday in September 1991, the same being the 3rd day of said month, at the Court House door, of Wichita County, in the City of Wichita Falls, Texas, at 10 A.M. by virtue of said levy and said Order of Sale I will sell said above described Real Estate at public vendue, for cash, to the highest bidder, as the property of said R.J. Davis

And in compliance with law, I give this notice by publication, in the English language, once a week for three consecutive weeks immediately preceding said day of sale, in the Iowa Park Leader a newspaper published in Wichita County.

Witness my hand, this 26th day of June 1991  
Thomas J. Callahan  
Sheriff, Wichita County, Texas  
By Larry W. Proffitt, Deputy  
8-8-3tc

**Monty's Plumbing**  
592-4928

**KINGS KIDS CHRISTIAN DAYCARE & PRESCHOOL**  
"Iowa Park's finest for Parents who care"  
202 N. Jackson 592-4242

**BOB'S APPLIANCE REPAIR**  
1280 SH 370 (FM 369 & Old Iowa Park Rd.)  
Iowa Park Texas 76367  
Washers, Dryers, Freezers, Refrigerators, Window Air-Conditioners, Dishwashers (817) 855-8525

**Jim's Conoco**  
Check with Jim or Mark Shirley for expert repairs on your vehicle.  
592-4897  
612 W. Highway

**Monty & Son's SEPTIC TANK SERVICE**  
592-4928

**MTTY BIDDY CHRISTIAN CARE**  
Pre-School & After School Care  
Owned & Operated by Mary Biddy  
1201 1/2 3rd Street (across from Kidwell)  
592-9445 592-4302

**PRE-SCHOOL**  
3-Year-Olds  
Tuesday & Thursday ~ 11:30 - 2:15  
\$30 per month

4-Year-Olds  
Mon., Wed., Fri. ~ 11:30 - 2:15  
\$40 per month

Supply Fee - \$10 per semester

**AFTER SCHOOL CARE**  
1st Grade and Up  
2:30 - 6 p.m. Weekdays  
REGISTER NOW - SCHOOL BEGINS AUGUST 26