

May 28, 1987

MRS. LITA WATSON
520 W. CLARA
IOWA PARK TX 76367 112

Hawks bi-district champs

Tuesday's doubleheader lasts into Wednesday

The Hawks are the Bi-District baseball champs, but it took a lot of playing and some late traveling hours to earn the title.

Now they are tentatively scheduled to play for the area crown Saturday evening in Abilene, against either Kermit or Denver City.

For fans who like a lot of scoring, the three games with Crane would fill the bill.

After two "no contest" games, in which the Hawks won 11-1 and then lost 8-0, they battled to an 18-12 conclusion that didn't come until 12:45 a.m. Wednesday.

Kermit and Denver City were to have played their bi-district game Tuesday night, but were rained out, even though an alternate field in New Mexico had been arranged.

The bi-district champions were to be certified by Wednesday night, according to the University Interscholastic League schedule. Anticipating more field problems, the schools could request a delay, according to Coach Daryl Frazier.

Should a delay be granted, and field conditions continue to be unsatisfactory for play, Saturday's tentative schedule could be effected, he explained.

If Kermit and Denver City do get their game played in time, Frazier

said his team is to meet the winner at 6:30 p.m. Saturday at the Hardin-Simmons Univ. field.

That game is to follow another, between Abilene Cooper and Lubbock Monterey.

An alternate field to Abilene's is at Snyder, Frazier added.

Junior hurler Billy Kenyon, who limited Clyde to only three hits Monday night, picked up his second win in as many evenings when he came on in relief Tuesday in the third and final game.

Another junior, Craig Rickman, had the most consistent bat in the series for Iowa Park, collecting six hits in nine official at-bats.

Clyde put a scare in Hawk fans in the first meeting of the clubs Tuesday at Hoskins Field in Wichita Falls by taking a 1-0 lead in the first inning and holding on through the third frame.

But the Hawks began picking up Shane Shewmake's pitches and scored once in the bottom of the third, adding three more in the fourth, and then, against the fourth Clyde pitcher, added seven more to end the game on the 10-run rule in the fifth.

The first run came on a double by Robert Adams to send Rickman, who had earlier walked, across the

plate. It was a single by Mike Williams, with only one out and the bases loaded, that drove in the game-ending run.

In their opener Tuesday, Clyde called on a pitcher, Jim Shelton, the Hawks hadn't seen. And he earned his shutout by limiting the big Hawk bats to only seven hits.

"We were hitting the ball," said Frazier, "but everything we hit was to someone."

Freshman pitcher Jim Duggins had given up three runs through the first two innings and had the bases loaded when Robert Adams was called for relief.

Three runners crossed the plate against Adams before he could end that inning, and one each scored in the fifth and sixth innings.

Iowa Park left nine runners on bases in the game.

The rubber match was a scoring marathon, with a total of 30 runs being scored.

Frazier started Rickman, a lefty who hadn't worked in over a month.

Iowa Park had scored five runs in the first inning and three in the second, while Rickman was charged with only two runs going into the third.

But after Rickman got in trouble in the third by loading the bases and no outs, Frazier again called on Kenyon.

"It took him a while to get loosened up (walking in three runs)," commented Frazier, "but once he did, he pitched another great game."

Clyde finished the top of the third inning with a 9-8 lead after scoring seven runs.

But in the bottom, the Hawks gained the lead once more with five more runs.

Both teams went scoreless in the fourth, but the Hawks sent four more across the plate as they pounded the Clyde pitching staff (there were seven in all in that game), and added one more in the sixth.

Clyde scored two in the top of the sixth, and was held to one additional run in the seventh.

Iowa Park was credited with 16 hits in the third game. And for the evening, the Hawks had 14 stolen bases, with 10 in the second game.

Because the games lasted so late and the distance back home, the team did not arrive at the field house until 3:30 a.m.

However, the players were able to get some sleep during the return trip, and all reported for their final examinations Wednesday, according to David Baugh, athletic director.



KEEPING CLYDE RUNNER CLOSE TO FIRST BASE ...during Monday's first bi-district game.

Hawk Stadium scene of graduation Friday

Commencement exercises for the Iowa Park High School Class of '87 will begin at 8 p.m. Friday in Hawk Stadium.

Should weather not permit, the event will be moved into the school auditorium.

Eight tickets were issued to each graduate for distribution to family members and friends, according to

Richard Davis, because of limited seating in the auditorium. There are 100 students in the class.

Tickets will not be required for ceremony.

The commencement address this year will be delivered by David Baugh, school athletic director.

Danny Forman, class president, will make the traditional presentation

of the school key to Toby Brown, student council president.

Following the presentation of the class by Davis to Superintendent sent by Jimmy Howell, president of the board of trustees.

Invocation will be given by Scott Davis and benediction by Wes Ward.

The processional, recessional and school song will be played by the Hawk Band.

IOWA PARK LEADER 28

Vol. 18, No. 37 IOWA PARK, WICHITA COUNTY, TEXAS 76367 Thursday, May 28, 1987

News Briefs

Area receives 2-4 inches rain

Iowa Park received an even two inches of rain during the past week, according to Virgil Woodfin.

Some areas reported more. One report, from Kamay, was that 3.5 inches fell there over the weekend.

Aldermen to hold Saturday retreat

Members of the Iowa Park city council will hold a retreat most of Saturday at Lake Kickapoo, to study future goals and consider department requests for the coming year.

Then, according to Mayor Tim Hunter, a session on the day's topics will be put in perspective, and a plan for future action decided.

While no action is taken at such a study meeting, and a report is made of the goals set, council members the past two years have said retreats are extremely beneficial.

The meeting is to begin at 9 a.m. at the J.O. McCullough cabin, and conclude around 3:30 p.m., Hunter said.

Friday is last day of school

Friday will be the final day of classes for the Iowa Park schools, and students will be dismissed one hour earlier than usual that afternoon,

according to Supt. Glen Mitchell.

Teachers will report Saturday for a "teacher's workday," Mitchell said.

Educators complete gallon plateaus

Two of the donors who gave blood Tuesday when the Red Cross Bloodmobile was at Faith Baptist Church completed multi-gallon plateaus.

Tim Kaspar and Jimmy Alsup, both educators in Iowa Park schools,

completed their eighth and sixth gallons, respectively.

Though the community's goal was 50 units, 27 were collected, said James Grove, blood chairman for the Optimist Club which sponsors the Bloodmobile visits here.

Community features to be displayed

Iowa Park will get its "two cents" in at the Fallsfest June 5-7 in Wichita Falls.

The Chamber of Commerce, in concert with the City of Iowa Park, will have a booth located in Lucy Park which will be designed to let all visitors know the benefits offered to those living in the community.

Frank Gossett, Chamber president, named Robert Palmer and Bob Hamilton to design the layout and literature to be displayed in the 10x10 booth, and Gossett will have the booth built.

Volunteers to man the booth to greet visitors and answer questions are being solicited by the Chamber.



15-MONTH OLD CLARE Carrillo-Miranda tries out her "all-weather" outfit during a brief shower Friday afternoon. The daughter of Mr. and Mrs. Ralph Carrillo-Miranda apparently liked the drip line on the sidewalk in front of her mother's business, Homestead Ceramics.

City, school gain in franchise taxes

Iowa Park city and school were the only two entities in the county on the plus side in this year's first allocation of the state's franchise tax on banks, according to a report from the state comptroller's office.

The Legislature in 1984 brought banks under the state franchise tax for the first time and allocated money from the tax to cities, counties, school districts and other local taxing units where the banks are located.

Banks are taxed on the same rate as other Texas corporations. Previously, bank stocks were subject to local property taxes. The Legislature exempted the stocks from property taxes, substituting the bank franchise tax. Collections are prorated among

local taxing units based on their tax rates.

Iowa Park schools were a +15.59 percent over this same period last year, and the city was a +5.20.

Electra school was a +11.85, but the city was a -4.07; Burkburnett was +8.51 and -1.08, respectively, and Wichita Falls was a -4.03 and -.24.

The Iowa Park school check for the period was \$10,899.21, up from the \$9,429.02 last year.

The city received \$10,692.94 last year, and \$11,249.91 this year.

Wichita county's check of \$116,385.35 was down 4.03 percent from the \$121,276.28 received last year.

The next bank franchise allocation will be in August.

Swim pool opening Sunday

Sunday will be "splash day" in Iowa Park, but most are hoping the splash will apply to swimming, rather than raining.

Iowa Park Bicentennial Swimming Pool will open for the season.

Hours will be 1-6 p.m. seven days a week.

No changes in prices have been made from last year. General admission will be \$1.50, with children four and under admitted free when accompanied by an adult.

Books of 10 tickets for children 10 and under will be \$10, and \$12 for all ages above 10. Season tickets for families are \$50.

The pool is available for private parties before and after regular hours, at \$20 per hour.

The pool was built in 1976 as the part of the community's participation in the nation's 200th anniversary, and is administered jointly by the city and school, though it was located at the high school.

Does your subscription to the Leader expire this month?

Check the list on page 4.

Smith, Lamb nuptials solemnized in Wichita Falls

The focal point of decorations in the chapel of First Baptist Church in Wichita Falls Saturday afternoon for the wedding of Miss Cynthia Ruth Smith and Larry Don Lamb was a 13-point archway candelabra. Seven-branched candelabra and the unity candlestick complemented the archway, and two stands holding fresh ferns completed the altar decor.

Rev. John Edie, assistant pastor, officiated the double-ring ceremony to unite the daughter of Mr. and Mrs. Sidney C. Smith and the son of Mr. and Mrs. Troy Lamb.

Mrs. Jerry Sparks, pianist, played "Longer Than" and "Evergreen" for prelude numbers. Lisa Silvils sang "You and I" after the mothers were seated, and the "Lord's Prayer" after the bride and groom lighted the unity candle. The members of the wedding party entered the chapel and exited to the tune of the traditional wedding marches.

The bride was presented in marriage by her father. She wore a designer gown of shimmering white satin, the bodice embellished with lace appliques to the flattering waistline, exquisite sweetheart neckline bordered with Alencon lace and tiny seed pearls.

The sleeves of the gown were puffed in style and beautifully adorned with seed pearls and lovely silk flowers.

The full skirt accented with scattered appliques of lace gracefully flowed into a chapel length train bordered with a deep flounce of crystal organza ruffles.

The bride's waist-length illusion veil was gathered to a wreath of silk flowers, and she carried an arm bouquet of two dozen white roses.

The bridal traditions included her gown for "something new," and the bride's grandmother's lace handkerchief for "something old." The veil was "something borrowed" and a garter was "something blue."

Miss Gari Lynn Robinson, the maid of honor, wore a blue organza tea length dress overlaid with matching lace designed with a low scoop and a bow of organza at the dropped waistline. She wore white pumps and hose and carried a bouquet of peach roses and blue carnations.

The bridesmaids, Mrs. Steve Colley, Mrs. Terry Meyer and Mrs. Bill Lamb, wore peach organza dresses styled identically to the maid of honor's dress and carried bouquets to match hers.

Christopher Smith and Doug Collins served as ring bearer and best man respectively and wore grey tuxedos with blue ties and cummerbunds to match the color of the maid of honor's dress. The ring bearer carried a peach pillow.

The groom wore a grey tuxedo with tails, a silver tie and cummerbund.

The groomsmen were Melvin Joyner, Howie Evans and Mike Crooks, the last two of Dallas, and the ushers were Roger Smith and Bill Lamb. All wore grey tuxedos with regular coats, peach ties and cummerbunds to match the color of the bridesmaids' dresses.

The bride's father wore a grey tuxedo with silver tie and cummerbund.

The bride's mother wore a tea length blue and white floral print dress accented with a white silk collar, and the groom's mother wore a tan organza street length dress.

The wedding reception was given by the bride's parents in the church parlor where the serving tables were draped with white silk overlaid with white lace.

The bride's table was highlighted with a four-tiered white cake decorated with peach and blue frosting flowers around each tier and the second layer completely topped with them. The top ornament was a bride and groom figurine by the Precious Moments collection standing under an archway of peach silk



MRS. LARRY DON LAMB

flowers. Moments bride and groom dolls dressed in clothes that resembled the wedding attire of the newlyweds, and The other table decorations included handmade porcelain Precious

a crystal punch bowl filled with peach punch.

The groom's table held a chocolate cake iced white and decorated with a policeman's badge on the top, peach and blue flower arrangement topped with a Precious Moments policeman, silver coffee service, trays of mints in the chosen colors completed the pattern of decorations.

During the reception, refreshments were served by Lisa Smith, Teisha Thomas, Phyllis Woody and Janet Slack. Serving as hostesses were Karen Lamb, sister of the groom, Shawna McIntyre and Lynn Youngblood.

The catered rehearsal dinner was given by the future bride and groom on the eve of their wedding at the Log Cabin in Lucy Park.

The bride was graduated from Iowa Park High School and is employed by Farmers Insurance. The groom was graduated from Rider High School and is employed by the Wichita Falls Police Department.

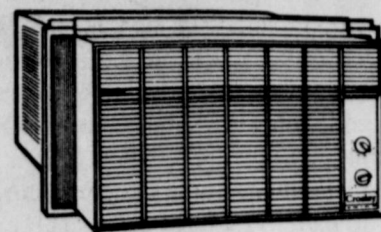
The couple were wearing their wedding clothes when they left the church in a limousine. Following a trip to Gulf Shores, Ala. and Pensacola, Fla., they will live in Wichita Falls.

A special wedding guest was Mrs. Clower Smith, grandmother of the bride. Other out-of-town guests included uncles and aunts of the bride who were Messrs. and Mmes. Marshall Smith, Howard Anderson, Hollis Sisco, Carol Barfield and McAdoo Cook.

Either model great for **BEDROOM COOLING**

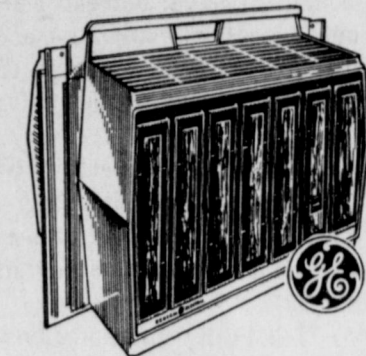
Crosley

made by Fedders



Room Air Conditioner. 2-speed fan, 2-way airflow and auto. thermostat. 4,700 BTU, with 115 volts, 8.2 amps, 880 watts. CA5R2

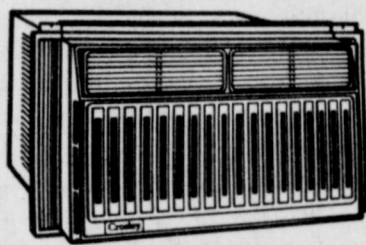
Your **\$199⁹⁹** Choice



Model AT604FS
115 volts, 7.5 amps. Easy installation. Save Energy Range, 10-position thermostat. 2 fan/2 cooling speeds. Built-in handle.

Crosley

Energy Efficient

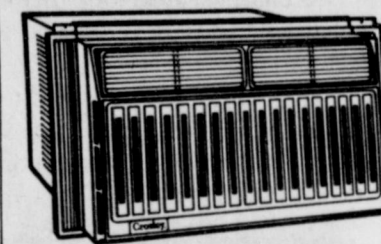


\$299⁹⁹

Room Air Conditioner has 3-speed fan, auto. thermostat, flex-mount installation. With 7,500 BTUs, 115 volts, 9.6 amps. CABR4

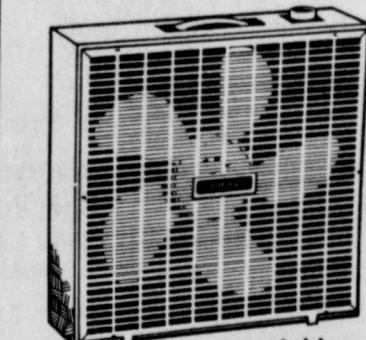
Crosley

Energy Efficient



\$249⁹⁹

Room Air Conditioner. 5,900 BTU, 115 volts, 7.5 amps, 790 watts. 3-speed fan, auto. thermostat, flex-mount installation. CA6R4



matching rollabout stand **\$17⁹⁹** stand **\$14.99**

20-In. 3-Speed Breeze Box Fan for economical comfort. With a heavy-duty metal box, plastic blades. CBF203T/4425/3713/P223

We stock these **Evaporative Cooler Needs**

- ✓ Pumps
- ✓ Pads
- ✓ Floats
- ✓ Overflows
- ✓ Water Hookups
- ✓ Plastic Tubing

Use "Coil Magic" to clean those dirty coils on the outside and inside of our window Air Conditioner.

32 oz. Spray Bottle **\$4.99**

PARKWAY

HARDWARE/FURNITURE
200-206 W. BANK
592-5512 or 592-4681



True Value HARDWARE STORES Spring Paint Savings Last 3 Days

Stop in today for your copy of our Spring Catalog.



10.98* Gallon
Flat Acrylic Latex House Paint leaves a high-hiding, protective coat that resists mildew. 24 colors, black, white. 18X



9.98* Gallon
E-Z Kare™ Latex Flat Finish for bedrooms, rumpus room. Spatter resistant. 39 colors and white. EZF



8.98* Gallon
Select Latex House Paint resists mildew and blistering on wood and masonry. Ready-mixed colors, white. M



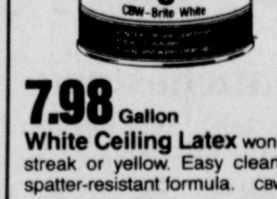
2.98 Gallon
Latex Redwood Stain enhances texture of exterior wood, siding or shingles. LW



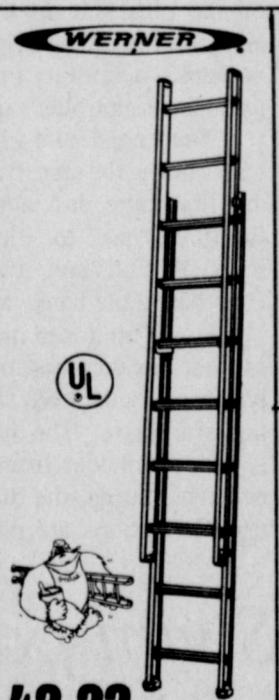
4.99 Gallon
Flat Latex Wall Paint has a soft finish for interior walls, ceilings. Colors and white. YF



7.98 Gallon
Tru-Seal™ Waterproofing Coating. Clear. CS-1



7.98 Gallon
White Ceiling Latex won't streak or yellow. Easy clean, spatter-resistant formula. CBW



42.22
16-Ft. Extension Ladder features modified I-beam construction, more. DMS-2



4.99
4-In. Tru-Test™ Paint Brush is made with durable Orel® polyester. 1077



2.78
Spray Enamel puts a glossy finish on wood and metal. Ass'd colors. 16 fl. oz. XO



99c
White Latex Caulk dries quickly and can be painted over. Handy 11-oz. tube. 86



1.88
Hi-Q™ Spray Enamel for a durable, glossy finish on interior/exterior surfaces. 16 oz. U



2.48
XO™ Stain Primer-Sealer & Stain Killer seals before painting. 16 fl. oz. XOS-1



9.99 Your choice
Weathered Wood Restorer restores the natural beauty of wood. 303-1



2.69
Exterior Paint Remover gets rid of flaking and peeling paint with just a rinse. 404-1



11.44 Final Cost
EZ Roller automatically feeds paint from the tank as you roll. Saves time. 4000-EP90



2.88
9-In. Paint Shield Roller protects against roller specks to avoid messes. 500-PSR-90



8.88
Mask-It™ Tape Applicator for quick masking jobs. Incl. 60-yd. tape. 0186001



4.66
Glass Mask™ Liquid Masker & Scraper Kit protects windows. 0284001

Savings Coupon
Coupon Expires May 01, 1987
with coupon **24c** without coupon 59c
Disposable Plastic Paint Tray Liner permits easy painting cleanups. 40
Limit: one coupon per customer

LOOK WHO'S NEW



An eight pound, two ounce daughter, Julianne, was born to Mr. and Mrs. Tim Swedburg May 14 at Wichita General Hospital. She is the couple's first child.

Mrs. Swedburg is the former Cyndi Lewis of Kamay. Grandparents are Mr. and Mrs. Don Lewis of Kamay and Mr. and Mrs. Gene Swedburg of Iowa Park.



SHOWER SELECTIONS FOR
APRIL WILLIAMS and ANDY ANDERSON
KAYLA NAULT and BRANDON MILLS
ALISA HICKS and CHUCK DEVENPORT
CONNIE HEARD and STEVE GINNINGS

PARKWAY
True Value HARDWARE
HARDWARE/FURNITURE
200-206 W. BANK
592-4681 592-5512

PARKWAY
FURNITURE
True Value HARDWARE
200-206 West Bank
592-5512
592-4681

Maness, Hillard vows are exchanged Saturday

One of the most important social events of the weekend was the dignified wedding in which marriage vows were exchanged by Miss Lisa Renae Maness and Terry Kevin Hillard. The First Methodist Church was the scene of the 2:30 p.m. ceremony Saturday and the doubling ceremony was officiated by Rev. Doyle Henderson of the Wesley Foundation at Midwestern State Univ.

The bride is the daughter of Mr. and Mrs. Gary Maness, and the groom is the son of Mr. and Mrs. Lewis Hillard.

Miss Jo Ann Reed presided at the wedding book table in the church entry. It was skirted with dusty rose taffeta topped with English ivy and caught at the corners with dusty rose stephanotis. It held a gold frame with the couple's wedding invitation on an easel, a votive candle encircled with miniature pink flowers, a single fresh pink rose, a white plume pen and guest book.

The wedding music was presented by John Teel, organist, who played the traditional marches by Wagner and Mendelssohn, Miss Missy Logan and Kent Roberts, vocalists, the latter providing the piano accompaniment for the solo and duet selections.

The vocal numbers included "You're My Inspiration" by Miss Logan, "Will You Still Love Me" by Roberts, and "Always" and "Doubly Good," duet selections.

The couple repeated their vows at the altar highlighted with an open Bible backgrounded by a gold cross. The table that held the Bible also held a three point gold candelabra with tall white tapers, and it was flanked by low arrangements of silver green foliage.

The entrance to the lower altar was flanked by tall votive tree candelabra traced with grapevine greenery and accented with bouquets of fresh dusty rose carnations, white starburst poms, baby's breath and tree fern.

The altar rail was entwined with fresh English ivy and lighted with votive candles spaced at intervals, and the piano held an arrangement of silk dusty rose orchids, tiger lilies and baby's breath.

The church pews were marked with large white lace bows centered with nosegays of miniature mauve flowers.

The bride was presented in marriage by her father and wore a white satin formal gown that complemented her youthful beauty

Hoffman graduates

William E. Hoffman II of Iowa Park received a bachelor's degree in engineering technology at Texas A&M University's 1987 spring commencement exercises.

A total of 3,279 degrees were awarded, including 2,777 bachelor's, 382 master's and 120 doctorates.



MRS. TERRY KEVIN HILLARD

and lent itself to the airiness of a spring-summer wedding. The gown was fashioned with a tight bodice gently sculpted with embroidered stitching and beaded pearls featuring short off-the-shoulder sleeves adorned with the embroidery and pearls. The full skirt swooped into a chapel length train.

Her flattering headpiece featured a pearl embroidered band across the forehead and a pouf of net and pearls at one side at the back to secure her fingertip illusion veil. She chose to keep the memory of her wedding day by carrying a solid pearl cascade and white roses and matching streamers.

The bride remembered to keep traditions by carrying a blue linen handkerchief that belonged to the groom's grandmother for "something old," and her wedding gown for "something new." The pearl and floral cascade that she carried was "something borrowed" from Mrs. Keith Hillard, and "something blue" was a garter.

The bride was attended by Miss Tammy Washburn as maid of honor and Miss Ginger Reese as bridesmaid. Each wore a handmade dusty rose satin tea length dress set off with a skirt covered with white lace. They carried fascinating brass chamber lights provided by votive

cups encircled with dusty rose open rosebuds, baby's breath, the picture completed with grey and mauve cascading ribbons.

Lori Maness, the flower girl, sister of the bride, scattered petals of spring flowers in the path of the bride as she walked to the altar. She carried an heirloom basket that had been used in weddings of the groom's family on several occasions and had been revamped in the chosen colors and flowers for the Maness and Hillard wedding. She wore a dusty rose taffeta dress trimmed with white lace on the bodice and sleeves. Kansas, cousin of the bride, the ring bearer, carried a white satin pillow embroidered in dusty rose by Mrs. Richard Lunney on one side with "with this ring I thee wed" and "Lisa and Terry" on the other side.

The groom wore a white tailed tuxedo with matching shirt, tie and cummerbund and a mauve rose boutonniere. The ring bearer, best man, groomsmen, ushers and fathers wore grey tuxedos, with matching ties and cummerbunds and dusty rose carnation boutonnières.

Darrin French served as best man and Scott Kiser was the groomsmen. The ushers were David Hillard, Keith Hillard, brothers of the groom, and Colin Durbin of Augusta, Kan., cousin of the bride.

The bride's mother wore a tea length pink satin dress with a dainty white collar, and the groom's mother wore a two-piece aqua crepe tea length dress designed with blouson bodice and peplum trimmed with darker rhinestones. Both wore corsages in the bride's colors and flowers to complement their dresses.

Following the wedding, the bride's parents were hosts for the reception in the Fellowship Hall of the church.

The bride's table was characterized by delicate and meticulous decorations with the cake giving it special appeal. It was draped with dusty rose taffeta, the two-tiered skirt falling to the floor from pearl-tipped pins around the top. The corners and center front were accented with white lace bows centered with miniature mauve silk roses, caught to English ivy.

The three-tiered white cake at one side of the table caught the eyes of all the guests with its lacy drapes, each valance centered with mauve roses highlighted with silvery grey ribbon, and two sets of Grecian pillars to lend stately grace. The Precious Moments porcelain bride

and groom top ornament furnished the romantic touch to the confection.

The other side of the bride's table was marked by the silver punch bowl, and the centerpiece was a four-branched silver candelabra holding votive candles and a bouquet of mauve roses and baby's breath. The bridal napkins, silver trays of mints and crystal serving dishes completed the dignified decor of the table.

The groom's table was covered with grey taffeta and centered with a tall silver holder filled with various dried flowers, dusty rose lilies, orchids and baby's breath. The chocolate sheet cake was topped with grapes, the sign of prosperity. The silver coffee service and dishes of nuts were also a part of the table appointments.

During the reception, Misses Lori Hines, Cindy Coltrain and Crystal Lewis served at the bride's table and Misses Lisa Weed and Terri Nesler served at the groom's table.

Misty Kerr, niece of the groom, handed out the mauve net rice bags tied with grey ribbon from a basket decorated with silver ribbon, pearls and roses. The basket was part of the gift table decorations.

The groom's parents hosted the rehearsal dinner Friday evening at Uncle Lynn's Catfish Inn.

The bride and groom were both graduated from Iowa Park High School. She is a student at Midwestern State Univ. and is employed at Kings Foods. He is employed by Lewis Hillard Trucking Co.

When the couple left for a wedding trip to Branson, Mo. and Arlington, the bride was wearing a white summer dress that she had made. They will live in Iowa Park.

Special guests at the wedding were Mr. and Mrs. Jerry Ferguson of Corpus Christi, grandparents of the bride, Mr. and Mrs. Doyle Ice and Mrs. Ruby Hillard of Nocona, grandparents of the groom, and Mr. and Mrs. Rick Lewis of Norco, Calif., great-grandparents of the bride.

Other out-of-town guests included Mr. and Mrs. Mike Ferguson of Augusta, Kansas, Mr. and Mrs. Scott Modlin of Scott City, Kansas, Mrs. Dennis Nesler, Terri Nesler and Mrs. Mike Jones, all of Augusta, Kansas, Mrs. Durl Chinn and Mrs. Loren Samples, both from Quincy, Mo.

New At Merle's Beauty Shop The Body Designer



Safe passive exerciser for Heart Patients, Arthritis Sufferers and especially for Weight Loss. 5 different motions exercise complete body.

\$5.00 for 30 minutes

Special - to first 5 to sign up - 1 month (8 visits) for \$30.00
By appointment only.

Merle's Beauty Shop

900 S. Colorado for appointment call 592-4429 or 592-4243
Hours: Monday through Saturday 7:30 - 7:30 Sunday 1 - 6

WAL-MART Pharmacy

500 W. Highway 592-4157
9 a.m. - 7 p.m. Monday - Friday
9 a.m. - 6 p.m. Saturdays



Jerel Kirby
Pharmacist

Vacation Time Sweepstakes

Win One of 4 Grand Prizes of \$1,000.00!

Plus, there are 1st, 2nd and 3rd Prizes awarded per participating Pharmacy. Ask your Pharmacist for details.

Also come by and check out our Vacation Specials!



State National Bank

Invites our customers to

TEXAS

A MUSICAL DRAMA • BY PAUL GREEN

On June 20th

A rousing story about the early settlers in the Texas Panhandle.
Plus a tour of the Plains Museum at Canyon.

PACKAGE PRICE INCLUDES

Roundtrip bus transportation - All meals
Refreshments enroute - Admission to all attractions.

COST/PERSON

Double Occupancy - \$85
Triple Occupancy - \$80
Single Occupancy - \$100

Registration Deadline - June 10, Register in lobby of the bank
Registration on a first come basis - limited to 40 participants.
Itinerary available at SNB

As I See It... By BOB HAMILTON



While most of you might find some of this column interesting this week, I'm really aiming it toward our graduating seniors, so please indulge me.

Young people, through your school years, money and budgeting has not been as important in your lives as have other things. Some may have felt a pinch to buy gas, go out on a date, some things like that, but your parents took care of most of your needs.

Now that you are entering adult life and will become accountable for your livelihood, it's time to realize that money is of vital importance.

That's a dumb thing to say, you may be thinking. But I'll tell you that money, and its management, is probably the most common cause of family disputes and divorces. It may not be the ultimate cause, but it likely is the root of most causes to an unhappy marriage.

Learning to budget is of the utmost importance.

David Sylvester had a very interesting article in Sunday's issue of the Dallas Morning News, entitled "Going Broke on \$44,500 a Year."

The point Sylvester made was that he had budgeted for his income, alright, but he hadn't been completely honest with himself.

Being honest with one's self is the topic of a firm's promotion on television about dieting. And it's just

as fitting in that category as it is with money.

I've worked out several budgets, accounting for all my income and, I thought, all my expenses. I convinced myself that I had covered everything.

But I hadn't. Sylvester touched on the same problem I'd overlooked. That is the cost of replacing goods consumed, such as carpet, the refrigerator, maybe clothing, etc.

Why should we worry about replacing the carpet in the home we just bought? It's good for years and years.

Well, if we've figured out our budget, and replacement isn't included, that cost will come sooner or later.

Sylvester, with his enviable salary, wrote that his budget was so tight that the air conditioner, refrigerator, even the carpet, couldn't be replaced unless some other additional income was produced before their replacement was needed.

OK, you won't be needing new carpet or refrigerator for several years because you'll be living in dorms at college and likely apartments afterward. So why budget for them.

And you're right, for the time. But you'll always find things in your budget are overlooked. And if you want to protect your reputation as one who can be trusted for credit or loans, you'll always want to pay

your bills on time.

Paying bills on time was one of Sylvester's cause of problems. He had spent a bunch of money on replacements, couldn't come up with a particular month's mortgage payment, and used his credit card to cover it.

Then he was paying something like 20 percent interest on the home payment which already had included 11.5 percent interest. In other words, he was paying interest on interest, and I'll tell you right now, very few people I know can afford that.

Did you know that if you trade off your car before it is paid for, you will actually be paying interest on interest with your newly-financed car?

Another unnecessary expense many today are paying is long-term interest on short-term items.

Say you buy a fully-furnished mobile home, and finance it maybe 12 years. Can you imagine how much interest you will pay for a chair or some of the furnishings over that period of time?

If this column concerns you, that all your adult life will be one big problem after another, I've not intended it to do that. Your adult life can, and likely will, be even more a joy than have your juvenile years.

My intent is only to help you, not concern you.

Congratulations to each graduate, and the very best in the years to come!

Boat racing returns to area lake June 7

For the first time in more than 20 years, boat racing is returning to the Iowa Park area.

The Iowa Park Athletic Alumni Association is sponsoring an afternoon of nationally-sanctioned power boat races at Lake Iowa Park.

The event is to begin at 12-noon Sunday, June 7.

Some residents recall the last race held at the lake and estimate several thousand spectators witnessed the events.

Several different classes of boats will be running, such as modified, pro, and stock outboards.

The racers will be competing for points in the national standings of the American Power Boat Association, and drivers are expected from as far away as Colorado and Northern Oklahoma.

Proceeds from the races will benefit the Bertha McDonald Memorial Scholarship Fund, the major project of the Alumni Association.

Admission will be \$1 at the gate, with children under seven years of age admitted free. The west entrance to the lake will be closed off,

and entry can be gained only from the US 287 access road.

Spectators should take lawn chairs or blankets for seating, according to Billy Gilmore, president of the sponsoring group, who added concession stands would be available.

Gilmore said boats will be at the lake the previous Saturday to make warm-up runs, and spectators will be

admitted free that day.

During race day, no other boats other than one used for emergencies will be allowed on the lake.

Exclusive use of the lake to raise funds for the scholarship project was granted by the city council.

Tickets can be obtained in advance from Gilmore, 592-2098, or Jerry Spruiell, 592-5714.

NOTICE TO SUBSCRIBERS

This is only a notice to those listed below that their subscriptions will expire on the published date. You don't owe us a thing if your name is on the list. It only means that what you've paid for is running out. To renew your subscription, please fill out the form below, as it appears on your paper's mailing label, please. Indicate whether this is a renewal or new subscription. Enclose your check or money order, as all subscriptions must be paid in advance.

Subscriptions due to expire June 15, 1987

Please disregard this notice if already paid

- | | |
|--|---|
| A.
Edward W. Anderson, IP | L.
Patty McDaniel Langley,
Grnd. Prairie |
| B.
Alline M. Beaver, IP
Mrs. J.A. Berg, IP
J.W. Birdwell, Kamay
David Blackerby, WF
Rose Boone, Hallettsville
Everett Boulware, IP
Donald Branscum, WF | M.
Clarence Mahler, IP
Jesse McCullough, IP
Billy McDonald,
New Braunfels
Betty Meadows, IP
Tom Mills, WF
Leona Moore, IP
Thomas K. Moore, IP
Henry J. Moorehead,
Holl.
MSU Information Office,
WF |
| C.
Dr. Joe Cannon, IP
J.A. Capehart, Dallas
Harold Cowley, Bogata
Danny Cravens, Kamay | P.
Juanita Pendergrass, IP
Afton Pike, IP |
| D.
Becky Davis, Greenbrier
Herman Daymude, IP
Fred Dwyer, WF | R.
Gwen Ramos, IP
Ed Reece, IP
Rose Reynolds, IP
Drama Roden, IP
Gary Rusk, IP |
| E.
Kenneth D. Edwards, IP
Frederick Eke, IP | S.
Margie Sayer,
Collingsville
Michael W. Sewell,
Radford
Luther Shaw, IP
Clyde Skinner, IP
Luther Skinner, IP
Wanda Smith, Eunice
Evelyn T. Stewart, IP
John Stewart, IP |
| F.
R.B. Faulkner, IP
Clyde Fowler, IP | T.
Dawn Thar, Richardson
Roy Thompson, IP
Don Todd, IP
Lee Roy Truett, IP
Barry Tyler, Kamay |
| G.
Glenn Gwinn, IP | V.
Kelli Valdez, IP
Joe Vickers, IP |
| H.
Donald E. Hale, IP
Jim Hall, WF
Larry Hardin, WF
William Hawn, IP
Sandy Hilliard, WF
Johna Weaver Holdbrook,
WF
Carolyn Holder, IP
Bill Honeycutt, Moultrie
Pat Hunter, IP | W.
A.R. Ward, IP
Mrs. L.L. Watts, IP
Dale Williams, IP |
| J.
Tracy Johnson, WF | |
| K.
C.S. Ketchersid, IP
Cindy Kingcade, IP
Don Roy Klinkerman, IP | |

Wichita and Archer Counties. \$10.63
Elsewhere in Texas \$12.75
Elsewhere in the United States. \$14.00

To: Iowa Park Leader
Box 430
Iowa Park, Tex.
76367

PLEASE CHECK ONE:
 New
 Renewal
 Change of
Address Only

\$ _____ Enclosed

(Name)

(Address, P.O. Box, or Route No.)

(City)

(State)

(Zip Code)

Worth Quoting

The recent lawsuit by the poor school districts of the state demanding "equalization" of funding for each pupil shows that special interest groups have found that the way to get money from the Treasury of the State of Texas through the courts not the legislature.

The school districts have joined with prison reformers and mental health activists in using the court system to increase the state's funding of their programs. It is easier to convince a judge, that is appointed for life, to spend taxpayers money than a legislature that faces reelection every few years. The court judge is not concerned with where the money will come from to pay for these reforms, just that they must be done by a certain date.

The basis of the poor school districts' suit was that there is a discrepancy between what the rich districts and the poor districts spend per pupil. At the low end \$2,100 is spent on each student each year, while in the more affluent districts over \$19,000 is spent on each student.

The trial judge agreed and said that each district should spend the same amount on each student each year to "equalize" education throughout the state.

The kind of "equalization" that the judge has in mind is exactly the kind you and I do on our yards each weekend. That is lob off all the spending that is above a certain level and send the excess to Austin to be shared with other districts that did not meet that level.

For an example let's use the Perryton Independent School District. Some of the best education minds in the state have suggested that for a student to have a good education it would cost about \$2,500 a year. Currently PISD spends about \$3,500 to educate a student each year.

Under the proposed "equalization" formula, we would pay the same or more in school taxes and send the tax money to Austin. After dutifully totaling up the number of students in the school system we would receive back from the state \$2,500 to educate that student for the academic year.

What happened to the \$1,000 difference between what was collected and what was returned, you ask. Well, what was left after the administrative expenses involved was given to the poor school districts to reach their \$2,500.

After studying this proposal a phrase kept coming to my mind. "From each according to ability, to each according to his need." A fellow named Lenin set up that system seventy years ago in Russia. The world

can see how well that works today. Let us not do the same thing to our school system.

JIM HUDSON
Perryton Herald

If you were one of those doing a slow burn over the amount you were required to send the Internal Revenue Wednesday, you can take heart from the fact that no matter what you sent, you underreported.

Uncle Sam wants his share of every dollar you make -- and you pay accordingly. But there's benefits on the side that you receive as an employee that largely escapes the eye of the IRS.

Last year, the side benefits of working for wages or salaries averaged out nationwide at \$8,166 per employee, or 37.7 percent of payroll.

The pay you received for hours not worked -- rest and lunch periods, wash-up, travel, clothes-changing, and preparation time, vacation, and paid holidays -- cost your boss about an additional 37 percent of your salary.

Such amounts are largely under-reported to the IRS.

In an annual study, the U.S. Chamber of Commerce noted that of all the benefits workers received on the side, the six most expensive are insurance, Social Security, vacations, pensions, paid rest periods and paid holidays.

Lumped together, on a nationwide average, the benefits cost employers an average of \$121.26 per employee.

It was pointed out that the benefit costs varied widely among manufacturing and non-manufacturing industries.

For example, firms in the petroleum industry averaged \$236.60 of benefits per week per employee while textile and apparel workers averaged \$88.44 of benefits.

In the non-manufacturing sector, average weekly benefits costs ranged downward from \$207.27 per employee for public utilities to \$82.54 for department stores.

The study broke the benefits down like this: Pension, life and health insurance, disability insurance, or voluntary benefit cost your company 12.8 percent of payroll.

Social Security and unemployment compensation taxes, and other legal requirements costs the bossman 9.5 percent.

Vacations, holidays, sick leaves and the like costs 9.4 percent and rest and lunch periods, travel time, etc., costs 3.4 percent.

Profit-sharing, employee-education, 401 plans, bonuses and the like

cost another 2.5 percent for a 37.7 percent total.

Loafing, talking, or gossiping on the job was not one of the costs estimated on side benefits.

If the IRS ever figures out how to get its share of the benefits accompanying the employee on his job, we're all in trouble.

JAMES ROBERTS
Andrews County News

It never fails. Wash the car -- it rains. Water the yard -- it rains. Paint the house -- it rains. Fertilize the yard -- it never rains.

There isn't much fairness in Mother Nature's decisions. Maybe it's my timing. I never get in sync with the weather.

There's not much room for complaint though. We certainly can use the rain.

"Rain, rain go away. Come again another day," are fightin' words in the part of Texas I come from. You never get enough of that precious stuff and if you do, you don't dare say it.

I'll just write off the four hours of yard watering Thursday night.

JOE THOMPSON
Hood County News
(Thompson is the former publisher of the Electra Star/News)

IOWA PARK LEADER

Bob Hamilton Editor/Publisher
Dolores Hamilton Co-publisher
Olive Blalock Reporter
Kari Collins Reporter
Kim Miller Composition

The IOWA PARK LEADER is published every Thursday. Offices are located at 112 W. Cash, Iowa Park, Texas, 76367 (766280). Telephone: 592-4431. Second Class Postage Paid at Iowa Park, Texas, 76367. Annual subscription rates are \$10.63 in Wichita and Archer Counties; \$12.75 elsewhere in Texas; \$14.00 anywhere in the United States. Any erroneous reflection upon the character, standing or reputation of any person, firm or corporation which may appear in the columns of this newspaper will be corrected upon being brought to the attention of the publisher.



Family meal makers

THE MORE YOU BUY... THE MORE YOU SAVE!



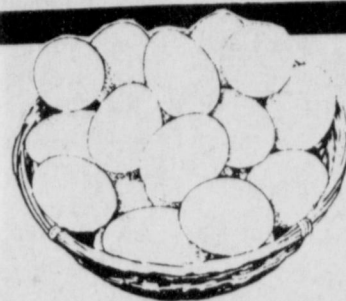
BOUNTY
PAPER
TOWELS

69¢



ALL VEGETABLE
CRISCO
OIL

\$1.87
48 OZ.
BTL.



SUNNY FRESH GRADE A
EXTRA LARGE
EGGS

88¢
18 CT.
CTN.



ALL GRINDS BRICK PACK
FOLGER'S
COFFEE

\$1.99
1 LB.
BAG



POTATO CHIPS
LAY'S
\$1.39
SIZE
BAG
69¢



BATHROOM TISSUE
NICE N' SOFT
79¢ 4 ROLL



AJAX
DETERGENT
\$3.98
147 OZ.



ALL
COKE TYPES
1.29 6 PK. 12 OZ.
89¢ 2 LITER

S & H BONUS BOOKLET SPECIALS

NICE N' SOFT BATHROOM TISSUE 34¢	WITH ONE FILLED S&H BONUS BOOKLET	BOUNTY JUMBO ROLL PAPER TOWELS 24¢	WITH ONE FILLED S&H BONUS BOOKLET	GRADE A EXTRA LARGE 18 CTN. EGGS 43¢	WITH ONE FILLED S&H BONUS BOOKLET	CRISCO OIL 48 OZ. \$1.42	WITH ONE FILLED S&H BONUS BOOKLET
--	--	--	--	--	--	--	--

KRAFT ASSORTED BARBECUE SAUCE 18 OZ. 89¢	DEL MONTE KETCHUP 32 OZ. 89¢
HEINZ SQUEEZE SWEET RELISH 14.5 OZ. \$1.29	CRISCO SHORTENING 3 LB. \$2.19
HEINZ 57 SAUCE 10 OZ. \$2.29	KEEBLER SANDWICH COOKIES E.L. FUDGE COOKIES 16 OZ. \$1.59
POST NATURAL RAISIN BRAN CEREAL 25 OZ. \$2.79	NABISCO PREMIUM SALTINES 89¢
SHURFINE MUSTARD 32 OZ. 69¢	PINE SOL CLEANER 28 OZ. \$2.49
SHURFINE SALAD DRESSING 32 OZ. \$1.09	FABRIC SOFTNER BOUNCE 40 CT. \$1.79

HEAVY GRAIN FED BEEF
BONELESS

**CHUCK
ROAST**



\$1.35

LB.

COOK'S WHOLE
6 TO 8 LBS. AVERAGE
SMOKED
PICNICS
LB. **75¢**

COOKS SLICED SMOKED PICNICS	LB.	85¢
FRESH-LEAN 83% LEAN GROUND CHUCK	LB.	\$1.35
SUPER TRIM BONELESS CHUCK STEAK	LB.	\$1.65
BONELESS-ARM CUT CHARCOAL STEAK	LB.	\$1.75
FRESH HAND CUT FRYER DRUMSTICKS	LB.	65¢
WILSONS ALL MEAT FRANKS	12 OZ.	95¢
SHURFRESH SLICED BACON	LB.	\$1.65

ALL PURPOSE RED
POTATOES



\$1.79
20 LB.
BAG

FOR A FRESH JUICY BREAKFAST
SUNKIST
GRAPEFRUIT

4 \$1

CALIFORNIA CRISP CELERY	STALK	39¢
FRESH TENDER ASPARAGUS	LB.	79¢
NEW ZEALAND FRESH KIWI FRUIT	3 FOR	\$1.00
CALIFORNIA CRISP CARROTS	4 1 LB. PKGS.	\$1.00
CALIFORNIA FRESH GREEN ONIONS	5 BUNCHES	\$1.00

DAIRY SPECIALS

ALWAYS FRESH
MARGARINE
QUARTERS
29¢
1 LB.
BOX

SHURFRESH TEXAS STYLE
BISCUITS
2 \$1
12 OZ.
CANS

SANDWICH MATE CHEESE
SINGLES
\$1.19
12 OZ.
PKG.

FROZEN FOODS

OAK
FARMS
ICE
CREAM
ASSORTED
1/2 GAL.
\$1.59

HEALTH AND BEAUTY AIDS

NEW
ULTRA
Pampers
66 SMALL / 44 MED. / 32 LG. /
28 EXTRA LARGE ULTRA
PAMPER'S
\$8.99
BOX

EXTRA STRENGTH
TYLENOL
CAPLETS
100 CT.
BTL. **\$4.99**

15' OFF LABEL
AQUA-FRESH
TOOTHPASTE
4.6 OZ.
TUBE **\$1.29**

ANTISEPTIC
LISTERINE
KOTEX REG/THIN
18 OZ.
BTL. **\$2.79**

KOTEX PANTILINERS
MAXIPADS
30 CT.
BOX **\$2.99**

KOTEX PANTILINERS
LIGHT DAYS
26 CT.
BOX **\$1.39**

AF AFFILIATED FOODS INC. *This Country's Best!*
B&R WE ACCEPT FOOD STAMPS
WE RESERVE THE RIGHT TO LIMIT QUANTITIES PRICES EFFECTIVE
MAY 28-31
THRIFTWAY

Obituaries

J.B. Darland

Services for J.B. "Blackie" Darland, 77, were held Wednesday at First Baptist Church in Burkburnett with Rev. Lamoin Champ, pastor, officiating. Burial was in the Burkburnett Cemetery under direction of Owens and Brumley Funeral Home.

He was born Dec. 9, 1909, in Farmersville, and had lived in Burkburnett 10 years. He was a former resident of Gainesville and Electra. He retired in 1977 after 35 years with Texaco. He was a member of First Baptist Church where he served as deacon.

He is survived by his wife, Nadine; three daughters, Peggy Whisnand of Iowa Park, Bobbie Marshall of Fort Worth and Fran Potts of Burkburnett; three sons, Ted of Irving, Bill and Jay, both of Burkburnett; three brothers, Sam of Wichita Falls, Byrie of Bowie, and Press Jr. of Electra; 14 grandchildren; and 11 great-grandchildren.

H.K. Black

Services for H.K. "Uncle Hez" Black, 89, were held Saturday at Owens and Brumley Funeral Home in Wichita Falls with Rev. Darius McKay, pastor of Trinity Baptist Church, officiating. Burial was in Crestview Memorial Park.

He was born Nov. 8, 1898, in Texas and had lived in Wichita Falls 50 years. He was retired from Crestview Memorial Park and was a member of West Side Baptist

Church. He served in the Navy during World War I.

He is survived by his wife, Annie; a son, Lawrence of Wichita Falls; three daughters, Juanita Toney of Wichita Falls, Winona Moer of Iowa Park and Barbara Rutledge of Burkburnett; 13 grandchildren; and 11 great-grandchildren.

Bettie Louise Ralston

Services for Bettie Louise Ralston, 82, a former resident of Iowa Park and teacher in the school system here, were held Tuesday at Tanner-Aulds Funeral Home with Rev. Merwin Turner, associate pastor of Floral Heights United Methodist Church, officiating. Burial was in Highland Cemetery.

Mrs. Ralston was born April 8, 1905, in Preston Bend. She also taught in the Wichita Falls school system and was a member of Grace United Methodist Church of Copperas Cove where she had lived for a short time.

She is survived by one son, Allie Jack of Thousand Oaks, Calif.; three daughters, Paula McNatt of Copperas Cove, Anne R. Graves of Tucson, Ariz., and Mary Margaret House of Arlington, Va.; 15 grandchildren; and 12 great-grandchildren.



Church members honor graduate

Lisa Fletcher, a member of the 1987 graduating class of Iowa Park High School, was honored at a special service Wednesday evening at the Church of God. She is the daughter of Mr. and Mrs. Robert Fletcher.

Dennis Herder served as master of ceremonies and Pam Cope paid tribute to the honoree and her accomplishments.

Debbie Herder, accompanied by Mrs. Bobby Fox, sang "Graduation Day," and Gayla Aldrich recited "A Graduate Prayer."

The speaker for the service was Mary Stevens and she used "Having Priorities That Please God" for a topic.

Miss Fletcher was honored at a reception in the Fellowship Hall following the program. The room

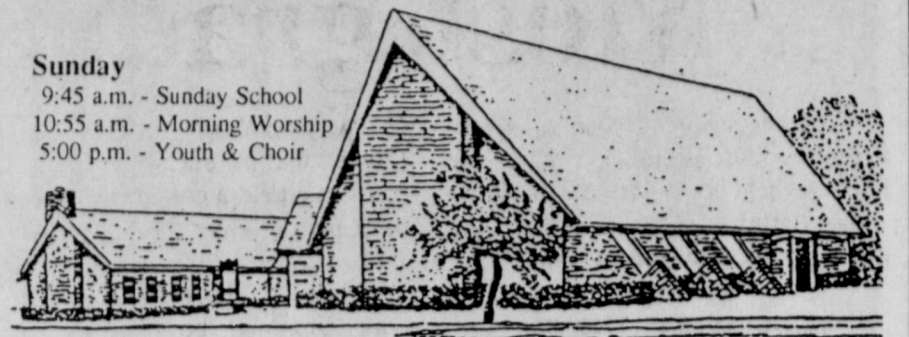
was decorated with congratulatory balloons in the school colors.

The cake, baked especially for the occasion, was decorated with green and white flowers, graduation cap, and marked with "Congratulations Lisa."

Mrs. Jerald Brown was chairman of the reception committee. She was assisted by Loretta Chandler, Denise Weaver, Traci Lippard, Lori Bohannon and Jerri Brown.

A two-year member of the National Honor Society, Miss Fletcher was a four-year member of the band. She held first chair in stage band when she was a junior. During her freshman year, she was a member of the choir and won first chair all-district band. She was a member of the one-act play when she was a sophomore.

Sunday
9:45 a.m. - Sunday School
10:55 a.m. - Morning Worship
5:00 p.m. - Youth & Choir



First Christian Church
(Disciples of Christ)
105 East Cash, Iowa Park Phone - 592-4513
Rev. Michael D. Grubbs, Pastor

Pacific Avenue Missionary Baptist Church

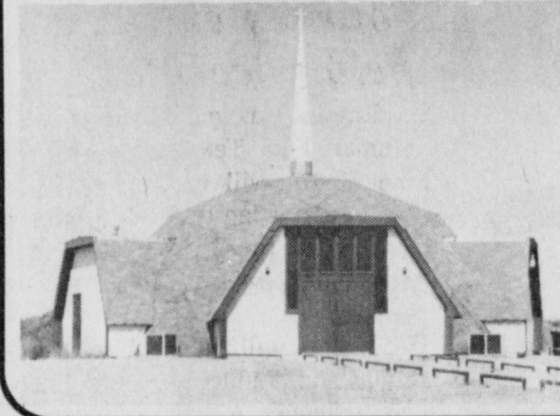
1400 North Pacific Avenue

Larry Washburn
Pastor

Church - 592-9711
Pastor - 592-4288

--Informal,
Christ-Centered
Worship for
all ages--

Sunday School 9:45 a.m.
Morning Worship 11:00 a.m.
Evening Worship 6:00 p.m.
Wednesday 7:00 p.m.



Faith Baptist Church

"Where the Bible is taught,
the family is emphasized,
and where everybody is
somebody."



411 S. Wall S.B.C. 592-2716

SUNDAY

Sunday School 9:30 a.m.
Morning Worship 8:20 &
10:40 a.m.
Church Training 6:00 p.m.
Evening Worship 7:00 p.m.

WEDNESDAY

Wednesday Evening Prayer 7 p.m.
Choir Rehearsal 8:00 p.m.

Nursery Care Provided -
Full Range of Mission's
and Children's Ministries

Pastor, Jerry L. Miller

ARE YOU WALKING ALONE?

We invite you to join people who care
**First
Presbyterian Church**

Church School 9:30 a.m. Worship 11:00 a.m.
Betty Meadows - Pastor
211 S. Yosemite 592-4220

Jesus
is the
Cornerstone

Cornerstone

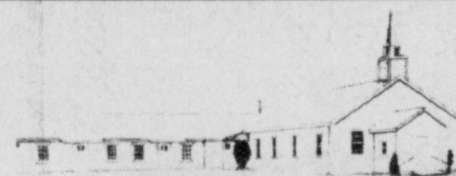
Pentecostal Church of God

SS - 9:45 a.m. Sun. Evening - 7:00
Sun. Morn. - 10:45 a.m. -SERVICES- Wed. Evening - 7:30

Jesus said, upon this rock I'll build my church and the gates of hell shall not prevail against it. - Matthew 16:18

W. Smith Rd. Pastor Duffy Terry 592-5520

Sunday School 9:45 a.m.
Morn. Worship 10:50 a.m.
Evening Service 7:00 p.m.
Wed. Prayer Meeting 7:00 p.m.



Pleasant Valley Baptist Church

Huntington Lane • South of Iowa Park Rd. • Church 855-3439
Pastor: Ben Story

"To God only wise, be glory through Jesus Christ forever. Amen." Romans 16:27 (KJV)

THE END OF YOUR SEARCH FOR A FRIENDLY CHURCH

ASSEMBLY OF GOD

SUNDAY
9:45 a.m. Sunday School
11:00 a.m. Morning Worship
5-6:30 p.m. Missionettes & Royal Ranger
7 p.m. Evangelistic Service
Wednesday Service 7 p.m.

200 S. YOSEMITE

Charles Hensley,
Pastor

Christ The King Catholic Church

First and Clara Phone 592-2802
Rev. Mr. Patrick Burke, Pastor
8:45 a.m. C.C.D. -- 10 a.m. Mass

Lakeview Church of God

Wednesday Evening (FTH-Bible Study) 7:30 p.m.
Sunday School 9:45 a.m.
Sunday Morning Worship 11:00 a.m.
Sunday Night Worship is now 6:00 p.m.
Pastor Rev. Ole Olds, Pastor Church
592-9555 N. Victoria & Expressway 592-2776

First United Methodist Church

201 E. Bank

Church School 9:40 Youth Meetings 5:00
Morning Worship 10:40 Evening Worship 6:00

JOHN MOLLET, PASTOR

Church of God 601 E. Cash

Pastor, S.A. Luke
Sunday School - 9:45 a.m.
Sunday Morning Worship - 11:00 a.m.
Sunday Night Worship Service - 7:00 p.m.
Wednesday Night Service - 7:30 p.m.

Parish 592-5316 Office 592-4348

Good Shepherd Lutheran Church

1st & Magnolia
Iowa Park

Sunday School: 9:45 a.m.
Worship Service: 10:45 a.m.

Kamay Road Church of Christ

Corner of Colorado
& Emerald

Seeking the
Old Paths

Lord's Day
10:30 a.m. & 6 p.m.
Wednesday 7:00 p.m.

First Baptist Church

A Southern Baptist Church
of Iowa Park Yosemite at Park



SUNDAY SERVICES Mornings

Sunday School 9:45
Worship 11:00
Evenings
Church Training 6:00
Worship 7:00

WEDNESDAY

Prayer Meeting 7:00
Choir Rehearsal 7:45
Dr. Derrell Monday, Pastor

IOWA PARK CHURCH OF CHRIST

300 East Park, Iowa Park, Texas 76367, (817) 592-5415

SCHEDULE OF SERVICES

Sunday
Bible Study 9:30a.m.
Worship 10:30a.m.
Evening Worship 6:00p.m.
Wednesday
Evening Study 7:30p.m.
Thursday
Ladies bible Class 7:30 p.m.
Call office for information



We offer a Free Bible Correspondance Course, Call for details.

Most graduates plan to continue education

After working 12 years to obtain a high school diploma, the Iowa Park High School class of 1987 has some definite ideas of what life might be like after graduation.

A sampling of 20 seniors showed that all but one of those has plans to attend a college or university and most plan to enter the work force as well.

Some of the graduates' ideas of what life will be like after high school include:

Scott Davis: I plan to work at Cryovac this summer and save all the money I can. This fall I will be attending Wayland Baptist University with a major in composite science and a minor in P.E.

Dana Gray: After graduation I plan to attend Tarelton State University and majoring in animal science. And then on to Texas A&M for a degree in veterinary medicine.

Gaylene Sorey: I plan on

going to MSU and obtaining a degree in accounting in the fall. I'm planning on getting a job and working the summer.

Kirsten Sharpe: This summer I plan on getting a job. In the fall I plan on going to MSU and work towards a degree in teaching the deaf & blind.

Sarah Owens: After graduation I plan to attend Trinity University in San Antonio in the fall of '87.

Wendy Trantham: Looking for employment during the summer months and going to college in the fall - MSU.

Brad Huff: I plan on attending college at either MSU or Kansas Wesleyan. I will work for the school this summer before attending college.

Douglas E. Deitrichson: I plan to go to East Texas State University and major in general industries. I will enroll in ROTC and come out of college as a commissioned officer in the Air Force. Afterwards, I will begin pilot training.

Mindy Brown: I'm going to start MSU in the fall and I will remain working at Skaggs part-time.

Robert Adams: I plan on going to college (not sure where yet) and getting a degree in biology or some type of physical science. I would like to play either football or baseball but that is optional. I would like to work at a good place with benefits.

Brett Hale: I planned on running cross country for MSU for the next couple of years. But since they canceled the program I will just attend for one year before transferring to Texas Tech, where I hope to run. Then, hopefully, I'll be entering medical school.

Kathy Walker: I'm planning to be married on July 4th and plan to

start work at Texas Ret. as soon as school is out.

Lana Swan: I will attend Texas Women's University in the fall. I plan to major in fashion merchandising and minor in marketing.

Sharon Wynn: I will be attending McMurry College this fall. I plan on transferring to Tarleton State University my sophomore year and majoring in business and home economics.

Wayne Oltman: I plan to go to Kansas Wesleyan College in the fall of 1987 and go on four years to get my bachelor's degree and hopefully become a coach!

Laurie Underwood: Job - summer; college - NTSU - fall.

Kerri Richardson: Work at Cryovac in the summer, and then college at MSU in the fall.

Laurie Espinoza: I plan to work this summer and then attend Midwestern State in the fall. I will major in elementary education and minor in business.

Richard Morath: I plan to attend MSU during the fall semester of 1987. I plan to get my basics there and then hopefully go to UT in Austin and major in engineering. While attending MSU I plan to work at Showbiz and at Cryovac or

Certainly.

Danny Thomas Forman: I plan to get a summer job at Cryovac

or some other place. Then in August I will be going to Salina, Kansas to attend Kansas Wesleyan University.



T-BALL
Bears 35, Orioles 28
Braves 35, Bears 34

5-PITCH
Blue Jays 9, Mets 5
Phillies 13, Padres 7

MINOR LEAGUE
Cardinals 9, Expos 7
White Sox 16, Indians 12
Oilers 17, Reds 2
Rangers 13, Cubs 11

MAJOR LEAGUE
Giants 7, Pirates 6
Astros 7, Yankees 5

Municipal Court Records

Results of municipal court held here yesterday were:
Ronnie Dean Stokes, exhibition of speed, \$63;
Joe Lewis Ayala, turned left from wrong lane, \$63;
Tommy Wayne Fowler, speeding, \$56;
Cindy Deann Blanton, following too closely, \$43;
Bradford Burton Ketchum, fail to yield right of way from stop position, \$43;
Jerry Randolph Robertson, speeding, \$45;
Ruth Via Sampley, speeding, \$56;
Angela Nicole Davis, speeding, \$48;
Michael Glen Gerstner, speeding, \$48;
Stanley Price Perrin, disorderly conduct, \$49;
Paul Curtis Oakley, disorderly conduct, \$49;
Paul Curtis Oakley, public intoxication, \$49.

Name cheerleaders

Top 'O Texas cheerleaders were selected Saturday. They include:
Pee Wee Hawks: Randi Tigrett, Christie Rauls and Cami Fisher, third grade; Shellye Hughes, Liza Castles and Amber Atchley, fourth grade; Kim Overman, mascot.

Midget Hawks: Michelle Pendleton, Brandi Catlin and Mandy Beisch, fifth grade; Brande Overman, Mandy Threet and Ronda Morath, sixth grade; Teri Goin, mascot.

Looking for opponent

The Iowa Park Police Department is putting together another slow pitch softball team and is seeking other teams to play benefit games.

Det. Tommy Adams can be contacted at 592-2181 between 7 a.m. and 3 p.m. Monday through Friday.

Cowley honor graduate of East Texas State

James Cowley, son of former Iowa Park school superintendent Harold and Mrs. Cowley, was graduated with honors May 16 from East Texas State University at Commerce.

As part of the requirements to graduate through the honors program, Cowley wrote a thesis titled "An Analysis of Auction Barn Cattle Prices for Hunt County, Texas," under direction of Dr. David Crenshaw, ETSU agriculture faculty.

Cowley is a graduate of Iowa Park High School. His degree is in agriculture education and agribusiness.

Tourney entries being accepted

Entries in the annual Adult Summer Fun Tennis Tournament, June 13-14, will be accepted until June 9, according to Pan Bowerman, member of the Iowa Park Tennis Association which sponsors the event.

Events will be men's A and B singles and doubles and over 40 singles, women's A and B singles and doubles, and mixed doubles.

A minimum of four entries are needed for each event, and players may enter three events.

First and second place trophies will be awarded in each event, and all play will be at the newly-lighted high school courts.

Entry fee will be \$7 for singles and \$14 for doubles, and entry forms are available from Mrs. Bowerman, 1615 Karen.

B&R Delicatessen

Sunday-**BBQ Chicken**
Call ahead with your order!

- Thurs.** Meatloaf
- Fri.** Catfish & Shrimp
- Sat.** Beef-n-Potatoes
- Sun.** BBQ Chicken (halves)
- Mon.** Chicken & Beef Enchiladas
- Tues.** Salisbury Steak
- Wed.** Fajitas

FREE
At
GOLDEN'S

Family Order of
CORN
With any **FAMILY SIZE**
CHICKEN ORDER.
Offer good thru June 3.

Open 10 a.m. - 10 p.m.

GOLDEN
FRIED · CHICKEN

Loop 370 & Pacific Ave. • Iowa Park • 592-2811

If you were disabled, could you make your house payments?



Call:
Philip Welch
118 W. Park

Ask About Health Insurance... The Easy Way!

Like a good neighbor, State Farm is there.

State Farm Mutual Automobile Insurance Company
Home Office: Bloomington, Illinois

Enjoy
Coca-Cola
Trade-mark



Ask about our Senior Citizen 10% Discount Card.

805 West Highway
FOR TAKE OUT ORDERS

CALL 592-4731

SONIC
America's favorite drive-in.
719 WEST HIWAY
IOWA PARK, TEXAS

SONIC

Call in advance
592-2087

Enjoy
Coca-Cola
Trade-mark

Old Fashioned Fountain
GLASS

79¢
Filled

Pete & Otto's
3-M CAFE

114 W. Cash 592-4721

We serve a Home Cooked Breakfast

Monday - Friday
7:30 - 10 a.m.

Business Hours
7:30 - 2 p.m.

Call-ins Welcome

Friday Fish Night

Opens 5-8:30 p.m.
Small Basket \$2.95
Large Basket \$3.95
Ex. Large Basket \$4.95

Thursday Noon
Mexican Food

~Enchiladas~Tacos~
~Rice~Refried Beans~
~Chips & Salsa~

Buenos Dias
Come and see us!

EXPRESS YOURSELF
with a letter to the editor

Iowa Park Leader
P.O. Box 430
Iowa Park, TX 76367



OFFICERS ELECTED

The Wichita County 4-H Council recently elected 1986-87 officers, five of whom are from the Iowa Park area.

They include: Lisa Hodges, Iowa Park, president; Markita Savage, Iowa Park, vice president; Joieise Hanson, Wichita Falls, secretary; Sheri McAlister, Electra, treasurer; Kimberly McAlister, Electra, reporter; Scott James, Iowa Park, council delegate; and alternate council delegates, Jolene Hodges and Clay Carrillo-Miranda of Iowa Park.

The group plans and carries out the annual 4-H achievement banquet and the annual Tri-County 4-H Camp of Clay, Jack and Wichita counties. It also trains club officers.

ATTEND DISTRICT TEEN LEADER LAB

Nineteen counties from the Rolling Plains - 3 Extension District were on hand for the annual 4-H Teen Leader Lab held at the Texas 4-H Center on Lake Brownwood. The theme for the weekend was "Walk This Way with 4-H" and 200 4-H members, adult leaders and county extension agents "walked" their way to Brownwood to be a part of this educational and fun leadership experience.

The lab included educational workshops, vespers, and recreation. Election of the 1987-88 4-H District Council officers were held and the new officers are: President, Angie Partridge - Knox County; Vice President, Reggy Spencer-Fisher County; Secretary, Tracy Wheeler-Shackelford County; Treasurer, Lee Wall-Foard County; and Public Relations Chairman, Kari Coltharp - Baylor County. These officers will conduct and coordinate 4-H activities in the Rolling Plains District.

Extension Agent-Home Economics Carolyn Halsell and Baylor County Extension Agent John Ford served as agent advisors for the weekend event. Also assisting with the retreat were District 4-H Specialist Harry Campbell and District Extension Directors Elaine Houston and Ed Garnett, all of Vernon.

A special event held this year was the First Annual Chili Cookoff. Sixteen county teams participated and used costumes and props and made chili over an open fire. The "Best Chili" Award went to Wichita County and the "Best Costumes and Props" Award went to Fisher County. Second place award for "Best Chili" went to Baylor County with King County picking up second place honors for "Best Costumes and Props."

Participating from Wichita County were: Scott James, Iowa Park 4-H; Rex Wilson and Mark dela Rosa, Valley View 4-H Club; Staci Hufhines, Southwestern 4-H, Donna Hodges, Valley View Volunteer Adult Leader and Bethann Oswald, County Extension Agent.

DOG SHOW TO BE HELD

The Wichita County 4-H Dog Show will be held at 9 a.m. May 30 in the 4-H barn.

Participants of the dog show have completed a 10-week training session. Youth worked with their dogs on verbal commands and obedience training.

Admission to the show is free and the public is invited to attend.



ANDREW SITGREAVES

Sitgreaves is DPS officer

Trooper Andrew J. Sitgreaves, 25, has recently graduated from the Department of Public Safety Training Academy and assigned to the Highway Patrol service in Electra.

Sitgreaves was among 80 cadets recently commissioned as state troopers in graduation ceremonies in Austin. He is a native of Iowa Park and has already assumed his duties.

Col. Jim Adams, DPS director, said he is especially pleased with the quality of people who are entering the law enforcement profession.

"These men and women were carefully selected from a large group of applicants to undergo an intensive 18-week course," Adams said. "They have been trained to uphold the laws of this state in routine as well as difficult law enforcement situations."

"Today's Texas trooper is required to handle many varied tasks in addition to traffic enforcement. The trooper may assist in narcotics arrests, recovery of stolen vehicles and investigation of theft cases. A broad range of law enforcement responsibilities will face the trooper who has chosen to serve his fellow Texans," Adams said.

The DPS training course included instruction in traffic law, criminal law, arrest procedures, accident investigation, and numerous other law enforcement related topics.

Cubs see Karate display

The Wichita Kenpo Karate showed a group of Boy Scouts some of the moves and kicks they know at the Pack 7 meeting Monday.

During the evening, Shane Sisley graduated from Tiger Cub to Cub Scout, and those who graduated from Webelos to Boy Scouts were Marc Ming and Randy Schmidt.

Jason Winkler earned his denner's rope and Shane Bagley received his denner's tab.

In the Webelos Pack 7, Kevin Pace received his engineer scholar and sportsman. Cullen Everett received the communication skill award, family living skill award, printing and salesmanship. Charles Cole received awards in athletics, dog care, hiking, metal work, music, pets, printing, rabbit raising, soil and water, and his recruiting badge.

Jason Stevens received awards in family living skill, dog care, environmental science, music, pets,

ELECT NEW OFFICERS

Wichita County 4-H Volunteer Adult Leaders elected two new officers for the 1987-88 4-H year at their May meeting held May 12 in Iowa Park.

Donna Hodges, of Valley View 4-H Club, was elected vice-president. Diane Kleiwer of Wichita Falls Southwestern 4-H Club was elected treasurer.

Other officers completing their two-year term next year will be: Nelda Hanson, president; Pat Cravens, secretary, and Dee Blackwell, reporter.

Area oil, gas report

Williams Petroleum has filed first production figures on a new oil well in the Wichita Regular Field. The No. 31 Tidewater showed potential to pump 45 barrels of oil per day, plus 22 barrels of water.

The operator has 158 acres leased, with drillsite in the SA&MG Survey, A-430, two miles southeast of Fowlkes.

The well will produce from perforations in the Permian Formation, 902 to 906 feet into the

wellbore. Total drilling depth was 977 feet.

Drillsite is 2,060 feet from the north line and 2,088 feet from the east line of the lease.

A new producer has been brought on line in the Wichita Regular Field, with Maddux Oil & Gas as the operator.

Located 5.5 miles southwest of Burkburnett, the well is in a 22-acre lease in the L.C. Denison Survey, A-55. It is designated as the No. 2-M Reilly-Landrum.

The operation indicated ability to pump 16 barrels of oil per day. Production will be from perforations in the Cisco Formation, 750 to 1,636 feet into the wellbore. Total drilling depth was 1,950 feet.

The well is located 2,250 feet from the north line and 250 feet from the west line of the survey.

A 4,400-ft. developmental well is planned by Sage Energy of Midland at a drillsite 2.5 miles northeast of Kamay, Wichita County. The location is in a 466-acre lease in the KWVFL S/D Survey, Blk. 27. Well's designation is the No. 30 First National Co. Omohundro. It will be drilled in the K-M-A Field.

The operation will be drilled approximately 2,100 feet from the south line and 2,250 feet from the east line of the lease.

Mobil Producing of Midland has revealed plans to drill four 2,050-ft. developmental wells in the Wichita Regular Field. The operator has 1,748 acres leased, with drillsites in the HT&B Survey, A-127. The wells will be known as the Nos. 162, 165, 167 and 168 S.M.A. Unit "B". Drillsites are one to 1.5 miles southeast of Clara.

The No. 162 well will be located 750 feet from the south line and 930 feet from the west line of the lease; the No. 165 well will be located 1,577 feet from the south line and 770 feet from the west line of the lease; the No. 167 well will be drilled 1,850 feet from the south line and 1,638 feet from the west line of the lease; and drillsite for the No. 168 is 1,670 feet from the south line and 2,118 feet from the west line of the lease.

Williams Petroleum has given up on its efforts to make a producer out of the No. 32 Tidewater, a developmental well in the Wichita Regular Field, two miles southeast of Fowlkes. Drillsite was in a 158-acre lease in the SA&MG Survey, A-430. Spudded April 7, the well bottomed dry at 995 feet. Location was 2,480 feet from the north line and 1,810 feet from the east line of the lease.

At a location five miles southwest of Iowa Park, Mack Knight finalized a new oil producer in the Wichita Regular Field.

The well is designated as the No. 5 Roller, pumping 14 barrels of oil per day, plus 20 barrels of waste water.

Location is in a 326-acre lease in the McKinney & Williams Survey, A-238. Bottomed at 1,246 feet, the well will produce from perforations in the Gunsight Formation, 1,228 to 1,232 feet into the wellbore.

Drillsite is 1,710 feet from the south line and 750 feet from the west line of the survey.

The Wichita Regular Field gained two new producers when Krot Oil completed the Nos. 4 and 5 Wild Horse five miles northwest and three miles west-northwest of Burkburnett, respectively.

The No. 4 well pumped nine barrels of oil per day, plus 60 barrels of water, while the No. 5 well pumped nine barrels of oil per day and 55 barrels of waste water. Total drilling depths were 1,630 and 1,625 feet, respectively. Production will be from perforations in the Gunsight Sand Formation, ranging from 1,588 to 1,591 feet into the wellbore.

Drillsites are in a 120-acre lease in the RRVL S/D Survey, blk. 70. The No. 4 well is located 150 feet from the most northerly north line and 450 feet from the most northwesterly line of the lease. The No. 5 is located 450 feet from the most northerly north line and 735 feet from the most westerly west line of the lease.

Elwood Co. spudded the No. 1 Wallingford April 27 at a wildcat location in Wilbarger County. Drillsite is five miles east of Vernon in a 630-acre lease in the H&TC Survey, A-614.

Drilling operations are nearing the 7,800-ft. mark. The well carries permit for 9,000-ft. total depth.

Location is 1,280 feet from the most northerly north line and 660 feet from the east line of the lease.

S&H Oil of Vernon is planning to drill the No. 2 W.T. Waggoner Estate "AA", a 1,975-ft. developmental well in the Wilbarger Regular Field. The well will be located seven miles southwest of Harrold in a 113-acre lease in the H&TC Survey, A-824.

Drillsite is 850 feet from the north line and 2,590 feet from the east line of the lease.

The W.T. Waggoner Estate has temporarily abandoned the No. 1 W.T. Waggoner Estate "AU", a developmental well in the Wilbarger Regular Field. The operation was spudded Feb. 25, 1986, and has been bottomed at 2,015 feet.

Drillsite is in a 68-acre lease in the H&TC Survey, A-82, 6.5 miles south of Harrold. The well is located 154 feet from the north line and 13 feet from the east line of the lease.

Farrex Inc. has filed first production figures on an oil producer in the Quanah Field, Hardeman County. The No. 2 Parker showed potential to pump 75 barrels of oil per day from perforations in the Palo Pinto Sand Formation, 5,824 to 5,832 feet into the wellbore.

The operator has 231 acres leased, with drillsite in the W&NW Survey, A-779. The well is located 4.3 miles north-northeast of Quanah.

Bottomhole was at 6,011 feet. Drillsite is 1,500 feet from the north line and 63 feet from the east line of the lease.

Paul DeCleva Inc. of Wichita Falls has revealed plans to drill an 8,500-ft. wildcat well in Hardeman County. The operator has 232 acres leased, with drillsite in the B.L. West Survey, A-534. The venture has been designated as the No. 1 Kennedy. Drillsite is five miles southwest of Chillicothe.

The well will be located 2,779 feet from the north line and 1,842 feet from the west line of the survey.

Wichita Telephone Service



Complete sales and service
Business and Residential

Ray Featherston
(817) 592-4958

14 years Experience
FREE Estimates

FREE Drawing For Amplified Telephone

Bring coupon when you are tested, or mail coupon and we will test in your home.

PHONE 767-9952

NAME: _____

ADDRESS: _____

CITY: _____

Drawing will be held

May 29, 1987

FREE Hearing Test

We specialize in:
(1) NEW automatic aids that reduce background noises & enhance speech understanding. These are especially made for those with NERVE DEAFNESS.
(2) TINY all in the canal aids that are hardly visible.
CALL FOR APPOINTMENT OR MAIL COUPON.

Vincent Hearing Center

2407-B Kemp Blvd. Wichita Falls, Tx. 76309
767-9952

Summer Computer Camp



For Elementary Students
Introduction To Computers With
Math Emphasis. Nine One-Hour
Sessions Beginning June 9. \$75

JEAN JOHNSON 592-2391

Hands On/Small Groups

- ✓ Gas Lines
- ✓ Water Lines
- ✓ All Types Plumbing Repairs
- ✓ Sewer Lines
- ✓ Air Lines

Bell Plumbing Co.

Iowa Park, Texas

592-9816

Serving Iowa Park and All Surrounding Communities

Remove Unwanted Hair the Right Way-Permanently!



Yeada Gunter, Technician

Iowa Park women caught in the vicious circle of ridding themselves of superfluous hair have found new relief with short wave. Consult with Gunter Electrolysis about this permanent method available.

Gunter Electrolysis Studio

Closed Friday and Saturday

592-2883

Member of the Association of Texas Electrologists

Tanner-Aulds Funeral Home

"Our family serving your family"



Call Us For Pre-Need Funeral Plans
592-4151 300 E. Cash

GRADUATION

SPECIAL

Permanent \$20

good through May 21

Mary's Haircutting

900 W. Hwy 592-5427
Mary Morrow - and - Judy Pearson

Dave Lennox announces:
A BIG HIT FOR AIR-CONDITIONER BUYERS

It's a whole new
DAIL GAME

0.0%
FINANCING

FOR 12 MONTHS
OR \$300 IN REBATES

Between April 1st and June 30, 1987. Lennox is bringing you big-league savings when you buy any Lennox Series 14 high-efficiency Air Conditioner or Furnace. Now's the time to play ball with the pros.



POWER SAVER™ one of the world's most efficient, offers up to 15.0 Seasonal Energy Efficiency Ratio (SEER). Famous 2-speed compressor runs on low speed 90% of the time!

SANDERS SERVICE CO.
767-9714



Cook of the Week

Breakfast is one of the most important meals, according to nutritionists, and yet, it is perhaps the most neglected meal for many reasons.

One is that some people prefer to sleep and skip a meal. Another is that they do not relish food early in the morning.

Maybe something different for breakfast like Baked Eggs in Maple Toast Cuplets, a recipe submitted by Kathy (Mrs. Harrell) Riggins this week would excite their taste buds.

Kathy says that the maple syrup, one ingredient in the recipe, makes the cuplets very pleasing to the sense of taste.

One authority on the origin of foods says that maple syrup and maple sugar are perhaps the only foods which are produced nowhere except in North America. The New World has given the Old many others—Indian corn, the potato, the tomato, the turkey, but they are now raised in the Eastern Hemisphere, too.

It is possible that the Indians used the maple syrup to give their guests nourishment, and a present for money, for cakes of maple sugar sometimes served the Indians as a medium of exchange.

Maple sugar remained the major sweetener, at least in the northeast, until nearly the end of the 19th century. Two hundred years ago, American consumption of maple sugar was four times what it is today.

Benjamin Rush wrote to Thomas Jefferson in 1791 "I am led to expect that a material part of the general happiness of mankind will be derived from the manufacture and use of maple sugar." Today in America, the demand for genuine maple syrup absorbs the total production each year. Many people think that the best way to be assured that they are getting pure maple syrup, and not a product that is 80 or 90 percent corn or sugar syrup and maple flavoring, is when it is sold directly from roadside stands or by mail.

Kathy is a native of Abilene and was graduated from Rider High School. She and Harrell, who is working for General Dynamics at Fort Worth, have lived in Iowa Park 20 years. They and their children, Tommy, who works for Smith X-Ray, and Kristi, a high school junior, are members of Faith Baptist Church.

Kathy is employed at City Cleaners and had previously worked at King's Kids six years. She teaches the four-year-olds in Sunday School at Faith Baptist Church and she is a member of the Iowa Park Toastmasters Club. She and Harrell have been active in the FFA program several years. She and Mrs. Donald Potter work together in catering



Mrs. Harrell Riggins

weddings and receptions, and her hobbies are cake decorating and cooking.

BAKED EGGS IN MAPLE TOAST CUPLETS

Butter 6 muffin tin pans. With rolling pin, lightly press out 6 fresh bread slices, about 30 minutes before serving. Heat oven to 400 degrees.

In small skillet, combine 2 tablespoons butter or margarine and 2 tablespoons maple blended syrup or buttered syrup. Heat, stirring to blend. Brush on one side of bread, then carefully press a bread slice brushed side up into each muffin cup. Sprinkle each cup with crumbled crisp bacon.

Carefully break egg into each cup. Sprinkle with salt and pepper. Cover with sheet of foil and bake 20 minutes or to desired doneness.

To serve, carefully remove each from muffin cup to a warm plate.

POTATO CASSEROLE

1 (2 lb.) package hash browns, slightly thawed
1 can cream of chicken soup
1 small carton sour cream
6-8 green onions, part of tops
Salt and pepper to taste.

Mix all together and pour in baking dish.

Mix: 1 cup Pepperidge Farm herb seasoned stuffing mix, and 1 stick oleo, melted. Sprinkle over potatoes and bake 40 minutes at 350 degrees.

HOT FUDGE SAUCE

1/2 cup real butter
1/2 cup grated chocolate (1 1/2 squares)
1 1/2 cup sugar
1 cup whipping cream
1/4 teaspoon salt
2 teaspoons vanilla
1/2 cup cocoa

Mix above ingredients well in a saucepan. Stir over medium heat until well dissolved.

SANGERIA TEA (GRAPE PUNCH)

1-12 oz. can frozen grape juice
2 oranges sliced-squeeze juice from end
1 lemon sliced-squeeze juice from end
4 tablespoons instant tea

Mix above ingredients well. Fill a glass 3/4 or so with punch. Then fill with Sprite.

BLUEBERRY JELLO

2 packages of grape or black cherry jello
2 cups boiling water
1 can blueberries and juice
1 small can crushed pineapple and juice

Dissolve jello in boiling water. Add juices drained from the fruit and enough water to make 2 cups. After jello cools, add the fruits and jell.

TOPPING

1-8 oz. package softened cream cheese
1/2 pint sour cream
1/2 cup sugar
1 tsp. vanilla

Mix well until fluffy and spread on top of jello. Sprinkle with chopped pecans.

Shower fetes bride elect

Miss Alisa Suzanne Hicks, bride-elect of Charles Ray Devenport, Jr. was honored at a miscellaneous shower Tuesday evening.

The honoree's chosen colors of blue, silver and white were carried out in decorations of the Fellowship Hall of First Baptist Church, the setting for the party, in refreshment table decorations and corsages for the honoree, her mother Mrs. Carlton Hicks and the future groom's mother, Mrs. Charles Devenport Sr.

The hostesses were Mmes. Wayne Williams, Bob Dawson, Alton Hunter, John Cummings, Harold White, Joe Ward, Charles Quick, Everett Stephenson, C.O. Dodd, Bill Curry, J.C. Helms, Howard Marlar, Preston Leath, Lee Hale, Clyde Patterson, and Glen Miller.

The couple will be married June 27 at First Baptist Church.

Two seniors get awards

The Modern Music Study Club met in the Tom Burnett Memorial Library Thursday evening for the final meeting of the year.

Achievement awards were presented to two seniors, Dee Ann Todd and John Teel, for their outstanding contributions to the school, church and community, and they furnished the program. Dee Ann sang "My Father's Eyes" with piano accompaniment provided by Cecilia Todd, and John presented a piano solo "My Tribute."

Special guests were Delbert Todd and Mr. and Mrs. M.H. Teel and daughter.

The July production for the pavillion in the park was discussed. It was decided to meet on Tuesdays and Thursdays in June from 9 to 10:30 a.m. at the library. Students who are interested in taking part in the patriotic musical are asked to sign up at the library now.

Prenuptial shower held

Miss Connie Kay Heard, who will exchange matrimonial vows with Steve Ginnings July 18 at the First Baptist Church in Wichita Falls, was honored at a pre-nuptial shower Saturday at Tom Burnett Memorial Library.

The hostesses were Mmes. Darrell Hale, Russell Guyette, Gayle Cleghorn, David Padgett, Peggy Miller, Bill Curry, D.O. James, Gary Lyles, Randy Case, Bob Dawson, C.O. Dodd and Wayne Williams.

Blue and white, the honoree's chosen colors, governed decorations for the function.

Mrs. Floyd Heard and Mrs. Hallie Price, mother and grandmother of the honoree, and Mrs. Jim Ginnings, the future groom's mother, were special guests.

Callaway decorated

Chief Warrant Officer Jimmy R. Callaway, son of Mr. and Mrs. Nathan Callaway, 1011 N. Jackson, has been decorated with the Army Achievement Medal in West Germany.

The Achievement Medal is awarded to soldiers for meritorious service, acts of courage, or other accomplishments.

Callaway, a 1967 Iowa Park High graduate, is an ammunition accountable officer with the 501st Ordnance Co.



DR. AND MRS. RICHARD CARVER

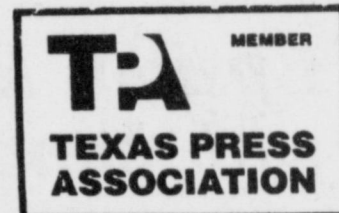
Observe 40th anniversary

Dr. and Mrs. Richard Carver were honored Saturday with a surprise reception for their 40th wedding anniversary at the Silver Square Room in Wichita Falls.

The event was hosted by the couple's daughters, Debbie Reed of Richardson, Deanne Britt of Indianapolis, Ind., and Janice Goins of Wichita Falls.

Special out of town guests were

Mr. and Mrs. Dwain Holmes of San Antonio and Dr. and Mrs. Ben Kirkpatrick of Mineral Wells.



FAMILY HEALTH NOTES

ANEMIA-A COMMON CONDITION

In just about every part of the world the most frequent cause of anemia is the lack of iron in the blood—iron deficiency anemia. Whether due to disease (as could be the case with intestinal parasites in Asia and Africa), poor nutrition due to diet, or requirements of pregnancy, few countries escape this fairly common condition.

Quite simply, anemia is a word used to describe too few red blood cells that contain hemoglobin, the substance in blood that carries oxygen all over the body.

The circulatory system is designed to carry oxygen from the lungs to the cells of the body, and return carbon dioxide wastes from the cells back to the lungs. The heart maintains circulation as it pumps the blood out through the arteries and into the network of some 35,000 miles of tiny capillaries that reach nearly every cell in the body.

Blood is composed of about 55 percent fluid, called plasma. The remaining 45 percent is made up of three kinds of cells: red blood cells, white blood cells, and platelets (little plates). Red blood cells outnumber white blood cells by about 700 to one. They contain a combination of iron and a protein called hemoglobin. The most important component of hemoglobin is iron. Hemoglobin binds oxygen and has the capacity to carry huge amounts of it in each cell.

Red blood cells are produced mostly in the marrow of the long bones of the body, and also in the marrow of the skull, vertebrae, pelvis and breastbone. Since red cells work constantly in carrying oxygen and carbon dioxide, they wear out after about four months and have to be replaced. Because of the constant need for new red blood cells, the bone marrow requires a constant supply of iron.

Actually the word anemia means "without blood," but is used to indicate "low blood" or lack of red blood cells to meet the body's needs. Iron deficiency anemia is a condition in which the red blood cells contain too little iron. Since hemoglobin is composed of protein and iron, iron deficiency anemia also means low hemoglobin content in the red blood cells.

Depending upon the severity of the anemia, patients may complain of weakness, fatigue, irritability and headache and, when anemia is severe, tingling, numbness, fluttering of the heart and pain in the joints. Some patients have mouth sores and difficulty swallowing. Paleness is more apparent in some than others. In the United States about three percent of men and ten to thirty percent of women have iron deficiency anemia. This condition can happen to anyone.

Pernicious anemia is another form of the disease in which the sufferer has fewer than normal red blood cells. The problem is that people with this form of anemia cannot absorb vitamin B-12 from their food. Their red blood cells are bigger than normal, but fewer in number. Therefore, there is much less hemoglobin in the blood and the cells have a shorter life. Pernicious anemia occurs most often in people over the age of 40.

The treatment for iron deficiency anemia consists of taking more iron into the body in the form of iron tablets or foods rich in iron—foods like liver (meat) and green vegetables.

Sensible eating habits can prevent problems from starting



Park Clinic

Earl F. Watson, M.D., Erwin F. Soell, M.D., Larry D. Stutte, M.D. Telephone 592-4141 • 310 W. Alameda Hours: Mon. - Fri., 8:30 a.m. - 6:00 p.m. Physician on call 24 hours

McClane's
4105 SEYMOUR HWY. 696-1119
"YOUR FULL SERVICE NURSERY"

Landscaping?
Start with a plan by McClane's. We have a team of professionals to help you to have your perfect landscape.

15% OFF ALL Stepping Stones in stock

Saturday 50 minute SALE
ALL Shrubs in stock
50% off regular price
No guarantee

New shipment Yaupon Clusters Texas Grown Full

Open 8-6 Mon.-Sat. Thurs. till 8 Sun. 1-5

BUY AMERICA'S FAVORITE AIR CONDITIONING, GET **No SWEAT** PROTECTION FREE PARTS & LABOR FOR 5 YEARS! \$25 SAYS YOU WON'T NEED IT.

Buy a new Carrier deluxe central air conditioner or heat pump now and get our Carrier Customer Protection plan at no extra cost. That's great peace of mind. But we're so confident you won't need it, we'll give you \$25 the first time you have to call us for repair service. \$25 offer applies anytime within your 5-year coverage except during the first 30-days when minor adjustments may be required. Call for details!

THE PREMIUM ROUND ONE.™

- Our Finest Central Air Conditioner—with every deluxe protective feature.
- Super High Efficiency—cools for about half the cost of typical older models.
- Top Quality Throughout.

38ED

ENERGY ACTION SAVES MONEY

LIMITED-TIME OFFER. **CALL TODAY!** GET OUR FREE ESTIMATE.

Carrier
OUR NAME ALONE WILL MAKE YOU FEEL COMFORTABLE.

IOWA PARK AIR CONDITIONING
607 W. Bank 592-2761

Offer available to homeowners only Expires June 1, 1987
Carrier Customer Protection Plan does not include recommended maintenance.

FAMILY HEALTH NOTES

ANEMIA-A COMMON CONDITION

In just about every part of the world the most frequent cause of anemia is the lack of iron in the blood—iron deficiency anemia. Whether due to disease (as could be the case with intestinal parasites in Asia and Africa), poor nutrition due to diet, or requirements of pregnancy, few countries escape this fairly common condition.

Quite simply, anemia is a word used to describe too few red blood cells that contain hemoglobin, the substance in blood that carries oxygen all over the body.

The circulatory system is designed to carry oxygen from the lungs to the cells of the body, and return carbon dioxide wastes from the cells back to the lungs. The heart maintains circulation as it pumps the blood out through the arteries and into the network of some 35,000 miles of tiny capillaries that reach nearly every cell in the body.

Blood is composed of about 55 percent fluid, called plasma. The remaining 45 percent is made up of three kinds of cells: red blood cells, white blood cells, and platelets (little plates). Red blood cells outnumber white blood cells by about 700 to one. They contain a combination of iron and a protein called hemoglobin. The most important component of hemoglobin is iron. Hemoglobin binds oxygen and has the capacity to carry huge amounts of it in each cell.

Red blood cells are produced mostly in the marrow of the long bones of the body, and also in the marrow of the skull, vertebrae, pelvis and breastbone. Since red cells work constantly in carrying oxygen and carbon dioxide, they wear out after about four months and have to be replaced. Because of the constant need for new red blood cells, the bone marrow requires a constant supply of iron.

Actually the word anemia means "without blood," but is used to indicate "low blood" or lack of red blood cells to meet the body's needs. Iron deficiency anemia is a condition in which the red blood cells contain too little iron. Since hemoglobin is composed of protein and iron, iron deficiency anemia also means low hemoglobin content in the red blood cells.

Depending upon the severity of the anemia, patients may complain of weakness, fatigue, irritability and headache and, when anemia is severe, tingling, numbness, fluttering of the heart and pain in the joints. Some patients have mouth sores and difficulty swallowing. Paleness is more apparent in some than others. In the United States about three percent of men and ten to thirty percent of women have iron deficiency anemia. This condition can happen to anyone.

Pernicious anemia is another form of the disease in which the sufferer has fewer than normal red blood cells. The problem is that people with this form of anemia cannot absorb vitamin B-12 from their food. Their red blood cells are bigger than normal, but fewer in number. Therefore, there is much less hemoglobin in the blood and the cells have a shorter life. Pernicious anemia occurs most often in people over the age of 40.

The treatment for iron deficiency anemia consists of taking more iron into the body in the form of iron tablets or foods rich in iron—foods like liver (meat) and green vegetables.

Sensible eating habits can prevent problems from starting

Park Clinic

Earl F. Watson, M.D., Erwin F. Soell, M.D., Larry D. Stutte, M.D. Telephone 592-4141 • 310 W. Alameda Hours: Mon. - Fri., 8:30 a.m. - 6:00 p.m. Physician on call 24 hours

Robertson anniversary observed

Approximately 100 relatives and guests attended a barbecue supper held Tuesday evening at the ASCS building to honor Mr. and Mrs. Jerry Robertson. The affair was hosted by the couple's children, Rowdy Robertson and Tammie and Mark Patterson.

Cheyenne and Dakota Robertson, grandchildren of the couple, presided at the guest registry which was placed on a yoyo scarf on top of an old trunk standing on its side. A silver frame holding the couple's wedding picture stood by the guest book.

The infant-size red "long handles" of the grandchildren hung on the inside of the trunk lid and a wedding doll stood in the bottom of the trunk.

The tables in the room were arranged in cafe style, covered with brown paper and held lighted oil lamps, plow discs decorated with burlap ribbon and flowers, and animal-shaped salt and pepper shakers.

The buffet meal was served by young people dressed in western attire from a chopping block and granite pans. Guests ate from granite plates and drank from tin cups.

The gift table held an old trunk topped with a glass dome that covered the top of the Robertson's



MR. AND MRS. JERRY ROBERTSON

wedding cake and a bouquet of flowers.

Special guests were parents of Jerry and Peggy, Mr. and Mrs. Clyde Robertson and Mr. and Mrs. Fed

Toler, also Mr. and Mrs. James Yarbrough, who were the couple's wedding attendants when they were married May 26, 1962 at the First Baptist Church in Iowa Park.

Epsilon Eta ends year with banquet Friday

Epsilon Eta chapter of Epsilon Sigma Alpha held the end-of-the-year dinner Friday evening in the Elk's Lodge private dining room in Wichita Falls. Mrs. Roy Johnson, social chairman, decorated the tables for the occasion.

Mrs. Howard McDowell, president, welcomed guests.

Following the meal, Mrs. Alan Forney reported on the state convention held at Odessa, and Mrs. McDowell reported on the awards won by District Six and Epsilon Eta. Among these were the district scrapbook made by Mrs. Bud Mercer that won first place in state.

Mrs. Marvin Robertson presented Mrs. McDowell with the 1986-87 scrapbook, and Mrs. Bruce Robertson presented Mrs. Steve

Turner with a charm for outstanding service.

Mrs. Forney discussed the district meeting in July which will be hosted by Epsilon Eta and appointed committees. Mrs. McDowell announced a meeting for June 16 to make plans for the coming year.

The meeting was climaxed with revealing secret pals and exchange of gifts.

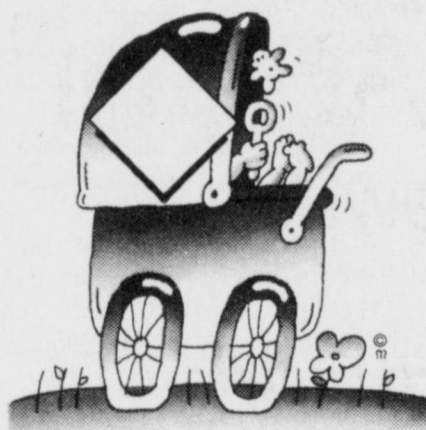
Young adults to organize

An organizational meeting for "Young Adult Christians" will be held at the TU Electric Reddy Room in Iowa Park at 7 p.m. Saturday, according to Bob Woods, organizer.

He described the group as being non-denominational and not sponsored by any church.

"We feel the need for a good, wholesome place for single adults to get together for good programs, speakers, fellowship and just to talk to others who may have similar problems," he said.

Some topics of program speakers already planned are "Making Budgets Work," and "Raising Children Alone."



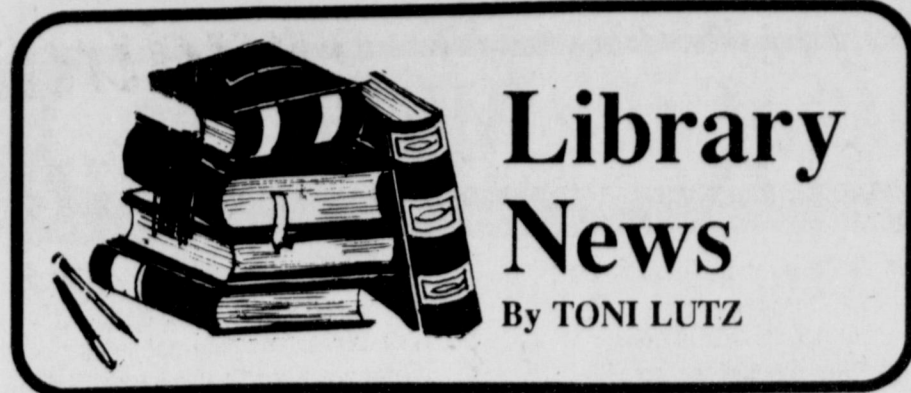
LOOK WHO'S NEW

Waylon Lee, an eight pound eight ounce son, was born to Mr. and Mrs. Eddie Browning May 23.

The grandparents are Mr. and Mrs. Willie Browning of Iowa Park, Mr. and Mrs. Bob Ford of Wichita Falls and Mr. and Mrs. Glenn Cox of Irving. The great-grandparents are Ellis Gross of Louisville, Ky., Jewell Reed of Linden, Edith Cox of Irving and Ruth Ford of Wichita Falls.

A son, Grayson Grant, was born May 13 to Mr. and Mrs. Lee Gwinn of Fort Worth. He weighed eight pounds, eight ounces and is the couple's first child.

Grandparents are Mr. and Mrs. Glenn Gwinn of Iowa Park and Mr. and Mrs. Elmer Rath of Mandan, N.D.



World of Records Day is only a week away. Have you signed up for any of the events? If not, there is still time. We need you to make this exciting day a success. The events in which records will be set are:

- Brick Throwing
- Card Throwing
- Spitting Contest
- Frisbee Throwing
- Largest Human Pyramid
- Apple Bobbing
- Bubble Gum Blowing
- Knot Tying
- Bathtub Racing
- Hot Dog Eating
- Most People in Volkswagen
- Marshmallow Stuffing

The first event will begin at 5:30 p.m. The events will take place one at a time in order to avoid any conflict. The MuleSkinners will be providing barbecued brisket sandwiches and iced tea for \$2.50. You can have a meal and have fun too. We hope to see you downtown at the pavillion on June 4, at 5:30 p.m. Don't miss it!

NEW SUMMER SCHEDULE

The story time schedule will be changed for the summer.

Toddlers (2-3 yrs.) 10-10:30 a.m. Friday.

Preschool (4-6 yrs.) 11-11:45 a.m. Tuesday & Thursday.

Elementary (1st-3rd grade) 11-11:45 a.m. Wednesday.

The LIBRARY HOURS will be changed also for the summer beginning June 2.

Sunday & Monday - Closed

Tuesday - 11-6

Wednesday - 11-6

Thursday - 11-6

Friday - 9-3

Saturday - 9-3

NEW BOOKS

Fiction - Adult

Under the Lake - Woods, Bolt - Francis, Death on Deadline - Goldsborough, Bandits - Leonard, The Parson's Daughter - Cookson, Destiny - Beauman, Santorini - McLean, Wisconsin! - Ross, No Deals, Mr. Bond - Gardner.

Non-Fiction - Adult

The Way to Happiness - Montapert, CLEP College-Level Examination Program - Arco, Bernstein; a biography - Peyser, Vanna Speaks - White,

RENT-A-CAR
Ronnie Wilson 592-4106

This far & no more; a true story-Malcom, Anne Frank; the diary of a young girl - Frank, Engaged to Murder; the inside story of the Main Line murders - Schwartz, Small Sacrifices-Rule, The Comanches, lords of the South Plains - Wallace, Lovebirds-Vriends.

NEW BOOKS

Fiction - Children

The Whipping Boy - Fleischman, Enterprise - the first adventure - McIntyre, Star Trek, the Wrath of Khan-McIntyre, Star Trek III - the search for Spock - McIntyre, Hey Al-Yorinks, Alistair in outer space-Sadler, There's an alligator under my bed - Mayer.

Tourism topic of Lions Club

Debbie Bonine, director of convention sales for the Wichita Falls Board of Commerce and Industry, spoke to the Evening Lions Tuesday on "Travel Industry in Texas."

She said that tourism brought in \$16-billion to Texas in 1986, and told of efforts that Wichita County was doing to capture its share of the revenue. She was introduced by R.E. Waters.

C.L. Thompson conducted the business and the induction ceremony for Lem Tate.

It was voted to make the annual contribution to the Camp Fire Girls and to sponsor two girls at camp this summer. Plans were made for transportation for two young people to and from the Lions Camp at Kerrville in June.

Guests were Mrs. Lem Tate and Donald Jagger.

Retiring after 31 years

Lucy Heard, retiring after a teaching career spanning 31 years, was honored recently at a reception hosted by the Bradford Elementary faculty.

Mrs. Heard was presented with an inscribed silver serving tray.

She was graduated from Decatur Baptist College and Howard Payne Univ. and did graduate work at Mid-western State Univ. and Univ. of Texas.

She taught 22 years in the Iowa Park school system, and three years each in Oklahoma, Kansas and Henrietta.

Webb named to board

Scott Webb of Iowa Park has been named to the 1987-88 Student Development Board (SDB) at Austin College in Sherman.

Webb, son of Mr. and Mrs. John A. Webb, will serve on the admissions committee.

The SDB is composed of students selected each year to assist the vice president for college relation in promoting Austin College through four committees-admissions, public relations, college relations and student relations.

The admissions committee works closely with the Admission Office in conducting campus tours, coordinating visits to area high school and making contacts with prospective students.

Students are selected to the board through a series of interviews conducted during the spring semester by Dr. Howard Starr, vice president for college relations.



AUTO RACES FRIDAY NIGHT

Races start promptly at 8 p.m.

Come early and watch the "Hot-Laps"



"Exciting competition" "Good food" "Economical entertainment for families" On Jacksboro Hwy (US281) at Rathgeber in Wichita Falls

COL. C'S SPEED DROME

New Summer Store Hours

8 a.m. to 6 p.m.

Monday - Friday

8 a.m. to 5 p.m.

Saturdays

Settle Drug

Joe Hughes - Pharmacist

592-4191 120 W. Park

24 Hour Service

PCS • Blue Cross & Blue Shield

Medimet • Medicaid • Paid Prescriptions

We give S&H Green Stamps

FREE Delivery of Prescriptions

AHOY, BOATERS! SAVE ON DELCO VOYAGER

• Delco Voyager spells reliability, high-cycle stamina and long drain capacity.

• It's powerful, rugged and maintenance-free - never needs water.

• Buy now and save.



86-CA-2123



AC-Delco. The smart parts.

DC AUTO PARTS

211 N. Wall 592-4181 Iowa Park

Open Monday-Friday 7 a.m. - 6 p.m.

Open Saturday 8 a.m. - 5 p.m.

Now Closed!

Home Place

Thanks!
We had fun while it lasted!

We've appreciated your patronage and friendship.

Power Boat Racing

Sponsored by
Iowa Park Athletic Alumni Association
JUNE 7, 1987 • LAKE IOWA PARK
1 mile west of Iowa Park
Races start at 12:30 p.m.
Sanctioned by American Power Boat Association
Proceeds will benefit scholarship fund

NOTICE

Effective June 1, 1987
Lone Star Gas bills may be paid at the following business:
FLOWERS BY REBA
309 NORTH WALL
IOWA PARK, TEXAS
8:30 a.m. - 5:30 p.m.
Monday-Friday
9:00 - 12:00 noon Saturday
The HOME PLACE will no longer take payments effective the above date.

Let's Swim at
SAND BEACH POOL
4400 Old Iowa Park Rd. 855-2711
Open Daily - 12-8 p.m.

Variable Admissions:
Daily, Monthly & Season Passes
Season Passes now on SALE with
\$10 Discount through June 1.

Red Cross Swim Classes
Begin June 8
Register Now

Junior high graduation exercises this evening

Iowa Park Junior High eighth grade graduation exercises will be held at 8 this evening in the high school auditorium.

Glenn Mitchell, superintendent of schools, will be the speaker.

Jimmy Alsup, principal, will announce the top 10 scholastic members of the class, including Kerri Dorner, valedictorian, and Patrick Birk, salutatorian, Paul Schlaud, Julie Short, Hope Drissel, Marsha Glass, Dawn Beeman, Tommy Ashton, Emily Short and Misti Murry.

Alsup will then present the class to Richard Davis, high school principal. Special music will be provided by the Eighth Grade Choir; processional and recessional played by Glenna Via, invocation given by Tim Bradberry and benediction by Michael Miller.

At the recently-held honors program of the school, Julie and Emily Short were named the girl recipients

of the principal's award, and Jason Welch the boy.

Other awards included: Outstanding girls in athletics: Marcy McCarthy and Cassi Beal, seventh grade; Julie Short, eighth grade.

Outstanding boys in athletics: Greg Steger, seventh grade; Bryan Luney, eighth grade.

John York Award: Gary Green. Outstanding student in tennis: Cinnamon East, girl; Brent Wineinger and Paul Birk, boy.

Band Director's Award: Patrick Birk. Outstanding student in band: Kamron Robnett and Jeff Franklin, sixth grade; Michelle Roberts, Leisa Bates and J'Bill Merrick, seventh grade; Misti Murray, Kerri Dorner and Jeremy Kingcade, eighth grade. Randy Kuehler Memorial Band Award: Lisa Wiggins.

Choir Director's Award: Kelly Gray. Outstanding students in choir: Jason

Young, seventh grade; Karen Elder, eighth grade.

Outstanding students in computer lit: Marcy McCarthy and Chris McKee.

Outstanding students in English: Mistie Williams and John David Padgett, sixth grade; Marcy McCarthy and David Payton, seventh grade; Kerri Dorner and Paul Birk, eighth grade.

Outstanding students in health: Chasity Sims and Duane Davis.

Outstanding students in math: Jody Yarbrough and John Travland, sixth grade; Marcy McCarthy and Rex Wilson, seventh grade; Kerri Dorner and Tony Chacon, eighth grade.

Outstanding student occupational orientation: Jessica Galliton and David Payton.

Outstanding students in PE: Ginger Fields and Ralph Dillard, sixth grade; Dee Ann Warren and Jason Patton, seventh grade; Adela Collazo and

Ryan Gosler, eighth grade.

Outstanding students in reading: Raylyn Compton and Dell Blackwell, sixth grade; Jana Carender and Jason Patton, seventh grade; Shelley Hamlett and Scott James, eighth grade; Literature Appreciation - Dawn Beeman and Chad Reis.

Most improved resource student: Monica Wainscott, Mike Benson and Dwayne Park.

Outstanding students in science: Michelle Robins and John Travland, sixth grade; Marcy McCarthy and Chris McKee, seventh grade; Julie Short and Paul Schlaud, eighth grade.

Outstanding students in social sciences: Mistie Williams and Jason Miller, sixth grade; Brandy Cretsinger, Lisa Wiggins and Greg Steger, seventh grade; Hope Drissel and Clint Beavers, eighth grade.

Outstanding students in speech: Marsha Glass and Tony Chacon.

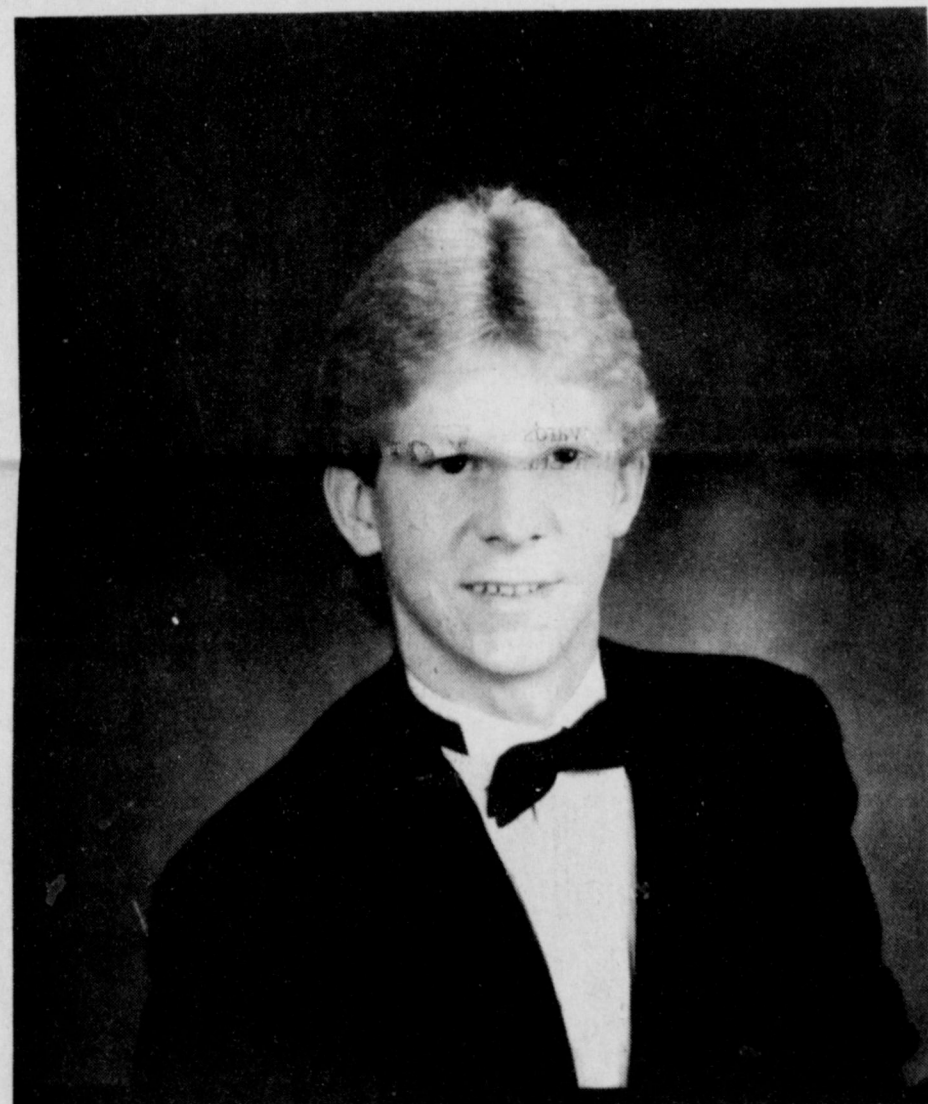


KERRI DORNER AND PATRICK BIRK
... Junior High valedictorian and salutatorian.

Congratulations CLASS of '87

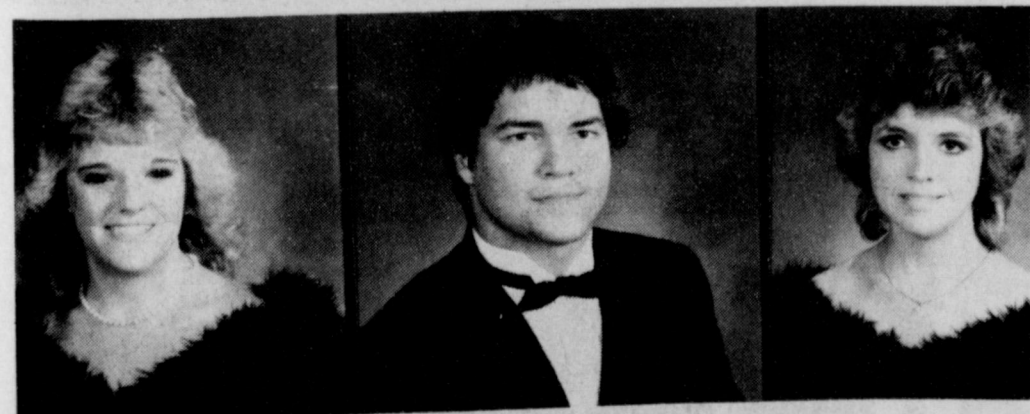


SARAH OWENS
Valedictorian



BRETT HALE
Salutatorian

Louis' Jewelry
Harvey's Hamburgers
Spruiell Drilling Co.
King's Food
Posey's Appliance Service
Wal-Mart Pharmacy
Bud Mercer Electric



BRANDI ADAMS ROBERT ADAMS JILL ALLEN



MICHELE BREWER AMY BRILLHART MINDY BROWN

Tanner-Aulds
Funeral Home

Dr. Carter Pirkle
& Staff

Video Library

Valley View
Mini Mart

Sonic Drive-In

Doctors and Staff
of Park Clinic



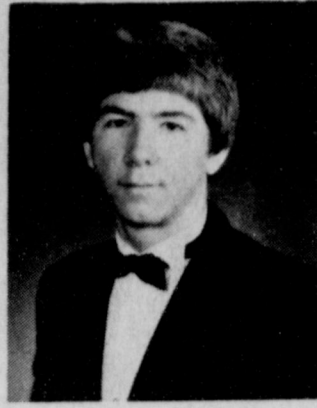
STEVE ALLEN CHERYL BARKER CINDY BLANTON



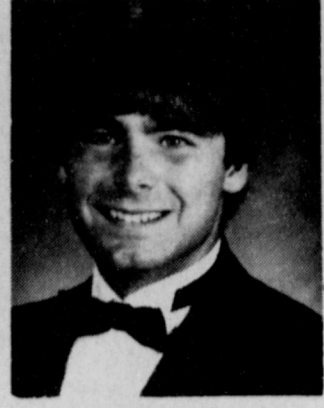
LYNN BRUMBELOE AL CHACON DALE CHURCH



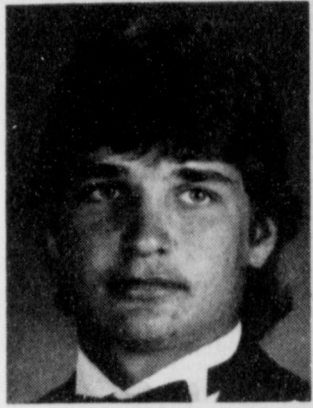
DAWN CLARK



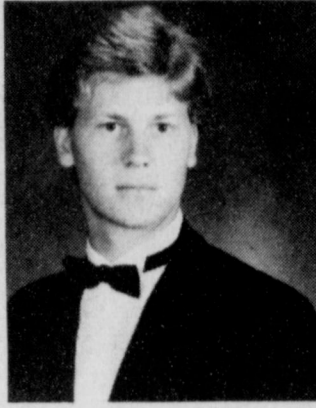
EDDIE COLLINS



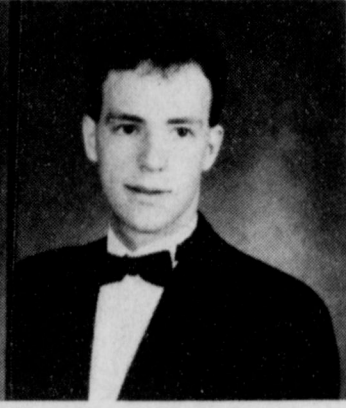
SCOTT DAVIS



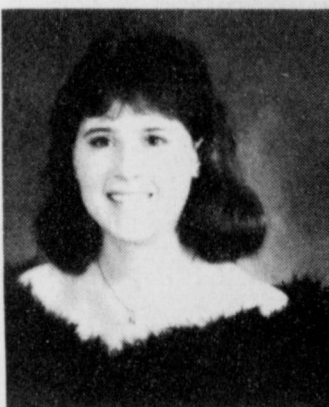
KELLY DICKERSON



DOUG DIETRICHSON



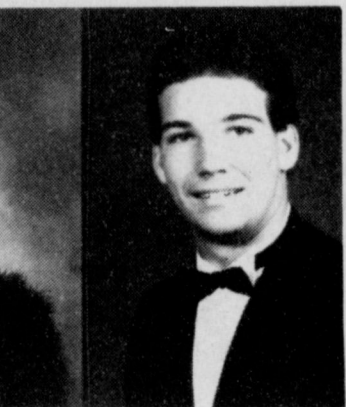
MARK ELLIOT



TINA ESCUE



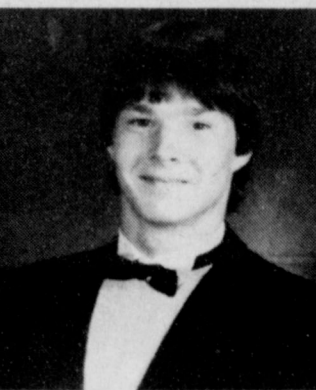
LURIE ESPINOZA



LANCE FARRIS



SCOTT FEATHERSTON



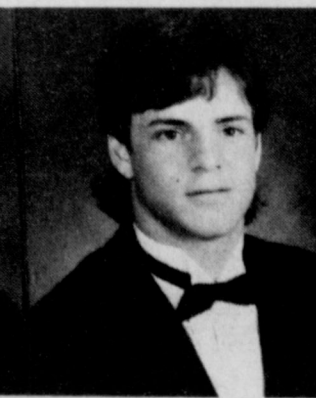
GREG FELTMAN



LISA FLETCHER



EMILIE FLICK



DANNY FORMAN



JIMMY FRANTZ



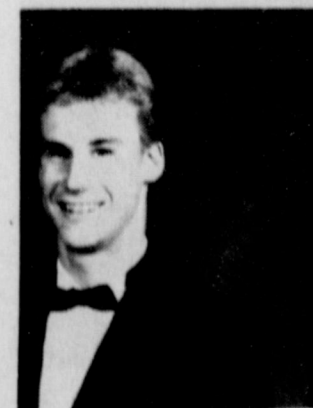
LINDA GIBBONS



LISA GRACE



DANA GRAY



LARRY GREEN



BECKY HANKINS



MELISSA HILL

Mr. and Mrs.
Jimmy Howell
Scobee's Mini Mart

Pete & Otto's
3-M Cafe

Park Ford

Iowa Park
Air Conditioning
Smith X-Ray Co.

City Cleaners

Johnson Road
Texaco

Iowa Park Leader
Parkway Furniture
& True Value

Martha Dudley

Double M
Beauty Shop

Ken's Pizza

B&R Thriftway

Iowa Park Florist
Cryovac Division
W.R. Grace & Co.

Mr. and Mrs.
Gordon Griffith

King's Kids I & II

Joe Galloway
Insurance

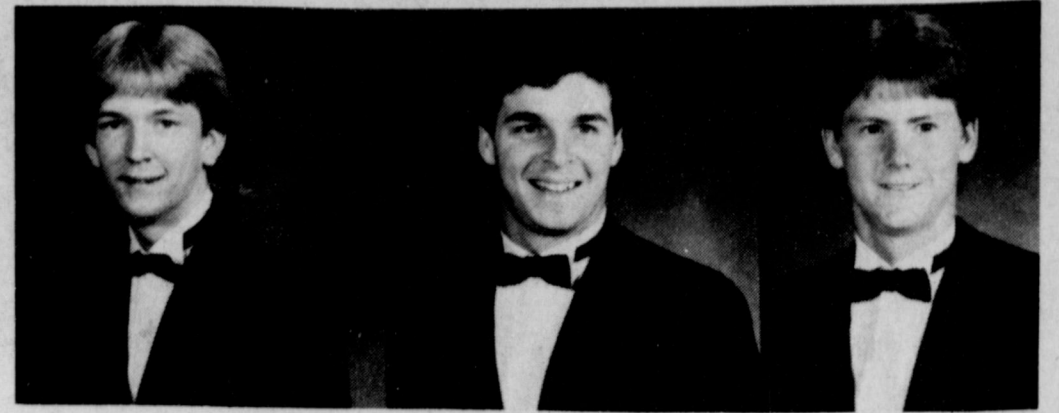
G.M. Via Insurance

Golden Fried
Chicken

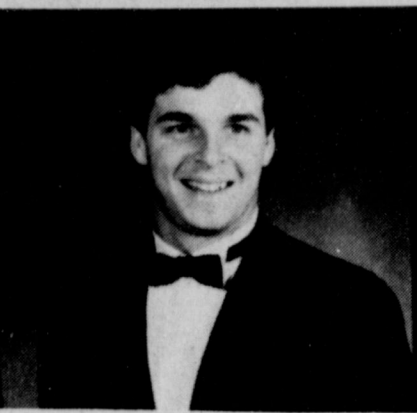
Carl Catlin Oil Co.

Family Hair Styles

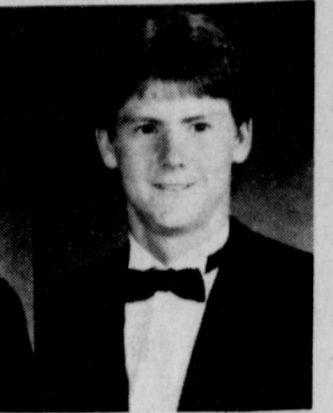
Mr. and Mrs.
Don Decker



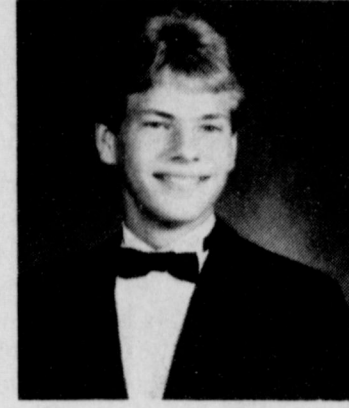
DAVID HOLLAND



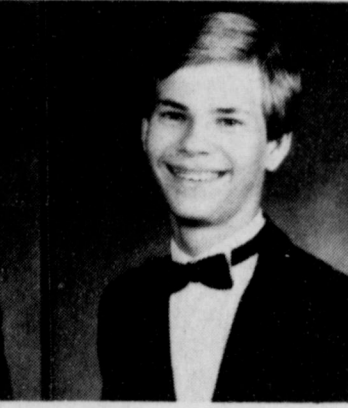
BRYAN HOODENPLYE



BRAD HUFF



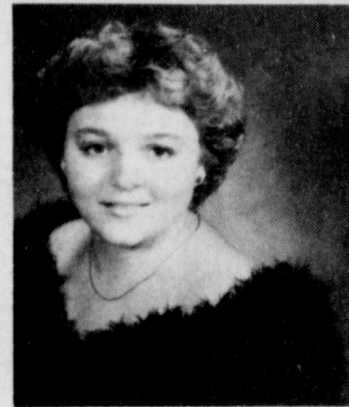
DARRELL JOHNSON



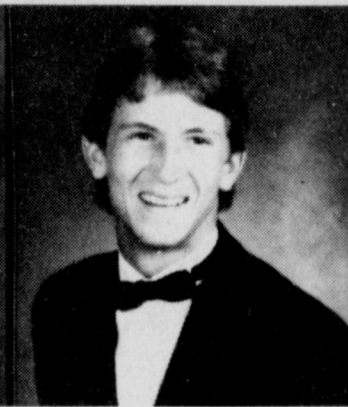
LEWIS JOHNSON



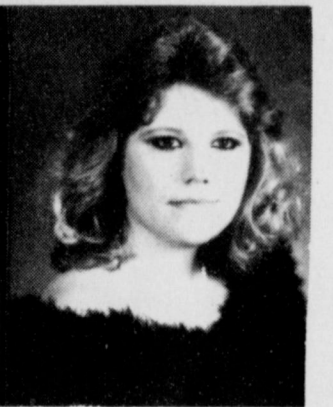
RACHEL JONES



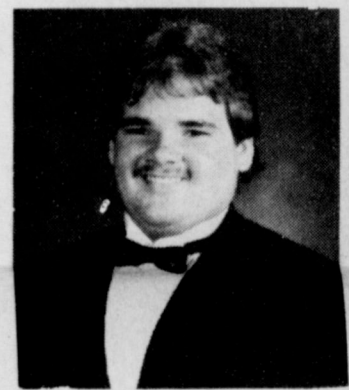
LEONA KYSER



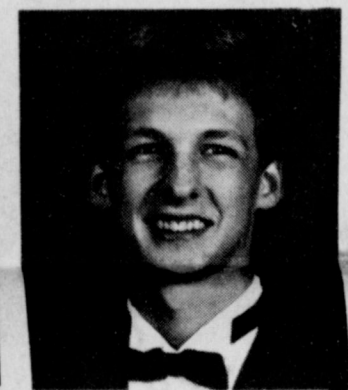
DONNIE LEWIS



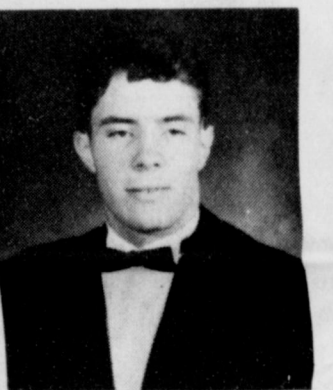
MISSY LOGAN



CLINTON LOGGINS



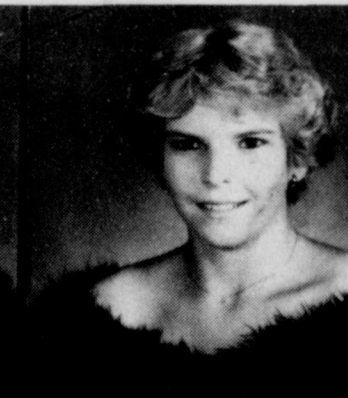
KYLE LONG



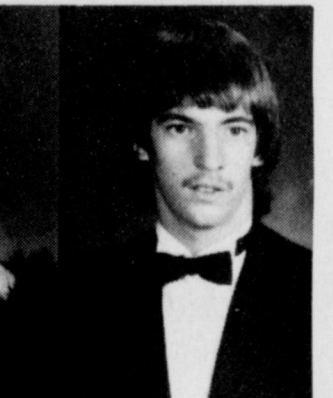
SCOTT LYLES



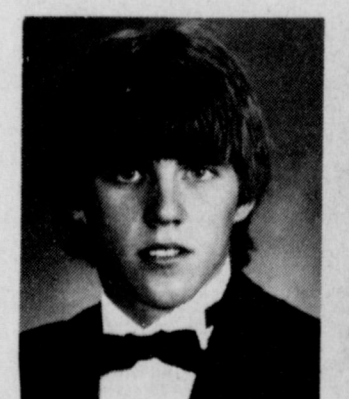
TAMMIE McADA



STEPHANIE MCCORD



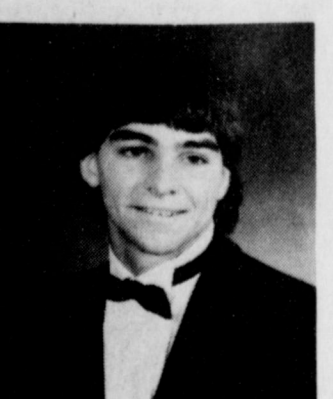
DAVID MEISSNER



ANDY MELCHIORI



KRISTI MERACLE



JEFF MERKLIN



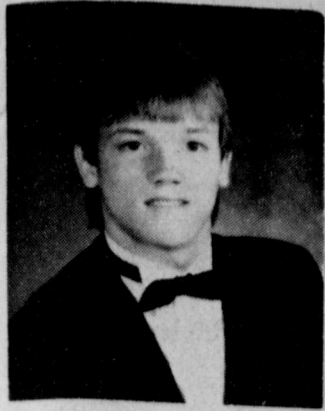
STACY MILLER



MARK MOLSBEE



KAREN MOORE



RICHARD MORATH



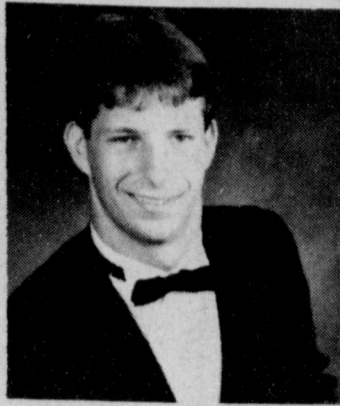
ARTHUR MORRIS



NATALIE MORTON



KIM NICHOLSON



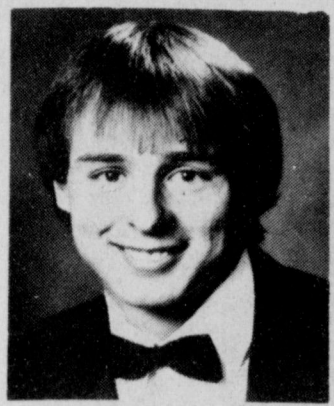
WAYNE OLTMAN



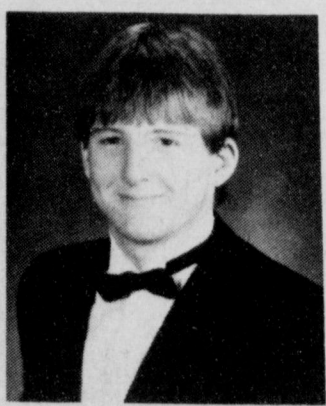
JAMIE OWENS



DEBRA PARKS



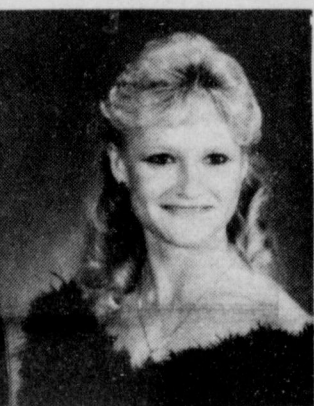
RONNIE PATTERSON



DENNIS PHILLIPS



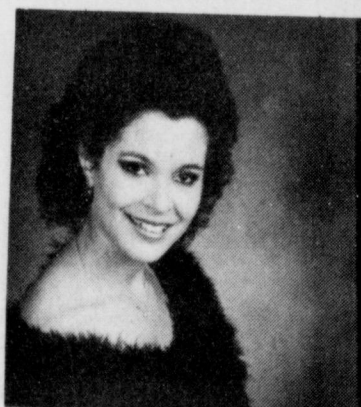
CARLA POOL



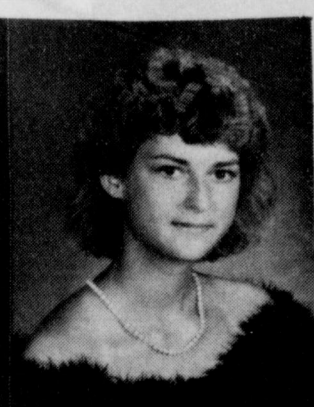
TINA REASOR



CELENA REDWINE



LISA REEVES



KERRI RICHARDSON



SEAN ROBINSON



SHARON ROUTH



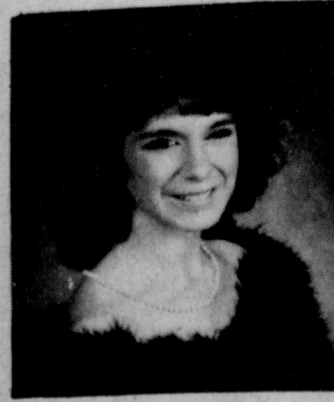
AMY RUSSELL



KIRSTEN SHARPE



KIM SIMS



RENEE SMITH



GAYLENE SOREY

Fashion Outlet

Iowa Park Ready Mix

Jim's Conoco

Mr. and Mrs. Wendall House

Homestead Ceramics

Verna's Apparel

Collazo Texaco

Hill's Farm & Ranch Supply

Settle Drug

Park Tank Truck Service

James Edwards, O.D.

DC Auto Parts

K&K Quick Stop

State National Bank

Bill Bates Chevrolet

Mr. and Mrs. Jerry Reed

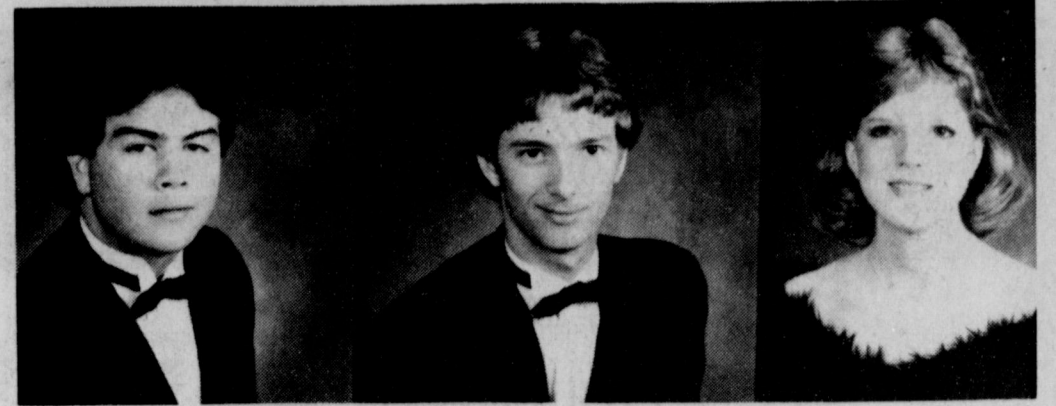
Mary's Haircutting

Sam's Body Shop

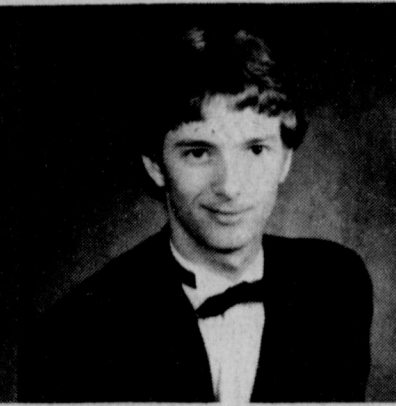
Phil Welch
STATE FARM INSURANCE

Pleasant Valley Grocery

All Occasions
Flowers & Gift Shop



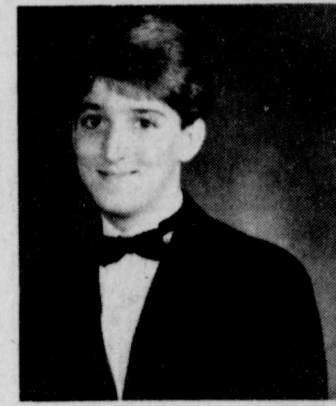
CHARLES STAMM



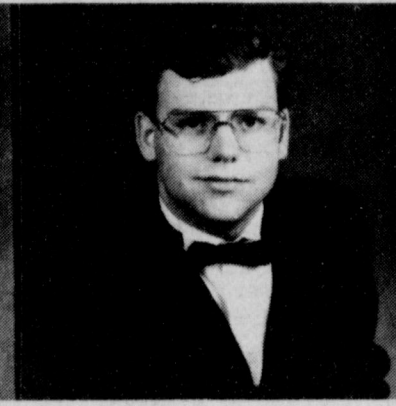
STEVEN STILES



LANA SWAN



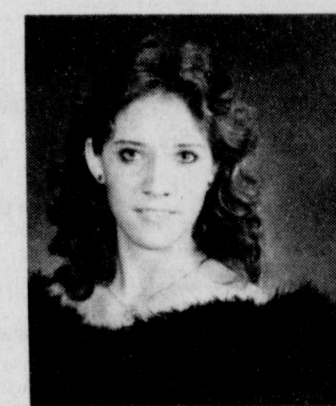
JOHN TEEL



PHILIP THAMES



MELINDA THOMASON



JANA THOMPSON



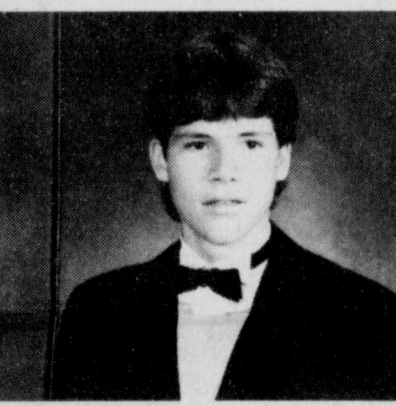
DEE ANN TODD



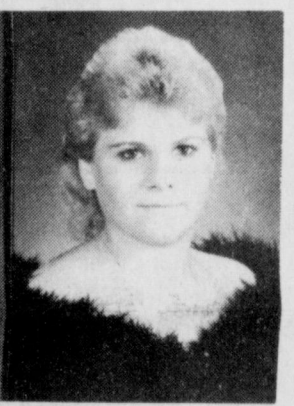
WENDY TRANTHAM



LAURIE UNDERWOOD



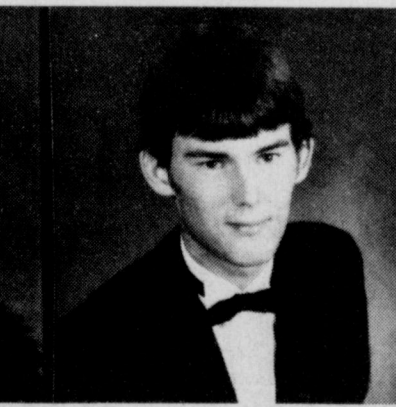
RONNIE WAGNER



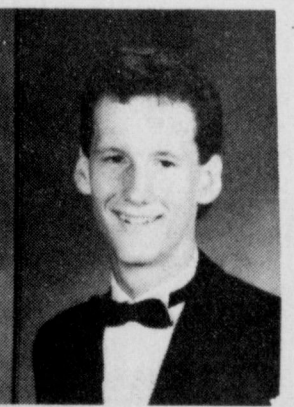
KATHY WALKER



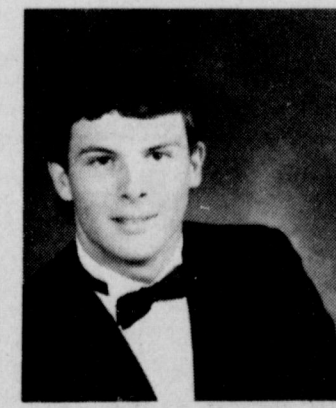
DENISE WARD



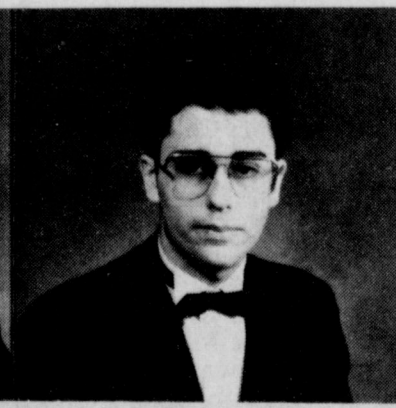
STACY WARD



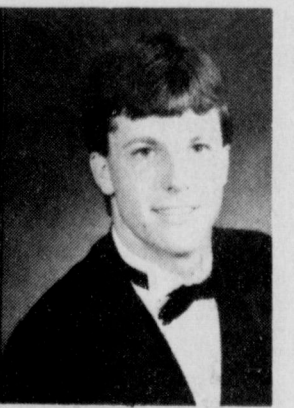
WES WARD



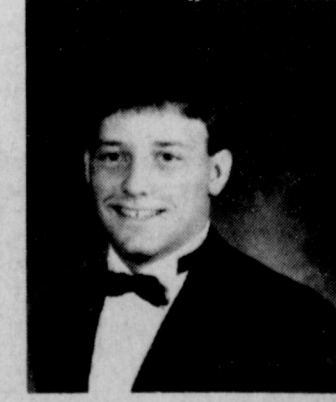
SCOTT WEAVER



ROBERT WELKER



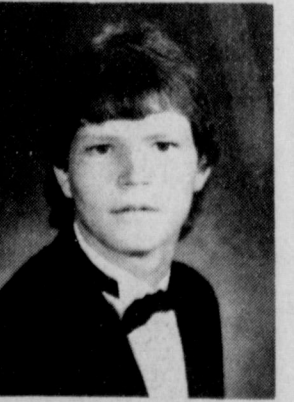
ERIC WHITMAN



MIKE WILLIAMS



SHARON WYNN



TRACY YOUNG

BUYING? SELLING? RENTING? HIRING? WANT ADS PAY OFF

DEADLINES

10 A.M. WEDNESDAY (Word Ads Only)
4 P.M. TUESDAY, DISPLAY ADS

SAVE 8¢ PER WORD FIRST INSERTION BY PAYING WITH COPY AT OFFICE

RATES: 23¢ PER WORD FIRST INSERTION 15¢ PER WORD EACH REPEAT

- Homes for Sale
- Homes for Sale
- For Rent
- For Rent
- Real Estate
- Domestics
- Domestics
- Help Wanted

#654 VERY Nice 3 bedroom, 2 bath mobile home with fireplace on 3 lots. \$22,000. Agent Gene Weaver, 692-8461, 592-9574.

CORNER LOT, 2 bedroom house, large living area, 1 3/4 bath, carpeted, all electric, detached double garage with large utility or workshop. Includes one bedroom rent house with detached garage. Call June 592-4329. 5-14-tfc

FURNISHED 2 bedroom mobile home. Quiet neighborhood. Large lot. No pets. Air condition, \$195 month. \$150 deposit. 304 S. Wall, 592-4521. 5-28-1tp

FOR LEASE 1006 Foley. 3 bedrooms, 2 baths, private patio, children's play area, \$500 monthly, plus deposit. Mary Styles Real Estate, Patti Milford 767-3322, 723-7777. 5-28-2tc

NOTICE: Highland Cemetery Association now accepting bids on 38 acres grazing and/or cultivation rights. Contract provisions available for inspection at cemetery office. All bids must be sealed, with the notation "Sealed Bid" clearly written on the outside of envelope. Bids will be opened 7:30 p.m., Friday, June 26, 1987, at cemetery office. 5-28-4tc

WILL CARE for your children. Clean Christian home. Low rates. 592-5013, 592-4502. 5-28-2tp

\$10 LAWN MOWING, General clean up, haul anything, and light welding jobs. 855-6576. 5-28-1tc

ASSISTANT manager - 5 to close, 5 nights a week. Apply between 2 and 4. Sonic Drive-In. 5-28-1tc

Woodbriar Apartments
All Bills Paid
√ 1, 2, 3 bedrooms
√ Cable
√ Senior Citizen Discount
√ Military discount
√ Swimming Pool
√ Special \$50 deposit
Ask about our instant living home.
592-2121

NEW THREE BEDROOM brick homes with central heat and air, energy efficient, and fully carpeted. Low monthly payments if you qualify. Swan Construction Co. 692-8788. 3-14-tfc

2 BEDROOM, older brick home, on 2 lots. \$275 per month. 301 W. Pecan. 592-4910. 5-28-1tp

1 BEDROOM apartment. Partly furnished, \$150 month, \$75 deposit. 592-2597. 5-28-1tp

FOR SALE: 3 1/4 acres, with water connections. Ideal for country living close to town. \$20,000. F.M. Road 1814 across from experiment farm. Ph. 592-2953. 5-28-1tc

SUMMER CHILD Care, activities and fun. Dianna Miller, 592-9561. 5-28-1tp

LAWN MOWING - Light hauling, odd jobs, very reasonable. Call 592-5311. 5-28-1tp

SONIC DRIVE-IN now taking applications for full and part time help. Apply between 2 and 4 p.m. only. 5-21-tfc

Hallmark Realtors
"We sell Iowa Park."
691-7855
Day or Night

Dee Blackwell Agent 438-2824
Darrell Jolly Agent 592-4926

Looking for country properties?
Call Cindy Witherspoon - 592-5381

#710 - Modular home, barns, corrals, irrigation, stock tank, small shooting range, lots of privacy on 9 acres. 40's
#708 - Over 2,000 sq. ft. 3 bdrm., 1 1/2 and 3/4 bath, open plan, on 9 acres, stock tank, great barn, excellent buy, mid 70's.
#743 - Panoramic view, 2,000 sq. ft. home, beautifully decorated, country paper, expensive hand made drapes, fabulous barn on 2 acres, 2 miles north on 368.

KEY REALTY
Home 592-4964

CHILD CARE - All ages. Hot meals, nutritious snacks, large fenced yard. Call Sandi, 592-9015. 5-28-1tp

REGISTERED child care has opening for summer. 592-9734. 5-28-2tp

MOWING, TREE trimming, clean-up work, will catch grass if requested. Light construction, remodeling, repairs. Light hauling. Loyd Thompson, 592-5344 or 592-5384. 5-21-5tp

HANDYMAN SERVICE Yardwork, light hauling and moving, run errands, drive locally and to Wichita Falls. Call for rates. Discount to elderly. 592-9801. 5-21-tfc

Notice

FOUND - Australian Shepherd cow dog, 592-9854 after 6. 5-28-nc

FREE PUPPIES Half Chow, half German Shepherd. 855-3190. 5-28-1tp

#171 NEW LISTING - lovely older home on large corner lot. Lots of trees, large den with fireplace, 3 bdrms, 2 baths. \$55,000

#175 NEW LISTING - Gracious, Spacious living in this 3 bdrm. 2 living areas, 2 fireplaces, 2 car garage, ornamental fish pond.

#181 NEW LISTING - Grab this fast - It won't last! 3 or 4 bdrms. 2 full baths, fireplace, 125x50 pre fab building, 10 acres, needs TLC. Price will shock you! It did me!

#162 SHILOH ADDITION - 3 living areas, 2 1/2 baths, 2 covered patios, on extra lg. lot.

#164 NICE 3 BDRM, home on 10 acres, just outside Iowa Park.

#147 LIKE TO VISIT in a large kitchen/dining room. this home has 3 bdrms., 1 1/2 bath, storage building and single car garage. Price Reduced.

#108 5, 10 & 20 ACRE TRACTS available.

#117 7 ACRES, arena, barn and 3 bedroom home.

#115 PICTURE PERFECT 3 bdrm, 1 1/2 bath, bricked wood burning stove, jacuzzi, surrounded by privacy fence, stereo wired to master bdrm, game room and patio. Wall murals. You must see.

#121 GREAT FOR 1ST TIME HOME BUYERS 3 bdrm, fenced yard, new vinyl siding, carpeted, central heat & air, very well kept home. Priced to sell. Low \$30's

#114 COZY THREE BEDROOM 2 full baths, master bedroom separated, large living area, quiet neighborhood, energy efficient, carpeted, central heat and air. 20' x 50' shop, double car garage detached garage and laundry room. Owner will take anything of value for equity, mobile home, land, car, etc.

#109 NEW LISTING-6 3/4 acres, 3 bedroom, 2 bath brick home, large workshop, barns, arena and more.

#987 BEST BARGAIN IN TOWN! Lovely 4 bdrm. brick home in mint condition. Neutral tone carpet throughout, bright and sunny kitchen. \$32,500. Owner financing.

#929 GREAT HOME in Shiloh addition. Excellent floor plan. Priced to Sell!

#965 COUNTRY MEADOWS new home on large corner lot, excellent financing available.

#971 EVERYTHING YOU HAVE EVER WANTED. swimming pool, sprinkler system, TV dish, storm shelter, custom home with acreage. Price will shock you!

#968 INCOME PROPERTY home plus business opportunity, fully equipped beauty shop.

#863 BEST BARGAIN IN TOWN nice brick home in good neighborhood. 3 bedroom, 2 baths, 2 car garage, small rental house on property. Price in the \$40's.

#131 NEW LISTING-10.5 Acres west of Iowa Park, possible home site for VA Land Bank Loan.

102 S. YOSEMITE 1,523 sq. ft. living area. 3 bdrm., 1 3/4 baths, good carpet, ceiling fans, large corner lot. \$28,000.

NEW LISTING 504 N. Pacific, 3 bdrm., 1286 sq. ft. living area, 80'x100' lot. Fenced, trees, carport, workshop. Prices below appraisal. \$18,000.

NEW ON MARKET 3 bdrm, 1 3/4 baths, formal living, dining, coming cook-top, double oven in large kitchen, plant room, porch, basement, 2500 sq. ft. living area. Much more. \$68,500

CUSTOM HOME 4 large bdrms, 2 baths, spacious liv-din & kitchen-den. Much more! Cal for details. Desirable location.

STORM SEASON Excellent cellar ready, 3 bdrm. & den or 4 bdrm., storm cellar, corner. 500' bldg. including large single garage & sheet-rocked room, concrete floor. \$36,000

WALK TO SCHOOL. Immed. Possession. Fence, \$33,000.

CHOICE COMMERCIAL lot. Frontage on 2 sides. New concrete street on north.

PRICE REDUCED on 55 acre tract. Frontage for building.

METAL SHOP BLDG., 1980 sq. ft. work area. 50'x94' corner lot. Immed. possession. \$20,000.

3.2 ACRES, Building site \$4,900.

2 ACRES, water meter, with or without small mobile. \$22,500. Negotiable.

100'x100' lot, E. Park, \$5,500.

33 ACRE. Owner finance, \$1,000 per acre.

1 BDRM. FRAME, \$15,000.

Sam Hunter Real Estate
107 E. Cash 592-4661
We've been selling Real Estate in Iowa Park since 1958! Call an experienced Realtor when you need to buy or sell. We Appreciate Your Business!

Domestics

Vegetable Plants
Flower Bedding Plants
Baker's Greenhouse
1 mi. south on Bell Rd.
592-2328

Colonial Heights Apartments
Magnolia St. at Johnson Rd.
IOWA PARK

One and two-bedroom apartments, energy efficient, central heat/air, total electric appliances, fully carpeted and draped. Children's play area. Off-street parking. Fully equipped laundry room. Month to month rent starting at \$189.00 for one bedroom, and \$229 for two bedroom apartment (to qualified persons). Water paid.

CALL 592-2705 **EQUAL HOUSING**

Buzbee Roofing
and other work
Phone 592-4846
ALL WORK GUARANTEED

MINI-CON Self-storage

- Variety of sizes.
- Competitive prices.
- Locally owned and operated.
- Monthly rates.

805 W. Hwy. 592-2761

Quail Run Apartments

1-2 Bdrm., Ground Floor, Central Heat & A/C. Appliances, Laundry. Close to school & public park. Starting at \$205 per month to qualified tenants. Gas & water paid.

Call 592-2933

\$1000 REWARD

For information leading to the arrest and conviction of any person or persons involved in theft, vandalism, arson, fishing or hunting on any of our properties in Wichita, Archer, Wilbarger, Clay, Wise or any other county in which we may have equipment located. Tom Swanson Oil Co., TS&T Drilling Inc. Ph. 817-495-3971.

8-8-tfe

TAKE A LOOK

Three large bdrms., large livingroom, kitchen & breakfast area, fence back yard, covered camper storage, & more. \$45,000

COUNTRY LIVING

Good location, close to town, utilities available. 125x400 on FM 368. \$7,500.

WALKING DISTANCE

Lovely two bedroom home with cent. heat and air. Two nice small apartments in rear for income. New siding excellent condition. \$34,500

HANDYMAN SPECIAL

Extra large lot, 1 bedroom, kitchen and dining area, 1 bath. \$10,000.

LOVELY HOMESITE

70'x140 level lot. Asphalt street close to expressway. \$5,000.

THREE BEDROOM

Livingroom, den, central heat, kitchen & dining, fenced yard, storage bldg., carpet & panelling. Price reduced \$28,000.

For information on these and other properties, call now.

JOHNNY LEE REAL ESTATE
592-2378
109 W. CASH

MEMBER MULTIPLE LISTING SERVICE

Cindy Witherspoon
592-5381
692-8461
592-4964

When quality, service & dependability are a must - We are the Key

#650 - Immaculate 4 bedroom, colonial style, 1 1/2 bath, near Kidwell.

#651 - Comfortable, relaxing 3 bedroom, 2 bath, this home was awarded Yard of the Month, beautiful trees, property is also available for lease.

#596 - Owner will sell on FIA seat equity excellent for starter home, 3 bdrm., 2 living area, 1 bath, central heat & air. 20x20 shop, \$25,000.

#597 - Shilo edition, elegant 3 bdrm., 2 hollywood bath, cathedral ceilings, spacious kitchen with all extras.

#538 - Low equity, Manes edition, spacious, clean, ready to move-in, property is also available for lease.

#553 - Extra spacious home on 5 acres. 4 bdrm., 3 bath, 2 car garage many extras, owner will consider trade.

#688 - Excellent commercial property, busy Hwy. front.

#290 - Well landscaped, 4 bdrm., 1 1/2 bath, storm cellar, fireplace, spacious, new carpets.

#567 - Beautifully landscaped, freshly redecorated, new carpet, 3 bdrm., 1 1/2 bath, Owner ready to negotiate.

#709 - Excellent location for light commercial, needs little repair owner needs to sell to settle estate make offer.

#703 - Possible owner finance, older home needs some repair, nice yard & trees, low 20's.

#723 - Extra special beauty, 1700 sq. ft. rock fireplace, beautifully decorated, gorgeous back yard, see to believe.

#655 - Owner moving must sell, fresh paint, 2 year old, AC unit, 3 bdrm., 1 3/4 bath, 2 car garage. See and make offer, lease purchase for qualified buyer.

#781 - Cute neat home in Foley area. \$1,000 total move-in costs. 100% financing. Call for more details.

#775 - Country cozy-beautifully remodeled from carpet to drapes, fireplace, 4 bdrm. 1 3/4 baths.

#768 - Looking for assumption? Low equity, large rooms, extra large yard, 3 bdrm., 1 bath, 2 car garage, low 30's.

#761 - Fabulous shop goes with this newly remodeled 3, 1 1/2, 1 2 living areas and fireplace, low 50's.

#744 - Extra clean older home lots of new extras, 2 bdrm., 1 bath 12x12 storage, 13,500.

#755 - New Construction 3-2-2 hollywood style bath, fireplace, ash cabinets, great area near Kidwell, 49,500.

#595 - 3 bdrm., 1 3/4 bath, 2 story freshly redecorated, fireplace, privacy fence, corner lot, reduced to sell.

- Best buy 3-1 1/2-0 fireplace, nice wallpaper, great starter home, mid 20's.

Business

LANDSCAPING - Design and installation, sprinkler systems installed and repaired. College degree in horticulture. I will save you money. Call for free estimate. 592-9832. After 5, 592-5949. 5-21-2tp

PAINT Contractor needs extra work for June, Daughter leaving for college special. Price for month. Also carpet repair and cleaning. 592-2306. 5-28-2tp

LAWN MOWER sick? Call Park Lock & Key, 592-4929. 5-28-1tc

STANLEY Home Products- Call Shirley Hicks, 592-4634 after 5:30. 5-14-4tp

"YOUR Watkins Dealer"- Vanilla, Black Pepper, etc. 592-4836 5-7-12tp

Business

CUSTOM COMBINING wanted. 2 Massey combines near new, 2 grain trucks, and supporting equipment. Warren Bachman, 515-342-2532. 3-26-10tc

BUILDING, remodeling or repair, additions, carports, patios. Free estimates. Call day or night Phil McDonald 592-9437, or Jim Clapp 592-4967. 3-26-tfc

PAINTING - exterior or interior. Reasonably priced. References. 592-5654. 7-31-tfc

HANDYMAN SERVICES Home repairs, painting, carpenter work, paper hanging, etc. No job too small. Work guaranteed. Call Herb, 592-5560 evenings and weekends. 11-20-tfc

MARY KAY cosmetics, Ann Moore, 592-4752. 3-5-28tp

Business

POODLE GROOMING by appointment only. Reasonable rates. 592-4766. 4-30-12tp

RICK'S TRACTOR Service - Tractor mowing, leveling, plowing, etc. Ricky Moss, Phone 438-2418. 3-5-tfc

COPIES MADE - 20¢ each including reduction and enlargement. Iowa Park Air Conditioning. 607 E. Bank. 10-2-tfc

COPIES MADE at Parkway True Value, 25¢ each. 1-1-tfc

ROOFING - Buzbee Roofing. Phone 592-4846. All work guaranteed. 1-30-52tp

PRIVATE FENCE sales and installation. Charles Skelton, phone 696-0839. 12-5-tfc

CUSTOM CABINETS - from new countertop to complete new kitchen or bathroom cabinets. Residential or commercial. For free estimate call Jeff Shiery 592-2827 or 322-3636. 1-22-tfc

LOCKED OUT? Call Park Lock & Key, 592-4929. 5-28-1tc

Business

BLACK POWDER Guns and accessories, revolvers \$50 and up. Powder \$5.00 lb. Will order modern guns for 10% over cost. Ye Ole Gun Shack. 413 W. Washington, 592-5430. 9-18-tfc

REMODELING/Concrete - For all your home remodeling and concrete, additions, driveways, etc. Hamilton Construction, 855-6100. 7-10-52tp

VINYL & STEEL Siding. Saves energy, never needs painting. 100% financing available. Call Jerry Mathews at Great Plains Siding and Insulation. 592-9829 or 761-2124. 10-2-tfc

BUILDING, remodeling or repair, additions, carports, patios. Free estimates. Call day or night Phil McDonald, 592-9437. 10-2-tfc

HOME IMPROVEMENTS from additions to remodeling. Patios and carports, acoustic ceiling, ceramic tile, general carpentry. Gary Williams, 592-2480. 10-2-tfc

INSULATION for walls, attics, & metal buildings. Storm windows and doors. For free estimates call Jerry Mathews at Great Plains Siding and Insulation, 761-2124 or 592-9829. 10-2-tfc

HOUSE PAINTING Free estimates. Experienced, all work guaranteed. 592-5270. 5-28-4tp

Misc. for Sale

AUCTION, 2 p.m. Sunday, 5-31-87, 102 S. Victoria, Iowa Park. Oak dining room suite, antique dresser, antique rocker, 4 stoves, Whirlpool frost free refrigerator, G.E. upright freezer, Duncan Phyfe table w/2 leaves, 3 sofas, numerous side chairs & rockers, king size bed w/headboard, full size canopy bed, full size bed w/pecan headboard, lamps, brass bakers rack, brass table, coffee & end tables, 2 dishwashers, 1 built-in, other portable, hand tools, Rockwell router, sander-polisher, jig saw, old Craftsman table saw, 2 heavy duty motors. Much more too numerous to mention. Terms: cash or check with Auctioneer approval. Announcements made day of sale supercede all other announcements. Absolute sale, no minimum, no reserves. Landon (Will) Bonham Tx Lic 048-007178 5-28-1tp

GARAGE SALE Saturday, 9 to 5 p.m. Craft supplies, baskets, toys, clothes, small freezer, 38 Special, 1968 restored Firebird, misc. 1702 Quail Valley. No early sales. 5-28-1tp

BLOCK SALE - Come to Hope Lane and find all sorts of bargains at nearly every home. State plate collection with several duplicates willing to trade, lawn mowers, wooden doors, hair dryer, clothes of all sizes. Saturday and Sunday, 9-5. 592-2205 5-28-1tp

MOVING SALE - Twin bed and chest \$30, queen hide-a-bed \$20, TV stand, string art clocks. Thursday only, 107 W. Pecan, 592-2964. 5-28-1tp

3-TON Frigidaire air conditioner, \$150. 592-4323. 5-28-1tp

ALMOST NEW O'Keefe-Merritt gas range, almond color, \$200. 205 W. Texas, 592-5416. 5-28-1tp

FRESH brown country eggs 702 E. Alameda, 592-5544. 5-28-2tp

1981 PONTIAC Bonneville V-6. One owner. New tires, tilt, cruise, clean, good air, 66,000 miles. 1020 Cornelia. 592-4676. 5-28-1tp

78 FORD Fairmont wagon. 6 cyl., P.S., A.T., new tires, \$850. 592-9355 after 4 p.m. 5-28-1tp

1966 MUSTANG - 6 cyl., new paint, new interior, perfect condition. \$3,200. 855-6119. 5-21-2tc

Notice

PUBLIC NOTICE
The Board of Adjustment of the City of Iowa Park, Texas, will conduct a public hearing at 5:30 p.m. on Tuesday, June 2, 1987, to consider the issuance of a variance at Lot 10, Block 39, Original Townsite (304 West Alameda), to allow a home occupation (collection service) in a R-1 zone. Any comments for or against may be presented orally at the hearing or in writing to the City Administrator prior to the meeting. All meetings are open to the public. 5-21-2tc

Count on the Classifieds to Do the Job

Wichita County Commissioners' Notebook

Wichita County Commissioners Court met Tuesday in the Tom Burnett Memorial Library. Some of the items that were considered were:
Wichita County will be participating along with other Texas counties in the Capitol restoration project, endorsed by the Texas Association of Counties as "A Walk in History" Project. By donating \$300 to this project, Wichita County will have a permanent part in our future history when our County's name will be engraved in one of the diamond shaped pavers in the Great Walks of our State Capitol. This project is in conjunction with the May 16, 1988 celebration of the 110th year dedication of our State Capitol Building.

Notice

ADVERTISEMENT FOR BIDS CITY OF IOWA PARK, TEXAS

Sealed bids for Concrete Paving of Victoria, Ruby and Third Streets in the City of Iowa Park, Wichita County, Texas will be received by Mr. Tim Hunter, Mayor, until 10:00 am, Thursday, June 18, 1987, in the City Hall of Iowa Park, Texas, and then publicly opened and read aloud.

Information for bidders, form of bid, plans, specifications, and forms of bid bond, performance bond, payment bond and maintenance bond, together with other contract documents, may be examined at the offices of Biggs & Mathews, Inc., 2500 Brook, Wichita Falls, Texas 76301. Copies may be obtained at the offices of Biggs & Mathews, Inc. upon payment of \$10.00 for each set, which is non-refundable.

The project has the following approximate items:
Removal of Existing Asphalt Paving
Base Bid: 54,700 SF Reinforced Concrete Paving
Alternate Bid: 13,150 SF Reinforced Concrete Paving

Bidders must submit with their bids a Cashier's or Certified Check in the amount of five (5%) percent of the maximum amount of bid payable to the City of Iowa Park, Texas or a Proposal Bond in the same amount from a reliable surety company as a guarantee that Bidder will enter into a contract and execute bond and guarantee forms provided within ten (10) days after notice of award of contract to him. Bids without check or proposal bond will not be considered. The successful Bidder must furnish payment and performance bonds in the amount of 100% of the contract price from an approved surety company holding permit from the State of Texas to act as surety and acceptable according to the latest list of companies holding certificates of authority from the Secretary of the Treasury of the United States, or other surety or sureties acceptable to the Owner.

Successful bidder must also furnish a two (2) year Maintenance Bond in the amount of fifty (50%) percent of the contract price.
City of Iowa Park, Texas
Tim Hunter, Mayor
May, 1987
5-28-2tc

PUBLIC NOTICE
The Board of Adjustment of the City of Iowa Park, Texas, will conduct a public hearing at 5:30 p.m. on Tuesday, June 2, 1987, to consider the issuance of a variance at Lots 1-4, Block 51, Original Townsite (705 East Alameda), to allow a mobile home on leased property. Any comments for or against may be presented orally at the hearing or in writing to the City Administrator prior to the meeting. All meetings are open to the public. 5-21-2tc

As a result of a request from the Individual Development Center to lease additional land from the county on what is commonly known as the old county farm property, the Commissioners Court voted to advertise to lease this tract of land at public auction. This action was necessary in order to comply with statutory requirements, and notice will run for three weeks.

In other action, the Commissioners Court awarded the bid on the truck cab and chassis to Longhorn Chevrolet. The bids accepted were in the amounts of \$18,265.72 per unit for cab and chassis with a diesel engine and \$15,608.47 per unit for a cab and chassis with a gasoline engine. Also, the bid for dump bodies was awarded to Longhorn Trailer and Body Co. in the amount of \$4,260.35 per unit or \$16,641.40 for four units.

The next Commissioners Court meeting will be held at 10 a.m. Monday, June 8, in the Commissioners Courtroom, Room 200, County Courthouse.



Charles Yard Service
12 yrs. Experience

- ✓ Mowing
- ✓ Edging
- ✓ Tree-hedge
- ✓ Light Hauling
- ✓ FREE estimates
- ✓ Weedeating
- ✓ Flower Beds
- ✓ Trimming
- ✓ Odd Jobs

Before 8 a.m. or After 4 p.m.
CALL 569-0295

The Grime Busters Are Here!

Professional carpet and upholstery cleaning and auto interior.

SPECIAL 10% OFF thru June 25

Van Schrader Method used exclusively! Deep Dry Foam Extraction, no water saturation. Fast drying. No odors. Don't delay, Call today.

Al Wells & Anita Moore
owner/operators
Call Day or Evening 592-9637
FREE estimates

KING'S KIDS

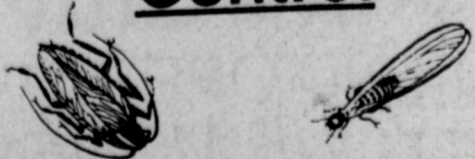
CHRISTIAN DAYCARE & PRESCHOOL

"Iowa Park's finest for Parents who care"
202 N. Jackson 592-4242

INFANT CARE
"NEWBORN THRU 10 YEARS"
PRESCHOOL CLASSES
"CHRISTIAN CURRICULUM"
FULLTIME CARE
HALF DAYS
BEFORE & AFTER SCHOOL
SUMMER PROGRAM

A-1 Exterminators

Complete TERMITE & PEST Control

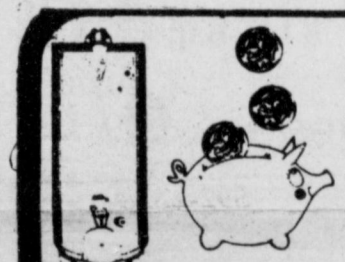


Home-owned since 1960
FREE ESTIMATES

692-6361

Larry Burke, owner

IOWA PARK LODGE #713 A.F. & A.M.
700 W. Washington Iowa Park, Texas 76367 Phone 592-5506. Gary Wood W.M. Phone 696-5132. Bud Mercer Sec. Phone 592-5413. Stated meeting 7:30 p.m. 2nd. Thursday each month. Floor school every other Thursday night.



OUR MOST AFFORDABLE MODEL

Quality and Workmanship At a Special Value Price
If you're looking for a new water heater at an affordable price, call us today.

FEATURES

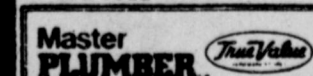
- Dense fiberglass insulation
- Porcelain glass-lined tank
- Anode rod for corrosion protection
- Five-year tank warranty
- Two-year parts warranty (Best warranties and features for standard model of the business)
- 30-gallon, gas or electric

\$124⁹⁵
Includes free delivery in town

Parkway



HARDWARE & FURNITURE
200-206 W. Bank
592-5512 592-4681



Pam's Upholstery

- ✓ High Quality Work
- ✓ Low Quality Prices

592-2205 or 592-4839



Monty & Son's SEPTIC TANK SERVICE
592-4928

Shop Iowa Park First



600 WEST HIGHWAY PHONE 592-4106