

Reaching Changes In SS Act Affect Every U. S. Family

deliberated for almost a year before making changes in the Social Security Act which will take effect when President Eisenhower signed the bill on Aug. 1.

Reaching changes in the law will affect every American family. The article is intended to give the information that will enable you to determine the importance of the Amendments of 1956, to you and your family.

Retirement and family insurance payments will be payable beginning with November of this year to women at age 62. The benefits for women workers and wives of retired workers will be at a reduced rate before age 65. Payments to widows and the dependent mothers of deceased workers will be paid at age 62 without a reduction.

EXTEND

fire insurance



these 7 other perils

damages by-

- Lightning
- Theft
- Smoke or Smudge
- Water Damage
- War and Civil Commotion
- Explosion
- Other

SIXTON INSURANCE AGENCY

BETWEEN YOU AND LOSS

Another important change in the law provides for the payment of disability insurance at age 50 to those who become unable to work because of extended sickness or accident. These payments will first be paid for July, 1957, to those over age 50, who have had extensive social security coverage.

Lawyers, dentists, osteopaths, veterinarians, and chiropractors, are now under the law in 1956, like other self-employed persons. Self-employed medical doctors are still excluded. Members of the armed forces of the United States will be covered by the law like other employees on Jan. 1, 1957. Important changes were also made in the law as it applies to farmers and agricultural workers.

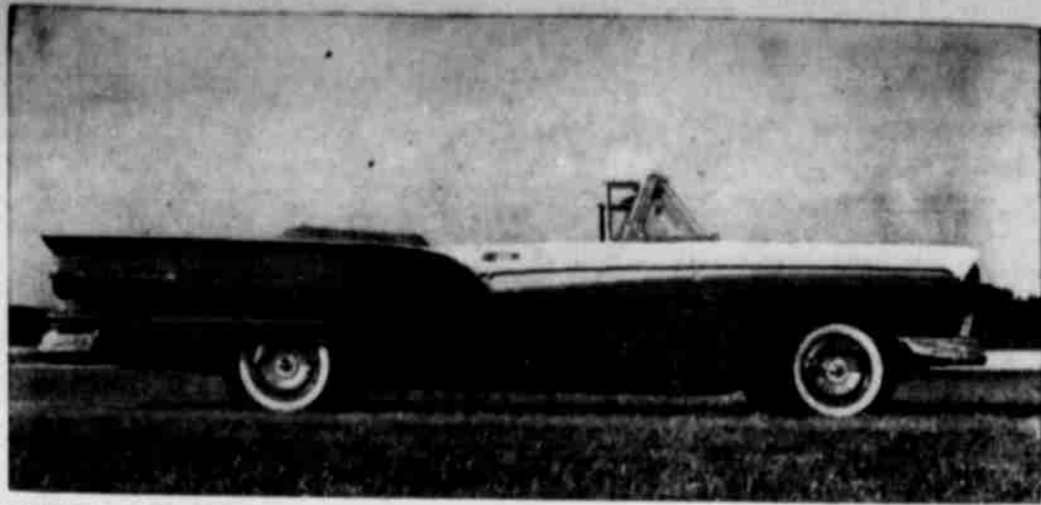
These, and other interesting revisions of the amended law, will be explained in detail in future articles.

A representative of the Lubbock Social Security Office will be in Post on Oct. 5, at 1 p. m. at the District Courtroom and will be glad to assist in all matters pertaining to Social Security.

DOG SHOW SLATED

The 8th annual all-breed dog show, sponsored by the Heart of the Plains Kennel Club, will be held Saturday in Municipal Coliseum, Lubbock. Approximately 175 trophies will be awarded, according to Lewis G. Herring, president of the kennel club.

A 1,000-mile fence was built all the way across the Australian continent in 1907 to keep rabbits from invading western Australia.



LONGEST AND LOWEST—The longest, lowest Ford convertible ever made is this 1957 Sunliner which is being introduced along with 18 other completely new Ford body styles. The new Fords offer a broader range of improved engine performance, with the top power plant being the optional 245-horsepower Thunderbird Special V-8. The Sunliner is a member of Ford's new Fairlane "500" series, which offers a band of gold-colored anodized aluminum side trim with two-tone paint selections.

Six Of 19 New Ford Models On Display Here At Tom Power, Inc., Ford Dealer

Six of the 19 new Ford models for 1957 were unveiled here Wednesday morning at Tom Power, Inc., Ford Dealer, 122 West Main.

Large crowds were thronging to the show rooms to see on display a Custom two-door, a Custom "300" two-door, Fairlane Club Sedan, Fairlane Club Victoria, Fairlane "500" Town Victoria, and a six-passenger Country Sedan.

For the first time in its 53-year history, Ford Motor Company is producing two sizes of Ford cars. The 19 new models have the highest performance engines ever offered in the low price field.

R. S. McNamara, Ford Motor Company vice president and Ford Division general manager, said the 1957 Fords "represent the biggest change in the modern history of the Ford car."

The new Ford line divides into two basic sizes, Fairlane and Custom, plus the station wagon series, each with its own body and chassis. In addition, the Fairlane series has been expanded to offer "Fairlane 500" models, which have extra luxury features.

The 1957 Fairlane and Fairlane 500 sedans are nine inches longer and four inches lower than last year's comparable models. Custom and Custom 300 sedans are more than three inches longer and nearly three and one-half inches lower than the 1956 models. Station wagons are three and one-half inches longer and nearly six inches lower. Fairlanes and Fairlane 500's are built on a 118-inch wheelbase. Station wagons, Customs and Custom 300's have a 116-inch wheelbase.

"There has been no sacrifice of headroom inside the car, in spite of their reduced height," Mr. McNamara said. "The new frame extends to the sides of the car, and this permits the floor to be lowered inside the frame rails."

"The design and styling are new from the ground up. Every dimension is changed. Wheels, frame, rear axle, drive shaft, engines, and every inch of sheet metal in every body style are definite departures from past models," he explained.

Riding ease has been greatly improved by using a longer, wider frame with lower pressure tires on wider treads, and employing redesigned ball-joint suspension on front and outboard-mounted longer leaf springs in back. Because there is more spring length ahead of the rear axle, front end dip on quick stops is checked better than ever before.

"Durability is built into the 1957 Ford through stronger alloy metals, greater use of insulation and sound-deadening materials, longer-wearing fabrics and plastics, and strengthening of mechanical parts," Mr. McNamara pointed out.

For the first time, a high performance V-8 engine is available as an optional power plant on all Ford cars. The engine, called the Thunderbird Special, develops 245 horsepower, and is equipped with a four-barrel low silhouette carburetor.

Standard engine for the Fairlane and station wagon series is the 212 h. p. Thunderbird V-8. A 190 h. p. V-8 is standard for the Custom and Custom 300 series. Both have two-barrel carburetors. In addition, the 144 h. p. Mileage Maker six is available on all models. All engines can be ordered with standard, over-drive or Fordomatic transmissions.

Advanced design of the engines' carburetion, combustion chamber, and exhaust system, plus stepped-up compression, provides increased operating economy in all models. The dry-type air filter, carburetors, intake manifold, intake valves, camshaft, and distributor are the new components which give Ford increased performance.

Ford's new styling starts with wide hooded headlights and a forward slanting grille, and includes streamlined wheel openings, a windshield that wraps further around the sides for better visibility, distinctive fins at the rear, and contoured sides that give the car a sculptured look.

"Hardtop" styling is the trademark of the conventional two door and four door sedans in the Fairlane and Fairlane 500 series. The effect is achieved with thin side pillars. Ford's true pillarless "hardtops," the four door and two door Victorias, also are offered in these series.

Babson Says—

(Continued From Page 2)

Atomic Energy Commission for permission to refine uranium ores and sell the product direct, as they would sell coal and oil. This is something that all investors should watch. As the war scare passes, Congress will compel the AEC to permit, under license, the treatment and sale of uranium. A demand for small reactors should then follow.

For this demand both the Westinghouse and General Electric organizations are now preparing. Some of their engineers believe that the heaters in our homes will some day be discarded and replaced by uranium heaters. They further forecast that a small amount of uranium can, by the "self-feeding process," be made to last several years. Shipping is sure to turn to this fuel. Probably airplanes will follow, and ultimately (perhaps) automobiles. I am only a statistician, not a physicist, but I advise that the stocks of the manufacturers of small reactors, household heaters, and other utilities may be better buys than the uranium itself.

And besides that, he said, Ike kept his promise to Texas and Texas ought to return the favor by keeping Ike.

You know, he might have had something there. "Gratitude" is one of the greatest words in the English language, and we all like to think of ourselves as being grateful when people do something for us. Like I heard a man say one time: "Texans are people who never forget anything that is done TO them—or FOR them." That's the way we think of ourselves, and it's about right.

This Eisenhower man pointed out that Ike promised to give the Tidelands back to Texas, and he kept that promise; he promised to do his best to close out Mr. Truman's war in Korea, and he kept it.

Ike Better Democrat Than Adlai, Says Supporter

A bunch of us were standing around talking the other day, and the talk got around to politics like it usually does. Some of the boys said they'd voted for Ike in '52 and were going to do it again; some of them said they'd always voted the Democratic ticket straight and always expected to—you know how it goes around a little Texas town.

One fellow said something that made the rest of us stop and think. He said he was a Democrat, sure—always had been, and his father and grandfather before him. And he always felt like he had to vote for the best Democrat in the race, which he was going to do this year.

"And that means," he said, "that I'll have to cast my vote for Ike Eisenhower. He's a better Democrat, by my definition of a Democrat, than that other fellow ever will be."

And besides that, he said, Ike kept his promise to Texas and Texas ought to return the favor by keeping Ike.

You know, he might have had something there. "Gratitude" is one of the greatest words in the English language, and we all like to think of ourselves as being grateful when people do something for us. Like I heard a man say one time: "Texans are people who never forget anything that is done TO them—or FOR them." That's the way we think of ourselves, and it's about right.

This Eisenhower man pointed out that Ike promised to give the Tidelands back to Texas, and he kept that promise; he promised to do his best to close out Mr. Truman's war in Korea, and he kept it.

That's why I still like Ike—better than ever!

Yours truly,
Tex

(Pol. adv. paid for by Texas Democrats for Eisenhower, Weldon Haft, Director.)

Clearer vision . . . the most IMPORTANT thing that YOUR CHILD should take back to school!



THE TEXAS OPTOMETRIC ASSOCIATION, INC. 1900

Work places a great demand on the eyes. Have your children's eyes examined once a year to improve or preserve your vision.

Consult a member of Texas Optometric Association:

- Dr. CARL L. DEAN, Post & Lubbock
- Dr. BLUM & NESBITT, Snyder
- Dr. JOHN B. MAJORS, Sweetwater
- Dr. JACK LEWIS, Sweetwater
- Dr. J. DAVIS ARMISTEAD, Lubbock
- Dr. CLYDE E. DAWSON, Snyder
- Drs. MAJORS & MAJORS, Colorado City



Test Drive Today's New Flite-Fuel

DISCOVER WHY WE SAY: IT'S PERFORMANCE THAT COUNTS!

- Check off these Performance Advantages of Flite-Fuel
- Higher anti-knock
 - Easy starting
 - Fast acceleration
 - Clean-burning
 - More mileage

Claims of gasoline performance are one thing—actual performance something entirely different. That's why we make this suggestion: you've got nothing to lose and a lot to gain by test driving Phillips 66 FLITE-FUEL. Let your car's performance be the judge.

You'll discover ease of starting and responsiveness that you may never have suspected your motor could deliver. You'll benefit from the smoothness of advanced high octane. You'll get the advantages of controlled volatility and positive anti-stalling, and more miles per gallon, too. No other gasoline gives you the combination of high performance components you get in FLITE-FUEL.

Why not give FLITE-FUEL a try? Fill up today at any station where you see the familiar orange and black Phillips 66 Shield.

PHILLIPS PETROLEUM COMPANY



Here Today!

A new kind of FORD with the mark of tomorrow



The Fairlane 500, finest Ford series, features five of the 19 longer, lower, better Fords for '57.

You're in for a thrill when you see this new knock-out named Ford! But save your superlatives till you drive it! That's where the fun really starts.

It's fun just knowing that others who see you wish they were you. For you're commanding the longest, lowest, heaviest, biggest car ever to sport such a low price tag. There's head room to spare for a new fall bonnet . . . stretch-out space for a "Daddy Longlegs."

You'll find that the tough and ready new "Inner Ford" is built to take the roughest road you'll care to travel. New outboard rear springs and ball joint front suspension let Ford take the turns without the tilt. New sweep-back control arms help take bounce out of bumps.

Best of all, Ford's library-like quiet is built in. And the new "Inner Ford" is why. For never before in Ford's field has there been a body with so much extra bracing so firmly anchored to its foundation. And you can choose from three big Silver Anniversary V-8's with up to 245 horsepower. There's also a new Mileage Maker Six with 144 horsepower, the most modern Six in the industry.

You can pick your Ford tailored to your desires and your budget, too! Choose from nine Fairlane or Fairlane 500 models or from five Custom or Custom 300 models. Or take your pick from Ford's five longer, lower, new station wagons. Whichever model you select, you'll get a car that's been re-invented from the wheels up!

So there's the new kind of Ford. Big! Gracious! Spacious! A luxury car true—but one that any new-car buyer can easily afford. Come in! See what wonder-cars you can buy now at low Ford prices.

IN TWO NEW SUPER SIZES!

- OVER 12 FT. LONG (in a new 115" Wheelbase)
 - 3 Custom Models
 - 2 Custom 300 Models
- OVER 11 FT. LONG (in a new 110" Wheelbase)
 - 4 Fairlane Models
 - 5 Fairlane 500 Models

PLUS 5 NEW MODELS IN THE STATION WAGON SERIES!



The Fairlane Fords for '57, like the Fairlane 500 models, have no equal . . . no counterpart, in the low-price field.

Go first with

FORD for '57

TOM POWER, INC. — FORD DEALER



IT'S PROFITABLE TO BUY SELL RENT HIRE THROUGH THE WANT ADS

Call And Place Your Want Ads By Telephone
Telephone 111

CLASSIFIED ADVERTISING RATES
FIRST INSERTION, per word 4c
CONSECUTIVE INSERTIONS, per word 3c
MINIMUM AD, 12 words 50c
BRIEF CARDS OF THANKS \$1.00

Rentals

FOR RENT—Four and five-room houses with baths, unfurnished. Mattie Dunlap, call 67-W. tlc.
FOR RENT—Three room furnished apartment, phone 71-J. tlc.
FOR RENT—Large, attractive bedroom to lady. Plenty of closet space; with or without kitchen privileges. Mrs. Lala Pennington, telephone 486-W after 4 p. m. 3tc.
FOR RENT—Four room house and bath. Call Mrs. N. A. Lushby at 592-J. tlc.
FOR RENT—Four-room unfurnished house, phone 214-W. tlc.
FOR RENT—Duplex, air-conditioned, two rooms and bath. 118 North Avenue S. 1tp.

FOR RENT
Mrs. Nola Brister, Mgr.
Two and three room apartment, furnished, private baths, air conditioning, television, garages.
COLONIAL APARTMENTS
Telephone 52

FOR RENT—Furnished apartments, call 136-J, Earl Rogers. tlc.

Real Estate

HOUSES FOR SALE—Build to suit owners. G. I. and F. H. A. houses, see Forrest Lumber Co. tlc.
FOR SALE—Small house, 14 by 18-foot, to be moved; built-ins and furniture. Ralph Kirkpatrick. Telephone 434. tlc.
FOR SALE—Residential or business lots. R. Hardin, Avenue H and East 19th St. 2tc.
FOR SALE—Good water storage tank and tower. See George Carpenter or phone 914-K3. 1tp.

Employment

TRUCKING—Will haul anything. Prices reasonable. See Howard Freeman or call 65. 5-tp.
BABY SITTING IN MY HOME—Mrs. W. L. Mathis, 307 South Ave. H. tlc.
WILL DO IRONING IN MY HOME on Clairmont Highway, one block south of Eastside Station. Edna Smith. 4tp.
WANTED—Ironing and baby sitting in my home. Mrs. Pat Robinson, 502 West 11th. Telephone 382. 3tc.
PROTECTION—Protect your air conditioner this winter. We make covers to fit. Shaw's Upholstery. Telephone 265. 4tc.
WANT TO BUY—Good first lien mortgages, see Jim Sexton. tlc.

FINISH HIGH SCHOOL or Grade School at home. Spare time. Books furnished. Diploma awarded. Start where you left school. Write Columbia School, Box 5081 Lubbock. 52tc.

TILLIE'S UPHOLSTERING SHOP IN SLATON—Three blocks west of Red Top Motel on highway. 445 West Scott, phone 718-W. Mrs. Fred Perdue. tlc.

FOR SALE—Kid Pony. See J. W. McCullough at White Way Courts. 2tc.

Hospital Notes

Admitted to Garza Memorial Hospital since last Wednesday were:
Billy Meeks, Post, surgical.
W. V. (Cap) Roy, Post, medical.
Tommy Cole, Post, surgical.
Mrs. J. A. Bryant, Post, obstetrical.
Benny Larosa, Post, medical.
Gwendolyn Royce, Post, medical.
Mrs. Jerry Kotrla, Post, obstetrical.
Stella Jo Cook, Post, surgical.
Mona Newbold, Post, surgical.
Mrs. Emmett Steiner, Post, medical.
Dismissed
Johnny Young (treated and released).
Billy Meeks.
Mickey Juarez (treated and released).
Tommy Cole.
Dean Robinson.
Thomas Jefferson was the first official ambassador from the U. S. to France.

Public Notice

NOTICE OF ELECTION
THE STATE OF TEXAS,
COUNTIES OF DICKENS, CROSBY AND GARZA,
WHITE RIVER WATER CONTROL AND IMPROVEMENT DISTRICT.
TO THE RESIDENT, QUALIFIED ELECTORS OF THE WHITE RIVER WATER CONTROL AND IMPROVEMENT DISTRICT, WHO OWN TAXABLE PROPERTY IN SAID DISTRICT.
TAKE NOTICE that an election will be held in the White River Water Control and Improvement District on the 27th day of October, 1956, for the purpose of confirming the organization of such District and to elect a Board of Directors for such District pursuant to a resolution adopted by the Board of Directors appointed by the State Board of Water Engineers, Austin, Texas, under order dated September 19, 1956.

That for the purpose of holding such election, the said White River Water Control and Improvement District has been divided into four voting precincts. The area and boundaries of the lands to be contained within each of said voting precincts shall be the area in and boundaries of each of the Cities of Spar in Dickens County, Crosbyton and Ralls in Crosby County, and Post in Garza County, as such boundaries existed on May 15, 1956.

That said election shall be held at the following places:
(a) At Dickens County Electric Co-op, situated within the City of Spar, Texas, and the following persons have been appointed officials to hold said election, to-wit:
John L. Green, Presiding Judge, Mrs. E. B. Blumberg, Assistant Judge, Mrs. Jack Rector, Clerk, and Mrs. John F. Moore, Clerk.
(b) At City Hall situated within the City of Crosbyton, Texas, and the following persons have been appointed officials to hold said election, to-wit:
L. B. Parkhill, Presiding Judge; S. P. Covington, Assistant Judge; R. R. Jones, Clerk, and F. M. Dunn, Clerk.

(c) At City Auditorium situated within the City of Ralls, Texas, and the following persons have been appointed officials to hold said election, to-wit:
Tim Lyle, Presiding Judge; W. W. Watkins, Assistant Judge; Mrs. John Fowler, Clerk, and Mrs. C. O. Edwards, Clerk.
(d) At City Hall situated within the City of Post, Texas, and the following persons have been appointed officials to hold said election, to-wit:
Walter Crider, Presiding Judge; Harold Lucas, Assistant Judge; Mrs. Lucille Acker, Clerk, and Mrs. Irene Rodgers, Clerk.

That said election shall be held as provided by Chapter 23 of the General Laws, Regular Session of the 39th Legislature, 1925, as amended, and shall be conducted as provided by law for holding general elections, except as otherwise provided in said Chapter.
That at said election only qualified resident, property taxpaying voters of such District shall be permitted to vote.
The ballots for said election shall have written or printed thereon the following:
"FOR CONFIRMATION OF DISTRICT"
"AGAINST DISTRICT"
Each voter shall draw a line through one of the above expressions thus leaving the other as indicating his vote.
Also, the ballot shall have the names of the five members appointed by the Board of Water Engineers and five blank spaces to enable the voters to write in names of other persons whom they may desire to elect as directors and shall be in substantially the following form:
Lynn D. Buzbee,
Robert Work,
R. J. Jennings,
M. A. McLaughlin,
Tom Bouchier,

All voters desiring to vote for persons other than those named on the ballot shall strike out the name or names of the person or persons listed and write in the name or names of the person or persons for whom they desire to vote.
This notice is given pursuant to a resolution adopted by the Board of Directors on the 25th day of September, 1956.
TOM BOUCHIER,
President, Board of Directors, White River Water Control and Improvement District.

ATTEST:
ROBERT WORK,
Secretary, Board of Directors, White River Water Control and Improvement District. 3tc.

SHERIFF URGES CAUTION NEAR SCHOOL BUSES

Safety Of Children In Traffic Rests Largely On Shoulders Of Grown-ups

"I'd like to give every parent and every automobile driver a chance to sit behind the steering

wheel of a school bus for just one day. Believe me, they'd learn plenty about child pedestrian safety."

That observation was made today by Sheriff Carl Rains. He was discussing the child safety program which is being conducted in Texas this month by the Texas Safety Association and the Department of Public Safety in cooperation with the National Safety Council.

The sheriff is pretty sure that driving a school bus would convince the adults of one thing—that the responsibility for the safety of children in traffic rests largely on the shoulders of grown-ups.

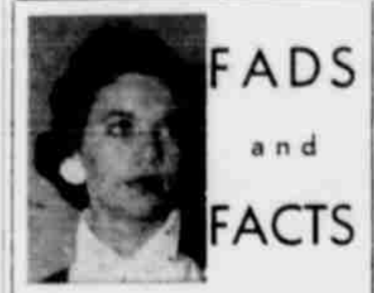
"Sure, we have problem kids on the bus," he said. "But it's my opinion that the problem of most children is their parents."
He believes that the youngsters who get out of control on the school bus, or who disregard safety rules when getting on or off the bus, haven't been taught at home to respect others or to respect law and order.

So much for the adults who are an indirect cause of many child pedestrian accidents. He also had plenty to say about the adults who are a direct factor—the automobile drivers.

"Some of them are in such a hurry to get where they're going that they can't spare the time to stop while the school bus is loading or unloading," he said. "There are others who stop, but who don't make sure that all the children are safely across the street before they start up again. Drivers like these risk the lives of children just to save a few seconds time."

For these drivers and for those who don't slow down near schools and playgrounds or who don't keep a constant eye out for children in traffic, the sheriff had this reminder:

"It's one of the responsibilities of an automobile driver to look out for kids in traffic. If you're not ready to accept this responsibility, you're not ready to drive a car."



FADS and FACTS

By RUBY MONTGOMERY
The Antelopes really made a flying comeback with their 39-20 win over the O'Donnell Eagles in Friday night's game, played at O'Donnell. This made the third win of the season for the Antelopes. Their one loss was last Friday in a hardfought game against the Denver City Mustangs, which we lost 13-7. Tomorrow evening at the Post stadium, the Slaton Tigers will try their luck against the Antelopes for the first conference game of the year.

Lonnie Welborn, who is attending Odessa Junior College, spent the weekend here visiting friends and relatives.

A-3C Larry McCullough of Big Spring arrived Tuesday morning to spend a few days with friends and relatives.

Walter Didway of Snyder and Dickey Beggs of Big Spring were here during the weekend.

Couples seen together during the past week include Joe McCowan and Patsy Rogers, R. A. Thompson and Linda Lushby, Don Beard and Marca Dean Holland, Jimmy Short and Kay Martin, and Weidon Reed and Maritta Pennell.

Let's see a good turn-out at the football game tomorrow night at 7 p. m.—TO SEE POST WIN!

School Lunchroom Menus Are Listed

School lunchroom menus for Oct. 8-12 have been announced as follows:
Monday: Creamed tuna on rice, buttered English peas and carrots, celery sticks, bread, milk, cherry cobbler.
Tuesday: Glamour dogs, red beans, cabbage and apple salad, bread, ice box cookies.
Wednesday: Meat loaf, buttered green beans with potatoes, bread, cucumber pickles, milk, peaches.
Thursday: Baked pork, creamed potatoes, buttered beans, bread, milk, plain jello with whipped cream.
Friday: Pimiento cheese sandwiches, potato chips, tossed salad, milk, devil food cake with icing.

1955 Club Meets In Butler Home

Mrs. Stanley Butler was hostess for a meeting of the 1955 Club Thursday. She gave a demonstration on "closets and storage space".
Roll call was answered with "a task I have simplified."
Refreshments were served to Mrs. Oscar O'Neal, Thurman Maddox, Luther Bilberry, Ben Owen and the hostess.
The next meeting will be at 9 a. m., Oct. 11, in the home of Mrs. Ben Brewer. Each member is asked to bring a homemade toy or gift.
Mr. and Mrs. Tom Eason of San Angelo visited Thursday and Friday with her mother, Mrs. M. C. Hodges, and other relatives.

J-B HOUSE PAINT
Looks Better
Stays Brighter
Lasts Longer
SHORT HARDWARE

All Right for You...
Quality convenience service savings

OLEO
KIMBELL, POUND 19
400 COUNT—KLEENEX 25
PEACHES
SHURFINE, SLICED OR HALVES, 303 TIN 18
HI-C, 46 OZ.—ORANGE ADE 25
Salad Dressing
MIRACLE WHIP, PINT 30
MA BROWN, OL FASHUN, PINT JAR—PICKLES 25
COFFEE
SHURFINE, DRIP OR REGULAR, POUND 95
NORTHERN, COLORED, 3 ROLL PACKAGE—TISSUE 24
BISCUITS
BALLARD, CAN 10
COMET, 12 OZ. PACKAGE—RICE 15
CORN
DEL MONTE, WHOLE KERNEL, 12 OZ. CAN 15

FRUITS VEGETABLES
TOKAY, POUND—GRAPES 10c
FIRM RIPE, POUND—TOMATOES 15c
GOLDEN RIPE, POUND—BANANAS 12 1/2c
WHITE, 10 POUND BAG—POTATOES 53c
NEW CROP, POUND—SWEET POTATOES 10c

MAINE, 2 CANS—SARDINES 19c
CHILI 45c
KIMBELL, NO. 2 CAN
VAN CAMP, CAN—VIENNAS 19c
SHORTENING 75c
SHURFINE, 3 POUNDS
DUDE RANCH, 20 OZ.—STRAWBERRY PRESERVES ... 39c
2 BOXES—KRAFT DINNERS 23c
KIMBELL, NO. 2 CAN—CHERRIES 18c

Frozen Foods
MRS. CHESSEY'S, 2 POUNDS—FRYERS 89c
KEITH, 10 PIECES PACKAGE—FISH STICKS 29c
ESSEX, 10 OZ. PACKAGE—STRAWBERRIES 19c
KEITH, CUT, 10 OZ. PACKAGE—CORN 12 1/2c
DONALD DUCK, 6 OZ.—ORANGE JUICE 12 1/2c

Quality Meats
U. S. GOOD, CHUCK, POUND—ROAST 39c
WILSON, PURE PORK, POUND—LUNCHEON MEAT 39c
FACE, POUND, SUMMER—SAUSAGE 39c
BEST VAL, POUND—BACON 47c
2 POUNDS, PINKNEY—SAUSAGE 59c

Get Extra Savings With Double Thrift Stamps
And They Are Double On Tuesdays.

K&K Food MART
OPEN 7 DAYS A WEEK
419 East Main

Clubs * Personalities * Churches

Please Send or Telephone News to GANELL BABB, Women's Editor, Telephone 11, Not Later Than Wednesday Morning.



OFFICERS—Pictured are the new officers of the Past Chapter, Order of Rainbow for Girls, installed at a recent meeting in the hall. They are, left to right, front row, Jan Haynie, Edna Mae Blodgett and Kay Ballentine, second row, Kay Ballentine, Betty Porterfield, Carolyn Moore, Emma Ruth Miller, Clara Frances Smiley, Dale Ann Jones and Jerry Beth Rains; third row, Barbara Shytle, Lee Ann Mitchell, Leslie Nichols, Mrs. R. B. Dodson, mother advisor, Peggy Butler and Kay Gordon.

Miss Bettie Sue Norman Honored Tea Shower In Maddera Home

Bettie Sue Norman, who is the bride of Charles Norman, Oct. 20, in the First Baptist Church, was honored at a miscellaneous shower given in the home of Mrs. Maddera at 613 West 10th. Mrs. Norman was attired in a green pongee dress with princess lines, and accessories. Mrs. Maddera greeted the bride and presented them to the bride's mother, Mrs. Ray and Mrs. L. L. Chandler, respective bridegroom's parents. Mrs. Kennedy presided at the tea.

Step into superb style and comfort in

FLORSHEIM U-Wings



Light from the first step...light, trim detailing and easy-going comfort quickly identify this U-wing as an inspired example of unsurpassed Florsheim quality. Styled with a proper amount of vigor...you'll find these U-wings meet the demands of busy office detail or more relaxing moments with sleekly tailored ease.

20.95



Church News

The Sacrament of the Lord's Supper will be observed at 11 o'clock Sunday morning at the First Presbyterian Church. The Rev. Clinton Edwards, pastor, announces that his sermon text will be Psalms 122:1. This service will launch the Church Attendance Crusade, which continues through October. The goal in this crusade is every member in church every Sunday. A nursery is available each Sunday with two attendants. It is located in the old manse next door to the church.

Roy Shahan, First Baptist pastor, reports: "Last Lord's Day was a great day in our church. We had 399 in Bible School and the auditorium and part of the balcony were filled for the morning worship. There were three additions to the church, one by a profession of faith in Christ. There were 147 in Training Union and good attendance in the evening worship service. September was one of our best months in church work in every way. The pastor will speak Sunday morning on the subject, 'Life's Finished Work' (John 17:1-4). At the evening service the subject will be 'The Church Ordinances' (Acts 2:37-41; 1 Cor. 11:23-29). We are expecting another great day in all our services next Lord's Day. 'Come thou with us and we will do thee good' (Num. 10:29)."

The junior and intermediate GAs of Calvary Baptist Church met Wednesday for promotion program. Mrs. Jim Hays, W. M. U. president, addressed the group and presented promotion certificates to Wanda Foster, Marion Dean Karr, Emmer Jean Halford, Mickie Barrett, Dorothy Fogarty and Reenie Holly. Mrs. Graydon Howell, intermediate counselor welcomed the girls into their new group. Girls who took "forward step" during the year were presented GA pins by Mrs. W. C. Kiker, junior counselor. They are Dorothy Fogarty, Wanda Foster, Brenda Foster, Mickie Barrett, Emmer Jean Halford and Marion Dean Karr.

Mrs. Walter Boren will be hostess of the Presbyterian Women's Organization at 2 p. m. Monday at the church. Mrs. I. N. McCrary will be program leader. Members of the intermediate girls Sunday School Class at Calvary Baptist Church and their guests were entertained at a party Saturday night in the home of Mr. and Mrs. Roy Brown, Jr. After a series of games, Fritos, punch and cookies were served to Kay Anthony, Dorothy McElroy, Janice Ticer, Sherry Odum, Graydon Howell, Jr., Lucy Ann Howell, Jerry Hays, Jerry White and Mr. and Mrs. Lawrence Lambkin of Lubbock.

Mrs. Stanley Sims, Mrs. Outlaw, Mrs. Hodges, Mrs. Glenn Davis, Mrs. Brewer, Mrs. Mock, Mrs. Gerner and a new council delegate, Mrs. Bill Long of Barnum Springs.

Amity Study Club Has Meeting In Burruss Home September 25

Mrs. Jack Burruss' home was the scene of the first regular meeting for the Amity Study Club year on Sept. 25. Mrs. Lewis Herron was co-hostess. The group repeated the Club Collect in unison and answered roll call with "My Obligation as a Club Member". Mrs. Malcolm Bull discussed "Federation Projects and Their Basic Objectives" and Mrs. Conrad Hartel spoke on "Club Ethics and Hospitality". Mrs. G. K. Cash presided for the business session.

Refreshments were served to Mrs. Leo Acker, Bull, Cash, Bill Cates, Leo Cobb, Bob Collier, Edsel Cross, Thurman Francis, Hartel, N. R. King, Guy Nutt, Bob Olson, V. L. Peel, E. F. Schmidt, Powell Shytle, Pat Walker, Carlton Willingham, George Miller and Jess Michael. Miss Thelma Clark and the hostesses. Amity is observing its 20th year this year. Its motto is "If You Would See Great Things, Look", and the group has the following projects: to conduct absentee voting for shut-ins during all elections; cooperate with county health officers by furnishing clerks for chest x-ray unit; provide magazines for hospital; sponsor Brownie Troop 4; send representatives to meetings of Community Chest, March of Dimes, youth center, Parent-Teacher Association, city library and Red Cross. Officers are Mrs. Cash, president; Mrs. Francis, vice-president; Mrs. Collier, secretary;

Miss Hunt Weds J. Ned Myers In First Baptist Parsonage Sept. 22

Miss Bettie Sue Hunt, daughter of Mr. and Mrs. Grady Hunt, became the bride of Jackie Ned Myers, son of Mr. and Mrs. Jack Myers, at 6 p. m., Sept. 22, in the home of the officiating minister, the Rev. Roy Shahan, First Baptist pastor.

Mrs. Royce Josey, matron of honor, wore a blue sheath dress and a corsage of pink rosebuds. Fred Myers attended his brother as best man. The bride wore an original costume suit of winter white, em- bossed taffeta designed on princess lines. The fitted bodice featured a portrait neckline accented with embroidery, ice blue sequins and seed pearls. The matching coat was lined with ice blue taffeta.



"Hobo" Party Marks Beginning Of Beta Sigma Phi Rush Season

The first Beta Sigma Phi Sorority rush party of the season was held Monday evening in the Garza County Youth Center. A "hobo" theme was emphasized in costumes and decorations.

Pictures were made of the group and games were played. Hot dogs, potato chips, pickles, Cokes and brownies were served.

Mrs. Kirkpatrick Speaks At Scout Meeting Recently

At their regular meeting at the Little House Wednesday, members of Girl Scout Troop 3 elected the following officers: Glenda Hutto, president; Pam McCrary, scribe, and Mary Williams, treasurer.

Attending were Mrs. Johnny Hopkins, Mrs. Mason Justice, Mrs. Dennis Eubank, Mrs. Charles Benson, sponsor, Mrs. Ed Sawyers, Mrs. Bing Bingham, Mrs. Jess Compton, Mrs. Jimmy Bird, Mrs. Bob Garrison, Mrs. Tom Arnett, Mrs. Wallace Simpson, Mrs. Gladys Price, director, Mrs. Jack Kirkpatrick, Mrs. Jimmy Hundley, Mrs. Joy Barron, Mrs. James Minor, Mrs. Max Gordon, Mrs. Bill Fumagalli, Miss Zephie Brown, Mrs. Ed Sims, Mrs. George Pierce, Miss Melba Cowger, Miss Maxine Durrett, Mrs. A. C. Cash, Mrs. Jack Henderson, Mrs. Burney Francis, Mrs. Wagoner Johnson and Miss Ganell Babb.

Baptist Banquet Will Be Tonight

The annual installation banquet for all general and departmental officers of the First Baptist Sunday School and Training Union will be held this evening in the dining hall. Approximately 100 are expected to attend.

A football game theme will be used in the program and decorations. The program will be as follows: referee (master of ceremonies) the Rev. Roy Shahan; game called (invocation) Dean A. Robinson; time out (remarks) Rev. Shahan; team work (reports) Ray Smith, Sunday School superintendent, Tom Williams, Training Union director, Mrs. E. S. Stewart, W. M. U. president and Walter Crider, Brotherhood president; pep rally (special music) Mrs. Manus Samples; "Let's Go Into a Huddle" (banquet talk) the Rev. G. M. Cole, First Baptist Church, Snyder, and game called (benefaction).

Past Matrons Club Is Organized Here

Past Matrons of Post and Southland Chapters of the Order of Eastern Star met Monday evening at the Masonic Hall to organize a past Matrons' Club. The following officers were elected: Mrs. Will Wright, president; Mrs. Jack Myers, vice-president; Mrs. L. G. Thuet, Jr., secretary-treasurer; Mrs. Donald Pennell, chaplain; Mrs. J. H. Haire, marshal, and Mrs. T. W. Hagood, reporter.

4-H Club Members Elect New Officers

Past Senior 4-H Club girls met Monday and elected officers as follows: Oneta Jones, president; Linda Livingston, vice-president; Marilyn Steel, secretary-treasurer; Pat Wheatley, reporter; Sharon Jobe, 4-H Council representative, and Edna Mae Blodgett, recreation leader.

Merrymakers Meet At Richardson's

The Merrymakers Club met at Mrs. Lacy Richardson's Tuesday of last week. After the business meeting, birthday and anniversary gifts were exchanged. Icebox pie, ginger ale-sherbet punch were served to Mrs. L. W. Dalby, T. A. Loyd, G. N. Leggett, E. A. Hargrave, Homer Gordon, Dave Sims, A. E. Floyd, H. F. Wheatley, Lonnie Peel, Nora Willingham, Alice Parsons, J. F. Storie and the hostess. The next meeting will be at Mrs. Sims' home, Oct. 9. Members are asked to bring their thumbies as the afternoon will be spent working on the club quilt.

Mrs. W. Simpson Is Hostess To Club

Mrs. Wallace Simpson entertained the Needlecraft Club in her home Friday afternoon. After an hour of sewing and visiting, refreshments were served. Those present were Mrs. T. L. Jones, Mrs. J. R. Durrett, Mrs. J. D. Glass, Mrs. J. E. Stephens, Mrs. M. J. Malouf, Mrs. H. W. Schmidt, Mrs. J. C. Caylor and the hostess.



PUTS YOU ON A NEW PLANE OF LUXURY WITH VAN HEUSEN'S

FINE CONTINENTAL FLIGHT CHECKS!



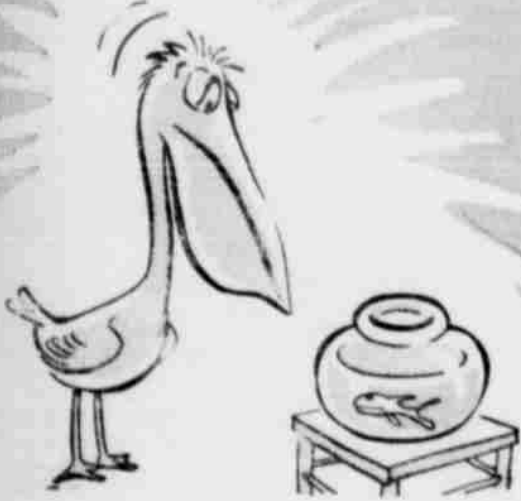
It's Van Heusen's smooth new translation of a European favorite—the smaller, subtler, more conservative Continental Flight-Checks—dynamically styled to American tastes. They're top echelon for town and country wear in high visibility tones of horizon blue, sun tan, mist green and dawn gold. Continental Flight-Checks soar to new heights in fashion, but the prices are strictly on the ground. Just see how little it costs to fill your hangers.

- Dress Shirt 3.95
- Sport Shirt 5.00
- Pajamas 3.95
- Handkerchiefs 65c
- Neckwear 1.50

FEDERAL LAND BANK
FARM AND RANCH LOANS

Terms: 34 1/2 Years Interest: 4 Per Cent
Available Through
TAHOKA-POST NATIONAL FARM LOAN ASS'N.
Offices At Tahoka and Post Duckworth-Weakley Bldg. Each Wednesday

BIG BILLS CAN BE A PROBLEM!



But this is no fish story. Big bills aren't cumbersome when they're handled right. Before contracting any large obligation, ask yourself these questions first:

1. How much will it cost me to finance this?
2. Is this obligation in line with my earning power?
3. Can I meet each payment promptly as it comes due?

Credit Bureau of Post

PHONE 448-W P. O. BOX 218

Auto Inspections Prove Of Value In Accident Cutdown

The 1956-57 automobile inspection period in Texas opened Sept. 15 and will continue through April 15, a period of seven months. Supervisors of auto inspection in this district have not yet furnished The Dispatch with a list of inspection stations in the county, but last year there were six of these stations, five in Post and one at Southland.

The supervisors have urged people to have their vehicles inspected early and avoid delay. "They should get it done now," said L. W. Wilhite, one of the inspectors. "By waiting until the last month of the inspection period, car owners are likely to encounter long lines at inspection stations."

After April 15, 1957, it will be illegal to operate a motor vehicle not bearing the 1956-57 official inspection sticker on public roads in Texas. The stickers are blue in color and shaped as an outline of the state.

Brakes, lighting equipment, horn and warning devices, rearview mirrors and windshield wipers are included in the inspection of a vehicle. These items must be in good condition and properly functioning before a mechanic-inspector can issue the driver a sticker.

Vehicles inspected statewide in the 1954-55 period totaled 3,462,495.

and 3,750,000 were inspected in the 1955-56 period. Forty-four per cent of vehicles inspected in the 1955-56 period required some adjustment. Ten per cent needed brake adjustments, 30 per cent needed adjustment of lights and 4 per cent came under other requirements.

Statistics for 1955 show a 10 per cent over-all reduction in accidents caused by defective vehicles. There were 221,000 reported accidents in the state in 1955. Ten per cent of that number reveals approximately 22,000 accidents prevented by motor vehicle inspection in 1955. The National Safety Council evaluates each accident as an economic loss of \$880. It is calculated that motor vehicle inspections in 1955 brought about a net saving of \$7,372,500 in the state.

Texasans drove approximately 39 1/2 billion miles in 1955 and 2,547 persons were killed in traffic mishaps. This means that 6.4 persons were killed for each 100 million miles traveled. The nation's death rate for 1955 was also 6.4 killed per 100 million miles traveled.

The citizen's attitude toward motor vehicle inspection reportedly has been one of voluntary compliance. As of May 1, 1956, 98 per cent of the vehicles in the state had been inspected.

During the first six months of 1956, The Texas Highway Patrol of this district, which consists of 22 counties in the South Plains area, filed 503 inspection sticker violations.

Of vehicles inspected in 1954-55, 40 per cent needed adjustment, while in 1955-56, 44 per cent required adjustment. The reasons for this increase included license plate lighting requirements, visibility of license plates, strengthening of brake requirements and methods of qualifying mechanic-inspectors, including written tests and demonstrations.

GARZA COUNTY AGENT SAYS

Lawn's Appearance Next Spring May Depend Upon Care Given It This Fall

The appearance a lawn has next spring may well depend upon the care given it during the fall season. County Agent Lewis C. Herron says beautiful lawns just don't happen, they require careful and considerate management.

Soon they should be fertilized. Do this job, says Herron, about 30 days before the first expected frost. By making application early, the grass will have an opportunity to use most of the plant food before going dormant. Too, the fertilizer will allow lawn grasses to go into the winter season in a vigorous condition and they will remain green longer in the fall and grow off earlier next spring. Weeds, during the winter and spring, will also cause less trouble.

The agent suggests using a complete fertilizer with a 2-1-1 or a 1-1-1 ratio applied at a rate to give two pounds of actual nitrogen for each 1,000 square feet of lawn. This amount of nitrogen can

be supplied by using 20 pounds of 10-5-5 or 10-10-10 or 25 pounds of 8-8-8. Some soils do not need potash for crop production but since the cost is small, he believes the results may be very good.

He advises halving the fertilizer. Apply one-half and then distribute the other half at right angles to the first application. This will insure even distribution. The lawn should be watered after the application. Soak the soil to a depth of at least six inches. If the soil is wet when the fertilizer is applied, wash it off the grass onto the soil. Moisture is necessary for plants can not use the food until it is dissolved.

In some sections of the state, Herron says that Bermuda lawns are sometimes overseeded with Italian or annual ryegrass to give green color during the winter. But, he warns, unless the ryegrass is closely clipped during the spring, it may prove harmful to the Bermuda. It competes with

FIRST PLACE WINNER

Miss Janet Stephens, School student, was a first winner in the senior division of the youth department last week's Panhandle Plains Fair in Lubbock. Stephens' first place wintry was a pair of pajamas.

Some 25.7 million hogs were used on farms in 1920 as compared with five million in 1954.

the Bermuda for light, and plant food. He says the Italian or annual ryegrass cause it dies in the spring.

We Buy You

Blackeyes, Mung Beans, Grass Seeds, Guar, Plant most other Soil Building.

HIGHEST CASH PRICE

DORMAN & CO.
W. A. Dorman
Phone POster 3-8223 1928
P. O. Box 303 Lubbock

Santa Fe Railway Will Continue Its Club Work Awards

The Santa Fe Railway will continue to support national 4-H Club work in 1956 by making its annual contribution to the National Committee on Boys' and Girls' Club Work, according to Fred G. Gurley, Santa Fe president.

A contribution of \$15,164.50 provides 68 awards to individual boys and girls and 25 college scholarships to be used in states served by the Santa Fe and for a grant of \$1,000 to the National Committee's service fund.

Under the awards plan, Texas will receive 13 awards, New Mexico seven, and Colorado four. Use of the money is determined by the 4-H Club leaders in each state, who consider individual achievement records of the boys and girls.

In the scholarship program, Texas will receive four, and New Mexico and Colorado each will receive two. They are for \$250 each.

Other states participating are Arizona, California, Illinois, Iowa, Kansas, Missouri, Louisiana and Oklahoma.

Following a custom of many years standing, the Santa Fe will honor its award winners and their leaders with a special dinner in Chicago during the National 4-H Club Congress to be held there this Fall.

NOVEMBER DRAFT CALL.
AUSTIN (SpI.)—The State Selective Service Thursday announced a draft quota of 858 men for November in Texas. The quota is the largest monthly call received since December, 1955. The October quota was 847. The Selective Service also announced a November call on about half of the state's local boards for 1,500 men to take pre-induction physical and mental examinations for future calls.

There is an average of 1.9 police officers for every 1,000 persons in the population of the U. S.



Enter Gulf's "Life of Riley" Contest



WILLIAM BENDIX, star of "The Life of Riley" TV show, points out your royal Riviera playground.

GRAND PRIZE:

LIVE THE LIFE OF RILEY IN A PALACE ON THE RIVIERA WIN 30 FABULOUS DAYS WITH \$200 A DAY TO SPEND



Fly via a luxurious PAN AMERICAN Super 7 Clipper

Fly direct to Nice, France, in 20 hours, via the world's most experienced airline. Live in a Riviera mansion for four fabulous weeks. Reign in a royal home, with all modern conveniences.

Servant staff, luxury furnishings, glamorous patio, private swimming and boating facilities... all this and more... all yours in a stunning setting on the Mediterranean!

It's a once-in-a-lifetime trip for

two. You enjoy scores of exciting holiday adventures—with \$200 a day to spend! Your own limousine whisks you through a gay round of gala events in nearby Nice, Cannes and other Riviera playgrounds.

A world of pleasure awaits you. Golden beaches, festive occasions, dazzling scenery... sports, pleasure, regal relaxation... you live the Life of Riley for a magnificent, memorable month!

Simple to enter—Easy to win!

Just complete this jingle. Enter as often as you wish. All entries must be on official Contest Entry Blanks, which contain complete contest rules. Get yours free at any Gulf station. Contest closes midnight, Oct. 31.

Gulf No-Nox is the gasoline that's famous 'cause it burns so clean. Fill up at Gulf and you will see.

(Make your last word rhyme with "see.")

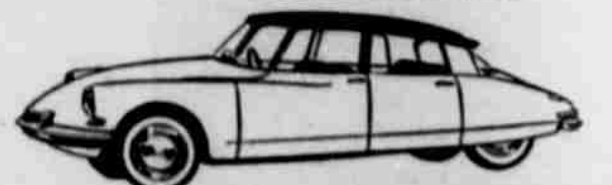
Clean-burning No-Nox gives you many more miles of new-car power!

HINTS TO HELP YOU WIN!

1. No-Nox burns clean because Gulf refines out the "dirty-burning tail-end" found in ordinary gasoline.
2. No-Nox combats formation of carbon deposits which "stuck" engine power.
3. No-Nox protects your engine, keeps new-car power intact for thousands of extra miles.
4. Gulf No-Nox is a high-octane gasoline—gives more miles per gallon in short-trip driving.

NEXT 4 TOP PRIZES 4 NEW CITROEN SPORTS SEDANS!

The revolutionary DS19 by CITROEN of France—safer, smoother, first with automatic air-oil suspension



and a Gulf galaxy of 183 other prizes

- 8 Revolutionary TAPPAN Electronic ranges—cook at amazing speed without heat.
- 12 MAGNAVOX Color TV Sets. Featuring Hi-Fidelity Color and Sound.
- 10 HIGGINS, Inc. of New Orleans 14-foot deluxe outboard runabouts and trailers.
- 18 1957 FRIGIDAIRE Laundry Pairs. "For the savin'gest washdays ever."
- 18 Magnificent MAGNAVOX Hi-Fidelity Radio-Phonographs—4 multiple speakers.
- 50 BROWNING Shotguns. Double Automatic Lightweight models with cam.
- 67 Montague-Ocean City Fishing Sets. Complete deluxe fishing outfit.



GET FREE ENTRY BLANKS FROM YOUR GULF DEALER

—where you get that clean-burning No-Nox!

LESTER NICHOLS

GULF CONSIGNEE

W. O. THAXTON'S GULF PRIDE STATION
BOB WILLOUGHBY'S GULF STATION
J. I. COOK STATION, Close City

G. W. WOODRAL STATION, Justiceburg
W. C. KIKER'S GULF STATION
C. R. BALDWIN, Graham, Route 3

COX'S

NOTICE:

We have employed a **BUILDING FOREMAN** to supervise construction on all types of building jobs available thru us.

When you need our **CARPENTER**, call us. He is available to build you a new home, or to repair your screen door. We are interested in any job, **NO MATTER HOW SMALL.**

ALL WORK CAN EITHER BE DONE OR SUPERVISED BY OUR OWN EMPLOYEES.

DEPEND ON COX'S FOR . . .

"COMPLETE BUILDING SERVICE"

LABOR — MATERIALS — LOANS

R. E. COX LUMBER CO.

IN POST

FOR ALL WE HOLD SACRED.... ATTEND CHURCH!

CHURCH CALENDARS

POST
FIRST BAPTIST CHURCH
 Rev. Shahan, pastor
 Bible School 9:45 a.m.
 Morning Worship 10:30 a.m.
 Radio Broadcast 11:15 a.m.
 Training Service 7:00 p.m.
 Evening Worship 8:00 p.m.
Wednesday
 Officers and Teachers Meeting 7:00 p.m.
 Prayer Service & Bible Study 7:30 p.m.
 Choir Rehearsal 8:15 p.m.

FIRST PRESBYTERIAN CHURCH
 Rev. Clinton Edwards
 Sunday School 10:00 a.m.
 Morning Worship 11:00 a.m.
 Women's Organization 3 p.m.
 2nd and 4th Mondays

FIRST CHRISTIAN CHURCH
 Rev. Almon Martin
 Sunday School 10:00 a.m.
 Morning Worship 11:00 a.m.
 C.Y.F. 5:30 p.m.

FIRST METHODIST CHURCH
 Rev. W. L. Porterfield
 Sunday School 9:45 a.m.
 Morning Worship 11:00 a.m.
 M.Y.F. 6:45 p.m.
 Evening Worship 7:30 p.m.
Second Monday
 Methodist Men 7:30 p.m.
Second Wednesday
 Board Meeting 7:30 p.m.

CHURCH OF CHRIST
 Otis Proffitt, Minister
 Bible Study 10:00 a.m.
 Morning Worship 11:00 a.m.
 Evening Classics 5:30 p.m.
 Evening Worship 6:30 p.m.
Monday
 Ladies' Bible Study 2:30 p.m.
Wednesday
 Bible Study 7:00 p.m.

CHURCH OF THE NAZARENE
 Rev. Cecil Stowe
 Sunday School 9:45 a.m.
 Worship Service 10:45 a.m.
 NYPS 7:00 p.m.
 Evening Service 7:30 p.m.
Wednesday
 Prayer Meeting 7:30 p.m.

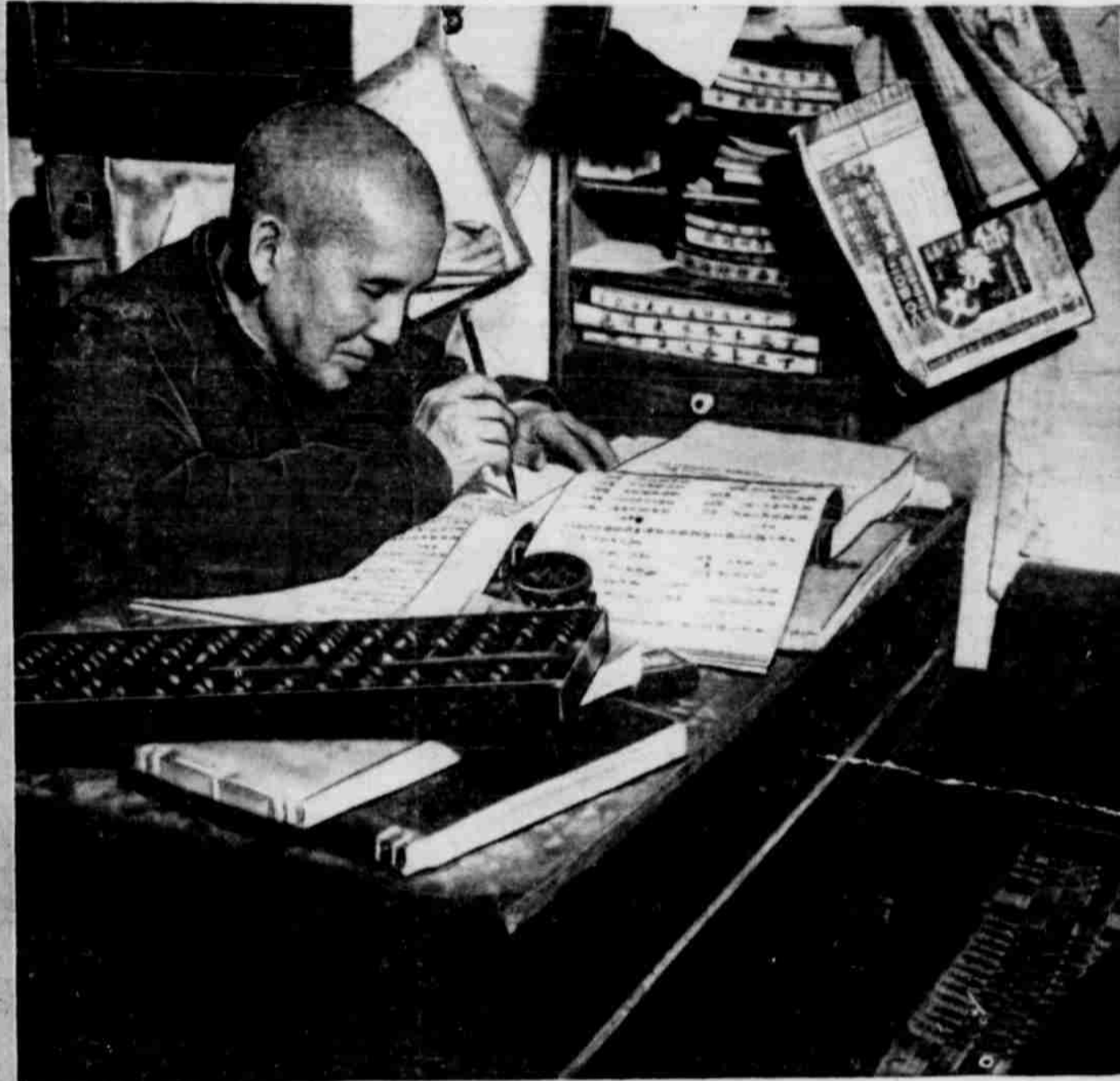
CALVARY BAPTIST CHURCH
 Graden Howell, Pastor
Sunday
 Junior Choir 9:30 a.m.
 Sunday School 9:45 a.m.
 Morning Worship 10:50 a.m.
 Training Union 7:00 p.m.
 Evening Worship 8:00 p.m.
Monday
 Brotherhood and WMU 7:30 p.m.
Wednesday
 Prayer Service 7:30 p.m.

ASSEMBLY OF GOD
 J. R. Brincefield
 Sunday School 9:45 a.m.
 Morning Worship 11:00 a.m.
 Evening Worship 8:00 p.m.
Wednesday
 Prayer Meeting 7:30 p.m.
Friday
 C. A. Service 7:30 p.m.

HOLY CROSS CATHOLIC CHURCH
 Rev. James Erickson
Sunday
 Mass 5:00 p.m.
 (Church located Northeast part of town)

某某人之鄰里

Comebody's Neighbor



He probably doesn't look much like the man next door. He does his arithmetic with the aid of a centuries-old gadget called the abacus, and he writes the results in characters that would be quite undecipherable to you... yet you probably have far more in common with him than you'd ever dream.

Like you, he wants peace. Like you, he wants a good future for his children, and he wants them to have more than he has had. Like you, he has experienced happiness and sorrow, love and disillusionment. Like you, he prays.

On World Wide Communion Sunday, he will be going to Church and, though this may seem a bit odd to you, he will be praying for you. Yes... for you, and for everyone else in the world, friend or enemy.

Why not join him? Why not, on World Wide Communion Sunday, go to your own church and include him... him and everyone else... in your prayers.

Pray for peace, too. Remember, the power of prayer is a wonderful thing... especially when it is given many voices.

THE CHURCH FOR ALL... ALL FOR THE CHURCH

The Church is the greatest factor on earth for the building of character and good citizenship. It is a storehouse of spiritual values. Without a strong Church, neither democracy nor civilization can survive. There are four sound reasons why every person should attend services regularly and support the Church. They are: (1) For his own sake. (2) For his children's sake. (3) For the sake of his community and nation. (4) For the sake of the Church itself, which needs his moral and material support. Plan to go to church regularly and read your Bible daily.

Day	Book	Chapter	Verses
Sunday	Matthew	22	14-26
Monday	John	12	1-17
Tuesday	1 Corinthians	11	17-24
Wednesday	1 Corinthians	12	12-21
Thursday	1 Corinthians	13	1-13
Friday	1 Timothy	4	1-18
Saturday	1 John	3	12-24

Copyright 1954, Editor Adm. Service, Staunton, Va.

POST
CHURCH OF GOD OF PROPHECY
 A. W. West, Pastor
 Sunday School 10:00 a.m.
 Morning Worship 11:00 a.m.
 Evening Worship 7:30 p.m.
 1st Tuesday Missionary Service 7:30 p.m.
 2nd Tuesday Prayer Meeting 7:30 p.m.
 3rd Tuesday Bible Study 7:30 p.m.
 4th Tuesday C.F.M.A. Services 7:30 p.m.
 Thursday Victory Leaders 7:30 p.m.

MEXICAN BAPTIST CHURCH
 Raul Solis, Pastor, (Tel. 516J)
 Sunday School 9:45 a.m.
 Worship Service 11:00 a.m.
 W.M.S. 12:15 p.m.
 Brotherhood 12:15 p.m.
 Training Union 7:30 p.m.
 Worship Service 8:30 p.m.
Wednesday
 Bible Doctrine Studies 7:45 p.m.
 Prayer Meeting 8:15 p.m.

"TODOS BIENVENIDOS"
 (Church located on Northeast side of town on Spur highway)
CHURCH OF GOD OF PROPHECY (Spanish)
 Esteban Dela Cruz, Leader
 Sunday School 10:00 a.m.
 Worship 11:00 a.m.
 Evening Worship 7:30 p.m.
 Wed. Eve. Worship 7:30 p.m.
 Sat. Eve. Victory Leaders 7:30 p.m.

PLEASANT HOME BAPTIST CHURCH
 Rev. Emory McFrazier
 Sunday School 9:45 a.m.
 Training Service 6:30 p.m.
Second And Fourth Sundays
 Morning Worship 11:00 a.m.
 Evening Worship 7:30 p.m.
Wednesday
 Prayer Service 7:30 p.m.

GRAHAM CHURCH OF CHRIST
 Bible Study 10:00 a.m.
 Morning Worship 11:00 a.m.
 Evening Worship 8:00 p.m.
METHODIST CHURCH
 Sunday School 10:00 a.m.
 Morning Worship 11:00 a.m.
 Evening Worship 8:00 p.m.

CLOSE CITY CHURCH OF CHRIST
 Bible Study 10:00 a.m.
 Morning Worship 11:00 a.m.
 Evening Worship 8:00 p.m.
FRIENDSHIP BAPTIST CHURCH

Rev. Charles Nowell, Pastor
 Sunday School 10:00 a.m.
 Morning Worship 11:00 a.m.
 Training Union 7:30 p.m.
 Evening Worship 8:30 p.m.
Monday
 WMU 2:30 p.m.
Wednesday
 YWA, RA and GA 8:00 p.m.
 Prayer Meeting 8:00 p.m.

PLEASANT VALLEY BAPTIST CHURCH
 Rev. J. W. Rives, Pastor
 Sunday School 10:00 a.m.
 Morning Worship 11:00 a.m.
 Training Union 7:30 p.m.
 Evening Worship 8:30 p.m.
Wednesdays
 Prayer Meeting and Bible Study 8:00 p.m.
2nd and 4th Thursdays
 W.M.U. and Bible Study 8:00 p.m.

JUSTICEBURG BAPTIST CHURCH
 Sunday School 10:00 a.m.
 Morning Worship 11:00 a.m.
 Evening Worship 8:00 p.m.
New Congregation
CHURCH OF CHRIST
 Located at 115 West 14th St.
 Sunday Morning Service 10:30 a.m.
 Sunday Evening Service 7:30 p.m.

This Religious Feature Is Made Possible Through Cooperation of Garza County Ministers And Is Paid For By The Public Minded Individuals And Firms Listed Below:

- O. K. FOOD STORE**
E. E. and ESTELLE PIERCE
312 North Broadway
- CAPPOCK CHEVROLET, INC.**
"A Good Deal Depends On Your Dealer"
- DAIRY MART**
Mr. and Mrs. Joe Gibson
- LEVI'S BUNCH CAFE**
"Where Good Food Is Never Accidental"
- SHYTTLES' IMPLEMENT CO.**
John Deere Quality Farm Machinery
- HUDMAN SERVICE STATION**
HANS HUDMAN
"Across The Tracks"
- G. F. WACKER STORES**
"A City Store At Your Door"
- POST FEED & SEED**
PURINA AND EVERLAY FEEDS
Baby Chick, Poultry and Livestock Remedies
MR. AND MRS. W. A. LONG

- EARL ROGERS' FEED STORE**
Feeds And Ford Tractors
- DUCKWORTH & WEAKLEY**
- PIGGLY - WIGGLY**
S & H Green Stamps
PAUL JONES, Mgr.
- GREENFIELD HARDWARE CO.**
"We Buy Merchandise To Sell"
- POST AUTO SUPPLY**
DeSoto-Plymouth - Dodge Trucks
SALES AND SERVICE
- WESTERN AUTO ASSOCIATED STORES**
Mr. and Mrs. Jess Michael

- POSTEX COTTON MILLS, INC.**
"Sleepy Time Is Garza Time"
- BROWN BROTHERS, Et Al.**
- HUDMAN FURNITURE COMPANY**
"Your Credit Is Good"
- S. E. CAMP**
Texaco Wholesale
- WILSON BROTHERS**
"Bumper To Bumper Service"
- MASON FUNERAL HOME**
"Dignified Service Since 1915"
- INCE OIL CO. SERVICE STATION**
Onyx Gasoline - Kelley Springfield Tires
... LAWRENCE GRAY ...

- Compliments Of ...
CARL RAINS
Sheriff, Tax Assessor-Collector
Garza County
- GULF PRODUCTS**
LESTER NICHOLS
CONSIGNEE
- KIRKPATRICK AUTO ELECTRIC**
"Exide Battery Headquarters"
- GRAEBER'S GROCERY & MARKET**
"Serving This Community For 39 Years"
- THAXTON CLEANERS**
For Quality Dry Cleaning
"We Give S & H Green Stamps"
- FORREST LUMBER COMPANY**
"Everything For The Builder"
- D. C. HILL BUTANE**
Clairmont Highway
- HIGGINBOTHAM BARTLETT CO.**
"We Furnish Your Home From Plans To Paint"

This page is published in the hope that the church of your choice will grow stronger with your regular attendance and support.

Play Begins Friday For All District Teams Except Whirlwinds

Exception of Floydada... District teams start firing Friday... with conference on tap from here on...

District 2-AA teams have against non-conference... is the only underdog as loop play opens...

Final non-conference... Post downed O'Donnell... by Seagraves, 20-0...

Fines ranging upward from \$100 were common as justices of the peace dealt sternly with violators...

The director said some sharp punishment was dealt out to deer herd raiders... a Houston man paid \$150 and costs for killing a spike buck...

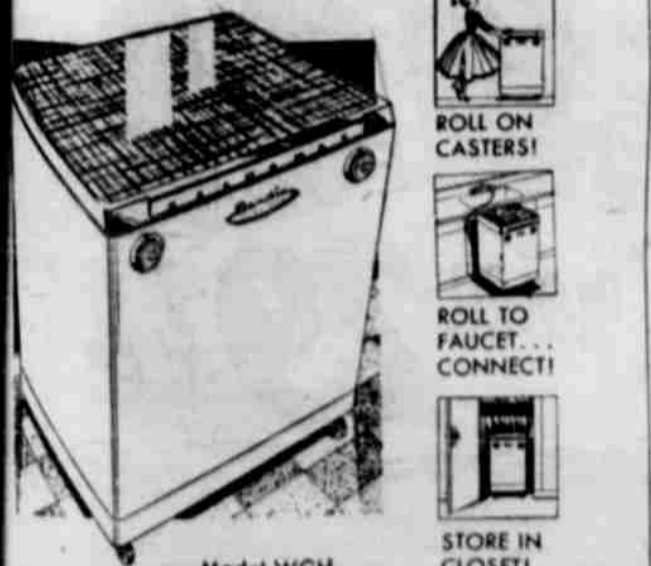
A Mercedes resident killed a blue rock pigeon, protected by law, and paid a fine of \$25 and costs... this pigeon, which is comparatively rare, has a red bill and red feet...

Other cases on the report included those for hunting from an automobile, shooting from a public road, possession of wild fawn deer and killing quail out of season.

Mrs. Earl Elkins spent Tuesday in Lubbock.

ONLY BENDIX has Formica Worktops

heat-resistant, chip-proof, stain-proof... in exciting colors—over 4 sq. ft. extra work space!



ROLL BENDIX ECONOMAT FULLY AUTOMATIC WASHER ANYWHERE!

This compact, portable unit is the most completely automatic washer in its price class! Fills, washes, rinses, drains automatically... controls water temperature automatically... damp dries with exclusive, gentle vacuum action—like a giant pair of gentle hands—automatically!

Choose gleaming white or Bendix Color-Glo Pink, Green, Yellow! SMALL DOWN PAYMENT, EASY MONTHLY INSTALLMENTS (casters optional) BENDIX HOME APPLIANCE DIV., AVCO Mfg. Corp., Cincinnati 25, Ohio

J.'s Furniture Co.

Slaton Back Takes Over Point Lead

Dickie Thomas of Slaton scored 15 points—two touchdowns and three extra points—Friday night in his team's 29-14 victory over Roscoe to take over the scoring lead in District 2-AA, with a total of 40 points.

No report had been received late Monday on who scored Abernathy's touchdown and extra point in its 13-7 defeat at the hands of Dimmitt. Before Friday night's game, Kenneth Jordan, Abernathy fullback, led the district scoring with 31 points.

James Williams of Post climbed up among the leaders by scoring three TD's in the Antelopes 29-14 win over O'Donnell.

Following are the scoring totals through Friday night's games, which completed non-conference action for the District 2-AA teams this season.

Table with columns: Name, td, ep, tot. Lists players from various schools and their statistics.

Early-Day Circuit Rider Is Claimed

Funeral and burial services were conducted Tuesday in Littlefield for James Oscar Gore, 87, a retired Methodist minister and early-day circuit rider in this area, who died Saturday morning after a brief illness.

Mr. Gore was born in the Indian Territory. He came to the South Plains in 1904 and became a circuit rider for the Tahoka circuit, which included Lynn, Dawson and Garza counties.

He built the first church in Tahoka and preached the first sermon in Lamesa in the winter of 1904. He later moved to New Mexico where he retired, but continued to preach in area towns he could reach by horseback. He moved to Littlefield nine years ago.

Mr. Gore is survived by his wife; two sons, Griswold of Littlefield and Horace Gore of Hondo, and one sister, Mrs. Pauline Thomas of Sulphur Springs.

Miss Frances Craig of Waco is spending a few days visiting friends and relatives here and in Lubbock.

Now...HEAVY DUTY POWER you can steer with ONE HAND

Advertisement for International 300 Utility tractor, highlighting 'POWER STEERING'.

Advertisement for a tractor wheel tread adjustment, showing a tractor wheel and a person adjusting it.

Dowe H. Mayfield Co., Inc.

Fluvanna Preacher Is Speaker At Southland Methodist Church Sunday

The Rev. J. A. Walker of Fluvanna was guest speaker at the Southland Methodist Church Sunday in the absence of the pastor, the Rev. Mr. Dixon, who is hospitalized because of a knee injury. Visitors at the church Sunday were Mrs. Walker and Laurie Ruth, Mr. and Mrs. Clay Oats and sons of Cooper and Ross Dunn, who is attending McMurry College in Abilene.

Mr. and Mrs. Oscar Dial of Alvin, Calif., spent last week with her brother and family, the Roy Williams.

Mr. and Mrs. Steve Dearth of Amarillo attended services at Gordon Sunday and were dinner guests of her parents, the Noble Wynns.

Mr. and Mrs. Norman Leland of Lubbock were Sunday visitors in the T. A. Warren home.

Several women from the community entered handicraft in the Lubbock Fair last week. Mrs. Max Jackson won second place on a crocheted hat and third on a planter.

Southland football team won over Wellman in a game played there Friday night by a score of 52-20. Several Southland fans went to Wellman for the game.

The W. A. Fields family visited the John Easts at Wilson Sunday afternoon.

Mmes. Hub Haire, Sam Martin, Jack Myers and Harley Martin attended an Eastern Star meeting at Brownfield last Tuesday night.

The Chris Gindorf family went to Wilson Saturday night for a celebration honoring her nephew, Gilbert Steinhauser on his birthday. The honor guest's sister of Albuquerque, N. M., provided the decorated cake for the party.

Friends who visited Mrs. Ed Denton last week were Mmes. Mary Edwards, L. E. Bartlett and B. L. Billingsley of Lubbock, E. K. Ridd and Teddy of Slaton, F. W. Callaway, Jack Hargrove, Hub Haire, Herbert Dunn, Dan Siewert, Sam Martin, Alfred Basinger, Houston Haire and W. M. Bruster.

Mrs. R. H. Haliburton and her son, Bobby, and wife visited her parents at Denison last weekend.

Mrs. R. R. Jones and daughter, Mrs. Heywood Basinger, have returned home from Vernon, where they have been receiving medical treatment for the last three weeks. Visiting Mrs. Jones during the weekend were a daughter, Mrs.

Officers Elected By Library Club

Officers for the Post High School Library Club were elected in a recent meeting, according to the librarian, Mrs. Lillie McRee.

They are: Frances Bird, president; Betty Nelson, vice president; Ruth Ann Long, secretary; treasurer: Patsy Ethridge, reporter; Jo Ann Cornett, activity chairman; Allan Brown and Marilyn Huffstader, assistant chairmen; Linda Messer, Student Council representative, and Pat Crowley, district delegate.

The group also discussed plans for a party in the near future and set membership fees of 25 cents.

Mr. and Mrs. N. A. Lusby and family and Miss Ruby Montgomery attended the Lubbock Fair Thursday evening.

VA Questions And Answers

Q. I am a disabled Korean veteran. I want to take vocational rehabilitation training, but I've been told it must be full-time. Does that mean I will be prohibited from training?

A. No. Although veterans usually are required to devote full-time to their training, less than full-time training may be permitted if their disabilities prevent them from taking a full-time course.

Q. Would it be possible to get a GI business loan to engage in business in a foreign country?

A. No. The business must be located in the United States, its territories or possessions.

Q. I hold a World War II GI term insurance policy. Will I have to take a physical examination in order to convert it to a permanent plan?

A. No. A physical examination is not necessary to convert your term insurance to a permanent plan.

Q. Is flight training allowed under the new War Orphans Education program?

A. Flight training by itself is prohibited. It may be taken, however, if it is part of a standard college course for which credit is given toward a degree.

Mozelle Edwards and Freda Kennedy, freshman students at Hardin-Simmons in Abilene, spent the weekend here visiting their parents, Mr. and Mrs. Loyd Edwards and Mr. and Mrs. Pete Kennedy.

Mr. and Mrs. H. D. Hallman and Miss Mattie Dabbs arrived home Saturday after two weeks vacation in California, where they visited relatives.

Mrs. Pauline Kilpatrick returned home Saturday after spending two weeks visiting her daughter and family in Wisconsin.

Mr. and Mrs. Paul Hodrick and girls of Lubbock were guests of friends and relatives during the weekend.

Advertisement for Hudman Funeral Home, featuring a large graphic of a funeral home building and the slogan 'So wise a choice'.

Hudman Funeral Home

Large advertisement for the 'Fair' at Fair Grounds, featuring the word 'Fair' in large stylized letters and details about rides and shows.

Advertisement for County-Wide Amateur Contest, including details about the contest date, location, and prizes.



DOUBLE-BARRELLED

\$25,000.00 GRAND PRIZE

GENERAL MILLS' 1956 ELECTION QUIZ

SEVEN WEEKLY FIRST PRIZES

7 WEEKLY FIRST PRIZES of Philco Dream Sets
 REFRIGERATOR-FREEZER, RANGE, AUTOMATIC WASHER + DRYER
2 WEEKLY SECOND PRIZES
 PHILCO 21-INCH COLOR TV SETS
60 WEEKLY THIRD PRIZES
 PHILCO ALL-TRANSISTOR RADIOS



FLOUR

GOLD MEDAL, KITCHEN TESTED, 10 LB. BAG

8

40 OZ. BOX—**BISQUICK**.....

M & M, 6 OZ. BAG—**CHOCOLATE CONFECTIONS** 29c

SUPREME, 16 OZ. BAG—**PECAN SANDIES** 49c

SUNSHINE, LARGE BOX—**HI-HO CRACKERS** 35c

JUICE
 SANTA ROSA, PINEAPPLE, 46 OZ. CAN
25c

MELLORINE PEACHES

PLAINS, ASSORTED FLAVORS, HALF GALLON

3

VAL-VITA, NO. 2 1/2 CAN

2

LIBBY'S, 14 OZ. CAN—**DEEP BROWN BEANS** 15c

LIBBY'S 303 CAN—**GARDEN LIMAS** 27c

LIBBY'S, 16 OZ. CAN—**SPAGHETTI and MEAT BALLS** 25c

PIONEER, 10 OZ. PKG.—**VANILLA WAFERS** 25c

FRESH, POUND— YELLOW SQUASH 7 1/2c	CALIFORNIA, POUND— CANTALOUPE 10c
BANANAS 12 1/2c	GOLDEN FRUIT, LB.
CABBAGE 2 1/2c	FIRM HEADS, LB.
APPLES 12 1/2c	COLORADO DOUBLE RED, DELICIOUS, SMALL SIZE, LB.
FRESH BUNCH— GREEN ONIONS 7 1/2c	CALIFORNIA GREEN, LARGE STALK, EACH— CELERY 12 1/2c

Your Choice **29¢ each**

HILLS-O-HOME, FROZEN, 10 OZ. PKG.—**WHOLE BABY OKRA** 19c

THOMAS, 16 OZ. PKG. FROZEN—**MELON BALLS**

STRAWBERRIES

WESTERN WONDER, 10 OZ. PKG.

PARKERHOUSE OR CLOVERLEAF, FROZEN RITE, 24 CT.—**FROZEN ROLLS** 45c

APPLE, CHERRY, PEACH, PET RITZ, 24 CT.—**FROZEN FRUIT PIES**

LIBBY'S FROZEN, 10 OZ. PKG.—**BABY LIMAS** 25c

LIBBY'S, BEEF, CHICKEN, TURKEY, 8 OZ.—**FROZEN POT-PIES**

LEMONADE

LIBBY'S FROZEN, 6 OZ. CAN 10

SALAD DRESSING

SALAD BOWL, QUART

HEINZ, LARGE BOTTLE—**KETCHUP** 25c

WHITE KARO, NO. 1/2 BOTTLE—**SYRUP** 25c

UNCLE BEN'S, 28 OZ. BOX—**RICE** 37c

GEHARDT'S, NO. 300 CAN—**CHILI** 29c

ANGELUS, 6 OZ. BOAT—**MARSHMALLOWS**

PATIO BEEF, NO. 300 CAN—**TAMALES**



SELECTION CONTEST

Pard G
PRESIDENTIAL PARADE CONTEST

\$20,000.00
FIRST PRIZE

GET YOUR FREE ENTRY BLANK AT OUR STORE

REDEEM YOUR PARD G COUPONS HERE

- | | |
|----------------------------------------------------------------------------------------|--------------------------------------------|
| LARGE BOX, WITH YOUR 5c COUPON—
OXYDOL 28c | REGULAR CAN
JOY 39c |
| CAMAY, REGULAR
TOILET SOAP 3 bars 25c | CAMAY BATH
TOILET SOAP 2 bars 25c |
| TIDE WITH YOUR 8c COUPON, RECEIVED IN MAIL 2 LARGE BOXES 56c | |
| RAZORS GILLETTE, LIGHT, MEDIUM, OR HEAVY, WITH FREE BASEBALL ENCYCLOPEDIA \$1.00 | |
| GILLETTE, 10 BLADES—
RAZOR BLADES 49c | GILLETTE—
FOAMY SHAVE 69c |
| WITH YOUR 8c COUPON, LARGE TUBE—
CREST 45c | BAYER'S, 15c TIN—
ASPIRIN 10c |
| QUART—
CLOROX BLEACH 19c | NORTHERN—
TOILET TISSUE ... 3 rolls 25c |

2ND PRIZE
\$10,000.00

(5) 3RD PRIZES
FORD COUNTRY SQUIRE STATION WAGONS

(30) 4TH PRIZES
\$15,000 NATURAL MINK STYLES

(200) 5TH PRIZES
RCA TRANSISTOR 6" POCKET SIZE PORTABLE RADIOS

PIGGLY WIGGLY WILL GIVE YOU \$2,500.00 IF YOU AS OUR CUSTOMER WIN FIRST OR SECOND PRIZE!

NYLON HOSE FAMOUS BRAND 51 GAUGE, 15 DENIER **2 Pairs 98c**

KLEENEX 400 COUNT BOX **25c**

- MARSHALL, NO. 1 FLAT CAN—
CRUSHED PINEAPPLE 15c
- HUNT'S, NO. 2 1/2 CAN—
PURPLE PLUMS 25c
- 1 POUND CELLO BAG—
KRAFT'S CARAMELS 35c

- BACON** Wilson's Certified, Lb. **53c**
- FRYERS** SWIFT PREMIUM, FRESH DRESSED, WHOLE, POUND **29c**
- | | | |
|---------------------------------------------------|---------------------------------------------------|--------------------------------------------------------|
| WATER BREADED, 10 OZ. PKG.—
SHRIMP 53c | FRESH GROUND, LB.—
HAMBURGER 29c | U. S. GOOD CALF, LB.—
CHUCK ROAST 39c |
| FISHERMEN, 1 LB. PKG. FILLETS—
MERCH 39c | E & R, ALL MEAT, 1 LB. CELLO—
FRANKS 39c | U. S. GOOD CALF, LB.—
ROUND STEAK 79c |
| FRESH FROSTED PORK, LB.—
PARERIBS 39c | U. S. GOOD CALF, LB.—
RIB STEAK 69c | U. S. GOOD CALF, PINBONE, LB.—
LOIN STEAK 69c |
- PORK SAUSAGE** PINKNEY'S, PURE PORK, 2 LB. BAG **49c**

- TUNA** LUCKY STRIKE, CHUNK STYLE, NO. 1/2 CAN **25c**
- BEANS** GREEN, ROSEDALE BLUELAKE CUT, 303 CAN **2 FOR 25c**
- CORN** KOUNTY KIST, 12 OZ. WHOLE KERNEL, VACUUM PACK **2 FOR 25c**
- EGGS** SMALL SIZE REGULAR CARTON, FRESH, FULLY GUARANTEED, DOZ. **39c**
- JAM** BAMA, PURE GRAPE 20 OZ. DECORATED TUMBLER **29c**

PARD DOG FOOD
 2c OFF CAN, 16 OZ. CAN NET PRICE **2 cans 25c**

- CHEESE** KRAFT'S VELVEETA, 2-LB. BOX, EACH **74c**
- | | | |
|---------------------------------------------------|----------------------------------------------|-------------------------------------------------|
| WATER FREESTONE, 303 SLICED—
PEACHES 29c | HUNT'S, NO. 2 1/2 CAN—
APRICOTS 25c | DINTY MOORE, 24 OZ. CAN—
BEEF STEW 39c |
|---------------------------------------------------|----------------------------------------------|-------------------------------------------------|
- PORK & BEANS** MARSHALL, NO. 300 CAN **3 FOR 25c**
- | | | |
|-------------------------------------|----------------------------------------------------------|-----------------------------------------------------|
| GIANT, 303 CAN—
AS 19c | LIBBY'S, SOUR OR DILLS, 22 OZ. JAR—
PICKLES 33c | BETSY ROSS, 24 OZ. BOTTLE—
GRAPE JUICE 29c |
| TON'S, 1/2 LB. PKG.—
A 29c | MACARONI, 7 OZ. BOX—
SKINNERS 2 for 25c | LIBBY'S 303 CAN—
GARDEN LIMAS 27c |





JACK MORRIS



ANDY SCHMIDT



KENNY POOLE



JAMES WILLIAMS



JERRY HAYS



LEON DAVIS



DARRELL JONES



RAY GARY



NOEL WHITE



ARLON FORD



DAN RANKIN



DON AMMONS



HOWARD JONES



AUVY MCBRIDE



BILLY WILLIAMS



VICTOR HUDMAN



DONALD YOUNG



GARY WELCH



BRYAN WILLIAMS III



SAMMIE MARTIN



CLINTON SMITH



RONNIE KENNEDY



JERRY MCCAMPBELL



POST ANTELOPES VS. SLATON TIGERS

FIRST BIG CONFERENCE GAME OF THE SEASON

FRIDAY NIGHT OCTOBER 5TH

We're Behind You All The Way Antelopes!

THIS PAGE IS SPONSORED IN THE INTEREST OF GOOD SPORTSMANSHIP BY THE FOLLOWING MERCHANTS:

- | | | |
|------------------------------|-------------------------------|-----------------------------------|
| INCE OIL COMPANY | S. E. CAMP — TEXACO | TOM POWER, FORD DEALER |
| AL NORRIS TRUCKING CO. | JUDY'S CAFE | R. J.'S FURNITURE COMPANY |
| FERGUSON GROCERY AND MARKET | WESTERN AUTO | BROWN'S RECREATION CLUB |
| IVEN CLARY'S SERVICE STATION | WHITE AUTO STORE | THE LAVELLE SHOP |
| POST FEED AND SEED | SHORT HARDWARE | GREENFIELD HARDWARE |
| CLANTON CONSTRUCTION COMPANY | HUDMAN FURNITURE COMPANY | CUMMINGS' BARBER SHOP |
| WESTSIDE CLEANERS | PEEL'S TEXACO SERVICE | MEDICAL AND PROFESSIONAL BUILDING |
| TOM'S PLACE | FORREST LUMBER COMPANY | INGRAM'S BARBER SHOP |
| TRIANGLE SERVICE STATION | GARNER BUTANE COMPANY | BROWN BROS., Et Al |
| DOWE H. MAYFIELD COMPANY | HUDMAN SERVICE STATION | TV-APPLIANCE CENTER |
| FASHION CLEANERS | THE FLOWER SHOP | GULF WHOLESALE, LESTER NICHOLS |
| LONE STAR SERVICE STATION | SHYTL'S IMPLEMENT COMPANY | DUCKWORTH AND WEAKLEY |
| WINDHAM GROCERY AND STATION | McCRARY APPLIANCE | POST INSURANCE AGENCY |
| IDEAL LAUNDRY | DODSON'S JEWELRY | AMERICAN GRILL |
| HODGES TRACTOR COMPANY | MASON AND COMPANY | TOWER THEATRE |
| JONES ICE AND GRAIN | HIGGINBOTHAM-BARTLETT COMPANY | PHILLIP'S QUICK SERVICE |
| PARKER'S BAKERY | WACKER STORE | JACK HENDERSON, COTTON BUYER |



HARRY SMITH



CHARLES MORRIS



LEON BRADDOCK



ROBERT CARLTON



JACKIE CARPENTER

WOLF HUNT

Texas - Oklahoma
will be held Oct. 16-19
land camping grounds
with plenty of
will be enter-
the entire family
Everyone is invited.

Kirkendall ac-
son, Spencer, and
Phoenix, Ariz.,
after they had spent

measured by the cord-
of four foot sticks piled
high and eight feet long.

**WETTING
CAN BE
STOPPED!**

Wetting in children over
can result in many serious
of maladjustments
the child's future
Science has de-
a safe, simple and ra-
to this problem,
already helped thou-
of children and adults.
can help your child
confidence, enjoy life

BUGS - NO DIETS
NO SHOTS

NOY ATTACHMENTS

fill in and mail
coupon. There is
or embarrassment
child or family.

ROCKY MOUNTAIN
BURTONE CO.
West 42nd Avenue
Front Ridge, Colorado

Phone
State

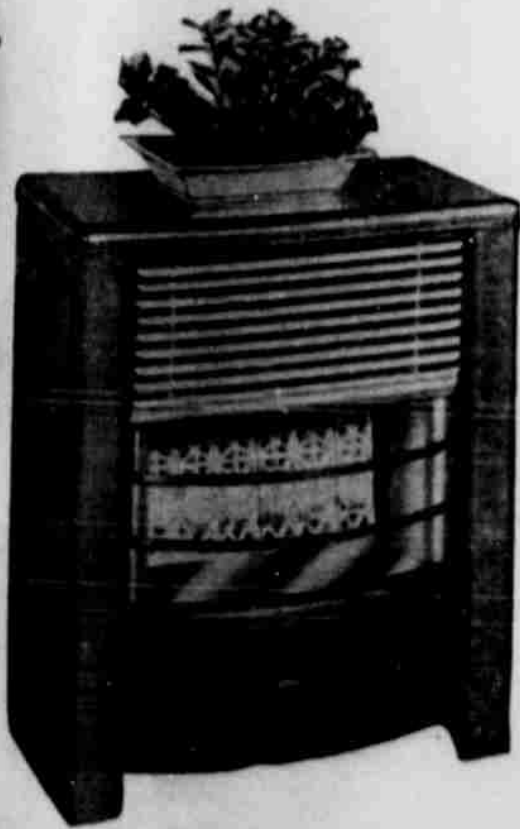
SHAW'S UPHOLSTERY

Let Us Upholster Your Car And Truck Seats
We Also Build Hassocks To Suit The Buyer, Repair
Furniture And Do Tarp Work And Door Paneling
Of All Kinds.

SEE US FOR THAT NEXT UPHOLSTERING JOB!

Located At 405 North Ave. H

TELEPHONE 265



**YOU
CAN
HEAT
ONE
ROOM
OR
YOUR
ENTIRE
HOUSE
WITH**

Dearborn AREA HEAT

It costs you less in every way to heat your home with Dearborn Area Heat. If you haven't heard about Dearborn Area Heat... come in and let us tell you about it... you'll save money!

SHOP NOW --- ALL MODELS ON DISPLAY

**HUDMAN
FURNITURE COMPANY**

Post Pastors Are Elected At Meet

The Rev. Roy Shahan, pastor of the First Baptist Church, was elected clerk and treasurer of the Lubbock Baptist Association at its 32nd annual session held recently in Lubbock. He was also named as a district board member for a three-year term.

The Rev. Graydon Howell, pastor of Calvary Baptist Church, was named to the evangelism committee at the meeting.

The Lubbock Baptist Association is made up of 44 churches and several missions. It has a combined church membership of 26,502 and a combined Sunday School enrollment of a little over 20,000. The total money received through these 44 churches the past year was just a little over one and one-half million dollars.

Mr. and Mrs. Buddy Hays and Tony accompanied Mr. and Mrs. Grady Harris and family of Slaton to Waco during the weekend. They attended the Tech-Baylor game Saturday afternoon.

Nearly three million persons move annually to a new place of residence. Almost 6 1/2 million aged persons are drawing old age and survivors insurance benefits.

**JIMMIE HOLLEMAN
PLUMBING COMPANY**

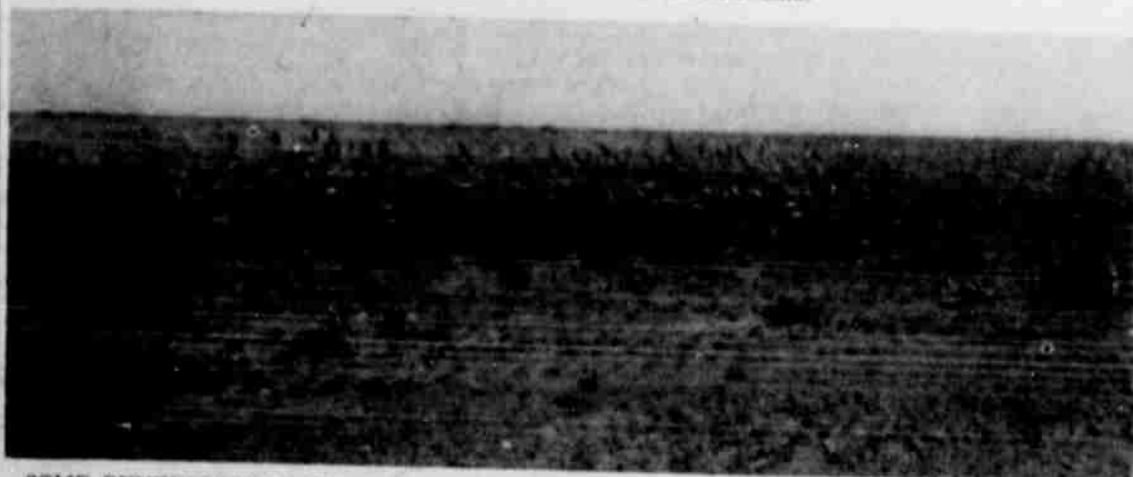
LOCATED AT

R. E. Cox Lumber Co.

Phone 193

THERE SHE BLOWS!—Cultivated, but unplanted land such as this, is in for hard blows unless protection is afforded. The Soil Conservation Service suggests drilled crops and the hope of rain

before killing frost. The Post Work Unit of the Dyck Creek Soil Conservation District offers its assistance in planning the best possible treatment for such land.



SOME BENEFIT HERE!—This field of unharvested feed, if properly managed and left up, will be protection against wind erosion. Such crop aftermaths or residues may keep tons of soil on the

land this winter. Both pictures were made of areas in an especially "dry" section of the county, a few miles southwest of Post.—(Staff Photos).

Residues, Emergency Tillage Urged For Saving Of Soil

Concern is growling daily in the Post area as farmers, ranchers and government agencies begin to fully recognize the seriousness of the wind erosion problem. Guy W. Nutt, Soil Conservation Service work conservationist, said this week.

"Conditions locally," Nutt said, "are as bad or perhaps worse than at any time for the past several years."

Should rain come, he said, every effort should be made to use any cover grown, wheat, weeds, grass or planted crops.

Lack of rainfall in some areas, which even prevented planting crops, and large acreages of crops destroyed have made more completely bare soil than ever before, he points out.

The SCS technician said it will be difficult to make more progress toward solving this problem without good rains this fall. Use of any residues and emergency tillage that will produce cloddiness will give some protection.

Drilled crops of millet and sorghums, with the hope of rain before killing frost, would give protection.

Best prospects for good protection, Nutt said, would be drilled crops such as oats, barley and rye. He said assistance from the ASC office is available for seeding these crops when seeded with a legume such as vetch or Austrian winter peas.

"The local work unit of the SCS," he continued, "will be glad to assist farmers in planning best possible treatment on their farms."

"Erosion is a natural process," he continued. "Under natural conditions nature establishes, with vegetation, a working balance between the rates of soil formation and soil removal. Crossing the Plains with animals, tractors, and plows, men upset the delicate hair-trigger balance between the climate and the grass cover which had held the soil for centuries. In many regions of plentiful rainfall this balance has been disturbed by the hand of man with ax, plow, and herds, as is proved by the deeply etched gullies and raw, eroded slopes of northern Missouri, southern Iowa, and other places. But in regions of scant rainfall, like our own, this balance of nature has been more dramatically disturbed, and the conflict between natural forces and inappropriate human enterprise is recorded in a marked transformation."

"There's nothing any of us can do to change the climate nor to alter the natural topography of the land, or the basic materials from which the soil was derived. We can, however, conduct farming operations which are in harmony with natural requirements."

Applications Being Taken Until Oct. 15 For Highway Patrol

Applications for appointment as Texas Highway Patrolmen will be accepted from the present time until Oct. 15, according to an announcement by Col. Homer Garrison, Jr., director of the Texas Department of Public Safety.

Examinations for the men qualifying will be given state-wide during the latter part of October and those scoring the highest will enter the recruit training school next January.

Garrison said that appointments will be made to fill the additional positions authorized by the last Texas Legislature and to fill existing vacancies caused by promotions and resignations.

Salary of patrolmen is \$315 monthly, plus longevity. They are also paid during training. Other benefits include annual leave and benefits of the State Retirement System and Federal Social Security.

General requirements for appointment to the State Highway Patrol include: 21 to 35 years of age, inclusive; minimum height of five feet, eight inches; weight in proportion to height; excellent physical condition; and high school education or equivalent.

In addition, applicants must be citizens of the United States and residents of Texas for at least a year immediately prior to filing of the application. They are also subject to a rigid character investigation.

Application blanks or further details may be obtained by writing to W. J. Elliott, Chief, Texas Highway Patrol, at Austin or by contacting the Captain in command of the nearest Patrol District.

It's A Mighty Good Time To Look Into Your BUILDING NEEDS!



FORREST'S FINANCE PROVIDES A MEANS FOR ALL BUILDING REQUIREMENTS.

WE OFFER A LOAN FOR EVERY BUILDING PURPOSE

We also invite you to take advantage of FORREST'S FINANCE PLAN... We can, without delay, arrange a suitable loan for any kind of building project... We have a special loan to cover all purchases made from Forrest Lumber Company or affiliated stores. A loan plan to cover cost of all types of repairs, alteration, or improvements to your existing residence. The same type of loan to cover multi-family dwellings. A loan to cover buildings and commercial structures. A finance plan for new structures for agricultural purposes; and loans for new homes.

LET US ACQUAINT YOU WITH SOME OF THE MANY TYPES OF LOANS OFFERED THROUGH FORREST'S FINANCE PLAN

We have a loan designed so that you can finance any purchases made from this Forrest yard or any affiliated stores. Purchase any amount from \$65.00 to \$5,000. You can re-pay this loan in from 6 months to 60 months. Payments may be made monthly, quarterly, semi-annually, or annually. This type loan is designed to enable you to purchase new bath fixtures, floor coverings, home furnaces, paints, new fences, or any materials carried by the firm. An ideal loan for the man who likes to "Do It Himself."

We offer a loan plan, purpose of which is to enable a home-owner to repair, make alterations and improvements to his existing home. This loan will cover all costs of labor and materials. This loan offers borrower to secure up to \$2,500.00 and may be re-paid in from 6 to thirty-six months.

A loan is provided, (F.H.A. Title) to enable borrower to make alterations, repairs and improvements, or conversion of an existing structure, or to be used as an apartment house or dwelling for 2 or more families. This loan provides \$2,500.00 per dwelling unit and a total maximum of \$10,000.00. Repayment ranges from six months to seven years.

BUILDING AND COMMERCIAL STRUCTURES

If you are interested in building a new business structure we can arrange a small building loan. The maximum is \$3,000.00, exclusive of financing charge. Repayment extends from six months to three years.

FARM BUILDINGS

This loan is designed to enable farmers and ranchers to build structures for agricultural purposes, exclusive of residential purposes. The loan provides a maximum of \$3,000.00, repayable six months to seven years.

NEW HOMES AND ADDITIONS

We have a loan designed to enable you to add an extra room or two, build a new garage or make any kind of extensive addition and improvement to your home. You can borrow from \$2,000.00 to \$5,000.00. Repayment ranges from five to 15 years.

If you are interested in building a complete new home... we can fix you up with a GI or FHA to include purchase of real estate and completely build the structure. Complete cost for a 2-bedroom home will range from \$7,000 to \$10,000. Low monthly payments, including taxes and insurance, will retire the loan over a period of years. Come in and talk it over with us.



WE OFFER A NEW FINANCE PLAN For Repair Loans
Come In And Discuss Our REVOLVING CREDIT PLAN
It May Be Just What You Need
Telephone 80

AFFORDS OPPORTUNITY TO INCREASE FARM INCOME

Spur Experiment Station Studies Given On Wintering Steer Calves

Growing weaned beef calves during the fall and winter usually affords an opportunity to increase farm income on the Rolling Plains of Texas.

According to research studies made at the Spur Experiment Station over a 14-year period, it has provided a practical and economical means of utilizing and marketing small grain pasturage, native grass, stalk fields, sorghum silage and bundle feed.

Wintering calves is well suited to farms that produce such crops as sorghums, cotton and wheat and have native grass available.

Workers, P. T. Marion, C. E. Fisher and J. H. Jones, say the calves may be sold as stockers or retained for summer grazing or for finishing in drylot for slaughter. This flexibility of management, they say, provides an excellent opportunity for making adjustments in line with crop prospects.

Wheat pasture provided the lowest cost of winter maintenance for calves. Sorghum fields and native grass supplemented with cotton-

seed cake were intermediate in cost, while winter maintenance in drylot was the most expensive.

The research workers cite the favorable spring price for wintered calves or short yearlings as another reason for wintering calves. They say that during the period from 1936 to 1954 prices of stocker cattle on the Kansas City market, 15 out of 19 years, were higher in May than in the preceding November and this favorable situation plus the fact that thrifty calves weighing from 300 to 500 pounds can economically utilize cheap roughages.

The results of the 14-year studies are given in a recently released Texas Agricultural Experiment Station publication, B-835, Wintering Steer Calves at the Spur Station. It is available from the Agricultural Information Office, College Station, Texas.

American industry consumed an estimated 5,450 long tons of tin in April for the largest total since January of 1951.



TALL IN THE SADDLE—This convict cowboy will find that being thrown over the head of a wild bronc is especially dangerous because of the tramping hooves. But chills, thrills and excitement are the rule for the justly world-famous Texas Prison Rodeo. Don't miss the 25th annual rodeo. Performances each Sunday afternoon in October at Prison Stadium, Huntsville.

LONE STAR AGRICULTURE

Cotton Crop Estimate Whittled Down 140,000 Bales From Guess Of Aug. 1

By JOHN C. WHITE, Commissioner of Agriculture

Texas' prospective cotton crop estimate has been whittled down by 140,000 bales since the U. S. Department of Agriculture's previous guess of Aug. 1. The new prediction is for 3,460,000 bales this season.

County Confirmer Pumping To Test

W. M. and A. P. Fuller's No. 2 Frankie Irwin, one and one-quarter mile northeast outpost to the discovery well for the Aycock-Glorieta pool of northwestern Garza County, was continuing to test on pump this week.

Latest 24-hour gauge was 21 barrels of oil plus unreported amount of water from perforations opposite Glorieta between 3,675-705 feet and 3,673-77 feet. Five and one-half inch casing is cemented at total depth of 3,826 feet.

Well-site spots 330 feet from north and 2,310 feet from west lines of Section 1, K. Aycock Survey, A-488. It is eight miles northeast of Southland.

Meanwhile, five and one-quarter miles southeast of Justiceburg, same operators have set stake for their No. 25A Fee Unit. It will be drilled 2,220 feet from north and 1,360 feet from east lines of Section 140, Block 5, H&G Survey.

The project is a one-half mile west offset to a recently opened San Andres producing area and one mile southwest of the Dorward field.

Turkey Growers in Texas are Raising an Estimated 4,457,000 Birds This Year

Turkey growers in Texas are raising an estimated 4,457,000 birds this year. This increase of 47 per cent over the 1955 output has trade nervously wondering whether the market will absorb such an increase and still provide any kind of profit for the grower. The turkey crop is bigger than at any time since records were begun in 1934.

Over the United States as a whole, the number of turkeys is put at 76 million, or 16 per cent above last year.

As a result of this increase and the unsettled condition of the market, the USDA has inaugurated a turkey purchase program to prop up the anticipated sag in demand. Turkeys which the government buys will be distributed to non-profit school lunch and institutional programs.

Pecans, the fruit of our state tree, may amount to 26,800,000 pounds, according to the Crop Reporting Board. The estimators, remembering a bad miss in their guess of last year, cautiously add that the casebearer insect is busy on the crop and may reduce it somewhat. Drouth is also cited as a factor that may cut this figure down before harvest time.

Broomcorn, a minor state crop, but one of importance in South Texas, is estimated at a low of 2,500 tons this season. This is only 26 per cent of the 9,500 tons of last year and 36 per cent of the 10-year average.

A record-low crop of 25,800 tons is expected for the entire United States.

Production details for any of the above crops or other state production may be obtained by writing John C. White, Commissioner, Texas Department of Agriculture, Austin, Tex.

Bits-Of-News

Mr. and Mrs. T. R. Hibbs will leave tomorrow to spend two weeks visiting friends and relatives in Great Bend, Kans. and Kansas City.

Mr. and Mrs. Carl Adcock of Lubbock visited during the weekend with friends and relatives.

Miss Margie Moore of Sweetwater, former Post school teacher, visited here during the weekend.

Among those attending the WTSC football game at Canyon during the weekend were Mr. and Mrs. Leroy Fenstermaker, Frank Krhut and Burl McCoy.

Sunday guests in the Hub Stroud home were Mr. and Mrs. R. E. Bratton and Mr. and Mrs. Guy Stroud of Lubbock.

Weekend visitors in the Weaver Moreman home were Mr. and Mrs. Charles Nelson and baby and Mr. and Mrs. J. B. Anderson, all of Abernathy.

Mr. and Mrs. Roy Stevens spent Sunday in Brownfield visiting Mr. and Mrs. Charles Gay.

Mr. and Mrs. Bob Thomas and his mother, Mrs. W. C. Thomas, spent the weekend in Fort Worth with their brother and son, Hub Thomas, who is seriously ill in a hospital there.

Mr. and Mrs. Billy Avent of Coffeyville, Kans., Mrs. Ruby Wood and Mrs. Zell Avent of Slaton spent last Wednesday here in the Buck Gossett home.

There are an estimated 5,700,000 camels in the world camel population, a 34 per cent increase above previous times, or five camels today for every four in 1898.

News From Around

POSTEX MILLS

By A. LEE WARD

Well, it's Tuesday again and it did rain. At least 10 drops.

Our predictions about the sewing situation in the Postex Sewing Room did come true. We have now worked two full weeks and should be able to do so from now on. Monday afternoon we received 98,000 yards of colored cloth in one freight car from Alabama. We have been experiencing this previously.

We noticed a let-down in production the past two Friday afternoons, and from information given us by several sheet hemmers, it seems they got out of the habit of working on Friday afternoon.

Frances Buchanan spent the weekend in Lubbock visiting in the W. T. Jackson home.

Mr. and Mrs. John Sullivan and baby of Andrews visited Saturday night in the Ross Sullivan home.

Mr. and Mrs. W. L. Crider visited Saturday in Chico with Mrs. Crider's parents, Mr. and Mrs. John Lawson.

Mr. and Mrs. T. R. Cole of Newfoundland visited in the Jack Beavers home Sunday.

Mr. and Mrs. Jimmie Parrish and children and Mr. and Mrs. P. A. Austin of Tahoka visited in the A. O. Parrish home Sunday.

Mr. and Mrs. Clarence Maddux and boys visited Mr. and Mrs. F. T. Maddux in Mineral Wells Sunday.

Mr. and Mrs. A. C. Thomas and baby of Eunice, N. M., spent the weekend visiting Mrs. Tol Thomas.

Mrs. Bill Norman spent last weekend in Waurika, Okla., with her mother, Mrs. B. L. Maples, who was seriously ill.

Mr. and Mrs. Billy Littrell and Pam spent the weekend in Odessa visiting Mr. and Mrs. Matt V. Mabry, Jr., and son.

Mrs. Mary Lee Feece and Miss Imogene Powell of Washington, D. C., and Mrs. Clyde Daughtery of Slaton visited Mrs. Carl Clark Monday.

The pillow case hemmers need not worry about short hours for a time. We need more dozens of pillow cases hemmed this next three months than we have ever had to produce in one quarter in the history of the mill.

HAPPY BIRTHDAY

Please Call Or Mail Your Family's Birthday Dates To The Post Dispatch.

- October 6**
Boo Olson
Joe Lynn Plemister
Mrs. Bill Hughes, Lubbock
- October 7**
Jerry Odum
W. L. Welborn
E. W. Williams III, Lubbock
Dennis Huntley
- October 8**
R. E. Josey
Mrs. Gordon Hamilton
Mrs. Glen Day, Plainview
Micah Cross
Jimmy Lee Parrish
- October 9**
Sue Stephens
Rexene Welch
W. H. Barton
Nola Brister
Charlie Bowen, Bangs
- October 10**
Elizabeth Tubbs
Jack Kennedy
Carroll Bowen, Levelland
Mrs. Ed Moseley
- October 11**
C. N. Chandler
Thomas Ray Carter
- New Officers By Student Council**
- The Student Council High School held its election of the school year at which time a secretary and reporter were elected.
- The president and vice president had been elected late in 56 school year.
- Officers serving this year are: Bill Stephens, president; Davis, vice president; Stone, secretary; Linton, treasurer; and Smith, reporter.
- Quinoa, a hardy, native plant found in the Andes of South America, was experimentally in 1899 as a possible spinach.
- Mrs. Arvel McBride
Mrs. Ira Lee Ducky
Sue Chapman, Plainview
Sandra Cross
Hallie Caylor
- October 12**
Ella Sue Crowder
Mrs. A. F. Churchill
Elton Nance
Ricky Jenkins, Lubbock
C. R. Wilson

THEY'LL NEVER DREAM YOU PAID So Little!

WADSWORTH WATCHES
PRODUCT OF **ELGIN**

FROM JUST \$19.95

- PRODUCT OF ELGIN
- STYLED BY ELGIN
- ELGIN UNBREAKABLE DURAPOWER MAINSPRING

Dolores. A little charmer. Has 17 jewel movement. \$25.95

Cody. Masculine round waterproof case and luminous dial. \$19.95

Sabara. A most entrancing style. Has 17 jewel movement. \$27.95

Dodson's Jewelry

21-INCH OVER-ALL DIAGONAL 263 SQ. IN. VIEWABLE AREA 1957 Model

TURN'S FULL CIRCLE!

LOWEST PRICED SELF-TUNING TV! NEW MOTOROLA SPECIAL TABLE MODEL—SWIVEL BASE CABINET

Shrewd choice! Automatic Controls. Super 5-Star Automatic Power Chassis. Charcoal; or Mahogany or Blond grain finish. Remote controls, extra. Model A21T33.

Matching swivel base cabinet..... \$20.00

\$229.95

TV-APPLIANCE CENTER

Thursday's 'H-Day' Winners Are Named

Another in the weekly series of Hospitality Days, sponsored by the Post Chamber of Commerce and 78 business firms, will be held between 4 and 4:30 o'clock this afternoon in front of the Chamber of Commerce office.

Last Thursday's winners and the firms on which their \$20 merchandise certificates were drawn were: Mrs. W. T. Bullard, Keith Kemp Service Station; Lela Huffman, O. K. Food Store; Mrs. L. G. Thuet Jr., Sparks Radio & TV Service; Mrs. Willie Goodjohn, Parsons Dress Shop; Lee Byrd, Kirkpatrick Auto Electric.

K&K Food Mart Is Damaged By Fire

Fire, believed to have caught from a neon sign, burned a hole in the northeast corner of the K & K Food Mart about 10 o'clock Saturday night.

Damage was confined to that done to the building and some water damage to the store's frozen foods department.

The blaze was noticed and the alarm turned in by a family living nearby.

The New JOHN DEERE TRACTORS are HERE... and

we have them on display

Shytles' Implement Co

A NEW LOOK AHEAD TO LUXURIOUS LIVING... AT MODEST BUDGET PRICES

KROEHLER Piedmont GROUP

SOFA AND MATCHING CHAIR 329.50

EASY PAYMENT PLAN
from rubber cushions at slightly higher cost

- New Styles that bring fresh new glamour to any living room!
- New Fabrics and Colors that add new smartness to your home!
- New Comfort—plus the durability of famous "Cushionized" Construction!
- New Values—prices that mean real dollar savings!

41st Year

Mason and Company

1915 - 1956... 41 YEARS SERVING THE WEST TEXAS