

Model airplane club to hold Fly-in Saturday

The Haskell Free Press

VOL. 123—NO. 26, ©JUNE 25, 2009

"The People's Choice"

8 PAGES—ONE SECTION—75 CENTS

Calendar

Volleyball night

First Baptist Church in Haskell is hosting an open gym for volleyball every Thursday night at 7:30 p.m. Volleyball players of all ages are welcome to come and play. There is no charge. For more information, call the church office at 864-2581.

Summer lunches

The Summer Food Service program, sponsored by Haskell CISD, has begun and will continue through July 24. Meals will be served from 11:30 a.m. to 1 p.m. Monday through Friday at the Haskell Elementary School Cafeteria, 306 S. Ave. G. Anyone ages 1 through 18 years of age is invited to come eat free. Adults may eat for \$3 per plate.

Bible festival scheduled

Cornerstone Fellowship Baptist Church in Haskell will host their Family Bible Festival Aug. 6-8 from 6 to 8:30 p.m.

Paint Creek Homecoming

Paint Creek School is seeking updated information on all former students for Homecoming 2009. Send any name changes, address changes or life status changes to rlhansoncmc@srcaccess.net, call 940-864-3904, or mail to 807 N. 9th St., Haskell, Texas 79521. Homecoming is planned for early November.

Praise night to be held

A praise night will be held Sat., June 27 at 7 p.m. at the Goree First Baptist Church. Music will be by 3 Chord.

Haskell CISD Homecoming set Sept. 25-26

Haskell CISD will hold homecoming Sept. 25-26. The Indians will face the Quannah Indians.

Index

Obituaries..... Page 2
Out of the Past.... Page 4
Menus Page 6
Classifieds..... Page 7



STATE RUNNER-UP—The Haskell 14 and under softball team, N-Force, competed in the ASA Class "C" Fast Pitch State Tournament at Kirby Lake Park in Abilene June 19-21. On Fri., June 19, N-Force won their first two games against G.R.I.T. from Eula and Crossfire from Abilene North. Saturday, they beat the Breckenridge Bombshells to stay undefeated in the tournament. On Sunday, N-Force played the only other undefeated team in the tournament, X-Treme from Killeen and won. In the championship game they played Crossfire and lost the first game

12-11 and then lost a tough battle in the next game 7-5 to place second in the tournament. Each player and coach received a silver medal, and the team received a State Runner-Up trophy. Team members are, front row, l-r, Liz Bowers and Kalyn Wheatley; second row, Morgan Frierson, Emily Fouts, Delecia Garcia and Cailey Foster; back row, Coach Cindy Foster, Carson Hadaway, Jasmine Klose, Maegan Gonzales, Caitlan Johnson, Maci Colley, the team mascot "Mort" the lemur, Taylor Burson and Coach April Colley.

Fly-in slated June 27

The twenty-fourth open house fly-in will be held Sat., June 27 at the Haskell Model Airport, three miles east of Haskell.

The club invites everyone to visit and watch the flying. A group from Abilene is expected to fly large scale models through precision acrobatic maneuvers. Some of these models will be forty percent of the size of real airplanes. Also expected are helicopters, electric powered models, sport planes and sailplanes.

The club maintains the field and participates in the state highway litter pickup project. The club has attained a Gold Club rating by the Academy of Model Aeronautics.

Club members will be glad to show their models and answer questions about their planes to those attending.

Library has lots to offer this summer

by Caron Yates

The Texas Reading Club, a program designed by the Texas State Library and Archives Commission to encourage more than 461,000 youth to read for pleasure and to promote library usage, is well underway in 775 libraries all across Texas.

The Haskell County Library is again sponsoring the Reading Club program for all area children. Paula Rennegarbe directs the activities of the program each Wed. morning at 10:00 a.m. It is open to all age groups. Readers are encouraged to keep track of their summer reading through a reading log. Activities include stories, crafts, prizes and refreshments. It's not too late to join the fun! The program will continue through Aug. 5, at which time a party will be held with certificates awarded.

The 2009 statewide theme is Libraries: Deep in the Heart of Texas! Upcoming topics planned by Rennegarbe include Heart of Texas Critters, Deep in Salsa, Heart of Texans and Deep in Texas Tall Tales.

The Texas Reading Club allows children to practice and develop their reading skills in a fun environment," said Peggy D. Rudd, director and librarian of the TSLAC. "This also fosters their love of reading, the usage of libraries and gives them opportunity to be better prepared for school in the fall."

"Children who read,

succeed," states Christine McNew, Youth Services Consultant at the TSLAC. "Studies show that children who don't read during the summer months may lose three to four months of hard-earned reading skills."

Also being offered through the Haskell County Library this summer, is

Family Movie Time. Each Monday, from 2:00 to 3:00, movies suitable for all ages are shown. Rennegarbe says, "These are movies that most people have not seen before."

ESL, or English as a Second Language, classes are being conducted each

Tuesday evening at 7:00 at the Haskell County Library. These classes are made possible through a grant. A program entitled, Learn to Speak English, In English, is being used. While the focus is on conversational English at present, plans are to progress to skills for filling in forms,

applications, etc. Anyone interested in improving their English speaking skills are encouraged to attend this free program.

The Haskell County Library offers these, as well as other opportunities, to area residents. Not only is it educational, but it is free and cool inside.



DIVISION CHAMPIONS—The Haskell Dragons won the Quad County 7-9 year old youth baseball division championship in a tournament played in Haskell June 18-21. The team's season record stands at 13-1. Team members include, front row, l-r, Aaron

Skiles, Peyton Smith, Evan Green, Dakota Hearn, R.J. Chavez, Frankie Macias, James Pierce, Tanner Thomas and Juan Rodriguez; second row, Dalton Meinzer and Reed Roewe; back row, Coaches Tyke Meinzer, Cory Gren, Casey Larned and Donnie Skiles.

FOR NEWS ITEMS OR TO SUBSCRIBE, CALL 940-864-2686



COTTON TOUR—Touring the Cotton Incorporated's World Headquarters and Research Center in Cary, North Carolina recently were, l-r, Wesley Alsabrook of Haskell, Larry Book, Nancy Book, Roy Book, and Jimmy and Melissa Burson of Haskell.

Local cotton producers tour Cotton Incorporated

Local cotton producers, Wesley Alsabrook, Jimmy Burson and wife Melissa Burson, all of Haskell, recently joined other cotton producers and industry representatives from across the Cotton Belt on a tour of Cotton Incorporated's World Headquarters and Research Center in Cary, North Carolina. The tour allowed the producers to see how cotton checkoff

dollars are increasing the profitability and demand for cotton through Cotton Incorporated's research and promotion efforts.

Cotton Incorporated tour participants spent the first day of the tour learning more about the ongoing research and promotional efforts through presentations given by senior staff, as well as participating in a comprehensive walking

tour of the research facility. Participants spent the second day touring the [TC] 2 facility in Cary. [TC] 2 is a provider of solutions for the soft goods industry specializing in technology development and supply chain improvement. Visiting producers saw the latest technologies in digital textile printing and 3D Body Scanning Measurement Software for custom fitting of apparel.

Official Texas County Yield Survey to begin

Each year, USDA's National Agricultural Statistics Service (NASS) is required to estimate average yields for the major crops in each county. Administrative information is available for planted acres and failed acres in a county, but the only comprehensive source of information for actual harvested acres and the yield from those acres, is the producer.

The county yield per harvested acre which NASS must estimate is a key component of several programs that many farmers use. They include crop insurance and disaster programs, and the new ACRE program offered through FSA. Obtaining

good coverage of actual harvested yields in a county is vital to making reliable estimates for that county. Producer participation in the NASS yield surveys is critical to having reliable county yield averages.

Beginning in mid-July, the first County Agricultural Production Survey will be mailed to farmers across the state. This early county survey will focus on wheat and oat production and yields. Farmers can return the form by mail or complete the survey online at a secure website. Follow-up contacts will be made in August and September to obtain the best coverage possible of wheat and oat yields in every county.

Some wheat and oat producers will not receive a County Survey in July, but will receive a September Ag Survey instead. Responses on the September Survey are used for final state level production estimates, and used for county yields as well. Later in the fall, a second County Survey will be conducted to obtain harvested yield information for corn, cotton, sorghum, peanuts, rice, soybeans and sunflowers.

With county yields having a significant role in several highly used farm programs, producers are encouraged to complete the NASS yield surveys if they receive one. As with all NASS surveys, a producer's individual responses are guaranteed complete confidentiality under federal law (Title 7, U.S. Code).

For more information, contact Bob Garino at 800-626-3142.

Obituaries

Patricia Ann Ingram Pettigrew



PATSY PETTIGREW

Funeral services for Patricia Ann Ingram Pettigrew, 73, of Rule were held Sat., June 20 at First Baptist Church in Rule. Burial was in Rule Cemetery under the direction of McCauley-Robison Funeral Home of Rule.

She passed away Tues., June 16 at her Fort Worth

home.

Born July 21, 1935, she was the daughter of the late Ruth Anna Cloud Ingram and Bonner Wade Ingram of Rule. She spent her childhood in the Pinkerton community on a farm and was a member of the Pinkerton Baptist Church. In adulthood, she became a Methodist. Her mother died when she was only 10 and her brother, Thomas, was only 8, so they lived with their Grandmother Cloud and Aunt Willie (Geer) during the school week and went back to the farm on the weekends. They both transferred to San Marcos Baptist Academy and graduated from high school there. She attended Baylor University for a few semesters. She later became a cosmetologist and had her own beauty shop in Dallas.

She was preceded in death by her brother, Thomas Ray Ingram; and son-in-law, Perry Marbut.

Survivors include three daughters, Marsha Ensey of Houghton, Louisiana, Debbie Pettigrew Crocker and husband, Jamey of Starr, South Carolina and Annette Pettigrew of Fort Worth; a son, Robert Ensey and wife Rose of Mesa, Arizona; a sister-in-law, Beth Ingram of Georgetown; grandsons, Clay and Cole Marbut of Louisiana and John and Paul Ensey of Arizona; nephew, Burt Ingram and wife Christi of Flower Mound; niece, Dr. Bonnie Ory and husband Bill of Georgetown; and several cousins, great nieces and great nephews who remain among those who loved Patsy. PD. NOTICE

Cattle TB confirmed in Texas dairy herd

Cattle tuberculosis (TB) has been confirmed in a west Texas dairy that has been quarantined since April when some cattle in the herd responded to a TB test being conducted prior to a sale. (The sale was cancelled.)

The cattle TB diagnosis was confirmed at the National Veterinary Services Laboratory (NVSL) in Ames, Iowa, where *M. bovis*, or cattle TB bacteria, was grown or "cultured" from tissues that had been collected during the necropsy of the test-positive cattle.

"The infected herd remains quarantined while the final disposition of the herd is determined either slaughtering the herd, or repeatedly testing and removing infected animals until the herd is free of cattle TB," said Dr. Bob Hillman, Texas' state veterinarian and head of the Texas Animal Health Commission (TAHC), the state's livestock and poultry health regulatory agency. "Dairy, calf-raising and dairy animal replacement operations with epidemiological links to the infected herd are being tested to determine both the origin and potential spread of the disease."

"I encourage ranchers or accredited veterinarians to call the state of destination prior to shipping bison, beef or dairy cattle out of Texas," said Dr. Hillman. "Some states may impose enhanced TB entry requirements on Texas cattle and bison. Keep in mind, too, that many states, like Texas, have implemented cattle trichomoniasis testing requirements, so call before you haul."

Dr. Hillman said Texas' cattle TB-free status with the U.S. Department of Agriculture (USDA) could be in jeopardy, if the infected dairy cannot be depopulated, or if a second infected herd is detected within 48 months.

Nebraska, in early June, confirmed TB infection in a beef herd. Currently, California and Minnesota are not cattle TB-free, and areas in Michigan and New Mexico have specified zones that are not TB-free. When TB-free status is lost, breeding cattle and bison moved out of a state need a negative TB test within 60 days prior to shipment, or animals must originate from a herd that has accredited TB-free status, achieved through a formal testing and retesting program.

Texas initially gained TB-free status in November 2000, when all counties except El Paso and portions of Hudspeth Counties were declared free of the disease. (The El Paso Milk Shed had a history of recurring infection, and eventually, the dairies were depopulated. Dairies no longer operate in this area along the U.S.-Mexican border near El Paso.)

In June 2002, Texas lost TB-free status after infection was detected in a beef herd and in an operation with both beef and dairy cattle. To regain TB-free status, 2,014 Texas purebred beef herds and the state's 818 dairies were tested for the disease from October 2003 through August 2006. One TB-infected dairy was detected and depopulated. In September 2006, the USDA

issued the coveted TB-free status for all of Texas' 254 counties.

When exposed to cattle TB, an animal's immune system will fight the invasion by encapsulating the bacteria. This can cause the formation of lesions or growths in and on lymph nodes, mammary glands, lungs and other internal organs. Although infected, the animals may appear healthy, until the latter stages of the disease, when signs may include weight loss, coughing or breathing difficulties. The disease is not treatable in livestock.

"Cattle TB is a serious, transmissible disease that can spread among herds," said Dr. Hillman. "In the early 1900s, when the national cattle TB eradication program was initiated, more than five percent of the country's herds were infected with the disease. At that time, cattle TB posed a significant human health threat, because consumers could become infected when they drank raw, unpasteurized milk that had not been through heat-treatment to kill bacteria. Today, commercially produced milk is pasteurized. While bovine TB is still a human health threat, other forms of tuberculosis, such as the human and avian strains, now pose the greatest risk of TB exposure to persons."

Students in the News

Kolt S. Kitley of Rule graduated Summa Cum Laude with a Bachelor of Science degree from West Texas A&M University in Canyon May 9.

To graduate Summa Cum Laude, a graduate must have a 3.9-4.0 GPA.

Ross Hairgrove of Haskell and M'Lynn Lehrmann of Rule were

awarded diplomas during spring commencement ceremonies at Texas A&M University.

Hairgrove graduated Magna Cum Laude with a Bachelor of Science degree in Nutritional Sciences.

Lehrmann graduated Cum Laude with a Bachelor of Landscape Architecture-Landscape Architecture degree.

SMH the heart beat

of Stonewall County

It has over 20 million faces but only one name:

DEPRESSION

Depression has specific symptoms with which your doctor will be familiar. Read the checklist below and mark the descriptions that best apply to how you've been feeling. If you have experienced any of these symptoms for longer than two weeks take this checklist to your doctor or call The Alternatives Program at Stonewall Memorial Hospital.

- I feel sad and/or irritable.
- I don't enjoy the things that once gave me pleasure.
- My appetite and/or weight has changed.
- My sleep patterns have changed and I now sleep too much, or not enough.
- I am tired all the time and have no energy.
- I can't concentrate, remember things, or make decisions.
- My friends have noticed that I am restless or that my activity has decreased.
- I often think about death, or have even tried to commit suicide.

THE ALTERNATIVES PROGRAM
Stonewall Memorial Hospital
940-989-3551



Dunn's FISH FARM

P.O. Box 85 Fittstown, OK 74842
www.dunnsfishfarm.com
(800) 433-2950

Delivery of Black Crappie, Channel Catfish, Bass, Hybrid Bluegill, Redear Bream, Coppernose Bluegill, Fathead Minnows, KOI and Triploid Grass Carp are now available for Pond and Lake Stocking. A permit and ten days notice are required for the purchase of Triploid Grass Carp.

Thursday, July 2, 1:00-2:00 p.m.

Haskell • Richardson's • Hwy. 277 N.

We furnish your hauling containers! Live Delivery Guaranteed! Discounts/Special Deliveries on large orders!
Turtle Traps, Fish Feeders, Fish Traps! Decorative Fountains, Aerators, Windmill Aerators! Vegetation Control, Pond Fertilizers and Floating Docks!

To place an order or for more information, call one of our Aquatic Consultants, your local dealer, or email sales@dunnsfishfarm.com.

Mon.-Fri. 7 a.m.-6 p.m. Sat. 8 a.m.-4 p.m. CST
1-800-433-2950 Fax 1-580-777-2899
www.dunnsfishfarm.com

We deliver to Haskell!

Call
940-889-6060
or 866-889-1076

24 HOURS A DAY
7 DAYS A WEEK



Don Awalt, Denise Allen and Jack Blisard of Seymour Medical Supply, Inc.

SERVING THESE COUNTIES:

HARDEMAN • FOARD • WILBARGER • WICHITA KING • KNOX • BAYLOR • ARCHER • HASKELL • THROCKMORTON • YOUNG • COTTLE

We supply oxygen, hospital beds, walkers, canes, diabetic supplies, wheelchairs, trapeze bars, bedside commodes, lift chairs, nebulizers and so much more!

Seymour Medical Supply, Inc.
110 W. Reiman, Seymour TX 76380



HONORED—Cleo Williams Casey of Houston, a Rochester High School graduate and long-time resident of Haskell County, was honored at a retirement party the last week in May at the home of Dianne Nadolsky in Garland. Pictured are front row, l-r, Moletta Miner and Claudia Shortman; second row, Linda Willis and LaRee Simpson; third row, Casey and her sister Sammie Williams Clay; fourth row, Mary Frances Gipson Binns, formerly of Haskell County, and Nadolsky; top row, Sandra Baumann and Jan Crowe. Casey retired from the medical profession after 40 years of service.

Sanders family holds reunion

Children, grandchildren and great grandchildren of the late Jack and Sallie Sanders, longtime residents of Weinert, met June 12-14 at the Circle S Ranch, east of Haskell. The ranch belongs to brother, Jacky and Sandra Sanders and his family. Hosts were Jacky and Sandra Sanders; Ricky, Shane and Shambrey of Milsap; Rex, Mandy, Abby, Robert and Jacklyn.

Prayers, fellowship and memories made each one realize the importance of such a gathering. Lots of pictures were taken, and visiting and special fun were enjoyed by those attending.

A ride over the ranch, where new colts and pretty scenery were observed by Jacky's sisters and some of the children, was conducted by Jacky.

A special feature

included a skit performed by Sallie Alexander Sartain where she portrayed her great grandmother, Sallie Alexander Sanders, for whom she was named.

Attending were Jacky's family; Lona Mae Phelps, Kenneth and Elaine Campbell, Karen, Kendall, Leslie, Allison and Keagan of Abilene; Travis and Wilma Sanders of Coleman; Ethel Slade's grandson, Ben, Malinda, Tyler, Nicole, Mercedes and Beau Slade of Burleson;

Andy and Marlene Sanders of Cross Plains; Andra Jackson, Kendra and Caitlin Poole of Cross Plains; Netha and A.J. Carrouth of Cross Plains; ReNetha and Kadie Carrouth, Brent, Crystal, Logan and Jaci McDaniel of Cross Plains; Tina, Ricky, Austin, Thomas,

Megan and Robert Gooding of Cross Plains;

William Maupin, Bill and Denise and Mark Maupin of Odessa; B.D. and Marie Kirkland of Fort Worth; Jacky D. and Barbie Kirkland of Weatherford; Tammy and Tom Tension of Fort Worth; Jennifer and Alex Parker of Fort Worth; Walter and Sue Cox of Omaha; Scott, Brenda, Austin and Sallie Sartain of Omaha;

David, Deborah, Zane, Anna and Lindsey McKay of Naples; Junior Cox, Kade and Drew Cox of Naples; Rocky and Marsha Sanders of Abilene; Shawn, Alexis, and Tyler Sanders of Abilene; Keith, April and Austin Escobedo of Abilene.

Preview party set

Make reservations now for the 36th annual Stamford Art Foundation Preview Party Show and Sale to be held Tues., June 30 beginning at 6:30 p.m. at the John Selmon Memorial Gallery located at the Texas Cowboy Reunion Rodeo Grounds.

The show is held in conjunction with the Texas Cowboy Reunion Rodeo, July 1-4. Last year, over 450 guests attending the Preview Party enjoyed mingling with the artists, outbidding their friends during the legendary "Quick Draw Auction," eating a delicious steak dinner and dancing. Another record attendance is expected this year.

Texas Cowboy Hall of Fame Artist, Wayne Baize donated a print on canvas to be sold in the Quick Draw Auction. Baize was an original artist in the Stamford Art Show in 1974 and continues to be supportive of the show's endeavors.

The Stamford Art Foundation founded in 1974, is a non-profit organization with 17 directors and approximately 130 volunteers who work together to have an outstanding art show. The proceeds from the Show benefit the West Texas Rehabilitation Center. At the conclusion of the 2008 Show, the Stamford Art Foundation presented a check to the West Texas Rehabilitation Center for over \$18,000.00. This donation enabled the West Texas Rehabilitation Center to provide outpatient rehabilitation care to more than 450 children and adults.

For information regarding the show or reserving tickets, contact Dawn Ham at 325-773-9094.



MR. AND MRS. EDWARD R. MOELLER

Moellers celebrate 60th anniversary

Edward R. and Melba Moeller of San Angelo celebrated their 60th wedding anniversary Feb. 19, 1949 at the Faith Lutheran Church in Sagerton in a ceremony officiated by Rev. Hoermann.

To subscribe,
Call 940-864-2686

Gone to Market
Check with us for new items!

Bridal Selections for
Jodi Langford and Mat Graven
Melanie Michaels and Bradley Lowrance
Kelly Tidrow and Jake Wedeking

The Carousel Gift Shop

Erlinda Mayfield
Open M-F 10 to 5:30. Sat. 10 to 4
Southside of the square in Haskell
864-2069

Try a bleach bath for eczema relief

New research is now validating the age-old practice of adding a capful of bleach to bathwater in order to help relieve itchy symptoms of eczema.

"We have advised our patients of this simple, cost-effective practice for years. But recent research has now confirmed the benefits of diluted bleach baths for patients with atopic dermatitis. The bleach kills bacteria such as staph/MRSA [methicillin-resistant Staphylococcus aureus] that plague our patients with eczema," says Dr. Kent Aftergut, clinical assistant professor of dermatology at UT Southwestern Medical Center.

Dr. Aftergut points out that studies have shown that up to 90 percent of patients with eczema carry staph bacteria on their skin. The bleach works by killing the staph through a mechanism that the bacteria cannot become resistant to.

Dr. Aftergut suggests starting with a capful of bleach added to an entire bath, and no more than a quarter cup of bleach for a standardized bathtub. He has patients soak in this twice a week for at least 15 minutes.

An occasional bath with a capful of bleach added may also be useful for limiting staph infections for others such as athletes and those who frequent gyms, Dr. Aftergut says; however, consulting a physician before starting a bleach-bath regimen might help avoid harmful reactions.

"Staph/MRSA are becoming more of a problem with so many patients. Special antibacterial washes and oral antibiotics can all breed resistance. We feel more comfortable recommending the diluted bleach baths knowing that the practice will not produce more staph resistance," Dr. Aftergut says.

Summer Clearance Sale
begins Thurs., June 25

30% off
Spring and Summer Clothes

Buy 1 Pair of Shoes at Regular Price:
Get 2nd Pair at
1/2 price
paying the price of the more expensive pair.
(Excluding Yellow Box)

Personality-Slipper Shoppe
940/864-2501 • 864-3051
South Side of Square Haskell, Texas

NEW
CroisSONIC
BREAKFAST SANDWICH

Egg and American Cheese on a Soft, Buttery Croissant

Sausage **\$2.49** Bacon

each PLUS TAX

SONIC
America's Drive-In

No Waiting • Call In Orders
864-8533

Limited Time Only!
Only at participating SONIC Drive-Ins. © May 2009
American's Drive-In Brand Properties LLC
*Natural and artificial butter flavors.

\$IZZLING
Summer Sale!

Jewelry
Sunglasses
25% off
REGULAR PRICE
Some restrictions apply

Good Neighbor Pharmacy
Omeprazole 20 mg

Treats Frequent Heartburn!
Compare to Prilosec OTC
14 tablets
\$8.99

Centrum
#1 Doctor Recommended Multivitamin
100 + 30 tablets
\$9.99

Bridal Registry
Jodi Langford and Mat Graven
Melanie Michaels and Bradley Lowrance

Gift Cards Available!

Ask about our
\$18 prescriptions.
Only \$18 for 100 tablets or capsules
on over 200 Generic Maintenance Medications.
Call or come by for details!

Prices good June 25-27
www.haskelldrugstore.com
8 to 6 Monday-Friday
8 to 2 Saturday
THE DRUG STORE
Haskell • 864-2673

We deliver to Haskell daily!

Check with us for
Sweet Shop Candies • Vletas Candies • Roses
Blooming Plants • Candy Baskets
Silk Arrangements • Fresh Arrangements
Green Plants • Stuffed Animals • Lots of Plush!
Balloon Bouquets • Bud Vases • Balloons
Boxed dozen roses

Come by and place your order or call
325-773-2005 Teleflora

Stamford Floral
102 S. Swenson • Stamford
We accept all major credit cards.

OPINION

TEXAS PRESS ASSOCIATION

State Capital



HIGHLIGHTS By Ed Sterling

Governor vetoes 35 bills before June 21 deadline

AUSTIN — Gov. Rick Perry signed the 2010-2011 state budget and vetoed 35 bills two days before Sun., June 21, the deadline for approving or vetoing legislation passed by the 81st Texas Legislature.

The budget leaves the state's \$6.7 billion rainy day fund untouched but includes \$12 billion in federal stimulus money.

Perry said the final outcome of all bills would "move Texas in the right direction."

Now, here are samples of a few bills the governor vetoed:

•HB 130, creating a pre-kindergarten education grant program. In his veto statement, Perry said a similar grant program already exists, and the new state budget contains \$25 million earmarked for HB 130, so the Texas Education Agency should use those funds to bring 21,000 more students into the existing program.

•HB 821, mandating that television manufacturers collect and recycle a quantity of televisions to be determined annually by the Texas Commission on Environmental Quality.

•HB 1293, creating disclosure requirements and consumer education standards relating to the sale and marketing of life insurance and annuities.

"Although the bill establishes standards of transparency and improvements that are important, I believe it will do more harm than good" because it would create more opportunities for frivolous lawsuits, Perry said.

•HB 3481, authorizing the expunction of criminal records, including law enforcement case files, 180 days after an arrest if no formal misdemeanor or felony charges have been filed.

•HB 3485, relating to certain county, municipal, district, and other governmental functions, procedures, powers, duties, and services, including certain criminal procedures. "The bill's provision regarding physician liability was neither debated nor discussed, but rather amended onto this bill late in the session.

"It risks unraveling the progress we made in curtailing excessive liability and ensuring that patients who need physicians will be able to find them," Perry said.

•SB 1440, clarifying guidelines on how the Department of Family and Protective Services takes children into custody. Perry said he vetoed the legislation

because it could infringe on the rights of parents and guardians.

•SB 2558, allowing beer and malt beverage tastings to be held in a branded vehicle on the premises of a retailer with a permit to sell alcohol, therefore allowing alcohol consumption in a vehicle.

"The Texas Alcoholic Beverage Commission would be required to increase its on-site inspections to ensure the proper precautions are taken to prevent serving to minors and over-consumption," Perry said, in explaining his veto.

And, here are a few samples of bills the governor approved:

•HB 4586, the supplemental appropriations bill that includes \$150 million in funding to help the University of Texas Medical Branch in Galveston recover from Hurricane Ike.

•HB 4409, reforming the Texas Windstorm Insurance Association "to ultimately reduce the burden of catastrophic storms on the state and eventually establish TWA as an insurer of last resort," Perry said.

•HB 4765, tripling the small business franchise tax exemption from \$300,000 to \$1 million, thereby lowering the tax burden for more than 40,000 small businesses across Texas.

•HB 4294, allowing public schools to purchase electronic textbooks. Perry backed up the bill with an executive order that underscores the State Board of Education's role in the electronic textbook approval process.

Website parades tax evaders

Texas' top tax evaders are featured on a new web page posted by the office of the Texas comptroller.

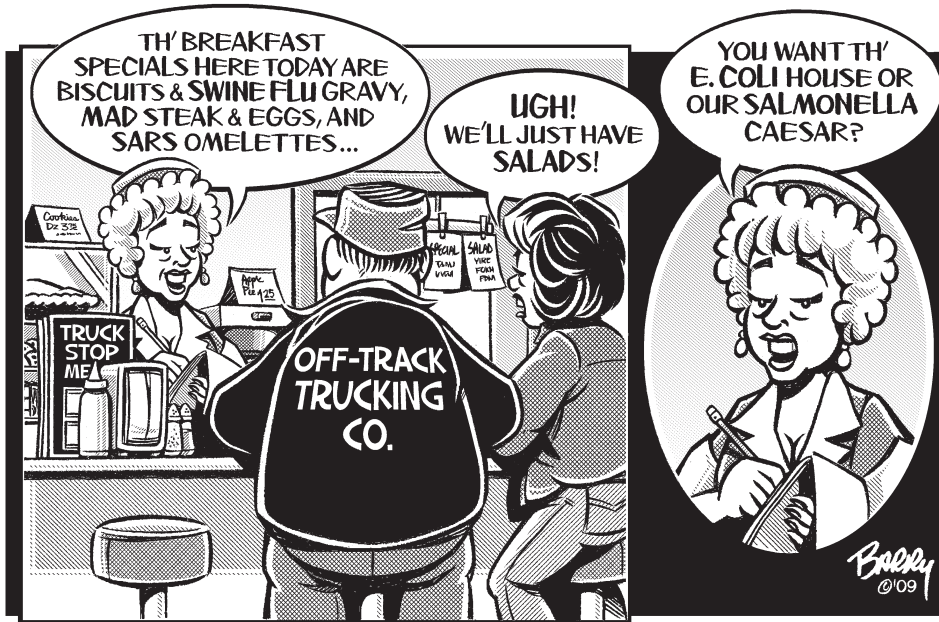
The Comptroller's Criminal Investigation Division focuses on tax fraud cases involving sophisticated schemes to dodge sales, motor fuel, tobacco and other taxes.

The site also allows online reporting of suspected tax fraud and highlights indictments and convictions.

Unemployment rate increases

Texas' seasonally adjusted unemployment rate increased in May to 7.1 percent and continued to trend below the national rate of 9.4 percent, the Texas Workforce Commission reported.

U.S. labor statistics show Texas recorded a net loss of 222,600 jobs in the past 12 months, compared with job losses of 5.4 million nationwide during the same period.



IMPORTED PATHOGENS AFFLICTING DOMESTIC APPETITES...

From Out of the Past

From the files of The Haskell Free Press

10 Years Ago July 1, 1999

During the end-of-school awards ceremonies at Haskell Elementary School, several Accelerated Reading students receiving recognition were first grader, Johnny Land; second grader, Brett Acosta; third grader, Erika Solano, all winning bicycles and fourth grader, Ashley Foster; fifth grader, Miguel Chavez and sixth grader, Morgan Acosta, all winning jam boxes.

Nellie Wilson, well-known worker at the Experienced Citizens Center, volunteered to add her skills with a needle to help other volunteers at the center to raise needed funds by quilting several quilts.

Lions Club officers for the 1999-2000 club year were song leader, Ford Cole; Lion sweetheart, Meg McManamon; president, Benny Harris; secretary/treasurer, Tommy Watson and Lion tamer, Darold Roberson.

20 Years Ago June 29, 1989

Rotary Club president, Dr. Tom Hairgrove and secretary/treasurer, Abe Turner, presented scoutmaster, Bill Perry and Troop 136 with a donation.

Shane Hadaway was selected as a member of the Outstanding College Students of America.

Trina Fry was selected to play on Tarleton State University's varsity tennis

team as a No. 2 player for doubles and singles.

Haskell junior varsity twirlers were Cindy Henry and Nichole Cothron.

30 Years Ago June 28, 1979

The family of the late Willard and Eva McMillin all met for their annual reunion.

HHS cheerleaders, Cheryl Conner, Kerri Lane, Lori Johnson, Janet Wallace, Teri Welsh and Emily Cox, attended camp at Tarleton State University.

Officers and directors installed into the Haskell Lion's Club were Raja Hassen, director; Ervin Unger, tail twister; Joe Alves, secretary; John Wayne McDermett, 3rd vice president; Darold Roberson, past president; Aubrey Carroll, president; Brian Burgess, song leader; John Sam Rike, first vice president; Mike Jordan, director; Buster Gholson, director and Jerry Iley, director.

40 Years Ago June 26, 1969

H.T. Fillingim, Jr. assumed duties as vice president of the Haskell National Bank.

Tom Watson was named Haskell fire chief for the tenth year in a row.

Mrs. J.B. Edwards hosted the Rainbow Sewing Club meeting in the home of Mrs. W.E. Johnson.

50 Years Ago June 25, 1959

Brooks Middleton

purchased the dealership for Gulf Gasoline and Oil Products from John Kimbrough.

The colorful Haskell Sheriff's Posse won first place in the parade opening the 12th annual Olney Rodeo in Olney.

Mary Louise Rodriguez, twelve year old girl, was struck by a bolt of lightning while hoeing on a farm near Rochester.

Suzanne Lane, daughter of Mr. and Mrs. R.A. Lane, spent the week in Norman, Oklahoma, where she was enrolled in the annual Drum Majors School.

100 Years Ago June 26, 1909

H.C. Wyche had the contract for the new Methodist Church to be built in the city.

E.D. Avery sold his 500 acre farm near the Howard schoolhouse to Emma English for \$17,500.

Dr. L.F. Taylor of Hereford, friend of A.J. Smith, settled in Haskell.

The Sherrill Grain and Elevator Company has started work on building their large elevator.

Joe Friedman, the first boot maker in Haskell County, returned to Haskell after a twenty-three year absence. Friedman opened a shop in the Neatherly Building.

The merchants shipped in a car of cottonseed and let farmers have the seed at cost.

AG Consumer Alert

By Greg Abbott

Smishing Scam Targets Houston-area Credit Union Accounts

Schlumberger Employees Credit Union members should be aware of a smishing scam that has been uncovered in the Houston area. Members of the Sugar Land-based credit union have complained to the Office of the Attorney General about receiving fraudulent text messages that claim their Schlumberger Employees Credit Union debit card has been deactivated for security reasons. The text messages claim that cardholders must call an 800-number and provide personal information to reactivate their cards.

Texans should never provide personal information in response to unsolicited text messages, e-mails or telephone calls—even if they appear to be from a legitimate business. Recipients should never click on links provided in unsolicited e-mails or text messages. Banks do not send unsolicited electronic messages or make unsolicited phone calls asking customers for their personal information.

Customers with questions about the validity of communication that claims to be from a financial institution should contact the institution directly by telephone or in person.

The following tips will help Texans to avoid becoming a smishing or identity theft victim:

- Assume unsolicited text messages are fraudulent.
- Become familiar with the financial institution's policies for communicating with customers.
- Upon receipt of an unsolicited text message, call the actual business at a telephone number that appears on a bank statement, a credit card or debit card, or the telephone directory.

To report fraudulent text messages, e-mails or telephone calls seeking personal information, contact the Texas Attorney General's Office at 800-252-8011.

From the AG

By Greg Abbott

Gaming Systems Can Expose Children to Risks

When we were young, our parents warned us not to talk to strangers. That important rule applies at the local playground and in our neighborhood. Today, children are more likely to frequent a digital playground that can be even more dangerous.

For example, many game systems have evolved dramatically and now have many of the same capabilities as home computers. In particular, these games' online interfaces allow users to interact with each other using text, voice or even video chat. Parents should beware of the potential for child predators to use these systems to prey upon and contact their children.

Video game systems typically have parental control features that can be used to restrict game features that bear increased risks. These controls allow a parent to:

- Enable or disable a game console's chat features or

manage with whom and how a user can communicate and play;

- Enable or disable Web browsing;
- Permit or block access to online games;
- Restrict games based on maturity ratings;
- Restrict the amount of time a game console may be played (per day or per week); and
- Restrict purchases of games or add-ons from manufacturer's online store.

While these features are designed to give parents peace of mind, many kids have the technological knowledge to bypass controls. So even the best controls do not replace adult supervision.

Nonetheless, parents should carefully consider whether to enable their gaming system's chatting feature. Parents who choose to allow chat should teach their children to closely guard and protect their "friend code" or game user name. During online conversations, child predators may look for clues that reveal a child's

physical location. Children should also be strongly cautioned against discussing anything personal while playing online games with people they do not know.

As with computers, game consoles should be kept in a common area of the home. Parents should also consider participating in their children's game-playing activities.

Hand-held gaming devices also pose potential risks to children. Many of these devices have wireless-communication capabilities and are popular among kids who use them to communicate with others who are within range, usually about 30 feet. Child predators may be able to exploit this feature in certain public settings.

Texans should be aware that not all games are appropriate for children of all ages. Most video games come with a rating that indicates age appropriateness. These ratings are assigned by the Entertainment Software Rating Board (ESRB), a self-regulatory body that rates computer and video game content; enforces industry-adopted advertising guidelines; and helps ensure responsible online privacy practices for the interactive

entertainment software industry.

ESRB ratings help parents determine which games are appropriate for their children. The ratings are incremental from "early childhood" through "adult only" and offer content descriptions that explain the games' themes, language, violence or sexual content. In addition to using the ESRB guide, parents should consider their child's maturity and personality when selecting games for them.

Although most parents take steps to reduce the threat of accessible, unsuitable content on their home computers, many do not realize that the same Internet content can be accessed with a game console. Current game systems are Internet capable, which means kids can use them to browse potentially inappropriate material on the Web.

Parents who believe their child has been contacted by a sexual predator should try to preserve the record of the communication and report it to their local police department or to the OAG Cyber Crimes Unit. For more information about cyber safety, visit www.texasattorneygeneral.gov.

The Haskell Free Press

Established January 1, 1886
PUBLISHED EVERY THURSDAY

420 North First Street • P. O. Box 555
HASKELL, TEXAS 79521

Phone 940-864-2686 • Fax 940-864-2687
hfp@valornet.com

John McDougalPublisher
Lisa ShawBusiness Manager
Doris McDougalProduction
Bill Blankenship ...Staff Photographer

Periodical Paid Haskell, Texas 79521
(USPS 237-040)

SUBSCRIPTION RATES:

Haskell County, one year, \$25.00.
Outside of Haskell County, one year, \$34.00.

NOTICE TO PUBLIC-Any erroneous reflection upon the character, reputation or standing of any firm, individual or corporation will be gladly corrected upon being called to the attention of the publisher.

POSTMASTER: Send address changes to The Haskell Free Press, P.O. Box 555, Haskell, TX. 79521-0555.

This issue mailed Wed., June 24, 2009



Clear Fork Crime Stoppers
1-800-222-TIPS

Wichita Brazos Museum to feature reenactments during grand opening

The eight communities of Knox County are digging into their local histories to prepare exhibits that reflect the development of each town for the grand opening of the Wichita Brazos Museum on June 27.

Knox City, Munday, Rhineland and Goree are mostly farm oriented country today, with oil fields also contributing, but once wild horses roamed there. Wild Horse Prairie is still a location many recall.

Vera, Gilliland, Benjamin

and Truscott in the northern part of the county have farmland also, but many fields are on the edge of the Wichita and Brazos River breaks where ranching replaces the plow.

In the 1860's no one lived in what is now Knox County. Even the Indians just passed through hunting buffalo, but not making permanent homes.

In 1861 all Federal Troops left Texas to fight in the Civil War. Volunteer ranger companies from the frontier

counties in danger of attack made "Scouts" into Indian Country that now makes up Archer, Baylor and Knox. The rangers of the 1860's will return to Knox County on June 27 and make camp near the Wichita Brazos Museum. At least a couple of the re-enactors will represent them. They will discuss with every one who visits them what the rangers of 1860 did to protect the frontier counties.

Visitors can search through the musty rolls of several different counties at the June 27 camp site. Ray Cragar, a civil war history buff, will help anyone look through the rolls or seek the name of an ancestor listed in the Index of Applications for the Texas Confederate Pensions.

Taking Knox County from Indian times to modern times is the story woven into the exhibits as each community tells a story at the Wichita Brazos museum at Benjamin, June 27. Visitors are invited to seek out their ancestors in the exhibits and maybe even find their own faces in the school exhibits.

The program will begin at 10 a.m. After the program, the museum will be open until 5 p.m. Members of Friends of the Knox County Historical Commission will guide visitors on a tour of the museum after the 10-11 a.m. outdoor program. A hamburger lunch will be served at the Benjamin Memorial Building by the Benjamin Senior Class.

Everyone is invited to attend, come out and learn about our history.

Be careful when using electricity

The National Fire Protection Association (NFPA) is reminding the public to be aware of the risks associated with the use of electricity, and providing safety tips to assist individuals in taking steps to reduce the risk of experiencing a home electrical fire.

In recent years, an average of 53,000 home electrical fires have been reported per year. These fires resulted in an average of 500 deaths, 1,400 injuries, and \$1.5 billion in direct property damage per year. One of every seven home fires was an electrical fire. Any type of equipment that uses electricity may be involved in an electrical fire. Some type of electrical distribution equipment such as wiring, light switches, outlets, cords, and plugs or lighting equipment was involved in roughly half of the home electrical fires. There are also many home electrical fires involving air conditioners, fans, clothes dryers and appliances.

"Whether you are actively flipping a switch, inserting a plug, or simply enjoying all the electric-powered appliances in your home, the risk of fire may not be on your mind," said Lorraine Carli, NFPA's vice president of communications. "Most electrical fires can be easily avoided. The first step in preventing them is to be aware of the danger, the second is to learn the rules of fire safety and then put them into practice."

NFPA offers the following safety tips. To learn more about electrical safety, visit <http://www.nfpa.org/electricalsafetymonth>.

•Replace or repair loose or damaged cords on all electrical devices.

•Avoid running extension cords across doorways or under carpets.

•In homes with small children, unused wall sockets and extension-cord receptacles should have plastic safety covers.

•Consider having additional circuits or outlets added by a qualified electrician so you do not have to use extension cords.

•Follow the manufacturers' instructions for plugging an appliance into a receptacle outlet.

•Avoid overloading outlets. Plug only one high-wattage appliance into each receptacle outlet at a time.

•If outlets or switches feel warm, shut off the circuit and have them checked by an electrician.

•When possible, avoid the use of "cube taps" and other devices that allow the connection of multiple

appliances into a single receptacle.

•Place lamps on level surfaces, away from things that can burn and use bulbs that match the lamp's recommended wattage.

Electrical fires tend to happen more frequently in older homes. The Fire Protection Research Foundation conducted the Residential Electrical System Aging Research Project (2008) to study how aging and installation quality of components in home electrical systems impact fire safety.

The project involved harvesting from 30 homes from across the U.S. ranging in age from 30 to 110 years. More information on hidden electrical hazards and a link to the Foundation's report are available at <http://www.nfpa.org/electricalsafetymonth>.

Lightning safety awareness week designated June 21-27

Our love of outdoor activities and the frequency of thunderstorms make summer the most likely time to be injured or killed by lightning, according to statistics compiled by NOAA's National Weather Service. In order to reduce lightning injuries and fatalities, the National Weather Service is promoting Lightning Safety Awareness Week the last week of June.

More than 70 percent of lightning fatalities occur between June and August, says John Jensenius, the National Weather Service lightning expert who tracks and evaluates lightning deaths for the agency.

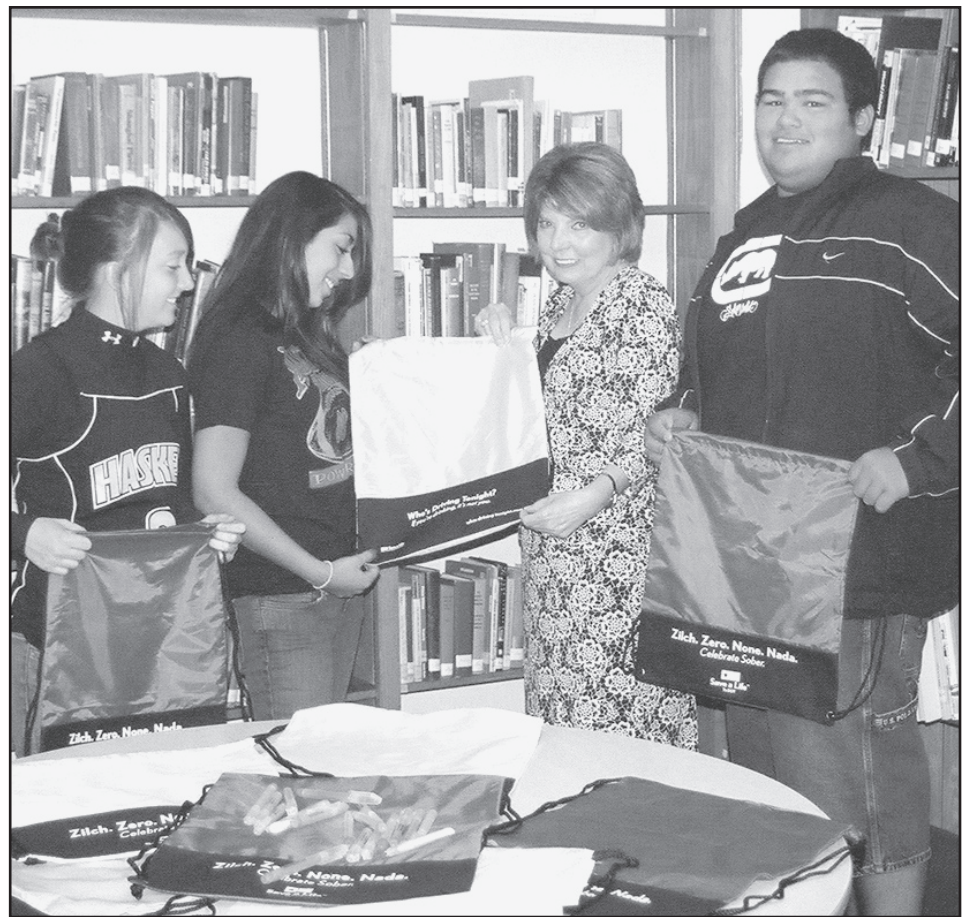
Annually lightning strikes more than 400 people in the United States. About 60 of those die, and many more are left with devastating and permanent disabilities. The National Weather Service studies lightning fatalities in order to know where to best target its lightning education efforts. For example, men are struck far more often than women, sustaining about 85

percent of lightning deaths. And men under 40 account for 60 percent of all lightning fatalities.

"At the start of summer when people are getting ready to enjoy outdoor activities, we want to remind them that lightning is very dangerous," says Jensenius. "Lightning can kill—so remember—when thunder roars, go indoors."

New for its 2009 campaign, NOAA has produced a dramatic video public service announcement by Ohio college student Ellen Bryan. Bryan's sister, Christina, was seriously injured in a lightning strike nine years ago. A Miss America hopeful, Ellen Bryan has made lightning safety her personal pageant platform. View the video public service announcement on the National Weather Service Lightning Safety Web site.

NOAA also has published a new brochure, Lightning Safety for You and Your Family, which provides basic facts about lightning and information on how to



PROJECT GRADUATION—Three Haskell High School graduating seniors hold backpacks that Brenda Mitchell, second from right, brought to the school as gifts for the seniors' all-night graduation party. These backpacks are in addition to the \$350 mini-grant the Texas Department of Transportation provided the school for the party. Each senior that attended the party received a backpack which bears a TxDOT safety slogan. Pictured, l-r, are Claire Isbell, Laura Garcia, Mitchell, and Jacob Rodriguez. Mitchell is TxDOT's Abilene District traffic safety coordinator.

TxDOT provided grant for Haskell's All Night Party

Again this year, the Texas Department of Transportation provided a \$350 mini-grant to area high schools to help defray the cost of all-night high school graduation events.

Called Project Celebration 2009, Haskell High School is among 30 high schools in the Abilene District that took part in TxDOT's graduation program. Each participating school received a \$350 mini-grant.

"As a mother myself, it's always a comfort to me knowing that TxDOT provides funds to high schools that offer our teenagers a safe

and sober occasion for their graduating events," Brenda Mitchell said. "TxDOT helped to support hundreds of high schools across the state with their organized and chaperoned graduation activities." Mitchell is the Abilene District's traffic safety coordinator.

Mitchell visited each of the 30 participating high schools in the district. In addition to the \$350 each school received, she presented the Project Celebration chairperson mementos for each of the graduates who attended their high school all night event. One of the mementos was a colorful backpack that bears a safety

slogan.

According to the traffic safety coordinator, these mini-grants are not intended to fully fund a Project Celebration event, but to provide seed money for schools to start and support alcohol and drug-free parties for high school students. The funds are to be used to cover expenses such as printing, materials, postage, supplies, room rentals, and the like.

Mitchell said this program, which began in 1984 with only two schools, is one of TxDOT's most popular and well-received projects offered throughout the state.

E-mail your news and photos to The Haskell Free Press at hfp@valornet.com

ERICH REID, OWNER
Reid Roofing
 All Phases of Roofing
 10 Years Experience
 Contract or Subcontract
 FREE ESTIMATES

(325) 721-3004 Cell
 (940) 864-3190 Local
 706 North 12th St.
 Haskell, Texas 79521

Painting - Exterior & Interior
 Tree Trimming & Removal

Independence Day Motorcycle Rally
July 4, 2009
 9 a.m. to 4 p.m.
 Old Glory, Texas

Bike Competitions and Contests
 Entry Fee: \$30 per bike
 Free Vendor Space (Call to reserve)
 Food • Music by Dan Green
 Call Britt: 254-652-3270

SANTA ROSA Telephone Cooperative
 Haskell office 863-1125 INC. 113 N. Ave. D.

DSL \$24.95 and up

Hermann Sons Youth Camp
 A Fraternal Service for Members
 Riverside Camp for Girls
 Hilltop Camp for Boys
 Ages 9-13

Call Today!
830-995-3396

Agent Jean Merchant

Order of the Sons of Hermann in Texas • San Antonio
 More information is available at www.texashermsongsons.org
 Serving Texas Families Since 1890

HERMANN SONS
HSFI
 FRATERNAL INSURANCE

(Subject to space available)

Tips for teens, employers for summer hiring

During the summer months, thousands of youth gain valuable work experience. Among employment opportunities for youth in Texas are traditional summer jobs in parks and recreation, leisure and hospitality, libraries, and other community organizations.

"Seasonal summer jobs offer young Texans an opportunity to earn income, while gaining valuable work experience," said Texas Workforce Commission (TWC) Chairman Tom Pauken. "Texas workforce centers provide valuable information and can serve as a core resource as teens start their job searches."

TWC offers the following important tips to teens as they seek summer employment:

- Register for job alerts

on www.WorkInTexas.com, TWC's online job-matching Web site.

- Look for work in a field that you find interesting. Volunteer work is an excellent way to broaden your résumé and can open doors to landing a job in that field.

- Visit with a parent, teacher or other mentor about typical interview questions that you will have to answer and do a mock interview.

- Smile and be friendly to each person you encounter at that business, even as you are filling out the application and turning it in.

- Once you are scheduled for an interview, learn as much as you can about the business and even consider visiting that place of business at least a day ahead of time.

- After the interview, thank

your interviewer and follow up with a thank you note.

TWC reminds employers, workers and parents to familiarize themselves with state and federal laws, as well as safety regulations that address child labor issues.

Any person under the age of 18 is considered a child when employed. Federal and state child labor laws protect youth against potentially detrimental occupational settings or working conditions that could interfere with their safety, health or well-being.

Different child labor laws apply to different age groups. For example, teens who are age 16 or 17 can perform work for any number of hours, as long as it is not deemed hazardous by the U.S. Department of Labor (DOL).

Children aged 14 or 15 may perform a job beyond traditional school hours in some nonmanufacturing, nonmining and nonhazardous jobs, but only under certain conditions. Because operating power-driven lawnmowers is considered dangerous, 14- and 15-year olds are

prohibited from that activity, but children ages 16 and 17 are permitted to do so.

Job-related functions prohibited by law and considered inappropriate or unsafe for teens include any operations on or about a roof, jobs involving power-driven woodworking machines, employment involving manufacturing or storing explosives, and logging and sawmilling.

Teens seeking job-search assistance can visit their local workforce centers, a list of which can be found at <http://www.twc.state.tx.us/dirs/wdas/wdamap.html>.

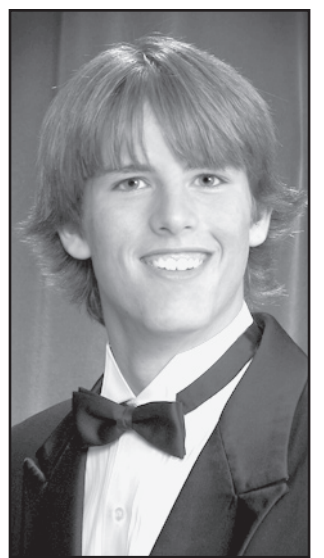
For other information on prohibited jobs or those with restrictions, employers or prospective summer youth workers can visit <http://youthrules.dol.gov/jobs.htm>. To learn more about child labor laws, call TWC's Labor Law Section at 800-832-9243 or 512-837-9559, or visit online at <http://www.twc.state.tx.us/ui/lablaw/lablaw.html>. More employer or workers services are available online at www.texasworkforce.org.

Whitfield receives academic award

Caleb Whitfield of Paint Creek has received an academic scholarship from the Annie Ozella Jones Memorial Academic Award program of Claims Administrative Services (CAS). The award was presented to Paint Creek ISD in recognition of its achievements in workplace safety.

The district was recognized by CAS during the 18th annual TASA Mid-Winter luncheon Jan. 26 in Austin. The award was in response to the district's success in implementing safety programs that minimize losses and control workers' compensation cost.

Whitfield plans to



CALEB WHITFIELD

study Game & Simulation Programming at DeVry University in Arlington, Virginia this fall.

Pressure canner gauges to be tested

by Jane Rowan
CEA/FCS, Haskell Co.

A pressure canner testing clinic will be held Tues., June 30 from 10 a.m. to 1 p.m. at the Haskell County Extension Office located at 101 S. Ave. D in Haskell.

Canner gauges need to be tested for accuracy each year.

The clinic is free of charge and will only take about ten minutes. Participants will need to bring their pressure canner lid and gauge.

For more information contact, Jane Rowan—County Extension Agent/FCS, at the Haskell County Extension Office 940-864-2546.

Young farmers

By Todd Staples
Texas Agriculture Commissioner

Young farmers. The 2007 Census of Agriculture says they're becoming an endangered species. Nationally, the number of farmers under 25 has decreased by 30 percent since 2002, and the average age of U.S. farmers has increased from 55 to 57 over the same time period. In Texas, the average age of farmers is now even older: almost 59.

So why are there fewer newcomers to production agriculture?

One reason is the lack of user-friendly, effective financing options. High start-up costs discourage young people from entering farming and ranching. As a result, we need to be mindful not to discourage our children or their friends when they express a desire to be farmers.

One young farmer told me she often hears families telling their children things like, "Farming is too hard, and too risky."

It's true that it takes a strong will and determination for young farmers to succeed, especially if they're starting from scratch, but the same is

true of many other industries. And regardless of the challenges they face, 92 percent of young farmers and ranchers see themselves as life-long farmers, according to a recent American Farm Bureau survey. So it's important to help young farmers get started because once they do, they tend to continue for the long run.

Farming is often a difficult and challenging business, but thanks to the Texas Legislature, the Texas Department of Agriculture can help make things easier with four new programs created in the 81st Legislative Session. Our new Agricultural Loan Guarantee Program and expanded Interest Rate Reduction Program will provide financing tools for all of agriculture. There are also two new programs exclusively for young farmers—the Young Farmer Interest Rate Reduction Program and the first-ever Young Farmer Grant Program. These new initiatives will make farming a little lighter on the pocket book and even grant money to young producers. These programs are available after Sept. 1, and you can learn more about them by calling TDA at 800-TELL-TDA.

Haskell Summer Menu

Lunch	chips, lettuce, tomatoes, pickles, ice cream cups
Monday: Popcorn chicken, mashed potatoes with gravy, breadsticks, broccoli with cheese, orange slices	Thursday: Chicken spaghetti, green beans, salad, breadsticks, fresh fruit
Tuesday: Corn dogs, macaroni and cheese, pork 'n beans, shape-ups.	Friday: Ham and cheese sandwiches, chips, lettuce, tomatoes, pickle spear, chocolate chip cookie
Wednesday: Hamburgers,	

ECC Menu

Mon., June 29	tea or coffee
Lunch—Sloppy Joes on bun, pinto beans, onion slice, chips, pickles, misc. dessert,	Announcements begin at 11:45 a.m. followed by lunch.

The Haskell Free Press

Faithfully covering the news and events of Haskell County since 1886.

This Week's Devotional Message: Brighten your life with the Golden Rule



Do unto others, the Bible has said.
As you'd have others do unto you;
And if you will follow this passage you've read.
You will find it is certainly true
That in business, your home life or simply with friends.
It is easier getting along
If you'll never be forced into making amends,
Just because you have done someone wrong.
So to learn more about this unfailing advice
That will frequently serve as a warning.
You should go to your church, where it's only the price
Of an hour on next Sunday morning.

ATTEND CHURCH THIS SUNDAY

- HASKELL—•
- East Side Baptist Church**
Ronnie Gibson, pastor
Sun. 9:45 a.m., 11 a.m., 6 p.m.; Wed. 7 p.m.
600 N. 1st East, Haskell
- Christian Church**
Jim McCurley, interim minister
Sun. 10:45 a.m.
107 N. Ave. F, Haskell
- Church of God**
Bruce Ray, pastor
Sun. 10 a.m., 11 a.m., 6 p.m.
Wed. 7:00 p.m.
714 North First East, Haskell
- Trinity Lutheran Church**
Ron Rennegarbe, pastor
Sunday School 9:30 a.m., Worship 10:30
Hwy 380 East, Haskell
- Iglesia Bautista El Calvario**
Art Flores, Interim pastor
Sun. 9:45 a., 10:45 a., 5 p.m.; Wed. 7 p.m.
607 S. 7th, Haskell
- First United Methodist Church**
Rev. Tom Long, pastor
Sun. 9:45 a.m., 10:50 a.m. 6 p.m.
Wed. 6 p.m.
201 N. Ave. F, Haskell
- First Assembly of God**
Rev. J.C. Amburn
Sun. 9:45 a., 10:45 a., 6 p.m.; Wed. 7 p.m.
1500 N. Ave. E, Haskell
- St. George Catholic Church**
Father George Roney
Sat. Mass 7 p.m.; Sun. Morn. 9:00 a.m.
901 N. 16th, Haskell
- Church of Christ**
Phillip Sims, minister
Sun. 9:30 a.m., 10:30 a.m., 6 p.m.;
Wed. 7 p.m.
510 N. Ave. E, Haskell
- First Presbyterian Church**
Kelly Pigott, interim pastor
Sun. Morn. 9:30 a.m.
306 N. Ave. E, Haskell
- Trinity Baptist Church**
Larry White, pastor
Sun. 10 a., 11 a., 6:30 p.m.; Wed. 6:30 p.m.
114 S. Ave. D, Haskell
- Hopewell Baptist Church**
Sun. 9:30 a.m., 11:00 a.m.; Wed. 7 p.m.
908 N. Ave. A, Haskell

- Greater Independent Baptist Church**
Sun. 9:30 a., 11:00 a., 6:30 p.; Wed. 7 p.
301 N. 3rd St., Haskell
- New Covenant Foursquare**
Bill and Renee Glass, pastors
Sun. 10 a.m., 11 a.m., 6:30 p.m.
Wed. 7 p.
200 S. Ave. F, Haskell
- Mission Revival Center**
Rev. William Hodge
Sun. 10 a.m., 11 a.m., 6 p.m.; Tues. 6 p.m.
1600 N. Ave. B, Haskell
- First Baptist Church**
Greg Gasaway, pastor
Sun. 9:45 a., 10:55 a., 6 p.m.; Wed. 6:30 p.m.
301 N. Ave. E, Haskell
- Church in the Wind**
C.C. Curran, pastor
Sun. fellowship 5 p.m. Church 5:30 p.m.
Tues. Bible Class 7:30 p.m.
203 S. 1st East, Haskell
- Cornerstone Fellowship Baptist Church**
Morris R. Johnson, pastor
Sun. 9:30 a.m. 10:45 a.m., 6 p.m.
Wed. 7 p.m.
1600 N. First St., Haskell
- WEINERT—•
- First Baptist Church**
Dan Bullock, pastor
Sun. 10 a.m., 11 a.m., 6 p.m., Wed. 7 p.m.
Weinert
- Weinert Foursquare Church**
Rev. Robert Harrison
Sunday 11 a.m
Weinert
- ROCHESTER—•
- Church of Christ**
Steve Willis, minister
Sun. 9:45 a., 10:45 a., 6 p.m.; Wed. 6 p.m.
West on Main Street, Rochester
- First Baptist Church**
Joseph Barrett, pastor
Sun. 9:45 a.m., 11 a.m., 6 p.m.;
Prayer Time/Team Kids 5 p.m.;
Wed. Youth meeting 7 p.m.
500 Main, Rochester
- Union Chapel Baptist Church**
Clovis Dever
Sun. 9:45 a., 10:45 a., 6 p.m.; Wed. 7 p.m.
Rochester

- Faith Chapel of Rochester**
Randy Hollingsworth, minister
Sun. 10 a.m., 11 a.m., Wed. 6 p.m.
Hwy 6, Rochester
- SAGERTON—•
- Sagerton Methodist Church**
Stephanie Gilkey, pastor
Sun. Morn. 9:45 a.m.
Sagerton
- Faith Lutheran Church**
Rev. Dr. Keith Palmquist, pastor
Sun. 10:30 a.m.
Sagerton
- RULE—•
- First Baptist Church**
Russell Stanley, pastor
Sun. 9:45 a., 10:00 a., 5 p.m.; Wed. 7 p.m.
1001 Union Ave., Rule
- Primitive Baptist Church**
Dale Turner Jr., pastor
First & Third Sundays 10 a.m.
Corner of 8th & Robins, Rule
- Church of Christ**
John Greeson, minister
Sun. 9:45 a., 10:40 a., 6 p.m.; Wed. 7 p.m.
811 Union, Rule
- Primera Iglesia Bautista**
Alfa y Omegas
Manuel Marin, pastor
Sun. 10 a., 11:00 a., 5 p.m.; Wed. 6 p.m.
500 Elm Street, Rule
- Sweet Home Baptist Church**
Larry Neal, pastor
Sun. 10 a.m., 11 a.m., 5 p.m.;
Gladstone Ave., Rule
- West Bethal Baptist Church**
Rev. Clovis Dever
Sun. 10 a., 11 a., 8 p.m.; Wed. 7:30 p.m.
300 Sunny Ave., Rule
- PAINT CREEK—•
- Paint Creek Baptist Church**
Sun. 10:00 a.m., 11:00 a.m., 6 p.m.
Paint Creek
- O'BRIEN—•
- O'Brien Baptist Church**
Jim Reid, pastor
Sun. 9:45 a., 11 a., 5 p., 6 p, Wed. 6 p.m.
O'Brien

Sonic Drive-In
1402 N. Ave. E
864-8533
Managers: Leon & Carolyn Herring

Steele Fire Apparatus
Hwy. 380 East • 864-2208

Modern Way Food Store
1202 N. Ave. E • 864-3763

HANSON PAINT & BODY SHOP
207 S. 1st • 864-3631
Professional Auto Body Repair
Glass Installation • 24 Hour Wrecker Service

Rule Co-op Gin & Elevator
301 Adams • Rule • 996-2421

Smitty's Auto Parts
107 N. 1st East • 864-2607

The Haskell Free Press
"The People's Choice"
420 N. First Haskell, Texas 940-864-2686
Serving Haskell County Since 1886



Shop The Haskell Free Press CLASSIFIEDS



940-864-2686

ALL DEADLINES MONDAY 5 P.M.

940-864-2686

For Sale

FOR SALE: 16 ft. garage door. Door is sectional with all hardware. \$100. 325-660-8011. 14tfc

FOR SALE: Aluminum camper shell for a short bed pickup. \$25. Call 325-721-0674 cell or 940-864-2023 after 5 p.m. 44tfc

SACRIFICE. Queen pillowtop mattress set. New in Wrapper. Only \$140. 325-428-9172. 26c

FULL SIZE ORTHOPEDIC mattress set, in plastic. \$120. 325-428-9172. 26c

ALL NEW king mattress and split box set. First \$245 takes complete 3 piece set, still wrapped. 325-428-9172. 26c

NASA memory foam mattress set. New with warranty. \$375. 325-428-9172. 26c

REAL LEATHER sofa, loveseat, 3 piece table set. Lifetime warranty. Must!! \$650. 325-428-9172. 26c

5 PIECE microfiber sofa, loveseat and cocktail table set. Brand new! Call now! \$550. 325-428-9172. 26c

FOR SALE: Red Top Cane hay to be laid down in July. Big bales or small squares. Call Tiffen Mayfield, 940-673-8364 nights, or 940-256-0294 days. 26tfc

Miscellaneous

HOUSE LEVELLING and foundation repair. No payments until work is satisfactorily completed. David Lee & Co. 325-675-6369. 1-888-486-8588. 6tfc

SRC ACCESS.NET. Download, talk and surf. High speed internet. Call 863-1125. New extreme speeds. New anti-extreme rates. srcaccess.net. 33tfc

Real Estate

FOR SALE: Brick, 2 bedrooms, 2 bath. CH/A. Large rooms. Great location. Expandable to 3 bedrooms. Bill Jackson Realtors, 325-773-3358 or 325-669-8691. G.W. Clark, agent. 20tfc

Help Wanted

THE NEW SONIC Drive In in Haskell is now taking applications for all positions. Apply in person. 44tfc

GIBSON CARE Center, Aspermont needs CNAs for all shifts. Call Melissa Prew, ADON at 940-989-3526. E.O.E. 9tfc

REDROOSTER restaurant now hiring experienced cook. Apply in person. 1006 S. Ave. E. 24-27c

LICENSED Vocational Nurse, EMT or Paramedic: Rolling Plains Jail and Detention Center is currently accepting applications for LVN, EMT or Paramedic to work night shift. Must be up to date on their certifications. Benefits include medical at no cost to the employee, PTO, 401K and optional benefits. Please contact Kimberly Hammes at 940-864-5694 for additional information. EOE. 25-27c

THE HASKELL County Appraisal District is accepting resumes for the position of clerk. Knowledge of Microsoft word, Quick Books, and a general understanding of Windows System is preferred. High school degree is required. Resumes will be accepted until position is filled. Resumes may be sent to P.O. Box 467, Haskell, TX 79521-0467 or may be brought by the office at 604 N. 1st St., Haskell, TX. 940-864-3805. 26c

COUNTRY ELEGANCE at 1700 Mulberry Lane, Stamford, Texas is taking applications for dietary service attendants, resident Care attendants, and maintenance. Applications can be picked up at 1700 Mulberry Lane between 8:30 a.m. and 4:00 p.m. Monday through Friday. Salaries will depend on experience and job skills. Country Elegance is an equal opportunity employer. 26-27c

Garage Sale

HAMLIN TRADES DAY Village, 711 N. Central. July 11 and 12. Sat. 9-5 and Sun. 11-4. www.hamlintradesdayvillage.com. 26-28c

GARAGE SALE: 202 N. Ave. I. Fri. and Sat., 8 til ? Lots of clothes, all sizes; dolls, dishes, freezer, other merchandise. 26c

GARAGE SALE: Sat., 8 to 1. 400 N. 14th. Womens clothes, boys clothes, Americana items, microwave. Too much to list. 26c

YARD SALE: Sat. 8 to 8. 604 N. 3rd St. Apt. 2A. Sewing machine, jewelry, books, kids' name brand clothing, kids' toys, other items. 26p

YARD SALE: Fri. and Sat. 9 to ? Tamales. Bake sale. 911 N. Ave. C. 26p

Public Notices

NOTICE
June 25, 2009
"Application for Local Option Election Petition to Legalize"
We, the Citizens Committee of Haskell, hereby petition the County of Haskell, Texas, for a petition to legalize sale of beer and wine for off premises consumption only, in the City of Haskell, Texas. This application will be filed with Rhonda Moeller, Haskell County Clerk.

June 25, 2009
"la Aplicación para la Peticion Local de Elección de Opción para Legalizar"
Nosotros, el Comité de Ciudadanos de Haskell por la presente peticionan el Condado de Haskell, Tejas, para una petición para legalizar la venta de cerveza y vino para el consumo de de-local sólo en la ciudad de Haskell, Tejas. Esta aplicación será archivada con Rhonda Moeller, Empleado de Condado de Haskell.
This public notice was

Public Notices

paid for by the Citizens Committee of Haskell.26c

ABANDONED MOTOR VEHICLE

In compliance with Article 683.031 Transportation Code, I will proceed to sell at public auction to the highest bidder on 7 day July of 2009 all of the following listed Abandoned Motor Vehicles at the described locations and times listed below:
10:00 a.m. at the south door of the Haskell County Courthouse in Haskell, Texas.
Year, 1998; Make, Oldsmobile; Model, Van; VIN, 1GHDX03E9WD241412; Tag #887WXD.
The successful bidder upon payment of the money to the Haskell County Sheriff's Office is entitled to take possession of the Vehicle and apply for title free and clear of all liens and claims of ownership.
David Halliburton
Sheriff Haskell County
Telephone
940-864-2345. 26c

PUBLIC NOTICE
Haskell CISD will be holding an auction on Saturday, June 27 at 10 a.m. The auction will take place on the high school tennis courts located two blocks east of Hwy. 277, behind the ag building and

FOR RENT

Bobcat Skid \$125
Steer Loader per day
Excavator \$175
per day
Call or check at
Steele Machine
940-864-2208

Langford Roustabout Services, LLC
8348 U.S Hwy 277 N.
Haskell, TX 79521
Scott Langford
Owner
940-256-0535
Doug Sorrells
Supervisor
940-256-0536
Office
940-864-3490
Fax
940-864-3491

Haskell County Realty
103 N. Ave. E • 940-864-2665
1-800-658-6342
haskellcountyrealty.com
BROKER: BRIDGET GUESS
Agents: Chan Guess and Hess Hartsfield

FEATURED LISTINGS
202 S. AVE. G—HERE IS AN ESTATE FOR YOU! 2 bedroom, 3 bath lovely home, large kitchen, dining room, large guest quarters out back to include a 2 bedroom, 1 bath with sitting area, three car garage. Estate also includes a large warehouse and has two additional lots (1/2 city block). Lots can be sold separately. REDUCED.
1005 N. 3RD ST. EAST. MUST SEE. 3 bedroom, 2 bath, frame home, entire home remodeled, beautiful kitchen with new cherry wood cabinets and tile counter tops, an island sets in the kitchen for easy entertaining, living room open to dining room, large utility room, nice storage throughout home, fenced in back yard with amazing landscaping, covered patio, two car carport. REDUCED. UNDER CONTRACT.
COMMERCIAL PROPERTY. 101 N. AVE. E. LOOK WHAT WE FOUND: HISTORIC BUILDING. Two story, open downstairs area, office areas upstairs, step down cement safe area, great location, corner lot. REDUCED.
"Where we make You our #1 Priority"
Residential, Commercial, Land
www.haskellcountyrealty.com

Public Notices

cafeteria. Items available to be sold are desks, shelves, welders, drill press, a bus, tables, etc. 26c

For Rent

FOR RENT: Furnished rooms for rent. Nightly, weekly. Call Lone Star Lodging 864-2238 or 864-2424. 2tfc

S&S STORAGE in Haskell has storage units for rent. Call 864-2208. 23tfc

Lost and Found

LOST: Set of keys including a silver ring and a Toyota car key. If found, call Jo Cox at 940-864-2957. 26c

NOTICE
The deadline for Classified Advertising is 5 p.m. on Mondays.
Haskell Free Press

WE ARE LOOKING FOR...

A man or woman to represent Farm Bureau Insurance in this area. The person we seek is probably employed but may be experiencing job dissatisfaction because of insufficient income or lack of potential for professional growth.
We offer
•3 year training income
•Assigned accounts
•License assistance
•Complete training program
•Career in this area
If you would like to represent one of the most respected companies in the industry please call or write for an appointment.
Farm Bureau Insurance
508 N. 1st
Haskell, TX 79521
940-864-2647

Clear Fork Crime Stoppers 1-800-222-TIPS

Selling 2 estates of Vernon, the estate of Mary Kaigler of Haskell, items from the Lawrence Harmel estate of Seymour & other consigners in surrounding area.
Don't miss this one!

AT THE
Garnett Auction Gallery
Downtown, Vernon, TX
1801 Cumberland, Vernon, TX
FRIDAY, JUNE 26 – 6:00 P.M.
Boat, Riding Mower, Shop Equip, Tools, Yard items
SATURDAY, JUNE 27 – 9:30 A.M.
Gallery is full of NICE antique items & furniture, Appliances, bedroom suits, exceptional glassware & collectables
www.garnettauctions.com
Royce W. Miller, Auctioneer, TX 11840
1801 Cumberland, Vernon, TX
(940) 553-1685, 800-687-1296
Announcements made sale day takes precedence.
Never a buyer's premium.
No minimums or reserves.
PREVIEW FRIDAY—CHECK WEBSITE FOR PHOTOS & UPDATED LISTING!

Big Country
Real Estate
Haskell, Texas 79521 Robert Tribbey Farm & Ranch
Office: 940-864-2238 Broker Commercial
Royalty Interest Mineral Leases
www.bigcountryrealestate.com

FEATURED PROPERTIES
210 Carothers, Rochester. Grocery/market/cafe/game room/etc. Unlimited possibilities. Possible owner finance. Call for more details. Must sell.
5871 Hwy. 6, Stamford. Rustic frame house, 3 bedroom, 1 & 1/2 baths. Includes 4 acres and barns. Six miles west U.S. 277 on Hwy. 6. Reduced \$29,900.
507 N. 5th St. 2 or 3 bedroom, 2 bath. Furnished. Recently updated. New windows. Must see inside. Large corner lot. Water well. Storage building.
Historic Railroad Depot. To be moved, located in Knox City. Approximately 1,200 sq. ft. Great potential.
Building lots available. Several zoned for mobile homes. Other will have building deed restrictions.

RIKE
REAL ESTATE
Mary Rike, Broker John Rike, Agent
411 1/2 S. First Street
Haskell, Texas 79521
940 864 2411 940 864 2332
mrike@ctnspeed.net
mjr@windstream.net
www.rikerealestate.com

907 N. AVE. F Custom built brick home with 3 bedrooms, 2 bath, large utility room, large patio, C/HA, and one car garage. There is a sprinkler system and water well for the yard. Property is in excellent condition. REDUCED.
AVE. I EAST (S. FIRST EAST). Don't miss this beautiful interior! This property is a CLASSIC with everything new. Windows, roof, doors, carpet, kitchen cabinets, dishwasher, light fixtures and fans, and sewer line are a great addition to this 1910 vintage home. Wood floors have been refinished and antique mock fireplace mantel with a brick insert added to the large living. Other amenities include a dining room with bar open to the kitchen, C/HA, utility connections, carport, outside storage, well and storm cellar. Location is isolated like country living.
1303 N. AVE. I. Residential or Commercial Multi-purpose building, kitchen, baths and extra storage, house, extra lots
Come by Rike Real Estate for a complete list.

Dodson Concrete Construction
Commercial – Residential
David Dodson
704 N. Ave. F • Haskell
940-864-2038
Over 30 Years in the Business
FREE ESTIMATES

Nanny Plumbing, Inc.
301 S. Ave. E • Haskell
940-864-3043
Sales and Service for Residential Plumbing and Heating/Cooling, Pump Installer and Sprinkler Systems.
License numbers available upon request

EXPERT AUTO WORK
REASONABLE RATES
See us for all your auto mechanic needs. 20 years experience. We do it right the first time.
US 277 South • Haskell

NOTICE TO CONTRACTORS OF PROPOSED TEXAS DEPARTMENT OF TRANSPORTATION (TxDOT) CONTRACTS
Sealed proposals for contracts listed below will be received by TxDOT until the date(s) shown below, and then publicly read.
CONSTRUCTION/MAINTENANCE/BUILDING FACILITIES CONTRACT(S)
Dist/Div: Abilene
Contract 6045-53-001 for PICNIC AREA MAINTENANCE in HASKELL County, etc. will be opened on July 16, 2009 at 2:00 p.m. at the District Office for an estimate of \$16,160.00.
Plans and specifications are available for inspection, along with bidding proposals, and applications for the TxDOT Prequalified Contractor's list, at the applicable State and/or Dist/Div Offices listed below. If applicable, bidders must submit prequalification information to TxDOT at least 10 days prior to the bid date to be eligible to bid on a project. Prequalification materials may be requested from the State Office listed below. Plans for the above contract(s) are available from TxDOT's website at www.txdot.gov and from reproduction companies at the expense of the contractor.
NPO: 29935
State Office: Constr./Maint. Division, 200 E. Riverside Dr., Austin, Texas 78704. Phone 512-416-2540.
Dist/Div Office(s): Abilene District, District Engineer, 4250 N. Clack, Abilene, Texas 79604-0150. Phone 325-676-6800.
Minimum wage rates are set out in bidding documents and the rates will be part of the contract. TxDOT ensures that bidders will not be discriminated against on the grounds of race, color, sex, or national origin.

Billingsley to speak at Haskell First Baptist

Don Billingsley will speak and share his testimony during the morning worship service at First Baptist Church in Haskell Sun., June 28 at 11 a.m.

Billingsley was a member of the 1988 Odessa Permian Panther team immortalized by the book "Friday Night Lights" which was later made into a movie.

He has a powerful testimony and will share how he grew up in church, but did not accept Christ until after high school. During his high school years, he experimented with drugs and alcohol while looking for something to fill the void in his life.

After graduation, he moved back in with his mother and was required to attend church. God began working on him, but he still put off the decision to accept Christ as his Savior. Shortly after one of his friends took his own life, Billingsley knew that he could not continue to live life on his own and he asked Christ to come into his life.

Life took a different path from that point on. Today, Billingsley and his family are active members of the First Baptist Church-Carrollton.

He and wife, Melanie, are the parents of three children.

The church invites



DON BILLINGSLEY

everyone to the morning worship service. Childcare will be provided. For more information contact the church office at 864-2581.



RIBBON CUTTING—Haskell Chamber of Commerce members held a ribbon cutting ceremony at the new office of State Farm Insurance Agent Tom Bassett at 705 N. Ave. E in Haskell. Attending, l-r, were Randy Basset, Sue Reese—State Farm Sales Specialist, Carl Milburn, Charlotte Raynes—State Farm Sales Specialist, Steven King, Shannon Waters—State Farm Sales Specialist; Bassett and Sally Rueffer.

Increase in sales tax seen by most local cities

Texas Comptroller Susan Combs announced that the state collected \$1.77 billion in sales tax revenue in May, a 5.2 percent decrease compared to May 2008.

"Weakness throughout most sectors of the economy resulted in a significant decrease in May sales tax collections," Combs said. "While year-to-date sales tax revenue is up 0.5 percent for state fiscal 2009, further declines are expected this year."

Combs sent cities, counties, transit systems and special purpose taxing districts \$441.1 million in June local sales tax allocations, down 3.9 percent compared to last June.

Combs sent June sales tax allocations of \$297 million to Texas cities, down 3 percent compared to June 2008. So far this calendar year, city sales tax allocations are down 0.5 percent compared to the same time period last year. Texas counties

received sales tax payments of \$26.4 million, down 6.9 percent compared to last June. So far this year, sales tax allocations to counties remain up 2.7 percent compared to 2008.

In addition, \$17.1 million went to 150 special purpose taxing districts around the state, down 0.9 percent compared to last June. Ten local transit systems received \$100.4 million in sales tax allocations, down 6 percent compared to a year ago.

June's sales tax allocations represent sales that occurred in April.

The Comptroller's next sales tax allocation will be made on Fri., July 10.

Haskell County had a 9.17 percent increase for June 2009 of \$32,572.47 in comparison to \$29,833.81 for June 2008. 2009 payments to date of \$201,191.17 reflect a 1.36 percent decrease over 2008 payments to date of \$203,976.38.

The City of Haskell had a 6.4 percent increase for June 2009 of \$29,753.12 in comparison to \$27,962.15 for June 2008. 2009 payments to date of \$184,968.64 reflect a 1.58 percent decrease over 2008 payments to date of \$187,950.41.

The City of O'Brien had a 155.04 percent increase for June 2009 of \$117.78 in comparison to \$46.18 for June 2008. 2009 payments to date of \$680.48 reflect a 33.57 percent increase over 2008 payments to date of \$509.43.

The City of Rochester had a 66.88 percent increase for June 2009 of \$720.90 in comparison to \$431.98 for June 2008. 2009 payments to date of \$3,590.76 reflect a 7.13 percent increase over 2008 payments to date of \$3,351.76.

The City of Rule had a 52.38 percent increase for June 2009 of \$1,772.06 in comparison to \$1,162.92 for June 2008. 2009 payments to date of \$10,166.48 reflect a .33 percent decrease over 2008 payments to date of \$10,201.04.

The City of Weinert had a 9.52 percent decrease for June 2009 of \$208.61 in comparison to \$230.58 for June 2008. 2009 payments to date of \$1,784.81 reflect a 9.11 percent decrease over 2008 payments to date of \$1,963.74.

Texas grant recipients includes Haskell Independent School District and Region 14 Education Service Center from this area.

This grant will allow these school districts to implement high quality service-learning programs that support strong community partnerships, engage young people in schools and communities, expand service-learning for disadvantaged students, involve youth in service-learning activities related to the Martin Luther King, Jr., National Day of Service (www.mlkday.gov), and sustain and institutionalize this effective method of teaching and learning.

Haskell CISD receives Learn and Serve grant

The Texas Center for Service-Learning announced recently that it will award \$990,000 in Learn and Serve Texas grants for service-learning programs that will involve nearly 60,000 students across the state of Texas in meaningful service projects that will enrich learning and strengthen communities. These grants are funded through the Learn and Serve America program of the Corporation for National and Community Service and are awarded as part of a three-year grant cycle, with continuation funding projected through August 2012.

The Learn and Serve

Producers join together to control wild hog population

by Wes Utley
CEA-Ag/NR, Haskell Co.

In the last 5 years local agricultural producers have seen an increase in the number of wild hogs in the area. These pests have caused thousands of dollars in damage to crops and property.

In recent months local producers have banded together to form a group dedicated to the control of these wild hogs and the damage they cause. The complete eradication and control of these wild hogs is a tall order to fill, however producers have come up with

a solution to the problem.

In the last month producers have begun the use of aerial control methods via helicopter. This method has proven to be a highly successful method to make a big impact on the population of wild hogs in a short time period.

The target area selected for the pilot program in Haskell County covered 18,634 acres. Studies conducted by the Texas AgriLife Extension Service have shown that a single wild hog can do \$1,300 in damage per year.

The initial flight produced great success, eliminating

140 hogs, in only seven hours. Considering the damage done by individual hogs this shows a positive impact of \$182,000 for participating producers. The cost associated with the first flight of the program was \$17.73 per hog eliminated. The cost per hog eliminated will more than pay for itself considering the damage done by these local pests.

If you have any questions regarding this program or would like to participate in the program when it is expanded, call Wes Utley at the Haskell County Extension office at 940-864-2658.

Cookie dough recalled

The Texas Department of State Health Services is warning consumers to avoid eating any varieties of prepackaged Nestle Toll House refrigerated cookie dough as state and federal health officials investigate an outbreak of E. coli O157:H7.

Consumers are advised to throw away or return any prepackaged, refrigerated Nestle Toll House cookie dough products. Cooking the dough is not recommended because people can get the E. coli bacteria on their hands or cooking surfaces.

Nestle USA's Baking Division voluntarily recalled

all Nestle Toll House refrigerated cookie dough products including Nestle Toll House refrigerated Cookie Bar Dough, Cookie Dough Tub, Cookie Dough Tube, Limited Edition Cookie Dough items, Seasonal Cookie Dough and Ultimates Cookie Bar Dough. No other Nestle Toll House products are included.

To date, 66 cases of E. coli O157:H7 have been reported in 28 states, including three in Texas. No deaths have been reported, and the three Texas cases have recovered.

E. coli O157:H7 is a bacterial illness that causes bloody diarrhea and can lead

to serious kidney damage and death. Most healthy adults recover in five to 10 days, but children under age 5 and the elderly are more likely to develop a severe illness.

People, especially children in diapers, can pass E. coli O157:H7 to others if contaminated feces get in the mouth. If you think you or someone in your family has an E. coli O157:H7 infection, call your doctor or clinic immediately.

Information on the recall is available from the U.S. Food and Drug Administration at www.fda.gov.

44th Annual

Haskell Singing School

conducted by the Haskell Church of Christ

July 5-10, 2009

for Ages 10 – Adult
(Boys and Girls/ Men and Women)

*Out-of-town students arrive on July 5
**Classes begin on Mon., July 6 at 8:45 a.m. in the main auditorium

Class subjects:

<p>Rudiments of Music</p> <p>Sight reading</p> <p>Hymn appreciation</p> <p>Voice</p>	<p>Song leading</p> <p>Song writing</p> <p>Music theory</p> <p>Harmony</p>
--	--

Classes for beginners and advanced

How to register . . .

Call the church office at 864-3101
or drop by the office at 510 N. Ave. E
for an application form.

Cost for Haskell students is \$35
(included in the cost are five noon meals served at the building and a book for the classes.)

My bank rocks.

I'm going to school full time and working part time to help pay for it. I have a busy schedule. So, I bank online. I use my ATM card. And if I ever have any money to spend, I use my Debit Card. To me, banking is all about convenience. My bank rocks.

Rated one of the nation's strongest banks.

First National Bank

MUNDAY - HASKELL - STAMFORD - ROCHESTER

(940) 864-8555

40 MILLION DRIVERS PARK HERE.

See me and find out why State Farm® is such a great place to park.

Tom Bassett, Agent
705 N Avenue E
Haskell, TX 79521
Bus: 940-864-3250
tom.bassett.m8yb@statefarm.com

LIKE A GOOD NEIGHBOR, STATE FARM IS THERE.®

P050367 9/05 statefarm.com®
State Farm Mutual Automobile Insurance Company, State Farm Indemnity Company - Bloomington, IL