





**MONUMENTS**

"See Your Monument Before You Buy."  
More Than 50 Designs To Choose From.

**J. C. McGee**

**NOTICE --**

If You Want To Buy or Sell a Farm

Contact S. N. Reed, Licensed Real Estate Dealer.

**S. N. REED**

Phone Office 658-3061  
Residence 658-4091 Knox City

**STATE CAPITAL**

*Highlights*

**AND Sidelights**

by Vern Sanford

TEXAS PRESS ASSOCIATION

**ELECTRICAL SERVICE AND SUPPLIES**

- Commercial & Industrial Wiring
- Electric Appliances
- Repair Service
- Motor Rewinding

**GRAHAM ELECTRIC**

Telephone 658-5281

Supporters of the proposed billion-dollar Trinity River development plan won the first round on the opening day of hearings when the Texas Water Commissioners turned down the railroads' motion to delay the Austin hearing.

Gov. John Connally's approval of the commission's proposed plan was expected. He had long since pledged his support.

Connally called the navigation project, "a major step in one of the most important water conservation, flood control, and navigation projects in the history of Texas."

Texas Highway Department's 420-seat capacity auditorium overflowed during the two-day hearing as every community in the vast Trinity watershed was represented.

Spokesman for the railroads was Walter Caven, counselor for

the Texas Railroad Association. Plan for the U. S. Corps of Engineers calls for development of the entire watershed for navigation, flood control, water conservation, water quality control, drainage, irrigation, hydroelectric power, fish, wild life and recreation.

Thirteen reservoirs are included in the long-range plan. Locks and other features to make navigable from the Gulf to Fort Worth would claim more than \$515,000,000. That's more than a million dollars a mile for the 500 mile project.

Barge-line navigation of the Trinity from the Gulf of Mexico to the Dallas-Fort Worth market was the target of railroad objections.

Railroads claimed that Army engineers "greatly overestimated" traffic potential, future growth and benefits to be derived. Caven said the 20 railroads would have to spend more than \$25 million to relocate lines and bridges in the Fort Worth area. Then they would lose \$6,500,000 annually in freight business to the barge lines.

NEW SPEED LIMIT OKAYED

• FARMS  
• REAL ESTATE  
• HOMES  
• BUSINESS PROPERTY

TALK TO ME ABOUT YOUR Hospitalization and Especially

**CANCER POLICY**

**L. W. GRAHAM**

REAL ESTATE  
411 Central Avenue  
Phone 658-4021

—Some 41,500 miles of state-maintained highways will be zoned for the new 70-mile per hour speed limit when the law becomes effective on August 23.

Texas Highway Commission approved the daytime maximum for passenger cars for more than two-thirds of the state's highway system. But the old 60-mile per hour maximum still applies to 18,640 miles. Engineering studies indicated that these roads couldn't handle faster traffic.

A large percentage of the Farm to Market Road system will come under the 70-mph maximum. Lower limits will apply where conditions warrant.

District engineers are expected to release news of re-zoning on a local basis.

**HEART OF TEXAS** — A roadside park some 20 miles north of Brady on U.S. 377 is the geographical center of Texas.

It will be so designated when the Highway Commission erects a brilliant "Heart of Texas" marker.

**HOT WEATHER TOLL** — Four consecutive weeks of 100-plus degree weather plus drying wind took a toll of crops and pastures over the state, according to the Texas Crop and Livestock Reporting Service. Early harvesting was used to beat the heat in many places.

Reporting Service predicts that general rains in all areas still could revive pastures.

**POLIO FADES TO FOUR CASES** — Poliomyelitis, the dread disease that kept parents stiff with fear for many summers has declined to the point that the State Health Department has received only four reports of cases so far this year.

Total caseload for the state last year was only 114. Credit for the decline of the crippling is given Salk and Sabin vaccines.

But health officials continued to warn Texans not to be complacent. People of all ages are urged to follow up with booster

shots.

**PEACE PRECINCTS PUZZLE** — Ector County's Commissioners Court had a plan to provide offices for the county's four precincts of the peace in the new county courthouse, to be completed early in 1964.

Plan was to rezone the four peace precincts so that all would intersect at the new courthouse. Current justices would keep their present offices.

But Atty. Gen. Waggoner Carr ruled it cannot be done that way. "If the commissioners' court alters the boundary lines of any justice precinct," Carr commented, "a vacancy exists in the office of justice of the peace and constable, which the court must fill by appointment until the next general election."

**LEGISLATIVE 'RIDER'** — A legislative "rider" on the 1964-65

**NOTICE--**

TRY OUR—

**PLATE LUNCHES**

Choice of meats; steak, chicken, roast, Underwood's Bar-B-Que or Fish — Three vegetables, dessert, tea, coffee or milk—

\$1.00 plus tax

We feature hamburgers, chili, sandwiches, pies, all kinds of ice cream.

**HOSPITAL CAFE**

Phone 658-5601

**Subscribe Today**

**TO THE HERALD**

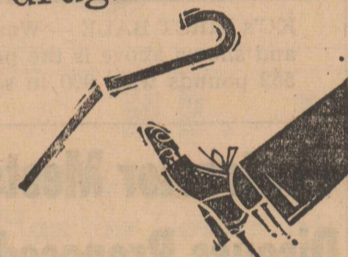
**Cafe Help Wanted**

WAITRESSES — COOKS  
DISHWASHERS  
Call in Person

**Shamrock Cafe**

Benjamin, Texas

STILL MORE FACTS about prescription drugs



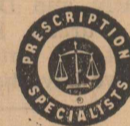
**HOGE'S PHARMACY**

1 Today's drugs have worked wonders by permitting doctors to CURE disease instead of merely relieving symptoms. For instance, life expectancy today is 10 years greater than in 1938.

2 Well known name brands are your best values when it comes to drugs, purchased from reputable sources such as our professional pharmacy.

We stock all the new drugs put out by the recognized manufacturers. And, with our staff of trained pharmacists, you are assured prompt and precise filling of your doctor's prescriptions.

YOUR BEST HEALTH VALUE IS TODAY'S PRESCRIPTION DRUG

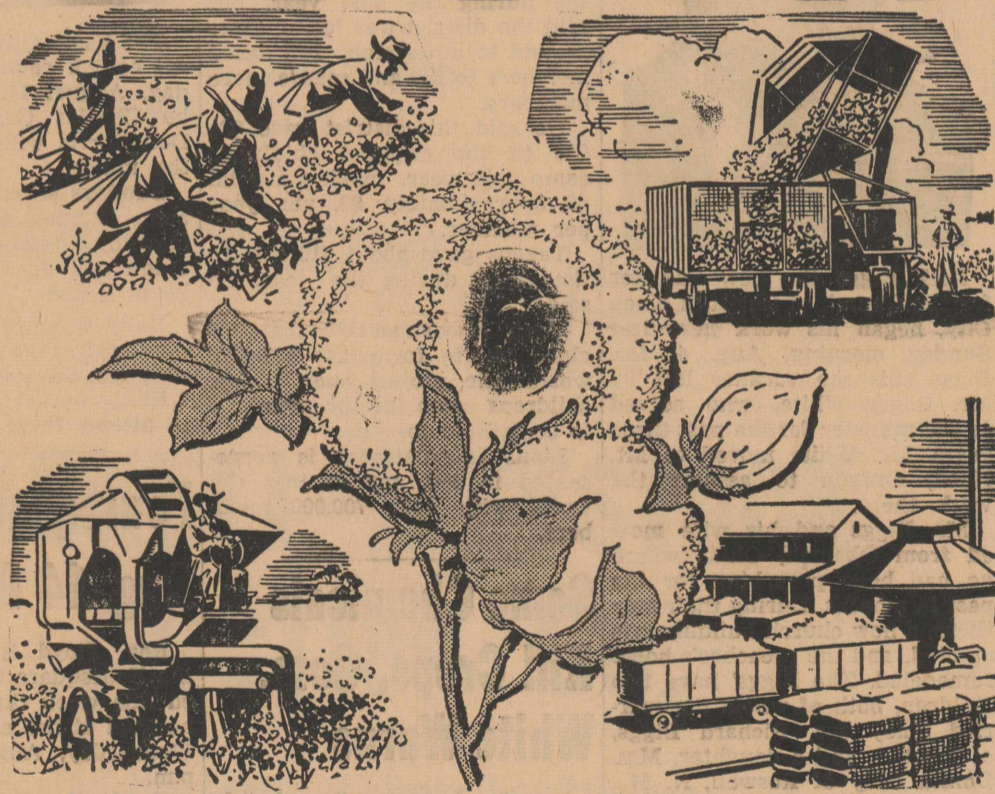


**MONEY TO LOAN**

FARMS AND RANCHES  
Texas, Oklahoma, New Mex.  
Long terms, 5 1/2% Rate  
and Ample Funds.

WRITE or CALL  
WILLIAM A. COOPER  
**Cooper Insurance Agency**  
120 N. Ave. C Olney, Tex

# COTTON GROWERS



Watch For The Announcement Of The --  
"Lucky Bale" Winners -- Every Bale Ginned  
With Us Will Be Eligible To Be Winners!!

GIN WITH US -- WHERE YOU GET

**Ginning At Cost**

**Farmers Co-op Gins**

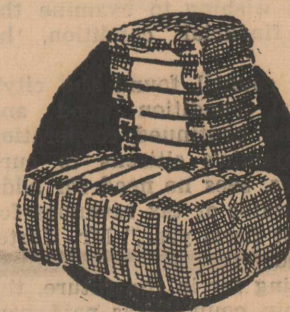
MUNDAY, TEXAS

**WE WILL Welcome All Old Customers, As Well As New Ones, And We Invite You To Try Our Modern Gin Plants This Season.**

**We Assure You Ginning Satisfaction.**  
**Try To Top Us For Service...**

**THE LARGEST And Most Modern**  
**GIN PLANT In The State**  
**TO SERVE YOU!**

**Our Gin Plant Was Completely Repaired And Is Ready To Give You The Best Samples And Turnouts Possible Anywhere. We Have The Only Gin Plant In This Area With Triple Lent Cleaning.**





# **WATCH FOR YOUR 'M' SYSTEM CIRCULAR 4 PAGES OF BARGAINS**

---

**FRESHER FRUITS & VEGETABLES  
BY 'M'SYSTEM'S Refrigerator Truck**

---

**Try The Fine Baby Beef In Onr Market  
Everyday - The Calves Were Fed Out,  
Here In Knox City's Own Feed Lot.**

---

**Finest Quality And Freshest Fine  
Foods - High Quality At Low Prices.**

---

**"M" SYSTEM SUPER MARKETS**

KNOX  
•  
CITY



OUR MARKET ALWAYS HAS THE  
VERY BEST IN

# Fresh Meats

- Sausage** 3 Lbs. ..... **1.00**
- Arm or Chuck
- ROAST** Pound ..... **55¢**
- JOWL** Pound ..... **35¢**
- Armour Star -- Wilson Certified
- BACON** 1 Lb. Pkg. .... **59¢**
- Pressed Ham** Pound .. **49¢**
- Steaketts** Pound ..... **73¢**
- Dry Salt Bacon** Pound **35¢**



Early June

**Libby's** PEAS 4 FOR **89¢**



**4 FOR 89¢**



Libby's Cream  
Whole Kernel  
303 C  
6 for

# HAMS HALF OR WHO

# CLUB STEAK 69¢

# PORK CHOPS 49¢



**Black-Eye Peas** 6 FOR **1.00**  
300 Cans



**Potted Meat** 5 FOR **49¢**

FANCY CUT



303 Cans

5 For

**1.00**



HAWAIIAN  
46 Oz. Cans

3 For

**89¢**

ANGEL SOFT  
TISSUE

4 Roll Package  
2 Pkgs. 99¢

PECOS  
CANTELOUPE

Pound

**10¢**

WILSON  
GOLDEN OLEO

2 Pounds

**29¢**

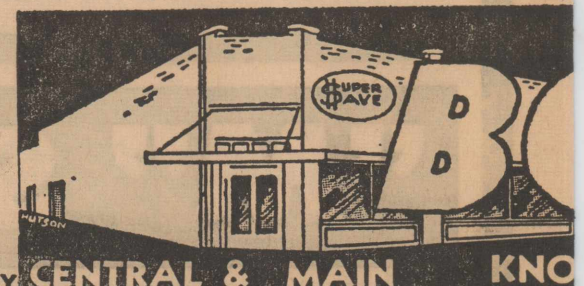
THOMPSON  
SEEDLESS GRAPES

Pound

**29¢**

SMART WAY TO SAVE!

Buy Beef or Pork  
Whole Sides or Quarter  
CUT & WRAPPED FOR YOUR FREEZER!  
See Our Market Manager — Schedule Your  
Requirements . . .



THESE PRICES GOOD THURSDAY, FRIDAY AND SATURDAY CENTRAL & MAIN KNOX

KEEP COOL WITH READY TO SERVE FOODS

# wife saver DAYS

Garden Fresh



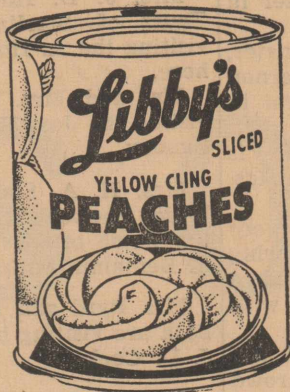
**Spinach** 303 Cans **6 FOR 89¢**



Style or  
nel Corn  
Cans  
89¢

**3 FOR 89¢**

Sliced or Halves, No. 2½ Size



**LE** Pound ..... **49¢**

## JIG SAW DOLLAR WINNERS

MRS. E. L. TANKERSLEY

MRS. BARNEY ARNOLD

MR. I. C. GODSEY

MRS. W. E. LOVELACE

Are the lucky winners of our jigsaw dollar game! Work Bob's Puzzle and win today!

**FOLGER'S COFFEE**

1 Pound Can

**59¢**

**SUNKIST LEMONS**

Dozen

**29¢**

**MORTON'S FRUIT PIES**

Apple - Peach - Cherry and  
Cocoanut

**3 FOR 1.00**

**BEKO RED POTATOES**

10 Pounds

**39¢**

**BOB'S SUPER \$AVE & LOCKER PLANT**

KNOX CITY, TEXAS Dial 658-2611

ONLY THE LEANEST MEATS GO INTO LIBBY'S—



5 Reg. Cans

**1.00**

LIBBY'S—The Most Tomato-est Tomato JUICES There Is!



Fresh Tomato Flavor

14 Oz. Bottles

6 Bottles

**1.00**



46 Oz. Cans

4 For

**1.00**

JUST RIGHT FOR YOUR READY-TO-GO PICNIC DEEP BROWN



14 Oz. Cans

8 For

**1.00**

Refreshing—Pineapple Grapefruit



**Drink** 4 29 Oz. Cans **89¢**

FRESH From The Tree Flavor Bartlett, 303 Cans



**Pears** 4 For **1.00**



JUST LIKE HOME-MADE

24 Oz. Cans ..... **2 For 89¢**

Gravenstein, 303 Cans



**Apple Sauce** 5 FOR **1.00**

A Taste Treat From Hawaii NO. 1 FLAT CAN



**Pineapple** 4 FOR **69¢**

SWEET—NO. 3 SQUAT CANS



**Potatoes** 3 FOR **1.00**

**Play.. Jigsaw DOLLARS**

EXCITING NEW GAME  
**HUNDREDS of WINNERS**

SO-O-O EXCITING! No Purchase Necessary  
Simply Collect Pieces of JIGSAW DOLLARS until  
You Have a Complete Coin. Pick up Your Card Today

**WIN UP TO \$100.**