

MRS G W STEPHENS
BOX 236
CITY

Six Food Winners Show 'Good Taste'

Six youths took top honors in the Knox County 4-H Food Show Saturday, January 13, in Munday.

Winners earned first-place awards in two divisions, senior and junior, which each included four classes.

First place winners in the senior division were Robert Sutton of Knox City, breads and desserts, and Cindy Maston of Munday, snacks and beverages.

First place winners in the junior division were Lana Gideon of Benjamin, snack and beverages; Lori Griffith of Benjamin, side dish; Michael Rauch of Knox City, bread and desserts; and Pam Welch of Munday, main dish.

Others earning blue ribbons in the junior main dish were Cliff Hacker of Knox City, Christy Morgan, Julie Partridge, and Holly Hutchinson, all of Munday. Also, Debbie Bufkin, Twylah Pierce, and Christi Ray of Benjamin.

In the junior bread and desserts, Beverly Tolson and Tina Ray of Benjamin received blue awards. Molly Grimes, Amy Parker and Cindy Berryhill of Munday received red awards.

Bobby Faye Toliver of Munday received a blue ribbon in junior side dish and Toni Benson of Benjamin received a red ribbon.

Those receiving blue awards in the junior snack and beverages were Becky Griffith, Sue Gideon, and Lorrie Ralston of Benjamin; and Amanda Abell of Munday. Earning red ribbons were Sheri Parker, Sulynn Oxford, and Oscar Gideon, all of Benjamin.

Judging the event was Mrs. Veeta Reid of O'Brien and Bobby Hudson of Benjamin.

Leaders for the foods projects were Mrs. Jimmie Ryder, Mrs. Sue Oxford, and Mrs. Jan Rolston from Benjamin. Knox City leaders were Mrs. Sherry Hacker, Mrs. Mary Rauch, and Mrs. Pearl Eaton. Munday leaders were Mrs. Joan Hutchinson, Mrs. Mary Huffman, and Mrs. Frances Parker.

Fifty-five members, leaders, and parents attended the tasting tea following the judging.

4-H is open to any youth, ages 9-19 regardless of socioeconomic levels, race, color, sex, religion or national origin.



PROUDLY DISPLAYING a rosette for first place, along with a first blue ribbon in the Knox County Food Show Saturday, is Rob Sutton, a freshman and son of Mr. and Mrs. Gene Sutton. Rob won in the senior division, breads and desserts.



EQUALLY AS proud of his rosette and blue ribbon for first place in the junior division, breads and desserts, is Michael Rauch, son of Mr. and Mrs. Walter Rauch.

Sales Tax Rebates Are Received

AUSTIN - State Comptroller Bob Bullock Monday said the January allocation of the local option one percent sales tax to Texas cities will exceed \$18.1 million.

This month's rebate is about \$300,000 less than the state paid to some 900 Texas cities during the same one-month period last year.

Texas cities received a record \$424.8 million during 1978 as their share of the city sales tax, an increase of 17 percent over the previous year, Bullock said.

Knox City received \$1,100.13 for the period ending December 29, 1978. Munday had \$1,069.25, Haskell received \$2,741.55, Seymour had \$2,071.35, and Stamford's net amount was \$2,520.56.

Amounts for the towns of O'Brien, Rochester, Rule, and Benjamin were not computed for the period.

The sales tax is collected by merchants and other sales tax permit holders along with the state sales tax and is rebated monthly to cities in which it is collected by the Comptroller's Office.

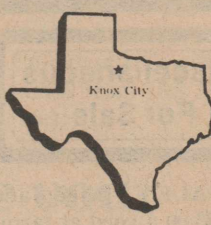
Last Week's Samples Total 9700

About 9700 cotton samples were classed during the week ending January 12, bringing the season total to 48,000 at Munday.

Cotton prices dropped about 100 points on Thursday, according to Sidney Ferrell in charge of the Munday Marketing Services Office. Prices being quoted now range from 1000 to 1075 points above current CCC loan levels. Producer and buyer activity is very light.

Grade 42 was the predominant quality with 33 percent. Grade 41 accounted for 19 percent and Grade 51 was 15 percent. Grades 32 and 52 each accounted for 14 percent of the cotton classed during the week. About 35 percent of the cotton was reduced in grade because of bark or grass.

Staple 32 continued as the predominant fiber length with 67 percent. Staple 31 accounted for 18 percent and Staple 33 was 15 percent. Micronaire readings continued to decline as only 69 percent of the cotton was in the base range of 35 to 49. Twenty-six percent tested in the 30 to 34 range and 5 percent was below 30.



THE KNOX COUNTY NEWS

KNOX CITY, KNOX COUNTY, TEXAS 79529
THURSDAY, JANUARY 18, 1979

VOLUME VIII, NUMBER 14

Single Copy Price 20¢

Knox-Haskell Groundwater Study To Be Released Friday

The Texas Department of Water Resources and Rollen W. Hardin, Hardin and Associates Engineering Firm, Austin, will release a forty-month study of the Seymour Aquifer at a meeting on Friday, January 19, at 1:30 p.m. in the Munday Chamber of Commerce and Agriculture Office. The public is invited, according to Callie Ann Combs, secretary of the Munday Chamber.

The study was initiated by the Munday Chamber some four years ago when area residents became concerned with various types of pollution of the Aquifer. The concentrated study will

evaluate approximately 1200 samples of water taken from the aquifer to determine the pollution sources, both natural and man-made. It will include locations of domestic and irrigation wells, water tables, mineral contents of chosen wells as well as locations of oil wells, disposal wells and rates of transpiration of the aquifer.

The engineering firm and the Water Resources Department has worked closely with the Texas Railroad

Commission in collecting material for this study. They have also worked with an area advisory committee who has served for four years with input into the study. The advisory committee members include M.L. Wiggins, chairman; Clint Norman and Callie Ann Combs of Munday; Calvin Christian, Seymour; A.A. Cox, O'Brien; and Joe B. Cloud of Rule.

Special invitations to the meeting have been extended to State Senator Ray Farabee, Representative W.S. 'Bill' Healy, Directors of the Texas Railroad Commission in Abilene and Wichita Falls Districts, county judges, mayors, city secretaries, and ASCS and Soil Conservation offices in the area. A limited number of copies of this report will be made available at the meeting. Other copies will be available from the Munday Chamber of Commerce and Agriculture, and the Texas Department of Water Resources, 1700 N. Congress Avenue, Austin, Texas 78711, Mrs. Combs said.

Clothing Workshop Is Slated

The Texas 4-H center near Brownwood will host a weekend workshop for 4-H clothing project leaders on February 3 and 4.

Theme of the weekend training is "A Carousel of Ideas," and Assistant County Extension Agent Sharon Book invites all interested 4-H leaders who want to sharpen their knowledge and skills in clothing to participate.

Instructors for the training sessions include Beverly Rhoades and Nancy Brown, extension clothing specialists from College Station; George McArthur, 4-H and youth specialist, College Station; Teri DeBolt and Nancy Justice, both of Abilene.

Activities planned include a fashion show and fabric trends for '79; make-up application hints and exercise demonstrations to help complement the new clothing ideas for '79.

For further information and/or registration details, interested persons may call the Knox County Extension Office at (817) 454-2651.

Educational programs conducted by the Texas Agricultural Extension Service serve persons of all ages regardless of socioeconomic levels, race, color, sex, religion, or national origin.

O'Brien Tourney Reset This Week

Due to the return of last week's bad weather situation, the O'Brien Junior High basketball tournament was canceled after four games were played last Tuesday.

The tourney resumed action this week with eight girls' and boys' teams participating.

According to Charles Reed, mid-school principal, six games will be played Thursday (today) with the remaining six games scheduled for Saturday.

Teams entered include both seventh and eighth grade teams from O'Brien, with Munday, Rochester, Weinert, Goree, Benjamin and Patton Springs participating.

Water Rates To Increase

Water rates for Knox City customers will be increasing effective with the March billings, according to Faye Railsback, city secretary-manager. Other rates for garbage collection and nightwatching will remain the same, Mrs. Railsback explained.

After Knox City began receiving water from the North Central Texas Municipal Water Authority last October, city officials decided to make the raise effective after the first of the year.

Previously, the minimum was 3,000 gallons for \$5.50, and now the 5,000 minimum will cost the consumer \$10.00. All amounts above the minimum will be \$1.00 per thousand.

Did You Know ...

that Mr. and Mrs. Z.B. Thomas of Robert Lee, Texas, subscribe to The Knox County News?

Weatherwise

1978 Year Of Extremes

By MARTI TACKITT

1978 ... labeled by some as the 'Drought Year' and again, later, as the 'Year of the Flood.' Regardless of how it is labeled, 1978 will be remembered by many area people for the severity of its extreme climatic differences.

The long dry spell, officially declared as beginning in July, 1977, and continuing on through what is normally the "rainy" season for this area to February of 1978, cost local farmers most of their wheat crop and caused late plantings later on in the year of cotton and maize; much of which is still in the field now. The area didn't really receive enough moisture, however, until August, when a downpour over a total of three consecutive days brought an unofficial 14 inches of rain to Knox County and a flooding 17 inches to neighboring Haskell County, destroying crops and property alike in one gigantic wash.

Knox County was twice declared a disaster area due to the fractious weather, and over \$1,300,000 (approx.) was loaned to area farmers through disaster aid, economic emergency and low yield payment programs.

According to the weather station at the Plant Materials Center north of Knox City, the coldest day in 1978 was February 18, when a chilly four degrees was registered. The hottest day of the year was July 15, at 114 degrees. 1977's record low and high temperatures

SS Rep Visit Rescheduled

A representative of the Vernon Social Security office will be in Knox City at the City Hall Thursday, January 18 (today), from 10:00 a.m. until noon to assist you with any of your social security problems.

The meeting was scheduled for last Thursday, but due to inclement weather it was rescheduled.

Weather

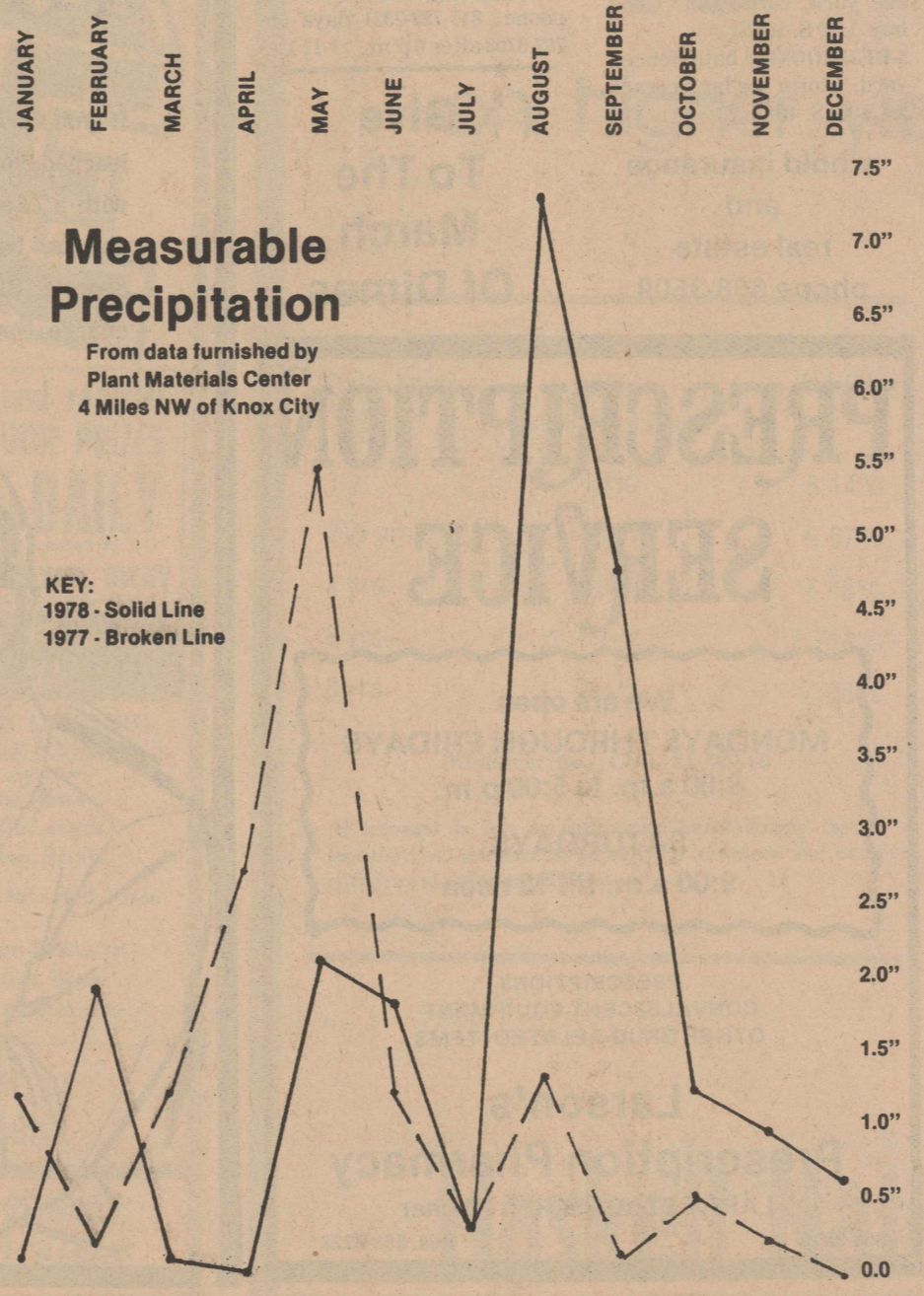
FURNISHED BY PLANT MATERIALS CENTER
4 Miles NW of Knox City

date	low	high	rain
1-9	24	41	
1-10	25	34	.34
1-11	24	35	
1-12	33	50	
1-13	16	36	Tr.
1-14	13	30	
1-15	24	43	

were six and 107 degrees.

Comparing the rainfall of the two years, January '78 received a mere two-tenths of an inch of rain compared with January '77's 1.3 inches; February '78 gained over two inches of moisture, compared with February '77's three-tenths of an inch. March, April and May of the past year were considerably lower than 1977, however, recording two-tenths, one-tenth and 2.2 inches respectively, compared with 1.3, 2.8 and 5.5 inches in 1977. June 1978 earned a more respectable 1.9 inches of rain, compared with 1977's 1.3 inches. July '77 and '78 both brought four-tenths of an inch of the wet stuff; August 1978 claims a big 7.3 inches total, while only 1.4 inches were received in 1977. The moisture level for the remainder of the year was quite a bit more than that received in '77: 4.8 compared with two-tenths in September; 1.3 compared with six-tenths in October; over one inch compared with three-tenths in November; and seven-tenths compared with the previous five-hundredths in December.

Total moisture received officially was 22.3 inches in 1978, as compared with 15.5 inches in 1977.



Basketball Results

BOYS VARSITY
Tuesday, January 9
Rule 47, Knox City 35
Walling 9, Roberson 13, Gonzales 6, S. White 4, and A. White 3.
Friday, January 12
Crowell 58, Knox City 48
Rushing 6, Walling 10, Johnson 8, Roberson 20, Counts 2, A. White 2.

VARSITY GIRLS
Rule 466 7 = 23
Knox City 109 10 = 38
Rhonda Skiles 10, Kay Howell 15, Tammie Helton 2, Gerri Watson 4, Gaylynn Burkham 2, and Brenda Albus 5.
Crowell 810 11 17 = 46
Knox City 6 8 8 4 = 26
Skiles 8, Howell 2, Helton 10, Hutchinson 6.

JUNIOR VARSITY
Crowell 534 8 = 20
Knox City 026 1 = 9
Angie Bateman 1, Kelly Watson 2, Chayo Garcia 6.

4. Institution notifies student of aid award decision.
The Family Financial Statement forms, the CCS Financial Aid Forms and the Basic Education Opportunity Grant Forms are available in Mrs. Reeves' office. She will also have the Student Financial Assistance Filmstrip Presentation ready for viewing at one's request.

School And Community Calendar

Wednesday, January 17 - Noon Lions.
Thursday, January 18 - Knox City Study Club, 2:30 p.m.
Friday, January 19 - Quannah, here, 5:00, GGB.
Tuesday, January 23 - Munday, here, 5:00, BGB.
Thursday, January 25 - Weinert, here, 6:00, eighth grade GB; seventh and eighth grade girls and boys in Haskell Tourney.

Fat Stock Show Sets New Records

Records continue to fall as the 83rd annual Southwestern Exposition and Fat Stock Show nears its opening day, Wednesday, January 24. The show will end on Sunday, February 4, with all activities scheduled on Carter Square in Fort Worth.

A record of 14,900 head of livestock is expected to be exhibited at the exposition and the 22 performances of the World's Original Indoor Rodeo will feature contests for a record 846 cowboy entries vying for over \$188,000 in prize money. Livestock premium money totals almost \$200,000.

"We are pleased to see the projected increases in livestock show and rodeo entries," said W.R. Watt Jr., Stock Show president-manager. "This continues a trend of recent years where we have been fortunate in establishing a gain from year to year."

Special guest entertainer at each rodeo performance will be Rex Allen Jr., recording star for Warner Brothers, and his band the Country Travelers. Tickets are on sale daily, including

Sunday, from 9 a.m. until 6 p.m. in the Will Rogers Coliseum lobby ticket office. Watt said good tickets remain for many of the 22 performances, and urged rodeo fans to buy their tickets early. Performances are set at 8 p.m. January 24 through February 4; 10 a.m. Saturday, January 27; and 2 p.m. January 27 through February 4. The two Friday nights, two Saturday matinees and nights and the final Sunday night are sold out.

"All the reigning world champion cowboys are among the rodeo entries," Watt said. Leading the cowboy list is Tom Ferguson, all around champion, whose biggest win last year was over \$12,000 at the Fort Worth Rodeo. He competes in calf roping and steer wrestling and finished the 1978 rodeo year with over \$84,000 in prize money.

Saddle bronc champion Joe Marvel, bareback champ Bruce Ford, bull riding king Don Gay, calf roper champ Roy Cooper and steer wrestling tophand Byron Walker, as well as

Dee Picket, "PRCA Rookie of the Year," are also on the entry list.

Neal Gay of Mesquite will serve as rodeo production manager with eight rodeo stock contractors providing rodeo stock this year. Mrs. Ellen Backstrom of Wickenburg, Arizona, will return as rodeo secretary.

Scheduled to do the chores of protecting the bull riding contestants are four top rodeo clowns. Returning will be Tommy Lucia of Weatherford, barrel man, while Miles Hare of Gordon, Nebraska, and Skipper Voss of Crosby will be arena clowns. New in the group will be Bob Romer of Canyon.

The livestock show entry count posted more than 9,300 cattle, sheep and swine; 1,900 horses, and an estimated 3,800 rabbits, pigeons and poultry entry.

A sizeable gain was also posted in the pen division where commercial Hereford and Angus females will show in pens of 20 and 15 head, respectively, prior to auction. Watt said the buying opportunities in the commercial sales are outstanding, with buyers having a chance to choose from top replacement heifers from some of the best known herds in the Southwest.

New departments this year brought 75 entries of Devon breeding cattle and 93 entries for the National Pinzgauer cattle show. Also, some 85 entries are listed in the Texas Longhorn Cattle sale group.

Watt expressed confidence for a well-attended junior division program, saying that the separation of the junior heifer and steer shows and the rearrangement of show times for junior sheep, lambs and barrows should be more convenient for young exhibitors and present a better show to the public.

"Since our show was founded in 1896, show officials have encouraged our young exhibitors through educational programs, higher premiums and more competition with a broader schedule," the president-manager said.

The annual Stock Show Parade is scheduled Friday, January 26, at 2 p.m. through downtown Fort Worth. Entries are welcome to participate. The Parade does not allow motorized vehicles, in keeping with the western heritage of the Stock Show.

O'Brien Happenings

By CHARLENE BROTHERS

I have tried very hard not to be unhappy with this weather, but it is so hard when you cannot get around. I'm about ready for some pretty sunshine for a while. I did not fall any this time, but several did and broke bones. We hope they are doing fine by this time. The last place that the ice will melt is on the north side of our house, it is still slick, maybe by the time you read this it will be gone. Also it needs to stay pretty for some time so the farmers can get their cotton out. We are saying that we are about halfway through, we have weighed something over 8700 bales. There is still a lot of cotton in the fields. Several bales in ricks, most of the modules are being ginned, since we got caught up with the trailers. People have O'Brien gin trailers parked all over the county, I saw two parked at Rochester on the old gin yard there on the highway, where the gin is closed. Maybe we will get them all back when farmers start using them again.

The City Council met last Thursday night for a regular meeting, with all members present. The first order of business was the swearing-in of the new councilman to replace Johnny White who had moved; this was Clifton Duncan. (Now Clifton, your phone will ring with complaints.) We still do not know

very much more about when they will get to work on the water line that will connect us in with Miller Creek Dam, maybe soon.

Have you ever noticed on boxes to be opened, it says push in and pull back, sounds easy. The other day I got so bothered with a box of detergent that I thought I was going to have to get a saw to open it. It would not push in with my hand, had to get a knife, then it would hardly cut open. I'm always having trouble with something like this, but what gets me the worse is medicine bottles that you have to line up the arrows or something of that sort. First off I cannot see the arrows half of the time, then the top is so hard to push off I cannot manage that. Guess I'm just a weakling, or so dumb I cannot understand directions.

All the college students got off to school this week. I for one really missed Craig this morning, he had been working at the gin while he was out and on the cold mornings he would start my pickup when he left to go to work, and it would be warm when I got ready to go. This morning I had to do it myself.

This is one of those weeks when I'm late again. Even last week with all the ice on the ground I made it in on

Monday, was just too busy yesterday. Maybe they will have time to get this in.

HERE AND THERE
Mrs. Loretta Hewitt and Vicki visited in Snyder with Mr. and Mrs. Bert Davis during the weekend.

Mr. and Mrs. Orval Manning were in Slaton last week to attend the funeral for Ford Renny, a relative of Helen's sister-in-law. They also visited with Mr. and Mrs. C.L. Parr and Mr. and Mrs. D.M. Pack while they were there.

Mr. and Mrs. Eugene Jones of Wichita Falls visited with his mother, Mrs. Clyde Jones, during the weekend.

Marvin Manning spent the weekend in Springtown with his children Mr. and Mrs. Derwin Lancaster, Cynthia, Wendell, and Carla; Mr. and Mrs. Larry Gibson, Shane and Shawna; Mr. and Mrs. Tim Ivey and Mr. and Mrs. Darvin Altom.

Pearce Manning was in Fort Worth to attend the funeral for her grandmother. Christie stayed in Hamlin with relatives while she was gone and Cody stayed with his granddaddy, Marvin Manning.

(The following is not really O'Brien news, but some people in California will appreciate reading it, so I'm going to add it.)

having trouble with our TV's again, and think it is from the tower. If you have trouble like we had back last year will you please put down the day, date and call the mayor or one of the councilmen. They are C.H. Underwood, mayor, Buster Hodges, Butch Stephens, Clifton Duncan, James Manning and Charlene Brothers, councilpeople. Now remember that not all interference is caused from that, so when it is bad weather and it acts up, probably it is not the tower, so do not call. Only when the set does like it did last year, and I think most of us will remember that. Mr. Smith said if the tower started giving trouble again they would check it out.

Some of us have been



RUGGED COUNTRY RUGGED BOOT

Insulated comfort for hunting and fishing.

RED WING

Norma's Leather Express

Sharon's Tips & Topics

By Sharon Book
Assistant County Extension Agent

PLAN NOW FOR CHRISTMAS 1979

Now that Christmas 1978 is history, readers should begin plans for Christmas 1979 to save time, money, and frustration.

Plan in advance to avoid hasty shopping decisions, finance charges on credit purchases, and crowds of seasonal shoppers which jam the displays and counters during the holiday season.

Use the following suggestions to make the 1979 holiday season an enjoyable time for the whole family:

--Buy Christmas cards, supplies and decorations during the after-season markdowns. Many items will be cut in price by 30 to 50 percent, or more.

--Take advantage of sales and specials to buy gifts at bargain prices. Retail stores

Use The Classifieds

usually follow a time cycle in selling certain items at reduced prices.

Keep a list of sizes on hand for quick reference when shopping for adult gifts.

--Use imagination in choosing gifts. Try new types of stores and items. Instead of one large present, consider several small related gift items or combine items with homemade items.

--Plan to sew, bake, paint or make gifts. These gifts mean more to the receiver than a bought item.

--Instead of buying gifts for everyone, consider drawing names.

This suggestion is especially helpful if the group is large.

--Consider giving a very special birthday or "other occasion" gift rather than a large gift for Christmas. This will schedule gift buying throughout the year.

--Budget a realistic amount of money for Christmas gifts. Substitute time, effort and skills for money.

PAY YOUR TAXES

NOW!

Penalty and Interest, Plus \$1.00 Costs, will be added February 1, 1979

John A. Smith

Tax Assessor-Collector, Knox County, Texas



SHOP AND SAVE AT ALLSUP'S

ALLSUP'S CONVENIENCE STORES

PRICES EFFECTIVE JANUARY 18-21, 1979

Hunt-Wesson's TOMATO-RAMA

 <p>HUNT'S HALVES /SLIC. 2 PEACHES 15 OZ. CANS 89¢</p>	<p>FRESH TOMATOES 59¢ Lb.</p>	 <p>HUNT'S SPINACH 13 1/2 OZ. CANS 89¢</p>
 <p>HUNT'S STEWED TOMATOES 14 1/2 OZ. CANS 89¢</p>	<p>GEBHARDT'S 19 Oz. Chili No Beans 99¢</p>	 <p>HUNT'S KETCHUP 32 OZ. BTL. 89¢</p>
 <p>HUNT'S MANWICH SANDWICH SAUCE 15 1/2 OZ. CAN 59¢</p>	 <p>BORDEN'S CHOCOLATE MILK 1 QT. CTN. 59¢</p>	 <p>PURE WESSON OIL 48 OZ. BTL. \$1 89</p>
 <p>HUNT'S HALVES /SLIC. 2 PEARS 15 OZ. CANS 89¢</p>	<p>SHURFRESH 12 Oz. Bologna 89¢</p>	 <p>HUNT'S TOMATO JUICE 46 OZ. CAN 69¢</p>
 <p>SHORTENING SNOW DRIFT 48 OZ. CAN \$1 49</p>	 <p>BORDEN'S COTTAGE CHEESE 12 OZ. CTN. 59¢</p>	 <p>ALLSUP'S ICE CREAM 1/2 GAL. RD. CTN. \$1 19</p>
 <p>HUNT'S WHOLE TOMATOES 14 1/2 OZ. CANS 89¢</p>	<p>CHECK OUR Mix 'N Match Vegetables 4/99¢</p>	 <p>HUNT'S FRUIT COCKTAIL 15 OZ. CANS 89¢</p>
 <p>HUNT'S WHOLE NEW POTATOES 14 1/2 OZ. CANS 89¢</p>		 <p>HUNT'S TOMATO SAUCE 8 OZ. CANS 99¢</p>

Great Possibilities For Your Home

A DO-IT-YOURSELF RETREAT

Getting away from it all need not take you far from home, nor be too expensive. Using low-cost materials and your own ingenuity, you can build a private retreat right where you live.

An attic or backyard addition may be just the place, or you can put up a separate guest house within steps of the main house. All it takes is advance planning, and the energy and skill required to do most of the construction yourself.

Attic Addition

Almost any attic—even a finished one—will provide more living space if you add a shed dormer. All it involves is cutting away a section of the roof and then pushing it up and out as though it were hinged at the ridge line.

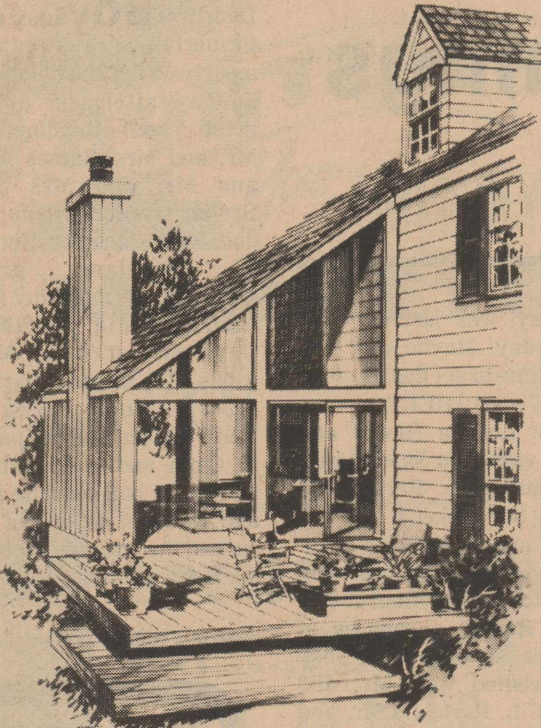
Its sides should be supported by standard 2x4 framing, which you can sheathe with plywood and finish with plywood siding. Studs for inside walls can run from the rafters to plates nailed to the existing joists.

Insulation should be installed under the roof and between the studs of the new wall supporting the dormer roof.

Backyard Addition

At the back of your house, an add-on room has one wall up even before construction starts. Extend the existing roof with 2x6 rafters—or, for a more dramatic effect, with 4x6 or 4x8 lumber beams that will remain exposed. Use 5/8" thick textured plywood siding for a beautiful, modern ceiling.

You may want to cover the side walls inside and out with quality plywood siding like that manufactured by Georgia-Pacific or opt for a beautiful prefinished plywood paneling, with a different texture.



HOW TO TAKE A VACATION WITHOUT LEAVING HOME: Simply add a room to your house, or a guest house to your backyard, and you've created a hideaway where you can relax.

If you install a fireplace, you should choose the prefabricated type that's safe even when there's no clearance between it and wood framing. Once you've framed it with standard dimension lumber, you can cover the interior wall with prefinished wall paneling.

A glass wall on one side of the room opening onto a deck will complete a room designed for indoor-outdoor living.

The Retreat

A guest house built around a prefabricated fireplace, where you can retreat when you feel like being alone, calls for a perimeter foundation and wood joists covered with a plywood or particle-board floor system. The

Naman Re-Elected To TFU Presidency

LUBBOCK - Jay Naman, a cattleman and farmer of Waco, was re-elected by a large voting majority as president of the Texas Farmers Union during its annual state convention.

In a race for the post between Naman and long-time member David Samuelson of Coupland, farmers involved in the American Agriculture Movement attempted unsuccessfully to unseat Naman who has held the position since 1961.

Samuelson has been an activist in the farm protest movement.

"I think it's significant," said Naman, "that at the same time the election returns were being tabulated by the elections committee, our delegates were overwhelmingly adopting a resolution in support of the thousands of farmers who will work in Washington this year for critical changes in farm policy. Our

organization has indicated complete harmony with the American Agriculture Movement during their business here. And, of course, our stand for 100% parity has been on the books since the drafting of that formula in 1937."

Naman also gave high compliments of respect for his opponent, saying, "David Samuelson has been a personal friend for over fifteen years and his work for Farmers Union in Central Texas has, in a singular and dedicated effort, held the organization together in that area of the state."

Also elected during the state convention to attend the National Farmers Union convention in Kansas City the first week in March were Charlotte Garner of Seminole (Gaines County), Cathey Harmon of Happy (Swisher), Joe Rankin of Ralls (Crosby) and Virgil Blakney of Turkey (Hall). Rankin, who is current vice president and who ran unopposed, was also re-elected.

Your Social Security

CHANGE OF ADDRESS

If you are presently receiving Social Security checks and have moved recently, it is necessary that you report your new address to the Social Security office.

If the post office has a forwarding address for you, you should contact your nearest Social Security office and have them change your address on their records. By doing this, you will prevent an unexpected non-receipt of your Social Security check. The post office will not always forward government checks. If they do not, then your checks would have to be returned to the Treasury Department. These checks would eventually be reissued to you, but not until after a long delay.

If your checks are being sent directly to a bank or savings institution, it is also very important that you change your mailing address each time you move. This will permit the Social Security Administration to send continuing information about Social Security to your correct address. It will also permit the Social Security office to get in contact with you at once should they need

to speak with you about your benefits.

If you have moved recently or are contemplating a move in the near future within the Knox County area, you should contact the Vernon Social Security office to update your records. The office is located at 1701 Cumberland and the phone number is 817-552-9346.

Card Of Thanks

To all our friends and relatives, may we express our thanks and appreciation for your many kindnesses during the loss of our loved one.

The cards, food, flowers, visits and words of sympathy meant so much to us. Our special thanks to Doctor Howell, the nurses and honorary pallbearers.

The Family of Theodore Ressel

JOINING THE ARMY RESERVE WON'T INTERFERE WITH COLLEGE.
In the Army Reserve's Split Training Program, you can split basic and advanced individual training into two consecutive summers. You'll earn full Army pay during the summers away plus Reserve pay during the rest of the year. For more details, call your local unit. It's listed in the white pages under "U.S. Government."

ELECTRICAL service

★ OIL FIELD ★ INDUSTRIAL ★ REPAIR
★ WIRING ★ IRRIGATION ★ COMMERCIAL

DEPENDABLE INSTALLATIONS

C & C Electric

Willie Collins Knox City 658-3921

WE ARE CONCERNED WITH YOUR HEALTH

The dispensing of a prescription medicine is much more than an ordinary transaction. A doctor has determined that a specific drug will help a person with an illness and he has given careful instructions as to the name and strength of the drug, the amount to be taken, and for how long it should be used.

As your pharmacist, we have translated these instructions and from them prepared your medicine. Often, we must give you additional information as to storing the prescription, possible side effects, possible reactions with other products and other cautions.

YOU OR YOUR DOCTOR CAN PHONE US when you need a delivery. We will deliver promptly without extra charge. A great many people rely on us for their health needs. We welcome requests for delivery service and charge accounts.

RX DELIVERIES AVAILABLE IN KNOX CITY

H-M Jones Pharmacy, Inc.

Knox City, Texas Phone 658-3215

KC Colored News-Events

St. Paul were host to the 'Lovely Sunset' Association last Wednesday - Friday, opening Wednesday night with the Moderator Rev. F.K. Williams in charge. Churches from El Paso, Midland, Odessa, Anson, Sweetwater, Aspermont were present. Meals were served about hundred people were served.

Sunday School at St. Paul had a small attendance, Supt. in charge. The lesson were taught and reviewed by the Supt.

People don't be afraid that you see is the brown stuff is the ground, in case you forget.

The Church of the Living God did not hold Sunday School because of the weather.

LAST WEEK

St. Paul didn't have service Sunday. First Baptist weren't on the T.V. At least I couldn't get them because of God good weather we stayed at home in our half warm house. But we prayed right on.

I wonder what that is out there, some says it white paint. I wonder how did it get there a little boy said some men put it on every thing to make everything pretty. Weren't that sweet?

Well the Cowboys have made the Super bowl. Now if they can make it to champion again this time wont that be something?

Study Club Meets Today

The Knox City Study Club will hold their regular meeting at 2:30 p.m. on Thursday, January 18, at the Community Center with Myrtle White as leader.

Speaker for the meeting will be W.R. Baker. Hostesses will be Lillian Logan and Winifred White.

EHE Club To Meet Jan. 22

The Extension Home Economics Club will meet at the Community Center Monday, January 22, at 7:30 p.m.

Refreshments will be furnished by Sherry Hacker and Pearl Eaton. The door prize will be furnished by Carolyn Sloan.

RTA To Hold Meeting Here

The Knox County Retired Teachers Association will meet at 2:30 p.m. in the Knox City Community Center on Tuesday, January 23. Hazel Smith and Ila Moody are directors of the program.

The subject to be discussed will be "Look What I Made."

Hostesses for the meeting will be Mabel Pyeatt, Eruis Reid, and Gladys Reed. Guests are invited.

IN IOWA PARK

Mr. and Mrs. O.C. Poe spent the weekend in Iowa Park visiting with Mr. and Mrs. John R. Peysen and Rhondi.

A Romantic Name

Scotland has some very peculiar names, and visitors are always making fun of Auchtermuchty, Ecclefechan, Lismahagow and Auchensbuggle.

But Scotland has some very beautiful names, too, and one of the most romantic is Sweetheart Abbey, although its real name is New Abbey.

Dance

SAT. NIGHT, JAN. 20

Kuntry Kings
Benjamin Memorial Building

9:00 to 1:00 \$4.00

January Sale

— SELECTED GROUP —
Coats 1/4 and 1/3 Off
Up to 50% off on
Misses and Junior
Dresses and Sportswear
Long and Short Formals
Pantsuits All 1/2 Off

Lane-Felker
HASKELL

Whatever happens we'll make it together.

This year's a real puzzler. Anything could happen. But no matter what, you can count on us to hang in there with you. Just like we have for 51 years.

And when you save with us you'll earn the highest rates allowed by law.

You Deposit This Lump Sum (Minimum)	For This Long	Compounded Daily At This Rate	Your Actual Yield Is
\$ 5	Osamatic Prestige Account	5 1/4%	5.39%
\$ 1,000	6 mos.	5 3/4%	5.92%
\$ 1,000	1 yr.	6 1/2%	6.72%
\$ 1,000	30 mos.	6 3/4%	6.98%
\$ 1,000	4 yrs.	7 1/2%	7.79%
\$ 1,000	6 yrs.	7 3/4%	8.06%
\$ 1,000	8 yrs.	8%	8.33%
Money Market \$10,000	6 mos.	Variable	Call us collect for the weekly rate.

For quotes on deposits over \$100,000, just give us a call.

Early withdrawal on savings certificates is subject to reduction to passbook rate plus 90 days interest penalty.

OLNEY SAVINGS

Olney, Seymour, Jacksboro, Bridgeport, Nocona and now Weatherford and Azle.

To us, people are worth a lot more than money.



KC School News

THE KENNEL

SENIOR CLASS NEWS
By Terry Curd

Last Thursday night the seniors had a class meeting. We discussed our upcoming senior trip. We voted to go to the coast. Doug (the president) is going to write to some places down on the coast.

We also voted to have our senior picture plaque, the one that hangs in the hall, in color. Each student has to pay \$2.50 to have this done.

In English we started on our soil conservation essays. We also started on our autobiographies.

In Civics we have a test Thursday (today) over the Constitution. Everyone must pass this test to complete civics, which a student must

JUNIOR CLASS NEWS
By Gerri Watson

The juniors have been working hard on their themes again this week in English III. Last week Mrs. Burnett checked over bibliography cards for form and content.

Monday we turned in our outlines. Mrs. Burnett checked these for form and content too.

One-act play tryouts were held Monday night. Results will be given next week about those actors and actresses who got parts in "Aesop's Fables."

BAND NEWS
By Gerri Watson

The band is still working on UIL contest music. This is

probably all we will be working on until contest time in April.

Each student is required to play certain scales for UIL music for Mr. Steckler after school by a set date. **EIGHT IS ENOUGH + TWO?**

By Jan Burt

Here we are again with a new recruit. Amber Ashcraft joined after the Christmas holidays. Welcome back, Amber.

The choir has started working on some popular songs just for fun. If anyone would like to come join us, come on!

FHA NEWS
By Tammie Helton

The persons working on level three encounter had a meeting Thursday, January 11. The members present were Gerri Watson, Kelly Watson, Angelia Reid, and Tammie Helton. Mrs. Newton and Mrs. Reid were also present. Those who finish the third level of encounter will be presented with a red rose and a pendant at the Area meeting in Abilene next March.



Facts from a pro on driving to survive.

Q: During the recent ice storms I noticed highway crews often put sand or gravel on freeway overpasses, but not on the ground level stretches of highway. Why?—N.B., Waco

A: It's a matter of priorities. Overpasses and bridges get colder and freeze faster because the air is cooling them on both sides. They can freeze even when the rest of the highway (partially insulated by the ground beneath) remains unfrozen.

Icy roads are rare in much of Texas and motorists lack experience with that kind of hazard. Always slow your speed in freezing weather, even without other traffic on the road. Remember, your tires don't have much traction on that slippery surface. Be especially cautious on bridges, curves and hills.

Q: Is a wet road more slippery the colder it gets?—B.R., Houston

A: No. Conditions can be most dangerous just at 32 degrees, when unfrozen water may be found on top of a layer of ice. You simply must reduce your traveling speed in such weather. Also, avoid sudden braking or steering movements; they can trigger a skid. If you do slip into a skid, don't slam on the brakes; you'll only make things worse. Let up on the gas and steer into the skid until you regain control.

Q: Obviously the faster you are going when you have a wreck, the more dangerous it is. But are there statistics which show how much more so?—R.M., San Marcos.

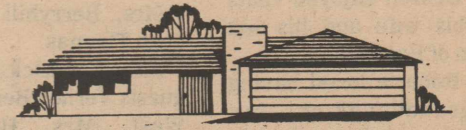
A: Plenty. The probability of a fatality in a crash roughly doubles as travelling speed increases from 45 to 60 mph, and doubles again as speed increases to 70 mph. They didn't just pull the 55 mph speed limit out of a hat. In 1974, the first year of 55 mph, national highway deaths dropped by 9,393.

If you have a question on driving, send it to:
Texas Office of Traffic Safety
P.O. Box 1165
Austin, Texas 78767



Boyd's Welding Service
Backhoe Service Available
24 HR. SERVICE
Shelton Boyd
(817) 658-3639

Dr. C.L. Cromwell
OPTOMETRIST
PHONE
(915) 773-3542
STAMFORD



Custom Homes

By
DAVE OXFORD

FREE ESTIMATES

(817) 454-3641

BENJAMIN

Multiple Dose Baits

By DEENA PATTILLO,
Wildlife Damage Control Specialist

While trapping is a good method for eliminating rats and should be used in coordination with baiting, the use of rodenticides is better for controlling large numbers of rats.

The proper use of these baits is usually unknown by the general public and several important points must be remembered in order to have a successful baiting program. These points are valid for all cereal or pelletized anticoagulant rat baits regardless of brand.

The first point to remember is that none of these baits will kill rats overnight* or

with one dose. They must be eaten repeatedly for at least three or four nights before death will occur. (2) These baits must be used in large quantities. The lethal dose for a rat is 1/4 to 1/2 pound per rat. A minimum of three pounds for a home, or ten to fifteen pounds for farms, must be used. (3) Moisture is the enemy of the bait so outside usage is usually not very successful. When used under the house, an empty milk carton will make a good bait box. (4) Do not pour the bait in an open, shallow container. A small sack with a cupful or two of bait in it will help keep dust, moisture, and contamination off the bait. A small hole punched with a pencil is the only opening needed. (5) Remember to check the bait daily for at least ten days and replace all eaten bait as necessary.

These baits are made to work in a delayed manner purposely. They are the least hazardous baits on the market; the rats never get wary of it; and it is very effective if used properly. Remember to follow label directions, or contact the local Wildlife Damage Control Specialist, Deena Pattillo, at 767-4981.

WINTER DRIVING TIPS

If you're like most people, you probably don't realize how cold weather can affect the performance of your tires.

Every time the temperature drops 10 degrees, your tires lose a pound of air pressure, and underinflation causes dangerous excess wear. Underinflation can also induce tire failure. Road checks reveal that at least one out of four cars is driving on seriously underinflated tires—4 or more psi below the vehicle manufacturer's recommendation. Check your tire pressure even more often in winter than you do the rest of the year—at the very least, once a month.

Another thing to check is your tire's "footprint"—the flattened section where the tread meets the road. It can be easy to see in snow, dirt or mud. When that footprint is worn smooth—down to 1/16th of an inch or less tread depth, your tire is dangerous. Nearly 90 percent of tire trouble happens in the last 10 percent of tread wear.

HOGGE VISITORS

Recent visitors in the home of Mr. and Mrs. C.C. Hogge were Mr. and Mrs. David Hogge of Nacogdoches, Mrs. Sue McLaren, Danny and Sue Ann of Temple and Mr. and Mrs. Paul Hogge and Ann of Seymour.

Hospital News

Patients Dismissed
Since January 6, 1979

Knox City: Mary Rocha, Jaurine Jones, Benita Reyes, Louise Finley, Lupe Rios, Romain Stubbs, James Wallace, Rose Marie Castro, Mary Alice Thompson, Clara Smith.

Rhineland: S.E. Williamson.
Truscott: Paul Bullion.
O'Brien: April Lehmann
Goree: Mason Harlan.
Munday: Bernice Shields, Lois Beaty, Georgia Toliver
Benjamin: Juanita Burnett, Theodore Ressel.
Goree: L.L. Atkinson.
Rochester: Mattie Daniel.

Patients In Hospital
As Of January 13, 1979

Knox City: Othella Walker, L.F. Fisher, Tom Thomsas, Eva Penman, Julian Garcia, Zeola Corley, Louise Finley.
Rochester: James Yarbrough, Nena Alvis.
Munday: John McMahon, S.E. Williamson, Lois Trimmier, Florine Wilde, Eddy Y. Johnson, Carl Hamilton.
Arlington: Wesley Garrison.
Graham: Andrew Depriest.
Truscott: Mae Welch.

CURRY CHICKEN

- 1 can (10-3/4 oz.) condensed cream of chicken soup
- 1 medium apple, chopped
- 1/4 cup seedless raisins
- 3/4 cup milk
- 2 tsp. curry powder
- 9 pieces Original Recipe Kentucky Fried Chicken

Whip up something exotic for special guests—Curry Chicken. Two delectable differences make this dish so extraordinary: the creamy white sauce combining apples, raisins and tantalizing spices; and the main ingredient—Original Recipe Kentucky Fried Chicken. The entree is a favorite of Colonel Sanders, and a sure-winner on your table too!

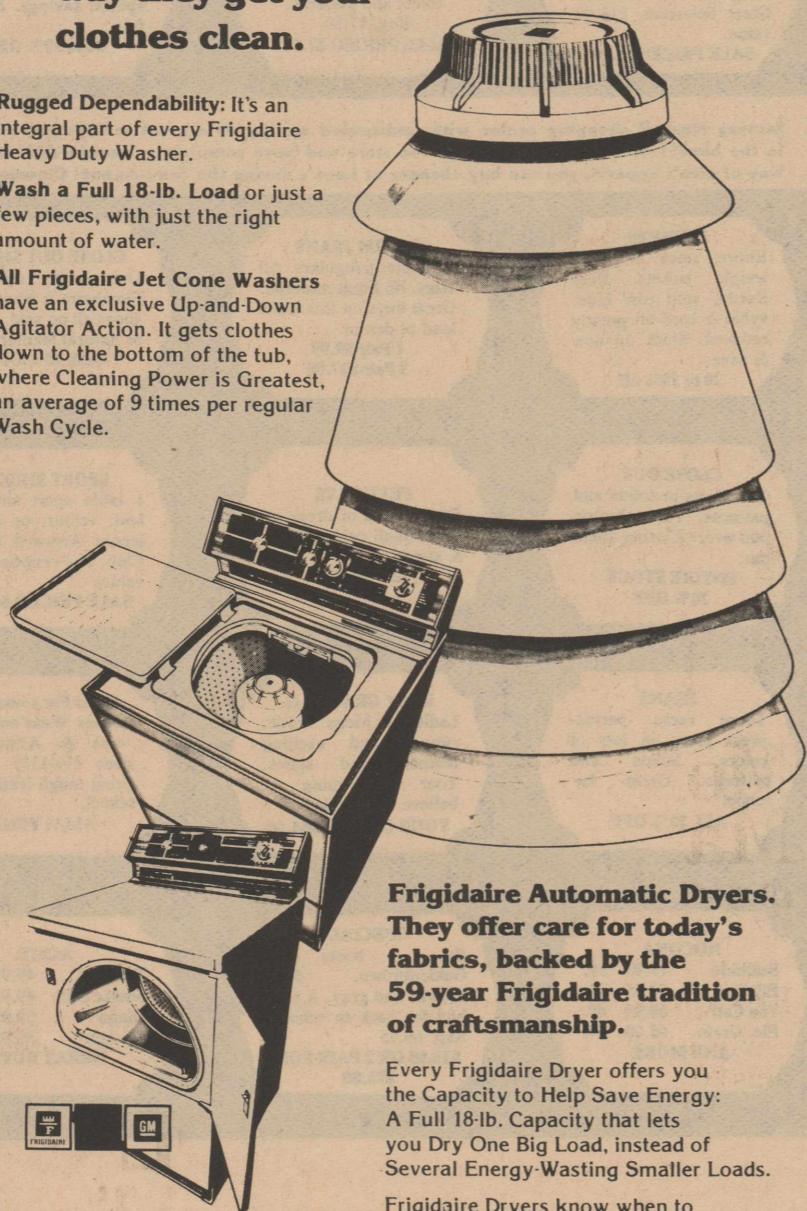
In medium bowl, combine all ingredients, except chicken. Place chicken in single layer in 8" x 12" baking dish. Cover chicken with sauce. Bake, covered, in preheated 350° F. oven for 30 minutes. Remove cover. Continue baking, uncovered, for 30 minutes longer. Serves 6.

Frigidaire Jet Cone Washers.
Every laundry day, you'll be proud of the way they get your clothes clean.

Rugged Dependability: It's an integral part of every Frigidaire Heavy Duty Washer.

Wash a Full 18-lb. Load or just a few pieces, with just the right amount of water.

All Frigidaire Jet Cone Washers have an exclusive Up-and-Down Agitator Action. It gets clothes down to the bottom of the tub, where Cleaning Power is Greatest, an average of 9 times per regular Wash Cycle.



Frigidaire Automatic Dryers.
They offer care for today's fabrics, backed by the 59-year Frigidaire tradition of craftsmanship.

Every Frigidaire Dryer offers you the Capacity to Help Save Energy: A Full 18-lb. Capacity that lets you Dry One Big Load, instead of Several Energy-Wasting Smaller Loads.

Frigidaire Dryers know when to take the Heat off—to Save you more than just Energy.



Qualified Factory-Trained Servicemen Offer You The Finest In Appliance Service.

Lowrey's

LADIES' SPORTSWEAR
DRESSES -- COATS
NOW 1/2 PRICE

MEN'S FASHION JEANS

By Levi's, Wrangler
& Sedgefield

1/2 Price Plus \$1⁰⁰

HAGGAR SLACKS

1/2 Price Plus \$1⁰⁰

Four Critical Areas Discussed At Meeting

LUBBOCK - Inflation, energy, transportation, and representation are four critical areas that must be dealt with on behalf of agriculture, according to a national farmer spokesman.

Speaking to the opening session of the Texas Farmers Union state convention last week, Stanley Moore, president of the North Dakota Farmers Union and a member of the executive committee of National Farmers Union, said inflation is already causing rationing of basic necessities in the United States.

"Because of inflation, we are starting to ration energy by price. Even food is being rationed by price, though farmers aren't getting much of that price. Land availability is being rationed by price. High interest costs are rationing capital," declared Moore.

"We all have a mutual obligation to face up to the creeping effects of inflation and try to meet the guidelines set forth by our national government. If we don't, rationing as a national policy is an inevitability."

The availability of energy is critical to the future of farming, noted Moore, "...and we must develop programs to help deal with the energy supply situation from the farmer standpoint." He suggested that even some of the cooperative

energy programs initiated on behalf of rural America are moving in directions that may not be in the best interest of farmers.

As new trade markets open for agricultural products, transportation becomes more and more of a critical concern for farmers, pointed out Moore. "If we are to develop new markets in this world, we have to revamp, reorient and shape up our transportation system," he said. "If a major new market did open to us, we wouldn't be able to supply it because of our inadequate transportation system."

Moore suggested railroad transportation is a basic need to agriculture, adding "It is energy-efficient as well."

Meaningful farmer representation becomes more and more important to farmers as those farmers make up a smaller share of the U.S. population, said Moore, whose North Dakota Farmers Union with its 35,000 members is by far the largest farm organization in that state, adding "Even if we had every single farmer involved in our state, we wouldn't have a completely meaningful impact on the national level. What is needed is the participation of many farmers in every state in organizations with com-

mon goals."

Moore said cooperative institutions can provide "very significant representation" to farmers. He noted that cooperative institutions, numerous and closely interlocked in North Dakota, "have a significant and continuing impact in North Dakota."

The educational fun concept, where cooperative institutions help support a general farm organization, as well as financial support from more direct cooperative services, particularly insurance services, have been major factors in building a meaningful cooperative family in North Dakota, said Moore.

"But," he added, "let me say to you that it is the individual farmer's participation ... the participation in our organization of farmers as delegates, as board members, as voting members ... that is the single most important ingredient to an effective farmer force."

Moore also stressed that farmers must continue to rely on "a partnership with government" to achieve their needs.

Agricultural research, rural electric and telephone services, and farm supply and marketing, have resulted from the traditional farmer partnership with government, said Moore, noting that government farm programs, "as inadequate as they have been, have had significant economic impact and some of us wouldn't have made it without those programs."

Moore is a member of a U.S. government international trade advisory committee.

VELVET—THE ROYAL FABRIC FOR EVERYONE

Smooth, luxurious velvet has come a long way since the days when it was the choice of royalty for courtly robes. Velvet has moved into the forefront of fall and winter fabrics for use in everything from evening wear to rainwear to casual blazers—for men as well as women.

Velvets are woven from silks, cottons and synthetics, each with its own unique look. But various types of velvet also need a

special kind of care because of the uniqueness of the fabric.

The Textile Analysis Laboratories of the International Fabricare Institute (IFI), the association of drycleaners and laundries, reports that most velvet fabrics are easily restored to good appearance in drycleaning using regular procedures for cleaning and stain removal, followed by a steaming-brushing technique for pile conditioning avail-

able at most professional drycleaning establishments. They caution, however, that you take care of velvet garments, since permanent distortion can result from any pressure on the pile of some velvets when they are wet or damp.

The royal families had to take even greater care than we do with their velvets. Today we have the advantage of spot, stain and crush-resistant finishes on many of our velvet garments. Velvets can be used even in rainwear with the

application of water-repellent compounds that assure rain protection in addition to spot and stain resistance.

To help you enjoy the most pleasure and the longest wear from your velvet garments, the experts at IFI offer these tips:

- Always check the fabric. Tightly-woven velvets are less likely to suffer loss of pile during wear. Also select garments with finished seam edges to avoid unravelling.

- Never iron velvet, even on the wrong side. This will flatten the pile. Instead, use a hand steamer to remove wrinkles. Turn the garment inside out and steam from the wrong side. Remember not to touch the fabric or attempt spot removal while it is damp. This will distort the pile, and it may be impossible to restore it.

Enjoy this season's velvets for many seasons to come by treating them gently and sharing their care with your professional drycleaner.

Summary Statement Of Receipts And Expenditures

Office of the County Treasurer
For The Quarter October 1 - December 31, 1978

	Cash Bal. 10/1/78	Add Cash Rec. & Deposited	Deduct Checks Written	Cash Bal. 12/31/78
Jury Fund	2,558.17	\$ 6,033.60	\$ 2,179.90	\$ 6,411.87
Salary Fund	10,689.46	20,178.59	27,858.56	3,009.49
General Fund	3,306.46	78,679.36	41,411.89	40,573.93
Road & Bridge Fund				
Precinct No. 1	17,495.56	11,075.01	7,816.79	20,753.78
Precinct No. 2	6,763.15	12,451.58	8,829.42	10,385.31
Precinct No. 3	6,692.06	11,427.91	9,318.13	8,801.84
Precinct No. 4	12,265.67	12,005.23	11,045.44	13,225.46
Lateral Road Fund				
Precinct No. 1	5,272.65		1,783.29	3,489.36
Precinct No. 2	5,262.77			5,262.77
Precinct No. 3	5,431.24			5,431.24
Precinct No. 4	5,262.99			5,262.99
Social Security Fund	3,928.83	5,781.50	6,069.30	3,641.03
Public Bldg. Sinking Fund	284.95	2,005.54		2,290.49
Courthouse Building Fund	286.61			286.61
County Fine Tax Fund	2,020.57	1,573.00	1,209.82	2,383.75
County Law Library Fund	706.31	95.00	135.00	666.31
Title VII Program	3,618.12		3,453.64	164.48
Senior Citizens Fund	1,340.32	842.73	963.37	1,219.68
Federal Revenue Fund	49,592.55	21,760.00	8,414.34	62,938.21
TOTAL ALL FUNDS	\$142,778.44	\$183,909.05	\$130,488.89	\$196,198.60

The above Quarterly Finance Report, which was prepared by Knox County Treasurer J.T. Cypert, was approved by the County Commissioners' Court on this the Eighth day of January, A.D., 1979.

ATTEST:
/s/ Gloria L. West
County Clerk, Knox County

/s/ H.T. Melton
County Judge, Knox County, Texas

Employers Must File W-2 Forms With SSA

Employers must now file Forms W-2 and W-2P with the Social Security Administration, and not with the Internal Revenue Service, the IRS said. Deadline for filing these forms is by February 28, 1979.

Previously, Form W-2, "Annual Wage and Tax Statement," and W-2P, "Statement for Recipients of Periodic Annuities, Pensions, Retired Pay or IRA Payments," were filed with the IRS. The 1978 W-2 and W-2P are considerably different than the 1977 W-2 and W-2P. It is important that the proper tax year W-2 and W-2P are used, the IRS said.

Under the new procedure, the forms will be processed by the SSA, which will then furnish the IRS with all data (including income tax data) on the forms.

The change should reduce paperwork for employers because the forms will include Social Security coverage information as

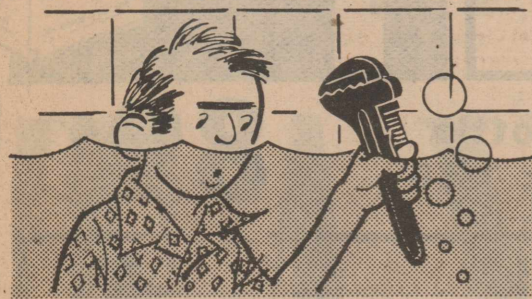
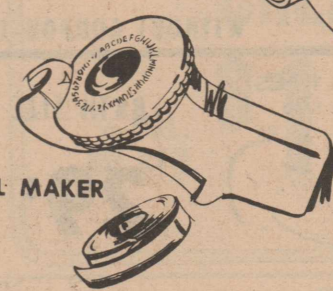
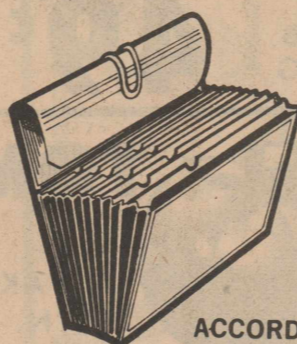
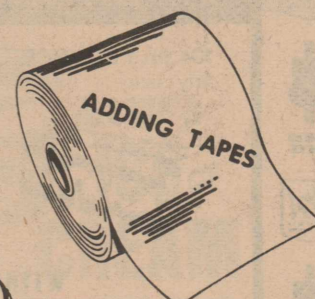
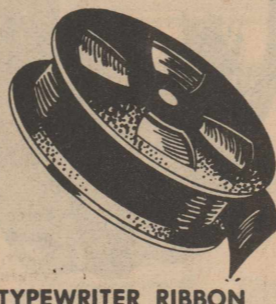
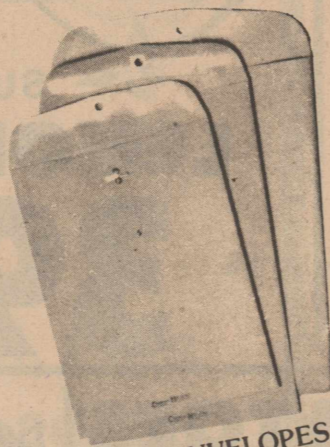
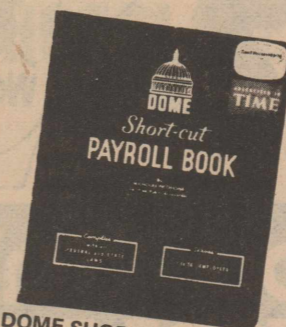
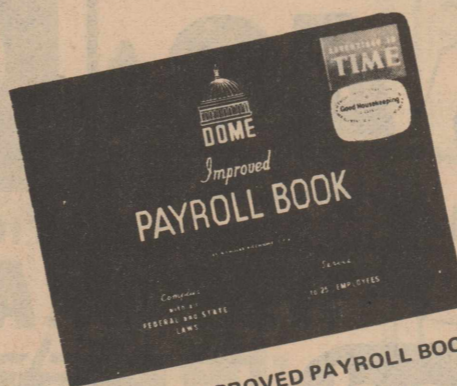
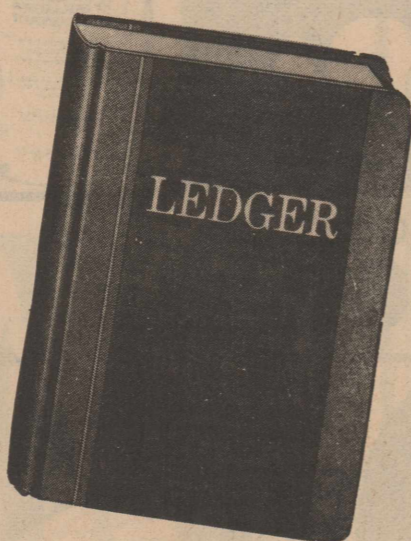
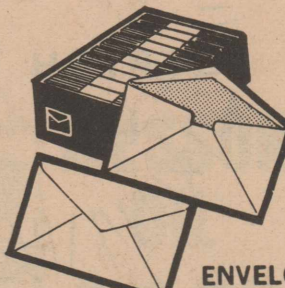
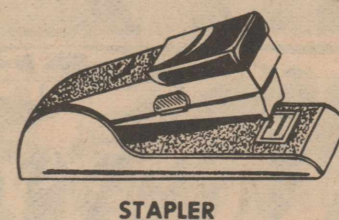
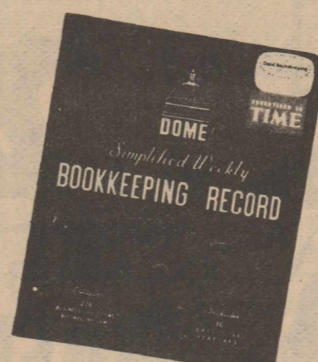
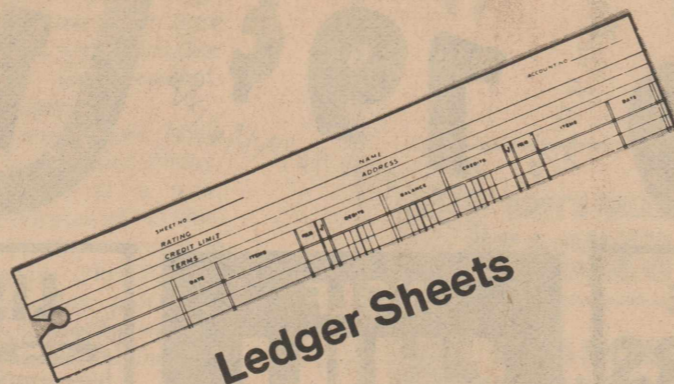
well as employee earnings information, with computations for quarterly wage coverage being determined on an annual basis, according to the IRS.

Also as part of this new Combined Annual Wage Reporting System, the IRS said, employers may report wage and tax information on paper, magnetic tape, or a variety of magnetic media. For reporting to SSA, employers must remember to attach Form W-3, "Transmittal of Income and Tax Statements," with Copies A of Forms W-2 and W-2P.

The IRS emphasized that employers should use the pre-addressed labels sent to them. The labels are included in the mailout of Publication 393, "Federal Employment Tax Forms." The labels should be affixed to the Form W-3, "Transmittal of Income and Tax Statements."

For additional information, IRS Publication 15, "Circular E - Employer's Tax Guide," is available free from local IRS offices.

Check With Us For Your First Of The Year Needs



PLUMBING - HEATING
AIR-CONDITIONING
Jerry's Plumbing

658-3322 207 N. Central Knox City

Announcing...

the opening of

Haskell Chiropractic
Office

January 22

One Ave. B

Two Blocks East of Square

864-3950

Haskell, Texas

Hours 8 a.m. til 5:30 p.m. Monday thru Friday

8 a.m. til 12 Noon Saturday

Melvin H. Henexson

The Knox County News

M SYSTEM

Your FRIENDLY
SUPER MARKETS

KNOX CITY

mid-winter Food Savings

DOUBLE S & H GREEN STAMPS WEDNESDAYS
With The Purchase Of \$2.50 Or More

SPECIALS GOOD THUR., FRI., SAT., JAN. 18-19-20

TEXSUN
GRAPEFRUIT JUICE
48-oz. Can
LIMIT 3
48¢

FOOD KING CUT GREEN BEANS
5 303 CANS **1.**
FOOD KING GOLDEN WHOLE KERNEL CORN CREAM STYLE
4 303 CANS **1.**

GRAVY TRAIN
GAINES
25-Lb. Bag
4.99

LAST CHANCE: JANUARY 20, 1979 WILL BE THE LAST DAY YOU CAN PURCHASE THE PIECES YOU NEED TO COMPLETE YOUR BEAUTIFUL GOURMET COOKWARE SET. SEE IN STORE DISPLAY FOR FULL DETAILS

GLADIOLA
FLOUR
5-Lb. Bag
69¢

SHURFINE SOUPS
CHICKEN NOODLE or VEGETABLE
4 FOR 1.

PICNICS SMOKED
89¢ LB.
HOT LINKS
SMOKED LB.
79¢

Shurfine
SHORTENING
3-POUND CAN
98¢
LIMIT 1-WITH 10.00 GROCERY PURCHASE

LIMIT 3
SHURFRESH
MELLORINE
Assorted Flavors
1/2 Gallon
3 For 1.00

CLOROX BLEACH
79¢ GAL. JUG

Shurfresh Sliced
BACON
1-Lb. Pkg.
1.29

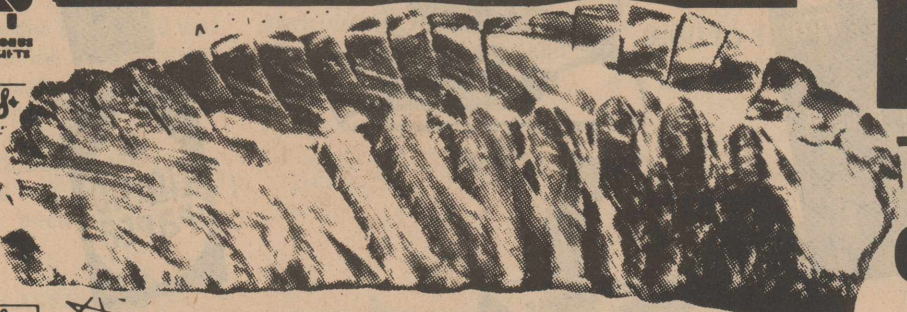
NEW!
MILK MATE
CHOCOLATE FLAVORED SYRUP
20-OZ. BOTTLE
1.29

Hi-C Fruit Drinks
46-oz. Can
59¢

CASCADE
50 Oz. Box
1.79

CHEER DETERGENT
49 Oz. GIANT SIZE
1.19

PARKAY
LIGHT SPREAD OLEO
2-LB. TUB
1.19



SHURFINE
CRACKERS
1-Lb. Box
49¢

WOLF
CHILI
19 oz. Can
99¢

LISTERINE
18-OZ. BOTTLE
REG. 2.19
1.59

MAALOX LIQUID
12-OZ. REG. 1.93
1.69

SPARERIBS
FRESH LB.
1.19



SKIN CONDITIONING
WONDRA LOTION

6-oz. Bottle Regular 1.45
89¢

Redeem Your Mailed COUPONS HERE and SAVE
... just received in your Publishers Clearing House Envelope

10¢ on 1 BOUNCE any size 20-CT.
99¢
WITHOUT COUPON-1.09

10¢ on 1 BIZ any size 25-OZ.
1.29
WITHOUT COUPON-1.39

10¢ on 1 ZEST any size BATH SIZE
29¢
WITHOUT COUPON-89¢

10¢ on 1 MR. CLEAN any size 28-OZ.
1.29
WITHOUT COUPON-1.39

RED DELICIOUS APPLES
3-LB. BAG
49¢

SUNKIST
LEMONS
LB.
39¢

ZIPPER SKIN TANGERINES
3 LBS.
1.

TOMATOES
3-PAK CTN.
39¢

WHITE ONIONS
LB.
29¢



Employees Should Receive W-2 Forms

Employees who do not receive their Wage and Tax Statements by January 31, 1979, must still file by the tax deadline, the Internal Revenue Service said.

Additional Wage and Tax Statement information is available in the free IRS Publication 15, "Circular E - Employer's Tax Guide," obtained from IRS District offices.

To avoid delay in mailing Wage and Tax Statements, employees should furnish his or her employer with a current address, according to IRS. If employees do not receive their statements by

the end of January, they should contact their employer first. After February 15, 1979, they should contact their local IRS office.

Make sure your next loan is easier to pay back



A good loan should be one you can manage on your income.

The Federal Land Bank can tailor a payment plan to fit your income patterns and cash flow. The long-term feature of Land Bank loans helps keep your payments manageable.

At the Land Bank, we want to make sure your loan is as easy to pay back as it is to get in the first place. Stop by and see how we can help.



**The Land Bank
The Bank of Generations**

FEDERAL LAND BANK
ASSOCIATION OF HASKELL
JOE HARPER, Manager

Offices at Haskell, Anson, and Seymour
Haskell (817) 864-2062; Anson (915) 823-1142
Long-time Loans on Farms and Ranches
in Haskell, Jones, Baylor, and Knox Counties

Money Market CD's Offer Boost In 1979

OLNEY - "The new six-month Money Market Certificates are expected to continue to be offered at rates anticipated to be higher than ten percent for a good portion of 1979," according to D.D. McClatchy, president and chief executive officer of Olney Savings Association.

This exciting news offers the Olney Savings customer the highest savings rates ever. And, at the same time, helps prevent a repeat of the 1974-75 slump in housing starts when savings and loan associations had little money to finance mortgages," he

explained. Olney Savings began offering the Money Market Certificates in late 1978. "Since that time, we, savings and loans, have offered a higher yield of 1/4 of a percent point above the 26-week Treasury Bills."

He continued, "For the consumer interested in high-yield short-term investments, the Money Market Certificate has definite advantages. It's easy to obtain, minimum \$10,000. You know the rate of return on your investment in advance. (Rates on the Money Market Cer-

tificates are based upon weekly U.S. Treasury Bill Auctions in Washington, D.C.) and your money is insured up to \$40,000 by an agency of the U.S. Government."

Olney Savings certificates pay from date of deposit to date of maturity and require a reduction in interest to withdraw before maturity.

Olney Savings is a \$158 million dollar savings and loan with branch offices in Seymour, Jacksboro, Bridgeport, Nocona, Weatherford, and Azle. Also, Ranger Savings in Ranger, Eastland Savings in Eastland, and Electra Savings in Electra, all divisions of Olney Savings.

Dallas Man Convicted Of S.S. Fraud

James H. Harper, Social Security branch manager in Vernon, announced another Supplemental Security Income (SSI) and Social Security Fraud conviction in the Southwest Region.

Harper stated that Leroy Williams of Dallas pled guilty before U.S. District Judge Sarah T. Hughes in Dallas to two counts of having made false statements to the Social Security Administration about his employment and wages in order to receive SSI and Social Security Benefits to which he was not entitled.

Sentencing is scheduled for February 2. The maximum sentence permitted by law is a \$1,000 fine or one year in prison, or both, on each count.

"We are proud to serve in an agency that has a basic mission of helping people," Harper said, "but we are obligated and determined to pay benefits only to those who are lawfully entitled to them."

JOHNSTON VISITORS

Visiting Mr. and Mrs. F.A. Johnston and Shane over the weekend were their children, Jerry Johnston, Kerrie and Sundee of Millsap and Mr. and Mrs. John McGaughey, Jodie and Barbie of Stamford.

Jerry's wife, Janice, was in Abilene with her mother who is ill.



Marble Pound Cake is elegant dessert

WINSTON-SALEM, N.C. — When company will be calling, plan ahead and prepare a Marble Pound Cake made with Milk Mate, a chocolate-flavored milk enricher from RJR Foods, Inc.

MARBLE POUND CAKE

- 2 1/4 cups sifted all-purpose flour
- 1 1/2 cups sugar
- 2 1/2 teaspoons baking powder
- 1/4 teaspoon salt
- 1/2 cup milk
- 1 cup butter or margarine,
- 1 teaspoon vanilla
- 4 eggs
- 1/4 cup Milk Mate

Sift flour, sugar, baking powder and salt into large mixing bowl. Add milk, butter and vanilla; beat 2 minutes at low speed, scraping bowl frequently (batter will be thick). Add eggs and beat 2 minutes more at medium speed.

Remove 1 1/2 cups batter to small mixing bowl and blend in Milk Mate. Pour 2/3 of plain batter into greased and floured 9- or 10-inch tube pan or bundt pan; top with chocolate batter. Spoon remaining plain batter into pan. Bake in a preheated 350-degree oven for 50 to 60 minutes or until done. Cool in pan for 20 minutes; remove cake to wire rack. Makes one 9- or 10-inch tube cake.

Give To The
March Of Dimes

**GRAND OPENING AND
JANUARY CLEARANCE**

Sale Starts Thursday, January 18, 1979

Department I		Department II	
MENS HANGING SHIRTS REGULAR \$11.98 NOW \$5.99	MENS LONG SLEEVE CASUAL WRANGLER KNIT SHIRTS 1/2 PRICE	BOYS KNIT DRESS PANTS 1/2 PRICE VALUES TO \$11.50 Now \$5.75	ONE GROUP LONG SLEEVE KNIT DONMOOR SHIRTS Reduced 1/3 to 1/2 Off
ONE GROUP SUITS, LEISURE SUITS & SPORTSCOATS 1/2 PRICE	SOME ARROW SHIRTS 1/3 OFF	ONE GROUP BOYS JEANS 1/2 PRICE	BOYS DENIM JEANS 1/3 OFF REGULAR \$11.50 NOW \$7.67 REGULAR \$10.50 NOW \$7.00 REGULAR \$9.50 NOW \$6.33
ONE GROUP OF MENS LONG SLEEVE DRESS SHIRTS 1/2 PRICE	DOUBLE KNIT PANTS \$2.00 OFF	BOYS DACRON AND COTTON DRESS SHIRTS 1/2 PRICE	BARGAIN TABLE VARIOUS ITEMS 99c
LONG AND SHORT SLEEVE WESTERN SHIRTS 1/2 PRICE	CARDIGAN & PULLOVER MENS SWEATERS 1/2 PRICE	BOYS LEISURE SUITS 1/2 PRICE & BELOW	ALL WINTER BUSTER BROWN CHILDRENS WEAR 1/3 REDUCTION
ONE GROUP WINTER COATS 1/3 to 1/2 PRICE	SOME (ONE GROUP) FELT HATS 1/2 PRICE \$5.00 OFF	FIELDCREST BEDSPREADS 25% OFF	ONE GROUP TOWELS REGULAR \$5.99 SALE \$2.99 H.Towel \$3.99 \$1.99 Washcloth \$1.99 \$.89
Department III		Department IV	
MENS WORK CAPS VALUES UP TO \$7.98 NOW ONLY \$1.99	FLANNEL SHIRT REGULAR \$7.98 NOW \$5.98	ONE GROUP MENS JEANS PRE-WASHED STYLE 1/3 OFF	ONE GROUP PIECE GOODS 1/2 PRICE KNITS, CHALLIS, DOTTED SWISS & TERCLOTHS REGULAR \$5.98 SALE \$2.99 \$4.98 \$2.49 \$3.98 \$1.49 \$2.98 \$1.99
ONE GROUP WRANGLERS & LEVIS ASSORTED SIZES AND STYLES 1/2 PRICE	MENS INSULATED COVERALLS VALUES UP TO \$17.98 NOW \$12.98	MATERIAL REMINANT SALE 50c & 99c	SUEDE FABRIC 60 INCHES WIDE 1/2 PRICE
Department VII		Department V	
ONE GROUP LADIES PERSONALITY CASUAL & DRESS SHOES VALUES UP TO \$28.98 1/2 PRICE	LADIES KED'S GRASSHOPPER SHOES VALUES \$12.98 NOW \$7.49	ONE GROUP COORDINATES BY DONOVAN GALVANI REDUCED 50% AND 1/3 OFF	ONE GROUP LADIES DRESSES 1/2 PRICE AND BELOW
ONE GROUP DR. SCHOOLS LADIES SHOES \$10.99	BARGAIN TABLE OF LADIES SHOES FROM \$3.99 to \$5.00	LADIES DRESS & CASUAL COATS GREATLY REDUCED	\$10 BARGAIN RACK OF BLOUSES, PANTSUITS AND DRESSES
ONE GROUP MENS WESTERN BOOTS VALUES UP TO \$49.98 REDUCED \$25.98	BARGAIN TABLE OF MENS SHOES \$8.99 and \$10.99	SUNNY SOUTH AND DONOVAN GALVANI BLOUSES & SKIRTS 1/3 OFF	Department VI BIGGEST LINGERIE SALE EVER ONE GROUP Long Gowns, Waltz Length, Robes, Scarfs Reduced to Half Price Bargain Tables Of Panties, Bras, Slips and Girdles
BOYS & GIRLS CHILDRENS SHOES VALUES TO \$12.98 NOW ONLY \$4.99	BIG SELECTION OF LADIES TENNIS SHOES RAINBOW OF COLORS NOW ONLY \$2.99		

SALE

Come and register for DOOR PRIZES \$50 DAILY
IN GIFT CERTIFICATES
to be given away

Biggest sale ever - everything must go to make room for spring merchandise

**NO REFUNDS
NO EXCHANGES**

HIT THE JACKPOT OF SAVINGS

UP TO 7 3/4%

on higher yielding savings

ALSO:
T-BILL SAVINGS CERTIFICATES
A Solid Investment for You.

	Rate	Yield
Daily Saver	5%	5.13%
(Compounded Daily)		
1 yr.	6%	6.14%
2 1/2 yrs.	6 1/2%	6.67%
4 yrs.	7 1/4%	7.45%
6 yrs.	7 1/2%	7.714%
8 yrs.	7 3/4%	7.98%

Minimum (Reg. CD's) \$1,000.00

[If interest is left to compound continuously for 12 months.] A substantial penalty is required for early withdrawal from certificates.

9.53%

Effective January 11-18

Haskell National Bank

BOB'S \$UPER \$AVE

Knox City, Texas

LOWER FOOD PRICES!



MRS. BAIRD'S BUTTERED SPLIT TOP WHITE BREAD 1 1/2 LB. LOAF **59¢**

Coca-Cola 32-oz. Returnable Bottles 6-pak **\$1.59** plus deposit

CRISCO OIL 38 oz. Btl. **\$1.69**

SIRLOIN STEAK Pound **\$1.89**
PORK STEAK Pound **\$1.59**
GROUND BEEF Pound **\$1.19**
SWIFT **sizzlean** 50% leaner than bacon \$ **1.39**
SLAB BACON BLOCK OR SLICED Pound **\$1.69**

VAN CAMP'S PORK & BEANS 3 16-oz. CANS **89¢**

CRISCO OIL 38 oz. Btl. **\$1.69**

DEL MONTE Cut Green Beans 3 16-Oz. Cans **\$1.00**

DEL MONTE SPINACH 3 15-Oz. Cans **\$1.00**

ALPO DOG FOOD 25 lb. **\$5.95**

LIBBY'S VIENNA SAUSAGE 2 4-Oz. Cans **89¢**

LIBBY'S VIENNA SAUSAGE 2 4-Oz. Cans **89¢**

DEL MONTE Early June PEAS 2 For **79¢**

RANCH STYLE CHILI WITHOUT BEANS 19 oz **99¢**

WAGNER FRUIT DRINK 32-OZ. JAR 2 FOR **89¢**

FIELD-FRESH FLAVOR produce

FRESH GREEN BELL PEPPERS 17¢ EACH

Texas Yams East Texas, US #1 -Lb. **4/\$1**

RED DELICIOUS APPLES 3 Lb. Bag **\$1.00**

Sweet & Juicy! Luscious Snacks or Desserts!

TEXAS RUBY RED GRAPEFRUIT 5 FOR **\$1.00**

SUNKIST LEMONS 10 FOR **\$1.00**

FIRM GREEN CABBAGE HEADS LB. **17¢**

HEALTH AND BEAUTY AID
BAYER Aspirin 100 ct. btl. **1.39**
HEAD & SHOULDERS Shampoo 7oz. tube **\$1.98**
SINE-AID 24 Ct. **\$1.49**

Frozen Foods
MORTON'S FROZEN HONEY BUNS 2 FOR **\$1**
Banquet FROZEN FRIED CHICKEN 9 OZ. PKG. **\$2.49** 2-LB. Box

DELTA TOWELS ASST'D. 2 Jumbo Rolls **\$1.00**

LYSOL SPRAY DISINFECTANT 18 Oz. Size **\$1.89**

COMET LIQUID 32 OZ. **\$1.19**
DOWNY FABRIC SOFTENER 64 oz. **\$1.89**

DISCOUNT SPECIALS

WITH FILLED Buccaneer DISCOUNT BOOKLETS

WHITE SWAN BISCUITS 4 Ct. Can **9¢**

DELSEY BATHROOM TISSUE 4-Roll Pkg. **39¢**

HUNTS SLICED or HALVES PEACHES 29 Oz. **9¢**

CRISCO 3-LB. CAN **\$1.39**