

POLITICS is with us again. In the next few months, we'll be hearing about everybody's platform--what they stand for, and what they won't stand for. In the event some of the candidates don't know which way to turn, we've prepared a standard platform they all should be able to follow.

Here 'tis:

- We need more progressive-minded people.
- We should have fewer radicals who want to change everything.
- Better telephone service.
- No telephones.
- More recreation for young people.
- No kids.
- More parking space.
- No cars.
- More paving.
- Less taxes.
- More church activities.
- Less do-gooders.
- Better education.
- No teacher salary raises.
- For Mother and Church.
- Against sin and the devil.
- Better TV shows.
- Abolish TV commercials.
- Is everybody happy?

SOMEBODY has come up with some figures that clear up any puzzle about who's doing all the work in these United States. These are the facts:

- The population of the United States is 180 million. About 50 million people are of retirement age. That leaves 130 million people to do the work.
- Another 72 million are 21 years of age or younger. That leaves 58 million to do the work.
- Another 28 million work for the government. That leaves 30 million to do the work.
- People in State and city offices total about 16 million. That leaves 14 million to do the work.
- About 13,793,000 are in the army, navy, marines, or air force. That leaves 207,000 to do the work.
- Another 98,947 are in hospitals and insane asylums. That leaves 108,533 to do the work.
- Take away another 86,450 for bums and others who don't work and you have 22,103 to do the work.
- Now another 22,101 persons are in jail. That leaves two to do the work.
- I guess that means you and me.

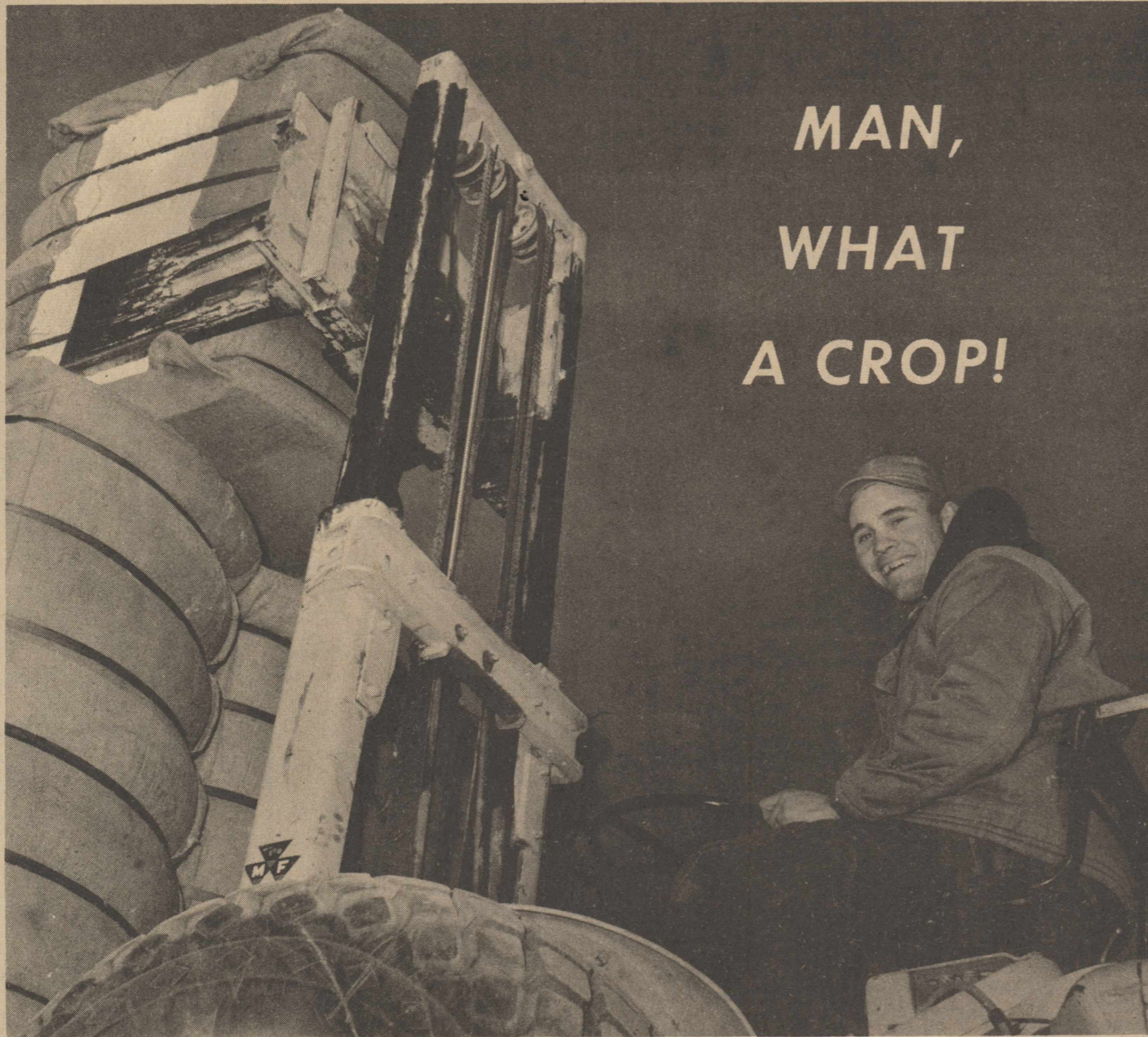
Vegetable Meet Set

A meeting of the South Plains Vegetable Council has been set Friday at 11:30 a.m. at the Alcovue Cafe in Plainview by Clovis Poteet, president.

New officers will be elected and a delegate to the state organization will be chosen.

Speakers will be Henry Van de Walle of San Antonio, state president; Dr. Jack Kyle, Lubbock; Bill Day, Plainview and Ed Lewis, Plainview.

The public is invited to the lunch.



MAN, WHAT A CROP!

THAT GRIN on gin hand Donnie Mandrell's face expresses the feeling of many an Olton farmer reflecting on the 1961 Cotton crop, a record-breaker. Through late Wednesday, ginnings totaled 45,550 bales, with some 1,600

more on the yards still to be ginned. Less than one per cent of the crop remains to be harvested, but farmers already have broken the 1958 record of 42,237 bales.

Farmers Hit Jackpot

Traveling along the same path as the area's record farm year, Olton State Bank recorded an all-time bank call high for deposits at the close of business on Dec. 30.

The bank's deposits, generally regarded as a barometer of local business conditions, totaled \$6,035,405.90.

The previous high for a year-end bank call was \$5,811,515.27,

recorded at the end of 1958. Compared with deposits at the same time a year ago, the Dec. 31 total was an increase of almost three-quarters of a million dollars.

Total deposits at the end of 1960 were \$5,356,177.37, compared with \$5,165,861.12 at the end of 1959. Deposit total at the end of 1956, another big farm year, was \$5,296,900.31.

High Plains Water District Election Slated Tuesday

Annual election of officials for the High Plains Underground Water Conservation District has been set Jan. 9. Polling place in Olton will be at the city hall.

The terms of office of two directors on the District's Board expire this year. Directors are elected for two years.

Lamb, Cochran and Hockley county residents will elect one representative to the board of directors. Floyd county residents will also elect one man to the board.

The terms of two committeemen in each of the thirteen water district counties also expire this year. Committeemen are elected for three years.

Nominees for the director's race are Henry Gilbert of Sudan, Roy Hickman of Morton and Henry "Chick" Schmidly of Levelland.

County residents will elect one committeeman-at-large.

Nominees are Troy Moss of Littlefield and Doyle Tapley of Amherst.

Qualified voters who reside within this county will be eligible to cast a ballot. The 1960 poll tax receipt, the one used during 1961, will be used for voting.

It is not necessary to be a farmer, an irrigator or to be involved in any other specified occupation to be eligible to vote in the election. Any qualified voter is eligible to vote in any race that affects him.

Voters must cast their ballots in their home county. They may, however, vote at any one of the polling places in that county.

Other polling places in Lamb County are Sudan, city hall; Earth, community building; Littlefield, county courthouse; Spade, Farmer's Co-Op Gin.

"Our cotton and grain year, of course, was the big factor," bank president Owen Norfleet said Wednesday, commenting on the record report.

The Olton area's six gins will gin more than 47,000 bales of cotton this year, surpassing the 1958 record of 42,237 bales.

Through Wednesday afternoon, the six gins (including two at Circle) had ginned 45,550 bales, and they had about 1,600 more on their yards. Less than one per cent of the crop remained to be harvested.

"We had good prices on grain, and that helped," Norfleet said. "And we had good yields because of sound farming practices and an increased use of fertilizers."

The bank president said the area's cotton farmers "had good luck as far as hail was concerned and that was a big factor in our volume of production."

The area showed a good increase in cotton production, despite the fact that the percentage of lint ginned from raw cotton did not measure up to standards of previous years.

Deposits at Olton State Bank rose steadily as the New Year began, with big totals banked the early part of this week.

That was due largely to the fact that much of the area's cotton remained to be sold. Cotton men estimated late Wednesday that at least 25 per cent of the crop, and possibly one-third of it, was still to be sold.

A condensed statement of the bank's condition, and a com-

parison with the statement of 20 years ago, can be found on page 6 of today's Enterprise.

The statement at the end of 1941 showed total deposits of \$407,611.47. Records show a steady growth of the bank ever since it was founded in 1929.

'61 Business Good; Big Year Predicted

"When the farmers can pay off their bills with their corn and grain and have their cotton clear, that usually means a good year for everybody."

This is the way one local businessman expressed his feelings about a generally optimistic outlook for 1962 shared by most Olton merchants.

The majority of businessmen reported a business increase for 1961 over the previous year and are looking forward to a big year in 1962.

After a slow fall, buying picked up in December, reaching a peak the last week before Christmas.

One businessman reported the best Christmas week since 1952.

The annual clearance of fall and winter merchandise begins this weekend with more to follow next week.

Merchants are clearing out their winter stock to make room for spring goods which are already arriving.

Some windows were displaying new spring apparel this week.

In the auto industry business was reported up with one car dealer saying most of the business had come during the last six months of the year.

In used cars, he reported the last three months of the year to be the best ones.

Purchases of large items in the furniture and appliance lines were reported to be slightly down from 1960.

Some felt this was due to the late harvest and predicted an increase in the next few months.

Private home building in Olton fell below the previous year's pace although it held up better than it did in many parts of the county.

Four Toss Hats In Lamb Politics

Boone Seeks District Judge Post

County politics came to life this week with three incumbents announcing they will seek re-election and Pat Boone Jr. announcing as a Democratic candidate for district judge.

Judge E. A. Bills is retiring after an active law practice and 12 years as district judge.

Boone has served as county judge since September of 1957. He was a Littlefield city commissioner for a two year term prior to entering county politics.

Ernest Owens, district clerk, Charles Jones, county clerk and Mrs. Lucy Moreland, county treasurer, all announced as candidates for re-election on the Democratic ticket this week.

Boone's resignation as county judge leaves that office with no candidates as of Wednesday night.

Curtis Wilkinson, county attorney, said Wednesday he was "still undecided" as to whether he might run for the office.

Deadline for candidates to get their names on the primary ballot, either Democrat or Republican, is Feb. 5.

Jerry Lumsden, county superintendent, has announced his resignation. Lumsden is moving to North Central Texas.

First primary election will be May 5, and the general election will be held Nov. 6.

Other offices which come up for election this year are surveyor, Lindsey Williams; justice of the peace precinct 1, David Maxey; justices of the peace in precincts 2, 5 and 7; commissioners in precincts 2 and 5.

Jan. 31 Poll Tax Deadline

Political Calendar

JAN. 31--Last day to pay your poll tax or get an exemption certificate.

FEB. 5--Deadline for politicians to get their names on the primary ballot, either Democrat or Republican. This includes candidates for county, district, and state elective officials; all 31 state senators and 150 representatives, 23 U.S. congressmen, and one judge in each of the 11 courts of civil appeals district. The state wide races include governor, lieutenant governor, attorney general, comptroller, land commissioner, treasurer, agricultural commissioner, two railroad commissioners, one judge of the court of criminal appeals and three members of the state supreme court.

APRIL 15--Absentee voting begins for first primary elections.

MAY 1--Last day for absentee voting.

MAY 5--First primary elections, for both Democrats and Republicans. Precinct conventions, both parties.

MAY 12--County conventions, both parties.

MAY 13--Absentee voting begins for second primary run-offs.

MAY 29--Absentee voting ends.

JUNE 2--Second primary elections, both parties.

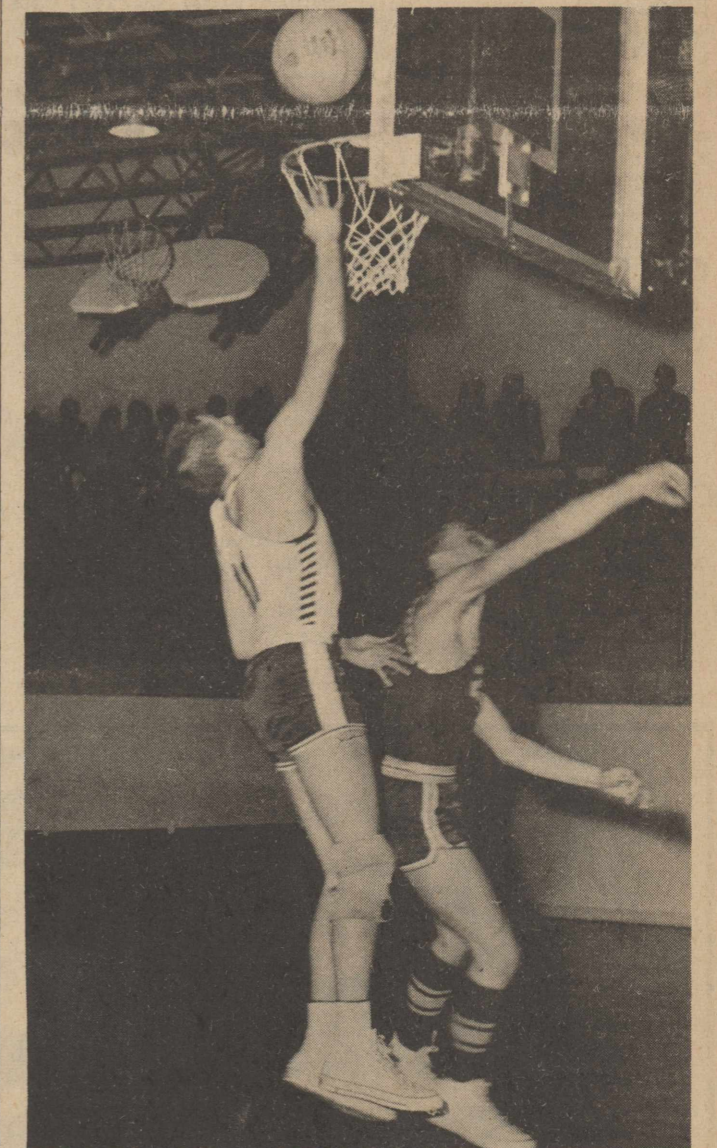
SEPT. 18--State conventions, both parties. Sites to be selected in March.

OCT. 1--Sale of 1963 poll taxes begins.

OCT. 17--Absentee voting begins for general election.

NOV. 2--Absentee voting ends.

NOV. 6--GENERAL election. In addition to all nominees named in party primaries, voters will ballot on 14 proposed changes in the state constitution. These include legislature-approved plans to put a \$2,000,000 ceiling on state assistance to the totally disabled, raising the limit on state needy and old age payments from \$47,000,000 to \$52,000,000, line of succession for state officials in case of enemy attack, resale of veterans land program land when unsold to veterans, workmen's compensation insurance for employees of all political subdivisions, a state program for acquiring water conservation storage facilities and a number of hospital districts.



SCORE TWO FOR OLTON!--Olton forward Gary Johnson drove hard for a lay-up on this play Tuesday night, eluding a Springlake defender. Springlake proved too tough in the boys' game, but Olton's girls won, 78-33.

Business Volume Above Quota In Lamb County

NEW YORK, Jan. 4--Lamb County's business indicators are moving upward. Local consumers, armed with better incomes, are returning to the market place in force.

Such are the findings contained in a new survey of business activity, covering the fiscal year 1961. The survey, which was made by the Standard Rate and Data Service, incorporates data gathered from national, state and local sources. It takes in every section of the United States.

Most of the gains that were made occurred during the latter part of the fiscal year, in the six months ending June 30th. They took place when the consumer, after a long period of caution and hesitation, began feeling more secure and more confident about the business outlook and started spending a

little more freely.

The result was that retail sales in Lamb County in the year aggregated \$31,733,000, topping the previous \$31,260,000.

In volume, it was equivalent to .0144 percent of the nation's business, which was more than its quota since the local population is only .0121 percent of the national.

The resumption of consumer spending was not, however, on an across-the-board basis. People held back somewhat in their purchases of hard goods, such as cars and appliances, and devoted more to soft goods and services.

Had the public mood been one of all-out optimism, there might have been a tremendous buying spree, according to the economists. They note that personal assets were at a high level

and were growing greater. But the people were not ready to spend. Instead, they put their spare cash into debt reduction and into savings.

The SRDS report lists net income in Lamb County in the year, after payment of personal taxes, at \$46,601,000, which compares favorably with the previous year's \$45,834,000.

It represented an average spending capacity of \$7,136 per local household.

This was more than was available in the United States generally, \$6,504 per household. In the West South Central States, it was \$5,687.

The pickup in business has been gaining momentum in the last few months, according to the latest Government figures. The sharp spurt in automobile sales in the current quarter is dramatic evidence of it.



EMPTY TRAILERS--The ginning season's end is near at hand, as evidenced by a flock of empty trailers which dot gin yards. Many ginner are caught up and expect very few more bales. Most gins will wrap it up by the end of this week, or early next week.

Gayle Nicholas Hits 53 As Olton Teams Split Pair

Olton basketballers split a pair of games with Springlake teams here Tuesday night, with the Fillies taking a 78-33 verdict paced by Gayle Nicholas' amazing total of 53 points.

The Mustangs lost their tilt to the Wolverines, 63-42, the defeat brings the Olton record for the year to 5-7.

The Fillies picked up a four-point lead in the first period and were never headed. They led 41-19 at the half.

Reserves were called in throughout the second half by Coach Sandra Meadows, with two reserve guards, Pam Hair and Maxine Schaefer, and two reserve forwards, Margaret Schaefer and Oketa Follis, showing well.

Turning in top performances at guard were Linda Price, Gladys Thomas and Renee Giv-

ens. Price and Thomas led the rebounders with five each.

Miss Nicholas burned the nets for 14 points in the first quarter, 19 in the second, 12 in the third and 8 in the fourth. Cheryl Poteet hit for 18, while Tommy Witten had 5 and Margaret Schaefer 2.

Carolyn Gregory led Springlake scorers with 16.

In the boys' game, Hal Hudson, Springlake's outstanding football quarterback, led scorers with 25 points, with Ronnie Dent chipping in 12.

Gary Johnson topped the Mustangs with 15, while Ronnie Parsons hit for 7, and George Phillips, George Jones and Johnny Schenck 6 each.

Springlake led 16-7 at the end of the first period and 32-19 at the half. Olton staged a mild rally in the third, cutting the lead to 12 points, 44-32.

The Olton Enterprise

Published each Thursday at Olton, Texas.

Entered as second class matter at the post office at Olton, Texas, under the act of Congress, March 3, 1897.

Any erroneous reflection upon the character, firm or corporation which may appear in the columns of The Olton Enterprise, will be gladly corrected upon being brought to the attention of the publisher.

Subscription rates: \$3.00 per year in Lamb and neighboring counties; \$5.00 per year elsewhere.



BILL TURNER... PUBLISHER
AMY TURNER... NEWS EDITOR
KAY CHERRY... SOCIETY EDITOR
MAENETTE HOUSTON... OPERATOR
DUANE WHITELEY... COMPOSITOR
LANA HAIR... PASTE-UP
GENEVA CURRY... PASTE-UP

EDITORIALS

Only 27 Shopping Days Left

The announcing of candidates for political offices should be a reminder that only 27 days are left to do your poll tax shopping. It is a small chore, but an important one.

State officers from top to bottom will be elected in 1962 and some hot races are shaping up for the top places--governor, lieutenant governor and attorney general. County and district officials also will be elected, and this is where the campaign fur sometimes flies thickest.

Offices to be voted on include county clerk, district clerk, county judge, district judge, county treasurer and in some parts of the county, county commissioners and justices of the peace.

The election of qualified officers is, in the last analysis, the voter's most important function, for they make and execute the laws that govern us.

Some of the candidates, as always, will be moved to run by considerations other than their qualifications or a desire to serve. Others will have varying degrees of fitness.

It will take discriminating selection by disinterested, public-spirited citizens to produce a capable set of office holders.

The greater the vote of such citizens, the better the county and state will be. So why not add another resolution to your New Year's list?

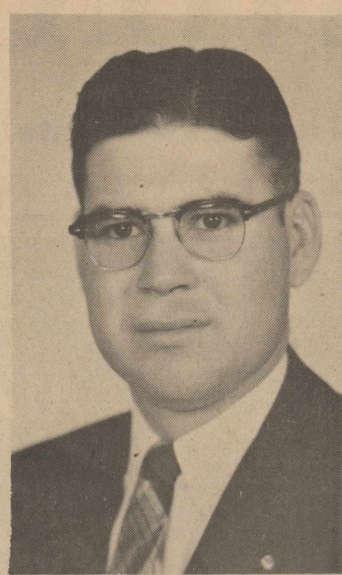
Resolve now to pay your poll tax--preferably before the final rush begins.

Charles Jones Announces For Lamb County Clerk

Charles Jones, candidate for re-election as county clerk of Lamb County, this week issued a formal statement to the citizens of Lamb County:

"I am placing my candidacy before the citizens of Lamb County for your consideration for re-election to the office of county clerk. I wish to express my appreciation to the people of this county for the excellent vote you gave me when I was elected to this office, and for the encouragement you have given me since then.

I have always tried to merit your confidence in me by giving you courteous and efficient service. I have not and I shall not break faith with the people who elected me to serve them. I will appreciate your vote and influence in the May 5, 1962 Democratic Primary Election and I pledge to continue to put forth my best efforts for the good of Lamb County and its people."



CHARLES JONES

ther, Mrs. Lula Brock.

Mr. and Mrs. Billy Wayne Clayton, Tommy and Brenda, Mr. and Mrs. Donnie Clayton, Susan and Keith and Myrtle Clayton gathered at the home of Mr. and Mrs. Donald Kelly Sunday night for their tree.

Mrs. Viola Baldwin was admitted Christmas night to the Littlefield Hospital with a sprained wrist that she suffered in a fall at her home. She was released Tuesday morning.

Rev. and Mrs. Clifford Jester, Jon Mark, Donna and Debbie of Hurst spent Wednesday night with Mr. and Mrs. Bill Watson. They also visited the Ed Jones and other friends in the community.

Tommy Clayton was admitted Wednesday to the Littlefield Hospital with Hepatitis.

H.T. Ray was admitted to the Littlefield Hospital Wednesday.

Mr. and Mrs. Darrell Kenner, Debbie and Ricky of Muleshoe visited Saturday night with her parents, Mr. and Mrs. Lowell Walden and Delwin.

Mr. and Mrs. Johnny Starky and children moved recently to Montana to make their home.

Jeardean Matlock was admitted early Tuesday morning to the Littlefield Hospital. She came home that night.

Mr. and Mrs. Bob McClure and children of California spent Thursday night with Mr. and Mrs. Orlan Bibby and Kathy.

Mrs. Bud Matlock, Debbie and Sammie visited Tuesday at the Littlefield Hospital with Jeardean Matlock.

Miss Charlotte Gibson of Waco spent the holidays with her parents, Mr. and Mrs. J.T. Gibson.

Dinner guests of Mrs. Thelma McClanahan Sunday, Dec. 24, were Mr. and Mrs. Bud Matlock, Debbie and Sammie, Mr. and Mrs. Bill Matlock, Hoby and Jeff and Mr. and Mrs. Doug Avery, Pam and Diane of Muleshoe.

Ricky Ingram of Lubbock, Mr. and Mrs. Lloyd Payne of Lubbock and Mr. and Mrs. D.F. Byerly of Lockney were dinner

Bible Class Meeting Held

Ladies Bible Class #2 of the Main Street Church of Christ met Wednesday morning. They started studying a new topic, "You Can Be Beautiful", taught by Mrs. I. B. Holt.

Present were Mmes. George Kidd, D. M. Granbery, Bill Smith, Tom Carlisle, Lonnie Smith, Jay Rainey, Nova Con-dren, Jimmy Priest, Bob Williams, Gene Green, Robert Nick-erson, I. B. Holt, Alfred White, LaVerl Phares and Miss Helen Locke.

LCC Chorus To Appear Here Sunday Night

The Lubbock Christian Col-lege Chorus will hold the Sunday night services at the Olton Main Street Church of Christ at 7 p.m.

Regular Bible study will be held at 6 p.m. and the chorus will sing at 7 p.m. Refreshments will be served at the cafeteria after the services.

Ladies Bible Class Meets

Ladies Bible Class #1 met Wednesday morning in the Main Street Church of Christ. Alfred White, minister, taught them in Matthew 26.

Ladies present were Mmes. C. T. Hulsey, D. Y. Ray, O. B. LaFrance, W. L. Thomas, Hoyte Paschal, M. L. Armstrong, J. C. Scruggs, E. C. Jones, Jack Edwards, Fred Hicks, Floyd Hall, J. A. Stiles, A. C. Mc-Kinzie, Ed Hestand, R. A. Lewis, T. Combest, C. M. Owen, M. R. Cavett, Bill Bennett, Elmo Bryant, G. W. Locke, Lee Poteet and Mrs. C. B. Bennett from Clarendon, a visitor.

guests of Mr. and Mrs. Wayne Davis Sunday, Dec. 24.

Mr. and Mrs. Arnold Wash-ington and family, Mr. and Mrs. Bill Watson and family and Mr. and Mrs. James Washington and girls went to Tulsa Christmas Eve to eat dinner with the Omes J. Washington family and other relatives.

Mr. and Mrs. Kenneth Hinson, Kevin and Kent visited several days before Christmas with her parents, Mr. and Mrs. Jesse G. Watson of Dallas.

VISIT PARENTS
Mr. and Mrs. Johnny Mack Estes and children of Dexter, N.M., and Mr. and Mrs. Sam Roy (Corky) Estes and girls of Temple all visited in the J.G. Estes home over the holidays.

VISIT PARENTS
Mr. and Mrs. Arles Cavett, Rodney, Barry and Britt of Andrews visited in the home of his parents, Mr. and Mrs. M.R. Cavett, over the Christ-mas holidays.

VISIT IN MIDLAND
Mr. and Mrs. Larry Witten spent the Christmas holidays in Midland with her parents, Mr. and Mrs. Oran Nichols.

VISIT PARENTS
Mr. and Mrs. Roy Landers, Glenda, Gary and Larry of Hereford visited in the home of her parents, Mr. and Mrs. R.J. Caviness, over the Christ-mas holidays.



Syd for spring... one wonderful suit and endless wonderful ways to wear it. With its own bright white collar... which buttons on... buttons off... for easy wash and care. Underneath, a self collar that takes to a scarf or jewelry like the beautiful rayon Shanto by Shirley takes to the suit's easy lines. Navy, black, toast, or mint green.

\$19.95

in olton it's Bizzella

Political Announcements

Subject to Action of Democratic primary, May 5, 1962.

District Judge

PAT BOONE, JR.

District Clerk

ERNEST OWENS

County Judge

County Clerk

CHARLES JONES

County Treasurer

MRS. LUCY MORELAND

Mrs. Moreland Announces For County Treasurer

Mrs. Lucy M. Moreland, Lamb County treasurer, is announcing her candidacy for re-election for a second term as county treasurer, subject to the action of the Democratic primary.



MRS. LUCY MORELAND

Mrs. Moreland and her husband have a son, Gregory Allan, 22-months-old. They live in Littlefield and are members of the Methodist Church. Her husband is employed at the Lamb County ASCS office.

"I wish to express my sincere appreciation and gratitude to the people of Lamb County for the excellent vote they gave when I was elected to this office in 1958. I have tried to do the best job I possibly could as county treasurer, and if re-elected a second term, I will continue to do so. Your vote and influence will be greatly appreciated."

Springlake News

Mr. and Mrs. Franklin Starky were supper guests of Mr. and Mrs. Jess Matlock and Jeardean Monday night.

J.W. Dear was admitted last week to the Littlefield Hospital with a virus.

Mrs. Myrtle Clayton visited in the home of Mrs. E.C. Clayton and Evelyn last Tuesday.

Mrs. Ilo Sanders was dismissed from Northwest Texas Hospital last Monday. She went to the home of Mr. and Mrs. Shot Sanders of Morton Tuesday for a while.

Mr. and Mrs. George Choate

left Thursday to spend the Christmas holidays with her cousin, Mrs. Suzie Roberts, and also with her granddaughters, Karla Sue and Barbara Choate, all of Plainview.

Mrs. Johnnie Busby went to Littlefield Wednesday for a medical check-up and on to Lubbock for another check-up.

Mr. and Mrs. Billy Wayne Clayton, Brenda and Tommy and Mr. and Mrs. James Sanderson, Brian and Stephen left last Thursday to ski at Red River, N.M., until Sunday.

Mr. and Mrs. Lois Murrell and Buddy of McFarland, Calif., spent the Christmas holidays with her parents, Mr. and Mrs. Bud Skinner and her sister, Mr. and Mrs. T.V. Murrell of Earth.

Mr. and Mrs. James Busby, Cynthia and Steve were dinner guests of her parents, Mr. and Mrs. J.C. Hood of Olton, Christmas Day.

Mrs. Roscoe Thomas and Mrs. Pearl Schreier of Olton visited Tuesday with Myrtle Clayton.

Mr. and Mrs. James Packard received work last week of the recent death of Mrs. H.M. Packard of Mission.

Mr. and Mrs. Richard McCaskill and Judy of Lubbock spent the holidays with their parents, the Bob McCaskill, of Earth, and the Almon Whit-fords.

Mr. and Mrs. John Brock and family of Wichita, Kansas, spent the holidays with his mo-

KELLEY'S.....

PRICE BUSTING SALE

Today Through Saturday, Jan. 13

BUY MORE-SAVE MORE... PRICES SLASHED UP TO 50%!

One Group Ladies Dresses	Reg. \$14.98	\$9.99
One Group Ladies Taper Pants	Reg. \$8.98	\$6.99
Girls' Dresses	Reg. \$8.98	\$6.99
One Group Men's Sport Coats	Reg. \$35.00	\$21.99
One Group Boys' Sport Coats	Reduced 1/2	

KELLEY'S Olton

These are just a few of hundreds of items on sale. Shop for bargains throughout the store.

SEMI-ANNUAL SHOE SALE

Sale Starts Jan. 5th Continues Thru Jan. 13th

Buy One Pair At Regular Price And Get Another Of Same Value FOR... ONE CENT

Ladies Wear From 1/3 To 1/2 OFF

Many Other Items On Sale-All Sales Cash

Whittington's, Inc.

Main Street - Olton

News Of Interest To Women



MR. AND MRS. HERMAN HARRISON

McFadden-Harrison Vows Said In First Baptist Ceremony

Miss Lila Lee McFadden became the bride of William Herman Harrison in a double ring ceremony in the Olton First Baptist Church Friday night, Dec. 29 at 7 p.m. Rev. John L. Lewis read the wedding vows.

Parents of the bride are Mr. and Mrs. Paul McFadden and parents of the groom are Mr. and Mrs. J.W. Harrison, all of Olton.

Dressed in Chantilly lace over satin, the bride was escorted and given in marriage by her father. The long lace sleeves that enhanced the dress came to petal points over the hands. The bodice buttoned down the back with tiny covered buttons and the tiny buttons also enhanced the sleeves. Small pearls and sequins were strewn on the bodice. Swept into a chapel train, the billowing lace skirt was also accented by small pearls and sequins.

A veil of silk illusion fell from a crown tiara of pearls and sequins. An arrangement of pink rose buds in the cen-

ter of white carnations carried atop a white Bible composed the bridal bouquet. Traditionally, the bride wore something old, something new, something borrowed, something blue. Her wedding gown served as something new. She wore her mother's wedding ring on a gold chain around her neck as something old. For something borrowed, she borrowed Lonna May's white Bible and she wore a blue lace garter for the something blue.

Harold Dean Carson provided a prelude of nuptial selections on the organ. He also accompanied Mrs. Owen Jones as she sang, "Because", "Whither Thou Goest" and "O Perfect Love" for the benediction. The couple knelt as Mrs. Jones sang the benediction.

Baskets of white mums and gladioli and blue candles tied with blue bows decorated the church. Small white satin anchors with blue bows decorated the pews in the church. Since the groom is serving in the

U.S. Navy, a navy theme was carried out throughout the wedding and the reception. The groom was dressed in his Navy uniform.

Maid-of-honor was Miss Mary Martens of Griswold, Iowa, cousin of the bride. Misses Sharon Smith, Lonna May and Shirley Cole were bridesmaids. They were attired in identical dresses of soft powder blue embroidered taffeta. The dresses featured tightly fitted bodices with short sleeves and pleated skirts with a bow belt. They wore matching hats and mitts of the self-material. They carried nosegays of blue and white carnations with blue ribbon streamers.

Terri Lynn Harrison, sister of the groom, was flower girl. She was dressed identical to the bride's attendants and carried a small basket trimmed with blue net and ribbon and filled with white and blue carnations.

Miss Paulette McFadden, sister of the bride, lighted the

candles and also served as junior bridesmaid. Hazel Harrison, sister of the groom, registered the guests. Both were attired identically to the bride's attendants.

Ring bearer was Bryan Allcorn.

James Jones of Hereford served as best man. Groomsmen were Jerry Peterson and Donnie Mandrell, both of Olton, and Paul Jones of Hereford. The groomsmen also served as ushers.

The two mothers, Mrs. Paul McFadden and Mrs. J.W. Harrison, wore matching sheath dresses of embroidered ivory beige. They were enhanced by three-quarter length sleeves trimmed with brown fur. Matching hats were also trimmed in brown fur. Other accessories were also brown. Both mothers wore corsages of blue and white carnations. The reception was given in the fellowship hall of the church following the ceremony. Miss Nancy Critchfield and Mrs. Tommy Green presided at the serving table. Miss Hazel Harrison passed out tiny rice favors.

The serving table was covered with a white ruffled nylon tablecloth over blue. A white

satin rope around the table was decorated with small white anchors with blue bows on the corners. The center of the room was decorated with a large silver anchor hanging from a white rope with a blue bow on it coming from the ceiling to the floor.

A three-tiered wedding cake topped with a miniature bride and groom enhanced the serving table. The tiny groom was dressed in a navy suit. Completing the table decorations were appointments of silver and crystal. Mints of blue and white, wedding cake and blue punch were served to the guests.

Attending from out of town were Mr. and Mrs. Glenn O. Brown, Griswold, Iowa, aunt and uncle of the bride; Mr. and Mrs. Travis Martens and Mary Ruth of Lyman, Iowa, cousins of the bride; Mrs. Maude Marsh of Spencer, Iowa, a great aunt of the bride; Pete Peterson, Earth; Mrs. Nolan Jones, Paul Jones, Sharon Newman, Linda Jones, Don Wall, Tawana Jones, Mr. and Mrs. Dan Jones, Danny and Wayne, and Jenny Roberts, all of Hereford; Mrs. Bobby Johnson, Austin; Miss Mickey Andersen, Morris Lorenz, Mr. and Mrs. John Lorenz, Bovina; Mr. and Mrs. Wray Wilson, Mr. and Mrs.

Neal Krietzberg, Clovis, N.M.; Mr. and Mrs. Willis Westfall, Amarillo; Mr. and Mrs. Joe Allen, Port Neches; Mr. and Mrs. Dale Berggren, Farwell; Mrs. Bobby Sessums, Hereford; Gracie Lee, Roswell, N.M. and Ray Lee, U.S. Navy, Memphis, Tenn.

For traveling the bride chose a black wool suit, black gloves and a white fur hat and black shoes. She wore a corsage of red roses. For a wedding trip, the couple went to Carlsbad, N.M.

The couple will be at home in San Francisco, Calif., after Jan. 8, where the groom is now stationed in the U.S. Navy and is attending Electronics School.

The bride is a 1961 graduate of Olton High School. She was elected senior class favorite, a member of the National Honor Society and was outstanding homemaker of the year.

He is a 1960 graduate of Hereford High School. He played football for Hereford and was on the Student Council. He was employed by the Olton Enterprise before joining the Navy.

VISIT DAUGHTER

Mr. and Mrs. Ira Foster spent Christmas in Houston visiting their children, Mr. and Mrs. Hallie Earthman, Don and Carla. It was the first Christmas the Fosters have spent with their grandchildren. The Fosters returned home Thursday, Dec. 28.

Phillips Home Scene For Family Reunion

The Clury Phillips home was the scene of a family reunion for members of the Phillips family Sunday, Dec. 31. A lunch was served and the afternoon was spent visiting and making pictures.

Attending were Mr. and Mrs. Millard Phillips, Littlefield; Marvin Phillips and H.A. Phillips and family, Sunray; Jay Phillips, Anton; Mr. and Mrs. J. Jolly, Hale Center; Mr. and Mrs. Joe Thompson and Charles Thompson and family, Dimmitt; Mr. and Mrs. Earl White, Farmington, N.M.; Marvin Coffee and family, Hereford; Mrs. Jo Ann Orwig and daughters, Mrs. Jerry Rheudasid and Mr. and Mrs. Phillip White, all of Lubbock; Mr. and Mrs. Cecil Maddox, Earth; the Hubert Waldrop family and the Milford Lambright family of Olton and the host and hostess, Mr. and Mrs. Clury Phillips.

HD Club Meet Held Tuesday

The Olton HD Club met Tuesday afternoon in the home of Mrs. Jack Edwards. Mrs. Lady Claire Phillips, home demonstration agent, installed the new officers and gave an illustrat-

ed lecture on interior color and lighting.

The hostess, Mrs. Edwards, gave a ten minute demonstration on making "Tasty K Cereal Candy." The recipe is as follows:

1 cup white karo
1 cup white sugar
1/2 cup brown sugar
Bring these to a boil, set off the heat and add 1 cup of peanut butter, 1 teaspoon vanilla and 5 cups Special K cereal. Drop by spoonful on wax paper.

Present were Mmes. Harry Thomas, Tom Smith, Dan Adair, Z.D. Miller, Fred Shaw, Lady Claire Phillips, Jack Edwards, Miss Ann Warren and one visitor, Mrs. Miller.

The next meeting will be Jan. 16 in the home of Mrs. Harry Thomas.

VISIT IN LUBBOCK

Mr. and Mrs. D.C. Eby visited in Lubbock New Years with their two daughters, Beverly Eby and Mr. and Mrs. Gerald Cross and Gary. Gary returned home with them and is spending this week. Also while in Lubbock, the Ebys visited with their parents, Mr. and Mrs. L.R. Johnson and Mr. and Mrs. W.D. Eby, Sr.

PARSONS FURNITURE

"Where A House Becomes A Home"

Jan. 5 To Jan. 20

SMITH & STRUVE'S

Jan. 5 To Jan. 20

JANUARY CLEARANCE SALE

ALL MEN'S SPORT SHIRTS
\$4.95 & Up **\$4.00**
\$2.98 to 3.95 **\$2.25**

One Group
Men's & Boys' JACKETS
1/2 Price

One Group
Men's & Boys' Jackets

\$19.95 Value	---\$14.00
18.95 Value	--- 14.00
16.95 Value	--- 12.00
14.95 Value	--- 10.00
12.95 Value	--- 9.00
11.95 Value	--- 8.00
10.95 Value	--- 7.00
9.95 Value	--- 6.00
8.95 Value	--- 5.00

MEN'S SWEATERS
1/3 OFF

One Group
BOYS' COWBOY BOOTS
1/2 PRICE

Boys' Sweaters
1/3 Off

SWEAT SHIRTS

\$1.49 Value	--- 99¢
1.95 Value	--- 1.38
2.98 Value	--- 1.98

ALL PIECE GOODS
1/4 OFF

59¢ Value --- 44¢
98¢ Value --- 73¢
1.29 Value --- 97¢
1.39 Value --- 1.04
1.98 Value --- 1.25

Corduroy
\$1.69 Value
\$1.27

Felt & Velvets
\$2.98 Value
\$1.98

Ladies' & Children's Sweaters

SHORT COATS & CAR COATS

\$18.95 Value	---\$12.75
14.95 Value	--- 10.00
13.95 Value	--- 9.00
12.95 Value	--- 8.00
11.95 Value	--- 7.00
10.95 Value	--- 6.50
9.95 Value	--- 6.00
8.95 Value	--- 5.50

Children's Dresses
1/4 OFF

House Coats
Ladies, Childrens **1/4 OFF**

Ladies' Hand Bags
1/3 OFF

SPECIAL

Men's, Ladies And Children's

2 SHOES

for the price of 1

of same value

MANY OTHER ITEMS NOT LISTED ARE 1/4 OFF.

Blankets
Are Marked Down, Too

ALL SALES FINAL
NO RETURNS - NO EXCHANGES

SMITH & STRUVE

OLTON

Bowlers. . . .

We Need Bowlers For Our Monday Night Couples League!

The league is almost ready to go, but we need a few more bowlers. Couples League bowling will be at 8:30 p.m. on Monday nights and will last for a 10 to 14-week period. Sign up now.

OLTON BOWLING CENTER, INC.

THE HART BEAT

A SUPPLEMENT TO THE OLTON ENTERPRISE

Thursday

January 4, 1962

Cotton Variety Important In Mechanical Harvesting

Did your mechanical cotton harvester do a satisfactory job on this year's crop? If it didn't, the blame might lay with the variety of cotton you planted. According to tests conducted by the Texas Agricultural Experiment Station, some cotton varieties are more suitable to mechanical harvesting than others. For the studies, 14 open-boll varieties were tested on the A&M Plantation near College Station and 12 storm-resistant varieties were tested at Substation No. 6 near Denton. In the mechanical picking tests all varieties were planted on the same date and all received the same cultural practices. All were harvested in a once-over operation and immediately after the harvesting the cotton remaining on the plants and cotton dropped to the ground was collected and weighed. This information was then analyzed statistically to determine mechanical picking efficiency. The storm-resistant varieties were tested in the same manner, but two different types of stripper rolls were used. Double steel rolls, which are used on some commercial strippers, and rubber paddle stripper rolls developed by the Experiment Station were used on all varieties. In almost every case the rubber paddle stripper rolls showed higher harvesting efficiency.

VISIT BRYANTS
Visiting in the Lemon Bryant home for New Years were Mr. and Mrs. Kruger Johnson, Pam and Denise of Amarillo, Mr. and Mrs. Bobby Bryant, Chris and Don Odie of Austin, James Bryant of A&M College in Bryan, Ida Fair of Matador and Mrs. Billy Bryant and Scott of Cotton Center.

VISIT PARENTS.
Mr. and Mrs. John Boverie and family of San Antonio spent New Years in the home of his parents, Mr. and Mrs. J.A. Boverie.

IN LUBBOCK SUNDAY
Mr. and Mrs. J.A. Boverie, Mr. and Mrs. John Boverie and family of San Antonio, Mr. and Mrs. Edward Boverie and family of Idalou, Mrs. Opal Boverie and Mr. and Mrs. Robert Boverie and family, all of Lubbock ate New Years dinner in the Clem Boverie home in Lubbock Sunday.

VISIT FARRISES
Mr. and Mrs. J.B. Wilson, Sandy and Debbie of Sunnyville, and Glenn Farris, Patricia and Stevie of Roswell, N.M., spent the Christmas holidays in the W.L. Farris home.

PARSONS Funeral Home
"AS NEAR AS YOUR NEAREST TELEPHONE"
Oxygen equipped ambulance Service.
We accept any funeral home burial policy.
Phone 285-2621 Olton

Henderson TV
Repair Service At Night in Hart
Phone MI 7-3636 in Dimmitt
Hart WE 8-3234

Miss Cheves Engagement Is Revealed

Mr. and Mrs. Arthur B. Cheves announce the forthcoming marriage of their daughter, Judith Ann Cheves, to Don William Helbert of Hale Center. He is the son of Mr. and Mrs. William Helbert of Hale Center. A January wedding is planned.

HART TO HART

Mrs. R.A. Futrell and Mrs. E.L. McLain have been in the Plainview Hospital the last few days.

Mr. and Mrs. Ray Warren attended the funeral of Mrs. Russell Warren of Floydada Saturday. She is an aunt of

HART SCHOOL LUNCH MENU

Jan. 8-12, 1962
MONDAY- Steak and gravy, lettuce and tomato salad, buttered potatoes, cherry cobbler, butter, milk and bread.
TUESDAY- macaroni, black-eyed peas, french fried potatoes, catsup, banana pudding, milk, butter and bread.
WEDNESDAY- Cold sliced turkey with applesauce, seasoned green beans, tomato wedge, hot rolls, butter, jelly and milk.
THURSDAY- Chuck wagon beans, buttered corn, seasoned spinach, cornbread, butter, milk and pineapple cake.
FRIDAY- Fish sticks, cole slaw, scalloped potatoes, hot biscuits, applesauce, butter and milk.

Mr. Warren. The funeral service was conducted by her son, Tom.

Mr. and Mrs. Otto Dinwiddie were in Indianapolis, Indiana, visiting their children.

Mrs. Perry spent New Years Day with Mr. and Mrs. Charlie Martin of Plainview.

Doyce and Mary Johnson of Austin, Miss Nancy Cox of Hobbs and Mr. and Mrs. Phillip Conaway of Stamford spent a few days with Mrs. Ena Bowden during the Christmas holidays.

Mr. and Mrs. Paul Brooks visited Mr. and Mrs. J.W. Dale of Olton Sunday.

Mrs. H.C. Brooks of Lamesa is spending a few days with her sons, Mr. and Mrs. Paul Brooks and Mr. and Mrs. Jim Brooks, and their families.

Mrs. Gladys Fry of Marlow, Okla., visited Christmas week with her daughter, Dr. and Mrs. Jack Harris and family.

Mr. and Mrs. Everett Heller spent the Christmas holidays in Meadville, Mo., with her parents, Mr. and Mrs. H.A. Stelplugh.

Rev. and Mrs. Lee Crouch and family spent Christmas with their parents, Mr. and Mrs. L.C. McMinn, of Post and Mr. and Mrs. H.L. Crouch Sr. of Lamesa.

Mr. and Mrs. Arthur Cheves visited in Port Aransas last week.

Mr. and Mrs. T.B. Cox had dinner with Mrs. Ora Smith in Plainview Sunday.

Rev. and Mrs. Benzil Leonard spent New Years Day in Pampa visiting relatives.

Mr. and Mrs. Harvey Davis and children spent Christmas day in Brownfield.

Spending Christmas Eve with the Harvey Davis's were their children, Mr. and Mrs. Weldon Davis and children, Mr. and Mrs. Jimmy Ray Davis and family, Mr. and Mrs. Floyd Light of Olton and Ann Leonard.

Mrs. Norlan Dudley and girls visited Mr. and Mrs. Milton Dudley and Mr. and Mrs. Charlie Holt in Silvertown Sunday.

Visiting New Years Day with Mr. and Mrs. Norlan Dudley and family were his sister, Mrs. W.H. Graham, and boys of Farwell, N.M.

Visiting Mrs. Roland recently were Mr. and Mrs. Clifford Addcock of Abernathy, Mrs.

John Norfleets Have Baby Girl

Mr. and Mrs. John Norfleet of Hart are the parents of a baby girl, Nancy Carol, born Dec. 27 at the Plainview Hospital. The infant weighed nine pounds and fourteen ounces at birth.

Grandparents are Mr. and Mrs. W.R. Norfleet of Hart and Mr. and Mrs. J.G. Caylor of Plainview.

Dean Phillips Have Baby Boy

Mr. and Mrs. Dean Phillips of Canyon are the parents of a baby boy, Tommy Dean, born Dec. 29. The infant weighed seven pounds and twelve ounces at birth.

Grandparents are Mr. and Mrs. Monroe Phillips of Hart and Mr. and Mrs. James Jennings of Canyon.

Louise Lockeby of Estelline, and Jim Smith of Plainview.

Mr. and Mrs. Allen McLain went to New Mexico for the weekend to visit Mr. and Mrs. Jack McLain and family in Toas, N.M., and Mr. and Mrs. Harvey Lee and family in Portales, N.M.

Mrs. Joe Ray Warren and children of Lubbock visited New Years Day with Mr. and Mrs. Ray Warren.

Mrs. Lee Harris was in Wellington this weekend to visit her mother, Mrs. W.V. Huffman.

Mr. and Mrs. Deward Harris and family visited Mrs. Sally Harris in Wellington this weekend.

Judge and Mrs. Meade F. Griffin of Austin visited this weekend with his sister, Mr. and Mrs. W.A. Hawkins Sr.

Roxanna Gallion of Olton spent Monday night with her grandparents, Mr. and Mrs. William Gallion.

Mr. and Mrs. Fred Barrington and daughters of Corpus Christi visited Mrs. Thelda Hawkins and children during the holidays.

Mr. and Mrs. Willis A. Hawkins Jr. and W.A. III were with her parents, Mr. and Mrs. Guy Ford Sr., and Mr. and Mrs. Guy Ford Jr. in Canyon Christmas day, Mr. and Mrs. Guy Ford Sr. had for the first time in 17 years all of their ten children together at one time.

Mr. and Mrs. Frank Sanders visited in Holly for the 50th wedding anniversary of Mrs. Sanders' niece.

Mrs. Nora Ray and Opal spent the weekend visiting Mr. and Mrs. Jewel Ray in House, N.M.

Mrs. W.A. Hawkins Sr. visited Monday with her mother, Mrs. W.T. Griffin, in Tulia.

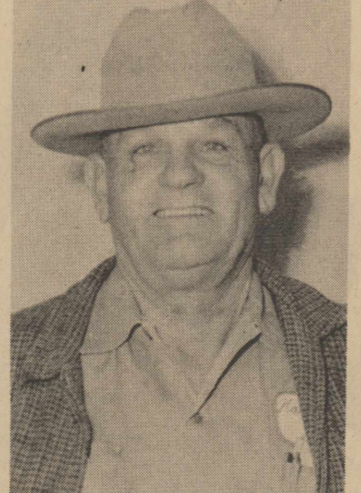
Mr. and Mrs. Claude Mitchell of Brownwood spent Saturday night with Mr. and Mrs. W.A. Hawkins Sr. and all attended the 60th wedding anniversary of an uncle of Mrs. Hawkins, Mr. and Mrs. John T. Griffin, Dec. 24 in Littlefield.

MADE GOOD SINCE 1880
TRADE MARK
MOUND CITY
HORSE SHOE BRAND
PAINTS * VARNISHES * ENAMELS
ED HARRIS LUMBER CO.
BUILDING MATERIALS
CAPABLE-DEPENDABLE
Phone 938-3281 Hart, Texas

W. T. KING
• Blacksmith • Welding
• Hard Facing • Portable Welding
1 1/2 Miles East of Hart
On Plainview Highway
Phone WE 8-5151 Hart

THERE MUST BE A BETTER WAY TO PAY BILLS
You're right... there is! You can pay by CHECK. This way, you can let the mailman do your footwork, and avoid the risk of loss involved in carrying large sums of money around with you. Come in now and open a checking account here!
FARMERS STATE BANK
Hart, Texas

ANNOUNCING
The Appointment Of
Elmer Gray
As Our Sales Representative In Hart
See The 1962 Fords At The Lot Next Door To
Hart Tractor Supply - Phone 938-3528
HALL-SIDES MOTORS, INC.
Box 466 Phone 285-2627 Olton



LIKE THE MACHINERY YOU USE...



SOUND CREDIT

Is the foundation on which the successful agricultural operation must be built... The use of credit becomes increasingly important in providing needed capital for the expanding farming and ranching operation.

The Plainview Production Credit Association offers many advantages as the agricultural credit center for its eight-county area of the Texas Panhandle.

SPECIALIZED	DEPENDABLE
<ul style="list-style-type: none"> Personnel experienced in all phases of agricultural credit Deals only in agricultural credit Intimate knowledge of needs and requirements of its borrowers 	<ul style="list-style-type: none"> Nation's largest organization of its type Unlimited loan funds available from the nation's money market, through the Intermediate Credit Bank at Houston as discount agency Funds not affected by local and area conditions Owned and operated by stockholder-borrowers, able to make most any size of loan

The Plainview Production Credit Association can make loans for practically any type or size of agricultural operation and for almost any purpose.

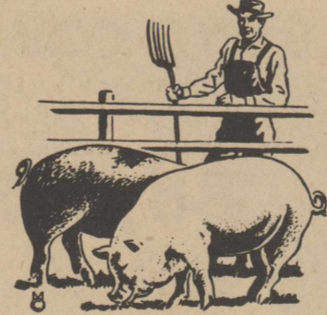

<ul style="list-style-type: none"> Operating loan Capital Improvements 	<ul style="list-style-type: none"> Pay off existing indebtedness Land Purchases
--	---

Visit the office nearest you to see how the Plainview Production Credit Association can provide complete agricultural credit services.

Plainview Production Credit Association
"The Nation's Largest Production Credit Association"
Offices in: Plainview, Littlefield, Dimmitt, Muleshoe, Friona, Tulia, Silvertown, Floydada

Attention Feeders & Ranchers...

EVERYONE INVITED!
- MONDAY -
7:30 P.M. January 15th



WHAT? - ANIMAL HEALTH MEETING:
You'll see how methods in the medication of animals plus new techniques for treatment.

WHERE? - The Plainsmen Farm & Ranch

WHEN? - 7:30 P.M. Monday, Jan. 15

<p>EXTRA! Cotton John</p> <p>of Amarillo Radio-TV will be on hand with new information and films.</p>	<p>EXTRA! Free Coffee And Donuts!</p>	<p>EXTRA! Fred Hayrich, representative of Cyanamid will speak on new animal medication.</p>
--	--	--

The Plainsmen FARM & RANCH
Home Of Caddo Feeds
Custom Grinding, Mixing, Pelleting

SELL · BUY · TRADE · HIRE · SERVICE · HELP WANTED · EMPLOYMENT OPPORTUNITIES

CLASSIFIED ADS

Rates
Rates on classified advertising are: 6 cents per word first insertion; 3 cents per word second insertion, and each additional consecutive insertion. Minimum 50 cents first insertion, 25 cents additional insertions. The Enterprise is not responsible for mistakes after first insertion. Please read your ad.

All classified accounts are due and payable 10th of month following insertion. A flat rebilling fee of \$1.00 will be charged for all accounts 30 days past due and for all successive rebillings.

NOTICE
DON'T TAKE OLD PAINT off your furniture, kitchen cabinets, T.V. Refinish in wood-grain or antique with Old Masters. Easy. Just paint it on. Hobby House, Littlefield. 37-tf.

OLTON LODGE NO. 1257
A. F. & A. M.
Stated Meetings 3rd Thursdays
JOE NEWMAN, W.M.
C.D. KIRKPATRICK, secretary
Visitors Are Welcome
Members Urged To Attend.

PARLEY'S Barber Shop
LOCATED NEXT DOOR TO LESTER'S
Olton, Texas

WANTED
MAN OR WOMAN
SPARE TIME
To refill and collect money from our machines dispensing Hersheyets, Gum and Sport Cards in this area. Easy to do. Excellent income. \$440 cash required secured by inventory. Include phone number. Write P.O. Box 2874 Amarillo, Texas.

FOR ALL GEAR HEAD
Service and Repair
SEE
W.M. Whitesides
207 East 5th Street
PLAINVIEW, TEXAS

Water Well Drilling
NO MONEY DOWN
3 YEARS TO PAY
Pressure Pump Service
CALVIN COOK
CA-4 4498 2519 Gladney
(Seth Ward)
PLAINVIEW, TEXAS

I. E. FISH
CESS POOL DRILLING
STARTED 1950
Ph. CA. 3-2115 Concrete Tops and
Plainview, Texas Outside Plumbing
REMEMBER ME!

WAYNE'S
— OFFICE SUPPLIES —
PRINTING And LITHOGRAPHING
PHONE 285-2225 Olton, Texas

For Sale

FOR SALE: Two bedroom house 125 foot front, celler, and fruit trees. 812 W. 11th Street. J.W. Huggins. 46-4tp.

FOR SALE: 57 Ford pickup. Call 285-2065. W.G. Green. 45-tf.

FOR SALE: 57 Ford Station Wagon. Clean, all equipment. Phone 285-2494. 13-tf.

FOR SALE: Nice two bedroom house, kitchen, living room or den, and bath. Approximately 1,000 sq. feet floor space. Clean inside and out. Priced to sell. Phone 285-2939. 31-tf.

FOR SALE: One GMC 1 1/2 ton truck with grain bed. \$400. Plainsmen Farm and Ranch. 285-2255. 48-4tc.

FOR SALE: Small upright piano. Good condition. J.W. Dale. Phone 285-2542. 48-3tp.

FOR SALE: CAR PORTS, any size or color. All steel. See at Roberson Mobile or call 285-2131. 27-tf.

FOR SALE: 5 room house and 2 acres joining city limits of Olton. Two caber layer buildings— 24 x 30 and 24 x 60. Priced to sell. A.A. Smith, City Real Estate, c/o City Barber Shop, Olton. 48-tf.

FOR SALE: 300 IHC tractor. 1956 model. Call Bill Langford. 48-3tp.

Wanted

WANTED: Custom combining and cotton stripping. See R.W. Green or Phone 285-2556. 34-tf.

WANTED: To make buttons, button holes, buckles, belts, children's garments. Dress making. Wilena Gordon. Phone 285-2401. 27-tf.

WANTED: Farm land to rent or buy. One half section or more. Phone 285-2762. William Neinst. 42-2tc.

For Rent

FOR RENT: Two bedroom modern home on Avenue G. W.B. Smith, Jr. 45-tf.

FOR RENT: House, five rooms and a bath. On corner of 11th and Main. Contact H.E. Huckabee, Phone 285-2175. 46-tf.

FOR RENT: Furnished apartment. 1103 Ave. E. Call 285-2207. 47-tf.

FOR RENT: Two clean three bedroom houses. Call 285-2425 or contact Mack Keating in Olton. 47-2tc.

FOR RENT: Furnished house. Call Mrs. W.C. Dennis. 48-tf.

Notice

LOST: Large purse belonging to Mrs. Paul Nafzger. \$25 reward for return. Light beige. Contains prescription colored glasses, billfold, personal papers. 48-1tc.

NOTICE GRAPEFRUIT
Tree Ripened,
Ruby Red
For Sale
DENNIS
Builders Supply
Phone 285-2144
Olton, Texas

Springlake News

Mr. and Mrs. Arnold Washington entertained in their home Saturday with a party, in honor of Mr. and Mrs. Robert Bridge of Yuma, Ariz. They were here during the holidays. An enchilada supper was served to Mr. and Mrs. James Washington, Mr. and Mrs. Bud Matlock, Mr. and Mrs. Jimmy Banks, the honorees and the host and hostess. Games were played later.

Mr. and Mrs. Bill Matlock took Hwy to the doctor at Littlefield Saturday night with a high fever due to a cold. He also received medical treatment again Sunday and Monday.

Mr. and Mrs. Jess Matlock and Mr. and Mrs. F.W. Bearden and Ann went to Paducah Sunday morning to attend the funeral services for a long time friend, H.E. Grant, 44, of Paducah.

Mr. and Mrs. Jimmy Banks, Mr. and Mrs. Jerry Bearden and Mr. and Mrs. Alton Hollingsworth of Hereford left Sunday afternoon for Dallas to attend the Cotton Bowl New Years Day.

Mrs. Dorothy Washington and boys and Mrs. Ann Vincent of Muleshoe went to Spur Friday.

Ernest Baker was admitted Friday to the Littlefield Hospital due to a back injury he suffered Wednesday.

Mrs. Thelma McClanahan visited in Muleshoe Wednesday with her daughter and family, Mr. and Mrs. Doug Avery, Pam and Diane returned home with her to stay until Monday.

Mr. and Mrs. K.B. Parish and Mr. and Mrs. Jim Stephens left Saturday for Red River, N.M., to ski until Monday.

Mr. and Mrs. Melvin McClure arrived Dec. 22 to spend the holidays with his parents, Mr. and Mrs. Howard McClure. McClure is stationed at Fort Carson, Colo. In two weeks he will have finished boot training.

Dinner guests of Mr. and Mrs. Jack Hinson Christmas Day were Mr. and Mrs. Earl Parish, Jacqueline, Becky and Susan and Mr. and Mrs. Kenneth Hinson, Kevin and Kent.

Mr. and Mrs. F.W. Bearden and family visited Saturday night with Mr. and Mrs. James Bills and daughter, Joanna of Karnack, in the home of Mr. and Mrs. Nat Bearden of Earth.

VISIT PARENTS
Mr. and Mrs. James A. Caley and family spent the Christmas holidays in San Marcos visiting with his parents, Mr. and Mrs. William J. Caley.

CHRISTMAS VISITORS
Having Christmas dinner in the Gordon Thomas home were Mrs. Patsy Franklin and Graduate and Mrs. Annie Campbell, all of Olton; Mr. and Mrs. J.G. Campbell and family of Houston and Ray Campbell of Clovis, N.M.

VISIT MOTHER
Mr. and Mrs. J.G. Campbell and family of Houston and Roy Campbell of Clovis, N.M., visited their mother, Mrs. Annie Campbell, over the Christmas holidays.

VISIT CARDERS
Visiting in the J. Roy Carder home over the Christmas holidays were Mr. and Mrs. Dale Greathouse, Mr. and Mrs. Clyde Greathouse and Mrs. W.D. Greathouse, all of Portales, N.M.

VISIT IN PADUCAH
Mr. and Mrs. Vernon Carlisle, Jr., David, Carolyn, Gary and Kent spent New Years day in Paducah visiting with her parents, Mr. and Mrs. Vard Worley.

LEVI'S
Smith & Struve
OLTON, TEXAS

FARM SALE
I have rented my farm and am having a farm sale Jan. 10th at 1:30 P.M.
B. C. Cooner
5 Mi. North, 5 Mi. West, 3 Mi. North of Olton

Dinner guests of Mr. and Mrs. J.B. James and Mrs. G.C. Bearden Sr. Christmas Day were Mr. and Mrs. Jess Matlock, Mr. and Mrs. Jearl James, Mr. and Mrs. Royce Bearden, Olton, Mrs. Fay Bearden of Olton, Bennie Pickrell and Mrs. Avaline Jones.

A.M. McGowan of ENMU, Portales, N.M., arrived home last week to spend the holiday with his parents, Mr. and Mrs. Mac McGowan.

Everette Baldwin was home from Wayland College.

Brenda Martin of Silvertown spent several days last week with Donna Watson.

Mr. and Mrs. Charles Basham and family of Portales, N.M., Mr. and Mrs. Weldon Reed and family of Floyd, N.M., and Mr. and Mrs. Milton Basham of Oklahoma spent Christmas Eve in the home of Mr. and Mrs. Mac McGowan. The Junior Johnson's and family of Floydada joined them Christmas Day.

Mr. and Mrs. Bob McClure and boys of California arrived last Friday to spend the holidays with his mother, Edna McClure and other relatives.

Mr. and Mrs. Bill Matlock, Jeff and Hwy, Mr. and Mrs. Bud Matlock, Debbie and Sammie, Mr. and Mrs. Clifton Adams, Johnny and Sherry of Circle, and Mr. and Mrs. Charles Hedrick and Brent of Sunny-side, were supper guests of Mr. and Mrs. Jess Matlock and Jearldean Christmas Eve.

Mr. and Mrs. Mac McGowan visited Tuesday afternoon with Jearldean Matlock at the Littlefield Hospital.

Mr. and Mrs. R.L. Byers Jr., Ricky and Danny left Wednesday morning for Fort Worth. They also attended the Cotton Bowl New Years Day at Dallas.

Mr. and Mrs. Jim Stephens, Gloriann and Randy went to Muleshoe Christmas Eve to visit her parents. They also visited his sister in Amarillo Christmas Day.

Mr. and Mrs. James Washington, Jamie and Alicia were Christmas Day visitors in the home of her parents, Mr. and Mrs. Edgar Morrison of Quitaque.

Mr. and Mrs. Bill Matlock entertained in their home Tuesday night, Dec. 18 with a Christmas party. Cokes, coffee, cookies and fruit cake were served to Mr. and Mrs. Ray Joe Riley, Mr. and Mrs. John Bridges and Mr. and Mrs. Eddie Haydon. "42" was also played by the group.

Mrs. Dorothy Washington, Brent, Jeffery, Cretia and Randy visited in Muleshoe Christmas Day with her sisters.

Mr. and Mrs. Robert Bridge, Terry, Sissy and Mark of Yuma, Ariz., arrived Saturday to visit until Sunday with their parents, Mr. and Mrs. Louis Bolinger, and Mr. and Mrs. Bailey Bridge of Lubbock. They also visited with the Jerry James and Leroy Bolinger's.

Mrs. Betty Monette of Muleshoe visited Friday with her sister, Mrs. Dorothy Washington.

Mrs. Fay Washington was admitted last Wednesday to the Littlefield Hospital with a virus. She came home Saturday morning.

Mr. and Mrs. Claude Davis of Lovington, N.M., visited Christmas Day with the Ashley Davises.

The home of Myrtle McNamara was the scene of a Christmas dinner Monday. Those present were Mr. and Mrs. Hershel Sander and Jerry, Mr. and Mrs. Ralph Starner of Ceres, Calif., Mr. and Mrs. Glen Patterson, Linda and Donnie of Sunnyvale, Calif., Mr. and Mrs. Ashley Davis, Mr. and Mrs. Frank McNamara, Lindel and Frankie and Mr. and Mrs. Cass Kirkpatrick and girls of Olton.

Mr. and Mrs. Gary Dee Bearden of Maryland visited with relatives in this community Friday.

HAPPY EATING AHEAD



when you shop here!

CAMPBELL'S TALL CAN TOMATO SOUP 10c

SPINACH 2 FOR 25c SHURFINE 303 CAN

PEAS 2 FOR 39c DEL MONTE 303 CAN

TUNA FISH 25c SHURFINE FLAT CAN

ASPARAGUS 25c SHURFINE 300 CAN

CRACKERS 59c SUNSHINE 2 LB. BOX

SHORTENING 69c SHURFINE 3 LB. CAN

FLOUR \$1.69 SHURFINE 25 LB. BAG

NAPKINS 11c SOFLIN BOX 80 CT.

LIPTON'S TEA 39c 1/4 LB. BOX

COOKIES 43c SUPREME MILKOLET GRAHAMS 14 OZ.

COFFEE 63c MARYLAND CLUB 1 LB. CAN

TIDE 69c GIANT SIZE

IVORY 59c LIQUID DETERGENT GIANT SIZE

LEMONS 15c CALIFORNIA LB.

BANANAS 12 1/2c GOLDEN RIPE LB.

GRAPES 19c CALIFORNIA LB.

ROUND STEAK 79c U.S.D.A. GRADED LB.

FRYERS 33c FRESH LB.

CHEESE 25c SHURFRESH SLICES 6 OZ.

Phone us your special orders for BAR-B-Q -- Parties or company.
SHERMAN FOOD
Double Gunn Bros. Stamps Wednesday With \$2.50 Purchase
Free Delivery Quality Meats Phone 285-2787

**Our
January Clearance
Starts Friday,
Jan. 5, At 9 A.M.**



USE FREE PARKING LOT
Located Behind Store

Hart Camp Happenings

Mr. and Mrs. Von Lister brought Mrs. Eula Sullivan home Saturday from Shamrock where she has been visiting with the Lister family. Mrs. Lister is a daughter of Mrs. Sullivan. Other visitors in the L.W. Sullivan home over the holidays were Mr. and Mrs. D.R. Leonard and family and Mr. and Mrs. Roy Hendrick and family of this community, Mr. and Mrs. Max Allen and family of Lubbock, Mr. and Mrs. Dean Elms and family of Littlefield and Mr. and Mrs. Roy Lasater.

Dewey Parkey went to Beeville Sunday afternoon to get David Phillips and Ronnie Gillespie who live in the Baptist Childrens home there. David is spending the holidays with the Dewey Parkey family and Ronnie is spending the holidays with the H.V. Lynch family.

Guests in the J.W. Wells home Christmas Eve were Mr. and Mrs. Jerry Wells, Terry and Mike, Levelland and Mr. and Mrs. David Metcalf, also of Levelland. Sunday night Mr. and Mrs. Wells visited Mrs. Wells' parents, Mr. and Mrs.

Doctor to portly patient: "Follow this diet, and in a couple of months I want to see three-fourths of you back here for a checkup."

W.P. Neinast of Littlefield. Monday the Wells were dinner guests of Mr. and Mrs. William Neinast of Olton. Other guests were Mr. and Mrs. Victor Neinast and family, Mr. and Mrs. Aubrey Neinast and family and Mr. and Mrs. W.P. Neinast of Littlefield.

Mrs. Elma Burleson, Steve, Lajuana, Mike and Gregory were in Shallowater Monday night where they visited with Mrs. Burleson's parents, Mr. and Mrs. C.M. Thomas.

Mr. and Mrs. Blanton Martin visited in Southland Monday with Mr. and Mrs. Harley Martin and family, and with Martin's father who is a patient in the hospital in Slaton.

Mr. and Mrs. H.V. Lynch and Ronnie Gillespie were in Arkansas a few days during the holidays to visit with Lynch's parents.

Mr. and Mrs. O.J. Neeley, Wanice and Thresa spent the holidays with relatives in Gatesville.

Mrs. Aubrey Neinast and children returned last week from Macon, Ga., where they visited Mrs. Neinast's mother, Mrs. Smith, who is ill.

Visitors in the James Ball home Christmas Eve were Mrs. Ball's parents, Mr. and Mrs. A.O. Dickson, Amherst; Keith Dickson, Linda Steffy, Mr. and Mrs. Kenneth Hannah, Lubbock and Mr. and Mrs. Ivy Thompson and Mikey, parents of James Ball.

Christmas day Mr. and Mrs. James Ball and sons had dinner with Mr. and Mrs. A.O. Dickson, Amherst.

Mr. and Mrs. Phil Neinast were guests of Mrs. Neinast's parents, Mr. and Mrs. S.E. Whittington of Olton, Christmas Eve.

Sue Moore accompanied Sherrod Fielden, Mrs. S.L. Fielden and Sherman Fielden of Littlefield to Muleshoe Sunday where they attended church services at the Methodist Church. They were dinner guests of Mr. and Mrs. Lonnie Bass and children.

Mr. and Mrs. H.V. Lynch were dinner guests of Mr. and Mrs. J. Oliver Bier in Plainview Sunday evening. Mrs. Bier is a sister to Mrs. Lynch.

Mrs. R.S. Moore and J.Fae spent Sunday night and Monday in Plainview with Mr. and Mrs.

George Ragle and family. Mrs. Ragle is a daughter to Mrs. Moore.

Visiting in the Blanton Martin home Sunday were Mr. and Mrs. A.M. Spikes, Nita and Jimmy, Bill Hedley, Miss Eulalie Davies and A.F. Davies all of Lubbock.

Mrs. Elsie Durall of Lowell, Ark., is visiting with her daughter, Mrs. Floyd Prentice, and family.

Lajuana and Mike Burleson visited a few days in Anton with their grandparents, Mr. and Mrs. Ivy Burleson last week.

Mrs. Dewey Parkey, Gary, Don, Steve, Lavon, and Ricky were in Plainview Monday where they visited with Mr. and Mrs. Gene Hollums and family. Mrs. Hollums is a sister to Mrs. Parkey.

Visiting in the Ray Johnson home during the holidays were the families of T.R. Cannon, Hale Center, Mr. and Mrs. Judd Walker, Littlefield, Mr. and Mrs. Kruger Johnson, Amarillo and Mr. and Mrs. G.M. Vann, Spade.

Holiday visitors in the home of Mr. and Mrs. Paul Teal were their three daughters and their families, Mr. and Mrs. Charles Tue and children, Littlefield, Mr. and Mrs. Charles Kidwell and children, Almagorda, N.M., Mr. and Mrs. Bill Whittenburg, Deming, N.M., Mrs. Teal's sisters, Mr. and Mrs. Ed Kinsky, Farmington, N.M. and Mrs. Jay Bosden, Roswell; her parents, Mr. and Mrs. C.M. Douglas, Littlefield; Mr. Teal's mother, Mrs. Ada Teal, Littlefield, and a nephew, Jackie Dyer and family, Hart.

Mr. and Mrs. Sammie Wheeler and children were in Dallas Friday through Wednesday visiting with Mrs. Wheeler's father, Mr. and Mrs. A.J. Malone.

Mr. and Mrs. Donald Ray Rivers and Rickey of Hobbs, N.M., visited in the home of Mrs. Rivers' parents, Mr. and Mrs. T.I. Kittrell, two days last week.

Visiting in the L.A. Smith home Monday were his father, H.C. Smith, his sister, Mrs. Josephine McWilliams, and a nephew, Gary Smith, all of Wichita Falls. Other guests in their home included two sisters of Mrs. Smith, Mrs. Bessie Elliot, Friona and Mrs. Ruth Heath, Lubbock. Also Mr. and Mrs. Ackery Barton, Littlefield and the Barton's daughter and children of Freeport.

Mr. and Mrs. Edwin Oliver, Kerwin and Debbie returned home Wednesday night after spending the holidays with Mrs. Oliver's parents, Mr. and Mrs. I.N. Mitchell, of Newcastle. They also helped celebrate her parents 50th wedding anniversary.

Mrs. Lee Holden and Lee Edward spent Christmas with her parents in Tahoka. After they returned home Mr. and Mrs. John Armstrong, Kay, Sue, Shaw and Mary Ellen of Hobbs, N.M., spent several days with them. Mrs. Armstrong is a niece of the late Lee Holden.

Mr. and Mrs. Bob Green visited in Hereford Monday with Mr. and Mrs. Johnny Baker.

Guests in the Roy Hollums home Monday were their two children and their families, Mr. and Mrs. Donald Green and boys and Mr. and Mrs. Kenneth Hollums and daughter of Dimmitt. Also Mr. and Mrs. Paul Foster of Lubbock.

Mr. and Mrs. Nolan Hukill and boys visited with her mother, Mrs. Pearl Jones, of Littlefield during the holidays. A niece of Mrs. Hukill, Judy Jones, Albuquerque, N.M., spent Saturday night with them. Judy is a daughter of Mr. and Mrs. W.T. Jones, former residents of this community.

Guests in the Homer Hukill home Monday included all of their children, Mr. and Mrs. Nolan Hukill and boys, Mr. and Mrs. Jeff Burkett and children, and James Hukill.

Mr. and Mrs. R.V. Loman of Oklahoma City visited in the H.J. Loman home Friday through Sunday. R.V. Loman is a son of the H.J. Lomans.

Kerwin Oliver and John Johnson attended a New Years Eve party following church services Sunday night in the home of Mr. and Mrs. E.B. Stanley of Spade.

Mr. and Mrs. J.A. Talburt and Mr. and Mrs. Johnny Talburt and children visited in the home of Mr. and Mrs. Forrest Latimer and children of Olton during the holidays. Mr. and Mrs. Johnny Talburt entertained his parents, Mr. and Mrs. J.A. Talburt, and his sisters, Mr. and Mrs. Forrest Latimer and children of Olton and Mr. and Mrs. Clark Hill and family of Fieldton, Christmas Day.

Rev. Jack Moore was called to the bedside of his nephew Saturday night who is seriously ill in an Abilene hospital. Dewey Parkey and Blanton Martin had

charge of the morning and evening church services Sunday in the absence of the pastor.

Mary Bess and Helen Ruth Smith spent New Years Eve night in the home of Mrs. Lee Holden and Lee Edward.

Mr. and Mrs. Junior Muller and family were in Chillicothe over the holidays visiting with Mrs. Mullers Grandmother, Mrs. Love.

Mr. and Mrs. L.E. Ball and Carolyn spent Christmas in Ralls with Mr. and Mrs. Richard Atterbury and daughter. Mrs. Atterbury is a daughter of Mrs. Ball. For New Years Mr. and Mrs. Ball and Mr. and Mrs. Wesley Neinast and boys were in El Paso where they attended the Sun Bowl football game. On their return trip home they visited with Mrs. Ball's daughter and family, Mr. and Mrs. Billy Pierce, of Gaudalupe.

The ladies of the Baptist Church met Monday in their regular W.M.U. meeting. Mrs. R.S. Moore was in charge of the Bible study program. Ladies present were Mrs. Junior Muller, Mrs. W.M. Wheeler, Mrs. Jack Moore and Mrs. R.S. Moore.

Leslie Burleson, an employee of the North Spade gin, got his hand and arm caught in some gin machinery Monday and was injured. He was carried to the Littlefield hospital for treatment.

Mr. and Mrs. Junior Muller and children were in Friona Sunday to visit Mrs. Muller's brother and family, Mr. and Mrs. Clarence Monroe, and daughter.

Olton Study Club Will Meet Monday

The Olton Study Club will meet Monday night, Jan. 8 at 7:30 p.m. in the Jim Fuller home.

Program topic for the meeting will be "Women of International Importance."

VISIT IN AMARILLO
Mrs. Effie Edwards and Mr. and Mrs. Robert Edwards and children ate Christmas Day dinner in the J.O. Edwards home in Amarillo.

VISIT IN LITTLEFIELD
Mr. and Mrs. James Ellis spent Christmas Day in Littlefield with her parents, Mr. and Mrs. C.L. Jackson.

1942

1962

20 JANUARYS....

Twenty Januarys have gone by and the records show a record of growth for the past and great hope for the future. . . .

Condensed Statement Of Condition Of
OLTON STATE BANK
Olton, Texas
at The Close Of Business on Dec. 30, 1961

Resources	
Loans & Discounts	968 058 09
Commodity Credit Loans, Grain	1 873 844 90
Cotton Notes & Cert. of Inst.	1 029 505 17
Participations (notes)	90 000 00
Overdrafts	35 612 48
Banking House	85 922 66
Furniture & Fixtures	19 177 33
Bonds & Warrants	967 385 12
Cash & Due from Banks	1 479 851 54
Other Assets	2 900 51
Total	6 552 257 80
Liabilities	
Capital Stock	187 500 00
Surplus	187 500 00
Undivided Profits	141 851 90
Deposits	6 035 405 90
Total	6 552 257 80

Statement of Condition Dec. 30, 1961

Published in January, 1962

Condensed Statement Of Condition Of
OLTON STATE BANK
Olton, Texas
at The Close of Business on Dec. 31, 1941

Resources	
Loans & Discounts	58 186 99
Gov. Wheat Notes	68 163 30
Gov. Cotton Notes (Cert. of Inst.)	60 900 00
Overdrafts	5 01
Banking House	5 000 00
Furniture & Fixtures	1 00
Bonds & Warrants	63 235 86
Bills of Exchange	4 209 67
Gov. Cotton Loans (New Orleans)	48 041 48
Gov. Cotton Loans (Here)	1 325 83
Cash & Due From Banks	141 566 45
Total	448 135 59
Liabilities	
Capital Stock	20 000 00
Surplus	10 000 00
Undivided Profits	10 524 12
Deposits	407 611 47
Total	448 135 59

Statement of Condition Dec. 31, 1941

Published In January, 1942

We say thanks and thanks again to all our friends and customers who by their confidence and patronage have helped us to attain this steady growth.

OLTON STATE BANK
Member F.D.I.C.

**Our Annual
January
Clearance
Sale
Starts Friday**

We Will Be Closed All Day Thursday

To Prepare For The Sale

WARE'S
Littlefield

Girl Scouts Elect New Officers

Girl Scout Troop 132 met Tuesday, Jan 2 at 4 p.m. in the Scout House. The purpose of the meeting was to elect new officers.

They are president, Kathline Carson; secretary, Karen Whiteley; treasurer, Cherie Thompson; scribe, Carol Scribner; song leader, Alta Adams; and sergeant at arms, Jan Ross.

Members present were Kathline Carson, Karen Whiteley, Cherie Thompson, Linda Harrel, Carol Ann Scribner and Jan Ross.

Their next meeting will be Jan. 7 at 4 p.m. in the Scout House.

Services Held For Relative Of Oltonite

Funeral services for Mrs. Mary Payne Bates, 94, grandmother of Mrs. A. J. Spain, Olton, were held Wednesday, Dec. 27 at 2:30 p.m. in the First Methodist Church in Levelland.

Mrs. Bates died at the home of her son, David Bates, in

Levelland, Monday, Dec. 25. Burial was in the Hale Center Cemetery.

She was survived by her one son, David, and five grandchildren.

Ambulance Calls Reported

Parsons Funeral Home answered two calls this week. They took Mrs. S.F. Bennett, mother of Mrs. W.M. Smith, to the Medical Arts Hospital in Littlefield Sunday.

They also carried Fred Gilmore home to Earth from the Methodist Hospital in Lubbock Sunday.

Gerald Elkins Have New Son

Mr. and Mrs. Gerald Elkins announce the arrival of a new adopted son, Christopher Scott. He was born Dec. 16 and weighed seven pounds.

The Elkins have one other child, Cynthia Ann, age nine. Paternal grandparents are Mr. and Mrs. L.G. Elkins, Olton, and maternal grandparents are Mr. and Mrs. C.D. Pierce, Almoregordo, N.M.

VISIT ELKINS
Mrs. Nadine Spinks from Borger was a visitor Sunday in the L.G. Elkins home.

Semester Tests Start Next Week

Final semester tests will be given in Olton High School Thursday and Friday, Jan. 11 and 12.

School will be dismissed at 2:25 p.m. Friday, Jan. 12 and the buses will run at 2:30.

Hackler Home Fire Reported

The Olton Fire Department was called to a fire Tuesday night at the Curtis Hackler home on ninth street.

A panel ray heater had exploded. Little damage was reported.

Basketballers Enter Slaton Tournament

The Olton High School basketball boys and girls will be entered in the Slaton basketball tournament this week.

The tournament begins Jan. 4 and lasts through the 6th.

Cold 'Cures' Discredited

The weather is cold and raw in most of the nation at this season of the year, and most of us sometime or other this winter will have a cold in the head.

And a lot of us will spend money for pills and other nostrums to "cure" our colds. This money, almost every bit of it, will be wasted. We'll still have a cold until the body's protective mechanisms take over and the cold bugs simmer down to manageable numbers.

As kids we used to hear an adage: Treat a cold and you can cure it in two weeks; let it alone and it will go away in a fortnight. The time element isn't quite that exact, but the theory is the same.

Today's Health, the magazine of the American Medical Association, offers a few commonsense suggestions about colds. The "remedy" is the same as in Grandma's day. Stay home, in bed if you can, take aspirin for the discomfort, keep warm, gargle to ease a sore throat. Various vitamins, ultraviolet light and bacterial vaccines have been offered as cold cures. Carefully controlled experiments have discredited all of them.

Mothers who have colds should wear masks when attending small infants. Colds in young babies should be treated with respect. If the baby has a severe cold, call a physician. Babies suffer much discomfort with a cold, and there's always the chance that it isn't a cold but something more serious.

The Illinois State Medical Journal offers the following definition of a cold:

"Present information leads us to believe that the common cold is a group of infections caused by a number of different but closely related viruses. These diseases have in common the fact that the incubation period is short -- from one to four days -- and the symptoms are scratchy throat and cough, headache, occasional fever. The cold itself lasts from three to six days, longer only if complications develop."

A vaccine to protect against colds would have to include each of the different viruses responsible. Scientists aren't yet certain how many different viruses are involved. Until all of the viruses are tracked down and cataloged, no cold vaccine could be more than partially successful.

In the season of colds, use your head. Dress warmly, eat properly, get plenty of rest and sleep. Forget about the fad cures. If your cold persists, call your physician.

VISITS IN FORT HOOD
Mr. and Mrs. Elmer Houston and Mr. and Mrs. Elmer J. Houston visited Mr. and Mrs. Dan White and family and Mr. and Mrs. Jerry Dennis and family in Fort Hood over the weekend.

VISIT CARSONS
Mr. and Mrs. Ed Gentry of LaHabra, Calif. spent Sunday night and Monday in the H.B. Carson home. Gentry is Mrs. Carson's brother.

VISITS IN EL PASO
Mr. and Mrs. Wayne Carson and Eddy Carson spent the weekend in El Paso.

ATTEND BALL GAME
Morris Gene Brown of Olton and Bill Perkins of Springlake went to Dallas Monday and attended the Cotton Bowl game.

VISIT LOFTISES
Mr. and Mrs. Johnny Latham and family of Garden City, Kansas and Mr. and Mrs. Wayne Loftis and Joey of San Jose, Calif., visited their parents, Mr. and Mrs. B.L. Loftis, over the holidays.

FINANCIAL STATEMENT	
ASSETS	
Cash On Hand & In Banks	\$3,867,428.00
(Read That's What They Had In Last Report)	
Notes Receivable	15,746.00
Accounts Receivable	18,720.00
U.S. Government Securities	555-628-28
(My Social Security Number)	
Stocks and Bonds (Weight Of 10 Steers)	7,821
Inventory	17,920.00
Other Current Assets	
(3,876 Customers at \$5,000 Each)	\$19,380,000.00
Life Insurance	20,000.00
Machinery	35,000.00
Improvements	36,000.00
Real Estate	36,000.00
Other Assets (Describe Fully)	
Wife 5'2" Brunette	
Children--Sherry and Jerry	1,000,000.00
LIABILITIES	
Notes Payable To Bank	876.00
Notes Payable To Relatives, Friends, Etc.	15,000.00
Accounts Payable	658.00
Chattel Mortgages	NONE
Interest, Tax, Rents	574.00
Other Liabilities (Describe Fully)	NONE

Here's Our Financial Statement For: Bankers, Creditors, Suppliers, Etc.



Here's Our Financial Statement For: Customers, Friends, Collectors And Those Who Really Want The Truth.



FINANCIAL STATEMENT	
ASSETS	
Cash On Hand or In Banks	NONE
Notes Receivable	\$175.00
(Expecting several harsh notes from creditors)	
Accounts Receivable	\$1,275.00
U.S. Government Securities	Lyndon, Bobby And John F. Marriage
Stocks and Bonds	12,746 hog pellets
Inventory	NONE
Other Current Assets	(Don't Mention That!)
Life Insurance	18.00
Machinery (Price Wrecking's Bid)	---
Improvements (Price Would Not Bid)	---
Real Estate (Less Taxes)	276.00
Other Assets	NONE
LIABILITIES	
Notes Payable To Banks	\$22,487.00
Notes Payable To Relatives, Friends	15,746.00
Accounts Payable	EVERYWHERE
Chattel Mortgages	EVERYTHING
Taxes	276.00
Other Liabilities (Describe Fully)	UNKNOWN
Wife 5'2" Brunette	
Children--Sherry and Jerry	

NOTICE OF ELECTION TO BE HELD TUESDAY, JANUARY 9, 1962

for Water District Director and County Committeemen
Polling Place in Lamb County:

1. City Hall, Olton
2. City Hall, Sudan
3. Community Bldg., Earth
4. County Courthouse, Littlefield
5. Farmer's Co-Op Gin, Spade

For District Director:
(One to be Elected)

1. Henry Gilbert, Sudan
2. Roy Hickman, Morton
3. Henry "Chuck" Schmidly, Levelland
- 4.

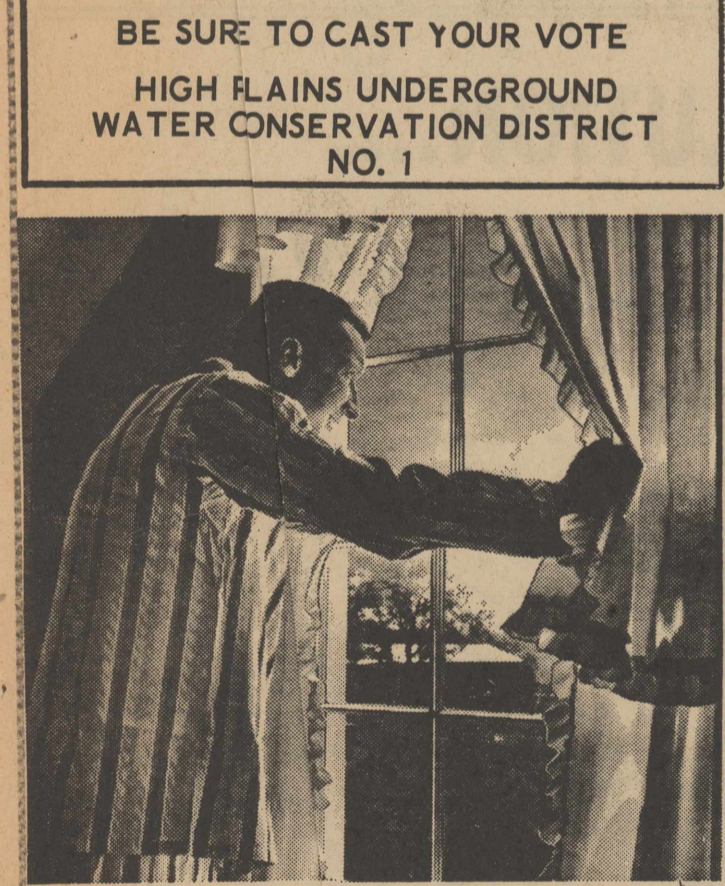
For County Committeemen:
(County Residents will elect one Committeeman-At-Large)

1. Troy Moss, Rt. 1, Littlefield
2. Doyle Tapley, Rt. 1, Amherst
- 3.

(Residents of Commissioner's Precinct No. 2 will elect one)

1. Roger Habear, Earth
2. Clarence Keley, Earth
- 3.

BE SURE TO CAST YOUR VOTE
HIGH PLAINS UNDERGROUND WATER CONSERVATION DISTRICT NO. 1



Be ready to go when the weather's right...

Let us put your tractor in top working condition now

When you roll out of bed that certain spring morning, and the water's finally right for a real day's work... will your tractor be fully up to it?

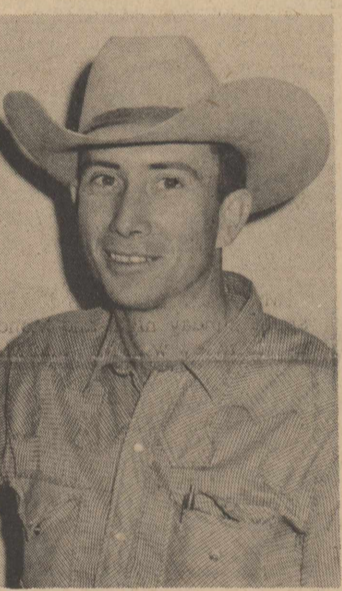
You can be sure by letting us take care of necessary service work now. Our John Deere-trained staff will do the best possible job, at reasonable cost. Make a service date with us soon. You'll like our work.

ED THOMPSON IMPLEMENT CO.

Phone 28-2636



Jean Caddel President



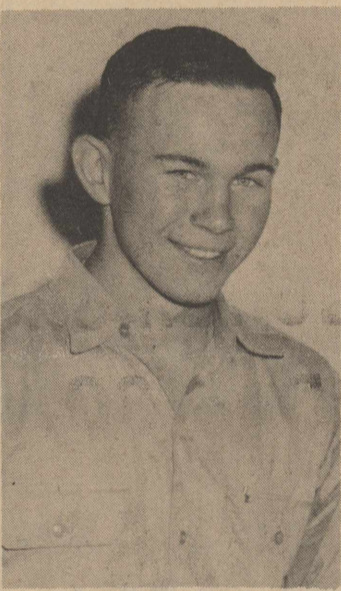
Jim Evans

Evans--The Man Who Comes Up With Excuses

JIM EVANS has been appointed vice-president in charge of Public Relations.

Jim is directly responsible for making believable and novel excuses for the things we fail to do, plus the things we do wrong.

In his spare time he carries cans of excellent insecticides.



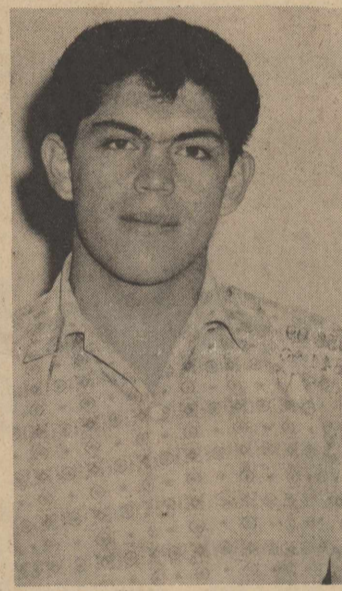
Gary Bizzell

Bizzell Sets Goal Of Even Distribution

GARY BIZZELL has been named vice-president in charge of distribution.

He is charged with distributing the Windex equally on the windows and the floor sweep on the floors, plus the added responsibility of their removal.

In his spare time, he throws sacks of ASGROW SEED.



Tommy Rey

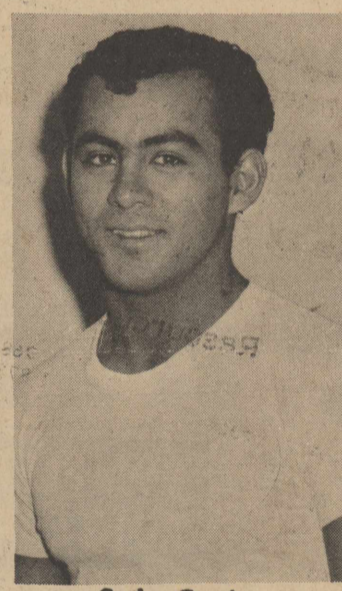
Production Big Job Of Tommy Rey

TOMMY REY is the new vice-president in charge of production.

Tommy is charged with running the pellet mill, mixer and making those good CADDO FEEDS.

He has been charged with other things outside the store by local officials.

In his spare time, he throws sacks. And once in a while, he throws his weight around.



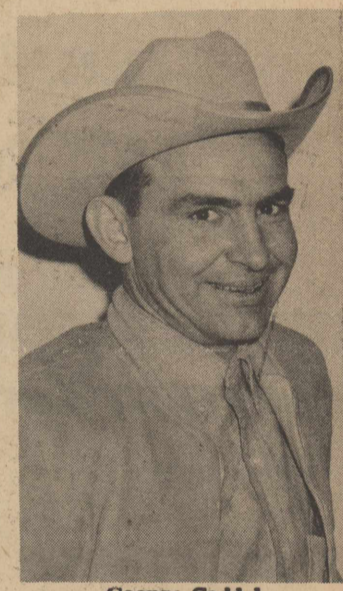
Carlos Garcia

Transportation Is Handled By Carlos Garcia

CARLOS GARCIA has been appointed vice-president in charge of transportation.

Carlos is really the delivery man for CADDO FEEDS, CAPROCK FERTILIZER with that four-ton easy spreader.

He has just announced free delivery service in his department. In his spare time, he hauls sacks.



George Caddel

George Heads Vice-Presidents And Finance

GEORGE CADDEL has been named vice-president in charge of vice-presidents and finance.

Due to a shortage in his department, all correspondence should be addressed to Huntsville, Texas, until further notice.

The above financial statements are samples of his work. In his spare time he throws sacks of CAPROCK FERTILIZER.

RESOLVED

TO KEEP ELECTRIC SERVICE THE BIGGEST BARGAIN IN YOUR FAMILY BUDGET

Reddy Kilowatt
YOUR ELECTRIC SERVANT®

PUBLIC SERVICE COMPANY

BOWLING SCORES

TEN PEN BOWLING LEAGUE

Wednesday, 9:00 p.m.

TEAM	W	L
Sanders-Paris	3	1
Williams Ins.	3	1
Campbell Tex.	3	1
Olton State Bank	3	1
Thomas Wash	1	3
Givens Texaco	1	3
Olton Butane	1	3
Chitwood Ins.	1	3

MEN'S SCRATCH LEAGUE

TEAM	W	L
#7	2	2
#2	0	4
#4	2	2
#6	4	0
#5	4	0
#8	4	0
#1	0	4
#3	0	4

High game, Dan Quigley, 235; high series, Dan Quigley, 783; high team game, Team #6, 392; high team series, Team #6, 1530.

B.C. Fitts	3	1
Jeffrey Lbr.	3	1
Lions Club	1	3
Co-Op Gin	3	1
Thompson Chev.	1	3
Watson Bros.	1	3
Higg.-Bart.	0	4

High game, Sam Kendall, 237; high series, Sam Kendall, 672; high team game, B.C. Fitts, Inc., 897; high team series, B.C. Fitts, Inc., 2526.

Business Establishments On Increase In Lamb Co.

NEW YORK—A new count of the number of businesses in the United States, broken down to county levels, shows that Lamb County and vicinity have a total of 1,670 non-farm business establishments, compared with 1,586 in 1956. The area comprises Bailey, Cochran, Hockley, Lynn and Terry Counties.

School Menu

OLTON SCHOOL LUNCH MENU Jan. 8-12, 1962

MONDAY - Chili burger, cream of tomato soup, cheese and crackers, 1/2 apple, butter roll, milk.

TUESDAY - Fried chicken and gravy, green beans, lettuce and tomato salad, cranberry sauce, strawberry short cake, rolls and milk.

WEDNESDAY - Chili beans, dixie dog and mustard, cabbage and apple salad, cherry pie, corn bread and butter, milk.

THURSDAY - Beef roast and gravy, mashed potatoes, pickled beets, 1/2 peach, gingerbread, roll and milk.

FRIDAY - Deep Sea Doodle and lemon, buttered corn, waldorf salad, orange cake, rolls and milk.

Business Establishments On Increase In Lamb Co.

Education and Welfare, are based on tax reports submitted by employers for 1959 under the Old Age and Survivors Insurance program. It is the first such study in three years.

The report shows that the pioneering urge is still with us. Each year, thousands of venturesome souls throughout the country strike forth on their own, despite the hazards, to start up new businesses.

Some have brand-new ideas they want to try out. Others plan standard-type enterprises in newly-developed areas. Still others take over run-down establishments to breathe new life into them.

In Lamb County and vicinity, many such new starts are recorded each year. A fair proportion of them turn out successfully.

The current report shows that there are now 19 business establishments locally for every 1,000 residents.

Elsewhere in the United States, the average is 18 per 1,000, and in the West South Central States, it is also 18.

Gainful employment is provided by "covered" business firms in the area for some 8,679 local residents. By "covered" is meant those that are in the social security program.

The business birthrate in the United States is a healthy one, according to figures from the Office of Business Economics. The number of operating concerns, as of last January, come to 4,700,000, which was one percent more than in January, 1960.

VISITS IN PLAINVIEW

Shirley Cole spent Christmas day in Plainview visiting with Mr. and Mrs. Lyle Orthman and Thomas.

VISIT DAUGHTER

Mr. and Mrs. Vard Worley of Paducah spent Christmas here with their daughter and family, Mr. and Mrs. Vernon Carlisle, Jr.


AMERICAN FOUNDERS LIFE

Don Williams, Agent



January Clearance

Now At



Of Plainview

Wonderful Buys In Coats, Suits, Dresses, Sportswear
Robes, Blouses, Hats And Many Other Departments.

Come Shop With Us.
You'll Be Glad You Did.

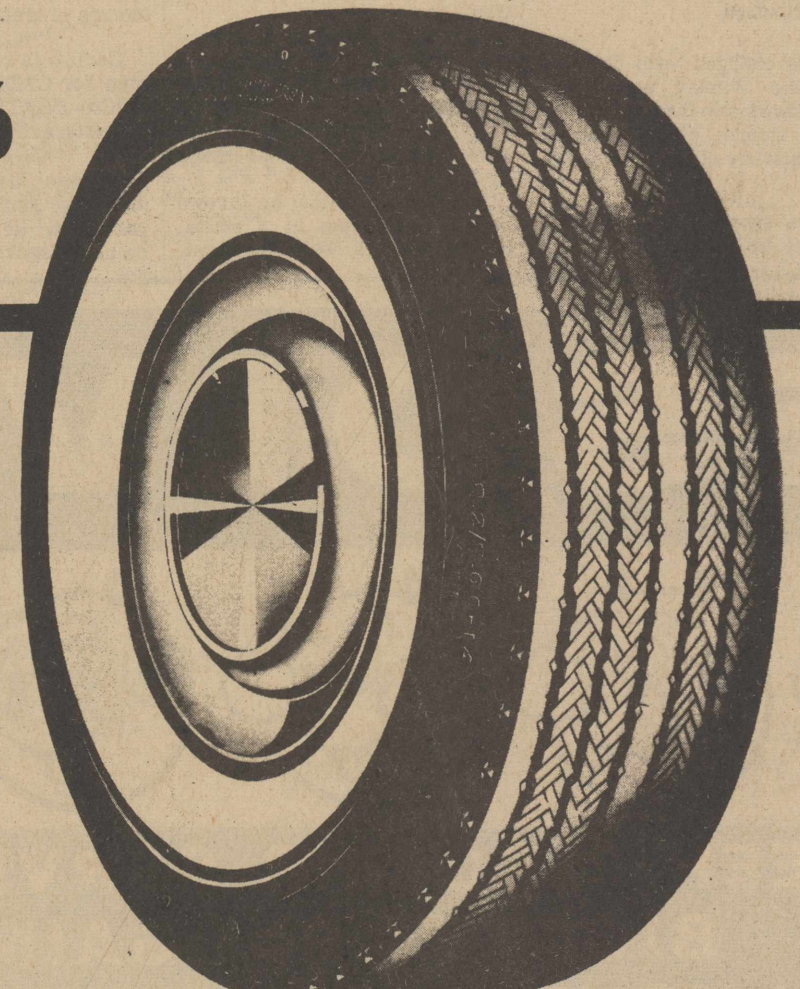
Drive in here for...

COMPLETE AUTO CARE

Let us inspect brakes, tires, radiator, battery, belts and lubrication to prevent costly repairs and unwanted delays later. Leave all car worries to us.

ALWAYS YOUR BEST TIRE BUY!


Phillips 66



Winter Driving Is Tough On Tires...

You Get A Tire That Can Take It When You Buy

Phillips 66 Super Action Treads!



G. H. BLEY

Your Phillips 66 Jobber

Hwy. 70 Olton

Screwworm Campaign Launched

A campaign to eliminate the most costly livestock pest known -- the screwworm -- has been launched by the Texas Livestock Industry, and area livestock operators have been asked to make contributions to finance the program.

A goal of \$3,000,000 in voluntary contributions has been set to finance the Southwest Animal Health Research Foundation, a non-profit organization formed by Texas livestock owners and operators. The foundation will conduct research and field trials leading to eventual eradication of the screwworm from Texas.

The eight offices of the Plainview Credit Association will serve as contributions headquarters for the Agricultural credit organization's eight-county area, General Manager Olan Alexander of Plainview has announced.

Contributions will be accepted at the association's offices in Plainview, Muleshoe, Littlefield, Floydada, Dimmitt, Friona, Tulia and Silverton, Alexander said.

HOSPITALIZED
Mrs. Henry Miller is hospitalized at Methodist Hospital, Lubbock. She was taken there last week by Parsons Ambulance.

Ask for a Demonstration

get a **FREE GIFT**



WRIGHT POWER BLADE SAW

- most versatile farm saw... cuts everything from trees to fine-line carpentry.
- reciprocating blade... 10,000 strokes a minute.

WRIGHT COMPACT POWER BLADE SAW

- Clog-free
- Carbide sanding surface never wears out
- Spring steel sanding plate
- Rolled edges
- Comfortable grip

WRIGHT CHAIN SAW - C70

Wright Power Blade Saws start at **\$139.50**

Free gift offer valid after March 31, 1962

COME IN TODAY!
OLTON FARM SUPPLY

Announcing The Purchase of

Spotlite Cafe

from Bonnie Brown

Specializing In Steaks
And Mexican Food

We Will Be Glad To Have Your Private Parties

Mr. & Mrs. Tom Hill

"Just Good Food"

MAKE A RESOLUTION....

That Will Help You And Your Neighbor In 1962!



WEAR COTTON!

It Just Makes Good Sense To Back The Crop That Support All Of Us-- Cotton. And you'll find that today cotton is still a serviceable, yet more versatile than ever.

PLAINVIEW Co-Op COMPRESS

Box 1249 (Two Miles East of Plainview) Plainview, Texas

Income Tax Filing Time Is At Hand

COLLEGE STATION, Jan. 4 --The year of 1961 will soon be history. For many people, the end of December means the conclusion of another tax year and that tax obligations must soon be met, points our C.H. Bates, extension farm management specialist.

Before tackling the tax reporting job, Bates suggests that farmers and ranchmen get a copy of the Internal Revenue

Service's 1962 edition of the Farmer's Tax Guide. It is available without cost from the offices of local county agents or those of the Internal Revenue Service. The guide is written in easy-to-read style and includes examples of problems worked out on the applicable tax forms, Bates says.

As for the dates, Jan. 15 is the deadline for farmers and ranchmen who want extra time for filing their final report to file their 1961 tax estimate. If the estimate is filed, Bates explains, the final date for filing of the 1040 form is extended to April 15. If no estimate is filed, Feb. 15 then becomes the deadline for making the final tax report. These

deadlines, points out the specialist, apply to taxpayers who derived two-thirds or more of their 1961 gross income from farming or ranching.

Another important consideration is the reporting of hired labor and the social security tax on wages paid. Either of two tests determine whether or not a farmer must pay the social security tax on wages. If the worker was paid \$150 or more during the calendar year or if the worker was paid wages (on hourly or day basis) for 20 days or more during the year, the three percent social security tax should have been deducted from the cash wages.

Form 943 is used for reporting farm wages. The farmer-employer must show the wages paid and give the account number of individual workers. The withheld tax plus an equal amount from the employer along with the reporting form must be filed on or before Jan. 31 or a month after the close of the year. Because every phase of the farm and ranch business can be affected by taxes, Bates emphasizes the need for a study of the Tax Guide.

FUNDS PLACED WITH US ARE:

- (1) Safely Protected—Each Account Insured Up to \$10,000.00
- (2) Earn 4 1/2 % per Annum
- (3) Ready When Needed

Funds Received by the 10th Will Receive Dividends for the Full Month

Open your account by mail

AMARILLO SAVINGS ASSOCIATION
401 W. 8th (Box 2948) Amarillo, Texas

Gentlemen:

Please send me all details regarding an account with you.

Name

Address

City State

Annual Dividend Rate 4 1/2 %
Beginning Jan. 1, 1962



401 West 8th Box 2948 Amarillo, Texas
Phone DR 4-4668

Tom Hills Purchase Spotlite Cafe

The purchase of the Spotlite Cafe by Mr. and Mrs. Tom Hill was announced this week.

Mrs. Bonnie Brown formerly owned the cafe.

The cafe will continue to specialize in steaks and Mexican food and will be available for private parties.

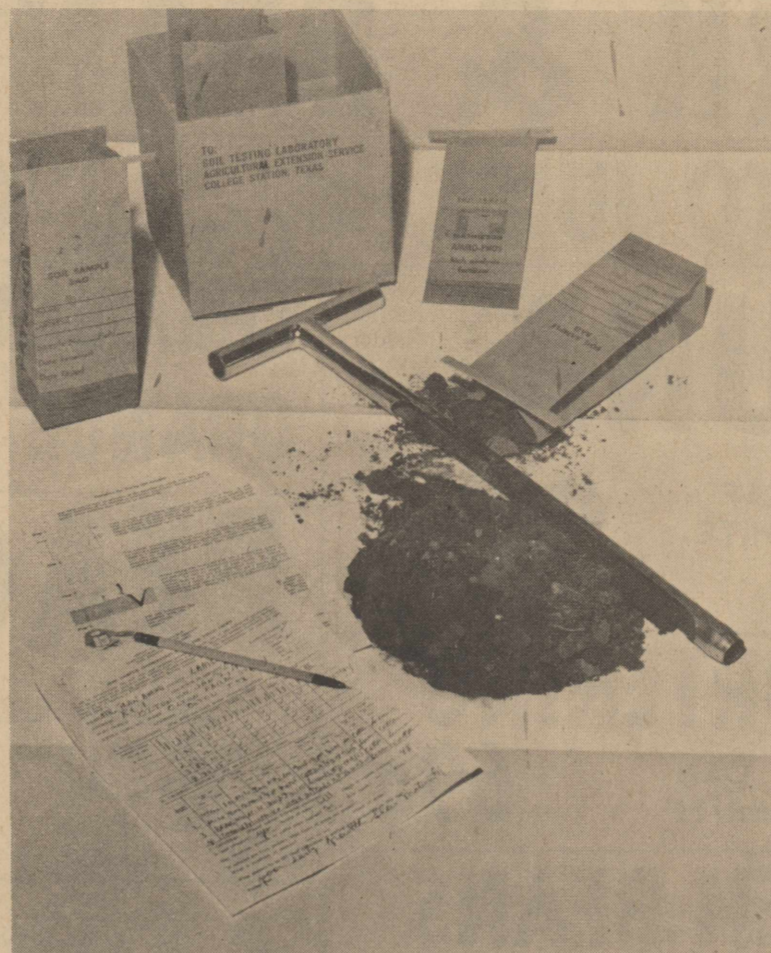
VISIT IN PORTALES

Mr. and Mrs. J.F. Cole and Joy Fern spent Christmas Day in Portales, N.M., visiting her sister, Mr. and Mrs. Garland Hawford.

VISIT IN LUBBOCK

Mr. and Mrs. J.F. Cole, Shirley and Joy Fernate Christmas Eve supper with his brother, Mr. and Mrs. Virgil Cole, in Lubbock.

DON'T GUESS ----- SOIL TEST!



Let Us Help

You With Your

Soil Test.

We have the necessary supplies and equipment plus 10 years of experience in preparing soil tests.



OLTON FARMER LESTER HOWARD takes advantage of our service of helping obtain soil samples to send to Texas A&M. We are ready to help you, too.



Phone 285-2404

Olton Farm \$upply

Don Spain, Owner



Olton, Texas

FREE

...WITH YOUR SUBSCRIPTION TO THE OLTON ENTERPRISE

There are no strings attached to this offer. Any one of these books is absolutely free with a new subscription or a two-year renewal to this newspaper.

Each of these books is one of the most popular books written on the subject covered. Each contains over 800 pages and many illustrations. Well-printed, durable--they are books you will use for reference for years to come.

To get your book, simply fill in the coupon, check your choice of books, and mail coupon with your check for \$3.00 plus 6 cents state tax for a new subscription or \$6.00 plus 12 cents tax for a two-year renewal.* Or better yet--come in to the newspaper office and see the books to make your choice.

If you want more than one book, you may get as many as you wish by extending your subscription for an additional year.

Your choice of volumes is absolutely free with a new subscription or two-year renewal to the Olton Enterprise. Additional volumes may be bought for \$2.00.

Why not stop in the newspaper office today and make your selection. Or, if you prefer, simply mail the coupon, tell us which book or books you want and enclose your check for \$3.06 for a new subscription or \$6.12 for a two-year renewal.

*These prices apply to subscriptions in Lamb and adjoining counties only. In other parts of Texas, new subscriptions are \$5.00 plus 10 cents tax and two-year renewals are \$10.00 plus 20 cents tax. These prices also apply to out-of-state subscriptions, less state tax.

Any one of these

\$3.98 books



Send Me The Following...

- The Cook Book
- Webster's Dictionary
- The Garden Book
- Holy Bible

NAME _____
ADDRESS _____

My Check For A New _____ Or Two-Year Renewal _____
Subscription Is Enclosed.

See Samples At The Olton Enterprise

Plant X To Have Largest Generator In SWPS System

Construction on a fourth unit at Plant X near Earth will begin this spring as part of a five year expansion program started at the start of 1961 by Southwestern Public Service Company.

The unit at Plant X will have a generating capability of 210,000 kilowatts, the largest single generator in Southwestern's system.

The company plans to invest approximately \$20,000,000 in its service area in 1962 with the Plant X unit as one of two major projects for the year.

A second unit at the company's Nichols Station, located northeast of Amarillo, will go into service in early summer.

The number two unit at Nichols, a 112,500 kilowatt generator, will double the capability of that plant. Also, when it goes into service, the generating capability of the twelve plants in Southwestern's system, will pass the 1,000,000 kilowatt mark.

"There is no more accurate evidence of the growth of a region than the increase in the amount of generating capability necessary to meet its electric service needs. You can readily see the ten year growth in this area when you realize that our generating capability in 1951 was 354,000 kilowatts, or just a little more than one-third of what it will be when this second unit goes into service at Nichols", A.R. Watson, president of the power company, pointed out in highlighting the significance of going over the 1,000,000 kilowatt capability figure.

"Nothing is as perishable as electric service. It is needed and used—the instant that it is created. But, we must plan from three to five years ahead to have the power available at that instant the customer requires it. This requires a faith in the future of our region and we have it", Watson said.

Transmission lines construction and planning will call for a 1962 investment of nearly \$7,500,000. The majority of the projects are designed to provide additional transmission circuits for the region, and to have the facilities available for anticipated increasing loads in industrial, agricultural and commercial fields.

A transmission line investment in 1962 with a long-range view is the engineering and survey work and right-of-way purchase for additional lines of transmitting 230,000 volts. The company is in the process of increasing its major transmission voltage from 115,000 to 230,000 volts. Doubling the voltage of a line increases the amount of power that the line can carry by four times. At the present time, construction has been completed on line segments capable of carrying 230,000 volts from the River-view Plant, at Borger, to Plant X and from Cunningham Station to Artesia, N.M. When the section from Plant X to Cunningham is completed and

necessary substations are installed, the entire main transmission line extending from Borger to Artesia, N.M., can be operated at the 230,000 volt capacity.

"We shall continue, as we have in the past to make the investment necessary to provide electric service for this growing area — well in advance of the actual need. And we shall make every effort, too, to keep electric service the biggest value in our customer's budgets. I think the fact that the unit cost of our service has decreased more than 20% in the last decade, while the cost-of-living has risen 23% is proof of our efforts to accomplish this goal", Watson said in conclusion.

Abstract No Assurance Of Good Title

While driving around a lake, John and Mary saw a "For Sale" sign on a piece of lake property they thought they could afford to buy.

They made inquiry of the owner and agreed on a price. They inquired about title and the owner assured them that he would give them an "Abstract." They took the abstract, which was a fat book of papers, and the deed, filed the deed at the courthouse and thought no more about it, assuming, as many people do, that an "abstract" is an assurance of good title.

Some years later they went to sell to a buyer who was better informed. He insisted that either the abstract be examined and an opinion given by an attorney that the title was good or that the sellers must provide title insurance. When they sought an opinion as to whether the abstract showed good title, they were dismayed to find that the title was not in good order, and that there would have to be a quiet-title lawsuit to dispose of some flaws in the title before the buyer would accept it. Neither would a title insurance company write a policy of insurance for them without legal action to clear up the title.

John and Mary were astounded to learn that they were wrong in assuming that an "abstract" was an assurance of good title. An abstract is merely a record of every document which has ever been filed of record at the courthouse affecting the title to a particular piece of property. It may show good title or bad title, or no title at all. It is only a bundle of papers, as John and Mary discovered, which summarizes the state of the title. Its possession does not in any way assure good title.

Thus while one may be able to get possession and peacefully occupy a property with an unsalable title, difficulties will arise when the property is to be sold or mortgaged. To do so is only to postpone and perhaps increase the trouble and expense of clearing the title. It makes good sense to correct any title defects when you buy a property.

(This newsfeature, prepared by the State Bar of Texas, is written to inform—not to advise. No person should ever apply or interpret any law without the aid of an attorney who is fully advised concerning the facts involved, because a slight variance in facts may change the application of the law.)

VISIT COLEMANS
Visiting in the F.B. Coleman home over the holidays were her sister, Mr. and Mrs. Avery Mitchell and family of Arlington, her brother, Mr. and Mrs. Tommy Burrows and family of Amarillo, another brother, Mr. and Mrs. Billy Burrows and a sister, Mr. and Mrs. James Rowland and family, all of Lubbock.

VISITS HAIRS
Mrs. Gary Smith and Stephanie of Lubbock and Mrs. LaValle Jones of Perryton visited in the Laus Hair home over the New Year's holidays.

MORE QUALITY! SAVINGS! SERVICE!

PORK & BEANS

KIMBELL 300 CAN **9¢**

TOMATO JUICE HUNTS 32 OZ. CAN **19¢** **CATSUP** SNIDER CHILI PEPPER 14 OZ. BOTTLE **2 FOR 35¢**

TUNA CLOVERLEAF GRATED WHITE 9 OZ. CAN **29¢** **LIMA BEANS & HAM** KIMBELL 300 CAN **29¢** **ORANGE DRINK** SHASTA 46 OZ. CAN **25¢**

PEACHES LIBBY SLICED OR HALVES 303 CAN **19¢** **DUZ** STARTER SIZE PREMIUM **53¢**

SHORTENING 3 LB. CAN BAKERITE **69¢** **APRICOTS** SUN-DRENCHED 2 1/2 CAN **23¢** **COFFEE** MAXWELL HOUSE 1 LB. CAN **59¢**

GREEN BEANS KIMBELL 303 CAN **19¢** **APPLESAUCE** WHITE HOUSE 303 CAN **15¢** **CRACKERS** CRACKER BARREL 1 LB. BOX **19¢**

CARAMELS KRAFT 14 OZ. BAG **29¢** **BISCUITS** KIMBELL **3 for 25¢**

COCOA MIX HERSHERY INSTANT 8 OZ. CAN **21¢** **CORN** 12 OZ. CAN KOUNTY KIST **15¢** **PUMPKIN** DEL MONTE 303 CAN **15¢**

Choice MEATS

BACON PINKNEY SUNRAY 2 LB. PKG. **98¢**
SAUSAGE PINKNEY PURE PORK 2 LB. BAG **59¢**

COCA COLA

12 BOTTLE CTN. PLUS DEPOSIT **55¢**

CLUB STEAKS

CHOICE HEAVY PEN FED BEEF **59¢** LB.

BANANAS

GOLDEN RIPE **12 1/2¢** LB.

CHOICE HEAVY PEN FED BEEF **45¢** LB.
CHOICE HEAVY PEN FED BEEF **49¢** LB.

ORANGES CALIFORNIA SUNKIST NAVAL LB. **15¢**
CARROTS 2 FOR **19¢**
TURNIPS PURPLE TOP LB. **9¢**

SPECIALS BEGIN FRIDAY, JANUARY 5

DOUBLE GUNN BROS. STAMPS EVERY WEDNESDAY

Phone 285-2250 **Free Delivery**

CASH WAY FOOD STORE
Where Friends Meet and Prices Talk

BEE GEE'S Butane Gas

USE GAS FOR WATER HOT - DON'T SCOLD AT WATER ALWAYS HALF-WAY COLD



Consumers BUTANE inc.
2 WAY RADIO SERVICE
Barton Prestridge Mgr.
Phone 285-2240
BUTANE GAS CARBURETION IGNITION PARTS
OLTON, TEXAS

ONE OF *The Plainsmen*

Sez: "I can't see our raising taxes to send money to England while they lower taxes."

Bulk Fertilizer 4-Ton Spreader Available

The Plainsmen
FARM & RANCH
Phone 285-2255 Hwy. 70.