

Phone 285-2240  
**CONSUMERS**  
**BUTANE, INC.**  
 OLTON, TEXAS

# THE OLTON ENTERPRISE



"The Golden Gate To The Golden Road"

OLTON, LAMB COUNTY, TEXAS, THURSDAY, OCTOBER 11, 1962

VOLUME 36

NUMBER 36

## City Approves Housing Sites, New Police Car

In a regular meeting of the city council Tuesday night, sites selected by the local housing authority were approved and the purchase of a new police car was authorized.

Approved sites selected by the housing authority are the north half of block 55, west half of block 35 and north half of block 1.

A resolution to the effect that the city will extend sewer services to block 1 according to the agreement with the housing authority was passed. No time was set for this extension.

Conner Parsons was approved as new head of the housing authority. He replaces Basil Sherman. Other members are Charles Sullivan, Duane Dodson, E.A. Hestand and Charles Polk.

A motion to trade in the 1958 police car for a new police car and to store the 1960 police auto for 30 days carried unanimous approval.

The motion came after a discussion over whether or not the city needs two police cars. The group decided to try the one car system for a 30 day period.

In other action, Dr. Basil Johns resigned as city health officer and a system for city inspection of meats was set up.

Richard Cowart of Plainview, who has recently purchased Olton Meat Co., appeared before the council and requested the city inspection of meats and animals.

Cowart said that he needs a city inspection stamp on meats to be able to take those meats into other towns.

Dr. Basil Johns then resigned as city health officer, saying he could not serve in such a capacity since his election to the council. He recommended Dr. Fite.

The group then voted in a motion authorizing the city health officer to appoint an assistant to inspect live animals and stamp specified meats at a temporary fee of 50 cents per head.

The fee will be paid to the city, who will then pay the inspector.

The group also discussed closing Seventh Street on the block in front of the high school from 8 a.m. to 4 p.m. during school days. No motion was made, pending a meeting with school officials.

Councilmen also voted to look into the possibility of changing the location of the justice of the peace's office, appointed Benny Moore electrical inspector and W.F. Williamson gas, water and sewer inspector.

Some of his suggestions for 'good firehousekeeping' include keeping rubbish cleaned out of the attic, basement, closet, garage and yard, keeping paint in tightly closed metal containers and storing gasoline and other flammable liquids in safety cans, well away from heat and children.

He added that it is wise to make a rule never to use flammable liquids like gasoline for cleaning clothes or kerosene for starting fires.

"Another important thing to remember," Smith said, "is to see that extension cords are never run under rugs or hooked over nails."

He noted that children should be especially watched and cautioned in connection with fire dangers.

"Children should never be left alone or unattended," he said, "and baby sitters should be told escape routes from the house and how to call the fire department."

Smith stressed pre-planning for fires and said that every family should plan at least two ways to get out of every room in the house.

"This would save about 85 percent of the lives lost in home fires each year," he said.

He added that appliances and cooking and heating units should be checked regularly.

"The big thing to remember," Smith said, "is to get out of there fast and don't go back in... not even to get the kid's pictures."

Olton's volunteer fire department tries to keep 31 members at all times. Someone is at the fire station every night.

Members get free water and trash hauling for their work. Why do they do it?

"It's mostly a matter of civic pride," Smith said. "We feel we're doing something important for the community."

"When these boys go out," he added, "they never know what they're going to run into. For that matter, they don't know if they're coming back."



CANDIDATES FOR PEP SQUAD KING-- One of these five will be named Olton's Pep Squad King at the ball game between Olton and Tulia here Friday night. Left to right are Leroy Powers, Larry Fancher, Johnny Moses, George Phillips and Ronnie Parsons. The candidates were selected by the Pep Squad Wednesday.

## HORNETS BIG, UNBEATEN

# Mustangs Battle Tulia

Tulia, an unbeaten outfit with the punch of Sonny Liston, invades Olton Friday night for a non-conference football game that could be as deadly for the Mustangs as Floyd Patterson's last stand.

The Hornets like to win and they like to win big. They started the year with a 76-0 walloping of Memphis.

And the Tulia crew will be a big favorite for this one, which starts at 8 p.m. Friday at Memorial Stadium.

While Olton was dropping three of its first five games of the year, the Hornets rolled to five straight wins.

Olton enters the game with its hard-running fullback, Johnny Moses, sidelined by a back injury. Moses apparently got the injury in Olton's 22-6 loss to Lockney last week. Moses' injury is a vertebrae fracture and will sideline him for at least two weeks.

Joe Costello, who has shown improvement with each game this year and is rated one of the Ponies' most consistent performers, will move into Moses' spot on offense.

Other backfield starters for the Mustangs will be George Jones, Joe Priest and Ronnie Parsons.

In the line it will be George Phillips and Charlie Burrus at ends, Daniel Rey and Jimmy Bennett at tackles, Billy Carson and Dennis Givens and guards and Leon Kendall at center.

The Hornets won over White Deer, 14-12; Muleshoe, 21-0; Wellington, 33-12; and Dimmitt, 14-6.

Hooper's passing accounted for three scores against Memphis, one against White Deer and two against Wellington.

He sat out last week's game with Dimmitt with an ankle injury, and the Tulia attack slowed considerably.

Another runner of note for the Hornets is Jim Arnold, a big breakaway threat. Arnold has notched several TD's and is adept at the running pass from his halfback slot.

There's still time to enter the contest for this week. Just pick up your copy of the Enterprise, fill it out and turn it in to one of the sponsoring merchants by 4 p.m. Friday.

Lamb County Farm Bureau annual convention and barbecue is scheduled Tuesday Oct. 16, 7 p.m., at the Olton High School cafeteria.

Free barbecue will be served to all Farm Bureau members and their families. There will be guest speakers, and election of county officers. Resolutions submitted by communities and individuals will be voted on.

Two resolutions already submitted are as follows:

"That Farm Bureau demand the resignation of Secretary Freeman and promptly thereafter investigate the entire Department of Agriculture."

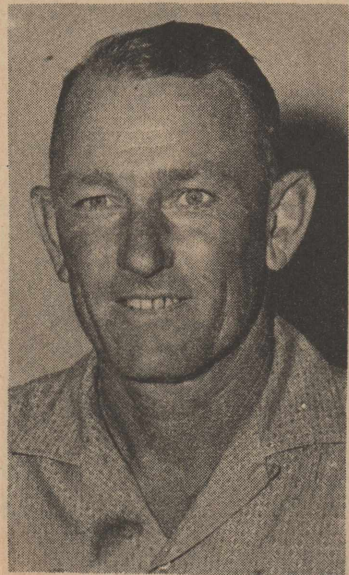
"Our ever increasing problem of securing adequate farm labor is contributed to by the welfare program that enables these people to refuse work and live off the state; therefore, we recommend that the welfare program be changed to eliminate the situation."

"All Farm Bureau members who derive over 50 percent of their income from farming are eligible to vote, and it is their individual duty to be present when policy is voted upon," President Elmer McGill said this week.

The second round of the Sabin polio clinics has been set here Sunday Oct. 28, according to Melvin McReynolds, manager of the Chamber of Commerce and Agriculture.

The clinics are being sponsored by the CC-A.

The second clinic was originally scheduled for Type III vaccine. Due to recent controversy, however, Type II will be given at the Oct. 28 clinic. A third clinic will be held later for Type III.



W.F. WILLIAMSON

## Water Man Hired Here

W.F. Williamson of Earth was hired Oct. 3 at a special meeting of the city council as Olton's new water superintendent.

Williamson was water superintendent at Earth for seven and a half years and at Littlefield for 14 and a half years.

He and his wife, Dardanelia, and children, Glinda Faye and Ronnie Dean, will attend the First Baptist Church here.

## School Board 'Answers' At PTA Meeting

The athletic program and a five day absentee ruling led discussion as a panel of school board members took the spotlight at a PTA meeting here last week.

The panel, composed of Ed Thompson, Owen Jones, Fred Hicks, Gilbert Roberson, O.J. Neeley, Roy Roberts, Winston Bley and Superintendent Johnny Clark, answered written questions submitted from the floor.

Mrs. Speck Aikman introduced Joe Turner, principal. Turner then introduced the individual board members and Clark.

In the 'Meet The Pressure' program, much of the discussion centered around the pros and cons of the athletic program in relation to the physical education program.

"Do you spend too much on athletics?" was one of the questions submitted.

The board answered 'No', saying that the program is supposed to support itself.

The five day absentee questions concerned a high school ruling that students are allowed a maximum of five days away from school for school activities other than for interscholastic programs.

Some parents at the meeting felt that the ruling should be modified.

## County Barn

A new barn for county equipment storage is scheduled to be built in Olton during November, according to A.J. Spain, county commissioner.

The barn will be located in the southwest part of town, on the lot where county equipment is now kept.

Bids will be taken by the commissioner's court until Oct. 31.

# Record Number Crowds School

## Classes Bulky In Lower Grades

More students than ever before are attending Olton schools and classrooms in the lower grades are beginning to show signs of popping at the seams.

That report from Supt. Johnny Clark Jr. was given Olton trustees at a regular meeting Tuesday night.

"We're having growing pains and classes are crowded, especially in the elementary school," Clark told the board.

"If we get more students, we're going to need to do something to relieve the situation," he added.

Clark said that he anticipates still more students, mostly transients who will be coming into Olton as the cotton harvest steps up.

Clark said that an additional first grade teacher may be required for a time this fall.

and that the large utility-recreation room at the elementary school might be needed for classroom space.

Official enrollment figures released Tuesday night show that 1,359 students are enrolled in public schools here, 1,225 of them in white schools.

The total tops by almost 100 the previous high recorded last fall.

Clark said that 26 students per classroom is figured the ideal number, with more than 29 or 30 considered overcrowded.

Some classes have as many as 34 students in them, he pointed out. The situation is particularly crowded in the third grade, where the four teachers have a total of 135 students.

In all the 22 regular teachers at the elementary school have 686 students, an average of 31.3 students per classroom. Another seven students are in a special education class.

The junior high school has 299 enrolled, up 19 from this time last year.

The high school has 233 students, an increase of seven from last year.

Böhner school has 134 students, up 27 from 1961.

In other activity at Tuesday night.

Continued on page 2



RUDY HARRELL

## Rudy Harrell Employed At Enterprise

Rudy Harrell, editor of The Hart Beat, has been employed by The Olton Enterprise as ad salesman and feature writer.

Formerly of Tampa, Fla., Harrell and his wife, Jeanie, are now living in Plainview.

They are members of the Hart Baptist Church.

Harrell attended Norman College, Norman Park, Ga., and Wayland Baptist College, Plainview.

# Carlisle Takes Grid Contest

Tom Carlisle of Olton picked up the first place prize money last week in the Olton Enterprise football contest. Carlisle picked correctly on 14 out of 15 games, missing only the Muleshoe-Hereford tilt. He also played a close one in picking Lockney over Olton in the tie-breaker by 14-13.

Geral Duncan of Olton won second place with two misses and edged out third place winner Ralph Davis, also of Olton, in the tie breaker. Duncan picked Lockney by a score of 15-6 while Davis gave Lockney a win of 19-13.

Two other Olton contest entries came close to collecting a portion of the prize money but lost out in the tie-breaker. They were Vervie Trusty and Joe Hall.

Prize money will be sent to the winners in the mail this week.

There's still time to enter the contest for this week. Just pick up your copy of the Enterprise, fill it out and turn it in to one of the sponsoring merchants by 4 p.m. Friday.

Lamb County Farm Bureau annual convention and barbecue is scheduled Tuesday Oct. 16, 7 p.m., at the Olton High School cafeteria.

Free barbecue will be served to all Farm Bureau members and their families. There will be guest speakers, and election of county officers. Resolutions submitted by communities and individuals will be voted on.

Two resolutions already submitted are as follows:

"That Farm Bureau demand the resignation of Secretary Freeman and promptly thereafter investigate the entire Department of Agriculture."

"Our ever increasing problem of securing adequate farm labor is contributed to by the welfare program that enables these people to refuse work and live off the state; therefore, we recommend that the welfare program be changed to eliminate the situation."

"All Farm Bureau members who derive over 50 percent of their income from farming are eligible to vote, and it is their individual duty to be present when policy is voted upon," President Elmer McGill said this week.

The second round of the Sabin polio clinics has been set here Sunday Oct. 28, according to Melvin McReynolds, manager of the Chamber of Commerce and Agriculture.

The clinics are being sponsored by the CC-A.

The second clinic was originally scheduled for Type III vaccine. Due to recent controversy, however, Type II will be given at the Oct. 28 clinic. A third clinic will be held later for Type III.

BANK CLOSED  
 Olton State Bank will be closed Friday Oct. 12 for Columbus Day.



VOLUNTEERS---Shown above are some of the members of Olton's volunteer fire department. Standing in the back row, left to right, are Percy Parsons, Charles Polk, Harold Jordan, A.E. Hudgens, Jake Ray, Gene Reynolds and Andy Stroebel. In the second row, left to right, are Tom Smith, Conner Parsons, Truitt Sides, Buren Lansford, Joe Chester, Gerald Cochran and W.A. Cure. Front row, left to right, are L.H. McAdams, Lynn Fite, Howard Hall, Johnny Schenck, James Hall, Gerald Bizzell, Eldon Franks and Bailey Hair.

## The Olton Enterprise

Published each Thursday at Olton, Texas.

Entered as second class matter at the post office at Olton, Texas, under the act of Congress, March 3, 1897.

Any erroneous reflection upon the character, firm or corporation which may appear in the columns of The Olton Enterprise, will be gladly corrected upon being brought to the attention of the publisher.

Subscription rates: \$3.00 per year in Lamb and neighboring counties; \$5.00 per year elsewhere.



BILL TURNER . . . . . PUBLISHER  
 AMY TURNER . . . . . NEWS EDITOR  
 DOROTHY HOLT . . . . . SOCIETY EDITOR  
 MAENETTE HOUSTON . . . . . OPERATOR  
 RETA MASON . . . . . COMPOSITOR  
 ELAINE AVERITT . . . . . PASTE-UP

## Cotton Research, Textile Groups Schedule Meeting

LUBBOCK --George W. Pfeiffer, executive vice-president of the PCG announced this week that the Cotton and Research and Technical Committees of American Textile Manufacturer's Institute will hold a joint meeting this month in Lubbock. The Plains Cotton Growers along with other segments of the High Plains cotton industry will act as host for the meeting which is scheduled Oct 24 through the 27.

The ATMI known as the American Manufacturers Institute Inc., until Oct 1 of this year, is the central trade association of the cotton, man-made fibers and silk segments of America's textile industry. W.H. Ruffin, president of the Erwin Mills Division of Burlington Industries, is currently serving as president of the organization.

It is expected that approximately 50 textile executives and their wives will be in attendance at the Lubbock meeting. The leading textile manufacturing states of North Carolina, South Carolina, Alabama, and Georgia will furnish most of the representatives with others coming from New York, Ohio and New Jersey.

Lubbock agricultural leaders are planning a "red carpet" welcome for their guests. A tour of the area has been planned which will include cotton harvesting and ginning operations, warehousing operations,

the oil mill industry, and cotton marketing facilities. The textile leaders will also visit Texas Tech College and the

Pilot Spinning plant on the Tech campus. Here they will be able to observe spinning tests on High Plains cottons which have helped to create new markets for the area both in the United States and abroad.

Also included on the tour will be a look at the huge beef cattle feeding operations at Lewter's feed lots, and other

agricultural industry in the Lubbock area.

The Lubbock Cotton Exchange, the oil mills, cotton warehouses, Plains Ginners, Lubbock Clearing House Association, Lubbock Chamber of Commerce, Texas Tech College, and others are working in cooperation with PCG in making preparation for the

meeting. "We are certainly happy to have these leaders in the textile industry visit our area," stated Pfeiffer. "This opportunity for members of the textile industry and cotton producers to become better acquainted should prove mutually beneficial to both groups" he concluded.



**WE'RE JUST HOME FOLKS**

Puttin' Out A Hometown Newspaper!

**YOUR NEIGHBOR**

Likes To Read Your Name In THE ENTERPRISE (And We Like To Print It, Too.)



Phone Us Your News Today

**285 2631**

Or Drop By

**OLTON ENTERPRISE**

### CLASSES BULKY

CONTINUED FROM PAGE 1

days night's board meeting the trustees heard a report on the school audit for last year, accepted a preliminary report on state funds, paid monthly bills and discussed school finances.

The board also officially employed the system's 14 bus drivers and discussed overcrowded conditions on some of the bus routes.

Supt. Clark pointed out that the system needs another bus route to alleviate those conditions, but must have state approval before this can be done.

### Seek Listings

Listings for the 1963 Birthday and Anniversary Calendar are now being taken by Olton Band Parents. The calendar is the organization's principal money-raising project.

Proceeds from the sale of the calendars and listings go into the Olton band fund.

Family listings, including birthdays and a wedding anniversary, are \$2 with the calendar. Individual listings are 25 cents per name. The calendar will sell for \$1.

Twelve different scenes, depicting activities of the three Olton school bands, will be pictured on the calendar pages.

Calendars or listings may be purchased by contacting Mrs. Robert Duncan, Mrs. Johnny Clark Jr. or Jimmy Priest, band director.

**Idle Money Profits You Nothing!**

**SIDES & YATES INVESTMENTS**

614 Main

**BOHNER SCHOOL OUT**  
 Bohner School will dismiss Friday for three weeks to allow students to work in the community's cotton harvest, it was announced this week.



**TIPPER FLINTLOCK** says . . .

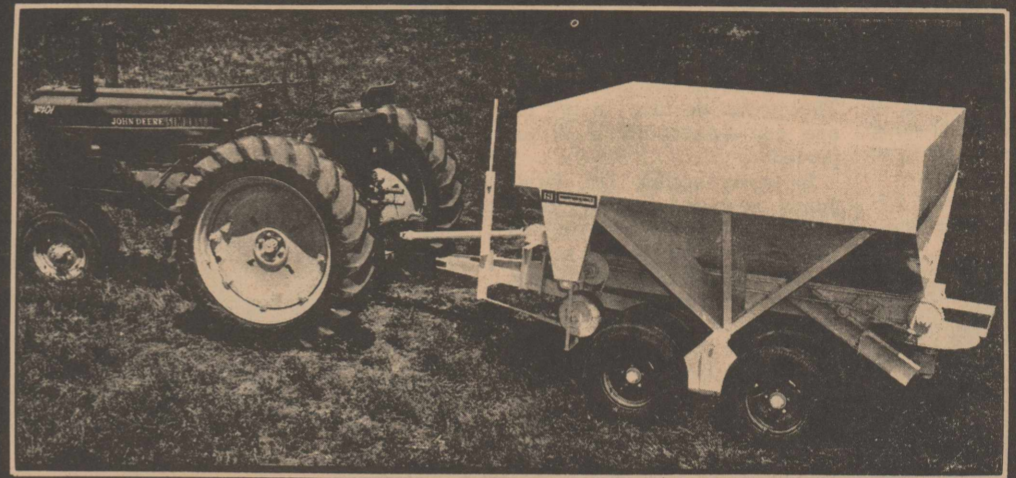
"Never point your gun at one you've befriended, for if it goes off-- your friendship is ended!"

**THE NATIONAL RIFLE ASSOCIATION** teaches shooting safety

**NOW is the TIME**

To Put On

**Rowland-Gordon PLOW DOWN EXTRA**



To Supply Plant Food For Next Year's

Crop And To Decompose Corn And

Milo Stubble.

**NO BAGS-NO SCOOPING- QUICK, ACCURATE APPLICATION**

**OLTON FARM \$UPPLY**

Phone 285-2404

Don Spain, Owner

Olton, Texas

**NO PLACE ON EARTH...**

**...Is More Anxious To Serve You Than Circle Gin Co.**



**EQUIPPED FOR CLEAN GINNING SERVICE**

- Murray Gin
- Moss Lent Cleaners In Tandem
- Double Drying



- GOOD TURNOUTS
- BEST SERVICE ANYWHERE

**WE WOULD LIKE TO GIN YOUR COTTON**  
**CIRCLE GIN CO.**

Phone 285-2016

"Where Ginning Is At It's Best"

Henry Mathis, Mgr.

# News Of Interest To Women



OLTON PRESENTS Blaine Buchenau, who celebrated his first birthday Monday. Blaine is the son of Mr. and Mrs. Rande Buchenau. Grandparents are Mr. and Mrs. G.H. Buchenau and Mr. and Mrs. N.B. Nicholas.

## Mrs. Struve Speaks At Club Meet

New Century Study Club met Wednesday Oct. 3 in the home of Mrs. Bill Turner for a meet-co-hostess was Mrs. C.J. Dorris.

Mrs. J.C. Brown gave the devotional on the first Thanksgiving.

Mrs. Frank Struve spoke on folklore.

Roll call was "an early American custom."

Refreshments of fruit salad, cookies, cokes and coffee were served.

Members present were Mmes. Wilton Bodkin, J.C. Brown, Bob Burgess, Johnnie Clark, M.C. Church, Ray Culwell, C.J. Dorris, Forrest Latimer, Gilbert Robertson, Archie Sorley, A.J. Spain, Don Spain, Frank Struve, Ed Thompson, Fred Thompson and Bill Turner.

Next meeting will be Oct. 17 in the home of Mrs. A.J. Spain with Mrs. Don Spain as co-hostess. Mrs. R.H. Campbell, guest speaker, will give a book review.

## Mrs. Harber Is Honored

Mrs. Bob Harber was honored with a get-acquainted coffee in the home of Mrs. Bill Walden Tuesday Oct. 9. Mrs. Billy Smith served as co-hostess.

Refreshments of ice cream, coffee, and muffins were served to about 30 guests.

Mr. and Mrs. Harber moved from Silverton to Olton, where he will be the manager of the new P.C.A. office.

## Ladies Bible Class Meets

The Ladies Bible Class No. 1 met in the Main Street Church of Christ Wednesday morning for a lesson on the 19th chapter of Acts, with Minister J.D. Lancaster doing the teaching.

Those present were Mmes. M.R. Cavett, T. Combest, R.A. Lewis, Paul Burrus, C.M. Owen, W.H. Leathers, M.B. Lough, Sidney Allen, J.D. Lancaster, Elmo Bryant, Arthur Couch, Ed Hestand, L.D. Smith, W.H. Thomas, C.T. Hulsey, D.Y. Ray, G.W. Locke, Earl Hysinger and J.C. Scruggs.

## Mrs. Carson Is Honored At Shower

Mrs. Don Carson was honored with a "Pink and Blue" shower Tuesday Oct. 2 in the home of Mrs. Clovis Poteet.

Mrs. Floyd Light registered the gifts and Mrs. Dwayne Wilks registered about 48 gifts.

The table decorations were in pink and white.

Refreshments of cokes, coffee, rolls and cookies were served to those present.

The hostess gifts were a sterilizer, stroller, high chair, bottle warmer, diaper pail and two pair of pajamas.

## Bodkins Have Open House

Mr. and Mrs. G.A. Bodkin observed their golden wedding anniversary Sunday Oct. 7 from 2:30 to 5 P.M. in their home with an open house.

Mrs. Wanda Slover of Alpine, a granddaughter of the Bodkins, registered approximately 50 guests.

Mrs. Leroy Bodkin served the punch and Mrs. Wilton Bodkin served the cake from a table covered with a gold colored cloth and centered with a bouquet of yellow and white mums. Appointments of silver and crystal also decorated the table.

The Bodkins were married Oct. 6, 1912 in Maud, Okla. They moved to Olton in 1928.

They have three children, one daughter, Mrs. Weldon Petty, and two sons, Leroy and Wilton, all of Olton, nine grandchildren and six great grandchildren.

Bodkin has been retired from the Oliver business for the past five years.

## Bible Class Meeting Held

The Ladies Bible Class No. 2 met Wednesday morning in the Main Street Church of Christ.

Mrs. Bill Smith directed the class on the subject of "Building A Real Home".

Those present were Mmes. Lonnie Smith, Bud Huckabee, Willie Green, Frank Candren, Harold Cartwright, Bob Williams, Mevlin Hines, Elmer McGill, D.M. Granbery, Johnny Clark, Luke Nickerson, Deryl Machen, Billy Smith, Jack Phares, Arno Hall, Bill Smith and Miss Helen Locke.

## Brides-To-Be Homemakers:

We would like to help you with your selections for your showers or an addition to your present stock of

CHINA CRYSTAL  
SILVER POTTERY

If we do not have your choice in stock we can order it for you on short notice.

COMPLETE WEDDING SERVICE

House Of Flowers

Charles and Sue Polk  
Phone 285-2388

## Virgle Kings To Be Honored

A housewarming for Mr. and Mrs. Virgle King is set Tuesday Oct. 16 at 8 p.m. in their new home.

Friends of the couple are invited.

## IN MULESHOE

Mr. and Mrs. E.S. Huckabee visited in the A.C. Bell home in Muleshoe last Thursday.

## VISIT FULLERS

Mr. and Mrs. Cecil James of Fort Worth visited in the home of Mr. and Mrs. Jim Fuller last week.

## VISIT GREENS

Mr. and Mrs. V.R. Wilcox, Pam and Terry of Friona, visited in the Willie Gene Green home this weekend. Wilcox is Mrs. Green's brother.

## AT HEREFORD

Mr. and Mrs. Ira Foster spent the day in Hereford Sunday visiting in the homes of friends.

## IN HALE CENTER

Mr. and Mrs. Earl Robertson visited Robertson's father, Lon Robertson, in Hale Center recently.

## IN MATADOR

Mrs. Lillian Green went to Matador and Paducah over the weekend to visit relatives and friends.

## OCTOBER 18

Ollie Sampler  
Shirley Bryan  
Marilyn Jones Carson

## OCTOBER 13

The Fred L. Georges

## OCTOBER 14

The Jim Williams

## OCTOBER 15

The Jack Mixons  
The J.A. Johnsons

## OCTOBER 18

The Elmer McGills  
The W.B. Dickenson Jr.

## VISIT ESTES

Mr. and Mrs. E.S. Huckabee visited in the home of Mr. and Mrs. Vance Estes Sunday afternoon.

## VISIT HUCKABEES

Mr. and Mrs. Harold Autry and Kathy of Tulsa visited in the home of Mrs. Autry's parents, Mr. and Mrs. E.S. Huckabee, Sunday.

## IN NEW MEXICO

Mrs. W.B. Dickenson visited with her sister, Mrs. L.H. Stark, and her niece, Mrs. J.T. Acrey, in Clovis, N.M., Friday.

## IN NEW MEXICO

Mr. and Mrs. J.L. Carson are vacationing in the mountains of New Mexico this week.

## Child Photo Contest Set

A photo contest for children will be held in the office of The Olton Enterprise Friday Oct. 12 from 10 a.m. to 5 p.m.

Pictures of all children competing in the contest will be printed in this newspaper.

Winston B. Lucas, Irving photographer, will take the pictures and judge the contest.

Photographs will be made free of charge and no charge will be made for their publication in The Enterprise.

Children will compete for \$20 in prizes which will be offered for the three best photographs made during the day. Proofs will be shown and parents may select the picture of their child which they would like to run in the newspaper.

Extra photographs may be purchased if desired, but no purchase is necessary to compete for the prizes.

There is no age limit on the contest.

## MUSTANG ANNUALS

Anyone wishing to purchase a Mustang Annual for the year 1962-63 should contact Sammie Clark, editor. You may order at the school from 8:30 to 9:25 a.m., or 12:55 to 2:55 p.m. They are \$5 and a plastic cover is included.



**TIPPER FLINTLOCK** says...  
"If staying alive is your main ambition—empty out that ammunition!  
Store your gun in a good, safe place—and remain a member of the human race!"  
**THE NATIONAL RIFLE ASSOCIATION** teaches shooting safety

The Texas Agricultural Extension Service has recently released a new publication which should be of interest to all broiler producers. It is B-991, "Broiler Production," and copies are available free from the Agricultural Information Office, College Station, Texas, or from the offices of local county agents.

## WALTERS DEPT. STORE

OLTON, TEXAS

Will Have A Photographer Taking Pictures

Saturday, October 20, 1962

10:00 A.M. TO 5:00 P.M.

## OUR PRE CHRISTMAS BABY CONTEST

Bring Your Child to be Photographed FREE OF CHARGE for the contest. Parents must personally select the proof to be entered in the contest. Each contestant will get a free picture.

NO CARD NECESSARY.  
ONLY ONE CONTESTANT TO THE FAMILY

FIRST PRIZE—11 x 14 Oil Color  
SECOND PRIZE—8 x 10 OIL COLOR  
THIRD PRIZE—8 x 10 Coppertone

COME IN EARLY AND AVOID THE RUSH

TELL YOUR FRIENDS ABOUT IT  
Ages To Qualify: 1 Month to 5 Years  
All Prizes Mounted In Salon Mounts

Other persons may be photographed for Pictures with a \$2.00 Deposit at this time.  
TAYLOR'S STUDIO VALLEY MILLS TEXAS

## Bykota Meet Held Tuesday

The Bykota Study Club met Tuesday Oct. 9 at 7:30 p.m. in the home of Mrs. Billy Guy Thomas.

The meeting was called to order by the president, Mrs. R.V. Allcorn.

The members voted to donate \$20 to the new library fund.

## Church Circle Meeting Held

The Louisa Dennis Circle met Wednesday morning at 9:30 in the First Methodist Church.

"The meaning of suffering" was the study led by Mrs. Glenn Leggett.

Those present were Mmes. Wilbur Gaede, Walter Bryan, Aubrey Smyth, Garland DePrang, J.L. Snider, Don Spain, A.J. Spain, Bill Walden, James Caley, Bob Coen, Wally Stewart.

## Bob Harbers To Be Honored

Mr. and Mrs. Bob Harber will be honored with a get acquainted coffee Sunday at 3 p.m. in the C.D. Kirkpatrick home.

Harber is the new Production Credit manager in Olton. Everyone is invited.

## IN LITTLEFIELD

Mrs. James Ellis and children visited Sunday in the home of her parents, Mr. and Mrs. C.L. Jackson, at Littlefield.

## VISIT CHITWOODS

Last week visitors in the R.L. Chitwood home were Mrs. Alvin Shaw of Roosevelt, Okla., Dr. and Mrs. B.N. Collier of Shelton, Wash. and Dr. and Mrs. James M. Parsons of El Paso.

Jack Hysinger, Dwayne Wilks, Charles Tussy, George Clark, Forrest Latimer and Melvin McReynolds.

<b>TOP QUALITY MEATS AT SAVINGS</b>		THURSDAY
		FRIDAY
		SATURDAY
<b>PORK CHOPS</b>	<b>CHUCK ROAST</b>	
LB. <b>55c</b>	LB. <b>49c</b>	
<b>SIRLOIN STEAK</b>	<b>LONG HORN CHEESE</b>	
LB. <b>79c</b>	LB. <b>49c</b>	
<b>CUSTOM SLAUGHTERING DAILY</b>		
<b>OLTON MEAT CO.</b>		
MAIN STREET OLTON		

## We Salute the Fine Men of our FIRE DEPARTMENT DURING

# FIRE PREVENTION WEEK



And We Urge You To Check Fire Hazards Around Your Home.

Let's Stop Fires Before They Have A Chance To Start.

## OLTON STATE BANK

Member F.D.I.C.

# MR. FARMER: WE WANT YOUR MILO

UP TO...

**13.5 % Moisture--- \$1.70**  
**14.0 % " --- \$1.68**

IF YOU ARE IN THE PROGRAM  
WE CAN GIVE YOU A FEDERAL WAREHOUSE RECEIPT  
FOR YOUR LOAN MILO AND BUY YOUR SURPLUS OR OVERAGE  
AT PREMIUM PRICES.  
Phone 227-5321

Daily Buyers For Cattle Feeders All Year Long  
Have Semi Truck Dump

## FEEDERS GRAIN INC.

LOCATED AT SUDAN LIVESTOCK & FEEDING CO.

### REPORT OF CONDITION OF "OLTON STATE BANK"

Of Olton, Lamb, Texas, at the close of business on Sept. 28, 1962  
State Bank No 1608 Federal Reserve District No 11

#### ASSETS

1. Cash, balances with other banks, cash items in process of collection (Schedule D, item 7).....	628 140 83
2. United States Government obligations, direct and guaranteed (Schedule B, item 10).....	600 000 00
3. Obligations of States and political subdivisions.....	589 668 41
4. Other bonds, notes, and debentures (including \$ None securities of Federal agencies and corporations not guaranteed by U. S.).....	None
5. Corporate stocks (including \$ None stock of Federal Reserve Bank).....	None
6. Loans and discounts (including \$12,019.41 overdrafts) (Schedule A, item 10).....	2 819 261 69
7. Bank premises owned \$ 87,863.07, furniture and fixtures \$ 19,177.33.....	107 040 40
(Bank premises owned are subject to \$ None liens not assumed by bank)	
8. Real estate owned other than bank premises.....	10 000 00
9. Investments and other assets indirectly representing bank premises or other real estate.....	None
10. Customers' liability to this bank on acceptances outstanding.....	None
11. Other assets (Item 6 of "Other Assets" schedule).....	4 954 40
12. TOTAL ASSETS.....	4 759 065 73

#### LIABILITIES

13. Demand deposits of individuals, partnerships, and corporations (Schedule E, item 3).....	2 647 112 54
14. Time and savings deposits of individuals, partnerships, and corporations (Schedule F, item 5).....	1 416 811 21
15. Deposits of United States Government (including postal savings) (Schedule E, item 4, and Schedule F, item 6).....	24 756 36
16. Deposits of States and political subdivisions (Schedule E, item 5, and Schedule F, item 7).....	98 411 27
17. Deposits of banks (Schedule E, items 6 and 7, and Schedule F, items 8 and 9).....	None
18. Certified and officers' checks, etc. (Schedule E, item 8).....	17 947 28
19. TOTAL DEPOSITS (items 13 to 18).....	\$ 4,205,038.66
(a) Total demand deposits (item 9 of Schedule E).....	\$ 2,773,227.45
(b) Total time and savings deposits (item 10 of Schedule F) \$ 1,431,811.21	xxx xxx xxx xx
20. Mortgages or other liens \$ None on bank premises and \$ None on other real estate.....	None
21. Rediscounts and other liabilities for borrowed money.....	None
22. Acceptances executed by or for account of this bank and outstanding.....	None
23. Other liabilities (Item 7 of "Other Liabilities" schedule).....	None
24. TOTAL LIABILITIES.....	4 205 038 66

#### CAPITAL ACCOUNTS

25. Capital: (a) Common stock, total par value \$ 187,500.00.....	187 500 00
(b) Preferred stock, total par value \$ None, total retirable value \$ None.....	
(c) Capital notes and debentures \$ None.....	
26. Surplus.....	187 500 00
27. Undivided profits.....	179 027 07
28. Reserves (and retirement account for preferred capital).....	None
29. TOTAL CAPITAL ACCOUNTS.....	554 027 07
30. TOTAL LIABILITIES AND CAPITAL ACCOUNTS.....	4 759 065 73

I, Gene Trotter, Vice Pres. & Cashier, of the above-named bank do solemnly swear that this report of condition is true and correct to the best of my knowledge and belief.  
Gene Trotter  
(Signature of officer authorized to sign report)  
Correct--Attest: Frank Cornelius, Owen Norfleet, G.T. Sides, Directors..

(SEAL)  
State of Texas, County of Lamb  
Sworn to and subscribed before me this 9th day of October 1962, and I hereby certify that I am not an officer or director of this bank.  
My commission expires June 1, 1963 Eleanor Sudduth, Notary Public



PLANNING AN EMPHASIS on America's heritage are these Steering Committee members who met recently to plan contests sponsored annually by the Plains American Heritage Program, in which public school students in 11 area cities participate. They are (back, left to right) Walter Edwards, Tulsa; James Bottruff, Plainview, Coronado Junior High School representative; I.L. Whitfield, Plainview High School; H.L. Cheatham, Hart; Howard Humphrey, Abernathy; Lyle C. Brown, Wayland Baptist College professor serving as program director; Clifford Curry, Ol-

ton; and Kenneth Patterson, Hale Center. Seated are (left to right) Jim Peggram, Plainview, Kress representative; Mrs. Eleanor Griffin, Plainview, Cotton Center representative; Miss Bernice Littlepage, Dimmitt; Miss Lucile Flowers, Plainview, Estacado Junior High; Miss Mary Sutton, Lockney; Mrs. Avis Smith, Dimmitt; and Dr. Eugene Jones, chairman of the Division of Social Sciences at Wayland, coordinating institution for the program.

### WTSC Plans Homecoming Girl Scouts Hold Meeting

CANYON, Oct. 11--Traditional Homecoming activities have been planned for the annual West Texas State College celebration here Oct. 20, when thousands of students and ex-students join for a day on the campus.  
Main events which have been held for many years will be club teas, smokers and reunions, a parade through Canyon, a barbecue, a football game, and a Homecoming dance following the game.

Silver anniversary reunion of the Class of 1937 is scheduled, along with a joint reunion of the classes of 1947 through 1951. About 100 members of the 25th anniversary class are expected, and approximately 1000 members of the other five classes will be on hand.

Club teas and smokers will be held from 9 a.m. until 3 p.m. Saturday. The parade starts at 3:30 p.m. with Walter Jetton of Fort Worth catering, the barbecue is scheduled at 4:30 p.m. on the old football field. Tickets cost \$1.25 each, and students may exchange a punch on their meal ticket for one barbecue ticket.

Closing out the day's events will be a football game at 7:30 p.m. in Buffalo Bowl between the Buffaloes and the New Mexico State Aggies, and a dance from 10 p.m. until 1 a.m. in the Student Union Building.

### Girl Scouts Hold Meeting

Girl Scout Troop No. 132 met Monday Oct. 8 at 4 p.m. in the Girl Scout House.  
There was an election of officers. Cherie Thompson was elected patrol leader; Carol Scribner, assistant patrol leader; Letha Estes, songleader; and Cheri Dorris, reporter.  
Those present were Letha Estes, Cherie Thompson, Paul-ette McFadden, Susan Gordon, Carol Scribner and Brenda Ellis.

Two guests present were Mrs. Jack Estes and Mrs. Paul McFadden.  
Next meeting will be Monday Oct. 15 at 4 p.m. at the scout house, when plans for the year will be made.

### VISIT HYSINGERS

Mr. and Mrs. Alvin Hysinger and Mr. and Mrs. Jack Hysinger visited with Mr. and Mrs. Joe Hysinger Monday.

### IN ARIZONA

Mrs. Walter Farris returned home last weekend from Tucson, Ariz., where she has been visiting her grandchildren, Patricia and Stevie Farris.

### VISIT GILES

Friends visiting in the Douglas Giles home this week are Mrs. Jessie Dickens and Mrs. Aaron Wheeler from Anson.

### IN LUBBOCK

Mr. and Mrs. D.C. Eby visited in the homes of their parents, Mr. and Mrs. L.R. Johnson, and Mr. and Mrs. W.B. Eby, in Lubbock Sunday.

### Seniors Sell Homecoming Corsages

Olton High School seniors are now selling homecoming mums for the homecoming game next week.

Included on the mums are the letters OHS, a football player's number or the year of graduation.

They are priced at \$2.50 and \$3 and may be purchased from any senior before Friday Oct. 19.

### AT GLENROSE

Rev. and Mrs. Russell Walburn and son, Duane, attended a preacher convale at Camp Arrow Head near Glenrose last week.

ONE OF *The Plainsmen*  
Sez:  
"Who was that other Lockney player in the red cap?"

See Us For Tetra Petkus Rye

*The Plainsmen*  
FARM & RANCH  
Phone 285-2255 Hwy. 70

# FIRES CAN BE Prevented!

## CHECK YOUR HOME AGAINST THESE FIRE HAZARDS NOW!

- USE CARE IN DISPOSING OF MATCHES, CIGARETTES
- BE CAREFUL IN HANDLING INFLAMMABLE LIQUIDS
- KEEP YOUR HOME FREE OF COMBUSTIBLE RUBBISH
- MAKE SURE YOUR ELECTRICAL WIRING IS ADEQUATE
- KEEP YOUR HEATING PLANT IN GOOD WORKING ORDER

Be wise . . . inspect your home today! And, make sure you're fully insured. Insurance won't prevent fires, but it will prevent total loss. For the up-to-date fire coverage you need . . . see us today!

**EVERY WEEK IS FIRE PREVENTION WEEK DO YOUR PART!**

## HOWARD HALL INSURANCE

Phone 285-2494 Olton, Texas

**SELL · BUY · TRADE · HIRE · SERVICE · WANT ADS!**  
**LOST and FOUND · SERVICE · T**  
**HELP WANTED · EMPLOYME**

**CLASSIFIED ADS**

Rates on classified advertising are: 6 cents per word first insertion; 3 cents per word second insertion, and each additional consecutive insertion. Minimum 50 cents first insertion, 25 cents additional insertions. The Enterprise is not responsible for mistakes after first insertion. Please read your ad.

All classified accounts are due and payable 10th of month following insertion. A flat rebilling fee of \$1.00 will be charged for all accounts 30 days past due and for all successive rebillings.

**For Rent**

FOR RENT: One 2 bedroom house and one three room modern house. Phone 285-2810. Claude Carothers, 29-tfc.

FOR RENT: Five room house, East 5th. Phone 285-2377. Paul Burrus, 30-tfc.

FOR RENT: Two bedroom house. Mrs. Ann Pavelka, 35-tfc.

FOR RENT: Two bedroom home. Small furnished apartment in rear. Phone 285-2508, 36-tfc.

FOR RENT: Two bedroom modern house 3 1/2 miles north west of Olton, E.S. Huckabee, 285-2319, 36-tfc.

**Monuments**

Winnboro Blue Granite White Georgia Marble and others  
 See Percy or Connor Parsons  
 Phone 285-2621 or 285-2767

**EXPERT FRAMING**

at reasonable prices

**QUALITY ART SUPPLIES**

Grumbacher-Craftint

**HICKS ART & FRAME SHOP**

1304 MILWAUKEE STREET PLAINVIEW, TEXAS

**FOR SALE**

354 acres. Full 8 inch pipe irrigation well, 143 acres of cotton, REA, School Bus, Telephone. Real nice 3 bedroom modern home. This is one of the top cotton producing farms of Lamb County. Ask the neighbors and also about well. Near Fieldton. Possession Jan. 1, 1963. Price, \$325 per acre. 29% down. Good terms on balance. Exclusive listing.

**EMETTE CROSS REAL ESTATE**

OFFICE PHONE-5790  
 RESIDENCE PHONE-5700  
 BOX 661  
 MULESHOE, TEXAS

**Farm For Sale???**

Do you want a larger place? More Water? Income property? Or just Money? We can sell or trade your farm or grass land. List with West Texas' largest, most active farm broker. We offer: Hale Co. 1/2; Hockley Co. 1/2 Sec. choice; Gaines Co. 160 A; Terry Co. 135 A. raw; others in most every county.

**J.W. Chapman & Sons**

3212-34th Street  
 Lubbock  
 Phone SW9-4321

Hear: Sat, Night weather, Ch. 11, 10:10 PM

**Thomas Speed Wash & Drycleaners**

Coin-Operated Drycleaner open 8 A.M. - 6 P.M. Six Days A Week.

Speed Wash Open 24 Hrs. A Day Seven Days A Week

**WAYNE'S**

— OFFICE SUPPLIES —  
 PRINTING And LITHOGRAPHING

PHONE 285-2225

Olton, Texas

**Wanted**

WANTED: To make buttons, button holes, buckles, belts, children's garments. Dress making. Willena Gordon. Phone 285-2401, 27-tfc.

WANTED: Someone to care for two small children 2 and 4 years old and live in the home. Call 285-2473 at night, 35-tfc.

HELP WANTED: For night office work at Thompson Gin. Please apply in person. 35-tfc.

HELP WANTED: Experienced Ford tractor mechanic to take over shop. Call A.D. Adams. Day 285-2828, night 285-2588, 36-2tc.

**Notice**

REWARD for information leading to recovery of any of seven head of 400 pound steers. Mixed breed and color. Wearing white ear tags or flying-C brand. Strayed from F.F. Calhoun farm southwest of Plainview. Call CA4-6613 or CA 4-2134 Plainview collect, 27-tfc.

NOTICE: Expert painter, interior and exterior. Roy Whittington. Inquire Whittington's, Inc. 25-tfc.

NOTICE: Child's chair picked up from 506 Ave. E. Please return. Ralph Reid, 35-tfc.

**For Sale**

FOR SALE: Beautiful A.K.C. registered Chihuahua puppies and grown dogs, all colors. Call Richard Roberson, 285-2131 or 285-2097, 1-tfc.

FOR SALE: CAR PORTS, any size or color. All steel. See at Roberson Mobile or call 285-2131, 27-tfc.

FOR SALE: Moline Model E Corn Sheller. Bought new last year. Also Moline 2 row corn puller. Marlin Ferguson, Route 1, Farwell. Phone Sharp 225-4373, 35-3tp.

FOR SALE: Six room house, double garage, lot 84' x 140', close in. Plainview. Phone CA 4-9632, \$7000, 35-1tc.

FARMS FOR SALE: 160 A with 7 room brick home, 80 A with 3 bedroom house in Hale Center area. Tri-County Land Co. Howard Hall-G.T. Sides, Phone 285-2924, Olton, 34-tfc.

**GEARHEAD**

REPAIRS  
 MACHINE WORK  
 OF ALL KINDS

Edwards  
 Machine Shop

**Water Well Drilling**

NO MONEY DOWN  
 3 YEARS TO PAY

Pressure Pump  
 Service

CALVIN COOK  
 CA-4 4498 2519 Gladney

FOR ALL  
 GEAR HEAD  
 Service and Repair  
 SEE

W.M. Whitesides  
 207 East 5th Street  
 PLAINVIEW, TEXAS

FARM FOR SALE: 200 A near Olton. 2 well-2 sets imp. \$600 per acre. Tri-County Land Co. 614 Main St. Howard Hall-G.T. Sides. Phone 285-2924, 34-tfc.

FOR SALE: Good John Deere 77 stripper. Pulled 250 bales. See at Ed Thompson Implement, 36-1tp.

FOR SALE: Three room house to be moved. Telephone 285-2194. M.R. Cavett, 35-3tp.

FOR SALE: Combines and trucks. Good condition. Ben Henson, 217 East 6th, 34-3tp.

FOR SALE: Good comb honey. 1105 W. 8th St. 34-4tp.

BETTER HOMES FOR SALE: I. 3 bedroom brick. Utility room. Double garage. Extra nice. II. 3 bedroom frame, cellar, large lot. Priced Below Market. III. 3 bedroom brick, near church, school and post office. Tri-County Land Co. 614 Main. Phone 285-2924. Olton, 34-tfc.

FOR SALE: One 1955-650 Ford tractor extra clean. One 1958-850 butane Ford tractor extra clean. One 1949-8N Ford tractor. One 1949-A-John Deere. One 1949-D-Wheatland John Deere. One used International Tumble bug plow. One used International bole puller. Phone 285-2828, 36-2tc.

FOR SALE: 2 hydraulic dump buoy trailers. Call 285-2074, Roy McFadden, 36-tfc.

OLTON DAIRY MART FOR SALE: Call at Dairy Mart Drive In, 36-tfc.

**LEGAL NOTICE**

Notice is hereby given that the Commissioners' Court of Lamb County, Texas, will receive bids until 10:00 a.m. on Wednesday, the 31st day of October, A.D. 1962, at which time all bids will be opened and read aloud. Said bids being for construction of a barn in accordance with the following specifications upon lots owned by Lamb County in Olton, Texas.

One rigid farm steel building approximately 40' by 60' with 12' walls with applied color; minimum roof pitch 2-12; roof and walls to be minimum 26 gauge with suitable fasteners; roof to be equipped with six sky-lights measuring approximately 3' by 9', and suitable gutters;

Said barn to be constructed with two double split steel doors (one aperture at end and one on side) with each of such apertures not less than 11' high by 14' wide, two walk-in steel doors, approximately 3' by 6'8" and five windows approximately 4' by 4'. Said barn to be set upon reinforced concrete foundation with four inch reinforced concrete floor (five sack) and with two 5' by 18' concrete approach pads.

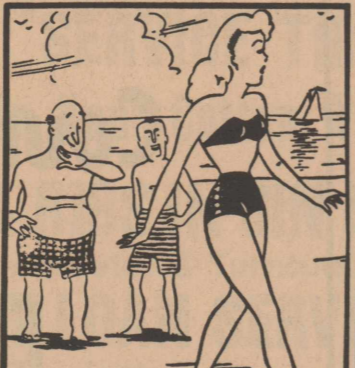
Further details of construction specifications are available upon contacting Commissioner A.J. Spain, Olton, Texas. Payment for the above building will be made in cash. All bids to be sealed when presented and filed and will be opened at the above shown time.

Lamb County Commissioners' Court reserves the right to waive formalities and reserves the right to reject any and all bids.

Dated this 8th day of October A.D. 1962.

Pat Boone Jr.  
 County Judge, Lamb County, Texas

MISTAKES?  
 If you find a mistake in this paper, please consider that it was put there on purpose. We publish something for everyone, including those who are always looking for mistakes...



"That reminds me - our lines will please you to."

We'll please you, and there are no "curves" to it. Get the habit of driving in regularly. When we know your car better, we can give you better service.

Byrd & Roper Oil Co.  
 YOUR SHAMROCK DEALER  
 "Where Customers Send Their Friends"  
 First & Ave. G 285-2602

**Floats Anyone?**

Olton's annual homecoming parade will be a short one unless more interest is shown--and quickly.

Only one float is being planned at the high school this year and more entries are needed from civic organizations if the parade is to be held, according to Joe Turner, high school principal.

Organizations interested in entering a float in the parade should contact the school by Monday, Turner said. The annual event is scheduled Friday afternoon, Oct. 19.

This is the season of the year when the tempo of farm activities soar toward their peak. And, points out the Texas Farm and Ranch Safety Council, it is also the season when rural residents should put their best safety practices into use. Tractors and harvesting equipment are rolling, trailers, trucks and farm machinery are using the highways in record numbers and the chances for accidents are multiplied.

Because it is hard to diagnose, verticillium wilt disease may be a serious threat to geraniums, says Dr. Harlan Smith, extension plant pathologist and in charge of the Plant Diagnostic Laboratory at Texas A&M College. The disease is often confused with bacterial rot and plants are thus treated for the wrong condition.



**TIPPER FLINTLOCK**

says...

"Hunting is a lot of fun, sight that bird but watch that gun!"

THE NATIONAL RIFLE ASSOCIATION teaches shooting safety

**TOO LATE TO CLASSIFY**

IRONING WANTED: Mrs. Bob Starrit. Phone 285-2476, 36-2tc.

The season of sweating walls and windows is at hand. As an aid to the solution of the problem, W.S. Allen, extension agricultural engineer, says all gas stoves, floor furnaces, central heating systems, gas refrigerators, dryers and water heaters should be vented. Good insulation in the home will also help, he adds.

LP or liquefied petroleum gas is in wide use on Texas farms and ranches as a fuel for tractors and for household uses. According to Henry O'Neal, extension agricultural engineer, it is a safe fuel and can be used without fear of explosion or fire if proper care and safety practices are observed regarding its use.

GENERAL DENTISTRY  
 Tues., Thur., Sat, 9 a.m. - 5 p.m.  
 C.W. Jennings B.Sc., D.D.S.  
 412 Main St. Olton, Texas  
 Phone 285-2929

**12 YEARS OF DEPENDABLE SERVICE**

GRAIN IS OUR BUSINESS AND WE LIKE DOING BUSINESS WITH YOU, OUR CUSTOMERS, SO AGAIN THIS YEAR AS IN THE PAST---

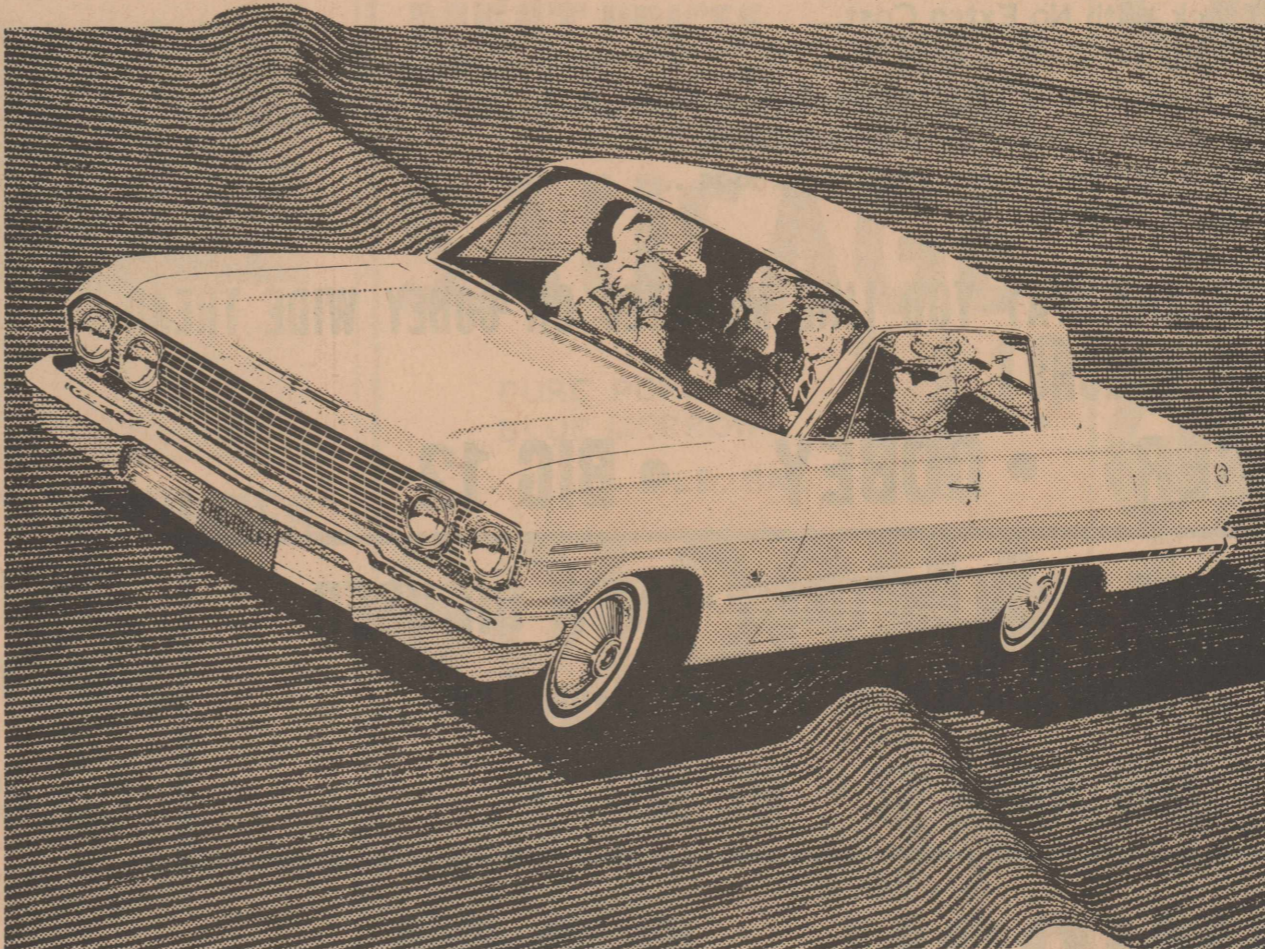
**We Earnestly Solicit Your Grain**

- Highest Market Prices
- 4 Unloading Stations That Assure No Delay
- A Record Of Honest Dependable Service In The Grain Business
- New Fairbanks-Morse Dial Printer Scales
- New Farm Store Purina Feeds, Hardware, Seeds Of All Kinds
- Prompt, Courteous Service

**SPRINGLAKE ELEVATOR**

**SUNNYSIDE GRAIN CO.**

**GO JET-SMOOTH '63 CHEVROLET - IT'S EXCITING!**



smooths bumps better than a bulldozer

If all roads were superhighways, Chevrolet's remarkably smooth and silent ride might be just another luxury. But as most town and country roads will demonstrate, this is one Chevrolet advantage that's mighty easy to get excited about. (The way those four deep-coil springs put the kibosh on bumps, you'd almost think Chevrolet was working for the highway commission.) The '63 Bel Airs, Biscaynes and Impalas are equally easy going on upkeep. Brakes are self-adjusting. New Delcotron generator s-t-r-e-t-c-h-e-s battery life. Even the rocket panels on the Body by Fisher are self-washing and ventilating to cut down on rust. Your dealer's waiting to tell you lots more.



the make more people depend on

'63 Chevrolet Impala Sport Coupe

See four entirely different kinds of cars at your Chevrolet dealer's... Chevrolet, Chevy II, Corvair and Corvette

**THOMPSON CHEVROLET CO.**

Phone 285-2646

Olton, Texas

## Aerial Spraying

AAA FLYING SERVICE  
DEFOLIATION  
WITH  
SHED-A-LEAF & ACID  
CONTACT  
AUBREY SITZ

Ph. 285-2016

Olton, Texas

At  
Lichte-Sullins Acid Delinting Co.  
Littlefield, Texas

### You Get . . . .

- \* Acid delinting for \$35.00 per ton
- \* Highest quality workmanship
- \* Germination on every load.

When we delint a farmers cottonseed, he comes back year after year.

**There Is A Reason.** To know the reason just ask any one of our many customers. You'll save real money and get a top job, too.

East on Spade Highway  
Tel. 385-4141

# Lockney's Tough Line Too Much In 22-6 Decision

Lockney's tough forward wall proved the difference Friday night as Olton's Mustangs dropped a 22-6 decision to the Longhorns at Lockney.

The heavier Longhorn linemen mustered enough offensive effort to give Lockney control of the ball most of the night, and played fine defensive ball in allowing the Mustangs only 50 yards on the ground.

Olton came up with some fine defensive play of its own, but the Mustangs ran into some costly miscues that led to Lockney touchdowns.

Lockney took a 22-0 lead before Olton's George Jones slashed back with an 80-yard kick-off return with three minutes left to spare the Mustangs from the horseshollar.

Lockney's field goal and three touchdowns came in this order:  
1. Quarterback Tommy Moore booted a 5-yard field goal midway in the second period after an eight-yard Olton punt gave the Longhorns possession at the Olton 35.

2. Rusty Smith ran six yards for a TD with 1:50 left in the half after the Horns intercepted an Olton pass and returned to the Olton 31.

3. Moore ran six yards for the second touchdown with 1:13 left in the third quarter after getting possession at the Olton eight when a bad pass from center thwarted a punting attempt.

4. Clem Zavala took a 23-yard pass from Moore for the last TD with 3:45 to play in the game. The Longhorns had taken over at the Olton 23, recovering their own punt after a Mustang accidentally came in contact with the ball while attempting to block.

So it went, with Lockney taking advantage of every break that came its way.

The Mustangs were in the ball game, however, right up to the last four minutes.

Neither team was able to move with much progress in the first period. Olton had possession twice, with minus one yard gained on eight plays.

Lockney chalked up five first downs, moving to the Olton 36 early in the second period. There the Mustangs held and

Lockney's Ronnie Belt kicked into end zone.

Three plays netted Olton seven yards and Jones' punt sliced off the side of his foot and traveled only eight yards to the Olton 35.

Two plays gained little, but then Moore broke down to the Olton 20. After three plays gained only five, Moore kicked the field goal and Lockney led 3-0.

The Mustangs' Jones recovered a Lockney fumble a few plays later, giving Olton possession at the Lockney 49. The Ponies gained five, then lost it on a penalty and Joe Priest tried a third down pass.

Zavala intercepted and returned to the Olton 31. He carried on the next play for 15, then ripped off eight more a couple of plays later. Smith went in for the TD from the six and Lockney led, 9-0, with 1:05 left.

As time was running out, Olton moved for its only two first downs of the first half. One came on a roughing-the-kicker penalty and put the ball at the Lockney 47. After Ronnie Parsons gained four, Priest kept and went 13 yards to the Lockney 30. Time ran out as the Mustangs had a first down at that point.

As the second half opened, it appeared the Mustangs might get their offense rolling. They moved for three first downs, with Jones and Parsons getting short yardage and Lockney chipping in with a 15-yard penalty.

With the ball at the Lockney 31, the Ponies fumbled and the Longhorns' top-flight guard, Donnie Hanst, recovered.

The next time Olton got possession, two penalties killed any chances and on fourth down at the Olton 20, Jones dropped back to punt.

The center came back low and Lockney nailed Jones at the Mustang eight.

Three plays later, Moore went six paces for the second Lockney TD and it was 15-0 with 1:13 left in the third quarter.

That seemed to rile the Mustangs and they took the kick-



GEORGE JONES (11) is nailed by a pair of Lockney tacklers after picking up four yards to the Lockney 45 late in the second period of last Friday night's encounter with the Longhorns. Other Mustangs pictured are Clyde Galloway (85), Leon Kendall (55) and Jimmy Bennett (65).

er with the Longhorns. Other Mustangs pictured are Clyde Galloway (85), Leon Kendall (55) and Jimmy Bennett (65).

off and moved 69 yards to the Lockney 15 in eight plays. The drive was featured by a Parsons-to-Charlie Burrus pass and two connections between Priest and Burrus.

However, the Longhorns nailed Priest for a 12-yard loss from the 15 and that killed off the drive.

Neither team was able to start anything until Lockney punted with 3:50 left in the game. Jones was back to take the punt and Parsons attempted to throw a block for him. As Parsons dove, the ball took a bounce toward him, touched the Mustang and Zavala fell on it for the Longhorns at the Olton 23.

About three plays later, Moore hit Zavala with a scoring pass and it was 1-0. Moore



ZAVALA PICKS UP 15--Lockney Halfback Clem Zavala is shown as he gained 15 yards to the Olton 16, setting up the Longhorns' first touchdown. Olton defenders are Johnny Moses (38), Joe Priest (34) and Charlie Burrus (30).

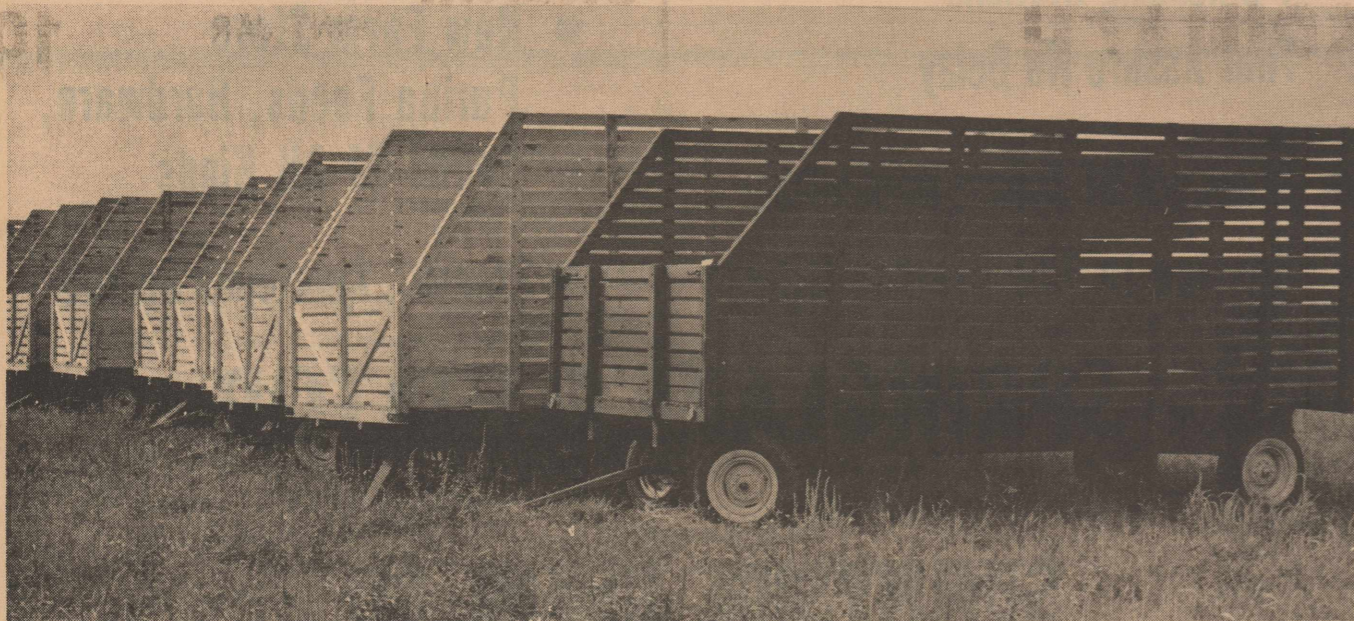


JOE PRIEST IS on his way to a 13-yard pickup to the Lockney 30 just before the half. The run picked up the second of Olton's two first downs in the first half against the Longhorns.

added the extra point.	Leon Kendall, Johnny Moses, Joe Costello, Dennis Givens, and Billy Carson.	STATISTICS	O	L		
Jones took the kick-off at the 20' and headed straight up the field. At about the 35, a wall of blockers massed in front of him and the Olton halfback sailed the distance, making it 22-6.		First Downs	8	14		
Lockney was led offensively by Zavala, who picked up 12 yards in 19 carries. Johnny Moses led Olton with 26 yards in nine trips.		Yards Rushing	50	237		
Defensively, Olton standouts were Jones, Burrus, Priest,		Yards Passing	55	23		
		Total Yds. Gained	105	260		
		Pass Attempts	17	5		
		Pass Completions	5	1		
		Interceptions	1	1		
		Fumbles Lost	1	1		
		Punts, Avg.	5-31.4	5-21.2		
		Penalties, Yds.	7-35	7-85		
		SCORE BY QUARTERS				
		Olton	0	0	6	---6
		Lockney	0	9	6	---22

NEW REDUCED  
PRICES ON

# COTTON TRAILERS



Compare these  
Exclusive Auto-Steer  
Features  
Before You Buy

- 7-inch depth axles stronger
- Solid Yoke construction
- Double turn stops
- One-inch King Pins
- Shorter turning
- 1/4" plate runner brackets
- Larger tongue and yoke bolts
- Low center of gravity
- Long coupling Pole

SEE US  
BEFORE  
YOU BUY

## GET YOUR ORDER IN NOW FOR EARLY SPECIAL PRICE

- .Designed As The Most Durable Wagon Ever Manufactured...
- .Accommodates 20 Foot cotton And Grain Beds...
- .Wider Track With No Extra Cost...
- .Trails Straighter At Any Speed...
- .Choice of 5 or 6-Stub Hubs to Interchange With Your Present Wagon...
- .Choice of Wheel Sizes For Heavier Loads...
- .Especially Engineered For Heavier Loads...
- .Economically Priced...

18' OR 20' BEDS MADE ANY WAY YOU LIKE MOUNTED ON COBEY WIDE TREAD,  
STANDARD OR RANGER WAGONS ...

• RANGER • COBEY • BIG 12

ALL KINDS OF TRAILER TIRES - NEW OR USED  
14 or 15 inch Passenger or Airplane Nylon Tires ...  
YOU NAME IT - WE GOT IT

# JOHNSON-POOL

TIRE & APPLIANCE

320 Main

Muleshoe, TEXAS

Phone 7370

## LAMB COUNTY FARM BUREAU

ANNUAL

### County Convention AND FREE BAR-B-Q

For All Farm Bureau Members & Families  
OLTON HIGH SCHOOL CAFETERIA  
OLTON, TEXAS  
TUESDAY OCTOBER 16th AT 7 P.M.

### Hart Camp Happenings

Mr. and Mrs. Walter Hollums of Floydada visited with Mr. and Mrs. Roy Hollums Friday night.

Mrs. Charles Tue and children of Littlefield visited with her parents, Mr. and Mrs. Paul Teal, Tuesday afternoon.

Mr. and Mrs. Billy Pierce and daughters of Corona, N.M. are visiting this week in the home of Mr. and Mrs. Louis Ball and with other relatives in the community.

Mrs. J.C. Kirk of Slaton and her daughter, Mrs. J.D. Edmondson of Lubbock visited with Mr. and Mrs. Roy Hollums Sunday afternoon.

A group of ladies from the Hart Camp W.M.U. attended an Associational W.M.U. Meeting and Workshop at the First Baptist Church in Anton Thursday night. Ladies attending were Mrs. Jack Moore, Mrs. Blanton Martin, Mrs. Elma Burleson, Mrs. Edwin Oliver and Mrs. R.S. Moore.

Hart Camp gained three new families this week. All of the men will be employed at the Hart Camp Coop Gin. They are Mr. and Mrs. Lloyd Owens, formerly of Kenefic, Okla., Mr. and Mrs. Gene Workman from Durant, Okla. and Burt Emerson, formerly of Bonham.

Mrs. K.W. Mahaffey returned home Tuesday from Carlsbad, N.M. She has visited there with a new granddaughter and other relatives for several days.

Bobby Jones, son of Mr. and Mrs. Harvey Jones, is in Dallas this week with a group of FFA and FHA boys and girls from Spade High School. They will attend the State Fair.

Ray Johnson ginned the first bale of cotton at the Hart Camp Coop Gin this season.

Mrs. Dewey Parkey, Von and Ricky visited her mother, Mrs. C.L. Jarrett of Floydada last week. Mrs. Jarrett is confined to a hospital in Floydada and is in a serious condition.

The Roy Hollums were in Dimmitt Sunday night where they helped celebrate the birthday of their small granddaughter. The granddaughter is the daughter of Mr. and Mrs. Kenneth Hollums of Dimmitt.

Mr. and Mrs. Homer Hukill left by train Tuesday evening for Houston in a piano recital with their daughter and family, Mr. and Mrs. Jeff Burkett and son, Jeff.

Judy Hurt was among a group of children in a piano recital at Spade Sunday afternoon at 4 in the home of their teacher, Mrs. Juanita Robinson.

Preston Leggett, son of Mr. and Mrs. Glenn Leggett was hospitalized a few days last week in the Littlefield Hospital.

Mr. and Mrs. Eudale Oliver and Leon of Thalia visited Saturday night and Sunday in the homes of Mr. and Mrs. Edwin Oliver, Kerwin and Debbe and Mr. and Mrs. Floyd Oliver and girls. On Sunday a dinner was given in the home of the Edwin Olivers for the group in honor of Floyd Oliver, Kerwin Oliver and Mrs. Edwin Oliver who were celebrating birthdays.

Mr. Weatherly, who is making his home with his son and family, Mr. and Mrs. J.T. Weatherly and Vaughn, is confined in the Amherst Hospital.

The Brotherhood of the Baptist Church met Monday night for their regular monthly meeting. Speaker for the evening was Rev. Delbert Surratt, pastor of the Spade Baptist Church. Following the business meeting and the program refreshments of coffee, cocoa and doughnuts were served to Rev. Jack Moore, Rev. Delbert Surratt, Blanton Martin, M.W. Wheeler, Paul Teal, L.W. Sullivan, Dewey Parkey, Fay Moore, Elma Burleson, Doe Leonard, Bill Johnson and Edwin Oliver.

### Amphitheater Ground-Break Ceremony Set

Ground-breaking ceremony for the Texas Panhandle Heritage Foundation amphitheater will take place in Palo Duro Canyon Sunday Oct. 14 at 4 p.m.

Mayors from various Panhandle communities are being invited to be present to wield spades in a group movement representative of the area participation in the open-air theatre project.

Mrs. Ples Harper, president of the Foundation, will speak briefly, and clergy and other dignitaries will be present. Music, and candy for the children will be provided.

### Area FFA Boys Attend National Convention

Jerry Jones, Area I Lone Star Farmer from Springlake, and Harvey Sullivan from Hart are among 54 FFA boys and two vocational agriculture teachers from Area I who left Monday to attend the national FFA convention at Kansas City. Jones is a Santa Fe Award winner.

The group will return Saturday. In charge of the group is Leon Bagwell, vocational Agriculture instructor at Canyon, assisted by Danny Garcia, Wellington.

Receiving the American Farmer, degree from Area I are Charles Ray Vasek, Here-

ford; Danny Davis, Wellington; Larry Adrian, Idalou; R.C. Lewis, Ropesville; and Don Alford, Lubbock.

Other Santa Fe Award winners from Area I attending are Curtis Dickson, state vice-president from Whiteface, and Larry Combest, Area I president from Panhandle.

Others attending are Johnny Ballew and Jerry Settle, Abert; Robby Becker and Bud Higginbotham, Floydada; Bobby Hardin, Lockney; Forrest Dollar and Joel Shepard, Plainview; Ronnie Drewrey and Joe Bob Watson, Silverton; and Tommy Edwards and Mac Hill, Tulia.

### Harvest-Aid Chemicals Discussed At Meeting

LUBBOCK—In a meeting held this week in Lubbock, leading cotton authorities from the Lubbock Experiment Station, the Extension Service, the cotton trade, the cotton ginners and other segments of the cotton industry discussed the use of harvest-aid chemicals on the High Plains. The meeting was called by the Plains Cotton Growers, Inc. at the request of area ginners and farmers.

Information developed at the meeting will be reported by the PCG through area news media and in a direct mail program to High Plains ginners. According to Don Johnson, PCG executive assistant, the ginners will receive a letter emphasizing the importance of proper defoliation practices, a cotton defoliation guide prepared by the extension service, and a poster outlining the major points to consider in a defoliation program.

"It should be understood," said Johnson, "that the recommendations on the poster are intended as guidelines only. Each grower must carefully evaluate his situation and circumstances in making a decision regarding the use of a defoliant or desiccant on his crop."

The last few years has seen a marked increase in the use of harvest-aid chemicals as a recognized management tool. With the increase of machine harvesting, both defoliants and desiccants have been used to good advantage by area farmers. Harvest-aid chemicals when properly used can in-

crease profits through earlier harvesting, higher grades, improved fiber quality, and other values to individual growers. However, as was pointed out at the meeting, improper use of such chemicals can lower profits to the grower through lower grades, decreased yields, poor fiber quality and other damaging effects.

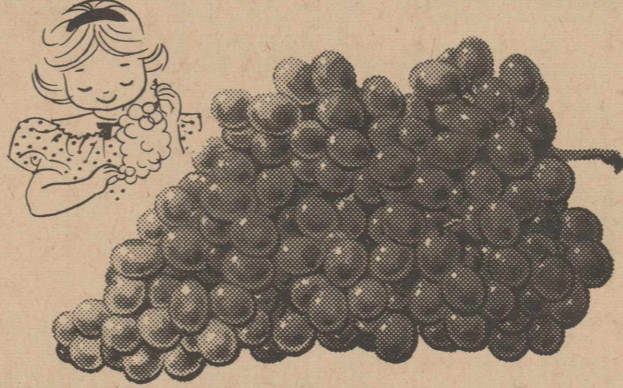
It was also pointed out that poor fiber quality can injure the reputation of a cotton producing area, thus causing the trade to look elsewhere for its supply of raw cotton. High Plains cotton has enjoyed an enviable position in the market place over the past three years and

Research at Lubbock and throughout the cotton belt has shown that 60 per cent of the cotton bolls should be open before a true defoliant is applied and more than 60 per cent open before a desiccant is applied. Harvest-aid materials thus applied have not been observed to reduce yields or lower fiber quality. This is not, however, a hard and fast rule which will apply to all cases as other factors such as stage of growth, variety, date of last watering, weather conditions, and condition of bolls on the plant must be considered.

"Again it should be emphasized," said Johnson, "that each grower will need to evaluate his individual situation, to determine whether he should or should not use a harvest-aid chemical. If in doubt, he should seek the advice of his county agent or some other recognized authority."

# HIGHEST QUALITY Foods AT lowest prices

## Produce Specials



**GRAPES**  
TOKAY  
LB. **15c**

**CARROTS**  
CELLO BAG  
NEW CROP  
**10c**

**LEMONS**  
CALIF.  
LB. **15c**

**TOMATOES**  
CALIF.  
VINE RIPE  
LB. **15c**

**TOILET SOAP**  
ZEST REG. SIZE  
**2 FOR 29c**

**COOKIES**  
CHOCOLATE DROP OR  
PECAN SUNDIES  
SUPREME 1 LB. BAG  
**43c**

**CATSUP**  
HUNTS 14 OZ. BOTTLE  
**19c**

**SPINACH**  
HUNTS NO. 300 CAN  
**4 FOR 49c**

**BISCUITS**  
SHURFRESH  
**2 FOR 15c**

**OLEO** SHURFRESH  
YELLOW QUARTERS  
**19c**

**CARMELS**  
KRAFT  
1 LB. BAG  
**33c**

**CRACKERS**  
NABISCO 1 LB. BOX  
**29c**

**SUGAR**  
PURE CANE  
IMPERIAL 5 LB. BAG  
**49c**

**MARSHMALLOW CREAM**  
HIP-O-LITE  
PINT JAR  
**19c**

**CHEESE SPREAD**  
SHURFRESH  
2 LB. BOX  
**69c**

**CHEER** GIANT SIZE  
FREE SCOTCH TAPE  
**73c**

**TOILET TISSUE**  
DELSEY  
4 ROLL PAK.  
**49c**

**CAKE MIX**  
POUND  
GLADIOLA  
1 LB. BOX  
**29c**

### MEAT PRICES LOWERED without lowering on QUALITY!

**SAUSAGE**  
PURE PORK  
BLUE MORROW  
2 LB. BAG  
**\$1.19**

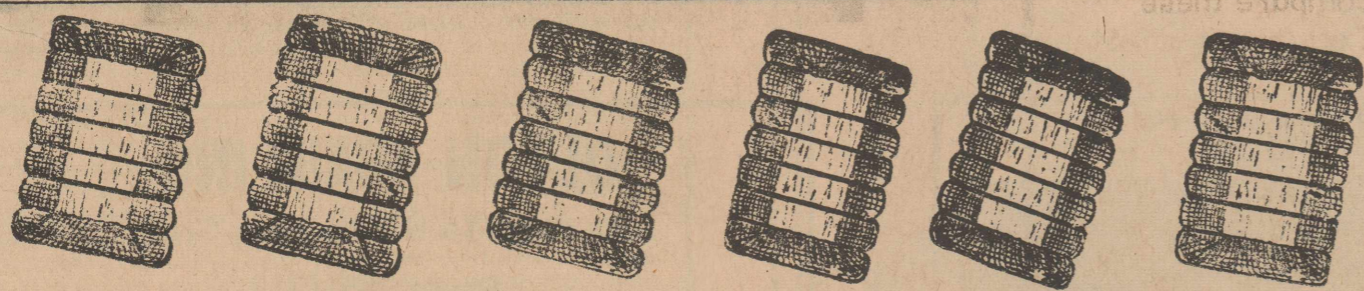
**BOLOGNA**  
ARMOUR STAR  
ALL MEAT  
LB. **39c**



**FROZEN Foodateria**  
**ORANGE JUICE**  
FROZEN LIBBY 12 OZ. CAN  
**29c**

**POT PIES** SPARE TIME  
CHICKEN, BEEF,  
TURKEY  
FROZEN 6 OZ.  
**2 FOR 29c**

**SHERMAN FOOD**  
Double Gunn Bros. Stamps Wednesday With \$2.50 Purchase  
Free Delivery Quality Meats Phone 285-2787



## READY TO GO AGAIN



You Can Depend On 'SERVICE THAT SATISFIES'  
When You Gin Your Cotton With Us.

- ❑ NEW SAWS & RIBS IN GIN STANDS  
To Give You Better Service & Turnouts
- ❑ GOVERNMENT LOAN SERVICE....  
Checks Issued On The Spot
- ❑ MARKETING SERVICE

- A MURRAY GIN -

MOSS LINT CLEANERS

# THOMPSON GIN

5 Miles North of Circle

T.E. Williams, Mgr.

Phone 285-2425

# LET'S GO MUSTANGS-BEAT TULIA

THIS WEEK WE SALUTE . . .

## FOOTBALL

**WEEKLY PRIZES!**

### CONTEST RULES

Winners selected in each ad must be circled in ink or pencil. Tie-breaker winners must be circled and scores printed in the spaces made available for them.

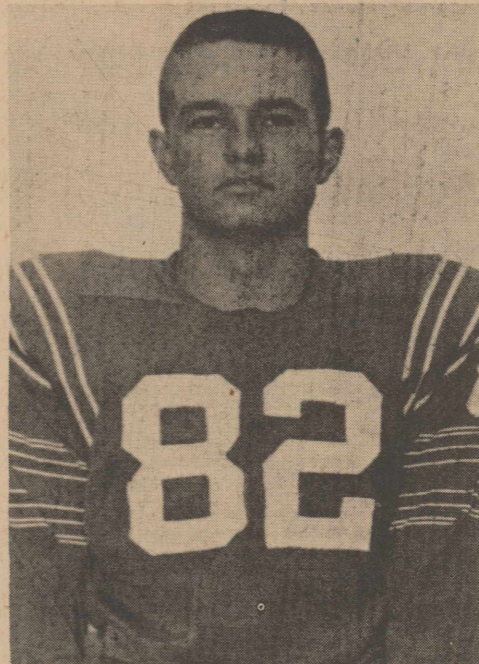
Each week's entry must be turned in to one of the merchants sponsoring the contest. Contestants are given a week to prepare and turn in their entries. When they receive their paper on Friday, they have until the next Friday at

4 p. m. to turn in their entries.

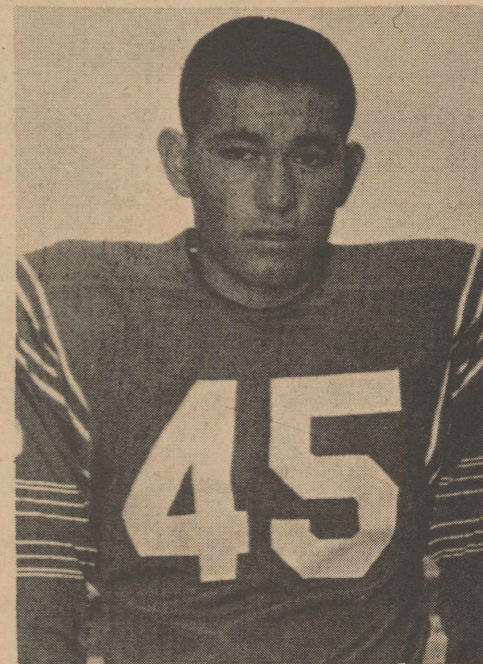
Sponsoring merchants may accept mailed entries, but none mailed directly to the Enterprise will be accepted. All late entries will be discarded.

In case of ties, a coin will be flipped to determine the winners.

Anyone may enter except employes of the Enterprise or their families.



DARRELL GLOVER



JOE COSTELLO

### 1962 FOOTBALL SCHEDULE

SEPT. 7	OLTON 7	VS.	ABERNATHY 8	(H)
SEPT. 14	OLTON 12	VS.	FLOYDADA 28	(T)
SEPT. 21	OLTON 14	VS.	SPRINGLAKE 7	(T)
SEPT. 28	OLTON 31	VS.	HALE CENTER 8	(H)
OCT. 5	OLTON 6	VS.	LOCKNEY 22	(T)
OCT. 12	OLTON	VS.	TULIA	(H)
OCT. 19	OLTON	VS.	DIMMITT	(H)
OCT. 26	OLTON	VS.	MORTON	(T)
NOV. 2	OLTON	VS.	MULESHOE	(T)
NOV. 9	OPEN DATE			
NOV. 16	OLTON	VS.	FRIONA	(H)

### WEEKLY PRIZES

Weekly prizes will be awarded in the following manner:

**FIRST PRIZE \$10**      **SECOND PRIZE \$6**      **THIRD PRIZE \$4**

### WEEK'S WINNERS

Top Three Winners Each Week Will be Listed Here  
See How Often Your Name Can Be Listed

1. TOM CARLISLE
2. GEARL DUNCAN
3. RALPH DAVIS

NAME \_\_\_\_\_ ADDRESS \_\_\_\_\_

\_\_\_\_\_ Tie Breaker \_\_\_\_\_

Olton \_\_\_\_\_ Vs. Dimmitt \_\_\_\_\_

#### HIGGINBOTHAM-BARTLETT CO.

"Good Lumber"  
All Kinds of Building Materials- Pressure Water Systems  
Plumbing Fixtures  
Phone 285-2939  
MICHIGAN ST. AT NOTRE DAME

#### OLTON DRUG

PORTABLE BATTERY-OPERATED  
Transistor Tape RECORDER  
Only \$29.95  
BOVINA AT HART

#### OLTON GRAIN INC.

We Want To Handle Your Grain  
Phone 285-2313  
TCU AT TEXAS A&M

#### FARMERS GIN

TANDEM MOSS LINT CLEANERS — DOUBLE DRYING  
Improved to Give You Faster, Better Service  
Phone 285-2075  
SPRINGLAKE AT SUDAN

#### OLTON STATE BANK

Member FDIC  
Phone 285-2653

ABERNATHY AT FLOYDADA

#### OLTON BUTANE CO. INC.

Butane-Diesel-Gasoline-Oils-Greases  
Anhydrous-Flame Cultivation Equipment  
Try Our Service  
MORTON AT MULESHOE

#### BODKIN-NIXON IMPLEMENT

Your Oliver Dealer  
Phone 285-2888  
SYRACUSE AT PENN. ST.

#### Harrison Mills Co.

GRAIN-SEED-BEANS  
Olton, Texas  
ALABAMA AT TENN.



#### ED THOMPSON IMPLEMENT

"YOUR JOHN DEERE DEALER"  
Phone 285-2636  
KRESS AT FARWELL

#### JACK STRAW GIN CO.

YOUR FUTURE GINNER  
Phone 285-2343  
BORGER AT PLAINVIEW

#### CONSUMERS BUTANE INC.

Butane-Motorolls-Oilfilters  
Ignition Parts-Batteries  
BEST OF SERVICE PHONE 285-2240  
TEXAS TECH AT BAYLOR

#### OLTON CO-OP GIN

It's Profitable to Patronize your Co-Op Gin  
Phone 285-2525  
LOCKNEY AT CANYON

#### HALL-SIDES MOTORS INC.

"Your Friendly Ford Dealer"  
Phone 285-2627 Olton  
-Ride To The Game In A New Ford-  
RICE AT SMU

#### THE OLTON ENTERPRISE

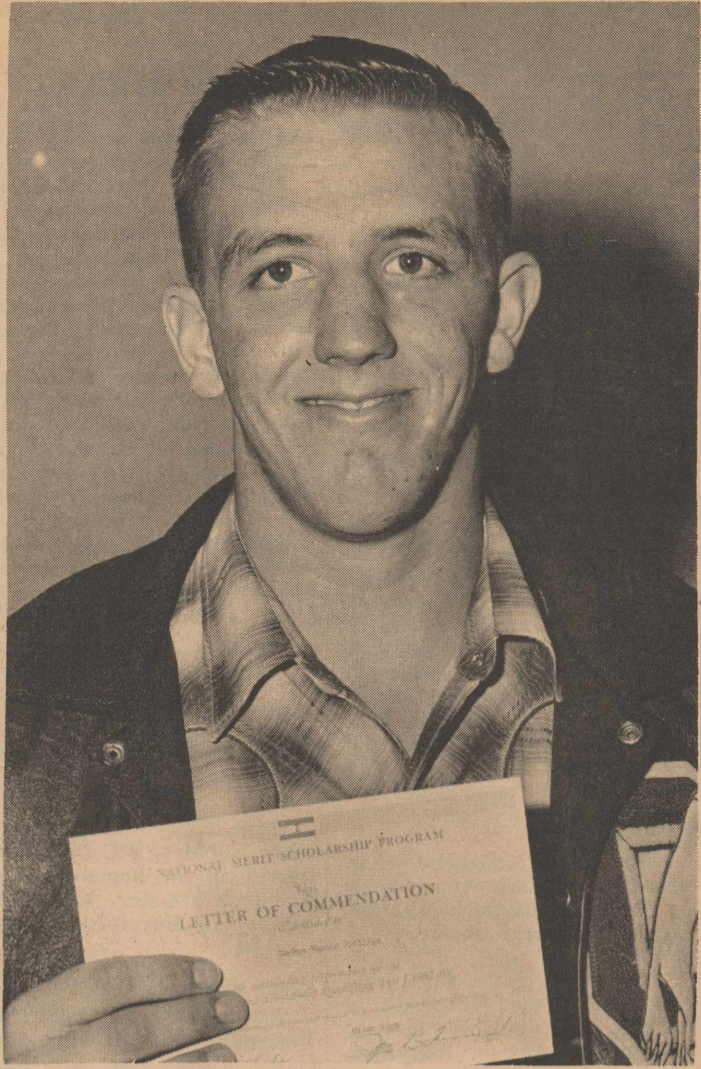
"The Only Paper In The World That  
Cares About Olton"

#### G. H. BLEY

"YOUR PHILLIPS 66 DEALER"  
Phone 285-2515  
ARKANSAS AT TEXAS







George Phillips

**Phillips Wins Scholastic Commendation**

"You have demonstrated outstanding ability and have brought credit to yourself and to your school," reads a letter of commendation, received this week by George Phillips, OHS senior.

"We sincerely hope that in the years ahead you will accept your responsibility to develop these abilities fully," continues the letter, signed by Joe Turner, president of the National Merit Scholarship Corporation.

Phillips, 17-year-old son of Mr. and Mrs. Martin Phillips, is the only OHS senior to be honored with the letter. He was endorsed after his high performance on the National Merit Scholarship Qualifying Test given last spring.

Out of 596,000 students given the test, approximately 28,700 students throughout the country have been awarded the letter. "Although they did not reach the status of semi-finalists in the current Merit Program," Stalnaker said, "They are so capable that we wish to call attention in this way to their achievement and academic promise."

The semi-finalists and commended students together constitute approximately two percent of all high school seniors.

The National Merit Scholarship Corporation gives recognition to two groups of students who achieve high scores on the NMSQT. The Semifinalist group is composed of the highest-scoring students in each state and in U.S. territories. Some 11,000 Semifinalists will take a second examination in December to establish further their eligibility to receive Merit Scholarships.

"We earnestly hope that the commended students will continue their education," Stalnaker continued, "By doing so they will benefit both themselves and the nation."

"The letters of commendation provide tangible recognition of their high ability. We urge the students honored today to make every effort to attend college, and to develop to the fullest their promise of achievement."

To increase their opportunities to obtain financial assist-

ance if they need it, the Merit Corporation sends the names, home addresses, and test scores of all commended students to the two colleges they indicated as their preferred choices at the time they took the qualifying test. Other special services are also performed by NMSC in an effort to increase the scholarship opportunities of commended students and semifinalists.

The commended students were among the high school juniors in more than 16,000 schools who took the NMSQT last March. The test is a three-hour examination that covers five separate areas of educational development. It was the first step in the eighth annual Merit Program.

This year's program will conclude about April 25, 1963, with the naming of students who will receive four-year Merit Scholarships to the colleges of their choice.

The commended students and the semifinalists who do not win merit scholarships are considered for certain other scholarships that are offered through the facilities of the national Merit Scholarship Corporation.

The annual merit scholarship competition is open to all high schools in the United States and its territories. There are more than 3500 merit scholars currently enrolled in about 400 colleges and universities. More than 2000 merit scholars have been graduated.

Scholarship awards are made from the resources of the national Merit Scholarship corporation and through sponsoring business corporations, foundations, unions, associations, and individuals.

**VISIT JEFFERYS**  
Mr. and Mrs. Joe Wyman of Dallas visited in the Albert Jeffery home last week.

When removing jars from boiling water, use a jar lifter made for the purpose or a pair of kitchen tongs. It is a very poor idea to lift jars out by the lids.



**TIPPER FLINTLOCK** says...

"If you're going hunting along with your son, teach him well how to use his gun!"

**THE NATIONAL RIFLE ASSOCIATION** teaches shooting safety

**WHO'S NEW 6 Pink, 1 Blue**



Baby daughter of Mr. and Mrs. Douglas Owen of Stillwater, Okla., born Wednesday Oct. 10, weighing seven pounds, seven ounces. Paternal grandparents are Mr. and Mrs. C.M. Owen of Olton and maternal grandparents are Mr. and Mrs. A.C. Owens, Detroit, Texas. The Owens' have two other children, Stephen, 5, and Timothy, 2.

Rachel, born Oct. 8 in the Community Hospital, weighing seven pounds and 15 ounces. She is the daughter of Mr. and Mrs. Ray Chapa of Springlake. They have one other child.

Sylvia, a baby girl born in the Community Hospital, weighing six pounds and two ounces. Her parents are Mr. and Mrs. Benjamin Reyes of Halfway. They have one other child.

A baby girl born to Mr. and Mrs. Florentino Garza Jr., of Olton, born Oct. 10 in the Community Hospital, weighing seven pounds and five ounces. She is named Rachel. The Garzas have one other child.

Kari Latonne, daughter of Mr. and Mrs. Lyman Hull born Oct. 8 in the Plainview Hospital and Clinic, weighing seven pounds and eight ounces. Maternal grandparents are Mr. and Mrs. Tom Sluder of Olton and paternal grandparents are Mr. and Mrs. Earl Hull of Sytook, Okla.

Yolanda, born to Mr. and Mrs. Gregorio Alvarez of Olton, Oct. 6 in the Community Hospital, weighing six pounds and 15 ounces. Mr. and Mrs. Alvarez have one other child.

Christopher Bede Jenkins, son of Mr. and Mrs. Leo D. Jenkins of Canon City, Colo., born Sept. 21. Mrs. Jenkins is the former Yvonne Pinkerton of Olton. Maternal grandparents are Mr. and Mrs. R.J. Pinkerton of Columbus, Ohio, formerly of Olton. Paternal grandparents are Mr. and Mrs. Thomas Jenkins of Canon City, Colo. The Jenkins have one other child, a daughter, Jeanette.



**CRASH AT MAIN HIGHWAY 70--** An Olton youngster Carl Motley, was hospitalized with head injuries over the weekend following this wreck at Main and 70 last Friday about 6 p.m. Motley, driver of the 1957 Ford, suffered

cuts and bruises about the head. Damages were about \$500 to the Motley car and \$300 to the other car, driven by Ramon Losa, Latin American farm laborer.

★ ★ ★ **Saluting Our Loyal Firemen** ★ ★ ★

**FIRE PREVENTION WEEK**

★ ★ **OCTOBER 7-13** ★ ★ ★



**Members Of Olton Volunteer Fire Dept.**

JOHN SCHENCK  
GERALD COCHRAN  
JAKE RAY  
CHARLES POLK  
GERALD BIZZELL  
JAMES HALL  
ANDY STROEBEL  
CONNER PARSONS

PERCY PARSONS  
GENE REYNOLDS  
DAVID MAXEY  
LYNN FITE  
MARSHALL STONE  
LLOYD BLACKWELL  
JOE CHESTER

ELDON FRANKS  
BAILEY HAIR  
BUREN LANSFORD  
HAROLD JORDAN  
G.T. SIDES  
BOB DUNCAN  
BOBBY DAUGHTERY  
BILL KEMP

DOUG JONES  
J.C. SCRUGGS  
A.E. HUDGENS  
CHARLES MCCLAIN  
W.A. CURE  
HOWARD HALL  
L.H. MCADAMS  
TOM SMITH

**We Appreciate The Job Our Firemen Are Doing In Olton !**

**OLTON CO-OP GIN**

"It Pays To Patronize Your Co-op Gin"

**WHEN YOU THINK OF DEFOLIATION ....**

**.... THINK OF** *The Plainsmen*  
FARM & RANCH

**COMPARE OUR LOWER PRICES** **ON TOP QUALITY FOODS**

**FRYERS** HEART O TEXAS U.S.D.A. GRADE A **29c**

**HENS** HEART O TEXAS U.S.D.A. GRADE A LIGHT **39c** **LUNCH MEAT** 6 OZ PKG. WILSONS PICKLE LOAF, OLIVE LOAF, MACRONI & CHESE LOAF, LIVER LOAF, SALOMI & BOLOGNA **4 FOR \$1**

**FRANKS** 3 LB. BAG PINKNEY JUMBO **\$1.19**

**SUGAR** 10 LB. BAG IMPERIAL **98c**

**TIDE** GIANT **73c**  
**CHILI** 40 OZ CAN WITH GEBHARDTS BEANS **59c**  
**COFFEE** 1 LB. CAN KIMBELL **59c**  
**FLOUR** 10 LB. BAG GLADIOLA **98c**

**SHORTENING** 3 LB. CAN MRS. TUCKERS **59c**

**NEW NEW CRACKERS** 1 LB. BOX SUPREME **29c**



**PEACHES** 2 1/2 CAN OAK HILL ELBERTA **2 FOR 45c**  
**JELLY** 18 OZ. GLASS ZESTEE APPLE **23c**  
**PEANUT BUTTER** 18 OZ JAR ZESTEE **45c**

**BOTH TO BE SAMPLED WED. OCT. 17th**  
**CHIP & DIP** 12 OZ CARTON CLOVERLAKE **29c**  
**SOUR CREAM DRESSING** 12 OZ CARTON CLOVERLAKE **29c**

**BIF** 12 OZ CAN WILSON (CHOPPED BEEF) **39c**  
**TOMATOES** 303 CAN DIAMOND **2 FOR 25c**  
**GRAPEFRUIT SECTIONS** DELMONTE 303 **21c**

**APPLES** FANCY RED ROME **10c** LB.  
**GRAPES** TOKAY **10c** LB.  
**SPUDS** 10 LB. CELLO BAG RED **39c**  
**TOMATOES** VINERIPE **15c** LB.

**GREEN BEANS** 303 CAN KIMBELL WHOLE **21c**  
**PEAS & SNAPS** 300 CAN BLACKEYED KIMBELL **2 FOR 27c**  
**PORK & BEANS** 300 CAN KIMBELL **2 FOR 19c**  
**CHERRIES** KIMBELL 303 CAN R.S.P. **17c**

**CHOICE HEAVY PEN FED BEEF** Cut And Wrapped For Your Home Freezer. UNCONDITIONALLY GUARANTEED To Your SATISFACTION!

**ORANGE JUICE** 12 OZ CAN WHOLESUN **29c**  
**FRESH WATER CATFISH EVERY TUESDAY**

**SPECIALS BEGIN FRIDAY, OCTOBER 12**

**DOUBLE GUNN BROS. STAMPS EVERY WEDNESDAY**

Phone 285-2250 **Free Delivery**

**CASH WAY FOOD STORE**

Where Friends Meet and Prices Talk

**SPECIALS EVERY DAY**



**Springlake News**

Mr. and Mrs. Lowell Walden spent Wednesday night with his mother, Mrs. L.L. Walden of Bula.

Mrs. Thelma McClanahan spent Thursday afternoon with Mr. and Mrs. Doug Avery of Muleshoe.

Rev. and Mrs. M.B. Baldwin spent Tuesday with their son and wife, Mr. and Mrs. Jim Baldwin of Lubbock.

Mr. and Mrs. Wayne Davis, Del and Tammy spent Friday and Saturday with Mr. and Mrs. Shot Sanders, Beth and Wade on Slaughter Ranch, near Morton.

Mr. and Mrs. Joe Bridge of Lubbock spent Saturday night and Sunday with Mr. and Mrs. Robert Bridge, Terry, Janis, and Mark.

Mrs. Lowell Walden was hostess to a supper Thursday night in her home honoring her husband Lowell and their son, Delvin on their birthdays. Also present were Mr. and Mrs. Darrell Kenemer, Debbie and Ricky of Muleshoe.

Mrs. Louise Bridge was hostess to the regular business meeting of the Homemakers Sunday School Class Tuesday morning. Those attending were Mmes. Bety Matlock, Louise Alair, Velma Baker, Neva Busby and the hostess, Eva Hopping and Dorothy Washington joined the group later.

Dinner guests of Thelma McClanahan Sunday were Mr. and Mrs. Doug Avery, Pam and Diane of Muleshoe, Mr. and Mrs. Bill Matlock, Jeff and Hoby and Mrs. Bud Matlock, Debbie and Sammie.

Mr. and Mrs. Jimmy Baldwin of Lubbock spent the weekend here with his parents, Rev. and Mrs. M.B. Baldwin, and Rev. and Mrs. Price Hamilton and Loy Jean of Earth.

The new officers and teachers of the New Year in Sunday School and Training Union of the First Baptist Church had a covered dish supper in fellowship hall Thursday night. After the meal the new Sunday School Supt. Robert Bridge and the new Training Union director gave a short talk on some of the goals for the year, then Bro. Meadows, Earth, brought a short message on the "Price Tags of Life".

Debbie Kenemer of Muleshoe spent from Thursday until Saturday with her grandparents, Mr. and Mrs. Lowell Walden. They took her home Saturday.

Henry Conner was dismissed Tuesday from the Methodist Hospital in Lubbock. He had been a heart patient there. But he was admitted again to a Plainview hospital Wednesday afternoon where he remains a patient.

Phil Bearden was admitted to the Littlefield Hospital Sunday night.

Mr. and Mrs. George Choate spent from Wednesday until Friday with Mrs. Suzie Robertson in Plainview.

Visitors in the K. Sorrenson home last week included a son and daughter and their families from Houston. Sorrenson was dismissed from the hospital last week but is still confined to his home.

Mrs. Louis Ball and her daughter, Mrs. Billy Pierce, and girls visited in Ralls the last of the week with Mr. and Mrs. Richard Atterbuy and family.

Promotion Day was observed at the Baptist Church Sunday morning for the different age groups and the new teachers took their places for the coming year.

Robert Lynn Conner, who is serving in army duty in Germany arrived home last week to be with his father, who is ill.

Mrs. Maggie Banks and Mrs. Onita Nunn visited Friday in Plainview with Henry Conner. They also visited with Mrs. A.B. Smith who is staying in the home of a daughter. Mrs. Tom Smith came home with them to spend the night.

Mr. and Mrs. Charlie Jones, David and Jana of Amherst visited Saturday night with Mr. and Mrs. George Choate.

The WMU of the First Baptist Church met Wednesday at 2 p.m. with a business meeting and circle program. Betty Matlock, president, opened the meeting with the watchwords and Dorothy Washington read the calendar of prayer. After the business meeting Mrs. Billie Walden, program chairman, brought a program on "The Meaning of the WMU Emblem." Those present were Mmes. Edna McClure, Myrtle Clayton, Alice Huckabee, Moena Miller, Dorothy Washington, Billie Walden, Betty Matlock, Frances Watson, Hugh Watson, Thelma McClanahan, Viola Baldwin, Evelyn Bridges and Mary Clayton.

Mr. and Mrs. Robert Riley, Shaunessy, Mr. and Mrs. Jim Baldwin of Lubbock, and Rev. and Mrs. M.B. Baldwin were among the dinner guests of Mr. and Mrs. Price Hamilton of Earth Sunday.

**Olton School Lunch Menu**

Oct. 15-19, 1962 (Subject to Change)

**MONDAY**- Steak and gravy, tomato catsup, mashed potatoes, green beans, candy bar, hot rolls and milk.

**TUESDAY** - Texas Stew, cheese sandwich, potato chips, lettuce wedge, cherry pie and milk.

**WEDNESDAY** - Pizza Pie, buttered corn, broccoli, fruit salad, cookie, rolls and milk.

**THURSDAY**- Brown beans, Tacos, french fried potatoes, peaches and doughnut, cornbread and butter, milk.

**FRIDAY**- Deep Sea Doodle, lemon, buttered potatoes, blackeyed peas, apple sauce, gingerbread, rolls and milk.

**IN HEREFORD**  
 Mrs. Lowell McGill and Mrs. Wayne Hair visited with Mr. and Mrs. Joe Hysinger in Hereford Sunday.

**IN HEREFORD**  
 Mr. and Mrs. B.C. Daugherty visited in the home of Mrs. Daugherty's sister, Mrs. G.W. Wilson, in Hereford Sunday.

**VISIT KENDALLS**  
 Mr. and Mrs. T.H. Nall from Panhandle visited with Mrs. Nall's sister, Mrs. Sam Kendall. Sam Kendall's brother, R.C. Kendall from Los Angeles, Calif., also visited in the Kendall home.

**VISIT GIVENS**  
 Visiting in the Delmer Givens home last week were Mrs. Givens' aunt and uncle, Mr. and Mrs. L.E. Mason, from Westovina, Calif.

**IN CORPUS CHRISTI**  
 Mr. and Mrs. C.C. Curry returned home last Thursday from Corpus Christi, where they visited their daughter, Mrs. W.J. Wagner, who underwent minor surgery. Billy Ellen Curry, daughter of Mr. and Mrs. Clifford Curry, went with her grandparents.

**AS NEAR AS YOUR TELEPHONE**



**PARSONS FUNERAL HOME**  
 Phone 285-2621 Collect  
 We Accept Any Funeral Home Burial Policy

**We Will Be Closed COLUMBUS DAY FRIDAY, OCT. 12**

**Olton State Bank**

**SALE OF USED TIRES**



**ALL SIZES Buy 'Em Right At HALL-SIDES MOTORS**

Olton