

A New Sweetheart For The Lions

SANDRA COX, right, daughter of Mr. and Mrs. Carroll Cox, took over as new sweetheart of the Olton Lions Club Tuesday, succeeding Lana Hair, left, daughter of

Mr. and Mrs. Luis Hair. The club elected Miss Cox, a 17-year-old OHS senior, from a field of four candidates.

ASC Mails Acre Prices On Wheat

Notices informing wheat growers of the amount of money per acre they will receive for diverted acreage will be mailed to producers Friday, Lamar Aten, county ASC office manager, said this week.

Under the new wheat program, all producers with allotted acreage automatically were cut 10 per cent.

Per-acre prices under this minimum will average \$26.30 in Lamb County, Aten said. Producers diverting 30 per cent will receive an average of \$35.20 per acre for the diverted acreage.

In Community B, the Olton area, the average will be \$28.10 under the minimum program and \$37.60 under the 30 per cent plan.

Producers who now have allotments and who enter the program will be eligible for price support.

Aten also announced that grain producers participating in the feed grains program should make certain they are in compliance.

If a farmer harvests more than the acreage allotted after diverting 20 per cent of his grain land, he will be "out of compliance" and ineligible for price support on any of his harvest, Aten said.

Farmers who are uncertain about the amount of acreage they may harvest should check with the ASC office, he said.

Civil Defense Course Begins Here Tonight

What should you do in case of an atomic attack in or near Olton?

This is one of the topics to be covered in a civil defense course, sponsored by the Olton Chamber of Commerce and Agriculture, which begins tonight at 7:30 in the high school study hall.

A licensed instructor from the civil defense unit in Plainview will teach the 12 hour free course which is open to the public.

Each of the four meetings scheduled will last three hours. Other subjects to be covered include how to organize a civil defense unit in Olton, what equipment would be needed for the unit and how to build the most effective fall-out shelter.

"We have children in school who would have to be taken care of in case of an atomic attack," Dick Whiteley, manager of the Chamber of Commerce and Agriculture said this week.

"We need to find out what we must do to protect them."

"This is not a scare course," Whiteley added. "It is just a case of needing to be prepared."

Perfect Pick Wins Enterprise Contest

It took a perfect score to win the Olton Enterprise football contest last week and a Nazareth man, Gene Varner, did it.

Varner picked all 13 of the games right to edge out three challengers who missed only one game apiece.

Even if the other three had picked all the games right, they still would have had a hard time beating Varner.

The Nazareth man was just about as close as a guesser can be on the tie-breakers. He picked Springlake to beat Olton, 6-0, and Hart to beat New Deal, 14-0.

Final scores in those games were Springlake 8, Olton 0 and Hart 16, New Deal 0.

Second place went to L.H. McAdams, while Jerry Dennis copped third. Almost in the money was Jackie Gray.

McAdams was 32 points off the tie-breakers, Dennis 36 and Gray 44. McAdams missed the Lubbock-Odessa game, and Dennis and Gray missed on Springlake and Olton.

You can still enter this week's contest by picking up a copy of the Sept. 14 Enterprise and filling out the contest entry blank. Entries should be turned in to sponsors of the contest.

Ponies Take On Hale Center 11

Olton's Mustangs invade Hale Center Friday night for a clash with the tough, unbeaten Owls who have already beaten one District 2-AA opponent and tied another.

The Class A Hale Center team topped Abernathy, 38-20, last week while the Mustangs were bowing to Springlake, 8-0, for the first time since 1947.

Hale Center also owns a 14-14 tie with Lockney and defeated Sundown, 20-12.

Olton boasts a win over Petersburg, 14-12, but the Ponies lost an encounter with McCamey, 18-14.

The Mustangs again will be without Center Robert Duncan, who is out six to eight weeks

with a knee fracture. Duncan, hurt in the McCamey game, is not expected to be ready until, at least the Muleshoe game, and he may be out longer than that.

Coach Walter Bryan said Wednesday afternoon that he'll use the same line-up against Hale Center that went against Springlake last week.

The Mustangs will go into the game a two-touchdown underdog.

While Olton was taking its lumps against Springlake last Friday night, Hale Center was having a merry time with Abernathy.

The Owls, ahead only 8-0 at the half, unleashed a powerful scoring attack in the last half. Hale Center used two quick fourth quarter scores to ice the victory.

Halback Jimmy Louthan and Fullback Lloyd Louthan made repeated long jaunts for the Owls.

300 Attend Telephone Open House

Approximately 300 persons toured the new General Telephone building here during their open house Wednesday afternoon.

Highlights of the afternoon were the showmobile, showing the latest modern telephone equipment, and the dial demonstration.

The dial demonstration, using only two telephones to simplify the process, especially attracted the youngsters.

Olton now has 1,000 lines, according to Bob Saunders, district manager, compared with 400 lines before the change to dial here April 13.

There are now 971 telephones in Olton.

With the change to dial came a new numbering system, known as the all numerical calling plan (ANC). Each telephone number is now composed of seven digits instead of the old four digit scheme.

Exes Football Game Set

The Exes Football game will be played Saturday, Sept. 30 at 8 p.m. in the Olton Memorial Stadium, according to Connor Parsons and John Schenck, Sr. The game will be between the Springlake Exes and the Olton Exes.

An Exes Queen will be crowned at the game. She will be selected by the public, which will cast votes with nickels. Jars will be placed in various businesses for the nickel votes. Admission price for this game will be \$1 for adults and 50¢ for students.

In the lineup will be such "stars" as "Two Bales of Cotton" Givens, "Bird Legs" Jo Jo Bryan and "Galloping Ghost" Allcorn.

Woman, 25, Is Victim Of Attack

Castro County officers continued an investigation Wednesday of an incident in which a 25-year-old Dimmitt woman, formerly of Olton, told of being attacked, beaten and cut by one of two young men who stopped her car on a highway near Dimmitt.

Jailed this week at Castro County jail, Dimmitt, in connection with the incident were a 19-year-old Oklahoma youth and a 16-year-old boy who gave his address as Hereford.

County Attorney Jack Miller said Lawrence Lee Calfy, 19, of Oklahoma and the 16-year-old were held on a complaint of robbery by assault, pending their appearance before a grand jury on Oct. 2.

Calfy was still in jail Wednesday and had not made a statement. His bond was set at \$10,000. The 16-year-old went free earlier in the week on \$1,500 bond.

The incident took place about two miles from the woman's home on the night of Sept. 11. She told officers her auto was forced off the road on a highway near Dimmitt.

The woman, who was alone, reportedly was driving home after bowling in Dimmitt when a car pulled across the highway in front of her, causing her to stop.

Although she had her car doors locked and the windows up, the woman told of lowering a window when one of the youths, the older of the two, said he wanted to give her a ticket.

A relative of the woman said she was aware the youth was not a policeman but thought he might be someone she knew in Dimmitt.

The woman told relatives she was grabbed by the hair and forced out of the car with a bottle opener pushed against her neck.

She told officers she was then attacked, beaten and cut with the bottle opener.

The woman said the younger boy was instrumental in affecting her release, according to County Attorney Miller.

After her release, the woman said she drove to her home where her husband notified officers and took her to the hospital.

After treatment, she was released from the hospital.

Cattle Weighing Set For Monday

The fourth weighing in Olton's first self-feeder cattle demonstration will be held Monday at 8 a.m. at the stock pen behind Olton Farm Supply. The public is invited.

At the last weighing Aug. 31 the 20 Whiteface heifers, owned by Allen Johnston, showed a gain of 3,221 pounds per head per day.

Countdown Starts On Cotton Harvest

Area Gets Showers Tuesday

Cotton and grain trickled into gins and elevators this week as the Olton area's harvest got off to a slow, but promising start.

A check at 14 area gins early this week revealed that only 20 bales had been ginned. Most gins had received a "first bale" but that was about all.

Ginners, however, expect the harvest to show gradual pick-up starting next week. They expect to be fairly busy by Oct. 1.

Grain elevator operators reported a pickup this week, but they, too, figure it'll be another week or two before the grain harvest hits a fast pace.

Estimates from ginners show that contracting of whole cotton crops will involve probably less than 10 per cent of the farmers.

Most ginners said they believe very few farmers are contracting their cotton, but a couple believed the percentage in their particular areas might go as high as 25 per cent.

The Olton area received showers Tuesday night, with the town itself getting .60 of an inch. On the farms, it appeared the moisture didn't amount to quite that much.

J.B. Kemp, who farms four miles north and one-half east of town, began harvesting grain Monday.

The rain Tuesday night, which amounted to about .25 of an inch at the Kemp farm, stopped the grain harvest for a few days, but didn't amount to enough to hurt his crops.

Kemp said his cotton will be ready to harvest about the third week in October.

"I've got a pretty fair crop—it could be better—but I'm proud of it, because I've been hauled out a lot in other years," he

CONTINUED PAGE 4

Complete Recovery Seen

Miracle, Doctors, Prayers Bring Kenneth Hooper Home

Some said it was a miracle. Others praised doctors and modern medicine.

Many felt their faith in the power of prayer reaffirmed. But all agreed on one thing. It was a great day in Olton when Kenneth Hooper returned home Tuesday morning.

Kenneth, 17-year-old son of Mr. and Mrs. Elbert Hooper, suffered critical head injuries in a car wreck on Highway 70 June 26. Taken to the Methodist Hospital, Lubbock, he remained there until his return home this week.

Local residents followed the condition of the boy from day to day, but, often, progress seemed slow.

Regularly, they came forward to offer any assistance. Though

Kenneth was allowed no visitors, many still came and called to offer just a word of encouragement. Cards poured in and, in Olton, thoughts and prayers poured out. When the call went out for needed blood, Olton was ready.

"The people of Olton have been more than wonderful to us," Mrs. Hooper said this week.

"There are so many to thank for so much," she added, "but, particularly, the prayers. We couldn't have made it without the prayers."

Although at home, Kenneth is still allowed no visitors. Mrs. Hooper termed his progress during the past week as "remarkable." His first words since the accident were spoken

only a little over a week ago. "He still has a long way to go," Mrs. Hooper commented. "The doctors have assured us he will recover completely. This type of brain injury just takes time to heal."

Last week a Love Fund for Kenneth and little Robin Brown, son of Mr. and Mrs. M.G. Brown, was started here.

Robin was injured when struck by a car June 3 here. He has been in the Methodist Hospital, Lubbock, since that time.

He was reported this week to be "steadily improving."

Anyone interested in contributing to the Love Fund is asked to contact Gene Trotter at the Olton State Bank. Trotter is in charge of the fund.

Halfway Station Sets Field Day Wednesday

Soil and water conservation will be the main theme of the Fifth Annual Field Day at the High Plains Research Foundation next Wednesday afternoon.

Tours will start at 1:30 p.m. and continue until the barbecue at 5 p.m. The evening program will begin at 6 p.m. with the introduction of the Trustees of the Foundation.

Addresses by Congressman James Wright and Texas Agricultural Commissioner, John White, will conclude the program.

Scientists and farmers will explain the research in progress at various stops on the

tour. Comparison of the various fertilizer applications on major crops will be shown. Varieties of crops to be seen will include fifty-six dryland and sixty-two irrigated grain sorghums and thirty-two forage sorghums, thirty varieties of cotton, thirty of corn, eighteen of castor beans, nine-hundred and twelve of sesame and seven-hundred and ninety-four of soy beans. A new grass and legume nursery will also be exhibited.

The new soybean and sesame breeding program will attract the attention of many guests. Plants are being crossed to

produce varieties better suited to the climate and growing season of the High Plains. Thirteen varieties of soybeans have been bombarded with three different strengths of Cobalt 60 to induce more plant variations. Eight varieties of sesame have had similar treatment with a total of twenty-four different plantings. This is a search for a mutation that might result in new high yielding and non-shattering varieties of each crop.

Flame cultivation results on all crops including sugar beets

CONTINUED PAGE 4



First Bale With All-Cotton Bagging

FIRST OLTON COTTON to be wrapped in All-Cotton Bagging under a program developed by the Plains Cotton Growers was this bale, produced by Lyndel Johnson, second from right, and ginned by Jack Straw, right. At right is Truitt Sides of Olton, a director of Plains Cotton Growers, Inc. PCG is testing the All-Cotton bag-

ging this year, hoping to make it standard throughout the industry. Use of the bags on all cotton produced in this country would result in a new market for cotton, because about 300,000 bales would be used in such bagging.

The Olton Enterprise

Published each Thursday at Olton, Texas.

Entered as second class matter at the post office at Olton, Texas, under the act of Congress, March 3, 1897.

Any erroneous reflection upon the character, firm or corporation which may appear in the columns of The Olton Enterprise, will be gladly corrected upon being brought to the attention of the publisher.

Subscription rates: \$3.00 per year in Lamb and neighboring counties; \$5.00 per year elsewhere.



BILL TURNER, PUBLISHER
LANA HAIR, REPORTER
MAENETTE HOUSTON, OPERATOR
DUANE WHITELEY, COMPOSITOR
KAY CHERRY, SOCIETY EDITOR
AMY TURNER, NEWS EDITOR

EDITORIALS

Three Cheers For Kenneth

All too frequently in the newspaper business, a reporter is faced with writing those stories he would just as soon forget.

Stories of tragedy, suffering, violence—though unpleasant—must, nevertheless, be written.

Occasionally, however, a story appears that makes it all worthwhile.

It is with great pleasure that the Enterprise reports this week that Kenneth Hooper has been released from the hospital and has returned to his home in Olton.

Since his critical injury in an auto accident on Highway 70 June 26, Hooper's progress at Methodist Hospital, Lubbock, has been reported each week in the Enterprise.

This last story in that series is, indeed, the kind that makes it "worthwhile."

It's been a long battle, but Kenneth Hooper is no "quitter." His action on the football field with the great Mustang team last year was evidence of that fact.

So now we say: "Three Cheers For Kenneth!"

USA--An Underprivileged Nation?

To listen to some of the advocates of federal aid, one would get the impression ours is a nation of starving, sick and underprivileged peoples.

This is rather surprising in view of the fact that we have one of the highest living standards of any country in the world.

It seems we need federal aid for education, medicine, depressed areas, old people, young people, sick people, home-hunters, employed, unemployed and you-name-it.

Where are all these needy people? In another town, another place? In Olton?

How many people do you know in Olton who are starving? How many who really want an education and can't get it? How many who legitimately need medical help and can't get it? How many who would kick their mothers and fathers out on the street?

Probably not many, if any. Is Olton so different then from other towns?

We think not.

The truth of the matter is that the average citizen fares increasingly better each

year. Consumer purchasing power goes up, not down. In 1959 personal income was \$383 billion. In 1960 it was \$404 billion. Many of the products and services we take for granted today were unheard of 5 years ago.

True, we have now, and always will have, a small percentage of people around who need help.

It is difficult to believe, however, that the American people have become so selfishly irresponsible that the job must be done by the government.

The economy of this country is created not by government activities, but by the people. . . a people we believe to be generally successful, imaginative and resourceful. . . not paupers and misfits as some would have us believe.

It's an old politician's trick to promise the voter a "Free" slice of bread after first relieving him of the loaf.

When we hear the federal aid-to-the-poor advocates extolling the virtues of the "free slice," we can't help wondering:

What happens to the rest of the loaf?

ONE MAN SAID. . .

You cannot bring about prosperity by discouraging thrift.

You cannot strengthen the weak by weakening the strong.

You cannot help little men by tearing down big men.

You cannot help the wage earner by pulling down the wage payer.

You cannot further the brotherhood of man by encouraging class hatred.

You cannot help the poor by destroying the rich.

You cannot establish sound security on borrowed money.

You cannot keep out of trouble by spending more than you earn.

You cannot build character and courage by taking away men's initiative and independence.

You cannot help men permanently by doing for them what they could and should do for themselves.

Abraham Lincoln

First Methodist Rally Day Set

The First Methodist Church will observe Rally Day and Promotion Sunday, Sept. 24, 1961, beginning at 9:45 a.m. The purpose of Rally Day according to Rev. Wilbur Gaede is to stress the importance of Christian Education.

"The national figures show that seven out of every ten persons won to Christ and His Church come through the Church school," Rev. Gaede said. Also, it is reported by J. Edgar Hoover, the director of the FBI that fewer boys and girls as well as men and women who attend Church School with any regularity and interest ever have a brush with the law enforcement agencies.

During the Promotion time, children and youth will advance to an age group corresponding to their grade in public school. Pre-school children will advance according to age. Bibles and girls being promoted from the Primary Department to the Junior Department.

At the morning worship hour all Church School teachers and workers will be recognized for service rendered or services just beginning.

Everyone is cordially invited to attend these services.

Spanish HD Club Meet Is Held

Sept. 12 the Spanish Home Demonstration Club met at 2:30 p.m. at the home of Mrs. Ralph Saldivar.

The project of the meeting was canning tomatoes. Subjects discussed were the different uses of tomatoes, such as making catsup, tomato juice, and other items. Mrs. Lady, Claire Phillips was the demonstration agent.

Those attending the meeting were Mmes. Mary Rodriguez, Lali Arroyos, Pat Tuentes Jr., Richard Alcorta, Mary Rubacalda, Pablo Saldivar, Ruben Gonzales, Miss Olivia Rodriguez and the hostess, Mrs. Ralph Saldivar.

All the Spanish ladies of Olton are invited to the next meeting which will be held Tuesday, Sept. 26, at the home of Mrs. Ruben Gonzales, 211 East 11th.

Dee Stamps Are Parents Of Baby Girl

Mr. and Mrs. Dee Stamps are the parents of a baby girl, Rhonda Deann, born Wednesday morning in the Community Clinic at 11:35. She weighed 7 pounds and 1 ounce at birth.

The Stamps have two other children, Ricky, 5, and Jerry, 3.

Maternal grandparents are Mr. and Mrs. M.S. Witt of Amarillo. Paternal grandparents are Mr. and Mrs. J.D. Stamps of Olton.

ATEND CONFERENCE

Attending a leadership conference Monday at the College Heights Baptist Church in Plainview were Mmes. W.C. Gunter, Lacy Armstrong, Clyde Vaughn, Santana Leal, J.F. Miller, W.D. Holley, Robert Edwards, A.D. Adams, Owen Jones, Carlton Whittle, Lee Simmons and Don Franks.

WSG Has

Salad Supper

The Wesleyan Service Guild met Tuesday, Sept. 12, in the Methodist Church. They started the meeting with a salad supper.

Program theme for the meeting was "The Spirit is Lord." Mmes. H.G. Walker, E.R. Spain and Roy Aikman presented talks concerning the Holy Spirit.

Wanda Thompson and Ava Robertson were hostesses at the meeting and approximately 30 women attended. Mrs. Owen Norfleet was the leader of the program.

Girl Scout Troop Meets Tuesday

Girl Scout Troop 132 met Tuesday evening at 4 o'clock at the Girl Scout House. At this meeting they selected patrol names and elected officers.

Thriller patrol officers elected were: president, Brenda Ellis; vice-president, Kathleen Carson; secretary-treasurer, Judy Neinaast; reporter, Cheri Dorris; song leader, Linda Haral; game director, Jan Ross.

Girls scouts present were Gail Williams, Deborah Walden, Francine Offield, Carol Scribner, Cherie Thompson, Karen Whiteley, Brenda Ellis, Kathleen Carson, Judy Neinaast, Linda Haral, Jan Ross, Cheri Dorris, and the leader, Mrs. Wayne Carson.

The next meeting of Girl Scout Troop 132 will be Tuesday, Sept. 25 at 4 p.m. in the Scout House. Troop rules are to be made at this meeting.

CARD OF THANKS

I wish to take this opportunity to thank all the people of Olton for their kindness shown, for the telephone calls, visits and sympathy cards sent to me during the time of the death of my sister, Mrs. Leona Halcomb of Tullia. Mrs. D.B. Adair

WSCS Meets At First Methodist Monday Morning

The Women's Society Christian Service of the First Methodist Church met Monday morning at 9:30 for a business meeting.

The meeting was called to order by the president, Mrs. Owen Norfleet. The next meeting will be Oct. 2 at 9:30 a.m. at the First Methodist Church.

Members present were Mmes. Owen Norfleet, Gilbert Roberson, Delmar Givens, Jessie Brown, Dick Cade, Glenn Leggett, Jim Gregory, Bill Collins, Earl Roberson, and Leo Ross Bryant.

Supper Honors Rainbow Girls

The Eastern Star sponsored a supper for the Rainbow Girls Monday night at 6:30. After the supper, the Rainbows had their regular meeting.

Evangeline Coleman is the Rainbow's new mother advisor. Lana George presided as Worthy Advisor in the absence of Janice Galloway.

They had nine visitors, including Mrs. and Mrs. T.B. Cox, Hart, Mrs. Cox is Worthy Advisor for the Eastern Star.

The next Rainbow meeting will be Oct. 2. They will go on a ice skating trip for this meeting.

Brownies Meet To Organize New Troop

Brownie Troop 50 met Friday in the Girl Scout House to help organize a new Brownie Troop.

Troop 50 taught the newly organized troop songs and the Brownie Promise.

Games were also played by the seven members of Troop 50 and the 13 new members of the other troop. Refreshments were served by Gay Lewis and Mary Brown.

Troop Leaders for Troop 50 are Mrs. F.B. Coleman and Mrs. Buster Nicholas. Leaders for the new troop are Mrs. Dewayne Wilks and Mrs. C. W. Leathers.

CARD OF THANKS

We want to thank everyone who has been so wonderful to us in every way. We could not have made it without your prayers and your kind help. May God bless you. The Elbert Hoopers

Teachers Meet Held Monday

The Classroom Teachers' Association had their first meeting of the year Monday afternoon, Sept. 11 at 4.

After a short business session, Mrs. John Campbell discussed "What C.T.A. is, and what it does to us."

Refreshments were served to 32 members by David Howton, Mrs. Jimmy Jenkins, Mrs. Raiford Daniel, Mrs. E.J. McKnight, Mrs. Kathryn Lewis, Mrs. Austa Fisher and Mrs. Freda Worley.

H.D. Carson Is Chairman Of Concert Drive

The Membership Drive for the Community Concert closes Friday. Anyone interested in joining should contact Harold Dean Carson, who is chairman in this area, by Saturday.

The concert season will open in November and last until April. At least five concerts are planned. The ones listed at this time are the Tucson Boys Choir and the Paganini String Quartet.

CARD OF THANKS

I wish to express my sincere thanks to all the people for the flowers, cards, and kind sympathy shown to me at the time of the death of my father. Bonnie Brown

VISIT SHERMANS

Mrs. Kay Featherngill and daughter, Linda, have been visiting Kay's parents, Mr. and Mrs. Basil Sherman. Mr. Featherngill is in New York City taking a two week course on income tax at New York University. They will return home Saturday.

Boy Scouts

Meet Tuesday

The Olton Boy Scouts met Tuesday at 7:30 p.m. in the Legion Hut. The purpose of this meeting was to get organized for the coming year.

The scout master, Kenneth Campbell, talked to the boys about studying their hand books and learning the main parts of becoming a scout. Officers are Jimmy Schreier, senior patrol leader; Ronnie Parsons, scribe; Ronnie Parsons and Dewain Campbell, patrol leaders.

There were six members present at this first meeting. They were Johnny Clark, Dewain Campbell, Garland Huguley, Jimmy Schreier, Billy Kemp and Ronnie Parsons.

The next meeting of the Olton Boy Scouts will be held Tuesday, Sept. 26 at 7:30 p.m. in the Legion Hut. Everyone interested in joining the scouts is urged to attend this meeting.

ONE OF
The Plainsmen
SEZ "After Christmas, it seems like those cotton graders got hold of some bad whiskey!"

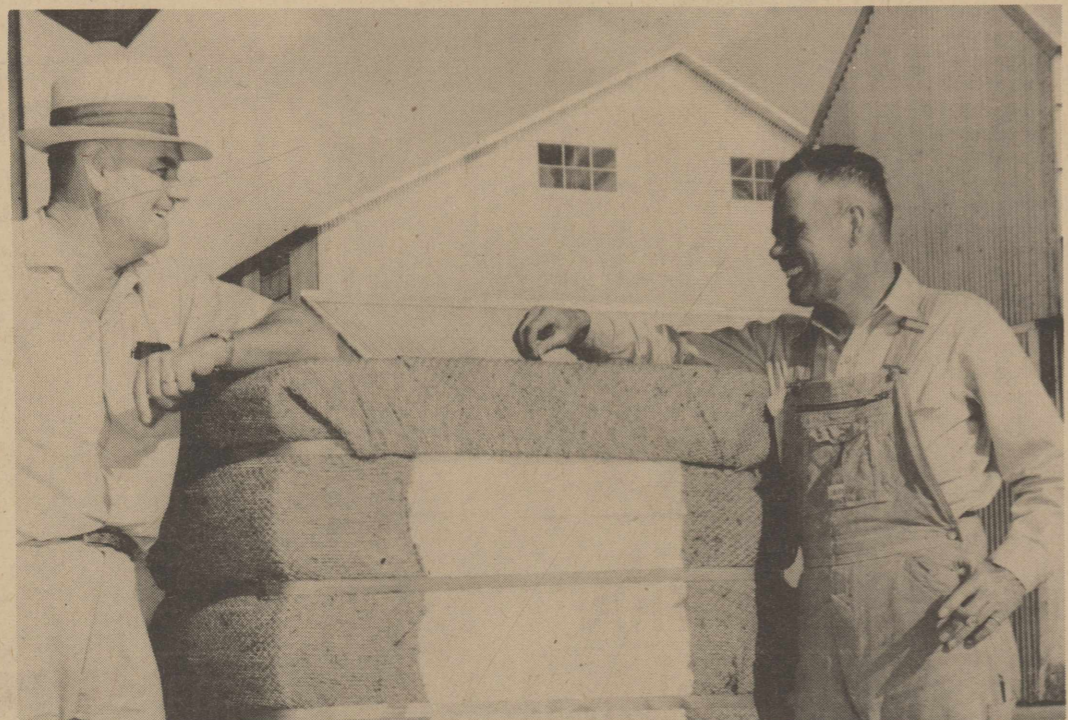


COTTON DEFOLIATION SERVICE
GUARANTEE NO STREAKS
Rye, Wheat & Oat Seed For Sale

The Plainsmen
FARM & RANCH
Phone 285-2255 Hwy. 70

Congratulations To Drexel Lawson

Producer of Olton's First Bale of 1961 Cotton



With the 1961 Cotton Harvest Getting Underway

It's a good time to remember that we HELP OURSELVES AND OUR NEIGHBORS

When We Buy And Use More Cotton

PLAINVIEW CO-OP COMPRESS

2 1/2 Miles East Of Plainview

Phone CA4-7435

WE WANT TO HANDLE YOUR GRAIN

Immediate Storage For Your Grain - No Delay On Warehouse Receipts

Top Cash Price or Federal Warehouse Receipt

Two Fast Trucks Dumps Assure Quick Service

Plenty Of Storage Space Available

We want to express our appreciation for your past business and assure you of continued dependable service in the future.

UNITED Elevators

DAN GREGORY, mgr., Olton Elevator

VISIT IN FRITCH

Mr. and Mrs. Glen L. Peterson and daughter, Kathy Sue, visited in the home of their daughter and son-in-law, Mr. and Mrs. Wendell Cavett, in Fritch.

HAS SURGERY

Mrs. C.F. Williams came home from the Muleshoe Hospital Monday after undergoing minor surgery. Her condition is said to be good.

REPORTED IMPROVED

Michael Wayne Davis, son of Archie Davis, Olton's golf professional, is reported to be recovering rapidly and should be here within six weeks to start to school.

VISIT BOVERIES

Visitors Sunday in the home of Mr. and Mrs. J.A. Boverie were Mr. and Mrs. Edward Boverie, Idalou; Mrs. Opal Boverie, Lubbock; and Bob Norris, Acauff.

VISIT IN LUBBOCK

Mr. and Mrs. Ernest LaFrance, Jack and Jerry, visited their daughter and son-in-law in Lubbock, Mr. and Mrs. Dewey Hukill, over the weekend.

ATTEND CONFERENCE

Mimes, Bob Hipp, Gene Cade, Fred Long, and J.F. Miller attended a leadership conference at the First Baptist Church in Littlefield Tuesday.

IN HOSPITAL

Dewey Hukill was admitted to the Methodist Hospital Saturday where they placed him in traction because of a back injury.

Parent-Teacher Bi-County Meet

The Parents-Teacher Lamb-Bailey Bi-County Council met in Springlake Tuesday, Sept. 12, at 2 p.m. Mrs. Melvin Hines of Olton presided during the meeting.

Mrs. L.E. Sullins was elected parliamentarian to fill a vacancy which has occurred recently. A Council study course on parliamentary procedure was planned for the near future.

Schools represented at the meeting were Amherst, Littlefield, Muleshoe, Olton, Spade, Springlake and Sudan.



TEN YEARS SERVICE with Sherman Food prompted the gift Basil Sherman is shown presenting Jimmy Nicholson. Shermans is celebrating a 11th anniversary this week.

Shown left to right are Basil Sherman, Dwain Eby, Floyd Lawhon, Norene Roberson, Jimmy Nicholson, Bob Starritt and Bruce Hackler.

AMERICAN FOUNDERS LIFE

Don Williams, Agent



Why Does L.G. Elkins Like DeKalb?

TOP YIELDS

Olton Farmer Gets 7,554 Lb. Yield With F-62a



L.G. Elkins, who farms 1 1/2 miles north of Olton, cut his first grain of the year last Thursday, Friday and Saturday, harvesting 7,554 pounds of DeKalb F-62a per acre from 24 acres.

Top yield is one of the big reasons why Mr. Elkins likes DeKalb F-62a.

He planted his F-62 on April 26 on land which had been in cotton and milo the year before. Planting rate was eight pounds of seed to the acre.

The crop was pre-fertilized with 14 gallons of Uran on the stubble and later with 200 pounds of Anhydrous ammonia. He watered the grain three times.

Adds Mr. Elkins

"You can harvest a dry head from a green stalk with F-62a."

Moisture Test Was 13.30 To 14.48

Mr. Elkins is shown above in a field of DeKalb E-56a, which he planted at a rate of eight pounds per acre on June 21. He fertilized with 150 pounds of anhydrous ammonia, cultivated twice and watered two times. This grain sorghum follows a 60-bushel-per-acre wheat crop.

MORE FARMERS PLANT DEKALB THAN ANY OTHER BRAND

Olton Farm Supply

Phone 285-2404

Don Spain, Owner

Olton, Texas

Sherman Food To Celebrate Anniversary

Sherman Food, owned and operated by Basil Sherman, will stage its 11th anniversary celebration next week.

Specials offered for the event will begin Friday.

The store was purchased by Sherman in 1950. Originally located on the southwest corner of eighth and Main, the store was moved in August of 1954 to its present location.

In October, 1957, the firm joined Panhandle Associated Grocers Inc., Amarillo.

In celebration of the anniversary, three prizes of free groceries will be given away Wednesday. A number of demonstrations will also be held that day and a merry-go-round will be in use for the kiddos.

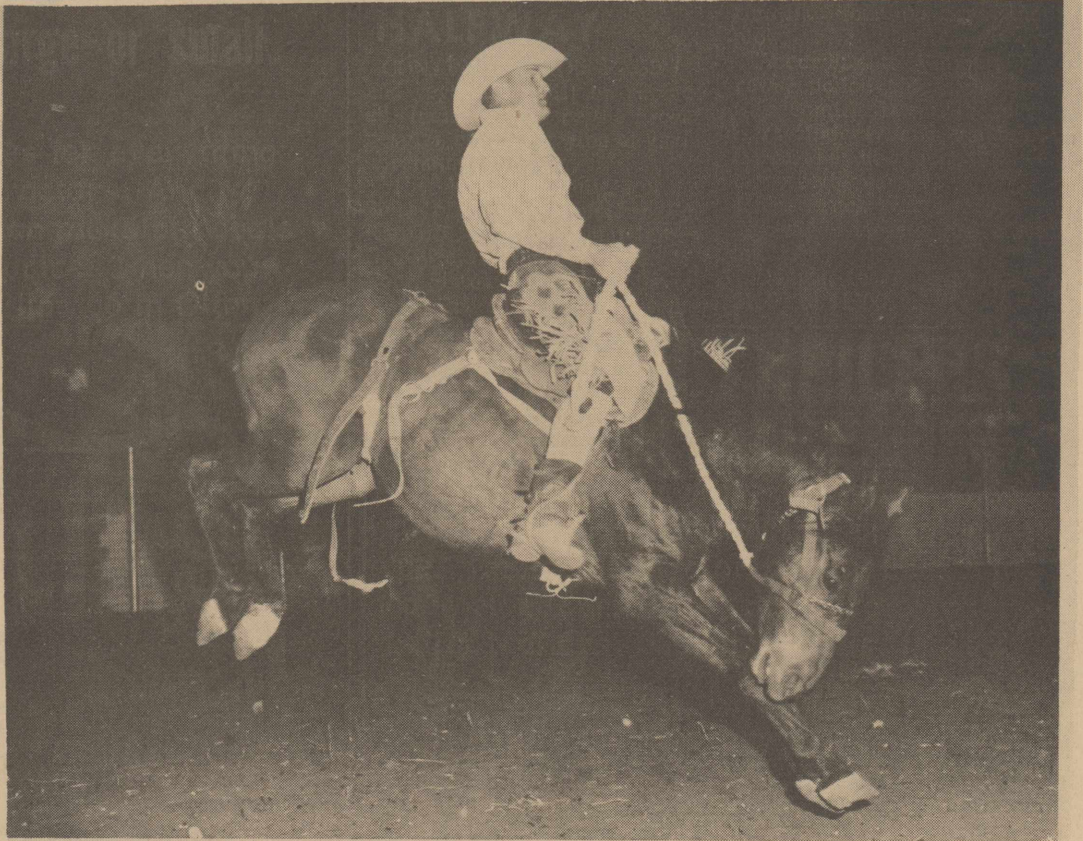
Personnel at the store include Bruce Hackler, produce manager; Dwain Eby, market manager; Mrs. Homer Worley, Rusty Sherman and Floyd Lawhon, all assistants in the market; Bob Starritt, stockman; Gwynne Turner, bookkeeper; Jimmy Nicholson, Norene Roberson and Ruby Lee Sherman, all checkers; Topper Maxey, Danny Roberson, Ronnie Parsons and Billy Cox, all sack boys.

Guy Granbery Is Speaker At FTA Club Meet

The Future Teachers of America Club met Wednesday, Sept. 6, at 4 p.m. in Mrs. Campbell's room.

They discussed plans for the future such as having a homecoming parade. It was also approved by the club to have a cakewalk for the Halloween Carnival.

The F.T.A. will have a speaker from Civil Defense sometime throughout the year. The guest speaker for this meeting was Guy Granbery.



OLTON COWBOY EDD WORKMAN is shown in action here, as he tames a bucking bronco. The Lubbock Christian College student is one of the nation's top college rodeo performers.

HARVEST

CONTINUED FROM PAGE 1

Joe Roberts, who farms four miles south and 2 1/4 east, said he probably would begin both his cotton and grain harvests next week.

"We have a good crop, a little better than usual, especially my grain. Insects have been the least I've ever seen, but we've had weeds-a-plenty," Roberts said he got about .10 of an inch of rain Tuesday night.

A.C. Light Jr. who farms five miles north of Olton, said his place got "just a sprinkle."

"We won't harvest maize for about two weeks," he said. He doesn't plan to pull any cotton by hand and will not start strippers until his cotton is defoliated.

Light expects his maize to make about 6,000 pounds and

his cotton a bale and a half. Roy Thurman, who farms 4 1/2 miles south and one-half west, said his crop is "real late" and that he won't start grain harvest for about two weeks.

"We won't begin cotton harvest till after frost," he said. The Thurman place received hail early in the season.

Frank Farrar, three east of Olton, said he probably will begin harvest in three weeks.

"We seem to have a good crop and we haven't had to spray at all this year," he said.

C.W. Phillips, 7 1/2 miles northwest of Olton, said he didn't get "enough rain to measure" Tuesday night.

"My crop's looking real good and is really getting loaded, but it just isn't ready for harvest yet," he said.

At the Jim Gregory farm one mile east and two south of town, Gregory said he got a half-inch of rain Tuesday night.

"We plan to start cutting grain in about eight days... it's a real fine crop," he said. He expects to make about 5,500 to 6,000 pounds per acre.

"I doubt if I'll harvest cotton until after frost," he said. He thinks his cotton will make about 1 1/2 bales to the acre.

HALFWAY

CONTINUED FROM PAGE 1 and vegetables will be reported. Included will be the recent results of field drying of grain sorghum using flame.

The A.S.C. Committee of the State of Texas, consisting of Ralph T. Price, Bryan James E. Goad, Rosebud Weber W. Pool, Sinton and John P. Gayle, West Columbia, will be the

special guests of Foundation President, Frank Moore, also a member of the committee.

Guides for the tour will include county agents, soil conservation personnel, representatives of agricultural firms and members of the Young Farmers organization. Dr. T.C. Longnecker, Director, stated that he expected an even larger attendance than the record of nearly 3,000 in 1960.

The Board of Trustees of the Foundation will hold their semi-annual meeting at McGrath's, Plainview, at 10 a.m. the morning of the Field Day.

Local men on the board are I.B. Holt, Cleo Smith and Jim Yates.

A headquarters building for the High Plains Research Foundation was assured by a grant made by the estate of Florence Lee and C.L. Kilgore this week.

Truck Crashes Into Implement Yard Tuesday

A tractor trailer truck, driven by Virgil Hubbard of Canyon, crashed into the Bryant Implement Tractor lot here Tuesday morning about 5 a.m. The truck was reported to have run into four tractors and a plow.

According to Emmett Burrows, police chief, the truck was coming into Olton on the Hart Highway and the brakes failed when he reached the stop sign at Highway 70.

The truck went across the highway and into the tractor lot.

Damage was estimated at \$1500 to \$1700.

COTTON TRAILERS AT WHOLESALE PRICES

The Big 12 chassis will not whip or road walk. 1961 model automotive or 5th wheel type. Choice of wire or slatted beds with heavy steel runners. These are extra heavy quality trailers, designed to last longer.

Ask anyone who has used them. They will not only tell you, but they will sell you on the famous

BIG 12 TRAILER CHASSIS

See your local ginner or contact

GENE HARRIS

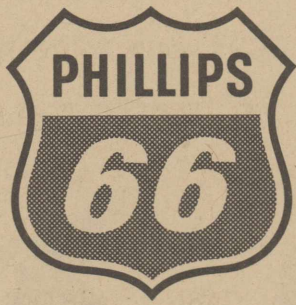
Box 45, Edmonson, Texas, Phone UNion-4-3641

It costs nothing to check--call collect.

Are Your Problems Large Or Small?

Just like our Phillips 66 Emblems here, we're geared to handle any size job, large or small.

We have Phillips 66 tires for everything from compact cars to tractors. And we think you'll agree you can make big deals at small, moneysaving prices when you trade at the sign of Phillips 66 in Olton--G.H. Bley.



Visit Us For All Your Needs-

- TIRES, BATTERIES, SPARK PLUGS, MOTOR OILS, BELTS & HOSES, LUBRICATION, IGNITION PARTS, SERVICE, PHILLIPS 66 GASOLINE



G. H. BLEY

Your Phillips 66 Jobber

Hwy. 70

Olton

Phone 285-2515

SHERMAN'S 11th

Anniversary SALE

ENJOY OUR
SELL-A-BRATION



REGISTER FOR FREE GROCERIES

1st. Prize
2ND PRIZE ...\$15
3RD PRIZE ...\$10

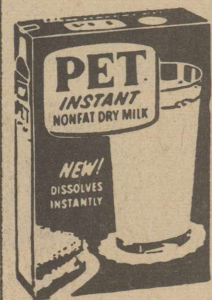
\$25

TO BE GIVEN AWAY SEPT. 27 - 6 P.M.
YOU DO NOT HAVE TO BE PRESENT TO WIN



PET EVAPORATED MILK

2 tall FOR **25¢**
3 small FOR **25¢**



PET INSTANT NONFAT DRY MILK

8 QT. POWDERED **69¢**

COOKIES HYDROX SUNSHINE FULL LB. BAG **43¢**

OLEO FOOD KING 1 LB. CTN. 2 FOR **29¢**

COFFEE SHURFINE 1 LB. CAN REG. OR DRIP **55¢**

VIENNA SAUSAGE SHURFINE NO. 1/2 CAN 2 FOR **35¢**

THOUSANDS OF GUNN BROS STAMPS

TO BE GIVEN AWAY FREE!

ROAST RUMP OR PEAK LB. **59¢**

STEAK

T - BONE SIRLOIN ROUND USDA GRADED LB. **79¢**

LETTUCE LARGE FIRM HEADS LB. **10¢**

BANANAS

LARGE GOLDEN FRUIT lb. **10¢**

TOMATOES

VINE RIPE lb. **10¢**

ICE CREAM CLOVERLAKE 1/2 GAL. ALL FLAVORS **69¢**

MERRY-GO-ROUND WED., SEPT. 27
FREE ICE CREAM SAMPLING

CRISCO 5¢ OFF LABEL 3 LB. CAN **79¢**

COCA COLA 12 BOTTLE CTN. PLUS DEPOSIT **49¢**

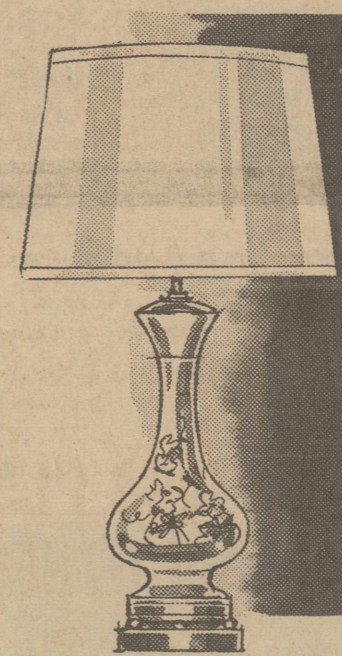
FREE DEMONSTRATION - WED. SEPT. 27

PEANUT BUTTER

12 oz. Jar **35¢**
FREE MAIL IN OFFER FOR TOY BAKING SET

GRAPE JELLY SHURFINE 20 OZ. JAR 3 FOR **\$1**

18 COLORS AND SHAPES TO CHOOSE FROM!



Fantastic Fabulous Offer

NEW CERAMIC TABLE LAMPS 35 INCHES HIGH, (3) WAY SWITCH, FIBERGLASS SHADES. RETAIL VALUE \$14.95. SAVE \$75.00 IN OUR CASH REGISTER TAPES, YOUR CHOICE OF COLORS AND STYLES FOR ONLY \$3.99. LAMP NO. 1 PLAN. YOU CAN SAVE ONLY \$75.00 IN OUR CASH REGISTER TAPES AND GET YOUR CHOICE OF AN \$8.95 LAMP FOR ONLY \$2.99. THIS FANTASTIC OFFER WILL NEVER BE OFFERED AGAIN. START NOW SAVING OUR CASH REGISTER TAPES. BEAUTIFY YOUR HOME WITH ONE OF THESE BEAUTIFUL LAMPS.

— THIS OFFER MAY BE WITHDRAWN AT ANY TIME —

EARLY AMERICAN CAKE MIX
DUNCAN HINES FUDGE NUT
CHERRY ALMOND
DATE NUT
APPLESAUCE RAISIN
BUTTER PECAN **3 FOR \$1**

Phone us your special orders for BAR-B-Q -- Parties or company.

SHERMAN FOOD

Double Gunn Bros. Stamps Wednesday With \$2.50 Purchase

Free Delivery Quality Meats Phone 285-2787



BEAUTIFUL SWISS WATCHES
By HERLIN

\$7.95
Plus Federal Tax and \$39.95 in CASH REGISTER TAPES

Each Watch Carries a Two Year Service Certificate. Many Styles From Which to Choose. A Watch You'll Be Proud to Wear or to give for Gifts. Get Several While This Offer Lasts.

BEAUTIFULLY BOXED

Springlake Breaks Hex, Nips Olton

Olton's Mustangs, who for the past 13 years used Springlake for a stepping stone, stumbled to an 8-0 defeat at the hands of the Wolverines here last Friday night.

Springlake ended 13 years of frustration in the last 34 seconds of the ball game, as Quarterback Hal Hudson hit End Darrell Barlow with a six-yard touchdown pass.

That six-pointer would have been plenty, but Hudson tacked on two more markers with a strike to Halfback Jerry Been for the extra points.

The victory gave Springlake a 3-0 record, while Olton now stands at 1-2.

Until the last minute of the battle, it appeared both teams would have to settle for a scoreless tie.

The Wolverines, who last triumphed in 1947, hadn't made too much of a dent in the Mustang defense over the first 47 minutes. In fact, Springlake had advanced inside the Olton 40 only once before during the game, that time on a drive that fizzled at the Olton 29 in the first quarter.

Olton, meanwhile, drove to the Springlake 28 as time ran out in the first half, then mustered a march to the Wolverine 13 in the third quarter.

The Mustangs won the battle of the statistics, chalking up 12 first downs at Springlake's 9 and 161 total yards to Springlake's 141.

Neither team was able to generate anything near a scoring punch until the Wolverines took over at their 43 with 5:11 left in the ball game.

Hudson unwound his passing arm and hit three straight completions, including one to Ronnie Dent which picked up 14 yards to the Olton 40. The third toss went to Barlow and advanced the ball to the Olton 34.

With 2:40 left and Springlake at the 39 after a penalty, Hudson swung wide to his right on a run-pass option and gained down to the 31, a yard shy of a first down.

Another penalty moved the Wolverines back to the 36, but Hudson called his run-pass option play again and moved the ball down to the 25 for a first down with 1:45 left.

A pass went incomplete, so Hudson went back to his same old trick, the run-pass option, and raced down to the Mustang 7 before he was stopped by Olton Halfback Gary Johnson.

A straight shot into the line gained only one on first down and two passes went incomplete. One was broken up neatly by Olton Linebacker Jimmie Lawson and the other slipped off the fingertips of Springlake's Ronnie Dent.

On fourth down, with the clock showing 42 seconds left, Hudson started to his right on what appeared to be his specialty. This time he took the pass option and threw back to his left, finding Barlow clear

for the touchdown. The extra points play worked neatly, with Hudson tossing to Been, and the Wolverines led 8-0 with only 34 seconds left.

The Mustangs found time for three plays, and aided by a penalty, moved to the Springlake 38. But with the clock running out, the Wolverines smothered Olton's Johnny Schenck for an 11-yard loss.

Springlake's only other threat came midway in the first quarter, when the Wolverines moved from their 37 to the Olton 28.

The Mustangs took care of that drive on a smashing "red dog" play by Pony Linebacker Charlie Burrus. Burrus broke through to nail Hudson for an eight-yard loss, moving the ball back to the Olton 37. A moment later, Springlake was penalized 15 yards and the Wolverines were unable to get inside the Olton 40 again until their scoring drive.

The Mustangs moved 52 yards from their own 20 to the Springlake 28 before time ran out at the half.

Halfback James Loveless picked up 16 yards in four carries to help move the Ponies to their own 42.

Then Schenck hit Lawson with a 14-yard pass to the Springlake 44.

Schenck added another first down quickly, running 13 yards to the Springlake 31.

With 24 seconds left in the half, Schenck pass went incomplete, and on the last play

Game At A Glance

SCORE BY QUARTERS	
Olton	0 0 0 0 --0
Springlake	0 0 0 8 --8
STATISTICS	
First Downs	12 9
Yards Gained Rushing	139 104
Yards Gained Passing	22 37
Total Yards Gained	161 141
Passes Attempted	4 14
Passes Completed	2 6
Passes Intercepted	0 0
Fumbles Lost	0 0
Punts, Avg.	4-35.5 6-38
Penalties, Yards	5-25 5-55

SCORING SUMMARY—Olton, none; Springlake, Darrell Barlow, six-yard pass from Hal Hudson with 34 seconds left in game; extra points, Jerry Been, pass from Hudson.

of the half, the little signal-caller moved down to the 28 after finding no receivers open. The Ponies started the second half like they meant business, with George Jones returning the kick-off 23 yards to the Olton 38.

Schenck made nine and Loveless made it a first down at the Springlake 49. Johnson added seven more to the 42 and Schenck ran to the Wolverine 34.

Three plays picked up only four yards, but on fourth down, Jones fought his way down to the Springlake 23 for a new series of downs. Schenck added seven, and

Burrus got one more to the 15. Then Schenck hit the middle twice, but his second effort lacked a foot making the first down and Springlake took over at the 13.

The Wolverines took advantage of a couple of breaks to gain field position. On a fourth down play, Hudson's punt sailed to the Springlake 45 and hit a Mustang on the head.

The crazily bounding ball was nabbed by Springlake's Eddie Townsend, a tackle, and the Wolverines kept possession.

Three plays later, after gaining only one yard, Hudson kicked again. This time the ball died on the Olton one-foot line.

Olton's Johnson later got off a fine 50-yard punt to get the Mustangs out of that hole. The fourth quarter was played between the 35-yard lines until Hudson started hitting passes on the Wolverine touchdown drive.

Springlake picked up 38 yards on the ground and 29 in the air during that five-minute period. In the 43 minutes before that, the Wolverines had managed only 66 yards on the ground and eight in the air.

Hudson and Don Layman led the Wolverines on offense, with Hudson picking up 51 yards in 13 carries and Layman getting 52 in 12. Hudson also completed six passes for 37 yards.

For the Mustangs, Schenck got 47 yards in 18 trips, Burrus got 36 in 12. Loveless picked up 32 in 9. Johnson had 16 in 4, and Jones got 17 in three runs. Schenck also hit two passes for 22 yards.

The Mustangs were minus a co-captain, Robert Duncan, who is out with a knee injury. Duncan will miss six to eight weeks of play.

He was replaced by a freshman, Leon Kendall, at center and Kendall turned in a good performance. Others playing bang-up defensive ball for the Ponies were guards Gary Bizzell and Jimmy Bennett and tackles Joe McKnight and George Phillips. Larry Fancher also was a defensive standout. Tackle Steve Holt and Guard Dale Dent turned in strong line play for Springlake.

Social Security Benefits Told

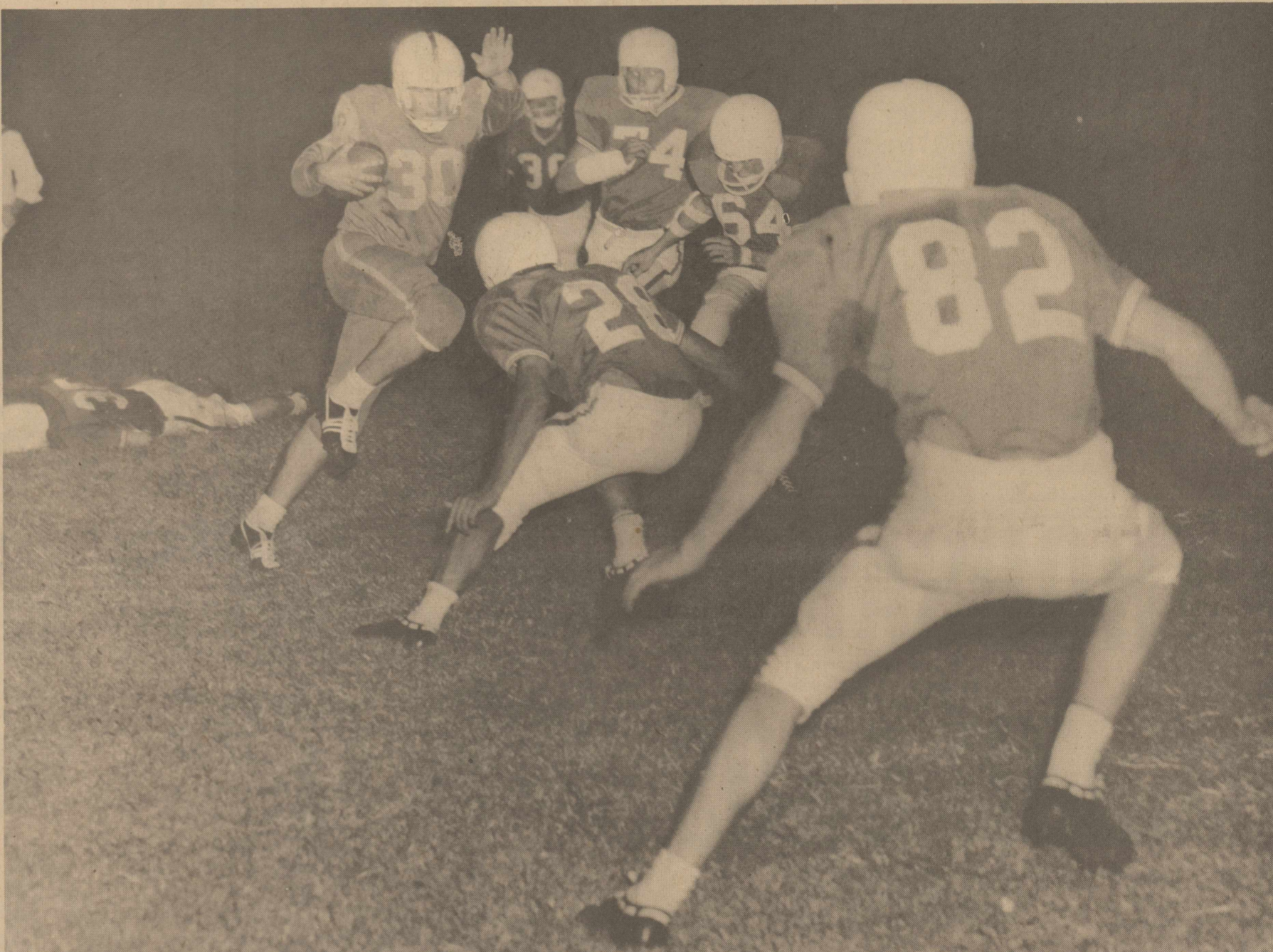
Widows 62 or over, who are collecting social security benefits based on their own work, did not get increases in their payments with the checks delivered to them this month, John G. Hutton, district manager of Lubbock Social Security Office pointed out today. But some of them may find that they can get a small increase in their monthly payments by applying to their social security office.

ADVERTISING PAYS



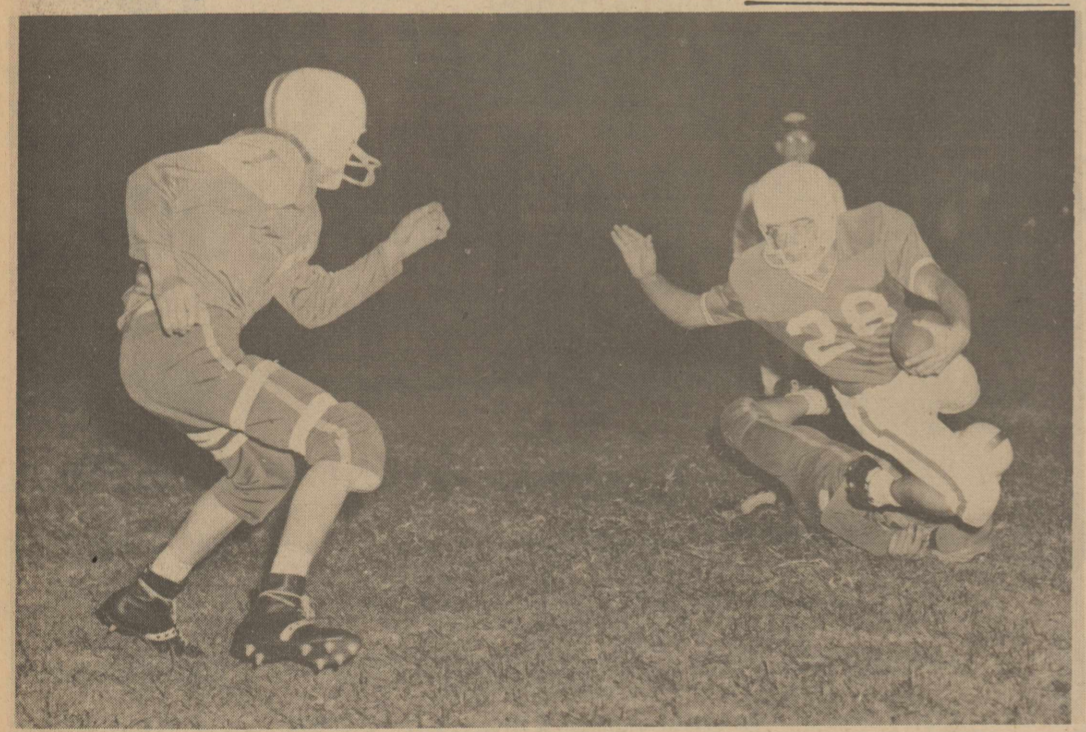
HOLD THAT MUSTANG—Olton Halfback George Jones is pulled down from behind by Springlake's Eddie Townsend after returning the second half kick-off 23 yards to the Olton 38. Closing in to make the tackle secure are Raul

Munoz (41) and Leslie Lewis (71). Olton marched on from there to the Springlake 13, but failed to score.

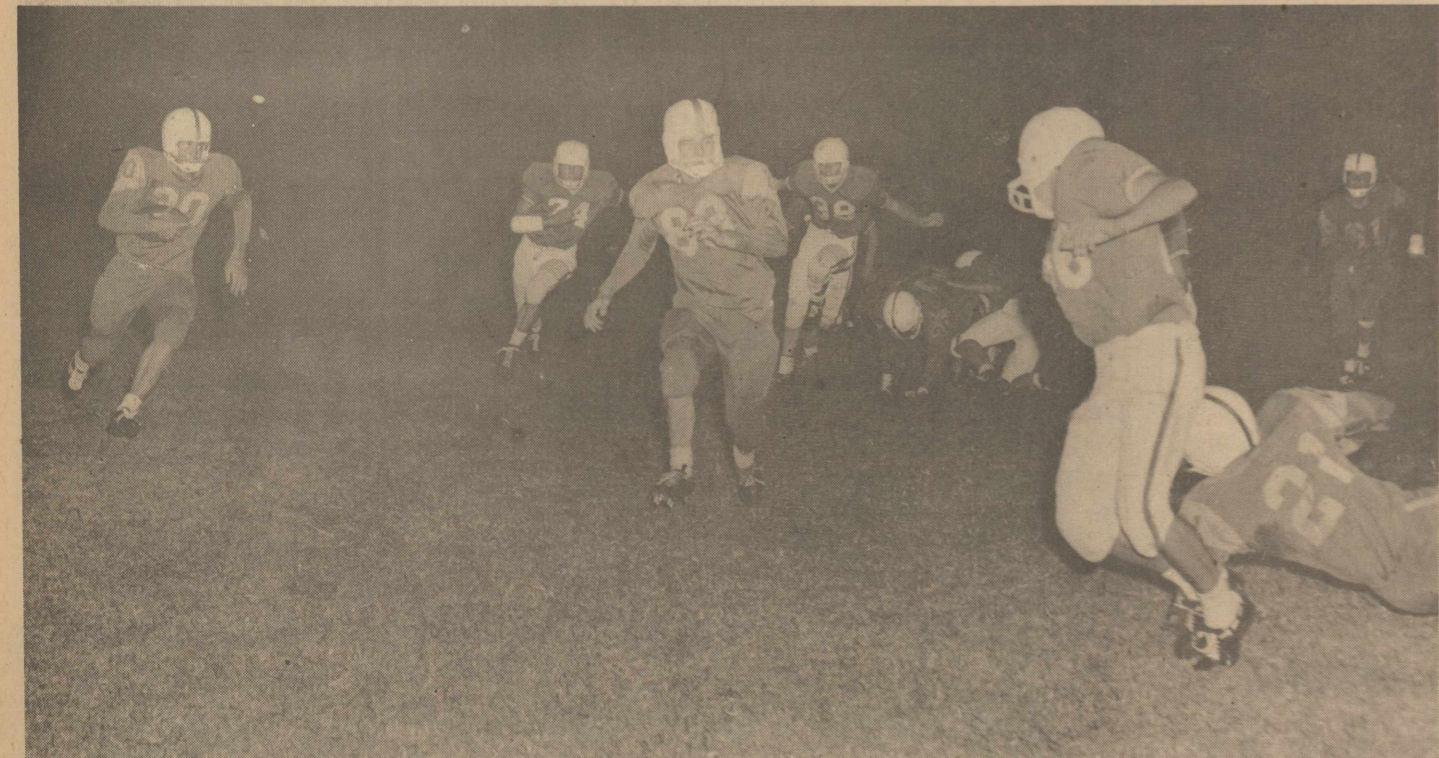


HUDSON ROMPS—Springlake Quarterback Hal Hudson (30) gives the high sign as the Mustangs run him down after a 9-yard pickup to the Olton 30 with only 2:40 left in the game. About to make the tackle is Johnny Schenck

(28), with more help on the way in the form of Larry Fancher (74), Dickie Hudgens (64) and Jimmie Lawson (82).



SCHENCK GOES DOWN—Olton Quarterback Johnny Schenck is hauled down after a 13-yard pick-up to the Springlake 31 moments before the end of the first half in last Friday night's ball game.



WATCH THAT CLIP—Springlake's Hudson gains 18 to the Olton seven on the key gain of the Wolverines' drive to a touchdown that beat Olton, 8-0. The officials missed what appears to be a clip, at right, and the play stood.

Olton 8th Graders Take 20-0 Victory Over Dimmitt

Olton's 8th Graders racked up a 20-0 victory over a heavier Dimmitt 8th Grade team there Tuesday night.

Halfback Ronnie Digby got the first Olton score from three yards out and Olton led at the half, 6-0.

In the fourth period, Rocky Farrar scored on a 25-yard run to make it 12-0.

Then Joe Priest raced 55 yards for the final marker of

the night. He passed to Charles Church for the extra points. Olton's line turned in an outstanding job, holding Dimmitt inside the 10-yard line on three different occasions.

Next game for the Olton 8th Graders is here Tuesday at 5 p.m., when they will meet the Littlefield 8th Graders.

Admission will be 25 cents for children and 50 cents for adults.

The band and pep squad will take part in the game.

Break-In At Spot Lite Cafe Is Reported

A break-in at Spot Lite Cafe on Highway 70 was under investigation by police this week.

The break-in was believed to have taken place sometime during the week the cafe was closed, Sept. 10-Sept. 16, when the owner, Mrs. Bonnie Brown, was in California due to the death of her father.

Police chief Emmett Burrows said articles taken included a whole ham, three boxes of cigars, three boxes of chewing gum and two to three hundred pennies.

He also said four t-bone steaks had been cooked and eaten in the cafe sometime during the week.

One of the first things a man finds out after he gets married is that intelligence is no match for intuition.

VISIT ELKINS
Rev. and Mrs. A.C. Lyons, Mr. and Mrs. Henry Wright and Mr. and Mrs. Bob Waddell, all of Amarillo, visited Mrs. Lavelle Elkins and the L.G. Elkins Sunday.

Happiness comes when we stop worrying about the troubles we have, and offer thanks for all the troubles we don't have.

ADVERTISING PAYS

WILL HARVEST YOUR MILO

All good equipment

Call Collect

W.J. Lumpkins, Box 114

PHONE 3591

HAPPY, TEXAS

CALLING ALL BOYS AGES 6 - 10

Be Sure And Enter The Ford

PUNT, PASS AND KICK CONTEST

Register Between Now And October 14th

You May Win A Complete Football Uniform, A Warm-Up Jacket or a Football—15 Prizes In All Will Be Awarded—Plus You Get A Chance To Go On To National Honors. Contest Date Is Oct. 21, So Get Your Entry In Now.

Pro Football Guide Books, Rule Books and PP&K Buttons For Every Boy Who Enters!

Hall-Sides Motors, Inc.

Olton

"Your Friendly Ford Dealer"

Texas

GO MUSTANGS - BEAT HALE CENTER

FOOTBALL

WEEKLY PRIZES!

CONTEST RULES

Winners selected in each ad must be circled in ink or pencil. Tie-breaker winners must be circled and scores printed in the spaces made available for them.

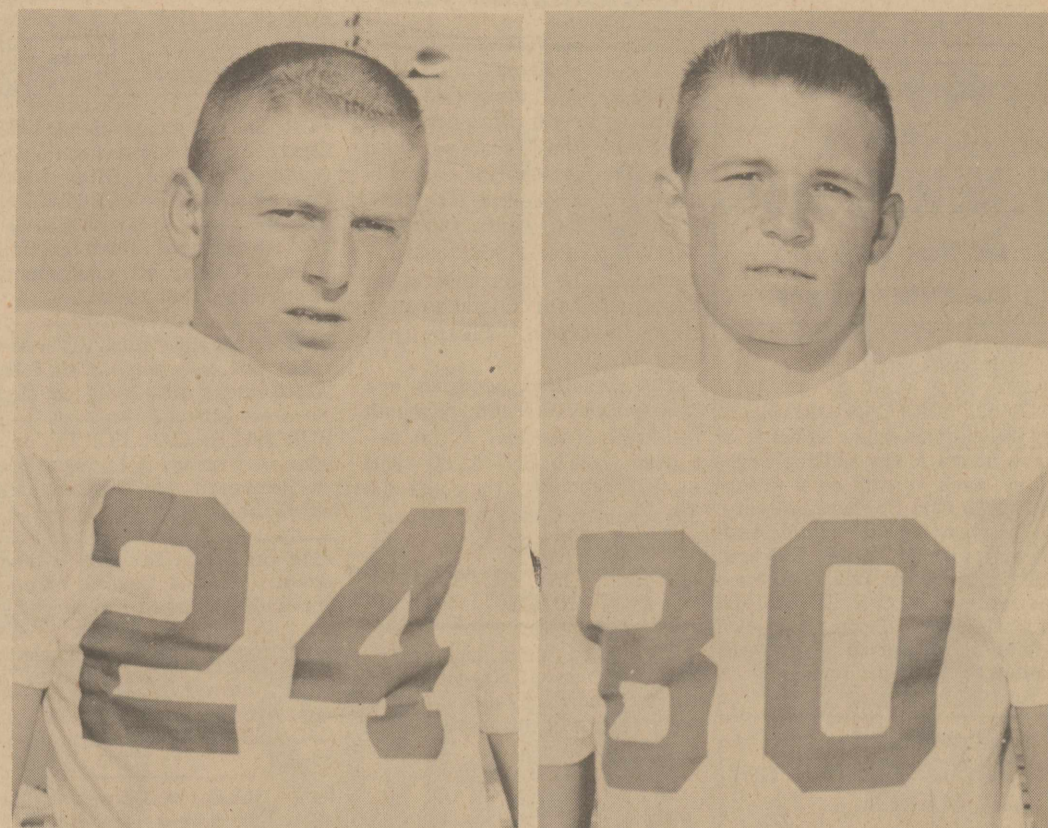
Each week's entry must be turned in to one of the merchants sponsoring the contest. Contestants are given a week to prepare and turn in their entries. When they receive their paper on Friday, they have until the next Friday at

4 p. m. to turn in their entries.

Sponsoring merchants may accept mailed entries, but none mailed directly to the Enterprise will be accepted. All late entries will be discarded.

In case of ties, a coin will be flipped to determine the winners.

Anyone may enter except employes of the Enterprise or their families.



GARY JOHNSON
HALFBACK

ROY MOSS
END

LAST WEEK'S WINNERS

Top Three Winners Each Week Will be Listed Here
See How Often Your Name Can Be Listed

- 1. Gene Varner, 13-0
Rt. D, Nazareth
- 2. L.H. McAdams, 12-1
Box 316, Olton
- 3. Jerry Dennis, 12-1
Olton

WEEKLY PRIZES

Weekly prizes will be awarded in the following manner:

FIRST PRIZE **\$10** SECOND PRIZE **\$6** THIRD PRIZE **\$4**

1961 FOOTBALL SCHEDULE

NON CONFERENCE		
Olton 14	Petersburg 12	
Olton 14	McCamey 18	
Sept. 15	Springlake	Here
Sept. 22	Hale Center	There
Sept. 29	Open Date	
Oct. 6	Hereford	There
CONFERENCE		
Oct. 13	Muleshoe	Here
Oct. 20	Morton	Here
Oct. 27	Lockney	There
Nov. 3	Abernathy	There
Nov. 10	Floydada	Here

TIE TEXAS TECH ANTON
BREAKER at TEXAS at HART

Name

Address

HIGGINBOTHAM-BARTLETT CO.

"Good Lumber"
All Kinds of Building Materials- Pressure Water Systems
Plumbing Fixtures
Phone 285-2939
TULIA AT ABERNATHY

G. H. BLEY

"YOUR PHILLIPS 66 DEALER"



Phone 285-2515
TULSA AT ARKANSAS



HOWARD HALL INSURANCE

Phone 285-2494

PETERSBURG AT HALE CENTER



ED THOMPSON IMPLEMENT

"YOUR JOHN DEERE DEALER"

Phone 285-2637

SMU AT SOUTHERN CAL.

OLTON CO-OP GIN

It's Profitable to Patronize your Co-Op Gin

Phone 285-2525

DIMMITT AT MULESHOE

THOMPSON CHEVROLET CO.

"A GOOD PLACE TO BUY A CAR"

Phone 285-2646

BAYLOR AT PITTSBURG

OLTON BOWLING CENTER, INC.

Come By And Bowl Before-And After The Game
Snack Bar Open Before and After The Game

Phone 285-2666

LITTLEFIELD AT PLAINVIEW

OLTON STATE BANK

Member FDIC

Phone 285-2653

RICE AT GEORGIA TECH

FARMERS GIN

TANDEM MOSS LINT CLEANERS — DOUBLE DRYING
Improved to Give You Faster, Better Service

Phone 285-2075

TEXAS A&M AT LSU

JACK STRAW GIN CO.

YOUR FUTURE GINNER

Phone 285-2343

TCU AT OHIO STATE



Parsons Furniture

"Where A House Becomes A Home"

Phone 285-2767

Parsons Funeral Home

Oxygen-Equipped

Ambulance Service

Phone 285-2621

BORGER AT PALO DURO

SELL · BUY · TRADE · HIRE · SERVICE · HELP WANTED · EMPLOYMENT OPPORTUNITIES **WANT ADS!**

FOR ALL GEAR HEAD Service and Repair SEE W. M. Whitesides
207 East 5th Street
PLAINVIEW, TEXAS

WANTED
WOMAN WHO CAN DRIVE... If you would enjoy working 3 or 4 hours a day calling regular clients on a group of Studio Girl Cosmetic clients on a route to be established in and around Olton, and are willing to make light deliveries, etc., write to STUDIO GIRL COSMETICS, Dept. SW-42, Glendale, California. Route will pay up to \$5.00 per hour.

OLTON LODGE NO. 1257 A. F. & A. M.
Stated Meetings 3rd Thursdays
DOYLE PINSON, W. M.
W. G. FINNEY, secretary
Visitors Are Welcome
Members Urged To Attend.

PARLEY'S Barber Shop
LOCATED NEXT DOOR TO LESTER'S
Olton, Texas

IRRIGATION WELL SERVICE
PULLING AND SETTING
PERFORATING CASIN IN WELL
CLEAN OUTS
DIGGING DEEPER
JACK MCFARLAND
PH CAPITOL 46554
PLAINVIEW, TEXAS

FOR SALE
New 3-Bedroom house. Carpeted, priced cheap. Low down payment. Also have some farm listings 80 A 160 A, all near Olton. All priced to sell. See:
J.C. HOOD
Phone 285-2055

TOP SEED PRICES.
We are paying top Prices for commercial quantities of dry Blackeyes, Mung Beans, Pinto Beans and other field seeds. Our new processing plant is designed for fast unloading -- LESS BREAKAGE -- more farmer profit.
DORMAN & COMPANY
1920 Avenue E
Phone: POrter 2-0896, Lubbock

WAYNE'S
— OFFICE SUPPLIES —
PRINTING And LITHOGRAPHING
PHONE 285-2225 Olton, Texas

B.W. Armistead, O.D.
Glenn S. Burk, O.D.
OPTOMETRISTS
406 LFD. Drive - Phone 385-5147
Littlefield, Texas

CLASSIFIED ADS

Rates
Rates on classified advertising are: 6 cents per word first insertion; 3 cents per word second insertion, and each additional consecutive insertion. Minimum 50 cents first insertion, 25 cents additional insertions. The Enterprise is not responsible for mistakes after first insertion. Please read your ad.
All classified accounts are due and payable 10th of month following insertion. A flat rebilling fee of \$1.00 will be charged for all accounts 30 days past due and for all successive rebillings.

For Sale
FOR SALE: White potatoes, \$2 per sack or \$2.50 delivered. 8 miles north, 1/4 east of Olton. Melvin Mitchell. Phone 285-2224. 33-tfc.

For Sale
FOR SALE: Two piece living room suite. Good condition. \$40. Call 285-2175. 33-2tc.

WELL DRILLING
16-Inch Heavy Casing
Drilling & Casing
Repair All Types Of Irrigation Pumps Gearhead Service New F&F Pumps Well Deepening Pulling & Setting
B. C. Fitts, Inc.
PHONE 285-2111-Olton

REGISTERED Polled Herefords Quality Calves MITCHELL HADDAD
Box 158 Olton, Texas

LEVI'S Smith & Struve
OLTON, TEXAS

Water Well Drilling
NO MONEY DOWN 3 YEARS TO PAY
Pressure Pump Service
CALVIN COOK
CA-4 4498 2519 Gladney (Seth Ward)
PLAINVIEW, TEXAS

For Sale
FOR SALE: Golf Cart 4 passenger Crosley. Ready to go. \$150 Ed Hart, Anton. 32-tfc.

FOR SALE: Extra clean 1955 Chevrolet 1/2 ton pickup. Very reasonable price. Olton Meat Co. Phone 285-2881. 13-tfc.

FOR SALE: 57 Ford Station Wagon. Clean, all equipment. Phone 285-2494. 13-tfc.

FOR SALE OR RENT: Three-room and bath home. Call E. E. Whittington, 285-2727. 26-tfc.

FOR SALE: CAR PORTS, any size, or color. All steel. See at Roberson Mobile or call 285-2131. 27-tfc.

FOR SALE: Tascosa seed wheat, \$2.25 a bushel. Phone 285-2120. Emmett Harper. 28-tfc.

FOR SALE: R.J. Pinkerton home, corner of third street and Avenue H. Olton, Texas. Call 285-2833 for information. 33-2tc.

FOR SALE: 80 acres, 6 1/2 miles northwest of Olton, 1/2 mile underground tile. Plenty water; waters good. Contact B.C. Cooner, 28-11tp.

FOR SALE: Four room house to be moved. See Mrs. Tom Ross or call 285-2758. 33-tfc.

FOR SALE: 100 acres of choice land. See T.W. Hackler or phone 285-2779. 32-tfc.

FOR SALE: Tascosa Seed Wheat \$2.25 bushel. See T.W. Hackler. Phone 285-2779. 32-3tp.

FOR SALE: Fixtures and lease building at Playland Cafe. Good dining room. Seats 68 people. On highway 70, 2326 West 5th Street, Plainview. See S.M. Breland, Route 4, Olton or call TU 9-3772 out of Plainview, Texas. 33-2tc.

FOR SALE: Tascosa wheat seed, \$2.25 bushel. Phone 285-2074. Royce McFadden. 32-tfc.

FOR SALE: Model "A" 60 Series (1951) A.C. Combine with pickup fingers. Good condition. Call 4442 Bean, at Silvertown. 31-3tc.

FOR SALE: Nice, 2 bedroom house, kitchen, living room or den, and bath. Approximately 1,000 sq. feet floor space. Clean inside and out. Priced to sell. Phone 285-2939. 31-tfc.

FOR SALE: Set of used golf irons. Priced right. See or call Bill Turner, Olton Enterprise. 31-tfp.

FOR SALE: Vetch seed. \$16 per hundred. W.D. Holley or call 285-2177. 33-tfc.

MAKE COSTUME JEWELRY Novelties, Laminations with liquid plastics. Kits available at Hobby House, Littlefield, 15-tfc.

FOR SALE: 80+ acres 3 miles west of Olton on pavement. One 8-inch well. Cotton allotment 30.8 acres, Contact J.A. Pehs-worth, Jr., Tahoka, Texas. Phone 998-4091. 29-tfc.

FOR SALE: Rye seed. \$1.50 bushel, Art Nafzger, Phone 285-2337. 32-2tc.

For Rent
FOR RENT: Four room modern house for rent. Phone 285-2461. 33-tfc.

FOR RENT: Three room and bath modern house. Contact V.J. Carlisle or call 285-2764. 33-2tc.

Notice
NOTICE: THROUGH WITH IT? Sell it to Price Wrecking. Phone 285-2235. 44-tfc.

LADIES: Could you spare 16 hours a week if you received \$40 for it? If so and you have a car, please write Box 1135, Plainview. 32-3tp.

TRASH BARRELS delivered, \$3. Price Wrecking. Phone 285-2235.

NOTICE: Call Thomas Beauty Shop for latest hair styles and lovely permanents. Phone 285-2029. 28-tfc.

Wanted
WANTED: Custom planting, fertilizing, plowing of any kind. See R.W. Green or Phone 285-2556. 11-tfc.

WANTED: Custom combining work. See L.W. Howard. Phone 285-2532. 31-3tp.

Wanted
WANTED: To make buttons, button holes, buckles, belts, children's garments. Dress making. Wilena Gordon. Phone 285-2401. 27-tfc.

Highway Patrol Reports Seven Rural Accidents

The Highway Patrol investigated seven accidents on rural highways in Lamb County during the month of August, according to Sergeant D.S. Lawson, Highway Patrol supervisor of this area.

These wrecks accounted for three persons injured, and a property damage of \$3,255.00.

LEGAL NOTICE

Statement required by the act of August 24, 1912, as amended by the acts of March 3, 1933, July 2, 1946 and June 11, 1960 (74 Stat. 208) showing the ownership, management, and circulation of THE OLTON ENTERPRISE published each Thursday at Olton, Texas for the year of 1961.

1. The names and addresses of the publisher, editor, managing editor, and business managers are: publisher, W.B. Turner, Box 787, Olton, Texas; editor, W.B. Turner, Box 787, Olton, Texas; managing editor, W.B. Turner, Box 787, Olton, Texas; business manager, W.B. Turner, Box 787, Olton, Texas.

2. The owner is: (If owned by a corporation, its name and address must be stated and also immediately thereunder the names and addresses of stockholders owning or holding 1 percent or more of total amount of stock. If not owned by a corporation, the names and addresses of the individual owners must be given. If owned by a partnership or other unincorporated firm, its name and address, as well as that of each individual member, must be given.)
W.B. Turner, Box 787, Olton, Texas.

3. The known bondholders, mortgagees, and other security holders owning or holding 1 percent or more of total amount of bonds, mortgages, or other securities are: (If there are none, so state.)
G.T. Sides, Box 25, Olton, Texas; Littlefield Press, Inc., Box 72, Littlefield, Texas.

4. Paragraphs 2 and 3 include, in cases where the stockholder or security holder appears upon the books of the company as trustee or in any other fiduciary relation, the name of the person or corporation for whom such trustee is acting; also the statements in the two paragraphs show the affiant's full knowledge and belief as to the circumstances and conditions under which stockholders and security holders who do not appear upon the books of the company as trustees, hold stock and securities in a capacity other than that of a bona fide owner.

5. The average number of copies of each issue of this publication sold or distributed, through the mails or otherwise, to paid subscribers during the 12 months preceding the date shown above was: (This information is required by the act of June 11, 1960 to be included in all statements regardless of frequency of issue.) 1700.

W.B. Turner
Sworn to and subscribed before me this 18th day of September, 1961.
Howard L. Hall (seal)
My commission expires June 1, 1963.

BEE GEE'S Butane Gas

DELIGHTED IS HIS LOVING SPOUSE, THIS GAS IS NOW USED IN THEIR HOUSE



Consumers BUTANE inc
2 WAY RADIO SERVICE
Bartons PRESTRIDGE My N
Phone 285-2240
Butane Gas CARBURETION IGNITION Parts
OLTON, TEXAS

Law Lets Farmers Register Trailers For \$5

The last regular session of the Texas Legislature amended the Texas Motor Vehicle Registration Law to allow farmers to register their farm trailers and farm semi-trailers for a \$5 fee providing the gross weight is not less than 4,000 or more than 10,000 pounds. Farm trailers weighing less than 4,000 pounds, gross weight, are still exempt from registration by statute. Those exceeding 10,000 pounds, gross weight, must register as a regular commercial trailer.

Captain J.L. Miller, License and Weight Service of the Department of Public Safety, advised however that any vehicle bearing the \$5 plate must not: (1) exceed 30 MPH, (2) be operated for hire, (3) have steel or metal wheels in contact with the pavement and it must be

equipped with an adequate hitch to remain secured to the towing vehicle and be operated and equipped in conformity with all other provisions of the law. Violation of any of the above sections of the law nullifies the \$5 registration fee and the trailer will be subject of the regular registration fees and penalties as prescribed by law.

This does not change the existing law which requires that all trailers or semi-trailers having a registered or gross weight in excess of 3,000 pounds be equipped with clearance lamps, side marker lamps, and reflectors as well as a tail light and stop light, if the stop light on the towing vehicle is obscured.

Captain Miller further stated that all machinery type vehicles, other than machinery

used solely for the purpose of drilling water wells and road construction machinery, must now be registered with regular license plates and title applied for. This includes oil field drilling and servicing machinery. Regardless of whether such machinery is a unit within itself or is mounted on a conventional vehicle or chassis.

Water well drilling units and road construction maintenance equipment are required to have either the \$5 registration plate or a regular registration plate,

Assembly Of God Plans Revival

There will be a revival beginning Wednesday, Sept. 27 and ending Friday, Oct. 6, at the Assembly of God Church. Rev. Charles C. Robinson, Waxahachie, will conduct the revival. Rev. Gene Falser, Olton Assembly of God Pastor, will lead the singing.

Services will be held at 7:30 each evening.

depending upon how the equipment is used.
Captain Miller suggested that anyone needing further information should contact their county tax assessor and collector.

You Are Invited HIGH PLAINS RESEARCH FOUNDATION FIELD DAY
September 27, 1961
to see **R. C. Mitchell's Hybrid Millos.....**
STANDMASTER STANDKING
In comparison with other varieties

COTTON DEFOLIATION
12 YEARS EXPERIENCE
Whitaker Aerial Service
PHONE 285-2112 OR 285-2603 IN OLTON
HART PHONE 938-4436

Partners in Progress

PLAINS COTTON GROWERS INC. PROVIDES THESE SERVICES

LOOK FOR THIS EMBLEM IN YOUR GIN OFFICE. IT IS A SIGN OF YOUR AND YOUR GINNERS PARTICIPATION IN A PROGRAM OF PROGRESS

Research

1. Established a Cotton Research center at the Pilot Spinning Plant at Texas Tech.
2. Cooperation with USDA and other agencies on programs of cotton breeding, seedling disease, weed control, fertilizer research and dry-land water conservation.
3. Cooperation with Texas Tech College on programs of gin engineering, harvesting economics and quality studies.
4. Secure USDA funds for spinning and fiber evaluation studies at the pilot spinning plant.
5. Program investigating the instrument classing of cotton.

Service

1. Representation in all legislative matters pertaining to cotton.
2. Conducted successful campaign to get light spots recognized for a higher loan rate.
3. Conduct quality education program.
4. Sponsor scholarships and contests at Tech.
5. Cotton acreage allotment and loan vigilance.
6. Analyses of market situations.

Promotion

1. Technical meetings with domestic and foreign spinners on utilization of Plains cotton.
2. Disseminate information on agricultural events through local and area news media and radio facilities.
3. Conduct advertising campaign on Plains cotton, nationally and internationally.
4. Compile and distribute area cotton quality reports and information to mills and merchants throughout U. S. and abroad.
5. Print a monthly publication.
6. Developed all cotton bale bagging.

Plains COTTON GROWERS, INC.
TELEPHONE PO 2-0553 1720 AVE. M LUBBOCK, TEXAS



ALFRED WHITE, minister of the Main Street Church of Christ, is shown here with the equipment he will use in operation of the church's non-commercial radio station here.

Services Held For Father Of Olton Woman

Funeral services for Leroy Perkins, 81, father of Mrs. Bonnie Brown of Olton, were conducted Sept. 12 at Madera, Calif., in the Church of Christ. He died Sept. 9 at his home in Madera after suffering a stroke.

Born Oct. 7, 1897 in Missouri, Perkins came to Texas and was a long time resident of Paducah.

Survivors include five sons, Bill of Springlake; Raymond of Fort Worth; Roy of Wichita Falls; Russell of Phoenix, Ariz.; and L.V. of Madera, Calif.; two daughters, Mrs. Aubrey Gentry of Madera, Calif., and Bonnie Brown of Olton.

"Flu", Cold Make Rounds

The "flu" and the common cold seemed to be making the rounds in Olton when Community Clinic reported numerous cases this week.

A number of preventative cold shots were also given. Dr. Basil Johns said these shots come in a series of five.

"Flu" shots come in a series of two and are effective for a three month period. A booster shot may then be taken.

OPEN 7 DAYS A WEEK

WEEKDAYS 5:30 AM - 9 PM
SUNDAYS 6 AM - 8 PM

Spotlight CAFE

CARD OF THANKS

I would like to express my thanks to all the people who were so kind to me during my recent surgery and stay in the Lubbock Hospital. The visits, prayers, flowers, and food were all greatly appreciated.

Mrs. W.R. Bean

L. O. Kelley Services Held At Springlake

Funeral services for Lester Orville Kelley, 47, who died of a heart attack about 3:15 p.m. Tuesday at his home three miles north and one mile east of Springlake, were held this afternoon at 3 p.m. in the Springlake Baptist Church. The Rev. C.T. Jordan of Childress officiated, assisted by Rev. M.B. Baldwin.

Burial was in the Littlefield Memorial Cemetery under direction of Parsons Funeral Home, Olton.

Kelley was talking to a neighbor, P.A. Washington, in the driveway of his home when he suddenly slumped in his pickup.

Kelley, a farmer, was born in Sweetwater, Okla., and moved to the Springlake area from Hereford in Oct. of 1933. He had also lived in Bovina. He was a member of the Oddfellows and also a member of the Springlake Baptist Church.

He is survived by his wife, Letta; two daughters, Beverly and Billie Kaye, both of the home; one brother, Lonnie Kelley, Bovina; and four sisters, Mrs. Odie White, Bovina; Mrs. C.E. Gatlin, Meridian; Mrs. R.W. Smith, Healdsburg, Calif.; and Mrs. E.A. Males, Vallejo, Calif.

Pallbearers were Bill Struve, Furch Riley, Arnold Washington, Clarence Kelley, Alvin Kelley, and Lowell Watson.

Local Merchants Plan Breakfast

A group of Olton merchants will host the Plainview Chamber of Commerce at a breakfast here Saturday morning, according to Dick Whiteley, manager of the Olton Chamber of Commerce and Agriculture.

Last year the Olton group was entertained in Plainview.

Some people are like blisters. They don't show up until the work is finished.



PEACHES	THREE STAR SPICED 2 1/2 CAN	19c
MARSHMALLOWS 2 FOR	CURTISS 10 OZ. BAG	29c
PEAS 2 FOR	303 CAN MISSION	29c
SHORTENING	3 LB. CAN JEWEL	59c
COCOA 1/2 LB. CAN	HERSHEY	29c
STRAWBERRIES	10 OZ. CAN FROZEN	15c
BACON 1 LB. PKG.	WILSON CORN KING	65c
FRANKS 3 LB. BAG	PINKNEY JUMBO	\$1.09
NO. 2 CAN COMSTOCK CHERRY PIE FILLING 2 FOR		49c
TIDE GIANT BOX	WITH \$5 OR MORE PURCHASE	49c
BEET SUGAR	10 LB. BAG CRYSTAL	95c
OLEO 1 LB. CTN. BLUE SEAL	2 FOR	29c

STEAK T-BONE SIRLOIN ROUND LB.

79c

CHOICE HEAVY PEN FED BEEF

TOMATOES VINE RIPE	LB.	7c
AVOCADOES LARGE - EACH		15c
SWEET POTATOES HOME GROWN	LB.	7c
NEW CROP APPLES WASHINGTON FANCY RED DELICIOUS	LB.	19c

PEARS EARLY GARDEN OR BANQUET 2 1/2	2 FOR	65c
SPINACH 300 CAN HUNTS	2 FOR	25c
TUNA FLAT CAN STARKIST		27c
ORANGE ADE HI-C 46 OZ. CAN		29c
CHILI NO. 2 CAN FRITO NO BEANS		53c
COFFEE MARYLAND CLUB	1 LB. CAN	65c
CRACKERS HI-HO	1 LB. BOX	35c
MEAL GLADIOLA WHITE	5 LB. BAG	35c
FLOOR WAX SIMONIZ ELECTRIC POLISHER	QT. CAN	79c
GREEN BEANS KIMBELL WHOLE	303 CAN	21c

the **BEST** way to **BEAT HEAT** is with year 'round **GAS** air conditioning

Enjoy COMPLETE cooling comfort for little more than the cost of Gas heating! Choose either the dual cooling-heating unit for new homes, or the add-on cooling unit for existing ducted central heating plants. And remember, Pioneer provides continuing maintenance — a mighty important factor to consider.

LIVE MODERN... FOR LESS... WITH GAS!

Pioneer Natural Gas Company

SPECIALS BEGIN FRIDAY, SEPTEMBER 22

DOUBLE GUNN BROS STAMPS EVERY WEDNESDAY

Phone 285-2250

Free Delivery

CASH WAY SPECIALS EVERY DAY

Where Friends Meet and Prices Talk

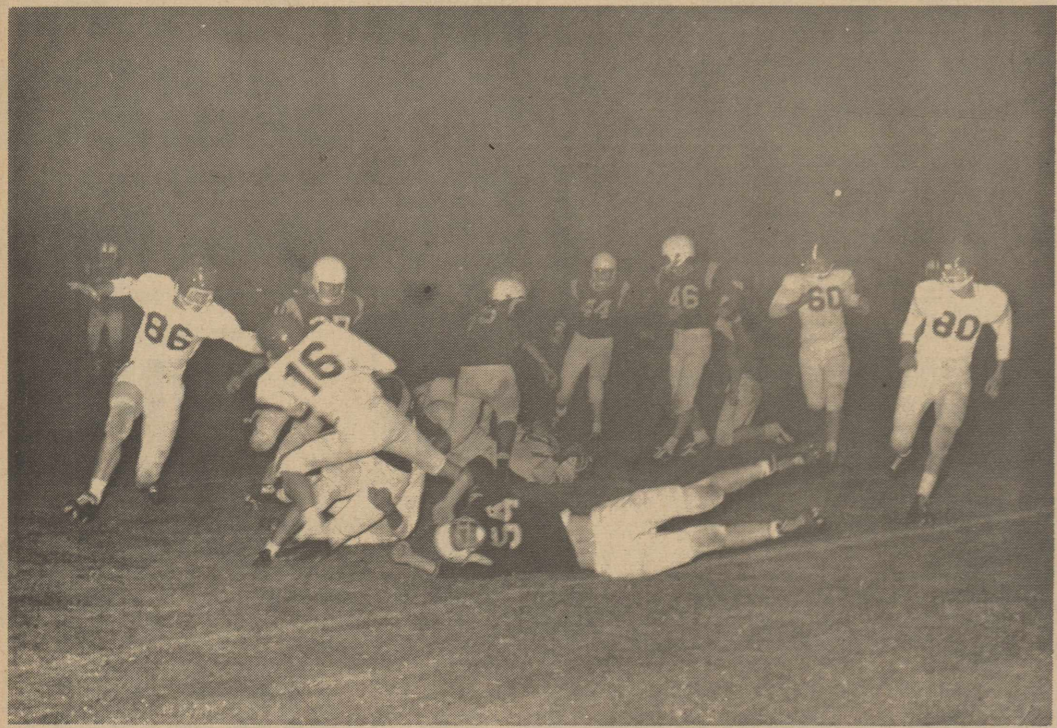
FOOD STORE

Thursday

THE HART BEAT

Sept. 21

A SUPPLEMENT TO THE OLTON ENTERPRISE



Longhorns Take New Deal With 16-0 Victory Friday

The Hart Longhorns blasted the New Deal Lions 16-0 Friday night at New Deal with fullback Larry Lee personally making 205 of the yards.

Outstanding on defense for Hart were Eufemio Rubalcaba, guard; Johnny Kittrell, end; Royce Tally, tackle and his running mate, David Irons.

David Attebury, fullback for New Deal, led the Lion offensive efforts. Don Brown, end, and Jimmy Justice, guard, gave outstanding performances on defense.

After taking the opening kickoff, the Longhorns moved from their own 37 to the New Deal 42 where they made their first and only fumble of the game, with New Deal recovering on

the 42.

They took the ball back to the Hart 37, where play had originally begun, and fumbled the ball back to the Longhorns.

It was at this time that the Longhorns began the march to their first touchdown march, a drive of 63 yards in 12 plays, with 4 first downs racked up in the process.

Lee picked up 40 of the 63 yards, the longest a 14 yard gain around right end.

It took the Longhorns just 8 plays to reach the New Deal 5 yard line on the drive, but it took four more plays to crack over for the TD, with Lee scoring from 4 yards out around end.

Billy Farris, 130 lb. soph-

omore halfback scored the extra points to make it Hart 8 and New Deal 0.

Four plays after the kickoff, Rubalcaba jarred the ball out of Attebury's arms and recovered on the New Deal 41 but the Lions held on their own 36.

They began a drive which took them to the Longhorn 23 when another fumble was recovered by Rubalcaba and Tommy Morrison on the Hart 12 yard line.

The score remained 8-0, Longhorns, at the half.

In the early part of the fourth quarter the Lions began another drive to the goal but the Longhorns held on the Hart 16 and set the stage for an 84 yard run by Lee.

Dennis McLain ran the extra points making the score 16-0.

Next week, the Longhorns will go to Kress for a bout with the as yet undefeated Kangaroos of district 3-A.

Funeral Services For Hart Infant Held Saturday

Funeral services for Shawn Ervin English, five-day-old son of Mr. and Mrs. Cecil R. English of Hart, were held at 2:30 p.m. Saturday in the Hart Baptist Church with Rev. G.C. Applewhite, Lockney Baptist minister, officiating.

The baby, one of twin sons of the Hart couple, died at 6:40 a.m. Friday morning at the Medical Center Hospital in Plainview.

Survivors besides the parents include five brothers, Wayne Lee, Woodie Bryan, Cecil Wade, Michael Ray and Shane Venice the twin; grandparents, Mr. and Mrs. Earnest Martin of Hart, Mrs. Frankie English, El Sobrante, Calif., Wade English, San Pablo, Calif.

Interment was in the Hart Cemetery under the direction of the Lemons Funeral Home, Plainview.

School Issues Emergency Rules

Emergency instructions for parents of school children were issued by the Hart School.

Parents are asked to not bring cars into the school area as it would hamper getting the children to places of safety.

In case of an emergency, children can be picked up at these cellars:

- The entire first, second and third grades will go directly to the Baptist Church cellar; Mrs. Purcell's fourth grade, Joe Bailey's cellar;
- Other fourth grade students to Max Stephen's cellar;
- Fifth grade, Mrs. A.L. Aven's cellar;
- Sixth grade, Ray Bennett's cellar;
- Seventh grade, Herman Burress cellar;
- Eighth grade, H.H. Sullivan's cellar;
- High school students will go to cellars at Miles Cox, L.C. McLain, Willis A. Hawkins, Sr., Judd Davis, William Gallion, Jimmy Bitner and Pat Patterson.

Adults who can reach cellars other than those especially assigned to the grades are asked to do so.



HERE'S GLENN CROWE, minister of the Hart Church of Christ, as he displays equipment he will use in operation of the church's non-commercial radio station at Hart.

CARD OF THANKS

Our heartfelt thanks to all who extended comfort and sympathy in our recent sorrow during the loss of our sister, Mrs. H.H. Kisselburg. Our thanks for the beautiful flowers, cards and other kindnesses extended to us.

May God bless you.
Homer G. Inscore

Mrs. Fancher Is Honored At Bridal Shower

Mrs. Jerry Fancher of Olton, nee Miss Glenda Sue Hardy, was honored with a bridal shower, from 3 to 5 p.m. Sept. 5 at the home of Mrs. Clyde

Witten, west of Edmonson.

Guests were registered by Mrs. Jim Grishma. A corsage of pink carnations was presented the bride and corsages of white carnations to her mother, Mrs. Terry Hardy and his mother, Mrs. Cloys Fancher, of Olton.

Mrs. J.R. Duvall and Mrs. John Stephenson served strawberry punch and white cake squares topped with pink rosebuds, mints and nuts from appointments of crystal and silver.

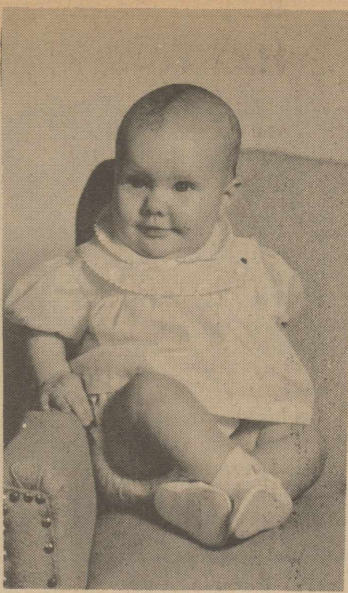
The table was laid with an off-white lace cloth over pink. The centerpiece was a white lattice archway covered with sweetpeas in the background steps containing a miniature bride and groom and attendants. Pink sating ribbon with orchid glittering words spelled out "The Fancher's."

About 50 guests attended and were present from Hale Center, Hart, Olton, Valleyview, Plainview and Edmonson.

The hostess gift was a service for eight of dinnerware and stainless steel tableware.

Hostesses were Mmes. Clyde Witten, Floyd Wilson, Ben Kennedy, Lester White, Tom Witten, D.L. Lewis, Alex Reeves, Andy Wieber, Jim Grishma, J.R. Duvall, John Stephenson, Buford Hamby, William Hall and Lee Jones, all of Edmonson. Others were Mmes. Lloyd Farris, Ruby Bennight, J.F. Clark, Howard Sharp, Judd Davis, O.C. Kittrell, Jerry Kittrell, Melvin Aven, Paul Brooks, Jim Brooks, Milton Sharp, and Roy Taack, all of Hart.

Mrs. Fancher, daughter of Mr. and Mrs. Terry Hardy of between Hart and Edmonson, and Mr. Fancher were married August 24.



HART PRESENTS Donna Annette Motley, 9-month old daughter of Mr. and Mrs. Weldon Motley of Olton. Grandparents are Mr. and Mrs. Myrtle Bradley of Hart and Mr. and Mrs. Raymond Motley of Olton.

WANTED: Custom dress making, designing and altering. Evelyn Grimes, Phone 938-4613. Route D Nazareth. 32-1tc.

Henderson TV

Repair Service At Night In Hart
Phone MI 7-3636 in Dimmitt
Hart WE 8-3234

SEE

BAILEY MOTOR SERVICE

FOR

Complete Brake work
All Kinds of Automotive Work
Brake Drum Turning
State Stickers
JOE BAILEY, OWNER
Phone 938-3710 Hart

Holt's Gear Head Repair Shop
SPECIALIZING IN ALL TYPES OF GEAR HEADS

REPAIR AND SELL NEW AND USED DRIVE SHAFTS WL37 AND WL41-- REPAIR GENERATORS MAGNETOS AND STARTERS--AND DO ALL KINDS OF WELDING.

I Will Appreciate Your Business
PHONE 938-3737 HART, TEXAS

Date Set For Making Pictures At Hart Schools

Pictures of Hart High School seniors and faculty members will be made Sept. 28. Other school children will have their pictures made Sept. 29.

Photographer will be Paul Benton.

Rhoda Guild Elects Officers

The Hart Rhoda Guild met Wednesday in the home of Mrs. Jack Dyer. The called meeting was to present a program on the Secrets of Charm given by Mrs. W.T. Sanders and Mrs. Ralph Futrell.

Officers were also elected at this meeting. New officers include Mrs. Tom McLain, president; Mrs. Arlene Dyer, vice president; Mrs. Cleve McLain, secretary and reporter; Mrs. Bill Hill, rec. leader; Mrs. Suzanne Tipps, treasurer; and Mrs. Bill Rich, historian.

Present were Mmes. Melvin Aven, Jimmy Bitner, James Clay, Weister Cleavenger, Doyle Davis, Lloyd Davis, Jack Dyer, Jack George, Joe Hart, Bill Hill, Bud Hill, Weldon Jones, Tom McLain, Cleve McLain, Bobby Reed, Bill Rich, and Mrs. Suzanne Tipps. Special guests were Mrs. Sanders and Mrs. Futrell.

Radio Station Schedule Set

Schedule for the Hart Church of Christ radio station announced this week is as follows:

Monday through Saturday - mornings, 6:30-7, music with Tom Burrus; 7-7:15, Life Line; 7:15-7:35, Bible Study; 7:35-7:40, news; 7:40-8, chorus misc.

Evenings, 5:30-6:30, music; 6:30-6:45, devotional.

Sunday, 7:30-8:30 in the morning, devotional.

HART SCHOOL MENU

Sept. 25-29

MONDAY - Steak and gravy, creamed potatoes, celery and carrot stick, hot rolls and jelly, butter, milk.

TUESDAY - Hot dogs with chili sauce, french fries, lettuce wedge, plain cake with cherry sauce, butter, milk.

WEDNESDAY - Brown beans, cream style corn, tomato wedge, onion slice, peanut butter cookie, cornbread, butter, milk.

THURSDAY - Pressed ham sandwich, french fries, lettuce and tomato wedge, peach cobbler milk.

FRIDAY - Roast pork, candied yams, cabbage pineapple salad, hot rolls, apricots, butter and milk.

FOOTBALL CONTEST

WEEKLY PRIZES!

CONTEST RULES

Winners selected in each ad must be circled in ink or pencil. Tie-breaker winners must be circled and scores printed in the spaces made available for them.

Each week's entry must be turned in to one of the merchants sponsoring the contest. Contestants are given a week to prepare and turn in their entries. When they receive their paper on Friday, they have until the next Friday at 4 p.m. to turn in their entries.

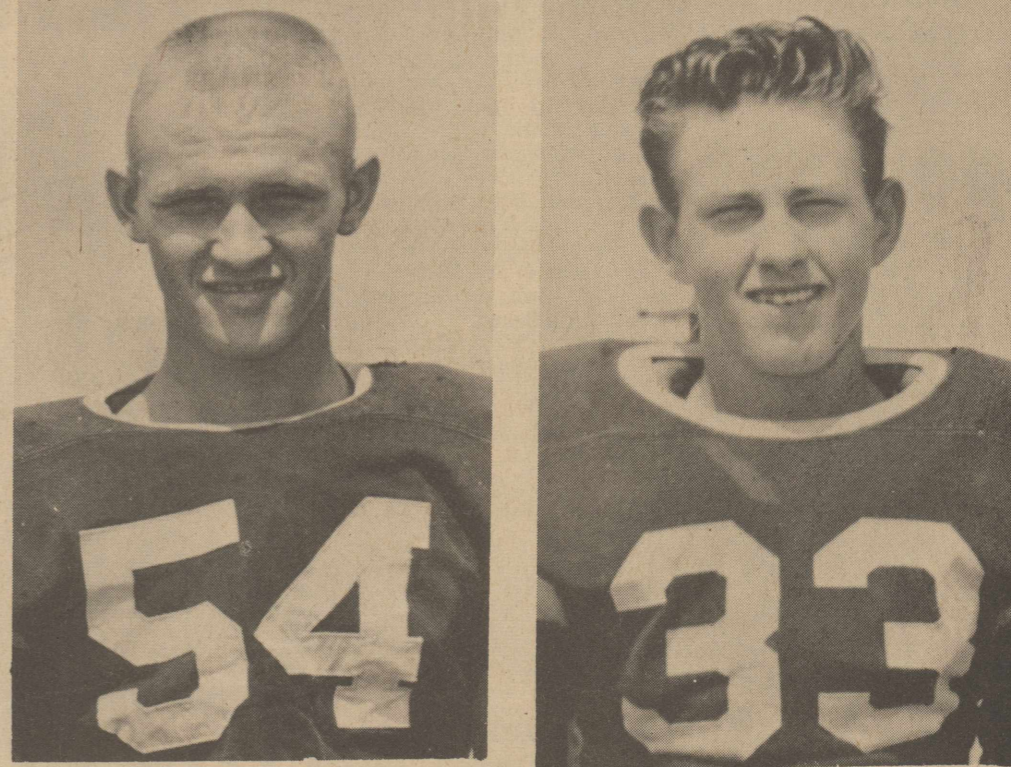
Sponsoring merchants may accept mailed entries, but none mailed directly to the Enterprise will be accepted. All late entries will be discarded.

In case of ties, a coin will be flipped to determine the winners. Anyone may enter except employes of the Enterprise or their families.

LAST WEEK'S WINNERS

Top three winners each week will be listed here. See how often your name can be listed.

1. Todd Varner, Rt. D. Nazareth 7-1
2. Connard Riddles
416 Cameron, Dallas 7-1
3. A.A. Smith
Box 301, Olton 6-2



HART LONGHORN 1961 SCHEDULE

HART 28	NEW HOME 6	
HART 0	SPRINGLAKE 31	
HART 16	NEW DEAL 0	
Sept. 22	KRESS	There
Sept. 29	ANTON	Here
Oct. 6	WHITHARREL	There
Oct. 13	BOVINA	There
Oct. 20	OPEN	
Oct. 27	HAPPY	Here
Nov. 3	LAZBUDDIE	Here
Nov. 11	VEGA	There

FARMERS STATE BANK

MEMBER FDIC

DIMMITT AT MULESHOE

HART OIL & BUTANE CO.

Phone 938-3282

RICE AT GEORGIA TECH

FARMERS GRAIN CO

Phone 938-3271

TEXAS A&M AT LSU

Cox Butane — Cox Auto Parts

Phone 938-3231

BAYLOR AT PITTSBURG

HART GRAIN CO., INC.

Phone 938-3241

BORGER AT PALO DURO

LET'S GO LONGHORN'S

HI-POINT GRAIN & FERTILIZER, INC.

Phone 938-3741

TCU AT OHIO STATE

HART TO HART

Mr. and Mrs. Ivan Mitchell and daughter visited Wednesday through Sunday with relatives in Hart.

Mr. and Mrs. Charlie Warren and family of Floydada visited his brother, Mr. and Mrs. Ray Warren, Sunday.

Willard Pollan of Dalhart visited Friday with Mr. and Mrs. C. V. Martin.

Mr. and Mrs. Roy Connard of Hereford visited Sunday with his sister, Mr. and Mrs. Carl Godfrey.

Mr. and Mrs. H.E. Loman visited his cousin, Mr. and Mrs. Coy Rice, Sunday in Littlefield.

Mr. and Mrs. Lester Richburg visited in Earth Sunday with the Tom Myers and Opal Rudd families.

Konnie and Ena Bowden were in Plainview Thursday night. They also visited her brother, Mr. and Mrs. Glen Roberson, at Cotton Center Sunday.

Mr. and Mrs. Norlan Dudley and Mr. and Mrs. Carol Davis and their families visited in Silverton with their relatives Sunday.

Visiting in the Roy Taack home the past week were Mr. and Mrs. Charlie Rowland of Houston.

Mr. and Mrs. Roy Taack visited his sister, the Bill Cape's, at Littlefield Sunday.

Mr. and Mrs. Melvin Malone of Vernon visited over the weekend with her parents, Mr. and Mrs. Roy Taack.

Mr. and Mrs. E.E. Foster and Mrs. John Holloway were in Lubbock Monday.

On the sick list are Mrs. Ed Bennett and Mrs. Ed Harris.

Mr. and Mrs. Paul Kennedy were in Wichita Falls and Oklahoma City, Okla., this weekend.

Mr. and Mrs. Howard Odle and daughter of Dennison visited his cousin, Mr. and Mrs. H.E. Loman, Sunday.

Mrs. Jim Wellborn spent Saturday night and Sunday with her daughter, Mrs. Lester Lancaster.

Spending Sunday in the Lester Lancaster home were Mr. and Mrs. Oscar Telchik of O'Donnell, Curtis Wellborn and Harold of Muleshoe, Mr. and Mrs. Zemmry Boozer and family of Bovina and Mr. and Mrs. Paul Holcomb and son of Bovina.

Lee Harris were in Amarillo Friday night and Saturday.

Visiting Mr. and Mrs. D.D. Harris were Mr. and Mrs. C.O. Harris and Paul Junior of Silverton Sunday.

Mr. and Mrs. T.C. Ray were visiting in Snyder this weekend with Mr. and Mrs. N.J. Harrison.

Mrs. N.A. Curry was visiting in Hart Friday.

Mr. and Mrs. Lloyd Moon of Tuscon visited Mr. and Mrs. Kenneth Lambert Sunday night.

Mr. and Mrs. Robert Brooks and Mr. and Mrs. Earnest Lee Brooks and family were at Boys Ranch Sunday for the Rodeo.

Jimmie H. Davis

LIVESTOCK DEALER

ORDER BUYER

Phone 938-3522

Hart, Texas

Construction Worker Hurt At Hart Wednesday

Cirilo Ramirez, a construction worker at Hi-Point Grain, was injured Wednesday when a plank fell from scaffold and hit him first on the head and then on the leg and foot.

He was taken to the Plainview Hospital and Clinic where he was reported to have foot and head injuries.

New Teacher Hired At Hart For First Grade

A new first grade teacher, Mrs. Mary Ellen Porter, has been hired by the Hart School System.

Mrs. Porter is a graduate of Pampa High School and Wayland College.

Her husband is a ministerial student at Wayland. Previously, he was in Alaska, where he served three years with the U.S. Army.

Two Arrested Saturday Night In Hart Area

Billy Joe Williams of Plainview was arrested Saturday night at Hart about 9 for transporting liquor in a dry area. His wife, Willie Lee Williams, was arrested at the same time for carrying a pistol without a license.

They were each fined \$100 and court cost Monday morning at Dimmitt.

Arrest was made by Deputy Sheriff Granville Martin.

Jerry Kittrells Are Parents Of Baby Daughter

Mr. and Mrs. Jerry Kittrell are the parents of a baby girl, Teresa Sheree, born Wednesday, Sept. 13, at the Plainview Hospital and Clinic. The infant weighed six pounds, two ounces at birth.

Grandparents are Mr. and Mrs. Judd Davis and Mr. and Mrs. O.C. Kittrell, all of Hart.

Junior High's Next Game Set At Springlake

Hart Junior High football schedule announced this week is as follows:

Sept. 28, Springlake there; Oct. 3, Happy here; Oct. 10, Lazbuddie, here; Oct. 17, Vega, there.

Three Bales Ginned At Hart

Three bales of cotton have been ginned by the Hart gins this week with most area farmers looking forward to a bumper crop.

First bale, belonging to Travis Bundick, was ginned at the Hart of the Plains gin with the next two belonging to Ray Joe Riley and Clint McFarland. Riley's was ginned at the Hart Producers Co-Op Gin and McFarland's was ginned at the Hart of the Plains Gin.

Dinzel Leonard Is In Hospital

The Rev. Dinzel Leonard, who was taken to the Tulia Hospital Sept. 10, was moved Saturday to the Northwest Texas Hospital in Amarillo by Parsons ambulance, Olton. His illness has been diagnosed as encephalitis.

Monday morning, he was reported to be improving.

Mustang Band Will Compete In Fair Parade

Three outstanding West Texas and Panhandle band directors have been named as judges for the 1961 Panhandle South Plains Fair Parade of Bands, D.O. Wiley Parade of Bands chairman, said Monday. The parades that Olton Mustang Band will compete in kicks off the 1961 Fair at 10 a.m. Monday. The Fair closes on Sept. 30.

Bands will compete for \$600 in cash prizes in four divisions, class AAA, AA, A and B.

PARSONS Funeral Home

"AS NEAR AS YOUR NEAREST TELEPHONE"
Oxygen equipped ambulance Service.
We accept any funeral home burial policy.
Phone 285-2621 Olton

School Menu

Sept. 26-29, 1961

TUESDAY - Chili burger, vegetable beef soup, peanut butter and crackers, lettuce and onion salad, apple crisp and milk.

WEDNESDAY - Ham and cheese on toast, buttered potatoes, broccoli, pineapple and olive salad, gingerbread and milk.

THURSDAY - Turkey pot pie mashed potatoes, carrot sticks, strawberry jello with whipped cream, doughnut, bread and milk.

FRIDAY - Deep sea doodle, 1/4 lemon, baked sweet potato and butter, corn, chilled watermelon wedge, hot rolls and milk.

R. P. Green Services Held Here Monday

Funeral services for Richard Pearson Green, 61, brother of J.R. Green, Olton, were held Monday afternoon in the First Baptist Church here with the Rev. Dorman Kinard of Plainview officiating. He was assisted by Rev. John Lewis, pastor.

Born April 2, 1900, Green died Saturday in the South Plains Hospital, Levelland.

He moved to Levelland from Plainview about a year ago.

Survivors include his wife, Mrs. R.P. Green, Fresno, Calif.; two daughters, Mrs. Barbara Hood, Fresno, Calif., Mrs. Mildred Knippling, Stamford; one son, R.E. Green, Tulare, Calif.; one brother, Tom Green, Bend, Ore.; three sisters, Mrs. Josie Greenwood, Glendale, Ariz.; Mrs. Leola Swearingen, Odessa; Mrs. Osie Luellen, Wichita Falls; one half sister, Mrs. Doris Stroud, Stamford; one half brother, Herbert Thames, San Angelo; and eight grandchildren.

Pallbearers were Claude Ray of Hart, D.Y. Ray, Kenneth Ray, W.B. Dickenson, Jr., E.J. Neinaast and Bill Weaver.

Burial was in the Olton Cemetery under direction of Parsons Funeral Home, Olton.

Recipe

This recipe was donated to us by Mrs. Bob Gullett. She said it was one of her favorites because it was "quick and easy."

Jam Cake
2 sticks margarine
1 1/2 cups dark sugar
3 cups flour
1/2 teaspoon salt
1 teaspoon soda
1/2 teaspoon nutmeg
1 teaspoon cinnamon
1 teaspoon allspice
3 eggs
1 cup blackberry jam
1 cup nuts (chopped)

Crop Insurance Plans Improved

Secretary of Agriculture Orville L. Freeman announced today that Federal Crop Insurance will offer an improved cotton insurance program to both dry land and irrigated cotton farmers in Texas and New Mexico for the 1962 crop year.

For the first time a new irrigated grain sorghum insurance plan will be offered in the following Texas counties: Lubbock, Bailey, Castro, Crosby, Floyd, Hockley, Lamb, and Swisher.

This year all-risk crop insurance will be offered in the following Texas counties: Lubbock, Bailey, Castro, Crosby, Floyd, Hockley, Lamb, and Swisher.

Mix all ingredients together. Blend well and bake until done. Top with this Caramel Icing.

Put 1 1/2 cups of sugar in a skillet. Cook it over low heat. Mix in saucapan 1 slightly beaten egg, 2 cups sugar, 3/4 cup milk and 1 stick butter. Cook to the soft ball stage and add 1 teaspoon vanilla. Blend in the other sugar that is in the skillet to add the caramel flavor. Beat the mixture to the consistency that you want it.

Insurance provided Texas and New Mexico farmers with over \$11,000,000 of protection on money spent to produce crops, and a sharp increase of this amount is expected for 1962. "We are thinking in a straight line toward rapid expansion of this self-help plan of insurance," Secretary Freeman stated. "The climbing cost of production dictates the necessity of making this investment protection available to as many farmers as possible. We are moving fast in that direction."

A woman's final decision is not necessarily the same as the one she makes later.

ONE OF SEZ
The Plainsmen
"Don't fret, Jo-Jo, Kennedy lost a war with Cuba."
COTTON DEFOLIATION SERVICE
GUARANTEE NO STREAKS
Rye, Wheat & Oat Seed For Sale
The Plainsmen
FARM & RANCH
Phone 285-2255 Hwy. 70

MECHANIC WANTED
Elmer Gray, Owner
HART TRACTOR SUPPLY
Phone 938-3528 Hart, Texas

WE ARE READY TO HANDLE YOUR GRAIN THIS HARVEST SEASON.

Complete Grain Handling Service
Including Storage
* Govt. Loan
* Highest Market Prices

TEX-HART GRAIN, INC.
formerly A.A. Lindsey Grain
Hart 1/2 Mi. Southeast on 194
Phone 938-3538

SHOP OUR YARD OUR STOCKS ARE COMPLETE

LANKY PLANKY says:
ONE STOP BUILDING SERVICE
yes when you Build-Remodel or Repair

LUMBER
PLYWOOD
ROOFING
SIDING
INSULATION
FLOORING
PANELING
CEILING TILE
BUILDERS HARDWARE

ED HARRIS LUMBER CO
PHONE 938-3281
We finance Home and Farm Improvements
Hart, Texas

Notice To Bowlers
We Need Couples To Bowl In Mixed Doubles Mondays & Tuesdays At 9 P.M.

All Men Interested In Bowling Tuesday nights at 6:30 or 7 P.M. Are Asked To Contact the Manager

All Women Wanting to Bowl in daytime leagues - Please Call Bowling Center

SNACK BAR ALWAYS OPEN
And we're pleased to announce Vera Young is back with us at the Snack Bar.

OLTON BOWLING CENTER INC.
Phone 285-2666

NOW! A NEW WORLD OF WORTH!
NEW FROM DIESEL TO DAZZLE!

'62 CHEVROLET JOBMASTER TRUCKS!
WITH NEW High Torque Power

Here they are—handsome, functional '62 Chevrolet trucks powered to work harder in every weight class. Hefty new V8's with the highest torque in Chevrolet history. New diesel drawn for medium-duty models. And new power to pick from in light-duty models.

There's a wider choice of power, a wider choice of torque, across the board. For heavies, there's the new High Torque 409 V8*, with 16% per cent more torque than ever before available from Chevrolet. Big news in the middle-weight class is the new Chevy-GM 4-53 Diesel. It's compact, rugged, high in torque, and backed by years of GM Diesel experience. In the light-duty lineup, the High Torque 261 Six* adds new sock, new savings in extra-tough applications. You can pick from nine rarini'-to-work, ready-to-save engines.

Handsome new work-styling includes forward-sloping hoods that allow drivers to see as much as 10 1/2 feet more of the road directly ahead. Chevrolet's famous Independent Front Suspension gives you a smoother riding, easier working, longer lasting truck. New heavier duty, smoother hypoid rear axles for middle-weights. Rugged new I-beam front axles* of 9,000- or 11,000-lb. capacity are available on Series 80 heavyweights. Mufflers are longer lived on all models. You'll find a total of 198 models in the new '62 Chevy line—including three work-proved, versatile Corvair '95's. Every model is built to out-haul, out-last and out-value any other truck at anywhere near the price. See your Chevrolet dealer! *Optional at extra cost

New SERIES 60 DIESEL. Diesel savings and sure Chevy durability.

New FLEETSIDE PICKUP. Most modern version of America's most popular pickup.

See your local authorized Chevrolet dealer

THOMPSON CHEVROLET CO.
Phone 285-2646 Olton, Texas

Your invitation . . .

to the fifth annual

FIELD DAY

at High Plains Research Foundation

WEDNESDAY AFTERNOON

September 27

Guided Tours

1:30 p.m. - 5 p.m.

Barbecue

5 p.m.

Hear Addresses By

**Congressman James Wright
And
John White**

Texas Agricultural Commissioner

Flame Cultivation Results On All Crops

CROPS INCLUDE:

- ★ CASTOR BEANS
- ★ SOYBEANS
- ★ COTTON
- ★ CORN
- ★ SESAME
- ★ GRAIN SORGHUM
- ★ FORAGE SORGHUM

Also
**New Grass And Legume
Nursery To Be
Exhibited.**

**DON'T
MISS
IT!**

FIFTH ANNUAL FIELD DAY
AT
HIGH PLAINS RESEARCH
FOUNDATION

OLTON CHAMBER OF
COMMERCE & AGRICULTURE
OLTON

FARMERS GIN, INC.
OLTON

OLTON CO-OP GIN
OLTON

HART CAMP CO-OP GIN
HART CAMP

THOMPSON GIN
5 MILES NORTH OF GIRCLE

MAYFIELD CO-OP GIN
MAYFIELD COMMUNITY

HART GIN
HART

HART OF THE PLAINS GIN, INC.
HART

HART PRODUCERS CO-OP GIN
HART

HALFWAY CO-OP GIN
HALFWAY

JACK STRAW GIN CO.
OLTON

GANNAWAY GIN
MAYFIELD COMMUNITY

TRI-COUNTY CO-OP GIN
OLTON

THE OLTON ENTERPRISE
OLTON