

DEDICATE BANK

Italians May Have Started Bank System

Banking is believed to have had its birth in Italy.

In olden times in the trading cities of Italy, men from every part of the world came, bringing with them coins of their countries and sometimes bars of gold or silver.

There were men who engaged in the business of changing this money into the money of the city. Each of the money changers sat at a bench or table (banca in Italian) and this may be the origin of our word bank.

To protect their money from thieves, strong boxes and secret vaults were commonly used by the money changers. Knowing this, other people who had saved up some money would pay the money changers to keep it for them in the vaults.

Since these depositors seldom took back all of their funds at one time, there would be a balance at the end of each day. The money changers soon realized that they could put this reserve to work by loaning it on good security. This was the beginning of the modern bank that today accepts deposits and makes loans.

Importance of banking is pointed up in history of this country. Although America won her independence on the battlefield, it was almost lost through a conspiracy to control the infant country's banks and currency system.

Baron de Rothchild once declared, "If I can control the money, I care not who writes the laws."

Realizing that the people of the country must be able to have faith in the stability of the country's banks, the American government established safeguards to protect deposits up to a certain figure. This is to help prevent a "run" on the banks of the country such as that of the early 1930s which threw the country into the abyss of a depression and closed banks across the nation.

Through sound banking, the wheels of America's industry and enterprise grind on the people's savings providing more good things and even more savings for the people.

Looks Forward To Open House

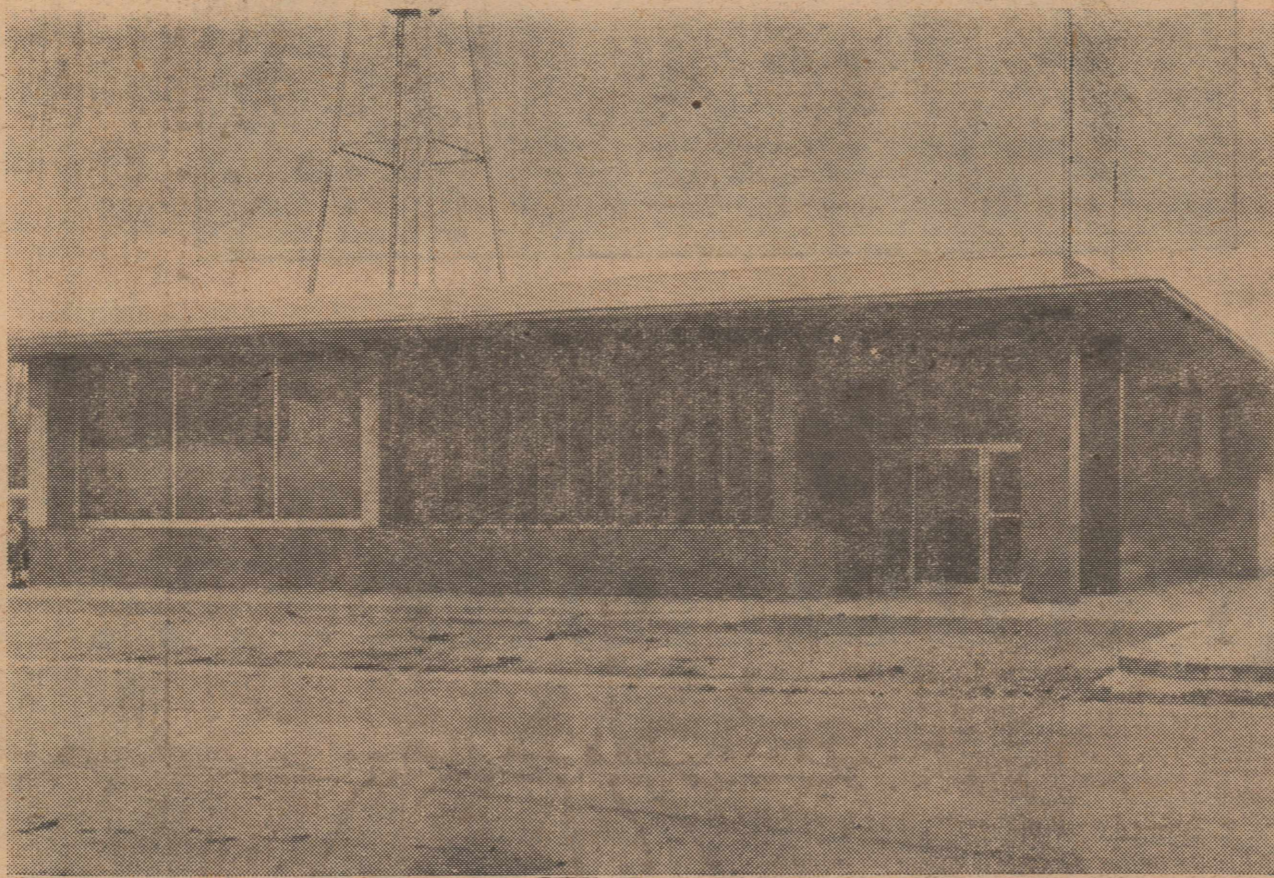
One of the longtime employees of Olton State Bank's efficient bookkeeping department is Mrs. Margie Carlisle. . . she has been with the bank since August, 1953.

Mrs. Carlisle, daughter of Mr. and Mrs. S. E. Whittington, was born in Olton and attended public schools here. She graduated from Olton High School in 1949.

Like other Olton State Bank employees, Mrs. Carlisle is looking forward to moving into the bank's new building and to its open house celebration on Wednesday.

NEW BANK BUILDING

This new \$100,000 building will house Olton State Bank. It is one of the finest buildings of its kind in this part of the state. This new building will be formally opened next Wednesday afternoon. The public has been invited to attend. (Photo by R. L. Slagle)



First Opening Coincided With Olton History

Here is a story from The Olton Enterprise file of Oct. 31, 1929, telling of Olton State Bank's first formal opening.

The story in all probability was written by L. L. Kyle, who was owner and editor of the paper at that time.

Here is the story from long ago:

"The new Olton State Bank opened its doors for business at 12 o'clock Monday, Oct. 28, 1929. Forty-five customers were welcomed during the afternoon and at the closing hour, a total deposit of \$20,616.79 had been received.

"This institution fills a long felt need in the town and desires to be of real service and merit the confidence and cooperation of the people. The town is justly proud of this institution and the men whose untiring efforts have made it possible. Much credit and sincere thanks is given to the banks of Plainview for the generous cooperation and assistance. Gorgeous baskets of beautiful flowers were tokens of friendship from these neighboring institutions."

Truman Moore Is Bank Teller

Truman Moore, 25-year-old native of Olton, has been an Olton State Bank teller since Dec. 1, 1954.

Truman, son of Mr. and Mrs. Eddie Moore, had never before worked in a bank, and he's quick to admit that it's "wonderful work."

Following his discharge from military service in June of last year, Truman worked for a time at White Auto Store before joining the Olton State Bank staff shortly prior to Christmas.

He served in the United States Navy as a commissaryman from 1950 to 1954, saw two years of service at Pearl Harbor, and served seven months in Japan.

Truman, unmarried, lives with his parents. He has two brothers, Wayne, serving with the U. S. Navy at San Diego, Cal., and Benny, of Olton. Mrs. E. W. Bateman of Dallas is his only sister.

Hobbies? Truman likes fishing, swimming and boating.

INJURES NOSE

Sandy Hicks sustained nose injuries during basketball practice Monday. Her mother, Mrs. Jackie Hicks, states that she is doing all right, however.

Bank President Played On First Olton Grid Team

Olton State Bank President D. M. "Dub" Granbery has lived in Olton since 1917.

In fact, Dub played on the original Olton Mustang football team back in 1924.

Like so many other folks who live in this part of the country, Dub is a native of Oklahoma but he didn't stay in the Sooner state long enough to get acclimatized.

He was born at Texhoma, Oklahoma, moved to Guymon and then in 1915 moved to Lockney. Two years later he enrolled in the second grade in Olton school.

When he got into high school he played football. He started out in the line but quarterbacked the team in 1926 and 1927. (His son, Guy, was the Mustang field general in the quarterback slot during the 1954 season.)

Dub lettered four years on the football squad. He also ran the 100 yard dash and participated in high school basketball.

Mr. Granbery attended Texas Tech and then Wayland College. Leaving Wayland College he went to work at Olton State Bank in April of 1930. He has been in the banking business ever since.

Dub became assistant cashier in 1935. He succeeded Jack Silcott as cashier in 1944 and took over management of the bank.

He became president of the bank in 1949, succeeding George T. Abbott in that capacity.

Dub is a member of the Masonic Lodge of which he is a past worshipful master and is a member of the Olton Chamber of Commerce board of directors.

He has been very active in soil conservation work in this area.

Mr. Granbery was married June 15, 1934 to Miss Charlie Fay Owens. The couple has two children, Guy, 17 years old and a senior in high school and Charla Beth, 13, who is finishing grade school this year.

Norfleet Was Flyer During World War II

Another native of Olton is Owen Norfleet, vice-president of Olton State Bank.

Owen was born Dec. 21, 1919, northeast of Olton. He is the son of Mr. and Mrs. Bob Norfleet and a nephew of the famous J. Frank Norfleet.

His father was a rancher in the Olton area before the land was broken up into farms. Owen was graduated from Olton High School and served 39 months in the U. S. Air Force as a bombardier-navigator.

He was discharged from the service with the rank of captain after having served in the Mediterranean and Italian theaters of operations with the 15th Air Force. He was decorated with the Distinguished Flying

(Continued On Back Page)

Several Olton State Bank Organizers Still In Olton

Several of the founders of Olton State Bank still live at Olton and will be on hand for the opening of the new bank building.

G. T. Abbott, who was the bank's first president, died last year. He served the bank as president from the time it was founded until 1949 when he was succeeded by D. M. "Dub" Granbery.

First vice-president of the bank was A. C. Brigrance. Owen Norfleet is the present vice-president of the bank.

L. E. "Jack" Silcott was executive vice-president and cashier as the bank opened. He was in charge of actual operation of the bank until 1944 when he was succeeded by Mr. Granbery.

Members of the first board of directors were G. T. Abbott, chairman; and A. C. Brigrance, G. H. Phillips, C. E. Bley, R. E. Dennis, P. B. Campbell and L. E. Silcott.

The new bank was organized

Formal Opening of New Building Slated For Wednesday Afternoon

Bank Looted By Robbers In Bold Heist

Olton State Bank has been robbed at gunpoint only one time during its 25-year history.

That was on a July day in 1932. Dub Granbery, Jack Silcott and John Shropshire of Plainview were in the bank when three men came in.

Two of the strangers walked boldly into the bank while a third stood at the door.

One of the trio asked for change for \$5.

"When I looked up from changing the \$5 bill, I saw he had a gun," Dub remembers.

The men made Mr. Granbery, Mr. Silcott and Mr. Shropshire lie down on the floor. Dub was forced to open the vault and then was returned to his place on the floor.

Deputy Sheriff Tommy Matthews, now of Littlefield, came over from the Sheriff's office for some change. He walked right into the crooks and they made him lie down too. The deputy was not armed at the time.

The bank had \$4,100 in coin and currency when the robbery was pulled off. The crooks took \$3,850.54.

Only one of the robbers ever stood trial. He was the one who waited by the door. He was tried at Plainview on a charge of venue, convicted and sentenced to 20 years in prison.

One of the men killed a deputy sheriff in New Mexico while resisting arrest and was given a life sentence there. The other man was killed while resisting arrest in New Mexico.

with \$20,000 capital stock. Surplus was \$5,000. The bank now has \$125,000 common capital stock.

Here is another story from The Enterprise files dated Nov. 21, 1929.

"C. E. Bley is having his cement garage building just across the street north of the Western Drug Co. torn down and will build three brick business houses. One will be occupied by Olton State Bank, one by Olton Drug Co., and one will be occupied by C. E. Bley for his general mercantile business. I am sure these buildings will add much to the town of Olton. Let the good work go on."

One of these buildings now is occupied by Speer Drug Co., and the other by Smith & Struve. Kelley's Men Shop will occupy the present Olton State Bank building as soon as the bank moves and the building can be remodeled.

Formal opening of Olton State Bank's new \$100,000 building will be held from 2 until 5 o'clock next Wednesday afternoon.

With the opening of the new building, Olton will have one of the finest banking plants on the High Plains. Bankers across the Panhandle have declared that facilities in the new building compare favorably with those of bank buildings in Lubbock and Amarillo.

President of Olton State Bank is D. M. "Dub" Granbery. Other officers of the bank are Owen Norfleet, vice-president; Gene Trotter, cashier; and W. N. Yates and Charlie Fay Granbery, directors.

Mr. Granbery said total expenditure on the new building including fixtures came to about \$100,000.

The new building is located just south of Lanning Radio Sales & Service on land formerly owned by A. C. Brigrance.

It is a granite and brick structure and is equipped with decorative steel louvers on the south and east sides. The outside appearance of the bank building has a ranch style flavor.

Floors are of trazzo and the building has reflected lighting. Huge plate glass windows behind the louvers enhance the appearance of the building. The south and east sides are of granite and a granite pillar decorates the southeast entrance to the building.

The interior is heated by circulating warm air in the winter and will be air conditioned in the summer.

A paved parking area and paved alley way adds to convenience of the customers. Curbs and gutter around the building does away with an unsightly pool which has been an Olton eye sore up to now.

Glover Construction Company of Lubbock built the new building. A Dallas architect drew the plans and fixtures were furnished by a Houston company.

Probably one of the most outstanding services made possible by the new building is a night depository. This will be of particular benefit to merchants during the autumn months when they wind up Saturday's business with large amounts of cash on hand.

There is no wood about the new building. It is completely fire proof.

The officers and staff and board of directors of Olton State Bank have invited the public to attend the formal opening.

Town's Growth Reflected In Bank Deposits

Olton State Bank's deposits were some 60 times greater when the bank's statement of condition was made Dec. 31, 1954 than when the same statement was made Dec. 31, 1929.

The December 1929 statement was the first ever issued by Olton State Bank.

At that time the deposits were \$38,119.59 as compared to \$5,983,122.97 on the December statement of last year.

THE OFFICERS AND DIRECTORS

OF

OLTON STATE BANK

CORDIALLY INVITE YOU

TO THE

FORMAL OPENING OF THEIR

NEW BANKING HOME

AT OLTON, TEXAS

ON JANUARY 19, 1955

FROM 2 P. M.

UNTIL 8 P. M.



Congratulations

From a Friend and Neighbor.

Your New Bank Building is Beautiful.

*The Olton State Bank, its officers, directors
and the people of the Olton Community have
our every good wish.*

Hale County State Bank

PLAINVIEW, TEXAS

First Opening Made Enterprise Headlines Also

What kind of time was it when Olton State Bank first opened for business back in October of 1929?

Through the files of The Enterprise we can get an idea.

In Olton at the time were three general stores, eight grocery stores, three dry goods stores, three garages, six filling

stations, two lumber yards, two implement houses, one telephone exchange, one hardware store, two drug stores, two blacksmith shops, two wholesale oil stations, two barbershops, one light plant, two coal yards, two hotels, three cafes, two cotton gins, one feed mill, one tailor shop, one butcher shop, two realty companies, two good brick school buildings, six frame buildings, three doctors, one theater and a bank.

Wamba coffee was being advertised by the W. E. Kelley Grocery at three pounds for

\$1.15. The PTA was advertising a stage play called "44 Flappers." In the cast was James A. Gowdy, Mrs. Eunice Burrus, Mrs. Tillman Carter, Tillman Carter, Pearl Brigrance, Pat Brown, Carl Womack, Miss Fay Bartlett, Merrill Brigrance, Miss Lois Clark, A. C. Brigrance, Pat Campbell, Dovie Wallace, Margaret Burrus, Dana May Silcott, Thava Dellis, Mrs. A. H. McGavock, and Miss Brasher.

The Enterprise noted: "Our cotton farmers are certainly being rushed handling this abundant crop. Willie Simmons is

gathering his cotton in old plantation style, employing 60 negroes." Some 5000 bales was produced here that year.

Elsewhere martial law had been lifted at the rip snorting boom town of Borger. Borger's crusading District Attorney John Holmes had been murdered earlier and Governor Dan Moody had slapped Borger under martial law.

Moody dispatched famed Lone Wolf Gonzales, a two-gun Texas Ranger to put down the Lorg-er trouble.

Some say Gonzales originated a famous Ranger saying on his trip to Borger when some of the townspeople protested because the governor had sent only one Texas Ranger to put down their "riot."

"There's only one riot ain't there," Gonzales is said to have quipped.

Prohibition was a subject of radio debate that week. Snow fall in Plainview shattered an eleven year record. It was the first time snow had fallen in October since 1918.

It was not a day like any other day in Olton because Olton State Bank had opened its doors for business and it was no longer necessary to drive 20 miles over poor roads to get a check cashed.

Clothes Needed By Red Cross

Olton is asked to participate in an emergency Red Cross clothing drive in Lamb County, according to Rev. J. Henry Cox.

Children's clothing is desperately needed, Rev. Cox states, especially shoes. Rev. Glen Godsey is chairman of the Olton campaign, and any clothes contributed may be left with him. County chairman is Mrs. Arbie Joplin, Littlefield.

Calendar Forms Circulated Here

Handbills for applications for birthday calendars were distributed Tuesday to all Olton school students to deliver to their parents.

The birthday calendar sales are sponsored by the Olton Band Parents Association as a fund-raising scheme for sending

the Mustang Band to the Enid, Okla., music festival this spring. The handbills include an explanation of the purpose of the

calendars, and applications for space on the calendars. Deadline for returning the forms to the school is February 10.

For Office Supplies Come To The Enterprise

CONGRATULATIONS...

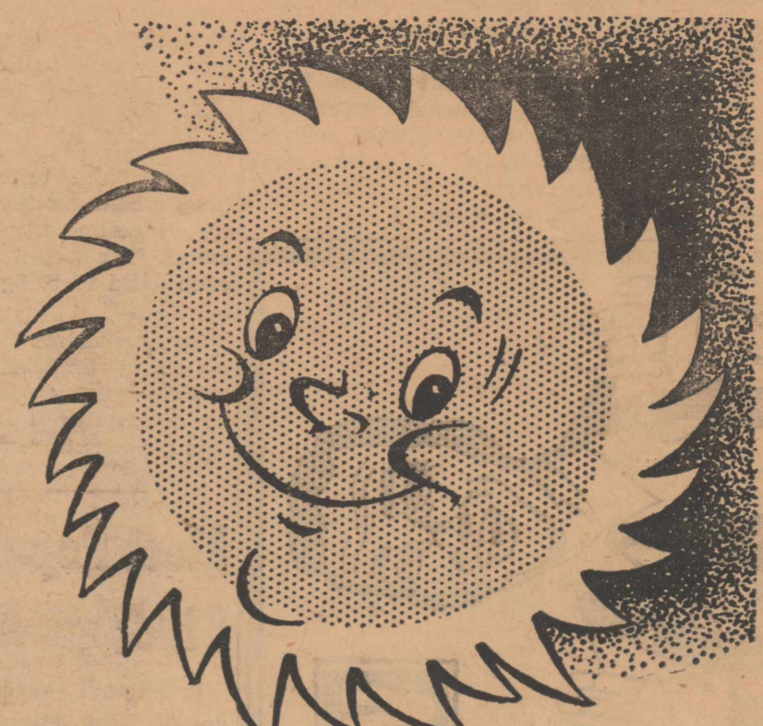
The new Olton State Bank building is one of the finest on the South Plains, and it is a genuine pleasure for us to offer our sincere congratulations to such a progressive organization.

We commend the officers and directors of the Olton State Bank for providing the Olton trade area with such a fine new building, and we join with the bank's many faithful customers in offering a hearty "Well done!"

Security State Bank

LITTLEFIELD, TEXAS

Olton State Bank's new building is a bright addition to our fast growing community



. . . and it is a pleasure for us to commend the bank's officers and directors on a job well done.

Farmers Gin Co.

LAUIS OLTON, TEXAS SHORTY



THE NEW
OLTON STATE
BANK BUILDING
IS
BIG NEWS . . .

. . . We readily recognize that the Olton State Bank is one of the major service agencies in our rapidly expanding community, and it is a real pleasure for us to offer our hearty congratulations to the bank for its initiative in providing Olton with one of the most modern new banking structures on the entire South Plains.

We appreciate being served by such a progressive organization.

Granbery Insurance

Phone 2921 Olton, Texas

We're Proud

To have been the general contractor on Olton State Bank's fine new building.

We know Olton is proud, too, of such a fine new business addition in one of the most progressive communities in the Panhandle Plains area.

Our business is quality construction, and we cordially invite inquiry from other Olton merchants who may be considering construction of a new business home.

GLOVER Construction Co.

Box 1194 Lubbock, Texas Phone PO 5-7304

New Employee Likes Banking

Mrs. Ineta Dennis has been an employee of the Olton State Bank only since the first of the year. She's busy, and a little puzzled right now, learning the many phases of the bank's intricate bookkeeping and filing system, but she'll tell you that she likes the work.

Mrs. Dennis has been an Olton resident since Sept. 3, 1949, and prior to becoming a member of the bank's bookkeeping staff, she was employed at Olton Drug.

She has three sons, Jerry, an Olton High School senior, and Darryl and Ronnie, both of whom are OHS freshmen. Her

three daughters are Maenette, an eighth grader here, Sharron, a seventh grader, and Mrs. J. S. Nicholas, of Olton.

Funds Still Needed For New Stadium

Some \$7,000 has been raised in sale of reserved seats for the construction of a new, modern football stadium here.

This information came Tuesday from Carl Macon who discussed the stadium fund campaign before the Olton Lions Club. Mr. Macon is superintendent of Olton public schools.

"It's going to take some pretty hard work to finish it," Mr. Macon declared.

Pre-School Registration Is Thursday

Next Thursday morning, January 20, registration of all children who will be six years old by September 1, 1955, will be held in Olton Primary School.

Fred Gordon, principal, announces that first grade children will not attend school on that day. Pre-school children are to be in the primary building at 9:00 a. m. to register, and will stay until after lunch. Parents may call for the children at 11:35 a. m.

Each child registering must have a birth certificate with him for enrollment. Mr. Gordon states, "We would also like for each child to bring 30 cents for his lunch."

He emphasizes that it is very important that all children in the community who will be six by September 1 participate in this pre-registration.

Chamber Elects Sherman

Basil Sherman was named president of the Olton Chamber of Commerce last Thursday night as the Chamber met at Olton Fire Station.

He succeeds Rev. Glen Godney in that position.

Other officers elected include Dr. Lynn Fite, first vice president; G. H. Gley, second vice-president; Marshall Stone, third vice-president; and D. M. Granbery, Louis Schreier and Herman Meyer, directors. David Maxey was re-elected secretary.

Tentative plans call for the annual Chamber of Commerce banquet to be held the night of Feb. 22.

Youth Choir Is Organized

About 15 teen-agers met Sunday to organize a youth choir, composed of selected voices from all churches in the city.

Bill Rogers is director of the group. Officers elected Sunday include Jerry Davis, president; Guy Granbery, vice president; Ruth Stansell, secretary; and Pat Harborn, reporter.

Immediate plans of the choir are for a Sunrise Easter Service, followed by a breakfast. Tickets for this affair will be sold in advance by members of the musical group.

Young people interested in joining the organization may contact Mr. Rogers or any of the other officers or members for time and place of the next meeting.

ATTEND CHURCH SUNDAY



this laboratory plays football

Skip Collins looks ready for anything. Is he ready for polio?

Last spring he received a vaccine designed to protect him from infantile paralysis. Some time this year, after studying records on Skip and nearly two million other youngsters, scientists will know if the vaccine works. Skip's a football-playing laboratory, helping them out.

Your March of Dimes contributions not only make the vaccine trials possible, they also give a chance for a better life to thousands who have polio.

Join THE MARCH OF DIMES

The National Foundation for Infantile Paralysis

Most Popular Students Named

In a runoff election held Tuesday at Olton High School, Jack Henderson was named the most popular OHS boy, Nora Lee Wozencraft was chosen most popular OHS girl, and Jerry Dennis won the dubious honor of being named the "beast" of a beauty-and-beast combination, Yvonne Peterson previously having been chosen the beauty.

At a Tuesday night meeting, OHS faculty members named Bobby Straw and Linda Franks as best all-around OHS students. Their selection was based on activities, scholarship, leadership and citizenship.

In an earlier student body election, Guy Granbery and Wylene Freeman were named the students most likely to succeed, and Max Kennedy and Bonnie Kersch were chosen Mr. and Miss OHS.

All will be featured in The Mustang, OHS yearbook.

Herbert Dunn Will Be Here Next Week

Herbert Dunn, Lamb County Tax Assessor-Collector, will be in Olton City Hall next Tuesday and Wednesday for the purpose of collecting state and county taxes.

Deadline for paying taxes is January 31. Penalties begin on February 1.

Mr. Dunn announces that poll taxes may be paid anytime through January 31 at the City Hall. He urges that persons who desire to vote in this year's elections must pay their poll taxes in January.

Olton Boys Will Enter Houston Show

Approximately 25 members of the Olton Future Farmers Chapter will attend the Houston Fat Stock Show late this month and early next month.

Vocational Agriculture Teachers J. W. Brown and J. C. Lane said the Olton group will leave for the show Jan. 29 and return Feb. 6.

They said about 40 head of stock will be shown including fat stock and breeding stock in sheep, cattle and swine.

COMMUNITY CHURCHES ARE GROWING

Attitude of Olton folks toward the community's churches has been good and appears to be steadily improving.

This assertion came Tuesday from Rev. R. H. Campbell, pastor of Olton Methodist Church. Rev. Campbell spoke before a regular meeting of the Olton Lions Club.

The preacher did not confine his observations to his own church but declared that there has been a steady growth in most of the churches in the community.

He said the churches appear to be having better attendance, better financial support, more support for improvement of the churches' building facilities and more enthusiasm for evangelistic work.

"Yes," declared the Methodist minister, "I'd say the attitude of our community is a wholesome attitude."

Mrs. Ballard Is Proud Of New Building

Mrs. Marilyn Ballard, whom you may meet any day at Olton State Bank, is a native of Olton.

She is the daughter of Mr. and Mrs. Guy Willis. Although she was born here, Marilyn moved to Littlefield with her parents when the seat of county government shifted to that town.

She was graduated from Littlefield High School in 1947 and was married to Thomas R. Ballard in June of 1948.

Her husband farms southwest of Olton. The couple has a son, Guy Thomas.

Mrs. Ballard went to work for Olton State Bank in February of 1952. She is employed as a bookkeeper and declares that she likes her job.

"And of course, we're all proud of the new bank building," Mrs. Ballard asserted.

FINEST BANK IN WEST TEXAS!

... That's exactly the way we feel about the new Olton State Bank building.

We're Plumb Proud...

... of Olton's new bank building, and offer our sincere congratulations to the management of the bank for providing the community with such a splendid new banking house.

Consumers Butane



WHITE'S



Big Annual Sale

SALE

ONE-CENT SALE BEGINS MONDAY, JANUARY 17, AT WHITE AUTO STORE IN OLTON

VALUES A-PLENTY FOR AN EXTRA PENNY!



R. L. Slagle recently snapped this picture of himself. Mr. Slagle takes pictures for

The Enterprise. He also is available for commercial photography by appointment.

Launch March of Dimes Here; Study Club Seeking Goal Of \$2,500

The March of Dimes in Olton, with a goal of \$2500, is being launched by the Olton Study Club, Mrs. Basil Sherman, president, announced this week.

Containers are set up in downtown places of business for contributions. Grade-school students are supplied with Dime Cards to fill, and high school students will observe "Tag Day" sometime during the drive. On Tag Day, blue crutch pins will be sold for contributions.

Members of the Olton Study Club will stage a door-to-door march one night toward the end of January.

Lamb County's goal for this campaign is \$10,000. The national goal is \$64,000,000. Mrs. Sherman reports that of the nine cases of polio in Lamb County last year, only two were covered by insurance, which left seven cases to be cared for through the March of Dimes.

as yet but certainly will be obvious soon," Mr. Holt declared.

"These include changes in the issuance of money orders, in the insuring of parcels, and in all phases of reports," the postmaster continued. "Of great benefit is the establishment of regional accounting offices and district offices of regional operations. This places the operations at home with people who know our area and its needs. Our district office is in Amarillo and the district manager is the former Pampa, Texas postmaster. His office now handles much of business and reports of post offices in this area that formerly had to go to Washington. This is a great improvement and will be reflected in better postal service.

Mr. Holt said postal receipts for 1954 were almost 10 percent greater than in 1953. He said 1953 receipts came to \$18,252.25 while receipts in 1954 came to \$20,014.27.

The 1954 receipts were more than twice those of 1949 when receipts came to \$9,681.15 and almost twice that of 1950 when they were \$10,235.22.

Contributions may also be made to Mrs. Sherman or to any member of the Study Club. The campaign will continue to January 31.

Land Leveller Is Available

The Soil Conservation District land leveller is available for custom use and may be obtained by contracting the Olton High School vocational agriculture department.

This announcement came this

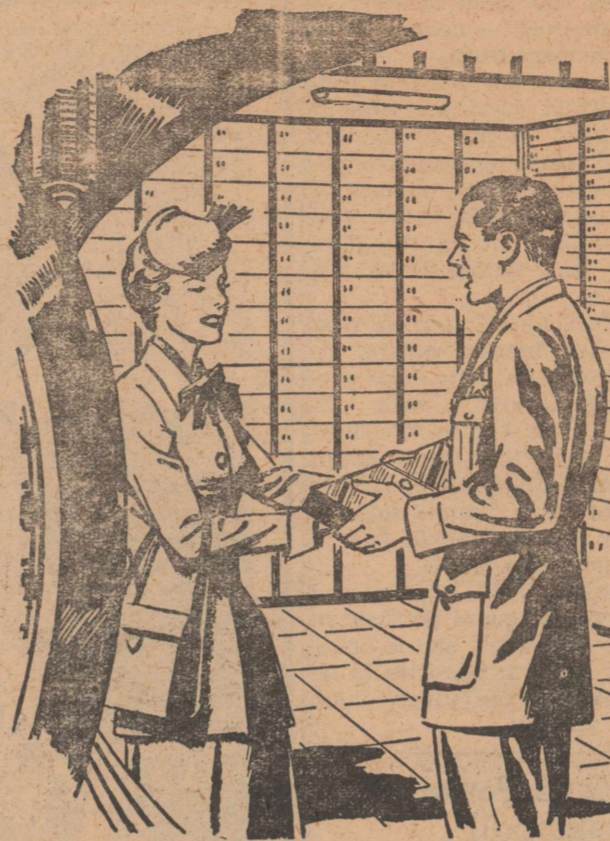
week from J. C. Lane, high school agriculture teacher.

Mr. Lane said the SCD set a price of \$8.00 per day as rental fee on the leveller.

Farmers wishing to use the machine may contact Mr. Lane or J. W. Brown at phone number 3626.

NAME MCGILL AS WATER DIRECTOR

Local farmers Tuesday elected Elmer McGill as the Olton area's representative on the board of directors of the High Plains Water Conservation District. McGill will serve for two years. He replaces Eldon Franks.



Progress

AND

Sound Banking

GO

Hand-In-Hand

Olton State Bank's completely modern new building is a leading community asset. All of us take pride in its completion and formal opening, and we heartily congratulate the bank for helping to lead the way to a bigger, better Olton.

Straw-Burrow Gin

Sweeping Improvements Seen For Olton Post Office In '55

New clerical help, seven day mail service and additional post office boxes appear in the offing for the Olton post office during 1955.

This information came this week from I. B. "Doc" Holt, postmaster.

The Post Office Department has notified the postmaster that four new sections of post office boxes will be shipped in the near future.

Three of the new sections will replace boxes of three old sections now in use. The fourth section will add 100 boxes to the available list at the post office bringing the total number

of boxes to 556.

"We urgently need the addition," declared Mr. Holt.

Mr. Holt said the Post Office Department is investigating the possibility of beginning a 7 day week service here. Mr. Holt said this would speed up by 24 hours the receipt and dispatch of Olton mail over the week end.

Mr. Holt said he has been notified that additional clerical help will be supplied during this year.

"The Post Office Department has made many beneficial changes, which possibly may not be so apparent to the public

We Salute . . .



. . . Olton State Bank upon the completion of its fine new building. We are proud in your behalf, and we know that your many depositors sincerely appreciate doing business with such a progressive banking firm.

A town and its bank grow together. The future of Olton is a bright one, and residents of the Olton area are fortunate to be served by a banking organization which offers service, integrity and sound leadership.

We commend the Olton State Bank for looking to the future.

CITY NATIONAL BANK

PLAINVIEW, TEXAS

We Offer
Our Hearty...

C
O
N
G
R
A
T
U
L
A
T
I
O
N
S

**Catherine Dodd
Is All-Tourney
At Tulia Meet**

Olton High School girls' basketball team won one game and lost two in last week end's invitational cage tourney at Tulia, and had one team member — Catherine Dodd — named to the all-tournament team.

Olton lost its opening contest to Tulia, 40-45, and won its first game in the consolation bracket, trouncing Paducah, 48-40. Linda Franks tallied 19 points in the Tulia game, despite fouling out in the third quarter, and tallied 28 against Paducah.

The OHS girls lost their next consolation bracket outing, 31-34, to Crosbyton. Betty Sides paced the local attack with 21 points. Coach Louise "Poodles" Boyles says the result might have been different but for the fact that Linda Franks suffered a badly sprained ankle late in the game.

Catherine Dodd was named all-tourney at guard position. In practice this week, she is being tried at a forward position in an effort to give the offense more scoring potency.

**Charlotte Porter
Is Basketball
Sweetheart**

Charlotte Porter has been elected sweetheart of the 1954-55 Mustang basketball team, according to an announcement this week by Mrs. A. B. Manning, sponsor of the OHS yearbook.

Miss Porter will be featured in the yearbook, and will be crowned basketball sweetheart at a home game in the near future, she said.

**Hart Legion
Holds Boxing
Tournament**

Hart American Legion post sponsored a boxing tournament at Hart last Saturday night.

Boys from Hart and Plainview participated in the matches.

**OHS To Begin
Conference Cage
Play Next Week**

Olton High School cagers — both boys and girls — are about ready to swing into district play.

The girls will open conference play Tuesday night, Jan. 18, at Littlefield, and Coach Louise Boyles is hopeful that her star forward, Linda Franks, will be ready for that contest. Miss Franks suffered a severe ankle sprain in an invitational tournament last week end at Tulia.

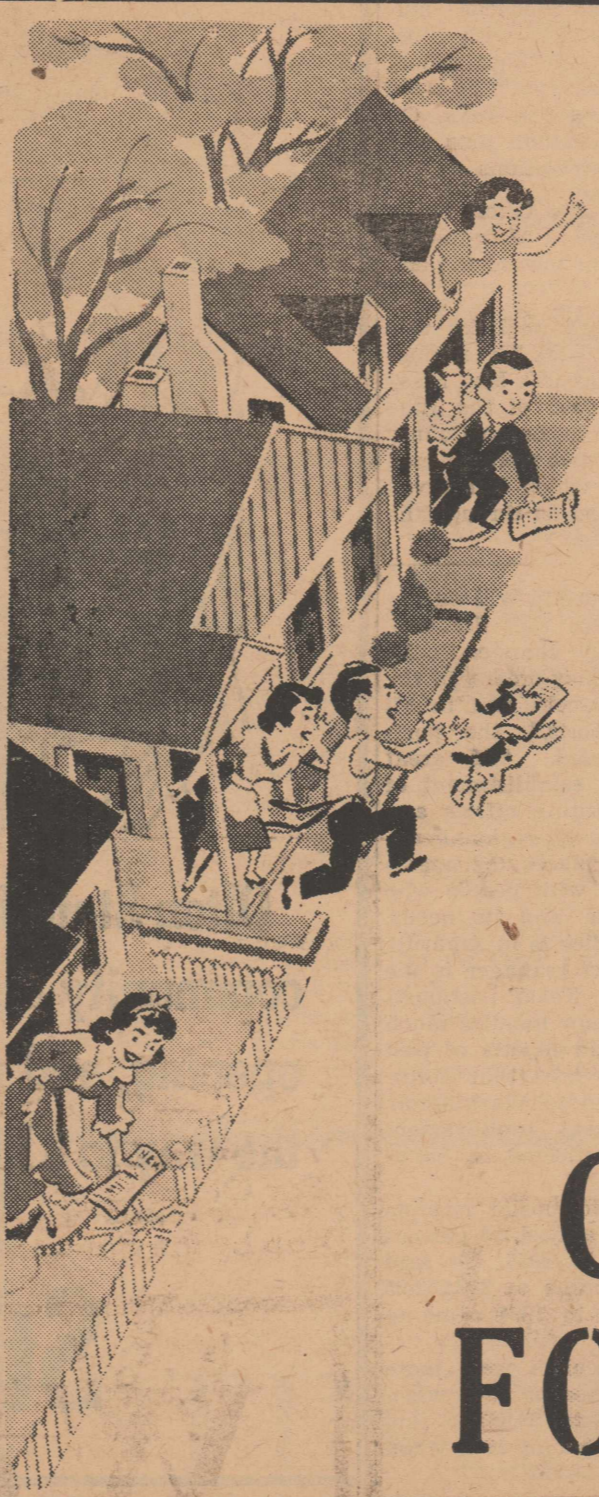
OHS boys also will tangle with Littlefield here Tuesday

night, but it will be a non-conference clash.

The boys open their conference schedule here Friday night, Jan. 21, against always dangerous Floydada. A & B boys' games and a girls' game are scheduled that night, and Coach Joe Turner has announced that boxing matches, featuring OHS mittmen, will be held

between halves of both the boys' and girls' games as an added inducement for a larger crowd on the occasion of the first home district games.

CONFERENCE IN LUBBOCK
Evangelistic Conference for Baptist churches will be held January 20-21 at the First Baptist Church in Lubbock.



Up and Down
Every Street
In Olton ...

... it's mighty good news to all of us that we now are served by a new bank building that is one of the finest to be found anywhere. We heartily commend the Olton State Bank on the formal dedication of its new business home. It is significant of a growing Olton.

**CASHWAY
FOOD STORE**

... to the Olton State Bank. The new bank building is a distinct credit to this community, and is ample proof of forward-looking bank management.

**Ben F. Smith
Grain Co.**

Olton, Texas



Keeping
Up With
the Times...

... is an important earmark of a progressive business, and we are proud to offer our hearty congratulations to the Olton State Bank upon the completion of its splendid new building.

First National Bank

Littlefield, Texas

Olton Cagers Down Canyon

TULIA, Jan. 14 — The Happy boys and the Nazareth girls were the first to reach the finals in the Tulia Tournament here, with the host Hornets playing a semi-final game tomorrow and Tulia's girls also trying to gain a final berth.

Scores of games today: Boys—Happy 61, Canyon B 40; Tulia 65, Kress 40; Happy 70, Tulia B 45; Kress 68, Nazareth 54; Tulia B 57, Olton 40. Girls — Olton 40, Canyon 30; Tulia 29, Tulia B 11; Nazareth 48, Kress 35.

Four players in double figures led the Hornets in the Kress victory, Jan Tucker getting 14, Eddie Morris 13, Bobo Hamilton 11 and Kelly Atchley 10. It was 30-15 at the half and the winners were never pressed. Ellison Williams topped the losers with 15.

William Hasly

Williams had 14, Larry Johnson 15, Jimmy Brinkley and James Ellis 11 and Charley Rinehart 10 as Kress defeated Nazareth, with Walter Acker getting 17 for the losers.

Kress has only a 33-32 lead at halftime.

Douglas O'Daniel sparked the Tulia B-team against Happy with 27 points and then got 26 against Olton. High men for Happy were twins Carrol and Carl Sims, 15 and 14, Gary Poage 11 and Carl Irlbeck 13. Don Machen and Donald Powell each had eight for Olton. In that one, Forrest Macy got 12 and Darrell Nelson 10 for the winning Hornets.

Sims, Poage Lead

Carol Sims and Poage each had 16 in the Happy win over Canyon's Reserves, with Irlbeck getting 13. Melvin Cunningham and Don Britton both scored 15 for the losers.

Dolores Husema of Nazareth was high-point maker in the girls games, with 34 against Kress, paced by Nelda Durham's 21. Linda Franks and Betty Sides each had 15 for Olton, with Betty Brothers leading Canyon with 13. Both games were 21-13 at the half.

Saturday's schedule — with finals in both divisions set for

7 and 8:30 p. m. — is: Tulia-Silverton boys at 10:15 a. m. with the winner to meet Happy; Kress-Tulia B at 1:45 p. m. for boys consolation; Tulia-Olton girls at Claude at 11:30 a. m. with winner to finals against Nazareth girls.

CONGRATULATIONS

Yes, we extend our heartiest congratulations and best wishes to the Olton Community and the officers, directors and stockholders of

OLTON STATE BANK

Upon the formal opening of your beautiful new bank building.

First National Bank

AMHERST, TEXAS

White Auto Changes Hands

White Auto Store here has changed hands.

Horace Cates, who with his wife Ida Belle has operated the firm since July, 1952, has sold the firm to M. T. James, Jr., of Paducah.

James, who has been assistant manager of Western Auto Store, assumed operation of White Auto Store on Thursday.

The 26-year-old James is the son of Mr. and Mrs. Major T. James, Sr., of Plainview. J. B. James, prominent farmer in the Springlake area, is his uncle.

James was employed by Western Auto Store at Paducah in 1949 and 1950, and served in the United States Marine Corps from 1951 until his discharge from military service in June, 1954, when he returned to Western Auto as assistant manager.

"My wife and I like Olton and its people, and we are going to make every effort to operate White Auto Store on the same friendly, efficient level on which Mr. and Mrs. Cates have run the firm," James said.

The Cates have been Olton residents since the mid-1920's, except for a five-year residence in Colorado from late 1946 to early 1952. They have announced no definite plans.

VISIT HERE

Mr. and Mrs. Eugene Stevens of Sault Ste. Marie, Mich., have been visiting in the home of Mr. and Mrs. Ray Culwell. Mr. Stevens is Mrs. Culwell's brother.

For Office Supplies
Drop by the Enterprise



THE OLTON STATE BANK

IS

OUT IN FRONT

. . . in initiative and foresight, and best evidence of this is the bank's splendid new building, a real credit to the Olton area.

We offer our heartfelt congratulations to the bank's officers and directors for leading the way to a larger, modernized community.

Sherman Food

As You May Have Heard By Now . . .

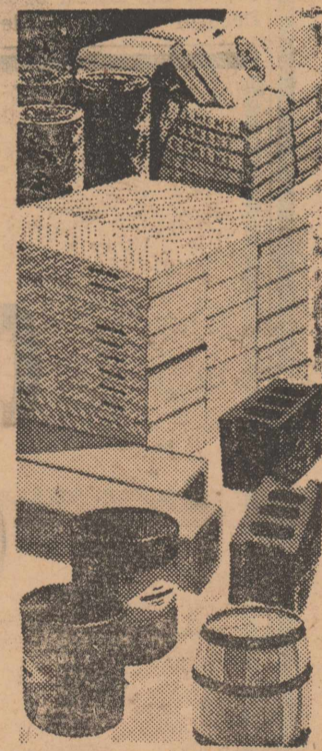
. . . . We have sold the White Auto Store here after having operated it since mid-1952. So we feel it is appropriate at this time to extend our heartfelt gratitude to our many friends and customers who have traded with us during the time we have owned the store.

Your friendship and support have made our business a pleasure, and we extend our warm personal thanks to each of you for your patronage.

We hope we will continue to see all of you often.

Sincerely,
Horace and Ida Belle Cates

We Are Proud



. . . . to have furnished some of the building materials for the fine new

OLTON STATE BANK

All Of Us Are Interested . . .

. . . . in a larger, more progressive community, and we regard the construction of Olton State Bank's new building as an important milestone in the making of a business district of which each of Olton's citizens can be rightfully proud.

Higginbotham-Bartlett Co.

PHONE 3511

"GOOD LUMBER"

OLTON, TEXAS

BEST WISHES

TO THE OFFICERS AND STAFF

AND

BOARD OF DIRECTORS

OF

OLTON STATE BANK

UPON DEDICATION OF

YOUR FINE NEW BUILDING

THE OLTON ENTERPRISE

Phone 3361

Norfleet Was

(Continued From Page One)

Cross and the Air Medal with three clusters.

He was married in April of 1945 to Miss Billie Richards, daughter of Mr. and Mrs. George Richards, Sr.

Mr. and Mrs. Norfleet have two children. They are Susan, 6 years old, and Leslie, 3.

When Owen was discharged from the service in October of 1945, he went to farming and continued farming until he went to work for the bank in February of last year.

During the years he was farming Owen worked falls at Straw-Burrow Gin.

Gene Trotter Is Cashier At Olton Bank

Like many of his fellow workers at Olton State Bank, Gene Trotter, the cashier, was born right here at Olton.

Gene was born Sept. 26, 1926, northeast of Olton.

He was graduated from high school here in 1944 after playing varsity football and basketball.

He served in the US Navy from June 1944 to September of 1947 and then worked at Olton Food Bank until he became employed at Olton State Bank in 1949.

He was married in September of 1947 to Miss Mozelle Whittington and the couple has two children, Pat, 3 years old, and Mike, 4.

Gene holds the position of cashier at the bank. He is the son of Mr. and Mrs. K. Trotter who farm 2½ miles southwest of Circle.

"I guess we're all anxious to get into the new building," Gene declared.

ATTEND BOARD MEETING

Rev. and Mrs. J. Henry Cox were in Decatur Thursday where Rev. Cox attended the meeting of the Board of Directors of Decatur Baptist College.

Underwood Is Newest Teller

Lee A. Underwood, from point of service, is the newest teller at the Olton State Bank . . . he has been a bank employee only since Jan. 3, 1955, and his job at the front teller's window keeps him mighty busy.

A native Texan, Underwood was born June 14, 1916, at Ax-tell. He has been an Olton resident since May 1, 1954, and prior to accepting the bank job, worked here for Straw-Burrow Gin and White Auto Store.

Underwood's life has been a varied one. He attended public schools at Liberty School, west of Idalou in Lubbock County, and finished at Slaton High School.

He lived in Amarillo for 12 years, was a division manager for Sears-Roebuck there for about three years, and operated his own floor sanding company in Amarillo for four years.

Prior to establishing residence here, Underwood lived at Hart for about two years, where he delivered butane and gasoline and was serviceman for the Hart Oil Co.

His wife, LaVola, was born and raised at Stamford, and is a graduate of Texas Technological College. She teaches sixth grade in the Olton public school system.

The couple has two daughters, LuAnne, 12, a seventh grader, and Peggy Lee, 11, a sixth grader, and one son, 7-year-old Lee A. Underwood, Jr., a second grader.

Underwood's mother is Mrs. Lula Underwood of Amarillo.

Job Entails Many Duties

Miss Joan Dudley, 1952 graduate of Amarillo High School, has been employed in Olton State Bank's filing and book-keeping department since Sept. 15, 1954.

A former secretary and cashier at the Amarillo News-Globe, Miss Dudley moved to Olton

with her mother, Mrs. Ruby Dudley, in December of 1953.

She was born in Olton and lived here until she was 8 years old, when she moved to Amarillo.

Her job entails daily posting of ledgers and statements, help-

ing balance accounts each day, running the posting machine, and use of the Recordak, which makes a permanent photographic record of each check processed through Olton State Bank. Joan is 20.

Best Wishes

To Our Neighbors

At Olton

Upon The Formal

Opening of

Your Beautiful New

BANK BUILDING

Citizens State Bank

EARTH, TEXAS

TO THE OLTON STATE BANK OUR CONGRATULATIONS

. . . . The completion of Olton State Bank's fine new building is not simply a matter of which the bank management can be proud rather, it is a matter of interest and importance to the entire community.

A good bank helps build a good town, and we congratulate the Olton State Bank for its progressiveness, and for its faith in Olton's future.

Bley Equipment Co.



YOUR INTERNATIONAL HARVESTER DEALER

Olton

Texas

