

THE PLAINS PRIDE

PLAINS, YOAKUM COUNTY, TEXAS

VOLUME 10, NUMBER 19 WEDNESDAY, AUGUST 10, 1994

School board adopts budget, to set tax rate on August 15

Meeting in regular session on Monday, Aug. 8, Plains ISD school board adopted the budget for the coming year. Total budget included estimated revenues of \$9,010,349 and estimated expenditures of \$9,002,399. These figures are down from the 1993-94 budget of \$9,850,209 in revenues and \$9,653,215 in expenditures.

Following requirements of Sen. Bill 7, Plains district must reduce its wealth by approximately 56% by

either sending that amount to the state or sharing with other districts. Plains ISD voters approved option four of SB7 wealth reduction options last May, which allows the district to share with other districts instead of the state. It also allows the district to gain approximately \$100,000 in return for sharing with other districts. This option is not available when sharing with the state. Plains ISD must share \$4,571,706 of the \$9,002,399 budget

with other districts under this requirement. Plains ISD would then be left with an operating budget of \$4,430,693. Plains ISD operating budget expenditures have held steady for the past few years.

In order to meet obligations of SB 7 and to continue to operate our school without drastic cuts, the board proposes to set the tax rate at the statutory maximum of \$1.50 per \$100 valuation. This is the limit set by law that the board may adopt. It is also the level of taxation required of wealthy districts to continue our programs as they were prior to the Edgewood decision calling for sharing the wealth.

Under the "share the wealth" plan. SB 7 allows for a three year "hold harmless" or "phase in" time for wealthy districts. Districts willing to tax at the maximum rate may continue to spend approximately the same amount they were spending in 1992-93 (pre-SB7). We are now in the second year of the "phase in" period. If the board does not set the tax rate at the maximum "hold harmless" rate of \$150/\$100, the district would only be allowed to keep approximately \$2,375,000 which would force the district to cut its current programs and staff almost in half.

Because of a 23% loss in taxable value the "effective tax rate" for Plains ISD is \$1.71 and the rollback rate is \$1.77. This rate calculation uses last year's revenue with this year's reduced value to determine what tax rate would allow the district to receive the same revenue as last year. This calculation and notice is published elsewhere in today's paper as required by law. The board's proposed actual rate will be \$1.50. The Plains board will meet at 7:30 a.m. on Monday, Aug. 15 to set the tax rate for this year. If taxpayers have questions, they are encouraged to contact any board member or the superintendent.

Wee Care service to be offered

Wee Care at First Baptist Church will begin Thursday, Sept. 8. There are openings for children two to four years old.

It will be held from 8:30 a.m. to 2:30 p.m. each Thursday during the school term. For additional information, contact Donna Friesen, 456-3425.

Martin services held in Brownfield

Services were held Wednesday in the Church of Christ in Brownfield for Reg Martin, 77, of Tokio. John Snyder officiated.

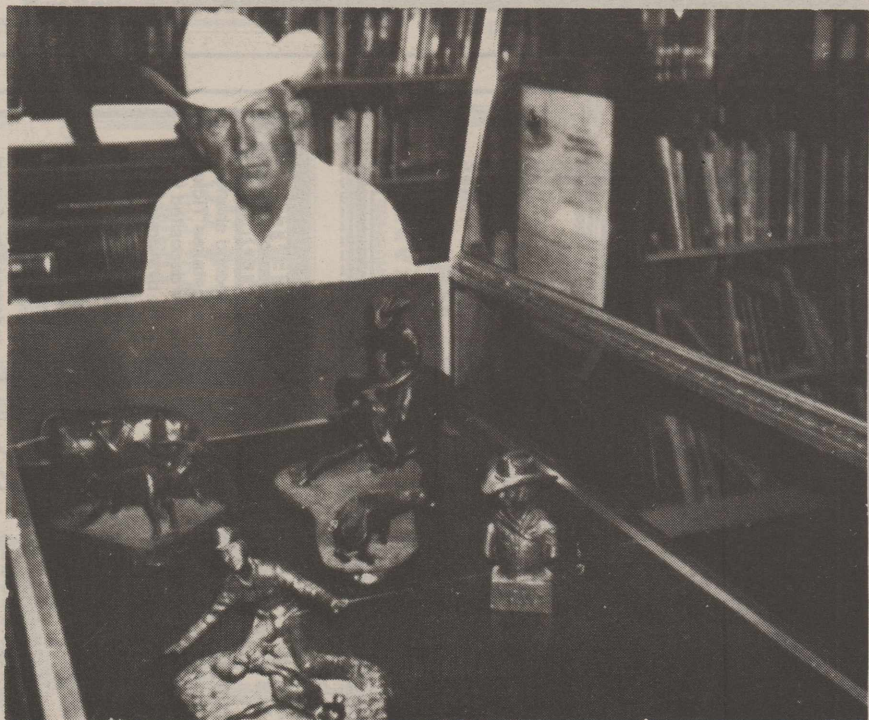
Interment was in Terry County Memorial Cemetery under direction of Brownfield Funeral Home.

Mr. Martin died Aug. 2 in Methodist Hospital in Lubbock. He was born Feb. 13, 1917 in Young County. He married Edrie Elouise (Bitsy) Lee on Jan. 7, 1941 in Brownfield.

He attended Tokio schools and was a farmer in the Tokio community.

Survivors include his wife; two sons, Reggie of Brownfield and Lee of Tokio; two daughters, Ethel Hart of Moran and Ann Trout of Brownfield; eight grandchildren; a brother, Glen of Lubbock and a sister, Mary Green of Brownfield.

Pallbearers were Lawrence Green, Pat Green, Donald Martin, James Martin, Keith Martin and Bill Park.



C.C. COPELAND displays bronze sculptures at Yoakum County Library this month.

Bronze sculptures on display at Yoakum County Library

Bronze figurines sculpted by C.C. Copeland are displayed this month in Yoakum County Library. Residents are invited to stop by and view the display.

Copeland has enjoyed the hobby of bronze sculpturing for many years. Much of his work has been given away, he explains.

Son of Charlie and Carie Copeland, C.C. was raised in Yoakum

County. He and his wife, live west of Plains on the State Line. They raise quarter horses. They reared two daughters. Joann is deceased. Jan lives in Post.

The Copelands have four grandchildren and a number of great-grandchildren. Mrs. Copeland is a shut-in as a result of a stroke. Their grandson, Dan Holbert, helps Copeland with the ranch.

Meet the

Cowboys & Cowgirls

at the Stadium,
Monday, Aug. 15,
at 8 p.m.

Hospice Care exists to serve the terminally ill - regardless of the disease. Hospice Care specializes in control of pain and other symptoms, psychological, social, and spiritual support are also part of this care. The patient, family and/or nursing home staff are supported by visits from the hospice staff and specially trained volunteers.

18/4tc



Baby Talk



Shandy Willett and Scotty Rains announce the arrival of a daughter born at 7:09 a.m. July 24 in University Medical Center in Lubbock. The little miss weighed six pounds 15 ounces and measured 20 and three-quarters inches long. She has been named Sierra Brooke. Grandparents are Jerry and Paula Willett and David and Shirley Bunch. Great-grandparents are Chris and Joan Humphrey, Ruby Bilibrey and Mrs. Carl Rains of Brownfield.

Dr. and Mrs. Steve Smith of Lubbock announce the arrival of a son born at 10:55 p.m. July 21 in University Medical Center. The little lad weighed seven pounds 14 ounces and measured 20 and one fourth inches long. He has been named Joel Dylan. He has a sister, Jessica, ten, and two brothers, Jacob, three and Joshua, 20 months. Grandparents are Sheron and Lanny Smith. Louise Smith of Tahoka is his great-grandmother.

WE NOW HAVE:

- 40 LB. POTTING SOIL \$3.35
- 20 LB. ZIPP ALL-PURPOSE FERTILZER 16-8-8 \$3.49
- FLOWER AND VEGETABLE SEEDS 79¢
- 25' ARROW "THE BRUTE" MEASURING TAPE \$14.95
- 1 LB. BERMUDA GRASS SEED \$4.45
- 3 LB. BERMUDA GRASS SEED \$12.95
- 4 LB. BONSAI GRASS SEED \$8.95

BAYER LUMBER

1018 AVE E
PLAINS, TX 79355
456-4800

Yoakum County Florist & Gifts

WIN FRED FOOD!

Come in and Start Winning Today!

WIN UP TO \$1000 INSTANTLY!

Pick up your free game ticket today!

FINAL WEEKS OF OUR PROMOTION!!!



INSTANT WIN GAME

ALLSUP'S

\$50.00 WORTH OF GASOLINE FREE!!!

TAKE THIS COUPON TO BIG COUNTRY FORD 2400 MABRY DR. CLOVIS, NEW MEXICO 88101. IF YOU PURCHASE A NEW VEHICLE BEFORE AUGUST 13, 1994 YOU WILL RECEIVE \$50.00 WORTH OF FREE GASOLINE COURTESY OF ALLSUP'S.

ATTENTION! CUSTOMERS!

All second chance Sweepstakes Tickets must be deposited in the stores by August 13th. The drawing for the Ford Escort LX will be held on Friday August 19th. You must have all your Free Products redeemed by August 31st.

PRICES EFFECTIVE AUG. 9-15, 1994 PLAINS, TEXAS

FREE GAS FOR A YEAR

VICTOR E. PEREZ ALBUQUERQUE, NEW MEXICO
PEGGY R. RUBIO BARTOW, TEXAS
MARIE WARREN CANYON, TEXAS
SHEILA LEWIS BORGER, TEXAS
LISA RAMIREZ RUIDOSO, NEW MEXICO
MARINA UNDERWOOD WINK, TEXAS
JIM LINDSEY WELLINGTON, TEXAS
MICKEY WILLIAMSON GUADALUPITA, NEW MEXICO

WINNERS! \$1,000

VICTORIA A. MATTHEWS LAS VEGAS, NEW MEXICO
PAM FREEMAN BALLO, OKLAHOMA
ARCHIE A. CRAWFORD ALAMOGORDO, NEW MEXICO
DAVID JONES CARLSBAD, NEW MEXICO
MARLO BOOGUA GALLUP, NEW MEXICO

SAUSAGE, EGG, & BISCUIT FOR ONLY 99¢

SHURFINE MAGIC STARS 14 OZ. BOX

HOMOGENIZED MILK GALLON

SAVE ON SHOCK TARTS

ALLSUP'S HOT LINKS

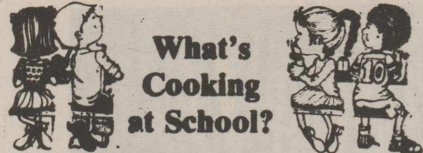
Welcome back students!

We are pleased to have each of you at school this year. It is exciting to see young people in the buildings once again because of your enthusiasm and interest. Everyone of you is special, and you have a special role to fill at Plains ISD. We hope that this will be a year that all of you will try to do your very best, that you will grow mentally, and that you will have fun along the way.

**Meet the
Cowboys
&
Cowgirls**

**at the Stadium,
Monday, Aug. 15,
at 8 p.m.**

**Sponsored by the
Booster Club, there
will be homemade
ice cream served to
all those attending.**



BREAKFAST

- MONDAY - Cereal, toast, grape juice and milk.
- TUESDAY - Donuts, toast, apple juice and milk.
- WEDNESDAY - Scrambled eggs, toast, orange juice and milk.
- THURSDAY - Pancakes w/syrup, fruit punch and milk.
- FRIDAY - Toast, cold cereal, orange/pineapple juice and milk.

LUNCH

- MONDAY - Ham/cheese sandwich, French fries w/catsup, lettuce leaf, sliced pickles, chocolate chip cookies and milk.
- TUESDAY - Taco salad w/cheese, pinto beans, taco sauce, corn, shredded lettuce, tomatoes, brownies, crackers and milk.
- WEDNESDAY - Hamburger, lettuce leaf, sliced tomatoes, pickles, onions, potato chips, mixed fruit, banana cake and milk.
- THURSDAY - Mr. Rib w/barbecue sauce, pinto beans, Kosher spears, onions, cornbread, apple cobbler and milk.
- FRIDAY - Fried chicken w/gravy, creamed potatoes, green beans, hot rolls, Jell-O and milk.

School Events

THURSDAY, AUGUST 18 - Football scrimmage against Petersburg - here at 5:30 p.m.



ENERGY SAVING TIP.....

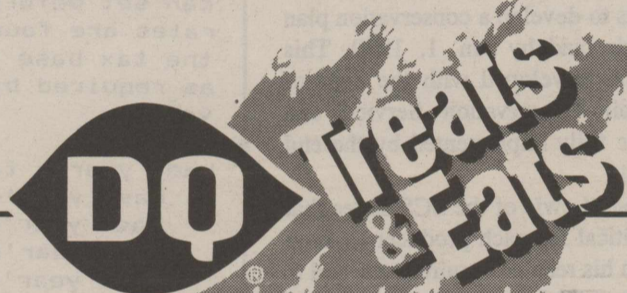
SHOWERS SAVE POWER...They use about half as much hot water as an average tub bath.

LEA COUNTY ELECTRIC COOPERATIVE, INC.

"OWNED BY THOSE WE SERVE"

LOVINGTON/TATUM, NM

PLAINS, TX



Full Meal Deal™

1/4-lb.† Hungr-Buster*, fries, drink and a sundae.



\$2.99

DQ® Kid's Pick-nic™

The only kid's meal that lets kids pick! Pick your favorite food, your favorite treat - even your favorite prize! Plus, you also get a drink and fries!



\$1.99

On Sale at Dairy Queen® August 8-21, 1994.

©Reg. TM Am. D.Q. Corp. *Reg. TM Tx. D.Q. Op. Coun. ©Tx. D.Q. Op. Coun. †Pre-cooked weight. At participating Dairy Queen stores.

SHURFINE MAGIC STARS 14 OZ. BOX \$1.99	DECKER CHOPPED HAM 10 OZ. PKG. \$1.59	SHURFINE PEANUT BUTTER 18 OZ. JAR \$1.99
ALLSUP'S HOMOGENIZED MILK GALLON \$1.99	SAVE ON TROLLI GUMMI 5.29 OZ. BAG 99¢	SHURFINE SQUEEZE TOMATO KETCHUP 28 OZ. 99¢
SAVE ON SHOCK TARTS 2.99¢ FOR	ASSORTED SARA LEE DANISH 2 \$1.00 FOR	ALL TYPES PEPSI- COLA 6 PAK 12 OZ CANS \$1.99
ALLSUP'S HOT LINKS 2.99¢ FOR	WILSON MEAT FRANKS 12 OZ. PKG. 69¢	PEARSON'S "BONUS" NUT ROLL 2.5 OZ. 2.89¢ FOR

Free Food & Food Products!

FAST MONEY!

Jackson rites held in Oklahoma

Graveside services were held Aug. 2 in Vernon Cemetery in Coweta, Okla. for Mrs. Opal Marie (Jackie) Jackson, 84, of Artesia, NM, formerly of Plains.

Rex Shrum of Coweta officiated.

Mrs. Jackson died July 30 in Artesia General Hospital. She was born Sept. 5, 1909 in Coweta, Okla. She married John T. Jackson in 1928 in Coweta. He died in 1989.

She moved to Artesia in 1987 from Tulsa, Okla. She was a retired sales clerk for Froug's Department Store in Tulsa.

Survivors include her son and daughter-in-law, J.T. and Annie Jackson, also former Plains residents; four grandchildren, Ronnie Jackson, Janis Champion, Rhonda Jackson and Camille Hanes; five great-grandchildren, J.D. Champion, Ladd, Landon and Chanda Jackson; and one brother, Pete Sanders of Coweta, Okla.



READ TO ME PARTICIPANTS - Kevin and Kim Gass and Kelsey and Lynn Curry are among the pre-school children who participated in the read to me division of the summer reading program at Yoakum County Library.

Reading club comes to a close

The summer reading program at Yoakum County Library will conclude this week. Some 252 children registered to participate with 98 earning certificates and coupons for Dairy Queen ice cream cones.

Library personnel extend appreciation to the local Dairy Queen for participating in the reading promotion.

Filmtime will begin at 10 a.m. Wednesday morning, Aug. 31. All pre-school children are invited to participate in the weekly story time hour with stories, games, songs, films and parties. Parents who wish to help their child celebrate birthdays may contact library personnel for details.

NOTICE
BEAUTICONTROL cosmetics.
Call Holly Dyer, 456-8451.

CRP land options to be discussed

The Conservation Compliance provision of the 1985 Food Security Act required farmers receiving USDA benefits to develop a conservation plan for their land by Jan. 1, 1990. This plan was developed with the help of the Soil Conservation Service and must be fully implemented by the end of 1994.

Mark Lewis of the SCS states that it is critical for each producer to keep up with his residue requirements and to stay on schedule. After the planned practices are implemented the first time, the farmer is responsible for staying on schedule with their plan.

For producers with irrigated cropland, the first iteration of high residue or cotton burrs must be completed by the end of December 1994. Producers using wind strips are reminded that the strips must be planted every year to remain in compliance.

By not following the FSA plan, a producer will increase the risk and uncertainty of losing valuable deficiency payments and in many cases these practices reduce the expenses involved in growing a profitable crop.

There are alternatives for the producer, the plan can be changed to meet new farming needs. Changes can be made with the approval of your local conservation district if they meet the requirements of FSA. The plan must be revised before you apply the new practice.

The first Conservation Reserve Program (CRP) contracts signed by Texas Landowners will begin expiring in 1995. According to Soil Conservation Service officials, now is the time to start making plans for the use of those acres.

Wildlife and other options will be discussed at CRP meetings scheduled for Amarillo, Aug. 23, and Lubbock, Aug. 25. The Amarillo meeting will be at the Sunset Convention Center from 9 a.m. to 4 p.m. The Lubbock meeting will be at the Civic Center Auditorium from 9 a.m. to 4 p.m.

1994 Property Tax Rates in PLAINS SCHOOL DISTRICT

This notice concerns 1994 property tax rates for PLAINS SCHOOL DISTRICT. It presents information about three tax rates. Last year's tax rate is the actual rate the school district used to determine property taxes last year. This year's effective tax rate would impose the same total taxes as last year if you compare properties taxed in both years. This year's rollback tax rate is the highest tax rate the school district can set before it must hold a rollback election. In each case these rates are found by dividing the total amount of taxes and state funds by the tax base (the total value of taxable property) with adjustments as required by state law. The rates are given per \$100 of property value.

Last year's tax rate:

Last year's operating taxes.....	\$	9,673,227.68
Last year's debt taxes.....	\$	0.00
Last year's total taxes.....	\$	9,673,227.68
Last year's tax base.....	\$	716,535,384.00
Last year's total tax rate.....	\$	1.3500 /\$100

This year's effective tax rate:

Last year's adjusted taxes.....	\$	9,639,231.58
(after subtracting taxes on lost property)		
/ This year's adjusted tax base.....	\$	562,410,664.00
(after subtracting value of new property)		
= This year's effective tax rate.....	\$	1.7139 /\$100

x 1.03 = maximum rate unless unit publishes notices and holds hearing.....

\$ 1.7453 /\$100

This year's rollback tax rate:

School maintenance and operations:		
component	\$	9,692,013.33
/ This year's tax base	\$	563,554,304.00
= This year's local maintenance and operating rate	\$	1.7198 /\$100
+ \$.06 = this year's maximum operating rate.....	\$	1.7798 /\$100
+ This year's debt rate.....	\$	1.7798 /\$100
= This year's rollback rate.....	\$	1.7798 /\$100

SCHEDULE A: Unencumbered Fund Balances

The following balances will be left in the unit's property tax accounts at the end of the fiscal year. These balances are not encumbered by a corresponding debt obligation.

Type of Property Tax Fund	Balance
General Operating Fund	\$ 300,000.00
	\$.
	\$.