

Nichols  
Worth



By Nanalee Nichols

Well, I hate to be a fair weather friend, but it looks like it's time to batten down the hatches because I've been keeping a weather eye out and it looks like the storm warnings are a'flying.

It seems the storm clouds are gathering, but you know that every cloud has a silver lining...and it's always darkest just before the dawn. That means that pretty soon we'll be singing in the rain and then it'll be blue skies again.

We'll be out making hay while the sun shines and it will be hot enough to bake our brains and fry eggs on the sidewalk.

Naturally, we'll be as happy as an old sow in the sunshine.

Right now, it's so dry that we saw two trees fighting over a dog the other day. A fisherman told us he caught a catfish and it had ticks, it's so dry! We wish it were raining cats and dogs instead.

Later this year, I'm sure that it will come a major gully washer...I mean a real frog strangler. It will be so wet that the ducks will be carrying umbrellas. It won't matter, we'll still get out a paper, if the Good Lord's willing and the creek don't rise, that is.

This fall we usually get a few days that are peaseoup foggy...so thick that the fish will take short-cuts over land from one lake to another.

In winter there won't be anything between here and the North Pole but a barbed wire fence, and someone will have left the gate open at that!

Then it will be spring time again and those April showers will bring May flowers. It will be fair sailing for sure.

If you haven't already figured it out, folks, the above column (?) consists entirely of weather "Cliches".

After talking with some people about the current drought I began pondering just how much of our vocabulary is devoted to phrases that use weather as an analogy!

Even those to whom weather is not a guiding factor in their lives tend to use climatic conditions to illustrate their point.

One of the really odd things I stumbled upon was the fact that most cold weather statements aren't suitable for this column! Think about the expressions "It's colder than a ...". Off hand I come up with at least three things it's colder than...none of which will appear here!

Well, I just thought it was interesting how many weather expressions there were. But time and tide waits for no man (or woman) and I've written about enough this week. If you folks think of any more expressions of this nature, let me know, there are bound to be many more of them!

**WATER PURIFIER**-Ernest and Sarah Butler stand beside the new water purification system they are installing at their "Best of Texas" location in Detroit. The purifier will be supplying reverse osmosis purified water to the public soon. The Butlers also make a wide variety of salsa, jalapeno jelly, pickled jalapenos and other southwestern speciality food items at the location. (Staff Photo)

Your Community Newspaper...Serving Local Folks, And Local Businesses For 84 Years

# Deport Times

84th YEAR, No. 14

DEPORT, LAMAR COUNTY, TEXAS

Thursday, September 2, 1993

25¢

## Prairiland Board Amends Budget, Okays Roof Repairs and Classrooms

The Prairiland Board of Trustees met in a called meeting in the Blossom school library at 8:00 p.m. on August 31, 1993 to conduct a public hearing on the 1993 - 94 budget and to conduct some regular business.

After the public hearing, the board adopted a district recycling program as mandated by law; adopted School Board Policy Update #44; accepted the certified tax roll as given by the Lamar County Appraisal District; and made budget amendments on the 1992-93 budget.

The Board then adopted the 1993-94 budget of 4.9 million dollars. This is an increase of approximately \$300,000 over last year's budget. The increase will be taken from the fund balance with no planned increase in the present tax rate. The increase comes as a result of plans to implement an alternative learning lab at the high school; repair roofs at the Blossom and high school campuses; and the building of a science lab and dressing rooms at the Deport campus.

With the elimination of the County Education District (CED) the board was required to take a record vote for a proposed tax increase from its 17/100 to 1.095/100 which would be a total of the CED tax rate of 92.5/100 plus the current Prairiland tax rate.

After the executive session the board hired teacher Amanda Barnard for the Blossom campus and Peggy Benedict to work part-time in the Deport cafeteria.



**COTTON HARVEST**-drought has seriously reduced the yield on area cotton fields but there is

still some of the beautiful white bolls to be found, as in this field

south of Deport. (Staff Photo by Nanalee Nichols)



**IS THIS THE ONLY RAIN?** the summer sun gives a glow to the water droplets from a water sprinkler in Deport last week. In

spite of rains to the west, south and north of Deport, the town remains dry! (Staff Photo by Nanalee Nichols)

## Lamar County Sheriff & Precinct 1&4 Constable Report

August 27: Sheriff's Department responded to telephone harassment in Powderly.

Sheriff's Department responded to civil matter in Powderly.

Sheriff's Department and Constable Pct. 1 responded to report of burglary of habitation in Pattonville.

Sheriff's Deputy responded to disturbance off FM 197W.

Sheriff's Deputy responded to disturbance call on old Detroit highway.

Constables 1 and 4 responded to report of suspicious activity in Reno.

August 28: Sheriff's Department responded to report of animal complaint on Hwy. 82E in Reno.

Sheriff's Deputy responded to report of sexual assault in Blossom.

Sheriff's Deputy responded to car fire on Hwy. 82 West of Blossom.

Constable Pct. 1 responded to report of suspicious vehicle south of FM 1503 Deport.

Lamar County Deputy and Pct. 1 Constable arrested one white male on bail bond surrender and one white male for PI and disorderly conduct.

August 29: Sheriff's Deputy arrested intoxicated driver on Hwy. 82E in Reno.

Sheriff's Deputy responded to disturbance in Blossom.

Sheriff's Deputy responded to minor accident in Arthur City.

As of August 29, Lamar County Jail holds 207 inmates.

## Now There's Water To Go With The Hot Stuff!

By Thomas Nichols

Ernest and Sarah Butler of Manchester have a unique business, and are adding another unique feature to it. They have added a reverse osmosis filtered water system to their canning operation in Detroit.

The Butlers opened their business, named "Best Of Texas" in February of 1992. They manufacture relish, jellies, picante sauce, pickle chips, apple butter and candied jalapeno peppers. The onion and jalapeno pepper are both important ingredients in these zesty garnishes.

The Butlers say that the new water purification system will produce 800 gallons of water per day.

Tap water will feed into the systems and go through a process that removes chemicals and bacteria and it is then fed into a holding tank.

They are confident this new sys-

tem will aid them in their canning process as well as providing a convenient market for filtered water.

They have installed a coin operated dispenser by the entrance of their business in Detroit. Anyone wishing to purchase a gallon of water at any time can simply insert a gallon jug under the enclosed spigot.

The dispenser will automatically fill the jug and shut off.

The Butler's "Best of Texas" products are sold generally through fairs, shows and other events, although they are available in some stores throughout the area.

Their jewel-like reds, greens and mixed colors are attractive in the jar and pleasant to those who like a zesty "taste of Texas" flavor.

Now, there's water to go along with those spicy taste treats.

There will be a miscellaneous shower for Crystal and Dexter Baker Thursday Night, September 2nd from 7 until 8 p.m. at the First Baptist Church of Deport.

Gospel Singing, featuring Huey Family and local singers, will be held at the Blossom Church of God on September 4th, 7:30 p.m. Everyone is welcome.



Deport Legion To Hold Fish Fry, Install Officers

The Deport American Legion will be at 7:00 p.m. on September 10th for a Fish Fry and meeting and to install officers for the year.

District officers will be on hand and all members are urged to attend.

Deport PTO Giving Away Money!

Could you use \$100 or \$50? Of course you could. And for a \$1 donation to the Deport PTO you could just win the first prize of \$100 cash or the second prize of \$50 cash!

Deport students will have tickets

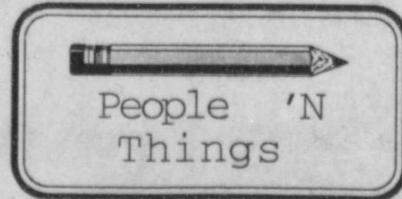
September 2nd through the 10th and the \$1 will put your name in the drawing for these two prizes.

The prizes will be given away on September 14, 1993 at 7:00 p.m. in the Deport School Cafeteria at the PTO meeting. You do not have to be present to win. A cash door prize will also be given away that night.

The Deport PTO uses their funds for a wide variety of projects at the school, and urges everyone to help make this fund raiser a success.

**Attention Deport Volunteer Fire Department Members:**

The meeting scheduled for Monday, September 6 has been cancelled, due to Labor Day holiday. The next meeting will be September 20.



Deport Nursing Home Beauty Pageant will be held September 8 at 2 p.m. in the dining room. Everyone is invited to attend.

Deport Times

USPS 154-360

Published Every Thursday  
By Thunder Prairie Publishing, P.O. Box 98,  
Deport, TX 75435  
Entered As Second Class Matter At Deport, TX  
on Feb. 10, 1908

Nanalee Nichols Publisher-Editor  
Thomas Nichols Managing Editor  
Cindy Allen Office Manager

SUBSCRIPTIONS  
\$13.00 A Year For Red River, Lamar and Titus  
Counties.  
\$16.00 A Year For Out Of Above Counties And In  
State Of Texas.  
\$16.00 A Year For Out-of-State.  
DEADLINE:  
For News And Advertising, Tuesday At Noon.  
POSTMASTER Send Change of Address To:  
Deport Times  
P.O. Box 98  
Deport, Tx 75435



**COUNTRY COOK**-Freda Jean and her children Mitchell and Sarah are pictured in the kitchen of their Johntown home. Freda is featured in this week's Country Cooking column. (Photo by Judy Screws)

## Country Cooking

By Judy Screws

I got a letter a few weeks ago from a lady who had a suggestion for a Country Cook. She said that Freda Jean, of Johntown, was an excellent cook. I called Freda to ask her if I could feature her in this column. She said it would be alright but that I could not take her picture. I half heartedly agreed, but I had plans for being featured if necessary. She finally consented, and I'm sure the picture is lovely. Of course, this is assuming that there is a picture. There have been weeks when my pictures were less than wonderful and sometimes they have been totally non-existent.

Freda is a housewife. She and her husband, Donald, have two children, Mitchell 11, and Sarah 4. Mitchell is in the 6th grade and Sarah doesn't attend school yet. Donald and Freda have been married for 16 years. He is employed as an Electronic Technician with Texas Utilities. They met at Rivercrest High School, from which they both graduated. She plans to attend college as soon as Sarah is in school.

The Jeans are members of Johntown Missionary Baptist Church, where Freda is Sunday School Superintendent, teaches the Junior Class, sings in the choir, and serves on the activity committee.

Freda says she loves arts and

crafts/ She gives them for gifts, and also uses them to decorate her home. She also sells some of them. I saw some examples of her work, and it looks really good to me. She has decorated some pretty colorful wreaths with paper twisted ribbons, berries and curls. I also saw some woodwork that she had painted and some other evidences of her talent placed around the house in the appropriate places.

According to Freda, she has to force her friends to try her Reuben sandwiches, in fact she didn't think they would be good at first since she doesn't usually like saurkraut, but now they are a regular at her table. Her recipe for Hot punch was given to her by a friend, Tonya Davis, and is a popular drink at get togethers. Her mom finally managed to get the cornbread recipe together, since she doesn't measure anything and wasn't sure how much of what to put into it. Freda says she loves the Mexican salad, but says she has to threaten the hubby with it since he swears that for the first five years of their marriage, she cooked it four nights a week and he has banned it from their home.

Thanks for letting me visit, Freda. I enjoyed it.

Everyone have a good week, and take care.

## Obituaries

### Lorena Williams Dies August 23

Funeral services for Lorena Williams, 72, of Kilgore were held at 2 p.m. August 26 at Mangum Funeral Home Chapel in Center with the Rev. R.D. Warr officiating. Burial was in Oaklawn Memorial Park in Center.

Mrs. Williams died August 23 at Mother Frances Hospital in Tyler.

She was a native of Joaquin, Texas born November 7, 1920, the daughter of John J. and Annie Armstreet. She was a homemaker and a member of Jackson Baptist Church in Joaquin.

She is survived by her husband, T.J. of Kilgore; daughters, Judy Easley of Talco and Tommie Williams of Kilgore; a son, Steve Richards of Friendswood; granddaughter, Candice Urban of Houston; grandsons, John Easley of Bogata, Tim Easley of Talco and Craig Easley of Kilgore; brother, Charlie Armstreet of Shreveport and a number of nieces and nephews.

Bearers were Billy Anderson, Nolen Cogswell, Webb Dean, Aaron Hooper, Edward Hooper, J.C. Leggett, Buren Lowe and Levis Wortham.

Mangum Funeral Home in Center directed arrangements.



Iva L. Hooker

### Iva L. Hooker Dies August 26

Iva L. Hooker, 97, of Bogata died Thursday, August 26 at her home.

Services were held at 2 p.m. Sunday, August 29 in the Bogata United Methodist Church with the Rev. Randy Newkirk officiating. Burial was in Bogata Cemetery by Wood Funeral Home.

Mrs. Hooker was born June 14, 1896 in Bogata, a daughter of Lemuel and Willie Coffield Lassiter. She was a graduate and valedictorian of the 1916 graduating class of Bogata High School. She attended business college in El Paso and afterwards was employed as a court reporter. On January 3, 1926 she married John Hooker. He preceded her in death in 1938. After his death she did legal work in the office of Hutchinson & Hutchinson. She moved to Dallas in 1948 and worked for attorneys there before returning to Bogata for five years and then entered the real estate business and was active for 20 years before retiring. She was the editor of two books, "The History of the United Methodist Church," written in 1981, and "History of Bogata, Red River County, Texas," written in 1982. She was a lifetime member of the Bogata United Methodist Church, serving as pianist and soloist for a number of years. As a young girl, she played the piano for the silent movies.

She contributed much to her church and community. She was a active member of the Methodist Church, serving as pianist, choir member, Sunday School teacher, worker with the youth, president of the Women's Society and secretary of the official board. She was a former member of the Bogata Book Club and served on the Board of Red River County Library for several years and was the first woman to serve on the Bogata City Council.

Surviving are two daughters and one son-in-law, Narca Duncan of El Paso and Patsy and F.R. Lipscomb of Dallas; six grandchildren; and 13 great-grandchildren.

Bearers were Neil Rozell, David Rozell, Russell Rozell, Howard Bryson, Jeff Puckett, Bunky Smith, John Howison and Jack Troutt.

### Ethylleene Martin Bills Dies August 25

Ethylleene Martin Bills of Paris died Wednesday, August 25 at her home.

Fry and Gibbs Funeral Home conducted graveside services at 2 p.m. Friday, August 27 at Evergreen Cemetery with the Rev. Cline Davis officiating.

Mrs. Bills was born February 23, 1911 in Minter, a daughter of Albert and Annie Ball Martin. She attended Paris schools and received her B.A. from Trinity University in Waxahachie and an M.S. from East Texas State University.

She married Mack Bills February 19, 1932 in Deport. He died February 14, 1966. She was a retired school teacher, having taught at First Ward in Paris for 27 years. She was named Paris Independent School District's Outstanding Teacher in 1966. She was a member of Central Presbyterian Church, Delta Kappa Gamma and the Retired Teachers Association.

Surviving are a son, Robert Scott Bills of Minter; three grandchildren, Melissa Bills Hutto of Tyler, Scott Martin Bills of San Antonio and Steven Mack Bills of Waco; three great-grandchildren; and a niece, Ruth Loven of Paris.

**DAVE'S FARM SERVICE CENTER**  
\*Tires \*Complete Exhaust System\*Batteries \*Brake Repair  
(We Offer In Field Repair Service)  
Hwy. 82 West - Clarksville, Tx. 903-427-3326

Get Ready September 22 For The  
**Red River County Fair**  
This Reminder Is from  
**"YOUR FRIENDS FOR LIFE"**  
**RED RIVER GENERAL HOSPITAL**  
Clarksville, Texas (903) 427-3851

**Care Check.....**  
We look in on the elderly to see they are getting the proper care. We also run errands and make minor repairs. For more information, contact: Sharon Jones or Don Burns (903)632-5431.

**RICKEY MOORE'S TEXACO**  
**BOGATA, TEXAS**  
Formerly Ed Williams Texaco  
Open Weekdays 7-5:30 Saturdays 7-12 Noon  
Full Service Station With Mechanic On Duty. Will Fix All Types Flats.  
(903)632-5404

**This Month In Texarkana is fun!**

**SHOES & HATS**  
Aug. 28 - Jan. 31  
Texarkana Historical Museum. A history of shoes and hats throughout the Eras. Also Olivia Smith Moore's 500 + pairs of size 4 1/2B shoes and hats display at the Ace of Clubs. Hours are Tues. - Fri. 10 - 4, and Sat. 1 - 3. 903-793-4831.

**FILL THE OTHER BOWL BOYS**  
Sept. 1 - Oct. 13  
Texarkana Historical Museum. An exhibit of colonial American drinking vessels. Admission is \$1.50 for children. Call 903-793-4831.

**STRANGE FAMILY BLUEGRASS FESTIVAL**  
Sept. 2 - 5  
Bluegrass music festival all labor day weekend. Call 903-838-0361 for more information.

**COUNTRY JUNCTION MARKET PLACE**  
Sept. 10 - 12  
Arts & crafts at Union Station. Sat. 9-6, Sun. 11-5. Free admission. Contact Kathy Knight at 903-793-0140.

**QUADRANGLE FESTIVAL**  
Sept. 11 - 12  
Over 2 miles of arts & crafts, downtown Texarkana. Family fun, live music, food booths and much, much more. \$1 entry. Sponsored by the Texarkana Museums Systems. Call 903-793-4831.

**49TH ANNUAL FOUR STATES FAIR & RODEO**  
Sept. 17 - 26  
Collin Ray/Radney Foster in concert on 17th. Demolition Derby on the 18th. Traditional midway rides, bargain days, cowboy days, fair twirling contest, beauty pageants, school judging & more! Fair admission is \$5 for adults (6 and over) and children (under 6) free. Opens at noon Sunday - Friday, 9 a.m. Saturday. Midway rides opens 5 p.m. Friday, Mon. & Tues. 4 p.m. Wed. & Thur., 12 noon Sat. & Sun. Call 501-773-2941.

**Texarkana ARK/TEX State Line Cities**  
For information on these and other fun activities, call the Chamber of Commerce 903/792-7191

September 2, 1993

**REUBEN SANDWICHES**  
by Freda Jean  
Rye Bread  
Horseradish  
Corned Beef (Slice very thin.)  
Shredded Swiss or Mozzarella Cheese  
Saurkraut  
Heat oven (or toaster oven) to 350-400 degrees. For each sandwich lay out 2 slices of rye bread. On one slice of each pair spread horseradish. (You may want to go easy on the horseradish as it will open up your sinuses.) Spread layer of Kraut on top of horseradish. On other slice of bread, place a slice of corned beef. Cover beef with sprinkles of cheese. Bake in broiler part of oven until lightly brown and cheese is melted. This is great served with potato chips and dill pickles.

**HOT PUNCH**  
1 1/2 quart apple juice  
1 1/2 quart cranberry juice  
1 large can pineapple juice  
2 tsp. pumpkin pie spice  
3 sticks cinnamon  
2 cups sugar  
Mix all ingredients together. Bring to a boil and serve hot.

**MEXICAN SALAD**  
1 to 2 lbs. hamburger meat  
1 can ranch style beans  
chunks of velveeta cheese (as desired)  
Lettuce  
Tomatoes  
Brown ground beef, and drain. Season meat as desired. Add beans and cheese. Cook on low to medium heat until cheese melts and mixture is hot and bubbly. Serve over lettuce and tomato salad. Sprinkle with tabasco if desired. Serve with Doritos.

**MOM'S CORNBREAD**  
3/4 cup self rising cormeal  
3 heaping Tbs. flour  
1 egg  
1 tsp salt  
1 tsp baking powder  
Buttermilk or equal amounts of evaporated milk and water to desired consistency.  
Preheat oven to 425. Pour small amount of Crisco to cover bottom of skillet. When skillet is hot, sprinkle cormeal over bottom. Lightly brown meal. Pour cornbread mixture in skillet on top of browned cormeal. Bake about 25 minutes or until lightly browned and done in the middle.

"Therefore being justified by faith, we have peace with God."  
Romans 5:1

**Card of Thanks**  
Thanks so much to my family and friends for all your thoughts and prayers, the beautiful flowers, cards, visits, the food, calls, and all the other acts of love and kindness shown me while I was in the hospital and since I have returned home. Thanks to the hospital staff and Dr. W.R. Phillips. Also a special thanks to these ministers: George Thomas, Bob Bush, Mark Jones, and Don Shovan. Your visits and prayers will always be remembered and appreciated. May God bless each of you

Thanks again,  
Imogene Hutson

**Card of Thanks**  
I want to thank all of my friends and relatives for the visits while I was in the hospital, recuperation from surgery. I am thankful for the prayers, visits, calls, food and cards and concern expressed by each of you. May God bless each of you in a special way.  
Marjorie Strain

"Forasmuch as ye know that your labor is not in vain with the Lord."  
1 Corinthians 15:58b

**Leveling Out Your Electric Bills Is A Smooth Move.**

The Budget Billing Plan from Texas-New Mexico Power Company lets you smooth out the highs and lows in your electric bill. With the plan, you pay about the same amount each month. The actual annual amount you pay for electricity is no more or less than it would be without the plan, but you have greater budgeting convenience. To see if you qualify call or visit your local TNP office.

**Texas-New Mexico Power Company**

**HAYS GARAGE & STATE INSPECTION STATION**  
has moved to a new location, next to Bogata Auto Parts Store, Bogata. (903)632-5707



Mr. and Mrs. Lee Roy Bice

### Guess-Bice Exchange Vows

Kathy Ann Whittle Guess of Deport and Lee Roy Bice of Dumas exchanged wedding vows at 7 p.m. Saturday, August 21 at the home of Earl and Nancy Gresham in Deport. The Rev. Chief Warden performed the ceremony.

The bride is the daughter of Ruth Whittle of Deport and the late Jinks Whittle. She is the granddaughter of Mrs. Faye Elmore of Deport.

The groom is the son of Henry Bice and the late Mrs. Henry Bice of Forney, TX.

The ceremony was performed in the carport, which was decorated with green plants and hanging baskets, peach and mint colored ribbons and an arch of peach carnations and greenery. The guest register was presided over by Susan Whittle, niece of the bride. The table was draped in peach. To complete the setting, a guest book, china bride doll and ceramic doves accented the table.

The bride was escorted by her brothers, Larry and Jeff Whittle and given in marriage by her family. She wore a two piece ivory brocade satin street length dress with elbow length sleeves. The dress was accented with an ivory colored string of pearls and pearl and gold earrings. Her hairpiece was an ivory comb adorned with roses and ribbons. She carried a

cascade bouquet of peach carnations, baby's breath and greenery.

Attending the bride was her mother, Ruth Whittle.

Brittany and Courtney Filkins, nieces of the bride, were flowergirls. Floyd Bice of Forney, brother of the groom, was best man.

Wedding music was provided by Tim Wood, who played and sang "Unexpected Song." Crystal Francis played pre-recorded music of George Strait's "I Cross My Heart" and she sang "(Everything I do) I Do It For You" to pre-recorded music.

Following the ceremony, a reception was held. The bride's table was decorated in peach and mint colors, featuring a multi-tiered cake, lime and orange sherbet punch, a crystal candelabra centerpiece and a picture of the bride and groom. Serving were Sharon Francis, Nancy Gresham, Nell Wolfe and Sue Sheppard.

The groom's table was laid with a white tablecloth, set with the chocolate groom's cake, decorated with a hard hat, shovel and sack of cement. A sterling silver coffee set and peach and mint centerpiece adorned the table. Serving at the groom's table was Penny Whittle, niece of the bride.

Following a wedding trip to Colorado and points of interest, the couple will make their home in Deport.



Mr. and Mrs. Thomas L. Garrett  
Married 55 Years

### Mr. and Mrs. Thomas Garrett Celebrate 55th Anniversary

Mr. and Mrs. Thomas L. Garrett of Blossom celebrated their 55th anniversary on Friday, August 27. A family dinner was held Saturday, August 20 to honor the occasion.

Thomas Lindel Garrett and Bessie Leona Smith were married in Pattonville in 1938, and have lived in the Blossom area for most of their married life. They have two sons and daughters-in-law, Paul and Sue

Garrett of Paris and Jerry and Patti Garrett of Lake Tawakoni.

They have four grandchildren and two great-grandchildren. Before retiring, Mr. Garrett was employed by Lamar County Electric Cooperative in Paris.

The couple received an anniversary greeting from President and Mrs. Bill Clinton congratulating them on this special occasion.

### Fulbright News



By Betty Rodgers  
652-6051

Bobbie King of Paris and Jimmie King had supper Tuesday with Mr. and Mrs. Kyle King of Paris.

Saturday visitors of Betty Rodgers were Mrs. Marlene Bolin of Shady Grove and Mr. and Mrs. Aubrey Her-ring of Bogata.

Karen Baker spent the weekend with her parents, Mr. and Mrs. Worth Baker.

Gilbert and Melissa Arriaga had supper Saturday night with Monte and Shelley Rodgers in Tigertown, also Mr. and Mrs. Larry Cope and Duana enjoyed supper too.

Spending Sunday with Betty Rodgers were Monte and Shelley Rodgers, Melissa and Gilbert Arriaga and Marcella Wright.

Alice Jean Garnet visited her mother, Mrs. Faye Gandy.

Harvey (Bo) King of Kansas City, KS spent the day Sunday with his mother, Mrs. Jimmie King.

Visitors of Fay Gandy Thursday night were: Judy Nutt, Wynell Campbell, Pam Urbano, Sarah Lee a ll of Paris.

Boyd Hurt of Clarksville, Gilbert Arriaga of Deport, Wayne Williams of Dallas visited Fay on Saturday.

Her daughters Alice Jean Garner of Rowlette and Sandy Jarecki and Adam Chase of Rosewood came Sunday and brought dinner and spent the day. They had an early birthday celebration for Alice Jean and Adam Chase who will be in Branson, Missouri vacationing on their birthdays.

Betty Rodgers visited Fay also. Terrie Shelby of Detroit and Jackie Wilson of Detroit and W.W. Alley dropped by.

Mrs. Ruby Chandler celebrated her 92nd birthday on Sunday, August 29. She received lots of cards and many people came and visited and brought gifts.

Other visitors of Fay Gandy were MArion Mitchell and Brad and Renea Anderson.

Mrs. Bob Embrey spent last week in Bedford with her grandchildren while Tracey and Sharon vacationed in Las Vegas.

\*\*\*  
The farther backward you can look, the farther forward you are likely to see.

—Winston Churchill

Serving your investment needs  
Stocks \* Bonds \* IRA's  
Mutual Funds \* Annuities

**A.G. Edwards**  
Jim Gifford  
785-4584  
1305 Lamar Avenue  
Paris, Tx. 75460 AN-IM-119-SMC

**We LOVE Cowards**  
Gentle, Concerned Care

- ♥ Bonding & Porcelain Veneers
- ♥ Root Canals
- ♥ Gum Treatment
- ♥ Extractions
- ♥ Crowns & Bridges
- ♥ Dentures
- ♥ Bleaching
- ♥ Preventive Care

WE'LL TAKE YOUR DENTAL INSURANCE UP FRONT  
Treat Yourself to a Soft Touch • AFFORDABLE DENTISTRY  
♥ Emergencies & Toothaches Seen Same Day ♥

G. Donald Haslam, D.D.S.  
General Dentistry  
HOURS 8-5 M-F  
**785-1662**  
2845 Lewis Ln., Paris  
Across Street from McCuision Hospital (In Pavilion West)

"We Care Bear"

**BIG LABOR DAY SALE**  
MONDAY, SEPTEMBER 6th  
Mary Helen's Dress Shop  
Final Clearance On All  
Summer Merchandise  
**25% to 75% Off**  
Select Group Of  
Fall Merchandise  
**20% Off**

**MARY HELEN'S DRESS SHOP**  
FM Rd. 2825 South Of Red River General Hospital  
Clarksville, Texas - 903-427-3595

### Dr. L. C. Stout Selected As Delegate To National Educational Congress

Dr. L. C. Stout, superintendent of the Prairiland Independent School District and Texas' president of the National Rural Schools Association, has been selected by Commissioner

Lionel Meno to be one of two delegates from Texas to the National Congress on Rural Education to be held in Burlington, Vermont in October 1993.

### OLD FASHIONED PREACHING BIBLE BAPTIST TEMPLE

3515 Bonhom Street  
Paris, Texas

903-784-1635 or 785-6530

#### Standing For The King James Bible And The Fundamentals Of The Faith

Sunday School 10 a.m. - Sunday Service 11 a.m.

Sunday Night Service 6 p.m.

Wednesday Night Service 7 p.m.

Pastor - Vince Pisciotta

Call For Free Ride

### Wood Funeral Homes

Locally Owned and Operated By  
The James Wood Family

Locations At

414 N. Main  
P.O. Box 217  
Bogata, Texas  
(903) 632-5614

508 Monroe  
P.O. Box 236  
Deport, Texas  
(903) 652-3195

Complete Funeral Arrangements  
Pre-Need Arrangements

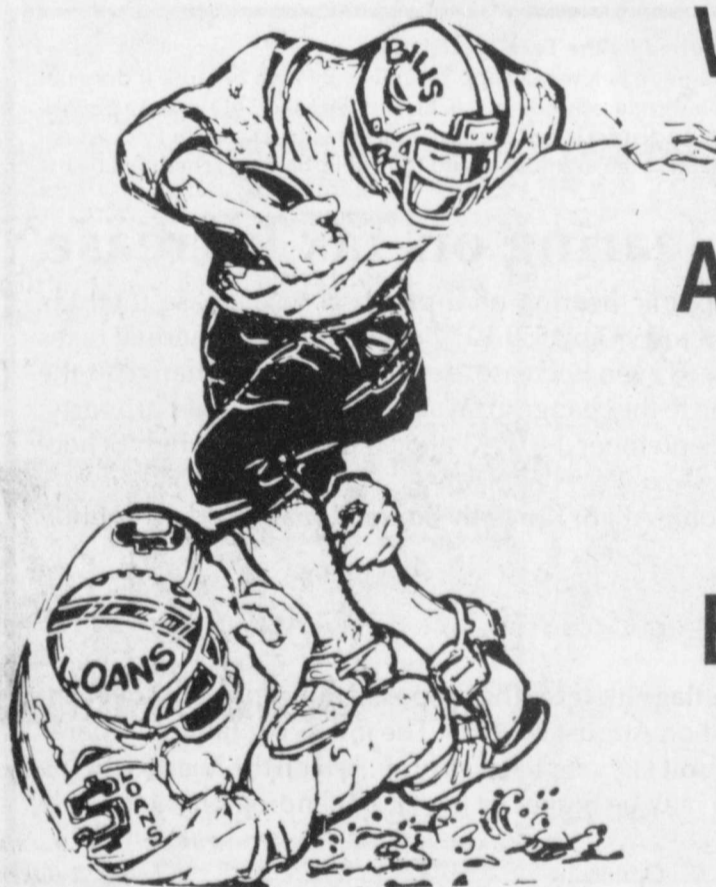
Grief Library

Monuments

"Allow Our Family To Serve Yours"

"We will continue to honor any burial or pre-need funeral contract regardless of the funeral home, or company issuing it for full value.

This is our pledge to you." James G. Wood



**We're Eager  
To Tackle  
Any Request  
You Have  
For  
Extra Funds  
This Fall.**

Expenses have a way of piling up at this time of year and if you could use some extra dollars, we urge you to call or stop in and tell us your needs. We want to help!

Making A Difference  
Through Local Commitment

**Guaranty Bank-Deport**

111 Main Street - Deport, Tx.

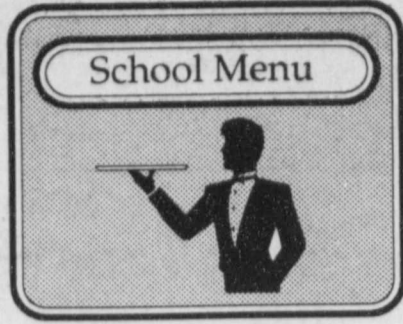
903-652-3615

MEMBER FDIC

**Hobbs Reunion Is Set For September 5th**

Descendants of G.W. and Lavonia Campbell Hobbs will hold their annual family reunion on Sunday September 5, 1993.

All relatives and friends are invited to come on out to the American Legion Hall in Deport and enjoy the day of visiting and reminiscing with old friends and folks.



**School Menu**

Prairiland High School  
Lunch Menu  
September 6-10, 1993

- Monday**
- Holiday
- Tuesday**
- Burritos, sauce, cheese
- Salad
- Mexican beans
- Cake
- Milk
- Wednesday**
- Chicken nuggets
- Potatoes/gravy
- Green beans
- Rolls, butter
- Milk
- Thursday**
- Ravioli
- Sliced potatoes
- Blackeyed peas
- Jello
- Bread
- Milk
- Friday**
- Hot dogs
- Cheese sauce
- Pork and beans
- Chips
- Fruit
- Milk

**Turner Tours, Attends Scout Jamboree**

After a long year of planning, meetings and campouts, Chris Turner a former member of the Deport Cub Scout Pack 19, attended the National Scout Jamboree at Ft. A.P. Hill near Fredericksburg, Va. from August 4 through the 10th.

Chris, a 7th grade student at Deport Junior high is a member of Boy Scout Troop 2 in Paris and holds the rank of Star.

He also serves as Quartermaster for the patrol and is a member BSA Order of the Arrow Lodge.

Chris was among a group of 36 boy scouts from out NETSEO Trails council area that attended the 1993 National Scout Jamboree. There were more than 30,000 boy scouts from the US and other countries converging onto Ft. A.P. Hill, making the town the state's third largest city during the week-long festivities.

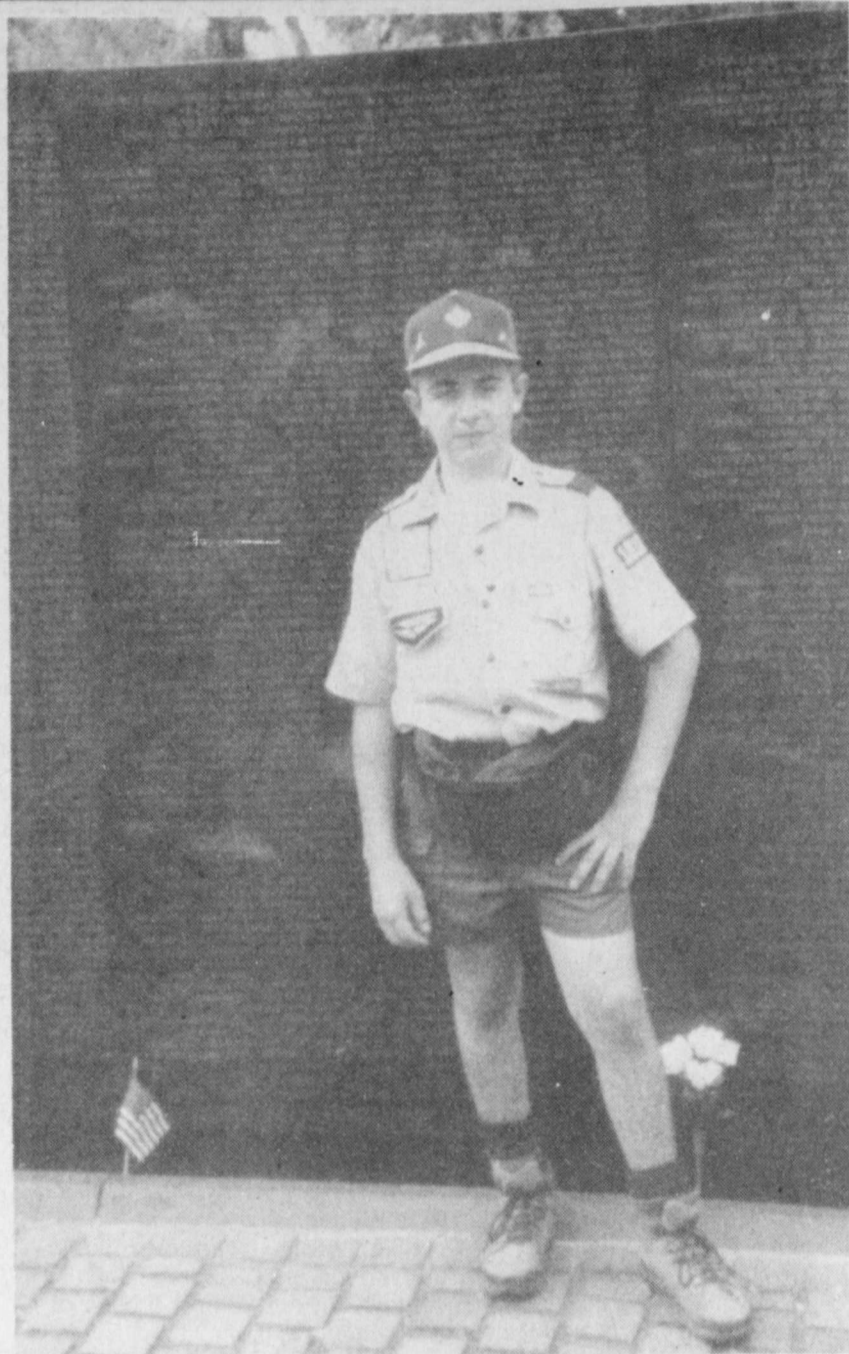
The scouts were able to participate

in various outdoor activities such as scuba diving, repeling, BMX raceway and were able to learn about atomic energy, computers, and space travel to earn merit badges.

Before the Jamboree officially kicked off on August 4th this group of scouts did some sightseeing. They flew to Philadelphia to see such things as the Liberty Bell, Independence Hal and the US Mint.

They went to New York city where they toured the World Trade Center and the Statue of Liberty. From here they went to Washington D.C. where sightseeing included the Smithsonian Museums the White House and the Viet Nam Memorial and Numerous other sights.

After 8 days of touring and 7 days of Camping Chris arrived home in time to celebrate his 13th birthday and start to school.



Chris Turner In Front Of Viet Nam Memorial

**Paris Body Works**

8-5

AMERICAN & FOREIGN COLLISION REPAIR  
FREE ESTIMATES  
UNIBODY ALIGNMENT  
FRAME STRAIGHTENING  
INSURANCE WORK  
PAINT MIXING SYSTEMS

120 NE 25TH ST. PARIS, TX 75460

**(903)784-7455**

MOTORS • MOTORS • MOTORS • MOTORS • MOTORS • MOTORS

**DON'T**

Spend Unnecessary Money On New Car Payments

LET US REBUILD YOUR WORN OUT MOTOR

Motors Of All Types - Rebuilt Totally **GUARANTEED**

Align Boring - Engine Balancing - Bore & Honing  
Value Jobs - Seat & Guide Replacement  
Head & Block Milling - Engine Vtting  
The Most Complete Machine Shop  
In Northeast Texas

**COME SEE US AT SEELIGER RACING & MACHINE SHOP**  
(903)785-2791  
450 E. Kaufman • Paris, Texas 75460

MOTORS • MOTORS • MOTORS • MOTORS • MOTORS • MOTORS

**Deport Nursing Home News**

By Joni Kincaid

Heather and Jenny Hale, Velma and Donnie Burns, Linnie Bailey, Alice Bumgarner and Ruby Blevins visited Nina Hale.

Mr. and Mrs. Alfred Fangio and Mr. and Mrs. Elvis Francis visited Mr. and Mrs. David Geer last week.

Cindy Burks and Kathy Wright visited their mother, Allie Burks and Mary Mathews.

Burrell Kincaid, Pat Talley and Mary Johnson visited Lillie Mae and Betty Gardner.

Reecie Kelsey visited her sisters, Doris Norwood and Brodie Bell.

Willie Mae Dowdy of Denton visited Melvina Dinwiddie this week-end.

Kenneth Palmer visited his mother, Meldina Palmer.

Paul and Sara Mazy, Ruby Blevins, Linnie Bailey, Alice Bumgarner and Margie Woods visited Mrs. Annie Mazy this week.

Howard Higdon, Pam White and Mary Jo Smith visited Grace McHam.

Marie Watson, Lucy Fowler, Margie Wood, Kelly Kincaid and Alice Bumgarner of Deport visited Johnnie Warren.

Syble Evans visited Mrs. Elizabeth Barnett Monday as well as Willie Mae Dowdy of Denton and son Tom Dowdy of Garland.

Pat Smith, Elizabeth Talley, Ruth Wear, Hillery Atwood, Jeremy Smith, Jennifer Torres, Bill Talley and Travis Talley were visitors of Ethel Talley

and Herman Adams.

Residents having birthdays this month are Herman Adams, Isabel Blakney, Betty Gardner, Ernest Ham, Frankie Archibald, Terry McDowra, Annie Mazy and Elizabeth Barnett.

Welcome home to Edna Bell. We missed you.

The Baptist Temple Church of Paris joined us Saturday for singing and fellowship. Fourteen members were led by Bro. Vince Pisciotta, while 32 residents enjoyed the service. It is heartwarming to see so many younger Christians sharing their time and friendship with us. The Bible Baptist Church will be with us again on the fourth Saturday of each month.

Our "Salute to Fruit" party was held Thursday in the dining room. Thirty-nine residents attended this fruit event. We held a fruit walk with 12 exciting winners. They were Clyde Bankhead, Ima Baker, Miriam Shannon, Dorothy Boatwright, Mary mathews, Marshall Dunigan, Lena Powell, Brodie Bell, Johnnie Warren, Pug Palmer, Herman Johnson and Nina Hale. We continued the party with orange and grape races.

Winer of the orange race was Marshall Dunigan with Herman Adams coming in second. The grape race was won by Frankie Archibald and Doris Norwood with second places going to Nina Hale and Opal Ham. The residents enjoyed the day and settled down for a delightful dinner.

The Mrs. Deport Nursing Home Beauty Pageant will be held September 8 at 2 p.m.

**Prairiland FHA Holds Pillow Party**

On Monday, August 23, teh Prairiland Future Homemakers of America held a pillow party in the homemaking department. The movie "Mighty Ducks" was shown while everyone enjoyed hot dogs and punch. This was the first activity of many to be held by the FHA department this year. The next activities to be held by the FHA department will be the Homecoming Reception and a leadership workshop with other schools from the county.

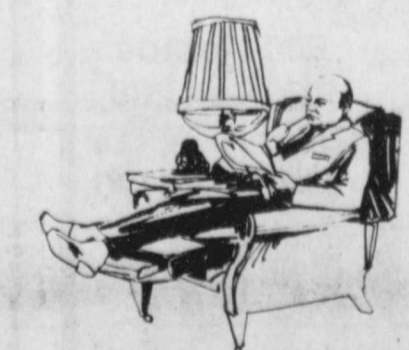
**Getting Your Fluids From Other Sources**

According to Virginia Brock Texas A & M Extension Agent, Red River County, Home Economics, drinking eight glasses of water a day is difficult for some, but all the fluid you drink doesn't have to come from the tap. In fact, most of it doesn't. Here is how one survey breaks it down:

- \* 28 percent from drinking water
- \* 24 percent from tea and coffee
- \* 9 percent from vegetables
- \* 9 percent from milk and dairy products
- \* 8 percent from soft drinks
- \* 7 percent from meat and eggs
- \* 6 percent from fruits and fruit juices
- \* 5 percent from grain products
- \* 2 percent from alcoholic drinks
- \* 2 percent from miscellaneous

Being bored is an insult to oneself.

—Jules Renard



Melanie: "What does that PTA mean that my parents are always talking about?"  
Sara Lee: "I think it means Poor Tired Adults."

Hwy. 271

**Pattonville News**

By Missy Merritt

Call Missy at 652-3709 or The Deport Times at 652-4205

Colt Moore spent Saturday night with T.J. and Margaret Fowler.

Jerry and Dorothy Richey visited bob and Linda Weddle of Paris on Sunday evening.

Mike, Missy and Jake Merritt, Marise Fontenot, Barbara Young and Darren went to Sherman on Sunday.

T.J. and Margaret Fowler visited Rickey, Melanie, Michael, Meghan and Colt Moore on Friday.

The Pattonville Community Center and Volunteer Fire Department held its regular meeting Monday.

Carol and Jennifer Dorsey ate supper with Margaret and T.J. Fowler Saturday.

Dorothy and Jerry Richey visited Margaret and T.J. on Sunday night.

Rickey, Melanie and Colt Moore had supper with Magaret and T.J. Fowler Sunday.

Melissa and Doug Phillips went to Dallas for the weekend.

Visitors of Mr. and Mrs. Buster Crossland on Monday were Ruby Ray of Blossom, Mr. and Mrs. Travis Crossland, T.K., Annette and Ashley of Paris and Jerald Spangler.

Mary Ann Wright celebrated her birthday Sunday. Happy Birthday!

**Experienced RN Needed for Home Health Service**

Full time position available. One year full-time experience in hospital, public health or home health nursing desired. Competitive salary and benefits. Mileage reimbursement. Hours 8-4:30 with call rotation.

**Contact Red River General Hospital,**  
Rhonda Strate, RN  
Director of Home Health Care Department  
Call (903)427-3851, Ext. 270

This notice is required by the Texas Legislature

\*The percentage increase shown in the first paragraph below may appear unusually high because it does not reflect 1992 taxes levied by the now-abolished county education district (CED). In 1992, the CED levied a portion of the taxes used for school purposes, and the second district levied the remainder of school taxes. In 1993, school districts will levy all school taxes. For an explanatin of the increase, attend the public hearing scheduled below or call your school district.

**Notice of Public Hearing on Tax Increase**

The Prairiland C.I.S.D. will hold a public hearing on a proposal to increase total tax revenues from properties on the tax roll in 1993 by 559.12 \* percent. Your individual taxes may increase at a greater or lesser rate, or even decrease, depending on the change in the taxable value of your property in relation to the change in taxable value of all other property.

The public hearing will be held on September 14, 1993 at 8:00 p.m. at the High School Library.

FOR the proposal: John Dunagan, John Allen, Kenneth Burks, Ronald Roddy, Johnny Patterson and Chet Downs.

AGAINST the proposal: None  
PRESENT and not voting: None  
ABSENT: Billy Ray Oats

The statemtn above shows the percentage increase the proposed rate represents over the effective tax rate that the unit published on August 29, 1993. The following table compares taxes on an average home in this taxing unit last year to taxes proposed on the average home this year. Again, your individual taxes may be higher or lower, depending on the taxable value of your property.

|   | Optional Last Year | Last Year School District          | This Year School District |
|---|--------------------|------------------------------------|---------------------------|
| Average home value  | \$31,458           | \$31,458                           | \$31,458                  |
| General exemptions available (amount available on the average home, not including senior citizens or disabled peson's exemptions) | \$11,292           | \$5,000                            | \$5,000                   |
| Average taxable value   | \$20,166           | \$26,458                           | \$26,458                  |
| Tax rate  | 92.5               | 17/\$100                           | 1,095/\$100               |
| Tax   | \$186.54           | \$44.98                            | \$289.72                  |
| (Optional) Total 1992 School Taxes  | \$231.52           | (Optional) Total 1993 School Taxes | \$289.72                  |

Under this proposal taxes on the average home would increase/decrease by \$58.20 or 20.08 percent compared with last year's total school taxes. Comparing tax rates without adjusting for changes in property value, the tax rate would increase by \$0.00 per \$100 of taxable value or 0.00 percent compared to last year's total school tax rate. These tax rate figures are not adjusted for changes in the taxable value of property.

Under this proposal taxes on the average home would increase/decrease by \$58.20 or 20.08 percent compared with last year's school district taxes. Comparing tax rates without adjusting for changes in property value, the school district tax rate would increase by 0.00 per \$100 of taxable value or 0.00 percent compared to last year's school district tax rate. These tax rate figures are not adjusted for changes in the taxable value of property.

**Explanation of Conversion from County Education District Texas**

County education districts have been abolished. In order to compare school tax rates from last year to this year, it is necessary to compare the combined school tax rate to the school district's proposed tax rate for this year.

Last year the Prairiland school district's tax rate was \$17.  
Last year the Lamar county education district's tax rate was \$92.5.  
The combined school district and county education district tax rate was \$1,095.  
The proposed tax rate for Prairiland school district for this year is \$1,095.

PRICES GOOD SEPT. 2-8

|  |   |
|--|---|
| <b>MILK</b><br>Oak Farms Homo<br>Gallon<br><b>\$2.29</b>     | <b>Lays POTATO CHIPS</b><br>Reg. \$1.49<br><b>99¢</b> |
| <b>ICE CREAM</b><br>Blue Bell<br>1/2 Gallon<br><b>\$2.99</b> | <b>PEPSI</b><br>2 Liter-<br><b>99¢</b>                |
| <b>CATFISH FILLET DINNER</b><br><b>\$3.49</b>                | <b>CHICKEN FRIED STEAK DINNER</b><br><b>\$2.98</b>    |
| <b>HOT DOGS</b><br>29¢ Each or <b>4/\$1</b>                  | <b>ICE CREAM SANDWICH</b><br>29¢ Each or <b>4/\$1</b> |
| <b>CHOPPED HAM</b><br><b>\$1.49 Lb.</b>                      | <b>PEPSI</b><br>20 Pack Cans <b>\$4.99</b>            |

**NEW HUNTING & FISHING LICENSES NOW GET YOUR LOTTERY TICKETS HERE!**

**QUICKIE SUPERETTE**

Open 5 a.m. - 11 p.m. - 7 Days A Week  
HWY. 271 - Deport - 652-6831  
EXXON GAS, MOVIES

## Bradford-Lewis Exchange Vows



Mr. and Mrs. Danny Bradford

Terra Renee Lewis and Danny Joe Bradford were united in a formal double ring ceremony at 7:00 p.m. on Friday, August 20, 1993 at First Christian Church in Paris.

The bride is the daughter of Chris and Taunyia Lewis and Tim Salter. She is the granddaughter of Bill and Mary Lou Coe, Pat and Joyce Lewis, Mrs. Velma Salter and the late Glen Salter. She is the great-granddaughter of Mrs. C.A. (Alma) Skidmore, Mrs. E.C. Coe and Mrs. Ginnie Woodson all of Paris.

The groom is the son of Danny and Sue Bradford of Blossom and the grandson of Mrs. Dorothy Wilson and the late Travis Wilson and Clemmie and Louise Bradford of Blossom.

The Reverend Mike Fortenberry, Pastor of East Paris Baptist Church officiated the double ring ceremony performed beneath a trio of arches highlighted with polished lemon leaf and english ivy cascading clusters of white roses and freesia. Large arrangements of white gladiolas, stargazer lillies, white snapdragons and alstrameria lillies complimented the altar area. Groupings of cathedral candelabras intertwined with ivies and white roses with freesia were used to complete the setting.

Mark Hardy was organist, accompanied by Sandra Clary as vocalist. Music chosen for the ceremony included "A Whole New World", "I Don't Know Much" and "The Wedding Song". They presented several selections during the wedding reception.

The bride was escorted to the altar and given in marriage by her parents. She wore a formal gown of candlelight brocade. The fitted, princess-seamed bodice was overlaid with

alencón satin lace re-embroidered with pearls and sequins. The Queen Ann neckline was accented with pearls and sequins with a vee pointed back overlaid with alencón lace with long tapered sleeves. The full skirt featured appliques with pearls and sequins with a satin signature back bow and drape topped the extra full length chapel train with cut out patterns covered with alencón lace with pearls and sequins. The double tiered waist length veiling was secured to an ivory beaded tiara. The bride carried a colonial cascade bouquet of white roses, freesia, larkspur, alstrameria lillies with lemon leaf and english ivy tied with lace love knots centered on a motehr of pearl Bible, a gift from Israel from her grandparents.

Honor attendants were Kerry Welch of Lamar Point.

Bridesmaids were Angie Faulkner of Paris and Salena Bell, aunt of the bride. Their identical dresses were of burgandy satin tea to floor length, sweetheart neckline, off shoulder ruffles with looped bows and fitted bodices. The dresses were made by the great-grandmother of the bride, Allma Skidmore. They each carried flowing cascades of minuet roses, gypsophilia, stargazer lillies accented with lemon leaf and ferns. Flower girl was Bridgett Ray, cousin of the groom. Brandi Coe, cousin of the bride and Kim Lewis, sister of the bride distributed rice bags.

Danny Bradford, Sr., served his son as best man. Groomsmen were Bill McFadden and James Boyd, both are brother-in-laws. Aaron Bell, Bride's cousin was ring bearer. Jarrod and Jerry Briggie, cousins of the bride were candle lighters. Ushers were Billy Coe of Dallas and Brad Coe of

Paris, Uncles of the bride.

Presiding at the guest register were Kim Lewis, sister of the bride and Tabitha Bell, cousin of the bride.

Following the ceremony a reception was hosted in the Fellowship Hall at the church hosted by the bride's parents. The multi-tiered cake was topped with a miniature bride and groom. Fresh flowers of stargazer lillies, astrameria lillies, white freesia, gypsophilia with lemon leaf encircled the bottom layer and spiraled to the top layer. The groom's cake was a double ring chocolate filled with chocolate dipped strawberries. Trays with assorted fruits and dips lined the table. Members of the houseparty included Sharon Boyd and Dana McFadden, both sisters of the groom, Shelley Briggie, aunt of the bride, Carolyn Jamar, cousin of the bride, Midge McDaniel and Betty Rusak. The parents of the groom hosted a dinner following the wedding rehearsal, where gifts were presented to all attendants.

A bridesmaid luncheon and bridal shower was given by the grandmothers. The bride was honored with a miscellaneous shower given by Salena Bell and friends and a bridal shower was given by Katy Allred, aunt of the bride, Carolyn Jamar and Jan Barnes, both cousins of the bride.

The bride is a senior at North Lamar and is employed at Paris Real Estate as receptionist. The groom is a graduate of Prairiland High School and is currently serving in the United States Navy in Orlando, Florida.

Out of town guests from Gainesville area included Gayle Elliott, Tressie Adair, Larry, Debbie and Aubrey Brandon and friends.

### USED CAR & TRUCK SPECIALS

**FEATURE OF THE WEEK**  
1988 Chevrolet Nova  
4 cylinder, automatic, air conditioning, low miles  
\$3,595

1992 Olds Ciera-30,000 miles, Stock #L2012-power windows, power locks, tilt, cruise, AM./FM cassette

1992 Chevrolet Lumina Euro-4 Dr., air, p/s, p/b, p/w, tilt, cruise, cassette

1992 Chevrolet Corsica -air, p/s, p/b, p/w, tilt, cruise, cassette

1991 Honda Accord SE-4 Dr., auto, air cond., loaded, low miles

1989 Chevrolet Silverado PU-sportside, V-8, automatic, loaded with power equipment.

1989 Buick Park Avenue-vinyl top, 36,000 miles, all power, one owner.

1986 Chevrolet PU-one owner, LWB, Silverado, camper, auto, air, two tone.

1991 Dodge D150 PU -SWB, V-8, auto, chrome wheels, rag top.

1990 Chevrolet Conversion Van-Custom Interior, "Nice"

**Sandlin**  
MOTORS INC.

MI. PARIS, TEXAS  
(903) 572-3656

**Farris & Family Glass Shop** 9-16  
650 19th NW - Paris, TX  
For All Commercial & Residential Needs

- ✓ Door Glass
- ✓ Mirrors
- ✓ Plate Glass
- ✓ Window Panes
- ✓ Shower Doors & Repairs
- ✓ Store Fronts

Call 903-739-8800  
Free Estimates & Insurance Claims Accepted

For Emergencies Call:  
784-7071 - Homer 982-6526 - Norris

**Antlers Landfill**  
Serving Southern Oklahoma and Northeast Texas since 1974. For safe, sanitary and legal Trash Disposal.

**SOUTHERN DISPOSAL, INC.**  
CALL TODAY 405-298-3729  
Located 2 miles south of Antlers on Highway 271

TRASH COLLECTION AND DISPOSAL Rt. 1, Box 706  
COMMERCIAL AND RESIDENCE Antlers, Oklahoma  
CITY OR RURAL Business 405-298-3729  
Home 405-298-3201

**Deport's LONESOME DOVE CAFE**  
Hwy. 271 & Main Street (903)652-3926

Specializing in: To Better Serve Our Customers, We Have Lowered Our Sunday Buffet Price To Our Low Everyday Price!!

- \*BBQ \*FISH
- \*STEAKS

LUNCH BUFFET Sunday-Friday 3 Meats \$4.25  
4 Vegetables Offered Daily  
Saturday-Menu Orders Or \*Special Of The D

FREE Ice Cream With Meal!!  
Senior Citizen Discounts

Try Our Delicious Breakfast & Dinner Menu

FRIDAY Night Is FISH NIGHT!! Reg. Plate \$5 Child's Plate \$3  
All You Can Eat \$6

OPEN 6 am-9 pm M-S: 6 to 3 Sunday Wesley Rhoades, Owner

**HELPING HANDS**  
**The Neighborly Way!**

We offer financial assistance whenever we can, to provide opportunities for local families and businesses to improve, inovate and grow. As members of this community, we at Community National Bank realize the importance of working together to bring out the best in all of us for the benefit of all. It's the neighborly way!

Open Lobby Mon. - Thurs. 9 a.m. - 3 p.m. Fri. 9 - 6  
Drive-In Open Mon.-Thurs. 8 a.m. - 5 p.m. Fri. 8 - 6

**CNB**  
COMMUNITY NATIONAL BANK

Detroit, Texas  
903-674-4355  
MEMBER F.D.I.C.

**SPECIAL LABOR DAY HOURS**  
MONDAY, SEPTEMBER 6th, 10 a.m. - 2 p.m.

**KINGSDOWN**  
**Factory Authorized**  
**TRADE - IN SALE**

TRADE IN YOUR OLD MATTRESS & BOX SPRING AND RECEIVE A CREDIT OF \$15 TO \$50 TOWARD THE PURCHASE OF ANY NEW SET OF KINSDOWN BEDDING. RECEIVE \$15 FOR TWIN, \$25 FOR FULL SET, \$50 FOR QUEEN OR KING SETS!

|                         | Sale Price | Trade-In Price |
|-------------------------|------------|----------------|
| <b>Imperial Comfort</b> |            |                |
| Twin                    | 69 ea pc   | 123 set        |
| Full                    | 99 ea pc   | 173 set        |
| Queen                   | 299 set    | 249 set        |
| King                    | 399 set    | 349 set        |
| <b>Royale Posture</b>   |            |                |
| Twin                    | 119 ea pc  | 223 set        |
| Full                    | 159 ea pc  | 293 set        |
| Queen                   | 399 set    | 349 set        |
| King                    | 549 set    | 499 set        |
| <b>Royal Supreme</b>    |            |                |
| Twin                    | 149 ea pc  | 283 set        |
| Full                    | 199 ea pc  | 373 set        |
| Queen                   | 499 set    | 449 set        |
| King                    | 649 set    | 599 set        |

**EXTRA LOW PRICES**

|               | Sale Price | Trade-In Price |
|---------------|------------|----------------|
| <b>Summit</b> |            |                |
| Full          | 259 set    | 493 set        |
| Queen         | 649 set    | 599 set        |
| King          | 799 set    | 749 set        |

**KINGSDOWN HAS A SLEEP SYSTEM THAT'S ENGINEERED FOR EVERY BODY!**  
*Sleeping Beauty GIVES ACTIVE ADULTS EXTRA SUPPORT AT THE HIP AND SHOULDER AREAS WHERE THEY NEED IT MOST.*

**KINGSDOWN**  
Handcrafting America's finest mattresses since 1904

|                      | Sale Price | Trade-In Price |
|----------------------|------------|----------------|
| <b>Emerald Crown</b> |            |                |
| Full                 | 449 set    | 873 set        |
| Queen                | 949 set    | 899 set        |
| King                 | 1099 set   | 1049 set       |

**SLEEP TIP** ✓  
Sleep problems are often bed problems. Replace mattresses and foundations every 8-10 years.

**SLEEP TIP** ✓  
According to a recent study, orthopedic surgeons say old mattresses often contribute to back problems.

**REEP'S FURNITURE**  
AND INTERIORS  
115 Clarksville • Paris, Texas • (903) 785-1651



CURTIS FENDLEY

FARM AND RANCH OWNERS WRITTEN WITH A-PLUS COMPANY BELOW STATE PUBLISHED RATE.

Call or drop in and see us today.

Mackey, Pierson, & Fendley

1705 Lamar \* 784-0836 Paris, Tx. 7-8



SING-SING-SING!! Bible Baptist Temple Church of Paris sang for residents of Deport Nursing Home last week. (Staff Photo by Joni Kincaid)

THOUGHT FOR FOOD by GOULD CROOK

Peaches Jubilant

- 1 Chocolate-flavored Ready-Crust pie crust
- 1 cup fresh or frozen peaches, chopped coarsely and well drained
- 1 qt. good quality vanilla ice cream, slightly softened
- 1/2 cup raspberry jam
- 5-6 tbsp. shaved chocolate

Fold peaches into softened ice cream until well mixed. Blend 1/2 of raspberry jam into ice cream and spoon into pie shell. Refreeze until firm. At serving time, spoon remaining raspberry jam over each individual piece and garnish with chocolate shavings or fresh raspberries.

Hint for mixing raspberry jam: Heat in microwave for 10 seconds or stir with a spoon before adding to ice cream.

The Keebler Company

SEPTEMBER

|    |    |    |    |    |    |    |
|----|----|----|----|----|----|----|
| S  | M  | T  | W  | T  | F  | S  |
|    |    | 1  | 2  | 3  | 4  |    |
| 5  | 6  | 7  | 8  | 9  | 10 | 11 |
| 12 | 13 | 14 | 15 | 16 | 17 | 18 |
| 19 | 20 | 21 | 22 | 23 | 24 | 25 |
| 26 | 27 | 28 | 29 | 30 |    |    |

Prairiland Calendar of Events

|    |   |
|----|---|
| 2  | School Board Meeting at Blossom School, 8 p.m.      |
|    | Volleyball at Caddo Mills, JV, 7 p.m.               |
| 3  | Football, Caddo Mills, H, 8 p.m. Parents Night      |
|    | Volleyball, V girls at Texas High Tourney           |
| 4  | Volleyball Tourney continues at Texarkana           |
| 6  | Holiday   |
| 7  | Volleyball: N. Lamar & John Tyler, H, 4 p.m.        |
|    | Fresh and JV at North Lamar, 4 p.m.                 |
|    | Sulphur Bluff at Deport, 5 p.m.                     |
| 9  | Volleyball: Crockett at Blossom, 4:30 p.m.          |
|    | Football: JV, TBA                                   |
| 10 | Football: Varsity at Valliant, OK, 8 p.m.           |
|    | Volleyball: V in N. Lamar Tournament                |
| 11 | North Lamar Volleyball Tourney Continues            |
| 13 | Volleyball: Deport at N. Hopkins, 5 p.m.            |
|    | Blossom at Chisum, 4:30 p.m.                        |
|    | Northeast Texas School Board Workshop at Mt. Vernon |
| 14 | School Board Meeting, 8 p.m.                        |
|    | Volleyball: Three teams at Tyler, 5 p.m.            |
| 16 | Football: JH and JV at James Bowie, 5 p.m.          |
| 17 | Homecoming  |
|    | Volleyball: Longview, H, 5 p.m.                     |
|    | Football: James Bowie, H, 8 p.m.                    |
|    | Volleyball Tournament at Deport                     |
| 18 | Varsity volleyball tourney at New Boston            |
| 20 | Volleyball: Deport at Chisum, 4 p.m.                |
| 21 | Volleyball: High school teams at Chisum, 4 p.m.     |
| 23 | Six Weeks Tests                                     |
|    | Football: V at Karnack, 8 p.m.                      |
| 25 | Volleyball: JV and V at Redwater, 10:00             |
|    | Prairiland JH volleyball tournament                 |
| 27 | Volleyball: Chisum at Deport, 4 p.m.                |
| 28 | Volleyball: James Bowie, H, 5 p.m.                  |
| 30 | Football: JH and JV vs. Union Hill, Here            |
|    | Volleyball: Blossom at Crockett                     |

Until there are none, adopt one!! Lamar County Humane Association 784-6774

TO THE COMMUNITY We would like to express our sincere thanks and gratitude to each and every one who has helped us rebuild what we lost from the fire. We wish we could mention each one by name, but we would miss someone. We never dreamed our lives would have to endure such a tragedy, but the strength of the community and special friends has pulled us through a difficult time. Each one of you will have a special place in our hearts. We never knew the community could mean so much. Thank you for making this time in our lives more endurable.

David and Nita, Cody, Wesley Sullivan and Brad Griffin

TRIANGLE CARPET



Commercial Carpet \$2.99 yd. Vinyl starting at \$2.99

(903) 784-5989

1555 N. Main St., Paris, TX \* Hours: 9-5 M-F, 9-12 Sat.

I GOT MINE AT ELLIOTT MOTORS

Todd Ward of Bogata Has Recently Purchased His Dodge Dakota Sport Truck From Elliott

Todd has owned a Dodge Dakota before this one and really loves these trucks. He bought his from Michael Whitney. Todd says "I think Michael and all the folks at Elliott are really nice folks".



Why Not Get Yours At Elliott



CHRYSLER • PLYMOUTH • DODGE • JEEP/EAGLE • 928 WEST 16TH STREET, MT. PLEASANT, TEXAS 572-4371

Malone Accepted Into Turtle Creek Chorale

Larry N. Malone, formerly of Cunningham, was again accepted in the membership of the Dallas based Turtle Creek Chorale after auditions for the 1994 season which began August 17. The world renowned male chorus numbers 225 and just recorded its fifth CD to be released on the Reference Recording label worldwide in January.

The season begins with a fully staged production of "The Wizard of Oz", complete with Broadway sets, lights, orchestra, choreography and over 200 costumes.

The chorale's holiday celebration includes traditional and familiar music from around the world with the chorus being accompanied by the Morton H. Meyerson Symphony

Center Lay Family Organ, 3 grand pianos, a bell choir, brass and percussion.

The March 1994 concert features music of the soul rooted in Africa and the chorale will be joined by the 100 voice men's chorus from the First Baptist Church, Hamilton Park, New Arts Six and Dallas Black Dance Theatre.

The season finale in June celebrates Texas, with "There's No Place Like Home". The chorale welcomes Miss Texas '93, Bashara Chandler as its guest.

Larry invites former classmates and friends in the Cunningham area to consider attending one or more of the concerts.

Small Trouble Spots In Home Can Add To Big Waste

A small crack around the door, loose ductwork in an attic or a leak around an electrical outlet are small problems that can add up to big energy waste, according to Texas-New Mexico Power Company.

That small crack around the door, for instance, is equal to having a four-inch hole in the wall, said Gary Petty, Bogata district manager with TNP.

"None of us would let a four-inch hole in the wall go unrepaired," he said, "and we shouldn't let a crack around the door go unnoticed."

Fixing small energy wasters is a good fall project homeowners can tackle in a weekend that will provide benefits throughout the year. TNP recommends including the following chores on the project list:

\*Install foam rubber gaskets under cover plates of electrical outlets and switches on outside walls. A study of air leakage showed that wall outlets were responsible for 20% of the leakage in a home. Electricity should be turned off before removing the electrical cover plates.

\*Caulk the edges around windows. Caulking helps seal non-moving joints in a house.

\*Weatherstrip moving joints such as where windows and doors close

against a frame. Use self-stick 1/4-inch foam, self-stick plastic V-strips, rolled vinyl or felt strips. All of these pay for themselves in less than one year. Door sweeps, thresholds and draft-stoppers also help block air flow.

\*Fireplaces sometimes have aluminum collars in the attic area that are not covered with insulation. These areas should be insulated too. Also, keep the fireplace damper closed when not in use.

\*Inspect ductwork for broken seals. All joints, including where the ductwork joins the furnace blower, need to be sealed with duct tape. After the joints in the attic have been sealed with duct tape, the ducts need to be wrapped with insulation.

For more information on any of these projects, area residents can contact their nearest Texas-New Mexico Power Company Office.



Jency Cole Branch Manager

Stop by

Liberty National Bank in Super 1 Foods and sign up to win an ice chest filled with picnic goodies and a Deli Tray in Liberty's Labor Day Drawing

Saturday, Sept. 4 There is no purchase necessary to win

Check out the super hours in our super location. Monday through Friday 10 to 8 p.m. Saturday, 10 to 6 p.m.

Liberty National Bank

member f.d.i.c. (Deli Tray donated by Super 1 Foods Deli)

I DON'T CARE WHAT MY ACCOUNTANT SAYS, I'M CONTINUING MY 50% OFF SALE ANOTHER WEEK!

If You Think You're Sexy, Come On And Let It Show!

Petite To Voluptuous

We Have Styles and Sizes To Whatever Size You Need... We Have Jeans Waist Size 46,

Have Pride...Don't Hide

Make EVERY BODY Beautiful We Have It, Sizes 3-4 to 30 Dress Suits, Stretch Pants

Remember, Your Clothes Can Look Stylish and Sexy Without Costing A Lot!

GRIGGS EMPORIUM

At The Treasury Main Street (Old Bank Building) Detroit, Texas 903-674-2361

SAVE Up To 50% Off

STORE WIDE SALE!



We're Small Enough To Be Big On Personal Service

We take pride in providing your family with friendly, personal service.

Unlike many pharmacies, we take the time to get to know you, review your medications for interactions, and carefully explain your doctor's instructions.

Stop in soon.

CITY DRUG STORE

DEPORT - 652-3456

# Cunningham News

By Berniece Wyatt



Friends were sorry to learn of the death of the Rev. Louis F. Ricketson of Paris, Rt. 1. He was a former pastor of the Cunningham Baptist Church. Sympathy is extended to his family.

Mr. & Mrs. Frankie Norwood honored his mother, Geneva Norwood, with a surprise birthday dinner Sunday. Guests attending were: Mr. & Mrs. Billy Ray Oats, Brandon and Georjeana, Mr. & Mrs. Scotty Norwood, Spur and Amber, Zarinska Musgrove of Lewisville, Mr. & Mrs. Johnie Musgrove, Mr. & Mrs. Stacey Musgrove, Stoney and Charity, Brenda Watson, Jarvis and Bruce, Deana Gibson and Dillion, Mr. & Mrs. Almer Norwood and Mr. & Mrs. Odie Watson.

Preston Crump who underwent surgery last week was dismissed from the hospital Sunday and is recuperating at the home of his mother, Fannie Crump.

Bud and Sally Richardson of Mesquite spent the weekend with his parents, Mr. & Mrs. George Richardson of Paris.

Bonnie Baumgardner and Faye Pearson of Paris had lunch with Mabel Lynn Saturday.

Bill and Ruth Chipman honored their daughter-in-law, Tracie Chipman, with a birthday supper Sunday

night. Guests attending were Mrs. Verta Lynn, Mr. & Mrs. Joel Chipman of Novice, Chris Chipman and Riley.

Velma Cox returned home Friday after visiting Dorothy Meadors and Joyce of Greenville, Mr. & Mrs. David Taylor and Vera Cox of Ft. Worth, Mr. & Mrs. Gordon Cox and family of Alvarado, Lisa Gaylord who is attending A&M College and Monica Villegam of Louiston, Maine, in the home of Morris Cox of Dallas. They all attended the Ringling Bros., Barnum and Bailey Circus in Ft. Worth.

Virginia Bell of Paris visited Mr. & Mrs. Norman Sain Tuesday.

Mr. & Mrs. Byron Wickes of New Boston and Mr. & Mrs. William

Cooper were in Mt. Pleasant for the day Thursday.

Mr. & Mrs. Clyde Slusher visited Harry Slusher in the Cherry Street Annex Thursday.

Church services were dismissed at the Baptist Church Sunday night so the members could attend the special singing at the Pattonville Church.

Mr. & Mrs. Norman Sain and Ollie Ruth Guthrie had lunch with Mr. & Mrs. George Green of Mt. Pleasant Monday and visited Carl Guthrie in the Mt. Pleasant Nursing Home.

Mr. & Mrs. Bud Richardson of Mesquite, Mr. & Mrs. George Richardson of Paris, Mr. & Mrs. Gene Cavender of Deport and Kristi Bankhead had lunch with Clyde and Gerri Bankhead, Chance and Gerrod Sunday.

Alma Norwood visited her sister, Lenno Graham, in the St. Joseph Hospital Saturday.

Mr. & Mrs. Talma Fowler of Pattonville and Lucy Fowler visited Mr. & Mrs. Rickey Moore of Clarksville Sunday afternoon.

Mr. & Mrs. Danny Norwood and Kennedy and their granddaughter Lilly Norwood visited Mr. & Mrs. Almer Norwood Saturday night.

Mr. & Mrs. Keith Medlin and Brooke of Mesquite and Mr. & Mrs. Ricky Moore and Colton of Clarksville had supper with Lucy Fowler.

Mr. & Mrs. Frank Malone attended the funeral of her aunt at Tira Saturday.

Louise Black and Carolyn Black of Paris visited Mrs. Delsa Wilson

Sunday afternoon.

Cindy Nichols of Deport and granddaughter Erika White of Carthage visited Mr. & Mrs. Almer Norwood Thursday.

Virginia Bell of Paris had lunch with Mr. & Mrs. Norman Sain Thursday.

On Friday, Mary Helen Whitney visited her granddaughter, Stacey Whitley, who was honored on her birthday with a family party. On Monday, Russell and Mary Helen Whitney visited the Kenneth Risingers, Chris and Stacy Whitley and Jayci.



**THE GRAPE QUEEN**-Doris Norwood won the grape race at Deport Nursing Home last week during their "Salute the Fruit" contest. (Staff Photo by Joni Kincaid)



Ice cream, because it is high in calories, will tend to warm anyone who eats it.

**SEAY & MEGGITT**  
**WRECKER SERVICE**  
**24 HOUR**

165 West Center St. Paris, Texas 784-2435

**SPECIAL On Rhino SR 15 Cutter**

**15 Ft. Wide Cut Now Only \$7800<sup>00</sup>**

**CONROY FORD TRACTOR**

1 Mile North I-30 on Hwy. 271 Bypass  
Mt. Pleasant, Texas  
903-572-2629

80-240 (7-93)

1993 **Property Tax Rates in PRAIRILAND ISD**

This notice concerns 1993 property tax rates for PRAIRILAND school district. It presents information about three tax rates. Last year's tax rate is the actual rate the school district used to determine property taxes last year. This year's effective tax rate would impose the same total taxes as last year if you compare properties taxed in both years. This year's rollback tax rate is the highest tax rate the school district can set before it must hold a rollback election. In each case these rates are found by dividing the total amount of taxes and state funds by the tax base (the total value of taxable property) with adjustments as required by state law. The rates are given per \$100 of property value.

|                              |                 |
|------------------------------|-----------------|
| <b>Last year's tax rate:</b> |                 |
| Last year's operating taxes  | \$ 147,161.70   |
| Last year's debt taxes       | \$ -0-          |
| Last year's total taxes      | \$ 147,161.70   |
| Last year's tax base         | \$ 86,565,707   |
| Last year's total tax rate   | \$ .1700 /\$100 |

|  |                 |
|--|-----------------|
| <b>This year's effective tax rate:</b>   |                 |
| Last year's adjusted taxes (after subtracting taxes on lost property)                | \$ 139,487.94   |
| + This year's adjusted tax base (after subtracting value of new property)            | \$ 86,885,076   |
| - This year's effective tax rate   | \$ .1605 /\$100 |
| x 1.03 = maximum rate unless the school district publishes notices and holds hearing | \$ .1654 /\$100 |

|  |                 |
|--|-----------------|
| <b>This year's rollback tax rate:</b>              |                 |
| School maintenance and operations component        | \$ 1,096,266.32 |
| + This year's tax base                             | \$ 87,793,616   |
| - This year's local maintenance and operating rate | \$ 1,249 /\$100 |
| + \$.06 cents = this year's maximum operating rate | \$ 1,309 /\$100 |
| + This year's debt rate                            | \$ -0- /\$100   |
| - This year's rollback rate                        | \$ 1,309 /\$100 |

80-179 (Rev. 8-83/2)

**Schedule A**  
**Unencumbered Fund Balances**  
The following estimated balances will be left in the unit's property tax accounts at the end of the fiscal year. These balances are not encumbered by a corresponding debt obligation.

|                           |           |
|---------------------------|-----------|
| Type of Property Tax Fund | Balance   |
| General Fund              | \$500,000 |
| Interest/Sinking          | 2,200     |

**Schedule B**  
**1993 Debt Service**  
The unit plans to pay the following amounts for long-term debts that are secured by property taxes. These amounts will be paid from property tax revenues (or additional sales tax revenues, if applicable).

| Description of Debt   | Principal or Contract Payment to be Paid from Property Taxes | Interest to be Paid from Property Taxes | Other Amounts to be Paid | Total Payment |
|---|--|---|--------------------------|---------------|
| NONE  | \$ 0   | \$ 0                                    | \$ 0                     | \$ 0          |
| Total required for 1993 debt service  |  |   | \$ -0-                   |               |
| - Amount (if any) paid from funds listed in Schedule A                                |  |   | \$ -0-                   |               |
| - Excess collections last year  |  |   | \$ -0-                   |               |
| - Total to be paid from taxes in 1993   |  |   | \$ -0-                   |               |
| + Amount added in anticipation that the unit will collect only % of its taxes in 1993 |  |   | \$ -0-                   |               |
| - Total Debt Levy   |  |   | \$ -0-                   |               |

This notice contains a summary of actual effective and rollback tax rates' calculations. You can inspect a copy of the full calculations at LAMAR COUNTY APPRAISAL DISTRICT 521 BONHAM PARIS, TEXAS

Name of person preparing this notice CATHY JACKSON  
Title DEPUTY CHIEF APPRAISER  
Date prepared 8-16-93

# The Chaise Is Up!

For a limited time! Save \$200 on this quality Chaise Recliner from

**SPECIAL \$399 PURCHASE**

**LA-Z-BOY®**

Don't miss your chance at factory-direct savings on "Cheers" Reclina-Rocker® recliner or Reclina-Way® wall chair by La-Z-Boy®. Featuring casually styled comfort and full-body chaise support. Covered in an acrylic/polyester blend fabric, in your choice of fashionable colors all backed by a 2-year Monsanto Wear-Dated warranty.

**SHELTON'S**  
PROPANE, FURNITURE & APPLIANCES

Hwy. 37, 1 Mile North of I-30  
Mount Vernon, Texas 537-4142

**Back to School**  
**Security Finance**  
 has funds available for  
**"Back to School"**  
 Phone Applications welcome..  
**903-427-2373**  
 Your friends when you need cash.  
 We love to say Yes!  
 Loans from \$100 to \$385  
 116 W. Main - Clarksville - Serving a 16 Mile Radius



CHRISTMAS IN AUGUST was enjoyed by residents of Deport Nursing Home last week. (Staff Photo by Joni Kincaid)

**Patriot Sports Report**

The Prairiland volleyball girls teams played Paris High last Friday night.  
 The varsity girls won their game, 15-3, 15-5.  
 The junior varsity girls lost their game 15-12, 15-9.  
 The freshman girls won their game 15-13, 15-8, 15-11.

**BIG WHEEL AUTO SALES**  
 Pattonville, Tx. - Owner Randy Boren

- \* Mechanic Johnnie Thorton has 18 years experience, specializing in all type motors, Gas and Diesel.
- \* Front End Work
- \* Brakes
- \* Tune-Ups
- \* Tractor Repairs
- \* Recondition Transmissions: Standard and Automatic and Rear Ends
- \* Rebuilt Carburetors, specializinf in fuel injection
- \* Fre Estimates on all vehicles
- \* Free Pick up and delivery
- \* Light body work and paint on all autos.

All Work Guaranteed  
 At Low And Affordable Rates  
 Call Big Wheel Auto Repair Now And Save  
 Hours: 8 a.m. - 6 p.m. Phone - 652-2005 After 6 p.m. 582-6263

*1993 Lady Patriot Volleyball Schedule*

| September                               |                         |            |                |
|---|-------------------------|------------|----------------|
| 3 & 4                                   | Texas High Tournament   | Texarkana  | V TBA          |
| 7                                       | John Tyler & N. Lamar   | Here       | V 4:00         |
|   | John Tyler & N. Lamar   | N. Lamar   | 9. JV 4:00     |
| 10-11                                   | North Lamar Tournament  | N. Lamar   | V TBA          |
| 14                                      | Robert E. Lee & Kilgore | Tyle       | 9. JV, V 5:00  |
| 17                                      | Longview                | Here       | JV, V 4:30     |
| 18                                      | New Boston Tournament   | New Boston | V TBA          |
| *21                                     | Chisum                  | Chisum     | 9. JV, V 4:00  |
| *25                                     | Redwater                | Redwater   | JV, V 10:00    |
| *28                                     | James Bowie             | Here       | 9. JV, V 5:00  |
| October                                 |                         |            |                |
| *2                                      | Paul Pewitt             | Here       | 9. JV, V 10:00 |
| 5                                       | Daingerfield            | Here       | 9. JV, V 4:00  |
| *9                                      | Chisum                  | Here       | 9. JV, V 10:00 |
| *12                                     | Redwater                | Here       | JV, V 4:00     |
| *16                                     | James Bowie             | Bowie      | 9. JV, V 10:00 |
| *19                                     | Paul Pewitt             | Pewitt     | 9. JV, V 5:00  |
| 23-30                                   | Open                    |            |                |
| November                                |                         |            |                |
| 4-6                                     | Bi-District             |            |                |
| 8-9                                     | Area                    |            |                |
| 12-13                                   | Regional                |            |                |
| 19-20                                   | State                   |            |                |
| Coaches: Frankye Sessums & Jeff Ballard |                         |            |                |

**NEW AFFORDABLE HEARING AIDS**

Put Off Getting A Hearing Aid Because of the Initial Cost.  
 Wait No Longer - Start Enjoying Life Anew  
 Offering No Interest Financing On All Hearing Aids to Qualified Buyers.  
 As Little As 1/4 Down You Can Get A Hearing System Custom Made For You And Start Hearing What You've Been Missing

**HURRY! Call Now for a FREE, No Obligation Hearing check. (Adults Only).**

**784-8100**

**LOCH HEARING CENTER**  
 3130 Lamar Avenue - Paris, Texas

**HUDDLESTON'S GROCERY**

Huddleston DRAWING \$50 in Groceries **SPECIALS GOOD EVERY DAY; Thurs-Fri-Sat-Sun-Mon-Tues-Wed** SEPT. 2 - 8  
 Saturday 5:00 P.M. **OPEN Mon.-Sat. 7:00 a.m. - 7:00 p.m. SUNDAY 9:30 a.m.-6:30 p.m.**  
 Bogata 632-5624 7 Days A Week

We Honor Manufacturing COUPONS

|   |  |  |  |
|---|--|--|--|
| <p><b>CURED HAM</b><br/>                 Tip Top - SLICED \$1.59 Lb.<br/>                 BUTT END \$1.59 Lb.<br/>                 SHANK END \$1.39 Lb.<br/>                 WHOLE - Lb.<br/> <b>\$1.39</b></p> | <p><b>BRISKETS</b><br/>                 Lb.<br/> <b>\$1.29</b></p> | <p><b>WEINERS</b><br/>                 Wilson 12oz. Pkg.<br/> <b>69¢</b></p> | <p><b>TEA BAGS</b><br/>                 Lipton Family Size 24 Ct.<br/> <b>\$1.99</b></p> |
|---|--|--|--|

|  |   |   |  |  |   |  |
|--|---|---|--|--|---|--|
| <p><b>ICE CREAM</b><br/>                 Blue Bell 1/2 Gallon All Flavors<br/> <b>\$2.99</b></p> | <p><b>BBQ SAUCE</b><br/>                 Kraft 18oz. Bottle<br/> <b>99¢</b></p> | <p><b>SAUSAGE</b><br/>                 Carls 2 Lb. Roll Reg. &amp; Hot<br/> <b>\$2.59</b></p> | <p><b>GROUND CHUCK</b><br/>                 Fresh - Lb.<br/> <b>\$1.59</b></p> | <p><b>SPAM</b><br/>                 12oz. Can<br/> <b>\$1.79</b></p> | <p><b>CHEESE</b><br/>                 Longhorn Parade 8oz. Pkg.<br/> <b>99¢</b></p> | <p><b>MILK</b><br/>                 Poinsettia Homo &amp; 2% Gallon<br/> <b>\$1.99</b></p> |
|--|---|---|--|--|---|--|

|   |  |  |   |  |  |  |
|---|--|--|---|--|--|--|
| <p><b>EGGS</b><br/>                 Grade A Large - Dozen<br/> <b>79¢</b></p> | <p><b>JELLY</b><br/>                 Bama 2 Lb. Jar GRAPE &amp; APPLE<br/> <b>\$1.29</b></p> | <p><b>ICE CREAM</b><br/>                 Bordens All Flavors 1/2 Gallon<br/> <b>\$2.69</b></p> | <p><b>CORN FLAKES</b><br/>                 Post Toasties 18oz. Box<br/> <b>\$1.99</b></p> | <p><b>CATSUP</b><br/>                 Del Monte 40 oz. Squeeze Bottle<br/> <b>\$1.59</b></p> | <p><b>TOMATO SAUCE</b><br/>                 Del Monte 8oz. Can<br/> <b>5/\$1</b></p> | <p><b>PORK &amp; BEANS</b><br/>                 Van Camp's 16oz. Can<br/> <b>2/89¢</b></p> |
|---|--|--|---|--|--|--|

|   |   |  |  |   |   |   |
|---|---|--|--|---|---|---|
| <p><b>GATORADE</b><br/>                 All Flavors 32oz.<br/> <b>99¢</b></p> | <p><b>RUFFLES CHIPS</b><br/>                 Reg. \$2.89<br/> <b>\$1.89</b></p> | <p><b>POTATO CHIPS</b><br/>                 Lays Reg. \$1.49<br/> <b>89¢</b></p> | <p><b>CRACKERS</b><br/>                 Parade Lb. Box<br/> <b>59¢</b></p> | <p><b>HOT DOG BUNS</b><br/>                 County Fair 8 Pk.<br/> <b>2/\$1</b></p> | <p><b>HAMBURGER BUNS</b><br/>                 County Fair 8 Pk.<br/> <b>2/\$1</b></p> | <p><b>BISCUITS</b><br/>                 Parade Buttermilk<br/> <b>4/\$1</b></p> |
|---|---|--|--|---|---|---|

|  |  |  |   |   |  |   |
|--|--|--|---|---|--|---|
| <p><b>TISSUE</b><br/>                 CHARMIN 6 Pack \$5.94<br/>                 4 Roll Pk. Each<br/> <b>99¢</b></p> | <p><b>TIDE</b><br/>                 30 Load 80oz. Box<br/> <b>\$5.89</b></p> | <p><b>Sunshine PIMIENTO</b><br/>                 Sliced 2oz. Jar<br/> <b>3/\$1</b></p> | <p><b>Bee Bo HONEY BUNS &amp; SNACK CAKES</b><br/> <b>3/99¢</b></p> | <p><b>SOLO PLASTIC CUPS</b><br/>                 20/16oz.<br/> <b>89¢</b></p> | <p><b>BREAD</b><br/>                 Soft Mix Large Loaf<br/> <b>2/\$1</b></p> | <p><b>BREAD</b><br/>                 County Fair Large Loaf<br/> <b>2/\$1</b></p> |
|--|--|--|---|---|--|---|

|   |   |   |   |  |
|---|---|---|---|--|
| <p align="center"><b>PRODUCE</b></p> <p><b>BANANAS</b> 29¢ Lb.<br/> <b>APPLES</b> 59¢ LB.<br/> <b>ORANGES</b> 39¢ Lb.</p> | <p><b>POTATOES</b> 10 Lb. Bag \$1.49<br/> <b>GREEN ONIONS</b> 4/\$1<br/> <b>Colo. PINTO BEANS</b> 39¢ Lb.</p> | <p><b>CATFISH FILLETS</b><br/>                 Boneless 5-7oz. Lb.<br/> <b>\$2.99</b></p> | <p><b>COUNTRY CROCK</b><br/>                 Churn Style 3 Lb. Tub<br/> <b>\$1.79</b></p> | <p><b>COKE-SPRITE</b><br/>                 DIET COKE 6 Pack Cans \$1.25<br/>                 CASE \$4.99</p> |
|---|---|---|---|--|





**SLATON FURNITURE**  
Appliances,  
Carpet & Vinyl,  
& Furniture  
East Side Square  
Clarksville, Texas  
903-427-2005

*ours is a tradition of*  
**infinite care**

**FRY & GIBBS FUNERAL HOME**

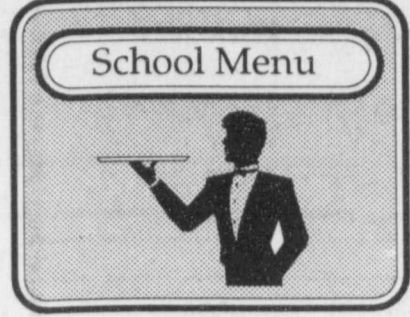
730 CLARKSVILLE ST.  
PARIS, TEXAS  
(903)784-3366

**Deport Locals**  
By Kathy Guess

Visiting Mrs. Mildred Howard in Paris over the weekend were Hal Hammett from Texas City, Charles Hammett from Galveston, Mr. and Mrs. Kenneth Howard of Garland and Charleen Anderson of Waskom and Mrs. Lee Wright of Sherman.  
Mr. and Mrs. Larry Hughes of Paris visited the Joe Ballards Saturday.  
Jack Ballard and family of Texarkana spent Saturday in Dallas where their daughter, Marleena, was in her gymnastic program.  
Jordan Ballard joined the Boy Scouts.  
Mrs. Clyde Bankhead of Deport Nursing Home has been suffering with headaches.  
Mrs. Luvetta McMurray of Deport has been feeling ill.  
Mr. s Earlene Wilson of Pattonville is home after heart surgery.  
Mr. Nash of Paris preached Friday and Saturday at Minter Church.

Visitors of Mutt Harvey at Red River Haven were Irene Walker, Joyce Smith, Boots Shipp and great-grandchildren Matthew and Micah.  
Russell Lawlers visitors were Ida Lou Read, martha Wood, Kay Joyn and Larann Denison.  
LaRann Denison Carl Wood, Beulah Shipp, Irene Walker and Raymond Mauldin and Ann Evans.  
Richard Nance had super Friday night with Thomas and Nanalee Nichols.  
Saturday night guests of Thomas and Nanalee Nichols were Dicky, Jayne and Neleigh King.  
Mr. and Mrs. Bob Ring of Mabank spent the weekend with Purna Haydock.  
Remember, Labor Day is Monday and will result in many offices, banks and post offices being closed.  
Tom and Midge Foley spent last week with cousins from Connecticut

in Hot Springs, Ark. On their way home, Tom and Midge spent the night at Queen Wilhemina Lodge in Mena, Ark.



**Deport School Menu**  
Sept. 6-10  
**Monday**  
Holiday  
**Tuesday**  
**Breakfast:** Pancakes, peanut butter Juice, milk  
**Lunch:** Burritos with sauce Salad Mexican beans Cake Milk  
**Wednesday**  
**Breakfast:** Cereal, raisins Toast, milk  
**Lunch:** Chicken nuggets Gravy Potatoes Beans Butter, rolls Milk  
**Thursday**  
**Breakfast:** Eggs, toast Juice, milk  
**Lunch:** Ravioli Sliced potatoes Blackeyed peas Bread Jello Milk  
**Friday**  
**Breakfast:** Oatmeal, toast Juice, milk  
**Lunch:** Hot dogs with sauce and cheese Pork and beans Chips Fruit Milk

**Deport Housing Authority News**  
By Mary Westbrook 652-3605

Mr. and Mrs. Grady Hignight of Sherman visited Edna Earl Gifford Friday.  
Mr. and Mrs. Donnie Wright and family visited Mildred Wright Sunday and celebrated his mother's birthday.  
Mr. and Mrs. Billy Joe Suggs and Mrs. Mary McMikel visited Mrs. Eunace Suggs Sunday.

Alpha Barnard visited Mr. and Mrs. Jim Bill Ratliff in Paris Saturday. She also attended the luncheon at the Western Sizzlin with friends and relatives.  
Mr. and Mrs. Charles Langston and Mr. and Mrs. James Langston and family, all of Paris, visited Mae Storm Friday.  
We welcome Mrs. Jimmy Smith and Shannon and Mrs. Luella Smith and Matthew to our apartments.  
Louise Mauldin of Bogata visited Mrs. Mauna Kidd Sunday.

**Derrick Benedict Celebrates Birthday**

Derrick Benedict celebrated his eighth birthday with a party at the home of Charles and Peggy Benedict on Saturday in Deport.  
His birthday is August 31. The theme of the party was "Hot Wheels" with cars and balloons.  
Those attending were Cindy, Becky and Amy Talley and Jackie, Debbie, Jace Short and Kelley Smith, all of Deport, John, Barbara and John Jr. Trussell all of Halesboro.  
Everyone enjoyed cake and punch and all had an enjoyable time.

**Clardy News**  
News Of Marvin, Jennings and Clardy

Rant Stone celebrated his 93rd birthday September 2. Happy birthday, Rant.  
On September 5, Rant and Myrtle Stone will be married 65 years. They were married in Bethel in 1928.  
Jennifer Stone had surgery last Thursday.  
J.D. Williams of Paris had surgery Monday at St. Joseph's Hospital in Paris.  
Roy and Laverne Griffin of Sumner ate supper with A.L. Clement and Louise of Clardy Friday night.  
Kip Winters and a friend, Tiffany of Dallas, and Bobb and Betty Winters, Clayton and Kim Carlow ate at Cajun Moon Cafe last Saturday.  
Elaine Ballard and Blake Bowmer went to College Station to visit Amy and Kelli Ballard during the weekend.  
Blake Bowmer made a business trip to Lampassas last week and also went by College Station to visit.  
Evelyn Pearson of Rockford and Ruby Simmon of Biardstown made a trip to Honey Grove Saturday to visit Jessie and Patsy Smith.  
Anna and Jakob McDowra of Paris visited Larry and Edith Woodall of Clardy Sunday.  
Barry Woodall of Pattonville visited Larry and Edith Woodall Saturday.  
Visitors of Gene and Ann Martin of Clardy Saturday night were Mr. and Mrs. Earl Martin, Mr. and Mrs. Carl Kuhle, April and Ashley, Mr. and Mrs. Hayden Paul Martin and Morgan of Clarksville.  
Daniel Lee Hancock celebrated his

11th birthday on Saturday, August 28.  
Priscilla McGuire of Paris passed her state board for a beautician this week.  
Visitors of Mr. and Mrs. Alvin harris were Carolyn Parsons, Katylin and Montana of Direct, Betty Clement of Blossom, Shorty Bolton of Dallas, Kelli Clement, David Harris, Stephen and Brittany.  
Bobby Harrell and Scottie Norrell and several others went hunting in Colorado this week.  
Mr. and Mrs. L.T. Clement had visitors, Shawn and Lelia McClain and friend Tira of Abilene. They were on their way to Omaha, Nebraska and spent Friday and Saturday night.  
Dustin Clement celebrated his 13th birthday Sunday at his grandparents, Mr. and Mrs. L.T. Clement. He is the son of Bobby and Glenda Clement.  
Joe Glen Gibbs of Detroit visited Mr. and Mrs. A.G. Ballard Saturday night.  
Visitors of Hershel and Mary Stone were Onita Short of Paris, J.C. and Barbara Pomroy and Bobby Pomroy.  
Rick and Shirlene Harrell stayed in Magnolia House in Paris Friday night. Saturday they went to Dallas shopping and attended the Mesquite rodeo and ate supper at the Alamo.  
Maurice Davidson, Mike and Kim Davidson and Morgan went to watch Landon play T-ball at Woodall Field Thursday night.  
Ray and Sue Davidson of Paris visited Maurice Davidson Friday night.



Sara Michelle Cox, Returns From Abroad

**Sara Cox Returns From Overseas Studies**  
Sara Michelle Cox, daughter of Gordon and Jan Cox of Alvarado, and granddaughter of Velma Cox of Cunningham returned from Italy where she attended the Texas A&M Study Abroad Program. She travelled extensively throughout Europe during her studies including France, Spain and Austria, Switzerland and Germany.  
Her courses included field trips to Assisi, Florence, Cortoria, Sienna, Ravenna, Venice, Cortina, Rome, Pompeii and Capri.  
Her advice for travelers is to take half of what you think you need, leave space to bring home gifts, take a language dictionary and twice as much money as you think you will need.  
Shelly will be a fifth year senior at Texas A&M University in the fall and will graduate in May with a BS in Engineering Geology.

**CASH!!!**  
The Deport PTO Is Giving Away MONEY!!!  
A One Dollar Donation Puts Your Name In The Drawing For a \$100 Cash First Place and a \$50 Cash Second Place!  
Tickets Will Be Available From Students September 2nd through 10th.  
Drawing Will Be Held on Sept. 14, 1993 at 7:00 p.m. at the PTO Meeting in the Deport School Cafeteria.  
You Do Not Have To Be Present To Win  
CASH DOOR PRIZE Given Away At Meeting

**ALLEN'S FOOD MART**  
HWY. 271 - DEPORT - 652-3520  
Open 7 Days A Week 5 a.m. - 9 p.m. Sunday 8 a.m. - 8 p.m.

|  |  |   |
|--|--|---|
| <b>TACO SHELLS</b><br>Old El Paso 12 Count<br>\$1.59 | <b>PEPPERED LOAF</b><br>Eckrich - Lb.<br>\$3.69            | <b>BOLOGNA</b><br>Eckrich 1 lb. Pkg.<br>\$1.79          |
| <b>POTATOES</b><br>Russet 10 Lb. Bag<br>\$1.59       | <b>MARGARINE</b><br>Parkay 4 Sticks<br>79¢                 | <b>ICE CREAM</b><br>Bordens 1/2 Gallon<br>\$2.49        |
| <b>POTATO CHIPS</b><br>Frito Lay 6oz. Pkg.<br>99¢    | <b>PINTO BEANS</b><br>Bush's 15oz. Can<br>2/89¢            | <b>PRINGLES CHIPS</b><br>Assorted<br>99¢                |
| <b>TOWELS</b><br>Bounty-Medley Big Roll<br>\$1.49    | <b>BREAD</b><br>Sof-Mix - Loaf<br>2/\$1                    | <b>VEGETABLE OIL</b><br>Parade 48oz.<br>\$1.99          |
| <b>COKE</b><br>DIET COKE 12 Pack Cans<br>\$2.99      | <b>MACARONI &amp; CHEESE</b><br>Kraft Dinner 7.5oz.<br>89¢ | <b>BUTTERMILK</b><br>Poinsettia 1/2 Gallon<br>\$1.19    |
|  | <b>SNACK CAKES</b><br>Mrs. Bairds<br>3/99¢                 | <b>COOKIES</b><br>Mrs. Alisons Creme Filled 8oz.<br>89¢ |

**Milton News**  
By Mattylu Upchurch

Carla Caldwell, Savannah and Casey and Sue Davis of Clarksville visited Mr. and Mrs. George Wolf Sunday.  
Mr. and Mrs. Frank Lee went to the Baptist Church in Pattonville Sunday night to listen to the singing of a group that their son, Ollie Lee, sings with.  
Sheldon Lee was in Sherman Wednesday on business.  
Harold Bell of West Plains, MO and Harvey Bell of Cypress Springs visited Mr. and Mrs. Holland Bell Thursday.  
Mr. and Mrs. Steve Franklin of Lewisville visited Mr. and Mrs. Bob Marshall Sunday.  
Mr. and Mrs. Sam Boren of Albuquerque, NM spent Friday to Monday with Mr. and Mrs. Bill Upchurch. Peggy Robison of Wills Point visited her aunt, Elizabeth Walker, this week.  
Beth Roach played volleyball with her team from Prairiland at a tournament Saturday at North Lamar. Prairiland won third place.  
H.R. Upchurch spent the weekend with friends in Austin.  
Having dinner with Mr. and Mrs. George Wolf Sunday were Lyn and

Sherrie Wolf, Mr. and Mrs. David Wolf, Marcus and Allison, Mr. and Mrs. Bert Filkins, Stephanie and Joseph, all of Deport.  
John Pettit of DeSoto visited Mr. and Mrs. Bob Marshall Friday.  
Mr. and Mrs. Frank Lee attended the revival at East Post Oak last week.  
Belle Day of Shady Grove visited Elizabeth Walker Tuesday.  
Mr. and Mrs. Bill Upchurch and Sam Boren of Albuquerque, NM visited Ann Ford of Paris Saturday.  
Harold Bell of West Plains, Mo has returned home from visiting his mother, Corene Taylor of Cherry Street Annex and Mr. and Mrs. Holland Bell.  
Spending Sunday with Mr. and Mrs. Fraunk Lee were Steve and Vickie Reeves and Ruth and T.J. Johnston of Paris.  
H.R. Upchurch was in Texarkana Monday and Thursday on business.  
Micah Malone spent Friday night with her grandparents, Buddy and Sue Malone of Deport.  
Tommy Malone visited his grandfather, Mutt Harvey, in Bogata Nursing Home Sunday. Mr. Harvey appreciates all the visits from his friends in the area.

**By C.L. Mitchell**  
To the lady who taught me The golden rule, even though I didn't do too good in school.  
A picture was prettier than any diagram I knew.  
The roses are gone, the violets are dead, but their beauty I keep in my head.  
When I was in school I didn't think that pronouncing a sentence could make you think.  
Now that I'm older, and sometimes can't spell, I should have listened to Miss Sparks instead of the bell!

**LABOR DAY SALES & SPECIALS**  
Sale Good September 2nd, 3rd and 4th  
**Incredible Buys! Our Below-Wholesale Rack Is Now Marked Down To Half Off!**  
(That's Half Off The Already-Below-Wholesale-Price!)  
**75% Off**  
Ladies Summer Dresses & Separates  
**Darden-Sparks Department Store**  
Come See Us! Main Street, Deport 652-4515 Lay Away Now