

Mrs. L.A. Flye
Box 22
City

No Traffic Fatalies in County During Holiday Rush

Although automobile accidents were extremely rare in Sherman County this New Year's weekend and no deaths were reported in the Panhandle as a whole, the state of Texas led the nation in highway deaths by a wide margin.

Ambulance calls in Sherman County were reported as "surprisingly slow" by paramedic Leland Lewis, who added that none of the calls were related to vehicle accidents.

The Sherman County Sheriff's Department reported that there were only three minor one-vehicle accidents reported in the county during the 78-hour weekend. Of those one occurred in town and two were on highways. None of the three resulted in any injuries.

The lack of accidents in the area was made even more surprising by late evening snowfall Saturday, Jan. 2, which limited visibility and accounted for between .2 and .5 inches of snow in Sherman County. This flurry was not a contributing factor in any of the local accidents.

The highway death total for Texas had reached at least 41 at press time and the Highway Department stated that an exact count would not be known until later in the week.

This figure was three more than anticipated by the Department of Public Safety and led the nation by a considerable margin over California which had at least 15 less traffic fatalities.

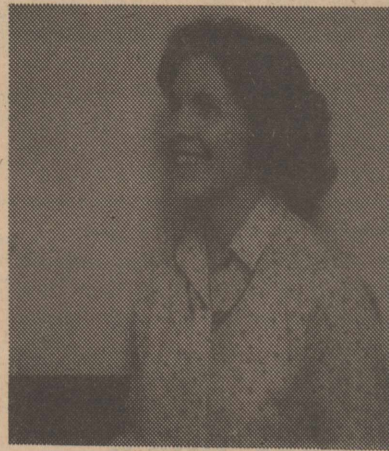
The National Safety Council estimated that between 300 and 400 traffic deaths would occur nationally for the New Year's weekend. In neighboring states, New Mexico reported three deaths and Oklahoma listed seven fatalities.

Reminder

Candidates for Local

Office Must File by Feb. 2

Two More Candidates File for Clerk and Treasurer



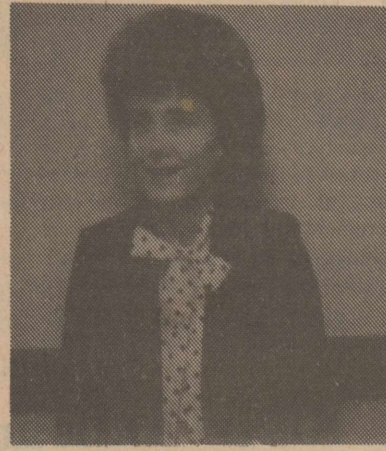
Mary Lou (Shorty) Albert

Mary Lou (Shorty) Albert has announced that she is a candidate for the Sherman County District and County Clerk's office.

Shorty has lived in Sherman County for 29 years. She is a graduate of Stratford High School. She is the daughter of Mr. and Mrs. C.W. "Pup" Wells. Shorty is married to Raymond Albert. They operate the Queen of Creme. Shorty has three children, Joe Pete who teaches and coaches in Seminole, Lisa Gayle who works with the family at their business, and Steven who is a student at Stratford High School. Shorty is a member of the Baptist Church and is active in community activities.

"I feel like I am qualified to serve as your District and County Clerk as I have had 11 years experience with the county

[Continued on page 2]



Linda Keener

Linda Keener, Sherman County Treasurer for five years, yesterday announced plans to seek re-election.

Her candidacy in the November 1982 General Election is subject to the May 1 primary.

Linda is a native of the Stratford area having lived at Kerrick prior to marrying and moving to Stratford. She is the daughter of Nita Taylor and the late Ray "Hap" Taylor. She is married to Harold "Poe" Keener who owns and operates Keener Oil and ranches. They have two sons, Mark who is a junior at Northwestern Oklahoma State University and plays on the Ranger football team, and Jere Don who is a junior at Stratford High and is active in the sport program there.

She is a member of the Methodist Church and serves on the Stratford

[Continued on page 2]

Candidate First to Declare for District and County Clerk

Leonda Fedric of Stratford announced today that she will seek election to the office of District and County Clerk of Sherman County.

Mrs. Fedric stated, "I feel that I qualify for this position. I have an extensive background in working for the public and with experience in legal and abstract fields".

Mrs. Fedric was employed as a legal secretary for Sheehan, Dubuque, and Dyess, and has also been employed by Sherman County Abstract and Powell Abstract. She owned and operated the Bumble Bee Floral, and is currently employed as office manager for Henry Anderson of Texas, Inc., where she has been employed for the past three years. Mrs. Fedric is a 1968 graduate of Stratford High School, having lived in Stratford since 1962.

She is a member of Stratford Chamber of Commerce, and is currently serving on the board of the Women's Division of the Chamber of Commerce. Mrs. Fedric is also a member of the Stratford Volunteer Fire Department Auxiliary.

The Fedrics are members of the First Christian Church of Stratford, where Leonda sings in the choir. Leonda and her husband, Claude Nelson, teach the high school Sunday School class, and serve on the Official Board.

The Fedrics are parents to two children, Jenny - 11, and Sheila - 5.



Leonda Fedric

Claude Nelson is employed as a parts man for Olson Automotive.

Mrs. Fedric stated, "I feel I am qualified for this position. I would strive to bring to the office a professional attitude and to treat each and every person in a polite and considerate manner and to assist everyone in whatever way possible". Mrs. Fedric further stated, "I sincerely desire this position, and ask each voter to give serious consideration to my candidacy".

Coming Events...

THURSDAY, January 7, 1982
Stratford Tournament begins

FRIDAY, January 8, 1982
7 a.m. Chamber Board Meeting, Headquarters Restaurant
Stratford Tournament

SATURDAY, January 9, 1982
8 p.m. Square Dance, County Barn
Stratford Tournament

MONDAY, January 11, 1982
4 p.m. Sunray 7-8 boys & girls here

TUESDAY, January 12, 1982
2:30 p.m. Historical Commission, Commissioners Courtroom

THURSDAY, January 15, 1982
7-8th Grade Spearman Tournament

Candidate Announces for Clerk

Mildred Hacker is announcing her candidacy for the office of County and District Clerk in the Primary election. She graduated from Stratford High School and West Texas State University. She has been a member of the Sherman County Historical Commission, the Fair Board, the Ex-Student Association, the Sherman County 4-H program, Great Books Discussion Group, Community Choirs, County Fairs, and the Tri-Corner Art Association.

She is a member of the Methodist Church and has served as church secretary for the past 10 years. She has also served on the Administrative Board as Membership Secretary and in the Chancel Choir and Bell Choir. She is also serving as District Historian for the Amarillo District Council on Ministries in the Methodist Church.

She has been a 4-H Gold Star Girl, an International Farm Youth Exchange student, and in "Who's Who of American Colleges and Universities" in 1954.

She was born in Sherman County. Her parents are Mr. and Mrs. H.C. Bennett. She is married to Alvin Hacker and they have three children, Ty, Betty Jean and Jay. Betty Jean is married to Jim Laxson and they live in Lubbock with their two children, Jeannie and Jeremy.

Crops & Weather

CROPS
Wheat...\$3.60 bu.
Milo...\$4.10 cwt.
Corn...\$2.80 bu.

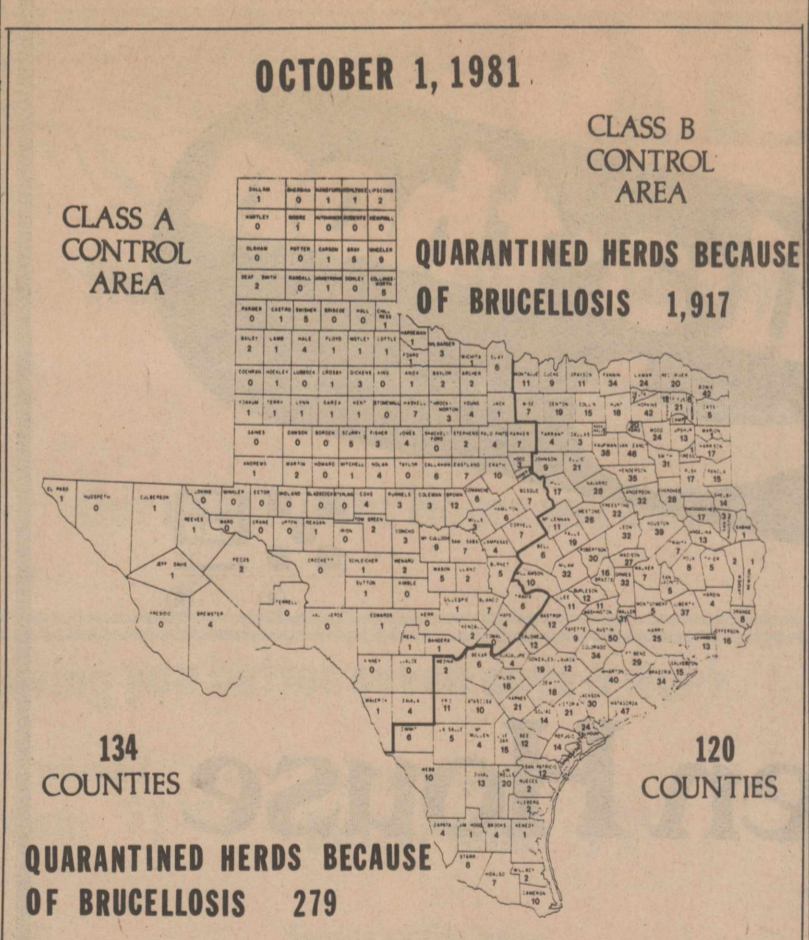
WEATHER
About .2 inches of snow fell in most of Sherman County Saturday night, Jan. 2. Temperatures had risen to a high in the '50s by Tuesday, Jan. 5.

The Stratford Star

NUMBER 1

Stratford/Sherman County/Texas/79084 "The Tip Top Town In Texas" Fifteen Cents

Sherman County Reports No Brucellosis Contaminations



The above map shows a county by county breakdown of herds quarantined because of brucellosis during 1981.

The new Brucellosis Control Program came into effect throughout Texas on Jan. 1 with the adoption of new rules to follow early in 1982 and restricted cattle movement rules to be enforced during spring or early summer.

Sherman County was reported to have no cattle herd contaminations last year by the reporting body of the Texas Animal and Health Commission.

As a whole, the Panhandle was among the least affected areas in the state with neighboring counties of Hartley, Hutchinson, Roberts, Hemphill, Oldham, Potter and Randall also reporting no cases of herd contamination.

The nearby counties of Dallam, Moore, Hansford and Ohltree reported one case of brucellosis contamination each. Hardest hit in the area were Wheeler with nine cases and Collinsworth with five cases. Both are located in the extreme southeast area of the Panhandle.

The hardest hit region in was the central portion of the Gulf Coast where Matagorda led with 47 cases and Wharton had 40 herd contaminations.

Impending changes to current policies are as follows:

- 1) Use calfhood vaccination with reduced dosage of strain 19. It provides good protection. State and national regulations are now being considered which will encourage freer movement of animals which are vaccinated.
- 2) Certified brucellosis free herd. Your best assurance for as much free movement as possible within Texas or our-of-state is a certified brucellosis free herd.

Panhandle Least Affected Region

In the near future, commissioners of the Texas Animal Health Commission will make a determination based on information from all segments from the livestock industry regarding the Brucellosis Program.

Texas Animal Health Commission (TAHC) is the state agency with the responsibility to implement state regulations in accordance with federal brucellosis requirements.

Filing Dates Near for May 1 Primary Ballot

The primary elections for offices in Sherman County are just five months away and there will be an unusually large number of offices involved due to recent redistricting.

The offices involved in the primary and November general election are county judge, county and district clerk, county attorney, justice of the peace for each district, and all four county commissioners.

Filing dates to appear on the May 1 primary ballot are between Jan. 2 and Feb. 2. Forms to appear on the ballot are available at the Court House where filing fees can also be paid.

The 1982 general election will take place on Nov. 2.

WTSU--Officers for the 1981-82 West Texas State University Student Foundation, who recently completed a successful scholarship fund-raising campaign, are, top row from left, Kenneth Young, Shallowater, vice president; Lisa Jernigan, Plainview junior, university Fun Fair chairperson, and Katie McBride, Melrose, N.M., junior, phonathon committee chairperson. Others are, second row, from left, Brenda Baker, Stratford senior, secretary; Paulette Bolton, Lubbock junior, social committee chairperson; Patricia Gauthreaux, Hereford junior, treasurer; and bottom row, Trent Hill, Amarillo junior, president; Jud Hicks, Fritch senior, Senior Extravaganza committee chairperson; and Rocky Gillmore, Borger senior, scholarship committee chairperson. [WTSU Photo by Andy Hester]



Opinion

The Star Editorial

Anyone who has ever been associated with a newspaper or other publication knows the importance of reporting direct quotes correctly, but according to a group of researchers some of the most famous quotes in history have been passed along incorrectly.

According to the "Oxford Dictionary of Quotations" each of the following statements either did not occur or have been misquoted for years:

--Humphrey Bogart did not say "play it again Sam," in the movie "Casablanca." What Bogart said was, "If she can stand it I can, play it."

--Despite often being credited with the line, "Why don't you come up and see me sometime," Mae West never delivered that line in any of her films. In fact, the closest she came was, "Why don't you come up sometime, see me?"

Famous misquotes aren't just to private domain of films, however, as the following examples from very famous books attest:

The "immortal" phrase "Elementary, my dear Watson," often attributed to Sherlock Holmes appears nowhere in any of the books of Sir Arthur Conan Doyle, nor in this case was there ever any similar phrase written.

--Perhaps the most famous of all misquotes, however, is attributed to the Bible. Nowhere in the English language's most quoted book does the phrase, "The Lion shall lie down by the lamb," appear. Actually it is the wolf who "dwells" with the lamb.

I guess that just goes to show you can't believe what you hear or read. HUUUUUU.....

"It takes two to speak the truth—one to speak and another to hear."
Henry David Thoreau

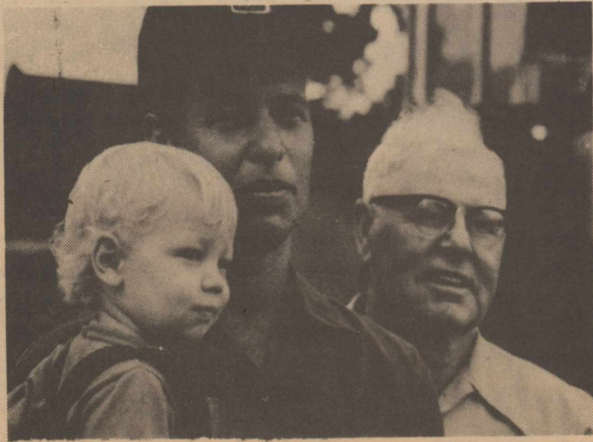
The Land Bank

We say a farm real estate loan should be as easy to pay back as possible.

See us:



The Bank of Generations



Federal Land Bank of Dalhart

Dumas Location in Powell Abstract Office
Each Tuesday 10 a.m. - 4 p.m.
Phone No. 935-5658

Keener Seeks Re-Election

(Continued from page 1)

Hospital District Board.

The County Treasurer office is the centralized accounting department for the county. The treasurer handles all investments. During the last year the return of interest to the county government has greatly increased.

In addition to the role of county investor, the treasurer is responsible for receiving and disbursing all monies for the county. This includes all county bills,

jury payment, and payroll. The treasurer also handles all retirement, insurance and workmen compensation.

Over the past five years the treasurer's office has seen many changes and up-grading to a full-time accounting department. The most recent change is converting to computer.

If re-elected, I shall continue to serve the county to the best of my ability and sincerely ask for your vote in the May 1 Primary.

Albert Announces for Clerk

(Continued from page 1)

as secretary of the County Agent and I am familiar with other aspects of the county operations. I feel that I am capable of doing a good and efficient job and pledge to operate the office of District and County Clerk to the best of

my ability. I sincerely ask your support in the Democratic Primary May 1.

Card of Thanks

To each of you who remembered us so kindly in the loss of our Mother, Geneva Meredith. The food, flowers, memorials, visits and cards were truly appreciated. Most especially we wish to express our thanks to the administration and staff of Coldwater Manor who cared for her in such a loving manner through out her stay there. Also the volunteers who assisted, the ambulance attendants who cared for her on the many trips this past year, and Dr. Harlow who was so kind and gentle. Words do not express our appreciation.

Marilyn Albert
Janice Meredith
Louise Garcia
Kenneth Shuff

Blood Drive to be held Jan. 26

There will be a local blood drive from noon until 4 p.m., Jan. 26 at the County Barn. It was announced by local coordinator R.J. Hill.

The drive will be held in conjunction with "National Blood Drive Month," an act that was recently approved by President Reagan. Locally the drive will be hoping to replace 129 pints used by Roy Davis.

STATEMENT OF INTENT TO CHANGE RATES

GENERAL TELEPHONE COMPANY OF THE SOUTHWEST hereby gives notice, in accordance with TEX. REV. CIV. STAT. ANN. art. 1446c, §43(a), of its intent to implement a new schedule of rates for those customers residing in the State of Texas but who are served out of the Company's Guymon and Texhoma, Oklahoma exchanges.

The proposed changes, which were implemented on an interim basis in October 1981, will affect all customer classes and are designed to increase revenue from affected customers by approximately 37 percent.

A complete set of revised rate schedules has been filed with the Public Utility Commission of Austin, Texas, and is available for public inspection in the Company's Guymon and Texhoma, Oklahoma Business Offices.

GTE
General Telephone

Legal Notices

THE STATE OF TEXAS
Any Sheriff or any Constable within the State of Texas
CITATION BY PUBLICATION

To: Salomon Gonzales
Greeting: You are commanded to appear and answer the plaintiff's petition at or before 10 o'clock a.m. of the first Monday after the expiration of 42 days from the date of issuance of this Citation, the same being Monday the 25th day of January, A.D., 1982, at or before 10 o'clock a.m., before the Honorable District Court of Sherman County, at the Court House in Stratford, Texas.

Said plaintiff's petition was filed on the 11th day of December, 1981. The file number of said suit being No. 2449.

The names of the parties in said suit are: Mary Jane Gonzalez as Petitioner, and Salomon Gonzalez, Respondent, and in the interest of their minor children.

The nature of said suit being substantially as follows, to wit: A brief statement of the nature of this suit is as follows to-wit: divorce action, as is more fully shown by Petitioner's Petition on file in this suit.

If this Citation is not served within 90 days after the date of its issuance, it shall be returned unserved.

Issued this the 11th day of December A.D., 1981.

Given under my hand and seal of said Court, at office in Stratford, Texas, this the 11th day of December A.D., 1981.

M.W. Terrell, Clerk
District Court, Sherman County, Texas

Coldwater Manor

by Nola Brunton

Everyone had a great time during the holidays even if we did eat too much. But we got by with it and had fun.

Thanks to the Baptist Youth for the hand lotion given to every resident. We sure use it on these old worn out hands of ours.

Thanks to the Ladies Bible Class of the Christian Church for the large print Bible. It's easy on the eyes.

Mr. B.I. Crutchfield of Dumas donated a much needed sewing machine. Thanks to you.

We still like to eat though we are past "sweet sixteen." Many thanks to the Fire Department Auxiliary and Fire Department for the candy and fruit they

brought.

Our sympathy goes to the family of Geneva Meredith. Lela Moon is in High Plains Hospital, Amarillo. Bertha Crutchfield has gone home.

Many thanks to Jane Willey, TEHA Moonshiners Club and Laura Wells for the special help with our Christmas party. How could we do things without your help?

Nu Beta Sorority made a money donation to our needy. We do appreciate it very much.

'Freak Accidents'

There were two accidents involving vehicle collisions with cattle in or near Sherman County over the New Year's weekend.

In the more serious of these accidents, six head of cattle owned by Mike and David Vincent were killed when they were struck by a semi-truck at about midnight, Jan. 2, about two miles southeast of Kerrick.

The driver of the truck was not injured and his vehicle was reported to have sustained little damage. The cattle apparently got on the road when someone left a gate open earlier in the day.

In a separate accident, a car driven by Glenda Dyess was nearly overturned when it struck a 300-pound pig near the Arthur Milton place. The pig had been struck by a truck and bounced into the path of Mrs. Dyess' car.

Neither she nor her husband, Bill, were injured in the accident.

Hospital Report

In the hospital this week is Mrs. Lela Moon at High Plains Baptist in Amrillo and Mrs. Becky Lavake was reported to be in Dumas Memorial.

Card of Thanks

I wish to say thanks to each one for my Christmas gifts. Wishing each one a Happy New Year.

Ruth Adams

FIRST BAPTIST CHURCH
Stratford, Texas
CHANNEL 3

January 6-12

WEDNESDAY, January 6

7 p.m. Spring Street, USA

8 p.m. Castle Hills Baptist Church, San Antonio

THURSDAY, January 7

7 p.m. First Baptist Church, Amarillo

8 p.m. First Baptist Church, Houston

FRIDAY, January 8

7 p.m. Broadmoor Baptist Church, Shreveport, La.

9 p.m. Day of Discovery

SATURDAY, January 9

No Programming

SUNDAY, January 10

3 p.m. First Baptist Church, Stratford, (Audio Only)

3:30 p.m. Day of Discovery

4 p.m. First Baptist Church, Amarillo

5 p.m. Singing Jubilee

MONDAY, January 11

7 p.m. Immanuel Baptist Church, Little Rock, Ark.

8 p.m. Singing Jubilee

TUESDAY, January 12

7 p.m. First Southern Baptist Church, Del City, Okla.

8 p.m. Castle Hills First Baptist Church,*San Antonio

The Stratford Star

Second class postage paid at Stratford, Texas, 79084. Subscription rates are \$8.00 per year in Sherman and adjoining counties; all other \$11.00 per year

Mike Reed, Editor and Publisher



TEXAS PRESS ASSOCIATION



Sell-a-thon



Open House

Appreciation Day Sell-a-thon

Jan. 14

Time: 8 a.m. to 5 p.m.

Come see our store and meet our people. We have teamed up with Purina to provide you with the best service.

Door prizes will be awarded and refreshments served. Come on in and see what we can offer you from America's largest line of quality animal products.

Sherman County Grain Co.

GET MORE FOR YOUR CROPS.

PAY LESS INTEREST ON NEW EQUIPMENT.

IH ATTACKS YOUR TWO BIGGEST PROBLEMS.

We've mounted an all-out attack on your two biggest problems—low commodity prices and high interest rates—to really help you afford the new equipment you need and want.

Get More For Your Crops. Now we'll give you an extra 20% cash allowance for your crops! 20% more than the price you tell us you get at your local elevator. In figuring your crop bonus, the value of the crop plus 20% cannot exceed ¼ of the sale price of the new International equipment you buy.

Pay Less Interest. We'll give you a big break on interest rates, too. You can pay a low 13.5% APR guaranteed for three years. Or, we'll waive your regular interest payment completely until next season.

See us now! This offer is good only on new equipment purchased and delivered before January 29, 1982.

Get the Red Edge. With IH as your partner helping you fight high interest and low crop prices, you can't lose.



King Equipment

Athlete of the Week



Craig Sladek



Cara Brite

Craig Sladek and Cara Brite were named as "Players of the Week" for their performances against Sunray, Saturday night.

Sladek, a repeat winner, had 20 points and was 10 of 15 shooting from the field.

In addition, he pulled down 13 rebounds and had five assists, three blocked shots and a steal.

Brite, a junior guard, had two points and played well defensively with a steal, a caused mistake and two tie-balls.

Elks Blast Sunray by 63 Points

The Elks handed Sunray one of that school's worst defeats in history with a stunning 86-23 win over the Bobcats Saturday night.

Craig Sladek led the Elks with 20 points on 10 field goals and 13 rebounds. Chris Stanley also scored in double figures with 10 points. Danny Barrett also had a big game with six points and seven rebounds as did Joe Bill Boren

who scored eight points and six rebounds.

The Elks substituted freely throughout the game with 12 players scoring before the night was over. Elk point leaders were: Sladek 20, K. Stanley 10, Boren 8, Chris Stanley 8, Barrett 6, Lane Robertson 6, Oscar Rendon 6, Rhett Ragsdale 5, Dean Mitts 4, Albert Olivas 4, Dean Mitts 4, and Brent Spurlock 3.

Elkettes Beat Sunray 58-39

The Elkettes upped their district record to 1-1 with a 58-39 win at Sunray, Saturday.

Leading the Elkettes were Carol Chesher with 11 points and six rebounds, Diann Riffe with 10 points and three rebounds, ViAnn Ferguson with eight points, and Tania Wilson with five rebounds.

The Elkettes jumped to a five-point lead in the first quarter and increased that lead to 27-20 at the end of the half.

Stratford took control of the game in the third quarter outscoring their opponents 14-6 to move ahead 41-26. The Elkettes added to their lead by a couple of baskets in the fourth quarter to come away with a 17-point win.

Couples Bridge at Country Club

The Couples Bridge monthly session will be held Saturday, January 9 at 7:30 p.m. at the Country Club. Mr. and Mrs. Lew Bruni will be hosting and all bridge members are urged to attend as there will be election of officers for the 1982 year.

Menus

School Lunch Menus
Jan. 11-15

MONDAY - Steaks with mushroom soup, creamed potatoes, w/k corn, hot rolls, butter, peanut butter brownies, chocolate or plain milk.

TUESDAY - Pizzas with hamburger and cheese, blackeyed peas with snaps, lettuce tomato salad, peach cobbler, chocolate or plain milk.

WEDNESDAY - Fried chicken, gravy, creamed potatoes, green beans, hot rolls, butter, peanut butter, applesauce, chocolate or plain milk.

THURSDAY - Chili with brown beans, cole slaw, crackers, cinnamon rolls, chocolate or plain milk.

FRIDAY - Hamburgers, cheese, lettuce with pickle relish, onions, tater tots, catsup, pears, chocolate or plain milk.

Willards Named to Tech Honor Roll

Julie Willard, a student at Texas Tech University in Lubbock, had a 4 point grade average this semester. Her brother, Jay Willard, also attending Texas Tech, had a 3.59 average. They are the son and daughter of Mr. and Mrs. Jess Willard of Stratford.

Kerrick News

With all the Holiday visiting and traveling, Kerrick folks had a busy time. Now it's back to normal, but what's normal for Kerrick is still a busy time!

The annual Christmas gathering of the Taylors was held at the Taylor place. Virgie Mathews was hostess for one of the largest groups to attend.

From out of the area were Marysue, Marvin, Susie, Connie and Steven Cotton, Bettendorf, Iowa; Gary Mathews, San Antonio; Marjory, Dick Munden, Raton, NM; Richard, Judy, Angie, Melissa Munden, Sacramento, Calif.; Jeanie, Kermit, Shelly, Kermie Dixon, Lamar, Mo.; Kevin, Vicki Hill, Austin; Brenda Taylor, Denver, Colo. Norval Wells, Guymon, Okla.; Mella Wells, Hooker, Okla.; Geneva, Lawrence, Joyce Wells, Griggs, Okla.; Peggy, Buck, Christi, Debbie Hart, Boise City, Okla.; Kathryn, Joe, Teressa Edwards, Dalhart.

From Stratford were Darla, Wayne, Shawna, Sheila, Brett Cummings; Helen, Jim Taylor; Jodie, Kathy Taylor; Terry, Ann, Christi, Laurie, Teresa Wells; Linda, Poe, Mark, Jerry Keener; Winnie, Kay Dunlap; Karen, Cindy Stoval; Mary, R.J., Kirby, Keith Hill.

(Continued on page 6)

Close Out Sale!

Save Hundreds of Dollars

on Sofas, Chairs, Dining Room Suites, Bedroom Suites, Mattress & Box Springs Lamps, Mirrors & Pictures

Our Entire Stock is Sale Priced

McMahen Furniture

31ST ANNUAL FIVE STATES HEREFORD BREEDERS SALE

Place: Boise City, Oklahoma
Date: Sale - Friday, February 5 - 1:30 p.m.

70 Head of Serviceable Age Bulls in Range Condition
Consigned in Pen Lots

All bulls will be TB and Bangs tested within 30 days of the sale and dipped within 10 days to comply with Interstate Health Regulations now in effect.

Community Calendar for the month of January

SUNDAY	MONDAY	TUESDAY	WEDNESDAY	THURSDAY	FRIDAY	SATURDAY
					1 Happy New Year!	2 4 p.m. A & B & G at Sunray
3	4 8:30 a.m. School begins 7 p.m. EMT Meeting, County Barn	5 4 p.m. A&B B&G, Fritch here 7:30 p.m. St. Josephs Altar Society 7:30 p.m. OES, M. Hall	6	7 Stratford Tournament	8 7 a.m. CofC Bd. Mtg. Headquarters Restaurant Stratford Tournament	9 Stratford Tournament
10	11 4 p.m. Sunray 7-8 B&G H	12 2:30 Historical Committee Commissioners Courtroom 4 p.m. A&B B&G Phillips T	13	14 Spearman 7-8 tournament	15 Spearman 7-8 Tournament 4 p.m. Panhandle A&B B&G here	16 Spearman 7-8 Tournament
17	18 4 p.m. 7-8 B&G Stinnett T	19 8 a.m. Women's Div. CofC 4 p.m. A&B B&G White Deer there 7:30 p.m. Fire Dept Aux. Meeting 7:30 p.m. OES, M. Hall	20	21 8 p.m. Masonic Lodge #874	22 5-7 p.m. Lions Club Chili & Bean Supper, School 4 p.m. A&B B&G Gruver H	23 7 p.m. Pine Wood Derby
24	25 4 p.m. Gruver 7-8 B&G here	26 12-4 p.m. Blood Drive, County Barn Noon Luncheon, Women's CofC, Methodist Hall 4 p.m. A&B B&G Fritch T	27	28	29 4 p.m. A&B B&G Stinnett H	30

E.A. Hamilton
has announced his
candidacy for
**County & District
Clerk**
Paid Political Advertisement

Bell Steamway
Professional
Carpet Cleaning
KERRICK, TEXAS
collect 405-343-4300
Visa & Master Card
accepted

<p>C & C TEXACO PRODUCTS Darrell Cotney</p> <p>CIMARRON FEEDERS LTD (405) 543-6383 Nights (405) 543-6375</p> <p>CUT RATE GROCERY Hwy. 54 East</p>	<p>CONSUMERS 396-2261</p> <p>FARM BUREAU INSURANCE</p>	<p>It is later than you think! "And that, know the time, that now it is high time to awake out of sleep: For now is our salvation nearer than when we believed." Romans 13:11 Over and over again in the New Testament we are taught that every day brings us closer to the end of time. In fact those of us who believe in Jesus have heard him say, "Let your loins be girded about, and your lights burning; and ye yourselves like unto men that wait for their Lord, when he will return from the wedding; that when he cometh and knocketh, they may open unto him immediately. Blessed are those servants, whom the Lord when he cometh shall find watching..." (Luke 12:35-37) This new year brings us closer to salvation if we are Christians and closer to the eternity of separation from God if we live in unbelief. Personally this year presents a great challenge to me to live closer to my Saviour and my Father than ever before. I hope you feel the same. Alfred White - Minister Church of Christ</p>	<p>FIRST STATE BANK of Stratford</p> <p>WALTER LASLEY & SONS TLU Feeding</p> <p>SHERMAN IMPLEMENT CO Your John Deere Dealer</p>	<p>KING EQUIPMENT CO Your IHC Dealer</p> <p>NORTH PLAINS SAVING ASSOCIATION Your Money Store</p> <p>STRATFORD GRAIN CO 396-5541</p>		
<p>Assembly of God Rev. Jesse Ashley Fulton and Purnell</p>	<p>Church of Christ Alfred White 3rd and Chestnut</p>	<p>First Baptist Rev. Genoa Good 3rd and Fulton</p>	<p>First Christian Rev. David Harker Main and 5th</p>	<p>Independent Baptist Rev. James D. Jones South Main</p>	<p>St. Joseph's Catholic Fr. Donald P. Ruch 519 S. Pearl</p>	<p>United Methodist Rev. Kenneth Metzger Main and 6th</p>

**Shop Wednesday's for
Double Value on
Manufacturers
Cents Off Coupons**



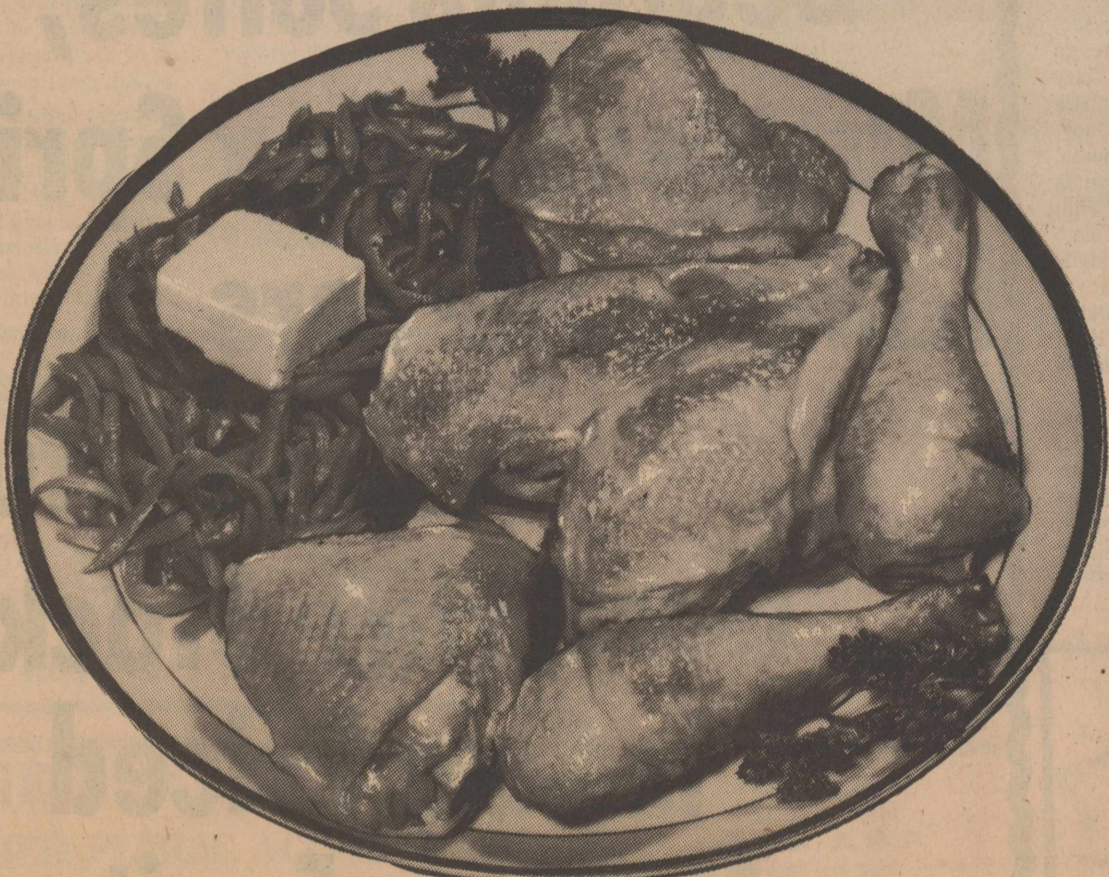
...received in your Publishers Clearing House Mailing
Don't receive your coupons in the mail? Simply send your name, address and ZIP code number to: Publishers Clearing House, Dept. P, 302 Channel Drive, Port Washington, NY 11050

**DON'T MISS THE EXTRA SAVINGS...
Redeem your Procter & Gamble
mailed coupons at** Shop Your Home Owned Cut Rate Store

JOIN US IN SUPPORTING SPECIAL OLYMPICS. For each coupon you redeem in our store by January 22, 1982 Procter & Gamble will contribute 5¢ to Special Olympics... A non-profit organization dedicated to a happier, more fulfilling life for millions of mentally handicapped children and adults.

"MATCHING GIFT" CERTIFICATES AVAILABLE IN OUR STORE TO SUPPORT LOCAL SPECIAL OLYMPIC ORGANIZATIONS

MEAT BUYS



**Country Pride Family Pack Grade A
Fryers lb 39¢**

**Boneless Farm Fresh
Catfish Fillets lb \$3²⁹**

**USDA Choice Boneless
Club Steak lb \$3⁷⁹**

**Hillshire Farms Smoked
Sausage lb \$1⁶⁸**



**Kraft Halfmoon
Cheddar & Colby 16 oz pkg
Cheese \$2⁴⁹**

**Morton Beef-Chicken-Turkey Frozen
8 oz pkg
Pot Pies 2/89¢**

**Fresh 73% Lean
Ground Beef lb 99¢**



**Oscar Mayer 8 oz pkg
Chopped or Cooked
Ham \$1⁴⁹**

**Delicious Roasted Chicken To Go USDA Choice Freezer
Beef Cut & Wrapped Special Cut Steaks & Roasts - Give Us A Call**

GIANT FROZEN FOOD SAVINGS



**Minute Maid Frozen 12 oz can
Apple Juice 94¢**

Shurfine Frozen 10 oz pkg

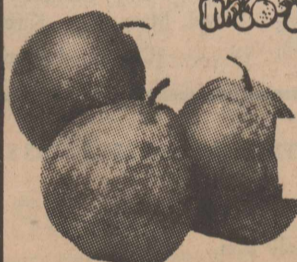
Brussel Sprouts 59¢

**Sara Lee Frozen Individual 7 1/2 oz pkg
Apple & Cinnamon Raisin**

Danish Rolls \$1⁴³



DELICIOUS PRODUCE!

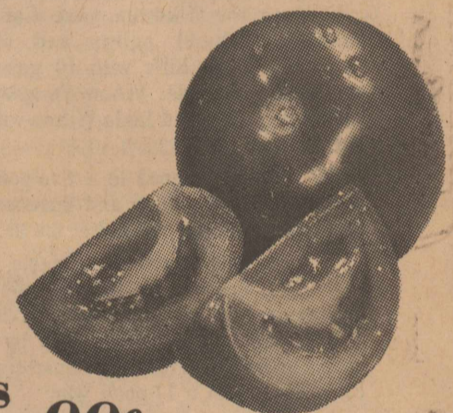


**Washington Bartlett
Fresh Pears lb 39¢**

**Central American
Bananas 3 lbs 99¢**

**Texas Green
Cabbage lb 12¢**

**Texas Large
Fresh Bell Peppers lb 49¢**



**California
Fresh Tomatoes 3 lbs 99¢**

**Pillsbury 13 oz
Apple Streusel & Cherry Streusel
Coffee Cake \$1²⁹**



**Hunt's 15 oz can
Fruit Cocktail 59¢**



**20 ct box Bounce
Fabric Softener \$1¹⁹**

**Crystal White 48 oz btl
Dishwashing Liquid**



\$1¹⁹

Mr. Clean \$1⁸⁹



Shurfine 16 oz box

Saltine Crackers 59¢

WITH THIS COUPON

**Folger's
Coffee Crystals**
10 oz **\$3⁹⁹**

COUPON GOOD THRU JAN 13, 1982
ONE COUPON PER PURCHASE

Cut Rate Grocery

WITH THIS COUPON

Shurfresh Milk
1 gal **\$1⁸⁹**

COUPON GOOD THRU JAN 13, 1982
ONE COUPON PER PURCHASE

Cut Rate Grocery

WITH THIS COUPON

Shurfine Sugar
5 lb **99¢**

COUPON GOOD THRU JAN 13, 1982
ONE COUPON PER PURCHASE

Cut Rate Grocery

**We Reserve
the Right
to Limit**

**Specials Good
Jan 7-13, 1982**

A
Good Place
to Meet Your
**NEIGHBORS
&
FRIENDS**

Cut Rate

GROCERY AND FAMILY CENTER

**LOW,
LOW
EVERYDAY
PRICES**

**Shop Cut Rate's
Everyday low
stampless prices
and save!**

**We offer case lot
sales for extra savings**

Stratford, Texas YOUR PATRONAGE APPRECIATED OPEN SEVEN DAYS A WEEK Sunray, Texas

Light Crust 5 lb bag **Hunt's 15 oz can**
Flour 79¢ **Pear Halves 59¢**

19 oz can **Sunshine 89¢**
Ranch Style **Cheez-it Crackers**
Plain Chili 99¢ **Soft & Pretty 4 roll pkg**
99¢ **Bathroom tissue**

\$1.39 **300 can**
Kraft **Van Camp's**
Italian Dressing **Pork & Beans**
16 oz btl **2/79¢**

Peter Pan 18 oz jar **Van Camp's**
Peanut Butter **Pork & Beans**
\$1.49 **2/79¢**
(Crunchy or Smooth)

Tang 40 1/2 oz cannister **Maryland Club**
Breakfast Drink \$2.99 **1 lb can** **Coffee \$2.09**

BEN FRANKLIN® annual white sale!

**Save on Cannon
Packaged
Sheet Sets**

Twin Reg \$16.99	Sale \$9.97
Full Reg \$22.99	Sale \$15.97
Queen Reg \$29.99	Sale \$22.97
King Reg \$34.99	Sale \$26.97

CANNON evolution **Twin Reg \$9.98** **Full Reg \$11.98**
Blanket Hug-A-Bed **Sale \$7.97** **Sale \$9.97**
Bonanza **Mattress Cover**

- Choice of Colorful Prints
- 72x90-in. Twin/Full Size!

Reg \$9.98 Sale \$6.97 Reg \$7.98 \$5.97

Zippered Pillow Covers **Standard \$1.47**
Queen \$1.97
King \$2.47

Keep your pillows in good condition with these cotton and polyester covers. Machine washable covers with rust-proof zippers come in assorted colors.

Dishcloths **Reg \$1.09 Sale 77¢**

Irregular Towels **Reg \$3.99 Sale \$2.49** **Daaron** **Standard Reg \$6.99 Sale \$4.97**
Hollofil®808 **Queen Reg \$8.99 Sale \$6.47**
BED PILLOWS

AFFILIATED FOODS JANUARY SAVINGS

Fiesta **Niblets** **Whole Kernal Golden Corn 4/\$1.79**

Green Giant 16 oz can **Kitchen Sliced Green Beans 5/\$1.99**

Green Giant Sweet Peas 5/\$1.99 **17 oz can**

REAL MAYONNAISE \$1.69 **32 OZ. JAR**

1 roll pkg **HI-DRI TOWELS** **2/99¢**

Excedrin 30's **PM Tablets** **Reg \$2.89 \$2.16**

Excedrin 60's **Tablets** **Reg \$3.62 \$2.71**

Excedrin 40's **Capsules** **Reg \$3.62 \$2.71**

Super II **Blades** **9's Reg \$4.37 \$3.27**

Deodorant **Tickle Roll-On** **Efferdent Tablets** **60's Reg \$2.71 \$1.97**

Listerine **18 oz** **Reg \$2.92 \$2.19**

Personal Touch **Razor** **Reg \$2.73 \$1.89**

Ultrax **Blades** **Reg \$2.50 \$1.87 5's**

WITH THIS COUPON

Shurfresh Eggs 76¢
Grade A Medium

COUPON GOOD THRU JAN 13, 1982
ONE COUPON PER PURCHASE

Cut Rate Grocery

WITH THIS COUPON

Kleenex Facial Tissue
200 ct box 2/99¢

COUPON GOOD THRU JAN 13, 1982
ONE COUPON PER PURCHASE

Cut Rate Grocery

WITH THIS COUPON

Tendercrust Bread
(Ranch, Sandwich, or Big Bag) 49¢

COUPON GOOD THRU JAN 13, 1982
ONE COUPON PER PURCHASE

Cut Rate Grocery

Society News

Seven From Stratford Work on Building of Church

Five Stratford youth and two sponsors were in Mesa, Arizona last week to work in a church building. Becky Goad, Karen Waters, Dorothy Rolen, Rodney Roberson and Barry Durham, with Minnie Hampton and Gordon Lewis as sponsors, went in the Baptist Church van to Baseline Baptist Church at Mesa.

"The youth mostly painted furniture,

building and people", laughed Mrs. Hampton.

They attended candlelight services New Year's Eve at the church which is near Phoenix.

Pastor of the church is Rev. R.G. Whitehead whose wife is a sister of Esther Ferguson of Stratford.

Association for Retarded Citizen to Sponsor Dance

The Moore County A.R.C. (Association for Retarded Citizens) has received many compliments for the previous dances the A.R.C. has sponsored so we have decided to continue these dances.

The next A.R.C. sponsored dance will be held January 8 (Friday night) from 7 p.m. to 12 a.m. at the (Dumas) Moore County Community Building. Amachron (1) from Amarillo will provide the music and lights. Dance contests of all kinds will be held and prizes will be awarded to the winners. All kinds of popular

music will be played and requests will be accepted.

Proceeds from these dances are being used to develop new programs for the Mentally Retarded. If you have any questions, feel free to call Wess Burnett, A.R.C. President, at 1-806-935-5746.

An 1824 strike of weavers in Pawtucket, RI, is the first recorded strike by women.



McClellan-Hayes Engagement Announced

Mr. and Mrs. C.A. Hayes of Elkhart, Kansas wish to announce the engagement and approaching marriage of their daughter Melinda Gaylene to James Edward McClellan of Stratford.

The couple will be married on January 16, at 7 p.m. at the First Baptist Church in Elkhart.

Jim is the son of Mr. and Mrs. James

L. McClellan and the late Edwina McClellan of Stratford. He is a 1978 graduate of Stratford High School and is a senior majoring in physical education at Panhandle State University.

Jim and Gay will make their home in Goodwell, Oklahoma. All friends and relatives are invited to attend the wedding.

*A life of sharing, caring
A love of endless giving together*

Mr. and Mrs. Billy Hawkins
*request the honour of your presence
on Saturday the ninth of January
Nineteen Hundred and Eighty-Two
at three o'clock
when their daughter
Sona Kay
and
Bradley Dean Collison
become united through marriage
at the Assembly of God Church
Beaver, Oklahoma
Reception following at The First Security Bank*

Kerrick News

by Marylou McDaniel

(Continued from page 3)

And Rose, Walker Taylor; Nita Taylor; Doug, Anita, Mandy Taylor; Franny Taylor.

Franny Taylor had several visitors during the holidays. Daughter Brenda was here Dec. 23-Jan. 3. Others were Richard Lewis of Brenham, Texas; John and Maricella Graham, Cindy Graham, Tommie Garoutte. Christmas night Franny and Brenda were in Boise City at the M.H. Robinsons with 15 present.

Holiday visitors with the Alvin Harris family were his parents, Mr. and Mrs. Oliver Harris, Hot Springs, S.D., Mr. Leonard Harris and family of Gordon, Nebraska.

At the Gary Thompsons were his brother, Tom Thompson and family of El Paso and her parents, Mr. and Mrs. Don Harper and Donna of Payson, Ariz.

On New Year's Day they all got together at the Community Center for a family dinner with 22 present.

During the holidays Kayo and Jo June McDaniel had the Penny Whitsons of Clayton, John McDaniel, Whit and Diane McDaniel of Pampa, Robbie Yates and Evelyn Cooper of Stratford.

The Ralph Hamptons celebrated

Christmas three times—the Crabtree Christmas at the Don Ellisons, Ethel Hampton hosting the Hamptons, then at home.

The George Avents spent Christmas Eve in Vega with his niece and family. Mr. and Mrs. Jack Richardson. There were 25 present. Bevilyn and Jimmy Wright, Odessa, were home to see them and Jimmy's parents.

Bill, Pat, Joe Bill and Kerry Boren were in Gotebo, Okla. Dec. 26-27 to see the Frank Kirchoffners and their new daughter, Sara.

Hank and Mabel Rogers were hosts Christmas Day to the Alvin Harris, Gary Thompson, Boots Avent families. There were eight kids there, but no Ian! They picked him up in Amarillo on Dec. 28, then traveled to San Antonio where Ian celebrated his birthday with dinner at the Tower of the Americas. They toured San Marcus, then were at Ethel Murdock's to help celebrate her birthday on New Year's Eve. Flying down from Dallas for the event were Lyall and Louine Murdock. Sorry to report that Ethel was not feeling too well during this visit.

Before they left, the Rogers family gathered on Dec. 26 at Hank and Mabel's.

Present were Mr. and Mrs. Jim Rogers, Jo Alice of Oden, Ark.; Mr. and Mrs. Garland Palmer, Dalhart; Mrs. James Pendleton and children, Dumas; and from Amarillo, Mrs. Geneva Pullen, Tammy, Janel Palmer, Mr. and Mrs. Bob Wolf and Mark, Mrs. Reba Holloway.

From Felt, Okla., Mr. and Mrs. Parker Maness, Mr. and Mrs. Gary Maness, Randy and Ashley; Mr. and Mrs. Parker Lee Maness.

Norval Wells, Guymon, Okla.; Mella Wells, Hooker, Okla.; Mr. and Mrs. Lawrence Wells, Joyce Wells, Griggs, Okla.; Mr. and Mrs. Kenneth Wells, Jennifer and Mark; Paul Wells.

Ashley Wells, young daughter of Paul and Sandy Wells, spent some of the holiday in the hospital.

Christmas Day guests at the Kenneth Wells were Mr. and Mrs. Lyman Potter, Wade and Cole of Boise City, Mr. and Mrs. Rodney Testerman, Driftwood, Texas.

Bill, Sandy and Ericka Taylor of Dallas didn't get home in time for Christmas, but made it for the New Year's celebration. They left Tuesday after visiting with his mother, Nita Taylor, and other relatives.


QUILTING AT TAYLOR PLACE... Virgie Mathews will host the Kerrick EH Club Tuesday, Jan. 12, 2 p.m. at the Taylor homeplace. Dayle Harris will have the program on quilting. Everyone is invited.

THE WAY I SEE IT snow in the mountains is different than panhandle snow! My dad, Myron Leedy, Fred and I met Patti at "Fred's Spread" on Dec. 23 when it was -2 degrees as we unloaded. There was two feet of snow. Probably six more inches fell during the time we were there. Had great fun sledding and my Dad insists that Patti headed he and the sled toward a snow bank once! Patti was there from Denver twice for a total of seven days and Mike was there for three. Donna Baker and daughter Cindy spent New Year's Eve with us and we were at Donna's for football games on Saturday. Came home Sunday and Dad traveled on to Junction City, Kansas Monday.

Tips & Topics

I have had some questions about the safety of ZUCCHINI PINEAPPLE this past week as a result of an article printed in the magazine, "Farm Wife." I, too, must recommend that homemakers destroy all jar contents of ZUCCHINI PINEAPPLE. Next week I'll discuss in more details the reasoning behind this decision.

A TEXAS TRADITION



**Pendleton Ford
Lincoln - Mercury**

Hwy 54 E DALHART, TEXAS

CATHERINE D. TAYLOR
CERTIFIED PUBLIC ACCOUNTANT

North Plains Building
401 N. 3rd. 396-2435


Monday - Friday 9 a.m. - 5 p.m.

HEARING AIDS
All Repairs, \$40
Batteries - \$2, \$3, \$4
9 a.m. to 5 p.m.
Monday-Friday
Your local representatives:
Shirley Moore, H.A.S.
A.W. McGinnis, M.S.
Dumas Hearing
Aid Center
1301 Dumas Ave. 935-2213

Stork Club

Mr. and Mrs. Travis Ward of Midwest City, Okla., announce the birth of a daughter, Tiffany Marie. She weighed 7 lbs. 10 oz. and was 20 in. long.

Grandparents are Alan and Alta Anderson, Gale and Lee Ward. Great-grandparents are Mrs. Ward, Mr. and Mrs. James Hulise, Mrs. Enid Anderson, and Mrs. Ruth Adams of Stratford.

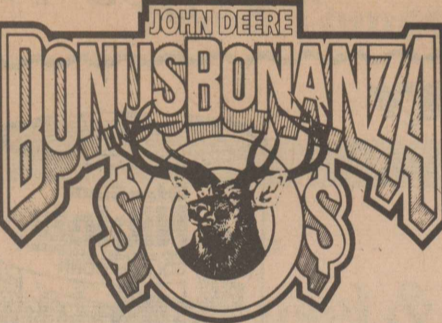


ALLSUP'S
CONVENIENCE STORES

"THERE'S ONE NEAR YOU"

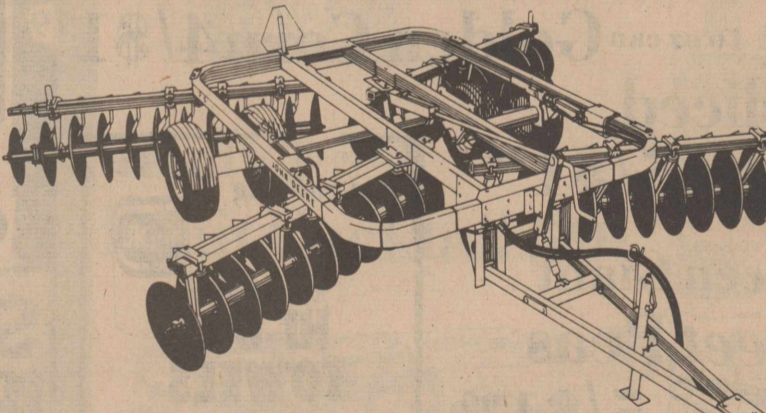
<p>HOT, FRESH ALLSUP'S COFFEE LARGE 12 OZ. CUP 25¢</p>		<p>Shurfine Sugar \$1⁰⁰</p>	<p>5 lb Crisco \$2⁰⁰</p>
<p>BORDEN'S NUTTY BUDDYS 6 CT. PKG. 99¢</p>	<p>Velveeta Cheese \$2⁹⁹ 2 lb</p>	<p>Chicken of Sea Tuna 89¢</p>	
<p>Shurfine Syrup 39¢</p>	<p>Shurfine Crackers 2/51</p>	<p>DELICIOUS BORDEN'S BUTTERMILK 1/2 GAL. CTN. \$1⁰⁹</p>	
<p>Shurfine Tomato Juice 79¢</p>	<p>Kraft Grape Jelly \$1⁵⁹</p>	<p>Shurfine Colby Cheese \$1¹⁹</p>	<p>Spam \$1³⁹</p>
<p>Wolf Brand Chili 59¢</p>	<p>Shurfine Coffee \$1⁰⁰ 1 lb can</p>	<p>Kraft Miracle Whip \$1⁰⁰</p>	
<p>BORDEN'S ICE CREAM SANDWICHES 6 CT. PKG. 99¢</p>		<p>Rath Bacon 89¢ lb</p>	<p>Many in Store Specials</p>

PRICES EFFECTIVE JANUARY 7-9, 1982 WHILE SUPPLIES LAST




BONUS BONANZA

For a limited time, earn \$50 to \$1,200 in bonus buying power by ordering a new John Deere disk, hay or forage tool



HAY AND FORAGE EQUIPMENT		DISKS	
MACHINE	BONUS IN JOHN DEERE MONEY	DISK MODELS	BONUS IN JOHN DEERE MONEY
Square Balers	\$ 250	111, 115	\$ 75
Round Balers	\$ 250	210, 215, 310, 315, 340	
PTO Forage Harvesters	\$ 375	1630, 1635	\$ 175
SP Forage Harvesters	\$1200	220, 230, 235, 350, 355, 440, 455, 1640	\$ 250
Mower/Conditioners	\$ 350	331, 335	\$ 425
SP Windrowers	\$ 450	370, 375	\$ 600
Ag Mowers	\$ 50		
Rakes	\$ 50		

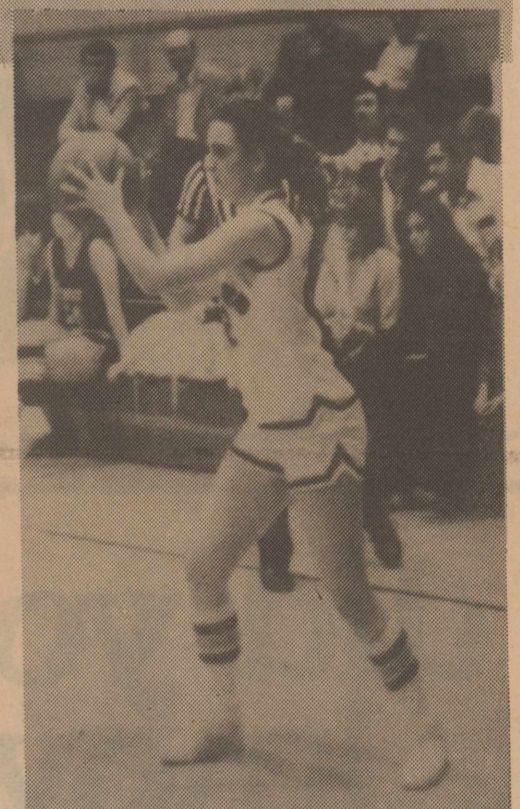
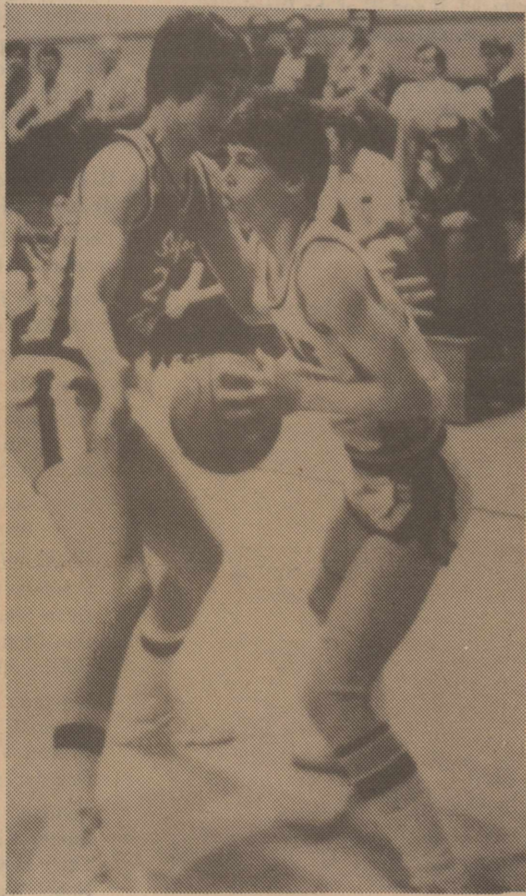
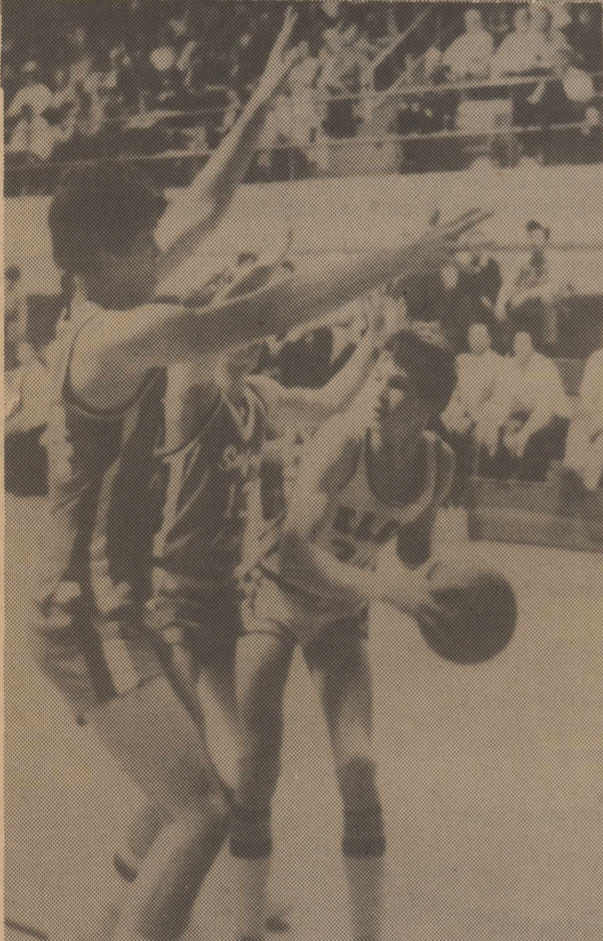
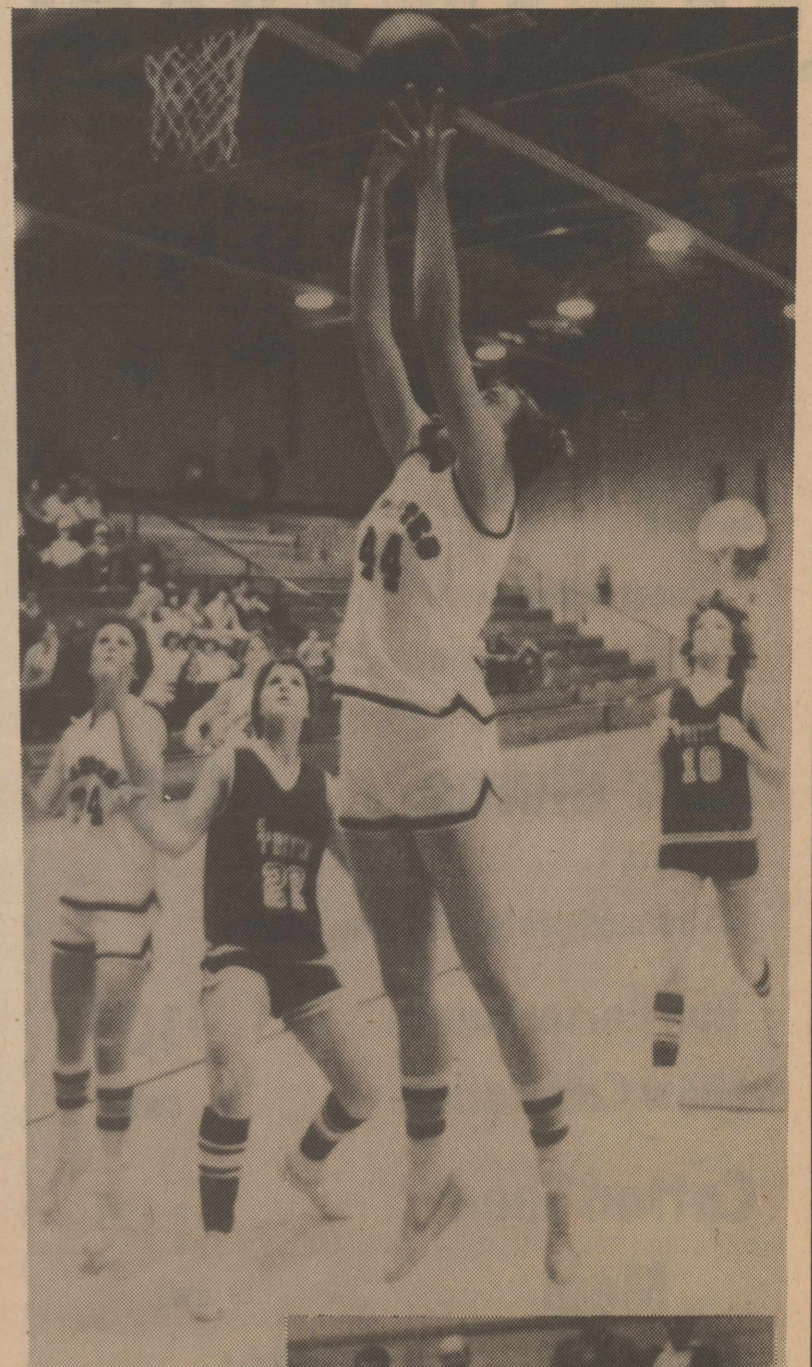
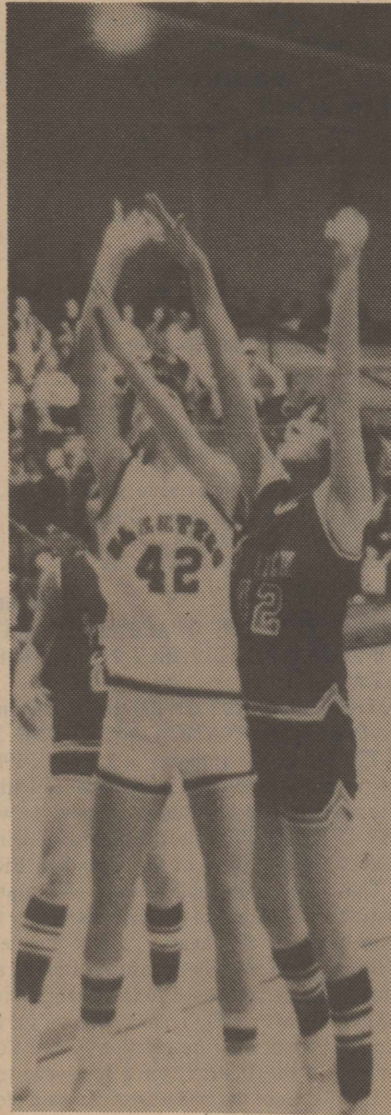
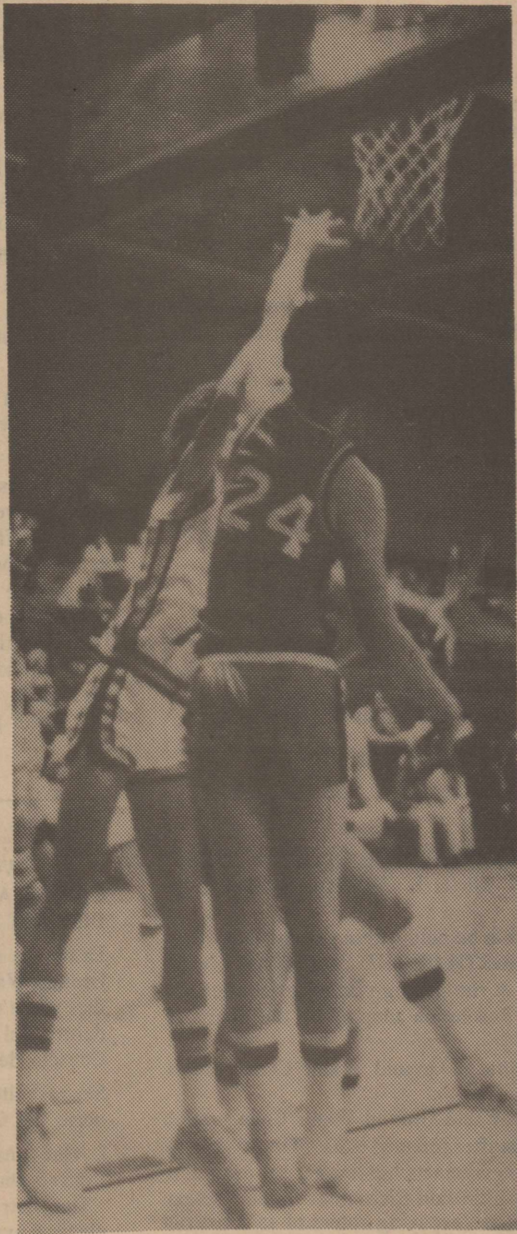
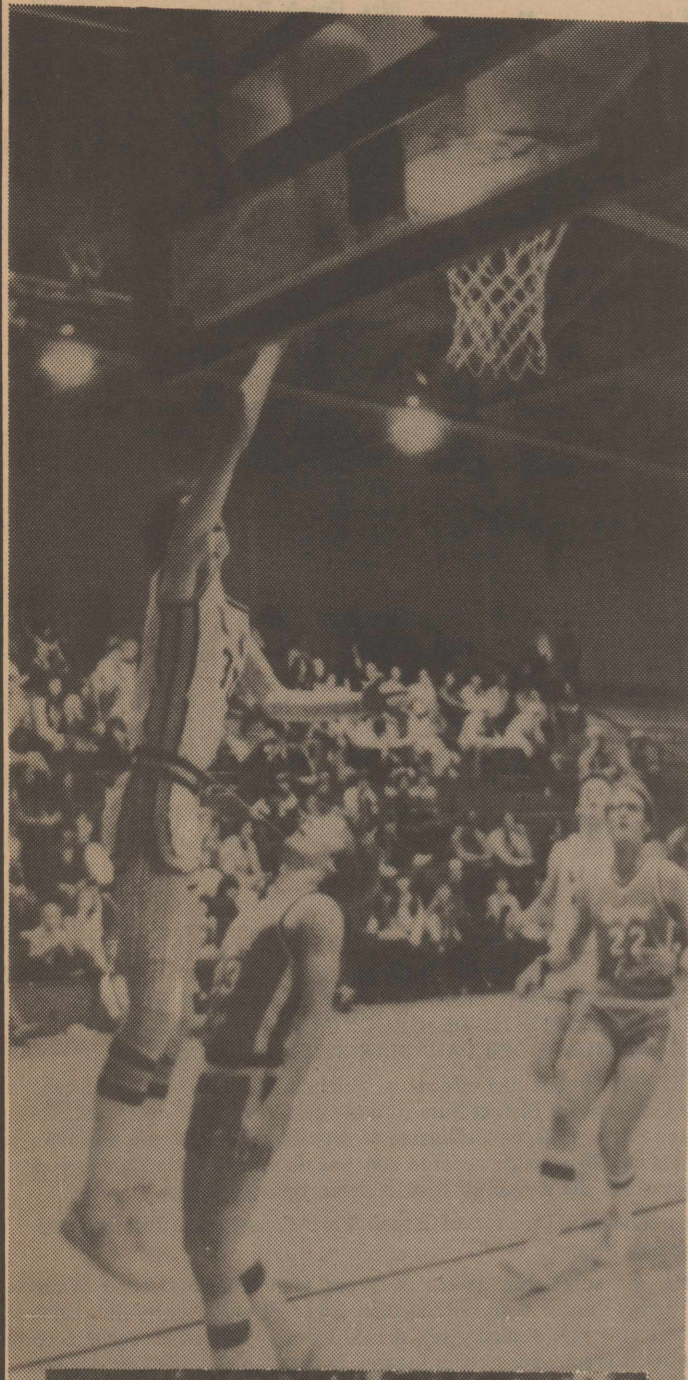
*This finance offer may be withdrawn at any time



Your John Deere Dealer 396-5561

Sherman Implement Co.

Stratford Tournament Jan. 7-9



These Businesses Boost the Elks and Elkettes and Urge You to Attend All of the Games

Brown's Meat Locker 396-2513 Stratford	Duncan Chevrolet 396-5557 The Duncans	Robertson Drilling 396-5601 396-5563 Hwy 287 S.	Walter Lasley & Sons Feedlot 753-4411 TLC Cattle Feeding
W.D. Brannan & Sons Flying Service 396-2157 Stratford		TECO 396-2300 Stratford	Stratford Cablevision 396-2020
The Stratford Star 396-5555 Stratford	Elk Pharmacy 396-5631 Stratford	A & I Parts Center 396-5593 Stratford	Stratford Feed Yards Inc. 396-5501
King Equipment Co. 396-2221 or 396-2343 Your IHC Dealer	Empire Wholesale 396-5629 Stratford	North Plains Savings & Loan Association 396-5534 Jerry Dyess	Stratford Grain Co. 396-5541 Stratford-Lautz
Cimarron Feeders Ltd. [405] 543-6383 Griggs Rt.	The First State Bank of Stratford 396-5521 Stratford	Olson Automotive Machine & Supply Co. 396-5572 Ole Olson	Stratford Printing Service 396-5371 The Fergusons
Consumers Company 396-2261 Leon Guthrie, Mgr.	Golden Spread Implement Co. 396-5529 Your Case Dealer	Smith Agency 396-2031 Chuck Smith	C's Male Box 396-5971
Corral Ford Inc. 396-5511 Your Ford Dealer	J Cattle Co. 396-5577 Jerry Johnson	Sherman Implement Co. 396-5561 Your John Deere Dealer	Shelley's Seed & Supply Stratford, Tx
Cut Rate Grocery 396-5586 Hwy. 54E	JA's 396-5951 Stratford		Moore Implement Co. 396-2101 The Ed Moores

CLEARANCE!**Formula 77****Hog Feed Pellets**
14 percent protein**\$975**

cwt.

Colt**Booster Ration**
16 percent protein**\$1285**

cwt.

Shur Blume**Pellets****25 percent protein-for any animal****\$1980****Bull Performance**
& Show Calf Ration**\$1070**

cwt.

Cotton Seed**Meal****41 percent**
old process**\$1125**

cwt.

396-5596

Shelley's**County Agents Report**of Sherman County *by Jim Allison***SAFETY OF KEROSENE HEATERS DISCUSSED**

Dramatic increases in home heating costs have developed a demand for small portable heaters to provide spot heating. Many challenging questions are being asked by consumers about the safety of the kerosene type heating units.

Hazards associated with kerosene heaters include:

- 1) The lowering of available oxygen and a possible increase in carbon monoxide.
 - 2) The threat of burns from direct contact with the unit.
 - 3) An increase in the risk of fires.
- Hazards will vary according to the heater design and the use of good judgement regarding its operation.

Users should use kerosene heaters only during waking hours and always have a window open about one inch or keep a door ajar during operation.

Only clear white kerosene should be used in kerosene heaters. Other fuels

including regular yellow kerosene should not be used as these fuels will smoke and interfere with operation.

Heaters should always be placed away from curtains and other combustibles and the use of smoke detectors in areas where heaters are used is recommended.

Consumers wanting more information about the hazards of kerosene heaters and recommended safe operating procedures can request the data sheet entitled "Portable Kerosene Heaters" by writing to Jim Allison, Box 540, Stratford, Texas 79084 or calling 396-2081.



The average 100 watt light bulb uses one kilowatt hour for every ten hours it's on.

LEGAL NOTICE

TO THE RESIDENT QUALIFIED TAXPAYING VOTERS OF GROUND WATER CONSERVATION DISTRICT NO. 2, NORTH OF THE CANADIAN RIVER IN TEXAS:

NOTICE IS HEREBY GIVEN that an election will be held within and for GROUND WATER CONSERVATION DISTRICT NO. 2, NORTH OF THE CANADIAN RIVER IN TEXAS, on the 16th day of January, 1982, at the polling places hereinafter set out, within said District in accordance with a Resolution adopted by the Board of Directors of said District as follows, to wit:

"BE IT RESOLVED by the Board of Directors of Ground Water Conservation District No. 2, North of the Canadian River:

I. That an election shall be held within and for said Ground Water Conservation District No. 2, North of the Canadian River (hereafter referred to as "The District") on the 16th day of January, 1982, in the election precincts hereinafter set forth and at the polling places hereinafter set forth, all within said District, at which election there shall be submitted to the qualified resident taxpayer voters of said District the election of one (1) Precinct Director for Precincts I, II and III of the District for a two year term, and the election of two County Committeemen from each county composing the District, for a four-year term.

II. Upon each of the ballots used in said elections shall be placed the names of the candidates for Precinct Director to be elected as follows:

- Precinct I, Lipscomb and Ochiltree Counties
Roy Stollings - Director
Precinct II, Hansford and Hutchinson Counties
N.F. Renner - Director
Precinct III, Sherman County
Luther Browder - Director

III. Upon each of the ballots used at said election shall be placed the names of the candidates for County Committeemen to be elected for each county composing the District as follows:

- LIPSCOMB COUNTY
Gene Born
Victor Miller
OCHILTREE COUNTY
Dean Slaughter
Dan Manning
Bill Pletcher
HANSFORD COUNTY
Robert C. Ferguson
Everett Vanderburg
Dee Jackson
HUTCHINSON COUNTY
Buster Kirk
Than McCloy
Nobel Watson
SHERMAN COUNTY
H.H. Caraway
Walter Lasley
Duane Schafer

IV. Blank spaces shall be left in order that the names of other persons may be written in. Each person (voter) residing in Director's Precincts Nos. I, II, and III, as set forth above, shall vote for only one Director, namely for Director for the Director's Precinct in which the voter resides. All voters may vote for the candidate of their choice by placing an "X" in the square beside the name or by scratching or marking out all other names in that race and leaving the name of such Director on the ballot. All voters desiring to cast a vote for a candidate whose name is not on the ballot may do so by writing the name of the person in the blank space provided on the ballot and by placing an "X" in the square by the name, or by scratching or marking out all other candidates appearing on the ballot for Precinct Director. Each person residing in the counties composing the District, as set forth above, shall vote for two (2) County Committeemen for the county in which the voter resides. Each person may vote for the candidate of his choice by placing an "X" in the square beside the name, or by scratching or marking out all other names in that race and leaving the name of the County Committeemen on the ballot. All persons desiring to cast a vote for a candidate whose name is not on the ballot, may do so by writing the name of that person in the blank space provided on the ballot and by placing an "X" in the square beside the name, or by scratching or marking out all but two candidates appearing or written in on the ballot.

V. The area comprising the District is hereby divided into the following election precincts, to include all or that part of the county designated which lies within the district, such election to be held at the polling places indicated and conducted by the following election officers:

- ELECTION PRECINCT NO. 1 -- LIPSCOMB COUNTY
Polling Place: Lipscomb Clubhouse
Election Judge: W.J. Miller
ELECTION PRECINCT NO. 1 -- OCHILTREE COUNTY
Polling Place: Ochiltree County Courthouse, Perryton, Texas
Election Judge: J.T. Wright
ELECTION PRECINCT NO. II -- HANSFORD COUNTY
Polling Place: Hansford County Courthouse, Spearman, Texas
Election Judge: Johnny Vernon
ELECTION PRECINCT NO. II -- HUTCHINSON COUNTY
Polling Place: Morse School
Election Judge: Elvegene Dixon
ELECTION PRECINCT NO. III-- Sherman County
Polling Place: Sherman County Courthouse, Stratford, Texas
Election Judge: Wilma Jean Knight

VI. That such election shall be held and conducted and returns made to the Board of Directors of the District, in accordance with the general election laws of Texas, except as same are modified by the provisions of Chapter 25, Acts of the 39th Legislature of Texas of 1925, together with all amendments and additions thereto.

VII. That the President and Secretary of the District shall give notice of this election by causing a substantial copy of this resolution or notice containing the same to be published once a week for three (3) consecutive weeks in a newspaper or newspapers of general circulation published in the bounds of the District, the first publication to be not less than twenty-one (21) nor more than thirty-five (35) days prior to the date of the election.

PASSED AND APPROVED this 9th day of November, 1981. **Gaston Wells**
President, Board of Directors

ATTEST:
Robert Thompson
Secretary

(Published in The Stratford Star, December 31, 1981; January 7, 14, 1982)

Bellevue Hospital in New York opened the nation's first school of nursing in 1873, using instruction based on teachings of Florence Nightingale.

Obituaries**J.L. Griffith**

DUMAS--J.L. "Griff" Griffith, 59, died Tuesday, December 29, 1981.

Services were at 3 p.m. Thursday at the Morrison Funeral Chapel with the Rev. Russell Kinser, pastor of St. John's Lutheran Church, officiating. Burial was in Dumas Cemetery by Morrison Funeral Directors.

Mr. Griffith was born in Maysville, Okla., and had lived in Dumas since 1954. He retired in 1978 as vice president of Empire Construction Co. of Stratford.

He was a veteran of World War II and a member of St. John's Lutheran Church.

Survivors include his wife, Doris; two sons, Steve Griffith of Stratford and Gary Griffith of Corpus Christi; a daughter, Mrs. Susie Reed of Versailles, Ky.; three brothers, J.T. Griffith and Duane Doney, both of Enid, Okla., and Dale Griffith of Tulsa, Okla.; two sisters, Mrs. Dorrie Skeen of Enid, Okla., and Mrs. Sunny White of Lake Charles, La.; and seven grandchildren.

Mrs. Gussie Rainey

Mrs. Gussie Rainey, sister of Clyde Pittman, died December 30, 1981. She was 79 years old and lived in Ruston, Louisiana. The services were held at 2 p.m., January 1, at the Grace Methodist Church in Ruston.

She was survived by one son, one daughter, four brothers, and two sisters.

Graydon E. Gamble

Graydon E. Gamble, 74, died Tuesday, January 5, in Amarillo.

Services will be at 11 a.m. Thursday at the First United Methodist Church. Internment will be in Stratford Cemetery under the direction of Morrison Funeral Directors.

Mr. Gamble was a lifetime resident of Stratford. He was a farmer and rancher. He was a member of the First United Methodist Church.

Survivors include his wife, Audrey; a son, Bill Gamble of Amarillo; three daughters, Mrs. Sharon Wilson and Mrs. Yvonne Pittman, both of Stratford, and Mrs. Cynthia Reed of Palos Verdes, Calif.; a sister, Mrs. Ione Kendrick of Stratford; a brother, Oris K. Gamble of Dalhart; seven grandchildren and one great-grandchild.

NOTICIA LEGAL

A LOS VOTANTES QUIENES SON HABITANTES Y CONTRIBUYENTES CALIFICADOS DEL DISTRITO DE GROUND WATER CONSERVATION DISTRICT NUM. 2, NORTE DEL CANADIAN RIVER IN TEXAS:

La noticia se da por esto que una eleccion se celebra dentro de y por el distrito Ground Water Conservation District Num. 2, norte del Canadian River en Texas el diez y seis dia de Enero, 1982, en los lugares de votacion explicados mas adelante, dentro del antedicho Distrito de acuerdo con una Resolucion adoptada por el Consejo de Directores del antedicho Distrito como sigue, a saber:

Sea resuelto por el Board of Directors of Ground Water Conservation District No. 2, norte del Canadian River:

I. Que una eleccion se celebra dentro de y por el antedicho Ground Water Conservation District Num. 2, norte del Canadian River (despues ser referido como "The District" (El Distrito) el diez y seis dia de Enero, 1982, en los recintos de eleccion expuestos mas adelante y en los lugares de votacion mas adelante dados a conocer, todo dentro del antedicho Distrito, en que eleccion a los votantes calificados quienes son residentes y contribuyentes del antedicho Distrito les habra ser sometido la eleccion de un (1) Director de Recinto de los Recintos uno (1), dos (2) y tres (3) del Distrito por un periodo de dos años, y la eleccion de dos Miembros de la Comision de Condada de cada condado formando el Distrito, por un periodo de cuatro años.

II. En cada de las balotas usadas en la antedicha eleccion se pondran los nombres de los candidatos de Director de Recinto ser elegidos como sigue:

Recinto de Director Num. 1 -- Territorio dentro del Distrito que esta situado en el condado de Lipscomb y Ochiltree Counties: Roy Stollings

Recinto de Director Num. 2 -- Territorio dentro del Distrito que esta situado en el condado de Hansford y Hutchinson Counties: N.F. Renner

Recinto de Director Num. 3 -- Territorio dentro del Distrito que esta situado en el condado de Sherman County: Luther Browder

III. En cada de las balotas usadas en la antedicha eleccion se pondran los nombres de los candidatos de Miembros de la Comision de Condado ser elegidos para cada condado formando el Distrito como sigue:

Condado de Lipscomb County
Gene Born
Victor Miller

Condado de Ochiltree County
Dean Slaughter
Dan Manning
Bill Pletcher

Condado de Hansford County
Robert C. Ferguson
Everett Vanderburg
Dee Jackson

Condado de Hutchinson County
Buster Kirk
Than McCloy
Nobel Watson

Condado de Sherman County
H. H. Caraway
Walter Lasley
Duane Schafer

IV. Los espacios blancos de dejaran a fin de que los nombres de otras personas se escriban dentro. Cada persona (votante) viviendo dentro de los Recintos Nums. 1, 2, y 3 de Director, como promulgado arriba, votara por solo un Director, es decir, por el Director del Recinto de Director en que vive el votante. Todos los votantes pueden votar por el candidato de su seleccion por poner una "X" en el cuadrado junto al nombre o por rasgar todos otros nombres en aquella competencia y dejar en la balota el nombre de tal Director. Todos votantes deseando votar por un candidato cuyo nombre no esta en la balota pueden hacer asi por escribir el nombre de la persona en el espacio blanco proveido en la balota y por poner una "X" en el cuadrado junto al nombre, o por rasgar a todos otros candidatos apareciendo en la balota para Director de Recinto. Cada persona viviendo en los condados formando el Distrito, como promulgado arriba, votara por dos (2) Miembros de la Comision de Condado para el condado en que vive el votant. Cada persona puede votar por el candidato de su eleccion por poner una "X" en el cuadrado junto al nombre, o por rasgar todos otros nombres en aquella competencia y por dejar el nombre del Miembro de la Comision en la balota. Todas personas deseando votar por un candidato cuyo nombre no esta en la balota, pueden hacer asi por escribir el nombre de aquella persona en el espacio blanco proveido en la balota y por poner una "X" en el cuadrado junto al nombre, o por rasgar todos excepto dos candidatos apareciendo en o escritos en la balota.

V. La region incluyendo el Distrito se divido por esto en los siguientes recintos de eleccion, incluir todo o aquella parte del condado designado que esta echado dentro del distrito, tal eleccion ser celebrada en los lugares de votacion indicados y conducidos por los siguientes jefes de eleccion:

RECINTO DE ELECCION NUM. 1 -- EL CONDADO DE LIPSCOMB COUNTY
Sitio para Votar: Lipscomb Clubhouse.
Juez de Eleccion: W.J. Miller

RECINTO DE ELECCION NUM. 1 -- EL CONDADO DE OCHILTREE COUNTY
Sitio para Votar: Ochiltree County Courthouse, Perryton, Texas
Juez de Eleccion: J.T. Wright

RECINTO DE ELECCION NUM. 2 -- EL CONDADO DE HANSFORD COUNTY
Sitio para Votar: Hansford County Courthouse, Spearman, Texas
Juez de Eleccion: Johnny Vernon

RECINTO DE ELECCION NUM. 2 -- EL CONDADO DE HUTCHINSON COUNTY
Sitio para Votar: Morse School
Juez de Eleccion: Elvegene Dixon

RECINTO DE ELECCION NUM. 3 -- EL CONDADO DE SHERMAN COUNTY
Sitio para Votar: Sherman County Courthouse, Stratford, Texas
Juez de Eleccion: Wilma Jean Knight

VI. Que tal eleccion se celebra y se conducira y los resultados se haran al consejo de Directores del Distrito, de acuerdo con las leyes generales de eleccion de Texas, salvo que las mismas estan modificadas por las clausulas del Capitulo 24, Hechos de 39th Legislature of Texas of 1925, con todas enmiendas y adiciones a eso.

VII. Que el Presidente y el Secretario del Distrito daran la noticia de esta eleccion por hacer una copia considerable de esta resolucion o noticia conteniendo la misma ser publicada una vez cada semana por tres semanas consecutivas en un periodico o en los periodicos de tirada general publicados dentro de los limites del Distrito, la primera publicacion no ser menos que veinte y uno (21) ni mas que treinta y cinco (35) dias antes de la fecha de la eleccion.

Consentida y aprobada este nueve dia de noviembre, 1981.

Gaston Wells
President, Board of Directors

Confirmacion:
Robert Thompson
Secretario

(Publicado en The Stratford Star, el 31 de diciembre, el 7 y 14 de enero de 1982)

did you know?

SPS works with other electric utilities to guarantee that its customers will have adequate power even in emergency situations. SPS is a member of the Southwest Power Pool, which is made up of electric utilities in parts of Texas, Oklahoma, Louisiana, Arkansas and Missouri. These utilities work together in planning and operations to keep down operating costs, conserve fuel and increase the reliability of their systems.

Bob Maxwell, System Operation Supervisor, Amarillo.

Preheat your oven for no longer than 10 minutes for most efficient use. To conserve energy while cooking, cook the entire meal or several foods at the same time and temperature setting. And don't keep peeking to see if your foods are cooked, since the temperature inside an oven drops 25 to 50 degrees every time the oven door is opened.

Vivian Limer, Home Service Advisor, Lubbock.



Southwestern's efficiency is 99.978 percent. This means that our customers can be sure of all the electricity they need. SPS has nine active power plants, interconnected by more than 5,000 miles of power lines to guarantee that customers in our 45,000-square-mile service area will always have access to the electricity they need for their homes and businesses.

Bill Bankston, General Foreman, Hereford.

Knowing what electricity is worth is worth knowing. For answers to your questions, call or write your SPS manager.



SOUTHWESTERN PUBLIC SERVICE COMPANY

930.1



DO YOUR SHOPPING IN THE CLASSIFIEDS

BUYING OR SELLING, THE CLASSIFIEDS WORK FOR YOU!



Phone 396-5555 To Place Your Star Classified Ad

Classified ad rates 10 cents per word first insertion, 5 cents per word on subsequent insertions. Additional 25 cents if ad is billed.

FOR SALE

FOR SALE--Trailer House and lot. Ready to move into. Terms. 118 S. Wall. Ph. 396-2181. 52-53c

New buildings at factory. All parts accounted for. All structural steel. Carries full factory guarantee. Building 10,000 sq. ft. to the smallest, 1,200 sq. ft. Must sell immediately. Will sell cheap. Call toll free 1-800-248-0065, Ext. 777 or 1-800-248-0321. 52-53c

FREE--Doberman puppies. Contact Dave, 396-5500 or come by Cargills Inc. 46-tfc

FOR SALE--AKC Registered Cocker Spaniels, 6 male, 2 female. Can be seen at 320 S. Pearl, Stratford, Texas, or phone 396-2866. Will be weaned by Jan. 14, 1982. Chip and Kelli Caraway. 51-53p

FOR SALE--1969 Pickup, good condition. Call 396-2212. After 4:30 p.m. call 396-2480. 50-tfc

FOR SALE--excellent opportunity, 20% down, 10% financing, 3 BR, 2 1/2 baths, large rooms, wood burning fireplace at 1201 NW 1st. All the extras included. Call Steve Woods, day at 1-214-742-3747 at night 1-214-750-0616. 53-3c

TOY BARNS FOR SALE--Can take orders or sell right away. Home made and wonderful gift for a child, ages 3 to 12. 419 N. Grace Street. 1p

FOR SALE--'78 Fiat X-19, 25,000 miles. Take up payments or \$4100. Call 396-5846. 1c

FOR SALE--Registered blond female co. her spaniel, six months old. \$75. Call 396-5960. 1c

Prices slashed on selected automotive items--1/2 price and less. Come make us an offer!! True Value. 1c

All remaining Christmas decorations are half-price--stock up now for next year. True Value. 1c

Men's jackets and vests, 30% off; Velour shirts, knit and cord jeans, 30% off; men's dress pants and sweaters, 20% off. C's Male Box 1-2c

Pre-inventory clearance sale--boy's clothes, shirts, pants, jackets, jog suits, 40% off. Boys' Sedgefield Denims, 1/2 price. C's Male Box 1-2c

FOR SALE--Side by side 21 cu. ft. refrigerator. Good workable condition. Call 396-5997. 1p

HOUSE FOR SALE or rent--Call 396-2125. 1-tfc

SERVICES

For Chimney Cleaning and Repair--Call or come by Plainsman Woodburners, 396-2445, 102 N. Main, Stratford, Texas. Open 8:30-5:30. 38-tfc

NOTICE: Keith Waters is now a representative for James H. Perkins & Associates Farm Sales. Call 396-5391 or 396-5801. 46-tfc

Eddie Williams now local representative for Wallace Monument Co. Clarendon. Call Eddie at 396-5330. 13-tfc

ALL CABINET WORK--custom built, Leo L. Scott, across from North Plains Building, Ph. 396-2219. tfc

Tailwater Pits cleaned, wet or dry Draglines Loaders Dozers Graders and Carryalls

Lee Roy Mitchell since 1954 733-2384 Gruver, TX 47-tfc

RHYTHMIC AEROBICS beginning Jan. 11 at Mary Allen Elementary--one class meeting Mon. & Wed., 6-7 p.m.; another Tues. & Thurs. 4:15-5:15 p.m. Beginners come 30 min. early 1st week. 1c

INCOME TAX? Yes, I still do 'em! Call 396-2040. Nell Wall 1-tfc

WANTED

BUS DRIVERS NEEDED. Stratford Ind. School. Call E.L. Bass, Supt, 396-5571, or Frank Vaughn, 396-5600. 38-tfc

Year-around farm hand wanted. Cattle, dryland, and light irrigation. Must have reference. No drinkers. House furnished. Conlen area. Bill Allen, Stratford, 396-2285. 52-1c

TO GIVE AWAY--Puppies, black and white. Real cute. 727-4340. 1-2c

APPLICATIONS are being received at City Hall for dogcatcher for City. 1-tfc

FOR SALE--sofa, floral pattern. Good condition. Call 727-4340. 1-2c

REAL ESTATE

FOR RENT--North Chestnut Apartment. Call Les McKay. 396-5987. 48-tfc

FOR RENT--Stratford Hotel Apartments. Call 396-2505 or 5657. 34-tfc

FOR RENT--2 bedroom house trailer. Call 396-2298 or 396-5321. 32-tfc

FOR RENT--Half a quonset. Call 396-2102. 53-tfc

HOUSE FOR SALE OR RENT. Call 396-2125. 1-tfc

FOR SALE--3 bedroom, 2 bath older home. Owner will finance. Call 396-2040. 1-tfc

For The Ultimate In
STORM DOORS & WINDOWS
Custom Built, Designed, And In
Colors To Fit Your Home...
Contact Howard Moyer at
Only Aluminum Industries
Guyton, OK 73942 114 W. 1st 405-338-6966 or
after 6 p.m. 338-6170

THINKING AUCTION SALE?
Call the leading Full Service Auction Company in this 5 state area since 1958. We do all kinds - specializing in farm sales, heavy equipment and real estate, with a reputation built on know-how, honesty and reliability.
"The Auctioneers"
LEE W. FREEMAN TxS-012-0193
P.O. BOX 453
DUMAS, TEXAS 79029
Phone (806) 935-2419

1982 Inventory Clearance Sale

	Reg.	Sale Price
Small Morovian	\$849 ⁰⁰	\$700 ⁰⁰
Large Morovian	\$869 ⁰⁰	\$749 ⁰⁰
Buffalo Free Standing	\$825 ⁰⁰	\$650 ⁰⁰
E-Z Free Standing	\$875 ⁰⁰	\$750 ⁰⁰
Comforter	\$759 ⁰⁰	\$600 ⁰⁰
Small Timer	\$325 ⁰⁰	\$300 ⁰⁰
Franklin	\$329 ⁰⁰	\$189 ⁰⁰

Chimney & Installation not included in these prices

Also 10% off

on all in stock chimneys and installation

Plainsman Woodburners

102 N. Main
396-2445

Seasoned Oak Firewood Delivered and Stacked by the Pick or Cord Call Now!!!

BYLOW

Starting SUNDAY January 10th Bylow will now be open 7 days a week.
Our Double Stamp Days will be Sunday & Wednesday.
Our new Winter Hours will be 8:00 a.m. till 7:00 p.m. 7 days a week.

Bylow-- Serving you better seven days a week.

Borden 1/2 gal round Ice Cream \$1 ³⁹	Borden 1/2 gal Butter Milk 99¢
Freshe 16 oz Bread 3/\$1	Sammy's Pride gallon Milk \$1 ⁷⁹

"THE BIG DOUBLE BARREL SHOOT OUT"
This Phase of the Game will end February 3, 1982

Special Sunday Only

White Swan New 16 oz Potatoes 3/\$1
White Swan 5 lb Sugar \$1 ¹⁹
2liter 67.6 oz Coca Cola 99¢

Head Lettuce each 79¢
Red Grapes lb 89¢
Special Sunday Only

Meat

Beef Tripe lb 39¢
Pigs Feet lb 39¢
Chuck Roast lb \$1 ³⁹
Ground Beef lb 95¢

Special Sunday Only

DISCOUNTS
EXTRA GUNN BROS. STAMPS

Notice

WE'VE GONE WHOLE HOG!

Prices Good Jan 7-13, 1982



Pork Sale

Family Pack
Pork Chops \$1.19 lb

CENTER CUT
PORK CHOPS **\$1.59** lb.

Philadelphia 8 oz
Cream Cheese 89¢

SMALL LEAN
SPARE RIBS **\$1.39** lb.
Red Rind Loghorn
Cheese \$1.89 lb

SKINLESS & DEVEINED
SLICED BEEF
LIVER **79¢** lb.
Country Pride Grade A Whole
Fryers 49¢ lb



HOT LINKS **\$1.19** lb.

WRIGHT'S TRAY PACK SLICED
SLAB BACON **99¢** lb

RANCH STYLE CHILI
19 OZ. **\$1.19**

WHITE SWAN CRACKERS
16 OZ. **59¢**

SALTINES

Cycle 3 Dog Food
14 oz **4/51**

BOUNCE FABRIC SOFTENER
20 CT. **\$1.09**

Gladiola **Pancake & Waffle Mix** **5/51**
6 oz

CAMAY BATH SOAP
5 OZ. **59¢**

Log Cabin Country Kitchen
Syrup 24 oz **\$1.49**

CHEF BOY-AR-DEE
RAVIOLI **78¢**
BEEF MINI 15 OZ.

Frozen Foods
Minute Maid **ORANGE JUICE** 16 oz **\$1.49**

MRS. P'S PARTY
PIZZA'S **89¢**
ITAL SAUSAGE PEPPERONI-CORNO

ORE IDA **FRENCH FRIES** **89¢**
2 LB. Pet Ritz

Pumpkin Pie 26 oz **\$1.09**

Health & Beauty Aids
Maalox Plus 12 oz **\$2.49**

Q-TIP **SWABS** 54 CT. **59¢**

BIC **LIGHTERS** 2 CT. **2/51**

6 OZ. **NYQUIL** **\$2.69**

CASSAROLE PINTO BEANS
2 LB. **69¢**

PAMPERS CONVENIENCE PACK **\$7.99**
•NEW BORN •TODDLER •EXTRA ABSORBANT

KRAFT SALAD DRESSING **\$1.39**
•FRENCH •CATALINA •1000 ISLAND 16 OZ.

Tree Top **APPLE JUICE** 64 oz **\$1.83**

HUNT'S **KETCHUP** 32 OZ. **\$1.19**

Delsey **BATH TISSUE** 4 roll pkg **99¢**

White Swan 8 oz
TOMATO SAUCE **4/51**
8 OZ.

Coke or Dr. Pepper **99¢**
10 oz 6 pk & Dep.

Wolf Brand **TAMALES** 15 oz **69¢**

Old El Paso **REFRIED BEANS** 16 oz **2/89¢**

LITTLE FRISKIES **CAT FOOD** 6 1/2 OZ. **3/51**

Fresh Produce

Fancy Bananas **39¢ lb**

CALIF. GREEN SKIN **AVOCADOES** **6 FOR \$1**

EXTRA FANCY RED ROMÉ APPLES **49¢** lb.

ALL PURPOSE POTATOES 10 lb for **\$1.29**

LOCAL PURPLE TOP TURNIPS **3 \$1** LBS.

Shop Bylow-Free carry out;
Double Stamps every
Wednesday & Sunday

"THE BIG DOUBLE BARREL SHOOT OUT"

BYLOW FOOD STORE
The store that brought low food prices back to Stratford

MEMBER Waples West ADVERTISING GROUP

DISCOUNTS EXTRA GUNN BROS STAMPS