

Burkburnett Star

LIKED BY MANY - - CUSSSED BY SOME - - READ BY EVERYBODY

BURKBURNETT, WICHITA COUNTY, TEXAS, THURSDAY, MAY 26, 1966

NUMBER 38

Snags can steal lures. Guard against it by putting a fishing bubble about a yard above the lure. Then it hits snags, lifts over and keeps lure clear. Well, usually.

Chamber of Commerce Luncheon Each FIRST MONDAY At Town Hall, Everybody Invited Each Pays For His Meal

Among Other Matters

WANDA HENRY

Paul Browning at Lions Thursday. The Brownings California now, but are long-time Boomtown residents. Paul says Mrs. Brown catches the mail for the News, but we already had before he said it.

Following letter was re- by the Burk Burnett Chamber of Commerce this week think it speaks volumes town and its people and Mr. and Mrs. Davies kind words and for tak- time to write them.

May 23, 1966

mett Chamber of om- met, Texas the happen- ay 3, we arrived in your spend a week visiting us Christ Since we had never here and were not fa- with the streets, we stop- a service station to ask The attendant gra- u have a we when a customer offered us to the address we He took us to the door de sure we had the right before leaving us. For wish to thank Mr. Roy ers, who undoubtedly me from his own busy e, to help us.

the week we were there many friendly people. Looking forward to our at and hope we will have me to tour the area.

erely. & Mrs. William Davies 245 Well, Oregon 97452

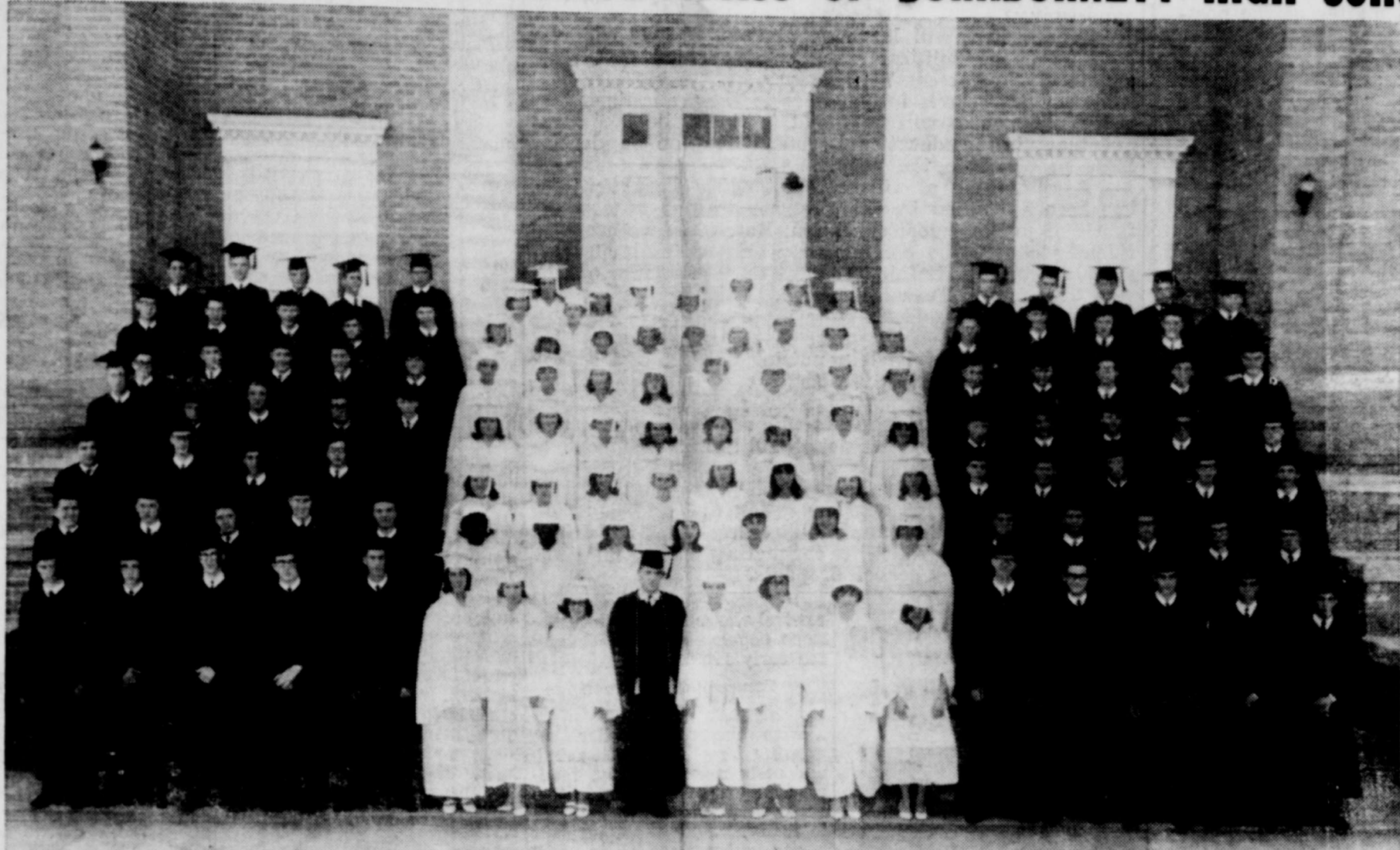
in Champ was 'substi- stand by speaker at Club Tuesday. He com- loudly (but good na- because the ones who him to speak didn't ear him. They'll be sorry it was a wonderful speech ust full of our favorite phical quotes.

Discussing the 'keys of life,' named was 'compassion.' "Do you care about People know... even children sense... if you care about them." Last saw a small mentally- child at the Training get up from his chair and Mrs. C. E. Lundberg, teacher... they know!

U.S. Naval Training San Diego, Calif. Simpson of Burk Burnett. is a 1960 graduate of ment High and has been ed by Texas Electric Ser- the past five years.

Dave McNeill returned Tuesday from Abilene, where she attended the cement program of Ab- Christian College. Her Patsy McNeill Partin, her Bachelor of Scien- in Elementary Edu- with Cum Laude hon-

CONGRATULATIONS TO 1966 SENIOR CLASS OF BURKBURNETT HIGH SCHOOL



— PHOTO COURTESY OF DOC ESTES

Powerful Dallas Tigers To Visit Rangers Sunday

A once postponed meeting between the Dallas Tigers and the Burk Burnett Rangers takes place this Sunday afternoon, as the two clubs square off in a 2:45 p.m. contest here.

The Rangers, still smarting from a 7-2 licking by the Dallasites last week, will seek to turn that score around and just might be capable of doing so. Manager Dee Underwood will probably send strong righthander Richard Scott to the mound in an attempt to thwart the heralded Dallas attack.

The Tigers have been very successful this season, winning seven and losing only two games. They are currently tied for the lead in the Dallas Amateur Baseball Association, a league made up of outstanding college and Dallas area baseball talent. Their leading hitter, Windham, is as capable on the bunt as he is on the long ball, and hits a lot of both. Their ace righthander, Ballew, will probably draw the starting pitching assignment.

The Rangers have been getting exceptional hitting for an amateur baseball team, with six players hitting over the .333 mark, two of them over .600. The starting line-up for the Rangers will probably be Gary Owen at first base, Leonard Young at second, Granville Chandler at shortstop, Bobby Monson at third, Wendell Allen at catcher, Bobby Hubble in left field, Jerry Allen in centerfield, and Joe Montgomery in right field, with Richard Scott pitching.

Game time is 2:45 as the Rangers seek to improve on their current record. There is no admission charge and everyone is invited to come out and back your local young men.

Burk Council For Retarded Meets, Discusses Plans

Twenty people attended the May 23rd meeting of the Burk Burnett Auxiliary Council for Retarded Children. The Community Room of The Burk Burnett Bank has been named the regular meeting place for the Council, on the fourth Monday of each month and meetings will continue throughout the summer months.

George Smith was appointed as the Council's representative to the Community Service Council. I. C. Evans, Superintendent of Burk Burnett Schools discussed the "Operation Head Start" program.

Featured speaker was Rev. Don McKenzie, pastor of Highland Heights Christian Church of Wichita Falls. His subject was, "Christianity Speaks to Our Parents." He told the members, parents and friends of retarded children, that religion can help parents to face the problems they encounter and help them to live a normal life.

Some churches have special Sunday School classes for retarded children. One of the aims of the Burk Burnett Auxiliary Council is to have such a class in Burk Burnett.

The next meeting will be June 27th. Anyone interested in retarded children in the community is invited to attend.

Welcome To These NEWCOMERS To Burk Burnett

Wade, Johnnie Jr. Rhoades, Allan Ellis, Ozrow A. Baugh, A. F. Both, John B. Barker, William Mooney, Gary Wright, Vernon McMahan, Alton

Pathologist To Visit Tuesday

Dr. C. Wendell Horne, plant pathologist from A&M University, will be in the county May 31st from 9:00 a.m. to 4:00 p.m. to work with people who are having trouble with diseases on flowers, shrubs, trees and field crops. His schedule is as follows:

Burkburnett Texas Electric Auditorium, 9:00 a.m. to 11:30 a.m.

County Agent' Office, 304 Federal Bldg., Wichita Falls, 1:00 p.m.-4:00 p.m.

Any person having a disease problem is invited to bring a specimen to Dr. Horne in Burk Burnett or Wichita Falls during his visit here. His services are free.

Swimming Pool Opens Saturday

The Burk Burnett Swimming Pool is scheduled to open Saturday, May 28 at twelve o'clock noon for the 1966 summer season. The time schedule has been posted at the pool.

Season passes are on sale now at the pool from 9:00 to 11:00 a.m. each morning.

Nation's First And Second Loads Of 1966 Wheat Are Delivered To Burk Burnett Elevator Monday

By JOE BROWN
Wichita Falls Times

The first and second loads of wheat in the nation—one from Oklahoma and the second from Texas—were combined Monday and delivered here in Burk Burnett to Harlin Mills Elevator.

Honors for the first in the nation in 1966 go to Oklahoma farmer, B. B. Menz, who operates a farm one mile east and a half mile south of Randlett, Okla. in Cotton County. He brought in the first load of 65 bushels at 11:45 a.m.

Gene Robertson, Wichita County farmer, cut about 100 bushels of his farm, one mile northwest of Burk Burnett, and weighed in at 3:30 p.m.

Early Triumph was the variety of both of these early wheat crops and both men received \$50 in premium money.

Two Prizes

The Burk Burnett Chamber of Commerce offered a \$25 premium for the first Oklahoma wheat brought to Burk Burnett and another \$25 to the first Texas wheat. Harlin Mills, considered by many as the largest independent grain exporter in the nation, duplicated this award to Menz and Robertson.

Menz's first load weighed 60 pounds per bushel and tested 14 per cent moisture. Robertson's was about the same.

The Oklahoma farmer cut his first load from a field of 230 acres while Robertson took the ripest from a 55-acre field. Both said their yields this year will be about 25 per cent smaller than last year.

Menz told Buddy Byars, manager of the Burk Burnett Chamber of Commerce, that his 230 acres promised a smaller yield than last year when he averaged 31 bushels per acre, but he added, "You never know. You can't tell until the combines get

into the fields and you start weighing your grain."

15-18 Bushel Yield

Robertson said his was being combined by Carl Dishman of Wichita Falls. They figure this first field will yield only 12 bushels per acre while overall he expects to average 15-18 bushels per acre. He averaged 26 bushels per acre last year.

Wheat was selling for \$1.64 to the farmer at the elevator on Monday, according to Mills.

The present government loan is \$1.25 per bushel. However, individual farmers will also have marketing certificates worth around 50 cents a bushel for the share of their crop considered for domestic consumption if planted within their allotments.

Howard Henderson, Burk Burnett, chairman of the Wichita County-ASCS committee of farmers, indicated he expects the county's average to be between 15-18 bushel per acre. However, he explained it will be quite spotted. Some wheat in the Electra area may reach 30 bushels per acre while some will do good to make ten.

The Texas wheat crop, based on May 1 prospects, is forecast at 63,910,000 bushels, according to the Texas Crop Reporting Service. This is 12 per cent smaller than the 1965 crop.

The harvest for this beginning end of the nation's winter wheat belt isn't expected to get under full swing until around June 1. Some barley and oats are being cut but the heavy rains of a few weeks ago delayed the harvest a few days, according to B. T. Haws, Wichita County agent.

Haws pointed out that the wheat harvest in the 22 counties surrounding Wichita Falls on both sides of the Red River add approximately \$55 million to the Wichita Falls economy.

New Service For Rural Telephone Users Announced

A new service which will make a significant improvement in telephone service for people living within a three mile radius of Burk Burnett will be introduced here June 3. Dub Deuschle, manager for Southwestern Bell Telephone Company, announced.

The new service, called Suburban Telephone Service, will mean there will never be more than four parties on any line within the three mile area. At present, there can be up to eight parties on any rural telephone line.

"There will be an increase in monthly rates to help offset the cost of providing this improved service," Deuschle said. Residence service will increase from \$4.25 to \$5.35 per month.

Letters have been sent to all customers in the three mile radius explaining the improved service, the manager added.

Customers outside the three mile area can have the improved service by making special arrangements with the company's business office. A monthly mileage rate will apply for this service beyond the three mile area.

"We have long been aware

Headstart Okayed For Local Schools

The Office of Economic Opportunity has informed the Burk Burnett Schools of approval of a Summer Headstart program. There are to be 62 pupils, four teachers, four teacher aids, nurse and cook as well as a director on the staff. The pupils will be given training that will aid them in adjusting for school next year.

They will eat the noon meal at the school and medical and dental services will be provided.

This program is for children who will start to school for the first time next year. Anyone who has not made application for their child to take part in the program is asked to call Hal Mabry at 569-3326.

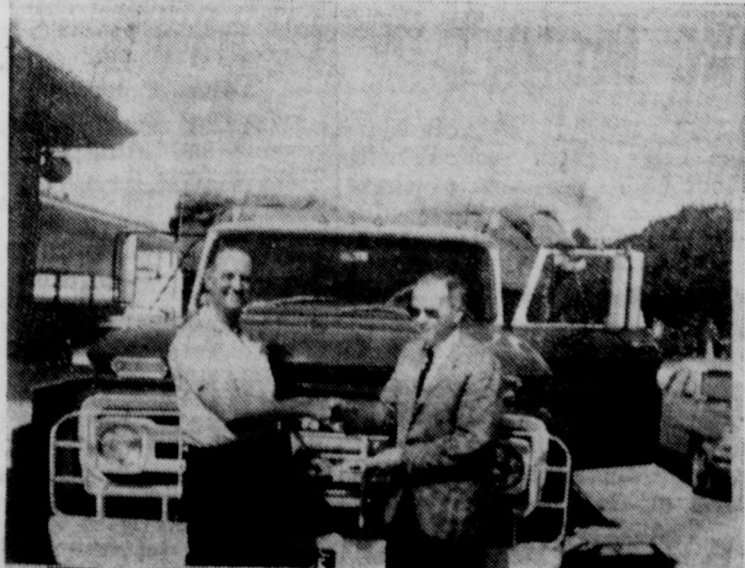
of the fact that eight party service does not adequately serve the telephone needs of our suburban customers. At the same time, we have known that good business practices make it impossible to extend enough plant into all thinly populated areas to make a substantial reduction in the number of telephone customers served on one line. The new Suburban Service plan seems a practical beginning to the solution of this problem," Deuschle said.

First Wheat From Oklahoma



B. B. Menz of Route 1, Randlett, Okla., delivered the first load of 1966 wheat to Harlin Mills Grain Elevator here May 23rd at 11:45 a.m. He received a \$25.00 premium from the Burk Burnett Chamber of Commerce and \$50.00 premium from Mills Elevator Co. It has also been announced that this was the first wheat harvested in the

First Wheat From Texas



Gene Robertson of Burk Burnett is shown receiving a \$25.00 premium check from Jack Aaron, Secretary of the Burk Burnett Chamber of Commerce, for bringing in the first load of 1966 wheat from Texas. He also received a \$25.00 premium from Harlin Mills Co. The wheat was brought in Monday afternoon about 3:45 p.m.

SPELL QUIZ

amonia ammonia amnonia

(Meaning: Solution of gas in water.)

See Classified Page for Correct Answer

The Burkburnett Star

HARRY C. DODSON, Owner and Editor



Printed weekly at Burkburnett, Wichita County, Texas. Entered as second class matter at the post-office at Burkburnett, Texas, August 19, 1907, under the Act of Congress of March 3, 1879.

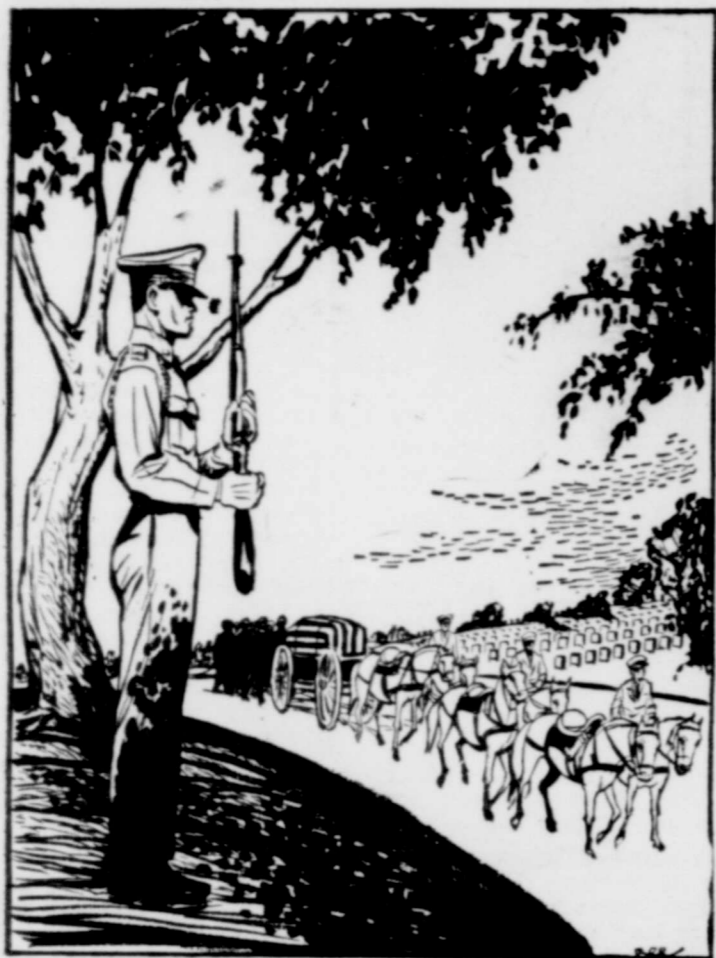
Reginald V. Mauger, Supt. of Production
Mrs. Lola Mae Bailey, Bookkeeper-Society Editor
LaWanda Henry, Advertising Mgr.
Danny Larson, Sterotype-Pressman
Harry J. Mullins, Makeup, Commercial Printing

Notice to the Public: Any erroneous reflection upon the character, standing or reputation of any person, firm or corporation, which may appear in The Star, will be gladly corrected as soon as it is brought to the attention of the publisher.

Subscription Rates:

Burkburnett Star \$2.00 Per Year
Burkburnett News \$2.00 Per Year
Burkburnett Star and News \$3.00 Per Year

THEIR LAST FULL MEASURE



A DAY TO REMEMBER

The muffled dirge of a military band . . . the rhythmic cadence of marching men . . . the creaking, squeaking of the caisson . . . the nervous clatter of horses hooves all break the tense silence as the cortege slowly wends its way toward its final destination in the National Cemetery in Arlington.

The trees are beginning to weave their natural canopy of green over the Virginia landscape, the floral plants are in bloom, and in the distance one may see President Kennedy's resting place, the Lee Mansion, and the Tomb of the Unknown Soldier.

Slowly paced through the winding streets amid the thousands of small headstones nestled close to the turf and bordered by the trees about to flower into protective shade, the impressive procession passes. Suddenly it halts. The precision-like steps of the pallbearers are heard against a murmuring silence. And as they lead the mourners to the grave sight "Lead Kindly Light" is heard softly in the background. At the grave a man of God says a prayer. On the far hill — the sharp clicking of rifle bolts is heard — three sharp reports from the firing squad — and the poignant rendition of Taps is sounded. The pallbearers in meticulous precision remove the flag — and snap each fold into place. The commanding officer presents the flag to the next of kin.

This is but one day — in one place — but all over America on May 30th the nation pays tribute to the military dead.

DIPLOMAS AND IRONIES

This month 123,166 Texas high school seniors will receive their diplomas. For about 65-70 per cent of these youngsters, graduation will be only a pause in their educational progress because that many are expected to go on to college.

What about those 30-35 percent of the graduating seniors who won't go to college? A portion of them may not be college material. But many of them are. And in them, the college capable "won't go's," Texas is losing much.

What strikes with greater impact is the number of students who won't be getting high school diplomas this month and for whom college, now, or ever, is largely ruled out.

Texas Education Agency records show that more than 65,000 students should be among the state's high school graduating classes this year but won't be because they dropped out of school.

In 1959 — when this year's seniors were in the fifth grade — fifth grade enrollment in Texas was 185,557. But, now, seven years later, the very same class has

dwindled to the point where only 123,166 are graduating. These 65,000 dropouts, and the 37,000 college "won't go's," combine to form the makings of a rather dismal record of educational achievement in this case, one of the richest states among the 50.

Many, if not most, of the dropouts and "won't go's," become useful upright citizens. But this should not be used as argument to conceal the serious problem of low educational achievement on the part of so many Texas young people.

Indeed, one's imagination is overwhelmed by the terrible questions involved in this tale of wasted human resources.

For example, what does the rising number of school dropouts hold in store for our future ability to pay for expanded costs of law enforcement, relief and public housing services clearly implicit in the deadly combination of low educational achievement and lack of economic opportunity?

What effect will large populations of low achievers have upon the political stability of our national, state and local governments?

In our search for answers to these questions how many root causes will be found to lie in the home and how many in the educational system. How can we identify these problems to the people.

A committee of fifteen outstanding Texas citizens has been appointed by the governor to study the whole fabric of public school education. But, while we can confidently expect the committees work to result in progress, it would be unfair to expect them to answer all the questions facing Texas education.

Someone has said that the problem involved in putting an astronaut on the moon is child's play compared to the problems involved in putting a child into school, keeping him there and educating him well enough to become a productive, happy member of society.

The 65,000 Texas dropouts who should be part of the Class of 1966, but who are not, stand in ironic contrast to one man on the moon.

Still more ironic is the probability that not a small number of the 123,166 who are graduating and going on to college, will find themselves in careers that in various respects will be devoted to conquering the social complexities created by school dropouts.

Roger W. Babson Weekly Report



WHAT'S AHEAD FOR RETAIL STORES

Babson Park, Mass., May 26— At first glance, no segment of our economy appears to be in better shape than retailing. Sales have been climbing at a fast clip for some years now and the immediate future is bright. Yet retailers are troubled by rising costs, including taxes.

The Sales Picture

During the past ten years the economic, social, and scientific progress of the United States has been very great. We have had a continuing boom in population, incomes, agricultural and industrial productivity, and overall scientific achievement. This has been good for many—indeed for most—businesses. And retailers generally have been extremely successful. Last year, retail sales volume totaled \$283.9 billion,—up 8½% from 1964 and a most impressive 54½% above 1955.

During the first four months of this year, additional good gains in retail sales have been chalked up. The prospects for a record first-half-year are excellent. Employment is at the highest level ever, and personal incomes—bolstered by rising wages, interest, and dividends, as well as a larger government payments — are still trending up. This means that retail sales should continue to show good gains versus a year ago in the months just ahead.

Store Expansions

With U.S. retail markets still growing and with people still trekking from the cities and to the suburbs, 1966 should see a sizeable increase in the total number of retail stores. Most of the largest department store chains, the leading variety chains, and the multi-unit discount store operations are scheduling store expansion programs in the months ahead. And these plans are not likely to be drastically curtailed even though some may be trimmed because of tighter money and higher interest rates.

What kind of stores will be built? Mostly one-level outlets of functional design, but with modern decor and lighting. As for size: A good many really big units are still being opened, but even the department stores are shying away from the ex-

cessively large outlets which became popular in the 1950's and the early 1960's.

Competition Between Retailers

With the retail dollar pie growing larger and with retailers' costs rising steadily, readers can expect the competitive situation within the industry to intensify. Junior department stores and variety chains will now more openly and more per-

sistently vie with one another and the rivalry between discounters and the more traditional retailers will become sharper.

There will also be more competition in the recruitment of executive and sales personnel and in the attainment of suitable supply sources. Today's record-high incidence of employment at good wages and the growing sophistication of consumers are leading to an upgrading of American taste that is permeating the whole retail scene. The pressure on the stores to upgrade their wares and to acquire still better selections of quality merchandise is already great. We think it will increase in the period just ahead.

What About Discounters?

Three or four years ago, a number of discount department store companies were in deep trouble. Some lacked sufficient financing. Others were critically short of executive manpower to properly run their expanded operations. There was a shake-out, after which the survivors came into stronger and more responsible hands.

Today the leading discount store companies—which include some very good regional operations as well as the large, national chains—are more certain of where they are heading and of their ability to get a larger share of the total merchandising dollar. Leading discounters meeting last month in Atlantic City formed the Mass Merchandising Research Foundation, Inc. This organization will compile badly needed merchandising and operational data and percentage breakdowns. Armed with these facts and with updated information on consumer marketing trends, the discounters aim to improve and consolidate their position. If they can succeed in upgrading without losing their low-margin image, the discounters will present a still greater challenge to other retailers.

569-2191 For Quality Printing

LEGAL NOTICE

NOTICE TO TRUCK AND DUMP BED DEALERS

Sealed proposals addressed to the Commissioners Court of Wichita County, Texas, will be received at the office of the County Auditor, Wichita Falls, Texas, until 11:00 A.M., Monday, June 6, 1966, for the purchase of three or more dump trucks for Wichita County. Specifications may be obtained from the County Commissioner, Precinct No. 2, or from the County Engineer, Court House, Wichita Falls, Texas.

A cashier's check for five per cent (5%) of the total amount of the bid, or acceptable bid bond, made payable without recourse to the order of Joe C. Gowdy, County Auditor, must accompany each proposal. The trucks will be purchased from the lowest and best responsible bidder. The suc-

cessful bidder will be required to enter into contract with the State of Texas.

Bids must be submitted in sealed envelopes and "Bids for Dump Trucks" Usual rights reserved. Wichita County

All Tomato, Peas and Bedding

AT Reduced Price
MRS. MAC GREENHOUSE
308½ West 2nd St
PHONE 569-2191

ROARK OFFICE SUPPLY

305½ East 3rd Phone 569-3030

Everything For The Office Worker

ART STUDENTS

COME IN AND SEE OUR ART SUPPLIES

- Oil Paints
- Tempera Paints
- Brushes
- Charcoal Pencils
- Construction Paper
- Drawing Paper
- Tracing Paper

EAT IT HERE OR

"TAKE IT HOME HOT"

FROM

UNDERWOOD'S

IN

Parker Plaza — Burkburnett



An Opportunity To Work IS PROVIDED TO THE HANDICAPPED OF THIS AREA BY THE

Opportunity Workshop



LOLA TIGRETTE EXPLAINS HER WORK TO VISITOR LAMOIN CHAMP.



JESSIE "BUCK" BRISTER CHATS WITH VISITOR MRS. C. E. LUNDBERG



Member Federal Deposit Insurance Corporation

"SERVING BURKBURNETT SINCE 1907"

ett, Wichita County
 successful bidder will be
 enter into contract
 take bond in the full
 the contract price
 by some surety
 authorized to do business
 state of Texas.
 Bids must be submitted
 sealed envelopes and
 bids for Dump Trucks
 Usual rights reserved
 Wichita County

Two rolling days,
 at a veterans' conven-
 tion. From the windows
 they joyfully drop-
 ped water on unsuspect-
 ing-by.
 The third day came
 a cluster of pedestri-
 ans scattered in panic,
 crowded off the curb
 at a passing car, suf-
 fering injuries.
 To find out who had
 this particular bag, the
 hotel manager again-
 stly collected.
 He said it was the hotel's
 mischief had con-
 long, to put a stop to

any building own-
 er has responsibilities
 to the occupants of its
 premises but also to the
 public beyond. It must
 reasonable measures to
 harm by those on the
 outside.
 The hotel cannot be
 held liable for an acci-
 dent if it had no real oppor-
 tunity to avert the accident.
 The hotel was held not li-
 able for a bibulous guest on
 the grounds impulsively
 emptying a bottle over the
 building. The court
 management had no way
 of knowing, hence no way
 of preventing, such an unusual
 incident.
 The hotel responsible
 because it happens to
 an article that was drop-
 ped from the balcony.
 Example:
 A guest, handling a
 screen too roughly,
 sent it falling outside. An un-
 derstandable mistake, struck
 a pedestrian below, struck
 a car, put in a claim for
 damages from the management.
 Although the screen was
 the property, the court found
 the hotel liable for such a claim—no
 matter how negligent the hotel
 management had been in the ac-
 cident.
 In contrast, in an an-
 nouncing-screen case, the
 hotel succeeded in holding



LOOK OUT BELOW!

Two rolling days,
 at a veterans' conven-
 tion. From the windows
 they joyfully drop-
 ped water on unsuspect-
 ing-by.
 The third day came
 a cluster of pedestri-
 ans scattered in panic,
 crowded off the curb
 at a passing car, suf-
 fering injuries.
 To find out who had
 this particular bag, the
 hotel manager again-
 stly collected.
 He said it was the hotel's
 mischief had con-
 long, to put a stop to

PHONE 569-2

PHONE 569-3

PHONE 569-3

PHONE 569-3

PHONE 569-3

PHONE 569-3

PHONE 569-3

PHONE 569-3

PHONE 569-3

PHONE 569-3

PHONE 569-3



SAM HOUSTON'S HOME — Thousands of visitors to historic Huntsville each year make a pilgrimage through this white cottage which was once the home of the famous Texas statesman. The house is part of the Sam Houston Shrine located across from Sam Houston State College. Other points of interest here include a museum containing clothing, weapons, books and rare documents owned by Houston. Nearby is his old law office and the frame building shaped like a steamboat in which he died.

the hotel liable. The difference in this case, the screen was already loose when a guest dislodged it by swatting a fly.

The court said an alert management could well have foreseen that a fly would land on the screen, that a guest would swat the fly, that the loose screen would fall out, and that somebody below would get hurt. And what should have been foreseen should have been avoided.

(A public service feature of the American Bar Association and the State Bar of Texas. Written by Will Bernard.)

CARD OF THANKS

Thank You.
 I am indeed grateful to everyone, who was so kind to me during my stay in the hospital. For all the lovely cards, notes, letters, flowers and gifts and visits. Words can't express how I feel, so I'll just say, May God bless each of you real good.
 Mamie Bryant

Residents Visit Rayburn Library

Mr. and Mrs. F. E. Cruce, of Burkburnett, visited The Sam Rayburn Library in Bonham recently.

They saw the books, papers and historical mementoes collected by the late Sepaker Sam Rayburn during his more than fifty years of service to his country.

The Library also contains a replica of the office Mr. Rayburn occupied in the Capitol during the time he served more than twice as long as any other man as Speaker of the United States House of Representatives.

There is no admission charge to the Library. It is open to the public Monday through Friday from 10 a.m. until 4:00 p.m.; on Saturday from 1:00 p.m. to 5:00 p.m. and on Sunday from 2:00 p.m. until 5:00 p.m.

569-2191 For Quality Printing

Health and Safety Tips From AMA

SUNBURN

One dermatologist (skin specialist) has predicted that sun-tanning some day will no longer be a "status symbol" and that people will quit baking their outer hides to a golden brown each summer.

The dermatologists have long known of the hazards of sun-tanning, such as premature aging of the skin and various freckles and blemishes.

But your doctor also knows that, whatever the future brings, some Americans today still are sunbathers, and thus the American Medical Association suggests that if you must tan, do it without burning.

Gradual tanning with a minimum of discomfort is possible for most people. Gradual exposure to the sun is the safest and simplest method of acquiring an attractive tan. As a general rule, begin with 15 minutes exposure the first day, and increase the time by a few minutes a day. The time of day is important, with the mid-day period, when the sun is directly overhead, being the hottest for burning purposes.

Continued tanning brings gradual changes in the blood vessels of the exposed surfaces. The connective tissue of the skin degenerates, causing wrinkles and a coarsening of texture. The "V" of the neck becomes permanently reddened and freckle-like dark spots appear on the skin. These spots can sometimes be the start of skin cancer.

Sun bleaches the hair, too, and over a period of time the sun-bleached hair become brittle and unmanageable. However, the damaged hair will eventually grow out.

The physical benefits of tanning are almost nil. The only beneficial effect of sunlight, other than the psychological lift of sporting a good tan, is the formation of vitamin D, and the American diet already provides an ample supply.

Bright fluorescent paint helps keep a bobber in sight on rough or dark days.

LOCAL BOYS IN VIET NAM

SUNBURN

Listed below are the names and addresses of local boys who are serving with the U.S. Armed Forces in Viet Nam. We are sure they would appreciate receiving letters or cards from Burkburnett residents regardless of whether you know them or not.

The Burkburnett Star-News will be glad to publish the names of other local boys in Viet Nam if parents or friends will call 569-2191 and give us this information.

Chaplain Weldon Wright
 HHC 1st Brigade,
 1st Calvary Div. (AIR)
 APO San Francisco 96490

Tommy R. Morrow
 FN 692664
 E. Div. US Sacramento AOE
 FPO San Francisco 96601

A1/c James E. Brunson
 AF 16618204
 6254th Combat SPT-GP
 Box 166
 API San Francisco 96295

A2/c Jerry W. Melton
 AF 18701596
 1964 Comm. Gp. AFCS
 Box 7134
 APO 96307
 San Francisco, California

S/Sgt. Edgar Milstead
 RA 540 20 869
 Company B, 2nd Bn.,
 28th Infantry
 APO 96345
 San Francisco, California

Pfc. Don Trotter RA 16826903
 Co. D, 1st Bn. 12th Cav.
 (Air Borne)
 1st Cav. Div. (Air Mobil)
 APO San Francisco, Calif.
 96490

Capt. Herbert Lawson
 Hq. & Hq. Company
 14th ICC, APO 96312
 San Francisco, California

Pfc. William E. Tyler, Jr.
 U.S. 55833104
 48th AVN Co. (AML)
 APO 96321
 San Francisco, Calif.

Sp/4 Joe M. Bilyeu
 RA 18711830

B Btry. 3rd. BN 13th. Artl.
 APO San Francisco 96225

Jerry D. Brookman
 EMC 996-55-01 Box 6408
 U.S. Naval Support Activity
 APO San Francisco 96337

A. Gene McCallister
 920 1451 FA
 E Division
 U.S.S. Enterprise CVA (N) 65
 FPO San Francisco 96601

Cpl. Kenneth Durham
 2087919, U.S.M.C.
 1st Motor Transport Battalion

H&S Co. Supply Section
 %F.P.O. San Francisco, Calif.
 96602

Donald Hervey 54164045
 USA Central Registra Det.
 APO San Francisco 96243

Airman Gaylan L. McDonald Graduates At Gunter AFB

MONTGOMERY, Ala. — Airman Third Class Gaylan L. McDonald, son of Mr. and Mrs. Homer L. McDonald of 605 S. Harwell, Burkburnett, Tex., has been graduated at Gunter AFB, Ala. from the training course for U.S. Air Force medical help-

ers. The airman is being assigned to Sheppard AFB, Tex., for duty with the Continental Air Command.

A graduate of Burkburnett High School, he attended Midwestern University, Wichita Falls, Texas., where he received his B.S. degree in biology.

NO-SKID SEAT
 Put stair treads on the seat of your boat. No slip when you sit.

LEGAL NOTICE

HOUSE FOR SALE

Sealed bids addressed to the Commissioners Court of Wichita County, Texas, for the sale and removal of a house located on the Precinct No. 2 Warehouse property at Burkburnett, Texas, will be received at the office of the County Auditor, Court House, Wichita Falls, Texas, until 11:00 A.M., Monday, June 6, 1966. Proposals shall be submitted in sealed envelopes and marked.

A certified or cashier's check in the amount of 5% of the bid, made payable without recourse to the order of the County Auditor, must accompany each proposal as a guarantee that the bidder, if successful, will pay the full price of the bid immediately upon notice of the award of the sale.

The Commissioners Court of Wichita County reserves the right to reject any and all bids.

The entire house with all of its attachments including foundations, and sheet iron garage, shall be completely removed from the Precinct No. 2 Warehouse property, and the grounds cleaned up, all within thirty days from the notification of the award of the sale. Bidder agrees to pay the sum of \$25.00 for each and every day over the thirty days on which any part of the house has not been removed or on which the grounds have not been cleaned up.

CROW DECOY

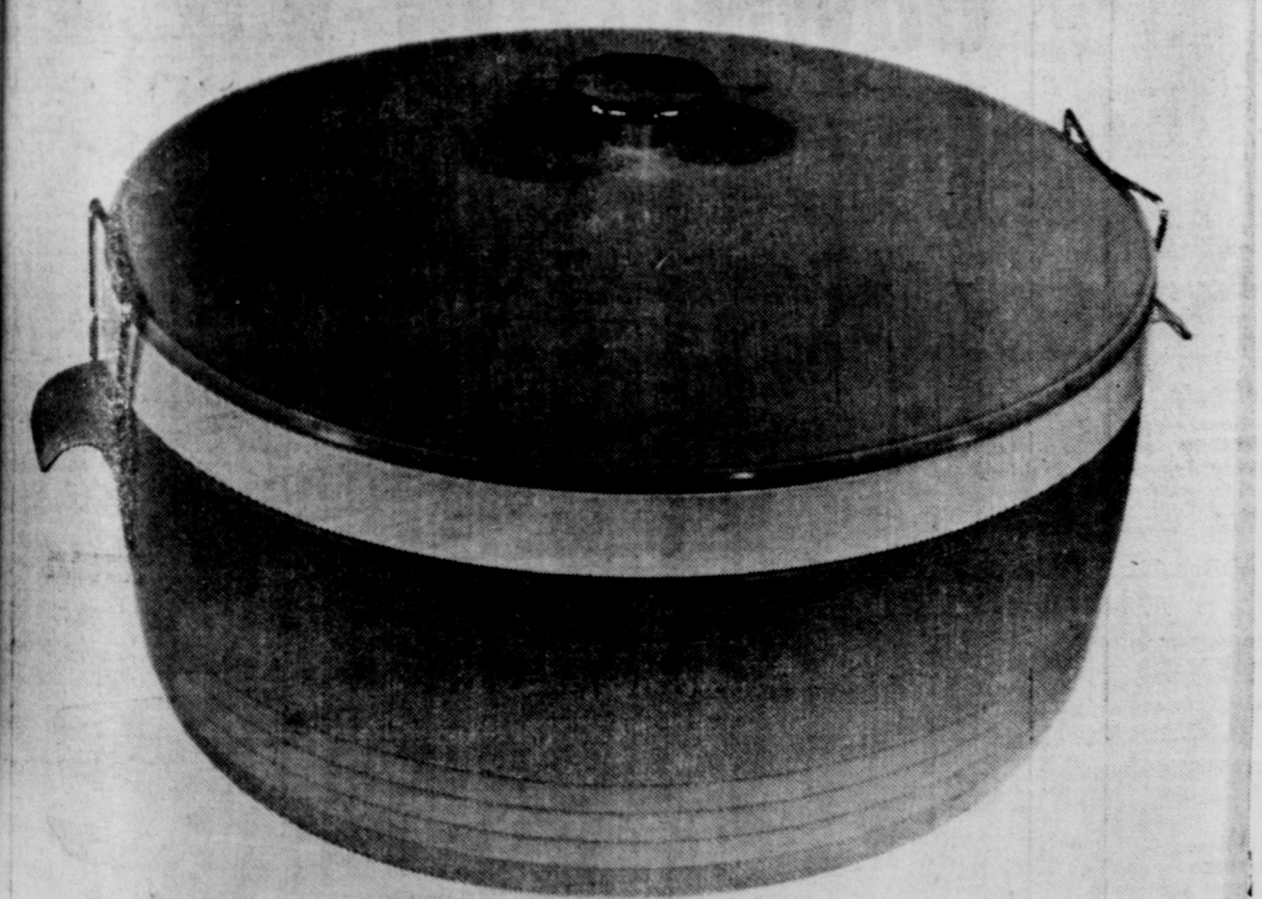
Shape a wire clothes hanger in the outline of Old Blackie and pull an old black sock over it. Stick hanger hook out. Straighten and use as ground spike.

WEST
PAINT, BODY AND FENDER SHOP
905 VIOLET STREET
 (1/2 Block East Sloan's Station—Off Okla. Cutoff)
569-3642—PHONES—569-3486

FIRST SAVINGS & LOAN

OFFERS YOU - YOUR CHOICE OF FINE PREMIUMS WITH A NEW ACCOUNT OF \$250.00

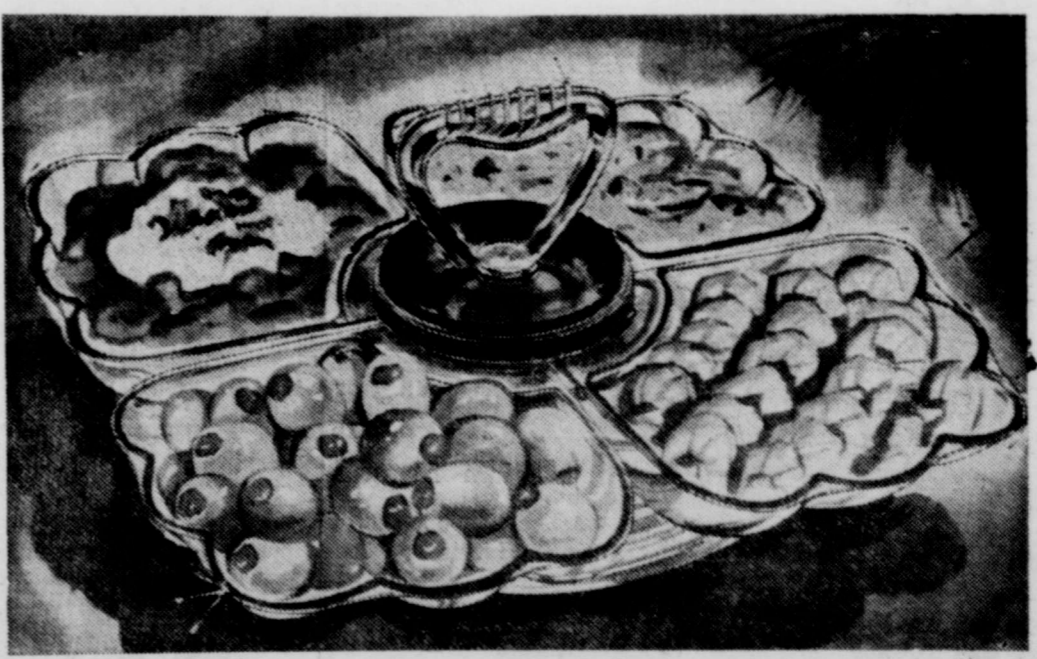
OR AN ADDITION OF \$250.00 TO YOUR PRESENT ACCOUNT



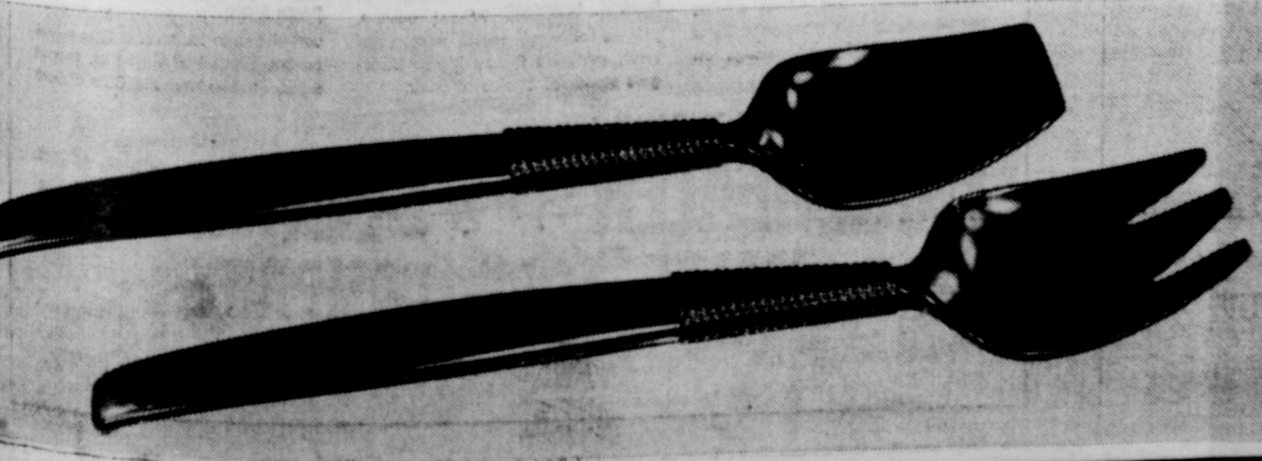
LARGE THREE QUART SUN FROST THERMO-MASTER FOOD SERVER — ICE KEEPER WITH SALAD FORK AND SPOON

Turns At Finger-Tip Touch And Is Ideal For Formal Entertaining, Casual Dining, TV Time

Keeps Food Hot or Cold And Has A Spill-Proof Lock-On Therm-o Cover



SPECTRA TONE REVOLVING LAZY SUZAN



First Savings and Loan Association
Current Dividend 4.8%
 SAFETY OF YOUR SAVINGS INSURED UP TO \$10,000
 BY A PERMANENT AGENCY OF THE FEDERAL GOVERNMENT

Burkburnett High School COMMENCEMENT EXERCISE

Burkburnett, Texas



LINDA HENDRIX



JAMES M. CREEL

HIGH SCHOOL GYMNASIUM
Thursday, May 26, 1966

8:00 O'CLOCK P. M.

PROGRAM

Processional—Pomp and Circumstance	Elgar
Kathy Sykes	
Invocation	John Carah
"A Broad Mind; The Door To Happiness"	Jimmy Creel
"You'll Never Walk Alone"	Laura McCandless
"Climb Every Mountain"	Linda Hendrix
Presentation of Scholarships and Awards	James L. Pearson High School Principal
Introduction of Speaker	I. C. Evans Superintendent of Burkburnett Schools
A Message To The 1966 Senior Class	Congressman Graham Purcell
Presentation of Class	M. D. Groenewold Guidance Counselor
Presentation of Diplomas	Floyd Marten President, Board of Education
Alma Mater	Kathy Sykes
Benediction	Brent Walker
Recessional—Pomp and Circumstance	Elgar
Kathy Sykes	

HONOR STUDENTS

VALEDICTORIAN	SALUTATORIAN
Linda Hendrix	Jimmy Creel

BOARD OF EDUCATION

Floyd Marten	President
Jack S. Smith	Vice-President
Norman Roberts	Secretary
Weldon Nix	Gene Bankhead
Paul Fisher	Arlis Key

FACULTY

I. C. Evans	Superintendent of Schools
James L. Pearson	High School Principal
Walter Koller	Assistant High School Principal
M. D. Groenewold	Guidance Counselor
Mrs. Opal Kennedy	Registrar
Hal Mabry	Curriculum Director
Mrs. Sydney L. Askins	Mr. Gerr Huber
Mr. Willis L. Bartley	Mrs. Dorothy Lewis
Mrs. Minnie M. Benton	Miss Anita G. Maye
Mr. Lloyd A. Bloodworth	Mr. Billy Mac Moore
Mr. David Ray Brewer	Mr. Tom Moore
Mr. Robert M. Carpenter	Mrs. Grace P. McDonald
Mr. W. R. Carswell	Mr. Kenneth L. Pace
Mrs. Donna Clappitt	Mrs. Dorothy Page
Mr. Donald D. Davis	Mrs. Linda Patterson
Mrs. Mary I. Davis	Mrs. Laura Powell
Mrs. Patricia A. Davis	Mrs. Frances Reppond
Mr. Cecil Devine	Mr. Kent Reppond
—Visiting Teacher	Mr. Bruce Roark
Mrs. Mary Dixon	Mr. Dan Schaffner
Mr. B. A. Farris Jr.	Mrs. Zell Schmidt
Mr. Don Faubion	Mrs. Wanda Smith
Mrs. Joan Faubion	Mrs. Carole Spurgeon
Mrs. Dorothy Faulk	Mrs. Barbara K. Thompson
Mr. Elmer L. Forrest	Mrs. Wanda Wallace
Mr. William H. Froman	Mr. Raymon West
Mrs. Mary F. Hastings	Mr. James C. Wickersham
Mr. Robert D. Karns	Mrs. Christine Wickersham
Mrs. Doris Hutchison	

Young Party Line

At the "Gaming" Table

Planned entertainment may not be foremost in your mind when friends gather at your house during the evening; however, the popularity of table games has increased so much every family usually has at least one favorite. At your next gathering ask each couple to bring their favorite game along. When guests and games are assembled, have each group of four select a game to play. During the course of the evening, plan to circulate the games to keep things lively. You might even have a few prizes on hand for the winner of the most games.

Dessert Jamboree

Even though entertainment may not always be planned, refreshments usually are. Dessert and coffee fill the bill perfectly. One way to get variety without a great deal of work is to have a creamy, chocolaty sauce on hand to pour over dif-



ferent foods for a do-it-yourself dessert. Depending on the number of guests, make up two or three batches of Creamy Fudge Sauce, one plain, one with the addition of nuts, another with instant coffee or sherry wine, brandy, or orange liqueur.

To serve with the sauce, have platters of thinly sliced angel cake (from the bakery or made

from a mix), tiny cupcakes, scoops of ice cream in different flavors. Small bowls of toppers might be included as well, such as plain and toasted flaked coconut, chopped salted nuts, chopped maraschino cherries.

Creamy Fudge Sauce

3 squares unsweetened chocolate
1/2 cup light cream
3/4 cup sugar
3 tablespoons butter
Dash of salt
3/4 teaspoon vanilla

Combine chocolate and cream in saucepan. Place over low heat; stir constantly until chocolate is melted and mixture is smooth. Add sugar, butter, and salt; cook and stir 3 to 5 minutes or until slightly thickened. Remove from heat; add vanilla. Serve warm or cool. Makes 1-1/3 cups or about 8 servings.

Note: Store, covered, in refrigerator. Before serving, place bowl of sauce in hot water; stir until smooth.

Fudge Nut Sauce. Prepare Creamy Fudge Sauce as directed, mix in 1/2 cup chopped nuts with the vanilla.

Dark Mocha Sauce. Prepare Creamy Fudge Sauce as directed, decreasing chocolate to 2 squares and adding 1 tablespoon instant coffee with vanilla.

Spiked Chocolate Sauce. Prepare Creamy Fudge Sauce as directed, stirring in 1 tablespoon sherry, brandy, or orange liqueur with vanilla.

Identifying the Sauces

Make small tent-shaped signs to place in front of each sauce. These can be made from colored construction paper and lettered with a felt pen.

WATERPROOF FLASHLIGHT

Want to make a waterproof flashlight? Buy long jar full of olives. Eat olives. Buy a flashlight to fit jar. Solder flashlight base to jar top and screw tight. Light goes through bottom. Flashlight floats, water stays out.



BURKBURNETT STAR

Burkburnett High School Senior Girls

Diane Marie Bentley	Naoko O. Kosbau
Karen Ann Bentley	Donna Ruth Langdon
Clover Nell Blum	Patricia Mae Lewis
Helen Lois Brown	Drucilla McBride
Jan Ellen Brown	Donna Ann McClory
Sarah Elizabeth Byars	Sharon Ann Maloney
Maureen Ann Cleveland	Vicky Louise Martin
Emily Ann Crank	Valaree Matherly
Nancy L. Davis	Celia Mable Matlock
Susan Kay Decker	Sally Blair Mitchell
Mary L. Duggan	Marsha Monson
Jim Joye Eastman	Gwenda Jean Morris
Toni Ann Elliott	Diana Mullins
Nancy Lee England	Judy Rae Owens
Charlotte Marie Farris	Kathryn D. Pearman
Carol Frances Faulk	Frances Jo Perry
Teresa Fisher	Betty Jo Phillips
Christine Gailer	Roberta Maria Prince
Sharon Elaine Gellner	Linda Rine
Virginia M. Giles	Patricia Ann Rodgers
Sharon Kay Hales	Patricia D. Ross
Rosalyn Hall	Janice Bolinger Salter
Jodie Ann Hargis	Jeannie Smith
Linda Marie Hendrix	Ricki Lea Smith
Carolyn Sue Hillis	Linda Spiek
Anabelle H. Hodshire	Sandra Marie Sullivan
Donna Kay Hudson	Jo Ann Turner
Margaret Janeke	Kathy Varner
Betty Lee Ora Jefferys	Alba Weed
Effie Ann Johnson	Teri Ann Whelan
Susanne Jeanette Kepler	Karen Sue Williams
Phyllis Kiesling	

Burkburnett High School Senior Boys

Jerry E. Austin	Larry W. Kinnard
George W. Barker	Garry Koinig
James Michael Barousse	Robert Paul Korpany
Phillip Roy Barousse	Larry Lange
John Boswell	Greg Scott Lawrence
Eddie E. Bumpus	Mitchell W. Lively Jr.
John K. Carah	Orval Loyd
Larry Carter	George R. Lucier
George Christopher	Ben McDonald
Chandler	Oliver Forrest McDonald
Howard Randall Clement	Guenther Michael McGaha
William James Cole III	Jerry Michael Maddux
David Wayne Coleman	Charles William Missman
Pedro Collazo Jr.	Lane Montgomery Moore
Lawrence S. Cotten	David Mooney
Jamer Warren Cowles	Paul Michael Morren
James M. Creel	Warren Wade Nickens
Douglas Danford	Clayton Wilton Norris Jr.
Dwayne L. Deason	Ronald Everett Owens
Darrell Masson Dillard	Verlon Parker
Kenneth Wayne Dodson	James O. Parsons
Edward Donnell	Clifford R. Patrick
Michael Todd Dougall	Danny Payton
Johnny Dyer	John Kirby Pitman
James W. Ellis	Charles A. Pollard
Charles E. Fletcher	George Provence
Ronald Friedls	Sidney Eulan Puder
Michael Ralph Glandon	Wallace Ray Robison
James A. Goins	Michael Clyde Sanders
Michael T. Grabfelder	Robert L. Schiermeyer
John H. Gray	Phil Ellis Seay
Ralph Emerson Gum	James Byford Sparkman
John P. Hastings	Joe Story
Roger Owen Hembree	Jerre Strother
Johnny Charles Herring	David Sunderland
Tommy Hinnant	Wesley Dean Thompson
Dennis Allen Hobbs	Bobby Van Loh
Thomas Gary Holman	Peter Van Wickler
George Michael	Brent Walker
Humphries	James Daniel Weathers
Frank Hunter	Jeffrey Scott William
Robert Randall Jenkins	Bobby Woods
John L. Keith	Michael Leon Woods
Joseph Lee Kelsey	John Lee Welter
Robert Creed King	

LOCAL SOLDIER VISITS HERE ON 15-DAY LEAVE



Pvt. 1c Ronald Gene McBride, who graduated from Burkburnett High School in 1964, is home on a 15-day leave. He will be staying in Burkburnett until June 6.

Ronald joined the Army in

April, 1965 and took basic training at Fort Polk, La. From there he went to Ft. Gordon, Ga. for training as a paratrooper in Airborne Infantry. Since then he has attended a special riggers school in Ft. Benning, Ga. and that is where he is presently stationed.

Ronald's parents are M/Sgt. Drue S. McBride, who is presently stationed in Seoul, Korea,

and Mrs. Vera McBride, who reside at 215 Laurel Lane, Burkburnett.

MEN'S BIBLE CLASS
FIRST METHODIST CHURCH
INVITES YOU TO
WORSHIP WITH THEM
Each Sunday Morning
at 9:30 A. M.
I. R. Reagan, President
Francis Feltz, Teacher

MRS BAIRD'S



Stays Fresh Longer

Precision Printing Is Where We Shine . . .

You don't need a MAGNIFYING GLASS to see the difference in our printing. Even business cards or billheads take on a new look when imaginatively designed and crisply printed by us. The result of our careful craftsmanship is immediately apparent.

Let Us Brighten Up Your PRINTING

BURKBURNETT STAR & NEWS

Save on every Ford in stock!



FORD RANCH WAGON



FAIRLANE 500 CONVERTIBLE



GALAXIE 500 HARDTOP

Specialty equipped, specialty priced FORDS Styled steel wheel covers, special exterior trim, whitewalls. Color choice too! And extra savings on optional Cruise-O-Matic!

Specialty equipped, specialty priced RANCH WAGONS Wheel covers, pleated all-vinyl seats, whitewalls! New, exclusive 2-way Magic Door-gate standard! Choice of color.

Specialty equipped, specialty priced FAIRLANES Hardtops and convertibles with XL spinner type wheel covers, pleated all-vinyl trim, special exterior trim, whitewalls! Color choice!

YOU'RE AHEAD ALL THE WAY!
FORD DEALER Spring SPORTS SALE
WOLFE FORD COMPANY

Sheppard Road Phone 569-2275 Burkburnett, Texas

Insurance is the same 'til you have a claim

Burk Insurance Agency
 HOWARD CLEMENT
 New Location - Next To Legion Hut

Wicket News

Wicket News
 Ruth Elliott
 Club met May 17
 Henry Kinnard. The
 was spent quilting.
 was given by
 Kinnard from Ro-
 17th vered the group in

was answered with
 Motion was made
 O. Wilson to donate
 Red Cross. This was
 and carried. White
 was drawn by Mrs.
 Wilkinson. The motion
 by Mrs. Jess Butler
 club adjourn to meet
 with Mrs. N. R. Kirk-
 members present were:
 C. O. Wilson, Jess
 Underwood, Fay
 C. B. Ressel, B. B.
 L. Wileman, Jimmie
 Nomie Wilkinson, N.
 C. H. Thompson,
 Henry Kinnard, Lee
 Henry Kinnard, Ola Aus-
 Cluskey and one
 Fred Spoon.
 Mrs. Virgil Farrington
 visited Mr. and
 Baldwin Friday.
 Mrs. Jim Crittendon

and children of Grapevine visited her parents over the weekend recently, Mr. and Mrs. A. J. Shaw.

Mrs. Ralph Postelwaite left Friday night for a trip to Casey, Iowa to her son's, Mr. and Mrs. Aldean Postelwaite and twin daughters.

Mrs. Marie Starks and son Dickie spent Friday night and Saturday with Mr. and Mrs. Leenie Keen of Lawton.

Mr. and Mrs. M. D. Baggs and daughters of Ft. Park, Ark., Mrs. Vida England of Fort Worth visited Mr. and Mrs. E. L. Martin and Mrs. Florence Baggs recently.

Mr. R. V. Nason of Olney visited Mr. and Mrs. A. S. Nason Sunday.

Mrs. S. H. Davis entered a Wichita Falls hospital last Tuesday and underwent surgery Wednesday. At this time, reports are she is doing fine.

Mrs. C. M. Morris received word the first of last week of the critical illness of her daughter, Mrs. Juanita Vaden of Oklahoma City.

Mrs. Rose Griffith is reported ill and in a Wichita Falls hospital.

Mrs. M. M. Bowles reported ill and in a Wichita Falls hospital.

MD Meets "Little Girl Blue"



Dr. Willis J. Potts, who performed the first successful "blue baby" operation in 1946 on Diane Schnell of Woodbury, N.Y., presents her with a specially autographed copy of his new child care book entitled "Your Wonderful Baby".

A breakthrough in this usually fatal affliction came twenty years ago when Dr. Potts performed the operation on Diane, a 21-month-old mortally sick "blue baby". The history-making surgery thus permitted more blood to flow from Diane's heart to her lungs. The lives of thousands of blue babies have since been saved through the use of this surgical technique.

"When the child was brought to me she was blue-as-grape-juice and would have died in a few weeks," the surgeon recalled. The operation was completed and Diane was taken to her parents. They stared at their daughter in disbelief and cried, "Look, she's pink". Diane is now a bright, active college sophomore.

Drawing from his 50-year career in pediatrics, Dr. Willis J. Potts, a native of Sheboygan, Wis., and former Surgeon-in-Chief of Children's Memorial Hospital in Chicago, has dedicated his child care book "Your Wonderful Baby", just published by Rand McNally, to the most important job parents will ever have—keeping their youngsters well and happy. Written in a relaxed, easily understandable style, the book covers the entire spectrum of children's diseases, emergencies and accidents. In a reassuring manner, Dr. Potts guides parents in methods of home treatment, and helps them to decide when to call a doctor.

visited Mr. and Mrs. Louis Due and children of Duncan.

Rita Sue Balwin spent from Friday to Monday with her aunt and uncle, Mr. and Mrs. Scott Morgan of Wichita Falls.

Mrs. Raymon Underwood was honored at a birthday dinner Sunday in the home of her son, Mr. and Mrs. Leon Underwood and children.

Mrs. Erma Bentley of Jacksboro visited Mr. and Mrs. A. L. Patterson last Thursday.

Mr. and Mrs. Sonny Bentley of Tishomingo, Okla. spent the weekend with his parents, Mr. and Mrs. Howard Bentley and Karen.

Mrs. Spencer Steele and Mrs. Bubba Steele and Mrs. Olan Myers and daughter of Houston visited Mrs. C. H. Dunn Saturday to Wednesday.

Mr. and Mrs. Travis Anderson of Weatherford, Okla. spent Saturday and Sunday and Sunday guests were Mr. and Mrs. Max Anderson and children, Mr. and Mrs. Edwin Anderson and children, Mr. and Mrs. Alton Anderson of Wichita Falls at Mr. and Mrs. A. L. Anderson's.

Mrs. C. C. Watkins and Mrs. Zaida Bryant of Henrietta visited Mr. and Mrs. R. H. Rhoads last Tuesday.

Misses Rita Sue Baldwin, Rebecca and Linda Turner, Johnette Martin, Gari Beth Vache, Bryna Jean Harrison and Treva Swarrington accompanied by two sponsors, Mrs. Clarence Vache and Mrs. Lois Kennedy left Tuesday morning for Stillwater to the 4-H Club Roundup, returning home Friday.



GRASSHOPPER SURVEYS REVEAL LOCAL THREAT

Grasshoppers could seriously threaten a 13-state area this year, according to surveys conducted and reported by the Agricultural Research Service. More than 16.6 million acres of rangeland were infested with economically significant numbers of grasshoppers last fall, the report indicated.

This rate of infestation is nearly double the 8.7 million acres found infested in the same states a year earlier. Entomologists point out that more grasshopper damage may be expected during 1966 in Montana, Wyoming, Arizona, Idaho, Oklahoma, Washington and Oregon. Other states which will see lighter infestation include Texas, California, South Dakota, New Mexico, Utah and Nevada.

In the 13-states Montana had the largest infested area. Montana's 9 million acres of grasshopper infestation found in the insect survey is nearly three times the state's total of a year earlier.

New Control Methods

Grasshoppers have been periodic threats to grass and rangelands for many years. In years past, hopper plagues destroyed crops and grass, nearly devastating farms and rangelands. With development of modern pesticides, farmers had new weapons to fight grasshopper threats.

More recently, area control programs have proved highly successful. Application of Malathion low-volume insecticide, in rates as low as 6 ounces of pesticide per acre, have controlled the pests.

This new concept, use of undiluted Malathion insecticide in the ultra low volumes, has gained wide interest from grasshopper areas to the cotton belt. According to pest control scientists, the high degree of insect control, low cost and speed of application makes the new low-volume technique one of the most significant new developments in pest control.

TELEVISION

PARTS AND SUPPLIES

REPAIRS AND SERVICE

ALL MAKES

USED TV'S FOR SALE

569-2814 - Day or Night

ED'S TV

Randall, Owner 809 E. 3rd St.

Dale Swinford of Burkburnett spent Friday night with his grandparents, Mr. and Mrs. C. O. Wilson.

Mrs. Frank Bohac and Amy of Wichita Falls visited Mr. and Mrs. R. H. Rhoads Monday morning.

Mr. and Mrs. H. T. Dulworth and granddaughter, Michell Dulworth of Irving visited Mr. and Mrs. D. A. Cornstubble, Mr. and Mrs. Jess Butler Sunday.

Russell Allan and Kimberly

Ann Harrison were ill at their home last week.

Mrs. Bill McGarry and son, Robbin of Grandfield visited her parents, Mr. and Mrs. R. H. Rhoads Wednesday.

Mrs. Buster Rogers of Dallas, Mr. and Mrs. Elmer Lloyd Rogers of Durant visited Mr. and Mrs. J. C. Goode Saturday night and Sunday till noon. In the afternoon they and Dana Goode and Mrs. W. R. Baldwin

OWENS-BRUMLEY FUNERAL HOME

AMBULANCE SERVICE

PHONE 569-3361

HAROLD VAN LOH, PRESIDENT



Lady, you'll just love flameless electric cooking ...it's so cool

You'll love your flameless electric range most of all during hot weather. Your kitchen stays cooler because electric surface units transfer heat by direct contact with enamel bottoms. They send heat through the utensils into the food, not the kitchen air. The oven is insulated all around, including the bottom, to keep heat inside where it belongs. There's no flame, so no intake and exhaust of air is needed to support combustion. The big difference in kitchen comfort is one of the many reasons why you'll just love flameless electric cooking.

AND YOU'LL LOVE THE SPECIAL INSTALLATION OFFER AT YOUR DEALER'S... SEE HIM SOON

TEXAS ELECTRIC SERVICE COMPANY
 JOE T. SALTER, Manager 569-3373

WARNING! LIBERALS SEEK UPSET ON JUNE 4TH!

Most Knowledgeable Man in State Government - Governor John Connally.

Crawford Martin was the overwhelming choice of Texans by more than 100,000 votes in the first primary. But the job isn't done yet. Liberal forces, hoping for a light vote in the runoff, are redoubling efforts to capture this important office. Your help is urgently needed; make SURE you vote on June 4th to keep good government in Texas!

CRAWFORD MARTIN HAS A 20-YEAR RECORD OF PUBLIC SERVICE

- Served as mayor of Hillsboro
- 14 years a key leader in the State Senate... three times unopposed for re-election.
- Twice selected as his Secretary of State by Governor John Connally.

CRAWFORD MARTIN HAS WORKED FOR ALL TEXANS.

- Helped write or pass most of our important laws enacted the past decade.
- A proven friend of senior citizens. Helped obtain first medical aid for elderly.
- Fought to pass the first laws controlling loan sharks.
- Was a key leader in passing insurance reform legislation.
- A leader in passing Gilmer-Aikin laws for better education in Texas.

LET'S COMPLETE THE VICTORY ON JUNE 4TH!

CRAWFORD MARTIN

FOR ATTORNEY GENERAL

Political aid paid for by Martin Campaign Committee, George Cowden, Chairman

WHAT'S THE ANSWER

When your car needs service... but you need your car?

DRIVE A NEW

IMPALA CHEVROLET

ONLY \$3.00 A DAY

While Your Car Is In Our Shop!

A convenience "plus" for our service customers! No need to put off needed service or repairs because you can't do without transportation. We'll rent you a smart new car to drive while we put your car in tip-top shape! Try it next time your car needs service.

ADVANCE RESERVATION SAVES TIME!

MATHIS CHEVROLET CO.
 Best Place By Far To Buy Your Car
 300 E. 2ND, BURKBURNETT, TEXAS
 Chevrolet-Oldsmobile Phone 569-3381

AND PONTIAC

Donations Requested For Expansion Of Burk Youth Center

A called meeting of the Community Service Council was held in the Texas Electric Reddy Room on Monday, May 23.

The Youth Committee Chairman, Ken Blankinship presented a proposed expansion program of the Youth Center.

The Girl Scouts, under the leadership of Mrs. Leslie Landers, and the Boy Scouts, under the leadership of Mr. Thomas Evans, will distribute house-to-house 3000 circulars, like the one printed in the paper, on Friday, May 27. The Girl Scouts will distribute the circulars in the downtown area on Saturday, May 28.

We as adults are responsible for your youths welfare and feel our citizens will respond as they have in the past.

Dear Citizen:

The Youth Center Board of Directors have presented a proposed expansion program for the Youth Center facilities to the Youth Committee of the Community Service Council, also the entire Council membership. The members of the Community Service Council have pledged their support of this program.

Included in the expansion program will be a game room with 1760 sq. ft. of floor space, new lounges, serving area and renovation of the present building. A fenced patio will be added for fresh air activities which will help simplify proper supervision.

Through the addition of these facilities, a more versatile program of activities can be offered our youth, such as table tennis tournaments, hobby and craft lessons, art classes, basketball goal on the patio, shuffle-board, etc.

The Youth Center is a non-profit organization and operated solely from donations. All donations to the Youth Center are tax deductible. A statement will be mailed in January of each year to all donors for income tax purposes.

The youth of today will be our leaders of tomorrow. If you would like to help with this program, please fill out the statements at the bottom of this form and mail to Mrs. Ken Blankinship, Treasurer, 701 Meadow Drive, Burkburnett, Texas. Also, please notify Mrs. Blankinship if you would like to make other donations such as furniture or equipment (tables, chairs, T.V., games, etc.)

Thanking you in advance for your interest.

Yours very truly,

MR. JOHN LARSON

Chairman of Youth Center Board of Directors

(PLEASE FILL OUT BOTH FORMS)

I request and authorize the Treasurer of the Youth Center Board of Directors to draw a draft on my account at the

(Bank) in the amount of

\$ _____ (\$1.00 or more) on the 1st day of each

month, beginning _____ (month and year),

payable to the Youth Center.

This authorization may be revoked by written notice at any time.

Signature of Donor

(Authorization for Bank)

I request and authorize the Treasurer of the Youth Center Board of Directors to draw a draft on my account at the

(Bank) in the amount of

\$ _____ (\$1.00 or more) on the 1st day of each

month, beginning _____ (month and year),

payable to the Youth Center.

This authorization may be revoked by written notice at any

Signature of Donor

(Authorization for Youth Center Board of Director's Treasurer)

First Place Bowling Team



The team winning First-place in the recent area-wide tournament at Boomtown Bowl are pictured here with their sponsor, Cliff Wampler of Wampler Insurance Agency. They are, left to right, Ethelyn Johnson, Carolyn Bailey, Hazel Hoshler, Mr. Wampler, sponsor, Carol Wright and Phoebe Todd.

Step Ants Hold Bowling Lead

The Step Ants are still leading the Thursday Morning Women's Bowling League with 19 wins and five losses. They are followed by The Pin Spinners with 16 wins and eight losses. In third place are The Magic Markers with 12 wins and 12 losses. Fourth, fifth and sixth place team are The Pin Wheels, Misfits and The Four Stars, respectively.

Last Thursday's high team series was by the Step Ants

with a pin fall of 1920. Individual high series was 563 by June Albion. High game was 205 by Willa Divine.

Bowlers interested in bowling come down as substitutes or join a team as some women will be leaving soon and will need to be replaced. Call Pearl Draper, Secretary, 569-2846 or Carol Rochell, President, 569-1560 for information concerning the league.

Citizens On Workshop Tour



Jerry Thomas and Brian Hooper of Burkburnett watch Rose Nelson, an employee of the Opportunity Workshop, as she packages magnetized bottle caps.

Burkburnett Group Tours Training Center, Opportunity Workshop

Touring the Children's Training Center and The Opportunity Workshop last week, visitors from Burkburnett witnessed the fulfillment of the greatest desire of handicapped people... the opportunity to learn and earn.

Classroom procedure and teaching methods were explained to the group by the dedicated teachers at the Training Center. The children were eager to show the visitors their newly-acquired knowledge and skills.

Buddy Byars, Lamoin Champ, George Smith, C. J. Lippard, Jerry Thomas, Brian Hooper, Mrs. C. E. Lundberg, Mrs. Cecil LeBeau and Mrs. N. O. More from Burkburnett were conducted on the tour by Dan Nolte, Executive Director of the Center and Workshop.

The Opportunity Workshop provides employment for 30 to 40 handicapped people. Light manufacturing and packaging is done by the workers.

MRS. HENNIS RETIRING AFTER 17 YEARS CAFETERIA SERVICE



Mrs. Myrtle Hennis, after 17 years of faithful work in Hardin Cafeteria is retiring. At a party given in her honor by those who worked with her in the Cafeteria, the following was read:

"We from the Burk Cafeteria have studied and learned the golden rule.

"Some girls, some boys, some grief, some joy, Memories are made of this.

"Yes, let us reminisce about the past and a person we have loved best. We can't forget those golden days when first upon her we did gaze. Her words—our response—rolls flat—our grins. Memories are made of this.

"We've added two and two and decided Myrtle Hennis this must be you."

(Call for her to come forward)

"Myrtle, here are a few facts about your life which you probably didn't think we knew—

"1. You were born in 1900 and married in 1923 to Mark Groves.

"2. You had five children—2 girls and 3 boys.

"3. Your first child died in 1924.

"4. You lost both your third child (a boy) and your husband in 1938.

"5. With children and a home to maintain you went to work in the sewing room.

"6. In 1940 you met and married Skeet Hennis.

"7. You have also worked at the Wichita General Hospital and S.A.F.B.

"8. Your son has 6 children and your daughter, Wanda, has 3 children.

"9. You have one daughter who is unmarried (she thought you had enough grandchildren). She teaches school.

"10. You went to work in the cafeteria in 1949 and are retiring from this job this year

—So—

"With his blessings from above
We let you go with our love.
No grief—no pain—our love
you've gained
Memories are made of this."

Those attending the party were: Kathleen Kuhahl, Fairlene Mullins, Gloria Miller, B. Harmon, Ada Harmon, Kathrine Kormas, Mary Ann Hobbs, Elsie Garrett, Dorothy Williford, Sophie Willingham, Faye Abbott, Joy Simmons, Wanda Davis, Thelma Van Loh, Mina Lindsay, Laura M. Alewine, Bernita Silber, Verdine Reynolds, Norena Brister, Juanita Groves, Mrs. A. E. Brown, Mrs. Leo Foster, Leo Foster.

Singles Winner



Lucene Stanley of Burkburnett won First-place Singles trophy in the Women's First Annual Gusher Tournament at Boomtown Bowl. She bowled a 655 series for this win from a field of 60 entries.

Classified Ads Bring Results

Special Holiday Safety Message

From The Texas Highway Department Travel And Information Division, Austin

DEVOL NEWS

Mrs. C. O. Woodley

The long Memorial Day weekend heralds the beginning of Summer. Thousands of travelers will be on Texas highways for their first holiday outing of the vacation season.

The Texas Highway Department tries to make as safe as possible areas where construction or maintenance is in progress. Nevertheless, these areas become more hazardous as additional vehicles take to the highways.

We are enclosing a copy of the Texas Highway Department road condition bulletin. This "Special Holiday Driving Guide" shows areas where highway construction is in progress throughout the state.

One or more of these projects may be in your area. To provide a highway system adequate for the basic transportation needs of Texans, more than 1,000 miles of highways are under construction at all times.

We urge you to call to the attention of your listeners or readers the highway construction areas in or near your community. Repeat this safety message as often as possible during the holiday period.

And—above all—urge them to drive carefully, observing warning signs in construction areas... and everywhere... to make this a happy, safe holiday.

Your cooperation in helping to make Texas highways safer is appreciated... now and throughout the year.

Former Resident Awarded Honors

Clarice Lawrey, daughter of Mr. and Mrs. D. C. (Clarence) Lowrey of New Orleans, was recently awarded the Girl Achiever award of the New Orleans JA. Clarice is a senior this year and has won many other awards. She was chosen Miss Junior Executive of New Orleans by the Business and Professional Women; placed in Junior Speakers Contest at Houma and placed first in Homemakers Class with a lovely suit she made. The Lowreys are former Burkburnett residents.

Miss Marilyn McCullough, daughter of Mr. and Mrs. Bob McCullough is at home for the summer vacation from the University at Stillwater. Debbie and Elaine Eastman of Randlett were Saturday night guests of their grandparents, Mr. and Mrs. W. C. Charboneau.

Mr. and Mrs. K. L. Smith visited Mr. and Mrs. R. A. Odum Sunday.

FOR WEDDING CONSULTATIONS CALL **JUANITA'S FLOWERS** 569-3197

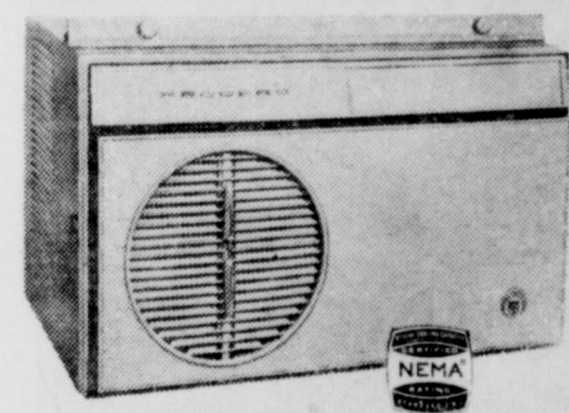
Acknowledgements From Nursing Home

Harrelson Nursing Home gratefully acknowledges the following gifts and services were taken to see "Star Music" at the State Theater May 15th. Tickets were provided by the First National Bank of Burkburnett. Mr. Ken Van made all the arrangements provided transportation, cake, Janlee Baptist Auxiliary, Mrs. Shirley Leley, counselor, shampoo and permanents, Ideal Shop, Mrs. Mueller, and owner; Marshmallow Sunbeams of the First Church.

569-2191 For Quality Products

PALACE
NEW STARTING TIME
Matinees Sat. and Sun.
Window Opens 2:30
Show Starts 2:45
Evening Shows:
Boxoffice Opens 7:30
Show Starts 7:30
Adults 65c Children
Friday-Saturday
MAY 29-30-31
DOUBLE FEATURE
WAR OF THE ZOMBIES
John Drew BARRYMORE
COLORSCOPE
PLUS
TOWN TAME
DANA ANDREWS
TECHNICOLOR
Adults 65c Children
MAY 29-30-31
WILD WILD WINTER
GARY CLARKE
CHRIS NOBLE
TECHNICOLOR
Special Guest Star
Jay and The American
Beau Brummels
Dick and DeeDee
The Astronauts
Jackie and Garly
ALSO Selected Short
PLUS
LATE NEWS
SPONSORED BY
First Savings and Loan
Assn. of Burkburnett

ENJOY 1 FULL TON OF COOLING ON YOUR 115-VOLT CIRCUIT!



12,000 btu's ONLY

\$229.95

Plugs into any adequate appliance outlet. Avoids costly expense of 230-volt re-wiring.

FEDDERS

World's Largest Selling Air Conditioner

Save money! Enjoy all the benefits of high capacity famous Fedders cooling without the costly expense of 230-volt re-wiring. Only Fedders offers you seven cooling models—all designed to operate on existing household current (adequately wired 115-volt circuit). Select the exact Fedders size that meets your requirements. All superbly engineered. All precision-built by Fedders. And look at these quality features:

- RESERVE COOLING POWER, a Fedders exclusive, for truly reliable comfort. Guarantees cooling on scorching days—even in 115-degree Sunload.
- SOUND BARRIER muffles and hushes operating sounds. Unique design delivers a huge volume of cool air with hospital-quietness.
- DEHUMIDIFIES—wings out up to 10 gallons of water per day... Washable Germicidal Filter... Dual Flow Weather Wheel for extra precise air direction control.
- AIR EXCHANGER exhausts smoke-filled air... Two Speeds for "hurry-up" and normal cooling.

WILKINS ELECTRIC CO.

1308 SHEPPARD

PHONE 569-3117



Total Tenderness! Shop United

CHECK THESE LOW, LOW PRICES!



MORE FOR YOUR MONEY!

RANCH STYLE STEAK

SWIFT'S PREMIUM ProTen

lb.

59¢

WATER CUT BEEF SHOULDER

ROAST

Swift's Premium ProTen LB.

69¢

ANKS 49¢

BACON 1-LB. PACK 79¢

CAN HAM 3 LB. CAN \$2.89

CHUCK 2 LBS. \$1

Swift's Premium LUNCH MEATS Olive-Pickle-Bologna 3 6-Oz. Pkg. 89¢

SWIFT'S LUXURY ICE CREAM ROUND 1/2-GALLON PLASTIC CTN. - 69¢

SWIFT'S PREMIUM PROTEN MISS STEAK ROUND BONE AKM CUT LB. 69¢

UNITED PREMIUM QUALITY EGGS GRADE "A" LARGE 2 DOZ. 79¢

SWIFT'S JEWEL SHORTENING

3 * 59¢

lb. can



PARD DOG FOOD 8 16-Oz. Cans \$1

MORTON'S POTATO CHIPS Reg. 68c 14-Oz. Bag 59¢

SWIFT'S "OZ" PEANUT BUTTER 16-Oz. Jar 39¢

LIPTON TEA 1/2-Lb. Pkg. 79¢



Banquet FROZEN CREAM PIES 4 for \$1



ALL SWEET OLEO 4 1-LB. CARTONS \$1.00

PREM. 2 12-Oz. Cans 89¢

Swift's Premium POTTED MEAT 10 3-Oz. Cans \$1.00

LIPTON TEA BAGS 28-Oz. Box 59¢ INSTANT TEA Lipton 6-Oz. Jar BONUS PACK \$1.19

UNITED Fresher PRODUCE *

Spaghetti BALLS 39¢

Swift's Premium VIENNA SAUSAGE 5 CANS \$1.00

Swift's Premium BEEF STEW Large 1 1/2-Lb. Can 49¢

CHOPPED BEEF Large 1 1/2-Lb. Can 59¢

SWIFT'S LIMA and Ham BEANS 1 1/2-Lb. Can 49¢

CHOPPED HAM Swift's 12-Oz. Can 69¢

Fresh VINE RIPE TOMATOES 6 FOR 25¢



CALIFORNIA SPRINGTIME PEACHES DOZ. 49¢

OPEN 'TIL 9 P. M. Gunn Bros. Stamps DOUBLE EVERY WEDNESDAY



RED POTATOES 20 LB. BAG 59¢



Fresh California ICEBERG LETTUCE 2 Large Heads 25¢

UNITED SUPER MARKETS

Everyday Prices

Buy Auto Liability | From The Travelers Insurance Co. |

IT DOESN'T COST ANY MORE TO BE SURE
HOWARD CLEMENT, Agent
 New Location — Next To Legion

GARBAGE COLLECTION ORDINANCE NO. 245

Mr. Walter West has been awarded the contract for garbage service with the City of Burkburnett beginning June 1, 1966.

The following is City Ordinance No. 245 which regulates the various phases of the garbage service.

ORDINANCE NO. 245

AN ORDINANCE DEFINING THE VARIOUS KINDS OF GARBAGE, REGULATING THE KINDS AND SIZE OF RECEPTACLES IN WHICH TO PLACE SAME, THE MANNER OF ITS PREPARATION AND WHERE IT MUST BE PLACED TO BE COLLECTED BY THE CITY GARBAGE DEPARTMENT; PROVIDING REGULATIONS FOR COLLECTION OF SAME; PROVIDING THE SERVICE CHARGES, AND A METHOD OF BILLING AND COLLECTION OF THE FEES; PROHIBITING THE MEDDLING, SCATTERING CONTENTS, PILFERING OR JUNKING, WITH GARBAGE CANS, TRASH OR RUBBISH RECEPTACLES; PROHIBITING THE COLLECTION OF GARBAGE, TRASH OR RUBBISH BY OTHERS THAN CITY AGENTS OR AGENTS WITHIN THE CITY LIMITS; AND PRESCRIBING PENALTIES; REPEALING ALL ORDINANCES IN CONFLICT HERewith; AND DECLARING AN EMERGENCY.

BE-IT ORDAINED BY THE BOARD OF COMMISSIONERS OF THE CITY OF BURKBURNETT, TEXAS:

SECTION 1. This ordinance shall be known as the "garbage ordinance" of the City of Burkburnett, Texas. The word "premises" as used in this ordinance shall be taken to mean business houses, boarding houses, offices, theaters, hotels, restaurants, cafes, eating houses, schools, private residences, vacant lots, and all other places within the city limits of the city, where garbage, trash or rubbish accumulates in ordinary quantities.

The various kinds of garbage shall be defined as follows:

A. By the term "kitchen refuse" as used in this ordinance is meant, dry kitchen refuse, all meat, vegetable and fruit refuse, small dead animals and dead fowls, from any premises within the city limits.

B. By the term "dry kitchen refuse" is meant the solids after the liquids or slop has been drained off.

C. By the term "trash" as used in this ordinance is meant paper of all kinds, rags, old clothing, paper containers, old rubber, pieces of wood, boxes, barrels, crates, feathers, weeds, grass, tree limbs from any premises within the city limits.

D. By the term "rubbish" as used in this ordinance, is meant tin cans, bottles, glass, scraps of iron, tin wire, or any other metals from any premises within the city limits.

SECTION 2. It shall be the duty of every person, firm or corporation owning, managing, operating, leasing or renting any premises, or any place where (a) kitchen garbage or (b) dry kitchen refuse accumulates to provide a portable garbage can or cans constructed of galvanized iron, tin or other suitable material with handles and a tight fitting cover of a capacity not less than twenty gallons and the daily accumulation of kitchen garbage and dry kitchen refuse shall be placed in this or these garbage cans. It shall be the duty of every person, firm or corporation owning, managing, operating, leasing or renting any premises to place all trash or rubbish from said premises in boxes, portable cans, or other portable metal containers provided that the gross weight shall not exceed sixty (60) pounds. Any person desiring to place tree trimmings or hedge cuttings for collection shall cause the same to be securely tied for collection in bundles not heavier than seventy-five (75) pounds nor more than four (4) feet in length. These shall be placed with the other garbage and trash for pickup at the regular time for collection.

SECTION 3. Business houses, restaurants, cafes, eating establishments and other commercial establishments shall provide suitable containers for their particular needs. These shall be subject to the approval of

the City Manager, and may not be used unless acceptable to him.

SECTION 4. After the enactment of this ordinance it shall be unlawful for fifty-five (55) gallon oil drums to be used as garbage containers.

SECTION 5. Rock, waste, scrap building materials, or other trash resulting from construction or remodeling, resulting from a general clean-up of vacant or improved property or resulting from sizeable amounts of trees, brush, or debris cleared from property will not be removed by the City as a regular service, but may be done for the owner on payment of an extra fee. Exceptions to this are:

1. Trees, shrubs and cuttings will be carried by the City as defined elsewhere in this ordinance. 2. All types of trash, refuse, and rubbish will be carried by the City during any clean-up campaign which is proclaimed and authorized by the Mayor or City Commissioners. The owner, at his option, may have such debris removed at his expense by private haulers. In the event the owner desires the City to haul debris, a charge therefore, will be made at the rate approved by the City Manager of the City of Burkburnett, Texas.

SECTION 6. The authorized agents of the City of Burkburnett will not make collections of kitchen garbage, trash or rubbish or tree limbs where same is not prepared for collection and placed as designated by the terms of this ordinance and fail to comply with this provision will be an offense and each day's failure to comply will constitute a separate offense.

SECTION 7. The lids, garbage cans, and other receptacles shall be kept in a sanitary condition and closed tightly at all times so that flies and other insects may not have access to the refuse contained therein and shall only be removed while emptying additional garbage or refuse therein, or while the Garbage Collector or person authorized in removing such garbage or unloading the same for disposal. The contents of all receptacles shall be so protected that the wind cannot blow out and scatter same over the streets, alleys, and premises of the city.

SECTION 8. It shall be unlawful for any person other than those designated by the city to collect or dispose of any garbage or to haul or transport or convey said garbage within the City of Burkburnett, Texas, except as specifically designated within this ordinance.

SECTION 9. The meddling with garbage cans, trash or rubbish receptacles or in any way pilfering, scattering contents or junkings in any alley or street within the city limits is prohibited.

SECTION 10. Garbage and refuse situated at residences shall be picked up twice per week.

All business concerns situated within the corporate limits of the city, shall receive a daily pickup.

SECTION 11. Rates for gathering and removal of garbage and refuse from all premises within the City of Burkburnett, Texas, shall be calculated on the following basis:

- (a) Single family unit with alley entrance \$1.50 per month
- (b) One family unit without alley entrance, where it is necessary to carry out refuse or garbage for more than 20 ft. from property line 2.50 per month
- (c) Two family units on separate meters, per unit 1.50 per month
- (d) Apartment houses in one building with three or more units, per unit 1.50 per month
- (e) Housing Developments to be charged per family unit 1.50 per month
- (f) Commercial and business establishments, regardless of location shall be charged at a rate to be established by the City Manager and by the Supervisor of Garbage Collection on the basis of cost of daily service according to actual time required but no concern shall be less than 1.50 per month

SECTION 12. The charges fixed or to be fixed under the terms and provisions of this ordinance and any contract that may be entered into by the City for the removal and disposal of garbage, waste or refuse, shall be charged against such person or persons, owner, occupant, or lessee, and the amount fixed shall be collected through the Water Department monthly, as the water charges are collected.

SECTION 13. If garbage pickup charge is not paid, water service will be discontinued to that customer until such time as garbage charge is paid.

SECTION 14. If water service is discontinued because of non-payment of water and/or garbage charge, then an extra charge of One Dollar (\$1.00) shall be made and collected before water service is re-installed.

SECTION 15. All charges for service as outlined in this ordinance are the same for all establishments of like kind without regard for whether there is or is not a separate water meter for the house or residence, commercial or business establishment.

SECTION 16. Any persons, firm, or corporation who violates any of the provisions of this ordinance or who fails to provide the necessary garbage cans herein required, or shall allow the premises to become unsanitary, shall be deemed guilty of a misdemeanor and upon conviction shall be fined a sum of not less than five (\$5.00) dollars and not more than two hundred (\$200.00) dollars for each offense and each day's continuance of a failure to comply therewith shall constitute a separate and distinct offense for each of said days.

SECTION 17. The term "garbage collector" or "garbage collectors" as used herein shall mean an employee or employees of the City of Burkburnett, Texas, or other person or firm under contract with the City,

to remove garbage and other trash.

SECTION 18. All ordinances and parts of ordinances in conflict with this ordinance are hereby expressly repealed.

SECTION 19. Should any section, paragraph, sentence, clause, or phrase of this ordinance be declared unconstitutional or invalid for any reason, the remainder of said ordinance shall not be affected thereby.

SECTION 20. The fact that there are no adequate regulations governing the collection and disposal of garbage and industrial waste in the corporate limits of the City of Burkburnett creates urgency and emergency for the immediate preservation of the public peace, health, safety and general welfare, and requires that this ordinance shall take effect from and after its passage, and publication on the 1st day of September, A.D. 1960, and it is accordingly so ordained.

PASSED AND APPROVED THIS THE 25th DAY OF JULY, 1960.

GEORGE McCLARTY, Mayor
 ATTEST: C. R. CHAMBERS, City Secretary

The following are the routes

and days each week for pickup service in the three areas established by Walter West, Contractor of the Garbage Service for the City of Burkburnett.

AREA NO. 1—Monday and Thursday. South of Tidal Street and East from railroad to Oklahoma Cutoff Highway.

AREA NO. 2—Tuesday and Friday, all remaining areas east of railroad not included in area No. 1.

AREA NO. 3—Wednesday and Saturday all areas west of the railroad.

The City of Burkburnett and Mr. West will appreciate your cooperation in helping him render the type of service that you desire.

and interclub director Wichita Falls chapter. Mrs. Davis installed following officers of the club: President, Mrs. Ann Conway; Treasurer, Barbara Reed.

After installation, business meeting was held. Jaycee Wives will meet each 3rd Thursday of each month. Letters from wives were read commending Rubenoff Concert and Jaycee Banquet. Report given of the Jaycee Convention held at Houston, Tex. Edyth Key, Co-Chair of the Rubenoff project, 83 hours were given in tickets and publicity. We urge all Jaycee wives to attend the next meeting.

Seventeen members and three guests met in the home of Mrs. Pat McClure on May 19. Guests were Mrs. Marvella Davis, State Vice President of Area 3 of the Texas Jaycees; Mrs. Paula Southerland, President of the Wichita Falls chapter; Mrs. Wanda Baggs, State Director

INSTALLATION DINNER IS HELD BY JAYCEE WIVES

Seventeen members and three guests met in the home of Mrs. Pat McClure on May 19. Guests were Mrs. Marvella Davis, State Vice President of Area 3 of the Texas Jaycees; Mrs. Paula Southerland, President of the Wichita Falls chapter; Mrs. Wanda Baggs, State Director

USE AMPLE LINE Keep your fishing reel to capacity with line get better casting distance fewer backlashes. At each turn of the reel a bait casting or surf cast will pick up more line, saves wear and tear on

Church of Christ, Wichita Falls chapter. Mrs. Davis installed following officers of the club: President, Mrs. Ann Conway; Treasurer, Barbara Reed.

After installation, business meeting was held. Jaycee Wives will meet each 3rd Thursday of each month. Letters from wives were read commending Rubenoff Concert and Jaycee Banquet. Report given of the Jaycee Convention held at Houston, Tex. Edyth Key, Co-Chair of the Rubenoff project, 83 hours were given in tickets and publicity. We urge all Jaycee wives to attend the next meeting.

Seventeen members and three guests met in the home of Mrs. Pat McClure on May 19. Guests were Mrs. Marvella Davis, State Vice President of Area 3 of the Texas Jaycees; Mrs. Paula Southerland, President of the Wichita Falls chapter; Mrs. Wanda Baggs, State Director

BATON TWIRLING



MISS LINDA WOOD

WILL GIVE INSTRUCTIONS IN ALL PHASES OF BATON TWIRLING

Solo Twirling — Two Baton — Fire Baton
 Flag Twirling — Duets — Strutting
 Military Marching — Junior High
 Senior High School Majorette Routine
 For Half-Time Shows

SPECIAL RATES HAVE BEEN ESTABLISHED FOR SUMMER STUDENTS

For Additional Information: Call 569-3604 in Burkburnett

WHAT IS THE FATHER'S WILL AS TO HOW WE MUST BEGIN THE CHRISTIAN LIFE?

(Continued From Last Week)

Besides hearing the Word, and believing that Jesus is the Son of God, isn't it His will for us to repent? "... but now commandeth all men everywhere to repent?" Acts 17:30. What is the true meaning of repent? It is NOT mourning, praying, nor merely quitting evil. The true meaning is seen in Matthew 21:28,29. One son of a certain man was told, "go work today in my vineyard. He answered and said, I will not; but afterward, he repented and went." What did he say at first? Later didn't he go do his father's will? What did he do between his former and latter action? Didn't he change his will? Isn't it the Father's will for us all to change our will and then do His will?

(This subject not completed, look for continuation)

HEAR HERALD OF TRUTH, KWFT, 620, SUNDAYS, 8:00 A. M.

CHURCH OF CHRIST

HEY EVERYBODY ...

THE ...

Texan Drive-In

AT 3rd AND HOLLY IS NOW

OPEN!

INSIDE SERVICE TOO

AND CALL IN SERVICE

569-8145



We've just had our best sales month in 40 years. Somebody somewhere must be buying a lot of Pontiacs.

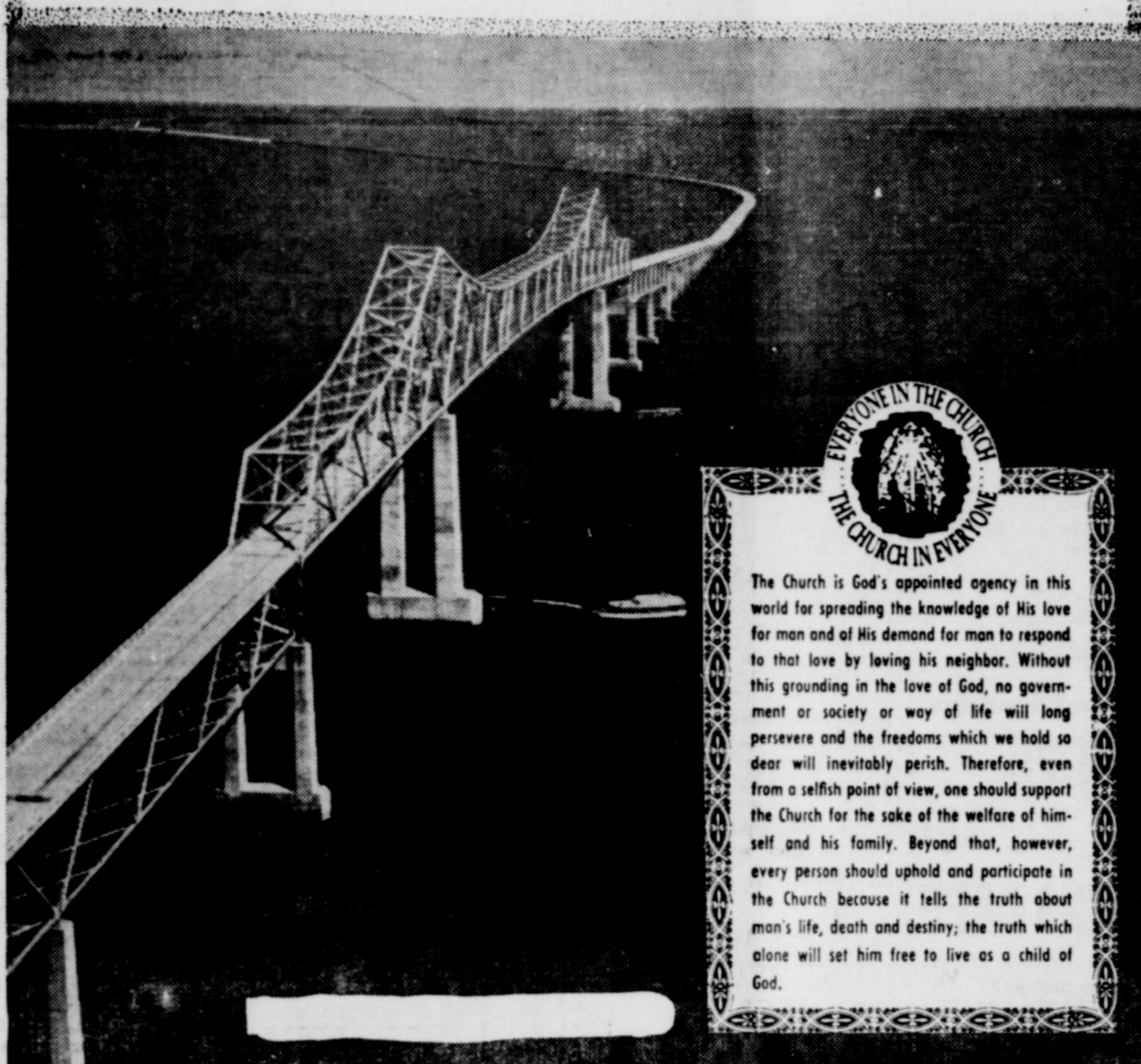
See your authorized Pontiac dealer. He's trying to make May even better than April!

MATHIS CHEVROLET CO., 300 EAST 2nd STREET

Triumph OVER THE SEAS

"What is man . . . Thou madest him to have dominion over the works of thy hands"

God has blessed man and given him the right and power to rule over his creation. As man has needs, God has given him the knowledge and ability to meet these needs. Pictured here is only one of many such triumphs. Our nation has particularly been blessed. Let us each Sunday attend worship services and give thanks to our Lord, who is so generous.



**EVERYONE IN THE CHURCH
THE CHURCH IN EVERYONE**

The Church is God's appointed agency in this world for spreading the knowledge of His love for man and of His demand for man to respond to that love by loving his neighbor. Without this grounding in the love of God, no government or society or way of life will long persevere and the freedoms which we hold so dear will inevitably perish. Therefore, even from a selfish point of view, one should support the Church for the sake of the welfare of himself and his family. Beyond that, however, every person should uphold and participate in the Church because it tells the truth about man's life, death and destiny; the truth which alone will set him free to live as a child of God.

Wichita Baptist Church

Homer V. Southerland
Pastor
Worship, 7:00 P. M.

Church of Christ

Study Sunday, 9:45 a. m.
Worship, 10:45 a. m.
People Class 5:00 p. m.
Worship, 6:00 p. m.
Study, Wednesday, 7:30

Wichita Lutheran Church

Worship, 9:15 a. m., Sunday
Bible Classes.
Worship Service at 10:30.

First Christian Church

Gardiner, Minister
Street and Avenue D
Phone 569-4062
Phone 569-1236

Wichita Baptist Church

Wichita Highway
Philip Watson, Pastor
Worship, 9:45 a. m.
Worship, 11:00 a. m.
Worship, 5:30 p. m.
Worship, 7:30 p. m.

Church of Jesus Christ of Latter Day Saints

Worship, 9:30 a. m.
Morning Worship — 10:40 a. m.
Training Union — 5:30 p. m.
Evening Worship — 6:30 p. m.
WEDNESDAY:
Teachers and Officers Meeting — 6:30 p. m.
Prayer Meeting — 7:30 p. m.

Calvary Baptist Church

College and Ave B
Ray C. Morrow, Pastor
10:00 a. m., Sunday School.
An Independent Southern Baptist Church.
We use the Bible as our only literature.

Central Baptist Church

814 Tidal St.
Kenneth D. Bradshaw, Pastor
Sunday School, 9:30 a. m.
Morning Worship, 10:45 a. m.
Training Union, 6:00 p. m.
Evening Worship, 7:00 p. m.
Wednesday Night Prayer Service, 7:30 p. m.

Church of Christ

Randlett, Oklahoma
Corky Grisham, Minister
Home-Office Phone Ly 9-2893
WORSHIP SERVICES
SUNDAY —
10:00 a. m., Bible Study.
10:45 a. m., Morning Worship.
6:00 p. m., Evening Worship.
WEDNESDAY —
7:30 p. m., Bible Study.

Church of God

J. W. Jackson, Pastor
10:00 a. m., Sunday School.
11:00 a. m., Hour of Morning Worship.
7:00 p. m., Evangelistic Services.
7:30 p. m., Wednesday, Young Peoples Endeavor.

Trinity Lutheran Church At Clara

(Missouri Synod.)
8 Miles West on Hwy. 240
Walter Streicher, Pastor
Sunday — 8:30 a. m. Sunday School and Bible Study.
9:30 a. m. Worship Service
Monday — 6:30 to 8:30 p. m. Weekday School.
Wednesday — 7:30 p. m. Walter League Meeting.

Pentecostal Church Of God

Berry Street
Rev. Gerald Bryant, Pastor
Sunday School, 9:45 a. m.
Morning Worship, 11:00 a. m.
Sunday Night Evangelist Service, 7:00 p. m.
Saturday Night Fellowship, 7:30 p. m.

First Church of Christ Scientist

2156 Avenue H
Wichita Falls, Texas
Sunday School for children under 20 years of age, 11:00 a. m. in the Church Edifice.
Nursery.
Services at 11:00 a. m.
Wednesday Evening Services, 8:00 p. m.

Randlett Baptist Church

Randlett, Oklahoma
Rev. T. E. Lee, Jr., Pastor
SUNDAY —
Sunday School, 9:45 a. m.
Morning Worship, 11:00 a. m.
Training Union, 7:00 p. m.
Evening Worship, 8:00 p. m.
Wednesday Evening Prayer Service, 7:30 p. m.

Assembly of God Church

Corner of College and Ave. B
Rev. J. W. Hocker, Pastor
Sunday School, 9:45 a. m.
Morning Worship, 11:00 a. m.
Evening Worship, 7:15 p. m.
Women's Missionary Council, Tuesday, 2:00 p. m.
Prayer Meeting, Wednesday, 7:30 p. m.

Church of the Nazarene

Main at Holly
R. B. Fitzgerald, Pastor
Sunday School, 9:45 a. m.
Morning Worship, 11:00 a. m.
Young Peoples Service, 6:15 p. m.
Junior Society, 6:15 p. m.
Evening Worship, 7:00 p. m.
Wednesday Prayer Service, 7:30 p. m.

First Methodist Church

Avenue C and 4th Street
Phone 569-3778
Theo Wright, Minister
Sunday School — 9:30 a. m.
Morning Worship Service — 10:35 a. m.
Methodist Youth Fellowship — 5:45 p. m.
Evening Worship Service — 7:00 p. m.
Bible Study — 7:30 p. m.
Wednesday
Nursery provided for all Church Services.
Kindergarten — Week Days 8:30 — 11:30 a. m.

First Baptist Church

Lamoin Champ, Pastor
Maurice Fennell,
Minister of Education—Music
Corner Avenue D and 4th
Sunday School — 9:30 a. m.
Morning Worship — 10:40 a. m.
Training Union — 5:30 p. m.
Evening Worship — 6:30 p. m.
WEDNESDAY:
Teachers and Officers Meeting — 6:30 p. m.
Prayer Meeting — 7:30 p. m.

Episcopal Church Of St. John the Divine

1000 S. Berry St.
Rev. Walter A. Gerth, Vicar
SUNDAY—
9:00 a.m.—Holy Communion
10:30 a.m.—Church School
WEDNESDAY—
7:00 p.m.—Holy Communion
8:00 p.m.—Forum
SATURDAY—
7:30 p.m.—Hymn Practice

First Baptist Church

DEVOL, OKLAHOMA
Sunday School, 9:45 a. m.
Morning Worship, 11:00 a. m.
Training Union, 7:00 p. m.
Evening Worship, 8:00 p. m.
Prayer Meeting, Wednesday, 7:30 p. m.
Intermediate and Junior G. A. each Tuesday evening at the Church, 4:00 p. m.
Sunbeams at Church Tuesday evening at 4:00 p. m.

THIS SERIES OF CHURCH ADS IS BEING SPONSORED BY THE UNDERSIGNED INDIVIDUALS AND BUSINESS INSTITUTIONS:

WOLFE FORD CO.
Complete Service and Sales
1001 Wichita Highway
Phone 569-2275

Wicket Humble Ser. Sta.
Service—Mechanic On Duty
Give S&H Green Stamps
1001 Wichita Highway
Phone 569-8129

DOMTOWN BOWL
"Magic Triangle" Pinspotter
Bar—Nursery Phone 569-8139
1001 Wichita Highway

BIB
BURKBURNETT BANK
MEMBER OF FDIC

AT Piggly Wiggly
Parker Plaza,
Burkburnett
—Greater Variety
Lowest Prices
Give S&H Green Stamps

BURKBURNETT FLORIST
Member Florist Telegraph Delivery
Mr. and Mrs. L. V. Richards
115 So. Ave. B. Phone 569-2281

CLIFF WAMPLER
For Insurance Of All Kinds
203 N. Ave. D Phone 569-3161
Burkburnett, Texas

Texas Electric Service
Joe T. Salter, Manager
"Live Better Electrically"
Phone 569-3373

A FRIEND

PAT'S ELECTRIC
LICENSED AND BONDED
Complete Electrical Service
RESIDENTIAL — COMMERCIAL
FREE ESTIMATES
104 LINDEN PHONE 569-1331
Mr. and Mrs. M. L. Patterson

BRING A FRIEND WITH YOU THIS SUNDAY

ATTEND CHURCH THIS SUNDAY

DAIRY MART
909 Wichita Hwy. Phone 569-8114
Fine Food and Friendly Service
CALL IN ORDERS
Mr. and Mrs. John Gratton

Cicero Smith Lumber Co.
Free Estimates—Call Us For Service
GENE ALLEN, Mgr.
Phone 569-3711

IDEAL DRIVE-IN CLEANERS
Joe and Jill Hensley
407 East 3rd St. Phone 569-2847

UNITED SUPER MARKET
Kenneth Palmer, Manager
Wichita Highway and Tidal Street

Manhattan DEPARTMENT STORE
We Give S&H Green Stamps

Insure Today — Be Sure Tomorrow
LIPPARD INSURANCE AGENCY
319 Avenue C Phone 569-2691

Monaghan Furn. & Apl. Co.
Furniture Color TV's G. E. Appliances Stereos
200 East 3rd St. Phone 569-8112

Lloyd Clemmer Lumber Co.
Your Business Appreciated
See Us For Prices Before You Buy
Okla. Cut-Off Phone 569-2911

BURK INSURANCE AGENCY
Insurance — Real Estate and Rentals
Phone 569-3333 Next to Legion Hall

COMPLIMENTS OF
THE FAMOUS DEPARTMENT STORE

Why Buy Less Than The Best?

THE LARGEST MULTIPLE LINE INSURANCE COMPANY IN THE WORLD. SEE YOUR AGENT. INSURE With The TRAVELERS INSURANCE CO.

CLASSIFIED RATES
5c per Word 20c per Line
50c Minimum Charge

FOR RENT
CHECK YOUR TV TUBES FREE AT BURK TV SERVICE, 123 E. Main, Phone 569-2801.

FOR RENT
Furnished or Unfurnished. 2, 3, and 4 bedroom houses. Also 1 and 2 bedroom apartments.

FOR SALE
A Good Selection Of 2 and 3 bedroom homes. FRAMES and BRICKS.

Burk Insurance
303 Ave C
Phone 569-3333
Sunday and Holidays, Call 569-3613 569-2904

FOR RENT—Newly decorated unfurnished 2 bedroom house. Garage. Close to town. 609 E. 4th St. Phone 569-2519. 12-CZ

FOR RENT—Nice 1 bedroom furnished house. 129 Ave. F. Call 569-2332. 24-CZ

FOR RENT—Small mobile home. Ideal for couple. 121 Ave. F. Phone 569-2332. 24-CZ

LA MAISON APTS. . . .
Two bedrooms, furnished. Brick. Refrigerated air. Wood paneling. Fenced. Washer, dryer. Gas, water paid. Convenient to expressway and SAFB. 1000 East Sycamore. Ph. 767-4472 or 569-1044. 26-CZ

FOR RENT—2 bedroom unfurnished house. 412 Glendale. Phone 569-3857. 31-CZ

FOR RENT—3 room modern furnished house. 505 Ave. F. Ph. 569-2668. 36-CZ

FOR RENT—5 room house. Furnished or unfurnished. 317 East 7th. Ph. 569-3727. 37-CZ

FOR RENT—3 room furnished house. 123 Ave. C. Ph. 569-2347. 38-11C

FOR RENT—3 bedroom unfurnished house. Large den. Carport. 805 East College. Phone 569-3309. 38-11C

FOR RENT—Nice and clean furnished one bedroom house. Walk-in closet. Air conditioned. Okla. cutoff. Call Braley, 569-3333 or 569-2993. 38-11P

FOR SALE
FOR SALE—1958 Ford 2-door hardtop. \$150. 569-1361. CZ

FOR SALE—14-ft. Larson fiberglass boat, 35 h.p. Johnson electric starting motor, new factory built trailer and skis. Call 569-3212. 35-CZ

FOR SALE BY OWNER—3 bedroom house. Like new. Well landscaped, fenced yard. Attached garage. Immediate possession. \$82.00 monthly. Small equity. Mimosa Heights. Burk Burnett. Ph. 569-3519 evenings and weekends. 37-4TC

WORMS
African Nightcrawlers
A NATURAL BAIT FOR FISHING
CLAYTON'S WORM FARM
614 Park Street
Burkburnett, Texas
28-CZ

HOMEMADE CAKES, PIES, AND COOKIES. Also birthday and special occasion cakes. Mrs. Fred Burns, 208 Linden. Ph. 569-3732. 51-CZ

FOR SALE TO BE MOVED—2-1 bedroom houses. Also two bedroom house. All furnished. Call 569-2320. 38-CZ

FOR SALE
FOR QUICK SALE . . . LIST YOUR PROPERTY WITH US!
NOTHING DOWN
Snow White . . .
3 bedroom home. Redecorated. Fenced. Only \$60.00 a month.

HOLLY STREET BRICK . . .
Three Large Bedrooms . . .
Wall to wall carpeting. 2 baths. Enclosed yard. Double garage. Only \$13,900.00.
TOTAL PRICE \$2,900.00 . . .
Neat Two-Bedroom Home . . .
\$35.00 monthly. Immediate possession.

ASSUME LOAN . . .
Pay Closing . . .
\$79.00 monthly. 3 spacious bedrooms. Family room kitchen. Corner lot, fenced. Immediate possession.

WALNUT STREET . . .
Like New . . .
3 bedrooms. Spacious kitchen built-in oven and cooktop. Storm cellar. Only \$75.00 monthly.

FOUR BEDROOMS . . .
Spacious Kitchen With Built-in Range and Refrigerator . . .
Low down payment. Vacant. Total price \$7,900.00.

MIMOSA STREET . . .
Three Bedrooms . . .
Wall to wall carpeting. Spacious kitchen with built-in oven and cooktop. Low down payment. Immediate possession.

NOTHING DOWN . . . NO CLOSING COSTS . . .
Three Bedroom Brick . . .
Spacious kitchen with built-in oven and cooktop. Attached garage. Vacant.

FOR RENT
TWO AND THREE BEDROOM UNFURNISHED HOUSES.
Jo Smith Realty
PHONE 569-3490
VA MANAGEMENT BROKER

FOR SALE—2 bedroom house. \$5,400.00. 135 Lilac Lane. Call Joseph A. Janke, Attorney, 569-3761 or 569-3410. 37-CZ

FOR SALE—3 bedroom frame. Central heat. Back yard fenced. 305 So. Holly. Ph. 569-3282. 38-11C

MONUMENTS
HENDERSON MONUMENT CO
A Manufacturer Since 1906
5001 Jacksboro Hwy.
Wichita Falls
Ph. 767-7750 Res. 767-1064
A monument at a price any family can afford
Rock of Ages—Georgia Marble Stone Eternal 8-CZ

FOR SALE
Residential and Commercial Properties
Cliff Wampler
Real Estate Broker
"Licensed and Bonded"
203 North Avenue D
Phone 569-3161

FOR SALE—Three bedroom frame house. Newly remodeled. No down payment to right party. Also three bedroom brick. Very reasonable price. Phone 569-2206. After 5 p. m. call 569-1396. 48-CZ

Did you know that you can buy a . . .
NEW 1966 GMC PICKUP for only \$1,769.00
LAX MOTOR COMPANY
1310 Wichita Highway
Ph. 569-3363 Burk Burnett 10-CZ

FOR SALE
FOR SALE BY OWNER—1960 Corvair. Power glide. 1 owner. 40,000 actual miles. La Wanda Henry. Ph. 569-1158 after 5:00 p.m. 37-CZ

For Sale
Two bedroom house. Fenced yard. 219 East 5th St. Also a 4-cycle lawn mower; 26" girls' bicycle 26" boys' bicycle; 1950 Dodge half-ton pickup; 3 speed, good condition; and a 1957 Plymouth. Good tires. Good condition.
219 EAST 5TH STREET
PHONE 569-1937 37-CZ

FOR SALE—Nice residential lot. 60x150 ft. Curbed and guttered. Paved street. Ph. 569-2388. 37-CZ

FREE DINNERS
You might be one of the lucky persons to receive a FREE dinner at Robbins Cafe. Every 20th dinner is FREE. This offer is good every day.
ROBBINS CAFE
Oklahoma Cutoff Hwy.
Phone 569-8125

SPECIALS
Tues. and Fridays

\$1.25
All the fish you can eat. Includes salad, french fries and rolls.

FOR SALE
Two bedroom house. Remodeled inside and out. Mahogany paneling in living room. Also a 4-cycle lawn mower; 26" girls' bicycle 26" boys' bicycle; 1950 Dodge half-ton pickup; 3 speed, good condition; and a 1957 Plymouth. Good tires. Good condition.
219 East 5th Street
PHONE 569-1937

Going Overseas . . .
GARAGE SALE
Now In Progress
Household items including refrigerator - freezer combination; divans; dinette set; bed; stereo and records and etc.
1212 CLOVER DR.
Phone 569-1847

CAMPBELL
Auto Supply
MACHINE SHOP
—Valve jobs
—Crankshaft grinding
—Block reboring
—Piston nurlized and top grooves cut
—Head surfaced
—Piston pin fitting
—Brake drums turned
—Manufax head for crack
—All types valve guide and seat work
—Motor rebuilding
Leon Husky, Machinist
223 East 3rd St.
Burkburnett, Texas
569-3391 PHO. 569-3392 16-CZ

TRANSFERRED . . .
MUST SELL THREE BEDROOM HOUSE
Two baths, living room, kitchen and den. Utility room. Covered patio. Fenced and landscaped. Double garage. Heat and air.
510 N. Hilltop Ave.
Burkburnett, Texas

SERVICES
NEED TO COPY a document, certificate, legal paper, etc? See First Savings and Loan for quick copies on new Xerox Copy Machine. 10c per copy. Phone 569-2206. 16-CZ 35-11P

WILL SPRAY—Yards, trees, shrubs, cattle. Now is the time to spray pecan trees. Gad Garland. Ph. 569-3995. 32-CZ

SERVICES—Licensed and bonded. Water wells, oil wells, cores, formation drilling. Richard Wiseman, Jacksboro Hwy., Wichita Falls. Ph. 767-3537. 31-121C

BOOMTOWN
TV and RADIO
Sales, Rentals, Repairs
We Make Service Calls
206 East 3rd St.
Phone 569-1551
If No Answer, Phone 569-3763 or 569-3643 33-4TC

FOR SALE
LIST YOUR PROPERTY NOW FOR QUICK SALE!
NO DOWN PAYMENT ON REPOSSESSED HOMES ALL REDECORATED
SPECIAL . . .
Ten acres. 3 bedroom house 2 water wells. Cellar. 4 1/2 acres cultivation. School bus Only \$12,000.00.
ASSUME LOAN . . .
Three bedroom brick. Large built-in kitchen and den combination. Dishwasher, disposal. 1 1/2 baths. Better grade carpet. Lovely fenced yard. Water well. 2 car garage.

ASSUME LOAN . . .
Three bedroom brick. 1 1/2 baths. Landscaped corner lot. Near school. \$81.00 per month.
ASSUME LOAN . . .
Clean 3 bedroom frame. Built-in kitchen. Utility. Tile bath. Large closets. Fenced yard. \$81.00 per month.

ONE ACRE . . .
Four bedroom brick. Den. Cellar. 2 car garage. Red wood fence.

MIMOSA HEIGHTS . . .
Three bedroom brick. Large den. Built-ins. Carpet. Landscaped, fenced yard.

ASSUME LOAN . . .
Three bedroom brick. Kitchen-den area. Built-ins. Carpet. 1 1/2 baths. 2 car garage. Fenced.

HAVE SEVERAL HOMES PRICED FROM \$2,900 - \$19,000.

Loise Bean Realty
569-3986 PHONE 569-2321

FOR SALE—Kenmore automatic washer; power lawn mower and lawn furniture. Ph. 569-3051. 38-11C

TUNE-UP AND REPAIRS on all makes of garden tractors and lawn mowers. Cranks, shafts, straightened. Houser's Mower Shop. 507 East 4th St. 36-CZ

Aviation Meeting
Friday, May 27, 7:30 P. M.
Private license for less than \$300.00.
Commercial license for less than \$1,200.00.
Includes Complete Ground School
Payable \$25.00 Per Mo.
CITY HALL
Temple, Oklahoma
Eddie Laxson

LOST bright carpet colors . . . restore them with Blue Lustr. Rent electric shampooer \$1. Wackers, 416 So. Ave. D. 38-11C

WANTED
—Good Used Furniture
—Used Air Conditioners
—Used Gas Ranges
Will Buy or Take On Trade
Bill's TV & Furn.
Phone 569-3651 27-CZ

WANTED—Reliable lady to baby sit in my home 5 days a week. Ph. 569-1279 after 5:30 p.m. 38-11C

WANTED—Reliable girl desires job caring for elderly woman or will do baby sitting. Ph. 569-1292. 38-11C

HELP WANTED
HELP WANTED—Inside help and car hops for Dairy Mart in Burkburnett. Apply in person. 909 Sheppard Rd. 35-CZ

HELP WANTED—Waitress and dishwasher. Apply in person. Robbins Cafe, Oklahoma cutoff hwy. 38-11C

SERVICES

SERVICES—Mowing tractor and rotary mower. Vacant lots, around vacant houses. Average size \$3.50. Roy Brown, Ph. 569-3523. 35-CZ

BLOCK & BRICK MASON.
Storm cellars, cisterns, all types concrete work. W. M. Bohannon, Ph. 569-1937. 31-CZ

SERVICES—We repair washing machines, stoves, blenders, Maytags parts and service. Mustard & Perker. Ph. 569-2801 or 569-3441. 35-CZ

SERVICES—Weed and grass mowing on lots and small patches. Gardens plowed. Ph. 569-2819. Pete Boswell. 35-4TP

SERVICES—Tractor mowing, plowing and yard leveling. Ph. 569-1310. 38-11P

DUMP TRUCK HAULING
Top Soil, Fill Sand, Concrete and Driveway Material
LEO BRYANT
PHONE 569-3704 Or 322-9132
609 Tidel, Burkburnett 51-CZ

FURNITURE UPHOLSTERING
You can trust your fine furniture and antiques to us for the ultimate in upholstery.
FINEST WORKMANSHIP
REASONABLE PRICES
JAMES GIBBONS
UPHOLSTERY
GRANDFIELD, OKLA.
Ph. 479-5277 for
Free Pickup and Delivery 47-CZ

THE PROGRESSIVE FARMER
546 Rio Grande Bldg.
Dallas, Texas, 75202
37-31C

WANTED
Piano Recital Held By Students Of Mrs. Gene C. Allen
Mrs. Gene C. Allen presented her pupils in a studio recital May 14. Pupils participating were: Carol Tullis, Andrea Orman, Valerie Schnitker, Sharon Allison, John Ludeke, Teresa Allen, Jimmy Adams, Tracey Marten, Janalyn Fennell, Barbara Rucker, La Velda Norris, Susie Dennis, Larry Holtzen, Danny Allen, David Orman, Pat Wickersham, Angela Davis, Vicki Littlejohn, Connie South-erland, Kurt Marten, Karen Landrum, Marilyn Schnitker, Sandra Allen, Celia Wickersham, Debbie Holtzen, Dianna Swan, Ulana Ludeke, Pam Swan, Laura Allison, Lia Hodgen, Joyce Gilmore and Kathy Unger. Pupils unable to attend were: David Schroeder, Clydette Cox and Sherry Dempsey. Each pupil was awarded a statuette of a composer after the program. Refreshments were also served.

HELP WANTED
Vacancies
We have vacancies for two men, preferably between the ages of 35 to 60, to contact farm families in Southern Oklahoma. Must furnish good references and have a serviceable car. If selected you will be given personal training by a trainer now in your area. This is a full time permanent position and you should earn between \$100 and \$150 per week. For interview write by Air Mail to Frank Huff, Manager Reader Service Division.

HELP WANTED
CONKLING REALTY CO.
410 Ave C
Phone 569-1021 or 569-3606

HELP WANTED
We have vacancies for two men, preferably between the ages of 35 to 60, to contact farm families in Southern Oklahoma. Must furnish good references and have a serviceable car. If selected you will be given personal training by a trainer now in your area. This is a full time permanent position and you should earn between \$100 and \$150 per week. For interview write by Air Mail to Frank Huff, Manager Reader Service Division.

HELP WANTED
Wanted
—Good Used Furniture
—Used Air Conditioners
—Used Gas Ranges
Will Buy or Take On Trade
Bill's TV & Furn.
Phone 569-3651 27-CZ

HELP WANTED
HELP WANTED—Inside help and car hops for Dairy Mart in Burkburnett. Apply in person. 909 Sheppard Rd. 35-CZ

HELP WANTED
HELP WANTED—Waitress and dishwasher. Apply in person. Robbins Cafe, Oklahoma cutoff hwy. 38-11C

HELP WANTED
HELP WANTED—Reliable lady to baby sit in my home 5 days a week. Ph. 569-1279 after 5:30 p.m. 38-11C

HELP WANTED
HELP WANTED—Reliable girl desires job caring for elderly woman or will do baby sitting. Ph. 569-1292. 38-11C

HELP WANTED
HELP WANTED—Inside help and car hops for Dairy Mart in Burkburnett. Apply in person. 909 Sheppard Rd. 35-CZ

HELP WANTED
HELP WANTED—Waitress and dishwasher. Apply in person. Robbins Cafe, Oklahoma cutoff hwy. 38-11C

HELP WANTED
HELP WANTED—Reliable lady to baby sit in my home 5 days a week. Ph. 569-1279 after 5:30 p.m. 38-11C

HELP WANTED
HELP WANTED—Reliable girl desires job caring for elderly woman or will do baby sitting. Ph. 569-1292. 38-11C

HELP WANTED
HELP WANTED—Inside help and car hops for Dairy Mart in Burkburnett. Apply in person. 909 Sheppard Rd. 35-CZ

For Sale

115+ ACRE in COLEMAN COUNTY, TEXAS . . .
\$100.00 per acre. 1/2 minerals. Farm rented now for \$460.00 per year. 4 1/2 miles to town.

THREE BEDROOM BRICK . . .
Built-in oven. Panel heat. Garage. No down payment. No closing cost.

SIX ROOM BRICK . . .
Large den. 1 1/2 baths. Built-in oven. Air conditioned. New cellar. Well. 2 car carport. \$15,500.00.

153x180 FT. CORNER LOT ON EAST 3RD STREET . . . \$12,000.00.

26+ ACRES NEAR DENISON, TEXAS . . .
Large pecan trees. Old 3 bedroom modern house. Barn. Good well. On Red River. \$185.00 per acre.

CONKLING REALTY CO.
410 Ave C
Phone 569-1021 or 569-3606

HELP WANTED
Vacancies
We have vacancies for two men, preferably between the ages of 35 to 60, to contact farm families in Southern Oklahoma. Must furnish good references and have a serviceable car. If selected you will be given personal training by a trainer now in your area. This is a full time permanent position and you should earn between \$100 and \$150 per week. For interview write by Air Mail to Frank Huff, Manager Reader Service Division.

HELP WANTED
Wanted
—Good Used Furniture
—Used Air Conditioners
—Used Gas Ranges
Will Buy or Take On Trade
Bill's TV & Furn.
Phone 569-3651 27-CZ

HELP WANTED
HELP WANTED—Inside help and car hops for Dairy Mart in Burkburnett. Apply in person. 909 Sheppard Rd. 35-CZ

HELP WANTED
HELP WANTED—Waitress and dishwasher. Apply in person. Robbins Cafe, Oklahoma cutoff hwy. 38-11C

HELP WANTED
HELP WANTED—Reliable lady to baby sit in my home 5 days a week. Ph. 569-1279 after 5:30 p.m. 38-11C

HELP WANTED
HELP WANTED—Reliable girl desires job caring for elderly woman or will do baby sitting. Ph. 569-1292. 38-11C

HELP WANTED
HELP WANTED—Inside help and car hops for Dairy Mart in Burkburnett. Apply in person. 909 Sheppard Rd. 35-CZ

HELP WANTED
HELP WANTED—Waitress and dishwasher. Apply in person. Robbins Cafe, Oklahoma cutoff hwy. 38-11C

HELP WANTED
HELP WANTED—Reliable lady to baby sit in my home 5 days a week. Ph. 569-1279 after 5:30 p.m. 38-11C

HELP WANTED
HELP WANTED—Reliable girl desires job caring for elderly woman or will do baby sitting. Ph. 569-1292. 38-11C

HELP WANTED
HELP WANTED—Inside help and car hops for Dairy Mart in Burkburnett. Apply in person. 909 Sheppard Rd. 35-CZ

HELP WANTED
HELP WANTED—Waitress and dishwasher. Apply in person. Robbins Cafe, Oklahoma cutoff hwy. 38-11C

HELP WANTED
HELP WANTED—Reliable lady to baby sit in my home 5 days a week. Ph. 569-1279 after 5:30 p.m. 38-11C

HELP WANTED
HELP WANTED—Reliable girl desires job caring for elderly woman or will do baby sitting. Ph. 569-1292. 38-11C

Winston Brooks
Services Me

Funeral for . . .

Survivors include . . .

Local Boys . . .

Dance Recit

Explorer . . .

Post Estab

A number of . . .

any 14 to 20 . . .

and at the next . . .

parent are encourag . . .

Burkburnett has . . .

group of this type . . .

Scouts are reachi . . .

urgently need one . . .

Crazy Hat Show . . .

Held Recently . . .

Sheppard . . .

SHEPPARD . . .

hat show was held . . .

Officers Wives Club . . .

Thursday, May 19 . . .

Open Room . . .

Spring was the . . .

artificial flowers . . .

A special guest . . .

ward H. Negro, wife . . .

Gen. Edward H. . .

mander of Shepp . . .

Base. Other guests . . .

Flora Gump, and . . .

Westergren.

Crazy hat winners . . .

Ivan Pierce, most . . .

Franklin Britt, . . .

Mrs. Don Lowery . . .

Mrs. Ronald Gar . . .

reading entitled . . .

Soapsudding Good . . .

The next meeting . . .

business meeting . . .

June 2 at 1 p.m. . .

Room. A nursery . . .

able at 12.30 . . .

Mrs. William H . . .

door prize.

SPELL . . .

Correct Anso . . .

ammo . . .

Red Cross . . .

Burkburnett . . .

Widow . . .

Room . . .

Painted above . . .

ments to bl . . .

Gen Givens, . . .

Robert Norris . . .

all represent . . .

300 collectio . . .

30 P. M. W . . .