

The Burkburnett Star

HARRY C. DODSON, Owner and Editor



Printed weekly at Burkburnett, Wichita County, Texas. Entered as second class matter at the post office at Burkburnett, Texas, August 19, 1907, under the Act of Congress of March 3, 1879.

Mrs. Lola Mae Bailey, Bookkeeper-Society Editor
Forrest Green, Linotype-Pressman
J. W. Brookman, Commercial Printing

Notice to the Public: Any erroneous reflection upon the character, standing or reputation of any person, firm or corporation, which may appear in The Star, will be gladly corrected as soon as it is brought to the attention of the publisher.

Subscription Price \$2.00 Per Year

PUSHING US AROUND

What is an address?

That is a question that Congress may soon have to decide if Postmaster Joan A. Gronouski continues his hell-for-leather campaign to make zip code numbers mandatory on the mail he is willing to handle for us.

The Postmaster announced to business mail users in a recent speech that they would have to zip code and pre-sort bulk mail by January 1, 1967 and would be required to mark sacked mail for zip code sectional centers as of July 1, this year.

Next, of course, come the first-class mailers who will be discovering (if the department's plans go through) that a five-cent stamp will no longer be good enough without the addition of a zip code number.

How do you find these zip code numbers? The P. O. has magnanimously offered to supply them free for addresses in multi-zoned cities during 1965 — if mailers will submit their lists typed individually on 3x5 cards. After that, this service will cost \$1.50 per thousand. And if you want zip code numbers outside of these big cities, go find 'em yourself.

It would seem from what lies ahead for those who would like to use the mails, that our telephone systems are going to have to add another "service number." It just won't be enough to be able to dial "Operator" and long distance, and information and weather and time. We gotta have another — such as PO4-6836 (POINTEM, P.O. Information-Needed-to-Expedite-Mail.) Just dial the number, ask for the zip code number of anybody anywhere, and the voice-with-the-smile at the Post Office will give it to you instantly. (No doubt.)

If an address is no longer an address to the P. O. unless it bears a zip number, it begins to look as if we might have stayed in the trees and never learned to write. But, dependent as we are on the written word at this late date, perhaps Congress had better decide just what the responsibility of the Post Office Department is in moving the mails.

GRASS ROOTS OPINION

RIVERTON, WYO., RANGER: "Better get it while the getting's good" is a philosophy growing in favor as the different federal assistance programs come forward. More and more people who used to stand flatly against the principle of paternal government now are saying that it's foolish not to apply for and get what's offered, because if they don't someone else will."

MAYSVILLE, CALIF., APPEAL - DEMOCRAT: "When the richest nation in the world must seriously consider penalizing any citizen who leaves the country as a tourist the sum of \$100, then things are in pretty bad shape. The \$100 head tax is designed to discourage Americans from going overseas and to reduce their spending there if they do go. The Russians do the same thing, of course. They always have. But, there remains, just in case anybody thinks it's still worth mentioning, that little deal called freedom, which the U. S. government is supposed to respect. To restrict the free movement of citizens is not to promote freedom."

ANDALUSIA, ALA., STAR-NEWS: "Just take a gander at the latest in Federal boon-doggery. Uncle Sam is offering college students substantial assistance to steer the brilliant minds into medical schools. And how is Congress going to reward these youngsters who choose the paths that lead to M. D. degrees? Why naturally, by adopting Medicare legislation that will socialize the medical profession, undermining any ambitions that might lead to a profitable profession for the scholarship winners."

Ralph T. Moore writes in the Oregon Voter: "We have come to have far too great a reliance on the standard and the conventional as a virtual guarantee of success. That is, we spend so much per pupil, we provide certain facilities in the schoolroom, we adjust the teacher's work load according to the prescribed and then we blithely turn our back on the whole thing, blissfully trustful that we have done our duty. But the burden of right attitude inculcation resides firmly in the home rather than in the schoolroom. If we don't, as parents, have at it ourselves, the odds are that the job won't be done at all. And it is this neglect that is now at the basis of most of our national troubles."

If statistics are any indication, today's man in uniform has found a good friend in the American Red Cross. ARC officials report that one out of every six servicemen last year received help from Red Cross workers at more than 500 offices located at military installations and in military medical facilities here and overseas. In some overseas areas, the average was substantially higher. In Viet Nam, for instance, it was closer to one out of three.

THE AMERICAN WAY



Roger W. Babson Weekly Report



ROGER W. BABSON

POLLUTION OF OUR LAKES AND STREAMS

Our waterways are being fouled and poisoned at an almost incredible rate. The problem of how to fight this pollution of our most valuable resources is becoming complicated more critically every day by the population explosion. By the time pending legislation at the federal level becomes law, it will already be obsolete if we hope to restore our lakes, ponds, rivers and brooks to their original beautiful and sparkling condition.

How Bad The Situation Is

Men of wisdom and foresight have long been battling against pollution, but political and public apathy have slowed down the move to purify our natural water system. Chief spoilers of our lakes and streams are community sewage and industrial waste. While considerable progress has been made in the establishment of sewage treatment plants in our major cities, the population is growing so swiftly that most of these systems may be entirely inadequate within a matter of a few years.

If the building of sewage treatment facilities should continue at its current rate, it is estimated that by 1970 the equivalent of raw municipal waste from 85 million people would still have to be disposed of in our waterways. And by 1980, given the same construction rate for facilities, the equivalent of untreated community waste from 114 million persons would be dumped into our rivers. Unfortunately, sanitary municipal sewage is only a part of the pollution problem. Vast spoils of our waterways results from industrial wastes and chemicals, plus the discharge of overflow sewer systems.

Dire Forecasts Made

Stream contamination from these industrial organic wastes has been increasing at a much faster pace than that stemming from municipal sources. At the turn of the century, water pollution from factories was equal to the raw waste of some 15 million people. By 1960, it had risen to the equivalent of the raw waste of 160 million people. The U. S. Public Health Service has completed studies which indicate that within five years industrial pollution will be equal to the untreated waste of the entire population of the country, or in the vicinity of 210 million persons.

Now A Federal Fight

Governor Rockefeller of New York has proposed an outlay of \$1.7 billion to purify the misused lakes and rivers of his state. Anti-pollution moves have been made in many other states

as well. Greatest pressure from now on, however, is likely to come from the federal government. Recently, Health Secretary Celebrezze has been conferring with anti-pollution forces in an effort to intensify campaigns to clean up Lake Michigan and other waterways serving Chicago and its environs. Both local communities and industries are being urged to purify their waste discharge themselves.

If the pleas of the federal authorities and the anti-pollution campaigners are ignored, the government will order of-fencing communities and or factories—through the courts—to arrange for proper treatment of waste before it is deposited in waterways. President Johnson's insistence on cleaning up our lakes and streams we hope will have an immediate effect upon

cities and industrial establishments that have been dragging their feet on this important matter. Plans and programs that have been discussed and temporarily pigeon-holed will be brought forth and put into operation.

Waterways

Everyone's Birthright

Every man, woman, and child in our country has a stake in our waterways. Streams and ponds must be made safe, not left as open sewers endangering health and even life. The

recreational value of ways also is immense can be little enjoyment are dead or dying, fowl driven away by desecration. Today must be met head-on may be too late.

OWENS-BRUMLEY FUNERAL HOME

AMBULANCE SERVICE

PHONE 569-3361

HAROLD VAN LOH, PRESIDENT



Complete Paint and Body Shop

MANAGED BY MR. EARL WEST

34 YEARS EXPERIENCE

FREE ESTIMATES — ALL WORK GUARANTEED

WRECKER SERVICE

Phone Day 569-3381

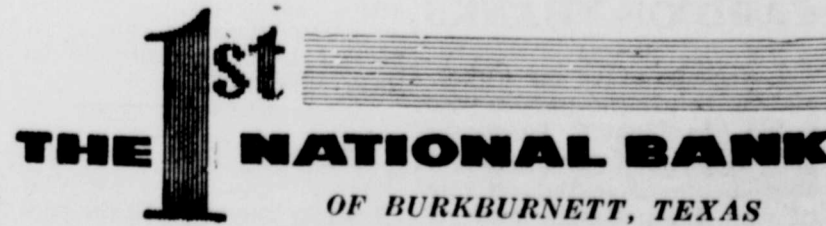
Phone 569-37

Busy-ness Is Progress



Busy Girl Scouts At Work

4 Per Cent PER ANNUM Paid On Savings



4 Per Cent PER ANNUM Paid On Savings

Member Federal Deposit Insurance Corporation

"SERVING BURKBURNETT SINCE 1907"

Insurance is the same 'til you have a claim

Burk Insurance Agency
 HOWARD CLEMENT
 New Location — Next To Legion Hall



Sweaters are important parts of a wardrobe and now is a good time to buy. They can be high fashion items as well as practical, says Thelma Wirges, county home demonstration agent.

Selection of a sweater usually depends on several considerations: Individual preference, activity of the person, clothing budget, and the method of care the garment will require.

Sweaters are cut and sewn as in regular fabrics, or are shaped by full fashioning where the designs are knitted to a particular shape. The full fashion sweaters are more expensive.

Many of today's sweaters have decorative trim. Take time to evaluate the extra cost of decorative trim in relation to

the service the sweater will get and the maintenance cost. The trim should require the same care as the rest of the sweater Miss Wirges says.

The finish around the sweater neck is important. Necks can be finished by single or double thickness of ribbing. For soft yarns as cashmere or nylon, a double thickness of ribbing keeps the shape more adequately.

Buttonholes should be of fine stitches with well tacked ends.

Always read labels carefully for care instructions. Jot down a description of the sweater on the label and file it for future references. If sweaters are inadequately labeled, do not purchase, Miss Wirges recommends.

Careful laundering of sweaters for care instructions is essential. Wool sweaters should be washed in cool water with a mild, neutral soap, then blotted and dried flat. Some of the wool fibers are treated chemically for stability and are machine washable. Many of the synthetics may be machine washed and dried at low temperatures.

Since homemakers will soon store winter bedding, they will be interested in the best method. Research conducted recently on machine washable and machine dryable 100 percent wool blankets has implications for consumers, says Thelma Wirges.

Blankets used in the test bore the label, "dynamize," one of the recent treatments or finishes developed to make wool washable.

The Textile Research Laboratory of Ohio University's School of Home Economics did the research study, using four 100 percent wool blankets of two different brands purchased at different stores. All blankets were labeled "dynamize — machine washable and machine dryable." Five samples, each approximately 22 x 44 inches with binding on one end, were cut from each sample blanket. An 18 inch square was marked in the center of four of the samples for shrinkable measurements. The fifth sample was

MOUTH WATERING



Fruits of Triumph cucumber are shown at the upper left. Below is a head of Savoy King cabbage. On the right is that luscious cantaloupe variety, Samson; and below it summer squash, Chefini.

It's enough to make your mouth water just to look at the pictures of these luscious vegetables (or do you contend that cantaloupe is a fruit?) Did you know that you can grow them in your garden from seeds? Just order early and plant early so those taste buds will be satisfied.

For these vegetables are the 1965 All-American Selections winners — a cucumber named Triumph, a cabbage named Savoy King, a squash called Chefini and that cantaloupe which is designated as Samson. Every one of them is a first generation hybrid and therefore possesses that important quality — hybrid vigor.

Triumph should be a boon to gardeners who have been troubled with cucumber diseases since it is resistant to cucumber mosaic and tolerant of downy mildew. It also is especially early in fruiting and has uniform 7 to 8 inch long fruits all season.

Savoy King is one of the family of beautiful curled and crimped leaved cabbages, a joy to grow and pick for the table because it is so lovely to look at.

This variety won a silver medal for its vigorous growth, high yield and the uniformity of its semi-flat heads. Gardeners in the north can start seeds early in spring for a summer crop or in July for a fall crop. Southern gardeners can sow them the end

Chefini is a summer squash of the dark green Italian bush type. Its fruits look like Zucchini, slender and cylindrical, but they mature about a week earlier than those of Zucchini and keep on coming.

One feature of this new squash is that it may be eaten raw as an appetizer or in salads if picked while very young, for its skin is tender at that time. Don't overplant this squash — a few plants are all you'll need unless you have an especially large family.

Samson cantaloupe is another silver medal winner, resistant to two melon diseases — powdery mildew and fusarium wilt. Deep orange flesh in a slightly oval, 6-inch-across melon and above average sweetness (but not too sweet) should endear it to every melon lover. This variety produces an unusually high number of fruits so, once again, don't overplant.

kept as the original for comparison with the processed samples

One sample from each blanket was processed by each of the following methods: Automatic washer, automatic dryer; automatic washer, hang drying; professional drycleaning and tumbler drying; and coin-operated drycleaning with the process including tumble drying. Measurements and observations were made to determine shrinkage, change of color in blanket and binding, change of texture and softness of blanket, and change in appearance of bindings.

After 10 processings, these results were noted:

Although a slight shrinkage did occur in the four blankets representing the two different brands, it appeared to be the relaxation type and not felting of wool, and the washed blanket rated the highest in softness. The brand that shrank the most with washing shrank the least with drycleaning.

The drycleaned blankets became somewhat stiff and "boardy" with a harsh feel. Colors selected for "dynamize" wool blankets had good colorfastness.

Indications were that laundering is better for the blankets than drycleaning.

The sale of homemade articles by the Wichita County Home Demonstration Council will be Wednesday, April 28th in the 4-H Club Barn in Wichita Falls starting at 9:00 a. m.

More children — over 5,000 — will die from cancer in 1965 than from any other disease. Prompt diagnosis and treatment could have saved many of these children. The American Cancer Society urges all parents to know the symptoms of childhood cancer and to consult a doctor at the first sign of such a symptom. April is Crusade against Cancer month. Support research, education and service programs of the American Cancer Society.

It took Gutenberg 5 years to complete the first Bible printed from movable type.

Banging Up Family Car!!
 On Out and Call
 569-1821
 Nylon Siber
 and Body Shop
 108 E. 3rd

SPRING SALE SPECIAL!

CALORIC INCOMPARABLE 75 GAS RANGE

Here is the only eye-level 30-inch range with two-oven "full capacity" cooking! Giant lower oven holds as many as 25 hamburgers! Features include super-fast Infra-Red broiling (can cut broiling time by 30%!) Cook 'n' Keep automatic gas oven (cooks perfectly then turns itself down to hold foods serving-hot for hours without over-cooking! Burner-with-a-Brain (makes every pan automatic. Foods won't burn!) Regularly priced at \$596.00. Now with \$96.05 trade-in, only

\$499⁹⁵ PLUS TAX

LONE STAR GAS COMPANY

Why today's brides choose modern gas cooking...

Mrs. James W. Hammond, Jr. cooks on a new gas range

Only gas offers new infra-red broiling...super fast, super delicious...can cut broiling time 30% or more

The newest gas ranges broil with infra-red rays for speedy, succulent cooking. The intense rays broil so fast that meat hasn't time to dry out — stays tender and juicy. You save 30% or more in cooking time. And when you're through, you'll have less to clean up since spattering is reduced with infra-red gas broiling. Easy to see why the bridal set is going for modern gas. How about you? Who says you have to be a bride to enjoy quicker, tastier broiling?

GAS RANGE DEALERS' SPRING SALE

LONE STAR GAS

Cafeteria Menu

High School Hardin Grade Sheppard-Burk

APRIL 12-15

MONDAY
 Hamburger and Spaghetti
 Green Beans—Carrot Sticks
 Cornbread—Butter—Milk
 Cookies and Fruit

TUESDAY
 Roast Beef—Brown Gravy
 Creamed Potatoes
 Seasoned Spinach
 Hot Rolls—Butter—Milk
 Plumped Prunes

WEDNESDAY
 Pizza Pie
 French Fries—Buttered Peas
 Bread—grated Cheese
 Milk
 Jello and Cookies

THURSDAY
 Hamburgers
 Sliced Onions—Mustard
 Pickles—Potato Chips
 Baked Pork and Beans
 Sliced Tomatoes
 Buns—Cheese Sticks—Milk
 Cherry Cobbler

FRIDAY
 HAPPY EASTER!

SMALL GAME FREEZER
 Empty cardboard milk cartons make fine freezer units for any small game that will fit in them. Just fill carton with game then fill with water and freeze.

Call the
 Lumber Number
569-3354
 Lumber Hardware
 Plumbing Supplies
C. D. Shamburger
 LUMBER COMPANY, INC.

PALACE Theatre
 BURKBURNETT, TEX.

NEW STARTING TIME
 Matinees Sat. and Sun.
 Window Opens 2:00
 Show Starts 2:15

Evening Shows:
 Boxoffice Opens 7:15
 Show Starts 7:30

25¢ — 50¢
SUNDAY-MONDAY
 APRIL 4-5
GOODBYE CHARLIE
 COLOR
 TONY CURTIS
 PAT BOONE
 — ALSO —
LATE NEWS
 SPONSORED BY
 First Savings and Loan
 Assoc. of Burkburnett

25¢ — 50¢
 Wed.-Thurs.-Fri.-Sat.
 April 7-8-9 and 10
DOUBLE FEATURE
 DEAN CONNERY
GOLDFINGER
 TECHNICOLOR
 PLUS
TARZAN THE MAGNIFICANT
 Breath-Taking Color

25¢ — 50¢
Sunday-Monday
 April 11-12
TENNESSEE JAMBOREE
 Starring WEBB PRICE
 COLOR
 — ALSO —
LATE NEWS
 SPONSORED BY
 First Savings and Loan
 Assn. of Burkburnett

Wichita County, Texas

straight talk

By TOM ANDERSON

Editor
and Ranch Magazine
Nashville, Tenn



STRAIGHT FROM SELMA

Montgomery, Alabama — Civil Riots I have witnessed here and in Selma are very reminiscent of the ones I saw carrying Kennedy banners at the Democrat convention. I saw a few bona fide ministers. But I saw not all who posed as ministers. Ministers don't become ministers but Communists do. Ministers get drunk neither do nuns. Ministers were taking it from the bottle here. The Sheriff in Selma told me four "nuns" were on the Selma Courthouse

anybody with walking sense should know, our "newsmagazines," "news" and networks have dis- and lied about what is here. This Communist-

promoted prelude to civil war has virtually no connection with right to vote. In Selma for several months the Sheriff's office has been urging qualified negroes to register to vote. When asked why more negroes didn't register, the negroes replied that they were waiting for Dr. Martin Luther King to lead them to the polls. Any negro who can read and write can register to vote.

Reports

Reliable sources here have reported to me that an ambulance carrying a woman to a hospital was stopped and blocked by marchers. Police asked them to disperse. They refused. Mounted police moved in to disperse them and were attacked with switchblade knives. Eight horses were cut badly. Mac Butler, Sheriff of Mont-

Teen Party Idea



Here's a hot party idea for a "real cool" hostess. Forget the last minute flurry of cooking hamburgers for the crowd. Let the guests cook their own burgers (kabob-style) on a table-top hibachi. Then, give the party a quick, refreshing lift with Banana Split 7-Up "Floats."

Burger Kabobs

Combine 1 lb. ground beef with 1 teaspoon garlic-flavored salad dressing mix and 1/2 teaspoon salt. Form into 18 small meatballs. Alternate on 6-inch metal skewers with onion wedges, green pepper squares and strips of partially-cooked bacon. Cook slowly over glowing coals. Serve in "hollowed out" frankfurter buns. Makes 6 servings.

Banana Split "Floats"

In each tall glass place: 1 tablespoon mashed banana, 1 small scoop each vanilla and strawberry ice cream and 1 tablespoon sweetened, sliced strawberries. Tilt glass and slowly pour in 1 bottle (7 ozs.) chilled, sparkling 7-Up.

gomery County, was hit on the back of the neck by a brick and cut on the leg. Demonstrators were finally dispersed. In the meantime the woman in the ambulance died from a heart attack.

A priest from Hamilton, Ontario, went to the Sheriff and apologized for having come down here. It wasn't what he thought it was. But even if it was what he thought it was, what business was of it this foreigner's?

There was much sex activity in evidence, some involving

blacks and whites under blankets on the streets, in church pews and in open fields.

Montgomery airport was loaded with chartered planes, such as one used by Americans for Democratic Action, for which they paid a round trip fare of \$5,800.

Alabama's great governor, George Wallace, received a letter from the north saying: "You've got our Episcopal priest down there. How about keeping him?"

Those Present

C. C. Hunter, negro Metho-

dist preacher in Selma, told me he has never heard a white person in Selma say that a negro shouldn't vote. Hunter, an original backer of Martin Luther King, has lost faith in King 238 reportedly have been in Selma. Strange how little truth got out — although local negroes were threatened and intimidated in order to force them to march, the Sheriff's office in Selma reports that they could identify only seven local negroes in the March. "Nazi" Lincoln Rockwell was here. He seems to follow King everywhere. If King can't cause trouble, Rockwell can — the movie stars fell on Alabama are the same immoral gang of perverts, prostitutes and com- rants who have promoted count- less other Communist projects.

President Johnson came on TV in a white fury because a woman who should have been in Detroit taking care of her three children was brutally murdered while violating the laws of the formerly sovereign state of Alabama. The President was strangely silent when a Mississippi police officer, trying to enforce the law in Missis- sippi, was murdered by a negro.

Mrs. J. S. Brown New President Of Hardin PTA for Next Year

The Hardin PTA elected Mrs. J. S. Brown to head the slate of officers for the coming year. Mrs. Brown succeeds Mrs. Norman Roberts as president of the Hardin PTA.

The other officers elected to work with Mrs. Brown are, Mrs. Don Seyfang, vice president; Mrs. Pat McClure, Secretary; Mrs. Bobby Wilkerson, Treasurer.

President, Mrs. Norman Roberts, announced plans for by-county Council April 9th at Kamay, Texas. Also a district Spring Conference, April 22nd and 23rd at Bowie, Texas.

The meeting was opened by

A Picture Story . . .

GARDEN BELLS



Hanging bells here and there in the garden to ring when breezes blow is a popular pastime. Living bells may be in the garden, too. Here, on the left, are California Blue Bells, with gentian blue flowers. On the right are the green bells which earn this plant the name Bells of Ireland.



The well known, widely grown Canterbury bells above left, come with blue, pink or white flowers; bloom the year after planting. Cathedral Bells, on the right, are sturdy vines with blue or white flowers. All are easily grown from seeds.

the flag ceremony led by Girl Scout Troop, 50.

The fifth grade students under the direction of Miss Ann Grady gave the devotional.

The program was presented by a group of teachers under the direction of Mrs. James Pearson.

Miss Neida Lemons and Miss Ann Grady won the attendance award.

Everyone is invited to attend a PTA meeting April 20th at 7:30 p. m. in the Hardin Auditorium.

Fifty years ago few cancer patients had any hope of cure. Today one cancer patient in three is being saved. Support the Society's April Crusade against Cancer. To help cure more, give more.

Put telephone wires underground and you've put them in a safe place. Safe from wind, rain, hot weather, cold weather, stormy weather. All around safer from the kinds of trouble which can affect your phone service.

That's why this year Southwestern Bell is spending \$10 million burying hundreds of additional miles of telephone cable underground. In effect, buying life insurance for your telephone service.

There's another benefit. New jobs will be created. Some in the telephone business and an estimated 500 new jobs among the hundreds of firms which sell supplies, services and materials to the telephone company.

This is a 1965 communications bonus. Part of a massive construction effort to make the world's best telephone service even better.



Southwestern Bell

1965: Your Bonus Year for Telephone Service



Buried cable: \$10,000,000 in new life insurance for your telephone this year

"WATCH FOR THE DEAL"

WITH THE

BIG WHEEL!

(ANOTHER ABE FIRST)

THE *Famous* DEPARTMENT STORE



Her '65 Ford rides quieter.... than her Rolls-Royce

Tests proved it*. Maybe you find this hard to believe. If so, your Ford Dealer has a suggestion: Look Ford over. Try it. Compare it. You won't find Ford offering Rolls-Royce's rare luxuries. But you will find it has an uncommonly quiet ride. And quiet means quality. Test-drive Ford, you'll discover it offers features, conveniences, models unmatched in the popular-priced field . . .

New Quality ■ 100% new body—strongest ever on a Ford. Frame tunes out irritating road vibration ■ New

suspension puts a big ultrasoft coil spring at each wheel

New Luxury LTD's ■ Decorator interiors, thick nylon wall-to-wall carpeting ■ Walnutlike vinyl inserts on doors and instrument panel ■ Rear-seat center arm rests, five ash trays (4-door hardtops)

New Power ■ Big, new 289-cu. in. V-8 standard in XL's and LTD's ■ New BIG SIX—biggest Six in any car, std. on other Galaxie and Custom models

Visit your Ford Dealer and take a test drive soon!

*Leading acoustical consultants conducted tests in which 1965 Fords (Galaxie 500 Sedan, XL and LTD Hardtops) with 289-cu. in. V-8 engines and automatic transmissions rode quieter than a new Rolls-Royce. Tests were certified by the U.S. Auto Club.

Test Drive Total Performance '65 Best year yet to go Ford!

FORD

A PRODUCT OF Ford MOTOR COMPANY



1965 Ford Galaxie 500/XL 2-Door Hardtop

WOLFE FORD COMPANY

Sheppard Rd.

Phone 569-2275

Burkburnett, Texas

Try the quiet ones for yourself at your Ford Dealer's now!

Miss Billie Joyce Tullis Becomes Bride Of Donald Leroy Owens In Home Ceremony



Mr. and Mrs. Donald Leroy Owens are at home in Burkburnett following their wedding Saturday in the home of the bride's parents, Mr. and Mrs. Neal Tullis in Burkburnett. The bridegroom is the son of Mrs. Arleta Owens, also of Burkburnett.

Joyce Tullis wore a pink linen suit and carried a bouquet of pink carnations and white mums. The bride's parents were hosts for a reception following the rites. Mrs. Jeanie Tullis presided at the table decorated in pink and white. Miss Betty Nell Wood registered the guests. The newlyweds took a honeymoon trip to Altus, Okla.

Friberg-Cooper 4-H Club Holds 3 Day Electrical Workshop

The Friberg-Cooper 4-H club held meetings Friday, Monday and Tuesday, for an electrical workshop. The instructors were Mr. Gad Garland and Miss Nancy Bates of Texas Electric Service Company.

watts, amperes, what size bulbs and things about electricity. We made a lamp that we got to keep.

Architectural Styling

Modern architectural styling of wood fences has produced a variety of striking patterns and forms.

PUGGY



costs more per pound. Careful shopping will help to stretch the food dollar while you serve tasty meals to your family.

Ever wonder how much meat to buy for a meal? Here's a guide suggested by Thelma Wirges, county home demonstration agent.

For boneless cuts or ground meat, allow about one half pound per serving.

Cuts with some bone—Steaks, chops and roasts—require one third to one half pound for each serving.

Dried beef, liver sausage, bologna and some other sausages require only one eighth to one sixth pound per serving.

Shoppers may soon have an opportunity to buy processed fruits and vegetables in film bags instead of tin cans.

Researchers at Utah State University have already bagged peaches, apricots, cherries and beans with considerable success. Although there are still some kinks in the storage life, the scientists are optimistic about canning in film.

Poly bags are much less expensive than tin cans and packing is easy. For consumers, this could mean a sizeable reduction in the cost of processed items.

If you buy fresh chilled or fresh frozen poultry and if you intend to put it in the freezer,

be sure the wrapping is tear free and tight, says Thelma Wirges, county home demonstration agent.

Exposure to air dries out frozen poultry quickly and may turn it dark and develop off flavors, she warns.

Should you wish to repack poultry or make packages larger or smaller, be sure to use a moisture, vapor, resistant wrapping material. Foil is fine for this purpose and there are several types of freezer wraps available at most super markets.

Force the air out by pressing the wrapping close to the bird. Then fold the ends of the paper upward and over until the package is tight. Store frozen chicken no longer than a year. And turkey, goose and duck should be used within six months.

Wichita County Home Demonstration clubs are having a demonstration on 'Conserving Nutritive Values in Foods.' The demonstrations are given by Thelma Wirges, Wichita County Home Demonstration agent in all sections of the county.

Homemade articles will be sold by the Wichita County Home Demonstration Council, Wednesday, April 28th in the 4-H Club Barn in Wichita Falls. Sale will start at 9:00 a. m.

Alaska's easternmost point is 600 miles west of San Francisco.

Soften Monofil

Monofilament line (especially the cheaper varieties) tend to stiffen after use. Prevent this by threading line through a rag saturated with vaseline.

Since 1945, the American Cancer Society has spent almost \$140,000,000 on research into the cause, diagnosis, treatment and cure of cancer. Half of those who now get cancer could be cured if the disease were diagnosed and treated in time.



How do you get the truth through?

The Iron Curtain isn't soundproof. And so the truth is broadcast, through the air, where it can't be stopped by walls and guards, up to 18 hours a day to millions of people in the closed countries behind the Iron Curtain.

Will you help the truth get through? Send your contribution to: Radio Free Europe, Box 1965, Mt. Vernon, N. Y.

NEED A SIGN IN COLOR?

Water-Proof Glow at Night In Sizes 4x14 and 8x14

Large Signs, 8x14 Printed and Ready for use Apartment for Rent, Closed, For Rent, For Sale, House for Rent, No Hunting, No Parking, No Smoking, No Trespassing, Open

Large size 69¢ Small Size, 4x14

Apt. for Rent, Cashier, Checks Cashed, Closed, Danger, Employees Only, Exit, Fire Escape, For Rent, For Sale, Fur. Apt. for Rent, Garage for Rent Information, Help Wanted, Keep Out, Men, No Checks Cashed, No Credit No Fishing, No Hunting Allowed, No Minors Allowed, No Pets, No Parking, No Smoking, No Riders, No Trespassing, No Soliciting, Not Responsible for Lost Articles, No Vacancy, Office Open, Private, Out to Lunch, Quiet Please, Reserved, Rooms, Room for Rent, Sold, Thank You Call Again, Vacancy, Waitress Wanted, Women

Small size 35¢ NOW ON SALE AT THE Burkburnett Star Office

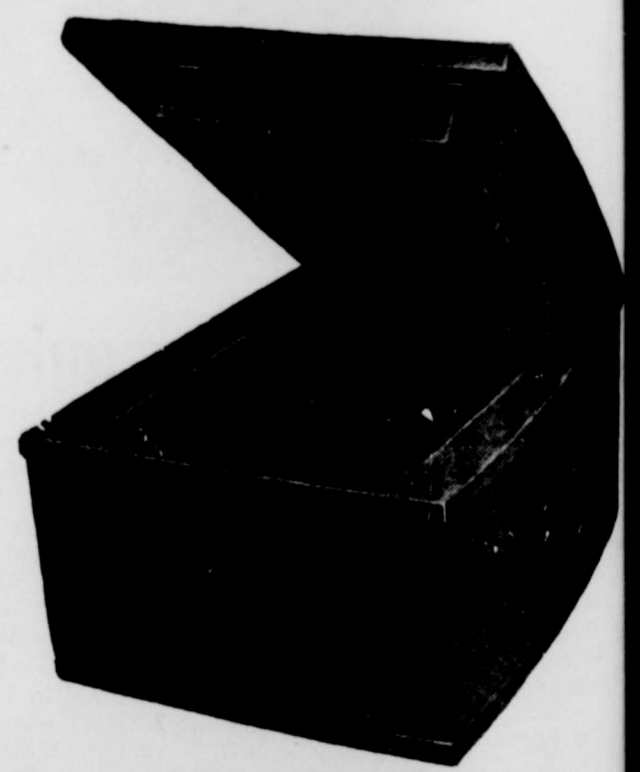
Protect Those Valuable

Everyone Can Afford This New Fire Protection Chest at the lowest price ever

Your Bonds, Insurance Policies, Notes, Mortgages, Contracts, Income Tax Receipts, Birth Certificate, Discharge Papers, Leases, Rent Receipts, Your Will, Livestock Registration Papers, Canceled Checks, Stamp and Coin Collections, and many other things of personal and sentimental value, which would be destroyed (and could not be replaced) if you had a fire—and you could!.. There is one about every 20 seconds.

DESCRIPTION AND SPECIFICATIONS Fire Protection Chest Made of heavy gauge steel inside and out, all electric welded. Between these steel walls is 1 1-2 inches of solid Fire Proof Vermicule Insulation which has over 300,000 tiny air cells to the square inch. It has the universally used tongue and groove principle around the door with a 1 1-2 inch Fire Proof Seal completely around it. No chest, regardless of price, has a better insulation. Outside Dimensions 14x11 1/2 x 7 1-2 in. Inside Dimensions 8 1-2 x 11 x 4 1-2 in. Equipped with a heavy standard type lock, with 2 keys. Color, Gray, very attractive.

The New High Quality, Low Cost Fire Protection Chest



Tested One Hour At 1700 Degrees

Supply Limited At This Special Price \$19.95

ON DISPLAY AT The Burkburnett Star

Advertisement for Charlie's Restaurant. Features: 'Meet Me At Charlie's', 'HOME OF ONE DOLLAR STEAKS', 'ASK THE MAN WHO HAS EATEN ONE', 'CLUBS and T-BONES Every Day', '\$1.00 CHOICE HEAVY BEEF', '10-Oz. T-BONES - ONLY \$1.25', '75¢ AND 85¢', 'PLUS THESE SPECIALS—LARGE PORTIONS CHICKEN FRIED OR HAMBURGER STEAKS ONLY \$1.00', 'OUR SATURDAY SPECIAL! HAMBURGERS LARGEST AND BEST IN TOWN 5 FOR ONLY \$1.00', 'HOURS — 6:00 A. M. — 5:30 P. M. Every Day Except Sunday'.

Advertisement for RUFFY TWINS INSURANCE AGENCY. Features: 'what's your LOBBY?', 'Look for lots of exciting hobby ideas and equipment the months ahead...', 'A big attention-getter Monogram Models, Inc. was an addition to its new one-eighth-size model cars. This time it's the Co-Sting Ray. The kit features such operating parts as reliable headlights, steerable wheels and a hood that opens up in the stores this mer and Fall.', 'For collectors of World II aircraft, Monogram will be introducing the Gee Pocke-Wulf Fw 190. This has extra parts so you can the plane in any one of variations.', 'Bats have been known to live as long as 20 years.', 'Nobody more interested in facts, than I am. But no one else has the idea that the st...', 'March 1... Service... two examples... the city... say... outside the w... us, we hav... our destinies... supersedes a... other article... southern Cal... is purch...', 'Any Type... WILL W... Auction... CALL 855-723-45... Route 1, F... Wichita Fall...'

AMERICAN WAY

AS VIEWED BY
Mary Whitman

HARRY BROWNE
WHO BENEFITS FROM SUBSIDIES?

...sincere, but certainly... people are trying to... the inevitable "Medi... bill by promoting an al... known as "Eldercare..." both programs entrench... federal bureaucrats deeper... the medical profession, it's... figure why a "free enter... would promote either... the proponents of El... are naturally taking... case to the "Senior Cit... hoping to impress them... the idea that "Eldercare" benefit them more than... alone, is contradictory—... even more important... is overlooked.

Nobody Wins

...more I examine the pre... facts, the more I am... that not even the so... "beneficiaries" of poli... projects benefit. We all... that the taxpayer loses... money is coercively taken... But not even the re... of the stolen property

...March, 1965, issue of... Service Magazine con... two examples of this. In... article, the "inmate of a... fully-financed "Senior Cit... housing project says: We... the cities—and we have... erable say in the city... ment outside our walls;... side the walls, the FHA... us, we have no control... our destinies, that Big Bro... overrules all."

...other article reveals that... Southern California Edison... is purchasing a small...

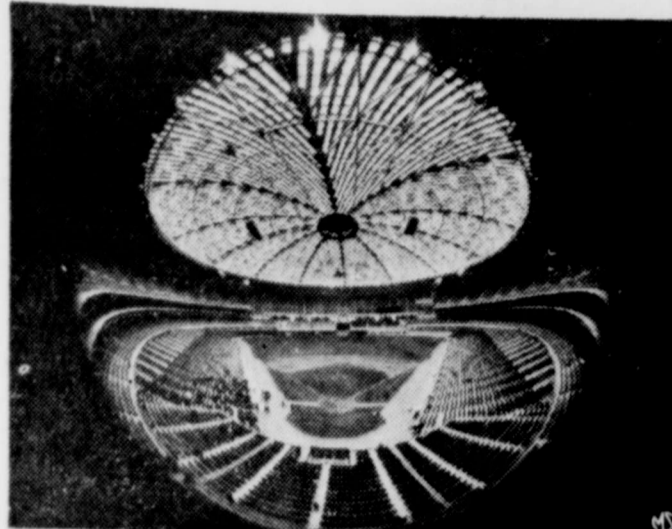
WILL WHITE
Auctioneer
CALL 855 0560 or 723 4982
Route 1, Box 140
Wichita Falls, Texas

Texans Think Big—About Weather And Baseball...

Like most Americans, Texans talk about the weather—and baseball. But the folks in Houston have finally done something about the weather. In fact, they've made every day an ideal day for baseball.

That "something" is the Harris County Domes Stadium, home of the Houston Astros and the first indoor baseball field in history. Covered with a network of close to 5,000 skylights of Du Pont's "Lucite" acrylic monomer, the unique stadium guarantees sports fans perfect pre-packaged weather 365 days a year. Come heat, humidity, rain or even a freak snow flurry, spectators will be able to attend baseball, football, circuses, rodeos, trade shows, political conventions, religious services—all in constant-temperature comfort. For the stadium is fully air-conditioned, with 6,000 rated tons of equipment in constant operation. What's more—the playing field will have natural grass growing on it, made possible because the skylights permit sufficient sunlight to filter down to the playing field to nourish the grass.

An idea literally pulled out of the sky brought about this indoor-outdoor weatherproof roof. Architects took the same concept that Du Pont scientists had developed for the B-17 airplane gunner's dome of "Lucite", brought it down several thousand feet and simply thought big—half a mile big to be exact.



Seen through a fish-eye lens, the AstroDome interior is a study in curves. Grass on the playing field is nurtured by sunlight transmitted through skylight panels of "Lucite".

All this is, of course, a far cry from the sports stadium of old—whose builders tried all sorts of methods of beating the heat and other discomforts. The ancient Greeks, for example, tackled the weather problem by choosing as the site of their games, Olympia, for its thick grove of trees. But, when Zeus let fly with a lightning bolt, everyone, spectators included, donned winged sandals for a cross-country run. Time and progress brought the newspaper held over the head, the plastic raincoat, the

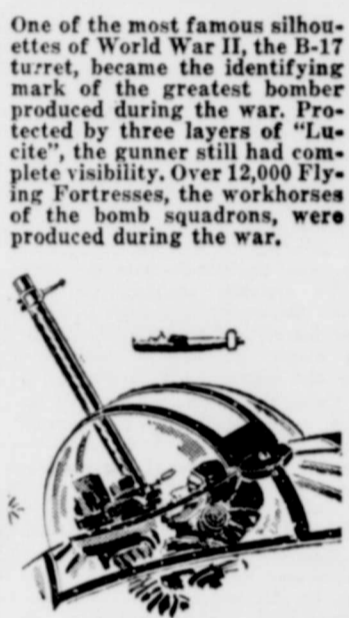
portable plastic pup tent, and finally the half-enclosed stadium, where the sports fan observes the proceedings in chilled semiprotection. But these will be mere relics of the past when the Astros take to the field in Houston this spring and summer—or when the Houston Cougars and Houston Oilers kick off the football season in the fall. Even should mighty Bob Aspromonte strike out, there'll be no gloom in Houston's "AstroDome."



It'll be a rainy day in Texas and a great day for a baseball game at Houston's Harris County Domes Stadium, the world's first indoor-outdoor weatherproof sports arena. Only the sun will be able to penetrate the skylight roof of Du Pont's "Lucite". Inside the stadium 2 1/2-million cubic feet of air will be cooled and circulated each minute.

Ax Guard
Save the tops of leather boots. Rivet top closed. Now fit it over your ax to guard the blade. Cut it off at appropriate spot and lace along bottom and around haft. It will never come off, makes a safe carrying handle.

Skin A Fish
Often "muddy" flavor of some fish comes from the skin. Take skin off the easy way like this: Dip fish in pot of boiling water to which salt has been added. Let sit 30 seconds. Skin scrapes off with a knife.



One of the most famous silhouettes of World War II, the B-17 turret, became the identifying mark of the greatest bomber produced during the war. Protected by three layers of "Lucite", the gunner still had complete visibility. Over 12,000 Flying Fortresses, the workhorses of the bomb squadrons, were produced during the war.

NOTICE
The Wichita County Association of Odd Fellows and Rebekahs will be held in the IOOF Hall Monday night April 12th in Burk Burnett. All Oddfellows and Rebekahs are invited to attend.

No Scratch
Put adhesive tape on the base of your fish and game mounts. They'll go on table tops then without scratching.

Play as you GO

By Mary Whitman

Valentines can be a memorable part of childhood. Many a child likes to assemble his own valentines, make his own envelopes, affix his own stamps in the form of hearts, and even deliver his own mail. If he can print, he will enjoy painstakingly putting the names of favorite boys and girls on the envelopes before dropping them off.

A project of this kind will keep a child happily occupied for days. "New valentine punch-out and sticker-books at low cost are ideal because the young child can work without paste or scissors," is a reminder passed on to parents from Dorothy Joslyn of Whitman Publishing Company in Racine, Wisconsin. The books contain greetings that can be given to friends, family and teachers.

In a neighborhood, most youngsters enjoy dropping the missives in friends' mailboxes or slipping them under doors. In a school it often proves best to have each child bring a valentine, address it by means of a drawing to another member of the class, and have an appointed messenger deliver envelopes to each desk. Favoritism is eliminated in this way.

At a home party, punch-out valentines could be used as placecards, along with gala refreshments. A few colorful touches can make even a family dinner festive on February 14. The origin of Valentine's day is unclear. A saint of that name lived in the third century. Legend has it that his thoughtful messages to others inspired the greetings we send today, but history offers us no proof of that story. A Roman festival was also celebrated in February and traces of it remain in our commemoration of the day. St. Valentine is thought to be the patron saint of lovers, but today the feast has encompassed all expressions of love to relatives and friends as well.

There are those who predict that valentines will disappear from our life. We hope not. There are all too few occasions when we tell others that we like them.

About 92,000 cancer patients will probably die in 1965 who might have been saved by earlier and better treatment. The American Cancer Society urges all adults to have a health check up each year as their best cancer protection and to support the April Crusade against Cancer which makes possible the Society's nation-wide programs of education, research and service to the cancer patient and his family.

Family FINANCIAL PROTECTION

Policyholder Questions Answered by the Institute of Life Insurance 277 Park Ave., N.Y., N.Y., 10017

Q. How much life insurance is in force in the United States?
A. The Institute of Life Insurance estimates that at the end of 1964, American families had a total of \$795 billion of life insurance protection. This was an increase of \$64.4 billion or about 9 per cent during the year. The 1964 total included \$459 billion of ordinary life insurance (up \$36.1 billion or 9 per cent); \$230 billion of group life insur-



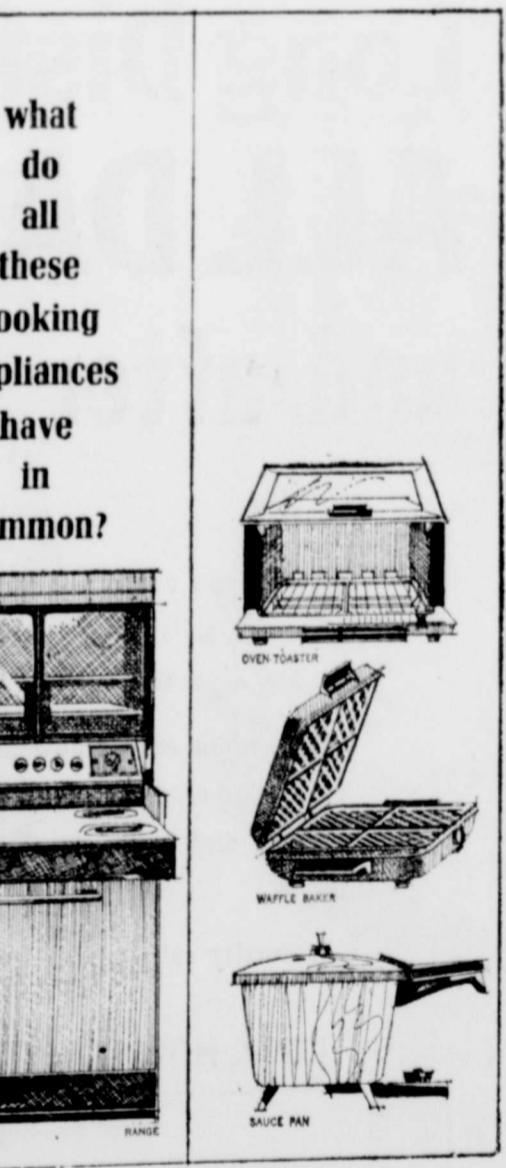
ance (up \$21.5 billion or 9 per cent); \$50 billion of credit life insurance (up \$6.5 billion or 15 per cent) and \$40 billion of industrial life insurance (up \$300,000 or less than 1 per cent).

Q. What is a "general agent" in the life insurance business?

A. A general agent is an independent businessman who has a franchise from a life insurance company to sell that company's policies through his own sales organization, usually within a specific geographical territory. He is much like a local dealer or franchise holder in other types of business—for example, a local, independent automobile dealer. The individual agents in his agency are employed and paid by him, and are largely trained by him. The general agent is responsible for all the expenses of his agency, even though he may receive an expense allowance from the life insurance company.

The sales forces of many life insurance companies are organized under the general agency system. Other companies, however, use the "branch manager" system, in which local sales offices are headed by direct employees of the company. Individual agents are also direct employees of the life insurance company, under the "branch manager" system. Some life insurance companies use a combination of both the general agency and branch manager system.

Creek Boat
Cut a 55 gallon steel drum in half, the long way down the middle, to form two troughs. Cut one end out of each trough and weld two pieces together. Flatten bottom as much as possible. Cut holder for oars and line with rubber. You've got a creek boat.



what do all these cooking appliances have in common?

They're electric... they're versatile... they're flameless. And because they're flameless they provide cooking that's clean and cool. Electric cooking is clean because the heat used is as clean as electric light... cool because there are no flames to waste heat into the kitchen air. Whether you cook with an electric range or one of the many portable electric cooking appliances, you'll be a cooler cook in a cleaner kitchen. See your appliance dealer soon. Electricity is your modern, better way to cook because it's flameless.

TEXAS ELECTRIC SERVICE COMPANY
JOE T. SALTER, Manager 569-3373

'65 HOTLINE: FORD HARDTOPS



The styling warms you up to these '65s from Ford—and a test drive leaves you hot for 'em! GALAXIE is all new from road to roof. Standard new 240-cu. in. Six is Texas' biggest! A new body-frame-suspension system results in a quieter ride than Rolls-Royce.† Even the interior elegance compares with America's most expensive cars! And then there's MUSTANG—our runaway success car! Lots of standard luxury at a low price: bucket seats, all-vinyl interior, full carpeting, a new 200-cu. in. Six, 3-speed floor shift and much more! Make the switch to the hardtop hotline now... at your

TEXAS FORD DEALER'S WOLFE FORD COMPANY
Sheppard Rd. Phone 569-2275 Burk Burnett, Texas

THE HIGH ROAD

L. W. PRENTISS, Executive Vice President
AMERICAN ROAD BUILDERS' ASSOCIATION

Safe Scenery

You see some strange sights along the highways. Not long ago, motorists in Illinois were startled to find a work crew anchoring used Christmas trees in an expressway median. The explanation was reasonable. The trees, donated by department stores, were being set up to simulate evergreen plantings as part of a research project in highway safety.

In this case, the specific problem was that motorists were running off the edge of the pavement onto the median strip. Engineers demonstrated that this was happening because the highway was not adequately defined. The expressway was practically level and the absence of markers, natural or artificial, created a problem in perspective for motorists. The Christmas trees not only helped motorists stay on the road but also reduced the headlight glare from oncoming vehicles.

Of course, many people would favor evergreen plantings in highway medians simply because of their attractive appearance. Highway engineers are interested in highway beautification not only for aesthetic reasons but, also, because some beautification measures contribute to the safety of the highway. Trees have been found to be valuable

as a buffer against undesirable traffic noises, objected to by residents in areas transversed by expressways.

Driver tension and fatigue are the hidden causes of many automobile accidents. Driving on a highway with no conspicuous landmarks or reference points can give the driver the sensation that he is not making any progress. Boredom encourages inattention and fatigue.

With this knowledge in hand, modern highways are being designed to take advantage of natural terrain and to emphasize natural scenic charm. Such a road is not necessarily more expensive to build than one that is constructed in long, straight slashes, and engineers know that it is likely to pay dividends in safety because it is less tiresome to drive on.

The administration is emphasizing the desirability of considering "beauty" in highway location, design and construction, and one can expect a concentrated effort by highway departments to improve their highways in the interest of conserving and developing beauty.

Therefore, highway beautification measures are studied carefully in advance. As knowledge increases, we can look forward to more and more roads that combine good looks with good service.

HOW TO GET MORE FUN OUT OF HOME MOVIES

by Skip Miller

THREE POINTS OF VIEW

The story goes that Hollywood director C. B. DeMille used three camera crews when shooting spectaculars. After one complicated scene, involving an explosion, a toppling bridge, a fire holocaust and thousands of extras, Mr. DeMille anxiously contacted Crew 1 and was informed they had encountered shutter trouble. Somewhat perturbed, he called Crew 2 and was informed that the camera's remote control apparatus had failed to function. Desperately, he phoned Crew 3.

The cheery reply over the wire was: "We're ready to begin any time you are, C.B."



Photo courtesy Keystone Camera

Fortunately, those of us making personal movies are not compelled to use three separate camera crews. We should however, use at least three different camera viewpoints.

Suppose, instead of using a single viewpoint when photographing a little girl riding a tricycle, we were to take one scene from the adult's eye-view angle, one from the little girl's eye-view position, and one from the mother's vantage point as she leaned out an upstairs window to watch her little darling pedal up and down the sidewalk.

Using the Hollywood formula for this, we would first take an overall scene showing the house and the mother leaning out of the window. Next, we would move in for what is called a medium scene of the little girl tricycling up the sidewalk.

Now comes the impact shot: we shoot over the girl's shoulder, close up, as she pedals. The lawns and flower beds literally fly by us. To give the viewing audience the feeling of being part of the action, do

an ultra-close-up of the girl's feet pedaling 'round and 'round.

Finally, we flash back to the Mother looking out the upstairs window, then a finale shot of the little girl pedaling out of sight down the block.

Here are some points to remember:

High Shooting Angle: lessens the dimension of the target. Shooting down from the second-story window of the home at a little girl tricycling up and down makes the little girl appear smaller than she actually is.

Low Shooting Angle: magnifies the dimension of the target. Shooting up, from grass level, enables the little girl to dominate the scene, overpower the audience, and assume a new-found sense of importance.

Medium Shooting Angle: enables an eye-to-eye perspective viewpoint which, in the case of the little girl, causes her to appear as she would normally appear in the eyes (viewpoint) of another little girl.

Front Shooting Angle: minimizes action, slows down apparent speed, compresses time and movement. It takes a long time for the little girl to reach the camera position if we shoot her coming up the sidewalk toward the camera, from the opposite end of the block.

Side Shooting Angle: creates the illusion of tremendous speed, violent action, forceful velocity. A 90° angle at the little girl on her tricycle catches her only for a fleeting instant. She literally flies by in front of the camera, creating the illusion of tremendous speed.

Panning: is a great idea if well done, but should be used very seldom. For entirely too many amateurs, panning means swinging a movie camera from side to side in garden hose fashion. This is sudden death to the aspirations of the movie maker. Panning must never, positively never, be sudden. And the pan must create a visual effect which could not be created in any other manner.

NOTICE

Applications are now being taken for a lifeguard and manager for the Burkburnett swimming pool which will open in the near future. Mail applications to H. R. Hayes or Harold Van Loh, Burkburnett, Texas.

A clock that gains or loses one hundredth second a day is not accurate enough for some scientific purposes.

A weekly public service feature from the Texas State Department of Health

Accent on Health

J.E. PEAVY, M.D.
Commissioner of Health

You can't sleep? You have lots of company.

There are millions of "insomniacs" in America. Even though they are tired and weary, they toss and turn for hours—wake up four or five times during the night. And they face the early morning with all the pep

and enthusiasm of a wet dish cloth.

Almost every one has a pet remedy for sleeplessness. If you have one that works—use it.

Charles Dickens could sleep only in a bed that faced north. A physician once said he found counting sheep did no good, but he had success starting at 1,000 and counting backward.

If you are one of those who find themselves staring dejectedly at the ceiling at 3 in the morning, maybe some of these suggestions will help. Make yourself comfortable as possible before you retire. Make sure you've the right temperature in your bedroom.

Use a comfortable mattress, not too hard or too soft; good bedsprings that won't hop coils into your ribs and won't sag in the middle; and fluffy, light blankets rather than heavy ones.

Take a brief, relaxing walk before turning in, or do some

mild exercising to help enough to relax.

Again there are all theories. Some people fee keeps them awake prefer warm milk or snack. Many people read something from comic book mystery magazine to cal poetry.

If you do encounter less night now and the fight it. Just lie there iax. The rest will do y Chances are, you will and get enough sleep drop off. Worrying sleeping will only ma more awake than ever.

If insomnia becomes health problem, see p tor. He may be able you find relief.

Earliest known bill was used by Duke He Brunswick at a bap 1555.



Planning a New Kitchen Stop Here for the Money



A loan from us is easy to get, easy to repay. Let us help you with your modernization plans whether it's the kitchen, or any home improvement... we're ready to help, now!

FIRST SAVINGS & LOAN ASSOCIATION OF BURKBURNETT

THE BEST MEXICAN DISHES

Prepared By An Expert Chef With 25 Years

Experience In Preparing Mexican Foods

MEXICAN DINNERS

TACOS — TAMALES — ENCHILADAS AND FAMOUS MEXICAN STYLE FRIED BEANS

Orders to Go . . . Everything Cooked Fresh Daily

OPEN 5:30 A. M.

Speciality: Mexican Breakfast

Huevos Rancheros (Country Style Eggs, Hot Sauce) **65¢**
Bacon, Ham or Sausage with Eggs **65¢**

El Taco Restaurant

502 Sheppard Road Phone 569-1751



Who ever heard of an economy tiger?

You did—just now. It's called the Pontiac Tempest. A zippy six that thrives on regular gas is standard equipment. Feel more tigerish and still want regular-gas economy? Pick the 250-hp V-8 engine. The price? A trifle, as tigers go. Look into it.

The Wide-Track Pontiac Tigers

COME TO TIGER COUNTRY. SEE THE NEW BONNEVILLE, STAR, CHEF, GRAND PRIX, CATALINA, 7-42, LE MANS, GTO AND TEMPEST AT YOUR AUTHORIZED PONTIAC DEALER.

MATHIS CHEVROLET, COMPANY

300 East 2nd St. Burkburnett, Tex.

Call Long Distance for Less ALL DAY SUNDAY and after 8 Each Evening

NOW you can make long distance calls *all day Sunday* at the low *night* rate.

The night rate is now in effect on station-to-station calls all day Sunday and every evening after 8 p.m.

Saturday calls are cheaper, too.

Now the "evening" rate applies all day Saturday and from 6 to 8 p.m., Monday through Friday.

Why not call out-of-town family or friends any time Sunday, or any night after 8 p.m., when rates are lowest? It's the next best thing to being there.

LOOK HOW LOW RATES ARE NIGHTS AND SUNDAYS

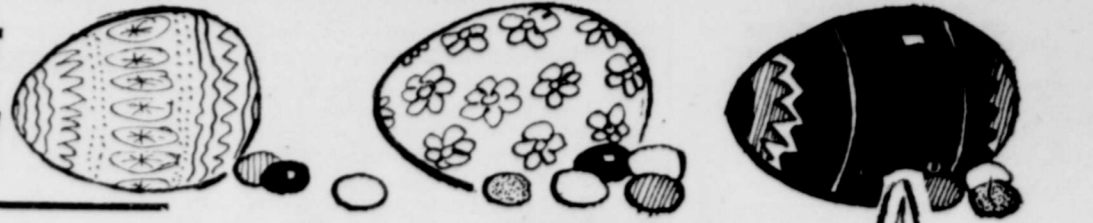
	Sunday — all day; Monday-Saturday 8 p.m.-4:30 a.m. (night rate)	Saturday 4:30 a.m.-8 p.m. Monday-Friday 6 p.m.-8 p.m. (evening rate)	Monday-Friday 4:30 a.m.-6 p.m. (day rate)
Dallas to Abilene	\$.50	\$.70	\$.85
Fort Worth to Phoenix	.75	1.05	1.45
Lubbock to Austin	.60	1.00	1.15
Wichita Falls to St. Louis	.65	.95	1.35
Tyler to San Antonio	.60	.90	1.05

All rates for three-minute station-to-station calls. Add 10% Federal excise tax.

* Does not apply to collect or third-number calls within Texas.

Southwestern Bell

EGGS . . . TO COLOR . . . TO EAT
NEST - FRESH FROM PIGGLY WIGGLY



EGGS Nuday, Grade "A", Medium **2 DOZ. 69¢**

BAMA, STRAWBERRY
PRESERVES, 10 Oz. Jar 29¢
CARNATION OR DAIRYLAND
BUTTERMILK, 1/2 Gallon Carton 39¢
PILLSBURY, White, Chocolate, Yellow, Double Dutch, Swiss Chocolate, Lemon
CAKE MIX, 3-20 Oz. Pkgs. \$1



PIGGLY WIGGLY MEAT SPECIALS!

PICNICS
Rodeo, Hickory Smoked, Whole, 6 to 8 Lb. Average Smoked
LB. 23¢



SLICED BACON

Butcher Boy, Hickory Smoked, Thick or Thin **2 LB. PKG. 89¢**

Rodeo, Lean, Northern Pork, Wafer Thin, Center Cuts
Breakfast PORK CHOPS, Lb. 79¢
Hickory Smoked, Center Cut Rib Chops
SMOKED PORK CHOPS, Lb. 79¢
Butcher Boy, All-Meat, Thick or Thin
SLICED BOLOGNA, Lb. Pkg. 49¢
American or Pimento
SLICED CHEESE, 3-8 Oz. Pkgs. \$1

PORK SAUSAGE

Pinkney's, Pure Pork **2 LB. SACK 49¢**



HOT DOGS

Made with Butcher Boy, All-Meat Weiners, (Buy them by the Poke Full any Day, Friday and Saturday, April 9, 10, 1965)
5¢ EACH ONLY

Sugar

C&H OR IMPERIAL
PURE CANE

5 29¢
Lb. Bag

GRAPEFRUIT Juice

TEXSUN
UNSWEETENED

3 46-OZ. CANS \$1

Fresh Frozen Foods!
FRUIT PIES

JOHNSTON, Apple, Cherry, Peach, 9 inch Pie **69¢**

BANQUET TUNA PIES, 4-8 Oz. Pkgs. \$1

SEABROOK, MIXED VEGETABLES, 4-10 Oz. Pkgs. \$1

These Values Good In
Burkburnett,
April 8-10, 1965.

We Reserve the Right
To Limit Quantities.

Lowest Prices . . . Greatest Variety . . . always at . . .

Piggly Wiggly

THIS WEEK!
STEUBENVILLE FAIRLANE
SAUCER
50¢ VALUE
9¢ WITH EACH \$5.00 PURCHASE



WITH COUPON!

DRINKING GLASSES

99¢ Value Each
3 FOR \$1

THIS WEEK ONLY!

PEARS

CLIFF GOLD, Green Slices
3 NO. 2 1/2 CANS 89¢

Health and Home Needs!

HOME PERMANENTS

Gentle, Super or Regular, \$2.00
\$1.47 PLUS TAX

AWAY RINSE, Dandruff, 12c Off Label
SHAMPOO, 6 Oz. Bottle 79¢

Juice, Plastic, Regular 49c
SHAMPOO, 64 Oz. Size 29¢

COOKIES

6 49¢
8-OZ. CANS



POWDERED
COOKING OIL, 14 Quart Box 89¢

REBELLE, QUARTERS
COOKING OIL, Lb. 69¢

Fresh Produce Specials!

LETTUCE

Firm, Crisp, Iceberg

2 25¢
HEADS

BUNCH, RED
SPINACHES, Each 5¢

FANCY, Delicious
SPINACHES, Lb. 19¢

PEAS, 50-Lb. Bag 89¢

FROM THE GUEST PEN

THE GREAT SOCIETY
By WILLIS E. STONE

Recent political regimes have gone in for the promotional effect of the "good image" to identify a political administration from its start. Once labeled, everything which occurs during the administration is forced to fit within the "good image" to become serenely encompassed as a part of the "Great Society."

In other times and places tyrants came to power as "Eric the Good," or "Cesar the Just," or "Phillip the Brave." No matter what the name, the adjective was selected to give the despot a benevolent reputation. It helped to beguile the uninformed. This ancient practice is now employed in America. We have had the "New Deal" and the "Fair Deal" with neither measuring up to the "image" created by the name. Then there was "Modern Republicanism" and the "New Frontier." Now comes the "Great Society," the latest hand painted political "image" designed to give high character to strange political forces being unleashed.

The effort to make the "Great Society" responsible for the foibles of power politics constitutes a tragic misuse of words. Long ago when our Founding Fathers struggled with the same problem Thomas Paine clarified the differences in his masterpiece "Common Sense." He asserted: "Some writers have so confounded society and govern-

ment, as to leave little or no distinction between them; where as they are not only different, but have different origins. Society is produced by our wants, and government by our wickedness; the former promotes our happiness positively by uniting our affections, the latter negatively by restricting our vices."

"Society in every state is a blessing, but government, even in its best state is but a necessary evil; in its worst state an intolerable one; for when we suffer, or are exposed to the same miseries by a government, which we might expect in a country without a government our calamity is heightened by reflecting that we furnish the means by which we suffer."

"We Furnish The Means By Which We Suffer." What a classic phrase to describe the fantastic taxes required to support the take over of our lives and properties!

More than half the federal revenue each year is used to pay the losses and hidden costs of the federal activities which compete with the taxpayer's enterprise. This consumes an amount greater than all of us together pay in federal individual income taxes. These federal activities which operate without constitutional authority have already taken over 40 percent of the land area and 20 percent of the industrial capacity of the nation.

Our Founding Fathers fought against the same practices which were destroying their society. They resolved their problem by adopting the federal Constitution, and thus prevented government from controlling their great society. We can resolve this problem in our time by applying the terms of the Liberty Amendment. It is now pending

Sidewinder Is Fond Of Hills And Water



DETROIT — A "double-jointed" new military-type vehicle that snakes up rocky slopes, over ditches, swamps and roads and even swims rivers has been developed by Chevrolet in association with General Motors Defense Research Laboratories.

Called the "Sidewinder" because of its undulating movement over all types of tough terrain, the new 3/4-ton "four-by-four" wheeled vehicle was designed to offer military forces a low-cost, lightweight swimmer with exceptional off-road mobility.

The vehicle is built in three sections and each section may be changed in about 20 minutes. The three sections are driver's cab, center power unit and payload compartment. Special payload sections would perform a variety of tasks.

Swivel-jointed drive be-

tween sections gives a smooth rolling action, or articulation, and affords constant wheel-to-ground contact over foot-high stones, two-foot walls and other obstacles.

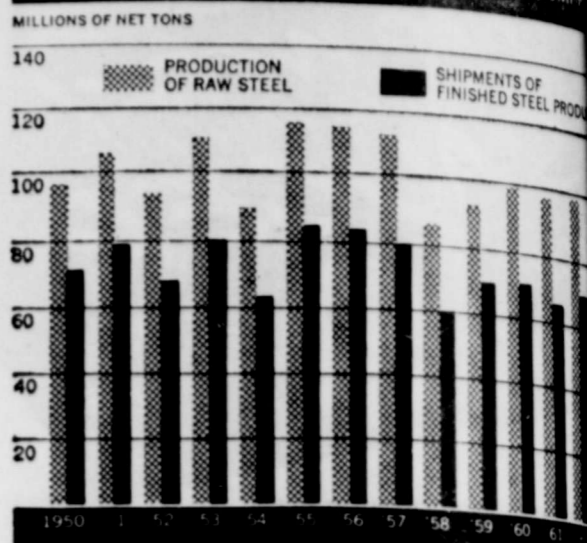
Buoyancy is derived from large, low pressure tires. Steering action in the water is performed by swiveling the sections to act as rudders.

Because of the unique design, the 16-foot-long Side-

winder could perform a wide variety of military missions ranging from cargo and personnel carrier to reconnaissance vehicle or front line ambulance with space for four litter patients.

In recent tests over rough courses at eight military proving grounds the Sidewinder's mobility equaled that of the most complicated tracked vehicle.

RECORD STEEL OUTPUT AND SHIPMENTS COMP.



American Iron and Steel Institute reported that 1964 was of greatest steel production in the United States. Steel mills produced nearly 127 million net tons of raw steel. That was a record amount, nearly 10 million tons above the previous annual output in 1955. Last year's shipments of steel products also set a record, totaling over 84.9 million tons compared with 84.7 million tons during 1955.

MRS BAIRD'S



Stays Fresh Longer

RADIATOR EXPERTS

SUGGEST GETTING READY FOR SPRING AND SUMMER DRIVING NOW!

Let Us Clean, Repair, Recore Your Radiator NOW!

LONNIE DOLAN Radiator Shop

104 East 3rd St. Phone 569-3635

in Congress as H. J. Res. 23 and has already been approved by seven states. It provides that Sec. 1. The Government of the United States shall not engage in any business, professional, commercial, financial or industrial enterprise except as specified in the Constitution.

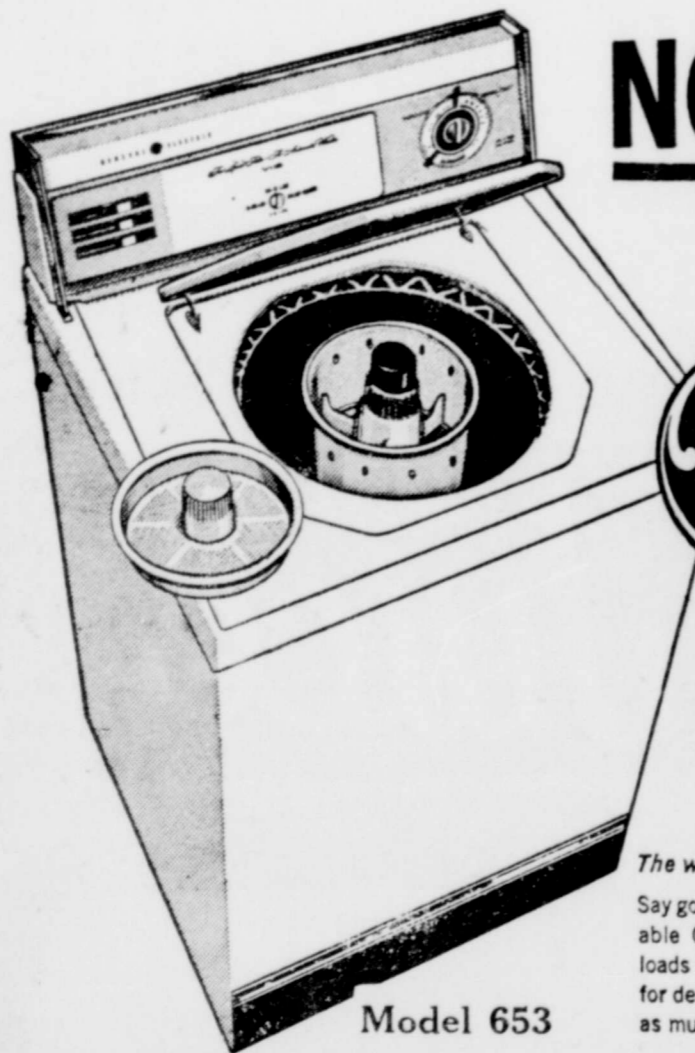
"Sec. 2. The constitution of laws of any State or laws of the United States shall not be subject to the terms of any foreign or domestic agreement which would abrogate this amendment.

"Sec. 3. The activities of

the United States Government which violate the intent and purposes of this amendment shall within a period of three years from the date of the ratification of this amendment, be liquidated and the properties and facilities affected shall be sold.

"Sec. 4. Three years after the ratification of this amendment the sixteenth article of amendments to the Constitution shall stand repealed and thereafter Congress shall not levy taxes on personal incomes, estates, and or gifts."

MODEL WA-1250V ILLUSTRATED ABOVE



NOW AVAILABLE!

FILTER-FLO® WASHER

WITH

MINI-BASKET* G-E WASHER

Prices Start At

\$ **155****

and Up

The washer for all your washables...

Say goodbye to washing by hand! This dependable G-E Washer gets full 12-pound family loads truly clean. With exclusive Mini-Basket for delicate and tiny loads, it uses one-fourth as much water as the regular loads.

Model 653

NO DOWN PAYMENT --- 1st PAYMENT IN JUNE

FURNITURE AND APPLIANCES

MONAGHAN

200 East Main St.

Phone 569-3112

Burkburnett, Texas

*Trade Mark of General Electric Co.

Mr. Merchant:

YOU LOSE 3 OUT OF 10 Customers Every Year

... AND THIRTY PER CENT OF YOUR BUSINESS GOES WITH THEM. HARD TO BELIEVE, BUT TRUE. IF YOURS IS AN AVERAGE BUSINESS, YOU NORMALLY LOSE APPROXIMATELY THIRTY PER CENT OF YOUR CUSTOMERS EVERY YEAR. IF YOU DON'T BELIEVE IT, LOOK THROUGH LAST YEAR'S ACCOUNTS AND SEE HOW MANY ARE NO LONGER ACTIVE.

Why do you lose them?

Through death, hard feelings, moving to another community or through the efforts of hard-driving competitors ... a variety of reasons ... some of them beyond your control.

AT THE SAME TIME THERE IS A NORMAL BUSINESS INCREASE OF ONLY FOUR PER CENT EVERY YEAR. THAT LEAVES YOU FACING A TWENTY-SIX PER CENT HANDICAP EVERY YEAR ... A HANDICAP YOU MUST OVERCOME IF YOUR BUSINESS IS TO REMAIN HEALTHY AND PROFITABLE.

What to do about it:

The answer lies in better merchandising, better planning and more vigorous promotion of fast selling goods and services.

The Surest Most Profitable Method of Sales Promotion Is Consistent Timely Advertising In Your STAR and NEWS.

LEATHER YOUR OWN NEST

With Your Shopping Dollars

SHOULD YOUR SHOPPING DOLLARS LEAVE TOWN TO HELP BUILD SOMEBODY ELSE'S COMMUNITY? YOU LIVE HERE. YOUR CHILDREN ARE GROWING UP HERE. YOU HELP MAKE THIS A BETTER PLACE FOR ALL, WHEN YOU.



SHOP IN BURKBURNETT

HAVE A DEFINITE STAKE IN THIS COMMUNITY. IT IS MEASURED NOT ONLY IN MONEY WHICH YOU MAY HAVE INVESTED IN A HOME OR OTHER PROPERTY HERE, (EVEN MORE MEANINGFUL) IN THE YEARS OF YOUR LIFE THAT YOU HAVE INVESTED (AND WILL INVEST) HERE. BETTER SCHOOL, CHURCH, RECREATIONAL AND OTHER CIVIC FACILITIES ADD UP TO A HAPPIER, MORE SATISFYING LIFE FOR YOU AND YOUR FAMILY. THE DOLLARS YOU SPEND AT HOME HELP PAY THE TAXES AND MAINTAIN THE CONTRIBUTIONS THAT SUPPORT THESE SERVICES. TRULY, THEY HELP LEATHER YOUR NEST."

Get More Than Merchandise FOR THE DOLLARS YOU SPEND AT HOME

SHOPPING ADVANTAGES . . .

- BETTER VALUES** - Relatively low overhead costs here help home-town merchants keep prices down.
- FREE PARKING** - You park the Easy Way in Burkburnett and it's **FREE**.
- FAMOUS BRANDS** - If you like nationally famous brands you'll find them in Burkburnett stores.
- SHOP with CONFIDENCE** - Hometown merchants do everything they can to earn and hold your complete confidence.
- FRIENDLY SERVICE** - You are a Preferred Customer here at home and are treated accordingly in the stores.

The Manhattan
BURKBURNETT'S LEADING DEPT. STORE

WE ALWAYS PUT BURKBURNETT FIRST
THE BURKBURNETT BANK

"WHERE YOUR \$\$ GO FURTHER"
The FAMOUS DEPT. Store

The Best Deal Yet Is In Burkburnett
WOLFE FORD COMPANY

YOUR HOME TOWN BAKERY
Henry's Pastry Shop

Wacker's

Spend Your Advertising Dollars at Home
Burkburnett Star and News

CICERO SMITH
LUMBER COMPANY - I

SHAMBERGER
Lumber Co. Inc.

OPAL'S DRESS SHOP
COME IN AND BROWSE

YOU GET A GREAT DEAL AND A GREAT DEAL MORE AT

S&L BARBER SHOP

NEW AND USED APPLANCES
Furniture Company

Mathis Chevrolet Company
CHEROULET, OLDSMOBILE and PONTIAC

BILLS T.V., Furn. and Appl.

WHITE'S AUTO SUPPLY
WELDON NIX, Owner

OUR BUSINESS APPRECIATED
Glemmer Lumber Co.

SHOP WITH THE TURNER'S
BUTLER'S 5 AND 10

BURKBURNETT'S OWN
First Savings & Loan Assoc.

You Are A Guest, Before You Are a Customer
BENNIE'S DRESS SHOP

PUGGY



by Horace Elmo

Goodbye to Ice and Snow



PRINCETON, N.J.—Hazardous ice or snow can be melted with fertilizers—and it can be done without damaging valuable trees and plants near walks, drives, or highways, according to Thomas R. Cox, chief agronomist, at American Cyanamid Company's Agricultural Division in Princeton, N.J.

- Homeowners particularly are concerned with injury to lawns, trees and shrubs, but now even state highway departments are becoming increasingly aware of the cost of these side effects—especially on the newer landscaped roadways.
- Urea fertilizer is a key solution to all of these problems, Cox said, and listed the following important special properties and advantages:
1. It is relatively non-corrosive to most metals.
 2. It is a non-conductor of electricity.
 3. Runoff will fertilize plants, thereby improving growth.
 4. It has not been observed to cause chipping or crumbling of concrete.
5. It leaves very little residue to track into homes.
6. It will not damage or discolor most floors or carpets.
7. It can be handled and spread with ordinary equipment.
8. It is readily available in many farm and garden supply stores.
- Cox emphasized that "Homeowners who have lost lawns and valuable shrubs as part of the price paid for safe walks and porches will welcome the fact that urea is usually safe on grass and shrubs when used at rates and time recommended. The runoff will actually feed these plants with nitrogen so that greener, more vigorous growth will result in spring."

Contemporary Club Met In Wilson Home Tuesday, March 30th

The Contemporary Study Club met in the home of Mrs. Oran Wilson, Tuesday, March 30th. The president, Mrs. Oran Wilson, was in the chair.

Mrs. H. S. Thaxton reported for the project committee. We gave used clothing to 4 needy families.

Mrs. J. F. Eastman, treasurer reported we donated \$27.66 to

the beautification of the cemetery.

The members voted to give \$50.00 to the community improvement project, Museum and Library fund.

Mrs. Fred Eastman gave a lovely report on "Passport to Hospitality," showing lovely color slides of party ideas and party foods.

Mrs. Fred Eastman, co-hostess, served delicious refreshment plates to 13 members. Mrs. Joe Eastman won the door prize.

Is Your Name Mention Here?

Mrs. Ruby Duncan Rites Were Tues.

Funeral for Mrs. Ruby Duncan, 77, who died in an Iowa Park nursing home Sunday were held at 3 p. m. Tuesday from the Owens and Brunley Funeral Home Chapel in Burkburnett.

Burial was in Burkburnett Cemetery.

Born Aug. 24, 1887 in Waco, she moved to Burkburnett from Chillicothe in 1932. A member of the Baptist church, she made her home at 613 Cottonwood.

Survivors include her husband, John; five daughters, Mrs. Ted Bell, Mrs. Lydia Hale and Mrs. Ella Ray Taylor, all of Burkburnett, Mrs. Inez Coburn of Borger and Mrs. Della Britton of Wichita Falls; three sons, Alvie E. Brister of Altus, Okla., William Brister of Ballinger, Tex., and Jesse O. Brister of Burkburnett; 19 grandchildren and 17 great grandchildren.

Over 1,300,000 Americans are alive today, cured of cancer, according to the American Cancer Society. Early diagnosis and treatment is the best protection against death from cancer. Know the seven Danger Signals of Cancer and see a doctor if any symptoms persist for longer than two weeks. Fight cancer with a checkup — and support the American Cancer Society's April Crusade with a check.

569-2191 For Quality Printing

Notice of Public Hearings

Concerning Improvement of Water Quality in the Arkansas and Red River Basins

The District Engineer has been directed to make a study of the sources and methods for control of mineral pollution in the Arkansas and Red River Basins, pursuant to a resolution by the Committee on Public Works of the United States Senate, adopted 16 December 1959.

"RESOLVED BY THE COMMITTEE ON PUBLIC WORKS OF THE UNITED STATES SENATE, That the Board of Engineers for Rivers and Harbors, created under Section 3 of the River and Harbor Act, approved June 13, 1902, be, and is hereby requested to review the report of the Chief of Engineers on the Arkansas River and tributaries, Kansas, Oklahoma, and Arkansas, published as House Document No. 308, Seventy-Fourth Congress, and the report on the Red River and tributaries, Arkansas, Louisiana, Oklahoma and Texas published as House Document Numbered 378, Seventy-Fourth Congress, and other pertinent reports, with a view to determining in cooperation with the Division of Water Supply and Pollution Control, Public Health Service, methods and means of improving and managing water quality in the Arkansas and Red River Basins."

In order that the required report may fully cover this matter, the District Engineer will hold TWO PUBLIC HEARINGS: Convention Hall, 6 April, 1965 9:30 a. m. at Enid, Oklahoma. Memorial Auditorium 27 April 1965, 9:30 a. m., Wichita Falls Texas.

Amazon River adds an average of eight million cubic feet of water per second to the Atlantic Ocean.

Gipsy Rig

Know how to make a Gipsy Rig? Take a 12 to 14 inch of monofilament and tie hooks on both ends. Now loop so one hook is several inches long than the other (so they won't foul). Tie line to loop. Bait one hook with a meal worm, the other with a garden worm.

NOTICE

Applications are now being taken for a lifeguard and manager for the Burkburnett swimming pool which will open in the near future. Mail applications to H. R. Hayes or Harold Van Loh, Burkburnett, Texas.

Rebekah Lodge NO. 67

The Rebekah Degree was conferred upon Mrs. Marcella Coleman at the Monday night meeting of the Burkburnett Rebekah Lodge No. 67, held in the IOOF Hall.

A program to commemorate the founder of the Rebekah Lodge was conducted by Mrs. Bessie Stubblefield.

The charter was draped in memory of a member, John Rogers.

Representatives to the County Association were appointed as follows: Pauline Bellamy, Bertie Smith, Marcella Coleman, Cora Lee Harmon and Bessie Stubblefield.

Refreshments were served following the meeting.

13.5 Miles Section Of U. S. Highway 287 To Be Resurfaced

Resurfacing of a 13.5 mile section of U. S. Highway 287 in Wichita County was authorized today by the Texas Highway commission. The project will extend from near the east City Limit of Electra to a point 2.0 miles west of Iowa Park. Cost of construction was estimated at \$155,000. Financing will be included in the 1966 State Highway Safety and Betterment Program.

Bullheaded

Bullheads will bite on bread if you peel the crust off and roll the rest into a little ball. Mix in a small amount of cotton to give substance.

"WATCH FOR THE DEAL"

WITH THE

BIG WHEEL!

(ANOTHER ABE FIRST)

THE Famous DEPARTMENT STORE

8th Anniversary Sale!

COME IN POP A VERY ONE WINS

BALLOON

EVERY ITEM MARKED DOWN

5 Off On All T. V. COMBOS

Portable T. V. \$89⁹⁵

Color T. V. \$299⁹⁵ W.T.

White Wall Paint.....\$4⁷⁹ Gal.

21 INCH RCA COLOR TV \$175.00 WITH TRADE

"Big Ten" Refrigerator \$139⁹⁵ W.T.

8,000 BTU Air Conditioner.....\$149⁹⁵

Frigidaire Dryer.....\$99⁹⁵

SPECIAL OFFER Sunbeam Polisher.....\$24⁹⁵

NEW 4000 CFM UTILITY OR ALPINE AIR CONDITIONERS \$99.95 CASH AND CARRY

1 ONLY 9000 BTU AIR CONDITIONER USED 3 MONTHS \$150.00

BILLS T. V

FURNITURE AND APPLIANCES

1 AVENUE D

PHONE 569-3651

Precision Printing Is

Where We Shine . . .

You don't need a MAGNIFYING GLASS to see the difference in our printing. Even business cards or billheads take on a new look when imaginatively designed and crisply printed by us. The result of our careful craftsmanship is immediately apparent.

Let Us Brighten Up Your PRINTING

BURKBURNETT STAR & NEWS



Randlett News

Mollie Ruth Elliott

A pink and blue shower was given to Mrs. Catalina Morales in the home of Mrs. T. L. Wileman last Thursday afternoon. Co-hostesses were Mesdames Robert Goode, Clarence Vache, J. S. Baber.

Attending were Mesdames T. E. Lee, Jr., Lee Miller, B. B. Menz, C. F. Postelwaite, Walt Manley, Robert Goode, Jess Goode, Fletcher Baber, Henry Kinnard, J. S. Baber, Clarence Vache, Joe McCluskey, T. L. Wileman, Jesusa Morales and Alta Mae Braden.

Many sent gifts not being able to attend. Mrs. Walt Manley sang a solo and Mrs. T. E. Lee, Jr., gave devotional.

Mrs. Elmer Rogers, Sr. of Dallas spent the weekend with Mr. and Mrs. J. C. Goode Saturday and Mrs. Otto Kemp and family of Duncan visited in the Goode home.

Mr. and Mrs. Jerry Baber and children of Walters, Mr. and Mrs. Kenneth Byars and children of Wichita Falls visited their parents, Mr. and Mrs. M. M. Bowles Sunday.

Lorie Ann Griffin, small daughter

of Mr. and Mrs. Jimmie Griffin suffered injuries in a fall out of the car at Burkburnett Saturday afternoon. She was taken to a Wichita Falls hospital for observation for 24 hours.

Mr. and Mrs. Phillip Totley of Duncan and Mrs. Lewis Totley of Waurika visited Mr. and Mrs. Fred Spoon Saturday.

Mrs. Geneva Taylor and children of Temple, Okla., and Miss Willie Fay Wood of Wichita Falls visited Mr. and Mrs. Jinks Woods and Mrs. J. C. Fowler Saturday.

Mr. Lane Crow and Mrs. Dorothy Miller of Lindsay, visited Mr. and Mrs. J. M. Marten Sr. last Thursday.

Mr. and Mrs. C. L. Watson spent the weekend with her sister, Mr. and Mrs. Clyde Cotter of Okla. City.

Mr. and Mrs. Arlan Kinnard and sons of Burkburnett spent the weekend with her parents Mr. and Mrs. Lonnie Boles.

Mr. and Mrs. Herbert Kieseling of Iowa Park visited Mrs. Zaida Bryant Sunday afternoon.

Mr. and Mrs. Howard Hatcher and daughter of Wichita Falls were Sunday dinner guests of his mother, Mrs. Flora Hatcher.

Mrs. Katie Poke of Salinas, Calif., spent last week visiting

Historic Mound Near Alto



The home site of a tribe of Caddo Indians who lived about 1000 A.D. near Alto, in Cherokee County, today supports a forest of small trees. This is the site of Texas Forest Service Indian Mound Nursery, located six miles southwest of Alto, along State Highway 21 where it crosses the Neches River.

Only a granite monument atop a 30 feet high, "L" shaped mound testifies to the Indians' having been there. A portion of the mound and surrounding area was excavated in 1940 by the Department of Anthropology of the University of Texas. Although no important artifacts were found, items of pottery, flints and sites of several houses were located. Archaeologists believe the mound was used as a place to worship their sun god. Occasionally, pieces of pottery and flints are unearthed as the area near the mound is cultivated by nursery personnel.

Presence of several constantly flowing springs nearby probably accounts for the Indians' use of the area. Availability of surface water for irrigation was a major factor in selecting the area as a state tree nursery.

To the citizens of nearby Alto goes a large amount of credit for their part in purchase of the 173 acres in 1940.

The nursery produces tree seedlings for reforestation in Texas. Initial production in 1940 was about 10 million seedlings. Maximum capacity is about 21 million seedlings which are sold to Texas landowners at cost.

Trees are to be used for reforestation, and windbreak planting; none are sold for ornamentals or for landscaping.

Supplying tree seedlings for reforestation and windbreak planting is but one of the many ways your Texas Forest Service, now celebrating its 50th Anniversary, performs its obligation to Texans.

her brothers, Mr. and Mrs. R. C. Brown and Mr. and Mrs. R. O. Brown.

Mr. Eugene Elliott of Amarillo and Mr. and Mrs. David Elliott of Durant, spent the weekend with their mother, Mrs. Mollie Elliott.

Sgt. Maurice Brown of San Antonio spent Thursday night with his parents, Mr. and Mrs. R. C. Brown.

Word was received here of the death of Roland Merrick of Sewell, Iowa of a heart attack at the age of 59 years. The Merricks are former residents of Randlett and had visited here recently. He is survived by his widow, 3 daughters,

1 brother, Melvin, two sisters, Inez and Mary.

Visitors of Mr. and Mrs. R. C. Brown were Mr. and Mrs. Walter Lee Brown and daughters, Mr. and Mrs. Joe Allen Brown and children of Burkburnett, Mrs. Philip Britt and daughter, of Iowa Park, Mrs. Katie Poke of Salinas, Calif. and Mr. and Mrs. R. O. Brown.

Mr. and Mrs. I. L. Smith and children of Burkburnett visited his parents, Mr. and Mrs. C. O. Wilson Sunday afternoon.

Mr. and Mrs. A. S. Nason spent Friday night with their daughter, Mr. and Mrs. Wayne Boles and daughter, Wynn in Wichita Falls.

Mr. Orville Lee Hatcher and

Ready-Set GARDEN



GARDEN SEEDS
AND PLANTS
ARRIVING DAILY

Farmers Co-op. Feed & Supply

502 N. Ave. B

Burkburnett

Zing into spring! Chevelle by Chevrolet



'65 Chevelle Malibu Convertible— with color-keyed all-vinyl upholstery

It's the most popular mid-size traveler built— which isn't surprising when you consider who built it.

There's no doubt that a car like this could get by on its good looks alone.

But the fact that it is built by Chevrolet assures you right off it's got a lot more going for it than merely meets the eye. It tells you, for example, you can have the impetuous kind of power—6 or V8—that Chevrolet has a reputation for putting in its cars. It tells you that you get Body by Fisher handwork inside and

out. It tells you that you're going to get a ride developed by engineers who are old hands at putting the squelch on bumps.

Knowing all this, you probably won't be startled by the fact more people are now buying Chevelle than any other car its size. But you will have a happy surprise when you check what you can buy one for—right now at your Chevrolet dealer's.



HIGH TIME TO TRADE AT YOUR CHEVROLET DEALER'S

Zing into spring in a new Chevrolet, Chevelle, Corvair, Chevy II or Corvette

MATHIS CHEVROLET COMPANY

300 East 2nd Street

Burkburnett, Texas

Phone 569-3381

WACKER'S

Big Photo SPECIAL!

6 King Size Wallet

One Day Only
WEDNESDAY,
APRIL 14th

No Age Limit
Adults Included

99¢

Tax Included

No Limit
On
Amount
Of
Pictures



99¢

Tax Included

No Limit

SHUGART
STUDIOS

AT

WACKER'S

Auto Liability | From The Travelers Insurance Co. |

IT DOESN'T COST ANY MORE TO
BE SURE
HOWARD CLEMENT, Agent
New Location — Next To Legion Hall

From The County Agent

100 million acres of land could be used much more profitably if farmers and range managers followed these profitable range management practices:

1. Use adapted native grasses for seeding.
2. Protect rangeland from wild fires—build and maintain fire guards.
3. Remember that pounds of production, rather than numbers of head, count at the market.

Dr. A. J. Bauman will discuss the Brucellosis Program at the Valley Farms Community House on Friday, April 19th. The meeting will start at 7:30 p. m. Mrs. L. S. Clements is president of that community. All interested persons are urged to attend.

We would like to remind the folks in the Clara-Fairview Community of their regular monthly meeting on Friday, April 9th beginning at 7:30 p. m. Norman Brints, farm management specialist from Vernon, will discuss record keeping.

We would like to remind all livestock producers in Wichita County that the Wichita County Screwworm drive is underway. Dr. J. R. McKinney is chairman for the county. Each livestock producer is asked to contribute ten cents per head of livestock that he owns. Texas livestock producers are being asked to contribute \$300,000. The goal for Wichita County of \$2,841. In the next few days your neighbor will be calling on you for your donation. If someone fails to contact you, you may mail your donation to J. R. McKinney, or leave it at the ASCS office or the county agents' office.

The Junior Sheep Show will be held in the 4-H Barn on Saturday, April 10th. All animals are to be in the barn by 8:00 a. m. The show will be judged at 2:00 p. m. Anyone interested is invited to attend.

A cotton meeting for Wichita County cotton growers will be held at the ASCS office in Iowa Park on Thursday, April 15th beginning at 7:30 p. m. The Rolling Plains Cotton growers program, insects, fertilizers and varieties will be discussed. This is a real important meeting and all cotton producers are urged to attend.

Are you interested in learning to graft and bud pecans? If so, you will want to attend one of the following meetings on Thursday, April 15th: 10:00 a. m. Texas Electric Auditorium, Burkburnett; and 1:30 p. m. First Aid Room, County Courthouse in Wichita Falls.

Mr. U. A. Randolph, superintendent of the Montague Experiment Station will be in charge of each demonstration. Mr. Randolph will also discuss insects and diseases of pecans. The general public is invited to attend. Both men and women are invited to attend.

The 4-H County Elimination contests will be held in the ASCS office Community Room in Iowa Park on Saturday, April 24th. The program will start at 10:00 a. m. All interested club members are urged to attend.

Kids and household chemicals are deadly combinations. Most

parents realize this, but even so many youngsters under five years old are accidentally poisoned every year.

It can happen to your own children if you're careless about handling household pesticides and underestimate your toddler's ability to seek out trouble according to county agent B. T. Haws.

Those sprays and dusts you bring home to take flies, ants, roaches and other pests out of circulation can also be a kiddie trap.

You can protect your children, and the rest of your family too, by chaining to your memory these four keys to pesticide safety—label, use, storage and disposal.

Read the label on the chemical container carefully each time before using. The label gives specific instructions for proper use and important information for your safety.

Keep children out of spraying and dusting area to prevent inhalation of toxic fumes or mists. In using the chemicals follow special instructions to the letter.

Store chemicals in their own labeled containers where they belong and never in or near food containers. Keep them out of reach of children and pets, and under lock after use.

Get rid of empty containers right away. Destroy and bury them where they cannot contaminate food, people, animals or water supplies.

The cotton plant occurs in five distinct species, some of them perennial.

Divorce: Sign of the Times?

Divorce, once a social sin great enough to shame an entire family if any member committed it, has now apparently become socially acceptable in almost every strata of society. Why? The rapidity with which the transition from sin to acceptability was made has appalled social workers and psychiatrists for a generation, but statistics are proving that divorce is here to stay.

Why? There are several theories. Well-heeled career wives are one. There was a time when a wife depended entirely upon her husband's largess for her livelihood and thought twice (and swallowed hard) before she packed her suitcase and flounced from his bed and board forever. The second thought usually did it—and they wound up celebrating their Golden Wedding Anniversary. Not any more. Working wives sometimes contribute as much as half to the family income, and with this new-found emancipation they feel their husbands can either toe the mark or else. And if children are caught up in the maelstrom and become victims of broken homes, well—everybody's doing it, isn't he?

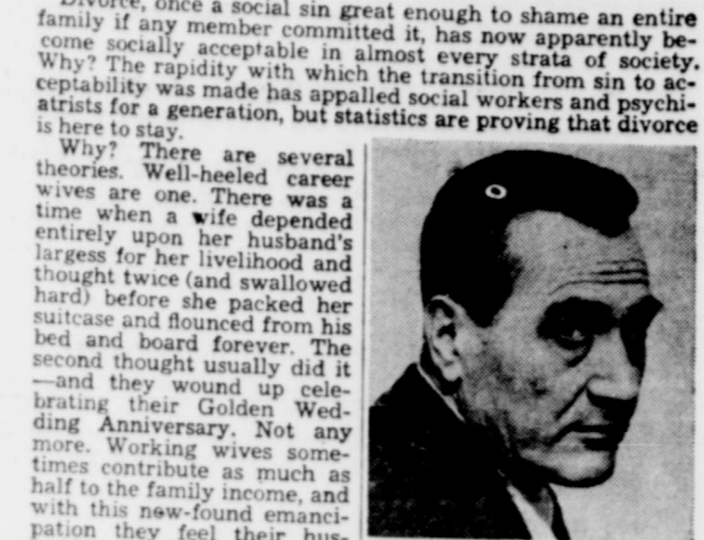
Like the weather, everybody talks about divorce, but nobody seems to be able to do anything about it but theorize. However, Artie Shaw, former band leader-actor-composer who quit the music business at the height of a remarkable career to write, does an admirable job of analyzing three broken marriages in his latest book of fiction, I LOVE YOU, I HATE YOU, DROP DEAD!

These are unusual marriages, to be sure, for Shaw has been exposed to an unusual, more-than-ordinarily glamorous life. But his treatment of the cause for divorce is an interesting one: he does it via three related novellas in which three sets of protagonists do their level best to destroy not only their marriages but their peace of mind and dignity as well.

The stories will mean many things to many people. In the first one, "Grounds for Divorce," it will seem unfeasible to one reader that Marjorie's action against Buddy, which could be interpreted as that of any law-abiding citizen, could upset Buddy so much that he would seek divorce. Another reader will feel that there is more to the case than meets the eye. And so it goes through the novellas, the third being a mystery entitled "Whodunit," whose heroine may, or may not be recognizable to the readers who have kept up with Shaw's colorful life.

What causes divorce? Many things. And many people!

Artie Shaw



Artie Shaw

agonists do their level best to destroy not only their marriages but their peace of mind and dignity as well. The stories will mean many things to many people. In the first one, "Grounds for Divorce," it will seem unfeasible to one reader that Marjorie's action against Buddy, which could be interpreted as that of any law-abiding citizen, could upset Buddy so much that he would seek divorce. Another reader will feel that there is more to the case than meets the eye. And so it goes through the novellas, the third being a mystery entitled "Whodunit," whose heroine may, or may not be recognizable to the readers who have kept up with Shaw's colorful life. What causes divorce? Many things. And many people!

Dorcas SS Class Met Monday, April 5th

The Dorcas Sunday School class of the First Baptist Church met in the home of Mrs. Lena Houser, April 5th, with group two serving. The devotional was given by Mrs. Grace Anderson on prayer. Mrs. Jo Brookman read a poem on Granny Really Worked. Mrs. Davis had the games. All enjoyed the evening. Those present were Mesdames Sylvia Lohofener, Marie Brashears, Helen Turner, Nomie Wilkinson, Grace Anderson, Leo Foster, Zella Mills, Jo Smith, the teacher, Mrs. Davis and two honorary members, Jo Brookman and Mrs. L. B. Horr and the hostess, Mrs. Lena Houser. The next social will be May 3rd with group 3 serving.

CARD OF THANKS

I am sincerely grateful to all my friends for the visits, cards, prayers and other kindnesses during the recent death of my sister. May God bless each of you.
MRS. RUTH CHANDLER

HAVE YOU

Patronized Your Hometown Bakery THIS WEEK?
HENRY'S Pastry Shop

WACKER'S Spring SPECIALS JUST IN TIME FOR Easter

VARIETY! QUALITY! SAVINGS! YOU GET ALL '3' AT WACKER'S

Ladies Hair Brushes
ASSORTMENT OF TWO STYLES FOR YOUR SELECTION
NYLON BRISTLE-ASSORTED, CLEAR AND BLACK. IDEAL BRUSH FOR YOUR MODERN HAIR-DO.
REGULAR 49c
SALE PRICE 36c 2 for 69c

Lustrous Pearl Necklace & Earring Sets
BEAUTIFUL THREE AND FOUR ROW NECKLACES WITH MATCHING EARRINGS.
REGULAR PRICE \$1.19 Set plus fed. tax
SALE PRICE 77c set plus fed tax

BANGLE Bracelets
NARROW PLASTIC BRACELETS IN SEASONS FASHION COLORS.
REGULAR PRICE 10¢ ea.
5¢ each 12 For 49

Shop Now and Enjoy Greater Savings For Easter and Spring...Select from Fresh New Stock Now on Display at WACKER'S
* LINGERIE * COSMETICS
* HOSIERY * PLUSH TOYS
* CANDIES * CARDS

Wacker's OPEN SUNDAY 1 TO 6 P. M.

Nylon Half Slips
TAILORED WITH APPLIQUES ASSORTED COLORS IN SMALL, MEDIUM AND LARGE SIZES
REGULAR PRICE \$1.29
SALE PRICE 97c

Ladies Genuine ETELL Pixies
MADE OF SOFT VINYL WITH RIBBED RUBBER SOLES.
Choice of six styles: BLACK, BONE, WHITE, RED.
Sizes: Small, Medium and Large
SALE PRICE 97c pair

Brassieres
TWO STYLES: SANFORIZED COTTON WITH FOAM RUBBER CUPS OR COTTON WITH CIRCULAR STITCHED CUPS.
Size 32 thru 40 A B C Cups
REGULAR PRICE 79c
SALE PRICE 2 for 99c

Nylon Head Squares
WOVEN NYLON GEORGETTE 29 INCH SQUARES IN ASSORTED COLORS.
REGULAR PRICE 59¢ Each
SALE PRICE 29c

Shirt Blouses
IN SOLIDS...STRIPES...BLOCK PLAIDS AND PRINTS. CHOOSE FROM FOUR STYLES IN SIZES 32 thru 38
REGULAR PRICE \$1.98 Each
SALE PRICE 2 for \$3.

String-Tie Belts
MARSHMALLOW PLASTIC WITH ASSORTED ORNAMENTS. THREE STYLES TO CHOOSE FROM
REGULAR PRICE, 79¢
SALE PRICE 44¢ each

Childrens Nylon Panties
WHITE ELASTIC LEG BRIEFS WITH lace trim and bows.
SIZES 4 thru 12
REGULAR PRICE 49¢ Each
3 pair 99c

Ladies Panties
Rayon Elastic Leg Briefs Assorted Pastels and High Shades
SIZES: 5-6-7
REGULAR PRICE 49¢ PAIR
3 PAIR 99c

Ladies Panties
RAYON ELASTIC LEG BRIEFS IN ASSORTED COLORS.
SIZES 8-9-10
REGULAR PRICE 59¢ Pair
2 PAIR 79c

Childrens Nylon Panties
WHITE ELASTIC LEG BRIEFS WITH lace trim and bows.
SIZES 4 thru 12
REGULAR PRICE 49¢ Each
3 pair 99c

Childrens Nylon Panties
WHITE ELASTIC LEG BRIEFS WITH lace trim and bows.
SIZES 4 thru 12
REGULAR PRICE 49¢ Each
3 pair 99c

