

The Burkburnett Star

HARRY C. DODSON, Owner and Editor



Printed weekly at Burkburnett, Wichita County, Texas. Entered as second class matter in the post office at Burkburnett, Texas, August 28, 1905, under the Act of Congress of March 3, 1879.

Mrs. Lela Mae Bailey, Bookkeeper-Society Editor
Forrest Green, Linotype-Pressman
J. W. Benokman, Commercial Printer

Notice to the Public: Any anonymous reflection upon the character, standing or reputation of any person, firm or corporation, which may appear in The Star, will be gladly corrected as soon as it is brought to the attention of the publisher.

Subscription Price \$2.00 Per Year

'GREAT SOCIETY' OFF THE PAD

The first bill to implement the President's "Great Society" program — that is to relieve the economic stresses of that vague, ill-defined, 360 county area that has been designated "Appalachia" — went to the White House when and as the President ordered it.

hailed as a remarkable demonstration of Democratic strength in the House, the Senate-passed version of the bill cleared the House 367-166 after Administration forces swiftly smothered 17 efforts to make changes. It should also be recognized as a tremendous personal victory for Mr. Johnson and a rare feat of salesmanship that he could sell the Congress on the idea that 360,000 square miles of the USA, extending from the Pennsylvania-New York border to Alabama and including some healthy "pockets of prosperity" as well as poverty, is, in its entirety, a depressed area.

The \$1.1 billion aid measure, which may well go down in history as the "greenest-guy" bill, authorizes expenditure of \$640 million over five years to pay 70 percent of the cost of 1,350 miles of highways to open up relatively inaccessible areas, and \$261 million for the first two years of a six-year \$2 billion program embracing hospital construction and maintenance, water pollution, soil improvement, reclamation of strip-mine lands, vocational schools, sewage treatment and assorted research and aid projects. The bill provides that a portion of the costs be met out of State funds.

If the area is as desolate and the 16 million inhabitants as destitute as the Administration would like us to think, you might agree that it would be cheaper to carry the people out piggyback than to build those new roads. On the other hand, motorists are always lined up with their engines running, waiting for the Governor (or somebody) to cut the ribbons across a new highway. And who knows but Appalachia's peaks may yet be crowned by high-rise apartments and summer estates and the terrain studded with golf courses and swimming pools?

Now that the newly established Appalachian Regional Commission has its green light, the taxpayer should be seriously interested in what happens. As mentioned above, the Appalachia project is but the first to be pushed over the Legislative line by the architects of the Great Society. And it should be remembered that lawmakers from other parts of the nation who put their shoulders to the wheel have been making poor mouths over areas nearer home. Furthermore, politics being what it is, the word has gone out that other depressed regions are not to be overlooked.

BURDEN ON ALL TAXPAYERS

When government engages in a commercial business, the least that should be asked is that the prices and charges honestly pay all the costs. But this is seldom, if ever, the case. The common practice is to operate the business at a loss, and force the taxpayers to make it up.

A good example is the parcel post service. It has operated on a deficit basis during most and perhaps all of its life. And this continues to be the case. A short time ago, it was reported that first class and airmail produce profits for the department, while parcel post, along with some other categories, loses money. It would be far more logical for the mails to be the losers—they are not competitive and are charged with public service attributes that take them out of the commercial classification. Parcel post, on the other hand, is a direct competitor of REA Express which operates on not only a national but an international scale.

This company gets no taxpayer subsidies. It is a taxpayer, not a tax consumer. It has known serious problems and it has met them, in the way of private enterprise, by dramatically improving the standards of service and thus attracting more business. In this, it is in complete contrast to parcel post.

Parcel post is doubtlessly here to stay as part of our mail system. But that is no excuse for the burden it places on every taxpayer.

Medicine At Work, a publication of the Pharmaceutical Manufacturers Association says, "What is the rationale in using a system set up for retirement to provide medical assistance? What is the logic in socializing medical care when health insurance programs can function so effectively and are expanding every day; in fact, already covering most of our citizens. Why, then, remove health care from the private sector when the private sector is doing such a fine job? If private initiative disappears there may never be enough time to repair the damage that will ensue."

World population should reach 3.3 billion this year and 4.3 billion by 1980, according to the Population Reference Bureau. The growth rate is about 65 million annually, with the greatest increases in the least developed areas.

THE AMERICAN WAY



You Can't Do Business With Communism!

Roger W. Babson Weekly Report



ROGER W. BABSON

WORKING WHILE GETTING YOUR DEGREE

Students heading toward a higher education should look into the growth in many parts of the nation of co-operative programs that permit college students to work with a company in their chosen field while pursuing college training in that same direction. Emergence of this system has resulted from successful teamwork between college and management leaders.

College-Job Combination Programs

While the idea of "working your way through college" is scarcely new, in times past the jobs taken by students to help themselves along often had nothing to do with their career objectives. Boys "perked" sodas, mowed lawns, did night work in local factories, girls baby-sat, did part time clerking in local stores, tutored, and so on. But the trouble was that their scholastic aims were almost always slowed—or even diverted—by their need to make money.

Recently, colleges in many sections have begun to appreciate the value of developing workable plans in joint action with private concerns and government agencies seeking to build strong crews of skilled employees. There are currently 74 colleges and universities with such programs in operation, 18 of these having been added in the past two years. The National Commission for Cooperative Education reports that nearly 50 more higher education establishments are considering such systems. So it is evident the work-study concept will attract many more degree seekers from now on.

For Ambitious College Material

As a rule, the program requires five years instead of four to get a bachelor's degree, because of the time devoted to developing on the job skill in an allied company or agency. For the first year, concentration is usually on basic academic studies, so other forms of financial help may be essential for that period. In the years thereafter, however, an eligible student should be able to work—in his job study program—enough to cover most of his costs. Commission figures indicate that there are now more than 35,000 entered in the co-operative program, earning on average about \$2,000 annually.

When a company or a government agency ties in with a work study program at a given university or college, it is naturally for the possible later recruitment of the students for full time employment. In this

way, employers get to know the young people during their training days and are able to appraise their capabilities as they go along. This provides an extraordinary opportunity to give direction to scholars and lead them toward careers for which they are best suited with in the field they have originally selected. The college is likewise enabled to slant its courses toward this end.

Program Worth Looking Into

No matter where you live, those of you who have children or grandchildren with hopes for a higher education should direct the attention of such young people to this rapidly expanding job-study concept. One very strong point in its favor is that cooperation and agency

concerned are almost always willing to start graduates at higher than average beginner's pay. This is because the on the job training during the college years cuts the time and cost that would otherwise be spent breaking in such employees when they joined personnel with.

Now while high school seniors are starting the last lap—is the time to look into the possibilities of job study programs for fall entrance into college. The National Commission for Cooperative Education, 4 West 40th Street, New York, N. Y. 10018 will send you a list, free of charge, of institutions of higher learning which have such programs in operation. A letter to any college selected from the list should bring you details of the plan and tell you what steps must be taken to determine eligibility for insurance. Send a full-sized, stamped, self-addressed return envelope.

DROP AROUND AND TALK OVER

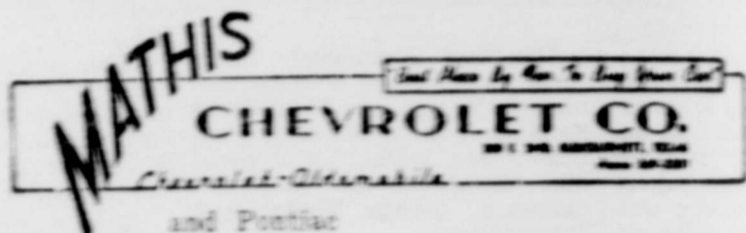


YOUR INSURANCE OR REAL ESTATE NEEDS WITH C. J. LIPPARD

LIPPARD Insurance Agency

319 AVENUE C

PHONE 569-38



Complete Paint and Body Shop

MANAGED BY MR. EARL WEST

34 YEARS EXPERIENCE

FREE ESTIMATES — ALL WORK GUARANTEED

WRECKER SERVICE

Phone Day 569-3381

Phone Night 569-3745

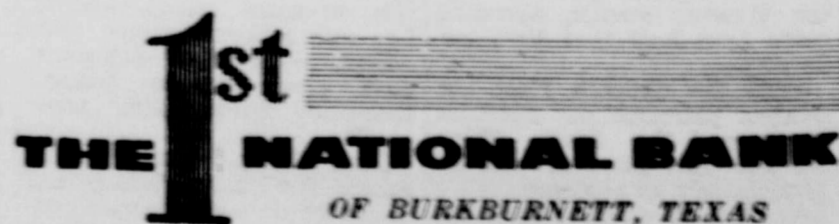
GIRL SCOUTS PARTICIPATE IN

"Hands Across The World"



INTERNATIONAL UNDERSTANDING MEANS PROSPERITY

4 Per Cent PER ANNUM Paid On Savings



4 Per Cent PER ANNUM Paid On Savings

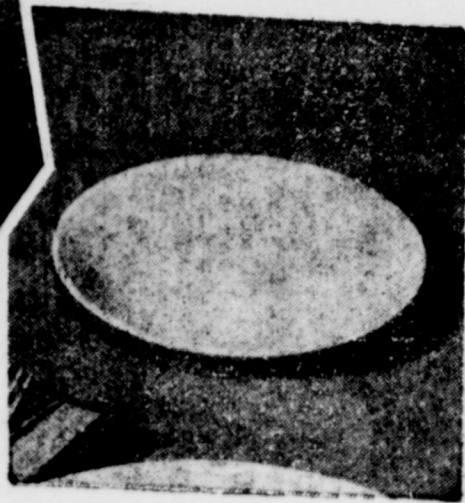
Member Federal Deposit Insurance Corporation

"SERVING BURKBURNETT SINCE 1907"

Wichita County, Texas

50 Free S&H Green Stamps WHEN YOU BUY ...

THIS WEEK!
STUEBENVILLE FAIRLANE
BREAD
BUTTER PLATE
50¢ VALUE
Only **9**
WITH EACH \$5.00 PURCHASE



SECTIONS II-VIII
FOR ONLY **99¢ EACH**



FROZEN FOOD SALE!
Banquet, Apple, Cherry, Peach, Fruit, Family Size
PIES ... 29¢

- | | |
|---|---|
| Sweet
Orange Juice, 12 Oz. Can 43c | Hills O' Home, Cut
Okra, 5-10 Oz. Pkgs. \$1 |
| Parkerhouse
4-24 Count Pkgs. \$1 | Ore-Ida
Corn on Cob, 6 Ears 59c |
| Beef, Chicken, Turkey
Pies, 6-6 1/2 Oz. Pies \$1 | Banquet
Tuna Pies, 5-8 Oz. Pies. \$1 |
| Cut
6-10 Oz. Pkgs. \$1 | Banquet Dinner
Mexican Dinner, 16 Oz. .39c |
| Green
6-10 Oz. Pkgs. \$1 | Banquet-Macaroni and Cheese
Casserole, 5-8 Oz. Pkgs. \$1 |

WINNERS BANQUET, BEEF, CHICKEN TURKEY, 11 OZ. PKG. 39¢

TERGENT Bonne, Washday, Powdered, 6c Off Label Giant Box 39¢

COFFEE Maxwell House, Drip, Fine, Regular 1 Lb. Can 59¢
2-Lb. Can 15c Off Label, Drip or Reg. \$1.17

CONDENSED MILK STAR KIST 3 No. 1/2 Cans 89¢

HONEY BOY CHUM ALMOND NO. 1 CAN 39¢

ROAST BEEF ROUND BEEF 3 LB. PKG 89¢

Fill Your Freezer With These Frozen Food Specials On Sale At Piggly Wiggly ...

STEWING CHICKENS Fairview Fancy, U.S.D.A. Grade A, 2 1/2 to 3 Lb. Average LB. 19¢

50 Lbs. Home Freezer Beef Deal
Buy the Following Armour's Star, Heavy Aged Beef and Save at Piggly Wiggly

10 Pounds Chuck Roast	
10 Pounds Short Ribs	
5 Pounds Family Style Steak	
5 Pounds Boneless Stewing Beef	
5 Pounds Rib Steaks	
5 Pounds Swiss Steak	
10 Pounds Lean Ground Beef	
50 Pounds Total	
Regular Price	\$29.95
You Save	5.00
Special Price Only	\$24.95



AT PIGGLY WIGGLY, YOU GET THE
GREATEST VARIETY OF FAMOUS BRANDS!
FRIENDLIEST, MOST COURTEOUS SERVICE!
THE ONLY NATIONALLY KNOWN SAVINGS STAMP
PLUS!
LOWEST PRICES ALWAYS!

Now Available At Your Piggly Wiggly Stores

INSTANT CREDIT

You May Fill Your Freezer By Using Any
NATIONAL CREDIT CARD
Freezer Beef, Frozen Food By The Case
or Can Goods By the Case
Up to \$150.00 While You Wait. Months To Pay.
Ask Any Piggly Wiggly Employee.

- SANTA ROSA
- PINEAPPLE, No. 300 Can..... 19¢**
 - ARROW, HOUSEHOLD
 - FOIL, 25 Foot Roll..... 49¢**
 - BELLE, NON-FAT
 - INSTANT MILK, 14 Qt. Box.... 89¢**
 - CARNATION OR DAIRYLAND
 - BUTTERMILK, 1/2 Gal. Carton.. 39¢**

FRESH PIGGLY WIGGLY PRODUCE!

GRAPEFRUIT

RUBY RED
5 LB. BAG 39¢

RED
RADISHES, Bunch 5¢

FANCY BUBBLE PACK
TOMATOES, Each 19¢

Carrots SWEET AND CRISP 1 LB. BAG 5¢

PACIFIC GOLD
Peaches 3 No. 2 1/2 Can 69¢

MARGARINE Miracle Whip 1 Lb. Pkg. 35c	BAR SOAP Lux 2 Reg Size Bars 23c 2 Bath Size Bars 33c
COOKIES Weston's, Malted Milk Nuggets 9 Oz. Pkg. 39c	DETERGENT Wisk, Liquid Quart Plastic . 81c
DOG FOOD Ideal 2 No. 1 Cans . . 33c	French Dressing Kraft's 8 Oz. Bottle . 29c

Lowest Prices ... Greatest Variety ... always at ...
Piggly Wiggly

- Fresh Frosted, Perfect for Broiling
Out Steak, 12 Oz. Pkg... 59¢
- Fresh Frosted, Jumbo
Red Shrimp, 2 Lb. Pkg. \$1.99
- Fresh Frosted, Heat and Eat
Sticks, Lb. Pkg..... 49¢
- Certified, Sliced Bologna, Liver Loaf,
and Pimento, or Olive
- Meat, 6 Oz. Pkg... 29¢**

Auto Liability | From The Travelers Insurance Co. |

IT DOESN'T COST ANY MORE TO
BE SURE
HOWARD CLEMENT, Agent
New Location — Next To Legion Hall

Drillers Cop Chamber of Commerce Tournament Sat.



Pictured above left to right: Bubba Bailey, John Guise, Carl Raleigh, Oneal Weaver, Bobby Nichols, Dan Strickland and Stan Owen.

Shown in front holding the trophy is Ollie Ratliff, manager of the team.

factor in the Drillers' back-board domination and guard, Lonnie Nichols, sparked a double tough defense.

Gripado and Kelley led Enid with 23 and 21 points.

The Burk Burnett Bankers won third place with a 97-92 victory over Decatur. Consolation honors went to Magic-Aire of Wichita Falls as they downed Lawton's Jets, 83-53.

The Drillers' victory trail to the finals included a 115-62 and a 112-57 verdict over Decatur.

In first nights action, the Bankers beat Magic Aire and Decatur dropped Lawton. In the second round Enid won over the Bankers and Magic Aire kayoed Valley View.

The tournament served as a warm-up for the Drillers before they journey to the State AAU Tournament.

Rotary District Conference At Abilene, Texas, March 19-20

Rotary District Conference will be held in Abilene, Tex., March 19-20. Those from the Burk Burnett Rotary Club who are planning to attend are Carrol Copeland, George Counter, T. M. Cornelius, Al Dillard, Bill Donnell, I. C. Evans, Bryan Farris, Clark Gresham, Al Lohofener, Alvin Hill, Geo. McClarty, Floyd Marten, Walter Riley, Marvin Taliaferro, Harold Van Loh, Bill Vincent, Cliff Wampler, W. T. Zimmerman. Several Rotary Anns are also planning to attend.

Tom Thumb's real name was Charles Sherwood Stratton.

Cafeteria Menu

Sheppard-Burk Hardin Grade School High School

MARCH 22-26

MONDAY

Baked Pork and Beans and Vienna Sausage
Buttered Corn—Cole Slaw
Cornbread—Butter—Milk
Boston Cream Cake

TUESDAY

Roast Beef—Brown Gravy
Creamed Potatoes
Green Beans
Hot Rolls—Butter—Milk
Fruit Spread

WEDNESDAY

Fried Chicken
Buttered Rice
Mixed Vegetables
Bread—Butter—Milk
Apple Cobbler

THURSDAY

Hamburgers
Pickles—Mustard
Sliced Onions
Potato Chips—Spring Salad
Buns—Cheese Sticks—Milk
Ice Cream

FRIDAY

Deep Sea Dandy
(Fish on Hot Dog Bun)
Tarter Sauce
Potato Salad—Carrot Sticks
Lettuce and Tomato
Hot Dog Bun —Butter
Milk
Cookies and Fruit

RAZOR'S EDGE

Trappers carry a supply of single edged razor blades to make the first slits in skinning. Tough hide of animals dulls regular knife quickly.



How do you get the truth through?

The Iron Curtain isn't soundproof. And so the truth is broadcast, through the air, where it can't be stopped by walls and guards, up to 18 hours a day to millions of people in the closed countries behind the Iron Curtain.

Will you help the truth get through?
Send your contribution to:
Radio Free Europe,
Box 1965, Mt. Vernon, N. Y.
Published as a public service in cooperation with The Advertising Council

FIND A LEAK

Find the tiniest leak in waders or boots by filling with water and watching where it seeps through. Mark spot, dry out and patch.

ANNOUNCING

FIRST SAVINGS & LOAN ASSOCIATION

4.6%

— OF —
BURKBURNETT, TEXAS

QUARTERLY

Announces A New Anticipated Dividend of 4.6 Per Cent Per Annum Payable On A Quarterly Basis.

4.6%

QUARTERLY



Savings In By the Tenth Earn From the First

Dog Emetic

If your dog eats poison and there's no time to get him to a vet, hold open his mouth and pour a can of concentrated evaporated milk down his throat. Follow it immediately with a can of soapy water. Up will come the poison.

TRAFFIC FACTS

Given By
BURKBURNETT STUDY CLUB

During 1963 there were 21 days with 15 or more fatal accidents in Texas!

Bubba Bailey, a 6 foot North Texas State product, who can dunk the ball with two hands, pumped in 31 points Saturday night to lead at 97-83 romp by the Burk Drillers over Enid, Okla., in the championship game of the first annual Chamber of Commerce Semi-Pro Basketball Tournament.

The Drillers' Strickland, Stan Owens and Oneal Weaver, all chimed in with double figures of 25, 17, and 17 respectively. Bailey put three straight free throws, and from then on the champs were never headed. Bailey went on to hit 19 from charity alley.

Owens, a Burk High player of a few years back, and former basketball roach at Iowa Park, was deadly on long set shots and lay-ups. Strickland, Howard Payne coached and educated, was deadly from all over the court, a real competitor. Weaver, a 6' 6" veteran, All American at Midwestern, was a particular crowd pleaser with his spectacular hook shots and calm play. Carl Raleigh's towering 6' 10" was a prime

OWENS-BRUMLEY FUNERAL HOME

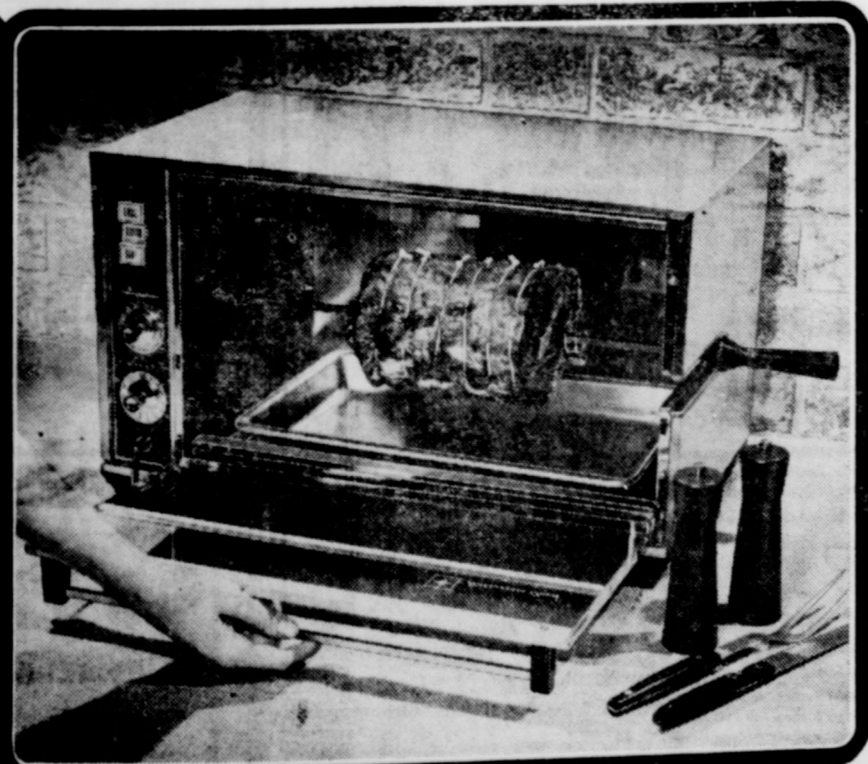
AMBULANCE SERVICE

PHONE 569-3361

HAROLD VAN LOH, PRESIDENT

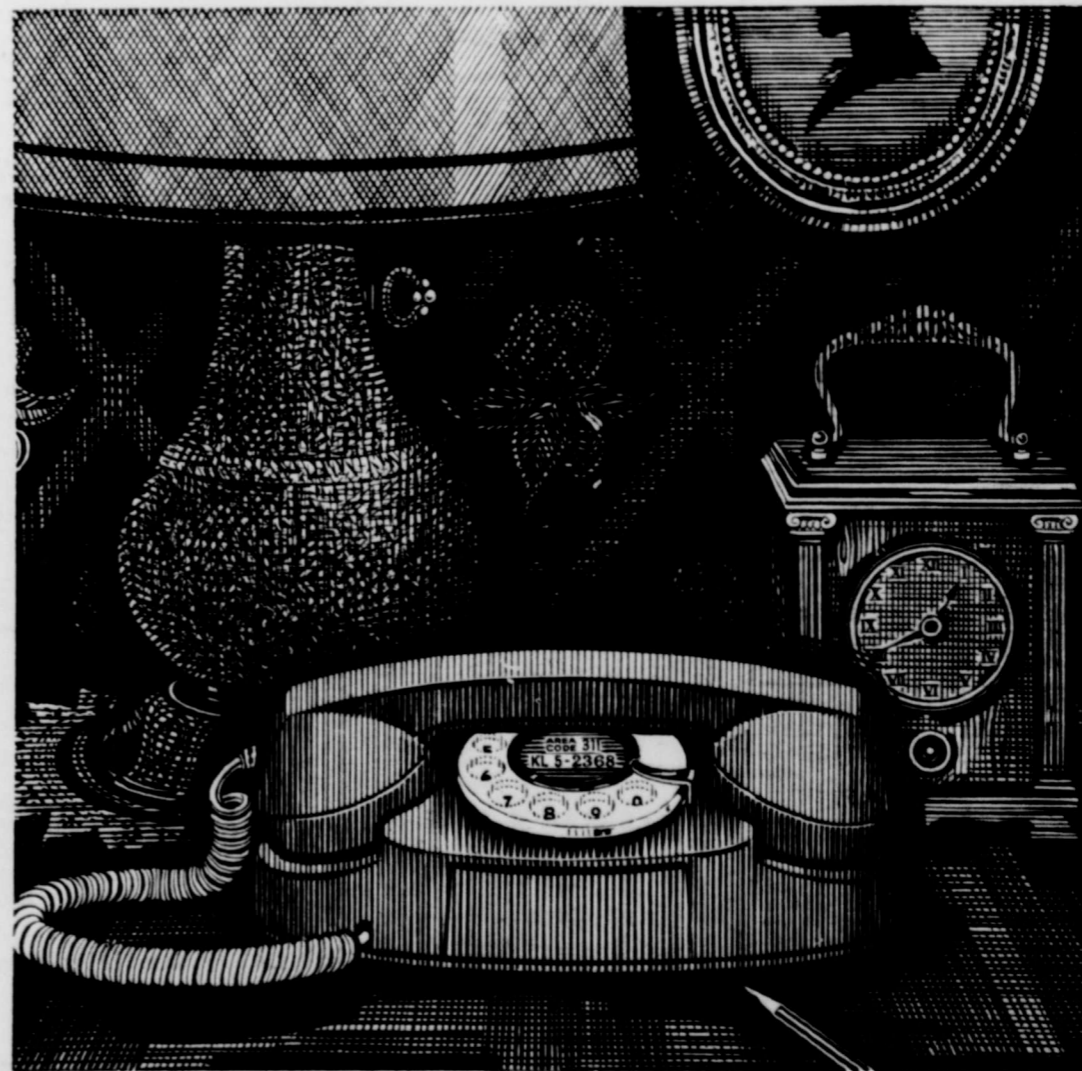
YOUR BETTER WAY TO COOK BECAUSE IT'S FLAMELESS

Only electricity cooks meats without flame in their own savory juices



For a new taste sensation, try a rolled roast, ham or chicken cooked in an electric rotisserie. The meat bastes itself as it revolves on a slowly turning spit under radiant, flameless electric heat. The result is mouth-watering juiciness and flavor that will have your family coming back for "seconds." You can bake and broil foods, too, in your electric rotisserie. And because it's flameless electric, you can plug it in anywhere, cook wherever you choose — in the kitchen or family room, on the porch or patio. See the new electric rotisseries and other electric cooking appliances at your dealer's soon.

TEXAS ELECTRIC SERVICE COMPANY
JOE T. SALTER, Manager 569-3373



practical

and compact, a Princess® telephone fits easily and gracefully anywhere in the home. Its night-light dial glows in the dark to help you find the phone safely, quickly. When you lift the receiver the dial lights up brightly to make dialing easy. Comes in smart decorator colors, too. Practical and beautiful.

SOUTHWESTERN BELL



