

Chamber of Commerce Luncheon Each FIRST MONDAY at Town Hall. Everybody Invited Each Pays for His Meal

# Burkburnett Star

LIKED BY MANY - - CUSSSED BY SOME - - READ BY EVERYBODY

The first transcontinental airmail route between New York City and San Francisco was started in 1920.

ME 58

BURKBURNETT, WICHITA COUNTY, TEXAS, THURSDAY, MARCH 4, 1965

NUMBER 25

## Burkburnett Pageant Set For Friday, March 5th At 8:00 P. M.

### -R-O

Friday, March 5th at 8:00 p. m. at the Burkburnett High School Cafetorium, a new Miss Burkburnett will be crowned. One of the ten lovely and talented girls who have worked so hard in preparation for this night will take the first step up the road that leads to the Miss America title. Miss Sue Revier, Miss Burkburnett, 1964, will place the crown on the head of the girl selected by the panel of judges to represent Burkburnett in the Miss Texas Pageant.

Each of the ten contestants will be interviewed by the judges Friday and later will be joined by members of the Modern Study Club for dinner at the Ranch House Restaurant. Then at 8:00 p. m. they will start their final bid for the crown. The girls will be presented in bathing suit and evening dress competition. Each girl will give a three minute talent routine. They will be judged on the basis of poise, personality, charm, beauty and talent.

Jerry Thomas, who so capably stepped in at the last minute and did a wonderful job as Master of Ceremonies last year, has been asked to fill that position this year. Entertainment will be provided at intermission by the Stings, Gary Bean, Burns Alexander and Mark McClain and Miss Sue Revier.

The contestants are Theresa Farley who will be sponsored by Lippard Insurance Agency; Linda Bryant, Burk Insurance Agency; Stephanie Slusher, Preston Dairy; Marilyn Greenwald, Mathis Chevrolet; Donna Todd, Tullis Motor Co.; Candice Logan, Wampler Insurance Agency; Patricia Johnson, White's Auto; Marie Farris, Bill's TV and Appliance; Brenda Spillers, Monaghan's Furniture and Joy Roberts, Wacker's Variety.

The Modern Study Club of Burkburnett will give the winner a \$100.00 scholarship to the college of her choice. Other prizes to be given Miss Burkburnett are a \$25 bond from the First National Bank of Burkburnett, a plaque and a trip to compete in the Miss Texas Pageant in July. First runner-up will receive a \$15 savings account from the Burkburnett Bank; second runner-up, \$15 savings account from First Savings and Loan; third and fourth runners-up will get \$10 gift certificates from Harlan Mills and Corner Drug.

The remaining five contestants from the following merchants: will receive \$5 gift certificates: Burk Beauty Shop, Bennie's Dress Shop, Crane Beauty Shop, Famous Dept. Store and Clements Fashions.

It promises to be a most enjoyable evening and we would like to urge each citizen of Burkburnett to come out and give moral support to the girl of their choice. Tickets will be on sale at the door with reserve seats \$1.50 and general admission \$1.25. All children under 12 years of age 50c.

## School Board Candidates Turn Out In Drove

When the deadline for filing for the school board came Wednesday night, Mar. 3, eleven candidates had been recorded. Three places are to be filled.

Those in the merry chase are, in the order of their filing:

- M. Leon Thompson
- J. L. "Roy" Mitchell
- Hugh Veach
- Gary Bean
- Weldon Nix
- C. D. Landrum
- Floyd G. Seay
- Norman C. Roberts
- Gene Bankhead
- Louis A. Gray
- Albert Dillard
- Mitchell, Veach and Nix are seeking re-election.

## Gov. Buys First Sheet Easter Seals



Governor John Connally received the first sheet of 1965 Easter Seals to be distributed in Texas on the eve of the Annual Easter Seal Campaign, opening March 1 and continuing through Easter Sunday. The 1965 National Easter Seal Chairman, Lucille Ball, of "I Love Lucy" fame, and Chuck Winikates of Dallas, Texas made the presentation at the Governor's Mansion. Chuck is the Texas Easter Seal Child for the 1965 Campaign.

The year-round Easter Seal Programs of care and treatment for handicapped children and adults are made possible by the funds raised during the annual Easter Seal Campaign.

## Citywide Organizational Meeting At Town Hall Thurs., March 4th In Interest of Library-Museum

### March 6 Deadline For Filing On City Council

Saturday, March 6th is the deadline for filing for a place on the City ballot for Councilman. As we go to press, the following have filed for the two open positions:

Will Teal, C. J. Lippard, Clarence Bizet, J. T. Gillis and C. L. "Pete" Simmons. Simmons is an incumbent. Harry Elliott, the other outgoing Councilman, has not filed to date for re-election.

### Burk Chamber Seeks Workers For '65 Program

The Burkburnett Chamber of Commerce is forming committees for its 1965 work programs. Albert Dillard, president, asked members to list their committee choices on nine available groups with more to come at the regular luncheon. The luncheon was highlighted by a talk on county government and management by County Judge Calvin Ashley. He outlined how county funds were channeled into the various departments.

Committees offered are public relations, education and military affairs, industry development, membership and finance, parks, agriculture, fund raising, recreation, rodeo and retail merchants promotion. Members who were not present and who wish to volunteer for any committee should contact Buddy Byars, chamber manager.

During the meeting Al Lohofener, retired postmaster, received a plaque for his service with the post office department and his service to the community. W. T. (Dub) Zimmerman, acting postmaster, presented the plaque. A certificate of service and a letter of commendation was presented to James T. Brady, retired rural carrier. The commendation came from B. M. Myers of the Dallas regional office of the post office. Buddy Byars spoke on behalf of the Community Improvement program now underway.

# C. of C. Semi-Pro Basketball Meet Starts Fri. Night

## Permanent Committees for C. of C., 1965

PROGRAM OF WORK COMMITTEE Officers For 1965

President, Albert Dillard; 1st Vice President, Joe Salter; 2nd Vice President, C. J. Lippard; Treasurer, Jim Frye; Assistant Treasurer, Jack Aaron.

At the noon business luncheon Monday of the C. of C., Albert Dillard, president, named nine important committees and the members thereof. He asked that each one check their committee assignment, and if they preferred to work on a different committee, the change would be made gladly. Mr. Dillard stated two or possibly three other important committees would be named later on.

Members of the Community Improvement Program are:

**Public Relations, Education, Military Affairs:** A. E. Brown, Jack Mathis, Harry Dodson, I. C. Evans, A. R. Hill, Col. W. M. Hendrix, James Pearson, Lloyd Bloodworth, (Mayor of Burkburnett)

**Industrial Development:** Joe Salter, Jack Aaron, Harry Elliott, Bill Donnell, Jim Frye, A. R. Hill, Jack Mathis.

**Membership and Finance:** A. R. Hill, Joe Janeke, Cliff Wampler.

**Parks:** C. J. Lippard, Mrs. Edna White, Jim Frye, Jess Whately, Mrs. P. A. Carpenter, Clark Gresham, Clyde Conway, Bud Ramsey, Francis Beaver, D. C. Dodson.

**Agriculture:** B. H. Preston, Jr., Bryan Farris, C. B. Bowles, Jerry Thomas, J. C. Hinkle, Gene Robertson, Clair Day, Joe Hensley.

**Fund Raising:** Floyd Marten, Carl Dixon, W. T. Zimmerman, Buster Morgan, H. A. Traxton, Roy Silkwood.

**Recreation:** Jerry Thomas, Darrell Nichols, Marvin Taliaferro, Lamoin Champ, T. M. Cornelius, Dale Lewis, Hal Mabry, Arnold Oliver, Lonnie Taylor, Neal Tullis.

**Rodeo:** Floyd Marten, Bryan Farris, Reed McCandless, Bill Vincent, Bryan Hooper, James Spinks, Charles Palmer, Dow Estes, Roy T. Magers, Jerry McClure.

**Retail Merchants Promotion:** George McClarty, Francis Beaver, John Gill, John Page, C. M. Archer, Mrs. Francis Kauer, Mrs. Ina Gilbert, Mr. and Mrs. B. L. Turner, Bob Monaghan, Opal Bookbinder.

## Bill Donnell Is New President of Rotary Club

At an election held Tuesday, Bill Donnell was named president of the Rotary Club.

T. M. Cornelius is secretary.

Three new directors were elected to serve 3 years: W. T. Zimmerman, Harold J. Wolfe and Lamoin Champ. The club meets each Tuesday noon at Town Hall.

## Red Cross Blood Bank To Be Here Wed., March 10

Red Cross Mobile Blood Bank Unit will be in Burkburnett Wednesday, March 10th at the Community Room of the Burkburnett Bank from 12:00 noon to 6:00 p. m.

Blood is urgently needed. We feel that Burkburnett owes the Blood Bank approximately 70 pints of blood. It is not necessary for donors to fast before giving blood as was required in recent years. Your blood donation will be appreciated.

## New Committee Starts Work On New Cemetery

Members of the Community Improvement Program began beautifying the new cemetery Tuesday with the planting of 72 trees and shrubbery in the new area.

Another of the Community Improvement Program's projects, the club plans to landscape the old cemetery, as well.

Mrs. Ralph White is president of the club. Mrs. Philip A. Carpenter serves as treasurer and Buddy Byars as publicity chairman.

The 47 nonbearing mulberry, 25 cherry laurel trees and shrubbery planted Tuesday were bought with memorials from persons who have relatives and friends buried in the Burkburnett Cemeteries. Memorials may be sent to Mrs. Philip A. Carpenter, 722 Sunset Drive, Burkburnett, Texas.

## Cafeteria Menu Sheppard-Burk Hardin Grade School High School

MARCH 8-12

**MONDAY**  
Barbecued Pork on Bun  
Green Beans  
Carrot and Raisin Salad  
Bun—Cheese Sticks—Milk  
Ice Cream Bar

**TUESDAY**  
Ham Chunks and Red Beans  
French Fries—Cole Slaw  
Cornbread—Butter  
Milk

**WEDNESDAY**  
Texas Hash  
Mixed Vegetables  
Peanut Butter Stuffed Celery  
Bread—Butter—Milk  
Graham Cracker Crumb  
Cream Pie

**THURSDAY**  
Hamburgers  
Mustard—Pickles—Onions  
Potato Chips—Spring Salad  
Buns—Cheese Slices  
Chocolate Cake

**FRIDAY**  
Fish Fillet—Tarter Sauce  
Buttered Corn—Field Peas  
Hot Rolls—Butter—Milk  
Cookies and Fruit Spread

Rev. J. T. Strange, a long time resident of Burkburnett, is still confined to the Electra hospital. Rev. Strange was hospitalized shortly after Christmas.

Uruguay means bird's tail.

There will be four games Friday night starting at 6:00.

Burkburnett Bank plays Magic Aire of Wichita Falls at 6:00 and the Burk Drillers play at 7:30.

Decatur Baptist College plays YMCA of Wichita Falls at 9:00 and Lew Johnson's Restaurant and Lawton, Oklahoma plays Enid, Oklahoma at 10:15.

Semi-finals and finals will be Saturday morning and Saturday night. This is the first annual Chamber of Commerce basketball tournament.

**Burk Bankers**  
Terry Webb, 6' 4" playing forward position, was All-American High School in Alabama in 1961.

Ron Altenburg plays at a guard position. He is from Cornell University of Iowa, and also plays with Phillips 66's.

**Burk Drillers Have Tallies**  
7-0 Eddie Jackson from Oklahoma City University; 6-10 Richard Trice, All-American from Howard Payne College; 6-6 O'Neal Weaver, All-American from Midwestern University; 6-8 Roger Morgan from Midwestern University; 6-10 Carl Raleigh from the University of Houston.

## Lions Club Hears Discussion On Medicare Bill

Marie Farris, Club sweetheart, furnished dinner music.

Dr. Wm. Boardman, program chairman, introduced the main speaker, Dr. McGeyer, who is chairman of the Public Relations Committee of the Wichita Falls District Medical Society. He discussed two bills before Congress, Elder care and Medicare. The Dr. told of the good and undesirable features of each proposal.

The club voted to send a girl to Girls' State and a boy to Boys' State. The candidates will be chosen by the faculty, based on grades, good citizenship, and overall excellence of the students. Two guests were present, M. L. Patterson of Gainesville and Louis Gray of Burkburnett.

## We Want to Borrow Old Photographs

The Star and News plan to run old pictures of the early days and of the boom days of Burkburnett.

There must be many interesting pictures which our readers would like to see.

If any one has such pictures, we would like to use them in this series. We make the cuts right here in our office. The pictures are not damaged in any way, and we will take tender loving care of all pictures entrusted to us.

# The Burkburnett Star

HARRY C. DODSON, Owner and Editor



Printed weekly at Burkburnett, Wichita County, Texas. Entered as second class matter at the post office at Burkburnett, Texas, August 19, 1907, under the Act of Congress of March 3, 1879.

Mrs. Lola Mae Bailey, Bookkeeper-Society Editor  
Forrest Green, Linotype-Pressman  
J. W. Brookman, Commercial Printing

Notice to the Public: Any erroneous reflection upon the character, standing or reputation of any person, firm or corporation, which may appear in The Star, will be gladly corrected as soon as it is brought to the attention of the publisher.

Subscription Price \$2.00 Per Year

## NEW UNION MONOPOLY TWIST



News Note: Union dockworkers continue paralysis of all Atlantic and Gulf ports despite ratification of settlements by locals in all but two ports.

### RAW POWER IN ACTION

The serious damage that organized labor's monopoly power can inflict on the nation's economy was never more graphically demonstrated than in the strike of the International Longshoremen's Association.

This stoppage which paralyzed shipping in all Atlantic and Gulf Coasts ports would have been bad enough under ordinary circumstances but the manner in which it was conducted and prolonged showed complete disregard, by the union, for fair play and honest dealing.

Even though the rank and file union members in most of the ports from Maine to Texas ratified a contract that was hailed by their own leaders as one of the finest ever offered a labor organization, the strike in all ports was continued as a means of forcing management to capitulate to the demands of locals in two of the ports.

Thus, shipping companies who had agreed to the harsh terms weeks before, were still unable to resume operations, the shutdown of which was costing an estimated 25 million dollars a day.

Has the standard union dictum of 'No contract, no work' now been changed to 'No work, even with a contract'?

## THE AMERICAN WAY



The Legacy

### Junior Progressive Study Club Met In Cozby Home March 1

Members of the Junior Progressive Study Club met in the home of Mrs. Phillip Cozby, March 1st.

Meeting was called to order by the President, Mrs. Leslie Terry. Three students, George Province, Charles Herring and Bill Cole, from the speech department of Burkburnett High School presented our Texas Day Program.

Following the program the new officers for the 1965-66 year were presented and accepted. They are as follows: President, Mrs. Lewis Gray; vice president, Mrs. Jerry Houston; Recording Secretary, Mrs. Phillip Cozby; Corresponding Secretary, Mrs. Leslie Terry; Treasurer, Mrs. Eddie Eastman;

and Reporter and Historian, Mrs. Tom Christopher. Meeting adjourned and refreshments were served by Mrs. Cozby and Mrs. Eastman, co-hostess.

### From The Harrelson Nursing Home

The staff of Harrelson's Nursing Home wishes to express their appreciation to the Fidelis Class of Central Baptist church for the nice selection of fresh fruit that they delivered to the patients on Thursday, Feb. 18th.

### Mrs. H. G. Williams Hostess Feb. 24th Burk Garden Club

Burkburnett Garden Club met recently in the home of Mrs. H. G. Williams on Tidal street. President, Mrs. A. H. Lohofener presided. All business and reports of standing committees were disposed of. The Council Flower Show date was changed from April 21 to April 23rd.

The program for this date was "Conservation." Roll call was answered by "Name a bird you know by sight." Leader for the day, Mrs. A. R. Bunstine presented Mrs. J. C. Adams, who talked on "The Miracle of the Birds." The first miracle is that they are believed to have evolved during geologic times from a reptile like ancestor and the difference in their structure which seems so great today have been brought about by the birds learning to fly. Their bodies are so built

that man has learned to fly by modeling a plane along the same lines, heavy parts of weight in the center and lighter at both ends and use of tilting wings to soar.

The second miracle is the migration of the birds. How they travel thousands of miles from south to north in seasons and fly back for nesting in seasons. How the song bird males travel in groups and females follow a few weeks later for building nests and mating for new families.

If you wish permanent song birds, keep plenty of water and food available for them in winter and keep stray cats away.

In the absence of Mrs. Johnnie Herring, Mrs. Carl Morrison talked on "Trees and Shrubs that furnish food for the birds."

Certain types of cedar that have tiny seed is so very good for food and also shelter. All the holly family, nandinas and this fall, the photinia, has been of the greatest food supply.

For spring food, the bearing mulberry tree is a great source,

also the berry bearing nests of the young. Mrs. Morrison insisted that all care for our feathered friends. They are great indeed. A lovely salad plate was served to fourteen members and gracious hostess.

We adjourned to meet 24th with Mrs. Lloyd worth.

ROY BRAKEBILL HEARING AID CENTER  
Vance Quality Hearing  
710 Austin Phone 322  
Free Parking Wichita

MEN'S BIBLE CLASS  
FIRST BAPTIST CHURCH  
INVITES YOU TO WORSHIP WITH THEM  
Each Sunday Morning  
At 9:30 A. M.  
George McClarty, Pastor  
W. R. Carswell, Teacher  
R. O. Brookshier, Secretary

**MATHIS CHEVROLET CO.**  
Chevrolet-Alabama  
and Pontiac

## Complete Paint and Body Shop

MANAGED BY MR. EARL WEST

34 YEARS EXPERIENCE

FREE ESTIMATES — ALL WORK GUARANTEED

WRECKER SERVICE

Phone Day  
569-3381

Phone Night  
569-3748

## PALACE Theatre

BURKBURNETT, TEX.

### NEW STARTING TIME

Matinees Sat. and Sun.

Window Opens 2:00  
Show Starts 2:15

### Evening Shows:

Boxoffice Opens 7:15  
Show Starts 7:30

25c 50c

### FRIDAY-SATURDAY

MARCH 5 and 6

### DOUBLE FEATURE

THE BEATLES

"A HARD DAY'S NIGHT"

PLUS

MY SON, THE HERO

TECHNICOLOR

Pedro Armendariz

Jacqueline Sassard

25c 50c

### SUNDAY-MONDAY

MARCH 7th and 8th

A BOY, TEN FEET TALL

Edward G. Robinson

— ALSO —

LATE NEWS

SPONSORED BY

First Savings and Loan

Assn. of Burkburnett

25c 50c

### FRIDAY-SATURDAY

MARCH 12th and 13th

### DOUBLE FEATURE

CRACK IN THE WORLD

DANA ANDREWS

TECHNICOLOR

PLUS

YOUNG FURY

RORY CALHOUN

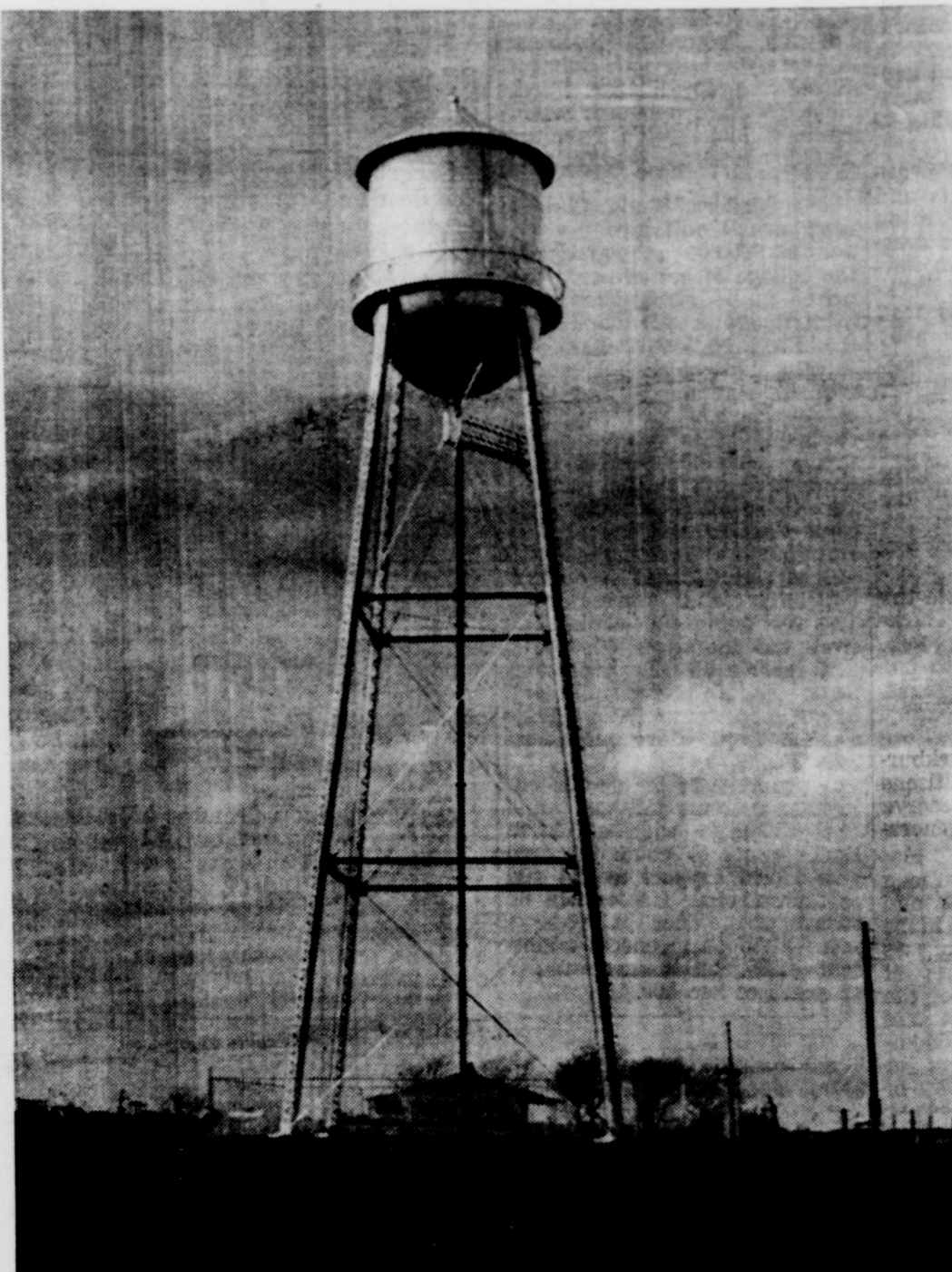
VIRGINIA MAYO

25c 50c

CLOSED ON

WED. and THURS.

## STANDING TALL



IN RANDETT

SHOULDER TO SHOULDER WITH OUR NEIGHBORS

4 Per Cent  
PER ANNUM  
Paid On Savings

**1st NATIONAL BANK**  
OF BURKBURNETT, TEXAS

Member Federal Deposit Insurance Corporation

"SERVING BURKBURNETT SINCE 1907"

4 Per Cent  
PER ANNUM  
Paid On Savings

## WE ARE NOW . . .

AUTHORIZED

## STATE INSPECTION STATION

Avoid Last Minute Rush

Get Your Car Safety Checked Now!

## SPECIAL

Adjust Brakes \$2.49

AND

Pack Front Wheels

(Regular Cost \$4.85)

## Wolfe Ford Co.

1007 Sheppard Road

Phone 569-2275

Burkburnett, Texas

# PARTICIPANTS IN THE MISS BURKBURNETT PAGEANT TO BE HELD MARCH 5 IN HIGH SCHOOL CAFETORIUM



These lovely three are Marilyn Groenwold, who will pantomime and dance to Fernando's Highway; The Farley, who will do a pantomime to the Stripper and Candy Logan who does a modern Jazz Dance to Raunchy '65.



Participating in the Miss Burk Burnett Pageant to be held March 5th at the Burk Burnett High School Cafetorium are these four beauties, Patti Johnson, Marie Farris, Stephanie Slusher and Linda Bryant.



A wide variety of talent is shown by these three. Brenda Spillers will do a skit, No Talent; Joy Roberts is to do a comedy pantomime and Donna Todd will do a Dramatics Interpretation.

## ABOUT SPORTS

By BOB LAURICK

Basketball season all on the shelf for the season. The Midwestern University team is to play in the state at Kansas City. Of course this line team has the backing of us and best wishes. We want to carry home a victory of this kind to keep sports in the University. One by one they have been dropped from the rolls of merit. Why? Many have tried to reactivate football and baseball, but they seem to be on the short end. The local college always seem to have a top contending team in any sport it took after. The main problem seems to be the support of the local fans.

I understand that the MU Indians were swamped with telegrams by well wishers in the recent play off when they were on the road.

The local paper headlined the games. The stands of the well on the way champs, field house, filled to capacity in the later more crucial games. I remember when the small cozy field house on the campus was big enough to hold what fans sought to back the mid classed team. You had to look hard for any backing from the local paper.

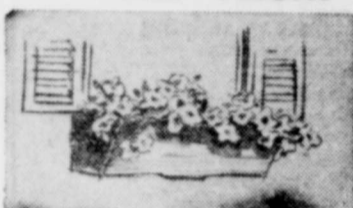
It seems to this writer that the old saying, "Everyone likes a winner," is true. Just what makes a winner? The team! The coach! An individual player! The School! Or is it a little of each with a Big lot of fans and supporters behind them? Yes even if we can't play the game we take a big part in it first by backing the team from the stands. Of course we realize everyone can't make the out of town trips. But the team knows that you're behind them at the home field.

We also want to take time to wish: Don Dolberry, coach of the First National Bank of Burk Burnett Women's Basketball team good luck in their bid for State Championship at Houston, March 5-6-7th. I understand that Don's team won the Wichita Falls Commercial league and the Regional play-offs held in Abilene recently. It seems to me that Burk Burnett has produced several winners in the sports field this year. The Burk Burnett Kings, a semi pro football team won the State Championship which I played with. The Burk Burnett Women's team just mentioned and now the Burk Burnett Drillers will travel to the State Play-offs soon. Boomtown has something to be proud of, but we all have to support these teams win, lose or draw.

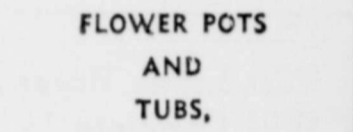
A foot note to this column is that right now the Burk Chamber of Commerce is putting together a terrific basketball tournament that should be held this coming weekend, 5-6-7th of March. All entries are not secured yet, but with teams like Ft. Worth, who beat the Drillers, The Drillers, Ada, Okla., Lou Johnsons of Lawton, and teams from Dallas, Abilene, Waco and Okla. City in the line up it should be tops in the state. Good Luck!

Hats Up For Crows  
If crows sit in trees and caw at you but won't fly over to investigate your call, throw your hat in the air. Keep the hat flying up and down. Soon crows' curiosity gets the best of them and they'll fly over to see what's up.

## Annuals Make Your Garden Gay Use Them Everywhere



IN WINDOW BOXES,



FLOWER POTS AND TUBS,



IN PLANTERS,

IN HANGING BASKETS AND IN FLOWER BEDS AROUND AND UNDER TREES.



EITHER SIDE OF THE DOOR OR ATOP A GARDEN WALL—

EVERY PLACE IS A PERFECT PLACE FOR ANNUALS.

## Classifieds In The STAR Get Results

# BARGAIN!

SAVE \$7.40 ON A ONE YEAR SUBSCRIPTION TO THE

**Burk Burnett Star and News**

For Example, the Subscription Rate for The Burk Burnett Star and Burk Burnett News Is

**\$3.00 FOR ONE YEAR**

(Two Papers Delivered to Your Home Each Week)

If Purchased In Single Copies, the Price is 10c Per Copy or \$10.40 Per Year

To Have Your Name Placed On Our Mailing List

**Just Call 569-2191**

Or Come By the Office at 417 Avenue C

**Burk Burnett Star & News**

## Mrs. Oscar McBride Hostess Of Friendly Homemakers Feb. 24

The Friendly Homemakers club met at 9:30 a. m. Feb. 24th in the home of Mrs. Oscar McBride.

The meeting was called to order by the club president, Mrs. Earnest Masters. Opening exercise by Mrs. Monroe Gray. "A Job I have Simplified." Minutes were read by Mrs. Monroe Gray. Mrs. Oscar McBride showed movies of the Friendly Homemakers entertaining another club with a salad luncheon. Mrs. Cheney, member of the Steering Committee for the Museum and Library, talked on what Museum and Library will mean to the people of Burk Burnett.

March 4th, 11th and 25th will be the dates for the charm Workshop to be held in the Wichita Falls Texas Electric Auditorium from 10-12. These meetings are open to all interested homemakers. On March 30th will be a meeting on 'Children's Nutrition,' which will be in Burk Burnett Texas Electric Auditorium from 10-00 to 12:00.

Our program was given by Mrs. McBride on "How to Improve our memory." We do have good memory, not poor, just untrained. Club project, a pair of shoes was given to a needy child. Door prize was won by Mrs. Elvin Bangs. Recreation by Mrs. J. G. Cheney.

Refreshments was served. A new member, Mrs. William Thomas was welcomed into the Club. Next meeting will be March 10th in the home of Mrs. Monroe Gray. Program will be presented by the 4-H girls Meeting adjourned. Those attending was Mesdames E. E. Bangs, Wm. D. Thomas, Earnest Masters, Allen McCollar, J. G. Cheney, Haskell Draper, Oscar McBride, Monroe Gray and Dru McBride.

## Sucker Bait

Toss a pressurized biscuit tin in your bait box. Next trip you have sucker bait when and where you want it with no storage problem.

Plenty of Experience For Any Type of Sale

## BILL WHITE

Auctioneer

CALL 855-0560 or 723-4982

Route 1, Box 140  
Wichita Falls, Texas

## Family FINANCIAL PROTECTION

Policyholder Questions Answered by the Institute of Life Insurance 277 Park Ave., N.Y., N.Y., 10017

Q. What is a life insurance "rider"?

A. It is an added page, section or paragraph, which is attached to and become a part of a policy. It usually modifies the basic policy or provides additional coverage. For example, a rider may provide special benefits for the policyholder if the policyholder becomes disabled, or an additional payment to his family



RIDER USUALLY MODIFIES "BASICS"

If he is killed in an accident. Riders are also often used to provide extra term insurance (such as a family income or mortgage redemption rider) under a permanent policy. Occasionally a rider is used to modify the insurance company's liability under certain conditions—for example, to limit the accidental death payment if the policyholder regularly engages in some unusually hazardous activity.

Q. A friend and I each took out a \$10,000 life insurance policy this year. We are both 30 years old. So why is he paying only \$37 a year for his policy, while I am paying \$162?

A. Your friend's is undoubtedly a term policy, which will expire within a certain length of time—probably five years. Yours sounds like a straight life policy, which you can keep in force the rest of your life at the same premium rate. Also, your policy builds up cash value, while his does not.

A term policy is often the best way to get temporary protection for a few years. But a straight life policy is usually a better way to get longer range protection.

Although your friend may have the right to renew his policy when it expires, he will then have to pay a higher premium because he will be five years older. If he keeps renewing it every five years thereafter, by the age of 50 or so he will be paying more than you—and at older ages his premium will jump much higher than yours. Yet he will still have only temporary protection. He won't be able to renew it beyond a certain age—probably 65 or 70, by which time his policy will have cost nearly as much or perhaps even more than yours. And, since it has no cash value, he can get nothing back.

Under the Joint resolution of Congress, March 1, 1845, Texas may subdivide it into four states.

## Clements Fashions



PHONE 569-3831

SEE OUR NICE SELECTION OF HALF SIZES IN ALL NEW FABRICS

OUR WINDOW THIS WEEK WILL FEATURE HERMAN MARCUS FASHIONS

Call the Lumber Number **569-3354**

Lumber Hardware Plumbing Supplies

C. D. Shamburger LUMBER COMPANY, INC.

Wedding Invitations

FREE WEDDING NOTE PAPER WITH EACH ORDER

**\$12.50**

BURKBURNETT STAR

**M & N**

We Give "S & H" Green Stamps

Plastic—Reg. 10c <b>HEAD BANDS</b> .. <b>2 for 15c</b>	Turquoise, Pink and Beige <b>PYREX BOWL SET</b> Regular \$4.95 <b>4 Pieces</b> .. <b>\$3.95</b>
Protects all Styles of Hairdos <b>Coiffure Bonnet</b> .. <b>47c</b>	Regular 98c <b>Waste Baskets</b> .. <b>47c</b> For Bedroom or Bath—Decorated
Head and Shoulders <b>Condition Shampoo</b> .. <b>57c</b>	Alladin 300 Count <b>Notebook Paper</b> .. <b>34c</b>
Free-Hi Stretch <b>Campus Sox</b> .. <b>37c</b>	Hytone, Leather Board, With Filler <b>Memo Book, reg. 79c</b> .. <b>47c</b>
Women's Long White <b>Work Socks</b> .. <b>4 pr. 66c</b>	Small Metal <b>Receipt Boxes</b> .. <b>27c</b>
Women's White <b>Handkerchiefs</b> .. <b>2 for 15c</b>	Regular 69c <b>Chocolate Peanut Clusters</b> .. <b>44c</b> Pound

**ALL SWEAT SHIRTS** .. **1/3 off**

FOR THROW PILLOWS

Regular 69c  
**SHREDDED FOAM** .. **34c bag**

Bondex Blue  
Regular 69c  
**JEAN PATCHES** .. **47c**

Coats and Clarks  
Regular 29c  
**THREAD** White, Six Cord .. **19c**  
Size 30, 40, 50, 60

Regular 30c  
**Singer Machine Oil** .. **19c**

# All Insurance is the same 'til you have a claim

**Burk Insurance Agency**  
HOWARD CLEMENT  
New Location — Next To Legion

## DEVOL NEWS

Mrs. C. O. Woodley, Reporter

Rev. Bob Terrell received word of the death of his step father, Mr. J. B. Miller, who passed away in a Jacksboro hospital, Feb. 22nd, following a brief illness. Rev. and Mrs. Terrell attended the funeral service Thursday which was held in Memorial Christian church in Jacksboro, and burial was in Chico Cemetery. Mr. Miller was 73 years old.

Mr. and Mrs. W. C. Charboneau were Sunday dinner guests in the Robert Wyatt home.

Mr. and Mrs. Harold Kirby spent Friday night with Mrs. Kirby's parents, Mr. and Mrs. Charboneau.

Sunday company in the A. J. Adams home were Mr. and Mrs. Deryl Adams and family from Wichita Falls and Mr. Rex Mullins and children of Burkburnett.

Mrs. Billy June Jeffreys of Burkburnett spent Monday with her parents, Mr. and Mrs. W. H. Stevens.

Betty Dahms, Cotton County HD agent, gave an interesting lesson on Safety at the Home Demonstration Club meeting Feb. 25th in the home of Mrs. Belle Charboneau.

Mrs. Grace Uthe, president conducted the business session after which refreshments were served by the hostess, Mrs. Charboneau to Mesdames Betty Dahms, E. N. Miracle, J. B. Stevens, Edna Wilkinson, Dollie Hardin, Pearl Cates, Pearl Coker, Minnie Smith, Nora Woods, Grace Uthe and Ethel McCasland. The next meeting will be with Pearl Cates March 11th.

Nesbit Baker and Johnnie Sykes of Duncan were calling on friends in Devol one day last week.

Mr. and Mrs. Eddie Morrow accompanied by a grandson, Eddie Wayne visited their son and family, Mr. and Mrs. Terry Morrow at Kremlin, Okla.

Mrs. Pearl Coker and Mr. and

Mrs. Lester Coker were Ringling, Okla. visitors Sunday.

**CORRECTION** — We are sorry that we erred in last weeks news when giving the age of Mr. Wesley Charboneau as 81, who enjoyed having friends call on him on his happy 91st birthday on Feb. 22nd instead of 81 year olds as we stated. Mr. Charboneau has been blind for the past 20 years but is alert and active.

Mr. and Mrs. W. H. Stevens visited Mr. Stevens brother, last week.

Mr. Fred Stevens in Frederick Mr. and Mrs. James Barker and Mrs. Yvonne Morgan were Ft. Worth visitors over the weekend.

Sunday company in the Guy Hutson home were Mr. and Mrs. Charles Morgan of Hollister, and Mrs. Joyce Bryan and daughter of Wichita Falls.

Mr. and Mrs. W. D. Short of Okla. City were guests in the Guy Hutson home Saturday.

Mr. and Mrs. H. C. Golson and family wish to thank friends and family wish to thank friends and neighbors for the many contributions and help bestowed upon them in their time of need, when their home was destroyed by fire. Also thanks to the people who brought in food, it was deeply appreciated.

The people of Devol Community want to also express their thanks to our neighboring community for the cooperation to our call for help for the Golson family.

### 4-H FOODS GROUP ONE MET FEB. 18th In ENDRES HOME

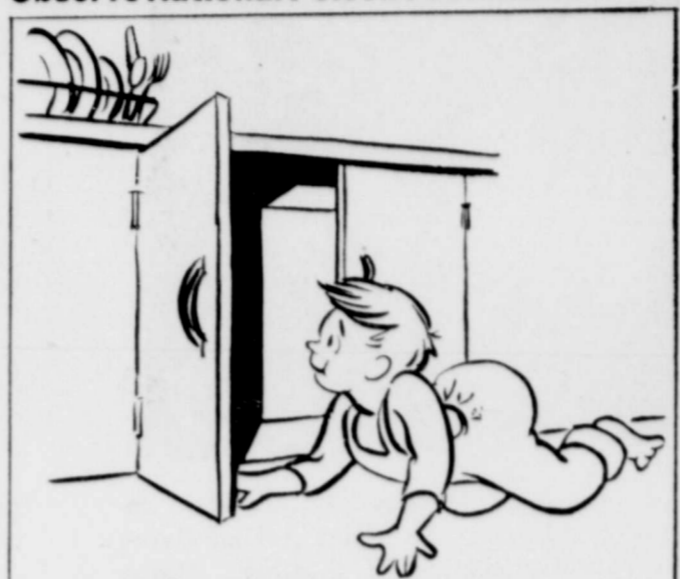
Group One of the 4-H Foods group met Feb. 18th with Mrs. Endres. We made orangeade and cocoa. Vicki Endres led the group in making the orangeade.

Those attending were Sue Schuman, Laura Alewine and Debra Underwood.

### Tight Ferrules

Remember for loose ferrules, rub beeswax on 'em. No wooble.

## Observe National Poison Prevention Week



Even the President sees fit to speak Of National Poison Prevention Week. The purpose of which is to make you aware Of the potential dangers to your heir. Since toddlers are curious and fast as a wink, Never store products under the sink That polish, scour, clean or bleach. They're sure to be tasted if left within reach. The prudent way to do your cleaning 'Til children learn "don't touch's" meaning is with baking soda, a safe pure food For which you'll find a multitude Of cleaning uses around the house Which protect, besides baby, you and your spouse. For when cleaning with soda where food's involved, The problem of harmful residue's solved. So observe the rules of poison prevention And you won't be under constant tension Fearing what's clutched in baby's hand May be possibly poisonous contraband. \*(March 14-20)

### Mrs. Clyde Hoskins Hostess Feb. 23rd To Jr. Forum Study Club

Meeting was called to order by the President, Mrs. Raymond Schroeder and devotional on Cain and Abel was given by Mrs. C. L. Pruett.

Mrs. James Roderick presented her guest, Miss Sandra Herrall of Wichita Falls, who is Assistant County Home Demonstration agent Miss Herrall brought a program to the Junior Forum Study Club entitled "Money Management," which was illustrated on poster cards.

The program was designed to teach young children how to manage their money, which they receive from allowances, gifts, earnings, etc. Miss Herrall pointed out that the young homemaker could use a chart method in spending and saving money if the budget is hard to stretch.

A true and false quiz on Parliamentary Procedure was given by Mrs. Bill Wood.

A change in officers for 1965-66 was made with Mrs. C. L. Pruett accepting the position of President, Mrs. Wayne Smith, vice president.

A pre-scheduled bake sale has been postponed until March 13 in front of the First National Bank.

Mrs. Clyde Hoskins served refreshments to Mesdames C. L. Pruett, James Roderick, Raymond Schroeder, John Gill, and Bill Wood.

March 9th meeting, observing "Texas Day" will be held in the home of Mrs. Robert Williams.

### Dyed In The Red

Don't ask us why fish like red porkrind. Just dye yours red and see.

### Miss Linda Bryant Will Compete In Miss Burk Pageant



Miss Linda Janette Bryant, daughter of Mr. and Mrs. J. T. Bryant, 106 Preston, will be a contestant in the Miss Burkburnett Pageant on March 5th, 8:00 p. m. in the Burkburnett High School Cafetorium.

A DE student, Miss Bryant is employed by the 1st National Bank. She is on the student council, a member of the Tennis club and played basketball for 2 years.

Linda, who is a brunette with blue eyes, is 5 ft. 3 1-2 inches tall. She has chosen to sing as her talent in the pageant. She is being sponsored by Burk Insurance Agency.

### Card Of Thanks

I wish to express my sincere appreciation to my friends and neighbors for the many kindnesses shown me during my stay in the hospital. The visits, flowers, cards and phone calls meant so much to me and will always be remembered.

Gay GROVES

### Miss Donna Todd Will Compete For Miss Burk Title



Miss Donna Alicia Todd, daughter of CM-Sgt. and Mrs. Fred Todd, Jr., 210-B Titan, will compete in the Miss Burkburnett Pageant, March 5th at 8:00 p. m. in the Burkburnett High School Cafetorium.

Miss Todd is 18 years of age and is a senior at Burkburnett High School, where she is a cheerleader, a member of the student council and the National Thespians Society. She played basketball in 1963-64.

Miss Todd has brown hair and green eyes and is 5 ft. 1 1/2 inches tall. Her hobby is swimming. She will be sponsored by Tullis Motor Co.

### HAVE YOU

Patronized Your Hometown Bakery THIS WEEK? HENRY'S Pastry Shop

### Coleman-Sharp Vows Announced

Mr. and Mrs. Milburn Lee Coleman, students at Midwestern University, are making their home at 1903 Taylor. The couple was married Jan. 27th.

The bride is the former Miss Faye Sharp, daughter of Mr. and Mrs. H. E. Sharp, 3144 Lela Lane. An honor graduate of Rider High School, she has been on the MU honor roll, and is a member of Tau Beta Sigma, honorary women's band sorority.

She was the Texas State Twirling Champion in 1961 and has received over 300 awards in that field.

Parents of the bride are Mr. and Mrs. L. M. Coleman of Burkburnett, where he graduated from high school in 1961. He attended North State University before coming to MU where he is a medicine major and scheduled to graduate in August.

Coleman is a member of the Sigma fraternity, Academy of Science Club, Association, and the American Chemical Society. He is on the Interfraternity Council as general secretary of the Southwestern Region in student government. He is a laboratory aide for the City Water Department.

The couple exchanged vows in the First Methodist

## MRS BAIRD'S



Stays Fresh Longer

### BUILDERS — CONTRACTORS

BUY YOUR GENUINE

## FORMICA

CHEAPER THAN YOU CAN ORDER IT

T. S. THOMAS

1516 BEVERLY

PHONE 734

WICHITA FALLS, TEXAS

# DO YOU KNOW About Medicare? About Eldercare? Compare the Bills

**ELDERCARE** Herlong-Curtis H. R. 3727  
**MEDICARE** King-Anderson H. R. 1

Non-Surgical Doctor's Care	YES	NO
Surgery	YES	NO
Drugs and Medicine Outside Hospital	YES	NO
Hospitalization and Nursing Home	YES	YES
Increase in Social Security Payroll Tax	NO	YES
For Only Those 65 and Over Who Need Help	YES	NO
For All 65 and Over, Including the Wealthy	NO	YES
State Administration	YES	NO
Federal Administration	NO	YES

For More Information Contact Your Doctor or Write:

WICHITA COUNTY MEDICAL SOCIETY

1600 8TH STREET, WICHITA FALLS, TEXAS

## WRITE YOUR VIEWS TO CONGRESS NOW

(This message provided by the Wichita County Medical Society)



Miss Kaybrooke

### YOUNG FASHION GREAT

... smart and perfect for any Spring wardrobe. A coat with the lady-like good looks to take it, and you anywhere. A small Peter Pan collar tops a modified full line. In a blend of acetate and rayon that's polyester foam laminated for marvelous shape retention. Black or Navy. Sizes 6 to 20.

\$35.98

Lorraine's

WICHITA FALLS, TEXAS

SOUTHMOOR CENTER

PHONE 767-1614

### Ready-Set GARDEN



## GARDEN SEEDS AND PLANTS

ARRIVING DAILY

Farmers Co-op. Feed & Supply

502 N. Ave. B

Burkburnett

Burnett, Wichita County, Texas

**Janlee Baptist Church**  
Homer V. Southerland  
Pastor

Cross from High School  
Sunday School, 9:30 a. m.  
Worship Service, 11:00 a. m.  
Training Union, 6:00 p. m.  
Evening Worship, 7:00 P. M.  
Wednesday—  
Teachers and Officers 7:00  
Church in Prayer—7:45 p. m.  
Bible Practice, 8:15 p. m.

**Church of Christ**  
Gene Gilmore, Minister

Bible Study Sunday, 9:45 a. m.  
Worship, 10:45 a. m.  
People Class 5:00 p. m.  
Worship, 6:00 p. m.  
Bible Study, Wednesday, 7:30  
Bible Class, Tuesday,  
8:00 a. m.

**Grace Lutheran Church**  
Third St. and Ave E  
Philip M. Otten, Pastor

The Church of the Lutheran  
TV's "This is the Life".  
Sunday, 9:15 a. m., Sunday  
School and Bible Classes.  
Worship Service at 10:30.

**First Christian Church**  
Jack Gardiner, Minister  
2nd Street and Avenue D  
Phone 569-2062  
Res. Phone 569-1236

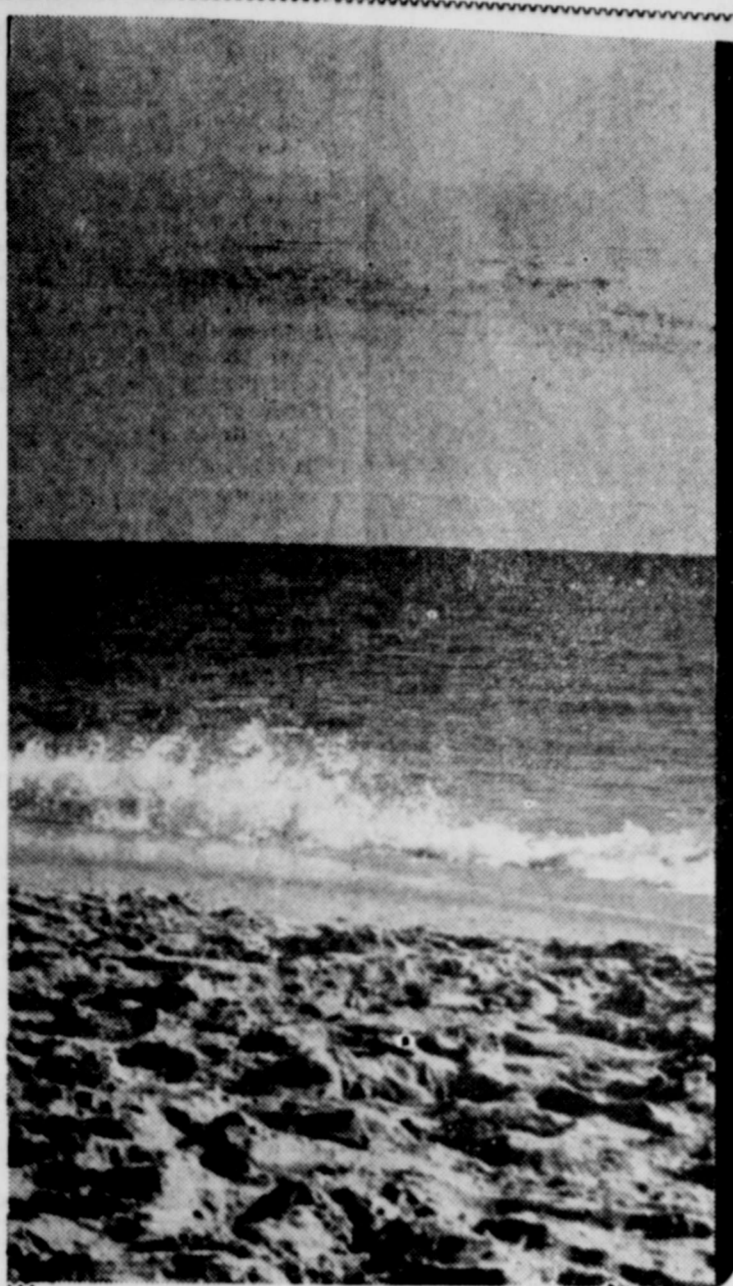
SUNDAY —  
9:30 a. m., Church School.  
10:00 a. m., Morning Worship.  
6:30 p. m., Youth Fellowship  
7:30 p. m., Evening Worship  
WEDNESDAY —  
7:30 p. m., Choir.

**First Baptist Church**  
Lamoin Champ, Pastor  
Maurice Fennell,  
Minister of Education—Music

Corner Avenue D and 4th  
Sunday School — 9:30 a. m.  
Morning Worship — 10:40  
Training Union — 5:30 p. m.  
Evening Worship—6:30 p. m.  
WEDNESDAY:  
Teachers and Officers Meet—  
6:40 p. m.  
Prayer Meeting — 7:30 p. m.

**Trinity Lutheran Church**  
Rev. David W. Janosky

Miles West of Burkburnett  
on State Highway 240  
9:30 a. m. — Sunday School  
Bible Classes.  
6:30 a. m. — Worship Service.  
Communion Service — First  
of each month.  
Other League meetings  
Wednesday, 8:00 p. m.



**DEEP  
AS THE SEA**

Standing in the sand, looking at the sea, one cannot help thinking of the boundless, fathomless love of God toward us. Oh, how he loves us, uplifts us, protects us and encourages us. There comes to mind many of his precious promises and the heart swells with gratitude. Recalled first of all, perhaps, are verses like these:

"Fear thou not; for I am with thee: be not dismayed; for I am thy God: I will strengthen thee: yea, I will help thee."

"Yea, I have loved thee with an everlasting love: therefore with loving kindness have I drawn thee." Jeremiah 31:3.

"For God so loved the world that he gave his only begotten Son, that whosoever believeth in him should not perish, but have everlasting life."

"For God sent not his Son into the world to condemn the world; but that the world through him might be saved." John 3:16, 17.

Many more words of comfort await you in the Bible and in the Church as His words are proclaimed from the pulpit. We invite you to attend church this week. You will be glad you did.

The Church is God's appointed agency in this world for spreading the knowledge of His love for man and of His demand for man to respond to that love by loving his neighbor. Without this grounding in the love of God, no government or society or way of life will long persevere and the freedoms which we hold so dear will inevitably perish. Therefore, even from a selfish point of view, one should support the Church for the sake of the welfare of himself and his family. Beyond that, however, every person should uphold and participate in the Church because it tells the truth about man's life, death and destiny; the truth which alone will set him free to live as a child of God.

©Coleman Adv. Ser., P. O. Box 20067, Dallas 20, Texas



**Calvary Baptist Church**  
College and Ave B  
Ray C. Morrow, Pastor

10:00 a. m., Sunday School.  
An Independent Southern Baptist Church.  
We use the Bible as our only literature.  
11:00 a. m., Song, Preaching Service.  
7:00 p. m., Young Peoples Services.  
7:30 p. m., Night Preaching Service.  
Wednesday Night—  
6:45 p. m., Teachers Meeting.  
7:30 p. m.—Prayer Meeting.

**Central Baptist Church**  
814 Tidal St.

Kenneth D. Bradshaw, Pastor  
Sunday School, 9:30 a. m.  
Morning Worship, 10:45 a. m.  
Training Union, 6:00 p. m.  
Evening Worship, 7:00 p. m.  
Wednesday Night Prayer Service, 7:30 p. m.

**Church Of Christ**  
Randlett, Oklahoma

Corky Grisham, Minister  
Home-Office Phone Ly 9-2893  
WORSHIP SERVICES  
SUNDAY —  
10:00 a. m., Bible Study.  
10:45 a. m., Morning Worship.  
6:00 p. m., Evening Worship.  
WEDNESDAY —  
7:30 p. m., Bible Study.

**Church of God**  
J. W. Jackson, Pastor

10:00 a. m., Sunday School.  
11:00 a. m., Hour of Morning Worship.  
7:00 p. m., Evangelistic Services.  
7:30 p. m., Wednesday, Young Peoples Endeavor.

**NOTICE**

Burkburnett residents are invited to attend the First Presbyterian Church in Grandfield, Oklahoma.  
Sunday School—10:00 a. m.  
Morning Worship—11:00 a. m.  
Wednesday Bible Study—7:30 p. m.  
Rev. Campbell B. Long, Pastor.

**Church Of Jesus Christ Of Latter Day Saints**

Elders Briem and Allen  
Ward of the church located at 3200 Cheryl, Wichita Falls with services each Sunday at 10:00 a. m. and 5:30 p. m.  
Primary classes are held at the Town Hall in Burkburnett on Wednesday at 4:00 p. m. for children, ages 2-11.

Is Your Name Mention Here?

**Pentecostal Church Of God**  
Berry Street  
Rev. F. H. Owen, Pastor

Sunday School, 9:45 a. m.  
Morning Worship, 11:00 a. m.  
Sunday Night Evangelist Service, 7:00 p. m.  
Saturday Night Fellowship, 7:30 p. m.

**First Church of Christ Scientist**

2156 Avenue H  
Wichita Falls, Texas  
Sunday School for children under 20 years of age, 11:00 a. m. in the Church Edifice.  
Nursery.  
Services at 11:00 a. m.  
Wednesday Evening Services, 8:00 p. m.

**Randlett Baptist Church**  
Randlett, Oklahoma  
Rev. T. E. Lee, Jr., Pastor

SUNDAY —  
Sunday School, 9:45 a. m.  
Morning Worship, 11:00 a. m.  
Training Union, 7:00 p. m.  
Evening Worship, 8:00 p. m.  
Wednesday Evening Prayer Service, 7:30 p. m.

**Assembly of God Church**  
Corner of College and Ave. B  
Rev. L. H. Finney, Pastor

Sunday School, 9:45 a. m.  
Morning Worship, 11:00 a. m.  
Evening Worship, 7:30 p. m.  
Women's Missionary Council, Tuesday, 2:00 p. m.  
Prayer Meeting, Wednesday, 7:30 p. m.

**Church of the Nazarene**  
Main at Holly  
Howard Lester, Pastor

Sunday School, 9:45 a. m.  
Morning Worship, 11:00 a. m.  
Young Peoples Service, 6:15 p. m.  
Junior Society, 6:15 p. m.  
Evening Worship, 7:00 p. m.  
Wednesday Prayer Service, 7:30 p. m.

**First Methodist Church**

Avenue C and 4th Street  
Phone 669-3778  
Carrol D. Copeland, Minister  
Sunday School — 9:30 a. m.  
Morning Worship Service — 10:35 a. m.  
Methodist Youth Fellowship — 5:45 p. m.  
Evening Worship Service — 7:00 p. m.  
Bible Study — 7:30 p. m.  
Wednesday and Thursday.  
Nursery provided for all Church Services.  
Kindergarten — Week Days 8:30 — 11:30 a. m.

**Cashion Baptist Church**  
Wichita Highway  
Rev. Michael Barnard, Pastor

SUNDAY:  
Sunday School, 9:45 a. m.  
Morning Worship, 11:00 a. m.  
Training Union, 6:30 p. m.  
Evening Worship, 7:30 p. m.  
TUESDAY:  
WMU — 7:30 p. m.  
WEDNESDAY:  
Beginners and Primary Sunbeams Junior Choir. Christian Development Program, 6:45 p. m.  
Hour of Power, 7:30 p. m.

**Episcopal Church Of St. John the Divine**  
1000 South Berry Street  
Rev. Walter A. Gerth, Vicar

SUNDAY—  
11:00 a. m. Christian Education  
12:00 Noon, Morning Prayer and Holy Communion  
Nursery Available  
FRIDAY—  
7:30 p. m. Inquirers class  
SATURDAY—  
7:30 p. m. Choir Practice

**First Baptist Church**  
DEVOL, OKLAHOMA

Sunday School, 9:45 a. m.  
Morning Worship, 11:00 a. m.  
Training Union, 7:00 p. m.  
Evening Worship, 8:00 p. m.  
Prayer Meeting, Wednesday, 7:30 p. m.  
Intermediate and Junior G. A. each Tuesday evening at the Church, 4:00 p. m.  
Sunbeams at Church Tuesday evening at 4:00 p. m.

THIS SERIES OF CHURCH ADS IS BEING SPONSORED BY THE UNDERSIGNED INDIVIDUALS AND BUSINESS INSTITUTIONS:

**AT Piggly Wiggly**

Parker Plaza  
Burkburnett  
— Greatest Variety  
Lowest Prices —  
We Give S. & H. Green Stamps



**THE BURKBURNETT BANK**  
MEMBER OF FDIC

**Modern Butane Company**

"FOR FARM — HOME AND COMMERCIAL USE"  
903 East 3rd St. Phone. 569-3331

**Wortham Radiator Shop**

Complete Radiator Service  
115 East 3rd Phone. 569-2431

**Farmers Co-op. Gin, Feed and Supply**

501 N. Ave. B Phone 569-2601

**Cicero Smith Lumber Co.**

Free Estimates—Call Us For Service  
GENE ALLEN, Mgr.  
Phone 569-3711

**Harlan Mullins Butane Co.**

PROPANE — BUTANE  
ANHYDROUS AMMONIA  
Everything In L. P. Gas Carburetions  
Pho. 569-1811 Home 569-2088  
BURKBURNETT



**BURKBURNETT FLORIST**

Member Florist Telegraph Delivery  
Mr. and Mrs. L. V. Richards  
115 So. Ave. B. Phone. 569-2281

**Texas Electric Service Co.**

Joe T. Salter, Manager  
Phone 569-3373

**CLIFF WAMPLER**

For Insurance of All Kinds  
203 N. Ave. D Phone 569-3161  
Burkburnett, Texas

**Leist Texaco Service Station**

"A COMPLETE SERVICE"  
400 So. Ave. D Phone 569-8134



**FOODS Company**

Milk — Ice Cream  
Cottage Cheese  
Always The Peak of Perfection

**Lloyd Clemmer Lbr. Co.**

Your Business Appreciated  
See Us For Prices Before You Buy  
Okla. Cut-Off Phone 569-2911

**Ideal Drive-In Cleaners**

407 East 3rd St. Phone 569-2847  
Joe and Jill Hensley



**Spinks Fina Service Station**

418 So. Ave. D Phone 569-8108  
BURKBURNETT, TEXAS

**Manhattan**  
DEPARTMENT STORE

We Give S. & H. Green Stamps

**PAT'S ELECTRIC**

RESIDENTIAL — COMMERCIAL INDUSTRIAL  
209 E. 3rd Pho. 569-1331—569-2306  
Mr. and Mrs. M. L. Patterson

**DAIRY MART**

909 Wichita Hwy. Phone 569-8114  
Fine Food and Friendly Service  
CALL IN ORDERS  
Mr. and Mrs. John Gratton

**Alexander Insurance Agcy.**

B. H. Alexander, Jr.  
Fire and Auto Insurance—Real Estate  
114 E. 3rd St. Phone 569-2831

**United Super Market**

Kenneth Palmer  
Manager  
Wichita Highway  
and Tidal Street



**WOLFE FORD CO.**

Complete Service and Sales  
Hppard Road Phone 569-2275

**Waffle Humble Ser. Sta.**

Complete Service—Mechanic On Duty  
We Give S. & H. Green Stamps  
Hillage and Ave. D Phone 569-8129

**BOOMTOWN BOWL**

"Magic Triangle" Pinspotter  
Back Bar—Nursery Pho. 569-8139  
1001 Wichita Highway

Compliments of

Burkburnett Civic Leader  
and Businessman

# Medicare and Eldercare Bills Explained By Dr. Carpenter

By Doctor Philip Carpenter, President, Wichita County Medical Society

The President of the Wichita County Medical Society, Dr. Philip Carpenter of Burkburnett, announced that area physicians would undertake a program of informing citizens in this region about the "Medicare Bill" which is now being considered in the House Ways and Means Committee of the Congress. He stated that the urgency of this effort was indicated by a recent nationwide Galloup Poll which indicated that 77 percent of Americans were confused as to the provisions of this proposed legislation.

Dr. Carpenter pointed out that Texas can be proud of the progress that it has made in providing for the medical care of the elderly. The Kerr-Mills Act was first implemented in the state in January of 1962. This program provides hospital, medical, surgical, x-ray and nursing home benefits for those on Old Age Assistance. The state has purchased a Blue Cross-Blue Shield insurance policy for 229,000 of our needy aged, this representing 30 percent of the entire 65 and over population of 745,000 in the state. Further, the passage of Constitutional Amendment 3 in November of 1964 has provided a mechanism whereby the State Legislature is expected to provide the means to help those who do not qualify for Old Age Assistance. In addition, commercial insurance companies and Blue Cross-Blue Shield have made policies available which are specially tailored for the aged. Texas now ranks first among all of the states in the percentage of aged who have one or more health insurance policies. Some 72 percent of the elderly in the state are now being covered by health insurance.

Concerning "Medicare" (The King Anderson Bill, HR 1 and S 1), Dr. Carpenter said that the Bill would provide limited benefits to all individuals 65 or over regardless of need. It is estimated that the benefits of the "Medicare" proposal would cover about one-fourth of the total yearly health care costs of the average aged person. He emphasized that the key consideration in any program of this type should be to provide fully adequate benefits, but only to those in real need.

The initial cost of the King Anderson Bill is estimated at 1.7 billion dollars in additional taxes the first year. The bill would provide for an increase in both the percentage and wage base of social security taxes. The employee who now pays a maximum tax of \$174.00 annually would find the amount to be increased to \$291.00 by 1971. Employers would pay a similar increase for each employee. The ultimate cost is an unknown factor, but history shows that the cost of such programs is always much greater than the original estimates. Dr. Carpenter went on to say that it would be inevitable that the growth of such a program would weaken the Social Security System.

Dr. Carpenter stressed two major points concerning the misunderstanding which many people have concerning the King Anderson Bill. First, most people think that the cost of surgery and physicians care is covered. This is not true as the benefits are largely limited to hospitalization costs. Secondly, many think that the benefits would be made available only to those elderly in need. This is not true as the benefits would be available to all individuals 65 or over—the millionaire as well as the needy.

The activities of area physicians will be directed to informing persons about the weaknesses and dangers of the King Anderson approach. At the

same time, information will be made available concerning another Bill before Congress, the Herlong-Curtis Eldercare Bill (HR 3727) which would broaden the existing health care program in Texas and the other states. This bill would provide wider health care benefits, including medical and surgical costs, but only to those in need. It would provide this through existing tax structure, outside of the Social Security System, and would retain state administration of the program.

Dr. Carpenter stated that the Medical Society urges all citizens to become informed on these matters, and to make their views known to our two Senators and our Congressman. He suggested that this information could be obtained by a discussion with the person's private physician, or by writing the office of the Wichita County Medical Society at 1600 8th St. in Wichita Falls.

## News From The County Agent

The third decline in as many years was registered in the wheat carryover on July 1, 1964. This decline, explains B. T. Haws, county agent, is the result of the special acreage diversion programs and the high levels of exports during recent years. However, he adds the expected carryover on July 1, 1965 should amount to about 901 million bushels, about equal the carryover on the same date.

Texas farmers and ranchers received \$254.7 million during last November from the sale of all crops and livestock and poultry products, according to the Texas Crop and Livestock Reporting Service. Cash receipts for all markets were down 18 percent from November, 1963. The total cash receipts came from crop sales of \$166.1 million and livestock and livestock products sales of \$88.6 million.

Home owners can head off later troubles by purchasing only disease-free and healthy plants, advised the county agent, B. T. Haws.

He offers the following suggestions to those who may soon be buying transplants or nursery stock. If at all possible, check the root system to see they are free of such disease as rots, galls or knots. Avoid buying any plant that does not have a healthy appearing root system.

Also make sure the stems of the plant or plants are healthy in appearance. Dead areas or cankerous type lesions often found on stems may later develop and kill the plant, he warns. Then too, he adds, diseases can be carried to healthy plants already growing through the planting of those with disease.

When purchasing bulbs, make sure they are not discolored and do not have scab type lesions on the surface. Healthy bulbs will have smooth surfaces free from spots and pittings, the agent says.

Watch for signs of leaf spot



"GRASSLAND IMPROVEMENT PAYS" is the theme of a display prepared by Texas Electric Service Company to point out the benefits that result from restoring grassland. Shown inspecting the display are Oscar Castillon, left, area development manager of Texas Electric and Logan Crews of Temple, assistant state conservationist. The display is being exhibited in cities and towns served by Texas Electric and is scheduled to be shown here later this year.

on evergreens and check their color for uniformity and healthy growing condition. It may be money well spent to buy top grades of nursery stock says Haws.

Because some ornamentals are extremely susceptible to diseases which occur in a given area, the county agent suggests that only plants with resistance to these diseases be selected. Cotton root rot, for example, is very common over much of Texas and should be considered when plants are being selected. A list of plants which show the tolerance for this disease is available at the County Extension offices.

Most plant diseases, explains Haws, can be prevented and the logical starting point for a disease control program is the planting of disease-free stock.

Some bugs make their own anti-freeze. That's why cold weather doesn't kill many bothersome pests. When temperatures rise they're ready to start giving you trouble.

Although sub-freezing temperatures slow down insect activity, nature provides many pests with ways of beating cold according to County Agent B. T. Haws. Some manufacture their own glycerol, an effective anti-freeze similar to the product made by man for the same purpose.

When temperatures drop below the freezing point, these insects, by some process not yet fully understood, gradually adjust to it. The glycerol they manufacture gives them the hardness to withstand all but the most extreme cold weather. Among the insects that can make their own anti-freeze are certain species of ants, beetles, aphids, cankerworms, and flies.

Nature gives insects another protection from the cold, too. Most go through a metamorphosis which includes a dormant period when they are completely inactive. If insects stay dormant in the pupal or larval stage, during the winter, they often survive the cold weather. Some insects have been found

frozen in solid ice and thawed to full activity.

Animals, pests can withstand extreme cold, too. Mice simply grow thicker fur. Many species of squirrels and other warm blooded animals hibernate when the mercury drops. Insects and animal pests, like man, have learned to live with their surroundings. Very cold weather rarely controls these pests effectively.

## TRAFFIC FACTS

Given By BURKBURNETT STUDY CLUB

Statistics show 36 people in Texas were killed last year because of slick pavement.

## Doris Ann Whitt, Richard S. Taylor To Marry April 10th

Mr. and Mrs. R. D. Whitt of Clarksdale, Mississippi, announce Clarksdale, Miss., announce the forthcoming marriage of their daughter, Doris Virginia and Richard S. Taylor, son of Mr. and Mrs. Tommie N. Taylor of Burkburnett.

The April 10th wedding will be in the Calvary Chapel at Memphis Naval Air Station, Tenn., at 2:00 p. m.

Miss Whitt was graduated from Clarksdale, Miss., High School in 1963. Taylor attended North Texas State University before joining the Navy in 1964.

## Mrs. Sue Cantwell Hostess Of Blanche Groves Circle Mar. 3

Mrs. Sue Cantwell was hostess March 3rd to the Blanche Groves Circle of the First Baptist church. The singing of the hymn, "Work For the Night Is Coming," opened the meeting followed by prayer by Mrs. Cheney. Mrs. Mae Van-Deren read the minutes of the previous meeting. Margaret Parrish gave the call to prayer, followed by prayer by Frances England.

A report was given on a visit to the State Hospital and of the donation of gifts to a patient.

Mrs. Frank Parrish led the Bible study in "The Divine Plan Further Pursued By Jacob. Those participating in the program were Charlene Abdouch, Marie Hinkle Sue Vaughn, Mae Van Deren and Mrs. R. P. Thaxton.

The scripture used in this study was Genesis 25:24 thru 36:43. This is the study of the twin sons of Isaac and Rebekah, who were Esau and Jacob. Even the Esau was entitled to the position as head of the family after Isaac's death, Jacob demanded that Esau sell him his birthright. Jacob later paid a price for this misdeed. So it is sometimes with man today. How different the missionary outreach of this age would be if all Christians would be good stewards of the resources placed in their hands.

We know that after many years, Jacob became God's in-

For Banging The Family Come On Out 569 1821

Portrait CANDID WEDDINGS

Harold's PHOTOGRAPHS

By Appointment Only

Phone 723-4811

2012 Huff

Wichita Falls

strument and he read past goodness of God had a plan for him became the kind of whom God could work.

Delicious refreshments served to Gail Vaughn, Margaret Parrish, Van Deren, Frances Charlene Abdouch, Brewer, Marie Hinkle Tisdale, Mrs. R. P. Thaxton, Frank Parrish, Sue and our guest, Mrs. C.



STANDING IN CORNER??

For Banging The Family Come On Out 569 1821

Gaylon Sil Paint and Body 103 E. 3rd

# Protect Those Valuable

Everyone Can Afford This New Fire Protection Chest at the lowest price ever

Your Bonds, Insurance Policies, Notes, Mortgages, Contracts, Income Tax Receipts, Birth Certificate, Discharge Papers, Leases, Rent Receipts, Your Will, Livestock Registration Papers, Canceled Checks, Stamp and Coin Collections, and many other things of personal and sentimental value, which would be destroyed (and could not be replaced) if you had a fire—and you could! There is one about every 20 seconds.

The New High Quality, Low Cost Fire Protection Chest

DESCRIPTION AND SPECIFICATIONS

### Fire Protection Chest

Made of heavy gauge steel inside and out, all electric welded. Between these steel walls is 1 1/2 inches of solid

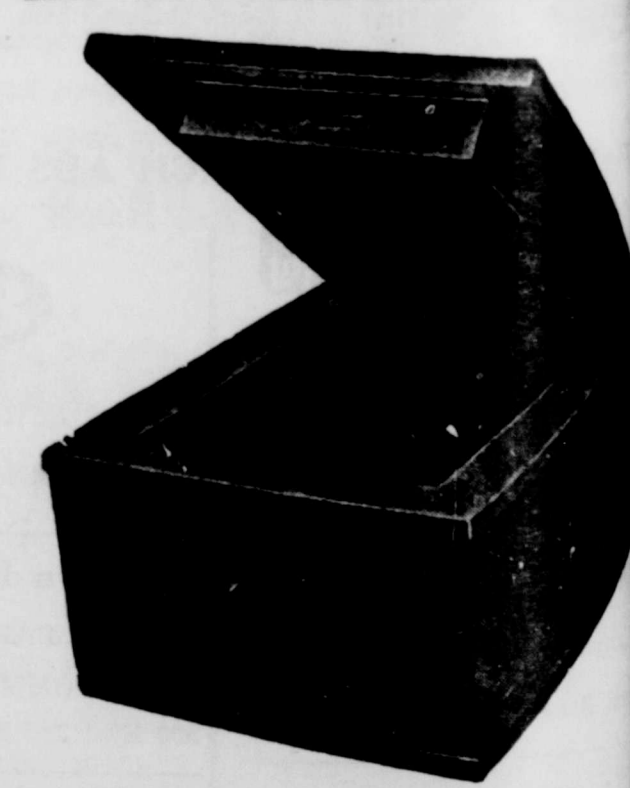
### Fire Proof Vermicule Insulation

which has over 300,000 tiny air cells to the square inch. It has the universally used tongue and groove principle around the door with a 1 1/2 inch Fire Proof Seal completely around it. No chest, regardless of price, has a better insulation.

Outside Dimensions 14x11 1/2 x 7 1/2 in.

Inside Dimensions 8 1/2 x 11 x 4 1/2 in.

Equipped with a heavy standard type lock, with 2 keys. Color, Gray, very attractive.



Tested One Hour At 1700 Degrees

Supply Limited At This Special Price \$199

ON DISPLAY AT The Burkburnett Star

## OWENS-BRUMLEY FUNERAL HOME

AMBULANCE SERVICE

PHONE 569-3361

HAROLD VAN LOH, PRESIDENT

## SALADMASTER DEALER

Will Give 100 FREE Plaid Stamps

FOR YOUR PERMISSION TO GIVE A 15 MINUTE PRESENTATION OF

Our Stainless Steel Kitchen Products

CALL 322-2467

Values Good In Burkburnett, March 4-6, 1965.



**THIS WEEK!**  
STEBENVILLE'S FAIRLANE  
**COFFEE CUP**

70¢ VALUE  
**Only 9¢** WITH EACH  
\$5.00 PURCHASE

AND COUPON FROM YOUR BOOKLET!

**HEALTH AND BEAUTY AIDS!**

BEST, Extra Large Size, 5c Off Label

- TOOTH PASTE** ..... 49¢
- Shoulders, Dandruff, Lotion, Regular 85c
- SHAMPOO, Medium Size Bottle** ..... 69c
- Prine, Regular 69c
- TOOTH WASH, 7 Oz. Bottle** ..... 53c
- Special Label
- SAFETY DISH, Square 2 Quart Size** ..... 88c
- Covered, Regular \$1. Value With Special Label
- ASSEROLE, 1 1/2 Quart Size** ..... 88c

CAMPBELL'S,  
ASST. MEAT FLAVORS,  
**SOUPS**  
NO. 1 CAN  
**15¢**

- Pacific Gold, Yellow Cling, In Heavy Syrup
- PEACHES, No. 2 1/2 Can** ..... 27c
- Lucky Leaf
- APPLE SAUCE, 25 Oz. Jar** ..... 29c
- Circus, Grape, Orange, Fruit, Pineapple-Grapefruit
- FRUIT DRINKS, 3-46 Oz. Cans** .. 89c
- Speas
- APPLE JUICE, Quart Bottle** .... 29c

DETERGENT,  
10¢ OFF LABEL,  
**TIDE**  
GIANT BOX  
**59¢**

PIGGLY WIGGLY MEATS!  
**RANKS**  
**39¢**

- Half, For Individual Servings
- STEAK, Lb.** ..... 59c
- Half, Brisket or Plate
- MEAT, Lb.** ..... 25c
- Morrow's, Thrift-T
- STEAK, 20 Oz. Pkg.** ..... 79c
- ation, Fully Cooked, Halves or Quarters
- MEATLESS HAM, Lb.** ..... \$1.09
- FAMILY STEAK**
- QUALITY CALF,  
Style, Chuck Cut  
**LB. 39¢**



- Sea Star, Heat and Eat
- FISH STICKS, 5-8 Oz. Pkgs.** ..... \$1
- Gorton's, Fresh Frosted, Pan Ready
- WHITING FISH, 1 1/2 Lb. Pkg.** ..... 29c
- American or Pimento
- SLICED CHEESE, 12 Oz. Pkg.** ..... 49c
- Mild Chunks, Excellent for Cooking, 9 to 15 Oz. Aver.
- CHEDDAR CHEESE, Lb.** ..... 69c
- CROWN ROAST**
- QUALITY CALF,  
Excellent for Pot Roasting  
**LB. 35¢**

**FRESH FROZEN FOODS AT LOWEST PRICES!**

- GRAPE JUICE** SENECA,  
6 OZ. CAN ..... 15¢
- Home,  
Cream of Potato  
**2 No. 1 Cans** ..... 45¢
- Home,  
**WASH, 10 Oz. Pkg.** ..... 19¢
- Home, Black Eye  
**10 Oz. Pkg.** ..... 19¢

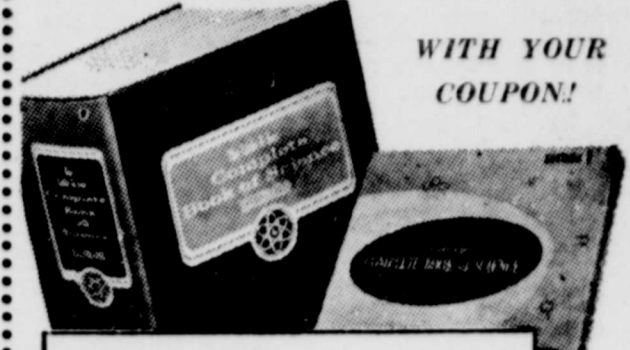
- DINNERS**
- PATIO, ENCHILADA,  
12 OZ. DINNER ..... 39¢

**FREE!**

**SECTION I  
COMPLETE  
BOOK OF SCIENCE**



50 S&H Green Stamps Free  
When You Buy Sec. II-IV  
Of Webster Dictionary  
For 99c Each!



50 S&H Green Stamps  
FREE When You Buy  
Sec. II-IV for 99c Each!

Shop Piggly Wiggly For Your Lenten Meals . . .  
**HIGHEST QUALITY - Lowest Prices, Always . .**

- JUICE** Pineapple, Santa Rosa 46 Oz. Can ..... **25¢**
- CORN** Del Monte, Vac Pack 12 Oz. Can ..... **17 1/2¢**
- FLOUR** Gold Medal 5 LB. BAG ..... **49¢**

- Dairyland or Carnation Carton
- Buttermilk, 1/2 Gal.** 39¢
- Del Monte, Garden Fresh No. 303
- Spinach, 2 Cans** ..... 29¢
- Swift's, Prem 12 Oz.
- Luncheon Meat, Can** 39¢
- Weston, Waffles and Cremes
- Cookies, 21 Oz. Pkg.** 59¢

FRESH PRODUCE FROM PIGGLY WIGGLY!

**STRAWBERRIES**  
RED RIPE, FULL OF FLAVOR  
PINT ..... **29¢**

TEXAS SWEET  
**ORANGES**

RUBY RED  
**GRAPEFRUIT**

FANCY  
CENTRAL AMERICAN  
**BANANAS**

Mix or Match Your Choice  
**8 LBS. \$1**

YELLOW  
**ONIONS, Lb.** .. 5¢

GARDEN SUPPLIES!  
Complete Supply of Fertilizer, Plant Food, Michigan Peat Moss, Flower and Garden Seed.

CARNATION OR DAIRYLAND  
**COTTAGE CHEESE**  
12-OZ. CARTON  
**19¢**

- COFFEE**  
Maryland Club, Drip, Fine, or Regular  
10c Off Label  
**2 Lb. Can** ..... \$1.63
- COFFEE**  
Maryland Club, Drip, or Regular,  
15c Off Label  
**3 Lb. Can** ..... \$2.40
- CRACKERS**  
Supreme, Saltines  
**1 Lb. Box** ..... 31c
- VINEGAR**  
Heinz, Cider  
**Pint Bottle** ..... 23c  
**Quart Size Bottle** 37c
- DOG FOOD**  
Pard, Rel Label  
**2 No. 1 Cans** ..... 33c
- HONEY**  
Sue Bee, Extract  
**12 Oz. Jar** ..... 39c

Lowest Prices . . . Greatest Variety . . . always at  
**Piggly Wiggly**

# Randlett News

Mrs. Mollie R. Elliott, Reporter

Teresa Morletz, twin daughter of Mr. and Mrs. Gregory Morletz, passed away Tuesday. Services were Wednesday in Burkburnett, with burial in Randlett Cemetery. The other twin is ill in a Wichita Falls hospital with pneumonia.

Mr. and Mrs. C. O. Wilson visited their daughter, Mrs. Glen Shelton Tuesday and Wednesday in Temple, Okla. She was ill with pneumonia.

Mrs. C. H. Thompson visited her daughter, Mr. and Mrs. Bill Lund and children in Tulsa, Okla. last week.

Mrs. Zona Ousley was ill last week.

Mrs. W. R. Baldwin and Rita Sue spent Saturday and Sunday with Mrs. Baldwin's sister, Mr. and Mrs. O. B. Bishop of Electra.

Mr. and Mrs. Lonnie Boles were ill with the flu at their home last week and this week.

Mr. R. L. Baldwin was in a Wichita Falls hospital from Thursday to Saturday.

Mr. and Mrs. Frank Bohac and Any of Wichita Falls visited her parents, Mr. and Mrs. R. H. Rhoads Saturday.

Mrs. Mollie Elliott visited Mrs. Jess Spannagel in Walters, last Thursday.

Mr. and Mrs. C. H. Thompson visited her daughter, Mr. and Mrs. Oneal Weaver and children in Knox City, Sunday.

Mr. Raymond Underwood is ill with the flu in his home this week.

Mrs. C. B. Ressel visited her

sister, Mr. and Mrs. W. G. Howell Friday in Wichita Falls. Mr. and Mrs. David Williams and baby of Chaney, Mr. and Mrs. Howard Baggs of Durant spent the weekend with Mr. and Mrs. Lewis Williams.

Mr. and Mrs. Frankie Miller and daughter of Irving, spent the weekend with his parents, Mr. and Mrs. Lee Miller.

Mrs. L. E. Ellis and son Garry of Burkburnett visited her parents, Mr. and Mrs. R. H. Rhoads Friday. Garry spent Friday night with his grandparents.

Mr. and Mrs. Dwan Cornstubble of Henrietta and Miss Wendolyn Goins of Burkburnett were 6 o'clock dinner guests of Mr. D. A. Cornstubble and sons Friday night.

Stanley Cornstubble arrived home Wednesday. He has been in military service at Bomburg, Germany.

Tommy Kemp of Stillwater spent the weekend with his mother, Mrs. Samantha Kemp and sons.

The Church of Christ Young People went to Vernon Sunday afternoon for a Young People's rally.

Mr. and Mrs. Gary Lee Ousley and children of Okla. City visited his mother, Mrs. Zonie Ousley Saturday.

Mrs. Winford Whitehead and son of Comanche, Okla. visited her mother, Mrs. F. W. Kemp Friday.

Mrs. C. H. Dunn spent the weekend visiting relatives in Burkburnett.

Mr. and Mrs. Alton Anderson of Wichita Falls visited Mr. and Mrs. A. L. Anderson and Shirley Sunday.

Mr. and Mrs. Rexford Pfeifer

# Jerry Burk In DECA Spotlight This Week



In the DECA Spotlight this week is Jerry Burk.

You will see Terry's smiling face when you drive into Spink's Fina Station.

Terry is a senior and is a first year Distributive Education Student. Terry also includes

of Okla. City, visited his mother, Mrs. G. L. Pfeifer Sunday of last week.

Jerry Snyder of Burkburnett visited Mrs. F. W. Kemp and Tommy Sunday.

Linda Underwood was ill with the flu last week. Rocky Underwood is ill with the flu this week.

Mr. and Mrs. T. E. Spannagel visited Mr. and Mrs. Roy Bent-

es business math and English IV in his school curriculum.

Among Terry's favorite hobbies are playing pool, horseback riding and water skiing.

Terry wishes to express his appreciation to Mr. Spinks for the opportunity he has given him.

Mr. and Mrs. J. H. Phillips of Geronimo, Okla., and Mr. and Mrs. Eddie Reed, Becky and Tommy of Burkburnett visited Mr. and Mrs. Wayne Ressel and son Gary, Sunday.

Mr. D. A. Cornstubble, Stanley and Donnie and Miss Wendolyn Goins of Burkburnett visited relatives in Dallas and Irving Saturday and Sunday. Mrs. Cornstubble returned home with them after a two weeks visit recovering from an operation.

The Big Pasture Rangers Basketball boys won the district which was held at Walters, last week. They played Geronimo Friday night in the final game and won. They led all the way

Robbie Best Saturday and Sunday.

Mr. and Mrs. Raymond Hale are both ill with the flu.

Mr. and Mrs. Herbert Struck of Munday spent Saturday night with her sister, Mrs. Mollie Elliott.

Mr. and Mrs. Frank Swindle and children of Okla. City spent Sunday with Mrs. F. W. Kemp and sons.

Mrs. Robbie Best is reported ill at her home this week.

Mr. and Mrs. J. C. Wallace and son Robbie of Munday, spent Saturday night with her mother, Mrs. W. J. Morrow.

Mr. and Mrs. R. H. Rhoads are visiting Mrs. Clifford Rhoads and daughters in Frederick this week while Mr. Clifford Rhoads is attending a School in Stillwater.

Mrs. Flora Hatcher spent Monday to Wednesday with her daughter, Lt. and Mrs. Burk Triplett and son in Wichita Falls.

Mr. and Mrs. J. H. Phillips of Geronimo, Okla., and Mr. and Mrs. Eddie Reed, Becky and Tommy of Burkburnett visited Mr. and Mrs. Wayne Ressel and son Gary, Sunday.

Mr. D. A. Cornstubble, Stanley and Donnie and Miss Wendolyn Goins of Burkburnett visited relatives in Dallas and Irving Saturday and Sunday. Mrs. Cornstubble returned home with them after a two weeks visit recovering from an operation.

The Big Pasture Rangers Basketball boys won the district which was held at Walters, last week. They played Geronimo Friday night in the final game and won. They led all the way

Robbie Best Saturday and Sunday.

Mr. and Mrs. Raymond Hale are both ill with the flu.

Mr. and Mrs. Herbert Struck of Munday spent Saturday night with her sister, Mrs. Mollie Elliott.

Mr. and Mrs. Frank Swindle and children of Okla. City spent Sunday with Mrs. F. W. Kemp and sons.

Mrs. Robbie Best is reported ill at her home this week.

Mr. and Mrs. J. C. Wallace and son Robbie of Munday, spent Saturday night with her mother, Mrs. W. J. Morrow.

Mr. and Mrs. R. H. Rhoads are visiting Mrs. Clifford Rhoads and daughters in Frederick this week while Mr. Clifford Rhoads is attending a School in Stillwater.

Mrs. Flora Hatcher spent Monday to Wednesday with her daughter, Lt. and Mrs. Burk Triplett and son in Wichita Falls.

Mr. and Mrs. J. H. Phillips of Geronimo, Okla., and Mr. and Mrs. Eddie Reed, Becky and Tommy of Burkburnett visited Mr. and Mrs. Wayne Ressel and son Gary, Sunday.

Mr. D. A. Cornstubble, Stanley and Donnie and Miss Wendolyn Goins of Burkburnett visited relatives in Dallas and Irving Saturday and Sunday. Mrs. Cornstubble returned home with them after a two weeks visit recovering from an operation.

The Big Pasture Rangers Basketball boys won the district which was held at Walters, last week. They played Geronimo Friday night in the final game and won. They led all the way

Robbie Best Saturday and Sunday.

Mr. and Mrs. Raymond Hale are both ill with the flu.

Mr. and Mrs. Herbert Struck of Munday spent Saturday night with her sister, Mrs. Mollie Elliott.

Mr. and Mrs. Frank Swindle and children of Okla. City spent Sunday with Mrs. F. W. Kemp and sons.

Mrs. Robbie Best is reported ill at her home this week.

Mr. and Mrs. J. C. Wallace and son Robbie of Munday, spent Saturday night with her mother, Mrs. W. J. Morrow.

Mr. and Mrs. R. H. Rhoads are visiting Mrs. Clifford Rhoads and daughters in Frederick this week while Mr. Clifford Rhoads is attending a School in Stillwater.

Mrs. Flora Hatcher spent Monday to Wednesday with her daughter, Lt. and Mrs. Burk Triplett and son in Wichita Falls.

Mr. and Mrs. J. H. Phillips of Geronimo, Okla., and Mr. and Mrs. Eddie Reed, Becky and Tommy of Burkburnett visited Mr. and Mrs. Wayne Ressel and son Gary, Sunday.

Mr. D. A. Cornstubble, Stanley and Donnie and Miss Wendolyn Goins of Burkburnett visited relatives in Dallas and Irving Saturday and Sunday. Mrs. Cornstubble returned home with them after a two weeks visit recovering from an operation.

The Big Pasture Rangers Basketball boys won the district which was held at Walters, last week. They played Geronimo Friday night in the final game and won. They led all the way

Robbie Best Saturday and Sunday.

Mr. and Mrs. Raymond Hale are both ill with the flu.

Mr. and Mrs. Herbert Struck of Munday spent Saturday night with her sister, Mrs. Mollie Elliott.

Mr. and Mrs. Frank Swindle and children of Okla. City spent Sunday with Mrs. F. W. Kemp and sons.

Mrs. Robbie Best is reported ill at her home this week.

Mr. and Mrs. J. C. Wallace and son Robbie of Munday, spent Saturday night with her mother, Mrs. W. J. Morrow.

Mr. and Mrs. R. H. Rhoads are visiting Mrs. Clifford Rhoads and daughters in Frederick this week while Mr. Clifford Rhoads is attending a School in Stillwater.

Mrs. Flora Hatcher spent Monday to Wednesday with her daughter, Lt. and Mrs. Burk Triplett and son in Wichita Falls.

Mr. and Mrs. J. H. Phillips of Geronimo, Okla., and Mr. and Mrs. Eddie Reed, Becky and Tommy of Burkburnett visited Mr. and Mrs. Wayne Ressel and son Gary, Sunday.

Mr. D. A. Cornstubble, Stanley and Donnie and Miss Wendolyn Goins of Burkburnett visited relatives in Dallas and Irving Saturday and Sunday. Mrs. Cornstubble returned home with them after a two weeks visit recovering from an operation.

The Big Pasture Rangers Basketball boys won the district which was held at Walters, last week. They played Geronimo Friday night in the final game and won. They led all the way

Robbie Best Saturday and Sunday.

Mr. and Mrs. Raymond Hale are both ill with the flu.

Mr. and Mrs. Herbert Struck of Munday spent Saturday night with her sister, Mrs. Mollie Elliott.

Mr. and Mrs. Frank Swindle and children of Okla. City spent Sunday with Mrs. F. W. Kemp and sons.

Mrs. Robbie Best is reported ill at her home this week.

Mr. and Mrs. J. C. Wallace and son Robbie of Munday, spent Saturday night with her mother, Mrs. W. J. Morrow.

Mr. and Mrs. R. H. Rhoads are visiting Mrs. Clifford Rhoads and daughters in Frederick this week while Mr. Clifford Rhoads is attending a School in Stillwater.

Mrs. Flora Hatcher spent Monday to Wednesday with her daughter, Lt. and Mrs. Burk Triplett and son in Wichita Falls.

Mr. and Mrs. J. H. Phillips of Geronimo, Okla., and Mr. and Mrs. Eddie Reed, Becky and Tommy of Burkburnett visited Mr. and Mrs. Wayne Ressel and son Gary, Sunday.

Mr. D. A. Cornstubble, Stanley and Donnie and Miss Wendolyn Goins of Burkburnett visited relatives in Dallas and Irving Saturday and Sunday. Mrs. Cornstubble returned home with them after a two weeks visit recovering from an operation.

The Big Pasture Rangers Basketball boys won the district which was held at Walters, last week. They played Geronimo Friday night in the final game and won. They led all the way

in the game. Game score by quarters were, 15-8; 36-24; 41-33; 48-47.

They will play their first game in the Regionals at Rush Springs Thursday at 3:30 p. m. At this time their opponent is unknown. More power to you Rangers.

A personal shower and money tree was presented to Mrs. Graham Shelton of Temple, Okla. Monday night in the home of Mrs. Clyde Davis. Co-hostesses were Mesdames Robbie Best, A. L. Patterson, C. B. Ressel, Raymond Hale, Jimmie Kinnard.

Refreshments of cake, coffee and punch were served to Mesdames Graham Shelton, A. L. Patterson, Grady Martin, Trill Oliver, B. B. Menz, C. B. Ressel, Ted Fowler, Wayne Ressel, Mollie Elliott, Eddie Reed and Becky and Tommy Reed.

Mrs. Graham Shelton's home and clothes were destroyed by fire recently in Temple.

# Hardin HD Club Hostess To Luncheon Wednesday, Feb 24

The ladies of the Hardin Home Demonstration Club were hostesses for a luncheon at the Texas Electric Reddy Room, Feb. 24th. Following the luncheon, the club met in its regular session at 1 p. m.

Mrs. E. W. Roderick, president, called the meeting to order and Mrs. S. E. Askins, had charge of the opening exercises. Each lady joined in reading a prayer from The club book. Then sang "When It's Spring-

time in the Rockies" then asked Mrs. Cheney to discuss the Federated City are working on Library and Museum burnett. She invited to attend a meeting at 7:30 p. m. at the to discuss further

Miss Sandra Ham assistant County Home stration agent, gave interesting program "Management"

Mrs. S. E. Askins Parliamentary Club asked that they be at each meeting. Mrs. Kins, THDA chairman that the recommen- voted on. Carol Reed the recommenda- ed that they be ac- carried. Mrs. Goins the club have a 8:30 Saturday, Mrs. Corner Drug Store, ried.

Guests at the meeting were Miss Eugene Gilmore and Wood, children were Ellen and Karen Gary and Larry Dorland, Lois Gilmore McHafferty.

Mrs. Kenneth hostess for the next Texas Electric Reddy. The club adju- singing "Blest Be The Binds."

Little pill boxes holders for the and sizes of trout good reason to visit

Pill Box

# WACKER'S March Sale

SEE THE QUALITY...SEE WACKER'S LOW PRICES...COMARE THEM ANYWHERE

**BOXER JEANS**  
Ideal for Play-Easy to Launder-Sizes 1 to 6  
Regular 98c  
**SALE PRICE 74c**

**Multi-Purpose BOLSTER**  
STYLED IN HIGH FASHIONED FABRIC, FILLED WITH POLYURETHANE FOAM. HAS ZIP-OFF COVER WHICH CAN BE LAUNDERED.  
LOUNGE IN COMFORT WHILE READING OR T.V. VIEWING.  
Regular Price \$2.49  
**SALE PRICE \$1.97**

**E-Z-POUR DECANTER**  
Holds 69 ounces \*Covered Pour Spout \*Easy grip Handle \*Wide tip-proof Base \*Made of Sturdy Linear Poly \*Colored tops.  
REGULAR 79c  
POUND BAG **SALE PRICE 57c**

**PEANUT CLUSTERS**  
A COMBINATION OF RICH CHOCOLATE AND CARAMEL COVERED COATING OVER CRISP, FRESH PEANUTS. A DELICIOUS TREAT FOR THE FAMILY.  
REGULAR 79c  
POUND BAG **SALE PRICE 57c**

**BAKE-KING BAKEWARE ASSORTMENT**  
YOUR CHOICE OF THESE SIX POPULAR BAKE-KING ITEMS: \*OBLONG BISCUIT PAN \*SQUARE BISCUIT PAN \*LOAF PAN \*PIE PAN \*CAKE PAN \*MUFFIN PAN.  
Values To 89c Each  
**WACKER'S SPECIAL 24c each 2 for 46c**

**Kitchen Terries**  
Add Color to Your Kitchen With These Attractive Terries....Your Choice of Assorted Colors and Prints in Sizes 16" x 27" FIRST QUALITY & SLIGHT IRREGULARS  
Regular Price 39c Ea. **SALE PRICE 3 FOR 99c**

**T.V. LAMP**  
FLORENTINE BASE WITH SHADE IN WHITE AND GOLD ANTIQUING OVER TRANSLUCENT SHADE OF WHITE, TANGERINE OR AQUA.  
\* 1 1/2 INCHES TALL.  
Regular \$1.98 Value  
**SALE PRICE 97c each**

**10 inch Classic PLANTER**  
WITH STURDY BRASS PLATED STAND. HEAVY DUTY PLANTER IN IVORY, GREEN AND COPPER  
**SALE PRICE 99c**

**PLASTIC HOUSEWARE ITEMS**  
\* DISH PAN \* WASTE BASKET \* LAUNDRY BASKET \* COLANDER \* CUTLERY TRAY \* LARGE PAIL.  
These are heavy duty, excellent quality plastic items in assorted colors. Yellow and Turquoise.  
values to 79c  
Opening Special  
**46c each 2 for 87c**

**ROSE BUSHES**  
AN UNUSUAL VALUE! A LARGE ASSORTMENT OF HARDY, FIELD GROWN 2 YEAR OLD PLANTS THAT WILL BLOOM THIS YEAR. MAKE YOUR SELECTION AND PLANT NOW FOR BEST RESULTS.  
**SALE PRICE 2 For 87c**  
AN ASSORTMENT OF POPULAR EVERBLOOMING ROSES. THESE ARE HARDY TWO YEAR OLD FIELD-GROWN PLANTS... IDEAL FOR GROWING IN THIS LOCALITY. PLANT THEM NOW.  
**SALE PRICE 77c**

**sponge MOP**  
WHY PAY MORE!  
GET THIS TI-DEE SPONGE MOP WITH CRONITE PLATED HOLDER. COLORS: PINK, YELLOW AND BLUE WITH MATCHING HANDLES.  
Regular \$1.98 Value  
**SALE PRICE 99c**

**Hair Curler BAG**  
KEEP ALL YOUR CURLERS IN THIS ATTRACTIVE, JUMBO SIZE CURLER BAG. ASSORTED COLORS. FLORAL DESIGN IN PADDED EFFECT.  
Regular Price 89c  
**SALE PRICE 68c**

**KITCHEN GADGETS**  
10 Popular Items: \* PEELER \* SERVING SPOON \* VEGETABLE AND FRUIT KNIFE \* PARING KNIFE \* BAR KNIFE \* PIE AND PASTRY SERVER \* STEAK KNIFE \* SCOOPER-SCRAPER \* CURVED FRUIT KNIFE. \* REGULAR VALUES TO 69c each  
**WACKER'S SPECIAL 36c each 3 for 99c**



# Auto Liability | From The Travelers Insurance Co. |

IT DOESN'T COST ANY MORE TO  
**BE SURE**  
HOWARD CLEMENT, Agent  
New Location — Next To Legion Hall

## FIRST NATIONAL BANK GIRLS BASKETBALL TEAM TO PLAY IN STATE CONTEST AT HOUSTON MARCH 5 AND 6



The Girls Basketball Team, sponsored by the First National Bank of Burkburnett, will play in the State Playoff Contest in Houston, March 5 and 6. The girls won the Commercial League Contests in Wichita Falls and the Regional Contest at Abilene, Texas, in order to qualify for the state playoffs. Don Dolberry is coach of this team and T. M. Cornelius is assistant coach and manager.

Pictured above, left to right, back row: Nahwana Donohoo, Billie Braswell, Glenda Dolberry, Dorothy Newell, Patsy Nettles, Don Dolberry. Front row, Grace Cox, Lola Byars, Betty Ingram, and Delores Rasmussen.

Mrs. Dixie Dillard of Burkburnett is also a member of the team, but was unable to be present when the picture was made.

Mrs. W. Landrum Hostess Feb. 25th To Forum Study Club

The Forum Study club met for a regular meeting Thursday evening, Feb. 25th in the home of Mrs. Wallace Landrum.

Mrs. Edwin Green was in charge of the program, "A Trip To The World's Fair." She presented Ricky Landrum, who showed color slides and gave a very interesting narration.

Ricky, an Eagle Scout, made the trip to the World Fair last June. He was one of 26 Scouts from this area on this particular trip. They served as guides at the Fair. They also visited many points of interest in and around New York City. Of particular interest were the slides of Washington D. C. They included the Capital, The White House and President Kennedy's grave. The beautiful slides and Ricky's presentation made it a very enjoyable program. Mrs. J. C. Adams, Jr., presid-

ed at a short business meeting.

The hostess served refreshment plates to the following members present: Mesdames J. C. Adams, Jr., Gene Allen, James Brockhaus, Tom Burnett, T. M. Cornelius, Edwin Green, Don Mills, Lonnie Taylor, and Joe Wolfe.

The next meeting is March 11th in the home of Mrs. Don Mills.



### Local Births

Birth certificates were issued to the following Burkburnett parents last week, Messrs. and Mesdames:

- Ben Albert Taylor, boy, Mark Allen.
- James B. Dunn, girl, Patricia Joyce
- Richard George Holzheuser, Jr., boy, Robert Allen.

## ANNOUNCING

### FIRST SAVINGS & LOAN ASSOCIATION

# 4.6%

— OF —  
BURKBURNETT,  
TEXAS

QUARTERLY

Announces A New Anticipated Dividend of 4.6 Per Cent Per Annum Payable On A Quarterly Basis.

# 4.6%

QUARTERLY



Savings In By the Tenth Earn From the First



## 2 out of 3 women choose flameless electric dryers

A flameless electric clothes dryer costs up to \$40 less to buy ...less to install because no flues or fuel pipes are needed. And safe, clean, flameless electric dryers operate for only about a nickel a load. See your electric dryer dealer soon.

TEXAS ELECTRIC SERVICE COMPANY



## Hard-working pickup... with a flair for fun!



Works hard, but knows how to relax! That's the new Ford Twin-Beam pickup. Two front axles give you big-truck toughness on the job, smooth riding comfort all the time. Each front wheel is suspended independently on a forged I-beam axle.

Forged radius rods lock in wheel alignment, heavy-duty coil springs cushion the ride for comfort you never found in a tough truck before. That's why, on the job or off on a family outing, Ford's Twin-Beam suspension pickup is best for you.

### '65 FORD TWIN-BEAM PICKUP

Come in and test the ride that's tailored for TEXANS

## WOLFE FORD COMPANY

Sheppard Road

Phone 569-2275

Burkburnett, Texas

