

# Burkburnett Star

LIKED BY MANY--CUSSED BY SOME--READ BY EVERYBODY

VOLUME 57 BURKBURNETT, WICHITA COUNTY, TEXAS, THURSDAY, JANUARY 9, 1964 NUMBER 18

Chamber of Commerce Luncheon Each FIRST MONDAY at Town Hall. Everybody Invited Each Pays for His Meal

You qualify as an old-timer when you think every man on the way up has a pencil stuck behind his ear.

## North County Loop Road Dedication Date Set

### CONSTRUCTION STARTS ON NORTH LOOP ROAD IN BURK

To kick off the construction of a new road running east and west north of Burk Burnett, Clark Gresham, County Commissioner of Precinct 2 of Wichita County; the Burk Burnett Chamber of Commerce officials and Mayor James E. Frye, and the City Commissioners of the City of Burk Burnett are to hold a ground breaking ceremony at 3:30 P. M. Friday, Jan. 10th to which the public is invited.

The ceremony will be held at the intersection of East 3rd Street and Highway 277, just west of the Oklahoma Bridge in Burk Burnett.

The new road was named "North County Loop and is a co-operative effort between the County of Wichita and the City of Burk Burnett. The new road will encircle the North city limits of the city of Burk Burnett and will allow truck traffic to miss downtown Burk Burnett.

The Burk Burnett City Commissioners expressed their gratitude Monday night in their meeting to Clark Gresham and the Burk Burnett Chamber of Commerce for their work in planning this new road, since there has been a long time need to route dangerous truck traffic away from downtown Burk Burnett.

### Receives Medal

WALKER AFB, New Mexico. —Airman First Class Charles L. Holloway of Burk Burnett, has been decorated with the United States Air Force Commendation Medal here.

Airman Holloway was awarded the medal for his meritorious achievement while serving as airman in charge of the Electrical Maintenance Shop of the 6314th Civil Engineer Squadron in Osan, Korea.

The airman, son of Mr. and Mrs. Roy E. Holloway of 505 E. First Street, Burk Burnett, is a former student of Technical High School, Fort Worth, Texas.

Airman Holloway's wife, Barbara, is the daughter of Mr. and Mrs. Clyde R. Pack of 2701 Lyle, Waco, Texas.

### NOTICE

The Burk Burnett Study Club will have its regular monthly meeting, Monday night, January 13, 1964, 8:00 p. m. at the home of Mrs. Hugh Preston, Jr., co-hostess, Mrs. Maxine Creel.

### WICHITA COUNTY DISASTER COMMITTEE TO MEET JAN. 16

The Wichita County Disaster Committee will hold a special meeting Thursday, Jan. 16th at 1:30 p. m. in the ASCS Office in Iowa Park for the purpose of hearing opinions on disaster feed for Wichita County.

All interested persons are urged to attend.

### SUNDAY VISITORS

Sunday visitors in the home of Mr. and Mrs. O. H. Buzbee were Mr. and Mrs. O. D. Childress and Mr. and Mrs. C. C. Burnett of Valley View and Mr. and Mrs. Bill Sheets of Wichita Falls.

Clinton Swinford, program chairman, introduced Mr. James Maloney from the Internal Revenue office, who spoke on making out income tax forms with a question and answer discussion. B. T. Haws, Wichita County agent, gave out the 4-H calendar to each one present.

A card of appreciation is to be sent to Bob Crocker, who is retiring from ASCS office after many years of work and was known as the Farmers Best Friend.

Refreshments were served to 35 members and guests.

The next meeting will be the first Monday night of February with Olen Bailey in charge of the program.

Clinton Swinford, program chairman, introduced Mr. James Maloney from the Internal Revenue office, who spoke on making out income tax forms with a question and answer discussion. B. T. Haws, Wichita County agent, gave out the 4-H calendar to each one present.

A card of appreciation is to be sent to Bob Crocker, who is retiring from ASCS office after many years of work and was known as the Farmers Best Friend.

Refreshments were served to 35 members and guests.

The next meeting will be the first Monday night of February with Olen Bailey in charge of the program.

Clinton Swinford, program chairman, introduced Mr. James Maloney from the Internal Revenue office, who spoke on making out income tax forms with a question and answer discussion. B. T. Haws, Wichita County agent, gave out the 4-H calendar to each one present.

A card of appreciation is to be sent to Bob Crocker, who is retiring from ASCS office after many years of work and was known as the Farmers Best Friend.

Refreshments were served to 35 members and guests.

The next meeting will be the first Monday night of February with Olen Bailey in charge of the program.

### Friberg-Cooper Organization Met Monday Evening

Friberg - Cooper Community organization met Monday evening in the Friberg School Auditorium. Sam Spencer, president called the meeting to order. Bee Bryant offered prayer. Minutes from the last meeting were read by Mrs. W. P. Rogers and approved. Mrs. Bee Bryant gave the treasurers report. Mrs. Lee Cooper gave report on Christmas party and dinner of last month.

Clinton Swinford, program chairman, introduced Mr. James Maloney from the Internal Revenue office, who spoke on making out income tax forms with a question and answer discussion. B. T. Haws, Wichita County agent, gave out the 4-H calendar to each one present.

A card of appreciation is to be sent to Bob Crocker, who is retiring from ASCS office after many years of work and was known as the Farmers Best Friend.

Refreshments were served to 35 members and guests.

The next meeting will be the first Monday night of February with Olen Bailey in charge of the program.

Clinton Swinford, program chairman, introduced Mr. James Maloney from the Internal Revenue office, who spoke on making out income tax forms with a question and answer discussion. B. T. Haws, Wichita County agent, gave out the 4-H calendar to each one present.

A card of appreciation is to be sent to Bob Crocker, who is retiring from ASCS office after many years of work and was known as the Farmers Best Friend.

Refreshments were served to 35 members and guests.

The next meeting will be the first Monday night of February with Olen Bailey in charge of the program.

Clinton Swinford, program chairman, introduced Mr. James Maloney from the Internal Revenue office, who spoke on making out income tax forms with a question and answer discussion. B. T. Haws, Wichita County agent, gave out the 4-H calendar to each one present.

A card of appreciation is to be sent to Bob Crocker, who is retiring from ASCS office after many years of work and was known as the Farmers Best Friend.

Refreshments were served to 35 members and guests.

The next meeting will be the first Monday night of February with Olen Bailey in charge of the program.

18-2TC

### March of Dimes Girl Visits Senator



SIGHTSEEING IN THE SENATE the 1964 National March of Dimes Child, Mary Lou Graves, 5, Flint, Mich., meets Texas Senator Ralph W. Yarborough at the nation's capital. Mary Lou, victim of the birth defect known as open spine, symbolizes the 250,000 American children born each year with a serious defect. Contributions to the January March of Dimes also will assist arthritis and polio victims through research, patient care, professional and public education.

### Tickets On Sale C of C Banquet Friday, Jan. 17

The annual banquet of the Chamber of Commerce will be held Friday, January 17. The time is 7:30 P. M. in the High School Cafeteria.

A check with President Bill Darnell and Manager Buddy Byars reveals that all arrangements have been taken care of.

Tickets are now on sale at the Chamber of Commerce office, or they may be obtained from any C of C director. Only 450 reservations have been made. Get your ticket as soon as possible.

### Methodists to Hold Training School Beginning Jan. 12th

Sunday, January 12th, at 3:00 in the afternoon will begin the first of four sessions of a leadership training school, which will be held in the University Methodist Church, Wichita Falls.

Five outstanding teachers in their fields have been secured to teach in this school. Dr. Benjamin A. Petty, a teacher of Philosophy and Religion at Southern Methodist University will teach a class in "New Testament: Content and Values."

All sessions are to be held at University Methodist Church and the sessions run each night through Wednesday, beginning at 7:30 and ending at 9:30. There will be a nursery.

Not until 1856 was the use of postage stamps on letters compulsory in the United States. Actually, the first stamps were cut from a sheet of gummed paper in 1847, in New York City. Stamps had been invented in England seven years earlier. It was not until 1857 that sheets of stamps were perforated for tearing. Up to that time they had to be cut out with scissors or knife.

Mr. and Mrs. T. P. Head and David of Crane, Texas, spent the Christmas holidays here with her parents, Mr. and Mrs. V. C. Skipwith.

### Choral Club To Be Organized Jan. 12

Burkburnett area singers and those interested in promoting an area wide civic or Community Choral Club are invited to attend a meeting to be held in the Community Center in Electra at 3:00 p. m. Sunday, Jan. 12th.

Plans will be discussed regarding such organization which will be non-denominational, but members of any or all area church choirs or choral groups are urged to co-operate in the movement.

The goal is cultural development of vocal talent and community fellowship.

### The Clara-Fairview Community Held Christmas Party

The Clara-Fairview Community had their annual Christmas Party December 21st at the Community House.

Carol Roderick had charge of the program. The group also was led in Christmas Carols.

Following our Christmas tree, delicious refreshments were served to the following:

Messrs and Mesdames James Roderick, Elmer Klinkerman, Raymond Schroeder, Newt Crane E. J. Simons, E. W. Roderick, Norman Roberts and Dude Smith, Mr. Bryan Farris and Claude Adams.

Children present were: Mark, Kenny, David and Kathy Schroeder, Charles, Judy, Griff, Jan and Joy Klinkerman, Vern and Mark Smith, Dan, Danita, Kenny Bob, Rodney and Joy Roberts, and Carolyn Farris.

The group enjoyed playing "42" for the rest of the evening.

The next meeting will be January 12, 1964. B. T. Haws will bring the program. We also will have installation of officers.

### Mrs. Arthur Houser Hostess Xmas Party Univ. Study Club

The University Study Club met in the home of Mrs. Arthur Houser for one of the loveliest parties of the Christmas season. Her house was beautifully decorated with a shining pink and aluminum Christmas tree with a lovely arrangement at the fireplace and the mantel.

The president, Mrs. Young, presided over the business session. Mrs. Bunstine read the minutes and they were approved. The treasurers report was also accepted.

Mrs. Young appointed the nominating committee which included Mesdames Sessums, Reger and Crosley to select officers for the new year.

She then turned the program over to Mrs. Reger who had charge of the program. The program was on Fine Arts and the quotation was "I heard the bells of Christmas Day, their old familiar carols play." Roll call, Christmas Bible verses, was given by the group, then Mrs. Reger brought a beautiful Christmas story.

Mrs. Cauthorn acted as Santa Claus and handed out the beautiful packages from under the tree.

Mrs. Houser served delicious refreshments carrying out the Christmas motif.

Members present were Mesdames Young, Mathis, Bazell, Brocker, Browning, Cauthorn, H. C. Gilbert, Lela Harwell, Pogue, S. S. Reger, Shrum, Melton and the hostess, Mrs. Houser.

The meeting adjourned to meet in January.

### OUR TOWN

BY J. L. BYARS, Manager Chamber of Commerce

The Chamber of Commerce would like to express their thanks to the people of the community for your purchases made in Burk Burnett during the Year of 1963. The Christmas program was well received by all, and we want to thank all merchants who gave Christmas tickets and helped to give a nice Christmas to a large group of families.

The following merchants could not give tickets and helped with cash donations to buy the candy, apples and oranges. The Burk Star, Texas Electric Service Company, Dr. P. A. Carpenter, Alexander Insurance Agency, Counter Insurance Agency, Lippard Insurance Agency, Burk Insurance Agency, Wampler Insurance Agency.

Thanks again to the Southwestern Bell Telephone Co., Lone Star Gas Co., Texas Electric Service Co., First National Bank, Jess Whatley and Claude Reed and the boys from City Hall for our beautiful Christmas decorations, and thanks to many more individuals who make up the best town to live in this side of the North and South poles. If you think we are bragging, just move here and find out for yourselves.

### NOTICE

The Blue Bonnet Garden Club will meet January 14th in the home of Mrs. Gayle DeVriese, 217 Beach Street.

### WORKSHOP FOR REPORTING

Mrs. Geo. McClarty, president of the Burk Burnett Study Club, called a meeting at her home last Monday for the purpose of outlining the material for the club's reports. All Chairmen and Co-Chairmen of departments were present.

### Lions Pancake Sale To Be Held Feb. 8th

Last Tuesday evening the Burk Burnett Lions club met in regular session at the Town Hall.

Immediately following the fine meal, Lion Cordell Parker presented the duet acting team composed of two BHS senior girls, Georganna Zelina and Sally Mayberry, who presented a dramatic skit. Next President Silkwood presented Clyde Conway, a new Lion, with his Lions emblem.

Finally, Mr. Silkwood announced that the annual Lions Pancake Sale will be held Saturday, Feb. 8th at the Town Hall from 6:00 A. M. to 8:00 P. M. Tickets will be on sale soon, and can be obtained for one dollar from any Lion.

### Letter to the Editor:

Burkburnett, Texas 507 E. 6th Street December 30, 1963

Dear Editor: I don't know who won the Christmas Card receiving Championship here, but my wife would be an excellent candidate for the position. To date she and I have received nearly 300 cards and they are still coming in. 279 at the last count.

My wife, Staff Sergeant Yvonne A. Lemon is with the Base Supply Document Office at Sheppard Air Force Base. She will complete twenty years of active service next spring.

Cards from many places throughout the world have arrived. France, Germany, Greece, Viet Nam, Japan and nearly every state in the United States have been received by her.

Your truly, GEORGE L. LEMON

### HAIL to the QUEENS



ROSE BOWL QUEEN—Nancy Kneeland, 19, of San Gabriel, Calif., was selected Queen of the 1964 Tournament of Roses.



ORANGE BOWL QUEEN—Joanne Hefinger, 20-year-old blonde University of Miami student, crowned Queen of the 1964 Orange Bowl festival, poses on her official car in preparation for Jamboree Parade January 1st.



DIANE SAWYER, 18, America's Junior Miss will reign as Senior Bowl Queen, Mobile, La.



COLORFUL PRECISION MARCHES will be performed by Kilgore Junior College Rangemasters, of Texas during the Navy-Texas game in the Cotton Bowl.

### CARD OF THANKS

With deep humility we gratefully acknowledge every act of kindness and thoughtfulness shown us in our recent bereavement.

THE FAMILY OF MRS. B. H. PRESTON, SR.

19-11C

**PAY YOUR POLL TAX NOW!**

LAST DAY - JANUARY 31

# The Burk Burnett Star

HARRY C. DODSON, Owner and Editor



Printed weekly at Burk Burnett, Wichita County, Texas. Entered as second class matter at the post-office at Burk Burnett, Texas, August 19, 1907, under the Act of Congress of March 3, 1879.

Mrs. Lola Mae Bailey, Bookkeeper-Society Editor  
Chas. L. Wisdom, Mechanical Foreman  
Forrest Green, Linotype-Pressman  
J. W. Brookman, Commercial Printing

Notice to the Public: Any erroneous reflection upon the character, standing or reputation of any person, firm or corporation, which may appear in The Star, will be gladly corrected as soon as it is brought to the attention of the publisher.

Subscription Price \$2.00 Per Year

## Victory For Freedom

The Supreme Court of the United States has now made it clear beyond question that state right-to-work laws are constitutional, and that the state courts have the power to enforce these laws which, in effect, give a worker the right to gain and hold a job whether or not he is a union member. The decision was unanimous—8 to 0. Justice Goldberg did not participate, as he was formerly Secretary of Labor and so might have been considered a prejudiced party to the dispute.

This action concerned an argument that federal law took precedence, that the issue must be decided by the National Labor Relations Board, and that the state courts were without authority. This was the argument that the court rejected. The right of the states to prohibit unwilling, compulsory union membership, if they so choose, is now firmly established.

Right-to-work laws are in effect in 20 states. Strong movements are constantly afoot to pass the additional states. Under their terms, no employer can discriminate against a man because he joins a union—and no union can prevent this employment if he chooses not to join. He is a free man, who can accept or reject the union's offerings without penalty.

It might be added that these laws make for more effective unions, doing a better job for their members—for under them, they must gain membership on the basis of service instead of compulsion. The Supreme Courts unanimous decision is a victory for freedom, and for one of the most fundamental of human rights—the right to work.

## GRASS ROOTS OPINION

MARYSVILLE, CALIF., APPEAL-DEMOCRAT: "The Northwood Times, a student paper of the Northwest Institute, Midland, Mich., has the following quote from Dr. V. Orval Watts: 'I know of only one other school which makes this kind of determined efforts to have the whole faculty teaching free enterprise in an organized integrated program as we have it. Teaching today has become collectivistic in public schools and universities because the insti-

## WASHINGTON AND "SMALL BUSINESS" BY C. WILSON HARDER

Any attempt in this column to discuss military strategy would be most fallacious. Yet, there does appear to be a point on which it might be well for the Congress to study.

It seems that every time there is talk of bringing home the bulk of the American troops garrisoned in West Germany, the German government officially expresses great alarm. The C. W. Harder Russians, they infer, just over the line, may invade.

There is a question whether all the combined NATO forces in Europe could prevent the Russian armed hordes from moving across Germany in a few days. This can only be answered by the military men competent to assay fire power, defensive strength and all of these technical matters.

And recently there was quite a dramatic test performance in flying thousands of troops into Germany from American bases in a few hours. Whether this is practical in the event hostilities should break out is again a technical question.

However, there does seem quite a question as to whether or not U.S. forces are in Germany primarily to protect the German soil, or the German economy. Big military payrolls and supply purchases are a boost to any economy. In addition, the report of the committee on non-essential governmental expenditures

is a question whether alarm is caused by considerations of economic power, or firepower.

Hence, this is a question that Congress could well investigate. As is well known, there are currently attempts to use the armed forces for sociological experiments, and a variety of other projects totally unrelated to the chief business of a military force.

It would be interesting to see what a Congressional study of the situation, provided the nations top military men are not muzzled, would find out about the situation.

headed by Senator Harry Byrd points out that the armed forces overseas are employing currently 160,000 foreign nationals. A little over 50,000 are employed in Japan, 21 thousand in France, 77,619 are employed in West Germany.

Actually, they are indirectly employed. The actual job handing out is by the German government, with the U.S. meeting the payroll.

Now in a nation of 56 million people, almost 78,000 jobs are an important item. The impact on the German economy is equal to what would result if in the United States 271,696 additional jobs came into being.

To give a better gauge, this hypothetical 271 thousand plus jobs is almost equal to the employment by the nation's third largest corporation, Ford Motor Co. It is almost twice the number of jobs supplied by the six biggest meat packers.

Thus, there is no question this causes alarm in Bonn.

But it would seem the big question is whether alarm is caused by considerations of economic power, or firepower.

Hence, this is a question that Congress could well investigate. As is well known, there are currently attempts to use the armed forces for sociological experiments, and a variety of other projects totally unrelated to the chief business of a military force.

It would be interesting to see what a Congressional study of the situation, provided the nations top military men are not muzzled, would find out about the situation.

tutions are necessarily organized and operated on statist, bureaucratic lines.' Dr. Watts used to be a socialist, he used to teach in bureaucratic schools. He's even been thru the indoctrination at Harvard. When he began to read the philosophers of the ages, he saw the error in his own thinking and he is now trying to get people to understand the blessings that come from respecting private property."

YORK, NEBR., NEWS-TIMES: "Few of us ever have folding money in our pockets long enough to become very well acquainted with it—But there's a fellow in Miami, Fla., who has complained to his congressman about the \$10 bill. He thinks the obsolete car in the picture on the back gives America a bad image and certainly does not convey the idea of progress which this nation is so proud of. However, as one Treasury spokesman commented, the out-of-date ten-spot is 'a symbol of the stability of the American economy.' On that controversial note, perhaps it is best to close the subject."

## BURKBURNETT.... HISTORY

Revealed By The Star Files 10 Years Ago . . .

Billy S. Vann and family of Brownwood spent the New Years holidays with his parents, Mr. and Mrs. W. C. Vann.

George Willingham and son Tommy have returned to their jobs in Dumas, Texas after spending the holidays at home.

Wayne Sikes has returned to his naval base in San Francisco, California, after spending a few days leave at home.

Mrs. H. E. Billingslea, Burk Burnett High School teacher, has returned from a two weeks trip to Germany where she spent the Christmas holidays with her husband, Sgt. H. E. Billingslea. Sgt. Billingslea is stationed in Munick, Germany.

Visitors in the Tom Harms home over the Christmas holidays were Major and Mrs. Tom H. Harms and boys of Montgomery, Alabama. Mr. and Mrs.

I. O. O. F. LODGE BURKBURNETT, TEXAS Meets at I. O. O. F. LODGE Every Tuesday Night 7:30 p. m. Visitors Welcome

BRINGING UP FATHER Vernon Green



Desmond Harms and Linda of Columbus, Mississippi and Mike of North Texas State Teachers College of Denton.

Mrs. G. T. Engalnd fell at her home during Christmas week and sustained a painful injury to her arm. She will have to carry it in a sling for awhile.

Paul and Bertie Machel visited Mrs. E. C. Hennis and Mrs. Boldin during Christmas.

Mr. and Mrs. F. T. Felty had as their guests during the New Years holidays, Mr. and Mrs. Bob Conley, Bobby and Penny of Borger, Sgt. F. T. Felty and Sgt. Masterson of Camp Crow-

der, Missouri.

Dr. and Mrs. R. M. Brum and daughters spent the Christmas holidays with her parents, Mr. and Mrs. O. H. Buzbee Iowa Park.

Gerald Goins from Big Spring, Texas, spent the Christmas day with his parents, Mr. and Mrs. W. E. Goins.

Mrs. Ida Reynolds spent Christmas in Seminole, Tex. with her daughter and father, Mr. and Mrs. Glen Sullivan.

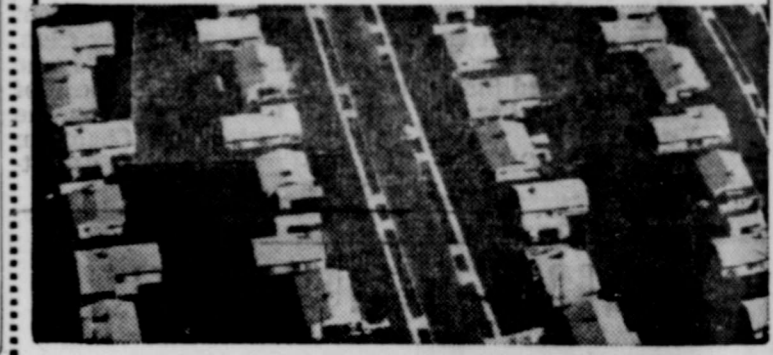
Miss Emily Moore has returned to Burk Burnett and her room from Paris, Texas, after the Christmas holidays.

IF IT'S FOR SALE-ADVERT

Fresh Idea from MRS BAIRD'S BREAD CUPBOARD ORGANIZER. If the small packets and envelopes of salad dressing mixes, dip mixes, sauce and soup mixes put your cupboard in a state of confusion, here's an idea you will appreciate. Purchase a plastic paper-napkin holder. File the packets inside the holder. It's easy to see what mixes you have on hand. Keeps the cupboard neat.

Have You Looked At Herring's Window? Herring's Hardware And Appliance. 201 E. Third (Main)

## Even homes that look the same



are not all worth the same. A close look, outside or inside, will reveal significant differences: Repairs made or neglected—and value effected accordingly. A prompt Home Repair Loan from us can cost infinitely less than you might lose by delaying repairs. So...!

INTEREST PAID ON SAVINGS 4% 1 YEAR DRIVE IN BANKING DRIVE IN BANKING HOURS: Mon. Thru Fri. 9 a. m. to 2 p. m.—4 p. m. to 6 p. m. Saturday 9 a. m. to 12 Noon

First NATIONAL BANK BURKBURNETT, TEXAS "SERVING BURKBURNETT SINCE 1907" MEMBER Federal Deposit Insurance Corporation

Get Your Car Ready For Winter And Save Money With This Coupon. Clean and inspect spark plugs, Clean and inspect Distributor, Check Coil, Compressor, fuel pump pressure, Reset Timing, Adjust Valves, Reset Engine an Analyzer. Reg. \$10.50 Value SPECIAL \$6.00 LABOR. Clifford Wells In Charge Of Complete PAINT and AUTO BODY SHOP ALL WORK GUARANTEED. WRECKER SERVICE. CHEVROLET CO. IRVIN "Smitty" SMITH, Service Manager



Are you remodeling? Check the advantages of CLEAN FLAMELESS ELECTRIC HEAT! Heat as clean and warm as sunshine! That's the kind of wintertime comfort you'll enjoy when you install modern flameless electric heat. Electric heat provides even, automatically controlled warmth so sunshine clean your home stays fresh and new-looking with a minimum of care. With easily installed built-in electric heating units, each room has its own "heating system" . . . the temperature can be raised or lowered as you like without overheating or underheating the rest of the house. Ask your architect or builder, or call our office about flameless electric heat for your home.

BASEBOARD TYPE replaces normal baseboards, takes up no living space, installs easily. WALL INSERT, available with or without circulating fan, mounts flush with wall . . . heats entire room.

TEXAS ELECTRIC SERVICE COMPANY JOE T. SALTER, Manager 569-3373



**Relaxing at Home**



**LOUNGING COMFORT** is the keynote for midday's treasured moments of relaxation in this classic short robe designed by Al Feiner. In one of fashion's favorite colors, classic white, the simplicity of line is accentuated with decorative floral sprays embroidered in tones of blue on collar and patch pockets. Quilted interlining of Eastman Kodak polyester fiberfill not only makes it pleasantly smooth and soft to the touch, but also insures its lightweight warmth and shape-retention after many cleanings. Available in Misses sizes 8-13, this cozy, low-priced robe also comes in blue, pink and rose.

work a short stretch of shoreline thoroughly than covering a lot of water haphazardly. You can't hurry an old bass. It is literally impossible to work a bait too slowly. Some fishermen spend several minutes on a single retrieve. If there is one common mistake most fishermen make in bait presentation, it is working the lure too fast.

The skilled fisherman thoroughly tests his tackle before he ever makes a cast. If he is using a reel with a drag device, he tests it to be sure it is set neither too hard nor too soft. He checks his knots to make sure they are secure. And he tests his line to see if it is frayed or nicked. When he drives the hook into a bass, he knows what his tackle can do. He knows exactly how much pressure he can apply without something giving.

Real good fishermen do all this checking the night before they head for the lake. Then they are ready for action as soon as they reach the water bright and early the next morning.

**Annual C. of C. Banquet Scheduled Fri., Jan. 17**

The Chamber of Commerce Banquet will be held Friday night, January 17th at 7:00 in the new high school cafeteria. Guest speaker will be Lee D. Herring, vice president of the Grand Prairie State Bank. Tickets are now on sale at the Chamber of Commerce office or from any director.

**IF IT'S FOR SALE-ADVERTISE**

your best success during these periods. The average fisherman, who gets on the water around eight in the morning and quits in mid-afternoon, wonders why he never takes any of these big bass. Main reason, of course, is that he's fishing at the wrong time of day. The fish simply are not feeding when he is fishing.

And finally, there is the skill of knowing how to fish. This encompasses more than the average fisherman would ever imagine. It includes everything from the proper approach to the correct presentation of the bait.

The lunker fisherman comes upon the spot he intends to fish with the utmost caution. He cuts his outboard long before he reaches the spot and either approaches with the aid of a silent electrical motor or paddles. He makes doubly sure not to make any unnecessary noise, such as scraping a paddle against the boat or banging shut his tackle box.

He tosses out his bait and lets it sink deep, for he knows the big ones hang out right on the bottom. Sure, you can take them on top occasionally, but far more often you'll get the

grandpa bass right off the bottom. The big bass angler either works his bait deep, near bottom, or right on the lake floor itself.

The bait comes in slowly, the slower the better. Blue ribbon fishermen have found it pays not to hurry. Far better to



**The Expectant Cat**

Motherhood comes naturally to cats. You needn't do much to help them, but a few precautions make an expectant cat's job easier. About a week before kittens are due, Mama cat is likely to search for a suitable place to have her kittens. To simplify her search, take a box, line it with a clean old towel, and place it in a warm, dark, quiet corner of the house.

Next, bring the cat to the box. Place her in it and pet her reassuringly. She may welcome this "maternity ward," — but don't be surprised if she decides that another spot is more to her liking. Cats can be extremely independent about these matters.

The Purina Cat Care Center recommends leaving a cat alone for a few hours after she has given birth. Her box may be a trifle soiled but don't let this bother you, this is normal.

After about three days, however, your efforts to aid in house-cleaning will be welcomed by the new mother—and she'll do her part by washing the kittens and disposing of any mess they make. New kittens should remain in semi-darkness for about 2 weeks because light can hurt their eyes.

For the first week or two, bring your pet's food to the box. Mother cat is busy with her offspring, and your attention will save her trouble and enable her to spend more time bringing up her children.

**Classified Ads Gets Results**

**Judge Temple Shell Asks Re-election As Judge of The 78th District Court**



JUDGE TEMPLE SHELL

Judge Temple Shell of 78th District Court Wednesday announced he will be a candidate for re-election this year subject to the Democratic primary.

Judge Shell said he would base his candidacy on his record as district judge.

He said he feels his record justifies his asking the people of Wichita County for re-election.

Judge Shell thanked "the people of Wichita County for their

confidence and for the privilege of serving as judge of the 78th District Court in the past" A formal announcement of Shell's candidacy will be issued later.

**Football Banquet Scheduled For Saturday, Jan. 11**

The Annual Football Banquet, sponsored by the Bulldog Booster Club, has been scheduled for Saturday night, January 11 at the new high school cafeteria at 7:00 p. m.

Tickets are now on sale at the Chamber of Commerce office and the First National Bank. Only a limited number of tickets are available, so get your ticket today!

**GENUINE ENGRAVED Wedding Invitations**  
 \$12.45 FOR 100  
 FREE WITH EACH ORDER

BURKBURNETT STAR

R. M. Brum  
 spent the Christmas  
 with her parents.  
 D. H. Buzbee  
 from Big Spring  
 Christmas  
 parents. Mr.  
 ins.  
 Reynolds  
 emoline, Ten  
 ter and fam  
 llen Sullivan  
 oore has re  
 tt and her  
 is. Texas,  
 holidays.  
 LE-ADVERT  
 Idea  
 RS  
 RD'S  
 AD  
 DARD  
 WIZER  
 packets and  
 aid dressing  
 rs, sauce and  
 at your cup-  
 of confusion,  
 ea you will  
 chase a plas-  
 holder. File  
 de the holder.  
 what mixes  
 id. Keeps the  
 LONGER  
 same  
 ne  
 reveal  
 le or  
 ngly.  
 s can  
 se by  
 INGS  
 to 6 p. m.  
 ANK  
 T, TEXAS  
 1907"

**Auto Advice For Cold Weather Starts**



To solve the usual wintertime problem of starting an automobile in subzero weather, motorists have tried everything from putting electric blankets around the car's engine to running outside three or four times during the night to try and start the motor. These methods offer a possible solution.

If (1) you have an extremely long extension cord or (2) you don't need much sleep before getting in a full day's work.

Each winter, it's the usual early morning scene: time, 8:45 a.m.; temperature, minus-13 degrees. Automobile batteries up and down the street giving last, sputter, gasps and groans. Automobile owners running back and forth between neighbors (also in the same predicament) sharing their "home remedies" for starting up a "frozen engine."

The term "frozen engine" actually is very misleading. Engines never freeze. The problem essentially, lies in two areas: the oil and battery, with the oil being the greater villain. In sub-zero weather, oil becomes extremely thick. This, in turn, places an enormously heavy load on the battery which is to activate "stiff" engine parts until the normal combustion cycle is established.

To compound this, the battery as already been weakened by winter's increased temperature strains. Cold weather, itself, reduces a battery's efficiency. At any degree, for example, a battery is only about 45 per cent as effective as at 80 degrees. Heat, too, heaters, defrosters, radio lights and cigarette lighters also contribute to decrease battery efficiency.

So wonder then, that a dead battery can't start a car with oil that's become as thick as molasses in January due to cold.

**FIELDCREST JANUARY WHITE SALE**

**FIELDCREST COUNTRY GARDEN**  
 FRESH AS ALL OUTDOORS FOR THE BATH

- 24 x 46 inch Bath Towels.....Reg. \$1.99 Sale \$1.69
- 16 x 26 inch Face Towels.....Reg. \$1.29 Sale \$1.09
- 12 x 12 inch Wash Cloths.....Reg. 59c Sale 49c
- 22 x 34 inch Bath Mats.....Reg. \$3.99 Sale \$3.49

GOLD — BLUE — PINK

**Country Garden For the Bedroom**  
 EXCITING FLORAL CHARM

- 42 x 38 Pillow Cases.....Reg. \$1.35 Sale \$1.19 Ea.
- 81 x 108 Panel Sheet.....Reg. \$4.99 Sale \$3.99 Ea.
- 72 x 90 Print Blanket.....Reg. \$5.98 Sale \$4.99 Ea.

GOLD — BLUE — PINK

**FIELDCREST SONATA TOWELS**  
 SOLID COLOR FASHIONS IN BIEGE—MOCHA—PINK—ANTIQUÉ GOLD

- 25 x 48 inch Bath Towel.....Reg. \$1.99 Sale \$1.69
- 16 x 28 inch Face Towel.....Reg. \$1.29 Sale 99c
- 22 x 34 inch Bath Mats.....Reg. \$2.99 Sale \$2.49
- 13 x 13 inch Wash Cloths.....Reg. 59c Sale 49c

**Fieldcrest Lexington Towels**  
 SO THICK AND THIRSTY

- 22 x 44 inch Bath Towel.....Reg. \$1.19 Sale 99c
- 16 x 26 inch Face Towel.....Reg. 69c Sale 59c
- 12 x 12 Wash Cloth.....Reg. 39c Sale 33c

ROSE—PINK—BLUE—MAISE—SAND ANTIQUÉ GOLD

**Manhattan DEPARTMENT STORE**  
 WE GIVE S&H GREEN STAMPS

**WE GIVE S&H GREEN STAMPS**

PSSST!

**DON'T MISS OUR WONDERFUL BOX SALE**

ON *Eye-catchers* STOCKINGS BY BERKSHIRE

Yes, our big, big value sale of the year is now going on. Just think, famous Berkshire quality and styling at a new low price. So save while you can! Three pair for only \$2.45 regularly 99¢ a pair

**AFTER INVENTORY SALE**  
**BIG . . . BIG . . . BIG . . . Savings In Every Dept.**  
**25% TO 33% REDUCTIONS ON**

- WOMEN'S SHORT or LONG COATS. ● WOMEN'S DRESSES
- MEN'S, WOMEN'S and CHILDREN'S SWEATERS
- MEN'S SPORT SHIRTS. ● MEN'S JACKETS
- WOMEN'S SHOES ● WOMEN'S and CHILDREN'S CAR COATS
- BOYS JACKETS ● WOMEN'S and CHILDREN'S CAPRIS
- COTTON FABRICS UP TO 98c . . . NOW 2 YARDS \$1.00
- SELECTED GROUP STETSON HATS, Reg. \$11.95 Now \$8.95
- AND YOU GET S&H GREEN STAMPS ON SALE MDSE.

**Manhattan DEPARTMENT STORE**

**"PLAY PIGGLY WIGGLY'S BEVERLY HILLBILLIES GAME"**



**WIN UP TO \$200.00**

**WIN ONE OF MANY COLOR TV SETS**

**HERE'S HOW TO PLAY: VISIT PIGGLY WIGGLY AND RECEIVE A BEVERLY HILLBILLIES GAME TICKET.**

**PLUS: GOLDEN JALOPIES FOR THE KIDS!**

**WIN CASH!**

Take it home with you, wipe off the black squares by rubbing with tissue or cloth, using any household oil, margarine or butter. CASH WINNERS UP TO \$200.00 will be indicated on the face of the ticket.

**WIN COLOR TV!**

Underneath the black square on the car radiator, there will appear the name of one of the four members of the Clampett family. Collect one each and you win an ADMIRAL COLOR TV SET, retail value \$500.00.

**WIN CAR CHARM**

Reverse side of ticket will show a variety of numbered pictures. A complete set of ten consecutively numbered pictures entitles you to win a miniature golden charm replica of the BEVERLY HILLBILLIES CAR.

Persons under 16 years of age and employees of Piggly Wiggly and their immediate families are not eligible to play.

**Grape Drink Monarch 4 Qt. Cans \$1**

**Mayonnaise New Wesson, Pure Quart Jar 45¢**

**Pickles Mother's Dill, Kosher Dill or Sour 4 22 Oz. Jars \$1**

- Carnation, Assorted Flavors Sherbert, Qt. Ctn. 39c
- Holsom, Elbow, 8 Oz. Macaroni, 2 Pkgs. 27c
- Hunt's—No. 300 Cans Tomato Sauce 2 for 39c
- Bonnelle—18 Oz. Peanut Butter, Jar. 45c
- Chef Boy Ar-Dee, 5c Off Label—30 Oz. Meatball Stew Can 58c
- Good-N-Rich—15 Oz. Pkg. Angel Food Mix. 43c
- Marshall, Freestone, Halves or Sliced—No. 2 1/2 Peaches, Can 33c

Fill Your Freezer or Locker With Meats From Piggly Wiggly! All Meats, Cut, Wrapped, and Quick Frozen to Your Specifications At No Extra Cost To You!

- Armour Star SLICED BACON . . . 12—1 Lb. Pkgs. \$5.79
- Armour Star, Heavy Aged Beef, 250 to 300 Lb. Aver. BEEF SIDES, Pound . . . 47c
- Armour Star, Heavy Aged Beef, 150 to 175 Lb. Aver. BEEF HINDQUARTERS, Pound . . . 55c
- Armour Star, Heavy Aged Beef, 150 to 175 Lb. Aver. BEEF FOREQUARTERS, Pound . . . 43c
- Armour Star, Heavy Aged Beef, Trimmed, 40 to 50 Pound Average BEEF LOINS, Pound . . . 73c

Extra Hearty . . . Extra Good! Piggly Wiggly Meats!

- Chuck Roast Armour Star, Heavy Aged, Beef, "Valu-Trim" . . . Lb. **39¢**
- Fish Steaks Booth's, Fresh Frosted, Perch, Cod, or Catfish, Ready to Fry, 1 1/2 Pound Package . . . **89¢**
- RIB STEAK, Lb. . . . . **69¢**
- Fish Sticks Booth's, Fresh Frosted, Heat and Eat 1 1/2 Pound Package . . . **89¢**
- Sliced Cheese, Lb. . . . . **59¢**
- Pork Chops Rodeo, Northern Pork, Lean, Center Cut Rib Chops . . . Lb. **59¢**
- Breaded Shrimp Booth's, Fresh Frosted Fantail, Lb. Pkg. . . . . **89¢**
- Luncheon Meats Butcher Boy, Sliced Bologna, Pickle or Macaroni and Cheese 6 Oz. Package . . . **29¢**
- Sliced Cheese, Lb. . . . . **59¢**

**FRUIT PIES** Banquet, Fresh Frozen, Apple, Cherry or Peach 20 Oz. Pie **29¢**

**MEAT PIES** Sparetime Beef, Chicken or Turkey 6 6 1/2 Oz. Pies **89¢**

**COFFEE** Golden West, Drip or Regular Grind 1 Pound Can **49¢**

**Cheese Food** Chef's, Delight 2 Lb. Pkg. **49¢**

"Hear About Piggly Wiggly Frozen Food Sale?"

**ENCHILADA DINNER** PATIO, 12 Oz. Pkg. **49¢**

- Seabrook, Fresh Frozen Green Peas 5—10 Oz. Pkgs. \$1
- Libby's, Frozen Broc Spears, 2—10 oz. pkgs. 49c
- Seabrook, Chopped or Leaf Spinach . . . 6—10 Oz. Pkgs. \$1
- Sommerdale Golden Cut Corn . . . 4—10 Oz. Pkgs. 53c
- Mr. G., French Fries Potatoes . . . 2—9 Oz. Pkgs. 25c
- Hills O Home Cut Okra . . 2—10 Oz. Pkgs. 35c
- Ranch Oven Bread Dough, 2 Count Pkg. 37c
- King's Frozen Pie Shells, 2 Count Pkg. . . 27c
- Banquet, Cook N Bag—8 Oz. Pkg. Chicken and Noodles . . . 4 for \$1
- Naturipe, Fresh Frozen Strawberries . . 10 Oz. Pkg. 21c

**ORANGE DRINK** Tip-Top, Fresh Frozen 4 6 Oz. Can **45¢**

Get A Regular \$6.95 Samsonite Folding Table for Only \$3.99 with \$15 Worth of Register Tapes NOW at Piggly Wiggly!

**HEALTH AND HOME NEEDS**

**Hand Lotion** Jergen's, Regular 33c Retail . . . 2 For **49¢** Plus Tax

- Dandruff Treatment, 12c Off Label—Reg. 98c Retail
- RINSEAWAY, 6 Oz. Bottle . . . . . **69c**
- Continuous Action Cold Capsules—Reg. \$1.49 Retail
- CONTACT OR CLINICIN . . . . . **\$1.09**
- Regular 39c Retail TABLETS, Big Chief, Pencil . . . . . **27c**
- S. P. Antiseptic—Reg. 33c Retail
- MOUTH WASH, 16 Oz. Bottle . . . . . **29c**

**FRESH PIGGLY WIGGLY PRODUCE!**

- Apples Red Delicious . . . . . Lb. **15¢**
- Rutabagas Sweet Yellow Turnips . . . . . Lb. **10¢**
- Carrots 2 Lb. Bag **19¢**
- Oranges Sunkist . . . . . Lb. **19¢**

- Waffles Syrup PAR MAPLE Quart Jar . . . 45¢
- Instant Coffee MAXWELL HOUSE 10 Oz. Jar . . . \$1.5
- TOILET TISSUE Scot, Assorted Colors 4 Roll Pkg. . . . 39¢
- CHILI AUSTEX, PLAIN No. 2 Can . . . . 65¢
- Instant Coffee MAXWELL HOUSE 6 Oz. Jar . . . \$1.0
- TAMALES AUSTEX No. 2 1/2 Can . . . 43¢
- DOG FOOD TASTE T-CHEW 10 Lb. Bag . . . \$1.0
- PAPER CUPS DIXIE 50 Count Pkg. . . 39¢

These Values Good In Burkburnett, January 9, 10, 11, 1964. We Reserve the Right to Limit Quantities.

Lowest Prices . . . Greatest Variety . . . always at . . . **Piggly Wiggly**

# Buy Auto Liability From The Travelers Insurance Co. |

IT DOESN'T COST ANY MORE TO  
**BE SURE**  
HOWARD CLEMENT, Agent  
New Location — Next To Legion Hall

## News From The County Agent

As a farm or ranch operator, would you like to join as a select group of cooperators with the Texas Agricultural Extension Service in a mail-in record keeping project, says B. T. Haws, county agent.

The Service's farm management specialists, with Rex Kennedy serving as coordinator, have issued a call for 300 volunteers who would like to participate in the year-long record project. Kennedy says for the past two years about 50 cooperators have been under the program and that results have been good. The program utilizes the electronic computers at Texas A&M University and makes it possible for the specialists to do a faster and more thorough job.

Here's what the new cooperator's will furnish the specialists at Texas A&M — a beginning inventory, monthly expense and income records (mailed in each month), and an ending inventory. At the end of the year, the specialists will supply the cooperator with a detailed analysis of the year's record.

**For COLDS take 666**

ord. This analysis will be provided in time for use in connection with the tax reporting, Kennedy says.

The material submitted by the cooperators will be treated as confidential information and summaries or averages without identification of individuals will be used by the specialists in their work. Summaries of the records will be available on request any time during the year, says Kennedy.

If you would like to participate in this mail-in-farm or ranch accounting program, the size or type of your operation makes no difference, you are advised to contact the local county agent, B. T. Haws, at once. He can supply detailed information and the selection will be largely on a first come basis.

According to business reports, 88 percent of all business failures are due to weaknesses in management.

Agribusiness firms, like all other businesses, are finding that managers must continually become more skilled if they are to solve the ever increasing problems which they face. Management is the only unique feature which any business firm can expect to have that no competitor can exactly copy or duplicate.

The Bureau of Business Research in Austin, reports Texas business activity during September was down by four percent. Despite this, the index of business activity in the state for the first three quarters of 1963 registered a gain of 4.5 percent over the same period

of 1962. These analyses indicate that, although the overall business trend is favorable, there are rough spots which can be overcome only through better management skills.

A recent comprehensive study made in Texas concerning business practices emphasizes the need for more formalized long-range planning by businessmen to avoid the pitfalls of random decision making. The days of operating a business from the "hip pocket" are gone. The question each agribusiness firm manager must answer before getting involved in details is: "Where do I want my business to be in 1970, and what specific programs do I have set up to help me get there?"

The feeding of cattle under drought conditions presents special problems, says B. T. Haws, county agent.

These hints are given by the county agent for feeding cows and heifers during these dry times. He says to feed at least the minimum amount of roughage or one pound of roughage per 100 pounds of animal body weight. This level must be maintained for the proper digestive processes. Haws points out that shortage of roughage is a problem in Texas because of its high cost.

He also recommends feeding no less than the minimum protein requirement because most roughages are not now providing as much protein as in normal years. Haws explains that rumen bacteria uses the nitrogen they get from protein for the digestion of feeds. This nitrogen is especially needed

to enable cows to digest low quality roughages

The county agent recommends feeding vitamin A to cows with calves and weaned calves. To supply this requirement, one pound of dehydrated alfalfa pellets or synthetic vitamin A may be fed, injected or given in the drinking water. Extra phosphorus should

be supplied in the drinking water or a free choice mineral lick provided. Salt should be fed free choice to all cattle.

If grain is substituted for part of the roughage, feed one and

one-half pounds of cottonseed or other protein supplement per head per day. If grass or grass hay is ample, feed two pounds of 41 percent protein meal or cake daily. Grain

should not be substituted for protein.

One last tip is to put calves on creep as soon as possible or to sell them to take the strain off the cows.

## Shopping Scene

By Dorothy Owens Wright

If you're overlooking duckling because you think it's hard to prepare, you're making a mistake. Several excellent recipes are available from the Long Island Duck Farmers Cooperative, Eastport, L.I., N. Y. One of the recipes, duckling with apple yam stuffing, was a holiday highlight for us.

You won't find it listed on the package, but one essential ingredient of the newest food products is glamour. Difficult French sauces and other foreign dishes... casseroles seasoned with hard-to-get spices... specialty dishes of famous chefs... all are right at our fingertips.

Such dishes can be prepared with a minimum of fuss. So can lumps sauces, gravies and batters be made easier with General Mills' new non-sift Wondra flour. It's a real time-saver.

The packers of Martha White beans have a good tip: You can keep down excessive foam when cooking Great Northern, red kidney, pinto or pea beans by adding a tablespoon of bacon drippings or other fat to the cooking water for each cup of beans.

Americans are eating twice as much sausage today as they did 20 years ago, reports the Gallo Salame Co. And with more than 100 varieties being marketed, it's not hard to find one for every taste.

If you're taking advantage of the abundant supply of tomato juice, you should realize it contains about half as much Vitamin C as orange juice.

## There are 30 Pontiacs in Wide-Track Town



**Did you say you wanted a 4-door sedan with Wide-Track and that luxurious Pontiac comfort?**

*(We've got four different models to choose from.)*

**Choose your Wide-Track performer at your local Pontiac dealers**  
HE HAS A WIDE CHOICE OF GOOD USED CARS, TOO

**MATHIS CHEVROLET CO.**

300 EAST 2nd STREET

BURKBURNETT, TEXAS




## should you pamper a Princess?

Depends on which princess—the teenager or the telephone. All teenage princesses—so we're told—glory in a little pampering.

But the Princess® telephone is so well made and trouble free that no pampering is required. Just dust it occasionally or wipe it with a damp cloth.

That, plus a little care in handling, is all the attention any phone needs. And phones almost never need repair—but if something does go on the blink, we'll fix it promptly at no extra charge.

We think it's our job to keep right on improving your telephone service and making it of greater personal value to you.

SOUTHWESTERN  BELL

Making telephone service better to serve you better



**King-Size savings with a gas dryer...only gas dries 5 loads for the cost of drying 1 load electrically. No wonder 91 out of 100 self-service laundries feature gas drying. You get long, safe, trouble-free service. And with gas white things won't yellow. So if a dryer's in the cards for you, deal yourself a winner with gas! Low prices during the LUCKY DEAL DRYER SALE at gas appliance dealers and Lone Star Gas.**

**Randlett News**  
Mrs. Mollie R. Elliott, Reporter



**WEDDING ANNOUNCED**  
Mr. and Mrs. Ted Green of Randlett, Oklahoma announce the approaching marriage of their daughter, Peggy Jo to A/2C Melvin M. Kowalski, son of Mr. and Mrs. Steve Kowalski of Loup City, Nebraska. A2/C Kowalski is stationed at Sheppard Air Force Base.

The wedding ceremony will be held February 1st at 3:00 o'clock in Chapel No. 2 at Sheppard Air Force Base. After the wedding vows and wedding trip to Dallas, the couple will make their home in Burkburnett, Texas.

There won't be any invitations sent out. Close friends and relatives are cordially invited.  
Mr. and Mrs. H. W. Bruce celebrated their 50th wedding anniversary with open house in their home Sunday afternoon January 5th, with their children, Mr. and Mrs. Roy Bruce and children of Denton; Mrs. W. C. Norton and daughter and Mrs. Joy Green of Oklahoma City, Oklahoma; and Mrs. Phil Hatcher of Okemah, Oklahoma, as hostesses.

Cake and punch was served to the following guests: Mrs. J. R. Fisher of Waurika, Oklahoma; Mrs. Aubrey Rankin, Mrs. Lucille Dalton, Mrs. Lauren Poole, Mrs. Verta Phillip and Mrs. Rachel Jones of Burkburnett; Wanda Green, Mrs. Zonie Ousley, Mr. and Mrs. Ted Green, Mr. and Mrs. Riley Davis, Mrs. Troy Horton and Donnie, Mrs. H. M. Hayes, Mrs. A. L. Patterson, Mrs. Flora Hatcher, Mrs. R. H. Rhoads, Mrs. Odis Fisher, Mrs. Doyal Leach and Rev. and Mrs. Harlen Duncan.

Mr. and Mrs. M. M. Bowles and Cindy accompanied by Mr. and Mrs. Jack Crow of Salinas, California visited Mr. and Mrs. Emmitt Boles of Lawton, Oklahoma and Mr. and Mrs. Jerry Bowles and children of Walters, Oklahoma, Wednesday.  
Bro. and Mrs. George Stewart, former pastor of Randlett Baptist Church are now at the Northeast Baptist Mission at Seymour.  
Mr. and Mrs. Clifford Rhoads and daughters of Frederick, Oklahoma visited his parents, Mr.

and Mrs. R. H. Rhoads Wednesday night.  
Mrs. Eva Stewart and Mrs. Terri Dobbs of Wichita Falls visited Mr. and Mrs. R. O. Brown Thursday.  
Mrs. G. M. Starks and son Dickie spent Saturday and Sunday with her daughter, Mr. and Mrs. Lennie Keen of Lawton, Oklahoma.  
Mr. and Mrs. Henry Roberts and family of Granite, Oklahoma spent Sunday with his sister, Mr. and Mrs. R. O. Brown.  
Mr. R. D. Pfeister, age 82, former resident of Randlett Community passed away Thursday in Eldorado Springs, Missouri. Funeral rites were held in the Pearsons Chapel in Walters, Oklahoma and burial was in the Walters Cemetery.

**DEVOL NEWS**  
Mrs. C. O. Woodley, Reporter

Mr. and Mrs. Charles Adams and baby visited her parents, Mr. and Mrs. Perry in Mineral Wells, Texas, over New Years holiday.  
Mr. and Mrs. A. J. Adams visited Mr. and Mrs. Roy Givens in Wichita Falls Sunday. They were accompanied by Mrs. Buelah Burchitt of Grandfield.

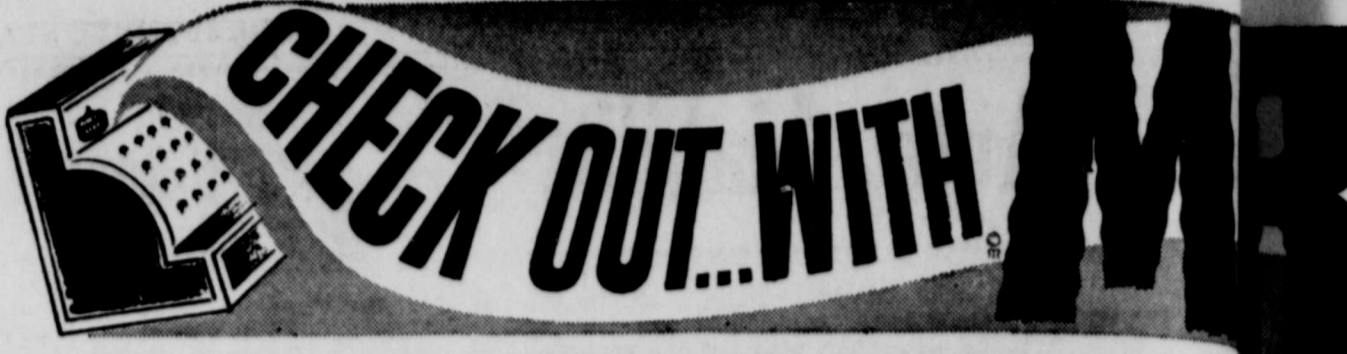
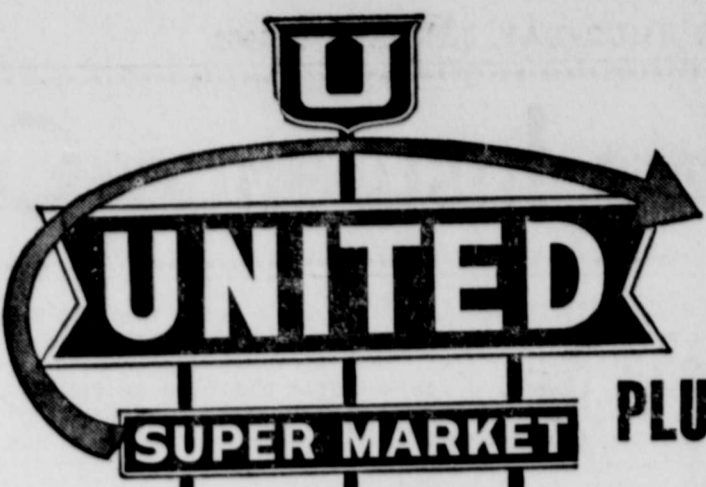
Mr. and Mrs. David Mulherne and children have moved here from Lincroft, New Jersey and will make their home here for the present. Mrs. Mulherne is former Betty McCasland. Mr. Mulherne is employed at Channel 3 Television Station in Wichita Falls as news reporter and photographer.  
Mr. and Mrs. W. C. Charbonneau are reported ill with flu at this time.

Mrs. Pearl Coker and John Coker Jr. visited Mr. and Mrs. Donnie Coker and family in Bowie, Texas Sunday.  
Mrs. Sylvia Myers and Mrs. Lorene Jernigan of Burkburnett visited Mrs. Pearl Cates Sunday.

Twyla Gay and Britt Dodson of Wichita Falls visited their grand parents, Mr. and Mrs. Aubrey Mays over the week end.  
Mr. and Mrs. G. Langley and children Danny, David and Carol Sue of Marysville, California visited her uncle and aunt, Mr. and Mrs. C. O. Woodley Thursday evening enroute home from a visit in Mufreesboro, Arkansas. Charles Lee and Steve Bridges of Wichita Falls and Miss La Von Richburg of Hermaleigh, Texas were also guests Thursday of the Woodleys.

The Devol Demonstration Club will meet Thursday, January 9th for their regular meeting.

**BUSY CORNER**  
A man stood on the street corner waiting to cross while the traffic streamed by, swift and continuous. After a long wait the man became impatient, but he dared not risk going out into the traffic. He spied another man on the other side of the street and called to him: "Hey, I say, how did you get over there?"  
The other man cupped his hand about his mouth and shouted: "I was born over here!"  
**IF IT'S FOR SALE-ADVERTISE**



PLUS THOSE VALUABLE GUNN BROS. STAMPS WITH EXCHANGE PRICES EFFECTIVE, THURSDAY - SAT



**LETTUCE** Large Firm Heads 10¢  
Head

**Apples** YORK 4 Lb. Bag 39¢

**Sweet Potatoes**

**Lemons** Sunkist Full-O-Juice Lb. 12 1/2¢

**Crackers**

**Baby Food** Gerber Strained 6 Jars For 59¢

**MOR** Wilson's Luncheon Meat 12 Oz. Can 39¢

**Sausage** Wilson's Vienna 5 4 Oz. Cans \$1.00

**TOMATOES** Standard Pack 303 Can 10¢

Reg. 54c Retail  
**ALKA-SELTZER**  
Reg. Size Bottle  
SPECIAL THIS AD... 39¢

**SOUP** Campbell Tomato  
**PICKLES**  
**Peanut Butter**



**UNITED SPECIAL OFFER . . .**  
A Beautiful \$5.95 Retail, Westclox Alarm Clock For Only \$2.49 With the Purchase of \$5.00 or More In Merchandise.  
(CIGARETTES EXCLUDED)

**TAMALES** Gebhart No. 2 1/2 Can 3 Cans For \$1.00

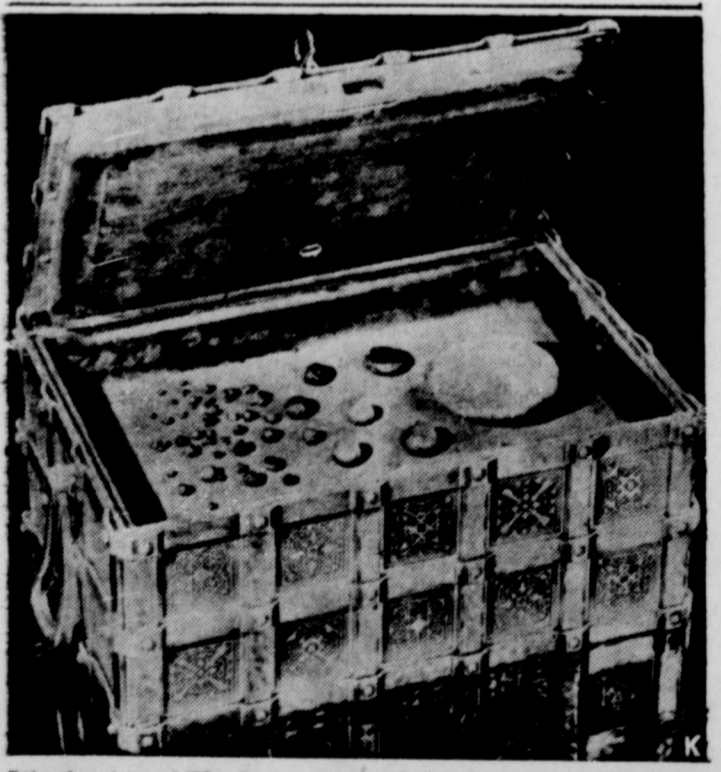
**PUREX** BLEACH 15¢  
Quart Plastic

**Dog Food** ROXEY 1 Lb. Can 12 Cans For 89¢

**CHILI** Wilson's 1 1/2 Lb. No Beans Can 39¢

**OLEO** Shurfresh Quarters 2 Lbs. For 35¢

**What Is It?**



It's aluminum! The first nuggets of aluminum created by electrolytic process in 1886. The metal and the company that introduced it—Alcoa (Aluminum Company of America)—are both celebrating their 75th Anniversary.  
Just three-quarters of a century ago, one of today's most widely used substances was as rare as one of its more costly oxides, the sapphire.  
The process to obtain it economically was discovered in a woodshed laboratory. It was first offered commercially in 1888.  
It is light, bright, non-magnetic. Its resistance to corrosion

**NEW!**  
FROM PROCTOR AND GAMBLE  
**THRILL**  
FOR DISHES  
Regular Size . . . . . 35¢

**COMET**  
AMAZING NEW KIND OF CLEANER  
2 REG. SIZE 33¢  
2 QT. SIZE 49¢

**MR. CLEAN**  
Proctor and Gambles NEW  
ALL PURPOSE LIQUID CLEANER  
Reg.. Giant 39¢ 69¢

**OXYDOL**  
Beats the Sun For Getting Clothes White  
Reg.. Giant 35¢ 79¢

**NEW! FROM PROCTOR and GAMBLE**  
**SALVO**  
Giant Size . . . . . 79¢

far surpasses that of steel, its chief competitor.  
It is used in a thousand products—from missiles to such everyday things as cooking utensils and appliances, storm windows and doors, packaging and zippers.  
Today this versatile metal plays a key role in your life. Annual U.S. per capita consumption now is 29 pounds, and rising rapidly!

# FOR LESS



**CHASE - DOUBLE WEDNESDAY WITH \$2.50 PURCHASE**  
**Y - SATURDAY, JANUARY 9, 10, 11, 1964**

**POTATOES** U. S. NO. 1 RUSSETT **25 Lb. Bag 69¢**

**Oranges** California Naval **2 Lb. For 25¢**

**Apples** RED DELICIOUS **2 Lb. For 25¢**

**FOR HEADACHES ANACIN**  
 Reg. 25c Retail  
**SPECIAL THIS AD... 19¢**

**3 No. 1 Cans 29¢**

**Quart Jar 25¢**

**ZESTEE 3 Lb. Jar 99¢**

**INSTANT 10 Oz. Jar \$1.39**

**FLOUR** Bake-Day **5 Lb. Bag 29¢**

**Shortening** Vegetole **3 Lb. Carton 39¢**

**WESSON OIL** **24 Oz. Bottle 29¢**

**Pecans** Ellis Shelled Halves **10 Oz. Pkg. 69¢**

**Crackers** Nabisco Graham **Lb. Box 39¢**

**Cookies** Nabisco Vanilla Wafers **12 Oz. Box 35¢**

**ROUND or SIRLOIN STEAK** UNITED PREMIUM **Lb. 79¢**

**Fresh Ground Beef** **3 Lbs. For \$1**

**Shurfresh CHEESE** **2 Lb. Box 59¢**

**Pork Sausage** FRESHLY GROUND UNITED PREMIUM **3 Lbs. For \$1**

**Sliced Cheese** CLEARFIELD AMERICAN SLICED **12 Oz. Pkg. 49¢**

**Ranger Bacon** EBNER RANGER SLICED **Lb. 49¢**

**Sliced Bologna** ALL MEAT SLICED **Lb. 49¢**

**All Meat Franks** WRIGHT ALL MEAT **Lb. 39¢**

**Sheppard-Burkburnett CAFETERIA MENU**  
 January 13-16, 1964

**MONDAY**  
 Crisp Bacon Sandwiches with Cheese Sauce  
 Buttered Spinach  
 Potato Salad  
 Bread, Butter, Milk  
 Fudge Brownies

**TUESDAY**  
 Country Sausages  
 Creamed Potatoes  
 Buttered Peas  
 Bread, Milk, Butter  
 Cookies and Fruit

**WEDNESDAY**  
 Chili Beans  
 Buttered Corn  
 Steamed Cabbage  
 Corn Bread, Butter, Milk  
 Lemon Pie

**THURSDAY**  
 Pork and Beans with Vienna Sausages  
 Cheese Balls  
 Peanut Butter Filled Celery  
 Bread, Butter, Milk  
 Ice Cream

**FRIDAY**  
 TEACHER'S WORK DAY.

**Engagement Announced**



Mr. and Mrs. Alfred E. Lange of Burkburnett, Texas announce the engagement and approaching marriage of their daughter, Ruby Pearl to Joe E. Hull, son of Mr. and Mrs. Cecil F. Hull of Dallas, Texas.

The prospective bride is a 1960 Burkburnett High School graduate, a senior honor student, and a member of the National Honor Society. She has attended Lubbock Christian College, in Lubbock, Texas and Midwestern University in Wichita Falls, Texas. Presently she is employed by the Burkburnett Public School as Hardin-Primary Elementary School Secretary.

The prospective groom attended Dallas Public Schools and is now in the United States Air Force stationed at Sheppard Air Force Base in Wichita Falls, Texas.

The wedding is scheduled for June 14 at the Church of Christ in Burkburnett, Texas.

**Hardin Grade School CAFETERIA MENU**  
 JANUARY 13-16

**MONDAY**  
 Hot Dogs  
 Macaroni and Cheese  
 Sliced Peaches  
 Chocolate Cake—Fudge icing  
 Milk

**TUESDAY**  
 Chicken Fried Steak  
 Cream Gravy  
 Whipped Potatoes  
 Lettuce Salad  
 Ice Cream

**WEDNESDAY**  
 Meat Pie topped with Biscuits  
 Buttered Green Beans  
 Pickle Stix  
 White Cake—Chocolate Icing  
 Milk—Hot Biscuits—Butter

**THURSDAY**  
 Hamburgers  
 Buttered Whole Kernel Corn  
 Jello with Bananas, whipped Cream  
 White Iced Cake  
 Milk

**FRIDAY**  
 HOLIDAY

**HIGH SCHOOL CAFETERIA MENU**  
 JANUARY 13-16

**MONDAY**  
 Hamburgers and Spaghetti  
 Buttered Corn  
 Corrot Sticks  
 Rolled Wheat Rolls  
 Butter—Milk  
 Pineapple Slices

**TUESDAY**  
 Sausage—Cream Gravy  
 Cream Potatoes  
 Buttered Spinach  
 Cranberry Sauce  
 Hot Biscuits—Butter—Milk  
 Applesauce

**WEDNESDAY**  
 Meat Loaf—Tomato Sauce  
 Buttered Peas and Carrots  
 Rice  
 Cabbage Slaw  
 Bread—Butter—Milk  
 Peach Cobbler

**THURSDAY**  
 Hot Dogs—Pinto Beans  
 Sauerkraut  
 Creamed Potatoes  
 Buns—Milk  
 Jello with Whipped Toppings

**Along the Way**

An old and homely story tells of a father who, in guiding his son, told him to drive a nail into a post every time he did an evil thing, and to withdraw one nail every time he did a good act.

The son did as he was told, and after a time, while he had driven many nails into the post, he had succeeded in doing enough good deeds to be able to withdraw all of them. So he proudly called his father, to show him that all the nails had been withdrawn.

"But," said the father, "why those holes in the post?"  
 "That's where the nails have been," meekly said the son.  
 "And so it is with life, son," admonished the father. "You may do good deeds, turn over a new leaf, or correct your mistakes, but the nail holes of wrongdoing are still there."

**CARD OF THANKS**

I wish to thank every one for the flowers, cards and words of comfort during my stay in the hospital. I am now at the Colonial Manor Rest Home, Room 206, Wichita Falls, Texas.  
 Sincerely,  
 Mrs. Lenora Clingman

**FISH IN THE BAG**  
 Time was when a man could catch a fish easy. Now he has to work at it. Like this: Fill a paper bag with chum that will attract the species you want. Put a rock in the bag, lower to the bottom. A sharp snap breaks the bag, releases the chum, signals the fish. (P.S. About that "used to be easy to catch fish," we don't believe it. We bet the Indians used to complain that the fish were getting too smart!)

**SPACE SCIENCE** *by Waldman*

Our space target is the moon. Project Apollo will follow Mercury and Gemini in the U.S. space race. Apollo will be used for manned flights near the moon and for a landing on the moon and return to earth.

Without today's welding processes, Apollo would not be possible. It contains the light, strong metal Titanium, which cannot be joined by conventional methods. Researchers answered the problem by developing the electron beam welder, the size of a .38 pistol.

There's another catch to Titanium. It must be welded in a vacuum. On earth the vacuum is man made. Out in the endless vacuum of space there'll be a ready-made workshop.

# TAKE YOUR PROBLEMS TO CHURCH -- MILLIONS LEAVE THEM THERE

## Jan Lee Baptist Church

Rev. Travis McMinn, Pastor  
Across from Junior High School

Early Sunday School, 8:30 a. m.  
Worship Service, 9:45 a. m.  
Late Sunday School 10:45 a. m.  
Training Union, 6:00 p. m.  
Evening Worship, 7:00 P. M.  
Wednesday—  
Teachers and Officers 7:00 p. m.  
Church in Prayer—8:00 p. m.  
Choir Practice, 8:15 p. m.  
Large enough to accommodate, small enough to appreciate.

## Church of the Nazarene

Main at Holly  
Ivy Bohannon, Pastor

Sunday School, 9:45 a. m.  
Morning Worship, 11:00 a. m.  
Young Peoples Service, 6:45 p. m.  
Junior Society, 6:15 p. m.  
Evening Worship, 7:00 p. m.  
Wednesday Prayer Service, 7:30 p. m.

## Church of Christ

Eugene Gilmore, Minister

Bible Study Sunday, 9:45 a. m.  
Worship, 10:45 a. m.  
Young People Class 5:00 p. m.  
Worship, 6:00 p. m.  
Bible Study, Wednesday, 7:30 p. m.  
Ladies' Bible Class, Tuesday, 9:30 a. m.  
"We welcome you to any of our services."

## First Christian Church

2nd Street and Avenue D  
Phone 569-2062  
Rodney W. Sptler, Minister  
Residence 500 Mimosa Drive  
Phone 569-1236

SUNDAY—  
9:45 a. m., Church School  
10:50 a. m., Morning Worship  
6:00 p. m., Youth Meetings and Junior Choir  
7:30 p. m., Evening Worship  
8:00 p. m., Fellowship Hour  
WEDNESDAY—  
7:30 p. m., Choir

## Grace Lutheran Church

Third St. and Ave E  
Philip M. Otten, Pastor  
The Church of the Lutheran Hour, TV's "This is the Life", Sunday, 9:15 a. m., Sunday School and Bible Classes.  
Worship Service at 10:30.  
You are cordially invited to our services.

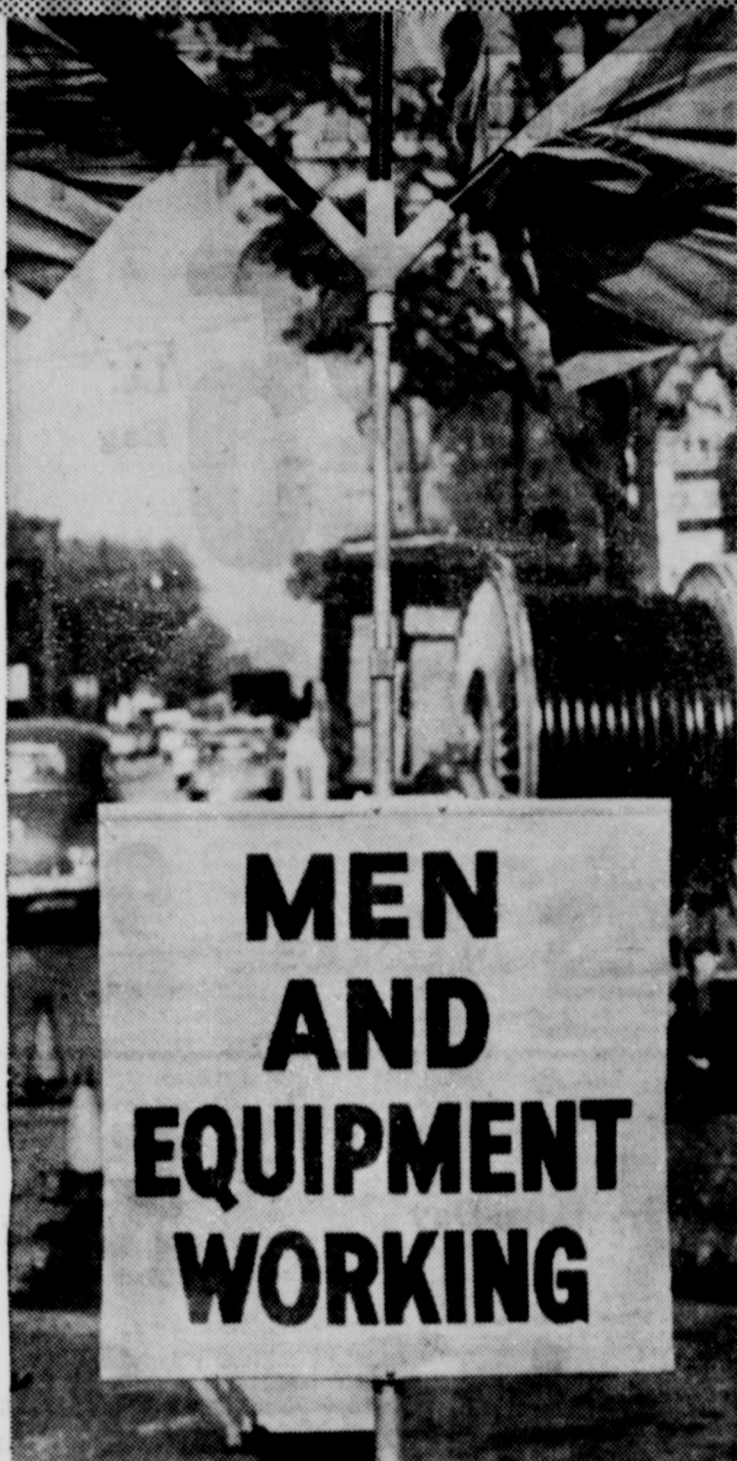
## Trinity Lutheran Church

Pastor, Rev. David W. Janosky  
Eight Miles West of Burkburnett on State Highway 240  
Sunday . . . . .  
9:45 a. m. — Sunday School and Bible Classes.  
10:45 a. m.—Worship Service.  
Communion Service — First Sunday of each month.  
Walthers League meetings every Wednesday, 8:00 p. m.  
A Church of the Lutheran Church—Missouri Synod

# MEN WORKING

This is the sign that should be lifted high in our beloved country — "Men Working." Men working with all they have and are, for a country that must show the world how to live in brotherhood and love and peace under God.

Let us resolve to dedicate anew our lives and our talents to our country and our God when we attend church this Sunday.



# MEN AND EQUIPMENT WORKING

The Church is God's appointed agency in this world for spreading the knowledge of His love for man and of His demand for man to respond to that love by loving his neighbor. Without this grounding in the love of God, no government or society or way of life will long persevere and the freedoms which we hold so dear will inevitably perish. Therefore, even from a selfish point of view, one should support the Church for the sake of the welfare of himself and his family. Beyond that, however, every person should uphold and participate in the Church because it tells the truth about man's life, death and destiny; the truth which alone will set him free to live as a child of God.



©Coleman Adv. Ser., P. O. Box 20067, Dallas 20, Texas

## ATTEND THE CHURCH OF YOUR CHOICE THIS SUNDAY

### Cashion Baptist Church

Wichita Highway  
Rev. Michael Barnard, Pastor

SUNDAY:  
Sunday School, 9:45 a. m.  
Morning Worship, 11:00 a. m.  
Training Union, 6:30 p. m.  
Evening Worship, 7:30 p. m.  
TUESDAY:  
WMU — 7:30 p. m.  
WEDNESDAY:  
Beginners and Primary Sunbeams Junior Choir. Christian Development Program, 6:45 p. m.  
Hour of Power, 7:30 p. m.

### Church of God

J. W. Jackson, Pastor

10:00 a. m., Sunday School.  
11:00 a. m., Hour of Morning Worship.  
7:00 p. m., Evangelistic Services.  
7:30 p. m., Wednesday, Young Peoples Endeavor.  
If you haven't a church home, we would like very much for you to visit us where the full gospel is preached in the old time way. There is special music and singing each service. Each and every one has a warm and hearty welcome to come worship with us.

### First Baptist Church

DEVOL, OKLAHOMA

Sunday School, 9:45 a. m.  
Morning Worship, 11:00 a. m.  
Training Union, 7:00 p. m.  
Evening Worship, 8:00 p. m.  
Prayer Meeting, Wednesday, 7:30 p. m.  
Intermediate and Junior G. A. each Tuesday evening at the Church, 4:00 p. m.  
Sunbeams at Church Tuesday evening at 4:00 p. m.  
You Are Cordially Invited to Our Services.

## Calvary Baptist Church

College and Ave B  
Ray C. Morrow, Pastor

10:00 a. m., Sunday School.  
An Independent Southern Baptist Church.  
We use the Bible as our only literature.  
11:00 a. m., Song, Preaching Service.  
7:00 p. m., Young Peoples Services.  
7:30 p. m., Night Preaching Service.  
Wednesday Night—  
6:45 p. m., Teachers Meeting.  
7:30 p. m.—Prayer Meeting.

## Episcopal Church Of St. John the Divine

1000 South Berry Street  
Phone 569-3558  
Rev. R. E. McCrary, vicar

Sunday—12:15 p. m. — Sunday School.  
12:30 p. m.—Sunday evening prayer service and Holy Communion.  
Nursery available.  
Monday — 4:00 p. m. — Children's Catechism.  
7:30 — Study Group.  
Wednesday — 7:30 p. m. — Confirmation Class.  
Saturday — 10:00 a. m. — Acolyte Practice.  
5:30-6:30 p. m. — Penance.  
7:00 p. m. — Choir Practice.  
The Vestry meets on the first Sunday of every month.  
The Faculty meets on the second Sunday of every month.  
The Episcopal Church Women meet every second Thursday of every month.  
The Alter Guild have corporate Communion and instruction at 9:30 a. m. on the first Tuesday of every month.  
There is a Layreaders meeting on the first and third Sunday evening.

## The First United Pentecostal Church of Jesus Christ

We want to invite you to any or all of our Services. You have a standing invitation where you can hear the Bible preached in the old fashion way.  
Come and bring some one.  
Service Nights—  
Thursday, 7:45 p. m.  
Saturday, 7:45 p. m.  
Sunday, 7:45 p. m.  
Sunday School, 10:00 a. m.  
Pastor, Rev. E. H. Menton  
Phone 569-1108  
606 E. 6th Street

## First Methodist Church

Avenue C and 4th Street  
Phone 569-3778  
Carrol D. Copeland, Minister  
Merwin K. Turner, Associate Minister  
Sunday School — 9:30 a. m.  
Morning Worship Service — 10:30 a. m.  
Methodist Youth Fellowship — 6:00 p. m.  
Evening Worship Service — 7:00 p. m.  
Bible Study — 7:30 p. m.  
Wednesday and Thursday.  
Nursery provided for all Church Services.  
Kindergarten — Week Days 8:30 — 11:30 a. m.

## NOTICE

Burkburnett residents are invited to attend the First Presbyterian Church in Grandfield, Oklahoma.  
Sunday School—10:00 a. m.  
Morning Worship—11:00 a. m.  
Wednesday Bible Study—7:00 p. m.  
Rev. Campbell B. Long, Pastor.

## Pentecostal Church Of God

Berry Street  
Rev. Alfred B. Qualls, Pastor  
Sunday School, 9:45 a. m.  
Morning Worship, 11:00 a. m.  
Sunday Night Evangelist Service, 7:00 p. m.  
Saturday Night Fellowship, 7:30 p. m.

## Central Baptist Church

814 Tidal St.  
Kenneth D. Bradshaw, Pastor  
Sunday School, 9:30 a. m.  
Morning Worship, 10:45 a. m.  
Training Union, 6:00 p. m.  
Evening Worship, 7:00 p. m.  
Wednesday Night Prayer Service, 7:30 p. m.  
"A Friendly Progressive Southern Baptist Church"

## Church of Christ

Randlett, Oklahoma  
Corky Grisham, Minister  
Home-Office Phone Ly 9-2888  
WORSHIP SERVICES  
SUNDAY—  
10:00 a. m., Bible Study.  
10:45 a. m., Morning Worship.  
6:00 p. m., Evening Worship.  
WEDNESDAY—  
7:30 p. m., Bible Study.

## First Baptist Church

Rev. Lamoin Champ, Pastor  
Corner Avenue D and 4th  
Sunday School — 9:30 a. m.  
Morning Worship — 10:45 a. m.  
Training Union — 6:00 p. m.  
Evening Worship — 7:00 p. m.  
WEDNESDAY:  
Teachers and Officers Meeting — 7:00 p. m.  
Prayer Meeting — 7:30 p. m.  
"In the Heart of the City" — the Hearts of the City"

## Assembly of God Church

Corner of College and Ave. H. J. Lackey, Pastor  
Sunday School, 9:45 a. m.  
Morning Worship, 11:00 a. m.  
Evening Worship, 7:30 p. m.  
Women's Missionary Council, Tuesday, 2:00 p. m.  
Prayer Meeting, Wednesday, 7:30 p. m.

## First Church of Christ Scientist

2156 Avenue H  
Wichita Falls, Texas  
Sunday school for children under 20 years of age, 11:00 a. m. in the Church Edifice.  
Nursery.  
Services at 11:00 a. m.  
Wednesday Evening Services 8:00 p. m.

## Burkburnett Florist

Member Florist Telegraph Delivery  
Mr. and Mrs. L. V. Richards  
415 South Ave. B — Phone 569-2281

## DAIRY MART

Fine Food and Friendly Service  
CALL IN ORDERS  
MR. and MRS. JOHN GRATTON  
909 Wichita Hwy. Phone 569-8114

## CORNER DRUG STORE

George McClarty  
320 East 3rd Street

## Lloyd Glemmer Lbr. Co.

YOUR BUSINESS APPRECIATED  
See Us For Prices Before You Buy  
OKLA. CUTOFF PHONE 569-2911

## Manhattan

WE GIVE  
S & H  
GREEN  
STAMPS

## United Super Market



Kenneth Palmer  
Manager  
Wichita Highway  
And Tidal Street

## WOLFE FORD CO.

Complete Service and Sales  
Phone 569-2275

## Farmers Co-op. Gin, Feed and Supply

501 North Avenue B  
Phone 569-2601

## Hofacket Humble Ser. Sta.

Road Service — Mechanic On Duty  
S & H GREEN STAMPS  
College and Ave. D Phone 569-3712



Dairy Products  
Milk — Ice Cream  
Cottage Cheese  
Always The Peak Of Perfection

## Texas Electric Service Co.

JOE T. SALTER, Manager



# A Digest Of Texas Motor Vehicle Laws

Published By  
Texas Department  
Of Public Safety

## MISCELLANEOUS REGULATIONS

- IT IS ILLEGAL:
- To follow closer than 500 feet a fire truck answering a fire alarm.
  - To fail to yield the right-of-way to an emergency vehicle exhibiting a red light in front and/or sounding a siren, whistle or bell.
  - To drive on highway a motor vehicle with a wheel which has a traction surface that will damage the roadway.
  - To operate a motor vehicle without a muffler or with a muffler that produces unusual noises.
  - To operate a motor vehicle that exhausts annoying smoke or gases.
  - To require or knowingly permit a driver under your direction to operate a vehicle upon a highway in any manner contrary to law.
  - To coast down a designated hazardous grade. Commercial vehicle drivers must keep clutch engaged on any down-grade.
  - To operate a vehicle with license plates that are unclean, expired, or hidden from view. Passenger cars and trucks must display license plates both front and rear.
  - Willfully to induce, cause, coerce, require, permit or direct another to violate any provision of the UNIFORM ACT REGULATING TRAFFIC ON HIGHWAYS. A person inducing or permitting a violation is also guilty of the violation.
  - To cross a fire hose without consent of a fireman or other official.
  - To drive across a dividing space or barrier (which separates the two roadways of a divided highway) between crossovers.
  - To enter or leave a controlled-access highway, such as an expressway, at any place except a designated entrance or exit.
  - To violate restriction posted on controlled-access highways.
  - To drive a vehicle through or within a safety zone (an area on a highway restricted

## ODDITIES.....by Thompson



**SNEEZE GERMS OF A SINGLE BOY WERE SPREAD FOR 30 DAYS IN EDINBURGH IN 1855 WHEN THE 13-YEAR-OLD SNEEZED FROM ONE TO SIX TIMES EVERY MINUTE! GERMS TRAVEL UP TO 103.6 MILES PER HOUR WHEN YOU SNEEZE!**



**GERM-SWAPPING WITHIN THE FAMILY IS REDUCED WHEN ALL MEMBERS USE PAPER CUPS, INSTEAD OF A COMMON GLASS. A HANDY DIXIE DISPENSER CAN EASILY BE INSTALLED IN YOUR KITCHEN OR BATHROOM.**

**A SINGLE GERM AND ITS DESCENDANTS DIVIDING EVERY HOUR WILL PRODUCE, AT THE END OF ONE DAY, 16 1/2 MILLION GERMS!**

- to pedestrian use.)
- To set fire to grass on a highway.
- To obstruct or damage willfully any highway or any traffic sign or device.
- To move, damage, or destroy a barricade placed on any highway by a governmental agency or by an authorized contractor.
- To dump refuse on a public beach, in a public park or within 300 yards of a highway, or to leave dead animals within 50 yards of a highway.
- To shoot a gun on or across a highway.
- To throw onto a highway glass or other things that can damage a vehicle or injure a person or animal.
- To ignore the directions of a police officer even though the direction conflicts with a traffic control device.
- To disobey instructions, signals, markings or warnings (including a flagman) placed upon any highway that is barricaded, under construction, or being repaired, unless directed by a police officer.
- To disobey instructions on official traffic signs unless directed by a police officer.
- To ride an animal or drive an animal-drawn vehicle in violation of sections of the UNIFORM ACT REGULATING TRAFFIC ON HIGHWAYS, except where provisions by their nature can have no application.
- To fail to grant a person riding an animal or driving an animal-drawn vehicle the same rights that are provided the driver of a vehicle under the UNIFORM ACT, except where provisions by their very nature can have no application.
- To tamper with or to break and enter a motor vehicle owned by another person.
- To permit loose or unattended stock to roam on a designated State Highway (except Farm to Market roads.)
- To pick, injure or destroy flowers, shrubs or trees on a State highway.
- To make a false report or false alarm to any government officer or to mislead or malign any officer.



New knit garments are now being seen. They are in yarn blends having outstanding wash-and-wear performances.

The new knit is actually self-blocking, returning to its original shape automatically as it dries, points out Thelma Wirges, county home demonstration agent.

"Nantuk," the self-blocking knits, are made of a yarn blend of "Sayelle" and "Orlon" acrylic fibre with the look and touch of Shetland wool. The fashions are expected to be especially popular with teenagers for they combine their favorite Shetland look with easy care, rich colors and shape retention.

"If the garment becomes stretched during wear, washing and drying will restore it to its original shape," he agent points out.

The addition of "Sayelle" in the blend gives the new knits the self-blocking characteristic. "Sayelle" denotes Du Pont's bi-component acrylic fiber, which reproduces chemically the structure of the wool fiber. While one side of the fiber absorbs moisture, elongating when wet, the other side is nonabsorbent and does not budge. Thus, drying causes the fiber to curl in a random spiral fashion — like wood — and brings it back to its original dimension, Miss Wirges explains.

The "Nantuk" units will be appearing in stores for early Spring purchase, and are featured in Du Pont's "Great American Knits" promotion. Other knit news for early Spring will include tweed blends of "Sayelle" and natural linen hand-some in natural colors, and seersucker knits of "Orlon" and

MARKETING BY TELEVISION makes its U. S. debut this month at Tucson House, Arizona's newest and largest apartment complex. As depicted in drawing, tenants may tune in their own television sets to a closed circuit TV channel connected to the market on the premises. This "electronic shopping cart" works in tandem with a direct-dial telephone to



further facilitate ordering and delivery. Additionally, occupants of the 411 apartments at Tucson House may see and converse with callers in the lobby via the closed-circuit TV; tune in weather reports, receive information on social events and maintain visual contact with their children in play areas and swimming pool.

Plans are being made, by the Wichita County Clothing Committee, to hold an advanced dressmaking workshop in Wichita Falls in the near future. The workshop will be open to all interested homemakers. For complete information contact Thelma Wirges, county home demonstration agent or a member of the clothing committee. Mrs. George Wyatt is chairman of the committee.

Research has shown that outdoor jackets which are labeled "washable" are not always good risks in the washer.

Seven types of outdoor jackets which were labeled washable were found to respond to dry cleaning better than washing in all seven cases, according to research done at Michigan State University, points out Thelma Wirges. The research done by a Michigan State Home economist shows that it is extremely risky to launder a jacket which has no cleaning instruction on the label.

The Michigan State research home economist laundered one jacket which looked washable, and found that the lining shrank 16.2 percent after the washing.

It is important to consider care necessary when buying a jacket, since the added cost of care increases the cost of the garment, Miss Wirges explains. Many times the garments labeled washable come through the wash with less body and are never quite as satisfactory unless they are taken to a professional cleaner, and sizing is added to the garment.

## DENTAL RUBBER BANDS

The small, round, high-quality rubber bands dentists use in orthodontic work to pull crooked teeth back in place make wonderful things to hold soft baits on a hook. Just the right size for a frog or crawfish or hellgramite. See your dentist twice a year... and ask him for rubber bands.

## FOR RESULTS ADVERTISE

**I. O. O. F. LODGE**  
BURKBURNETT, TEXAS  
Meets at I. O. O. F. LODGE  
Every Tuesday Night 7:30 p. m.  
Visitors Welcome  
GEORGE BENTON, Noble Grand  
THOMAS ARMS, Vice Grand  
SCOTT NEWTON,  
Fin. Secy. and Recording Secy.  
RALPH ENGLAND, Treasurer

# Protect Those Valuables

Everyone Can Afford This New Fire Protection Chest at the lowest price ever!

Your Bonds, Insurance Policies, Notes, Mortgages, Contracts, Income Tax Receipts, Birth Certificate, Discharge Papers, Leases, Rent Receipts, Your Will, Livestock Registration Papers, Canceled Checks, Stamp and Coin Collections, and many other things of personal and sentimental value, which would be destroyed (and could not be replaced) if you had a fire—and you could!.. There is one about every 20 seconds.

## DESCRIPTION AND SPECIFICATIONS

### Fire Protection Chest

Made of heavy gauge steel inside and out, all electric welded. Between these steel walls is 1 1-2 inches of solid

### Fire Proof Vermicule Insulation

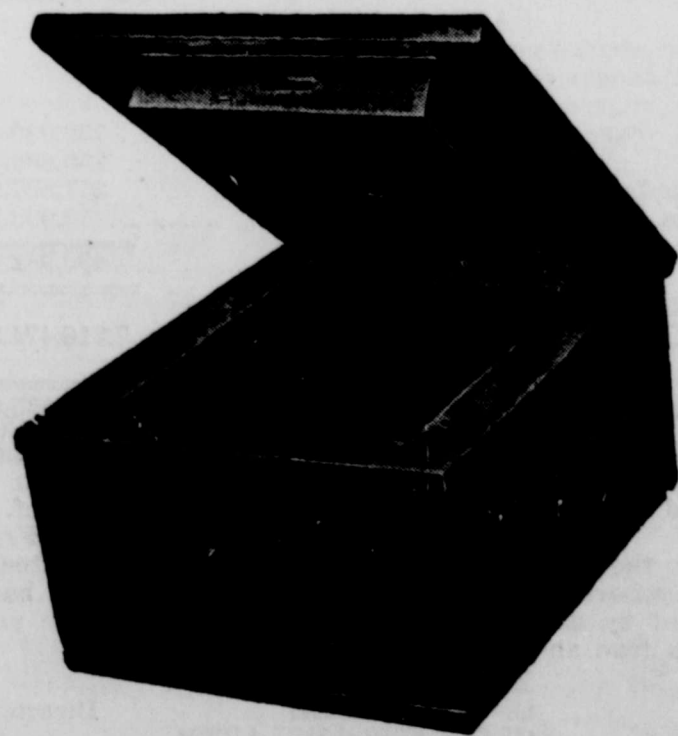
which has over 800,000 tiny air cells to the square inch. It has the universally used tongue and groove principle around the door with a 1 1-2 inch Fire Proof Seal completely around it. No chest, regardless of price, has a better insulation.

Outside Dimensions 14x11 1/2 x 7 1-2 in.

Inside Dimensions 8 1-2 x 11 x 4 1-2 in.

Equipped with a heavy standard type lock, with 2 keys. Color, Gray, very attractive.

The New High Quality, Low Cost Fire Protection Chest



Tested One Hour At 1700 Degrees

Supply Limited At This Special Price **\$19.95**

ON DISPLAY AT  
The Burkburnett Star

annual sale  
**Fanes**

seamless stockings

save up to \$1.05 on every box

reinforced sheer—(reg. \$1.50) \$1.25, 3 prs. \$3.60

sheer heel demi-toe—(reg. \$1.65) \$1.35, 3 prs. \$3.90

runless sheerloc®—(reg. \$1.75) \$1.45, 3 prs. \$4.20

all sheer sandalfoot—(reg. \$1.95) \$1.65, 3 prs. \$4.80

short, medium and long

one week only jan. 11—jan. 18

ANNUAL STOREWIDE

Clearance Sale Is Now In Progress

Come In And See Our Many Bargains

**Clements**  
Fashions



PHONE 569-3831

**ODDITIES**.....by Thompson



**WILD DANCES**  
WERE ONCE PERFORMED  
**BY WIVES**  
TO HELP THEIR HUSBANDS  
GET RID OF COMMON COLDS  
THAT WERE BELIEVED CAUSED  
BY EVIL SPIRITS!

**THE BEST EXERCISE**  
FOR FIGHTING COLDS  
ACCORDING TO SCHERING,  
A LEADING DRUG FIRM,  
IS TO WALK  
**TO YOUR PHARMACY!**  
MANY DOCTORS RECOMMEND  
PRODUCTS LIKE CORICIDIN  
TO RELIEVE THE SNEEZING,  
ACHES AND FATIGUE OF COLDS.

**EXCESSIVE EXERCISE**  
MAY ACTUALLY TEND TO  
INCREASE  
SUSCEPTIBILITY TO COLDS  
BY WEAKENING  
THE BODY'S RESISTANCE!

**Randlett News**

Mrs. Mollie R. Elliott, Reporter

Mrs. Sarah Elizabeth Elliott of Randlett, pioneer of the Big Pasture country died Saturday at her home at the age of 84 years, three months and 14 days.

Funeral services were conducted Tuesday at 2:30 o'clock from First Baptist Church in Randlett with Charles Gresham, Church of Christ minister officiating. Burial in Randlett Cemetery was directed by Pearson Funeral Home.

Mrs. Elliott was born September 14, 1879. She was married to J. R. Elliott in Texas and to this union two children were born.

In 1907 the family moved to Oklahoma and homesteaded on a farm northwest of Randlett.

A son, James Roy Elliott, died April 12, 1953 and her husband passed away July 14, 1954. She was a member of the Randlett Baptist Church.

Survivors include one son, L. C. Elliott of Randlett. Nine grandchildren and 16 great-grandchildren.

Mrs. Betty Carol Hendricks and daughter of Burkburnett visited Mrs. Bill Harrison and Mrs. Zaida Bryant Thursday afternoon.

A. J. Shaw was reported ill at his home this week.

Mr. and Mrs. W. R. Baldwin visited Mr. and Mrs. Bill Fuller of Wichita Falls, Sunday.

Walter Lee Brown and daughter and Joe Allen Brown of Burkburnett, visited their parents, Mr. and Mrs. R. C. Brown Sunday.

Mr. and Mrs. Bill MacSparrin of Twenty-Nine Palms, California, who have been visiting her mother, Mrs. Alma Capps returned to their home Wednesday.

Miss Barbara Manley returned to college at O. S. U., Stillwater, Oklahoma, Sunday after spending the holiday here with her parents, Mr. and Mrs. Walter Manley.

Mrs. Mae Martin, who has been visiting her sister and brother-in-law, Mr. and Mrs. Herbert Crow, for several days returned to her home in Temple, Oklahoma, Tuesday.

Mr. and Mrs. Gary Vickers of New Orleans, Louisiana, visited his grandparents, Mr. and Mrs. D. S. Johnston Thursday.

Mr. and Mrs. C. E. Williams visited their daughter, Mr. and Mrs. Leroy Johnson and Cheryl of Electra Wednesday.

Mr. and Mrs. Leon Davis and children of Altus, Oklahoma, visited his grandparents, Mr. and Mrs. S. H. Davis Sunday afternoon.

Mr. and Mrs. C. L. Davis visited their son, Mr. and Mrs. Freddie Davis and son of Cookietown Sunday afternoon.

Mrs. Zaida Bryant and Mrs. A. J. Shaw visited Mr. and Mrs. Johnnie Bryant of Burkburnett, Tuesday morning.

Mr. and Mrs. Dale Ingersoll and children of Akron, Ohio and Mrs. Freda Butler of Walters, Oklahoma visited last Monday with Mr. and Mrs. B. B. Menz.

Mr. and Mrs. Dickie Eastman and children of Austin, visited Wednesday and Thursday with his parents, Mr. and Mrs. F. E. Eastman.

Mrs. C. B. Ressel visited her sister, Mrs. W. G. Harwell of Wichita Falls, Friday.

Steve, little son of Rev. and Mrs. Charles Gresham, was reported ill this week.

Mr. and Mrs. O'Neal Weaver and children of Wichita Falls spent Saturday and Sunday with her parents, Mr. and Mrs. Carl Thompson.

Mrs. Lewis Moyer visited her mother, Mrs. J. A. Wyatt in a Lawton hospital, Sunday.

Mrs. Daisy Dunn returned home Wednesday night after spending the holidays with her son, Mr. and Mrs. Charles Dunn of Tulsa, Oklahoma.

Mr. and Mrs. J. T. Martin visited Wednesday and Thursday of last week with her daughter, Mr. and Mrs. B. L. Gross of Dallas.

Mrs. A. J. Turner is reported ill at her home this week.

Miss Betty Jo Braden of Wichita Falls, spent the week end

with her sister, Miss Alta Mae Braden.

Mr. and Mrs. J. C. Goode and Mr. and Mrs. Jess Goode and children visited Mr. and Mrs. Joe Cora of Altus, Oklahoma, Friday.

Mr. and Mrs. Wayne Wooten of Duncan, Oklahoma visited Mr. and Mrs. John Martin, Sr. Saturday.

Mr. and Mrs. Buster Taylor and daughter of Rosewell, New Mexico, and Mr. Fletcher visited Mrs. C. M. Morris and Dick Friday.

Dwayne Moyer returned to Cameron College, Lawton, Oklahoma, after spending the past week with his parents, Mr. and Mrs. Lewis Moyer.

Mrs. Patsy Alexander of Oklahoma City, Oklahoma spent the week end with her parents, Mr. and Mrs. A. L. Patterson.

Visiting in the home of their parents, Mr. and Mrs. T. L. Wilman and Larry, Saturday were Mr. and Mrs. Jack Wingfield and son, Mark, of Drumwright, Oklahoma; Mr. and Mrs. Joe Rose and children of Duncan, Oklahoma and Mr. and Mrs. H. K. Dudley and sons of Wichita Falls.

Mrs. Herman Biggerstaff of Lubbock, spent from Friday till Sunday afternoon with her parents, Mr. and Mrs. Raymond Underwood.

Mrs. Jack Williams entered a Wichita Falls hospital last week.

Six o'clock dinner guests of Mrs. Flora Hatcher Thursday were Miss Merle Hatcher of Oklahoma City and Major.

Mr. and Mrs. L. E. Ellis and children of Burkburnett, spent Saturday night and Sunday with her sister, Mr. and Mrs. Bill Harrison and children.

Mr. and Mrs. Jackie Wayne Elliott of Santa Rosa, California are the proud parents of a baby girl born December 28th. She weighed 6 lb. and 3 oz. and named, Holly Dawn. The paternal grandmother is Mrs. Milie Ruth Elliott of Randlett.

Mrs. R. H. Rhoads, Mrs. Zaida Bryant and Mrs. Bill Harrison and children visited Mr. and Mrs. Bill McGarry and Mrs. Hattie Rhoads of Grandfield, Oklahoma Wednesday afternoon.

Mr. and Mrs. Pearl Stevens of Burkburnett, visited Mr. and Mrs. A. J. Shaw Wednesday afternoon.

Mr. and Mrs. Carl Triplett of Salinas, California; Mr. and Mrs. Burt Triplett and son of Sheppard Air Force Base; and Mr. and Mrs. Howard Hatcher of Wichita Falls, visited Flora Hatcher Sunday.

Mr. and Mrs. Lanny Williams of Wichita Falls are the proud

**New Way To Beat A Winter Worry**



Local merchants are offering a new solution to an old problem, personal daintiness during winter, with its steam heat and heavy clothing. The new product, called Ban Cream, is a full-strength anti-perspirant and deodorant cream with a pink vanishing base that helps it disappear quickly on the skin. It's one of the many products local merchants offer to help us win out over winter.

Charter No. 13,668 Reserve District No. 11

REPORT OF CONDITION OF

**The First National Bank**

OF BURKBURNETT, IN THE STATE OF TEXAS

AT THE CLOSE OF BUSINESS ON December 20, 1963 published in response to call made by Comptroller of the Currency, under section 5211, U. S. Revised Statutes.

ASSETS

Cash, balances with other banks, and cash items in process of collection	\$1,401,344.60
United States Government obligations, direct and guaranteed	1,349,190.00
Obligations of States and political subdivisions	1,326,964.05
Corporate stock (including \$12,000.00 stock of Federal Reserve Bank (Net of any reserves)	12,000.00
Loans and Discounts (including \$27,868.73 overdrafts)	3,114,610.38
Bank premises owned \$62,105.61, furniture and fixtures \$28,280.15	90,385.76
Real estate owned other than bank premises	17,253.66
Other assets	4,725.90
<b>TOTAL ASSETS</b>	<b>\$7,316,474.35</b>

LIABILITIES

Demand deposits of individuals, partnerships, and corporations	3,357,329.61
Time and savings deposits of individuals, partnerships, and corporations	2,007,992.93
Deposits of United States Government (including postal savings)	156,711.61
Deposits of States and political subdivisions	412,594.63
Certified and officers' checks, etc.	690,863.09
<b>TOTAL DEPOSITS</b>	<b>\$6,625,491.87</b>
(a) Total demand deposits	4,597,998.94
(b) Total time and savings deposits	2,027,492.93
<b>TOTAL LIABILITIES</b>	<b>\$6,625,491.87</b>

CAPITAL ACCOUNTS

Common stock—par value per share \$25.00	
No. shares authorized 6000	
No. shares unissued—None	
No. shares outstanding 6000	150,000.00
Surplus	250,000.00
Undivided profits	271,887.24
Reserves	19,095.24
<b>Total Capital Accounts</b>	<b>690,982.48</b>
<b>Total Liabilities, and Capital Accounts</b>	<b>7,316,474.35</b>

NOTE

Time certificates of deposit outstanding \$211,035.00

I, James E. Frye, Vice-President, of the above named bank do hereby declare that this report of condition is true and correct to the best of my knowledge and belief.

We, the undersigned directors attest the correctness of this report of condition and declare that it has been examined by us and to the best of our knowledge and belief is true and correct.

HAROLD VANLOH  
O. W. PRECHEL  
GEORGE H. McCLARTY Directors

**OWENS-BRUMLEY FUNERAL HOME**

AMBULANCE SERVICE

PHONE 569-3361

Harold Van Loh  
President

Joe Allcorn  
Manager

**IT'S UP TO YOU**

By Howard E. Kershner, L.H.D.

T.V.A. was sold to the American people as a flood control and navigation project. One dam and \$150,000,000 dollars was supposed to do the job. Thirty years ago and \$2 billion dollars later finds T.V.A. with 30 major dams and more than a dozen steam operated power plants, with 9,000 miles of transmission lines. The main purpose is producing subsidized electricity for the area. Privately owned power companies pay part of the taxes to keep the project going. It offers cheap electricity only because it is heavily subsidized.

Just mere interest on the \$200,000,000 dollars our government spent to prevent floods in the Tennessee River Valley amounts to about five times the pre-T.V.A. annual flooding in the Tennessee at \$1,500,000 dollars.

Army engineers estimated that maximum flooding in the Tennessee River Valley would cover about 666,000 acres once every 500 years. Annual flood coverage, when it occurred, would be much smaller. Nevertheless, to control floods, the government permanently submerged nearly 1,000,000 acres causing crop losses every year of about \$27,000,000 dollars — a pretty high price to prevent annual flood damage of \$1.5 million.

To supply 650 miles of free waterway to Tennessee shippers, the government spends about \$6,000,000 a year of the taxpayers money for maintenance. If all the commodities shipped by water were sent by rail at government expense, the cost would amount to less than one-third of the cost of maintaining the shipping facilities.

On all three counts, therefore, flood control, shipping and electricity, T.V.A. operates at huge expense to the taxpayers and causes an enormous loss of River Valley soil — nearly 1,000,000 acres. To top it all off, industrial growth in the Tennessee Valley area is slower than in neighboring regions. Not even the rich government subsidy can make up for the loss of valuable land caused by T.V.A.

Howard Kershner's Commentaries, Inc., New York 17, N. Y.



Dr. Kershner

**5 & 10 M & N 5 & 10**  
"S & H Green Stamps"

REGULAR 98c  
**Plastic LAUNDRY BASKET**  
ROUND — ONE BUSHEL  
**Each ..... 57c**

REGULAR 49c  
**CLOTHES PIN BAG**  
WHITE OR COLORED  
**Special ..... 33c**

REGULAR \$1.00  
**IRONING BOARD**  
PAD AND SILCONE COVER  
**Set ..... 66c**

REG. 29c—COATS AND CLARKS  
**Mercerized Sewing Thread**  
325 Yd. Spool—Assorted Colors  
**Special ..... 19c**

REGULAR 29c  
**Doctor's Isopropyl Alcohol**  
**Special ..... 14c**

REGULAR 49c  
**Spring Printed Materials**  
**Special ..... 23c**

REGULAR 39c  
**IVY PLANTS**  
**Special ..... 27c**

REGULAR 98c  
**Alladdin Notebook Paper**  
300 COUNT  
**Now ..... 37c**

REGULAR \$1.19  
**STYLE HAIR SPRAY**  
**Each ..... 57c**

REGULAR 29c—WHITMAN  
**JIG SAW PUZZLES**  
**Each ..... 23c**

REGULAR 45c  
**KOTEX 12's**  
**Now ..... 31c**

REGULAR 33c  
**KLEENEX 400's**  
**Special ..... 21c**

REGULAR \$3.49  
**THROW RUGS**  
100% NYLON  
**Special ..... \$2.37**

REGULAR \$4.39  
**THROW RUGS**  
100% NYLON  
**Special ..... \$3.26**

REGULAR \$1.39  
**BOY'S SWEAT SHIRTS**  
WITH ZIPPER NECK  
**Special ..... 88c**

REGULAR \$2.98  
**LADIES' CAPRI PANTS**  
**Now ..... \$1.79**

REGULAR \$1.98  
**GIRL'S CAPRI PANTS**  
**Now ..... 97c**

REGULAR \$1.69  
**THROW PILLOWS**  
**Each ..... 88c**

her. Mr. and Mrs. Wayne Res announce the birth of a born January 4th in a Wichita Falls hospital. He is named, Gregory Allan. His paternal grandparents are Mr. and Mrs. C. B. Ressel.

Mr. and Mrs. C. E. Williams visited their daughter, Mr. Mrs. Clarence Banning and children of Wichita Falls, Saturday.

Mr. and Mrs. M. M. Bow and Cindy returned home Monday after visiting a few days with Mr. and Mrs. Cecil Preman and children of Seymour, Oklahoma. Mrs. Rita Sue visited Mr. and Mrs. O. B. Bishop of Electra, Friday.

Mr. and Mrs. Morris Chen of Burkburnett, visited Alta Mae Braden, Wednesday.

Dennis Ressel, son of and Mrs. Ben Ressel and Dnie Williams, son of Mr. Mrs. John Williams, returned college at O. S. U., Stillwater, Oklahoma after spending holidays here with their parents.

parents of a baby boy born December 30th. He weighed 7 lbs. and 12 oz. His name is Victor Leon. The maternal grandparents are Mr. and Mrs. C. L. Davis and the paternal grandparents are Mr. and Mrs. Jack Williams of Randlett.

Mr. and Mrs. Lloyd Whittington and daughter, and Mr. and Mrs. Harlen Whittington and son of Bochito, Oklahoma and Mr. and Mrs. Dale Whittington of Long Grove, Oklahoma visited Mr. and Mrs. S. H. Davis and Mr. and Mrs. C. L. Davis Saturday and Sunday.

Mrs. Beulah Riley is ill at her home this week.

Mr. and Mrs. C. E. Williams visited her mother, Mrs. J. S. Bowman of Burkburnett Sunday.

Mrs. Ken Jordan and son of Indianapolis, Indiana, who has been visiting her parents, Mr. and Mrs. Herbert Crow for the past two weeks returned home Monday.

Mr. and Mrs. Paul Vickers of Vernon spent Sunday with her parents, Mr. and Mrs. D. S. Johnston.

Miss Pauline Shaw returned to Southwestern College, Durant, Oklahoma after spending the holidays here with her mother, Mrs. Carmon Shaw and Darlene.

Mr. and Mrs. Kenneth Nichols and family of Dallas spent Saturday and Sunday here with his brother, Mr. and Mrs. H. L. Nichols.

Mr. and Mrs. Jack Crow of Salinas, California are visiting her brother, Mr. and Mrs. M. M. Bowles and other relatives

**CARTER'S**  
**Typewriter RIBBONS**  
Ribbons for Most All Typewriters  
**98c**

**CARTER'S**  
**CARBON PAPER**  
15 Sheet Pkg.  
**39c**

**BURK STAR**  
Phone 569-2191

FREE GENUINE ENGRAVED LETTERHEADS DIES & DESIGNING \$17.00 1000

# All Insurance is the same 'til you have a claim

## Burk Insurance Agency

HOWARD CLEMENT

New Location — Next To Legion Hall

mittees. Work has been planned for club and non-club members.

### SPARE FIRING PIN

Handy types (who know how to install one) can carry a spare firing pin by boring a hole in gun's stock and slipping in. Butt plate holds the spare pin in place.

### MEN'S BIBLE CLASS

**FIRST BAPTIST CHURCH**  
Invites you To  
Worship With Them  
Each Sunday Morning at 9:30  
A. R. Hill, President  
W. R. Carswell, Teacher  
C. R. Chambers, Secretary

## Central States News Views

**FOR WINTER**—Snow and ice removal salt is loaded on barge at Cargill, Inc., rock salt mine in Southern Louisiana. Cargo will be used to ease winter driving in northern part of the country.



**CONFUSED?** So is Susan Nelson as she checks road sign at Appleton, Wis., intersection.



**NOT WHAT IT APPEARS**—Ken Brown, left, really isn't propelling Joe Baker into the air during a soccer match. Baker actually is moving toward ball to divert it from Brown's waiting toe.



As a new year for the Wichita County Home Demonstration work begins, it seems to be a good time to look back to see what was accomplished in the year just past.

Miss Thelma Wirges, served as County Home Demonstration Agent the entire year. When she took a look, she found she had worked in 176 homes, received 402 office calls and 1379 telephone calls, prepared 116 news articles, participated in 20 radio programs and distributed 2,577 bulletins. In addition, she presented information in the field of home economics at 191 meetings, with an attendance of 6,132. She also trained leaders who gave 137 demonstrations where 2,756 attended.

Miss Sandra Harrell served as assistant county home Demonstration agent. The assistant agent does work with the youth program. In 1963, 272 4-H club girls were enrolled. These girls completed demonstrations in clothing, foods and nutrition, home improvement and furnishings and safety.

Mrs. Pete Wyatt served as chairman of the Wichita County Home Demonstration Council. The home demonstration Council reports many and varied accomplishments, some of which were: food sales; camp day; workshops in foods and nutrition, clothing and equipment; educational programs; demonstrator work; cancer and polio drives; civil defense work; training for officers; committees and leaders; community projects; annual meetings; news writing and radio programs. Mrs. Wyatt will serve a second term as chairman of the council in 1964.

Miss Linda Taylor served as the 1963 Gold Star Girl. This

is the highest county award a 4-H girl can receive. Miss Taylor received her award at the annual Achievement Banquet sponsored by the First Wichita National Bank. She also received a watch from the Wichita County Farm Bureau.

As a result of work in the field of foods and nutrition; 198 home makers changed ideas about food fads, 160 made changes in their use of food fads, 189 made regular family meals more attractive; 156 have improved meal planning and 196 families have changed in the kinds and amounts of fats used in family meals.

Home landscapes were improved as a result of the 1963 home demonstration program. 51 homemakers revised home landscapes and began changes; 1,362 shrubs and trees were pruned.

Improvements inside the home were made by demonstrators and individuals, reached thru group work. 138 homemakers planned and changed color schemes and 157 made plans for dollars spent in home improvement.

Following clothing work in workshops, special interest meetings and club meetings results reported included: 242

homemakers have increased their knowledge and used information on today's fabrics; 300 homemakers made changes in selection of clothing; and 101 homemakers reported changes in colors for clothes. 96 homemakers changed laundry methods. 169 children's garments were completed at a savings of \$390.

The local home demonstration program is planned and executed by the home economics sub-committee for Wichita County Program Building. Sub-committee chairmen are Foods and Nutrition, Mrs. Jack Marshall; Clothing, Mrs. George Wyatt; Home Improvement;

Mrs. D. D. Mendenhall; Organization, Mrs. Pete Wyatt; and 4-H Donna Childers.

In general, the 1963 home demonstration program included work with home demonstration clubs, committees and council; 4-H clubs; leaders were trained; demonstrators developed demonstrations in their own homes as a result of home demonstration work; workshops were held and individuals were helped. The teachings were given to all interested homemakers not just club members.

As 1964 begins a new year, work has been planned by the Wichita County Program Building Committee and its sub-com-

### WATER WELL DRILLING

Irrigation and Domestic

Fairbanks-Morse Pumps  
Alco Pipe—Western Land  
Roller Pumps

SALES and SERVICE

Guaranteed Drilling and Service

Earl T. Landrum  
4 Mi. South, 1 1/2 Mi West  
Grandfield, Okla.  
Phone GR9-5470



'64 Chevrolet Impala Sport Sedan and (background) Impala Convertible

## '64 Jet-smooth Luxury Chevrolet

What does it take to make a car a great highway performer? If the car happens to be a '64 Chevrolet, one thing only. A highway.

You'll find everything else already neatly packaged for you—on the car exactly as you pick it off the showroom floor.

There's a choice of seven engines—all the way up to a twin-carb high-compression 425-hp V8\*—and four transmissions, including a finely honed 4-speed stick shift.\*

And underlying it all—a bump-skimming Jet-smooth ride that helps keep the performance great even when the highways aren't so great.

What about special performance equipment? Professional driving skills? Forget them.

Nobody has to doctor or coax or soup up these Chevrolets to get the best out of them.

And that's really the test of a great highway performer: Just about anyone can get a kick out of driving one, just about anywhere, just as it comes out of the showroom.

Next time you're out your dealer's way, allow a few extra minutes to sample one of these highway performers on your own. A few are really all you'll need. That's enough time to do a lot of driving in a Chevrolet. \*Optional at extra cost

**THE GREAT HIGHWAY PERFORMERS** Chevrolet • Chevelle • Chevy II • Corvair • Corvette

See them at your Chevrolet Showroom

## MATHIS CHEVROLET COMPANY

300 East 2nd Street Phone 569-3381 Burkburnett, Texas

## NEED A SIGN IN COLOR?

Water-Proof  
Glow at Night  
In Sizes 4x14 and 8x14

Large Signs, 8x14  
Printed and Ready for use  
Apartment for Rent,  
Closed, For Rent, For  
Sale, House for Rent,  
No Hunting, No Parking,  
No Smoking, No Trespassing, Open

Small Size, 4x14  
Apt. for Rent, Cashier,  
Checks Cashed, Closed,  
Lumber, Employees Only,  
Exit, Fire Escape, For  
Rent, For Sale, Fur. Apt.  
or Rent, Garage for Rent  
Information, Help Wanted,  
K. Gap Out, Men, No  
Checks Cashed, No Credit  
to Fishing, No Hunting  
Allowed, No Minors Allowed,  
No Pets, No Smoking, No  
Trespassing, No Soliciting,  
Not Responsible for Lost  
Articles, No Vacancy, Office  
Open, Private, Out to  
Lunch, Quiet Please, Reserved,  
Rooms, Room for  
Rent, Sold, Thank You  
all Again, Vacancy,  
Waitress Wanted, Women

Small size 35¢

**NOW ON SALE**  
AT THE  
Burkburnett  
Star Office

## Family FINANCIAL PROTECTION

Policyholder Questions Answered by the Institute of Life Insurance

Q. Is the death rate going up or down among life insurance policyholders?

A. There was an average of 6.19 deaths per 1,000 ordinary life insurance policyholders during 1962. This was very slightly higher than the 6.12 average of the previous year.

The ordinary policyholders' death rate has remained relatively constant over the past 16 years, although there has been considerable shifting in the causes of death.



A dramatic reduction in the death rate from communicable diseases means a longer life span, and as people live longer they become more susceptible to degenerative diseases such as heart ailments and cancer.

Q. I read recently that George London, the Metropolitan Opera star, owns a large amount of life insurance. Why is life insurance so important to a man like him, whose income must be well above average?

A. Life insurance is important for people at all income levels. Mr. London explains it this way: "The financial decisions facing an opera singer are the same that confront so many other people. The main one is how best to provide for your family and their future with the dollars you make during your good years, when there is no guarantee as to how many good years you will have.

"Although a singer's career isn't necessarily a short one, he is vulnerable because his musical instrument is his own body and every physical and emotional disturbance affects him."

Mr. London said an important part of his own savings and investment program is the life insurance he has acquired through the years "to be very sure that my family is well provided for if anything should happen to me.

"This is a theory your head believes before you're married, but after you have a family you feel it in your heart."

### Gray-Gold

According to the Southern Pine Association, gray and gold—the colors of West Point—are an excellent combination for paneled walls.



## CM The Greensboro

CURTIS MATHEW

### HIGH FIDELITY COMBINATION

TV - STEREO - AM-FM RADIO

- 23,000 VOLT PICTURE POWER \$269.95
- 23" PICTURE TUBE
- HAND CRAFTED CHASSIS
- SELECTED HARDWOOD CABINET

With Trade

## BILLS TV FURNITURE & APPLIANCES

301 Avenue D Phone 569-3651  
BURKBURNETT, TEXAS

## First Savings & Loan Ass'n.

BURKBURNETT, TEXAS  
314 East 3rd St. Phone 569-2206

Making your city a better place to live, work and raise a family—the result of a GROWING Savings and Loan business

Current Dividend Payable Or Compounded Quarterly

4 1/4%

4 1/4% is the liberal dividend rate now paid on savings accounts here. It helps speed the growth of your money, brings nearer the day when the total in your bank book will say "Let's go" on that trip of a lifetime!

## Don't Just Wish You Were There... Go

Picture yourself on that trip to far-away places... that dream vacation! Then bring that picture into realistic focus by DOING something about it! The difference between wishing and actually GOING places is systematic saving pin-pointed to your purpose. Time to start is NOW

4 1/4% is the liberal dividend rate now paid on savings accounts here. It helps speed the growth of your money, brings nearer the day when the total in your bank book will say "Let's go" on that trip of a lifetime!

s. Wayne Res...  
4th in a Wich...  
He has be...  
ory Allan...  
parents are...  
B. Ressel...  
s. C. E. Will...  
laughter, Mr...  
e Banning...  
e Wichita Falls...  
s. M. M. Dow...  
urned home...  
iting a few...  
Mrs. Cecil Pe...  
ren of Seymo...  
s. W. R. Bal...  
visited Mr...  
ishop of Ele...  
s. Morris Che...  
tt, visited...  
den, Wednes...  
sell, son of...  
Ressel and...  
son of Mr...  
liams, retur...  
S. U., Still...  
er spending...  
with their...  
TER'S  
writer  
BONS  
for Most  
ypewriters  
8¢  
TER'S  
RBON  
PER  
eet Pkg.  
9¢  
K STAR  
569-2191  
& 10  
& H  
n Stamps  
HITMAN  
ZLES  
23¢  
5c  
2's  
31¢  
3c  
100's  
21¢  
3.49  
UGS  
\$2.37  
4.39  
UGS  
\$3.26  
1.39  
SHIRTS  
NECK  
88¢  
2.98  
I PANTS  
\$1.79  
1.98  
PANTS  
97¢  
1.69  
LWS  
88¢

