

Burkburnett Star

LIKED BY MANY - CUSSSED BY SOME - READ BY EVERYBODY

BURKBURNETT, WICHITA COUNTY, TEXAS, THURSDAY, MARCH 28, 1963

NUMBER 29

Chamber of Commerce Luncheon Each FIRST MONDAY at Town Hall. Everybody Invited Each Pays for His Meal

To arrive on time for a social engagement, not too late and not too early, takes a lot of contriving.

Ophthalmic Feather Speak At First Church Sun,



OPHTHALMIC FEATHER

In the absence of the pastor, Dr. Morris, who is away on a preaching tour, Rev. Ophthalmic Feather, pastor of the First Church of Christ, spoke at the first church service Sunday, March 24. Dr. Feather, who is currently on a preaching tour, spoke at the first church service Sunday, March 24. Dr. Feather, who is currently on a preaching tour, spoke at the first church service Sunday, March 24.

Dr. Feather has served as Minister of Education at First Baptist Church, Shawnee, Okla.; First Baptist Church, Wichita, Kan.; First Baptist Church, Fort Worth, Texas; and First Baptist Church, Dallas, Texas. He has written various articles and booklets on religious subjects. Dr. Feather comes to Burk Burnett to speak at the services, Morning at 10:40 A.M. Evening at 6:30 P.M.

Benny R. Kerlin Assigned to Berlin



Second Class Benny Kerlin of Taylor, Texas, has been assigned to Berlin, Germany for duty with a unit of the United States Air Force in Berlin. Kerlin is a graduate of Taylor High School and is currently attending the Air Force Academy at Maxwell Field, Montgomery, Ala. He is the son of Mr. and Mrs. Benny Kerlin of Taylor, Texas.

PIONEERS HONORED BY THE BURKBURNETT STUDY CLUB

The Burk Burnett Study Club members recognize the privileges they have of belonging to noble heritage, and of so living as to confer that nobility upon others. Every age has both its glitter and its gold. Every age has its rewards. But these rewards are not just handed to us, they have to be earned. That is what gives the Burk Burnett Study Club such pride in having this party...

Mrs. Glen Bear, vice president, greeted the guests. Mrs. Francis Felty, presided at the registration table. Badges were pinned on each guest stating the year they came to Burk Burnett.

The Town Hall was beautifully decorated with Spring flowers. Mrs. George McClarty, incoming president, and Mrs. D. H. Smith presided at the refreshment table, which was covered with a yellow net cloth and milk-glass appointments.

Miss Blanche Butler played background music throughout the afternoon. A special tribute was paid Miss Butler. She has been teaching piano in Burk Burnett for thirty-three years, and has appeared on hundreds of programs both in the city and surrounding communities.

Mrs. Jack Smith, a member of the Burk Burnett Study Club charmed the group with a medley of folk songs, and semi-classical numbers. Mrs. Smith is the granddaughter of Mr. E. J. Woodard, who was superintendent of the Burk Burnett Public Schools from 1918 to 1925.

The University Study Club was recognized as the oldest Federated club in Burk Burnett. It was organized as a Needle Club in 1921, and in 1923 became a Federated Study Club.

The Current Literature Club is the second oldest club, it was organized and Federated March 1923. Mrs. F. M. McMurtry is serving as president.

The Burk Burnett Study Club was organized and Federated in 1929, by the Senior University Study Club. Mrs. F. T. Felty is a charter member of the club. Mrs. Harold Preston is the president.

A special award was given Mrs. J. Harvey Bentley for being the oldest person present. She was born the Miss Tennessee Waller, September 18, 1882 in Charlie, Texas. She married Mr. J. Harvey Bentley in 1918 and moved on a farm South of Burk Burnett, where she still lives.

The Pioneers swapped tales such as: "The horse that drowned on main street in 1918," "How high the Fowler Oil well blew oil in the air," and "Men charging \$5.00 to carry a lady across the knee-deep muddy main street..."

Girl Scouts Annual Father-Daughter Banquet April 2nd

The Girl Scout Father-Daughter Banquet will be held April 2, 1963 at the American Legion Hall. Dinner will be at 7:00 p. m. All fathers of Girl Scouts are urged to come with their daughters and have a good time.

Troop 48 has been very busy getting ready for their camp-out in Quannah. This will be the first overnight camping trip for the Wichita Council area. The girls are looking forward to a big time.

All girls interested in joining Girl Scouts or Brownies please call 569-3244 for further information.

Rebekah Lodge

By Cora Lee Harmon

The Burk Burnett Rebekah Lodge met in usual form with the following officers in their chairs. Cordie Lawrence, Noble Grand; Bessie McKnight, vice Grand; Clara Turner, Chaplain, pro-tem; Cora Lee Harmon, Musician; John Rogers, inside Guardian, pro-tem; Bessie McKnight, Treasurer; Eva Bingham, Secretary; Mary Cecil, right supporter to N. G.; Pauline Bellamy, Conductor and Agnes Boyd Warden.

After roll call of officers, sick members were reported on. Under the good of the order the Grandfield trip was reported on. Lodge closed in form. Sandwiches and coffee was served by the Noble Grand.

Hadley Schools Enrolls Jesse O. Brister In Braille Course

The Hadley School for the Blind, Winnetka, Illinois, announces that Mr. Jesse O. Brister, of 320 Burk Burnett, has recently enrolled for a home study course in Braille.

Now in its 42nd year of service, the Hadley School is unique in being the only correspondence school for the blind in the world.

Hadley School's ever-expanding curriculum is accredited by the National Home Study Council and includes more than 100 different courses. Among these are Braille, English, foreign languages, touch typing, Bible study, high school physics, and poultry raising. A complete high school program is offered as well as a number of credit-bearing college courses.

Ranging in age from 13 to 90, Hadley students live in all parts of the world - in every state and in 52 countries. There are 70 Hadley students living in Texas.

School facilities include the world's largest braille textbook library, a professional recording studio, braille duplicating equipment and administrative offices. Specialists in each field of study serve either as consultants or teachers.

A non-profit organization, the Hadley School is supported entirely by donations from individuals, corporations and foundations. Lions Clubs and other interested civic and social organizations. There is no charge to the blind for Hadley services or tuition.

PAST NOBLE GRAND NIGHT TO MEET THURSDAY NIGHT

The Past Noble Grand hasn't met since last December, but is meeting next Thursday night with Elizabeth Gragg. All members are urged to be present. The club started a project some time ago in order to raise money for the lodge. The club mentioned a bazaar and probably a Bake Sale to go along with it.

Mrs. J. W. Stubblefield has been returned to her home in Burk Burnett from St. Joseph hospital in Fort Worth where she underwent bone surgery.

Revival To Begin At The Central Baptist Church



REV. KENNETH BRADSHAW

Revival services will begin at Central Baptist Church, 810 Tidal, March 31st and continue through April 7. There will be services each evening at 7:30 p. m.

This will be a pastor-led revival and Rev. Kenneth Bradshaw will bring Bible messages each evening. Rev. Bradshaw has been pastor of Central Baptist Church since January of 1960. The church has made unusual growth under his leadership. There will be an emphasis on basic Christian doctrines during the week.

Directing the music for the revival will be Mr. Paul Welleford, Minister of Music, at Faith Baptist Church of Wichita Falls.



PAUL WILLEFORD

Mr. Welleford is a young man with unusual background and training in music. He is graduate of Peabody College, Nashville, Tennessee and now completing work on a Master's Degree in Music from Southwestern Baptist Theological Seminary in Fort Worth, Texas.

He has developed outstanding choir programs in the churches he has served as minister of music. Special music will be a part of each of the services. You are invited to share in the spiritual growth program of this Southern Baptist Church. "Come thou with us, and we will do thee good."

VISITS REBEKAH LODGE IN GRANDFIELD, OKLA

Last Saturday night Bessie McKnight, Edna Peed, Elizabeth Gragg, Cora Lee Harmon, Agnes Boyd, Cordie Lawrence, Pauline Bellamy and Clara Turner visited the Grandfield, Okla. Rebekah Lodge.

That Lodge had a dedication ceremony and the burning of the mortgage of their Lodge Hall. The Noble Grand of the Grandfield Lodge stated that they had made the last payment on their new hall last December. A number of officers of the Grand Lodge were present and some of them participated in the dedication service. Delicious refreshments of cake, coffee and punch was served.

SCOUT - PARENT MEETING TO BE HELD BY TROOP 154 MONDAY, NIGHT APRIL 1st

On Monday, April 1st at 7:30 p. m. a meeting of all parents of Scouts in Troop 154 will be held at the Burk Burnett Youth Center. All parents are requested to attend this meeting.

Southwestern Bell Telephone Co. Spending \$166,000 On Projects

Big Pasture Senior Play To Be Presented Friday, March 29th

The Big Pasture Seniors will present their play, Hobboblin House, Friday, March 29th at 7:30 p. m. in the grade school auditorium in Randlett.

Dual Sunday School At JanLee Starts March 31

Next Sunday, March 31st, marks a new beginning for JanLee Baptist Church. On this day we will begin a "Dual Sunday School Program." This simply means that we will be having a Sunday School from 8:30 to 9:40 a. m. and another Sunday School from 10:45 to 11:55 a. m.

In order to provide for more people, we are beginning this new program. We would like to invite every person who is not enrolled in Sunday School anywhere to attend one of our Sunday Schools. A place will be provided for every member of the family. We have some wonderful teachers for all age groups.

We would like to extend a special invitation to you to come worship with us each Sunday morning at 9:45. Remember that our morning worship is from 9:45 to 10:45 due to the dual Sunday Schools. Also, we would invite you to our evening services. Our Training Union will begin at 6:00 p. m. on March 31st with our evening Worship Service beginning at 7:15 p. m.

Our Spring Revival is scheduled for April 21-28. Services will be held daily at 10:00 a. m. and 7:30 p. m. Dr. Earl Allen, pastor of Rosen Heights Baptist Church in Fort Worth, will be our evangelist. C. D. Roger, Minister of Music at First Baptist Church of Iowa Park, will direct our music.

DECA NEWS

The Deca Spotlight shines on a Senior Boy from the Deca Chapter. He is Jackie Lord. Jackie is the son of J. M. Lord. Jackie's training station is Boyd's. Mr. Jimmy Boyd, Jackie's supervisor has taught him a great deal about the store. Some of Jackie's jobs include stocking the shelves, working the cash register and also helping the customers find what they need.

CARD OF THANKS

I wish to express my thanks to friends and neighbors for the many kindnesses shown me during my recent stay in the hospital. Your flowers, cards, visits and phone calls were sincerely appreciated.

NEVER IN THE DARK

Many major airport control towers and passenger buildings throughout the world guard against electrical failure by providing emergency power by means of several hundred nickel-cadmium storage batteries.

It takes but a second to administer a rebuke, but it may take a life-time for the one who has been rebuked to forget it. For Results—Advertise

Gospel Meeting Church of Christ April 1 - 10th



WILLIAM HATCHER

The Church of Christ in Burk Burnett will be engaged in a Gospel Meeting beginning Monday, April 1 and ending Sunday evening April 7th.

William Hatcher, who will be the speaker, has had a very interesting career as a preacher and missionary. He and the local preacher for the Church of Christ, Eugene Gilmore went to Alaska together in 1945 and established a church in Juneau.

In 1947, Hatcher traveled to Italy, came back in 1948 to raise funds, and returned to Italy in 1949 with thirteen other missionaries. During his Italian stay he established a church in Rome and engaged in frequent debates with Monks.

DECA NEWS

The Distributive Education Class is having a car wash Sunday, April 7 at Tommy Goins' Service Station. It will be between 1:00 o'clock till 6 o'clock. We want everyone to feel free to come by and have their car washed.

If you buy a ticket from any member of the DE Class, it will only cost you \$1.25, but if you wait and come by it will be \$1.50. So bring out your cars and any kind of automobile and have them washed for you.

NOTICE

The St. Boniface Study Club is sponsoring a RUMMAGE SALE and BAKE SALE Saturday, March 30 beginning at 9:00 a. m. The Rummage Sale will be held on Ave. B by Boyd Bros. Store and the Bake Sale will be held at the Corner Drug Store. All proceeds will go to the Church Building Fund.

29-11C

Successful Cub and Scout Training Meet Held At Burk High School

Euell Spruiell, Chisholm Trail District, Leadership Training Chairman, reports that the Cub and Scout Basic Training held at the Burk Burnett High School was a successful event. About twenty Cub and Scout leaders attended the course.

Den mothers attending the course from Pack 155 were: Jermye Goodrich, Ruth Britton, Eileen Cox. C. J. Allmon, chairman of the pack committee was present also.

Members of Pack 156 attending were: Jack Rupard, committee chairman, assisted in the instruction; Den Mothers attending were Gloria Pyne, Betty Lacy, Mary Robertson and Mary Rupard.

Scoutmasters attending were: Frederick Crowner, Troop 155; Dexter Puder, Troop 154; Mr. J. E. Larson, Institutional Representative from Troop 154 and

Marvin McDonald, Institutional Representative from Troop 155 were present. T. H. Evans, Committee man from Troop 155 was present also.

Those attending from other towns included Wayne Ray and Bob Curry from Troop 40 of Electra and F. D. Duncan, Committee man from Troop 91 of Henrietta.

Instructors for the courses were John Reeves, Henrietta; Lawson Reeves, Wichita Falls; Jack Rupard, Burk Burnett; Frank Barret, Henrietta and Euell Spruiell, Henrietta.

Assisting the instructors were Al Russell, District Scout Executive from the Apache District; and Bill Davis, District Executive from the Chisholm Trail District. Burk Burnett is a part of the Chisholm Trail District of the Northwest Texas Council, Boy Scouts of America.

29-11C

# The Burk Burnett Star

HARRY C. DODSON, Owner and Editor

Mrs. Lola Mae Bailey, Bookkeeper-Society Editor  
Chas. L. Wisdom, Mechanical Foreman  
Forrest Green, Linotype-Pressman  
J. W. Brookman, Commercial Printing



Printed weekly at Burkburnett, Wichita County, Texas. Entered as second class matter at the post-office at Burkburnett, Texas, August 19, 1907, under the Act of Congress of March 3, 1879.

**Notice to the Public:** Any erroneous reflection upon the character, standing or reputation of any person, firm or corporation, which may appear in The Star, will be gladly corrected as soon as it is brought to the attention of the publisher.

**SUBSCRIPTION RATES PER YEAR**  
In Wichita and Cotton Counties ..... **\$2.50**  
Outside These Counties ..... **\$3.00**

## WYOMING MAKES 20

Last February 6th, Wyoming passed a Right to Work bill. The margin was substantial—33 to 23 in the House and 16 to 11 in the Senate. And this was accomplished in the face of the most aggressive sort of opposition.

Wyoming's act makes it the 20th state to forbid compulsory unionism. The principle of Right-to-Work, aside from difference of detail in the various state laws, is plain. Neither union nor employer can demand that a worker either join or not join a union. The decision is entirely up to him.

Right-to-Work is thus a force—and a highly important force—on the side of individual freedom. Then, beyond that, it is a force in favor of better, more responsible, labor organizations. A union which must sell itself on the basis of worth and service is a very different sort of union than one which can compel people to join and pay dues, whether they want to or not, or go jobless.

Wyoming's action—like that of the 19 other states which preceded it in passing Right-to-Work laws—is in perfect consonance with the needs and the public sentiment of these times.

## FLY KITES SAFELY

A California utility company has published a really worthwhile comic book. It features Bullwinkle Moose and his pal, Rocky the flying squirrel, and its main-point is to stress safety rules for flying kites. Here they are—and they are mighty important with spring and summer just around the corner:

Don't cross streets or highways while flying kites. Don't fly a kite with metal in the frame or tail. Don't use linsal string, wire or any twine with metal in it. Don't fly a kite over television or radio aerials. Don't fly a kite near electric power lines. Don't pull on the string or climb a power pole to loosen a snagged kite. Don't touch fallen electric wires. Don't fly a kite in the rain.

## Classifieds In The NEWS Get Results

# GO SAFELY

April 15th  
Is The  
Dead Line  
FOR YOUR

Automobile

## SAFETY INSPECTION

GUARDIAN MAINTENANCE



Always look for this  
Emblem for the best in  
Quality Automotive  
Service

MOTORS -- BRAKES -- TRANSMISSION  
WHEEL ALIGNMENT -- MUFFLERS

Earl West In Charge of Complete

## PAINT and AUTO BODY SHOP

ALL WORK GUARANTEED

For Fast Efficient

### WRECKER SERVICE

DAYS  
569-3381

NIGHTS  
569-3745



## MATHIS CHEVROLET CO.

Best Place to Buy a New or Used Car  
Chevrolet-Oldsmobile  
201 E. 3rd, BURKBURNETT, TEXAS  
Phone 569-3381

IRVIN "Smitty" SMITH, Service Manager

## WASHINGTON AND "SMALL BUSINESS" BY C. WILSON HARDER

It has been written that there is nothing new under the sun. The present tax proposals bear out this old adage.

In the various city-states of Ancient Greece, on through Ancient Rome, and all down the long corridor of history, there is found a continuity of strategy which eventually destroyed the nations adopting it.

These governments, to maintain their own extravagances, catered to the masses to keep manpower on their side, and to the segments of great wealth to keep economic resources on their side as well.

Eventually, something has always had to give. In all cases the middle class, from which all independent enterprise develops, has been destroyed. And freedom has never survived without a successful middle class.

And history shows without this successful middle class, a nation eventually deteriorates until the condition of the masses is far worse. That is why history presents the paradox of many leaders who were cheered in the arena as great humanitarians, living long enough to be jeered as tyrants.

There is no question but that reduced income taxes have a great popular political appeal. Neither is there any question reduction of taxes will help the economy.

But the full package on tax-

es as presented gives the masses and the big, almost monopolistic corporations quite a boon. But the middle class is again being penalized.

It is the American middle class who buy the better homes and pay on long term mortgages, who buy the appliances, the automobiles. The middle class also buys more medical service, and also is the backbone of charity drives as well as state and local tax structures. Limitations on the deductions this middle class can take for interest, charity, medical costs, state and local taxes, can serve no purpose other than to weaken the middle class.

Thus, it appears this is but a canny move to avoid cutting out the waste in government, and at the same time keep the factions on either end of economic spectrum fairly happy.

This is not to be inferred that there is a villainous plot afoot to destroy the American middle class, despite the fact for over 20 years "left wing" advisors in government have propounded this idea.

Most oppression by government throughout history was not motivated by malevolent intent, but rather through sublime ignorance of the true facts.

Whether or not the American nation will follow the historical path of middle class destruction and eventual doom is a moot question. The big counter balance to such a trend in the United States is the fact that there is a Congress. Thus, it might be said, that as long as people exercise their Constitutional right to express their views to their Congressmen, American democracy will continue to live.

## GRASS ROOTS OPINION

CARTHAGE, TENN., COURIER: "The Internal Revenue Service announced it would require businessmen to get a receipt for every cent spent on expense accounts, what the money was spent for, the time of day it was spent, why it was spent, and if its spending was instrumental in obtaining business for which it was spent. If even one cent could not be accounted for, then the entire account would not be allowed. When the storm came, as it should have come, IRS relented and changed some of its regulations. But the core of the matter remains, and if it is put into full force it will put many places out of business, create more unemployment, close literally hundreds of resorts, and do other things."

NORWALK, CONN., HOUR: "For the fifth consecutive year, enrollments in engineering schools and bachelor's degrees granted in this vocation are on the decline. Engineering schools had hoped that after four years of hammering away at the advantages of the profession and the very real need for more recruits, high school students would show a greater interest. It has not for forthcoming."

## Vehicles Must Be Inspected By Apr. 15

Many motorists in Texas are going to be faced with long lines and waiting periods in order to have their cars inspected prior to the April 15 deadline. Only 39 per cent of the 586,270 registered vehicles in Region 5 of the Texas Department of Public Safety have visited safety inspection stations and obtained their 1963 safety inspection sticker, according to Captain Alen Johnson, Motor Vehicle Inspection Service of the DPS.

"All registered vehicles in Texas must be inspected by April 15 and have a 1963 inspection sticker on the windshield," Captain Johnson said. He stated that there would be no extension of the April 15 deadline and advised motorists who have not had their cars inspected to do so now, before the long lines start forming. "In the past, many people wait until the last few days of the inspection period to have their vehicle inspected and have had to wait for a long period of time at the inspection station," Captain Johnson stated.

According to the records of the Motor Vehicle Inspection Service of the DPS there are 51,428 vehicles registered in Wichita County and only 21,660 or 42 per cent of the vehicles have been inspected to date. Due to this low number the Captain suggested that all motorists check their vehicles and see if they have a current 1963 inspection sticker on the windshield and if not to have their vehicle inspected today in order to avoid the last minute rush.



HE ADVERTISED

## Notice To Bidders

Sealed proposals will be received by the City of Burkburnett, Texas, at the office of the City Manager, Jess Whatley, until 3:00 p. m. Central Standard Time of March 26, 1963, for the construction of certain water line extensions along Wichita Highway in City of Burkburnett, Texas.

At the above time and place proposals will be publicly opened and read aloud by the City Manager in the Council Room at this hour. Award will be made by the City Council at its special meeting, April 1st, 1963, for action.

Plans and specifications may be examined, without charge at the office of the City Manager, Jess Whatley, and may be procured at the above office or at the office of R. Ernest Lee, 4729 Neta Lane, Wichita Falls, Texas, with a deposit of \$25.00 as a guarantee of the safe return of the plans and specifications in good condition. No refund on Contract Documents and Plans returned later than ten days after award of Contract will be obligatory.

Attention is called to the requirements that there must be paid on this project not less than the general prevailing rates of wages which have been established by the City of Burkburnett, Texas, and specified in the Contract Documents.

A cashier's check, certified check or acceptable bidders, bond, payable to the city, in an amount of not less than five (5%) per cent of the largest possible total for the bids submitted, must accompany each bid. No bid may be withdrawn after the scheduled closing time for receipt of bids, for at least thirty (30) days. The City of Burkburnett, Texas, reserves the right to reject any or all bids and to waive formalities.

The successful bidder will be required to furnish performance and Statutory Payment Bonds in an amount of 100% of his total Contract written by a responsible Surety satisfactory to the City of Burkburnett, Texas.

## BURKBURNETT... HISTORY

Revealed By The Star Files 10 Years Ago . . .

Reggie Southworth of Dallas is spending the Easter holidays with his aunt and uncle, Mr. and Mrs. Luther Hatch of this city. His parents, Mr. and Mrs. J. M. Southworth will spend Sunday visiting the Hatches, and Reggie will return home with them.

Mr. and Mrs. Johnny Morris and sons of Abilene, Texas, spent the week end with their parents, Mr. and Mrs. Ralph White and Mr. and Mrs. J. H. Ferguson of this city.

Mr. J. W. Keller was taken to the Wichita General hospital Sunday noon. He will remain in the hospital for several days under observation to determine the cause of his illness.

Mr. and Mrs. Wayne Randall and son Larry left Monday for their home in Long Beach, California, after a two weeks visit with their parents, Mr. and Mrs. T. P. Randall and Mrs. Ollie Cagel.

Mr. and Mrs. Marshall Young of Devol, Oklahoma, have just received word of their son Yoe-man Rayford L. Young's new assignment. He is now stationed

at USNAS Hutchinson, Okla. He recently visited the Young home after his training in San Diego, California.

Mrs. Ethel Page of Abilene, Texas, is visiting the home of her son, Mr. and Mrs. John Page and family.

Mrs. Florence Foster Enid, Oklahoma, visited several days last week in the home of Mr. and Mrs. Frances A. C. Scott.

Mrs. Gladys Holmes of Abilene, Texas, spent a few days last week in the home of Mr. and Mrs. H. C. Gilbert of this city.

Mr. and Mrs. Noyes and children of Abilene, Texas, spent a few days in the home of Mr. and Mrs. A. C. Scott.

FOR RESULTS — ADVISE

IRVIN J. VOGEL  
ATTORNEY  
312 City National Bank  
PHONE 723-4100  
WICHITA FALLS, TEXAS

## Lawn Mowers Serviced AND REPAIRED

BRING YOUR LAWN MOWER IN FOR A SPEEDY CHECK-UP — HAVE IT READY FOR SPRING

Avoid That Last Minute Rush  
ALL WORK GUARANTEED

BURK SERVICE CENTER  
209 EAST 3rd STREET PHONE 569-3381

REPAIR

REMODEL

NEW HOMES

## HOME IMPROVEMENT SERVICE

NO DOWN PAYMENT  
NO RED TAPE  
WE HANDLE LOAN DETAILS

OLD HOMES

## BURK INSURANCE

ADD-A-ROOM

MODERNIZE

303 Avenue C

Phone 569-3333

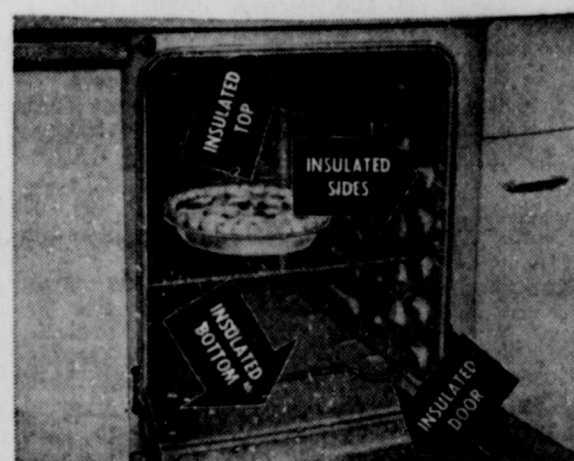
Women who cook electrically know...



## Electric cooking is COOLER because it's flameless



Flameless electric cooking units fit snugly against pan bottoms. They put their heat into the pans where it is needed, not into the kitchen air. With an electric range your kitchen stays degrees cooler when you cook. And there is less kitchen heat for your air conditioner to remove.



An electric range oven is insulated all around, including the bottom, to keep heat inside where it belongs. This is possible because the electric oven, being flameless, does not require a flow of air into and out of it to support combustion. Result: your kitchen stays cooler when you are baking or roasting.

Electric cooking also is clean, fast, accurate and economical. See your dealer soon for a flameless electric range and enjoy all these benefits. Electric cooking is one of the nicest things about living better... electrically.



TEXAS ELECTRIC SERVICE COMPANY

J. B. ADY, Manager

569-3373



**NO GUESS WORK!**  
**PRICES**  
 ALWAYS THE  
**LOWEST**  
 AT PARKER'S  
 PLUS FAMOUS S&H GREEN STAMPS



These Values Good in Burkburnett March 28-30, 1963.  
 We Reserve the Right to Limit Quantities.

- |                |        |    |                         |     |
|----------------|--------|----|-------------------------|-----|
| FRUIT COCKTAIL | Hunt's | 5  | No. 300 Cans            | \$1 |
| TOMATO JUICE   | Hunt's | 4  | 46 oz. Cans             | \$1 |
| TOMATO SAUCE   | Hunt's | 10 | 8 oz. Cans              | \$1 |
| CATSUP         | Hunt's | 4  | 20 oz. Bottles          | \$1 |
| TOMATOES       | Hunt's | 5  | No. 300 Solid Pack Cans | \$1 |
| SPINACH        | Hunt's | 7  | No. 300 Cans            | \$1 |
| PEARS          | Hunt's | 5  | No. 300 Halves Cans     | \$1 |

HEALTH AND BEAUTY AIDS

- |            |  |            |
|------------|--|------------|
| NYLON HOSE | CANNON, Anti-Run, Regular \$1.35 Retail    | 99¢        |
| EXCEDRIN   | Headache Tablets, 60 Count                 | Bottle 88¢ |
| SHAMPOO    | Lustre Creme Liquid or Lotion, \$1.00 Size | 77¢        |
| HAIR SPRAY | White Rain, Reg. \$1.49 Size, Plus 10c Tax | 99¢        |

- |                |  |                  |     |
|----------------|--|------------------|-----|
| Salad Dressing | Suzan                                  | Qt. Jar          | 29¢ |
| PEACHES        | Hunt's, Yellow Cling, Sliced or Halves | 4 No. 2 1/2 Cans | \$1 |
| SUGAR          | Imperial or C & H                      | 5 LB. BAG        | 39¢ |
| FLOUR          | SUNLIGHT, Fully Guaranteed             | 5 Lb. Bag        | 29¢ |

PARKER'S FRESH PRODUCE

- |                            |   |                |     |
|----------------------------|---|----------------|-----|
| APPLES                     | Washington State Extra Fancy Delicious or Winesap | Pound          | 19¢ |
| POTATOES                   | Reds No. 2  | 10 Lb. Bag     | 29¢ |
| RED RADISHES - Fresh Bunch |   | Bunch... 2 for | 15¢ |
| GREEN ONIONS - Fresh Bunch |   | Bunch... 2 for | 15¢ |
| SUNKIST LEMONS             |   | Pound          | 19¢ |

TODAY'S BEST BUY

- |                       |           |     |
|-----------------------|-----------|-----|
| PEARS - Fancy D'Anjou | Pound..   | 19c |
| CELERY HEARTS         | Package.. | 29c |

PARKER'S GUARANTEED QUALITY MEATS!

- |                               |   |               |     |
|-------------------------------|---|---------------|-----|
| ROUND STEAK                   | Valu-Trim, Heavy Beef, Full Cuts,                                       | Pound         | 75¢ |
| RUMP ROAST                    | Valu-Trim Beef, Boneless, Rolled,                                       | Pound         | 85¢ |
| RIB ROAST                     | Valu-Trim, Heavy Mature Beef, Fully Trimmed,                            | Pound         | 59¢ |
| SLICED BACON                  | Butcher Boy, Thick or Thin, No. 1                                       | 2 Lb. Pkg.    | 79¢ |
| Whole Hog Sausage, 1 Lb. Pkg. | Prater's, Texas Finest, Mild or Hot                                     | 59¢           |     |
| Shorthorn Cheese, 1 Lb. Horn  | Parker's, Mild, Tasty,  | 59¢           |     |
| Smoked Hams, 3 Lb. Can        | Rodeo, No Waste,  | 79¢           |     |
| CHEESE, Kraft's               | Cracker Barrel, Mild or Mellow,   | 10 oz. Stick  | 49¢ |
| SHORT RIBS                    | Valu-Trim, Lean and Meaty   | 5 Lbs. For    | \$1 |
| TASTY FRANKS                  | Flavorful   | 3 Lb. Pkg.    | \$1 |
| GROUND BEEF                   | Extra Lean, Dated for Freshness   | 3 Lbs. For    | \$1 |
| FISH STICKS                   | Booth's or Sea Pack, Frosty Good  | 4 8 oz. Pkgs. | \$1 |
| Lunch Meat                    | Butcher Boy, Bologna, Pickle and Pimento, Olive, or Macaroni and Cheese | 4 6 oz. Pkgs. | \$1 |
| Boston Pork Roast             | Semi-Boneless, Fresh,   | Pound         | 45¢ |



GREATEST VARIETY  
 LOWEST  
 PRICES

PARKER'S FROZEN FOODS

- |                    |                                       |                  |     |
|--------------------|---------------------------------------|------------------|-----|
| BANQUET CREAM PIES | Chocolate, Coconut, Lemon, or Banana, | 14 oz. Pie. Each | 49¢ |
|--------------------|---------------------------------------|------------------|-----|

- |  |                      |
|--|----------------------|
| Barbeque Chicken Underwood's, Half Chicken | 69¢                  |
| TATER TOTS, Ore-Ida                        | 4 - 16 oz. Pkgs. \$1 |
| ENCHILADAS, Patio, Cheese                  | 12 oz. Pkg. 39¢      |
| Cauliflower, Seabrook                      | 2 - 10 oz. Pkgs. 49¢ |
| Broccoli Spears, Seabrook                  | 2 10 oz. Pkgs. 49¢   |

- |              |  |     |        |                                       |     |
|--------------|--|-----|--------|---------------------------------------|-----|
| Pork & Beans | Campfire, No. 2 1/2 Can                          | 19¢ | Tuna   | Breast-O'-Chicken, Chunk, No. 1/2 Can | 49¢ |
| Green Beans  | Stokley's, Cut, No. 303 Can                      | 23¢ | Tissue | Northern, Assorted, 4 Roll Pkg.       | 39¢ |
| Detergent    | Via, Liquid, 20c Off Label 22 oz. Plastic Bottle | 39¢ | Towels | Northern, Jumbo, Each                 | 29¢ |
| Peaches      | Contadina, Spiced No. 2 1/2 Can                  | 25¢ |        |                                       |     |

**PARKER'S FOOD STORES, INC.**

### Fashions Favor the Casual Look



ONS FOR SPRING CATER to America's enthusiasm for outdoor living. Shoes and clothes with a country air are for city promenading as well as for suburban wear or across the fields. In tune with this country-oriented is a new kind of ribbed, seamless nylon stocking by Designed especially for wear with walking shoes, sports boots, Hanes Casuals provide a new concept of good and comfort for active or spectator sports or for proming on urban streets or rustic lanes.

### Local News

Mr. R. Elliott, Reporter  
M. Hayes is home from hospital  
Mrs. Ressel of A&M of Oklahoma is home visiting his parents, Mrs. C. B. Ressel. This vacation week.  
O. Wilson visited her P. H. Silvey and her Mr. and Mrs. Walter Comanche, Oklahoma  
visitors in the home and Mrs. F. E. Eastman  
Ina Williams of Wallahama and Mr. and G. Williams of Temple,  
Barbara Manley, home visiting her parents, Mrs. W. W. Manley, attending A&M College  
Mrs. Willard Spoonren of Springtown visited her parents, Mr. and Mrs. on Saturday and Sun-

Mrs. Ben Ressel.  
Mr. and Mrs. Howard Hatcher and daughter of Wichita Falls; Mr. and Mrs. Phillip Hatcher and son Wayne of Burkburnett were Sunday dinner guests of Mrs. Flora Hatcher, then Sunday afternoon LT. and Mrs. Burk Triplet of Wichita Falls were visitors.  
Mr. and Mrs. Frank Bohac of Wichita Falls visited her father, Mr. R. H. Rhoads Sunday, then Sunday afternoon Mrs. Bohac accompanied by Mrs. Bill Harrison and children visited Mrs. Rhoads in a Lawton, Oklahoma hospital.  
Mr. Bill Dorton visited his sister, Mrs. Zaida Bryant Monday afternoon.  
Mr. O. D. Boles entered a Latwon, Oklahoma hospital Sunday for surgery Monday.  
Mr. Raymond Underwood entered a Wichita Falls hospital Sunday. He is to undergo surgery the middle of the week.  
Mrs. W. J. Morrow is visiting her daughters, Mr. and Mrs. J. C. Wallace and children. Mr. and Mrs. Herbert Struck and children of Munday.  
Mr. A. S. Nason entered a Wichita Falls hospital Sunday. He was to have surgery Monday but due to him running a fever is was delayed.  
Mr. and Mrs. Louis Due and children of Duncan, Oklahoma visited her parents, Mr. and Mrs. A. S. Nason Sunday afternoon. Mrs. Due remained over for a few days to be with her father during his surgery.  
Mrs. Bill Harrison and children accompanied by Mrs. Zaida Bryant visited Mr. and Mrs. John Sells of Devol, Oklahoma Monday afternoon.  
Mr. G. C. Beavers was home Sunday from a Wichita Falls hospital where he had been the past ten days due to car wreck on his way to work.  
Miss Jo Ann Rhoads was ill Friday and Saturday at her home.  
Mr. and Mrs. Raymond Hale visited Mr. and Mrs. Charlie Sonnemaker and sons Saturday and Sunday of Tyler.  
Mr. and Mrs. Glenn Harwell and Mrs. W. G. Harwell of Wichita Falls visited Mr. and Mrs. C. B. Ressel Friday night.  
Mrs. Ella Penwell spent last week with Mrs. Pearl Best of Wichita Falls.  
Mrs. Herman Biggerstaff of Lubbock spent the week end with her parents, Mr. and Mrs. Raymond Underwood.  
Miss Janie Eschler of O. U. of Norman, Oklahoma, home this week with her parents, Mr. and Mrs. Don Eschler for the Spring week vacation.  
Mrs. Marie Brown of Lawton, Oklahoma visited Mrs. O. O. Best Wednesday to Friday of last week.  
Mr. Robert Vincent of Herford, Oklahoma visited Mr. and

### March Meeting Of Pack 155 Held In Burk Town Hall

The March meeting of Pack 155 was held in the Town Hall, Monday, March 25 at 7:30 p. m. The opening Flag Ceremony was led by Dick Lewis and Gary Cox and directed by Mr. Holland. Following announcements new Den Mothers, Mrs. Slayton, Den 2 and Mrs. Rodebush, Den 7 were welcomed and Mrs. Keith, parent in Den 3 was given recognition for making Pinewood Derby Awards.

After a fast game for the Cubs, Mrs. Rivard and Cubs of Den 8 and Mrs. Cox and Cubs of Den 3 presented their skits.

Sergeant Harold Lemm was presented an Award for Five Years of Faithful Service to Pack 155 as Cubmaster.

Bobcat pins were presented to Allen Hatcher, Johnnie Archer, Jr., Edward Slayton, David L. Skelton, Terry Burns, William Elliott and Freeman.

Wolf Badge went to David Brown with Arrows for Wolf going to Gary Fisher, Kurt Morten and Kenneth Young.

Bear Badges were presented to Steven Young and Don Ross with Arrows for the Bear Rank won by Steven Young and Morlin Dixon.

Dick Lewis received a Lion Badge and Gold Arrow.

Webelo Awards went to Dick Lewis and Dale Swinford.

Gary Cox was awarded his two year Service Star and Roundup Badges went to Tommy Bloodworth and James Bainbridge.

Attendance Pennant was won by Den 3. Mrs. Horn led Den 1 in closing and Den 5 and Mrs. Britton served refreshments.

### Right Detergent Leaves Dishes Clean and Shiny

A new electric dishwasher is a dilly for diminishing dull kitchen chores. It can help you tremendously, but remember that you have to help it, too. But not much. All you have to do to save hours of daily drudgery is (1) make sure the hot water your dishwasher uses is at least 140 degrees, and (2) use the right dishwasher detergent.

There are several low-suds detergents on the market that are made especially for dishwashers. These should be used exclusively because sudsy soap flakes and powders and foamy detergents smother washing action. They also may damage the machine and cause it to overflow.

Determine the amount of detergent to use by the size of the dishwashing load, the amount of soil on the dishes and water conditions in your area. The harder the water the more detergent needed. For best results, follow the directions in the "use and care" booklet supplied by the dishwasher manufacturer.

It is advisable in hard water districts—about two-thirds of the United States has hard water—to use a wetting agent during the final rinse cycle for spot-free dishes, glassware and silverware. Many dishwashers now have dispensers which automatically release a wetting agent at the proper moment in the cycle.

Wash encrusted pots and pans in the dishwasher first, then if any stubborn soil remains, a light scouring will finish the job.

For best results if you're not going to turn on the dishwasher within an hour or two after a meal, rinse cups that have had tea or coffee in them in order to avoid a tannic acid stain and rinse silverware to prevent spotting and tarnishing from acid and other food soils.

### Sue Revier Elected Treasurer Chi Beta Fraternity At TCU



Elected treasurer of Chi Beta Professional Fraternity at Texas Christian University recently was Miss Sue Revier of Burkburnett. Sue has also been initiated in Kappa Delta Sorority and was a Delta Sigma Pi Rose nominee.

She is a Vocational Home Economics Major and plans to be a home economics teacher. A 1962 graduate of Burkburnett High School, Sue was an honor student and participated in many extra-curricular activities.

She is the granddaughter of Mr. and Mrs. R. D. Revier of Burkburnett.

Week end guests in the home of Mr. and Mrs. Donald R. Purdy of Route 1, Burkburnett, were Mr. and Mrs. Tom Cokendolfer of Kirkland, Texas, and Mr. and Mrs. Tommy Cokendolfer and daughters of Quanah, Texas. Saturday visitors in the Purdy home were Mr. and Mrs. Ray Goree of Wichita Falls and a Sunday visitor was Mr. Tom Cokendolfer of Burkburnett. The occasion for the get-together was the celebration of Mr. Tom Cokendolfer's birthday.

FOR RESULTS — ADVERTISE

Democratic freedom was fine for colonial America but what will we have in 1976?

**THE PEOPLE WANT TO KNOW—**  
*high character and freedom*

History indicates and logic affirms that freedom can live and flourish under Big Government only if the people are well informed about the meaning, obligations, and value of freedom. They must also understand and strive to live by the high standards of character and conduct of men of good will and rigidly require their public servants to do likewise.

FREEDOM BERMONEETTES BY RUSSELL CHILTON HILL  
© 1963 THE CHILDREN'S FUND, SAN ANTONIO 2, TEXAS

## Boyd Bros.

Specializing In Sales And Service On

- General Electric Appliances
- Maytag Appliances
- Hoover Vacuum Cleaners
- Lawnmowers
- Venetian Blinds
- Groceries & Meats
- Shoes
- Hardware
- Linoleum
- Dry Goods
- Air Conditioners

TELEVISION AND RADIOS  
—FURNITURE—

**569-2214 — 569-2215**

FREE CITY WIDE DELIVERY  
SERVING TRADE TERRITORY SINCE 1919

123 E. 3rd (Ave B. at Main)

# 36 days that proved Ford's total performance!

RIVERSIDE, CAL. January 20

In a total performance test of brakes, suspension and steering on the twisting Riverside sports car course, Dan Gurney drove a Ford hardtop to victory over 43 other stock cars. The 500-mile grind demonstrated Ford's superior stamina and road-holding.

MONTE CARLO January 23

The '63 1/2 Falcon V-8 Sprints made their debut with a fantastic showing in the 2,500-mile Monte Carlo Rallye. Through Europe's worst winter weather they placed 1st and 2nd in class. Besides this... one Sprint defeated every entrant in the Rallye's six special stages.

PURE OIL TRIALS January 27

In a competition designed to test all-around performance, Fords were overall winners in Class I and Class II in the Pure Oil Performance Trials at Daytona. Their total performance design added up to most total points in gas economy, acceleration and braking events.

DAYTONA, FLA. February 24

Daytona "500" history was made when '63 1/2 Fords blazed into the first five places! Since Daytona is the toughest track in the world, this was eyewitness proof that Ford's total performance design can endure the maximum in automotive punishment.



## ...and here are the 63 1/2's that gave total proof of Ford's durability and handling!

You may never see a competitive auto event. But at 30 mph on rain-slick blacktop, in the close-packed rush of 5 o'clock traffic, on a twisting mountain road, the results are important to you. On every slippery surface you need the kind of roadability that placed five Fords out front in

the Daytona "500." On every busy cross street—you want the brakes that won on Riverside's sports car circuit. Your engine will hold up better through years of turnpike use because it's as beautifully balanced as Falcon's Monte Carlo V-8's. The winning competition car is bound to be a great road car—and Ford is the big winner!

If it's Ford-built, it's built for performance... total performance!

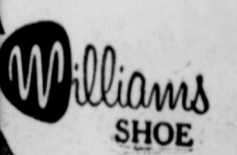


## WOLFE FORD COMPANY

3rd and AVENUE D

BURKBURNETT, TEXAS

PHONE 569-2275



draped, gently tall and slim...  
ump in white...  
the most of your foot. Just slip it rather upper.

Only 5.99

Manhattan

S&H Green Stamps

**DON'T MISS THE SPRING FASHION SHOW**  
SPONSORED BY THE JUNIOR FORUM STUDY CLUB WITH FASHIONS FROM BIRD'S — CLEMENT'S — OPAL'S ELITE — THE FAMOUS — MANHATTAN ENTERTAINMENT DOOR PRIZES

Burkburnett High School Auditorium  
March 29th 8:00 P. M.  
Adults \$1.00 — H. S. Students 75c — Children 50c

FREE GENUINE ENGRAVED LETTERHEADS  
DIES & DESIGNING \$17.00 PER 1000

### SHEPPARD-BURKBURNETT CAFETERIA MENU

April 1-5, 1963

- MONDAY**  
 Barbecued Pork on Bun  
 Potato Chips  
 Carrot Sticks  
 Cherry Cobbler
- TUESDAY**  
 Vienna Sausages and Sauer-kraut
- WEDNESDAY**  
 Pinto Beans  
 Home Style Pickles  
 Corn Bread, Butter, Milk  
 Banana Pudding
- THURSDAY**  
 Cubed Beef  
 Gravy over Mashed Potatoes  
 Buttered Peas  
 Cole Slaw  
 Bread, Butter, Milk  
 Cookies and Fruit
- FRIDAY**  
 Hamburgers  
 Hamburger Pickles  
 Baked Beans  
 Sliced Tomatoes and Lettuce  
 Bun, Cheese, Milk  
 Ice Cream
- SATURDAY**  
 Tuna Noodle Casserole  
 Green Beans  
 Spiced Beets  
 Hot Rolls, Butter  
 Pincol Marmalade

### Representing Burk High School Council



Pictured left to right: Gustena Lawson, Twila Bridges, Roy Silkwood, Bob Van Loh, and Bill Byars.

Representing the Burk Burnett High School Council at the State Student Council Conference at Abilene March 21-23 were Bill Byars, Bob Van Loh, Gustena Lawson, and Twila Bridges. Roy Silkwood, principal was a State Official, serving on the Scrapbook and Display Judging Team.

Burkburnett High School's "Dinny and the Witches," a fantasy drama by William Gibson, will meet eight other schools in District University Interscholastic League competition to be held in Graham, Texas, April 5, 1963 in the Municipal Auditorium. The production, directed by Cordell Parker, has a cast of ten and crew of six. They are as follows:

**CAST:**  
 Luella ..... Georganna Zelina (Nit witch in charge of life)  
 Uiga ..... Sandy Goodwin (Death witch)  
 Zenobia ..... Jean Todd (In charge of all change and no change)  
 Dinny ..... Robert Kelly (Man with a horn)  
 Jake ..... Johnny Koller (Symbol of man's weakness)  
 Amy ..... Marianne Campbell (The waitress at the coffee house)

Ben ..... John Wood (The blind man)  
 Stonehenge ..... Bill Byars (In charge of accounts)  
 King of the World ..... Roger Towery (Symbol of wealth and royalty)  
 Dawn ..... Judy Aiken (The fun-lover)

**PRODUCTION CREW:**  
 Carolyn Craft, Marsha Riegert, Ray Schuck, Dale Lewis, Charles Davey and Sue Parsons.  
 Other speech students entered in individual events and debate are:

**DEBATE** — Beck Weathers, George Provence, Sandra Panter, and Sharleen Beeman.  
**PROSE READING** — Robert Kelly and Jean Todd.  
**POETRY INTERPRETATION** — John Wood, and Georganna Zelina.  
**EXTEMPORANEOUS SPEECH** — Marianne Campbell, and Roger Towery.  
**PERSUASIVE SPEAKING** — Kathy Dopson, and Bill Byars.

Other Burkburnett High School students entering UIL competition are:

**READY WRITING** — Kim McClean, and Joan Skowkanski.  
**ALTERNATE** — Beck Weathers.  
**SPELLING AND PLAIN WRITING** — Joan Mattarogha, Jean Page.  
**ALTERNATE** — Jerry Lanig.  
**TYPE WRITING** — Kathy Steele, Virginia Eaton, Marilyn Greenwood, Tom Murphy, Beth Edwards.  
**ALTERNATE** — Gary Sharp.  
**SHORTHAND** — Cookie Murren, Janice Leitner, Terry Engle.  
**SCIENCE** — Ray Schuck, (Sr.) Dale Perry, (Soph.) Jay Forrest, (Soph.) Robert Pillitteri, (Jr.).

### Wichita County Unit State Teachers Assn. To Hold Spring Meet

The Wichita County Local Unit of the Texas State Teachers Association will hold their annual Spring meeting Monday, April 1, at 7:30 p. m. The meeting will be in the Cityview Cafeteria and the speaker will be Mrs. M. K. Anthony of the Wichita Falls Public Schools.

The business section of the meeting will include the election of new officers for the 1963-64 school year.

### Clara-Fairview HD Club News

On March 19th, the regular meeting of the Clara-Fairview Home Demonstration Club, was held in the home of Mrs. Joe Slama.

Mrs. E. J. Simons, president, called the meeting to order at 2:00 p. m. All members participate in "The Lord's Prayer" and also sang "The Eyes of Texas." Ten members answered the roll call. The minutes of the March 5th meeting were read and approved and the treasurers report was given.

Although Mrs. Charles Fletcher was unable to be present, she sent her report on Health and Safety. Mrs. W. R. Stimpson presented Mrs. Slama a gift upon her recovery from a 3 weeks illness. Mrs. J. H. Bentley was welcomed into the club.

Our club had volunteer workers to work at the Blood Bank recently in Burkburnett. The workers were Mrs. W. R. Stimpson, Mrs. Charles Fletcher, Mrs. Mrs. Claude Adams and Mrs. E. J. Simons.

Motion was made by Mrs. W. R. Stimpson and seconded that the club pay one half of cost for refreshments that were served at the Blood Bank. Mrs. Simons read a letter on different ideas for our exhibition and also gave a demonstration on food fads and fallacies. Recreation was presented by Mrs. Slama.

Mrs. Simons won a prize for answering the most questions and Mrs. Elmer Klinkerman won the door prize.

Next meeting will be at the home of Mrs. E. J. Simons.

Members present included Mesdames Mary Blamor, E. D. Gellner, R. C. Gilbow, Elmer Klinkerman, James Ludeke, E. J. Simons, Joe Slama, W. R. Stimpson, Bill Zimmerman and J. H. Bentley.

### Roy L. Silkwood Donates 9th Pint Of Rare Blood

When the Red River Regional Bloodmobile recently visited Burkburnett, the principal of Burkburnett High School, Roy L. Silkwood, donated his 9th pint of blood to help his fellow citizens.

Silkwood, a member of the Red Cross Gallon Club, possesses rare A negative type blood found in only six per cent of the population.

Silkwood belongs to the Methodist Church, the Lions Club, the Masonic Lodge, P.T.A. and Schoolmasters. He is a Navy veteran. Principal and Mrs. Silkwood reside at 514 Magnolia with their four children, Roilene, Lola Ann, Rita Gale and Brenda Lee.

Burkburnett Red Cross blood program chairman is Dr. J. A. Davey.

Every time one man puts a new idea across he finds ten men who thought of it before he did. But they only thought of it.

### Easy Ways to Entertain



A BUFFET BRUNCH is an easy yet effective way to entertain in spring, for the menu can be simple, and service informal, using decorative paper plates and cups that eliminate dishwashing after the meal. In fact, the use of paper service brings its built-in "maid service" to everyday breakfasts as well.

For an easy-to-prepare menu, feature Eggs Fiesta, prepared in advance and cooked in a jiffy. With the egg dish, serve sweet buns made with refrigerated biscuits. Juice to start, coffee for adults and milk or hot chocolate for the children, round out this easy but nutritious menu.

#### EGGS FIESTA

- 6 eggs, slightly beaten
- 1/4 cup milk
- 1 teaspoon salt
- Dash pepper
- 3 tablespoons butter
- 1 cup finely chopped ham
- 1/4 cup chopped green pepper
- 1/4 cup diced pimiento

Mix eggs, milk, salt and pepper. Store in refrigerator in lidded paper container. Chop ham and green pepper and store, covered, in refrigerator.

When ready to serve, heat butter in skillet. Add ham and green pepper and sauté for several minutes. Add egg mixture. Cook and stir until eggs are set. Spoon onto platter and decorate with green pepper and pimiento. Makes 6 servings.

### W. S. C. S. Circle Of Methodist Church Met With Mrs. Gragg

W.S.C.S. of the Methodist Church met in the home of Mrs. R. L. Gragg, Mrs. Reger, assistant circle leader called the meeting to order.

The opening song, "Take Time To Be Holy," with Mrs. Caffee at the piano. Mrs. Gragg led the opening prayer. Mrs. Copeland, spiritual life leader announced the meeting to be at Bridgeport, March 15 and 16.

The scripture, Luke 11 Chapter was given by Mrs. Copeland, program leader. Subject was "Lord, Teach Us To Pray." Volumes have been written on the subject: We know that Jesus spent hours every day and nights in prayer; God is nearer than breathing and closer to us than our hands and feet. Prayer, sincere prayer, must involve all of ourselves. This was a beautiful lesson and should it be for us to always be in prayer.

The benediction closed the meeting. A nice refreshment plate was

served the following members, Mesdames Galloup, Copeland, Caffee, Lowery, Bunstine, Reger, Gragg, Browning, Henderson, Cauthorn, Hall, Rigby and Henry.

### LEGION NOTES

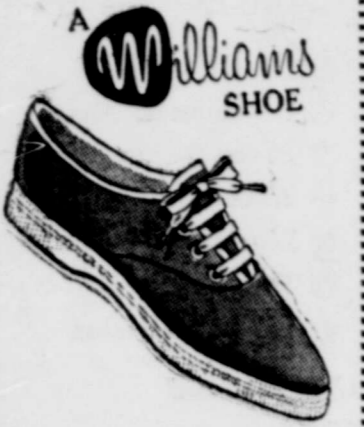
Frye-Vaughn Post No. 264

The American Legion Post 264 met March 2nd at the Legion Hall. A number of important matters were discussed.

Blood Drive was held March 13th at the Legion Hall. There were 43 pints donated. Refreshments were served by the Hardin Club and Clara Home Demonstration Club. Henry's Bakery furnished the donuts. Preston Dairy furnished the milk. In behalf of the Legion, I wish to thank all of these people and all blood donors.

The Legion will join with the Auxiliary in Child Welfare program for April. The Legion also voted to help two needy families.

Also voted to redecorate the Legion Hall in next week or so. Robert J. Dorland, Public Relations Officer



Style 669

How COLORFUL

Can It Be?

As colorful as you like it... like this easy-easy sneaker with its Vulcanized sole — bold and gay in flashing stripes.

Only 2.99

Manhattan

We Give S&H Green Stamps

## FARMERS CO-OP.

FEED AND SUPPLY

HEADQUARTERS FOR  
 Field, Garden and Lawn Seeds,  
 Fertilizers and Insecticides

ALL PURPOSE  
**VI-TEN FERTILIZER**  
 Contains the Most 10 Vital Plant Food Elements  
**50 POUND BAG... ONLY \$2.00**

Spagnum Peat Moss  
 1 Bale ..... \$5.25     1/2 Bale ..... 3.75

Michigan Peat Moss  
 100 POUND BAG ..... Bag \$3.15  
 50 POUND BAG ..... Bag 1.75  
 25 POUND BAG ..... Bag 1.10

Terra-Lite Soil Conditioner  
 3 BUSHEL SIZE ..... \$1.99  
 1/2 BUSHEL SIZE ..... .60  
 4 QUART SIZE ..... .26

**BABY CHICKS** and ALL Poultry Supplies

Purina Dog Chow  
 50 POUND BAG ..... \$5.00  
 25 POUND BAG ..... 2.70  
 10 POUND BAG ..... 1.70  
 5 POUND BAG ..... 70¢

502 NORTH AVE. B  
 3 Blocks North of Post Office     Plenty of Parking Area



Policyholder Questions Answered by the Institute of Life Insurance

Q. When is the best time for a single man to buy life insurance?  
 A. The sooner a young man gets started building his life insurance estate, the better off he will be in the long run. When he eventually marries, he will take on new financial responsibilities that he can meet only with the help of life insurance.  
 The younger he is when he takes out a policy, the lower his premium rate will be. For instance, if he takes out a \$10,000 whole life

policy at the age of 25, it will cost him only about \$140 a year. And this low premium rate never increases due to his advancing age. But if he buys it at 35, it will cost about \$195 a year.

Another important reason for not delaying the purchase of life insurance is that a young man never knows whether something might happen to his health that would make him uninsurable later on. Many life insurance companies will include in a policy he buys now a special low-cost provision guaranteeing him the right to purchase more insurance in the future, even though his health might deteriorate.

Of course, later on when he marries, he should seriously review his life insurance program and decide whether he needs additional protection at that time.

Q. What kind of policies should be maintained on children?

A. In most families, the primary function of life insurance is to replace the father's income if he should die prematurely. It is a good idea to have some life insurance on every member of the family, but protection on the breadwinner's life always comes first. For specific help in working out a plan to meet your family's needs, you should consult your life insurance agent. He can probably suggest several different ways to help your children get started on their own life insurance programs. For example, a special type of "jumping juvenile" policy provides a small amount of insurance immediately on children and a much larger amount at no increase in premiums when they grow up.

REPORT FROM MOTOR TREND EXPERTS ON THE '63 RAMBLERS:  
**"prove their mettle...reliability, performance in actual testing"**



## RAMBLER 6 OR V8 "Car of the Year"

MOTOR TREND Magazine's auto experts never handle the "Car of the Year" with kid gloves. They slammed Ramblers over back-country roads and reported, "rough roads can be stormed with confidence." They studied Rambler's Advanced Unit Construction—found it "so strong it'll take punishment longer." Finally, they summed up Rambler '63 by saying: "It's an even better value than before."  
 American Motors—Dedicated to Excellence

**TULLIS MOTOR COMPANY** Okla. Cutoff, Burkburnett, Tex.

Select Used Cars, Too. Buy Now During Your Rambler Dealer's Used Car VALUE PARADE

# Insurance is the same 'til you have a claim

**Burk Insurance Agency**  
 HOWARD CLEMENT  
 New Location—Next to Legion Hall

## Handyman The Place "Pros"

The owner who knows build things and fix save lots of money. Several suggestions made for the fund...

"do-it-yourselfer" is well as proficient. bite off more than he can chew and he knows all in the profession...

many home improvement projects fall within the amateur craftsmen, complex undertakings are consigned to the professional...

## CANINE CADGER FARES WELL



Although begging is against the law in Italy for humans, here is a four-legged hobo seeking his fortune on an avenue in Rome. He seems to have found at least one obliging contributor, who may just believe that he is out of Mother Hubbard's kennel.

## Put Lumber In The Proper Perspective

As preliminaries to spring remodeling with lumber, many "do-it-yourselfers" are taking the wraps off their saws, hammers and nails.

And while many home handymen are not conscious of the fact, the sheer simplicity of these woodworking tools often beguiles them into false perspectives on what to look for in lumber.

Since most of us can handle hammer and saws, we're inclined to associate lumber with ease of workmanship. But while no-one questions the correctness of this assumption, the personal comfort of the craftsman should not be allowed to transcend other considerations.

The far-sighted remodeler never lets a few callouses stand between him and a secure job. He doesn't base his choice of lumber on ease of nailing. He knows that what goes in too easy is likely to come out the same way. The important thing — in his mind — is the ability of lumber to hold nails once he has driven them in.

An extra lick or two with a hammer is a minor investment compared with the enormous dividend to be gained from strong permanent nail holding power.

According to the Southern Pine Association, this quality is essential for joints to stay tight and surfaces to remain smooth. It has an all-important bearing on the security and livability of a structure. In the case of decorative items, such as interior wood paneling or exterior wood siding, it is a source of enduring beauty and minimum maintenance.

Retail lumber dealers can identify wood species with strong natural nail holding ability. From this nail-gripping standpoint, it's equally important to use lumber that's properly seasoned and pre-shrunk.

Seasoning is a drying process that should be applied at the mill before lumber is surfaced to final size. Tests have proven that it can give an advantage of as much as 400 per cent in the ultimate nail holding of a structure.

Proper seasoning and pre-shrinking have been standardized for all grades of Southern Pine framing, paneling, siding sheathing and the like.



**INCOME TAX SERVICE**  
 MRS. RUSSELL DUVALL  
 Office Hours: 9 a. m. to 6 p. m.  
 AFTER 6 p. m. BY APPOINTMENT ONLY  
 "Your Tax Business Is My Only Business"  
 612 1/2 EAST 2nd STREET  
 Can turn out your tax returns efficiently, accurately and on schedule. Telephone 569-3713 for a friendly discussion of your tax problems.

**Lee Baptist Church**  
 ALL BEGIN A  
 Dual  
 Sunday School  
 March 31  
 Will Be As Fol-  
 S. S. 8:30  
 P. Service 9:45  
 S. S. 10:50  
 McMinn, Pastor

Southern Pine Association — wood plank-and-beam construction — a popular medium for adding wings, rooms and covered patios to existing dwellings.

While this system is best noted for the dramatic visual impact of exposed wood ceiling beams, it's also a precision product of modern engineered design. Some contractors assert that plank-and-beam can save up to twenty-five per cent of the cost of the building or addition — provided that both the builder and his crew are thoroughly familiar with the system and its execution. Obviously, this is a case where professional know-how is a source of economy.

Many retail lumber dealers have one-stop remodeling centers — where materials, contracting and financing may be obtained in a single convenient

package. This eliminates the duplication of services that may be involved if the home owner attempts to serve as his own contractor.

Reliable dealers and remodeling contractors know the value of quality in materials and how it can be used to generate economy.

For example — the adaptability of properly seasoned, "pre-shrunk" lumber to wood trussed rafters and other pre-assembled components, which are efficient devices for major home improvements. These engineered parts simplify structures and contribute to swifter, surer job-site work.

In the case of Southern Pine, further economy is achieved since standard framing grades meet all requirements of trussed rafters and other forms of engineered design. This eliminates a need for special grades, which such uses would otherwise require.

## Skip the sulphur and molasses— get a CHEVROLET SUPER SPORT

Chevrolet Super Sports\* have a charm that soothes your springtime yen for romantic adventure as fast as you can slip into a bucket seat. (Especially the Impala's, with its adjustable new Comfortilt steering wheel\*.) And the charm lasts all year round.

Match that, old-time tonics! In fact, match that, anybody! Front bucket seats are a great start, but Super Sports also feature plush all-vinyl interiors, special interior-exterior trim in tasteful touches, and a veritable feast of goodies we call performance options\*.

A detailed enough phrase to describe tailored-to-your-taste-action, from brisk to utterly overwhelming. Chevrolet and Chevy II Super Sports

invite adventure in convertible or coupe form. Think that's all? You don't know Chevrolet! That same Super Sport zing applies to the Corvair Monza Spyder, very breezy with its air-cooled 150-horsepower rear-mounted engine, 4-speed shift\* and an outlook made for green country lanes.

Ditto for the new Corvette Sting Ray, a magnificent thoroughbred among pureblood sports cars with not a single sacrifice in comfort. Both Spyder and Sting Ray come in coupe or convertible styles. All Chevrolet Super Sports are like spring days—you've got to get out in them to savor them. So catch yourself a passing zephyr and wait on down to your Chevrolet showroom.

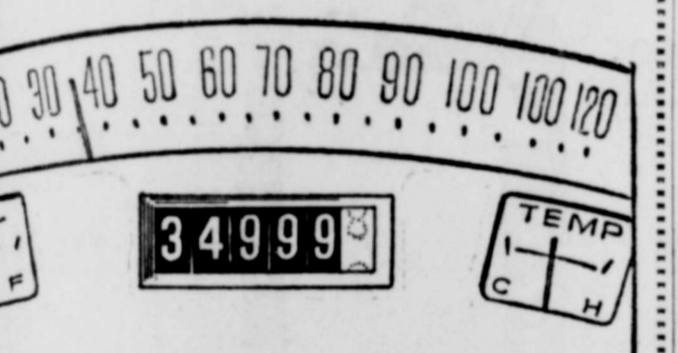


Models shown clockwise: Corvette Sting Ray Convertible, Corvair Monza Spyder Convertible, Chevrolet Impala Super Sport Convertible, Chevy II Nova 400 Super Sport Convertible. Center: Soap Box Derby Racer, built by All-American boys.

## NOW SEE WHAT'S NEW AT YOUR CHEVROLET DEALER'S

**MATHIS CHEVROLET COMPANY**

300 East 2nd Street Phone JO 9-3381 Burkburnett, Texas



## IT'S TIME FOR A BRAND-NEW CAR

Above the 35,000 mileage mark, parts begin to need replacement.

If your car or truck is pushing 35 thousand, it's a good time to visit the showroom of your favorite car maker. Before you buy, it's a good time to visit our bank—and let us tell you how simply you can arrange low-cost financing here, on convenient terms.

## INTEREST PAID ON SAVINGS

**3 1/2%** **4%**

6 MONTHS 1 YEAR  
 ● DRIVE IN BANKING

NEW DRIVE IN BANKING HOURS:  
 Mon. Thru Fri. 9 a. m. to 2 p. m.—4 p. m. to 6 p. m.  
 Saturday 9 a. m. to 12 Noon



**First NATIONAL BANK**  
 BURKBURNETT, TEXAS  
 "SERVING BURKBURNETT SINCE 1907"  
 MEMBER  
 Federal Deposit Insurance Corporation

## How to Get a Deeper View of the News!

If you wanted to choose just one section of a newspaper each week as a quick way to become superbly "informed"—that section could be "Perspective" in The Houston Post.

Just as perspective is the way an artist projects depth into a picture, "Perspective" is the way Texas' greatest metropolitan newspaper projects to readers a deeper view of the week's news each Sunday.

A wide range of topics from world affairs to local politics, art, new books, science, and education are collected and brought into sharp focus weekly in this thought-provoking new Sunday Houston Post section.

"Perspective" is just one more reason why every thinking person will want to read The Sunday Houston Post, Texas' greatest newspaper. Subscribe today.

Read  
**"Perspective"**  
 New focal point for Sunday reading in  
**THE HOUSTON POST**  
 Texas' Greatest Newspaper  
 Written and Edited to Merit Your Confidence

Burk Catholics Met In Home Of Mrs. Weldon...  
 Sunday, March 17th...  
 A Committee...  
 Weldon Nix...  
 Several suggestions...  
 The next meeting...  
 A. C. Hicks...  
 Why use 2 coats when 1 does the job...  
 One coat of BPS...  
 Superior coating...  
 WHITE Per Gallon...  
 CIGERO...  
 215 Ave. B...  
 Utility...  
 Year...  
 try roads and a confidence...  
 net, Tex.

Wilbarger-Wichita SOIL CONSERVATION DISTRICT NEWS



OUR SOIL ★ OUR STRENGTH DEFERMENT BEST RANGE IMPROVEMENT

Resting rangeland during the growing season is one of the better methods of increasing grass production on most pastures in this area states James Park, Soil Conservationist at Iowa Park.

Most grasslands in this area will profit more by a complete rest during spring and summer months. At this time moisture conditions are more likely to be adequate, and the warm season grasses are making their maximum growth, both in vegetative production and root development.

Where range acreage is large enough to divide, into two or more pastures, deferring a pasture during alternate summers works well, but where pastures are of such acreage that dividing would be impractical, supplemental grazing of sudangrass or sorghum alumn can be used to provide pastures a short rest of two to three months, which is desirable.

Where brush is to be controlled on rangeland, a deferment from time of spraying until frost is highly desirable.

School Trustee Election April 6

Five candidates have filed to have their names placed on the ballot for School Trustee Election, April 6, 1963.

Mr. Floyd Marten Mr. Cliff Hagstrom Mr. Paul Fisher Mr. B. H. Preston, Jr. Mr. Tommy Hubbard

Two are to be elected to fill the term of Mr. Floyd Marten and Mr. A. J. Muller. Their terms expire April 6, 1963. Mr. Marten is seeking re-election to a three year term.

Anyone desiring to vote an absentee ballot may apply for ballot at County Tax Assessor and Collector's Office any time after March 26th and before April 3, 1963.

Nature's Salt

Should the salt you bring with you dissolve in bad weather, search out the nearest hickory tree, char several pieces of the bark, and use as a salt substitute.

Mashed and powdered, the stuff is so good you won't miss the real thing.

PALACE Theatre BURKBURNETT, TEX.

NEW STARTING TIME Matinees Sat. and Sun. Window Opens 1:45 Show Starts 2:00

Evening Shows: Boxoffice Opens 6:45 Show Starts 7:00

FRIDAY - SATURDAY 25c 50c

DOUBLE FEATURE JERRY LEWIS IN IT'S ONLY MONEY -PLUS- THE FIREBRAND

SUNDAY 25c 50c

DOUBLE FEATURE PERIOD OF ADJUSTMENT JANE FONDA -PLUS- NORTH BY NORTHWEST CARY GRANT

Mon.-Tues. CLOSED

WEDNESDAY BARGAIN NIGHT ALL SEATS 20c DOORS OPEN 7:00 P. M. Show Starts 7:30 P. M. ONE COMPLETE SHOW ONLY

Thursday CLOSED



"Improve Personal Appearance Through Proper Care of Clothing" is being covered in a series of work shop meetings. The third work shop session will be Tuesday, April 9, at 10:00 a. m. in the Wichita Falls, Texas Electric Service Company Auditorium. The session will end at 12:00 noon.

Miss Lily Johnson, Home Economics Consultant for the Southwestern Area of Philco Corporation will lead this session. The session will include proper aids for keeping clothes new and crisp looking. As well as aids for doing the job, Miss Johnson will teach homemakers to pre-treat clothes, so that proper care is much easier.

Miss Johnson is well qualified to teach homemakers to care for clothing so they will receive full value for dollars spent on family clothing. She is responsible for product demonstrations and other home service operations in Arkansas, Louisiana, Mississippi, Oklahoma, Tennessee and Texas. Her home office is in Philadelphia, Pennsylvania.

Associated with the appliance industry since 1945, Miss Johnson has worked with laundry equipment, laundry aids and fabrics since the introduction of automatic laundry for consumer use.

She was formerly with Lever Brothers Company, with headquarters in Houston, Central Distributors Company and Kansas City Power and Light, both in Kansas City, Missouri. She is a graduate of Kansas State University, Manhattan, Kansas.

The work shop is sponsored by the Wichita County Program Building Subcommittee on Clothing. Mrs. George Wyatt is chairman of the subcommittee. Mrs. J. A. Fouts, Mrs. Emil Flusche, Mrs. J. G. Cheney, Mrs. Lem Park, Mrs. M. H. Feltman and Miss Thelma Wirges, county home demonstration agent, also work with the subcommittee. This subcommittee plans all clothing work for the Wichita County Home Demonstration Program.

The work shop is open to all interested homemakers.

Bleaches are important in laundering to remove stains and stubborn dirt, according to Thelma Wirges, county home demonstration agent. They differ in action and should be selected to suit specific fabrics.

The most common bleach is a liquid solution of chlorine. It is effective on white and colorfast cottons and linens. Too much of this type of bleach, however, will injure even sturdy fibers.

Powdered chlorine bleaches are now available, the agent reports. Used in the same way as liquid chlorine bleach, they are equally effective. The powdered form is easy to store, handle and measure.

An entirely different type of powdered bleach has sodium perborate as the bleaching agent. It will not harm silk or wool, and can be used safely on delicate materials as the action is mild. Fabrics allowed to stand in this bleach are not weakened.

When using either liquid or powdered bleaches, follow directions on the container carefully. All bleaches act more quickly in hot than in cool water.

Measure the liquid or powdered chlorine bleaches carefully. . . . excess may be hard on fibers and it adds to laundry costs.

Bleaches are only a small part of the laundry aids to be discussed by Miss Lily Johnson at the work shop, Tuesday, April 2.

NOTICE

Grass and Weed Burning Permits

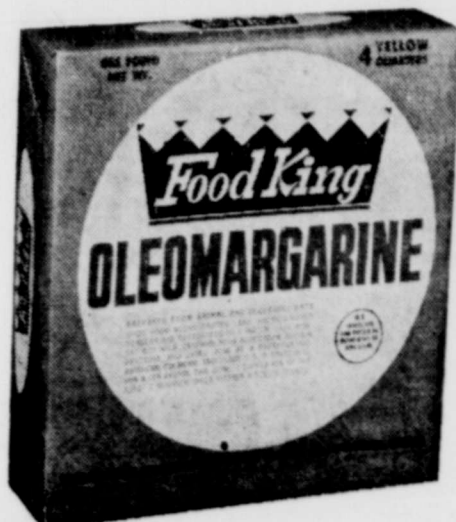
Due to the city employee's being off duty from 5:00 p. m. Friday until 8:00 a. m. Monday except for standby emergency duty, no permits for burning will be issued for the weekends.

Only the fireman is on duty during the week end and this will decrease the protection at this time.

The co-operation of the citizens in compliance with the trash burning ordinance has truly been appreciated. CITY MANAGER

FDR held his first "Fireside Chat" in 1933.

FOOD KING-SAL



OLEO

FOOD KING

HOMINY WHITE OR YELLOW 12 300 CANS

FOOD KING

Blackeye PEAS 12 300 CANS



FOOD KING

CUT Green BEANS 12 300 CANS

FOOD KING

Mexican Style BEANS 12 300 CANS

FOOD KING

Baby Lima Lima BEANS 12 300 CANS

FOOD KING

Kidney BEANS 12 300 CANS



FOOD KING 3 LB. CAN ONLY SHORTENING

49¢



Pea

1.00

Whole Irish TOE

1.00

Spa With Tomato And Cl

1.00

Ungra

EG 3

SUP MAR



# BUNDLE SALE

## MEATS



Boston Butt

SEMI-BONELESS

**PORK ROAST** LB.

**29¢**

FRESH

**Ground Beef** 3 LBS. FOR

**\$1.00**

ARMOUR'S STAR

**BACON** 2 LB. For

**89¢**

WRIGHT'S ALL MEAT

**BOLOGNA** Fresh Sliced Daily LB.

**39¢**



NO. 1 RED

**POTATOES** 10 Lb. Bag

**39¢**

VINE PINK

**TOMATOES** LB.

**17¢**

RUBY RED

**Grapefruit** 2 LBS. FOR

**25¢**

Washington Fancy Red Delicious



**APPLES** Lb.

**15¢**

FRESH

**GREEN ONIONS or CELLO RADISHES** Each

**5¢**

### Facts About Fire And Clean-Up

Every 12 minutes a home in this nation is destroyed or damaged by a fire starting in rubbish, according to National Fire Protection Association records.

The three storage areas of the home — attic, basement, closets—are the spots where 16.4% of all dwelling fires originate, National Fire Protection Association studies show.

About 550,000 U. S. homes are hit by fire each year, and over 6,000 persons — 30 per cent of them children — die in these fires, according to National Fire Protection Association records.

Last year (1962) Americans burned up more than \$1.5 billion worth of property in over two million fires, figures compiled by the National Fire Protection Association show.

### News From The County Agent

The date for the Wichita Falls Area Vegetable Show has been set for Saturday, June 29. The Wichita County Vegetable Committee set the date this week in a special meeting. It was suggested that prize money and ribbons be awarded as prizes this year. Only ribbons in the past have been awarded. The Nurserymen Association will have special displays at the show. Club boys, girls, and adults are urged to plan to enter vegetable exhibits in the show.

Now is a good time to get your sprayer ready to start spraying your peach and plum trees. You start your first spray when 75% of the blossoms have shed. Anyone wanting a spray schedule for all fruit trees may call the County Agents office and we will mail you a copy.

Richard Etter will serve as a swine demonstrator during 1963 in the county. Tom Hunter, farm management specialist from Vernon, along with the local county agent will work with him during the year on farm records and management. Records will be compiled at A&M College. Several other demonstrators will be selected during the month.

Sam Spencer, of the Friberg Community and Mrs. J. H. Bentley and daughters, of the Burkburnett Community, will serve as vegetable demonstrators in 1963. Virgil Woodfin, of the Iowa Park Experiment Station, and the local leaders will be working during the year with the demonstrators.

The District III 4-H Elimination Contest will be held at Midwestern University, in Wichita Falls, on Saturday, April 27th. 4-H boys and girls from 22 North Texas counties will participate in the contest.

Knowing immediately where every screwworm case in the Southwest is located has become so important to the eradication program that arrangements have been made so livestock producers can call the Mission headquarters collect when a case is found. Producers are urged to call day or night JUSTICE 5-1646, Mission, whenever an infestation is found. They are asked by the program officials to do two things — collect about ten worms from the wound, place them in water or alcohol and hold for instructions and report the infestation by telephone to Mission.

The 54th Annual Special Summer Cotton School will be held at Texas A&M College, June 3 through July 12. Details are available from Professor J. M. Ward, Department of Agricultural Economics and Sociology, Texas A&M College, College Station, Texas.

New developments in feeding and practical housing and equipment for the hog farm will be featured on the program of the 12th Annual Swine Short Course to be held at Texas A&M College, April 1-2. T. D. Tanksley, extension swine specialist, expects a highlight of the program to be the discussion by eight Texas commercial hog producers on their operations.

**PERCOLATOR PROGRESS**  
A life time coffee filter made of very fine mesh pure nickel has been developed to replace paper filters in coffee pots. The filter can be adapted to fit most coffee percolators.

### Fashion Show Burkburnett High Fri., March 29th

The Junior Forum Study Club is presenting a Spring Fashion Show, Friday, March 29th, 8:00 p. m. at the Burkburnett High School Auditorium.

The stores presenting their fashions are Bird's Sportswear, Clement's Fashions, Elite Dress Shop, The Famous Department Store, Manhattan Department Store and Opal's Dress Shop.

The show features women's, children's and men's wear. The commentator for the show will be Mrs. Helen Reasoner. Entertainment will be provided by Miss Carolyn Craft, vocalist; Connie Seidel, instrumentalist; and "The Imitations," featuring Leonard Muller, John Wood, Allen Neal, Sandra Goodwin and Robert Kelly.

There will be a drawing for a gift certificate after the show. Models participating for Bird's are Mitzi Mills, Treva Mills, Billie Monson, Stephanie Slusher, and Joan Dolan.

Models for Clement's are Barbara Myers, Tona Nix, Barbara Wolfe, Annette Preston, Beverly Preston, Jan Robertson and Barry Davey.

Models for the Elite are Mrs. Doyle Bratley, Mrs. T. M. Cornelius, Mrs. Russell Kelly, Mrs. Raymond Van Loh and Mrs. I. C. Evans.

The women modeling for The Famous are Jo Ann Thomas, Donna Sue Thompson, Dixie Van Reenan, Evelyn Maxwell, and Claudia Burnett.

Modeling children's clothing are Lee Ann Thomas and Kathy Thomas.

Men's wear will be shown by Jacky Cornelius, Barney Fudge, Johnny Koller, and Dale Lewis.

Ladies' fashions from The Manhattan will be shown by Brenda Spillers, Vickie Turner, Virginia Eaton, Toni Wood, and Carolyn Craft. Connie Dolan, Janet Di Marzio, Tommie Taylor, Vonda Willingham, and Tracey Martin will show the children's clothes.

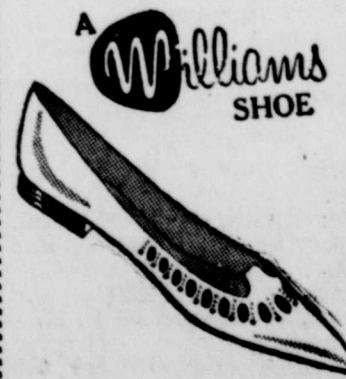
Modeling women's fashions for Opal's will be Gladys Holt, Judy Brister, Juanita McDonald, Faye Martin and Bobbie Slusher.

Little girl's fashions will be shown by Monica Hubbard, Janet Slusher, and Terri Taylor.

The proceeds from this show will be used in the various projects of the Junior Forum Study Club. In past years the club has donated to the Burk Swim Club, the Junior High School Library, and the Exchange Student Fund at the Burkburnett High School and various scholarships of the Texas Federation of Women's Clubs.

### NICKEL ON WHEELS

A present-day automobile, it is estimated, incorporates more than 40 separate parts which contain nickel. These include gears, axles, engine components, spark plugs and plated decorative parts.



Style 4520

### Prettiest Pump

— and COOLEST!

The prettiest pump this summer is rich white leather that complements all clothes. The coolest pump wears a crescent of cutouts around its vamp. Pancake heel. Leather up per.

Only 2.99

**Manhattan**

We Give S&H Green Stamps

**39¢**

**ITED**  
SUPER MARKET

# JanLee To Begin Dual Sunday School March 31

The JanLee Baptist Church will enter a "Dual Sunday School" program, beginning Sunday, March 31st.

Travis McMinn, pastor, says, "We feel that this is another step in the growth of our church. We are confronted with the need of more space in order to take care of the many people in our community who need to be in Sunday School every Sunday. We feel that this is the way to utilize the space that we now have and also a way that we can soon reach the many that we are not reaching now."

The schedule for the "Dual Sunday School" and Worship Service will be as follows:

FIRST SUNDAY SCHOOL  
8:30 — 9:40  
WORSHIP SERVICE

9:45 — 10:40  
SECOND SUNDAY SCHOOL  
10:45 — 11:55

Both schools will be completely graded in all departments. There will be a department and class for all people in both First and Second Sunday School with a complete staff of workers in each school. Everyone presently enrolled

in Sunday School at JanLee will have the opportunity to choose the First or Second Sunday School. The ones who attend the First Sunday School will move immediately to the Worship Service. After the Worship Service, the ones who attend the Second School will go to their departments. The ones who attend the Second school

may bring their children to the nursery for the Worship Service anytime after 9:30 a. m.

"The only voice a man has in the decoration of his home is the invoice."

No matter how handsome or how ugly you are, you still look better when you smile.

FOR RESULTS — ADVISE

**Income Tax Service**  
It doesn't cost anything to have it done right.  
**KEN HAYS**  
1002 Broad Ph. 788-44  
Wichita Falls, Texas

## TAKE YOUR PROBLEMS TO CHURCH — MILLIONS LEAVE THEM THERE

### FLIGHT... of Faith

The faith of a boy that a slender string shall hold high his kite — that when he extends a little more string his kite will go a little higher — shows that this flight is a flight of faith.

As the boy has faith in the string so must we have faith in our Lord, and the more faith we extend, the higher and more abundant our lives will be. It is written in **Romans 1:17**, "The just shall live by faith." Attend Church this Sunday and receive inspiration from those who share your faith, that you may, as the Apostle Paul said, "be comforted together by the mutual faith of you both."



The Church is God's appointed agency in this world for spreading the knowledge of His love for man and of His demand for man to respond to that love by loving his neighbor. Without this grounding in the love of God, no government or society or way of life will long persevere and the freedoms which we hold so dear will inevitably perish. Therefore, even from a selfish point of view, one should support the Church for the sake of the welfare of himself and his family. Beyond that, however, every person should uphold and participate in the Church because it tells the truth about man's life, death and destiny, the truth which alone will set him free to live as a child of God.



©Coleman Adv. Ser., P. O. Box 20067, Dallas 20, Texas

## ATTEND THE CHURCH OF YOUR CHOICE THIS SUNDAY

- FAIRMONT Dairy Products**  
Milk — Ice Cream  
Cottage Cheese  
Always The Peak Of Perfection
- DAIRY MART**  
Fine Food and Friendly Service  
CALL IN ORDERS  
MR. and MRS. JOHN GRATTON  
909 Wichita Hwy. Phone 569-8114
- Texas Electric Service Co.**  
J. B. ADY, Manager
- CECIL'S FOOD STORE**  
CHOICE MEATS and GROCERIES  
EAST 3rd PHONE 569-1221
- BOYD BROS. DEPT. STORE**  
General Merchandise-Furniture  
Maytag and G. E. Appliances  
117-123 Main — Phone 569-2214
- BURKBURNETT FLORIST**  
Member Florist Telegraph Delivery  
Mr. and Mrs. L. V. Richards  
415 South Ave. B — Phone 569-2281
- UNITED SUPER MARKETS**  
Kenneth Palmer  
Manager  
Wichita Highway  
And Tidal Street
- WOLFE FORD COMPANY**  
Complete Service and Sales  
Phone 569-2275
- BOOMTOWN BOWL, Inc**  
AMF "Magic Triangle" Pinspotter  
Snack Bar —Nursery—Phone 569-8139  
1001 Wichita Highway

- Farmers Co-op Gin, Feed and Supply**
- C. D. Shamburger Lbr. Co.**  
Gene A. Jen, Manager  
200 West 3rd Street
- Preston Dairy Products**  
For The Finest In Dairy Products  
Hugh and Buddy Preston  
219 East 2nd Street
- Manhattan DEPARTMENT STORE**  
We Give S. & B. Green Stamps
- DICKSON OIL COMPANY**  
**DICKSON MOTEL**
- Payton Cozby Plumbing and Heating**  
409 East Main Street  
PHONE 569-3911
- RANCHOUSE MOTEL**  
REX and JUANITA RICKETTS, Own.  
OKLA. CUTOFF PHONE 569-3838
- Lloyd Clemmer Lumber Co.**  
YOUR BUSINESS APPRECIATED  
See Us For Prices Before You Buy  
OKLA. CUTOFF PHONE 569-3838
- COMPLIMENTS OF  
**Mr. and Mrs. A. L. Gilbow**
- CORNER DRUG STORE**  
George McClarty  
320 East 3rd Street
- VIRGIL AARON**  
SANITATION CONTRACTOR  
Complete, Modern Facilities

- Jan Lee Baptist Church**  
Rev. Travis McMinn, Pastor  
Across from Junior High School  
Early Sunday School, 8:30 a. m.  
Worship Service, 9:45 a. m.  
Late Sunday School 10:45 a. m.  
Training Union, 6:00 p. m.  
Evening Worship, 7:00 p. m.  
Wednesday—  
Teachers and Officers 7:00 p. m.  
Church in Prayer—8:00 p. m.  
Choir Practice, 8:15 p. m.  
Large enough to accommodate, small enough to appreciate.
- Church of the Nazarene**  
Main at Holly  
Ivey Bohannan, Pastor  
Sunday School, 9:45 a. m.  
Morning Worship, 11:00 a. m.  
Young Peoples Service, 6:45 p. m.  
Junior Society, 6:45 p. m.  
Evening Worship, 7:30 p. m.  
Wednesday Prayer Service, 7:30 p. m.
- NOTICE**  
Burkburnett residents are invited to attend the First Presbyterian Church in Grandfield, Oklahoma.  
Sunday School—10:00 a. m.  
Morning Worship—11:00 a. m.  
Wednesday Bible Study—7:30 p. m.  
Rev. Campbell B. Long, Pastor.
- First Methodist Church**  
Avenue C and 4th Street  
Phone 569-3778  
Carol D. Copeland, Minister  
Merwin K. Turner, Assoc. Min.  
Morning Worship, 8:30 a. m. — 10:50 a. m.  
Sunday School, 9:45 a. m.  
Methodist Youth Fellowship, 5:45 p. m.  
Evening Worship, 7:00 p. m.  
Bible Study, 7:00 p. m., Wednesday and Thursday.  
Nursery provided for all Church Services.
- Central Baptist Church**  
814 Tidal St.  
Kenneth D. Bradshaw, Pastor  
Sunday School, 9:30 a. m.  
Morning Worship, 10:45 a. m.  
Training Union, 6:00 p. m.  
Evening Worship, 7:00 p. m.  
Wednesday Night Prayer Service, 7:30 p. m.  
"A Friendly Progressive Southern Baptist Church"
- Free Church of God In Christ In Jesus Name**  
West 6th St.  
W. W. Dixon, Pastor  
Saturday—  
9:45 a. m., Sabbath School.  
11:00 a. m., Preaching Service  
Thursday Night Service, 7:00 p. m.  
We welcome all colored and white people to our services.
- Calvary Baptist Church**  
College and Ave B  
Ray C. Morrow, Pastor  
10:00 a. m., Sunday School.  
An Independent Southern Baptist Church.  
We use the Bible as our only literature.  
11:00 a. m., Song, Preaching Service.  
7:00 p. m., Young Peoples Services.  
7:30 p. m., Night Preaching Service.  
Wednesday Night—  
6:45 p. m., Teachers Meeting  
7:30 p. m.—Prayer Meeting.
- First Church of Christ Scientist**  
2156 Avenue H  
Wichita Falls, Texas  
Sunday School for children under 20 years of age, 11:00 a. m. in the Church Edifice.  
Nursery.  
Services at 11:00 a. m.  
Wednesday Evening Services, 8:00 p. m.
- Assembly of God Church**  
Lonnie Finney, Pastor  
Sunday School, 9:45 a. m.  
Morning Worship, 11:00 a. m.  
Evening Worship, 7:30 p. m.  
Women's Missionary Council, Tuesday, 2:00 p. m.  
Youth Service, Tuesday, 7:30 p. m.  
Prayer Meeting, Thursday, 7:30 p. m.
- The First United Pentecostal Church of Jesus Christ**  
We want to invite you to any or all of our Services. You have a standing invitation where you can hear the Bible preached in the old fashioned way.  
Come and bring some one.  
Service Nights—  
Thursday, 7:45 p. m.  
Saturday, 7:45 p. m.  
Sunday, 7:45 p. m.  
Sunday School, 10:00 a. m.  
Pastor, Rev. E. H. Menton  
Phone 569-1108  
606 E. 6th Street
- First Baptist Church OKLAHOMA**  
Frank Grantz, Pastor  
Sunday School, 9:45 a. m.  
Morning Worship, 11:00 a. m.  
Training Union, 7:00 p. m.  
Evening Worship, 8:00 p. m.  
Prayer Meeting, Wednesday, 7:30 p. m.  
Intermediate and Junior G. A. each Tuesday evening at the Church, 4:00 p. m.  
Sunbeams at Church Tuesday evening at 4:00 p. m.  
You Are Cordially Invited to Our Services.  
Waters vary in their productive capacity, depending upon the type of soils surrounding them. Waters surrounded by rich soils produce good fish crops, while waters located in unproductive land areas produce a few fish.
- Grace Lutheran Church**  
Third St. and Ave E  
Philip M. Otten  
The Church of the Lutheran Hour, TV's "This is the Life".  
Sunday, 9:15 a. m., Sunday School and Bible Classes.  
10:30 a. m. Morning Services.  
LWMS meeting every first Tuesday, 2 p. m.  
Sunday School teachers meeting, Teacher training course, every 2nd and 4th Wednesday, 7:30 p. m.  
Walthers League Meeting, every 2nd and 4th Sunday at 7:30 p. m.  
You are cordially invited to our services.  
Worship With Us At **Church Of Christ**  
Randlett, Oklahoma  
Corky Grisham, Minister  
Home-Office Phone Ly 9-2893  
WORSHIP SERVICES  
SUNDAY—  
10:00 a. m., Bible Study.  
10:45 a. m., Morning Worship.  
6:00 p. m., Evening Worship.  
WEDNESDAY—  
7:30 p. m., Bible Study.
- First Baptist Church**  
Rev. Hollis Morris, Pastor  
Corner Ave D and 4th St.  
Sunday School, 9:30 a. m.  
Morning Worship, 10:45 a. m.  
Training Union, 5:30 p. m.  
Evening Worship, 6:30 p. m.  
Prayer Meeting, Wednesday, 7:30 p. m.  
"In the heart of the city for the hearts of the city."
- First Christian Church**  
2nd Street and Avenue D  
Phone 569-2062  
Rodney W. Spittler, Minister  
Residence 500 Mimosa Drive  
Phone 569-1236  
SUNDAY—  
9:45 a. m., Church School  
10:50 a. m., Morning Worship  
6:00 p. m., Youth Meetings and Junior Choir  
7:30 p. m., Evening Worship  
8:00 p. m., Fellowship Hour  
WEDNESDAY—  
7:30 p. m., Choir
- Church of God**  
J. W. Jackson, Pastor  
10:00 a. m., Sunday School.  
11:00 a. m., Hour of Morning Worship.  
7:00 p. m., Evangelistic Services.  
7:30 p. m., Wednesday, Young Peoples Endeavor.  
If you haven't a church home, we would like very much for you to visit us where the full gospel is preached in the old time way. There is special music and singing each service. Each and every one has a warm and hearty welcome to come worship with us.  
**MEN'S BIBLE CLASS**  
**FIRST BAPTIST CHURCH**  
Invites You To Worship With Them **Each Sunday Morning at 9:30**  
A. R. Hill, President  
W. R. Carswell, Teacher  
C. R. Chambers, Secretary
- Trinity Lutheran Church**  
Pastor, Rev. David W. Ja...  
Eight Miles West of Burkburnett on State Highway 9-45 a. m.—Sunday School and Bible Classes.  
10:45 a. m.—Worship Service  
Communion Service—  
Sunday of each month.  
Walthers League meeting every Wednesday, 8:00 p. m.  
A Church of the Lutheran Church—Missouri Synod.
- Church of Christ**  
Eugene Gilmore, Minister  
Bible Study Sunday, 9:45 a. m.  
Worship, 10:45 a. m.  
Young People Class 5:00 p. m.  
Worship, 6:00 p. m.  
Bible Study, Wednesday, 7:30 p. m.  
Ladies' Bible Class, Tuesday, 9:30 a. m.  
"We welcome you to our services."
- Pentecostal Church Of God**  
Berry Street  
Rev. Alfred B. Qualls  
Sunday School, 9:45 a. m.  
Morning Worship, 11:00 a. m.  
Sunday Night Evangelism, 7:00 p. m.  
Saturday Night Fellowship, 7:30 p. m.  
Every generation learns the old fashions, but religion follows the new.

chita County, Texas  
RESULTS — ADVERTISE

me Tax Service  
doesn't cost anything  
ive it done right  
KEN HATS  
Broadway  
chita Falls, Texas

inations For  
Carrier Or  
Clerk

ity has been received  
Pastmaster in Burkburnett  
accept applications for  
for Postal Carrier  
Clerk to be held by  
Service Commission.  
ations will be held at  
Falls and applicants  
notified by the Commis-  
the exact time and place  
for the written exam-  
ing salary will be \$2.26  
r. Applicants must re-  
the delivery limits  
Burkburnett post office  
have attained the age  
years. All qualified appli-  
will receive consideration  
employment without regard  
race, creed, color, or na-  
tional origin.  
Form 5000-AB  
obtained at the post

RESULTS — ADVERTISE

We Give  
S. & E.  
Green  
Stamps

COMPANY  
MOTEL

ton Cozy  
g and Heat  
st Main Street  
NE 569-3911

E MOTEL  
TICKETS, OK  
PHONE 568

Lumber Co  
APPRECIATE  
Before You Buy  
PHONE 568

NTS OF  
A. L. Gilbow

UG STORE  
Clarty  
d Street

ARON  
CONTRACTOR  
rn Facilities

ity Lutheran  
Church  
ev. David W. J.  
ies West of Bur  
State Highway  
m.—Sunday  
Classes.  
m.—Worship Se  
nion Service —  
f each month.  
League me  
dnesday, 8:00 p.  
rch of the Luth  
h—Missouri Syn  
rch of Chris  
e Gilmore, Minn  
udy Sunday, 8:45  
p, 10:45 a. m.  
People Class 5:30  
p, 6:00 p. m.  
udy, Wednesday

Bible Class, Tu  
come you to  
ces."

costal Church  
Of God  
Berry Street  
ed B. Qualls,  
School, 9:45 a.  
Worship, 11:45  
Night Evangelis  
p. m.  
y Night Fellow  
eneration laug  
shions, but relig  
e new.

# Buy Auto Liability From The Travelers Insurance Co. |

IT DOESN'T COST ANY MORE TO  
**BE SURE**  
HOWARD CLEMENT, Agent  
New Location — Next to Legion Hall

inations For  
Carrier Or  
Clerk

ity has been received  
Pastmaster in Burkburnett  
accept applications for  
for Postal Carrier  
Clerk to be held by  
Service Commission.  
ations will be held at  
Falls and applicants  
notified by the Commis-  
the exact time and place  
for the written exam-  
ing salary will be \$2.26  
r. Applicants must re-  
the delivery limits  
Burkburnett post office  
have attained the age  
years. All qualified appli-  
will receive consideration  
employment without regard  
race, creed, color, or na-  
tional origin.  
Form 5000-AB  
obtained at the post

RESULTS — ADVERTISE



**FREE**

**TRADING STAMPS**

Your Choice For  
**RC & PEHI**

**Bottle Caps**

Bottle Cap Worth ONE STAMP

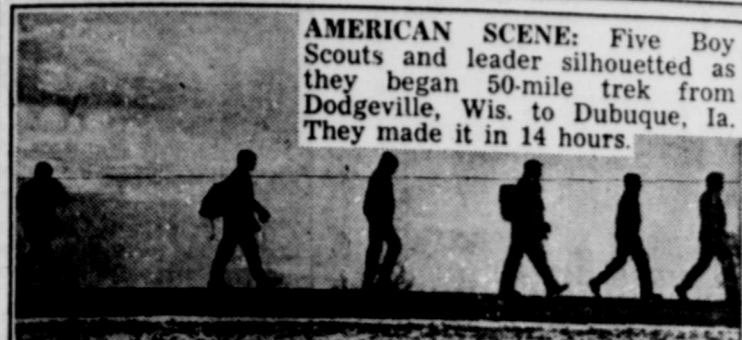
Following Crowns Are  
Trading Stamps:  
ROYAL CROWN COLA  
HI ORANGE  
HI STRAWBERRY  
HI GRAPE  
HI LEMONADE  
PER 10

Stamps that are good  
free trading stamps  
the ones that bear  
name on the Crown  
crown reads like  
BOTTLED BY  
ROYAL CROWN BOT-  
TLING CO., WICHITA  
FALLS, TEXAS, AND  
OKLAHOMA

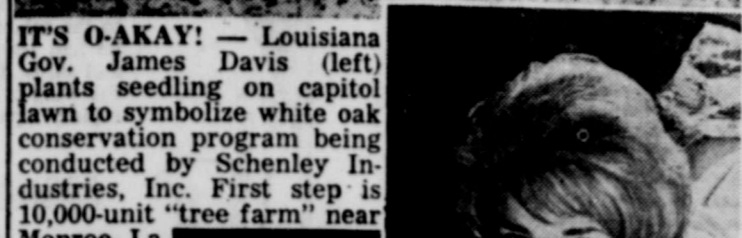
comers in Wichita  
and Altus should  
their crowns in at  
plant between 8:30  
and 4:30 p. m. Mon-  
through Friday.  
comers living in other  
turn your crowns  
your Royal Crown  
dealer after you  
saved 100 or more.  
your name and ad-  
on the sack and in-  
back with number of  
cans and the kind of  
ps you want. The  
will give Crowns  
your Royal Crown sal-  
and will mail  
to you.

up an extra carton  
Royal Crown Cola or  
of the delicious flav-  
oday at your favor-  
store and start sav-  
the crowns now.  
al Crown Cola  
Bottling Co.  
1206 Indiana  
Wichita Falls, Texas  
Altus, Oklahoma  
East Broadway

## People, Spots In The News



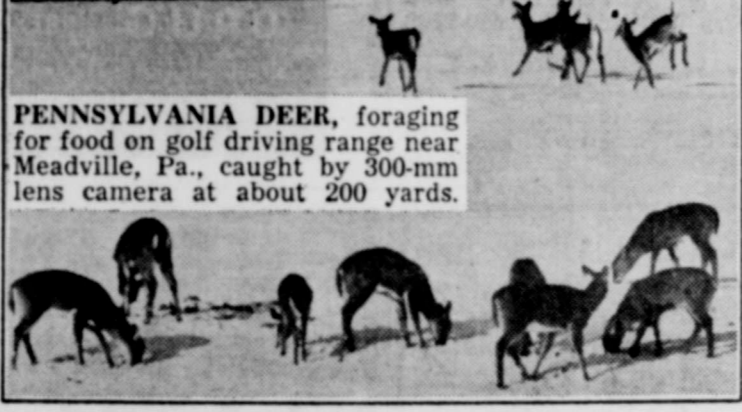
**AMERICAN SCENE:** Five Boy Scouts and leader silhouetted as they began 50-mile trek from Dodgeville, Wis. to Dubuque, Ia. They made it in 14 hours.



**IT'S O-AKAY!** — Louisiana Gov. James Davis (left) plants seedling on capitol lawn to symbolize white oak conservation program being conducted by Schenley Industries, Inc. First step is 10,000-unit "tree farm" near Monroe, La.



**SWEETHEART** of Sigma Chi's at U. of Florida is Harriet Bleidner, 18, shown on beach at Silver Springs, Fla.



**PENNSYLVANIA DEER**, foraging for food on golf driving range near Meadville, Pa., caught by 300-mm lens camera at about 200 yards.

## Wild Game Feed Tickets Available

Bud Seyler, Vice President of the Northwest Texas Field and Stream Association, announced today that the general ticket sales headquarters for the Annual Banquet and Wild Game Feed of the Field and Stream will be located at the Stringer-Barnard Company, 10th and Lamar.

Tickets may also be obtained at stores displaying green and white signs telling about the big banquet, which will be

Thursday night, March 28th, at 7:00 p. m. This year's Game Feed and Banquet will be staged at Midwestern University.

The public is invited and tickets are available from the officers and directors of the association for \$3.00 per person. Justin Wilson, (the Cajun story teller), will entertain after the Wild Game Dinner.

**FREE** GENUINE ENGRAVED LETTERHEADS  
DILES & DESIGNING \$17.00 PER 1000

## ALLIED FENCE

**FENCE YOUR YARD THIS SPRING WITH AN Allied "Lifetime" Guaranteed Fence**  
Special This Spring Only — Panel Vent Fronts  
Handled Exclusively By ALLIED  
FOR A FREE ESTIMATE  
CALL JIM LAND  
767-4690 or 767-1497



One Year Warranty

- HIGH FIDELITY COMBINATION TV - STEREO - AM-FM RADIO
- 23,000 VOLT PICTURE POWER \$299<sup>95</sup>
- HAND CRAFTED CHASIS With Trade
- SELECTED HARDWOOD CABINET
- 23" PICTURE TUBE

**BILLS TV FURNITURE & APPLIANCES**

301 Avenue D Phone 569-3651  
BURKBURNETT, TEXAS

## "PATIO" APARTMENTS

Patio plans are now appearing in the apartment buildings as well as homes.

In this form of design, rooms are grouped around a centrally located yard or patio and share the same outdoor extension.

According to the Southern Pine Association, the wood plank-and-beam system is well adapted to patio-planning with the extra strength of the roof permitting large window areas in outer walls facing the patio.

**I.O.O.F. Lodge**  
BURKBURNETT, TEXAS  
Meets at I. O. O. F. LODGE  
Every Tuesday Night 7:30 p. m.  
Visitors Welcome  
EARL DIXON, Noble Grand  
GENE BRYANT, Vice Grand  
CLOYD ADAMS, Secretary  
THOMAS AMES, Fin. Secy.  
GEORGE BENTON, Treasurer

## Classifieds In The STAR Get Results

### OWENS-BRUMLEY FUNERAL HOME

AMBULANCE SERVICE

PHONE 569-3361

Harold Van Loh  
President

Joe Allecorn  
Manager

## Make low cost financing part of your home plans

Financing that is low in cost and geared precisely to your needs and your budget is basic to successful home ownership.



Just as important as the right kind of blueprints for your home is the right kind of financing plan. Whether you are building a new home or buying an existing home, it will pay

you to investigate our mortgage loans. Let us show you how we can bring the over-all cost of financing your home down to the lowest possible figure, on terms you can readily handle out of current income.

# The First Savings & Loan Association

314 East 3rd St.

BURKBURNETT, TEXAS

PHONE 569-2206

SERVING THE SAVER AND HOME-OWNER

The Specialized Job of Savings and Loan Associations

Put your idle money to work for you earning dividends.

SAVINGS EARN A BIG

**4 1/4%**

Dividend Payable or Compounded Quarterly

NEW ANTICIPATED DIVIDEND

Our next dividend period will be declared June 30th  
**SAVINGS IN BY THE 10th EARN FROM THE 1st**



