

Burkburnett Star

LIKED BY MANY--CUSSED BY SOME--READ BY EVERYBODY

BURKBURNETT, WICHITA COUNTY, TEXAS, THURSDAY, APRIL 5, 1962

NUMBER 30

In business the contest of wits is eternal; championship tournaments are in daily progress, and those who err in judgment are mercilessly eliminated.

Wants to Seek Representative



(DUB) HICKS

Wichitan and one of the best-known young men, Wallace B. (Dub) Hicks, has announced his candidacy for the office of Representative in the 1st District.

Volunteer Work

State Guard Association, American Heart Fund, County Security Unit, a first lieutenant's in the Military Post of the Texas State Guard.

Statement: In the past seven years, graduation from college has worked for the son of Mr. and Mrs. Hicks, a 37-year veteran, Texaco, Inc., former manager of Wichita Falls.

Every voter should be shown their representative on Back Page)

New High School Building Program Explained

I would like to take this opportunity to explain the piecemeal building of our New High School.

In October 1960, you voted \$845,000 bonds for school buildings. It was immediately necessary to build Southside Elementary School to care for the growth for the coming fall.

If we then were to let the new high school in one contract and immediately start building the complete unit it would have been necessary to double the school tax valuations, since we had already sold bonds to the maximum 10% of valuations.

The action that seemed far wiser to me, was to build this high school over a period of three years, utilizing the "No Strings Attached" Federal Aid to our construction, that could be received over this length of time.

We are in the process of filing for another grant which together with the bond money and aid already received will complete our high school plant for occupancy.

All of this has been accomplished with a negligible tax increase and more important to me without throwing our school district outlandishly in debt.

WELDON NIX

MUSICAL PROGRAM SCHEDULED SUNDAY NIGHT AT CENTRAL BAPTIST

A highly talented vocalist of Wichita Falls, Mr. Frank Perry, will present a musical program at the Central Baptist Church in Burk Burnett Sunday night, April 8th at 7:00 p. m.

Mr. Perry's beautiful voice has thrilled audiences in many parts of Texas and the nation. Critics agree he has a brilliant future in the realm of serious music.

POLITICAL Announcements

Political announcements will be carried in this column at the following rates, payable in advance:

County Offices \$15.00

District and State \$20.00

The price covers a short announcement, followed by the formal announcement of not over one column long at a date of the candidate's choice, plus the listing in this column.

Subject to Action of Democratic Primary, May 5

FOR STATE SENATE: GEORGE CORSE, JR. GEORGE MOFFETT

FOR DISTRICT CLERK: WAYNE WIGGINS

FOR COUNTY JUDGE: HENRY J. ANDERSON CHARLES D. BUTTS CALVIN ASHLEY

FOR DISTRICT JUDGE 89th DISTRICT COURT: TEMPLE DRIVER WALTER FRIBERG

House of Representatives Place 1, 81st District DUB HICKS VERNON STEWART

House of Representatives Place 2, 81st District JACK CONNELL

MRS. PHILIP A. CARPENTER, JAMES E. FRYE JACK ALEXANDER SUCCESSFUL IN RACE FOR THREE PLACES ON BURK CITY COMMISSION

Miss Blanche Groves To Speak in Burk April 9th and 11th



MISS BLANCHE GROVES

Miss Blanche Groves, a Southern Baptist Missionary for forty years before her retirement in 1959, will speak in Burk Burnett and Wichita Falls, April 9, 10 and 11. She will speak in the First Baptist Church of Burk Burnett, on Monday morning at 9:30 a. m. to the W.M.U. and at 3:45 p. m. Monday afternoon she will speak to the G.A.'s.

Miss Groves is a native of Paradise, Texas and received her education at Decatur Baptist College, Baylor University and South Western Baptist Theological Seminary. She was a teacher in China for twenty years before World War II.

SCHEDULE of Coming Events

Thursday, April 5th— Jr. University Study Club, House of Pizza, Wichita Falls

ELIMINATE LAWN TROUBLES WITH CHEMICALS

Having trouble with winter weeds in your lawn? They can be eliminated with chemicals, says Thelma Wirges, county home demonstration agent.

The chemicals should be applied when the weeds are growing and before seed are formed. To control upright or semi-prostrate annual weeds such as burclover, henbit and rescue grass, she says the chemicals should be applied when the plants are no more than three inches tall.

New Bulletin on Landscaping Thelma Wirges, county home demonstration agent, has copies Planning. The bulletin is excellent for the family just starting a home landscape.

Big Pasture Senior Class Play, April 6

The Big Pasture Senior Class play has been scheduled for Friday night, April 6th at 8:00 p. m. The three act mystery comedy is titled "Tune In On Terror." Admission will be 75c, 50c and 25c.

Mr. and Mrs. Homer Wilson, Sally, David and Julie of Colorado Springs, Colorado are visiting this week with Mrs. and Mrs. Forrest Green and family.

The vote in Tuesday's election for three City Commissioners, was much lighter than expected. The total vote was only 656 ballots.

Three new faces will be on the Commission. James E. Frye led the ticket with 416 votes. Next was Jack L. Alexander with 360 ballots cast for him. Mrs. Philip A. Carpenter was the third ranking candidate with 310 votes.

Others in the race and their votes:

- Cecil Bradley, 40. Bill Bryant, 190. Joe Crowley, 212. John E. Larson, 107. Joe Logan, 23. C. L. "Pete" Simmons, 268. Cliff Wampler and Mrs. H. C. Preston Jr., neither on the ballot, received one vote each.

City Limits Expansion Carried

The vote to expand the city limits as per the map printed in the Star and the News, carried by a vote of 352 for to 236 against.

E. V. Thornton Likes Editorials

Camas Washington March 28, 1962

Hello Burk Star: Sorry I am late. We appreciate the improvements in the paper. I go along with your editorials mostly. The paper lies around the office here from week to week, and I can tell you some of the left handed Democrats, etc. who read them from time to time DON'T agree with your editorials. Which suits me alright. I would like to kill all these goof-balls—but that is against the law.

Sincerely, E. V. THORNTON

New Radio Series for Christian Science

A new radio series designed to highlight the essential vitality of Bible teachings was announced today by the Christian Science Church.

Starting April 8th more than 700 stations will broadcast the weekly 15-minute series called "The Bible Speaks to You."

Locally the series "The Bible Speaks to You" may be heard over Radio Station KWFT 620 KC at Wichita Falls each Sunday at 1:15 p. m.

Legion Notice

Thursday, April 5th is our Regular Meeting Night. We urge all members to attend this meeting. Also we would like for the Ladies Auxiliary to be with us at the meeting. Don't forget, Friday night is game night, at the Legion Hall, April 6th.

DEADLINES For Classified Advertising Tuesday News FRIDAY, 5 00 P. M. Thursday Star WEDNESDAY NOON

Tullis Motor Co. Grand Opening Winners Announced

Mr. Howard Tullis, owner of Tullis Motor Co., announces that his grand opening last Saturday was a huge success. Approximately 300 residents came by to look over the new business, listen to the good music furnished by Huie Long and His Star Boys Band and enjoy the refreshments of coffee and cookies.

Mr. Millard Jones of 1001 Rosebud was the winner of the beautiful reclining chair that was given away at 6:30 p. m. and Mr. Irvin Stickle received \$10.00 in cash. The chair was purchased from Monaghan Furniture Company in Burk Burnett.

The new motor company is located on the north end of Berry Street and the Oklahoma Cutoff Highway.

'The Crucible' One-Act Play Friday Night

The public is cordially invited to attend the Burk Burnett High School one-act play, "The Crucible," Friday night at 7:30 in the Burk Burnett High School Auditorium.

Directed by Mr. Alden Smith and Mrs. Lester Batterton, the play recently won the District 9-AA one-act play contest held at Jacksboro and will represent the district in the regional contest in Denton.

The play, based on the Salem witch trials of 1692 includes the following cast: Robert Kelly, Thom Reed, Jimmy Collins, John Woods, Jim Davey, Johnny Koller, Ronnie Evans, Sharon Nix, Sally McClain, and Pat McAdams. Ronnie Evans and Miss McAdams took the individual acting awards at the district contest and Thom Reed was in the all-star cast.

Admission will be 50c for adults and 25c for students with the proceeds going toward the expenses of the regional tournament.

If you want to see an excellent dramatic production by a talented group of Burk Burnett students and help a worthy cause, don't miss the Friday night production of "The Crucible."

Women's Army Corps Offers Girls Choice of Careers

High school graduates who enlist in the Women's Army Corps during April may have their choice of assignments to any one of the career fields of administration (office work), communication center operations, medical care and treatment, or food service. Master Sergeant Drue S. McBride, U. S. Army Recruiting Service, stated he received the announcement from Washington.

Applicants are not required to have experience in the selected assignment, but will be trained by the Army in the field chosen. Students receive the full pay and allowances of their rank while being trained for their assignments.

To qualify, single women between the ages of 18 and 34 may take a written examination at the U. S. Army Recruiting Station, 1007 Lamar Street, in Wichita Falls.

J. H. STRANGE RETURNS FROM MISSOURI

Mr. J. T. Strange returned home Tuesday from a visit with his son, J. T. Strange, Jr. and family, in Waynesville, Mo. While there, Mr. Strange had the pleasure of preaching the ordination service for his son who had been called as pastor of the Hickory Hills Baptist Church near Waynesville.

Calvin Ashley Announces For County Judge



CALVIN ASHLEY

Calvin Ashley, a practicing attorney in Wichita Falls for the past twelve years, has authorized the Burk Burnett Star to formally announce his candidacy for County Judge of Wichita County, Texas, subject to the Democratic Primary, May 5th.

Born in Wichita Falls, Texas, 37 years ago, Ashley attended public schools in Wichita Falls, where he graduated from the senior high school. He entered Hardin Junior College and attended briefly before entering military service in early 1943. He served in the Army Air Corps for almost three years, and upon returning entered Midwestern University. Ashley graduated from Baylor University in 1950 where he received his law degree.

Married and the father of three sons, Ashley has been very active in all civic affairs. He is on the Board of Directors of the Wichita County Bar Association; Board of Directors of the City Bowling Association; Past Director of the Northwest Texas Field and Stream Association; Past President of the Blackstone Club, a legal fraternity, and is a member of the State Bar of Texas.

Ashley has been an elder in the Presbyterian Church for more than ten years, where he has served as Sunday School Superintendent and has been an active teacher in church.

He is well qualified for the position of County Judge based upon his broad experience in both civil and criminal matters. He has served as City Judge of Wichita Falls, Texas, as an Assistant District Attorney for four years and has been Acting County Judge on numerous occasions.

In making his announcement Ashley states that the office of County Judge is one of particular importance, in that the County Judge is the presiding officer of the Commissioners Court, and that if elected he would always be ready to serve the people of Wichita County in a courteous, capable and impartial manner.

H. R. Hayes Will Retire from Texas Co. After 30 Years

Twenty-five employees of Texaco, Inc. in the Wichita Falls area will be honored at 6 p. m., Friday night, April 6th, at the Wichita Falls Country Club when the company holds its annual Quarter Century Dinner, according to C. W. Brock, assistant general manager of the Texas Pipe Line Company, who will serve as general chairman.

R. H. Webb and G. V. Anderson will serve on the Entertainment Committee and have announced that part of the program will be the performance of a square dance team. Mrs. Eleanor Doty of Wichita Falls will furnish the Dinner Music at the Organ.

W. T. Palmer, general manager of the Wichita Falls Division of the Texas Pipe Line Company, will serve as vice chairman and master of ceremonies.

H. R. Hayes will retire with thirty years service.

Europe is the second smallest continent in the world.

School Board Election April 7

When the deadline came for filing for the school board election, nine had filed to appear on the ballot.

Three members are to be selected in an election set for Saturday, April 7th.

Those filing were: Weldon W. Nix, Hugh Veach, Claude Meadows, Jr., J. L. Mitchell, C. D. Landrum, Amanual H. Heintz, W. T. Zimmerman, T. M. Cornelius, Jerome M. Adams, Nix, Veach and Mitchell are running for reelection. Those wishing to vote by absentee ballot may secure the forms at the County Clerk's office any time after March 17th.

Burk High School Wins Literary Meet at Seymour

Burkburnett High School was well represented at the interscholastic literary meet held last Wednesday at Seymour High. Burk Burnett High competed with the other six schools of District 9-AA and as a result of point standings, will be assured of the 1962 Literary Trophy. Burk until this time has amassed 157 points followed by Iowa Park's 122 and Electra's 74.

The following students from Burk placed in the various events. Extemporaneous Speaking was won by Roger Towery for boys and Marianne Campbell for girls. Second place was won by Cookie Morren and third in boys by Jim Davey.

The spelling team composed of Linda Holt and Karen Burton, placed first.

In shorthand, the team won first with Karan Burton taking high honors and Pat Tyler winning sixth.

The girls debate team of Kay Zimmerman and Sandy Goodwin took second behind perennial champion Iowa Park. The boys debate team composed of Don Kennedy and Wayne King failed to place.

In poetry reading both Burk entries, Sally McClain and John Woods placed second.

Sharon Nix placed first in persuasive speaking and Robert Kelly took third in the boys event.

Taking first in ready writing was David Nelson with Karan Burton taking second.

In the high school science contest, Ray Schuk placed second and David Nelson was third.

Other entries from Burk were Johnny Koller and Pat McAdams in prose; slide rule was Ray Brammer and Ray Schuk; and typing composed of Linda Lokey, Pam Duke, Janice Leitner and Jana Owens.

All first place winners will compete for regional honors at Denton on April 14th.

Young Rites Were Conducted Thurs.

Mrs. Minnie Young, 73, died Tuesday in a Wichita Falls hospital. She has been a resident of the Burk Burnett and Wichita Falls area for the past 35 years.

A member of the Church of Christ, Mrs. Young was born in May of 1888 in Montague County, Texas.

Funeral services were held at 3 p. m. Thursday from the Owens-Brumley Funeral Home Chapel in Burk Burnett. William Wilhoit, retired Church of Christ minister from Bellvue, officiated.

Burial was in the Burk Burnett Cemetery. Pallbearers included Hugh Preston, Clark Gresham, Francis Beaver, W. A. Beaver, Sr., Elbert Roderick and Jim Anderson.

Survivors include two brothers, Floyd Anderson of Needles, California, and Clarence F. Anderson of Wichita Falls.

The Burkburnett Star

HARRY C. DODSON, Owner and Editor
 Mrs. Lola Mae Bailey, Bookkeeper-Society Editor
 Mrs. Billie Mann, Features and Photography
 Chas. L. Wisdom, Mechanical Foreman
 Forrest Green, Linotype-Pressman
 J. W. Brookman, Commercial Printing



Printed weekly at Burkburnett, Wichita County, Texas. Entered as second class matter at the post-office at Burkburnett, Texas, August 19, 1907, under the Act of Congress of March 3, 1870.

Notice to the Public: Any erroneous reflection upon the character, standing or reputation of any person, firm or corporation, which may appear in The Star, will be gladly corrected as soon as it is brought to the attention of the publisher.

SUBSCRIPTION RATES PER YEAR
 In Wichita and Cotton Counties \$2.50
 Outside These Counties \$3.00

We Need 12 Months of Spring

We don't suppose there ever was a time since the dawn of Creation when man failed to respond to the miracle of spring—nor for that matter, the cats and the dogs and even the beasts of the field who doubtless look forward to new contentment in their greening, flower-dotted meadows.

But there's nothing like the break-up of a hard winter plus the national and global tensions of these critical and dangerous times to add to the glamor of this enchanting season—and to make us aware of the hunger of our souls for the beauty and inspiration of flowers—from dandelions to roses and forget-me-nots to sun-flowers.

With a better understanding of this need than most of us are conscious of, the Society of American Florists decided three years ago to help people get from flowers the comfort and glory that could, conceivably, extend the springtime around the calendar.

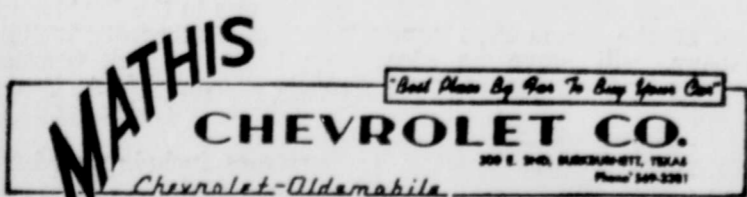
The society instituted a youth education program, and followed it up with a public information program, to bring to classrooms, homes and businesses a better knowledge and understanding of flowers and plants, their use and care. A booklet "Flowers and You" and other information being widely disseminated advise Americans how to use flowers and plants in their everyday living—even how to make them last longer.

Implicit in these programs is the thought that flowers and plants can do more for us than we either realize or admit, and that it makes little sense to limit their helpfulness to a brief season or to special occasions—Easter, birthdays, sicknesses, new babies and death. That the society's campaign is having its effect begins to be apparent as we look around us on our business and social errands. More and more, we are seeing greenery and

Avoid Last Minute Rush

APRIL 15, 1962
 Deadline For
 Car Safety
 Inspection As
 Required By The
 State Of Texas

AUTHORIZED
1962
Car Safety
Inspection
STATION



IRVIN "Smitty" SMITH, Service Manager

WASHINGTON AND "SMALL BUSINESS" By C. WILSON HARDER

In analyzing the figures that will be publicized to support the attempt to slash U.S. protective tariffs to tie in with the so-called European Common Market, it is perhaps important to bear in mind the story about the government statistician who drowned while wading across a river with an average depth of two feet.

Stripped of all non-essential verbiage, the plans proposed have but one final result. That C. W. Harder is the establishment in the United States of a bureaucratic economic dictatorship.

Perhaps the best evidence of this result is found in the publication "Import Competition and Small Business" written by Howard S. Piquet, senior specialist in international economics of Library of Congress.

Drawing most of his data from 1954 as his latest date which was before the full effect of modern production machinery given to European nations by the U. S. give away programs, and before the rounds of wages increases in U. S. since then, and before the increase in the minimum wage that was made law, he finds that many American industries cannot compete with wage scales of Europe in a free market.

He points out, due to European subsidies, other measures, Big Business can protect itself. It is the small business of America that will suffer. But he also raises the question whether or not those American industries which are primary

ly areas of operation for small business should be permitted to exist.

The report indicates that probably some American industries should, by government edict, be pronounced as inefficient and thus be permitted to be destroyed by cheap foreign imports.



Under this plan, it is proposed, that the businesses operating in these condemned industries be urged to produce something else, with the government giving them loans to re-tool or otherwise revamp their operations.

In addition, the government will put up the money to retrain the workers in these firms in new skills.

This, then, could be the final step to establish a dictatorship in America. Eventually, it would also lead to government telling farmers what they could plant; could not plant.

After all, bureaucracy now tells business how it shall keep books, how much it shall collect in taxes for government, the lowest wages business can pay. In addition, an agreement on wages and hours reached in Pittsburgh must be adhered to by a small plant in Idaho Falls. In short, bureaucracy has already made great strides in dictating how business shall be done in this nation.

So it is not surprising that the drive is now on for the ultimate step.

And that is to dictate what kinds of activity a business may or may not engage in so that this nation of Harvard, by Harvard and for Harvard shall not perish from the earth.

flowers in business establishments—not just to mark anniversaries, but as a daily life to the spirits of workers and visitors. And certainly flowers are brightening more homes more often.

There is nothing new in the universal "language of the flowers," but it's being heard more frequently—and at a time when we most need the encouragement and hope in which it speaks.

Grass Roots Opinion

BENTON, MO., DEMOCRAT: "Up until recently, one of the many things which has made this country great has been the way we handled our local problems at home. Here we all know what's going on, and we maintain control of them, not leaving it to a group of bubble-headed bureaucrats in Washington to tell us how to run our community. If we strive, slave and work, and still can't solve our community problems, we try the next best thing.

"Let's tell our senators and congressmen we want them to choke off this latest move of the big central Federal government getting into our home town affairs, and stop this Department of Urban Affairs."

CARROLLTON, ILL., GAZETTE-PATRIOT: "Man has always had to work for what he wanted. This pattern was so ordained by the Almighty Himself. And even though some of the labor bosses today figure they are more powerful than He that made us, they're not. We had all of us best realize what we're doing to ourselves.

SPECIAL TO INTRODUCE

Philco

INTRODUCTORY SPECIAL

4 CYCLE - 2 SPEED

WASHER \$199⁹⁵

FULL 12 POUND CAPACITY

With Trade

PHILCO-BENDIX—With more combination washer-dryers in actual use than the combined totals of all combination manufacturers.

Ask About Our Philco "Miss America"

Push button operation Washer. Set it and forget it. The prettiest machine you have ever seen. HIGHEST TRADES — EASIEST TERMS



HERRING'S

Hardware & Appl.
 Phone 569-2711

201 E. Main-Cor. Ave. B & 3rd



Burkburnett Independent School District Notice to All Food Serving Equipment Contractors

Sealed proposals for the furnishing and installation of the Food Serving Equipment in the Burkburnett High School, Burkburnett, Texas will be received by William W. Nix, President of the Board, Burkburnett Independent School District, P. O. Box 308, Burkburnett, Texas bearing a postmark time not later than 12:00 A. M., 5 April 1962.

Plans and Specifications may be examined at the following locations:

DODGE REPORTS
 501 Holliday, Rm. 211
 Wichita Falls, Texas
 TEXAS CONTRACTOR
 1400 S. Good-Latimer
 Dallas, Texas

DODGE REPORTS
 1635 Stemmons Freeway
 Dallas, Texas

DODGE REPORTS
 3817 W. Rosedale
 Fort Worth, Texas

Proposal Forms, Drawings and Specifications may be obtained from the office of James R. Killebrew and Associates, Architects and Engineers, 1710 Dayton Street, Wichita Falls, Texas.

All plans and specifications must be returned to the Architect.

The Owner reserves the right to waive any informalities or to reject any or all bids.

No bidder may withdraw his bid within 30 days after actual date of opening.

William W. Nix
 President of the Board
 Date: 16 March 1962.

28-31C

THREE TO REMEMBER

Inexpensive floor mats keep your regular car carpet in good shape . . . but they also prevent a tedious windshield scraping if freezing rain or snow is the forecast. And those empty plastic spray bottles your wife throws away by the score will make dandy oil cans. Pressure of your hand regulates the exact amount you need. Need a Phillips head screwdriver bad? A new large nail can sometimes do the job. (If the screw isn't set too tight.)

I. O. O. F. LODGE

BURKBURNETT, TEXAS
 Meets at I. O. O. F. LODGE
 Every Tuesday night, 7:30 p. m.
 Visitors Welcome
 J. A. SUTTLES, Noble Grand
 CECIL TODD, Vice Grand
 CLOYD ADAMS, Secretary
 L. E. ARMS, Financial Secy.
 GEORGE BENTON, Treasurer

BURKBURNETT HISTORY

Revealed By The Star
 Files 10 Years Ago . . .

Mrs. J. H. Brumley was admitted to the General Hospital in Wichita Falls Sunday for a check up.

Mrs. F. G. Jeffers was admitted to the General Hospital for surgery, Tuesday, April 1st.

Dr. and Mrs. Gene Brock of Wichita Falls spent Sunday with Dr. and Mrs. Carl Morrison and Kay.

The O. E. S. Study Club will meet Friday night at the Masonic Hall. The hostesses are Mrs. Chas. Boyd and Mrs. Gerald Tyler.

Many of the Burkburnett Junior High School students have been absent from school due to a small epidemic of the three-day measles.

Mrs. W. R. Spivey visited last week in the home of Mr. and Mrs. R. E. Friend and son Jimmy at Abilene, Texas. On Sunday evening they went to

San Angelo and visited Concho Fort and thoroughly enjoyed the

Mesdames Wylie Leo Foster, and attended the recital of Arias at Midwestern last Friday night.

Mrs. Louis Little Mrs. John Brookman Fort Worth last week.

Mr. and Mrs. Willard Fort Worth were guests in the home.

IF IT'S FOR SALE

ATHLETES FOOT HOW TO KILL IN 3 DAYS

If not pleased with instant-drying T-4L, back at any drug store infected skin slough healthy skin replace and burning are gone. CORNER DRUG ST.

LOOK!

WE HAVE ALL POPULAR BRANDS OF BEER

DISCOUNT PRICES

ALSO SNACK BAR

Sandwiches and Soft Drinks

One and a half miles across Red River Bridge in Oklahoma

Bowles Drive

Owned and Operated by Marie B.

HERRING'S HARDWARE & APPLIANCES ANNOUNCES

PHILCO for 1962

We are proud to announce our dealership for PHILCO Appliances. To produce these appliances, we are offering the following special prices on refrigerators—for a limited time only. Many of you are already familiar with PHILCO quality. If you are not, please be assured that all of these refrigerators are completely porcelainized (won't turn yellow in a few years) outside, even in the freezer compartment. They are all approved for recessed installation. The frost free models never ever need defrosting, and Philco uses a hot-gas recycling method of defrosting. COME IN AND LET US SHOW YOU THE DIFFERENCE.

	Regular Price	Special Price
Combination Refrigerator-Freezer 2 DOOR 14.1 Cu. Ft.	\$399 ⁹⁵	\$369 ⁹⁵
Completely Frost Free 2 DOOR 12.6 Cu. Ft.	\$379 ⁹⁵	\$349 ⁹⁵
13RD27—Completely Frost Free Freezer 2 DOOR 12.7 Cu. Ft.	\$349 ⁹⁷	\$319 ⁹⁵
Automatic Defrost 2 DOOR 12.7 Cu. Ft.	\$299 ⁹⁵	\$279 ⁹⁵
13RS22—A Lot of Refrigerator Single Door 12.5 Cu. Ft.	\$229 ⁹⁵	\$189 ⁹⁵
Compare This Value Single Door 8.6 Cu. Ft.	\$199 ⁹⁵	\$166 ⁹⁵

Please check competitive models then come in to see ours.

WE SERVICE EVERYTHING WE SELL

BANK RATE ON THE SPOT FINANCING

HERRING'S HARDWARE & APPLIANCES

201 East 3rd Street Johnny Herring Phone 569-2711

WE GIVE THOSE VALUABLE GOLD BOND STAMPS

APRIL SHOWER OF... GOOD VALUES



CENTER CUT
Pork Chops
Pound **49¢**

PORK STEAK
PORK ROAST

Butt Cut LB. **39¢**

BACON

2 LBS. FOR **89¢**

FRANKS

Wright's LB. **49¢**

YELLOW OR WHITE
Corn Meal Mush 2 LBS. FOR **19¢**



3 For 19¢

Ground Beef LB. **39¢**

PRODUCE



EXTRA FANCY WINESAP
Apples 4 LB. BAG **39¢**

Asparagus 4 300 CANS

FLORIDA
ORANGES Doz. **39¢**

Spaghetti In Tomato and Cheese Sauce 10 300 CANS

CALAVO
Avocados 2 For **19¢**

Berta Peaches 4 2 1/2 CANS

RUSSET
POTATOES 10 LB. Bag **39¢**

Golden Apples 5 No. 2 Cans

Coffee 1 LB. CAN **49¢**

UNITED SUPER MARKET



DOUBLE GUNN BROS. STAMPS
Every Wednesday With \$2.50 Purchase
PRICES GOOD THURSDAY FRIDAY and SATURDAY



ARMOUR'S STAR LUNCHEON MEATS
Pickle and Pimento, Souse, Olive Loaf, or All Meat Bologna
BUY 3 FOR \$1.00
Get Another 6 Oz. Pack FREE
Mix 'em or Match 'em

Randlett News Mrs. Mollie Elliott, Reporter

Mr. and Mrs. O'Neal Weaver and children of Wichita Falls visited her parents, Mr. and Mrs. C. H. Thompson Sunday. Mrs. Ruth Delaney of Ringling, Oklahoma, visited her parents, Mr. and Mrs. W. T. Slabaugh Sunday. Miss Murle Hatcher of Oklahoma City, Oklahoma, Miss Charlotte Hatcher of Edmond, Oklahoma, Miss Sharon Hatcher of Wichita Falls spent the week end with their mother, Mrs. Flora Hatcher. Mr. and Mrs. Wayne Boles and daughter Wynn of Wichita Falls visited her parents, Mr. and Mrs. A. S. Nason Sunday. Mr. and Mrs. Glenn Nihart of Dallas visited Mrs. Robbie Best Saturday and Sunday. Carol Bridges of Burkburnett spent Friday night with her grandmother, Mrs. Mollie Elliott. Mr. W. T. Slabaugh took ill and was taken to a Frederick Hospital Monday. Mr. and Mrs. Berlyn Nason of Burkburnett visited his brother, Mr. and Mrs. A. S. Nason Sunday. Mr. and Mrs. Emery Marten and son Larry and Mrs. F. M. Boggs visited Mr. and Mrs. R. A. Marten, Sr. of Walters, Oklahoma Sunday afternoon. Mrs. Robbie Best, Mrs. Raymond Hale visited Mrs. Marie Brown of Lawton, Oklahoma, Monday. Mr. and Mrs. A. L. Patterson visited their daughter, Mr. and Mrs. Louis Alexander of Roswell, New Mexico over the week end. Mr. Tud Capps of Oklahoma City, Oklahoma, spent Saturday night and Sunday with his mother, Mrs. Alma Capps. Mr. Raymond Underwood was home Friday from a Wichita Falls Hospital. Mr. and Mrs. Dwain Dunn of New York City are the parents of a daughter, March 28th. Paternal grandparents are Mr. and Mrs. C. H. Dunn. Mr. O. D. Boles was home Friday from a Lawton, Oklaho-

ma Hospital. Mr. and Mrs. Dickie Eastman and children of Wichita Falls visited his parents, Mr. and Mrs. F. E. Eastman Sunday. Wayne Ressel of Stillwater, Oklahoma home at his parents, Mr. and Mrs. C. B. Ressel over the week end. Mr. Ray Riley of Jefferson City, Missouri visited his mother, Mrs. Beulah Riley over the week end. Mr. and Mrs. G. M. Stark and Dickie spent Saturday night with his sister, Mr. and Mrs. Fred Clifton of Deport. On Sunday they visited Mr. Stark's mother, Mrs. C. P. Stark in a Deport Nursing Home. Mr. and Mrs. Sammie Cockrell and children of Duncan, Oklahoma, visited her mother, Mrs. Beulah Riley Sunday. Mr. and Mrs. R. O. Ray of Frederick, Oklahoma, visited Mr. and Mrs. M. H. Hyatt Sunday. Mr. Roy and Miss Alta Mae Braden visited Mr. Roy Peacock, Sr. in a Wichita Falls Hospital Sunday. Mr. and Mrs. Frank Bohac of Wichita Falls visited Mr. and Mrs. Bill Harrison and daughter, Betty Jean Sunday. Elaine and Gary Ellis of Burkburnett are spending this week again with their grandparents, Mr. and Mrs. R. H. Rhoads, while their mother, Mrs. Ellis isn't quite able to attend to them due to her illness. Mr. and Mrs. Leslie Tuel of Burkburnett visited his sisters, Mrs. Flora Hatcher and Mr. and Mrs. A. S. Nason Sunday afternoon. Jimmie Baber, Ben Martin, Joe Burton and David Elliott all of Southeastern College at Durant, are all home over the week end. Mrs. B. B. Menz, Mrs. B. L. Ressel, Mrs. Nomie Wilkinson and Miss Lena Patton attended the Southwest District Home Conference last Friday in Lawton, Oklahoma. Mrs. Howard Hatcher of Wichita Falls was a Sunday dinner guest of Mrs. Flora Hatcher while her husband was on a fishing trip.



Teenettes. 1st row: Juline Abdouch, Pat Ann Mills, Barbara Wolfe, and Janet Mathis. Back row: Carol Ann Ratliff, Francie Mills, president; Ann Jennings, Kay Hicks, Martha Meyers, Mitzie Mills and Treva Mills. These Teenettes were the captains

for the Easter Seal drive which was held Tuesday, April 3rd, from 6:00 to 8:00 p. m. The high school students were the workers. After the drive was completed refreshments and music for the workers was held at the Mathis Chevrolet house from 8:00 to 9:00 p. m.

Roger W. Babson Weekly Report



Roger W. Babson Babson Discusses Unemployment

President Kennedy is up against two "stonewalls." The FIRST is that dividing East Berlin from West Berlin; and the SECOND is how he can reduce unemployment. JFK is Conservative But Worried Employment is increasing in practically all lines—manufacturing, building, merchandising, and other important segments; but unemployment continues to

plague us, and no solution is yet in sight. Before going into further details, let me say that JFK is getting fed up with his "intellectual" advisers. He is willing to listen to them; but he has decided to make his own decisions and not leave them to anybody else—not even to Vice President Johnson. Some Administration officials are picking up big labor's theme that the government should do something soon to decrease heavy unemployment in the U. S. There is increasing talk of considering the problem an "emergency" . . . calling for drastic steps by Uncle Sam. These would include advancing public works projects, creating make-work programs—possibly a modern WPA. So far, JFK has balked at grandiose proposals, mainly because they would be too costly and would throw federal budgets even farther out of whack . . . to say nothing of the adverse impact on our already-sick balance of foreign payments. However, pressure from within and without the Administration is increasing . . . and 1962 election-year politics may force the President to send some stringent new proposals for reducing unemployment to Congress before too many more months have passed. Selling More Goods The Answer JFK is emphasizing to both

management and labor that the great need is for the United States to sell more U. S.-manufactured goods—at home and abroad—and to keep prices down. He believes this demands an entirely new brand of tariff powers—an ability to "trade." This is especially important in view of the "European Common Market." JFK believes that only as he is given dictatorial powers will he be able to meet dictators in Russia and other countries. I believe he is correct. In addition, the United States is faced with a rising imbalance of international payments and a resumption of the gold outflow. The nation really sits astride the horns of a dilemma: If the unemployment problem is met by inflationary spending, our gold outflow may become a flood; if we try to prevent gold loss through higher interest rates and lowered spending, business may slump and unemployment soar. The President—in trying to boost foreign trade is on the right track . . . but he will need to be a supersalesman to sell Congress on turning over to him dictatorial powers. The Coming Steel Contract The President is anxious to establish the principle that wages per hour will increase only as production per hour increases. (Management wants the new machinery also to get some "wages.") This may be okay for the steel corporations, but the trouble will come when all of the other unions want the same "deal" that the steel workers receive. Many corporations claim that, for various reasons, they cannot reduce costs further than they are now. All of this means that labor is tending more and more to approach a socialistic system as far as production, prices, wages, depreciation, etc., are concerned. This, of course, is the big danger. Meanwhile, the President's Labor-Management Committee has been conferring an automation-created unemployment and retraining has been proposed. Nor

has a plan for stemming economy-numbing strikes yet been aired. Internal union dissensions further complicate the situation. The Meany-Reuther-Hoffa triangle may not be eternal, but it will make for rough and tumble dislocations on the labor front during 1962, with many a headache for employers.

IT'S GARDEN TIME . . . BEDDING PLANTS OF ALL KINDS PLENTY OF TOMATO PLANTS ALSO A NICE SELECTION OF POT PLANTS SCRUGGS GREEN HOUSE 122 Avenue D Phone 569-2676

YOUR K. T. MARTIN CO. CROP HAIL INSURANCE MAN if I can show you how to SAVE UP TO 20% in CROP HAIL insurance premiums ARE YOU INTERESTED? The K. T. MARTIN PLAN offers top crop hail protection with fast claim service NOW with this great savings on premiums! Not just top protection and fast claim service from hail damage but also this GREAT NEW SAVING IN PREMIUMS with the K. T. MARTIN PLAN. Only a limited number of these crop hail policies will be available in this area. Act at once. For crop hail insurance protection under the K. T. Martin Plan, GET IN TOUCH WITH YOUR LOCAL K. T. MARTIN AGENT NOW! Fill out and send the coupon below today. K. T. MARTIN CO., INC. Crop Hail Insurance P. O. BOX 746, DALLAS, TEXAS

PHILCO presents The World's Finest High Performance Portable TV PHILCO 3244 The BLACK BEAUTY \$229.95 EASY TERMS 90-Day Total TV Service Guarantee—no extra cost HERRING'S Hardware & Appl. Phone 569-2711 201 E. Main-Cor. Ave. B & 3rd

WHAT TO MAKE By Allan Carpenter Director, Service Bureau Popular Mechanics Magazine PHOTO EQUIPMENT Dozens of plans for photo equipment and helpful hints are given in book B59. This book includes plans for an electric photoprint drier above which will save an amateur photographer a great deal of time in completing his darkroom work. This one dries eight 8 x 10 prints in about 12 minutes. To order B59 send 75¢ to this newspaper c/o Service Bureau, 200 E. Ontario, Chicago 11, Ill. Ask for a free listing of more than 600 other What-To-Make plans.

WE PAINT Refrigerators Any of the new colors you desire Phone Merrill Taylor, 569-3381 For FREE Estimates MATHIS CHEVROLET CO. 300 E. 2nd, BURKBURNETT, TEXAS

Notice BULLETIN TIME Sat., April 7, 8 a. m. 7 p. PLACE TOWN HALL EVENT Select three responsible School Board Trustees who are progressive and will stay on a growth plan and get the most out of your tax dollar, for the children. WHO MAY VOTE The only qualification to vote is a poll receipt, or sign your name if exempt, as in elections. IT IS NOT necessary to own any taxable property in the school district. IT IS NOT necessary to have resided here months—ONE DAY IS SUFFICIENT. PLEASE VOTE As this is the largest business in your community with over a \$1,000,000.00 budget annually your tax money being spent. FOR THE BENEFIT OF THOSE CONCERNED I HAVE RESIGNED AS CHAIRMAN OF PRECINCT No. 27 I sincerely appreciate your vote W. T. ZIMMERMAN Pol. Adv. Paid for by W. T. Zimmerman

Wichita DENIN BEAUTY MEASURE ROY MAGEE articles on beauty and Pi Roy Magers. feature in the star. Mrs. address is o is chairman Garden Club flower show met She hi in Burkburnett for several many club a voted a cons time and e clubs. Her ing for Bea re of an info cked by exp PLATES DON' CUSHION" NC in search and bit de and made to aban and forms will there. To receive this per to be washed and se only \$1.25. It all day BEING YOU Start down! WHETHER you' all selected, yo sooner if you se Because of ou usually, there' Thus, your goa Settle on a m ing it now, the Current Rat First Lesson F You No Bibl ME SHEET Y

Auto Liability

From The Travelers Insurance Co.

IT DOESN'T COST ANY MORE TO
BE SURE
HOWARD CLEMENT, Agent
New Location - Next to Legion Hall

GARDENING

BEAUTY AND MEASURE

ROY MAGERS

and knowledge of the work. If the shady spots in your garden have been annoying problems, you need vegetation that will tolerate the shade.

One of the best plants for that problem area is the caladium. Long in use in the South and Europe, the caladium has only recently become popular in this area. It is prized for its exotic foliage, a point that leads many to believe it is too expensive for them.

Due to the skillful work of plant breeders, it now is available in an almost unbelievable variety of color combinations. Masses of color red as the brightest roses, pink as crabapple trees in bloom, white as water lilies and green as the ferns are possible all summer without flowers. Color range from almost pure white through every shade of pink, rose scarlet and bronze, to dark red.

Veins and shadings of contrasting hues and patterns of green ribs, make the large heart shaped painted leaves entirely distinct from those of any other plant and light up shady places and dark corners.

The big leaves make as showy a display as anyone could want. What's more, they are most colorful when they grow in shade.

Simple Contemporary Designs



To show their adaptability, the vase and flower bowl were left empty while the ash tray, unexpectedly, holds a miniature flower arrangement! These pieces are from a collection of American-made glassware in a pattern called "Simplicity" and the designer has used graceful geometric forms - squares,

cones, triangles and ovals in a contemporary design with a sculptured look. They can be used for candy, cigarettes, preserves and, like all glassware, are perfect complements to silver, china and linen. Stemmed vase, 2 1/2 inches, about 59¢; square bowl, 6 inches, 29¢; ash tray, 39¢. By Hazel-Atlas Glass.

as well as the coloring of the leaves attract attention. Twelve inches from tip to tip is an ordinary length, and some reach 18 inches. Some gardeners describe them as heart shaped, others as arrow heads. Attached as they are at an angle to their stems the huge leaves bend gracefully with the slightest breeze.

No caladium leaf is plain green. All are variegated, spotted, streaked or combined at least two colors in some fashion. White ones with green veins are perhaps coolest looking. Also cool are soft pink leaves with so little green that it's hardly noticeable. White, pink and deep red are the predominating colors with or without a certain amount of green.

Aphis eggs laid last fall in the crevices of your plants and over the surface of the soil under the plants, are ready to hatch with the first warm days of spring, the eggs or red spiders and mites, and the over-wintering menace of thrips are there also: as well as the spores of such fungus diseases as black spot, mildew and rust.

That is the reason why it is sion will destroy the insects which spread diseases over the plants.

This material comes complete in one bottle. It is not only a dormant spray but can be used during the entire spring be-

cause of the fact that the lime sulphur is bonded in oil, creating a smooth emulsion that will not burn young tender foliage.

GAS SPARK PLUG

Did you know an ordinary pin is an effective measuring device to regap a spark plug in an emergency?

For Results, Try Classified Ads

A. F. & A. M.

Stated Meetings First and Third Monday at 8:00 p. m. At the Masonic Hall School of Instruction 2nd & 4th Mondays

L. D. MAGEE, W. M. J. H. FERGUSON, Secy.

Attendant On Duty LOOK

Now is the time of year to prepare your Quilts and Blankets for Storage. We have the Washing Machine to do the job, the Double Load Philco Bendix

OPEN 24 HOURS
FOR YOUR CONVENIENCE

Everybody Welcome

EZ WAY WASH and Dry Cleaning

100 East 3rd

Burkburnett

PLATES DON'T FIT CUSHION" NOW



Start downpayment savings here
WHETHER you're just thinking, or have the lot all selected, you'll build or buy your home sooner if you save for the downpayment here. Because of our high rate, compounded semi-annually, there's less wait for profits to build. Thus, your goal is reached sooner. Settle on a monthly amount, then start saving it now, the safe, profitable way.

4% All Accounts Insured Up to \$10,000.00 By FSLIC
Current Rate

First Savings & Loan Ass'n.

BURKBURNETT, TEXAS
314 East 3rd St. Phone 569-2206
CLAUDE MEADOWS, Mgr.



DO YOU KNOW THIS BOOK?

Lesson Home Study Course Offered Free
Your Own Bible the Only Textbook
No Obligation, Non Denominational
Fill In Coupon and mail to
Bible Correspondence Course
410 East Second Street
Burkburnett, Texas



any plant in bud or blossom) a clean up spray with a lime sulphur oil emulsion at this time. The lime sulphur will stop fungus disease and the oil emulsion important to give your entire

Now Is the Time

To Get Your Lawn Mower Repaired
All Work Guaranteed
BURK SERVICE CENTER
209 EAST 3rd STREET PHONE 569-3561

Live it up!

Presenting the cars for the lively life: 3 New lively Ones from Ford!

New Galaxie 500 XL!

Start this one and you really start something. Available with Thunderbird V-8 power up to 405 hp (coupled to a 4-speed stick shift), the XL outperforms America's most expensive cars. Standard features include all-new bucket seats with a Thunderbird-style console in between. The XL needs service only twice a year, or every 6,000 miles. Hardtop or convertible. Definitely not for pedestrian tastes!



New Falcon Sports Futura!

Here's a hot new number from the compact leader. The tempo starts fast with foam-padded bucket seats and a handy console in between . . . hits a new high note with a stylish new Thunderbird roof (vinyl-covered if you want it) . . . then goes into the lively melody of an optional 170 Special Six engine. Economy with a flair is the Sports Futura idea . . . it's priced below many standard compacts.



New Fairlane 500 Sports Coupe!

Don't flirt with this one unless you mean it. It has foam-padded bucket seats with a console in between . . . and an all-new optional "260" Challenger V-8 that packs 164 hp. Fairlane's room, ride and performance are bigger in every way, but this new fine car costs less than many compacts.



PRODUCTS OF Ford MOTOR COMPANY
JOIN THE LIVELY ONES AT YOUR FORD DEALER'S—THE LIVELIEST PLACE IN TOWN

WOLFE FORD COMPANY

3rd and AVENUE D BURKBURNETT, TEXAS PHONE 569-2275

DOLLAR DAYS



QUANTITY RIGHTS RESERVED
OPEN 7 DAYS A WEEK
Week Day 8:00 to 8:00
Sunday 9:00 to 8:00



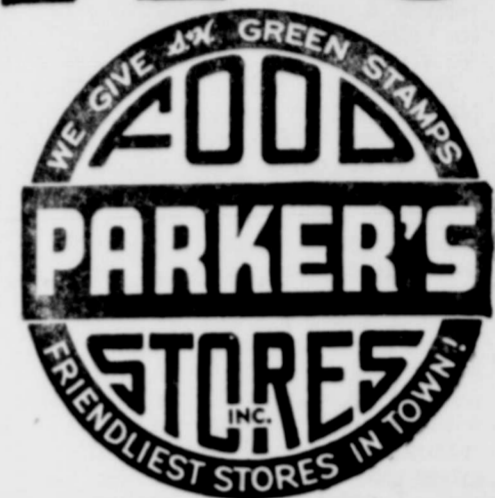
Last Week's Winner of \$25 IN FREE GROCERIES WAS
JOHN V. LEWIS
123 Lilac Lane
Phone No. 569-1390

MIX 'N' MATCH

Dollar items can be mixed or matched if items are same number per dollar. Any amount less than dollar deal—is regular retail.

Tomato Soup Campbell's	10	No. 1 Cans
Bama Jam Grape or Plum	3	18 Oz. Jars
Grape Juice Welch's	3	24 Oz. Bottles
Asparagus Verifine	4	300 Cans
Fruit Cocktail Del Monte	3	No. 2 1/2 Cans
Green Beans Del Haven	8	303 Cans
Pork and Beans Campbell's	8	303 Cans
Del Haven Hominy White	12	300 Cans
Golden Corn Del Monte Cream Style	6	303 Cans
Snider's Catsup	5	14 Oz. Bottles
Libby's Beef Stew	2	1 1/2 Cans
Hi-Power Tamales	3	2 1/2 Cans
Arrow Pinto Beans	2	4 Lb. Pkgs.
Toilet Tissue Chiffon	8	Rolls For
American Pickles Dill or Sour	4	22 Oz. Jars
Vigo Dog Food Beef or Horse	10	No. 1 Cans
Miracle Whip Salad Dressing	3	Pint Jars
Greens Turnip or Mustard Del Haven	10	303 Cans

TIDE
GIANT SIZE
59¢



GRADE "A" TURKEYS	
HENS, all sizes	TOMS, 14 to 16 Lb. Size
lb 43¢	lb 39¢
ARMOUR'S STAR	
SLICED BACON	lb tray .. 53¢

SWANSON'S TV DINNERS All Varieties **59¢ each**
POT PIES Chicken—Beef—Turkey
2 8" in pies 49¢

FRESH PORK SALE **PARKER'S QUALITY MEATS**

HALF OR WHOLE LOINS	lb ... 49c
END CUT ROAST (Loin)	lb ... 45c
END CUT CHOPS (Loin)	lb ... 49c
CENTER CUT CHOPS	lb ... 59c
NECK BONES	lb ... 49c
SPARERIBS (Meaty)	lb ... 49c
BUTT CUT ROAST	lb ... 39c
SLICED PORK STEAK	lb ... 45c
SLICED PORK LIVER	lb ... 25c

CHOICE SPRING **LAMB**
Legs lb
Chops lb
Boneless Shoulder
Roast, rolled lb
Steaks lb
Shanks lb
Patties lb
Stew Meat lb

PORK SAUSAGE, Cowboy 3 lb pkg
PICNIC WEINERS, Burlison's 3 lb bag
SLICED BACON, Columbia 3 1-lb trays
\$1.

PICTSWEET SALE FROZEN FOODS

LEAF SPINACH	10 oz pkg	Your Choice 19c Pkg. or 6 Pkgs. \$1.00	CAULIFLOWER	10 oz pkg	Yours
BROCCOLI CUTS	10 oz pkg		RHUBARB	10 oz pkg	Choice
Cream Style CORN	10 oz pkg		LIMAS Fordhook	10 oz pkg	4
GOLDEN CORN	10 oz pkg		SUCCOTASH	10 oz pkg	Play
Chopped SPINACH	10 oz pkg		BABY LIMAS	10 oz pkg	For
Potatoes, crinkle cut	9 oz pkg		BROCCOLI SPEARS	10 oz pkg	\$1
GREEN PEAS	10 oz pkg		STRAWBERRIES	10 oz pkg	
Peas and Carrots	10 oz pkg				

EXTRA GROCERY VALUES!

ICE CREAM	Brentwood All Flavors	2 1/2 Gallon Cartons	\$1.00
TOMATOES	Del Haven	2 303 Cans	23¢
SALTINES	Tea Flake	1 Lb. Package	23¢
GRAPE DRINK	Welch's	Quart Can	29¢

PARKER'S QUALITY PRODUCE

Potatoes	U. S. No. 1 Grade Red or Russet	10 Lb. Bag	49¢
Tomatoes	FANCY FLORIDA	Carton	15¢
LETTUCE	ICEBERG	Jumbo Head	19¢
Grapefruit	FLORIDA	5 Lb. Bag	39¢

Ranch Style Beans	300 Can	10¢
TUNA	Chicken of the Sea Chunk Style	No. 1/2 Can 29¢
COFFEE	MARYLAND CLUB	Lb. Can 49¢

HOME CENTER VALUES

SHAMPOO—Silvikrin economy size	2 for	\$
OINTMENT—Clearasil med. size	2 for	
Gillette Super Blue Blades	2 packs of 10	
SPRAY HOSE NOZZLES	2 for	
ANGEL SKIN CREAM, Hand, Economy Size, Plus Tax		

WEDNESDAY IS DOUBLE GREEN STAMP DAY WITH PURCHASE OF \$3.00 OR MORE | GARDEN HOSE 3/8 Inch, 50 Feet ... 99¢ | THROW PILLOWS Close-Out ... ea.

Garden Club In Home Of J. B. Riley

Burkburnett Garden Club regular meeting in the home of Mrs. J. B. Riley, 710 Drive, March 28. The host, Mrs. J. C. Adams, roll call was answered by one new member, Mrs. Mills, and one honorary member, Mrs. Chloe Wiggins. Reports were made by chairman of standing committee and alternate made from the District II meeting in Wichita Falls, 21-22.

Burkburnett Club had governor of District II for being the oldest in their group.

President, Mrs. J. C. Adams, won the governor citation for the best president's in Group I in the district.

Walter Riley was leader

for the day in the absence of Mrs. H. G. Williams and introduced the speaker of the day, Mrs. Roy Magers, who is from the home town. She has the honor of being an outstanding National Accredited Flower Show judge and is writing articles on horticulture in the Wichita Times.

The subject was "Elements of Flower Arranging." She began with preparation of the flowers for the show, caring for certain types and cutting properly. Then the ABC's in arranging, the proper containers, with proper height, harmonizing colors, proper accessories when used and placing in the correct space in the home.

She arranged some lovely dried material and stressed the proper uses for them.

Some members of the club prepared in advance some arrangements; namely, Crescent Vertical, Mass, and Hogarth Curve. She explained to the group, the points of each and the reason for the placing there—also the kind of container for each. Much was learned from

her expert knowledge. After the lecture the group went on to the area set up for the "Horticulture Display." Many lovely blooming shrubs and bulbs were on display.

The club adjourned to meet in April in the home of Mrs. Morrison with husbands as guests.

A lovely desert plate was served by the gracious hostess in her lovely home to the guest speaker, Mrs. Roy Magers, a new member, Mrs. Virgil Mills, and Honorary member, Mrs. Chloe Wiggins and fourteen members.



DID YOU KNOW? By Tom Anderson

(Editor's Note: Thos. J. Anderson, Publisher of *Farm and Ranch* and five other farm publications, is the most-quoted farm editor in America.)

Did you know that in Lebanon we spent \$128,000 for a cow barn to demonstrate to farmers—farmers who make \$100 a year or less?

That in Iran, U. S. tax money built a multi-million dollar beet sugar processing plant? That in the entire history of Iran they have never produced a bushel of sugar beets?

That the U. S. Department of Health, Education and Welfare made a \$33,101 grant to the Israel Institute of Applied Research to be used for making a test of husband and wife relationship? The aim is "to develop a diagnostic pictorial test of intrapersonal and interpersonal aspect of the role of relationship between husband and wife."

Another place this great scientific venture could get fruitful results would be in Newark, N. J. There is an intrapersonal and interpersonal family there which has 23 children—15 of them produced out of wedlock. Welfare payments have been diagnosed at \$969 a month.

Did you know that the New Frontier is "solving" the surplus problem by more than doubling the free food dole? In Georgia, for instance, the number of "hand out hounds"



The picture shows Royce Cullar, Waurika Jaycee president on the left and Don Watkins, Rattlesnake Hunt chairman, on the right. Each is holding a large diamond-back rattler caught in the rough, rocky ledges along the Red River, where the first annual Jaycee sponsored Rattlesnake Hunt will be held April 14 and 15.

Waurikans have become more rattlesnake conscious in the last few weeks than ever before with the Waurika Jaycee Rattlesnake Hunt only 2 weeks away—Apr. 14-15.

Snake catchers, clamp and hook type, are under construction by the Jaycees. They will be available to rent or purchase to use on the hunt for persons without proper equipment.

Registration for the hunt opens at 9:00 A. M. on Saturday, with the first hunt convoy scheduled to leave at 11:00 A. M. for the hunt area.

For other information concerning the hunt, banquet or dance reservations, write "Little Rattler", Box 268, Waurika, Oklahoma.

has jumped from 40,000 to 154,000. It's not uncommon to see the come-and-get-it crowd loading up free-loaders who come for their government goodies in taxis.

Did you know that more than 100,000 additional civilian employees were put on the federal payroll last year? That federal debt and spending are at all-time high levels? That the U. S. has 1 percent of the vote and pays 1.3 of the bills for the U. N.? That in the Cannibal Council of the U. N., the favorite new book is said to be "100 Ways to Serve Humanity?"

Did you know that you and your grandchildren will pay for:

preparing production control and price control regulations and procedures? A tenth agency provides 39 weeks of unemployment compensation for broiler producers on enforced vacations? An eleventh agency provides free lobotomies for poultrymen who found the business too "confining"? And a twelfth agency, headed by our most famous poultryman, Egghead Adlai Stevenson, solves all of our one-world problems by merging us into the omelet of humanity?

Note of Appreciation

I am sincerely grateful to all the workers who participated in the Easter Seal (Cerebral Palsy) Drive here Tuesday night and also to the residents who were so generous with their contributions. A total of \$503.31 was collected for this worthy cause.

A special thanks is extended to the Teenettes Club who served as captains for the drive, the high school students who participated, Mrs. Jim Frye, who served as co-chairman of the downtown drive and to Jim Frye and Waldo Huddleston who counted the money.

Sincerely,
Mrs. Jack Mathis, Chairman

Education is not necessarily what one learns, but rather, the habit of learning.

CITY GARBAGE REGULATIONS

City-wide garbage pickup and the elimination of trash burning has cut our fire runs by 95%. Doubtlessly will eventually affect itself in our key rate to a substantial savings in insurance rates.

Considering the garbage service your city council certainly interested in getting good service. We discovered, however, that in many cases the ordinance being followed. As you the garbage service is based on the ordinance, such as those who don't comply with the ordinance, such as improper containers, or keep garbage where it is inaccessible to the garbage crew; such things make it difficult for the crews to stay on schedule and give the service they could otherwise have.

We are asked to cooperate in following the ordinance in the garbage in proper and easily accessible areas.

Men have to walk more than 100 feet to pick up the garbage monthly service

charge is \$2.50. If the containers are within 20 feet of the truck route, and otherwise easily accessible, the rate is \$1.50 per month.

Spot checking has revealed that in many cases residents have claimed the \$1.50 rate when it should have been \$2.50. A system has now been provided where there will be a constant check of rates by the contractor. Any rate changes will be made by the contractor, and not by the water office. Service charge to mercantile establishments depends upon the time required to pick up the trash, and the charge is based on \$6.00 per hour.

There will be times when, with the best of efforts, the men will miss or skip a pickup. When such things happen, a call to the contractor, Virgil Aaron, 569-2522, will bring special pickup services to you. In bad weather, when trucks have difficulty in making the alleys, they naturally will be thrown off schedule. When such happens, we can certainly understand and have patience, realizing they are doing the best they can.

VIRGIL AARON GARBAGE CO.

Mothers!!
ENTER YOUR CHILD IN PETER PAN'S Photo Personality Contest!

\$150 IN PRIZES
CHILDREN 2 WEEKS TO 6 YEARS ELIGIBLE

Many Prizes—Many Winners

PETER PAN'S MODERN MOBILE STUDIO WILL BE AT:
Parker's Food Store
PARKER PLAZA
FRI. and SAT. APRIL 6th and 7th

YOU RECEIVE A BEAUTIFUL 8 x 10 TAPESTRY PORTRAIT AND ENTRY IN CONTEST FOR ONLY 98¢

DON'T MISS IT! DOLL 'EM UP—BRING 'EM IN!

PARKER'S FOOD STORES,
WE GIVE GREEN STAMPS

Advertisement For Bids

Sealed proposals addressed to the Commissioners Court of Wichita County, Texas, will be received at the Court House, Wichita Falls, Texas until 10:00 o'clock A. M., Monday, April 23, 1962 for the construction of two concrete bridges on Gilbert Creek near Burk Burnett, Texas.

A Certified or Cashier's Check, or Bid Bond, in the amount of five per cent (5%) of the bid, made payable without recourse to the order of Joe C. Gowdy, County Auditor, must accompany each proposal as a guarantee that the Bidder, if successful, will enter into a contract and execute a 100% Surety Bond, in accordance with the General Conditions and Specifications.

Attention is called to the provisions of the Acts of the 43rd Legislature of the State of Texas concerning the wage scale and payment of prevailing rates of wages as established by the Owners in the contract documents.

Wichita County reserves the right to reject any or all bids, to waive formalities, and to consider the most advantageous bid or bids. No bids may be withdrawn within thirty days after date on which bids are

opened. Proposal forms, plans, and specifications may be secured at the office of the Engineer, Court House, Wichita Falls, Texas, upon deposit of \$10.00 as a guarantee of the safe return of the plans and specifications. 31-31C

Note of Appreciation

I wish to thank the citizens of Burk Burnett for their vote of confidence in the recent city council election. I shall strive to make our fast growing city a better place in which to live.
Mrs. Philip A. Carpenter

NOTICE

The Modern Study Club will sponsor a RUMMAGE SALE Saturday, April 7th in front of the Culligan Soft Water Service Building on Ave. C.

NOTICE

The WSCS will hold a RUMMAGE SALE Friday and Saturday, March 23 and 24 in the building formerly occupied by the L & M Snack Bar located west of Boyd Bros., on East 3rd St. 28-31C

For Results, Try Classified Ads

LITTLE BOYS
BIG BOYS

WHITE COATS
BLACK SLACKS
For Easter and Graduation
LINEN WEAVE LINED
COATS

Size 8 to 10	Size 12 to 20	Size 37 to 42
\$8 ⁹⁵	\$10 ⁹⁵	\$15 ⁹⁵

Black Continental Wash and Wear Haggard
SLACKS \$8⁹⁵
Size 28 up

Boys' Esskay Slacks
Size 8 to 20
\$4.98

BLACK BOW TIES 59¢

Boys' White Wash and Wear Shirts
Convertible Cuffs
Wear Buttoned or With Links
\$1⁹⁹ Size 6 to 18

We Give S. & H. Stamps Green **Manhattan** DEPARTMENT STORE **We Give S. & H. Green Stamps**

Burk Locker
301 Avenue C —SPECIALS— Phone 569-3101
THIS WEEK'S SPECIALS

SIRLOIN STEAK 76¢ Per Pound

CHUCK ROAST lb 49¢

PORK CHOPS, center cut lb 59¢

GROUND BEEF 3 lbs. \$1.00

BURLISON'S 3 Lbs. 87¢
Quality FRANKS

ALL MEAT SOLD IN OUR MARKET IS INSPECTED BY THE TEXAS DEPARTMENT OF HEALTH
Store Hours 6:30 A. M. to 6 P.M., Mon. Through Saturday

The Friendly Home-Makers Met Mar. 29

The Friendly Homemakers met Wednesday, March 29th in the home of Mrs. C. E. Jones. The meeting was called to order by Mrs. Monroe Gray, president. The Club Prayer was repeated by the group. Plans were made for National Home Demonstration Week in May. Mrs. J. G. Cheney, parliamentarian gave simple parliamentary procedure. The next club meeting will be with Mrs. Earnest Masters April 11th. Miss Thelma Wirges will bring the Demonstration on nutrition. Refreshments were served to Mesdames Oscar McBride,

Tommy Reese, Earnest Masters, J. G. Cheney, Bill Willis, Monroe Gray and hostess C. E. Jones and guests, Tresa Reese and Lesa Reese.

NOTICE

The WSCS will hold a RUMMAGE SALE Friday and Saturday, March 30 and 31 in the building formerly occupied by the L & M Snack Bar located west of Boyd Bros., on East 3rd St. 28-3tC

Men's Bible Class
FIRST BAPTIST CHURCH
Invites You To
Worship With Them
Each Sunday Morning at 9:30
WILL TEAL, President
W. C. DAVIS, Teacher
DICK CHAMBERS, Secy.

DEVOL NEWS

Mrs. C. O. Woodley, Reporter

Mrs. J. H. Gardner, formerly a resident of Devol, died Monday, April 2nd in a Grandfield Nursing Home. Funeral services were held Tuesday in Devol Baptist Church with Rev. Joe Stevens officiating. W. C. Davis has returned home after a visit with relatives in Calera last week. Congressman Victor Wickersham was visiting friend in Devol Monday morning. Mrs. M. Estey returned home Sunday from Edmond where she visited a daughter and family. Mrs. Maud Green of Lubbock, Texas and Mrs. Fred Fewen, Jr. and daughter Lisa Teresa also of Lubbock visited Carl

Foster and R. L. Wyatt homes over the week end. Mrs. Bob McCullough underwent major surgery Tuesday at the Bethania Hospital in Wichita Falls and is reported doing nicely at this time. Mrs. A. J. Mays who was recently returned home from a Frederick Hospital after undergoing surgery here, was readmitted to the hospital Monday evening after suddenly becoming seriously ill at her home here. An emergency operation was performed Tuesday night and she is reported much improved now, one week after surgery. Buck McClurkin remains in a Wichita Falls Hospital where he is undergoing treatment for a heart attack. He is reported as being able to be up a few minutes at a time and feeling

much better. Mr. and Mrs. Jerry Bowles and children and Mr. and Mrs. Gene Wilkinson and children all of Walters; Regina, Belinda and Jack Schwarz of Wichita Falls were week end guests of Mr. and Mrs. Virgil Wilkinson. Mrs. John Short and Mrs. J. E. Parton of Duncan; Mrs. Ethel McCasland and Mrs. Edith Patterson of Amherst, Texas visited Mrs. K. L. Smith Thursday. Mrs. J. B. Stevens and Mrs. Willie Cozy of the Devol Demonstration Club attended the District Club meeting in Lawton Friday. Mrs. Pearl Cates has returned home from a visit with relatives in Arkansas. Mrs. Edith Patterson of Amherst visited her sister-in-law and bother-in-law, Mr. and Mrs. C. O. Woodley last week.

Male ostriches take their turn setting on the eggs to hatch them. Hottest spot on earth is at the Persian Gulf.

United Pentecostal Church of Jesus Christ

The United Pentecostal Church of Jesus Christ would like to invite everyone of the Apostolic faith to come to the church of the first borned, where the bible is preached in its fullness in the old fashioned way. Bible study Thursday night, 7:45 p. m. Sunday School, 10:00 a. m. Evangelist service Sunday night 7:45 p. m. Bro. E. H. Minton, Pastor 605 East 6th St. Phone 569-1108.

Pentecostal Church of God

Rev. Alfred B. Qualls, Pastor
Sunday School, 9:45 a. m.
Morning Worship, 11:00 a. m.
Sunday Night Evangelist Service, 7:00 p. m.
Saturday Night Fellowship, 7:30 p. m.

Church of St. John The Divine (Episcopal)

Bible School 12:45 p. m.
Morning prayer, 1:30 p. m.
First Christian Church, 7:30 p. m.
Rev. Elgene McCray, Pastor
Charge.
IF IT'S FOR SALE ADVERT

TAKE YOUR PROBLEMS TO CHURCH -- MILLIONS LEAVE THEM THERE

COMPLIMENTS OF
Texas Electric Service Co.
J. B. ADY, Manager

PALACE THEATRE
For Good, Clean Entertaining
Motion Pictures

B. and B. GROCERY
Choice Meats and Groceries
500 Avenue D — Phone 569-3701

WOLFE FORD COMPANY
Complete Service and Sales
Phone 569-2275

ALMA'S FLOWERS
285 North Ave. D — Phone 569-3371
Flowers By Wire

B & C GARAGE
Phone 569-3661

BOOMTOWN BOWL, Inc.
AMF "Magic Triangle" Pincotters
1001 Wichita Highway

CARL'S JEWELRY
301 East 3rd — Phone 569-3721
Shop With Us and Save

COMPLIMENTS OF
FAIRMONT FOODS CO.

COMPLIMENTS OF
Keller's
Sportswear & Shoes
313 East 3rd — Phone 569-3981

SIMMONS SHOE SHOP
208 East 3rd Street — Phone 569-3931

Medley Furniture & Appliances
Singer Sewing Machines — 311 E. 3rd St.

SPINK'S FINA SERVICE
418 South Avenue D
Your AAA Service Station—Pho. 569-8108

The RESPECTED WORD

The bible is a book translated into every known language. It is the word that men have died for, in order that it may be available to all men. It is the textbook for God's people.

The bible, itself, is not worshipped, but is respected, for it is the story of God and his relationship to man. It is man's guide for worship and daily living.

Attend church regularly, study, and seek God's will in your life.

"I wait for the Lord, my soul doth wait, and in his word do I hope."

The Church is God's appointed agency in this world for spreading the knowledge of His love for man and of His demand for man to respond to that love by loving his neighbor. Without this grounding in the love of God, no government or society or way of life will long persevere and the freedoms which we hold so dear will inevitably perish. Therefore, even from a selfish point of view, one should support the Church for the sake of the welfare of himself and his family. Beyond that, however, every person should uphold and participate in the Church because it tells the truth about man's life, death and destiny; the truth which alone will set him free to live as a child of God.

© Coleman Adv. Serv., P. O. Box 4887, Dallas, Texas

Davis Grocery and Market
Fancy and Staple Foods
403 West 3rd St. — Pho. 569-8145

Williams Petroleum Co.
Dealers in Gasoline, Kerosene
and Distillates Phone 569-2531

VIRGIL AARON
SANITATION CONTRACTOR
Complete, Modern Facilities

BOYD BROS. DEPT. STORE
General Merchandise-Furniture
Maytag and G. E. Appliances
117-123 Main—Phone 569-2214

BURKBURNETT FLORISTS
Mr. and Mrs. L. V. Richards
415 South Ave. B — Phone 569-2281

CORNER DRUG STORE
George McClarty
320 East 3rd Street

DICKSON OIL COMPANY
DICKSON MOTEL

THE MANHATTAN
Complete Department Store
218 East 3rd Street

Preston Dairy Products
Hugh and Buddy Preston
219 East 2nd Street

C. D. Shamburger Lumber Co.
R. C. Tevis, Manager
200 West 3rd Street

**Farmers Co-op Gin, Feed
and Supply**

COMPLIMENTS OF
MEAD'S BAKERY Inc.

United Super Market, Inc.
Kenneth Palmer, Manager
Wichita Highway at Tidal

SHEPPARD STATE BANK
Phone 723-0951
Banking For A Future

RANCHOUSE MOTEL
Oklahoma Cutoff — Pho. 569-2211

Jan Lee Heights Mission
Extension Of
First Baptist Church
Across from Junior High
School
Travis McMinn, Pastor
Sunday School, 9:30 a. m.
Morning Worship, 10:45 a. m.
Training Union, 5:30 p. m.
Evening Worship, 6:30 p. m.
Wednesday—
Teachers and Officers 7:00 p. m.
Midweek Service, 7:30 p. m.
Choir Practice, 8:15 p. m.
Large enough to accommodate, small enough to appreciate.

Church of Christ
Eugene Gilmore, Minister
Bible Study Sunday, 9:45 a. m.
Worship, 10:45 a. m.
Young People Class 5:00 p. m.
Worship, 6:00 p. m.
Bible Study, Wednesday, 7:30 p. m.
Ladies' Bible Class, Tuesday, 9:30 a. m.
"We welcome you to any of our services."

First Methodist Church
Carrol D. Copeland, Pastor
Sunday School, 9:45 a. m.
Morning Worship, 10:55 a. m.
Junior, Intermediate and Senior Youth Groups, 6:00 p. m.
Evening Worship, 7:00 p. m.
Official Board meets every Fourth Monday.
Visitors are cordially invited to attend all our services.
A nursery is provided for nursery age children for both morning and evening services.

Central Baptist Church
814 Tidal St.
Kenneth D. Bradshaw, Pastor
Sunday School, 9:30 a. m.
Morning Worship, 10:45 a. m.
Training Union, 6:00 p. m.
Evening Worship, 7:00 p. m.
Wednesday Night Prayer Service, 7:30 p. m.
"A Friendly Progressive Southern Baptist Church"

Assembly of God Church
Lonnie Finney, Pastor
Sunday School, 9:45 a. m.
Morning Worship, 11:00 a. m.
Evening Worship, 7:30 p. m.
Women's Missionary Council, Tuesday, 2:00 p. m.
Youth Service, Tuesday, 7:30 p. m.
Prayer Meeting, Thursday, 7:30 p. m.

Church of God
J. W. Jackson, Pastor
10:00 a. m., Sunday School.
11:00 a. m., Hour of Morning Worship.
7:00 p. m., Evangelistic Services.
7:30 p. m., Wednesday, Young Peoples Endeavor.
If you haven't a church home, we would like very much for you to visit us where the full gospel is preached in the old time way. There is special music and singing each service. Each and every one has a warm and hearty welcome to come worship with us.

Church of Jesus Christ United Pentecostal
The United Pentecostal Church of Jesus Christ would like to invite everyone of the Apostolic faith to come to the church of the first borned, where the Bible is preached in its fullness, in the old fashioned way. Bible Study, Thursday Night, 7:45 p. m. Sunday School, 10:00 a. m. Evangelist Service, Sunday night 7:45 p. m.
Bro. E. H. Minton, Pastor
606 East 6th St.
Phone 569-1108.

First Church of Christ Scientist
2156 Avenue H
Wichita Falls, Texas
Sunday School for children under 20 years of age, 11:00 a. m. in the Church Edifice.
Nursery.
Services at 11:00 a. m.
Wednesday Evening Services, 8:00 p. m.

First Baptist Church
Corner Ave D and 4th St.
Sunday School, 9:30 a. m.
Morning Worship, 10:45 a. m.
Training Union, 5:30 p. m.
Evening Worship, 6:30 p. m.
Prayer Meeting, Wednesday, 7:30 p. m.
"In the heart of the city for the hearts of the city."

Grace Lutheran Church
Third St. and Ave E
Philip M. Otten
The Church of the Lutheran Hour, TV's "This is the Life".
Sunday, 9:45 a. m., Sunday School and Bible Classes.
11:00 a. m. Morning Services.
LWMS meeting every first Tuesday, 2 p. m.
Sunday School teachers meeting, Teacher training course, every 2nd and 4th Wednesday, 7:30 p. m.
Walthor League Meeting, every 2nd and 4th Sunday at 7:30 p. m.
You are cordially invited to our services.

First Christian Church
2nd St. and Ave D
Wayne Black, Pastor
Sunday School, 9:45 a. m.
Morning Worship, 11:00 a. m.
CYF and Chi RHO, 6:00 p. m.
Evening Worship, 7:30 p. m.

Calvary Baptist Church
College and Ave B
Ray C. Morrow, Pastor
10:00 a. m., Sunday School.
An Independent Southern Baptist Church.
We use the Bible as our only literature.
11:00 a. m., Song, Preaching Service.
7:00 p. m., Young Peoples Services.
7:30 p. m., Night Preaching Service.
Wednesday Night—
6:45 p. m., Teachers Meeting.
7:30 p. m.—Prayer Meeting.
When you've cooked and served a dinner for eight you expect recognition and should get it.

Free Church of Christ In Christ In Jesus Name
West 6th St.
W. W. Dixon, Pastor
Saturday—
9:45 a. m., Sabbath School
11:00 a. m., Preaching Service
Thursday Night Service, 7:30 p. m.
We welcome all colored and white people to our services.

Church of the Nazarene
Main at Holly
R. A. Noakes, Pastor
Sunday School, 9:45 a. m.
Morning Worship, 11:00 a. m.
Young Peoples Service, 7:30 p. m.
Junior Society, 8:45 p. m.
Evening Worship, 7:30 p. m.
Wednesday Prayer Service, 7:30 p. m.
GO TO CHURCH SUNDAY



Production staff of the Burk Burnett High School's one-act play, THE CRUCIBLE. Front row: Charles Davey, Ronnie Evans, Jimmy Collins, Jim Davey and Robert Adams. Second row: Jimmy Seay, Janelle Hinkle, Judy Miller and Patricia Simons. 3rd row: Sally McClain, Pat Adams, Kay Zimmerman, Kerry Sexton, Sue Revier and Sharon Nix. 4th row: Thom Reed, Ray Dean Shaw, Hank Hodge, John Woods and Johnny Koller. Absent from picture: Mickey Cornelius, Karan Burton.



Sponsors of the High School's one act play: THE CRUCIBLE: Mrs. Suzanne Batterton, assistant director, and Mr. Alden Smith, director.

High School Wins First Place In Dist. One-Act Play Contest

Winning First Place in the District 9-AA One-Act play contest held at Jacksboro High School on March 26, 1962, was the Burk Burnett High School with their presentation of "The Crucible," by Arthur Miller. The troupe will compete in Region III on April 14th at N.T.S.U. in Denton. The winner of the Region will go to State, May 1, 2, and 3, at Austin.

Placements in the District were: First Place, Burk Burnett, "The Crucible"; Second Place, Iowa Park, "Command Performance"; and Third, Olney, "Aria de Capo." Other entries were Seymour, Electra, Jacksboro and Nocona.

This is the first year since 1956 that Burk Burnett has won the one-act play contest. The trophy was presented by Mr. Don Smith, principal of Jacksboro High School.

Named as best Actor and Actress were Ronnie Evans and Pat McAdams, both of Burk Burnett. Thom Reed was also named to the all-star cast of six.

Cast: Robert Kelly, Jim Davey, Sally McClain, Thom Reed, Sharon Nix, Johnny Koller, Pat McAdams, Jimmy Collins, John Woods and Ronnie Evans. Crew: Makeup, Kay Zimmerman and Kerry Sexton. Costumes: Patricia Simons, Sue Revier and Judy Brister. Properties: Karan Burton. Transportation: Ray Dean Shaw, Charles Davey and Jimmy Seay.

Wardrobe Mistress: Janelle Hinkle. Directors: Alden Smith and Suzanne Batterton.

For Results, Try Classified Ads

Newcomers Welcomed to Burk Burnett

The Burk Burnett Chamber of Commerce and the Greeters Service wish to welcome the following newcomers to our city.

- Morris, Gene
- Wood, Wayne
- Arnold, J. H.
- Pipkins, James
- Pearson, Robert
- Hearon, E. L.
- Joslin, Howard
- Davis, James
- Blackport, Paul

Bewick, J. F. Sherlock, Kenneth

If you are a newcomer to Burk Burnett and have not been contacted, please call Mrs. Savage, 569-2180, or the Chamber of Commerce Office, 569-3393.

IF IT'S FOR SALE ADVERTISE

Open Under New Management
T. & O. Grocery
 East 3rd Street
 PHONE 569-8125
 Mr. and Mrs. Jim Fowler



Church of God Revival Scheduled April 1 to 8

Evangelists Zoe Brown and Dianne Hancock will conduct a one week revival at the Church of God in Burk Burnett beginning April 1-8. Services will begin at 7:30 p. m. nightly and will feature full gospel preaching, special singing and prayer for the sick.

J. W. Jackson, pastor, extends a cordial invitation to the public to attend this revival. The church is located at 121 So. Ave. E.

The younger generation is more in needs of models than critics.

Schroeder Rites Held in Perryton

Mrs. Anna W. Schroeder, 66, a long time former resident of the Clara community, passed away March 23, in Perryton, Texas. Services were held in that city in the Bethlehem Lutheran Church. Interment was in the Gray, Oklahoma cemetery.

She is survived by her husband, Oscar Schroeder, two sons, Oscar Jr. of Perryton, Eugene of Amarillo, four daughters, Mrs. Lavonia McDaniel of Perryton, Mrs. Maxine Sargeant of Gray, Oklahoma, Mrs. Evelyn Sharp of Langley, Oklahoma and Mrs. Mary Ann Splitter of Sheridan Lake, Colorado, one brother, Mike Coleman of Odesa, Texas, one half-brother Karl Mertins of Iowa Park and 18 grandchildren.

A number of relatives and friends from this area attended the funeral.

Willie Freeman Of Burk, Dies

Willie Freman, 47, a resident of Burk Burnett for 34 years, was dead on arrival at Wichita General Hospital Wednesday and Justice of the Peace H. M. (Doc) Newman ruled death due to a heart attack.

Survivors include his wife; his mother, Anna Freeman, Burk Burnett; a daughter, Linda Faye Freeman, Burk Burnett; two sisters, Annie Williams, Olney, and Frances White, Los Angeles; and three brothers, Clifton Freeman, Los Angeles, and Arthur and Howard Freeman, both of Burk Burnett.

Funeral services were held at 2:30 p. m. Sunday at the Providence Baptist Church of Burk Burnett. Officiating was Rev. T. L. Longmiles, pastor. Burial was in the Burk Burnett Cemetery under direction of Wells Funeral Home of Wichita Falls.

moustache and long, drooping whiskers worn by the fashionable men of England in the 1860's.

OPEN FOR BUSINESS
JEANINE'S BEAUTY SALON
 215 Wigham St. (off So. College St.)
 AIR CONDITIONED DRYERS
 Specialist in Hair Styling and Permanent Waves
 OPEN EVENINGS BY APPOINTMENT
 JEANINE FOX, Owner and Operator
 PHONE 569-3789

Warren's Nursery and Play School
 Licensed Child Care
 Happy, Quiet Atmosphere
 Inspected and approved by local fire and health authorities
 Mrs. Herschel Warren
 Hardin Ave. Ph. 569-3442

A COMPLETE PAINT AND
Auto Body Shop
 201 East
 PHONE
569-3381
 2nd Street

MRS BAIRD'S ENRICHED BREAD
 MATHIS CHEVROLET CO.
 300 E. 7th, BURKBURNETT, TEXAS
 Chevrolet-Oldsmobile Phone 569-2381

MRS BAIRD'S STAYS FRESH LONGER

Pick Freshness!



U.S. CHOICE: GAS BROILING

It's smokeless! No wonder 85 out of 100 women prefer cooking with gas! Gas cooks cooler, cleaner. Broils smokelessly with the broiler door closed. You never suffer with a heat-or spatter-filled kitchen. The clean blue flame consumes the smoke. Save on your glamorous new gas range now.

SPRING GAS RANGE SALE

STATE CAPITAL Highlights AND Sidelights by Vern Sanford TEXAS PRESS ASSOCIATION

Austin, Texas — Candidates for governor now are quarreling over legislative redistricting which would give the metropolitan cities more strength.

Poll tax payments indicate that these cities actually have the voting strength.

But final figures are not in on all counties.

Official figures plus some estimates reveal 1,250,429 qualified voters in the 12 counties which contain cities of 100,000 or more. Offhand this would indicate that the 12 "big city" counties would have more than half the votes in the state.

But the "big 12" are not as well prepared to vote this year as they were in 1960. That year they had 1,362,173 voters. It was a presidential year. However, declines are reported

for 1962 elections in all of the 12 big-city counties except Travis, where the State Capitol is located.

One notable thing about the poll tax figures is the growing number of those with exemptions from the poll tax because they are 21 years of age and vote free—or they are over 65 and don't have to buy a poll tax in order to vote.

Indications are that there will be more exemption certificates this year (those in cities of 10,000 or more) than ever before, even in record-setting 1960.

Another fact to consider is that rural people go to the polls regardless of the weather, while inclement weather keeps many city folks home.

Motorcade Increases — Texas Department of Public Safety statisticians figure an accident occurred in Texas traffic every 97 seconds last year, with someone killed every three hours and 47 minutes.

When the department closed its 1961 "death book," it reported a motorcade total of 2,314—60 more traffic deaths than



Placing first in the University Interscholastic League Solo contest held Saturday, March 17 at Midwestern University are Mark McClean, cornet; Paul Taylor, trombone; Max Crowley, alto sax; Sam Gilbow, trombone; Connie Seidel, baritone.

1960 held. Drivers of 324,149 motor vehicles sustained 132,570 injuries.

December 22 was the most deadly day... 23 people were killed in 15 fatal accidents.

Col. Homer Garrison, Jr., director of the DPS, remarked, "It is a sobering thought to realize that the number of persons killed on Texas streets and highways was greater than the populations of most Texas towns."

Fourteen counties were free of fatal accidents in 1961—Borden, Brewster, Delta, Hansford, Hardeman, Kent, Lipscomb, Loving, Mason, Rains, Roberts, Somervell, Sutton, and Upton.

"Wel-Knowd Camel Cart-Driver" — The State Highway Department is pondering a mysterious postcard that carries a request for a copy of the new 1962 highway travel map.

The return address reads: Bashir Ahmed Sarban, (Wel-Knowd Camel Cart-Driver) 27, Corner Chambers, 181, McLeod Road, Karachi, Pakistan.

Folks at the highway department are wondering if this is

the same Bashir Ahmed who visited Texas and the U. S. last year as Vice President Lyndon Johnson's guest.

There was quite a furor when that "Bashir" retired his camel and accepted a gift of a new ford. Could he be planning to return to America and motor through the Lone Star State.

Austin, Tex. — At a joint meeting of the Governor's Highway Safety conference and the Texas Safety Association, Gov. Price Daniel said that good traffic safety legislation still is lacking because citizens "have never taken enough time and trouble to tell their legislators exactly what they want."

He said that five bills which have failed to pass will be introduced in the January session, "regardless of the identity of your next governor."

1. State financing to pay the salaries of driver-education teachers in public schools.
2. Complete revision of the driver-licensing law.
3. A chemical test law for use in cases of driving while intoxicated—designed to free the innocent and provide medical evidence against the guilty.
4. Adequate city and county traffic courts of record to handle traffic cases with efficiency and justice.
5. Authorization for additional highway patrolmen and additional pay for Department of Public Safety personnel.

Although the Legislature lately approved 51 additional highway patrolmen, a \$300 increase in pay and set a floor of \$4,947 annual salary, the governor reported the patrol still is 150 men short of its authorized strength of 804. He feels the pay hike was insufficient.

Voters List—Comptroller Bob Calvert added up the poll taxes and exemptions sent in by the counties and found 2,355,159 Texans qualified to vote.

This is an increase of 300,000 from 1958, the last non-presidential election year. But it is virtually the same as the number of qualified voters in 1952.

Still holding the record is 1960 with 2,599,924 Texans qualified to vote.

Teachers Quizzed — Texas school teachers are pretty good at answering their examinations.

Texas Education Agency sent out questionnaires to about 95,000 school people. They expected a 30 per cent return but 92,000 answered.

Questions were part of a Texas Legislative Council study of teacher training.

Results will be fed through computers to give lawmakers an idea of what school people think about the way public schools are run and how teachers are trained.

Water Loans Hit—The state will borrow another \$15,000,000 on April 19 to help local water districts, river authorities and cities on their water projects.

Texas Water Development Board has the authority to borrow up \$100,000,000 for this purpose.

Its first bond issue of \$10,000,000 is nearly used up in

four loans. So another \$15,000,000 worth of bonds will be sold.

Major project helped so far by this state program is the Toledo Bend reservoir on the Sabine River near Newton. It will get a \$15,000,000 loan over the next four years.

Padre Study — Herb Petry, chairman of a special committee to study the various proposals for making Padre Island a recreation area, said the committee will have a meeting in April to decide on its recommendations.

Governor Daniel appointed the committee after differences developed as to whether Padre Island should be turned into a recreational area by the federal or state government.

A bill in Congress has authorized federal purchase of a large part of the island as a national seashore area. But the bill has not passed the House of Representatives because South Texas Congressmen favor a smaller area, if any at all.

GI Farms — Veterans Land Board has sold 20 repossessed GI farms for \$19,000 more than it has invested in them.

It turned down bids on a Grayson County tract which drew 33 bidders.

Board tried, but failed, to put a block deal back together by advertising for bids on an 860

acre farm in Zavala County. Board had set the minimum bid at \$150,000 but nobody bid.

Only qualified veterans who have not made GI land loans were eligible to bid on the tracks.

Professors Pay—Two University of Texas department heads told their troubles as they moved into a new \$4,000,000 business and economics building.

Dr. Carey C. Thompson, chairman of the economics department, said he recently lost a good faculty member to the University of Rochester which bid his salary from \$7,800 to \$13,000 a year.

Dr. John Arch White of the College of Business Administration said his college had not had a full staff since the end

of World War II. Last year needed to hire 12 young instructors but could only hire eight and then lost four of them. Other employers are his salary limits.

The two departments have fine new building but are pressed for professors for growing number of students.

Sunday Sales—Atty. Gen. Wilson has held that the law which prohibits sales on Sunday or other days does not prohibit the sale of mobile homes (house trailers). New law requires retailers many lines to close either Saturday or Sunday.

President McKinley was first to toss out the ball at beginning of baseball season.

JOSEPH H. COTTON'S
BOOKKEEPING SERVICE
INCOME TAX — NOTARY PUBLIC
REPRESENTATIVE:
CHARLES D. GREEN
602 Forest — Pho. 569-3896 — Burkburnett, Tex.

GENUINE ENGRAVED Wedding Invitations
Complete matched cover required. Your hand inscribed on selected white paper. **\$12.45** FOR 100. FREE BURGUNDY NOTE PAPER WITH EACH ORDER.
BURKBURNETT STAR

KNOWLES PHOTOGRAPHY
COMMERCIAL
WEDDINGS and BANQUETS
PORTRAITS
CORNER OF DOT AND FORREST
Phone 569-1150 Burkburnett, Texas

Shop Wacker's Save
April Parade of Values!

SUPER QUALITY PAINTERS SPECIALS

FERRO-BOND LATEX WALL PAINT
15 Colors to choose from. Dries in one hour. \$3.95 Gallon Value. **SALE PRICE \$2.77** Gallon.
Buy 3 Gallons and get a 9 x 12 plastic Drop Cloth FREE. Matching semi-gloss ENAMEL available in our paint dept.

Pan & Roller Set
The Fast, Easy Way To Paint Walls. Rolls Paint on Walls and Ceilings Smoothly. Regular \$1.19 Value. **SALE PRICE 77¢** Set.

9 x 12 Plastic Paint DROP CLOTH FREE
WITH 3 GALLONS LATEX WALL PAINT OR BUY IT ALONE FOR ONLY **44¢**

SPECIAL ALL PURPOSE 4" x 2 1/2" NYLON BRISTLE PAINT BRUSH
Smooth Flowing - Easy To Clean. Regular \$2.29 Value. **SALE PRICE \$1.66**

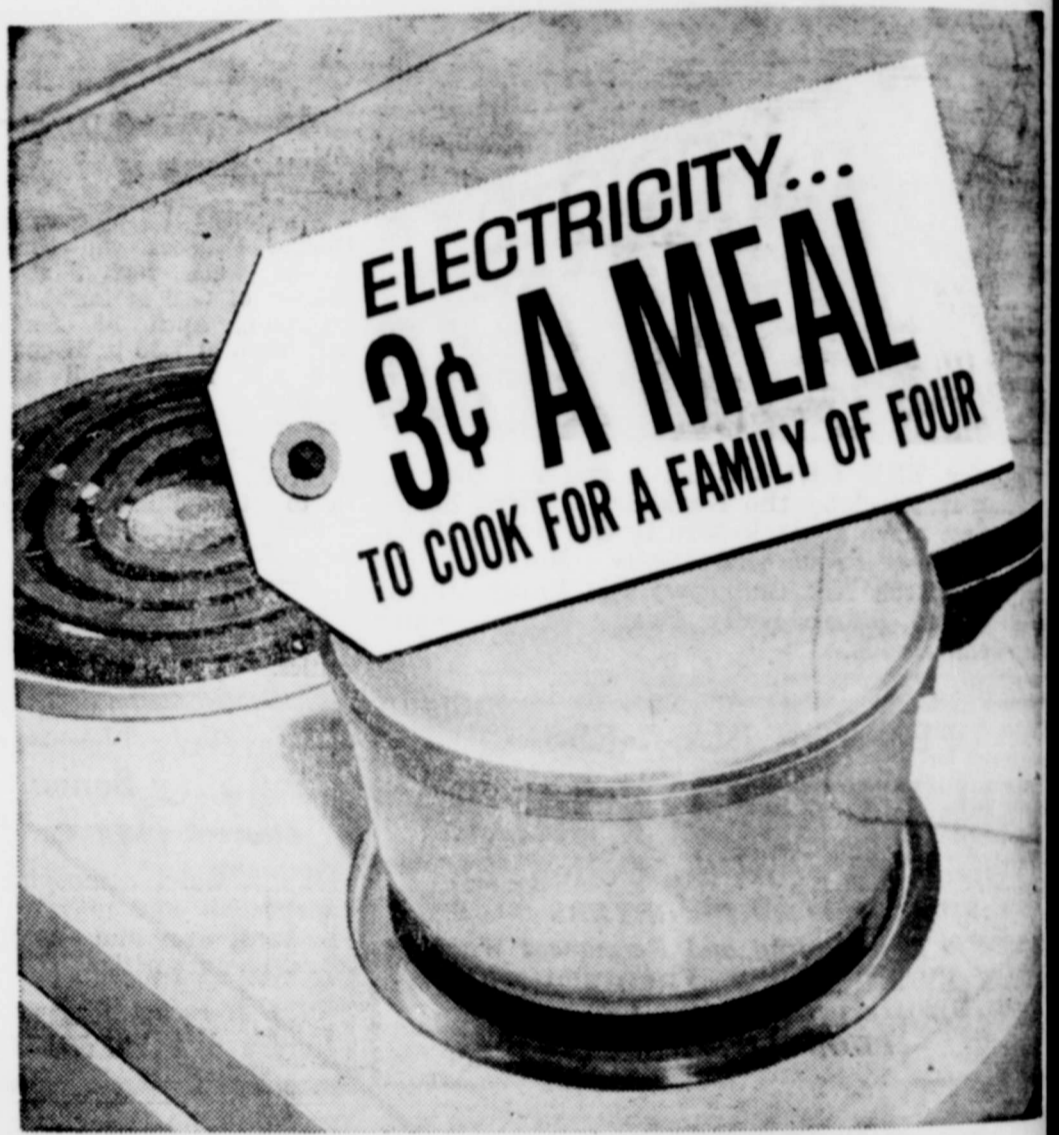
Decorative Sections of Snow White PICKET FENCE CAPE COD STYLE
With two 17 Inch stakes on each section. 35 inches long. 9 pickets to each section. Regular 29¢ Each. **WACKER'S SPECIAL 4 for 88¢**

10 SHELF c-thru SHOE BAG
with all these high priced features: OFFICE CLEAR PLASTIC, NEW HIGH TORQUE SHELVES, NEW TILT-UP TAIL SUSPENSION, GOLD DIAMOND SHUTTER TOP AND LIP, TORN-HEAT CRACK PROOF, TENSILE STRENGTH, EASY TO INSTALL. Regular Price \$2.49. **WACKER'S SPECIAL \$1.77**

3/4 INCH 2 PLY Plastic GARDEN HOSE
Solid Brass Couplings. 8 Year Guarantee. Regular Price \$1.39. **SALE PRICE 99¢** 50 FEET.

Transparent GARMET BAG
54 INCH JUMBO Size. Made of heavy vinyl plastic. Easily stores 16 garments. Convenient long length zipper closure. Steel non-tilt frame with 2 metal hooks. Regular Price \$1.49. **SALE PRICE 97¢** each.

Lawn EDGING
SAFETY EDGES. EXTRA HEAVY. NONRUSTING. MADE OF FINEST ALUMINUM. REG. \$1.19 VALUE. **SALE PRICE 88¢** roll.



WITH A CLEAN FLAMELESS ELECTRIC RANGE



Some may think electric cooking is expensive. Actually it costs an average of only 3¢ a meal for electricity to cook for a family of four. Considering how much cooler and cleaner your kitchen will be, this small per meal cost looks even smaller... and there also is the joy of having a beautiful kitchen that is truly modern. See your electric range dealer soon. You get so much more for so little when you cook the modern, flameless electric way.

HOW FAST CAN YOU GO IN A COFFIN?

Next time you are tempted to step on it, ask yourself this question! Last year, 40,000 died on our highways. In 3 out of 10 fatal accidents, drivers were speeding. Obey speed limits. Drive safely.

BACK THE ATTACK ON TRAFFIC ACCIDENTS!

Published as a public service in cooperation with The Advertising Council

TEXAS ELECTRIC SERVICE COMPANY
J. B. ADY Manager JO 9-3373

All Insurance is the same 'til you have a claim

Burk Insurance Agency
HOWARD CLEMENT
New Location—Next to Legion Hall

Forum Study Met in Home of Leslie Terry

Members of the Junior Forum Club met in the home of Leslie Terry. Bill Wood, president of the meeting to order the Club Collect was read. D. Hart read the minutes. The devotional was not due to an absence.

Plans were made for the Sale. A new amendment was added to the Constitution. There will be a fifty cent placed if you do not notify the club you are bringing a club also voted to run a concession stand at the kid all diamond this summer. Monty Knox, incoming president, named the year book for next year. They are Raymond Schroeder, Leslie Terry and Mrs. Dasher.

Refreshments were served to Mesdames Harry Park, Roderick, Raymond Sch. J. D. Hart, David Booth, Monty Knox, Bill Wood, Lawson, two guests, Yaden and C. L. Pruett the hostess, Mrs. Leslie

and Mrs. G. C. Hensen Burk Burnett and Mr. J. E. of Randlett, Oklahoma, Friday in Dallas visiting Benson's sister, Mrs. Dora, who is a patient in Bay-

Results, Try Classified Ads

IRVING J. VOGEL
ATTORNEY

City National Bank
PHONE 723-4105
WICHITA FALLS, TEXAS

the Saver lands on Top!

The man who has money—saved on schedule every payday in a bank account—is in the best position to seize many an opportunity to make money.

See you —here— next payday?

INTEREST PAID ON SAVINGS

3 1/2% 6 MONTHS
4% 1 YEAR

• Drive In Banking

NEW DRIVE IN BANKING HOURS:
Mon. thru Fri. 9 a. m. to 2 p. m.—4 p. m. to 6 p. m.
Saturday 9 a. m. to 12 Noon

1st
NATIONAL BANK
BURKBURNETT, TEXAS

"SERVING BURKBURNETT SINCE 1907"

MEMBER

Federal Deposit Insurance Corporation



Mr. Bud Hall from the Bud Hall Beauty Salon in Wichita Falls and Lawton, Okla., will conduct the fourth session of the grooming workshop, sponsored by the Wichita County program building subcommittee on Clothing. This meeting will start at 10:00 a. m. Tuesday, April 3rd in the Wichita Falls Texas Electric Auditorium. All Wichita County homemakers interested in Hair Styling are encouraged to attend.

Mr. Hall will include hair care and styles for the well groomed homemaker. He will illustrate as well as discuss his subject.

Mrs. George Wyatt is chairman of the planning committee for this and all clothing phases of the Wichita County Home Demonstration program.

Constant care can make hair lovelier. However, Thelma Wirges, county HD agent, stresses proper nourishment as the greatest hair preparation on the market. Since all nourishment comes from the blood stream that means the body must be healthy. With basic health taken care of, lovelier hair is almost everyone's privilege, but it is up to the individual to be consistent and persistent in its care.

Colorful cottons are in the limelight this spring. Thelma Wirges reminds homemakers. Whatever the weather, it will

Wichita County homemakers are now completing a basic sewing workshop, where they have each completed a garment.

be a sun bright season for cotton. From fragile pastels to vivid shock tones, cotton's color wheel spins full circle to present a whole new fashion concept.

Spring colorings include bright flag waving shades of red, white and blue; and warm citrus colors of lemon, lime and orange. In contrast, neutral beige and gray as well as sophisticated combinations of black and white are favored. Shown by designers of sports as well as dress-up clothes, this roster of colors appears on cotton pique ottoman, tweed and poplin.

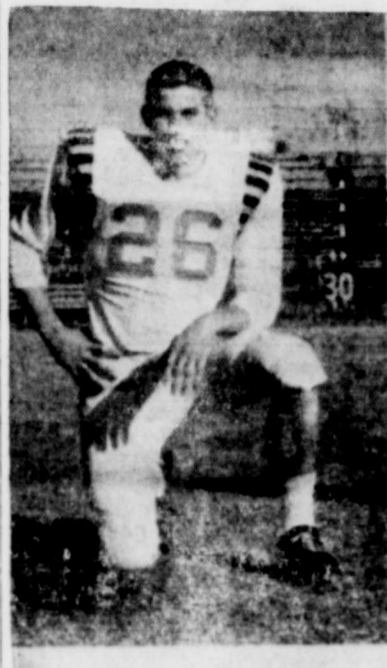
Additional color interest for cottons comes from the debut of a whole new family of blue-bloods. Sky blue, porcelain blue, lightened navy and fresh, clear aqua are examples of designer favorites for day into evening designs.

Prints are a fashion first for spring, according to Miss Wirges. Utilizing the whole color spectrum, they appear in free form versions reminiscent of a Matisse painting or as neat designs that echo the American theme so popular in fashion this year. Traditional stripes, plaids and checks assume new importance, as do designs of natural and abstract shapes magnified to bigger than life size.

These are used on cottons as varied as satin, knit, broadcloth, homespun and ba tiste, the HD agent said.

For Results, Try Classified Ads

Carlos Ramsey At Lamar Tech



CARLOS RAMSEY

A 1959 graduate of Burk Burnett High School who has impressive athletic and scholastic records has enrolled at Lamar Tech College at Beaumont.

He is Carlos Ramsey, son of Mr. and Mrs. C. W. Ramsey of Burk Burnett.

Ramsey lettered four years at Burk Burnett in football, was named to the all district team, was tri-captain his senior year and played in the Greenbelt Bowl at Childress and the Oil Bowl in Wichita Falls. He will play football at Lamar Tech next year.

He played baseball and basket-

ball for two years at Burk Burnett, was vice president of the Lettermen's Club in 1959, best all-around boy in Who's Who. He was a member of the National Honor Society.

Ramsey entered Henderson Junior College at Athens after graduating from high school and played football under coach Tommy Steigleder. He was named to the first all conference team in the Eastern Conference for junior colleges his freshman year.

This past football season he received an award from a Dallas paper as an outstanding athlete.

HIGH HAT TROUT FLIES

Neatest fly and bug holder in the world is a piece of cellulose sponge or lamb's wool sewed or glued on the brim of your fishing hat. Even if you don't catch fish, you will LOOK like you should have.

Classifieds In The STAR Get Results

CORNELIUS Insurance Agency



- Estate and Pension Plans
- TRUSTS
- ANNUITIES
- BUSINESS AND PERSONAL INSURANCE
- EDUCATIONAL PLANS
- ALL TYPES OF LIFE INSURANCE

703 South Berry Telephone 569-3498

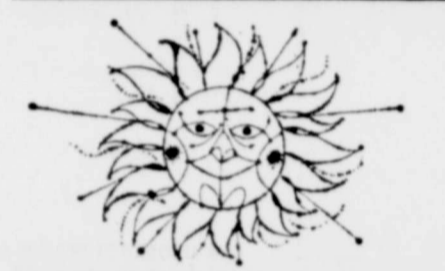
OWENS-BRUMLEY FUNERAL HOME

AMBULANCE SERVICE

PHONE 569-3361

Harold Van Loh
President

Joe Allcorn
Manager



NOW FUN AND SUN DAYS

AT YOUR CHEVROLET DEALERS

(where you'll find the nicest ways to get away!)

You won't find a vacation-brightening variety like this anywhere else. And now that spring has sprung, the buys are just as tempting as the weather. Look over all the wonderful Chevrolet ways to go wandering. Your choice of 11 new-size Chevy II models, including America's lowest priced 3-seat station wagon.* Fourteen spacious, spirited Jet-smooth Chevrolets. And a nifty, nimble crew of rear-engine Corvairs that specialize in sports car scamper, family style. Even Greenbrier Sports Wagons with up to twice the totip' space of ordinary wagons! Three complete lines of cars to cover just about any kind of going. You just won't find better pickings in size, sizzle and savings anywhere under the sun than now—during your Chevrolet dealer's Fun and Sun Days.

*Based upon manufacturers' suggested retail prices.



NEW BEL AIR 4-DOOR STATION WAGON

A Jet-smoothie that rides just right, loaded or light—with a whopping 97.5-cu.-ft. cargo case and Full Coil suspension.



CORVAIR MONZA 4-DOOR SEDAN

From snappy interiors to sure-footed scot, this one's got what it takes to make sport of most any trip.



NEW CHEVY II NOVA STATION WAGON

Like to latch onto a wagon that sells at a compact price, yet really goes for loads in a big way? Here 'tis with a longer load floor than any compact—over 9 ft. with second seat and tailgate down.

See the new Chevrolet, Chevy II and Corvaire at your Chevrolet dealer's One-Stop Shopping Center

MATHIS CHEVROLET COMPANY

300 East 2nd Street

PHONE 569-3361

Burkburnett, Texas

