

Burkburnett Star

LIKED BY MANY — CUSSSED BY SOME — READ BY EVERYBODY

John D. Rockefeller founded the University of Chicago.

Herbert Hoover is the only man of Swiss descent to be president of the U. S.

BURKBURNETT, WICHITA COUNTY, TEXAS, THURSDAY, MARCH 1, 1962

NUMBER 25

Chamber of Commerce Luncheon Each FIRST MONDAY at Town Hall. Everybody Invited Each Pays for His Meal

CITY HALL

News and Notes
By Clovis D. Mann
City Manager

many civic improvement acts that are now under way as well as those being planned by the various civic organizations, calls for a means of coordination—not only to prevent duplication of effort, but to focus attention on certain projects that may need the cooperation of its members.

The need for coordination can be met by means of the Community Council recently organized under the guidance of Ralph White, Project Director of the Council of the City of Wichita.

The Community Council is composed of representatives of all organizations in the city. It is community-wide in scope. Its purpose is not, in any manner, to be some kind of "super" organization to control and bind all clubs to do as it wishes. Its purpose is to coordinate the efforts of all organizations, but to assist all organizations in their efforts where community interest and cooperation may be needed to accomplish a given project.

It can do this by being a "clearing house" for the exchange of information with the various organizations through representatives who will express the desires of the particular organization, and also be able to bring information back to their organization as to the thinking of other groups. A Community Council which someone suggests should be of considerable help to all the clubs in future events.

These purposes are kept in mind and the various organizations cooperate by furnishing adequate representation, much can be accomplished.

The next meeting of the Community Council has been set for Friday, March 9th, 10:00 a. m. at the Town Hall.

Terms of George McClary, J. "Buddy" Byars and Rowley, on the City Commission expire this year. Crowley is the only one of the three to be re-elected for the next term (as of date of this writing, Feb. 27th).

Candidates had filed for three places by February 27th (Deadline on filing is Friday, March 2nd). They are Joe Byars, Jim Frye, Joe Logan, Larson and C. L. Simmons.

The election has been set for April 3rd, and will be held at the Town Hall.

Several citizens have been asked if anyone had filed for the office of City Charter Commissioner, or Board of Commissioners, by the Mayor.

These are the Mayor, Board of Commissioners, by the Mayor, Board of Commissioners, by the Mayor, Board of Commissioners, by the Mayor.

These are the Mayor, Board of Commissioners, by the Mayor, Board of Commissioners, by the Mayor, Board of Commissioners, by the Mayor.

These are the Mayor, Board of Commissioners, by the Mayor, Board of Commissioners, by the Mayor, Board of Commissioners, by the Mayor.

These are the Mayor, Board of Commissioners, by the Mayor, Board of Commissioners, by the Mayor, Board of Commissioners, by the Mayor.

These are the Mayor, Board of Commissioners, by the Mayor, Board of Commissioners, by the Mayor, Board of Commissioners, by the Mayor.

These are the Mayor, Board of Commissioners, by the Mayor, Board of Commissioners, by the Mayor, Board of Commissioners, by the Mayor.

These are the Mayor, Board of Commissioners, by the Mayor, Board of Commissioners, by the Mayor, Board of Commissioners, by the Mayor.

These are the Mayor, Board of Commissioners, by the Mayor, Board of Commissioners, by the Mayor, Board of Commissioners, by the Mayor.

These are the Mayor, Board of Commissioners, by the Mayor, Board of Commissioners, by the Mayor, Board of Commissioners, by the Mayor.

These are the Mayor, Board of Commissioners, by the Mayor, Board of Commissioners, by the Mayor, Board of Commissioners, by the Mayor.

These are the Mayor, Board of Commissioners, by the Mayor, Board of Commissioners, by the Mayor, Board of Commissioners, by the Mayor.

These are the Mayor, Board of Commissioners, by the Mayor, Board of Commissioners, by the Mayor, Board of Commissioners, by the Mayor.

These are the Mayor, Board of Commissioners, by the Mayor, Board of Commissioners, by the Mayor, Board of Commissioners, by the Mayor.

\$5.00

Waiting for a Close Observer

The front page of the Star has a new look. Its dress, used for the past thirty some years, has been redesigned.

It's not the slogan under the Mast Head. It's not the "Dog Ears" on either side of the head. It's not the Volume Number, the date line or the Weekly Number. But there is a change.

The Star will pay \$5.00 to the person describing in most detail the change which was made three weeks ago.

The winner and the old and new dress will appear in next week's paper.

How observant are you?

Kid Baseball Planning Group To Meet Mar. 12

A group of citizens interested in Kid Baseball, met at the Youth Center Monday, Feb. 19. Leaders, parents and coaches met to discuss ways and means of financing, rules, etc.

Representatives from Oklahoma, Grandfield, were present for the meeting and asked to be allowed to participate with Burk Burnett youths in the program.

This group will meet again March 12th, 7:30 P. M. in the Hardin Grade School auditorium to vote on important measures, such as improving the fields, financing, etc. All parents, coaches, managers, etc., are cordially invited to attend this meeting.

Burk Youth Chosen To Attend International Exchange

Word has been received by the Wichita Falls Composite Squadron from Texas Wing, Civil Air Patrol, that Cadet M/Sgt. Howard Wootton was selected to participate in special exchange this summer.

Howard was selected from a group of cadets from squadrons in Wing to take part in the International Air Cadet Exchange by a special selection board in Tyler, Texas on February 17. Each cadet selected will join cadets from other wings to travel in one of the nations participating in the Exchange Program and will be accompanied by a Senior CAP Officer and an Officer of the Air Force.

Selection is made on scholastic ability, knowledge of Civil Air Patrol, moral character, leadership, maturity, courage, and an above average knowledge of their country, its history and its goals.

C/Sgt. Wootton is a senior at Burk Burnett High School and Cadet First Sergeant of the Wichita Falls Squadron.

Funds are now being raised to send cadets on the special trips as well as the annual summer encampment which will be held at James Connally AFB, Waco, Texas.

Wichita Falls Composite Squadron Civil Air Patrol is proud of C/Sgt. Wootton as well as all others.

Wichita Falls Squadron meets Friday night 7:00 to 9:30 p. m. in Building 34, Sheppard AFB. Guests are welcome. Further information may be obtained by calling 767-8860 or 692-5534.

fiscal year should be changed so as to begin on October 1st. As it now stands, it puts your present City Commission in the position of adopting a budget to be used by the new Commission. The fiscal year should also coincide with tax collections which begins on October 1st. This cannot be changed, however, without an amendment to the City Charter.

are now preparing our budget which must be approved by the first of the year, which is April 1st. is another reason the

BAND QUEEN CROWNED AT BANQUET FEB. 10th



Coronation of Band Queen. Left to right, seated, Sue Revier, first runner-up; Patricia Simons, Queen; Phyllis Vaught, second runner-up. Standing, Jerry Mann, Ronnie Anderson, band president; Celeste Sims, crown bearer; Karen Burton and Max Crowley.

The banquet was held February 10 in the Town Hall. The theme of the banquet was "Birth of the Blues". Speaker for the evening was Dr. Hadden, band director of Midwestern University. Music was furnished by the Iowa Park Combo and by Karen Burton, as vocalist.

Menu was prepared by Huck McDonnell and served by the band parents.

Three Burk Students Make Honor Roll At Midwestern

Midwestern University officials announced this week that three Burk Burnett students have been named to the University Honor Roll for outstanding academic achievement during the Fall Semester of the present school year.

To be eligible for this honor a student must make no grade lower than B and must be enrolled in at least 15 semester hours of work.

Those listed are: Mrs. Vesta Lee Hubbard who is a graduate of Pryor, Okla. High school and is a Junior at MU majoring in Elementary Education. She and her husband reside in Burk Burnett.

Barbara Jeanne Dodson is a graduate of Burk High school and is a Senior at MU, majoring in English. She is the daughter of Mr. and Mrs. Harry C. Dodson, 133 Lilac Lane.

Jon Rush Evans, another Burk High graduate, is a MU Senior, majoring in Education. He is the son of Supt. and Mrs. I. C. Evans, 703 Maple.

For Results, Try Classified Ads

NOTICE

Everyone that has called the Chamber of Commerce office and reserved a car license number below 1000 are requested to pick them up by next week or they will be sold.

4-H SEWING MEETING HELD

The second year group of girls met at the home of Mrs. J. H. Bentley, Thursday, February 15th. The girls learned how to make tucks and darts in their blouses, which they plan to enter in the Spring Dress Review. The girls attending were Janice Sloan, Dianna Mullins and Margaret Scanzwart.

Reported by Diane Bentley

4-H SEWING MEETING HELD

There was a 4-H Sewing Meeting held February the 20th at the home of Mrs. J. H. Bentley. Mrs. Bentley discussed what we would be doing in the future meetings. At the next meeting we will start cutting out our dresses and start sewing. Those attending were Louise Bentley, Kathy Savage, Diane Bentley and Susan Litner.

Reported by Diane Bentley

Mr. and Mrs. Billy Ashlock of New Jersey are expected to arrive here Monday for a visit with Mr. and Mrs. Morris Bookbinder.

Southside P-TA Fund Raising Fun

A little hard work and lots of fun were the ingredients that made the Southside Teachers vs. Parents basketball game a rousing success. On the working end of the game were the committees. The Planning Committee, headed by Mrs. Reavis Wooten, included Mrs. Bill Hall, Rondell Mullings, Reavis Wooten, and Mrs. Robert Hunter. The Concessions Committee included Mesdames Frank Hodge, Chairman; Irwin Goossens, Raymond Stout, John Strayhorn, Forrest Mayes, and James Nunn. On the fun (?) end of the game were the following players:

Game 1. Mothers, 32; Teachers, 2. Parents: Mmes. Lorraine Askins, Bellacico, Cowles, John Dark, Tom Evans, Jackie Kinard, J. R. Sprague, Jr., Jerry Thomas and Oran Wilson. Teachers: Mmes. Daugherty, Grady, Malone, Miller, Miss Nitzel, Quattlebaum, Rodolph and Van Reenan.

Game 2. Fathers: Teachers: B. H. Alexander, Jr., Gene Allen, Billy Earl Askins, Tom Evans, Don Mapes, Floyd Marten, Huck McDonnell, Jerry Thomas and Reavis Wooten. Teachers: Clifford Alban, Louis Hall, J. D. Hart, Bob Littlejohn, B. D. Miller, Rondell Mullins, Duke Owens, James Pearson, Roy Silkwood, and Chas. Wiggs.

On hand to help were Coaches Koller and Reasoner, while Mike Lacy and Ronnie Molder had the tough job of referee. The P-T.A. thanks go to these workers and players as well as to the mothers who donated food for the concession stand. Never before has there been a fund raising that was so thoroughly enjoyed by both players and spectators. The P-T.A. officers have been overwhelmed with requests for another game. So, in order to stay as close to basketball season as possible, another game of parents vs. teachers is scheduled for Thursday, March 1, 7:00 p. m. in the Junior High Gym. Tickets will be 50c for adults and 25c for students. All the proceeds from this game will go to the teachers of Southside School for necessary teaching aids.

There was a good self-appointed cheering section at the last game, so bring your cheers to the game.

Arrangements have also been made for the old high school gym to be opened at 7:00 p. m. twice a week for the use of many interested adults. Tuesdays will be Ladies' Night and Thursdays Gents' Night. No charge.

Texas breeds the greatest number of Jersey cows.

Family Shopping Night Thurs. 6:00 to 8:00

Family Shopping Night will be observed tonight, Thursday, March 1st. The stores in Burk Burnett will remain open late for the convenience of shoppers who find it difficult to shop regular hours.

Bargains, and there are some real ones being offered, will be found on a double page spread elsewhere in this week's Tuesday Burk Burnett News.

Shop tonight. You've never dreamed of such bargains.

Another 'Vicious' Parent-Teachers Game Scheduled

Another 'tough, fast — and perhaps not too graceful' — basketball game between the parents and teachers of the Southside Elementary School is scheduled for Thursday, March 1, at 7:00 p. m. at the Junior High Gym.

At the last basketball game between the parents and teachers held recently, the mothers whopped the teachers 32 to 2. Everyone is invited to this 'grudge' game Thursday night to see if the teachers can raise their standard. Tickets will sell for 25c and 50c.

The games are sponsored by the Southside P.T.A., with the proceeds going to the teachers of the Southside School for necessary teaching aids.

Legion Notice

This Thursday, March 1st is meeting night at the Legion Hall.

The public is invited to attend this meeting. Lets get together at this meeting and make our plans for the American Legion Birthday which is March 17th through March 19th — forty-four years ago, you old timers made our American Legion one of the largest — ever made possible.

Don't let us down now — be at the Birthday 17th and 19th at the Legion Hall.

Don't forget our Bloodmobile will be at the Legion Hall, Tuesday, March 6th from 11 a. m. till?

There will be no dance at the Hall this Saturday night.

NOTICE

Mr. Paul E. Fields, a long time resident of Burk Burnett is seriously ill at 714 Paschal Street, San Antonio 12, Texas.

POLITICAL Announcements

Political announcements will be carried in this column at the following rates, payable in advance:

City Offices \$10.00
County Offices \$15.00
District and State \$20.00

The price covers a short announcement, followed by the formal announcement of not over one column long at a date of the candidate's choice, plus the listing in this column.

FOR STATE SENATE:

GEORGE CORSE, Jr.
GEORGE MOFFETT

FOR DISTRICT CLERK:

WAYNE WIGGINS

FOR COUNTY JUDGE:

HENRY J. ANDERSON

FOR DISTRICT JUDGE 89th DISTRICT COURT:

TEMPLE DRIVER

City Election Set For April 3

Tuesday, April 3rd, was set for the City Election in which three places on the City Commission will be filled. The election will be held in the Town Hall. Date and place for the election was called by the City Commission at its regular meeting last February 12th.

The terms of George McClary, Joe Crowley and Buddy Byars expire on April. Crowley is the only one of the three to file for the coming election. He was appointed by the Commission to fill the unexpired term of Claude Reed when Reed resigned to accept the position of City Inspector. According to our City Charter, the Mayor will be elected by the Commission, from among members of the Commission, at its first regular meeting after the election.

Other candidates that had filed by February 27th were Joe Logan, Jim Frye, John Larson and C. L. Simmons. March 2nd is the deadline for filing to have names placed on the ballot.

Burkburnett 4-H Meeting Held Monday, February 12

The Burk Burnett 4-H Community Club meeting which was held Monday, February 12 at the Youth Center was called to order by Patricia Simons, president. The 4-H Pledge was led by Kathy Savage and roll was called and last meetings minutes, and a treasurer's report was given by Toni Ann Savage.

The guests at the meeting were Miss Wirges, Home Demonstration Agent; Mrs. Smith, Assistant Home Demonstration Agent and Mr. Haws, the County Agent. They told us of the Poultry Show, Project Show, and the County Food Show which are to be held in the near future.

Mrs. Elizabeth Smith will be leaving her job as Assistant Home Demonstration Agent soon. We will miss her.

Our recreational leader, Kathy Savage had planned for us to sing a wonderful selection of songs.

After singing, Diane Louise and Marion Bentley furnished refreshments. They were cookies and Cokes. Mrs. J. H. Bentley, their mother, helped serve these.

We had three new members, Allen Green, Milinda Green and Sherry Hobbs.

The adult leaders attending were Mrs. J. H. Bentley, Mr. Howard Bentley, Mrs. Howard Bentley, Mrs. Simons and Mr. Simons and Mrs. Endres.

The members present were Louise Bentley, Susan Litner, Kathy Savage, Diane Bentley, Margarette Schwartz, Marian Bentley, Karen Bentley, Bill Byars, Betty Schuman, Sonny Bentley, Sue Revere and Eddie Viavattene and Vickie Endres. Reported by Diane Bentley

SCHEDULE of Coming Events

- Monday, March 5th—The Contemporary Study Club.
- Mrs. Oran Wilson.
- Tuesday, March 6—Modern Ceramic Club, Mrs. Clyde Peed, Rotary Club Luncheon, Town Hall.
- Lions Club Meeting, Town Hall.
- Wednesday, March 7th—University Study Club, Mrs. H. C. Gilbert.
- Thursday, March 8th—Current Literature Club, Mrs. Marjorie Kauer, Junior University Study Club, Mrs. Bill McLean.
- Friday, March 9th—Boomtowers, Town Hall.
- Monday, March 12th—Theta Epsilon Meeting, Mrs. Clyde Slusher, Burk Burnett Study Club, Mrs. D. H. Smith.
- Tuesday, March 13th—Bluebonnet Garden Club, Mrs. Velma Bohner, Rotary Club Luncheon, Town Hall.
- Lions Club, Town Hall.

The Burk Burnett Star

HARRY C. DODSON, Owner and Editor
 Mrs. Lola Mae Bailey, Bookkeeper-Society Editor
 Mrs. Billie Mann, Features and Photography
 Chas. L. Wisdom, Mechanical Foreman
 Forrest Green, Linotype-Pressman
 J. W. Brookman, Commercial Printing



Printed weekly at Burkburnett, Wichita County, Texas. Entered as second class matter at the post-office at Burkburnett, Texas, August 19, 1907, under the Act of Congress of March 3, 1870.

Notice to the Public: Any erroneous reflection upon the character, standing or reputation of any person, firm or corporation, which may appear in The Star, will be gladly corrected as soon as it is brought to the attention of the publisher.

SUBSCRIPTION RATES PER YEAR
 In Wichita and Cotton Counties **\$2.50**
 Outside These Counties **\$3.00**

BEACONS OF SAFETY

It's amazing how little effort is needed to solve big problems.

Rear-end collisions are among the greatest highway problems you have after dark. They are a problem because badly lighted, parked, or stalled cars cannot be seen in time to avoid an accident.

Yet, according to a recent study by state officials of Iowa, something as small as a license plate can be a major deterrent to collisions of this type.

"Safety" plates made of reflective material that glows brightly in headlights of oncoming cars—like traffic signs—have been found to reduce the rear-end collision hazard substantially at night.

The study also shows that reflective license plates perform a secondary safety function by enabling motorists to determine the position of cars with only one headlight operating. A further benefit, Iowa officials say, is that the plates aid nighttime depth perception.

The value of "safety" plates is confirmed by Edward P. Gallagher, President of the Indiana Insurance Institute. He says such tags increase the visibility of automobiles at night by as much as 1,000 feet—enough extra distance to stop safely even at 65 miles an hour.

Ten states and the District of Columbia already have adopted such license plates. Fifteen states are testing reflective plates or tabs for future use.

These states are to be commended for taking the lead in helping to reduce senseless highway slaughter. And its surprising how something as small as a license plate can help solve something as complex as the traffic accident problem.

Classifieds In The STAR Get Results

Avoid Last Minute Rush

APRIL 15, 1962
 Deadline For
 Car Safety
 Inspection As
 Required By The
 State Of Texas

AUTHORIZED
1962
Car Safety
Inspection
STATION

MATHIS

CHEVROLET CO.
 Chevrolet-Oldsmobile

IRVIN "Smitty" SMITH, Service Manager

WASHINGTON AND "SMALL BUSINESS"

By C. WILSON HARDER

By an overwhelming majority, in fact 85%, the independent business and professional people, voting through the National Federation of Independent Business, have expressed opposition to the proposed measures to permit federal employees to unionize.

If federal employees were ever unionized, the present 2 1/2 million employees would constitute the biggest union in the nation.

For some time the nation's businessmen have also requested a reduction in non-essential federal expenses, of which employee payrolls are a big item.

In this session of Congress they are going to get strong support in this direction from many Congressmen who are appalled at the constantly increasing inflationary pressures brought on by putting more and more civilian jobs on Uncle Sam's payrolls.

Rep. Richard Roudebush points out that in the first ten months of last year, 100,000 new employees were added, or a rate of 10,000 new civilian jobs a month.

He points out that in fiscal 1961, the federal civilian payroll reached an all time high of \$13.6 billion. In order to support this vast bureaucratic payroll, it cost each family in

the land an average of \$242 in hard earned tax money.

In 1947, he states, the per family cost for the bureaucratic payroll only averaged \$134. Thus, the biggest cost increase in the nation in the intervening years has been the expense of more and more people to shuffle more and more papers.

Yet all this vast increase in payrolls does nothing to increase the productive wealth of the nation. A comparable employment increase in business and industry, of course, would mean a greater output of goods and services, thus increasing the gross national output.

But money paid out in federal payrolls becomes sterilized and places a burden on the economy.

Despite this fact, in the last session a bill was defeated which would have raised salaries as much as 75%.

To Rep. Roudebush, and many others, it seems more than obvious that Federal civilian payrolls must be slashed, and slashed quite quickly.

That is why the bill introduced by Rep. Ben Jensen at the last session will be the focus of considerable attention during this session. This bill provides that when vacancies arise in federal jobs, that only one out of each four vacancies be filled until there has been a ten per cent cut accomplished in the total federal employment. This bill will get substantial support from the nation's independent business and professional people.

Grass Roots Opinion

CUERO, TEX., RECORD: "... there is nothing in the least 'free' about the personal enterprise system. Its operation calls for the expenditure of both money and effort. And it also requires a great deal of constructive thought, and in these times of increasing interference by and competition from government agencies it also calls for not a small amount of worry... If the personal enterprise system ever falls before the blandishments of the Mistaken, we in the end will have only ourselves to blame. Let us not be deceived about that. But the system does not have to fall. We can save individual freedom. We can if we will."

ODESSA, WASH., RECORD: 'It has long been agreed that the strength of a nation is in its food supply, the product of its farms. This realization brought the farm programs into being. Politics then made the program unworkable. Through the program the farm income has dropped to a tragic low... The eventual farm solution will have to come from farm levels, the only place it is understood.'

HILLSBORO, ORE., ARGUS: "A congresswoman reports that there is a saying among Europeans to the effect: 'Why do you expect the United States to stand up to Khrushchev when... they couldn't stand up to Castro.'"

Have Car Safety Inspected for '62 By April 15th

Less than thirty per cent of the registered vehicles in this area have been safety inspected for 1962, according to Patrolman Harlan Eades, Motor Vehicle Inspection Service of the Texas Department of Public Safety.

With the April 15 deadline, for having the vehicles checked, rapidly approaching, this means there are approximately 37,900 vehicles in Wichita County remaining to be inspected by the 53 approved inspection stations available.

Many motorists are going to find long lines awaiting them as the deadline draws nearer, due to the inspection stations not being able to cope with this large number.

The patrolman urged drivers to have their vehicles inspected as soon as possible to avoid this last minute rush. In addition, he reminded drivers that this time of the year is noted for adverse weather conditions which prevent the inspection stations from checking the vehicles.

"Passenger cars are inspected for brakes, lights, reflectors, horn and windshield wipers; while commercial vehicles are inspected for the above plus additional items required by law," Patrolman Eades said. "All motorists not displaying a valid 1962 inspection sticker by April 15 will be in violation of state law."

"An old-timer is a person who can remember when the government was known as Uncle Sam instead of John Dough."

"Remember when the village square was a place—and not a person?"



CASUAL LOOK—Youthful sophistication is interpreted in a cotton jacquard print in this loosely belted pull-over with a high cowl collar and matching trim tapers. This costume designed for casual wear at home or on the campus is by Turner Togs.

LOOK OUT CHUCKS!

Even though it's Spring, smart old woodchucks remember all the hazards of last year. Like you! Don't forget: If Mr. Chuck ducks down his hole, he'll come up looking for you where he last saw you. Circle around in back of him so you see him first next time. And where legal, a lot of chuck hunters are using handguns for increased sport. If you load clips only two-thirds full, ammo will feed smoother and springs will retain power longer.

In India, the King of England is given the title of Emperor.

FREE GENUINE ENGRAVED LETTERHEADS
 DIES & DESIGNING \$17.00 PER 1000
 BURKBURNETT STAR

BURKBURNETT... HISTORY

Revealed By The Star Files 10 Years Ago...

Hugh and Buddy Preston are adding a big improvement to their dairy building located on E. 2nd Street with the construction of a loading dock.

A mass meeting has been called for February 25 at the Town Hall to discuss the proposed Bond issue for water and light improvements.

The Chamber of Commerce has placed an order for 2,000 baby chicks to be delivered on March 4. At that time they will be ready for distribution to boys and girls in this area who have made application for them.

Chief of Police Willis Bartley is very much concerned over the large number of dogs that hang around the schools. Recently three little children have been bitten by some of these dogs.

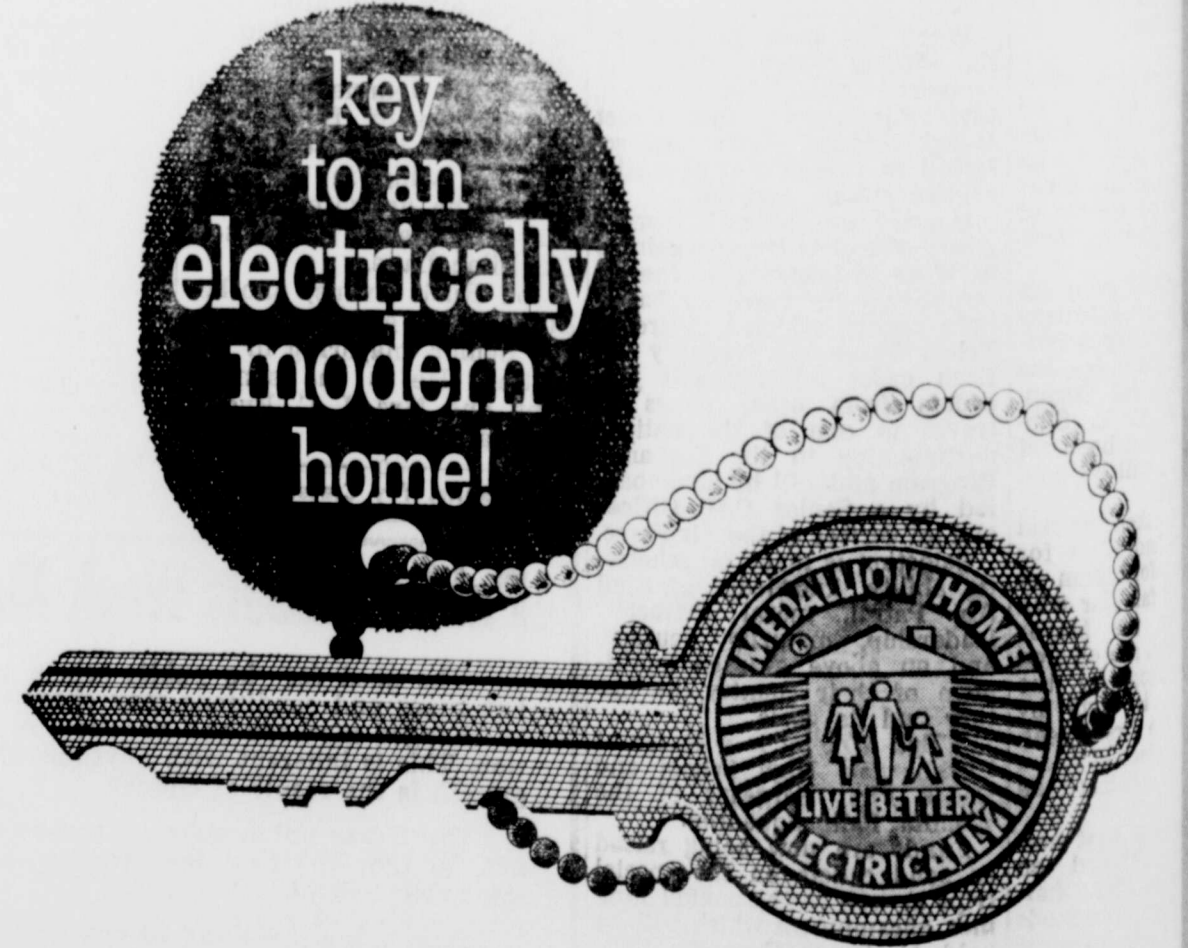
The different classes in the High School met and elected the following students to represent them in a Board for Teen Town: Seniors, Pude Fewin and Pat Lundberg; Juniors, Jon Bear and Carol Campbell; Sophomores, Billy Bean and Billijane Smith; Freshmen, Jer-

Now Is the Time
To Get Your Lawn Mower Repaired
 All Work Guaranteed
BURK SERVICE CENTER
 209 EAST 3rd STREET PHONE 569-3361

OWENS-BRUMLEY FUNERAL HOME

AMBULANCE SERVICE
 PHONE 569-3361

Harold Van Loh President
 Joe Allcorn Manager



key to an electrically modern home!

When you see the Live Better Electrically Medallion displayed on a home, you know it's a home equipped for truly modern electrical living. The Medallion certifies that the home is one that meets modern high standards for electrical excellence with FULL HOUSEPOWER wiring... modern efficient LIGHT FOR LIVING...and WORK-SAVING ELECTRIC APPLIANCES, including an electric range, electric bathroom heating and at least three other major electric appliances. So look for the Medallion when you look for a new home. It's your key to a home that is electrically modern and will stay modern for years to come.

TEXAS ELECTRIC SERVICE COMPANY

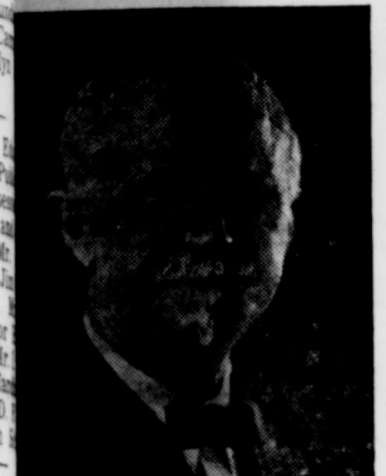


All Insurance is the same 'til you have a claim

Burk Insurance Agency

HOWARD CLEMENT
New Location—Next to Legion Hall

Weekly Report Roger W. Babson



Roger W. Babson

Babson Discusses Importance of Good Credit

A few weeks ago I wrote out how the Teamsters Union had taken over a large real estate development near Naples, Florida. Such purchases have been going on for some time. The latest news is that the owners of Look Magazine have bought into the General Development Corp. — probably the largest builder of small homes and the creator of Port Charlotte, the Florida city which started from scratch.

Surplus of Small Houses
Upon checking up with other sources I find a surplus of small homes almost everywhere. Such uses should soon be cheaper. A few years ago there was a shortage of one-family houses that sold for \$10,000 to \$15,000. Almost everything else, however, a shortage is followed by a surplus. (The only thing which there is a shortage of is parking space.) Even President Kennedy has excess supplies of metal and other commodities—not to mention wheat, corn, and other farm products.

If you chart the nation's births as you will be able to fore-

cast when marriages will be at their peak. We were in such a period a few years ago. This resulted in the great demand for two-bedroom single houses. This situation caused development companies to be formed—especially in the suburbs of almost every city. More real estate agents per 1000 of population exist today than at any previous time. They now average about 75 real estate salesmen for each 10,000 of population. I include the licensed realtors and their salesmen.

Easy Terms for Purchasing

The offering price for new vacant houses has not yet been broken in most sections; but the terms of purchasing have been severely cut. A veteran can "buy" a house without putting any money down; while any young couple can get a home for 10% down, and a small monthly payment. When the newly married couples do a little figuring they find that the monthly payment is no more than they would pay for rent, only then they would not have a new house. Talk it over with the FHA (Federal Housing Administration). You can get information on your problems by writing the Public Information Office, FHA, Washington, 25, D. C. or a local FHA office.

When the young couples must move to some other city, some foolish ones do not hesitate to move out sometimes at night and leave a note stating that no more monthly payments can be expected. The furniture has mostly been bought on installment payments. This they are willing to have the dealers repossess — or they will make a deal with some truck driver to take their furniture some night to the new location when they have "bought" another house.

Beware of a Bad Reputation

The above program is being followed continually by young home buyers who think nothing of their reputation. But it is wise for a young married couple to establish a reputation for honesty and reliability. This is very important. Young



SPLIT AND A SPARE—This Bermuda-length cotton denim dress and matching shorts are designed for action at the bowling lanes. The shoulders of the dress are slit for comfort, and the skirt is gathered and pleated for easy movement.

people may get married without money; but they should have an insurance policy (upon which they should never borrow)—and good credit.

The real estate men combine into associations which report to one another. The bank where you as a new resident will be cashing your monthly check in the new city will get a report upon you from its correspondent banks in the city you are leaving. So be sure to establish good credit. Be able to refer to your school principal and your minister or priest—and especially to your former employer. Be "above board" in all your transactions with your real estate agents and with the storekeepers. Build up good credit wherever you are and save a little money each month after paying your insurance premiums, which should be a MUST.

THE STATE OF TEXAS

To: W. W. Stout and the Unknown Heirs or Assigns of W. W. Stout and All Unknown Persons Owning, Having or Claiming Any Interest In the Property Described Herein, and the Unknown Heirs and Legal Representatives of All Defendants, Defendant, Greeting:

YOU ARE HEREBY COMMANDED to appear before the Honorable 78th District Court of Wichita County, at the Court House thereon, in Wichita Falls, Texas, by filing a written answer at or before 10 o'clock A. M. of the first Monday next after the expiration of forty-two days from the date of the issuance of this citation, same being the 5th day of March A. D. 1962, to Plaintiff's Petition filed in said court, on the 18th day of January A. D. 1962 in this cause numbered 69-365-B on the docket of said court and styled **GLENN BAGWILL**, Individually and as independent executor of the Estate of Nan Bagwill, deceased, Plaintiff, vs. W. W. Stout and the Unknown Heirs or Assigns of W. W. Stout and All Unknown Persons Owning, Having or Claiming Any Interest in Property Described Herein, and the Unknown Heirs and Legal Representatives of all Defendants, Defendant.

A brief statement of the nature of this suit is as follows, to-wit:

This is a trespass to try title suit wherein plaintiffs allege that on or about that Nan Bagwill, deceased, or her estate are now and have been the owners in fee simple of the real estate described below situated in Wichita County to-wit:

A track of land 46 feet wide and 150 feet long out of Outer Block 23, an addition to the City of Burkburnett, Texas, described as follows:

Beginning at a point in the South Right-of-way line of a 40 foot street known locally as Cottonwood Street, which said beginning point is 680 feet South and 268 feet East of the NW corner of said Outer Block No. 23.

Thence East along the South line of Cottonwood Street 47 feet to a point:

Thence South along a fence 150 feet to a point:

Thence West along a fence 47 feet to a point:

Thence North along a fence 150 feet to the place of beginning.

That on the day and year aforesaid defendants unlawfully entered upon and dispossessed

plaintiff of such premises and withhold from him the possession thereof to plaintiff's damage. Plaintiff further alleges the 40 years of Statute of Limitation and has had peaceable and adverse possession of the property above described for more than 40 years preceding the filing of this petition.

Where plaintiff's prayer that citation issue and that on final hearing he have judgment for title and possession of above described premises, for his damages, for costs of suit and for such other and further relief as he may be entitled to, either in law or in equity, as is more fully shown by Plaintiff's Petition on file in this suit.

If this citation is not served

IF YOUR PLATES DON'T FIT GET "CUSHION" NOW

A new Plastic Jelly. Apply "Cushion" from tube to eye glasses. Place in mouth and bite down gently. "Cushion" flows and molds to shape of eyes. "Cushion" absorbs and forms soft layer in place that lasts for weeks. To remove just peel out and apply more. Plates can be washed and reused without damage. Try it. 3 in. supply only \$1.39. At all drug stores.

within ninety days after the date of issuance, it shall be returned unserved.

The Officer executing this process shall promptly execute the same according to law and make due return as the law directs.

Issued and given under my hand and the Seal of said Court, at office in Wichita Falls, Texas, this the 18th day of January A. D. 1962.

WAYNE WIGGINS, Clerk,
78th District Court, Wichita County Texas.
By IRENE CRASS, Deputy
22-4C

The decision to discard a comfortable pair of old shoes or a beaten-up hat is a tough one for a man to make.

IRVIN J. VOGEL ATTORNEY

312 City National Bank
PHONE 723-4105
WICHITA FALLS, TEXAS

DO YOU KNOW THIS BOOK?

30 Lesson Home Study Course Offered Free

Your Own Bible the Only Textbook
No Obligation, Non Denominational
Fill In Coupon and mail to
Bible Correspondence Course

410 East Second Street
Burkburnett, Texas

NAME _____

STREET _____

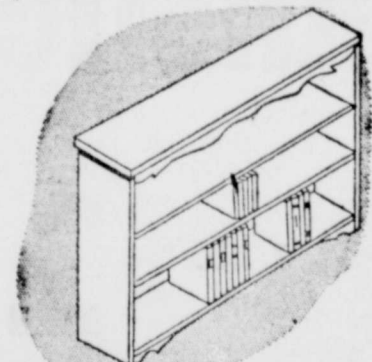
CITY _____



THE RESEARCH CENTER FOR BETTER LIVING

Readers have written to ask if we have any plans for a handsome yet easy-to-make bookcase. The plan we sent is simple and can be adapted to space available.

Material can be chosen to match your present furniture if you wish to stain the bookcase.



An adaptable and easily constructed bookcase.

Size of the bookcase not only depends on where it will be placed, but on the size and number of books to be stored. It can be 2 feet high or the entire wall height. It can be 3 feet wide or the length of a wall.

Regardless of size, a few basic portable electric power tools—circular saw, jig saw, sander, and drill—will let you do the work easily and quickly.

Stock for this bookcase should be 1x10 for storing average books. If larger books are to be placed on shelves, increase stock size.

For those who want a three shelf case, shelves can be cut to exact dimensions by clamping wood together, aligning, and cutting boards at one time. Ends can be cut the same way to assure identical lengths for end pieces. The top should be approximately 2 1/2 inches longer than the shelves to achieve overhang of about 1/2 inch.

A provision for shelf adjustment can be added by drilling two rows of 3/4 inch holes 3/4 inch deep in the end pieces, approximately 1 1/2 inches inside each edge. Space between shelves should be approximately 9 inches to accommodate average books but these adjustable holes will allow for larger volumes. Small wood pegs can be inserted in holes to support shelves, or hardware can be used for supporting them.

Sand all surfaces smooth with your electric sander before assembling and after assembly round off all corners with the sander so there are no sharp edges or splinters.

(You can receive free plans for this bookcase, by writing to The Research Center Aurora, Ill. — No. RC201.)



One big dazzler... one little gem...

now join the world's greatest V-8 collection

405-HP THUNDERBIRD V-8—Thirty years of Ford experience culminate in this startling V-8. Available in every Galaxie, it puts 405 horses under the throttle, a dazzling level of acceleration that cannot be imagined but must be felt. A super-performance option, it comes only with the four-speed gear box. But, unlike some "special" engines that require delicate tuning and modification, it puts out its potential right off the showroom floor. Even more impressive, Ford skill has made it a docile tiger; it idles smoothly, it is durable, its super capacity does not come at the expense of harshness and noise. Among expert drivers, it is praised as a true high-performance V-8 in America... the pace-setter for 9 other V-8's tailored to every driving need.

NEW FAIRLANE CHALLENGER "260" V-8—When the 221-cubic-inch Fairlane V-8 appeared last fall, automotive writers hailed it as a great basic advance, a compact jewel of design. Now, the "260" V-8 proves their prediction. With 164 hp, 19 more than the standard version, Fairlane gains a new brilliance of performance—but it still runs on "regular," still outsaves any standard-size Six. It has the durability of time-tested cast iron, slimmed and lightened by Ford's precision-casting technique. Created by the one maker who has built 30,000,000 V-8's since 1932, it brings the sparkle and smoothness of V-8 power well within the thrifty budget's reach, puts truly sophisticated engineering at the service of truly economical motoring.

Ford WORLD'S FOREMOST BUILDER OF HIGH PERFORMANCE V-8 ENGINES

Whatever you're looking for in a V-8, look to the long Ford line



FAIRLANE 500... Right size... Right price... Right between compacts and big cars



GALAXIE/500 Its silence whispers quality



THUNDERBIRD Unique in all the world



WOLFE FORD COMPANY

3rd and AVENUE D

BURKBURNETT, TEXAS

PHONE 569-2275

Bank by Mail!

ASK US FOR FREE MAILING FORMS.

INTEREST PAID ON SAVINGS

3 1/2% 6 MONTHS

4% 1 YEAR

• Drive In Banking

NEW DRIVE IN BANKING HOURS:
Mon. thru Fri. 9 a. m. to 2 p. m.—4 p. m. to 6 p. m.
Saturday 9 a. m. to 12 Noon

1st NATIONAL BANK
BURKBURNETT, TEXAS

"SERVING BURKBURNETT SINCE 1907"

MEMBER
Federal Deposit Insurance Corporation

SWIFT'S PREMIUM

CURED

Shank Half or Whole



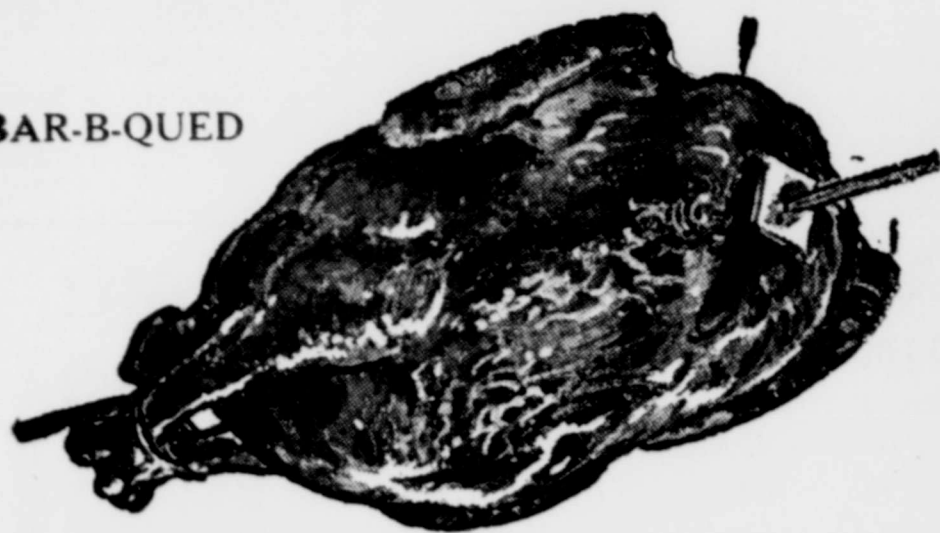
HAMS L.B. **39¢**



SWIFT'S PREMIUM TRAY PACK

BACON L.B. **49¢**

BAR-B-QUED



FRYERS EACH **7**

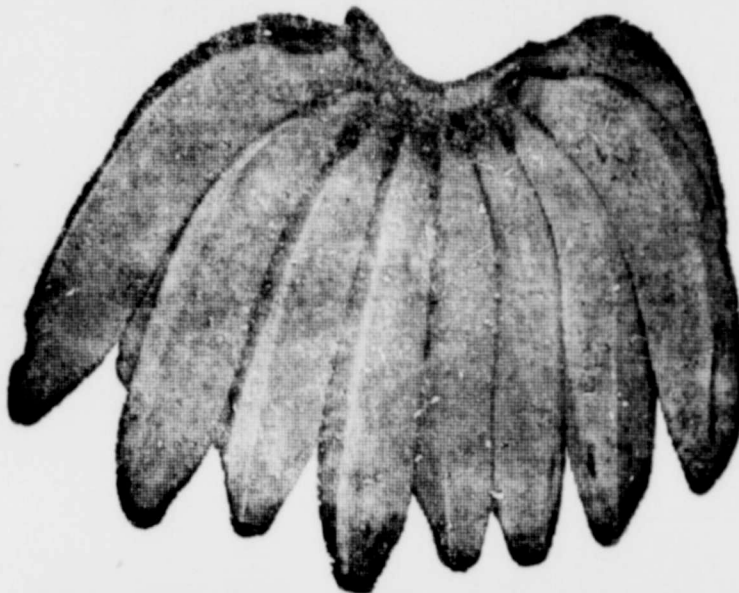


CARNATION ALL FLAVORS

ICE Cream One Pint

1¢

WHEN YOU BUY ONE PINT FOR 25c



GOLDEN RIPE BANANAS

2

ROXEY

DOG FOOD

13 No. 1 Cans **100**

RED POTATOES L.B. **25**

Fresh Radishes Or Green

Onions

SHURFRESH SHURFRESH SHURFRESH SHURFRESH

CRACKERS 1 Lb. Box

19¢

SHURFINE

Coffee

1¢ SALE

1-5 lb. BAG

Shurfine

FLOUR

with purchase of

4 SYLVANIA LIGHT BULBS **99¢**

both for **\$1.00**

SHURFINE

SYRUP

32 OZ. **39¢**

Reg., Fine or Drip

5

SWIFT'S CANDLELIGHT

DINNERS

- Turkey
- Fried Chicken
- Salisbury Steak
- Smoked Ham
- Beef

39¢

Each

SHOP AT THE STORES DISPLAYING THIS BANNER-

burnett, s Pame

00 o'clock

n, the F

i in Burkb

of the ma

Sue Star

Mr. and M

Burkburn

ald Moul

rs. Floyd

a Falls, Te

ill Copel

ed at the

ny. The

corated w

nd white

bride was

by her fat

blue linen

avy blue

age of whi

ng Miss

f honor wa

it who

cented wit

and a cor

ed carnati

best man

OCTAVA M

RED WED

OF DAUG

ely lunche

the home

er Wednes

er mother

, of Ran

y.

the love

ndall had

mes. Sho

ctures of

Walton Ma

Weaver

"It is No

anley sang

rt." The gr

numbers v

the piano.

e who enj

were old

live in De

g. still live

rs. May I

ts young

is Wood o

ermany w

Ethel B

Maggie N

Sally Hew

all of

alton Man

Weaver of

Mrs. Clen

ely time w

HALF-MIL

HEAVY D

HOPPER

a half mil

ngland i

S. Depart

g listing o

deposits o

lanchnen

g counts

population

ut survey

point the

measures

nd Mrs.

ne week an

se, visitin

usins, Mr.

son, who w

r 68th wed

's 50 fan

when we

... ..

Pamela Sue Stanaland Becomes Bride of Mr. Ronald Moulder



At 10 o'clock Saturday afternoon, the First Methodist Church in Burk Burnett was the scene of the marriage of Miss Pamela Sue Stanaland, daughter of Mr. and Mrs. Max Stanaland, Burk Burnett, Texas, and Mr. Ronald Moulder, son of Mr. and Mrs. Floyd Moulder of Falls, Texas.

The table at a reception following the wedding service was covered with a white organdy cloth with a pink table skirt and featured an arrangement of white stock as a centerpiece. Miss Charlotte Wallace served the three-tiered wedding cake and Miss Peggy Smith served punch. Mesdames J. L. Ragan and John Strayhorn registered guests of the wedding and the reception.

Clem Hardy Circle Met In Home Of Mrs. J. D. Grizzle

Mrs. J. D. Grizzle was hostess to the Clem Hardy Circle, which met in her home Monday afternoon at 1:30 p. m., February 19th, 1962.

Prayer was by Mrs. R. P. Thaxton, devotional by Joyce Conway. The Chairman, Mrs. J. D. Grizzle presided at the meeting. The Secretary-Treasurer was also present and she read the report of the January meeting.

There were eleven members present. The Stewardship Chairman, Mrs. J. N. Cantwell was absent on account of illness in her home of herself and her mother.

The Mission Chairman, Mrs. Earl Van Deren had charge of the Mission Program of Catholicism.

Prayers were prayed for the sick. Community Chairman, Mrs. R. P. Thaxton gave her report and reported about visiting the County Farm and taking cookies or candy and fruit.

Next week the Clem Hardy Circle will have a joint meeting with the Valerie Sherrod Circle at the Jan Lee Mission at 1:30 p. m. Joyce Conway gave a part about migrants and Catholicism. Those present were Mesdames: Dyle Vaughn, Joyce Conway, Cecil Powell, John Mise and daughters, Goldie Gilbert, Charlene Abdouch, James Brockhouse, Helen Grizzle, Mae Van Deren, Wilma Thaxton, and Oma B. Van Cleave.

Hostess Helen Grizzle served cherry fruit pudding with whipped cream on top of cake and coffee and Cokes.

Mrs. Van Deren gave a part on Catholicism with scripture. Mrs. Dyle Vaughn gave a part on the Mission Program, on Catholicism for America with a folder, "Who Cares."

Goldie Gilbert gave a part on the program. Mrs. Wilma Thaxton gave a part on the Mission Program, and Helen Grizzle gave the last part on the program. All reported a good meeting. Next meeting will be the week of prayer on Home Missions in March.

Charlene Abdouch gave a part on Catholicism Marriage. Prayer was by Charlene Abdouch.

Dismissal prayer was led by Helen Grizzle. Reporter, Oma B. Van Cleave

GRASSHOPPERS MAY BE BOTHERSOME IN TEXAS

Texas is included in the area where grasshoppers may be bothersome in 1962, reports the U. S. Department of Agriculture. Federal-state surveys conducted last fall disclosed grasshoppers on nearly 13.5 million acres of rangeland in 15 states.

Texas, California, Colorado, New Mexico and Washington were each found to have more than half a million grasshopper infested areas.

Rangeland acreage infested with grasshoppers has more than tripled since 1960. An abnormally dry spring and a warm, dry fall in 1961, both favorable to insect survival, helped to increase the numbers, the USDA reported.

Ranchers, farmers and governmental agencies will need to keep a sharp lookout in these infested areas, where outbreaks may occur and require control efforts, the USDA advises.

SOIL TEST MAY ANSWER YOUR CROP PRODUCTION

Are you satisfied with your crop production? If not, it may be that a soil test will answer your problem. B. T. Haws, County Agent, puts it this way. "To be successful a farmer must have a well organized and executed plan of action. This plan must include such things as good seed, proper seed bed preparation, timeliness in planting and rate of seeding and the use of the proper kinds and amounts of plant nutrients. The place to start your plan is with a soil test."

Controlling of Sorghum Midge

Research workers of the Texas Agriculture Experiment Station have found that chemicals can be used successfully for controlling the grain sorghum midge. Timing of application is very important.

CARD OF THANKS

We wish to thank all our many friends and neighbors and especially Dr. and Mrs. Carpenter for their great kindness and help in the loss of our loved one. Your kindnesses have meant much to us.

Mrs. Mont Bowles and Family

Contemporary Study Club Met Feb. 19

Mrs. J. F. Eastman presided when the Contemporary Study Club met February 19th in the home of the hostess, Mrs. Chas. Schumann.

The new slate of officers presented by the nominating committee, and accepted by acclamation were as follows:

President, Mrs. Joe Eastman; Vice President, Mrs. Joe Crowley; Treasurer, Mrs. Joe Parsons; Recording Secretary, Mrs. Gene Turner; Reporter, Mrs. Irvin Smith; Corresponding Secretary, Mrs. F. A. Eastman; Historian, Mrs. Morris Cheney; Parliamentarian, Mrs. Harry Elliott.

The members voted to become members of the Community Council and also voted to contribute to the Foreign Student Fund.

An invitation was received from the Burk Burnett Study Club, to attend a tea at the Town Hall, Monday, February 26th.

The White Elephant Sale was enjoyed so much there will be another one at the next meeting. Remember members to either donate or be prepared to pay a 50c fine.

Mrs. Jim Maag won the door prize. Refreshments were served by the co-hostess, Mrs. Cliff Wampler, to one visitor, Mrs. Francis Beaver and the following members: Joe Crowley, J. F. Eastman, Harry Elliott, A. B. Fields, Jim Maag, Joe Parsons, Irvin Smith, Chas. Schumann, Cliff Wampler and Oran Wilson.

CARD OF THANKS

I wish to express my heartfelt thanks to everyone for the many kindnesses shown me during my long stay in the hospital. Your flowers, gifts, visits and prayers were sincerely appreciated. A special thanks is extended to Bro. McMinn and Dr. Carpenter for their services. May God bless each of you.

Mrs. James Metz

Junior University Study Club Met Thurs., February 22

The Junior University Study Club held its regular meeting Thursday, February 22nd in the home of Mrs. Walter Koller with Mrs. C. D. Landrum co-hostess. Mrs. Floyd Marten, president, presided over the business meeting at which time it was voted to donate \$50.00 more to the Swim Club. This makes a total of \$100.00 donated by us this year and a total of \$425 which we have donated altogether.

A discussion was held concerning cooperating with the Chamber of Commerce in the concession stand at the Rodeo this summer. Plans were made for the Casual Coffee which our club will be hostess to all other Federated Clubs on March 15 at the Town Hall.

Mrs. L. J. Byars, who was to have been our incoming president, explained to the members how it was a necessity that she resign from this office and her resignation was regretfully accepted.

Mrs. Walter Koller was elected incoming president and Mrs. Russell Kelly incoming vice president.

Delicious refreshments were served to one guest, Mrs. Audine Henderson, and the following members: Mesdames J. L. Ragan, L. J. Byars, Walter Keller, Russell Kelley, Bill Vincent, Ellis McCullough, Gene Robertson, W. H. McLean, B. H. Alexander, Jr., J. B. Riley, Jr., C. D. Landrum, B. H. Preston, Jr., Finis Talyor, Floyd Marten. The door prize was won by Mrs. W. H. McLean.

YOUNG PEOPLE INVITED TO MEET FRIDAY NIGHT, MAR. 2

The Christs' Ambassadors of the Assembly of God takes this opportunity to invite all the young people of Burk Burnett to attend our C. A. Meeting, Friday night, March 2, at 7:30 p. m.

Surely we'll do you good. Kirby C. Hunter, C. A. President

Mrs. Walter Robbins Presented An Exhibition of Water Color Paintings



MRS. WALTER ROBBINS

Mrs. Walter Robbins of Wichita Falls presented an exhibition of her original water color paintings of "Plants of the Bible," in a tea given at the Town Hall February 26th by the Burk Burnett Study Club.

Mrs. Robbins had arranged the plants in symbolic patterns, interpreting portions of the Bible in which each collection was found. In her interpretive talk, "Herbals from the Scripture," she likened the groupings of herbs to the ancient herbals of medical history, noting that "a collection of herbs or plants made for medicinal purposes is called an Herbal." These may be called "medicine for the soul."

By noting the message of the verses in which the plants were mentioned, Mrs. Robbins traced the whole plan of salvation, from the creation in Genesis through the prophecies of the Revelation.

The Burk Burnett Study Club was host to the Federated Study Clubs at the Tea. Mrs. Robbins' invitation was "Bring your scissors and a garden basket; to clip a path through scripture . . . a path fragrant with many flowers and much incense, replete with fruits of tree and field." Mrs. Robbins is a well-known professional in her field, and brought many years of study and research to her subject.

"I'm sorry to have to tell you, but you're only as sound as a dollar."

OCTAVA MANLEY RED WEDNESDAY IN OF DAUGHTER

A lovely luncheon was enjoyed at the home of Mrs. Lloyd Red Wednesday noon honor mother, Mrs. Octava Manley, of Randlett on her 50th birthday.

The lovely lunch, Mrs. Randall had charge of several. She also took severities of the group.

Walton Manley and Mrs. Weaver of Randlett "It Is No Secret," and Manley sang, "How Great Is Our God." The group then sang numbers with Mrs. Manley at the piano.

Those who enjoyed the luncheon were old friends who live in Devol and some who still live there. They are Mrs. May Dillow, who is 80 years young, Dolly Hardin of Wood of Devol; Mrs. Germany who is 80 years young; Ethel Beasley, Lena Maggie Nelson, Velma Sally Hewell and Angie, all of Burk Burnett; Walton Manley and Mrs. Weaver of Randlett and Mrs. Clemmer.

The party time was enjoyed by all.

HALF-MILLION ACRES HEAVY DEPOSITS OF HOPPER EGGS

A half million acres of rangeland is included in the U. S. Department of Agriculture listing of lands with heavy deposits of grasshopper eggs. Ranchmen are reminded that counts indicate that populations could be kept under control by spot surveys this spring to pinpoint the areas where measures may be recommended.

AT 2ES ING 115 ER-

and Mrs. Ted Randall for the week end in Konowa, Okla., visiting Mrs. Ranskins, Mr. and Mrs. J. Mason, who were celebrating their 65th wedding anniversary.

Miss Carolyn Clement read a poem that she had composed in Miss Stanaland's honor.

Approximately twenty-five guests were present as were the mothers of the engaged couple, Mrs. Max Stanaland of Burk Burnett and Mrs. Floyd Moulder of Wichita Falls.

Louisiana produces most of America's sugar cane.

Protect Those Valuables

Everyone Can Afford This New Fire Protection Chest at the lowest price ever!

Your Bonds, Insurance Policies, Notes, Mortgages, Contracts, Income Tax Receipts, Birth Certificate, Discharge Papers, Leases, Rent Receipts, Your Will, Livestock Registration Papers, Canceled Checks, Stamp and Coin Collections, and many other things of personal and sentimental value, which would be destroyed (and could not be replaced) if you had a fire—and you could! There is one about every 20 seconds.

DESCRIPTION AND SPECIFICATIONS Fire Protection Chest

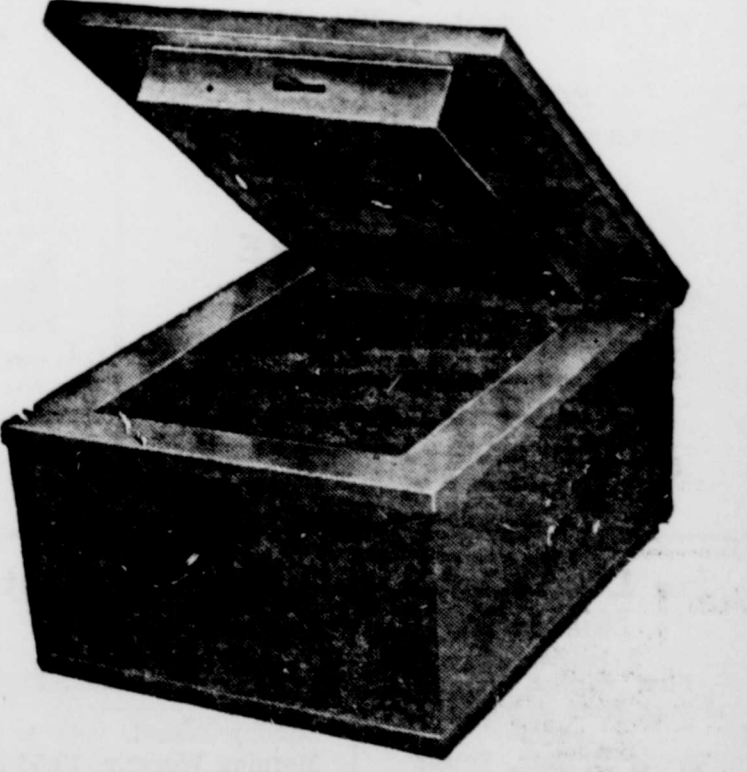
Made of heavy gauge steel inside and out, all electric welded. Between these steel walls is 1 1/2 inches of solid

Fire Proof Vermicule Insulation which has over 300,000 tiny air cells to the square inch. It has the universally used tongue and groove principle around the door with a 1 1/2 inch Fire Proof Seal completely around it. No chest, regardless of price, has a better insulation.

Outside Dimensions 14x11 1/2 x 7 1/2 in. Inside Dimensions 8 1/2 x 11 x 4 1/2 in.

Equipped with a heavy standard type lock, with 2 keys. Color, Gray, very attractive.

The New High Quality, Low Cost Fire Protection Chest



Tested One Hour At 1700 Degrees

Supply Limited At This Special Price

\$19.95

ON DISPLAY AT The Burk Burnett Star

"Comin' 'Round the Mountain"
by
BIG PASTURE
JUNIOR CLASS

Hillbilly romance and music. Boys and girls of the back woods a-feudin', a-fightin', and a-fussin'! You'll find them all in "Comin' 'Round the Mountain," which is the interesting title of the three-act farce comedy to be presented by the Junior Class of Big Pasture in the Grade School Auditorium on Friday night of March 2nd. Those taking part in the play are the following: Jerry Hayes, Gayle Monson, Terry Baber, Mickie Zachary, Garland Hooper, Nita Sue Bowles, Ronald Wyatt, Patti Nichols, Roger Bates, Billie Baggs, Sharon Butler, and A. J. Mays. The play is being put on under the direction of Mrs.

Alice Hull and Mr. Waylon Holt, who said that "Comin' 'Round the Mountain" is the funniest play that they have put on in a long time. Publicity and tickets are being taken care of by Virgie Wilkinson, Carol Wilkerson, Mary Beth Eley, Kathie Griffin, Patsy Burton and Mary Self. Stage props, settings, and furniture are being handled by Dan Bales, Terry Morrow, Jerry Raleigh, Jerry Rodgers, Joe Champion, Troy Harris, and Freddie Zweiecker. The proceeds from this play will be used to finance the Annual Junior and Senior Banquet.

An idea is the result of hard thinking which is hard labor. If you've ever been poor and hungry you don't forget it as long as you live.

"LONE STAR COMPANY"
TO BE FORMED IN MARCH

The Navy Recruiting Office, Chief Blankenship announced today that a "Lone Star Company" will be formed the first three weeks in March and then leave Dallas the last week in March for recruit training in San Diego, California. The forming of a "Lone Star Company" is an opportunity for the young men of Texas to serve their country and show honor to our Lone Star State simultaneously. Three year enlistments are now being accepted, and special programs guaranteeing a trade school for High School graduates are being offered to qualified men. For more details call or drop in at the Navy Recruiting Office, Room 215, Post Office Building.

Mrs. S. S. Reger
Feb. 21st Hostess
To Univ. Study Club

The University Study Club met February 21st in the home of Mrs. S. S. Reger. The Vice President, Mrs. Joy Sessums called the meeting to order by reading the Club Collect and "Pledge to the United States Flag." The program "Fine Arts" was introduced by Mrs. O. E. Melton.

A Historical Sketch of the "Penny Art Fund" was given by Mrs. J. H. Rigby, program chairman. Mrs. Anny Bazzell gave a most interesting talk on "The Revival of Antiques." Several members brought family antiques to be displayed, some dated 1772-1840 and 1842.

A lovely refreshment was served to the following members: Mesdames Andy Bazzell, A. R. Bunstine, E. R. Burns, B. N. Cauthorn, Bill Crosley, H. C. Gilbert, I. E. Harwell, A. C. Houser, J. D. Majors, L. W. Mathis, O. E. Melton, J. D. Morris, J. M. Pogue, J. H. Rigby, Joe Sessums, Carl Williams, H. G. Williams, Marshal Young and hostess Mrs. Reger. The next meeting will be March 7th.

Church of St. John
The Divine
(Episcopal)

Bible School 12:45 p. m.
Morning prayer, 1:30 p. m.
First Coristian Church, the Rev. Eugene McCrary, Priest in Charge.

Pentecostal Church
Of God

Berry St.
Rev. Alfred B. Qualls, Pastor
Sunday School, 9:45 a. m.
Morning Worship, 11:00 a. m.
Sunday Night Evangelist Service, 7:00 p. m.
Saturday Night Fellowship, 7:30 p. m.

Men's Bible Class
FIRST BAPTIST CHURCH
Invites You To
Worship With Them

Each Sunday Morning at 9:30
WILL TEAL, President
W. C. DAVIS, Teacher
DICK CHAMBERS, Secy.

IF IT'S FOR SALE ADVERTISE

United Pentecostal Church

The United Pentecostal Church of Jesus Christ invite everyone to come to the first born of the bible is preached in the old fashioned way. Study Thursday m. Sunday School 7:45 p. m. Bro. E. H. Minton, Pastor 603 East 6th St. Phone 569-1108

TAKE YOUR PROBLEMS TO CHURCH -- MILLIONS LEAVE THEM THERE

- ALMA'S FLOWERS**
265 North Ave. D — Phone 569-3371
Flowers By Wire
- B & C GARAGE**
Phone 569-3661
- BOOMTOWN BOWL, Inc.**
AMF "Magic Triangle" Pinspotters
1001 Wichita Highway
- CARL'S JEWELRY**
301 East 3rd — Phone 569-3721
Shop With Us and Save
- COMPLIMENTS OF
FAIRMONT FOODS CO.
- JACK'S MINUTE MAN**
When Eating Out—It's Jack's Minute Man
In Burkburnett
- COMPLIMENTS OF
Keller's
Sportswear & Shoes
313 East 3rd — Phone 569-3981
- SIMMONS SHOE SHOP**
208 East 3rd Street — Phone 569-3931
- Medley Furniture & Appliances**
Singer Sewing Machines — 311 E. 3rd St.
- SPINK'S FINA SERVICE**
418 South Avenue D
Your AAA Service Station—Pho. 569-8108
- Davis Grocery and Market**
Fancy and Staple Foods
403 West 3rd St. — Pho. 569-8146
- COMPLIMENTS OF
Texas Electric Service Co.
J. B. ADY, Manager
- PALACE THEATRE**
For Good, Clean Entertaining
Motion Pictures
- B. and B. GROCERY**
Choice Meats and Groceries
500 Avenue D — Phone 569-3701


THE LIGHT

"Thy word is a lamp unto my feet, and a light unto my path."

The bible, God's word, has often been compared to a light, for it penetrates the darkness and reveals God to man. It is the light that leads man down life's pathway. For those who study it, it reveals not only the past, but also the future.


"The entrance of thy words giveth light; it giveth understanding..."

Attend church and hear God's leaders expound on His word.



The Church is God's appointed agency in this world for spreading the knowledge of His love for man and of His demand for man to respond to that love by loving his neighbor. Without this grounding in the love of God, no government or society or way of life will long persevere and the freedoms which we hold so dear will inevitably perish. Therefore, even from a selfish point of view, one should support the Church for the sake of the welfare of himself and his family. Beyond that, however, every person should uphold and participate in the Church because it tells the truth about man's life, death and destiny; the truth which alone will set him free to live as a child of God.

© Coleman Adv. Serv., P. O. Box 4867, Dallas, Texas



- CORNER DRUG STORE**
George McClary
320 East 3rd Street
- DICKSON OIL COMPANY**
DICKSON MOTOR OIL
- THE MANHATTAN**
Complete Department
218 East 3rd Street
- Preston Dairy Products**
Hugh and Buddy Preston
219 East 2nd Street
- C. D. Shamburger Lumber**
R. C. Tevis, Manager
200 West 3rd Street
- Farmers Co-op Grain and Supply**
- COMPLIMENTS OF
MEAD'S BAKERY
- United Super Market**
Kenneth Palmer, Manager
Wichita Highway at 3rd St.
- SHEPPARD STAR**
Phone 723-0951
Banking For A Future
- RANCHOUSE MEATS**
Oklahoma Cutoff — Phone 569-8108
- Williams Petroleum**
Dealers in Gasoline, Kerosene and Distillates
- VIRGIL AARON**
SANITATION CONTRACTORS
Complete, Modern Plumbing
- Dickerson's Pit Barbecue**
Barbecue at Its Best—Phone 569-8108
125 Freeman St. — Phone 569-8108
- BOYD BROS. DEPT. STORE**
General Merchandise
Maytag and G. E. Appliances
117-123 Main—Phone 569-8108

Jan Lee Heights Mission
Extension Of
First Baptist Church
Across from Junior High School
Travis McMinn, Pastor
Sunday School, 9:30 a. m.
Morning Worship, 10:45 a. m.
Training Union, 5:30 p. m.
Evening Worship, 6:30 p. m.
Wednesday—
Teachers and Officers 7:00 p. m.
Midweek Service, 7:30 p. m.
Choir Practice, 8:15 p. m.
Large enough to accommodate, small enough to appreciate.

Church of Christ
Eugene Gilmore, Minister
Bible Study Sunday, 9:45 a. m.
Worship, 10:45 a. m.
Young People Class 5:00 p. m.
Worship, 6:00 p. m.
Bible Study, Wednesday, 7:30 p. m.
Ladies' Bible Class, Tuesday, 9:30 a. m.
"We welcome you to any of our services."

First Methodist Church
Carrol D. Copeland, Pastor
Sunday School, 9:45 a. m.
Morning Worship, 10:55 a. m.
Junior, Intermediate and Senior Youth Groups, 6:00 p. m.
Evening Worship, 7:00 p. m.
Official Board meets every fourth Monday.
Visitors are cordially invited to attend all our services.
A nursery is provided for nursery age children for both morning and evening services.

Central Baptist Church
814 Tidal St.
Kenneth D. Bradshaw, Pastor
Sunday School, 9:30 a. m.
Morning Worship, 10:45 a. m.
Training Union, 6:00 p. m.
Evening Worship, 7:00 p. m.
Wednesday Night Prayer Service, 7:30 p. m.
"A Friendly Progressive Southern Baptist Church"

Assembly of God Church
Lonnie Finney, Pastor
Sunday School, 9:45 a. m.
Morning Worship, 11:00 a. m.
Evening Worship, 7:30 p. m.
Women's Missionary Council, Tuesday, 2:00 p. m.
Youth Service, Tuesday, 7:30 p. m.
Prayer Meeting, Thursday, 7:30 p. m.

Church of God
J. W. Jackson, Pastor
10:00 a. m., Sunday School.
11:00 a. m., Hour of Morning Worship.
7:00 p. m., Evangelistic Services.
7:30 p. m., Wednesday, Young Peoples Endeavor.
If you haven't a church home, we would like very much for you to visit us where the full gospel is preached in the old time way. There is special music and singing each service. Each and every one has a warm and hearty welcome to come worship with us.

Church of Jesus Christ United Pentecostal
The United Pentecostal Church of Jesus Christ would like to invite everyone of the Apostolic faith to come to the church of the first born, where the Bible is preached in its fullness, in the old fashioned way. Bible Study, Thursday Night, 7:45 p. m. Sunday School, 10:00 a. m. Evangelist Service, Sunday night 7:45 p. m.
Bro. E. H. Minton, Pastor
606 East 6th St.
Phone 569-1108.

First Church of Christ Scientist
2156 Avenue H
Wichita Falls, Texas
Sunday School for children under 20 years of age, 11:00 a. m. in the Church Edifice.
Nursery.
Services at 11:00 a. m. Wednesday Evening Services, 8:00 p. m.

First Baptist Church
Corner Ave D and 4th St.
Sunday School, 9:30 a. m.
Morning Worship, 10:45 a. m.
Training Union, 5:30 p. m.
Evening Worship, 6:30 p. m.
Prayer Meeting, Wednesday, 7:30 p. m.
"In the heart of the city for the hearts of the city."

Grace Lutheran Church
Third St. and Ave E
Philip M. Otten
The Church of the Lutheran Hour, TV's "This is the Life".
Sunday, 9:45 a. m., Sunday School and Bible Classes.
11:00 a. m. Morning Services.
LWMS meeting every first Tuesday, 2 p. m.
Sunday School teachers meeting, Teacher training course, every 2nd and 4th Wednesday, 7:30 p. m.
Walter League Meeting, every 2nd and 4th Sunday at 7:30 p. m.
You are cordially invited to our services.

First Christian Church
2nd St. and Ave D
Wayne Black, Pastor
Sunday School, 9:45 a. m.
Morning Worship, 11:00 a. m.
CYF and Chi RHO, 6:00 p. m.
Evening Worship, 7:30 p. m.

Calvary Baptist Church
College and Ave B
Ray C. Morrow, Pastor
10:00 a. m., Sunday School.
An Independent Southern Baptist Church.
We use the Bible as our only literature.
11:00 a. m., Song, Preaching Service.
7:00 p. m., Young Peoples Services.
7:30 p. m., Night Preaching Service.
Wednesday Night—
6:45 p. m., Teachers Meeting.
7:30 p. m.—Prayer Meeting.
When you've cooked and served a dinner for eight you expect recognition and should get it.

Free Church In Christ
In Jesus
West 7th
W. W. D...
9:45 a. m. Sunday School
11:00 a. m. Morning Worship
Thursday Night
p. m.
We welcome white people
Church
Naz...
Main at...
R. A. No...
Sunday School
Morning Worship
Young Peoples
p. m.
Junior Society
Evening Worship
Wednesday
7:30 p. m.
GO CHURCH SUNDAY

Burkburnett Star

LIKED BY MANY — CUSSSED BY SOME — READ BY EVERYBODY

BURKBURNETT, WICHITA COUNTY, TEXAS, THURSDAY, MARCH 1, 1962

NUMBER 25

The reasons most men succeed is that their wives won't let them fail.
Fewer words begin with X than any other letter.

Chamber of Commerce Luncheon Each FIRST MONDAY at Town Hall. Everybody Invited Each Pays for His Meal

PROPERTY TAX BURDEN OF LOCAL GOVERNMENT

property tax — chief of burden" for local governments in the United States has not been able to keep up with the demands of a rising population growth in urban areas. The total amount of property taxes raised in 1960, property taxes nationwide raised \$15.7 billion and \$4.7 billion in 1946, the first year. Significantly, the percentage of general revenue for local governments of all types being supplied by the property tax has increased from 75.1 percent in 1946 to 83.8 percent in 1960. The same period there has been a sharp rise in the increase in debt for local governments chiefly relying on the property tax. In 1932, the debt of local governments was \$9 billion, while in 1960 it had increased to \$42 billion.

licenses and fees, \$695 million. The fifty largest cities in the United States raised \$2.6 billion through the property tax out of a total of \$3.8 billion of overall tax collections. Percentage wise, approximately 70 percent of the tax collections of the larger cities comes from the property tax. In the larger Texas cities which are a part of the 50 largest in the nation, the relative importance of the property tax is considerably greater than the national average. Houston, Dallas, San Antonio, Fort Worth and El Paso average 10.2 percent of their total tax collections from non-property tax sources. This means that approximately 90 percent of the local tax collections supporting the largest cities in Texas come from property taxes as contrasted with the national averages in cities of comparable size of just under 70 percent.

Board of Corrections and Highway Department have purchased more than \$350,000 worth of steel, which state prison inmates will use to fashion auto license plates for 1963. Republicans have appointed Mrs. Robert McCord of Dallas to handle publicity for the 10th Annual Republican Women's conference in Washington, D. C., on April 15th.

CARD OF THANKS

I want to thank everyone for the nice visits, cards and gifts I received while I was in the hospital. Also to thank Dr. Adams and the very nice nurses who cared for me at Bethania Hospital.
Tommy Roy Key

FIRST SAVINGS & LOAN ASSOCIATION PASSES TWO MILLION MARK IN EIGHTEEN MONTHS



FIRST SAVINGS & LOAN ASSOCIATION OFFICERS

- Harold Van Loh, president.
- Claude R. Meadows, Jr., executive vice-president and managing officer.
- Mrs. Bennie Dodson, Assistant Secretary.
- DIRECTORS: D. C. DODSON, R. R. ROBINSON, JR., JACK W. MATHIS, GLEN H. BEAR, PHILIP A. CARPENTER, HARLIN A. MILLS, A. R. HILL



CLAUDE R. MEADOWS, JR.

The growth of the First Savings & Loan Association since its opening August 29, 1960, is reflected in the lines below. In eighteen months the Association went over the two million dollar mark.

December 31, 1960	\$702,950.84
June 30, 1961	\$1,421,602.26
December 31, 1961	\$1,906,367.92
February 28, 1962	\$2,002,095.82

Claude R. Meadows, Jr., Executive Vice-President, says this growth was possible because of the support of local people, and the progressiveness of Burkburnett. He is very optimistic about the future, and states he expects a steady growth for the Association in the years ahead.



The Past Presidents of Hardin P.T.A. present for the Founders Day Meeting of February 20th, were introduced and a special tribute paid to them by Mrs. R. W. Morine (extreme left), president of Hardin P.T.A.

Mrs. Morine presented a little gift of appreciation to each past president as follows: Mrs. John Brookman (1935-36 and 1936-37); Mrs. Frank Kelley (1939-40 and 1940-41); Mrs. J. M. Willingham (1941-42); Mrs. Fred Hunt (1943-44, 1944-45 and 1950-51); Mrs. O. G. Burnett (1945-46 and 1946-47); Mrs. W. T. Zimmerman (1957-58); Mrs. M. D. Glover (1958-59 and 1959-60); and Mrs. Geo. Smith, who was president of Primary P.T.A. (1960-61).



The Life Members of Hardin P.T.A., who were present when Hardin P.T.A. met February 20th, were recognized and honored for their contributions to school activities and the community.

Reading from left to right: Mrs. Fred Hunt, Mrs. O. G. Burnett, Mr. Ralph M. Davis, Mrs. W. T. Zimmerman, Mrs. M. D. Glover, Mr. James L. Pearson and Mrs. George Smith.

STATE CAPITAL Highlights AND Sidelights by Vern Sanford TEXAS PRESS ASSOCIATION

Austin, Texas—Texas newsmen quizzed seven candidates for governor at a session of Sigma Delta Chi, a professional journalism society, and fanned early season campaign sparks. Gov. Price Daniel took the center position, weathering attacks from nearly all the other candidates, both Democratic and Republican. All candidates took part except John Connally and Edwin Walker.

A little fire developed between the three Republican candidates. Harry Diehl of Houston said Jack Cox of Breckenridge was "not a Republican—just a conservative candidate."

But two days later, Diehl withdrew from the race, leaving Roy Whittenburg as the only Republican primary opponent for Cox.

Don Yarborough and Marshall Formby attacked the Daniel administration as "tired" and "lacking vigor." Daniel came back with a recital of his five-year accomplishments in education, industry and other fields.

Will Wilson's approach was that Daniel's entry collapsed the Connally bandwagon by splitting Vice President Lyndon Johnson's organization, and that the only way to get an uncontrolled candidate was to elect Wilson.

Candidates got in more punches in answering tough questions posed by nine newsmen. All of Daniel's opponents made the Governor's unprecedented four-term try a central issue. In the course of questions, Daniel came out for a two-term limit, but with four-year terms for governor instead of the present two.

Friendless Insect—A big-hatted crowd of ranchers gathered at an Austin hotel to get more facts on the stockman's dream—the elimination of the screwworm.

There was no one there to defend the insect.

Ranchers learned from Floridians how that state was swept free of this costly scourge by a dramatic program. Florida ranchers covered the state with sterile male screwworm flies, thus wasting the female flies' single mating period. First airplane distribution of flies in South Texas started the day of the Austin meeting.

Texas stockmen are raising \$3,000,000 by voluntary contributions to match an equal amount of Federal money put up by the U. S. Department of Agriculture. The screwworms cost Southwestern ranchers an estimated \$40,000,000 a year in losses.

Livestock Raisers Get Helpers—A committee of five legislators held its first meeting after hearing plans of the Southwest Animal Health Research Foundation.

Speaker James A. Turman appointed Representatives Ray Bartram of New Braunfels, Steve Burgess of Nacogdoches, Stanley Boyesen of Yoakum, Glenn Kothmann of San Antonio and Gus Mutscher of Brenham to assist the SWAHRF in planning its attack on the screwworm fly.

Horse of Another Color — Stamford oilman Keith Wheatley seemed to get off the track in his campaign for Railroad Commissioner when he told Austin pressmen that Texans should be able to cast a vote on the return of horse racing to the state.

Wheatley said he is neither for nor against racing, but believes "tax profits from horse racing could do much to aid the old people and the children of Texas."

Gubernatorial candidates are interested in regulating another kind of race. They think limitations should be set on the number of times a governor can run for reelection.

Marshall Formby based his objections to the present lack of limits on the fact that most state projects are operated by

commissions whose members are appointed by the governor on a rotating basis. Formby figures that by the end of a second term, a two-time governor has made every state commission appointment and it's time for him to take a rest.

John Connally seconded the charge of commission domination, and said that by the end of a third term, every one of the more than 800 commissioners have been appointed by a three-time governor. He promised that he would ask the Legislature to limit a governor's tenure to two terms if he's elected.

Migrant Study Set Up—State Board of Education appointed R. P. Ward of Edinburg to head a study on the education of children of migrant parents, after Commissioner J. W. Edgar called this "one of the critical problems facing the Texas public school system."

Ward, former president of Pan American College, will develop a guide for teaching these children, who form a large percentage of the enrollment in Rio Grande Valley schools.

Teachers' Time Tabulated — State Board of Examiners for Teacher Education and the Texas Education Agency sent out about 80,000 questionnaires, asking how Texas educators spend their time on curricular, co-curricular and extra-curricular activities.

So far, more than 20,000 answers are in. Agency researchers are anxious for the other replies. They want to feed them to computing machines. Purpose is to get an analysis to help the Texas Legislative Council prepare a full report on teacher certification and the status of education in Texas.

Other facets of a report to be presented to the 58th Legislature in January will include the public view of education; a history of teacher education and certification in Texas; personal characteristics and social and economic data of teachers; a look at the current class of education majors and an analysis of their college course work.

When the "portrait of a Texas teacher" is completed, educators think it will represent the most comprehensive study of public education ever undertaken in this state.

A teachers' pay survey revealed that the West Texas towns of Crane and Kermit pay the highest salaries to new teachers—\$4,900 a year, and that practically all districts with 2,500 or more students pay more than the \$4,014 legal minimum.

GOP Primaries Under Fire—State Democratic committeeman Walter Sterling opened another argument in the inter-party battle when he accused Republicans of dodging their responsibilities by not holding a primary in every precinct in the state.

Sterling and the State Democratic Executive Committee questioned the legality of a Republican primary nominee who has not been voted on by every Republican. Executive Director Clyde Johnson said, "The Republicans should not be able to avoid legal and financial responsibility in these primary elections."

Republicans counter-charged that Democrats failed to hold primaries in 24 counties during the 1960 special election. But Johnson promised the party will "follow the law as usual" and hold primaries in all 254 counties this May.

SHORT SNORTS Governor Daniel has appointed Thomas H. Stilwell of Palestine as judge of the 3rd District Court to succeed Judge V. M. Johnston.

A report from State Auditor C. H. Cavness showed the Board of Registration for Professional Engineers made a transfer of \$225,000 to help pay for the new State Office Building No. 2, where it will office.

Household Hints BY JOAN MARCH WORDEN Director, Pine Cleaner Information Center.

Every day may be a holiday for some people but every holiday is Labor Day for the homemaker who has to clean-up after.

As the New Year begins, here's a clean-up calendar with emphasis on holidays but useable on any day.

January: If the New Year dawns with souvenirs of last night's celebration still around, remember that such party postscripts as grease spots, spilled food and beverages can be eased away with the aid of a little pine cleaner.

February: If any of the Valentine candy gets mashed on the floor or rug, keep in mind that pine cleaner is a magician at making sticky goodies like candy, cake and cookies disappear.

March: If the Ides of March bring coughs and sneezes, remember to kill many of the germs with a high-percentage pine oil disinfectant.

April: The joke's on you if you still start spring house-cleaning by tearing the house apart. Assemble a small portable kit of cleaning aids and do your housecleaning a room at a time. Easier on you, easier on the house, easier on your family.

May: Mothers who long to return to the days of feeling like Queen of the May might hint for a bottle of glamorous pine bath oil.

June: Every day is Father's Day for doing man-size chores. Pine cleaner, sponge and water are dad's best friend for basement clean-up, car and whitewall tire washing, dog shampooing and patio-maintenance.

July: Outdoor sobriety for the Fourth of July? Keep a bottle

of pine cleaner handy for a quick clean-up of grill and utensils used over the charcoal fire.

August: Vacation days need not turn into dog days if the whole family lends a hand at cottage clean-up or summer spruce-up. Remember that a good pine oil cleaner is a great banisher of sticky salt-water residue, tar tracked in from the beach and even "general" dirt from hot dogs.

September: Make Labor Day a take-it-easy time by preparing for fall clean-up. Check on your cleaning supplies — three basic aids should be a 2-sided sponge, a sponge cloth, a triple duty pine oil cleaner-disinfectant.

October: Trick the holiday treaters out of marking up windows with soap. Smears and ghosts will vanish in a whisk with pine cleaner.

November: The turkey and trimmings will taste better if you know you can short-cut the after-dinner kitchen chores. While you're sitting at the groaning board, let your pots and pans sit in a pine cleaner solution. Then just a good rinsing — and little or no scrubbing will be needed at clean-up time.

December: Add gaiety to your own outlook of the festive holiday season by providing some little household elves to help with holiday clean-up: two shopping bags to hold wrapping paper (before and after use); extra sponges for quick mop-ups during parties and, of course, an extra bottle of pine cleaner might be a gift you can give yourself to help make the holiday season more fun and less work.



45TH ANNIVERSARY

WEDNESDAY IS DOUBLE GREEN STAMP DAY WITH PURCHASE OF \$3.00 OR MORE OF MERCHANDISE



FREE

NEW 1962 GALAXY
 FOUR DOOR
 NOTHING TO BUY — JUST REGISTER AT

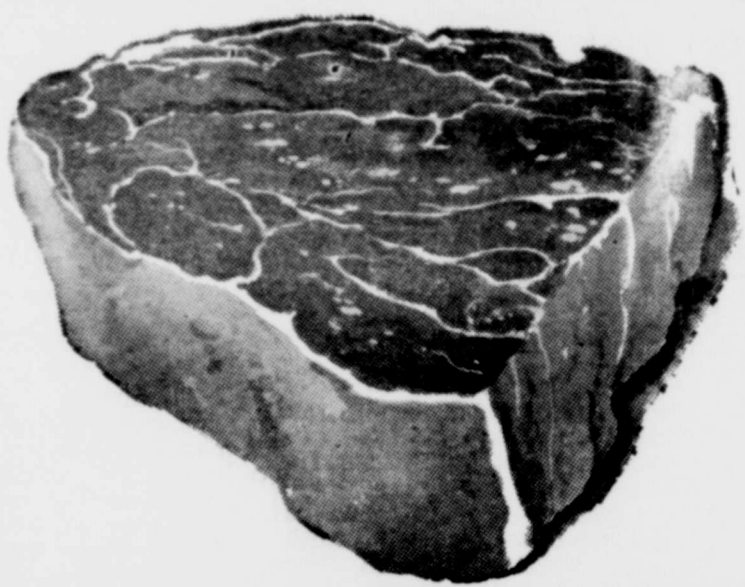
PARKER'S

As often as you wish — Between 10:00 AM and 10:00 PM
 CAR WINNER WILL BE DRAWN

You need not be present to win!

This is just another way PARKER'S FOOD STORES have taken to express their appreciation for your valued and loyal patronage over the past 45 years and for the years to come.

FREE-GROC



CHUCK ROAST

Lb. **49¢**

PARKER'S FRESH PRODUCE

- BANANAS** CENTRAL AMERICAN Pound **10¢**
- APPLES** WINESAP 4 Lb. Bag **29¢**
- CAULIFLOWER** CELLO WRAPPED Head **25¢**
- FRESH CORN** FLORIDA 3 Ears **19¢**
- CELLO RADISHES** Cello. Bag **5¢**
- FRESH GREEN ONIONS** Bunch **5¢**
- Strawberries** FRESH PINT **39¢**

PICNICS 33¢
 Ranger—6 to 8 Lbs. POUND

FRESH GROUND BEEF 49¢
 POUND

Ranger Sliced **BACON** 55¢
 LB. TRAY

Armour's Star **BACON** 99¢
 2 LB. PKG.

CORNISH HENS 69¢
 14 Oz. Size EACH



Each Person Will Give A Free Groc
 Winner Can Win A Groc
ON EACH DAY
 FOR MARCH 10th

Parker employees not eligible for children

FAMOUS CHIL

Lb. Package 79



PARKER'S FOOD STORES, INC.

ANNIVERSARY



WE NEVER UNDER-ESTIMATE
THE POWER OF A CUSTOMER

Grape Drink WELCH	3 Qt. Cans	83¢
FLOUR PETER PAN	5 Lb. Bag	29¢
COCKTAIL DEL MONTE FRUIT	2 303 Cans	35¢
ICE CREAM CARNATION "1880"	Quart Cartons	59¢



6 BOTTLE CARTON
REGULAR SIZE ONLY

23¢

 Plus Deposit

CRISCO

 3 LB. CAN **59¢**

COFFEE

 FOLGERS INSTANT 6 Oz. JAR **59¢**

TRIUMPH
RUBBING ALCOHOL
Pint Bottle **9¢**

100's
BUFFERIN TABLETS
Pkg. **83¢**

LUSTRE CREME
SHAMPOO
Personal Size 30¢
Medium Size 55¢
Large Size 89¢

BANQUET
POT PIES
Beef—Chicken
Tuna—Turkey
2 8-Oz. Pies **45¢**

THE FRIENDLY STORES

Green Giant Peas	303 Cans	23¢
ASPARAGUS Veri-Fine	300 Cans	29¢
Pork and Beans Van Camp's	2 300 Cans	25¢
Armour's Treet	12 Oz. Can	49¢
Tuna Fish Chicken of the Sea Green Label	1/2's Can	37¢
Ireland Chili	No. 2 Can	59¢
Soft Weve Toilet Tissue	2 rolls	27¢

PARKER'S FOR FRIENDLY PEOPLE

Pie Apples Comstock's	No. 2 Can	23¢
Pineapple Del Monte Crushed	No. 2 Can	32¢
DRINK Del Monte Pineapple-Orange	29 Oz. Can	27¢
Dried Prunes Sun-Sweet	12 Oz. Cello.	29¢
Kraft Velveeta	2 Lb. Loaf	79¢
Hollandale Oleo	1 Lb. Crt.	20¢
Log Cabin Syrup Butter	12 Oz. Bottle	33¢

EGGS

Medium "B" doz. **39¢**
Large "A" doz. **49¢**
Large "A" Cage doz. **59¢**

Plastic

 DISH PAN BUCKET BASKET TRAY YOUR CHOICE **77¢** EACH

FROZEN FOOD FEATURES

WHOLE SUN
ORANGE JUICE
6 6 Oz. Cans **\$1.**



BANQUET
DESERT PIES
PEACH, CHERRY
APPLE, CUSTARD
8 INCH PIES
4 FOR **98¢**

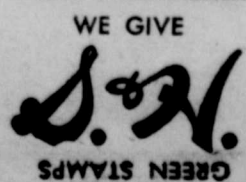
WORLD'S GREAT MUSIC

 On the Album-At-A-Time Plan!

ALBUM No. 1 **ONLY 49¢**
VOLUME NO. 4 NOW ON SALE
ALBUMS 2 to 24 **ONLY 99¢** EACH

24 ALBUMS
56 Symphonic Masterpieces
HIGH FIDELITY • 12 INCH LONG PLAY RECORDINGS
by World Famous Orchestras and Conductors

PARKER'S FOOD STORES, INC.



BURK YOUTHS IN HAM RADIO STUDY GROUP



HAM RADIO STUDY GROUP— Back row, T-Sgt. Charles Taylor, K5UUN, Don McCullough, W5BWC; Chester Todd, Joel Dempsey, Seeley Gallup, WN5AZU; Chuck Gallup, K5DHG; Rusty Todd, WN5DFR, and Lee Gibson.

RUSTY TODD

WN5DFR Rusty Todd, age 11 years, son of Mr. and Mrs. Chester Todd, 519 Bluebonnet, Burkburnett, has received his Nov-

ice Radio Licenses.

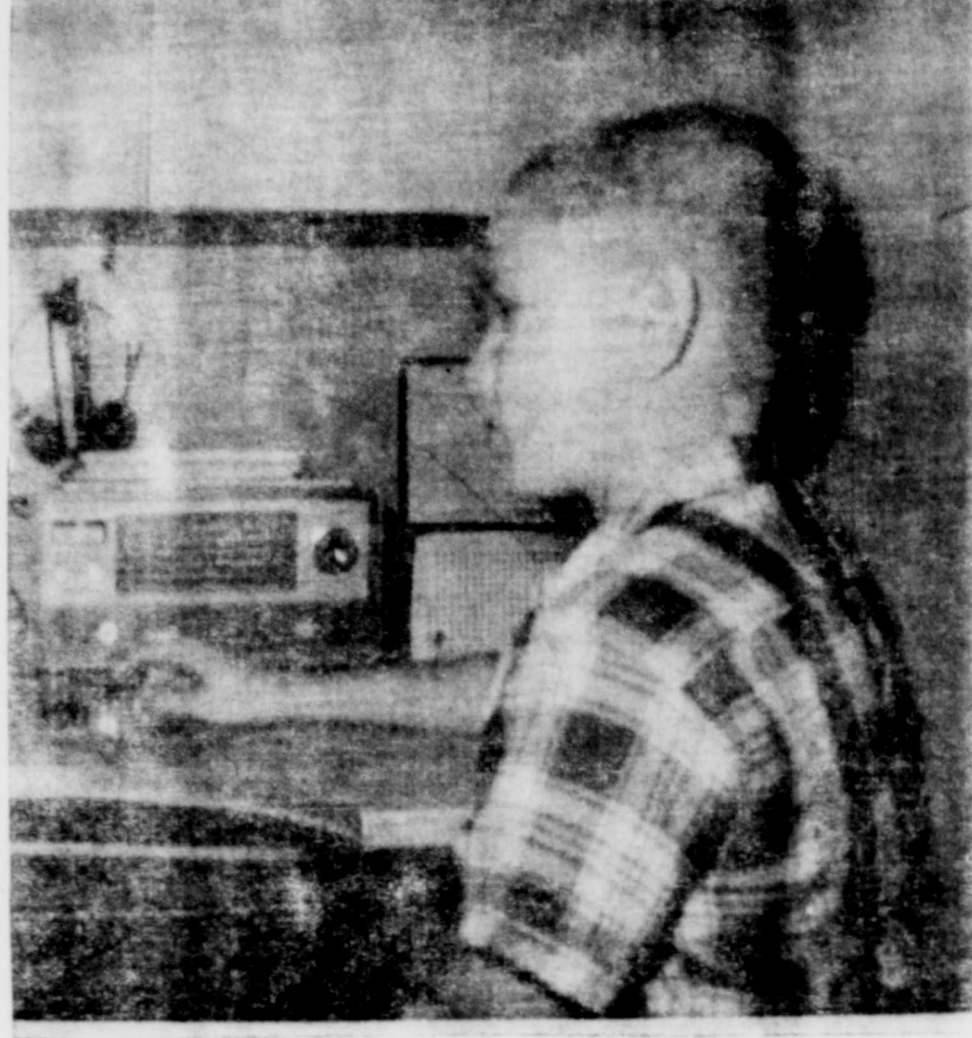
A sixth grader in Hardin Grade School, Rusty has an A average in his grades. He became interested in ham radio last summer, mowing yards to earn money for his first receiver which he constructed himself.

Sgt. Charles Taylor and Mr. Don McCullough started a Tuesday night study group for men and boys interested in ham radio. After three months study Rusty

took his Novice Test under the instruction of A 2-C Jim Magill of SAFB. Several men and boys are studying now for their licenses. Among these are several father-son combinations.

Rusty's father, Chester, has passed his test but has not received his call letters.

On February 4th, Rusty won an award for the youngest operator present at the Lawton-Fort Sill Hamfest.



few years, done outstanding work in promoting and causing to be promoted, many worthwhile and outstanding civic improvements; and,

WHEREAS the Federated Study Clubs have distinguished themselves by taking the lead in so many civic projects to promote the welfare and interest of the citizens of Burkburnett; and,

WHEREAS the Federated Study Clubs have, by their untiring efforts, secured the cooperation of all clubs, organizations, and many individuals throughout the city in the accomplishments of various endeavors which have resulted in making Burkburnett, Texas, a better city in which to live, and a city meriting the pride of its citizens; and,

WHEREAS the Federated Study Clubs have been successful in securing the cooperation and help of all clubs and organizations in the future planning of the city, and in the development of those plans; NOW THEREFORE BE IT

RESOLVED by the Board of Commissioners of the City of Burkburnett, Texas:

That the Federated Study Clubs of Burkburnett, Texas, and all individual members thereof, be commended for their achievements, and that such commendation be made a matter of record and so entered into the official Minutes of the Board of Commissioners meeting as of this date;

That this Resolution be publicized, and copies thereof be furnished to the Federated Study Clubs of Burkburnett, Texas.

PASSED, APPROVED AND ADOPTED this, the 26th day of February, 1962.

s. L. J. Byars Mayor Pro-Tem

ATTEST: s. Don Pemberton City Secretary

A typical \$1 CARE Food Crusade package, for a needy family in Colombia, contains 10 lbs. corn meal, 5 lbs. macaroni, 1 lb. margarine, 9 lbs. powdered milk (makes 36 quarts.) Colombia is one of 17 countries whose people are helped by dollars sent to CARE Food Crusade, New York 16, New York.

RESOLUTION WHEREAS the Federated Study Clubs of Burkburnett, Texas, have, within the past

day, February 26, 1962, at 7:30 p. m. in the City Hall, with a quorum being present. Among the actions taken by the Board of Commissioners was the following:

Commissioner Joe Crowley made a motion, seconded by Commissioner Harry Elliott, that the following Resolution be adopted. The motion carried by unanimous vote:

RESOLUTION WHEREAS the Federated Study Clubs of Burkburnett, Texas, have, within the past

day, February 26, 1962, at 7:30 p. m. in the City Hall, with a quorum being present. Among the actions taken by the Board of Commissioners was the following:

Commissioner Joe Crowley made a motion, seconded by Commissioner Harry Elliott, that the following Resolution be adopted. The motion carried by unanimous vote:

RESOLUTION WHEREAS the Federated Study Clubs of Burkburnett, Texas, have, within the past

day, February 26, 1962, at 7:30 p. m. in the City Hall, with a quorum being present. Among the actions taken by the Board of Commissioners was the following:

Commissioner Joe Crowley made a motion, seconded by Commissioner Harry Elliott, that the following Resolution be adopted. The motion carried by unanimous vote:

RESOLUTION WHEREAS the Federated Study Clubs of Burkburnett, Texas, have, within the past

day, February 26, 1962, at 7:30 p. m. in the City Hall, with a quorum being present. Among the actions taken by the Board of Commissioners was the following:

Commissioner Joe Crowley made a motion, seconded by Commissioner Harry Elliott, that the following Resolution be adopted. The motion carried by unanimous vote:

RESOLUTION WHEREAS the Federated Study Clubs of Burkburnett, Texas, have, within the past

day, February 26, 1962, at 7:30 p. m. in the City Hall, with a quorum being present. Among the actions taken by the Board of Commissioners was the following:

Commissioner Joe Crowley made a motion, seconded by Commissioner Harry Elliott, that the following Resolution be adopted. The motion carried by unanimous vote:

RESOLUTION WHEREAS the Federated Study Clubs of Burkburnett, Texas, have, within the past

day, February 26, 1962, at 7:30 p. m. in the City Hall, with a quorum being present. Among the actions taken by the Board of Commissioners was the following:

Commissioner Joe Crowley made a motion, seconded by Commissioner Harry Elliott, that the following Resolution be adopted. The motion carried by unanimous vote:

RESOLUTION WHEREAS the Federated Study Clubs of Burkburnett, Texas, have, within the past

day, February 26, 1962, at 7:30 p. m. in the City Hall, with a quorum being present. Among the actions taken by the Board of Commissioners was the following:

Commissioner Joe Crowley made a motion, seconded by Commissioner Harry Elliott, that the following Resolution be adopted. The motion carried by unanimous vote:

RESOLUTION WHEREAS the Federated Study Clubs of Burkburnett, Texas, have, within the past

day, February 26, 1962, at 7:30 p. m. in the City Hall, with a quorum being present. Among the actions taken by the Board of Commissioners was the following:

Commissioner Joe Crowley made a motion, seconded by Commissioner Harry Elliott, that the following Resolution be adopted. The motion carried by unanimous vote:

RESOLUTION WHEREAS the Federated Study Clubs of Burkburnett, Texas, have, within the past

day, February 26, 1962, at 7:30 p. m. in the City Hall, with a quorum being present. Among the actions taken by the Board of Commissioners was the following:

Commissioner Joe Crowley made a motion, seconded by Commissioner Harry Elliott, that the following Resolution be adopted. The motion carried by unanimous vote:

RESOLUTION WHEREAS the Federated Study Clubs of Burkburnett, Texas, have, within the past

day, February 26, 1962, at 7:30 p. m. in the City Hall, with a quorum being present. Among the actions taken by the Board of Commissioners was the following:

Commissioner Joe Crowley made a motion, seconded by Commissioner Harry Elliott, that the following Resolution be adopted. The motion carried by unanimous vote:

RESOLUTION WHEREAS the Federated Study Clubs of Burkburnett, Texas, have, within the past

day, February 26, 1962, at 7:30 p. m. in the City Hall, with a quorum being present. Among the actions taken by the Board of Commissioners was the following:

Commissioner Joe Crowley made a motion, seconded by Commissioner Harry Elliott, that the following Resolution be adopted. The motion carried by unanimous vote:

RESOLUTION WHEREAS the Federated Study Clubs of Burkburnett, Texas, have, within the past

day, February 26, 1962, at 7:30 p. m. in the City Hall, with a quorum being present. Among the actions taken by the Board of Commissioners was the following:

Commissioner Joe Crowley made a motion, seconded by Commissioner Harry Elliott, that the following Resolution be adopted. The motion carried by unanimous vote:

RESOLUTION WHEREAS the Federated Study Clubs of Burkburnett, Texas, have, within the past

day, February 26, 1962, at 7:30 p. m. in the City Hall, with a quorum being present. Among the actions taken by the Board of Commissioners was the following:

Commissioner Joe Crowley made a motion, seconded by Commissioner Harry Elliott, that the following Resolution be adopted. The motion carried by unanimous vote:

RESOLUTION WHEREAS the Federated Study Clubs of Burkburnett, Texas, have, within the past

day, February 26, 1962, at 7:30 p. m. in the City Hall, with a quorum being present. Among the actions taken by the Board of Commissioners was the following:

Commissioner Joe Crowley made a motion, seconded by Commissioner Harry Elliott, that the following Resolution be adopted. The motion carried by unanimous vote:

RESOLUTION WHEREAS the Federated Study Clubs of Burkburnett, Texas, have, within the past

day, February 26, 1962, at 7:30 p. m. in the City Hall, with a quorum being present. Among the actions taken by the Board of Commissioners was the following:

Commissioner Joe Crowley made a motion, seconded by Commissioner Harry Elliott, that the following Resolution be adopted. The motion carried by unanimous vote:

RESOLUTION WHEREAS the Federated Study Clubs of Burkburnett, Texas, have, within the past

day, February 26, 1962, at 7:30 p. m. in the City Hall, with a quorum being present. Among the actions taken by the Board of Commissioners was the following:

Commissioner Joe Crowley made a motion, seconded by Commissioner Harry Elliott, that the following Resolution be adopted. The motion carried by unanimous vote:

RESOLUTION WHEREAS the Federated Study Clubs of Burkburnett, Texas, have, within the past

Forum Study Club Held Meeting In The Holtzen Home

Regular meeting of the Forum Study Club was held in the home of Mrs. Don Holtzen, on February 22nd.

The President, Mrs. Lonnie Taylor presided for the business meeting. She reported on the profits realized from the Chicken Noodle Dinner sponsored by the Council of Federated Clubs. A report was made on a communication received from Senator George Moffatt. The convention dates were announced. District Convention at Childress, April 12-13, and the State Convention, May 8-9 at San Antonio.

Mrs. Don Mapes was welcomed as a new member.

Mrs. T. L. Cornelius reported on business conducted at the recently held Community Council meeting. This newly organized group, will have as representatives the presidents of each club in Burkburnett. The next meeting will be held on March 9th.

Special favors were presented to all members, from Mr. Don Mapes, manager of Keller's of Burkburnett. Mrs. J. C. Adams, Jr., who recently celebrated a birthday, received a gift from her secret pal, Mrs. James Brockhaus won the door prize.

The next meeting will be on March 8th in the home of Mrs. Clyde McDonnell.

There are more than 4.4 million motor vehicles in Texas.

Texas farmers and ranchers operate some 278,000 tractors.

"Good Grooming — Here's How!" Leaflet Available

A leaflet entitled, "GOOD GROOMING—HERE'S HOW!" is written especially for young girls. Cleverly illustrated, it gives practical, easy-to-understand information on grooming from "head-to-toe."

Summertime means more leisure time for most girls. It's a good time to start practicing better grooming habits that will carry through a lifetime.

Copies of the leaflet are available from the county home demonstration agent's office, 305 Federal Building, Wichita Falls, Texas.

FORUM STUDY CLUB HELD INFORMAL VALENTINE BUFFET ON FEBRUARY 8

The Forum Study Club honored husbands and guests with an informal Valentine Buffet at the Youth Center on February 8th.

Special guests of the club were Mr. and Mrs. Don Mapes, Benny Turner and James Klunker.

A delicious meal, planned by the club's social committee, was enjoyed by the thirty-two present.

Those attending participated in games of ping-pong, bingo, and dominoes. A special finger painting contest was held and J. C. Adams, Jr., was awarded first prize.

For some politicians the paths of glory lead but to the grave.

Thomas Jefferson introduced waffles to America.

Resolution

February 26, 1962 STATE OF TEXAS:

CITY OF BURKBURNETT:

The Board of Commissioners of the City of Burkburnett, Texas met in regular session Monday, February 26, 1962, at 7:30 p. m. in the City Hall, with a quorum being present. Among the actions taken by the Board of Commissioners was the following:

Commissioner Winston Freeman made a motion, seconded by Commissioner Joe Crowley, that the following Resolution be adopted. The motion carried by unanimous vote:

RESOLUTION

WHEREAS Dr. Robert M. Sims, Director of the City's Municipal Band, the "Boomtowners," has, for the past year, diligently worked voluntarily in the organizing and the establishment of the municipal band; and,

WHEREAS such untiring efforts have been rewarded, evidenced by the fact of weekly concerts in Hardin Park during the summer months of 1961, and the band's performance during the "Boomtowners" Rodeo of 1961, the concert held in Wichita Falls, Texas, and the many occasions of the band's performance in the downtown area; and,

WHEREAS the members of the band have volunteered their services by working faithfully and diligently in their weekly practice sessions, offtimes at their own inconvenience; and,

WHEREAS the "Boomtowners" Municipal Band has been, and is, a credit to the citizens of Burkburnett and is faithfully

following its plans and intentions to bring wholesome entertainment and enjoyment to the citizens of Burkburnett, Texas; NOW THEREFORE BE IT

RESOLVED

by the Board of Commissioners of the City of Burkburnett, Texas.

That Dr. Robert M. Sims, band director; and the various members of the band, be commended for their accomplishments in bringing enjoyment to the citizens of Burkburnett, Texas; and,

That the efforts and volunteer work of Dr. Robert M. Sims and the band members be publicly recognized and that they be publicly commended for the good which they are doing for the citizens of Burkburnett; and,

That such commendations be made a matter of record and so entered into the official Minutes of the Board of Commissioners meeting of this date;

That this Resolution be publicized, and copies thereof be furnished to Dr. Robert M. Sims for the attention of the band members.

PASSED, APPROVED AND ADOPTED THIS, the 26th day of February, 1962.

L. J. Byars Mayor Pro-Tem

ATTEST: Don Pemberton City Secretary

Resolution

February 26, 1962 STATE OF TEXAS:

CITY OF BURKBURNETT:

The Board of Commissioners of the City of Burkburnett, Texas, met in regular session Mon-

He who has a thing to sell
And goes and whispers in a well,
Is not so apt to get the dollars
As he who climbs a tree and hollers.

NEWSPAPER ADVERTISING

makes it Easy to Sell
your Service or your Product!

Like the branches of the tree,
NEWSPAPERS reach out into space — into the vast areas of the trade territory — into every home in every community, telling one and all about local happenings, local products, and local services.

It has its roots in all affairs
— for your good and the community's.

TEXAS PRESS ASSOCIATION 1716 SAN ANTONIO STREET AUSTIN, TEXAS

FREE! FREE!

40 Lbs. MEAT

10 Lbs. Round Steak
10 Lbs. Club Steak
10 Lbs. Roast
10 Lbs. Hamburger

72 PACKAGES

FROZEN FOOD MILK
SNOW CROP BRAND

All This Food Free
With This Special
Factory Freezer
SALE

Only \$12 per month

Model 1662
16.62 Cubic Feet

No Down Payment

Monaghan Fur. Appliances

200 East 3rd St Burkburnett, Phone 569-3

THE STATE OF TEXAS
To any Sheriff or any
within the State of
GREETING:
You are hereby notified
to cause to be published
not less than ten days
the return day of the
clusive of the date of
tion, in a newspaper
Wichita County, Texas,
comparing citation, and
the herein below, to
a true copy—but if no
no newspaper so printed
county, then that you
said citation to be pub-
least TEN days before
turn term thereof as
by law.

CITATION BY PUBLIC
THE STATE OF TEXAS
TO ALL PERSONS
ESTED IN THE COUNTY
A. E. Montgomery, et al.,
No. 9471, County of
ita County, Texas, et al.,
gomery, Administrators,
above numbered and
estate, filed on the 10th
of February, 1962, to
account for final settle-
said estate and respon-
said estate be settled,
ed, and said application
charged from his trust
Said application was
and acted on by said
10 o'clock A.M. on
Monday next after the
tion of ten days from
publication of this notice,
same being the 12th
March, 1962, at the
Courtroom in Wichita
Texas.

All persons interested
estate are hereby notified
to appear before said
Court at said above
time and place by fil-
ten answer containing
plication should they
do so.

The officer executing
writ shall promptly
same according to the
of law, and the man-
of, and make due re-
law direct.

GIVEN UNDER THE
AND THE SEAL OF THE
COURT at office of
Falls, Texas, this 26th
of February, A.D. 1962.

Dora DeLoach
Clerk of the Court
Wichita
County, Texas
By Adelle
DeLoach
Deputy

For Results, Try Classified Ads

CASUAL
A pillow
ing color
tapered i
this slip
piece per
Barad is
care coti

Policyhold
by the Ins

Q. Two
some fina
couldn't pa
life insur
had taken
policy five
nances are
and I woul
about my
state my o
advantage
taking out

A. The
protection
ago, even t
ing premi
forfeiture
life insur
you had b

REINSTAT
OLD POLI

during the
were und
part or al
there as c
up life in
have had
key for the
overdue p
through p
policy was
stopped p
may still b
these polic
For a su
policy laps
instat it I
up the bac
out on the
showing y
You are u
the reinst
several bl
stating yo
It was issu
years you
future pre
stantially
policy issu
value and
build up a
policy has
several year

Q. I thi
that I have
this mean
policy (w
years ago)
A. No.
facts truth
then, your
called for
developed
issued. Ev
take in fl
then, most
suitable an
after they
two years.

WRITE AD-RIMES \$310 Cash Given FREE LOCAL MERCHANTS ARE THE BEST

Think up a line to rhyme with



CASUAL AND COLORFUL—A pullover top striped in exciting colors is teamed with tapered black knit trousers in this sleep outfit. This two-piece pajama is styled by Barad in comfortable, easy care cotton knit.

Family FINANCIAL PROTECTION

Policyholder Questions Answered by the Institute of Life Insurance
Q. Two years ago I ran into some financial difficulties and couldn't pay the premiums on my life insurance, so I let it lapse. I had taken it out as a straight life policy five years earlier. My finances are now straightened out and I would like to do something about my insurance. Can I reinstate my old policy? Is there any advantage in doing so, rather than taking out new insurance?
A. The chances are that your protection didn't stop two years ago, even though you stopped paying premiums. Under the "non-forfeiture benefits" of permanent life insurance, the cash values you had built up in your policy

during the preceding five years were undoubtedly used to keep part or all of your protection in force as continued term or paid-up life insurance. Or you may have had a provision in your policy for the company to pay your overdue premiums automatically through policy loans. If your policy was debt-free at the time you stopped paying premiums, you may still be insured under one of these policy provisions.
For a number of years after a policy lapses, you can usually reinstate it in full force by paying up the back premiums, plus interest on those premiums, and by showing you are still insurable. You are undoubtedly still within the reinstatement period. There are several big advantages in reinstating your old policy. Because it was issued when you were seven years younger than now, your future premiums would be substantially smaller than on a new policy issued now. Also, your cash value and other benefits usually build up at a faster rate after a policy has been in force for several years.

Q. I have just been informed that I have a heart ailment. Does this mean that my life insurance policy (which I took out three years ago) can be cancelled?
A. No. If you stated all the facts truthfully on your application, your policy cannot be cancelled for any condition which developed after the policy was issued. Even if you made a mistake in filling out your application, most policies become incontestable and cannot be cancelled after they have been in force for two years.

Q. I have just been informed that I have a heart ailment. Does this mean that my life insurance policy (which I took out three years ago) can be cancelled?
A. No. If you stated all the facts truthfully on your application, your policy cannot be cancelled for any condition which developed after the policy was issued. Even if you made a mistake in filling out your application, most policies become incontestable and cannot be cancelled after they have been in force for two years.

HOW FAST CAN YOU GO IN A COFFIN?

Next time you are tempted to stop on it, ask yourself this question! Last year, 40,000 died on our highways. In 3 out of 10 fatal accidents, drivers were speeding. Obey speed limits. Drive safely.

BACK THE ATTACK ON TRAFFIC ACCIDENTS!
Published as a public service in cooperation with The Advertising Council

HOW TO WIN AD-RIME PRIZES

The arrow points to the "Guideline"
AD-RIME lines must tie in and rhyme with the Guideline. Your entry MUST carry the "Hidden Slogan." Find it among the ads—one word in each column in the ads starting at the left. One column will have two hidden words. The slogan will always have 6 words. You don't have to buy anything to win prizes but MUST find and write the Hidden Slogan. Preference is given to AD-RIME lines that tie in well and BOOST LOCAL TRADE. Get the swing—the two lines are a "jingle." One which can't win is:
These Stores Win In Every Test but you must write original ones. Good luck—and keep trying.

Appliance Service

South's Appliance Service
On all TVs, Radios, Appl. We sell Satchell Carlson TV's 305 W. 3rd—Ph. 569-2946

Auto Parts

BILL BRYANT'S TRUCK & AUTO SALVAGE
Parts for All Cars and Trucks Okla. Cut-off—Ph. 569-3581

Casey Logan Auto Supply
Comparisons Lowest prices for Parts on All Cars—Guaranteed 310 Ave. C Ph. 569-3322

Auto Radiators

WORTHAM RADIATOR SHOP
Complete job in overhauling your Radiator—Guaranteed 115 E. 3rd 569-2431—569-2389

Auto Repair

TATUM GARAGE
Your Car Our Specialty All Work Guaranteed 413 Ave. B Ph. 569-2391

Bakers

HENRY'S PASTRY SHOP
For the Best in Cakes Do-Nut Golden Creamy Taste 304 East 3rd Ph. 569-3201

Banks

FIRST NATIONAL BANK
Home Improvement Loans Drive-in Banking—Personal Loans Ph. 569-2221

Barber Shops

Double Eagle Barber Shop
Where Social Register Ends and Barboring Begins — \$1.00 120 East Main Street

McCREARY BARBER SHOP
4 Years Barboring Here Barber Work at Its Best 418 Ave. C Ph. 569-2560

Beauty Salon

Edith Guest's Beauty Shop
Professional Hair Styling \$5.00 Special on Permanents The Look That Looks Like You! 300 S. Ave. D Ph. 569-3111

IMA'S BEAUTY SALON
If it is the best in Hair Styling You Want to See Us Hardin Ave. Ph. 569-3442

SKID'S BEAUTY SALON
Latest Hair Styling by Nancy Truelove—Bertha Skidmore 539 Berry St. Ph. 569-3188

STELLA'S BEAUTY SALON
See Mrs. Leon Pace for The Best in Hair Styling 314 E. 7th St. Ph. 569-2489

Body Shop

Earl West Paint & Body Shop
The Most Reliable Wrecks Rebuilt — Paint Jobs 414 Ave. B Ph. 569-1321

Bowling

BOOMTOWN BOWL, Inc.
Free Daytime Bowling Lessons Tuesdays and Fridays 1101 Wichita Hwy. Ph. 569-8139

Building Contractor

BEN HINKLE, BUILDER
When Better Houses Are Built Ben Hinkle Will Build Them 903 Busy St. Ph. 569-2351

Butane Gas

SLOAN OIL CO.
Butane and Propane Gas Residence—Commercial Okla. Cut-off Ph. 569-3621

Carpets

CONTRACT CARPETS
Quality Carpets and Rugs First In Floor Covering 209 E. 3rd St. Ph. 569-2964

Cleaners

Hendon's Cleaners & Laundry
1 Day Ser.—Cleanest Clothes Best Service—4108 Burk Road 210 E. 3rd St. Ph. 569-2472

Ideal Drive In Cleaners
Complete Laundry and Dry Cleaning—Drive In Window 407 E. 3rd St. Ph. 569-2847

Construction

B. & G. CONSTRUCTION
Commercial Construction A Complete Service 712 Sheppard Rd. Ph. 569-2321

Don R. Mills Construction
Wood Work—Cabinets—Carpentry Large Or Small Jobs 316 E. 5th 569-2180—569-2154

LEROY LAWSON MASONRY
Specializing in Masonry All Work Guaranteed 1021 Beverly Loop —569-1371

Cosmetics

MERLE NORMAN COSMETICS
Free Demonstration At Besie's Beauty Shop. Latest hair Styling 406 E. 4th Ph. 569-2731

Credit Reporting

RETAIL MERCHANTS ASS'N
Don't be Sorry—Get A Credit Report—Can Save You Money 409 Ave. C. Phone 569-2243

Department Stores

FAMOUS DEPT. STORE
Men's Furnishings—One Stop Store For Entire Family 217 E. 3rd Phone 569-2441

Dirt Contractor

BRYANT DIRT CONTRACTOR
If It Is Dirt You Need Or Dirt Hauling—Call Me 1008 Rosebud Rd. Ph. 569-3704

Drive Inn

DAIRY MART
Prove Best In Food — Malts Drinks — Call In Orders 909 Sheppard Rd. Ph. 569-8114

Drug Store

BURK DRUG STORE
7 Days Week—Fountain Service Lunches—Service and Quality 220 E. 3rd Phone 569-8146

Electrical Contractor

PAT'S ELECTRIC
Commercial — Free Estimates All Kind of Work—Guaranteed 313 Ave. D. Ph. 569-1331

WILKINS ELECTRIC
Residential — Commercial Industrial — Bonded 308 S. Mimosa Dr. Ph. 569-3117

Feed

COZBY BROS. Feed & Supply
Garden and Yard Fertilizer Complete Line of Dog Food 407 E. 3rd. Ph. 569-3911

Florist

ALMA'S FLOWERS
Cut Flowers—Green Plants Free Delivery — Call Us 201 N. Ave. D—Ph. 569-3371

Frozen Foods

BURK FROZEN FOOD LOCKER
Fresh From Burk's—Complete Line of Meats—Also Lockers 301 Ave. C. — Ph. 569-3101

Read the Following Carefully for Good Rhyming Words

This wee jingle is no jest, bearing truth so manifest!

Now we earnestly suggest — that you enter this contest with an Ad-Rime to attest Why you Trade at Home with zest.

Local firms by every test prove that you are richly blest, When each dollar you invest Helps improve your own home nest.

G. R. ROSS

Furniture

BILLS TV FURN. & APPL.
Quality Furniture—Ranges Radios, TV's—Lowest Prices 301 Ave. D. Ph. 569-3651

MONOGHAN FURNITURE
Best Line In Furniture Lowest Prices—Visit Us 200 E. 3rd Phone 569-3112

Garage

SCOTTY'S GARAGE
Hours 6 p. m. to 10:30 p. m. All Day Sat. 12 to 10 p. m. Sun. 704 E. 3rd Phone 569-1021

Groceries

GILL GROCERY & MARKET
Fresh Vegetables, Frozen Foods Meats — Major Line 205 E. 3rd Phone 569-2661

M & P. GROCERY & MKT
Open 7 Days Wk 7 a. m. 7 p. m. 1/2 Block East of Bowling Alley 1024 Bishop Rd. Ph. 569-1231

PARKER FOOD STORE
Local Fresh Meats—Frozen Foods Fresh Vegetables 414 S. Ave. D. Ph. 569-3231

UNITED SUPER MKT, INC.
Best Line Of Groceries Drugs—Frozen Foods Wichita Hwy. — Ph. 569-2541

Gun Shop

THE GUN SHOP
Buy-Sell-Trade Guns and Coins Paying \$2.00-1950-D 5c 219 E. Main Phone 569-8149

Hardware

HERRINGS Hardware & Apl.
Power Mowers—Sporting Goods Tools—Saws—Garden Supplies 201 E. 3rd. Phone 569-2711

Insurance

Counter Insurance Agency
Complete Insurance Protection Auto—Home—Bonds 310 Main Phone 569-2771

Wampler Insurance Agency
Fire—Auto—Home Owners Your Insurance Agent 203 N. Ave. D. Ph. 569-3161

Ladies' Ready-to-Wear

CLEMENT FASHIONS
Selections in Bras—Girdles Formals for the Dressy Ladies Parker Plaza — Ph. 569-3831

OPAL'S DRESS SHOP
Complete Ladies Wear—Lingerie For All ages—Come See Us 212 Main Phone 569-3401

Laundries

M & W. LAUNDRY
Owned and Operated By Marion and Arthur Thornton 305 S. Ave. D.

SCRUB BOARD
Coin Operated — Free Parking Best Washers and Dryers 109 N. Ave. D — Ph. 569-1113

SIMPSON'S LAUNDRY
Soft Water—Open Wed., Thurs., Friday 'till 8:00 p. m. Colored People Welcome 308 Ave. E.

Lumber

LOYD CLEMMER LBR. CO
For Your Every Building Need Call us now Okla. Cutoff — Ph. 569-2321

READ THESE CONTEST RULES

- AD-RIMES are impartially judged and a cash prize of \$10 will be awarded each week for the best rhyming line; and \$50 for the best of the 26 weekly winners.
- Bring or mail entries on card or plain paper to Burkburnett Star.
- Everyone is eligible except employees of this newspaper. No limit on number of lines submitted by any person.
- The HIDDEN SLOGAN must appear on every entry (see Description).
- All entries must be in Newspaper office by 5:00 P. M. Friday.
- Identical duplicate prizes given for all ties. Decision of judges is final.

SHEPPARD AFB

Auto Finance

Wallace Insurance Agency
Special Service To Military Personnel—New and Used Cars 49 Locke Lane Ph. 723-8622

Auto Parts

SHEPPARD AUTO PARTS
Brakes Relined Most Cars \$12.50 — Gen.—Starters \$8.00 Burk Rd. 322-5763 Between Two Sheppard Gates

NICK'S PRODUCE
Fruit Trees — Shade Trees Roses — Budding Plants 640 E. Main Ph. 569-8119

Plumbers

W. J. Ainsworth Plumbing
Contracting—Repairing — For Prompt Service—Free Estimate 711 Ave. D. Ph. 569-3145

Logan Plumbing & Heating
Contracting — Remodeling All Work Guaranteed 1410 Shep Rd. Ph. 569-3533

Real Estate

JO SMITH REALTY CO.
Complete Real Estate Service Specializing In City Property 104 Maple Dr. Ph. 569-3490

Service Center

BURK SERVICE CENTER
Guaranteed Service On Lawn Mowers—Bicycles—Motors 207 E. 3rd Ph. 569-3561

Service Stations

DICKSON OIL AND MOTEL
We Have Groceries-Gas-Oil Tires-Motel Rooms 407 S. Ave. D. Phone 569-8124

MILL'S SERVICE STATION
Serve — Where Service Counts We Will Make You Welcome East 3rd. Phone 569-8118

SPINKS FINA STATION
Open 7 Days A Week — Road Service—Tires—Batteries 418 S. Ave. D. Ph. 569-8108

TV Service

BURK TV SERVICE
All Work Guaranteed — See Francis Beaver — Prices Right 313 Main Phone 569-2801

Upholstering

BRYANS UPHOLSTERY
High Grade Work—Reasonable Free Pick Up and Delivery 904 Shep Rd. Ph. 569-1081

Variety Stores

WACKER'S STORES
Compare Our Every Day Prices Drugs—Varieties—Notions 416 S. Ave D Ph. 569-3861

Water Softners

Culligan Soft Water Service
Rocks In Your Water Bother You—Good Water is Important Call Oscar McBride 569-3105

Wrecking Yard

"Doc" GENTRY AUTO PARTS
New and Used Auto Parts All Kinds of Rifles 202 W. W. City 569-3013

FORGING OUR OWN CHAINS

I recently engaged in a television debate with a distinguished professor and during the hour long discussion raised the danger involved in the surrender of our military establishment to the "UN Peace Force." The professor blandly assured the television audience that our State Department plan, although already submitted to the General Assembly, is far from execution and that it would be carried out only if certain conditions were met in the months and years ahead.

SHEPPARD AFB

Auto Finance

Wallace Insurance Agency
Special Service To Military Personnel—New and Used Cars 49 Locke Lane Ph. 723-8622

Auto Parts

SHEPPARD AUTO PARTS
Brakes Relined Most Cars \$12.50 — Gen.—Starters \$8.00 Burk Rd. 322-5763 Between Two Sheppard Gates

Beauty Salon

ORIENTAL BEAUTY SALON
Been Operator For 25 Years Modern Beauty Service 4124 Burk Rd. Ph. 723-8721

Braised Chicken

CHICKEN DERBY
Braised Chicken Worlds Finest Eating Chicken 4107 Burk Rd. Ph. 322-6132

Concrete

C. C. Pitts Sand & Gravel
We Operate Our Own Pits Sand—Gravel—Rock Stone 1144 Access Rd. Ph. 767-1466

Insurance

Wallace Insurance Agency
See Jack Wallace For Auto Insurance—Civilian & Military 49 Locke Lane Ph. 723-8622

Liquors

SAVE WAY CUT RATE No. 2
Finest Whiskies — Scotch Wines—Beer Between Capehart & Wherry

Lumber

PUCKET LUMBER CO
Better Building Materials — Shingles Roofing — Lucite Wall Paint 1314 Shep Access Rd. 723-6015

Plumbing Supplies

AUCTION CITY No. 13
10 Yr. Guarantee Glass Lined Heater, \$47.50; 3 pc Bath \$94.50 1164 Shep. Access Rd. 723-4651

Restaurant

ALLEN OLIVER WESTERN DUDE RESTAURANT — And Candelite Room—Best In Food 1225 Sheppard Rd. 322-2973

Testa's Italian Restaurant
Famous Italian Foods—Complete Dinners—5 p. m To Midnight 1164 Shep. Access Rd. 723-4757

Service Stations

MIDWAY SUPER SERVICE
7 Days A Week — For The Best In Fina Service Sheppard Ra. 322-0388

W. E. Holland Humble Service
Happy Motoring—High Energy 7 Days Week—Mech. On Duty 3606 Shep. Access Rd. 723-7263

Tired Cars

BELL MOTOR CO
For Better Cars — At The Lowest Prices — Guaranteed 1194 Sheppard Rd. 723-4805

WILLINGHAM MOTOR CO
2nd car paradise. Own financing Used Parts '48 to '57 Models 1197 Sheppard Rd. 322-5511

FORGING OUR OWN CHAINS

I find that this remoteness is the average reaction to this very real program already adopted as policy by our State Department. Most people, when they realize that a plan already exists to turn all our nuclear and conventional armament over to the United Nations "Peace Force" are disturbed. But they quickly recover and say "They could never put that one over. That would mean that the UN 'Peace Force' would rule the world and our form of government would be dissolved. That's fantastic."

SHEPPARD AFB

Auto Finance

Wallace Insurance Agency
Special Service To Military Personnel—New and Used Cars 49 Locke Lane Ph. 723-8622

Auto Parts

SHEPPARD AUTO PARTS
Brakes Relined Most Cars \$12.50 — Gen.—Starters \$8.00 Burk Rd. 322-5763 Between Two Sheppard Gates

Beauty Salon

ORIENTAL BEAUTY SALON
Been Operator For 25 Years Modern Beauty Service 4124 Burk Rd. Ph. 723-8721

Braised Chicken

CHICKEN DERBY
Braised Chicken Worlds Finest Eating Chicken 4107 Burk Rd. Ph. 322-6132

Concrete

C. C. Pitts Sand & Gravel
We Operate Our Own Pits Sand—Gravel—Rock Stone 1144 Access Rd. Ph. 767-1466

Insurance

Wallace Insurance Agency
See Jack Wallace For Auto Insurance—Civilian & Military 49 Locke Lane Ph. 723-8622

Liquors

SAVE WAY CUT RATE No. 2
Finest Whiskies — Scotch Wines—Beer Between Capehart & Wherry

Lumber

PUCKET LUMBER CO
Better Building Materials — Shingles Roofing — Lucite Wall Paint 1314 Shep Access Rd. 723-6015

Plumbing Supplies

AUCTION CITY No. 13
10 Yr. Guarantee Glass Lined Heater, \$47.50; 3 pc Bath \$94.50 1164 Shep. Access Rd. 723-4651

Restaurant

ALLEN OLIVER WESTERN DUDE RESTAURANT — And Candelite Room—Best In Food 1225 Sheppard Rd. 322-2973

Testa's Italian Restaurant
Famous Italian Foods—Complete Dinners—5 p. m To Midnight 1164 Shep. Access Rd. 723-4757

Service Stations

MIDWAY SUPER SERVICE
7 Days A Week — For The Best In Fina Service Sheppard Ra. 322-0388

Randlett News

Mrs. Mollie Elliott, Reporter

Miss Sarah Stark, daughter of Mr. and Mrs. G. M. Stark and A. L. Lennie Teen of Forbes Air Force Base of Topeka, Kansas were united in marriage February 21st at the Church of Christ of Burkburnett with the pastor there, Bro. Eugene Gilmore, performing the ceremony. Bro. Corky Grishom, pastor of Church of Christ in Randlett dismissed with prayer. The reception was held in the home of her parents following the ceremony.

Punch and wedding cake was served to honorees and several friends.

Mrs. Teen was a 1960 and 1961 graduate of Big Pasture School. She was Valedictorian of her class. She began a course at Draughon College in Wichita Falls in the later part of August.

Acting as best man was Jimmie Teen brother of the groom. Eridesmaid was Janet Hardin, class mate of Mrs. Teen. Serving the cake at the reception

was Miss Sharon McClurkin and Miss Judy Goss and Mrs. Janet Hardin. Serving punch was Miss Linda Underwood, and Shirely McAdoo.

Folks of the groom attending the wedding was the father, Mr. Leonard Teen and two brothers, Jimmie and Wayne Teen of Valley Falls, Kansas and grandmother, Mrs. Rose Schneider of Horton, Kansas. They left Saturday for Topeka, Kansas.

Mr. Bill Dorton of Union Valley visited his sister, Mrs. Zaida Bryant Thursday.

Miss Murle Hatcher of Oklahoma City, Oklahoma visited her mother from Wednesday night until Sunday afternoon.

Mrs. Raymond Underwood entered a Wichita Falls hospital Tuesday night. She suffered a heart attack.

Mr. and Mrs. A. S. Nason visited their daughter, Mr. and Mrs. Wayne Boles and Wynn of Wichita Falls Sunday afternoon.

Douglas Hendricks of Iowa Park is visiting his grandmother, Mrs. Zaida Bryant this week.

Mrs. Mollie Elliott spent last

Wednesday night with her daughter, Mr. and Mrs. Paul Bridges and girls of Burkburnett.

Mr. and Mrs. Buddie Rhoads and daughters of Fairview, Oklahoma spent from Thursday until Saturday afternoon with his parents, Mr. and Mrs. R. H. Rhoads.

Mr. and Mrs. Howard Hatcher of Wichita Falls visited his mother, Mrs. Flora Hatcher Saturday night.

Donna Carrol and Cathy Bridges spent Saturday night with their grandmother, Mrs. Mollie Elliott.

Mr. Bob Bush of SAFB was a house guest of Mrs. Flora Hatcher part of the past week end.

Mr. and Mrs. Johnnie Bryant and children of Burkburnett visited Mrs. Zaida Bryant, Mr. and Mrs. R. H. Rhoads Sunday.

Miss Sharon Hatcher of Wichita Falls spent Friday night with her mother, Mrs. Flora Hatcher.

Mr. R. D. Bishop of Sherman, visited his aunt, Mr. and Mrs. W. R. Baldwin and daughters Sunday.

A Wedding Shower was given for Mr. and Mrs. Lennie Teen Friday afternoon in the home of Mrs. Alva Hardin. Co-hostess were Mesdames W. E. Morrow, Herman McAdoo, Mrs. Jo Edd Inman, Maud Underwood, Kenneth Young, Joe Burton, Ted Fowler, J. D. Taylor, Mollie Elliott, Doyle Goss, Grady Martin, Clyde Davis, Leon Underwood, Flora Hatcher, F. W. Kemp and Misses Janet Hardin, Linda Underwood, Judy Goss, and Patsy Burton.

After the presentation of gifts, refreshments of cookies and punch was served to honorees and the following Mesdames: W. E. Morrow, Grady Martin, Fred Spoon, Herman McAdoo, F. W. Kemp, M. H. Hyatt, Ted Fowler, N. R. Kirkpatrick, C. F. Postelwaite, C. B. Ressel, Theo Kinnard, C. H. Dunn, Miss Patsy Burton, Miss Judy Goss, Miss Janet Hardin, Mrs. A. S. Nason, Floyd Justice, Bill Harrison, W. T. Oliver, W. R. Baldwin, F. E. Eastman, Miss Shirley McAdoo, Mrs. Jonesway and G. O. Stark. Approximately

thirty-five sent gifts not being able to attend.

Mrs. A. S. Nason and Mrs. Flora Hatcher received word that their sister-in-law, Mrs. Leslie Tuel of Burkburnett suffered a heart attack and entered a Wichita Falls hospital.

Miss Charlotte Hatcher of Edmond, Oklahoma visited her mother, Mrs. Flora Hatcher over the week end.

Mr. and Mrs. Bill Harrison and daughter are spending this week with her sister, Mrs. Frank Bohac of Wichita Falls, while Mr. Bohac is out of town on business.

Mr. and Mrs. A. J. Shaw spent the week end with their daughter, Mr. and Mrs. Kenneth Price and children of Irving.

Mrs. Jack Prentice and children of Burkburnett, Mrs. Wendell Prentice and children of Walters, Oklahoma visited Mrs. Flora Hatcher Sunday afternoon.

TOM REAVLEY

Wants To Be Your Attorney General



Former Texas Secretary of State
Former County Attorney and Assistant DA
Ex-President of State Junior Bar
Professor in criminal law
14 years a practicing, full-time working lawyer.

An independent progressive in the old-fashioned Democratic tradition. The best man for the job. Best for Texas.

Support TOM REAVLEY

Democratic Primary, May 5th (Pd. Pol. Adv.) Paid for by Clint Small, Jr., General Chm. —Reavley for Attorney General Campaign.

Word was received here that a former pastor of the Baptist Church, Bro. and Mrs. W. L. Trice, but now of Lone Mont, Montana are the parents of a daughter, born February 18th. They have chosen the name of Ruth Marie.

The Daisy Club met February 20th with Mrs. Raymond Hale for the regular business meeting. The devotional was read by Mrs. N. R. Kirkpatrick. Prayer was by Mrs. F. E. Eastman. There will be a bingo and domino party sponsored by the club March 17th in the Grade School.

Refreshments of angel food cake, coffee and punch was served to the following Mesdames members and two visitors:

B. B. Menz, C. H. Thompson, N. R. Kirkpatrick, Clarence Vache, F. E. Eastman, J. H. Kinnard, T. A. Kinnard, Nomie Wilkinson, Raymond Hale, A. D. Saddle, W. R. Baldwin, Jimmie Kinnard, Paul Hooper, Fred Spoon, Ruby Hooper, C. B. Ressel, Icina Pfeifer, B. L. Ressel, Miss Lena Patton, Miss Ola Austin, two visitors, Miss Verna Van Ness and Mrs. Guy Davis.

Next meeting will be with Mrs. Ruby Hooper, March 6th. The Randlett W.M.U. met at the Baptist Church for an all-day meeting. The W.M.U. who were present were Mesdames: Clarence Vache, Robert Goode, Jess Butler, A. S. Nason, R. H. Rhoads, Roy Clayton, J. S. Barber, W. R. Baldwin, D. D. Cornstubble and Miss Alta Mae Braden.

Mrs. Florence Due received word of the serious illness of her brother, Mr. Calvin James of Grandfield, so she left Friday for Grandfield. Mr. James suffered a stroke.

Mr. and Mrs. Louis Due and children of Duncan, Oklahoma were Sunday dinner guests of her parents, Mr. and Mrs. A. S. Nason. After dinner they went along to visit Mr. and Mrs. Wayne Boles and daughter of Wichita Falls.

DEVOL NEWS

Andrew James Monson and Linnie Jo Walker were married February 9th, 1962 at the Wilkes Blvd. Methodist Church in Columbia, Missouri, with Rev. W. E. Longstreth officiating. The bride is the daughter of Mr. and Mrs. Morris F. Walker of Columbia, Missouri, and the groom is the son of Mr. and Mrs. Tom Monson of Devol, Oklahoma.

Serving as attendants to the couple, were Jeanne Culver of Columbia and Eric Enberg of St. Louis, a fraternity brother of Mr. Monson. Mrs. Monson graduated from Hickman High School and attended Christian College in Columbia and is now employed at State Farm Mutual Insurance Company.

Mr. Monson received his BS Degree in Animal Husbandry at Panhandle A & M College and is now working on his master of science degree at the University of Missouri. He is a member of Gamma Alpha graduate fraternity.

Mr. and Mrs. Monson are at home at Route 4, Columbia, Missouri.

The Devol Demonstration Club met Thursday, February 22nd with Mrs. Pearl Coker in her home. The Club meeting opened with the song, "America." The hostess read the devotional from Proverbs, and the Lord's Prayer was repeated. Roll call was answered with a safety idea, and the minutes were read from the previous meeting. Papers were read on fall-out shelters by Mrs. Coker and Mrs. O. G. Weaver. Pictures on the subject were shown by Mrs. J. B. Stevens. An all-day meeting and Apron Party to raise club funds was planned for March 22nd in the Community Building.

The next meeting will be March 8th in the Community Building with Mrs. Lillian Hutson hostess. Refreshments were served to one guest, Mrs. Thelma Coker and these members: Willie Cozby, Belle Charboneau, Pearl Cates, Nora Wood, Lillian Hutson, Verta Stevens, Luella Odom, Lorine Weaver, Clara M. Woody, Ethel McCasland, Dollie Hardin and the hostess.

Mrs. A. J. Mays who has been seriously ill in a Frederick hospital is reported much improved and it is expected she may be returned home by this week end.

Mrs. W. W. Manley, Sr., was honored with a birthday dinner in the home of her daughter, Mrs. Lloyd Clemmer Wednesday in Burkburnett. Those attending from Devol were Mrs. O. G. Weaver, Mrs. T. C. Dillow, Mrs. Avis Wood, Mrs. Dollie Hardin and Mrs. Walton Manley of Randlett, also Mrs. Ethel Beasley, Mrs. Lena Hinkle, Mrs. Sally Hewell, Mrs. Belle Germany, Mrs. Maggie Nelson, Mrs. Frank Hewell, Mrs. Vera Ellis, and Mrs. T. P. Randall all of Burkburnett but formerly of Devol and neighbors of Mrs. Manley.

Mrs. Joe Stevens was admitted to a Wichita Falls hospital Thursday for medical care, but was expected to be home Monday.

Mr. and Mrs. E. N. Miracle attended the funeral for a brother-in-law, Mr. W. R. Koen in Wellington, Texas, Thursday. Mr. Koen had been a resident of Hale Center, Texas.

Rev. Joe Stevens announces the Baptist Church will sponsor a Sweetheart Banquet Friday night in the Community Building. All young people between the ages of 9 and 15 are invited to attend.

HEADQUARTERS FOR . . .

FOR FRESH STOCKS OF
GARDEN SEEDS
FIELD SEEDS
YARD SEEDS

Also Fertilizers and Insecticides

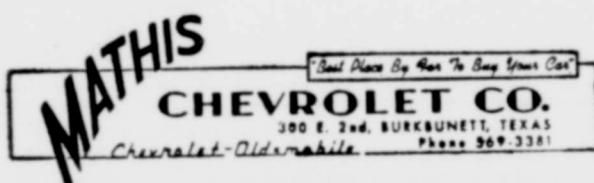
Spades, Hoes, Rakes, Brooms, Baby Chicks and Supplies — Come in and see us

Farmers Co-Op Feed & Supply

404 N. Ave. B

Phone 569-2601

A COMPLETE PAINT AND Auto Body Shop

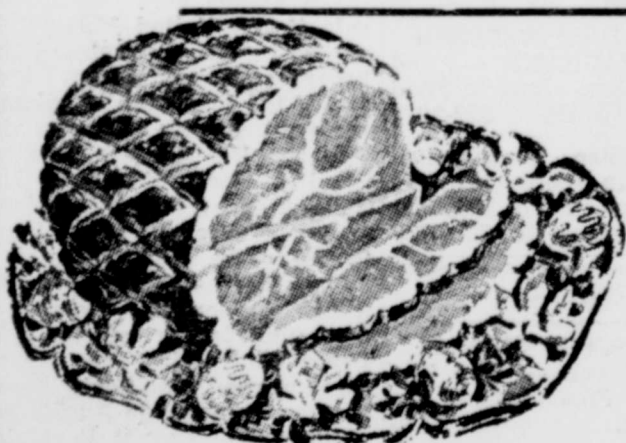


201 East
PHONE
569-3381
2nd Street

Burk Locker

301 Avenue C — **SPECIALS** — Phone 569-3101

THIS WEEK'S SPECIALS



Burlison's Cured
HAMS

12 to 16 LB Average
LB. **49¢**

Center Cut Pork Chops Lb **59¢**
T-BONE STEAK lb **89¢**
PORK STEAK lb **49¢**
Burlison's King Quality BACON lb **51¢**

ALL MEAT SOLD IN OUR MARKET IS INSPECTED BY THE TEXAS DEPARTMENT OF HEALTH

Store Hours 6:30 A. M. to 6 P.M., Mon. Through Saturday

I. O. O. F. LODGE

BURKBURNETT, TEXAS
Meets at I. O. O. F. LODGE
Every Tuesday night, 7:30 p. m.
Visitors Welcome
J. A. SUTTLES, Noble Grand
CECIL TODD, Vice Grand
CLOYD ADAMS, Secretary
L. E. ARMS, Financial Secy.
GEORGE BENTON, Treasurer

MARCH 3-10 DEVOLO 4-H CLUB WEEK
March 3-10 has been observed as 4-H Club Week. The same week in his official capacity that the devotional citizens and leaders of the club work. All special invitation in the activities of their community.

IF IT'S FOR SALE

PALACE

Open Week Days 60c - 45c

FRI.-SAT.,

The Tall Str

CINEMAS

Color by De

JOEL McCREA VIRGINIA

— ALSO —

DONDI

DAVID JANSSEN

PATTI PA

DATE

SUN.-MON.-TUE

WED., March

BEN HU

Winner of 11 Awards

CHARLTON HES

JACK HES

CLOSED TUES

WEDNESDAY

THURSDAY

Basketball S

WANTED

MALE or FEMALE

Reliable, mature individual to work in office during hours 12:00 P. M. to 8:00 A. M. For Apartment

Call 569-2231

Clement's fashion

PHONE 568-3

Burkburnett, Tex

All Winter Dresses

JUNIORS and MISSES ONE PRICE

ALL FALL AND WINTER \$1

PIXIES AND SHOES

SILF SKIN GIRDLES 1/4

AND PANTY GIRDLES 40

NEW SPRING MERCHANDISE IS ARRIVING DAILY

GILL GROCERY EXTRA LOW PRICES

AUSTEX SPAGHETTI and MEATBALLS	5 for \$1.00	WHITE or RED SPUDS	10 lb.
300 CAN LIBBY'S TOMATO JUICE	10 for \$1.00	CELLO CARROTS	Bag
LIBBY Fruitcocktail	4 for \$1.00	ZEE — 80 Count NAPKINS	Pkg.
RANCHSTYLE BEANS	2 for 25¢	Ebner's All Meat BOLOGNA	lb.
CONCHO Tomatoes	2 for 29¢		
SWEETHEART FLOUR	5 lb. 39¢		

TRADE IN BURKBURNETT AND SAVE

Gill Grocery & Mkt

205 East 3rd Street Burkburnett, Tex

MARCH 1, 1962

Burkburnett, Wichita County, Texas

Fill your bare cupboard
FOR LESS!

DOUBLE GUNN BROS.
STAMPS EACH WED.
With \$2.50 Purchase

Shurfine

YOUNG MOTHER HUBBARD SALE

SHURFINE BARTLETT
PEARS



4 No. 303 Cans \$1.

SHURFINE

ASPARAGUS 4

No. 300 Cans \$



SHURFINE

BISCUITS

13 Cans \$1.

SHURFINE

Apple BUTTER 4

Size 28 Oz. \$

SHURFINE

Grape Juice

3 24 Oz. \$1.

SHURFINE

Cocktail 5

No. 303 Cans \$

ENERGY Liquid DETERGENT

22 Oz. Bottle

39¢

SHURFINE

Flour

25 Lb. Bag



SOFLIN

Napkins 2

80 Count Pkgs.

25¢

SHURFINE

Catsup

5

14 Oz. Bottles \$

\$1.69



SHURFINE

PEACHES

Yellow
Cling
Sliced or
Halves

6

No. 303 Cans

\$1.



SHURFINE

CORN

CREAM STYLE
No. 303 CAN

Or 12 Oz. Can Whole Kernel

6

FOR

\$1.

"Comin' Round the Mountain"
by
BIG PASTURE
JUNIOR CLASS

Hillbilly romance and music-Boys an' gals of the back woods a-feudin', a-fightin', and a-fussin'! You'll find them all in "Comin' Round the Mountain," which is the interesting title of the three-act farce comedy to be presented by the Junior Class of Big Pasture in the Grade School Auditorium on Friday night of March 2nd. Those taking part in the play are the following: Jerry Hayes, Gayle Monson, Terry Baber, Mickie Zachary, Garlind Hooper, Nita Sue Bowles, Ronald Wyatt, Patti Nichols, Roger Bates, Billie Baggs, Sharon Butler, and A. J. Mays.

Alice Hull and Mr. Waylon Holt, who said that "Comin' Round the Mountain" is the funniest play that they have put on in a long time. Publicity and tickets are being taken care of by Virgie Wilkinson, Carol Wilkerson, Mary Beth Eley, Kathie Griffin, Patsy Burton and Mary Self. Stage props, settings, and furniture are being handled by Dan Bales, Terry Morrow, Jerry Raleigh, Jerry Rodgers, Joe Champion, Troy Harris, and Freddie Zweacker.

The proceeds from this play will be used to finance the Annual Junior and Senior Banquet.

An idea is the result of hard thinking which is hard labor. If you've ever been poor and hungry you don't forget it as long as you live.

"LONE STAR COMPANY"
TO BE FORMED IN MARCH

The Navy Recruiting Office, Chief Blankenship announced today that a "Lone Star Company" will be formed the first three weeks in March and then leave Dallas the last week in March for recruit training in San Diego, California. The forming of a "Lone Star Company" is an opportunity for the young men of Texas to serve their country and show honor to our Lone Star State simultaneously. Three year enlistments are now being accepted, and special programs guaranteeing a trade school for High School graduates are being offered to qualified men. For more details call or drop in at the Navy Recruiting Office, Room 215, Post Office Building.

Mrs. S. S. Reger
Feb. 21st Hostess
To Univ. Study Club

The University Study Club met February 21st in the home of Mrs. S. S. Reger. The Vice President, Mrs. Joy Sessums called the meeting to order by reading the Club Collect and "Pledge to the United States Flag." The program "Fine Arts" was introduced by Mrs. O. E. Melton.

A Historical Sketch of the "Penny Art Fund" was given by Mrs. J. H. Rigby, program chairman. Mrs. Andy Bazzell gave a most interesting talk on "The Revival of Antiques." Several members brought family antiques to be displayed, some dated 1772-1840 and 1842.

A lovely refreshment was served to the following members: Mesdames Andy Bazzell, A. R. Bunstine, E. R. Burns, B. N. Cauthorn, Bill Crossley, H. C. Gilbert, I. E. Harwell, A. C. Houser, J. D. Majors, L. W. Mathis, O. E. Melton, J. D. Morris, J. M. Pogue, J. H. Rigby, Joe Sessums, Carl Williams, H. G. Williams, Marshal Young and hostess Mrs. Reger.

Church of St. John
The Divine
(Episcopal)

Bible School: 12-45 p. m.
Morning prayer, 1:30 p. m.
First Christian Church, the Rev. Eugene McCrary, Priest in Charge.

Pentecostal Church
Of God

Berry St.
Rev. Alfred B. Qualis, Pastor
Sunday School, 9:45 a. m.
Morning Worship, 11:00 a. m.
Sunday Night Evangelist Service, 7:00 p. m.
Saturday Night Fellowship, 7:00 p. m.

Men's Bible Class
FIRST BAPTIST CHURCH

Invites You To
Worship With Them
Each Sunday Morning at 9:30
WILL TEAL, President
W. C. DAVIS, Teacher
DICK CHAMBERS, Secy.

IF IT'S FOR SALE ADVERTISE

United Pentecostal Church

The United Pentecostal Church of Jesus Christ invite everyone to come to the first bible in the old fashioned study Thursday m. Sunday School Evangelist service 7:45 p. m.
Bro. E. H. Minton, 606 East 6th St. Phone 569-1108

TAKE YOUR PROBLEMS TO CHURCH -- MILLIONS LEAVE THEM THERE

- ALMA'S FLOWERS**
246 North Ave. D — Phone 569-3371
Flowers By Wire
- B & C GARAGE**
Phone 569-3661
- BOOMTOWN BOWL, Inc.**
AMF "Magic Triangle" Pinspotters
1901 Wichita Highway
- CARL'S JEWELRY**
301 East 3rd — Phone 569-3721
Shop With Us and Save
- COMPLIMENTS OF FAIRMONT FOODS CO.**
- JACK'S MINUTE MAN**
When Eating Out—It's Jack's Minute Man
In Burkburnett
- COMPLIMENTS OF Keller's Sportswear & Shoes**
313 East 3rd — Phone 569-3981
- SIMMONS SHOE SHOP**
208 East 3rd Street — Phone 569-3931
- Medley Furniture & Appliances**
Singer Sewing Machines — 311 E. 3rd St.
- SPINK'S FINA SERVICE**
418 South Avenue D
Your AAA Service Station—Pho. 569-8108
- Davis Grocery and Market**
Fancy and Staple Foods
403 West 3rd St. — Pho. 569-8145
- COMPLIMENTS OF Texas Electric Service Co.**
J. B. ADY, Manager
- PALACE THEATRE**
For Good, Clean Entertaining
Motion Pictures
- B. and B. GROCERY**
Choice Meats and Groceries
590 Avenue D — Phone 569-3701

THE LIGHT

"Thy word is a lamp unto my feet, and a light unto my path."

The bible, God's word, has often been compared to a light, for it penetrates the darkness and reveals God to man. It is the light that leads man down life's pathway. For those who study it, it reveals not only the past, but also the future.

"The entrance of thy words giveth light; it giveth understanding..."

Attend church and hear God's leaders expound on His word.

The Church is God's appointed agency in this world for spreading the knowledge of His love for man and of His demand for man to respond to that love by loving his neighbor. Without this grounding in the love of God, no government or society or way of life will long persevere and the freedoms which we hold so dear will inevitably perish. Therefore, even from a selfish point of view, one should support the Church for the sake of the welfare of himself and his family. Beyond that, however, every person should uphold and participate in the Church because it tells the truth about man's life, death and destiny; the truth which alone will set him free to live as a child of God.

EVERYONE IN THE CHURCH... THE CHURCH IN EVERYONE

WOLFE FORD COMPANY
Complete Service and Sales
Phone 569-2275

BURKBURNETT FLORISTS
Mr. and Mrs. L. V. Richards
415 South Ave. B — Phone 569-2281

- CORNER DRUG STORE**
George McClary
320 East 3rd Street
- DICKSON OIL COMPANY**
DICKSON MOTOR OIL
- THE MANHATTAN**
Complete Department Store
218 East 3rd Street
- Preston Dairy Products**
Hugh and Buddy Preston
219 East 2nd Street
- C. D. Shamburger Lumber**
R. C. Tevis, Manager
200 West 3rd Street
- Farmers Co-op Grain and Supply**
- COMPLIMENTS OF MEAD'S BAKERY**
- United Super Market**
Kenneth Palmer, Manager
Wichita Highway at 1st St.
- SHEPPARD STATE BANK**
Phone 723-0951
Banking For A Future
- RANCHOUSE MOTOR OIL**
Oklahoma Cutoff — Phone 569-8108
- Williams Petroleum**
Dealers in Gasoline, Kerosene and Distillates
- VIRGIL AARON SANITATION CONTRACTORS**
Complete, Modern Facilities
- Dickerson's Pit Barbecue**
Barbecue at Its Best—Wichita
125 Freeman St. — Phone 569-3701
- BOYD BROS. DEPT. STORE**
General Merchandise
Maytag and G. E. Appliances
117-123 Main—Phone 569-3701

- Jan Lee Heights Mission**
Extension Of First Baptist Church
Across from Junior High School
Travis McMinn, Pastor
Sunday School, 9:30 a. m.
Morning Worship, 10:45 a. m.
Training Union, 5:30 p. m.
Evening Worship, 6:30 p. m.
Wednesday—
Teachers and Officers 7:00 p. m.
Midweek Service, 7:30 p. m.
Choir Practice, 8:15 p. m.
Large enough to accommodate, small enough to appreciate.
- Church of Christ**
Eugene Gilmore, Minister
Bible Study Sunday, 9:45 a. m.
Worship, 10:45 a. m.
Young People Class 5:00 p. m.
Worship, 6:00 p. m.
Bible Study, Wednesday, 7:30 p. m.
Ladies' Bible Class, Tuesday, 9:30 a. m.
"We welcome you to any of our services."
- First Methodist Church**
Carrol D. Copeland, Pastor
Sunday School, 9:45 a. m.
Morning Worship, 10:55 a. m.
Junior, Intermediate and Senior Youth Groups, 6:00 p. m.
Evening Worship, 7:00 p. m.
Official Board meets every Fourth Monday.
Visitors are cordially invited to attend all our services.
A nursery is provided for nursery age children for both morning and evening services.
- Central Baptist Church**
814 Tidal St.
Kenneth D. Bradshaw, Pastor
Sunday School, 9:30 a. m.
Morning Worship, 10:45 a. m.
Training Union, 6:00 p. m.
Evening Worship, 7:00 p. m.
Wednesday Night Prayer Service, 7:30 p. m.
"A Friendly Progressive Southern Baptist Church"
- Assembly of God Church**
Lonnie Finney, Pastor
Sunday School, 9:45 a. m.
Morning Worship, 11:00 a. m.
Evening Worship, 7:30 p. m.
Women's Missionary Council, Tuesday, 2:00 p. m.
Youth Service, Tuesday, 7:30 p. m.
Prayer Meeting, Thursday, 7:30 p. m.
- Church of God**
J. W. Jackson, Pastor
10:00 a. m., Sunday School.
11:00 a. m., Hour of Morning Worship.
7:00 p. m., Evangelistic Services.
7:30 p. m., Wednesday, Young Peoples Endeavor.
If you haven't a church home, we would like very much for you to visit us where the full gospel is preached in the old time way. There is special music and singing each service. Each and every one has a warm and hearty welcome to come worship with us.
- Church of Jesus Christ United Pentecostal**
The United Pentecostal Church of Jesus Christ would like to invite everyone of the Apostolic faith to come to the church of the first borned, where the Bible is preached in its fullness, in the old fashioned way. Bible Study, Thursday Night, 7:45 p. m. Sunday School, 10:00 a. m. Evangelist Service, Sunday night 7:45 p. m.
Bro. E. H. Minton, Pastor
606 East 6th St.
Phone 569-1108.
- First Church of Christ Scientist**
2156 Avenue H
Wichita Falls, Texas
Sunday School for children under 20 years of age, 11:00 a. m. in the Church Edifice.
Nursery.
Services at 11:00 a. m. Wednesday Evening Services, 8:00 p. m.
- First Baptist Church**
Corner Ave D and 4th St.
Sunday School, 9:30 a. m.
Morning Worship, 10:45 a. m.
Training Union, 5:30 p. m.
Evening Worship, 6:30 p. m.
Prayer Meeting, Wednesday, 7:30 p. m.
"In the heart of the city for the hearts of the city."
- Grace Lutheran Church**
Third St. and Ave F
Philip M. Otten
The Church of the Lutheran Hour, TV's "This is the Life" Sunday, 9:45 a. m., Sunday School and Bible Classes.
11:00 a. m. Morning Services.
LWMS meeting every first Tuesday, 2 p. m.
Sunday School teachers meeting, Teacher training course, every 2nd and 4th Wednesday, 7:30 p. m.
Walter League Meeting, every 2nd and 4th Sunday at 7:30 p. m.
You are cordially invited to our services.
- First Christian Church**
2nd St. and Ave D
Wayne Black, Pastor
Sunday School, 9:45 a. m.
Morning Worship, 11:00 a. m.
CYF and Chi RHO, 6:00 p. m.
Evening Worship, 7:30 p. m.
- Calvary Baptist Church**
College and Ave B
Ray C. Morrow, Pastor
10:00 a. m., Sunday School.
An Independent Southern Baptist Church.
We use the Bible as our only literature.
11:00 a. m., Song, Preaching Service.
7:00 p. m., Young Peoples Services.
7:30 p. m., Night Preaching Service.
Wednesday Night—
6:45 p. m., Teachers Meeting
7:30 p. m.—Prayer Meeting.
When you've cooked and served a dinner for eight you expect recognition and should get it.
- Free Church In Christ In Jesus**
West 4th
W. W. Dismore
Saturday—
9:45 a. m., Sabbath School
11:00 a. m., Prayer
Thursday Night
p. m.
We welcome all white people to our services.
- Church of Nazarene**
Main at 1st
R. A. Nokes
Sunday School
Morning Worship
Young Peoples
p. m.
Junior Society
Evening Worship
Wednesday
7:30 p. m.

Buy

GARDEN

R BEAUTY PLEASU
MRS. ROY M

series of articles for Beauty at Mrs. Roy Mag... weekly feature i... Star. M... home address... Road, is chair... ita Falls Garde... Magers is c... dited flower... burkburnett. S... active in Burli... ita Falls in... ties for sev... ing her many c... as devoted a... nt of time a... Garden clubs... Gardening for... ure are of an... e, backed by... knowledge of

You haven't di... gardening... the use of n... is a very ple... re for you... reasons for... and your plan... of course... newly plant... the wind and... a mulch cha... of water fr... ular blessing... What a relig... ge garden... of the mulch... day and fin...

BERRY WHI

WELL SE

Rods and... d Pumping

Call Co... 92-4910 or... Iowa Park,

Is

W

A TR... a visit... home... new p... — ma... while... vacati... each

4

Curren

GO TO CHURCH SUNDAY

MEMBER OF SPOON

Buy Auto Liability

From The

Travelers Insurance Co. |

IT DOESN'T COST ANY MORE TO
BE SURE
HOWARD CLEMENT, Agent
New Location—Next to Legion Hall

GARDENING

FOR BEAUTY AND PLEASURE

MRS. ROY MAGERS

Series of articles on "Gardening for Beauty and Pleasure" Mrs. Roy Magers, will be the weekly feature in the Burkburnett Star. Mrs. Magers, whose home address is on Shanley Road, is chairman for the Falls Garden Club.

Mrs. Magers is one of three featured flower show judges at the Burkburnett Star Garden Club. She has been active in Burkburnett and Falls in various clubs for several years. Her many club activities has devoted a considerable amount of time and effort to garden clubs. Her articles on Gardening for Beauty and Pleasure are of an informative nature, backed by experience and knowledge of the work.

Who haven't discovered how gardening can become the use of mulches, then it is a very pleasant surprise for you.

Reasons for using a mulch and your plants are many. Of course, it helps prevent wind and sun. In summer a mulch checks the evaporation of water from the soil. A mulch also helps in drought. What a relief it is to the gardener to dig down the mulch on a hot summer day and find the soil still

moist, loose and fairly cool.

A mulch will also be useful in keeping winter temperatures more even. This means that it will help protect against the alternate freezing and thawing process which so often causes the soil to buckle and heaves the plants or bulbs out of their place. Clean straw or hay used in the wintertime also helps by providing cleaner, less muddy pathways between rows of plants. This not only saves cold feet, but also makes the housework lighter.

And when springtimes comes the straw mulch under strawberries will keep the berries clean, too, off the ground and less likely to mildew.

Best of all, however, for those who are inclined to be a bit lazy, using a mulch makes it possible to garden with very little or no weeding at all. Weeds can't get a start under the heavy cover of a mulch and because the ground never packs down but is continually having lighter material added to it by the process of decay, the soil stays loose and you can practically retire the hoe in a corner of the tool shed.

What kind of mulch is best? Well, that depends largely on the location where you live, some materials that are used in one part of the country would be harder to obtain and too expensive to be practical in another. Also, some mulches in the decaying process may add more to your soil than others. Both these factors should be taken into consideration.

Grass clippings make an inexpensive mulch that anybody can obtain. Besides being inexpensive, a mulch of clippings readily allows water to seep through to the ground and will help prevent weeds. Do not pack clippings or put on too deep—about a two inch layer should be enough.

The use of hay or straw as a mulch has been mentioned. Spread the hay deep—about 5 inches and it will not blow when it has settled down. If it tends to blow a great deal when first applied, try weighting it down with boards be-

tween the rows for a while. Hay will let water through to the plants, will provide a clean walkway for the winter gardener and will keep strawberries or similar crops from getting dirty. The hay will enrich the soil in almost every way except for nitrogen. It is good to place the decomposed hay under in the spring and use it as a fertilizer.

You may have to use a little nitrogen on the soil to make up for that used by the hay in the decaying process. Watch the kind of hay you use—wheat usually has seeds still in it and you may have volunteer stands of wheat the next year if not careful. Other kinds of hay as well have to be watched for this.

Ground corn cobs can be used around trees, shrubbery, etc. It's best to use them only in the back of the house though since they are not particularly attractive. They do add nitrogen to the soil and if this is one of your troubles you may want to use them for that reason. However, in the winter they will soak up water and will freeze.

Wood chips make a good mulch for use around trees, shrubs, etc. They do not blow and are slow to decay. They are attractive after they have weathered to a dull brown, but it is necessary to be on the lookout for mice, which sometime nest in them. Sawdust can be used this way. Coarse sawdust is preferred to the fine which will sometimes pack. Apply sawdust about two inches in depth.

Peat moss or peat is good if



RESORT CHOICE—Cotton homespun goes sunshine gay in these new straighter leg tapers designed by Cle Turner for Turner Togs' cruise and resort line. They're worn with a cotton print overblouse in luscious shades of lime, citrean, and orange.

you wish to have an acid soil. They are especially good for use around azaleas, rhododendrons, etc. Wet the moss thoroughly before using. Mix the moss with the soil well so that it won't dry out and form a crust. Peat itself is a granular substance and is easier to apply. Both of these make attractive mulches but are apt to be more expensive than other materials. Another good mulch

if you want an acid soil and one which is very attractive and easy to handle is pine needles.

If you live in a location where they are available, buck wheat hulls are an excellent mulch. Apply about two and a half inches deep and since they decay rather rapidly, add to the mulch occasionally. Buckwheat hulls have an attractive appearance and do not blow but some people do not care for the odor as they decay and are inclined to cause heat.

Various mulches made of black paper or aluminum foil are now on the market and may be used if you think they suit the requirements of your garden. They do have many disadvantages, though, as they will not let water through to reach the soil and on a sunny day the reflection of the sun from the aluminum mulches may burn the plants they are meant to protect. Also they are not attractive and do not add to the appearance of the garden.

With all the advantages of mulching, it's difficult to see why any gardener wouldn't be willing to give it a try.

Why not give your hoe a chance to retire?

I. O. O. F. LODGE

BURKBURNETT, TEXAS
Meets at I. O. O. F. LODGE
Every Tuesday night, 7:30 p. m.
Visitors Welcome
J. A. SUTTLES, Noble Grand
CECIL TODD, Vice Grand
CLOYD ADAMS, Secretary
L. E. ARMS, Financial Secy.
GEORGE BENTON, Treasurer

Nebraska now has a law that barbers have to charge \$1.25 for haircuts or lose their license. . . . Casper, Wyoming, has forty millionaires, or one for each 1,000 people. . . . Ohio spent \$2 per public school pupil per year—but that was in 1853. . . . Nelson Rockefeller of New York gets the highest annual governor's salary, \$50,000. Gov-

ernors of Arkansas, Maine and North Dakota get the least—\$10,000 each.

OUT OF TOWN
PRINTERS PAY
NO TAXES HERE
LET US DO YOUR
PRINTING

THE "GO GO" DRY CLEANING

IS NOW IN OPERATION

AT THE SCRUB-BOARD LAUNDRY

109 NORTH AVE. D

8 Pounds for \$1.50

OPEN FROM 8:00 to 8:00
MONDAY THRU SATURDAY

TALLIE and OPAL SYKES

HARRY WHITTAKER

WELL SERVICE

Rods and Tubing
and Pumping, Swabbing

Call Collect

92-4910 or 592-4339

Iowa Park, Texas

Price, spice and everything nice!

Who ever thought a car that saves like this could have so much sizzle? Chevrolet engineers, that's who! Liveliness and luxury for a low, low price were exactly what they had in mind to begin with. And they began from scratch with a whole carload of ingenious new ideas designed to give you more car for your money. That spunky 6 with gas-sipping stinginess is just one example. Another: a new unitized Body by Fisher that's fit for a full-size family inside, easy to park outside. Still another: tough but gentle one-piece Mono-Plate rear springs that outdo many a bigger car for quiet comfort. And along with the dollar-saving dependability you just naturally

expect in a Chevrolet-built car, Chevy II has a flock of features that cut upkeep costs to the bone. For example, the various front-end components—fenders, engine compartment, the works—bolt on and off to make repairing easy. Any wonder Chevy II won Car Life magazine's 1962 Engineering Excellence award hands down? (The only wonder would be if you settled for anything less—once you get your hands on one at your Chevrolet dealer's!)

Chevy II Nova



The sporty Chevy II Nova Convertible and sprightly 4-Door Sedan

See the new Chevy II at your local authorized Chevrolet dealer's

MATHIS CHEVROLET COMPANY

300 East 2nd Street

Phone JO 9-3381

Burkburnett, Texas

Is your Vacation worth saving for?

A TRIP to foreign lands; a visit to the old folks at home; new surroundings, new people and activities—make vacations worthwhile. Enjoy your 1962 vacation by saving for it each week from now on!

4%
Current Rate

All Accounts
Insured Up to
\$10,000.00
By FSLIC

First Savings & Loan Ass'n.

BURKBURNETT, TEXAS

314 East 3rd St. Phone 569-2206

CLAUDE MEADOWS, Mgr.

MEMBER OF THE SAVINGS AND LOAN FOUNDATION, INC.
SPONSOR OF THIS ADVERTISEMENT IN LIFE AND THE SATURDAY EVENING POST

Why Buy Less Than The Best?

THE LARGEST MULTIPLE LINE INSURANCE COMPANY IN THE WORLD. SEE YOUR AGENT. INSURE With The TRAVELERS INSURANCE CO.

BURK INSURANCE
Howard Clemmer
Phone 569-3753

CLASSIFIED RATES
5c per Word, 20s Per Line
60c Minimum Charge

FOR RENT
FOR RENT—Furnished house. 5 rooms and bath. Close to schools. Inquire at O. S. Wilson Trading Post, Ave. D. 21-CZ

FOR RENT—3 room modern furnished apartments. Bills paid. McNeill Apts. Ph. 569-3753. 2-CZ

FOR RENT—Two room modern furnished house. Ph. 569-3651 or 569-3738. 1-CZ

Trade for a new Zenith or Philco TV at Bill's TV and Furniture Co. 301 N. Ave. D. Ph. 569-3651. 30-CZ

FOR RENT—4 room furnished house. \$45.00 mo. 615 Glendale. Ph. 569-3020. 25-11C

FOR SALE—Decorator pictures. All sizes and scenes at prices you won't believe. Come in. BURK FURNITURE MART. Ph. 569-3901. 23-CZ

FOR RENT—3 room modern furnished house. Clean. Good location. Couple preferred. 126 Ave. D. Ph. 569-2473. 25-11C

FOR RENT—Furnished or partially furnished 2 bed room duplex. Strictly private. Mrs. J. D. Riddle. Ph. 569-2755. 25-11C

FOR RENT—Nicely furnished 3 room house. Water paid. 710 Glendale. Mrs. Brousseau. Ph. 569-3970. 25-11C

FOR RENT—2 bed room unfurnished house. Built-in oven and range. Washer connections. 130 Lilac Lane. Ph. 569-2847. After 6:00 p. m., 569-3286. 25-11C

APARTMENTS FOR RENT. Ph. 569-3624. 25-11C

FOR RENT—4 room furnished apartment. Private bath and entrance. 113 So. Ave. D. Ph. 569-2353. 25-11C

FOR RENT—Modern furnished 3 room house. Ph. 569-2243. 25-11C

FOR RENT—3 room modern furnished house. 623 1/2 E. 2nd St. 25-11C

FOR SALE
Save money every day on furniture and appliances at Bill's TV and Furniture Company. 301 N. Ave. D. Phone 569-3651. 30-CZ

MONUMENTS
And markers. All name brands of granite and marble. Dave McNeill. Ph. 569-3753. 2-CZ

FOR SALE—New dinette sets, \$44.00. BURK FURNITURE MART. Ph. 569-3901. 23-CZ

WINKA SPRING OATS
\$1.50 per bushel. James W. Kinder, 9 miles north Randlett, Oklahoma. Ph. Mission 7-2981. Walters, Oklahoma. 21-CZ

FOR SALE—1961 Chevrolet Bellaire, hardtop, 4-door sedan. Also Craftsman jointer, 6-inch, heavy duty, with motor. 712 Park St. Ph. 569-2387. 25-11P

FOR SALE
NEW BRICK . . .
Three spacious bed rooms, wall-to-wall carpeting, one-and-a-half baths, front kitchen with built-in range, double garage. Near new grade school. Total price only \$12,500.00.

FURNISHED . . .
Cozy 2 bed room home. Enclosed yard. 1 block from school. Total price only \$4,500.00.

ONE-HALF ACRE . . .
Well constructed 2 bed room and den home. Wall-to-wall carpeting. Spacious closets and storage. Beautiful kitchen with built-in range. Total price only \$9,700.00. Immediate possession.

Jo Smith Realty
Ph. 569-3490

FOR SALE
FOR SALE—Income property. Block from high school. 4 room, unfurnished house, small furnished house. Call after 4:00 p. m. week days or anytime Saturday or Sunday. Ph. 569-2385. 21-CZ

FOR SALE—Bunk beds, cedar or maple. These are really beautiful and durable. At a price you can afford. See them. BURK FURNITURE MART 211 E. 3rd St. 23-CZ

FOR SALE—New refrigerators, washers and stoves at unheard of prices. We're afraid to quote prices here. BURK FURNITURE MART. Ph. 569-3901.

FOR SALE—Two 760—15 white sidewall tires. \$17.50 for the two. Ph. 569-2986 after 4:00 p. m. 23-CZ

FOR SALE
New 3 bed room brick, 1 1/2 tile baths, built-in oven and range. Carpeted throughout. Cabinets and vanities galore. Central heating. Low down payment.

TROY MILLS
Phone 569-2388

FOR SALE—Furniture at large discounts. Save 20% to 60% on all items. BURK FURNITURE MART, 211 E. 3rd St. 23-CZ

FOR SALE—7 pc. living room group, beautiful. \$119.00. "That's too high, but what ain't it." BURK FURNITURE MART. Ph. 569-3901. 23-CZ

FOR SALE—Modern, furnished 3 room house. Close in. Ph. 569-2243. 25-11C

REPOSSESSED FURNITURE FOR SALE—Buy this group at a steal. Ph. 569-3901. BURK FURNITURE MART. 23-CZ

FOR SALE
Residential and Commercial Properties
Cliff Wampler
Real Estate Broker
"Licensed and Bonded"
203 North Avenue D
Phone 569-3161

FOR SALE
3 bed room. Stone trim. Bath and a half. Total price only \$10,500.00. Call Bill Browning, Realtor, 569-2691. 21-CZ

FOR SALE—3 bedroom brick. Pay out like rent. Ph. 569-1077. 21-CZ

ATTENTION VETERANS!
G. I. Loans. No down payment. New 3 bedroom homes. B. H. ALEXANDER, JR., BUILDER. Phones 569-2831, 569-2778, 569-3434. 6-C3

9x12 ft. linoleum rugs for only \$4.95 at Bill's TV and Furniture Co. 301 N. Ave. D. Ph. 569-3651. 30-CZ

ESTEY . . .
America's most experienced organ maker now offers the very latest in electronic organ creations at a price everyone can afford.

Complete Dual Manual and Pedal Spinets . . .
Delivered Price —
\$499.95 AND \$699.95
Electronic Chord Organs
\$399.95 AND \$499.95

Bank Rate Terms—Free Lessons—Factory Guarantee Authorized Sales and Service

Toft Piano Service
1511 Monroe Ph. 322-8220
Wichita Falls, Texas 15-CZ

VETERANS ONLY
No down payment, \$67.50 monthly including taxes and insurance. 3 bedrooms, ceramic tile bath, attached garage. Good condition. BURK INSURANCE AGENCY. Ph. 569-3333. 35-CZ

FOR SALE—1951 Plymouth, 4-door. New overhaul. \$150.00. 303 So. Wigham. Ph. 569-3819. 25-11P

Save Money for You. Shop HERRING'S in 1962. New 5-tube Radio \$12.50. 17-CZ

FOR SALE
FOR SALE—Furniture. 4 rooms. ALL NEW. Includes 2 bedroom suites, all dust proof center guided drawers. These are not cheap veneer suites! good quality living room suite—5 pieces; dinette suite—7 piece. All of this beautiful furniture for \$380.00 total. No down payment and only \$13.72 per month. BURK FURNITURE MART, 211 E. 3rd St. 4-CZ

MONUMENTS
HENDERSON MONUMENT CO.
A Manufacturer Since 1906
5001 Jacksboro Hwy.
Wichita Falls Res. 767-1064
Ph. 767-7750 Res. 767-1064
A monument at a price any family can afford
Rock of Ages—Georgia Marble Stone Eternal 8-CZ

FOR SALE OR RENT—2 bed room trailer house. Completely furnished. Ph. 569-1095 after 4:00 p. m. 24-21C

FOR SALE—18 TV sets. All working. Some with new picture tubes. \$22.00—\$76.00. All wood console cabinets. Hurry for best selection. SOUTH'S APPLIANCE SERVICE, 305 West 3rd. Ph. 569-2946. 24-CZ

FOR SALE—Brick home in Hilltop Addition. 3 bed rooms, 2 baths. Would accept older home on trade. Ph. 322-6837. 24-CZ

FOR SALE—Good used 30 gallon hot water heater. Mrs. Carl Morrison. Ph. 569-3568. 25-CZ

FOR SALE OR TRADE—Equity in 1 year old, 3 bed room brick home. On Mimosa St. Ph. 322-8531. 25-11C

FOR SALE—Home made cakes pies and cookies. Will make birthday and party cakes. Mrs. Fred Burns, 208 Linden. Phone 569-3732. 15-CZ

For Fedder air conditioners, see Bill's TV and Furniture Co. 301 N. Ave. D. Ph. 569-3651. 30-CZ

SERVICES
SERVICES—For expert TV repair, call Home Furniture Co., day or night. 569-2801, or 569-2743. 9-CZ
Save Money for You. Shop HERRING'S in 1962. Houseware Savings. 17-CZ
Services—We repair Hoover sweepers. BOYD BROS., Phone 569-2214 44-CZ

SEWER LINES—Small yard machine. Free estimates. Logan Plumbing Co. Ph. 569-3553. 10-CZ

Services—We repair all models Maytag washers. BOYD BROS., Phone 569-2214 44-CZ

Septic Tank Pumping Service
Prices according to size
Phone 569-3265. 44-CZ

DUMP TRUCK HAULING
Top Soil, Fill Sand, Concrete and Masonry Sand
Driveway Material
LEO BRYANT
PHONE 569-3704
1008 Rosebud Burkburnett

Services—We repair all models G-E washers and appliances. BOYD BROS., Phone 569-2214 44-CZ

HILLCREST HAVEN NURSING HOME has 24 hour nursing for the aged or ill. Box 646, Phone 3363, Electra, Texas. 47-CZ

PIANOS TUNED AND REPAIRED
PHONE 569-1102
JIM JEFFERS 22-CZ

Services—We repair all Venetian blinds. BOYD BROS., Phone 569-2214 44-CZ

BARN YARD FERTILIZER
\$1.00 Sack Delivered
NICKS PRODUCE
East 3rd Street

SERVICES
SERVICES—I install carpets, second hand or new. Small job or large. Call me for an estimate today. 569-3316. 24-CZ

Lloyd Clemmer LUMBER CO.
Pittsburg Paints, Dierks Creosote Posts, Sheet Iron, Roofing, Sheetrock, Lumber, Plywood, etc. Reasonable Prices
Ph. 569-2911
OKLAHOMA CUT-OFF

CHECK YOUR TV TUBES FREE AT HOME FURNITURE. 313 E. Main Phone 569-2801

Save Money for You. Shop HERRING'S in 1962. Motorola Television. 17-CZ

SERVICES—Garden plowing, leveling and discing, planting. H. C. Thompson. Ph. 569-2437. 24-21C

INCOME TAX
And accounting service. Individuals and businesses. Qualified accountants. Holloway, Stevenson and Beeson. Ph. 569-1158. After 5:00 p. m. Ph. 767-5381, 692-4875 or 569-1158. 19-131C

FREE SERVICE CALL ELECTROLUX SALES AND SERVICE
Bill Terpstra - Ph. 569-1379
SERVICES—Shirts ironed to perfection. 20c each. Ph. 569-1215. 25-11P

WANTED
WANTED: People to Save Money; Buy Quality Merchandise at Discount Prices at HERRING'S. 17-CZ

WANTED—100 live bodies with good credit to buy furniture at large discount prices. Apply BURK FURNITURE MART, 211 E. 3rd St. 23-CZ

FOR LEASE
FOR LEASE—School supplies, lunch counter and store building. By grade school. Also trailer court. 114 N. Ave. D. Ph. 569-2567. 25-CZ

LOST
LOST—2 male bird dogs, lemon and white. Reward. 127 Lilac Lane. Ph. 569-3283. 25-11P

Help Wanted
HELP WANTED—Ambitious, neat appearing, married man, age 25-44, high school education, car, for local sales and collection work. Career opportunity. Guaranteed salary, plus commission. Call 723-5685 days, 723-1832 evenings, for appointment. 25-11P

Newcomers Welcomed to Burkburnett
The Burkburnett Chamber of Commerce and the Greeters Service wish to welcome the following newcomers to our city.

Licatovich, Alex S.
Michell, G. F.
Dodge, Richard
Riley, Robert
Hobbs, Charles
Mullins, Joe
Thompson, Joe
Murr, Jerry
Peckham, Elbert
Steen, J. M.

If you are a newcomer to Burkburnett and have not been contacted, please call Mrs. Savage, 569-2180, or the Chamber of Commerce Office, 569-3393.

Our Classified Ads Get Results

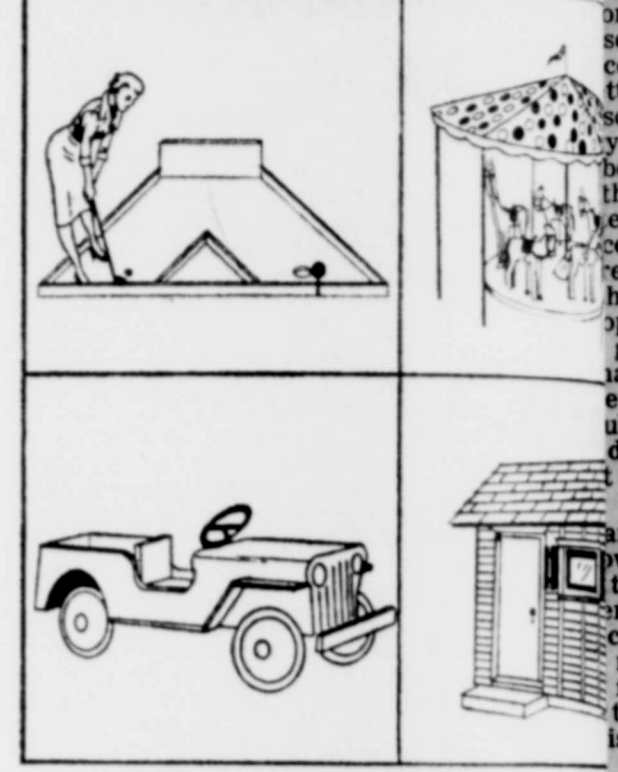
DEADLINES
For Classified Advertising
Tuesday News FRIDAY, 5 00 P. M.
Thursday Star WEDNESDAY NOON

CORNER DRUG STORE
PRESCRIPTIONS
320 East 3rd Street
STORE HOURS:
Week Days: 8:00 A. M. to 8:00 P. M.
Sundays and Holidays: 8:00 A. M. till 11:00 A. M.
For Drug Service When Closed Please Call 569-2328 (George) or 569-2327 (Cliff)

Clyde Robertson Rites Scheduled

Clyde Edgar Robertson, 86, died Saturday morning in the Hillcrest Haven Nursing Home of Electra, where he lived for one year. He has been in ill health for several years. Robertson was born January 26, 1876 in Magnolia, Ark. A retired cotton buyer, he had previously lived in Burkburnett for 32 years. Funeral services were held at 2:30 p. m. Sunday in the Jan Lee Baptist Mission with Travis McMinn, pastor of the Mission officiating. The land for the mission was donated by Gene Robertson, a son, and named after his two daughters, Jan and Lee. This is the first funeral to be held in the Mission. Burial was in the Burkburnett Cemetery under the direction of Owens-Brumley Funeral Home of Burkburnett. Survivors include five brothers, Albert Robertson, Prescott, Ark.; Fred Robertson, Atascadero, Calif.; Virgil Robertson, Duncan; W. D. Robertson, Bluffton; W. B. Robertson, Albuquerque, N. M.; four sisters, Mrs. Luna Erwin, Wheelington, West Va.; Mrs. Charles Donaldson, San Antonio; Mrs. Roxie Boyd, Fort Worth; Mrs. Charley Dodson, Little Rock; one son, Gene Robertson, Burkburnett; and three grandchildren, Lee, Jan and Ted Robertson. Pallbearers were John Strayborn, Ike Harwell, Horace Broome, J. C. Hinkle, Brack Preston and Walter Blevins.

WHAT TO MAKE
By Allan Carpenter, Director, Service Bureau Popular Mechanics Magazine



Congressman Purcell Introduces 1st Bill Since Taking Office

Congressman Purcell introduced, today a Bill, H. R. 10330 which will be referred to the Committee on Agriculture, allowing an expansion in castor beans, guar, safflower, sunflower or sesame, if designated by the secretary. Payment with respect to diverted acreage devoted to these crops would be one-half of the payment which would have been made if such acreage had been devoted to conservation use. In the present law, farmers are permitted to plant castor beans, guar, safflower, sunflower or sesame provided, however, they forego their entire acreage payment. Under Congressman Purcell's Bill, farmers would be permitted to plant these crops, as designated by the Secretary of Agriculture, and still be permitted to receive one-half of the diverted payments.

Posture and Exercise Will Be Stressed at Grooming Workshop

"Posture and Exercise" will be stressed when the "Grooming Workshop," sponsored by the Wichita County Program Building subcommittee on clothing, holds its second session. Miss Betty Davenport, assistant Professor of Health and Physical Education at Midwestern University, will instruct the group. The workshop started with work on "Weight Control," will work on "Posture and Exercise" Tuesday, March 6 at 10:00 a. m. in the Wichita Falls Electric Auditorium and will continue with other phases of grooming. Any homemaker interested, may participate in one or all workshop sessions. Mrs. George Wyatt, chairman of the planning committee, urges homemakers to enroll and participate by weighing in and practicing each workshop lesson. However, a homemaker may attend without participating, in an active way. Thomas A. Edison was dismissed from a job as a young man for sleeping while on duty. The farther north a bird summers, the farther south it will winter.

With Our Subscribers . . .

NEW
Leo Foster
William Ellard
Carolyn Clement
RENEWALS
H. C. Gilbert
W. P. Cozby
Ellis Carroll
Mrs. Audrey Byington
No Gunshy Pup
Start your pup right by firing a small-caliber gun while he's feeding. He'll be used to field shots by fall.

All Unpaid City Taxes Delinquent

Penalty and interest will be assessed on all unpaid city taxes. C. R. Cline, City Tax Collector.

Suit Will Be Filed for Collateral

L. D. Magee, City Attorney, has filed suit for collateral against J. H. Ferguson.

Minnows & Okla. Fishing

NICK'S PHISHING AND TACKLE 740 E 3rd St.

Cliff Wampler General Insurance
Payton Cozby Plumbing & Heating
Special Prices On 30 Gallon Hot Water Heaters
We Carry Filters For Central heating systems . . .
Repair Work — Plumbing
Fixtures and Materials
403 East Main St
Day 569-3911—Phones—Night 569-2545