



Recipe for a Merry Christmas

HOLIDAY FOODS



LIGHTCRUST FLOUR

5 Lb. Box

39¢

GLADIOLA FROZEN ROLLS

24 to the Bag **25¢**

HEMET Spiced Peaches

4 No. 2 1/2 Cans **\$1.00**

Xmas Candy

REGULAR 35c BAG

29¢

All Brands Chewing GUM 3 FOR 10¢

These Prices Good DEC. 23rd DEC. 24th

We Will Be Closed All Day Christmas

WE GIVE GUNN BROS. STAMPS DOUBLE STAMPS EACH WEDNESDAY

Griffin's **COCOANUT**
1 Lb. Bag **39¢** | 8 Oz. Bag **25¢**

Wilderness **PIE MIX** 3 For **\$1.**
Assorted Flavors

Santa Rosa **Pineapple** 5 303 Cans **\$1.00**
Crushed

Mrs. Tucker's **Shortening** 3 Lb. Crt. **59¢**

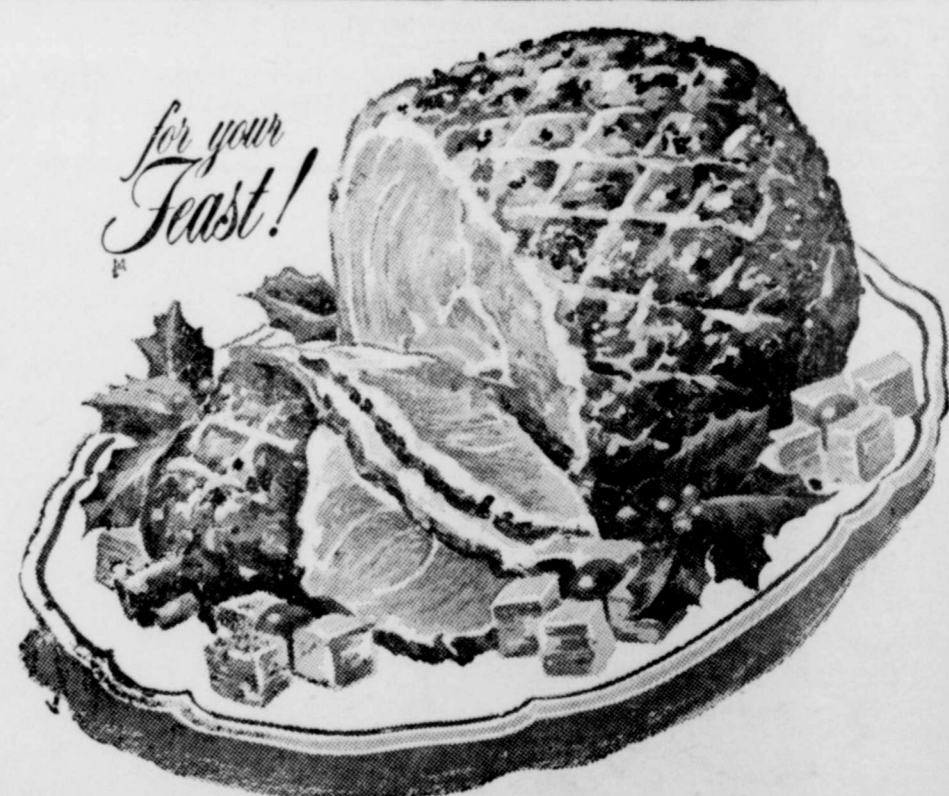
Griffin's **SWEET POTATOES** 2 No. 3 Cans **49¢** | **BISCUITS** 3 For **25¢**

Bananas Lb. **12 1/2¢**
CENTRAL AMERICAN GOLDEN RIPE

Shurfine **PUMPKIN** 2 No. 2 1/2 Cans **39¢** | **DOG FOOD** 3 1 Lb. Cans **25¢**

Wright's **READY TO EAT CURED WHOLE HAM**
Lb. **59c**

TURKEY TOMS
16 - 20 Lb. Size
Lb. **33c**



SWIFT'S PREMIUM **Bacon** 2 Lbs. **\$1.19**
Thick Sliced



UNITED SUPER MARKET

Merry Christmas



Chamber of Commerce Luncheon Each FIRST MONDAY at Town Hall Everybody Invited Each Pays for His Meal

Burkburnett Star

SECTION TWO

LIKED BY MANY -- CUSSSED BY SOME -- READ BY EVERYBODY

VOLUME NO. 52

BURKBURNETT, WICHITA COUNTY, TEXAS, THURSDAY, DECEMBER 25, 1958

NUMBER 16

The Night Before Christmas

'Twas the night before Christmas when all thru the house Not a creature was stirring, not even a mouse. When down through the chimney all covered with soot, Came the "Spirit of Fire", an ugly galoot.

His eyes glowed like embers, his features were stern, As he looked all around for something to burn. What he saw made him grumble, his anger grew higher, For there wasn't a thing that would start a good fire.

No door had been blocked by the big Christmas tree, It stood in the corner leaving passageways free. The lights that glowed brightly for Betty and Tim Had been hung with precaution so none touched a limb.

All wiring was new, not a break could be seen, And wet sand at its base kept the tree nice and green. The tree had been trimmed by a mother insistent, That the ornaments used be fire resistant.

And mother had known the things to avoid, Like cotton and paper and plain celluloid. Rock wool, metal icicles and trinkets of glass, Gave life to the tree; it really had class.

And would you believe it right next to the tree, Was a suitable box for holding debris. A place to throw wrappings of paper and string, From all of the gifts that Santa might bring.

The ugly galoot was so mad he could bust, As he climbed up the chimney in utter disgust. For the folks in this home had paid close attention, To all the rules of good "Fire Prevention".

ROSE BOWL HISTORY
After Michigan routed Stanford 49-0 in the first Rose Bowl football game, January 1, 1902, there was no football game supplement to the Tournament of Roses until 1916. Chariot races were substituted for the gridiron spectacle in 1903, proved popular for several years and then lost in favor until 1916 when collegiate football returned as Washington State defeated Brown University.

Exercise Care in Outdoor Decorations
If you light an outdoor tree, do it with care and caution. Spruce, firs and pines, when not too large, are ideal for outdoor Yuletide display, but hemlock, yew, boxwood and aborvitae are a little more sensitive to the heat of Christmas lights and their needles may be scorched if caution is not used.



MERRY Christmas



May the tender, lovely meaning of the first Christmas be yours this year.

Merry Christmas

Let faith and hope be your inspiration during this Christmas season.

GLENN SMITH LLOYD SMITH
FRANK MORTON BILL HUFFAKER
ED LINAM PHILIP REDMAN

Smith MOTOR & AUTO PARTS

YOUR JOBBER FOR
McQuay-Norris Automotive Parts

414 Ave. B Pho. JO 9-2881 Burkburnett

FIRST NATIONAL BANK

A. R. HILL JAMES E. FRYE
President Vice-President and Cashier


FAYE DENTON, Assistant Cashier

DIRECTORS

C. B. BOWLES GEO. H. McCLARTY
P. B. BROWNING A. R. HILL O. W. PRECHEL
GLEN H. BEAR JAMES E. FRYE HAROLD VAN LOH

Serving Burkburnett Since 1907

Washington's Christmas



...time was Christmas night. ... year was 1776. The place was the Delaware River. Some ...attered and bleeding men ...sily about, uncomplai-

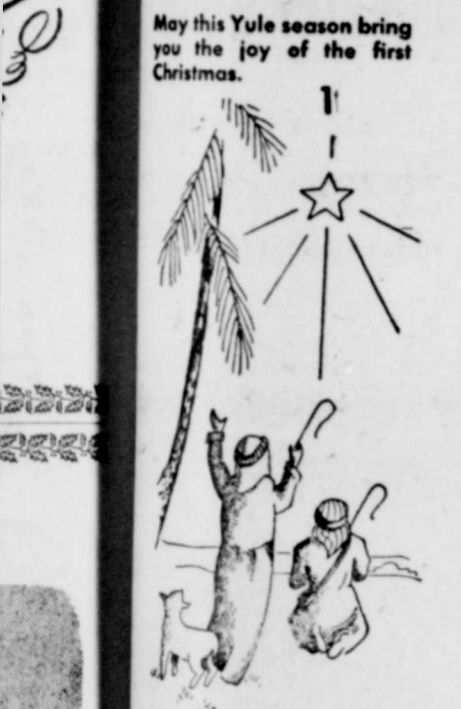
...Christmas night was a cru- ...ment for a new republic ...had yet to gain its freedom. ...the course was charted by a ...leader and a great American ...ident, George Washington. His ...of inspiration remain to this ... "This is it, gentlemen—vic- ...or death. That is our only ...word."

...victory it was. Fired by the ...age and inspiration of the man ...became known as "the father ...his country," a tattered band ...riots crossed the dangerous ...of ice and marched to Tren- ...where they surprised and hum- ...the Hessian mercenaries and ...ded a great Christmas story ...e pages of American history.

...ellhead value of Texas na- ...gas produced in 1957 is ...ated by the US Bureau of ...es at \$493 million.

Merry Christmas

May this Yule season bring you the joy of the first Christmas.

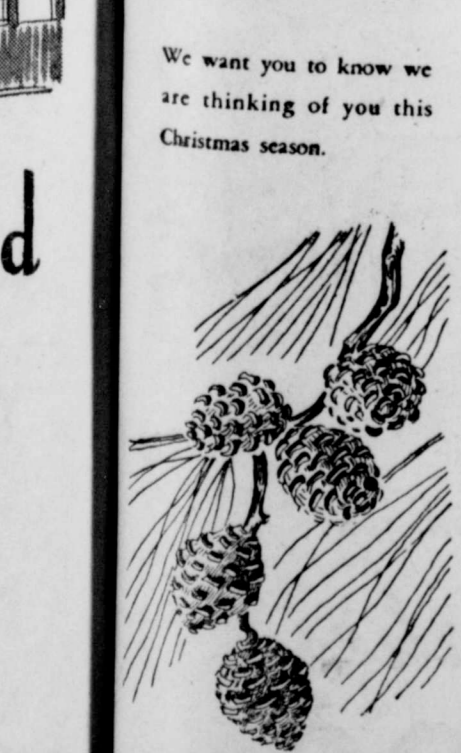


ELITE DRESS SHOP

MRS. C. C. GILBERT

Merry Christmas

We want you to know we are thinking of you this Christmas season.



DORA DAVIS

County Clerk
And Deputies

HOLIDAY GREENERY

Home owners can often get all the Yule greens they need by wisely pruning their conifer trees and evergreen shrubs. There are five simple rules to follow when trimming branches and twigs for holiday decorations.

(1) Thin the trees and shrubs for shape, always maintaining the natural contour of the plant (2) Do not cut more than 6 to 7 inches from a branch. (3) If the tree has not been pruned for some time, take off every other branch. (4) Do not cut beyond the green needles; otherwise this will not fill in with new growth. (5) Keep the cut branches in a cool moist place until ready for use.

Ideal Greens

Spruce, pine, hemlock, yew and arbutus make ideal Christmas greens. Yew seems to hold up best. Broadleaf evergreens such as laurel, andromeda, boxwood and Japanese holly should be kept in water when used indoors, otherwise their leaves shrivel.

Roping used to frame a doorway can be made of pine, balsam, laurel, and hemlock. Any of the broadleaf evergreens, co-mingled with holly, balsam or yew, are ideal for wreaths. Good for indoor arrangements are barberry, firethorn, viburnum with its bright red fruit, bayberry and drooping leucothoe.

Christmas Customs South of the Border

In the lands of Central and South America, the Christmas festival reaches its zenith with the celebration of the Misa del Gallo (Mass of the Cock) at midnight Christmas Eve. This traditionally is the hour at which Christ was born. The name itself stems from Christian Rome's early practice of holding the first service when the cock crew.

Christmas feasts follow the mid night service, and delicacies vary according to the country. While roast pig is Latin America's holiday favorite, turkey dominates tables in Mexico, Brazil, Colombia, Nicaragua, Panama and Puerto Rico.

Gift Giving

Gift giving has always been closely linked with the Nativity. The youngsters of many lands look to the Christ Child for presents. In certain countries, including Mexico and Puerto Rico, tots impatiently await Epiphany, January 6, and a visit from the Three Wise Men. Santa Claus adds, for the parents, an expensive complication.

Exchange of gifts takes an unusual turn in Colombia where it is custom for merrymakers in masquerade to mill through the streets on Christmas Eve. Whenever a friend detects another's identity, he claims a reward.

Children of Latin America traditionally send their letters to "Baby Jesus, Care of St. Peter," but North American symbols of Christmas, Santa Claus, the tinsel tree, wreaths, and greeting cards—are becoming familiar in the cities of several neighboring countries, notably Mexico, Cuba and Puerto Rico.

Holiday Celebrations in Various Countries

Although such things as family dinner and the custom of gift giving are a part of the Christmas observance almost everywhere, this universal holiday is celebrated differently around the world.

In the United States, of course, we have the Christmas tree, holly and mistletoe, Santa Claus and Christmas cards.

In Italy the shepherds gather in villages on Christmas Eve to play musical instruments as townfolks sing sweet Nativity songs. And thousands come from all over the world to attend Mass in St. Peter's in Rome on Christmas Day.

In Holland, the land of Old St. Nicholas, forerunner of our Santa Claus, it was custom in former years for the Dutch to celebrate for about a month. St. Nick scattered his gifts about the floors of Dutch homes as early as December 6.

In Greece, decorated trees, greeting cards and the exchanging of gifts mark the observance of the holiday. New Year's Eve is the time for a really big celebration with dances and parties for both young and old.

In Mexico, during the nine days before Christmas, candlelight processions are formed nightly. Called "Posadas," which literally means "lodging," this ritual reenacts the Holy Family's journey to Bethlehem and its difficulty in finding a place to stay. At a prearranged household, the marchers are barred at first, then admitted with rejoicing.

News From The County Agent

The time is here when cattle owners should be warned that Johnson grass or Sorghum after a frost is sometimes extremely high in prussic acid content and is very dangerous to livestock.

When wilted by frost or drouth, certain chemical changes sometime occur in the plant and it develops a content of prussic acid, or hydrocyanic acid explains B. T. Haws, Co. agent. The poison acts quickly and can kill an animal within a short time after the damed plant is eaten.

Symptoms described by Haws include an appearance of nervousness, difficult breathing and difficulty in standing. Whether a poisoned animal can be saved depends upon how quickly a veterinarian can get to it. Treatment involves injecting antidotes directly into the blood stream.

Young plants will develop more prussic acid than those approaching maturity, points out the veterinarian. Their leaves will contain from 3 to 25 times more acid than leaves of plants in the boot stage. Upper, younger leaves will contain more acid than lower leaves.

Frosted Johnsongrass or Sorghum should not be grazed until it is completely dry, advises Haws. If Johnson grass or sorghum is ready to cut before a frost, it may be cut the first day after the frost and used for hay if care is taken to see that it is completely cured before baling.

It may also be used for silage he adds. Generally enough, prussic acid is lost in gaseous form during the ensiling process and as the silage is removed and fed to make it safe for livestock. However, it is not advisable to let the animals self-feed from the silo filled with frosted sudan or sorghum. If the silage is questionable, it should be chemically tested by a local veterinarian or by using one or two inferior animals as "guinea pigs."

Demonstrations on controlling rats in the house, barn, wheat fields and pastures will be given this week. Mr. V. R. Smith, Texas Predator and Control Service, Ft. Worth will assist the Co. agent in this series of demonstrations. Everyone is invited to attend.

Poison maize to control rats in the fields and pasture will be available and rat bait for the house and farm will be available at the rat meeting only. People living in town are also invited to attend one of the meetings. The meetings will be as follows:

- Thursday, Dec. 11th—9:00 a. m.—Iowa Park Fair Grounds.
- 11:00 a. m.—Wilbur Prechel Farm-Clara Community
- 1:30 p. m.—Emil Flusche Farm, one mile north of Punkin Center
- 3:30 p. m.—K&K Grain, Co. Electra.
- Friday, December 12th
- 9:30 a. m. 4-H Barn, Wichita Falls
- 11:00 a. m.—Wiley Wolf Grain Wichita Falls



BIG TREE . . . Believed to be the largest man-made Christmas tree in the world, this 100-foot tall Christmas spectacle was designed by General Electric and last year graced Cleveland's Nela Park.

NEWSPAPER ADVERTISING AT YOUR SERVICE

YO. HELP YOU SELL



May your Christmas candle light a world of peace

CLODELLA'S BEAUTY SHOP

608 East College
PHONE JO 9-2671

Mr. and Mrs. CLARENCE BRIDGES AND CHILDREN

Christmas



May the blessings of the season be with you.

B and C GARAGE

CECIL BRADLEY
Across From Legion Hall
Burkburnett, Texas



PARAGON TAILORS

MR. and MRS. T. M. MAY AND EMPLOYEES

White House Hasn't Always Had a Tree

President Theodore Roosevelt, an early conservationist, once disapproved of Christmas trees and for several years forbade any being brought into the White House.

But one year, his sons, Archie and Quentin, smuggled one in and set it up in Archie's room. After the discovery, Gifford Pinchot, a great forester and conservationist who later became Governor of Pennsylvania, soothed T.R. by explaining that supervised and careful harvesting of Christmas trees—as thinnings—was good for the forests because it gave other trees room to grow.

Ever since, the White House has had an indoor tree.



Burkburnett Star

Season's Greetings



Cordial good wishes to all our friends this Christmas season.

PALACE CAFE

Mr. and Mrs. "Huck" McDonnell

BURKBURNETT FLORIST

MR. AND MRS. L. V. RICHARDS
Phone JO 9-2281
BURKBURNETT, TEXAS



Christmas Greetings

May His message of peace and good will fill every heart at this Christmas season. And may your heart and home be filled with all the many blessings of the Yuletide.



UNITED SUPER MARKET

State Capitol NEWS

Foreshadowing many hours of debate in the next Legislative session is the steady build-up of proposals and counter-proposals for improving public schools.

Texas State Teachers Association has voted to push a 19-point legislative program. TSTA will go along on most of the Hale-Aikin Study Committee's recommendations, though its own program omits a few H-A proposals and is lukewarm on others.

Most notable difference is that TSTA calls for larger teacher salary raises. Present minimum starting salary is \$3,204. Hale-Aikin Committee recommends hiking this to \$3,800. TSTA is asking for \$4,000 for bachelors degree holders, \$4,200 for those with a masters degree.

TSTA's salary increases would cost some \$10,000,000 to \$15,000,000 a year more than the Hale-Aikin plan. Overall, enactment of the Hale-Aikin school improvement plan would cost the state an estimated \$110,000,000 a year more than is now being spent.

Other planks in the teachers' legislative platform are specific changes to expand or enrich school programs, driver education, special programs for gifted children, more funds for small schools, etc. TSTA approved the Hale-Aikin proposal for lengthening the school year, but indicated it would not go all out for it.

Because they call for new spending at a time when the state already is in the red, no one expects smooth sailing for the school proposals. Governor Daniel warned teachers that he could not foresee available money for all the program. Many legislators are haunted on the one hand by the need to dig up new money just to keep the state in business and on the other by campaign promises not to vote for certain kinds of new taxes. They are inclined to view new spending plans like small-pox germs.

On the other hand, advocates of school improvement constitute a large and very active group. And all such efforts

gained tremendous new leverage when Sputnik I whizzed into orbit.

For Business Seeking—

Texas Industrial Commission is asking the Legislature for a \$100,000 a year appropriation to be used in attracting new businesses to Texas. Commission voted not to go into tourist promotion unless asked to by lawmakers.

Proposed budget allocates \$16,500 annually for executive director's salary and \$75,000 a year for advertising in national publications. All this activity will be brand new to Texas, made possible Nov. 4th when voters removed a 82 year old constitutional ban against spending state money for advertising.

Commission also announced that it is opposed to any plan of offering temporary local tax exemption as a sort of "prize" to new industries.

Back To Work—

For the first time in 1958, Texas non-farm employment broke the three-million mark in October.

Christmas rush and other gains may bring the number of workers to a new record high in December, according to the Texas Employment Commission.

Settlement of 13 labor-management disputes involving 9,749 workers contributed to the October employment peak of 3,001,400.

December's bright hopes are based on expectation of the usual retail job increases, more employment in cotton processing due to a high per-acre yield, plus gains in manufacturing, transportation and school employment.

Old Age Rolls Shorter—

Number of Texans receiving old age assistance payments dropped during the past year, but Texas still has a greater percentage of its population on state old age pensions than most other states.

State Welfare Department's report to the governor notes that an increase in the number of elderly persons receiving Federal Social Security payments is apparently causing the shrinkage in the state welfare rolls.

Despite this trend, Texas has 33.6 percent of its 65 and over population on the state pension rolls compared to a national average of 16.2%. Texas average payments are lower—\$47.08 per month compared to the national average of \$61.39.

During the past fiscal year the State Welfare Dept. paid out \$125,353,296 for old age pen-

sions. Of this, 30% was state funds, the rest federal.

Judicial Review Upheld—

Persons unhappy with State Water Board decisions may appeal to the courts, but not for a new trial starting from scratch. State Supreme Court ruled that appeals from Water Board rulings may be considered only in the light of the evidence presented in the original hearing. In so ruling, the high court invalidated a provision in the water code providing for trial de novo (or anew).

At issue was a Water Board decision denying Southern Canal Co. of Houston permission to take water from the Trinity River. An Austin district judge had ruled that he did not have jurisdiction. Now the case can go back to district court for judicial review under the "substantial evidence" rule.

Effect of the Supreme Court decision could be far-reaching if applied to appeals from other administrative decisions. Here, trial de novo has applied to appeals from the State Board of Insurance.

Social Security Claimants Urged To File Early

While most people are counting shopping days until Christmas the local Social Security staff is counting days until the first of the year, according to Ertan F. Tate, District Office manager.

It appears that Social Security Offices experience their "rush" season when the department stores have finished sweeping up debris from a rush of a different sort. Big reason for increased activity, said Mr. Tate, is the fact that people choose the turn of the year as a convenient time to make a series of new starts; a new fiscal year, a set of resolutions, and very often the first year of retirement. In order to soften the first full



MAY JOY FILL YOUR DAYS THIS HOLIDAY SEASON.

Jack Alexander

CAR and HOME Supplies
Goodyear Tires and Tubes
Fishing Tackle and
Shot Gun Shells

Mobilgas — Mobiloil

Phone JO 9-2381
Burkburnett, Texas

it's Christmas



May your holiday stocking be filled with naught but joy.

MARTIN'S LAUNDRY

MR. and MRS.
C. E. MARTIN
AND EMPLOYEES

Merry Christmas



May your Christmas be one of joy and lasting peace.

FLORA COBB

District Clerk
and Deputies

impact of increased business, according to Tate, the Social Security Administration is re-emphasizing its policy of suggesting that potential beneficiaries file for benefits as early as possible. People who will achieve retirement age in the first two months of 1959 are being advised that they may file as much as 3 months prior to their 65th birthday, or in the case of women, 62nd birthday. By the same token, those who have been waiting for early 1959 to file because their record of self-employment is not yet complete are being urged to undergo the routine elements of filing now, leaving the incidental task of

establishing current self-employment income for the early months of 1959, when income tax returns have been prepared.

Prospective claimant, Tate emphasized, will find early filing assures one of early payment, because a more even distribution of work loads permits prompt and efficient service for a greater number of people.

Tate was quick to point out that his staff stands ready to serve a beneficiary at any time, but added that a man's needs could be met more quickly if he files early, and provides himself with the documents he can anticipate will be necessary.



May the wonderful peace of the first Christmas be yours this holiday season.

MONROE'S GROCERY & MKT.

MR. AND MRS. MONROE PRINZING
205 East Main Street Phone JO 9-2661
BURKBURNETT, TEXAS

WHY WORRY?
I CARRY ANTI-WORRY INSURANCE—A Regular Ad In This Newspaper

Call JO 9-2191 For All Printing



MERRY CHRISTMAS

May the guardians of the season attend and keep you.

O. D. WORTHAM Radiator Shop

115 East 3rd Street
PHONE JO 9-2431
Burkburnett, Texas



Greetings To All

With this old fashioned scene we extend a hearty, old fashioned greeting to all in our community.

Williams Petroleum Co.

Phil D. Williams

P. O. Box 727

Phone JO 9-2531

Burkburnett, Texas



May the spirit of Christmas abide with you.

With Best Wishes BOYD BROS.

Jimmy and Charlie Boyd
and Employees

Phone JO 9-2214

Burkburnett, Texas

Buy Auto Liability From The Travelers Insurance Co.

IT DOESN'T COST ANY MORE TO
BE SURE
HOWARD CLEMENT, Agent
New Location — Next to Legion Hall

Safety Council Warns of Xmas Fire Hazards

The gaiety of the Christmas season can be changed to grief and sorrow within seconds. The time, during this season, is usually loaded with fire hazards and unless safety precautions are taken an accident could happen, warns the Texas Farm and Ranch Safety Council.

The Christmas tree, the center of most home decorations, can be a principal hazard. The Council suggests that a freshly cut tree be selected a few days before Christmas. Before it is placed in the house, the base of the tree should be cut diagonally and placed in water or wet sand. This will keep the tree fresh and help in retarding fire. The tree should be placed so that it will not block exits to a room and away from the fireplace, powerful electric lights and other sources of heat.

The Council recommends that only Underwriters Laboratories approved lights be used on the tree. Lights which have been used before should be checked for frayed wires or damaged sockets. Electrical circuits should not be overloaded with additional lights, toys and appliances.

Only non-flammable decorations should be used on the tree and tree lights should be turned off when no one is at home or when the family retires. Tree should be discarded when the needles begin to dry and fall.

This is also a time for smokers to be doubly careful, points out the Councilmen. Extra care with a cigarette, cigar or pipe is advised especially when smoking around flammable materials. Don't let wrappings from packages clutter up the house for they can become a real hazard.

Observance of the basic rules of home safety can make the holiday season happier and life more pleasant for the family and friends, concludes the safety group.

Olds Strengthens Lead in Medium Price Car Field

Oldsmobile will conclude "Registrations through the year 1958 as the solidly first nine months of the established leader in the year, and sales figures since

medium price class according to Oldsmobile general manager J. F. Wolfram, who is also a vice-president of General Motors.

the introduction of our new models on October 3, show Oldsmobile ahead of its nearest competitor by almost 41,000 units," Wolfram added.

"The latest sales report, for the second ten days in November, showed Oldsmobile sales to be double those of the first ten days. This reflects the increased production at our plants, which has in turn resulted in our dealers being supplied with a complete line of '59 Oldsmobiles. The sales figure was the highest in eleven months," Wolfram said.

"Our dealers are more enthusiastic about the product and more confident about the outlook for continuously improving business than they have been in years," Wolfram added. The public's enthusiasm and confidence is evident too in the large number of orders for new cars being received here in Lansing.

"Our assemblers are now building cars to fill these orders as fast as possible, consistent, of course, with the quality of manufacture for which Oldsmobile has earned such an outstanding reputation," he added.

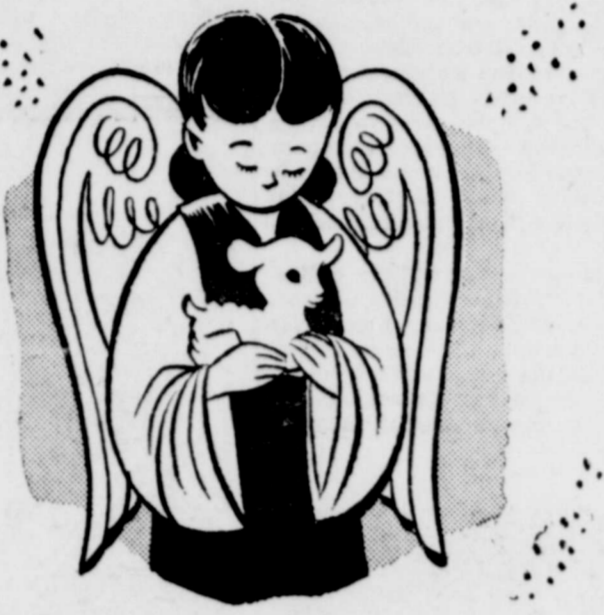
Oldsmobile's general manager noted that in order to supply dealer demand for 1959 Oldsmobiles, his firm has recalled over 2200 employees who had been laid off at various periods during the year.

"This means that all of Oldsmobile's seniority people were given job opportunities and several hundred others, who had worked for Oldsmobile in the past, are also back on the job", Wolfram concluded.

Andrews County is the top Texas oil producing county: 66,926,348 barrels in 1956.

Texas has 49.5% of U. S. total oil reserves.

Best Wishes



May this day prove to be the best Christmas of them all.

The Manhattan

BURKBURNETT'S LEADING DEPT. STORE



J. A. SUTTLES Electric Shop

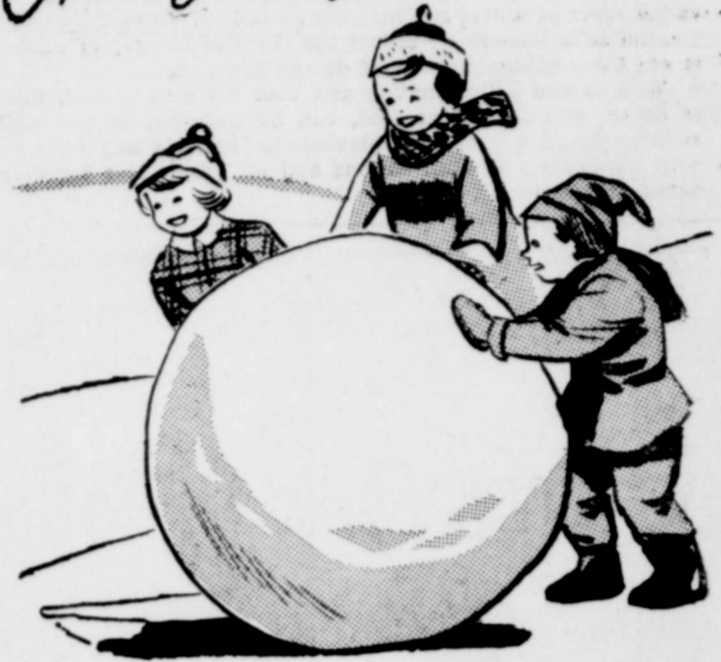
Motors and Parts ♦ Wire and Supplies

CONTRACTING — REPAIRING
205 East 2nd Street Burk Burnett, Texas



YOU CAN'T QUIT ADVERTISING
YOU'RE TALKING TO A PARADE
NOT A MASS MEETING

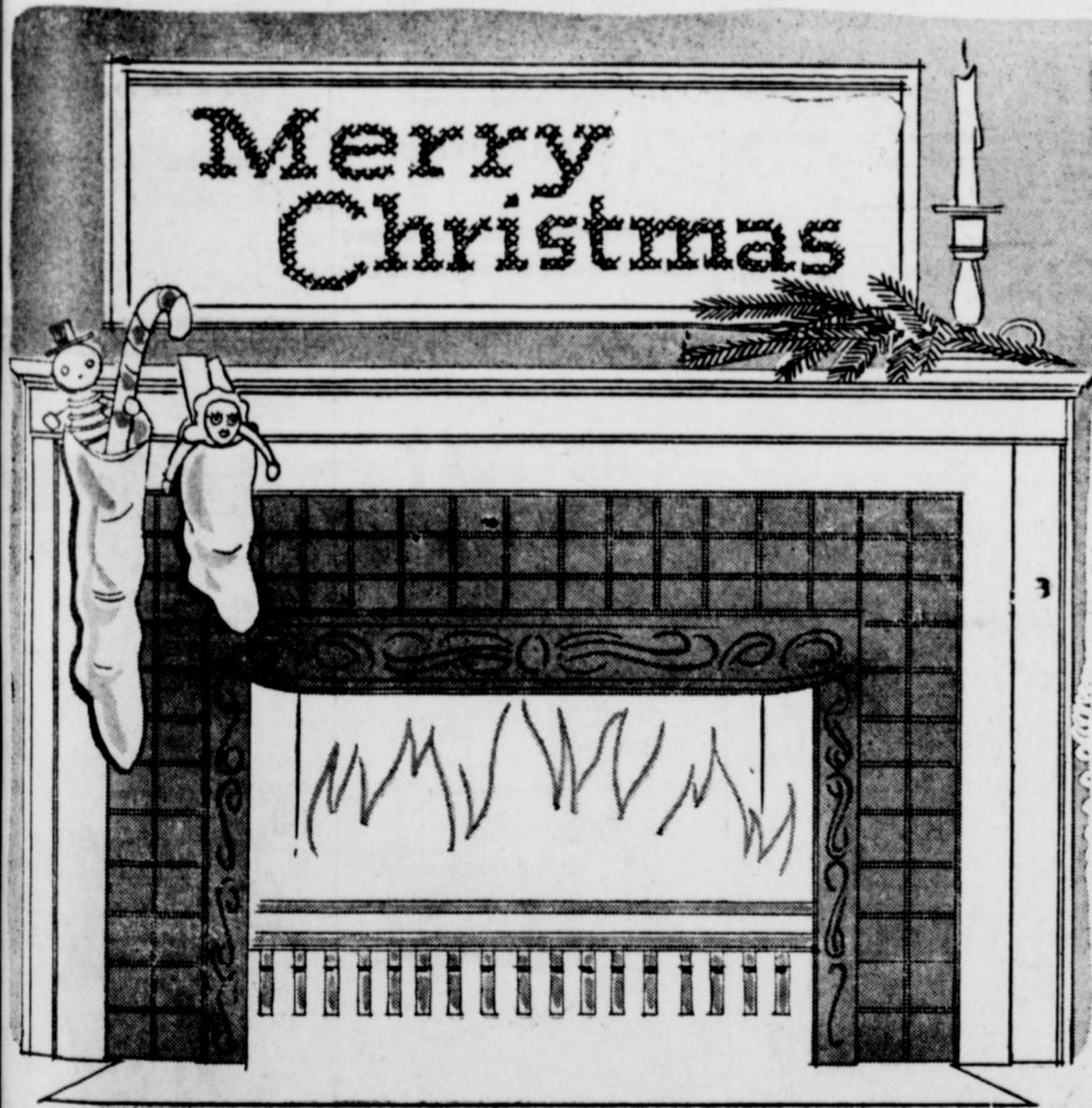
Christmas Again!



We hope each day is filled with the wonderful joy of youth.

PRESTON DAIRY PRODUCTS

HUGH AND BUDDY
AND ALL EMPLOYEES
BURKBURNETT, TEXAS



To old friends, and to new friends we hope to earn, it is a pleasure to extend best wishes of the season.

Burk Burnett Motors

DODGE — PLYMOUTH

Wylie -:- Blake -:- Bob -:- Paul

And All Other Employees

401 East 3rd Street

Phone JO 9-2201



And a Merry, Merry
Christmas to one
and all

HARLIN A. MILLS GRAIN COMPANY

DEVOL NEWS

MRS. C. O. WOODLEY

Last Weeks News
The annual Christmas party

Merry Christmas

May love and happiness fill your home this cheery Yule season.

JACK BILLEN'S

Bell Service Station
124 East 3rd Street
Burkburnett, Texas

for the Devol HD club was held Thursday afternoon, Dec. 11th in the home of Mrs. C. O. Woodley with Mrs. Verta Stevens assisting. The group sang Silent Night and the Lords Prayer was repeated in unison. Roll call was answered with The Gift I Most Enjoy Giving. Mrs. Betty Dahms, HD agent of Walters, gave a delightful reading on The Origin of Santa Claus. Mrs. Dahms also gave several demonstrations of atricles appropriate for Christmas gifts. Secret pals exchanged gifts and names were drawn for 1959 pals. Refreshments of cake and coffee or Cocoa were served to two visitors, Mrs. Dahms of Walters and Mrs. T. P. Randall of Burk and members, Mesdames F. J. Uthe, Callie Baumhardt, Pearl Cates, W. C. Charboneau, Willie Cozby, Guy Hutson, Claud Lemond, F. G. McClendon, Ed Morrow, E. N. Miracle, R. A. Odom, K. L. Smith, Amanda Warren, Nora Wood, O. L. Doty, Jack McCasland and the hostesses.

Little Frankie Wayne Tinsley, who has spent the past six weeks here with his grandparents, Mr. and Mrs. Ernest Wood, accompanied Mr. and Mrs. Wood and Judy to Ft. Worth Sunday where he was met by his mother, Mrs. Ray Tinsley. Mrs.

Tinsley took her little son to their home in Scott Field, Ill., where the father, Sgt. Tinsley is getting passports ready for his family to accompany him to Japan in the near future.

Mr. and Mrs. Rex Frye and daughter of Duncan spent Friday with his parents, Mr. and Mrs. W. L. Frye, Sr., Rex performed his regular and self imposed task of trimming the family Christmas tree.

Mr. and Mrs. Perry Bowman of Randlett were Sunday guests of Mr. and Mrs. F. J. Uthe.

Mr. and Mrs. Harvey Doty and children and Bill Ballard of Olney spent the weekend with Harvey's parents, Mr. and Mrs. O. L. Doty.

(THIS WEEKS NEWS)

Mrs. T. C. Dillow was honored with a surprise birthday party Tuesday afternoon on her 87th anniversary. Refreshments of coffee and cookies were served to Mesdames W. C. Charboneau, J. B. Stevens, E. Watson, Dollie Hardin, W. H. Stevens, Callie Baumhardt, Gertrude Farmer, E. L. McClurkan, K. L. Smith, R. A. Odom and Hume Fuller.

Mr. and Mrs. R. A. Wright of Ardmore were visiting friends in Devol Wednesday and were guests Wednesday night of Mr. and Mrs. W. L. Frye.

Word was received here Thursday of the death of Orville (Peanut) Smith Dec. 17th at his home in Melrose Park, Illinois. A former resident here, Mr. Smith was the son of the late Mr. and Mrs. Oles Stofer. Interment was in Birmingham, Ala., according to information received here.

A six o'clock supper was enjoyed at the Masonic Hall Thursday evening, Dec. 18th by about 50 Masons and OES members and families, after which joint installation ceremonies were conducted. In the Masonic ceremony, Robert Hopkins was installed as worshipful Master for 1959. Other elective officers installed included Hume Fuller, Senior Warden; Albert Coles, Junior Warden; Hugh M. Frye, Treasurer; T. V. Landers, Secretary; appointive officers installed were: W. L. Frye, Chaplain; Jack McCasland, Senior Deacon; Buck McClurkan, Junior Deacon; Joe Champion, Senior Steward; Tom Monson, Junior Steward and O. G. Weaver, Tyler. Conducting the Masonic rites were T. A. Landers, installing officer and W. L. Frye, installing Marshall. Joe Champion was the out going worshipful master.

Mary Fuller was installed as worthy matron and Hume Fuller as worthy patron for the ensuing year. Other elective officers installed were: Lucille Dulworth, associate matron; Hugh M. Frye, associate patron; Lorene Weaver, secretary; Bertha Frye, treasurer; Lois Goddard, conductress; Grace McClurkan, associate conductress; appointive officers selected by the worthy matron elect included Ethel McCasland, chaplain; Hortense Monson, marshal; Mary Lucille Coles, Adah; Clemmie Watson, Ruth; Ruby Hortsell, Esther; Helen Hopkins, Martha; Ruth Champion, Electra; W. L. Frye, Warder; John Hartsell, sentinel. A lovely gift was presented the out going worthy matron, Hortense Monson, from her officers. The presentation was made by Mrs. O. G. Weaver. Also a gift of appreciation was given to W. L. Frye from past officers for his work in keeping the lodge hall tidy and clean. The gift was presented by Ethel McCasland.

The installing worthy matron was Mrs. T. C. Dillow, of whom we are very proud. She is 87 years of age and gave all the work perfectly by memory. She was assisted by the installing officer, Clemmie Watson.

Mrs. T. C. Dillow was called to Oklahoma City Sunday by the illness of her daughter in law, Mrs. Lee Dillow.

Margaret Ferguson Floyd Jackson United In Marriage

Miss Ella Margaret Ferguson and Mr. Floyd Jackson were united in marriage Thursday, Dec. 18th at the First Baptist Church in Henrietta, Texas. Rev. Kenneth Cantrell, pastor, was the officiant.

The bride is the daughter of Mr. and Mrs. J. H. Ferguson of Burkburnett and the groom is the son of Mr. and Mrs. R. W. Kent, also of Burkburnett.

Mrs. Jackson is a graduate of Burkburnett High School and has been employed by Southwestern Bell Telephone Co. 13 years.

Mr. Jackson is also a graduate of Burk High School and is employed by the Benjamin F. Shaw Construction Co.

The couple will make their home in Tuscaloosa, Alabama.

Mr. and Mrs. Norman Maney of Odessa are here visiting relatives over the holidays. Mr. Maney is the new County Commissioner of Ector County.

TEXAS MASONS LEVEL CORNERSTONE FOR SCHOOL CHAPEL



Among state officers of the Grand Lodge of Texas, A. F. & A. M., who participated in the levelling of the cornerstone for a new chapel building being erected on the campus of Masonic Home and School of Texas, located in Fort Worth, were: left to right, Randa E. Briscoe, deputy grand master, Houston; John T. Bean, grand senior warden, El Paso; John G. Kemmerer, grand master, Fort Worth. The cornerstone was leveled on November 29.

Merry Christmas



May your Christmas be one of joy and lasting peace.

JACKIE'S BEAUTY SHOP

111 Ave. C - Pho. JO 9-2641
Mrs. D. L. Alexander, Melba and Mrs. Ralph Brookshier

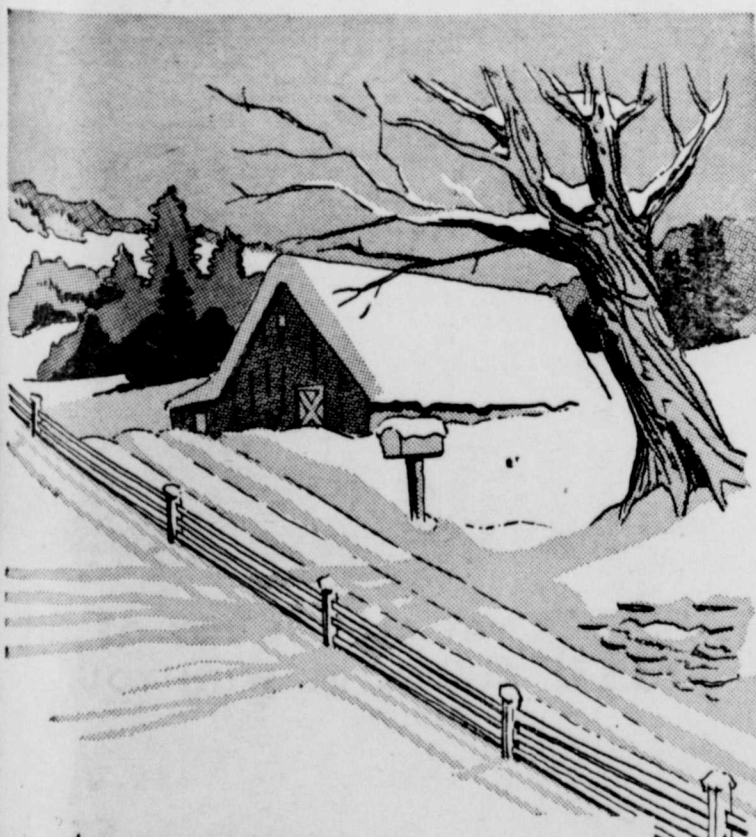
Merry Christmas

Have yourselves a happy holiday.



BOOMTOWN PONTIAC

L. R. LAMINACK
T. M. CORNELIUS
103 East 3rd Street
Burkburnett, Texas



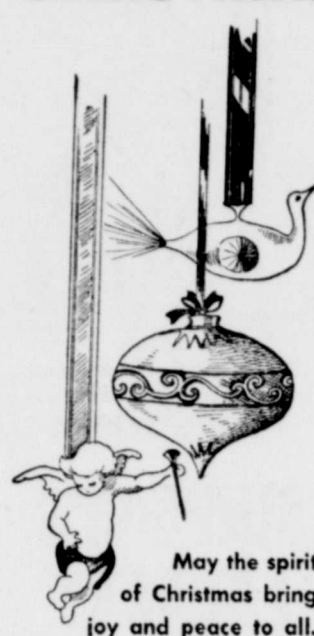
Merry Christmas

OUR HEARTS ARE FULL OF BEST WISHES FOR ALL OF OUR FRIENDS THIS HOLIDAY SEASON

JO SMITH REALTY

MR. AND MRS. D. H. SMITH
Phone JO 9-3490
Burkburnett, Texas

Merry CHRISTMAS



May the spirit of Christmas bring joy and peace to all.

EVERT GROCERY

730 West 3rd Street
Burkburnett, Texas

Season's Greetings



In the traditional manner, we wish for you a happy holiday.

SKID'S BEAUTY SHOP

N. Berry St.-Pho. JO 9-3188

BERTHA SKIDMORE
NANCY ALLEN



May you have a Bright and Happy Holiday.

GARLAND FURNITURE

—and—
MODERN BUTANE CO.

Buy and Use Christmas Seals



Fight Tuberculosis!



With every good wish for your happiness.

B and B GROCERY

Mr. and Mrs. Cecil Todd and Employees
Wichita Highway
Phone JO 9-3701



Pictured left to right: Mrs. Lavern Poole, Mrs. Opal Boren, Mrs. B. L. Turner, Mr. B. L. Turner, Mrs. Bertha Shufflin, Miss Pat Senn, Mrs. Dorothy Coyle. Not pictured is Miss Dee Ann Welborn.

Butler's 5 & 10

Mr. and Mrs. B. L. Turner and all employees of BUTLER'S 5 and 10 sincerely wish each of you a very Merry Christmas and a Happy New Year.

It has been a great pleasure to serve you in the past and your continued patronage will be greatly appreciated.

All Insurance is the same 'til you have a claim

Burk Insurance Agency
HOWARD CLEMENT
New Location—Next To Legion H



Here are some words from a famous Christmas message by Henry Van Dyke (1825-1933):
"... there is a better thing than the observance of Christmas day, and that is keeping Christmas!"
These famous words have echoed through the years and yet, sadly enough, so many of us never learn the "secret" of keeping Christmas. In the hearts of the majority, Christmas is a great holiday, a festive occasion, a time of joy and peace, of sincere pleasure in the very act of giving. There is a certain spirit about the preparation for and the observance of the holiday. We follow the usual customs, we decorate and adorn our homes and firesides, and on this one day allow our hearts to be filled with joy and peace. We hold the spirit of Christmas and we cherish it—until the bright lights come down and the tinsel and glitter are discarded.
Yet, how wonderful would be this world we live in if we could all keep Christmas in our hearts—all year round; if we could fill our hearts with love and do away with hatred and intolerance; if we could shun false pride and be always considerate and understanding in our relations with our fellow man; if we could replace the yearning for the gold and pleasures of the world with the virtues of faith and moral courage.
If we could do these things, we could build a better world; a world of peace and brotherhood and we would be keeping the spirit of Christmas—forever—in our hearts.

Teddy Roosevelt Banned Xmas Tree in Capitol

Teddy Roosevelt almost rode roughshod over the Christmas tree in his drive to conserve the nation's forests. But two little boys put the Christmas spirit—and the tree—back in the White House.
The Christmas tree was well-established in the United States when TR became president. Research experts with The World Book Encyclopedia says a Harvard professor named Charles Follen set up one of the first known trees in America in 1832.
President Franklin Pierce put up a tree in the White House in the 1850's to entertain the Sunday School of the New York Avenue Presbyterian church. And President Benjamin Harrison continued the custom in the 1890's.
But some modern-day Crooges convinced Roosevelt that the cutting of Christmas trees would soon deplete the nation's forests TR promptly banned the tradition at the White House.
However, the old Roughrider forgot to consult his young sons. Archie and Quentin cared little about presidential edicts, and less about conservation. They smuggled a tree into the mansion on Pennsylvania Ave, and set it up in Archie's room.
The president relented, and ever since, the White House has had an indoor Christmas tree.
TR's concession also sent the Christmas tree industry soaring beyond the dreams of one of its

founders—a Catskill farmer who brought his trees to market in New York City in 1851. And it helped pave the way for a new custom—the community Christmas tree.
In 1924, a Norway spruce was planted near the White House and later dedicated as "a national living Christmas tree."
Two years later, a giant California redwood in King's Canyon national park, named General Grant after the Civil War hero, was dedicated as the "Nation's Christmas Tree."
Reaching 267 feet into the sky from a base 40 feet thick, the tree is the second largest in the world.
Every year, nearby townspeople and visitors join in a holiday service and sing carols at the base of the sequoia, which was growing on the mountain slope when Christ was born in Bethlehem.

Highway Speed Showing Increase Over Last Year

"Motorists are driving faster in Texas in 1958 than they did during 1957," announced Capt. E. L. Posey of the Texas Highway Patrol.
Analysis of a Texas Highway Dept. speed survey by the Dept.

of Public Safety revealed that 12.6 per cent of all vehicles of Texas are exceeding the 60 mile per hour speed limit, as compared to 6 percent last year. The Statewide survey, taken at 25 checking points throughout the State will be used by the Highway patrol in planning its selective enforcement program in the future.

"Taking into consideration that the last month of the year is our mostly deadly in traffic accidents and deaths, said the Captain, we will use every available resource to reduce this speed problem. The Captain pointed out that December is a deadly month in traffic due to bad weather, holidays and shorter days hours.
Highway Patrolmen in this District have been instructed to carry out a stepped-up speed enforcement program in an effort to reduce as many of these accidents as possible during the remainder of the year.

About 70% of total Texas gas production came from 13,681 gas wells; 30% from 117,239 oil wells (casinghead gas).

News From The HD Agent

Mrs. Ben Lane, Kitchen demonstrator for the Eastland HD club has just completed her work for the year. She established goals and objectives early in the year.

Good kitchens do not just happen, they are only achieved after careful planning. Mrs. Lane made and developed a plan which made her old kitchen, which had no joined work centers into an adequate one. To do this an L-shape kitchen was

developed when new cabinets were built and equipment was moved. The kitchen now has 3 work centers conveniently arranged.
A neutral color scheme was selected to blend with the adjoining room.
Mrs. Lane is most pleased with the storage arrangement. Corners are not wasted space at the Lane home. Most useful corner cabinets add to the storage and arrangement to make the kitchen most useful as well as attractive.

Wichita County farmers must be going after wild game, judging from requests received in the county HD office.
Any wild game may be frozen for future use, county HD agent reminds that it must be dressed and frozen as soon as possible. Correct packaging is important. Birds should be wrapped individually in moisture proof wrapping materials such as cellophane, aluminum foil, plastic or different kinds of laminated wrapping paper.
Wrap steaks of venison with 2 layers of packaging material between each steak. This makes it possible to separate steaks and begin cooking without having to wait for complete package to thaw. However, for uniform cooking of the meat, each piece should be at least two-thirds thawed.
Wild game that is frozen and maintained at 0 degree or colder will not lose any of its fine qualities for several months.
Shrubs make long lasting gifts for a young couple just starting out or for anyone on your list who enjoys adding plants to the landscape. You will find a wide variety of ornamental shrubs to select from now at your local nursery. Also native shrubs of ornamental value are found in all parts of Texas, according to Thelma Wirges, co. HD agent.
Native plants found near your home will be especially well adapted to soil and climate of this area. They may take less care than introduced plants. Rose plants make fine gifts too. Now is the time considered best for transplanting woody plants. It is also a good time for adding

new plants. Early winter is an excellent time to obtain full root growth. Mrs. Gale Lowrance, landscape demonstrator and member of the Home Improvement Committee is doing this very thing.
Cut cannas down when frost has damaged the foliage. Give protection of a mulch if allowed

to remain in the open garden. Mrs. Lowrance is trying to do the same thing with her canna tree.

Merry Christmas



We wish for you good companionship and happiness this holiday season.

SIMPSON'S LAUNDRY
MAE, ELLEN and GUSTIE

Greetings To All

... of our many friends. We hope you have great happiness this Christmas.



BEN FRANKLIN STORE

Mrs. Francis Kauer and Leslie Kauer, Owners
Burkburnett, Texas



JOY AND PEACE BE WITH US ALL.

C. D. SHAMBURGER LUMBER COMPANY

R. C. "Bob" TEVIS, Manager
200 West 3rd Street Phone JO 9-3354
BURKBURNETT, TEXAS

Merry Christmas



MAY ALL THE JOY OF THE SEASON BE WITH YOU.

JOHN PAGE
Owner
203 E. 3rd Street
Phone JO 9-3121
Burkburnett Texas



A MERRY Christmas to all. And may peace and good will among men reign over all the earth.

CULLIGAN'S Soft Water Service
Oscar McBride



May the peace and joy of Christmas abide with you throughout the coming year.

MR. and MRS. J. F. KELLEY

CHURCH NEWS



First Baptist Church

Corner Ave D. and 4th St.
LEROY MEYER, Pastor
Verna Vaughn, Music Director

Sunday School, 9:45 A. M.
Morning Worship, 10:55 A. M.
Training Union, 6:15 P. M.
Evening Worship, 7:30 P. M.
Prayer Meeting, Wednesday,
7:30 P. M.
"In the heart of the city for
the hearts of the city"

Thrift Memorial Baptist Church

Marion D. Baker, Pastor
Sunday School, 9:45—Henry
Supt.
Morning Worship Service,
10:55 a. m.
Evening Worship Service, 7:30
P. M.
Training Union, 6:30 p. m.
Director, W. D. Sage
Wednesday night Prayer Ser-
vice, 7:30 p. m.

First Methodist Church

Leon Turner, Pastor
Sunday School—9:45 a. m.
Morning Service—10:55 a. m.
Junior, Intermediate, and Sen-
ior Youth Groups at 6:00 P. M.
Evening Worship, 7:00 P. M.
Official Board meets every
fourth Monday
Visitors are cordially invited
to attend all our services.
A nursery is provided for
nursery age children for both
the morning and evening ser-
vices.

First Church of Christ Scientist

Tenth and Van Buren
Wichita Falls, Texas
Sunday School for Children
under 20 years of age at 9:30 a.
m. in the Church Edifice.
Services 11:00 - 12:00.

Calvary Baptist Church

College and Ave B.
Ray C. Morrow, Pastor

10:00 a. m.—Sunday School.
We use the Bible as our only
literature.
11:00 a. m.—Song, preaching
service.
7:00 p. m.—Young People
services.
7:30 P. M.—Night preaching
service.

Calvary Baptist is an independ-
ent Baptist church, free from
organizational control and teach-
ing the truth in love. You have
a friendly welcome to all ser-
vices.

Grace Lutheran Church

Third St. and N Ave. E
J. H. KOLLMEYER, Pastor
The Church of the Lutheran
Hour, TV's "This Is The Life"

Sunday, 10 A. M., Sunday
School and Bible classes.
11 A. M., morning service.
LWMS meeting every first
Tuesday, 2 P. M.
Sunday School teachers' meet-
ing and teacher training course,
every second and fourth Tues-
day, 6:30 P. M.
You are cordially invited to
our services.

Church of God

J. W. JACKSON, Pastor
10:00 a. m.—Sunday School
11:00 a. m. Hour of Morning
Worship
7:00 p. m.—Evangelistic Ser-
vices
7:30 p. m. Wednesday —
Young Peoples Endeavor
If you haven't a church home
we would like very much for you
to visit us where the full gospel
is preached in the old time way.
There is special music and sing-
ing each service. Each and every-
one has a warm and hearty
welcome to come worship with
us.

Assembly of God Church

Rev. Lonnie Finney, Pastor

Sunday School—10:00 a. m.
Worship Service—11:00 a. m.
Sunday Night Service—7:00.
Women's Missionary Service,
Tuesday—2:00 to 4:00 p. m.
Prayer Meeting Service —
Wednesday night—7:00 p. m.
Church location—Two blocks
west of School on College St.

Bible Holiness

J. T. RICHARDS, Pastor
Sunday School—10 a. m.
Morning Worship—11 a. m.
Sunday Night Worship—7:30.
We wish to extend a hearty
invitation to all who do not have
a church home, to come and wor-
ship with us. The Bible is our
only literature. We are an inde-
pendent pentecostal group and
believe in the old time power of
God to save, deliver, heal and
meet your every need. We ex-
tend a special invitation to the
children for all of our services.

Church of Christ

Herbert A. Smith, Minister

Bible Study Sunday—9:45 a. m.
Worship—10:45 a. m.
Young Peoples classes, 5 p. m.
Worship—6:00 p. m.
Ladies' Bible Class—Tuesday,
9:30 a. m.
Bible study Wednesday 7:30
We welcome you to any of our
services.

First Christian Church

2nd St. and Ave. D
Rev. Wayne Black
9:45 A. M. Church School.
Classes for all ages.
11:00 A. M. Morning Worship
Attend services regularly, and
bring a friend.

Church of The Nazarene

Rev. T. F. Keese, Pastor
Sunday School—9:45 a. m.
Morning Worship—11:00 a. m.
Young People Service—6:45
Junior Society—5:45 p. m.
Evening Worship—7:30 p. m.
Wednesday—Prayer Meeting,
7:30 p. m.

I. O. O. F. LODGE
BURKBURNETT, TEXAS
Meets at I. O. O. F. LODGE
Every Tuesday Night, 7:30 p. m.
Visitors Welcome
J. B. ADY, Noble Grand
J. D. SHIPMAN, Vice Grand
RALPH ENGLAND, Jr. Secy.
JOHN M. BRYAN, Fin. Secy.

SAY IT WITH SAVINGS BONDS, SANTA



Photo by Tony Vent

"Say it With Savings Bonds, Santa," seems to be what Polly Bergen, stage and screen, and television star, is telling Santa Claus as they cuddle under a holly wreath decorated with United States Savings Bonds. Santa might very well be telling Polly about the Treasury's new gift booklets of U. S. Savings Stamps now available at all post offices in \$2.50 and \$5.00 sizes. Both Polly and Santa agree that U. S. Savings Bonds and Savings Stamps make ideal gifts for all occasions. Miss Bergen may be seen regularly on CBS-TV "To Tell the Truth" and in a forthcoming Broadway play "Faster, Faster."

-If Its For Sale Advertise-

For COLDS take 666

Trinity Lutheran Church

The Church of Radio's Lutheran Hour and the Family Worship Hour, and of TV's "THIS IS THE LIFE."

Lutheran Hour,
Frederick, 1670, 9:30 a. m.
Bible Class and S. S., 10 a. m.
Worship Service, 10:45 a. m.
Tuesday, Caroling, 7:00 p. m.
Wed., Children's Christmas service, 6:30 p. m.
Thurs., Christmas service, 10:45 p. m.
Saturday—
Saturday School 9:00 a. m.
Confirmation classes 9:00 a. m.
Junior Choir, 10:00 a. m.
A Friendly Welcome to All.
Rev. L. Boriack, Pastor

A. F. & A. M.
Stated Meetings First and Third Monday at 7:30 p. m. at the Masonic Hall
School of Instruction Thursday Night
J. H. Ferguson, Secretary
R. D. Cook, W. M.

Irvin J. Vogel

LAWYER
514-516 Wichita Nat'l Bank Bldg. Wichita Falls, Texas

Skid's Nursery

509 N. Berry
Phone JO 9-3188
Large Mimosas FOR SALE \$1.50 to \$2.50

The "Perfect Hostess" Holiday Buffet



Holidays are days for entertaining both family and friends, and entertaining them in a way that makes it pleasant for everybody. There is no better, easier, more enjoyable way to do this than the Holiday Buffet, which can be quickly set up, takes very little preparation, and keeps the hostess free to entertain her friends and enjoy the occasion. Here's a suggested buffet table, with the traditional turkey—or perhaps a ham, if more convenient—supplying the "meat" part of the buffet; a hot dish from which guests can help themselves, made up of whatever favorite recipe the hostess may have; then tasty hors d'oeuvres, or little sandwiches, in the form of stars, Christmas trees, or other figures easily created with your "cookie cutters," cream cheese "snow balls," the bowl of refreshment, with a gift bottle of Old Crow bourbon and its festive package adding decoration to the table; all with a touch of holiday gaiety by clever use of candles, and a touch of the Christmas tree to give it the right atmosphere.

Enjoy both your home town paper and The Dallas News!

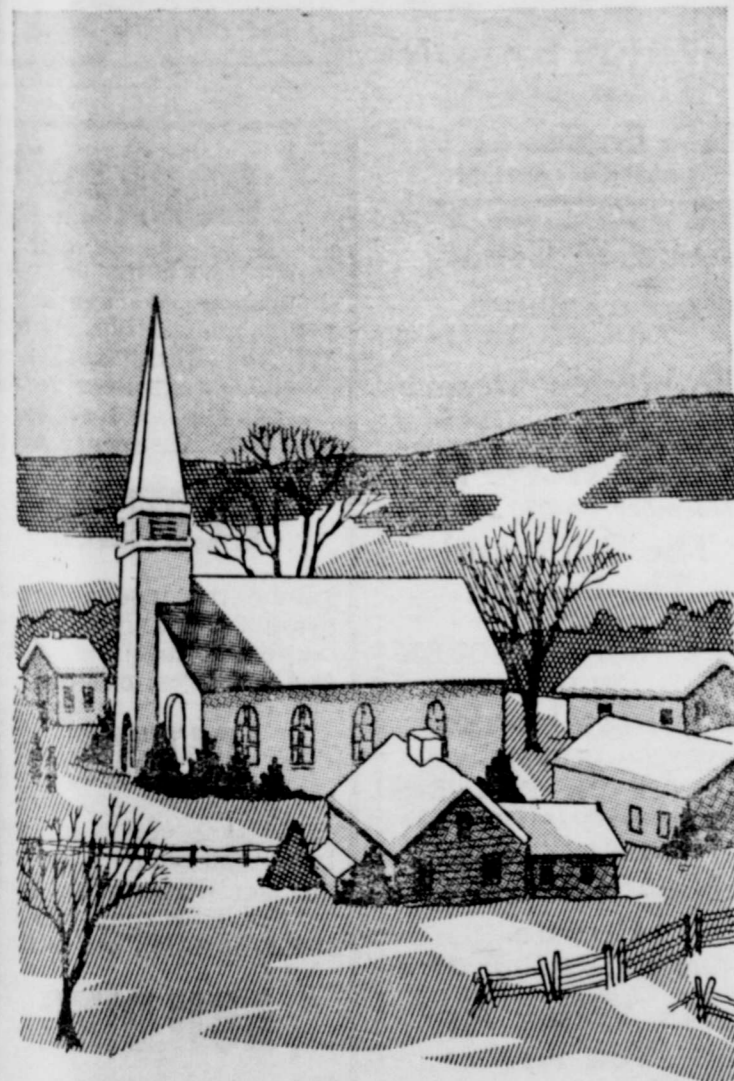


SUBSCRIBE! ALL THIS FOR ONLY \$1.75 PER MONTH!

The Dallas Morning News

FILL OUT AND MAIL THIS COUPON

Circulation Department, The Dallas Morning News, Dallas, Texas
Gentlemen:
Please send me The Dallas Morning News, DAILY and SUNDAY, for which I agree to pay \$1.75 per month.
Check or money order is enclosed for
 1 month, \$1.75 3 months, \$5.25
NAME.....
ADDRESS.....PHONE NO.....
CITY.....TEXAS



Merry Christmas

To all of our friends we send greeting and wish you a Merry Christmas.

MRS. GILBERT'S FLOWERS

Homer, Hettie, Juanita and Allie

Cliff Wampler
General Insurance
"AUTO BUSINESS HOME"
Phone JO-9-3161
203 N. Ave. D

SHOP GUNN BROS.
Gift and Stamp Redemption Store
For Lovely Christmas Gifts
New Gifts Arriving Daily
3 WAYS TO BUY
(1) All Stamps
(2) Part Stamps, Part Cash
(3) All Cash
GUNN BROS.
Gift and Stamp Redemption Store
Located at Sheppard Road and Avenue D
In United Grocery



A JOYOUS HOLIDAY BRINGS NEW FAITH TO A WAITING WORLD... MERRY CHRISTMAS TO ALL.



AND ALL EMPLOYEES

