

# Burkburnett Star

LIKED BY MANY — CUSSSED BY SOME — READ BY EVERYBODY

BURKBURNETT, WICHITA COUNTY, TEXAS. THURSDAY, NOVEMBER 22, 1951

NUMBER 18

Some people learn how to relax. Others never learn how to do anything else.

"Money is the root of all evil"—that's why we have to dig for it.

## Business Houses To Close For Thanksgiving

The Bank, Post Office and practically all business houses in Burkburnett will close Thursday for Thanksgiving. This is one of the holidays recognized by the Chamber of Commerce when all places of business close.

## Offenders Warned To Heed Tickets

It has been called to our attention that some who have been given red tickets for traffic violations tend to ignore them. These are not merely reminders, but a notice to appear before the judge at the City Hall. If this situation is not corrected, it will be necessary to issue warrants for arrest.

## Bird Call Imitator To Visit Burk School Monday Afternoon

Paul Leonard, who is slated to appear at the high school auditorium, Monday, Nov. 26, at 1:30 p. m., brings a unique program of bird songs, nature lore, and music, and a mysterious instrument.

His background qualifies him for exceptional work in these fields. As a little fellow in the Berkshire Hills of Massachusetts he wandered through the beautiful woods for hours at a time listening to the birds. He learned to imitate their calls and has since become their enthusiastic friend.

The son of a Baptist minister, he spent several years with his traveling missionary father in England, Palestine and Egypt. As a youngster he studied the piano rather indifferently . . . but the trumpet with zest. Today he is recognized as a trumpeter of the first rank and has played with some of the best bands in the Los Angeles area.

He combined whistling and trumpet playing into a program of entertainment and gradually evolved his present program of whistling bird songs and calls, presenting some fascinating nature lore and playing a mystery instrument. Behind him are several years of entertaining the public in person and on the radio. Recently his television appearances were seen from coast to coast.

One unusually interesting feature of the program is his playing of a mystery instrument which has no keyboard, reeds, strings, slides, valves or keys and which is played without being touched. On a recent "Truth or Consequences" show no one was able to guess its name. A small admission charge of 20 cents has been set for the Monday afternoon performance.

## Quarterback Club Slates Banquet

Members of the Quarterback Club met Monday night at the Grade School Cafeteria. Plans were made for the football boys' banquet which is slated for Monday night, Jan. 14, at Town Hall.

Nineteen members and guests were served donuts and coffee after the meeting. Date of next meeting will be announced in the future.

Mr. and Mrs. E. B. Chamberlain and Mrs. J. B. Ballard of Sherman were guests in the Ben McDonald home over the week-end.

# Thanksgiving



From its earliest beginnings Thanksgiving has been a family occasion, the gathering of those we love, a yearly meeting to give thanks to Him who has given us so much.

## Formal Opening Of New Gym Set For December 14

The game between the East Texas State basketball B-squad and the Sheppard Jets will feature the opening of Burkburnett's new gymnasium, Friday night, Dec. 14, at 8:15 o'clock. Admission will be 25 cents and 50 cents.

Billy Earl Askins, student at East Texas and formerly a basketball player for Burkburnett, will be in the game at that time. All fans are urged to attend the opening to witness two fast teams play.

## Halfhill-Ramming Wedding Date Is Set For December

Mrs. Della Ramming announces the engagement and approaching marriage of her daughter, Evelyn, to Sgt. Norman Halfhill of Rochester, Pa. The couple will be wed in rites scheduled for Dec. 16 at the Trinity Lutheran Church at Clara, Texas.

Miss Ramming graduated from the local high school in 1947. She attended college in Winfield, Kansas, for two years and taught in the Perry, Okla., school system for two years. She has been employed for the past four months by the United Gas Corporation in Burkburnett.

Sgt. Halfhill attended schools in Rochester. He joined the Air Force in 1948. For the past three years he has been stationed at Sheppard Air Force Base.

Mrs. Lewis Shores returned Friday from Houston where she has been visiting in the home of Mr. and Mrs. Sanford Shores and family.

## Jr. Study Club Sponsor Burk Blood Campaign

The Junior University Study Club is sponsoring the drive for the blood campaign in Burkburnett. Free transportation will be furnished by members to the Health Unit in Wichita Falls for those willing to contribute blood. Anyone wishing to donate is requested to call Mrs. Gene Robertson, chairman, at 528-J. Your appointment will be made and transportation furnished.

## December Rites Set For Boyd-Bundy Ceremony

Mr. and Mrs. W. M. Bundy Sr. are announcing this week the engagement and approaching marriage of their daughter, Evelyn, to Mr. William E. Boyd, son of Mrs. Agnes Boyd, all of this city.

The couple will be wed in services scheduled for Sunday, Dec. 16th at 2:30 p. m. at the Thrift Baptist Church with the pastor, Joe Green, officiating.

Miss Bundy is a graduate of the 1946 class here and has been employed for the past three years as Bookkeeper for Boyd Bros. Dept. Store.

Mr. Boyd is also a graduate of the 1946 class here. He is a graduate of Tarleton State College at Stephenville, Texas, and received his B. S. degree from Texas A & M College at College Station, Texas, in 1950. He is now in the U. S. Army and is stationed at Ft. Sill, Okla.

Mr. and Mrs. R. H. Henry visited in Fort Worth and Lott last week.

## Thrift Man Dies In Gun Mishap; Buried Sunday

Funeral services for Charlie Turnbow, 40-year-old oil field pumper who died Sunday in a Wichita Falls hospital, were held from the Thrift Baptist Church Tuesday at 1 p. m. followed by burial in Elmwood Cemetery of Bowie.

Turnbow died two hours after he was shot accidentally in the head with a .22 caliber rifle.

Officiating at the services were Rev. Joe R. Green, pastor, and Rev. Lamar Lewis, former pastor of the Thrift Baptist Church. Pallbearers were C. E. Lundberg, E. M. Cauble, Leroy Cotton, Jimmy Jaggars, James Sullivan and Frank Germany.

Survivors include his wife; two sons, Billy and Bobby of Thrift; and mother, Mrs. Lou Turnbow of Bowie; eight brothers, R. L. and Clay Turnbow of Borger, Van of Winters, and John, Ernest and Claude of Bowie, and Ed of Wichita Falls; one sister, Mrs. Alice Stephens of Bowie.

Turnbow, who lived on a Tucker Oil Company lease near Thrift for more than 12 years, left his house early Sunday carrying the rifle. Sheriff Hammett Vance said Turnbow stumbled and fell and the gun discharged with the bullet striking and lodging in the top of his head.

Mrs. T. W. Adams of Lott, Texas, is visiting in the home of her daughter, Mrs. B. L. McDonald on Avenue C.

## J. B. Thomas Presents Watch to Jim Ady



Jim Ady, Burkburnett manager of the Texas Electric Service Company, right, was an honor guest at the electric company's annual Quarter Century Club dinner Monday night at Wichita Falls. He is receiving a gold watch from J. B. Thomas, Fort Worth, president of Texas Electric Service Company. Six other new members of the Quarter Century Club were honored at the dinner.

## Burk Downs Electra 24-20 Friday Night

In a nip-and-tuck game here the Burkburnett Bulldogs came out victorious over the Electra Tigers, 24 to 20.

Play-calling Halfback Hugh Fewin, scoring all the Burkburnett touchdowns, turned in a brilliant performance, while the passing arm of Electra's Eugene Golden vied for the same prominence.

Fewin scored two touchdowns in the first period, first from the two, and then from the 10 after Burkburnett had recovered a fumble on the Electra 20.

In the second, Golden connected with a 25-yard pass to Glenn Hixon who ran 20 yards to score. Golden's kick was good.

Fewin put Burkburnett out front 18 to 7 in the third with a 20-yard run. Electra came right back, with a 20-yard touchdown pass from Golden to Left-half Foster. Kick was good, and the score was 18 to 14.

Then in the fourth, Harold Turnbow intercepted an Electra pass on the Electra 35, returning the ball to the 10 where Fewin a play later took the ball over. Attempt at conversion failed.

Electra got its last touchdown when the Tigers punted from their own 30 to the Burkburnett 30. The ball hit a safety man, and Electra fell on it. Golden's three-yard run, after a 27-yard march, left the final score 24 to 20.

Friends of Mr. and Mrs. Benny McDonald will be interested to know that their little son, Ben L., is recovering from Encephalitis. He has been very seriously ill, but is much better at this time.

John Brookman and Bill Reasner are expected to arrive here today from San Diego, California. Both of them are in the Navy.

## Federated Clubs Have Banquet Monday Night

On Monday night, Nov. 19, the Town Hall was the scene for the annual Federation Banquet for the four Federated Women's Clubs in Burkburnett.

The Hall for the occasion was very attractive with its decorations which were in keeping with the holiday theme. Seasonal flower arrangements were placed at advantageous points and the long banquet tables, laid with white linen, were accented with autumn leaves, berries, nuts and fruits. Especially effective was the large cornucopia which centered the speaker's table.

Mrs. Vernon Duke was mistress of ceremonies. Mrs. O. L. Clark gave the invocation.

A delicious turkey dinner with all the traditional trimmings was prepared and served by the high school home economics class.

Following the meal, Mrs. Duke introduced the following club presidents: Mrs. Fred Hunt, Current Literature; Larene Davis, Burk Study Club; Mrs. Bill Cauthorn, University Study Club; and Mrs. W. P. Boydston, Junior University Study Club.

Each president in turn presented their members and the following chairmen from each club who worked so diligently to make the banquet a success: Mesdames J. H. Rigby, Joe Majors and O. E. Melton from the University Study Club; Mesdames Ralph White, D. C. Dodson and F. M. McMurtry from the Current Literary Club; Mesdames Harry Dodson, Alvin Hill and A. G. Steele from the Burk Study Club; and Mesdames Bill Vincent, Maxine Creel, and B. H. Alexander, Jr., from the Junior Study Club. Each club member then introduced their guests.

Using the Hawaiian theme, the program presented consisted of two Hawaiian dances by little Jo Ann Gray, a Hawaiian picture by Rita Joy Hunt and Jimmy McMurtry, and in conclusion, Mrs. Gray showed colored movies of Hawaii.

Approximately 75 members and guests registered. Mrs. C. M. Archer presided at the guest book.

### Little Accomplished

It seems odd that so many folks can tell us so much about the future and yet do so little—past or present

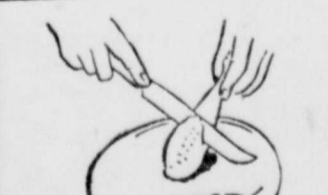
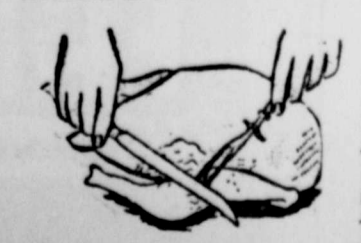
Harry Dodson, Cliff Dodson and Jim Alexander are in Fredricksburg hunting this week.

Louis Littlefair is ill at his home this week with the flu.

## HOW TO CARVE A TURKEY



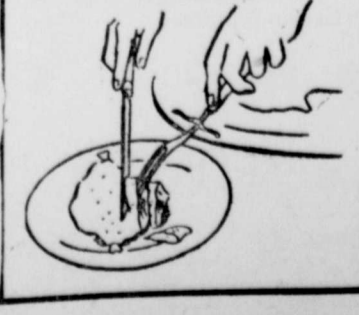
Then cut through joint joining leg to backbone and skin on the back. If the "oyster", a choice oyster-shaped piece lying in the spoon-shaped section of the back bone, was not removed with the thigh, remove it at this point. Hold leg on service plate with drumstick at a convenient angle.



Remove leg (thigh or second leg and drumstick). Hold the drumstick firmly with fingers, pulling away from turkey body. At the same time cut through skin between leg and body. Continue as follows: (1) PRESS LEG AWAY FROM BODY WITH FLAT SIDE OF KNIFE.

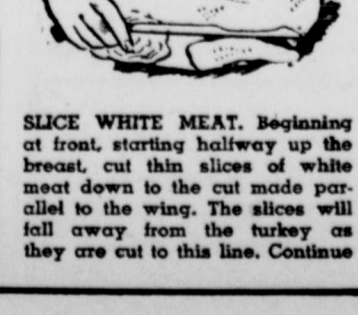
firmly on plate with a fork. Cut slices of meat parallel to the bone. (4)

CUT INTO WHITE MEAT PARALLEL TO WING. Make a cut deep into the breast to the body frame parallel to and as close to the wing as possible. (5)



Remove individual servings of stuffing from an opening cut into the side of the turkey where leg has been removed. (6)

SLICE WHITE MEAT. Beginning at front, starting halfway up the breast, cut thin slices of white meat down to the cut made parallel to the wing. The slices will fall away from the turkey as they are cut to this line. Continue



carving until enough meat has been carved for first servings. Additional turkey may be carved as needed.

Remove individual servings of stuffing from an opening cut into the side of the turkey where leg has been removed. (6)



Prepared by Poultry and Egg National Board and released by Purina News Bureau

# The Burkburnett Star

John Brookman—Harry Dodson, Owners and Publishers  
Harry Dodson, Editor



Printed Weekly at Burkburnett, Wichita County, Texas. Entered as second class matter at the postoffice at Burkburnett, Texas, August 19, 1907, under the Act of Congress of March 3, 1879.

**NOTICE TO THE PUBLIC**—Any erroneous reflection upon the character, standing or reputation of any person, firm or corporation, which may appear in THE STAR, will be gladly corrected as soon as it is brought to the attention of the publishers.

In Wichita and Cotton Counties \$2.00  
Outside These Counties \$2.50

## 1930 Roads Carry 2-3rds 1951 Freight

More than two-thirds of all freight tonnage moves over the nation's 3,500,000 mile highway network. Some 50,000 American towns are without rail service and entirely dependent on trucks and truck-trailers for their daily needs. When confronted with the facts, none of us would dispute the vital necessity for improving and modernizing our roads. Few of us, unfortunately, do much about it.

What is needed is a well-conceived workable program supported by the public. A youthful Detroit industrialist has supplied such a program. He's Roy Fruehauf, 42-year-old president of Fruehauf Trailer Company, who has outlined a six-point program which will give us an up-to-date road system if properly executed. This program, says Mr. Fruehauf, would include: (1) More exits and entrances to cities to break traffic bottlenecks. (2) Scientific design of roads to replace the present "hit and miss" approach. (3) Road tests that will prove something instead of "providing publicity for unfounded, sensational charges." (4) Better maintenance of roads. (5) Higher salaries for highway engineers. (6) Elimination of the practice of "diverting" funds collected from highway users.

Mr. Fruehauf sums up the seriousness of the highway situation: "Our roads are carrying 53% more vehicles than a decade ago. Yet, our highway system was built to meet the requirements of the 1930 motorist—and it is still being maintained according to the standards of that era."

## Horsepower Makes Horse Sense

It has been said that a nation's ability to progress and defend itself can be measured by its horsepower. Horsepower being, of course, the measure of the engines it turns out to power its industry, to roll its freight and its people on the highways and rails, in the air, and on the sea. While exact figures country by country are not available, it is evident that the United States produces more horsepower than any other.

We were reminded of this the other day by an announcement from the Detroit Diesel Engine Division of General Motors, that since it entered the field in 1938 it had produced 50-million horsepower in Diesel engines. The significance of this is in the fact that Diesel is a relatively new source of power. Actually, it only began to find wide-spread use in the early 30's, when C. F. Kettering devised a 2-cycle, much smaller, lighter, and more flexible Diesel engine for a greater variety of uses.

The impact of this is being increasingly felt from the oil fields of Texas to the fishing fleets off New England.



As typically American as your Thanksgiving turkey, life insurance is a means of assuring continued family life—no matter what happens to you!

## B. H. ALEXANDER

Representing  
**Southwestern Life Insurance Company**  
JAMES RAIPH WOOD, PRESIDENT HOME OFFICE • DALLAS

## J. D. "Duke" OWEN SERVICE STATION

Corner Avenue D and Main St.

Your Friendly Magnolia Dealer

## GRAGG MOTOR CO.

For NEW and USED CARS  
A Good Selection to Choose From  
1201 Lamar Wichita Falls, Texas

American-made Diesel engines are irrigating deserts in Africa and Arizona, building dams in the Pacific Northwest, hauling freight everywhere between and to the four borders of our country, and everywhere else in the world where there is a rail or road to move on. As W. T. Crowe, General Manager of the Detroit Diesel Division remarked, "Diesel is an economical, reliable source of power, and our production is limited only by what our country and the rest of the civilized world needs."

## Burkburnett . . . . History

Revealed By Star Files 10 Years Ago...

In observance of National Art Week, Mrs. J. M. Matthews is displaying some of her work in the shop window of the Elite Dress Shop throughout the week.

The U. S. Marine Corps announced today that a temporary recruiting office would be opened in Burkburnett for a period of 8 days for the purpose of accepting applicants for enlistment.

The finals in the annual golf tournament of the Burkburnett Golf Club members will be played Sunday afternoon beginning at 1:30. B. H. Alexander, Jr., and Harry Goble will fight it out for the championship.

Community Thanksgiving services were held Wednesday evening at the First Methodist Church sponsored by the Burkburnett ministerial alliance.

More than 100 soldiers from Sheppard Field were entertained in private homes here Thursday as Burkburnett residents observed Thanksgiving day No. 1 with the traditional turkey dinner.

## Fort Worth Fat Stock Show Set For Jan. 25-Feb. 3

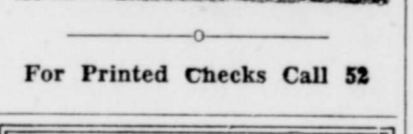
Breeding cattle, beef breeds, will compete for \$40,715 in premiums at the Southwestern Exposition and Fat Stock Show, January 25th through February 3rd, exposition officials announce. This includes \$6,335 in the carload-and-pen bull department. Other than this department, the prize money offered is divided as follows: Herefords, \$13,800, of which half is offered by the American Hereford Association and the other half by the show; Polled Herefords, \$5,000, the Texas Polled Hereford Association providing half and the show the remainder; Shorthorns, \$6,000—half by the American Shorthorn Breeders' Association and half by the show; Aberdeen-Angus, \$7,580—the American Aberdeen-Angus Association and the show each offering half; Brahman, \$2,000—half by the American Brahman Breeders' Association and half by the show.

Closing date for livestock entries is Dec. 10th.

For Printed Checks Call 52

**BUYER MEETS SELLER** IN OUR AD COLUMNS

**GASOLINE "GOSSIP"**  
By JAMES NUNN



"OOPS... WELL THE BOSS SAID TO CLEAN THEM ALL!"

It's a rule with us to keep your car clean, inside and out, to please you always.

We Give S&H Green Stamps

**Nunn's Gulf Service**  
404 E. 3rd St. — Phone 348  
Burkburnett, Texas

## Miss Beckman Gives Short Talk

Miss Katherine Beckman of Burkburnett took part in the workshop for college and high school English teachers held at Midwestern University in Wichita Falls November 10.

Miss Beckman gave a brief talk on one of the panel discussions held throughout the day. Subject of the workshop was the role of mass media such as newspapers, magazines, and radios in teaching.

The annual conference is sponsored by the Texas Conference of College Teachers of English and the English section of TSTA.

**Insurance Service Bonds**  
PROPERTY MANAGEMENT  
REAL ESTATE  
SALES AND SERVICE  
**W. A. ROBERTS**  
Phone 166 Office — 113 Res.  
Real Estate - Bonds - Notary

20 GAL. WATER HEATERS,  
Fully Automatic, Special, \$49.95.  
Garland Furniture Co.

You'll Enjoy your meals at  
**TOM'S COFFEE SHOP.**

## THE TEXAS DEPARTMENT OF PUBLIC SAFETY, MOTOR VEHICLE DIVISION

Will appoint official inspection stations for the purpose of certifying to the good operating conditions of motor vehicles.

Each person or organization so appointed will have to furnish a \$1,000 bond covering performance of their duties and also guaranteeing payment of the percentage of fees due the state.

The appointment made at present will be from the date of appointment until August 31, 1953.

Therefore a two year premium of \$20.00 will be charged for the bond, being in the amount of \$1,000.

We are in position to give you immediate service on these bonds which you are required to have in connection with the operation of an official inspection station.

## R. D. Laney Insurance Agency

411 AVE C Street Telephone 10

## J. A. Suttles Electric Shop

Motors and Parts Wire and Supplies

CONTRACTING — REPAIRING

205 East 2nd Street Burkburnett, Texas

## Gain new vim... new joy in life!

There is no need for you to be tired, nervous, cranky or constipated if due to dietary deficiencies which occur only when the daily intake of B-vitamins and Nicotin is less than minimum requirements over a prolonged period. These non-specific symptoms do not in themselves prove a dietary deficiency and may have other causes or be due to functional conditions.



**BEXEL SPECIAL FORMULA**, the wonderful new vitamin compound, may be exactly what you need to put you on your feet again if you... like so many, many others... are suffering from common symptoms of specific deficiencies.

With all the medical knowledge of vitamins now made available by science and health research, it is senseless for you to continue feeling excessively weak and over-fatigued, all jittery and nervous.

Where such conditions are due to lack of B-vitamins, iron and trace minerals known to be essential in human nutrition, Bexel may be the "miracle drug" you are looking for to put you in tip-top shape again!

Amazing New Medical Formula Combines Important B-Vitamins, Iron and Trace Minerals Known to be Essential in Human Nutrition!

## BEXEL HELPS YOU BUILD RICH RED BLOOD

Everybody knows the importance of iron in your diet to help you build rich, red blood. Well, just one capsule of Bexel Special Formula a day contains five times the minimum daily requirements of iron doctors say is needed by the body.

**POTENCY GUARANTEED**

YOU FEEL BETTER AFTER ONE BOTTLE... OR MONEY BACK WITHOUT QUESTION



**McKESSON'S Bexel**  
SPECIAL FORMULA VITAMIN CAPSULES

## CORNER DRUG STORE

Phone 44 Geo. McClarty, Owner Burkburnett

Help Fight TB



Buy Christmas Seals

## RELIEF AT For Your CO

Creomulsion relieves promptly if goes right to the seat of phlegm and aid nature to heal raw, tender, inflamed membranes. Guaranteed to relieve or money refunded. Creomulsion stood the test of millions of relieved Coughs, Chest Colds, Asthma.

## DR. QUIZ CONDUCTED BY GEO. M.S. CAR

WHAT STATE IN THE U.S. "ROUND ON BOTH ENDS HIGH IN THE MIDDLE"

A. ALABAMA  
B. TEXAS  
C. OHIO  
D. ILLINOIS

THIS SAILING SHIP IDENTIFIES WHAT AUTOS?

A. DE SOTA  
B. LA SALLE  
C. PLYMOUTH  
D. FORD

THESE MEN ARE SINGING ABOUT A GIRL NAMED...

A. MARY C. MARGIE  
B. NELLIE D. SUSIE

The CORNER DRUG STORE is thankful to know answer to your Christmas gift needs... Thank give O-hi-o, Plymouth and Nellie for the quiz and happy to wish you a glorious Thanksgiving

**CORNER DRUG STORE**  
BURKBURNETT — TEXAS

## 15 DENIER -- 51 GAUGE FIRST QUALITY NYLONS

MADE BY A NATIONALLY FAMOUS MANUFACTURER OF FINE NYLON HOSE.

A REGULAR \$1.35 SELLER



Only 300 pairs

\$1 Pair

Beautiful New Fall Shades

BUY YOUR CHRISTMAS SUPPLY NOW

**THE FAMOUS**  
Famous for its Values

# PARKER'S FOOD STORE



# Thanksgiving

## 1951

Copyrighted 1951  
by Meyer Both Company

## Everything for a PERFECT FEAST at PARKER'S

DELMONTE <b>PUMPKIN</b> No. 2 1/2 can <b>20c</b>	Yes, again as we sit down to our Thanksgiving dinner let us give thanks for the privilege of being an American... for the right to worship as we wish... and PARKER adds its thanks for the privilege of serving you, good friends and customers.	WHITE HOUSE <b>APPLE SAUCE</b> 300 size <b>23c</b>
Non Such <b>MINCE MEAT</b> 9 oz. <b>28c</b>	DELMONTE <b>PEARS</b> 303 size <b>29c</b>	<b>TOMATO SOUP</b> No. 1 can <b>13c</b>
COMET <b>RICE</b> 2 lbs. <b>37c</b>	DOLES SLICED <b>PINEAPPLE</b> No. 1 size <b>17c</b>	CRYSTAL BAY <b>OYSTERS</b> 4 3-4 oz. <b>48c</b>
SELECT <b>PINTO BEANS</b> 2 lbs. <b>32c</b>	MARTINELLIS <b>APPLE CIDER</b> 1/2 gallon <b>69c</b>	125 Ft. <b>WAX PAPER</b> cutrite <b>30c</b>
ADMIRATION <b>COFFEE</b> lb. <b>91c</b>	WHITE HOUSE <b>APPLE JELLY</b> 12 oz. <b>19c</b>	SELF POLISH <b>SIMONIZE WAX</b> pint <b>57c</b>
ALL FLAVORS <b>JELLO</b> pkg. <b>9c</b>	TENDER SWEET <b>ASPARAGUS</b> Cut green No. 1 <b>23c</b>	WUNDERLICK—SHELLED <b>PECANS</b> 7 ozs. <b>59c</b>
COLONIAL <b>FRUIT CAKE</b> 2 lbs. <b>\$1.98</b>	NIBLETS W. K.—GOLDEN <b>CORN</b> 12 oz. can <b>19c</b>	GLAZED <b>CHERRIES</b> 8 oz. <b>49c</b>
DURKEE'S <b>COCONUT</b> lb. <b>59c</b>	HUNTS <b>TOMATOES</b> 8 oz. can <b>9c</b>	DROMIDARY—PITTED <b>DATES</b> 7 1-4 ozs. <b>24c</b>
HERSHEY'S <b>COCOA</b> 1/2 lb. <b>28c</b>	<b>Tender MEATS</b>	
	<b>TURKEYS</b> FANCY TOMS lb. <b>59c</b>	<b>HENS</b> Nice — Fat lb. <b>57c</b>
	<b>PICNICS</b> , Smoke Cure lb. <b>39c</b>	<b>PEPPERS</b> Fancy Bell lb. <b>23c</b>
	<b>ROAST PORK</b> , Butt Cut lb. <b>49c</b>	<b>CELERY</b> Fancy Pascal lb. <b>9c</b>
	<b>BACON</b> Star Sliced lb. <b>59c</b>	<b>YAMS</b> Maryland Sweets lb. <b>19c</b>
	<b>SAUSAGE</b> Star Roll lb. <b>39c</b>	<b>CRANBERRIES</b> lb. Cello <b>27c</b>
	PARKER'S <b>FRYERS</b> Fresh, Whole lb. <b>55c</b>	<b>ONIONS</b> Fancy Yellow lb. <b>7c</b>
	<b>PICNICE</b> Ready to eat lb. <b>57c</b>	<b>APPLES</b> Rome Beauty lb. <b>10c</b>
	WHOLE CURED <b>HAMS</b> lb. <b>57c</b>	<b>MIX NUTS</b> CELLO PACK lb. <b>53c</b>
	<b>TURKEYS</b> FANCY HENS lb. <b>69c</b>	<b>PECANS</b> Stuarts Paper Shell lb. <b>49c</b>

### Fresh FRUIT & VEGETABLES

<b>LETTUCE</b> LARGE HEADS each <b>23c</b>	<b>CARROTS</b> FANCY CELLO pkg. <b>19c</b>
--	--

JACKS <b>VANILLI WAFERS</b> Pkg. <b>25c</b>
PREMIUM <b>CRACKERS</b> Lb. <b>30c</b>
PILLSBURY'S <b>Hot Roll Mix</b> Box <b>30c</b>
PILLSBURY'S <b>White Cake Mix</b> Pkg. <b>38c</b>
<b>Pecan Divinity</b> 10 Oz. <b>49c</b>
Chases Chocolate Covered <b>CHERRIES</b> Lb. <b>65c</b>
Chases Chocolate <b>DROPS</b> Lb. <b>33c</b>
Chases Orange <b>SLICES</b> Lb. <b>25c</b>

HONOR BRAND FROZEN FOODS

WHOLE SUN <b>ORANGE JUICE</b>	<b>19c</b>
FORD HOOK <b>LIMA BEANS</b>	12 oz. <b>33c</b>
<b>BROCCOLI</b>	10 oz. <b>31c</b>
WHOLE KERNEL <b>CORN</b>	10 oz. <b>21c</b>

**WE GIVE "S.&H." GREEN STAMPS**

**DOUBLE "S.&H." GREEN STAMPS EVERY WEDNESDAY**  
With Purchase of \$3.00 or More

**IT'S WISE TO SAVE**

HEALTH AND BEAUTY COUNTER

BEYERS <b>ASPIRIN</b>	24's <b>25c</b>
COLGATE <b>DENTAL CREAM</b>	<b>47c</b>
HINDS H and A <b>HAND CREAM</b>	<b>57c</b>
4 Ounce <b>WILDROOT CREME OIL</b>	<b>75c</b>

# PARKER'S FOOD STORES

WE GIVE S.&H. GREEN STAMPS

COMPLETE FOOD MARKET 301 MAIN STREET

NO MERCHANDISE SOLD TO DEALER OR OTHER MERCHANTS

OUR PRICES ARE LOWER



Scot  
TISSUE

10<sup>c</sup>  
ROLL

CUT-RITE

Wax  
PAPER

23<sup>c</sup>

Pabst-ett

Cheese

2 Lb. Box

79<sup>c</sup>

House of George  
Giant 46 oz.

Orange  
JUICE

19<sup>c</sup>

AMERICAN BEAUTY

KRAUT

3 for 25<sup>c</sup>

HEARTS DELIGHT

Pineapple

Crushed  
NO. 2

23<sup>c</sup>

DEL MONTE

Fruit Cocktail

No. 303

25<sup>c</sup>

DROMEDARY'S SPECIAL TO YOU All Four, Gingerbread, Devils Food, Fudge and White Cake Mixes for ONE LOW PRICE.

**Dromedary Sale - 99<sup>c</sup>**



Quality Meats

LEAN, SEMI-BONELESS

**Pork Roast** Pound . . . 55<sup>c</sup>

DECKERS IOWANA TRAY PACK

**Bacon** Pound . . . 57<sup>c</sup>

PICNIC

**HAMS** Pound . . . 47<sup>c</sup>

FRESH

**Ground Meat** Pound . 59<sup>c</sup>

**Chuck Roast** Pound . . 69<sup>c</sup>

THANKSGIVING

**HENS** Lb. 55<sup>c</sup>

**UNITED**  
Super Markets

We Sell  
for Less



**PRAISE-WINNERS**  
for **THANKSGIVING**  
**DINNERS**



We Reserve the Right To Limit Quantities

Come to the UNITED GROCERY for everything you need for a wonderful feed — fine foods at the fairest prices. Every department features super specials for Thanksgiving feasting to help you fill the menu without emptying your purse.

**BEST BUY of the Week!**



Folgers  
Coffee

Pound . . 79<sup>c</sup>

PET OR CARNATION

MILK 2 for 27<sup>c</sup>

KUNERS—Whole Kernel

CORN 12 ozs. 16<sup>c</sup>

WRIGHT'S DELIGHT 3 lb. Carton

PURE LARD 49<sup>c</sup>

ROSE HEART

TOMATOES 10<sup>c</sup>

OCEAN SPRAY

Cranberry Sauce 17<sup>c</sup>

Mrs. Wilkes Pure Strawberry

Preserves 2 lb. jar 55<sup>c</sup>

DELMONTE

Pumpkin 2 1/2 can 23<sup>c</sup>

CAMAY

Soap Reg 8<sup>c</sup>

McGILL—ALL STEEL  
MOUSE TRAPS 2 for

REGULAR 14 oz.  
CREAM of WHEAT

GRIFFINS  
WAFFLE SYRUP 3 lb. jug

BEST FOODS—BREAD AND BUTTER  
PICKLES

SALAD BOWL  
FRENCH DRESSING 8 oz.

JOLLY TIME  
POP CORN 10 oz. can



BAKERS BEST—(Tax Included)

HAIR TONIC

\$1.25 Size

ABSORBINE Jr.

70 %  
ALCOHOL pint

CHAMBERLAINS  
LOTION lg., 4, oz.



Frozen Food

FLORIDA GOLD—Frozen

Orange Juice

PATIO

Chili lb

FAIRMONT

Broccoli

FRINOR

Catfish lb

**Garden Club Enjoys Feasting**

The Unity Garden Nov. 14 in the home of Mrs. A. Goodwin for their luncheon and an- show.

The festive feast was enjoyed, the presi- Miller, called the order for a business which time it was help their Christmas of- the boys at SAFE, to be brought to the leader, presented who gave a report

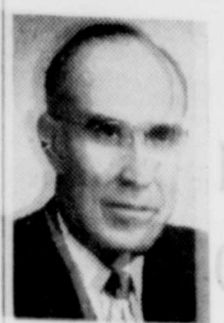
of the state board meeting at Fort Worth, Mrs. Ted Roark who talked on ornamental shrubs and trees, Mrs. Short gave a talk on roses and Mrs. Boman gave the garden reminder.

After admiring the beautiful arrangements, 18 members and one visitor departed thanking Mrs. Goodwin and co-hostesses Miller, R. C. Gilbow and White for a wonderful time.

**PATTERSONS HAVE OKLAHOMA GUESTS**

Mr. and Mrs. J. M. Patterson have had as guests in their home, Mrs. Mary Lawson of Tulsa, Okla., and Mrs. J. L. Lay of Oklahoma City. On Sunday they were joined by Mr. Lay and H. D. Hinkle of Devo, when they all enjoyed a pre-

Thanksgiving dinner in the Pat- terson home Monday they all were visitors in the H. D. Hinkle home in Devo. Mrs. Lawson and Mrs. Lay are sisters of Mrs. Patterson, and Mr. Hinkle is a brother.



**First Baptist Church**

T. LYNN STEWART, Pastor

The Church in Bible Study, 9:45 a. m. Many are being blessed by the study of God's word each Sunday morning in one of our classes. We have classes provided for every age. The Lord blessed with 517 in our Sunday School last Sunday. We rejoice that we had 36 visitors present. Won't you join the large crowd of people this Sunday morning and get a blessing from a study of God's blessed word?

10:55 a. m. Morning Worship. Sermon: "Who is the Lord, that I Should Obey His Voice?" This is a question asked by the skeptic in all centuries. Don't miss this Bible message.

6:15 p. m. The Church in Training. Unions are provided for all ages.

7:30 p. m. Evening Worship. Sermon: "A Castaway of God." What did Paul mean when he said, "Lest I should be a castaway?" Youth choir will sing.

Wednesday 7:00 p. m. Officers and teachers of the Sunday School meet to study next Sunday's lesson, 7:35 p. m. Prayer Service and Youth Choir practice.

Babyland is open for all regular services of the church. Capable attendants are in charge. Revival service Dec 5-8. Ross Coggins, a young preacher of

**Calvary Baptist Church**

College and Avenue B

3:15 - 9:00 a. m.—Radio program, KELT, Electra. Tune at 3:50 on the dial.

10:00 a. m.—Sunday School Lesson, Galatians, chapter 5. Pete Bryan, S. S. Supt.

11:00 a. m.—Singing. Special songs by Boosters. Pastor to bring the message.

6:45 p. m.—Young people to meet with Virgil Jones and wife.

7:30 p. m.—Song and preaching service. The pastor will be preaching.

Come and let us give thanks unto God for all His bountiful services toward us. This friendly church, with an open Bible for all people with open hearts and minds, welcomes you. Come as you are and hear God's word as it is.

—Ray C. Morrow

**Western Supper**

The Western Supper with baked beans, barbecued pork chops, cole slaw, pickles, onions, apple pie and coffee is being given at the parsonage of the Central Christian Church Thursday, Nov. 29 from 6 to 8 p. m. by the Christian Women's Fellowship. Yum, yum, what a supper for 85 cents. Children 40 cents. Remember we are cooking enough for you. Come and get it.

Mr. and Mrs. Mont Bowles are attending a Farm Bureau meeting in Houston this week.

Paul Ferguson, student at Howard Payne spent the weekend at home.

**Chorus Group To Sing Here Monday**

The Community Chorus of Wichita Falls and vicinity will give their annual concert here at the Methodist Church Monday night, Nov. 26, at eight o'clock. The chorus is directed by Cecil Lupo, minister of music of the First Methodist Church of Wichita Falls, and Dr. Nita Akin is the accompanist. The public is invited to attend free of charge.

The chorus was formed a little over a year ago. It has been well received in concerts at Olney, Wichita Falls, Iowa Park, Henrietta, and Burkburnett.

Membership in this chorus can be obtained through Mrs. W. J. Lacy. Local members include Mrs. Bill Bean, Mrs. Tom Britton, Mrs. Cliff Dodson, Miss Mary Johnson, and Mrs. Lacy.

**Mrs. R. A. Lincoln To Review Book Here December 4**

Mrs. R. A. Lincoln will review the book, "The Road to Bithynia" by Dr. Frank Slaughter, Tuesday night, Dec. 4 at the Central Christian Church. The review is sponsored by the Christian Women's Fellowship. There will be no ticket sales. There will be a free will offering, however.

This book is a novel on the life of Luke. The author, a practicing physician, should have a thorough understanding of Luke who was also a physician. Dr. Slaughter is a prolific writer, too. He spent much time and study on all available material before writing the Road to Bithynia, giving much thought to the characters he was portraying.

People who have heard Mrs. Lincoln in previous reviews, will want to hear her. To others, we say, "Don't miss this opportunity."

Do you know that your health is directly protected by the Wichita County TB Association? Every person who handles the food you eat is required to have a chest X-ray—to make sure he is free of contagious tuberculosis. Waitresses, waiters, cooks, dish washers and all other food handlers are given free X-rays.

**Methodist Church**

T. M. JENSON, Pastor

Sunday School at 9:45 a. m. Morning Worship at 10:50 a. m. At this service the pastor will preach on "By the Grace of God."

Evening Worship at 7 p. m. Continuing the sermons from Proverbs, the pastor will preach on "The Self-Respect of a Godly Man."

Woman's Society of Christian Service meets Monday afternoon at the church, 2:30 o'clock, for a program led by the secretary of student work.

The board of stewards will meet Monday evening, 7:30, at the church.

M. Y. F. Sunday evening at 6 o'clock.

Choir rehearsal Wednesday at 7:30 p. m.

**Christian Church Attendance Grows**

The Sunday School of the Central Christian Church is very happy over enough growth that it necessitates taking over the parsonage as an educational building. Plans are being made for decorating the rooms in keeping with their uses. The teachers, pupils and their parents are happily planning and exchanging ideas. Children not in Sunday School are invited to attend the Christian Church Sunday School.

The teachers of the school met Sunday afternoon at the parsonage for a planning period to take care of the new needs. Their recently planned trip to the educational building of the First Christian Church in Wichita Falls had to be postponed. It is to be made this next Sunday. The educational director there will accompany the visitors on a tour of the building and answer their questions and give suggestions.

Christmas Seal sales to control and prevent tuberculosis are now now conducted in about 40 countries, including Burma, Ceylon, Iceland, Pakistan, Luxembourg, Malayan Peninsula, and the Union of South Africa. The Christmas Seal idea originated in Denmark in 1904 to provide funds for tuberculosis children.

**Rotary Club**

Each Tuesday at Town Hall 12:05 o'clock

Pres. Virgil Brookshier called the meeting to order last Tuesday noon having Cliff Wampler lead the group in singing of the first verse of America. Ralph Davis gave the invocation.

Following the luncheon, T. M. Jensen, program chairman, gave a talk on "Thanksgiving," enumerating our blessings for which we should be thankful.

Don Short introduced O. T. Freeman, R. W. Lindsey, Frank Schram, Bart Dorbandt, Everett McCullough, Tom Stack, Fred Jones, W. P. Mowle, Hub Cheshire, Fred Rinenour, T. C. Foley and Ray Hanks, visitors from the Wichita Falls Club. Ralph Davis had as his guest, his brother, Charles Davis from Sussex, England. Joe Golding came with O. T. Freeman and Stump Cole was guest of Mr. Lindsey.

**Junior Study Club Met November 15**

The Junior University Study Club met Thursday, Nov. 15 at the home of Mrs. Ralph Brookshier, Jr., with Mrs. H. B. May as co-hostess.

After a short business meeting, Mrs. Rudolph Robinson gave a very interesting program on "A Famous Woman Actress."

Delicious refreshments were served to Mesdames Dan Hockett, Truett Majors, E. H. Alexander, Jr., Ralph Brookshier, Jr., Fimis Taylor, Phil Odum, Floyd Marten, Rudolph Robinson, C. W. Gilbert, John Page, Maxine Creel, J. C. Stevens, Bill Vincent, H. B. May, L. D. Holman, Chris Morris, W. P. Boydston and Bill McLean.

Mrs. W. E. Tyler and children are staying at the home of her mother, Mrs. G. R. Kramer, since returning from Guam where they have been the past six months. S-Sgt. Tyler was on Guam 18 months where he contracted TB and is now in the Fitzsimmons Hospital in Denver. At a future date, Mrs. Tyler will move to Denver to be near her husband.

Sell it with a Scar Classified Ad

**GOD IS ALWAYS ON THE JOB**

Strength for daily living... to meet the hardships... to help when the way grows dark... comes from letting Christ rule your life... Jesus invites you to find strength in Him. He promises to help those who place their trust in Him.

**December 5 - 9 CRUSADE FOR CHRIST**

ROSS COGGINS, Preaching Services Wednesday and Saturday at 7:15 p. m. Services Sunday, Dec. 9 10:55 a. m., 7:30 p. m. **FIRST BAPTIST CHURCH** Hear Our Pastor Preach This Sunday, 10:55 a. m., 7:30 p. m.

**New Low Terms!**



Come in! See how easy it is to buy this beautiful new...

**FRIGIDAIRE**

Now's the time to get rid of your old, worn-out, too-small refrigerator!

Don't wait another day to cash in on the new credit regulations—only 15% down and up to 78 weeks to pay—and be sure you buy Frigidaire, America's No. 1 Refrigerator. We'll give you top allowance for your old refrigerator while it's in good running condition—and we'll be glad to prove how much you'll enjoy the extra roominess, extra protection and extra quality found only in Frigidaire.

**15% down**  
Our Trade-in allowance may be all you need for the Down Payment

Frigidaire Master Model MD-81 only 51¢ per day

- More than 8 cu. ft. capacity
- 15.7 sq. ft. shelf area
- Full-width Freezer Chest
- Full-width Chill Drawer
- Two big porcelain Hydrators
- Quickcube Ice Trays
- Rustproof aluminum Shelves
- Lifetime Porcelain Interior
- Powered by Meter-Miser

**78 WEEKS TO PAY!**

See all the new Frigidaire Refrigerators—there's a size, style and price just right for you from \$199.75

**Garland Furniture Company**

Phone 103

**TOP PRICES**

PAID AT ALL TIMES

**FOR YOUR Live Stock**

See Joe McCluskey, Morris Philpott or Charles Bowles about your stock

**Sale Every Saturday**

**1:00 p. m. Promptly**

COME AND MEET YOUR FRIENDS EVERYBODY WELCOME

**Burkburnett Livestock Sales Barn**

Joe McCluskey, Charles Bowles, J. V. Brookshier, Bill White  
Morris Philpott

# City Cab - Phone 165

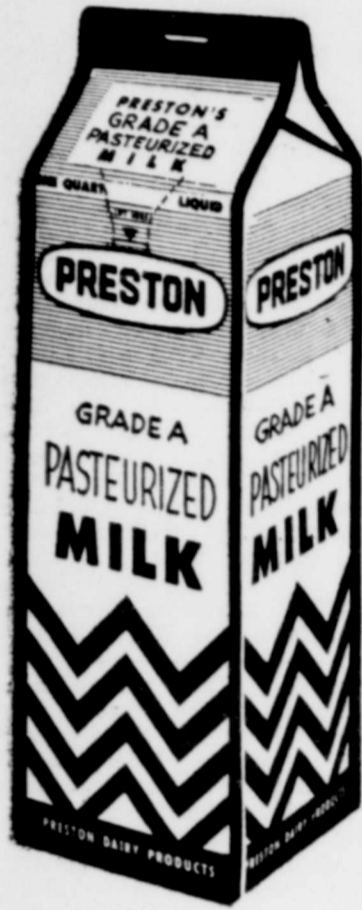
PROMPT, COURTEOUS SERVICE -- ACROSS FROM BURKBURNETT STAR ON AVENUE C NIGHTS CALL 772 or 486-M

## Valley View Baptist Church

Sunday School at 10 A. M.  
Evening service at 8 P. M.  
Rev. Jimmie Jaggears, Pastor  
51-Z

20 GAL. WATER HEATERS,  
Fully Automatic, Special, \$49.95.  
Garland Furniture Co.

Contribute to the Youth Center



Fresh Daily . . . .  
AT YOUR STORE . . . .  
AT YOUR DOOR . . . .  
PRESTON DAIRY  
PRODUCTS

211-13 E. 2nd St. - Phone 22

## Henderson Home Scene for Circle Dinner Monday

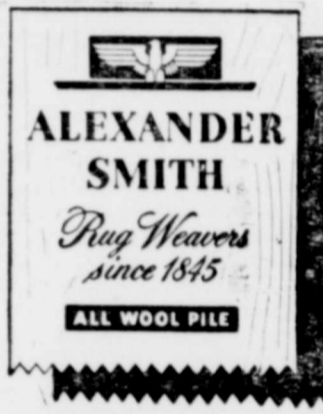
Circle 3 of the Methodist W. S. C. S. met Monday evening, November 12 at the home of Mrs. Howard Henderson with Mrs. Grace McDonald as co-hostess.

Mrs. Martha Carter gave the Devotional Service using the theme, "The Three Meditations of Thankfulness". The remaining part of the program was devoted to a review of the book "The Iron Mistress" by Mrs. Lynn Steele.

Enjoying the evening were: guests, Bro. and Mrs. Jensen and Mr. Henderson, and members, Mesdames Martha Britton, Marian Ragsdale, Nancy Flanagan, Mildred Foyce, Edith Hall, Virginia Mitchell, Margaret Carver, Mary Veach, Juanita Willingham, Katherine Ferris, Helen Arvington, Phyllis Brown, Lynn Steele, Martha Carter and the hostesses.

20 GAL. WATER HEATERS,  
Fully Automatic, Special, \$49.95.  
Garland Furniture Co.

Reductions UP To  
20 Per Cent



A Nice Selection  
Of Beautiful Patterns  
To Select From  
**BOYD BROS.**  
Cash Dept. Store  
JIMMY and CHARLIE

## A Dog's Life

Much is said in a dog's behalf  
They are the friend of man  
The idea has been handed down  
Since history began.

The dog, it seems, can do no wrong  
And roams both night and day  
In every yard except his own  
In spite of all you say.

He only needs to have a tag  
That's issued for one dollar  
And wears the thing around his neck  
Just bolted to the collar.

He then has access to your land  
And you need not complain  
Because according to the law  
That would not be humane.

And you in turn must build a fence  
To protect your shrub or tree  
Because his owner thought to pay  
The necessary fee.

And so he goes his noisy way  
But you cannot protest  
Because he wears that metal tag  
His license to molest.

—Selected

## Art Group Meets

The Burkburnett Art Group met Thursday afternoon at the Hill Ceramic Studio for a very enjoyable meeting. The members present spent the time in widely varied arts, crafts and hobbies including Oil painting water color, ceramics, and the making of nylon corsages.

Mrs. Dan Sheriff was presented an appropriate gift to show the group's appreciation for the help and guidance through it's first year. The Burk Art group actually is an auxiliary to the Wichita Falls Art Association, but it was Mrs. Sheriff who was instrumental in forming a local unit.

Delicious refreshments of cake and coffee were served to the following: Mesdames Maude Bohner, Katherine McKinnis, Elma Kelley, Grace McIlheran, Margaret McCabe, Virginia Sheriff, and the hostess, Mrs. Madolyn Hill.

## Youth Have Charge Of Central Christian Church Services Sun.

The Chi Rho Fellowship of the Central Christian Church had the first part of the evening worship service Sunday afternoon. It was a timely beautiful program. The audience received the program in a spirit of appreciation and thanksgiving that the children are doing so splendidly with the very capable training given them by their leaders and sponsors.

The prelude "Day is Done" was played by Miss Sadie Beth Tevis. Faith of our Fathers was the opening hymn sung by the Youth Choir. Marilyn English brocked the call to worship by reading Psalm 95:1-3. The hymn, "The Lord is my Shepherd" was sung by the choir with the audience joining in the latter verses. Leon English gave the invocation. "This is Why" (the why of Thanksgiving) was given by Barbara Hansen. The choir sang "Count Your Blessings." The scripture, 100th Psalm was read by Eva Jo Woodard. Loretta Brocker read the poem, "First Thanksgiving." This part of the program was closed by youth choir singing "Come Ye Faithful People."

The minister, Kenneth Newton, took charge of the services. In his sermon he said "This Thanksgiving time is time to take inventory." He explained that it is more than a time to take inventory but a time to recognize where all we have comes from, who created it all. We are only stewards of what we have.

His sermons are all thought-provoking and inspiring. He preaches the Word of God with great sincerity of purpose that is to bring people closer to the Master. The public is invited to hear him.

Help Build the Youth Center

## S. S. Representative Here Nov. 29th City Hall 9:30 A. M.

Farm workers: you're obliged to — you need to — you want to — get started right on your new social security. Obligated — because when you work regularly, you are legally required to get your social security account card and show it to your employer. Need to — because if you don't do your part you won't get credit for your work under social security. Want to — because you and your family are the ones who stand to gain by the monthly

cash benefit provisions of Federal old-age and survivors insurance.

For information, consult your social security office at Wichita Falls, or you can get in touch with a representative of the Wichita Falls Social Security Office who will be at the City Hall in Burkburnett on Thursday, November 29, 1951 at 9:30 A. M. He will be glad to discuss any questions you may have.

20 GAL. WATER HEATERS,  
Fully Automatic, Special, \$49.95.  
Garland Furniture Co.



"He Advertised"

## AUNT DORA

A MAN WHO WEIGHS HIS WORDS HAS THE MOST WEIGHT IN AN ARGUMENT.



... and a smart grocery buyer is known where she shops. We suggest that YOU try the WHITE HOUSE GROCERY & MARKET. The freshness of our foods adds the final touch to a perfect dinner. Enjoy a memorable THANKSGIVING.

- Pork Roast . . . 45c
- Picnic Hams . . 39c
- Hams, 10-12 . . 59c
- Beef Roast . . . 69c
- Club Steak . . . 79c
- Ham end sliced 59c

WHITE HOUSE GROCERY & MARKET  
J. N. "BUD" HICKS  
Phone 128 - WE DELIVER

## RESPONSIBILITY LAW

TEXAS MOTOR VEHICLES EFFECTIVE JAN. 1st. AFFECTS ALL MOTOR VEHICLE OWNERS AND OPERATORS INVOLVING ANY ACCIDENT TO ANY ONE PERSON, OR PROPERTY DAMAGE INCLUDING YOURSELF, EXCEEDING \$100

Within 24 hours after a motor vehicle accident resulting in death or injury, or property damage in the extent of \$25.00, the operator of every car involved, regardless of who is to blame, must file a written report with the Department of Public Safety of the State of Texas. Operators license and registration plates can both be suspended under this law. Suspension is automatic and applies to all motor vehicles owned by you.

## M. C. Tucker Insurance Agency

IS DULY AUTHORIZED TO WRITE JUST THE TYPE OF MOTOR VEHICLE LIABILITY INSURANCE REQUIRED. SEE M. C. TUCKER FOR BEST SERVICE. THANKS.

PHONES: Office 118 — Res. 645 — 407 Ave. C.

## Special Service Set For Thanksgiving At Grace Lutheran

Realizing that Thanksgiving Day was originally set aside and observed in order to give Americans an opportunity to offer special thanks to God for His blessings, the Grace Lutheran Church will observe Thanksgiving with a special worship service beginning at 10:30 a. m. We cordially invite you to worship with us and offer gratitude to our God for His blessings upon our land. The choir of our church will sing at this special Thanksgiving service also.

Divine worship is conducted each Sunday morning at 11 a. m. with Sunday School and the Adult Bible Classes meeting at 10. The Sunday School teachers meet each Thursday evening at 7:30 in the pastor's study. We preach Christ and Him crucified for the sins of the world.

While Trinity Lutheran of Clara has no resident pastor, divine worship will be conducted each Sunday night at 7:30. The Sunday School will continue to hold classes at the usual time each Sunday morning, at 10:30.

Charles Davis of Sussex, England, has been visiting in the home of his brother, Ralph Davis and family.

During the first 10 this year, more than X-rays have been given Unit. The X-ray machine bought and paid for Wichita County T. Association from the sale of Christmas Seal

**AUTHORIZED G-M Trucks Sales Service PONTIAC Sales & Service Allis Chalmers Tractors Implement H. S. (Hoon) Thaxton Sales Mgr. 414 Ave. Phone 23 THAXTON BROS.**

**DOUGLAS FLOOR COMPANY**  
23rd and Holliday — Wichita Falls, Texas  
SANDING — FINISHING — LINOLEUM TILES — DRAIN BOARDS  
PHONE 2-8505 DAY OR NIGHT  
FOR FREE ESTIMATE

## WILLING WATER SAYS . . . .

To Build Now, It Will Take A Lot More Money



Water works installations have never been cheaper. They were expensive in 1940. They cost a lot more today.

The mile of cast iron pipe you could have installed for \$11,000 in 1940 costs \$17,000 today. The pumping station that cost \$50,000 ten years ago will involve \$110,000 expenditure now.

Maintenance costs have risen proportionately. Take fuel oil for diesel engines, the bill that would have run \$100 per month in 1940 will run \$300 now. Trucks that cost \$800 ten years ago are now priced at \$1700. Water meters have increased in cost from \$12 in 1940 to \$21 at the present time. Labor costs have almost doubled in this period.

To provide a 25% increase in available water a community of 50,000 will cost approximately \$200,000; to provide a 50% increase the bill will be \$400,000; to provide \$100% increase, it will run \$700,000.

These approximations do not take into consideration the hundred and one special conditions which might lessen or increase the costs for any particular city. But they show how the figures may be expected to shape up.

One thing you can be sure of. To increase water facilities at any time in the near future is going to cost a lot more money than past experience has shown most people in the business to expect.

**City of Burkburnett WATER DEPARTMENT**  
LEON CARVER, City Manager

## EVEN A MINOR ACCIDENT MAY COST YOU YOUR DRIVERS LICENSE . . .

OUR POLICIES PROTECTS DRIVERS FROM HAVING TO POST \$15,000.  
WHAT THE LAW SAYS

Yes, the new Texas Motor Vehicle safety Responsibility Law says that, in case of accident, you must be able to post up to \$15,000 in cash or security, be covered by the right kind of automobile insurance, or it may cost you your driver's license.

### WHAT YOU CAN DO — —

Drivers in Burkburnett and surrounding country, are buying our thrifty, complete protection — THEY HAVE CARE-FREE DRIVING — THEY CAN KEEP THE RIGHT TO DRIVE THEIR CAR IN SPIRE OF AN ACCIDENT.

## R. D. Laney Insurance Agency

411 AVE C Street Telephone 10

**NOTICE**  
Bids will be received in  
of Burkburnett Inde-  
School District Tax Of-  
Thursday, December 6,  
P. M. o'clock on 1942  
Superior body,  
Read the Want Ads in the Star

Dodge chassis being offered for  
sale. This equipment may be  
seen at Burkburnett Public  
Schools. Bid proposals may be  
secured by contacting Tax of-  
fice at Burkburnett High School.  
R. M. DAVIS, Supt.  
17-2tC

### Cattle Grubs Cause Wasted Profits

Cattle grubs are profit grabbers, when livestock producers fail to control them. The damage caused by these pests is charged back to the producer in the form of lower prices for beef animals and lower milk production from the dairy cows, says

H. E. Shanahan, County Agent. According to James A. Deer, associate Extension Entomologist of Texas A. and M. College, the annual loss to livestock producers from cattle grub damages amounts to about \$65 million. Most of it could be added to the national farm income if cattle producers would control grubs. Shanahan recommends the use of a power sprayer—with a pressure of 200 to 400 pounds. Lower pressures decrease the effectiveness of the treatment, he says. Animals should be sprayed while being held in a chute and the spray nozzle should be held no further than four inches from the backs of the animals. It is best, he adds, to use a full gallon of spray on each animal and from 10 to 15 seconds are required for making a thorough application. The spray material should consist of 7 1-2 pounds of 5 per cent rotenone dust for each 100 gallons of water. Mix it thoroughly and this is often a rather difficult job because the fine rotenone dust is hard to wet. This mixture is the cheapest and most effective treatment for controlling cattle grubs. The first application should be made about 3 weeks after the first grubs begin to show up in the backs of animals. Treatment should be repeated at three week intervals for as long as needed. Grubs normally begin making their appearance about this time of the year; however, this will vary with different sections of the state. A good control job, will mean increased weight for the beef herd and a higher selling price when the animals are marketed. The dairymen with a grub free herd can expect a good increase in milk production. Your local county agents can supply additional information on the when and how parts of a complete cattle grub control program and suggests that livestock producers contact him at an early date.

### MEN'S BIBLE CLASS OF THE FIRST BAPTIST CHURCH

Invites you to worship with them each Sunday morning at 9:45 in the auditorium.

"Come as you are."  
J. D. KENNEDY  
President  
W. R. CARSWELL  
Teacher

### The Seed of A Happy Future

Yes, insurance is just like a seed, offering a promising future harvest. Plant your protection now by planning your insurance safeguard now.

CALL US  
Let US Take the Risk!  
SEE US FOR  
DETAILS NOW  
Standard  
Protection  
W. A. ROBERTS  
166 Office - Phone - Res. 113  
Palace Theatre Building  
BURKBURNETT, TEXAS

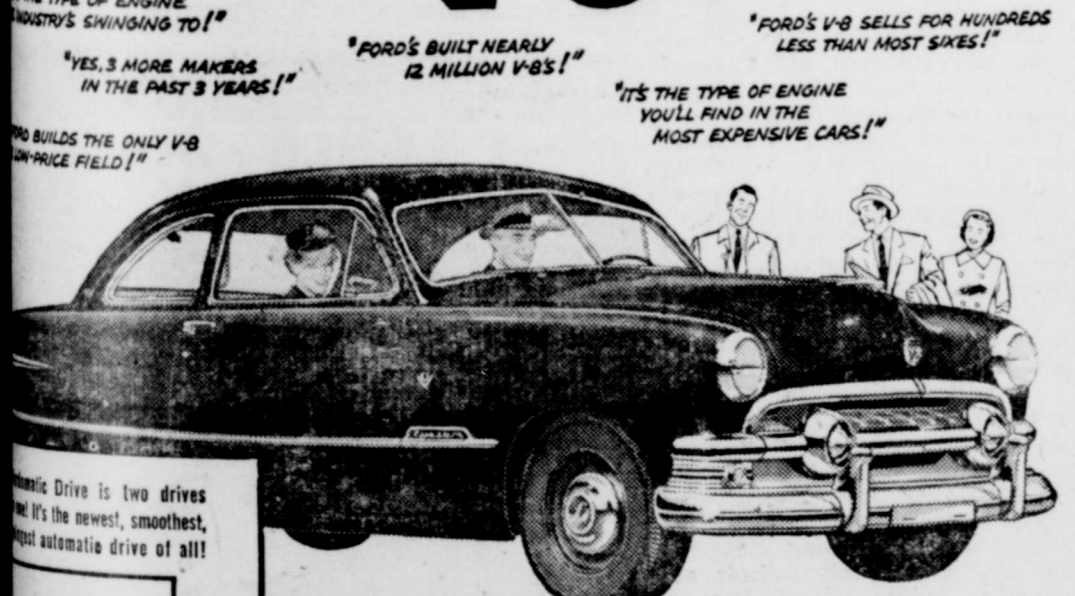
### MY SON WILL FOLLOW IN MY FOOTSTEPS



You can say the same when you save regularly. A regularly maintained savings account goes a long way toward insuring him the educational advantages you want him to have. It's a wise father who starts saving early.

The  
First National Bank  
BURKBURNETT, TEXAS

### Best Drive "America's Favorite V-8!



**Better yet...  
WITH FORDOMATIC DRIVE!**  
Fordomatic is two drives in one, combining the best features of earlier "automatics." You get the smooth flow of power of a Fluid Torque Converter... the GO of Automatic Mechanical Gears... plus the savings of having the exact power you need, when you need it!  
See our selection of  
A-1  
USED CARS  
Come in and "TEST DRIVE" it today!

Tom Britton Motors  
Phone 352

### Tanda Campfire

The meeting, November 14 was called to order by the president, Janice Henry and roll call and dues were taken by the assistant secretary, Dana Riddle. Dana also read the Secretary report and old and new business was discussed. The guest list for our Christmas party was made. Girls present were: Janice Henry, Dana Riddle, Charlene Davis, Carol Hageman, Sue Chapman, Louise Boyd, Carol Germany, Rosemary Roark, Pat Bernethy, Marilyn Felty and Wanda Redman. —Reporter, Wanda Redman.

### Church of Christ

9:45-10:40 The study of the Bible for all age groups under able teachers.  
10:45-11:00 Worship in song.  
11:00-12:00 Preaching of the Word.  
Sunday Evening  
6:00-6:55 Bible classes for the young people. The high school group is purposing a study concerning recreation.  
7:00-8:00 Worship through song prayer, teaching the communion.  
Wednesday Morning  
9:30 Ladies' Bible Class.  
20 GAL. WATER HEATERS,  
Fully Automatic, Special, \$49.95.  
Garland Furniture Co.  
You have unexpected guests — Don't fret, bring them to Tom's Coffee Shop.

### R-U-AWARE?



**The Cock of the Plains**  
IS THE LARGEST OF THE AMERICAN GROUSE. A CURIOUS FACT ABOUT THIS BIRD IS THAT IT HAS NO GIZZARD.  
We are well aware of our many blessings. As we pause and count them... we find among them the golden thread of your loyal friendship... and it is with the utmost sincerity that we say "HAPPY THANKSGIVING" to all.

WEST TEXAS RENDERING PLANT  
BUSTER MOORE-OWNER  
PHONE COLLECT 6565  
WICHITA FALLS - TEXAS

### Christian Church

Bible School, 9:45 A. M.  
Morning Worship, 11:00 A. M.  
Youth Fellowship, 6 to 7:30 P. M.  
Evening Worship 7:30 to 8:30 P. M.  
Both morning and evening sermons by the pastor, Kenneth Newton. The public is invited to study and worship with us.

### Nazarene Church

Our services are as follows:  
Sunday School, 9:45 A. M.  
Worship Service, 10:45 A. M.  
Young People's Meeting, 6:45 P. M.  
Evening Service, 7:30 P. M.  
Prayer Meeting Wednesday evening, 7:30 P. M.  
ROY MCCOY, Pastor

### Lone Star Baptist Church Services

12 mi. N. of River Bridge  
Sunday School, 10 A. M.  
Preaching, 11 A. M.  
Night Service, 7:00 P. M.  
Thursday night prayer meet 7:30 P. M.  
Everyone is cordially invited.

Dr. L. Shores  
CHIROPRACTOR  
Phone 93 407 East 1st

ACCIDENT INSURANCE  
Howard Clement  
PHONE 622-W

Irvin J. Vogel  
LAWYER  
330-332 Waggoner Bldg.  
Wichita Falls, Texas

### Complete Line of HOOVER Vacuum Cleaners



As Low As \$59.95  
BOYD BROS.  
Jimmy and Charlie Boyd  
Owners

let us service your car while you work  
Complete Service  
INCLUDING  
CHASSIS LUBRICATION  
MOTOR TUNING  
OIL CHANGE  
CAR WASH

LEAVE YOUR CAR IN THE MORNING  
PICK IT UP ON THE WAY HOME AT NIGHT

Casey Logan  
K-F MOTORS  
312 Ave. C Phone 131

RETIREMENT INSURANCE  
Howard Clement  
PHONE 622-W

BURKBURNETT  
I. O. O. F. LODGE  
Meets at I. O. O. F. Lodge every  
TUES. NIGHT, 8:00 P. M.  
Visitors Welcome  
O. M. Schreifels, Noble Grand  
Ralph England, Jr., Vice Grand  
De Von T. Smith, Secretary

Burkburnett Lodge No. 1027  
A. F. & A. M.  
Stated Meetings First and Third Mondays at 7:30 at the Masonic Hall.  
School of Instruction Each Thursday night  
JOHN R. SHIELDS, W. M.  
O. G. Burnett, Sec'y

FREE Snow Man  
Given to each child accompanied by its parents for Sunday Dinner

Tom's Coffee Shop  
Dr. L. A. Cramer  
OPTOMETRIST  
Monday Through Saturday  
Across From Burk Star

INSURANCE, REAL ESTATE,  
BONDS, FHA LOANS, Notary Public  
CLIFF WAMPLER  
114 East 3rd Street Phone 628

Burkburnett, Phone 121  
Wichita Falls, No. 2-3181  
City Calls \$2.50  
Others According to Distance  
All Calls Are Strictly Cash  
Bowie, Phone 77  
Fort Worth  
Phone 2-1348  
Owens & Brumley Funeral Homes  
Unexcelled Ambulance — Day or Night

Order Your  
Fort Worth Star-Telegram  
Amon Carter, President  
LARGEST CIRCULATION IN TEXAS  
OVER 200,000 DAILY AND SUNDAY  
NOW ON REDUCED  
BARGAIN DAYS  
RATES  
EFFECTIVE A SHORT TIME  
Daily and Sunday  
7 Days a Week  
WAS \$18.00 Per Year  
NOW \$13.95 By Mail  
Daily Without Sunday  
6 Days a Week  
WAS \$15.00 Per Year  
NOW \$12.60 By Mail  
Fill out coupon below, mail direct or hand to your nearest Home Town Agent.  
NAME  
LOCAL ADDRESS  
TOWN STATE

To Reduce  
Memory of  
COLDS  
Take 666

DON SHORT  
LAWYER  
208 Bank Bldg.  
Phone 233 Burkburnett

INSURANCE  
Real Estate - Bonds - Notary  
M. C. TUCKER  
Phone 118 - 407 Ave. C.

WATCH  
REPAIRING  
Authorized Hamilton and  
Elgin Watch Dealer  
Jewelry — Watch Bands  
Diamonds  
Our Work Is Guaranteed  
WESTBROOK  
JEWELRY  
209 E. Main Burkburnett

**CLASSIFIED AD SECTION**

WANTED—Experienced Waitress. No phone calls. Apply at Louis' Drive Inn. 14-Z

FOR SALE—Case Tractor, '45 model with 2 row equipment, Cultivator, Planter and Breaking Plow. \$600 Troy Mills, on Okla. Cut-off. 14-Z

20 GAL. WATER HEATERS. Fully Automatic, Special, \$49.95. Garland Furniture Co.

FOR SALE—Screen Wire, Door Locks and Hinges; Window and Door Frames; Window and Door Screens, all factory made. Large shipment Doors and Windows, all sizes; Coolerator and Steel Kitchen Sinks. Also want old houses to wreck. 14-Z

PAINT, ALL COLORS and kinds to sell at low prices. WILL DO TERMITE WORK. New shipment of White Pine, 7,000 feet. 18-ltc

New Corner China Cabinet for sale. Also washing machine. LOT for sale.

NEW Revelation Vacuum Cleaner with all attachments. Chest of Drawers, Shop made.

**O. S. WILSON**  
Next Door to Burk Laundry  
On Avenue D

**GROUP INSURANCE**

**Howard Clement**  
PHONE 622-W

HIGHEST READY CASH for any kind of good used furniture. HOME FURNITURE. 7ZC

**FOR SALE**

6 Room House to be moved, \$1,750.00.

New 4 Room House, \$3,000. \$1,700 down, balance \$39 per month.

**A. T. (Ab) Walling**  
617 East 3rd Street

**Cash**

PAID for DEAD or CRIPPLED STOCK



**CENTRAL HIDE & RENDERING CO.**

For Immediate Service  
2-7871 COLLECT  
WICHITA FALLS, TEXAS

LAWN MOWER SHARPENING AND SAW FILING.  
**A. G. BARTON.** 7-ZC

**SPECIAL**

Nice Modern 5 room home, only 3 1-2 years old. Concrete basement, nice orchard, 1 acre ground, 4 blocks from school. Price \$6,000.

**C. O. WALLING**  
Phone 306 Box 695  
Burkburnett, Texas

FOR SALE—New 2 bedroom frame home, \$7,000.00. \$2,000.00 down, balance in FHA loan, Payable \$45.00 monthly, includes prin., int., taxes and insurance. Immediate possession.  
Phone 628 or 777-M  
114 East Third

**WAMPLER INSURANCE AGENCY**

5 LOTS FOR SALE. L. A. McNeil, Box 46, Burkburnett. 17-21P

**FEMALE HELP—**  
HOUSEWIVES: Need \$25 to \$50 extra to help you on your monthly expenses? Many women earn extra money supplying their neighbors, friends, with Rawleigh's Spices, Flavors, Cosmetics, Household Cleaners, Polishes, Insecticides, Medicines, etc in the City of Burkburnett. If you have spare time to take orders and deliver this well known line of necessities you should make good profits every week. Write for information. Rawleigh's, Dept. TXK-360-HW Memphis, Tenn. 16-41P

**REEVES Gro. - Mkt.**

PHONE 543  
Fresh Channel Cat Fish,  
Shrimp and Fryers  
Big Juicy Hot Dogs . . . 15¢  
Call In Your Order  
Open Until 10 Evenings  
Also Sundays

FLOOR SANDER FOR RENT by day or hour. HOME FURNITURE. 11-Z

FOR TRADE—Property with 4 apartments, would like to trade for 4 or 5 room house close to town. 503 Park St. 16-Z

FOR SALE—5 room modern house, 1 acre of ground, one mi. West on Hardin St. \$4,000. Inquire from Ed Welborn, 400 N. Main, Phone 92 or 1244-W, Electra, Texas. 15-Z

WILL TAKE CARE of children in my home. Small children preferred. \$6 per week for one, \$10 for two. Phone 985. 18-ltc

FOR RENT—2-room furnished house, with bath. M. C. Tucker, phone 118 or 645. 18-ltc

WE HAVE a lot of nice Strawberry Plants for sale. \$2 per hundred. 611 Park. 18-ltc

FOR SALE OR TRADE for equity in house, a 1948 tudor Chevrolet, two-tone. May be seen at 700 Magnolia. Phone 398-W. 18-ltc

**Dodge Trucks Are Overwhelming Choice in Rodeo**

Paul Browning of Burkburnett Motors, local Dodge dealer, received word that 59 of the 97 state champions competing in the three major events of the 1951 National Truck Rodeo in Chicago chose Dodge "Job-Rated" trucks to drive in the spirited contest for national titles.

Six of the nine national championships awarded in the straight truck, the tractor single-axle semi-trailer, and the tractor tandem-axle semi-trailer classes were won by contestants driving Dodge trucks.

All three places in the tractor single-axle semi-trailer contest were won by drivers who chose a Dodge JA-128 (2½-ton) truck. Albert D. Pomahatch, driver for Merchants Motor Freight, Inc., St. Paul, Minn., won the national title in this event. Guern Royster, driver for Pacific Intermountain Express, Oakland, Calif., won second and J. Clark Gilbert, driver for Inland Motor Freight, Spokane, Wash., won third.

Two of the three championships in the straight truck event were won by drivers who chose a Dodge GA-152 (1½-ton) truck. They included Kenneth A. Folck, driver for Lee & Eastes, Inc., Portland, Ore., who won second, and Elvie A. Harris, driver for Great Southern Trucking Co., Jacksonville, Fla., who won third.

Norman L. Hulker, driver for Claxon Truck Lines, Inc., of Frankfort, Ky., drove a Dodge YA-142 (4-ton) truck to win third in the tractor tandem-axle semi-trailer event.

Five state champions who had won their titles in state eliminations while driving other makes of trucks switched to Dodge trucks in the national finals after they drove them on a Chicago practice course. Eight manufacturers offered trucks in the national finals, and the 97 champions representing 34 of the 48 states were free to choose any of the eight trucks to drive. Sixty per cent of the champions chose Dodge trucks to drive in their bid for national honors, or more than all other makes combined.

**CORRECTION**

Two mistakes were made last week in articles pertaining to the Youth Center Building. First, the contract was let to J. L. Pruitt of Burkburnett for \$11,875, instead of \$14,875 as stated. Also the drive by the Jaycees for additional funds will be made the night of Monday, Dec. 3.

Mrs. G. R. Kramer had as her guests this week, two daughters, Mrs. W. E. Tyler and Mrs. G. L. Rogers and their children. Mrs. Rogers' husband is stationed at Goodfellow Field, San Angelo, and Mrs. Tyler and children recently returned from Guam. S-Sgt. Tyler is in the Fitzsimmons hospital TB ward in Denver, Colo.

Mr. and Mrs. H. W. Beasley spent the week-end in Glen Rose where they visited in the home of Mrs. Beasley's mother. Mrs. Beasley's two brothers and two sisters joined them there to celebrate their mother's 76th birthday. Mr. and Mrs. Beasley visited relatives in Fort Worth on the return trip.

**CITY MANAGER'S MONTHLY REPORT**  
**CITY OF BURKBURNETT, TEXAS**

Month of October, 1951

**INCOME:**

	This Month	Last Month
Water Department	\$ 7,363.96	\$ 5,676.56
Light and Power	10,593.04	8,915.71
Sewer and Sanitary	1,156.60	881.00
General Fund	377.49	275.18
<b>Total</b>	<b>\$19,491.09</b>	<b>\$15,751.45</b>

**EXPENDITURES:**

	This Month	Last Month
Water Department:		
Salaries and Wages	\$ 1,481.75	\$ 1,419.00
Operating Expense	3,175.07	2,627.91
Light and Power:		
Salaries and Wages	2,238.00	1,845.50
Operating Expense	1,791.96	2,431.25
Sewer and Sanitary:		
Salaries and Wages	404.00	455.00
Operating Expense	26.22	40.21
General Fund:		
Salaries and Wages	1,451.66	1,508.00
Operating Expense	1,029.70	671.15
<b>Total Monthly Expense</b>	<b>\$11,598.36</b>	<b>\$11,028.02</b>

Both the Water and Light Funds transferred \$1,000 each to the General Fund from their operating profits.

**CLOSING BANK BALANCES AS OF NOV. 1, 1951:**

Water Works Fund	\$ 6,353.26
Light and Power Fund	9,201.04
Sewer and Sanitary Fund	2,769.30
General Fund	701.81

**OPERATING DATA:**

	*This Billing Period	Last Billing
Water Department:		
Gallons pumped	16,281,300	17,600,000
Light and Power:		
Kilowatts generated, KWhrs	324,634	334,466

\*Billing periods run from the 15th to 15th of each month.

It should be pointed out in this report that the increase in total income over last month is the result of collecting our delinquent accounts that have been carried on the books for some time.

LEON CARVER, City Manager



MILLIONAIRE FOR CHRISTY ZE

**Palace Theatre Sunday and Monday**

Mr. and Mrs. Theron Oxley and Patricia of Fort Worth were visiting in Burk Sunday.

Mrs. Bertha Cropper of Fort Worth and her daughter, Mrs. Sinnett Hill of Houston, visited here Sunday.

Mr. and Mrs. Lee Turnbow of Borger were in town Tuesday to attend funeral services for Charlie Turnbow.

Mrs. Gilbert and Mrs. P. A. Wiggins were Dallas visitors Tuesday.

**WEATHER ODDITIES**  
By WOOLLY BEAR<sup>®</sup>  
SUPER PYRO WEATHER FORECASTER

**SNOW IN MEXICO!**  
IN 1862 HEAVY SNOWS AND FREEZING TEMPERATURES OCCURRED IN CALIFORNIA. ICE FORMED AS FAR AS SOUTH AS MEXICO.

**SIX BUCKETS OF WATER DISTRIBUTED AS FOG CAN TIE-UP ANY HARBOR IN THE WORLD.**

**THE BLIZZARD OF 1888 TOOK ONLY SIX HOURS TO PUT NEW YORK CITY OUT OF TOUCH WITH THE WORLD FOR TWO DAYS.**

**WOOLLY BEAR SAYS:**  
WINTERS GETTING Milder? DON'T BELIEVE IT! DESPITE THE TALK OF OLD TIMERS U.S. WINTERS ARE JUST AS SEVERE TODAY AS THEY WERE 150 YEARS AGO!

**ICY BLASTS! SNOW ON THE TREES, TIME OF YEAR WHEN AN AUTO 'FREEZES!'**

\*Markings on the Woolly Bear caterpillar, Super Pyro Weather Forecaster, as observed by Dr. C. H. Curran, Curator, Museum of Natural History, N.Y.C., indicate that this winter will be reasonably mild, with sub-freezing temperatures being followed at unexpected intervals by moderate conditions.

**Band Booster Club To Meet at 6:45 Next Mon. Night**

The regular Band Booster Club meeting will be held at the Band Hall Monday night at 6:45. The step up in time was arranged so that those wishing could attend the Community Chorus at the Methodist Church.

**Veterans of 25 Yrs. Honored by Texas Electric Service**

Texas Electric Service Company veterans of more than 25 years of continuous service with the company were honored at a dinner Monday night at Wichita Falls when seven new members of the company's Quarter Century Club were introduced, along with the 25 present members in this area. One of the new members of the group who completed 25 years of service this year was Jim B. Ady, Burkburnett manager of the company.

Electric company employees from a four-country area and their guests numbering more than 350 attended the dinner which was held in the student center of Midwestern University. Gold watches were presented by J. B. Thomas, electric company president, to Ady, to B. C. Brice of Henrietta and to A. R. Black, F. S. Datson, L. D. Lively, W. D. Putman and L. D. Whitecotton, all of Wichita Falls. W. P. Portwood, Wichita Falls manager of the company was toastmaster.

Guest speaker at the dinner was Clayton Rand, Gulfport, Miss., editor and author of several books.

**Wilbarger-Wichita Soil Conservation District News**

A marked preference is being shown toward channel type terraces in the Wilbarger-Wichita Soil Conservation District.

Several district co-operators have recently built channel type terraces and are highly pleased with them. Among these are Hugh Cruse, Wichita Falls; Mrs. Bertha Ashton, Burkburnett; Bobbie Stewart on the Carey Estate, Friberg; Lloyd Osborne on the C. E. Birk Estate, Iowa Park; Dr. W. H. Ogden, Electra; and Glenn Bear, Wichita Falls and Burkburnett.

All these terraces empty onto well-sodded grass which is necessary before the terraces can be built in order to prevent erosion and gullying at the outlet end. If a pasture is not available for emptying terraces onto, then a waterway must be shaped and seeded to grass. Experience has shown that the quickest and best way to establish the waterway before terracing. Waterways shaped last summer and seeded this fall are beginning to show up well now. All of these terrace systems have been designed by technicians of the Soil Conservation Service at Iowa Park.

Channel type terraces differ from the standard ridge type terraces in that a lower ridge height is required. This is because all of the dirt is moved from the upper side downhill to form the ridge which leaves a large, wide channel to carry the water. Grain farmers are especially well satisfied with them over ridge type terraces.

An important factor in any terrace system is proper maintenance of the terraces so that they will continue to do the job for which they were designed.

Every year free X-rays are given to every member of every high school graduating class in the city and county schools of Wichita County. These X-rays were made possible by the Wichita County TB Association. If you have purchased Christmas Seals you have helped to pay for the machine.

Miss Nathalie Foster spent the week-end in Tulsa as guest of Mr. and Mrs. Jack Tatum.

Morris Bookbinder is on jury duty in Wichita Falls this week.

The wild boar of India attacks without provocation—as does the tame bore of America.

Side-stepping only gets you father away from where you hope you are going.

When your sins find you out, it's just about as bad as when the collectors find you in.

If you doubt that women are wearing fewer clothes, just take a look at the figures.

**PALACE Theatre**  
BURKBURNETT, TEX.

Sun. & Mon.

MacMURRAY PARKER  
A MILLIONAIRE FOR  
**Christy**  
RICHARD CARLSON  
"Hear a Secretary with a scheme as odd as Eve's!"

Tuesday

STAR-JAMMED! FUN-CRAMMED!  
GINNY TOM JANE MICHAEL  
**SIMMS-DRAKE-NIGH-O'SHEA**  
RUSS MORGAN  
TOMMY DORSEY  
SARAH VAUGHAN  
HERB JEFFRIES  
THE WEAVERS  
GEORGE SHEARING  
and more!  
**Disc Jockey**

Dart Jack Pot  
**\$170.00**

Wed. & Thurs.

ADVENTURES AND ADVENTURER TRAVEL  
A CHINA AIR  
JOSEPH COTTEN CORINNE CALVET  
EDMUND CRAWEN  
MAL WALLIS  
**PEKING EXPRESS**  
MAYNARD MILLER

KEEP SODA HANDY IN CAR



It's the wise motorist who keeps a box of baking soda handy in the glove compartment of his car for putting out unexpected fires. Baking soda is an inexpensive fire extinguisher—poured on a small fire, it will quickly and effectively smother it by generating carbon dioxide which settles down over the flames and shuts off the air supply of oxygen without which a fire cannot burn.

Man is the only animal that blushes, or has only one to.

**IT'S TRUE!**

**Clark GABLE**  
MADE HIS MOST AMBITIOUS LOCATION TREK FOR "ACROSS THE WIDE MISSOURI." THE SPECTACULAR OUTDOOR TECHNICOLOR DRAMA WAS FILMED 11,000 FEET UP IN THE COLORADO ROCKIES!

**By Wiley**

**Maria MARCO**  
IS M-G-M'S NEWEST SHE PLAYS HER FIRST ROLE AS GABLE'S SWAS AN INDIAN GIRL ALMOST ENTIRELY IN DIALECT AND SIGN LANGUAGE



Coming Palace Theatre Fri., Sat

**BU**

Fri. & Two Fe

CHARLES STARRETT SMILEY BURNETTE  
"The WEST'S CRIME-BUSTERS SHOOT THE WAGON"

You'll be caught in a draft of laughter!

MRS. B. DANFO  
HOSTESS FOR GARDEN CLUB

The Burkburnett met in the home of forth, Wednesday. The president, Mrs. Danfo, presided over the year book.

Jude Willingham, program, which giving Mrs. Tom of the origin of the displayed a love Plenty" table arrangement reser turkey" of flower Mrs. J. C. Adan her trip to Fort State Board of convention.

An appropriate plate was served ing: Mesdames J. Melton, Archer, Paul Browning, T. Coffee, B. N. Caddison, I. E. Harrison, J. M. Pogue, Ross Reagan, ham and the host forth.

Regardless of life, smooth run there a lot quicker Weigh well and knock you get it opportunity.

The wise man mowers—one for one for the neighbor After all is said keep on saying a

Services Here Sund

for Fay M. F... at his home... Friday, ... Sunday at ... Regina Beave... by Wi

was made in... Cemetery... Owens and E... home. include the wife... Wayne of Cl... Burkburnett and... W. R. Stewa... New Mexico and... of Raton,

and Infant Here Sat

services were... Owens and Br... Saturday at 2... infant daughte... R. B. Swi... Wichita Falls

Stewart, past... Church in Rar... assisted, assist... minister of... of Christ. made in the Bur... under dir... Brumley.

to the pa... include the gran... Mrs. P. S. J... Burkburnett and... O. Wilson of

Minick, st... W. Denton, with her pa... W. A. Minic