

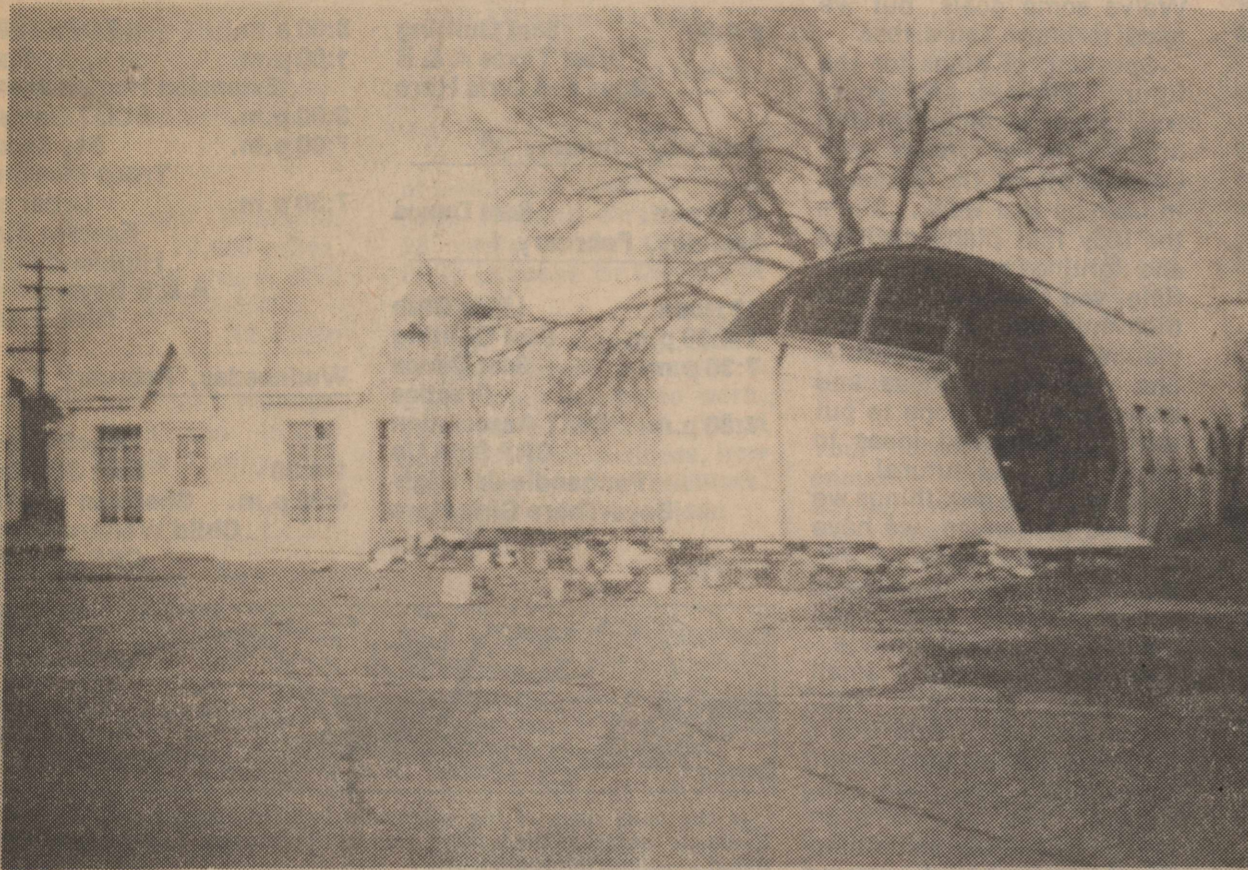
Serving the Pheasant Capitol of Texas

The Stratford Star

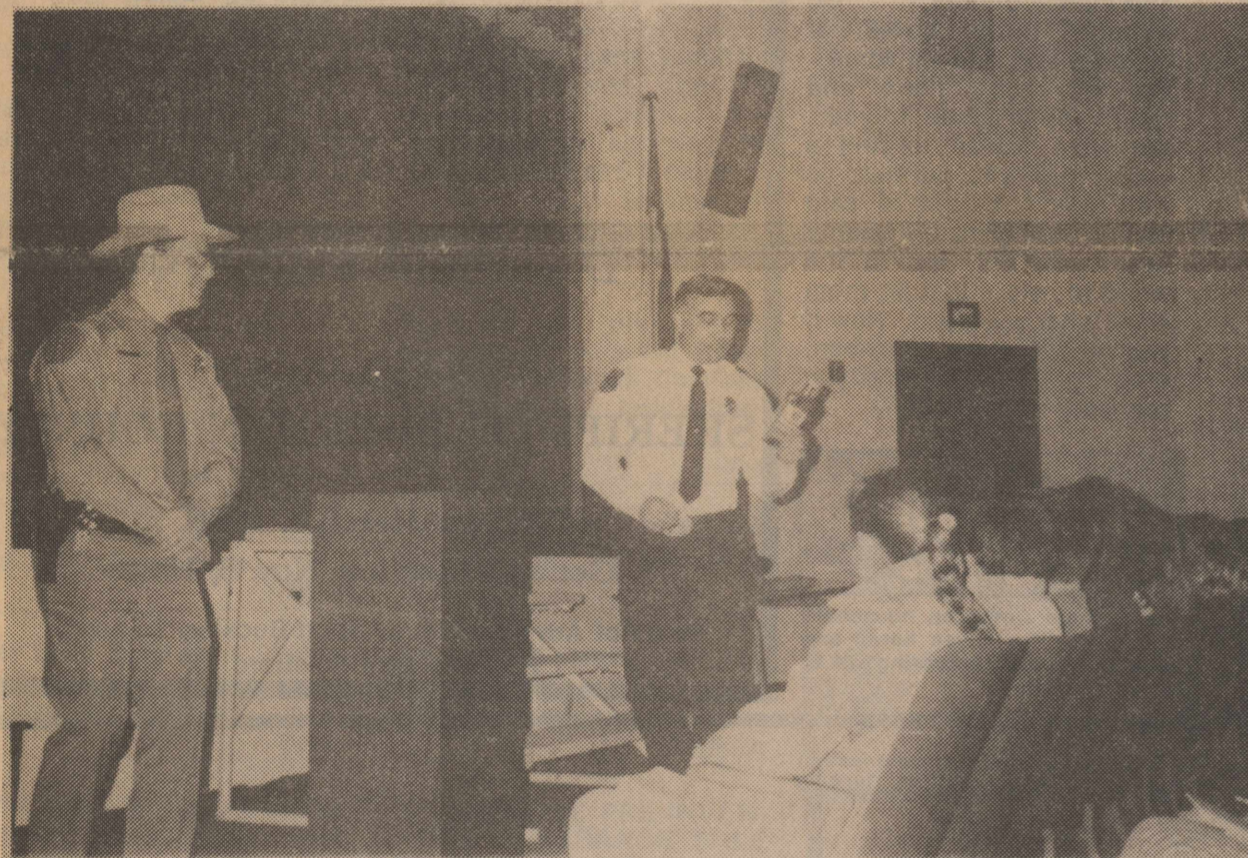
Number 4 25 Cents Publishing for 86 Years in Stratford, Sherman County, Texas 79084

USPS 523-108 Jan. 28, 1988

High Winds Damage Building



This was the result of the high winds January 19th. Pete Walls barn on Main Street had the front end torn off. We are fortunate there wasn't more damage done.



Police Chief Dennis Davis spoke to the Stratford Junior High Wednesday, January 20th on Drug and Alcohol Abuse. Trooper Steve Booth was assisting Chief Davis and answering questions while Trooper Harvey Ward spoke to the Jr. High teachers on how to detect drug abuse in students.

City Council Minutes

Stratford City Council met in regular session, Thursday, January 21, 1988 at 7:30 p.m. with Mayor Doug Reese presiding and the following Council Members present: Wanda Riffe, Bill Roberts, Eddie Haggard, Don Williams and Ronnie Pickens.

Minutes of the last meeting were read and approved as read.

Explorer's Post was not discussed because of lack of interest.

Chief Dennis Davis met with Council to discuss the City sponsoring a S.A.D.D. chapter (Students Against Driving Drunk). Chief Davis will also be contacting other entities about being a co-sponsor. Davis requested \$200 to get the program started at the Jr. High and High School levels. A

motion was made by Bill and second by Don to grant the request for funds and sponsorship of the program. Motion carried.

Rex Sladek was unable to attend.

Financial statements were reviewed. A motion was made by Eddie and second by Bill to approve the financial statements. Motion carried.

City Bills were reviewed for payment. A motion was made by Eddie and second by Bill to pay all bills except McMorries & Glover. Motion carried.

A motion was made to adjourn, motion carried, meeting adjourned.

D. Chris Rink, City Secretary
Dwight D. Reese, Mayor
City of Stratford

Has It Really Been '20' Years??

A committee to organize a reunion of the graduating 'Class of '68' from Stratford High School met Sunday, January 17, in the home of Barbara Dettle. Plans were made for a get-together during the week-end of Stratford Exes Reunion which is scheduled for July 29 and 30. Information

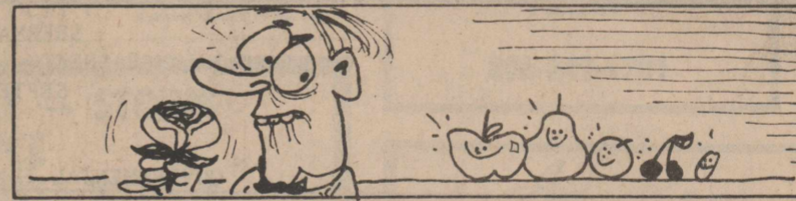
about the week-end activities will be mailed to members of the class. Any information concerning changes in addresses of members of the 'Class of '68' would be greatly appreciated. Please call Leonda Fedric, phone 396-5992, or Barbara Dettle, phone 396-2426.

G.E.D. Classes Discontinued

G.E.D. classes in Dalhart have been discontinued because of low attendance.

Students who are interested in attending G.E.D. classes please register with Valerie Snead at 315 Rock Island, Dalhart or call her at

806-294-4166 or call Portia Dees at 806-249-2681. If enough students are interested, classes may resume later. New classes will be announced in the radio and in local newspapers.



Apples, pears, plums, cherries and almonds are all related to the rose.

NOTICE

NOTICE

The Varsity Girls and Boys Basketball games are being filmed and will be shown on Channel 6 according to the following schedule:

Tuesdays games will be shown on Thursday beginning at 2:00 p.m. Fridays games will be shown on Monday beginning at 2:00 p.m.

These games will run continuously throughout the day--alternating girls-boys--until approximately 10:30 p.m.

NOTICE

A computer layout of the "Stratford Walk" to be placed in the Centennial Plaza has been sent to us by the Texas Parks and Wildlife Department of Amarillo, allowing those of us that purchased bricks the opportunity to check the spelling and position of our family or businesses brick. Please come to the Chamber office or call 396-2260 Monday thru Friday 9 a.m. thru 12 noon and 1 p.m. to 5 p.m.

NOTICE

St. Joseph Catholic church will begin Renew, Season 11, "Our Response to the Lord", on Sunday, February 14. This six week process will continue through the Lenten Season. Prayer Commitment Sunday is February 7. We would like to welcome back, our pastor, Monsignor Kevin Hand.

Grain Prices

Corn - \$2.15
Wheat - \$2.73
Milo - \$3.10

10 Big Blue Band Members Received All-Region Honors



Jenny Fedric, Cristle Chumley, Floyd Williams, Jon Engelbrecht, Phillip Zink, Lorita Jeffries. Sitting, Mistl Morgan, Shane Sawyer and Vickie Rolan.

Ten Big Blue Band members received all-region honors by making the A-AA all region Band. Tryouts were held in Canadian on January 9. After making the All-Region Band, our students from area schools Sat., Jan. 23 in Amarillo, to learn

music for a concert that was given Saturday evening at 7:00 in the Amarillo Civic Center.

Students that received All-Region patches were Phillip Zink, sitting 2nd chair cornet; Floyd Williams, sitting 4th chair cornet;

Lorita Jeffries, sitting 8th chair clarinet; Mistl Morgan, sitting 16th chair clarinet; Jenny Fedric, sitting 17th chair clarinet; Jon Engelbrecht, sitting third chair baritone; Shane Sawyer, sitting 8th chair trombone; Cristle Chumley, sitting 2nd



Front is Mandy Taylor, Michele Haggard, Emily Graham, Carie Switzer, Jenny Carter, Candace Ashby, Angie Porrus, Mary Lopez, LaQuita Vaughn. Second row is Lisa Ford, Anna Cano, Sunny Jo Lasley, Kendra Tillery, Brandie Lavake, Buffy Ellison, Jolina Garoutte, Shelby Harris, Chandra Jackson, Angela Flowers. Back row is Enedit Baeza, Heather Husmann, Clint Ward, Greg Vandiver, Paul Davis, Ramey Cozart and Skyler Reed.

chair bass clarinet; Vickie Rolan, sitting 3rd chair bass clarinet; and Wayne Stacy, sitting 1st alternate trombone.

Many concert goers from Stratford attended. Fifty Stratford Middle School Band students participated in the All Region

Band tryouts at Panhandle, Tex. January 16. These students were selected to be

Cont. On Page 2

Legal Notice

LEGAL NOTICE PUBLIC BID NOTICE

Sherman County will accept sealed bids on a two-way mobile radio. Interested bidders may secure detailed specifications from the Sheriff's Office. Sherman County reserves the right to reject any and all bids. Bids will be opened at 10:00 a.m., February 8, 1988. Send sealed bids to Sherman County, P.O. Box 165, Stratford, Texas 79084. Published in the Stratford Star January 21, January 28 and February 4, 1988.

W.S. Frizzell, Jr.
County Judge
Sherman County

Band

Cont. From Pg. 1

in the A-AA All Region Band. Jenny Carter-1st Chair Flute, Carle Switzer-3rd Chair Flute, Emily Graham-4th Chair Flute, Michele Haggard-10th chair flute, Mandy Taylor 13th chair flute, Shannon Norris 2nd Chair Cornet, Angie Porrus 2nd Chair Clarinet, Shelby Harris 3rd Chair Clarinet, LaQuita Vaughn 4th Chair Clarinet, Angela Flowers, 6th Chair Clarinet, Mary Lopez 7th chair clarinet, Lisa Ford 9th chair clarinet, Candace Ashby 15 chair clarinet, Jolina Garoutte 17th chair clarinet, Chandra Jackson 2nd Alternate. Anna Cano 1st Chair Alto Sax, Kendra Tillery 3rd chair Alto Sax, Sunny Jo Lasley, 5th Chair Alto Sax, Brandie Lavake 6th Chair Alto Sax, Heather Husmann 4th Trombone, Greg Vandiver, 8th Trombone, Clint Ward 1st Chair Alternate. Eneedit Baeza 6th Chair French Horn. Paul Davis 1st chair Tuba, Ramey Cozart, 4th Chair Tuba and Skyler Reed 6th Chair Tuba.

These students practiced all day Saturday January 23 with C.W. Simmons as the guest conductor. Mr. Simmons is the music co-ordinator for the Oklahoma School Assoc. and has co-authored a book "Pulsing the Beat". Rehearsals took place at Tascosa High School and the program, was presented at the Civic Center. Three numbers were performed; Stephen Foster Favorites, "Old Dominion March," and "Covenant". Stratford Jr. High Students had a very enjoyable day and received an All-Region patch at the conclusion of the program.

OBITUARY

Jesulita H. Hernandez

Jesulita H. Hernandez, 98 a Tolleson, Ariz. homemaker died January 7, 1988 at Maryvale Samaritan Hospital. She was born at Union, New Mexico. Funeral Mass was Saturday, January 9, 1988 at 9 a.m. Interment was in St. Frances Cemetery at Phoenix, Arizona.

Survivors include sons, Bert of Stratford, Eddie, Cip, Frank and Vincent; 26 grandchildren; and 46 great grandchildren.

Letter To Editor

Dear Editor:

I would like to express my sincere appreciation to the citizens of Sherman County for electing such an outstanding Tax Assessor-Collector as Zelda Pickens. By electing Zelda you made it possible for her to be a member of the Tax Assessor-Collectors Association of Texas. Zelda was elected to our Association as a Director a few years ago and I had the privilege to work directly with her. Through her leadership and determination TACA accomplished all of the goals we set out to achieve.

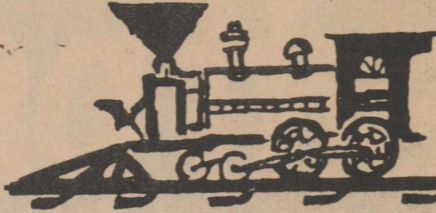
I feel confident that Zelda has worked just as hard and successful for the citizens of Sherman County. You folks really have someone to be proud of.

Sincerely,
Robert C. (Bob) Willis
President
TACA

Dear Editor,

Nikita Khrushchev once declared that an American would fly the soviet flag over the White House. He was only partly right. The soviet flag was flown inside the White House when Ronnie and Gorbie had their love-fest in December.

The soviet flag is the Communist symbol of world conquest. The red stands for the blood of the opponents of communism which must be shed before world conquest is complete. The hammer and sickle stand for the importance of the Communist Party in world conquest,



Museum Notes

Our board meeting for January was a treat, thanks to Scott and Dana Buckles. Though the wind was blowing, it was warm and cozy in their lovely home and the good food was enjoyed by all and we even tended to business.

This is a busy season for your museum. We are busy putting all the Christmas up and returning all the lovely nativity sets you brought us. We were so please by the response to our call and we thank each one of you for sharing your beautiful things with us.

This is also housecleaning season. Store room variety, that is! The men have plans to add some more shelves and an attic for us, so we women will be sorting, packing, and labeling like

while the five points of the star are the five inhabited land continents of the World which communists believe already belong to them, including North America.

Americans were solemnly told that Gorbachev no longer wanted world conquest, only peace. Peace to a communist is when there is no longer any opposition to communist conquest. He told President Reagan one thing in December, but on November 2, 1987 Gorbachev told the assembled Communist hierarchy in Moscow: "In October 1917, we parted with the Old World, rejecting it once and for all. We are moving toward a new world, the world of Communism. We shall never turn off that road."

The Red flag was flown all over Washington during the sell-out meeting. It was even flown above Old Glory on some poles. If the INF Treaty is part of the peaceful surrender of Washington, the Senate should reject it. The communists obviously intend to cheat anyway. Next sell-out time they may not allow Old Glory on any flagpoles in Washington. The groans from patriots buried in Arlington Cemetery could be heard as far away as Afghanistan, Angola, Cuba, and Nicaragua.

concerned,
Jack Skelly

mad. Just like you do at home. Then we have talked about our long range plans and wants for the museum. Like anything else, unless we have a goal in mind, we'll never attempt anything. As I've said before, this is your museum and we want your input. So think about it - where would you like our museum to be in 10 years? We'd like to know. When you see one of us on the street, stop us and tell us your ideas. Or call us. We've some goals, but we need to know yours too.

Speaking of plans for the future, Timmie and yours truly spent a delightful and informative afternoon with Carol Kline at the museum in Canyon last week. She's the lady that plans displays and lightings and such. Next time you're in Tulla, tour their museum. It's one she's planned and it's beautiful. She was full of ideas and know-how. We hope to put some of her good ideas to use in the near future!

After all the new things we learned at Canyon, we have some more needs. We would still like to have a small kitchen table and chairs 1910 - 1920 vintage. Then we could use a small "oriental looking" rug, about 4' X 6'. And don't forget to tell us about your collections. You have one, I'd bet. You may not even realize you collect something til you look around. We're looking for pictures of the first water well-drilling in Sherman County. Go through those boxes of pictures and find us some. We will copy them and return the originals to you. We were tickled to find a young man who can help us with this. Like I've said before, Sherman County people are the best in the world to help. Just let them know what you need. Now if you're free some afternoon, drop by the Depot, and you can pack a box too!



The average American household watches TV for seven hours and two minutes a day according to A.C. Nielson reports.

The Stratford Star

Second Class postage paid at Stratford, Texas, 79084. Subscription rates are \$13.00 per year in Sherman and adjoining counties; all other \$20.00 per year.

M. Robertson
Janis Tillery
Carole Gibson

Editor & Publisher
Darkroom & Advertising
Computer Operator



MEMBER 1987

TEXAS PRESS ASSOCIATION

Star Dates

Friday, January 29

9-4:30 Scot Quilting
West Texas A & B
Boys and Girls Here

Saturday, January 30

7:30 p.m. Scot Dance
Monday, February 1

12 Noon Lions Club
1-4:30 p.m. Scot Quilting
7:30 p.m. Scot Dance Practice

7:30 p.m. EMT Association
CRP Sign Up
Panhandle-Jr. High
Boys-There Girls Here

Tuesday, February 2

8:00 a.m. TOPS #897
1:00 p.m. Star
Extension Homemakers
3:00 p.m. SCOT Games
7:00 p.m. Boy Scout
Troop Meeting
Order of
Eastern Star
Highland Park
A & B Boys-There
Girls-Here

Wednesday, February 3

1-4:30 Stock Show
3:30 p.m. Scot Quilting
Sherman County
Child Welfare Board
CRP Sign Up



In the early days of the petroleum industry, during the late 1800s, Kerosene ranked as the leading product of refineries. Gasoline was considered a useless byproduct.

VOTE FOR

JACK HAILE

Democratic Candidate

for
SHERIFF OF SHERMAN COUNTY

Primary: March 8, 1988

General Election: Nov. 8, 1988

Paid Pol. Adv. Paid for by Scott Buckles, Treasurer,
P. O. Box 209, Stratford, TX

SHERMAN COUNTY, TEXAS
COMBINED BALANCE SHEET - ALL FUND TYPES AND ACCOUNT GROUPS
SEPTEMBER 30, 1987

	GOVERNMENTAL FUND			TYPES	ACCOUNT GROUPS		TOTALS (MEMORANDUM ONLY)	
	GENERAL	SPECIAL REVENUE	DEBT SERVICE		CAPITAL PROJECTS	GENERAL FIXED ASSETS	GENERAL LONG-TERM DEBT	SEPTEMBER 30, 1987
ASSETS								
Cash	\$ 308,760	\$ 635,799	\$ 132,356	\$ 366,525	\$ -	\$ -	\$ 1,443,440	\$ 1,635,161
Receivables	13,161	3,622	1	113,288	-	-	130,072	166,756
Due from other funds	5	1,838	-	-	-	-	1,843	27,151
Taxes receivable - delinquent	24,596	17,215	449	34	-	-	42,294	37,392
Allowance for uncollectible taxes	(24,596)	(17,215)	(449)	(34)	-	-	(42,294)	(37,392)
Prepaid expenses	13,235	7,589	-	-	-	-	20,824	-
Land	-	-	-	-	-	-	26,500	26,500
Buildings	-	-	-	-	658,335	-	658,335	658,335
Improvements other than buildings	-	-	-	-	57,434	-	57,434	57,434
Equipment	-	-	-	-	1,238,614	-	1,238,614	1,211,608
Construction in progress	-	-	-	-	2,940	-	2,940	-
Amounts available for retirement of bonds	-	-	-	-	-	132,357	132,357	158,057
Excess amounts available	-	-	-	-	-	(72,357)	(72,357)	(68,057)
Total Assets	\$ 335,161	\$ 648,848	\$ 132,357	\$ 479,813	\$ 1,983,823	\$ 60,000	\$ 3,640,002	\$ 3,872,945
LIABILITIES								
Accounts payable	\$ 26,064	\$ 25,505	\$ -	\$ 12,588	\$ -	\$ -	\$ 64,157	\$ 159,270
Due to other funds	1,938	5	-	-	-	-	1,843	27,151
Bonds payable	-	-	-	-	-	60,000	60,000	90,000
Total Liabilities	27,902	25,510	-	12,588	-	60,000	126,000	276,421
FUND BALANCE								
Investment in general fixed assets	-	-	-	-	1,983,823	-	1,983,823	1,953,877
Fund balance:								
Reserved for prepaid expenses	13,235	7,589	-	-	-	-	20,824	-
Unreserved:								
Designated for debt service	-	-	132,357	-	-	-	132,357	158,057
Designated for specific construction projects	11,760	-	-	467,225	-	-	478,985	604,895
Undesignated	282,265	615,749	-	-	-	-	898,013	879,695
Total Fund Balance	307,259	623,338	132,357	467,225	1,983,823	-	3,514,002	3,596,524
Total Liabilities and Fund Balance	\$ 335,161	\$ 648,848	\$ 132,357	\$ 479,813	\$ 1,983,823	\$ 60,000	\$ 3,640,002	\$ 3,872,945

SCOT Notes

by Timmie Brown

A bright morning this Jan. 25, 1988 Sherman County Older Texans, friends and neighbors. The north wind did blow and we did have snow and ice, didn't we? To date we have not been informed of any casualties such as falls or broken bones among our peers. Mr. Little's fall was due to low blood pressure. That fact is in the form of a miracle in our opinion and are we thankful!

A terrific north wind blew through Stratford last Tues. Jan. 19 but some brave Scotters were out and ready to play games at Scot Hall. Since we had been out to a Museum Board meeting, we discouraged the 42 party that day. The hardy souls who were out were Eskie Ritchie who was shopping; Jewel Dovel who was Marle Hill's luncheon guest; the two were ready to play. It is so fine that folks do try to get out and Scot Hall will be open on Tuesdays at 3:00 p.m. if the weather permits. Our winter weather since Dec. 15th hasn't been the best in the world for Scotter's to be around in.

Clara Bowling Cooke of Ft. Worth, a Sherman Co. Older Texan of the 1920-25 vintage called Sunday evening Jan. 17th and told us some startling news. On Dec. 22, 87 in the p.m. Clara had driven to a friend's condominium to take a Christmas gift. She hung her purse over her arm and stepped out of her car. As she did so a man tried to grab her purse. Friends know that "Scrapy Clara" tried to defend herself and keep the purse, but the handle broke and the fellow escaped. Clara was not injured. She said she was too angry to be hurt.

However, a small sum of money, credit cards, house and car keys etc. were gone. She reported all losses as she should. \$775 worth of clothing was charged on the credit cards. The man has not been found. Clara says that on parking lots in shopping centers in Ft. Worth one finds security men and cops stationed. How secure we feel here in Stratford. However, we decided to be sure our car doors are locked and try to be a little more observant around the house, even. Have you any idea how many single elderly people live in our community? Are your neighbors younger than you and in touch with you? Give it a thought!

Monday, Jan. 18, Neice Joyce Hart invited us to spend the day with her in Amarillo and Canyon at the Museum. At noon as we left the cafeteria, Lois (Meeks) Meadows of Briscoe hailed us. Lois taught school in Stratford when Joyce was in high school. So there was lots to talk about. Lois and Roy's daughter lives in Tenn. (I think) the wife of a Baptist minister; one son is in business in Dallas; the other on the farm near Lois and Ray. We learned that Lois does not receive information about S.H.S. Homecoming - so we will change that. She sends a "Hello" and love to former students. After Joyce's museum business with Carol Kilne was finished we toured the workshop area with Ms. Kilne.

It proved to be a memory feast for us. How many readers remember that Dr. Lester Sheffy and Dr. Hill

were two of the moving spirits and "determined and immovable" men in establishing High Plains Museum? Dr. Sheffy taught some of his first years here and Dr. Hill instilled many professional morals in yours truly.

Honey Hart Ladd lunched with us: we met the Grady Mullican's and her sister at the cafeteria. Grady came home. Looks fine!

Dorothy Lewis has been in the hospital. Send her a cheery card. Dorothy and Leland have given Sherman County many hours of splendid service.

We need the story of the Stratford Elk which stands in front of the high school. When, how, who helped establish it? We had a call from a H.S. Student about it and we don't know! There is a statement about it in GGG Vol. II but not enough information!

Surely is a "dry run" on personal news this week.

Lets get out our best of everything - bib & tucker, recipes, smiles and news - and be at Scot Hall Thursday, Jan. 28, 1988. Let's visit a "catch up" with each other.

The foot - patters and dancers remember that Dennis Hawby with his playing instruments will be at Scott Hall Sat. Jan. 30 at 8 p.m. to make beautiful music for us. Members bring finger food.

S.C.O. Texan's congratulate the many people - young and adult - who were mentioned for achievement in the Star of 21st. We are interested in everyone. Our special love and best wishes to Sr. Citizen Leona Kelp. There is only ONE Leona!

Cont. On Page 4

Haynes Wins Pinewood Derby



Winners of Class 1 were Finnan McClellan 3rd place, Paul Brown, 2nd and Nathaniel Walden, 1st place. Mary Lou Walden, Pinewood Derby Queen is standing in back.



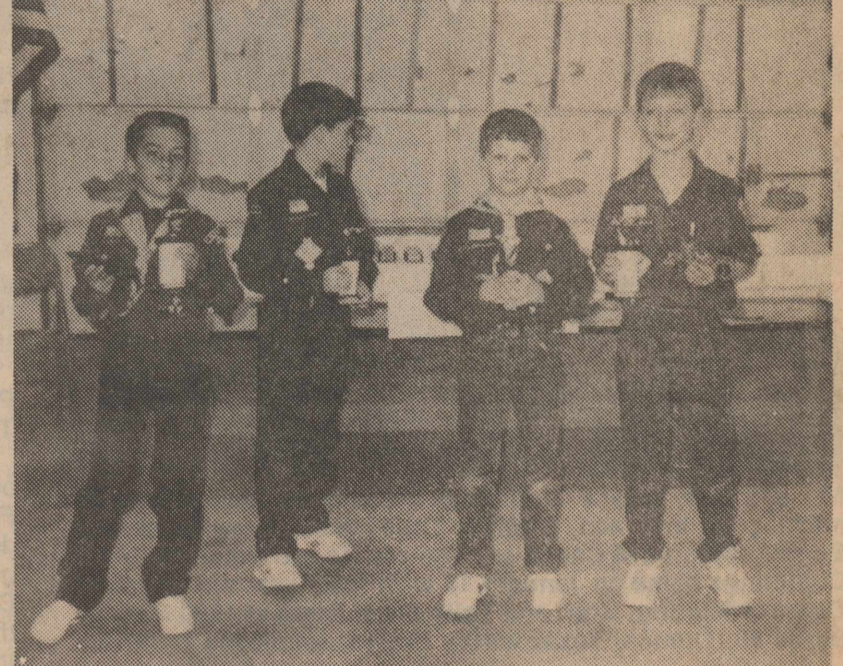
Along with Mary Lou Walden, are Winners of Class 2. Chris Haynes 1st place, Brandon Aduddell 2nd place and Daniel Hunsaker 3rd place.

Parents, grandparents, and friends watched Saturday night, January 23 as 41 Boy Scouts participated in the 1988 Pinewood Derby. The evening began as each boy weighed in and registered his car. Mary Lou

Walden was chosen as the 1988 Pinewood Derby Queen. The boys were divided into 3 classes. First and second graders participated in Class 1, third graders were in Class 2, while fourth and fifth graders made up Class 3. In Class 1, first place went to Nathaniel Walden, Second Place Paul Brown, and third place Finnan McClellan. In Class 2, Chris Haynes placed



Winners of Class 3 were Colby Jackson-3rd, Marshall Strifler 2nd and Jeremy Jackson 1st.



Trophies for Craftmanship went to Brad Williams, Best Paint Job, John Long for Best Design, David Merrill, Most Original and Kyle Ellison, Most Unusual.

first, Brandon Aduddell second, and Daniel Hunsaker third. In Class 3, Jeremy Jackson won first, Marshall Strifler second, and Colby Jackson third. Over all Grand Champion for the 1988 Pinewood Derby was Chris Haynes. Other trophies given were Best Design to John Long, Most Original to David Merrill,

Chris Haynes-Grand Champion Mary Lou Walden Pinewood Derby Queen

KEEP EXPERIENCE

RE - ELECT

Tom Wade

SHERIFF

SHERMAN COUNTY

Pd. Pol. Adv. by Tom Wade, Box 305, Stratford, TX

ULTRAWING

SWEEP

How does your sweep wear?

- Full parallel wing ends
 - sweep does not narrow during wear
 - retains approximate cutting width
- Wider wing widths
 - heavier construction
 - longer wear
 - more material to wear
- Convex wing surface
 - increased angle of penetration without increasing lift
 - less resistance to penetration
 - enhanced strength

Compare the Wear
Ask your local farm implement dealer.

LET'S JOIN IN PRAYER

The Churches of Stratford Welcome Your Family

<p>FIRST UNITED METHODIST Rev. Bill Watson 520 N. Main Sunday School 9:40 am Morning Worship 10:50 am Junior High UMY 5:30 pm Senior High UMY 6:00 pm Evening Worship 6:00 pm</p>	<p>FIRST BAPTIST Dr. Derrel Lewis 702 North 3rd Sunday School 9:45 am Morning Worship 10:50 am Church Training 6:00 pm Evening Worship 7:00 pm Wednesday Bible Study 7:30 pm</p>	<p>CHURCH OF CHRIST Minister Clark Tatum N. 3rd & Chestnut St. Sunday School 10:00 am Morning Worship 11:00 am Evening Worship 6:00 pm Wednesday Bible Study 7:30 pm</p>
--	---	---

ASSEMBLY OF GOD
Rev. Lonny Robbins
Corner of Purnell & Fulton
Sunday School 9:45 am
Morning Worship 10:45 am
Evening Worship 6:00 pm
Wednesday Bible Study 7:30 pm

FIRST CHRISTIAN
Rev. David Harker
5th & N. Main St.
Sunday Coffee Fellowship 9:00 am
Sunday School 9:45 am
Morning Worship 10:45 am
Evening Worship 6:00 pm
Wednesday, Adult Choir 8:00 pm

CALVARY BAPTIST
David Jones
302 S. Main St.
Sunday School 10:00 am
Morning Worship 11:00 am
Evening Worship 6:00 pm
Wednesday Prayer Service & Bible Study 7:00 pm

ST. JOSEPH CATHOLIC
Monsignor Kevin Hand
515 S. Pearl St.
Sunday Mass 8:30 am
Saturday Evening Mass 6:30 pm
Mass in Sunray 11:00 am

When I came to you, my brothers, to preach God's secret truth to you, I did not use long words and great learning. For I made up my mind to forget everything while I was with you except Jesus Christ, and especially his death on the cross.

1 Corinthians 2: 1-2

One of my sons is a computer expert, while the other is a college student, studying anthropology, with a new interest in biology. Both of their lives are tied up with data, gleaning, tabulating, evaluating and transmitting data. Their livelihood depends on it.

The old-fashioned word for data is facts. All of the facts in the world won't be of any lasting use to my young men unless they live their entire lives governed by one towering fact: that God loved the world so much, and that he loved my sons and all of us so much, that God sent his own Son, named Jesus Christ, to die on the cross of Calvary, that all of the sins of all of us might be taken away.

Because Jesus died on the cross, and because he rose again on the third day, my sons and I, my wife and nephew and all of us who claim Jesus Christ as our personal Saviour, have the forgiveness of sins and the hope of eternal life.

There are facts. And then there is THE FACT. We must live for Jesus, who died and lives again that we might have life, and have life more abundantly, forever and forever.

David Harker, Minister
First Christian Church

Women's Health Center

Normal and high risk pregnancies
Gynecologic cancer screening
Breast cancer screening
Infertility and family planning
Menopause and hormone problems

Dr. Turhan I. Baykan M.D.

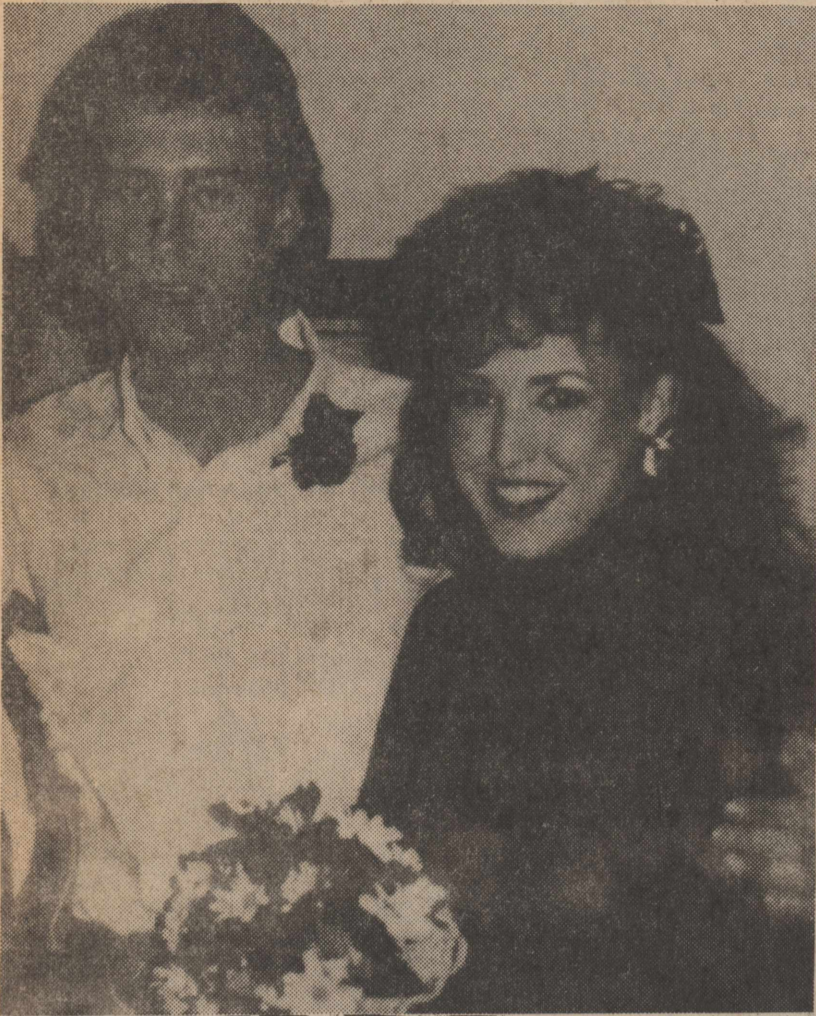
Specializing In
OBSTETRICS-GYNECOLOGY

201 South Bliss
Monday-Friday 9 a.m.-6 p.m.
Appointments 935-6599
Emergencies 935-7171

DUNCAN CHEVROLET & OIL COMPANY 396-5557 396-2835	NORTH PLAINS SAVINGS & LOAN 396-5534	C & C TEXACO STATION & C & C TEXACO PRODUCTS 396-2547 396-2131
WILLIAMS REPAIR SERVICE 396-5330 396-2322	CIMARRON FEEDERS, INC. 1-405-543-6383 Griggs	CONSUMERS CO. 396-2261
ZANADU VIDEO 396-2845	HEADQUARTERS RESTAURANT 396-2120	THE GIRLS NEXT DOOR C'S MALE BOX 396-5971
STRATFORD GRAIN CO. 396-5541 Lautz 769-4485	WALTER LASLEY & SONS, INC. 753-4411	TECO 396-2300
OLSON AUTOMOTIVE 396-5572	ALBERTS GROCERY & MARKET 396-2330	STRATFORD STAR 396-5885

Star SOCIETY

Marriage Announced



Mr. and Mrs. Wayne Cummings are pleased to announce the marriage of their son, Brett, to Talle Hicks, daughter of Mrs. Barbara Stearns of Canadian. The couple were married in the Cummings home on January 16 with the Reverend Raymond Dyess officiating. Brett and Talle are at home at 1600 Binkley, Space 60, Dumas, Texas where Brett is employed by Witco.

Biddy-Long Nuptials

Kari Lee Biddy and James Albert Long Jr. were married Dec. 5, 1987 at the First Baptist Church of Hillsboro.

The bride is the daughter of Ben Ray and Peggy Ann Biddy of Manchester and the granddaughter of Mr. and Mrs. Ben O. Biddy of Texas and the late Mr. and Mrs. Earl D. Moore of Nashville.

The bridegroom is the son of Jim Long of Hillsboro and Cynthia Tutton of Nashville. He is the grandson of Edna G. Long of Chattanooga.

The Rev. Martin Bowlin officiated at the candlelight ceremony and John Neal provided the music.

Red poinsettias, schefflera plants, and pine placed around brass spiral candelabra decorated the altar area. Pine boughs centered with a red candle and bow were placed in each window and red bows with pine and pine cones marked every other pew of the main aisle.

Given in marriage by her parents and grandparents, the bride wore an old fashioned white lace and taffeta floor-length gown with fitted bodice featuring V-back neckline, long tapered sleeves and a dropped waistline accented with a bow in the back. Her headpiece was a crown of flowers with a puffed veil at the back and delicate strands of pearls cascading to shoulder-length. She carried a bouquet of red and white poinsettias with pearls and red satin ribbon streamer.

Theresa Keele of Manchester served as maid of honor. Her dress styled like the bride's featured a red taffeta bodice and lace skirt accented with two taffeta bows. She carried a bouquet of white poinsettias accented with red and pearl bows and strands.

Lori Toneff kept the guest register. The bridegroom's father served as best man. Following the ceremony, the parents of the bride hosted a reception at their home on 16th Model Road. The serving table covered with white lace cloth over red liner and red bows at the

corners held a punch bowl circled with pine and a beige-tiered wedding cake decorated with trailing mistletoe. The servers were Sheila Toneff and Tammy Wilson, the bridegroom's sister.

The mother of the bride wore a champagne-colored chiffon dress with long sleeves and accented with lace and silk rosebuds.

The bridegroom's mother chose a misty pink chiffon dress gathered at the waist and street-length skirt. Both mothers wore corsages of miniature red and white poinsettias.

After a wedding trip to Gatlinburg, the couple is residing in Manchester.

Other out of town guests included Jim, Pat and Lee Carlisle of Winchester, Ky., Mr & Mrs. Charles Long and Mrs. Edna G. Long, all of Chattanooga.

Pre-nuptial parties included a surprise shower hosted by Sheila Toneff at her home and a shower hosted by the ladies of First Baptist Church in Hillsboro.

The bride, a graduate of Ezell-Harding Christian school in Nashville, received an associate degree in nursing from Motlow College and is presently employed by Medical Center Hospital in Manchester as a registered nurse.

The bridegroom graduated from Central High School in Manchester and is presently attending Motlow College and working for Long Imports in Hillsboro.

Fresh, unpeeled peaches supply 40 percent fewer calories than apples, almost twice as much vitamin C and more vitamin A.

Scot Notes
Cont. From Page 3

We "luv" you. Now, Scotter's, winter can't last forever. Let's make the best of our situations, be happy, serve the Lord, scatter Scot shoulder pads and "Luv u" all around. Be at Scot Hall Thurs. noon Jan. 28, 1988. Aloha!

Catherine D. Taylor
Certified Public Accountant
North Plains Building
401 N. 3 rd 396-2435
Monday - Friday 9 a. m. - 5 p. m.



Gladys Moore is the Coldwater Manor Birthday girl for January.

Busy Matrons

The Busy Matrons Extension Homemakers Group met Jan. 11 for the study of their January lesson on, "Develop a Healthful Eating Plan" in the home of Marion Thrasher.

The meeting was called to order by the president, Betty Fry, Marion had the devotional and the hostess gift was won by Maryann Chesnut. Dee Worley was the lesson leader. She stated that most canned goods and many other foods have labels as to their contents and number of servings. We need to learn to read the labels and to serve more nutritious meals to our families. Since we are what we eat it really can effect our health. We need to analyze our food habits and meal

patterns to fit the need, income and life styles of our family.

Roll call was answered with "What new foods have you tried lately?" by our new member Maryann Chesnut, Jane Clark, Jeanne Flanagan, Sue Fleming, Betty Fry, Ila Fry, Buena Shilling, Velma Shubert, Opal Thrasher, Dee Worley, Hostess Marion Thrasher, one guest, Joyce Thrasher and two children were present.

The next meeting will be on Feb. 8 at the club house with Opal Thrasher as hostess. The lesson will be "Strengthening Families" and will be given by Almenia Huddleston. We invite everyone to attend. We appreciate having guests.

Happy Hour

On January 21 the Happy Hour Home Demonstration Club met in the home of Dortha Allen with four members present. Elsie Pickens called the meeting to order. Dortha Allen read the opening exercise on who handles your anxiety.

Virginia Wells read the roll call on my most used shortcut for sewing. Then

she read the minutes from the last meeting. The program given by Virginia was on Shortcuts in Sewing.

The meeting was adjourned with delicious refreshments served to Dortha Allen, Mirtle Starker, Elsie Pickens and Virginia Wells.

The next meeting will be with Mirtle Starker on Feb. 18th.



Some people believe that sleeping on a piece of wedding cake is supposed to bring a dream to a single girl in which she will see her future husband.

RE-ELECT

Zelda Pickens

Your
TAX ASSESSOR-COLLECTOR
Sherman County

Your Vote and Influence Will Be Appreciated

Pd. Pol. Adv. —Pd. for by Zelda Pickens, Box 41, Stratford, Tx 79084

Happy Anniversary
Mom & Dad
From Your Kids & Grandkids
Serena, Bill, Doug, Rusty,
Randy, Ryan & Beth
Leona & Russell Kelp
had
Their 52nd Anniversary January 21st
Hope you had a Happy Day!!

Dallam County Child Welfare Board
Is Planning A
BENEFIT DANCE
To Raise Funds For Children in Foster Care
The Dance Will Be Held
Saturday, Jan. 30
At Rita Blanca Coliseum
Featuring The Popular Band
"CANYON"
Admission — \$10.⁰⁰ Per Person

Star Extension Club

Star Extension Homemakers met Jan. 19, 1988 with Geneva Bell for a noon luncheon.

President, Ava Keener, called the meeting to order and the "Pledge to the Texas Flag" was given.

Members answered roll call with "My Latest Fitness Effort" and a letter was read from Irene Wakefield.

Council delegate, Doris Dyess gave the council report and council recommendations were read by the committee chairman.

Ava announced the cost of the year books would be \$3.00, TEHA contribution \$2.00 and \$4.00 for 2 years subscription to the messenger.

Geneva Bell volunteered to take the leader training on "Vitamins and Minerals" January 20 at 2:00 p.m.

The members decided to not meet Feb. 2, but to take part in the meeting on A.I.D.S. Feb. 9th, 2 p.m. at the County Barn; Cindy Crabtree will give this.

Committee Chairmen were appointed for the year and are as follows: Year book - Geneva Bell, 4H - Doris Dyess, Finance - Leona Kelp and Melba Keener, E.E.E. - Jimmie Pronger and

Pinewood Derby
Cont. From Pg. 3

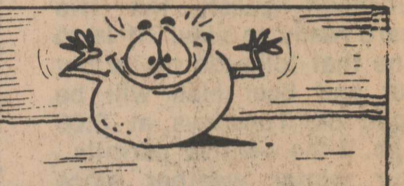
Best Paint Job to Brad Williams, and Most Unusual to Kyle Ellison. Don Riffe and Clark Tatum weighed in and registered the cars. Judges were Ritchie Brotherton, Jack Halle, Ken Forthman, and Johnny Mungia. Rhonda Mathews did a great job of running the brackets. The Scouting program would like to thank these men and women for helping with the Derby.

Genevieve Wilson, Cultural Arts - Bertha Blake and Joyce Harper, Telephone - Emma Naylor and Lorelyn Powers, Publicity - Jane Smith and Ava Keener, Membership - all club members will work on this and each hostess will be responsible for recreation at each club meeting.

Betty Golden was welcomed as a new member.

The next regular club meeting will be Feb. 26 at noon with Ava Keener.

Those present were: Leona Kelp, Betty Golden, Joyce Harper, Rowena Williams, Lorelyn Powers, Doris Dyess, Ava Keener, Jimmie Pronger, Susie Spurlock and Geneva Bell.



Until about the 18th century, oranges were enjoyed almost exclusively by kings, emperors, prelates and aristocrats. Nobody else could afford them.

Menu

Feb. 1-4

- Monday-Hamburger Pizza,** Tossed salad, corn, cherry cobbler.
- Tuesday-Turkey slices,** mashed potatoes and gravy, green beans, applesauce cake.
- Wednesday-Burritos,** chili, spinach, cole slaw and peaches.
- Thursday-Hamburger,** cheese and onions, lettuce, tomatoes, pickles, tator tots and pudding.
- Friday-No School**

Smith Agency
Stratford, Texas
Homeowners, Auto
Lower Rates
Call to see if you Qualify !
396-2031 396-2379
Your Local Independent Agent

Are you shoveling too much money into your car?

If auto repair expense is adding up to more than your car is worth, stop in and see us. We may be able to help you trade in that old 'clunker' for a new car. You'll find our interest rates attractive and our service fast and friendly. Isn't it about time you quit shoveling money into that old car? See us today.

The FIRST State Bank
OF STRATFORD
STRATFORD, TEXAS
MEMBER FEDERAL DEPOSIT INSURANCE CORPORATION

Cards of Thanks

We would like to thank everyone for their cards, visits, phone calls and flowers while Malcolm was in the hospital and since coming home. Everyone has been so nice.

Tommie, Brenda, Malcolm and Justin Long

Thank you for the many calls, flowers, and cards sent to us during the loss of Bert's mother. We appreciate it so much.

Bert and Carmen Hernandez

Tips & Topics

By Susie Spurlock

Beef To Be Featured At Local Grocers

Beef - Real Food for Real People will be featured at Nutrition Learning Centers in grocery stores throughout the county. Susie Spurlock, Sherman County Extension Agent, will be providing nutritional information and product samples at the learning centers on the following date and location: January 27, Thriftway 3 - 6 p.m.; January 28, Norris' Foodarama, 3 - 6 p.m.; February 3, Albert's Grocery & Market, 3 - 6 p.m.

According to Mrs. Spurlock, today's beef belongs in all diets because it is nutritious and has fewer calories than the beef of the 1950's. Beef is a nutrient dense food contributing a

significant level of nutrients at a relatively low calorie cost.

Come by and visit Mrs. Spurlock at one of the learning centers and see yourself why real people are eating beef!

Educational programs conducted by the Texas Agriculture Extension Service serve people of all ages regardless of socio-economic level, race color, sex, religion, or national origin. References to commercial products or trade names are made with the understanding that no discrimination is intended and no endorsement by the Texas Agricultural Extension Service is implied.

Deducting Moving Expenses May Save Taxpayers Money

Taxpayers who are changing their job location or starting a new job this year may be able to claim many of their moving expenses as an itemized deduction on Schedule A (Form 1040) when they file their tax returns, the Internal Revenue Service said. Form 3903 is used to compute the amount of deductible expenses.

Moving expenses that are allowable as an itemized deduction include the cost of: 1) househunting trips prior to the move but after getting the new job; 2) disposing of the old home and getting a new one; 3) meals and lodging while occupying temporary quarters at the new location; 4) moving personal items and household goods; and 5) transportation, meals, and lodging while traveling to the new residence.

A limited amount of job-related moving expenses may be deducted if the taxpayer meets the "distance test" and "time test," and the move is "closely related" to the start of work.

To meet the distance test, the new main job location must be at least 35 miles farther from the taxpayer's former home than the old main job location was. For example, if a taxpayer's old job was three miles from his or her former home, the new job must be at least 38 miles from that home.

To meet the time test, a taxpayer

must be employed full time for at least 39 weeks during the first 12 months after arriving in the general area of a new job location. A taxpayer does not have to work 39 consecutive weeks or work for the same employer to meet this requirement. If a taxpayer is married and filing a joint return, and if both spouses work, either spouse's employment may fulfill the full-time work requirement but the weeks each spouse worked cannot be added together to fulfill the 39-week test.

Taxpayers who are self-employed must work full time for at least 39 weeks during the first 12 months after their move, and for a total of 78 weeks during the first 24 months.

In general, a move is considered closely related to the start of work if moving expenses are incurred within one year from the date the taxpayer first reported to work at the new location.

Taxpayers generally deduct their moving expenses in the year they pay them. Taxpayers who did not deduct moving expenses on a return already filed may be able to file an amended return. For more information, Publication 521, *Moving Expenses*, is available free by calling the IRS Tax Forms/Publications number listed in local telephone directories under U.S. Government.

Social Security Numbers Required For Dependents 5 Years and Older

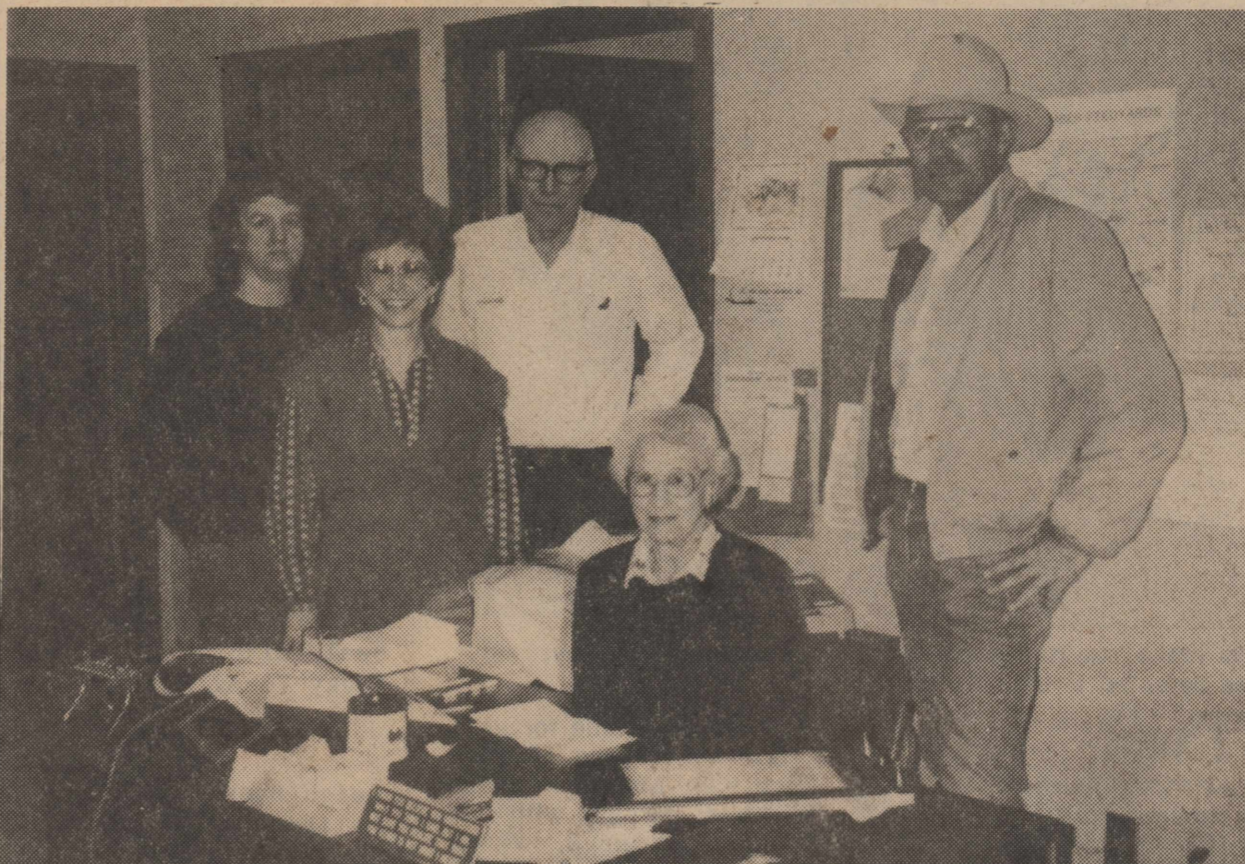
As a result of the Tax Reform Act of 1986, a taxpayer claiming a dependent who is at least 5 years old must include that dependent's taxpayer identification number on the taxpayer's return. For most individuals, this number is their social security number. This new law is effective beginning with 1987 tax returns.

If the dependent has a social security number, but the taxpayer does not know what it is, the taxpayer should contact a local Social Security Administration office.

To get a social security number, a dependent must have evidence of: (1) date of birth, (2) U.S. citizenship or legal alien status, and (3) identity. A public, hospital, or religious birth record is generally sufficient for the first two items. A school record and certain other documents can be used for proof of identity. For more information, taxpayers may ask at any Social Security Administration office for the free leaflet, *Applying for a Social Security Number*.

What's Happening !!

Business Spotlight



Jolene Skaggs, Betty Fesler, Walter Lasley, Bess Stone and Walter Lasley, Jr.

Walter Lasley and Sons Inc. is owned and operated by Walter Lasley and Walter E. Lasley. Walter Lasley is President of the business and Walter E. Lasley is Vice President and General Manager. Walter began farming the family farm in 1942 and feeding cattle in 1953. It was not until after he incorporated the family business in 1963 that they began feeding cattle commercially and added a grain elevator for local grain. The feedlot, located thirteen miles east and one mile north of Stratford is an 18,000 head custom feedlot

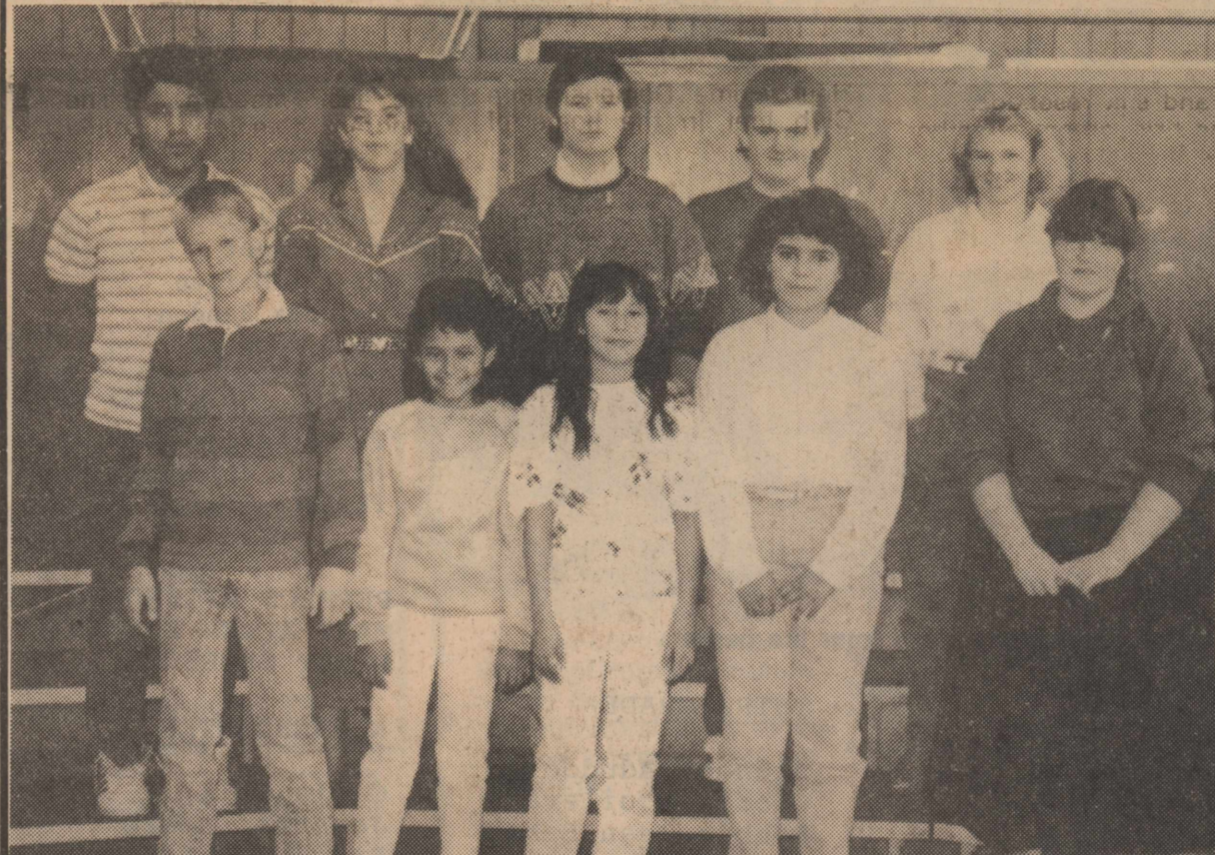
with a 400,000 bushel grain storage elevator. Walter also farms 3,500 acres of wheat for wheat pasture cattle and raises sorghum silage for the feedlot.

Seventeen people are employed at the Walter Lasley Feedyard. They include: Jerry House, Gaudencio Cenciros, Manuel Ortega and Sam Ortega in the Mill, W.R. Larance and Charlie Crabtree in Maintenance, Duane Robertson and Brad Harber taking care of the farming, Betty Fesler, Bess Stone and Jolene Skaggs in the office and Bob Bullock, Tommie Long, Max

Lowe, Ray Lerman, Justin Long and Malcom Long, the cowboys.

Walter and his wife, Le Verne, have three children, Walter E., Griff, and Sandie. Walter E. and his wife Kris, have three children and live near the feedyard. Sandie and her husband, Steve Woods, have four children and live in Dallas. Griff and his wife, Janice, have two children and live in Waco. Le Verne is Secretary Treasurer for Walter Lasley and Sons Inc. Both Walter and Walter E. enjoy flying and attending ballgames, Stratford and Aggie games in particular.

Student Of The Week



January 18, 1988

TEACHER	STUDENT	COMMENTS
RINDA ALLISON	Marcus Lavake	Hard worker; very nice
DIANE WARD	Pati Porras	Continually does her best
LYNDA HAUSER	Clarissa Valenzuela	Has assignments completed; pleasant
LINDA SWAIN	Cecilia Beltran	Shows much improvement in English
TERRI TEIG	Sherry Ritch	Good job on oral reading
BARBARA HAILE	Melissa Beattie	Conscientious, mature, responsible
MIKE BROWNLEE	Alberto Aguilera	Hard worker and good student
DWAYNE PLUNK	Alicia Miller	Pleasant, hard working, pleasing personality
SONJA KENDRICK	Jason Varner	Cooperative, hard working student
LARRY NORRIS	Eric Tillery	Quiet in the classroom
BEITY INGHAM	Kendra Tillery	Worked very hard on All-Region music and has much pride in the Jr. High Band.

Pets May Help Children Learn

According to recent research, children's blood pressure goes up when they read aloud, indicating an increased level of stress. When a pet was introduced into the room, however, the children reading aloud actually experienced lower blood pressure levels, creating a more relaxed learning experience.



Research is now underway to find out exactly what impact pets have on the learning experience. Experts conjecture that since children are more relaxed with a companion animal present, pets may actually be a key to developing a more productive learning environment.

Animals can also be important morale boosters for children who are experiencing difficulty with schoolwork or rejection by classmates. According to a University of Minnesota study, pets also are excellent companions for "latchkey" children who are alone after school. Other experts believe that pets may help youngsters bridge disturbing personal transitions such as a divorce or moving to a new neighborhood.

Taking care of a pet also teaches a child responsibility, which Dr. Alan Beck of the University of Pennsylvania says is an important facet in developing a healthy self image. In fact, says Beck, training a pet can benefit a child's mental health and increase his self-esteem by making him feel important in the life of the animal and giving him a sense of mastery over the external world.

Pets improve our mental and physical well being in many different ways. To receive a free booklet on how animal companionship benefits human health, write to Pet Information Bureau, 1710 Rhode Island Avenue, NW, Washington, DC 20036 or call 202/452-1525.

Representing Communicating for Agriculture, America's fastest-growing rural organization. Many exclusive membership benefits include:



John Husmann

- Group Health and Life Insurance
- USA-ONE National Credit Union
- Leasing Services
- Scholarships & International Exchange for Rural Youth

Call TODAY for more information:



JOHN HUSMANN
753-4426
HCR 1 Bx 392
Stratford, Tx 79084

1287CA

TECO

396-2300

North Plains Savings & Loan
396-5534

Olson Automotive
396-5572

Cimarron Feeders, Inc.
1-405-543-6383 Griggs

Stratford Grain Co.
Stratford 396-5541 Lautz 769-4485

Available Space

The Allen Agency
396-5810

Stratford Star
396-5885

Albert's Grocery & Market
396-2330

Coldwater Manor
396-5568

Elk Pharmacy
396-5505

Zanadu Video
396-2845

Walter Lasley & Sons, Inc.
396-2330

Thriftway

396-5586

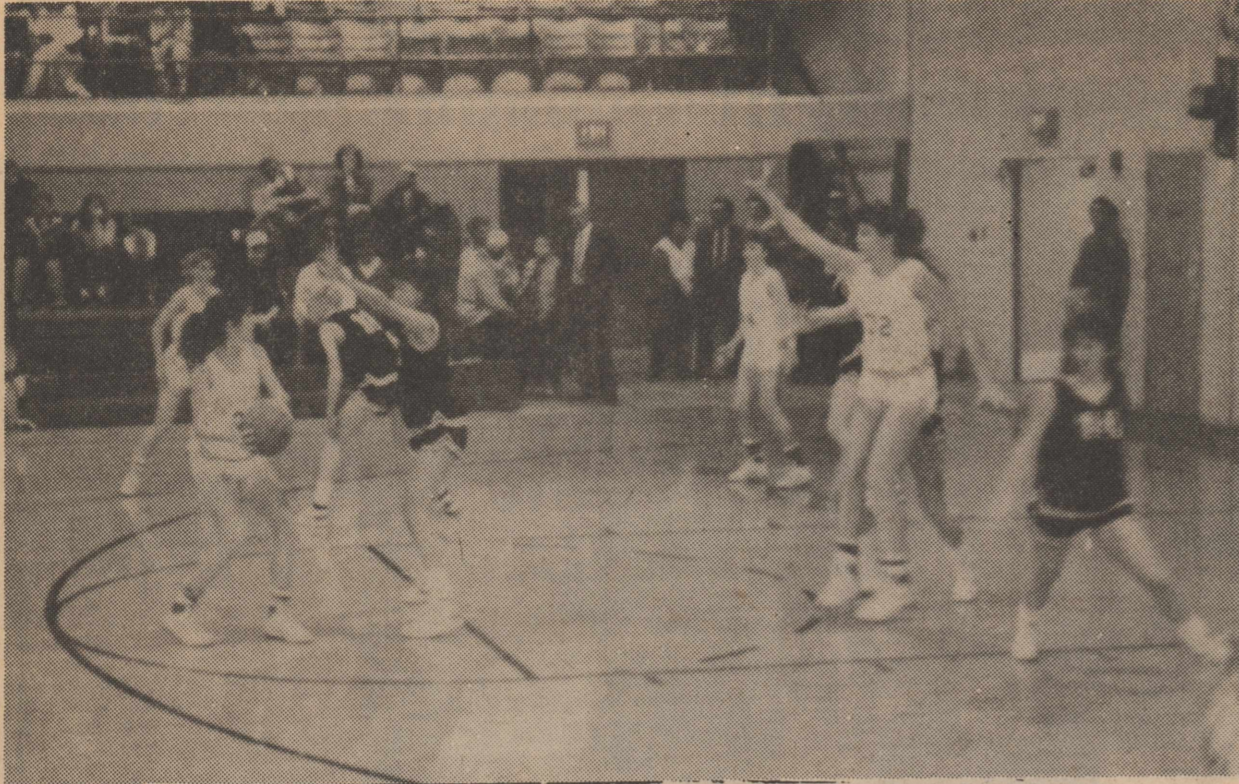
The Girls Next Door & C's Male Box
396-5971

Consumers Company
396-2261

Brooks Motor Company
396-2470

Walter Lasley & Sons, Inc.
753-4411

BASKETBALL



The Elkettes about to make another 2 points against Gruver Tuesday, January 19th. Elkettes defeated Gruver 53 to 41.

Elkettes Win Two

By Coach Morris

The Gruver girls and the White Deer girls were both defeated by the Stratford Elkettes. On Tuesday, January 19, the local girls won their game with Gruver by a score of 53 to 41. Stratford went ahead 10 to 4 after one quarter and never trailed after that. "We played well in spurts. I don't feel we played as well as the last ball game however, we did win." Scoring for Stratford was Vickie Rolan with 35 points, Kim Morris with 10, Michelle Durham 4, Michelle Decker with 2 and Desine Melton with 2. Vickie had 10 rebounds,

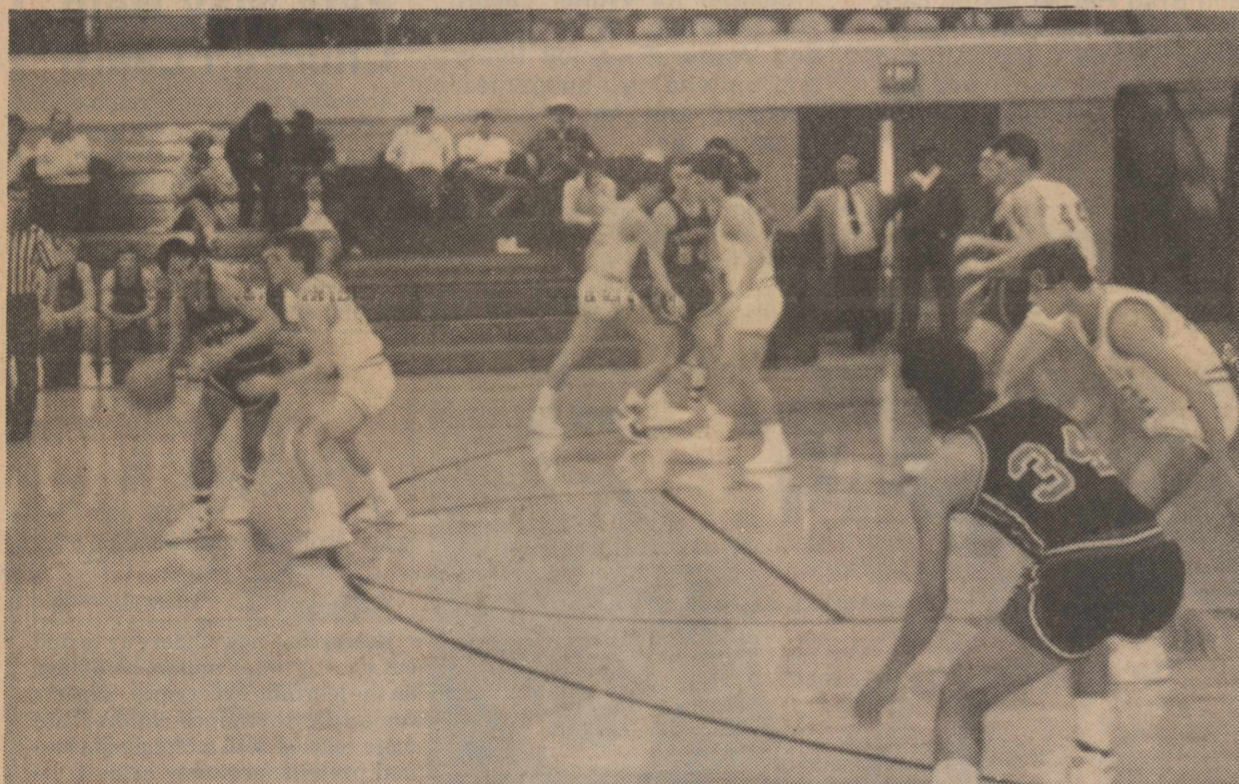
Michelle Durham and Michelle Decker both had 7 rebounds, Desine had three, Kristi had 6 assists and Kim had 5. Kim had 8 steals and Vickie had 3. Kristi, Michelle and Amie Vincent each had 2 steals.

On Friday, January 22, the Elkettes traveled to White Deer where they won 51 to 43. The White Deer girls came out and got the lead and held it until the 4th period. "We just did not play well at all during this game. The girls did show that they are winners by going ahead in the last quarter. We made some free throws in the fourth quarter

that won the game for us."

Scoring for the Elkettes were Kim Morris with 15, Michelle Durham with 12, Kristi Harrison 8, Vickie Rolan 7, Michelle Decker 7 and Tonya Dyess 2. Vickie had 7 rebounds, Kim 6, Kristi 6 Michelle Durham 5, Tonya 3, Desine 1 and Michelle Decker 1. Kristi had 6 assists, Kim 3, Michelle Durham 2, Michelle Decker 2 and Tonya 1. Kim and Kristi each had 6 steals, Tonya 3, Vickie 2 and Michelle Decker 1.

The JV Boys beat White Deer 38 to 37. The JV Girls lost to White Deer 31 to 21 and Gruver beat the JV Girls 21 to 9.



The Elks keeping the Gruver Greyhounds away from the basket.

By Coach Whiteside

"The Elks lost a very tough game to White Deer Friday night 64-63 in three overtimes. Both teams had numerous chances to win the game outright but couldn't quite seem to do it. The Elks were down by 4 points with 18 seconds left to play in the 3rd overtime and still nearly one as a shot at the buzzer to win rimmed out. The loss dropped the Elks into a second place tie again.

PERFECT ATTENDANCE
MARY ALLEN ELEMENTARY
THIRD 6 WEEKS

KINDERGARTEN

Carla Bell
Nimesh Bhakta
Amy Cox
David Hunsaker
Jessica Lucero
Brady McMillion
Eric Macias
Brock Swain
Parker Wells
Keri Wight

FIRST GRADE

Rocia Aguilera
Hillary Baskin
Mandi Bell
Tai Ann Brownlee
David Davis
Ross Davis
Crystal Herring
Levi James
Julie Kimball
Scott McAlister
Shawna McGee
Carrie Newcomb
April Parker
Jeremy Pool

Scoring for the Elks were Dirk Davis 26; Doug Pittman 12; Galen Knight 9; Gared McBryde 7; Wes Allison 5; Neal Smith 2 and Chris Waters with 2.

Rebounding were Wes Allison with 7, Galen with 6, Dirk with 6, Gared with 5 Neal with 3 and Doug with 2.

Casey Ramos
Bradley Ross
Nathaniel Walden
Lari Wells
Teresa Wells
Brian Whatley
Lindsay Whiteside
Lori Young
Tammy Zacharias

SECOND GRADE

Oscar Aguilera
Shelly Baker
Jorge Barajas
Cassie Bell
Christopher Bell
Charles Bogan
Shawn Brooks
Jessica Bryson
Gabriel Gonzalez
Christopher Huereca
Dan Jackson
Anthony Lucero
Garrett Macias
Angela Mitchell
Michael Navarrete
Keisha Naugle
Annie Ortega
Amy Reinart
Jessica Sikora
Ashley Stoy
Jamie Street
Casey Switser
Bill Henry
Blanca Valenzuela

THIRD GRADE

Brandon Aduddell
Gloria Aguilera
Bobbie Jean Baker
Gwen Baker
Misty Bruns
Ryan Davis
Rudy Gonzalez
Robin Hart
Chris Haynes
Jackie Larence
Bo Lindenfeld
Aleacia McMillion
Michael Meil
Dusty Palmer
J.B. Presley
Heath Reed
Aaron Roberts
Jennifer Sladek
Brian Street
J.J. Tobias
Jennifer Weiland
Brad Williams
Ty Young

FOURTH GRADE

Carlos Barajas
Cheryl Beattie
Hope Cargill
Roy Davis
Kyle Ellison
Colby Jackson
Jeremy Jackson
Tiffany Jackson
Lisa Jurado
Clint McAdams
Rachelle Mungia
Carissa Reinart
Brandon Starnes
Marshall Strifler
Ryan Swain
Sandra Valenzuela
Kelli Wight
Autumn Woolsey
Jennifer Zacharias

Honor Roll

STRATFORD HIGH SCHOOL FIRST SEMESTER HONOR ROLL

SENIORS:

Kristyn Altman
Rex Artho
Kristi Blake
Lucy Cano
Cristie Chumley
Susan Cloyd
Carla Crabtree
Martin Dettle
Mark Durham
Michelle Durham
Jenny Fedric
Kristi Harrison
Mike Kirkwood
Brent Lane
Gared McBryde
Kim Morris
Sami Oakley
Lisa O'Brien
Doug Pittman
Richard Ragsdale
Neal Smith
Becky Young

JUNIORS:

Leigh Bass
Melinda Decker
Jon Engelbrecht
Tina Lusk
Cindy McMurry
Desine Melton
Thad Parsons
Scott Riffe
Manuela Rodriguez

SOPHOMORES:

Renne Allen
Lori Blair
Heather Carter
Angie Gore
Brent Grimes
Tammy Holman
Tina Kirkpatrick
Michael Lunt
Steve O'Brien
Juanita Presley
Jamie Randall
Kathy Varner
Lisa White
Loyd Willard
Julie Young

FRESHMEN:

Trenton Borth
Marsha Diamond
Sammy Ellison
Micha Lunt
Mistie Morgan
Melinda Rendon
Beny Shuping
Wayne Stacy
Kim Thompson
Pedro Vargas
Marisol Villegas
Phillip Zinck

PERFECT ATTENDANCE MARY ALLEN ELEMENTARY FIRST SEMESTER

KINDERGARTEN

Carla Bell
Jessica Lucero
Brock Swain
Parker Wells

FIRST GRADE

Tai Ann Brownlee
Julie Kimball
Casey Ramos
Hillary Baskin

SECOND GRADE

Cassie Bell
Jessica Bryson
Christopher Huereca
Dan Jackson
Anthony Lucero
Garrett Macias
Angela Mitchell
Annie Ortega
Jessica Sikora
Ashley Stoy

THIRD GRADE

Gwen Baker
Robin Hart
Chris Haynes
Bo Lindenfeld
Michael Meil
Heath Reed
J.J. Tobias

FOURTH GRADE

Colby Jackson
Jeremy Jackson
Lisa Jurado
Clint McAdams
Rachelle Mungia
Carissa Reinart
Ryan Swain

STRATFORD MIDDLE SCHOOL FIRST SEMESTER HONOR ROLL

5th Grade

John Bogan
Marcus Lavake
Jeffrey Mercer
Wendy Palmer
Kimber Ward
Ryan Warner
Christy Wells
Kelly Grimes
Mandy Mires
Jennifer Newcomb
Oscar Baeza
Peggy Ford
Michael Harris
Katie Norris
Ashley Parsons
Lisa Ramos
Lea Shuping
Clint Vincent

6th Grade

Adrian Aguilera
Jami Allen
Courtney Dettle
Sarah Graham
Hollie Husmann
Stacy Reese
Elly Rhoades
Heath Starnes
Kaci Wight
Kimberly Bouldin
Kelly Canada
Dean Hauser

7th Grade

Lachelle Burton
Jolina Garoutte
Skyler Reed
Chandra Jackson
Alicia Miller
Enedit Baeza
Melissa Beattie
Matt Brotherton
Toby Diamond
Angela McGinnis
Josh Marshall
Clint Parsons
Teresa Presley

8th Grade

Scott Asher
Jeb Brotherton
Buffy Ellison
Alan Gore
Emily Graham
Angie Porras
Jason Varner
LaQuita Vaughn
Lily Cano
Jenny Carter
Heather Husmann
Brandi Lavake
Shannon Norris
Carie Switser
Greg Vandiver
Amber Woolsey

MARY ALLEN SCHOOL HONOR ROLL THIRD 6 WEEKS

THIRD GRADE

Gloria Aguilera
Bobbie Jean Baker
Lori Brooks
Davy Brown
Hillary Frank
Robin Hart
Chris Haynes
Nigal Kirkpatrick
Michelle McKaughan
Michael Meil
Dusty Palmer
J.B. Presley
Heath Reed
Aaron Roberts
Ty Young
Stephanie Knoelke
Janell Pronger
Misty Bruns
Justin Sims
Kevin Griffith
Quintana Dearing
Jennifer Sladek

FOURTH GRADE

Carissa Reinart
Kyle Ellison
Brandon Starnes
Jared Sims
Jennifer Chamberlain
Kelli Wight
Gery Ornelas
T.D. Baskin
Arthur Ellsworth
Ryan Swain
Clay Wheeler
Rachelle Mungia
Keely Naugle
Jamie Slater
Jennifer Zacharias

MARY ALLEN SCHOOL HONOR ROLL SEMESTER

THIRD GRADE

Gloria Aguilera
Bobbie Jean Baker
Lori Brooks
Davy Brown
Hillary Frank
Robin Hart
Chris Haynes
Nigal Kirkpatrick
Michelle McKaughan
Michael Meil
Dusty Palmer
J.B. Presley
Aaron Roberts
Brian Street
Stephanie Knoelke
Janell Pronger
Justin Sims
Misty Bruns
Quintana Dearing
Jennifer Sladek
Kevin Griffith
Gwen Baker

FOURTH GRADE

Carissa Reinart
Shannon Roberts
T.J. Jeffcoat
Kyle Ellison
Roy Davis
Brandon Starnes
Jared Sims
Jennifer Chamberlain
Kelli Wight
John Long
Gery Ornelas
T.D. Baskin
Arthur Ellsworth
Ryan Swain
Clay Wheeler
Keely Naugle
Jamie Slater
Jennifer Zacharias



In 1967, Carl Yazstremski won the batting title in the American League with a .301 batting average.

Three causes continue to stand out in the injury and fatality counts:
The following information is from the Texas Department of Public Safety "Motor Vehicle Traffic Accidents, 1985":

SPEED:
867 persons were killed in motor vehicle traffic accidents involving speeding—over limit; of those fatalities 560 were the speeding drivers; the other 307 were persons affected by those drivers' actions.

DWI:
989 people were killed in DWI related motor vehicle traffic accidents. Of those, 524 were the DWI drivers; the other 465 were persons affected by the DWI drivers.

YOUNG DRIVERS:
Drivers ages 15-19 were involved in 89,236 accidents, 485 of which were fatal. Drivers ages 15-19 totaled 6% of the licensed drivers, but accounted for 10.3% of the fatal motor vehicle accidents.

[Public Service Announcement from the Stratford Police Department and "Stratford Star"]

IT PAYS TO LOOK IN

THE

Star



CLASSIFIEDS

'THE BEST SALESPERSON AROUND'

Phone 396-5885 to place your Star classified ad

★ **FOR SALE** ★

Serving Breakfast from 7:30 a.m. Breakfast croissants our specialty at M's Meet and Eat.

8-13-tfn

For Sale: Extra clean 1981, 98 Oldsmobile, 4 door, loaded call 396-5978 or 396-5308.

11-26-tfn

Graduation Early! All luggage for the graduate on sale now Inside Family and Friends. 30-75% off.

2-11-c

For Sale: 1983 Chevrolet Pickup 1/2 ton. 72,000 miles. Clean and good shape. Call Les Dodson at 396-5521.

12-31-tfn

30-75% off all Konvex luggage from the Initial Decision Inside Family and Friends.

2-11-c

For Sale: Used Sofa and Recliner. Both recently recovered. Call Sue Hudson 396-5916.

1-28-c

For Sale: AKC Golden Retrievers, Ready now or will hold for Valentines. Call 396-2812, leave message.

1-28-tfn

Finches and parakeets for sale. C&C Aviary 396-2378.

1-21-tfn

WINTER SPECIAL

1981 CB900 F motorcycle, plexy fairing III tinted windshield, luggage carrier and padded backrest, new Michelin Tires, 7000 miles. Excellent condition. \$1,500 call 396-2520 after 6 p.m.

1-28-p

For Sale: Wizard electric stove with storage compartments \$50.00 and Baldwin Funmachine Organ. Dual keyboard and foot peddles. Excellent condition. Great for all ages. \$2,500.00 Call 396-2407 after 5 p.m.

1-28-c

For Sale: 1979 Ford Station wagon, new tires, good family car. 396-2346.

2-4-p

New Spring Merchandise arriving daily. Girls Next Door.

1-28-c

A human being is born with 305 bones, but during childhood a number of them fuse, so that an adult has only about 206.

★ **SERVICES** ★

Cowboy Cafe At Conlen Breakfast starting at 6:30 Daily Luncheon Special Good Ol' Country Cookin' 384-2124

10-22-tfn

Durans Disc Rolling Service 35 years experience No Mileage charged 405-423-7238

2-5-9-tfn

For Termite Control Call Leo Russell at 1-383-7075 Amarillo. Have been working Stratford for 28 years. Have City and State License for the City of Stratford.

4-24-tfn

If your clothes are neat & clean when you go to work, you will be noticed. What you do is your business, how you look is our business. Stratford Poly Clean

9-24-tfn

Come by for a free Halon fire extinguisher demonstration. I've also got smoke detectors for your home. Call or come by. Bill Riffe 396-5541.

9-24-tfn

For all of you that once used Rawleigh Products, you can now order from Distributor Tammie Helmuth. Call 396-5975 for a catalog.

2-4-c

VETERANS--Land purchase housing purchase, disability benefits, pensions. For assistance in applying for these and other VA benefits, contact Max Stephenson, CSO at 396-5348.

2-25-p

For all of your farm, business or personal book-keeping needs-call Charlene Harris [ABI Accounting] 396-2812.

1-28-c

Bridal Shower selections Tonja and Jeff Pronger. Ellie M's.

2-4-c

Chimney cleaning. A dirty chimney is a fire hazzard. Call 396-5321.

1-14-tfn

STORE WIDE PRE-INVENTORY CLEARANCE SALE GIRLS NEXT DOOR AND C'S MALE BOX.

1-28-c

To save room in lunch boxes, use empty pill-boxes with snap-on tops for items such as sugar, salt and pepper.

★ **MISC** ★

Headquarters Fish Fry Friday Night 5:30 to 9:00 P.M. All You Can Eat We are now open on Mondays 6:00 A.M. to 9:00 P.M.

5-14-tfn

ATTENTIONS

WHEN YOU BRING IN LAUNDRY OR DRYCLEANING TO STRATFORD POLY CLEAN ASK ABOUT OUR \$25 TRIVIA QUESTION

12-24-tfn

I, Christopher Edley Crabtree, am not liable for any debts incurred by Vickie Dianne Crabtree [Behney] as of January 25, 1988.

Your dollars not going far enough! Join thousands buying wholesale. Everything from household goods to appliances and vans. No obligation. Guaranteed. Call 396-5907.

2-4-p

ALCOHOLICS ANONYMOUS and AL-ANON meet each Thursday at 8:00 p.m. in the old County Barn

We're Moving Zanadu Video will be moving to Gophers Convenience Store at Hwy 54 and 287. Our last day of business at our present location will be Saturday, January 30th. Terrific specials on Thursday Friday and Saturday. Thanks for your patronage.

1-28-c

WHAT'S HAPPENING! GREAT WHITE SALE! GIRLS NEXT DOOR

1-28-c

Stratford Lodge No. 874
RONALD TILLERY
Third Thursday 8 p.m.

PASTURE — CATTLE — STORM INSURANCE
INSURE YOUR CATTLE WITH A **CATTLEMAN**
JOE FLORES
FARM BUREAU INSURANCE
396-5598 NIGHT 396-5389

Member American Optometric Association
Family Vision Care Specialists
Dr. J.W. McCormick
Dr. David Riddlesburger
OPTOMETRISTS
Dr. McCormick will be in the Stratford Office:
Thursday, Feb. 4th & 18th
Office Hours: 10:30 to 4:30
Call 935-6491 396-5516

HOME (806) 381-2212
DAN H. LOVING, D.D.S., M.A.G.D.
GENERAL DENTISTRY
Wednesday in Stratford
P.O. BOX 556 212 S. BLISS DUMAS, TEXAS 79029 (806) 935-9212
P.O. BOX 779 212 N. POPLAR STRATFORD, TEXAS 79084 (806) 396-5685

PALO DURO TRAVEL SERVICE
2009 Coulter Amarillo, TX 79106
PAT JOHNSON
Travel Consultant
Res. (806) 396-2243
JOAN BELL
Travel Consultant
Res. (806) 396-5958 Bus. (806) 396-5561

★ **FOR RENT** ★

Gillis Apartments for rent. Call 396-5564 or 396-2264. George Jeffcoat. Garrison at 396-5657.

5-21-tfn

For Rent: 3 bedroom 1 bath brick house with large fenced backyard and storage buildings. Call Janice after 5:00 396-2487.

1-7-tfn

New Tax Law TIP

To help you understand the new tax law, the IRS has two new publications. Publication 920 explains changes affecting individuals and Publication 921 explains changes affecting businesses. Both are free. Ask for one at any IRS office or call the IRS Tax Forms number in your phone book.

Don't forget . . .

You must report all income. For example, income from a second job, a freelance assignment, a home child care service, interest on a savings account, and income earned in another country.



Here's a tip . . . a Tax Tip.

If you are age 60 and over, a low-income earner, have a handicap or you don't speak English, the IRS will help you. Call IRS about their VITA and TCE tax help programs. The number is in your phone book.



Classified Ad Rate

16¢ per word after 25 words
\$4.00 minimum up to 25 words
16 cents each additional word first week
8¢ per word on subsequent insertions
\$1.00 discount if paid in advance

Deadline Noon Mondays

★ **HOUSES FOR SALE** ★

For Sale: Brick home. Fenced acreage and out-buildings. 396-2067.

11-26-tfn

For Sale: 3 Bedroom, 2 bath, brick home with fireplace, built ins. Central heat and air conditioning. Ceiling fans in all rooms. For information call 396-2843.

1-28-c

LAND FOR SALE

107 acres of native grass, 13 miles from Stratford. Murphy, 214-247-6681.

2-4-p

★ **MANUFACTURED HOMES**

ABANDONED HOMES Take over payments on 2 and 3 bedroom homes. QUALIFY BY PHONE 806-381-1352 CALL COLLECT

10-1-tfn

WOMEN'S CLINIC

OF DALHART

1422 Texas Boulevard Dalhart, Texas 79022

OLUMIDE MICHAEL MUGHELLI, MD

Board Certified OB/GYN

Office Hours

9-5 Mon. - Fri.

Thursday evening 6-9

PHONE

806-249-4701

★ **HELP WANTED** ★

Gophers Convenience Store is now taking applications for employment. Applications may be picked up at the store.

1-28-p

POSITION AVAILABLE County Librarian, Flexible hours, Good working conditions. Applications may be picked up in the Jr. High Principals office. Applications accepted until February 3rd.

1-28-c

ADDRESS ENVELOPES for firms, nationwide! Sensational earning! No experience. We show you. Begin immediately! Stamped envelope: Publications-1, 804 Old Thorsby Road, Clanton, Alabama 35045.

12-24-tfn

VISA! MASTERCARD! GUARANTEED! Without investigation. Bankrupt? Bad Credit? Divorced? Widowed? On welfare? No problem. All eligible. Free details. Send #10 self addressed stamped envelope Success, Drawer 389, Clanton, Alabama 35045.

12-24-tfn

TYPIST-Hundreds weekly at home! Write P.O. Box 17 Clark, N.J. 07066.

3-10-c

PART TIME- Home Mailing Program! Excellent income! Details, send self-addressed, stamped envelope. WEST, Box 5877, Hillside, N. J. 07205.

3-10-c

Want to VENDOR? Top candies, nuts, mints, gums, etc. using advanced machines, locators, training, merchandising for highest time-investment return? Responsible, mature with car & \$5,000.00? Call 1-800-346-6747.

1-28-p

Ad Rem Land Co.



710 S. Dumas Ave. 935-7364



Beautiful, good location, new carpet, new kitchen 3 bedrm. 2 bath \$35,000

Nice 2 BR house on four lots with metal shop and 2 mobil home hook ups. \$24,500.

Extra Clean mobile home, Ref. Air-2-lots-storage bldg. \$21,000.

Cute 2 bedroom-big yard new paint-storage garage. \$16,000. New roof & storm windows

Dollhouse on main! 3 bedroom, new paint and tile. \$25,000. Spanish style stucco

Excellent floor plan-extra nice 3 bedroom-3 bath-extra paved parking, lots of storage. \$78,000.

New carpet-new paint-built in desk-walkin cedar closet-3 ceiling fans. \$45,000.

New Listing: Good Location, 2 BR. carpet, cent. heat-regr., air, priced to sell, storm windows \$30,000.00

New Listing: Super nice home. Lots of storage, Morton Building. 5 lots on corner. 3 BR. 1 1/4 bath \$75,000.00.

New Listing: Good business opportunity, Lumber Yard, Stratford.

Peachy Perfect Duplex. 2 car garage, corner lots, owner financing available. \$30,000.00.

Good Buy, 3 bedroom ON CONTRACT to school, corner lot \$25,000.

House to be moved. 3 bedroom with fireplace, storm windows and doors. \$25,000.

LOTS & ACREAGE

40 acres with small feedyard N/W Hartley Co. Good Water & Allotments, 1 section-4 sprinklers, 2 wells.

3.17 acres-go ON CONTRACT bldg, concrete floor & utilities, 3 BR house, needs CONTRACT, 000.

Lot on beautiful Lake Meredith, Country Club Addition, all privileges go with lot. \$6,000.

36 x 200 concrete floor bldg. elec/gas 4.94 acres on Gruver Hwy.

Pat Johnson 396-2243

Tom Ferguson, Broker

Marty Bain 396-2053

Williams Repair Service
Phone 396-2429
For Plumbing and Heating trouble
Roof Repair and Home Remodeling
Residential and Commercial
We Sell
Smith Water Heaters
Cozy Wall Heaters
Heat Tape
Kohler Fixtures
Plumbing Supplies
Cozy Floor Furnaces
Delta Faucets
Don Williams Res. 396-2322
Eddie Williams Res. 396-5330

Michael Padwick M.D.
Board Certified in Family Practice
9 a.m.-5 p.m.
Mondays-Fridays
Until 7 p.m. Wednesdays
Family Practice with Obstetrics
Se Habla Espanol
201 South Bliss Dumas, Texas 935-7730



Bag the Savings!

THE MORE YOU BUY...THE MORE YOU SAVE!

Bonus Bucks



BATHROOM TISSUE
WHITE CLOUD

4 ROLL PKG. **29¢**

WITH ONE FILLED BONUS BUCK CARD 1

Bonus Bucks



BANQUET CHICKEN/ BEEF/ TURKEY
POT PIES

3 7 OZ. BOXES **19¢**

WITH ONE FILLED BONUS BUCK CARD 2

Bonus Bucks



SHUR-SAVING
HOMO MILK

GAL. JUG **\$1.19**

WITH ONE FILLED BONUS BUCK CARD 3

Bonus Bucks

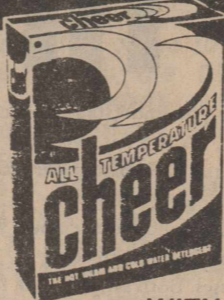


CASSEROLE
PINTO BEANS

4 LB. BAG **9¢**

WITH ONE FILLED BONUS BUCK CARD 4

Bonus Bucks



LAUNDRY DETERGENT
CHEER

42 OZ. BOX **79¢**

WITH ONE FILLED BONUS BUCK CARD 5

Bonus Bucks



REGULAR KRAFT
MAYONNAISE

32 OZ. JAR **89¢**

WITH ONE FILLED BONUS BUCK CARD 6

Bonus Bucks



MARGARINE QUARTERS
PARKAY

3 16 OZ. BOXES **39¢**

WITH ONE FILLED BONUS BUCK CARD 7

Bonus Bucks



ALL TYPES
COCA-COLA

2 LITER BTL. **29¢**

WITH ONE FILLED BONUS BUCK CARD 8

Bonus Bucks

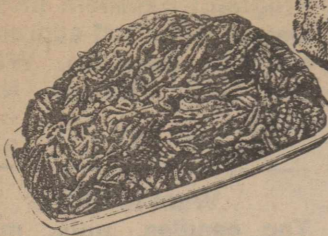


TEXSUN
ORANGE JUICE

6 PACK 12 OZ. CANS **\$1.79**

WITH ONE FILLED BONUS BUCK CARD 9

81% LEAN FRESH
GROUND CHUCK
\$1.49
LB.



HEAVY GRAIN FED BEEF BONELESS
CHUCK ROAST

\$1.39
LB.



MEAT SPECIALS

HEAVY GRAIN FED BEEF BONELESS
CHUCK STEAK LB. **\$1.69**
EXTRA LEAN FOR STEW
BEEF CUBES LB. **\$1.89**
HEAVY GRAIN FED BEEF BONELESS ARM
SHOULDER ROAST LB. **\$1.79**

WILSON'S
SLICED BACON 1 LB. PKG. **\$1.39**
WILSON'S SLICED
MEAT BOLOGNA 1 LB. PKG. **\$1.39**
WILSON'S MEAT OR
BEEF FRANKS 12 OZ. PKG. **89¢**
WILSON'S REGULAR/POLISH/BEEF
SMOKED SAUSAGE LB. **\$1.99**

PURINA
MAINSTAY DOG FOOD 20 LB. BAG **\$4.79**
HI-DRY
PAPER TOWELS JUMBO ROLL **59¢**
YELLOW HULLLESS
JOLLY TIME POPCORN 2 LB. BAG **89¢**
ECONOMY
REYNOLD'S FOIL 75' ROLL **\$1.69**
CONVENIENT
HANDI-WRAP II 200' ROLL **\$1.69**
SANDWICH BAGS
ZIPLOC 100 CT. BOX **\$2.19**



CAMPBELL'S DRY SOUP
CHICKEN NOODLE 2 CT. PAK **99¢**
CAMPBELL'S CHICKEN NOODLE/VEGETABLE BEEF
CUP-A-SOUP 2 CT. PAK **89¢**
CAMPBELL'S DRY ONION
SOUP MIX 2 CT. PAK **79¢**

Super Party
WEEKEND
KRAFT FRENCH/ CATALINA/ 1000 ISLAND/ RANCHERS CHOICE
POURABLE DRESSING 16 OZ. BTL. **\$1.89**

POST
HONEYCOMB CEREAL 14 OZ. BOX **\$2.39**
POST ASST. CEREAL
FRUIT & FIBRE 13 OZ. BOX **\$1.89**

KRAFT DINNERS
MAC & CHEESE 7 1/4 OZ. BOXES **2.79¢**
FOR

ASST. SPAGHETTI SAUCE
PREGO 32 OZ. JAR **\$1.89**

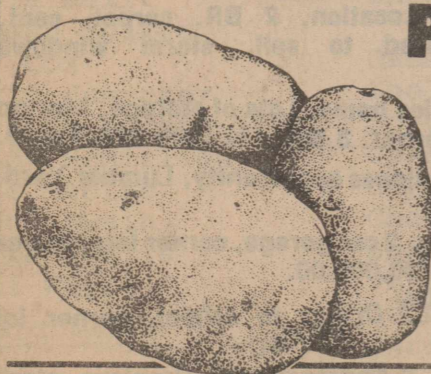
GOLDEN RIPE
BANANAS

4 \$1
LBS.



RED
POTATOES
20 LB. BAG

\$1.49



FLORIDA GOLDEN
SWEET CORN 4 EARS **\$1.00**
TEXAS RUBY RED
GRAPEFRUIT 5 LB. BAG **\$1.49**
SUPER SELECT
CUCUMBERS 3 LBS. **\$1.00**
MAMMOTH SIZE
TANGERINES LB. **59¢**
EAST TEXAS
SWEET POTATOES LB. **39¢**

DAIRY SPECIALS

CHEESE LOAF
KRAFT VELVEETA
2 LB. BOX

\$3.59

CHEDDAR/ COLBY 1/2 MOON LONGHORN
KRAFT CHEESE 10 OZ. PKG. **\$1.79**

PHILADELPHIA
CREAM CHEESE 8 OZ. PKG. **99¢**

FROZEN FEASTS

BANQUET ASST. VARIETIES
DINNERS 10 OZ. PKG. **99¢**

ORE-IDA MINI
CORN ON THE COB 6 EAR PKG. **\$1.19**

ASSORTED VARIETIES
EL CHARRITO BURRITOS 4 OZ. PKGS. **\$1.00**

ORE-IDA TOASTER
HASH BROWNS 7 OZ. PKG. **89¢**

HEALTH & BEAUTY

ANTISEPTIC MOUTHWASH
LISTERINE 24 OZ. BTL. **\$2.99**

EXTRA STRENGTH
TYLENOL CAPLETS 50 CT. BTL. **\$3.59**

FAST ACTING TABLETS
CO-TYLENOL 24 CT. BTL. **\$3.99**

SINUS MEDICINE
SINE-AID TABLETS 24 CT. PKG. **\$3.19**

AT AFFILIATED FOODS INC.

This Country's Best!

WE ACCEPT FOOD STAMPS
WE RESERVE THE RIGHT TO LIMIT QUANTITIES
PRICES EFFECTIVE JAN. 24-30, 1988

THRIFTWAY



**YOUR STORE FOR SAVINGS
IN THE 80'S**

ALBERT'S JACK & JILL

Stratford, Texas

JANUARY						
SUN	MON	TUE	WED	THU	FRI	SAT
24	25	26	27	28	29	30
FEBRUARY						
31	1	2	3	4	5	6

"THERE'S NO OTHER PLACE LIKE IT"

Store Hours: Mon. - Sat. 7 a.m. to 8 p.m.
Sundays 9 a.m. to 7 p.m.



QUANTITY RIGHTS RESERVED

PRICES GOOD WED. JAN. 27 THRU TUES. FEB. 2, 1988

SUPER BOWL SUNDAY



Quartered Margarine

**KRAFT
PARKAY**

1¢

1 lb.
Pkg.

Limit 1 With A Filled Certificate



Quartered
**PLEASMOR
BUTTER**

\$1.59

1 lb.
Pkg.

Limit 1 With A Filled Certificate



All Flavors
**GILLETTE
SHERBET**

79¢

1/2 gal.
Ctn.

Limit 1 With A Filled Certificate



BUY NOW AND SAVE WITH DISCOUNT STAMP SPECIALS!



All Purpose
**HUDSON
CREAM
FLOUR**

29¢

5 lb.
Bag

Limit 1 With A Filled Certificate



Refreshing
**COCA
COLA**

79¢

2 ltr.
Btl.

Limit 1 With A Filled Certificate



All Varieties
**FRITO-LAY
DORITO'S**

\$1.59

Reg.
\$2.69
Bag

Limit 1 With A Filled Certificate

STRATFORD JACK & JILL OFFERS YOU MANUFACTURERS' GREEN TAG SPECIALS

From time to time Major National Brand Manufacturers allow temporary price reductions on their products. We're taking these price reductions off the shelf price and passing the savings on to you.

Look for this sign of savings
The next time you shop JACK & JILL



- Featured Item and Price
- Temporary New Low Price
- Regular Retail and Savings
- Expiration Date



Nabisco
**OREO
COOKIES**

\$2.19

Regular
or
Double Stuf

20 oz.
Pkg.



SUPER BOV



Delicious
**KRAFT
VELVEETA**



\$3³⁹

2 lb.
Box

For A Rich Delicious Cheese Sauce Don't Forget The Kraft Velveeta.



Our Family French Style or Cut
GREEN BEANS

Whole or Cream Style Sweet
CORN or PEAS



3 \$1⁰⁰

16 oz.
Cans

Stock-Up Now And Save On Tender Plump & Juicy Our Family Vegetables.



Kraft
**HALF-MOON
CHEESE**

Cheddar,
Colby Or
Monterey Jack

SAVE
UP-TO
40¢

10 oz.
Pkg.

\$1⁷⁹

Delicious Shredded Over Tacos. Buy Now & Save!



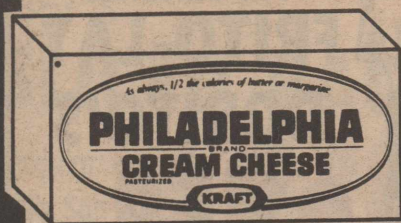
Kraft
**MACARONI
& CHEESE**

SAVE
UP-TO
29¢

2 \$8^{9¢}

7 1/4 oz.
Boxes

Compliment Any Meal With Quick-To-Fix Kraft Macaroni & Cheese.



Kraft 'Philadelphia'
**CREAM
CHEESE**

SAVE UP-TO 24¢

8 oz.
Pkg.

99¢

For A Delicious 'Cherry Cheese Cake' Buy Now & Save!



Tropicana 100% Pure
**ORANGE
JUICE**

SAVE
UP-TO
72¢

64 oz.
Btl.

\$1⁹⁹

Kick-Off Your Morning With A Glass Of Good Tasting Orange Juice!



Banquet
**CHICKEN
NUGGETS**

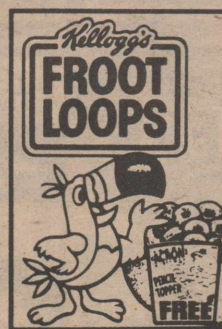
Sticks or
Patties

SAVE UP-TO 60¢

12 oz.
Box

\$2⁶⁹

You'll Score Extra Points Serving Delicious Banquet Chicken Snacks.



Kellogg's
**FROOT
LOOPS**

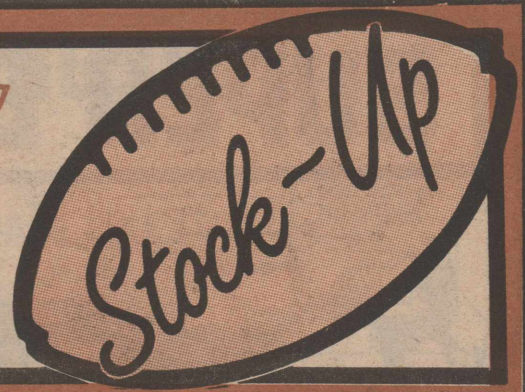
SAVE
UP-TO
59¢

15 oz.
Box

\$2⁴⁹

Kids Love The Delicious Taste Of Kellogg's Froot Loops For Breakfast.

WV SUNDAY



Crisp & Fresh
**NABISCO
SALTINES**

79¢

1 lb.
Box



Enjoy A Hot Bowl Of Chili With Crisp Saltines & Cheese.



Delsey
**BATH
TISSUE**

89¢

4 Roll
Pkg.



"Tender Loving Care" With Delsey Bath Tissue!



Dennison's
**CHILI WITH
BEANS**

SAVE
UP-TO
18¢

15 oz.
Can

99¢

Give The Cheering Section A 'Liff' With Hot Chili & Saltines.



Pre-Priced 3 for 99¢

**CANDY
BARS**

4 for \$1.00

Milky Way · 3 Musketeers
Mars · Twix · M&M's
or Snickers

SAVE UP-TO
32¢

Stock-Up Now For Half-Time & Save, Save, Save!



SAVE Up To
\$1.20

U.S. No. 2
RUSSET POTATOES

Baked, Boiled
or Fried.
So Good So
Many Ways!

\$1.49

20 lb.
Bag



California
**NAVEL
ORANGES**

\$1.99

5 lb.
Bag



Cello Bagged
**RED
RADISHES**

1 lb.
Bag

39¢



Green
CABBAGE

lb.

19¢

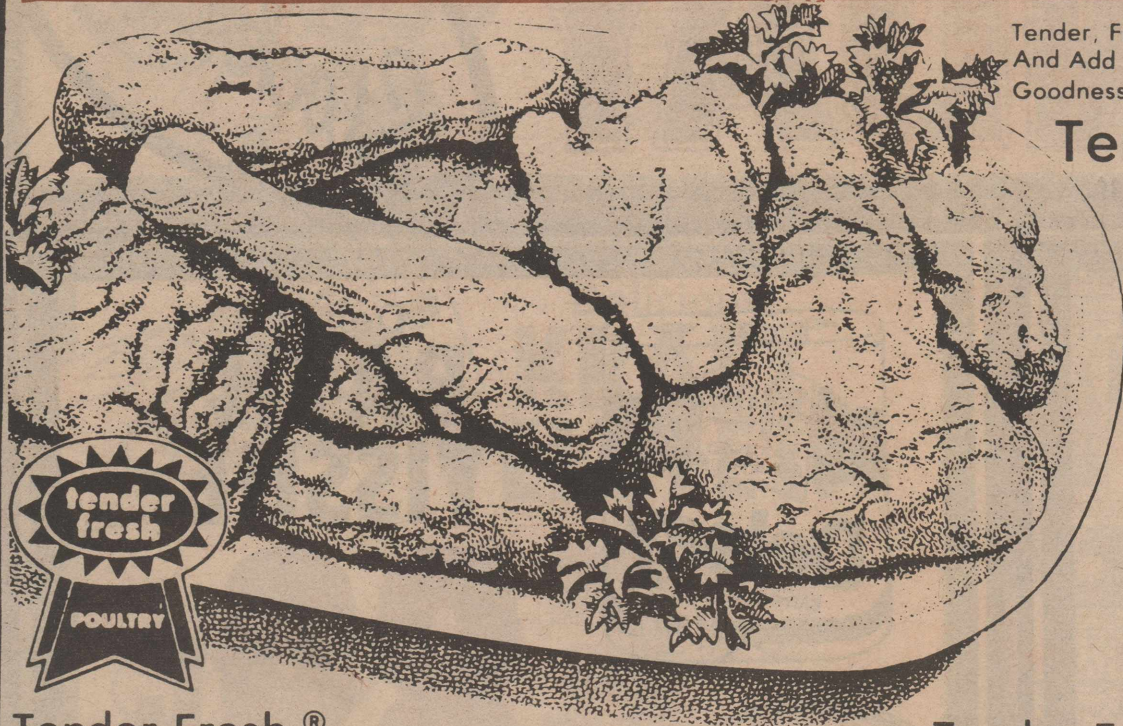
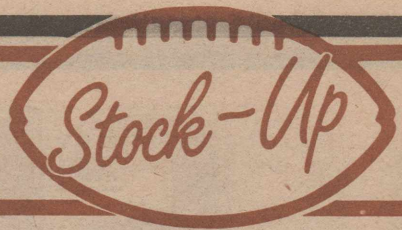


Texas
**RED
GRAPEFRUIT**

4 for \$1.00

for
only.

SUPER BOWL SUNDAY



Tender, Fresh And Tempting! What A Way To Treat The Family And Add Variety To Your Menu. Serve It Up In All Golden Goodness...Watch It Quickly Disappear!

Tender Fresh® 'Grade A'

WHOLE FRYERS

49¢

SAVE UPTO 23¢ per lb.

lb.

Tender Fresh®
FRYER THIGHS
or **DRUMSTICKS** lb.

59¢

Tender Fresh® With Ribs

SPLIT FRYER BREASTS lb.

\$1.29

Tender Fresh®

CUT-UP FRYERS

lb.

59¢

Bar-S

MEAT BIGGIES 16 oz. Pkg.

\$1.49

Franks

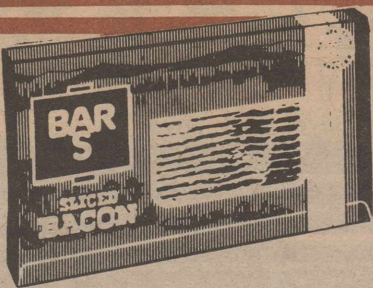
BAGGED KRAUT 32 oz. Pkg.

79¢

Oscar Mayer 'Variety Pack'

LUNCHEON MEAT 12 oz. Pkg.

\$2.79

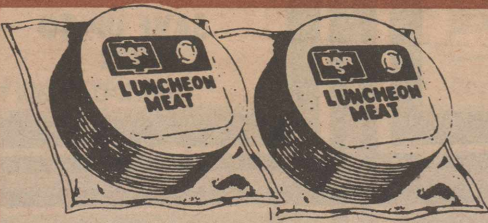


Bar-S
SLICED BACON

Regular or No Salt

\$1.28

16 oz. Pkg.



Bar-S

SLICED BOLOGNA

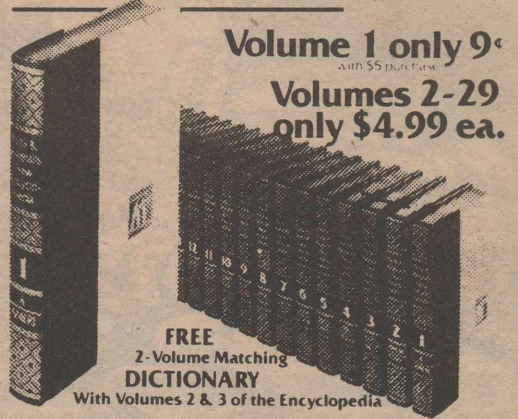
\$1.08

16 oz. Pkg.

The wisest investment you'll ever make for your family begins with only...

FUNK & WAGNALLS
NEW ENCYCLOPEDIA
Latest Edition

9¢



Volume 1 only 9¢
with 59 purchase
Volumes 2-29 only \$4.99 ea.

FREE
2-Volume Matching
DICTIONARY
With Volumes 2 & 3 of the Encyclopedia

HEALTH AND BEAUTY AIDS DEPT.



Vicks
VAPORUB

\$1.69

1.5 oz. Jar



Regular or Extra Strength
TUMS ANTACID

99¢

3 roll Pkg.



YOUR STORE FOR SAVINGS IN THE 80'S

We Reserve The Right To Limit Quantities And Correct All Printing Errors.