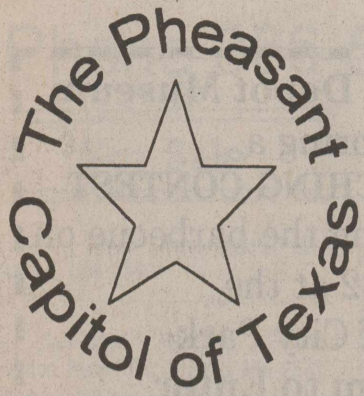


Sherman County Museum 7 /04  
 Box 1248  
 Stratford, TX 79084



# THE STRATFORD STAR

75 CENTS Published for over 100 years in Stratford, Sherman County, Texas 79084 usps 527 NUMBER 31 July 31, 2003

Imagination Station Theater Thursday July 31st

The Drama Camp players will present Imagination Theater Thursday, July 31 at 6:30  
 Drama I ages 5-7 will present "Jack and the Beanstalk" and "The Gingerbread Man"  
 Drama II ages 8-11 will present "Hearts and Tarts"  
 Drama III ages 12-up will present a Murder Mystery "Power and Greed" The public is invited and encouraged to support the Imagination Theater and to view the almost completed Phase II-Kitchen and Exhibit Hall window/door.

## High School Student Registration Set

Registration for high school students new to Stratford schools will begin August 4. Students may register at the high school office between 9:00 a.m. and 4:00 p.m. To register, students must reside in the district, have a parent or other adult responsible to sign for them, an immunization record, and past school records. If you do not have the school records, the Stratford High School Staff will be glad to secure them for you.

Students who completed class preference sheets in the spring, may pick up their schedules and locker assignments in high school room 1 using the following schedule.

- Seniors-Thursday, August 7, 1:00 p.m.
  - Junior-Thursday, August 7, 2:30 p.m.
  - Sophomores-Friday, August 8, 1:00 p.m.
  - Freshman-Friday, August 8, 2:30 p.m.
- Students who are required to get a TD booster during the summer should bring that record to the high school office. Classes begin Monday, August 18, 8:15 a.m.

See you at the Jamboree

## Old Timer King & Queen 2003



Old Timer King-Thomas Frank Baskin III



Old Timer Queen-Shirley Maxine Plunk

Stories on pages Page 4 & 6

## Texas Farm Service Agency Announces Authorization For Managed CRP Haying & Grazing

Cutting hay and grazing livestock on land enrolled in the U.S. Department of Agriculture's Conservation Reserve Program, in the absence of a weather-related emergency, is now an option for producers due to changes brought about by the 2002 Farm Bill.

Rebecca Hemphill, County Executive Director for the Sherman County Farm Service Agency, announced today that managed haying and grazing would be allowed on CRP lands began July 2. The starting date is tied to the end of the primary nesting and brood rearing season in the state. The ending date will be October 25, 2003.

Prior to the 2002 Farm Bill, commercial use of CRP land was generally prohibited except for weather-related emergencies such as droughts.

To take advantage of the new haying and grazing options, producers must modify existing conservation plans for the CRP acreage to include managed haying and grazing practices. The plans must be developed in conjunction with USDA's Natural Resources Conservation Service or one of its technical service providers.

Producers must also agree to certain terms and conditions, including signing an agreement to re-establish, at the producer's own cost, any cover destroyed or damaged as a result of haying or grazing and to remove all hay within 10 days of being notified that the managed haying and grazing season has ended.

Annual rental payments producers receive for enrolling land into CRP will be reduced by 25 percent for acreage that is hayed or grazed.

Under this program, producers can cut hay or graze livestock on a given acre no more than once every three years after the vegetative cover is fully established. An area hayed or grazed this year, for example, may not be hayed or grazed again until 2008. CRP participants can choose to hay or graze their entire CRP acreage in the first year, or only a portion of their CRP acreage each year. Producers may not harvest hay and graze livestock on the same land in the same year.

"The managed haying and grazing option will give producers a useful tool to help them better

## Mary Allen Registration For New Students

New students, PreK-4th grade, entering Mary Allen Elementary for the first time need to register sometime during the week of August 11 thru August 18th if you have not already done so. Mary Allen Elementary will be open from 8:30-3:00 beginning Monday, August 11. To enroll a student at Mary Allen Elementary, the student will need a valid birth certificate, current shot record, and social security number. Classes for the 2003-2004 school year will begin Monday, August 18th at 8:15. If you have any questions please call Mary Allen Elementary at 366-3340. We are looking forward to a good school year.

## Fund Set For Cano Family

A special fund has been set up at The First State Bank of Stratford for the Cano family who suffered losses from a fire at their home last Tuesday.

**Attention To All Stratford Community: At the request of the Stratford City Council, the Stratford Police Department will be enforcing the Double Yellow Line on Main Street. Citations will be issued, no warning tickets.**

**Stratford Police Department**

## Ex-Student Reunion August 1-2, 2003

Friday, Aug. 1 7:00 p.m. County Barn - Hamburgers and Ice Cream.

Saturday, Aug. 2 Noon Barbecue at Pendleton Park (bring a chair)

Class Activities as we know it!  
 Class 1953 Friday 8:00 p.m. Martha and Donnie Ellison, Saturday Afternoon Martha & Donnie's, Evening Eat Out in Dalhart.

Class 1963 Friday 8:00 p.m. - Yvonne and Duane Pittman

Class 1973 Sat. Ride in Parade 11:00 p.m., Sat. Afternoon Bill and Selma Pendleton, Sat. Night Supper, Gary Pool

Class 1983 Friday, 7:00 County Barn visiting, Sat. Noon Barbecue Park, Sat. Evening 7:00 p.m. Lori (Batis) Christian's house.

## Imagination Station News

July 4th Mirror Writing and Watermelon.

Main Street Art- Watercolor,

A successful Computer Camp was completed with approximately 26 children participating. Monday night Computer Classes will be posted on the front door and the web site.

ABC Camp for 3-5 year olds will conclude the morning of July 31 with a graduation ceremony.

## Imagination Station Theater Thursday, July 31

Drama Camp is underway with a production starring participants Thursday, July 31 at 6:30 p.m.

The public is also invited to see the near completion of Phase II-Kitchen, Exhibit Hall Entry.

Watch for the float, float in the Parade and pie by the slice at the Bar-B-Que.

The Ministerial Alliance will be holding a youth revival in August.

The Renovation continues along with programs.

## Mary Allen Elementary Back-to-School Goods & Bake Sale

Saturday, August 2 from 8:30 until 1:00, Mary Allen Elementary will have a Back-to-School Sale. Stratford ISD employees and some Community friends have donated children and adult clothing, toys, various household and outdoor items, plus many "treasures" so far unnamed. There will also be a Bake Sale. The sale will be held at the Mary Allen Parking Lot. All proceeds will go toward the MAE Math and Reading Incentives Program.

Last year with your donations of money, staff provided the students with cookies, ice cream, soft drinks, pizza, t-shirts for our Camp-Out, awards for our Accelerated Reading program,

and other items and activities throughout the school year. Our staff and children work hard and we enjoy providing the children work hard and we enjoy providing the children various incentives for their hard work.

Special items have been donated and drawings will be held throughout the day for these items. If you would like to donate "treasures" for the Parking Lot Sale or goods for the Bake Sale please call Mary Pat Williams at 396-2050 or Ronda Mathews at 366-2291 before Friday, August 1. We will pick your items up for you. Come one come all Saturday, August 2 from 8:30-3:00 to find the bargains of a lifetime, along with good food.

Cont. on page 2

## Stratford Jamboree

FRIDAY AUGUST 1 & SATURDAY AUGUST 2

### AUG 1

- 5:00PM MEET AND GREET EX-STUDENTS @ COUNTY BARN
- 7:30PM CAL CUTTA BEFORE RODEO @ RODEO ARENA
- 8:00PM RANCH RODEO (Stratford Chamber of Commerce) @ RODEO ARENA

### AUG 2

- 7:00AM CHUCKWAGON BREAKFAST-----FREE WILL DONATION @ COUNTY BARN
- 8:00AM COWBOY CHURCH @ COUNTY BARN
- 10:00AM OLD TIMERS KING AND QUEEN (Prospectus Study Club) @FIRST STATE BANK OF STRATFORD
- 11:00AM PARADE "RED WHITE AND YOU"
- NOON LIONS BBQ-----ADULTS \$5.00 KIDS \$3.00 @PARK
- NATIONAL ANTHEM & PRESENTATION OF COLORS
- COURTENAY SHIELDS & US ARMY COLOR GUARD
- EX-STUDENTS MEET AT THE PARK BRING YOUR LAWN CHAIRS @PARK
- 12:30PM KIDS GAMES (Stratford Student Council)
- 2:00PM HORSE SHOE PITCH (Museum Board) @PARK
- 8:00PM RANCH RODEO @ RODEO ARENA

## Manor Friends To Meet

Monday, August 4 is the time for our meeting at the Coldwater Manor. Come at 10:00 a.m. It has been a long time since our last meeting so all of you are needed.

## Lollipop Junction To Sell Tickets

Lollipop Junction will start selling raffle tickets on a "Playhouse" at the "Ranch Rodeo" August 1 and 2nd. The Playhouse is to be given away at the Christmas Parade.

More details in later editions of the Star.

## Pantry Board Meeting, July 31

There will be a Pantry Board Meeting on Thursday, July 31 at the XIT Building at 7 p.m.

## Cowboy Church Every Wednesday

Cowboy Church will meet every Wednesday at the County Barn at 7:30 p.m. Everyone is welcomed.

## Middle School Registration

Stratford Middle School registration will begin the week of Monday, August 11, 2003 from 8:30 a.m. to 3:00 p.m. Please call the office at 366-3320 for requirements from Monday, August 11 through Friday, August 15, 2003.

The first day of school is Monday, August 18, 2003. Classes will begin at 8:15 a.m.

## Renew Vehicle Registration On-Line

Valerie McAlister, Sherman County Tax Assessor/Collector, is pleased to announce a new and convenient option to renewing your vehicle registration-over the internet. Sherman County Tax Office is the latest to join [www.TexasOnline.com](http://www.TexasOnline.com), the official website of the State of Texas.

In order to renew your vehicle registration over the internet, you must have your renewal notice, your insurance card, and your VISA or MC handy. Go to the website listed above & click on vehicle registration renewal. Follow all instructions. Your sticker will be mailed to you in a few days. It's as simple as that! If you have any questions, call the tax office at 806-366-2150.

## Area Economic Development Coalition Announces: New Director Hired

The Panhandle Regional Economic Development Coalition, Inc. (PREDCI) announces the hiring of a new executive director.

Betty L. Mosburg, who most recently served as a Financial Service Advisor specializing in business and individual retirement planning, has been named executive director of PREDCI. Prior to her position in the financial service industry, Mosburg was a Director for the American Heart Association. She was responsible for the economic development and programming of a four county division. During that time she received extensive training in corporate relations, community organization & project implementation. Mosburg also served as a Legislative Office Manager for Pennsylvania State Rep. Jim Lynch. Among her many responsibilities, she acted as constituent liaison assisting industry leaders, small businesses and individuals in dealing with various state agencies.

In her leadership role, she will guide the PREDCI organization as it promotes economic development in communities in the Oklahoma and Texas panhandles and southwest Kansas. The coalition will carry out its work by partnering with area towns and chambers of commerce to attract new business and industry to their communities. The coalition also will assist existing business in their expansion plans or retention efforts.

"We encourage your town, economic development group or Chamber of Commerce to become a member of PREDCI and become a partner in economic prosperity for the region," Mosburg said.

Initially the coalition had four primary supporters, known as

foundation members, who partly make up the board of directors. They are Panhandle Telephone Cooperative, Inc., Xcel Energy (then, Southwestern Public Service Company), the City of Guymon, and the Guymon Chamber of Commerce.

The Hooker Chamber of Commerce, City of Boise City, Beaver Chamber of Commerce, Texhoma Chamber of Commerce, Guymon Industrial Foundation, Midfirst Bank, Denise Lunt CPA, Morton County Development and Sherman County Development have joined the regional economic development group.

The PREDCI by-laws have been written to allow for five classes of memberships, which will ease the financial burden on the groups.

Mosburg is currently a member of Oklahoma's Professional Economic Development Council, Southern Economic Development Council and a member of the Oklahoma State Chamber of Commerce.

To visit with Ms. Mosburg about PREDCI or any other economic development business, please call (580) 338-8500 or e-mail us at [predci@ptsi.net](mailto:predci@ptsi.net).

### Farm Service Agency Cont. from page 1

manage their lands. The periodic disturbance of vegetative cover under managed haying and grazing will increase the diversity and quality of the cover and improve wildlife benefits," said Hemphill.

For additional eligibility criteria and information regarding CRP Managed Haying and Grazing, contact the Sherman County FSA office at 806-396-2211 or visit the USDA Web site at <http://www.fsa.usda.gov>.

## Arts in the Area

By Gaynelle Riffe

\*\*\* note new listing

- June 6  
Aug. 16 "Texas"  
Palo Duro State Park 806-655-2181
- June 10-  
Aug. 26 Starlight Theater Tuesday Concert Series 7:00 p.m.  
Sam Houston Park on Western St. Amarillo
- June 11  
Aug. 17 "Lone Star Rising" Lake Meredith  
Borger Chamber of Commerce 806-274-9050
- July 31\*\*\*\*  
Drama Camp Production Teri Teig, Director  
Imagination Station 6:00 p.m.
- Aug 7,8,9  
"Dreadful Doin's at Cider Mill" Melodrama  
Dalhart LaRita Community Theatre 244-5646
- Aug. 21-31  
Buddy- The Buddy Holly Story  
Amarillo Little Theatre 806-355-9991  
[www.amarillolittletheatre.org](http://www.amarillolittletheatre.org)
- Aug. 26 \*\*\*  
Ringo Starr  
Amarillo Civic Coliseum 806-378-3096
- Sept. 18-21  
"Aaron Slick of Punkin Crick"  
Guymon Community Theatre
- Sept. 20\*\*\*\*  
Amarillo Opera "The Merry Widow" Mary Jane Johnson  
Amarillo Civic Auditorium 806-372-SING



The world's population grows by 100 million each year.



A hen requires 24 to 26 hours to produce an egg. Thirty minutes later, she starts all over again.

## STRATFORD JAMBOREE PARADE "RED WHITE & YOU"

The Stratford Jamboree invites you to show off your town, organization or business in the Stratford Jamboree Parade, Saturday August 2, 2003. The Parade theme is "Red White & You".

Entries will be judged for awards: Theme Floats 1<sup>st</sup> - \$100.00, 2<sup>nd</sup> - \$80.00, 3<sup>rd</sup> - \$65.00  
Commercial & Organization Floats (Separate Adult and Youth categories)

Riding clubs must be attired in long-sleeved western shirts, blue jeans, boots and hat. Individual Cowgirl or Cowboy 1<sup>st</sup> prize- \$35.00, 2<sup>nd</sup> - \$20.00 Riding Club - 1<sup>st</sup> prize- \$35.00, 2<sup>nd</sup> - \$20.00

Kiddie entries - Theme & Non-Theme, prizes ranging from \$7.50 to \$15.00

Parade entries will be placed and judged at 10:00am at the Stratford Depot parking lot. Horse participants may unload and park trailers on the CRP ground north of the ball park (the end of the parade) and assemble on the vacant lot north of the water tower. Kiddie entries will be placed and judged at the Stratford Grain Feed Store parking lot.

Please fill out this form below and return it to the Stratford Jamboree (Happy Bank) or the Chamber of Commerce by July 31, 2003.

For more information contact: Jim Taliaferro, Parade Chairman  
366-3300(work) 366-5698(home)  
Chamber of Commerce 366-2260  
Stratford Jamboree (Trish) 366-2265

Stratford Jamboree Parade Entry  
PO Box 677  
Stratford, Texas 79084

Chamber of Commerce  
PO Box 570  
Stratford, Texas 79084

### CIRCLE ENTRY AND INDICATE NUMBER IN GROUP

- Automobile Open Class Wagon or Buggy
- Riding Club Cowgirl/Cowboy - Junior/Senior Machinery/Equipment
- Theme Float Commercial/Adult Organization/Junior Organization
- Kiddie - Theme / Open Class Marching Organization
- Number in Group \_\_\_\_\_

For publicity purposes, please give a description of your entry and identify the participants.

Organization Name: \_\_\_\_\_ Contact Person: \_\_\_\_\_  
Mailing Address: \_\_\_\_\_ Telephone: \_\_\_\_\_

## STEVENSON & SONS

TERMITE & PEST CONTROL  
Rat Control - Bird Control - Yard & Tree Spraying  
Residential • Commercial Farms • Ranches  
"Professionals in Pest Control Technology"

249-4202

Licensed & Insured

Jim Stevenson Owner

Dalhart • Stratford • Hartley

# ALLSUP'S

July 27, 2003 thru August 9, 2003

DIET PEPSI, MOUNTAIN DEW OR

PEPSI \$1.69

6 Pack Cans or 3 Liter Bottles

AQUAFINA WATER  
.5 LITER  
\$6.49

24 PACK



Store No. 52  
101 S. Poplar  
Stratford, Texas  
(806)396-5334



ALLSUP'S DRINKING WATER  
.5 LITER / 69¢ EACH OR  
2 FOR \$1

KELLOGG'S ASSORTED FLAVORS  
POP TARTS  
69¢ EACH OR

2 FOR \$1



SO-DRI PAPER TOWELS  
59¢ EACH OR  
2 FOR \$1



ALL FLAVORS TOM'S CHIPS  
REG. \$1.89

2 FOR \$3

DORA THE EXPLORER ICE CREAM BAR  
REG. 79¢ / 4 OZ. 59¢  
SHURFINE DRINKING WATER  
GALLON 99¢



REG. SIZE CHOCOLATE

TALLSUP  
32 OZ. / REG. 89¢  
59¢



SANTA FE CORN TORTILLAS  
32CT. / REG. \$1.59  
99¢

BAR-5 TURKEY BREAST  
16 OZ.  
\$2.99



## ALLSUP'S COMBO MEALS

- COMBO NO. 1 2 BURRITOS & 32 OZ. TALLSUP ..... \$1.99
- COMBO NO. 2 CHICKEN BITES & 32 OZ. TALLSUP ..... \$1.99
- COMBO NO. 3 BBQ SANDWICH, HOWLERS & 32 OZ. TALLSUP ..... \$1.99
- COMBO NO. 4 BREAKFAST BURRITO, HASHBROWN & 16 OZ. COFFEE ..... \$1.99

See you At The Fair

## Dreadful Doings At The Cider Mill!!!!

LaRita Performing Arts Theater present the Melodrama "Dreadful Doings at the Cider Mill or The Ballad of Sweet Lucy Sweet", directed by Mary Jo Ondracek, August 7, 8, 9 during XIT. Tickets are \$6.00 available at the Dalhart Chamber of Commerce 244-5646.

Sherman County Depot Museum is sponsoring a HORSESHOE PITCHING CONTEST immediately following the barbecue on Sat. Aug. 2 at the East Side of City Park \$10.00 a Team to Enter

## Sherman Co. Child Welfare Board

To Report Suspected Child Abuse, Call

- Kathie Altman - 366-5611
- David Cross - 396-2396
- Ken Forthman - 366-2586
- Patsy Harland - 827-7568
- Michael Meyer - 827-7453
- Jesse Resendes - 769-4454
- Bob Sweeten - 366-5848
- Austin Hotline  
1-800-252-5400
- ALL CALLS CONFIDENTIAL

## The Stratford Star

Published Every Thursday at 309 N. Main, Stratford, Texas 79084

Second Class Postage paid at Stratford, TX, 79084

Martha (Marty) Robertson Editor & Publisher

Shari Hudson - Advertising & Darkroom

Subscription Rates

\$25.00 per year in Sherman and Adjoining Counties

\$32.00 per year all others

\$20.00 per year college rate

The Stratford Star

Box 8

1-806-366-5885

Fax 1-806-366-5885

BUY 12 GALLONS OF FRESH ALLSUP'S MILK... GET ONE FREE!

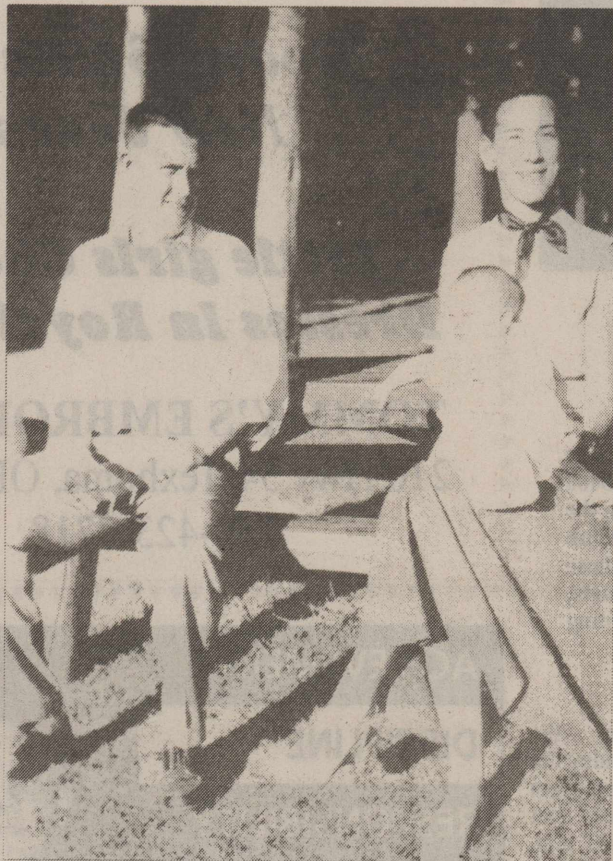


Collect Self Stick "Moo" Stamps Today & You Could Win FREE Milk For A Year!





Tommy Frank, A Navy man, 1944-46



Tommy & Mattie with Steve



Mike, Lucy, Steve 1957



The Baskin Family 1966



The Baskin Boys, Christmas 2000, Tommy, Steve, T.D., Mike

Old Timer King - Thomas Frank Baskin III

Thomas Frank Baskin III was born in Amarillo on July 21, 1926, a son of T.F. Baskin, Jr. and Flossie Muncy Baskin. His mother had trouble having children and am sure he was her joy. She died in child birth when Tommy Frank was about five years old. With the help of relatives, Tommy Frank and his dad made it for a number of years until Mr. Baskin married Maggie Fortenberry when his son was 14.

There have been four generations of Baskins farming in Sherman County-T.F. Sr., T.F. Jr., T.F. III and Steve.

Tommy started first grade in Stratford with Mary Allen as his teacher, then attended second grade at Ruby School with Mrs. Arthur Melton (Miss Dimple) as teacher.

With several bad farming years, Dad gave up farming in Sherman County in 1934 and moved to Fayetteville, ARK. He went to third and fourth grade at Wildcat Creek. They moved back to Texas in 1936. It was back to Ruby School for fifth & sixth grade where Ada Wre Handlin (Foster) was teacher. Billie Merle Hester (Steel) taught his seventh & eighth grades.

Tommy Frank went to high school in Tucumcari, NM making

his home with his Dad's oldest sister, Hilda and Oscar Jahns.

At 18 he joined the navy in 1944. He served 24 months and was an Aviation Radio Man with Combat Air Crew on a Martin Mariner seaplane. They flew around the Caribbean and Gulf of Mexico watching for enemy submarines. Tommy was injured in a landing accident and didn't leave with his outfit for the Pacific. He went later. There were 92 Purple Hearts awarded to the group posthumously.

Returning home in 1946, he met Mattie Lou Newman at a dance-party. As soon as she graduated from high school, they were married by Brother Howard Whalley at the Baptist parsonage on May 20, 1948.

And guess what! C.C. "Pinky" Plunk, who later married Old Timer Queen Shirley, was their best man!! Standing with Mattie was Ila Lewis, a teacher friend.

The couple still live in the same house they built 55 years ago. They have three children: Charles Steven (1951), Tommie Lou (1952), Robert Michael (1954).

Steve married Sandra Allen of Dalhart. They live on the ranch, fourth generation. Their children



A very young Tommy Frank

are Tommy Don in USN, married to Jamie & they live at Norfolk, VA. Megan Leigh teaches at Lubbock. Hillary Ann attends TAMU. Allison Gayle is a Stratford sophomore.

Lucy married Ray Gerken. They make their home in Denver and have six children. Amy Nicole

and her husband Kevin Kinkel have one child, Kai. Amy starts medical school at Omaha this fall. Melissa Jean works for Hyatt Regency in Dallas. Cynthia Suzanne works at her father's store and attends college. Holly Ann works in Denver and stars school again this fall. Carla Rene is a junior at Highlands Ranch and Issac Raymond is in seventh grade.

Robert Michael (Mike) has just moved to Scottsdale, AZ and a new job.


The King is a member of First Baptist Church where he teaches a men's Sunday School Class. He has been active in Sherman County Farm Bureau, Sherman County Appraisal District, American Legion (when there was one), Director of XIT for 30 years (President 9 years), a Life Member of National Rifle Association, Chairman of Sherman County Historical Society, and SCOT.

When asked about hobbies, Tommy said that he was a "fix it man of wood or metal". As busy as he is in community activities, there seems to be no time for "hobbies". And he still farms.

GFWC/Prospectus Study Club welcomes Tommy Frank Baskin III to the royal list.

Welcome Ex-Students & Teachers

See you at the Fair

<p><b>Business Directory</b></p>	<p><b>STRATFORD HOSPITAL DISTRICT</b> Coldwater Manor Stratford Family Medical Clinic Stratford EMS Proudly serving the medical needs of Stratford and Sherman County</p>
<p><b>WALTER LASLEY &amp; SONS INC.</b> <i>THE Feedyard</i> Since 1953 753-4411</p>	<p><b>NORMA'S PRECIOUS MOMENTS</b> 218 N. Main 366-7622 Gift Items, Balloons, Avon, Jafra Candy, Cosmetics &amp; More!</p>
<p><i>Stratford Grain Co.</i> Stratford 396-5541 Lautz 769-4485 4 North Main</p>	<p><b>Robert's Service Center</b> 400 S. Poplar 396-2882 Auto Repair &amp; Lawn Mower Repair</p>
<p><b>CONSUMERS</b> 208 Texas <i>We Sell Seed &amp; Fuel</i> Farmland, Acco. &amp; Moorman Seeds &amp; Diamond Shamrock Products 366-2261</p>	<p><b>Blue Stuff of Stratford Texas</b>  Betty Chamberlain 802 N. Pearl St. Stratford, TX 79084 (806)366-2843 E-Mail-rjb@xit.net</p>
<p><b>Stratford Auto Electric</b> 119 S. Wall, Stratford, Texas 79084 Phone 366-5941 366-5857 <i>Alternator, Starter,-Magneto Repair</i> Since 1964</p>	<p> <b>Allen-Tarver Insurance Agency</b> Carolyn A. Tarver Auto • Home • Life • Commercial Bus: (806)396-5810 • Res: (806)396-2393</p>
<p><b>Betty Brown's Medical Claim Service</b> 605 S. Main P.O. Box 7 Stratford, TX 79084 806-396-2623</p>	<p><b>Joe Flores Farm Bureau Insurance</b> 396-5538 office 396-5389 home</p>
<p><b>Brown's Meat Locker</b> <i>Custom Wholesale &amp; Retail Meat</i>  <i>Federally Inspected</i> Hwy 287 South 396-2513</p>	<p> <b>Jesse's Gun Shop</b> Gun Repairs • Sales • Cleaning Hours: Mon. - Fri. - 1730 - 2000 Sat. - 0800-1600 Jesse Resendes (806) 769-4454 (806) 366-3134 Shop 111 S. Maple Stratford, TX 79084</p>
<p><b>A &amp; I PARTS CENTER</b> AUTOMOTIVE AND INDUSTRIAL PARTS - THE CAR CARE PEOPLE <b>Jerry Ewers</b> Manager P.O. Box 1146 201 N. 2nd - Stratford, TX 79084 (806) 366-5561 Fax: (806) 366-2583</p>	<p><b>Your Home Town Pharmacy.</b>  ELK PHARMACY 317 N. Main P.O. Box 460 Stratford, TX 79084 806-396-4505 Major Prescription Plans Accepted Gayland Vandiver, R.Ph. Debbi Vandiver/ Owners Carlton Cards, Millionaire Candy, Gifts Cookies and Balloon Bouquets</p>
<p><b>This Space Available</b> Call 366-5885</p>	<p><b>Tommy's Embroidery</b> 580-423-7718 Texhoma, OK 210 Hwy 54 West Caps, Shirts, Jackets, Baby Blankets, Towels, Towel Wraps, School Logos, &amp; Much More!</p>
<p><b>THRIFTWAY</b> Big Town Selection • Small Town Friendliness Wide Selection Frozen Food Quality Foods Fresh Produce Hwy 54 East 396-5586</p>	<p><b>Westside Laundry/Stratford Laundry &amp; Dry Cleaners</b> 410 N. 4th - Stratford, Texas 396-2841 Owners - Jerry &amp; Janie Smith Operators - Bob &amp; Keri Harris</p>
<p><b>Joan Bell THE TRAVEL STORE</b> affiliated with National Travel Systems A Full Service Travel Agency 396-5958 1-800-753-2792</p>	<p> <b>Joe Taylor, Photography</b> PO Box 27 1305 N Chestnut Stratford, TX 79084 806-366-2459 Weddings, Portraits, Etc.</p>
<p><b>This Space Available</b> Call 366-5885</p>	<p><b>Rockin' C Cross Appraisals</b> Farm, Ranch &amp; Residential Appraisals 711 Purnell P.O. Box 1172 Stratford, TX 79084 Bus: (806) 366-7525 Fax: (806) 366-7515 DAVID J. CROSS General Certified Real Estate Appraiser Texas, New Mexico, Oklahoma</p>



