

# Enlisted Council probes Reese problems

Several irritants on base were addressed at the meeting of the Enlisted Advisory Council (EAC) Monday.

## Why Service Charge?

Old business opened the meeting with a question about why the base branch of the Lubbock National Bank charges checking account holders a service charge. The branch manager explained to an EAC representative that because the branch is a merchandising business, there is a lot of overhead which is not paid for by the bank's use of checking account funds. So a nominal service charge must be assessed.

The Council noted that anyone with further questions is invited to drop by the LNB branch to discuss it with the manager.

## Auto Hobby Shop

A complaint was lodged during last month's EAC meeting about the use of Automotive Hobby Shop facilities. The gripe was twofold:

•Patrons were not allowed to bring an automotive component (carburetor, transmission, etc.) to work on in without the patron's car.

•Patrons were not allowed to use the shop's test equipment.

The first part of the problem was a misunderstanding. Patrons may bring in a single part to work on. The second facet of the problem was caused by patrons not being qualified to use the test equipment.

## Movies for Swing Shift?

Another problem carried over from last month's meeting was the fact that swing shift workers were not able to go to the movies on base. The EAC was asked to look into the possibility of movies being shown at times other than the present showtimes. The Council researched the problem and found that past attempts at this type of offer at much larger bases did not pay off. Because of this, the Army and Air Force Motion Picture Service and Army and Air Force Exchange Service policies forbid it.

## Barracks Visitations

A plan is in the mill now for a program which would allow women to visit enlisted men in

the dormitories. The program, if approved, would be similar to the present visitation program in the women's dormitories — the visits would be controlled and would take place only in the first floor dayrooms, Senior Airman Advisor CMSgt. Jim Wood noted that the program would be a "self-policing" effort. "The first time there is any problem, it will end. It's just like anything else — if you abuse it, you'll lose it." Chief Wood later said that would probably mean the abusers would be the losers, so that everyone would not suffer for one person's mistake.

## 'Shadow' Program

The possibility of beginning a "shadow" program — where junior officers and airmen would stay with a commander for an extended period — was discussed. Col. Edward Mendel, wing commander, noted that "Not many people could take part, obviously, but those who did would get a lot out of it."

## Christmas Lighting

One of the other problems brought up at the meeting was the need for clarification on the Christmas lighting policy on base and in Reese Village. Colonel Mendel noted that because "We are just having trouble finding the money to pay the bills," outdoor Christmas lights would not be allowed either on base or in the Village. Colonel Mendel did say officials were looking into the possibility of having a single lighted tree for the entire base.

## Duck Hunting

Plans are being coordinated to open the lake on base to duck hunters. If this happens, the hunting will be strictly controlled, the EAC learned. More information on this will be released as it becomes known.

## Sewer Stench

Members of the EAC advised Colonel Mendel that several areas on base have "disgusting" sewer smells. The wing commander, noting that he did not know the problem existed, said he would make sure the sources of the smells were eliminated.

# THE ROUNDUP



VOLUME XXVI

NUMBER 47

Lubbock, Texas

November 28, 1975

## Proposal suggests base residents pay rent, bills

Air Force members may have to begin paying the fair market rental (FMR) value of their government quarters and the utilities they use if a joint office of the Secretary of Defense (OSD) — Office of Management and Budget (OMB) task force proposal is put into effect. According to the proposing this and other changes in draft form. They have asked the individual services for their reactions. The services have less than a month to comment on the far-reaching impact of the study.

The joint study by the Department of Defense (DOD) and the Office of Management and Budget (OMB) proposing this and other changes is in draft form. They have asked the individual services for their reactions. The services have less than a month to comment on the far-reaching impact of the study.

### 'Rent' Will Vary

Under this system, the rent members would pay would be determined for all housing in accordance with normal appraisal techniques. The rent for family housing will vary

according to the location. Officials explain if the base is in a high cost area the rental rate would be higher. However, bachelor housing rent would be standardized regardless of location.

All service members would receive BAQ at either the current dual rate or as recommended by the joint task force, at a uniform rate at the "with dependents" rate. That rate will be determined later but it will not have any direct relationship with the rent charged.

### Bachelors

Bachelors presently assigned to base housing (about 40 per cent of the active force, would receive more net pay than under the current system. Married airmen in government quarters (about 16 per cent of the total force) would receive less net pay. The remaining 44 per cent of the force would be unaffected.

The study reaffirms current policy that government family housing will be built to support military missions where adequate civilian housing is unavailable. This would be a new direction for bachelor housing. That policy would increase the services' reliance on housing in the civilian community adjacent to the base. The study also proposed more government help in developing civilian off-base housing close to military bases.

### Rental Option

If the proposal is implemented, members would have the option of renting government housing or private off-base housing. However, some members may be required to live on-base because of military necessity. Recruits and trainees would also be required to live on-base. Free housing will continue to be provided in austere field situations and combat areas.

The proposal also calls for the metering of all family housing units and for the occupants to pay for the utilities they use.

New priorities for base family housing would be revised as follows, in descending order: military necessity; involuntarily separated families and those who are in transit or inadequately housed; those with adequate quarters in the local community and military families already in government quarters.

The services have been asked to comment on the impact of these proposals. (AFNS)

### Christmas program announced

## Chapel hosts young visitors

The Chapel Center will sponsor its annual Christmas Program for underprivileged children from 2 to 5 p.m. on Sunday, Dec. 14.

About 80 boys and girls from six to 16 years of age will take part in the program, along with their Reese volunteer foster parent for the day. The boys and girls will be coming from the Children's Home of Lubbock, Coronado Children's Home, Great Plains Boys Ranch, and Texas Boys Ranch.

### Busy Day

It will be a busy day for the visitors, beginning at the Chapel Center when the youths meet their foster parents for the day. That will be followed by carols and refreshments at the Chapel.

Next the youngsters and their hosts will be treated to base tours. Stops will include

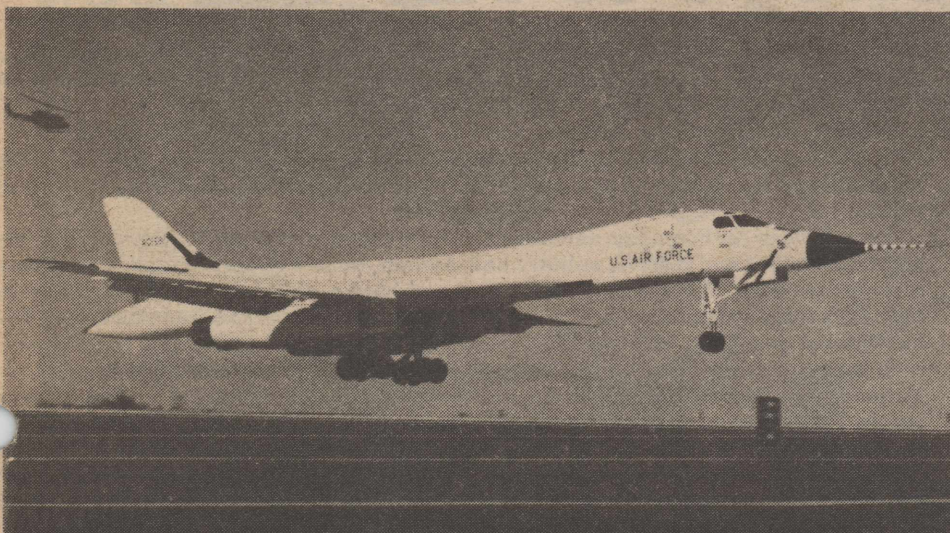
the Fire Protection Branch, Link Trainer Branch, Control Tower, Physiological Training Unit, and Base Operations.

Finally the young people will stop at Simler Theater for a program of Mexican folk dancing. Afterward, gifts will be given to each of the boys and girls, traditionally one of the highlights of the day.

### Thoroughly Enjoyed Program

"Everyone who has participated in the Program in the past has thoroughly enjoyed the experience," said Chaplain (Maj.) Earl DeBlieux.

Volunteer foster parents are still needed for the Christmas Program. If you would like to give one afternoon to make Christmas a little brighter for some child, contact Chaplain (Maj.) Earl DeBlieux or 2nd Lt. Bruce L. Paterson at Ext. 2237 before Tuesday.



FLYING HIGH — Completing four supersonic runs over the Pacific, the Rockwell B-1 strategic bomber flew faster than the speed of sound for a total of 57 minutes. The aircraft achieved its fastest speed of Mach 1.55, and highest altitude, 45,000 feet, during the recent flight. Primary test objectives for the mission were high-speed flutter and engine inlet tests. (U.S. Air Force Photo)

## AF plans for women pilots

The chief of staff, U.S. Air Force, has announced plans for implementing a limited test program on the training and use of women as pilots.

Details of the test program are still being worked out, but the first increment of women could begin training in the summer or fall of 1976.

The students involved would be selected initially from qualified women officers already on active duty, officials say.

The Air Force is studying what

curriculum changes may need to be made to accommodate women trainees. In addition, noncombat pilot requirements for the Air Force will be evaluated as the first step in determining how many women might eventually be pilots.

Female applicants for Air Force flying training will meet the same mental, physical and medical criteria as males. Details of the test program will be announced as soon as they have been approved by the appropriate Air Force agencies. (Air Force News Release)

THE ROUNDUP is an unofficial newspaper published weekly in the interest of personnel at Reese Air Force Base of Air Training Command. It is published by Barron Publications, Inc., a private concern which is in no way connected with the department of the Air Force. Opinions expressed by publishers and writers are no

to be considered an official expression by the Department of the Air Force. The appearance of advertising, including supplements and inserts, in the publication does not constitute an endorsement by the Department of the Air Force of the products or services advertised.



# FROM THE TRAIL BOSS...

"'How to Manage a Woman?' — Respect her."

A song from Lerner and Lowe's "Camelot" asks, "How to Handle a Woman?" and answers saying, "love her." I'm going to take some license with poetry for the purpose of this article and ask instead, "How to Manage a Woman?"

Many Air Force supervisors are asking this question as more and more women enlist and are placed in an ever-increasing variety of Air Force specialties. Are female workers so different from male workers? Just what is it that seems to be causing problems for our supervisors?

I believe a great degree of the difficulty is caused by resistance to changes which are taking place in our society and the military forces. Most of us were reared with the idea that some jobs were inappropriate for women and other jobs were inappropriate for men. It is often hard to admit that the old traditions carry with them other stereotypes, too, such as "all women are not as strong as men" and "all women are highly emotional, while men are not." Supervisors who resist change and cling to old ideas and stereotypes are likely to be doing an injustice to themselves, the women they supervise, and the Air Force.

Supervisors like this are generally of two types. There is the supervisor who sets out to prove a woman cannot do the job, piling on the work hot and heavy and giving no consideration at all to the person. In this situation, the worker is likely to become bitter because of the unfair treatment and will



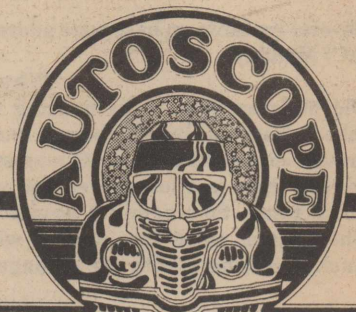
Col. Edward Mendel  
Wing Commander

probably seek separation or decide not to reenlist when the time comes.

Then there's the supervisor who pampers women, giving them only light work and sheltering them from the problems they should be learning to face and solve. This tactic makes it very hard for the woman to acquire the knowledge and skills they need for advancement. Supervisors who go to either of these extremes are wasting the investment the Air Force has in a worker, regardless of sex. They also may be destroying their confidence and self-esteem. Additionally, improper supervision of this type is also bad for the unit, causing dissention, hard feelings and unfounded rumors.

The proper course is not to differentiate because of sex in job-related situations. Supervisors should recognize that all workers, men and women alike, are individuals, with individual abilities, problems and needs.

"How to Manage a Woman?" — Respect her.



GOVERNOR'S OFFICE OF TRAFFIC SAFETY

December 1-7

**SAGITTARIUS** (Nov. 22 to Dec. 21) Keep your cool this week. If you're in a traffic jam, don't start in on your horn. One bad temper leads to another.

**CAPRICORN** (Dec. 22 to Jan. 20) As with many other signs, Mercury shows influence this week. Watch for things out of the blue such as children running into the street.

**AQUARIUS** (Jan. 21 to Feb. 19) Even if it doesn't look like snow now, a set of tire chains would be a good investment. Especially this week, when the stars say caution for you.

**PISCES** (Feb. 20 to Mar. 20) Your mind may go flying off in a thousand directions this week. On icy streets, that can mean trouble. Stay alert at all times.

**ARIES** (Mar. 21 to Apr. 19) How long has it been since you checked your spare tire? Now's a very good time to do it.

**TAURUS** (Apr. 20 to May 20) The planets say that this is a week of change for you. Watch for sudden moves from other drivers.

**GEMINI** (May 21 to June 21) You could be indecisive now. Don't act like you're going to turn and then hold up. It could cause someone behind you problems.

**CANCER** (June 22 to July 21) You could tend to overlook things this week. If you're going on a trip, watch your gas and oil levels.

**LEO** (July 22 to Aug. 21) Your common sense may be tested at this time. Don't do something foolish like trying to gun through a red light.

**VIRGO** (Aug. 22 to Sept. 22) Not a time to take chances. Come to a complete halt at stop signs. Downshifting around corners is for the racetrack.

**LIBRA** (Sept. 23 to Oct. 22) Watch for the unexpected. Remember to adjust your rear-view mirror before starting your car.

**SCORPIO** (Oct. 23 to Nov. 21) You may tend toward excesses this week. Resist the urge to make jackrabbit starts.



## Dr. McLucas says goodbye to Air Force



Dr. John L. McLucas

### CARE Line out

In the last issue of the ROUNDUP it was stated that the Commander's CARE Line recording machine would be back in operation this week. However, due to unforeseen problems, the CARE Line will be out of operation for two or three weeks. After going through your chain of

command with a problem or comment, with unsatisfactory results, you may address a letter directly to the wing commander through Box 64, Reese AFB, Tex. 79489. THE ROUNDUP will announce when the machine is back in service.

WASHINGTON (AFNS) — Secretary John L. McLucas is leaving the Air Force to become administrator of the Federal Aviation Administration. He has served almost seven years as Under Secretary and Secretary of the Air Force.

Dr. McLucas has sent the following letter to the men and women of the Air Force: "It has been inspiring and gratifying to be Secretary of the Air Force. I will miss the extraordinary people who have made the Air Force the vanguard of the Nation's Armed Forces.

"I am proud of Air Force men and women, old and young, airmen and officers, of all colors and races, active and reserve, military and civilian, those still serving and those whose careers have ended. Your talents, dedication, and hard work have made the Air Force an eminently respected military force as well as a national leader in social advancement. You have proved yourselves skilled airmen, motivated citizens, and responsible Americans.

"I am proud of Air Force accomplishments — an unmatched record of service to our Nation. Awesome military power has been ready at all times to safeguard our freedom as a people. The U.S. economy has been strengthened and the American way of life improved by the technological progress and spinoffs your efforts have produced. At the same time, the Air Force has remained at the forefront of the Nation's drive to improve our social environment, to elevate the stature of the individual, and to insure equal opportunity for all our citizens. I have enormous faith in your future achievements.

"I am proud that the Air Force has maintained high levels of morale, readiness, and effectiveness — despite cuts in personnel and equipment, despite the trauma of Southeast Asia, and despite criticism from some sectors of society. You have weathered these tribulations — you have overcome them and continued to strengthen the Air Force in spirit and capability.

"I am proud of Air Force efforts to build integrity and credibility to a new high because these are the keys to sustained public confidence and support. Air Force people are serving our country with as much candor as ardor, finding and correcting mistakes, always striving to improve. Your dedication to unexcelled stewardship in the use of the human and material resources provided by the American people is making the Air Force a better servant of the Nation.

"As I leave the Air Force, it is with deep pride in the way you are meeting your responsibilities. I have confidence that the Air Force will continue to be a pacesetter in setting and achieving new goals in efficiency of operations as well as in improving the environment in which our people work. It has been my honor and privilege to serve alongside the devoted Americans of the world's finest Air Force."

THE ROUNDUP is an unofficial newspaper published in the interest of personnel at Reese AFB under contract with Barron Publications, Inc., mailing address: P. O. Box 2415, Lubbock, Texas.

#### Publisher's Statement

"Everything advertised in this publication must be made available for purchase, use or patronage without regard to the race, creed, color, national origin or sex of the purchaser.

user or patron. A confirmed violation or rejection of this policy of equal opportunity by an advertiser will result in the refusal to print advertising from that source."

News for THE ROUNDUP should be delivered to the Information Division, Bldg. 800, no later than noon Monday prior to the Friday publication date. Classified ads of a non-commercial nature may be placed free of charge by Reese personnel if they are in to the Information Division by noon Monday prior to the Friday publication. Other advertising is handled exclusively by Barron Publications, Inc., Phone 763-4551.



**ROFFER PRODUCTS USED**

FOR THE FINEST IN HAIR CUTS & STYLES

His **UNIVERSITY HAIR-STYLING** Hers

762-9297 OPEN MONDAYS 807 UNIVERSITY

ANTENNAS MIKES ACCESSORIES

CB RADIOS HAM RADIOS SCANNERS

**C-B City**

4243-34th Street Lubbock, Texas 79410

PHONE (806) 792-4691 - 792-4692

SALES SERVICE INSTALLATIONS

THERE'S ALWAYS SOMETHING **old NEW**

Leona's **Antiques** JUST ARRIVED.....

3 TRUCK LOADS OF QUALITY ANTIQUES AT REALISTIC PRICES. Pressed back chairs, brass beds, brass & iron beds, Hall tree, baby cradle, desks, kitchen cabinet, ice boxes, love seats, cabinet pieces of jade and cherry amber, Victorian sofas and occasional chairs, French bedroom suite, light fixtures, clocks, china silver and glassware.

4601 AVENUE H 744-1893

**J & J Turquoise**

Authentic INDIAN JEWELRY

Layaways

797-2344

(West of Gridiron Rest.) QUAKER SQUARE 4405 - 50th

Master Charge

# Going TDY or PCS? Avoid unnecessary leave charges

By SSgt. Kathy Kraski  
Accounting and Finance

Many military people are asking, "What causes leave to be charged in conjunction with a temporary duty assignment (TDY) or permanent change of station (PCS)?"

When TDY orders are received there are two things to look for: (a) Is the use of a personal auto considered advantageous to the government,

and (b) What date and time do you have to report to your TDY point? Advantageous?

If the TDY orders state the use of a personal auto is advantageous to the government, then the Travel Pay Section will pay you for the actual time you travel. If a personal auto is not advantageous to the government but one is used, then the travel pay section of Accounting and Finance must compute travel time.

Construction of travel time means that we take the date and time that you arrive at the TDY point (as long as it complies with the orders.) We then theoretically place the fastest mode of transportation available to arrive there at the same time. An example of this would be:

**Itinerary**  
Depart Reese AFB Oct. 1 - 8 a.m.  
Arrive Lowry AFB Oct. 2 - Noon.  
Depart Lowry AFB Oct. 10 - 4 p.m.  
Arrive Reese AFB Oct. 11 - 2 p.m.

**Conditions**  
Orders read member had to report between 8 a.m. and 4 p.m. on Oct. 2. Member traveled by personal auto.

Personal auto was not more advantageous to the government.

At this point we can construct a person on a plane at 7 a.m. on Oct. 2 to arrive there by noon. All days of travel before Oct. 2 will be chargeable as leave. The same type

of situation applies on the return from TDY. We use the date and time of departure as a starting time for construction purposes. The constructive time for TDYs apply to everyone.

Keep in mind that the new leave policies do not apply to TDY and PCS, only to a normal leave requested on AF Form 988. If you work all day today and sign out TDY as soon as you get off work but you do not have to report until tomorrow afternoon, then you will be charged leave for today.

## Travel Time

There is also a misunderstanding about travel time with a PCS move. When PCS orders are issued, they show the maximum number of travel days allowed. The actual allowable travel time depends on how you travel. For example, if you are authorized to drive your own car you get one day for every 300 miles, except for the first day, which is 449 miles. If you fly from one point to another, you get one day for every 720 miles. Any time in excess of your travel time is charged as leave.

The travel pay area is one which constantly changes, and where there are exceptions to every rule. If you have any questions, do not ask your "Buddy," call Ext. 2163 before you depart TDY or PCS. Getting answers after you are charged leave is too late to do you any good.

## Starnes to speak on AFSA

CMSgt. William N. Starnes, U.S. Air Force retired, will speak on the Air Force Sergeants Association (AFSA) at 4:30 p.m. Thursday at the Reese NCO Open Mess. Chief Starnes is southwest regional director for the AFSA.

Chief Starnes will talk on the history, accomplishments and objectives of the AFSA. The meeting is open to all AFSA members, base personnel and interested residents from the local Lubbock area.

Membership in AFSA is open to all Air Force enlisted personnel in grades E-1 through E-9. Enlisted members of the Air Force Reserve, Air Guard, retired personnel and all former enlisted members of the Army Air Corps, Air Force or Army Air Force are also eligible for membership in AFSA.

While not eligible for membership, all officers and civil service employees interested in learning more about AFSA are invited to attend.

## Officials urge civilians to use excess leave time

The 1975 leave year for civilian employees ends during the first half of January. Officials say employees whose annual leave will exceed the maximum allowable for carryover (generally 240 hours) should make plans to avoid losing it. Annual leave taken after Nov. 22, 1975, should be approved in writing on leave form or memo, say officials. This would be needed if the leave is canceled because of illness or the demands of work and cannot be rescheduled in the 1975 leave year. Under Federal law, application can be made to the employing agency for restoration of annual leave unavoidably lost because of either of the above reasons. Restored leave is carried for the employee in a separate account and must be used within two calendar years.

**THIS WEEK ONLY**  
from **HI-FIDELITY**  
LOOK FOR THE RED TAG!

10% TO 52% DISCOUNT ON SELECTED RED TAGGED EQUIPMENT.

SAVE 10% TO 52%

**UNMASKED RAIDER**  
List \$727  
Hi-Fi reg. \$639  
**\$599**

**HI-FIDELITY**  
661 SANSUI RECEIVER

25 watts per channel min. RMS, both channels driven into 8 ohms load from 30Hz to 20KHz with no more than 0.5% total harmonic distortion.

Garrard 70M with base & shure M93E cartridge

We include a Garrard 70M automatic turntable with base and Shure magnetic cartridge with a diamond stylus. Tracking is less than 2 grams, this combination will take good care of your records; you will get the same undistorted sound on the forty-seventh playing as you did on the first.

LIST — \$727.00  
Hi-Fi PRICE — \$639.00

5yr. HI-Fi Personal Guarantee WARRANTY

20 Day Exchange Privilege

Advent utility speakers

We at Hi-Fidelity have a system, with a big compromise on the price, but with none on the sound quality. The system is based around the Advent Loudspeakers. They are meant to be compared directly in every respect of performance, including frequency response, to the most expensive and elaborate speakers available, and they sound clearly and dramatically better than many far more expensive systems.

To power the Advents we recommend the Sansui amplifier: it can produce 25 watts RMS per channel with exceptionally low distortion (RMS is the most rigorous and least flashy measure of power.) The 661 will fully realize the line low base capabilities of the Advents.

**HI-FIDELITY**

2217-34th STREET LUBBOCK, TEXAS 79411 (806) 747-4507

STORE HOURS: 9 AM-6 PM MON.-SAT.

**RETIREMENT SHELTER**

If you are not covered by a retirement plan — do something wonderful for yourself today!

Let our Specialists show you how to establish a First Federal TAX FREE RETIREMENT SHELTER tailored to your needs.

**FIRST FEDERAL'S SELF EMPLOYED RETIREMENT SHELTER...**  
A retirement shelter which allows yearly contributions up to \$7,500 Tax Free. This is a Keogh plan.

**FIRST FEDERAL'S INDIVIDUAL RETIREMENT ACCOUNT SHELTER...**  
A retirement shelter available to employees, self employed, part-time workers — anyone with earned income. It's a Retirement Shelter which allows yearly contributions up to \$1,500 Tax Free.

Both Retirement Shelters can be opened with a nominal amount. Systematic deposits can be added during the year until the amount eligible for Tax Free Shelter is reached.

-----CLIP AND MAIL-----

Please let me know how I can establish a Tax Free Retirement Plan with retirement savings paying highest rates of interest.

I am interested in:

1. Self Employed Retirement Plan

2. Individual Retirement Plan

3. Other Savings Plans

Name \_\_\_\_\_ Phone \_\_\_\_\_

Address \_\_\_\_\_ Town \_\_\_\_\_

**FIRST FEDERAL SAVINGS AND LOAN**

1120 14th Street Lubbock, Texas 79401



# Exchange announces special holiday events

The Reese Base Exchange (BX) has announced several special programs for the upcoming Christmas season, the first of which begins today.

The BX will open at the regular time — 10:30 a.m. — today, but will stay open until 8 p.m. for those who want to get their Christmas shopping started early.

## Santa Visits

A special feature for the younger set will be visits from Santa Claus. He will arrive at Reese at noon today for his first visit. The Reese Fire Department will take him around Reese Village in a fire truck, where he will throw candy to children. He then will go to the Caprock House from 1 to 3:30 p.m. to talk with Reese children. Santa will return to the Caprock house from noon to 3:30

p.m. Dec. 6, 13, and 20 to see what the kids want for Christmas.

## Caprock Special

Parents may plan to eat with their children at the Caprock House during those Saturdays, when the cafeteria will feature the Caprock \$1.35 Special. Children less than 14 years of age may eat for half price.

## Stag Nite

"Stag Nite," a special evening of shopping for men only, will be held Monday. The BX will be open from 10:30 a.m. to 5:30 p.m. for normal shopping, followed by Stag Nite from 6 to 8 p.m. Offered to male shoppers will be free beer, pretzels, potato chips and a fashion show. Door prizes will be given away, also. The BX will be open late again

from Dec. 15 to Dec. 19. Hours during these days will be 10:30 a.m. - 8 p.m. On Dec. 20 it will open at 10 a.m. and close at 8 p.m. The next day, Sunday, the BX will operate from 1-5 p.m.

The last day to shop at the BX Main Store and Four Season Store before Christmas will be Christmas Eve. Operating hours that day will be 10:30 a.m. to 4 p.m. Vaughn Mongan, BX manager, urged all customers who have layaways ready to be picked up to get them by that date.

Also being planned by the BX is "Wonderful Wednesday," when a 10 per cent discount will be offered on many items throughout the Main Store and Four Seasons. The date of this proposed special will be announced.



**'TIS THE SEASON** — With the coming of the Christmas holidays, shoplifting incidents seem to be on the rise, as illustrated in these simulated scenes. Recent figures show that the Army and Air Force Exchange Service has nabbed 2,833 shoplifters in base exchanges during the first quarter of this fiscal year. SSgt. Jesse Brinson of the Reese Security Police ushers our "shoplifter" into the squad car for a trip to SP headquarters. Shoplifters face possible loss of their exchange privileges, trial in military or civilian court, fine, transfer and a stigma which will follow them throughout their career. (U.S. Air Force Photos by Sgt. Buddy Lerch)

## Time grows short for applicants

Randolph AFB, Tex (ATCPS) — With the recent signing of legislation by President Ford authorizing women to attend the U. S. Air Force Academy an excellent opportunity now exists for enlisted women to apply for admission.

The Air Force Academy plans to enroll as many as 150 women cadets in the summer of 1976 for the graduating class of 1980.

Entry into the Prep School is possible in January 1976 for some enlisted women who meet the basic admission requirements. The Prep School is designed to provide the needed academic and physical training to qualify selected candidates for entrance into the academy.

Officials stress that the time factor for application and processing is critical, and that young women should act immediately if they desire to attend the academy or Prep School.

For more information, interested enlisted women should contact the base Education Office as soon as possible.

## NCO Leadership School graduates 14 sergeants

Graduation ceremonies for Reese Noncommissioned Officers Leadership School Class 76-D, were held Nov. 14 in the NCO Open Mess.

Col. Robert J. Sandvick, deputy commander for Resources addressed the class of 14 students. Each graduate earned the Certificate of Training from the 152-hour course.

Wing Commander Col. Edward Mendel presented the Honor Graduate Award to SSgt. Gregory J. Basting, 64th Student Squadron. The Commandant's Award went to SSgt. Perry R. Ellison, Management Engineering Detachment 11, and the Academic Achievement Award to SSgt. Charles H. Cape Jr., 64th Student Squadron.

Col. Richard A. Ingram, Air Base Group commander, presented certificates of training to Sgt. Michael G. Medina, 64th Civil Engineering Squadron, and Staff

Sergeants David D. Campbell and Lewis E. Tollison, 64th Supply Squadron.

Also receiving certificates were 64th Organizational Maintenance Squadron's SSgt. John D. Marez and Sgt. Danny R. Woodcock. Staff Sergeants Alvin Gehegan and Daniel Steed and Sgt. Richard Barfield of the 64th Field Maintenance Squadron were also graduated from the Leadership School.

SSgt. Benjamin C. Teague and Sergeants Joe L. Alls and Ronald D. Pack of the 64th Air Base Group round out the list of graduates.

**FOR YOUR SPECIAL CHRISTMAS GIVING, GIVE THE GIFT OF AMAZING ACCURACY**  
The **SEIKO** QUARTZ



Also genuine Seiko watch bands.  
This Seiko Quartz watch is a rare investment in accuracy and elegance. Because a quartz watch is at least four times more accurate than any other type of wristwatch.

For Expert Watch Repair See Your Former BX Jeweler Hank Lankford - U.S. Army Ret.

**HANK'S SEIKO CENTER SALES & SERVICE**  
We Take Trade-Ins  
1652-13th 765-8205  
ACROSS FROM SEARS



HARLAN WOMACK - Owner  
1111 53rd St.

**SAVE**  
THOSE COSTLY DRIPS  
CALL **KIP'S** 762-5994

Expert Service On All Kinds Of  
Plumbing Repairs & Remodeling Work  
Washer & Dryer Hook-ups

We Also Work on All Types of Heating Systems.  
Ask About Our Special on Hot Water Heaters.

## W.D. WILKINS

Distributing Company

THE SOUTHWEST'S LARGEST & MOST COMPLETE SHOWROOMS

JEWELRY & GIFTS

FURNITURE & APPLIANCE

- Luggage
- Radios
- Stereos
- Cameras
- Sporting Goods

- Bed & Bath
- Imports
- China
- Sterling

- GE Major Appliances
  - Complete Home Furnishings
- Largest selection of furniture in West Texas!  
G.E.C.C. FINANCING Available

THREE FLOORS OF SHOWROOM DISPLAYS UTILIZING PNEUMATIC TUBES & CONVEYOR DELIVERYS FOR FAST ECONOMICAL SERVICE.

SPECIAL CHRISTMAS HOURS: Mon.-Fri. 9:30 AM - 9:00 PM  
Saturday - 9:30 AM - 6:00 PM  
42 YEARS IN BUSINESS

2204 - 2210 AVE. G 747-1666

## TURNER MEEKS & WILSON REALTORS

HOMES BY WILSON & WILSON

5208 34th • 797-4248 (24-Hours)

C.W. "Dub" Turner . 795-5426 • Billy Meeks . 792-0106  
Gonzalo "Gee" Garza . . . 799-8838

**DUPLEXES** — Under construction with VA financing & No Down Payment.

**DON'T BE TOO LATE FOR THE '75 TAX REBATE!**

DEED MUST BE FILED AND HOUSE OCCUPIED IN 1975

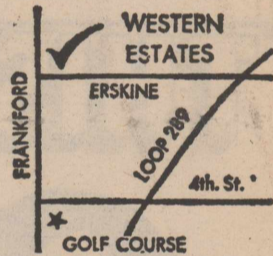
**WESTERN ESTATES**  
OPEN HOUSE DAILY

Noon 'til Sunset  
PRICED FROM **\$26,100.**

FHA & VA

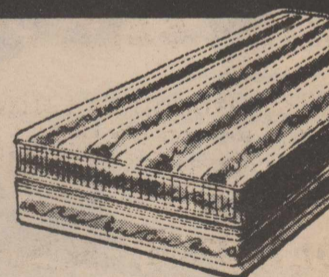
**7<sup>3</sup>/<sub>4</sub>% INTEREST**

EQUAL HOUSING OPPORTUNITIES



- Double Car Garages
- Brick Fronts
- ¾ Brick and All Brick
- 3 & 4 Bedrooms
- All Electric Kitchens
- Optional Fireplace & Ref. Air.

## SERTA PERFECT SLEEPER SUPREME



- Extra Firm
- Luxury Firm

**KING** REG. \$459.95  
**QUEEN** \$329.95  
**FULL** \$259.90  
**TWIN** \$219.90

**SALE**  
**\$275.95**  
**\$197.95**  
**\$155.95**  
**\$131.95**

- TERMS
- FREE DELIVERY
- FULLY GUARANTEED

## BRASS BEDS

- Large Selection NOW

**20% OFF**

SEE GARY WOOD FOR YOUR CUSTOM DRAPES

**20% OFF** ON ALL FABRIC

## SLUMBERLAND

3532-34th

featuring the largest selection of bedspreads in Texas

799-5212 or 799-8121

**CHRISTMAS SHOP NOW**  
While Selections Are Good!

Large Group of Suits **1/2**  
And Sports Jackets **PRICE**



797-1991

SOUTH PLAINS MALL



ALL ART Complete Custom Framing MIRRORS  
**Horton Frame Co.**  
 Prints & Originals Very Reasonable Prices  
 709 7th Shallowater Phone 832-4738

**SOUTHWEST INDIAN JEWELRY & CRAFTS**  
 Special on Silver Heishi  
 14 inches for \$1<sup>15</sup>  
 1/2 oz. for 8<sup>00</sup>  
 1 oz. for 13<sup>00</sup>  
 All items in Store  
 20% OFF Through Christmas  
 Do it yourself supplies on Heishi and Liquid Silver.  
 Phone 797-5885 5408 Slide Rd.

For Early Santa Shoppers  
  
**MR JAC JR.**  
 Long arnel/nylon fleece robe, zip front. Red  
 Matching Brushed antron long gown has venice lace trimmed deep plunge neckline. Full sleeves. White/Red. Sizes 5-7, 9-11-13.  
*Intimate Impressions*  
 Lay-A-Ways 4920 34th Terrace 797-0101

## Supply cites outstanding personnel

Several 64th Supply Squadron workers have been given special recognition recently.

An "open ranks" inspection Nov. 17 saw two Supply NCOs honored with three-day passes for their top personal appearance. Presented passes were SSgt. Earl Morris of Supply's Pickup and Delivery Section and SSgt. Elmer Troxell of the Nonoperationally Ready Support Section.

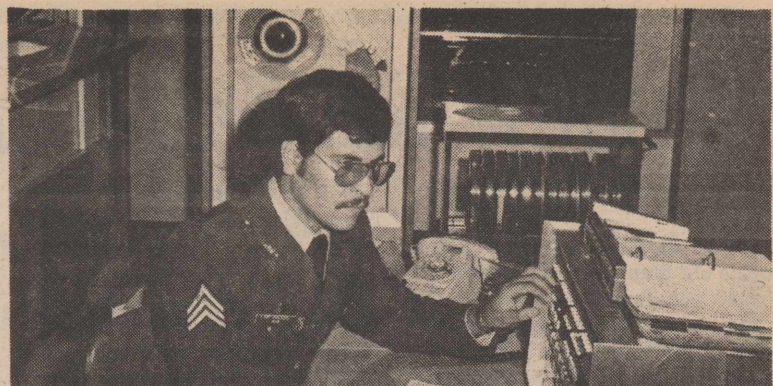
During a recent Air Training Command fire inspection, Supply received an "outstanding" rating.

Iranian SSgt. Mehdi Khaleghi recently completed his Supply on-the-job training course and was presented a certificate by Supply Commander Maj. Larry Woods during the squadron's staff meeting Nov. 19. Sergeant Khaleghi is scheduled to return to his home country Dec. 4.

The Supply "Eagle of the Month" Award went to three work sections for October. Research, Demand Processing and Pickup and Delivery were instrumental in Supply's getting "rush" call-in orders out on time. About 94 per cent of these rush jobs were delivered on time — 68 per cent of all requests were rush jobs. Credit was given to Irene Beaudoin of Research, TSgt. William Wheatley of Demand Processing and TSgt. Ronald Simpson of Delivery for these rush job rates.

**NEED CAR INSURANCE?**  
 Call **TOM PERRY**  
 33 Briercroft Office Park  
 Ave. Q At 57th 747-4450  
 Like a good neighbor, State Farm is there.  
 State Farm Mutual

Letters from Santa Clause — Give your children, grand-children or a child in need the happiest Christmas ever. A Personal Letter from Santa.  
 Send \$3.00, child's age, name and address to:  
 E. F. King  
 1921 70th Street  
 Lubbock, Texas 79412  
 763-4941  
 If child is in a children's home or the hospital send \$2.00.



**OJT SUCCESS** — Iranian SSgt. Mehdi Khaleghi applies the skills he learned in on-the-job training at the 64th Supply Squadron here. He recently was presented a certificate of completion for his on-the-job training. (U.S. Air Force Photo by Sgt. Buddy Lerch)



## AIR FORCE NEWS SUMMARY

### House OKs Per Diem Boost

The House of Representatives has passed a bill raising the per diem ceiling to \$35 per day. The bill also would raise the maximum in certain conditions to \$50 per day. The \$50 maximum rate would apply in designated high-cost areas and under unusual circumstances. This bill could make the military rates exactly the same as the rates now in effect for civilian Federal employees. The bill must pass the Senate before taking effect.

### Pullout from Thailand Continues

The United States and Royal Thailand governments issued a joint announcement Sept. 3 cutting U.S. forces in Thailand by 3,000 and closing the U.S. facility at Nakhon Phanom RTAFB. Recently, the two governments agreed to close the U.S. facility at Udorn RTAFB by Jan. 31, 1976. By that date, U.S. forces in Thailand will be cut an additional 5,000 persons. Officials say that approximately 70 U.S. aircraft at Udorn will be out of Thailand by Dec. 31. The Thailand and U.S. governments are continuing talks aimed at complete withdrawal of U.S. combat forces by March 20, 1976.

### AAFES Reports Shortage of New Air Force Uniforms

Army and Air Force Exchange Service (AAFES) officials report a slow delivery of the newly authorized Air Force uniform, shade 1578. Officials say delays are because certified mills have had difficulty meeting the color standards established by the Air Force. AAFES officials are closely following the situation and will rush delivery to exchanges when the uniforms are received, they say.

### Leave-Selling Limit Passes House

A bill limiting to 60 days the total amount of leave that can be sold over an entire enlistment career has passed the House of Representatives. The 60-day limit could not apply to leave already sold prior to enactment of the bill. The bill must now go to the Senate for approval.

## mission measure

Senior Class ..... 76-05  
 Projected Graduation ..... Dec. 20

### Tuesday's Flying Status (Days)

T-37 Phase ..... + 2.98  
 T-38 Phase ..... + 8.16

Mission Trivia: There have been 614 permanent party new arrivals on base since Jan. 1, 1975 to present with an average of 55.8 new personnel arriving per month. This is excluding student pilots.

## THANKSGIVING SPECIALS!

**SHAMPOO & SET** Friday & Saturday ONLY  
 \$4<sup>50</sup> Reg. \$8.50 Nov. 28th & 29th

**HAIRCUTS FREE WITH SHAMPOO & SET**

**FASHION FLAIR BEAUTY SALON**

OPEN MONDAY thru SATURDAY • 799-8145  
 Caprock Center on 50th (Neighboring Zales & Dunlaps)

## KAWASAKI CHRISTMAS SALE

JUST RECEIVED  
 KAWASAKI MOTORCROSS BIKES REG. \$149<sup>95</sup>  
 DX-200 - Aluminum with Swing arm and adjustable socks ..... **NOW \$139<sup>95</sup>**  
 Kawasaki Mini Bike 75cc with Helmet REG. \$483<sup>95</sup> ..... **NOW \$359<sup>00</sup>**  
 Mini Bike - KD 80 and KD 90 REG. \$538<sup>95</sup> ..... **NOW \$399<sup>00</sup>**  
 G-5 100 REG. \$606 ..... **NOW \$499<sup>00</sup>**  
 KD 125 REG. \$763 ..... **NOW \$649<sup>00</sup>**  
 F-7 175 REG. \$918 ..... **NOW \$695<sup>00</sup>**

CHRISTMAS LAYAWAYS  
**KAWASAKI GOOD TIMES**  
 9 to 6 Mon.-Fri. 1002 AVE. Q 762-0303 9 to 5 Sat

## DOOR SALE CONTINUED! !

\$100 INSTALLATION & DELIVERY CHARGE (Lubbock City Limits) ON ALL STORM DOORS

## GOLD-FINISHED STORM DOOR

- Available with or without speaker.
- Gold Finished frame and facing strip
- Safety glass.
- Heavy extruded corners assures no sag; no warp.
- Black Colonial pushbutton latch and pneumatic closer with all screws.
- Standard size 3'0" x 68"

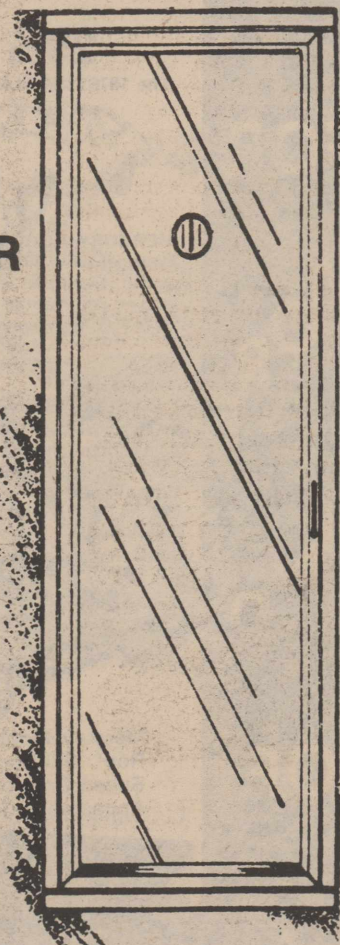
If you are planning to build or remodel your home, call us or come by today. You are invited to look over our many lines of building products and samples to use our many helpful services.

12 Models on Display  
 Best Storm Door Selection In Lubbock  
 Be Our Guest and Look Before You Buy

NO SPEAKER ..... \$79<sup>95</sup> WITH SPEAKER ..... \$89<sup>95</sup>



**HOME IMPROVEMENT CENTER**



120 N. UNIVERSITY  
 765-7736



# Some missed good bash

By Yossarian Minderbinder

If your short block wouldn't crank or the old man wouldn't let you out 'cause you forgot to take out the trash, you really missed a rockin' time at the Wing Prom Nov. 21.

The 54th-ers of "D" Flight put on a groovy sock hop for the dudes of the 64th Flying Training Wing — and what a rocker it was! Congratulations for the fine efforts of the "Dogs" and to all the promising young jitterbuggers who participated with such enthusiasm.

We at News Central want to remind all members of the 54th Flying Training Squadron that the elves of "Echo" Flight will sponsor the Squadron Christmas extravaganza around Dec. 12. Mark your calendar, lest you miss another of the functions of the decade.

Not to be outdone by Mother Nature, the Talon Phliers have been lining up to get their very own individual, certified genuine, one-time good deal flu shots. For those of you who missed them this week, they will be given at 3:30 p.m. today in Bldg. 105. We invite any and all comers. Bring your shot record if available or the good shot fairies will update the computer product for you. Protect your flying time by protecting yourself against pointless grounding due to the flu. (A word of advice from Dr. "Healthy Hints" Haynes.)

Good projects deserve emphasis, so . . . the Chapel is once again sponsoring a Christmas Party for deserving children in the Lubbock area. These kids are from the Baptist Children's Home, Texas

Boys' Ranch and other organizations. Volunteers are needed to sponsor a child apiece on the afternoon of Dec. 14. Baby sitters will be furnished for your own brood while you help make Christmas merry for some youngster. We in the 54th FTS and 64th FTW have alot to be thankful for, so let's share. It only takes a little time to give so much. Contact the Chapel at Ext. 2237 now before you forget.

Speaking of being thankful, I sincerely hope your day of Thanksgiving was filled with people, prayers and festivities which make Thanksgiving meaningful for you. We work long hours here at Reese and sometimes the things we should be thankful for seem pretty obscure, but they ARE there. Take a minute to see, to think and to reflect today and everyday and you will be amazed at the amount you have to be thankful for.

We in the 54th have some new personnel in our instructor pilot ranks who we are thankful to get. (another wonderful transition, Yossarian!) Talon Staffers welcome Captains Ronald Elsdon, Leon Croley, Richard Judson and Ronald Carroll and First Lieutenants William Carpenter, Stanley Kanno, Doug Porter, Andy Perona, John Wilson, Phillip Faye, Byron Beal, Brent Barker, Ira Fortenberry and Danny Clifton. They are from Moody AFB, Ga. and other commands. They represent a lot of experience in the flying and instructing business now available to the students of the Wing. WELCOME TO YOU ALL!

### Trivial Fact of the Week

Today the National Weather Service releases the meteorological forecast for the winter months. Has the weather been questionable? Has Dub Bollus been in error? Has Sergeant Lacey led you astray? Probably not, but now you can read the official forecast to plan your winter flying with...Good Luck!

Yours in the news,  
Yossarian Minderbinder

## 35th FTS crosswinds

# Winter strikes Reese

By 1st Lt. Clifford Napolitano

Winter has struck Reese and the 35th Flying Training Squadron again this year. At last our ear muffs begin to pay off with a dual purpose — soundproofing and keeping our ears warm.

As the intramural program moves indoors, the 35th's roundballers are out en mass preparing for the season, under the skillful eye of player coach Earl "The Pearl" Smith. Other stalwarts include Jim Nelson, John Martin, and Mike "Sluggo" Wilken. Denny Granquist is our representative from Stan/Eval Division. Don LaMontagne and Bob Grinder add to the team. Not to be forgotten, the man with experience, Keller rounds out the team.

A noteworthy performance in our preseason games was turned in by John Martin of "C" Flight. He scored 20 of the team's 40 points in our first game.

Coach Smith predicts a long, hard season, with conditioning being a major factor in our season's success.

Congratulations go to Maj. Jerome Thies, new flight commander of "F" Flight. Capt. Bob Meadows is making the move across the street to Stan/Eval. Congratulations, Bob, and good luck with the new job.

The Bill Slattery "Two-Iron" Memorial still stands in Phoenix, Ariz. It is reported that while Bill and his cohorts were challenging the links at "Willie," a certain group of trees had the misfortune of being brought up in what was to be the dauntless Captain Slattery's path to the green. After hitting seven

consecutive trees, he proceeded to soundly thrash the last tree with his rented two iron.

Yes, it did break! Not the tree.

Our congratulations go to 1st Lt. Joe "Crazy Legs" Dye and his No. 1 girl (and wife) Marge for their outstanding performance on the dance floor at the Wing "Fifties" Party. The Dyes won the jitterbug contest! "Arnold's Drive Inn" was well-represented at the Wing Party by 35th wives Barb Hamlin and Pam Fox. Gracing the party a la "American Graffiti," those fast-on-their-feet soda shop waitresses dazzled everyone. The 35th snack bar will never be the same.

Capt. Bob Meadows never fails to amaze us . . . this time with "hair." You devil, you.

The students of "E" Flight again received a "U" for judgement and an "F" for ground operations on the softball field. It seems the instructor pilots have again beaten the students in their classic "softball" battle. The scorekeepers stopped counting runs and started concentrating on the keg when the score reached 23-4 in favor of the IPs.

The Squadron would like to welcome 1st Lt. Carl Knott back from Pilot Instructor Training. Carl will be rejoining "E" Flight as an instructor.

The Squadron also welcomes back Check Sections newlywed, Capt. Bill Zahn. Captain Zahn was married Nov. 8. He and his new bride Pam left the next day for the Bahamas. We do understand that the Zahns missed that early morning flight but the reason was never determined.

## HOW ABOUT

MAKING THAT THANKSGIVING TRIP AND MANY MORE MILES OF DRIVING HAPPIER IN ONE OF OUR FINE USED CARS. COME TAKE A LOOK AT THESE....

'74 CHEVROLET MALIBU SPORT COUPE - LOADED.....	\$2888
'74 PONTIAC CATALINA COUPE - LOADED.....	\$2988
'74 PONTIAC LEMANS COUPE - LOADED.....	\$3088
'73 FORD GRAN TORINO 4-DOOR, LOADED.....	\$2388
'74 PONTIAC VENTURA COUPE, LOADED.....	\$2888
'74 AMX MATADOR COUPE LOADED.....	\$2488
'73 CHEVROLET MONTE CARLO COUPE - LOADED.....	\$3088
'73 CHEVROLET IMPALA CUSTOM COUPE - LOADED.....	\$2488
'73 BUICK CENTURIAN 4-DOOR LOADED.....	\$2388

'74 OLDS CUTLASS SUPREME COUPE, vinyl top, WSW tires, tinted glas, power steering, factory air, radio. \$3488

**MAC'S** OLDS-PONTIAC-GMC

84 BYPASS SLATON 828-6554

# POW & WOW

Trading Co.

- Turquoise Jewelry • Silver • Heishi
- Rings • Necklaces • Bracelets
- Chokers • Do-It-Yourself Items

5422 Slide Rd. Plaza Center  
Open 10-6 Monday-Saturday

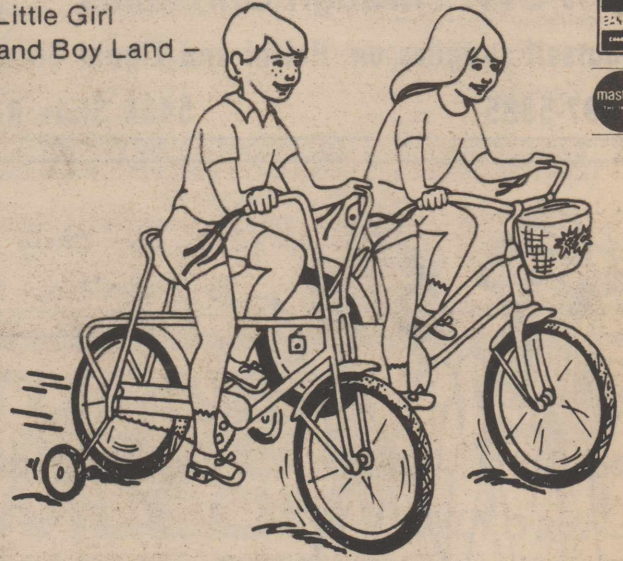
2 Blks. North of Mall  
792-9460

LAYAWAY NOW FOR CHRISTMAS

## CHRISTMAS SALE

on Bicycles  Hedstrom

Little Girl and Boy Land -



16" Trail Bike REG. \$49 <sup>95</sup>	NOW \$39 <sup>95</sup>
16" Girls Bike REG. \$53 <sup>00</sup>	NOW \$42 <sup>40</sup>
13" Trail Bike REG. \$38 <sup>95</sup>	NOW \$31 <sup>16</sup>
13" Pedi Brake Bike REG. \$38 <sup>95</sup>	NOW \$31 <sup>16</sup>
10" Trail Bike REG. \$32 <sup>95</sup>	NOW \$26 <sup>36</sup>

We have just received a new shipment of Baby Furniture.

OPEN 10 A.M. TO 6 P.M. MONDAY THRU SATURDAY III 8:30 THURSDAYS

Furniture

Clothing

**Baby**  **WORLD**

4918 - 50th

795-1584

## WE HAVE MORE KINDS OF CARS



### 29% MORE ECONOMY FOR '76

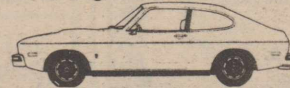
The 1976 LINCOLN-MERCURY's Have Achieved a 29% Increase in Fuel Economy over the 1975's.



**MERCURY BOBCAT** 3 Door Shown with optional WSW tires and bumper protection group. Equipped with 2.3 Litre 4-Cylinder engine and manual 4-speed transmission. 34 M.P.G.\* Highway - 27 M.P.G.\*\* Combined.



**MERCURY MONARCH** 2 Door Sedan. Equipped with 200 CID 6-Cylinder engine and manual 3-speed transmission. 30 M.P.G.\* Highway - 25 M.P.G.\*\* Combined.



**MERCURY CAPRI II** Shown with optional cast aluminum wheels. Equipped with 2.3 Litre 4-Cylinder engine and manual 4-speed transmission. 27 M.P.G.\* Highway - 21 M.P.G.\*\* Combined.



**MERCURY COMET** 4-Door Sedan. With custom option. Equipped with 200 CID 6-Cylinder engine and manual 3-speed transmission. 30 M.P.G.\* Highway - 25 M.P.G.\*\* Combined.

These figures are E.P.A. Fuel Economy Estimates. actual mileage will vary with driver and driving conditions. Based on 55% City - 45% Highway Simulated Test Cycles.



**ONE ONLY - 1975 DEMONSTRATOR I-552 \$4686.95**

Mercury Montego MX Brougham 4-Door Pillared Hardtop. Light Green White Vinyl Roof, 400 Engine. white side wall Radials. Convenience Group. Tilt Steering Wheel Speed Control. Bumper Group. Air. Radio and Rear Seat Speakers. Interval Wipers Appearance Group. Light Group. and Body Molding. 4200 Miles

FOR MORE KINDS OF PEOPLE

*Pioneer*  
**LINCOLN-MERCURY**

Open 8:00 to 6:00, Monday thru Saturday

9TH AND AVENUE H - 765-5751



# INTRODUCING the 1976 Volvos

## WHEN'S THE LAST TIME YOU HEARD A SALESMAN TALK ABOUT SAFETY?

You'll hear a lot of gushing about gas economy. And expansive talk about smaller-size cars. But rarely will you hear the man who's trying to sell you, tell you what happened when his car was test-crashed into a barrier.

But in our showroom, you will.

Our people sell Volvos and their living is based in good measure on explaining to people like yourself the protection built into every Volvo they show you.

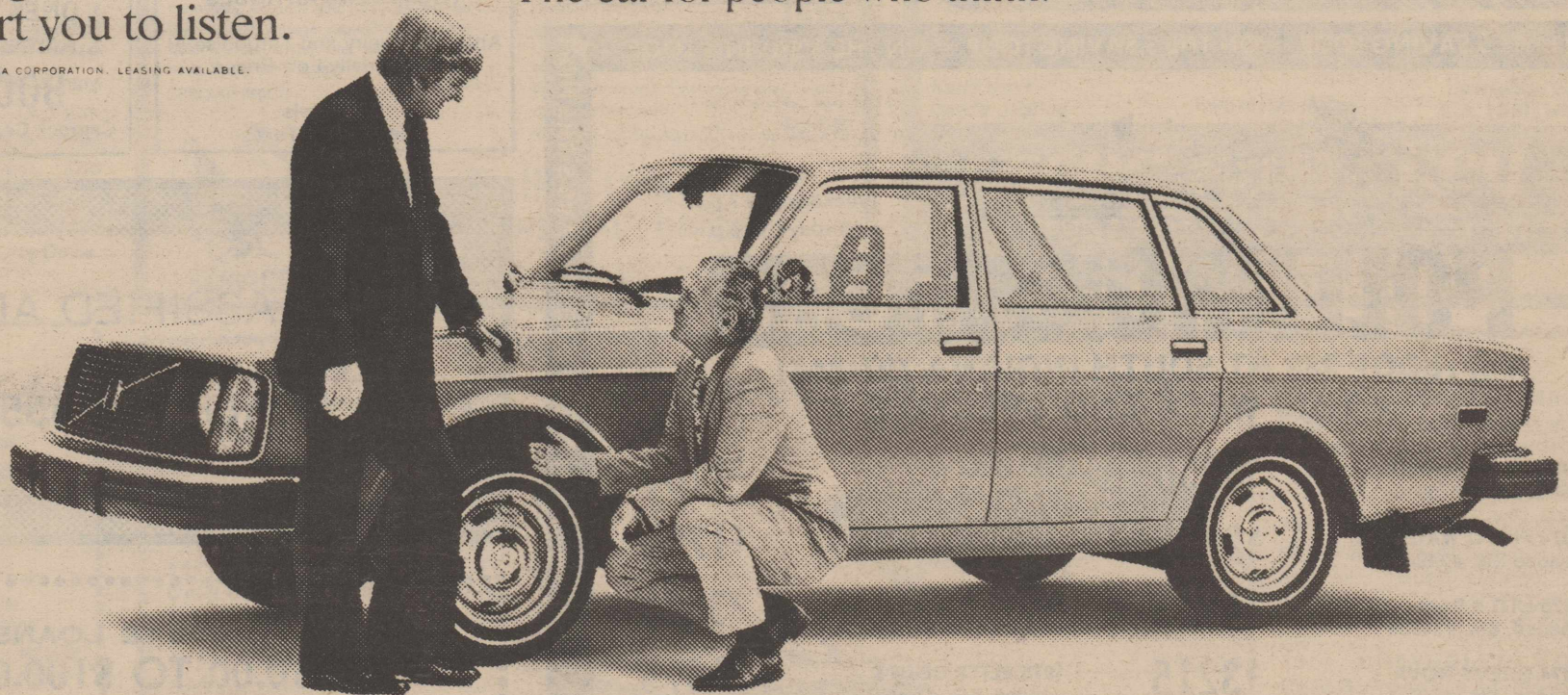
So your salesman will explain why Volvos come with four—not two—power disc brakes. And how the two independent braking circuits each work on a total of three wheels. He'll tell you the roof pillars have supported a weight of seven tons. (Turn that over in your mind.) And why the front and rear ends are designed to crumple rather than remain inflexible under heavy impact.

He'll even point out a little thing like the defoggers/defrosters that help clear the front side windows. Because when you have traffic thundering to the right and the left of you, it isn't a little thing.

So whether you come in to inspect the luxurious new Volvo 260 series or one of the new 240s, he has a lot of explaining to do. And it won't hurt you to listen.

**VOLVO**

The car for people who think.



• Top Trade-in allowances • LNB Financing available • Complete inventory • Lease plan available •

# OVERSEAS MOTORS

1941 Texas Ave — Phone 744-4547

Showroom Open Monday thru Friday til 6:30 PM • Saturday til 5:30 PM



# CLOSE-OUT SALE

BIG DISCOUNTS ON ALL REMAINING 1975 MODELS IN STOCK.

Choose From These Models:

- BEETLE ..... (1)
- RABBIT ..... (6)
- SCIROCCO . (5)
- DAHSEY .... (1)
- AUDI ..... (5)
- FOX ..... (1)



**MONTGOMERY MOTORS**  
4101 Ave Q 747-5131



# Classified Ads

## ARROWHEAD ENGRAVERS

2423 34th 797-8136  
Hours 9:30 to 5:30 Mon. - Sat.  
REGULATION NAME TAGS \$1.00  
SPECIAL: 3 ALIKE FOR \$2.75

## FLY AT SKY BREEZE AVIATION APPROVED FOR VA

- 150 - \$15 hr
  - 172 - \$20 hr
  - 182 - \$30 hr
  - 182 IFR - \$34 hr
  - Cherokee Arrow IFR - \$34 hr
  - 140 - \$17 hr
  - Supercub - \$17 hr
  - Cruiser - \$20 hr
  - 180-E - \$27 hr
- TOWN & COUNTRY AIRPARK 745-3244

1975 FIAT X1-9 Mid-engine, sports car with removable top. New car closeout. List \$5087.15. Discount: \$387.15. Call Tina Strouble. 744-4547.

## SINGER TOUCH AND SEW

Deluxe models. These machines zig-zag, blind hem, make button holes, fill bobbin in machine, etc. Desk cabinets, with drawer space. Used only three months. Several left out of public school systems. Your choice, \$75.00 each. Fully guaranteed.

Sewing Machine Service Center  
2716 50th 792-8226

WOULD YOU LIKE TO HAVE AN EXTRA \$20 or \$30 for Christmas? Call 797-3935 or 792-3543 After 4 p.m.

## SUBARU

"The Economy Car for Today's Economy"

- 1—GL COUPE
- 5—DL WAGONS

DL STATION WAGON AS LOW AS

**\$3350**

(#229)

WAS \$3819.60

THESE CARS HAVE OUR 3 GREAT WARRANTIES:

- I. 12-Month Unlimited Mileage Warranty
- II. 30-Day/1000-Mile Money Back Warranty
- III. 5-Year/49,000-Mile Warranty on All Lubricated Parts

WE GUARANTEE THESE CARS TO GET 25 M.P.G. CITY & 33 M.P.G. HIGHWAY.

**HUFSTEDLER GMC and SUBARU**  
1802 Erskine Rd. • 762-0611

1975 MARINA 4 Dr. Tinted glass, 4-sp. transmission, radial tires. List: \$3392.50. \$400 discount. Price: \$2992.50. New car warranty. Will trade. Call A.M. Schuch. 744-4547.

## We Buy Equities

C.K. Cunningham, Realtors  
797-1114 799-8824

VACANT — Three bedroom, 1 1/2 bath, near Tech. \$15,950. VA. Immediate possession. Call South Plains Realty - 792-4466 or Frank French 795-0938.

HOUSE - 1104 13th Street, Levelland. Three bedroom, one bath and storm cellar. For only \$12,500. Call South Plains Realty - 792-4466 or Frank French - 795-0938.

## HI PLAINS ART PLASTER

Everything in Art Prices Right

Phone 234-2161  
Levelland Hwy. Smyer

FOR SALE: Going PCS. Six-week-old 19 inch RCA color TV, \$430. 1974 Suzuki T500 only 500 miles, \$900. Call TSgt. Mattice at 797-7582.

CLOSEST KENNEL TO REESE  
K-9 KENNEL - HORSE CARE CENTER & CATTERY  
North of Red Barn Meat Mkt.  
PHONE 792-1325  
Hours - 8:30-5:30 Mon thru Sat.  
4 p.m.-8 p.m. Sundays

WE BUY Garage Sale leftovers. Clothing, shoes, purses, toys, etc. CONTAINER RECYCLING COMPANY - Call 762-9937 for more information.

## THOMPSONS ANTIQUES

Antique Jewelry and Turquoise At Exceptionally Low Prices.

609 Clovis  
Shallowater, Texas

FOR SALE: 1961 Harley Davidson. \$1,200 - runs good, is not radical. 7922698.

FOR SALE: CLASSIC JAGUAR, 1958 XK-150 Call 866-4547.

## MARANTZ RECEIVER

Used - 15 Watts RMS per channel • Hi-Lo Filters • Loudness Control • Muting • Tape Monitor • 1 1/2 yrs. old. \$220<sup>00</sup>

Martin Sound Center  
4902 34th 792-2156

1973 FIAT 124 Sport Spider, New Michelin tires, Metallic brown paint, New tip, 5-sp, transmission, Test drive at Overseas Motors, 1941 Texas.

## GARAGE SALE CENTER

We Buy & Sell Furniture, Refrigerators, Stoves, Air Conditioners, Plumbing Fixtures, Tools, T.V.'s and etc.

3102 Ave. H 744-5621

FOR SALE: 1974 two door Malibu Classic, V-8, low mileage, regular service, vinyl roof, AM/FM/tape, five steel-belted radials GR70-15. \$3,695. Call 797-1349.

## CARS AND PICK-UPS

"We will sell them for you — and Handle All Details"  
See Wayne Canup  
Lubbock Auto Co., Inc.  
"The Oldest Automobile Name in Lubbock"  
18th & Texas

747-2754 795-1637

1975 FIAT 128 station wagon. Luggage rack, radial tires, 4 sp. transmission. New car warranty. List \$3486.15. Closeout discount \$246.15. Selling \$3240. Call A.M. Schuch, 744-4547.

FOR ONLY \$12<sup>00</sup> a true massage, steam sauna, and relaxing foot massage (known as reflexology). No appointments after 8 p.m. Call 799-7842.

WHY PAY FULL PRICE For Paperbacks When We Sell Them For HALF PRICE?

ALSO TRADE YOUR OLD ONES TWO-FOR-ONE!

BOOK RACK

Caprock Center (50th) 792-6003

## GOOD USED CARS AT REASONABLE PRICES

- 1971 MERCURY MONTEGO COUPE: 49,000 miles Solid ..... \$1595
- 1973 CHEVROLET 1/2 TON PICK-UP: Blue and White - 36,000 miles, automatic, all power and air. .... \$2795
- 1974 VOLKSWAGEN BEETLE: Extra nice - Two door - 25,000 Miles ..... \$2495
- 1974 CHEVROLET 1/2 TON: Long Wide Bed, 18,000 miles, automatic power steering and Brakes air, one owner, see to appreciate ..... \$3895
- 1974 OLDS VISTA CRUISER: Loaded - EXTRA NICE - 24,000 Miles ..... \$4444

### THIS WEEK'S SPECIAL

1971 BONNEVILLE HARDTOP PONTIAC 4 door Sedan - Green & White Completely Equipped ..... \$1200

- 1974 GRAND AM LEMANS: Low Mileage - Loaded - New car Trade-In ..... \$4495
- 1975 CHEVROLET MONZA 2+2 Yellow - 2,949 Miles - New Car Warranty - Completely Equipped - HURRY! To see this little darling ..... \$4395
- 1973 CADILLAC COUPE DEVILLE: Locally owned All standard cadillac accessories - Mist Green - Excellent Buy! ..... \$4995

ASK FOR DON CASTLEBERRY, BILL BELYEU, OR BILL GALLION

**Frank Brown**  
**PONTIAC HONDA**

4637 50th ON SATURDAYS CALL 799-3655 799-3651

ON THE \$ SAVING LOOP — ON THE \$ SAVING LOOP — ON THE \$ SAVING LOOP



Visit our Showrooms...  
16 Lords Now on Display!

OPEN

Weekdays 'til 7 p.m.  
Saturdays 'til 6 p.m.

**POLLARD Friendly FORD**

LOOP 289 AT SOUTH INDIANA 797-3441

★ THIS WEEK-END SPECIALS ★

- |   |   |
|---|---|
| 1975 PINTO WAGON Loaded Stk. #75010 ..... \$3250                | 1973 VEGA GT Sharp - Stk. #3516-2 ..... \$1788            |
| 1974 PINTO WAGON Loaded Stk. #74988 ..... \$2888                | 1972 CHEVY NOVA Loaded, Stk. #9191-2 ..... \$1795         |
| 1975 LTD 4 Door Loaded, Stk. #74986 ..... \$4295                | 1975 MAVERICK 4 Door Loaded, Stk. #75024 ..... \$3535     |
| 1974 CHEVY NOVA Loaded, Stk. #74974 ..... \$3215                | 1975 ELITE COUPE Loaded, Stk. #75035 ..... \$4675         |
| 1974 LTD 4 Door Loaded, Stk. #3475-1 ..... \$4350               | 1974 COMET COUPE Extra Nice, Stk. #74976 ..... \$2688     |
| 1973 CHEVY DUSTOM DEWY 1/2 Ton Loaded, Stk. #74997 ..... \$3288 | 1974 RANGER XLT 1/2 Ton Loaded, Stk. #7046-1 ..... \$3838 |
| 1974 FORD LTD Wagon Loaded, Stk. #74074 ..... \$3045            | 1974 CHEVY CHEYNNNE Loaded, Stk. #74966 ..... \$3695      |
| 1973 PINTO RUNABOUT Loaded, Stk. #75023 ..... \$2345            | 1975 LTD LANDAU Loaded, Stk. #75032 ..... \$4444          |

Whatever It Takes - Pollard Friendly Ford Will Do!

ON THE \$ SAVING LOOP — ON THE \$ SAVING LOOP — ON THE \$ SAVING LOOP

## CLASSIFIED ADS

CALL 763-4551

SIGNATURE LOANS  
\$30.00 TO \$100.00

"The Best Small Loan Company in Lubbock"

**KEY FINANCE COMPANY**

TOWN & COUNTRY SHOPPING CENTER

4TH & UNIVERSITY

PHONE 763-6407



# Classified Ads

**ST. MARY OF THE PLAINS HOSP.**  
 • Registered Nurses • LVN's  
 • Nurses Aids • Orderlies  
 Competitive Salaries—Excellent Benefits  
 Call Director of Personnel: 792-6812  
 4000-24th Lubbock, Texas  
 Equal Opportunity Employer

**2 MG MIDGET**, Super economy car with lots of sports class. Two to choose from. Take a test drive at Overseas Motors, 1941 Texas.

**TOP PRICES PAID FOR GOOD USED FURNITURE AND APPLIANCES**  
**747-5530**  
 Nights & Sundays — 746-5122

**CLASSIC JAGUAR, 1958 XK-150** Call 866-4547.

Wholesale Retail  
**Magpie Antiques**  
 ANNIE LAURIE PARRISH  
 Owner  
**PRE-CHRISTMAS SALE!**  
 820 10th St. Res.  
 765-8790 763-8591

**FOR SALE:** 1972 Honda 500. \$400 and assume payment. Call 745-1977.

You'll Enjoy The Lovely...  
**WESTERN OAKS APTS.**

**\$195 UNFURNISHED • ALL BILLS PAID**  
 All brick, luxurious 2 Bedroom Quadrplexes. Total electric, refrigerator, continuous cleaning range, dishwasher, disposal. Separate utility room. Custom drapes. Shag carpet. Refrigerated air.  
 Member Lubbock Apartment Association  
 4601 52nd 792-9423  
 If No Answer Call 799-8351

**1975 FIAT 131 4-Dr.** Automatic transmission, factory air conditioning, radial tires, tinted glass, tilt steering wheel. Economy in a mid-size sedan. List \$5056.15. Closeout discount \$476.15. Price: \$4580. Will trade. Call Cary Davis, 744-4547.

**SINGER CLINIC**  
 Annual \$1.95 Tune Up Special — adjust tensions, completely oil, check timing for sewing of knit fabrics, check motor wiring, etc. Singer \$1.95. All other brands \$2.25.  
**SEWING MACHINE SERVICE CENTER**  
 2716 50th 792-8226

**1975 JENSEN HEALEY.** The ultimate in today's sports car field. Two liter lotus, twin cam engine, 5-sp. gearbox, removable hardtop, and convertible top. AM-FM stereo 8-track, radial tires. List: \$9588.50. \$700 punt. Will trade. Call Cary Davis, 744-4547.

**coupon**  
**A-R-A Matador**  
**November Special**  
**TRANSMISSION SERVICE**  
 Regular \$9<sup>95</sup>  
 Coupon \$4<sup>95</sup>  
**Your Cost \$5<sup>00</sup> + Parts**  
 Most American Made Automatic Transmissions  
 1610 4th 762-5233  
**coupon**

**1973 MGB-GT** Air conditioned, wire wheels, low miles, cassette tape player. This car features 12 month or 12,000 mile Wynn's X-tend guarantee on engine, transmission, differential, parts, only. Overseas Motors, 1941 Texas.

**CALL 763-4551 FOR CLASSIFIED ADS.**

**FOR SALE:** Kawasaki 175 Enduro, 1800 miles. CDI ignition, like new. Call Capt. Pipkin at 797-1192.

## HELP GOODWILL INDUSTRIES

Help a Handicapped Worker. Donate Your Discardable Items Now. Box Located In The BX Parking Lot, or Call 744-8419 For Larger Items.

**FLY AT RAIDER AVIATION:** Private, Commercial and Instrument Courses. Tail Dragger \$12.50 per hour.

**CHRISTMAS SPECIAL**  
 Zero time thru first solo \$175  
 Aircraft Recovered with Ceconite \$1900. Complete Paint Job \$900. Annual for \$100 and up. Hangars \$30 per month. We want and Appreciate Your Business. 832-4584 or 762-4447.

**FOR SALE:** One male and one female Chihuahua puppies, seven-weeks-old, had shots. Will make a nice Christmas present. See at 210 McGuire or call 885-2103.

**LEFT IN LAYAWAY**  
 Component Stereo • 8 Track Tape • AM-FM Radio • 2 Large Speakers. Assume Balance \$182<sup>00</sup> or \$10 monthly.  
 Martin Sound Center  
 4902 34th 792-2156

**McWhorter's, Inc.**  
**FAST SERVICE**  
 "Only Goodyear has Polysteel"  
**COMPLETE LINE OF GOODYEAR TIRES**  
 TOP TRADE... LOW PRICES  
 —INSTANT CREDIT—  
**TIRE STORE**  
 762-0231 10th & Texas  
**TRUCK CENTER**  
 763-8208 213 N. Ave. U

**NEW CAR LOT JUST OPENED!**  
**405 University 762-2870**

- We Specialize in Good Second Cars and Pick-ups
  - We Pay Cash For Good Clean Used Cars
  - We Take Cars On Assignment
- \$50.00 DOWN & UP — Small Bi-weekly Payments, No Credit Check**

**THIS WEEK'S SPECIAL!**  
**1966 FORD LTD COUPE** - Automatic, air, Runs Good  
 Only \$695<sup>00</sup>, \$100<sup>00</sup> Down, \$50<sup>00</sup> Bi-weekly.

**CALL OR COME BY — BEN TUCKER, USAF RETIRED**

**POLLARD FORD**  
 LOOP 289 AT SOUTH INDIANA 797-3441

**10% Discount on Parts & Labor**  
 OFFICERS • AIRMEN • CIVILIAN EMPLOYEES  
 REESE AFB (Excludes body work) Identification is all it takes!

**SAVE DURING NOVEMBER & DECEMBER**

<b>OIL FILTER AND AIR FILTER SPECIAL</b> Includes Motorcraft oil filter and air filter replacement with 5 quarts of oil. Four-quart capacity cars even less. SPECIAL PRICE . . . . . <b>\$1415</b>	<b>ENGINE TUNE-UP SPECIAL</b> Includes installation of eight Autolite spark plugs, Motorcraft point set and Motorcraft condenser and labor. Fours, sixes and solid state ignitions even less. Econolines slightly higher. SPECIAL PRICE . . . . . <b>\$3062</b>
<b>ELECTRICAL SYSTEM SERVICE SPECIAL</b> Includes: Test starter circuit, test battery, check battery water level and add water if necessary, inspect and clean battery terminals, test voltage regulator and alternator output, check and adjust all drive belts. Parts extra if needed. SPECIAL PRICE . . . . . <b>\$800</b>	<b>DISC AND DRUM BRAKE SPECIAL</b> DISC BRAKES — Replace front pads including hardware. SPECIAL PRICE . . . . . <b>\$3719</b> DRUM BRAKES — Replace front or rear brake shoes and linings with top quality Ford Authorized Remanufactured parts. Includes hardware. SPECIAL PRICE . . . . . <b>\$2595</b>

**Let's Talk Turkey . . . . .**  
 (ABOUT "SPECIAL" PRICES)  
**SERVICE DEPARTMENT HOURS: 7:00 - 6:00 P.M.**

**19th & J AS IS SPECIALS THIS WEEK**

**1969 DODGE CHARGER:** Blue - As Is. Stock #2266-A . . . . . **\$549**

**1969 OLDSMOBILE 98 COUPE:** Loaded. Stock #S041-A . . . . . **\$599**

**1970 CHEVROLET MONTE CARLO:** Loaded - Blue & White. Stock #8830-B . . . . . **\$999**

**1975 CHEVROLET MONTE CARLO:** Loaded - Red with white 1/2 top. Stk. #62084-A . . . . . **\$4299**

**1974 CHEVROLET MONTE CARLO:** Loaded - Weekly Special. Stk. #2070-1 . . . . . **\$3599**

**1974 CHEVROLET NOVA:** 2 Door - 6 cyl. - 3 speed - Radio. Stk. #6152-A . . . . . **\$2599**

**1973 CHEVROLET VEGA HB G.T.:** 4 speed - Radio. Stk. #6186-B . . . . . **\$1499**

**WE HAVE OVER 200 CARS IN STOCK**

**1976 MONTE CARLO'S**  
 As Low As . . . . . **\$5139**

**1975 VEGAS** #6093 . . . . . **\$2883**  
 5 Years-60,000 Miles Warranty #6229 . . . . . **\$3362**

**1976 MONTE CARLO'S**  
 As Low As . . . . . **\$5139**

**1975 VEGAS** #6093 . . . . . **\$2883**  
 5 Years-60,000 Miles Warranty #6229 . . . . . **\$3362**

**1974 CHEVROLET NOVA:** 2 Door - 6 cyl. - 3 speed - Radio. Stk. #6152-A . . . . . **\$2599**

**1973 CHEVROLET VEGA HB G.T.:** 4 speed - Radio. Stk. #6186-B . . . . . **\$1499**

**1974 CHEVROLET MONTE CARLO:** Loaded - Blue & White. Stock #8830-B . . . . . **\$999**

**1975 CHEVROLET MONTE CARLO:** Loaded - Red with white 1/2 top. Stk. #62084-A . . . . . **\$4299**

**1974 CHEVROLET MONTE CARLO:** Loaded - Weekly Special. Stk. #2070-1 . . . . . **\$3599**

**1974 CHEVROLET NOVA:** 2 Door - 6 cyl. - 3 speed - Radio. Stk. #6152-A . . . . . **\$2599**

**1973 CHEVROLET VEGA HB G.T.:** 4 speed - Radio. Stk. #6186-B . . . . . **\$1499**

**1974 CHEVROLET MONTE CARLO:** Loaded - Blue & White. Stock #8830-B . . . . . **\$999**

**1975 CHEVROLET MONTE CARLO:** Loaded - Red with white 1/2 top. Stk. #62084-A . . . . . **\$4299**

**1974 CHEVROLET MONTE CARLO:** Loaded - Weekly Special. Stk. #2070-1 . . . . . **\$3599**

**1974 CHEVROLET NOVA:** 2 Door - 6 cyl. - 3 speed - Radio. Stk. #6152-A . . . . . **\$2599**

**1973 CHEVROLET VEGA HB G.T.:** 4 speed - Radio. Stk. #6186-B . . . . . **\$1499**

**1974 CHEVROLET MONTE CARLO:** Loaded - Blue & White. Stock #8830-B . . . . . **\$999**

**1975 CHEVROLET MONTE CARLO:** Loaded - Red with white 1/2 top. Stk. #62084-A . . . . . **\$4299**

**1974 CHEVROLET MONTE CARLO:** Loaded - Weekly Special. Stk. #2070-1 . . . . . **\$3599**

**1974 CHEVROLET NOVA:** 2 Door - 6 cyl. - 3 speed - Radio. Stk. #6152-A . . . . . **\$2599**

**1973 CHEVROLET VEGA HB G.T.:** 4 speed - Radio. Stk. #6186-B . . . . . **\$1499**

**1974 CHEVROLET MONTE CARLO:** Loaded - Blue & White. Stock #8830-B . . . . . **\$999**

**1975 CHEVROLET MONTE CARLO:** Loaded - Red with white 1/2 top. Stk. #62084-A . . . . . **\$4299**

**1974 CHEVROLET MONTE CARLO:** Loaded - Weekly Special. Stk. #2070-1 . . . . . **\$3599**

**1974 CHEVROLET NOVA:** 2 Door - 6 cyl. - 3 speed - Radio. Stk. #6152-A . . . . . **\$2599**

**1973 CHEVROLET VEGA HB G.T.:** 4 speed - Radio. Stk. #6186-B . . . . . **\$1499**

**1974 CHEVROLET MONTE CARLO:** Loaded - Blue & White. Stock #8830-B . . . . . **\$999**

**1975 CHEVROLET MONTE CARLO:** Loaded - Red with white 1/2 top. Stk. #62084-A . . . . . **\$4299**

**1974 CHEVROLET MONTE CARLO:** Loaded - Weekly Special. Stk. #2070-1 . . . . . **\$3599**

**1974 CHEVROLET NOVA:** 2 Door - 6 cyl. - 3 speed - Radio. Stk. #6152-A . . . . . **\$2599**

**1973 CHEVROLET VEGA HB G.T.:** 4 speed - Radio. Stk. #6186-B . . . . . **\$1499**

**1974 CHEVROLET MONTE CARLO:** Loaded - Blue & White. Stock #8830-B . . . . . **\$999**

**1975 CHEVROLET MONTE CARLO:** Loaded - Red with white 1/2 top. Stk. #62084-A . . . . . **\$4299**

**1974 CHEVROLET MONTE CARLO:** Loaded - Weekly Special. Stk. #2070-1 . . . . . **\$3599**

**1974 CHEVROLET NOVA:** 2 Door - 6 cyl. - 3 speed - Radio. Stk. #6152-A . . . . . **\$2599**

**1973 CHEVROLET VEGA HB G.T.:** 4 speed - Radio. Stk. #6186-B . . . . . **\$1499**

**1974 CHEVROLET MONTE CARLO:** Loaded - Blue & White. Stock #8830-B . . . . . **\$999**

**1975 CHEVROLET MONTE CARLO:** Loaded - Red with white 1/2 top. Stk. #62084-A . . . . . **\$4299**

**1974 CHEVROLET MONTE CARLO:** Loaded - Weekly Special. Stk. #2070-1 . . . . . **\$3599**

**1974 CHEVROLET NOVA:** 2 Door - 6 cyl. - 3 speed - Radio. Stk. #6152-A . . . . . **\$2599**

**1973 CHEVROLET VEGA HB G.T.:** 4 speed - Radio. Stk. #6186-B . . . . . **\$1499**

**1974 CHEVROLET MONTE CARLO:** Loaded - Blue & White. Stock #8830-B . . . . . **\$999**

**1975 CHEVROLET MONTE CARLO:** Loaded - Red with white 1/2 top. Stk. #62084-A . . . . . **\$4299**

**1974 CHEVROLET MONTE CARLO:** Loaded - Weekly Special. Stk. #2070-1 . . . . . **\$3599**

**1974 CHEVROLET NOVA:** 2 Door - 6 cyl. - 3 speed - Radio. Stk. #6152-A . . . . . **\$2599**

**1973 CHEVROLET VEGA HB G.T.:** 4 speed - Radio. Stk. #6186-B . . . . . **\$1499**

**1974 CHEVROLET MONTE CARLO:** Loaded - Blue & White. Stock #8830-B . . . . . **\$999**

**1975 CHEVROLET MONTE CARLO:** Loaded - Red with white 1/2 top. Stk. #62084-A . . . . . **\$4299**

**1974 CHEVROLET MONTE CARLO:** Loaded - Weekly Special. Stk. #2070-1 . . . . . **\$3599**

**1974 CHEVROLET NOVA:** 2 Door - 6 cyl. - 3 speed - Radio. Stk. #6152-A . . . . . **\$2599**

**1973 CHEVROLET VEGA HB G.T.:** 4 speed - Radio. Stk. #6186-B . . . . . **\$1499**

**1974 CHEVROLET MONTE CARLO:** Loaded - Blue & White. Stock #8830-B . . . . . **\$999**

**1975 CHEVROLET MONTE CARLO:** Loaded - Red with white 1/2 top. Stk. #62084-A . . . . . **\$4299**

**1974 CHEVROLET MONTE CARLO:** Loaded - Weekly Special. Stk. #2070-1 . . . . . **\$3599**

**1974 CHEVROLET NOVA:** 2 Door - 6 cyl. - 3 speed - Radio. Stk. #6152-A . . . . . **\$2599**

**1973 CHEVROLET VEGA HB G.T.:** 4 speed - Radio. Stk. #6186-B . . . . . **\$1499**

**1974 CHEVROLET MONTE CARLO:** Loaded - Blue & White. Stock #8830-B . . . . . **\$999**

**1975 CHEVROLET MONTE CARLO:** Loaded - Red with white 1/2 top. Stk. #62084-A . . . . . **\$4299**

**1974 CHEVROLET MONTE CARLO:** Loaded - Weekly Special. Stk. #2070-1 . . . . . **\$3599**

**1974 CHEVROLET NOVA:** 2 Door - 6 cyl. - 3 speed - Radio. Stk. #6152-A . . . . . **\$2599**

**1973 CHEVROLET VEGA HB G.T.:** 4 speed - Radio. Stk. #6186-B . . . . . **\$1499**

**1974 CHEVROLET MONTE CARLO:** Loaded - Blue & White. Stock #8830-B . . . . . **\$999**

**1975 CHEVROLET MONTE CARLO:** Loaded - Red with white 1/2 top. Stk. #62084-A . . . . . **\$4299**

**1974 CHEVROLET MONTE CARLO:** Loaded - Weekly Special. Stk. #2070-1 . . . . . **\$3599**

**1974 CHEVROLET NOVA:** 2 Door - 6 cyl. - 3 speed - Radio. Stk. #6152-A . . . . . **\$2599**

**1973 CHEVROLET VEGA HB G.T.:** 4 speed - Radio. Stk. #6186-B . . . . . **\$1499**

**1974 CHEVROLET MONTE CARLO:** Loaded - Blue & White. Stock #8830-B . . . . . **\$999**

**1975 CHEVROLET MONTE CARLO:** Loaded - Red with white 1/2 top. Stk. #62084-A . . . . . **\$4299**

**1974 CHEVROLET MONTE CARLO:** Loaded - Weekly Special. Stk. #2070-1 . . . . . **\$3599**

**1974 CHEVROLET NOVA:** 2 Door - 6 cyl. - 3 speed - Radio. Stk. #6152-A . . . . . **\$2599**

**1973 CHEVROLET VEGA HB G.T.:** 4 speed - Radio. Stk. #6186-B . . . . . **\$1499**

**1974 CHEVROLET MONTE CARLO:** Loaded - Blue & White. Stock #8830-B . . . . . **\$999**

**1975 CHEVROLET MONTE CARLO:** Loaded - Red with white 1/2 top. Stk. #62084-A . . . . . **\$4299**

**1974 CHEVROLET MONTE CARLO:** Loaded - Weekly Special. Stk. #2070-1 . . . . . **\$3599**

**1974 CHEVROLET NOVA:** 2 Door - 6 cyl. - 3 speed - Radio. Stk. #6152-A . . . . . **\$2599**

**1973 CHEVROLET VEGA HB G.T.:** 4 speed - Radio. Stk. #6186-B . . . . . **\$1499**

**1974 CHEVROLET MONTE CARLO:** Loaded - Blue & White. Stock #8830-B . . . . . **\$999**

**1975 CHEVROLET MONTE CARLO:** Loaded - Red with white 1/2 top. Stk. #62084-A . . . . . **\$4299**

**1974 CHEVROLET MONTE CARLO:** Loaded - Weekly Special. Stk. #2070-1 . . . . . **\$3599**

**1974 CHEVROLET NOVA:** 2 Door - 6 cyl. - 3 speed - Radio. Stk. #6152-A . . . . . **\$2599**

**1973 CHEVROLET VEGA HB G.T.:** 4 speed - Radio. Stk. #6186-B . . . . . **\$1499**

**1974 CHEVROLET MONTE CARLO:** Loaded - Blue & White. Stock #8830-B . . . . . **\$999**

**1975 CHEVROLET MONTE CARLO:** Loaded - Red with white 1/2 top. Stk. #62084-A . . . . . **\$4299**

**1974 CHEVROLET MONTE CARLO:** Loaded - Weekly Special. Stk. #2070-1 . . . . . **\$3599**

**1974 CHEVROLET NOVA:** 2 Door - 6 cyl. - 3 speed - Radio. Stk. #6152-A . . . . . **\$2599**

**1973 CHEVROLET VEGA HB G.T.:** 4 speed - Radio. Stk. #6186-B . . . . . **\$1499**

**1974 CHEVROLET MONTE CARLO:** Loaded - Blue & White. Stock #8830-B . . . . . **\$999**

**1975 CHEVROLET MONTE CARLO:** Loaded - Red with white 1/2 top. Stk. #62084-A . . . . . **\$4299**

**1974 CHEVROLET MONTE CARLO:** Loaded - Weekly Special. Stk. #2070-1 . . . . . **\$3599**

**1974 CHEVROLET NOVA:** 2 Door - 6 cyl. - 3 speed - Radio. Stk. #6152-A . . . . . **\$2599**

**1973 CHEVROLET VEGA HB G.T.:** 4 speed - Radio. Stk. #6186-B . . . . . **\$1499**

**1974 CHEVROLET MONTE CARLO:** Loaded - Blue & White. Stock #8830-B . . . . . **\$999**

**1975 CHEVROLET MONTE CARLO:** Loaded - Red with white 1/2 top. Stk. #62084-A . . . . . **\$4299**

**1974 CHEVROLET MONTE CARLO:** Loaded - Weekly Special. Stk. #2070-1 . . . . . **\$3599**

**1974 CHEVROLET NOVA:** 2 Door - 6 cyl. - 3 speed - Radio. Stk. #6152-A . . . . . **\$2599**

**1973 CHEVROLET VEGA HB G.T.:** 4 speed - Radio. Stk. #6186-B . . . . . **\$1499**

**1974 CHEVROLET MONTE CARLO:** Loaded - Blue & White. Stock #8830-B . . . . . **\$999**

**1975 CHEVROLET MONTE CARLO:** Loaded - Red with white 1/2 top. Stk. #62084-A . . . . . **\$4299**

**1974 CHEVROLET MONTE CARLO:** Loaded - Weekly Special. Stk. #2070-1 . . . . . **\$3599**

**1974 CHEVROLET NOVA:** 2 Door - 6 cyl. - 3 speed - Radio. Stk. #6152-A . . . . . **\$2599**

**1973 CHEVROLET VEGA HB G.T.:** 4 speed - Radio. Stk. #6186-B . . . . . **\$1499**

**1974 CHEVROLET MONTE CARLO:** Loaded - Blue & White. Stock #8830-B . . . . . **\$999**

**1975 CHEVROLET MONTE CARLO:** Loaded - Red with white 1/2 top. Stk. #62084-A . . . . . **\$4299**

**1974 CHEVROLET MONTE CARLO:** Loaded - Weekly Special. Stk. #2070-1 . . . . . **\$3599**

**1974 CHEVROLET NOVA:** 2 Door - 6 cyl. - 3 speed - Radio. Stk. #6152-A . . . . . **\$2599**

**1973 CHEVROLET VEGA HB G.T.:** 4 speed - Radio. Stk. #6186-B . . . . . **\$1499**

**1974 CHEVROLET MONTE CARLO:** Loaded - Blue & White. Stock #8830-B . . . . . **\$999**

**1975 CHEVROLET MONTE CARLO:** Loaded - Red with white 1/2 top. Stk. #62084-A . . . . . **\$4299**

**1974 CHEVROLET MONTE CARLO:** Loaded - Weekly Special. Stk. #2070-1 . . . . . **\$3599**

**1974 CHEVROLET NOVA:** 2 Door - 6 cyl. - 3 speed - Radio. Stk. #6152-A . . . . . **\$2599**

**1973 CHEVROLET VEGA HB G.T.:** 4 speed - Radio. Stk. #6186-B . . . . . **\$1499**

**1974 CHEVROLET MONTE CARLO:** Loaded - Blue & White. Stock #8830-B . . . . . **\$999**

**1975 CHEVROLET MONTE CARLO:** Loaded - Red with white 1/2 top. Stk. #62084-A . . . . . **\$4299**

**1974 CHEVROLET MONTE CARLO:** Loaded - Weekly Special. Stk. #2070-1 . . . . . **\$3599**

**1974 CHEVROLET NOVA:** 2 Door - 6 cyl. - 3 speed - Radio. Stk. #6152-A . . . . . **\$2599**

**1973 CHEVROLET VEGA HB G.T.:** 4 speed - Radio. Stk. #6186-B . . . . . **\$1499**

**1974 CHEVROLET MONTE CARLO:** Loaded - Blue & White. Stock #8830-B . . . . . **\$999**

**1975 CHEVROLET MONTE CARLO:** Loaded - Red with white 1/2 top. Stk. #62084-A . . . . . **\$4299**

**1974 CHEVROLET MONTE CARLO:** Loaded - Weekly Special. Stk. #2070-1 . . . . . **\$3599**

**1974 CHEVROLET NOVA:** 2 Door - 6 cyl. - 3 speed - Radio. Stk. #6152-A . . . . . **\$2599**

**1973 CHEVROLET VEGA HB G.T.:** 4 speed - Radio. Stk. #6186-B . . . . . **\$1499**

**1974 CHEVROLET MONTE CARLO:** Loaded - Blue & White. Stock #8830-B . . . . . **\$999**

**1975 CHEVROLET MONTE CARLO:** Loaded - Red with white 1/2 top. Stk. #62084-A . . . . . **\$4299**

**1974 CHEVROLET MONTE CARLO:** Loaded - Weekly Special. Stk. #2070-1 . . . . . **\$3599**

**1974 CHEVROLET NOVA:** 2 Door - 6 cyl. - 3 speed - Radio. Stk. #6152-A . . . . . **\$2599**

**1973 CHEVROLET VEGA HB G.T.:** 4 speed - Radio. Stk. #6186-B . . . . . **\$1499**

**1974 CHEVROLET MONTE CARLO:** Loaded - Blue & White. Stock #8830-B . . . . . **\$999**

**1975 CHEVROLET MONTE CARLO:** Loaded - Red with white 1/2 top. Stk. #62084-A . . . . . **\$4299**

**1974 CHEVROLET MONTE CARLO:** Loaded - Weekly Special. Stk. #2070-1 . . . . . **\$3599**

**1974 CHEVROLET NOVA:** 2 Door - 6 cyl. - 3 speed - Radio. Stk. #6152-A . . . . . **\$2599**

**1973 CHEVROLET VEGA HB G.T.:** 4 speed - Radio. Stk. #6186-B . . . . . **\$1499**

**1974 CHEVROLET MONTE CARLO:** Loaded - Blue & White. Stock #8830-B . . . . . **\$999**

**1975 CHEVROLET MONTE CARLO:** Loaded - Red with white 1/2 top. Stk. #62084-A . . . . . **\$4299**

**1974 CHEVROLET MONTE CARLO:** Loaded - Weekly Special. Stk. #2070-1 . . . . . **\$3599**

**1974 CHEVROLET NOVA:** 2 Door - 6 cyl. - 3 speed - Radio. Stk. #6152-A . . . . . **\$2599**

**1973 CHEVROLET VEGA HB G.T.:** 4 speed - Radio. Stk. #6186-B . . . . . **\$1499**

**1974 CHEVROLET MONTE CARLO:** Loaded - Blue & White. Stock #8830-B . . . . . **\$999**

**1975 CHEVROLET MONTE CARLO:** Loaded - Red with white 1/2 top. Stk. #62084-A . . . . . **\$4299**

**1974 CHEVROLET MONTE CARLO:** Loaded - Weekly Special. Stk. #2070-1 . . . . . **\$3599**

**1974 CHEVROLET NOVA:** 2 Door - 6 cyl. - 3 speed - Radio. Stk. #6152-A . . . . . **\$2599**

**1973 CHEVROLET VEGA HB G.T.:** 4 speed - Radio. Stk. #6186-B . . . . . **\$1499**

**1974 CHEVROLET MONTE CARLO:** Loaded - Blue & White. Stock #8830-B . . . . . **\$999**

**1975 CHEVROLET MONTE CARLO:** Loaded - Red with white 1/2 top. Stk. #62084-A . . . . . **\$4299**

**1974 CHEVROLET MONTE CARLO:** Loaded - Weekly Special. Stk. #2070-1 . . . . . **\$3599**

**1974 CHEVROLET NOVA:** 2 Door - 6 cyl. - 3 speed - Radio. Stk. #6152-A . . . . . **\$2599**

**1973 CHEVROLET VEGA HB G.T.:** 4 speed - Radio. Stk. #6186-B . . . . . **\$1499**

**1974 CHEVROLET MONTE CARLO:** Loaded - Blue & White. Stock #8830-B . . . . . **\$999**

**1975 CHEVROLET MONTE CARLO:** Loaded - Red with white 1/2 top. Stk. #62084-A . . . . . **\$4299**

**1974 CHEVROLET MONTE CARLO:** Loaded - Weekly Special. Stk. #2070-1 . . . . . **\$3599**

**1974 CHEVROLET NOVA:** 2 Door - 6 cyl. - 3 speed - Radio. Stk. #6152-A . . . . . **\$2599**

**1973 CHEVROLET VEGA HB G.T.:** 4 speed - Radio. Stk. #6186-B . . . . . **\$1499**

**1974 CHEVROLET MONTE CARLO:** Loaded - Blue & White. Stock #8830-B . . . . . **\$999**

**1975 CHEVROLET MONTE CARLO:** Loaded - Red with white 1/2 top. Stk. #62084-A . . . . . **\$4299**

**1974 CHEVROLET MONTE CARLO:** Loaded - Weekly Special. Stk. #2070-1 . . . . . **\$3599**

**1974 CHEVROLET NOVA:** 2 Door - 6 cyl. - 3 speed - Radio. Stk. #6152-A . . . . . **\$2599**

**1973 CHEVROLET VEGA HB G.T.:** 4 speed - Radio. Stk. #6186-B . . . . . **\$1499**

**1974 CHEVROLET MONTE CARLO:** Loaded - Blue & White. Stock #8830-B . . . . . **\$999**

**1975 CHEVROLET MONTE CARLO:** Loaded - Red with white 1/2 top. Stk. #62084-A . . . . . **\$4299**

**1974 CHEVROLET MONTE CARLO:** Loaded - Weekly Special. Stk. #2070-1 . . . . . **\$**



# Reese Briefs

## Golf Pro Shop Christmas Sale

The annual Christmas sale at the Golf Pro Shop will begin Tuesday. Many new golf items have been received and these will provide a fine selection of gifts for Christmas. Among the items offered are golf shirts, new woods and irons, golf bags, women's golf outfits, jackets, sweaters and other bargains will be available.

## December Retirees

Three Reese NCOs will be retiring from active duty effective Monday. They are TSgt. William J. Watson, 64th Air Base Group, TSgt. Russell E. Van Buskirk, 64th Field Maintenance Squadron, and TSgt. Donald D. Catlett, 64th Organizational Maintenance Squadron.

## Education Counseling

Dr. Anne Shankman of the Psychology Guidance and Counseling Department of the University of Northern Colorado will be the Reese Education Office from 8:30 a.m. to 4:30 p.m. Dec. 8. Jim Bertrand, Texas regional director, will also be available for counseling. If you would like more information or an appointment, call the Education Office at Ext. 2634/2469.

## Pet Innoculations

Effective Dec. 10, feline viral rhinotracheitis/distemper inoculations will be available at the Reese Zoonoses Clinic. Please call Ext. 2535 for an appointment.

## New Commissary Policy

Beginning Monday, all children under 10 years of age will be restricted to shopping carts while shopping in the Commissary. Children must ride inside the carts. This new policy is necessary in order to reduce congestion in the Commissary's narrow one way aisles and to protect our small patrons from possible injury.

## Saturday Child Care

The base nursery will be open at 10 a.m. Saturdays through Dec. 20. This service is intended to make Christmas shopping more convenient. Make your reservations for this service by calling the Child Care Center at Ext. 2541.

## Christian Year Begins

In denominations which use a liturgical Christian calendar, Sunday marks Advent, the beginning of the Christian year. In keeping with the need to provide a wide spectrum of worship experiences, an additional morning worship will be provided during the four weeks of Advent. It will be held at 9 a.m. each Sunday and will follow the form of the Episcopal Morning Prayer Service with Holy Communion. The Chapel Center invites all to attend this service in addition to the regular worship services at 11 a.m.

## NCO Club Membership Meeting

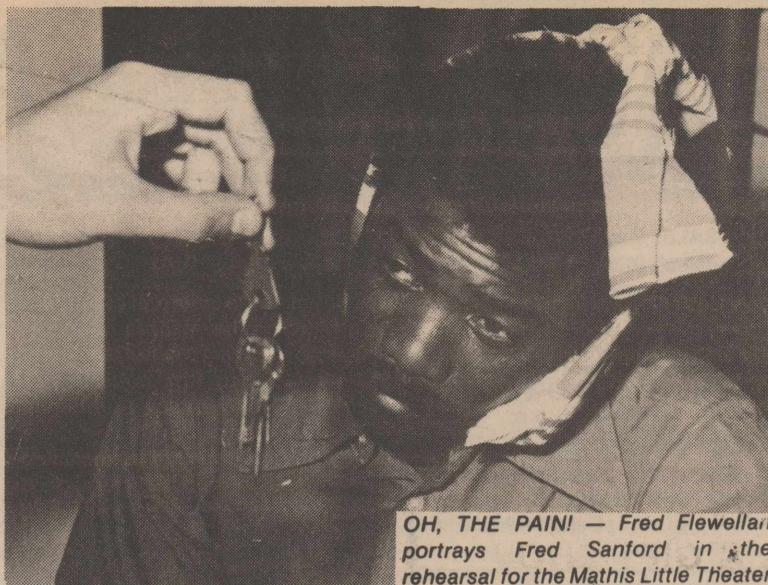
There will be an NCO club membership meeting at 7 p.m. Thursday at the club. The purpose of this meeting is to elect new committee members to the advisory committee. At the close of the meeting there will be a smorgasbord dinner and free beer for all NCO club members.

## Christmas Wreaths

Handmade patchwork Christmas wreaths will be on sale from 10 a.m. until 5 p.m. tomorrow in front of the Main Exchange.



NEATNESS COUNTS — A1C Pam Reusch of the 64th Supply Squadron relaxes in her room in Dormitory 320. She deserves the rest, since a recent inspection team chose her quarters as Dorm Room of the Month for October. (U.S. Air Force Photo by Sgt. Buddy Lerch)



OH, THE PAIN! — Fred Flewellan portrays Fred Sanford in the rehearsal for the Mathis Little Theater production of "Tooth or Consequences," based on an episode from the "Sanford and Son" television series. The play is scheduled for 8 p.m. Monday night at Simler Theater. Admission is free. (U.S. Air Force Photo by Sgt. Buddy Lerch)

## Base actors stage first production

Reese people have a special treat in store for them Monday when the "Mathis Little Theater" group presents its first stage production.

The play, entitled "Tooth or Consequences," is based on a hilarious episode of the "Sanford & Son" television series. It promises to provide a unique and entertaining evening to all who attend.

The evening's entertainment will begin at 8 p.m. in Simler Theater when the "Magical Singers" from Atkins Junior High present a special musical show. Immediately following, the play will complete the evening of music and comedy. Everyone is invited to attend and there will be no charge for the performance.

A special dress rehearsal will be held Sunday at 2:30 p.m. in the Simler Theater. This rehearsal is open to the public.

The cast for this production are: Fred Flewellan as Fred Sanford, A1C Vincent Redmond as Lamont Sanford, Sgt. Jason Tyler as Bubba, A1C John Dongarra as the hypnotist, Beth Morrow as the receptionist, Marilyn Higbee as the patient, Joan Ballinger as the first dentist and SSgt. Ed Matteson as the second dentist.

The stage crew consists of Bob Schlessler, Jeff Zajas, Richard Horehlad and Mark Whitmire.

According to Joe Perron, Recreation Center director, interested persons are being sought for future productions with openings for stage crew as well as actors and actresses. Present plans include exchange performances between the theater group here and those at Cannon AFB, N.M. and Webb, Dyess, Randolph Air Force Bases, Tex. and surrounding bases. A trip to Cannon AFB will probably head the list for the "Tooth or Consequences" cast and crew.

For further information about Monday's performance or Sunday's rehearsal, contact Sgt. Jason Tyler or Joe Perron at Mathis Recreation Center Ext. 2787.

## DOWNTOWN Deluxe Restaurant

George & Dee Sanders (New Owners)

SPECIALIZING IN . . .

- Breakfast
- Buffet Lunches
- Steaks

HOURS  
5:30 a.m. - 4:00 p.m.

10% Discount with Military I.D. & This Ad

812 TEXAS AVE. (NEXT DOOR TO RON SEWELL)

- Good Service
- Friendly People
- Best Prices

GIVE US A TRY !!!



紅樓 (The Red House)

Hong Lou Restaurant

2417 Broadway

Open 'til 11 p.m. Fri. and Sat. nights

Hong Lou is already popular with Reese airmen. Some who have not yet tried us, are welcome to join our regular customers.

Sun. thru Thurs. 11 to 2 and 5:30 to 10:00  
Fri. and Sat. 11 to 2 and 5:30 to 11:00

CLOSED MONDAYS

744-4342

FRI. & SAT. DANCE

WILD BILL

and his

Buffalo Yankees

\$1.50 At The Door

322 N. Univ. Doors open at 8:00



LOOKIE HERE, LOOKIE HERE, LOOKIE HERE, LOOKIE HERE!

FHA -VA APPROVED  
BELOW \$31,000

7807 UVALDE

STANLEY REED CONSTRUCTION

Office  
792 3218

4901 - BROWNFIELD HWY  
Nights - 792-7591

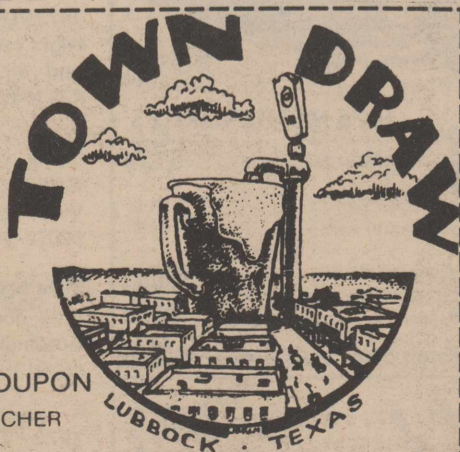
Nights  
797 3739

BEST SANDWICH

FASTEST DRAW  
in the west

CLIP THIS COUPON  
FOR \$1.65 PITCHER

GOOD TIMES AT GOOD PRICES







**RED BARON**  
RESTAURANT (Under New Management)  
ON LEVELLAND HWY. ACROSS FROM REESE  
Featuring Daily Specials 11 to 2 • \$1.45 to \$2.25  
Also All-U-Can-Eat Mon. thru Fri. Nites

Mon - CHICKEN FRIED STEAK	.....	\$2.25
Tues - CATFISH	.....	\$2.50
Wed - CHILI	.....	\$1.25
Thur - FRIED CHICKEN	.....	\$1.95
Fri - SHRIMP	.....	\$3.50

ALL ORDERS MAY BE PREPARED TO GO!  
FOR FASTER SERVICE, CALL IN! 797-7150

**NOW OPEN**  
**COUNTRY COUSIN GIFT SHOP**

4122-B 34th Street 797-5574

- Decorative School desks
- Macrame
- Chambray shirts
- Hand-painted art plaster gifts
- Dolls
- Hand-made purses
- And many new items daily




**STORE HOURS:**  
Open Mon. thru Sat.  
10:00 - 4:00  
Open Thursday  
night til 9:00  
through Christmas

Owners: Jo Turpin  
and Joy Crecellus

**Fats Johnson Extravaganza**  
with Joe Neddo

November 18-30  
Starts Tuesday  
**Tom Connor**  
& Northwind  
December 2 - 14

Feast with up to  
50 friends on  
any budget in  
the Brookshire  
banquet room.



**Brookshire Inn**  
3838 50th

**DECEMBER SPECIAL**

REG. \$8<sup>19</sup>

- 15 Pcs. Chicken
- 2 Pts. Potatoes
- 1 Pt. Gravy
- 1 Pak of Rolls

NOW **\$6<sup>99</sup>**



Bring This Ad For  
A FREE Coke While  
You Wait.

**Mountain of a Meal!**  
Good December 1st thru 28th

Have a barrel of fun™  
**Kentucky Fried Chicken®**

5004 SLIDE ROAD 3814 - 34th  
1208 - 50th  
215 UNIVERSITY

# entertainment

## Flick Flack

Sean Connery, Candice Bergen, James Caan, Alan Arkin, Warren Beatty, Jack Nicholson and Jan-Michael Vincent are a few of the stars that will be appearing in movies this week at the Simler Theater.

The theater is open Tuesday through Sunday. The shows begin at 8 p.m. with the Saturday Matinee beginning at 2 p.m.

### Tonight

"The Wind and the Lion" stars Sean Connery as Raisuli, the Berber leader who kidnaps Candice Bergen and her two children with the intention of ransoming them back to the U.S. government for gold and arms. The spectacular action scenes have scope and elements of violence which may offend some. The film is rated PG, parental guidance suggested.

### Saturday Matinee and Evening

"Red Red Dragon" is recommended for both youngsters and adults by "Parents Magazine." This full-length animated feature is a delightful story that traces the steps of the 49th descendant of the original Marco Polo in the fables city of Xanadu. It offers a combination of cartoon characters, laughter, music and adventure. This film is rated G, all ages admitted.

### Sunday

"Freebie and the Bean" stars James Caan and Alan Arkin as two fabulous San Francisco city

detectives who got their first big break in a garbage can and then went all the way to greatness in the ladies' room at the Super Bowl. Highlights of the film are plenty of stunts, car chases and sort of happy-go-lucky destruction of property, primarily in San Francisco. This film is rated R, under 17 requires accompanying parent or adult guardian.

### Tuesday, Wednesday

"The Fortune" stars Warren Beatty and Jack Nicholson. This film is rated PG.

### Thursday

"White Line Fever" stars Jan-Michael Vincent and Kay Lenz. Vincent plays a young Air Force veteran who is starting into business for himself as an independent truck driver. He has just married Kay Lenz and gotten a bank loan to purchase a giant 13-speed tractor truck, which he names "the Blue Mule." He seeks an old family friend, Slim Pickens, who manages a trucking company. By accident, Vincent discovers that his first cargo is contraband. His refusal to transport illegal goods leads to a beating by a band of thugs, harassment from a crooked deputy sheriff and threats on his life. With the aid of an older friend and other truckers he fights back against the organized forces of Don Porter. Action is nonstop with a series of fist-fights, car-truck duels climaxing in a colossal truck smash-up that will leave you aghast. This film is rated PG.

## At Open Messes

**Tonight** the Officers Open Mess features New York strip steak, served with baked potato and salad bar for \$5. There will be no band for this weekend, but remember that Spring Fire will be coming to the club the week of Dec. 8-13 in the Lounge.

**Tomorrow:** Roast prime rib of beef au jus will be served with baked potato and salad bar for \$5.25.

**Sunday:** Closed.

**Monday:** Chicken fried steak will be offered as the membership special for \$2.50. The Retired

Officers' Association will also hold its Christmas party.

**Tuesday:** A chicken cordon bleu special will be served for only \$3.95.

**Wednesday:** The 54th Flying Training Squadron bowling league will have its party while the membership is invited to enjoy Beef and Bubbles (steak special served with a glass of champagne) for only \$4.25.

**Thursday:** The Caprock Bridge Club will hold a party and the membership will dine from the menu.

### NCO CLUB

"The Branded Men" will provide dancing music for NCO Open Mess patrons tonight to kick off this week's schedule of events there.

**Tomorrow** - Appearing at the NCO club for the first time, "Soul Vibrations" are scheduled to entertain tomorrow night.

**Sunday** - Discotheque action will be featured.

**Thursday** - Happy Thanksgiving! The NCO club will operate on a holiday schedule.

## At Mathis

**Tonight:** The Mathis Recreation Center will host a discotheque dance tonight beginning at 8 p.m.

**Tomorrow:** The monthly pool championship tournament will begin at 2:30 p.m.

**Sunday:** The monthly table tennis tournament will begin at 2:30 p.m.

**Sunday:** The monthly table tennis tournament will begin at 2:30 p.m.

**Monday:** Table tennis will begin at 7 p.m. At 8 p.m. the Mathis Little Theater group will present "Tooth or Consequences" in the Simler Theater.

**Tuesday:** Films will be shown beginning at 7 p.m.

**Wednesday:** The Chess Club will meet at 7:30 p.m.

**Thursday:** The Center will provide paper, tape and string for mailing your Christmas gifts home.

**PLUMBING**  
**PAY-LESS PLUMBING & SEWER SERVICE**  
SALES • SERVICE • REPAIRS  
We are new - Please make note of telephone Numbers. We are not listed in the phone book.

**24 HOUR SERVICE**

- Trailer Hook-ups
- Water Heaters
- Winterize Air Conditioners
- Sewer & Drain Cleaning
- Washer & Dryers Hook-ups
- Heating & Coolings

CALL 792-4895 (DAYS)  
797-4931 (NIGHTS)  
10% CASH DISCOUNT ON LABOR AND THIS AD

**NEVER A COVER CHARGE**

Mixed Drinks - 85¢ Pitchers - \$1.95

These Prices Good From 9:30 P.M. to Closing  
Every Night for Everybody at the

**SUPER CHIEF DISCOTHEQUE**  
Music by Marantz & JBL  
There's A Dance Floor Too!

IT'S ALL AT

**SANTA FE STATION**

Corner of 4th & Q  
Closed Sunday



**TARTAN LOUNGE**  
"FOR THE QUIET TIMES"  
3 p.m. - 2 a.m. Mon. - Sat.  
6 p.m. - Midnight Sunday  
Happy Hour - 5:00 to 6:30



**RODEWAY INNS**  
RODEWAY INN MOTEL  
2401 - 4th  
763-8081



# Scores remain high for bowlers

By Sonny Serutan

Judy Turner set the pace in the Reesette League the night of Nov. 24. Judy had a 212 538. Johnnie Caskey followed close behind with a 197 game. 511 series. Other good scores were bowled by Tina Ballosky. 490 series, and Aquilla

Brinker, 191 game. Howard Creek led the Intramural League with a 246/611. Rod Wilson and Sam Mele followed close behind with 577 series. High games are so commonplace in this league, we're thinking about printing the low series. However, here are some more

good ones. Speedy Vodopich had a 213/573. Sam McCarter had a 234 game, Lee Steverson a 212 game, Bill Meeks a 207 game, Fred Dew a 205 game, Tex Peyton 204, Pete Hooser 202 and Bob McLean and Bob McFall both had 200 even.

For the women, Johnnie Caskey had a 173/500 and Sue Vodopich had a 476 series.

Rod Wilson and Cindy Harbison won first place in the Turkey Shoot. Judy and Randy Turner were second with Howard Creek and Bill Littlejohn coming in third.

## Ball and Chain League

Tex Peyton had a 191/554 to lead the Ball and Chain League Nov. 20. Jay Bell had a 524 series, Bob Wocking a 520, Bill Register a 518, Jim Turner a 515, Sam Mele 513 and Dewey Payne 505.

Jo Ann Clark led the women with a 199/513. Gladys Mele had a 192/470.

## Cotton Pickers League

Rod Wilson showed the Cotton Pickers about the bear and the buckwheat. Rod had a 220/598. Bob Wocking has a 214/560 and Skip McGarrigle had a 542 series.

# Gym holds tourney

The base Gym has started something new with the forming of the Paddleball Ladder Tournament.

The tournament will end Dec. 15 and the top three winners on the ladder will be presented jackets as awards.

The tournament works like this. To begin on the ladder you must challenge the last man on the ladder of 15 positions. If you beat him in two-out-of-three games then your name is entered in his place and you may begin your way up the ladder.

To advance up the ladder you must challenge and defeat the man who is above you on the ladder. You may challenge the man directly

above you or challenge the man two steps above you. Each of the 15 positions on the ladder has that step's present holder's name and extension where he can be contacted. Each challenge must be answered within 72 hours or the match is forfeited in the challenger's favor.

Reservations for these matches may be made one day in advance. Reservations are taken from 7:30-8 a.m. on a walk-in basis for military personnel. From 8-9 a.m. reservations may be made by phone by military and after 9 a.m. civilians may reserve the court.

# Student Sq. places first

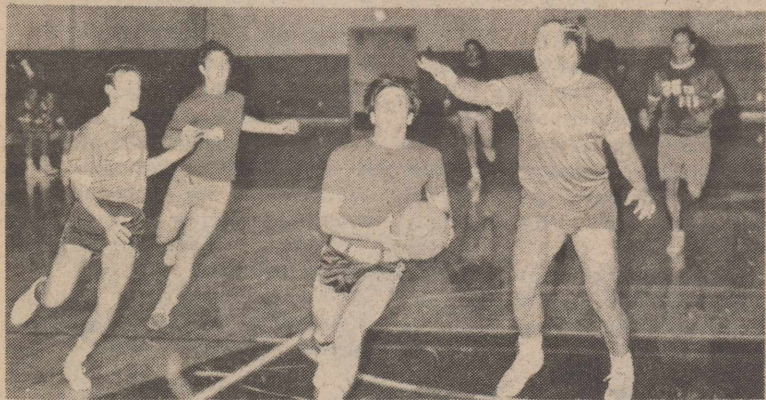
The preseason intramural basketball tournament ended Nov. 20 with the 64th Student Squadron No. 1 taking first place.

The Student Squadron was undefeated until they played the USAF Hospital in the finals. The Hospital team had lost their first game forcing them to work their way out of the loser's bracket. In the first showdown between these two

teams, the Hospital won 58-56. This forced a playoff to decide the winner of the double elimination tournament.

The final game was hard fought. The Student Squadron won 38 to 34.

Eleven teams played in the tournament and each has a chance to take first place in regular season play. Regular season play got underway Monday night.



DRIVIN' HARD — 64th Student Squadron player Bryan Armbrust (with ball) drives down to the basket, anticipating the coming shot during the first game of the regular Intramural Basketball season Monday night. Around Armbrust are 35th FTS player Bob Lafreniere, left, Student Squadron's Mike Ragan and 35th FTS' Mike Wilken. The Student Squadron won the hard-fought tilt 43-29. (U.S. Air Force Photo by Sgt. Buddy Lerch)

# Reese men place high in autocross

Four Reese men took top honors during the South Plains Sport Car Club Autocross held in Lubbock Sunday.

Tom Gravelle, driving his 1973 Corvette, took first place in the Sports 4 Division (V-8 engines) and also had the low time for the course. Charles Heald won first in the Sports 3 Division.

Mark O'Green took first in the Sports 2 Division (four-cylinder) in an MGB. Bill Riechmann took third in Sports 4, driving a '69 Corvette.

The Autocross was held in the Lubbock Municipal Auditorium parking lot.



**SONNY ARNOLD & ASSOCIATES**

### WHY

DO YOU THINK YOUR LANDLORD OWNS THE PROPERTY YOU RENT? He doesn't collect rent receipts like you! Get smart & call us today & see how easy it is to own your own home! Financing available more than ever!

### SPECIAL

Financing on these homes

### WEST WIND

5704 2nd Pl. ....  
5706 2nd Pl. ....  
5723 3rd St. ....

### MANY MORE

VA, FHA or FHA in Service Loans

REALTORS BUILDERS  
APPRAISERS  
WE WELCOME TRADES

2350 - 34th 792-5171

EQUAL HOUSING OPPORTUNITIES 24 HOURS



## DO-IT-YOURSELF

## PICTURE FRAMING

• EASY • FUN • INEXPENSIVE

## QUALITY CUSTOM FRAMING

Manager — Douglas Webb  
Owner — Tom McSpadden

797-3154 5422 SLIDE ROAD

# MOVING WEST!

## The Great American Dream

West, where there's hope,  
where there's freedom,  
where there's . . .

well, where things are just better.

In the 1600's in Europe, West meant America.

Easterners moved West to Ohio and the Mississippi for a better life in the 1700's.

During the 1800's in America, West meant California or Oregon.

Today around here, "Moving West for a better deal," means Bank of the West in South Plains Mall. Don't take our word — ask around!

No Service Charge

Free Personal Checking ☆ No Minimum Balance

# BANK of the WEST

MEMBER FDIC

YOUR ACCOUNT INSURED UP TO \$40,000

Marshall Vorhies, Special Rep.

### BANKING HOURS

Mon thru Thurs 9-3  
Friday 9-6 Sat. 9-1

Drive-In Tellers Open Till 6 P.M.  
TV Teller in The Mall Open Till 7



Phone 797-3211

South Plains Mall — Loop 289 & Slide Road

# Pre-Christmas Sale!

COMBO BUSINESS CHANGING OWNERSHIP EFFECTIVE DEC. 1ST  
BUY NOW AND SAVE ON CHRISTMAS SHOPPING

MUST REDUCE STOCK  
DRASTIC PRICE CUTS  
ON ALL MERCHANDISE

GUITARS—AMPS—SOUND SYSTEMS  
COMBO PIANOS AND  
COMBO ORGANS

15% to 40% OFF

FRIDAY & SATURDAY ONLY

**JENT'S HOUSE OF MUSIC**

2640 34th Street Lubbock, Texas Phone 795-5579  
BankAmericard and Master Charge