

Muleshoe Journal

Striving to be your source for local news 75¢
 Volume 94, No. 49 www.muleshoejournal.com Muleshoe, Texas December 5, 2013

Fire Destroys Local Veterinary Clinic

Fire destroyed the Muleshoe Animal Clinic's office building Sunday night. About 11:15 p.m., the Muleshoe Volunteer Fire Department was dispatched to a fire at the veterinary clinic, located west of Muleshoe on Hwy. 84. Other assisting agencies included the Farwell Volunteer Fire Department, the Lazbuddie Volunteer Fire Department, the Bailey County Sheriff's Department, and the Muleshoe Police Department. According to Sheriff Richard Wills, an



Photograph by Larry Thornton

investigator with the state fire marshal's office has been contacted, and will assist in determining the cause of the fire. The building has been reported as being a total loss.

Flames continue to burn inside the veterinary building Monday morning.

Huge Effort Kept Area Roads Drivable

By Larry Thornton
Editor
It took approximately 279 manhours to make Bailey County roadways passable following the Nov. 24 snowstorm, according to city, county and state officials, and that was only Sunday's efforts. An additional 641 manhours were needed

in the days that followed to clear the roads. In Muleshoe, City Manager David Brunson said eight Public Works employees put in 73 manhours on the municipal streets. "They really did a good job," Brunson said. "They're out there on their football Sunday, and most of them are big football fans, working so the rest of us can get around," Brunson added. The city employees followed Sunday's efforts with an estimated 320 more manhours ridding the streets of the estimated nine inches of snow that covered the Muleshoe area. And while the road crews worked, Muleshoe's police department worked to free vehicles trapped in the heavy snow. Surprisingly, according to Police Chief Roy Rice, there were no snow or ice-related traffic accidents during the

Continued on A3



Photograph by Larry Thornton

Crazy Ice

There are some things that are supposed to be rather predictable. For example, when snow melts on a roof, the water drips "down" forming beautiful icicles, some of which depending upon the weather are quite large. But it was the "down" part of the dripping water that took a turn for the unusual at the home of Jerry

and Laura Killingsworth, 308 Joliet, following the most recent snow storm. As can be seen in the above photograph of the front of the Killingsworth residence, the dripping water that normally forms vertical icicles was apparently blown toward the house, forming horizontal ice art.

Local Snow Removal Questions Answered

Some local residents were curious about the City of Muleshoe's policies regarding how and when the city's streets are cleared of snow.

The following explanation was provided by City Manager David Brunson:

Q: My street was not cleared, how does the city choose which streets to clear?

A: The primary focus of the city when clearing snow from the streets are emergency services (fire and EMS) and safe passage to schools.

Q: Why does the city pile the snow in the middle of the street?

A: Snow is moved to the middle of the street so that private drives are not blocked.

Q: Why do I have to drive across the snow piles to turn into my driveway?

A: While the snow is piled in the middle of the street driving patterns should be adjusted so that you can turn right into your driveway.

Q: Why doesn't the city move the snow to vacant lots or parks?

A: Loading and moving snow from the streets to vacant lots or parks would be extremely time consuming and would greatly reduce the number of streets that would be cleared.

Q: Does the city remove snow from private parking lots and drives.

A: No. Private businesses contract for snow removal from their parking lots.

Q: But, I saw the city removing snow from the hospital's parking lot.

A: The hospital and nursing home are tax supported entities.

Q: Does the city clear snow from Hwy. 84 and 214?

A: No. TxDOT has the responsibility to clear snow from Hwys. 84 and 214.

These are the city's primary guidelines for street clearing. Certain incidents and conditions may cause the city to vary from the guidelines.

The Christmas Key

By Larry Thornton
Part 3

After snatching the key, Darkbeak came to his senses, realizing that he'd just stolen something from the winter witches. Instinct told him he should open his beak and let the key fall, but his greed overcame instinct, and he continued to hold it tightly.

Only, instead of returning to his nest, where he would have stowed it with the other glittering items

he'd collected over the years, Darkbeak decided a new nest further south was warranted.

* * * * *

Darkbeak had flown for several days, pausing to rest only when he could fly no further. And even his rests were becoming fitful and tiring. It was as if the winter witches were constantly peering over his shoulder, waiting for a chance to snatch the key back.

The previous night it was even worse. His

dreams swiftly turned to nightmares with Sophia and Porsha calling his name over and over again. No matter how deeply he tried to tuck his head under his wing the images were still there, both sisters reaching for the key... his key.

All thoughts now of building a new nest were gone, replaced with hours and more



hours of flying. As the days whirled past, the forests of the far north changed to the towns, farms and eventually cities further south.

Other crows cried out to Darkbeak as he winged past, but he ignored them, and when they took wing to pursue him, Darkbeak flew even harder, driven to escape the

dreams and his fear of losing the shiny key he clutched within his beak.

But the day came when he could fly no further. The shiny bauble he'd snatched from the air in the far north provided no sustenance, and it had been several days since he'd dropped it long enough to eat or drink.

Darkbeak was weak, his attention focused on the next beat of his wings... so he was unprepared for the hawk's attack.

With a bone-chilling screech, a large hawk swooped at Darkbeak, its talons outstretched for what appeared to be an easy meal. However, weakened as he was, Darkbeak's years in the wilds of the far north kicked in and he twisted out of the hawk's deadly path, suffering the loss of only a few feathers... and the key.

Turning to the left, the crow dove into a

Continued on A6



MULESHOE STATE BANK

"Where a handshake still means something"

MULESHOE • 272-4561 • 101 W. American Blvd. • FARWELL • 481-9580 • 801 Ave. A



OPINION

An Odd Calendar And 'Merry Thanksgiving!'

Around Muleshoe...



Announcements from non-profit organizations in the Muleshoe area.

To post an announcement send an email to editor@muleshoejournal.com

Medicare Open Enrollment

Medicare open enrollment is coming up quickly. Open enrollment begins on Oct. 15 and runs through Dec. 7. If you are needing to enroll or compare prescription drug coverage call Shelby Carpenter at the Bailey County Office of Aging, 806-272-3647, to make an appointment.

Medicaid and Social Security counseling will also be available.

Christmas Card Project

Park View Nursing Care Center's Christmas Card Project is underway. This year's monies will go for new patio furniture for the nursing home's new and enlarged patio, and for flag poles in both the front and the back of the facility.

Your cards may be mailed to Christmas Card Project, 1100 W. Ave. J, Muleshoe, Texas 79347, or dropped off at the same address. You may also drop off donations at Muleshoe State Bank and First Bank.

Dec. 19 is the cut off date to make donations.

SPCAA Funds

South Plains Community Action Association of Muleshoe, 804. W. American Blvd., has received additional funding for its low-income energy assistance program for the period ending Dec. 31.

Priority will be given to eligible households and to households including at least one member who is elderly, disabled or under five years of age. For additional information contact Janie Posadas at the SPCAA office, or call 806-272-7537.

Food Pantry

The Bailey County Ministerial Alliance Food Pantry will be open only one Saturday in December. Christmas boxes will be distributed 9-10:30 a.m., on Saturday, Dec. 7.

All clients must pick up their December food at that date and time.

Pheasant Hunt Breakfast

The Bailey County EMS Organization will be hosting its annual breakfast on Saturday, Dec. 7, beginning at 5 a.m., at the Bailey County Coliseum. Tickets are \$7 at the door. The breakfast is open to the public.

Winter Wonderland

Muleshoe area Girl Scouts will be presenting "Winter Wonderland Around The World," on Saturday, Dec. 14, from 1-3 p.m., at the Family Life Center, 521 S. First, in Muleshoe. There will be crafts, and photographs with Santa will be available for \$2. The event is open to the public.

Boy Scouts Food Drive

Boy Scout Troop 620 and Cub Scout Pack 620 will be picking up canned food on Saturday, Dec. 14, for the BCMA Food Pantry. To donate, place your cans in a bag on your front porch where it can be visible from the road.

Call Lisa Puckett at 806-946-9658 for additional information.

I'm writing this column between meals on Thanksgiving weekend. Our family's absolutely gargantuan meal is still coming, sandwiched between meals that are just really amazingly big, and I'm sitting in a food-induced stupor pondering the calendar.

The calendar is playing some tricks on us this year. Thanksgiving and the turkey, dragging their heels, showed up way late, which means that Advent/Christmas will be upon us way early.

By Sunday, Thanksgiving weekend and December will have crashed right into each other, a bit of a wreck with ramifications. If you're a retailer, you'll have six fewer days to "re-tail" this year.

If you are, say, a guy who has just recorded a Christmas CD, that means six fewer days to sing Christmas concerts (and it's six days closer to post-Christmas singing depression).

And, yes, if you're a pastor planning a variety of seasonal church and worship activities, services, sermons, etc., well, it might be helpful to know that this year when the wise men show up it probably won't be with gold, frankincense, and myrrh. More likely they'll be bringing turkey, dressing, and giblet gravy.

It is, you know, simply because three gifts were mentioned the first time around that we just assume those first wise guys were a trio.

If that first Christmas

Christmas Parade Postponed

The Muleshoe Chamber of Commerce & Agriculture announced Monday evening that the annual Christmas parade, originally scheduled for Saturday, Dec. 7, has been postponed until Dec. 14.

According to chamber officials, the postponement is due to the second blast of arctic weather that is expected in the region over this coming weekend.

The pancake breakfast planned for Dec. 7 at the Oneida Wagon Senior Center has been postponed until Saturday, Dec. 14.

Events at the Muleshoe Heritage Center have also been postponed.

At press time, it was unknown of other events planned for Dec. 7 will be postponed.

Thank you for reading the Journal!



Focus On Faith
Curtis Shelburne

had been as close to Thanksgiving as this one, I figure our Christmas cards would be featuring an additional wise fellow, the song would be "We Four Kings," and one more little guy in a church Christmas pageant would need to borrow his dad's bathrobe to dress up for the journey down the church aisle to Bethlehem under the star up front.

I'm betting that somebody's wise wife would have packed his camel bags with some cranberry sauce as a gift to go along with the other three guys' tasty

offerings. And that makes four. Four gifts. And four wise men.

Anyway, it's leftover turkey and dressing for lunch this Sunday, after the service where we light the first Advent candle. Merry Thanksgiving!

But maybe this year's calendar crash is not as much of a clash as I first thought.

You see, Thanksgiving reminds me that no matter how hard I've worked, the most noteworthy thing about my life is how completely needy and poverty-stricken I am when it comes to saving myself.

The blessings I need the most are blessings

straight from God, blessings that only he could give, blessings that I could never earn, deserve, or procure myself.

Guess what? Here comes Christmas with much the same lesson, written large: "Get over yourself, pilgrim! The Gift given to save you is God's Gift, not one you could ever have given or even imagined. You can't improve it, add to it, or in any way deserve it. You can just accept it."

Peanut butter and jelly. Turkey and dressing. Joy and thanksgiving. Some things just go together. A good lesson from an odd calendar.

Need Dental Work?

Dental insurance money for 2013 will expire at the end of December. So call:

J.W. HALTOM

Family Dentistry & Orthodontics for all your dental needs before your insurance expires for the year.



385-6935

Hours: Mon.-Thurs. 8 to 5 Friday 8 to noon

Hillary Harris, Amber Garcia, Jessica Haltom, & J.W. Haltom



Lift up a child's voice. A child's life.™

Help an abused or neglected child at www.becomeacasa.org, Great Plains CASA for Kids, Inc., (806) 363-1211



Give... and Receive

Help a child in our community



Donate a toy and get *Free* activation

Make the season a little *brighter* with one of these...



Yes, we carry all major brands! **Keep the celebrations going with unlimited calling, texting and data - starting at just \$50 per month!** Drop by your nearest Plateau store or call us today.

Sign up today and get a *Free* Alcatel M'Pop Android phone!

Phone offer ends December 31, 2013. To receive free activation, donated toy must be new, unwrapped and valued at \$10.00 or more. The Alcatel M'Pop is available for free only with a two-year contract for wireless service. While supplies last. Contract Term: One or two-year commitment required. Early termination fee: \$100 per year, maximum \$200 and is prorated. Activation Fee \$25.00. Partial megabytes rounded up. Full speeds available up to monthly data allotment; capable device required. After data allotment used, speeds slowed to up to 2G speeds for remainder of billing cycle. Night and weekend minutes are available when within the Plateau Network. Night and Weekend Hours: Monday through Thursday 7 p.m. through 6:59 a.m. and Friday 7 p.m. through Monday 6:59 a.m. Free Mobile to Mobile calls between Plateau mobile phones within the Plateau area. Roaming outside Plateau Network Home Area (U.S. and Canada): \$0.10 per minute voice call with Free Nationwide Long Distance, \$0.50 per MB Data. Additional taxes, fees and surcharges may apply. 50% usage on all plans must be on the Plateau network. Unlimited data: 4G speeds up to your selected plan of 2GB or 5GB. May not be available in all markets. Certain restrictions apply.

1-877-PLATEAU (752-8328) www.plateautel.com



Muleshoe Journal USPS 367820
Established Feb. 23, 1924 Published by Panhandle Weeklies, LLC.
Every Thursday at 201 W. Ave. C, P.O. Box 449, Muleshoe, TX 79347.
Periodicals paid at Muleshoe, TX, and at additional mailing offices.
Postmaster: Send address changes to the Muleshoe Journal, P.O. Box 449, Muleshoe, TX 79347.
We are qualified members of the Panhandle Press Association, West Texas Press Association and Texas Press Association

David Wedel, Publisher
dwedel@hearstmp.com

Larry Thornton, Editor
editor@muleshoejournal.com

Rhea Gonzales Ad Representative
adsales@muleshoejournal.com

Ad Design / Classified Advertising
advertising@muleshoejournal.com
classifieds@muleshoejournal.com

Subscriptions:
By Carrier Yearly — \$27
Bailey County, by mail — \$29
Elsewhere — \$40
By E-mail — \$22
Advertising rate cards on request

© 2013

West Texas Press Association

Hours are 8 a.m. to 5 p.m., Monday - Thursday, and 8 a.m. to noon on Friday. *Advertisers should check their ad the first day of insertion. The Journal will not be liable for failure to publish an ad or for a typographical error or errors in publications except to the extent of the cost of the ad for the first day of insertion. Adjustment for errors will be limited to the cost of that portion of the ad where the error occurred.

Retired Teacher Tells Of Service As 'Green Beret'

On Nov. 5, Tom Boutell, local artist and retired Muleshoe Independent School District teacher, spoke to the seventh grade students of social studies teacher Jennifer Givens at Watson Junior High.

As Veterans Day approached, Boutell spoke with the students about his time in the US Army during the Viet Nam War in 1966-67.

He served with the 5th Special Forces Group and started his remarks by saying, "This presentation is by no means an attempt



Former "Green Beret" Tom Boutell

to glorify war. War is a horrible thing." Boutell brought a few mementos, including his flight suit covered with patches earned for his skills and groups with which he served, and his green beret, and he passed around a small

sewing kit, the kind his group distributed to the local civilians.

Boutell explained how important items made of steel were in a third world country. "The needle and thread were precious items to those who received them," he said.

He included what he called his most important items, his compass and D ring.

Boutell also displayed photographs, and explained the training of his A Team, each of the 12 soldiers having two military occupation specialties,

his being primarily as a medic and radio operator, with cross training in weapons and demolition.

He also described his medical work with the local civilian population and the mountain tribal Montagnard people.

At one point, Boutell told of a dramatic helicopter rescue of wounded American soldiers, calling helicopter pilots the "real heroes of the war."

Boutell spoke of the Cambodian troops which he commanded, describing them as men he could depend totally on to do any job, saying, "You can't teach that kind of courage, that kind of loyalty."

When asked about the men in his A Team, he said, "Most of the time we were in the middle of the jungle with 11 other guys. We trained together and we were brothers. You had to be ready to give your life for the other members of the team and they had to be ready to do the same."

The students asked

many questions and expressed their gratitude to Boutell, both for his service to his country and for his willingness to speak to them about it.

In thank you letters to Boutell, one student commented that he was her hero.

Another said he was amazed to see Boutell doing surgery on a wounded guy.

And, one boy said he could hardly believe some of the Vietnamese soldiers were as young as 12 — his own age.

A young lady expressed a heartfelt thank you for telling the students how scared he was, but still went on missions.

Almost all of the students said they will miss him as a teacher at Watson Junior High.

The 5th Special Forces Group is an active duty United States Army Special Forces Group that was activated on Sept. 21, 1961. Reportedly, it is one of the most decorated special operations units in the United States military.

Congressman Updates West Texas

Farm Bill

The Farm Bill Conference Committee is continuing to work on reconciling the differences between the House and Senate bills.

We've ironed out a lot of the details already in areas like rural development, research, and trade programs. What's left? Commodity support and nutrition assistance.

These have always been the toughest issues to agree on, but we're making some progress.

Chairman Frank Lucas and Ranking Member Colin Peterson of the House Agriculture Committee have been meeting regularly with Chairwoman Debbie Stabenow and Ranking Member Thad Cochran



from the Senate side.

Our goal is to get the Senate to agree on reforms to nutrition assistance that stop program abuse and ensure your taxpayer dollars are going to people who are gaming the system.

We also want to make sure the commodity support in the bill works for every region in the country, and not just a few select crops. We'll continue working on this, and my hope is that we'll have a long-term Farm Bill in place before Christmas.

Budget Discussions

The other big issue to

be sorted out before the end of 2013 is our budget. As you know, the Senate finally agreed to form a Conference Committee with the House to come to a resolution on our budget.

The aim is to produce a plan to fund the government for the rest of FY2014. The Committee has set a goal of reaching an agreement by December 13.

If they don't meet that self-imposed deadline, there are no immediate consequences. But on January 15, we come up against a hard deadline.

That's when the current continuing

resolution expires.

I'm not on the Budget Conference Committee, but I've made my priorities clear: We need to address our growing debt instead of kicking the can down the road — so that we can protect our economy and America's legacy.

Our \$17 trillion in debt isn't going to disappear on its own. We need to start taking steps to reduce our spending and recommit ourselves to responsible government.

That's why I've introduced a Balanced Budget Amendment to the Constitution, as well as a bill that requires any increase in the debt limit to be considered as a stand-alone bill and pass with a supermajority of two-thirds.

Snow Storm Road Clearing...

Continued from A1 storm in Muleshoe.

In rural Bailey County, 10 members of the precinct road crews put in almost 86 manhours clearing county roads for travel.

"They did good," said Bailey County Precinct 1 Commissioner Butch Vandiver. "I was real happy with the work they did."

"I am very proud of our county, city and

state road crews for the awesome job they did on getting our roads and streets safe and passable," County Judge Sherri Harrison said.

"I would also like to thank our local sheriff's deputies, police officer's and local citizens for all of the hard and tedious work on pulling out vehicles from the ditches and snow drifts," she added.

Following

Sunday's efforts, the commissioners reported that more than 200 manhours were necessary to clear the remaining county roadways.

Department of Transportation road crews were also at work during the storm, putting in about 46 manhours per employee over the course of the clearing effort.

NOTICE

Meeting of the Redistricting Advisory Committee of Muleshoe Area Hospital District

December 5, 2013
6:00 p.m.
215 S. First
Muleshoe, Texas

Notice is provided that the Redistricting Advisory Committee of the Muleshoe Area Hospital District will meet on December 5, 2013, at 6:00 p.m. at 215 S. First, Muleshoe, Texas, for the purpose of discussion and consideration regarding the redistricting of the District's single-member Board of Directors after the 2010 U.S. Census. The committee will meet with the District's attorney regarding redistricting options. The public is invited.

AVISO

REUNIÓN DEL COMITÉ ASESOR PARA LA NUEVA DIVISIÓN EN DISTRITOS DE

Muleshoe Area Hospital District
(Distrito Hospitalario del Área de Muleshoe)

5 de diciembre de 2013
6:00 p.m.
215 S. First
Muleshoe, Texas

Se comunica que el Comité asesor para la nueva división en distritos del Distrito Hospitalario del Área de Muleshoe se reunirá el 5 de diciembre de 2013, a las 6:00 p.m., en 215 S. First, Muleshoe, Texas, con el propósito de debatir y considerar la nueva división en distritos electorales, después del censo de 2010, de aquellos distritos con un único miembro en el Consejo de administración. El Comité se reunirá con el abogado del Distrito para examinar las opciones de la nueva división en distritos. El público está invitado a dicha reunión.

INDOOR STORAGE FOR LARGE EQUIPMENT AVAILABLE

COMBINES, COTTON STRIPPERS, PLANTERS, TRAILERS, RVS

MONTHLY RATE DEPENDING ON SPACE USED

CALL MAX KING @ 806-946-8455 (CELL)
OR 806- 272-3918 (HOME)

Online Subscription to the Muleshoe Journal ONLY \$22.00

www.muleshoejournal.com

Send Your Student to College with an Online Subscription to the

Muleshoe Journal

201 W Ave C., Muleshoe, TX 79347 • Call 806-272-4536

Senior Citizen News

By Laverne Winn

Based on the snow and cold weather, it seems that winter is here with this week being the first week of December, particularly since we just celebrated Thanksgiving.

The weather news reports that Dec. 6-8 will have some more cold weather with snow as a possibility. It seems like just the other day that we were in April. Where did the time go?

Do not forget about Saturday, Dec. 14. The Oneida Wagnon Senior Center will be hosting a pancake breakfast from 7-11 a.m., with the Muleshoe annual Christmas Parade passing in front of the center during the morning.

So bundle up and come on down to the center for pancakes, bacon, sausage, various syrups, with milk, coffee, orange juice.

Then you can watch the parade as it goes by.

This past week, Kathy Carr of the Bailey County Extension office finished her series on Preventing Memory Loss.

Thank you, Cathy for a great series which is important to all of us.

Kathy returns in December with a nutrition report.

Be aware that Bingo games occur every Thursday afternoon at the center and Bunco games are played the first and third Tuesday of each month.

The Frontier Group

will gather for a 6 p.m. dinner at the center on Tuesday, Dec. 10.


Dec. 9-13 menus:
Monday, Dec. 9 — Crispy chicken on bun, tomato and lettuce, mayonnaise, potato wedges, carrot and raisin salad, and fruit cocktail.
Tuesday, Dec. 10 — braised beef brisket, pinto beans, spinach, tossed vegetable salad, low calorie French dressing, sliced whole wheat bread, and applesauce.
Wednesday, Dec. 11

— grilled steak, mashed sweet potatoes, green beans, tossed vegetable salad, low calorie French dressing, cornbread, and tropical fruit salad.

Thursday, Dec. 12 — Taco salad, refried beans, Spanish rice, broccoli and cauliflower salad, corn or flour tortilla, and apricot halves.

Friday, Dec. 13 — fish or chicken strips, borracho beans, green peas, tossed vegetable salad, low calorie French dressing, whole wheat roll, and tropical fruit mix.

"Honor the LORD with your wealth, with the firstfruits of all your crops; then your barns will be filled to overflowing, and your vats will brim over with new wine."



Proverbs 3:9-10, NIV

Christmas Project Is Under Way

Park View Nursing Care Center's Christmas Card Project is underway.

Cards may be mailed to Christmas Card Project, 1100 W. Ave. J, Muleshoe, Texas 79347, or dropped off at the same address.

Donations may also be dropped off at Muleshoe State Bank and First Bank.

Dec. 19 is the cut off date to make donations.

FARWELL FUELS

North of Hwy 60 Farwell, TX

Serving Western Texas & Eastern New Mexico

PROPANE DELIVERY

Residential and Commercial

1-877-467-9261

BAILEY COUNTY DEVOTIONAL PAGE

ASSEMBLY OF GOD
FIRST ASSEMBLY OF GOD
Pastor Ryan Pate
521 South First Street
272-3017
S.S. 9:45 am,
W.S. 10:45 am & 6:00 pm,
Wed. 7:00 pm

EL BUEN PASTOR
415 E. Ave. F - 272-5455
Pastor Ruben Acevedo
272-4542
S.S. 9:45 am, W.S. 11 am & 6 pm; Wed. 7 pm

BAPTIST
CALVARY BAPTIST
1733 W. Ave. C.
Rev. Jeff Coffman
FIRST BAPTIST
220 West Ave. E
Dr. Stacy Conner
FIRST BAPTIST
Lazbuddie • 965-2126
PRIMERA IGLESIA BAUTISTA
223 E. Ave. E
Rev. Rosendo Lopez
PRIMITIVE BAPTIST
621 South First
Elder Bernard Gowens, Min.
PROGRESS BAPTIST
Progress, TX
PROGRESS SECOND BAPTIST
Arthur Hays, Min. - 1st & 3rd Sundays
RICHLAND HILLS BAPTIST
Bro. Larry Thornton
17th & West Ave. D
S.S. 10 am; W.S. 11 am
www.rhbc-muleshoe.org

CATHOLIC
IMMACULATE CONCEPTION CATHOLIC CHURCH
805 E. Hickory
Leonardo Pahamtang, Min.
EPISCOPAL - CHARISMATIC
ST. CLEMENTS CHURCH

Titles of Jesus (Solutions on A5)

X	J	J	F	O	H	E	J	W	C	Q	L	T	X	U	S	G	Prince of Peace
E	F	M	E	S	S	I	A	H	T	C	R	E	A	T	O	R	Redeemer
K	M	B	C	H	R	I	S	T	A	O	Z	P	S	C	N	B	Savior
D	N	S	A	A	E	D	I	V	A	D	F	O	T	O	O	R	Bread of Life
T	O	F	E	K	P	R	S	X	R	K	H	H	R	D	F	E	King of Kings
Q	C	G	P	L	Z	S	X	L	I	H	E	T	U	K	M	A	Lamb of God
K	T	X	F	P	A	T	T	N	W	W	Z	U	E	W	A	D	Messiah
D	S	G	O	O	F	R	G	O	A	Q	S	R	V	O	N	O	Immanuel
O	E	I	E	M	B	O	E	Y	N	I	T	T	I	R	T	F	Great Shepherd
G	I	B	C	F	F	M	Z	M	O	E	U	E	N	D	Y	L	Capstone
F	R	Z	N	K	U	V	A	F	E	M	C	H	E	O	S	I	Creator
O	P	X	I	N	Z	L	D	L	V	E	Z	T	T	F	E	F	Root of David
N	H	N	R	O	I	V	A	S	D	C	D	N	H	G	A	E	Son of Man
O	G	L	P	L	N	I	M	M	A	N	U	E	L	O	Z	T	Word of God
S	I	G	R	E	A	T	S	H	E	P	H	E	R	D	V	S	True Vine
I	H	X	O	R	Y	G	V	R	Y	M	C	N	U	T	V	J	The Way
Q	R	B	E	Q	P	B	C	D	A	D	W	Y	A	T	U	F	The Truth
																	High Priest
																	Son of God
																	Christ

This devotional & directory is made possible by these businesses who encourage all of us to attend worship services.

<p>COMMUNION OF CHRIST THE REDEEMER Hwy. 214 South • 272-5954 Father Sergio Leal Sun. W.S. 10:30 am</p> <p>CHRISTIAN TRINITY CHRISTIAN CENTER 1723 W. American Blvd. 272-3877 Reydon Stanford, Pastor Sun. W.S. 10:30 am</p> <p>CENTRO CRISTIANO 117 E. Birch St. Hermanos Barron S.S. 10 a.m.; W.S. 11 a.m. & 6 p.m.; Wed. 7 p.m.</p> <p>CHURCH OF CHRIST LARIAT CHURCH OF CHRIST Wesley Roach, Min.</p>	<p>S.S. 10 a.m.; W.S. 11 a.m. & 6 p.m.; Wed. 7:30 p.m.</p> <p>LAZBUDDIE CHURCH OF CHRIST Harrol Redwine, Min. S.S. 9:30 am; W.S. 10:20 am & 5 pm; Wed. 6 pm</p> <p>MULESHOE CHURCH OF CHRIST 22nd & W. American Blvd. S.S. 9:30 am; W.S. 10:20 am & 6 pm; Wed. 7:30 pm 16th & AVE. D</p> <p>CHURCH OF CHRIST Curtis Shelburne, Min. 272-4619 S.S. 9:30 am; W.S. 10:30 am; Growth Gr. 1:30 pm; Wed. 7:00 pm</p> <p>LUTHERAN ST. JOHN LUTHERAN Lariat, TX • David Symm, Min.</p>
---	---

S.S. 10:30 am; W.S. 9:30 am

METHODIST
FIRST UNITED METHODIST
507 W. 2nd St.
S.S. 9:45; W.S. 11:00;
Praise & Prayer 6 pm;
First Sunday of Month
4 pm Parkview Nursing Home Service
Mon. 9 am Ladies Bible Stdy;
Tues. 6 pm Adult Bible Stdy;
Pastor Mindy McLanahan,
272-5517

LAZBUDDIE METHODIST
S.S. 9:30 am; W.S. 10:30 am
Pastor Ken Peterson
965-2121

EL DIVINO SALVADOR U.M.C.
619 E. 5th Street & Ave. G,
Fernando Sanchez, Pastor
272-6888

PENTECOSTAL
Iglesia Apostolica de la Fe en Cristo Jesus
207 East Ave. G
Sunday 1:30 pm
Wednesday 7:30 pm

INTER DENOMINATIONAL NEW COVENANT
Plainview Hwy.
Steve Claybrook, Pastor
W.S. 10 am; Wed. 7 pm
MULESHOE COWBOY FELLOWSHIP
710 E. American Blvd.
Steve Friskup, Minister
272-5199
Service: 7:30 p.m. Thursday

If you have changes to make to church information, please contact the Journal at 272-4536.

Serve Wholeheartedly, as if you were serving the Lord, not men. Ephesians 6:7



MULESHOE ALLEY INC.
2601 W. American Blvd.
P.O. Box 631
Muleshoe, Texas

(806) 272-4266
Mobile (806) 946-8763
mviinc@fivearea.com

Muleshoe Journal
201 W. Ave. C, Muleshoe
OFFICE: 806.272.4536

"THE FIVE AREA TELEPHONE COOPERATIVE, INC."
West Plains Telecommunications, Inc.
Five Area Systems, Inc. • Plateau Wireless
Five Area Long Distance • Five Area Internet
302 Uvalde Muleshoe, USA (806) 272-5533

SHIPMAN'S BODY SHOP, INC.



410 N. First St. • Muleshoe, TX
Office: 806-272-4408 • Fax: 806-272-3366 • Night # 806-336-5422

CENTRAL COMPRESS & WAREHOUSE
SUDAN, TEXAS

To place your ad here call Rhea at the Muleshoe Journal 806-272-4536

McCORMICK SEEDS, INC.
400 East Ash • 272-3156
Muleshoe, Texas
A COMPLETE LINE OF FIELD SEEDS
Tim McCormick




MAPLE COOP GIN
927-5501
Maple, Texas

Leal's TORTILLA FACTORY
105 E. Ash St., Muleshoe • 272-5772
Phillipians 4; "I can do all things through Christ who strengthens me."

Muleshoe Journal
201 W. Ave. C, Muleshoe
OFFICE: 806.272.4536

Deaf Smith County Grain, Inc.
Cliff A. Skiles, Jr.
Jeb S. Skiles

BOEHNING DAIRY
690 CR 45, Earth
"MILK - A PART OF EVERYTHING THAT IS GOOD!"



MULESHOE ANIMAL CLINIC
GENERAL PRACTICE

MVS MULESHOE VET SUPPLY
1430 US Hwy. 84, Muleshoe Office: 272-3061


BCEC BAILEY COUNTY ELECTRIC COOPERATIVE ASSOCIATION



A Touchstone Energy® Cooperative
Muleshoe — 272-4504 Morton — 266-8600

Muleshoe Journal
www.muleshoejournal.com
201 W. Ave. C, Muleshoe
OFFICE: 806.272.4536
FAX: 806.272.3567

McDONALD'S OF MULESHOE




1315 W. American Blvd. • 272-3333
Open at 5 AM every day! i'm lovin' it

WAYNE COPLEY TRUCKING
CALICHE, SAND & ROCK PRODUCTS


P.O. Box 63 Muleshoe, Texas 79347 (806) 272-3697 Mobile: (806) 946-8072

Pizza Hut



1412 W. American Blvd. Muleshoe • 272-4213
Open: Sun.-Mon. 11AM-11PM
Lunch Buffet: Sun.-Fri. 11:30 AM-1:30PM
Monday Night Buffet: 6-8PM
PIZZA HUT WING STREET IS HERE!
"Gather round the Good Stuff"

FARMERS INSURANCE GROUP



Julie DeBruin, Agent
1602 West Amer Blvd
Muleshoe, TX 79347
Bus: 806-272-7548
Fax: 806-272-4756

To Place Your Ad Here Call Rhea At Muleshoe Journal
806-272-4536 or 806-518-4606

Obituaries

Cruz Ramirez

Funeral services for Cruz Ramirez, 72, of Muleshoe, are scheduled for 2 p.m., Wednesday, Dec. 4, at the First Assembly of God in Muleshoe with Raul Ornelas of Portales, N.M., officiating.

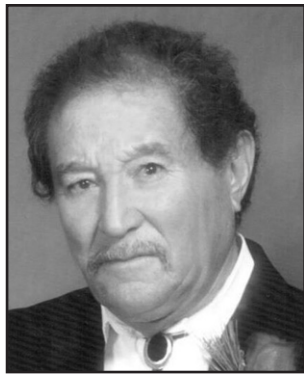
Burial will follow in the Bailey County Cemetery in Muleshoe.

Cruz died on Nov. 30, 2013, in Muleshoe. He was born on April 20, 1941, in Guadalupe, Chihuahua, Mexico, to Joel and Crecensia (Guadian) Ramirez, and married Ignacia Villa in Guadalupe, Chihuahua, Mexico, on Oct. 28, 1960.

Cruz was a member of the Assemblies of God Church on Persil Street in Clovis, N.M. He was an outdoorsman and loved taking care of his animals. He enjoyed spending time with his family, and especially with his grandkids.

He also enjoyed cooking and reading the *National Geographic* magazine.

Cruz was preceded in



death by his parents.

He is survived by his wife — Ignacia V. Ramirez of Muleshoe; three sons — Daniel Ramirez, Joel Ramirez and Ramiro Ramirez, all of Muleshoe; four daughters — Romelia Gonzales of Pueblo, Colo., Dina Wiseman of Providence, Alejandra Guardiola of Harlingen, and Minerva Garcia of Providence; three sisters — Esperanza Lara of Fabens, Marta Alfaro of Las Cruces, N.M., and Maria Ramirez of Fabens; two brothers — Guadalupe Ramirez of Fabens and Pedro Ramirez of Las Cruces, N.M.

Condolences can be left online at www.ellisfuneralhomes.com.

Elsie Messenger

Funeral services for Elsie L. Messenger, 93, of Muleshoe, were held on Wednesday, Dec. 4, at the First Assembly of God Church with the Rev. Jack Stone of Muleshoe officiating.

Burial followed in Mission Garden Cemetery.

Elsie died on Dec. 1, 2013, in Muleshoe. She was born May 4, 1920 in St. Joe, to Charlie Bell Howard and Pearl (Woodard) Howard, and married Bennie Messenger on June 9, 1977.

Elsie was a nursing homecook and dietician. She was a member of the First Assembly of God Church in Muleshoe.

She was preceded in death by two husbands, Clark Selman and Bennie Messenger, her parents, four sisters and two brothers.

Survivors include her two sons Lonnie Roby and wife Topsy of Headly, and Darrell Selman and wife Paula of Norman, Okla.; two



step-sons — Lonnie Messenger and wife Shirley of Abilene, and Reggie Selman and wife Lorna of Almogordo, N.M.; two daughters — Nora Burris of Muleshoe, and Melba McRae of Lubbock; three brothers — Allen Howard, Ralph Howard and Troy Howard; eight grandchildren, 10 step-grandchildren and numerous great-grandchildren, nieces and nephews.

Memorials may be sent to the First Assembly of God, 521 South 1st Street, Muleshoe, Texas 79347.

Online condolences can be made at www.ellisfuneralhomes.com

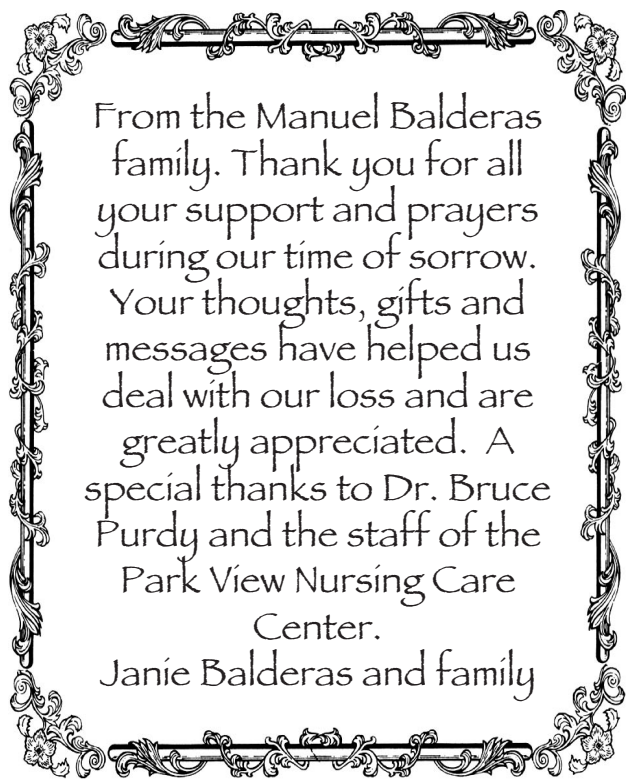
Johnsons Celebrate 50th Wedding Anniversary

Mr. and Mrs. W. O. Johnson of Sudan, pictured above, celebrated their 50th wedding anniversary recently.

They are the parents of Dale and Brenda Johnson of Littlefield, and Dean and Leslie Johnson of Sudan.

Bertha Bartlett and W. O. Johnson were married on Nov. 30, 1963, at the home of the brides parents in Tulia.

They have four grandchildren.



From the Manuel Balderas family. Thank you for all your support and prayers during our time of sorrow. Your thoughts, gifts and messages have helped us deal with our loss and are greatly appreciated. A special thanks to Dr. Bruce Purdy and the staff of the Park View Nursing Care Center. Janie Balderas and family

Subscribe Today!

Leamon Stancell

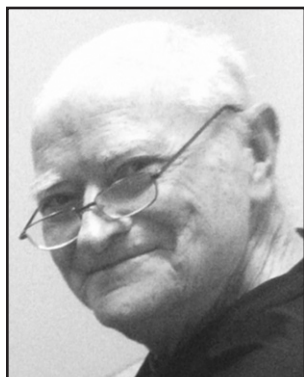
Funeral services for Leamon Stancell, 79, of Muleshoe, were held on Monday, Dec. 2, at Lariat Church of Christ with Waymon Dowdy of Clovis, N.M., and Curtis Shelburne of Muleshoe officiating.

Burial followed in Muleshoe Memorial Park Cemetery.

Leamon died on Nov. 29, 2013, in Muleshoe. He was born on Aug. 10, 1934, to William McHenry and Janie (Green) Stancell in Bailey County, and married Joy Smith in Lariat on June 1, 1953.

Leamon was a farmer and a member of the Lariat Church of Christ. He was also a member of the Farwell Bluegrass Group.

Survivors include his wife — Joy Stancell



of Muleshoe; a son — Wayde Stancell of Muleshoe; three daughters — Deborah Hensley of Levelland, Wendy Lavo of Lubbock, and Jennifer Garza of Lubbock; a sister — Nadine Hawkins of Muleshoe; seven grandchildren, and nine great-grandchildren.

Memorials may be sent to Muleshoe Memorial Park Cemetery, 104 East Ave. C, Muleshoe, TX 79347.

Online condolences can be made at www.ellisfuneralhomes.com.

Baby Showers

Leal Honored With Shower

Alyssa Leal was honored with a baby shower on Sunday, Nov. 17, at the Muleshoe Heritage Center.

Hostesses for the event included Sharon Johnson, Kit Diaz, Annette Orozco, Kathy Ambriz,

Elisa Baca, BreAnn Saenz, Karie Preston, Tiffany Boehning,

Laura Leal, Denise Dunham, Berna Bradley, Estella Duarte,

Alice White, Lissi Hall, Gigi Hall, Aida Pacheco, Lisa Whalin, Marlene Tafoya, Debbie Leal, Dora Triana, Cynthia Hasley, Lela Villarreal, Taylor Rodriguez, Debbie Gallman, Diana Thompson and Jody Wood.

The hostess gift was a Graco™ stroller/car

seat, and a Graco™ play yard.

Among the special guests in attendance were Laura Leal, Irma Leal, Grace Leal, Tracie Leal and Julia Hurtado.

Death Notices

John Carrion

Muleshoe resident John Henry Carrion, 52, died on Wednesday, Nov. 27, 2013. He was born on June 8, 1961, in Breckenridge, to Henry and Josephina Carrion. Services were held on Monday, Dec. 2, at Immaculate Conception Catholic Church. Burial followed in Bailey County Cemetery.

Titles Of Jesus

X	J	J	F	O	H	E	J	W	C	Q	L	T	X	U	S	G
E	F	M	E	S	S	I	A	H	T	C	R	E	A	T	O	R
K	M	B	C	H	R	I	S	T	A	O	Z	P	S	C	N	B
D	N	S	A	A	E	D	I	V	A	D	F	O	T	O	O	R
T	O	F	E	K	P	R	S	X	R	K	H	H	R	D	F	E
Q	C	G	P	L	Z	S	X	L	I	H	E	T	U	K	M	A
K	T	X	F	P	A	T	T	N	W	W	Z	U	E	W	A	D
D	S	G	O	O	F	R	G	O	A	Q	S	R	V	O	N	O
O	E	I	E	M	B	O	E	Y	N	I	T	T	I	R	T	F
G	I	B	C	F	F	M	Z	M	O	E	U	E	N	D	Y	L
F	R	Z	N	K	U	V	A	F	E	M	C	H	E	O	S	I
O	P	X	I	N	Z	L	D	L	V	E	Z	T	T	F	E	F
N	H	N	R	O	I	V	A	S	D	C	D	N	H	G	A	E
O	G	L	P	L	N	I	M	M	A	N	U	E	L	O	Z	T
S	I	G	R	E	A	T	S	H	E	P	H	E	R	D	V	S
I	H	X	O	R	Y	G	V	R	Y	M	C	N	U	T	V	J
Q	R	B	E	Q	P	B	C	D	A	D	W	Y	A	T	U	F

News about your college student

If your college student is graduating or has made the Dean's or President's List, in order for that information to appear in the *Muleshoe Journal*, we must receive notice from the respective educational institution.

Your son or daughter must sign a release so the information can be sent to us.

Have them visit their bursar's office to sign a form indicating they wish to share their good news!

Once permission to share information has been granted, the college or university should send the info via email to: editor@muleshoejournal.com.

Muleshoe Heritage Center

Presents

WEST TEXAS CHRISTMAS

DECEMBER 14, 6-7:30 P.M.

Come join us for a FREE fun-filled evening & a great start to the Christmas Season.
\$50 Mule Bucks Drawing!

The Muleshoe Heritage Center historical buildings will be lighted and decorated and a host will give guided tours. Free hot cider, Hot Chocolate, & Christmas cookies will be served. We will entertain you with live Christmas music & bring the kids to see Santa!

THE S.C.A.C. AND Y.A.C. WILL GIVE A PRESENTATION OF MULESHOE'S 100 YEARS. THE S.C.A.C. WILL ALSO BE GIVING HAY RIDES.

Curtis Shelburne will be playing his new Christmas album in the new center and Pat & W.T. Watson will be playing in the Depot.

SANTA WILL BE AT THE DEPOT!

For more information contact: Dolores Harvey
(806) 272-5873 or 806-946-9078

The Christmas Key... Continued From A1

grove of trees for safety, only realizing his loss after the hawk was no longer a threat.

Toby enjoyed being outdoors. It didn't matter if the north wind was blowing or snow was falling.

She enjoyed playing outside, and she especially enjoyed playing outside at her grandfather's farm.

With Christmas still three weeks in the future, her parent's decision to spend the weekend at her grandfather's farm was almost an early Christmas present.

This year, they would be traveling to her mother's parents for the holiday, which meant an early trip to visit her father's father,

at his farm.

After arriving late Friday evening, Toby had awakened to the prospect of a day in the winter sun, exploring the fields and orchards of the farm.

She'd helped with some of the chores, something she didn't mind even when one of the old hens tried to peck her hand as she gathered the eggs, and had been released to frolic in the unseasonably warm weather.

In her imagination, the trees became castles and ogres, the pasture battlefields. Even the small foot bridge across the small stream in the middle of the north pasture was a place of childish wonder, the dark abode of an imaginary troll.

After all, Toby knew such things as trolls, ogres, witches... and even Santa Claus were, as her father called them, figments of her imagination. Weren't they?

When Toby saw the crow approaching from above, her imagination turned it into mighty eagle, a thought that was short-lived when the hawk suddenly appeared and swooped down at its prey.

But this sight was swiftly replaced by the realization that the crow had dropped something from its beak before seeking shelter in the trees.

Curious, Toby ran over to the patch of brush near which the shiny object fell, and after a brief search

found it.

"A key?" she asked aloud, even though she was alone, "why would a crow be carrying a key?"

In the distance, Darkbeak squawked his protest from the safety of the trees.

"Mine!" he cawed. "It's mine!"

Ignoring the commotion in the trees, Toby dropped the key into her pocket, and went in search of dragons.

In the distant north, Sophia and Porsha stared into a black pool of water.

As they had each morning since the key had been lost, they scooped out a small pit in the black ashes

of their fireplace, filled it with water and muttered the spell that turned its darkened surface into a magical mirror through which they could search for their stolen prize.

And now, after days of searching, a tiny glimmer finally beckoned the sisters from the pool's dark surface.

"There it is," Porsha exclaimed, "my key!"

"Our key," Sophia corrected her.

Porsha sniffed sharply in irritation before turning her attention back to the tiny speck of light in the water.

"Where is it?" she asked.

Sophia waved her crooked fingers over the water. From a hand

a few hundred years younger, with fewer liver spots, and skin that wasn't drier than a two-year-old corn husk, it might have been graceful... but it wasn't, and neither was the hand's movement.

The cuff of Sophia's sleeve broke the surface of the water, disturbing the image.

"Clumsy," Porsha muttered.

"Hag," Sophia muttered back.

Ignoring the dampness of her cuff, Sophia sat back for a moment. Nothing more could be done until the water stopped its movement.

During their wait, the sisters glared menacingly at each other.

Continued next week

Planning To Give A Bicycle For Christmas?

Don't Forget The Helmet!

With Christmas approaching, many parents are planning to give their child a new bicycle — maybe even their first bicycle.

This is an excellent opportunity to teach children about the importance of wearing a helmet to protect their head.

According to National Safe Kids, helmets can reduce the risk of severe brain injury by up to 88 percent, but only 45 percent of children wear bike helmets.

According to National Safe Kids, bicycles are associated with more injuries in children than any other product except automobiles. Other studies from the organization found that nearly half of the hospitalizations related to bicycles are traumatic injury to the brain.

Helmets should be considered an important

part of bike riding.

"Learning to ride a bicycle is not just child's play," said Texas A&M AgriLife Extension Service agent Kathy Carr of Bailey County.

"In addition to promoting healthy living habits, riding bicycles can teach children about becoming independent. With this new independence, children need to learn to follow important safety rules. One of the most important rules is to always wear a helmet," she said.

Parents can be great role models to promote bicycle safety and wearing helmets on every trip.

A child who rides with companions wearing helmets or adults in general is

more likely to wear a helmet himself. Even very young toddlers on tricycles should wear helmets to establish good habits.

When selecting a helmet for your child, follow these tips:

- Look for a helmet that has been certified to meet Consumer Product Safety Commission standards.

- Make sure the helmet fits properly. To do this, measure around the rider's head about an inch above his or her eyebrows, and select an appropriately sized helmet.

When wearing a helmet, make sure the rim sits level from front to back and is worn low and just above the eyebrows.

- Make sure the

helmet fits snugly. Adjust the helmet's size with extra foam pads, which are provided with most helmets.

- Buckle the chin strap on every ride.

- Replace a helmet if it has been in a crash, even if no damage is visible.

In addition to helmets, parents need to find safe places to ride, such as parks, sidewalks, or playgrounds. It is important to supervise preschoolers when they are riding, and keep children younger than 10 from riding bikes in

the street.

When teaching children to ride bicycles, also educate them on these tips for safe bicycle riding:

Always wear a bike helmet.

Make sure the bicycle is the right size for the rider and in good working order.

Wear the proper clothing - neon, fluorescent, or other bright colors when riding day or night.

Teach children to make eye contact with drivers.

Ride in the same

direction as other traffic.

Use hand and arm signals.

There should only be one rider per saddle.

Keep at least one hand on the handlebars.

The bicycle must have a white light on the front and a red reflector or red light on the rear (for riding at night).

Use effective brakes that are capable of making the braked wheel skid.

For more information, visit the Bicycle Helmet Safety Institute's website at www.bhsi.org, Bike Texas at www.biketexas.org, and Safe Kids Worldwide at www.safekids.org.

Air Quality And Acid Rain Discussed

Q: Does air quality affect the weather?

A: Air pollution is mainly caused by burning fossil fuels, such as gasoline or coal, but the weather can make a big difference in how fast pollution is dispersed, says Brent McRoberts of Texas A&M University.

"For example, when there are periods of high pressure during the summer months, the air can remain stable and not move much at all, causing some people to have severe



breathing problems," he explains. "This is when ozone alerts are given. One recent study shows that kids who played outside when ozone levels were high had a higher rate of developing asthma."

Q: What is in the air that affects air quality?

A: It ranges from carbon monoxide, lead, ozone, sulfur dioxide and numerous other

pollutants, McRoberts adds.

"All of these are very harmful to people who have breathing problems. But this happens all over the world," he says.

"Mexico City, for example, has some of the worst air on Earth, as does Beijing, Buenos Aires and even Cairo. In London during the

Continued on A8

COMPOSTED CATTLE MANURE

Paco Feed Yard -- Hub
Cargill Cattle Feeders -- Bovina
Bovina Feeders -- Lazbuddie

BRANDON SCHILLING
Mobile 806-225-7700
OFFICE 1-800-650-2550

NORTH PLAINS COMPOST, INC.
PO BOX 1099
FARWELL, TEXAS 79325

Muleshoe Chamber of Commerce & Agriculture invites you to spend...

Christmas Around Muleshoe

"Christmas Around Muleshoe" participants will give one entry for every \$10 purchase (up to \$100) every day between **Nov. 16th and Dec. 14th**. The merchants will also have six special days customers will receive double entries - **Nov. 16th, Nov. 23rd, Nov. 30th, Dec. 7th, and Dec. 14th**. You will receive two entries for every \$10 purchase (up to \$100) on these six days! \$1000 Chamber Mule Bucks certificates and Gift certificates up to \$50 from sponsoring businesses will also be given away. Enter at the participating businesses listed below.



Shop at home in Muleshoe!!!



Muleshoe Abstract Company
Abstract & Title Insurance
103 W. Avenue D
272-4732
8:30-12:00, 1:00-5:00 M-F
"Wishing everyone a safe and happy holiday season."

Scarves • Sweaters • Leggings
HOLIDAY SHOPPING
AT IT'S BEST, START
OFF TAX FREE!
Double Your Entries With
Every \$10 Purchase On
Dec. 7th
WILLIAMS 272-6853
1405 W. Amer. Blvd.

MOHAWK AUTO PARTS, INC.
Remember Double Entry Day
AUTO PARTS Dec. 7th
Lynn Moore
1701 W. American Blvd. • 272-4425

Muleshoe Heritage Center
Dec. 14th
Time to be announced
West Texas Christmas
Guided Tours,
Refreshments & Live Entertainment
For more information contact the:
Muleshoe Heritage Foundation
2000 Ash • 272-5873
Muleshoe, TX 79347

Antiques & Fine Things
2104 W AMERICAN BLVD
272-4217
OPEN TUE.- FRI.
10:00 - 5:00

Trés Bella Salon
1519 W. American Blvd.
Muleshoe
272-7516

Cry & Cox INC.
401 S. 1st Muleshoe
806-272-4511
Open: Mon.-Sat. 8-6

Acron's
2104 W American Blvd
Muleshoe, TX 79347
806.272.8925
Monday - Friday: 9:30am - 6:00pm
Saturday: 9:30am - 5:00pm
Sunday: Closed

Touched by the Cross
119 W. 3rd Muleshoe • 806-272-3994
• PERSONALIZED CROSSES
• CUSTOM DESIGNED FREE STANDING CROSSES
• HAND TURNED PENS MADE FROM EXOTIC WOODS OR DEER ANTLERS
• REGULAR ROLLER BALL PENS
• SHOTGUN SHELL PENS
• BOLT ACTION RIFLE PENS
MON.-FRI. 8:30AM-12PM,
1PM-5:30PM

Over 100 The Closets You'll
Ever See in One Place!
The Closet
230 Main Street • 806-225-7283 •
Muleshoe (Located in The Studio)

Bailey County Senior Center
319 S. Main St. • 272-4969
8:00 AM-4:00 PM Mon.-Fri.
Join us for a Pancake Breakfast.
Dec. 14th 7 to 11 am
Open to the public.
Adults \$5 & Child Under 10 yr. \$3

WAYNE COPLEY TRUCKING
CALICHE, SAND &
ROCK PRODUCTS
P.O. Box 63
Muleshoe, Texas 79347
(806) 272-3697
Mobile: (806) 946-8072

K&K PHARMACY
1411 West
American Blvd.
Muleshoe, TX
806-272-7511

TIRE & SERVICE TIREWORKS TIRE PROS
MICHELIN
Glenn Kahlich 220 E. American Blvd.
Muleshoe, TX 79347
Cell: 806-344-7034 Shop: 806-272-4594
Fax: 806-272-8996

Lasting Impressions
516 South First
Muleshoe, TX 79347
806-272-4287



Shop at home in Muleshoe!!!





The Sudan Buzzy

Sudan Hornets Among All-District Honorees

By Cheri Sain
Sudan Correspondent

The All District Selections were announced for District 3-1A Division II football on Monday.

Junior Barry Johnson from Sudan was named the District's Most Valuable Player. Junior Elijah Ramon from Springlake Earth was named the Offensive District Most Valuable Player.

Senior Monroe Luther from Springlake Earth was named the Defensive Most Valuable Player.

On offense, Bovina's Joseph Casa was named

first team quarterback, and Farwell's JJ Herrera was named second team quarterback.

First team running backs were Bovina's Alejandro Guevara, Morton's Darius Hall, and Farwell's Dillon Kirkland.

Second team running backs are Farwell's Adrian Aleman, Springlake Earth's Nathan Lorgoria, and Sudan's Ty Shaw.

First team receivers Springlake Earth's JT Weldon, Farwell's Angel Graxiola, Bovina's Bernabe de la Cruz, and Sudan's Tanner Fisher.

Second team receivers

include Sudan's Ethan Herrera, Springlake Earth's Zack Riley, and Farwell's Kurt Langford.

First team tight ends include Bovina's David Velo and Morton's Donovan Ruiz. There were no second team tight ends named this year.

First team offensive linemen include Springlake Earth's Shane Roberson, Sudan's Luke Tiller and Uriel Delgado, Bovina's JC Maruffo, and Farwell's Trevor Shilling and Zach Dale, and Morton's Kody Kuehler.

Second team

offensive linemen include Springlake Earth's Eriq Lopez and Marcus Sandoval, Sudan's Damion Montes and Dex Baker, Bovina's Hector Lopez, & Farwell's Mitchell Ratke.

On defense, first team linebackers include Bovina's Alejandro Guevara, Farwell's Dillon Kirkland, Morton's Kody Kuehler, Springlake Earth's Nathan Longoria, and Sudan's Luke Tiller.

Second team linebackers include Farwell's Chase Mitchell, Morton's Kalin Bracken, Springlake Earth's Isiah

Trevizo, Sudan's Ethan Herrera, and Bovina's Hector Lopez.

First team defensive ends include Springlake Earth's Eriq Lopez, Farwell's Lazaro Velasquez, and Sudan's Ty Shaw.

Second team defensive ends include Morton's Chris Pina, Bovina's Joel Salas, Farwell's Oscar Muniz, and Sudan's Damion Montes.

First team defensive line includes Springlake Earth's Shane Roberson, Morton's Isaac Valencia, Bovina's JC Maruffo, and Sudan's Uriel Delgado.

Second team

Earth's Zach Riley, and Sudan's Tanner Fisher.

Second team secondary include Farwell's Angel Graxiola, Morton's Jamatrack Joyce, Springlake Earth's Kanan Winders, Sudan's Xavier Trillo, and Bovina's Bernabe de la Cruz.

On special teams, first team punter is Morton's Donovan Ruiz, and second team punter is Farwell's Lazaro Velasquez.

First team kicker is Sudan's Edgar Nunez, and second team kicker is Bovina's Diego Perez.

Special team players selected are Bovina's Leonel Carillo, Farwell's Curt Langford, Morton's Logan Garner, Springlake Earth's Luis Silva, and Sudan's Harris Chester.

Staff of the Year honors went to Farwell's coaching staff.

Sudan Students Among Academic All District

By Cheri Sain
Sudan Correspondent

Academic all district selections were named for the District 3-1A Division II.

Several young men earned the distinction of having good grades while playing at optimum levels for their football teams.

Among the honorees are:

Sudan — Adam Martin, Reece Harper, Tanner Fisher, Xavier Trillo, Cole Helton, Dex Baker, Xavier Baker, Damion Montes, Edwin Delgado, Isiah Conley, Kendon Drennan, Luke Tiller, Ethan Herrera and Ty Shaw.

Bovina — Justus Brozek and Julian Martinez

Farwell — Adrian

Aleman, JJ Herrera, Pedro Ruiz, Dillon Kirkland, Health Hadley, Daniel Kirkland, Curt Langford, Ryon Smith, Peyton Ledbetter, AJ Bermea, Christian Pena, Chase Mitchell, Koby Larsen, Seth Chilton, Omar Soto, Garrett Schilling, Dakota Meeks, Mitchell Ratke, Keith Kalbas, Zach Dale and Adrian

Vara.

Morton — Kody Kuehler, Paxton Willingham, Saul Garcia and Matt Ochoa.

Springlake-Earth — Treylr Jackson, Ethan McLain, Zach Riley, Shane Roberson, Zach Rowan, JT Weldon, Monroe Luther and Luis Silva.

Subscribe!

2013 Sudan Varsity Nettes

The 2013 Sudan Varsity Nettes include: Jessica Barrett, Jr, Madi Edwards, Sr., Ashton Sawyer, Jr., Kimberlee Gonzales, Fr, Allison Black, Jr., Payton Lockhart, Jr., Celine Scheer, Jr., Araseli Cornejo, Fr., Shaylee Johnson, So., Madison Chester, Sr., Ashton Schultz, So., and Amber Binion, Sr. Not pictured is manager Joanie Miller.



Cattle On Feed Numbers Continue Drop

Cattle and calves on feed for slaughter market in Texas feedlots with capacity of 1,000 head or more totaled 2.53 million head on November 1, 2013, down five percent from a year ago.

According to the monthly report released by the Texas Field Office, the estimate was up three percent from the Oct. 1 level.

Producers placed 530,000 head in commercial feedlots during October, up 18 percent from a year ago and up 10 percent from September.

Texas commercial

feeders marketed 440,000 head during October, unchanged from 2012 but up two percent from September.

On Nov. 1, there were 2.19 million head of cattle and calves on feed in the Northern High Plains, 86 percent of the state's total.

The number on feed across the area was down five percent from last year but up three percent from the Oct. 1 total.

October placements in the Northern High Plains totaled 466,000 head, up eight percent from the September

total.

Marketings were unchanged from last month at 380,000 head.

Cattle and calves on feed for slaughter market in the United States in feedlots with a capacity of 1,000 head or more totaled 10.6 million head on Nov. 1.

This inventory was down six percent from Nov. 1, 2012.

Placements in feedlots during October totaled 2.39 million head, 10

percent above October 2012.

October placements of cattle and calves weighing less than 600 pounds totaled 720,000 head; 600-699 pounds totaled 584,000 head; 700-799 pounds totaled 510,000 head; 800 pounds and greater totaled 580,000 head.

Marketings of fed cattle during October totaled 1.86 million head, one percent above 2012.

Thank you for reading the Buzz!

SUDAN ISD
EXCELLENCE
IN
EDUCATION



WWW.SUDANISD.NET
Hwy. 303 PHONE: (806) 227-2431
SUDAN, TX 79371 FAX: (806) 227-2146

SUDAN VETERINARY SERVICES
S&S
CHRIS LARSON D.V.M.

- ◆Specializing in Dairy Medicine◆
- ◆Small Animal & Equine◆
- ◆Same Day Minor Surgery◆
- ◆Farm & House Calls◆
- ◆Climate Controlled Boarding◆
- ◆Services by Appointment Only◆

1704 East Hwy. 84 • Sudan Tx
806-227-2444 806-241-1915



KING AG AVIATION, INC.

Specializing in Aerial Spraying - Insecticide, Herbicide & Seeding - Field Scouting Service

Johnny King Home (806) 227-2211
P.O. Box 189 Fax (806) 946-3659
Sudan, Texas 79371 Mobile (806) 946-7309
Business (806) 946-3399 Vernon Office (940) 552-6102

Please join First United Bank for our Christmas Open Houses

LITTLEFIELD Friday, December 13 11 am - 1 pm 2003 S. HALL AVENUE 385-7181	EARTH Wednesday, December 11 11 am - 2 pm 220 EAST MAIN STREET 257-3451	SUDAN Thursday, December 11 11 am - 1:30 pm 220 MAIN STREET 227-2411
--	--	---

FIRST UNITED MEMBER FDIC

Landlord Has Right To Not Renew Lease

Q. I have lived in the same apartment for six years. I am a good tenant and always pay my rent on time. Can my landlord just refuse to renew my lease with no explanation?

A. As a general rule, either the landlord or the tenant can choose not to renew a lease with no explanation. For example, if you wanted to move, you could just tell the landlord "I'm not renewing my lease."

If he asked why, you could say "none of your business."

Similarly, the landlord can decide not to renew your lease and require you to move.

He cannot refuse to renew the lease, however, based on race, sex, age or religion, or the fact that you asserted your legal right to have your apartment repaired.

Q. I am an hourly employee. I always put in eight hours a day and do my job well. Can I be fired for not working over-time?

A. Yes, you could be fired if you refused to work when your employer requested.

Basically, an employer may set the hours employees work. An employer may require you to work more than forty hours a week. All that the law requires is that you be paid overtime for any hours in excess of 40.

Q. Is it legal for me to act as an agent for a company from outside the US?

The company will have their customers mail checks to me in my name, I cash the checks, keep a percentage of the original, and send the remainder to company?

This sounds like a great opportunity.

A. It does sound like a great opportunity, and as my father used to say, "if it sounds too good to be true, it probably isn't."

There is nothing illegal

Ask A Lawyer... By Richard Alderman

about representing a company from outside of the US for the purpose of collecting payments.

In this case, however, this offer probably is a scam. Without going into the details, what will happen is the checks you receive eventually will bounce after you have forwarded your money to the company.

You will then have to return all the money you received from the bank. The bottom line will be you are out a lot of money. My advice is to ignore all of these get rich quick, work-at-home, schemes.

Q. My apartment was recently flooded from a water leak in the apartment above mine. The landlord paid to

have my rugs cleaned. I asked him to pay for the cost of cleaning my furniture and he refused.

He said that either the upstairs tenant or I would have to pay. It is his apartment, why isn't he responsible?

A. Just because the landlord owns the apartment does not mean he is responsible for any damage that occurs.

Basically, a landlord is responsible only for damage that either is caused by his breach of the lease or his negligence.

A landlord is not liable for damage caused by an accident, another person's negligence, or act of God. That is

why all tenants are encouraged to obtain renter's insurance.

For example, if the landlord knows about a faulty pipe and does not take reasonable steps to repair it, or does not properly maintain the plumbing, he may be liable for any damage that results when a pipe leaks.

On the other hand, if a pipe simply begins to leak, or an upstairs tenant clogs a drain causing an overflow, the landlord is not responsible.

In fact, if the leak was caused by the negligence of the upstairs' tenant, the tenant would be liable.

The landlord replaced the carpet because he owns the carpet. I suggest you find out the circumstances surrounding the leak.

Unless you can establish some "fault" on the part of the landlord, he probably is not responsible for the costs of cleaning your furniture.

Do you want to know more about your legal rights? Visit my website, www.peopleslawyer.net.

Weather Whys...

Continued from A6

1950s, a cloud of pollution hung over the city for days, resulting in at least 4,000 deaths, leading to the passage of a Clean Air Act. Air pollution has been around a long time and will likely be a problem for years to come in some areas."

Q: What exactly is acid rain?

A: Acid rain is rain that contains pollutants, says McRoberts.

"The term has been around a long time, having been coined by an English scientist in 1872," he reports.

"Even then, scientists believed acid rain could lead to a natural destruction of many of Earth's resources, which many still believe today. Much of the acid rain today comes from products of burning coal or other fuels and from industrial sources. If there is a significant concentration of these products, chemical reactions with water molecules will lead to acid rain."

Q: What is the chief danger of acid rain?

A: Acid rain is harmful to the environment, but we know it can also affect animals and people, McRoberts adds.

"Where there are large industrial and power generating plants and many transportation vehicles, there are going to be some amounts of pollutants in the air," he explains "Some types of acid rain occur naturally, such as from volcanoes. But most is man-made. Acid rain is especially concentrated today in parts of China, Eastern Europe and Russia because all of these areas use coal to generate heat. We know that vegetation, especially trees, are affected by acid rain and there is evidence that lakes can be harmed. Some researchers have reported large fish kills in lakes directly related to acid rain."

WE'RE AT YOUR
Service

Visit the following
local businesses for quality service
and customer satisfaction!



K&K PHARMACY
1411 West American Blvd.
PO Box 239
Muleshoe Texas



Kristine Isaacson PharmD., R.Ph.

806-272-7511
806-272-7515 fax

Interested in advertising
your business here?

ONLY \$10⁰⁰ PER WEEK
TO ADVERTISE HERE!

Contact **Rhea Gonzales** at the
Muleshoe Journal 806-272-4536

R&M
Home-Style Catering

Specializing in:

~catering small & large special events
~selling pre-made entrée & breakfast casseroles,
side items, smoked meats, & desserts

Contact **Ryan**

Phone: (806)566-9002; Email: rmcatering@yahoo.com
Facebook: R&M Home-Style Catering

WE SMOKE & FRY TURKEYS, TOO!

**Support The Merchants
Who Support The Mules!**

**ADVENT
PRAYERS &
DEVOTIONS**

**WEEKDAYS
TUES., DEC. 10-
FRI., DEC. 20
10:00 A.M.**



"A Family United in Christ"

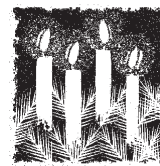
16th & D
Church of Christ

1600 West Avenue D Muleshoe, Texas

Open to everyone,
these 10 minute daily
devotional Scripture readings

and prayers led by Curtis Shelburne are designed to help us in
this busy season "prepare our hearts" as we approach the
wonderful celebration of Christ's birth.

We hope these devotions offer a wonderful
few moments of quiet, beautiful, and worshipful
reflection. Whether you can come once, or twice,
or every day, you're
most welcome!



For more information,
call: (806) 272-4619



Obituaries and Death Notices

Death notices will be published free of charge in the *Muleshoe Journal*.

Obituaries will be published at the rate of \$4.50 per column inch.

In all cases, the death notice and obituary information should be submitted by the funeral home for verification purposes.

The guidelines that will be used to determine if, and how much the publication will cost is as follows:

Death Notices...

Death notices may include the deceased's name, city of residence, age, date and place of birth, date and place of death, and the names of parents. Survivor information will not be included.

If the notice is to be published prior to any services, the time, date and location of services, and location of burial may be included.

If publication will be after said services, the time will not be included.

Obituaries...

Obituaries printed in the *Muleshoe Journal* are printed at the rate of \$4.50 per column inch, and may contain a variety of information, including but not limited to: Date and details of funeral and place of burial; date and place of birth and parents names; date of marriage; biographical information; names of parents, spouses or children who have preceded the person in death; names of survivors; and where memorials may be directed.

A black and white photo will be included; however, there is an additional charge of \$75 to include a color photograph.

MULESHOE INDEPENDENT SCHOOL DISTRICT STATEMENT OF REVENUES, EXPENDITURES, AND CHANGES IN FUND BALANCES - GOVERNMENTAL FUNDS FOR THE YEAR ENDED JUNE 30, 2013

	General Fund	Debt Service Fund	Other Governmental Funds	Total Governmental Funds
REVENUES:				
<i>Local and Intermediate Sources</i>	\$ 3,025,306	\$ 832,583	\$ 203,700	\$ 4,061,589
<i>State Program Revenues</i>	8,581,888	710,117	164,366	9,456,371
<i>Federal Program Revenues</i>	220,584	--	2,183,045	2,403,629
Total Revenues	11,827,778	1,542,700	2,551,111	15,921,589
EXPENDITURES:				
Current:				
<i>Instruction</i>	6,468,384	--	1,305,620	7,774,004
<i>Instructional Resources and Media Services</i>	163,862	--	--	163,862
<i>Curriculum and Staff Development</i>	30,446	--	57,736	88,182
<i>Instructional Leadership</i>	170,057	--	70,861	240,918
<i>School Leadership</i>	803,055	--	--	803,055
<i>Guidance, Counseling, & Evaluation Services</i>	284,990	--	--	284,990
<i>Social Work Services</i>	--	--	46,465	46,465
<i>Health Services</i>	146,817	--	--	146,817
<i>Student Transportation</i>	550,236	--	--	550,236
<i>Food Service</i>	45	--	1,054,570	1,054,615
<i>Cocurricular/Extracurricular Activities</i>	595,817	--	--	595,817
<i>General Administration</i>	549,009	--	3,000	552,009
<i>Plant Maintenance and Operations</i>	1,390,367	--	--	1,390,367
<i>Security and Monitoring Services</i>	5,305	--	--	5,305
<i>Data Processing Services</i>	41,313	--	--	41,313
<i>Community Services</i>	2,506	--	17,789	20,295
<i>Principal on Long-term Debt</i>	--	670,000	--	670,000
<i>Interest on Long-term Debt</i>	--	843,136	--	843,136
<i>Bond Issuance Costs and Fees</i>	--	1,000	--	1,000
<i>Capital Outlay</i>	193,629	--	--	193,629
<i>Payments to Shared Service Arrangements</i>	85,925	--	--	85,925
<i>Payments to Juvenile Justice Alternative</i>				
<i>Education Programs</i>	6,111	--	--	6,111
<i>Other Intergovernmental Charges</i>	86,894	--	--	86,894
Total Expenditures	11,574,768	1,514,136	2,556,041	15,644,945
Excess (Deficiency) of Revenues Over (Under)				
Expenditures	253,010	28,564	(4,930)	276,644
Net Change in Fund Balances	253,010	28,564	(4,930)	276,644
Fund Balances - Beginning	9,003,090	741,839	223,636	9,968,565
Fund Balances - Ending	\$ 9,256,100	\$ 770,403	\$ 218,706	\$ 10,245,209

SPORTS NEWS

Mules Listed Among All-District Honorees

By Delton Wilhite
Sportswriter

The District 2-2A Division I coaches recently released their 2013 All-District selections. The Mules placed four players in five positions on the first team and five players on the second team.

"We were a very young team this year," said the Mules' head coach David Wood. "We were able to surprise some people this year and sometimes we even surprised ourselves. We will miss our seniors and their leadership next year but we will work hard in the off season to be ready to go again in August."

"I am very happy we placed several players on the All-District squad. These guys gave their all on every play and never gave up when we were behind. We lost one game on the final play of the game, another in overtime and one we were leading 14-0 at the half," he added.

"I want to thank all the fans for supporting us through this roller coaster season. Their support was vital to the

success we had and the kids really did respond to the fans," concluded Wood.

Austin Ross, a senior, was chosen to both the first team offense and defense. He was picked as a receiver with his 53 catches for 836 yards.

He averaged almost five receptions per game that gained 15.8 yards per catch. Ross scored eight touchdowns and a two-point conversion for 50 points.

Ross also made the first team defensive squad as the punter. He punted 32 times for 1409 yards and averaged 44 yards per punt.

Dustin Smith, a junior, anchored the Mule offensive line and was chosen to the first team.

Chamel Regalado, a junior, played through injuries and was chosen to the first team defense as a linebacker.

He led the Mules with 138 tackles, with 12 being for losses, one sack, broke up one pass, caused or recovered two fumbles, intercepted two passes and made five special team tackles.

Senior, Eli Leal, was picked to the first team

as a defensive back. He always defended against the oppositions best receiver.

Leal made 60 tackles, broke up 16 passes, caused or recovered two fumbles, made two interceptions, two special team tackles and blocked one kick.

Josh Lopez, a sophomore, was injured in the Dimmitt game but was still picked as a second team running back.

He rushed 44 times for 316 yards and averaged 7.2 yards per carry. Lopez scored seven touchdowns and a two-point conversion for 44 points.

Ignacio "Nacho" Elizalde, a senior, was chosen as the second team kicker. He booted 41 extra points, one field goal and caught one touchdown pass for 50 points.

Junior, Keagan Gonzales, was named to the second team as a defensive end. He made 49 tackles, seven for losses, had 23 quarterback hurries, broke up three passes, made five special team tackles and blocked two kicks.

James Lutz, a sophomore, made the second team as a defensive lineman. He made 32 tackles, nine for losses, two sacks, hurried the quarterback seven times, caused or recovered four fumbles and made one special team tackle.

Ross was picked as a second team defensive back. He made 93 tackles with one being for a loss. Ross also broke up two passes, caused or recovered four fumbles, intercepted five passes and made four special team tackles.



The Mule offense at work against Childress.

Photographs by Gabby Perez

Matt Barron, a senior, was an honorable mention on both offense and defense. He caught 52 passes for 652 yards, an average of 12.5 yards per reception and scored nine touchdowns for 54 points.

He returned six kickoffs for 121 yards and eight punts for 126 yards and one touchdown. Barron made 30 tackles, hurried the quarterback once, broke up 10 passes, caused or recovered one fumble and made three interceptions.

Leal was an honorable mention receiver. He made 35 receptions for 475 yards, an average of 13.5 yards per catch and scored nine touchdowns for 54 points. He returned 19 kickoffs for 279 yards and four punts for 33 yards.

Danny Campos, a sophomore, was honorable mention

quarterback. He completed 183 of 319 passes for 2468 yards and 29 touchdowns. Campos had 17 passes intercepted. He rushed 107 times for 222 yards and four touchdowns.

Braden Bessire, a junior, was an honorable mention linebacker. He

made 94 tackles with 15 being for a losses.

Bessire also made four and a half sacks, hurried the quarterback 14 times, broke up two passes, intercepted one pass, scored a defensive touchdown and made one special team tackle.



The Mule defense smothers the Childress Bobcats.

Muleshoe To Host Six-Man Semi-Finals

The Muleshoe Independent School District will host the 2013 6-Man 1A Division 2 State Semi-Final Championship game this Friday at 6 p.m. at Benny Douglas Stadium, Superintendent Dr. Gene Sheets announced Sunday.

The game will feature Grandfalls-Royalty

Cowboys (12-1), ranked as #1 in the state against the Follett Panthers (12-1), ranked #2 in the state.

Tickets will be \$6 for adults and \$3 for students.

All tickets will be sold at the gate.

Grandfalls-Royalty will be designated the home team.

"This exciting football game should

bring in lots of visitors to Muleshoe, and we hope this playoff game helps businesses in Muleshoe," Sheets said. "We are expecting over 1,000 people at the game on Friday evening."

The Lady Mules Round Robin tournament, set for Dec. 5-7, has been canceled due to the expected winter storms, according to Sheets.

Subscribe!

ATHLETE OF THE WEEK

McKENNA DUNHAM

HBC
Higginbotham Brothers
Serving Texas Communities Since 1881

ACE
The helpful place.
1516 W. AMERICAN BLVD. • MULESHOE, TX
806-272-3351

Help Us Celebrate Our New Location!

GREAT PLAINS

AG INSURANCE

623 American Blvd. • Muleshoe, TX

Thursday, December 12th
11 a.m. – 1 p.m.
LUNCH WILL BE PROVIDED

Grand Opening

Support the Boosters Who Support Our Teams, Schools and Community!

<p style="text-align: center; font-weight: bold;">MULESHOE ANIMAL CLINIC & MULESHOE VET SUPPLY</p> <p style="font-size: 0.8em;">1430 US HWY. 84, MULESHOE 272-3061 OR 272-4990</p>	<p style="text-align: center; font-weight: bold;">BCEC</p> <p style="font-size: 0.8em;">A Touchstone Energy Cooperative</p> <p style="text-align: center; font-weight: bold;">BAILEY COUNTY ELECTRIC COOPERATIVE ASSN.</p> <p style="font-size: 0.8em;">610 E. American Blvd. Muleshoe • 272-4504</p>	<p style="text-align: center; font-weight: bold;">Muleshoe Journal</p> <p style="font-size: 0.8em;">www.muleshoejournal.com 201 W. Ave. C 272-4536</p> <p style="font-size: 0.8em; font-style: italic;">Striving to be your source for local news!</p>	<p style="text-align: center; font-weight: bold;">MICHELIN TIRE & SERVICE TIREWORKS TIRE PROS</p> <p style="font-size: 0.8em;">Glenn Kahlich • M: 806-344-7034 220 E. American Blvd. Muleshoe, TX 79347 • 272-4594</p>	<p style="text-align: center; font-size: 0.8em;">"Where Custom Is Attainable"</p> <p style="text-align: center; font-size: 2em; font-weight: bold;">HR</p> <p style="font-size: 0.8em;">Hartline Renovations (806) 946-6652 <small>Micah & Aubrey Rutland</small></p>
<p style="text-align: center; font-size: 2em; font-weight: bold;">M</p> <p style="text-align: center; font-size: 0.8em;">i'm lovin' it</p> <p style="text-align: center; font-weight: bold;">McDONALD'S of Muleshoe</p> <p style="font-size: 0.8em;">1025 W. American Blvd. 806-272-3333</p>	<p style="text-align: center; font-weight: bold;">FIVE AREA TELEPHONE COOPERATIVE</p> <p style="font-size: 0.8em;">302 Uvalde Muleshoe, TX 272-5533</p>	<p style="text-align: center; font-size: 2em; font-weight: bold;">eVolve</p> <p style="text-align: center; font-size: 0.8em;">EMBROIDERY</p> <p style="text-align: center; font-weight: bold;">(806) 272-3865</p> <p style="text-align: center; font-weight: bold;">117 South Main MULESHOE, TX</p>	<p style="text-align: center; font-weight: bold;">La Espiga Rosa</p> <p style="text-align: center; font-size: 0.8em;">Simplemente la mejor</p> <p style="font-size: 0.8em;">104 West American Blvd Muleshoe, TX 806-272-3822</p>	<p style="text-align: center; font-weight: bold;">H&R BLOCK</p> <p style="font-size: 0.8em;">104 E. Ave C Muleshoe, TX 79347 272-3332</p>

WE SUPPORT THE MULES AND LADY MULES!

BASKETBALL

Dec. 5-7 • Muleshoe Tournament - has been cancelled

Dec. 10th • JVG - 5:00 - JVB - 5:00 - VG - 6:30 - VB - 8:00 VS Floydada (Here)

Dec. 12 - 14 • Dimmitt Tournament - VG - TBA - VB - TBA Dimmitt (There)

WE SUPPORT THE MULES AND LADY MULES!

ENTERTAINMENT NEWS

We make gifts for the holidays... ...and donate them to different groups.

Newspaper Fun!

www.readingclubfun.com Annimills LLC © 2013 V10-48 Solutions on B3

We like to make gifts! The holidays are here! It's great fun to surprise family or friends with gifts. If you like to make gifts, it's time to start planning and working on them. Gifts that you make and give from your home, kitchen, garden or artistic skills are from your...

_____ n _____

(Hint: There are 2 parts to this picture. Find '1★' to start the first puzzle...then follow the numbers. Next, find 'A★' to start the second puzzle... then follow the alphabet.)

Read the clues to fill in the crossword:

and your _____ a _____!

The Art of 'Gifting'

1. yarn, I can make a doll or mittens or a _____
 2. evergreen branches, I can make a _____ to hang or a table centerpiece
 3. balloons, newspaper, and paste, I can make a bright _____ for a party
 4. loom and loops, I can make a _____ or a set of placemats
 5. playdough or clay, I can make small ceramic animals or a _____
 6. camera and a computer, I can make a _____ of family pets
 7. photos, paper and glue, I can make a _____ to keep track of memories
 8. dye and rubber bands, I can make a colorful _____ to wear
 9. popsicle sticks and glue, I can make a _____ to hold knick-knacks
 10. paper, glue and glitter, I can make a _____ to mail
 11. wood, nails, hammer and paint, I can make a _____
 12. beads and string, I can make a _____ or a necklace

Giving a World of Color

Everyone likes a dash of color to brighten up the day! You can make a wonderful gift by painting something. How about building and painting a birdhouse or feeder? Maybe you can decorate or paint someone's name on an item.

Can you find and circle these things that you can paint?

- tote bags
- lunch bags
- notebooks
- footstools
- school boxes
- gift wrap
- stones
- sneakers
- models
- shirts
- aprons
- hats

Free Stuff

Hey! It's dark in there. But, cozy warm!

Crunch! Crunch!

Come to print out free puzzles: "G" is for... and Holiday Books, Movies and T.V. Shows and a Holiday reading log set @ www.readingclubfun.com

Girl Scouts Offer Winter Wonderland

Muleshoe area Girl Scouts will be presenting "Winter Wonderland Around The World," on Saturday, Dec. 14, from 1-3 p.m., at the First Assembly of God's Family Life Center, 521 S. First, in Muleshoe. The event will include crafts for children, and Santa Claus will be on-hand for photographs. The photographs with Santa are \$2. The event is open to the public.

Boy Scouts Food Drive Set

Boy Scout Troop 620 and Cub Scout Pack 620 will be picking up canned food on Saturday, Dec. 14, for the BCMA Food Pantry. To donate, place your canned food items in a bag on your front porch where it can be visible from the road. Call Lisa Puckett at 806-946-9658 for additional information.

Thank you for reading the Journal!

Bill Johnston BJA Auctioneers

WHEN ONLY THE BEST WILL DO CALL **Bill Johnston Auctioneers** WE ARE AGENTS AND AGENTS ONLY! MIKE ARCHIBEQUE

CONTRACTORS • FARMERS • RANCHERS • DAIRYMEN

TWO BIG DAYS

LARGEST AUCTION OF THE YEAR

PORTALES, NEW MEXICO

DATE: SAT. DEC. 13 & 14, 2013 • TIME: 9:00 A.M.

LOCATION: BILL JOHNSTON AUCTIONEERS LOT 3 MILES N.E. OF PORTALES, NEW MEXICO ON US HIGHWAY 70

CONSIGNMENTS WELCOME

Accepting the following types of consignments
 TRACTORS • FARM EQUIPMENT • TRUCKS • TRAILERS • CONSTRUCTION EQUIPMENT • AUTOMOBILES • LIVESTOCK EQUIPMENT INDUSTRIAL & SHOP EQUIPMENT • ATV'S • RV'S

PO Box 747 • Portales, NM 88130 • Office: (575)356-5982
www.bjayucca.net • E-mail address: bjay@yucca.net

AN EVENING IN DECEMBER

December 15th
 11 a.m. at **First United Methodist Church**

507 W 2nd Street
 Muleshoe, TX
 Call 272-5517 for more information

Clovis Community College and THE CITIZENS BANK of CLOVIS present:

The Sicilian Tenors

A Christmas Amore

"The Three Tenors meets The Rat Pack!" ~Joan Rivers, Comedian

7 PM | December 12 | Marshall Auditorium | \$20/15

Family Friendly Pass: 5 tickets for \$45

Event Sponsor **ROWLEY LAW FIRM, LLC**

575.769.4031 | www.clovis.edu/culturalarts
 Join us on Facebook.com/CulturalArtsSeries

The Art of 'Gifting'

Chitter and I are teaming up to make gifts for the holidays.

Gifts that you make and give from your home, kitchen, garden or artistic skills are from your... **hands and your heart!**

I used my camera to take photos of our pet. Then, I put them on my computer and printed out a calendar.

'Put Together' Gifts

1. rubber stamps, ink pads, paper
2. cheese, crackers, jelly
3. soaps, bubble bath, small towels
4. dried flowers
5. candies, cookies
6. coffee, tea, muffin mix
7. fruit, nuts
8. pens, envelopes, stationery
9. pet toy, pet snacks and shampoo

CLASSIFIEDS

Deadline is Monday at noon to place a classified ad. Call 272-4536.

HELP WANTED

6 temp positions: Livestock worker, 12/27/13 to 04/30/14 @ \$12.33 p/hr. Housing provided, 48 hrs p/wk. 3/4 guarantee, and transportation and subsistence expenses to work-site paid after 50% completion of contract. Tools, equipment provided at no cost. Min. 3 months experience. Duties: repair and maintenance of farm machinery, buildings and structures, hauling of large grain crop to market, hauling of fertilizer for spring planting, cleaning of seed for spring planting. Must be able to lift 50 lbs and work in adverse weather. West Acres Farm Partnership, Gettysburg, SD. Interested? **Apply at nearest Job Service SD, 605-773-3372, job order #1625311.**

HELP WANTED

3 temp positions: Livestock worker, 01/01/14 to 04/30/14 @ \$15.25 p/hr. Housing provided, 48 hrs p/wk. 3/4 guarantee, and transportation and subsistence expenses to work-site paid after 50% completion of contract. Tools, equipment provided at no cost. Min. 3 months experience. Duties: maintenance and repair of equipment & buildings, hauling fertilizer, cleaning seed. Driver's license required. Work in adverse weather. Olson Transport Co, LLC, Douglas, ND. Interested? **Apply at nearest Job Service ND, 701-857-7500, job order #341266.**

HELP WANTED

1 temp positions: Equipment Operator, 12/30/13 to 04/30/14 @ \$15.25 p/hr. Housing provided, 48 hrs p/wk. 3/4 guarantee, and transportation and subsistence expenses to work-site paid after 50% completion of contract. Tools, equipment provided at no cost. Min. 3 months experience. Duties: Maintenance and repair of equipment & buildings, hauling fertilizer, cleaning seed. Driver's license required. Rick Neumiller, Bowden, ND. Interested? **Apply at nearest Job Service ND, 701-253-6200, job order #341269.**

HOUSE FOR SALE BY OWNER

Country Club Area- 3-1-1 newly renovated interior, all mechanical systems new, adjacent lot included with sale. Priced to move quickly \$75,000! Shown by appt. only 806-946-6652.

HOUSE FOR SALE BY OWNER

One of the Oldest English Tudor Style homes in Farwell. Unique in appearance & originality. 700 3rd Street. 3 Bedroom/ 2 Bath/ 2 Car Garage/ Separate Apartment in Back, 2400 total sq.ft. Red brick, Wood Shake Shingle roof, 7 ft concrete block privacy fence, central heat & air, wood floors/carpet, tile bathrooms, underground sprinkler, covered front porch, unfinished basement, Backyard Adventure playhouse/swing set, separate fenced side yard play area, large shade trees surround the property. Shown by appt. only. Call 806-946-8968.

REAL ESTATE

Vic Coker Land Co.
Agricultural Real Estate

Farmland/Investment

Bailey County - Southeast of Circle Back. 93.7 acres with 3 bedroom 2 1/2 bath brick home. 2 park garage, large finished basement, 30' x 40' x 12' insulated steel barn. As nice as it sounds. House, barn, and 4 acres can be sold separately.

Lamb County - 537 acres in two tracts. Sudan area. Good soils & fertility. 3 sprinklers, 1-5 years old, 2-10 years old. All well maintained. Excellent cotton yields. Each tract can be sold separately.

Bailey and Parmer Counties - 960 acres, 9 wells, 5 center pivot sprinklers, Brick house w/ improvements.

Bailey County - 177 acres, 10 year CRP contract. On pavement, could be a nice recreational place. Mule deer and other wildlife in the area.

Bailey County - 144 acres Northeast of Muleshoe. 2 wells, center pivot. Immediate possession available.

Vic Coker, Broker Cell 806-946-7242 Barry Coker, Agent Cell 806-787-0917
316 Main Street • Muleshoe, Texas
Office: 806-272-3100 • www.vicoland.com

Subscribe Today!

TRIANGLE REALTY
Triangle Realty, LLC
(806) 367-8334
info@triangler Realtyllc.com

- **Incredible 1 owner brick home in Earth.** 3/2 immaculate & updated. Formal living/ dining combo, beautiful kitchen. Office with large walk in closet. Enormous den on back with fireplace. Pergola in back with patio, huge trees and beautifully landscaped front and back. Owners are offering \$8000.00 carpet allowance. 829 N. Fm 1055 Call Phyllis 806-685-1543.
- **Perfect home with something for everyone!** Tidy, old Chicago style brick home: immaculate and fresh with new paint and carpet to please the wife. 3/2. For the husband: huge steel shop in back, insulated with woodburning stove, sliding doors, plumbed for a bathroom. Big lot with steel fencing. 908 S Ave I Olton Call Phyllis (806) 685-1543
- **Awesome brick house 118 SW 2nd, Earth.** 4/3/4 Gorgeous yard with mature trees and sprinkler system. Call Phyllis: 806-685-1543
- **Lovely brick home 112 Main, Springlake, Texas!** 3/2/2 Large living/dining space. Call Phyllis: 806-685-1543.
- **Prime Farmland in Lamb County, Texas!** 531± acres, two 1/4 mile pivots, four wells on property — all tied together — 500 gallon minute combined, per owner. 40x50 metal shop, cattle scales, working chute, automatic waters, pipe/cable working pens. Five-strand barbedwire fenced and cross-fenced around property. Call: JT — 806/681-3421.

HELP WANTED

INTEGRACARE
Home Health • Hospice • Community Services
Caring... with every touch

IntegraCare, an affiliate of Kindred at Home knows that our own strength is in our people! You deserve to work for a company that recognizes your value and invests in both your personal and professional growth! We currently have the following opening:

Account Executive
Job #: 147892

In this role you will support both the leadership and marketing teams through active participation in market place analysis, development, and execution of new business plans for assigned referral territory/hospitals.

Qualifications: Bachelor's degree in related field, 2 years of experience in healthcare marketing and sales management, and previous work in developing strategic plans with senior leadership teams.

We offer competitive compensation and comprehensive healthcare benefits plan and much more!

To apply: please visit www.kindred.com and search for job # 147892. EOE

HELP WANTED

ACCOLADE HOME CARE is currently seeking a Branch Agency Director in the Muleshoe, Texas area. It is required that the likely candidate **MUST BE** a Registered Nurse. Accolade Home Care considers it an honor to care for our patients & to serve our employees. We offer competitive salaries, generous PTO benefits, excellent health and life options and a supportive work environment. If you are interested in learning more about this opportunity, please contact Shelly Olis at 817-709-7126 or you may email your resume to: shelly.olis@FMS-Regional.com

Medwards REALTORS
FARM & RANCH RESIDENTIAL COMMERCIAL
LAND

Sudan
• 1260 Acres, Irrig/CRP/Grass-Trophy Mule deer Potential. Will Divide - Easy Access. FM 303

King County
• 320 Acres. Excellent hunting and scenic views. Has Turkey, quail, dove whitetail deer and wild hogs. 2 Trail Homes Included. 3200 CR 352

COMMERCIAL

Springlake / Earth
• Springlake Feed Yard For Sale - Permitted for 10K Head of Cattle, 5000 Ton Silage. Located on Hwy 70 4 Miles W. Of Earth Texas.

RESIDENTIAL

Sudan
• Wonderful Family Home! 539 Fm 298 4/3/2 \$325,000
• Country Living! 3/2/Carport - WOW Just Reduced to \$45,500

Amherst
• Very Well Kept 4/1.5/2 Priced To Sell! \$85,000

Monty Edwards Broker/REALTOR® 806.786.5426
Clint Jones REALTOR® 940.256.0069

Vernie Moore REALTOR® 806.543.9347
Mitch Edwards REALTOR® 806.777.4168

806.686.6371 Office
MEDWARDSREALTORS.com

COVER CROPS FOR SALE

WHEAT \$11.00/50lb. bag
CALL FOR BEST PRICING ON TRITICALE, OATS, BARLEY, & RYE

BROWNING SEED, INC.
806-293-5271
1-800-243-5271
After hours 806-729-1728

REAL ESTATE

Byrd Realty

Ronald Byrd 575-760-1495
Licensed Broker
Crista Bass 806-946-7261
Sales Associate
Carleton Johnson 806-789-4289
Sales Associate

- **New Listing**-Country Home on Highway-3 Bedroom, 1 3/4 bath brick home, central heat, built-ins, 2 car garage,boxcars for storage. Call for more details.
- **New Listing**- Country Club Addition- Very Nice 3 bedroom, 2 bath brick home, fireplace, built-ins, all electric, central heat and air, large utility, 2 car garage, sprinkler system, fenced backyard, across from the country club on corner lot. Call for more details.
- Nice 3 bedroom, 2 bath brick home, central air and heat, fireplace, appliances, large sunroom great for entertaining, finished basement, shop, sprinkler system, fenced backyard, patio, 2 car garage. Call for more details.
- Only \$67,900.00-3 bedroom, 2 bath brick home, central air & heat, appliances, single car garage, fenced backyard. Priced to sell.
- Country home on highway- 3 bedroom, 1 3/4 bath home, central air and heat, built-ins, jacuzzi tub, 2 1/2 car garage, large room for office or a business, fenced backyard, septic system, all on 10 acres!
- Nice 3 bedroom, 1 bath home, central air and heat, sprinkler system, detached garage, storage building, septic system, all on 5.75 acres. Priced to Sell, this one will not last long.
- **PRICE REDUCED In Country on 10 acres.** Nice 4 bedroom, 2 1/2 bath brick home, fireplace, utility, built-ins, new windows, roof and air, large storage, 2 car garage. Call for more details.

IN CONTRACT SOLD

222 Main Street, Muleshoe, Texas
Check all of our listings at www.byrdrealestate.net

NIEMAN REALTY

116 E. AVE. C • GEORGE NIEMAN, BROKER • 272-5285 OR 272-5286
CHECK OUR LISTING INFO., PHOTOS, ETC. ON-LINE AT WWW.NIEMANREALTY.COM
HAVE BUYERS! NEED HOME AND LAND LISTINGS!!

- HIGH SCHOOL AREA**
- 3-1.5-1 carport Home, Cent. A&H, stove thermal windows, "AS IS", MAKE OFFER!! \$47K!!!
 - 3 Bedroom, 2 Bath, 2 Car Garage Home on corner lot, wall furnace heat, win. refrig. air, stove, refrigerator, ceiling fans w/lights, large wkshop in garage, fenced yd., stor. bldg., includes 1 bdrm. rental unit!! **PRICE REDUCED!** \$78,900!!
 - 5-3-2+2 carport home, Cent. Air & Heat, approx. 3124' lv. area, FP in den, WB stove in lv. area, 2 large workshops, stor. bldgs., +1 bdrm aptmt., corner lot, MUCH MORE!! \$440,000!! \$120K!!
 - VERY NICE - 3 - 2 Brick Home, Cent. A&H, built-ins, WB stove, nice flooring, utility, thermal win. & doors, fans, fence yd., stor. bldg.!! \$99K!!
 - 3- 2 1/2 - 2 carport HOME, corner lot, 2301' living area!! \$80K!!! REDUCED \$72K!!
 - 4-2 Brick Home, Cent. A&H, DW, fans w/lights, lg. util., fenced yd., auto. sprklr. approx. 1962 lv. area!! \$89.5K!!!
- RICHLAND HILLS • PARKRIDGE • HIGHLAND**
- VERY NICE 3-2-5-2 Brick Home, Cent. A&H, built-ins, FP, approx. 2749' lv.area, lots of storage, nice courtyard & landscaping, workshop/storage/ fenced yd., Much More!! Reduced-\$170K!
 - 3-2 BDRM. DUPLEX UNITS, TOTAL ELECTRIC!! \$180K!!!
 - 2-1 Home, wall furnace heat, window evap. air!! \$30,000!!!
 - CUSTOM BUILT 3-2-5-2 Brick Home on corner lot, 2608' lv. area, built-ins, FP, covered patio w/ grill, fenced yd., auto spklr., numerous amenities!! \$270 K!!
 - VERY NICE 3-2-2 Brick Home, Cent. A&H, Built-ins, FP, thermal windows & doors, approx. 1876' lv. area, workshop/storage, fenced yd.!! \$119,500!!
 - NICE 3-2-2+2 carport Home, corner lot, Cent. A&H, built-ins, ceiling fans w/light kits, storm doors, & windows, covered patio, tile block fence, auto. spklr., workshop/storage. MUCH MORE!! \$135K!!
- LENAU • COUNTRY CLUB**
- 3 Bdrm, 2 bath, 2 carport, Cent A&H, Dishwasher, WB Stove, approx. 2156' lv. area, \$60K!! \$48K!!
- RURAL**
- NICE 4.8 acre homesites, deed restricted!! \$17,500!!
 - NICE 3-2-2 Home on 11 acres at edge of town, Cent. A&H, built-ins, FP, freshly painted interior, thermal windows & doors, plus 1 bdrm house, workshop, storage, greenhouse, plus 3 garages, barns & outbuildings!! \$455,000!! \$135,000!!
 - FM 1760 @ edge of town, nice 3-2-2 carport home on 3 acres, cent. A&H, built-ins, FP, approx. 2253' lv area, fenced, horse barn w/corral, hay & tack room!! \$105K!!!!
 - FM 303-4 Bedroom, 2 Bath, 2 Det. Garage, 2 acre tract, Par. Cent. A&H, Dw, disposal, thermal windows, storm doors, fans, stor. bldg.!! \$89!! \$69,500!!
 - 3 Bedroom, 2 Bath Mobile Home (1998 Skyline), approx. 2280' lv. area, Cent. air&heat, built-ins, FP, metal roof, auto spklr., 40' x 80' insulated metal building, w/office, 1/2 bath, workshop, loft storage, 220 electric, 14.68 acres on Hwy.84 close to town!! MUCH MORE!! \$157,900!!
 - STEGALL 3-2-2 Austin Stone Home on 3.67 acres, Cent. A&H, built-ins, gas log FP, approx. 3064' living area., workshop/storage, 24'x36' metal shed, MORE!! \$125K!!
 - MAPLE - 3-2-5-2 Brick Home on 2.48 acres, Cent. A&H, built-ins, gas log FP, approx. 2557' lv. area, (garage enclosed), storage unit!! MORE!! \$65K!!
- LAND & COMMERCIAL**
- Approx. 1080' metal bldg. w/off. & 3 bay garage/ workshop area plus chain link fenced area!! \$39,500!!
 - GREAT BUSINESS LOCATION - 13000' Bldg., 7000' paved parking, corner lot, Hwy. 84 & Main. A&H, \$100,000!! **Price Reduced \$80,000!!**
 - 101.8 acres, edge of town, pasture & farm land, 1 irrig. well!! \$122,244!!
 - FOR LEASE - 2100' office space + 20,500' warehouse area!!
 - 308 W. 2nd - 2856' bldg. - former Odd Fellows Lodge, PRICED TO SELL!! \$31,500
 - 1020 S. Main - 200' x 104' tract w/ 1000' Bldg.!! \$20K!!
 - 2.95 acre tract with 2140' office + 17000' & 3465' ware houses 4 miles east on U.S. 70 - \$130K!! \$99K!!
 - CASTRO CO. / FM 303 - Approx. 440 acres, 6 subs, 1 turbine, 2 valley & 1 Zimmatic circle!! \$1750 per acre!!
 - NICE OFFICE/SHOP/WAREHOUSE on approx. .7 acre tract, metal bldg. one 1/2 bath & one 3/4 bath, cent. A&H, city water, insulated \$85K REDUCED - \$50K!!
 - 2007 W. American Blvd. - 100' x 140' tract - \$12750!!

Watson Junior High Wins District Runner-Up

Watson Junior High participated in the District UIL Literary Contest on Nov. 6, Nov. 9, Nov. 12 and Nov. 13.

On Nov. 6, participants competed in Ready Writing and Editorial Writing at Watson Junior High.

On Nov. 9, the One-Act Play competed at Friona.

On Nov. 12, participants competed in Speaking Events at Olton.

Then on Nov. 13, all other contests were held at Wayland Baptist University in Plainview.

A total of 88 WJH students participated.

At the end of the four days of contests, Watson Junior High scored a total of 584 points and was awarded the UIL District 2AA Literary Contest District Runner-Up Plaque.

The results of the competitions are as follows:

One-Act Play, third place — Coleman Preston, Fernando Salamanca, Kayla Tores; All-Star Cast — Abigail Boehning; Honorable Mention All-Star Cast.

Sixth Ready Writing, Individual — Maria Campos, third.

Seventh Ready Writing, Individual — Haili Gardner, fourth.

Eighth Ready Writing, Individual — Hallie Myatt, sixth.

Seventh Editorial Writing, Individual



— Colton Morrison, second; Aston Atchley, fourth; Abigail Boehning, fifth.

Eighth Editorial Writing, Individual — Hallie Myatt, second.

Sixth Oral Reading, Individual — Maria Campos, sixth.

Seventh Oral Reading, Individual — Brenden Mehl, first; Ethan Clapp-Gonzales, second; Abigail Boehning, third.

Seventh Modern Oratory, Individual — Ethan Clapp-Gonzales, second; Joel Xavier Guerrero, fifth; Colton Morrison, sixth.

Eighth Modern Oratory, Individual — Liliana Barrera, fourth.

Sixth Art, Individual — Maria Campos, first; Team — Matthew Alarcon, Maria Campos, Kelan Florez, Jonathan Carter McCamish, Aaron Venzor, Jayton Zimmerman, third.

Seventh Art, Individual — Citalli Vargas, second; Haili

Gardner, fourth; Team — Haili Gardner, Luke Leal, Michelle Martinez, Jose Nava, Reina Regalado, Citalli Vargas, second.

Eighth Art, Individual — Lizeth Venzor, second.

Eighth Calculators, Individual — Coleman Preston, sixth.

Sixth Dictionary, Individual — Camryn Beam, fourth; Nathan Rodriguez, sixth; Team — Camryn Beam, Jose Cardenas, Tyler Moeller, Nathan Rodriguez, second.

Sixth Listening, Team — Camryn Beam, Ricardo Diaz, Jaydin Reyes, Sharice Rosas, third.

Seventh Listening, Individual — Lindzee Wilson, second; Aston Achley, fifth; Team — Aston Atchley, Leonel Camarena, Taylor Cortez, Lindzee Wilson, second.

Eighth Listening, Individual — Haley Hunt, third; Izaiah

Perez, fifth; Team — Giovanni Ceja, Haley Hunt, Josh Mata, Izaiah Perez, first.

Sixth Maps, Graphs and Charts, Individual — Jill Rojas, third; Team — Jose Cardenas, Ricardo Diaz, Cesar Reyes, Jill Rojas, second.

Seventh Maps, Graphs and Charts, Individual — Joel Xavier Guerrero, sixth; Team — Joel Xavier Guerrero, Miranda Melendez, Valentina Platas, Noah Russell, second.

Eighth Maps, Graphs and Charts, Individual — Hallie Myatt, first; Jacob Kettner, third; Coleman Preston, fourth; Team — Jacob Kettner, Joely Melendez, Hallie Myatt, Coleman Preston, first.

Sixth Mathematics, Individual — Tyler Moeller, third; Team — Tyler Moeller, Jill Rojas, Valerie Toscano, Eddie Vasquez, second.

Seventh Mathematics, Individual — Brenden

Mehl, fourth; Brady Martinez, sixth; Team — Arturo Huerta, Brady Martinez, Brenden Mehl, Raul Sierra, third.

Eighth Mathematics, Individual — Jacob Kettner, second; Liliana Barrera, fourth; Team — Liliana Barrera, Giovanni Ceja, Jacob Kettner, Coleman Preston, first.

Sixth Number Sense, Individual — Tyler Moeller, fifth; Team — Camryn Beam, Tyler Moeller, Jill Rojas, Eddie Vasquez, second.

Seventh Number Sense, Individual — Arturo Huerta, fifth; Team — Arturo Huerto, Brady Martinez, Brenden Mehl, Raul Sierra, third.

Eighth Number Sense, Individual —

Sofia Sianez, first; Hallie Myatt, third; Team — Giovanni Ceja, Michael Lozano, Hallie Myatt, Sofia Sianez, first.

Eighth Spelling, Individual — Hallie Myatt, fourth; Kevin Chavez, fifth; Team — Giovanni Ceja, Kevin Chavez, Michael Lozano, Hallie Myatt, third.

Seventh Science, Individual — Joel Xavier Guerrero, fourth.

Eighth Science Individual — Hallie Myatt, second; Coleman Preston, fourth; Team — Josh Mata, Joniah Menoza, Hallie Myatt, Coleman Preston, second.

Sixth Music Memory, Individual — Regan Mullins, first; Team — Leonel Belmonte, Kelan Florez, Jacob Landeros, Esteban Lozano, Erik Lujan, Reagan Mullins, second.

Sixth Social Studies, Individual — Jose Cisneros, first; Camryn Beam, third; Team — Camryn Beam, Jose Cisneros, Ricardo Diaz, Jariana Mendoza, second.

Eighth Social Studies, Individual — Hallie Myatt, first; Yvonne Diaz, fifth; Team — Liliana Barrera, Yvonne Diaz, Joely Mendoza, Hallie Myatt, first.

Eating Healthy = Staying Healthy!

GRAND OPENING

OPEN HOUSE

MULEPLEX



Self Storage

1528 WEST AMERICAN BLVD.

Phone- 272-7512 / After Hours-806-549-8687

**COME SEE MULESHOE'S
NEWEST AND ONLY
STORAGE FACILITY WITH
INDOOR CLIMATE CONTROLLED
UNITS!**

Walk thru our facility, enjoy refreshments and enter the drawing for

**CASH PRIZES OF:
2 - \$25, 2 - \$50 and 1 - \$100**

Saturday, Dec. 14th - 12 - 3 PM



Don't Miss this Event!



24/7 ENTRY

WITH PIN CODE SECURITY FEATURE, FOR ADDED PEACE OF MIND!

