

MPD confiscates 73 marijuana plants following investigation

An evening search of a local residence by the Muleshoe Police Department on Monday resulted in the confiscation of 73 growing marijuana plants, along with other drug-related paraphernalia. The finding was the culmination of a three day investigation by local police officers.

According to Muleshoe Police Chief Julian Dominguez, a search warrant was executed and the search was carried out at about 7:49 p.m. on Monday. Dominguez said he could not reveal any location or names at this time because charges and arrests are currently pending.

Lt. Jay Livingston and patrol officer Benny Parker worked on the investigation and carried out the search.

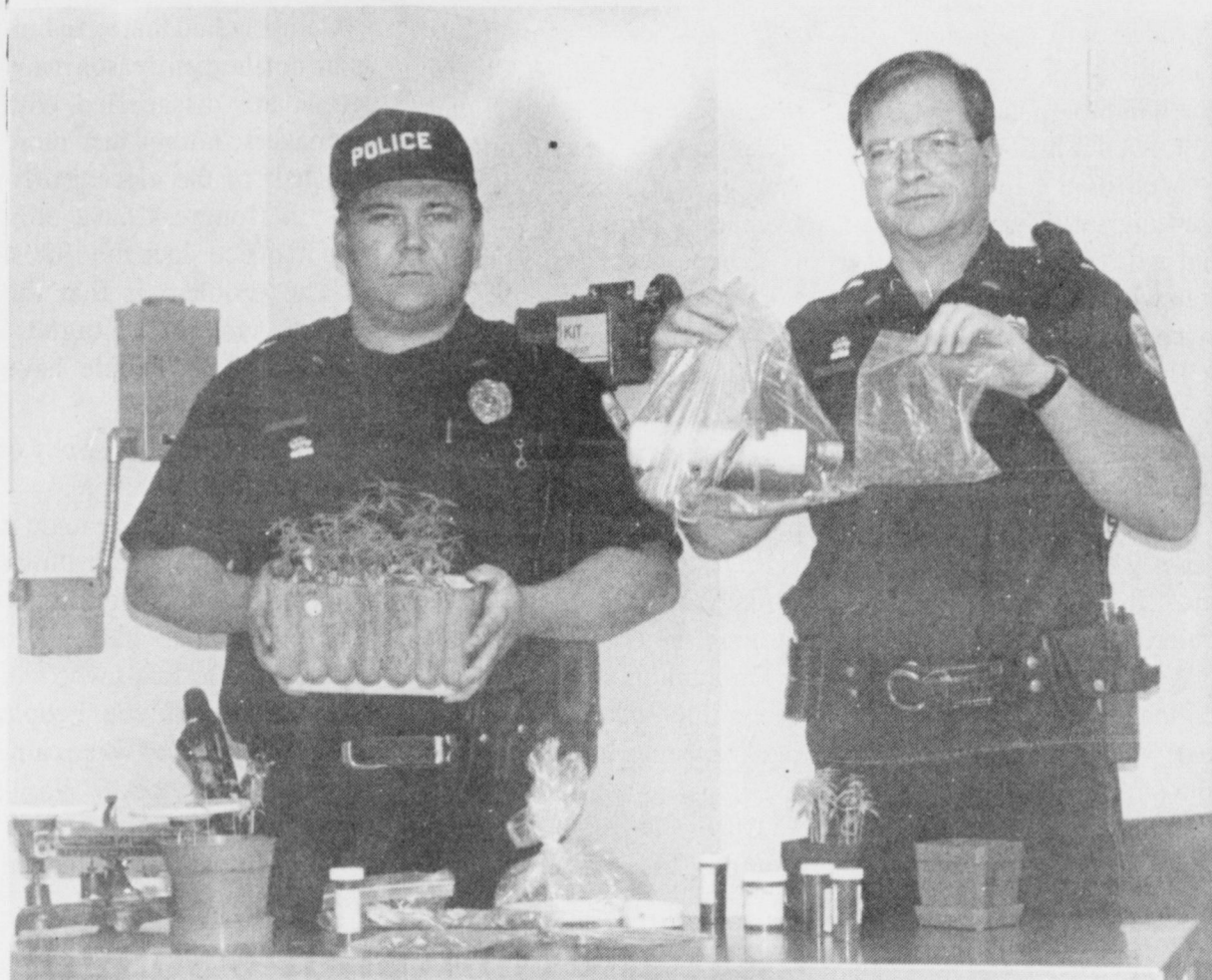
"During the course of the

investigation, they were able to get enough facts and information to get a search warrant on a residence in town," Dominguez said.

"Officers entered the residence and found 73 growing marijuana plants, some were 8-12 inches high," Dominguez said.

Dominguez said he is not sure if the marijuana was being grown for personal use or for distribution. Other items confiscated Monday include a weight scale, five pipes, water bongs, plastic bags and containers with marijuana seeds.

Dominguez said he does not have an estimate of the street value of the marijuana plants, but he said, "If all of these 73 plants grew to three or five feet high, you would be



PUTTING A HALT ON ILLEGAL ACTIVITY - (Left) Muleshoe Police Department Patrol Officer Benny Parker and Lt. Jay Livingston display items which they seized during a search of a local residence on Monday. Items seized included marijuana plants, pipes, water bongs, a weight scale, baggies and marijuana seeds.

looking at quite a bit of money." The case will be turned over

to the county attorney or district attorneys office.

Continued on page 9

Mules host Springlake-Earth in scrimmage on Friday

Encouraged after the first scrimmage of the pre-season last week at Morton, the Muleshoe High School football staff is busy getting the Mules geared up for taller tests the next two weeks.

The Mules will host Springlake-Earth Friday at Benny Douglas Stadium in their second pre-season scrimmage, then travel west across the state line to take on Portales, NM, in the season opener Sept. 2.

The Mule football staff saw good things on both sides of the ball against Morton, scoring three times to the Indians' two in the "good on good" portion of the scrimmage.

"It was encouraging," said head coach Randy Adair. "We wanted to get a good picture of our personnel and we were very pleased and encouraged."

The Mules' three touchdowns all came on passes and two other potential scores were nullified by dropped balls.

Defensively, the Mules gave up one score on a sustained Morton drive and the other on a long, fake reverse.

"Morton isn't picked high in their district, but they're definitely a sleeper," said Adair. "They have great speed and I think they will surprise some people."

Offensively, Adair was pleased that three different receivers caught touchdown balls for the Mules.

"We're very pleased," he said. "It looks like we'll be able to put four or five guys on the field all the time that can score for us."

Under new defensive coordinator Donnie Wylie, the Mules are playing a new scheme with multiple fronts and coverages. Adair said he

Continued on page 2

Combest in support of other health care reform

During a town hall meeting in Muleshoe on Monday, U.S. Representative Larry Combest (R-Texas) acknowledged that there is a problem with health care in the United States. However, President Bill Clinton's proposed healthcare reform plan is not the solution, he said.

"I think we need to create incentives to solve the problem. I don't think our entire healthcare system needs fixing. We can fix the parts that are broken while not interfer-

Continued on page 9



ANSWERING QUESTIONS - U.S. Representative Larry Combest (R-Texas) conducted a town hall meeting in Muleshoe Monday, answering questions from local residents.

Residents confront Combest with issues during town meeting

By Helena Rodriguez

U.S. Representative Larry Combest (R-Texas) was in Muleshoe on Monday for a town hall meeting, answering questions about agriculture, small businesses, diesel fuel taxes, legislative bills, environmental regulations, government bureaucracy and over-regulation.

About 50 residents attended the town hall meeting at Muleshoe High School Auditorium.

During his visit Monday, Combest spent a great deal of time talking about government regulation and bureaucracy.

"I agree that government wastes a lot of money and is spending money in ways that they shouldn't," Combest said. "I support free enterprise and want government out of the way," Combest said in regard to mandates and what he calls over-regulation, which burdens small businesses.

"They (small businesses) are the ones coming under fire," Combest said.

Combest is a member of the House's Small Business Committee.

Continued on page 2

Heifer bred in Bailey County is selected national grand champ

JACKSON, Miss. - A Limousin heifer bred in Bailey County has been selected as the national grand champion at the annual National Junior Limousin Show and Congress held here recently.

DIAY Poll Young Love 303C, shown by Ashley Rae Wellman of Richmond, Ky., was chosen from a field of more than 250 heifers from all over the U.S.

The national champion was bred by Jim and Terry Young and Greg and Chris Young of Young Diamond's Y, Inc., of Muleshoe. The heifer was sired by the Young's Polled Brite Lites 824A. Her dam, TYPE Miss Punch 39X, is also owned by the Youngs.

Wellman, who bought the heifer from the Youngs, is the

daughter of Bob and Gwen Minerick of Richmond, Ky. She is expected to show her national junior champion at the National Limousin Show in Denver in mid-January.

The Youngs have been raising Limousin cattle for more than a decade.

"There are good people in the Limousin breed and we had a liking for Limousin cattle,"

said Jim on the reason he got into the breeding business.

The Youngs sell show

steers, bulls and females; in black polled, red and horned varieties. They are expected to

sell some of their heifers and bulls during the National Limousin Show in December.



JUNIOR NATIONAL GRAND CHAMPION - DIAY Poll Young Love 303C, shown by Ashley Rae Wellman of Richmond, Ky., was selected as the junior national grand champion heifer at the National Junior Limousin Show and Congress in Jackson, Miss., July 21-24. The heifer was bred in Bailey County by Young's Diamond Y, Inc. Pictured are (from left) Jeff Ponder, Terry Young, Jim Young, Dr. John Edwards, Bobe Minerick, Gwen Minerich, Ashley Rae Wellman, and a host of National Junior Limousin Show queens and princesses.

Around Muleshoe

Reserve tickets can be picked up now

Muleshoe Independent School district would like to remind all people holding reserve seat tickets for the 1994 football season that they may pick up their options through Friday, Aug. 26 until 5 p.m. at the Administration Building.

All remaining tickets will go on sale Monday, Aug. 29 on a first come, first serve basis.

Parmer County 4-Hers plan picnic

The Parmer County 4-H will

Continued on page 9

Scrimmage

Continued from page 1

was pleased with the first test. "It's a whole new package for the kids and we were a little concerned about getting lined up correctly and doing what was called in the huddle," Adair said. "But I was pleased with the execution. As far as basic technique was concerned, we saw some things we need to work on."

Overall, Adair said he felt the Mules are a little ahead of schedule. But they'll have to pick their game up a notch against Springlake-Earth, which is ranked 4th in the Associated Press Class AA pre-season football poll and 10th in the Harris poll.

"They're big, physical and have great coaching," said Adair of Springlake-Earth, which has made the state quarterfinal round the past two seasons. "We have real respect for them and we'll really have to rise to a higher level."

The scrimmage begins at 6 p.m. with a junior varsity session. Under the tentative format, the JV first teams will each get 15 offensive plays, followed by a second-team JV session with 12 plays by each offense. The first teams will come back for a 10-play series each, followed by another second-team session.

The varsity format, expected to begin about 7:15, will feature each team running 20 plays with its No. 1 unit, followed by 15 plays each from the No. 2 squads. The first teams will return for 12 plays each, followed by a 10-play session by each No. 2 offense.

The scrimmage will end with at least one full quarter of

actual game situation. Coaches will move to the sidelines and a limited kicking game will be implemented.

"We're a week away from playing and we need to get some game situation in," Adair said, adding that the Mules' first regular-season opponent, Portales, will open their season this week against Clovis and will have a game under its belt when it hosts Muleshoe.

Muleshoe has 25 players working out at the varsity level and will face a Portales team that will likely have at least twice that many in uniform.

But numbers are increasing for the Mules, which have 31 in the freshman class and good numbers in the junior high.

"It's encouraging to look at those younger guys," Adair said. "It gives us hope for the future."

With just 25 varsity players, the key for the Mules will be depth and the ability to stay injury free. Adair projects 18 to 20 playing a great deal, but admits health in a few key positions is critical.

Overall, fall drills have been fun for the Mule coaching staff, Adair said.

"We have three new coaches at the high school and the chemistry has been great," he said. "The players showed up for two-a-days with a great attitude and their effort has been good. Things are a lot better for us."

Free CANVAS 16 X20 with Weddings
 BOX COPY PHOTOGRAPHY
1-800-540-6810

Combest

Continued from page 1

Combest also talked about the Crop Insurance Program, saying that the House is working to make improvements on it. But he cautioned, "In writing the next farm bill, the EPA (Environmental Protection Agency) will have an impact."

"These people are serious about property rights. A lot of people with the EPA feel that in the name of environment, there are no property rights," Combest said.

Combest was asked questions about the efficiency of the Veteran's Administration. One citizen told him about problems with government bureaucracy and red tape.

Combest responded, "The program (VA) has good programs like Social Security, but sometimes some people fall through the cracks, and there are limitations on what we can change because it may cause other people to fall through the cracks as well."

During his visit Monday, Combest also discussed

posed term limits for elected officials.

He said, "I don't think term limitations will ever pass, but I do think the issue will cause things to happen. People basically want term limitations because they are frustrated and want something to happen."

Combest said that term limits are not the main reason many people are dissatisfied with lawmakers, noting that more than half of the elected officials in Congress have only been in office since the 1990s.

"The problem is that the system has not changed," Combest said. "People have

changed but the philosophy of a district doesn't change."

"What we will have to do is change the system so it allows us to see how it is working."

Combest also said, "We need elected officials who will deal straight with you. People give great speeches when campaigning, but once in Washington, it is a different story."

An example Combest cited

Pageant contestants sought

SAN ANTONIO- Mrs. Texas USI officials are looking for the next Mrs. Muleshoe! The woman selected will receive her own crown and banner and will have the opportunity to represent Muleshoe at the 1995 Mrs. Texas USI Pageant which will be held in San Antonio in February.

Married women between the ages of 24 and 55 who have been married for a minimum of two years qualify to compete for the title.

To receive an application for the Mrs. Muleshoe Competition, call the state office at

(210) 590-6877, or write to Bray Creative Service, independent producers of the Mrs. Texas USI Pageant, at 5410

Vista Court, San Antonio, Texas, 78247.

is when many lawmakers used a balanced budget as an issue during their campaign. But he added that a dozen lawmakers who sponsored a balanced budget amendment voted against it.

In closing, Combest urged people to write to their Con-

gressmen.

"I always encourage people to contact my office. That is the greatest form of government that we have," Combest said, adding that his office also encourages phone calls.

"We like to hear from both sides (of an issue)," he said.

DQ Treats & Eats

Blizzard®
 Flavor Treat
 DQ® soft serve mixed with your favorite candy, fruit or nuts.
99¢ 12-oz.

Breeze®
 Frozen Yogurt Treat
 Non-fat, cholesterol-free frozen yogurt with your choice of fruit or nuts.
99¢ 12-oz.

On sale at Dairy Queen® August 22 - September 1, 1994.
 ©Reg. TM Am. D.Q. Corp. ©Tx. D.Q. Op. Coun. At participating Dairy Queen stores.

JOE'S BOOT & SHOP

1-800-658-6378 106 E. American Blvd. Muleshoe, Texas

And Country Junction

BOOTS
 Buy 2 Pair Seconds
 Get 1 Pair
FREE

Stetson HATS

Resistol
 20X Black Gold
HATS \$275⁰⁰

20X \$225⁰⁰
 30X \$260⁰⁰

ALL Brands Of Double Welting Boots On Sale From Aug. 27-Sept. 5

All
Straw Hats 20% OFF

Bag The Savings At Furniture Plus

UP TO 60% OFF

2 DAYS
Friday & Saturday
 9:00 AM to 7:00 PM

TWIN MATTRESS SET
 "Super Value" Innerspring Mattress and Foundation. **HURRY! REG. \$199.95**
SALE 97⁰⁰

RECLINER
 Large Man's Size. Beautiful velvet covers. **REG. \$249.95**
SALE 127⁰⁰

\$0 DOWN
6 MONTHS NO INTEREST
 O.A.C.

One Item Or A Housefull -- Bag The Savings!!

Terms Of Sale:
 * All Credit Cards Accepted
 * Cash or Personal Check

DECORATOR WALL MIRRORS
 Brighten up any room
SALE 77⁰⁰

5 PC. BRASS & GLASS DINETTE SET
 Great value at this great low price! **REG. \$259.95**
SALE 137⁰⁰

3 PC. COCKTAIL TABLE SET
 In Brass & Glass
 Fits with any decor
SALE 177⁰⁰

TWIN/FULL BRASS BED
 Headboard & footboard with porcelain knobs.
SALE 177⁰⁰

FOUR DRAWER CHEST
 Need extra storage?
SALE 49⁹⁷

WOOD BUNK BEDS
 Complete with mattresses. All wood.
SALE 199⁰⁰

Open
 9 a.m. - 6 p.m.
 Daily

Furniture Plus

SAME DAY DELIVERY 421 N. Main, Clovis, NM 505-762-5001

Perry says to examine options besides the endangered swift fox

AUSTIN—Instead of listing the swift fox as an endangered species in the Panhandle and West Texas, the U.S. Fish and Wildlife Service should consider other options including developing habitat enhancement guidelines for voluntary use by landowners, Agriculture Commissioner Rick Perry said in a letter sent Wednesday to the federal agency.

The U.S. Fish and Wildlife Service is considering a petition to place the swift fox on the endangered species list, which could restrict farming, ranching and oil field activities in its habitat.

In Texas, swift fox habitat is roughly contained in the western portion of the Panhandle from the Oklahoma border south to Upton County. However, Perry argues that the species is not facing extinction in Texas, and its population also appears to be healthy in Colorado, Kansas, New Mexico and Oklahoma.

"Substantial numbers of this small fox occur on private lands in these states," Perry said in a letter to Elizabeth McPhillips, supervisor of Ecological Services with the U.S. Fish and Wildlife Service. "In fact, this species is numerous enough in Kansas that...the Kansas Department of Wildlife and Parks indicated a desire to provide surplus

animals for restocking in South Dakota."

Swift fox populations appear to be low in the northern Great Plains portion of its habitat, and the petitioner has requested that the swift fox be listed as an endangered species in South and North Dakota, Nebraska and Montana.

However, the U.S. Fish and Wildlife Service stated in its initial findings that "substantial information exists to support a decision that listing of the fox may be warranted throughout its entire range."

Along with the Texas Department of Agriculture, the Texas Parks and Wildlife Department does not agree with this federal opinion.

"As they typically tend to do, U.S. Fish and Wildlife is taking a board-brush approach

and considering impacting at the swift fox's entire Great Plains habitat whether populations are threatened or not,"

Perry said.

Vehicle traffic kills of the fox may be having a much greater impact on the animal's

population than farming and ranching activities because the fox frequents highway rights-of-way, Perry said.

Three Way News

By Mrs. H.W. Garvin

The community is still dry, still no rain, dryland crops aren't very good but irrigation crops are pretty good.

The Three Way school started Aug. 15 with good attendance.

Several youth from the community have gone off to college to several schools.

Mrs. Robert Kindle and Mrs. Bob Foley were in Levelland Wednesday shopping.

George Tyson spent Tuesday night in Lubbock with his daughter the Tommy Joe

Durhams.

Mrs. Robert Kindle visited Mrs. H.W. Garvin Tuesday afternoon.

Mr. and Mrs. Uvaldo Castillo spent the week in Seminole with their son Bobby and his wife.

Mr. and Mrs. Bobby Kindle spent the weekend in Roswell N.M. visiting Mrs. Kindle's mother and visiting their daughter Stacy.

Mrs. Jack Lane visited Mrs. Nettie Quisenberry in Muleshoe Wednesday.

Muleshoe Area Calendar

Thursday, August 25

Oddfellows, lodge hall, 7:30 pm
Tops Club, Am. Blvd. Church of Christ, 6:00 pm
Border Rounders Square Dance, Muleshoe Square, 7:30 p.m., American Legion

Friday, August 26

Daisy Girl Scouts, girl scout hut, 3:30 pm
American Association of Retired People (AARP), noon, Civic Center

Monday, August 29

Cub Scouts, pack 620, boy scout ground
Girl Scouts, girl scout hut, 3:30 pm
Muleshoe Heritage Foundation, Old Depot Round Dance, Civic Center, 7:30 pm
Border Rounders dance, 7:30 p.m. at Civic Center

Tuesday, August 30

AA, 723 West Ave. E, 8:00 pm
Rotary Club, Civic Center, noon
Rebekah Lodge, Lodge Hall, 7:30 pm
Young Homemakers, Muleshoe Church of Christ
Muleshoe Senior Citizens dance, Legion Hall, 8:00 pm

Wednesday, August 31

Lion's Club, Civic Center, noon
Muleshoe Volunteer Fire Dept., City Fire Station
Muleshoe Country Club Association, noon, Muleshoe Country Club.

**NEED TO SELL
OR HIRE HELP?
CLASSIFIEDS WORK
CALL 272-4536
NOW!**

MULESHOE MOTOR COMPANY
"Car Capital of The West Plains"



MULE DAYS SAVINGS

F	'93 Ford Taurus.....	\$13,790.
O	'88 Mercury Scorpio.....	\$6,300.
R	'91 Pontiac Sunbird LE Convertible.....	\$8,980.
D	'90 Chevrolet Corsica.....	\$6,850.
M	'91 Ford Ranger XLT.....	\$8,880.
E	'93 Ford Aerostar XLT, extended.....	\$16,865.
R	'84 Chev. S-10 Ext. Cab, 4X4.....	\$3,975.
C		
U		
R		
R		
Y		

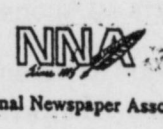
1225 West American Blvd.
272-4251 Muleshoe, Tx. 1-800-432-7617

Muleshoe Journal USPS 367820

Established February 23, 1924. Published by Triple S Publishing, Inc. Every Thursday at 304 W. Second, P.O. Box 449, Muleshoe, Tx. 79347. Second Class Postage paid at Muleshoe, Tx. POSTMASTER: Send address changes to the Muleshoe Journal, P.O. Box 449, Muleshoe, Tx. 79347.

We Are Qualified Members Of:

Panhandle Press Association, National Newspaper Association, West Texas Press Association and Texas Press Association.



MEMBER 1994
TEXAS PRESS ASSOCIATION

© 1990

Scott Stinnett, Publisher
Lisa Stinnett, Vice-President/Comptroller
Helena Rodriguez, News
Laura Sanchez-Mora, Classified
Holly Millsap, Advertising

SUBSCRIPTIONS
Muleshoe Journal and Bailey County Journal
By Carrier Yearly - \$15.00
Bailey and surrounding counties
By Mail - \$16.75
Elsewhere - \$18.50

WEST TEXAS PRESS ASSOCIATION **PPA**

Advertising Rate Cards on Application

Advertisers should check their ad the first day of insertion. The Journals will not be liable for failure to publish an ad or for a typographical error or errors in publication except to the extent of the cost of the ad for the first day of insertion. Adjustment for errors will be limited to the cost of that portion of the ad where the error occurred.

NOTICE OF CALCULATION OF EFFECTIVE TAX RATE, ESTIMATED UNENCUMBERED FUND BALANCES, AND DEBT SCHEDULES

THIS NOTICE CONCERNS 1994 PROPERTY TAX RATES FOR THE ONE TAXING UNITS LISTED BELOW. THIS NOTICE PRESENTS INFORMATION ABOUT THE TAX RATES FOR EACH UNIT. LAST YEARS TAX RATE IS THE ACTUAL RATE USED TO DETERMINE 1993 PROPERTY TAXES. THIS YEARS EFFECTIVE TAX RATE WOULD IMPOSE THE SAME AMOUNT OF TAXES ON THE SAME PROPERTIES AS LAST YEAR. THIS YEARS ROLLBACK TAX RATE IS THE HIGHEST TAX RATE THE TAXING UNITS MAY SET BEFORE TAXPAYERS CAN START ROLLBACK PROCEDURES. IN EACH CASE THESE RATES ARE FOUND BY DIVIDING THE TOTAL AMOUNT OF TAXES BY THE TOTAL VALUE OF TAXABLE PROPERTY WITH ADJUSTMENTS AS REQUIRED BY LAW. THE RATES ARE GIVEN PER \$100.00 OF PROPERTY VALUE. THIS NOTICE CONTAINS A SUMMARY OF THE EFFECTIVE AND ROLLBACK TAX RATE CALCULATIONS. YOU CAN INSPECT THE FULL CALCULATIONS AT FARMER COUNTY APPRAISAL DISTRICT, 305 3RD STREET, BOVINA, TEXAS. NOTICE PREPARED BY RONALD E. PROCTER RPA/RTA/RTC, CHIEF APPRAISER, AUGUST 17, 1994.

NOTICE OF 1994 EFFECTIVE AND ROLLBACK TAX FOR:

LAZBUDDIE INDEPENDENT
SCHOOL DISTRICT

LAST YEAR'S TAX RATE	
Last year's operating taxes-----	\$ 542,199.24
Last year's debt taxes-----	\$ 52,317.46
Last year's total taxes-----	\$ 594,516.70
Last year's tax base-----	45,441,721
Last year's total tax rate (per \$100)---	1.3200
THIS YEAR'S EFFECTIVE TAX RATE	
Last year's adjusted taxes-----	\$ 587,922.23
This year's adjusted tax base-----	45,815,950
This year's effective tax rate (per \$100)	1.2832
1.03= Maximum rate unless unit publishes notices and holds hearings-----	1.3216
THIS YEAR'S ROLLBACK TAX RATE	
Last year's adjusted operating taxes----	\$ 590,206.00
This year's adjusted tax base-----	46,078,351
This year's effective operating rate----	1.2808
1.08= This year's maximum operating rate-	1.3408
This year's debt rate-----	0.1144
This year's rollback rate before adjustment-----	1.4552
Sales tax adjustment rate-----	-0-
Adjusted rollback rate-----	1.4552

SCHEDULE A: UNENCUMBERED FUND BALANCES
The taxing units estimate the following balances will be left at the end of the fiscal year. These balances are not encumbered by a debt obligation.

Estimated unencumbered M&O or General Fund Balance-----	\$ 160,000.00
---	---------------

SCHEDULE B: 1994 Debt Service-----	50,092.00
---	-----------

The taxing units estimate the following amounts will be paid from property tax revenues (or additional sales tax revenues) for long term debts that are secured by property taxes.

SCHEDULE C: EXPECTED REVENUE FROM ADDITIONAL SALES TAX-----	\$ -0-
--	--------

SCHEDULE D: STATE CRIMINAL JUSTICE MANDATE	-0-
---	-----

The Farmer County Auditor certifies that Farmer County has spent \$ _____ in the previous 12 months beginning _____, 1993 for the maintenance and operations cost of keeping inmates sentenced to the Texas Department of Criminal Justice. Farmer County has provided information on these cost, minus the state revenues received for reimbursement of such costs.



Mark of safety

An employee from the Texas Highway Department sprays new paint over a cross walk on West American Blvd. With the new school year underway, school zone lights are in affect again and motorists are cautioned to keep students in mind.

Bike-A-thon set for this weekend

Mark Morton of Muleshoe is calling on all Muleshoe residents to join the St. Jude

Children's Research Hospital Wheels for Life Bike-A-Thon, slated for Saturday, Aug. 27

from 8 a.m. to 1 p.m. at the Muleshoe High School Parking Lot.

Volunteer workers and riders are needed for this Bike-

A-Thon to raise funds for the world-famous research center

in its battle against childhood cancer and other catastrophic childhood diseases.

"We are looking for riders and helpers who will contribute their time and talent to make

this Bike-A-Thon successful," Morton said.

In the Wheels for Life Bike-A-Thon, riders ask sponsors to make a donation based on each mile completed. All riders who

raise \$35 or more will receive a certificate and a special St.

Jude T-Shirt. When \$75 or more is raised, the rider re-

ceives a sports bag in addition to the certificate and the T-

Shirt. "The real prize though, is the pride everyone can take in

giving children a chance to live a normal life," Morton said.

For details on riding or sponsoring a ride, contact Morton at 272-7519. Sponsor forms can be picked up at

Dillman and DeShazo Schools or at State Farm Insurance offices.

St. Jude Hospital was founded by Danny Thomas and operates primarily from public support.

Labor Day weekend activities planned

Say goodbye to summer by attending the Don Harrington Discovery Center's Labor Day weekend family event -- Discover '94. Again this year, the two-day celebration features live entertainment on the Discover Stage, activities for the entire family, and food booths.

Activities will be held at the Don Harrington Discovery Center at 1200 Streit Drive in Amarillo.

Discover '94 begins Sunday, September 4, and ends with the grand finale on Monday evening, September 5 -- Fireworks by Grucci of New York and a concert by the Amarillo Symphony Orchestra.

"Many exciting events and new activities have been added to this year's schedule," said

Discover '94 Chairman, Debra Ballou. "Plan now to celebrate in style on Sunday and Monday with the Discovery Center at the Harrington Regional Medical Center."

Activities for families and children kick off both days at 1:00 p.m. with games, family fun, and entertainment. Many more activities have been added on Sunday than were available last year, so be sure to attend both days.

Outstanding entertainment will be presented both afternoons, including: Amarillo Gunfighters, Tascosa High School Cheerleaders, Tae Kwon Do Demonstration, Tejas Trio, Joe Ed Coffman, Gary and Haskell, Clay Collins,

One newly-added event is Sparks & Spikes! -- the grass

coed volleyball tournament slated to begin on Monday morning at 8:30 a.m. Teams will consist of 3 males and 3 females.

Each team is guaranteed a minimum of 10 games. Teams will be required to officiate during play; however, paid officials will be present for the playoff matches.

Rebekah Lodge to host skating parties

The Rebekah Lodge will sponsor kid skating on Friday,

Aug. 19, Sept. 16, Oct. 28, Nov. 18 and Dec. 16.

The lodge expresses sympathy to Francis Burrows on the death of her husband Olan

Burrows and Ruby Garner on the death of her brother Floyd Damron. Those still improv-

ing are Ona Berry, Doris Lambert, Dorothy Browning and Ernest Bass.

On Sept. 1, the lodge will

have a chili dinner.

The Lodge was opened and

closed by Bekki Venzor, who acted as Noble Grand. Sixteen members answered roll call.

Refreshments were served by

Louise Allen, Thursie Reid and Ruby Green.

True Value.

Help Is Just Around The Corner.

EASY COLOR
INTERIOR
Latex Satin Enamel

EASY COLOR
EXTERIOR
Latex Flat House Paint

Introducing Easy Color™... our newest paint line. Choose interior latex satin finish or exterior latex flat house paint. They go on easy and look great for years!

Available in over **1000** colors

9.98 Your choice Easy Color™ Latex Satin Enamel Wall Paint. JSE1 K 258 676 F4

Easy Color™ Latex Flat Exterior House Paint. Gal. JEF9 K 299 456 F4

TRU-TEST
BEAUTIFULLY TOUGH

Home Painting Sale

5.98
All-Purpose 4" Brush with blend of quality Orel® and china bristles. 900-4 K 601 930 6

6.98
6-Pc. Painting Set includes roller cover, edger pad, 1 1/2" brush, more. RKP-600 K 207 068 12

4.98
Tru-Seal Waterproofing Coating. Gal. CS1R K 141 187 F2

Fry & Cox

True Value.
Help Is Just Around The Corner.

Lumber

Mon. - Sat. 8 a.m. - 6 p.m.
Sun. 1:30 p.m. - 4:30 p.m.

Hardware

401 S. 1st Muleshoe 272-4511

School BULLETIN

Just In Time
For Back To School
JEANS
30% off

Lookin' Good

206 Main Muleshoe 272-5052

Delayed Payment Lease Program And "Buck A Foot" Rebate

The Delayed Payment Lease Program and the "Buck A Foot" Rebate is available at your local Lockwood dealer this Fall. You can get tremendous value on a 1994 Model 2000 Lockwood Center Pivot. Choose the special "Buck A Foot" Dealer Rebate and also available is a Delayed Payment Lease Program with no lease payment until January 1996.

No fancy gimmicks, just an honest, reliable Lockwood 2000 at an extremely competitive price. See your Lockwood Dealer for details!

Irrigation Supply

607 E. American Blvd. Muleshoe 272-4466

Muleshoe Area

Summer Business Directory



Quesadillas
Two flour tortillas filled with your choice of beef or chicken fajitas, cheddar and monterey jack cheeses, grilled onions and bell peppers. We cut them into quarters and serve them with guacamole, pico de gallo and sour cream.

Beef or Chicken **\$5⁹⁵**

Closed Mondays
Leal's Restaurant

1008 W. American Blvd. 272-3294

Wilson Drilling Co.

"Complete service from the bottom of the well to the bottom of the Glass"
Domestic * Irrigation * Test Holes



***INSURED * BONDED**
W. Hwy 84

272-5521

TX LIC 02628W NM WD1152



The Sale Was A Huge Success!!

We would like to thank everyone for their help and generosity during our sale.

We truly couldn't have done it without the support of our friends and the community.

Muleshoe Art Loft



NEW products!

Calculators - Watches - Knives
Fingertip Towels - Tire Gauges
Umbrellas - Billfolds
& Other Items!



Higginbotham-Bartlett Co.

215 Main 272-3351



Victor & Debbie Leal

Would Like To
Welcome All
Area Students
and Teachers
Back!!

They Invite You To Come
In And Enjoy Good
Mexican Food and Sample
Their New Menu Items!!

The Finest in Mexican Food . . . Since 1957

Leal's

MEXICAN FOOD RESTAURANT



BLOOMIN' BEAUTIFUL!



Stop by and see our wide selection of healthy blooming plants — for someone special, including yourself!



Decorator's Floral & Gifts

616 S. 1st 272-4340

Scoggin Ag Center, Inc.

"Where Fertilizer Is Our Business"
1532 W. American Blvd. 272-4581



It's Time To... WINTERIZE

Now's the time to winterize your lawn for the winter season with ferti-lome WINTERIZER.

When your lawn has had a hot, dry summer, it's more susceptible to damage by cold, insects, and fungus.

Fertilize NOW for a beautiful lawn next spring.

Henry Insurance Agency, Inc.

"Serving Your Insurance Needs Since 1964"



Kenneth R. Henry, Certified Insurance Counselor
Real Estate Broker

111 W. Ave. B. 272-4581

We Service & Repair Late Model GM's, Fords & Dodge Automobiles & Trucks!
We Also Specialize In General Automotive Repair Work Of All Kinds!

We Pickup & Repair All Types Of Irrigation Motors!

MULESHOE TRUCK & AUTO

301 N. 1st 272-5111



SAVE UP TO 40% ON YOUR COOLING BILLS! PLUS A 10-YEAR PARTS & LABOR WARRANTY!

- Remember last summer? This season could be just as hot, so don't take a chance on a cooling system breakdown.
- Replace your old system with a new Carrier high-efficiency cooling or heat pump system.
- Save up to 40% on your cooling bills.
- Pay no repair costs for 10 years.
- Call today for details. Limited time offer.

1-800-439-4992

(505) 762-0112



CLAIBORNE REFRIGERATION

We're The Inside Guys.

Serving Muleshoe For Over 40 Years



10 lb. Bag Covers 5000 Sq. Ft.

\$6³⁹

Diazanone

Kills Grubworms, Ticks and Fleas in your yard!

Muleshoe Feed Barn

311 W. American Blvd. 272-5626



Sandwiches
Pizza Hut Supreme \$3.49
Melted cheese on tender ham and salami slices, topped with lettuce, tomatoes and Italian dressing

Ham N Cheese \$3.49

Served with shredded lettuce, tomatoes, Italian dressing and melted cheese

Pancho Villa \$3.49

Sliced ham, melted cheese, chopped jalapenos, onions and mustard



272-4213

Delivery Available
11 a.m. - 1:30 p.m.
& After 5:00 p.m.

1412 W. Amer. Blvd.

U.S.D.A. Choice

Half of Beef **\$1⁴⁹** lb.

Cut and wrapped to your specifications!

Muleshoe Meat Market & Deli

506 W. American Blvd. 272-4361

DAILY BUFFET:

Includes Salad Bar & Cobbler

Serving Breakfast Daily

Connie Dominguez, Owner

HOURS: Monday-Friday 5:00 a.m.-4:00 p.m.
Saturday 5:00 a.m. - 2:00 p.m.

Connie's Place

121 Main 272-3126

Public Record

Obituaries

Virginia Shultz

EARTH - Funeral services for Virginia Shultz, 72, of Earth were held on Sunday, Aug. 21 at First Baptist Church with the Rev. Bobby Broyles officiating. Burial was held at Earth Memorial Cemetery.

Shultz died Friday, Aug. 19, 1994 at her residence of natural causes.

She was born Sept. 7, 1921 in Plainview. She married Jerry Shultz on Dec. 13, 1952 in Mexico. He died in 1980.

Virginia had been a resident of Earth for 20 years, moving there from Phoenix, Ariz. She worked for Dr. Homer Allgood in Muleshoe and was a member of First Baptist Church in Earth.

She is survived by a brother D.P. "Pete" Shoup of San Angelo; a sister, Dora Belle Angeley of Muleshoe and several nieces and nephews.

The family suggests memorials be sent to Earth Memorial Cemetery in Earth.

Funeral services were under the direction of Parsons-Ellis Funeral Home in Earth.



Visiting with constituents

During his annual town hall meeting with constituents on Monday, U.S. Representative Larry Combest (R-Texas) took time afterward to visit with local residents. Residents questions the state representative on issues from diesel fuel taxes to agriculture.

Library seeking memorabilia

The Heritage Gallery of the Weatherford Public Library is seeking information and memorabilia relative to Oliver Loving, Charles Goodnight, and Bose Ikard, Texas cattle drivers of the Loving - Goodnight trails in the 1860's. Their exploits and adventures on the trail are depicted in the fictitious

characters of McMurtry's book "Lonesome Dove".

The Traildriver's Exhibit is being organized by the Heritage Gallery Committee with assistance from Loving

family descendents and local historians. Oliver Loving and Bose Ikard are buried in Weatherford's City Greenwood Cemetery.

EMT classes to be held

Bailey County Emergency Medical Services (EMS) will be offering an Emergency Medical Technicians (EMT) class to be held in Muleshoe this fall.

In order for the class to begin, a minimum of 15 students must attend. In order to be eligible for the class, a person must be 18 years old and have a high school diploma or equivalent.

Classes will be held two

nights a week, from 6-10 p.m. for approximate four months in Muleshoe.

Upon completion of the course, a person will be eligible to be a part-time medic for Bailey County EMS. If anyone would like to be a part of the life-saving team for Bailey County, contact Jackie Wayne Burriss at Bailey County EMS, between 8 a.m. and 5 p.m. at 272-4390. We need your help!

Attention Soccer Players

AYSO



Soccer Registration For Boys and Girls Ages 5 and up August 26, 27, 28 North Plains Mall

**Farwell, Texas
800 3rd 481-3228
Sun., Aug. 28th 1-6 p.m.**

Enochs News

By Mrs. J.D. Bayless

Mrs. Mutt Autry and daughter JoAnn spent the weekend at Tres Tretos.

Mrs. Elnita Key visited her sisters, Mire and Bibbie Adams and Mrs. Bonnie Long one day the past week, at Marton, Bonnie is in the nursing home.

Mrs. Claudie Brown of Morton visited her sister-in-law Mrs Bonnie Blackstone Thursday.

Visiting Mrs. Inez Sanders and Mrs. Ellen Bayless Friday afternoon were Rev. and Berdia Howell from Littlefield.

Gene Stroud was a dinner guest in the home of his parents, Mr. and Mrs. Goldman Stroud Saturday.

Mr. and Mrs. Dale Nichols visited his aunt Mrs. Anna Mae Nichols at Littlefield Saturday afternoon.

John Snitker of Lubbock visited his dad Mr. and Mrs. J.C. Snitker Sunday.

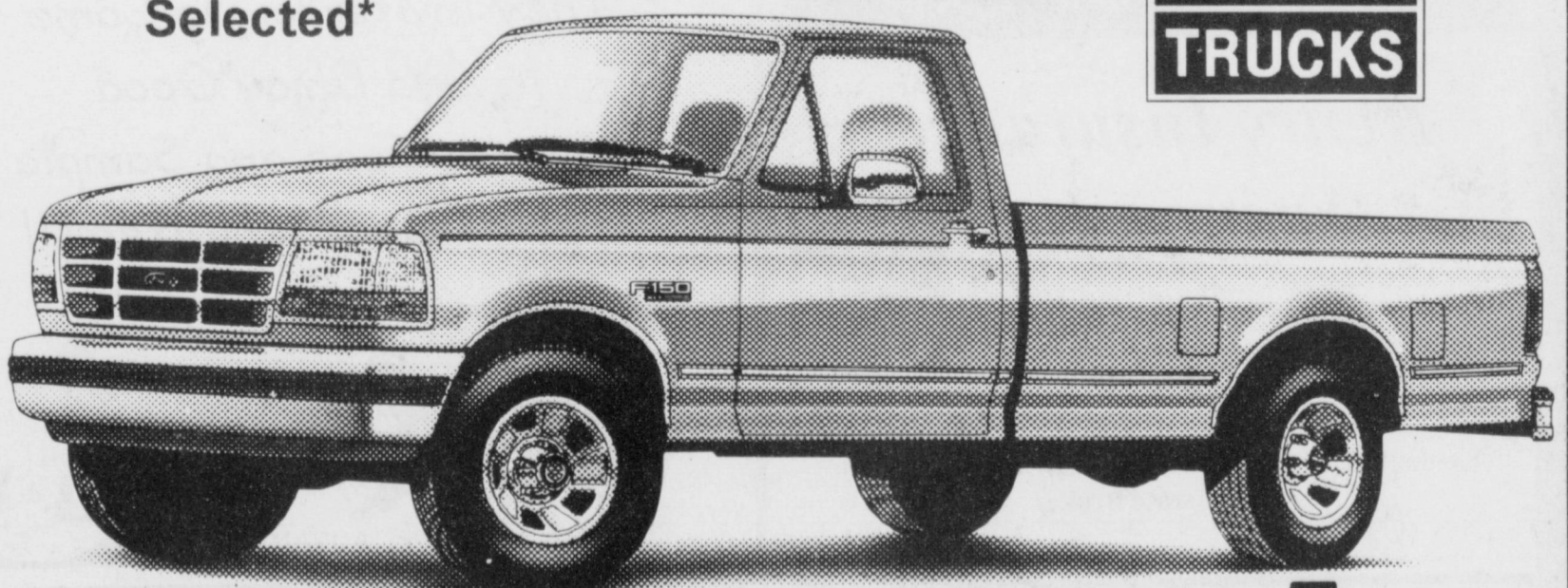
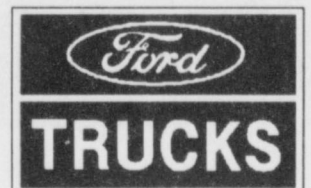
Mr. and Mrs. Jack Stanley were lunch guests in the home of his brother Mr. and Mrs. Bud Huff Sunday.

Ford Motor Company Has Just Announced

Special 2.9% APR Financing* For 48 Months

\$750⁰⁰ Cash Back From Ford Motor Co*

On Selected* 1994 F-Series



Or Choose A **\$1,000 Rebate****

On A 24 Month **Red Carpet Lease.**

We Have

Over 30 F-Series Trucks In Stock

That Qualify

HURRY IN!

This Program Lasts For A Limited Time Only

ALCO

A NEW FULL-LINE DISCOUNT STORE WILL OPEN SOON IN

MULESHOE TEXAS

Multiple opportunities exist in the below listed areas:

- Sporting Goods
- Automotive
- Health & Beauty Aids
- Stationery
- Housewares
- Photographic
- Domestic
- Ladies' Apparel
- Men's Apparel
- Boys' Apparel
- Girls' Apparel
- Fabrics
- Registers
- Receiving/Office
- Customer Service
- Maintenance

BENEFITS INCLUDE:

- Profit Sharing Plan
- Immediate Discount on Purchases
- Sick Leave
- Paid Vacations
- Holiday Pay

Please Pick Up An Application and Schedule An Interview At:

Texas Employment Commission
112 E. Avenue B
Muleshoe, Texas 79347

An Equal Opportunity Employer - Employer Paid Ad

TEAGUE STREBECK



(505) 356-8581 • (505) 762-3845
1115 North Chicago

Portales, NM

The very best prices and service anywhere... We personally guarantee it!


(On the first curve into Portales)

Triple Coupon WEEK

We Will TRIPLE Manufacturer Coupons UP TO 29¢ All Week!
See Store For Details!

REGULAR OR DIET
Sprite, Mr Pibb
or Fanta Red

99¢
12 oz. cans



MEAT

WILSON ALL MEAT Bologna 69¢
12 oz. pkg.

WILSON REGULAR OR POLISH Smoked Sausage 1.29
1 lb.

WILSON VARIETY PACK 99¢
12 oz. pkg.

WILSON REGULAR OR THICK SLICED Meat Bologna 1.39
1 lb.

WILSON JUMBO ALL MEAT Franks 88¢
1 lb.

WILSON ALL MEAT Franks 69¢
12 oz. pkg.

VALUE PACK FRESH FRYER Leg Quarters 29¢
lb.

VALUE PACK BONE-IN Round Steaks 1.89
lb.

SPLIT Fryer Breast 1.19
lb.

BONE-IN Round Steaks 1.69
lb.

SIRLOIN TIP Steak or Roast 2.49
lb.

Cube Steaks 2.69
lb.

BONELESS Rump Roast 1.79
lb.

OWEN'S REGULAR OR HOT Biscuits 1.99
12 oz. pkg.

CORN KING Half Hams 1.89
lb.

HORMEL CURE #1 MINI Half Ham 3.39
lb.

HORMEL LIGHT & LEAN Franks 1.89
1 lb.

HORMEL Little Sizzlers 99¢
12 oz. pkg.

BLACK LABEL LOW SALT REGULAR OR MESQUITE Hormel Bacon 1.79
1 lb.

Produce

SWEET JUICY Watermelons 1.88
ea.

SWEET YELLOW Corn on the Cob 7.1
For

CALIFORNIA ROMAINE, RED OR GREEN Leaf Lettuce 2 for 1

EXTRA LARGE Bell Peppers 3 for 1

JEWEL Green Limes 8 for 1

SUPER SELECT Cucumbers 3 for 1

MAKE CALLS NOT CHANGE.

WESTERN UNION PHONE CARD \$10

Buy the easy to use Western Union Phone Card, a pre-paid calling card. Available at these convenient locations.

Pay N Save Marketplace

Non Food Specials

LIQUID FABRIC SOFTENER Ultra Snuggle 1.99
64 oz. jug

FRISKIES BUFFET ASSORTED Cat Food 4.1
3 lbs. 40 ct.

CHINET COMPARTMENT OR Dinner Plates 2.3
18 ct.

MARDI GRAS Jumbo Towels 2.1
2 lbs.

GROCERY SPECIAL

ASSORTED, 64 oz. bl. Nestea or Powerade 1.79

BAMA, 16 oz. Jar APPLE OR Grape Jelly 1.19

ASSORTED, 46 oz. size Tropicana Twister 1.69

ASSORTED Lipton Tea Bags 1.99
24 ct.

WHITE OR YELLOW Morrison Cornbread Mix 4.1
4 For

CORNKITS, BISKITS OR PANKITS Morrison Kits 4.1
4 For

NABISCO ASSORTED CRACKERS OR COOKIES Snackwell's 1.79
5-7.75 oz. pkg.

LIFESAVERS ASSORTED Gummi Savers 3.99
1.5 oz. 13 ct.

RAGU ASSORTED Spaghetti Sauce 2 for 3
28-30 oz. jars

PACE THICK & CHUNKY ASSORTED Salsa 1.79
16 oz. jar

BLUE BUNNY 1/2 GAL. ROUND WHERE BLUE BELL NOT AVAILABLE REGULAR, LIGHT, DIET, YOGURT, OR BLUE BELL FREE Blue Bell Ice Cream 2.69
1/2 gal. ctn.

LOWE'S Homo Milk 1.97
OR SHURSAVING 1/2% OR 2%
1 gallon

VEGETABLE, BEEF STEW, MACARONI BEEF & CHICKEN STEW, NOODLE & TURKEY STEW, RICE, SPAGHETTI W/ MEATBALLS Gerber Graduates Main Dishes 89¢
6 oz.

PEACHES, PEARS, OR APPLES Gerber Graduates Diced Fruits 39¢
4.5 oz.

CARROTS, GREEN BEANS, POTATOES OR PEAS, 4.5 oz. Gerber Graduates Diced Vegetables 3 for 1

GERBER APPLE, APPLE/BANANA OR APPLE GRAPE Gerber Juices 99¢
3 pk, 6 oz.

HEALTH & BEAUTY

CAPLETS OR TABLETS, 50 ct. pkg. Bayer Aspirin 3.29

DUAL REGULAR OR SENSITIVE SKIN Stri-Dex Pads 1.99
32-55 ct. pkg.

ASSORTED, 6.4 oz. tube Crest Toothpaste 1.88

QUAKER SWEET PUFFS, FRUIT CURLS, COCOA BLASTS, JEFFERS, SWEET CRUNCH OR OATMMM'S Popeye Cereal 12-18 oz. box

CLIP & SAVE Sparkletts Water BUY TWO GET ONE FREE
Gallon w/coupon at right

FROZEN & DAIRY

SWANSON ASSORTED, 6.5-10 oz. pkgs Homestyle Entrees 2 for 3

STILWELL Mixed Vegetables 99¢
16 oz. pkg.

COUNTRY STYLE, REGULAR, CALCIUM OR PULP FREE Minute Maid Orange Juice 1.79
64 oz. ctn.

PHILADELPHIA CREAM CHEESE 99¢
8 oz. box

KRAFT PHILADELPHIA ASSORTED, 8 oz. box Cream Cheese 99¢

MICHELINA'S Macaroni & Cheese 79¢
9 oz.

ASSORTED Michelina's Entrees 99¢
9-10 oz.

ORE-IDA Corn on the Cob 2.3
4 ear pkg. 2 For

NO FAT, LITE, OR REGULAR Daisy Sour Cream 1.39
16 oz.

IMPERIAL Margarine Quarters 2.1
1 lb. 2 For

Blue Bonnet Spread 1.59
3 lb. bowl

ASSORTED SHAMPOO, CONDITIONER OR STYLING AIDS White Rain Exotics 88¢
4.11 oz.

ASSORTED Cuddles Diapers 2.99
24-32 ct. pkg. w/coupon at right

SAVE \$2.00 CUDDLES DIAPERS 24-32 ct. pkg.

Lowe's MARKETPLACE

515 W. Amer. Blvd. Muleshoe 272-4406

401 W. Amer. Blvd. Muleshoe 272-4585

Prices Effective August 1994

WED THUR FRI SAT SUN MON TUE
24 25 26 27 28 29 30

WE RESERVE THE RIGHT TO LIMIT QUANTITIES. NO SALES TO BE MADE ON DOUBLE COUPONS EVERYDAY. SEE STORE FOR DETAILS.

Pay-n-Save
QUALITY AND SERVICE

Our Best to you

Legal Matters

By Dan Morales, Attorney General

August is National Child Support Month. At this time every year, we pause to reaffirm the far-reaching importance of our efforts to ensure that Texas children receive the support owed them by both parents.

On an almost daily basis, we read about front-burner, headline-grabbing issues such as welfare reform and youth violence.

How often do we stop to think about the connection between these issues such as welfare reform and youth violence. How often do we stop to think about the connection between these issues and child support? Probably not enough. Yet the connection is direct and vital. Many children in our country grow up in poverty and on public assistance precisely because both parents do not help support them.

Recently, we released a new juvenile justice plan for Texas, which addresses the complex issues of youth violence and school safety. In that plan, we restate our belief that the child support program is an integral

part of the answer to the rising juvenile crime rate.

Most hardened criminals start out as disadvantaged children. Many have known both poverty and parental desertion early in their lives. Child support is critical. No child should unnecessarily experience the pain or the harmful effects of poverty.

And child support is not just about money. Children need to know who their parents are and that their parents care about them. In all our dealings, we actively and consistently urge both parents to stay in touch with their children.

Fathers are important
Our goal is to intervene as early as possible in cases where our assistance is needed. Two of our special child support initiatives are especially important in this respect: Parenthood and Paternity (PAPA) and Volunteers in Paternity (VIP).

PAPA is a program we have introduced to the public schools. It is a curriculum for teaching young people about the responsibilities of parenthood. We explain that the law

requires both parents to help support their child until the child is 18 years old.

The VIP program is based upon a partnership we have formed with more than 280 hospitals and birthing facilities across the state.

We find that many unmarried fathers respond positively when given the opportunity to acknowledge their newborns at the time of birth. Once legal paternity has been established, the ground work exists for a court order of child support - and that newborn's future is a little more secure.

Child support today and tomorrow

Our caseload continues to grow, and social forces beyond our control add new cases to our docket every day. For one thing, migration to Texas from other states is on the rise again. As a result, many of these new Texans owe child support which we must collect and send to other states.

Although the task is monumental, we are showing positive results. In the first three years of our administration, we collected more than \$1 billion in child support collections.

Currently, annual elections are near the \$430 million mark, and for Texas children, we established more than 30,000

paternities last year. We have made these gains through various strategies, some of which have been detailed in other Legal Matters columns: wage withholding, tax refund intercepts, and the new hire program, for example.

In the next year, we will be implementing a revolutionary system of automation to support the collection process.

This new system is slated to come on line next winter, and my technical staff is working around the clock now to ensure that every detail is in place before we shift the burden from the old system to the new.

For more information about our child support program, call us at 800-252-3515. To receive copies of our child support brochures, please visit your local Child Support Office. Or write to: Office of the Attorney General, Research and Legal Support Division, P.O. Box 12548, Austin, Texas 78711-2548.

Complete Line Monuments - Markers Memorials
Granites - Bronze
Muleshoe Memorial Park Cemetery, Inc.
232 Main P.O. Box 373
Muleshoe, TX
272-5727 or 272-4670

Weather

R.G. Bennett, Muleshoe

Date	High	Low	Rain
Friday, Aug. 19	103	63	
Saturday, Aug. 20	78	63	
Sunday, Aug. 21	83	64	
Monday, Aug. 22	91	63	



CHILL OUT
WITH A NEW DO LEMON FREEZ'R!

It's the newest frozen treat from Dairy Queen®! The DO® Lemon Freez'r. It's tangy. Refreshing. Smooth. And delicious! And it's also non-fat and cholesterol free. You've just gotta try it! Only at your participating Dairy Queen® stores!

DQ Treats & Eats

©Reg. U.S. Pat. & Tm. Off. Am. D.Q. Corp.

Letters to the Editor policy

The Muleshoe and Bailey County Journals welcome readers to write letters to the editor. Letters to the editor may be written on any subject, containing a person's comments or opinions on a particular issue they wish to address.

Letters to the editor do not necessarily portray the opinions or standpoints of people at the Muleshoe and Bailey County Journal, but by the people they are written by.

Letters to the editor will be published on Sundays on the Editorial Page. In order to be published, a letter must contain a person's signature and phone number. The person's name will be published along with the letter. No letters will be published that do not contain a signature.

The newspaper reserves the right to edit content which may be lengthy or contain potentially libellous material. Letters may be mailed, faxed or brought to the Muleshoe Journal.

Lariat Lutheran Church Auction

LARIAT, TX
SATURDAY, AUG. 27, 1994 • 11:00 AM TX TIME

Lariat is between Farwell TX and Muleshoe, TX on US Highway 70-84

FURNITURE

GOLD TWEED LAZY BOY RECLINER COUCH
LOVESEAT
KING SIZE WATERBED
BRASS BAKERS RACK
DROP LEAF TABLE
BRASS PLANT STAND
COFFEE TABLE
DESK CHAIR

BLDG. SUPPLIES

2X4 2X6 LOTS
BROWN SHINGLES
WHITE BRICK 1500 APP.
PVC PIPE
GLASS ENTRANCE DOOR W/FRAME
MEDICINE CABINET
ASSORTED LIGHT FIXTURES
ART DECOR BATHROOM SINK W/ACC.
APPROX. 80 YDS. 100% WOOL SCULPTURED CARPET
ASSORTED CABINET DOORS AND DRAWERS
1 GLASS SHOWER DOOR
HEAVY DUTY ALL STORM DOOR
SOLID OAK CHURCH PEWS
ANTIQUUE STYLE TOILETS
KITCHEN EXHAUST FAN
DOOR, FRAMES AND MOLDING
10 21" TO 36" WOOD DOORS
SINGLE SS SINK
WOOD SHELVEING

LUNCH AVAILABLE BY THE LADIES OF THE CHURCH

MISC.

LG PRESSURE COOKER
BENCH SEAT FOR FAN
WOODEN STEP STOOL
ROYAL TYPEWRITER
POT PLANTS
BEAUTY SHOP HAIRDRIYER
CHALKBOARD
3 WOOD TABLES
12 PRESCHOOL CHAIRS
LOT OF PRESCHOOL TOYS
2 CARD TABLES
20 SCHOOL DESKS
WOODEN STEP STOOL

APPLIANCES

SEARS GAS DRYER (GOOD)
GAS RANGE
KITCHEN AID DISHWASHER BLT IN IN CABINET W/ SS SINK AND FAUCET
AMANA FRIG. FREEZER 18 CU. FT.
1000 GAL. 200 PSI PROPANE TANK
FORCED AIR HEATER (4)
AIR COND. REF/VEAP. SEVERAL
GAS 15 HP AIR CONDITIONERS
30 GAL HOT WATER HEATER
CHARM GLO DOUBLE PROPANE & LAVA ROCK BAR B QUE GRILL

2 WHEEL PICKUP TRAILER

MISC. DISHES

MISC. HOUSEHOLD GOODS

ITEMS MARKED WITH (M) ARE NOT PART OF THE ESTATE. ITEMS MARKED (F) HAVE A MINIMUM BID.

All purchases must be paid for on day of sale. While descriptions are believed correct, the Auctioneers or Owners make no warranties or guarantees as to the genuineness, authenticity, or date of origin of any lot and will not be held responsible for advertising discrepancies or inaccuracies. All sales are final, when awarded to successful bidder. Buyer accepts full responsibility for all purchases made and holds the Auction Company and Owners free of any liability in the event of theft or disappearance of any items purchased.

ANY ANNOUNCEMENT MADE BY AUCTIONEER SUPERSEDES ANY PRINTED MATTER PERTAINING TO THE AUCTION.

Inspection All Day Friday & Saturday Prior to Auction

James Priest & Associates W & J Auction

"OUR KNOWLEDGE IS YOUR SECURITY"
AUCTIONEERS: James Priest, Butch Priest, Gid Priest
4205 South Prince Clovis, New Mexico

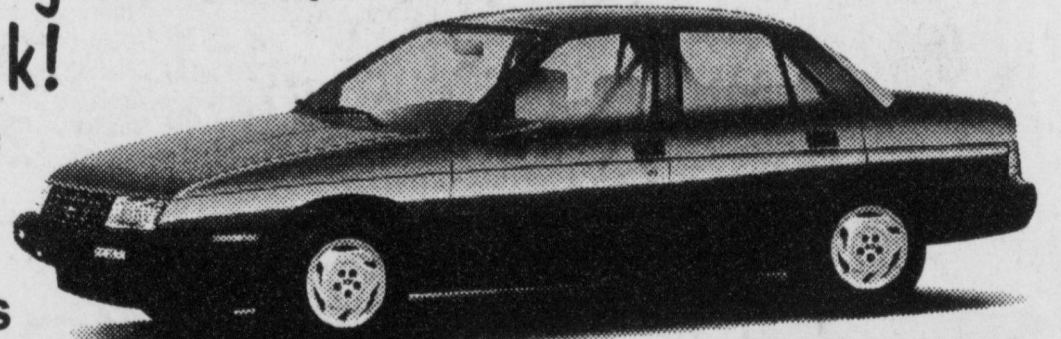
Clovis NM (505) 763-7311
Artesia, NM (505) 746-6727
Las Vegas NM (505) 454-8026
TX LIC. # 11077 & 9474
1-800-822-1243

CLOSE-OUT PRICES

We're Sacrificing All '94 Models In Stock!

To Make Room For The '95s

1994 CHEVROLET
CORSAICAS



Loaded With:
Automatic Transmission
Air Conditioning, Power Door Locks
Tilt Steering Wheel, Cruise Control
AM/FM Cassette, Driver's Side Air Bag
Anti-Lock Brake System

\$179⁹⁵ Per Month*

36 Month **GMAC SMARTBUY**
Optional Final Payment - \$6691.20
See Dealer For Other End Of Term Options

10% APR with \$800 down - Includes \$1000 factory rebate and \$500 First Time Buyer rebate assigned to dealer.

Low Prices / Low Payments On Used Cars & Trucks

88 Ford Ranger Super Cab
4x4, XLT, V6, 2 Tone Paint, Aluminum Wheels
Only **\$99** Per Month
48 months @ 12% APR with \$600 down*

88 Bonneville SSE
Automatic, Air Conditioner, Power Windows
Power Door Locks, Tilt, Cruise, AM/FM Cassette
Was \$9,995 Now Only **\$7,495**

88 Dodge Dakota Pickup
Automatic, Low Miles
Only **\$129** Per Month
48 months @ 12% APR with \$1000 down*

92 Chev S-10 4x4 Pickup
Tahoe Package, Automatic, Tilt, Cruise, Cassette
Aluminum Wheels, Long Wheel Base, Low Miles
Was \$13,995 Now Only **\$11,995**

88 Lincoln Town Car
Auto, Air, Windows, Locks, Tilt, Cruise, Cassette
Only **\$159** Per Month
48 months @ 12% APR with \$820 down*

92 Ford F-150 4x4
Was \$13,995 Now Only **\$11,995**

91 Ford Aerostar
Auto, Power Windows/Locks, Dual Air, Cassette,
Tilt, Cruise, Extended Length, Low Miles
Was \$14,995 Now Only **\$12,695**

92 Javelin 20' Fish & Ski
200 GT Johnson Motor
Foot-Controlled Electric Trolling Motor,
Fish Finders, 6 Live Wells, AM/FM Cassette
Below Deck Storage, Plus Many Other Accys

93 Cadillac DeVille
Automatic, Air, Power Windows / Door Locks
Tilt, Cruise, AM/FM Cassette, Leather Interior
Was \$26,995 Now Only **\$21,995**

Bad Credit? No Credit? We Can Help - Ask For Credit Man!

Win A Free Cellular Telephone!

Register At The Air Power Expo '94 At CFB - Saturday, August 27th, 10am-4pm

*Subject to lender's approval and prior sale

STREBECK

GM AUTOPLEX



Clovis Highway • Portales, NM

The very best prices and service anywhere... We personally guarantee it!

(505) 356-3501

(505) 763-3501

Senior Citizens hold monthly luncheon at Depot

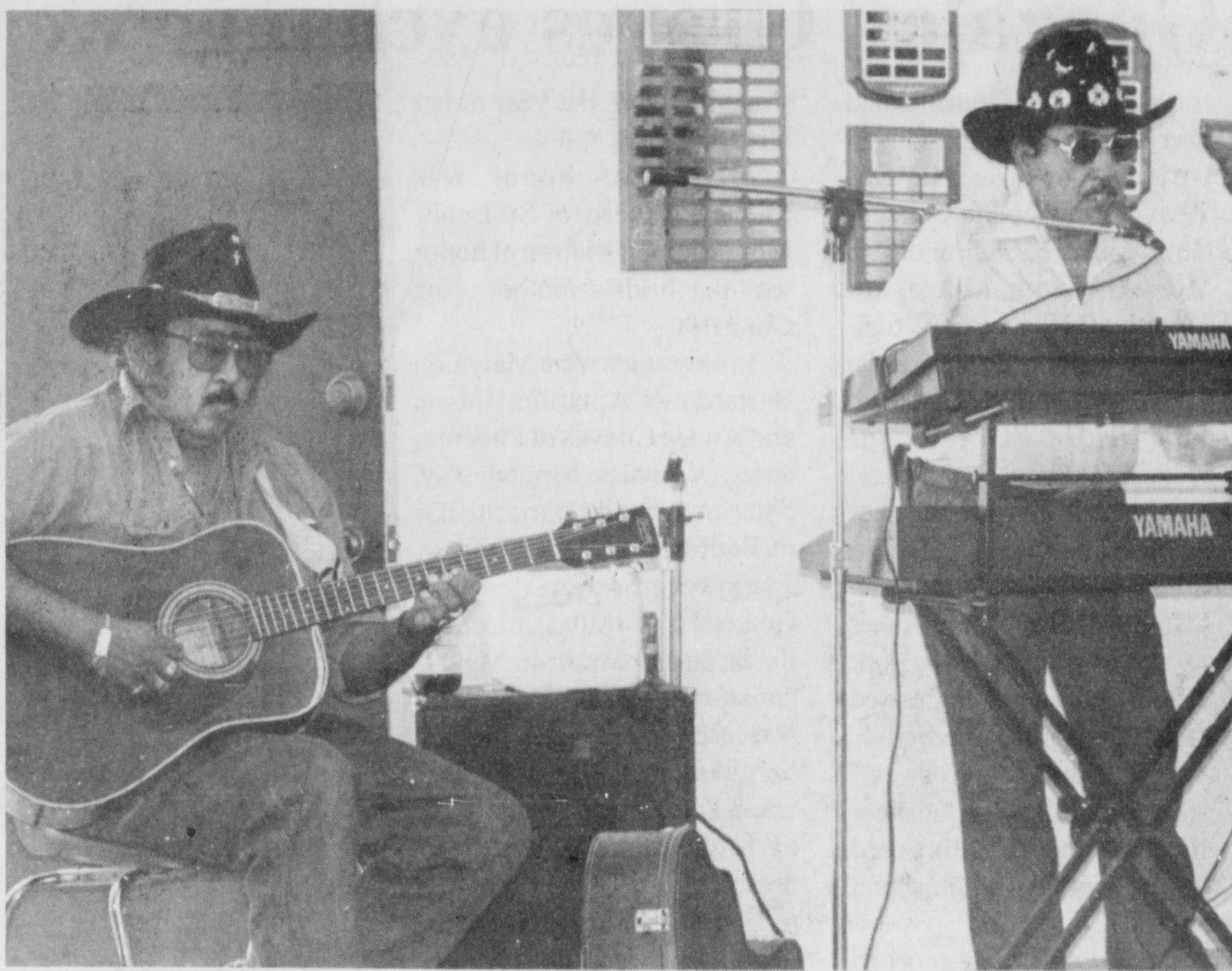
The Senior Citizens of Muleshoe met at the Heritage Depot for their regular covered-dish luncheon. The invocation was given by President Buster Kittrell. The pledge to the flag was given by Buster also.

In the absence of Margaret Collin, who is in Methodist Hospital with knee surgery, Buster made arrangements for the program with the Little Wranglers, Jimmy and Jessy Espinoza. They played music during the meal. Selections they played included "Just Because," "Blue Suede Shoes," "Pretty Women," "Amazing Grace" and many more.

Under business, it was voted to give \$25 to Kermit Price, a Boy Scout who is working on placing the world's largest muleshoe in front of the Heritage Depot. They want him to come to the next meeting to explain more about it.

The group voted to go to Lubbock to the Omnium Theatre for the Science Spectrum. They will leave Muleshoe at 9:30 a.m. on Wednesday, Sept. 14.

Minutes were read and ap-



TOE TAPPING TUNES - (Left) Jesse and Jimmy Espinoza, also known as the Little Wranglers, provided entertainment at the Senior Citizen's monthly covered-dish luncheon on Monday at the Heritage Depot.

proved. Thirty two members were present with six visitors. They were: Jimmy and Jessy Espinoza, Merriel and Leon

Lewis, Lucille Murrell from Earth and Velma Howell. Cards were signed for

Clifton Finley and Margaret Collins. The dismissal prayer was given by Alton Epling.

Marijuana

Continued from page 1

"There is marijuana and drugs in town and we do plan to work on it," Dominguez said. "Anyone who is caught will be

prosecuted, and if anyone knows of illegal drugs in the city, they should contact the police department."

Health

Continued from page 1

ing with everything else," Combest said.

Combest said Monday that the Clinton plan would do just that, interfere with others.

"If the government tells small businesses that they have to provide insurance for everyone, they will cut back on people to cut expenses or go out of business. That should not be the bottom line," he said.

Combest suggested a health insurance system that would allow small businesses to go into insurance plans together like one large company in order to make them eligible for discounts larger companies receive.

According to Combest, 25 percent of the cost of health care today is regulatory.

"We need to get rid of the red tape," he said. "Under the proposed health care plan by Clinton, 60 agencies will be

created. I feel that if we are going to change something like this, we need to do it right. It would be worse if we did it wrong," Combest said.

Combest said his office has been receiving thousands of calls from members of the American Association of Retired People (AARP), saying they do not support Clinton's proposed health care reform.

"Nationwide, people are scared of government regulating health care. It will take away their freedom to choose," Combest said.

"We have to provide opportunity for healthcare," Combest said.

According to Combest, U.S. lawmakers have been receiving three times the normal amount of mail since Clinton revealed his proposed healthcare reform plan.

Muleshoe

Continued from page 1
have an informal awards picnic on Saturday, Aug. 20 in the Farwell Park at 6 p.m.

The awards picnic is the

culmination of the 4-H year and will recognize 4-Hers and adults for the work they accomplished in the 1993-94 year.

WE WELCOME YOUR COMMENTS - WRITE A LETTER TO THE EDITOR.
MULESHOE JOURNAL
Box 449
MULESHOE, TX 79347

Got something to buy or sell?
Read the classifieds!

Cardinals Sport Center brings all their name brand shoes, apparel, and equipment to a new location in Plainview.

GRAND Opening SALE

Cardinals is excited to bring our special brand of sports excitement to Plainview and we're kicking off with a giant Grand Opening Sale now through Wednesday, August 31!

All team licensed T-shirts and sweatshirts, 20% off

All No Fear, Nike and Above the Rim apparel, 20% off

All Nike warmups, 20% off

All licensed caps, 20% off

All licensed jackets by Apex One, Starter, Logo Athletics, 20% off

\$5 off every single pair of shoes in stock (regular price merchandise and we'll even take an extra \$5 off the sale price of in stock shoes) Shoes by Nike, Adidas, Reebok, Puma, Fila, Converse, more!

Cardinals
SPORT CENTERS
3404 Olton Road-Plainview 293-3694

MULESHOE CATTLE MARKET

Saturday, August 20, 1994, 670 Head of Cattle Was Sold. Trend was steady to 2 dollars lower

STEERS	
Weight	Per #
200-300 lbs.....	\$1.00-1.15
300-400 lbs.....	\$0.90-1.00
400-500 lbs.....	\$0.80-0.90
500-600 lbs.....	\$0.78-0.88
600-700 lbs.....	\$0.75-0.80
700-800 lbs.....	\$0.70-0.77

HEIFERS	
Weight	Per #
200-300 lbs.....	\$0.90-1.00
300-400 lbs.....	\$0.85-0.95
400-500 lbs.....	\$0.80-0.90
500-600 lbs.....	\$0.75-0.85
600-700 lbs.....	\$0.70-0.75
700-800 lbs.....	\$0.65-0.75

PAIRS	
Type	Per head
Good and young.....	\$800.00-950.00
Others.....	\$600.00-800.00

BRED COWS	
Type	Per head
Good and young.....	\$500.00-600.00
Others.....	\$450.00-550.00

PACKER COWS	
Type	Per #
Ranged.....	\$45.00-49.00
Others.....	\$40.00-45.00

PACKER BULLS	
Type	Per #
Ranged.....	\$55.00-60.00

REPRESENTATIVE SALES				
Seller, City	#	Type	Wt.	CWT or PH
Robbie Barrett, Muleshoe.....		Bmf Bull Clf.....	160.....	\$245.00 per hd
Bill Bradley, Amherst.....		Red Bull.....	210.....	\$260.00
Bill Bradley, Amherst.....	4	Mxd Bulls.....	330.....	\$100.00
Ginny Allen, Amherst.....	2	Rwf Str.....	400.....	\$89.00
Bill Roberson, Muleshoe.....	3	Char Str.....	590.....	\$80.25
John Fred, Morton.....		Rwf Str.....	685.....	\$77.50
Glen Huffaker, Plains.....		Blk Str.....	750.....	\$75.00
Arnold Huseman, Nazareth.....	2	Hol Str.....	835.....	\$55.00
Robbie Barrett, Muleshoe.....	2	Bm Hfr.....	210.....	\$250.00
Bill Bradley, Amherst.....	4	Mxd Hfr.....	350.....	\$85.50
Jerry McGrizht, Clovis, N.M.....		Char Hfr.....	310.....	\$86.00
Bill Roberson, Muleshoe.....	9	Char Hfr.....	560.....	\$75.00
Bill Roberson, Muleshoe.....	3	Char Hfr.....	645.....	\$74.75
Shafer Cattle, Muleshoe.....	1	Blk Hfr.....	715.....	\$71.00
Carlos Martinez, Muleshoe.....	1	Rwf Hfr.....	620.....	\$74.00
Paula Nix, Olton.....		Rwf Pair.....	1740.....	\$950.00
CM Cattle, Farwell.....	4	Blk Pr.....	1420.....	\$800.00
Bill Bradley, Amherst.....		Blk Pr.....	1395.....	\$720.00
RL Davis, Maple, Tx.....		Char Pr.....	1290.....	\$800.00
Hollis Horton, Friona.....		Bwf Cow P7.....	1315.....	\$640.00
F&M Cattle, Brownfield.....		Blk Cow P8.....	930.....	\$580.00
Randy Johnson, Muleshoe.....		Rwf Cow P7.....	1050.....	\$570.00
Tommy Lewis, Morton.....		Blk Cow.....	1215.....	\$48.75
Jim Hill, Plainview.....		Hol Cow.....	1245.....	\$47.50
Royce Turner, Muleshoe.....		Rwf Cow.....	880.....	\$48.00
D.C. Pearson, Ropesville.....		Red Bull.....	2005.....	\$60.00
Tommy Lewis, Morton.....		Char Bull.....	1645.....	\$59.00

The Muleshoe Cattle Market is brought to you each week by Muleshoe Livestock Auction, located east of Muleshoe on U.S. 84. Muleshoe Livestock conducts sales every Saturday, beginning with hogs, sheep and goats at 10 a.m. and cattle following at approximately 12 noon. For information on sales or to consign cattle, call (806) 272-4201.

South Plains cotton growers are ready to harvest this fall

LUBBOCK - Cotton producers on the Texas South Plains are anxious to bring this crop to harvest and get ready for a new season. Harvest in this area normally begins about Halloween, after the first freeze dries and desiccates the plants.

An almost three-month drought over most of the three-million-acre "cotton patch" in Lubbock and 24 surrounding counties got some relief the end of July with scattered showers in some areas. But those rains came too late for a million acres of dryland (not irrigated) cotton and has farmers facing crucial decisions about the remaining dryland and irrigated fields.

Those late rains are causing cotton plants to put on new growth, trying to make bolls which probably won't have time to mature this season. And they have slowed development of existing bolls. Now farmers must decide whether to try to hold onto the crop awhile longer and gamble on increased yields or to apply harvest aids and strip the early bolls before they can deteriorate.

"Half the fields are still in the blooming cycle," said Kater Hake, cotton agronomist with the Texas Agricultural Extension Service. "Some of this cotton would like to have hot dry weather" to mature the bolls already on the plants, "while other plants would like more rain," he said.

Fields which have survived the summer weather onslaught have matured more rapidly than usual. "Many fields are about 10 days ahead of last year's crop," Hake said.

"Where growers had water and could irrigate, the crop looks superb," he notes. "Some fields look better in fruit set (the load of fiber-producing bolls) than the best fields did last year."

And last year, with 3.4 million bales, was the second best crop in the area's history.

But with the loss of the million acres of dryland crop, scattered hail losses and other weather damage in irrigated fields, area crop watchers are expecting this year's South Plains harvest to be some 2.1 to 2.7 million bales.

"Last year made many (area) cotton producers believers in the use of harvest aids on early maturing fields," Hake said. Harvest aids dry down the crop and rid plants of leaves before machines strip the open bolls. Hake said several factors should make harvest aids even more successful this year:

* The crop is 7 to 10 days ahead of last year. "The risk from not using harvest aids will be greater, as the time interval between boll opening and a freeze-aided harvest will be longer," Hake said. The longer open bolls remain in the field, the more likely they are to sustain weather damage to the fiber;

* Early applications of harvest aids generally go on when the weather is warmer and lower rates of less expensive materials are effective;

* The plants are shorter than last year, with the same boll retention. "Short, compact, well fruited plants respond extremely well to harvest aids. Use of lower rates of the materials, and single applications, should be possible on more acreage in 1994," the cotton agronomist said.

* Growers made a "quantum leap forward in harvest aid experience and knowledge" with last year's crop, Hake said.

The Extension Service agronomist said another key decision facing growers is that of properly winding down the irrigation of the crop. "The objective at this time is to keep the plant healthy enough to retain and mature bolls while depleting the soil moisture and maximizing the heat units to mature the bolls," Hake said.

Weddings

Gonzales, Graves exchange wedding vows

Selina Katrin Gonzales and Terry Lynn Graves exchanged wedding vows on May 28, 1994 at Immaculate Conception Catholic Church in Muleshoe with Monsignor Timothy P. Schuertner officiating. Parents of the couple are Ana M. Gonzales and Bob and Billie Graves of Muleshoe.

Given in marriage by her mother and brother Sergio Gonzales, the bride wore an Alfred Angelo Dream Maker gown designed in New York City. The gown was created with bridal satin. The bodice was fashioned with a sweetheart neckline with a sheer illusion yoke complimented with a jeweled wedding band collar.

Cascading pearls adorned the neckline. A full-length Juliette sleeve accented the princess bodice. Appliques of Schifflil lace embellished with pearls and sequins adorned the bodice and sleeves. A fitted basque waistline allowed the full-ball gown skirt to float to the floor and sweep into a full royal-length train. The train was adorned with insets of Schifflil lace embellished with pearls and sequins. A cascade of satin duchess roses transcended the train and allowed it to bustle for the reception.

The bride chose a rose and pearl band with a cascade on one side, highlighted with a double-pouf accented with pearls and two tiered illusion veiling.

The bridal bouquet was a cascade consisting of bridal pink and white roses, white stephanotis, hot pink stargazer lilies with sprays of pearls and teal and pink ribbon accents. It was signed by Ruth Owen of Muleshoe.

For something old, the bride wore a gold ring belonging to her great-grandmother Felicitas Gonzales. Something new was her dress and veil. Something borrowed was the gold ring from her grandmother, Mrs. Cuevas of Muleshoe. Something blue was her garter. The bride also wore a penny in her

shoe minted in the year of her birthday.

Matron of honor was Michele Roberts of St. Louis, Mo. Honorary matron of honor was the bride's mother, Ana Gonzales.

Bridesmaids were Mary Lou Bastardo of Amarillo, Cassie and Andee Cuevas of Phoenix, Ariz., Veronica Montalvo of San Antonio, and Daria Stanko of Bedford.

Flower girls were Mercedes Gonzales of Dallas, niece of the bride and Madison Myers, cousin of the groom. Mercedes was escorted by her brother Sergio Gonzales II of Dallas. Laura Perez, cousin of the bride of Muleshoe, was the train bearer.

Myndi Heathington, cousin of the groom of Muleshoe, was pillow bearer. Crystal Heathington, cousin of the groom of Muleshoe, and Quino Cuevas, cousin of the bride of Phoenix, Ariz., were the ringbearers. Candlelighters were Michael Dunham, cousin of the groom and Mike Foss of Muleshoe.

The groom was dressed in a showl-style long tail tuxedo by Raffetina. Bestman was Jerry Bob Graves, brother of the groom of Muleshoe. Groomsman were Mike Foss, Michael Dunham and Pat O'Grady of Muleshoe, Scott Calvert and Kyle Cranford of Lubbock and Mike Harris of Irving. Ushers were the groomsmen.

Guests were registered by Ana Mendoza of Muleshoe, Dora Morales of San Antonio, cousins of the bride. Alisa Gray handed out wedding programs written by Gary Watkins. Musical selections were presented by Alan Finney, Laura Leal and Betty Hutton.

Godparents were: Lazzo-Mr. and Mrs. Sergio Gonzales; arras-Mr. and Mrs. Aurelio Cuevas Jr.; Iglesia-Mr. and Mrs. Noe Anzaldua; mariachi-Mr. and Mrs. Jesse Leal; brindis-Mr. and Mrs. Roy Anzaldua and Mr. and Mrs. Joe Flores; pastel-Alicia Avila, Dora Morales, Lila Avila, Herminia Moreno; pala y cuchello-Annie Avila.



Mr. and Mrs. Terry Lynn Graves

Special guests were: Mr. and Mrs. Norberto Garza and family of Laredo; Dr. and Mrs. Charles Pummill of Bedford; Olga and Mari Trevino, Odila Perales and Mirtala Sanchez of Monterrey, Mexico; Mr. and Mrs. Shawn Nieman of Lubbock; Mr. and Mrs. Steve Bradshaw of San Antonio; Mr. and Mrs. Gary Atwood of Enid, Okla.; Mr. and Mrs. Luis Saucedo of Littlefield; Mr. and Mrs. Ray Scott of Blanchard, Okla.; Mr. and Mrs. Paul King of Levelland; Mr. and Mrs. Garrick King of Bakersfield, Calif.; Mrs. Beronima Gonzales and Robert of San Antonio; Mr. and Mrs. Rob

Donaldson of Monroe, La., a Mr. and Marilyn Bye of Wawataus, Milwaukee; Aurelio Cuevas, grandmother of the bride and Vernal King, grandfather of the groom.

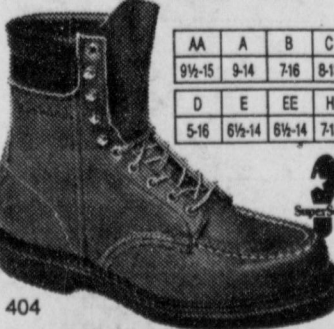
For their honeymoon, the couple spent a week in San Juan, Puerto Rico, enjoying a seven-day Caribbean cruise.

The bride is a Muleshoe High School graduate and is a chemistry major at the University of North Texas. The groom is a graduate of Muleshoe High School and Texas Tech University. He is a teacher and tennis coach at Muleshoe High School.

Birthday policy

The Muleshoe and Bailey County Journals publish birthday announcements free of charge for babies one year old or for people ages 90 and over. A photo may also be included with the announcement. Complete guidelines and forms are available at the Muleshoe Journal office.

M-M-M-M!



Sink your workin' feet into 8 inches of Red Wing soft... Red Wing support... and Red Wing fit Days go better!

The Fair Store

120 Main 272-3500
Muleshoe, Texas



The Muleshoe Chamber of Commerce and Agriculture wishes to express our most sincere thanks to the following named businesses and individuals that contributed to our Mule Days 1994!

Whiteface Feedyard
Wes Tex Feedyard
Winkler's Meats
K.C. Mufflers Manufacturing, Inc.
Robert Clark's Texaco Service Station
Robert Hooten - Muleshoe Motor
Herman Morrison - Texaco Distributor
Barbara E. Wilson
Jack & Peggy Bates
Paco Feed Yards
Muleshoe Feed Barn
Town and Country #134
Bovina Feeders
Paul Poyner - Home & Auto
Sanitary Barbershop
Lambert Cleaners
Spudnut Shop
Coyote Lake Feedyard

Mike & Terry Hahn - James Crane Tire
Texas Sesame
Shipman Body Shop
Dinnerbell Cafe
Muleshoe State Bank
J&J Storage
Mark Morton - State Farm Insurance
David Tipps - Farm Bureau Insurance
Cliff Black
Higginbotham - Bartlett
Bank of America
First Bank of Muleshoe
Fry and Cox
Williams Brothers Office Supply
Family Medical Care - Dr. McClanahan
Five Area Telephone
Bratchers Motor Supply
Cliffs Tire Company

A Special Thank You To:

Mr. Donald Harrison - Barbara Wilson - Alice Cocherham - Mr. Jack Templar and Rhonda Calvary for their extra time and efforts.

Our Board of Directors for their efforts to make Mule Days a Success!

KENW-TV

Public Television

WHAT'S NEW

JOHN EATON PRESENTS:
"Life and Music of George Gershwin"
"Life and Music of Duke Ellington"

Sunday, 28th, 3:00 and 3:30 p.m.

Through musical examples, storytelling, and anecdotal material, Mr. Eaton presents the life and music of two American greats. Joined by world class musicians including clarinetist Wally Garner, drummer Dude Brown, and bassist Tommy Cecil, he demonstrates the characteristics of each artist's music which make it unique and timeless. Gershwin selections include "Summertime," "They Can't Take That Away From Me," and "Rhapsody in Blue," while Ellington selections

MUSIC MASTERS AND RHYTHM KINGS
Sunday, 28th, 4:00 p.m.

This documentary journeys to the American South to celebrate cultural diversity through music, history, and humor. Told through the stories of four musicians and three different types of music — blues, bluegrass, and Afro-Cuban bembé — this program demonstrates how music can be a powerful force for cultural sharing and understanding.

RHYTHMS OF THE WORLD
Monday, 29th, 8:00 p.m.

A combination of sweat, sun, and sound, this program is jam-packed with the best of world beat music, sampling global sounds to create an overview of cross-cultural musical influences. Singers Bobby McFerrin and Peter Gabriel host.

SILENT SURVIVORS
Tuesday, 30th, 11:30 p.m.

During the Viet Nam Conflict, many of the 2.7 million men and women who went into battle died and many returned. But there are still some that continue to be declared missing. This program chronicles the lives of the families whose loved ones are POW MIA's from the Viet Nam conflict. It conveys the grief and hope these families hold, and the belief that someday they will be reunited with those they love.

RIVER OF STEEL
Wednesday, 31st, 8:30 p.m.

This special chronicles the turn-of-the-century struggle to build the Interborough Rapid Transit (IRT), New York's first subway line. A vast complex system, it was considered folly by many when it was first conceived. Narrated by actress Anne Jackson, the program utilizes never-before-seen footage, including some of the earliest home movies from the 1920s, archival photographs, and antique postcards to tell the story of the visionary crusade to link Manhattan to the other boroughs.

Channel 3 Television from
Eastern New Mexico University, Portales, New Mexico

Got something to buy or sell?
Read the classifieds!

Journal Classifieds

Call 272-4536 Deadlines: For Thursday, Noon Tuesday; for Sunday, Noon Friday Call 272-4536

CLASSIFIED RATES
 15 words & upder, minimum charge \$2.30
 Thereafter \$2.00.
 16 words & over,
 1st Insertion 15 cents per word,
 2nd Insertion 13 cents per word
CLASSIFIED DISPLAY RATES
 \$1.75 Per Column Inch

DEADLINES
 Noon Tues. For Thursday Paper.
 Noon Friday For Sunday Paper.

To receive the reduced rate after the first insertion, ad must run contiously. We reserve the right to classify, revise, or reject any ad. We are not responsible for any error after ad has run once.

Help Wanted
POSTAL JOBS
 Start \$11.41/hr. For exam and application info. call (219)769-8301 ext TX759, 8 AM- 8 PM, Sun-Fri. O3-32t-8tp

HOME ALONE? Senior Citizens, shut-ins, latch key kids. We call daily just to make sure everything is O.K. Reasonable rates. (806)272-5426. M15-31t-12tp

Need a part-time bartender at the Muleshoe VFW. Apply in person at VFW after 3:00. V3-34s-4tc

Drivers needed for new equipment. Booker transportation needs to staff 2 1994 Air Ride Conventional with 3406E multi torque cats. We operate in 10 midwestern states with majority of miles being in Texas, Oklahoma, Kansas and Colorado. We are a refrigerated carrier that offers a competitive wage plus a \$10,000 longevity bonus. Our biggest haul is "meat to Texas". If you like the short haul & plenty of miles, this is for you. We have never lost a driver due to "not enough miles". Give us a call at 800-569-4633, Booker, TX. B3-34t-7tc

Business Opportunities
 Own your own apparel or shoe store, choose: jean/sportswear, bridal, lingerie, westernwear, ladies, men's, large sizes, infant/preteen, petite, dancewear/aerobic, maternity, or accessories store. Over 2000 name brands. \$24,900 to \$36,900: Inventory, training, fixtures, grand opening, etc. Can open 15 days. Mr. Loighlin (612) 888-6555. R15-34t-1tp(t)

Automobiles
 1993 Ford Tempo, 4 door, loaded, very nice. \$8900. 272-5690. M8-34t-8tc
 1983 Mercury Marque, 4 door, loaded, good condition, runs good, \$1,500. Call 925-6712 after 3 o'clock. M8-34t-4tp
 1986 Buick Park Avenue. This car is in immaculate condition. It has been very well maintained. Priced to sell or trade. Call (505) 359-0117. Portales. S8-34s-3tc

0 Down, 90 days same as cash No payments till October!
 Wood Bunk Beds complete with mattress...239.99
 5 pc. Bedroom Suites...399.99
 Dinettes starting at..... 174.75
 New furniture at used prices! Serving the area for 35 years.
Factory Direct Furniture Warehouse
 300 S. Ave C, Portales, NM (505) 356-4814

Mobile Homes
 DOUBLE WIDES, 95 Models, 3 Bed 2 Bath, Only 264.05 per month, FREE Delivery & Setup, FREE Skirting with Home purchased this month, **BELL MOBILE HOMES 806-894-7212. 10% DN * 10.75 APR * 240 months.** \$1250.00 Down & \$240.09 per month on 95 Model 16x80, 3 Bed 2 Bath Clayton, FREE Delivery & Setup, FREE Skirting with Home Purchased this month, **BELL MOBILE HOMES 806-894-7212. 5% DN * 11.5 APR * 240 months.**

Land For Sale
 Land For Sale Price Reduced
 320 acres 2 miles South of Lariat. 160 acres each side of FM 1731. NW/4 Section 19 and NE/4 Section 30. 4 wells, 2 Valley pivots, corn & wheat base. \$150,000, 7.5% Variable Interest Rate, Contact the Federal Land Bank Association of Muleshoe. 806-272-3010.

Miscellaneous
 All types of fencing and corrals constructed. Call 925-6742 evenings. M15-27s-tfc

MUST SELL!! 1990 Olds Cutlass Supreme, power windows, power locks, power mirrors, air cond., AM/FM cassette, tilt, cruise, rear defrost, aluminum wheels, V-6 engine, automatic transmission, and much more!! No old contract to assume, no back payments to make, just need responsible party to make reasonable monthly payments, contact **Kim Humphrey** in the Credit Dept. Friona Motors, 806/247-2701.

Must Sell!! 1994 Ford Escort LX Wagon, automatic with overdrive, AM/FM cassette, electric mirrors, luggage rack, rear wiper/washer, cruise control, driver side air bag, and much more! No old contract to assume, no back payments to make, just need responsible party to make reasonable monthly payments, contact **John Risher** in the credit dept., Friona Motors, 806/247-2701

MUST SELL!! 1994 Mercury Cougar XR-7, V-8 automatic with overdrive, power windows, power locks, power mirrors, 6-way driver's seat, tilt, cruise, air conditioning, AM/FM cassette, dual airbags, rear defrost, aluminum wheels & more! No old contract to assume, no back payments to make, just need responsible party to make reasonable monthly payments, contact **Kim Humphrey**, 806/247-2701.

MUST SELL!! 93 Ford Aerostar, XLT, extended van, 7 passenger seating, power windows, power door locks, front & rear air conditioning, cruise control, tilt steering wheel, AM/FM stereo cassette, and much more. No old contracts to assume, no back payments to make, just need responsible party to make reasonable monthly payments. Call **Kim Humphrey** in the Credit Dept, Friona Motors, 806/247-2701

"SPECIAL OF THE WEEK"
Kemp Home Furnishings
 414 W. American Blvd.
 272-5023

Sizzling Special: Beautiful Queen sized pine BR. suite: Mirrored Bookcase headboard and dresser top, 2 night stands, Hutch-styled dresser base. Special price \$999.00. Bring us your furniture needs and your troubles. The tremendous savings will make the later go away! Have a great week!

"Let us save you money"
Wayland James Wanda

TEXAS MIGRANT COUNCIL
 Summer Employment
 Is now taking applications for infant-toddler teacher trainees:
 Qualifications Needed:
 1. High School Diploma or G. E.D.
 2. Some experience in child care
 3. Bilingual helpful
 For applications come by 101 E. Ave. B., Muleshoe

\$50,000 A YEAR CAREER OPPORTUNITY AVAIL ABLE IN AUTOMOBILE SALES.

- * DEMO PLAN
- * FAMILY HEALTH INSURANCE
- * HIGH VOLUME FLOOR TRAFFIC
- * OPPORTUNITY FOR ADVANCEMENT
- * AGGRESSIVE MANAGEMENT TEAM
- * HIGH INVENTORY TO SELL FROM
- * 4 NEW CAR FRANCHISES TO SELL FROM INCLUDING FORD AND CHEVROLET

See Dave King or Doug Hulderman at Friona Motors, 1011 Grand Ave, Friona TX or call 806/247-2701 to schedule a confidential interview. Only aggressive individuals seeking high income career in automobile sales need apply.

HENRY REALTY
 111 W. AVE. B 272-4581
 Muleshoe, Tx.

West part of town, 3 bed, 1 bath, dining room, stucco finish, wood doors and windows. Large lot. See us appreciate.

 Near High School-3 Bedroom, 3 Bath, BV Central Heat, Ducted in Evaporative Air Cond., Carpet throughout, Large Den with rock fireplace, Top grade wood paneling throughout. Storm Windows and Doors. Insulation in ceiling. Large utility room and spacious storage area. Kitchen built-ins.

 Country Club Addition, 2 bedroom, 1 bath, 4 carport, new roof, carpet, 2 ceiling fans. Includes vacant lot next door. Storm doors and windows.

 Country Club Addition, 2 bedroom, 1 bath, enclosed carport, new protective siding. Carpet throughout, wood fence, storm doors and some storm windows. Ceiling fans, new front porch and new back patio. Ample storage, storm cellar. Excellent condition.

 Excellent location, large 2 bedroom, 1 bath, dining room, large utility with hookup for washer & dryer, carpet, double carport, spacious hobby shop. Call for appointment.

 Edge of town 3 bedroom, 2 bath, large den with fireplace, large utility room, heat pump, carpet, kitchen, builtins. Call for appointment.

 Reduced Price - Owner ready to sell. 2 bedroom, 1 bath, 1 car garage, carpet, wood fence, storm cellar.

COMMERCIAL PROPERTY
 Ideal location on West American Blvd. 150' highway frontage. A great Lease opportunity.

 West American Boulevard 150' frontage. Priced to sell.

Legal Notice
Notice to Contractors Of Proposed Texas Highway Maintenance Work
 Sealed proposals for: Modification of Picnic Areas, A.D.A. on highway(s) Various in: Parmer, Castro, Swisher, Bailey, Lamb & Lubbock. Will be received by the Texas Department of Transportation located at: 135 slaton Rd., Lubbock, Texas, until 10:00 A.M., Thursday, September 8, 1994. Then publicly opened and read.

 All prospective bidders are notified that there will be No Pre-Bidders' Conference *****
 Bidding proposals, plans and specifications will be available at the Office of: Woody Marcy, 135 Slaton Rd., Lubbock, Texas. Telephone (806) 745-4411. Usual rights reserved.
 C15-34t-2tc

Real Estate
 For Sale 3 bedroom, 2 bath, brick home, nice lawn and trees, in Lazbuddie school district, 965-2342. M8-33t-4tp

New Truck Just Arrived
STUBBLEFIELD'S
 Rugs & Remnants
 2226 19th in Lubbock 806-744-REMS
 Cash and Carry-Free Local Delivery
 Carpet Starting at \$2.99 Sq. yd.
 Store Hours Mon-Sat 7-6, Closed Sun.
 A new concept in buying carpet you'll love. We buy roll ends & remnants from the factor at drastically reduced prices. These fine quality products will save you 40-70% off retail. Our overhead is low with no commission sales people. We also have large rolls of slightly irregular products; i.e. Plush Pile @ \$4.59 Per Sq. Yd. Heavy Plush @ \$10.95 Per Sq. Yd. 1000's of rolls of wallpaper, \$1.50 per roll-closeout. New selection of wallpaper, regular \$19.99; sale price \$4.99 single roll. All stock vinyl from \$2.99 to \$5.99 Sq. Yd. Selections include: Armstrong, Tarkett, Domco & Mannington. 12x32 No wax Vinyl Self Stick Tiles \$.68 Sq. Ft. Tool rental for do it yourselfers. So if you want to know what factory direct prices are really like, come see us. Don't forget, from 1 room to the whole house, you won't make a better deal than at:
"STUBBLEFIELD'S"

Minding Your Own Business

By Don Taylor

The clerk didn't look up as I entered the motel lobby. I approached the counter and without making eye contact the clerk said, "Yes?"

"I'm Don Taylor and I think you have a room reserved for me," I replied. The clerk frowned and marked his place carefully in the stack of papers he was working on. He checked the records and slapped a registration form on the counter. "Fill out the top part," the clerk ordered. There was no please; no greeting, no smile, no eye contact, just the order to fill out the form.

I filled out the card and asked politely, "That is a non-smoking room isn't it?"

"Yes," was the short reply.

"If you have something on the ground floor I'd appreciate it," I suggested hopefully. I'd just driven 350 miles after a full day at the office and the thought of making several trips upstairs was not appealing.

I sighed and reminded myself, that it was late and the motel was probably full and I should be grateful just to have a room. I accepted the key and followed the rerrfunctory instructions to find

my room.
 "No," he replied. "Your room is on the second floor."

As I parked, I noticed that several ground floor, non-smoking rooms were empty. That's when I realized that I was more of an interruption to the motel clerk's work than a customer to be pleased. Changing my room from the second floor to the first would have required a computer entry and would have added to his "end-of-the-shift" paperwork.

The following morning I was greeted by a somewhat more friendly clerk. As I checked out, she pushed a brochure into my hand. "This is your 'Return Club' membership," she said. "It's good for a free night's stay." I took the brochure, said thank you to the clerk, and thought to myself, "It would have to be free if I stay here again."

Later I looked at the brochure. If I would give the motel chain more than 70 pieces of personal data including salary and credit information and stay 11 nights, I could earn a free room. "Earn" is the right word, I thought as I threw away the brochure.

Got something to buy or sell? Read the classifieds!



Office (806)481-3846
 Mobile (505)760-1495

Richland Hills Addition, Approx. 2500 sq. ft. 3-2-2 Nice Brick Home, basement, fenced backyard, ref. air & central heat, lots of storage, assumable loan to qualified buyer. OWNER SAYS SELL!!! Call for appointment. Low \$80's! FARMERS WATCH FOR OUR NEW FARM ADS IN THE NEAR FUTURE!

Nieman Realty
 116 E. Ave. C George Nieman, Broker 272-5286 or 272-5285

RICHLAND HILLS
 NICE RESIDENTIAL LOTS...\$5,000 UP
 JUST LISTED-3-2-2 Brick Home, corner lot, Cent. A&H, built-ins, FP, spklr. sys., fenced yd., MUCH MORE!!! \$70K-RH-1

COUNTRY CLUB - Very Nice- 3-2-2 Brick Home, 2200'+ lv. area, Cent A&H, built-ins, FP, thermal windows, auto. spklr. sys., st. bldg., fenced yd., & nicely landscaped. \$70's!!

HIGH SCHOOL
 JUST LISTED- NICE 3-2-1 carport Home, Cent. A&H, built-ins, basement, ceiling fans, water softener, covered patio w/gas grill, fenced yd., & one bdrm. apartment. \$45K!!!! HS-12

JUST LISTED- NICE 3-2-2 Brick, 2150'+ lv. area, Heat pump, built-ins, Ceiling fans, nice carpets, fenced yd. MORE!! \$70K HS-6

3-2-1 Brick, Cent. A&H, ceiling fans fenced yd., MORE!!!! \$20's. HS-3

NICE 3-1-1 carport home, 11 furnace heat, window cover, nice carpet. \$110-5

3-1-1 carport Home, heat pump, storm windows, & doors. MUCH MORE. \$20's!!!! HS-4

JUST LISTED Large 3-2-2 Home, Cent. A&H, FP, 1800+ lv. area. fenced yd. \$30K!!!! HS-9

JUST LISTED-VERY NICE 3,000+ sq. ft. Home, recently remodeled, built-ins, heat pump, Fp, spklr. system, storage bldg, fenced yd., & MUCH MORE!!!! \$ 70's!!!! HS_11

HIGHLAND AREA
 Nice 4-2-1 Brick, Cent. A&H, built-ins, fans, encl. patio, man. spkll. sys., gas grill, st. bldg., fenced yd. \$60's!! HL-5

LENAU ADDITION
 VERY NICE 3-2-1 Home, Heat Pump, storm windows & doors, extra insulation, nice carpet, spklr. sys. & MORE!!! \$30's!!!! L-2

3-2-1 carport Home, Cent. heat, evap. air, built-ins, cov. patio, st. bldg, travel trailer cober. VERY NICE!!! \$30's!! L-3

JUST LISTED-Nice 2-1-1 Home, new interior paint, new carpet, fenced yd., storage bldg. MORE!!!! \$20's!! L-4

JUST LISTED 2-1-1 carport Home, floor furnace heat, nice carpet, deck area, fenced yd. \$17K!!!! L-1

RURAL HOMES
 VERY NICE 3-4-2 Brick Home on pavement, edge of town, 1.2 acres, 3,000'+lv. area, cent. heat, evap. air, built-ins, Fp, auto. spklr. sys., stor. bldgs.. Possible Owner Financing!!!! HR1

VERY NICE 3-2-2 Brick Home on pavement, edge of town, 4.4 acres, 30' x 40' shop, barns, corrals, storage, MUCH MORE!! HR-2

ASK ABOUT OUR COMMERCIAL LISTINGS!!!

PLEASANT VALLEY- 160 acres. 8" well Lindsey circle!!!!

PLEASANT VALLEY- large bldg. on 1.4 acres on pavement, could be remodeled for residence.

ESTABLISHED BUSINESS, 40+ yrs., lot bldg., furniture, fixtures, & inventory. Books open to qualified buyer!!!

Storage rooms available. Call Ted Barnhill. 272-4903.

B11-23s-tfc
 Good used Carrier 4 ton heating and air conditioner unit. Coke machine that will dispense bottles and cans. 2 electric wall mount heaters new in box. Call 272-5109 after 6:00 PM. M11-33s-
FOR SALE - Electric lift recliner, wheel chair, 6 drawer desk. 272-3256. G11-33t-4tp
 For Sale Sears stationary bicycle. Excellent condition, used very little. 272-3388. M11-34s-2tp

Miscellaneous
 Custom shredding, discing and drilling. Call 925-6742. Evenings. M8-30t-9tc
 I want to sew your wheat. 272-4132. Y15-32s-6tp

Fresh Okra & tomatoes for sale. Picked daily 272-5981 after 5 p.m. Will deliver locally. M15-30s-10tc
 Old mule train yearbooks: 1956-57-58-59. Call Luke 745-1396. D11-34t-4tc

Ben Franklin®

Our Variety Shows

Dollar Days

- Clean & Clear, 11 oz. Shampoo \$1
- Clean & Clear, 11 oz. Conditioner \$1
- Potpourri Carpet & Room Society Hill, 20 oz. Deodorizer \$1
- Address Book \$1
- Painters Caps \$1
- Puzzle Book \$1
- Stoneware Coffee Mugs \$1
- Cologate, 13.2 oz., 20% more FREE Shaving Cream \$1
- Travel Bath Set \$1
- Rain Poncho \$1
- Cows, Soft & Chewy Dairy, Individual Wrapped Butter Toffees 7 oz. bag \$1
- Individual Wrapped, Choco-Chips, Apple, Oatmeal, Banana, Devil Food Bishops Cakes, 9 1/4 oz., \$1
- Choice Spearment, Assorted Fruit, Wintergreen 10 Ct. Pkg. Mints \$1
- Flintstones Bedrock With Peanuts, 5 oz. box Butter Carmel Corn Puffs \$1
- Red Heart Yarn 3 1/2 oz. skien \$1
- Teen Spirit, by Meirmon Shampoo, Conditioner 12 oz. \$1
- 1 lb. Rubber Bands by Eco \$1
- Cellophane Tape, 4 pk. Dispenser \$1
- 250,000 words & meanings Webster's Dictionary \$1
- Style & Sizes, Assorted shades & sizes Panty Hose \$1
- Tire Gauge 10-100 lbs. \$1
- Snakes & Ladders, Checkers, Chess, Chinese Checkers, Tic Tac Toe, Pachassi Assorted Travel Games - \$1
- Hysteria, Horse Race, Tricky Triangle, Elimination, Mill, Peg Out, Tic Tac Toe Brain Testers - \$1
- Play Color Clay 12 colors per pkg. \$1
- Tons of Fun**
- Coloring & Activity Book Reg. \$4.95 \$1
- 64 Ct. Justin Crayons \$1
- 24 Ct. Color Chaulk \$1
- Plastic Watering Cans \$1
- Royal Oak Charcoal Lighter 32 oz. \$1
- Make up Mirror \$1
- Royal II Disposable Razors \$1
- Economy Super Value Combs 20 Ct. \$1
- Sexy Touch Enriched With Aloe Hair Styling 16 oz. \$1
- Cosmetic Brushes 6 assorted \$1
- Embery, Clippers, File Nail Care Assessories \$1
- 10 Emry Boards \$1



Possession, 2.75 oz. Our version of Obsession for Men Deodorant Stick \$1

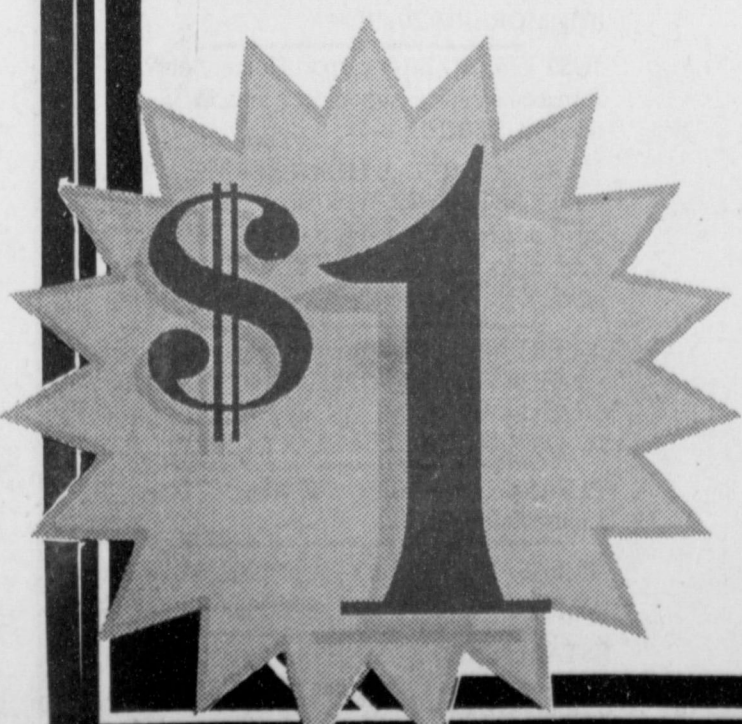
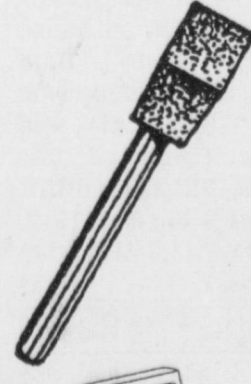
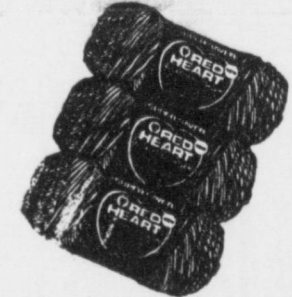
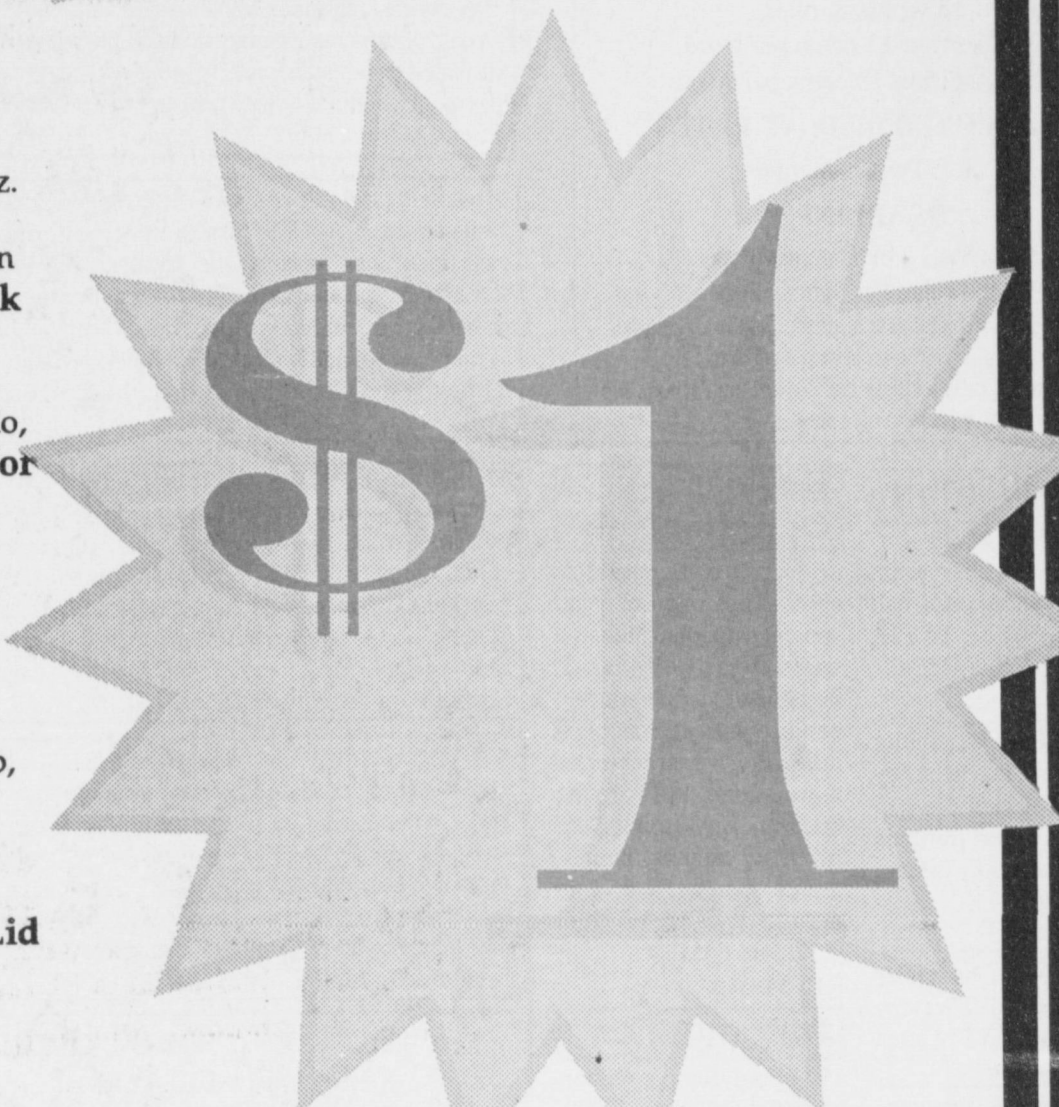
Inspired by Giorgio, Voile Cologne for Men \$1

15 Ct. Fine Line Markers \$1

Travel Kits, Toothbrush, Soap, Makeup \$1

Travel Mug w/Lid \$1

- Lander Cocoa Butter Creme 16 oz. \$1
- Lander Original Skin Cream 16 oz. \$1
- Lander White Petroleum Jelly 13 oz. \$1
- Lander Aloe Vera Lotion 33.8 btl. \$1
- Lander Coco Butter Soap 4 pk. \$1
- Lander Liquid Soap 20 oz. \$1
- Lander Milk and Honey Bubble Bath 32 oz. \$1
- Lander, peppermint & refreshing mint Mouth Wash & Gargle 24 oz. \$1
- Lander Baby Shampoo 15 oz. gentle & tearless \$1
- assorted shapes and colors, Novelty Soap, 8 pc \$1
- Show-offs Barrettes 18 pk \$1
- Landers Aloe Vera Bubble Bath 32 oz. \$1
- Utility Flashlight \$1
- Set of 5 Measuring Cups \$1
- Mustard & Ketchup Dispensers \$1 set
- Set of Six Spatulas assorted sizes \$1
- Angled Assorted Colors Tooth Brushes 8 pk. \$1
- 6 pk, Soft Spun Bath Tissue \$1
- Perfect To Mix With Diet Drinks, Handy Shaker w/straw hole \$1
- 6 styles to choose from Fun Kiddy Box \$1
- Soap Dish \$1
- Corn on the Cob Holders 12 ct. \$1
- 4 Rolls, Asst. Colors PVC Tape \$1
- 36 Spools Sewing Thread \$1
- 30 Suction Cups w/Hooks \$1
- 1", 2", 3" Plastic Handle 3 Pc. Foam Brush \$1
- Solids, Prints, 45" width Assorted Fabric yd. \$1
- 500 Ct. Cotton Balls \$1
- Pizza Cutter \$1



Ben Franklin®

Our Variety Shows

2104 W. American Blvd. Muleshoe 272-3855
Mon.-Sat. 8 a.m. - 8 p.m. Sun. 12 - 5 p.m.

